

Investigation of complex coastline geometry impact on the evolution of storm surges along the east coast of India: A sensitivity study using a numerical model

Pawan Tiwari^{1*}, Ambarukhana D. Rao¹, Smita Pandey¹ and Vimlesh Pant¹

5 ¹Centre for Atmospheric Sciences, Indian Institute of Technology Delhi, India.

Correspondence to: Pawan Tiwari (ptiwari474@gmail.com)

Abstract. Comprehensive investigation is made on the generation of storm surges along the coast in response to complex coastline geometry using a standalone ADCIRC model. The study initially deals with sensitivity experiments by using various idealized concave/ convex model domains with the same intensity of parallel cyclone tracks. It demonstrates that a sharp curvature along with the landfall location of each track within the domain has more influence on the surge evolution. Peak surges (PS) are generated in the domain for the tracks possessing strong onshore winds, while intense alongshore winds are responsible for PS spreading along the coast. The time evolution of both positive and negative surges along the coast is also demonstrated. The propagation of energy per unit length associated with surge waves is computed for concave coasts to explain the funnelling effect. Development of PS is also seen with actual intricate coastal stretch having concave and convex coastlines along the east coast of India using parallel tracks, which is consistent with that of idealized experiments. Further simulations are carried out along real coastlines with different approach angles of the track exhibit that maximum PS are not always aligned to the right of the track. Depending on track angle, PS may also develop on the left side. Experiments on real coastlines also indicate that PS in the concave coastline is more influenced by cyclone's radius of maximum winds. Surge generation with different radius of maximum winds is seen to the left side of the track though the cyclone is not making a landfall in this region. Simulation with a recent cyclone, Michaung reveals that occurrence of storm tides is also seen to left of the landfall as the track moves parallel to the coast, which agrees with the observations. This study signifies importance of local coastline configuration, particularly in the concave coasts, on the intensification of storm surges.

25 **1 Introduction**

The shape of the coastline, whether concave or convex, significantly influences the generation and propagation of storm surges (SS) during any extreme weather events such as tropical cyclones (TC). Concave coastlines are curved inward, which tends to



focus and funnel SS waters into a narrower channel, amplifying surge heights and their impact on the coastal regions. The concave coastline forces the storm waters to converge as any cyclone approaches the coast, resulting in a buildup of water levels that can cause more severe flooding near coastal areas. On the other hand, convex coastlines, which protrude outward, can help dissipate the energy of incoming SS by spreading the water over a wider area. The associated dispersion may reduce the SS's intensity, mitigating its impact on coastal communities. Hence, concave coastlines amplify SS heights, which may pose a greater risk to coastal populations and infrastructure. In contrast, convex coastlines serve as natural buffers, dispersing and reducing the impact of SS.

There have been many studies in the past on the generation of SS along the coast, which depend on many factors, such as cyclone intensity (Zhong et al., 2010; Resio and Westerink, 2008), forward speed (Rego and Li, 2009), R_{max} , known as the radius of maximum winds (Peng et al., 2004, 2006), orientation of the coastline (Dube et al., 1982), coastal bathymetry (Johns et al., 1983), width and slope of the continental shelf (Poulose et al., 2017), and angle at which the cyclone is crossing the coast (Zhang, 2012). Several researchers developed earlier many numerical models to realize the contribution of various factors in the development of SS in the Bay of Bengal (BoB) (Das, 1972; Johns et al., 1983; Dube et al., 1994; Rao et al., 1997; Murty and Kolukula, 2023; Pandey and Rao, 2018; Pandey et al., 2021; Tiwari et al., 2024).

Ueno (1981) developed a simplified model, investigated the effect of SS over a curved coastline, and learned that even slightly curved shoreline produces more SS than straight coasts. According to Dassallas and Lee (2019), regions with concave coastlines are prone to SS much higher than the straight coastline of the same topography and bathymetry. It is further revealed that the flood from SS is more likely to occur if the typhoon approaches perpendicularly than to that of the parallel coastline. Xuan et al. (2021) discussed that the SS enhancement is highly dependent upon coastline shape, with flaring (convex) coastlines suffering from higher SS mostly when the TCs strengthen into severe cyclones. While for the arch (concave) coastline, the higher surge enhancement occurs during severe or super typhoons. Hope et al. (2013) found that the translation speed and coastline geometry significantly influence maximum SS heights, with slender bays showing increased susceptibility to extreme SS from fast-moving hurricanes, while short and wide bays exhibited elevated SS levels during slower storms. According to Qian et al. (2024), the shape of the coast is majorly represented by the bay category, leading to high maximum SS in narrow bays when a TC strikes. For instance, longer and broader bays are prone to higher SS during slow TC events. Under certain conditions, square bay cases showed utterly different behavior compared to open-coast cases, and as a result, maximum SS was lowered. Subramaniam et al. (2019) reported that in the case of convex dikes, the wave run-up is increased at the center as the opening angle increases. Contrary to this, for concave dikes, wave run-up enhances as the opening angle gets narrower. As studied by Eurotop (2018), the concave curvature may contribute to the accumulation of wave energy, enhancing the wave's run-up and overtopping. The opposite is the case for convex curvature because the distribution of wave energy affects the wave run-up, and overtopping will consequently decrease.



Different coastlines affect the vulnerability due to tsunami waves, which are also long waves like SS. The study of Zhao and Niu (2022) highlighted that when a tsunami wave approaches a concave coastline, it meets with the uniqueness of an environment that irregularly concentrates and redirects the wave's energy. The waves are tightly squeezed in the concave coast, which creates a natural amplifier that makes them higher as they approach the center of the coastline. Salaree et al. (2021) also highlighted how the coast's concave geometry concentrates the tsunami wave amplitudes with idealized bathymetry, consistent with edge wave theory (Munk et al., 1956).

Sebastian et al. (2019) examined the concave coast features on SS generation through net-flux movement computation. A concave-shaped coastline, along with a cyclonic approach angle, leads to an impact within the concave coast that contributes to the complicated behavior of non-linear surges in the sites situated inside the concave coast among the entire coastlines. Pandey & Rao (2019) performed a numerical assessment of approaching hurricane tracks at different angles. They unveiled that the higher SS and its interactions with tides and wind waves are associated with the perpendicular cyclone track. Irish et al. (2008) employ numerical simulations to quantify the effect of storm track variation on SS in different slope areas along the Gulf of Mexico as the northern gulf boundary has a linear coastline orientated east-west. Numerical simulations of Flierl and Robinson (1972) for the northern part of BoB demonstrated that surge heights depend on the track angle between two perpendicular straight beaches. All prior studies concerned only with the SS development along the actual concave coastlines. However, no mention is made of the impact of any kind of irregular coastal stretch associated with the cyclone approach angle on the generation mechanism of SS.

The coastline along India's east coast covers about 2500 km with most irregular geometries like concave, convex, and straight coastlines of varying horizontal dimensions. Several cyclones in the past hit these coastal stretches with different approach angles. Some of the cyclones move parallel to these areas without making any landfall. They can generate significant SS and associated coastal inundation, particularly on the left side of the track. Hence, it emphasizes the influence of complex coastal geometry and cyclone approach angle on the generation of SS. Owing to its significance, the present study thoroughly investigates the role of different coastal shapes and approach angles (parallel and oblique) in generating SS over idealized and natural coastlines.

The study examines the evolution of SS by considering idealized parallel tracks based on the information from the historical cyclone track data over the BoB. The study uses the advanced circulation (ADCIRC) model to analyse peak surge (PS) trends over various dimensions of concave/convex coasts. The experiments are divided into three sections; the first one is sensitivity analysis based on idealized and different forms of concave/convex shorelines along with parallel cyclone tracks landfalling in these domains. The second part considers the actual shoreline representing the east coast of India by taking oblique, perpendicular, and parallel tracks concerning the landfall location. The last experiment computes and validates storm tides (ST) for the recent cyclone, named Michaung (RSMC report, 2023), making landfall in one of the concave regions of the east



90 coast of India. The present investigation helps in understanding the associated dynamics, which is crucial for effective coastal planning, hazard mitigation, and disaster preparedness efforts in vulnerable regions.

2 Synoptic History of the Michaung Cyclone

The Michaung cyclone initially formed as cyclonic circulation in the neighboring south Thailand on 26th November 2023. Following a westward path by 1st December, it was strengthened into a depression over the southeast BoB. The cyclone
95 continued its northwestward path till 4th December, off the coastlines of north Tamil Nadu and south Andhra Pradesh. It was strengthened further into a severe cyclonic storm (SCS) over the west-central and adjacent southwest BoB. Later, it made landfall as SCS near Bapatla in the afternoon of 5th December with maximum sustained winds of 90-100 km/h. It was then moved nearly northward, parallel close to the coast of south Andhra Pradesh. In the North Indian Ocean, the Michaung was the sixth cyclone that formed in the same year, with maximum sustained winds surpassing 34 knots (63 km/h). A lot of flooding
100 was observed around Chennai due to cyclone-induced precipitation and intense gale winds that hit the coastal regions of south Andhra Pradesh and north Tamil Nadu. A maximum SS of about 1.0 -1.5m was observed and flooded low-lying parts of south coastal Andhra Pradesh. The entire cyclone track covers a long distance of about 1150 km (RSMC report, 2023).

3 Model Description

105 3.1 Hydrodynamical surge model

The study utilizes the 2D depth-integrated hydrodynamic Advanced Circulation (ADCIRC-2DDI) model developed by (Luettich et al., 1992; and Kolar et al., 1994a). Luettich et al. (1992) provided a detailed explanation of the ADCIRC-2DDI hydrodynamic model. More information about the model can be found at (<https://adcirc.org/home/documentation/users-manual-v50/>). The momentum and continuity equations of the ADCIRC-2DDI model are solved on an unstructured grid using
110 the Galerkin finite-element method. The model solves the generalized wave continuity equation (GWCE) to determine the maximum water elevation and the vertically integrated momentum equation for the currents. The model's governing equations are approximated using Boussinesq, incompressibility, and hydrostatic pressure. The ADCIRC incorporates boundary conditions such as normal flux per unit width and free-surface elevation from different tidal components at the open boundary. The model employs a hybrid bottom friction formulation with a minimum drag coefficient of 0.0015 to compute SS. The
115 duration of the ramp function for all simulations is around one day. The weighting factor (τ_0) in GWCE is 0.05, according to Pandey and Rao (2018), while the eddy viscosity is $2 \text{ m}^2/\text{s}$, as reported by Cyriac et al. (2018). The simulations utilize the wind drag formulation proposed by Garratt (1977).

3.2 Holland wind module



120 Wind stress and horizontal variations in surface air pressure primarily produce SS. The inverse barometric effect results from
the impact of changing air pressure on the sea surface. The sea level rises one cm for each hPa decrease in atmospheric pressure.
The wind load on the sea surface leads to a notable fluctuation in sea level, influenced by the maximum wind speed and
geographic distribution of winds. The study uses a cutting-edge wind module (Holland et al., 2010, cited as H10) as an input
in the model to work out horizontal cyclonic winds. H10 is a revised, more advanced version of the earlier model by Holland
125 (1980) known as (H80) that uses an improved estimation of the wind speed and wind direction near the cyclone eye, optimizes
the information that is essential to determine the R_{\max} , resolves bimodal wind profiles and provides higher spatial resolution
for a more precise assessment of the wind parameters in TCs. Murty et al. (2020) used the H10 wind module in the
hydrodynamic and wave model in the BoB.

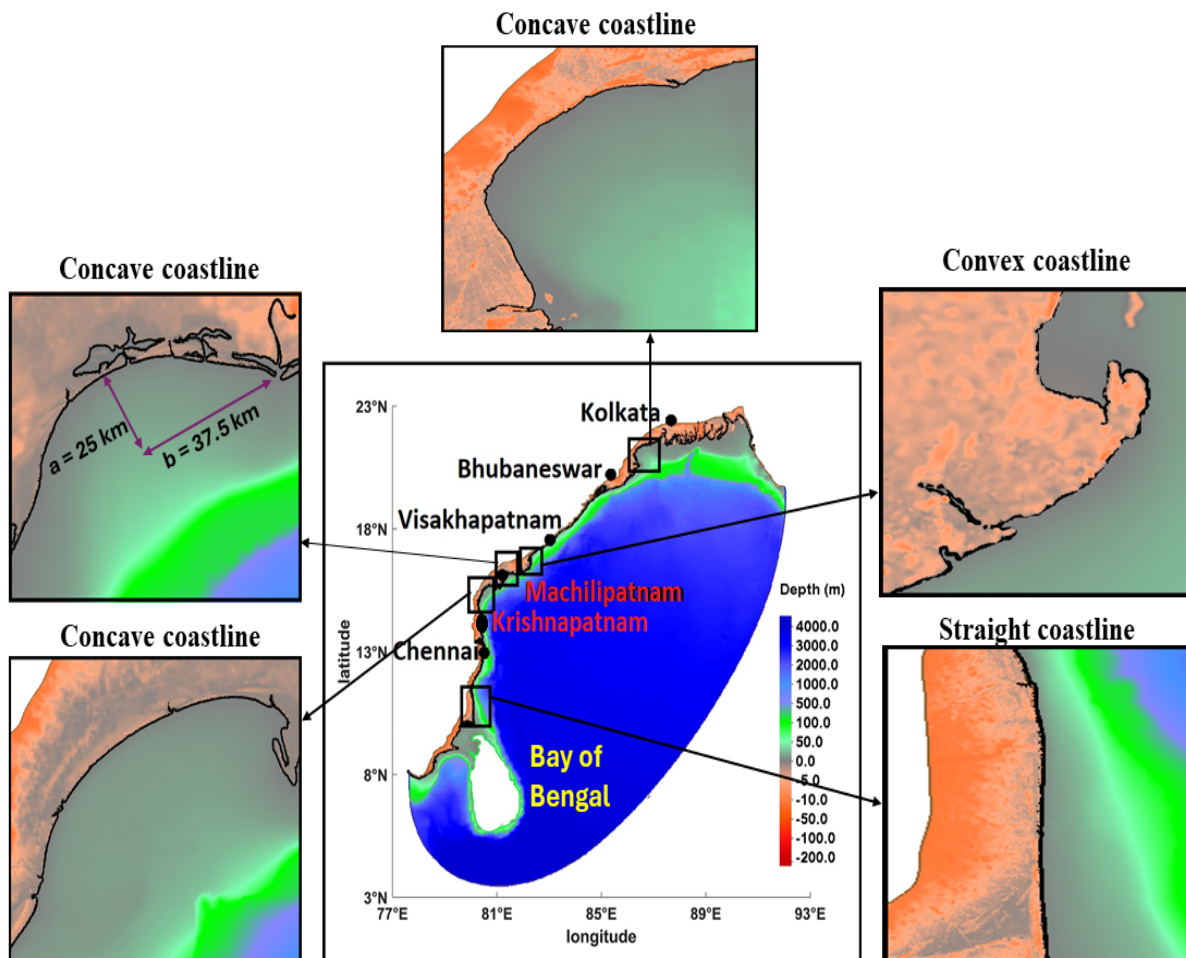
130 4. Data and Methodology

The east coast of India has a very irregular coastline consisting of concave, convex, and straight coastlines, as shown in Fig.
1. To understand the effect of concave, convex, and straight coastlines on the generation of SS, the concave-shaped coastline
near Machilipatnam is selected for the study as this area is frequently affected by the SS. The bathymetry of the region also
follows a concave-shaped coastline. For the first set of experiments (Exp1), different ellipse-shaped concave and convex
135 meshes are designed with distinct a and b values, as shown in Fig. 2. Each designed shape has different a and b values than
the actual one because a and b values are very small in the actual coastline. Therefore, domains of concave/convex are designed
based on taking diverse a and b values. Fig. 2 (ii -vii) represent different concave shapes having $a = 50, 100, 150, 200, 250,$
and 300 km, respectively, retaining the same value of $b = 150$ km. These shapes are named CC1, CC2, CC3, CC4, CC5, and
CC6 respectively. Similarly, Fig. 2 (viii-xiii) represents a convex shape with $a = 50, 100, 150, 200, 250,$ and 300 km,
140 respectively, keeping the same $b = 150$ km. These shapes are named CV1, CV2, CV3, CV4, CV5, and CV6. While Fig. 2 (xiv)
shows the straight coastline domain. All the above concave and convex domains represent the ellipse shape, where b acts as
the semi-major axis and a as the semi-minor axis until $a = 150$ km (circular shape), after which a becomes the semi-major axis
and b as the semi-minor axis. A total of 13 meshes are created (6 for concave, 6 for convex, and one for straight coastline)
using the Surface Water Modeling System (SMS) application (<http://www.aquaveo.com/products>) with a maximum resolution
145 of 200 m near the coast and 15 km in the open ocean. The bathymetry of the domain is generated using a constant continental
shelf width of about 50 km, which is an average value for the region. The depth contours follow the coastline, with a maximum
depth of $3,500$ m in the open ocean. As shown in Figure 2(i), five idealized parallel cyclone tracks are considered with a
maximum pressure drop of 50 hPa. The translational speed of all cyclone tracks is maintained at about 13 km/hour, which is
the average speed of a cyclone observed in this region from past historical data. The wind field for each track is calculated by
150 taking a constant radius of maximum (R_{\max}) winds as 30 km, based on observation of the past cyclones in this region
(Mohapatra and Sharma, 2015; Sharma and Mohapatra, 2017). These tracks are named T_0 for the center, T_1 and T_2 for the
tracks making landfall 30 km and 50 km north of the center, and T_{-1} and T_{-2} for the tracks 30 km and 50 km south of the center



track, respectively. All the tracks make landfall at the same time (on the 48th hour). The curvature of the mesh increases from left to right for both the concave and convex-shaped coastlines, as shown in Fig. 2 (ii-xiii).

155 In the next set of experiments (Exp2), the model domain incorporates actual coastline geometry and prevailing bathymetry, which is complex in nature including coastal water features (river channels, lakes, etc.). The analysis area covers the east coast of India from (77.08° E, 8.36° N) to (93.36° E, 19.80° N) as shown in Fig. 1. The domain mesh uses several digital elevation models (DEM) (airborne, CARTO2, and SRTM30) and bathymetry datasets (ETOPO-2 and MIKE-CMAP) (Mandal et al., 2020).

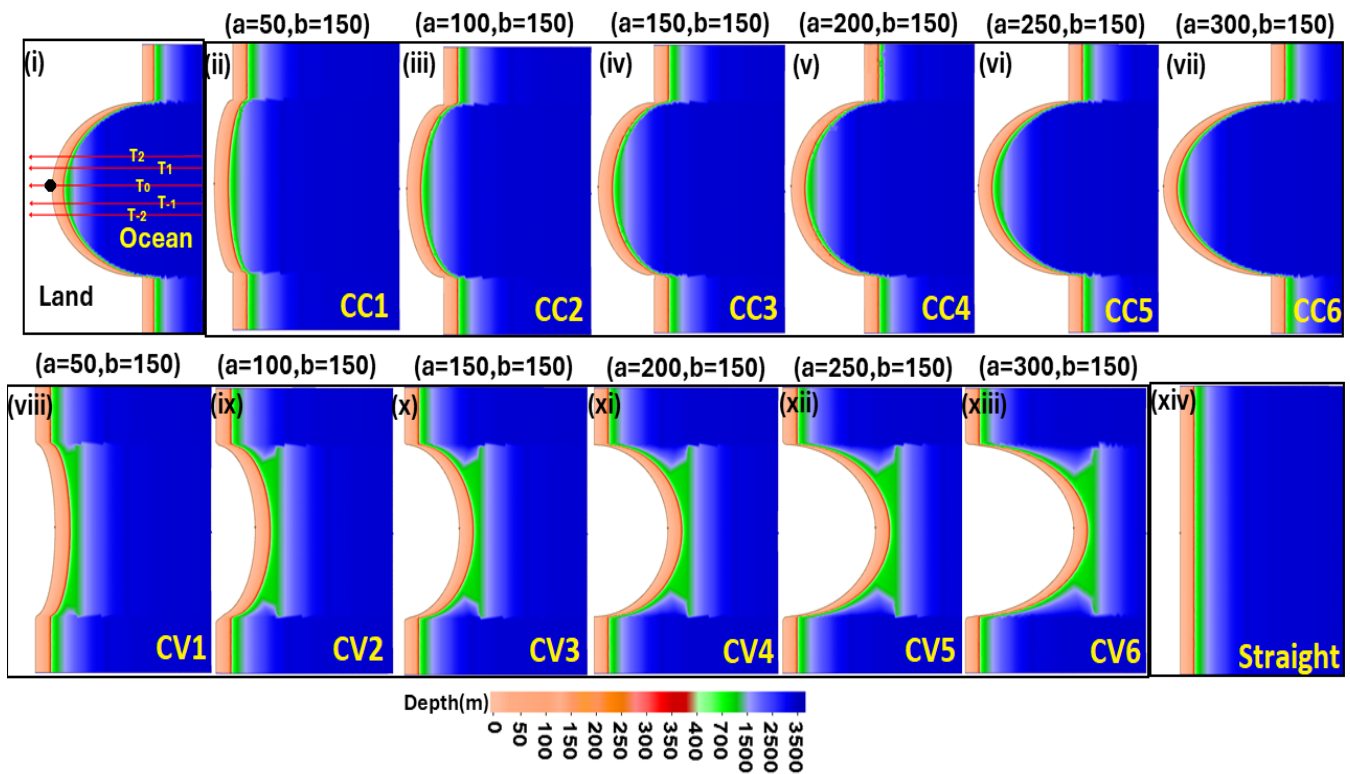


160 **Figure 1. Model domain along with different coastline geometry (zoomed)**

The model's landward boundary is considered up to 10 m contour from the shore assuming the surge never exceeds 10 m topo. The mesh has a high resolution near the coast of about 100 m and 18 km in the open ocean. Since the study focuses only on



the generation of surges at the coastline, the computation of associated coastal inundation is not a part of this study. Therefore, the land is masked to counteract river openings impact or the presence of other water bodies. For the sensitivity experiments, cyclones of parallel, oblique, and straight tracks are considered to have the same intensity as in the previous experiment. In the last set of experiments (Exp3), the recent cyclone of Michaung is considered, which made landfall in the same region.



170 **Figure 2. (i) Parallel tracks used in the study. Black dot (●) represents the vertex of the domain. (ii-vii) Shapes of idealized coastlines considered for concave (CC1-CC6), (viii-xiii) convex (CV1-CV6), and (xiv) straight coastlines.**

The information for the cyclone is taken from the IMD best track data (https://rsmcnewdelhi.imd.gov.in/report.php?internal_menu=MzM=). The INCOIS website provides the tide-gauge data used in this study (<https://incois.gov.in/portal/datainfo/drform.jsp>). In Exp1 and Exp2, the tides are not considered in the model; however, in Exp3, the tides are simulated in the model to compute storm tides (ST) during the Michaung cyclone period. The model uses 13 tidal constituents (K1, M2, N2, O1, P1, S2, K2, L2, 2 N2, MU2, NU2, Q1, and T2) at the open boundary, extracted from the "Le Provost" tidal database (Le Provost et al., 1998) for the simulations of tides. With these configurations, model simulations are performed with a standalone ADCIRC model to compute SS. However, we are interested in plotting



maximum SS at any location during the entire cyclone period, denoted here as PS. Among all PS values along the coast, the maximum PS is referred to as MPS.

180 5. Results and Discussion

5.1. Peak surge generation with parallel cyclone tracks in the idealized domains

Numerical simulations are carried out without tides using different parallel cyclone tracks as described for Exp1 to delineate its effect on the generation of SS in the concave/convex domain. The model is integrated for 3 days, out of which the cyclone makes landfall after 2.5 days. Figure 2(i) shows the computational domain along with five idealized parallel cyclone tracks making distinct landfalls within the domain. In this study, parallel tracks (T_{-2} to T_2) are considered and the central track, T_0 making landfall at the vertex of the domain. The distribution of the PS, while moving from track T_{-2} (south) to T_2 (north) within the same domain and between different shapes of the domain are depicted in Fig. 3.

The computed MPS between different concave domains is shown in Fig. 3(i). For the track T_{-2} , the value of MPS does not vary much for different shapes of the concave (CC1 to CC6), and the maximum difference of only 0.04 m is observed. It shows an increasing trend in MPS for the track T_{-1} as the curvature of the domain increases from CC1 to CC6 with a maximum difference of 0.075 m. Whereas for the central track T_0 , the value of PS increases up to CC4 and then decreases marginally. It is noticed the trend is seen linearly decreasing with the increase in curvature of the domain as the track moves further north.

The maximum difference in MPS between CC1 and CC6 is computed at about 0.38 and 0.60 m for the tracks T_1 and T_2 , respectively. The decrease may be attributed to the curvature of the coastline, which becomes more convergent from CC1 to CC6. This indicates that as the cyclone track and the landfall position move northward from the vertex/center of the concave coast, the MPS value decreases in correspondence with the increasing convergence. Further investigation is made in this regard and is explained in the subsequent sections.

Figure 3 (ii) shows the MPS trends for different convex domains. It is noted that there is a linear decrease trend in the PS from CV1 to CV6, and the decrease is substantial as the curvature increases. The maximum differences in MPS values between CV1 and CV6 range from 0.02 to 0.83 m for tracks T_{-2} to T_2 . It is observed that if the curvature of the convex shape increases, the MPS values for a particular track decrease significantly. This also underscores the influence of coastline shape and landfalling position on surge computation. Further, these simulations quantify the behavior of the MPS distribution for both concave and convex shapes.

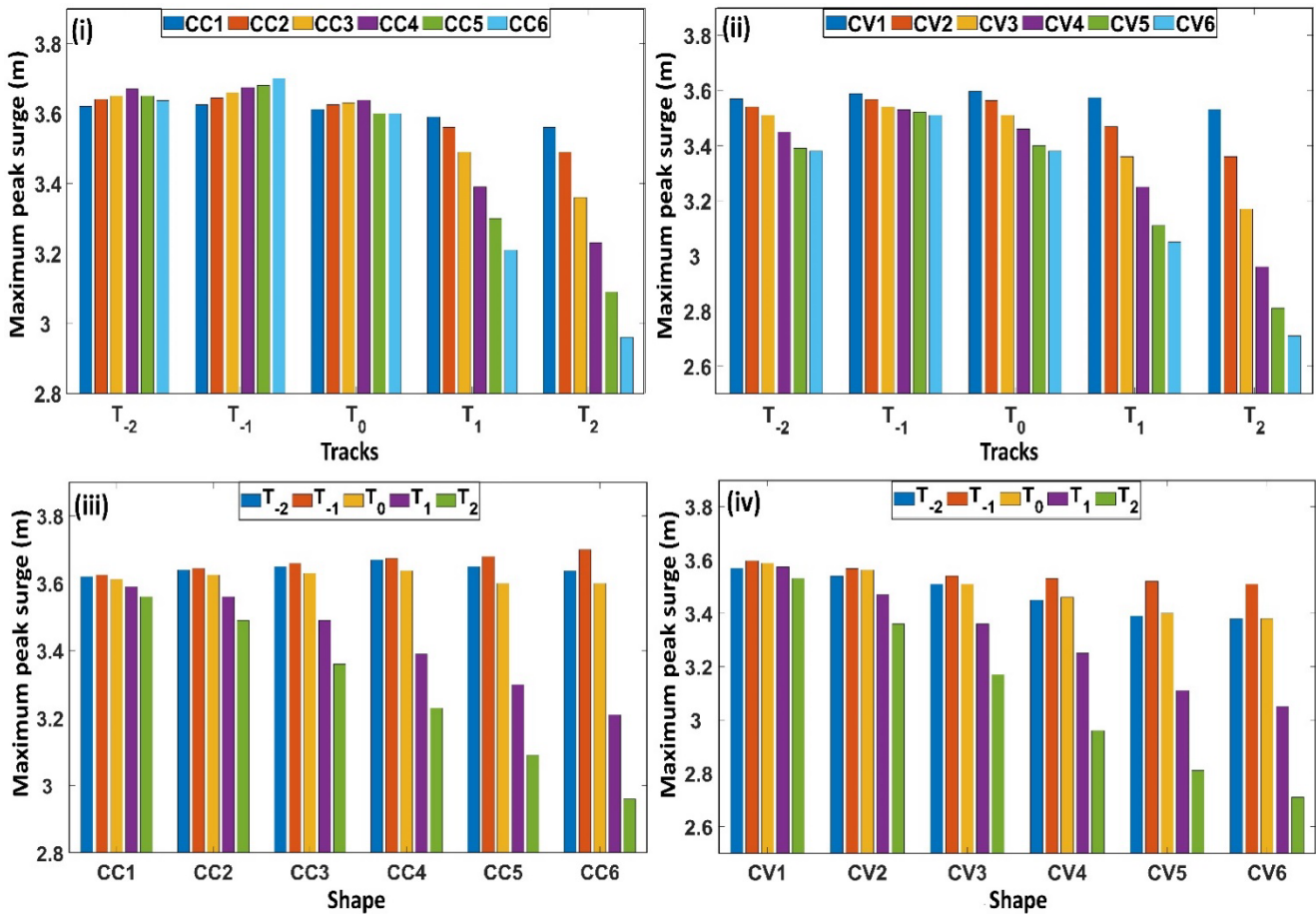


Figure 3. Generation of maximum peak surge (MPS) for different cyclone tracks for (i) concave and (ii) convex coastlines and within the (iii) concave and (iv) convex curvatures.

210 Figures 3 (iii-iv) depict the tendency of the MPS within the concave and convex domains, respectively, as the tracks move from south to north (T_{-2} to T_2). For all the concave/convex curvatures, the MPS increases initially from T_{-2} to T_{-1} followed by a decrease. However, the MPS is noticed at T_{-1} in both shapes, though it is more for the concave coast, being it is a convergent type. The value of MPS varies from 3.62 to 3.7 m for CC1 to CC6, while it ranges from 3.60 to 3.51 m for CV1 to CV6, as depicted in Fig 3 (iv). The reason for simulating higher MPS for T_{-1} may be due to the value of R_{max} that lies at the vertex of the curvature, as it provides maximum winds in this region. For the straight coastline (not shown here), the MPS is simulated at about 3.6m, which falls mostly between the concave and convex values. From the above analysis, it is noted that there is not much difference in the MPS computed for the CC1 as the track moves from south to north. However, the difference increases as the curvature increases for both concave and convex shapes. The maximum differences in MPS between parallel tracks (T_{-1} to T_2) within the domain for CC1 to CC6 are 0.07, 0.14, 0.30, 0.44, 0.59, and 0.74 m, respectively. For the convex

215

coastline domain CV1 to CV6 these values are 0.07, 0.20, 0.37, 0.57, 0.71, and 0.80 m. In general, the values of MPS increase as concave curvature increases because of the accumulation of more wave energy towards the coast. While energy gets distributed or dissipated on the convex coast with increasing curvature, which results in lower MPS along the coast.

220

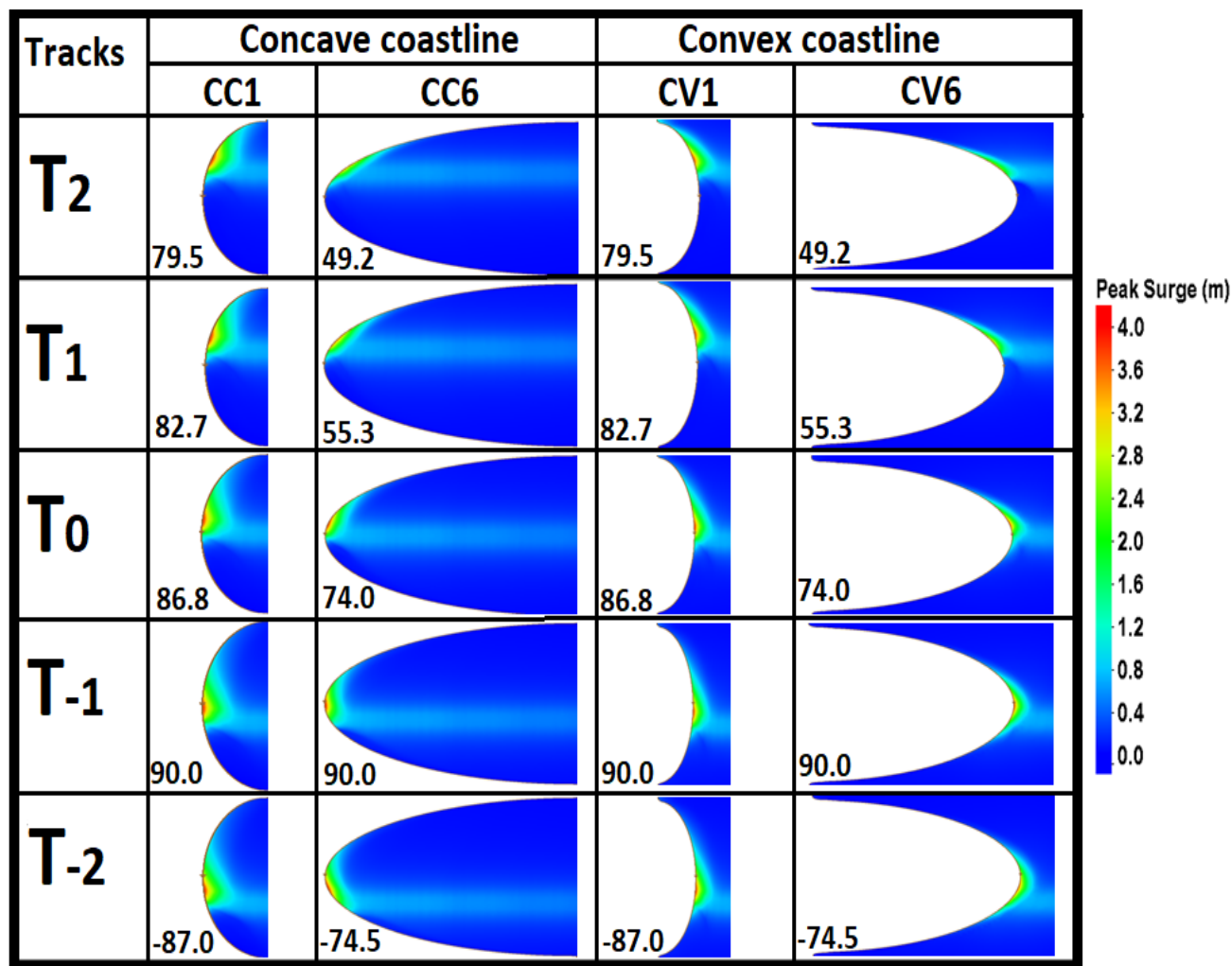


Figure 4. Peak surge generated along the coast for two distinct shapes of concave (CC1 and CC6) and convex (CV1 and CV6) coastlines. Numbers inside the plot represent tangent angle (θ) to the location of peak surge.

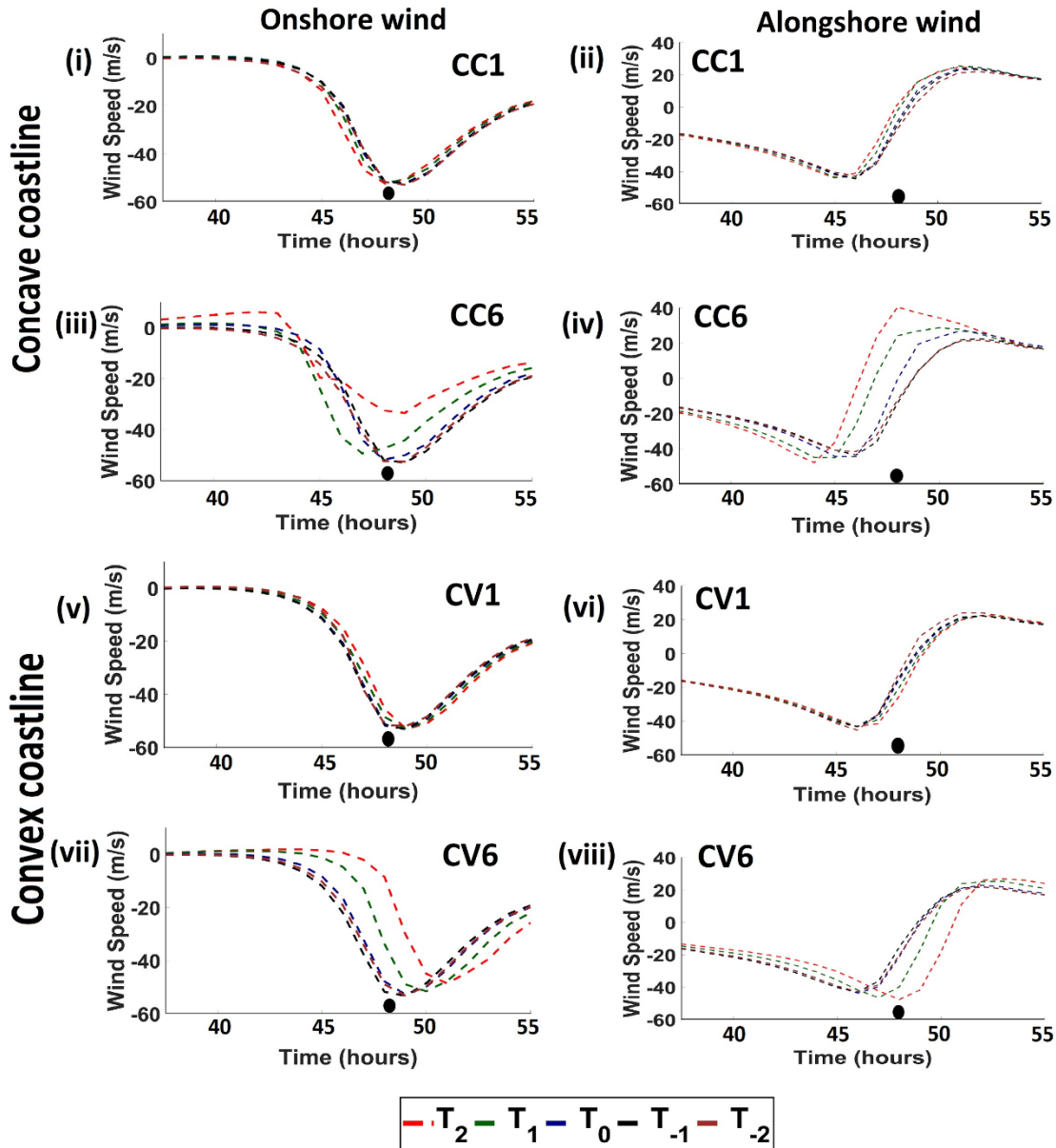
225 This analysis is further explained using a tangent angle at the location of MPS, which usually coincides with the location of maximum sustained winds along the coast based on the value of R_{max} . The detailed calculation of the angle corresponding to the location of the MPS for each track and shape of the domain is explained in the Supplementary Fig. S1. Tables S1 and S2 provide tangent angles corresponding to the location of MPS generated by various tracks against each domain. Table S1 shows



that the difference in the angle between T_{-1} and T_2 increases as the domain curvature increases from CC1 to CC6, while the
230 angle (negative) decreases for the track T_{-2} . A similar observation is also made for the convex domain, as given in Table S2.
These angles bear a significant effect on the generation of the MPS as shown in the tables. It is noted that the maximum
curvature domain (CC6) produces different MPS for different tracks (T_{-2} to T_2) compared to that of the minimum (CC1). This
infers that the curvature of the coast is playing a significant role in the generation of PS along with the landfall location of the
track in the domain. To understand further whether this angle is also responsible for the spread of the PS, the spatial distribution
235 of PS along the coast during the cyclone period is shown in Fig. 4 for the domains CC1, CC6, CV1, and CV6 as these two
domains represent the least and the maximum curvature domains. It is noted that the least spread of PS is seen at the vertex of
the domain when the angle is maximum ($\theta = 90^\circ$) and is more as the theta decreases on either side of it. It infers that the spread
along the coast increases as the curvature of the domain increases.

5.2. Onshore and alongshore winds.

240 As cyclone winds are the primary forcing for the generation of the SS, it is important to investigate the wind distribution along
the coast with reference to each curvature of the domain. For this, wind components onshore and alongshore are estimated at
the location of the MPS and how these components vary due to different shapes of concave and convex coasts. These
components provide an insight into the PS and its distribution along the coast. Storm waters are driven toward the coast by
onshore winds originating at sea. Due to the accumulation of water caused by these winds along the coast, the PS enhanced.
245 However, the alongshore wind component influences the distribution/spread and direction of water movement along the coast.
Hence, the onshore wind plays a vital role in developing SS at the coast, while the alongshore wind is responsible for the
spread of the surges along the coast. Figure 5 represents the temporal variation of the onshore and alongshore wind components
for the domains CC1, CC6, CV1, and CV6 calculated at the location of MPS. From Figure 5, it is noted that the onshore wind,
in general, increases as the cyclone approaches the coast. The negative sign represents the onshore wind towards the west
250 (positive towards the east) and the alongshore wind towards the south (positive towards the north). At the time of landfall, the
onshore winds for the CC1 are -45.1, -49.0, -48.2, -47.7, and -46.7 m/s, and the alongshore wind is -25.0, -15.0, -14.3, -15.7
and -23 m/s for the tracks T_{-2} , T_{-1} , T_0 , T_1 , and T_2 , respectively. Similarly, the CC6 experiences onshore winds of -49.2, -52.3,
-46.0, -40.0, and -32.4 m/s, and alongshore winds of -15.0, -4.0, -22.0, 27, and 40.4 m/s for the tracks T_{-2} , T_{-1} , T_0 , T_1 , and T_2 .
A higher onshore wind always results in greater MPS (refer: Fig. 3), as depicted in Fig. 5. Although the maximum wind speed
255 of 54 m/s of the cyclone is used for all the tracks, the generation of SS depends upon the strength of the onshore wind at the
time of landfall, which varies with the curvature. For the convex domain (CV1), there is not much change in the onshore wind
for all the tracks, which is same as CC1.



260

Figure 5. Time series of onshore and alongshore cyclonic wind components for (i-ii) CC1, (iii-iv) CC6, (v-vi) CV1 and (vii-viii) CV6. Black dot (●) represents the landfall time.

265 However, the change becomes significant as the curvature increases, as shown in Fig. 5(vii). At the time of landfall, the onshore winds for the CV1 are -45.0, -46.0, -44.0, -43.6, and -43.2 m/s, and the alongshore wind is -24.1, -23.2, -26.0, -26.8 and -27.3 m/s for the tracks T-2, T-1, T0, T1, and T2, respectively as shown in Fig. 5 (v-vi). Similarly, the CV6 experiences onshore winds



of -41.5, -44.8, -40.0, -33.8 and -30.0 m/s and alongshore winds of -29.3, -25.7, -30.5, -39.8 and -41.6 m/s for the tracks T₋₂, T₋₁, T₀, T₁, and T₂ as shown in Fig. 5(vii-viii). Similarly, the onshore wind does not much change for CV1, but it makes significant changes for CV6. From all the cases discussed above, the maximum onshore wind is noticed for track T₋₁ as the R_{max} coincides with the vertex of the curvature. Hence, the occurrence of the MPS is observed for the track T₋₁. It is also noted that the distribution of the PS along the coast increases as the alongshore wind enhances, which is evident from Fig. 4(b).

5.3 Generation of positive and negative surges along the coast.

Figures 6(i-xx) describes generation of positive and negative surges along the coast during the cyclonic period for the shapes CC1, CC6, CV1 and CV6 for all the tracks T₂ to T₋₂. The distance along the coast is considered with reference to the landfall location, implying positive values on the right and negative on the left. Figures 6(i-v) describes surge development for CC1 for all the tracks. It is observed that the positive surge occurs close to the landfall on the right side, while the negative surge on the left generates about two hours prior to the landfall time. Similar observation is made from Fig. 6(vi-x) for CC6. The simulations for different concave coasts (CC1, CC6) suggest that the positive surge decreases for the tracks from T₋₂ to T₂, while the negative surge increases. This can be attributed due to less oceanic area available in the domain to drag water masses by the onshore winds towards the coast and offshore winds away from the coast.

In the case of convex coasts (CV1, CV6), the surges generated along the coast, in general, diverge/spread instead of convergence seen as in the case of concave coasts. As the curvature increases from CV1 to CV6, a reduction of peak surge is seen for all the tracks because of lower onshore and higher along shore winds (refer Fig. 5(v-viii)). The onshore winds are responsible for the accumulation of surge waters towards the concave coasts, while the alongshore winds for divergence/spreading of the waters along the convex coasts.

285

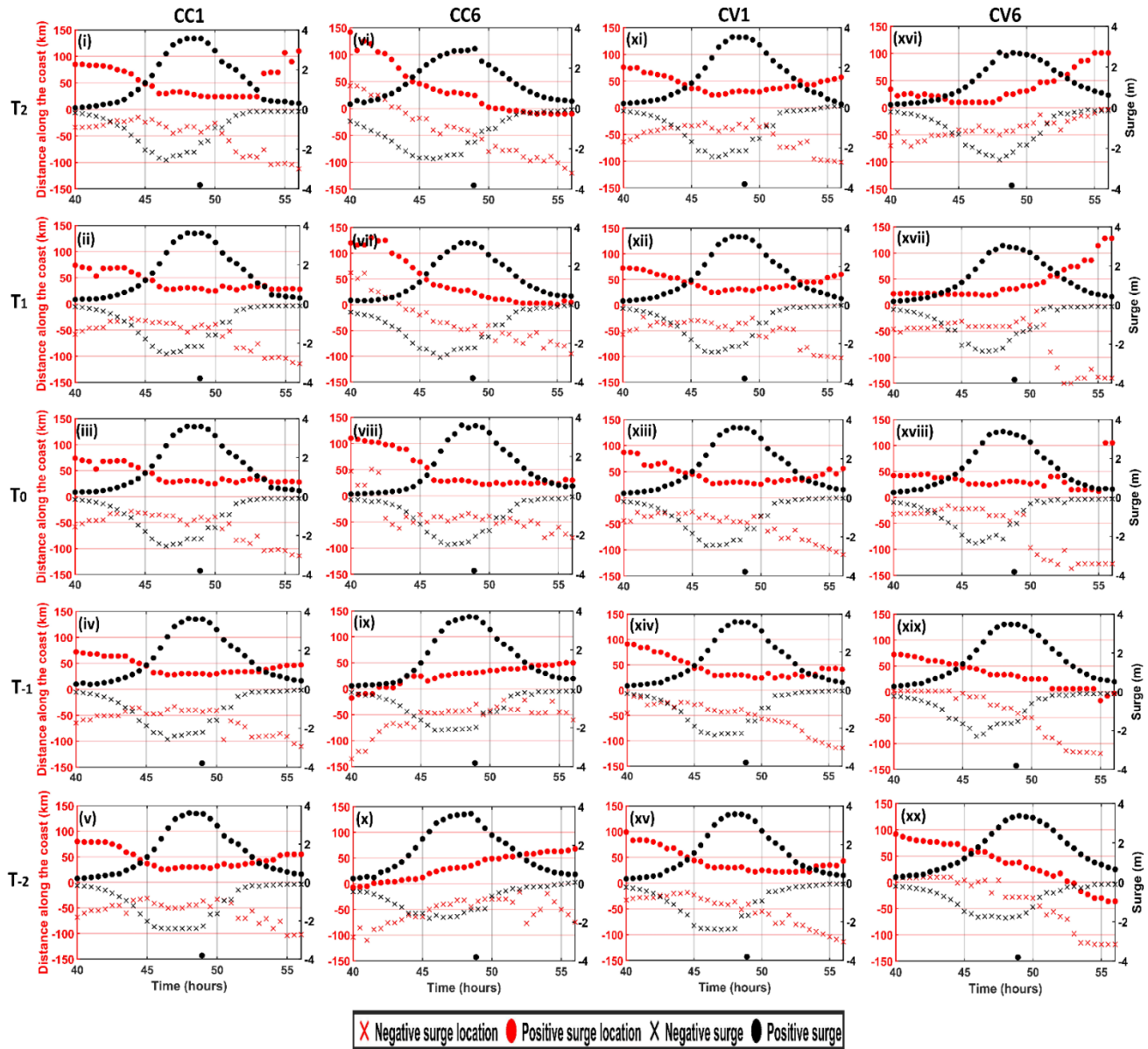


Figure 6 (i-xx). Time of occurrence of surges along the coast with reference to the landfall location for CC1, CC6, CV1 and CV6 for all the tracks. Black dot (●) represents the landfall time.

290 5.4 Computation of energy density per unit length of a surge wave in the concave coast

As observed from the earlier simulations, the value of PS in the concave domain increases as the storm surge waves are propagated towards the coast. The increase in the SS can be related to an increase in the corresponding energy flux in the



domain. If the shape of the domain becomes narrower and shallower away from the sea, the surge will increase up in the domain. This may be known as the funnelling effect. If we neglect frictional losses, the wave energy flux will theoretically remain constant as the wave progresses up in the domain, and the wave energy density is given by:

$$E = \frac{\rho g A^2}{2} \quad (1)$$

where, A is the amplitude of the surge wave; ρ is the density of the water and g is the acceleration due to gravity. The energy per unit length of the domain is given by (EB) , where B is the width of the domain. Then the energy flux in the domain given by (EBc) will be constant (c being the phase speed or energy propagation speed in the shallow water), i.e.,

$$\frac{(\rho g A^2) B (gh)^{1/2}}{2} = \text{constant} \quad \text{or} \quad A \propto B^{-1/2} h^{-1/4}, \quad \text{where } h \text{ is the depth} \quad (2)$$

Energy per unit length (EB) is computed for concave coasts of CC1 and CC6 as shown in Fig. 7(i-ii) using the computed peak surge (A) at each grid and multiplied by the grid resolution (B) for the track T_0 . It is observed that the maximum EB is computed near the coast of 60 MJ/m and 58 MJ/m for CC1 and CC6 respectively at the time of landfall. As seen in the figure, the integrated value of EB is computed across the lines AA', BB' and CC' falling at 5km (LA), 25km (LB) and 50 km (LC) from the vertex (L) of the domain for the shapes CC1 and CC6. These values are 1953, 197 and 56 MJ/m for CC1, while it is 983, 300 and 85 MJ/m for CC6 respectively. The higher energies (AA') are seen close to the landfall for CC1, while it is decreased significantly for CC6. However, higher values are seen in CC6 much away from the landfall (BB', CC') compared to that of CC1, implying more spread of energy for CC6. These simulations explain the energy propagation through different concave shapes resulting because of funnelling effect.

The value of width (B) reduces as the cyclone gets closer to the concave shore resulting in an increase in the energy density and energy per unit length. This increase of energy is directly responsible for the enhancement of surges in the concave-shaped domains. Since B has a more significant influence on A than h , we have considered only B in the above computations, leaving out h . This explanation holds good for all other concave shapes as well. This formula may not be applicable directly for convex domains. However, it is expected that more energy will dissipate along the coast for the convex domains instead of accumulation as in the case of concave. The simulations for all the concave domains (not shown), in general, suggest that the energy is more focused towards the coast as the tracks move from T_2 to T_{-2} .

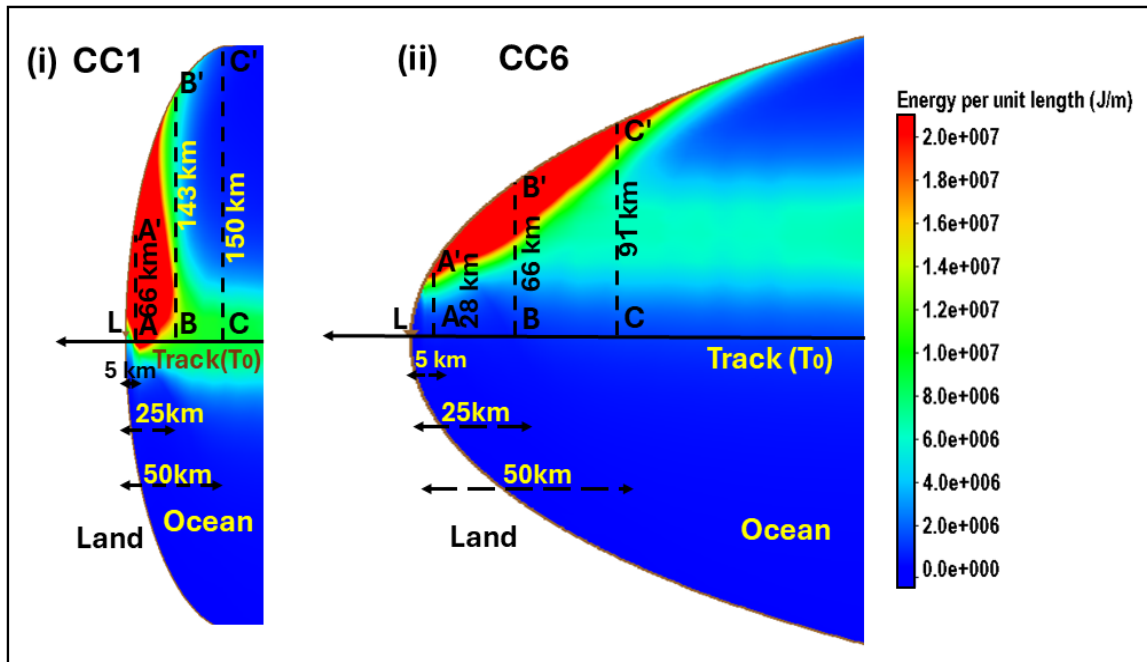


Figure 7. Energy propagation associated with the peak surge for (i) CC1 and (ii) CC6 as the cyclone proceeds towards the coast. The L refers to the cyclone landfall.

320

In the next experiment (Exp2), complex coastal stretch of having concave and convex geometry is selected along the east coast of India to investigate the impact of PS in the region. This experiment consists of three parts. The first part computes PS using three independent parallel tracks (Fig. 8). The second part deals with the tracks approaching at different angles at different locations in the domain (Fig. 9). The final part examines the generation of the PS with three straight tracks parallel to the coast with different R_{max} values (Fig. 10). In all these experiments, the strength of the cyclone remains the same.

325

5.5 Computation of peak surges by parallel tracks using actual coastal stretch along the east coast of India.

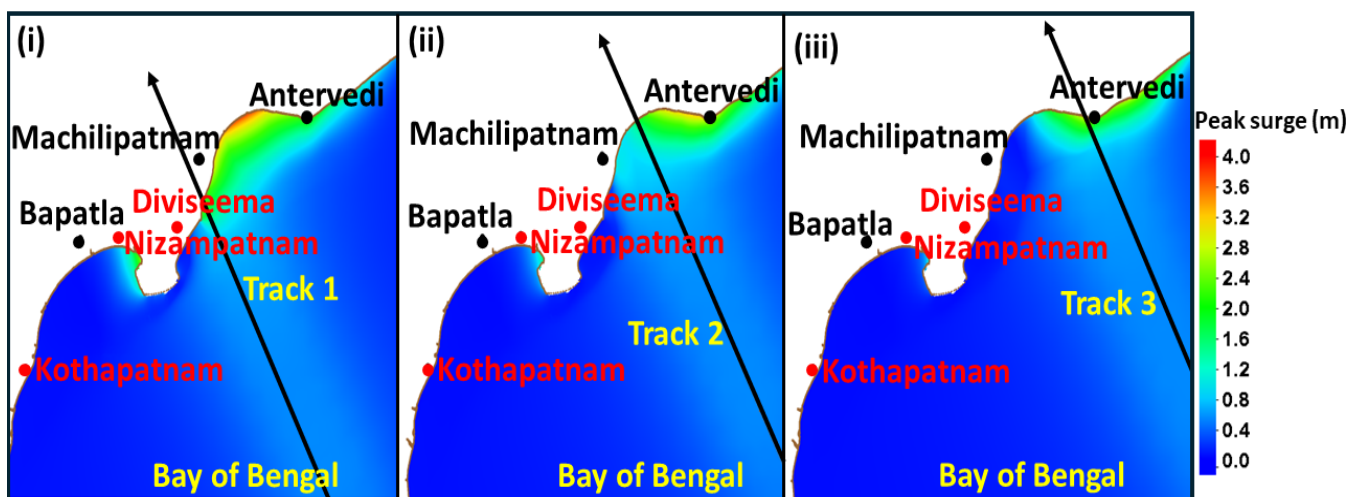
As shown in Figure 8, three parallel tracks, 1, 2, and 3, are considered in the concave-shaped coast, which makes landfall at different locations on the left, center, and right sides of the concave coast, respectively. R_{max} is considered 30km for all the three tracks. Track 1 is making its landfall near Diviseema, with the MPS of 3.94 m occurring in the middle of the concave coast, as shown in Fig. 8(i). The reason for this is attributed to the prevailing maximum onshore winds associated with the track1, which is found close to the vertex of the concave coast as the R_{max} is 30km. Tracks 2 and 3 make landfall near Machilipatnam and Antervedi with MPS of 3.51 m (Fig. 8(ii)) and 3.13 m (Fig. 8(iii)), respectively. As the tracks move from

330



335 left to right, a reduction in the PS/MPS, and shifting of its location is perceived. The reason for the reduction is due to the
change of landfall location on the concave coast which leads to a reduction in the onshore winds as the tracks change from 1
to 3. Hence, accumulation of the storm waters reduces as the tracks move to the right, deducing the effect of the concave coast
reduces as the landfall location of the track moves to the right of the coast. It is also important to note that the MPS is also
generated to the left of track1 and 2 near Nizampatnam due to the presence of another concave coast close to Bapatla. A
340 convex-shaped coastline is also enclosed between the concave coasts of Nizampatnam and Diviseema.

However, the PS reduces in this region as the tracks shift to the right. The experiments infer that the concave coastline geometry
is more susceptible to higher SS especially when the track makes landfall on the left of the coast. Additionally, SS computed
along the concave-shaped coastline is higher compared to that of the convex coastline, which aligns with the observations
made with the idealized concave and convex domains (refer to section 5.1).



345 **Figure 8. Occurrence of peak surge along the actual concave coastline with the different parallel cyclonic tracks landfalling at (i) left (Track 1), (ii) center (Track 2) and (iii) right (Track 3) of the concave coastline.**

5.6 Computation of peak surges by the tracks with different approach angles using actual coastal stretch along the east coast of India.

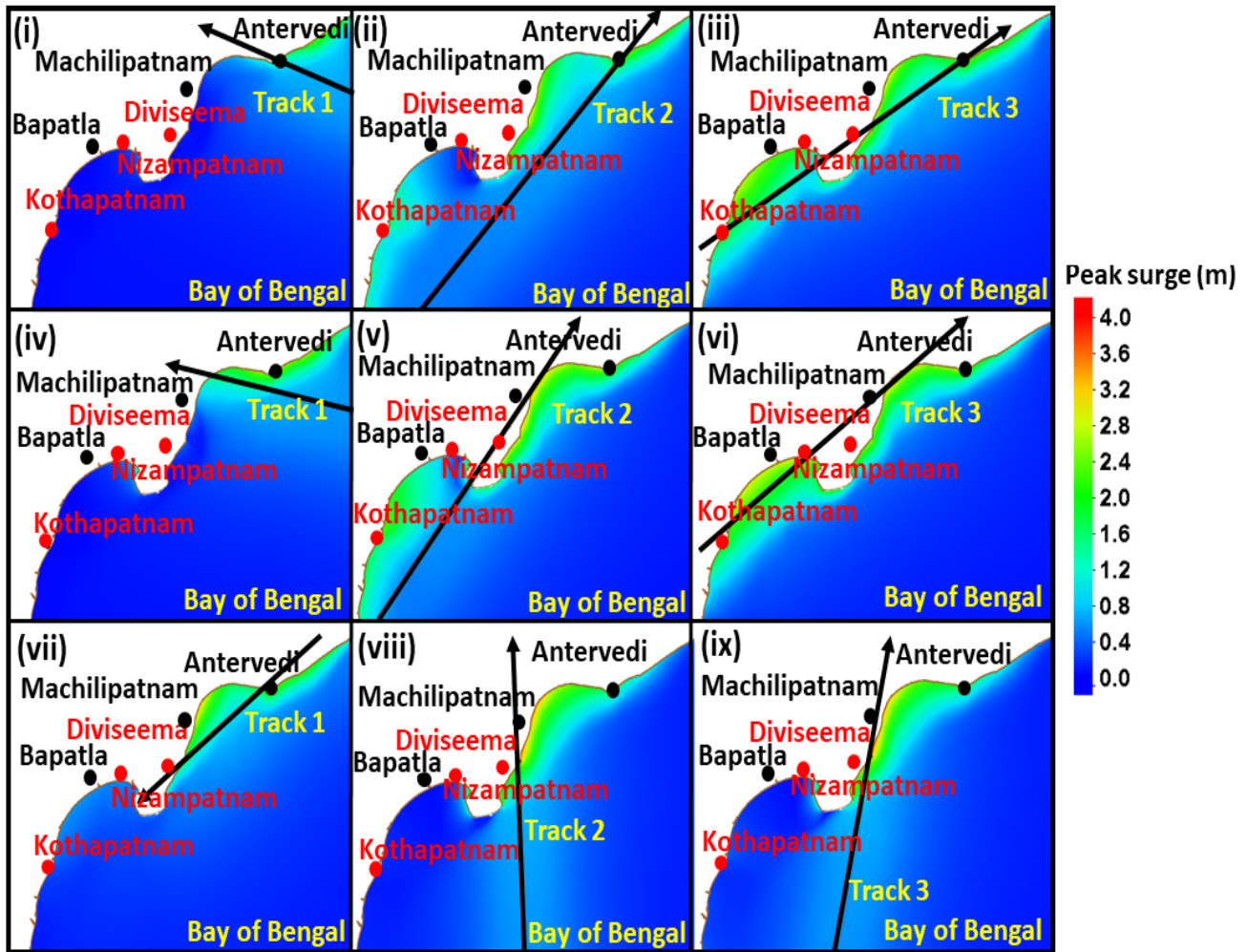
350

In this Exp2, the impact of various approach angles and the location of the landfall on the generation of PS in the concave coastline is explored. These approach angles and landfall locations considered in this study are based on the history of the cyclones formed in this region, which include the 1977 Andhra Pradesh cyclone, Ogn, Khaimuk, Laila, Helen, Lehar, and



355 Roanu cyclones. The model domain is the same as that of section 5.5. Here, three landfall locations on the concave coast are considered with three different approach angles. Though some tracks cross the coast multiple times, the PS is studied at selected landfall locations in the concave domain, as discussed in the above section. As a part of this exercise, the PS is simulated in the concave-shaped coastline with approach angles of 45, 165, and 180 degrees made at the landfall location (right, center, and left) represented as tracks 1, 2, and 3 as shown in Fig. 9. The reason for selecting these tracks is that some generate PS over the region that is left of the track. The track angle is measured clockwise, with the tangent drawn parallel to the landfall
360 location. These tracks are chosen so that they have more influence on the occurrence of PS in the concave domain. The tracks striking on the right side of a concave coastline near Antervedi generate MPS of about 2.56, 3.08, and 3.15 m for tracks 1, 2, and 3, respectively, as shown in Fig. 9 (i-iii).

The MPS is also computed in the neighboring concave-shaped coastline near Bapatla at about 2.01 and 3.02 m for tracks 2 and 3, respectively. The MPS for track 1 is computed on the right side, while for tracks 2 and 3 it is on the left side due to the
365 concave nature of the coastline. In Figures 9(iv-vi), tracks 1, 2, and 3 are making landfall at the center of the concave domain near Machilipatnam, and associated MPS are about 2.83, 3.59, and 3.62m, respectively. Tracks 2 and 3 also generate MPS in the adjacent concave-shaped coastline near Bapatla of about 2.75 and 3.27 m, respectively. The simulations shown in Figures 9(vii-ix) correspond to the landfall location near Diviseema with different approach angles. The simulated MPS for tracks 1, 2, and 3 are approximately 3.34, 3.61, and 3.67 m respectively, which exhibit higher SS in the concave domain compared to
370 that of any other landfall locations. This suggests that occurrence of MPS is not always confined only to the right side of the cyclone track if a cyclone makes landfall towards the concave geometry with unique approach angles. These simulations infer that the generation of PS depends on both track approach angle and the landfall location in the concave domain.



375 Figure 9. Effect of approach angle (45 (track 1),165 (track 2) and 180 degrees (track 3)) on peak surges due to tropical cyclone landfalling at (i-iii) left, (iv-vi) center and (vii-ix) right of the concave coastline.

5.7 Computation of peak surges by parallel tracks with different R_{max} using actual coastal stretch along the east coast of India

380 In the past, many parallel cyclonic tracks along the east coast of India were seen that passed through the coastal stretch covering from Kothapatnam to Antervedi, which has a complex geometry with concave/convex-shaped coastlines. Though the cyclones may not have landfall in this region, this coast is prone to higher SS due to its irregular coastline geometry. Hence, this experiment is designed to study the effect of PS with equally spaced (20km) tracks moving parallel to this coast with different

R_{max} values of 20, 30, and 40km for tracks 1,2 and 3, respectively, as shown in Fig. 10. The PS in the domain is depicted in Fig. 10 (i-iii) as the cyclonic tracks are moving parallel to the coast with R_{max} 20km. It is important to note from the simulations that all these parallel tracks generate SS along the coast. However, the MPS of 2.85m is simulated with track 1 and the minimum of 2.0m by track 3.

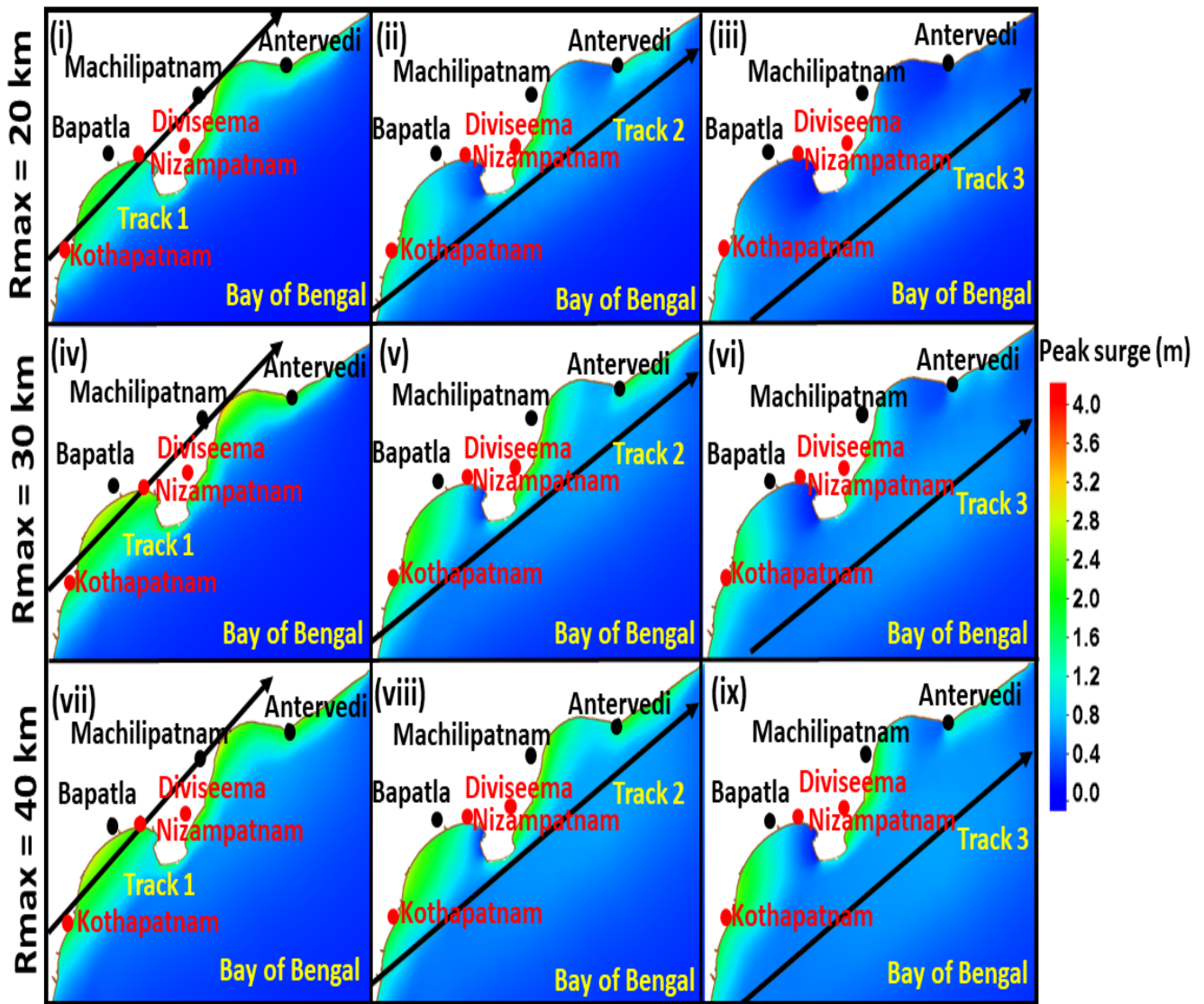


Figure 10. The occurrence of peak surge over concave coastline with different parallel tracks and radius of maximum wind (R_{max}) of (i-iii) 20km, (iv-vi) 30km and (vii-ix) 40km.



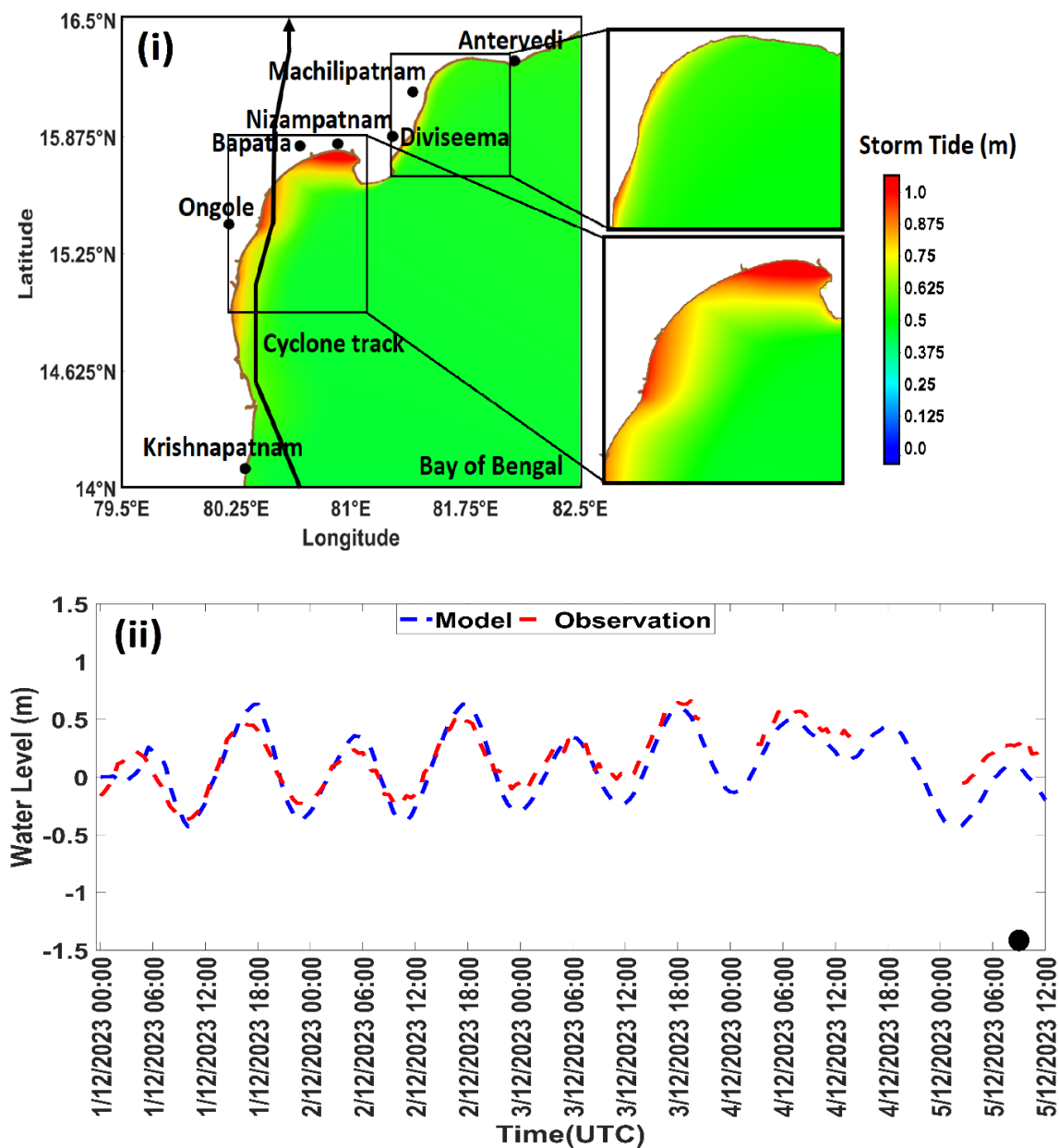
390 Similarly, the experiments are carried out with R_{\max} 30km and 40km, as shown in Fig. 10 (iv-vi) and (vii-ix), respectively. The pattern of surge development at the coast is very similar to that of R_{\max} 20km. However, the MPS simulated for track 1 is 3.1m and 3.2 m for R_{\max} 30km and 40km, respectively. It is also observed that the MPS for track 3 are 2.5m and 3.0m for R_{\max} 30km and 40km respectively. It is worth noting that the PS is generated only on the left of the concave coasts due to strong associated onshore winds, and the maximum is produced along the coast with R_{\max} 40km. it is observed from the
395 simulations made for R_{\max} more than 40km (not shown here) that the effect of SS on the coast is reduced as the tracks move away from the coast. Moreover, the concave coast in the north covering Diviseema to Antervedi experiences higher SS compared to that of adjacent concave coast lying in the southern part of the domain at Bapatla.

5.8 Computation of storm tides for the Michaung cyclone.

400 In the final Exp3, maximum ST are computed for the Michaung cyclone by considering tides in the model during cyclone period as shown in Fig. 11(i). The amplitude of the local tide at Krishnapatnam is observed about 0.5m (not shown in the figure) at the time of cyclone crossing this region.

It is observed that the ST are simulated along the coast both to the left and right side of the track as the cyclone moves northwards parallel to the southern coast before its landfall. These simulations are very consistent with that of Exp2, where the
405 PS is also observed to the left of the track when it moves parallel to the coast. The ST of about 1.6m is computed on the right of the track in the concave-shaped coast near Bapatla. Moreover, ST of 1.25m are also generated along the coast near Ongole on the left of the track. The ST of 1.0m are also seen along the coast near Diviseema. Validation of the model simulated ST is made with the only available tide-gauge data at Krishnapatnam, which falls on the left of the cyclone track, located at about 30 km from the track and 160 km from the landfall point, as shown in Fig. 11 (i).

410 As shown in Figure 11(ii), the maximum ST from the model and tide-gauge are noted as 0.63 and 0.66m at Krishnapatnam respectively, occurring 36 hours before the landfall. While the ST values are reduced at the time of landfall to 0.08 and 0.28 m respectively. However, the simulated maximum ST at Krishnapatnam is in good agreement with that of tide-gauge observation. Though some gaps in the tide-gauge data is seen, no missing data is found during the maximum ST or landfall time. The reason for generation of lower ST may be due to the location of Krishnapatnam, located to the left of cyclone track,
415 which was mostly influenced by the offshore winds during cyclone period. This experiment confirms our previous hypothesis that the concave coasts are always subjected to more vulnerability in terms SS whenever cyclone approaches close to it, irrespective of whether it may be to the right or left of the cyclone track.



420 Figure 11. (i) Model computed storm tide for the Michaung cyclone. (ii) Comparison of model and tide-gauge data at Krishnapatnam. Black dot ● represents landfall time.



6. Conclusions

425 The study emphasizes the complex interrelationship between the growth of SS and irregular coastline geometry like concave and convex. For this, a numerical model, ADCIRC, is used for the generation of SS with differently shaped shorelines along with diverse cyclonic tracks with the same intensity. The study is confined to the computation of PS during the cyclone period and delineates the distribution of PS along the coast. The present study is divided into three experiments by considering idealized/actual coastal domains of concave/convex. In Exp1, idealized different-shaped concave/convex domains are
430 considered with many parallel tracks. The curvature effect of the concave coast on the generation of MPS is observed more for the tracks moving from south to north (T_{-1} to T_2) in the domain. However, MPS associated with southern tracks (T_{-2} to T_0) produce higher MPS compared to that of T_1 and T_2 because of more accumulation of storm waters in the domain. The MPS associated with T_{-1} is the highest among all the tracks, as the R_{max} value coincides with the domain's vertex. In general, higher curvature of the domain (CC6) produces larger amplitudes of the PS, as seen with the track T_{-1} . Similar experiments with the
435 convex-shaped domain reveal a monotonic decrease of the MPS as the curvature of the domain increases from CV1 to CV6 with the highest difference for the track T_2 . It is noticed that the MPS decreases from T_{-1} to T_2 as higher dissipation of energy is expected along the convex domain as the tracks move from T_{-1} to T_2 .

As the curvature effect plays a significant role in the PS generation along the coast, the tangent angle with respect to all the tracks is computed for the domains having the least (CC1/CV1) and the highest (CC6/CV6) curvature, which can play as a
440 proxy for generation of MPS by any parallel track. If the angle is close to 90 degree as in the case of T_{-1} , the computed MPS is seen higher, and it decreases on either side as the angle decreases. With the decrease of angle, the spread of the PS along the coast is also seen more, which is explained by the alongshore wind. At the same time, the MPS along the coast is attributed to the onshore wind. It is important to observe that the onshore wind is the maximum for T_{-1} and decreases as it moves to T_2 with increasing curvature and hence the MPS decreases. While the alongshore wind increases from T_{-1} to T_2 , resulting in higher
445 spread of the PS along the coast. Time evolution of storm surges for concave coasts suggest that both positive and negative surges incline towards the vertex of the domain as the track moves from T_2 to T_{-2} and away from the vertex for convex coast. Computation of energy per unit length for the concave coasts demonstrate the funneling effect and suggests that the spread of the energy along the coast enhances as the curvature of the coast increases from CC1 to CC6. These idealized experiments signify the effect of important parameters like tangent angle, wind components, and shape of the curvature, which are closely
450 related to the growth and spread of the PS along the coast for any track.

The experiments are carried out with the real coastline of having complex coastal geometry covering from Kothapatnam to Antervedi, which is one of the most prominent cyclone prone regions along the east coast of India. The simulations are designed using parallel and oblique tracks landfalling at different locations in the region. Initially, Exp2 considers three parallel tracks to evaluate the PS development in the domain of the concave coast. The study reveals that MPS are simulated if the track is



455 close to the south of the concave coast and decreases as it moves northwards, which is consistent with Exp1. The second part
of Exp2 considers the exact landfall locations as in the first part with oblique tracks along with its different approach angles
of 45, 165 and 180 degrees. These experiments suggest that the PS along the coast enhances as the approach angle increases,
inferring that the track parallel to the coast generates more PS, not only to the right but also to the left of the track for certain
tracks. In the final part of the Exp2, three parallel cyclone tracks are considered with different R_{\max} values of 20, 30, and 40km
460 as these tracks produce a larger amplitude of the PS along the coast. The study reveals that the cyclone with higher R_{\max}
generates more PS to the left of the track, particularly on the concave coast, signifying the vulnerability of the region though
the cyclone moves parallel to the coast without making its landfall. As there are many cyclones in the past landfalling in the
same region, Exp3 is performed to compute ST associated with the recent cyclone, Michaung. The simulations of ST are
computed by considering the tides in the model with a maximum of 1.65m near Bapatla (right to the track) and 1.25m near
465 Ongole (left to the track), which are consistent with the reports of the India Meteorological Department (RSMC report, 2023).
A comparison of model ST with the tide-gauge data available at Krishnapatnam suggests that the model can simulate the ST
reasonably well even in the complex coastal stretch, as considered in the study. This study helps to unearth the complex relation
in generating SS with respect to the coastline geometry, approach angle and R_{\max} of the cyclone. This comprehensive study is
applicable for any part of the coastal region having complex geometry. This study may also be important as concave/ convex
470 coastline domains may face shape alteration due to several factors, including erosion, sediment deposition, sea level rise, and
human activities. In addition, the investigations may assist in designing better preparedness and response strategies that target
coastal communities. Such knowledge can thus be utilized in developing more accurate predictive and warning systems ahead
of time.

475 **Author contributions**

Pawan Tiwari: Conceptualization, Formal analysis, Investigation, Methodology, Software, Validation, Visualization, Writing
– original draft, Writing – review & editing. **Ambarukhana D. Rao:** Conceptualization, Investigation, Methodology,
Supervision, Visualization, Writing – review & editing. **Smita Pandey:** Writing – review & editing. **Vimlesh Pant:** Writing
– review & editing.

480

Acknowledgments

The authors are thankful to the Indian National Center for Ocean Information Service (INCOIS) for providing tide-gauge data,
the India Meteorological Department (IMD) for providing the best track data. The authors also thank IIT Delhi HPC facility
for affording computational resources.

485



Data availability statement

The best track data used in the study can be obtained from the IMD website (<https://rsmcnewdelhi.imd.gov.in/rsmc-tropical-cyclones.php>) and the tide gauge data used in this study can be obtained from the INCOIS website
490 (<https://incois.gov.in/portal/datainfo/drform.jsp>).

Competing Interests:

The contact author has declared that none of the authors has any competing interests.

495

References

- Cyriac, R., Dietrich, J. C., Fleming, J. G., Blanton, B. O., Kaiser, C., Dawson, C. N., and Luettich, R. A. (2018). Variability in Coastal Flooding predictions due to forecast errors during Hurricane Arthur. *Coastal Engineering*, 137, 59–78.
- 500 Das, P.K. (1972). Prediction model for storm surges in the Bay of Bengal. *Nature*, 239(5369), 211–213.
- Dasallas L and Lee S (2019);. Topographical Analysis of the 2013 Typhoon Haiyan Storm Surge Flooding by Combining the JMA Storm Surge Model and the FLO-2D Flood Inundation Model. *Water*. 11(1):144. <https://doi.org/10.3390/w11010144>.
- Dube, S. K., Sinha, P. C., and Rao, A. D. (1982). The effect of coastal geometry on the location of peak surge. *Mausam*, 33(4), 445–450.
- 505 Dube, S. K., Rao, A. D., Sinha, P. C., and Chittibabu, P. (1994). A real-time storm surge prediction system: an application to the east coast of India. *PROCEEDINGS-INDIAN NATIONAL SCIENCE ACADEMY PART A*, pp. 60, 157–157.
- EurOtop (2018). Manual on Wave Overtopping of Sea Defences and Related Structures: An Overtopping Manual Largely Based on European Research, but for Worldwide Application.
- 510 Flierl, G. R., and Robinson, A. R. (1972). Deadly surges in the Bay of Bengal: Dynamics and storm-tide tables. *Nature*, 239(5369), 213–215.
- Garratt, J. R. (1977). Review of drag coefficients over oceans and continents. *Monthly weather review*, 105(7), 915–929.
- 515 Holland, G. J. (1980). An analytic model of the wind and pressure profiles in hurricanes. *Monthly Weather Review*, 108, 1212–1218.



- Holland, G. J., James, B. I., and Fritz, Angela. (2010). A revised model for radial profiles of hurricane winds. *American Meteorological Society*. <https://doi.org/10.1175/2010MWR3317.1>.
- Hope, M.E.; Westerink, J.J.; Kennedy, A.B.; Kerr, P.C.; Dietrich, J.C.; Dawson, C.; Bender, C.J.; Smith, J.M.; Jensen, R.E.;
520 Zijlema, M.; et al. Hindcast and validation of Hurricane Ike (2008) waves, forerunner, and storm surge. *J. Geophys. Res. Space Phys.* **2013**, *118*, 4424–4460.
- Irish, J. L., Resio, D. T., and Ratcliff, J. J. (2008). The influence of storm size on hurricane surge. *Journal of Physical Oceanography*, *38*(9), 2003–2013.
- 525 Johns, B., Sinha, P. C., Dube, S. K., Mohanty, U. C., and Rao, A. D. (1983). On the effect of bathymetry in numerical storm surge simulation experiments. *Computers and Fluids*, *11*(3), 161–174.
- Kolar, R. L., W. G. Gray, J. J. Westerink., and R. A. Luettich, (1994a). Shallow water modeling in spherical coordinates: Equation formulation, numerical implementation, and application. *J. Hydraul. Res.*, *32*, 3–24.
- Le Provost, C., Lyard, F., Molines, J. M., Genco, M. L., and Rabilloud, F. (1998). A hydrodynamic ocean tide model improved
530 by assimilating a satellite altimeter-derived data set. *Journal of Geophysical Research*, *103*(C3), 5513–5529.
- Luettich Jr, R. A., Westerink, J. J., and Scheffner, N. W. (1992), ADCIRC: An advanced three-dimensional circulation model for shelves, coasts, and estuaries. Report 1. Theory and methodology of ADCIRC-2DDI and ADCIRC-3DL (No. CERC-TR-DRP-92-6), *COASTAL ENGINEERING RESEARCH CENTER VICKSBURG MS*.
- Mandal, A.K., Ramakrishnan, R., Pandey, S., Rao, A.D., and Kumar, P. (2020). An early warning system for inundation
535 forecast due to a tropical cyclone along the east coast of India. *Nat Hazards* *103*, 2277–2293. <https://doi.org/10.1007/s11069-020-04082-w>
- Mohapatra, M., and Sharma, M. (2015). Characteristics of surface wind structure of tropical cyclones over the north Indian Ocean. *Journal of Earth System Science*, *124*(7), 1573–1598. <https://doi.org/10.1007/s12040-015-0613-6>
- Munk, W., Snodgrass, F., and Carrier, G. (1956). Edge waves on the continental shelf. *Science*, *123*(3187), 127–132.
540 <https://doi.org/10.1126/science.123.3187.127>.
- Murty, P. L. N., and Kolukula, S. S. (2023). Future projections of storm surges and associated coastal inundation along the East Coast of India. *Journal of Water and Climate Change*, *14*(5), 1413–1432. <https://doi.org/10.2166/wcc.2023.358>
- Murty, P. L. N., Srinivas, K. S., Rao, E. P. R., Bhaskaran, P. K., Sheno, S. S. C., and Padmanabham, J. (2020). Improved cyclonic wind fields over the Bay of Bengal and their application in storm surge and wave computations. *Applied Ocean Research*, *95*, 102048. [doi: 10.1016/j.apor.2019.102048](https://doi.org/10.1016/j.apor.2019.102048)
545



- Pandey, S., and Rao, A.D. (2018). An improved cyclonic wind distribution for computation of storm surges. *Nat Hazards* 92, 93–112 <https://doi.org/10.1007/s11069-018-3193-3>.
- Pandey, S., and Rao, A. D. (2019). Impact of Approach Angle of an Impinging Cyclone on Generation of Storm Surges and Its Interaction with Tides and Wind Waves. *Journal of Geophysical Research: Oceans*, 124. <https://doi.org/10.1029/2019JC015433>.
550
- Pandey, S., Rao, A. D., and Haldar, R. (2021). Modeling of Coastal inundation in response to a tropical cyclone using a coupled hydraulic HEC-RAS and ADCIRC model. *Journal of Geophysical Research: Oceans*, 126, e2020JC016810. <https://doi.org/10.1029/2020JC016810>
- 555 Peng, M., Xie, L., and Pietrafesa, L. J. (2004). A numerical study of storm surge and inundation in the Croatan–Albemarle–Pamlico Estuary System. *Estuarine, Coastal and Shelf Science*, 59(1), 121–137.
- Peng, M., Xie, L., and Pietrafesa, L. J. (2006). Tropical cyclone-induced asymmetry of sea level surge and fall and its presentation in a storm surge model with parametric wind fields. *Ocean Modelling*, 14(1-2), 81–101.
- 560 Poulouse, J., Rao, A. D., and Bhaskaran, P. K. (2017). Role of continental shelf on non-linear interaction of storm surges, tides and wind waves: An idealized study representing the west coast of India. *Estuarine, Coastal and Shelf Science*, 207, 457–470.
- Qian, X., Hwang, S., and Son, S. (2024). A study on key determinants in enhancing storm surges along the coast: Interplay between tropical cyclone motion and coastal geometry. *Journal of Geophysical Research: Oceans*, 129, e2023JC020400. <https://doi.org/10.1029/2023JC020400>.
565
- Rao, Y. R., Chittibabu, P., Dube, S. K., Rao, A. D., and Sinha, P. C. (1997). Storm surge prediction and frequency analysis for the Andhra coast of India. *Mausam*, pp. 48, 555–566. <https://doi.org/10.54302/mausam.v48i4.4322>
- Rego, J. L., and Li, C. (2009). On the importance of the forward speed of hurricanes in storm surge forecasting: A numerical
570 study. *Geophysical Research Letters*, 36, 1–5. L07609. <https://doi.org/10.1029/2019JC015433>
- Resio, D. T., and Westerink, J. J. (2008). Modeling the physics of storm surges. *Physics Today*, 9, 33–38.
- RSMC report (2023). <https://rsmcnewdelhi.imd.gov.in/report.php>
- Salaree, A., Huang, Y., Ramos, M. D., and Stein, S. (2021). Relative tsunami hazard from segments of Cascadia subduction zone for M_w 7.5–9.2 earthquakes. *Geophysical Research Letters*, 48, e2021GL094174. <https://doi.org/10.1029/2021GL094174>.
575



- Sebastian, M., Behera, M. R., and Murty, P. L. N. (2019). *Storm surge hydrodynamics at a concave coast due to varying approach angles of cyclone*. *Ocean Engineering*, 191, 106437. doi:10.1016/j.oceaneng.2019.106437.
- Sharma, M., and Mohapatra, M. (2017). Standard operation procedure for tropical cyclone vital parameters over North Indian Ocean. In *Tropical cyclone activity over the North Indian Ocean* (pp. 367–381), Cham. Springer. https://doi.org/10.1007/978-3-319-40576-6_24
- 580 Subramaniam, S. P., Scheres, B., Schilling, M., Liebisch, S., Kerpen, N. B., Schlurmann, T., ... Schüttrumpf, H. (2019). *Influence of Convex and Concave Curvatures in a Coastal Dike Line on Wave Run-up*. *Water*, 11(7), 1333. doi:10.3390/w11071333.
- Tiwari, P., Rao, A.D., Pandey, S., and Pant, V. (2024). Assessing the influence of land use and land cover data on cyclonic winds and coastal inundation due to tropical cyclones: a case study for the east coast of India. *Nat Hazards*. <https://doi.org/10.1007/s11069-024-06603-3>
- 585 Ueno, T. Numerical computations of the storm surges in Tosa Bay. *Journal of the Oceanographical Society of Japan* 37, 61–73 (1981). <https://doi.org/10.1007/BF02072559>
- Xuan, J., Ding, R., and Zhou, F. (2021). Storm surge risk under various strengths and translation speeds of landfalling tropical cyclones. *Environmental Research Letters*, 16(12), 124055. <https://doi.org/10.1088/1748-9326/ac3b78>
- 590 Zhang, C. (2012), effect of hurricane forward speed and approach angle on coastal storm surge. LSU Master's Theses. 3468, Louisiana State University, USA.
- Zhao, G.; and Niu, X. (2022) amplification of tsunami waves along the west coast of Negros Island and Panay Island, *Applied Ocean Research Volume* 123103175, ISSN 0141 1187, <https://doi.org/10.1016/j.apor.2022.103175>.
- 595 Zhong, L., Li, M., and Zhang, D. L. (2010). How do uncertainties in hurricane model forecasts affect storm surge predictions in a semi-enclosed bay? *Estuarine, Coastal and Shelf Science*, 90(2), 61–72.