

Long-term hazard of pyroclastic density currents at Vesuvius (Southern Italy) with maps of impact parameters

Pierfrancesco Dellino¹, Fabio Dioguardi¹, Roberto Sulpizio^{1,2,3}, Daniela Mele¹

¹Dipartimento di Scienze della Terra e Geoambientali, Università degli Studi di Bari “Aldo Moro”, Bari, 70125, Italy

² Istituto Nazionale di Geofisica e Vulcanologia, Bologna section, Italy

³ IGAG-CNR, Milano, Italy

Correspondence to: Pierfrancesco Dellino (pierfrancesco.dellino@uniba.it)

Abstract. The hazard of pyroclastic density currents (PDCs) at Vesuvius is investigated **by analysing deposits from** past eruptions. Analysis is extended to all the eruptions that left substantial deposits on the ground. **Based on the stratigraphic evidence, we assume that at Vesuvius, the currents are** bipartite, with a basal highly-concentrated part, which was fed from the **collapse** of the eruptive fountain on the ground, and an overlying part generated by the squeezing of the collapsed material that fed a dilute and turbulent shear flow. **Dynamic pressure, particle volumetric concentration, temperature and flow duration are** hazardous characteristics of PDCs that can impact buildings and population and are defined here as impact parameters. They have been calculated by means of an implementation of the PYFLOW code, which uses the deposit particle characteristics as input. The software searches for the probability density function of impact parameters. The 84th percentile has been chosen as a safety value of the expected impact at long term (50 years). Maps have been constructed by interpolation of the safety values calculated at various points over the dispersal area, and show how impact parameters change as a function of distance from the volcano. The maps are compared with the red zone, which is the area that the National Department of the Italian Civil Protection has declared to be evacuated **under conditions of an** impending eruption. The damaging capacity of currents over buildings and population is discussed both for the highly concentrated part and the diluted one.

1 Introduction

Pyroclastic density currents (PDCs) originate from a variety of processes during explosive volcanic eruptions, e.g. the fountaining of the gas-particle mixture (aka eruption column) issuing from a crater or the avalanching of a volcanic dome. In the first case, the parent current can evolve into a highly concentrated, massive underflow and an overlying, dilute, fully-turbulent current (Sulpizio et al., 2014). PDCs represent the most hazardous events of volcanic eruptions, with historic cases causing destruction and deaths over **large areas** (Baxter et al., 1998; Cao et al., 2003; Sulpizio et al., 2014). Understanding the processes characterizing PDCs, such as transport and deposition of pyroclastic particles, from the study of deposits **emplaced by** PDCs is essential for developing effective hazard assessment and risk management strategies (Jones et al. 2023).

Codice campo modificato

ha eliminato: basing on

ha eliminato: ¶

ha eliminato: T

ha eliminato: are assumed to be

ha eliminato: impact

ha eliminato: ¶

ha formattato: Apice

ha eliminato: in the

ha eliminato: of an

ha eliminato:

ha eliminato: by

ha eliminato: vast

ha eliminato: from

Various attempts have been made to define specific flow characteristics that are useful for evaluating the damaging capacity of PDCs, such as dynamic pressure, which is a measure of the impact force per unit area of a current that can exert lateral loads onto buildings (Valentine et al., 1998; Spence et al., 2004; Zuccaro et al., 2008). Other damaging factors, which we define here as impact parameters, are the flow temperature, the content of ash particles, projectiles carried by the current and the duration of the flow, which directly or indirectly affect the survivability of people caught unprotected by a PDC (Horwell and Baxter, 2006; Jenkins et al., 2013; Baxter et al., 2017). The latter become important especially over distal areas, where the strength of the current decays but the lethal effect of the gas-particle mixture remains, as occurred at Pompeii during the historical eruption of 79 AD (Dellino et al., 2021), which represents an invaluable source of information of the actual impact of PDCs.

No systematic analysis of these flow characteristics as evidenced by deposit properties has been made so far for assessing quantitatively the PDCs' hazard around a volcano. At Vesuvius, PDC deposits have been studied in previous papers (Cioni et al., 2004; Neri et al., 2007; Sulpizio et al., 2007; Esposti Ongaro et al., 2008; Dellino et al., 2008; Zanella et al., 2008; Sulpizio et al., 2010a; Gurioli et al., 2010; Mele et al., 2011; Zanella et al., 2015; Giordano et al., 2018; Dellino et al., 2021; Pensa et al., 2023), but a detailed investigation of the impact parameters for the aim of a probabilistic hazard assessment is still not satisfactory. PDCs at Vesuvius represent a significant source of risk since the area surrounding the volcano is densely populated, with around 700,000 inhabitants living in the red zone, which is displayed in Figure 1. It is the area to be evacuated in case of an impending eruption (Civil Protection Department, 2014). However, the impact that the PDCs could have on buildings or people are not quantified on the red-zone map. In this paper, we try to fill this gap and investigate the distribution of the impact parameters over the volcano's surroundings, including the red zone. Since pyroclastic deposits are the only records left by PDCs at Vesuvius, deposits from past eruptions are the only way to get hints about the expected range of impact parameters. To follow this line, it is necessary to investigate the PDC deposits first, then define a general model of the current that links deposit characteristics to flow dynamics, and finally reconstruct the impact parameters that better represent flow intensity in terms of damaging potential.

ha eliminato: solicit the resistance of buildings to

ha eliminato: ¶

ha eliminato: flow duration

ha eliminato: s

ha eliminato: mechanical

ha eliminato: it

ha eliminato: unvaluable

ha eliminato: , which we define here as impact parameters,

ha eliminato: of a

ha eliminato: s

ha eliminato: (Sulpizio et al., 2007; Dellino et al., 2008;

ha formattato: Non Evidenziato

ha formattato: Non Evidenziato

ha eliminato: Sulpizio et al., 2010a; Mele et al., 2011; Dellino et al., 2021)

ha eliminato: ¶

ha eliminato: may be very dangerous, being the area surrounding the volcano highly populated

ha eliminato: ,

ha eliminato: .

ha eliminato: included

ha eliminato: defined by

ha eliminato: (

ha eliminato: Gurioli et al. (2010)

ha eliminato: .

ha eliminato: The red zone

ha eliminato: ,

ha eliminato: ...

ha eliminato: , which

ha eliminato: The red zone

ha eliminato: It is undifferentiated as it concerns t

ha eliminato: effects

ha eliminato: cover

ha eliminato: ¶

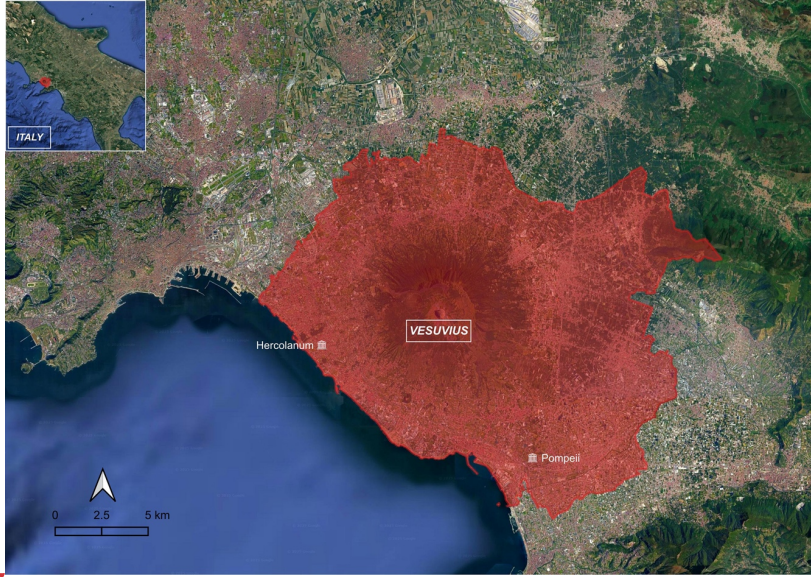


Figure 1. The red zone of the evacuation plans for Vesuvius (from <https://www.protezionecivile.gov.it/it/approfondimento/aggiornamento-del-piano-nazionale-di-protezione-civile-il-vesuvio/>, last access: 19 March 2025; base map is from Google Earth).

2 Reconstruction of the facies architecture of PDC deposits

Volcanism at Vesuvius, as reconstructed by deposit stratigraphy, dates back to around 39 cal. ky BP (Brocchini et al., 2001; Santacroce et al., 2008), with predominantly effusive eruptions forming the Monte Somma volcano. About 22 cal. ky BP, the activity changed into largely explosive eruptions, which formed the summit caldera complex of Mt Somma (Cioni et al., 1999). After Pompeii's Plinian event of 79 AD, volcanism continued mainly within the Mt Somma caldera, with the construction of Mount Vesuvius. The last eruption occurred in AD 1944 (Cole and Scarpati, 2010). The best preserved PDC deposits are from the eruptions of Pomici di Mercato, 8.9 cal. ky BP (Santacroce et al., 2008; Mele et al., 2011), Pomici di Avellino, 3.9 cal. ky BP (Sulpizio et al., 2010b; Sevink et al., 2011), AP2, 3.5 cal. ky BP (Cioni et al., 2008), Pompeii (AD 79; Sigurdsson et al., 1985; Cioni et al., 1992), Pollena (AD 472; Sulpizio et al., 2005) and AD 1631 (Rosi et al., 1993). PDC deposits from other eruptions can be found (i.e. Pomici di Base and Greenish; Bertagnini et al., 1998; Cioni et al., 2003), but do not have sufficient

ha eliminato: This is the way the paper is organized.

Formattato: Allineato al centro

ha formattato: Tipo di carattere: 9 pt, Grassetto

Formattato: Interlinea: singola

ha formattato: Tipo di carattere: 9 pt, Grassetto

ha formattato: Tipo di carattere: 9 pt, Grassetto

ha eliminato: polyphased

ha eliminato: formation

ha eliminato: ¶

ha eliminato: refer to

ha eliminato: Other

ha eliminato: in other eruptions

ha eliminato: no

ha eliminato: t

ha eliminato: show the outcropping

continuity of exposure that is necessary for the hazard analysis of the present research. According to Selva et al. (2022), there is around 34% probability of an eruption at Vesuvius in the next fifty years, which we consider as a reference time for the long-term hazard. Spotty data about the intensity of PDCs at Vesuvius in terms of potential damage have been published in the past using both geological data (Sulpizio et al. 2010; Mele et al. 2011; Dellino et al. 2021) or numerical simulations (e.g. Neri et al. 2007; Esposti Ongaro et al. 2008), but a comprehensive assessment of the expected intensity, i.e. a quantification of the impact parameters, of PDCs in the Vesuvius area is still not available.

To take the eruptive history of Vesuvius into account and get an unbiased range of the variation of impact parameters, all the eruptions which show well-preserved deposits in the field are considered in this paper. This means that no particular event is used to propose a specific hazard scenario, but all the suitable PDC-forming eruptions are considered, in order to obtain a representative sample of the impact parameters of PDCs. It is worth noting that our approach may be biased towards the larger PDCs. However, these are the flows that can have a significant impact in the area. However, these are the flows that can have a significant impact in the area under analysis and, furthermore, our assessments are not based on the calculation of probability of occurrence, which would require a thorough knowledge of all the PDCs events.

The field study, which extended from the gullies on the volcano flank to the plain surrounding Vesuvius, shows that a PDC deposit is commonly composed of a repetitive succession of beds in stratigraphic continuity. Combining observations of all deposits, a general “facies architecture” has been defined, synthesizing the lateral and vertical succession of beds associated with a current (Figure 2). The general facies architecture records the common behaviour of PDC emplacement at Vesuvius.

ha eliminato: , and are not considered here

ha eliminato: input

ha eliminato: parameters

ha eliminato: a

ha eliminato: indication

ha eliminato: into account

ha eliminato: whole

ha eliminato: ,

ha eliminato: to

ha eliminato: under analysis and, furthermore, our assessments are not based on the calculation of probability of occurrence, which would require a thorough knowledge of all the PDCs events

ha eliminato:

ha eliminato: sometime

ha eliminato: Figure 1

ha eliminato: well represents

ha eliminato: , and is the base for the PDC emplacement

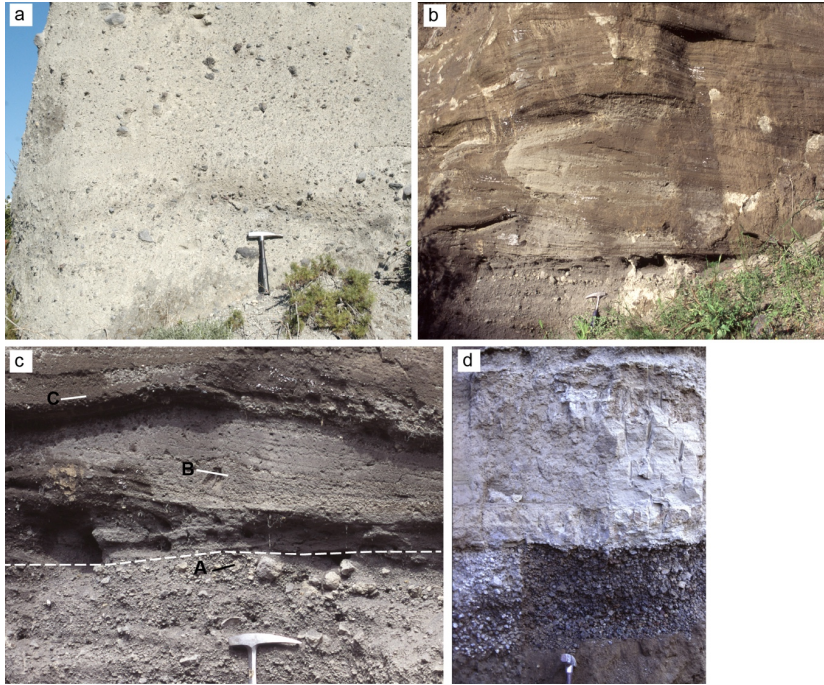


Figure 2. Deposits of pyroclastic density currents at Vesuvius. a) a massive, structureless deposit of ash, lapilli and bombs. b) a decimeter to meter thick dune-bedded layer of ash and lapilli with internal lamination and traction structures. c) the fining upward succession formed by the passage of a PDC: A = coarse clast entrained at the base of the current, B = laminated layer. C = thin, fine ash layer. d) Fine-ash deposit (white layer).

In the proximal area, along the gullies that cut the volcano slope, the vertical facies architecture is generally composed of meters thick poorly-sorted massive layer of ash, lapilli and bombs (Figure 2a). It is overlain by a decimetre-to-meter thick stratified, sometimes dune-bedded bed of ash and lapilli with internal lamination and traction structures (Figure 1b, c). The facies architecture is capped by fine-grained ash layer(s) of centimetric thickness (Figure 1c). Coarse grained massive facies occur close to the break in slope between the volcano and the surrounding apron, at the mouth of the main valleys draining the volcano slopes. Stratified facies predominate in overbank deposits, and, for Avellino and Pompeii eruptions, this facies occurs also beyond the break-in slope up to the distal area (tens of km from the volcano). As a general rule, the stratified facies



ha eliminato:

ha eliminato: Figure 1

ha eliminato: The clast is 7 cm long.

ha eliminato: Figure 1

ha eliminato: followed

ha eliminato:

ha eliminato:

ha eliminato: closed

ha eliminato:

180 decreases in thickness and grain size with distance from the source, while the fine-grained ash facies remains almost constant in grain size (Figure1d).

185 In the volcanological literature, massive and stratified deposits have been interpreted either in terms of distinct flows or in terms of bipartite currents in which the massive part refers to a highly concentrated undercurrent and the stratified one to the overlying dilute turbulent current. In other cases, the massive deposit has been interpreted as the local reworking of material firstly deposited by a primary, stratified current (Valentine et al., 2022).

In the case of Vesuvius, we interpret the deposits as the result of a bipartite current, because the massive deposit and the overlying stratified one are always in stratigraphic continuity, which means that no erosional surfaces are found in between layers, hence, no temporal breaks are associated to the layers emplacement. Following this interpretation, the facies cropping out along the gullies are the result of a basal highly-concentrated underflow, which forms the massive facies, and an overlying dilute current, forming the stratified facies and the fine-ash one. The contemporaneous occurrence of a massive underflow together with a dilute overcurrent has already been reported (Fisher, 1966; Cas and Wright, 1986; Druitt et al., 2002; Gernon et al., 2013; Breard and Lube, 2017, Valentine et al., 2022). This deposit architecture can be interpreted in terms of a current that in its early phase of development was separated into two parts, depending on a different balance between the sedimentation rate and the bedload flux.

195 Our interpretation is that the massive layer was fed directly from the collapse of the eruptive fountain on the ground, which was characterized by a high sedimentation rate that damped turbulence due to a high particle concentration. It has already been demonstrated that thick, massive deposits can be formed, because of a high sedimentation rate, also called suspended-load fallout rate, which inhibits traction at the bedload (Lowe, 1982, 1988; Fisher, 1990; Druitt, 1992; Kneller and Branney, 1995; Branney and Kokelaar, 2002; Woods et al., 2002; Postma et al., 2009). Furthermore, experiments show that massive beds are formed from suspension where the sedimentation rate exceeds the bedload flux by two orders of magnitude (Dellino et al. 2010; 2019).

The underflow was channelised along the volcano valleys and stopped abruptly at the break-in slope (Figure 2a).

The lateral stress generated by the collapse on the ground of the eruption fountain led to the expulsion of part of the collapsed material and fed an overlying shear flow decoupled from the massive flow (Dellino et al. 2020). It evolved laterally into a highly expanded, fully turbulent, gas-particle current that formed both the stratified facies (Figure 2b, c) and the fine-grained ash from gentle settling of the suspended material during the waning phase of the current (Sweeney and Valentine; 2017; Valentine and Sweeney, 2018; Valentine, 2020). The fine ash has a sedimentation time and can be easily drifted away from lower atmosphere winds over the plain surroundings the Vesuvius.

3 Physical modelling of impact parameters: the example from the Pomici di Mercato eruption

210 Before showing the hazard intensity maps obtained by integrating data from all eruptions, the approach used in the reconstruction of the impact parameters is illustrated by the example of one PDC of the Pomici di Mercato eruption. The

- ha eliminato:
- ha eliminato:
- ha eliminato:
- ha eliminato: CITARE Greg
- ha eliminato: Valentine et al., 2022)
- ha eliminato: ,
- ha eliminato: so
- ha eliminato: T
- ha eliminato: , AGGIUNGERE
- ha eliminato: and shear rate
- ha eliminato: (i.e. the bedload transportation capacity of the current).
- ha formattato: Tipo di carattere: 10 pt
- ha eliminato: impact
- ha eliminato: pyroclastic
- ha eliminato: or column collapse to
- ha eliminato: dumped
- ha eliminato:
- ha eliminato: directly from suspension,
- ha eliminato: transportation
- ha eliminato: rate
- ha eliminato:
- ha eliminato: Figure 1
- ha eliminato:
- ha eliminato: the impact of the collapsing
- ha eliminato: column
- ha eliminato: on the ground
- ha eliminato: "squeezing" (fluidization)
- ha eliminato: Figure 1
- ha eliminato: ADD GREG
- ha eliminato:
- ha eliminato:
- ha eliminato: It has
- ha eliminato: long
- ha eliminato: of sedimentation trough the atmosphere,
- ha eliminato:
- ha eliminato: hazard maps
- ha eliminato: ¶

stratigraphy of this eruption (Mele et al., 2011) is made up of alternating fallout and PDC deposits that are well-exposed in the northern sector of the volcano (Figure 3a). The massive bed and the overlying stratified one are in stratigraphic continuity and can be traced for a sufficient distance without showing erosional contact. Therefore, we interpret them as the result of a bipartite current. The PDC deposits considered here are from the first phase of the eruption and were generated by the collapse on the ground of an eruptive fountain, whose tentative location is represented by the black dot at the rim of Figure 3a, as deduced by the maximum thickness of deposits. The deposit sequence consists of a meter-thick poorly-sorted massive layer of lapilli and scattered bombs and blocks set in an ash matrix (Figure 3b, c), which is related to the highly-concentrated underflow, and a dune-bedded, stratified layer (Figure 3c, d), which is related to the overlying dilute current (Mele et al., 2011; Dellino et al., 2019). When cropping out on the gentle slope of the volcano flank, the stratified layer shows a thickness of 0.5 m and small dunes of lapilli and ash of 1 m wavelength and 0.1 m in height (Figure 3c).

The physical characteristics of the bipartite current needs to be reconstructed by means of two separate models.

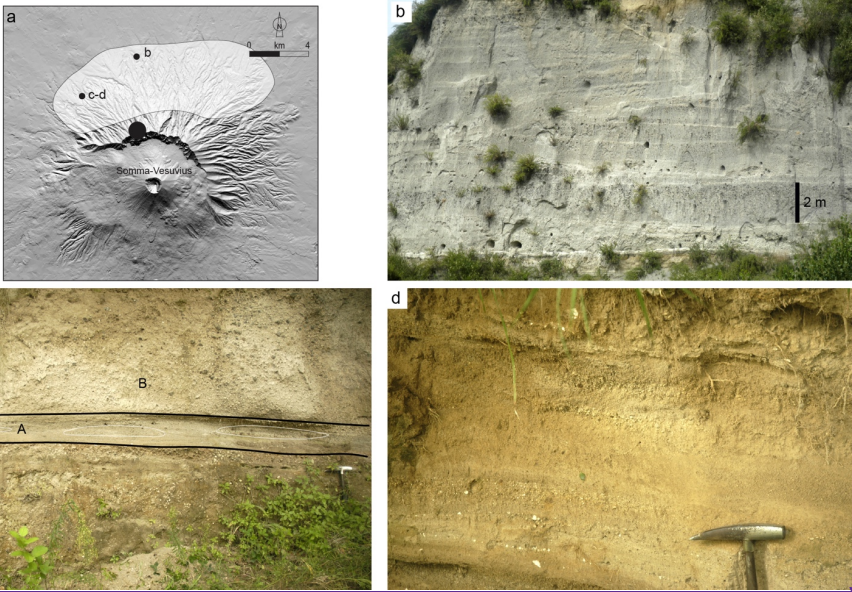


Figure 3. Field pictures showing the Pomici di Mercato eruption deposits used as a case study. (a) The labels b, c and d refer to the deposits shown in b, c and d. The c-d location corresponds to the MC13/4massive and MC13/4 samples on the Table 2). The black circle represents the zone of impact of the eruptive fountain (the digital elevation model by Tarquini et al., 2023). The white shaded area represents the dispersal area of the PDCs. (b) The massive deposit emplaced by freezing at the break in slope. (c) The stratified layer at the base of the massive layer at the split location. Small dune structures have been drawn. (d) The stratified layer on top of the massive layer at the split location.

ha eliminato: e Pomici di Mercato

ha eliminato: Figure 2

ha eliminato: 2

ha eliminato: and

ha eliminato: Figure 2

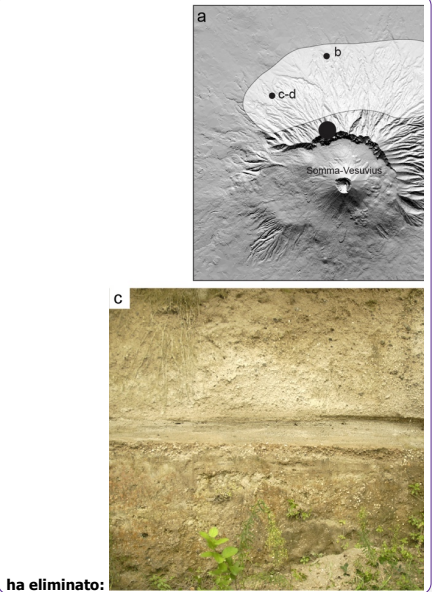
ha eliminato: Figure 2

ha eliminato: Figure 2

ha eliminato: .

ha eliminato: o

ha eliminato: to



ha eliminato:

ha eliminato: Figure 2

ha eliminato: Mercato

ha eliminato: Structure spacing is about 1.0 m, height about 0.1 m. ...

In the following, the model of the overlying dilute current, which represents the deposition of the dune-bedded layer, is discussed first. Afterward, the model of the highly-concentrated undercurrent forming the massive bed, is presented. This order is justified by the fact that data from the overlying dilute current provides information on the underlying concentrated one.

3.1 Model of the overlying dilute current forming the dune-bedded layer

The overlying dilute current, which formed the stratified dune-bedded layer, is modelled as a turbulent boundary layer shear flow (Furbish, 1997; Dellino et al., 2008) that carries solid particles into suspension. Flow movement is initiated by the gravity acting on the current along the volcano slope, which is due to the density difference between the volcanic gas-particle mixture and the surrounding atmosphere. The current is made up of a mixture of magmatic gas, volcanic particles, and atmosphere-air entrained by turbulence during runout. It is stratified in terms of velocity and particle concentration, hence density (Middleton and Southard, 1984; Valentine, 1987). As a consequence of sedimentation and air entrainment, the volumetric particle concentration decreases down to a point where the density difference with atmosphere is nullified, and the current stops its lateral movement and may become buoyant. The final deposition from the buoyant part of the current forms the fine-ash layer that closes the layer sequence.

The distribution of particles of different size, density and shape in the PDC deposit, suggests that a link exists between current flow dynamics and particles that are first taken into suspension, then sedimented into a bed load, and finally moved by traction on the ground. Such jinks allow the use of particle characteristics (size, density and shape), as measured in the laboratory on sediment samples, for constraining the flow model and calculate the impact parameters.

A detailed formulation of the physical model (Dellino et al., 2008) and of the numerical software code PYFLOW v2.5 (Dioguardi and Dellino, 2014; Dioguardi and Mele, 2018) is deferred to Appendix A. The main data used as input are reported in the Zenodo repository (Mele et al., 2024). Here, only the main principles of the probabilistic approach are summarised. The basic assumption is that, at sedimentation, the settling velocity of particles equals the current shear velocity (Middleton and Southard, 1984; Dellino et al., 2008), which is a quantity that, together with flow density, allows estimating the impact parameters (dynamic pressure, particle concentration, temperature, flow duration). The settling velocity depends on the particle characteristics, mainly grain size, density and aerodynamic coefficients. Deposits are characterized by a broad distribution of particle sizes and densities, which can result from unsteady flow fluctuations that, upon sedimentation, affect shear velocity and settling velocity. In order to take such unsteadiness into account, solutions are provided in terms of the probability density function (PDF) of the grain-size distribution of deposit samples. In this paper, the solution corresponding to the 84th percentile of the PDF is used in the maps of impact parameters. It is considered a safety value for evaluating the damaging effect of the impact parameters. The method has been validated by large-scale experiments (Dellino et al., 2010), where values of the impact parameters measured by sensors fell well in the range of solution of the probability density function. Also, it was demonstrated that the solid particles temperature did not change much before the experiment and in the deposits after the experiment. It means that the simple model of flow temperature we used, which takes into consideration only the gas-particle average mixture

- ha eliminato: is because
- ha eliminato: needed for
- ha eliminato: Such an order of illustration is motivated by the fact that data from the overlying current helped constraining the flow model of the underlying one
- ha eliminato: tak
- ha eliminato: shear stress
- ha eliminato: s
- ha eliminato: sizes
- ha eliminato: layering
- ha eliminato: attitude to be
- ha eliminato: to
- ha eliminato: ation
- ha eliminato: a
- ha eliminato: s
- ha eliminato: (
- ha eliminato:)
- ha eliminato:
- ha eliminato: ref.
- ha eliminato:
- ha eliminato: to derive
- ha eliminato: into account
- ha eliminato:
- ha eliminato: The 84th percentile
- ha eliminato: here as
- ha spostato in alto [3]: The 84th percentile is considered here as a safety value for evaluating the damaging effect of the impact parameters. he method ha
- ha eliminato: .
- ha eliminato: ¶ Since model solutions depend on particle characteristics (mainly grain size, density and aerodynamic coefficients) and since deposits are characterized by a broad distribution of particle sizes and densities, solutions of impact parameters are given in terms of a pProbability dDensity fFunction (PDF), which depends on the statistical distributions of deposit particles characteristics. The 84th percentile is considered here as a safety value for evaluating the damaging effect of the impact parameters.
- ha eliminato: ref.

355 temperature and not the interphase heat exchange between phases, is an acceptable approximation of the average temperature
of the gas-particle mixture.
In the following, the results of flow dynamic pressure, particle volumetric concentration, temperature, and flow duration, which
represent the impact parameters, are illustrated for an example of the Pomici di Mercato eruption.

- ha eliminato: representing
- ha eliminato: the study case

3.1.1 Flow dynamic pressure and particle volumetric concentration

360 In order to illustrate how the calculated flow characteristics vary vertically in the stratified current, the profiles of particle
concentration, density, velocity, and dynamic pressure calculated from a single outcrop of a Pomici di Mercato's PDC deposit
are shown in Figure 4. Results are presented by means of the 84th, 50th and 16th percentile of the PDF, which were calculated
with the method of Dioguardi and Dellino (2014; see the method in Appendix A) and show the statistical variability in terms
of percentiles. Here, we present the vertical profiles up to 50 m above the ground level, which is the minimum estimate of the
total flow thickness calculated by PYFLOW.

- ha eliminato:
- ha eliminato: Figure 3
- ha formattato: Apice
- ha formattato: Apice
- ha formattato: Apice

365

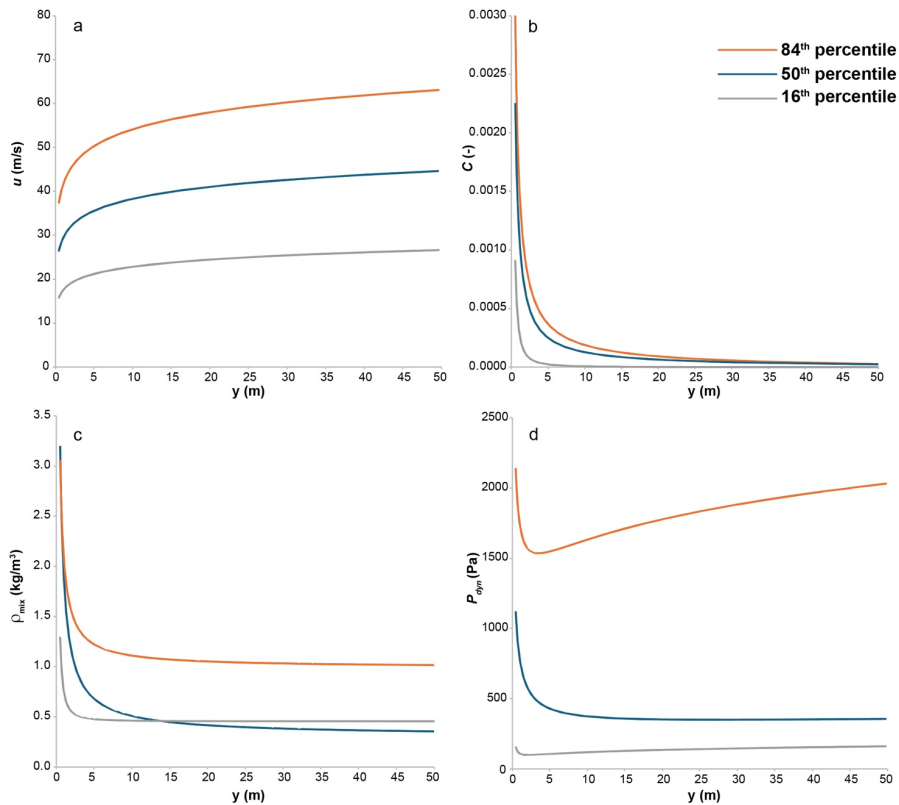
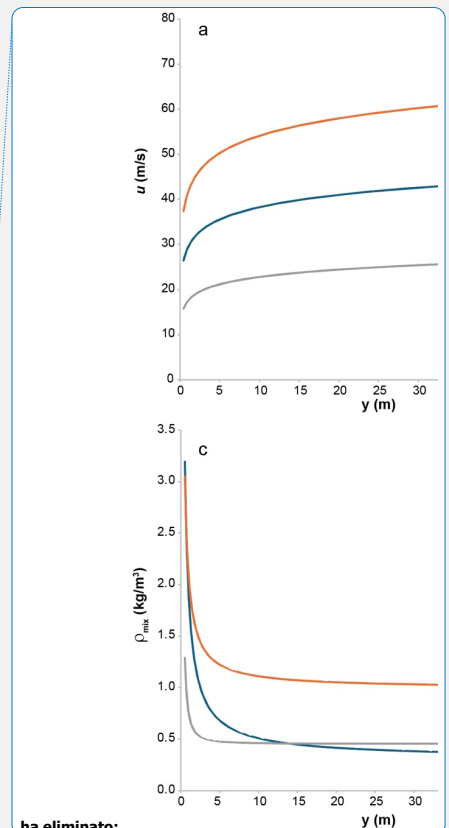


Figure 4. Example of parameters calculation of a PDC of Pomici di Mercato eruption. The curves refer to the minimum (16th percentile), the average (50th percentile) and the maximum (84th percentile) of the probabilistic model solution. (a) Velocity profiles. (b) Particle volumetric concentration profiles. (c) Density profiles. (d) Dynamic pressure profiles.

Velocity (u) logarithmically increases upward in the flow (Figure 4a), reaching values in the range of tens m/s (a list of symbols is provided in Table 1). Particle volumetric concentration (C) decreases with height (Figure 4b), and already in the first few meters is lower than 0.001. The density profile (ρ_{mix}) mimics the trend of the concentration profile (Figure 4c), and rapidly decreases down to a value lower than atmosphere (which is reached, typically, at a concentration about 0.0001), making the upper part of the current buoyant. The dynamic pressure P_{dyn} has a maximum in the first few meters (Figure 4d). Higher in the



ha eliminato:

ha formattato: Italiano

ha eliminato: Figure 3

ha eliminato: parameters

ha eliminato: calculation

ha eliminato: Profiles of the impact parameters representing the flow dynamic pressure.

ha eliminato: Figure 3

ha eliminato: Figure 3

ha eliminato: Figure 3

ha eliminato: Figure 3

390 current, dynamic pressure ranges around 1 kPa. The P_{dyn} value integrated over the first 10 m of the current, which we consider
helpful for representing the stress acting on a typical building, is 1.7 kPa, [in the 84th percentile curve for this example](#). With
such a value, moderate mechanical damages are expected (Zuccaro et al., 2008; Zuccaro and Leone, 2012).

ha formattato: Apice

Table 1. Notation

Symbol	Description	Units
A_r	Aggradation rate	m s^{-1}
C	Particle volumetric concentration	-
C_0	Reference particle concentration in the Rouse equation	-
C_d	Drag coefficient	-
C_{ga}	Volumetric concentration of the entrained air	-
$C_{ga,rel}$	Relative volumetric concentration of the entrained air	-
C_{gm}	Volumetric concentration of the magmatic gas	-
$C_{gm,rel}$	Relative volumetric concentration of the magmatic gas	-
C_{pm}	Specific heat at constant pressure of the magmatic gas	$\text{J kg}^{-1} \text{K}^{-1}$
C_{ps}	Specific heat at constant pressure of the particles	$\text{J kg}^{-1} \text{K}^{-1}$
d	Particle size	m
d_{ent}	Entrained particle size	m
g	Gravity acceleration	m s^{-2}
H_{dep}	Total deposit thickness	m
H_{lam}	Thickness of the laminated layer	m
k	Von Karman's constant	-
k_s	Substrate roughness	m
P_{dyn}	Dynamic pressure	Pa
P_n	Particle Rouse number	-
$P_{n,avg}$	Average Rouse number of the particles in the current	-
$P_{n,susp}$	Average Rouse number of particles in turbulent suspension	-
P_n^*	Normalized Rouse number of the current	-
P_{ni}	Rouse number of the i^{th} solid fraction in the deposit	-
R_a	Specific gas constant of air	$\text{J kg}^{-1} \text{K}^{-1}$
Re_*	Particle Reynolds number	-
R_m	Specific gas constant of the magmatic gas	$\text{J kg}^{-1} \text{K}^{-1}$
S_r	Sedimentation rate	$\text{kg m}^{-2} \text{s}^{-1}$

T	Flow temperature	K
t	Time of deposition	s
T_a	Air temperature	K
T_m	Temperature of the magmatic gas	K
T_s	Particle temperature	K
u	Velocity	m s^{-1}
u_*	Shear velocity	m s^{-1}
w_t	Particle settling velocity	m s^{-1}
z	Vertical coordinate	-
z_0	Reference height in the Rouse equation	m
z_{sf}	Shear flow thickness	m
z_{tot}	Total flow thickness	m
α	Substrate slope	°
θ	Shields parameter	-
μ	Fluid viscosity	Pa s
ρ_{atm}	Atmospheric density	kg m^{-3}
ρ_g	Gas density	kg m^{-3}
ρ_{mix}	PDC flow bulk density	kg m^{-3}
ρ_s	Particle density	kg m^{-3}
$\rho_{s,ent}$	Entrained particle density	kg m^{-3}
ρ_{si}	Density of the i^{th} solid fraction in the deposit	kg m^{-3}
τ	Flow shear stress	Pa
τ_0	Yield strength	Pa
ϕ_i	Weight fraction of the i^{th} solid fraction in the deposit	-
ρ_{dep}	Deposit density	kg m^{-3}

395

3.1.2 Flow temperature

Flow temperature was calculated by using as input in eq. A1.7 (see the appendix A) the values of density, concentration, temperature and specific heat of the three components of the gas particle mixture, namely: magmatic gas, air and volcanic particles. The temperature of magmatic gas T_m and of volcanic particles was set to 850 °C, which is compatible with the temperature of Vesuvius magmas (Cioni et al. 2004). Average density was set to 1700 kg m^{-3} for the volcanic particles, to 0.2 kg m^{-3} for volcanic gas at 850 °C, and to 1.2 kg m^{-3} for air at 18 °C, respectively. The specific heats were set to 2200 $\text{J kg}^{-1} \text{K}^{-1}$ for volcanic gas, 700 $\text{J kg}^{-1} \text{K}^{-1}$ for the volcanic particles and 1005 $\text{J kg}^{-1} \text{K}^{-1}$ for air. As for the particle concentration, an

400

ha eliminato: (

ha eliminato: 3;

ha eliminato:

average value of 0.001 was set, which was obtained by integrating the concentration profile over flow height from the ground to 10 meters above the ground (see [Figure 4b](#)) by means of Eq. (A7). The relative concentrations of air and magmatic gas were obtained by the method illustrated in Appendix A and resulted as 0.941 and 0.058, respectively. A temperature about 500 °C was obtained, in the first few meters of the current, by solving Eq. (A17). The low temperature obtained in the distal areas for other deposits (sometimes lower than 200° C) is due to the very low content of solid particles and a high content of cold atmosphere air in the current, which is attributed to the air entrainment process that characterizes PDCs along runout ([Dellino et al., 2019](#)). We consider it as a minimum value, since in our model no heat transfer between phases is considered, assuming that the time of mixing was relatively low and did not allow rapid heat exchange. It is also confirmed by experiments, as reported in a previous section.

3.1.3 Flow duration

Flow duration was calculated by dividing layer thickness (H_{dep}) by the sedimentation rate (S_r). The method is described in Appendix A, and is derived by [Dellino et al. \(2021\)](#). The input data (particle concentration, Rouse number and settling velocity) are all functions of the shear flow density, which was calculated in terms of a PDF with PYFLOW v2.5 ([Dioguardi and Mele, 2018](#)). As a consequence, also flow duration is expressed in terms of probabilities. The average flow duration was about 20 min, representing the case study of Pomice di Mercato eruption. The duration is quite long when compared to the couple of minutes considered as a survivable time for people engulfed in a PDC, even at low temperature ([Horwell and Baxter, 2006](#); [Baxter et al., 2017](#)).

3.2 Model of the highly concentrated undercurrent that formed the massive bed

In order to constrain the general model of the basal part of PDCs that forms the massive deposits, we can start from the experimental data on granular flows of volcanic material passing over a break in slope ([Sulpizio et al. 2016](#)). The method was successfully tested against granular avalanches of 1944 eruption at Vesuvius and for some of the volcanoclastic flows that occurred on May 5-6, 1998, in the Sarno area. In particular, [Sulpizio et al. \(2016\)](#) provided an equation linking velocity and distance travelled beyond the break in slope, using different slope ratios:

$$\frac{v}{v_{max}} = 1 + mD + nD^2 + pD^3 \quad (1)$$

where v_{max} is the velocity at break in slope, D is the distance beyond the break in slope, and m , n and p are parameters depending by ΔH , defined as the difference in height between the source area and the front of the deposit:

ha eliminato: at
 ha eliminato: Figure 3
 ha eliminato: means of
 ha eliminato: ¶

ha eliminato: .
 ha eliminato: :
 ha eliminato: ,
 ha formattato: Non Evidenziato
 ha formattato: Non Evidenziato
 ha eliminato: value of
 ha eliminato: at section 14 of Fig. 2
 ha eliminato:

ha formattato: Tedesco

$$\begin{cases} m = \frac{a}{\Delta H} \\ n = \frac{b}{\Delta H} \\ p = \frac{c}{\Delta H} \end{cases} \quad (2)$$

where a, b and c are parameters depending on the slope ratio (SR), defined as the ratio between the slope downvalley and upvalley of the break in slope:

$$\begin{cases} -a = 4.91e^{-2.15R} \\ b = 15.56e^{-3.515R} \\ -c = 16.73e^{-4.885R} \end{cases} \quad (3)$$

In order to get the velocity at different distances beyond the break in slope we have to set ΔH and v_{max} . For the case under study, the elevation of impact on the ground of the collapsing pyroclastic material was set around 800-900 m (the hypothetical height of collapse from Plinian column; Wilson et al. 1980; Woods, 1995) and the elevation of deposits occurrence was set around 200-300 m, which resulted in a ΔH of 600-700 m. The velocity at the break in slope can be set around 15 m s⁻¹, similar to that measured for volcanoclastic flows of May 5-6, 1998 in the Sarno area (Zanchetta et al. 2004). The present-day SR around Vesuvius is close to 0.5, which has been used as input value in equation (3). Figure 5 shows the results for a ΔH of 600 m. It is worth noting that the deposit lateral extent from the break in slope, for SR=0.5, is around 800-900 m, quite in agreement with the field data (Gurioli et al. 2010).

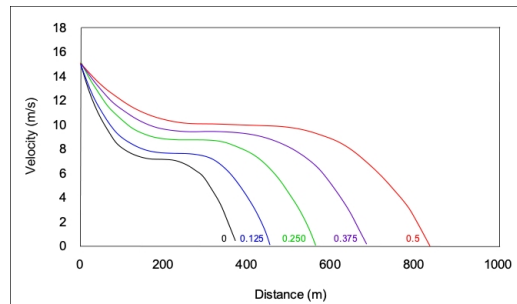


Figure 5. Velocity profiles beyond the break in slope for different SR.

ha eliminato:

ha eliminato: height

ha eliminato: height

ha eliminato: Figure 4

ha eliminato: D

ha eliminato: distance

ha eliminato: Figure 4

ha eliminato:

475

480

485

490

495

500

505

In order to constrain the specific flow model of [Pomici di Mercato](#) eruption, we used data from the stratified layer formed by the overlying current. When cropping out on the gentle slope of the volcano flank, the stratified layer is 0.5 m thick. When it occurs along the slopes of the gullies departing from the crater rim, it is split into two parts by the intercalated massive layer of the underflow. The split consists of a 0.15 m thick basal part ([Figure 3c](#)) and a 0.35 m thick top part ([Figure 3d](#)). The intercalated massive layer is 1.6 m thick ([Figure 3c](#)). The different speeds of the two flows moving downslope justify such interpenetrating stratigraphy between the massive and the dune-bedded layer. The dilute current, being faster, overtook the slower basal flow and started forming the dune-bedded layer by aggradation [at the split location](#). After the [concentrated flow](#) passed over, [and deposited the massive layer at the split location](#), the aggradation of the dune-bedded layer continued as long as the current was fed from the source. This kind of sandwiching stratigraphy is quite common for sedimentary deposits [formed by density currents](#), as reported for turbidites (e.g., Talling et al., 2004).

The speed of the underflow can be estimated by the ratio between the distance from the crater rim ([Mount Somma](#)) and the total time the underflow took to reach the dune-bedded layer at the 'split' location. The total time is evaluated by summing the time the overcurrent took to reach the [split location](#) plus the time that the overcurrent took to accumulate, by aggradation, the part of the stratified layer found under the massive one (0.15 m). The former time, 95 sec, was calculated by the distance, 4 km, divided by the speed of the overcurrent, ca 42 m s⁻¹, which was calculated by means of the turbulent boundary-layer shear flow approximation (Eq. (A6)) using PYFLOW v2.5 (see sample 13/4, in Table 2 and Mele et al. (2024)). With the software, the time of aggradation of the stratified layer found under the massive layer was calculated, and resulted in 1,140 sec. The total time that the underflow took to reach the split location was 1,235 sec, corresponding to a velocity of the massive undercurrent of 3.23 m s⁻¹, which is much slower than that of the overcurrent, as [it is](#) expected for a highly concentrated massive flow moving downslope.

The [concentrated undercurrent](#) stops at the base of the volcanic cone where, as a consequence of the decrease of the slope angle, it freezes in a 2 m thick [massive layer](#) ([Figure 3b](#)). Such a behaviour is typical of [particulate material](#) with a high internal yield strength that does not allow downslope flowage until a minimum shear stress is overcome, similarly to a Bingham-plastic (Furbish, 1997). Such flows stop when the slope [decreases](#), and the yield strength equals shear stress. Assuming that flow density was not much different from that of deposit, i.e., 1400 kg m⁻³ (as calculated by considering a known volume of deposits and weighing it), the yield strength τ_0 can be equated to the shear stress acting on the slope, which results in the minimum stress for the down-slope movement of the massive flow:

$$\tau_0 = \rho_{dep} g \sin \alpha H_{dep}$$

With a slope angle α of 1.5° and a deposit thickness H_{dep} of 2 m, the yield strength is 700 Pa.

By inverting the equation of the height-averaged velocity of a Bingham-plastic,

$$\bar{u}(z) = H \left(\frac{\rho_{dep} g \sin \alpha H}{3\mu} - \frac{\tau_0}{2\mu} \right)$$

ha eliminato: the massive undercurrent of

ha eliminato: steeper

ha eliminato: Figure 2

ha eliminato: Figure 2

ha eliminato: Figure 2

ha eliminato: massive

ha eliminato: '

ha eliminato: '

ha eliminato: , and in good agreement with the range of Figure 4

ha eliminato: massive

ha eliminato: facies

ha eliminato: Figure 2

ha eliminato: flows

ha eliminato: decreases

(4) ha eliminato: 1

ha eliminato: ;

(5) ha eliminato: 2

525

and using the value of yield strength τ_0 previously obtained, the thickness H_0 of the massive layer, and a slope angle at the split location of 6.5° , a viscosity μ of 200 Pa s results, which completes the rheological characterization of the massive underflow. Such a rheology is compatible with other massive sedimentary flows, to which massive pyroclastic flows have already been compared in the literature (Fink et al., 1981; Major and Pierson, 1992; Palladino and Valentine, 1995; Major and Iverson, 1999; Capra et al., 2018). While such type of flows maintains mobility only inside channels and stop at the gully apron, they are still destructive at the foot of the volcano because of a dynamic pressure over of 7 kPa, and high temperature, which is due to the high particle concentration.

535 **4. Hazard intensity maps and expected impact**

The PDF of the impact parameters of the PDCs were reconstructed from the deposits of all eruptions that showed, in the field, a good enough exposure to both characterize the deposit structure and to sample the pyroclastic material for the laboratory analyses. Multiple deposits cropping out along the dispersal area were investigated for each eruption; specifically, we took into account 65 samples of 16 PDCs' deposits. A list of the locations of the deposits taken into analysis is provided in Table 2 and a map is displayed in Figure 6. The input and output files of all the PYFLOW simulations for each deposit is provided in Mele et al. (2024). The models used in the PYFLOW code for calculating the PDF of the impact parameters are the same as those illustrated in the previous section's example of the Pomici di Mercato eruption (Appendix A).

ha eliminato:

ha eliminato: '

ha eliminato: '

ha eliminato: maintain

ha eliminato: Hazard maps

ha eliminato: .

ha eliminato: '

ha eliminato: Figure 5

ha eliminato: and explained in more detail in the

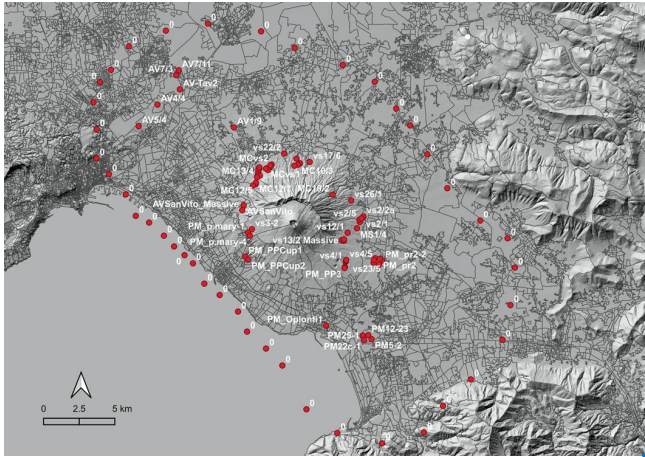
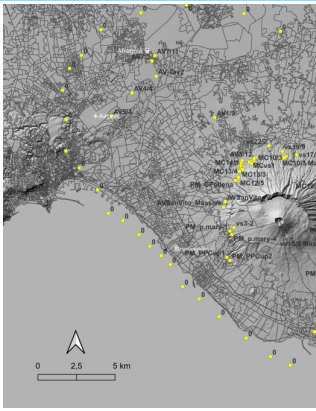


Figure 6. Map of sample locations at Vesuvius (see Table 2 for more details). The digital elevation model (Tarquini et al., 2023), territorial bases and census variables (Istat, 2011) are used as the topographic base for data set visualizations.



ha eliminato:

ha eliminato: Figure 5

Table 2. List of the sample locations (cartographical reference system WGS 84-UTM 33N).

Eruption	Unit	sample	X (m)	Y (m)
AD 1631 (Rosi et al., 1993)	1631	MS1/4	456008.13	4518724.03
Pollena (AD 472) (Sulpizio et al., 2005)	S1	vs17/6	452734.67	4523363.56
		vs19/9	451810.00	4523595.88
		vs22/2	450944.56	4523960.21
		vs2/1	456416.53	4519450.54
		vs4/1	455205.03	4516400.34
	S2	vs23/5	457160.09	4516331.52
		vs2/2a	456466.04	4519547.75
		vs4/3	455224.57	4516447.74

Tabella formattata

		vs23/2	457284.24	4516635.62
		vs13/2 Massive	454938.93	4517904.16
	Sy	vs13/2	455088.76	4517858.92
		vs2/3	456213.00	4519171.41
		vs12/1	455358.48	4518422.88
		vs23/4	457179.51	4516514.30
		vs26/1	455613.39	4520674.32
		vs4/6	455228.34	4516482.65
		vs2/5	456186.41	4519330.02
		vs13/3	455098.74	4517964.11
		vs4/5	455252.46	4516521.57
		vs2/4a	456327.61	4519414.50
Pompeii (AD 79) (Cioni et al., 1992)	EU3pf	PM_PP2	455153.96	4516044.29
		PM_pr2-2	457748.39	4516468.36
		PM_pr2	457596.00	4516572.87
	EU4	PM_PP3	455125.20	4515969.86
		PM_p.mary-1	448383.07	4518488.93
		PM_PR4	457532.66	4516201.35
		PMvs1_Massive	449818.91	4522825.06
		PMvs1	449669.96	4522919.38
		PM_Oplonti1	453805.10	4511968.91
		PM_CPollena	448750.75	4521753.94
		PM_PPCup1	448182.52	4516805.40
		PM_PPCup2	448379.34	4516597.53
		PM5-2	456987.12	4511000.96
		PM25-1	456374.22	4511259.25
		PM22c-1	456467.72	4510935.56
		PM12-23	456757.24	4511281.08
	EU7	PM_p.mary-4	448507.65	4518263.67
AP2 (Cioni et al., 2008)	AP2	vs3-2	448658.59	4518710.98
Pomici di Avellino (Sulpizio et al., 2010)	EU5 a	AV2/2	449209.95	4522930.73
	EU5 b	AV2/5	449142.01	4522869.39

ha formattato: Francese

Tabella formattata

		AV2/7	449208.65	4523011.56
		AV1/9	447451.73	4525799.95
	<u>Cava San Vito</u>	AVSanVito_Massive	447987.83	4520035.70
		AVSan Vito	448091.94	4520384.36
	<u>EU5 b</u>	AV_Tav2	443690.19	4528476.65
		AV4/4	442120.93	4527426.14
		AV5/4	440790.89	4525942.00
		AV7/3	443439.30	4529463.26
	<u>EU5 c</u>	AV7/11	443623.49	4529801.35
		AV3/12_Massive	449968.79	4523028.51
		AV3/12	449978.44	4523138.63
Pomici di Mercato (Mele et al., 2011)	<u>EU4</u>	MCvs1	449777.76	4522964.23
		MCvs2	450072.39	4523203.00
		MC13/3	449064.39	4522395.94
		MC8/3	452056.53	4523272.95
		MC10/3	451918.93	4523181.88
		MC10/3 Massive	451662.41	4523113.25
		MC14/1	449126.76	4522613.68
		MC14/2	449129.16	4522678.89
		MC19/2	454328.68	4521073.78
	<u>EU6</u>	MC13/4_Massive	449242.12	4522437.32
		MC13/4	449036.04	4522328.96
		MC12/5	448943.77	4521846.17
		MC12/7	448965.37	4521944.05

565 Upon processing data with the PYFLOW code, only results that were significant after a t-test on grain size, at 5% probability, were included in the final database (see PYFLOW user manual for more details). The resulting dataset consists of 65 georeferenced data points distributed around the volcano, each containing values of the four impact parameters: dynamic pressure, particle volumetric concentration, temperature and flow duration. The 84th percentile of the PDF, which we consider as a safety value of the intensity of PDCs, is used for constructing the hazard intensity maps.

570 By the analysis of results shown in Figure 7, which are arranged in order of eruption age, no temporal trend of PDC intensity (as expressed here by the dynamic pressure) emerges at Vesuvius. The variability inside an eruption (between different PDCs)

- ha formattato: Apice
- ha eliminato: hazard maps
- ha eliminato: data
- ha eliminato: Figure 6

575 covers a broad range as it is also the variation of parameters among eruptions. Therefore, there is no reason to choose one
specific eruption as representative of the hazard of PDCs in the next fifty years. Also to note that if one considers the scale of
eruptions as represented by the total volume of volcanic material emitted including deposits of other origin with respect to
PDCs, such as Plinian fallout), which is an often used metric in volcanology, there is not any correlation between eruption size
and PDC intensity. An example is the Pollena eruption, whose PDCs are as intense as those of Pomici di Mercato or 79 AD
580 eruptions, but have a total volume five times smaller (Sulpizio et al., 2005; 2007). All data points of all eruptions calculated at
an exceedance probability of 16% (which is the complement to the 84th percentile of solution of the PDF) have been, therefore,
used for drawing the hazard intensity maps, without any choice of a particular case as a specific scenario to be expected in the
long term. Therefore, the maps represent the value of the impact parameters at an exceedance probability of 16% in the event
of a PDC-forming eruption at Vesuvius, without making assumptions on any scenario (e.g., eruption size). In the construction
585 of the hazard intensity maps, all data points, referring the outcropping deposits of all the eruptions were considered together
as to obtain isolines of the impact parameters.

- ha eliminato: , which, in the long term, means
- ha eliminato: It is a
- ha eliminato: (which also
- ha eliminato: es
- ha eliminato: V
- ha eliminato: This is likely to be related to the fact that the material erupted during a single PDC is a very small fraction of the total eruption volume, and still, each current is very dangerous.
- ha eliminato: not weaker than
- ha eliminato: Pompei
- ha eliminato: 5
- ha eliminato: (which is the complement to the 84th percentile of solution of the PDF)
- ha eliminato: h

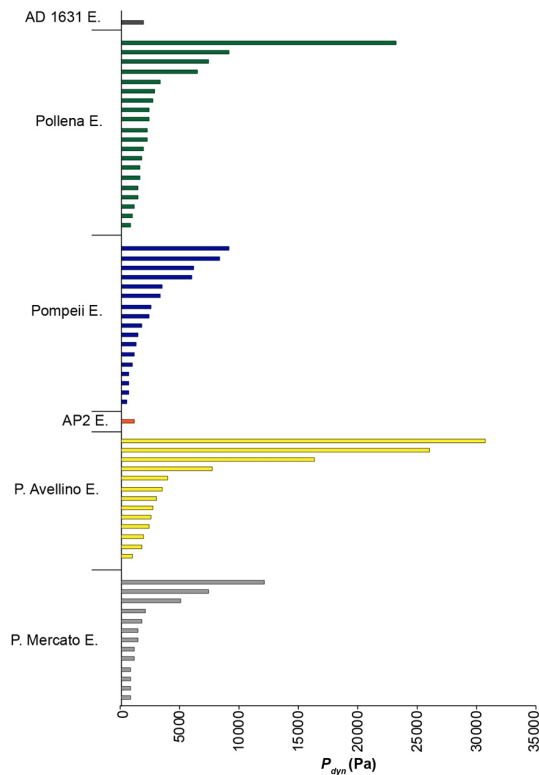


Figure 7. Dynamic Pressure (Pa) values (in the basal 10 m of the current), calculated from the deposits of all studied eruptions.

Hazard intensity maps representing the isolines of the expected safety values of the impact parameters are shown in Figure 8. The maps were produced using the open source QGIS software. To reconstruct the maps, it was first necessary to add “zeroes” (zero values of impact parameters), representing points where PDC deposits do not crop out. Whilst this does not completely rule out the arrival of the PDC at these locations, the potential error committed in the evaluation of the impact parameters in the areas close to the zero line is negligible since the last non-zero contour lines were set to very low values of the impact parameters. Then we applied the QGIS contour plugin in order to spatially interpolate the data (Crook and Rouberyrie, 2024).

ha eliminato: Figure 6

ha eliminato: over the first

ha eliminato: All data points of all eruptions calculated at an exceedance probability of 16% have been, therefore, used for drawing the hazard mapshazard intensity maps, without any choice of a particular case as a specific scenario to be expected in the long term. Therefore, the maps represent the value of the impact parameters at an exceedance probability of 16% in the event of a PDC-forming eruption at Vesuvius, without making assumptions on any scenario (e.g., eruption size).

ha eliminato: Hazard maps

ha eliminato: Figure 7

ha eliminato: contour

Each map of Figure 8 represents one impact parameter. Also, data were rasterized based on a regular grid at 250 m resolution, and are provided in the Zenodo repository (Mele et al. 2024), which could be useful for vulnerability analysis.

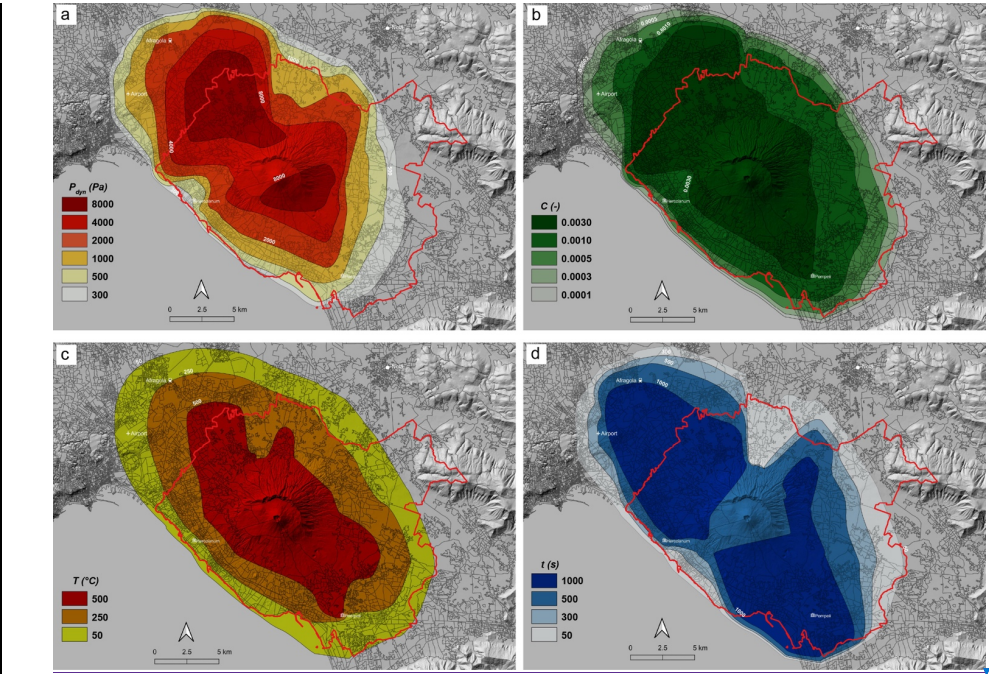
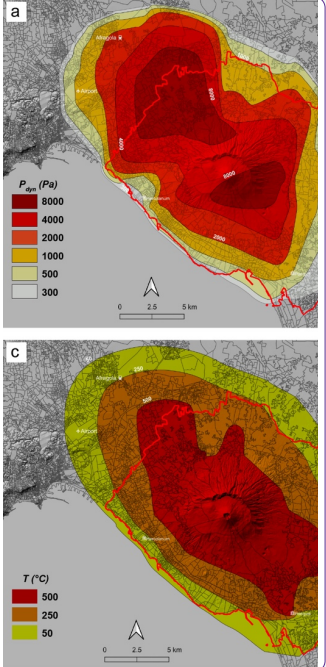


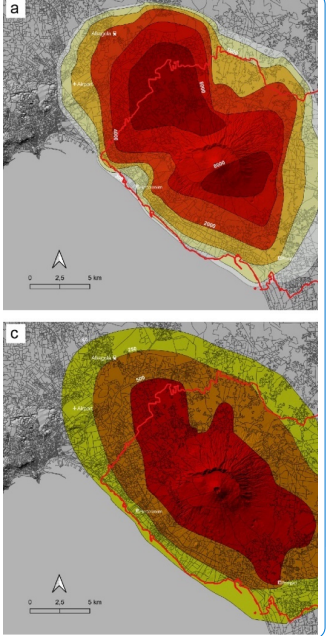
Figure 8. Hazard intensity maps of pyroclastic density currents at Vesuvius **calculated at the 84th percentile (16% exceedance probability).** The red solid line represents the boundary of the red zone proposed by the Italian National Civil Protection Department (2014). a) Dynamic Pressure (Pa) integrated over the **basal 10 m** of the current. b) Particle volumetric concentration integrated over the **basal 2 m** of the current. c) Flow temperature (°C) in the **basal 2 meters** of the current. d) Average flow duration (s). The digital elevation model (Tarquini et al., 2023), territorial bases and census variables (Istat, 2011) are used as the topographic base for data set visualizations.

From all the maps a decrease of PDCs intensity emerges as a function of the distance from the volcano, which helps to differentiate the potential impact of PDCs over the territory compared to the undifferentiated red zone proposed by the National Civil Protection Department of Italy (Civil Protection Department, 2014; Figure 8, red solid line). Our maps tend to have similar coverage to that of the red zone, the only exception being the northwest area, where the maps extend a little further than the

ha eliminato: Figure 7



ha eliminato:



ha eliminato:

ha eliminato: Figure 7

ha eliminato: Hazard maps

ha formattato: Apice

ha eliminato: first ...asal 10 m of the current. b) Particle volumetric concentration integrated over the first ...asal 2 m of the current. c) Flow temperature (°C) in the fir...asalst

ha eliminato: **Care la cornice nera rettangolo in c e d**

red-zone limit. This is because our maps include the PDCs of the [Pomice di Avellino](#) eruption, which spread over northwest but were not used in the drawing of the red-zone map because they were considered as representative of a too big scenario. [↓](#)

[↓](#) At the centre of the maps, around the Vesuvius cone, the massive undercurrents result in high values of impact parameters, with dynamic pressures over 8 kPa ([Figure 8a](#)) and temperature over 500°C ([Figure 8c](#)), due to the high particle concentration. These flows are totally destructive and [exceed reasonable engineering measures to protect buildings and populations](#), aside from evacuation. This conclusion is supported by data at Herculaneum, where the massive flows of the Pompeii eruption left a massive deposit that caused the breaking of thick Roman walls and charred wood [components of buildings](#) (Giordano et al. 2018). Results of the calculations for the massive undercurrents in the locations, where it has been possible to apply the model of section 3.2, are provided in the Zenodo repository (Mele et al. 2024). [↓](#) Moving away from the cone, the isolines of the impact parameters refer to the overlying dilute currents, since the massive underflow stops at the base of the volcano. Values of the impact parameters vary significantly moving away from Vesuvius, implying a different impact in the various zones around the volcano. [A constraint to the flow mobility exists toward northeast, which is represented by the remnants of Monte Somma, while toward southwest there is the sea, which is not considered in the red zone.](#)

[Focusing on](#) the impacts [on](#) buildings, dynamic pressure ([Figure 8a](#)) shows values [exceeding](#) 8 kPa in the more proximal zones, both toward northwest and southwest, while they reduce to less than 1 kPa at the margin of the red zone. This is due to the decrease of both speed and concentration. Engineering investigations (Spence et al., 2004; Zuccaro et al., 2008; Zuccaro and Leone, 2012) show that values higher than 5 kPa can significantly damage buildings, while pressure under 1 kPa has minimal to no consequence on structures or infrastructures. Different impacts can be indeed expected on buildings as one moves away from the volcano, and while in proximal areas severe damages are expected, [at distal locations](#), such as Pompeii, 10 km from the volcano, the mechanical effects of the dilute currents strongly decrease down to a value lower than 1 kPa. No damage to walls should be expected with such a flow strength (Spence et al., 2004; Zuccaro et al., 2008; Zuccaro and Leone, 2012). [This](#) is consistent with the fact that at Pompeii, during the 79 AD eruption, the walls of Roman buildings do not show evidence of damage [related to the passage of the PDC](#) ([Luongo et al., 2003; Gurioli et al., 2007](#)). While this is not the proper place to discuss in detail the engineering actions that can be used for protecting existing buildings or to propose guidelines for new constructions against the impact of PDCs, our map of [Figure 8a](#) suggests that already a few km away from the volcano, but still well inside the red zone, actions for protecting openings and walls (which are the weaker elements of buildings) against a dynamic pressure of a few kPa could be [viable](#).

Concerning the effects of PDCs on the population caught unprotected, the combination of data from maps of particle volumetric concentration, temperature and flow duration of [Figure 8 b, c, and d](#), respectively, allows to assess that even in distal zones, where the mechanical effect of dynamic pressure drastically decays, the effect of hot fine-ash needs to be considered as a primary impact over the population. [The ideal protective measure, even at these locations, is evacuation](#). In fact, it is emerging that even in areas far from a volcano, where particle concentration, temperature and dynamic pressure strongly decrease, people engulfed in the flow have “high probability of receiving fatal skin burns and inhalation injury of the upper and lower respiratory

ha eliminato: On the contrary, they were included in our study because, as discussed earlier, we do not choose any particular scenario as representative of the hazard in the long term, but we included consider the PDCs of all eruptions.

ha spostato in basso [2]: A constraint to the flow mobility exists toward northeast, which is represented by the remnants of Monte Somma, while toward southwest there is the sea, which is not considered in the red zone. [↑](#)

ha eliminato: Our maps, by including intensity information, allow us to inferring the potential impact of PDCs on buildings and the population, and could serve as a constraint for projecting the mitigation actions in the different areas around the volcano.

ha eliminato: [↑](#)

ha eliminato: occur and

ha eliminato: Figure 7

ha eliminato: Figure 7

ha eliminato: ,

ha eliminato: caused by

ha eliminato: do not allow, to our knowledge, to project any sustainable structural action for protecting buildings or populations

ha eliminato: (

ha eliminato:)

ha eliminato: s

ha eliminato: [↑](#)

ha spostato (inserimento) [2]

ha eliminato: Concerning

ha eliminato: over

ha eliminato: Figure 7

ha eliminato: even over

ha eliminato: on

ha eliminato: ,

ha eliminato: ,

ha eliminato: which

ha spostato in basso [1]: (Luongo et al., 2003; Gurioli et al., 2007) related to the passage of the PDC

ha spostato (inserimento) [1]

ha eliminato: Figure 7

ha eliminato: economically

ha eliminato: over free space

ha eliminato: Figure 7

ha formattato: Tipo di carattere: (Predefinito) +Titoli (Times New Roman), 10 pt, Colore carattere: Automatico

ha formattato

ha formattato: Colore carattere: Automatico

(... [3])

tract, unless the duration is very brief" (Baxter et al., 2017). The presence of fine-ash particles suspended in air for a long time, even in very small amounts, can be very harmful to human health, and represents one major cause of injury (Horwell and Baxter, 2006). Our maps show that temperature decays from 500°C in the zone characterized by the massive undercurrents around the cone, which is justified by the high particle volumetric concentration, down to values lower than 200°C at the margin of the red zone (Figure 8b). This decrease is due to the large volume of cold air entrained in the current during runout. The low temperature of the PDCs of the 79 AD eruption calculated at Pompeii (about 115°C) is due to the much higher content of cold atmosphere air in the current, with respect to the hot magmatic gas. Exposure to pure hot air at 200–250 °C can be survived for 2–5 minutes (Buettner, 1950), but the presence of inhalable hot fine ash drastically reduces survival times (Baxter et al., 2017). As expected, our map of particle concentration (Figure 8c) shows an abrupt decay passing from the area around the cone, which is characterized by the massive undercurrent, to values much lower than 0.001, typical of the dilute overlying current in distal reaches. Even a volumetric concentration of ash in suspension this low can be unbreathable and is one of the main causes of mortality of PDCs. This is consistent with the observation of historical eruptions, where the flow lasted for several minutes to hours (Lube et al., 2007). At that moment, the territory surrounding the volcano was engulfed by thick, expanded, fast and hazardous currents, loaded with unbreathable hot ash (Horwell and Baxter, 2006). The exposure time becomes indeed a major factor in determining the impact of PDCs on population, since it quantifies the residence time of hot volcanic ash that can be inhaled by people potentially exposed to the currents (Horwell and Baxter, 2006). Our map of Figure 8d, shows that flow duration ranges always exceed several minutes. These values refer only to the overlying dilute currents, since the massive undercurrent, that freeze at the foot of the cone are much shorter lived. In the case of Pompei eruption of 79 AD a value of 17 min had been calculated, which combined with the concentration of ash particles (about 0.001), was a long enough time to cause death by asphyxia at Pompeii. There are reports of recent eruptions showing that in the marginal reaches of the current, where the flow duration was only a few minutes, people were able to survive (Baxter et al., 2017). In other cases, longer flow durations did not permit survival and death was caused by fine-ash inhalation (Baxter et al., 2017; Nakada, 2000). We agree with Baxter et al. (2017) that the emergency planning for explosive eruptions should concentrate on the distal parts of PDCs where survival could be likely, and where the primary risk to life is asphyxiation from ash inhalation, rather than thermal or mechanical injury. It is important to take note of such information when projecting for emergency plans and risk-reduction measures.

5 Conclusion

Among volcanic phenomena, PDCs are the major cause of destruction and injuries in urbanized areas. Since it is impossible to predict the exact dispersal area or the magnitude of an eruption, a probabilistic approach that accounts for the variability of the intensity of pyroclastic density currents of past eruptions is a better choice to inform structural mitigation and, in case of an impending eruption, sustainable evacuation plans.

ha eliminato: Figure 7

ha eliminato: Figure 7

ha eliminato: During that period the territory

ha eliminato:

ha eliminato: Figure 7

ha eliminato: s

ha eliminato: ¶

ha eliminato: Flow duration is a key factor for assessing the impact of PDCs on human beings, especially in distal areas, where the primary risk to life is asphyxiation, as at Pompeii.

ha eliminato: C¶
Now, considering that multiple closely-timed currents characterize the sequence of events of eruptions at Vesuvius, it seems quite unlikely the survival of people caught unprotected even at the margin of the red zone.

ha eliminato: represent

795 Here, we combined field data from deposits of previous eruptions with a physical model to develop probability density functions for impact parameters around Vesuvius. By considering the 84th percentile of the distribution as a safety value, hazard intensity maps have been drawn that show the distribution over the territory of pyroclastic density currents intensity in the long term. Our choice of the 84th percentile as a safety value could appear as a particularly severe one, but it is often used in Geophysics and in Engineering (Bradley, 2011; Fang et al., 2020). These maps differ from the red-zone map of the Italian Civil Protection Department in two main aspects:

- 800 1. Our maps include the distribution of the PDCs' intensity (as represented by impact parameters). In contrast, the red-zone map is undifferentiated since it was constructed simply by delineating the outer margin of deposit dispersal, but not the PDCs intensities. The red-zone map is used to delimit the area to be evacuated, and not to project for possible mitigation actions.
- 805 2. Our hazard zones extend toward northwest compared to the red-zone map, because in our case all eruptions of Vesuvius are included, while in the construction of the red-zone map the Avellino and Pompeii eruptions were not considered, because it was assumed that eruptions that big should not occur. PDC intensity is not proportional to the volume of an entire eruption, since one single PDC is a small fraction of the total volume. An example is that the bigger eruption of Pompeii had weaker currents than the smaller eruption of Pollena.

810 Since our maps extend a little bit more toward northwest with respect to the red-zone map of the Department of Civil Protection of Italy, it would be useful considering an extension over that direction of the evacuation zone around Vesuvius.

In this study, an integrated model resolving the impact parameters of both the underlying massive part and of the overlying dilute part of the current was used, allowing to differentiate their respective impact. The Bingham plastic rheology used to approximate the massive underflow is similar to that proposed for other massive flows that occur both on volcanoes and on sedimentary terrains. To our knowledge this is the first time that such an integrated approach, resolving the complexity of both the concentrated and the dilute part of the flow, is used for constructing hazard intensity maps, and deserves to be taken into consideration also on other volcanoes that show a complex stratigraphy of PDCs. Such complex stratigraphy, at Vesuvius, implies that during an explosive eruption multiple currents occur, making it reasonable to assume that PDCs can continue for hours or days or more, and that their multiple, cascading effect, need to be considered when projecting for mitigation actions. The maps of impact parameters make it possible to back calculate the initial and boundary conditions of PDCs at the crater and to simulate, by 3D computational fluid dynamics, the propagation of currents over the actual morphology, including the urbanized area around the Vesuvius, which is the next step of the present research.

820 The precision of parameters used in the PYFLOW code needs to be tested against alternatives to assess the modelling approach's epistemic uncertainty. An extension of this work will be dedicated to such a subject, in order to assess the multi-model variability of results. We think that the method used here to prospect probabilistically the hazard in the long term, and

825 to take as a safety value the 84th percentile of PDF, covers an ample range of the uncertainty of results.

ha eliminato: Starting from data of deposits of past eruptions, by means of a physical model of the current, the probability density function of impact parameters has been calculated at each deposit location...

ha eliminato: hazard maps

ha formattato: Apice

ha formattato: Apice

ha eliminato: In fact, t

ha eliminato: maps are extended more

ha eliminato: with respect

ha eliminato: Actually, it is not the scale of the entire eruption (in terms of total material emitted) that is proportional to the intensity of a ...

ha eliminato: It is indeed to note that s

ha eliminato: should

ha eliminato: to consider

ha eliminato: hazard maps

ha eliminato: C

ha eliminato: F

ha eliminato: D

ha eliminato: Our choice of the 84th percentile as a safety value could appear as a particularly severe one, but it is often used in Geophysics and in Engineering (Bradley, 2011; Fang et al., 2020), so we decided to comply with this value. The PYFLOW code allows, anyway, to reconstruct any percentile of the probability density function of the impact parameters, in case other percentiles should be preferred for the emergency planning.

ha eliminato: , anyway,

ha eliminato: aleatoric

ha eliminato: , likely covering also the higher end of the epistemic uncertainty

ha formattato: Apice

855 Appendix A. The flow model and the numerical code

The reconstruction of the impact parameters of PDCs is based on a flow model that starts with the assumption that the current is steady, velocity and density stratified (Valentine, 1987; Dellino et al., 2008; Brown and Branney, 2013) and flowing on gentle slopes. The model is implemented in the Fortran numerical code PYFLOW v2.5 (Dioguardi and Dellino, 2014; Dioguardi and Mele, 2018).

ha eliminato:

860 In the stratified multiphase gas-particle current, the basal part is a shear flow that moves attached to the ground and has a density higher than atmosphere. The upper part is buoyant, because particle concentration decreases with height down to a value that, combined with the effect of gas temperature, makes the mixture density lower than the surrounding atmosphere.

The inputs needed, in our model, for the calculation of the impact parameters are reported in the input files of the Zenodo repository (Mele et al. 2024). Some of the input data are obtained directly in the field, such as deposit and layer thickness.

865 Deposit density is obtained by weighing a known volume of deposit. Other data come from laboratory analyses on samples extracted from the deposit. In the laboratory, first, the grain-size distribution is determined, then from each size class a sample of particles per each component (crystal, glass, lithics) is extracted, and density data are obtained on such particle samples by means of pycnometers (Mele et al., 2015). Particle shape parameters, which are needed for the calculation of settling velocity, are obtained by image analysis methods (Mele et al., 2011).

870 In a dilute PDC, particles are mainly transported by turbulent suspension and sedimentation is controlled by a balance between flow shear velocity u_* , which is controlled by fluid turbulence and favours suspension, and particle settling velocity w_t :

$$w_t = \sqrt{\frac{4gd(\rho_s - \rho_{mix})}{3C_d\rho_{mix}}} \quad (A1)$$

which favours sedimentation, where g is gravity acceleration, d is particle size, ρ_s is the particle density, ρ_{mix} is the bulk flow density and C_d is drag coefficient. The median of the grain-size distribution was used for particle size. PYFLOW allows

875 selecting among multiple shape-dependent drag laws; in this work, the drag law of Dioguardi et al. (2018) was used. The capacity of a current to transport particles in suspension is quantified by the Rouse number (Rouse, 1939) $P_n = \frac{w_t}{ku_*}$, where k is the Von Karman constant (0.4). At the limit of transportation by turbulent suspension when $P_n = 2.5$, from its definition, since $k=0.4$, it follows that:

$$w_t = u_* \quad (A2)$$

880 This is the suspension-sedimentation criterion (Middleton and Southard, 1984), which means that particles stay suspended until their settling velocity is less than the flow shear velocity. In other terms, particles in the deposit that are settled from suspension (the laminae-forming bed load) give an indication of the current shear velocity, once their terminal velocity is defined. Upon combining (A1) and (A2), it follows that:

$$u_*^2 = \frac{4gd(\rho_s - \rho_{mix})}{3C_d\rho_{mix}} \quad (A3)$$

885 which leads to the shear stress at the base of the current:

$$\tau = \rho_{mix}u_*^2 \quad (A4)$$

There can be also particles that are never transported in suspension but can be moved over the substrate by the overlying current's shear stress (e.g., particles for which $P_n > 2.5$ or that are already on the ground before the passage of the dilute PDC). The latter phenomenon can be described by the Shield or entrainment criterion (Miller et al., 1977), which compares the dilute PDC shear stress to the buoyancy force of the coarse particle in the flow:

$$\theta = \frac{\rho_{mix} u_*^2}{(\rho_{s,ent} - \rho_{mix}) g d_{ent}} \quad (A5)$$

where $\rho_{s,ent}$ and d_{ent} are the density and diameter of the entrained particle, respectively; θ is a parameter which is equal to 0.015 for a particle Reynolds number $Re_* = \frac{\rho_{mix} u_* d_{ent}}{\mu}$ (where μ is the fluid viscosity) larger than 1000 (Miller et al., 1977), a condition that holds for most dilute PDCs (Dellino et al. 2008).

Both methods are implemented in PYFLOW v2.5 and can be alternatively activated depending on the PDC's deposit's architecture. When the typical complete stratigraphic sequence attributed to a dilute DPDC is observed (e.g., [Figure 2c](#)), that is:

1. a coarse layer of lapilli and bombs moved by shear at the base of the current;
2. a laminated layer of ash formed by particles settled from turbulent suspension.

it is possible to apply both the Shield and the suspension-sedimentation criteria for calculating the flow parameters. However, the layer of entrained coarse lapilli or bombs, which is typical of proximal locations around the eruptive vent, is often missing in distal outcrops, thus preventing to use the Shield criterion far away from the volcanic vent. In that case, an alternative method based on the hydraulic equivalence of particles can be used.

In both cases the parameters needed to calculate the vertical profiles of velocity, particle concentration (hence flow density), flow temperature and dynamic pressure are obtained. Specifically, the velocity profile $u(z)$ follows the equation of a turbulent boundary layer shear flow moving over a rough surface (Furbish, 1997):

$$\frac{u(z)}{u_*} = \frac{1}{k} \ln \frac{z}{k_s} + 8.5 \quad (A6)$$

where k_s is the roughness parameter of the substrate. The concentration profiles is taken from Rouse (1939):

$$C(z) = C_0 \left(\frac{z_0}{z_{tot} - z_0} \frac{z_{tot} - z}{z} \right)^{P_n} \quad (A7)$$

in which z_{tot} is the total flow thickness, z_0 is the height at which the particle concentration is known (C_0). From (A7), the flow bulk density profile can be defined as:

$$\rho_{mix}(z) = (1 - C(z)) \rho_g + C(z) \rho_s \quad (A8)$$

PYFLOW first estimates the shear flow height z_{sf} by solving the system of equations composed of eq. (A4) and:

$$\tau = (\rho_{mix} - \rho_{atm}) g \sin \alpha z_{sf} \quad (A9)$$

where ρ_{atm} is the atmospheric density and α is the slope of the ground, measured in the field, on which the dilute PDC was flowing.

The shear current is composed of gas and a mixture of particles, in which those with $P_n = 2.5$ are at settling condition. Finer particles are held in suspension by turbulent [motion](#) and contribute to the concentration profile $C(z)$, but their average Rouse

ha eliminato: Figure 1

ha eliminato:)

ha eliminato: stress

number $P_{n,susp}$, which is lower than 2.5, is unknown. In addition, the thickness of the PDC z_{tot} and the flow gas density ρ_g are unknown. In order to get these three unknowns, PYFLOW solves for the following system of three equations:

$$\rho_{atm} = \rho_g + \left((\rho_s - \rho_g) C_0 \left(\frac{z_0}{z_{tot} - z_0} \frac{z_{tot} - z_{sf}}{z_{sf}} \right)^{P_{n,susp}} \right) \quad (A10)$$

$$\rho_{mix} = \frac{1}{z_{sf} - z_0} \int_{z_0}^{z_{sf}} \left[\rho_g + \left((\rho_s - \rho_g) C_0 \left(\frac{z_0}{z_{tot} - z_0} \frac{z_{tot} - z}{z} \right)^{P_{n,susp}} \right) \right] dz \quad (A11)$$

$$z_{tot} = \frac{H_{lam}}{C} = \frac{z_{lam}}{\frac{\rho_{mix} - \rho_g}{\rho_s - \rho_g}} \quad (A12)$$

The first equation (A10) states that the atmospheric density is reached at the top of the shear flow z_{sf} , the second one (A11) defines the average flow density calculated between z_0 and z_{sf} , the third equation (A12) defines the total flow thickness as the ratio between the thickness of the laminated layer H_{lam} in the deposit and the average concentration in the flow C (Lajoie et al., 1998), which is defined as:

$$C = \frac{\rho_{mix} - \rho_g}{\rho_s - \rho_g} \quad (A13)$$

This is just an approximate value used to initialize the software and does not influence much the solutions down to the first tens of meters of the current where the maximum intensity of impact parameters is found. In this work C_0 is set to the maximum

packing for pyroclastic particles (0.7) (Dellino et al., 2008), hence z_0 is taken as the minimal sedimenting thickness.

Subsequently, PYFLOW uses ρ_g to calculate the flow temperature profile $T(z)$, assuming the flow is composed by the solid particles, the magmatic gas and entrained air, if the user provides in input: the temperature of the magmatic gas T_m , the air temperature T_a (set by default to 293 K if not provided), the temperature of the solid particles T_s , the specific gas constant of the magmatic gas R_m and air R_a (set by default to 287 J kg⁻¹ K⁻¹), the specific heat at constant pressure of the magmatic gas $C_{p,m}$ and of the solid particles $C_{p,s}$ and the average density of the solid particles ρ_s . First, the density of the magmatic gas and entrained air are obtained by solving for the equation of state:

$$\rho_m = \frac{p_a}{R_a T_a} \quad (A14a)$$

$$\rho_a = \frac{p_a}{R_m T_m} \quad (A14b)$$

hence with the assumption that the gas phases are at constant atmospheric pressure (set to 101325 Pa if not specified in input by the user). From these densities and the flow gas density ρ_g , one can calculate the relative volumetric concentration of the

magmatic gas $C_{gm,rel}$ and entrained air $C_{ga,rel}$:

$$C_{gm,rel} = \frac{\rho_g - \rho_a}{\rho_m - \rho_a} \quad (A15a)$$

$$C_{ga,rel} = 1 - C_{gm} \quad (A15b)$$

These concentrations are still not the real magmatic gas $C_{g,m}$ and entrained air $C_{g,a}$ volumetric concentrations in the multiphase flow that includes the solid particle concentration calculated C via Eq. (A13), hence they need to be rescaled so that the sum of their rescaled values equals $1 - C$:

ha formattato: Tipo di carattere: Non Corsivo

ha eliminato: REF

ha eliminato: software, and

ha eliminato: It is to note that the latter is an approximation, since a deposition time component should be taken into account in

ha eliminato:

When $P_n^* > 1$, a current has a particle volumetric concentration in excess of its maximum capacity, e.g. it is over-saturated of particles, which favours sedimentation. When it is lower than 1, a current has a particle volumetric concentration lower than its maximum capacity, e.g. it is under-saturated, and could potentially include additional sediment in suspension by erosion from the substrate. For more details see Dellino et al. (2019).
990 Finally, PYFLOW calculates probability density functions of all the parameters presented above starting from a Gaussian distribution. From these functions, it is possible to obtain the values of the impact parameters at the desired exceedance probability.

Code availability
995 PYFLOW v2.5 is available at https://github.com/FabioDioguardi/PYFLOW/releases/tag/v_2.5.

Data availability
All supporting data, which include input and output files of the DPDCs simulations carried out with PYFLOW, calculations of the massive PDCs' impact parameters and rasterized impact parameters map data are available at <https://doi.org/10.5281/zenodo.13378963>.

1000 **Author contribution**
PD developed the methodology and the models and contributed to data analysis and text editing. FD developed PYFLOW v2.5, contributed to the simulations, data analysis and text editing. DM run the simulations with PYFLOW, conducted data analysis and produced the graphical outputs and contributed to text editing. RS contributed to data analysis and text editing.

Competing interests
1005 The authors declare that they have no conflict of interest.

Acknowledgements
This study was carried out within the RETURN Extended Partnership and received funding from the European Union Next-GenerationEU (National Recovery and Resilience Plan – NRRP, Mission 4, Component 2, Investment 1.3 – D.D. 1243 2/8/2022, PE0000005).

1010 **References**

Baxter, P. T., Neri, A., and Todesco, M.: Physical modeling and human survival in pyroclastic flows, *Nat. Hazards*, 17, 163-176, 1998.

Baxter, P.J., Jenkins, S., Rosadi, S., Komorowski, J. C., Dunn, K., Purser, D., Voight, B., and Shelley, I.: Human survival in volcanic eruptions: thermal injuries in pyroclastic surges, their causes, prognosis and emergency management, *Burns* 43, 1051-1069, 2017.

Bertagnini, A., Landi, P., Rosi, M., and Vigliargio, A.: The Pomici di Base plinian eruption of Somma-Vesuvius, *J. Volcanol. Geotherm. Res.*, 83, 219–239, 1998.

Bradley, B. A.: Design seismic demands from seismic response analyses: a probability-based approach, *Earthq. Spectra* 27(1), 213–224, 2011, <https://doi.org/10.1193/1.3533035>.

1020 Branney, M. J., and Kokelaar, P.: *Pyroclastic Density Currents and the Sedimentation of Ignimbrites*, Geological Society, London, Memoirs, 27 pp, 2002.

Breard, E.C.P., and Lube, G.: Inside pyroclastic density currents – uncovering the enigmatic flow structure and transport behaviour in large-scale experiments, *Earth Planet. Sci. Lett.*, 458, 22–36, 2017.

Brocchini, D., Principe, C., Castradori, D., Laurenzi, M.A., and Gorla, L.: Quaternary evolution of the southern sector of the Campanian Plain and early Somma-Vesuvius activity: insights from the Trecase 1 well, *Mineral. Petrol.* 73, 67–91, 1025 <https://doi.org/10.1007/s007100170011>, 2001.

Brown, R. J., and Branney, M. J.: Internal flow variations and diachronous sedimentation within extensive, sustained, density stratified pyroclastic density currents down gentle slopes, as revealed by the internal architectures of ignimbrites in Tenerife. *Bull. Volcanol.*, 75, 1–24, 2013.

1030 Buettner, K.: Effects of extreme heat in man, *J. Am. Med. Assoc.* 144, 732–738, 1950.

Cao, Z., Egashira, S., and Carling, P. A.: Role of suspended-sediment particle size in modifying velocity profiles in open channel flows, *Water Resour. Res.*, 39(2), 1029, doi:10.1029/2001WR000934, 2003.

Capra, L., Sulpizio, R., Marquez-Ramirez, V.H., Coviello, V., Doronzo, D.M., Arambula-Mendoza, R., and Cruz, S.: The anatomy of a pyroclastic density current: the 10 July 2015 event at Volcán de Colima (Mexico), *Bull. Volcanol.*, 80, 34, 2018.

1035 [Cas, R.A.F., and Wright, J.V.: *Volcanic Successions: Modern and Ancient*. Allen & Unwin, 1987.](#)

[Cerninara, M., Esposti Ongaro, R., and Berselli, L. C.: ASHEE-1.0: a compressible, equilibrium–Eulerian model for volcanic ash plumes, *Geosci. Model Dev.*, 9, 697–730, 2016.](#)

Cioni, R., Marianelli, P., and Sbrana, A.: Dynamics of the AD 79 eruption: stratigraphic, sedimentological and geochemical data on the succession from the Somma-Vesuvius southern and eastern sectors, *Acta Volcanol.* 2,109–123, 1992.

1040 Cioni, R., Santacroce, R., and Sbrana, A.: Pyroclastic deposits as a guide for reconstructing the multi-stage evolution of the Somma-Vesuvius caldera, *Bull. Volcanol.*, 60, 207–222, 1999.

- ha eliminato:
- ha formattato: Inglese americano
- ha formattato: Inglese americano
- ha formattato: Inglese americano
- ha formattato: Inglese americano
- ha formattato: Inglese americano
- ha formattato: Inglese (Regno Unito)

- Cioni, R., Sulpizio, R., and Garruccio, N.: Variability of the eruption dynamics during a subplinian event: the Greenish Pumice eruption of Somma-Vesuvius (Italy), *J. Volcanol. Geotherm. Res.*, 124, 89–114, 2003.
- 1045 Cioni, R., Gurioli, L., Lanza, R., and Zanella, E.: Temperatures of the A. D. 79 pyroclastic density current deposits (Vesuvius, Italy), *J. Geophys. Res.*, 109, B02207, 2004.
- Cioni, R., Bertagnini, A., Santacroce, R., and Andronico, D.: Explosive activity and eruption scenarios at Somma-Vesuvius (Italy): towards a new classification scheme, *J. Volcanol. Geotherm. Res.* 178:331–346, doi:10.1016/j.jvolgeores.2008.04.024, 2008.
- 1050 Civil Protection Department, Presidency of the Council of Ministers, Italian Government: Direttiva del 14 febbraio 2014: disposizioni per l'aggiornamento della pianificazione di emergenza per il rischio vulcanico del Vesuvio, *Gazzetta Ufficiale*, 108, <https://www.protezionecivile.gov.it/en/normativa/direttiva-del-14-febbraio-2014/>, 2014.
- Cole, P. D., and Scarpati, C.: The 1944 eruption of Vesuvius, Italy: Combining contemporary accounts and field studies for a new volcanological reconstruction, *Geol. Mag.*, 147, 391–415, 2010.
- 1055 Crook, C., and Rouberyrie, L.: QGIS Countour plugin, <https://github.com/ccrook/QGIS-Contour-Plugin>, 2024.
- Dellino, P., Mele, D., Sulpizio, R., La Volpe, L., and Braia, G.: A method for the calculation of the impact parameters of dilute pyroclastic density currents based on deposit particle characteristics, *J. Geophys. Res.*, 113, B07206, <https://doi.org/10.1029/2007B005365>, 2008.
- Dellino, P., Büttner, R., Dioguardi, F., Doronzo, D. M., La Volpe, L., Mele, D., Sonder, I., Sulpizio, R., and Zimanowski, B.: Experimental evidence links volcanic particle characteristics to pyroclastic flow hazard, *Earth Planet. Sci. Lett.*, 295, 314–320, 2010.
- 1060 Dellino F., Dioguardi F., Doronzo D.M., and Mele D.: The entrainment rate of non Boussinesq hazardous geophysical gas-particle flows: an experimental model with application to pyroclastic density currents, *Geophys. Res. Lett.*, 46 (22), 12851–12861, 2019.
- 1065 Dellino, P., Dioguardi, F., Doronzo, D. M., and Mele, D.: A discriminatory diagram of massive versus stratified deposits based on the sedimentation and bedload transportation rates. Experimental investigation and application to pyroclastic density currents, *Sedimentology* 67, 2013–2039, doi:10.1111/sed.12693, 2020.
- Dellino, P., Dioguardi, F., Isaia, R., Sulpizio, R., and Mele, D.: The impact of pyroclastic density currents duration on humans: the case of the AD 79 eruption of Vesuvius. *Sci. Rep.* 11, 4959, 2021.
- 1070 Dioguardi, F., and Dellino, P.: PYFLOW: a computer code for the calculation of the impact parameters of dilute pyroclastic density currents (DPDC) based on field data, *Comput. Geosci.*, 66, 200–210, doi:10.1016/j.cageo.2014.01.013, 2014.
- Dioguardi, F., and Mele, D.: PYFLOW_2.0: a computer program for calculating flow properties and impact parameters of past dilute pyroclastic density currents based on field data, *Bull. Volcanol.* 80, 28, 2018.
- Dioguardi, F., Mele, D., and Dellino, P.: A New One-Equation Model of Fluid Drag for Irregularly Shaped Particles Valid Over a Wide Range of Reynolds Number, *J. Geophys. Res. Solid Earth* 123(1), 144–156, <https://doi.org/10.1002/2017JB014926>, 2018.

Codice campo modificato

Druitt, T. H.: Emplacement of the 18 May 1980 lateral blast deposit ENE of Mount St. Helens, Washington, *Bull. Volcanol.*, 54, 554–572, 1992.

Druitt, T. H., and Kokelaar P.: The Eruption of Soufrie’re Hills Volcano, Montserrat, From 1995 to 1999, *Geol. Soc. Lond. Mem.*, 21, 664, 2002.

Esposti Ongaro, T., Neri, A., Menconi, G., de’Michieli Vitturi, M., Marianelli, P., Cavazzoni, C., Erbacci, G., and Baxter, P.J.: Transient 3D numerical simulations of column collapse and pyroclastic density current scenarios at Vesuvius, *J. Volcanol. Geotherm. Res.*, 178, 378–396, 2008.

Fang, C., Ping, Y., and Chen, Y.: Loading protocols for experimental seismic qualification of members in conventional and emerging steel frames, *Earthquake Engng. Struct. Dyn.*, 49, 155–174, 2020, <https://doi.org/10.1002/eqe.3231>.

Fink, J. H., Malin, M. C., D’Alli, R. E., and Greeley, R.: Rheological properties of mudflows associated with the spring 1980 eruptions of Mount St. Helens Volcano Washington, *Geophys. Res. Lett.*, 8, 43–46, 1981.

Fisher, R. V.: [Mechanism of deposition from pyroclastic flows, *Am. J. Sci.* 264, 350–363, 1966.](#)

Fisher, R. V.: Transport and deposition of a pyroclastic surge across an area of high relief: the 18 May 1980 eruption of Mount St. Helens, Washington, *Geol. Soc. Am. Bull.*, 102, 1038–1054, 1990.

Furbish, D. J.: *Fluid Physics in Geology*, 476 pp., Oxford Univ. Press, New York, 1997.

Gernon, T. M., Upton, B. G. J., and Hincks, T. K.: Eruptive history of an alkali basaltic diatreme from Elie Ness, Fife, Scotland, *Bull. Volcanol.*, 75, 704, 2013.

Giordano, G., Zanello, E., Trolese, M., Baffioni, C., Vona, A., Caricchi, C., De Benedetti, A.A., Corrado, S., Romano, C., Sulpizio, R., Geschi, N.: Thermal interactions of the AD79 Vesuvius pyroclastic density currents and their deposits at Villa dei Papiri (Herculaneum archaeological site, Italy), *Earth Plan. Sci. Lett.*, 490, 180–192, <https://doi.org/10.1016/j.epsl.2018.03.023>, 2018.

Gurioli, L., Zanello, E., Pareschi, M. T., and Lanza, R.: Influences of urban fabric on pyroclastic density currents at Pompeii (Italy): Flow direction and deposition, *J. Geophys. Res.*, 112, B05213, 2007.

Gurioli, L., Sulpizio, R., Cioni, R., Sbrana, A., Santacroce, R., Luperini, W., and Andronico D.: Pyroclastic flow hazard assessment at Somma-Vesuvius based on the geological record, *Bull. Volcanol.*, 72, 1021–1038, 2010.

Horwell, C. J., and Baxter P.: The respiratory health hazards of volcanic ash: A review for volcanic risk mitigation. *Bull. Volcanol.*, 69, 1–24, 2006.

ISTAT: *Basi territoriali e variabili censuarie: censimento 2011. 15-Campania.*

http://www.istat.it/it/files/2013/11/R15_11_WGS84.zip, 2011.

Jenkins, S., Komorowski, J. -C., Baxter, P. J., Spence, R., Picquout, A., Surono, F. L.: The Merapi 2010 eruption: an interdisciplinary assessment methodology for studying pyroclastic density currents, *J. Volcanol. Geotherm. Res.*, 261, 316–329, 2013.

Codice campo modificato

1110 Jones, T.J., Beckett, F., Bernard, B., Breard, E.C.P., Dioguardi, F., Dufek, J., Engwell, S., and Eychenne, J.: Physical properties
of pyroclastic density currents: relevance, challenges and future directions, *Front. Earth Sci.*, 11,
<https://doi.org/10.3389/feart.2023.1218645>, 2023.

Kneller, B. C., and Branney, M. J.: Sustained high density turbidity currents and the deposition of thick massive sands,
Sedimentology, 42, 607–616, 1995.

1115 [Lajoie, J., Boudon, G., and Bourdies, J.L.: Depositional mechanics of the 1902 pyroclastic nuée ardente deposits of Mt. Pelée,
Martinique, J. Volcanol. Geotherm. Res., 38, 131–142, 1998.](#)

Lowe, D.R.: Sedimentary gravity flows: II. Depositional models with special reference to the deposits of high density turbidity
currents, *J. Sed. Petrol.*, 52, 279–297, 1982.

Lowe, D. R.: Suspended-load fallout rate an independent variable in the analysis of current structures, *Sedimentology*, 35,
765–776, 1988.

1120 Lube, G., Cronin, S. J., Platz, T., Freundt, A., Procter, J. N., Henderson, C., and Sheridan, M. F.: Flow and deposition of
pyroclastic granular flows: a type example from the 1975 Ngauruhoe eruption, New Zealand, *J. Volcanol. Geotherm. Res.*
161, 165–186, 2007.

Luongo, G., Perrotta, A., Scarpati, C., De Carolis, E., Patricelli, G., and Ciarallo, A.: Impact of the AD 79 eruption on Pompeii,
II. Causes of death of the inhabitants inferred by stratigraphic analysis and areal distribution of the human casualties, *J.*
1125 *Volcanol. Geotherm. Res.*, 126, 169–200, 2003.

Major, J. J., and Pierson, T.C.: Debris flow rheology: experimental analysis of fine-grained slurries, *Water Resour. Res.*, 28,
841–857, 1992.

Major, J. J., and Iverson, R. M.: Debris-flow deposition effects of pore-fluid pressure and friction concentrated at flow margins,
Geol. Soc. Am. Bull., 111, 1424–1434, 1999.

1130 Mele, D., Sulpizio, R., Dellino, P., and La Volpe, L.: Stratigraphy and eruptive dynamics of a pulsating Plinian eruption of
Somma-Vesuvius: the Pomici di Mercato (8900 years B.P.), *Bull. Volcanol.* 73, 257–278, 2011.

Mele, D., Dioguardi, F., Dellino, P., Isaia, R., Sulpizio, R., and Braia, G.: Hazard of pyroclastic density currents at the Campi
Flegrei Caldera (Southern Italy) as deduced from the combined use of facies architecture, physical modeling and statistics of
the impact parameters, *J. Volcanol. Geoth. Res.*, 299, 35–53, 2015.

1135 Mele, D., Dellino, P., Dioguardi F.: Pyroclastic density currents hazard simulation data at Mt. Vesuvius, Italy [Data set],
Zenodo, <https://doi.org/10.5281/zenodo.13682628>, 2024.

Middleton, G. V., and Southard, J. B.: *Mechanics of Sediment Movement*, 401 pp., Soc. Econ. Paleont. Miner., Tulsa, 1984.

Miller, M.C., McCave, I.N., and Komar, P.D.: Threshold of sediment motion under unidirectional currents. *Sedimentology*,
24, 507–527, 1977.

1140 Nakada, S.: Hazards from Pyroclastic Flows and Surges, In *Encyclopedia of Volcanoes* (eds Sigurdsson, H. et al.), Academic
Press, Cambridge, 2000.

ha eliminato:

ha eliminato: .

1145 Neri, A., Esposti Ongaro, T., Menconi, G., Vitturi, M., De'Michieli, M., Cavazzoni, C., Erbacci, G., and Baxter, P.J.: 4D simulation of explosive eruption dynamics at Vesuvius, *Geophys. Res. Lett.*, 34(4), L04309, 2007.

Palladino, D.M., and Valentine, G.A.: Coarse-tail vertical and lateral grading in pyroclastic flow deposits of the Latera Volcanic Complex (Vulsini, Central Italy): origin and implications for flow dynamics, *J. Volcanol. Geoth. Res.*, 69, 343–364, 1995.

150 [Pensa, A., Giordano, G., Corrado, S., and Petrone, P.P.: A new hazard scenario at Vesuvius: deadly thermal impact of detached ash cloud surges in 79CE at Herculaneum. *Sci Rep* 13, 5622. <https://doi.org/10.1038/s41598-023-32623-3>, 2023.](#)

Postma, G., Cartigny, M., and Kleverlaan, K.: Structureless, coarse-tail graded Bouma Ta formed by internal hydraulic jump of the turbidity current, *Sed. Geol.*, 219, 1–6, 2009.

QGIS.org: QGIS Geographic Information System. Open Source Geospatial Foundation Project, <http://qgis.org>, 2024.

Rosi, M., Principe, C., Vecchi, R.: The 1631 eruption of Vesuvius reconstructed from the review of chronicles and study of deposits, *J. Volcanol. Geotherm. Res.*, 58, 151–182, 1993.

1155 Rouse, H.: An analysis of sediment transportation in the light of fluid turbulence, in *Soil Conservation Services Report No. SCS-TP-25*, USDA, Washington, D.C., 1939.

Santacroce, R., Cioni, R., Marianelli, P., Sbrana, A., Sulpizio, R., Zanchetta, G., Don-ahue, D. J., and Joron, J.-L.: Age and whole rock-glass composition of proximal pyroclastics from the major explosive eruptions of Somma–Vesuvius: a review as a tool for distal tephrostratigraphy, *J. Volcanol. Geotherm. Res.* 177, 1–18, 2008.

1160 Selva, J., Sandri, L., Taroni, M., Sulpizio, R., Tierz, P., and Costa, A: A simple two-state model interprets temporal modulations in eruptive activity and enhances multivolcano hazard quantification, *Sci. Adv.*, 8(44), eabq4415, <https://doi.org/10.1126/sciadv.abq4415>, 2022.

Sevink, J., van Bergen, M. J., van der Plicht, J., Feiken, H., Anastasia, C., and Huizinga, A.: Robust date from the Bronze Age Avellino eruption (Somma–Vesuvius): 3945 ± 10 calBP (1995 ± 10 cal BC), *Quat. Sci. Rev.* 30, 1035–1046, 2011.

1165 Sigurdsson, H., Carey, S., Cornell, W., and Pescatore, T.: The eruption of Vesuvius in 79 AD, *Nat. Geogr. Res.*, 1, 332–387, 1985.

Spence, R. J. S., Baxter, P. J., and Zuccaro G.: Building vulnerability and human casualty estimation for a pyroclastic flow: A model and its application to Vesuvius, *J. Volcanol. Geotherm. Res.*, 133, 321–343, 2004.

1170 Sulpizio, R., Mele, D., Dellino, P., and LaVolpe, L.: A complex, Subplinian type eruption from low-viscosity, tephri-phonolitic magma: the Pollena eruption of Somma-Vesuvius (Italy), *Bull. Volcanol.* 67(8), 743–767, <https://doi.org/10.1007/s00445-005-0414-x>, 2005.

Sulpizio, R., Mele, D., Dellino, P., and La Volpe, L.: Deposits and physical properties of pyroclastic density currents during complex Subplinian eruptions: The AD 472 (Pollena) eruption of Somma-Vesuvius, Italy, *Sedimentology*, doi:10.1111/j.1365-3091.2006.00852.x, 2007.

1175

ha formattato: Inglese americano

ha formattato: Inglese americano

ha formattato: Inglese americano

ha eliminato:

Sulpizio, R., Bonasia, R., Dellino, P., Mele, D., Di Vito, M.A., and La Volpe, L.: The Pomici di Avellino eruption of Somma-Vesuvius (3.9 ka BP). Part II: Sedimentology and physical volcanology of pyroclastic density current deposits, *Bull. Volcanol.*, 72, 559–577, 2010.

1180 Sulpizio, R., Cioni, R., Di Vito, M.A., Mele, D., Bonasia, R., and Dellino, P.: The Pomici di Avellino eruption of Somma-Vesuvius (3.9 ka BP) part I: stratigraphy, compositional variability and eruptive dynamics, *Bull. Volcanol.* 72, 539-558, 2010b.

Sulpizio, R., Dellino, P., Doronzo, D. M., and Sarocchi, D.: Pyroclastic density currents: state of the art and perspectives, *J. Volcanol. Geoth. Res.*, 283, 36–65, 2014.

Sulpizio, R., Castioni, D., Rodriguez-Sedano, L. A., Sarocchi, D., and Lucchi, F.: The influence of slope-angle ratio on the
1185 dynamics of granular flows: insights from laboratory experiments, *Bull. Volcanol.*, 78(11), 1–11, 2016.

[Sweeney, M.R., and Valentine, G.A.: Impact zone dynamics of dilute mono- and polydisperse jets and their implications for the initial conditions of pyroclastic density currents, *Phys. Fluids*, 29\(9\), 093304, 2017.](#)

Talling, P. J., Amy, L. A., Wynn, R. B., Peakall, J., and Robinson, M.: Beds comprising debrite sandwiched within co-genetic turbidite: origin and widespread occurrence in distal depositional environments, *Sedimentology*, 51, 163–194, 2004.

1190 Tarquini, S., Isola, I., Favalli, M., Battistini, A., and Dotta, G.: TINITALY, a digital elevation model of Italy with a 10 meters cell size (Version 1.1). Istituto Nazionale di Geofisica e Vulcanologia (INGV). <https://doi.org/10.13127/tinitaly/1.1>, 2023.

Valentine, G. A.: Stratified flow in pyroclastic surges, *Bull. Volcanol.* 49, 616–630, 1987.

Valentine, G. A.: Damage to structures by pyroclastic flows and surges, inferred from nuclear weapons effects, *J. Volcanol. Geotherm. Res.*, 49, 616– 630, 1998.

1195 [Valentine, G.A., and Sweeney, M.R.: Compressible Flow Phenomena at Inception of Lateral Density Currents Fed by Collapsing Gas-Particle Mixtures, *J.G.R. Solid Earth* 123\(2\), 1286–1302, 2018.](#)

[Valentine, G.A.: Initiation of dilute and concentrated pyroclastic currents from collapsing mixtures and origin of their proximal deposits, *Bull. Volcanol.* 82\(2\), 20, 2020.](#)

[Valentine, G.A., Fierstein, J., and White, J.D.L.: Pyroclastic deposits of Ubehebe Crater, Death Valley, California, USA: Ballistics, pyroclastic surges, and dry granular flows: *Geosphere* 18 \(6\), 1926–1957, <https://doi.org/10.1130/GES02526.1>, 2022.](#)

[Wilson, C.J.N.: The role of fluidization in the emplacement of pyroclastic flows: An experimental approach, *J. Volcanol. Geotherm. Res.*, 8, 231–249, 1980.](#)

[Woods, A.W.: The dynamics of explosive volcanic eruptions, *Rev. Geophys.* 33, 495–530, 1995.](#)

205 Woods, A.W., Sparks, R. S. J., Ritchie, L. J., Batey, J., Gladstone, C., and Bursik, M. I.: The explosive decompression of a pressurized volcanic dome: the 26 December 1997 collapse and explosion of Soufrière Hills Volcano, Montserrat, *Geol. Soc. London Mem.*, 21, 457-465, 2002.

Zanchetta, G., Sulpizio, R., Pareschi, M.T., Leoni, F.M., and Santacroce, R.: Characteristics of May 5–6 1998 volcanoclastic debris flows in the Sarno area (Campania, Southern Italy): relationships to structural damage and hazard zonation, *J. Volcanol. Geotherm. Res.* 133:377–393, 2004.

210

ha eliminato: a

Codice campo modificato

ha eliminato:

215 [Zanella, E., Gurioli, L., Lanza, R., Sulpizio, R., and Bontempi, M.: Deposition temperature of the AD 472 Pollena pyroclastic density current deposits, Somma-Vesuvius, Italy, Bull. Volcanol., 70, 1237-1248, 2007.](#)

[Zanella, E., Sulpizio, R., Gurioli, L., and Lanza, R.: Temperatures of the pyroclastic density currents deposits emplaced in the last 22kyr at Somma–Vesuvius \(Italy\). In: Ort, M.H., Porreca, M., and Geissman, J.W. \(eds.\), The Use of Palaeomagnetism and Rock Magnetism to Understand Volcanic Processes. Geol. Soc. Lond., 396, 13–33, \[https://doi.org/10.1144/ SP396.4\]\(https://doi.org/10.1144/SP396.4\), 2015.](#)

1220 Zuccaro, G., Cacace, F., Spence, R. J. S., and Baxter, P. J.: Impact of explosive eruption scenarios at Vesuvius, J. Volcanol. Geotherm. Res., 178, 416-453, 2008.

Zuccaro, G., and Leone, M.: Building Technologies for the Mitigation of Volcanic Risk: Vesuvius and Campi Flegrei, Nat. Hazards Rev., 13, 221-232, 2012.

ha formattato: Inglese (Regno Unito)

ha eliminato: ¶

Pagina 22: [1] ha eliminato	Daniela Mele	12/03/25 11:53:00
------------------------------------	---------------------	--------------------------

▼		◀
▲		

Pagina 22: [1] ha eliminato	Daniela Mele	12/03/25 11:53:00
------------------------------------	---------------------	--------------------------

▼		◀
▲		

Pagina 22: [1] ha eliminato	Daniela Mele	12/03/25 11:53:00
------------------------------------	---------------------	--------------------------

▼		◀
▲		

Pagina 22: [1] ha eliminato	Daniela Mele	12/03/25 11:53:00
------------------------------------	---------------------	--------------------------

▼		◀
▲		

Pagina 22: [2] ha eliminato	Daniela Mele	12/03/25 11:56:00
------------------------------------	---------------------	--------------------------

▼		
▲		

Pagina 22: [2] ha eliminato	Daniela Mele	12/03/25 11:56:00
------------------------------------	---------------------	--------------------------

▼		
▲		

Pagina 22: [2] ha eliminato	Daniela Mele	12/03/25 11:56:00
------------------------------------	---------------------	--------------------------

▼		
▲		

Pagina 22: [2] ha eliminato	Daniela Mele	12/03/25 11:56:00
------------------------------------	---------------------	--------------------------

▼		
▲		

Pagina 23: [3] ha formattato	Pierfrancesco Dellino	18/03/25 13:07:00
-------------------------------------	------------------------------	--------------------------

▼		
▲		

--	--	--

--	--	--

--	--	--

--	--	--

--	--	--

--	--	--

--	--	--

--	--	--

--	--	--

--	--	--

--	--	--

--	--	--

--	--	--

--	--	--

Tipo di carattere: (Predefinito) +Titoli (Times New Roman), 10 pt, Colore carattere: Automatico, Inglese (Regno Unito)