

Cultivation reduces quantities of mineral-organic associations in the form of amorphous coprecipitates

Floriane Jamoteau^{1,2,3,4*}, Emmanuel Doelsch^{2,3}, Nithavong Cam¹, Clément Levard¹, Thierry Woignier^{5,6}, Adrien Boulineau⁷, Francois Saint-Antonin⁷, Sufal Swaraj⁸, Ghislain Gassier¹, Adrien Duvivier¹, Daniel Borschneck¹, Marie-Laure Pons¹, Perrine Chaurand¹, Vladimir Vidal¹, Nicolas Brouilly⁹, Isabelle Basile-Doelsch¹

¹Aix Marseille Université, CNRS, IRD, INRAE, Coll France, CEREGE, Aix-en-Provence, 13545, France

²CIRAD, UPR Recyclage et risque, Montpellier, F-34398, France

³Recyclage et Risque, Univ Montpellier, CIRAD, Montpellier, F-34398, France

⁴Institute of Earth Surface Dynamics, University of Lausanne, Lausanne, 1015, Switzerland

⁵Campus Agro Environnemental Caraïbes-IMBE-CNRS, B.P. 214, Petit Morne, Le Lamentin, Martinique, 97232, France

⁶Laboratoire Charles Coulomb UMR 5221 CNRS-UM2, Université Montpellier 2, Montpellier Cedex5, 34095, France

⁷Université Grenoble Alpes, CEA, LITEN, Grenoble, 38100, France

⁸Synchrotron SOLEIL, L'Orme des Merisiers, Departementale 128, Saint-Aubin, 91190, France

⁹Aix-Marseille Université, CNRS UMR 7288, IBDM, Marseille, 13000, France

Correspondence to: Floriane Jamoteau (floriane.jamoteau@unil.ch)

Supplementary information

Supplementary information 1. Mineral characterization of bulk soils and fine fractions of the forest and crop soils	3
Supplementary information 2. Chemical mapping of mineral-organic associations with transects from crystalline to amorphous phases, using TEM-EDX.	4
Supplementary information 3. TEM images and high-resolution TEM images of the fine fractions of the forest and crop andosols	5
Supplementary information 4. TEM-EDX chemical mappings on the fine fractions of the forest and crop andosols	8
Supplementary information 5. TEM-EELS chemical mappings on the fine fractions of the forest and crop andosols	13
Supplementary information 6. STXM mappings on the fine fractions of the forest and crop andosols .	15

Supplementary Figures

Figure S1. X-ray diffractograms comparing the bulk and fine fractions of forest and crop andosols.	3
Figure S2. Chemical mapping of organo-mineral associations with transects from crystalline to amorphous phases, using TEM-EDX	4
Figure S3. TEM and high-resolution TEM image analyses on the fine fractions of the forest andosol	5
Figure S4. TEM and high-resolution TEM image analyses on the fine fractions of the crop andosol	7
Figure S5. TEM-EDX chemical mapping of mineral-organic associations in fine fractions of the forest andosol	8
Figure S6. TEM-EDX chemical mapping of mineral-organic associations in fine fractions of the crop andosol	10
Figure S7. Chemical map on fine fractions of the forest soil using TEM-EELS mapping (pixel size of 10 nm)	13
Figure S8. Chemical map on fine fractions of the crop soil using TEM-EELS mapping (pixel size of 15 nm).	14
Figure S9. Chemical mapping and organic matter characterization within the forest soil fine fractions, using STXM mapping	15
Figure S10. Chemical mapping and organic matter characterization within the crop soil fine fractions, using STXM mapping	16

Supplementary Tables

Table S1. Atomic proportions derived from TEM-EDX mappings of the forest soil	11
Table S2. Atomic proportions derived from TEM-EDX mappings of the crop soil.	12

Supplementary information 1. Mineral characterization of bulk soils and fine fractions of the forest and crop soils

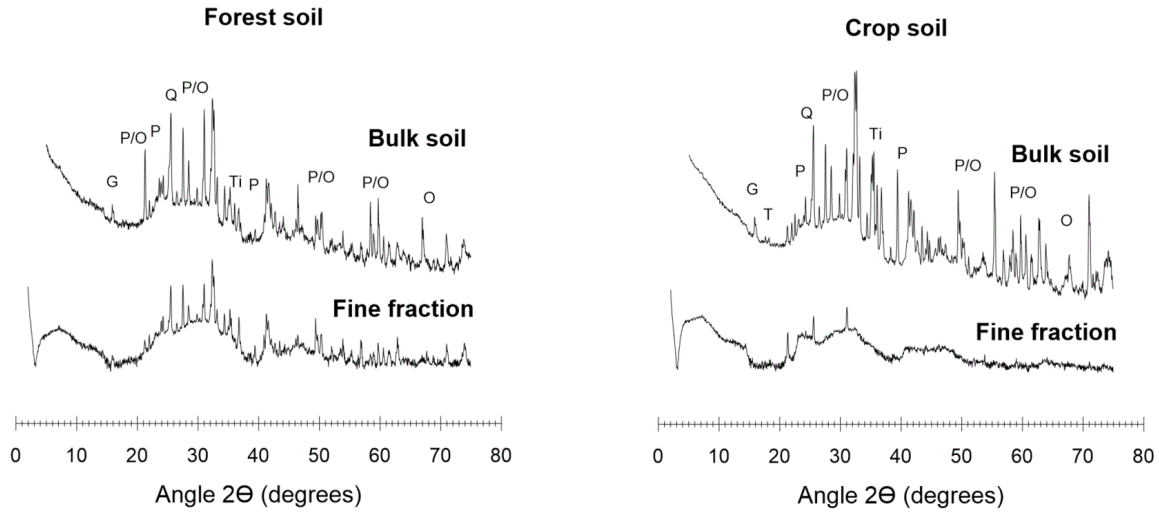


Figure S1. X-ray diffractograms comparing the bulk and fine fractions of forest and crop andosols. Displayed on a logarithmic scale, the mineral phases identified in the diffractograms are labeled as: plagioclase (P), orthopyroxene (O), gibbsite (G), tridymite (T), quartz (Q), and titanomagnetite (Ti). The broad diffusion bands suggest the presence of poorly crystallized or amorphous phases.

Supplementary information 2. Chemical mapping of mineral-organic associations with transects from crystalline to amorphous phases, using TEM-EDX.

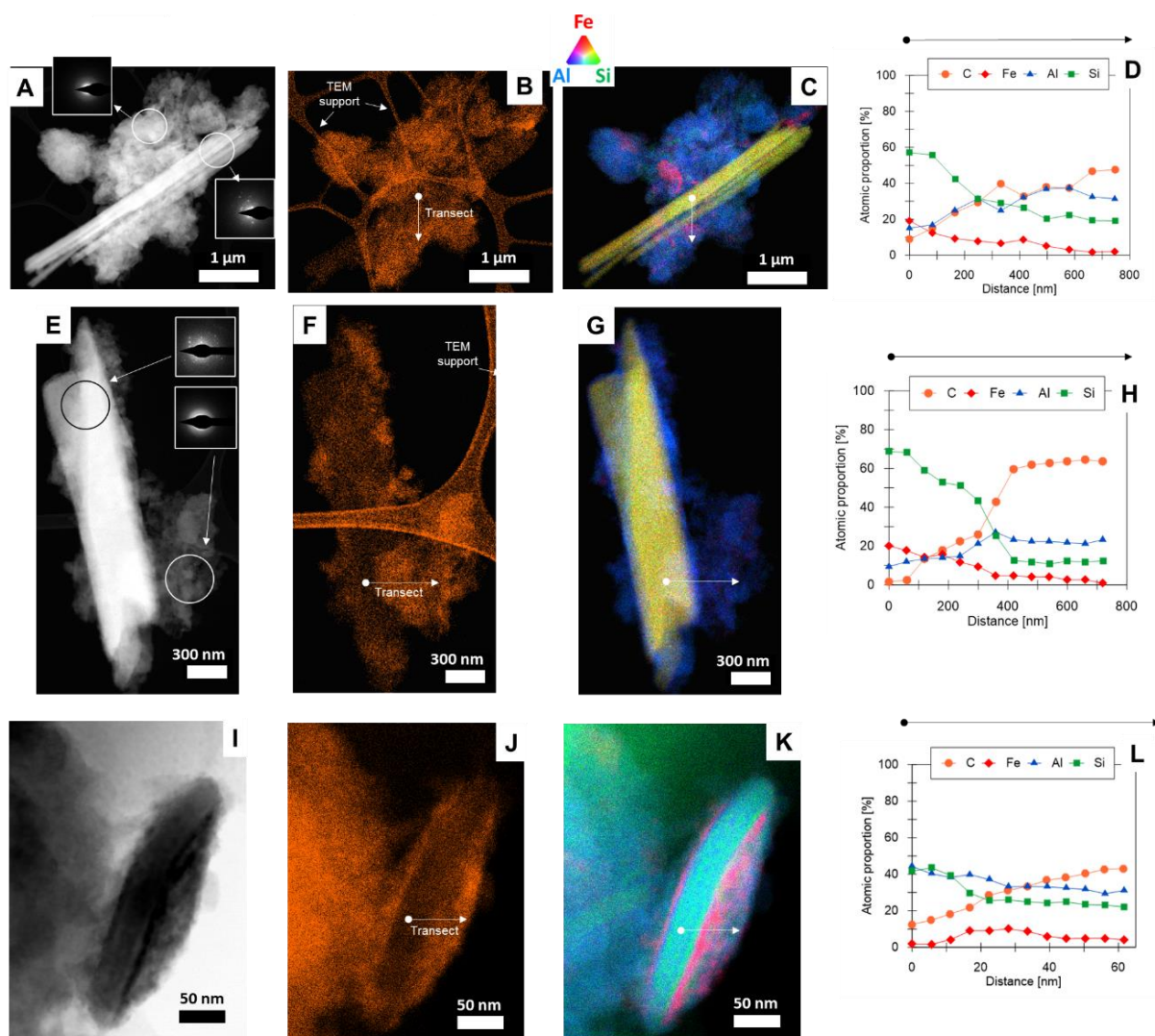


Figure S2. Chemical mapping of organo-mineral associations with transects from crystalline to amorphous phases, using TEM-EDX. The figures display: (A, E, I) TEM images highlighting fine soil minerals and the surrounding amorphous phase; (B, F, J) carbon distribution within these images; and (C, G, K) mappings of Al, Si and Fe. Transects show the atomic proportion transition from mineral to amorphous phase in (D, H, L). Mappings A-H were analyzed on the crop andosol, while mappings I-L were analyzed from the forest andosol.

Supplementary information 3. TEM images and high-resolution TEM images of the fine fractions of the forest and crop andosols

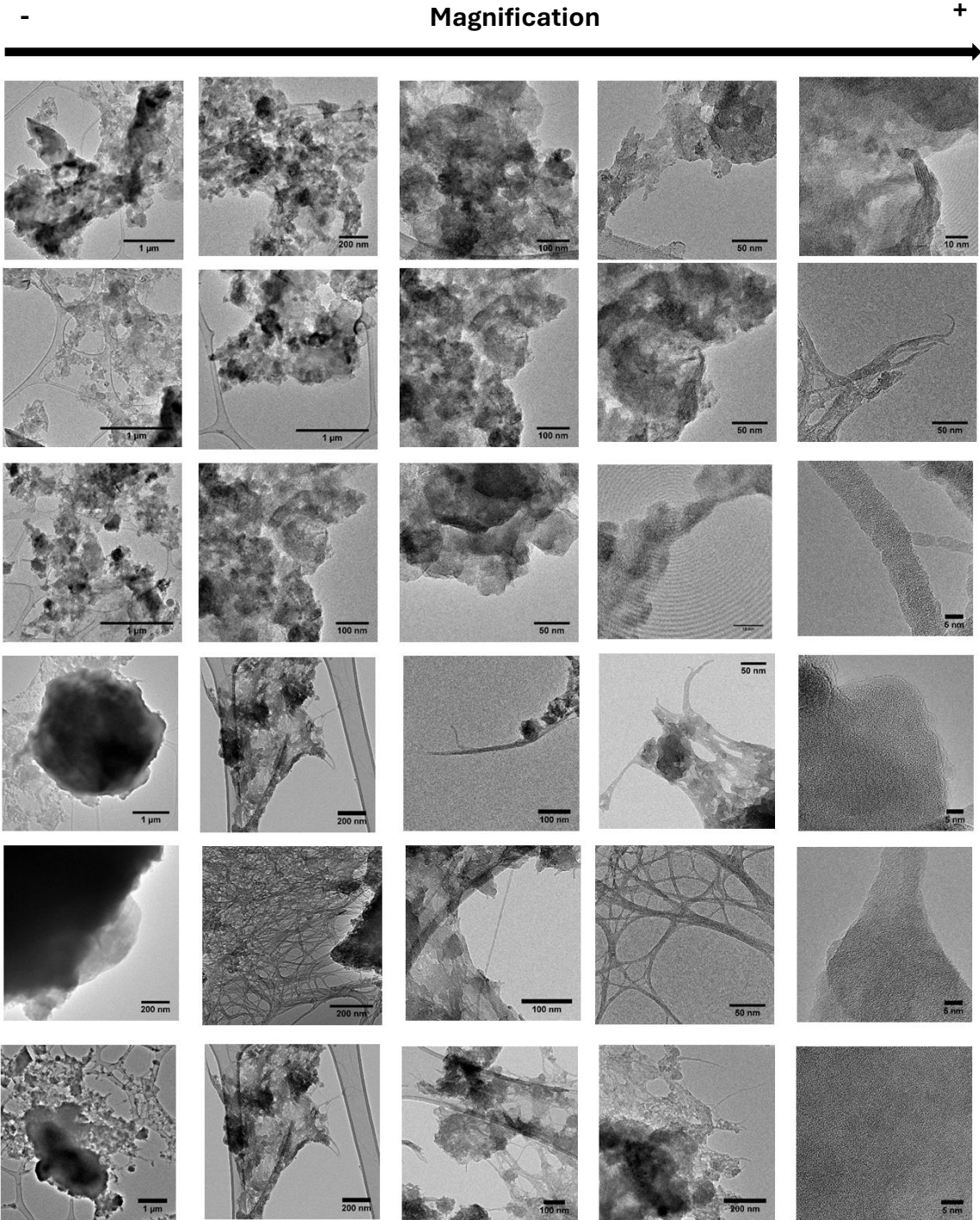


Figure S3. TEM and high-resolution TEM image analyses on the fine fractions of the forest andosol. Analyses were conducted in bright field from the micrometric to nanometric scale.

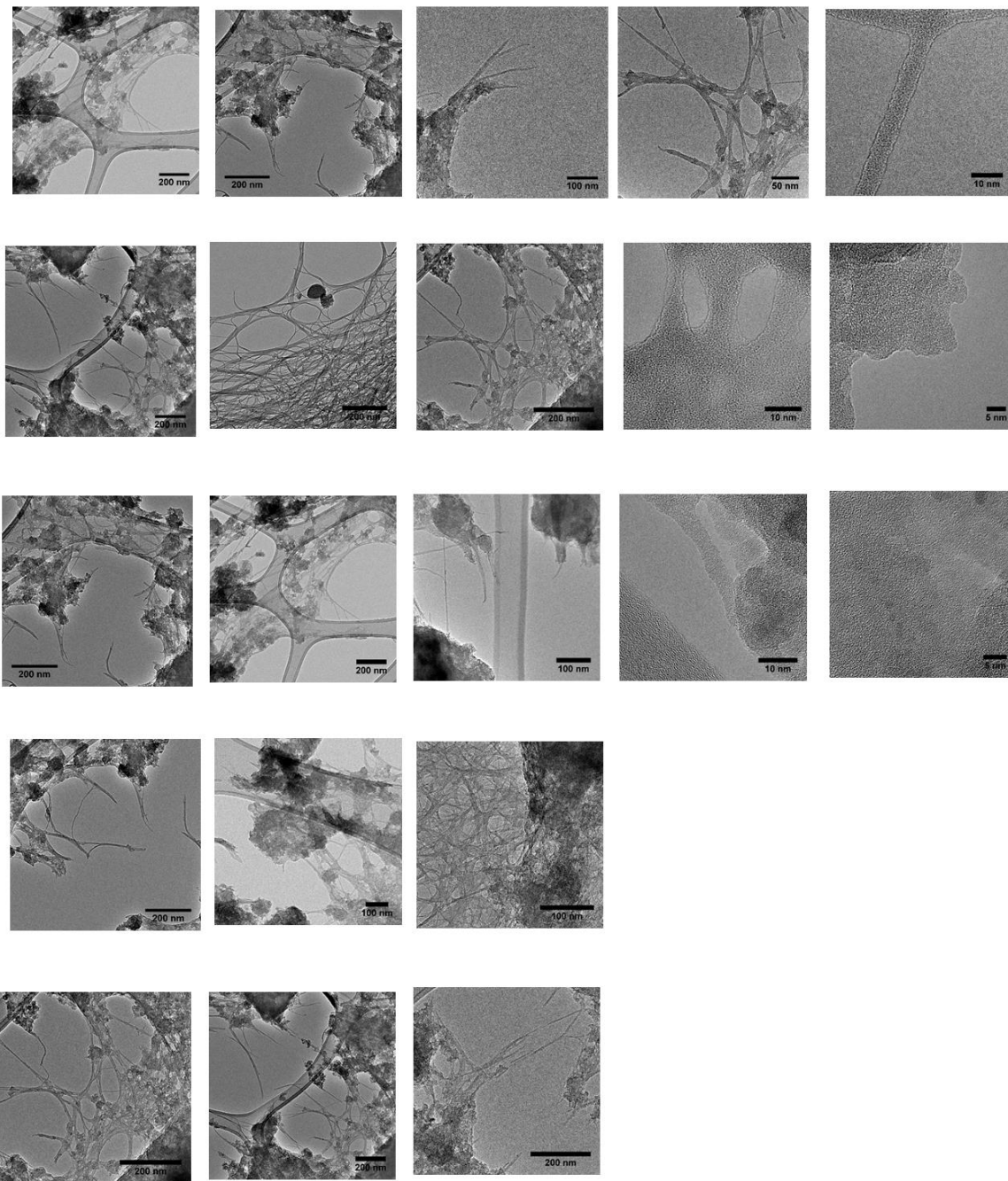


Figure S3. Continuation.

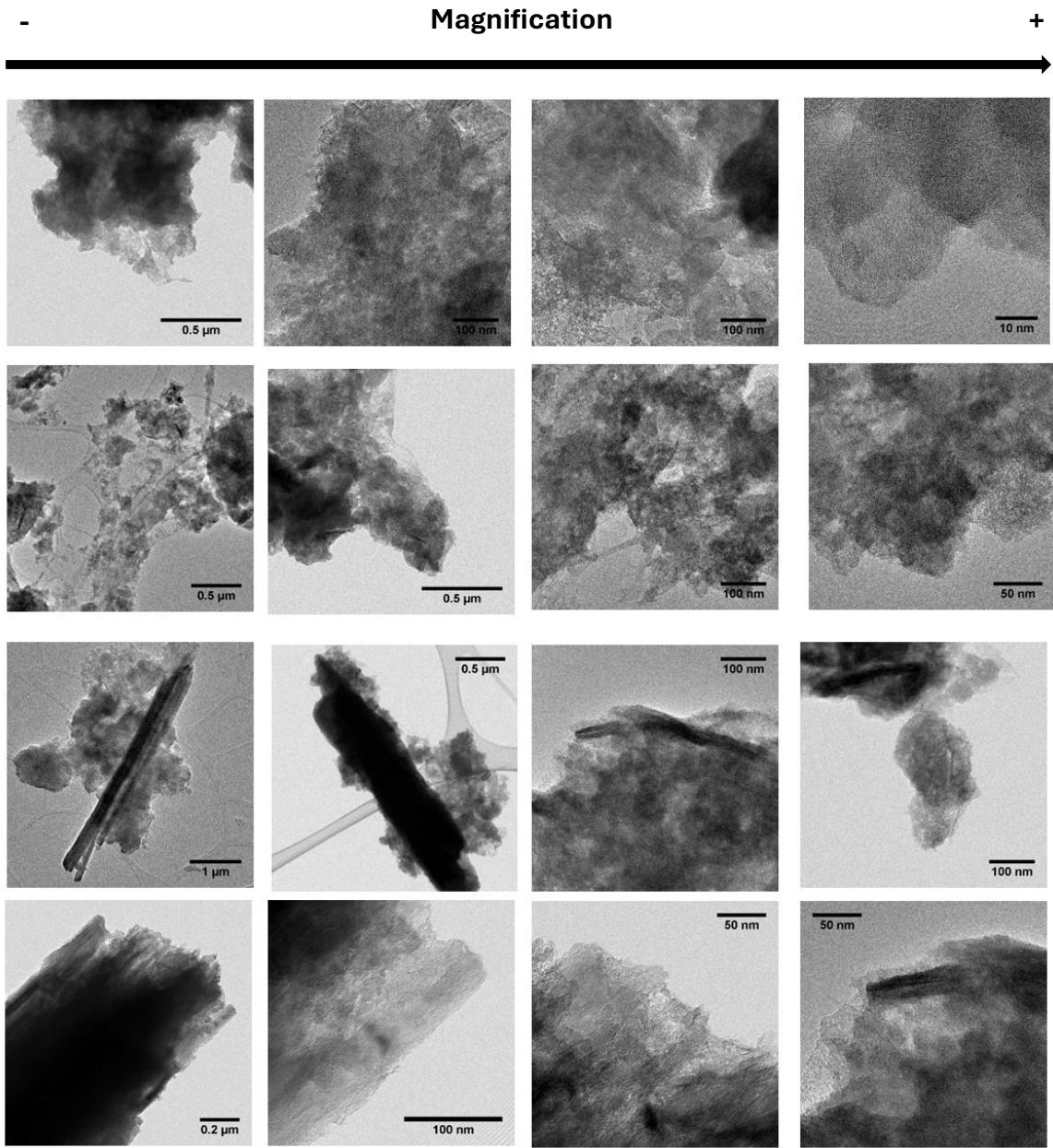


Figure S4. TEM and high-resolution TEM image analyses on the fine fractions of the crop andosol. Analyses were conducted in bright field from the micrometric to nanometric scale.

Supplementary information 4. TEM-EDX chemical mappings on the fine fractions of the forest and crop andosols

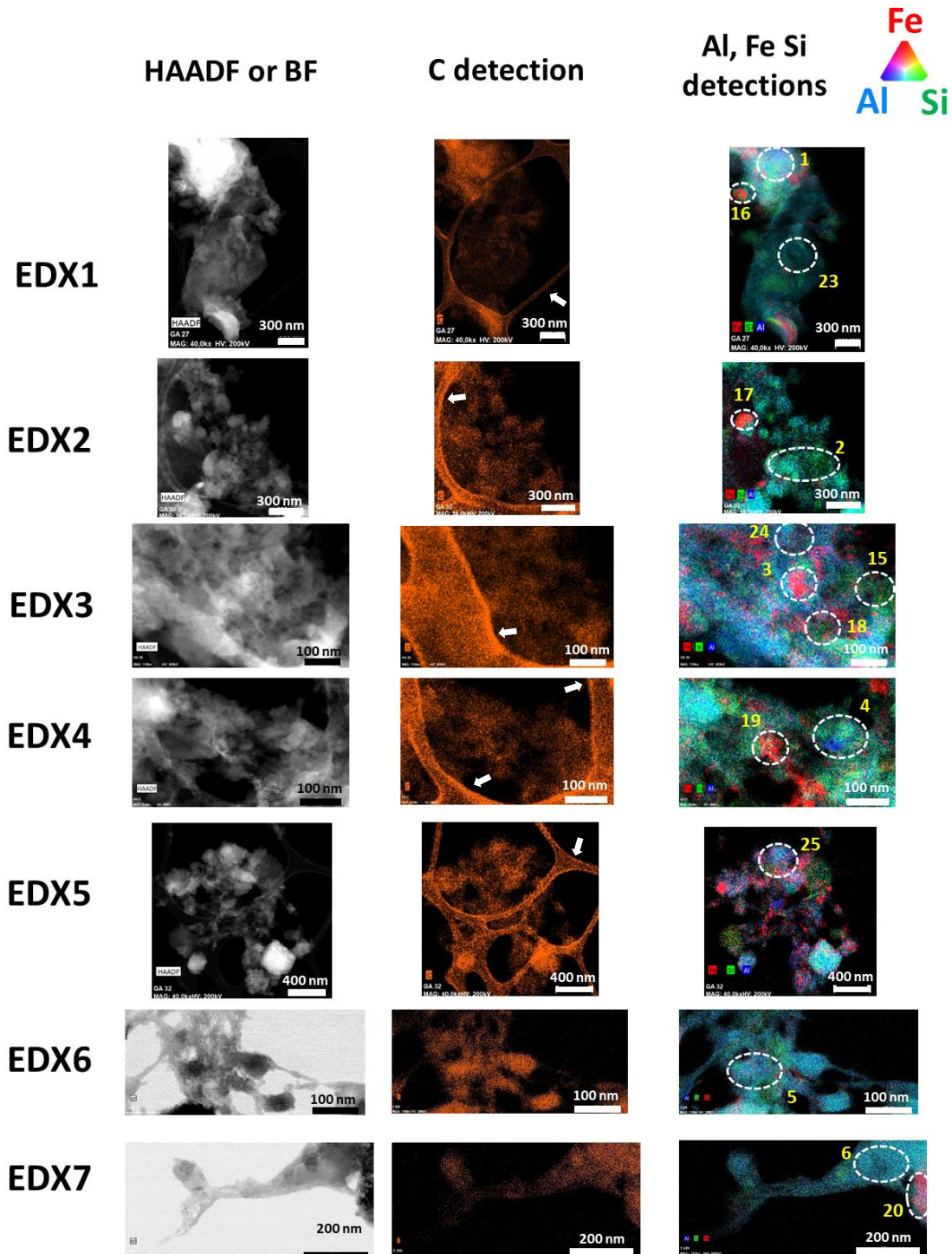


Figure S5. TEM-EDX chemical mapping of mineral-organic associations in fine fractions of the forest andosol. The images were acquired in dark-field (HAADF) and bright-field (BF) modes. In the C mappings, the arrows indicate the sample support (C lacey). In the Al, Fe and Si mappings, the numbered zones represent areas where atomic proportions were calculated (see proportions in Table S1).

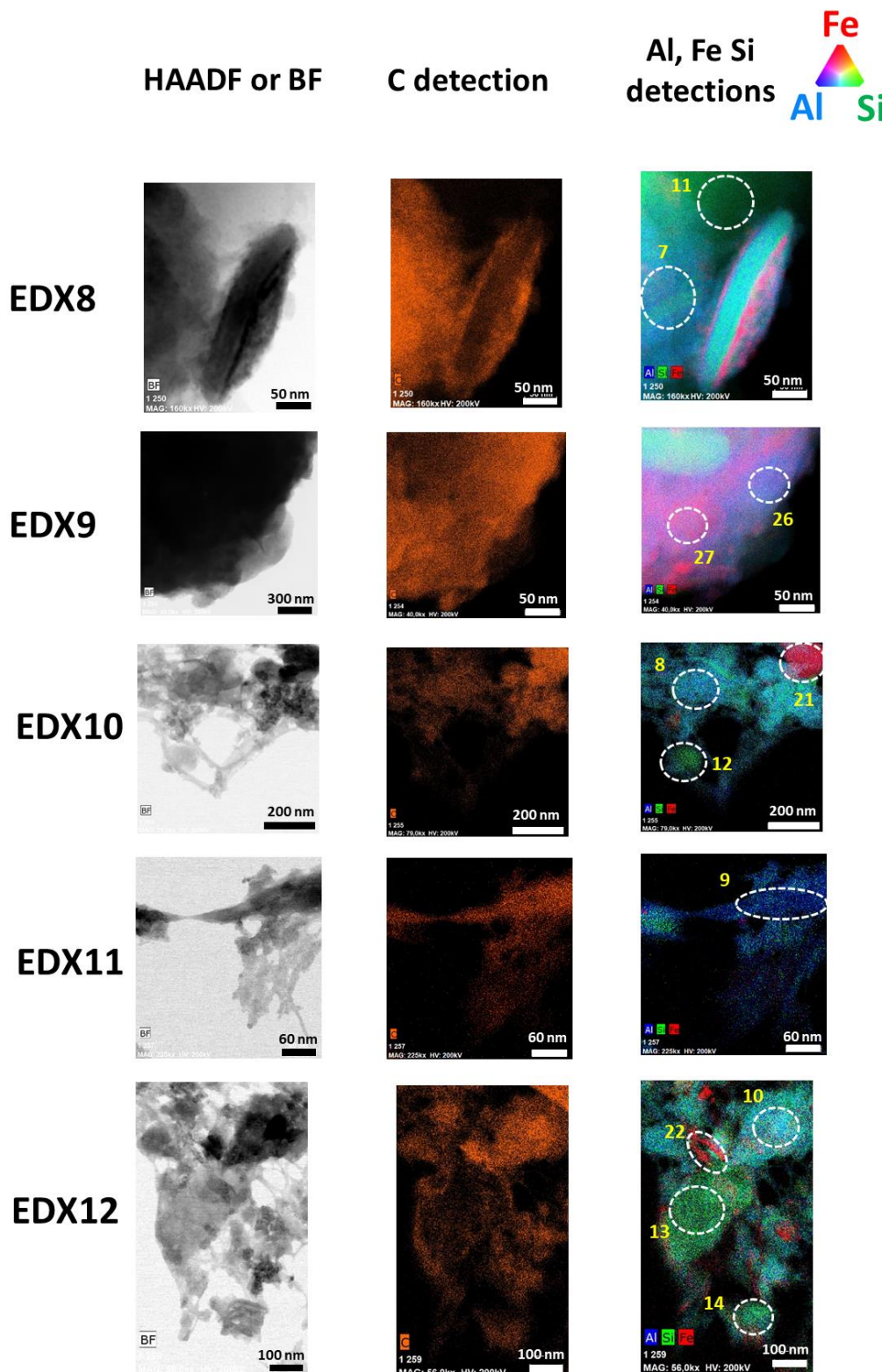


Figure S5. Continuation.

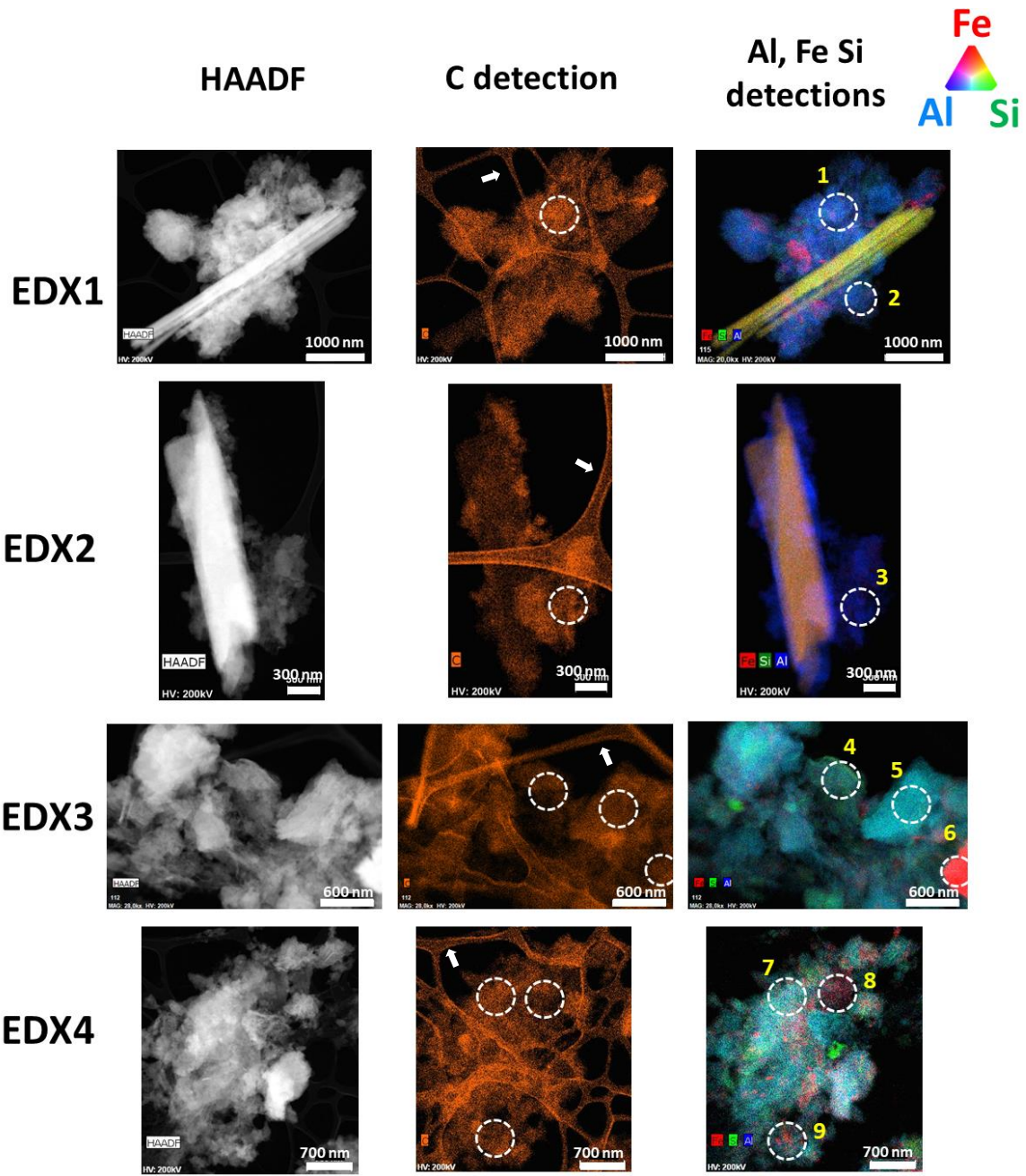


Figure S6. TEM-EDX chemical mapping of mineral-organic associations in fine fractions of the crop andosol. The images were acquired in dark-field (HAADF) mode. In the C mappings, the arrows indicate the sample support (C lacey). In the Al, Fe and Si mappings, the numbered zones represent areas where atomic proportions were calculated (see proportions in Table S2).

Table S1. Atomic proportions derived from TEM-EDX mappings of the forest soil. See the localization of individual areas in Fig. S5.

Area_number	EDX_number	Atomic proportions [%]						
		C	Fe	Al	Si	Ca	Mg	N
1	1	21.78	4.38	46.05	21.87	0.29	1.02	4.6
2	2	40.75	2.35	30.08	19.41	0.26	1.51	5.63
3	3	34.97	7.49	33.76	16.67	0.24	0.86	6
4	4	36.42	1.87	39.05	16.4	0.26	0.86	5.14
5	6	38.06	1.34	32.78	22.45	0.42	1.38	3.57
6	7	34.08	0.43	38.21	22.44	0.36	1.24	3.24
7	8	32.48	2.33	34.78	28.04	0.92	1.29	0.16
8	10	45.97	0.64	30.23	17.08	0.4	1.23	4.44
9	11	55.46	0.16	16.39	6.9	0.28	0.88	19.92
10	12	52.34	1.76	26.64	14.77	0.3	0.79	3.39
11	8	1.17	0.79	31.61	62.53	2.75	1.03	0.12
12	10	18.05	0.92	31.11	41.21	0.56	3.82	4.33
13	12	26.76	1.61	32.31	32.14	0.4	1.27	5.52
14	12	26.83	1.53	35.31	29.54	0.56	1.26	4.97
15	3	19.5	2.55	34.51	36.15	0.32	3.52	3.45
16	1	23.69	12.65	30.71	24.53	0.31	1.23	6.88
17	2	54.22	16.9	15.13	8.06	0.31	0.67	4.7
18	3	36.03	2.94	34.83	21.56	0.24	1.18	3.21
19	4	55.9	7.75	19.8	10.19	0.17	0.44	5.74
20	7	31.72	8.31	35.3	18.37	0.48	1.58	4.25
21	10	83.77	5.62	4.92	1.89	0.24	0.38	3.18
22	12	53.86	5.2	20.25	13.6	0.53	0.89	5.67
23	1	25.19	1.36	44.35	22.99	0.42	1.31	4.37
24	3	38.62	2.3	35.8	17.74	0.25	0.74	4.55
25	5	44.73	1.56	31.75	15.23	0.32	0.77	5.64
26	9	13.16	5.76	52.44	27.14	0.33	0.79	0.38
27	9	13.84	4.4	51.93	27.09	0.3	0.95	1.49

Table S2. Atomic proportions derived from TEM-EDX mappings of the crop soil. See the localization of individual areas in Fig. S6.

Area_number	EDX_number	Atomic proportions [%]						
		C	Fe	Al	Si	Ca	Mg	N
1	1	29,5	3,2	40,3	22,2	0,5	1,2	3,2
2	1	39,1	2,6	34,2	18,7	0,5	0,9	4,2
3	2	52,6	3,0	26,6	13,9	0,3	0,7	3,1
4	3	21,2	3,2	40,4	27,6	0,3	2,5	4,8
5	3	13,6	0,7	52,6	30,6	0,3	0,8	1,5
6	3	13,7	49,9	22,3	12,3	0,2	0,3	1,2
7	4	24,6	2,2	44,2	25,2	0,4	1,3	2,0
8	4	48,7	3,2	29,5	13,7	0,3	0,9	3,7
9	4	43,5	2,7	29,8	15,5	0,3	0,9	7,4

Supplementary information 5. TEM-EELS chemical mappings on the fine fractions of the forest and crop andosols

To investigate the colocalization of C with elements derived from mineral weathering ($\pm\text{Fe}$, $\pm\text{Al}$, and $\pm\text{Si}$) down to the nanometer scale, we performed TEM-EELS (Transmission Electron Microscopy - Electron Energy Loss Spectroscopy) chemical mapping on the andosol fine fractions. Our results showed that in the electron amorphous phase, C was predominantly found in elemental mixtures (Fig. S7, S8). In the forest soil mapping, 54% of C colocalized with a C+Al+Si elemental mixture, while 37% colocalized with Al alone. Considering that this technique tends to underestimate Si detection compared to Al and Fe detections (Jamoteau et al., 2023), we estimate that the majority of C was colocalized in a C+Al+Si mixture. In the crop soil mapping, results showed that 93% of C was associated with elemental mixtures made of C+Al+Fe+Si, C+Al+Fe, or C+Al+Si (Fig. S8), reaffirming that C is present in elemental mixtures within andosols at scales below 15 nm.

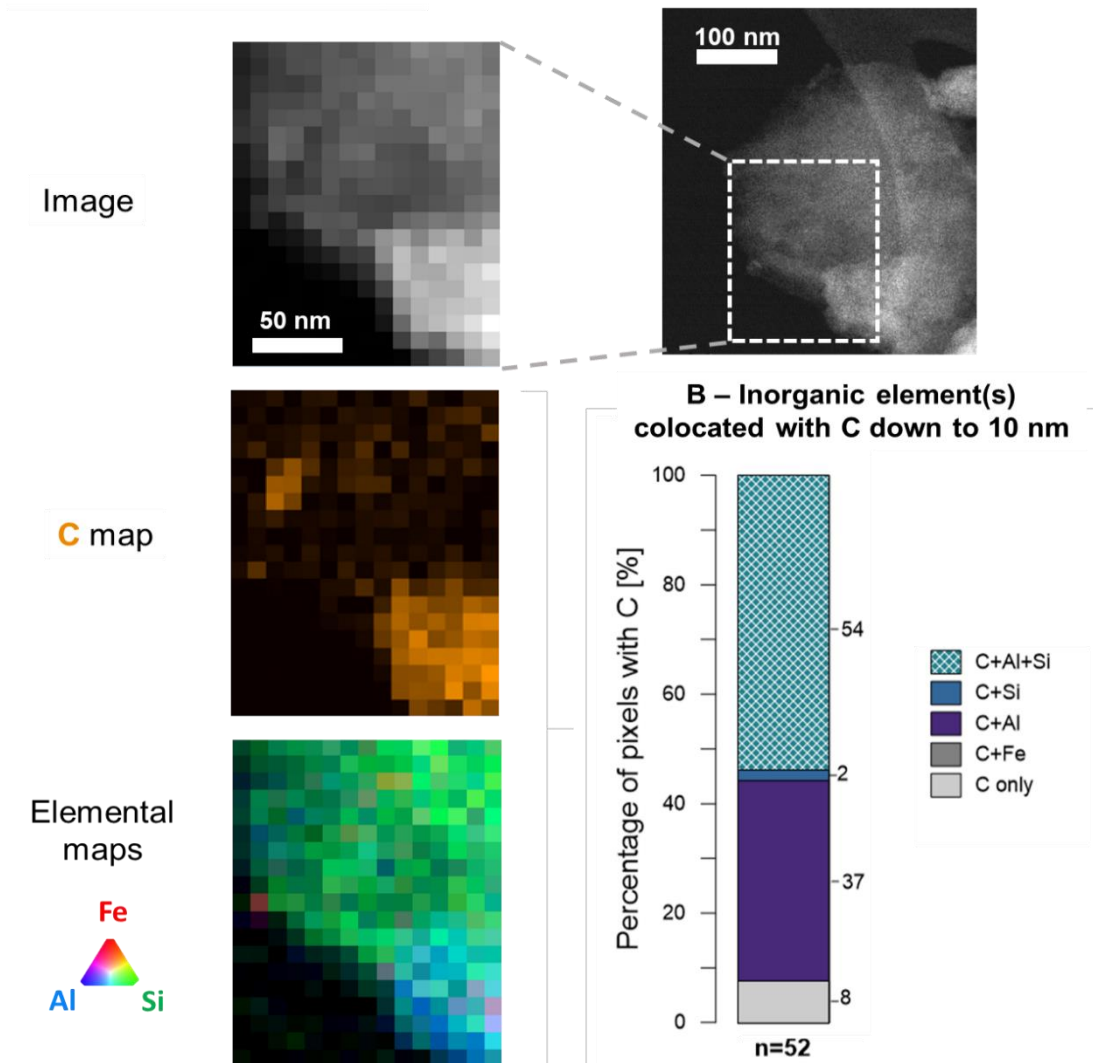


Figure S7. Chemical map on fine fractions of the forest soil using TEM-EELS mapping (pixel size of 10 nm). (A) images, C mapping and Fe, Al and Si mapping. (B) Compilation of collocated elements (Fe, Al and Si) with C in 10-nm-pixels-size. *n* stand for the number of pixels with a C detection ($n=52$).

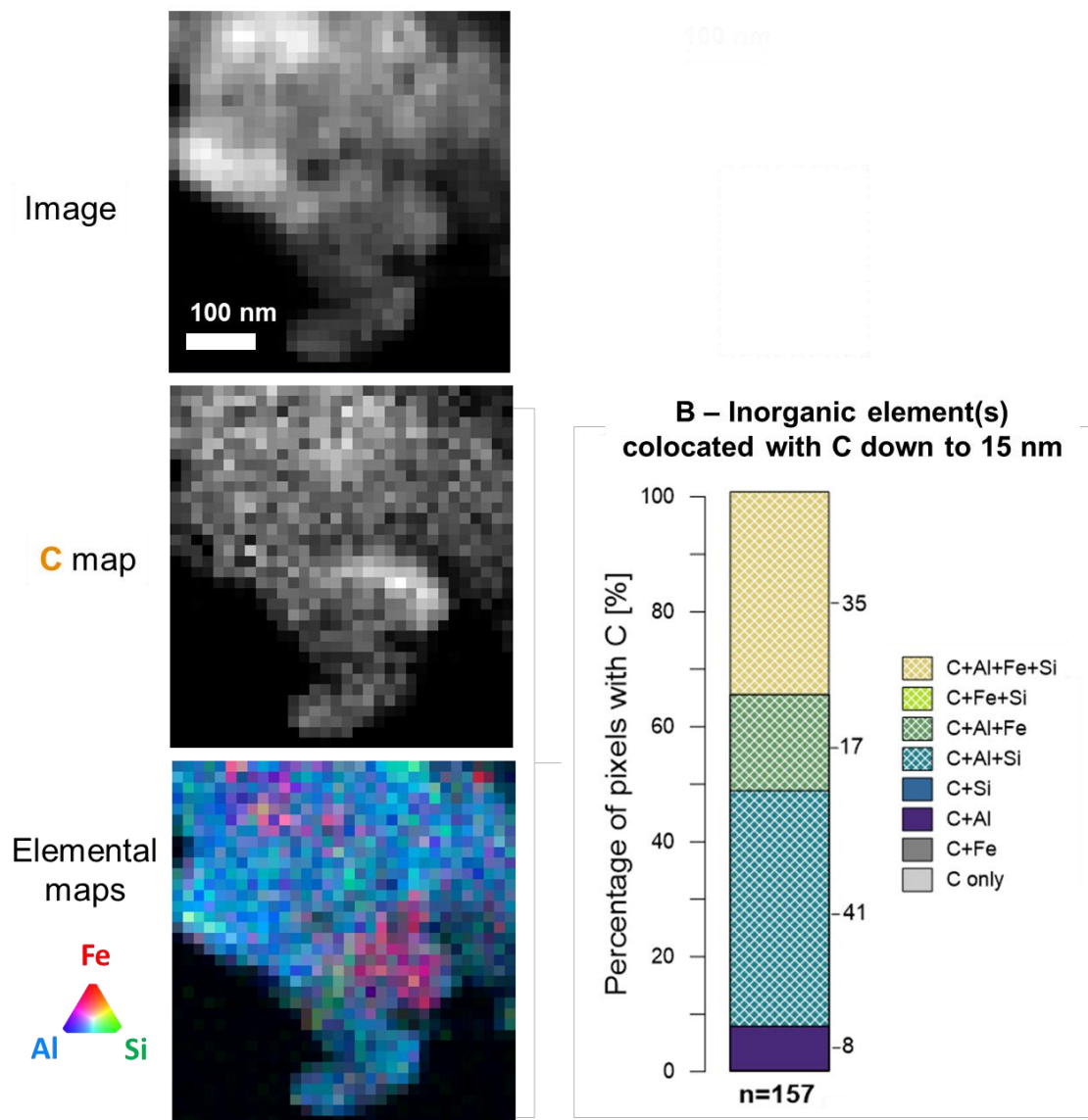


Figure S8. Chemical map on fine fractions of the crop soil using TEM-EELS mapping (pixel size of 15 nm). (A) images, C mapping and Fe, Al and Si mapping. (B) Compilation of collocated elements (Fe, Al and Si) with C in 10-nm-pixels-size. *n* stand for the number of pixels with a C detection (*n*=157).

Supplementary information 6. STXM mappings on the fine fractions of the forest and crop andosols

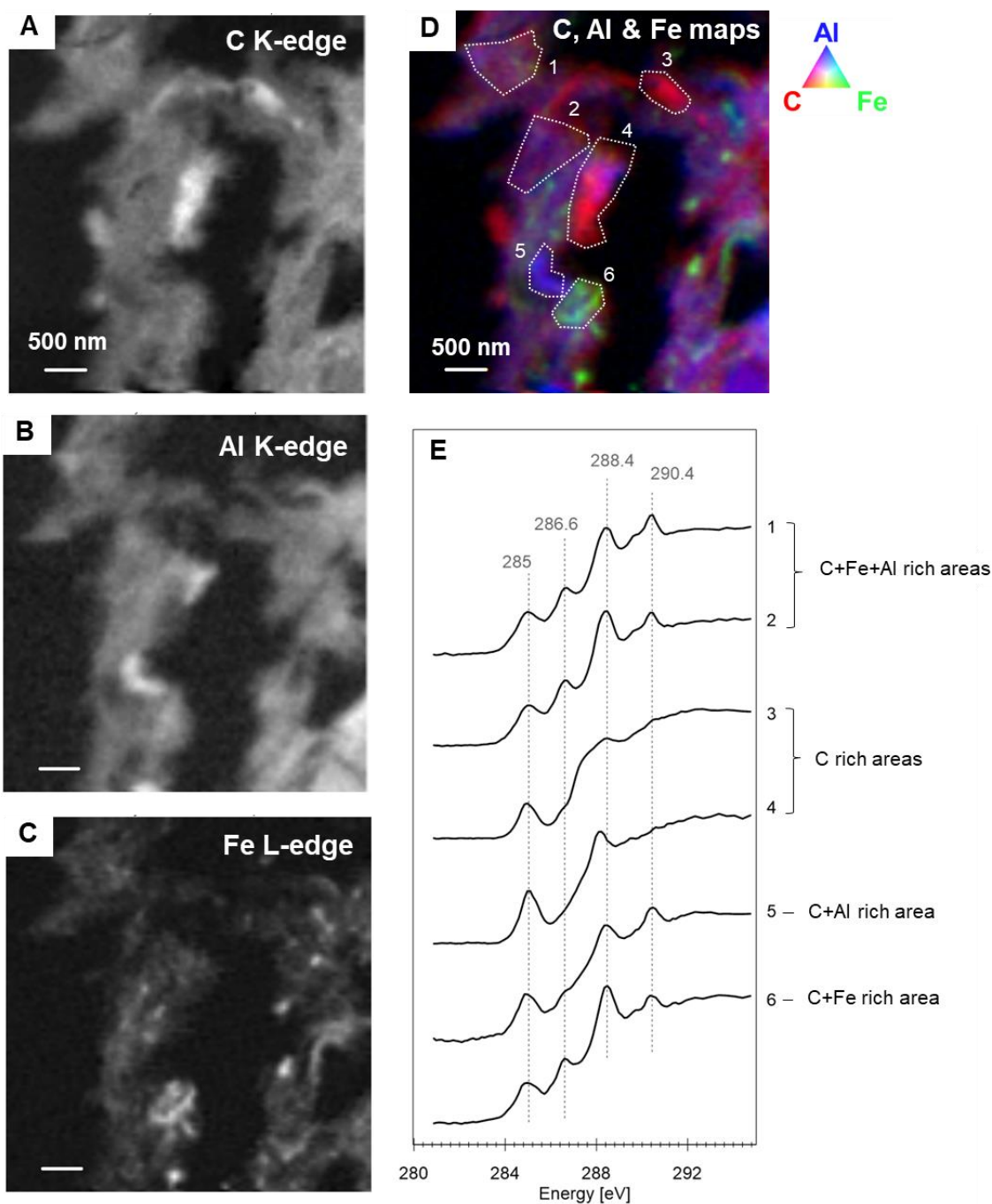


Figure S9. Chemical mapping and organic matter characterization within the forest soil fine fractions, using STXM mapping. (A) STXM chemical mappings at the C K-edge, (B) Al K-edge, and (C) Fe L-edge. (D) RGB composite image of the C K-edge, Al K-edge and Fe L-edge. (E) C K-edge spectra of the delineated area (outlined in panel D) showcasing principal energy bands associated with aromatic C=C and C-H (~285 eV), phenolic C-OH and ketonic C=O (~286.6 eV), carboxylic C=O and C-OH (~288.4 eV), and carbonyl C=O (~290.4 eV).

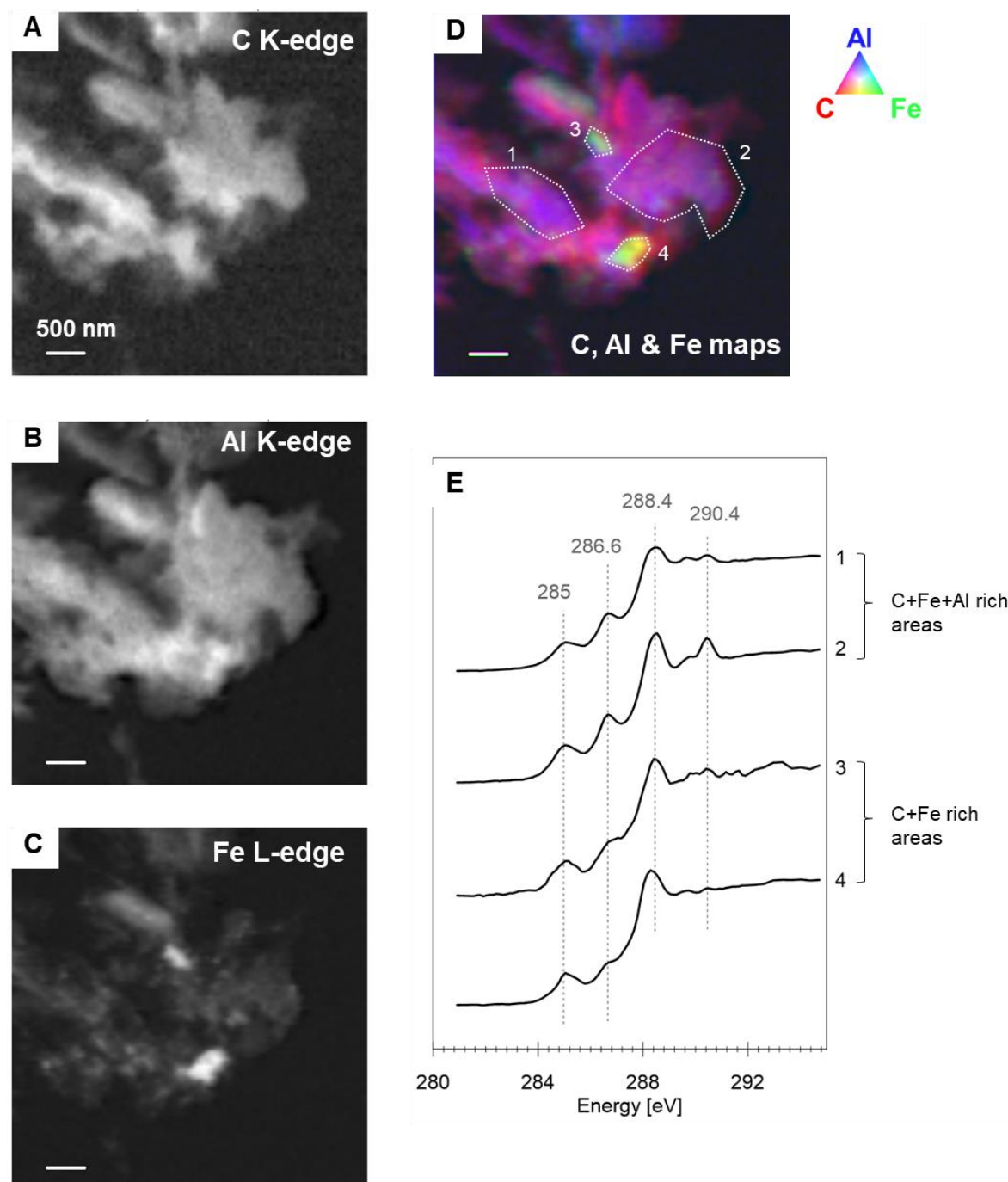


Figure S10. Chemical mapping and organic matter characterization within the crop soil fine fractions, using STXM mapping. (A) STXM chemical mappings at the C K-edge, (B) Al K-edge, and (C) Fe L-edge. (D) RGB composite image of the C K-edge, Al K-edge and Fe L-edge. (E) C K-edge spectra of the delineated area (outlined in panel D) showcasing principal energy bands associated with aromatic C=C and C-H (~285 eV), phenolic C-OH and ketonic C=O (~286.6 eV), carboxylic C=O and C-OH (~288.4 eV), and carbonyl C=O (~290.4 eV).

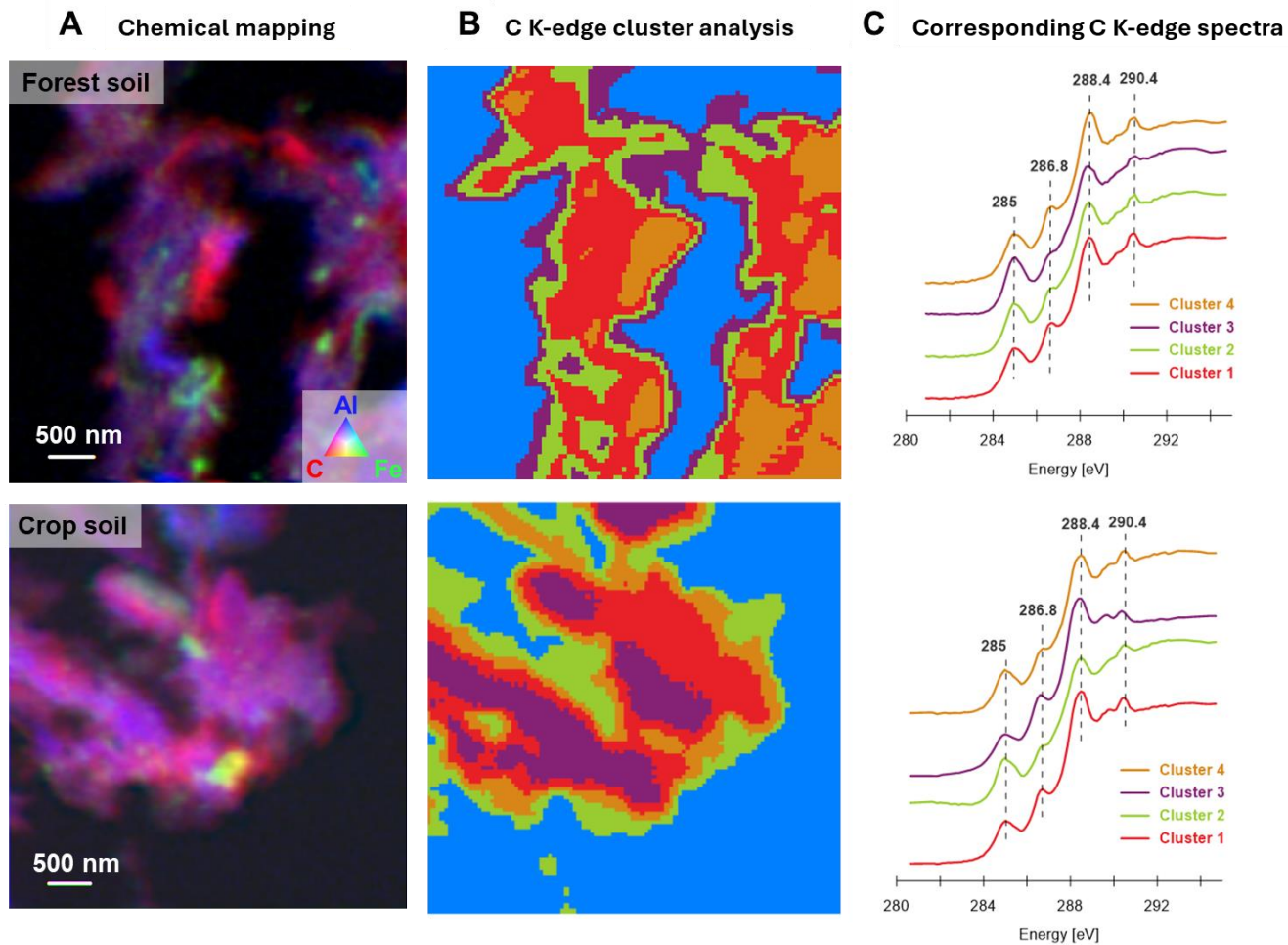


Figure S 11. Cluster analysis of the C K-edge of in forest and crop soil fine fractions. (A) RGB composite images showing the chemical mapping of the C K-edge, Al K-edge, and Fe L-edge. (B) Cluster analysis of the C K-edge. (C) Corresponding average C K-edge spectra for the identified clusters.