

High-resolution air quality maps for Bucharest using Mixed-Effects Modeling Framework

Camelia Talianu^{1,2,*}, Jeni Vasilescu^{1,*}, Doina Nicolae^{1,*}, Alexandru Ilie^{1,3}, Andrei Dandocsi^{1,4}, Anca Nemuc¹, and Livio Belegante¹

¹National Institute of Research and Development for Optoelectronics-INOE 2000, Str. Atomistilor 409, Măgurele, 077125, Ilfov, Romania

²Institute of Meteorology and Climatology, Department of Water, Atmosphere and Environment, University of Natural Resources and Life Sciences, Gregor-Mendel Street 33, Vienna, A-1180, Vienna, Austria

³Faculty of Geography, University of Bucharest, Bulevardul Nicolae Bălcescu 1, Bucharest, 010041, Bucharest, Romania

⁴UNST Politehnica of Bucharest, Bulevardul Iuliu Maniu 1-3, Bucharest, 061071, Bucharest, Romania

*These authors contributed equally to this work.

Correspondence: Camelia Talianu (camelia@inoe.ro), Jeni Vasilescu (jeni@inoe.ro), and Doina Nicolae (nnicol@inoe.ro)

Abstract. Fine-scale High-resolution mapping of pollutants based on mobile observations facilitates deep understanding of air pollutants distribution within a city and. This approach fosters science-based decisions to improve air quality, by adding up to the existing but not optimally distributed permanent monitoring stations. In this study, we developed high-resolution concentration maps of nitrogen dioxide (NO₂), particulate matter (PM₁₀) and ultrafine particles (UFP) for Bucharest, Romania, to evaluate the spatial variation of pollutants across the city during the warm and the cold seasons. Maps were generated using a mixed-effect method applied to a Land-use Regression (LUR) model. The approach relies on multiple land-use and traffic predictor variables, and assimilation of data collected by mobile measurements over 30 days in the periods May–July 2022 and January–February 2023. Cross-validation was done against in-situ data extracted from the same collection, while validation was organized by comparison with standard measurements at fixed reference sites. Our study shows that this combined method has a good performance for all pollutants ($R^2 > 0.65$), the highest performance being observed for the cold season. PM₁₀ concentration maps indicate multiple sources of particles during the warm season, the most important source being traffic. During the cold season PM₁₀ concentration maps show a more uniform distribution of sources in Bucharest. The city's principal roads, particularly the Bucharest ring road, are also highlighted in the NO₂ maps, with higher gradient during the warm period.

Copyright statement. TEXT

1 Introduction

The atmosphere is an essential element for the environment and life forms on Earth. Therefore, any change in natural composition of the atmosphere due to the presence of one or more pollutants in the atmosphere, such as gases or aerosols released directly into the atmosphere from natural or anthropogenic sources, can dramatically influence the Earth's climate and bio-

sphere, human life and health, and economic activities (Nemuc et al., 2013; Kokkalis et al., 2016; Ilie et al., 2023). Short term exposure to very high concentrations can also be a significant risk factor to human health in addition to prolonged exposure at lower concentrations. One major concern nowadays is the air quality in urban areas due to its significant health risks determined by prolonged population exposure to gaseous pollutants like nitrogen dioxide (NO_2), as well as to particulate matter ($\text{PM}_{2.5}$ and PM_{10}) (Brunekreef and Holgate, 2002; Bernstein et al., 2004; Almetwally et al., 2020). Numerous epidemiological studies related short- and long-term PM_{10} and NO_2 exposure with mortality and morbidity. Short-term exposure to high concentrations of pollutants can be related to both minor discomfort, such as irritation of the eyes, respiratory tract, or skin, and serious conditions, such as asthma, pneumonia, bronchitis, chronic obstructive pulmonary disease and heart problems (Rongqi Abbie et al., 2022; Hasegawa et al., 2023). Furthermore, years of continuous exposure to PM were shown to be associated with both newborn mortality and cardiovascular disorders. A $\text{PM}_{2.5}$ concentration increase with $10 \mu\text{g}/\text{m}^3$ was associated with a increase of 0.67% – 1.04% (Hamanaka and Mutlu, 2018) in all-cause mortality, 0.52% in cardiovascular hospital admissions and 1.74% increase in respiratory admissions (Hasegawa et al., 2023). While, a PM_{10} concentration increase with $10 \mu\text{g}/\text{m}^3$ was associated with a 43% increase of fatal coronary heart disease (Hamanaka and Mutlu, 2018) and 39.31% of deaths from cardiovascular diseases from short-term exposure (Seihei et al., 2024). A smaller impact is foreseen in the case of short-term exposure to NO_2 concentration, when an 10 ppb increase of concentration was associated with 0.19% increase in all-cause mortality in US (Hamanaka and Mutlu, 2018).

~~These compounds are often associated with the onset of multiple health issues including cardiovascular diseases, asthma or lung cancer (Brunekreef and Holgate, 2002; Bernstein et al., 2004; Almetwally et al., 2020; Schmitz et al., 2019).~~ Despite its critical impact (West et al., 2016), air pollution information in urban areas is not always available, or not at an appropriate spatial resolution, hindering effective air quality management efforts. High-resolution air quality maps are pivotal for environmental stewardship and public awareness by filling the gaps in our understanding of urban air quality. These maps can help to identify pollution hotspots, offering new opportunities for pollution mitigation strategies and influencing both policy and individual behavior (~~Apte et al., 2017~~)(Apte et al., 2017; Schmitz et al., 2019).

Mapping pollutant concentrations in urban areas requires fine-scale spatial interpolation of data collected at air quality monitoring stations, taking into account known emission sources and sinks to estimate the actual distribution of pollutants at ambient surface level. Moreover, changes in the composition of the atmosphere caused by urban agglomeration is highly variable in space and time, making its spatial variation difficult to assess with air quality monitoring instruments from ground-based networks or on-board of satellites (Hoek et al., 2015). Fixed monitoring stations are suitable for recording temporal variation of air pollution, including long-term trends, but not proper to capture the spatial variation of air pollution at local level (Li et al., 2019).

It has been demonstrated that gradients at urban scale can be identified by mobile monitoring (Deshmukh et al., 2020). High resolution mapping of air quality can be done based on long-term average of a significant number of repeated measurements (Upadhya et al., 2024). However, mobile monitoring to obtain reliable small-scale variations (for a street segment or a residential area) that are subsequently time-averaged to provide long-term concentrations is time-consuming, involving extended resources, due to the necessity to collect a large number of co-located data and in the same time to cover the whole relevant

area ([Yuan et al., 2024](#)). Several models have been developed to overcome the weakness of limited availability of the observational data, either collected at fixed locations, or during mobile campaigns, or measured by instruments onboard of satellites. Data from ground-based mobile and fixed stations as well as satellites data have been used in Land-Use Regression (LUR) models (e.g. Apte et al. (2017); Anand and Monks (2017); Messier et al. (2018); Shairsingh et al. (2019); Kerckhoffs et al. (2021, 2022a); [Xu et al. \(2021b\)](#); [Knibbs et al. \(2018\)](#); [Lee \(2019\)](#)) and dispersion models (e.g. Hamer et al. (2020); Ramacher et al. (2021); Snoun et al. (2023)). Both models have emerged as very promising and efficient tools for ~~fine-scale~~ [high-resolution](#) mapping of the changes in the composition of the atmosphere, as well as for quantifying the air quality by long-term averaging at a high spatial resolution.

The LUR model is more widely used in air quality studies compared to dispersion modeling because: (a) it is a multivariate linear regression model built on significant covariates that can be further used to estimate pollutant concentration elsewhere, (b) linear regression is one of the most used fine-scale spatial interpolation methods because it is fast, easy to implement ([Hoek et al., 2008](#); [Jerrett et al., 2005](#)), and does not require high computing power ~~and, such as computational fluid dynamics based on large-Eddy simulation or Reynolds-averaged Navier–Stokes approaches~~ ([Lin et al., 2023, 2024](#)), and (c) a LUR model does not require detailed information on atmospheric conditions [and an emission inventory](#) as input data. [LUR model usually requires measurement data and land-use predictor variables \(e.g. CORINE dataset\)](#) (Kerckhoffs et al., 2021, 2022b). Initially, LUR models were developed to estimate the concentration of air pollutants linked with traffic emissions, specifically NO₂ and NO_x (Briggs et al., 1997; Stedman et al., 1997; Hoek et al., 2008; Eeftens et al., 2012; Lu et al., 2020; Zhang et al., 2021). Lately, LUR models have been successfully expanded to include other air pollutants, such as particulate matter (PMs) (Taheri Shahraiyini and Sodoudi, 2016; Karimi and Shokrinezhad, 2021; Zhao et al., 2021; Wallek et al., 2022), ozone (O₃) (De Marco et al., 2022; Wei et al., 2022), carbon monoxide (CO) (Bi et al., 2022), and sulfur dioxide (SO₂) (Wu et al., 2019; Mikeš et al., 2023). LUR models can now estimate a wide range of air pollutants, including black carbon (BC) (Xu et al., 2021a; Van den Bossche et al., 2015), volatile organic compounds (VOCs) (Zapata-Marin et al., 2022; Choi et al., 2022), and ultrafine particles (UFP) (Ge et al., 2022; Kerckhoffs et al., 2021; Lloyd et al., 2023; van Nunen et al., 2020; Jones et al., 2020; Saha et al., 2019). LUR models can be used both for specific sites, such as highways (Lee et al., 2013; Patton et al., 2014) or neighborhoods (Lim et al., 2019), as well as in detailed studies covering a wide range of land-use types across large city areas (Hatzopoulou et al., 2017; Van den Hove et al., 2020). Recent studies report on variations of pollutant levels across different times of the year, based on seasonal measurement campaigns (Xu et al., 2021a; Miri et al., 2019; Shi et al., 2020).

In general, LUR models tend to "smooth" concentration levels over a wide area, leading to under or overestimation of observed concentrations within each pixel. Therefore, one of the most feasible and robust approaches to map air quality at high resolution is to use the mixed-effects modeling framework that combines the advantages of measurement-only mapping and LUR modeling (Kerckhoffs et al., 2022a, b). Mixed-effects modeling is mostly used in scenarios where data is hierarchical or clustered (e.g. Fokkema et al. (2018); Seibold et al. (2019)). In air pollution research, mixed-effects models are powerful tools that can account for spatial or temporal clustering inherent in air quality data. They can accommodate factors like geographic regions or repeated measurements over time, providing a nuanced understanding of pollutant distribution. These models can

be computationally complex, especially when dealing with large datasets or complicated random effects structures (Kerckhoffs et al., 2022a).

90 The mixed-effects model framework has been used in recent air quality studies for urban areas, like Amsterdam and Copenhagen (Kerckhoffs et al., 2022b), Oakland (US) (Kerckhoffs et al., 2024). Also, a similar mixed-effects approach has been used to estimate NO₂ concentrations over Hong Kong (Anand and Monks, 2017). Up to now, no ~~fine-high-resolution~~ mapping of air pollutants at high spatial resolution has been performed for urban areas in Romania, although many cities face serious atmospheric pollution episodes (Marin et al., 2019; Ilie et al., 2023).

95 In this paper we present the development and use of the mixed modeling framework for ~~fine-scale-high-resolution~~ mapping of NO₂, PM₁₀, PM_{2.5} and UFP concentrations in Bucharest, the capital of Romania. Data from two mobile measurements campaigns, representative for warm and cold seasons, were combined with fine-scale land-use parameters to provide the spatio-temporal information necessary to predict seasonal surface concentrations. Results were validated against in situ measurements from Magurele Center for Atmosphere and Radiation Studies (MARS), and eight fixed observation stations operated by the

100 National Air Quality Monitoring Network (NAQMN). A detailed description of the study area, measurements and data treatment are given in Section 2, the mixed-effects modeling framework tuning for Bucharest is given in Section 3, together with model performance evaluation and aggregated pollutants maps for warm and cold seasons in Bucharest.

2 Materials and methods

2.1 Study area

105 Bucharest is the most populated urban area, and the most important industrial and commercial center of Romania. According to the latest census, the population of Bucharest is approximately 2.1 million residents (INS, 2024), making it the sixth-largest city in the European Union by population. The city covers an area of about 240 square kilometers and has a dense urban structure. The land use of Bucharest is diverse ([Figure 1](#)), the central and northern parts of the city are predominantly residential areas, characterized by a mix of old and new housing developments. ~~The southern and western parts of Bucharest are more industrialized, hosting a variety of manufacturing plants. Most of the production sectors,~~ such as machinery, textiles, chemicals, electronics, and business parks ~~that contribute significantly to its economic base,~~ all contributing significantly to the economic base of Bucharest, are located in the southern and western areas. (Ilie et al., 2023; Balaceanu et al., 2018). The surroundings of Bucharest are mostly agricultural areas and rural/pre-urban residential areas.

Located in the southeastern part of Romania, in the Romanian Plain, Bucharest ~~belongs to the mid-latitude climate zone~~ with has a humid continental climate ~~with four seasons,~~ characterized by hot summers ~~and cold winters,~~ cold winters and two short transitional seasons, spring and autumn. Due to atmospheric circulation patterns specific to the north mid-latitude zone, episodes of long-range transport of aerosols from desert regions (Sahara, Arabian Peninsula and Persia) and from wildfires can affect Bucharest's air quality. However, the major pollution sources are local, influenced by the topography, the different local-scale wind regimes and anthropocentric activities (Fenger, 1999; Grønskei, 1998; Marmureanu et al., 2017; Balaceanu

120 et al., 2018; Marin et al., 2019; Ilie et al., 2023).

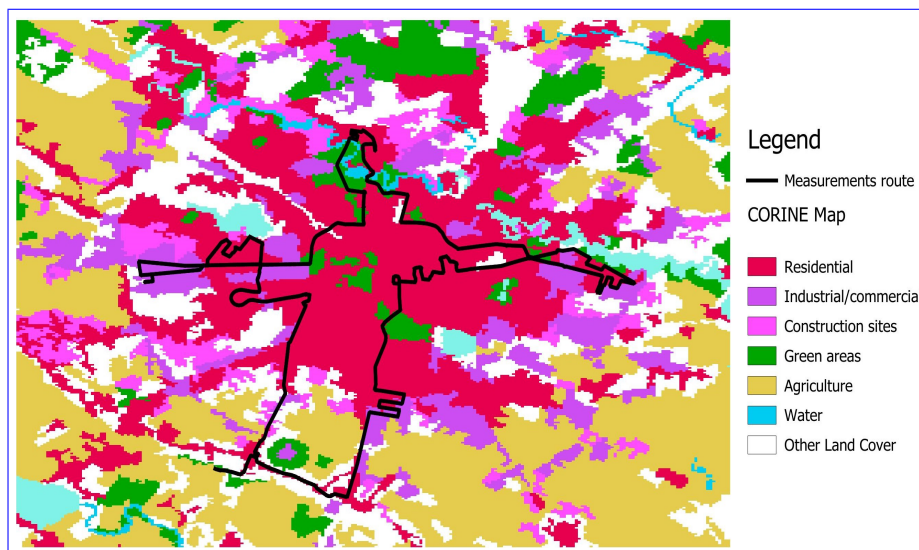


Figure 1. Landuse distribution in Bucharest, according to CORINE, 2018, black-overlapped mobile measurement route

2.2 Observational data

Data was collected during two intensive mobile measurement campaigns carried out in Bucharest during May - July 2022 and January - February 2023. For each campaign, at least 15 measurement routes of approximately 100 km long and around 8 hours were carried out, under various meteorological conditions. In order to ensure consistent and quality data that highlight the variability of pollutants specific to warm or cold seasons, rainy and/or windy days were excluded from the measurement campaigns. Measurements were performed from Monday to Friday, from early morning to the afternoon, being therefore representative for daytime working times. The route comprised high-traffic streets, residential, industrial, and commercial districts, as well as suburban neighborhoods. The mobile measurement route is limited to the areas where the car has access, excluding some urban areas (e.g. parks, agricultural zones and water bodies). Portable equipment measuring UFP, particle matter fractions (PM_1 , $PM_{2.5}$, PM_{10}), and NO_2 were employed in both campaigns, with a measurements rate of one second. An additional GPS system has been used to independently save the precise location. A Nafion dryer was also used during warm period to reach a humidity below 40% for UFP measurements.

The mobile data has been filtered before being ingested into the model. A pass-band filter based on the moving average model with a window on 3 data points window was used to ~~remove~~ invalidate data-points with values higher and lower than 1.5 times the window mean.

2.3 ~~Fine-mapping~~ High-resolution mapping model

We used the land-use regression and mixed-effects modeling framework to develop high-resolution air quality maps for Bucharest. In a LUR model, the concentration of a pollutant is expressed as a linear combination of variables that approx-

imates the influence of different emission sources and sinks. Usually LUR models are fixed-effect models because: (a) they use
 140 predictor variables that are temporally invariant (e.g. classes from the land cover inventories, statistical values of population
 density or traffic intensity, street networks) and, (b) they are applied to the average atmospheric state over the entire observation
 period. Therefore, LUR models based on fixed variables are not sensitive to unobserved heterogeneity arising from temporal
 variability in emissions or/and other environmental conditions.

The mixed-effects LUR model considered in this work is similar to the one developed in Kerckhoffs et al. (2022a). The daily
 145 mean concentration at a reference point i on day j (Y_{ij}) is assumed to be a linear function of the random effect (A_{ij}) and the
 predictor variables (X_{ijk}) computed at the same reference point:

$$Y_{ij} = \alpha_0 + \alpha_1 \cdot A_{ij} + \sum_{k \geq 0} \beta_k \cdot X_{ijk} + \epsilon_{ij} \quad (1)$$

In Eq. (1), α_0 is the random intercept, while α_1 is the random slopes of A_{ij} , respectively. The β_k are the regression coeffi-
 cients of predictor variables X_{ijk} at reference point i and day j . The regression coefficients are the same for all measurements
 150 days. The error term of the model is represented by ϵ_{ij} . Mixed model results were averaged per point, similar to the aver-
 age of the data-only approach. Mean NO_2 , PM_{10} , $\text{PM}_{2.5}$ and UFP concentrations from each reference point were used as the
 dependent variables Y_{ij} in Eq. (1).

The route taken during campaigns was divided into road segments with a length of approximately 250 m, equivalent to
 space traveled by a car with the average speed of 30 km/h in a time interval of 60 s. The reference points were considered at
 155 the midpoint of each road segment.

A temporal correction was applied on the data to synchronize the measurements. The correction factor is calculated for
 each point as the difference between the daily average values corresponding to the point and the whole-campaign average
 value corresponding to the same point. Values measured within a 250 m street segments were averaged for each day. Similar
 correction and averaging methods were reported in previous studies (e.g (Kerckhoffs et al., 2021, 2022a)).

160 The performance of the model has been evaluated in three steps. First, a subset containing 15% of data collected through
 mobile measurements (and not used to tune the model) was used for cross-validation. This percentage represents the optimal
 value for which the models developed in this study can recognize the relationship between the attributes of the input data
 and the output variable with R^2 score greater than 0.75. When selecting this percentage, providing as much quality data as
 possible (85%) was considered an important factor in the learning process to increase the performance of the model, as well as
 165 to avoid data leakage between the learning process and cross-validation. Second, an independent set of data collected at fixed
 sites was used for validation. In addition to the MARS site, eight monitoring stations operated by NAQMN in Bucharest were
 selected for validation, based on data availability, representing all types of environments: two urban-type stations located in the
 east and northeast of the city, one suburban station located 4 km to the south of the capital city, three industrial-type stations
 situated in the southern half of the city, and two traffic-type stations located in the center of the Bucharest. The evaluation
 170 involved direct comparison of statistical metrics (correlation, root mean square error, relative differences) between model

outputs and pollutant direct measurements. The last step was the evaluation of the model performance to resolve different types of environment (traffic, urban, industrial). Details and results are provided in Section 3.1.

3 Results and discussions

2.1 Tuning the mixed-effects Land-Use Regression model for Bucharest

175 Based on the specificity of the climate in the region of Bucharest, we decided to use the residential areas (predictor variable) as time-dependent variables with major differences between the warm season and the cold season (Ilie et al., 2023). Residential areas are considered sources of pollution due to household activities, heating being responsible for the major difference between the cold and the warm seasons. However, the time dependence of this variable is not sufficient to describe the day-to-day variability because the residential heating is generally switched on in late autumn and off in late spring, with no real daily
180 variability. To model NO_2 , PM_{10} , $\text{PM}_{2.5}$ and UFP concentrations over the Bucharest area, an additional variable was needed in the LUR models to cover the fast time-dependencies (the so-called "random" effects). In this mixed-effects framework, the pollutant concentration can be expressed as a linear relationship between fixed variables and time-dependent variables, where the random effect is modeled by including a discrete "dummy" variable.

In our work, for each reference point, the "random effect" was modeled as the difference between the standard deviation
185 calculated for the entire period of mobile measurements and the standard deviation calculated for each day of mobile measurements. Therefore, the magnitude and/or sign of the "random" effect were not the same over all reference points of measurements. The mixed-effects models were fitted to the observational dataset using the Python modules scipy, sklearn and statsmodels.

Other predictor variables used for the LUR models include vehicle traffic intensity (calculated separately for the warm and
190 for the cold seasons) as well as aggregated values of the spatial predictor variables calculated ~~in circular buffers with radii between~~ within circular buffers ranging from 25 m and to 2 km in radius.

The mixed-effects LUR models (one model for each pollutant considered in this study) were adjusted and trained for Bucharest to obtain consistent datasets. For the training process, 85% subsets of mobile measurements were randomly selected. The remaining 15% of the mobile measurements were used to cross-validate the LUR models. By dividing the data set used in the learning process into 85% for training and 15% for testing, it was followed on the one hand, to increase the performance of the models developed in this study, and on the other hand, the aim was to reduce the overfitting effect of the models by obtaining the smallest possible difference between the R^2 score obtained during training and testing. The regression
195 coefficients obtained as an output of the training were further used to generate high-resolution maps of seasonal concentrations of NO_2 , PM_{10} , $\text{PM}_{2.5}$ and UFP with a resolution of 100 m, over an area of approximately 240 km^2 (the entire area of the city
200 of Bucharest).

2.1.1 Spatial predictor variables

To define the optimal configurations of LUR architectures for Bucharest, for each 250 m street segment, spatial predictor variables were extracted using the following data sources: (i) CORINE for land cover (European Environment Agency, 2018), (ii) Open Street Maps (OSM) (OpenStreetMap, 2021) for road network and (iii) National Institute of Statistics (INS) for population density.

There is no recent source quantifying the traffic intensity on road segments in Bucharest, therefore the value for this predictor was estimated for each direction of the street segment i using the following relationship:

$$Counts_i = \frac{N}{L} \cdot f_{c_i} \cdot v_i \quad (2)$$

where N represents the total number of vehicles per day obtained from INS, L represents the total length of street segments (km), v_i represents the speed on the street segment (km/h), f_{c_i} represents cost function for the street segment (h) retrieved from geofabrik.de database (Geofabrik, 2024).

In order to tune and train the mixed-effects models for the specifics of Bucharest, the spatial predictor variables were selected from a number of proxies that describe the possible sources and sinks of NO_2 , PM_{10} , $PM_{2.5}$, PM_1 and UFP emissions. These variables are presented in Table 1. The column “~~direction-of-effect~~Effect” represents the effect that the predictor variables have on the concentration of the pollutant in the atmosphere. Variables associated with emission sources have a positive effect, while variables associated with sinks, such as vegetation cover, have a negative effect. The circle radii most commonly used for buffering the variables describing the sources and sinks at a given location are given in column “Buffer sizes”.

2.1.2 Predictor variable selection

For the selection of variables we first removed proxies with a percentage of null values greater than 90%. After applying this filter, proxies that describe the possible sources and sinks for LUR models tuned for Bucharest were associated with:

- traffic, with predictors "Counts" (number of vehicles per day) and road length variables in buffer of 50 to 1000 m
- land-use, with predictors: industry, green, residential lower density (individual residential), residential higher density (collective residential), construction and water in buffers of 100 to 2000 m
- population density in buffers of 100 to 2000 m

To determine the optimal combination of predictor variables, the supervised forward stepwise regression approach proposed within the European Study of Cohorts for Air Pollution Effects (ESCAPE) project (ESCAPE, 2024) was used. ESCAPE model starts from a constant value and after that the predictor variables are added based on the goodness of fit given by the adjusted cross-correlation (R^2) value. The direction of effect for all variables was kept as in Table 1. The variable with the highest adjusted R^2 was included in Eq. (1) as X_k . The process of building the model stops when the new variables do not contribute

230 significantly (more than 1%) to the improvement of the adjusted R^2 value. The LUR model configurations were generated using all possible combinations of generated predictor values. From the total of the models obtained, only the LUR models for which the adjusted R^2 value was higher than 0.5 were selected.

In a second step we calculated the confidence level (p-value) and variance inflation factor (VIF) to identify that predictor's contribution to a collinearity problem. The statistically insignificant variables ($p > 0.05$) and predictor variables where $VIF >$
235 5 sequentially were not used in the model.

The predictor variables and the size of the buffers used in this work are shown in Table 1. The predictors passing the above conditions are shown in bold.The sizes of the buffers are those established within ESCAPE project for the development of LUR models. These buffer sizes are used to determine the spatial proximity of different features by defining a distance zone around the features.

Table 1: Description of spatial predictor variables

Source data	Variable name	Description	Unit	Effect	Buffer sizes (m)
INS	POPDENS_X	Population density	#/m ²	+	100, 150, 200, 250, 300, 500, 1000 , 2000
CORINE 2018	LDRES_X	Low-density residential	m ²	+	100, 150, 200, 250 , 300, 500, 1000, 2000
	HDRES_X	High-density residential	m ²	+	100, 150, 200, 250, 300 , 500, 1000, 2000
	AIRPORT_X	Airport area	m ²	+	100, 150, 200, 250, 300, 500, 1000, 2000
	INDUSTRY_X	Industrial areas	m ²	+	100, 150, 200, 250 , 300, 500, 1000, 2000
	AGRI_X	Agricultural areas	m ²	+/-	100, 150, 200, 250, 300, 500, 1000, 2000
	FOREST_X	Forest areas	m ²	-	100, 150, 200, 250, 300, 500, 1000, 2000
	GREEN_X	Urban green areas	m ²	-	100, 150, 200, 250, 300, 500, 1000, 2000
	CONSTR_X	Construction sites	m ²	+	100, 150, 200, 250 , 300, 500, 1000, 2000
	WATER_X	Water bodies	m ²	+/-	100, 150, 200, 250 , 300, 500, 1000, 2000
Road network	LENGTH_X	Length of road segments	m	+	25, 50, 75 , 100, 150, 200, 250, 300, 500, 1000, 2000

	TRAFFIC_X	Total traffic load	(veh / day) * m	+	25, 50, 75, 100, 150, 200, 250, 300, 500, 1000
geofabrik.de INS	COUNTS	Traffic intensity	veh / day	+	NA N/A

240 **3 [Results and discussions](#)**

3.1 Evaluation of the model performances

For each individual pollutant, four configurations of LUR models were defined, out of those showing the adjusted R^2 greater than 0.5. Further, only the results and performances of the LUR models for which the highest adjusted R^2 value was obtained are discussed.

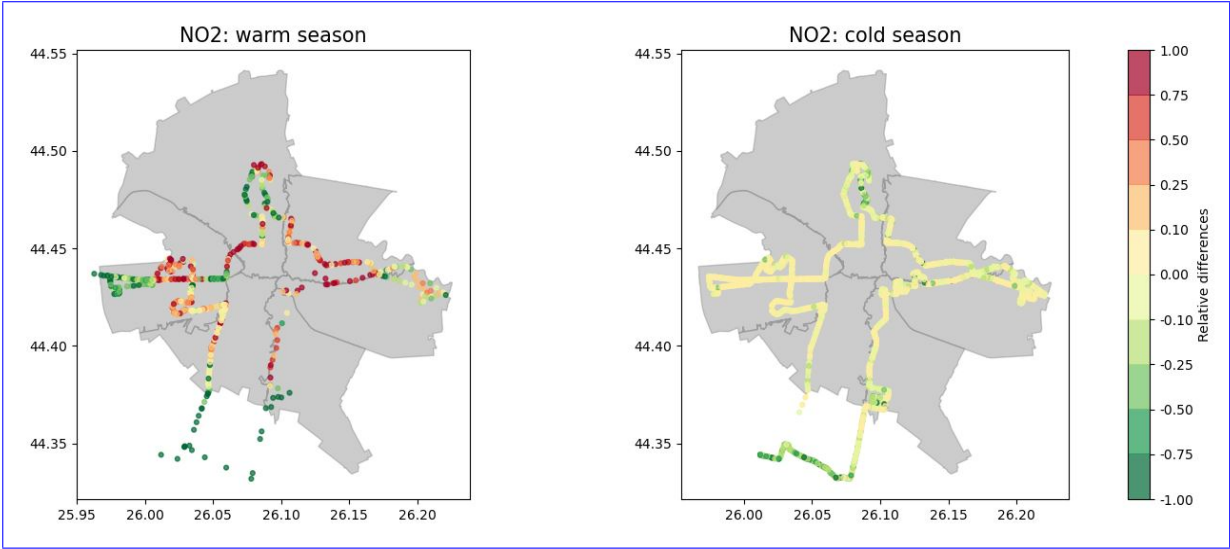
245 The mixed-effects model tuned for Bucharest city has been evaluated using mobile measurements and fixed-site measurements. The performance assessment involved not only the averages in some points, but also the overall agreement on specific types of urban areas covering the entire pollutants concentration intervals. The performance of each model (one for each type of pollutant) was tested in three steps. First, the outputs of the model have been cross-validated against mobile measurements on the route (the 15% randomly selected mobile datasets not used for training). [The percentage of 15% kept for testing represents](#)
250 [the optimal value for which the models developed in this study can recognize the relationship between the attributes of the input data and the output variable with a \$R^2\$ score greater than 0.5. Moreover, it cover all possible situations regarding the spatial distribution of the predictor variables used in the model.](#) Second, the average concentrations calculated by the model at the location of the fixed observation sites have been validated by comparison with the seasonal-average concentrations measured at those sites. Also, model data clustered based on the type of the environment (traffic, industrial, urban) has been compared to
255 similarly clustered data collected at the fixed observation sites.

3.1.1 Cross-validation against mobile measurements

Cross-validation is performed for each model by comparing the model predicted dataset against the observed data collected by mobile measurements. Agreement between the two datasets is quantified by calculating the adjusted R^2 and root mean square error (RMSE). The RMSE of each model was calculated as the square root of the mean of the squared errors. We also
260 present the relative differences between modeled and measured data as a general indicator of the model accuracy. Results show very good correlations ($R^2 > 0.91$) for each model as a follow-up of the training process. The cross-validation shows higher correlations for the cold season ($R^2 = 0.81$ for NO_2 and $R^2 = 0.88$ for PM_{10}) than for the warm season ($R^2 = 0.59$ for NO_2 and $R^2 = 0.72$ for PM_{10}). The weaker performance of the models during the warm season can be explained by the large variability of NO_2 and PM_{10} concentrations in the warm season compared to the cold season (Ilie et al., 2023), which is not completely
265 captured by our method. Moreover, this strong variability is also suggested by the RMSE values which for the NO_2 are higher

in the warm season (8.622.94 ppb) than in the cold season (6.992.64 ppb). In contrast, the RMSE values for PM₁₀ are lower in the warm season (4.742.18 μg/m³) than in the cold season (9.383.06 μg/m³). A cross-validated scatter plots were also added in the supplement.

270 The relative differences between mobile measurements and model retrievals, computed as (Model-Observed)/Observed, show the ability of the models to estimate PM₁₀ and NO₂ concentrations (Fig. 2). It can be seen that the model for NO₂ tends to overestimate the predicted concentrations in the warm season, especially in urban agglomeration areas (upper left panel), while the model for PM₁₀ tends to underestimate the predicted concentrations(lower left panel). However, such differences are acceptable considering the assumptions made, the uncertainty of the data used for training the models, as well as the general performances reported in the literature (Ma et al., 2024).



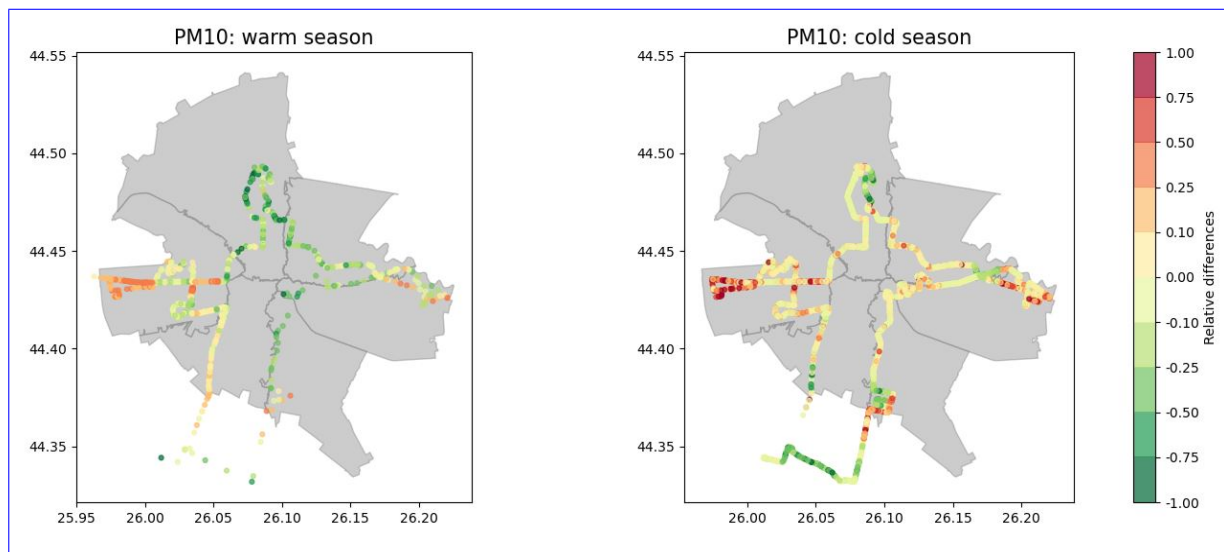


Figure 2. Relative difference between model predicted values and mobile measurements of NO₂ (upper panel) and PM₁₀ (lower panel) during warm (left panel) and cold (right panel) season

3.1.2 Validation against independent measurements at fixed observation sites

The model output was evaluated against the seasonal average of the hourly values of NO₂ and PM₁₀ measured at nine long-term operated in situ stations, out of which eight stations operated by NAQMN. These sites are considered representative for urban, industrial and suburban areas as pictured in Fig. 3. The model could not be evaluated in the case of UFP, due to unavailability of the data at all fixed stations. [More information about what type of variables are measured by NAQMN are given in \(Ilie et al., 2023\).](#) Statistical metrics, like R², RMSE and relative differences were calculated similarly as for the cross-validation. Statistical parameters are summarized in Table 2.

In Fig. 3, the mean mass concentrations measured at the fixed observation sites are represented by the diameter of the circle, and the type of the environment is represented by the color of the circle. [The missing data in Fig. 3 is due to the fact that no measurements were available for these periods, due to various non-scientific reasons \(technical problems with the measurement equipment, manpower problems, etc.\)](#) It can be seen that the variation of the concentrations across the city is relatively low, especially for particulate matter during the cold season. PM₁₀ concentrations range from 21 to 32 $\mu\text{g}/\text{m}^3$ in both seasons. The highest PM₁₀ concentrations are observed at the urban, sub-urban and the traffic stations, while the lowest PM₁₀ concentration is measured at the industrial stations. The western part of the city shows highest PM₁₀ values. NO₂ concentrations range from 8 to 20 ppb in the warm season and from 9 to 24 ppb in the cold season. The highest NO₂ concentrations correspond to the areas with intense traffic and industrial activities, while the lowest concentrations are observed in the sub-urban areas, which are less impacted by traffic.

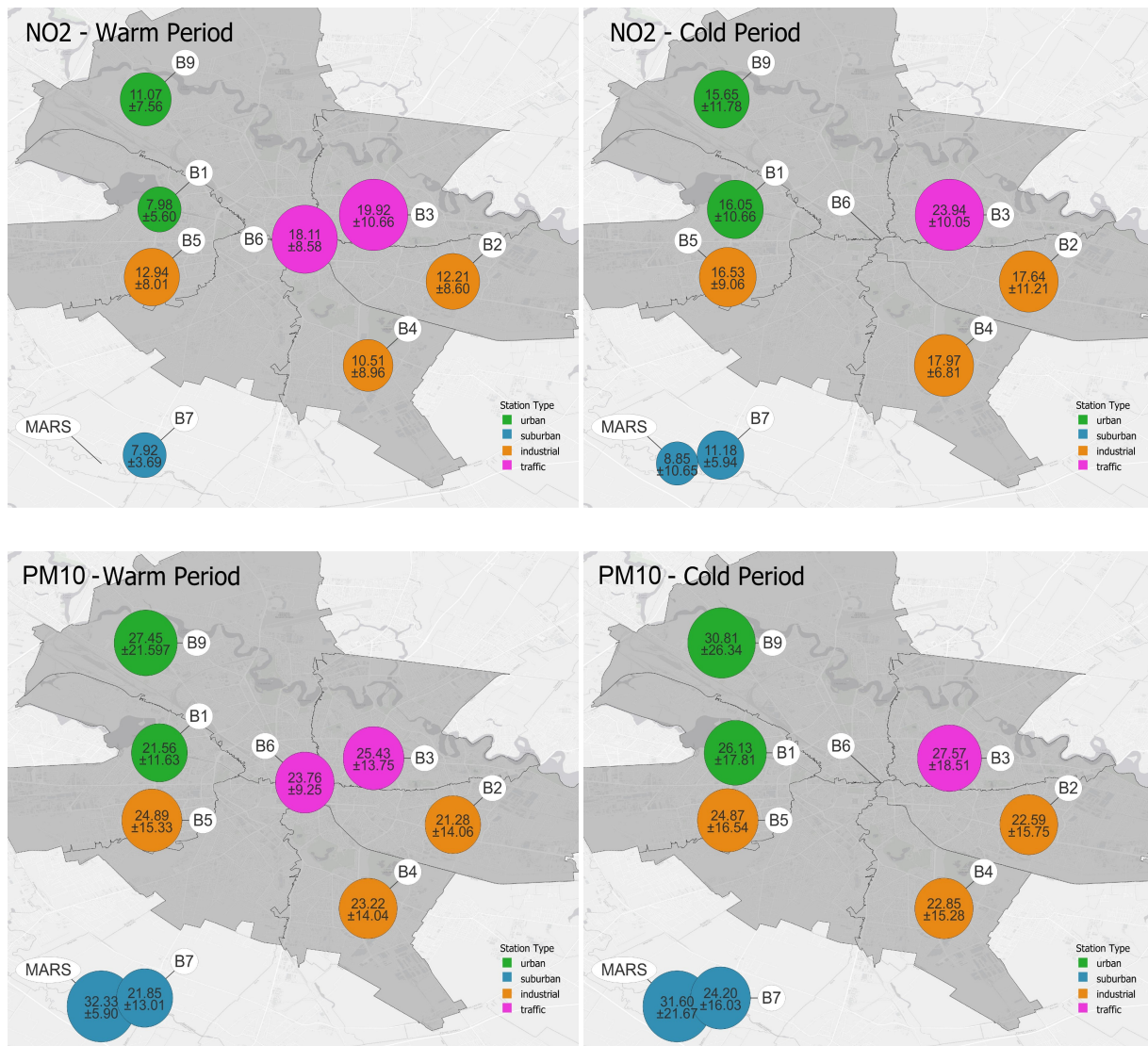


Figure 3. Average concentration of NO₂ (upper panel, units ppb) and PM₁₀ (lower panel, units $\mu g/m^3$) during warm (left panel) and cold (right panel) season at fixed sites: the diameter of the circle represents the mean mass concentrations measured at the site; the color of the circle represents the type of the environment at the site

The comparison between model predicted values and the observed values at the nine fixed sites is presented in Table 2. Overall, the model performed well, even if the NO₂ values tend to be slightly overestimated, and PM₁₀ tend to be slightly underestimated when compared with measured mean concentrations. Mean values of modeled NO₂ are within the range of the observed values, as indicated by the standard deviation. The differences can be explained by the local topography and the

specifics of the land use. The road system in Bucharest is very dense, so the distance from a street to residential or industrial sectors is often very short, sometimes less than few meters, therefore the NO₂ 100 x 100 m grid resolution cannot always resolve the variations. This "smoothing" effect caused by insufficient spatial resolution of the model is pin pointed by the lower values of the standard deviations returned by the model by comparison with those returned by observations.

300 The trends and seasonal differences of both NO₂ and PM₁₀ are well resolved by the model, as shown by the comparison with observations. The R² correlation between observed mean concentrations and modeled mean concentration is above 0.65 for all pollutants for warm season, and 0.75 for cold season. These values can be attributed to the good performance of the model, in accordance with the values reported for other cities (Yuan et al., 2023). The lowest correlation value is noted for particulate matter during warm season. This result can be explained by the fact that, during the warm season, photo-chemical
305 processes are intensified at the street level, and the model cannot capture the effects properly.

The RMSE is another important parameter for assessing the performance of the model, accounting for the level of absolute error. As in the case of R², we noticed a better model performance for the cold season. The difficulties of the model to capture the small variations during the warm period for both NO₂ and PM₁₀ are depicted by higher RMSE values. High values of RMSE correspond to low R² values, demonstrating that the model cannot fully capture the variations of NO₂ or PM₁₀ concentrations.

Table 2. Comparison between model output and measured values at fixed sites for NO₂ and PM₁₀ in Bucharest (Romania) during warm period 2022 and cold period 2023, and statistical metrics

Pollutant	Season	Observed mean concentration	Modelled mean concentration	R ²	RMSE
NO ₂	warm	12.58 ± 7.71 ppb	16.38 ± 2.47 ppb	0.66	4.97 ppb
	cold	15.98 ± 9.52 ppb	17.25 ± 1.17 ppb	0.75	2.27 ppb
PM ₁₀	warm	24.64 ± 13.18 µg/m ³	24.29 ± 4.38 µg/m ³	0.65	2.02 µg/m ³
	cold	26.33 ± 18.50 µg/m ³	25.64 ± 4.43 µg/m ³	0.76	1.69 µg/m ³

310 **3.1.3 Evaluation of the model performance to resolve different types of environment**

The model was tested for its robustness in capturing differences between various types of environment such as urban (including pre-urban), industrial, traffic. Long-term datasets collected at the nine fixed observation sites were used for this purpose. Figure 3 shows mean concentrations of NO₂ and PM₁₀ as retrieved by the model and measured at the stations, clustered by the type of environment and separated for the warm and cold seasons. The relative differences between values modeled and measured
315 in different environments are also highlighted.

NO₂ is the most variable species, with high differences between seasons and between environment types. Lower NO₂ concentrations are depicted for the urban group, whereas the highest NO₂ concentration is associated to traffic, as anticipated. The traffic group has the lowest variability among seasons and is also better captured by the model. The model shows increased NO₂ concentrations during the warm season for urban and industrial categories, while in the case of traffic areas the model

underestimate a bit the measurements averages. The overall relative differences between cold and warm seasons for both model and observational data inside each defined environment is less than 35%. Higher relative differences between modeled and measured data are observed for warm season for all areas, with lowest difference in the case of traffic areas, around 10%. Overall lower relative differences between modeled and measured data are observed during cold season in comparison with warm period, with NO₂ average concentration in industrial and traffic areas underestimated by the model, highlighted by relative differences up to -20%.

PM₁₀ concentrations show an overall lower seasonal variability, and also lower differences between model and observed data, with relative differences less than 20%. Particulate matter concentrations for urban, industrial, and traffic areas varied slightly among seasons. Modeled PM₁₀ concentrations shows higher values for industrial environment in comparison with observational data for both seasons. Moreover, industrial areas present the lowest PM₁₀ concentration during cold season, as shown by both modeled and measured data. Urban and traffic environment PM₁₀ concentrations are slightly underestimated by the model. The overall relative differences of PM₁₀ concentration between cold and warm seasons for both model and observational data inside each defined environment is less than 15%. Small relative differences between modeled and measured data are observed for PM₁₀ concentrations, during both seasons. PM₁₀ average concentration in urban and traffic areas are slightly underestimated by the model, highlighted by relative differences up to -10%, which can be also influenced by the low number of available fixed stations in each environment.

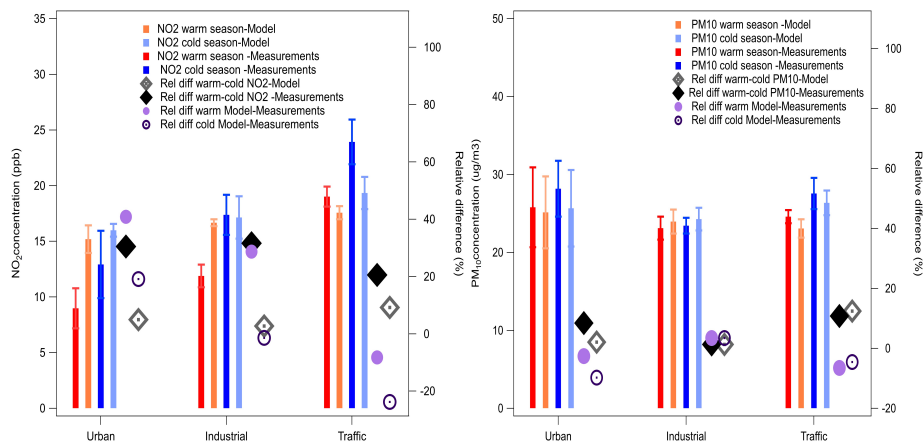


Figure 4. Model (light color) versus measurements (dark color) mean concentrations of NO₂ (left panel) and PM₁₀ (right panel) during warm (red) and cold (blue) seasons, along with the relative difference between cold and warm season from model (grey diamond mark) or measurements (black diamond mark); relative difference between model and measurements for warm (purple circle mark) and cold (dark purple circle mark) seasons

3.2 Mapping atmospheric pollution in Bucharest

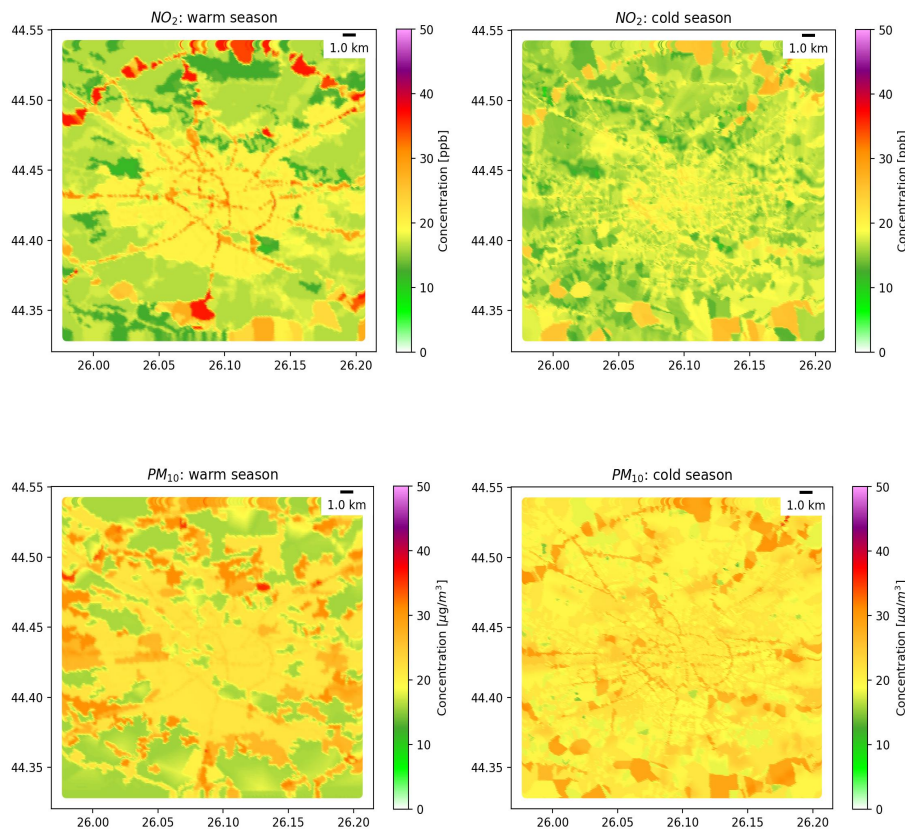
The validated model was further used to produce NO₂, PM₁₀ and UFP concentrations maps for Bucharest, representative for the warm and cold seasons (Fig. 5). The results are valid for daytime and working days of the week. It should also be taken into account that, in the absence of spatio-temporal emission inventories with a high spatial resolution and traffic data, modeled data were used. In analyzing these results, it must be noted that the near-surface concentrations of atmospheric pollutants are influenced not only by the emissions, but also by the height of the planetary boundary layer, transport from other regions, dry and wet deposition and chemical processes, all in relation to relatively fast changing meteorological conditions (e.g. air temperature, wind field). Model results show that, overall and regardless the season, NO₂, PM₁₀ and UFP concentrations are higher on the main road sections, with higher values on Bucharest's western area.

NO₂ concentration maps show that this pollutant is highly related to traffic, the road network of Bucharest being clearly visible both during the warm and during the cold season. The main roadways, especially the Bucharest ring road, are depicted as the primary NO₂ source. Also, featured are the city central routes, where traffic remains heavy throughout the day and seasons. The highest NO₂ concentrations is noted around busy highways due to the presence of a large number of NO-emitting automobiles. Sinks related to the green areas and water bodies regions are identified in dark green colors. Overall, NO₂ concentration is higher during the warm period, when concentrations are higher on key roadways (35.79 ± 8.38 ppb) and other sources in the city add up. The conversion of NO to NO₂ in the presence of sunlight and ozone is significant. During cold months, the NO₂ concentration is lower in absolute values across the city, however the main roads are still depicted as major sources, followed by several industrial areas such as power plants serving the centralized heating of the city. The distribution of the NO₂ concentration on all street segments is almost uniform during cold season, with a slight increase on the main street segments, including the Bucharest ring road (20.67 ± 3.44 ppb). At the level of the city of Bucharest, the average value of the NO₂ concentration as estimated by the model for the warm-cold season is 16.66 ± 4.04 ppb, while for the cold-warm season it is 18.75 ± 1.98 ppb.

The spatial variation of PMs in the city area is substantial, with an abundance of small particles and a high mass concentration of larger particles in densely populated residential areas. Significant concentrations of particles have been identified, mostly in industrial areas and anthropoeentric-anthropogenic agglomerations, but also along certain major transportation routes. During the cold periods, the PMs (all sizes) have larger loading and lower gradients, as reported also for other cities (Ndiaye et al., 2024). This is related to increased emissions from residential heating. A gradient of PM₁₀ concentrations is evidenced within the city, with higher loading in the western and southern areas. Average PM₁₀ concentration in Bucharest during cold season is 1.2 times higher than in the warm season. During the warm periods, the PM₁₀ clusters are localized around source areas, while during cold periods, the sources distribution are more homogeneous.

The average UFP number concentration throughout the mobile route exhibits an important spatial gradient, particularly during the warm season, with variations up to a factor of two in the mean, highlighting extensive human exposure to ultra-fine particles. The UFP number concentrations are elevated on the main roads, as well as on some areas related to industrial activities in southern, northern and western city regions, mostly during the warm season. A more uniform distribution of UFP

mean number concentration is observed during the cold season, when the house heating emissions add up to the traffic. Traffic sources ~~are less effective~~ have less impact during the cold season, ~~when the chemical processes are reduced under reduced~~ as chemical processes diminish due to limited sunlight. House heating sources, more evenly distributed at spatial scale than the roads, generate more homogeneous distribution but also larger absolute values of UFP. Average seasonal concentration on Bucharest city during the cold season (29132 ± 4362 particles/cm³) is 1.4 times higher than in the case of warm season (21469 ± 3528 particles/cm³).



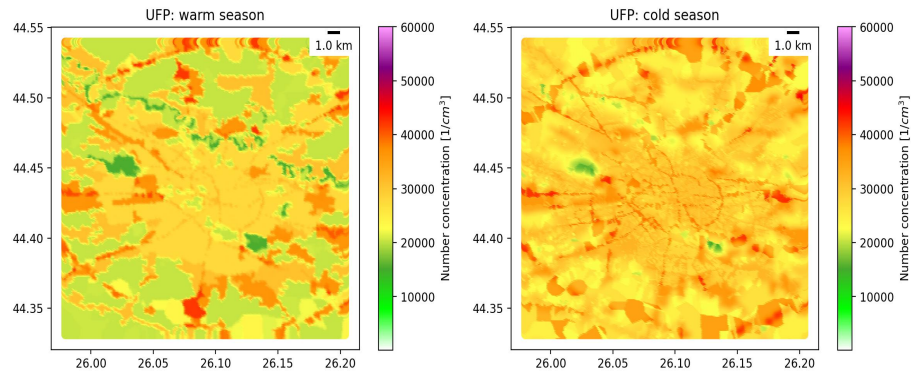


Figure 5. Near-surface concentration maps for Bucharest, as resulted from the model for NO_2 , PM_{10} and UFP during warm (left panel) and cold (right panel) seasons

The Since measurements of $\text{PM}_{2.5}$ were only available at a few fixed stations, we included the modeled ratio of $\text{PM}_{2.5}$ to PM_{10} as the result to show what we expect for the fraction of fine particles from the model. The model shows the fine particle fraction ($\text{PM}_{2.5} / \text{PM}_{10}$) is larger during cold than during PM_{10} to be larger during the cold periods, compared to warm periods, as expected, with fine particles accounting for up to 90% of the PM_{10} concentration. PM_{10} concentration (Fig. 6). This is explained by the fact that house heating generates household activities generate predominantly small particles. By comparison, during warm periods and higher percentages are seen in the peri-urban regions (outside of Bucharest) where the house heating are contributing more (lighter color of purple, Fig. 6 right panel) to $\text{PM}_{2.5}$ concentrations. During warm periods, fine particle fraction is approximately 70%, still showing a significant share 50% within the city and less than 40% in the villages close to Bucharest where the agricultural activities increase the PM_{10} fraction (Fig. 6 left panel). The main rivers and lakes within Bucharest's perimeter are clearly sinks for small particles, producing lower fine mode fractions in both seasons.

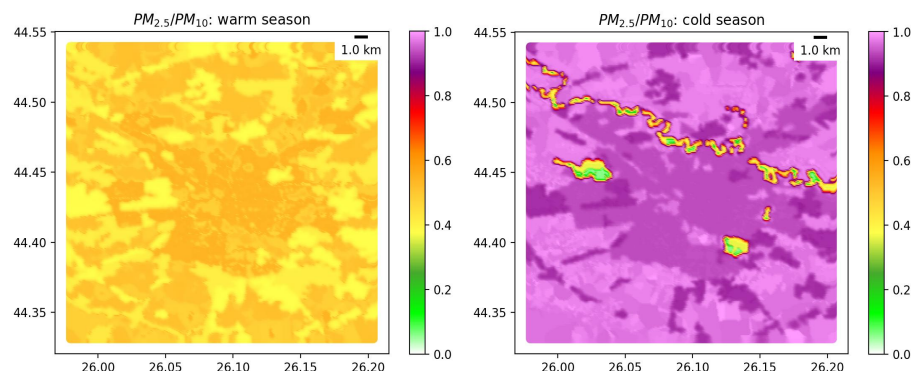


Figure 6. Model maps of $\text{PM}_{2.5}/\text{PM}_{10}$ ratio during warm and cold seasons

4 Conclusions

The regression-based methods fed by mobile data can predict NO₂, PM₁₀ and UFP concentrations for regions which are not properly covered by observations. In order to do this, the right combination of data sampling frequency, duration and route, and the correct number and type of predictor factors (corresponding to the surrounding environment) must be considered. Mobile monitoring together with modeling tools can therefore compensate for spatial and temporal data gaps which are collected by the monitoring stations, and can assist individuals and policymakers in identifying regions and causes of poor air quality. In this study we demonstrate the effectiveness of combining mobile measurements with mixed-effects LUR models to derive seasonal maps of near-surface PM₁₀, NO₂ and UFP. The study shows first-time validated results for Bucharest, the capital city of Romania, which is characterized by a large, densely populated surface with a very dense and heavily used street network.

Despite the limited number of fixed stations available for this work (8 + MARS), the tuned mixed-effects LUR model proved to be robust and accurate in producing high-resolution mapping of NO₂, PM₁₀ and UFP for the warm and the cold seasons. Overall, good model performance was observed for both seasons and all concentrations, similar to other studies. The slightly higher mean squared error values ~~correlated-coupled~~ with smaller cross-validation R² values obtained for the warm season suggest that the mobile campaign data collected for this study did not capture all the important NO₂ and PM₁₀ concentration variations. Even if the route selected for the two mobile measurement campaigns included all urban structures, the limitation of car access remains a source of error, which can lead to ~~underestimation-an underestimation of~~ the concentration of pollutants. The performance of this model can be greatly improved by the involvement of citizens (pedestrian or by bicycle) to collect data from areas where cars are not allowed. Data sets systematically collected by citizens during daily (repeated) activities or walks could provide improved estimates of spatial variability for these areas (Snyder et al., 2013; Hankey and Marshall, 2015; Van den Bossche et al., 2015). The citizen involvement increases the pollutants data collection on areas restricted for cars or bicycles and enable the possibility to study the sinks on green or water areas, but are based only on low cost sensors. Further improvements could also be made by the inclusion of spatio-temporal emission data with a high spatial resolution, such as traffic volumes or emission inventories.

The results provided by the model show that high concentrations of particulate matter during the cold season are representative for Bucharest city, due to the added effect of house heating (either dispersed in residential areas, or localized at the city's power plants). Fine particles dominate during the cold season, although ~~remaining-they remain~~ at high levels during the warm season ~~also as well~~. NO₂ is less challenging but still an important factor, especially during the warm season and along the main roads. The seasonal high-resolution air quality maps for Bucharest based on mixed-effects modeling ~~pin-pointed-pinpointed~~ pollutant variability mostly during the warm season and higher concentrations and fine particles ratio during the cold season. Water and vegetation areas are evidenced as effective sinks for NO₂ and fine particles, while traffic and residential heating are evidenced as effective sources in Bucharest. Based on these findings, a more extended certified AQ station networks would be beneficial for human health related pollutants monitoring, as well as inclusion of fine particles measurements among these

The approach presented in this paper can be adjusted for ~~resolving-high-resolution-high-resolution~~ mapping of NO₂, PMs and UFP in other cities as well, as-using the series of predictor variable identified in this study as necessary. This is feasible

as long as the urban structures are well-characterized and there is as-a fairly dense and diverse network of in situ monitoring stations of which, whose observational data can be used for model calibration and validation.

Code availability. Codes developed for this study are available from the main author (Camelia Talianu, camelia@inoe.ro) upon request.

Data availability. Data used in this study are available from the main author (Camelia Talianu, camelia@inoe.ro) upon request.

425 *Author contributions.* **Camelia Talianu:** Conceptualization, Methodology, Formal analysis, Software, Writing – original draft, Writing – review & editing. **Jeni Vasilescu:** Conceptualization, Formal Analysis, Methodology, Resources, Supervision, Writing – original draft, Writing – review & editing. **Doina Nicolae:** Conceptualization, Funding acquisition, Project administration, Resources, Supervision, Writing – original draft, Writing – review & editing. **Alexandru Ilie:** Data curation; Investigation; Visualization; Writing – original draft. **Andrei Dandoci:** Formal analysis, Investigation; Writing – original draft. **Anca Nemuc:** Writing – review & editing. **Livio Belegante:** Data curation; 430 Investigation; Formal analysis.

Competing interests. The authors declare that they have no competing interests

Acknowledgements. We thank INCAS and INOESY for making available the mobile instruments. Also, we thank BOKU-Met, Vienna, Austria for facilitating access to the supercomputer from the IT infrastructure used for the LUR models. This publication has been prepared using European Union’s Copernicus Land Monitoring Service. We gratefully acknowledge the National Air Quality Monitoring Network, 435 part of the Ministry of Environment and the Romanian Institute of Statistics for providing invaluable data essential to this research. We appreciate the anonymous reviewers and editors for their time and effort to improve the paper.

Funding

This work was carried out through RI-URBANS project (Research Infrastructures Services Reinforcing Air Quality Monitoring Capacities in European Urban & Industrial Areas, European Union’s Horizon 2020 research and innovation program under 440 grant agreement, Grant Agreement number 101036245), ATMO-ACCESS project (European Commission under the Horizon 2020 – Research and Innovation Framework Programme, H2020-INFRAIA-2020-1, Grant Agreement number: 10100800) and the Core Program within the National Research Development and Innovation Plan 2022–2027, carried out with the support of MCID, project no. PN 23 05.

References

- Almetwally, A., Bin-Jumah, M., and Allam, A.: Ambient air pollution and its influence on human health and welfare: an overview, *Environmental Science and Pollution Research*, 27, <https://doi.org/10.1007/s11356-020-09042-2>, 2020.
- Anand, J. S. and Monks, P. S.: Estimating daily surface NO₂ concentrations from satellite data—a case study over Hong Kong using land use regression models, *Atmospheric Chemistry and Physics*, 17, 8211–8230, <https://doi.org/10.5194/acp-17-8211-2017>, 2017.
- Apte, J. S., Messier, K. P., Gani, S., Brauer, M., Kirchstetter, T. W., Lunden, M. M., Marshall, J. D., Portier, C. J., Vermeulen, R. C.,
and Hamburg, S. P.: High-resolution air pollution mapping with Google street view cars: exploiting big data, *Environmental science & technology*, 51, 6999–7008, <https://doi.org/10.1021/acs.est.7b00891>, 2017.
- Balaceanu, C., Mitiu, M., Marcus, I., and Mincu, M.: Pollution Impact of the Grozavesti Thermoelectric Power Plant on the Urban Agglomeration Bucharest, *Revista de Chimie*, 69, 350–353, <https://doi.org/10.37358/RC.18.2.6105>, 2018.
- Bernstein, J. A., Alexis, N., Barnes, C., Bernstein, I. L., Nel, A., Peden, D., Diaz-Sanchez, D., Tarlo, S. M., Williams, P. B., and Bernstein, J. A.: Health effects of air pollution, *Journal of Allergy and Clinical Immunology*, 114, 1116–1123, <https://doi.org/10.1016/j.jaci.2004.08.030>, 2004.
- Bi, J., Zuidema, C., Clausen, D., Kirwa, K., Young, M., Gasset, A., Seto, E., Sampson, P., Larson, T., Szpiro, A., Sheppard, L., and Kaufman, J.: Within-City Variation in Ambient Carbon Monoxide Concentrations: Leveraging Low-Cost Monitors in a Spatiotemporal Modeling Framework, *Environmental health perspectives*, 130, 97 008, <https://doi.org/10.1289/EHP10889>, 2022.
- Briggs, D. J., Collins, S., Elliott, P., Fischer, P., Kingham, S., Lebre, E., Pryl, K., Reeuwijk, H. V., Smallbone, K., and Veen, A. V. D.: Mapping urban air pollution using GIS: a regression-based approach, *International Journal of Geographical Information Science*, 11, 699–718, 1997.
- Brunekreef, B. and Holgate, S.: Air Pollution and Health, *Lancet*, 360, 1233–42, [https://doi.org/10.1016/S0140-6736\(02\)11274-8](https://doi.org/10.1016/S0140-6736(02)11274-8), 2002.
- Choi, J., Henze, D. K., Cao, H., Nowlan, C. R., González Abad, G., Kwon, H.-A., Lee, H.-M., Oak, Y. J., Park, R. J., Bates, K. H., Maasakkers, J. D., Wisthaler, A., and Weinheimer, A. J.: An Inversion Framework for Optimizing Non-Methane VOC Emissions Using Remote Sensing and Airborne Observations in Northeast Asia During the KORUS-AQ Field Campaign, *Journal of Geophysical Research: Atmospheres*, 127, e2021JD035 844, <https://doi.org/10.1029/2021JD035844>, 2022.
- De Marco, A., Garcia-Gomez, H., Collalti, A., Khaniabadi, Y. O., Feng, Z., Proietti, C., Sicard, P., Vitale, M., Anav, A., and Paoletti, E.: Ozone modelling and mapping for risk assessment: An overview of different approaches for human and ecosystems health, *Environmental Research*, 211, 113 048, <https://doi.org/10.1016/j.envres.2022.113048>, 2022.
- Deshmukh, P., Kimbrough, S., Krabbe, S., Logan, R., Isakov, V., and Baldauf, R.: Identifying air pollution source impacts in urban communities using mobile monitoring, *Science of The Total Environment*, 715, 136 979, <https://doi.org/10.1016/j.scitotenv.2020.136979>, 2020.
- Eeftens, M., Tsai, M.-Y., Ampe, C., Anwander, B., Beelen, R., Bellander, T., Cesaroni, G., Cirach, M., Cyrys, J., de Hoogh, K., Nazelle, A. D., de Vocht, F., Declercq, C., Dèdelè, A., Eriksen, K., Galassi, C., Gražulevičienė, R., Grivas, G., Heinrich, J., Hoffmann, B., Iakovides, M., Ineichen, A., Katsouyanni, K., Korek, M., Krämer, U., Kuhlbusch, T., Lanki, T., Madsen, C., Meliefste, K., Mölter, A., Mosler, G., Nieuwenhuijsen, M., Oldenwening, M., Pennanen, A., Probst-Hensch, N., Quass, U., Raaschou-Nielsen, O., Ranzi, A., Stephanou, E., Sugiri, D., Udvardy, O., Éva Vaskövi, Weinmayr, G., Brunekreef, B., and Hoek, G.: Spatial variation of PM_{2.5}, PM₁₀, PM_{2.5} absorbance and PM_{coarse} concentrations between and within 20 European study areas and the relationship with NO₂ – Results of the ESCAPE project, *Atmospheric Environment*, 62, 303–317, 2012.

- ESCAPE: ESCAPE - Enhancing Sales Capacity for Agrifood Products in Europe, <http://escapeproject.eu/>, accessed: 2024-07-11, 2024.
- European Environment Agency: CORINE Land Cover (CLC) 2018 dataset, Data file, <https://www.eea.europa.eu/publications/COR0-landcover>, accessed: 2024-08-13, 2018.
- Fenger, J.: Urban air quality, *Atmospheric environment*, 33, 4877–4900, 1999.
- 485 Fokkema, M., Smits, N., Zeileis, A., Hothorn, T., and Kelderman, H.: Detecting treatment-subgroup interactions in clustered data with generalized linear mixed-effects model trees, *Behavior Research Methods*, 50, 2016–2034, <https://doi.org/10.3758/s13428-017-0971-x>, 2018.
- Ge, Y., Fu, Q., Yi, M., Chao, Y., Lei, X., Xu, X., Yang, Z., Hu, J., Kan, H., and Cai, J.: High spatial resolution land-use regression model for urban ultrafine particle exposure assessment in Shanghai, China, *Science of The Total Environment*, 816, 151 633, 2022.
- 490 Geofabrik: Geofabrik GmbH, <https://download.geofabrik.de/>, accessed: 2024-07-11, 2024.
- Grønskei, K. E.: Europe and its cities, in: *Urban Air Pollution—European Aspects*, pp. 21–32, Springer, 1998.
- Hamanaka, R. B. and Mutlu, G. M.: Particulate Matter Air Pollution: Effects on the Cardiovascular System., *Frontiers in endocrinology*, 9, 680, <https://doi.org/https://doi.org/10.3389/fendo.2018.00680>, 2018.
- Hamer, P. D., Walker, S.-E., Sousa-Santos, G., Vogt, M., Vo-Thanh, D., Lopez-Aparicio, S., Schneider, P., Ramacher, M. O., and Karl, M.:
 495 The urban dispersion model EPISODE v10. 0–Part 1: An Eulerian and sub-grid-scale air quality model and its application in Nordic winter conditions, *Geoscientific Model Development*, 13, 4323–4353, 2020.
- Hankey, S. and Marshall, J. D.: Land use regression models of on-road particulate air pollution (particle number, black carbon, PM_{2.5}, particle size) using mobile monitoring, *Environmental science & technology*, 49, 9194–9202, 2015.
- Hasegawa, K., Tsukahara, T., and Nomiya, T.: Short-term associations of low-level fine particulate matter (PM_{2.5})
 500 with cardiorespiratory hospitalizations in 139 Japanese cities, *Ecotoxicology and Environmental Safety*, 258, 114 961, <https://doi.org/https://doi.org/10.1016/j.ecoenv.2023.114961>, 2023.
- Hatzopoulou, M., Valois, M.-F., Levy, I., Mihele, C., Lu, G., Bagg, S., Minet, L., and Brook, J.: Robustness of Land-Use Regression Models Developed from Mobile Air Pollutant Measurements, *Environmental Science & Technology*, 51, <https://doi.org/10.1021/acs.est.7b00366>, 2017.
- 505 Hoek, G., Beelen, R., de Hoogh, K., Vienneau, D., Gulliver, J., Fischer, P., and Briggs, D.: A review of land-use regression models to assess spatial variation of outdoor air pollution, *Atmospheric Environment*, 42, 7561–7578, 2008.
- Hoek, G., Eeftens, M., Beelen, R., Fischer, P., Brunekreef, B., Boersma, K., and Veeffkind, P.: Satellite NO₂ data improve national land use regression models for ambient NO₂ in a small densely populated country, *Atmospheric Environment*, 105, <https://doi.org/10.1016/j.atmosenv.2015.01.053>, 2015.
- 510 Ilie, A., Vasilescu, J., Talianu, C., Ioja, C., and Nemuc, A.: Spatiotemporal Variability of Urban Air Pollution in Bucharest City, *Atmosphere*, 14, 1759, <https://doi.org/10.3390/atmos14121759>, 2023.
- INS: National Institute of Statistics of Romania, <https://insse.ro/cms/en>, accessed: 2024-07-11, 2024.
- Jerrett, M., Arain, A., Kanaroglou, P., Beckerman, B., Potoglou, D., Sahuvaroglu, T., Morrison, J., and Giovis, C.: A review and evaluation of intraurban air pollution exposure models, *Journal of Exposure Science & Environmental Epidemiology*, 15, 185–204, 2005.
- 515 Jones, R. R., Hoek, G., Fisher, J. A., Hasheminassab, S., Wang, D., Ward, M. H., Sioutas, C., Vermeulen, R., and Silverman, D. T.: Land use regression models for ultrafine particles, fine particles, and black carbon in Southern California, *Science of The Total Environment*, 699, 134 234, <https://doi.org/https://doi.org/10.1016/j.scitotenv.2019.134234>, 2020.

- Karimi, B. and Shokrinezhad, B.: Spatial variation of ambient PM_{2.5} and PM₁₀ in the industrial city of Arak, Iran: A land-use regression, *Atmospheric Pollution Research*, 12, 101 235, <https://doi.org/https://doi.org/10.1016/j.apr.2021.101235>, 2021.
- 520 Kerckhoffs, J., Hoek, G., Gehring, U., and Vermeulen, R.: Modelling nationwide spatial variation of ultrafine particles based on mobile monitoring, *Environment International*, 154, 106 569, 2021.
- Kerckhoffs, J., Khan, J., Hoek, G., Yuan, Z., Ellermann, T., Hertel, O., Ketzel, M., Jensen, S. S., Meliefste, K., and Vermeulen, R.: Mixed-effects modeling framework for Amsterdam and Copenhagen for outdoor NO₂ concentrations using measurements sampled with google street view cars, *Environmental science & technology*, 56, 7174–7184, <https://doi.org/10.1021/acs.est.1c05806>, 2022a.
- 525 Kerckhoffs, J., Khan, J., Hoek, G., Yuan, Z., Hertel, O., Ketzel, M., Jensen, S. S., Al Hasan, F., Meliefste, K., and Vermeulen, R.: Hyperlocal variation of nitrogen dioxide, black carbon, and ultrafine particles measured with Google Street View cars in Amsterdam and Copenhagen, *Environment International*, 170, 107 575, <https://doi.org/https://doi.org/10.1016/j.envint.2022.107575>, 2022b.
- Kerckhoffs, J., Hoek, G., and Vermeulen, R.: Mobile monitoring of air pollutants; performance evaluation of a mixed-model land use regression framework in relation to the number of drive days., *Environmental Research*, 240, 117 457, <https://doi.org/https://doi.org/10.1016/j.envres.2023.117457>, 2024.
- 530 Knibbs, L. D., van Donkelaar, A., Martin, R. V., Bechle, M. J., Brauer, M., Cohen, D. D., Cowie, C. T., Dirgawati, M., Guo, Y., Hanigan, I. C., Johnston, F. H., Marks, G. B., Marshall, J. D., Pereira, G., Jalaludin, B., Heyworth, J. S., Morgan, G. G., and Barnett, A. G.: Satellite-Based Land-Use Regression for Continental-Scale Long-Term Ambient PM_{2.5} Exposure Assessment in Australia, *Environmental Science & Technology*, 52, 12 445–12 455, <https://doi.org/10.1021/acs.est.8b02328>, 2018.
- 535 Kokkalis, P., Amiridis, V., Allan, J., Papayannis, A., Solomos, S., Biniotoglou, I., Bougiatioti, A., Tsekeri, A., Nenes, A., Rosenberg, P., Marengo, F., Marinou, E., Vasilescu, J., Nicolae, D., Coe, H., Bacak, A., and Chaikovsky, A.: Validation of LIRIC aerosol concentration retrievals using airborne measurements during a biomass burning episode over Athens, *Atmospheric Research*, 183, <https://doi.org/10.1016/j.atmosres.2016.09.007>, 2016.
- Lee, H. J.: Benefits of High Resolution PM_{2.5} Prediction using Satellite MAIAC AOD and Land Use Regression for Exposure Assessment: California Examples, *Environmental Science & Technology*, 53, 12 774–12 783, <https://doi.org/10.1021/acs.est.9b03799>, 2019.
- 540 Lee, K., Wu, J., Hudda, N., Fruin, S., and Delfino, R.: Modeling the Concentrations of On-Road Air Pollutants in Southern California, *Environmental science & technology*, 47, <https://doi.org/10.1021/es401281r>, 2013.
- Li, H. Z., Gu, P., Ye, Q., Zimmerman, N., Robinson, E. S., Subramanian, R., Apte, J. S., Robinson, A. L., and Presto, A. A.: Spatially dense air pollutant sampling: Implications of spatial variability on the representativeness of stationary air pollutant monitors, *Atmospheric Environment: X*, 2, 100 012, 2019.
- 545 Lim, C., Kim, H., Vilcassim, M. J. R., Thurston, G., Gordon, T., Chen, L.-C., Lee, K., Heimbinder, M., and Kim, S.-Y.: Mapping urban air quality using mobile sampling with low-cost sensors and machine learning in Seoul, South Korea, *Environment International*, 131, 105 022, <https://doi.org/10.1016/j.envint.2019.105022>, 2019.
- Lin, C., Wang, Y., Ooka, R., Flageul, C., Kim, Y., Kikumoto, H., Wang, Z., and Sartelet, K.: Modeling of street-scale pollutant dispersion by coupled simulation of chemical reaction, aerosol dynamics, and CFD, *Atmospheric Chemistry and Physics*, pp. 1421–1436, <https://doi.org/10.5194/acp-23-1421-2023>, 2023.
- 550 Lin, C., Ooka, R., Kikumoto, H., Flageul, C., Kim, Y., Zhang, Y., and Sartelet, K.: Impact of solid road barriers on reactive pollutant dispersion in an idealized urban canyon: A large-eddy simulation coupled with chemistry, *Urban Climate*, 55, 101 989, <https://doi.org/https://doi.org/10.1016/j.uclim.2024.101989>, 2024.

- 555 Lloyd, M., Ganji, A., Xu, J., Venuta, A., Simon, L., Zhang, M., Saeedi, M., Yamanouchi, S., Apte, J., Hong, K., Hatzopoulou, M., and Weichenthal, S.: Predicting spatial variations in annual average outdoor ultrafine particle concentrations in Montreal and Toronto, Canada: Integrating land use regression and deep learning models, *Environment International*, 178, 108 106, <https://doi.org/https://doi.org/10.1016/j.envint.2023.108106>, 2023.
- Lu, M., Soenarior, I., Helbich, M., Schmitz, O., Hoek, G., van der Molen, M., and Karssenber, D.: Land use regression models revealing
560 spatiotemporal co-variation in NO₂, NO, and O₃ in the Netherlands, *Atmospheric Environment*, 223, 117 238, 2020.
- Ma, X., Zou, B., Deng, J., Gao, J., Longley, I., Xiao, S., Guo, B., Wu, Y., Xu, T., Xu, X., et al.: A comprehensive review of the development of land use regression approaches for modeling spatiotemporal variations of ambient air pollution: A perspective from 2011 to 2023, *Environment International*, p. 108430, 2024.
- Marin, C., Marmureanu, L., Radu, C., Dandocsi, A., Stan, C., Toanca, F., Preda, L., and Antonescu, B.: Wintertime Variations of Gaseous
565 Atmospheric Constituents in Bucharest Peri-Urban Area, *Atmosphere*, 10, 478, <https://doi.org/10.3390/atmos10080478>, 2019.
- Marmureanu, L., Vasilescu, J., Stefanie, H., and Talianu, C.: Chemical and optical characterization of submicronic aerosol sources, *Environmental Engineering and Management Journal*, 16, 2165–2172, <https://doi.org/10.30638/eemj.2017.223>, 2017.
- Messier, K. P., Chambliss, S. E., Gani, S., Alvarez, R., Brauer, M., Choi, J. J., Hamburg, S. P., Kerckhoffs, J., LaFranchi, B., Lunden, M. M., et al.: Mapping air pollution with Google Street View cars: Efficient approaches with mobile monitoring and land use regression,
570 *Environmental science & technology*, 52, 12 563–12 572, <https://doi.org/https://doi.org/10.1021/acs.est.8b03395>, 2018.
- Mikeš, O., Sanka, O., Rafajová, A., Vlaanderen, J., Chen, J., Hoek, G., Klanova, J., and Cupr, P.: Development of historic monthly land use regression models of SO₂, NO_x and suspended particulate matter for birth cohort ELSPAC, *Atmospheric Environment*, 301, 119 688, <https://doi.org/10.1016/j.atmosenv.2023.119688>, 2023.
- Miri, M., Ghassoun, Y., Dowlatbadi, A., Ebrahimnejad, A., and Löwner, M.-O.: Estimate annual and seasonal PM₁, PM_{2.5} and PM₁₀ concentrations using land use regression model, *Ecotoxicology and Environmental Safety*, 174, <https://doi.org/10.1016/j.ecoenv.2019.02.070>,
575 2019.
- Ndiaye, A., Shen, Y., Kyriakou, K., Karssenber, D., Schmitz, O., Flückiger, B., Hoogh, K. d., and Hoek, G.: Hourly land-use regression modeling for NO₂ and PM_{2.5} in the Netherlands, *Environmental Research*, 256, 119 233, <https://doi.org/10.1016/j.envres.2024.119233>,
2024.
- 580 Nemuc, A., Stachlewska, I., Vasilescu, J., Górská, A., Nicolae, D., and Talianu, C.: Optical Properties of Long-Range Transported Volcanic Ash over Romania and Poland During Eyjafjallajökull Eruption in 2010, *Acta Geophysica*, 62, 350–366, <https://doi.org/10.2478/s11600-013-0180-7>, 2013.
- OpenStreetMap: OpenStreetMap database [PostgreSQL via API], © OpenStreetMap contributors. Available under the Open Database Licence from: <https://openstreetmap.org>. Data mining by Overpass turbo. Available at <https://overpass-turbo.eu>, 2021.
- 585 Patton, A., Collins, C., Naumova, E., Zamore, W., Brugge, D., and Durant, J.: An Hourly Regression Model for Ultrafine Particles in a Near-Highway Urban Area, *Environmental science & technology*, 48, <https://doi.org/10.1021/es404838k>, 2014.
- Ramacher, M., Kakouri, A., Speyer, O., Steiling, J., Karl, M., Timmermans, R., Denier van der Gon, H., Kuenen, J., Gerasopoulos, E., and Athanasopoulou, E.: The UrbEm Hybrid Method to Derive High-Resolution Emissions for City-Scale Air Quality Modeling, *Atmosphere*, 12, 1404, <https://doi.org/10.3390/atmos12111404>, 2021.
- 590 Rongqi Abbie, L., Yaguang, W., Xinye, Q., Anna, K., and Joel D., S.: Short term exposure to air pollution and mortality in the US: a double negative control analysis, *Environmental Health*, 21, 81, <https://doi.org/10.1186/s12940-022-00886-4>, 2022.

- Saha, P. K., Li, H. Z., Apte, J. S., Robinson, A. L., and Presto, A. A.: Urban Ultrafine Particle Exposure Assessment with Land-Use Regression: Influence of Sampling Strategy, *Environmental Science & Technology*, 53, 7326–7336, <https://doi.org/10.1021/acs.est.9b02086>, 2019.
- 595 Schmitz, O., Beelen, R., Strak, M., Hoek, G., Soenarjo, I., Brunekreef, B., Vaartjes, I., Dijst, M., Grobbee, D., and Karssen-berg, D.: High resolution annual average air pollution concentration maps for the Netherlands, *Scientific Data*, 6, 190035, <https://doi.org/10.1038/sdata.2019.35>, 2019.
- Seibold, H., Hothorn, T., and Zeileis, A.: Detecting treatment-subgroup interactions in clustered data with generalized linear mixed-effects model trees, *Advances in Data Analysis and Classification*, 13, 703–725, <https://doi.org/10.1007/s11634-018-0342-1>, 2019.
- 600 Seihei, N., Farhadi, M., Takdastan, A., Asban, P., Kiani, F., and Mohammadi, M. J.: Short-term and long-term effects of exposure to PM10, *Clinical Epidemiology and Global Health*, 27, 101 611, <https://doi.org/https://doi.org/10.1016/j.cegh.2024.101611>, 2024.
- Shairsingh, K. K., Jeong, C.-H., Wang, J. M., Brook, J. R., and Evans, G. J.: Urban land use regression models: can temporal de-convolution of traffic pollution measurements extend the urban LUR to suburban areas?, *Atmospheric Environment*, 196, 143–151, <https://doi.org/https://doi.org/10.1016/j.atmosenv.2018.10.013>, 2019.
- 605 Shi, T., Hu, Y., Liu, M., Li, C., Zhang, C., and Liu, C.: Land use regression modelling of PM2.5 spatial variations in different seasons in urban areas, *Science of The Total Environment*, 743, 140 744, <https://doi.org/10.1016/j.scitotenv.2020.140744>, 2020.
- Snoun, H., Krichen, M., and Chérif, H.: A comprehensive review of Gaussian atmospheric dispersion models: current usage and future perspectives, *Euro-Mediterranean Journal for Environmental Integration*, 8, 219–242, 2023.
- Snyder, E. G., Watkins, T. H., Solomon, P. A., Thoma, E. D., Williams, R. W., Hagler, G. S. W., Shelow, D., Hindin, D. A., Kilaru, V. J., and Preuss, P. W.: The Changing Paradigm of Air Pollution Monitoring, *Environmental Science & Technology*, 47, 11 369–11 377, <https://doi.org/10.1021/es4022602>, pMID: 23980922, 2013.
- 610 Stedman, J. R., Vincent, K. J., Campbell, G. W., Goodwin, J. W., and Downing, C. E.: New high resolution maps of estimated background ambient NOx and NO2 concentrations in the U.K., *Atmospheric Environment*, 31, 3591–3602, [https://doi.org/https://doi.org/10.1016/S1352-2310\(97\)00159-3](https://doi.org/https://doi.org/10.1016/S1352-2310(97)00159-3), 1997.
- 615 Taheri Shahraiyini, H. and Sodoudi, S.: Statistical Modeling Approaches for PM10 Prediction in Urban Areas; A Review of 21st-Century Studies, *Atmosphere*, 7, <https://doi.org/10.3390/atmos7020015>, 2016.
- Upadhya, A. R., Kushwaha, M., Agrawal, P., Gingrich, J. D., Asundi, J., Sreekanth, V., Marshall, J. D., and Apte, J. S.: Multi-season mobile monitoring campaign of on-road air pollution in Bengaluru, India: High-resolution mapping and estimation of quasi-emission factors, *Science of The Total Environment*, 914, 169 987, <https://doi.org/https://doi.org/10.1016/j.scitotenv.2024.169987>, 2024.
- 620 Van den Bossche, J., Peters, J., Verwaeren, J., Botteldooren, D., Theunis, J., and De Baets, B.: Mobile monitoring for mapping spatial variation in urban air quality: Development and validation of a methodology based on an extensive dataset, *Atmospheric Environment*, 105, 148–161, 2015.
- Van den Bossche, J., Theunis, J., Elen, B., Peters, J., Botteldooren, D., and De Baets, B.: Opportunistic mobile air pollution monitoring: A case study with city wardens in Antwerp, *Atmospheric Environment*, 141, 408–421, <https://doi.org/https://doi.org/10.1016/j.atmosenv.2016.06.063>, 2016.
- 625 Van den Bossche, J., De Baets, B., Verwaeren, J., Botteldooren, D., and Theunis, J.: Development and evaluation of land use regression models for black carbon based on bicycle and pedestrian measurements in the urban environment, *Environmental Modelling & Software*, 99, 58–69, <https://doi.org/https://doi.org/10.1016/j.envsoft.2017.09.019>, 2018.

- Van den Hove, A., Verwaeren, J., Van den Bossche, J., Theunis, J., and De Baets, B.: Development of a land use regression model for black
630 carbon using mobile monitoring data and its application to pollution-avoiding routing, *Environmental Research*, 183, 108 619, 2020.
- van Nunen, E., Vermeulen, R., Tsai, M.-Y., Probst-Hensch, N., Ineichen, A., Imboden, M., Naccarati, A., Tarallo, S., Raffaele, D., Ranzi,
A., Nieuwenhuijsen, M., Jarvis, D., Amaral, A. F., Vlaanderen, J., Meliefste, K., Brunekreef, B., Vineis, P., Gulliver, J., and Hoek, G.:
Associations between modeled residential outdoor and measured personal exposure to ultrafine particles in four European study areas,
Atmospheric Environment, 226, 117 353, <https://doi.org/https://doi.org/10.1016/j.atmosenv.2020.117353>, 2020.
- 635 Wallek, S., Langner, M., Schubert, S., and Schneider, C.: Modelling Hourly Particulate Matter (PM10) Concentrations at High Spatial
Resolution in Germany Using Land Use Regression and Open Data, *Atmosphere*, 13, <https://doi.org/10.3390/atmos13081282>, 2022.
- Wei, J., Li, Z., Li, K., Dickerson, R. R., Pinker, R. T., Wang, J., Liu, X., Sun, L., Xue, W., and Cribb, M.: Full-coverage mapping and
spatiotemporal variations of ground-level ozone (O3) pollution from 2013 to 2020 across China, *Remote Sensing of Environment*, 270,
112 775, <https://doi.org/https://doi.org/10.1016/j.rse.2021.112775>, 2022.
- 640 West, J., Cohen, A., Dentener, F., Brunekreef, B., Zhu, T., Armstrong, B., Bell, M., Brauer, M., Carmichael, G., Costa, D., Dockery, D.,
Kleeman, M., Krzyzanowski, M., Künzli, N., Lioussé, C., Candice Lung, S.-C., Martin, R., Pöschl, U., Pope, C., and Wiedinmyer, C.:
“What We Breathe Impacts Our Health: Improving Understanding of the Link between Air Pollution and Health”, *Environmental science
& technology*, 50, <https://doi.org/10.1021/acs.est.5b03827>, 2016.
- Wu, Y., Li, R., Cui, L., Meng, Y., Cheng, H., and Fu, H.: The high-resolution estimation of sulfur dioxide (SO2) concentration, health effect
645 and monetary costs in Beijing, *Chemosphere*, 241, 125 031, <https://doi.org/10.1016/j.chemosphere.2019.125031>, 2019.
- Xu, X., Qin, N., Qi, L., Zou, B., Cao, S., Zhang, K., Yang, Z., Liu, Y., Zhang, Y., and Duan, X.: Development of season-
dependent land use regression models to estimate BC and PM1 exposure, *Science of The Total Environment*, 793, 148 540,
<https://doi.org/10.1016/j.scitotenv.2021.148540>, 2021a.
- Xu, X., Qin, N., Yang, Z., Liu, Y., Cao, S., Zou, B., Jin, L., Zhang, Y., and Duan, X.: Potential for developing independent daytime/night-
650 time LUR models based on short-term mobile monitoring to improve model performance, *Environmental Pollution*, 268, 115 951,
<https://doi.org/https://doi.org/10.1016/j.envpol.2020.115951>, 2021b.
- Yuan, Z., Kerckhoffs, J., Shen, Y., Hoogh, K. d., Hoek, G., and Vermeulen, R.: Integrating large-scale stationary and local mobile
measurements to estimate hyperlocal long-term air pollution using transfer learning methods, *Environmental Research*, 228, 115 836,
<https://doi.org/10.1016/j.envres.2023.115836>, 2023.
- 655 Yuan, Z., Kerckhoffs, J., Li, H., Khan, J., Hoek, G., and Vermeulen, R.: Hyperlocal Air Pollution Mapping: A Scalable Transfer Learning LUR
Approach for Mobile Monitoring, *Environmental Science & Technology*, 58, 14 372–14 383, <https://doi.org/10.1021/acs.est.4c06144>,
2024.
- Zapata-Marin, S., Schmidt, A. M., Crouse, D., Ho, V., Labrèche, F., Lavigne, E., Parent, M.-E., and Goldberg, M. S.: Spatial
modeling of ambient concentrations of volatile organic compounds in Montreal, Canada, *Environmental Epidemiology*, 6, e226,
660 <https://doi.org/https://doi.org/10.1097/EE9.0000000000000226>, 2022.
- Zhang, L., Tian, X., Zhao, Y., Liu, L., Li, Z., Tao, L., Wang, X., Guo, X., and Luo, Y.: Application of nonlinear land use regression models
for ambient air pollutants and air quality index, *Atmospheric Pollution Research*, 12, 101 186, 2021.
- Zhao, Z., Jing, Y., Luo, X.-S., and Li, Hanhan and Tang, M.: Overview and Research Progresses in Chemical Speciation and In Vitro Bioac-
cessibility Analyses of Airborne Particulate Trace Metals, *Current Pollution Reports*, 7, 540–548, <https://doi.org/10.1007/s40726-021->
665 00200-9, 2021.