

Supplement: Emplacement age of the Sevier Gravity Slide, Utah, USA

Tiffany Rivera, McKenna Holliday, Brian Jicha, David H. Malone, Michael J. Braunagel,
V. Alex Bonilla Franco, Robert F. Biek, W. Ashley Griffith, David B. Hacker

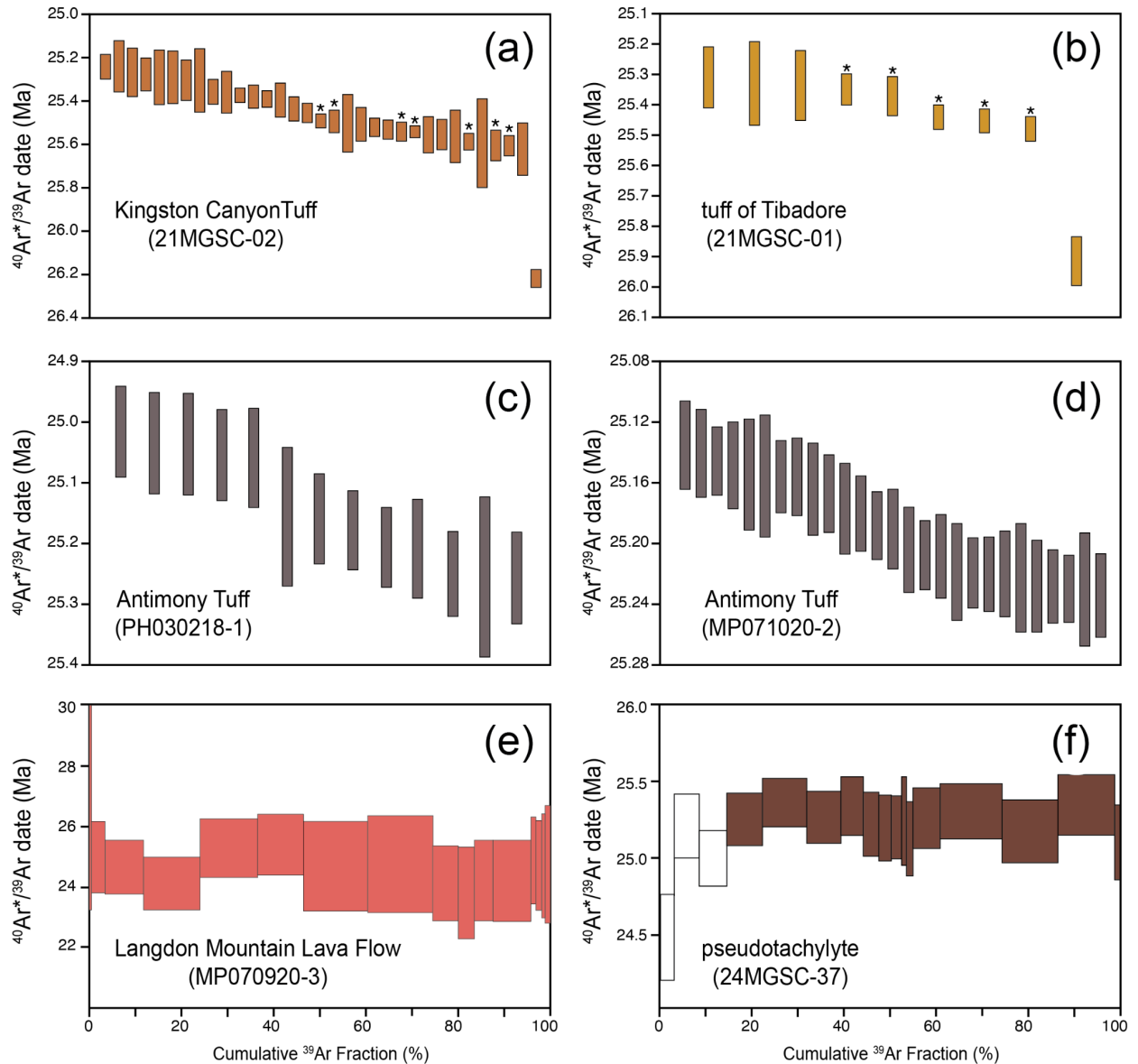


Figure S1. Results of $^{40}\text{Ar}/^{39}\text{Ar}$ dating analyses for volcanic units and pseudotachylyte investigated in this work. (a) Single crystal fusion analyses for the Kingston Canyon Tuff. Bar heights represent the date $\pm 2\sigma$. Analysis with a * were excluded from calculations. (b) Single crystal fusion analyses for the tuff of Tibadore. Bar heights represent the date $\pm 2\sigma$. Analysis with a * were excluded from calculations. (c, d) Single crystal fusion analyses for the Antimony Tuff from two locations. Bar heights represent the date $\pm 2\sigma$. (e) Incremental heating results of the Langdon Mountain Lava Flow. Each box height represents the date $\pm 2\sigma$. All incremental heating steps were used in calculations. (f) Incremental heating results of the pseudotachylyte. Each box height represents the date $\pm 2\sigma$. Filled incremental heating steps were used in calculations; unfilled steps were omitted.

List of tables provided as a supplementary Microsoft Excel file (Rivera_supp_tables.xlsx).

- Table S1: Location data for samples of this study
- Table S2: Full analytical data for $^{40}\text{Ar}/^{39}\text{Ar}$ analyses of the Kingston Canyon Tuff and tuff of Tibadore
- Table S3: Full analytical data for $^{40}\text{Ar}/^{39}\text{Ar}$ analysis of the Sevier gravity slide pseudotachylyte
- Table S4: Full analytical data for $^{40}\text{Ar}/^{39}\text{Ar}$ analyses of the Antimony Tuff
- Table S5: Full analytical data for $^{40}\text{Ar}/^{39}\text{Ar}$ analyses of the Langdon Mountain lava flow
- Table S6: Full analytical data for zircon U/Pb analysis of the Kingston Canyon Tuff (sample ID KCT)
- Table S7: Full analytical data for zircon U/Pb analysis of the Mt. Dutton Formation breccia