

**General comments:**

The manuscript *Duration of vegetation green-up response to snowmelt on the Tibetan Plateau* by Ni *et al.* addresses the responses of date of snowmelt and date of green-up - and the time lapsed between the two - to climate change. The study raises up questions relevant within the scope of BG, and present some novel results that highlight the importance of studying snowmelt patterns in alpine regions. The scientific methods are clearly outlines, but the statistical analysis is described in too little detail, which does not allow to reproduce the results. The title reflects the content of the article, and the abstract is good, though with too many details, it can be written in a more concise way. Some more references could be added, but in general they provide good and appropriate references.

**Response:**

We sincerely appreciate your constructive suggestions and have revised our manuscript accordingly. First, we have added more details to the methods and results sections. Following your recommendations, we increased the font size in all figures and refined their details. Additionally, we polished the text to enhance clarity and eliminate ambiguity. We then integrated the latest results and clarified our objectives. Based on these revisions, we rewrote the introduction to better align with the study's structure and adjusted the article's organization accordingly. The specific responses to each suggestion are detailed below.

**Major concerns:**

There are two major concerns I have about the article.

1. The statistical analyses are not actually described. In the Material and methods there are no details describing what program was used, what functions, how they dealt with problems in the different models... And in the results they do not provide any details either, they only indicate whether something is significant or not. They should at least mention the number of replicates, p-values, confidence intervals... They could include all these details in one table, for ease of reference. And they use different significant thresholds for different tests. They should provide the reasoning behind that, otherwise it looks like they were chosen *a posteriori*, which is not scientific. As the other referee points out, in one of the tests they use a significant threshold of 0.1, which seems quite high.

**Response:** The statistical methods used in this study include Moran's I index, the Mann-Kendall test, partial correlation analysis, and multiple linear regression analysis.

Global and local Moran's I values were computed using the Spatial Autocorrelation, Cluster and Outlier Analysis tools in ArcGIS 10.8, with all settings except the input layer kept at their default parameters (detailed in Section 2.3.2). Information about the software and tools has been incorporated into the manuscript.

*The calculations were performed using the Spatial Autocorrelation, Cluster and Outlier Analysis tools in ArcGIS 10.8.*

The Mann-Kendall test was implemented using MATLAB R2021a, where a custom function was developed to calculate the slope and significance level based on the formula in Section 2.3.3. Since MATLAB serves merely as an execution tool, further details are unnecessary.

For partial correlation analysis, we calculated the second-order partial correlation coefficient between the time difference ( $\Delta D$ ) and  $T_{spring}$ ,  $P_{spring}$ , and  $S_{StoG}$  to mitigate indirect effects. These coefficients were derived from simple correlation coefficients, calculated using the *corr* function in Python 3.8. Additional methodological clarifications and function usage details have been incorporated into the manuscript.

*The partial correlation coefficient between each variable and  $\Delta D$  was calculated to quantify their relationship. To isolate the direct effects of  $T_{spring}$ ,  $P_{spring}$ , and  $S_{StoG}$  on  $\Delta D$  while minimizing indirect influences, the second-order partial correlation coefficient was employed (Equation 8 & 9).*

$$r_{ij\cdot n} = \frac{r_{ij} - r_{in} \times r_{jn}}{\sqrt{(1 - r_{in}^2)(1 - r_{jn}^2)}} \quad (8)$$

$$r_{ij\cdot mn} = \frac{r_{ij\cdot n} - r_{im\cdot n} \times r_{jm\cdot n}}{\sqrt{(1 - r_{im\cdot n}^2)(1 - r_{jm\cdot n}^2)}} \quad (9)$$

where  $r_{ij}$  represents the simple correlation coefficient between variables  $i$  and  $j$ , calculated using the *corr* function in Python3.8.  $r_{ij\cdot n}$  is the first-order partial correlation coefficient between  $i$  and  $j$ , which accounts for their correlation after removing the linear effects of control variable  $n$ . Similarly,  $r_{ij\cdot mn}$  is the second-order partial correlation coefficient between  $i$  and  $j$ , controlling for both  $m$  and  $n$ .

Accordingly, we calculated  $r_{\Delta DT_{spring} \cdot P_{spring} S_{StoG}}$ ,  $r_{\Delta DP_{spring} \cdot T_{spring} S_{StoG}}$ , and

$r_{\Delta DS_{StoG} \cdot T_{spring} P_{spring}}$ .

The linear regression model was implemented in Python 3.8 using the *OLS* function for model estimation and the *variance\_inflation\_factor* function for the collinearity test.

*The OLS and variance\_inflation\_factor functions were used to construct the linear regression model and perform the collinearity test in Python 3.8.*

To provide a more detailed presentation of the results, we included the corresponding p-values for each global Moran's I index (Figure 3b, S4). Additionally, for the global Moran's I index over the period 2001–2018, we have included the full report generated by ArcGIS 10.8 in the supplementary materials (Figure S3). Regarding

the linear regression analysis, the model's fitting accuracy ( $R^2$ ) for each pixel has been added to Figure S5.

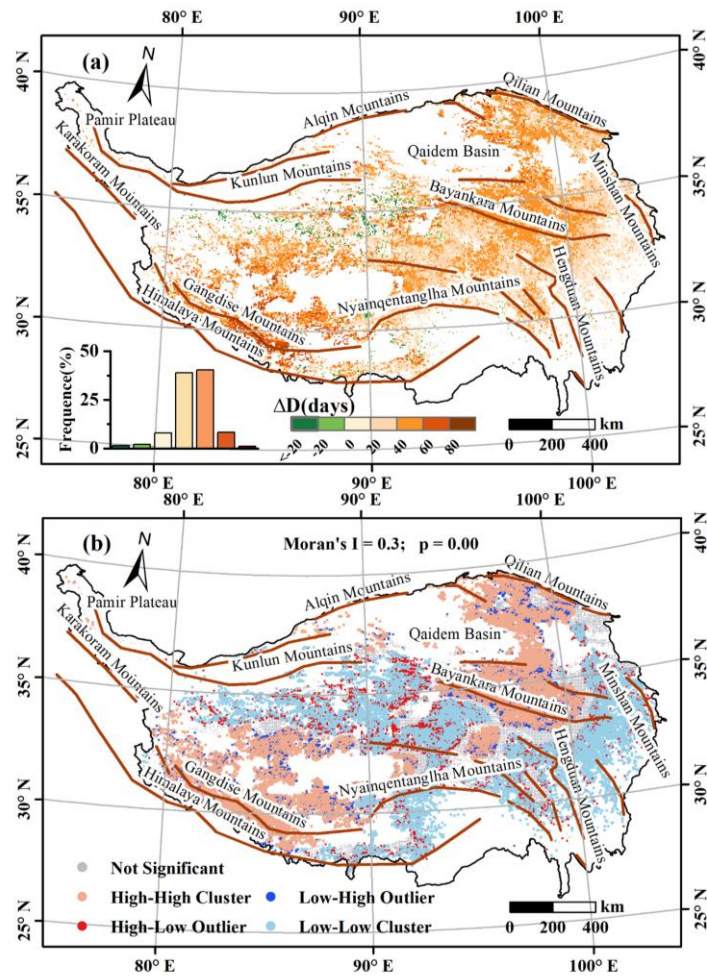


Figure 3: (a) Spatial, frequency distribution histogram and (b) local and global Moran's  $I$  value of average  $\Delta D$  on the Tibetan Plateau over 2001–2018.

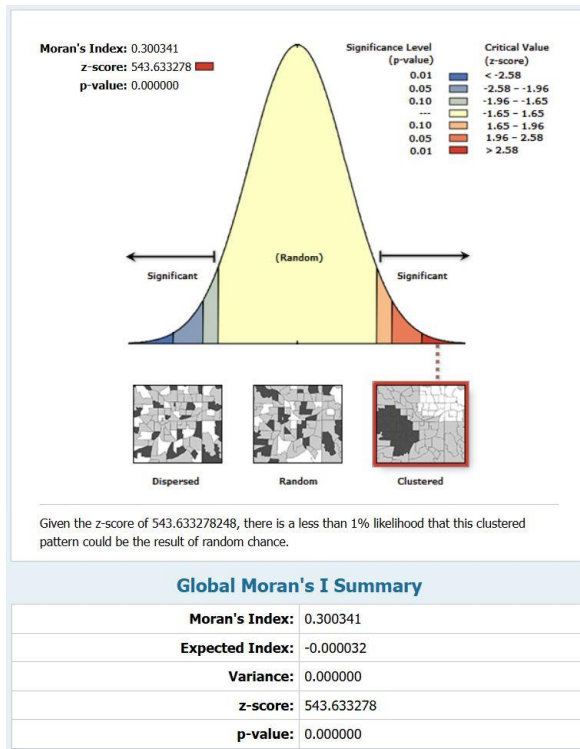


Figure S3: Report of the global Moran's I over 2001-2018 on the Tibetan Plateau

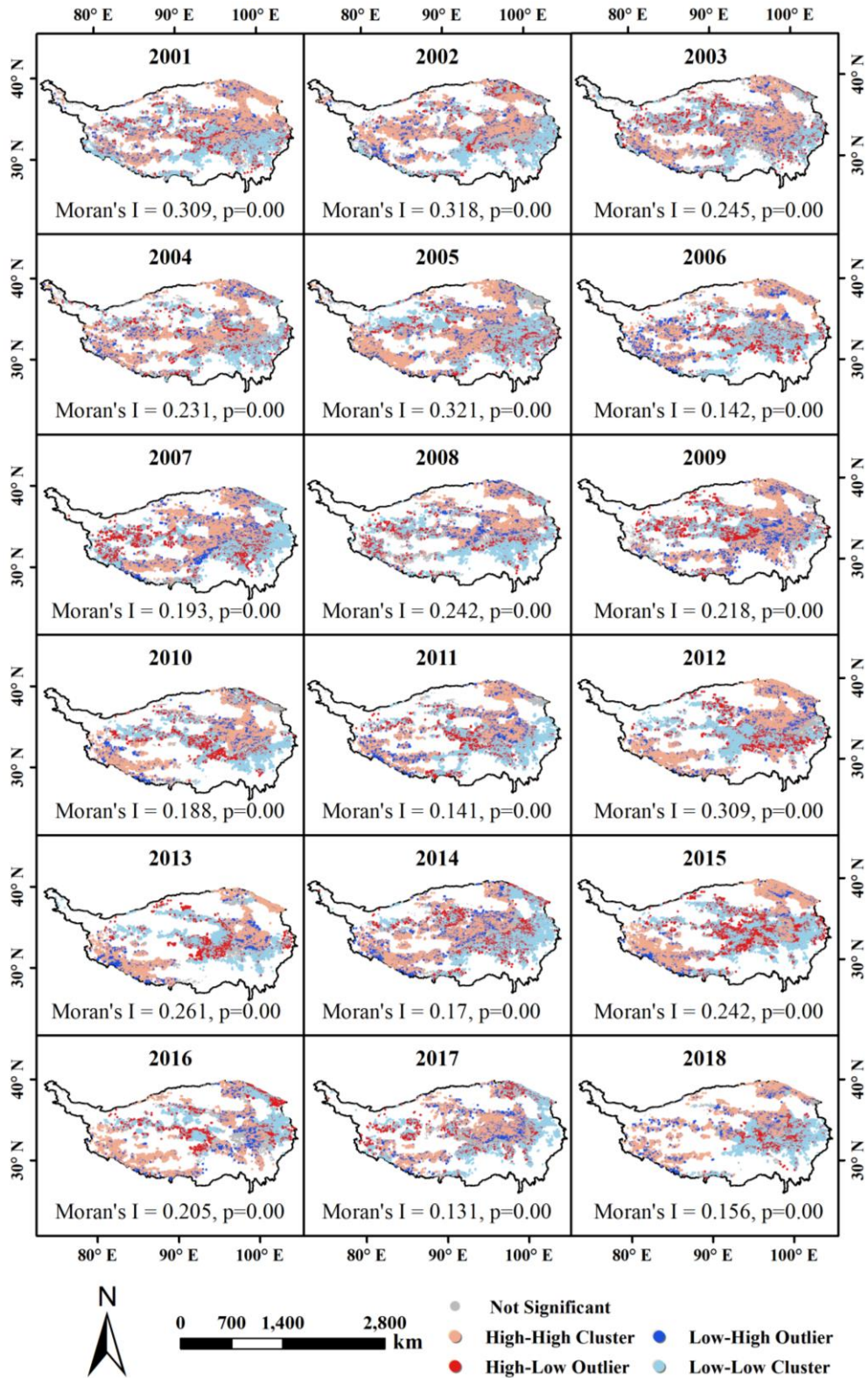


Figure S4: Global and local Moran's I values of  $\Delta D$  from 2001-2018 on the Tibetan Plateau

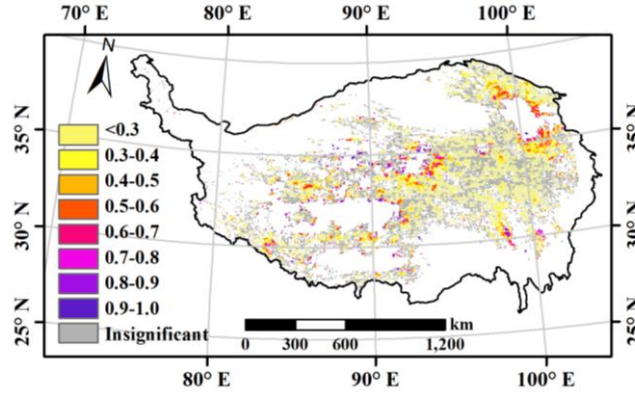


Figure S5: The fitting accuracy  $R^2$  of linear regression model of  $\Delta D$  for each pixel.

As this study includes only one regression model, it is not feasible to provide information such as confidence intervals, sample size, and goodness of fit as suggested. Each model has its own evaluation metrics for significance, but some require reference to distribution tables for determination. To enhance readability, we standardized the significance assessment by converting all indicators to p-values using unified formulas and degrees of freedom. For instance, partial correlation significance is typically evaluated using a t-test (Equation R1).

$$t = \frac{r}{\sqrt{1-r^2}} \sqrt{df} \quad (R1)$$

where  $r$  and  $df$  represent the partial correlation coefficient and degree of freedom, respectively. And we use the `stats.t.sf` function in Python 3.8 to convert the t-value to a p-value, retaining only samples where  $p < 0.05$ . In the figures, significant areas are shown in color, while non-significant areas are rendered in gray. The results section discusses only the significant pixels.

Regarding the significance threshold, in the revision, we adjusted the significance level to 0.05. Since each pixel has an average of 12 samples with three independent variables ( $x$ ), the average degrees of freedom ( $df$ ) is 8 ( $df = n - x - 1$ ). For  $df = 8$ , we conducted an experiment to calculate the significance indicator p-values for different correlation coefficients ( $r$ ), as shown in Table R1, R2.

**Table R1: Significance levels for correlation coefficients ( $r = 0.1 \sim 0.9$  with 0.1 interval)**

at $df = 8$	
Correlation coefficient ( $r$ )	Significance level( $p$ )
0.1	0.783
0.2	0.580
0.3	0.400
0.4	0.252
0.5	0.141
0.6	0.067

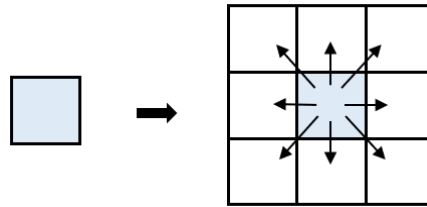


0.7	0.024
0.8	0.005
0.9	0.000

**Table R2: Significance levels for correlation coefficients ( $r = 0.61\sim 0.69$  with 0.01 interval) at  $df = 8$**

Correlation coefficient( $r$ )	Significance level( $p$ )
0.61	0.061
0.62	0.056
0.63	0.051
<b>0.64</b>	<b>0.046</b>
0.65	0.042
0.66	0.038
0.67	0.034
0.68	0.031
0.69	0.027

Only when  $r$  exceeds 0.64 does the test pass with  $p < 0.05$ . However, it is generally accepted that  $r \geq 0.75$  indicates a strong correlation,  $0.5 \leq r < 0.75$  indicates a moderate correlation, and  $0.25 \leq r < 0.5$  indicates a weak correlation. Consequently, with small sample sizes, only pixels with strong correlations pass the test (Bonett and Wright, 2000), potentially overlooking some valid information. In our study, a valid sample requires that both the green-up date ( $D_{GU}$ ) and  $D_{SOM}$  be valid, with  $D_{SOM}$  preceding  $D_{GU}$ . Therefore, the average sample size of 12 makes passing the significance test difficult. To address this, we applied the first law of geography by expanding the sample size to include the pixel itself and its eight neighboring pixels (Figure R1).



**Figure R1. Diagram of sample size expansion**

As a result, at the  $p < 0.05$  level, the significance ratios for  $T_{spring}$ ,  $P_{spring}$ , and  $S_{StoG}$  with  $\Delta D$  were 23.5%, 28.8%, and 35.4%, respectively (Figure 6). Meanwhile, the dominant factor influencing  $\Delta D$  was recalculated using the same methodology (Figure 7). While enhancing the significance, the original conclusions remain largely unchanged, with only minor revisions to some text and results.

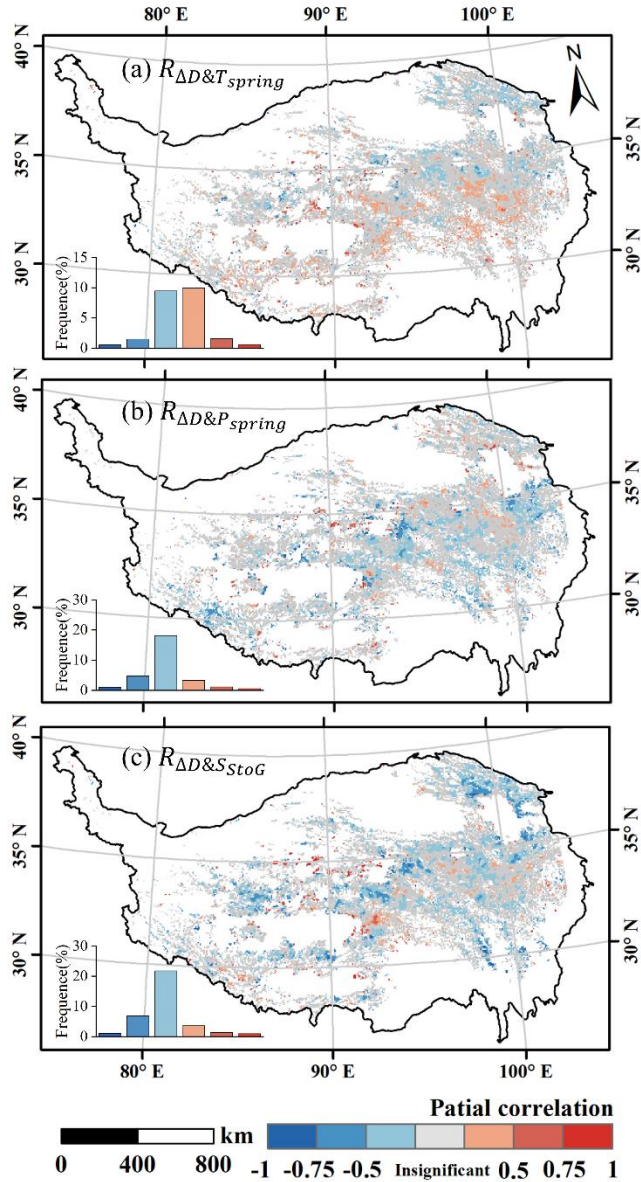


Figure 6: Spatial distribution of the partial correlation between  $\Delta D$  and (a) spring mean temperature ( $R_{\Delta D \& T_{spring}}$ ), (b) spring total rainfall ( $R_{\Delta D \& P_{spring}}$ ), and (c) daily snowmelt from  $D_{SOM}$  to  $D_{GU}$  ( $R_{\Delta D \& S_{StoG}}$ ).

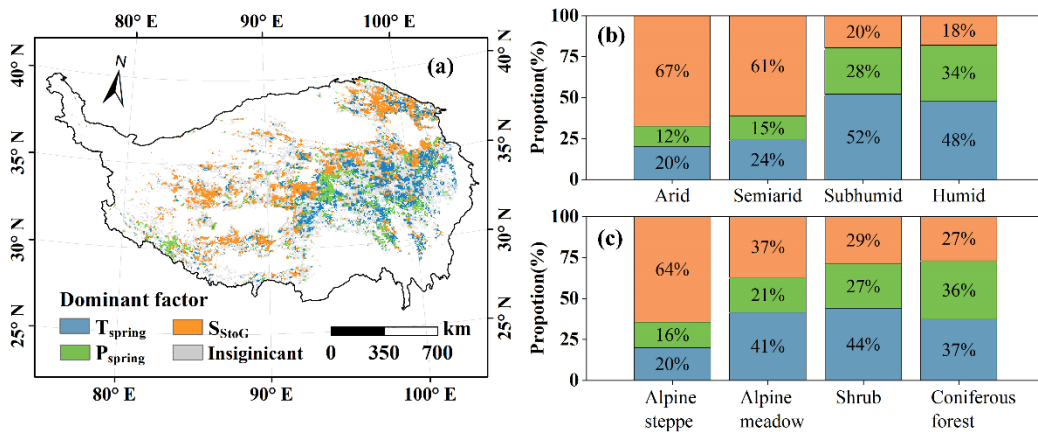




Figure 7: (a) Spatial distribution of dominant factor of  $\Delta D$  and its proportion diagram among (b) different geographical zones and (c) different vegetation types.

## References:

Bonett, D. G. and Wright, T. A.: Sample size requirements for estimating Pearson, Kendall and Spearman correlations, *Psychometrika*, 65, 23-28, <https://doi.org/10.1007/bf02294183>, 2000.

2. They do not write anything about what the objectives of the study are, and what their hypothesis are either. I think they need to state them clearly in the introduction, and the rewrite the structure of the Results and Discussion to answer the questions they pose. At the moment the structure is not completely cohesive. Having some clear hypothesis would help to streamline the flow of ideas. For example, the first subsection in the discussion is about a point that has not been raised before, and is not mentioned either in the Introduction or in the Results. I reckon this would also help the authors decide which results and figures to show in the Results section, something the other referee also mentions.

I think these points should be addressed before working any further in the manuscript. I consider that these points, though they require quite some work, do not change the content of the manuscript in a major way, so I think just a minor revision (though extensive) is needed.

**Response:** We have integrated the latest results and clarified the objectives and hypotheses of the study. While previous research has reported a positive correlation between the start of snowmelt ( $D_{SOM}$ ) and the green-up date ( $D_{GU}$ ), they did not address whether  $D_{GU}$  responds to  $D_{SOM}$  instantaneously or with a time lag. The first objective of this study was to explore this temporal relationship. Additionally, given geographical variations, we hypothesized that response times might differ regionally, which formed the second objective of the study—to verify regional differences in  $\Delta D$  and further explain the spatiotemporal variation and underlying response mechanisms. Accurate extraction of  $D_{SOM}$  and  $D_{GU}$  is fundamental to addressing these issues. Therefore, our third objective was to develop a more precise method for extracting  $D_{SOM}$  at a higher resolution. We have incorporated these purposes into the introduction to streamline the flow of ideas.

*Wang et al. (2015) found that 39.9% of meadows and 36.7% of steppes on the TP showed a significant correlation between  $D_{GU}$  and  $D_{SOM}$ . Additionally, Wang et al. (2018) reported positive Pearson correlation coefficients between  $D_{SOM}$  and  $D_{GU}$  for most regions of the TP, with exceptions in warmer and drier areas. Although these studies have confirmed that snowmelt affects vegetation green-up, the response time of vegetation to snowmelt remains unknown. Recent studies have investigated the delayed effect of meteorological factors on vegetation (Xu et al., 2023; Wu et al., 2015). We*

also propose a hypothesis: the response of vegetation green-up to snowmelt is delayed, and this delay exhibits regional heterogeneity.

To test our hypothesis, this study calculates and analysed the time difference between the  $D_{GU}$  and  $D_{SOM}$  on the TP. Accurate extraction of  $D_{SOM}$  and  $D_{GU}$  is essential for addressing these issues. For  $D_{SOM}$ , optical remote sensing primarily detects the presence or absence of snow, limiting its ability to identify the melting state. Although microwave remote sensing can more accurately detect snowmelt, its spatial resolution is lower. In this study, we used a daily snow depth dataset with a spatial resolution of  $0.05^\circ$  to identify  $D_{SOM}$  with higher resolution for the TP from 2001 to 2018. For  $D_{GU}$ , we used the  $D_{GU}$  dataset for the TP from 2001 to 2018, which was generated by Xu et al. (2022b) through the optimal combination of six vegetation indices and four extraction methods, resulting in the highest accuracy dataset. We then calculated the time difference between  $D_{GU}$  and  $D_{SOM}$ , denoted as  $\Delta D$ , to explore the response of vegetation green-up to snowmelt. In addition, we employed exploratory spatial data analysis and the Mann-Kendall test to examine the spatiotemporal variation of  $\Delta D$ . To further explore the spatiotemporal variation and response mechanisms, we applied partial correlation analysis and multiple linear regression to examine the relationships between  $\Delta D$  and various influencing factors.

Based on these objectives and additional feedback, we have reorganized the structure of the Results and Discussion sections. First, Section 3.1 presents the higher-resolution  $D_{SOM}$  data. Section 3.2 has been further divided into 3.2.1 and 3.2.2, focusing on spatial distribution and temporal dynamics, respectively, to address Purpose 1. Section 3.3 fulfills Purpose 2 through statistical analysis. In the first part of the Discussion, we evaluate the accuracy of the  $D_{SOM}$  data to achieve Purpose 3. In the second part, we further explore the mechanisms behind vegetation's response to snowmelt.

#### **Specific comments:**

1. L30-31. You say that the TP plays a role in maintaining global biodiversity and ecological security. Maybe add short sentence explaining what that role is?

**Response:** We have expanded this statement to further elaborate on the diversity and ecological security of the region.

*Moreover, its unique natural environment and diverse habitats facilitate the interaction and integration of various biota (Chu et al., 2024; Yu et al., 2021). These features help mitigate global warming, protect biodiversity, and provide carbon sequestration, thereby playing a crucial role in ecological security (Liang and Song, 2022).*

2. L50. Regarding snow phenology in the TP, I would appreciate a short description of when the first snow tends to arrive, for how long it lasts and when it starts melting. I think it would make it easier for the reader to picture it. Maybe include a table showing

the different values for the different regions? Seeing those values would help appreciate the changes experienced by the different regions

**Response:** As your advice, we have added an overview of TP snow phenology.

*In high-altitude areas (around 17.69%), snow cover typically begins in October and ends in April, whereas in low-elevation areas (around 56.69%), the snow cover duration is usually less than 20 days, concentrated in December and January (Xu et al., 2024).*

3. L61-65. This is part of the materials and methods. Here you should indicate what your objectives and hypotheses are

**Response:** We have reorganized the introduction and highlighted the purposes of this study in this paragraph.

*To test our hypothesis, this study calculates and analysed the time difference between the  $D_{GU}$  and  $D_{SOM}$  on the TP. Accurate extraction of  $D_{SOM}$  and  $D_{GU}$  is essential for addressing these issues. For  $D_{SOM}$ , optical remote sensing primarily detects the presence or absence of snow, limiting its ability to identify the melting state. Although microwave remote sensing can more accurately detect snowmelt, its spatial resolution is lower. In this study, we used a daily snow depth dataset with a spatial resolution of  $0.05^\circ$  to identify  $D_{SOM}$  with higher resolution for the TP from 2001 to 2018. For  $D_{GU}$ , we used the  $D_{GU}$  dataset for the TP from 2001 to 2018, which was generated by Xu et al. (2022b) through the optimal combination of six vegetation indices and four extraction methods, resulting in the highest accuracy dataset. We then calculated the time difference between  $D_{GU}$  and  $D_{SOM}$ , denoted as  $\Delta D$ , to explore the response of vegetation green-up to snowmelt. In addition, we employed exploratory spatial data analysis and the Mann-Kendall test to examine the spatiotemporal variation of  $\Delta D$ . To further explore the spatiotemporal variation and response mechanisms, we applied partial correlation analysis and multiple linear regression to examine the relationships between  $\Delta D$  and various influencing factors.*

4. L89-90. Where was the dataset obtained from? Where did the data come from?

**Response:** The  $D_{GU}$  dataset was produced by Xu et al. (2022), who are also the collaborators of this study, and they directly provided this data. The provenance of this dataset has been added to the manuscript.

*Since Xu et al. are also the collaborators of this study, they directly provided this data.*

**Reference:**

Xu, J. Y., Tang, Y., Xu, J. H., Chen, J., Bai, K. X., Shu, S., Yu, B. L., Wu, J. P., and Huang, Y.: Evaluation of Vegetation Indexes and Green-Up Date Extraction Methods on the Tibetan Plateau, *Remote Sens.*, 14, <https://doi.org/10.3390/rs14133160>, 2022b.

5. L143, Figure 2 caption. I write it here, but it applies to other captions as well. Could you write a more detailed caption?

It is explained in the text, but looking only at the figure I do not know what "Filtered" means, or what the 47 days, 3 days and 6 days indicate, for example. It would be easier for the reader if these values are explained, shortly, in the caption was well.

**Response:** Following your suggestion, we have further clarified the information in the caption. Additionally, as another reviewer recommended placing this figure in the supplementary material to simplify the text, the revised version is now available in Figure S1.

*Figure S1: Diagram illustrating the identification of the start of snowmelt ( $D_{SOM}$ ). The snow depth is smoothed using Sacitzky-Golay filtering, represented by the orange line. Each continuous snowfall event is identified based on set criteria and highlighted with a blue background. The duration of each snow event, indicated by the number of days, is used to determine the longest snowfall process. The final identified  $D_{SOM}$  is marked by the orange point.*

6. L152. When calculating  $I_i$ , how do you determine what the neighboring regions are? Is it just the adjacent pixels, or is it more complex?

**Response:** In our study, we assessed the degree of spatial autocorrelation between all pixels and region  $i$ . Different pixels are assigned weights based on inverse distance, meaning that the closer a pixel is to region  $i$ , the higher its weight. We have added a more detailed explanation of this method in the manuscript.

*The local Moran's  $I (I_i)$  measures the degree of clustering or spatial autocorrelation of  $\Delta T$  within a specific region  $i$ , relative to all other regions, as calculated using Equation 3.*

7. L186-187. Do you mean that, at temperatures below 0 degrees, the correlation between SCED and  $T_{GU}$  was low, while at temperatures above 0 the correlation was high? I think you could rewrite this sentence to make the message clearer

**Response:** In this revision, we have rewritten this sentence for clarity.

*Specifically, when the temperature is below 0°C, the correlation between the snow cover end date and  $D_{GU}$  weakens as temperature increases. In contrast, when the temperature exceeds 0°C, the correlation strengthens with rising temperature (Wu et al., 2023).*

8. L188. "a strong negative correlation prevailed". Between  $T_{SOM}$  and  $T_{GU}$ ? So, in areas of high temperature, a late  $T_{SOM}$  was related to an early  $T_{GU}$ , and an early  $T_{SOM}$  to a late  $T_{GU}$ ? Or am I misunderstanding it?

**Response:** Yes, that is what I intended to express. The correlation between  $D_{SOM}$  and  $D_{GU}$  varies under different hydrothermal conditions. I have added the full context to clarify any potential misunderstandings.

*Increased humidity from precipitation strengthened the positive correlation between  $D_{SOM}$  and  $D_{GU}$ , whereas in high temperature areas, a strong negative correlation between  $D_{SOM}$  and  $D_{GU}$  prevailed (Xu et al., 2022a).*

9. L189. What environmental conditions? The factors mentioned afterwards are either temperature-based or precipitation-based.

**Response:** The references do not explicitly indicate this. Here, we aim to highlight that, in addition to temperature and precipitation, it is essential to consider the amount of snowmelt.

10. L190. Regarding "influencing factors". Why did you end up choosing these factors? Was it based on the literature, did you perform any tests to see what factors had the largest coefficients...?

**Response:** We refer to the conclusion of Shen et al., "The temporal changes in phenology from long-term observations on the QTP have been mainly associated with three climatic drivers: changes in temperature, precipitation, and snowmelt date." We also reviewed these three factors prior to this sentence, which led us to focus on them. Following your suggestion, we have cited their article accordingly.

**Reference:**

Shen, M., Wang, S., Jiang, N., Sun, J., Cao, R., Ling, X., Fang, B., Zhang, L., Zhang, L., Xu, X., Lv, W., Li, B., Sun, Q., Meng, F., Jiang, Y., Dorji, T., Fu, Y., Iler, A., Vitasse, Y., Steltzer, H., Ji, Z., Zhao, W., Piao, S., and Fu, B.: Plant phenology changes and drivers on the Qinghai-Tibetan Plateau, *Nat. Rev. Earth Environ.*, 3, 633-651, <https://doi.org/10.1038/s43017-022-00317-5>, 2022.

11. L195. Any reasons for not considering interactions between the factors?

**Response:** Indeed, interactive effects between the factors may better explain the heterogeneity of  $\Delta D$ . Following Du et al. (2019), we included the product terms of each pair of the three original variables in the linear regression model to account for their interactive effects (Equation R2). However, before performing the linear regression, we conducted a collinearity test among the variables (i.e.,  $VIF < 3$ ). Upon including the product terms, severe multicollinearity issues emerged (Table R3, R4). Consequently, we retained these three factors as the independent variables in the original analysis.

$$\Delta D = aT_{spring} + bP_{spring} + cS_{StoG} + dT_{spring} \times P_{spring} + eT_{spring} \times S_{StoG} + fP_{spring} \times S_{StoG} + g \quad (R2)$$

Table R3: Variance Inflation Factor for  $T_{spring}$ ,  $P_{spring}$  and  $S_{StoG}$

Variable	VIF
----------	-----

$T_{spring}$	1.243
$P_{spring}$	1.209
$S_{StoG}$	1.174

Table R4: Variance Inflation Factor for  $T_{spring}$ ,  $P_{spring}$ ,  $S_{StoG}$  and their product terms

Variable	VIF
$T_{spring}$	32.416
$P_{spring}$	12584.8
$S_{StoG}$	1.185
$T_{spring} \times P_{spring}$	20254.1
$T_{spring} \times S_{StoG}$	30.826
$P_{spring} \times S_{StoG}$	21424.3

**Reference:**

Du, J., He, Z. B., Piatek, K. B., Chen, L. F., Lin, P. F., and Zhu, X.: Interacting effects of temperature and precipitation on climatic sensitivity of spring vegetation green-up in arid mountains of China, *Agric. For. Meteorol.*, 269, 71-77, <https://doi.org/10.1016/j.agrformet.2019.02.008>, 2019.

12. L224. When you say that a test or model was significant (here and later on) can you provide the statistical values connected to the test (p-value, confidence interval...), in order to give a better idea of the strength of the effect? And can you say anything about the goodness of fit of the model in the supplementary material?

**Response:** We have included the p-value for significance in the manuscript, as well as in Figure 3 and Figure S4. Besides, we added a full report of global Moran's I (Figure S3) by ArcGIS 10.8. However, Moran's I is an indicator for evaluating the degree of spatial clustering, not a fitting model. Typically, p-values or z-scores are used to test significance, rather than goodness of fit (Anselin, 1995; Li et al., 2024).

**Reference:**

Anselin, L.: LOCAL INDICATORS OF SPATIAL ASSOCIATION - LISA, *Geog. Anal.*, 27, 93-115, <https://doi.org/10.1111/j.1538-4632.1995.tb00338.x>, 1995.  
 Li, S. J., Sun, Z. C., Guo, H. D., Ouyang, X. Y., Liu, Z. Q., Jiang, H. P., and Li, H. W.: Localizing urban SDGs indicators for an integrated assessment of urban sustainability: a case study of Hainan province, *Int. J. Digital Earth*, 17, <https://doi.org/10.1080/17538947.2024.2336059>, 2024.

13. L249. You indicate how much  $\Delta T$  advances near the freezing point. But do you mean that it advances 3 days if we consider an increase in temperature of 1 K? Or what do you mean?

**Response:** Yes, an increase of 1K in temperature can shorten  $\Delta D$  by 3 days. We have modified figure 4 and the corresponding text based on your suggestion and feedback from another reviewer.

Figure 4 illustrates the mean value of  $\Delta D$  under varying spring meteorological conditions.  $\Delta D$  exhibits a clear stepwise decline from cold to warm regions, decreasing from approximately 48 to 37 days (Fig. 4a). In colder or hotter spring conditions (i.e.,  $T_{spring} < 270$  K or  $T_{spring} > 275$  K),  $\Delta D$  decreased slightly. However, near the freezing point (270–275 K),  $\Delta D$  shortens by 3 days with each  $1^\circ\text{C}$  increase in  $T_{spring}$ . Under varying precipitation conditions (Fig. 4b),  $\Delta D$  shortens by 0.29–1.96 days for every 10 mm increase in  $P_{spring}$ . Fig. 4c reveals a strong negative correlation between  $\Delta D$  and  $S_{StoG}$  when  $S_{StoG}$  exceeded  $6\text{ mm day}^{-1}$ . For each 1 mm increase in  $S_{StoG}$ ,  $\Delta D$  decreases by approximately 0.615 days. The dispersion within each snowmelt category remains relatively consistent, with a standard deviation of about 16.8 days.

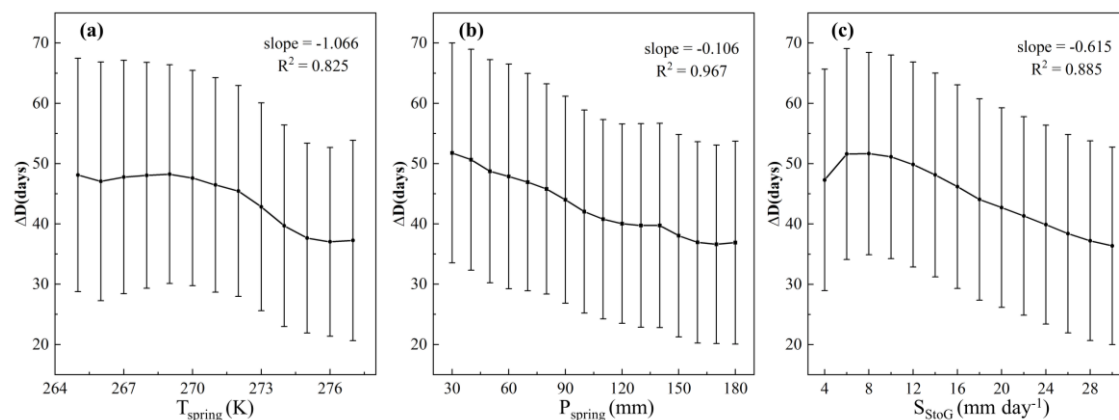


Figure 4: Variations in  $\Delta D$  across regions with differing (a) spring mean temperature ( $T_{spring}$ ), (b) spring total rainfall ( $P_{spring}$ ), and (c) daily snowmelt from  $D_{SOM}$  to  $D_{GU}$  ( $S_{StoG}$ ). Points represent the mean  $\Delta D$ , while error bars denote one standard deviation. The slope and  $R^2$  value reflect the coefficient and precision of the linear regression, respectively, with a significance level of 0.01.

14. L250. " $\Delta T$  fluctates with temperature". Do you mean that there is not a consistent trend, i.e., that higher temperatures do not always have shorter  $\Delta T$ ? Or something else? Could you make it clearer?

**Response:** Yes, while there is a general trend that higher temperatures lead to shorter  $\Delta D$ , it is not a strict linear relationship. The revision is consistent with specific comment 13.

15. L264. Just to make sure I understand your point. Even though higher  $T_{spring}$  was connected to lower  $\Delta T$  values, in more than 50% of the plots that had a significant correlation a greater average temperature in spring led to a delayed green-up after the start of the snowmelt, right?

**Response:** What we intend to convey is that 15.7% of the samples passed the significance test. Among these significant pixels, 59.4% exhibited a positive correlation, while 40.6% showed a negative correlation between  $T_{spring}$  and  $\Delta D$ . We have revised the expression following suggestions from another reviewer.

*At a significance level of 0.05,  $\Delta D$  was significantly correlated with temperature in 23.5% of the samples. Among these significant pixels, 51.3% exhibited a positive correlation between  $\Delta D$  and  $T_{spring}$ .*

16. L286. [This comment refers to the whole section 4.1]

This is the first time you mention that this study will look at different ways of identifying  $T_{SOM}$ . You should include a paragraph, or at least a couple of sentences talking about it in the introduction, describe in the material and methods how the values are obtained, and present the results in the Results section

This section is good, but comes up abruptly. I was not expecting this after reading the rest of the article.

**Response:** Indeed, proper foreshadowing enhances the coherence of the article and improves readability. We have incorporated the need for high-resolution  $D_{SOM}$  data into the introduction. Additionally, the extraction method has been described and revised based on another feedback (Section 2.3.1).

*Accurate extraction of  $D_{SOM}$  and  $D_{GU}$  is essential for addressing these issues. Xu et al. (2022) compared six vegetation indices with four extraction methods and used the optimal combination to generate the  $D_{GU}$  dataset for the TP. For  $D_{SOM}$ , optical remote sensing primarily detects the presence or absence of snow, limiting its ability to identify the melting state. Although microwave remote sensing can more accurately detect snowmelt, its spatial resolution is lower. Therefore, accurately extracting  $D_{SOM}$  at higher resolutions remains a challenge.*

17. L311. It would have been interesting if you could have had at least one sample area per land cover type (10 in total), as I imagine they differ in the snow cover pattern and properties. But maybe it was not possible?

**Response:** In the revision, we selected one sample area for each type of land cover. Corresponding adjustments were also made. First, permanent snow/glacier, lake, and arable land were excluded due to the lack of seasonal snow cover and the small number of samples. Second, since most land cover types are not distributed contiguously, the original  $10 \times 10$  km area was almost composed of mixed land cover type. We reduced the sample area to  $5 \times 5$  km. The recalculated results are presented in Figure 8:



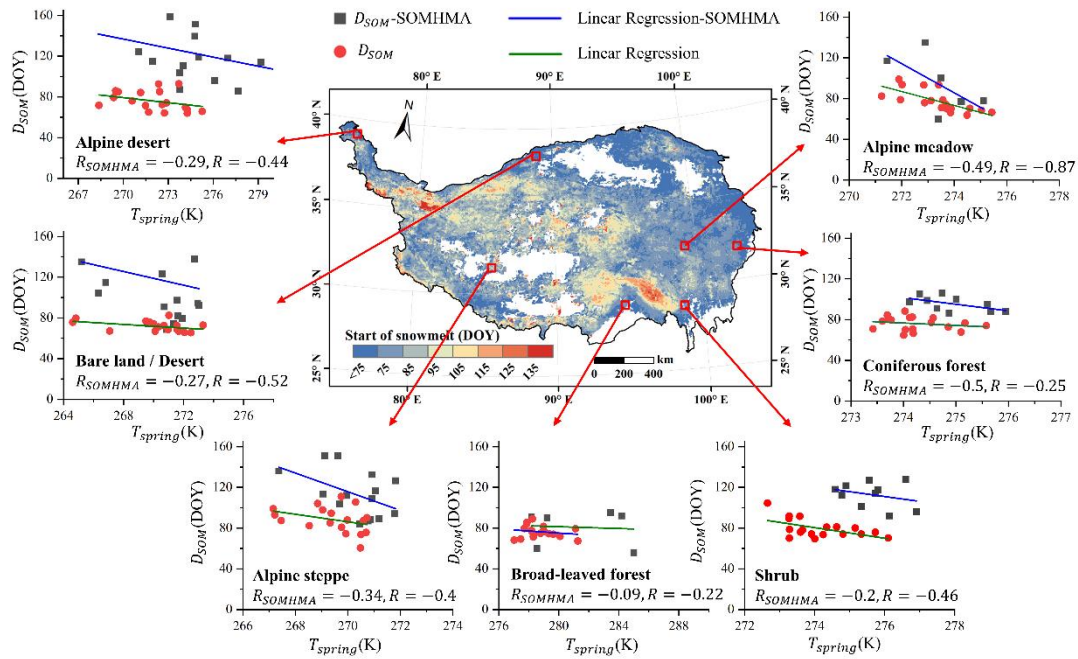


Figure 8: Relevance between the average  $D_{SOM}$  and mean April temperature in a sample area of each land cover.

Overall, the identification of alpine meadow yielded the best result, while the identification of forests was the least effective. When comparing the two  $D_{SOM}$  data, our result was still superior to SOMHMA in all types except for coniferous forests. We modified the original text accordingly:

Thus, following Grippa et al. (2005), we randomly selected one sample area for each land cover on the TP and calculated the correlation coefficient between average  $D_{SOM}$  and mean April temperature (Fig. 8). Our results showed stronger consistency with temperature trends compared to SOMHMA.

18. L318. I reckon you could first have a section where you discuss  $T_{SOM}$  and  $T_{GU}$  by themselves (section 3.1 in the Results): their spatial distribution, connecting it to the different land cover types (and maybe other factors); and their temporal distribution and how you find very few areas with a significant trend.

I think it would be best to cover these points before discussing the  $\Delta T$  (which is section 3.2 in the Results).

**Response:** It is essential to first discuss  $D_{SOM}$  and  $D_{GU}$ . We have split the original section 3.1 into 3.1 and 3.2 to analyze their spatial distribution. While temporal variation analysis should have been included, the lack of clear patterns (Figure R2) hindered the interpretation of subsequent  $\Delta D$  trends.

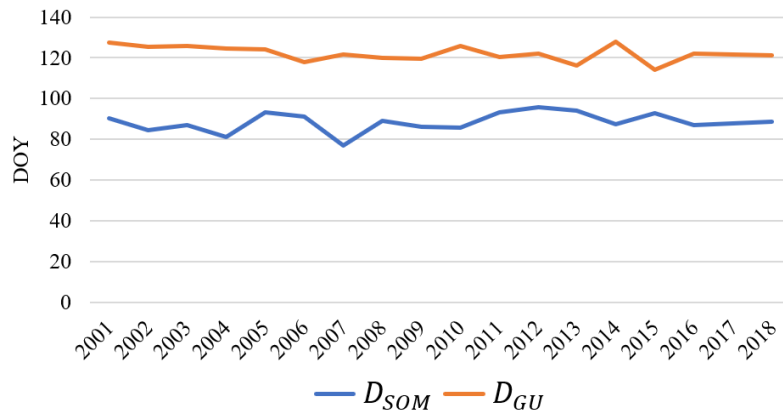


Figure R2: Mean annual  $D_{SOM}$  and  $D_{GU}$  on the Tibetan Plateau from 2001 to 2018.

19. L324. Maybe you could add a short sentence here, after "respectively", explaining that the larger deltaT in the TP is due to its characteristics - Which would link this paragraph to the following ones

**Response:** We have added the explanation to the manuscript.

*They were shorter than those on the TP, likely due to differences in snowpack characteristics. The blocking effect of the Himalayas and Karakoram Mountains results in transient, shallow, and patchy snow on the TP (Lei et al., 2023). Consequently, the impact of snow on response times is particularly significant on the TP.*

20. L360-363. I think you should write shortly what this actually means for the different vegetation types. What would happen to the vegetation (both higher and lower) if temperature increases and/or if snowmelt happens earlier?

**Response:** The influence of temperature and snowmelt on  $\Delta D$  has been analyzed in detail in the previous paragraph. This section focuses on determining which factor dominates under different conditions. In accordance with your suggestion, we have examined the differences in response across vegetation types under temperature rise and snowmelt scenarios:

*When analyzing by vegetation type,  $T_{spring}$  was the dominant factor for higher vegetation (e.g., shrubs and forests) while lower vegetation (e.g., alpine steppes and meadows) is more affected by  $S_{StoG}$  (Fig. 7c). Wind speed is high on the TP due to its special topography and elevation. This limited the snow accumulation on the branches for higher vegetation, thus some parts of the vegetation are exposed to the outside environment. In contrast, the height of the lower vegetation is sometimes equal to the depth of the snow, which can partially or completely cover the vegetation (Tang et al., 2024). If the temperature rises, it will directly act on higher vegetation while heat will transfer slower to the low vegetation buffered by snow. If the snow melts, the melting water can directly affect the lower vegetation under the snow while the tall vegetation can only be used after absorption through the soil.*

21. L373. You could name what areas in the TP experience a negative  $\Delta T$ , and explain shortly how they might be affected by climate change.

**Response:** Your suggestion was very constructive and we have incorporated these points accordingly.

*Zhu et al. (2019b) used the SI-x model to simulate the probability of false spring in China from 1950 to 2005 and projected it until 2100. Their findings revealed that the central TP exhibited the highest probability of false spring in China. Rising temperature due to global warming are expected to further advance the  $D_{GU}$ , thereby increasing the risk of false spring.*

22. L378. The conclusion includes too many details. You do not need all the specific numbers here, they appear in the rest of the manuscript. Here you should only include those details and numbers that more strongly support your conclusions.

**Response:** In this revision, we have modified as follows:

*This study investigates the dynamic response of vegetation to snowmelt on the Tibetan Plateau from 2001 to 2018. Our results reveal that the effect of snowmelt on vegetation is not immediate, with a mean response lag of 38.5 days from  $D_{SOM}$  to  $D_{GU}$ . Notably, the false spring was observed in the north-western TP, which warrants further exploration. As precipitation and snowmelt increase, the response time shortens. More complex than these factors, temperature exerts a greater influence on  $D_{GU}$  than  $D_{SOM}$  in colder regions, thus shortening the response time. Conversely, in warmer areas, the increased temperature has a stronger impact on  $D_{SOM}$ , which lengthens the response time. Furthermore, vegetation in arid regions is more dependent on water than heat, and low-vegetation areas rely more on sub-snow habitats than external climatic factors. These findings provide valuable insights into how vegetation responds to snowmelt in the context of climate change, deepening our understanding of the relationship between snowmelt onset and green-up dates. This knowledge is essential for predicting vegetation phenology and managing ecosystem services under changing climate conditions. Future research should focus on the impacts of snow cover and false spring.*

## **TECHNICAL CORRECTIONS**

1. L73, Figure 1. This applies also to some of the other Figures. They are a bit difficult to read, especially the text. Could you make the font slightly larger, or the figure?

**Response:** We have made the font larger in all figures.

2. L73. It is difficult to see the difference in colour between "Shrub" and "Coniferous forest" in the legend, and impossible (at least for me) in the Figure. Would it be possible to use colours with more contrast?

**Response:** We have used a different color (R:247, G:157, B:56) to represent the coniferous forest.

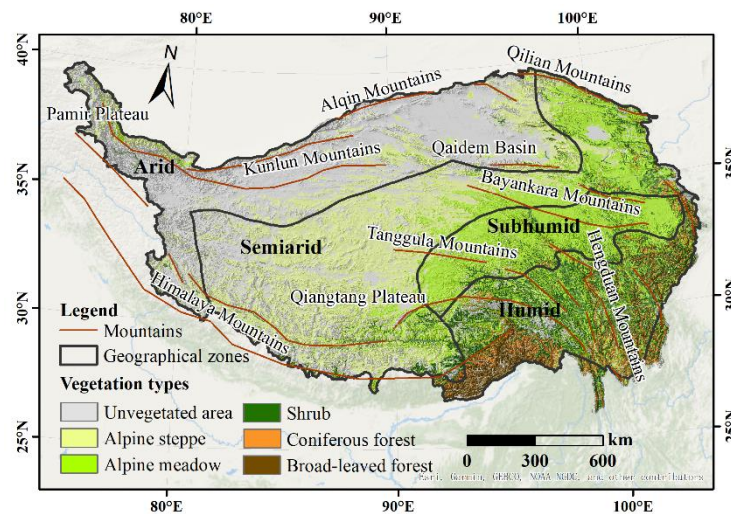


Figure 1: Map of the study area with vegetation types, distribution of mountains and geographical zones (based map from ESRI)

3. L120. It says "Subsection (as Heading 3)". I assume this is a typo, and you wanted to write only "Calculation of  $\Delta T$ "

**Response:** We have delete "Subsection (as Heading 3)".

4. L191.  $T_{spring}$  (here and in the whole manuscript). It might be best to use a different letter for temperature. In most cases you use T to denote time ( $T_{SOM}$ : time of start of snowmelt;  $T_{GU}$ : time of green-up). Using then T for  $T_{spring}$  could be confusing for the reader.

Or use a different letter for denoting time. Maybe D, as you are always talking about dates?

**Response:** We have replaced  $\Delta T, T_{GU}, T_{SOM}$  with  $\Delta D, D_{GU}, D_{SOM}$  throughout the manuscript.

5. L211. "more concentrated"? The range is almost the same (30 days)

**Response:** Initially, we wanted to highlight that the overall range of  $D_{SOM}$  is broader (i.e., the disparity between the maximum and minimum values is more pronounced). While the phrase may not have been the most appropriate, we chose to delete "and was more concentrated" to maintain contextual coherence.

6. L212. Is the progress not from East (earlier  $T_{GU}$ ) to West (later  $T_{GU}$ )?

**Response:** We have rewritten it for more accurate expression.

*Vegetation green-up earlier in the southeast and later in the centre and west.*

7. L223. "to gain more about spatial distribution". To gain what? More insight? More information?

**Response:** We have added "gain more insight" in the manuscript.

8. L233, Figure 5. Have you tried using the darkest colours to represent the high-high and low-low clusters (since they are more common), and paler colours for the other ones? Pale colours (at least in my case) are more difficult to distinguish from each other in a small image

**Response:** This color scheme is the default used after Cluster and Outlier Analysis tool (calculation of local Moran's I values) in ArcGIS 10.8 and is commonly employed in numerous papers (Peng et al., 2024). Therefore, we believe it is best to retain this classic color scheme for better legibility.

**Reference:**

Peng, R., Tang, J. H. C. G., Yang, X., Meng, M., Zhang, J., and Zhuge, C.: Investigating the factors influencing the electric vehicle market share: A comparative study of the European Union and United States, *Appl. Energy*, 355, <https://doi.org/10.1016/j.apenergy.2023.122327>, 2024.

9. L248. Do you mean "constant" instead of "consistent"?

**Response:** The original sentence has been removed.

10. L249. "rises" instead of "rise".

**Response:** Revised.

11. L253. Instead of "amplify" I think "strengthened" would be a better word. It implies that the reduction is greater, but also more consistent, which seems to be the case in your data

**Response:** The original sentence has been removed.

12. L280. "taller" instead of "higher".

**Response:** Revised.

13. L330-331. This is actually not that easy to see in the figure, maybe this figure should be larger.

**Response:** We have enlarged figure 7 in the manuscript.

14. L351-352. I suggest to rewrite this sentence. Something like this:

"Conversely, in colder regions increased temperatures can reduce cold stress on vegetation, resulting in a larger effect on  $T_{GU}$  (-0.27), similar to that on  $T_{SOM}$  (-0.28)."

**Response:** We have revised this sentence as follows:

*In warmer regions with mean annual temperatures above freezing, spring temperature correlates negatively with  $D_{SOM}$  (The correlation coefficient is -0.46)*

and  $D_{GU}$  (The correlation coefficient is  $-0.07$ ), indicating that temperature primarily influences snowmelt rather than vegetation growth, thus extending response times. In colder regions increased temperatures can reduce cold stress on vegetation, resulting in a larger effect on  $D_{GU}$  (The correlation coefficient is  $-0.27$ ). However, consistent sub-freezing temperatures do not significantly lead to later  $D_{SOM}$  (The correlation coefficient is  $-0.28$ , which is similar with  $D_{GU}$ ). In summary, the relationship between temperature and response time is modulated by the magnitudes of their respective influences at the local scale.

15. L353. "enhance" might be a bit of a misleading word. The reader might think that a better Time of start of snowmelt is an earlier Time of start of snowmelt. You could say "do not significantly lead to later  $T_{SOM}$ ", for example.

**Response:** We have changed "enhance" to "lead to later".

*However, consistent sub-freezing temperatures do not significantly lead to later  $D_{SOM}$  (The correlation coefficient is  $-0.28$ , which is similar with  $D_{GU}$ ).*

16. L364. "the growth rate of soil temperatures"? What do you mean?

**Response:** We have revised the expression.

*This finding aligns with the observations of Zheng et al. (2022), who noted that soil temperature increased more rapidly in lower vegetation than in higher vegetation following snowmelt in Alaska, suggesting that snowmelt has a greater impact on lower vegetation.*