

# **Riverine Responses of riverine dissolved organic matter responds to alterations differently damming in two distinct hydrological regimes from of Northern Spain**

Selin Kubilay<sup>1, 2, 3</sup>, Edurne Estévez<sup>2</sup>, José Barquín Ortiz<sup>4</sup>, and Gabriel Singer<sup>2</sup>

<sup>1</sup>Department of Ecohydrology and Biogeochemistry, Leibniz Institute of Freshwater Ecology and Inland Fisheries, Berlin, 12587, Germany

<sup>2</sup>Department of Ecology, University of Innsbruck, Innsbruck, 6020, Austria

<sup>3</sup>Geography Department, Humboldt University of Berlin, Berlin, 12489, Germany

<sup>4</sup>IHCantabria - Instituto de Hidráulica Ambiental de la Universidad de Cantabria, Santander, 39011, Spain

**Correspondence:** Selin Kubilay (kubilay.selin@gmail.com) and Gabriel Singer (gabriel.singer@uibk.ac.at)

**Abstract.** Iberian rivers are characterized by flow regimes with high seasonal flow variation. They also host one-fifth of Europe's reservoirs for hydropower generation, irrigation or water supply needs, and thus many rivers of this region have heavily altered flow regimes. Such flow conditions ~~also~~ alter the natural dynamics of ~~Dissolved Organic Matter~~ dissolved organic matter (DOM), ~~with likely which likely has~~ implications for carbon cycling due to changed conditions for the transformation, transportation, production, and storage of carbon. Here we looked into the effects of flow alteration on the "DOM regime", i.e. the seasonal variation of DOM concentration and composition, in 20 rivers belonging to two different ~~hydrological classes~~ (natural (reference) flow regimes (i.e., Mediterranean and Atlantic) in Northern Spain. To further investigate which flow regime components influence DOM properties, we linked the ~~turnover of~~ observed seasonal shifts in DOM composition to a range of hydrological indices.

We found that Atlantic rivers with a natural flow regime ~~have on average lower~~ tended to have lower annual mean DOC concentration than their altered equivalents, ~~but this is not~~ this flow alteration trend is weakly mirrored in Mediterranean rivers. ~~Moreover, we~~ We did not observe much difference in annual average DOM composition due to flow ~~alterations in~~ either hydrological class alteration in either Atlantic or Mediterranean rivers. However, the ~~turnover of DOM composition is higher in natural~~ seasonal variation in DOM composition was lower in altered Atlantic rivers compared to ~~the altered ones. We~~ linked this turnover natural ones. This flow alteration effect on the DOM regime was not as distinctive in Mediterranean rivers, which showed a higher diversity of DOM regimes across rivers. We linked the lack of seasonal variation in DOM composition ~~to the effects of upstream located reservoirs, creating flow regimes with homogenized or even reversed seasonality. Our results suggest that Mediterranean rivers may have higher resistance to flow alterations, at least in the sense of not showing unusual DOM behaviour, while Atlantic rivers affected by flow alterations lose their naturally high annual variability of in~~ flow-altered rivers mainly to the prevention of transmission of upstream-sourced DOM by the reservoirs. It appears that in our study area, reservoirs mostly act as a temporally homogenizing buffer averaging out naturally occurring shifts in DOM composition composition by transiently storing upstream-sourced carbon inputs and objecting them to bio and photo-degradation, thus sending relatively invariable DOM further downstream. This effect of dams on DOM regimes appears robust across

25 both Atlantic and Mediterranean regimes, despite some heterogeneity of dam types and purposes, with potentially important consequences for riverine carbon cycling.

## 1 Introduction

The structure and functioning of a river ecosystem are strongly tied to its flow regime (Poff et al., 2006). Climate and weather interacting with catchment properties such as topography, geology and land cover are primary controls of natural flow dynamics (Poff and Zimmerman, 2010), yet ~~these natural flows~~ are altered globally by a range of human interventions, including the construction and operation of dams for irrigation, navigation and hydropower generation (Stewardson et al., 2017). Traditionally, flow regimes are described by five components; magnitude, frequency, duration, timing and rate of change; and an altered flow regime is identified by deviation of one or more of these components from its natural tendency (Poff et al., 1997). Given the natural diversity of flow regimes and the many ways in which they can be modified by dam operations (McManamay et al., 2012; Nadon et al., 2015), the prediction of ecological consequences of flow alterations is not a trivial task.

35 Dissolved organic matter (DOM) is the largest pool of organic carbon and the main energy source for bacteria in aquatic environments (Battin et al., 2008; Riedel et al., 2012). DOM is chemically highly complex because of (i) the numerous sources it originates from, and (ii) the various biological and chemical processes it is subjected to during transport along the riverine network (Jaffé et al., 2008). Most of the DOM is of terrestrial origin, characterized by high aromaticity associated with humic acids (Jaffé et al., 2008), while only a small fraction is composed of highly reactive substances such as carbohydrates and proteins, which may have terrestrial as well as in-stream origin. This highly reactive fraction is often microbially degraded within minutes to hours after creation or entering the system while the more recalcitrant terrestrial fraction is transported along the river for a longer time (Hansen et al., 2016; Kaplan et al., 2008). This linkage of ~~differing~~ DOM reactivity with residence ~~times-time~~ creates a compositional DOM continuum ~~-, which varies not only spatially throughout the riverine network, but also temporally (Catalán et al., 2016)unfolding over space and time (Catalán et al., 2016; Peter et al., 2020).~~

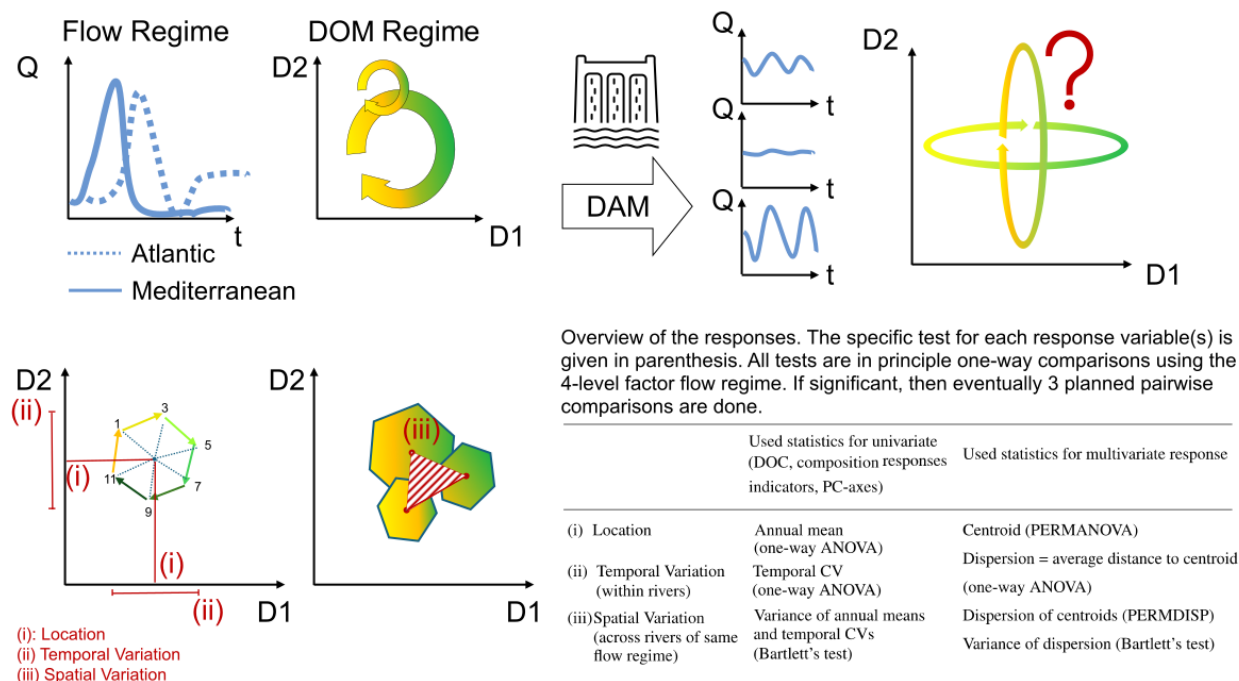
45 ~~In fact, DOM dynamics are shaped by~~ Spatiotemporal variation of DOM composition must also be tied to the flow regime (Hayes et al., 2018). In natural rivers, the variability of DOM concentration and composition is linked to (i) ~~heterogeneity of flow paths (Peter et al., 2020)~~ activation of heterogeneous flow paths draining water from the terrestrial surrounding to the river channel, especially during intense hydrologic events induced by snowmelt or rain (Raymond et al., 2016; Raymond and Saiers, 2010), and (ii) residence time of the DOM within the riverine network that is determined by discharge ~~-, which cycles through periods of stable base-flow, disturbing and eroding floods and droughts (Peter et al., 2020).~~ High discharge spates may be “hot moments” for the mobilization and transport of terrestrial DOM (McClain et al., 2003), yet the decreased residence times in the river corridor may limit ~~microbial access to DOM~~ its microbial transformation. In contrast, during base-flow conditions, such terrestrial material is more ~~heterogeneous and~~ dependent on soil processes and ~~subsuperficial flow pathways~~ subsurface flow paths. Moreover, following high-flow events, discharge and concentration (or composition) of terrestrial DOM undergo uncoupling due to the limited terrestrial storage capacity and exhaustion of DOM reservoirs along drainage flow paths (Andrea

et al., 2006; Wagner et al., 2019). Such hysteresis in discharge-concentration relationships combined with dynamic residence times ~~prevent/prevents~~ simple translations of flow regimes into “DOM ”~~regimes/regimes~~” (Andrea et al., 2006).

When flow dynamics are controlled by dams, flood extremes are minimized (Hayes et al., 2018) and water residence time increases due to the storage in the reservoirs, ~~leading to altered composition and timing of the DOM~~ providing an opportunity  
60 to change the composition of DOM and altering the timing of its delivery to the downstream river (Xenopoulos et al., 2021). Recent studies indicate that DOM concentration and composition vary according to dam operation and purpose, also determining whether a reservoir acts as a source or sink of carbon (~~Xenopoulos et al., 2021~~)(Chen et al., 2016; Kraus et al., 2011). A dam with sufficient residence time may dampen event-driven and seasonal terrestrial (allochthonous) signatures of DOM for downstream environments as the increased residence time in the reservoir enables photodegradation and biodegradation  
65 and may shift DOM composition towards a more autochthonous and more biolabile composition (Xenopoulos et al., 2021). ~~This rather general model of a DOM regime’s reaction to damming needs fine-tuning, however:~~ The net effect of production, transformation and loss of organic carbon in a reservoir (as in any river reach) depends on several variables including inflowing  
~~DOM concentration and composition~~ the amount and composition of inflowing carbon, algal and bacterial activity, nutrient availability, temperature and solar radiation (Kraus et al., 2011). ~~All~~ Most of these seasonal biotic and abiotic factors are  
70 ~~associated also~~ also associated with the river’s natural flow regime; suggesting that the alteration of a specific flow regime may result in quite a specific DOM regime for the downstream river sections. Notably, ~~compositional turnover of DOM~~ temporal  
changes in DOM composition throughout the year, i.e. shifts in DOM composition (especially under the influence of flow alteration~~has-), have~~ yet to be ~~implemented into~~ included in concepts of riverine carbon cycling.

Here, we study the effects of anthropogenic flow regime alterations by dams (which serve mainly hydropower and irrigation  
75 purposes) in rivers with two distinct natural (reference) flow regimes. ~~We specifically (i) search for;~~ namely, Atlantic and Mediterranean. Rivers were grouped into one of these two climate zone-associated flow regime types depending on either  
observed flow conditions (for natural, unaltered rivers) or given a classification into these reference regimes based on climate and landscape covariates (for those rivers altered by dams). Our objectives were to identify commonalities and differences in  
~~flow alteration response~~ response to dam-induced flow alteration across Atlantic and Mediterranean rivers with regard to ~~mean~~  
80 ~~and (i) mean and (ii) seasonally induced~~ variation of DOM concentration and composition over one year ~~across two naturally~~  
~~defined hydrological classes~~ as descriptors of a river’s DOM regime, and ~~(ii) investigate flow regime characteristics that can be~~  
~~linked to turnover of DOM composition throughout the year. iii) to assess~~ spatial similarity of flow alteration effects on DOM  
regimes across multiple rivers (Fig. 1). We hypothesize that DOM ~~properties respond to both~~ regimes are shaped by natural flow  
regimes ~~and flow alterations. We expect the effect of flow regime alterations on-~~ but also reflect anthropogenic flow alteration.  
85 The natural reference flow regime expected for a river may constrain how a dam can impact the DOM regime ~~to depend on~~  
~~certain characteristics of the natural flow regime. Despite-~~ Alternatively, a dam could force a DOM regime irrespective of the  
underlying natural hydrology of a catchment, perhaps with more or less dependence on specific dam and reservoir features.  
Given the high spatial and temporal variance of DOM composition, determining commonalities in the ~~DOM regime response~~  
~~of various natural flow regimes~~ response of DOM regimes to dam-induced flow alteration could increase our understanding of

90 the ecological consequences of a dam on the downstream river's structure and functioning, and thus improve our capability to predict effects on riverine carbon cycling.



**Figure 1.** Conceptual summary of the objectives and statistical pipeline. The upper row of graph panels shows a river's hydrograph (shown as discharge Q over time t) translating into compositional shifts of DOM (shown as a circular shift in two-dimensional space that multiple descriptors of DOM chemistry could define). With the effect of a reservoir on a flow regime resulting in variously altered hydrographs, the consequences on the DOM regime remain unknown. The lower row illustrates how we investigated effects on DOM regimes by looking at the quality and quantity of DOM from 3 different angles; (i) the annual mean DOM composition (location), (ii) the temporal variation at an annual time scale, and (iii) the spatial variation of various DOM regime descriptors across several rivers. Our choice of statistical method depended on whether a univariate or a multivariate response was used.

2 Methods

2.1 Study design and sampling strategy

Our study followed a control-impact design comparing rivers with natural and altered flow regimes in two ~~(natural-natural~~ (reference) flow regime types ~~(e.g., hydrological-classes)~~ in northern Spain (Fig. 1, Fig. 2). Peñas and Barquín (2019) clas-  
95 sified Spanish rivers in hydrologically unimpacted Spanish rivers into 20 hydrological classes using data from 282 gauged

naturally flowing rivers and relevant environmental and hydrological drivers such as climate, topography, land cover and geology. Using these latter discriminators, they defined natural ~~equivalents of rivers~~ equivalent flow regimes (in the sense of estimated pre-impact reference flow regimes) for rivers that are nowadays impacted by various types of flow alteration (Peñas et al., 2016). For our study, we selected 20 rivers within ~~the classes 13 and 10 defined by Peñas and Barquín (2019)~~ -In of Peñas and Barquín (2019); in each class, we sampled 4 naturally flowing rivers and 6 rivers with altered flow regimes (where one altered Mediterranean river had to be removed). Sampling sites were distributed within six basins, but we excluded locations on mainstems and - except one site - no site's catchment was nested within another one to maintain spatial independence (Fig. 2). All sampling locations were 2<sup>nd</sup> to 4<sup>th</sup> order rivers (Supp. Table. S1). For simplicity, ~~in this paper, the two classes~~ the two (reference) flow regime types will be referred to as Atlantic and Mediterranean, respectively, since class 13 is located in the ~~Atlantic~~ Atlantic-type climatic region and class 10 in the ~~Mediterranean~~ Mediterranean-type climatic region of Spain, regardless of where these rivers discharge or which basin they belong to (Table 1, Fig. 42). Overall ~~these rivers form the 4 flow regimes discussed as-~~ in our study, the sampled sites, - referred to as rivers for simplicity - belong to one of four flow regimes: natural Atlantic (nA), altered Atlantic (aA), natural Mediterranean (nM) and altered Mediterranean (aM) ~~in our study.~~

A natural Atlantic regime is characterized by highest flows in early spring (February-April) due to snowmelt, followed by a gradual decrease in flow until summer low flows are reached and continue throughout July-September (Fig. 23a). Once minimum flows are reached in October, the flow rate picks up quite quickly with a steep incline due to heavy rains in the fall. Contrary to this, a natural Mediterranean regime (Fig. 2e3d) has its highest flows a bit later in the spring, in March/April, followed by a sharp decrease in flow in May consequently leading to a long dry summer, reaching the minimum flows between August-September. As opposed to Atlantic rivers, the flow rate increases slowly leading back to the spring peaks, implying comparably less intense fall rains.

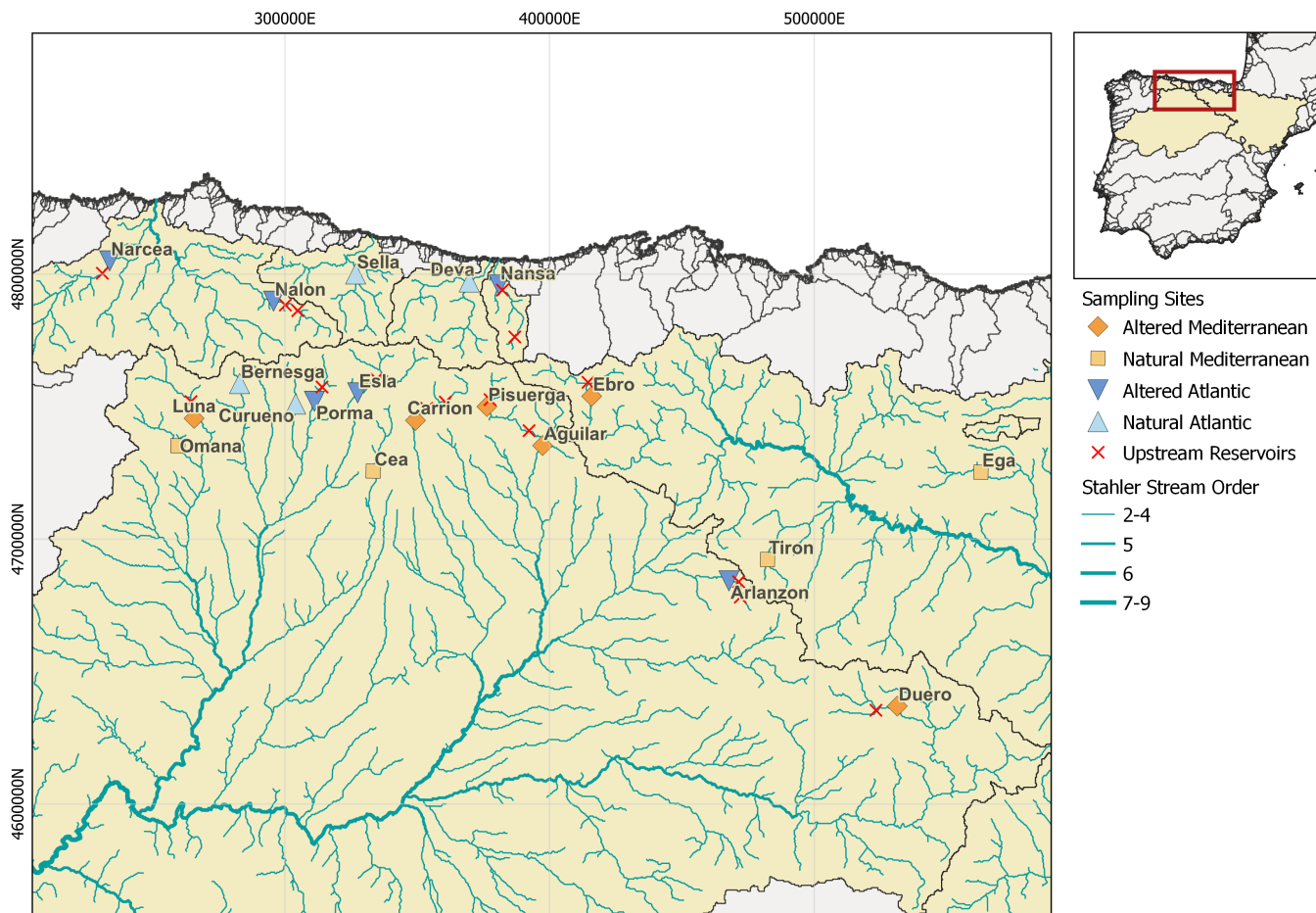
The selected altered rivers all have a dam with a reservoir ~~,though (predominantly in the headwaters or upper reaches),~~ although the exact alteration of the flow regime may vary depending on the size, purpose and operation of the involved dam (Table 1). ~~Yet, the pre-impact regime of an altered river is expected to be similar to that of a natural river of the same class.~~

The sampling sites in the altered rivers were located on average 4.1 km (range 1.74 - 33.6 km) downstream of a reservoir and some sites had multiple upstream reservoirs. The catchment areas upstream of the sampling sites ranged from 89 km<sup>2</sup> to 1258 km<sup>2</sup> (Table 1) with an average of 429 km<sup>2</sup>. All the reservoirs in altered Mediterranean rivers were used for irrigation, while in altered Atlantic rivers three reservoirs had irrigation and three reservoirs had hydropower production as their main purpose. Only one hydropower-producing reservoir, Narcea, has hydropeaking at short timescale and insufficient capacity for seasonal storage. On the other end of the spectrum, while Esla has the biggest reservoir capacity, Ebro has the highest storage index (i.e., highest capacity compared to its average annual runoff). In each river, we characterized DOM properties bi-monthly ~~between~~ from October 2017 ~~and to~~ August 2018 ~~resulting in a total of totalling~~ 6 sampling occasions (October and December 2017, and February, April, June and August 2018). Discharge measurements for each river and sampling day are given in Supp. Table S1.

**Table 1.** Study design and environmental characteristics of the altered (a) and natural (n) ~~flow regimes within the~~ Atlantic (A) and Mediterranean (M) ~~hydrological classes~~ flow regimes. The altered rivers encompass dams of various purposes/operations with varying reservoir volume(s). Sampling sites were located at similar distances to the next upstream reservoir, yet some sites had multiple upstream reservoirs. The catchment of Pisuerga is nested within the catchment of Aguilar, all other sites have spatially independent, non-nested catchments. Storage ~~indexes~~ indices were taken from (Pompeu et al., 2022) and show storage volume/average annual runoff. The last column reports the ecological status of the next upstream-located reservoir according to the wfd (2021) database.

River	Hydro Class	Alteration	Reservoir Usage	Upstream Catchment Area ( <del>km2</del> <u>km<sup>2</sup></u> )	Elevation (m)	Reservoir ( <del>hm3</del> <u>hm<sup>3</sup></u> )	Storage Index	Distance to reservoir(s) (km)	<u>Ecological Status</u>
Aguilar	M	a	Irrigation	579.87	882	247 - 65	0.82	5.5 - 33.6	<u>&gt;Good</u>
Pisuerga	M	a	Irrigation	255.53	1014	65	0.46	2.2	<u>&gt;Good</u>
Carrion	M	a	Irrigation	318.34	744.96	95 - 70	0.72	2.8 - 12	<u>&gt;Good</u>
Duero	M	a	Irrigation	590.31	1032	249	0.74	8.3	<u>&gt;Good</u>
Ebro	M	a	Irrigation	473.66	802	540	3.71	5.8	<u>Moderate</u>
Luna	M	a	Irrigation	507.69	1008	308	0.84	5.2	<u>&gt;Good</u>
Arlanzon	A	a	Irrigation	173.24	1023	75 - 23.2	0.63	2.3 - 9.7	<u>&gt;Good</u>
Esla	A	a	Irrigation	612.04	1001	664	0.86	3.1	<u>&gt;Good</u>
Nalon	A	a	Hydropower	356.26	317.33	4-34	0.13	4.2 - 9.5	<u>&gt;Good</u>
Nansa	A	a	Hydropower	363.37	66	2-12	0.06	1.74 - 29.1	<u>Good*</u>
Narcea	A	a	Hydropower	1258.45	122.33	33	0.03	4.4	<u>Moderate</u>
Porma	A	a	Irrigation	296.46	986	318	1.64	4.7	<u>&gt;Good</u>
Cea	M	n	-	370.23	893.67	-	-	-	
Ega	M	n	-	455.78	489	-	-	-	
Omana	M	n	-	403.74	974	-	-	-	
Tiron	M	n	-	186.59	815	-	-	-	
Bernesga	A	n	-	88.95	1132	-	-	-	
Curueno	A	n	-	168.29	1035.33	-	-	-	
Deva	A	n	-	647.17	23.68	-	-	-	
Sella	A	n	-	476.28	60	-	-	-	

*\*We could not find reservoir information, instead checked upstream and downstream water bodies for their ecological status*

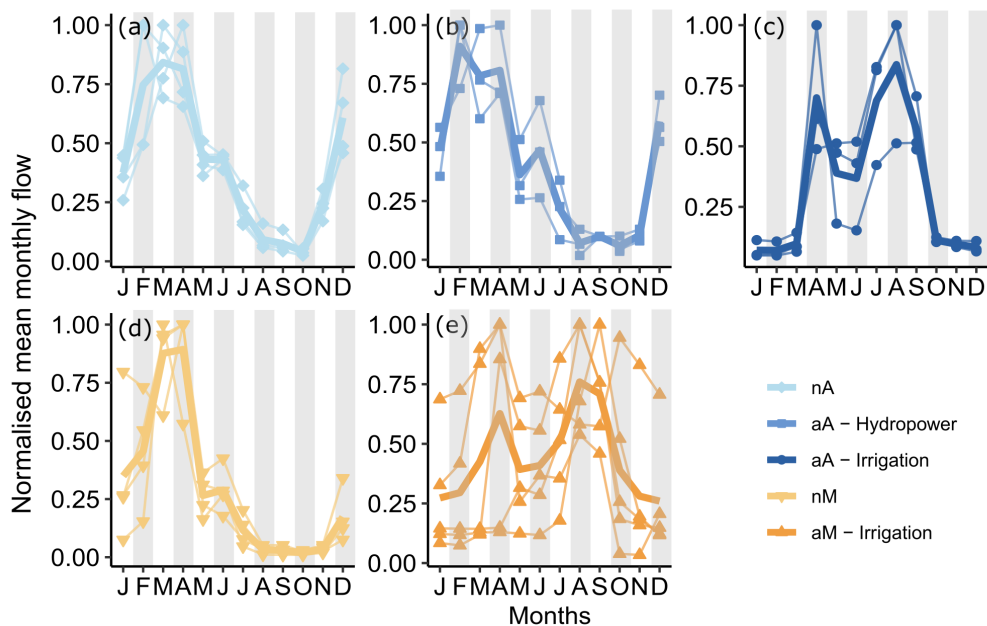


**Figure 2.** Location of sampling sites in selected rivers with Atlantic (blue) and Mediterranean (orange) sites on various rivers (reference) flow regimes in Northern Spain. Light and dark shades of a-the colour on rivers represent rivers with a-natural and altered flow regimeregimes, respectively. All sampling locations had spatially independent, non-nested catchments except Aguilar nestled in Pisuerga. The rivers and their basins are imported were sourced from the HydroSHEDS database of World Wildlife Fund's project (Lehner and Grill, 2013)

## 2.2 DOM composition

130 We measured DOC concentration, DOM absorbance and fluorescence, and DOM molecular size distribution. In the field, we filtered water samples through pre-combusted (450 °C, 4 h) glass fiber-fibre filters of 0.3  $\mu\text{m}$  nominal pore size (Advantec GF-75, Japan) into acid-washed, MilliQ water-rinsed, pre-combusted (450 °C, 4 h) glass vials. We stored all the samples in the dark at 4 °C until analysis. We measured DOC concentration ( $\text{mg L}^{-1}$ ) by high-temperature catalytic combustion of an acidified and sparged water sample with a Shimadzu TOC-V Analyzer. Analyser with a typical limit of quantification (computed as  
 135 6 times the standard deviation of blanks) of  $< 0.1 \pm 0.08 \text{ mg L}^{-1}$  and a typical analytical precision of 1.5 %. To prepare





**Figure 3.** Normalized (to maximum) mean monthly flow of each river grouped by flow regime (a) natural Atlantic (nA) in light blue, (b, c) altered Atlantic (aA) in dark blue shades according to their reservoir purpose, (d) natural Mediterranean (nM) in light orange, and (e) altered Mediterranean (aM) in dark orange (only reservoirs with irrigation purpose by default). The thick line represents the average of the flow regimes. The shaded months are the sampling months.

standards for DOC-measurements we used potassium hydrogen phthalate (KHP). We took DOM absorbance and fluorescence measurements simultaneously using an Aqualog (Horiba Ltd, Kyoto, Japan). We ~~measured~~ used MQ-water as a blank inserted every 10-15 measurements; each of 3 field replicates was measured 3 times and spectra were visually checked for consistency and outlier removal. We measured absorbance in 5 nm increments from 250 nm to 600 nm and fluorescence as excitation-emission-matrices (EEMs); we excited the samples from 250 nm to 600 nm in 5 nm increments with emission from 212 nm to 620 nm in 2 nm increments. We subtracted MilliQ water EEMs from all sample EEMs to remove optical scatter phenomena but did not apply any inner filter correction since the decadal absorption coefficient at 254 nm ( $A_{254}$ ) was lower than the threshold of 0.3 for all samples (Ohno, 2002).

We used the Aqualog measurements to calculate 6 optical indices; fluorescence index (FI), humification index (HI), freshness index ( $\beta/\alpha$ ), E2:E3 ratio, slope ratio (SR) and specific UV absorbance ( $SUVA_{254}$ ), as summarised in Table 2. Further, we performed a parallel factor analysis (PARAFAC) after Raman-normalizing, smoothing and normalizing each EEM by setting the maximum emission to 1 (Coble et al., 2019). We used the StaRdom package (Pucher et al., 2019) in R version 4.0.3 (R Core Team, 2020) to partition the EEMs into individual components ~~in accordance with~~ following the PARAFAC modelling strategy. We chose the 8-component PARAFAC model as the one achieving the best representation of the 699 EEMs dataset. We verified the model with split-half analysis with random sample selection following residual analysis. Sample-specific fluorescence of



components was expressed in Raman units by reverting the normalization step through the multiplication of  $F_{max}$  values with the original EEMs' maximum emission values. We scanned the literature via the OpenFluor database (Murphy et al., 2013) for similar components (Table 3). The components C1, C2, C3, C4 and C5 were reported as old humic-like DOM with strong terrestrial signals composed of mostly high MW substances. C6, C7 and C8 were all protein-like compounds of recently produced fresh material (Table 3). We grouped the relative contribution of the first 5 components (C1-C5) into an indicator of humic and terrestrial signatures ( $C_{Terrestrial}$ ) by dividing their sum of relative contributions by the sum of all components. In the same manner, we turned the last 3 components into an indicator of freshly produced microbial input ( $C_{Microbial}$ ).

**Table 2.** Calculated optical indices, their meaning and used method

Indice	Description	Method
FI	Fluorescence index; the relative contribution of terrestrial to microbial fluorophores	Ratio of emissions of 450 and 500 nm at 370 nm excitation (McKnight et al., 2001)
HI	Humification index	Dividing the sum of emission intensities from 435 to 480 nm by the sum of intensities from 300 to 345 nm and from 435 to 480 nm (Ohno, 2002)
$\beta/\alpha$	Freshness index, a proxy for relative microbial (fresh) contribution	Ratio of <del>emission intensity</del> <u>emissions</u> at 380 nm to the maximum emission <del>observed</del> between 420 and 435 nm at 310 nm excitation (Harjung et al., 2019; Wilson and Xenopoulos, 2009)
E2:E3	Inverse indicator of molecular size	Absorbance ratio of 250 to 365 nm
SR	Slope ratio; inverse indicator of molecular weight	Slope ratio of short slope between 275 and 295 nm and long slope between 350 nm and 400 nm (Loiselle et al., 2009)
SUVA <sub>254</sub>	Aromaticity indicator	Decadal UV absorbance at 254 nm divided by DOC concentration

We used liquid size–exclusion chromatography (SEC) with organic carbon and nitrogen detection (LC-OCD-OND; Huber et al. (2011)) for the molecular size distribution measurements. This allowed us to estimate the abundance of non-humic high molecular weight substances ( $C_{HMWS}$ , like polysaccharides and proteins,  $\text{mg C L}^{-1}$ ); humic substances ( $C_{Humic}$ ,  $\text{mg C L}^{-1}$ ) and neutral, hydrophilic to amphiphilic low molecular weight substances ( $C_{LMWS}$ , e.g., aldehydes, sugars and amino acids,  $\text{mg C L}^{-1}$ ). For samples below the detection limit, we used half the value of the detection limit in the final dataset to allow multivariate data analysis. To have an estimate of the relative contributions of each of the defined size fractions, we divided each by total dissolved organic carbon concentration measured by SEC (Heinz and Zak, 2018).

### 2.3 Statistical analysis

To assess differences among the flow regimes, we ~~did a PCA~~ used principal component analysis (PCA) using the 81 flow indices reported in Peñas et al. (2016) and grouped the rivers according to their ~~hydrological regime (Supp Fig. S1)~~ flow regime to see if flow alterations homogenize or diversify ~~the flow regimes in terms of their flow characteristics~~ natural flow characteristics (Supp Fig. S1). To this aim, we also used the average distance to the centroid of a particular flow regime as a measure of

**Table 3.** PARAFAC components with the modelled maximum emission and excitation values ( $Ex_{max}$ ,  $Em_{max}$ ) were compared to the literature using OpenFluor (TCC combined > 0.90). For each component, the main sources, the peak names and selected keywords from the literature are given.

Source	Comp.	$Ex_{max}$	$Em_{max}$	Keywords
<i>C<sub>Terrestrial</sub></i>	C1	330	444	Terrestrial humic-like, Peak C (Kothawala et al., 2012), high aromaticity, high MW, photosensitive (Lambert et al., 2016a)
	C2	<260 (340)	520	Terrestrial, humic-like DOM, high MW, aromatic (Kothawala et al., 2012; (Lambert et al., 2016a, b), Peak A and Peak C (Lin and Guo, 2020)
	C3	<325	390	Humic-like, low MW, UV-A, fresher DOM, Peak M (Kothawala et al., 2012)
	C4	260 (300)	420	High MW, aromatic (Kothawala et al., 2012), photoproduct of a terrestrial, Peak A, Terrestrial humic-like (Lambert et al., 2016b)
	C5	<260 (380)	460	High MW (Kothawala et al., 2012), photochemically degradable, terrestrial humic-like (Harjung et al., 2019), aromatic, fulvic acid (Yang et al., 2017)
<i>C<sub>Microbial</sub></i>	C6	<260 (295)	380	Protein-like, microbial-humic like fluorescence (Lambert et al., 2016a), tryptophan-like (Derrien et al., 2018), microbially produced, Peak T/Peak M mixture (Kothawala et al., 2012)
	C7	260	340	Tryptophan-like recent biological production (Lambert et al., 2016a), Protein-like (Lambert et al., 2017)
	C8	270	310	Protein-like recent biological activity fluorophores (Lambert et al., 2016a), tyrosine-like fluorophores (Painter et al., 2018)

170 dispersion in the same way as for DOM data (see below for assessment of [the](#) among-river variation of annual mean DOM composition). The magnitude of 1-30-90 day High Flow Events (1HF, 30HF, 90HF) and the magnitude of 1-30-90 day Low Flow Events (1LF, 30LF, 90LF) were selected to compare the four flow regimes following the findings of natural and altered rivers’ flow differences of Goldenberg-Vilar et al. (2022) on the same rivers.

As measures of mean DOM concentration and mean composition for each river, we computed annual [averages-means](#) of the  
175 DOC concentration, [of](#) optical indices and [of](#) SEC fractions. To express the seasonal variability of these variables we computed river-specific temporal coefficients of variation (CVs) [and used them as indicators of annual shifts in DOM composition](#). Annual means and temporal CVs were then used as univariate responses describing DOM regimes to test for differences between the four flow regimes. For this, we followed a 1-way approach in [2-two](#) steps for each response variable: First, we tested mean and CV differences of all four [hydrological-flow](#) regimes with a one-way test (Welch, 1951), which - unlike  
180 classical ANOVA - does not need variance homogeneity as a prerequisite. In case of significance, this was then followed by planned paired t-tests between (i) natural Atlantic and natural Mediterranean (nA vs nM), (ii) altered Mediterranean and natural Mediterranean (aM vs nM), (iii) altered Atlantic and natural Atlantic (aA vs nA). We corrected p-values with the Bonferroni method assuming [3-three](#) a-priori planned tests. We also compared the spatial variation of annual means and temporal CVs

across the rivers of the four flow regimes, ~~nA, aA, nM, and aM~~. For this, we followed a similar 1-way approach in 2-two steps, where we first tested for variance homogeneity of annual means and of temporal CVs across all four regimes with a Bartlett test, which - when significant - was followed by planned F-tests between (i) nA vs nM, (ii) aM vs nM and (iii) aA vs nA. Taken together, our response variables included measures of mean location and temporal variation for each river's DOM indicators, which serve as DOM regime descriptors, and measures of (spatial) variation of these DOM regime descriptors across rivers belonging to the same flow regime. The latter was specifically computed to assess whether, in any given ~~hydrological class,~~  
190 ~~flow alteration by various dams~~ natural reference flow regime, dam-induced flow alteration diversifies DOM regimes across rivers compared to DOM regimes under natural flow.

Additionally, to assess the similarities and differences in annual average DOM composition and ~~its annual turnover shifts in DOM composition~~ between natural and altered rivers ~~for each hydrological class~~ in a more integrative, multivariate way, we did a principal component analysis (PCA) using the relative fluorescence of PARAFAC components, optical indices and  
195 SEC fractions. We looked for recognizable differences in DOM composition among flow regimes (i.e., between natural and altered regimes of both hydrological classes) with regard to location (mean DOM composition) and specifically with regard to temporal ~~turnover of shifts in~~ DOM composition in the various rivers. To statistically test for differences in DOM composition among flow regimes we ~~use a 2-way~~ used a 1-way permutational multivariate ANOVA (Anderson, 2001) on annual average mean locations (river-specific centroids) in the PCA-space with the same paired ~~strategy as testing strategy as described~~ above.  
200 Temporal ~~turnover of DOM composition is~~ shifts in DOM composition are graphically represented in 2D PCA-space by ~~convex hulls polygons~~ for each river (Fig. 56c-f), where each corner represents the DOM composition of a sampling date in the PCA space and the centroid represents the mean DOM composition of that river over the entire sampling period. The average distance of individual sampling dates to the centroid of a river serves as a measure of temporal ~~turnover of shifts in~~ DOM composition; it is computed as a dispersion (i.e., multivariate variation) on all dimensions of the PCA ~~using the function~~  
205 betadisper() from the vegan R-package (Oksanen et al., 2025). Here, high average distance to the centroid (high dispersion) means strong temporal shifts in DOM composition. To statistically test the temporal ~~turnover of shifts in~~ DOM composition we followed the same analysis approach as described above for a univariate response variable, i.e. a one-way ANOVA comparing dispersion as a response among all 4-four flow regimes followed by 3-three planned t-tests as post hoc tests.

In analogy to the analysis of univariate responses, we also compared the among-river variation of annual mean DOM com-  
210 position and ~~of temporal turnover of that of temporal shifts in~~ DOM composition across the four flow regimes given by the multivariate dataset. ~~This step was again motivated in order~~ Our motivation was again to assess if, in any given ~~hydrological class, flow alteration by various dams~~ natural reference flow regime, dam-induced flow alteration diversifies DOM regimes (in either mean location or ~~temporal turnover in~~ temporal shifts of composition, i.e. dispersion) compared to DOM regimes under natural flow. Again, we followed a similar 1-way approach in 2-two steps. For the among-river variation of annual mean  
215 DOM composition, we tested for dispersion homogeneity of river centroids across all four regimes with PERMDISP, a permutational equivalent of the Bartlett test (Anderson, 2006), which - when significant - was followed by planned permutational F-tests between (i) nA vs nM, (ii) aM vs nM and (iii) aA vs nA. For the among-river variation of temporal ~~turnover of shifts in~~

DOM composition, we used the river-specific measure of temporal dispersion as a univariate response and followed the same approach as described above for variation of univariate responses (Bartlett-test followed by planned t-tests).

220 As the individual axes of the PCA can be understood as distinct meaningful components of a river's DOM regime, we also tested the differences in average location and variance along PC1 and PC2 axes following the same univariate strategy of a one-way test followed by planned t-tests as described above. Similarly, we compared across-river variance of average location and variance along the PC1 and PC2 axis, with a Bartlett test followed by planned F-tests as post hoc analysis. [A summary of the statistical workflow followed is included in Fig. 1.](#)

225 To look for links between characteristics of the flow regime and ~~annual turnover of~~ [temporal shifts in](#) DOM composition, we performed three partial least squares ([PLS-PLSR](#)) analyses (one for the overall ~~turnover of~~ [shifts in](#) DOM composition, one each for PC1 and PC2 variance). We chose [PLS-PLSR](#) analysis due to its reputed good performance in situations with high collinearity of predictors and small sample size (Carrascal et al., 2009; Coble et al., 2019). As predictors, we used 81 hydrological indices computed by Peñas and Barquín (2019) that were grouped into ~~5~~ [five](#) flow regime components: magnitude, 230 duration, frequency, timing, and rate of change (~~Supplementary Table S1~~ [Supp. Table S3](#)). As dependent variables we used the multivariate dispersion (for the overall ~~turnover of~~ [shifts in](#) DOM composition) and the two variances on the first ~~2~~ [two](#) PCA axes for each river, which can be understood as the two most important components of ~~DOM turnovers~~ [shifts in DOM composition](#), each having a specific qualitative character captured by the respective PCA-axis. In [PLS-PLSR](#) analysis, we selected the hydrological indices with VIP-scores (Variable Importance on the Predictor) higher than 1 as the most important 235 explanatory variables and reported only the first component of the [PLS-PLSR](#) analysis for simplicity.

### 3 Results

#### 3.1 Flow Regimes

Both Atlantic and Mediterranean natural flow regimes are characterized by high flows in early to late spring and low flows throughout the summer with a minimum in August-September before fall rains begin (Fig. ~~2a and~~ [e3a and d](#)). Additionally, 240 natural Atlantic flow regimes have a second high flow peak in early winter (November-December) compared to the natural Mediterranean regime.

Contrarily, altered Mediterranean rivers, with their irrigation reservoirs, do not experience the natural succession of ~~spring~~ [high-high spring](#) flows followed by summer droughts as observed in the ~~nM-rives~~ [natural Mediterranean rivers \(Fig.3b and c\)](#). From previous studies, we know that our altered Mediterranean rivers collect water during winter and spring and release it from 245 May to September (Pompeu et al., 2022), which is the reason behind the ~~summer-high~~ [high summer](#) flows. We also know that this behaviour is limited by the storage capacity of these reservoirs, where a lower storage capacity requires an additional 'pre-release' in [late](#) winter-spring due to the capacity being reached, resulting in a double-humped shape [of the annual hydrograph](#) (Fig. [23c and e](#)).

When the mean of the altered Atlantic rivers is compared to its natural equivalent (Fig. [2b3a-c](#)), we see that the above- 250 mentioned introduction of summer high flows is not as consistent, i.e. ~~3~~ [three](#) rivers have distinct summer high flows while

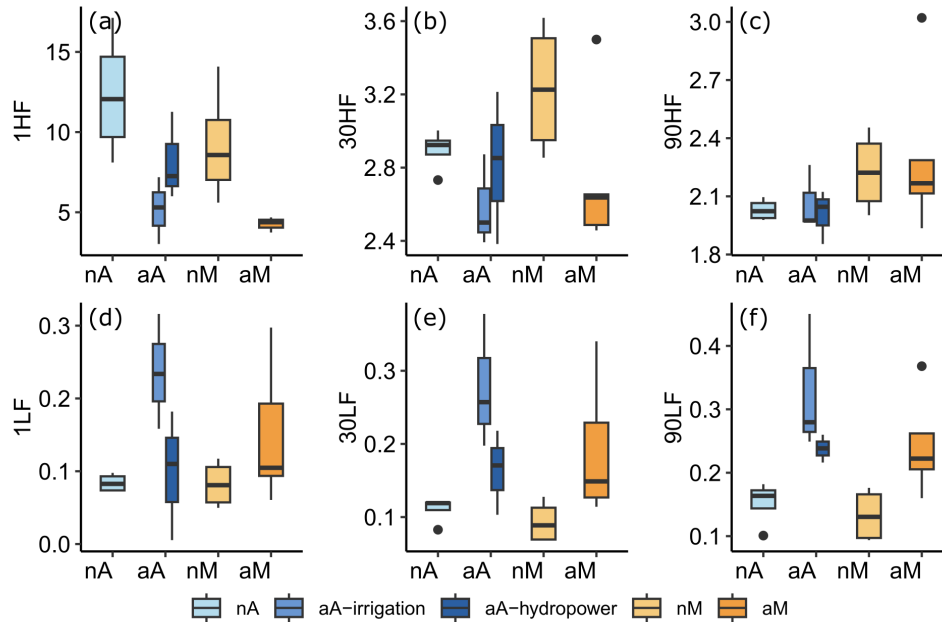
~~3 others have summer droughts in late summer~~ three others have late summer droughts. When grouped ~~according to their reservoir purposes~~ by reservoir purpose, rivers with hydropower reservoirs (Fig. ~~2e3b~~, Narcea, Nalon, Nansa) still possess summer droughts even though they have altered flow regimes; ~~i.e.~~ they somewhat mimic the natural flow regime expected of that river. Contrarily, rivers with irrigation reservoirs (Fig. ~~2b3c~~, Porma, Esla, Arlanzón) ~~are relatively small and hence~~ have clear summer high flows ~~due to storage capacity limitations and a secondary peak in spring due to limited storage capacity~~. Thus, in altered Atlantic rivers, flow regime heterogeneity among the rivers comes from the different purposes of the reservoirs (irrigation vs hydropower), whereas in altered Mediterranean rivers, flow regime heterogeneity is derived mostly from the ~~reservoir storage capacity differences since they are all irrigation reservoirs~~ differences in storage capacity of reservoirs exclusively dedicated to irrigation.

From previous studies on our rivers, we know that altered rivers show a higher diversity of flow ~~regime~~ regimes compared to natural rivers (Goldenberg-Vilar et al., 2022). ~~To distinguish this diversity for Atlantic and Mediterranean classes, we repeated~~ In a PCA analysis with these respective groups and, we found that altered Mediterranean rivers have 13-fold and altered Atlantic rivers 44-fold higher dispersion in the PCA space compared to their natural equivalents, while both natural flow ~~regime classes~~ regimes showed similarly small dispersions (Supp Fig. S1). This ~~furthermore~~ confirms that altered Atlantic regimes encompassing both irrigation and hydropower reservoirs are ~~somewhat~~ more diversified than altered Mediterranean regimes ~~which only have irrigation reservoirs~~ with irrigation reservoirs only.

As a final step, we looked at ~~some selected~~ flow regime characteristics (Fig. ~~34~~), specifically ~~to at~~ the magnitude of 1-30-90 Day High and Low Flow Events (selected from Goldenberg-Vilar et al. (2022)) ~~According to these resulting boxplots, both~~ These selected indicators are used to show the general trend of our flow regimes in magnitude and duration of annual minimum and maximum flows, covering short-duration flood pulses as well as seasonal droughts. Both natural flow regimes have higher ~~1HF~~ 1-Day High Flows than their altered counterparts. Natural Mediterranean rivers have higher ~~30HF~~ 30-Day High Flows than altered Mediterranean rivers, whereas this difference was not as clear between natural and altered Atlantic rivers. There was not much visible difference between regimes in ~~90HF~~ 90-Day High Flows. Similarly, natural Atlantic rivers have lower ~~1LF~~ 1-Day Low Flows than altered Atlantic rivers ~~in flows altered by irrigation dams but not in those with flow altered by hydropower dams~~. Natural rivers have lower ~~30LF~~ 30-Day Low Flows and ~~90LF~~ 90-Day Low Flows than altered counterparts for both Atlantic and Mediterranean rivers.

### 3.2 Average and temporal variation of DOC concentration

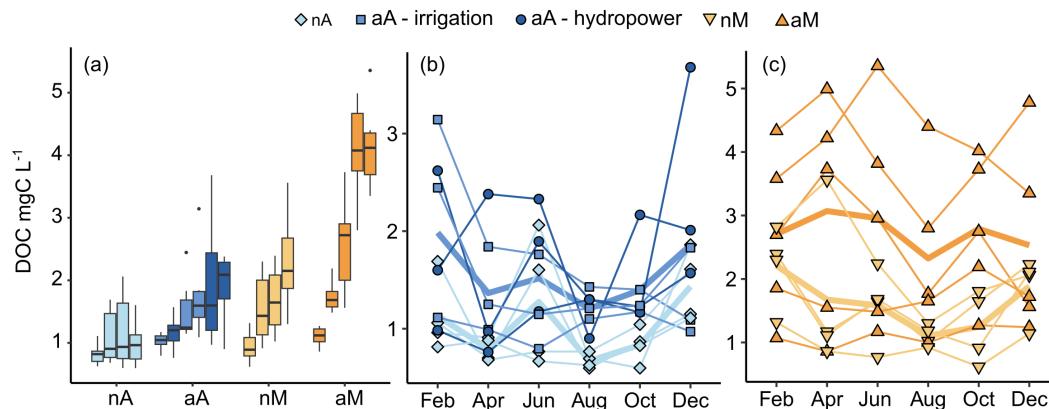
The DOC concentration varied 10-fold from  $0.59 \text{ mg L}^{-1}$  to  $5.3 \text{ mg L}^{-1}$  across rivers throughout the year. Planned t-tests ~~could~~ did not show any significant difference in annual ~~average mean~~ DOC concentration (Fig. ~~45a~~, Table 4) between the two natural flow regimes (nA-nM), nor between the altered and natural rivers ~~within each climate~~ (aA-nA and aM-nM, respectively). The consistently higher median in all altered Atlantic rivers compared to the natural Atlantic rivers and partly significant results prior to Bonferroni correction point to a lack of statistical power due to low sample size causing a lack of significance. The two highest average DOC concentrations belong to Duero and Ebro, respectively (Figure 5a). We could not find any common hydrological characteristics separating these two from the remaining altered Mediterranean rivers, but note that Ebro has the



**Figure 4.** Boxplots of magnitude of extreme flow events representing flow variability; Magnitude of (a) 1-Day High Flow Event (1HF), (b) 30-Day High Flow Event (30HF), (c) 90-Day High Flow Event (90HF) and (d) 1-Day Low Flow Event (1LF), (e) 30-Day Low Flow Event (30LF), (f) 90-Day Low Flow Event (90LF). Natural Atlantic (nA) rivers are shown in light blue, altered Atlantic (aA) in dark blue, separated by different shades according to their dam purpose; natural Mediterranean (nM) rivers are shown in light orange and altered Mediterranean (aM) in dark orange, where all rivers are altered with irrigation dams by default dams built for irrigation.

highest storage index in the dataset. We also could not find any association of DOC concentration with discharge (Supp Table 1). In fact, Ebro and Duero show completely opposite trends; Ebro has its highest DOC concentration in April at 1.05 m<sup>3</sup>/s and lowest DOC value in August at 5.31 m<sup>3</sup>/s, which coincides with the water release timings. Contrarily, Duero has its highest DOC concentration in June at 4.56 m<sup>3</sup>/s and lowest DOC concentration in December at 0.88 m<sup>3</sup>/s, when reservoirs are filled up.

The annual DOC variation of the rivers ( $CV_{DOC}$ ) ranged from 14% to 53%. The two natural regimes (nA-nM) showed no significant difference in  $CV_{DOC}$  (Table 4). The natural Mediterranean rivers had significantly higher  $CV_{DOC}$  than their altered equivalents (nM-aM), while this difference was not significant between natural and altered Atlantic rivers (nA-aA). Looking at the change in DOC through the sampled months in Atlantic rivers (Fig. 45b), we observe that both altered and natural rivers' average DOC time-series follow similar paths through the year with lowest values in August followed by an increase until spring high flows. In Mediterranean rivers, however (Fig. 45c), altered rivers' DOC time-series increase in April and May/June, while most natural rivers have low values in these months.



**Figure 5.** (a) DOC of each river as individual boxplots grouped by flow regime; natural Atlantic (nA) in light blue, altered Atlantic (aA) in dark blue, natural Mediterranean (nM) in light orange and altered Mediterranean (aM) in dark orange. (b) Atlantic and (c) Mediterranean rivers' temporal DOC behaviours are represented as lines following the same colour scheme. The aA rivers are separated into two reservoir purpose groups, irrigation and hydropower, for the sake of visualisation. All aM rivers have reservoirs with irrigation purposes by default. The individual points represent single DOC measurements in various rivers of each flow regime in each sampling month, thus thin lines represent the trajectory of a river throughout the year. The thick lines are connect the average of that month monthly averages for all the rivers of the represented respective flow regime regimes.

In both flow regimes, the among-river variation of DOC and  $CV_{DOC}$  seems lower in natural rivers than in their altered equivalents, but we could not find any significant difference between either of the any of the tested flow regime pairs (data not shown), likely again because of low statistical power.

### 300 3.3 Average DOM composition and its temporal turnover shifts

In all regimes, DOM showed strong terrestrial characteristics throughout the year with relatively low FI ( $<1.4$ ) and  $\beta/\alpha$  ( $<1$ ) and high HI ( $0.86 \pm 0.04$ ) and  $SUVA_{254}/SUVA_{254}$  ( $>2.4$ ). Also, with values  $>60\%$ , the indicator  $C_{Terrestrial}$  showed dominance of soil-derived materials over microbially produced materials (McKnight et al., 2001; Fellman et al., 2010; Hansen et al., 2016). The FI values ranged from 1.09 to 1.38 among the rivers throughout the year, typical for natural waters (Hansen et al., 2016). The SR values were relatively low for all flow regimes ( $SR < 1$ ) indicating dominance of higher MW compounds and aromatic, plant-derived materials (Oliver et al., 2016). The relative contribution of SEC fractions also indicates that, in all of the regimes, humic substances were most abundant ( $C_{HS}$ ), followed by simple monomers like sugars and amino acids ( $C_{LMWS}$ ) and polysaccharides and proteins ( $C_{HMWS}$ ).

When we compare the two natural regimes of Atlantic and Mediterranean rivers, there was no significant difference in any annual average optical indicator or SEC fraction (Table 4). However,  $CV_{SR}$  and  $CV_{E2:E3}$  were significantly higher in



natural Atlantic rivers compared to natural Mediterranean rivers. The F-test results for all annual averages and ~~annual-turnover~~ compositional shift indicators show similar among-river variances between the two natural regimes (nA-nM, data not shown).

When we compare the natural regimes to their altered equivalents in terms of average DOM composition, we could not observe any significant difference in the annual average optical indices (Table 4) in ~~either-of-the-two-hydrological-classes~~ Atlantic or Mediterranean rivers. Among the ~~temporal-turnover-indicators~~, CV values, indicating shifts in DOM composition, we observed that in Atlantic rivers,  $CV_{E2:E3}$ ,  $CV_{CProtein}$  and  $CV_{CTerrestrial}$  were significantly higher in natural rivers compared to their altered equivalents (Table 4). In Mediterranean rivers,  $CV_{SR}$  was significantly higher in altered rivers compared to their natural equivalents. From the F-test results, we observe that all of the average DOM composition and ~~temporal-turnover~~ compositional shift indicators showed similar among-river variances between the natural and altered regimes (data not shown).

We further ~~analyzed-analysed~~ the similarities and differences in the annual average and temporal ~~turnover-of-shifts-in~~ DOM composition in a multivariate approach with a PCA. The first and second axes of the PCA (Fig. 56, PC1) explained 47 % and 16 % of the total variation of DOM composition. PC1 was negatively correlated with terrestrial and humic components ( $C_{Terrestrial}$ ), humic substances ( $C_{HS}$ ) and HI, and positively correlated with microbially sourced components ( $C_{Microbial}$ ), FI,  $\beta/\alpha$ , and  $C_{HMWS}$ , representing non-humic biopolymers (Huber et al., 2011). PC2 was negatively correlated with SR, E2:E3 and  $SUVA_{254}$  and positively correlated with  $C_{LMWS}$ . ~~Together-Taken together~~, the PCA space from the bottom left to the top right corner shows a gradient of terrestrially sourced, aromatic, high MW and presumably diagenetically older material to microbially sourced, fresher, low MW material. Notably, PC1 and PC2 capture indicators of DOM composition described with different methods: PC1 groups mostly fluorescence-based indices ( $C_{Microbial}$ ,  $C_{Terrestrial}$ , FI, HI,  $\beta/\alpha$ ) and PC2 groups absorbance indices (E2:E3,  $SUVA_{254}$ , SR) and SEC fractions. The patterns in PCA space were not related to DOC concentration or discharge (data not shown).

We used the centroid location and average distance to the centroid of each river (represented as polygons in 2D space in Fig. 56c-f) as proxies for the annual average and temporal dispersion of DOM composition, respectively. We ~~did-could~~ not find a significant difference in centroid location, i.e. annual average DOM composition, between any of the compared pairs of flow regimes (SuppTable 1, Table S2). In terms of temporal dispersions, we could not identify a significant difference between the natural rivers nor between the natural and altered Mediterranean rivers, yet we ~~observe-observed~~ that natural Atlantic rivers have a significantly higher average distance to the centroid compared to their altered Atlantic equivalents (Fig. 56c-d, Fig. 67a, SuppTable 1, Table S2). Thus, in Atlantic rivers, DOM composition was more variable over time when the flow regime was natural. This effect was not as clear in Mediterranean rivers: Though DOM regimes appeared as being temporally less variable in all altered Mediterranean rivers, they showed a higher diversity in natural rivers. This higher diversity of DOM regimes in natural Mediterranean rivers, with some being naturally quite dynamic while others show fairly stable DOM composition in time, precluded the identification of a significant flow alteration effect. Notably, however, Mediterranean rivers showed slightly more clearcut flow alteration effects along the individual PCA-axes (see below), with slightly more prominent excursions towards higher PC1 scores and lower PC2 scores in dam-impacted rivers towards late summer and fall.

The global tests comparing the ~~4-flow-regimes-could~~ four flow regimes did not show any significant difference in among-river variance regarding the mean centroid location and the mean dispersions from the river centroids (SuppTable 1, Table

**Table 4.** Means of river-specific annual ~~averages-means~~ and temporal coefficients of variation (CV) for each of ~~4-the four~~ flow regimes; natural Atlantic (nA), altered Atlantic (aA), natural Mediterranean (nM), altered Mediterranean (aM). The table provides means  $\pm$  standard deviations. Superscripted letters above the values of mean and standard deviation indicate significant differences according to t-tests and F-tests done pairwise between two flow regimes. These letters allow pairwise comparisons between any two flow regimes, but Bonferroni-correction was applied to p-values assuming only 3 a-priori planned tests of relevance (nA vs. nM, nA vs. aA, nM vs. aM). The letters were dropped when the pairwise comparisons did not indicate a significant difference. For the calculations of the mean and CV values, 6 measurements distributed across one year were taken into account. The number of sites (n) for each flow regime is given in the column headlines.

	Atlantic		Mediterranean	
	natural (n = 4)	altered (n = 5)	natural (n = 4)	altered (n = 6)
<i>Water Chemistry</i>				
DOC (mg C L <sup>-1</sup> )	1.02 <sup>A</sup> $\pm$ 0.15	1.55 <sup>AB</sup> $\pm$ 0.39	1.62 <sup>AB</sup> $\pm$ 0.56	2.73 <sup>B</sup> $\pm$ 1.37
CV <sub>DOC</sub>	0.38 $\pm$ 0.13	0.33 $\pm$ 0.14	0.33 $\pm$ 0.04	0.19 $\pm$ 0.07
<i>Optical Indices</i>				
FI	1.20 $\pm$ 0.02	1.18 $\pm$ 0.04	1.23 $\pm$ 0.04	1.22 $\pm$ 0.03
CV <sub>FI</sub>	0.04 $\pm$ 0.01	0.03 $\pm$ 0.005	0.03 $\pm$ 0.02	0.03 $\pm$ 0.01
HI	0.86 $\pm$ 0.02	0.86 $\pm$ 0.02	0.88 $\pm$ 0.02	0.84 $\pm$ 0.03
CV <sub>HI</sub>	0.06 $\pm$ 0.03	0.03 $\pm$ 0.009	0.03 $\pm$ 0.01	0.05 $\pm$ 0.02
$\beta/\alpha$	0.66 $\pm$ 0.03	0.66 $\pm$ 0.05	0.66 $\pm$ 0.02	0.70 $\pm$ 0.02
CV <sub><math>\beta/\alpha</math></sub>	0.07 $\pm$ 0.01	0.07 $\pm$ 0.03	0.05 $\pm$ 0.02	0.09 $\pm$ 0.03
E2:E3	5.80 <sup>A</sup> $\pm$ 0.05	6.44 <sup>AB</sup> $\pm$ 0.06	6.30 <sup>AB</sup> $\pm$ 0.04	7.10 <sup>B</sup> $\pm$ 0.06
CV <sub>E2:E3</sub>	0.31 <sup>A</sup> $\pm$ 0.10	0.13 <sup>B</sup> $\pm$ 0.04	0.13 <sup>B</sup> $\pm$ 0.03	0.14 <sup>B</sup> $\pm$ 0.04
SR	0.89 $\pm$ 0.07	0.89 $\pm$ 0.10	0.82 $\pm$ 0.05	0.97 $\pm$ 0.09
CV <sub>SR</sub>	0.34 <sup>A</sup> $\pm$ 0.05	0.20 <sup>B</sup> $\pm$ 0.10	0.11 <sup>B</sup> $\pm$ 0.02	0.20 <sup>AB</sup> $\pm$ 0.05
SUVA <sub>254</sub>	2.93 $\pm$ 0.32	2.74 $\pm$ 0.37	2.63 $\pm$ 0.26	2.40 $\pm$ 0.33
CV <sub>SUVA254</sub>	0.18 $\pm$ 0.04	0.20 $\pm$ 0.05	0.23 $\pm$ 0.06	0.27 $\pm$ 0.05
<i>PARAFAC Components</i>				
C <sub>Terrestrial</sub>	0.69 $\pm$ 0.02	0.69 $\pm$ 0.04	0.71 $\pm$ 0.05	0.64 $\pm$ 0.07
CV <sub>C<sub>Terrestrial</sub></sub>	0.19 <sup>A</sup> $\pm$ 0.07	0.09 <sup>B</sup> $\pm$ 0.02	0.12 <sup>AB</sup> $\pm$ 0.04	0.12 <sup>AB</sup> $\pm$ 0.04
C <sub>protein</sub>	0.31 $\pm$ 0.02	0.31 $\pm$ 0.04	0.29 $\pm$ 0.05	0.36 $\pm$ 0.07
CV <sub>C<sub>protein</sub></sub>	0.40 <sup>A</sup> $\pm$ 0.10	0.20 <sup>B</sup> $\pm$ 0.05	0.28 <sup>AB</sup> $\pm$ 0.04	0.21 <sup>B</sup> $\pm$ 0.05
<i>Relative Contribution of SEC fractions</i>				
C <sub>HMWS</sub>	0.09 $\pm$ 0.02	0.06 $\pm$ 0.01	0.07 $\pm$ 0.02	0.09 $\pm$ 0.03
CV <sub>C<sub>HMWS</sub></sub>	0.60 $\pm$ 0.25	0.45 $\pm$ 0.27	0.59 $\pm$ 0.22	0.65 $\pm$ 0.18
C <sub>LMWS</sub>	0.13 $\pm$ 0.01	0.13 $\pm$ 0.02	0.14 $\pm$ 0.02	0.14 $\pm$ 0.01
CV <sub>C<sub>LMWS</sub></sub>	0.27 $\pm$ 0.08	0.25 $\pm$ 0.10	0.27 $\pm$ 0.07	0.11 $\pm$ 0.10
C <sub>HS</sub>	0.77 $\pm$ 0.03	0.81 $\pm$ 0.07	0.79 $\pm$ 0.03	0.76 $\pm$ 0.04
CV <sub>C<sub>HS</sub></sub>	0.12 $\pm$ 0.03	0.09 $\pm$ 0.09	0.11 $\pm$ 0.06	0.07 $\pm$ 0.02

S2). Still, DOM regimes did not appear similarly variable among the various flow regimes: Specifically, the seasonal ~~turnover of DOM shifts in DOM composition~~ in natural Mediterranean ~~flow regimes was rivers were~~ quite variable. Here, by optical assessment, ~~alteration dams~~ caused a homogenization across rivers with ~~seasonally similar invariable DOM invariable DOM through seasons~~ (Fig. 56e-f). Also, seasonal ~~turnover of DOM shifts in DOM composition~~ in natural Mediterranean regimes  
350 seemed to be more variable than in Atlantic counterparts.

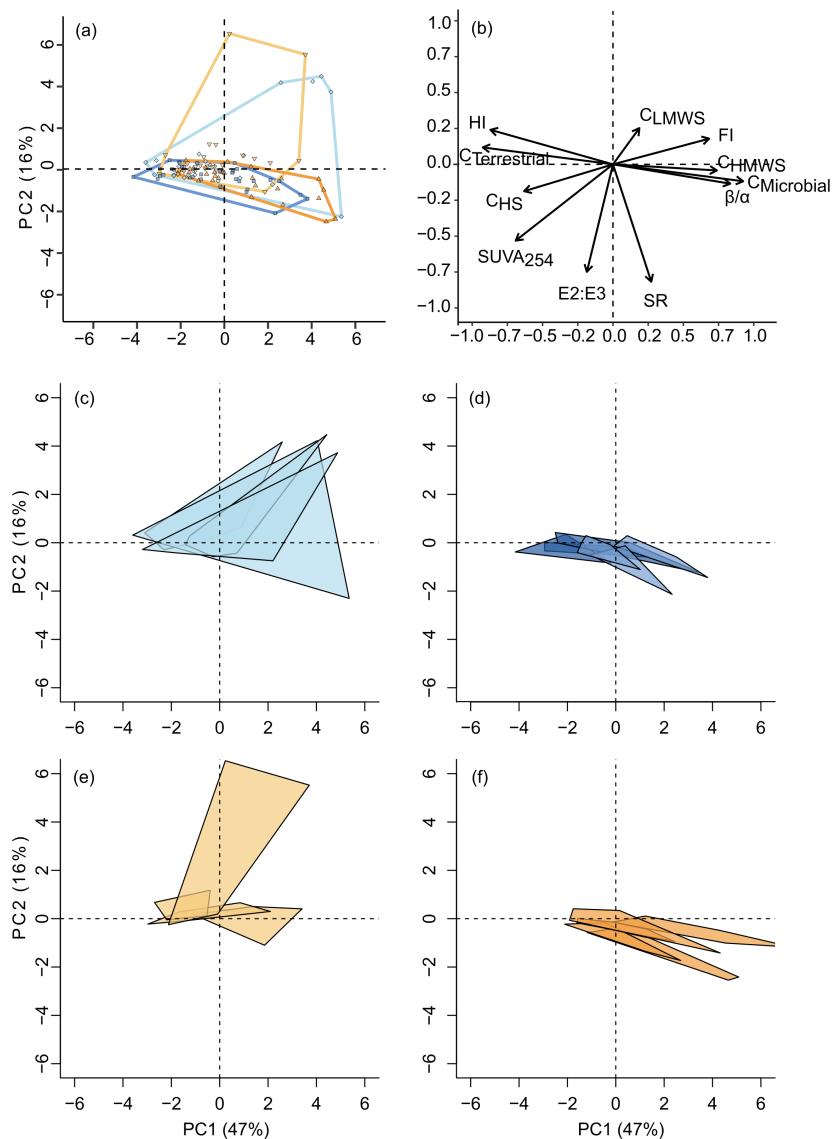
Since individual PCA axes represent ~~distinct gradients of compositional DOM turnover~~ qualitatively distinct shifts in DOM composition, we looked at the timelines, average locations and variances of rivers along the PC1 and PC2 axes separately as well. Timelines of DOM composition throughout the year ~~show showed~~ similar patterns on PC1 for all flow regimes (Supp Fig. 2a-b). Contrarily, on PC2, natural rivers differ from their altered equivalents both in August and October (Supp Fig. 2c-d).  
355 Plotting the  $\beta/\alpha$  index as a particular example, it ~~is turned out~~ higher in October in altered Mediterranean rivers than in its natural equivalents; such a difference was not observed in other months nor in Atlantic rivers (Supp Fig. 2 e-f). We could not find any significant difference in average location along the PC1 or PC2, neither between the two natural regimes nor between altered and natural Mediterranean rivers (Fig. 67b, Supp Table 1). ~~But~~ However, we can visually see that ~~aA irrigation rivers have the highest 3 and aA hydropower has the lowest 3~~ Atlantic rivers with irrigation dams have the three highest medians on  
360 PC1 median, while Atlantic rivers with hydropower dams have the three lowest.

We found that altered Atlantic rivers (Supp ~~Table 1~~ Table S2) have lower average PC2 scores than natural Atlantic rivers. ~~Similarly, we~~ We could not find any significant difference in temporal variation along the PC1 and PC2, neither between the natural regimes nor between the altered and natural Mediterranean rivers (nM-aM, Fig. 67b, Supp ~~Table 1~~ Table S2). However, we found that natural Atlantic flow regimes have significantly higher ~~temporal DOM turnover seasonal shifts in~~ DOM composition than their altered equivalents along both PC1 and PC2 axes (nA-aA, Supp ~~Table 1~~ Table S2).  
365

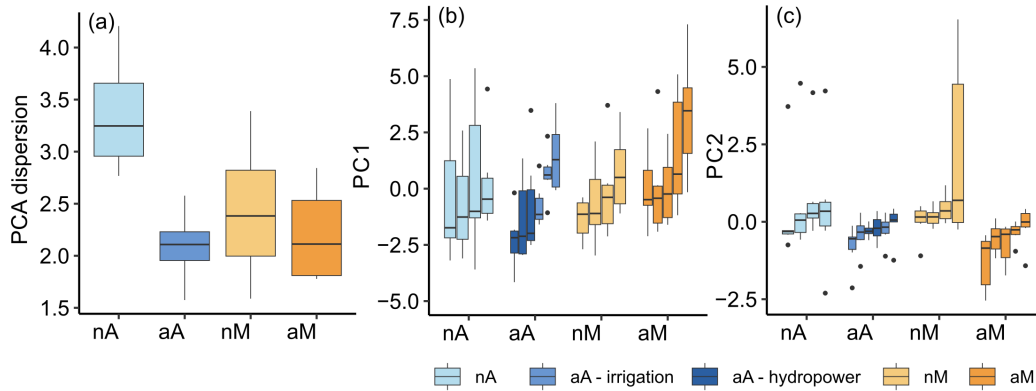
Moreover, along PC1, the among-river variation of mean DOM was similar among the rivers. Along PC2 we found a difference between the natural rivers (nA-nM; Supp ~~Table 1~~ Table S2). Similarly, along PC1, among-river variation of ~~temporal DOM turnover seasonal shifts in DOM composition~~ was similar for all the rivers. Contrarily, along PC2, it was different both between the natural rivers and between natural and altered ~~in the~~ Atlantic Rivers (nA-nM, nA-aA; Supp ~~Table 1~~ Table S2).  
370 These results confirm our visual assessments (Fig. 56c-f, Fig. 67).

### 3.4 Linking DOM regimes to flow regimes

The first component of the partial least square regression (PLSR) models explained ~~30.86~~ 30.9 % of the variance of the dispersion in the entire multidimensional PCA space, ~~18.72~~ 18.7 % of the variance on the PC1 axis, and ~~23.99~~ 24.0 % of the variance on the PC2 axis. For ease of interpretation, only the ~~1st~~ 1<sup>st</sup> component was selected from each of the three ~~PLS PLSR~~ PLS PLSR  
375 models. Based on VIP > 1 as a criterion, 34, 34, and 29 indices were selected to explain the multidimensional dispersion and the variance of PC1 and PC2 axes, respectively. Mostly, indices identified as important for "PCA Multidimensional dispersion" - as the global model of ~~DOM turnover shifts in DOM composition~~ - were then also found as relevant ~~to explain for explaining~~ variances of PC1 or PC2 or both axes. A few indices, however, were identified as relevant in only one of the three models, suggesting multivariate dispersion to be a maybe ~~blurry but more encompassing measure of DOM turnover~~ noisy but more



**Figure 6.** Principal component analysis of DOM composition. Graphical representation of (a) scores and (b) loadings of the PCA results where scores of each sampling occasion show a large overlap of flow regimes regarding DOM composition. The bottom panels show the temporal turnover of seasonal shifts in DOM composition in each river as a polygon in the same PCA space, where (c) the natural Atlantic rivers (nA) are represented in light blue(diamond), (d) the altered Atlantic (aA) rivers are represented in dark blue(square), (e) the natural Mediterranean (nM) rivers are represented in light orange (inverse triangle) and (f) the altered Mediterranean (aM) rivers are represented in dark orange(triangle). The PCA is based on absorbance and fluorescence measurements; humic-like components ( $C_{Terrestrial}$ ), protein-like components ( $C_{Microbial}$ ), specific absorption at 254 nm ( $SUVA_{254}$ ), humification index (HIX), fluorescence index (FI), freshness index ( $\beta/\alpha$ ), slope ratio (SR), inverse molecular weight indicator (E2:E3) and size exclusion chromatography fractions: high MW biopolymers ( $C_{HMWS}$ ), humic substances ( $C_{HS}$ ) and low MW substances ( $C_{LMWS}$ ).

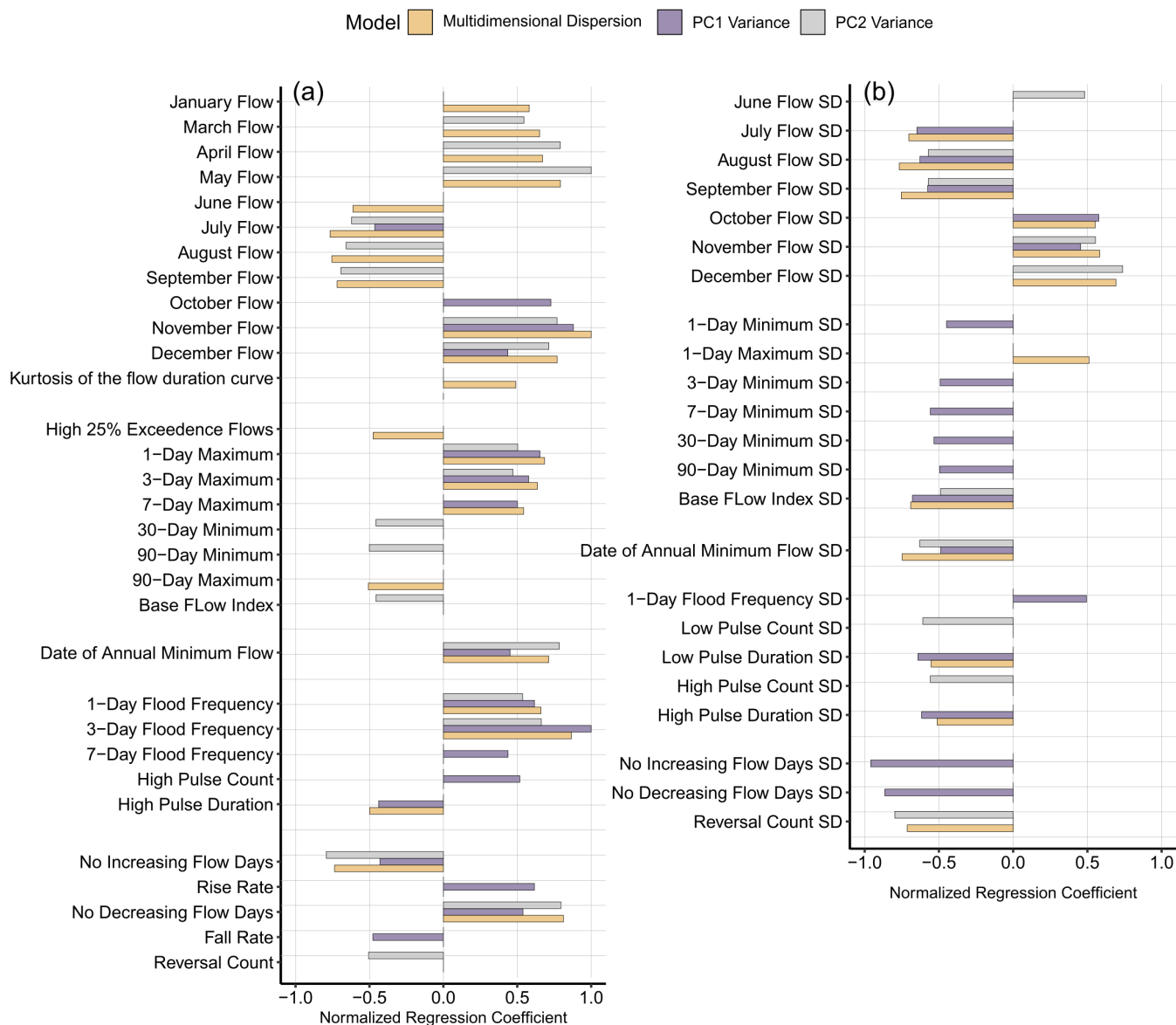


**Figure 7.** Temporal turnover of DOM composition—Seasonal shifts in the various rivers belonging to four flow regimes, i.e., natural and altered flow regimes in two hydrological classes: Annual DOM turnover composition as average dispersion (distance to river centroid) along all the PCA axes (a); temporal variation of DOM in each river along PC1 (b) and PC2 (c). The rivers are grouped by flow regime; natural Atlantic (nA, light blue), altered Atlantic (aA, dark blues), natural Mediterranean (nM, light orange) and altered Mediterranean (aM, dark orange) rivers. The aA rivers are separated into two reservoir purpose groups, irrigation and hydropower, for the sake of visualisation. All aM rivers have reservoirs with used for irrigation purposes by default.

380 comprehensive measure of shifts in DOM composition, i.e. capturing DOM turnover shifts in DOM composition that cannot be attributed solely to either PC1 or PC2.

The global model for dispersion was driven by high flow in the wet winter and spring months (November, December, January Flow, and March, April, May Flow, Fig. 78a) and low flow in the dry summer months (June, July, August, September Flows, Fig. 78a). Standard deviations of these flow magnitude indices show showed a similar trend of positive correlation in wet months and negative correlation in dry months. Moreover, the global dispersion increases dispersion increased with increasing magnitude and frequency of short duration high flow events (1-3-7 Day Maximum and 1-3-7 Day Frequency, Fig. 78a). Regarding the rate and frequency of flow change, the count of increasing flow days decreases decreased and the count of decreasing flow days increases increased this dispersion (No Increasing Flow Days, No Decreasing Flow Days, Fig. 78a). Regarding the timing indices, the later date of the annual minimum flow is was related to higher dispersion whereas variation in this date (i.e. its standard deviation) is was related to lower dispersion.

In addition to the global dispersion drivers, we observe identifying the drivers of dispersion, we observed that PC2 variance decreases decreased with increasing long-duration minimum flows specifically, while PC1 variance increases increased with increasing high flood frequency and counts. Similarly, PC1 variance increases increased with increasing rise rate and decreases decreased with increasing fall rate. Additionally, we found that PC1 variance decreases decreased with increasing SD of minimum flood-related indices especially, while most SD indices are were negatively correlated.



**Figure 8.** Following the PLSR model the indices with VIP scores higher than 1 were assessed for each model. (a) The mean indices and (b) the intra-annual standard deviation indices are separated for ease of interpretation. The yellow bars represent normalized regression coefficients for the indices in the model explaining multidimensional dispersion, the purple and grey bars represent the regression coefficients for the indices in the models explaining variance along PC1 (ranging from -0.07 to 0.07) and along PC2 (ranging from -0.06 to 0.06), respectively. For better comparison, regression coefficients were normalized to ranges [-0.02, 0.02], [-0.07, 0.07] and [-0.06, 0.06] for dispersion, PC1 and PC2, respectively. The indices that belong to the same sub-group are grouped together. The complete list of indices used and their abbreviations are given in Supp Table 2,3.

## 4 Discussion

In this study of 20 rivers, we compared the effects of flow alteration on the DOM regime in dams altering two distinct natural flow regimes ~~Our results contribute to the increasing evidence on DOM regimes. The literature suggests~~ that dams do not influence all rivers alike (McManamay et al., 2012). ~~Indeed, and indeed,~~ the likely high diversity of DOM regimes associated with natural flow regimes may give the impression that makes similar reactions to flow alterations are damming appear improbable. On the other hand, a suite of common ecological effects associated with reservoirs, e.g. the simple fact of increased residence time, may indeed drive commonalities of DOM regime response to a dam-induced alteration of natural flow dynamics. In reality, the natural flow regime forms a baseline background, on top of which a dam with a reservoir of a certain size and a certain type of operation, thus residence time, may cause flow alterations may alter flow with consequences for the DOM regime. ~~When designing this study, we acknowledged this~~ We acknowledged this in our study design by restricting study rivers to ~~2 distinct hydrological classes~~ two distinct natural reference flow regimes, namely Atlantic and Mediterranean. ~~In our study of 20 rivers, we indeed could not show similar responses~~

Notably, in several aspects, DOM regimes were more variable across the natural and altered Mediterranean rivers, hampering the identification of similar responses to dam-induced flow alteration in Atlantic and Mediterranean regimes ~~to flow alterations~~ neither in DOC concentration nor in DOM composition when comparing by a strict comparison of altered rivers to their natural equivalents. ~~Across the considered natural flow regime classes~~ However, DOM regimes ~~responded differently yet consistently to flow alteration~~ showed consistent features in both altered Atlantic and Mediterranean rivers. We suggest that ~~(1)~~ reservoir effects (i.e. ~~Hydraulic retention~~ hydraulic residence times and operation schemes ~~Maavara et al., 2020~~), ~~(2)~~ (Maavara et al., 2020)), which cause flow seasonality shifts and ~~(3) flow regime homogenization~~ flow regime smoothing, may work towards altered DOM regimes in downstream systems along a range of pathways, ~~with ultimately~~. This may ultimately lead to unique outcomes for each hydrological class river, yet with some consistencies despite rivers belonging to different reference flow regimes.

### 4.1 Investigated flow regimes and observed flow alterations

This study benefits from Peñas and Barquín (2019) who classified natural flow regimes on the Iberian Peninsula into 20 distinct regime types (or hydrological classes), of which we selected two. Indeed, natural rivers in both classes have pretty distinct flow regimes, each with common features. Hence, both ~~classes~~ natural flow regimes have a low variance of flow descriptors ~~across their rivers among their rivers~~ (Supp Fig 1c). Contrarily, the high among-river ~~variation~~ variations of flow variability boxplots in most altered regimes (Fig. 34), combined with the hydrographs (Fig. 23), indicate little commonality in flow ~~alteration~~ regimes across the altered rivers: while some rivers have smoother hydrographs, others show a tendency towards increased temporal variation in their flow regime (~~eg. e.g.~~ introducing summer high flows and/or winter low flows) or show little influence of the dam on the seasonal time scale studied. This is in accordance with the literature ~~, which suggests that flow alterations may not affect all flow regime classes alike,~~ suggesting diverse effects upon damming, and while it may push some rivers outside of their normal ~~river function~~ hydrological functioning (McManamay et al., 2012), others may still behave similarly to their expected natural flow regime. ~~Moreover, as~~



As visible by their higher ~~across-river~~ among-river variation, flow alterations diversified ~~altered~~ Atlantic rivers more than ~~altered Mediterranean rivers~~. Since flow alterations within each class diversify flow regimes in Mediterranean rivers (Supp Fig. 3). Indeed, both reference flow regimes diversified into different directions, mostly due to ~~by design with reservoirs of different various reservoir designs~~, purposes and sizes ~~together as one group, altered~~. Altered flow regimes are thus not as easily classified and not as distinct as their natural equivalents. ~~This is supported by the higher dispersion of these rivers in the PCA space of the flow regime analysis (Supp Fig. 3).~~ Despite this obvious diversification of flow regimes by dams and ~~reservoirs built for diverse purposes in both hydrological classes~~ However, we also ~~observe 2~~ observed two common features of altered flow regimes: (1) the general loss of dynamics ~~of the flow regime~~ throughout the year by less intense 1-Day ~~high flows~~ High Flows (Fig. ~~34a~~) and more intense seasonal low flows (Fig. ~~34e-f~~), and (2) the newly introduced summer high flows resulting in a shift ~~in-of~~ flow seasonality (Fig. ~~2-4~~ b and e). The latter was especially pronounced in Mediterranean rivers, ~~likely caused by them all being irrigation reservoirs with differing storage capacities that result in a need for water release where reservoirs exclusively serve the purpose of irrigation and thus release water to arid downstream regions~~ during summer. Additionally, the reservoir capacity is surpassed in some but not all smaller reservoirs in ~~winter-spring flows~~ late winter to early spring, resulting in ~~a second an unreliably appearing secondary earlier~~ “release”, hence the double-humped shape of ~~their flow regime~~ some altered flow regimes. Reservoirs of our study ranged in size between 2 hm<sup>3</sup> and 664 hm<sup>3</sup>, thus some but not all were big enough to withhold high spring flows for storage until release in a single summer peak. A similar seasonal water release does not exist in the altered Atlantic rivers, especially those flowing to the North (Nalon, Nanca, Narcea) ~~since they are all hydropower reservoirs without much~~. These hydropower reservoirs have low storage capacity, hence ~~they~~ at the studied seasonal time scale - they more closely mimic the intense summer low flows of their natural ~~equivalent~~.

~~This grouping had its challenges of its own; for instance, while hydropower production often drives hydropeaking fed by equivalents. We note that hydropower as a purpose does not principally prevent~~ seasonal water storage ~~, our hydropower reservoirs in our study tend not to hydropeak and while some irrigation reservoirs in this study tend to be small for their spring high flows and have to release twice within a year, some are big enough to produce one high flow during summer low flows. Moreover, we also had to group reservoirs of 2 hm<sup>3</sup> to 664 hm<sup>3</sup> in the same “flow alteration” group even though reservoirs of different sizes imply different residence times, stratification patterns, warming potential, etc., which have different implications for the carbon dynamics of the downstream rivers. for later hydropeaking (Almeida et al., 2020), yet hydropeaking was not observed in the studied rivers.~~

Thus, in our study, flow regimes diversify through common, yet varied types of alteration. Our study design implied the creation of inherently heterogeneous “altered” flow regime groups with reservoirs differing in size and residence time, but also facilitating various stratification patterns and showing various warming potentials. One thing our study cannot achieve by design is to look for commonalities in DOM regimes for reasonably categorized, distinct types of ~~alteration~~. ~~But, as a result, although grouping reservoirs for irrigation and hydropower production as “flow alteration” despite their very distinct flow features~~ flow alteration. In fact, grouping reservoirs by purpose (irrigation vs. hydropower) resulted in mostly little difference between the studied ~~flow regime responses~~ DOM regimes despite their distinct flow features. Thus, we believe any

commonality ~~or difference we find has high importance due to this grouping design~~ we find based on a coarser definition of mere "dam-induced flow alteration" may be of prominent importance and strong applicability.

## 465 4.2 Responses of annually averaged DOM quantity and composition towards flow regimes

In our comparison of annual averages of DOM quantity (DOC) of natural and altered rivers, ~~we saw clearly higher median values in altered Atlantic rivers compared to their natural equivalents and a weaker replication of the same trend in Mediterranean rivers. These patterns were not significant, likely due to low statistical power.~~

~~A clearcut~~ tests missed significance likely due to low statistical power despite median values of altered rivers appearing  
470 higher specifically in the Atlantic rivers. Yet, a clear-cut response of DOM quantity to flow regimes or their alteration is ~~not~~  
~~easy to predict. DOC maybe naive to expect.~~ DOM quantity of natural rivers is affected by various environmental factors such  
as topography, climate and land cover, ~~while~~. In contrast, in altered rivers, it is additionally influenced by factors such as dam  
operation, reservoir stratification and reservoir water temperature (Maavara et al., 2020). Various studies have found conflicting  
results on reservoirs as increasing, decreasing or not altering DOC concentrations for the downstream systems (Ulseth and  
475 Hall, 2015). In rivers from arid regions with high flow variation for example, upstream reservoirs may act as a carbon source  
(Parks and Baker, 1997) or a carbon sink (Miller, 2012). In temperate regions, upstream reservoirs may act as a carbon source  
(Knoll et al., 2013), while no change was observed in reservoirs of boreal rivers (Nadon et al., 2015; Imtiaz et al., 2024).

The existing diversity of influences makes a common response of DOM quantity to flow alteration across Atlantic and  
Mediterranean rivers unlikely, especially when considering the highly integrative nature of a variable like annually averaged  
480 DOC that integrates DOM across various sources and chemical compositions as well as over time. Yet, in our study, we  
observed an ~~increase~~ increasing trend in DOC from natural to altered rivers when Atlantic and Mediterranean rivers were separ-  
ated. One explanation for this ~~effect of flow alteration by~~ apparent effect of dams on DOC concentration ~~is~~ could reflect a  
sampling problem associated with the efficient capture, transient storage and averaging of extreme DOM amounts delivered to  
the river network from the catchment during short-term flood events (Raymond et al., 2016). In this explanation, dams with  
485 large enough reservoirs interfere with the downstream transmission of a DOM pulse during a flood, but more importantly,  
~~some DOM~~ this DOM pulse is transiently stored in the reservoir and ~~passed on~~ if not subjected too strongly to bio- and  
photodegradation - passed on towards downstream later over a longer time. Thanks to this ~~hydrological averaging, interference~~  
of dams with naturally occurring flow and DOM pulses, downstream DOM composition is "hydrologically averaged" and  
invariant in time. Thus, sampling at discrete points in time in ~~downstream rivers thus altered, downstream rivers~~ results in rela-  
490 tively high and stable values, while it is highly unlikely that with just six sampling dates we were able to capture a pulse on any  
of our natural rivers, whose annual mean DOC then ends up underestimated. In addition or alternatively to this effect of tempo-  
ral smoothing of terrigenous DOM pulses, productivity in reservoirs may contribute additional DOM of autochthonous origin.  
~~Both mechanisms are related to the increased,~~ which could potentially also counteract losses by bio- and photodegradation.  
All these mechanisms are associated with residence time of water in the reservoirs, yet they expectedly result in ~~very~~ different  
495 DOM compositions passed on to downstream river reaches.

Strictly looking at annual average measures for DOM composition between natural and altered flow regimes we found only limited evidence for differences; we observed a significant ~~difference only in flow alteration effect on~~ mean DOM composition ~~only~~ along PC2 ~~between natural and altered for~~ Atlantic rivers. ~~The Here, altered rivers appeared on average more humic with signs of photodegradation (SR). The (further)~~ lack of significant effects between naturally flowing and flow-altered rivers with regard to (average) DOM composition to some extent supports the idea of reservoirs as smoothers of a ~~lowly-variable~~ variable, natural DOM regime, or it may imply that other factors such as hydrology or catchment characteristics have an overriding influence on DOM composition, thereby masking any potential reservoir effect by a lot of noise.

In fact, the literature on linking DOM composition to dams has mixed results. Some studies show that a high export of autochthonous and biolabile DOM caused by increased primary production in reservoirs and tailwaters may result in a shift from terrestrially sourced DOM to protein-like DOM downstream of dams (~~Xenopoulos et al., 2021~~) (Imtiaz et al., 2024; Ulseth and Hall, 2015). Contrarily, other studies claim that dams of certain size and function may have no significant effect on downstream DOM composition. In boreal rivers, for example, no shift in DOM composition from terrestrial to protein-like was observed downstream of ~~dams (Xenopoulos et al., 2021)~~ hydropower and storage dams (Nadon et al., 2015). However, another study from the same climatic region observed that increased residence time in a hydropower-producing mesotrophic reservoir shifted the DOM composition from allochthonous to autochthonous (Imtiaz et al., 2024). This diversity of responses again points to a particular source of noise in our study that may cause difficulties in finding ~~clear-cut~~ clear-cut effects of flow alteration on DOM composition: the fact that we grouped various dams of different purposes and sizes under the term “flow alteration”. In this respect, reservoir trophic state and dam operations such as the timing of the reservoir filling or water release are also of concern, specifically regarding their influence on the composition of DOM transported to downstream reaches by interfering with residence times and transmission of upstream source signals (Xenopoulos et al., 2021). Indeed, dams can be a carbon source or a carbon sink depending on many such factors related to dam nature and operation; ~~in the worst case, they lead to~~ potentially, they cause DOM composition to respond to “flow alteration” in opposing directions ~~even if rivers are expected to belong to the same hydrological class.~~

#### 4.3 DOM regime reactions: Atlantic and Mediterranean rivers show divergent responses to flow regime alterations ~~in~~ annual DOM turnover but with similar outcome

A DOM regime may be better described than just by annually averaged DOC and DOM composition, especially when these variables are subject to dynamic processes and show pronounced temporal variability. Indeed, when looking at the temporal change of DOM composition indicators (Supp Fig. 2e-f, Fig. S2), we observed specific differences in summer and fall months between the natural and altered regimes in both Atlantic and Mediterranean rivers. The divergence between natural and altered rivers is even more obvious in the multivariate analysis, specifically along PC2 as well as in  $\beta/\alpha$ , where particularly during summer, DOM in altered rivers behaved differently than in natural rivers (Supp Fig. 2e-d, Fig. S2c-f).

To make use of the temporally spaced information without having to resort to time series analyses, we computed measures of variation of DOC and of ~~turnover of shifts in~~ DOM composition at the annual timescale as descriptors of the DOM regime.

We reasoned that such integrative measures based on variance can also be quite flexibly computed in cases where the temporal spacing of measurements is uneven, not aligned among rivers, or sampling is sparse or spread randomly over multiple years.

Hydrological seasonality and event-induced flow variation are the main drivers of annual variation in carbon concentration in natural rivers (Fasching et al., 2016). However, we could not observe an effect of flow regime on the annual DOC variation nor observe any clear difference among annual timelines of DOC (Fig. 45b-c). Contrarily, we found several DOM indices showing differences in their annual variance (CV values) and PCA dispersion among Atlantic in multivariate dispersion among natural and altered flow regimes. Such common patterns in Atlantic rivers but lack thereof in altered Mediterranean rivers imply that climatically different flow regimes respond differently to flow alterations in terms of DOM (or that flow alterations have climate-specific effects on DOM). Specifically dam-impacted Atlantic rivers showed consistently lower temporal variation of various indices, multivariate dispersion and PCA-axes. Thus, dams in these rivers led to a significant temporal homogenization of DOM in downstream sections. These patterns appeared in Mediterranean rivers as well, most notably when assessing multivariate dispersion (Fig. 6). However, in Mediterranean rivers, the differences between natural and altered flow regimes were insignificant for most indicators, largely because of remarkably higher spatial variation of temporal CVs across the various natural Mediterranean rivers. DOM regimes in naturally flowing Mediterranean rivers were indeed either quite variable over time or fairly stable - a finding that strongly contrasts the consistently dynamic DOM regimes of natural Atlantic rivers (Fig. 6, 7). Taken together, our results suggest that dams may lead to fairly consistent and temporally stable DOM regimes in downstream river sections even in climatically different reference flow regimes and contrasting the high diversity of DOM regimes potentially appearing in natural flow especially in Mediterranean rivers.

#### 4.4 Dam and reservoir-associated mechanisms behind DOM regime reactions to flow alteration

Our PLSR results linking flow regime characteristics to PCA-multidimensional dispersion and variance along PC1 and PC2 axes yield more insights into the mechanisms driving temporal DOM turnover in the various flow regimes behind seasonal shifts in DOM composition. Short-duration high-flow events are key in mobilizing terrestrially stored carbon into the riverine system via increased riparian connectivity. The PLSR results show an increase in DOM turnover wider annual shifts in DOM composition with an increase of indices describing magnitude (1-3-7 Day Maximum) and frequency (1-3-7 Day Flood Frequency) of such short-duration high flow events (Fig. 78a). These relationships may be partly driven by natural differences in terrestrial DOM mobilization, but more likely they are also associated with the ability of reservoirs to interfere with the downstream transmission of a terrigenous DOM pulse.

Indeed, many reservoirs in Northern Spain are associated with a decreased frequency of high flow events due to the storage of water in the reservoir and downstream flow homogenization-smoothing (Aristi et al., 2014). In our study, in both natural flow regimes, summer low flows follow high winter and spring flows (with some climate-specific variation, for instance in the exact timing and intensity of drought). Thus, flow alteration largely leads to a more or less strong reversal of seasonal dynamics by retaining water in reservoirs in winter and spring for later release during the summer. This effect is greater in Mediterranean rivers. These seasonalities-This seasonality of the flow regimes in our study are-is reflected in patterns of DOM turnover: a positive correlation-shifting DOM composition: PLSR modelling identified a positive effect of mean monthly flows of-in winter

and spring ~~high discharges (floods)~~ but a negative ~~correlation effect~~ of mean monthly flows in summer ~~droughts with the DOM turnover (droughts) on the magnitude of shifts in DOM composition~~. This is corroborated by relatively higher terrestrial signals in the rainy spring months in natural rivers (SuppFig. 2a-b, Fig. S2a-b) and also shown by the positive ~~correlation of aromaticity and molecular weight variance with effect of~~ seasonal high flows (March, April, May ~~Flows~~) on PC1 indicating aromaticity and molecular weight variance. This is in accordance with the current scientific consensus that high flows are generally linked to allochthonous DOM inputs while low flows promote autochthonous production (Imtiaz et al., 2024). Natural flow regimes allow the transmission of flood-induced terrigenous DOM pulses in spring while such DOM is rare in these rivers during summer low flows, ~~when there is increased opportunity for production of autochthonous DOM~~. On the other hand, in altered flow regimes, reservoirs pass on seasonally smoothed and thus rather invariable terrigenous DOM to downstream systems long into summer (SuppFig. 2e-f). ~~This is also supported by the negative correlation of summer high flows as part of the altered regimes with global PCA dispersion, indicating~~. Fig. S2e-f). The negative effect of summer flows on the magnitude of shifts in DOM composition is likely as much driven by low summer flows in natural flow regimes as by high summer flows in altered flow regimes. In altered flow below dams, the lack of summer ~~droughts drought~~ lowers the natural ~~DOM variance variation of DOM composition~~ of a river.

~~In addition to the importance of seasonal high flows for driving seasonal variance of DOM composition, On the other hand, low flow during~~ naturally dry summer months ~~contribute to DOM turnover as well as may directly increase the variation of DOM composition through~~ higher microbial signals from autochthonous production of DOM in the merely flowing rivers. This is shown by higher PC1 and PC2 values during summer low flow in the natural Atlantic rivers while DOM remained comparably invariable in the altered Atlantic rivers (SuppFig. 2a, Fig. S2). A similar microbially sourced carbon pulse was observable in altered rivers in October, coinciding with the lowest flow rate for these rivers. ~~This finding still agrees with the earlier interpretation about reservoirs as hydrological smoothers of upstream DOM signals, which, however, may include not only terrigenous DOM but also in-stream produced material. Within reservoirs, these two types of material may then be subjected to photo- and bio-degradation, ultimately leaving less labile humic material for continuous downstream export with little compositional variation.~~

A counter-effect to the lowered autochthonous contribution ~~from upstream rivers~~ to DOM variance in the altered rivers may be ~~given by~~ the potential production of DOM in the reservoirs, especially when ~~these reservoirs~~ have longer residence times (Ulseth and Hall, 2015; Imtiaz et al., 2024), reasonable nutrient (Maavara et al., 2020) supply and support warming. ~~This seems to be the case for altered Mediterranean rivers that show a stronger microbial and weaker terrigenous signal in summer compared to their natural equivalents (see time series of~~ For Atlantic rivers, our data do not suggest reservoirs as sources of new autochthonous material. For Mediterranean rivers, summertime excursions of DOM towards higher PC1, PC2, and betascores (i.e. towards more microbial DOM, higher FI and  $\beta/\alpha$ , SuppFig. 2b, d and f,  $\alpha$  ratios, Supp. Fig. S2 bdf) suggest some influence of DOM production within reservoirs, even though this effect could not be identified as statistically significant. These results agree with the generally good ecological status and thus low trophic state of the reservoirs (Table 1).

Notably, the buffering effect of reservoirs may also imply a change of DOM composition due to higher degradation as a result of longer residence time. We observed that in August - October measurements, PC2, which is strongly correlated to SR

and E2:E3, diverges between natural and altered rivers in both Atlantic and Mediterranean regimes. Here, natural rivers have positive values and altered rivers have negative values. We think this may be related to the higher irradiation ~~particularly since~~  
600 ~~SR indicates higher as SR indicates~~ photodegradation. This might be due to two factors; longer residence times in the reservoir leading up to these ~~months moments of sampling~~ and water release from the reservoirs ~~from May/June till October where water depth decreases hence light penetration increases over summer that decreases water depth, hence increasing light penetration.~~

#### 4.5 Dams drive homogenization of DOM regimes across rivers

~~Statistical tests involving the pairwise flow regime comparisons could not identify among river differences based on annually~~  
605 ~~integrated DOC variables, yet visual data inspection of among river variation of DOC and  $CV_{DOC}$  suggests a trend towards increasing among river variation from natural to altered rivers. This indicates a spatial diversification of DOM regimes in terms of quantitative behaviour, which parallels the flow regime diversification due to dams. This conclusion, however, could not be corroborated by a similar behaviour when analyzing DOM composition. We~~ The pervasive effects of dams on DOM regimes also had an interesting additional effect when looking at the spatial variation of DOM regimes across rivers. When assessing  
610 DOM composition, we observed that flow ~~regime~~ alterations homogenized the DOM regime across rivers despite our dams ~~being~~ of differing sizes and purposes ~~which alter the flow regime in different directions~~ -, altering flow regimes in various directions (e.g., Fig. 6). This loss of natural ~~DOM diversity~~ spatial diversity of DOM regimes across rivers indicates that dams have a ~~very strong powerful~~ homogenizing effect on DOM regimes ~~-at the landscape scale. Interestingly, we could not find such an effect for variation of DOC and  $CV_{DOC}$ . Here, data inspection (Fig. 5, Table 4) shows a non-significant trend towards~~  
615 increasing spatial variation across rivers from natural to altered rivers. This would indicate a spatial diversification of DOM regimes in terms of quantitative behaviour, which parallels the flow regime diversification due to dams.

## 5 Conclusions

In our study, we investigated how dams, serving various purposes, alter ~~the flow regime~~ flow and DOM regimes in rivers with ~~distinct natural flow patterns to uncover commonalities and variations in DOM dynamics, we looked into~~ two distinct  
620 ~~natural flow regimes and compared natural and altered DOM regimes within each~~ (reference) flow patterns. We concluded that ~~a dam may move a river outside of its~~ dams in our study can move rivers outside of their normal river function both in terms of ~~its~~ annual average and annual variance of DOC concentration and composition ~~through its influences on the natural flow regime expected of a river. Among such influences, introducing towards surprisingly similar outcomes despite differences in underlying natural hydrology. Dam effects such as~~ high flows during natural seasonal drought and ~~interfering~~  
625 interference with natural high and low flow events are likely the driving factors for the decrease in ~~annual turnover of carbon quantity. Moreover, these alterations created long periods of low flow in downstream rivers, especially in the winter and spring months, preventing the transmission of terrigenous DOM sourced upstream towards downstream located~~ seasonal shifts of DOM composition. A main mechanism is the prevention of transmission of upstream-sourced terrigenous and autochthonous DOM towards downstream located systems. In conclusion, ~~these the often~~ drastic seasonality reversals of the flow regime ~~may~~



630 can strongly impact the seasonality of the DOM composition ~~negatively~~. It appears that in our study area, reservoirs act as a buffer, where longer residence times average out the naturally ~~high turnover of DOM composition, and send~~ occurring shifts in DOM composition by trapping the upstream-sourced carbon inputs in the reservoir for a longer time and objecting them to bio and photo-degradation, thus sending relatively invariable DOM further downstream. This effect was similar across all altered flow regimes despite the diversity of dam types and purposes.

635 Flow alterations ~~also thus~~ resulted in the homogenization of DOM downstream of dams across time ~~and space~~ (within each river) and space (across rivers). This may have important consequences for riverine carbon cycling. In natural flow regimes, considerably variable DOM meets benthic bacterial consumers that undergo frequent succession due to disturbance by flow. The likely resulting mismatch between the chemical traits of incoming DOM and the microbial functions needed to process this DOM as a resource limits its metabolism (Talluto et al., 2024). In contrast, in altered flow regimes, there is an increased chance

640 for a match between diverse but stable carbon resources and functions of their heterotrophic consumers in now less disturbed microbial communities. Ultimately, this would translate to increased metabolism of terrigenous DOM and increasingly higher ~~CO<sub>2</sub> emissions in~~ CO<sub>2</sub> emissions from rivers downstream of dams. Notably, this yet-to-be-tested effect on riverine carbon cycling comes on top of already-known effects on intensified DOM processing caused by higher residence times in reservoirs. ~~Consequently, more research is needed to determine which flow components are influencing the concentration and composition of carbon more than others in their differing response. This~~ Increasing knowledge on this frontier could also help to design

645 flow alteration strategies that prevent impacts on ecosystem structure and functioning and move one step forward in restoring natural riverine habitats.

*Code availability.* The R code used for data analysis and visualisations in this paper is openly available on Zenodo at zenodo.14992677 (Kubilay, 2024b)

650 *Data availability.* The optical data used in the analysis is openly available on Zenodo at zenodo.13354316 (Kubilay, 2024a). Hydrological data is obtained from Pompeu et al. (2022) and Goldenberg-Vilar et al. (2022) and can be accessed through the authors.

*Author contributions.* SK: Conceptualization, Methodology, Software, Formal Analyses, Visualization, Writing – Original Draft and Review and Editing. EE: Conceptualization, Data Curation. JBO: Funding acquisition, Conceptualization, Writing – review & editing. GS: Funding acquisition, Conceptualization, Methodology, Supervision, Writing – review & editing. All authors have read and agreed to the published

655 version of the paper

*Competing interests.* Some authors are members of the editorial board of the journal Biogeosciences



*Acknowledgements.* We thank our colleagues from IHCantabria for their help in sample collection. We also thank our colleagues from Leibniz Institute of Freshwater Ecology and Inland Fisheries for sample processing. This project has received funding from the European Union's Horizon 2020 research and innovation programme under the Marie Skłodowska-Curie grant agreement No 765553.

- WISE Water Framework Directive Database, <https://sdi.eea.europa.eu/catalogue/srv/api/records/dc1b1cdf-5fa0-4535-8c89-10cc051e00db>, 2021.
- Almeida, R. M., Hamilton, S. K., Rosi, E. J., Barros, N., Doria, C. R. C., Flecker, A. S., Fleischmann, A. S., Reisinger, A. J., and Roland, F.: Hydropeaking Operations of Two Run-of-River Mega-Dams Alter Downstream Hydrology of the Largest Amazon Tributary, *Frontiers in Environmental Science*, 8, <https://doi.org/10.3389/fenvs.2020.00120>, publisher: Frontiers, 2020.
- Anderson, M. J.: A new method for non-parametric multivariate analysis of variance, *Austral Ecology*, 26, 32–46, <https://doi.org/10.1111/j.1442-9993.2001.01070.pp.x>, \_eprint: <https://onlinelibrary.wiley.com/doi/pdf/10.1111/j.1442-9993.2001.01070.pp.x>, 2001.
- Anderson, M. J.: Distance-based tests for homogeneity of multivariate dispersions, *Biometrics*, 62, 245–253, <https://doi.org/10.1111/j.1541-0420.2005.00440.x>, 2006.
- Andrea, B., Francesc, G., Jérôme, L., Eusebi, V., and Francesc, S.: Cross-site Comparison of Variability of DOC and Nitrate c–q Hysteresis during the Autumn–winter Period in Three Mediterranean Headwater Streams: A Synthetic Approach, *Biogeochemistry*, 77, 327–349, <https://doi.org/10.1007/s10533-005-0711-7>, 2006.
- Aristi, I., Arroita, M., Larrañaga, A., Ponsatí, L., Sabater, S., von Schiller, D., Elosegi, A., and Acuña, V.: Flow regulation by dams affects ecosystem metabolism in Mediterranean rivers, *Freshwater Biology*, 59, 1816–1829, <https://doi.org/10.1111/fwb.12385>, \_eprint: <https://onlinelibrary.wiley.com/doi/pdf/10.1111/fwb.12385>, 2014.
- Battin, T. J., Kaplan, L. A., Findlay, S., Hopkinson, C. S., Marti, E., Packman, A. I., Newbold, J. D., and Sabater, F.: Biophysical controls on organic carbon fluxes in fluvial networks, *Nature Geoscience*, 1, 95–100, <https://doi.org/10.1038/ngeo101>, number: 2 Publisher: Nature Publishing Group, 2008.
- Carrascal, L. M., Galván, I., and Gordo, O.: Partial least squares regression as an alternative to current regression methods used in ecology, *Oikos*, 118, 681–690, <https://doi.org/10.1111/j.1600-0706.2008.16881.x>, \_eprint: <https://onlinelibrary.wiley.com/doi/pdf/10.1111/j.1600-0706.2008.16881.x>, 2009.
- Catalán, N., Marcé, R., Kothawala, D. N., and Tranvik, L. J.: Organic carbon decomposition rates controlled by water retention time across inland waters, *Nature Geoscience*, 9, 501–504, <https://doi.org/10.1038/ngeo2720>, number: 7 Publisher: Nature Publishing Group, 2016.
- Chen, M., He, W., Choi, I., and Hur, J.: Tracking the monthly changes of dissolved organic matter composition in a newly constructed reservoir and its tributaries during the initial impounding period, *Environmental Science and Pollution Research*, 23, 1274–1283, <https://doi.org/10.1007/s11356-015-5350-5>, 2016.
- Coble, A. A., Koenig, L. E., Potter, J. D., Parham, L. M., and McDowell, W. H.: Homogenization of dissolved organic matter within a river network occurs in the smallest headwaters, *Biogeochemistry*, 143, 85–104, <https://doi.org/10.1007/s10533-019-00551-y>, publisher: Springer International Publishing, 2019.
- Derrien, M., Kim, M.-S., Ock, G., Hong, S., Cho, J., Shin, K.-H., and Hur, J.: Estimation of different source contributions to sediment organic matter in an agricultural-forested watershed using end member mixing analyses based on stable isotope ratios and fluorescence spectroscopy, *Science of The Total Environment*, 618, 569–578, <https://doi.org/10.1016/j.scitotenv.2017.11.067>, 2018.
- Fasching, C., Ulseth, A. J., Schelker, J., Steniczka, G., and Battin, T. J.: Hydrology controls dissolved organic matter export and composition in an Alpine stream and its hyporheic zone, *Limnology and Oceanography*, 61, 558–571, <https://doi.org/10.1002/lno.10232>, \_eprint: <https://onlinelibrary.wiley.com/doi/pdf/10.1002/lno.10232>, 2016.

- Fellman, J. B., Hood, E., and Spencer, R. G. M.: Fluorescence spectroscopy opens new windows into dissolved organic matter dynamics in freshwater ecosystems: A review, *Limnology and Oceanography*, 55, 2452–2462, <https://doi.org/10.4319/lo.2010.55.6.2452>, <https://onlinelibrary.wiley.com/doi/pdf/10.4319/lo.2010.55.6.2452>, 2010.
- 700 Goldenberg-Vilar, A., Delgado, C., Peñas, F. J., and Barquín, J.: The effect of altered flow regimes on aquatic primary producer communities: Diatoms and macrophytes, *Ecohydrology*, 15, e2353, <https://doi.org/https://doi.org/10.1002/eco.2353>, 2022.
- Hansen, A. M., Kraus, T. E. C., Pellerin, B. A., Fleck, J. A., Downing, B. D., and Bergamaschi, B. A.: Optical properties of dissolved organic matter (DOM): Effects of biological and photolytic degradation, *Limnology and Oceanography*, 61, 1015–1032, <https://doi.org/10.1002/lno.10270>, [\\_eprint: https://onlinelibrary.wiley.com/doi/pdf/10.1002/lno.10270](https://onlinelibrary.wiley.com/doi/pdf/10.1002/lno.10270), 2016.
- 705 Harjung, A., Perujo, N., Butturini, A., Romaní, A. M., and Sabater, F.: Responses of microbial activity in hyporheic pore water to biogeochemical changes in a drying headwater stream, *Freshwater Biology*, 64, 735–749, <https://doi.org/10.1111/fwb.13258>, [\\_eprint: https://onlinelibrary.wiley.com/doi/pdf/10.1111/fwb.13258](https://onlinelibrary.wiley.com/doi/pdf/10.1111/fwb.13258), 2019.
- Hayes, D. S., Brändle, J. M., Seliger, C., Zeiringer, B., Ferreira, T., and Schmutz, S.: Advancing towards functional environmental flows for temperate floodplain rivers, *Science of The Total Environment*, 633, 1089–1104, <https://doi.org/10.1016/j.scitotenv.2018.03.221>, 2018.
- 710 Heinz, M. and Zak, D.: Storage effects on quantity and composition of dissolved organic carbon and nitrogen of lake water, leaf leachate and peat soil water, *Water Research*, 130, 98–104, <https://doi.org/https://doi.org/10.1016/j.watres.2017.11.053>, 2018.
- Huber, S. A., Balz, A., Abert, M., and Pronk, W.: Characterisation of aquatic humic and non-humic matter with size-exclusion chromatography - organic carbon detection - organic nitrogen detection (LC-OCD-OND), *Water Research*, <https://doi.org/10.1016/j.watres.2010.09.023>, 2011.
- 715 Imtiaz, M. N., Hunter, K., and Hudson, J. J.: In-reservoir transformation of dissolved organic matter as a function of hydrological flow, *Journal of Environmental Management*, 352, 120099, <https://doi.org/10.1016/j.jenvman.2024.120099>, 2024.
- Jaffé, R., McKnight, D., Maie, N., Cory, R., McDowell, W. H., and Campbell, J. L.: Spatial and temporal variations in DOM composition in ecosystems: The importance of long-term monitoring of optical properties, *Journal of Geophysical Research: Biogeosciences*, 113, <https://doi.org/10.1029/2008JG000683>, [\\_eprint: https://onlinelibrary.wiley.com/doi/pdf/10.1029/2008JG000683](https://onlinelibrary.wiley.com/doi/pdf/10.1029/2008JG000683), 2008.
- 720 Kaplan, L. A., Weigner, T. N., Newbold, J. D., Ostrom, P. H., and Gandhi, H.: Untangling the complex issue of dissolved organic carbon uptake: a stable isotope approach, *Freshwater Biology*, 53, 855–864, <https://doi.org/https://doi.org/10.1111/j.1365-2427.2007.01941.x>, 2008.
- Knoll, L. B., Vanni, M. J., Renwick, W. H., Dittman, E. K., and Gephart, J. A.: Temperate reservoirs are large carbon sinks and small CO<sub>2</sub> sources: Results from high-resolution carbon budgets, *Global Biogeochemical Cycles*, 27, 52–64, <https://doi.org/10.1002/gbc.20020>, [\\_eprint: https://onlinelibrary.wiley.com/doi/pdf/10.1002/gbc.20020](https://onlinelibrary.wiley.com/doi/pdf/10.1002/gbc.20020), 2013.
- 725 Kothawala, D. N., von Wachenfeldt, E., Koehler, B., and Tranvik, L. J.: Selective loss and preservation of lake water dissolved organic matter fluorescence during long-term dark incubations, *Science of The Total Environment*, 433, 238–246, <https://doi.org/10.1016/j.scitotenv.2012.06.029>, 2012.
- Kraus, T., Bergamaschi, B., Hernes, P., Doctor, D., Kendall, C., Downing, B., and Losee, R.: How reservoirs alter drinking water quality: Organic matter sources, sinks, and transformations, *Lake and Reservoir Management*, 27, 205–219, <https://doi.org/10.1080/07438141.2011.597283>, publisher: Taylor & Francis [\\_eprint: https://doi.org/10.1080/07438141.2011.597283](https://doi.org/10.1080/07438141.2011.597283), 2011.
- 730 Kubilay, S.: Chemical Data used in the "Riverine dissolved organic matter responds differently to alterations in two distinct hydrological regimes from Northern Spain", <https://doi.org/10.5281/zenodo.13354316>, 2024a.

- 735 Kubilay, S.: Selkubi/Cantabria-Paper-Data-Analysis-and- Visualisations: Latest version used in the paper draft,  
<https://doi.org/10.5281/zenodo.13354231>, 2024b.
- Lambert, T., Bouillon, S., Darchambeau, F., Massicotte, P., and Borges, A.: Shift in the chemical composition of dissolved organic matter in  
the Congo River network, *Biogeosciences*, 13, 5405–5420, <https://doi.org/10.5194/bg-13-5405-2016>, 2016a.
- Lambert, T., Teodoru, C. R., Nyoni, F. C., Bouillon, S., Darchambeau, F., Massicotte, P., and Borges, A. V.: Along-stream transport and  
740 transformation of dissolved organic matter in a large tropical river, *Biogeosciences*, 13, 2727–2741, [https://doi.org/10.5194/bg-13-2727-](https://doi.org/10.5194/bg-13-2727-2016)  
2016, publisher: Copernicus GmbH, 2016b.
- Lambert, T., Bouillon, S., Darchambeau, F., Morana, C., Roland, F. A. E., Descy, J.-P., and Borges, A. V.: Effects of human land use on the  
terrestrial and aquatic sources of fluvial organic matter in a temperate river basin (The Meuse River, Belgium), *Biogeochemistry*, 136,  
191–211, <https://doi.org/10.1007/s10533-017-0387-9>, 2017.
- 745 Lehner, B. and Grill, G.: Global river hydrography and network routing: baseline data and new approaches to study the world’s large river  
systems, *Hydrological Processes*, 27, 2171–2186, <https://doi.org/https://doi.org/10.1002/hyp.9740>, 2013.
- Lin, H. and Guo, L.: Variations in Colloidal DOM Composition with Molecular Weight within Individual Water Samples as Char-  
acterized by Flow Field-Flow Fractionation and EEM-PARAFAC Analysis, *Environmental Science & Technology*, 54, 1657–1667,  
<https://doi.org/10.1021/acs.est.9b07123>, publisher: American Chemical Society, 2020.
- 750 Loiselle, S. A., Bracchini, L., Dattilo, A. M., Ricci, M., Tognazzi, A., Cózar, A., and Rossi, C.: The optical characterization of chro-  
mophoric dissolved organic matter using wavelength distribution of absorption spectral slopes, *Limnology and Oceanography*, 54, 590–  
597, <https://doi.org/10.4319/lo.2009.54.2.0590>, \_eprint: <https://onlinelibrary.wiley.com/doi/pdf/10.4319/lo.2009.54.2.0590>, 2009.
- Maavara, T., Chen, Q., Van Meter, K., Brown, L. E., Zhang, J., Ni, J., and Zarfl, C.: River dam impacts on biogeochemical cycling, *Nature*  
*Reviews Earth & Environment*, 1, 103–116, <https://doi.org/10.1038/s43017-019-0019-0>, publisher: Nature Publishing Group, 2020.
- 755 McClain, M. E., Boyer, E. W., Dent, C. L., Gergel, S. E., Grimm, N. B., Groffman, P. M., Hart, S. C., Harvey, J. W., Johnston, C. A., Mayorga,  
E., McDowell, W. H., and Pinay, G.: Biogeochemical Hot Spots and Hot Moments at the Interface of Terrestrial and Aquatic Ecosystems,  
*Ecosystems*, 6, 301–312, <https://doi.org/10.1007/s10021-003-0161-9>, 2003.
- McKnight, D. M., Boyer, E. W., Westerhoff, P. K., Doran, P. T., Kulbe, T., and Andersen, D. T.: Spectrofluorometric characterization  
of dissolved organic matter for indication of precursor organic material and aromaticity, *Limnology and Oceanography*, 46, 38–48,  
760 <https://doi.org/10.4319/lo.2001.46.1.0038>, \_eprint: <https://onlinelibrary.wiley.com/doi/pdf/10.4319/lo.2001.46.1.0038>, 2001.
- McManamay, R. A., Orth, D. J., and Dolloff, C. A.: Revisiting the homogenization of dammed rivers in the southeastern US, *Journal of*  
*Hydrology*, 424–425, 217–237, <https://doi.org/10.1016/j.jhydrol.2012.01.003>, 2012.
- Miller, M. P.: The influence of reservoirs, climate, land use and hydrologic conditions on loads and chemical quality of dis-  
solved organic carbon in the Colorado River, *Water Resources Research*, 48, <https://doi.org/10.1029/2012WR012312>, \_eprint:  
765 <https://onlinelibrary.wiley.com/doi/pdf/10.1029/2012WR012312>, 2012.
- Murphy, K. R., Stedmon, C. A., Graeber, D., and Bro, R.: Fluorescence spectroscopy and multi-way techniques. PARAFAC, *Analytical*  
*Methods*, 5, 6557–6566, <https://doi.org/10.1039/C3AY41160E>, publisher: The Royal Society of Chemistry, 2013.
- Nadon, M. J., Metcalfe, R. A., Williams, C. J., Somers, K. M., and Xenopoulos, M. A.: Assessing the effects of dams and waterpower  
facilities on riverine dissolved organic matter composition, *Hydrobiologia*, 744, 145–164, <https://doi.org/10.1007/s10750-014-2069-0>,  
770 2015.
- Ohno, T.: Fluorescence inner-filtering correction for determining the humification index of dissolved organic matter, *Environmental Science*  
*and Technology*, <https://doi.org/10.1021/es0155276>, 2002.

Oksanen, J., Simpson, G. L., Blanchet, F. G., Kindt, R., Legendre, P., Minchin, P. R., O'Hara, R., Solymos, P., Stevens, M. H. H., Szoecs, E., Wagner, H., Barbour, M., Bedward, M., Bolker, B., Borcard, D., Carvalho, G., Chirico, M., De Caceres, M., Durand, S., Evangelista, H. B. A., FitzJohn, R., Friendly, M., Furneaux, B., Hannigan, G., Hill, M. O., Lahti, L., McGlinn, D., Ouellette, M.-H., Ribeiro Cunha, E., Smith, T., Stier, A., Ter Braak, C. J., Weedon, J., and Borman, T.: *vegan: Community Ecology Package*, <https://CRAN.R-project.org/package=vegan>, r package version 2.6-10, 2025.

Oliver, A. A., Spencer, R. G. M., Deas, M. L., and Dahlgren, R. A.: Impact of seasonality and anthropogenic impoundments on dissolved organic matter dynamics in the Klamath River (Oregon/California, USA), *Journal of Geophysical Research: Biogeosciences*, 121, 1946–1958, <https://onlinelibrary.wiley.com/doi/abs/10.1002/2016JG003497>, publisher: John Wiley & Sons, Ltd, 2016.

Painter, S. C., Lapworth, D. J., Woodward, E. M. S., Kroeger, S., Evans, C. D., Mayor, D. J., and Sanders, R. J.: Terrestrial dissolved organic matter distribution in the North Sea, *Science of The Total Environment*, 630, 630–647, <https://doi.org/10.1016/j.scitotenv.2018.02.237>, 2018.

Parks, S. J. and Baker, L. A.: Sources and transport of organic carbon in an Arizona river-reservoir system, *Water Research*, 31, 1751–1759, [https://doi.org/10.1016/S0043-1354\(96\)00404-6](https://doi.org/10.1016/S0043-1354(96)00404-6), 1997.

Peter, H., Singer, G., Ulseth, A. J., Dittmar, T., Prairie, Y. T., and Battin, T. J.: Travel Time and Source Variation Explain the Molecular Transformation of Dissolved Organic Matter in an Alpine Stream Network, *Journal of Geophysical Research: Biogeosciences*, 125, e2019JG005616, <https://doi.org/10.1029/2019JG005616>, \_eprint: <https://onlinelibrary.wiley.com/doi/pdf/10.1029/2019JG005616>, 2020.

Peñas, F. J. and Barquín, J.: Assessment of large-scale patterns of hydrological alteration caused by dams, *Journal of Hydrology*, 572, 706–718, <https://doi.org/10.1016/j.jhydrol.2019.03.056>, 2019.

Peñas, F. J., Barquín, J., and Álvarez, C.: Assessing hydrologic alteration: Evaluation of different alternatives according to data availability, *Ecological Indicators*, 60, 470–482, <https://doi.org/10.1016/j.ecolind.2015.07.021>, 2016.

Poff, N. L. and Zimmerman, J. K. H.: Ecological responses to altered flow regimes: a literature review to inform the science and management of environmental flows, *Freshwater Biology*, 55, 194–205, <https://doi.org/10.1111/j.1365-2427.2009.02272.x>, \_eprint: <https://onlinelibrary.wiley.com/doi/pdf/10.1111/j.1365-2427.2009.02272.x>, 2010.

Poff, N. L., Allan, J. D., Bain, M. B., Karr, J. R., Prestegard, K. L., Richter, B. D., Sparks, R. E., and Stromberg, J. C.: The Natural Flow Regime, *BioScience*, 47, 769–784, <https://doi.org/10.2307/1313099>, 1997.

Poff, N. L., Bledsoe, B. P., and Cuhaciyan, C. O.: Hydrologic variation with land use across the contiguous United States: Geomorphic and ecological consequences for stream ecosystems, *Geomorphology*, 79, 264–285, <https://doi.org/10.1016/j.geomorph.2006.06.032>, 2006.

Pompeu, C. R., Peñas, F. J., Goldenberg-Vilar, A., Álvarez Cabria, M., and Barquín, J.: Assessing the effects of irrigation and hydropower dams on river communities using taxonomic and multiple trait-based approaches, *Ecological Indicators*, 145, 109662, <https://doi.org/10.1016/j.ecolind.2022.109662>, 2022.

Pucher, M., Wunsch, U., Weigelhofer, G., Murphy, K., Hein, T., and Graeber, D.: *staRdom: Versatile Software for Analyzing Spectroscopic Data of Dissolved Organic Matter in R*, *Water*, 11, 2366, <https://doi.org/10.3390/w11112366>, number: 11 Publisher: Multidisciplinary Digital Publishing Institute, 2019.

Raymond, P. A. and Saiers, J. E.: Event controlled DOC export from forested watersheds, *Biogeochemistry*, 100, 197–209, <https://doi.org/10.1007/s10533-010-9416-7>, 2010.

Raymond, P. A., Saiers, J. E., and Sobczak, W. V.: Hydrological and biogeochemical controls on watershed dissolved organic matter transport: pulse-shunt concept, *Ecology*, 97, 5–16, <https://doi.org/10.1890/14-1684.1>, \_eprint: <https://onlinelibrary.wiley.com/doi/pdf/10.1890/14-1684.1>, 2016.

- Riedel, T., Biester, H., and Dittmar, T.: Molecular Fractionation of Dissolved Organic Matter with Metal Salts, *Environmental Science & Technology*, 46, 4419–4426, <https://doi.org/10.1021/es203901u>, publisher: American Chemical Society, 2012.
- Stewardson, M. J., Acreman, M., Costelloe, J. F., Fletcher, T. D., Fowler, K. J. A., Horne, A. C., Liu, G., McClain, M. E., and Peel, M. C.: Chapter 3 - Understanding Hydrological Alteration, in: *Water for the Environment*, edited by Horne, A. C., Webb, J. A., Stewardson, M. J., Richter, B., and Acreman, M., pp. 37–64, Academic Press, ISBN 978-0-12-803907-6, <https://doi.org/10.1016/B978-0-12-803907-6.00003-6>, 2017.
- Talluto, L., del Campo, R., Estévez, E., Altermatt, F., Datry, T., and Singer, G.: Towards (better) fluvial meta-ecosystem ecology: a research perspective, *npj Biodiversity*, 3, 1–10, <https://doi.org/10.1038/s44185-023-00036-0>, publisher: Nature Publishing Group, 2024.
- Ulseth, A. and Hall, R.: Dam tailwaters compound the effects of reservoirs on the longitudinal transport of organic carbon in an arid river, *Biogeosciences*, 12, 4345–4359, <https://doi.org/10.5194/bg-12-4345-2015>, 2015.
- Wagner, S., Fair, J. H., Matt, S., Hosen, J. D., Raymond, P., Saiers, J., Shanley, J. B., Dittmar, T., and Stubbins, A.: Molecular Hysteresis: Hydrologically Driven Changes in Riverine Dissolved Organic Matter Chemistry During a Storm Event, *Journal of Geophysical Research: Biogeosciences*, 124, 759–774, <https://doi.org/10.1029/2018JG004817>, \_eprint: <https://onlinelibrary.wiley.com/doi/pdf/10.1029/2018JG004817>, 2019.
- Welch, B. L.: On the Comparison of Several Mean Values: An Alternative Approach, *Biometrika*, 38, 330–336, <https://doi.org/10.2307/2332579>, publisher: [Oxford University Press, Biometrika Trust], 1951.
- Wilson, H. F. and Xenopoulos, M. A.: Effects of agricultural land use on the composition of fluvial dissolved organic matter, *Nature Geoscience*, <https://doi.org/10.1038/ngeo391>, 2009.
- Xenopoulos, M. A., Barnes, R. T., Boodoo, K. S., Butman, D., Catalán, N., D’Amario, S. C., Fasching, C., Kothawala, D. N., Pisani, O., Solomon, C. T., Spencer, R. G. M., Williams, C. J., and Wilson, H. F.: How humans alter dissolved organic matter composition in freshwater: relevance for the Earth’s biogeochemistry, *Biogeochemistry*, 154, 323–348, <https://doi.org/10.1007/s10533-021-00753-3>, 2021.
- Yang, L., Zhuang, W.-E., Chen, C.-T. A., Wang, B.-J., and Kuo, F.-W.: Unveiling the transformation and bioavailability of dissolved organic matter in contrasting hydrothermal vents using fluorescence EEM-PARAFAC, *Water Research*, 111, 195–203, <https://doi.org/10.1016/j.watres.2017.01.001>, 2017.