

# “Blooming” of litter-mixing effects: The role of flower and leaf litter interactions on decomposition in terrestrial and aquatic ecosystems

Mery Ingrid Guimarães de Alencar<sup>1,2</sup>, Rafael D. Guariento<sup>3</sup>, Bertrand Guenet<sup>2</sup>, Luciana S. Carneiro<sup>1</sup>, Eduardo L. Voigt<sup>4</sup> & Adriano Caliman<sup>1</sup>

<sup>1</sup> Departamento de Ecologia, Centro de Biociências, Universidade Federal do Rio Grande do Norte, Natal, 59078-900, Brazil.

<sup>2</sup> Laboratoire de Géologie, Ecole normale supérieure, CNRS, IPSL, Université PSL, Paris, 75005, France

<sup>3</sup> Universidade Federal do Mato Grosso do Sul, CCBS, Campo Grande, 79070-900, Brazil.

<sup>4</sup> Departamento de Biologia Celular e Genética, Centro de Biociências, Universidade Federal do Rio Grande do Norte, Natal, 59078-900, Brazil.

Correspondence to: Mery Ingrid Guimarães de Alencar (alencarmery@gmail.com)

**Abstract.** The diversity effect on decomposition, through the litter-mixing effects, plays a central role in determining the nutrient and carbon dynamics in ecosystems. However, the litter-mixing effects are centered on a leaf litter perspective. Important aspects related to intraspecific interaction and biomass concentration are rarely evaluated, even though they could be essential to determine the litter decomposition dynamics. **To our knowledge**, we introduced a new perspective to evaluate whether and how the interaction between flower and leaf litter affects the occurrence, direction, and magnitude of litter-mixing effects in terrestrial and aquatic ecosystems. We performed laboratory experiments using flower and leaf litter from the yellow trumpet tree *Tabebuia aurea* (Silva Manso) Benth. & Hook. f. ex. S. Moore as a model. To obtain realistic results, **we manipulated various scenarios of flower:leaf litter biomass proportion** and measured 13 functional traits, respectively. Litter-mixing effects were consistent in both aquatic and terrestrial environments, with faster decomposition of both litter types in mixtures compared to their monocultures (synergistic effects). Litter-mixing effects were stronger in the terrestrial environment **and at higher flower:leaf litter biomass proportions**. Our results indicate that synergistic **outcomes** are mainly associated with complementary effects. Flower litter had a **higher concentration of labile C-compounds, N, P, and K and lower lignin concentrations representing a labile litter**; while leaf litter had a higher concentration **of lignin, Ca, Mg, and Na, representing a refractory litter**. **Our results demonstrate** the importance of litter-mixing effects between flower and leaf litter **via complementary effects**. **These results shed** light on the secondary consequences of flower litter on decomposition, suggesting that species with high reproductive investment in flower biomass may play an important role in the nutrient and carbon recycling of diverse plant communities, exerting a pivotal role in biogeochemical dynamics.

## 1 Introduction

Decomposition is an important ecosystem process because of its role in the energy and matter flows within and across terrestrial and aquatic ecosystems, which affects the cycling of nutrients and carbon (C) in the biosphere (**Cebrian and Lartigue, 2004; Tiegs et al., 2019**). Up to 90% of the primary production accumulates as organic matter (OM) in the soil (Cebrian, 1999), and a considerable proportion of this stock is transported to rivers, lakes, and oceans, contributing to the stocks of OM in aquatic environments, along with autochthonous OM (Tranvik et al., 2009; Aufdenkampe et al., 2011). Decomposition is controlled by abiotic factors such as temperature and humidity, as well as biotic factors such as the abundance and composition of decomposers, and litter quality, with the relative importance of each factor varying between biomes and ecosystems (Makkonen et al., 2012; García-Palacios et al., 2016; Djukic et al., 2018). While global OM stocks are relatively well known (Schimel et al., 2001; Hengl

39 et al., 2017), the mechanisms governing OM dynamics in ecosystems are far less understood (Tian et al., 2015). Given the vast  
40 size of OM stocks in ecosystems, even minor changes in OM content and dynamics can have major impacts on global C and  
41 nutrient budgets (Dignac et al., 2017; Minasny et al., 2017). Therefore, understanding the peculiarities of the mechanisms that  
42 regulate decomposition dynamics is crucial for comprehending the flows and stocks of C and nutrients in terrestrial and aquatic  
43 ecosystems (Basile-Doelsch et al., 2015; Davidson and Janssens, 2006).

44 Litter quality, which refers to the edibility of litter as a food resource for decomposers, has effects on decomposition that  
45 are comparable to, or even stronger than, those of abiotic factors across terrestrial and aquatic ecosystems (Makkonen et al., 2012;  
46 García-Palacios et al., 2016). The chemical compounds and physical structures of plant litter in ecosystems are highly diverse and  
47 heterogeneous, leading to distinct litter quality (Freschet et al., 2010, 2013; Olson and Pittermann, 2019; Schmitt and Perfecto,  
48 2020). The diversity of plant life forms, organs, and traits corresponds to the myriad of plant tissues that contain different pools of  
49 compounds (Jackson et al., 2013). After senescence, these tissues form litter pools with a wide range of resistance to biological  
50 (mostly microbial) degradation (Kuzyakov and Blagodatskaya, 2015; Jones et al., 2023). Therefore, the variety of functional  
51 differences in plant litter can affect decomposition both intrinsically and through mechanisms mediated by complex interactive  
52 effects among contrasting litter types, resulting in litter-mixing effects (LMEs) on decomposition (Schindler and Gessner, 2009;  
53 Liu et al., 2020; Hättenschwiler and Jørgensen, 2010).

54 Most biogeochemical models predicting decomposition dynamics in natural ecosystems ignore interactions among plant  
55 litters of different qualities and assume that the sum of the individual litters can predict decomposition in a mixture (Manzoni and  
56 Porporato, 2009). However, LMEs on decomposition could either increase (i.e. synergistic) or decrease (i.e. antagonistic) the  
57 decomposition rate of individual litter compared to their monocultures, and the magnitude of such effects can be highly variable  
58 depending on litter traits, decomposer community, and environmental contexts (Gartner and Cardon, 2004; Liu et al., 2020; Porre  
59 et al., 2020). The synergistic effects are mainly attributed to mechanisms such as nutrient transfer, niche partitioning among  
60 decomposers, and improvement of microclimatic conditions (Gessner et al., 2010; Boyero et al., 2011; Hättenschwiler et al., 2005;  
61 Makkonen et al., 2013). Mechanisms responsible for antagonistic effects include microbial nutrient immobilization, inhibitory  
62 decomposition by secondary compounds, and decomposer preferential feeding (Kuzyakov, 2002; Hättenschwiler et al., 2005).  
63 However, these mechanisms have been predominantly demonstrated in studies that manipulate inter-specific leaf litter diversity  
64 and in experiments where species contribute equally to the litter biomass in the mixture (but see Madritch and Hunter 2004;  
65 Crutsinger et al. 2009; Zhang et al. 2022). Some efforts have been directed towards understanding the intra-specific LMEs from  
66 different plant organs or varying proportions of litter types in litter mixtures on ecosystem functions (Dearden et al., 2006; de Paz  
67 et al., 2018; Schmitt and Perfecto, 2020; Hou and Lü, 2021; Zhao et al., 2019; Zhang et al., 2022). This is an important research  
68 avenue because it reinforces the idea that LMEs on decomposition depend more on functional dissimilarity than on the taxonomic  
69 richness of litter, and it may also indicate that within-species LMEs may occur and be particularly relevant for ecosystem  
70 functioning in low-diversity plant communities.

71 Previous studies have shown that the magnitude of LMEs on decomposition is affected by dissimilarity in litter quality  
72 (Schindler and Gessner, 2009; Finerty et al., 2016). As a result, much of the research on LMEs has focused on mixing leaf litter  
73 from different species (Porre et al., 2020; Hättenschwiler et al., 2005), whereas the interaction among mixed litters from different  
74 plant organs has not been well explored. It is important to note that unequal investment among plant organs, which can occur due  
75 to differences in organ form and function, may result in variations in the chemical composition of tissues across different plant  
76 organs, which has legacy consequences on litter decomposition (Freschet et al., 2013; Jackson et al., 2013). Leaves are specialized  
77 organs for photosynthesis and have a longer lifespan than flowers (Roddy et al., 2019). Therefore, accordingly to the growth-rate  
78 hypothesis, leaves are expected to have higher concentrations of structural compounds such as lignin and secondary metabolites

79 than flowers (Stamp, 2003). Conversely, flowers are fast-growing ephemeral organs specialized in reproduction (Ashman and  
80 Schoen, 1994). As a result, flowers, on average, are expected to receive less investment in the production of constitutive defenses  
81 against herbivory and structural tissues, but a greater investment in nutrients for growth and in labile C-compounds such as sugars  
82 for nectar production to attract pollinators (Mccall and Irwin, 2007; Boaventura et al., 2022). Finally, the differences in litter quality  
83 between leaves and flowers could also become more pronounced during senescence, as leaves have been shown to have the highest  
84 rate of nutrient resorption among plant organs (Freschet et al., 2010). Thus, since litter characteristics in general reflect  
85 environmental pressures that shape the form and function of plant organs when alive, we rationalized that flower litter is more  
86 labile than its leaf litter, and that this dissimilarity may cause LMEs in their decomposition when both litters are mixed.

87 Studies have demonstrated that the mixture of various sources of dissolved and particulate labile organic matter (LOM)  
88 and refractory organic matter (ROM) can exert opposing effects on each other's decomposition, both in terrestrial and aquatic  
89 ecosystems (Guenet et al., 2010). Generally, LOM is expected to accelerate the decomposition of ROM (Guenet et al., 2010; Wang  
90 et al., 2022) while ROM is expected to inhibit the decomposition of LOM (Liu et al. 2020; but see Swan and Palmer 2006; Cuchiatti  
91 et al. 2014). However, it is currently unclear how variations in the relative proportions of LOM and ROM in litter mixtures affect  
92 the magnitude and direction of LMEs, considering the degradation rate of each litter type and the whole litter mixture. This is  
93 important because the LOM:ROM biomass ratio in the detritus pool varies spatially and temporally within and among ecosystems  
94 due to a variety of causes (McClain et al., 2003). The LOM:ROM biomass ratio in the detritus pool is critical for microbial  
95 degradation rates, as the limited number of metabolic pathways available to microbial decomposers have specific energy  
96 requirements (German et al., 2011). Therefore, the LOM:ROM proportion in litter mixtures could be pivotal in determining the  
97 occurrence, magnitude, and direction of LMEs on decomposition (Smith and Bradford, 2003; Schindler and Gessner, 2009), but  
98 this is not well understood (Sayer et al., 2007; Gripp et al., 2018).

99 In this study, we explored a novel potential after-life role of flower litter in mediating the LMEs on decomposition. For  
100 this, we utilized flower and leaf litter (hereafter litter types) from the trumpet tree *Tabebuia aurea* (Silva Manso) Benth. & Hook.  
101 f. ex. S. Moore, as sources of LOM and ROM, respectively. To better understand the possible mechanisms underlying LMEs on  
102 decomposition, we evaluated the occurrence, magnitude, and direction of LMEs on each litter type individually and on whole litter  
103 mixture. In doing so, we sought to determine whether the LMEs of flower and leaf litter mixing were reciprocal or unilateral, and  
104 whether the magnitude and direction (i.e. synergistic or antagonistic) of such effects were symmetric or asymmetric. We tested the  
105 following hypotheses: (i) flower litter quality will be higher (i.e. LOM) than leaf litter quality (i.e. ROM) and consequently flower  
106 litter will decompose faster than leaf litter; (ii) the interaction between flower and leaf litter during decomposition will result in  
107 LMEs; (iii) litter-mixing effects on each litter type will be mostly asymmetric, with more frequent and/or stronger positive effects  
108 of flower litter on the decomposition of leaf litter; and (iv) litter-mixing effects, on each litter type and mixture, will depend on the  
109 relative proportion of each litter type in the mixture. Since the species from the *Tabebuia* genus as well as other trumpet trees can  
110 colonize floodplains, riparian areas, and seasonally dry forests in the tropics (Ribeiro and Brown 2006), the litter of these species  
111 can be decomposed under aquatic or terrestrial ecosystem contexts. Litter-mixing effects on decomposition have been traditionally  
112 investigated in aquatic (Boyero et al., 2021) and terrestrial (Makkonen et al., 2012) ecosystems separately (but see Handa et al.  
113 2014; García-Palacios et al. 2016) using different species and methodologies. This hinders testing the generality of the results of  
114 these studies for different types of ecosystems. Therefore, considering that *T. aurea* can contribute litter to both terrestrial and  
115 aquatic ecosystems, we tested our hypotheses throughout terrestrial and aquatic experiments.

## 116 .

## 117 2 Methods

### 118 2.1 Study site and species

119 The experiment was conducted in the laboratory at the Universidade Federal do Rio Grande do Norte, Brazil. The flower  
120 and leaf litter of *T. aurea* was sampled in a forest fragment (more details below). The geographic distribution of *T. aurea* in South  
121 America extends to most Brazilian biomes, such as the Amazon, Atlantic Forest, Cerrado, and Pantanal (Lorenzi, 1992), and its  
122 environmental distribution ranges from dry forests to riparian forests and floodplains (Batalha and Mantovani, 2001; Lorenzi,  
123 1992). Thus, the widespread geographic and environmental distribution of *T. aurea* allows its litter to contribute to the flow of  
124 matter and energy in both the aquatic and terrestrial ecosystems (Fig. S1; see Supplement A for more details to species in the  
125 section *Species used*). Synchronous and massive flowering, which is a common characteristic of Bignoniaceae species, is preceded  
126 by the loss of leaves (Barros, 2001). This phenological pattern creates a potentially important scenario for testing the LMEs on  
127 decomposition, as a layer of leaf litter is deposited in the soil, which is then covered by a layer of flower litter a few days later (Fig.  
128 S1).

129

## 130 **2.2 Estimation of flower and leaf litter functional traits**

131 We measured a set of traits to describe the functional differences between the litter types of *T. aurea*. These analyses focused  
132 on estimating the initial values for litter chemical and physical traits that commonly have an impact on litter decomposition in  
133 terrestrial and aquatic ecosystems. Each functional trait had three replicates. For chemical analyses, at least 3 g of each litter type  
134 was ground to a fine powder using a mortar and pestle. We then estimated the total C concentration using the high-temperature  
135 combustion method and infrared CO<sub>2</sub> detection with a Shimadzu TOC-5000 total carbon analyzer. Total nitrogen content (N) was  
136 estimated by acid digestion using Kjeldahl distillation (Allen et al. 1974). The total phosphorus (P) was estimated through strong  
137 acid digestion and reaction with molybdate (Fassbender, 1973). Potassium (K), calcium (Ca), and manganese (Mg) were  
138 determined in flame atomic emission spectroscopy after nitro-perchloric digestion (Sarruge and Haag, 1974). Sodium (Na) content  
139 was estimated via flame atomic emission spectroscopy (Robertson et al., 1999). Structural compounds, such as lignin (Lig) and  
140 cellulose (Cel), were estimated by the sequential method of neutral detergent and second acid detergent digestion (Goering and  
141 Van Soest, 1970). Phenolic compounds (Phe) were estimated by the Folin assay (Graça et al., 2005). We used the Antrona method  
142 (Morris, 1948; Van Handel, 1968) to determine the non-reducing soluble sugars (S-carb).

143 To evaluate physical traits, we assessed the water-holding capacity (WHC) and leaching of flower and leaf litter, which are  
144 considered crucial factors in determining litter decomposition (Makkonen et al., 2013). To evaluate WHC, we used dried flower  
145 and leaf litter and moistened the replicates with 50 ml of water (the same volume used to irrigate the terrestrial experiment) two  
146 hours before the measurements, based on Makkonen et al. (2013). For the leaching measurement, we stimulated the loss of  
147 hydrolysable water compounds, which is the main form of mass loss in the initial stage of decomposition, based on Pérez-  
148 Harguindeguy et al. (2013). For both structural traits, the material was dried in an oven at 60 °C for 72 h before and after the  
149 measurements.

150

## 151 **2.3 Litter sampling and experimental design and setup**

152 We sampled flower and leaf litter under the canopy of *T. aurea* individuals immediately after abscission. Soon after litter  
153 sampling, the litter types were separately dried at 60 °C for 72 h until a constant weight was achieved. The litter was conditioned  
154 in a dry and dark place to avoid changes in its chemical composition.

155 The experimental design followed an additive rather than a substitutive design, which is commonly used in experiments  
156 designed to test the effects of species diversity and litter mixing on ecosystem functioning (Jolliffe, 2000) (Table S1; see  
157 Supplement A for more detailed description about the additive experimental design in *Experimental design and setup*).

158 We performed controlled laboratory experiments to simulate terrestrial and aquatic environments. The duration of the  
159 terrestrial and aquatic experiments was standardized by the time required for approximately 50% of the more labile litter (i.e.  
160 flowers) to be decomposed in each environment. The aquatic experiment lasted for 3 months, while the terrestrial experiment lasted  
161 for 7 months.

162 To ensure aerobic conditions in both environments, distinct microcosms were used. In the terrestrial experiment, plastic  
163 containers (5 cm in diameter and 10 cm in height) were used as microcosms. Each terrestrial microcosm was filled with a soil layer  
164 of approximately 5 cm height, collected under the canopy of *T. aurea* individuals in the same area in which litter was collected.  
165 The soil was sieved (2-mm mesh size) to remove large litter particles, homogenized, and added to the microcosms. This procedure  
166 maintained a substantial part of the soil microflora and micro- and meso-fauna (Swift et al., 1979) while reducing environmental  
167 heterogeneity among experimental microcosms. It is important to note that the flower:leaf biomass proportion in the litter layer  
168 can significantly vary in nature across space and time. This variation can be attributed to several factors such as plant species  
169 identity, individual size, timing and magnitude of flowering phenology, and distance from the plant originating the litter (Uriarte  
170 et al. 2015; Buonaiuto and Wolkovich, 2021). However, despite the significance of this information, the literature still lacks data  
171 on flower:leaf biomass proportion for the majority of species, including the species used in our study. Although, a recent study  
172 looked at the amount of flower and leaf litter biomass for several species. The study found that despite leaf litter is generally more  
173 common than flower litter on an annual basis, the amount of flower and leaf litter varies significantly throughout the year. As a  
174 result, the proportion of flower:leaf biomass in the litter layer can vary greatly for different species. On average, flower litter  
175 contributes around 25% of the leaf litter on an annual basis, but this can range from 5% to 45% (Hill et al. 2022). And in some  
176 cases, during the blooming season, the amount of flower litter can even exceed the amount of leaf litter (Wang et al. 2016).  
177 Therefore, to encompass the unknown and possibly extensive variability in flower:leaf biomass proportion that may occur for *T.*  
178 *aurea* in nature, we assembled mixtures of flower and leaf litter along a gradient encompassing nine different flower:leaf biomass  
179 proportion. The amounts of litter types were added according to the information in Table S1.

180 Because *T. aurea* displays a very marked phenological pattern of leaf and flower abscission (where leaves senesce and fall  
181 completely one to two weeks before flowering and the consequent flower fall), and because studies have demonstrated that litter  
182 spatial position can alter litter decomposition (Berenstecher et al., 2021), we arranged the flower and leaf litter in the microcosms  
183 resembling their natural position in the litter layer. First, the leaf litter was added above the soil within the microcosms, followed  
184 by the flower litter overtopping it. All microcosms were then randomly arranged in plastic trays and covered with a 1 mm mesh  
185 opening screen to prevent the entry of foreign materials. The experiment was conducted in a laboratory room at a constant  
186 temperature of approximately 25 °C and a 12:12 h light:dark period. To avoid moisture limitation of litter decomposition in the  
187 terrestrial experiment, each microcosm was individually irrigated every three days with approximately 50 ml of tap water using a  
188 hand-held sprinkler. The amount of water was based on an estimation of the accumulated average precipitation at the study site  
189 during the experiment (January to July; Santos e Silva et al. 2012)

190 In the aquatic experiment, the microcosms were composed of 1 L glass bottles. The amount of each litter type added to the  
191 respective monocultures and mixtures is shown in Table S1. Dechlorinated tap water was used to fill the aquatic experimental  
192 microcosms and the water inoculum from the oligotrophic Carcará Lake (6°3'40"S, 35°9'28"W) was added to allow the  
193 colonization of microorganisms. The microcosms of the mixtures were filled with 1 L of water. However, as the final litter biomass  
194 added to the microcosms differed between mixtures and their respective monocultures, as well as throughout the monocultures,  
195 the volume of water in each microcosm was adjusted to maintain a final litter concentration of 3 g/L across all treatments.

196 As in the terrestrial experiment, litter types were added intact to the microcosms. To prevent litter from floating and/or  
197 sticking to the inner wall of the microcosms, we packed litter in synthetic bags with a 1 mm mesh size, each containing a small

198 metal weight, to keep the litter near the bottom of the microcosms. We ensured aerobic conditions in each microcosm and promoted  
199 water circulation and constant homogenization of abiotic conditions by providing aeration to each individual microcosm. The  
200 microcosms were randomly distributed along shelves in a darkened room at a constant temperature of approximately 25 °C to  
201 avoid primary production.

## 203 2.4 Measurements of the litter mass remaining

204 At the end of the experiments, litter was carefully removed from the microcosms. For mixtures, the remaining flower and  
205 leaf litter were visually identified and separated and subsequently dried at 60 °C for 72 h and weighed to estimate litter mass loss.  
206 The procedure varied between terrestrial and aquatic experiments. In the terrestrial experiment, we separated the remaining flower  
207 and leaf litter from each other (in mixtures) and from the soil particles and placed them in aluminum trays for subsequent weighing.  
208 In the aquatic experiment, flower litter fragmentation limited a similar procedure. Instead, we filtered the litter from each  
209 microcosm, for both monocultures and mixtures, using a previously weighted paper filter. We used paper filters to quantify the  
210 small particulate organic matter associated with flower litter, which fragmented more easily (personal observation). This problem  
211 did not occur with leaf litter, which disintegrated into larger particles at the end of the experiment. However, to maintain the same  
212 weighing procedure between the two litter types, we filtered them through paper filters and then quantified their mass loss  
213 separately. For monocultures, we removed the flower and leaf litter from the bags and placed them on a paper filter at the end of  
214 the experiment. We then poured the entire water volume from each microcosm containing the leaked particulate material into the  
215 corresponding filter. We followed the same procedure for the mixtures; however, leaf litter fragments, which were tougher than  
216 flower litter, were easily identified and collected from the filter surface. Leaf litter fragments were placed in previously weighed  
217 paper filter. The identified litter on the paper filter was then packed in aluminum trays and dried at 60 °C for 72 h. Subsequently,  
218 we repeated the weighing procedure and measured the remaining mass of each litter type in its respective microcosm, allowing us  
219 to estimate the decomposition rate of each litter type individually, even in mixtures. To verify if the paper filter could retain fine  
220 particles only for flower litter, we compared the paper filter mass before and after filtration of leaf litter to guarantee that there was  
221 no overestimation of flower litter mass due to fine leaf litter particles retained in paper filter, though the comparison of paper filter  
222 mass before and after leaf litter filtration of leaf litter in monoculture treatments (t-test= 0.95; p=0.78). We estimated the  
223 decomposition rate in both experiments as the percent of litter mass remaining (LMR %) calculated as the percentage of the dry  
224 mass of each type of litter (decomposing alone or in the mixture) at the end of the experiment concerning its respective initial dry  
225 mass accordingly to the following Eq. (1):

$$226 \quad LMR_i (\%) = \left( \frac{Fdwi}{Idwi} \right) \times 100, \quad (1)$$

227 where  $Fdwi$  and  $Idwi$  are the final and initial dry weights of litter  $i$  (flowers or leaves), respectively.

228 To estimate the total percentage of litter mass remaining for the two litter types combined in the observed mixture, we used  
229 Eq. (2):

$$230 \quad LMR_{obs}(\%) = \left( \frac{Fdwf + Fdwl}{Idwf + Idwl} \right) \times 100, \quad (2)$$

231 where  $Fdwf$  and  $Fdwl$  are the final dry weights of flower and leaf litter, respectively, and  $Idwf$  and  $Idwl$  are the initial dry weights  
232 of flower and leaf litter at the beginning of the experiment, respectively.

233 To quantify the LMEs for the whole mixture, we compared the observed ( $LMR_{obs}$ ) and the expected ( $LMR_{exp}$ ) LMR (Loreau,  
234 1998). The expected LMR for the combined responses of both litter types to litter mixing was calculated using Eq. (3) assuming  
235 no interaction between both litter types:

$$236 \quad LMR_{exp}(\%) = \left( (LMR_f) \times (pi) \right) + \left( (LMR_l) \times (pi) \right), \quad (3)$$



237 where  $LMR_f$  is the percentage of flower litter mass remaining in the monoculture,  $LMR_l$  is the percentage of leaf litter mass  
238 remaining in the monoculture, and  $pi$  is the proportion of the biomass of litter  $i$  in the mixture.

239 Then, we calculated the relative mixture effect (RME) in each litter type for each ecosystem (Barantal et al., 2011) using  
240 Eq. (4):

$$241 \quad RME (\%) = \left( \frac{LMR_{obs} - LMR_{exp}}{LMR_{exp}} \right) \times 100, \quad (4)$$

242 where RME is the relative mixture effect (%) for the whole combined litter or each litter type in the mixture; for the whole mixture,  
243  $LMR_{exp}$  is the expected litter mass remaining calculated by averaging the LMR values of both litter types in monoculture, and  
244  $LMR_{obs}$  is the observed litter mass remaining of the whole mixture calculated by averaging the observed LMR values of both litter  
245 types in the mixture. For each litter type,  $LMR_{exp}$  is the flower or leaf litter mass remaining in the monoculture and  $LMR_{obs}$  is the  
246 flower or leaf litter mass remaining in litter  $i$  in the mixture. For RMEs, positive and negative values indicate that litter decomposes  
247 faster and slower in mixtures than in its respective monoculture, respectively.

## 248

### 249 2.5 Data analysis

250 To test the functional differences between the litter types of *T. aurea*, we compared the average concentrations of functional  
251 traits (C, Cel, Lig, Phe, S-Carb, N, P, K Na, Mg, Ca, WHC, leaching, and some stoichiometric ratios (Lig:S-Carb, Lig:N, Lig:P)  
252 between both litter types using an unpaired t-test.

253 We conducted a set of statistical analyses to test our hypotheses. Initially, we conducted unpaired t-tests between the litter  
254 types to evaluate if the decomposition rate of flower and leaf litter differed. Specifically, we compared the LMR of each litter type  
255 in monocultures in both terrestrial and aquatic experiments. Then, we conducted regression analyses to assess the effect of flower  
256 litter biomass on the decomposition of each litter type, alone and in mixtures. Specifically, we assessed the LMR of each litter type  
257 in monocultures and mixtures as a function of the variation in flower litter biomass proportion. Next, we employed the test of  
258 heterogeneity of slopes to determine if litter mixture affected the biomass-decomposition relationship of each litter type separately  
259 as well as to the mixture. For this analysis we considered the proportion of flower litter biomass in the litter mixture as the predictor  
260 and the LMR of each litter type alone or combined as the response variable. Statistically significant effects (i.e. when the slopes of  
261 the regressions are different from each other) would indicate that the biomass-decomposition relationship differed between litter  
262 decomposing alone and in mixture in response to flower litter biomass proportion. This method is equivalent to an Analysis of  
263 Covariance (ANCOVA) (Zar, 1984). In cases where the slopes of the regressions did not differ significantly from each other, we  
264 used unpaired t-tests to compare the grand mean decomposition (i.e. irrespective of litter biomass) of each litter type alone as well  
265 as for the whole mixture. The aforementioned analytical procedures were performed separately for terrestrial and aquatic  
266 experiments because of experimental design differences between them (see details in *Litter sampling and experimental design and  
267 setup*). To assess whether the RME for each type of litter and the mixture is a function of their respective biomass in the mixture,  
268 we utilized linear regressions for both aquatic and terrestrial experiments.

269 Before linear regression analysis, the data were tested for assumptions of linearity with Run's Test. The homogeneity of the  
270 residuals as assumptions for linear regressions and unpaired t-tests were tested using the Bartlett Test. All statistical analyses were  
271 performed using the GraphPad Prism software (version 6.0). A level of significance of  $\alpha = 0.05$  was considered for all analyses.

## 272

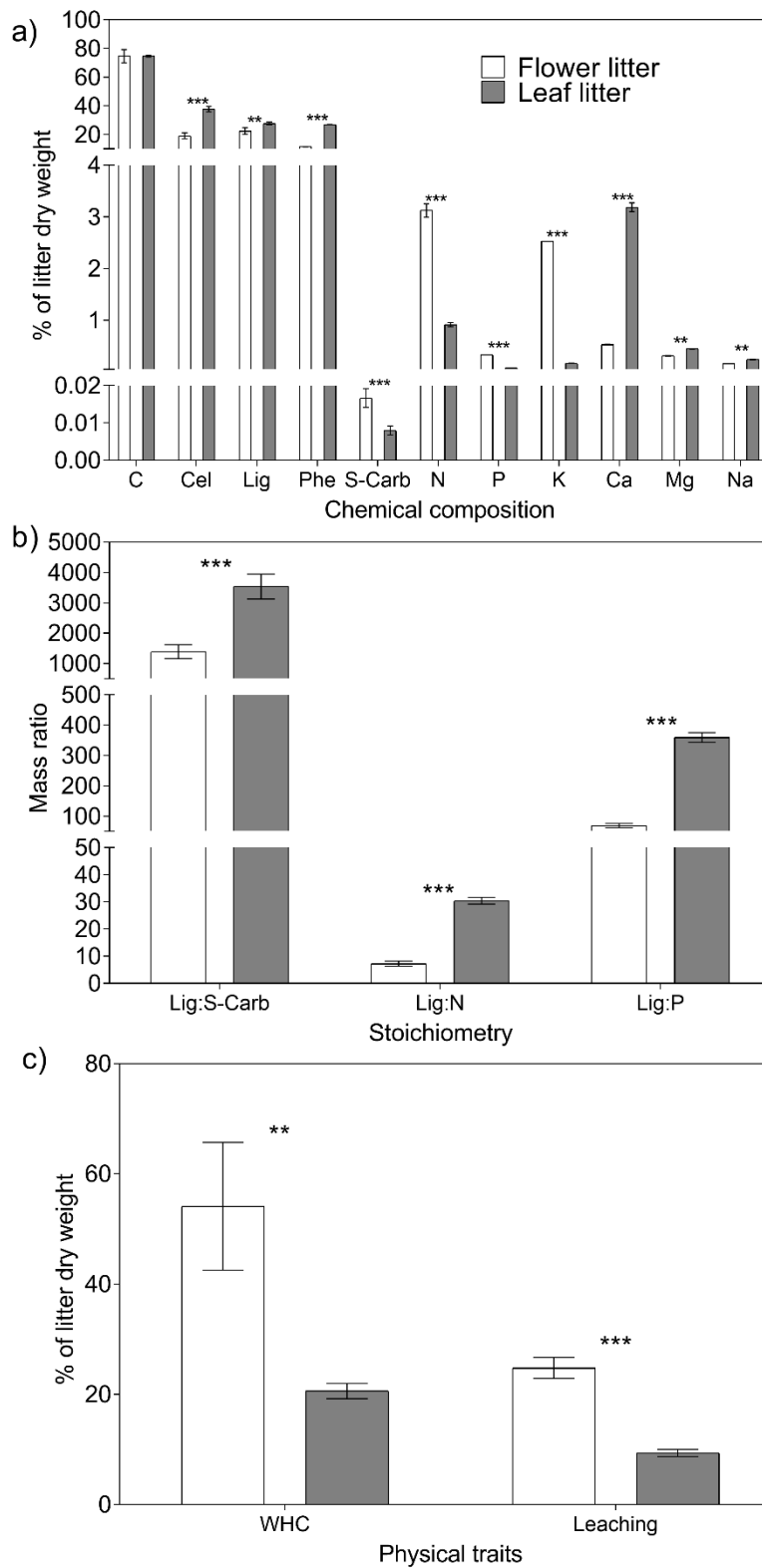
### 273 3 Results

#### 274 3.1 Flower and leaf litter chemical and structural composition

275 Overall, flower litter had a more labile chemical composition and physical traits than leaf litter. Except for the C content,  
276 all analyzed chemical constituents displayed significantly different concentrations between the litter types (Fig. 1a). Specifically,

277 flower litter had significantly higher concentrations of S-carb, N, P, and K than leaf litter, whereas leaf litter had significantly  
278 higher concentrations of Cel, Lig, Phe, Ca, Mn, and Na than did flower litter (Fig. 1a). Additionally, the Lig:S-Carb ratio, which  
279 indicates the relative proportion of recalcitrant and labile C, was significantly lower in the flower litter than in the leaf litter. The  
280 same pattern was observed for Lig:N and Lig:P ratios (Fig. 1b). Finally, the physical traits followed the same pattern, with flower  
281 litter exhibiting higher values of WHC and leaching than leaf litter (Fig. 1c).  
282





283  
 284 **Figure 1:** Average ( $n=3 \pm 1SD$ ) functional trait values for a) concentration of chemical constituents, b) stoichiometry, and c)  
 285 physical traits for flower and leaf litter of *Tabebuia aurea*. Abbreviations are as follow: Cel – cellulose, Lig – lignin, Phe – phenolic  
 286 compounds, S-carb – soluble carbohydrates, WHC – water holding capacity. Asterisks above the bars indicate significant statistical  
 287 differences between the flower and leaf litter for the respective functional traits (unpaired t-test; \*\* $p < 0.001$ ; \*\*\* $p < 0.0001$ ).

288

### 289 3.2 Differences in the decomposition rate between the litter types in monoculture

290 Considering only the values of leaf and flower litter decomposing in monocultures, the leaf litter decomposed significantly  
291 slower than flower litter in the terrestrial experiment, with the average leaf LMR (84.4%) being significantly higher compared to  
292 the average flower LMR (41.8%) (Fig. 2ab;  $t=72.4$ ;  $p<0.0001$ ; unpaired t-test). This pattern was consistent with that observed in  
293 the aquatic experiment, and the values of leaf and flower litter decomposing in monoculture were significantly different from each  
294 other. The leaf litter decomposed significantly slower than flower litter, with average leaf LMR (72.7%) significantly higher than  
295 the average flower LMR (50.3%) (Fig. 3ab;  $t=13.3$ ;  $p<0.0001$ ; unpaired t-test).

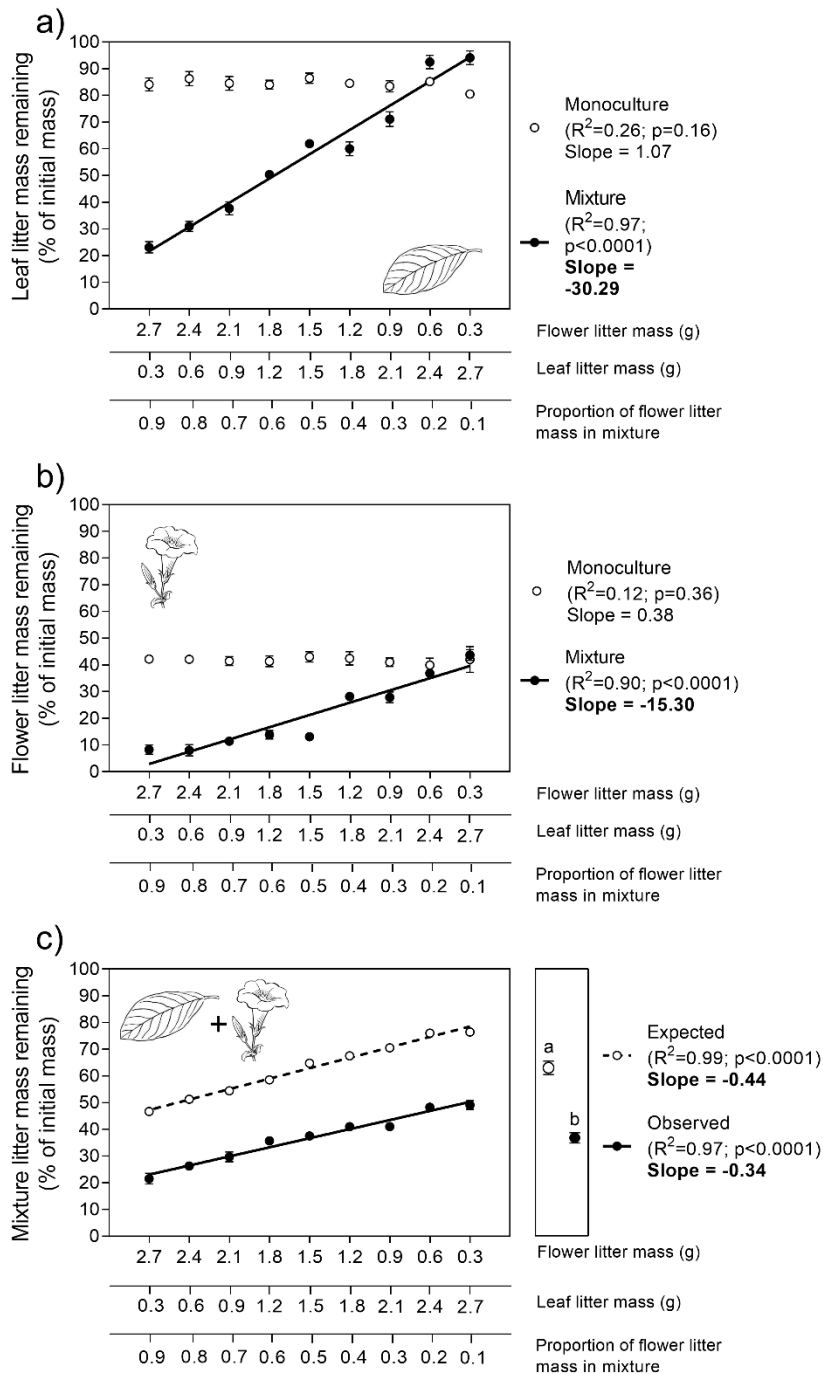
296

### 297 3.3 Litter-mixing effects of flower and leaf litter on decomposition in the terrestrial experiment

298 Leaf litter decomposition rates, expressed as LMR, did not significantly vary across the gradient of leaf litter biomass in  
299 the monoculture (Fig. 2a). However, leaf litter decomposition was significantly altered when mixed with flower litter. In general,  
300 an increase in the amount of flower litter had significant, positive (i.e. lower LMR values) and linear effects on leaf litter  
301 decomposition rates (Fig. 2a;  $F_{1, 14} = 215.9$ ;  $p<0.0001$ ). However, interestingly, in the two mixtures with the lowest flower:leaf  
302 litter biomass proportion, the decomposition of leaf litter were lower than those observed in their respective monocultures (i.e.  
303 higher LMR values; Fig. 2a).

304 Similar to leaf litter, flower litter decomposition rates did not vary significantly in response to its biomass variation in the  
305 monoculture (Fig. 2b). However, as observed for leaf litter decomposition, flower litter decomposition was significantly altered  
306 when mixed with leaf litter. In this scenario, the increasing amounts of leaf litter in mixtures had significant but negative (i.e.,  
307 higher LMR values) and linear on flower litter decomposition rates (Fig. 2b;  $F_{1, 14} = 65.9$ ;  $p<0.0001$ ).

308 Finally, we observed similar significant effects on the variation in LMR for both litter types combined in response to the  
309 proportion of flower litter mass in the mixture (Fig. 2c). Decreasing the amount of flower litter in the mixture significantly increased  
310 both the expected and observed values of LMR for the litter mixture as a whole, although the slopes of both relationships did not  
311 differ significantly (Fig. 2c;  $F_{1, 14} = 3.5$ ;  $p=0.08$ ). Litter-mixing effects on the whole mixture was significant (Fig. 2c – right panel;  
312  $t=16.5$ ;  $p<0.0001$  unpaired t-test), as the average observed LMR for the whole mixture (37%) was significantly lower than its  
313 average expected value (63%) calculated from the decomposition of both litter types alone. These results indicated that, on average,  
314 litter mixing had a stimulating effect of 26% on the decomposition of the whole mixture treatment.



315

316

**Figure 2:** Patterns of flower and leaf litter mass remaining in the terrestrial experiment for single a) leaf, b) flower, and c) whole mixture (leaf +flower) decomposing alone (i.e. monocultures) or mixed (i.e. mixtures). Litter mass remaining for each litter type alone and in combination were fitted as linear functions of flower:leaf litter proportion. Values in left panels are mean ( $n=10 \pm 95\%$  CI). Slope values in bold indicate significant statistical differences regarding the interactive effects between the explanatory variable and litter mass remaining ( $p<0.05$ ; F-test for Homogeneity of slopes analysis). Values in the right panel of Fig. 2c depict the grand mean ( $n=90 \pm 95\%$  CI). Different letters above the grand mean values indicate significant statistical difference ( $p<0.05$ ; unpaired t-test).

323

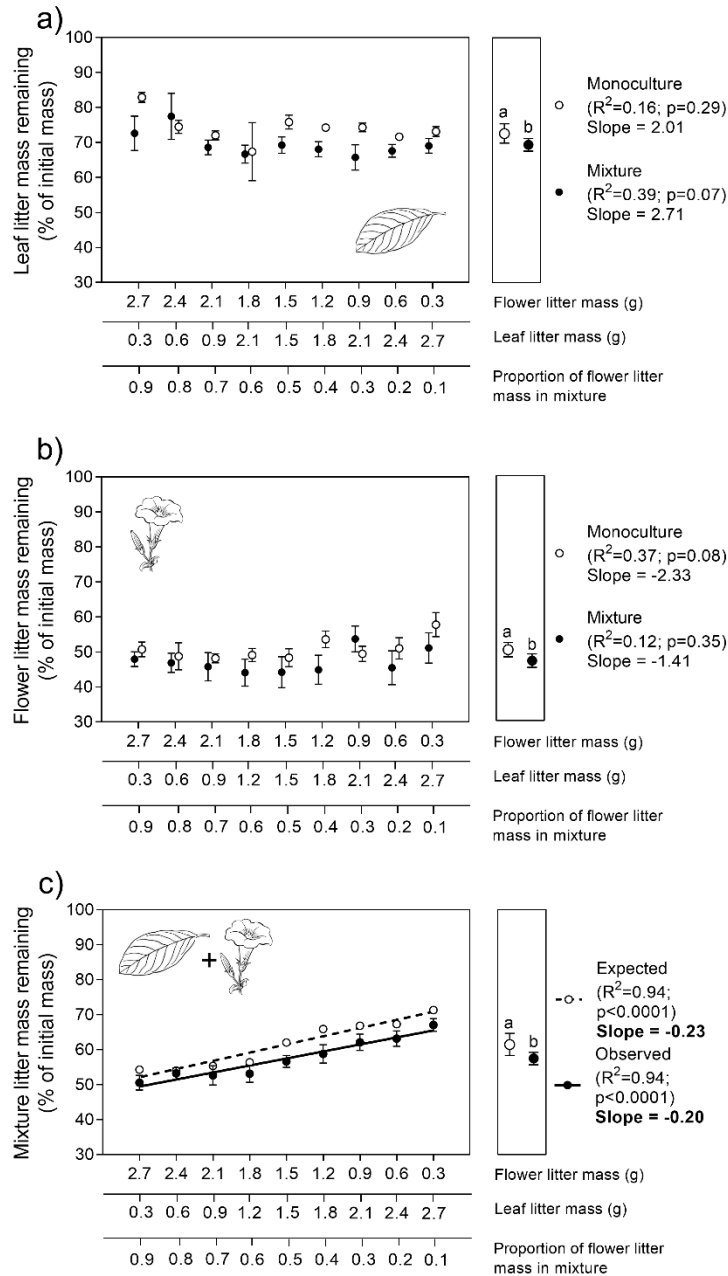
### 3.4 Litter-mixing effects of flower and leaf litter on decomposition in the aquatic experiment

Leaf litter biomass did not significantly affect the variation in leaf LMR, either alone or in combination with flower litter (Fig. 3a;  $F_{1, 14} = 0.1$ ;  $p=0.76$ ). However, when mixed with flower litter, the average leaf LMR was significantly lower (69.5%) than that of its monoculture (72.7%), indicating that leaf litter decomposed 3.2% faster on average in the presence of flower litter (Fig. 3a, right panel;  $t=2.1$ ;  $p=0.04$ , unpaired t-test).

Similar patterns were observed for flower litter decomposition. Variations in flower litter biomass had no effect on flower LMR, either alone or in combination with leaf litter (Fig. 3b;  $F_{1, 14} = 0.3$ ;  $p=0.62$ ). However, when mixed with leaf litter, the average flower LMR was significantly lower (47.1%) than that of its monoculture (50.3%), indicating that flower litter decomposed on average 3.2% faster in the presence of leaf litter (Fig. 3b, right panel;  $t=2.2$ ;  $p=0.04$ , unpaired t-test).

Finally, the expected and observed values for the LMR of the whole mixture increased significantly as a function of the decreasing proportion of flower litter mass in the mixture (Fig. 3c). However, similar to the observations in the terrestrial experiment, the slopes of both relationships were not significantly different from each other (Fig. 3c;  $F_{1, 14} = 1.3$ ;  $p=0.27$ ). Nevertheless, the LMEs on the decomposition of the whole mixture were significant (Fig. 3c, right panel;  $t=2.3$ ;  $p=0.03$ , unpaired t-test), as the average observed LMR for the litter mixture (57.5%) was significantly lower than its expected value (61.5%), calculated from the decomposition of both litter types alone, indicating that litter mixing had, on average, a stimulating effect of 4% on the decomposition of the whole litter mixture.

Litter-mixing effects on the whole mixture was significant (Fig. 2c – right panel;  $t=16.5$ ;  $p<0.0001$  unpaired t-test), as the average observed LMR for the whole mixture (37%) was significantly lower than its average expected value (63%) calculated from the decomposition of both litter types alone.

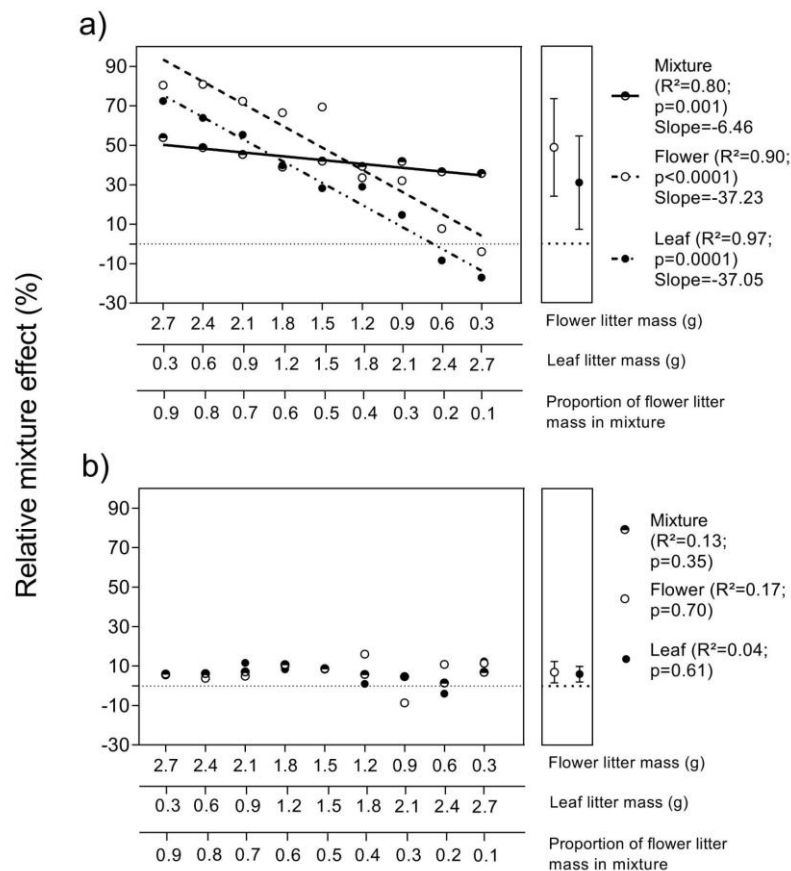


344  
 345 **Figure 3:** Patterns of flower and leaf litter mass remaining in the aquatic experiment for single a) leaf, b) flower, and c) whole  
 346 mixture (leaf +flower) decomposing alone (i.e. monocultures) or mixed (i.e. mixtures). Litter mass remaining for each litter type  
 347 alone and in combination were fitted as linear functions of flower:leaf litter proportion. Values in left panels are mean ( $n=3 \pm 95\%$   
 348 CI) for monocultures and ( $n=6 \pm 95\%$  CI) for mixtures. Slope values in bold indicate significant statistical differences regarding  
 349 the interactive effects between the explanatory variable and litter mass remaining ( $p<0.05$ ; F-test for Homogeneity of slopes  
 350 analysis). Values in right panels depict the grand mean ( $n=27 \pm 95\%$  CI) for monocultures and ( $n=54 \pm 95\%$  CI) for mixtures.  
 351 Different letters above the grand mean values indicate significant statistical difference ( $p<0.05$ ; unpaired t-test).

352  
 353 **3.5 The magnitude of RME for terrestrial and aquatic experiments**

354 Variations of RME values for the two litter types and for the whole litter mixture in response to flower:leaf litter biomass  
 355 proportion showed distinct patterns for terrestrial and aquatic experiments (Fig. 4). In general, RME values were higher for the  
 356 terrestrial experiment compared to the aquatic experiment considering each litter type and the whole mixture. In the terrestrial  
 357 experiment, RME values for flower, leaf, and both litter types combined, varied significantly and positively as a function of  
 358 flower:leaf litter proportion (Fig 4a). However, the variation of RME values for flower and leaf litter as a function of flower:leaf  
 359 biomass proportion were parallel and not statistically different from each other ( $F_{1,14} = 0.04$ ;  $p=0.85$ ) but they were both statistically  
 360 different (steeper) from the variation of RME values for the whole mixture ( $F_{2,21} = 21.2$ ;  $p < 0.0001$ ). On average, the decomposition  
 361 of flower litter increased 49% in the presence of leaf litter and the decomposition of leaf litter increased, on average, 31.2% in the  
 362 presence of flower litter, but such a difference was not statistically significant (Fig. 4a right panel;  $t=1.2$ ;  $p=0.25$  unpaired t-test).

363 Contrary to what was observed in the terrestrial experiment, we did not observe significant effects of flower:leaf litter  
 364 biomass proportion on the variation of RME values for leaf and flower litter as well as for whole mixture in the aquatic experiment  
 365 (Fig. 4b). Furthermore, average values of RMEs for flower (7%) and leaf litter (6%) were not significantly different from each  
 366 other (Fig. 4b right panel;  $t=0.34$ ;  $p=0.74$  unpaired t-test).  
 367



368  
 369 **Figure 4:** Response of the relative mixture effect (RME) of flower, leaf and whole mixture to the gradient of flower:leaf litter  
 370 proportion in a) terrestrial and b) aquatic ecosystems. Regression lines sided by different letters indicate their slopes are statistically  
 371 different from each other ( $p < 0.05$ ; F-test for Homogeneity of slopes analysis). Values in the right panel of Fig. 4a depict the grand  
 372 mean. Symbols represent mean ( $n=9 \pm 95\% \text{ CI}$ ). Error bars were shorter than the size of the symbols. The  $\pm 95\% \text{ CIs}$  values were  
 373 calculated via bootstrap.



374

#### 375 4 Discussion

376 Our study is the first to assess the LMEs of flower and leaf litter mixture on decomposition across terrestrial and aquatic  
377 ecosystems. Our findings suggest that flowers have a lasting interactive effect on litter decomposition beyond their role in  
378 reproduction, providing evidence of LMEs resulting from the mixture of litter from different plant organs, even at the intra-specific  
379 level. First, our findings reveal that *T. aurea*'s flower and leaf litter have distinct functional traits and decomposition rates.  
380 Consistent with our first hypothesis, *T. aurea*'s flower litter exhibits chemical and physical functional trait values indicative of a  
381 more labile detritus compared to *T. aurea*'s leaf litter. Such functional divergences between flower and leaf litter quality were  
382 confirmed by the higher decomposition rates of flower litter compared to leaf litter in both terrestrial and aquatic environments.  
383 Secondly, our results strongly supported that the interaction between flower and leaf would result in LMEs since the occurrence  
384 of LMEs of the flower and leaf litter mixture were consistent in terrestrial and aquatic environments. Third, we hypothesized that  
385 the LMEs of flower litter on leaf decomposition would be stronger and more positive than those from leaf litter on flower litter.  
386 However, flower and leaf litter mixing had reciprocal effects on the decomposition of each other, with symmetric LMEs (both in  
387 magnitude and direction) on the decomposition of both litter types and in both terrestrial and aquatic ecosystems. Finally, our  
388 fourth prediction that the LMEs resulting from the mixture of flower and leaf litter would vary in magnitude and direction  
389 depending on the proportion of flower and leaf biomass in the litter mixture, was supported only in the terrestrial environment,  
390 where the decomposition rate of leaves, flowers, and the whole mixture, was faster with increasing proportion of flower litter in  
391 the litter mixture. This result has two important ramifications. A more specific one suggests that the unbalance distribution of  
392 nutrients in flower and leaf tissues has consequences on litter decomposability after the senescence process, with further effects to  
393 the interaction between flower and leaf litter decomposition (Schmitt and Perfecto, 2020). This result expands what have been  
394 reported by recent studies showing the effects of litter mixing from different plant organs for the occurrence of LMEs on  
395 decomposition (de Paz et al., 2018; Hou and Lü, 2021). Secondly, a more general implication of our results indicates that since the  
396 increasing proportion of flower litter in the mixture increased the decomposition of litter mixture as a whole, the LOM:ROM  
397 biomass proportion in the detritus pool can be a crucial factor mediating the mechanisms controlling the decomposition process in  
398 ecosystems (Guenet et al., 2010). Finally, our results also reinforce the notion of what has been observed in studies that seek to  
399 synthesize the effects of litter functional diversity on decomposition, which advocate that LMEs are more consistent in terrestrial  
400 than in aquatic ecosystems (Gessner et al., 2010) .

401 Leaves and flowers are plant organs with distinct functions and forms, resulting in differences in their chemical and  
402 physical characteristics. Recent research has emphasized the significance of indirect effects of ecological and evolutionary  
403 mechanisms in shaping litter decomposition through legacy effects from functional traits of living plant tissues that persist after  
404 tissue death and impact litter decomposition through after-life effects (Freschet et al., 2012; Cornelissen et al., 2023). The longer  
405 lifespan and persistence of leaves require the plant to invest more in structural tissues to provide greater physical resistance for  
406 these organs, as well as in secondary compounds that act as constitutive defenses against herbivory and photo-damage by UV  
407 radiation (Stamp, 2003). Additionally, leaf senescence is generally slow, and many species have efficient nutrient resorption prior  
408 to leaf abscission, especially deciduous species living in infertile soils (Brant and Chen, 2015) like the one used in our study. On  
409 the other hand, flowers are ephemeral reproductive organs with high concentrations of nutrients and soluble compounds, as well  
410 as labile C compounds that make up nectar to attract pollinators (Freeman et al., 1991; Galetto and Bernardello, 2004). Compared  
411 to leaves, flowers are generally fast-growing and short-lived organs (Ashman and Schoen, 1994), which results in higher nutrient  
412 investment, lower nutrient resorption and lesser herbivore attack than leaves (Mccall and Irwin, 2007). As a result, flower litter  
413 may contain higher concentrations of nutrients and labile C compounds, while having lower amounts of structural tissues and

414 deterrent secondary compounds (Stamp, 2003). These conjectures were most supported by our data and confirmed our hypothesis  
415 that flower litter is a more LOM than leaf litter and decomposes faster than leaf litter in both terrestrial and aquatic ecosystems.  
416 Flower litter has higher concentrations of N, P, K, and labile C, as well as higher leaching capacity and WHC, while leaf litter  
417 were richer in micronutrients such as Mg, Ca, and Na. These results also supported the assumptions we have used to rationalize  
418 our second hypothesis, which predicted that due to functional differences in litter quality, the mixture of flower and leaf litter  
419 would cause LMEs on the decomposition of both litter types. Studies in both terrestrial and aquatic ecosystems have shown that  
420 the litter functional dissimilarity rather than litter species number is the most important factor causing LMEs on decomposition  
421 (Epps et al., 2007; Lecerf et al., 2011; Violle et al., 2017). Our study supports this paradigm in demonstrating that LMEs on  
422 decomposition can also occur intraspecifically via the interaction of flower and leaf litter, and call attention to the importance of  
423 LMEs on decomposition even in low-diverse systems through the interactions of litter from different plant organs.

424 Meanwhile, according to our third hypothesis, we expected the LMEs between flower and leaf litter to be asymmetrical,  
425 with the leaf litter decomposing more quickly in the presence of flower litter than vice versa. Our conjecture relied on the results  
426 of past studies that show that litter with contrasting qualities affects and/or responds to litter mixing in distinct ways. In general,  
427 studies have shown that LOM stimulates the decomposition of ROM mainly due to nutrient transfer and/or priming effects (Guenet  
428 et al., 2010; Liu et al., 2020), while ROM may inhibit the decomposition of LOM due to the presence of deterrent secondary  
429 metabolites (Hättenschwiler et al., 2005). However, our findings **rejected** our third prediction. While we observed that, on average,  
430 flower litter (LOM) accelerated the decomposition of leaf litter (ROM), we also found that leaf litter reciprocally accelerated the  
431 decomposition of flower litter, and the magnitudes of these effects were statistically indistinguishable from each other in both  
432 terrestrial and aquatic experiments. These results are due to complementary effects. The two litter types have highly contrasting  
433 chemical and physical characteristics. Flower litter has a higher concentration of labile C and nutrients (N, P, K), and WHC and  
434 leaching potential than leaf litter. This pattern points to the possibility of flower litter to accelerate the decomposition of leaf litter  
435 through mechanisms such as nutrient transfer and/or improved microenvironment conditions (Hättenschwiler and Jørgensen, 2010;  
436 Makkonen et al., 2013). On the other hand, leaf litter has higher concentrations of micronutrients such as Mg, Ca, Na, which could,  
437 via micronutrient transfer, compensate for possible limitations of flower litter decomposition by these elements. In fact, studies  
438 have already shown that litter decomposition is co-limited by macro and micronutrients in tropical forests (Kaspari et al., 2008;  
439 García-Palacios et al., 2016). Additionally, specifically for the terrestrial experiment, the higher toughness of leaf litter may have  
440 influenced microenvironmental conditions of the litter layer inside microcosms (Makkonen et al., 2013), preventing the compaction  
441 of the flower litter layer and avoiding anaerobic conditions, which could negatively affect the decomposition of flower litter in  
442 monocultures.

443 However, for a better understanding of the aforementioned mechanisms underlying the LMEs of flower and leaf litter  
444 mixing on decomposition, it is essential to consider how these effects, respective to each litter type, varied in response to the  
445 flower-to-leaf litter proportion. In the terrestrial experiment, we observed that RME of leaf litter increased in response to an increase  
446 in flower litter biomass in the litter mixtures, and negative RME values for leaf litter decomposition were observed only in the two  
447 mixtures with the lowest flower litter biomass. As discussed above, the variation in positive values of RME in response to the  
448 increasing biomass of flower litter in mixtures points out to mechanisms that are generally attributed to the enhancing effects of  
449 LOM on the decomposition of ROM in litter mixtures, such as nutrient transfer or mining and priming effects (Guenet et al., 2010;  
450 Chen et al., 2014). The resource concentration hypothesis posits that resource quantity drives resource use efficiency (Charnov,  
451 1976; Hambäck and Englund, 2005). The optimal foraging efficiency of microbial decomposers depends on mechanisms that  
452 maximize the balance between enzyme production and energy gain. We conjectured that the increase in flower litter biomass could

453 have optimized the enzyme production and energy for the maintenance of metabolic processes, known as the substrate induction  
454 hypothesis (Allison et al., 2014; Schimel and Weintraub, 2003), which might have enhanced the leaf litter decomposition. Another  
455 possibility is the occurrence of priming effects mechanisms, such as co-metabolism, which posits that the decomposition of ROM  
456 may be enhanced by LOM targeting enzymes capable of degrading the ROM, and/or that LOM decomposition may supply energy  
457 for microorganisms to produce extracellular enzymes capable of degrading ROM (Guenet et al., 2010). Such LMEs, resource-  
458 mediated mechanisms of flower litter on leaf litter decomposition in the terrestrial experiment may have acted in combination with  
459 the improvement of microenvironmental conditions promoted by the higher WHC of flower litter. **Otherwise, the antagonistic**  
460 **effects observed in treatments with lower biomass of flower litter may be associated with the preferential feeding of decomposers**  
461 **on flower litter, and the low energy provide by the LOM was not enough to induce the degradation of the ROM** (Cheng, 2009;  
462 Wang et al., 2015). **It is important to note that we did not use labeled material to clearly distinguish the ROM and the LOM dynamic**  
463 **as classically done in priming experiments. Therefore, our priming related interpretation must be taken with due care.**

464 However, what could explain the unexpected variation of flower litter decomposition in the terrestrial experiment as the  
465 proportion of flower-to-leaf litter varied in litter mixtures? Although the decomposition of flower litter was enhanced in the  
466 presence of leaf litter irrespective of the flower-to-leaf litter proportion, these effects consistently weakened as the amount of leaf  
467 litter increased and the amount of flower litter decreased in the litter mixture. We conjectured that such results might have occurred  
468 due to the combination of two potential mechanisms. First, the presence of even a small amount of leaf litter could have an  
469 enhancing effect on the decomposition of flower litter if it is enough to meet the microbial decomposer community's demand for  
470 a specific limiting nutrient in the mixture. This, for example, might have occurred in litter mixtures due to the higher concentrations  
471 of micronutrients such as Ca, Mg, and Na, in leaf litter compared to flower litter. These micronutrients are considered important  
472 for litter decomposition in tropical forests (Kaspari et al., 2009), and their demand for decomposers is comparatively lower than  
473 macronutrients, such as N and P (Tyler, 2005). Therefore, even the low proportion of leaf litter might have been sufficient to meet  
474 the micronutrient demand of decomposers for decomposing flower litter. Secondly, the interaction between different types of litters  
475 can affect their decomposition through two non-mutually exclusive ways: through the effect a given litter can have on the other  
476 and/or through the response a given litter can exhibit to the interaction with another litter in the mixture. For example, labile litter  
477 can both expedite the breakdown of another litter (as discussed earlier), but also it may be more reactive to stimulation from another  
478 litter. This is because labile litter typically offers fewer resources that limit decomposers. Consequently, when a stimulus results  
479 from interactions with another litter, it's more likely to boost the decomposition of labile litter compared to refractory litter. We  
480 believe that this mechanism may have been relevant in determining the observed results in the terrestrial experiment, as the  
481 synergistic effects of the mixture of litter on flower litter decomposition increased with the rise in flower litter biomass in the  
482 mixture, while decreased with the increasing in the amount of leaf litter in the mixture.

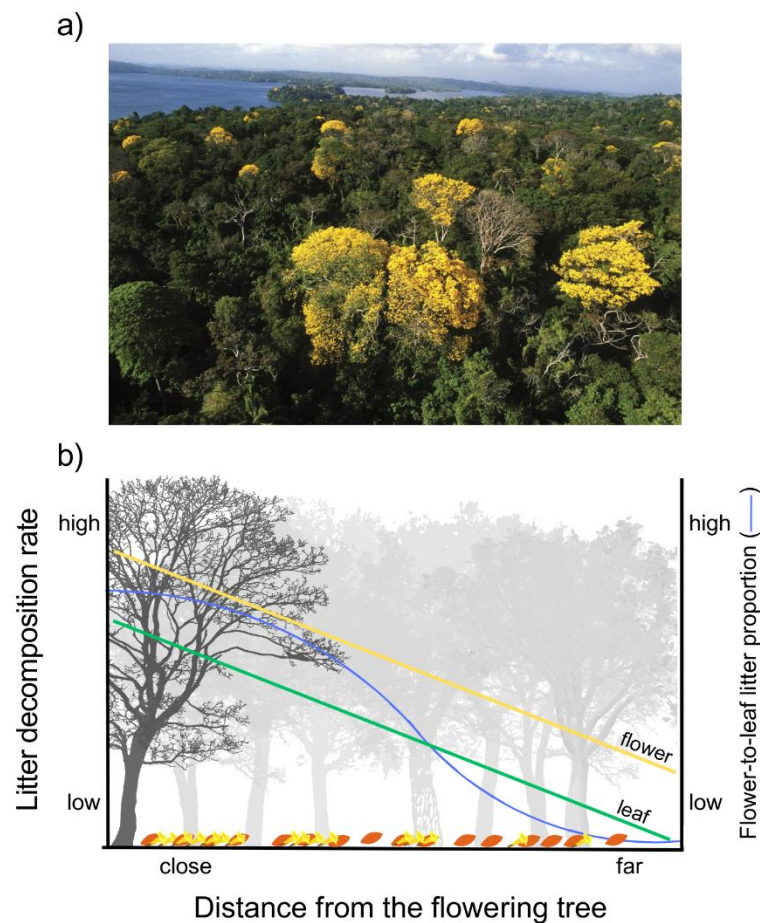
483 The patterns resulting from the mixture of flower and leaf litter and the variation in the relative biomass of these litter types  
484 in the mixture were much less pronounced in the aquatic experiment. Although litter mixing also resulted in synergistic effects in  
485 **the** aquatic experiment, such effects were weaker compared to those observed in the terrestrial experiment and did not consistently  
486 vary with the variation in the flower-to-leaf litter biomass proportion. Overall, these results support commonly reported  
487 observations in the literature regarding the effects of detritus mixture on decomposition, showing that LMEs are generally weaker  
488 or absent in aquatic ecosystems compared to terrestrial ones (Gessner et al., 2010). These results may be, in their entirety or in  
489 part, attributed to the fact that mechanisms potentially relevant for triggering LMEs in terrestrial ecosystem, such as moisture  
490 exchange between different types of litters and LMEs on physical properties of litter layer, lose relevance in the aquatic  
491 environment (Schmidt et al., 2011; Bengtsson et al., 2018). However, we may also have underestimated the LMEs in the aquatic  
492 experiment since, in this environment, a considerable portion of organic matter is leached from the litter and degraded in the water

493 column in its dissolved form, which was not quantified in our experiment. In fact, our results showed that leaching is responsible  
494 for causing 25% and 9% of mass loss on flower and leaf litter, respectively (Fig 1c). Several studies have demonstrated that litter-  
495 mixing interactions between dissolved organic matter from litter of different qualities also occur and accelerate decomposition in  
496 the water column (Farjalla et al., 2009; Fonte et al., 2013). Hence, forthcoming studies should explore the impact of flower and  
497 leaf litter mixture on both particulate and dissolved organic matter decomposition to achieve a more comprehensive understanding  
498 of the LMEs of flower and leaf litter on decomposition.

499 Although the results of our experiment have demonstrated consistent patterns of flower and leaf litter mixture in the  
500 occurrence, magnitude, and direction of LMEs in decomposition, it is important to consider some caveats of our experiment.  
501 Although we made an effort to maintain environmental conditions similar to those observed in nature, laboratory conditions will  
502 always suppress features of the environment that may be relevant to the study at hand. Firstly, we were unable to measure how the  
503 effect of the mixture and the variation in the proportion of flower and leaf litter affected the microbial community, which was the  
504 primary group of decomposers mediating our results. Secondly, the absence of macrofauna in our experiment could limit an  
505 accurate estimation of LMEs through flower and leaf litter interaction, since the presence of macro-fauna has been repeatedly  
506 shown to be an important factor in determining the occurrence and magnitude of synergistic LMEs on decomposition through litter  
507 fragmentation and decomposers complementary use of litter resources (Hättenschwiler and Gasser, 2005; Njoroge et al., 2022,  
508 2023). Therefore, in future studies the inclusion of macrofauna could be important to quantify the real impact of flower and leaf  
509 litter interaction in nutrient dynamics in ecosystems. Thirdly, in the aquatic experiment, we simulated stillwater environmental  
510 conditions typically observed in lentic systems, such as temporary pools along the channel of intermittent rivers, small ponds,  
511 phytotelmata, and so forth. These environments are generally nutrient-poor and result in the prolonged confinement of water and  
512 litter (Migliorini et al., 2018; Bonada et al., 2020), potentially affecting the generalizability of our results to other aquatic systems.  
513 However, our incubation method may not fully replicate real-world conditions, especially within lotic ecosystems. Therefore,  
514 future studies should assess the occurrence, magnitude, and direction of LMEs resulting from the interaction between flower and  
515 leaf litter in lotic systems. In these systems, there is a long tradition of studies evaluating the decomposition of detritus from riparian  
516 vegetation, yet the importance of the interaction between leaf and floral litter in decomposition is often overlooked (but see Rezende  
517 et al., 2017).

518 Massive flowering is a phenology pattern found in a range of species in different ecosystems, beyond the Bignoniaceae  
519 family (Conceição et al., 2013; Whigham, 2013; Zheng et al., 2020). The litter-mixing interactions between flower and leaf litter  
520 could be widespread in natural ecosystems, caused by differences in quality between flowers and leaf litter. These differences may  
521 be primarily attributed to variations in the form and function of these organs, creating a legacy effect for decomposition (Freschet  
522 et al., 2013; Cornelissen et al., 2023). In particular, our results indicate that species that present massive flowering phenology may  
523 represent key roles mediating the occurrence of temporal and/or spatial biogeochemical hotspots (Kuzyakov, 2010), both through  
524 direct effects, where the flowers themselves generally represent a more labile and rapidly decomposing litter, thus being recycled  
525 more quickly and efficiently, and through indirect effects, where flower litter can interact with leaf litter complementarily  
526 stimulating the decomposition of both litters at the litter layer around the flowering tree. However, the results observed in the  
527 terrestrial experiment, which highlight that the magnitude of LMEs depends on the flower-to-leaf litter biomass proportion in the  
528 litter mixture, may represent the occurrence of a phenomenon analogous to the Janzen-Connell Hypothesis (Janzen, 1970; Connell,  
529 1971). This hypothesis predicts that patterns of seed predation (Janzen, 1970) and herbivory on seedlings (Connell, 1971) are more  
530 intense near the parent tree because of resource concentration effects. In forests, the interaction between flower and leaf litter could  
531 occur beyond the taxonomic level, if differences of litter quality between flower and leaf litter were widespread. For example, in

532 dense forests the presence of a few scattered trees presenting massive flowering can generate LMEs on leaf litter at either intra- or  
 533 inter-specific levels (Fig. 5a). Analogously to what is expected for seed and seedlings distribution according to the Janzen-Connell  
 534 Hypothesis, flower litter biomass should be more concentrated below the flowering tree and gradually decrease farther from it. On  
 535 the other hand, leaf litter biomass would be more homogeneously distributed in the litter layer due to the contribution from the  
 536 neighboring trees (Fig. 5b). This differential input of flower and leaf litterfall to the litter layer could generate a pattern of variation  
 537 both in the concentration of flower litter and in the proportion of flower-to-leaf litter in the litter layer in relation to the blooming  
 538 tree. Therefore, the rate of nutrient recycling due to decomposition should be higher near the flowering tree due to the  
 539 decomposition of the high flower litter biomass itself and because, according to our results, synergistic effects of flower and leaf  
 540 litter on the decomposition of both litter types are stronger in high flower-to-leaf litter biomass proportions (Fig 5b). These potential  
 541 effects would be more important in terrestrial ecosystems, both because the LMEs of litter mixing were responsive to variation in  
 542 the flower-to-leaf litter biomass proportion only in the terrestrial experiment and because the arrangement of higher flower litter  
 543 concentration around the flowering tree is more likely to be found in terrestrial ecosystems. However, the conjecture presented in  
 544 this conceptual model must be properly tested to validate its expected results since our experiment, although allowing us to  
 545 speculate on potential hypotheses and patterns, does not enable us to test or confirm them. **Due to the importance of flower:leaf**  
 546 **biomass to the occurrence of LMEs, future studies should quantify the flower:leaf biomass proportion in natural conditions to**  
 547 **accurately understand the effects of flower on litter decomposition and which flower:leaf litter biomass proportions often generate**  
 548 **LMEs.**



549 **Figure 5:** Conceptual model expanding the importance of flower and leaf litter spatial distribution and potential interactions in  
 550 relation to the distance of the flowering tree in natural forests. a) Scattered distribution of massive flowering trees in a natural  
 551 forest; Photo by S. Joseph Wright, Smithsonian Tropical Research Institute. b) We adapted a theoretical scheme based on the  
 552



553 Janzen-Connell Hypothesis, which assumes that predation on seed and herbivory on seedlings decreases along the distance from  
554 the parent tree as seeds and seedlings become rarer on the forest floor. In our case, we assume that nutrient recycling, measured as  
555 litter decomposition rate, is a function of the absolute and relative biomass of flower and leaf litter in the litter layer. Absolute and  
556 relative biomass of flower litter decreases along the distance from the flowering tree. This is because the dispersion of flower litter  
557 to the litter layer is stronger near the flowering tree, becoming increasingly weaker with distance from the flowering tree, and the  
558 quantity of leaf litter from all neighboring tree species in the litter layer is independent of the distance from the flowering tree.  
559 Near the flowering tree, recycling through decomposition is expected to be higher due to the large amount of flower litter, which  
560 decomposes quickly because of its high quality, but also because the litter-mixing effects of the interaction between flower and  
561 leaf litter are stronger in the litter mixtures with a high proportion of flower-to-leaf litter. The results used to conjecture the  
562 predictions of this conceptual model are presented in Fig.4a.

563

## 564 **5 Conclusions**

565 Our findings highlight the importance of litter from plant reproductive organs for LMEs in ecosystems, which could  
566 substantially contribute to changes in nutrient and carbon dynamics. Our results highlight the importance of intra-specific  
567 variability among organs indicating the occurrence of LMEs could be more dependent on litter dissimilarity than taxonomic  
568 richness, suggesting the potential relevance of LMEs at intra-specific levels in low-diversity communities. Although recent studies  
569 have evidenced the role of reproductive organs in increasing the decomposition of organic matter in the natural environment in  
570 both terrestrial (de Paz et al., 2018; Schmitt and Perfecto, 2020) and aquatic (Rezende et al., 2017) ecosystems, it is necessary to  
571 evaluate the general patterns and the possible mechanisms driving the effects of litter from reproductive organs on LMEs in each  
572 environment. We found evidence of the central role of complementarity mechanisms in the occurrence, magnitude, and direction  
573 of LMEs. In the terrestrial environment, the LMEs varied as a function of flower-to-leaf litter biomass proportion in the litter  
574 mixture, indicating the potential importance of interplay between resource quality and quantity in determining niche partitioning  
575 among microbial decomposers. To understand the generalities of the second role of flowers on litter decomposition, it is important  
576 to verify the generality of our results found for *T. aurea*. Future studies should investigate the generalities of flower and leaf litter  
577 on LMEs at intra- and inter-specific levels, as well as the potential role of flower litter in affecting direct and indirect mechanisms  
578 of LMEs on litter decomposition across a large variety of plant species, an aspect that has been completely neglected in the literature  
579 about the effects of litter mixing on decomposition.

580

### 581 **Code availability**

582 Code is available upon request from the corresponding author.

583

### 584 **Data availability**

585 Data is available upon request from the corresponding author.

586

### 587 **Authors contribution**

588 MIGA was responsible for running the experiments and writing the original draft. RDG, LSC, and AC were responsible for  
589 conceptualizing the experiments. BG and AC were responsible for the funding acquisition. MIGA and AC were responsible for  
590 the formal analyses. BG, MIGA, and AC were responsible for data interpretation. ELV was responsible for providing material and  
591 reagents for the chemical analyses. All co-authors contributed by reviewing and editing the submitted version.

592



593 **Competing interests**

594 At least one of the (co-)authors is a member of the editorial board of Biogeosciences.

595 **References**

- 596 Allen, S.E.; Grimshaw, H.M.; Parkinson, J.A., Quarmby, C.: Chemical analysis of ecological material., Blackwell., Oxford, 325  
597 pp., 1974.
- 598 Allison, S. D., Chacon, S. S., and German, D. P.: Substrate concentration constraints on microbial decomposition, *Soil Biol.*  
599 *Biochem.*, 79, 43–49, <https://doi.org/10.1016/j.soilbio.2014.08.021>, 2014.
- 600 Ashman, T.-L. and Schoen, D. J.: How long should flowers live?, *Nature*, 371, 788–791, <https://doi.org/10.1038/371788a0>,  
601 1994.
- 602 Aufdenkampe, A. K., Mayorga, E., Raymond, P. A., Melack, J. M., Doney, S. C., Alin, S. R., Aalto, R. E., and Yoo, K.: Riverine  
603 coupling of biogeochemical cycles between land, oceans, and atmosphere, *Front. Ecol. Environ.*, 9, 53–60,  
604 <https://doi.org/10.1890/100014>, 2011.
- 605 Barantal, S., Roy, J., Fromin, N., Schimann, H., and Hättenschwiler, S.: Long-term presence of tree species but not chemical  
606 diversity affect litter mixture effects on decomposition in a neotropical rainforest., *Oecologia*, 167, 241–252,  
607 <https://doi.org/10.1007/s00442-011-1966-4>, 2011.
- 608 Barros, M. G.: Pollination ecology of *Tabebuia aurea* (Manso) Benth. & Hook. and *T. ochracea* (Cham.) Standl.(Bignoniaceae)  
609 in Central Brazil cerrado vegetation, *Rev. Bras. Botânica*, 24, 255–261, <https://doi.org/10.1590/S0100-84042001000300003>,  
610 2001.
- 611 Basile-Doelsch, I., Balesdent, J., and Rose, J.: Are interactions between organic compounds and nanoscale weathering minerals  
612 the key drivers of carbon storage in soils?, *Environ. Sci. Technol.*, 49, 3997–3998, <https://doi.org/10.1021/acs.est.5b00650>, 2015.
- 613 Batalha, M. A. and Mantovani, W.: Floristic composition of the cerrado in the Pé-de-Gigante Reserve (Santa Rita do Passa  
614 Quatro, southeastern Brazil), *Acta Bot. Brasilica*, 15, 289–304, <https://doi.org/10.1590/S0102-33062001000300001>, 2001.
- 615 Bengtsson, M. M., Attermeyer, K., and Catalán, N.: Interactive effects on organic matter processing from soils to the ocean: are  
616 priming effects relevant in aquatic ecosystems?, *Hydrobiologia*, <https://doi.org/10.1007/s10750-018-3672-2>, 2018.
- 617 Berenstecher, P., Araujo, P. I., and Austin, A. T.: Worlds apart: Location above- or below-ground determines plant litter  
618 decomposition in a semi-arid Patagonian steppe, *J. Ecol.*, 109, 2885–2896, [https://doi.org/https://doi.org/10.1111/1365-  
619 2745.13688](https://doi.org/https://doi.org/10.1111/1365-2745.13688), 2021.
- 620 Boaventura, M. G., Villamil, N., Teixido, A. L., Tito, R., Vasconcelos, H. L., Silveira, F. A. O., and Cornelissen, T.: Revisiting  
621 florivory: an integrative review and global patterns of a neglected interaction, *New Phytol.*, 233, 132–144,  
622 <https://doi.org/https://doi.org/10.1111/nph.17670>, 2022.
- 623 **Bonada, N., Cañedo-Argüelles, M., Gallart, F. von Schiller, D., Fortuño, P., Latron, J., Llorens, P., Múrria, C., Soria, M.,**  
624 **Vinyoles, D., and Cid, N.: Conservation and management of isolated pools in temporary rivers. *Water*, 12, 2870,**  
625 **<https://doi.org/10.3390/w12102870>, 2020.**
- 626 Boyero, L., Pearson, R. G., Gessner, M. O., Barmuta, L. A., Ferreira, V., Graça, M. A. S., Dudgeon, D., Boulton, A. J., Callisto,  
627 M., Chauvet, E., Helson, J. E., Bruder, A., Albariño, R. J., Yule, C. M., Arunachalam, M., Davies, J. N., Figueroa, R., Flecker,  
628 A. S., Ramírez, A., Death, R. G., Iwata, T., Mathooko, J. M., Mathuriau, C., Gonçalves, J. F., Moretti, M. S., Jinggut, T.,  
629 Lamothe, S., M’Erimba, C., Ratnarajah, L., Schindler, M. H., Castela, J., Buria, L. M., Cornejo, A., Villanueva, V. D., and West,  
630 D. C.: A global experiment suggests climate warming will not accelerate litter decomposition in streams but might reduce carbon  
631 sequestration, *Ecol. Lett.*, 14, 289–294, <https://doi.org/10.1111/j.1461-0248.2010.01578.x>, 2011.
- 632 Boyero, L., Pérez, J., López-Rojo, N., Tonin, A. M., Correa-Araneda, F., Pearson, R. G., Bosch, J., Albariño, R. J., Anbalagan,

633 S., Barmuta, L. A., Beesley, L., Burdon, F. J., Caliman, A., Callisto, M., Campbell, I. C., Cardinale, B. J., Casas, J. J., Chará-  
634 Serna, A. M., Ciapała, S., Chauvet, E., Colón-Gaud, C., Cornejo, A., Davis, A. M., Degebrodt, M., Dias, E. S., Díaz, M. E.,  
635 Douglas, M. M., Elozegi, A., Encalada, A. C., de Eyto, E., Figueroa, R., Flecker, A. S., Fleituch, T., Frainer, A., França, J. S.,  
636 García, E. A., García, G., García, P., Gessner, M. O., Giller, P. S., Gómez, J. E., Gómez, S., Gonçalves, J. F., Graça, M. A. S.,  
637 Hall, R. O., Hamada, N., Hepp, L. U., Hui, C., Imazawa, D., Iwata, T., Junior, E. S. A., Kariuki, S., Landeira-Dabarca, A., Leal,  
638 M., Lehosmaa, K., M'Erimba, C., Marchant, R., Martins, R. T., Masese, F. O., Camden, M., McKie, B. G., Medeiros, A. O.,  
639 Middleton, J. A., Muotka, T., Negishi, J. N., Pozo, J., Ramírez, A., Rezende, R. S., Richardson, J. S., Rincón, J., Rubio-Ríos, J.,  
640 Serrano, C., Shaffer, A. R., Sheldon, F., Swan, C. M., Tenkiano, N. S. D., Tiegs, S. D., Tolod, J. R., Vernasky, M., Watson, A.,  
641 Yegon, M. J., and Yule, C. M.: Latitude dictates plant diversity effects on instream decomposition, *Sci. Adv.*, 7, eabe7860,  
642 <https://doi.org/10.1126/sciadv.abe7860>, 2021.

643 Brant, A. N. and Chen, H. Y. H.: Patterns and Mechanisms of Nutrient Resorption in Plants, *CRC. Crit. Rev. Plant Sci.*, 34, 471–  
644 486, <https://doi.org/10.1080/07352689.2015.1078611>, 2015.

645 **Buonaiuto, D. M. and Wolkovich, E. M.: Differences between flower and leaf phenological responses to environmental variation**  
646 **drive shifts in spring phenological sequences of temperate woody plants.***J. Ecol.*, 109, 2922–2933. [https://doi.org/10.1111/1365-](https://doi.org/10.1111/1365-2745.13708)  
647 [2745.13708](https://doi.org/10.1111/1365-2745.13708), 2021.

648 Cebrian, J.: Patterns in the Fate of Production in Plant Communities, *Am. Nat.*, 154, 449–468, <https://doi.org/10.1086/303244>,  
649 1999.

650 **Cebrian, J. and Lartigue, J.: Patterns of Herbivory and Decomposition in Aquatic and Terrestrial Ecosystems, *Ecol. Monogr.*, 74,**  
651 **237–259, 2004.**

652 Charnov, E. L.: Optimal foraging, the marginal value theorem, *Theor. Popul. Biol.*, 9, 129–136,  
653 [https://doi.org/https://doi.org/10.1016/0040-5809\(76\)90040-X](https://doi.org/https://doi.org/10.1016/0040-5809(76)90040-X), 1976.

654 Chen, R., Senbayram, M., and Blagodatsky, S.: Soil C and N availability determine the priming effect : microbial N mining and  
655 stoichiometric decomposition theories, 2356–2367, <https://doi.org/10.1111/gcb.12475>, 2014.

656 Cheng, W.: Rhizosphere priming effect: Its functional relationships with microbial turnover, evapotranspiration, and C-N  
657 budgets, *Soil Biol. Biochem.*, 41, 1795–1801, <https://doi.org/10.1016/j.soilbio.2008.04.018>, 2009.

658 Conceição, A. A., Alencar, T. G., Souza, J. M., Moura, A. D. C., and Silva, G. A.: Massive post-fire flowering events in a  
659 tropical mountain region of Brazil: high episodic supply of floral resources, 2013.

660 Connell, J.: On the role of the natural enemies in preventing competitive exclusion in some marine animals and in rain forest  
661 trees, 1971.

662 Cornelissen, J. H. C., Cornwell, W. K., Freschet, G. T., Weedon, J. T., Berg, M. P., and Zanne, A. E.: Coevolutionary legacies  
663 for plant decomposition, *Trends Ecol. Evol.*, 38, 44–54, <https://doi.org/10.1016/j.tree.2022.07.008>, 2023.

664 Crutsinger, G. M., Sanders, N. J., and Classen, A. T.: Comparing intra- and inter-specific effects on litter decomposition in an  
665 old-field ecosystem, *Basic Appl. Ecol.*, 10, 535–543, <https://doi.org/https://doi.org/10.1016/j.baae.2008.10.011>, 2009.

666 Davidson, E. A. and Janssens, I. A.: Temperature sensitivity of soil carbon decomposition and feedbacks to climate change.,  
667 *Nature*, 440, 165–173, <https://doi.org/10.1038/nature04514>, 2006.

668 Dearden, F. M., Dehlin, H., Wardle, D. A., and Nilsson, M.-C.: Changes in the ratio of twig to foliage in litterfall with species  
669 composition, and consequences for decomposition across a long term chronosequence, *Oikos*, 115, 453–462,  
670 <https://doi.org/https://doi.org/10.1111/j.2006.0030-1299.15354.x>, 2006.

671 Dignac, M.-F., Derrien, D., Barré, P., Barot, S., Cécillon, L., Chenu, C., Chevallier, T., Freschet, G. T., Garnier, P., Guenet, B.,

672 Hedde, M., Klumpp, K., Lashermes, G., Maron, P.-A., Nunan, N., Roumet, C., and Basile-Doelsch, I.: Increasing soil carbon  
673 storage: mechanisms, effects of agricultural practices and proxies. *A review, Agron. Sustain. Dev.*, 37, 14,  
674 <https://doi.org/10.1007/s13593-017-0421-2>, 2017.

675 Djukic, I., Kepfer rojas, S., Schmidt, I., Larsen, K., Beier, C., Berg, B., Verheyen, K., Caliman, A., Paquette, A., Gutiérrez, A.,  
676 Humber, A., Valdecantos, A., Petraglia, A., Alexander, H., Augustaitis, A., Saillard, A., Fernández, A., Sousa, A., Lillebø, A. I.,  
677 and Tóth, Z.: Early stage litter decomposition across biomes, *Sci. Total Environ.*, 628–629, 1369–1394,  
678 <https://doi.org/10.1016/j.scitotenv.2018.01.012>, 2018.

679 Epps, K. Y., Comerford, N. B., Reeves James B., I. I. I., Cropper Wendell P., J., and Araujo, Q. R.: Chemical diversity –  
680 highlighting a species richness and ecosystem function disconnect, *Oikos*, 116, 1831–1840,  
681 <https://doi.org/https://doi.org/10.1111/j.0030-1299.2007.15853.x>, 2007.

682 Farjalla, V. F., Marinho, C. C., Faria, B. M., Amado, A. M., Esteves, F. de A., Bozelli, R. L., and Girollo, D.: Synergy of Fresh  
683 and Accumulated Organic Matter to Bacterial Growth, *Microb. Ecol.*, 57, 657–666, <https://doi.org/10.1007/s00248-008-9466-8>,  
684 2009.

685 Fassbender, H. .: Simultane P-Bestimmung in N-Kjeldahl-Ausfischluß von Bodenproben., *Die Phosphorsäure*, 30, 44–53, 1973.

686 Finerty, G. E., de Bello, F., Bílá, K., Berg, M. P., Dias, A. T. C., Pezzatti, G. B., and Moretti, M.: Exotic or not, leaf trait  
687 dissimilarity modulates the effect of dominant species on mixed litter decomposition, *J. Ecol.*, 104, 1400–1409,  
688 <https://doi.org/https://doi.org/10.1111/1365-2745.12602>, 2016.

689 Fonte, E. S., Amado, A. M., Meirelles-Pereira, F., Esteves, F. A., Rosado, A. S., and Farjalla, V. F.: The Combination of  
690 Different Carbon Sources Enhances Bacterial Growth Efficiency in Aquatic Ecosystems, *Microb. Ecol.*, 66, 871–878,  
691 <https://doi.org/10.1007/s00248-013-0277-1>, 2013.

692 Freeman, C. E., Worthington, R. D., and Jackson, M. S.: Floral Nectar Sugar Compositions of Some South and Southeast Asian  
693 Species, *Biotropica*, 23, 568–574, <https://doi.org/10.2307/2388394>, 1991.

694 Freschet, G. T., Cornelissen, J. H. C., van Logtestijn, R. S. P., and Aerts, R.: Substantial nutrient resorption from leaves, stems  
695 and roots in a subarctic flora: what is the link with other resource economics traits?, *New Phytol.*, 186, 879–889,  
696 <https://doi.org/https://doi.org/10.1111/j.1469-8137.2010.03228.x>, 2010.

697 Freschet, G. T., Aerts, R., and Cornelissen, J. H. C.: A plant economics spectrum of litter decomposability, *Funct. Ecol.*, 26, 56–  
698 65, <https://doi.org/https://doi.org/10.1111/j.1365-2435.2011.01913.x>, 2012.

699 Freschet, G. T., Cornwell, W. K., Wardle, D. A., Elumeeva, T. G., Liu, W., Jackson, B. G., Onipchenko, V. G., Soudzilovskaia,  
700 N. A., Tao, J., and Cornelissen, J. H. C.: Linking litter decomposition of above- and below-ground organs to plant–soil feedbacks  
701 worldwide, *J. Ecol.*, 101, 943–952, <https://doi.org/https://doi.org/10.1111/1365-2745.12092>, 2013.

702 Galetto, L. and Bernardello, G.: Floral nectaries, nectar production dynamics and chemical composition in six *Ipomoea* species  
703 (*Convolvulaceae*) in relation to pollinators, *Ann. Bot.*, 94, 269–280, <https://doi.org/10.1093/aob/mch137>, 2004.

704 García-Palacios, P., Maestre, F. T., Kattge, J., and Wall, D. H.: Climate and litter quality differently modulate the effects of soil  
705 fauna on litter decomposition across biomes, *Ecol. Lett.*, 16, 1045–1053, <https://doi.org/10.1111/ele.12137>, 2013.

706 García-Palacios, P., Mckie, B. G., Handa, I. T., Frainer, A., and Hättenschwiler, S.: The importance of litter traits and  
707 decomposers for litter decomposition: A comparison of aquatic and terrestrial ecosystems within and across biomes, *Funct.*  
708 *Ecol.*, 30, <https://doi.org/10.1111/1365-2435.12589>, 2016.

709 Gartner, T. B. and Cardon, Z. G.: Decomposition dynamics in mixed-species leaf litter, *Oikos*, 104, 230–246,  
710 <https://doi.org/https://doi.org/10.1111/j.0030-1299.2004.12738.x>, 2004.

711 German, D. P., Chacon, S. S., and Allison, S. D.: Substrate concentration and enzyme allocation can affect rates of microbial  
712 decomposition, *Ecology*, 92, 1471–1480, <https://doi.org/10.1890/10-2028.1>, 2011.

713 Gessner, M. O., Swan, C. M., Dang, C. K., McKie, B. G., Bardgett, R. D., Wall, D. H., and Hättenschwiler, S.: Diversity meets  
714 decomposition, *Trends Ecol. Evol.*, 25, 372–380, <https://doi.org/10.1016/j.tree.2010.01.010>, 2010.

715 Goering, H.K., Van Soest, P. J.: Forage fiber analysis (Apparatus, reagents, procedures and some applications), 379 pp., 1970.

716 Graça, M., Bärlocher, F., and Gessner, M.: Methods to Study Litter Decomposition, 329 pp., [https://doi.org/10.1007/1-4020-](https://doi.org/10.1007/1-4020-3466-0)  
717 3466-0, 2005.

718 Gripp, A. R., Esteves, F. de A., Carneiro, L. S., Guariento, R. D., Figueiredo-Barros, M. P., Coq, S., Milcu, A., and Caliman, A.:  
719 Weak to no effects of litter biomass and mixing on litter decomposition in a seasonally dry tropical forest, *Pedobiologia (Jena)*,  
720 68, 20–23, <https://doi.org/https://doi.org/10.1016/j.pedobi.2018.02.003>, 2018.

721 Guenet, B., Danger, M., Abbadie, L., and Lacroix, G.: Priming effect: Bridging the gap between terrestrial and aquatic ecology,  
722 *Ecology*, 91, 2850–2861, <https://doi.org/10.1890/09-1968.1>, 2010.

723 Hambäck, P. A. and Englund, G.: Patch area, population density and the scaling of migration rates: the resource concentration  
724 hypothesis revisited, *Ecol. Lett.*, 8, 1057–1065, <https://doi.org/https://doi.org/10.1111/j.1461-0248.2005.00811.x>, 2005.

725 Handa, I. T., Aerts, R., Berendse, F., Berg, M. P., Bruder, A., Butenschoen, O., Chauvet, E., Gessner, M. O., Jabiol, J.,  
726 Makkonen, M., McKie, B. G., Malmqvist, B., Peeters, E. T. H. M., Scheu, S., Schmid, B., van Ruijven, J., Vos, V. C. a, and  
727 Hättenschwiler, S.: Consequences of biodiversity loss for litter decomposition across biomes., *Nature*, 509, 218–21,  
728 <https://doi.org/10.1038/nature13247>, 2014.

729 Van Handel, E.: Direct microdetermination of sucrose., *Anal. Biochem.*, 22, 280–283, 1968.

730 **Hättenschwiler, S. and Gasser, P.: Soil animals alter plant litter diversity effects on decomposition. *Proc Natl Acad Sci*, 102,**  
731 **1519-1524, <https://doi.org/10.1073/pnas.0404977102>, 2005.**

732 Hättenschwiler, S., Tiunov, A., and Scheu, S.: Biodiversity and litter decomposition in terrestrial ecosystems, *Annu. Rev. Ecol.*  
733 *Evol.*, 36, 191–218, <https://doi.org/10.1146/annurev.ecolsys.36.112904.151932>, 2005.

734 Hättenschwiler, S. and Jørgensen, H. B.: Carbon quality rather than stoichiometry controls litter decomposition in a tropical rain  
735 forest, *J. Ecol.*, 98, 754–763, <https://doi.org/https://doi.org/10.1111/j.1365-2745.2010.01671.x>, 2010.

736 Hättenschwiler, S., Tiunov, A. V, and Scheu, S.: Biodiversity and Litter Decomposition in Terrestrial Ecosystems, *Annu. Rev.*  
737 *Ecol. Evol. Syst.*, 36, 191–218, <https://doi.org/10.1146/annurev.ecolsys.36.112904.151932>, 2005.

738 Hengl, T., Mendes de Jesus, J., Heuvelink, G. B. M., Ruiperez Gonzalez, M., Kilibarda, M., Blagotić, A., Shangguan, W.,  
739 Wright, M. N., Geng, X., Bauer-Marschallinger, B., Guevara, M. A., Vargas, R., MacMillan, R. A., Batjes, N. H., Leenaars, J. G.  
740 B., Ribeiro, E., Wheeler, I., Mantel, S., and Kempen, B.: SoilGrids250m: Global gridded soil information based on machine  
741 learning, *PLoS One*, 12, e0169748, 2017.

742 **Hill, S. K., Hale, R. L., Grinath, J. B., Folk, B. T., Nielson, R., and Reinhardt, K.: Looking beyond leaves: variation in nutrient**  
743 **leaching potential of seasonal litterfall among different species within an urban forest. *Urban Ecosyst* 25, 1097–1109,**  
744 **<https://doi.org/10.1007/s11252-022-01217-8>, 2022.**

745 Hou, S.-L. and Lü, X.-T.: Mixing effects of litter decomposition at plant organ and species levels in a temperate grassland, *Plant*  
746 *Soil*, 459, 387–396, <https://doi.org/10.1007/s11104-020-04773-0>, 2021.

747 Jackson, B. G., Peltzer, D. A., and Wardle, D. A.: Are functional traits and litter decomposability coordinated across leaves,  
748 twigs and wood? A test using temperate rainforest tree species, *Oikos*, 122, 1131–1142,  
749 <https://doi.org/https://doi.org/10.1111/j.1600-0706.2012.00056.x>, 2013.

750 Janzen, D.: Janzen, D. H. Herbivores and number of tree species in tropical forests. *American Naturalist*, *Am. Nat.*, 104, 501–  
751 528, <https://doi.org/10.1086/282687>, 1970.

752 Jolliffe, P. A.: The replacement series, *J. Ecol.*, 88, 371–385, <https://doi.org/https://doi.org/10.1046/j.1365-2745.2000.00470.x>,  
753 2000.

754 Jones, A. R., Dalal, R. C., Gupta, V. V. S. R., Schmidt, S., Allen, D. E., Jacobsen, G. E., Bird, M., Grandy, A. S., and  
755 Sanderman, J.: Molecular complexity and diversity of persistent soil organic matter, *Soil Biol. Biochem.*, 184, 109061,  
756 <https://doi.org/https://doi.org/10.1016/j.soilbio.2023.109061>, 2023.

757 Kaspari, M., Garcia, M. N., Harms, K. E., Santana, M., Wright, S. J., and Yavitt, J. B.: Multiple nutrients limit litterfall and  
758 decomposition in a tropical forest, *Ecol. Lett.*, 11, 35–43, <https://doi.org/https://doi.org/10.1111/j.1461-0248.2007.01124.x>,  
759 2008.

760 Kaspari, M., Yanoviak, S. P., Dudley, R., Yuan, M., and Clay, N. A.: Sodium shortage as a constraint on the carbon cycle in an  
761 inland tropical rainforest, *Proc. Natl. Acad. Sci.*, 106, 19405–19409, <https://doi.org/10.1073/pnas.0906448106>, 2009.

762 Kuzyakov, Y.: Review: Factors affecting rhizosphere priming effects, *J. Plant Nutr. Soil Sci.*, 165, 382–396,  
763 [https://doi.org/https://doi.org/10.1002/1522-2624\(200208\)165:4<382::AID-JPLN382>3.0.CO;2-#](https://doi.org/https://doi.org/10.1002/1522-2624(200208)165:4<382::AID-JPLN382>3.0.CO;2-#), 2002.

764 Kuzyakov, Y.: Priming effects: Interactions between living and dead organic matter, *Soil Biol. Biochem.*, 42, 1363–1371,  
765 <https://doi.org/10.1016/j.soilbio.2010.04.003>, 2010.

766 Kuzyakov, Y. and Blagodatskaya, E.: Microbial hotspots and hot moments in soil: Concept & review, *Soil Biol. Biochem.*, 83,  
767 184–199, <https://doi.org/https://doi.org/10.1016/j.soilbio.2015.01.025>, 2015.

768 Lecerf, A., Marie, G., Kominoski, J. S., LeRoy, C. J., Bernadet, C., and Swan, C. M.: Incubation time, functional litter diversity,  
769 and habitat characteristics predict litter-mixing effects on decomposition, *Ecology*, 92, 160–169,  
770 <https://doi.org/https://doi.org/10.1890/10-0315.1>, 2011.

771 Liu, J., Liu, X., Song, Q., Compson, Z. G., LeRoy, C. J., Luan, F., Wang, H., Hu, Y., and Yang, Q.: Synergistic effects: a  
772 common theme in mixed-species litter decomposition, *New Phytol.*, 227, 757–765,  
773 <https://doi.org/https://doi.org/10.1111/nph.16556>, 2020.

774 Loreau, M.: Separating Sampling and Other Effects in Biodiversity Experiments, *Oikos*, 82, 600–602,  
775 <https://doi.org/10.2307/3546381>, 1998.

776 Lorenzi, H.: Árvores brasileiras: manual de identificação e cultivo de plantas arbóreas nativas do Brasil, Instituto Plantarum de  
777 Estudos da Flora, 352 pp., 1992.

778 Madritch, M. D. and Hunter, M. D.: Phenotypic diversity and litter chemistry affect nutrient dynamics during litter  
779 decomposition in a two species mix, *Oikos*, 105, 125–131, <https://doi.org/https://doi.org/10.1111/j.0030-1299.2004.12760.x>,  
780 2004.

781 Makkonen, M., Berg, M. P., Handa, I. T., Hättenschwiler, S., van Ruijven, J., van Bodegom, P. M., and Aerts, R.: Highly  
782 consistent effects of plant litter identity and functional traits on decomposition across a latitudinal gradient, *Ecol. Lett.*, 15, 1033–  
783 1041, <https://doi.org/10.1111/j.1461-0248.2012.01826.x>, 2012.

784 Makkonen, M., Berg, M. P., van Logtestijn, R. S. P., van Hal, J. R., and Aerts, R.: Do physical plant litter traits explain non-  
785 additivity in litter mixtures? A test of the improved microenvironmental conditions theory, *Oikos*, 122, 987–997,  
786 <https://doi.org/https://doi.org/10.1111/j.1600-0706.2012.20750.x>, 2013.

787 Manzoni, S. and Porporato, A.: Soil carbon and nitrogen mineralization: Theory and models across scales, *Soil Biol. Biochem.*,  
788 41, 1355–1379, <https://doi.org/10.1016/j.soilbio.2009.02.031>, 2009.

789 Mccall, A. and Irwin, R.: Florivory: The intersection of pollination and herbivory, *Ecol. Lett.*, 9, 1351–1365,  
790 <https://doi.org/10.1111/j.1461-0248.2006.00975.x>, 2007.

791 McClain, M. E., Boyer, E. W., Dent, C. L., Gergel, S. E., Grimm, N. B., Groffman, P. M., Hart, S. C., Harvey, J. W., Johnston,  
792 C. A., Mayorga, E., McDowell, W. H., and Pinay, G.: Biogeochemical Hot Spots and Hot Moments at the Interface of Terrestrial  
793 and Aquatic Ecosystems, *Ecosystems*, 6, 301–312, <https://doi.org/10.1007/s10021-003-0161-9>, 2003.

794 **Migliorini, G. H., Srivastava, D. S., and Romero, G. Q.: Leaf litter traits drive community structure and functioning in a natural**  
795 **aquatic microcosm. *Freshwater Biology* 63.4, 341-352, <https://doi.org/10.1111/fwb.13072>, 2018.**

796 Minasny, B., Malone, B. P., McBratney, A. B., Angers, D. A., Arrouays, D., Chambers, A., Chaplot, V., Chen, Z.-S., Cheng, K.,  
797 Das, B. S., Field, D. J., Gimona, A., Hedley, C. B., Hong, S. Y., Mandal, B., Marchant, B. P., Martin, M., McConkey, B. G.,  
798 Mulder, V. L., O'Rourke, S., Richer-de-Forges, A. C., Odeh, I., Padarian, J., Paustian, K., Pan, G., Poggio, L., Savin, I.,  
799 Stolbovoy, V., Stockmann, U., Sulaeman, Y., Tsui, C.-C., Vågen, T.-G., van Wesemael, B., and Winowiecki, L.: Soil carbon 4  
800 per mille, *Geoderma*, 292, 59–86, <https://doi.org/https://doi.org/10.1016/j.geoderma.2017.01.002>, 2017.

801 Morris, D. L.: Quantitative determination of carbohydrates with Dreywood's anthrone reagent., *Science (80-. )*, 107, 111–114,  
802 1948.

803 **Njoroge, D. M., Chen, S.-C., Zuo, J., Dossa, G. G. O., and Cornelissen, J. H. C.: Soil fauna accelerate litter mixture**  
804 **decomposition globally, especially in dry environments, *J. Ecol.*, 110, 659–672, [https://doi.org/https://doi.org/10.1111/1365-](https://doi.org/https://doi.org/10.1111/1365-2745.13829)  
805 **2745.13829**, 2022.**

806 **Njoroge, D. M., Dossa, G. G. O., Ye, L., Lin, X., Schaefer, D., Tomlinson, K., Zuo, J., and Cornelissen, J. H. C.: Fauna access**  
807 **outweighs litter mixture effect during leaf litter decomposition, *Sci. Total Environ.*, 860, 160190,**  
808 **<https://doi.org/https://doi.org/10.1016/j.scitotenv.2022.160190>, 2023.**

809 Olson, M. E. and Pittermann, J.: Cheap and attractive: water relations and floral adaptation, *New Phytol.*, 223, 8–10,  
810 <https://doi.org/https://doi.org/10.1111/nph.15839>, 2019.

811 de Paz, M., Gobbi, M. E., and Raffaele, E.: Fallen fruits stimulate decomposition of leaf litter of dominant species in NW  
812 Patagonia shrublands, *Plant Soil*, 425, 433–440, <https://doi.org/10.1007/s11104-018-3590-0>, 2018.

813 Pérez-Harguindeguy, N., Díaz, S., Garnier, E., Lavorel, S., Poorter, H., Jaureguiberry, P., Bret-Harte, M. S., Cornwell, W. K.,  
814 Craine, J. M., Gurvich, D. E., Urcelay, C., Veneklaas, E. J., Reich, P. B., Poorter, L., Wright, I. J., Ray, P., Enrico, L., Pausas, J.  
815 G., de Vos, A. C., Buchmann, N., Funes, G., Quétier, F., Hodgson, J. G., Thompson, K., Morgan, H. D., ter Steege, H., Sack, L.,  
816 Blonder, B., Poschlod, P., Vaieretti, M. V., Conti, G., Staver, A. C., Aquino, S., and Cornelissen, J. H. C.: New handbook for  
817 standardised measurement of plant functional traits worldwide, *Aust. J. Bot.*, 61, 167–234, 2013.

818 Porre, R. J., van der Werf, W., De Deyn, G. B., Stomph, T. J., and Hoffland, E.: Is litter decomposition enhanced in species  
819 mixtures? A meta-analysis, *Soil Biol. Biochem.*, 145, 107791, <https://doi.org/https://doi.org/10.1016/j.soilbio.2020.107791>,  
820 2020.

821 Rezende, R., R.S. Correia, P., Goncalves Jr, J., and Santos, A.: Organic matter dynamics in a savanna transition riparian zone:  
822 Input of plant reproductive parts increases leaf breakdown process, <https://doi.org/10.4081/jlimnol.2017.1601>, 2017.

823 RIBEIRO, S. P. and BROWN, V. K.: Prevalence of monodominant vigorous tree populations in the tropics: herbivory pressure  
824 on *Tabebuia* species in very different habitats, *J. Ecol.*, 94, 932–941, [https://doi.org/https://doi.org/10.1111/j.1365-](https://doi.org/https://doi.org/10.1111/j.1365-2745.2006.01133.x)  
825 **2745.2006.01133.x**, 2006.

826 Robertson, G. P., Coleman, D., Bledsoe, C. S., and Sollins, P.: Standard soil methods for long-term ecological research, 462 pp.,  
827 1999.



828 Roddy, A. B., Jiang, G.-F., Cao, K., Simonin, K. A., and Brodersen, C. R.: Hydraulic traits are more diverse in flowers than in  
829 leaves, *New Phytol.*, 223, 193–203, <https://doi.org/https://doi.org/10.1111/nph.15749>, 2019.

830 Santos e Silva, C. M., Lúcio, P. S., and Spyrides, M. H. C.: Distribuição espacial da precipitação sobre o Rio Grande do Norte:  
831 estimativas via satélites e medidas por pluviômetros, *Rev. Bras. Meteorol.*, 27, 337–346, [https://doi.org/10.1590/S0102-](https://doi.org/10.1590/S0102-77862012000300008)  
832 [77862012000300008](https://doi.org/10.1590/S0102-77862012000300008), 2012.

833 Sarruge, J. . and Haag, H. P.: *Análise química das plantas.*, 56 pp., 1974.

834 Sayer, E. J., Powers, J. S., and Tanner, E. V. J.: Increased Litterfall in Tropical Forests Boosts the Transfer of Soil CO<sub>2</sub> to the  
835 Atmosphere, *PLoS One*, 2, e1299, 2007.

836 Schimel, D. S., House, J. I., Hibbard, K. A., Bousquet, P., Ciais, P., Peylin, P., Braswell, B. H., Apps, M. J., Baker, D., Bondeau,  
837 A., Canadell, J., Churkina, G., Cramer, W., Denning, A. S., Field, C. B., Friedlingstein, P., Goodale, C., Heimann, M.,  
838 Houghton, R. A., Melillo, J. M., Moore, B., Murdiyarso, D., Noble, I., Pacala, S. W., Prentice, I. C., Raupach, M. R., Rayner, P.  
839 J., Scholes, R. J., Steffen, W. L., and Wirth, C.: Recent patterns and mechanisms of carbon exchange by terrestrial ecosystems,  
840 *Nature*, 414, 169–172, <https://doi.org/10.1038/35102500>, 2001.

841 Schimel, J. P. and Weintraub, M. N.: The implications of exoenzyme activity on microbial carbon and nitrogen limitation in soil:  
842 A theoretical model, *Soil Biol. Biochem.*, 35, 549–563, [https://doi.org/10.1016/S0038-0717\(03\)00015-4](https://doi.org/10.1016/S0038-0717(03)00015-4), 2003.

843 Schindler, M. and Gessner, M. O.: Functional leaf traits and biodiversity effects on litter decomposition in a stream, *Ecology*, 90,  
844 1641–1649, <https://doi.org/10.1890/0012-9658-91.6.1869>, 2009.

845 Schmidt, M. W. I., Torn, M. S., Abiven, S., Dittmar, T., Guggenberger, G., Janssens, I. A., Kleber, M., Kögel-Knabner, I.,  
846 Lehmann, J., Manning, D. A. C., Nannipieri, P., Rasse, D. P., Weiner, S., and Trumbore, S. E.: Persistence of soil organic matter  
847 as an ecosystem property, *Nature*, 478, 49, 2011.

848 Schmitt, L. and Perfecto, I.: Who gives a flux? Synchronous flowering of *Coffea arabica* accelerates leaf litter decomposition,  
849 *Ecosphere*, 11, e03186, <https://doi.org/https://doi.org/10.1002/ecs2.3186>, 2020.

850 Smith, V. C. and Bradford, M. A.: Do non-additive effects on decomposition in litter-mix experiments result from differences in  
851 resource quality between litters?, *Oikos*, 102, 235–242, <https://doi.org/https://doi.org/10.1034/j.1600-0706.2003.12503.x>, 2003.

852 Stamp, N.: Out Of The Quagmire Of Plant Defense Hypotheses, *Q. Rev. Biol.*, 78, 23–55, <https://doi.org/10.1086/367580>, 2003.

853 Swift, M. J., Heal, O. W., Anderson, J. M., and Anderson, J. M.: *Decomposition in terrestrial ecosystems*, Univ of California  
854 Press, 1979.

855 Tian, H., Lu, C., Yang, J., Banger, K., Huntzinger, D. N., Schwalm, C. R., Michalak, A. M., Cook, R., Ciais, P., Hayes, D.,  
856 Huang, M., Ito, A., Jain, A. K., Lei, H., Mao, J., Pan, S., Post, W. M., Peng, S., Poulter, B., Ren, W., Ricciuto, D., Schaefer, K.,  
857 Shi, X., Tao, B., Wang, W., Wei, Y., Yang, Q., Zhang, B., and Zeng, N.: Global patterns and controls of soil organic carbon  
858 dynamics as simulated by multiple terrestrial biosphere models: Current status and future directions, *Global Biogeochem.*  
859 *Cycles*, 29, 775–792, <https://doi.org/https://doi.org/10.1002/2014GB005021>, 2015.

860 Zar, S. D., Costello, D. M., Isken, M. W., Woodward, G., McIntyre, P. B., Gessner, M. O., Chauvet, E., Griffiths, N. A., Flecker,  
861 A. S., Acuña, V., Albariño, R., Allen, D. C., Alonso, C., Andino, P., Arango, C., Aroviita, J., Barbosa, M. V. M., Barmuta, L. A.,  
862 Baxter, C. V., Bell, T. D. C., Bellinger, B., Boyero, L., Brown, L. E., Bruder, A., Bruesewitz, D. A., Burdon, F. J., Callisto, M.,  
863 Canhoto, C., Capps, K. A., Castillo, M. M., Clapcott, J., Colas, F., Colón-Gaud, C., Cornut, J., Crespo-Pérez, V., Cross, W. F.,  
864 Culp, J. M., Danger, M., Dangles, O., de Eyto, E., Derry, A. M., Villanueva, V. D., Douglas, M. M., Elosegi, A., Encalada, A.  
865 C., Entrekin, S., Espinosa, R., Ethaiya, D., Ferreira, V., Ferriol, C., Flanagan, K. M., Fleituch, T., Follstad Shah, J. J., Frainer, A.,  
866 Friberg, N., Frost, P. C., Garcia, E. A., García Lago, L., García Soto, P. E., Ghatge, S., Giling, D. P., Gilmer, A., Gonçalves, J. F.,

867 Gonzales, R. K., Graça, M. A. S., Grace, M., Grossart, H.-P., Guérold, F., Gulis, V., Hepp, L. U., Higgins, S., Hishi, T., Huddart,  
868 J., Hudson, J., Imberger, S., Iñiguez-Armijos, C., Iwata, T., Janetski, D. J., Jennings, E., Kirkwood, A. E., Koning, A. A., Kosten,  
869 S., Kuehn, K. A., Laudon, H., Leavitt, P. R., Lemes da Silva, A. L., Leroux, S. J., LeRoy, C. J., Lisi, P. J., MacKenzie, R.,  
870 Marcarelli, A. M., Masese, F. O., McKie, B. G., Oliveira Medeiros, A., Meissner, K., Miliša, M., Mishra, S., Miyake, Y.,  
871 Moerke, A., et al.: Global patterns and drivers of ecosystem functioning in rivers and riparian zones, *Sci. Adv.*, 5, eaav0486,  
872 <https://doi.org/10.1126/sciadv.aav0486>, 2019.

873 Tranvik, L. J., Downing, J. A., Cotner, J. B., Loiselle, S. A., Striegl, R. G., Ballatore, T. J., Dillon, P., Finlay, K., Fortino, K.,  
874 Knoll, L. B., Kortelainen, P. L., Kutser, T., Larsen, S., Laurion, I., Leech, D. M., Leigh McCallister, S., McKnight, D. M.,  
875 Melack, J. M., Overholt, E., Porter, J. A., Prairie, Y., Renwick, W. H., Roland, F., Sherman, B. S., Schindler, D. W., Sobek, S.,  
876 Tremblay, A., Vanni, M. J., Verschoor, A. M., Von Wachenfeldt, E., and Weyhenmeyer, G. A.: Lakes and reservoirs as  
877 regulators of carbon cycling and climate, *Limnol. Oceanogr.*, 54, 2298–2314, [https://doi.org/10.4319/lo.2009.54.6\\_part\\_2.2298](https://doi.org/10.4319/lo.2009.54.6_part_2.2298),  
878 2009.

879 Tyler, G.: Changes in the concentrations of major, minor and rare-earth elements during leaf senescence and decomposition in a  
880 *Fagus sylvatica* forest, *For. Ecol. Manage.*, 206, 167–177, <https://doi.org/https://doi.org/10.1016/j.foreco.2004.10.065>, 2005.

881 Uriarte, M., Turner, B. L., Thompson, J. and Zimmerman, J. K.: Linking spatial patterns of leaf litterfall and soil nutrients in a  
882 tropical forest: a neighborhood approach. *Ecol. Appl.*, 25: 2022-2034. <https://doi.org/10.1890/15-0112.1>, 2015.

883 Violle, C., Thuiller, W., Mouquet, N., Munoz, F., Kraft, N. J. B., Cadotte, M. W., Livingstone, S. W., and Mouillot, D.:  
884 Functional Rarity: The Ecology of Outliers, *Trends Ecol. Evol.*, 32, 356–367, <https://doi.org/10.1016/j.tree.2017.02.002>, 2017.

885 Wang, J., Liu, L., Wang, X., and Chen, Y.: The interaction between abiotic photodegradation and microbial decomposition under  
886 ultraviolet radiation, *Glob. Chang. Biol.*, 21, 2095–2104, <https://doi.org/10.1111/gcb.12812>, 2015.

887 Wang, J., Xu, B., Wu, Y., Gao, J., and Shi, F.: Flower litters of alpine plants affect soil nitrogen and phosphorus rapidly in the  
888 eastern Tibetan Plateau, *Biogeosciences*, 13, 5619–5631, <https://doi.org/10.5194/bg-13-5619-2016>, 2016.

889 Wang, L., Zhou, Y., Chen, Y., Xu, Z., Zhang, J., Liu, Y., and Joly, F.-X.: Litter diversity accelerates labile carbon but slows  
890 recalcitrant carbon decomposition, *Soil Biol. Biochem.*, 168, 108632,  
891 <https://doi.org/https://doi.org/10.1016/j.soilbio.2022.108632>, 2022.

892 Whigham, A. E.: Senescent Neotropical flowers (Lecythidaceae) offer a rich nutrient source to ground-foraging arthropods, *J.*  
893 *Torrey Bot. Soc.*, 140, 31–40, <https://doi.org/10.3159/TORREY-D-12-00028.1>, 2013.

894 Zar, J.H.: Comparing simple linear regression equations, in: *Biostatistical Analysis 2nd ed.*, Englewood Cliffs N.J: Prentice-Hall,  
895 1984.

896 Zhang, X., Zhang, Y., Jiang, S., Song, C., Zhang, J., and Mao, R.: Dominant species and evenness level co-regulate litter mixture  
897 decomposition in a boreal peatland, *Plant Soil*, 474, 423–436, <https://doi.org/10.1007/s11104-022-05346-z>, 2022.

898 Zhao, W., van Logtestijn, R. S. P., van Hal, J. R., Dong, M., and Cornelissen, J. H. C.: Non-additive effects of leaf and twig  
899 mixtures from different tree species on experimental litter-bed flammability, *Plant Soil*, 436, 311–324,  
900 <https://doi.org/10.1007/s11104-019-03931-3>, 2019.

901 Zheng, X., Lin, S., Fu, H., Wan, Y., and Ding, Y.: The Bamboo Flowering Cycle Sheds Light on Flowering Diversity ,  
902 <https://www.frontiersin.org/articles/10.3389/fpls.2020.00381>, 2020.