

A mechanism of stratospheric O₃ intrusion to atmospheric environment: a case study of North China Plain

删除[罗哈哈 haha]: significant

Yuehan Luo¹, Tianliang Zhao^{1,*}, Kai Meng², Jun Hu³, Qingjian Yang¹, Yongqing Bai⁴, Kai Yang¹, Weikang Fu¹, Chenghao Tan^{5,6}, Yifan Zhang⁷, Yanzhe Zhang⁸, Zhikuan Li¹

5 ¹Collaborative Innovation Center on Forecast and Evaluation of Meteorological Disasters, Key Laboratory of Aerosol-Cloud-Precipitation of China Meteorological Administration, Nanjing University of Information Science and Technology, Nanjing, 210044, China

²Key Laboratory of Meteorology and Ecological Environment of Hebei Province, Hebei Provincial Institute of Meteorological Sciences, Shijiazhuang, 050021, China

10 ³Fujian Academy of Environmental Sciences, Fuzhou, 350011, China

⁴Hubei Key Laboratory for Heavy Rain Monitoring and Warning Research, Institute of Heavy Rain, China Meteorological Administration, Wuhan, 430205, China

⁵State Key Laboratory of Organic Geochemistry, Guangzhou Institute of Geochemistry, Chinese Academy of Sciences, Guangzhou 510640, Guangdong, China

15 ⁶University of Chinese Academy of Sciences, Beijing 100049, China

⁷Xuchang Meteorological Service, Xuchang, 450003, China

⁸Ningxia Air Traffic Management Sub-bureau of CAAC, Yinchuan, 750009, China

Correspondence to: Tianliang Zhao (tlzhao@nuist.edu.cn)

Abstract. Stratosphere-to-troposphere transport results in the stratospheric intrusion (SI) of O₃ into the free troposphere through the tropopause folding. However, the mechanism of SI influencing the atmospheric environment with the cross-layer transport of O₃ from the stratosphere, free troposphere to the atmospheric boundary layer has not been elucidated thoroughly.

In this study, a SI event over the North China Plain (NCP, [33–40°N, 114–121°E](#)) [during May 19–20, 2019](#) was taken to investigate the mechanism of the cross-layer transport of stratospheric O₃ with the impact on the near-surface O₃ based on the multi-source reanalysis, observation data and air quality modeling. The results revealed a mechanism of stratospheric O₃

25 intrusion to the atmospheric environment induced by an extratropical cyclone system. The SI with downward transport of stratospheric O₃ to near-surface layer was driven by the extratropical cyclone system with vertical coupling of "upper westerly trough-middle the Northeast Cold Vortex (NECV)-lower extratropical cyclone" in the troposphere. The deep trough in the westerly jet aroused the tropopause folding, and the lower stratospheric O₃ penetrated the folded tropopause into the upper and middle troposphere; the westerly trough was cut off to form a typical cold vortex in the upper and middle

30 troposphere. The compensating downdrafts of the NECV pushed the further downward transport of stratospheric O₃ in the free troposphere; The NECV activated an extratropical cyclone in the lower troposphere, and the vertical cyclonic circulation governed the stratospheric O₃ from the free troposphere across the boundary layer top invading the near-surface atmosphere.

In this SI event, the averaged contribution of stratospheric O₃ to near-surface O₃ was accounted for 26.77%. The proposed meteorological mechanism of vertical transport of stratospheric O₃ into the near-surface atmosphere driven by an

删除[罗哈哈 haha]: and

删除[罗哈哈 haha]: significant

35 extratropical cyclone system could improve the understanding of the influence of stratospheric O₃ on atmospheric environment with implications for the coordinated control of atmospheric pollution.

Keywords: Stratospheric intrusion; Tropopause folding; Near-surface ozone; Extratropical cyclone system

1 Introduction

The prominence of tropospheric O₃ pollution is growing increasingly conspicuous in China (Chen et al., 2021; Li et al., 2020; Luo et al., 2022). The widely concerned photochemical reactions and regional transport are the principal sources of tropospheric O₃ in air pollution. Many studies have ascertained the mechanism of these factors on tropospheric O₃ and proposed targeted control strategies for O₃ pollution (Ding et al., 2019; [Li et al., 2019](#); Li et al., 2020; [Liu et al., 2021](#); Verstraeten et al., 2015). In addition, approximately 90% of the atmospheric column O₃ abundance concentrates in the stratosphere. The stratosphere intrusion (SI) with the downward cross-layer transport of stratospheric O₃ is also considered an essential natural source of tropospheric O₃ (Bourqui and Trepanier, 2010; [Chen, et al., 2023a](#); Holton et al., 1995; Wild, 2007), which has been non-comprehensively understand with the effect mechanism and degree on atmospheric environment change.

Under specific configuration of atmospheric circulations, stratospheric O₃ could invade downwards through the tropopause along with the dry and cold stratosphere air with high potential vorticity (PV), increasing the tropospheric O₃ concentrations with a contribution of about 300–700 Tg O₃·yr⁻¹ (Stevenson et al., 2006; [Wild, 2007](#)). As the primary pathway of stratosphere-troposphere transport (STT), SI is achieved by multiple synoptic-scale and mesoscale processes (Stohl et al., 2003). Ordinarily, SI is closely associated with the subtropical westerly jet, cut-off low pressure, tropopause folding, trough-ridge system, tropical cyclones, and convection systems, etc ([Chen et al., 2022](#); [Chen et al., 2023b](#); Ding and Wang, 2006; Holton et al., 1995; Jiang et al., 2015; Zhao et al., 2021). The deeply folded tropopause in the subtropical westerly jet with a cold front passing the western United States induced near-surface O₃ increases (Langford et al., 2012). The widespread subsidence movement in the south of the subtropical jet in March 2010 brought about a significant increase of O₃ in the low troposphere in Hong Kong (Zhao et al., 2021). In June 2014, the peripheral downdrafts in deep convection of the large-scale tropical cyclone Hagibis directly drove the STT of O₃, prompting the stratospheric O₃ transport downwards and causing rapid abnormal enhancements in surface O₃ (Jiang et al., 2015).

SI exhibits greater prominence in the mid-latitudes with the prevailing subtropical westerly jet. In the mid-latitudes of the northern hemisphere, approximately 20–30% of the O₃ reserve in the troposphere is sourced from the stratosphere. (Lelieveld and Dentener, 2000). SI events were observed frequently in the western United States, the eastern Mediterranean, the Middle East, and East Asia (Akritidis et al., 2016; Langford et al., 2009; Lefohn et al., 2011; Wang, X. et al., 2020). In parts of the US, the contribution of SI to surface O₃ is almost comparable to that of local O₃ precursor emissions ([Lin et al.](#),

删除[罗哈哈 haha]: Li et al., 2019;

删除[罗哈哈 haha]: the

删除[罗哈哈 haha]: Wild, 2007;

删除[罗哈哈 haha]: deep

65 [2012](#); Pfister et al., 2008). In China, the tropospheric O₃ exhibited an annual increase of 0.78% yr⁻¹ on account of the SI processes (Verstraeten et al., 2015). The SI caused by a landing typhoon sharply increased the surface O₃ by 32% in the North China Plain (NCP) (Meng et al., 2022a). Evidently, the artificial uncontrollability of SI impact on surface O₃ complicates the prevention and control of ambient O₃ pollution. Therefore, clarifying the influence mechanism of SI on surface O₃ could improve the knowledge system on the formation causes of ambient O₃ pollution, which is of great concern
70 for formulating effective prevention of O₃ pollution.

删除[罗哈哈 haha]: ; Lin et al., 2012

It is generally recognized that the SI processes are closely associated with subtropical westerly jet activities (Archer and Caldeira, 2008; Langford et al., 2012). The abnormal disturbances of the jet streams, which are the principal reason for the tropopause folding, could further develop to form a cold vortex over the mid-upper troposphere in mid-high latitudes (Martin, 2021; Satyamurty and Seluchi, 2007). The cold vortex regulates the weather and climate in the mid-high latitudes ([Xue et al.,](#)

75 [2022](#); Yang et al., 2017), and triggers vigorous convection, resulting in a variety of disastrous weather and anomalous climate (Tao et al., 2023; Xue et al., 2021). The Northeast Cold Vortex (NECV) is a typical cold low vortex system in East Asia (Lian et al., 2016; Xie and Bueh, 2017). The pronounced 500-hPa trough-ridge system of the subtropical westerly jet from the Caspian Sea to eastern China is considered the precursor of the NECV (Huang et al., 1997). And on account of the existence of the upper-level jet with the NECV, a significant horizontal wind vertical shear is aroused between the mid-lower
80 stratosphere and the NECV, potentially inducing the stratosphere-troposphere exchange of air mass. The overall impact of the NECV-resulting mass exchange at the tropopause is the net import of O₃ from the stratosphere to the troposphere (Chen et al., 2014a; Chen et al., 2014b). However, numerous existing studies on the cold vortex system focus on its causal factors of formation and structure as well as its effects on precipitation and extreme weather (Fu et al., 2014; Gao and Gao, 2018; Lian et al., 2016; Tao et al., 2023; Xue et al., 2021), the mechanism of the cold vortex in mid-high latitudes driving the
85 vertical cross-layer transport of stratospheric O₃ and the atmospheric environmental impact still lacks an unambiguous insight in need of thorough investigation.

删除[罗哈哈 haha]: ; Xue et al., 2022

Therefore, this study targeted the SI event driven by a typical NECV observed over the NCP during May 19–20, 2019 to investigate the mechanism of stratospheric O₃ intrusion affecting the atmospheric environment. Multi-source reanalysis data and the Weather Research and Forecasting/Chemistry (WRF-Chem) with integrated process analysis (IPR) are jointly
90 applied to delve into the mechanism of the cold vortex system triggering SI and the SI effect degree on surface O₃. This study aims to elucidate the mechanism of the vertical structure configuration of cold vortex systems in mid-high latitudes driving O₃ cross-layer transport and quantify the influence on surface O₃, refining the systematic understanding of the stratosphere-free troposphere-atmospheric boundary layer (ABL) transport of air pollutants with the application implication for improving the response capabilities to in atmospheric environment change.

95 **2 Data and Methods**

2.1 Observational and reanalysis data

3-D meteorological data in this study were obtained from the 0.25° ERA5 reanalysis product (<https://apps.ecmwf.int/datasets/>) released by the European Centre for Medium-Range Weather Forecasts (ECWMF). According to previous studies, meteorological variables such as air temperature, wind, and humidity of ERA5 reanalysis data show good performance in both stratosphere and troposphere (Hersbach et al., 2020). The ground meteorological data were collected from 639 meteorological stations in the NCP and surrounding region from the China Meteorological Observation Network. The data of 3-D O₃ concentrations were provided by the Modern-Era Retrospective Analysis for Research and Applications version 2 (MERRA2, https://gmao.gsfc.nasa.gov/reanalysis/MERRA-2/data_access/) with a horizontal resolution of 0.5° × 0.625° and a temporal resolution of 3 hours, to characterize the vertical transport of the stratospheric O₃.

The MERRA-2 data set assimilates TCO satellite retrievals from ozone monitoring instruments and stratospheric O₃ vertical profiles from microwave limb sounders after 2004 (Gelaro et al., 2017; Levelt et al., 2006; Waters et al., 2006). The MERRA2 O₃ enables the study of SI events because it is consistent well with ozonesondes and could realistically represent the temporal and spatial variations of O₃, especially in the lower stratosphere and near the tropopause (Wargan et al., 2015; Wargan et al., 2017). Hourly observed surface O₃ and CO concentrations retrieved from 440 observation sites of the National Air Quality Monitoring Network (<http://www.mee.gov.cn/>), with quality control based on China's National Standard of Air Quality Observation. To evaluate the reproducibility of the WRF-Chem simulations for the stratospheric O₃ intrusion, the portion (O₃S) of tropospheric O₃ concentrations originating from the stratosphere was applied to compare with our simulation results. The stratospheric tracer tagging method in global chemistry models was used to track the transport of stratospheric O₃ to the troposphere by releasing stratospheric tracers (Barth et al., 2012; Chang et al., 2023). The tracer was set to 1 above the tropopause, and only physically transported and chemically decayed in the troposphere without chemical productions (Chang et al., 2023; Ni et al., 2019). The O₃S in the troposphere was calculated by multiplying the concentrations of O₃ at the tropopause and the stratospheric tracers. The O₃S_t used in this study was obtained from the ECMWF Atmospheric Composition Reanalysis 4 (EAC4, <https://ads.atmosphere.copernicus.eu/cdsapp#!/dataset>) reanalysis dataset with a spatial resolution of 0.75°, temporal resolution of 3 h, and vertical divided into 60 model layers from 1000 hPa to 1 hPa. The EAC4 dataset produces optimized atmospheric chemical reanalysis results by assimilating multiple observations of atmospheric components, and is widely used in the field of atmospheric environment (Inness, et al., 2019).

删除[罗哈哈 haha]: due to its realistic representation in

删除[罗哈哈 haha]: portion of tropospheric O₃ concentrations originating from the stratosphere (

删除[罗哈哈 haha]:)

2.2 Modeling setup and configuration

The meteorology-chemical online coupled model WRF-Chem with IPR was applied in this study. WRF-Chem has been demonstrated to perform well in the simulation and analysis of SI cases (Chang et al., 2023; Ni et al., 2019; Zhao et al., 2021). The 5-day simulations covering three nested domains started on May 16, 2019, with horizontal resolutions of 81_km, 27_km, and 9_km, respectively. The initial and lateral boundary meteorological conditions at 6-hour intervals are derived

from ERA5 reanalysis data, and the Multi-resolution Emission Inventory of China (MEIC, <http://meicmodel.org/>) provided the anthropogenic emission data. The domain settings are presented in Fig. S1, and the physical and chemical parameterization schemes used in the simulations are listed in Table S1 in the Supplementary Material.

130 Since the stratospheric chemistry is not included in the WRF-Chem, an upper boundary condition (UBC) scheme derived from the Whole Atmosphere Community Climate Model was used to provide the initial and boundary chemical conditions for the stratosphere in the model (Barth et al., 2012). The UBC scheme could generate all key chemical species in the stratosphere, enabling the WRF-Chem to simulate the stratospheric intrusion processes more accurately (Barth et al., 2012; Lamarque et al., 2012; Zhao et al., 2021). To diagnose the impact of stratospheric O₃ on surface O₃ during the SI caused by
135 the cold vortex system, two simulation experiments were devised. The control experiment (CASE_{STRO3}), with the upper boundary conditions of stratospheric O₃ in WRF-Chem (Barth et al., 2012), was used to simulate the real meteorological and atmospheric chemical fields during the SI. The sensitivity experiment (CASE_{noSTRO3}) used identical physical and chemical configurations as in CASE_{STRO3}. The stratospheric O₃ of the UBC scheme in CASE_{noSTRO3} was turned off by setting O₃ concentrations to zero above the tropopause. The differences in O₃ simulation between the experiments CASE_{STRO3} and
140 CASE_{noSTRO3} are used to assess the quantitative effect of the stratospheric O₃ sources on surface O₃ in the SI event.

2.3 Modeling validation

The observed meteorological and chemical parameters, including air temperature at 2 m (T₂), wind speed at 10 m (WS₁₀), relative humidity at 2 m (RH₂), and O₃ concentrations, were used to assess the model performance in CASE_{STRO3} (Fig. S2).

145 We calculated the averages of meteorological elements and O₃ concentrations observed at all stations in the innermost domain and the averages of simulated meteorological elements and O₃ concentrations in the model grids corresponding to the station locations to conduct the modeling validation. It can be found that the simulated T₂, RH₂, and WS₁₀ generally agree well with the observations, the index of agreements (IOA) are 0.92, 0.99, and 0.90, respectively, and the correlation coefficients (R) are higher than 0.92, which all meet the usability criteria (Wei et al., 2019; Zhang et al., 2018). Hourly observed and simulated O₃ concentrations are shown in Fig. S2 (d). The R, MB (mean bias), RMSE (root mean square errors), and IOA of O₃ are 0.88, -8.25 %, 14.37, and 0.90, respectively, indicating that our simulation reasonably reproduced the variations of O₃ in CASE_{STRO3}. In Fig. S3, the differences of simulated surface O₃ between CASE_{STRO3} and CASE_{noSTRO3}, which indicate the contribution of stratospheric O₃ to the near-surface atmosphere, were compared with the O₃S of EAC4 reanalysis data and concluded that the simulations roughly captured the temporal and spatial variations of stratospheric O₃ reaching the near-surface layer during the SI. All these evaluations indicate that our simulations performed well in
155 reproducing the variations of O₃ and meteorological parameters during the SI process.

删除[罗哈哈 haha]: We

删除[罗哈哈 haha]: Therefore, our simulation results are available and convincing.

3 Results and discussion

3.1 Vertical configuration triggers O₃ cross-layer transport

The tropopause identifies the top of the troposphere and marks a separation with the stratosphere in terms of both thermal structure and chemical composition. SI events are characterized by the downward transport of stratospheric O₃-rich air, coinciding with high PV and low humidity cross the tropopause into the troposphere (Ganguly, 2012). The height with PV equal to 2 is widely used to indicate the position of the dynamical tropopause at mid-latitudes (Holton et al., 1995). The tropopause over the NCP presented the **obvious** variation over May 18–20, 2019 (Fig. S4), especially the tropopause folding with the contour at PV = 2 curving extremely downwards to below 400 hPa over the NCP region on May 19, 2019 (Fig. S4b). Figure 1 shows the latitudinal- and meridional-vertical structures of the dynamical tropopause on May 19, 2019 over the NCP. The tropopause **noticeably** folded over the area of 110–120E° and 39–42N°, dropping down to 500–600 hPa. In the tropopause folding region, strong downdrafts penetrated from the lower stratosphere to the near-surface layer, and the strong vertical velocity reaching up to 0.2 m·s⁻¹ was inclined to drive the downward transport of the stratospheric O₃ to the troposphere (Fig. 1). Correspondingly, the vertical O₃ distribution presented a tongue pattern with the O₃ concentrations exceeding 200 ppb poured into the troposphere along with the dry and cold air from the stratosphere (Fig. S4b), which indicating the SI influencing O₃ in the ambient atmosphere.

删除[罗哈哈 haha]: significant

删除[罗哈哈 haha]: significant

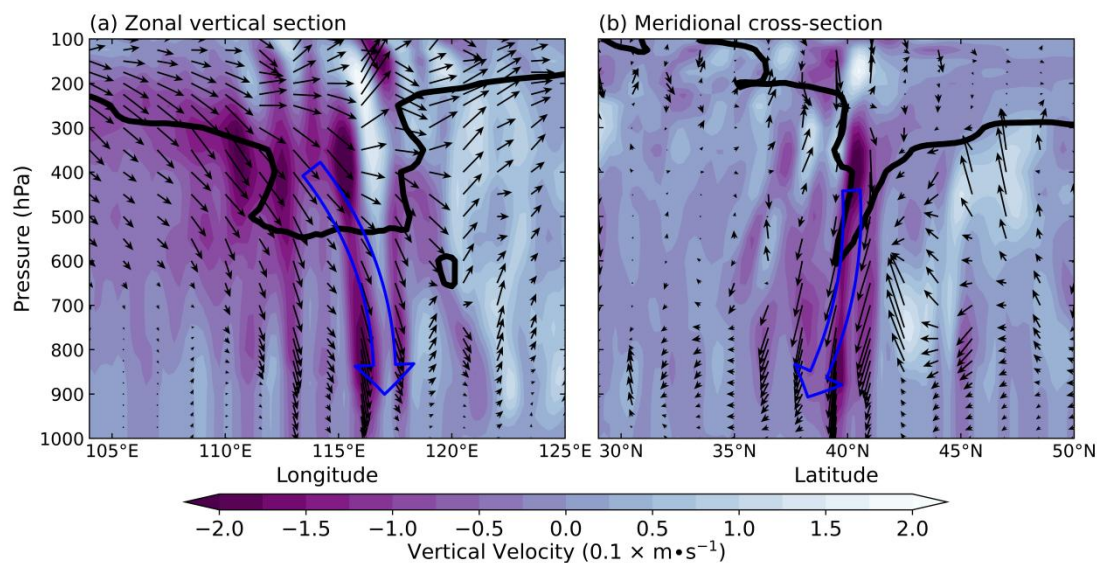


Figure 1: The vertical sections of the vertical velocity (color contours; $0.1 \times \text{m} \cdot \text{s}^{-1}$) and wind vectors of the components of U and V with $W \times 50$ from the ERA5 data averaged (a) over 32°N–40°N and (b) over 114°E–121°E in the NCP region on 19 May 2019. Black solid lines indicate the dynamical tropopause marked with the isolines at PV=2. The blue hollow arrows indicate the downdraft flows of SI in the troposphere.

Figures 2 (a–c) and S5 presented the upper, middle and lower tropospheric atmospheric circulations at 200 hPa, 500 hPa, and 850 hPa with the temporal variations during the NECV period. At 16:00 LST (Local Standard Time in 24-hour system) on May 18, 2019, the shallow troughs were located over 95–100E° in the subtropical westerly jets at 200 hPa and 500 hPa (Fig. S5). The subtropical westerly jet evolved from zonal to meridional patterns with the trough moving eastward and deepening

southward in the westerly wave fluctuations, and the prominently deepening troughs moved to the northern NCP on May 19 (Fig. 2a–b). The deepening troughs at the upper and middle troposphere at 200 hPa and 500 hPa were cut off forming the cyclonic cold vortex system—the NECV during May 19–20, 2019 (Figs. 2 and S5). The NCP was situated at the periphery of the NECV with the compensating downdrafts, which could drive the vertical transport down in the free troposphere (Fig. 2). Moreover, the NECV in the upper and middle troposphere induced the extratropical cyclone in the lower troposphere at 850 hPa on May 19, 2019, and the strong northwest horizontal wind prevailed behind the extratropical cyclone in the NCP (Fig. 2). On May 20, the NECV moved northeastwards and lost control of the NCP (Fig. S5). Figure 2d presents the section of the vertical velocity from the NCP to the center of the extratropical cyclone (red solid line in Fig. 2c) on May 19. The intense rising motions presented near the center of the NECV and the extratropical cyclone, ranging from the near-surface layer (1000 hPa) up to 100 hPa. The sinking branch of the vertical circulation of the cold vortex and the lower-tropospheric cyclone from the upper troposphere (200–400 hPa) to the near-surface layer was situated over the NCP (Fig. 2d), governing the downward transport of the stratospheric O₃ to the near-surface layer. Namely, the atmospheric circulation presented the vertical configuration in troposphere with upper westerly trough, middle NECV and lower extratropical cyclone. The downdraft branch of the system opened up a vertical transport channel from the lower stratosphere to the surface, allowing

stratospheric O₃ to invade the surface.

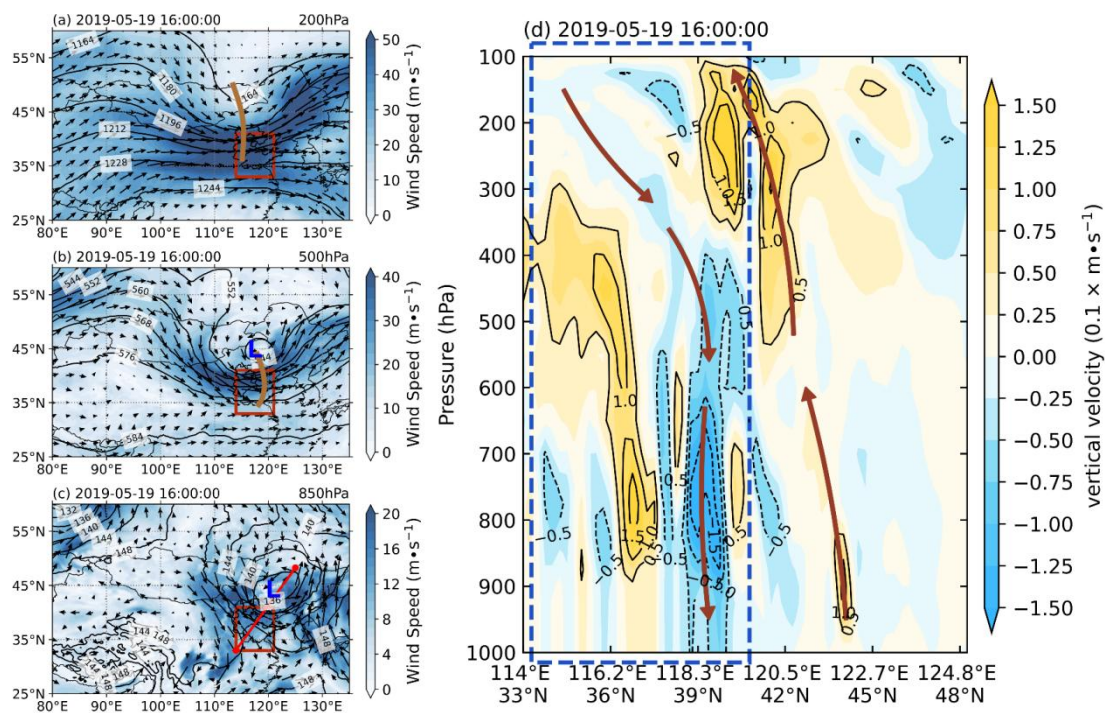


Figure 2: Atmospheric circulation patterns of horizontal wind vectors from the ERA5 data at (a) 200 hPa, (b) 500 hPa, and (c) 850 hPa with brown lines indicating the troughs in the westerlies, and (d) vertical cross sections of vertical velocity (color contours, $0.1 \times \text{m} \cdot \text{s}^{-1}$) along the red straight lines in (c) at 16:00 LST on May 19, 2019. The red solid boxes in (a–c) and the blue dotted box in (d) mark the NCP region. The solid red line in (c) is perpendicular to the northwest wind direction over the NCP region passing through the extratropical cyclone center at 850 hPa, and the brown lines with arrows in (d) indicating vertical transport directions between the lower stratosphere to the lower troposphere.

In the middle and lower troposphere, the downdrafts appeared over the northwest of the NCP and gradually reinforced with
205 the development of the cold vortex and the induced extratropical cyclone (Fig. 3). The mountain airflow, on the lee slopes of
the plateau and mountains in western NCP could also contribute to strengthening the subsidence motion in the lower
troposphere (Ning et al., 2018). Strong downdrafts in the lower troposphere, combining with the high turbulent diffusion in
the convective boundary layer during the daytime, could forced the tongue plume with $O_3 > 150$ ppb to cross the boundary
layer top extending to the near-surface layer from 9:30 to 15:30 LST on May 19 (Figs. 3c and d). Horizontally, the strong
210 northwest wind at the rear of the NECV and near-surface cyclone induced the O_3 -rich tongue plume to bend from the
northwest to the southeast of the NCP (Figs. 2c and 3). Therefore, the stratospheric O_3 reached the surface of northwest NCP
in the morning, gradually drifted along the direction of the airflow, and then reached the southeast NCP at night on May 19,
2019 (Figs. 3c–e). In this vertical configuration of atmospheric circulations of "upper westerly trough-middle NECV-lower
extratropical cyclone" from the lower stratosphere to the near-surface layer (Fig. 2), the deep westerly trough with strong
215 vertical wind shear triggered the tropopause folded downward, which was expected to induce the O_3 -rich air mass in the
stratosphere to pour into the middle and upper troposphere (Figs. 2–3). Subsequently, the compensating downdrafts at the
periphery of the cold vortex circulation effectively transport the high concentrated O_3 from the upper troposphere
downwards to the lower troposphere. The descending branch of extratropical cyclone in the lower troposphere further
promoted the transport of stratospheric O_3 from the free troposphere to the ABL in the lower troposphere.

220

删除[罗哈哈 haha]: s

删除[罗哈哈 haha]: ward

删除[罗哈哈 haha]: western

删除[罗哈哈 haha]: over the NCP

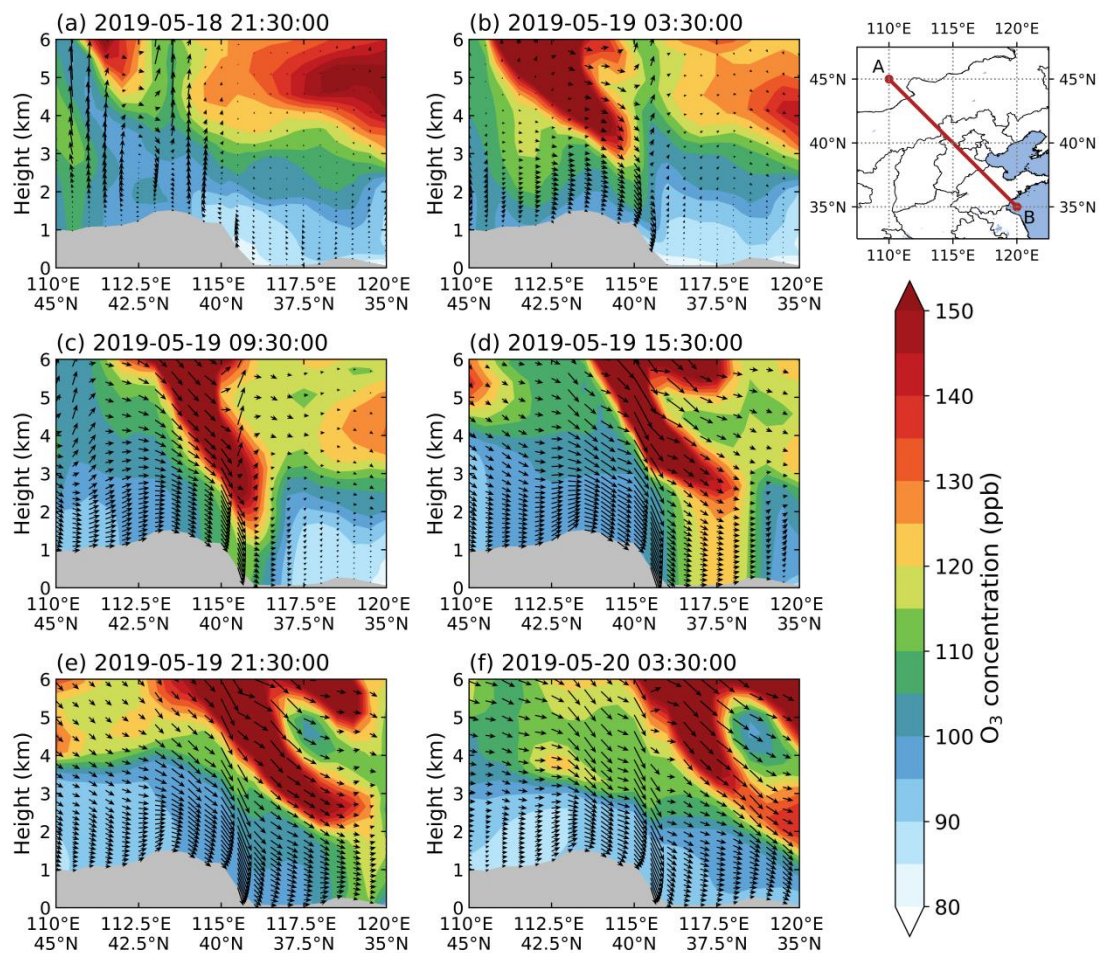


Figure 3: Vertical sections of O₃ concentrations (ppb) and composite wind vectors [from the MERRA2 data](#) along the line AB in the middle and lower troposphere over the NCP with the topography marked with gray areas. The line AB crosses the entire NCP along the northwest wind direction.

225 3.2 Impact of the SI on near-surface O₃

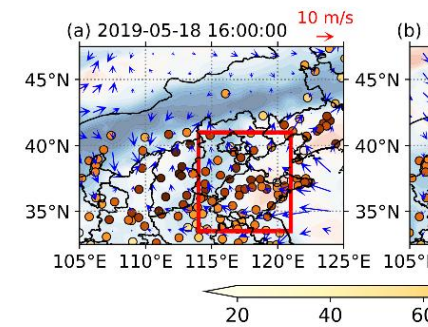
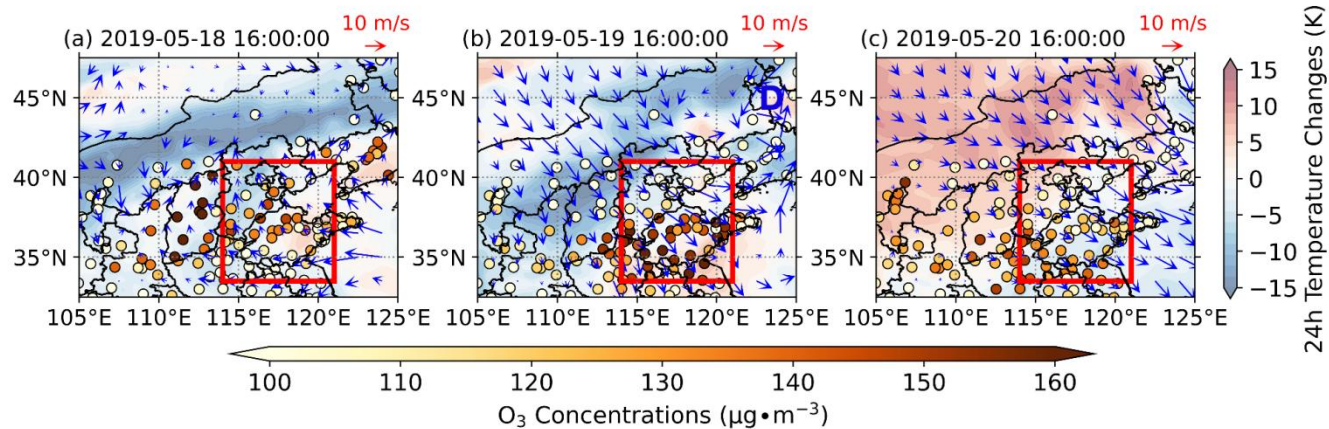
To investigate the impact of stratospheric O₃ on near-surface O₃ caused by the SI, the observed near-surface O₃ concentrations, the wind fields, and the 24-hour changes of air temperature at 950 hPa are shown in Fig. 4. Before the NECV formed on May 18, strong cold air was centered in the northeast-southwest zone in north China connecting with a slight cooling in the northwestern NCP, which was reflected by the 24-hour changes of air temperature at 950 hPa (Fig. 4a).

230 Meanwhile, a strong warm easterly airflow prevailed over the eastern and southern NCP with lower O₃ concentrations, and the high O₃ concentrations existed over the convergence zone between weak and strong easterly winds in the northwestern

NCP region. With the NECV formation on May 19, the extratropical cyclone in the lower troposphere was activated in the northern NCP and the Northeast China, and the northwest airflows at the rear of cyclone pushed the cold air mass southeastwards and prompted high O₃ in the northwestern NCP to spread downstream (Fig. 4b). On May 20, the NCP region

235 was beyond of NECV control with decreasing O₃ concentrations (Fig. 4c).

删除[罗哈哈 haha]: e



删除[罗哈哈 haha]:

Figure 4: Horizontal wind vectors and 24-hour changes of air temperature (shaded colors) at 950 hPa from the ERA5 data and the observed near-surface O₃ concentrations (color dots) at 16:00 LST on May (a) 18, (b) 19, and (c) 20, 2019. The red rectangles cover roughly the NCP region.

240

Figure 5 shows the temporal variations of near-surface O₃ and CO concentrations and meteorological variables over the NCP.

Due to the impact of cold air on the NCP, the rising air temperature required for the stronger photochemical reaction was not observed on May 19, 2019 (Fig. 5a). Precipitation in the NCP region could scavenge the O₃ precursors (Fig. 5a), which could modify the photochemical O₃ production (Sato et al., 2006; Yoo et al., 2014). Also, the dense cloud cover could reduce the

245

solar radiation suppressing the O₃ production from photochemical reactions (Fig. 5b). Since the stratosphere is rich in O₃ and poor in CO, the homology between CO and O₃ is commonly regarded as an indicator to identify the source of O₃ (Moody et al., 1995; Parrish et al., 1998; Voulgarakis et al., 2011). The negative correlation between CO and O₃ implies that O₃ derived from the vertical downward STT. As can be found from Fig. 5c, with the formation of tropopause folding and the cold vortex on May 19 (Fig. S2), the regional CO concentrations in the NCP decreased rapidly, reaching nearly half of the initial level.

250

Meanwhile, O₃ concentrations slightly increased. Remarkably, the opposite variations between CO and O₃ combined with the rapidly decreased T₂ and relative humidity (RH₂) could reflect the stratospheric O₃-rich air intrusion into the ground redistributing surface O₃ in the NCP region (Figs. 5a and c). In addition, triggered by the cold vortex in the upper and middle troposphere (Fig. 2), the extratropical cyclone dramatically increased the near-surface wind speed (WS₁₀) over the NCP (Fig. 5b), with the maximum regional averaged wind speed exceeding 7 m·s⁻¹. The strong northwest winds of the cyclone could

255

enhanced the diffusion of O₃, which were beneficial to the decrease of local near-surface O₃ concentrations in the SI event.

Additionally, the changes in observed meteorological and environmental elements from the representative sites SJZ and JN in the NCP (The red dots in Fig. S3) were examined in Fig. S6. The results showed the distinct characteristics compared with the regional averages that the diurnal cycles of O₃ concentrations were disturbed with the O₃ peaks by the SI event. The SJZ in the northwest NCP received stratospheric O₃ earlier and reached the spike at 10:00 LST on May 19. Then the O₃ concentrations gradually decreased under the influence of strong winds but still maintained a high level in the early morning of May 20. The JN in the southeast NCP was affected by the stratospheric intrusion later. While under meteorological

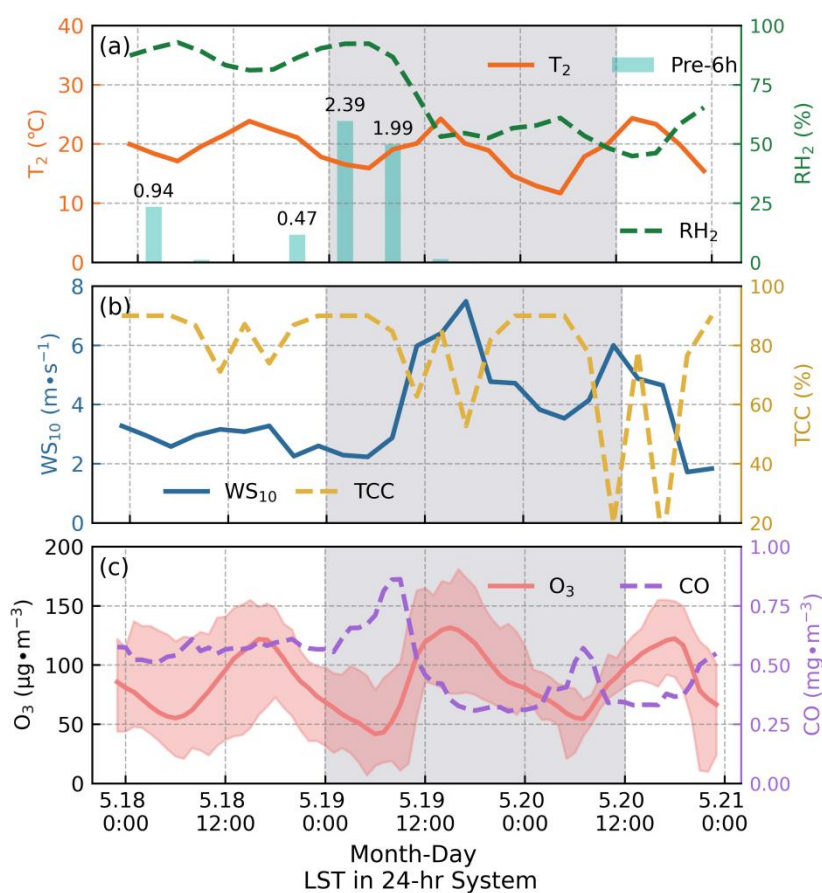
260

删除[罗哈哈 haha]: the p

删除[罗哈哈 haha]: significant

conditions conducive to the dissipation of pollutants (wind speed up to $8 \text{ m}\cdot\text{s}^{-1}$), higher O_3 concentrations than the previous day were still observed, reflecting the additional contribution of stratosphere intrusion to near-surface O_3 .

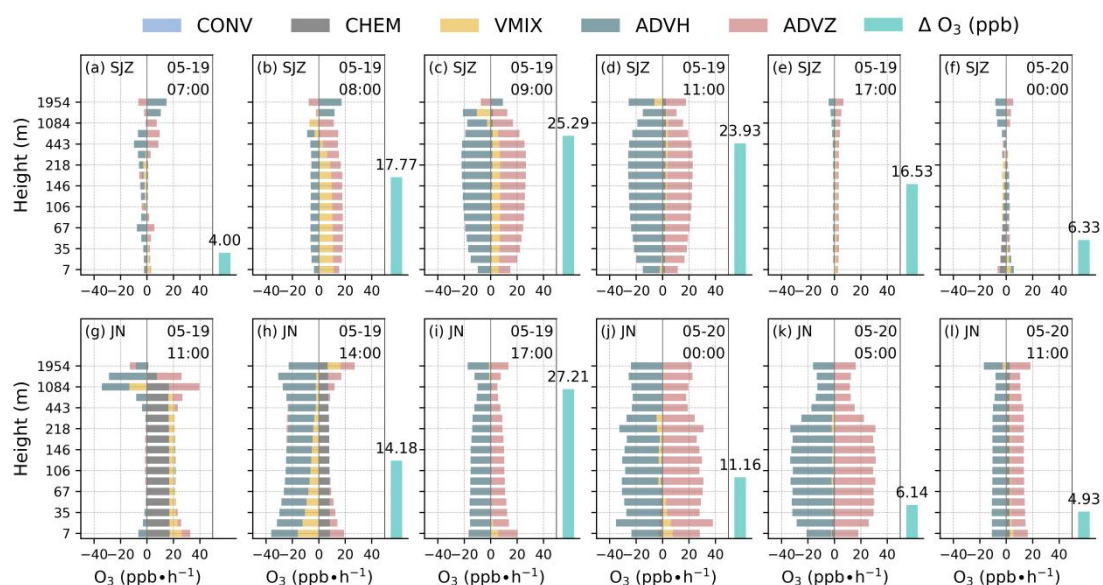
Overall, the vertical configuration of 1) The abnormal disturbance of the subtropical westerly jet induced a deep westerly
265 trough between lower stratosphere and upper troposphere, and the strong downdrafts on the south side of the trough
triggered the tropopause folding, allowing stratospheric O_3 to invade into the upper and middle troposphere (Blackmon et al.,
1977). 2) The deepening troughs were cut off forming the cold vortex in the upper and middle troposphere, the sinking
branch of the cold vortex vertical circulation driven stratospheric O_3 to continue to be transported downward to the lower
troposphere. 3) The cold vortex excited an extratropical cyclone in the lower troposphere, and the compensating downdrafts
270 on the periphery of the cyclone could pushed O_3 from the stratosphere to invade the near-surface, which could be a
mechanism of stratospheric O_3 intrusion affect the atmospheric environment in the following study.



275 | **Figure 5: Temporal variations of regionally averaged (a) T_2 , accumulated precipitation of 6 hours (Pre-6h, units: mm), RH_2 , (b) WS_{10} , and total cloud cover (TCC), (c) near-surface O_3 and CO concentrations from the observations in the NCP region. The shaded areas mark the periods of the SI to the near-surface layer.**

Quantification of the influence of NECV-driven SI on near-surface O_3 is crucial to deepen the understanding of SI process in
 O_3 pollution. To quantify the contribution of stratospheric O_3 to the near-surface layer during the SI event, we adopted the
WRF-Chem model with IPR. The IPR can be used to quantitatively analyze the contributions of physical and chemical
280 processes to O_3 . Five principal processes are considered in WRF-Chem, including subgrid convection (CONV), chemical

conversion (CHEM), vertical mixing (VMIX), horizontal advection (ADVH), and vertical advection (ADVZ) (Yang et al., 2022). The ADVH and the ADVZ are caused by the delivery of horizontal and vertical winds, and the ADVZ can be used to characterize the intrusion of the stratospheric O₃ into the ABL.



285

Figure 6: Temporal variations of contributions of atmospheric physical and chemical processes to O₃ from the simulation CASESTRO3 in the ABL in representative cities SJZ and JN in the NCP during the SI event.

In this study, we selected two sites of SJZ and JN (the red dots in Fig. S3) respectively in the northern and southern NCP as representatives to analyze the results of IPR (Fig. 6). It is noteworthy that the ADVH and ADVZ presented the generally reverse contributions in complementary ways, and the positive ADVZ contributions dominated the enhancements of near-surface O₃, indicating the vertical O₃ transport of the SI associated with the extratropical cyclone induced by the NECV (Figs. 3–6). The compensating subsidence branch of the extratropical cyclone further drove the stratospheric O₃ across the top of the ABL to the near-surface layer, which is reflected with significant positive contributions of ADVZ to O₃ within the ABL in SJZ and JN. Especially in the early morning of May 20, the contribution of ADVZ to JN peaked at 38.3 ppb·h⁻¹ (Fig. 6). However, the negative ADVH contributions reflected the diffusion of O₃ by the intense horizontal winds in the cyclone system. Even at the beginning of SI, the negative effects of ADVH to O₃ were greater than the positive effects of ADVZ. Compared with the vertical transport of O₃ by the ADVZ process, the horizontal O₃ transport driven by ADVH occurred earlier, which further demonstrated that the extratropical cyclone formed first and then drove the O₃ originating from stratosphere to penetrate the top of ABL downward to the near-surface layer.

The simulation results provided evidence that the surface extratropical cyclone excited by the NECV delivered stratospheric O₃ downward to the near-surface layer increasing the near-surface O₃ concentrations, while the extratropical cyclone caused atmospheric horizontal motions that removed the local O₃. Namely, although the intrusion of stratospheric O₃

has the potential to augment surface O₃ levels, rapid dispersion and removal facilitated by the peripheral horizontal winds of the cyclone mitigated this impact.

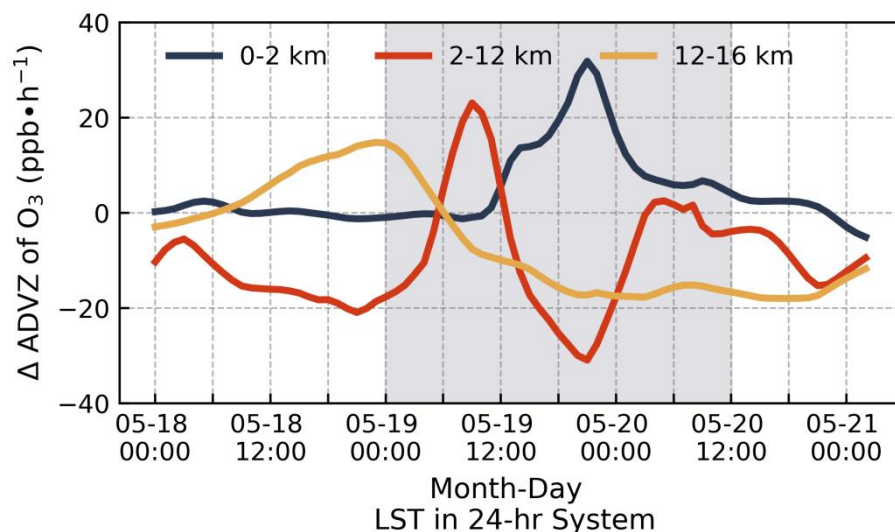
Therefore, the strong intrusion of stratospheric O₃ into the near-surface layer during the SI process without surface O₃ concentrations exceeding the hourly standard of O₃ pollution of 200 μg·m⁻³ over the NCP (Fig. 5c). Furthermore, SJZ received stratospheric O₃ in the near-surface layer earlier than JN, and the surface stratospheric O₃ in these two sites peaked in the morning and evening on May 19, respectively (Figs. 6c and i). This phenomenon confirmed the results in Section 3.1 that stratospheric O₃ injected into the near-surface layer in the northern NCP, and then the northwest wind of the cyclone drove the O₃ to drift southeastern downstream.

删除[罗哈哈 haha]: O₃ pollution

3.3 Contribution of stratospheric O₃ from SI to NCP

In this section, the simulations of the control experiment CASE_{STRO3} and the sensitivity experiment CASE_{noSTRO3} with the model WRF-Chem were applied to examine the atmospheric environmental effects of the stratospheric O₃ with the quantitative assessment of the contribution of stratospheric O₃ from the SI event. Since stratospheric O₃ was turned off in the simulation of CASE_{noSTRO3}, the impact of the stratospheric O₃ during the SI event to the tropospheric O₃ could be assessed with the differences in chemical simulations between CASE_{STRO3} and CASE_{noSTRO3}. Figure 7 illustrated the temporal lag changes of difference peaks in the vertical O₃ transport contributions to O₃ concentrations in the vertical altitude layers of 12–16km, 2–12km, to 0–2km to shed some light on the SI of stratospheric O₃ contributions from the lower stratosphere through the upper and middle troposphere into the lower troposphere including the ABL. During the SI event, the vertical O₃ transport contributions peaked in the lower stratosphere (12–16km) at 00:00 LST on May 19, about 9 hours late in the upper and middle troposphere (2–12km), and further 12 hour late in the lower troposphere (0–2km) influencing atmospheric environment (Fig. 7). The appearance times of these three peaks were delayed with the decreasing heights, reflecting that the SI occurrence could sequentially elevate the contributions of downward O₃ transport in the lower stratosphere, the free troposphere, and the ABL in the vertical cross-layer transport process of stratospheric O₃ during the SI event.

删除[罗哈哈 haha]: significantly



325

Figure 7: The temporal variations of vertical transport rates of stratospheric O₃ (Δ ADVZ) in the vertical layers of 0–2 km (lower troposphere), 2–12 km (middle and upper troposphere), and 12–16 km (lower stratosphere) with the differences between CASE_{STRO3} and CASE_{noSTRO3} simulations with the WRF-Chem during May 18–20, 2019. The shaded area marks the SI period.

The relative contributions of stratospheric O₃ to near-surface O₃ were calculated with dividing the absolute contributions from the simulated near-surface O₃ differences between CASE_{STRO3} and CASE_{noSTRO3} by the surface O₃ concentrations simulated in CASE_{STRO3}. Figure 8 presents the temporal variations of the stratospheric O₃ contributions to the near-surface layer in major urban sites in the NCP. As can be found that the intrusion of stratospheric O₃ sharply raised the relative contributions of O₃ originating from the stratosphere in the northern part of NCP, and the peak moments of stratospheric O₃ contributions delayed from north to south. The maximum contributions of stratospheric O₃ to near-surface O₃ in these major cities ranged from 43% to 58%, with the averaged contributions from 28% to 35% in this SI event (Fig. 8). On averaged over the NCP region, this SI event made the absolute contributions of 9.61 ppb to the near-surface O₃, accounting for 26.77% in the relative contribution. Compared with the others results, the stratospheric O₃ contribution in our study was lower, but the relative proportion was higher (Chang et al., 2023; Meng et al., 2022a; Meng et al., 2022b; Wang, H. et al., 2020), which could be related to the synoptic and atmospheric environmental conditions during cold vortex activity.

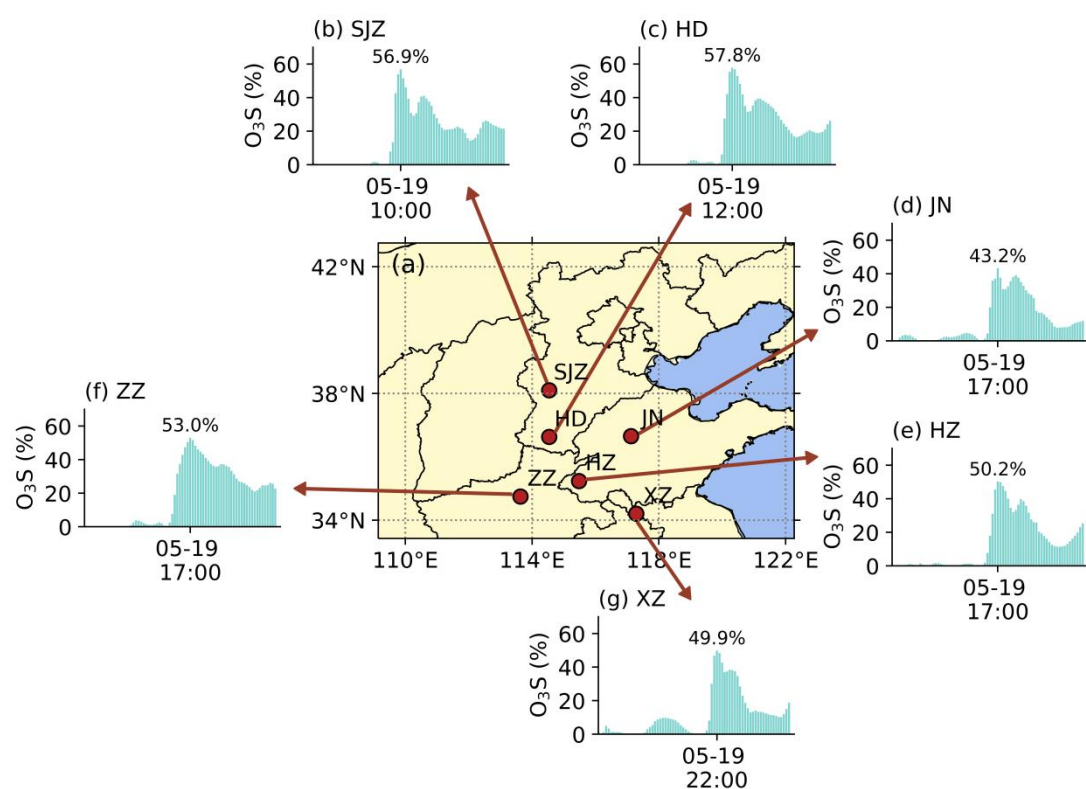
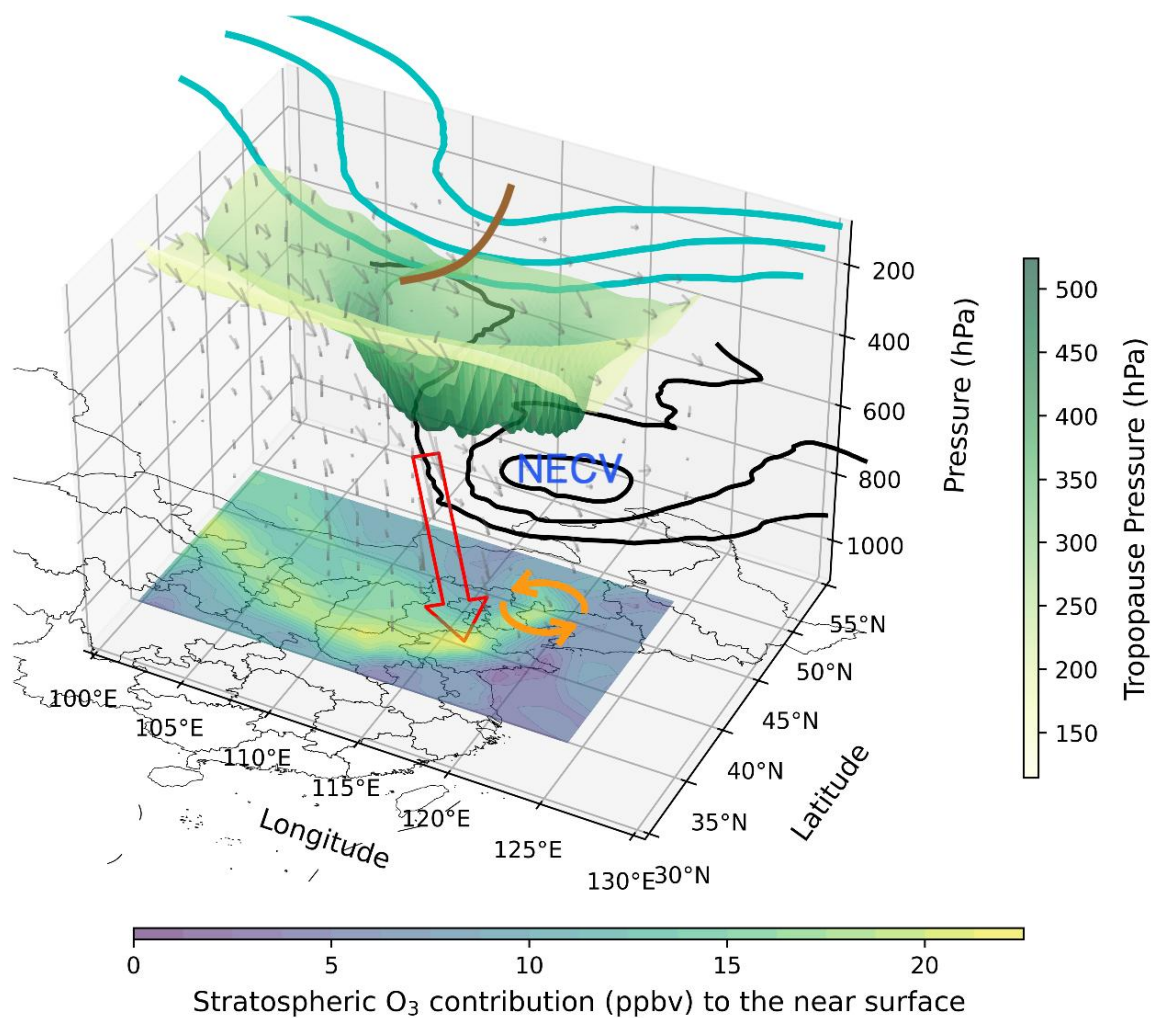


Figure 8: Temporal variations of the simulated contribution of stratospheric O₃ to near-surface O₃ in the urban sites SJZ, HD, JN, HZ, ZZ, and XZ over the NCP. The values annotated on the bars are the maximum contributions of the stratospheric O₃ occurring at the moments (month-day / hour: minute) marked on the x-axis.

345 **4 Conclusions**

The SI events could trigger the transport of O₃ from the stratosphere to the free troposphere. The SIs frequently happens around the subtropical westerlies, and the cold vortexes regulating weather and climate in mid-high latitudes are closely related to the westerly development. However, the mechanism of SI effects on the atmospheric environment with the cross-layer transport of O₃ from the stratosphere, the free troposphere to the atmospheric boundary layer has not been elucidated thoroughly. In this study, a SI process triggered by a typical cold vortex over North China was taken as an example to deeply investigate the driving mechanism of the vertical structure configuration of atmospheric circulation in the mid-high latitudes on the cross-layer transport of stratospheric O₃ to the near-surface atmosphere, and to quantify the impact of SI on the near-surface O₃ with jointly adopting the multi-source reanalysis and observation data of meteorology and environment and the numerical modeling of regional air quality.

355



360 **Figure 9: Conceptual diagram of the downward O₃ transport (red arrow) of SI to near-surface layer driven by the vertical configuration of "upper westerly trough-middle NECV-lower extratropical cyclone" in the troposphere. The upper 3D surface indicates the folded tropopause in the vertical air pressures, the green and black solid lines represent the westerly trough and NECV with the geopotential height contours of 200 hPa and 500 hPa in the upper and middle troposphere, respectively. The orange cycle arrows indicate the extratropical cyclone in the lower troposphere. The shaded colors on the surface indicate the stratospheric O₃ contribution to the near-surface (ppb).**

This study revealed a mechanism of stratospheric O₃ intrusion into the tropospheric, based on a case study of North China.

删除[罗哈哈 haha]: significant

删除[罗哈哈 haha]: atmospheric environment

The SI with downward transport of stratospheric O₃ to near-surface layer was driven by an extratropical cyclone system with
365 the vertical coupling of "upper westerly trough-middle NECV-lower extratropical cyclone" in the troposphere (Fig. 9). At
first, the disturbances in the westerly jet stream aroused a deep trough in the lower stratosphere and upper troposphere. The
vertical shear of the jet stream on the south side of the trough caused broad-scale subsidence, then induced the tropopause
folding down to 500–600hPa. The O₃-rich air from the lower stratosphere penetrated the folded tropopause into the upper
and middle troposphere. As the upper trough moved eastwards and deepened southward, the westerly trough was cut off in
370 the upper and middle troposphere, forming a typical cold vortex NECV in northern China. The compensating downdrafts of
the NECV pushed the stratospheric O₃ in the upper and middle troposphere to further downward transport. Simultaneously,
the NECV in the upper and middle troposphere activated an extratropical cyclone in the lower troposphere, and the
downdraft on the periphery of the vertical cyclonic circulation governed the stratospheric O₃ from the free troposphere to
break through the boundary layer top invading the near-surface atmosphere.

375 Based on the simulation experiments, we quantified the contribution of stratospheric O₃ to near-surface O₃ during the SI
process. The stratospheric O₃ intrusions were strengthened sequentially in the lower stratosphere, middle and upper
troposphere, and lower troposphere through vertical transport, reflecting that the stratospheric O₃ was indeed progressively
transported downwards from the lower stratosphere to the lower troposphere influencing the atmospheric environment. In
this SI event, the average contribution of stratospheric O₃ to near-surface O₃ was 9.61 ppb over the NCP region, accounting
380 for 26.77% in near-surface O₃ levels.

Our study illustrated the meteorological mechanism of vertical transport of stratospheric O₃ into the near-surface atmosphere
driven by an extratropical cyclone system, improving the understanding of the influence of stratospheric O₃ on the
atmospheric environment. The findings have significant implications for a comprehensive understanding of the cross-layer
transport of air pollutants on the coordinated control of atmospheric pollution complex. The study on the mechanism of
385 stratospheric O₃ intrusion into the atmospheric environment will be conducted with climatic analysis of long-term
observations of meteorology and environment combined with fine simulations of atmospheric chemical and physical
processes, to generalize the meteorological mechanism of stratospheric O₃ intrusion with climatology of stratospheric O₃
contribution to atmospheric environment change.

390 *Code and Data availability.* Code and data used in this paper can be provided upon request from Yuehan Luo
(lyh_nuist@qq.com) or Tianliang Zhao (tlzhao@nuist.edu.cn).

Author contributions. YL, TZ, and KM conceived the analysis and modeling study. YL designed the graphics and wrote the
manuscript with help from TZ, KM, JH and QY. YB, KY, WF, and CT were involved in the scientific discussion. All
395 authors commented on the paper.

Competing interests. The authors declare that they have no conflict of interest.

Disclaimer. Publisher's note: Copernicus Publications remains neutral with regard to jurisdictional claims in published maps
400 and institutional affiliations.

Financial support. This research was supported by the National Key Research and Development Program of China (Grant No. 2022YFC3701204) and the National Natural Science Foundation of China (Grant No. 42275196).

References

405 Archer, C. L., and Caldeira, K.: Historical trends in the jet streams. *Geophysical Research Letters*, 35(8), doi:<https://doi.org/10.1029/2008GL033614>, 2008.

Akritidis, D., Pozzer, A., Zanis, P., Tyrlis, E., Škerlak, B., Sprenger, M., and Lelieveld, J.: On the role of tropopause folds in summertime tropospheric ozone over the eastern Mediterranean and the Middle East. *Atmospheric Chemistry and Physics*, 16(21), 14025–14039, doi:<https://doi.org/10.5194/acp-16-14025-2016>, 2016.

410 Barth, M. C., Lee, J., Hodzic, A., Pfister, G., Skamarock, W. C., Worden, J., Wong, J., and Noone, D.: Thunderstorms and upper troposphere chemistry during the early stages of the 2006 North American Monsoon. *Atmospheric Chemistry and Physics*, 12(22), 11003–11026, doi:<https://doi.org/10.5194/acp-12-11003-2012>, 2012.

Blackmon, M. L., Wallace, J. M., Lau, N.-C., and Mullen, S. L.: An observational study of the northern hemisphere wintertime circulation. *Journal of the Atmospheric Sciences*, 34(7), 1040–1053,
415 doi:[https://doi.org/10.1175/1520-0469\(1977\)034<1040:AOSOTN>2.0.CO;2](https://doi.org/10.1175/1520-0469(1977)034<1040:AOSOTN>2.0.CO;2), 1977.

Bourqui, M. S., and Trépanier, P. Y.: Descent of deep stratospheric intrusions during the IONS August 2006 campaign. *Journal of Geophysical Research: Atmospheres*, 115(D18), doi:<https://doi.org/10.1029/2009JD013183>, 2010.

Chen, D., Chen, Z. Y., and Lü, D. R.: Simulation of the generation of stratospheric gravity waves in upper-tropospheric jet stream accompanied with a cold vortex over Northeast China. *Chinese Journal of Geophysics*, 57(1), 10–20,
420 doi:<https://doi.org/10.6038/cjg20140102>, 2014a.

Chen, D., Lü, D., and Chen, Z.: Simulation of the stratosphere-troposphere exchange process in a typical cold vortex over Northeast China. *Science China Earth Sciences*, 57, 1452–1463, doi:<https://doi.org/10.1007/s11430-014-4864-x>, 2014b.

Chang, F., Li, J., Li, N., and Liao, H.: Stratospheric intrusion may aggravate widespread ozone pollution through both vertical and horizontal advections in eastern China during summer. *Frontiers in Environmental Science*, 10, 2756,
425 doi:<https://doi.org/10.3389/fenvs.2022.1115746>, 2023.

- Chen, X., Jiang, Z., Shen, Y., Li, R., Fu, Y., Liu, J., Han, H., Liao, H., Cheng, X., Jones, D B. A., Worden, H., and Abad, G. G.: Chinese regulations are Working—why is surface ozone over industrialized areas still high? Applying lessons from northeast US air quality evolution. *Geophysical Research Letters*, 48 (14), doi:<https://doi.org/10.1029/2021GL092816>, 2021.
- 430 [Chen, Z., Liu, J., Qie, X., Cheng, X., Shen, Y., Yang, M., Jiang, R., and Liu, X.: Transport of substantial stratospheric ozone to the surface by a dying typhoon and shallow convection. *Atmospheric Chemistry and Physics*, 22\(12\), 8221–8240, doi:<https://doi.org/10.5194/acp-22-8221-2022>, 2022.](#)
- [Chen, Z., Xie, Y., Liu, J., Shen, L., Cheng, X., Han, H., Yang, M., Shen, Y., Zhao, T., and Hu, J.: Distinct seasonality in vertical variations of tropospheric ozone over coastal regions of southern China. *Science of The Total Environment*, 874, 162423, doi:<https://doi.org/10.1016/j.scitotenv.2023.162423>, 2023a.](#)
- 435 [Chen, Z., Liu, J., Cheng, X., Yang, M., and Shu, L.: Stratospheric influences on surface ozone increase during the COVID-19 lockdown over northern China. *npj Climate and Atmospheric Science*, 6\(1\), 76, doi:<https://doi.org/10.1038/s41612-023-00406-2>, 2023b.](#)
- Ding, A., and Wang, T.: Influence of stratosphere-to-troposphere exchange on the seasonal cycle of surface ozone at Mount Waliguan in western China. *Geophysical Research Letters*, 33, L03803, doi:<https://doi.org/10.1029/2005gl024760>, 2006.
- 440 Ding, D., Xing, J., Wang, S., Chang, X., and Hao, J.: Impacts of Emissions and Meteorological Changes on China’s Ozone Pollution in the Warm Seasons of 2013 and 2017, *Frontiers of Environmental Science & Engineering*, 13, 1–9, doi:<https://doi.org/10.1007/s11783-019-1160-1>, 2019.
- Fu, S. M., Sun, J. H., and Qi, L. L.: Study on the Evolution of a Northeast China Cold Vortex during the Spring of 2010. *Atmospheric and Oceanic Science Letters*, 7(2), 149–156, doi:<https://doi.org/10.3878/j.issn.1674-2834.13.0077>, 2014.
- 445 [Gao, J., and Gao, H.: Influence of the northeast cold vortex on flooding in Northeast China in summer 2013. *Journal of Meteorological Research*, 32\(2\), 172–180, doi:<https://doi.org/10.1007/s13351-018-7056-3>, 2018.](#)
- Ganguly, N. D.: Influence of stratospheric intrusion on the surface ozone levels in India. *International Scholarly Research Notices*, doi:<https://doi.org/10.5402/2012/625318>, 2012.
- 450 [Gelaro, R., McCarty, W., Suárez, M. J., Todling, R., Molod, A., Takacs, L., Randles, C. A., Darmenov, A., Bosilovich, M. G., Reichle, R., Wargan, K., Coy, L., Cullather, R., Draper, C., Akella, S., Buchard, V., Conaty, A., Silva, A. M., Gu, W., Kim, G., Koster, R., Lucchesi, R., Merkova, D., Nielsen, J. E., Partyka, G., Pawson, S., Putman, W., Rienecker, M., Schubert, S. D., Sienkiewicz, M., and Zhao, B.: The modern-era retrospective analysis for research and applications, version 2 \(MERRA-2\). *Journal of Climate*, 30\(14\), 5419–5454, doi:<https://doi.org/10.1175/JCLI-D-16-0758.1>, 2017.](#)
- 455 [Hersbach, H., Bell, B., Berrisford, P., Hirahara, S., Horányi, A., Muñoz-Sabater, J., Nicolas, J., Peubey, C., Radu, R., Schepers, D., Simmons, A., Soci, C., Abdalla, S., Abellan, X., Balsamo, G., Bechtold, P., Biavati, G., Bidlot, J., Bonavita, M., Chiara, G. D., Dahlgren, P., Dee, D., Diamantakis, M., Dragani, R., Flemming, J., Forbes, R., Fuentes, M., Geer, A., Haimberger, L., Healy, S., Hogan, R. J., Hólm, E., Janisková, M., Keeley, S., Laloyaux, P., Lopez, P., Lupu, C., Radnoti, G.,](#)

删除[罗哈哈 haha]: Gao, J., and Gao, H.: Influence of the northeast cold vortex on flooding in Northeast China in summer 2013. *Journal of Meteorological Research*, 32(2), 172–180, doi:<https://doi.org/10.1007/s13351-018-7056-3>, 2018.

- Rosnay, P. D., Rozum, I., Vamborg, F., Villaume, S., Thépaut, J. N.: The ERA5 global reanalysis. *Quarterly Journal of the Royal Meteorological Society*, 146(730), 1999–2049, doi:<https://doi.org/10.1002/qj.3803>, 2020.
- 460 Holton, J. R., Haynes, P. H., McIntyre, M. E., Douglass, A. R., Rood, R. B., and Pfister, L.: Stratosphere-troposphere exchange. *Reviews of geophysics*, 33(4), 403–439, doi:<https://doi.org/10.1029/95RG02097>, 1995.
- Huang, X., Zhu, Q., and Liu, S.: The characteristic analyses on East Asia block in the activity period of cold vortex over Northeast China in early summer. Liaoning Publishing House, 30–34, 1997.
- Inness, A., Ades, M., Agustí-Panareda, A., Barré, J., Benedictow, A., Blechschmidt, A. M., Dominguez, J. J., Engelen, R.,
465 Eskes, H., Flemming, J., Huijnen, V., Jones, L., Kipling, Z., Massart, S., Parrington, M., Peuch, V. H., Razinger, M., Remy, S., Schulz, M., and Suttie, M.: The CAMS reanalysis of atmospheric composition. *Atmospheric Chemistry and Physics*, 19(6), 3515–3556, doi:<https://doi.org/10.5194/acp-19-3515-2019>, 2019.
- Jiang, Y. C., Zhao, T. L., Liu, J., Xu, X. D., Tan, C. H., Cheng, X. H., Bi, X. Y., Gan, J. B., You, J. F., and Zhao, S. Z. Why does surface ozone peak before a typhoon landing in southeast China?. *Atmospheric Chemistry and Physics*, 15(23),
470 13331–13338, doi:<https://doi.org/10.5194/acp-15-13331-2015>, 2015.
- Langford, A. O., Aikin, K. C., Eubank, C. S., and Williams, E. J.: Stratospheric contribution to high surface ozone in Colorado during springtime. *Geophysical Research Letters*, 36(12), doi:<https://doi.org/10.1029/2009GL038367>, 2009.
- Langford, A. O., Brioude, J., Cooper, O. R., Senff, C. J., Alvarez, R. J., Hardesty, R. M., Johnson, B. J., and Oltmans, S. J.: Stratospheric influence on surface ozone in the Los Angeles area during late spring and early summer of 2010. *Journal of*
475 *Geophysical Research*, 117, doi:<https://doi.org/10.1029/2011jd016766>, 2012.
- Lefohn, A. S., Wernli, H., Shadwick, D., Limbach, S., Oltmans, S. J., Shapiro, M.: The importance of stratospheric-tropospheric transport in affecting surface ozone concentrations in the western and northern tier of the United States. *Atmospheric Environment*, 45, 4845–4857, doi:<https://doi.org/10.1016/j.atmosenv.2011.06.014>, 2011.
- Lelieveld, J., and Dentener, F. J.: What controls tropospheric ozone?. *Journal of Geophysical Research: Atmospheres*,
480 105(D3), 3531–3551, doi:<https://doi.org/10.1029/1999JD901011>, 2000.
- [Lamarque, J. F., Emmons, L. K., Hess, P. G., Kinnison, D. E., Tilmes, S., Vitt, F., Heald, C. L., Holland, E. A., Lauritzen, P. h., Neu, J., Orlando, J. J., Rasch, P. J., and Tyndall, G. K.: CAM-chem: Description and evaluation of interactive atmospheric chemistry in the Community Earth System Model. *Geoscientific Model Development*, 5\(2\), 369–411, doi:<https://doi.org/10.5194/gmd-5-369-2012>, 2012.](https://doi.org/10.5194/gmd-5-369-2012)
- 485 Li, K., Jacob, D. J., Shen, L., Lu, X., Smedt, I. D., and Liao, H.: Increases in surface ozone pollution in China from 2013 to 2019: anthropogenic and meteorological influences. *Atmospheric Chemistry and Physics*, 20(19), 11423–11433, doi:<https://doi.org/10.5194/acp-20-11423-2020>, 2020.
- Li, K., Jacob, D. J., Liao, H., Zhu, J., Shah, V., Shen, L., Bates, K. H., Zhang, Q., and Zhai, S.: A two-pollutant strategy for improving ozone and particulate air quality in China. *Nature Geoscience*, 12(11), 906–910,

490 doi:<https://doi.org/10.1038/s41561-019-0464-x>, 2019.

Lin, M., Fiore, A. M., Cooper, O. R., Horowitz, L. W., Langford, A. O., Levy, H., Johnson, B. J., Naik, V., Oltmans, S. J., and Senff, C. J.: Springtime high surface ozone events over the western United States: Quantifying the role of stratospheric intrusions. *Journal of Geophysical Research: Atmospheres*, 117(D21), doi:<https://doi.org/10.1029/2012JD018151>, 2012.

[Levelt, P. F., Van Den Oord, G. H., Dobber, M. R., Malkki, A., Visser, H., De Vries, J., Stammes, P., Lundell, J. O. V., and](#)

495 [Saari, H.: The ozone monitoring instrument. *IEEE Transactions on geoscience and remote sensing*, 44\(5\), 1093–1101, doi:<https://doi.org/10.1109/TGRS.2006.872333>, 2006.](#)

Lian, Y., Shen, B., Li, S., Liu, G., and Yang, X.: Mechanisms for the formation of Northeast China cold vortex and its activities and impacts: An overview. *Journal of Meteorological Research*, 30(6), 881–896, doi:<https://doi.org/10.1007/s13351-016-6003-4>, 2016.

500 [Luo, Y., Zhao, T., Yang, Y., Zong, L., Kumar, K. R., Wang, H., Meng, K., Zhang, L., Lu, S., and Xin, Y.: Seasonal changes in the recent decline of combined high PM_{2.5} and O₃ pollution and associated chemical and meteorological drivers in the Beijing-Tianjin-Hebei region, China. *Science of The Total Environment*, 838, 156312, doi:<http://dx.doi.org/10.1016/j.scitotenv.2022.156312>, 2022.](#)

[Liu, Z., Doherty, R. M., Wild, O., Hollaway, M., and O'Connor, F. M.: Contrasting chemical environments in summertime](#)

505 [for atmospheric ozone across major Chinese industrial regions: the effectiveness of emission control strategies. *Atmospheric Chemistry and Physics*, 21\(13\), 10689–10706, doi:<https://doi.org/10.5194/acp-21-10689-2021>, 2021.](#)

Martin, J. E.: Recent trends in the waviness of the Northern Hemisphere wintertime polar and subtropical jets. *Journal of Geophysical Research: Atmospheres*, 126(9), e2020JD033668, doi:<https://doi.org/10.1029/2020JD033668>, 2021.

Moody, J. L., Oltmans, S. J., Levy, H., and Merrill, J. T.: Transport climatology of tropospheric ozone: Bermuda, 1988–1991.

510 *Journal of Geophysical Research: Atmospheres*, 100(D4), 7179–7194, doi:<https://doi.org/10.1029/94JD02830>, 1995.

Meng, K., Zhao, T., Xu, X., Hu, Y., Zhao, Y., Zhang, L., Pang, Y., Ma, X., Bai, Y., Zhao, Y., and Zhen, S.: Anomalous surface O₃ changes in North China Plain during the northwestward movement of a landing typhoon. *Science of The Total Environment*, 820, 153196, doi:<https://doi.org/10.1016/j.scitotenv.2022.153196>, 2022a.

515 [Meng, K., Zhao, T., Xu, X., Zhang, Z., Bai, Y., Hu, Y., Zhao, Y., Zhang, X., and Xin, Y.: Influence of stratosphere-to-troposphere transport on summertime surface O₃ changes in North China Plain in 2019. *Atmospheric Research*, 276, 106271, doi:<https://doi.org/10.1016/j.atmosres.2022.106271>, 2022b.](#)

Ning, G., Wang, S., Ma, M., Ni, C., Shang, Z., Wang, J., and Li, J.: Characteristics of air pollution in different zones of Sichuan Basin, China. *Science of the Total Environment*, 612, 975–984, doi:<https://doi.org/10.1016/j.scitotenv.2017.08.205>, 2018.

520 [Ni, Z. Z., Luo, K., Gao, X., Gao, Y., Fan, J. R., Fu, J. S., and Chen, C. H.: Exploring the stratospheric source of ozone pollution over China during the 2016 Group of Twenty summit. *Atmospheric Pollution Research*, 10\(4\), 1267–1275,](#)

删除[罗哈哈 haha]: Liu, Z., Doherty, R. M., Wild, O., Hollaway, M., and O'Connor, F. M.: Contrasting chemical environments in summertime for atmospheric ozone across major Chinese industrial regions: the effectiveness of emission control strategies. *Atmospheric Chemistry and Physics*, 21(13), 10689–10706, doi:<https://doi.org/10.5194/acp-21-10689-2021>, 2021.

doi:<https://doi.org/10.1016/j.apr.2019.02.010>, 2019.

Parrish, D. D., Trainer, M., Holloway, J. S., Yee, J. E., Warshawsky, M. S., Fehsenfeld, F. C., Forbes, G. L., and Moody, J. L.: Relationships between ozone and carbon monoxide at surface sites in the North Atlantic region. *Journal of Geophysical*

525 *Research: Atmospheres*, 103(D11), 13357–13376, doi:<https://doi.org/10.1029/98JD00376>, 1998.

Pfister, G. G., Emmons, L. K., Hess, P. G., Lamarque, J. F., Thompson, A. M., and Yorks, J. E. Analysis of the summer 2004 ozone budget over the United States using Intercontinental Transport Experiment Ozone-sonde Network Study (IONS) observations and Model of Ozone and Related Tracers (MOZART-4) simulations. *Journal of Geophysical Research: Atmospheres*, 113(D23), doi:<https://doi.org/10.1029/2008JD010190>, 2008.

530 Stohl, A., Wernli, H., James, P., Bourqui, M., Forster, C., Liniger, M.A., Seibert, P., Sprenger, M.: A new perspective of stratosphere-troposphere exchange. *Bulletin of the American Meteorological Society*, 84(11), 1565–1574, doi:<https://doi.org/10.1175/BAMS-84-11-1565>, 2003.

Stevenson, D. S., Dentener, F. J., Schultz, M. G., Ellingsen, K., Van Noije, T. P. C., Wild, O., Zeng, G., Amann, M., Atherton, C. S., Bell, N., Bergmann, D. J., Bey, I., Butler, T., Cofala, J., Collins, W. J., Derwent, R. G., Doherty, R. M.,

535 Drevet, J., Eskes, H. J., Fiore, A. M., Gauss, M., Hauglustaine, D. A., Horowitz, L. W., Isaksen, I. S. A., Krol, M. C., Lamarque, J. F., Lawrence, M. G., Montanaro, V., Müller, J. F., Pitari, G., Prather, M. J., Pyle, J. A., Rast, S., Rodriguez, J. M., Sanderson, M. G., Savage, N. H., Shindell, D. T., Strahan, S. E., Sudo, K., and Szopa, S.: Multimodel ensemble simulations of present-day and near-future tropospheric ozone. *Journal of Geophysical Research: Atmospheres*, 111(D8), doi:<https://doi.org/10.1029/2005JD006338>, 2006.

540 Sato, E., Matsumoto, K., Okochi, H., and Igawa, M. Scavenging effect of precipitation on volatile organic compounds in ambient atmosphere. *Bulletin of the Chemical Society of Japan*, 79(8), 1231–1233. doi:<https://doi.org/10.1246/bcsj.79.1231>, 2006.

Satyamurty, P., and Seluchi, M. E.: Characteristics and structure of an upper air cold vortex in the subtropics of South America. *Meteorology and Atmospheric Physics*, 96(3–4), doi:<https://doi.org/203-220.10.1007/s00703-006-0207-6>, 2007.

545 Tao, W., Zheng, L., Hao, Y., and Liu, G.: An Extreme Gale Event in East China under the Arctic Potential Vorticity Anomaly through the Northeast China Cold Vortex. *Advances in Atmospheric Sciences*, 1–14, doi:<https://doi.org/10.1007/s00376-023-2255-y>, 2023.

Voulgarakis, A., Telford, P. J., Aghedo, A. M., Braesicke, P., Faluvegi, G., Abraham, N. L., Bowman, K. W., Pyle, J. A., and Shindell, D. T.: Global multi-year O₃-CO correlation patterns from models and TES satellite observations. *Atmospheric*

550 *Chemistry and Physics*, 11(12), 5819–5838, doi:<https://doi.org/10.5194/acp-11-5819-2011>, 2011.

Verstraeten, W. W., Neu, J. L., Williams, J. E., Bowman, K. W., Worden, J. R., and Boersma, K. F.: Rapid increases in tropospheric ozone production and export from China. *Nature Geoscience*, 8(9), 690–695, doi:<https://doi.org/10.1038/ngeo2493>, 2015.

Wang, H., Wang, W., Huang, X., and Ding, A.: Impacts of stratosphere-to-troposphere-transport on summertime surface
555 ozone over eastern China. *Science bulletin*, 65(4), 276–279, doi:<https://doi.org/10.1016/j.scib.2019.11.017>, 2020.

[Waters, J. W., Froidevaux, L., Harwood, R. S., Jarnot, R. F., Pickett, H. M., Read, W. G., Siegel, P. H., Cofield, R. E., Filipiak, M. J., Flower, D. A., Holden, J. R., Lau, G. K., Livesey, N. J., Manney, G. L., Pumphrey, H. C., Santee, M. L., Wu, D. L., Cuddy, D. T., Lay, R. R., Loo, M. S., Perun, V. S., Schwartz, M. J., Stek, P. C., Thurstans, R. P., Boyles, M. A., Chandra, K. M., Chavez, M. C., Chen, G. S., Chudasama, B. V., Dodge, R., Fuller, R. A., Girard, M. A., Jiang, J. H., Jiang, Y., Knosp, B. W., LaBelle, R. C., Lam, J. C., Lee, K. A., Miller, D., Oswald, J. E., Patel, N. C., Pukala, D. M., Quintero, O., Scaff, D. M., Snyder, W. V., Tope, M. C., Wagner, P. A., and Walch, M. J.: The earth observing system microwave limb sounder \(EOS MLS\) on the Aura satellite. *IEEE transactions on geoscience and remote sensing*, 44\(5\), 1075–1092, doi:<https://doi.org/10.1109/TGRS.2006.873771>, 2006.](#)

Wargan, K., Labow, G., Frith, S., Pawson, S., Livesey, N., and Partyka, G.: Evaluation of the Ozone Fields in NASA’s
565 MERRA-2 Reanalysis. *Journal of Climate*, 2961–2988, doi:<https://doi.org/10.1175/JCLI-D-16-0699.1>, 2017.

[Wargan, K., Pawson, S., Olsen, M. A., Witte, J. C., Douglass, A. R., Ziemke, J. R., Strahan, S. E., and Nielsen, J. E.: The global structure of upper troposphere-lower stratosphere ozone in GEOS-5: A multiyear assimilation of EOS Aura data. *Journal of Geophysical Research: Atmospheres*, 120\(5\), 2013–2036, doi:<https://doi.org/10.1002/2014JD022493>, 2015.](#)

Wild, O.: Modelling the global tropospheric ozone budget: exploring the variability in current models. *Atmospheric
570 Chemistry and Physics*, 7(10), 2643–2660, doi:<https://doi.org/10.5194/acp-7-2643-2007>, 2007.

[Wei, W., Li, Y., Ren, Y., Cheng, S., and Han, L.: Sensitivity of summer ozone to precursor emission change over Beijing during 2010–2015: A WRF-Chem modeling study. *Atmospheric Environment*, 218, 116984, doi:<https://doi.org/10.1016/j.atmosenv.2019.116984>, 2019.](#)

[Wang, X., Wu, Y., Randel, W., and Tilmes, S.: Stratospheric contribution to the summertime high surface ozone events over the Western United States. *Environmental Research Letters*, 15 \(10\), 1040a6, doi:<https://doi.org/10.1088/1748-9326/abba53>, 2020.](#)

Xue, D., Zhang, Y., Wang, P., Sun, F., and Yin, J.: Distinct Influences of Cold Vortex Over Northeast China On Local
Extreme Precipitations in Early Summer And Midsummer, doi:<https://doi.org/10.21203/rs.3.rs-987130/v1>, 2021.

Xue, D., Zhang, Y., Wang, P., Sun, F., and Yin, J.: Distinct influences of cold vortex over Northeast China on local
580 precipitation in early summer and midsummer. *Climate Dynamics*, 59(11-12), 3701–3716, doi:<https://doi.org/10.1007/s00382-022-06291-4>, 2022.

Xie, Z., and Bueh, C.: Cold vortex events over Northeast China associated with the Yakutsk-Okhotsk blocking. *International
Journal of Climatology*, 37(1), 381–398, doi:<https://doi.org/10.1002/joc.4711>, 2017.

Yang, H., Chen, L., Liao, H., Zhu, J., Wang, W., and Li, X.: Impacts of aerosol – photolysis interaction and aerosol-radiation
585 feedback on surface-layer ozone in North China during multi-pollutant air pollution episodes. *Atmospheric Chemistry and*

删除[罗哈哈 haha]: Wang, X., Wu, Y., Randel, W., and
Tilmes, S.: Stratospheric contribution to the summertime high
surface ozone events over the Western United States.
Environmental Research Letters, 15 (10), 1040a6,
doi:<https://doi.org/10.1088/1748-9326/abba53>, 2020.

Physics, 22(6), 4101–4116, doi:<https://doi.org/10.5194/acp-22-4101-2022>, 2022.

Yang, L. M., and Zhang, Y. H.: Summary of current research on Central Asian vortex. *Advances in Climate Change Research*, 8(1), 3–11, doi:<https://doi.org/10.1016/j.accre.2017.03.002>, 2017.

590 Yoo, J. M., Lee, Y. R., Kim, D., Jeong, M. J., Stockwell, W. R., Kundu, P. K., .Oh, S. M., Shin, D. B., and Lee, S. J. New indices for wet scavenging of air pollutants (O₃, CO, NO₂, SO₂, and PM₁₀) by summertime rain. *Atmospheric Environment*, 82, 226–237, doi:<https://doi.org/10.1016/j.atmosenv.2013.10.022>, 2014.

Zhao, K., Hu, C., Yuan, Z., Xu, D., Zhang, S., Luo, H., Wang T., and Jiang, R. A modeling study of the impact of stratospheric intrusion on ozone enhancement in the lower troposphere over the Hong Kong regions, China. *Atmospheric Research*, 247, 105158, doi:<https://doi.org/10.1016/j.atmosres.2020.105158>, 2021.

595 Zhang, L., Zhao, T., Gong, S., Kong, S., Tang, L., Liu, D., Wang, Y., Jin, L., Shan, Y., Tan, C., Zhang, Y., and Guo, X.: Updated emission inventories of power plants in simulating air quality during haze periods over East China. *Atmospheric Chemistry and Physics*, 18(3), 2065–2079, doi:<https://doi.org/10.5194/acp-18-2065-2018>, 2018.