

Buoy measurements of strong waves in ice amplitude modulation: a signature of ~~complex physics governing the impact of sea ice~~ closedness on waves in ice attenuation

Jean Rabault¹, Trygve Halsne^{2,3}, Ana Carrasco¹, Anton Korosov⁴, Joey Voermans⁵, Patrik Bohlinger², Jens Boldingh Debernard¹, Malte Müller^{1,9}, Øyvind Breivik^{2,3}, Takehiko Nose⁶, Gaute Hope², Fabrice Collard⁷, Sylvain Herlédan⁷, Tsubasa Kodaira⁶, Nick Hughes⁸, Qin Zhang⁸, Kai Haakon Christensen^{1,9}, Alexander Babanin⁵, Lars Willas Dreyer⁹, Cyril Palerme¹, Lotfi Aouf¹⁰, Konstantinos Christakos², Atle Jensen⁹, Johannes Röhrs¹, Aleksey Marchenko¹¹, Graig Sutherland¹², Trygve Kvåle Løken¹³, and Takuji Waseda⁶

¹Norwegian Meteorological Institute, Oslo, Norway

²Norwegian Meteorological Institute, Bergen, Norway

³The University of Bergen, Bergen, Norway

⁴Nansen Environmental and Remote Sensing Center, Bergen, Norway

⁵The University of Melbourne, Melbourne, Australia

⁶The University of Tokyo, Kashiwa, Japan

⁷OceanDataLab, Locmaria-Plouzane, France

⁸Norwegian Meteorological Institute, Tromsø, Norway

⁹The University of Oslo, Oslo, Norway

¹⁰Météo France, CNRM-CNRS, UMR-3589, Toulouse, France

¹¹The University Center in Svalbard, Longyearbyen, Norway

¹²Environment Climate Change Canada, Dorval, Canada

¹³Nord University, Bodø, Norway

Correspondence: Jean Rabault (jean.rblt@proton.me)

Abstract. The Marginal Ice Zone (MIZ) forms a critical transition region between the ocean and sea ice cover, as it protects the close ice further in from the effect of the steepest and most energetic open ocean waves. As waves propagate through the MIZ, they ~~get become~~ exponentially attenuated. Unfortunately, the associated attenuation coefficient is difficult to accurately estimate and model, and there are still large uncertainties around which attenuation mechanisms dominate depending on the conditions.

- 5 This makes it ~~challenging difficult~~ to predict waves in ice attenuation, as well as sea ice breakup and dynamics. Here, we report ~~in-situ in situ~~ observations of strongly modulated ~~waves-in-ice waves in ice~~ amplitude, with a modulation period of around 12 hours. We show that simple explanations, such as changes in the incoming open water waves ~~, or the or the direct~~ effect of tides and currents and bathymetry ~~on the propagating waves~~, cannot explain ~~for the~~ observed modulation. Therefore, the ~~significant~~ wave height modulation observed in the ice ~~most likely~~ comes from a modulation of the ~~waves-in-ice waves in ice~~ attenuation
- 10 coefficient. ~~To explain this, we conjecture that one or several waves-in-ice attenuation mechanisms are periodically modulated and switched on and off in the area of interest.~~ We gather evidence that sea ice convergence and divergence is likely the factor driving this ~~change in the waves in ice attenuation mechanisms and~~ ~~modulation in the~~ attenuation coefficient, ~~for example by~~

~~modulating the intensity of floe-floe interaction mechanisms through its influence on the ice "compactness". This implies that the level of sea ice "compactness" needs to be taken into account by future dissipation parameterizations.~~

15 1 Introduction

Sea ice is an important component in the global climate and weather system: in their respective late winters, Arctic sea ice ~~eovers typically~~ typically covers around 15.5 million square kilometers, and Antarctic sea ice ~~around~~ approximately 18.5 million square kilometers (averages are ~~computed~~ calculated for the reference period 1981-2010, and the trend of the extent of Arctic sea ice ~~September extent trend in September~~ is decreasing by about 12 percent per decade) (NSIDC, accessed 2024-03; 20 Meier and Stroeve, 2022). Averaged over the year, sea ice covers ~~around~~ approximately 25 millions square kilometers (~~though~~ although the trend is decreasing), corresponding to ~~around~~ about 7% of the area of the global oceans (Parkinson et al., 1997). Sea ice ~~has, therefore,~~ therefore has a major effect on the energy fluxes and physical oceanography of the polar regions, and a large impact on the Earth's weather and climate dynamics as a whole (Budikova, 2009; Overland et al., 2011; Gao et al., 2015). Moreover, sea ice ~~sets places~~ drastic constraints on human activities, in particular in the Arctic, where shipping, fishing, 25 logistics, and industrial activities are increasing (Olsen et al., 2020; Shi et al., 2019; Müller et al., 2023).

A particularly important region of ~~the~~ sea ice is the Marginal Ice Zone (MIZ). The MIZ is the area of ~~the~~ sea ice that is heavily influenced by phenomena happening in the open ocean, in particular, surface waves. The interaction and two-way coupling between the MIZ and the incoming surface waves and swells has a large impact on several key ~~sea-ice mechanisms~~ mechanisms of sea ice, such as ~~sea ice the~~ breakup, melting ~~, and drift~~ and drift of sea ice (Dumont, 2022; Horvat, 2022). This coupling can 30 have ~~large-scale~~ large-scale effects on the extent and evolution of ~~the~~ sea ice, especially ~~as~~ since there are a number of two-way coupling mechanisms ~~exist~~ (Thomson, 2022; Iwasaki, 2023; Gao et al., 2022). For example, sea ice breakup and melting is currently leading to the appearance of new open water areas in the Arctic, which in turn provides more fetch for waves to grow ~~, and to~~ and break even more sea ice (Thomson and Rogers, 2014). Similarly, albedo and solar radiation absorption mechanisms lead to self-reinforcing dynamics: since sea ice reflects up to 85% of incoming solar radiation, while the ocean absorbs up to 35 around 90% of solar radiation, sea ice melting leads to a self-reinforcing solar radiation energy absorption and temperature increase (Shao and Ke, 2015).

The two-way coupling between waves and ice in the MIZ is related to a number of physical phenomena, in particular:

- Wave attenuation (Squire et al., 1995; Zhao et al., 2015; Zhao and Shen, 2015; Sutherland and Rabault, 2016; Squire, 2020; Løken et al., 2021): ~~as~~ As waves propagate in the MIZ, ~~these get~~ they are progressively attenuated by a number of 40 mechanisms. ~~While~~ Although it is not completely clear at present which mechanisms dominate ~~in~~ under which conditions, most attenuation mechanisms result, in theory, in an amount of energy dissipation that is proportional to the local wave energy, hence an exponential wave damping as a function of propagation distance. More specifically, the underlying physics can be associated ~~to~~ with a combination of viscous damping at the water-ice interface (Zhao et al., 2015; Sutherland et al., 2019; Rabault et al., 2017; Marchenko, 2018), turbulence (Voermans et al., 2019; Smith and Thomson, 2020), 45 viscoelasticity (~~Zhang and Zhao, 2021; Zhao and Shen, 2018; Marchenko et al., 2021a~~), diffraction (~~Bennetts et al., 2010~~)

~~scattering (Zhao and Shen, 2016)~~(Mosig et al., 2015; Zhang and Zhao, 2021; Zhao and Shen, 2018; Marchenko et al., 2021a), scattering (Bennetts et al., 2010; Kohout and Meylan, 2008; Montiel et al., 2016; Zhao and Shen, 2016; Bennetts et al., 2024), collisions and floe-floe interactions (Herman et al., 2019; Løken et al., 2022; Herman et al., 2019; Smith and Thomson, 2020).

- 50 – Sea ice breakup (~~Voermans et al., 2020; Ren et al., 2021; Zhang and Zhao, 2021~~)(Montiel and Squire, 2017; Voermans et al., 2020; Thomson et al., 2021): waves with sufficient amplitude, and applied for long enough, can break the sea ice following a number of flexion and fatigue mechanisms (Voermans et al., 2020; Herman, 2017).
- Sea ice drift and melting (Sutherland et al., 2022): once the waves have broken the sea ice, sea ice can drift more freely, leading to different drift properties. In addition, wave attenuation combined with wave momentum conservation results in ~~a gradients of~~ wave radiation stress, which can also be a mechanism ~~driving sea ice drift that drives the drift of sea ice~~ in the MIZ and ~~ice edge displacements~~ the displacement of the ice edge (Dai et al., 2019; Thomson et al., 2021b; Thomson, 2022).
- Fetch modification effects resulting from the presence or absence of sea ice (~~Thomson and Rogers, 2014~~)(Thomson and Rogers, 2014): sea ice, by modulating the ocean-atmosphere coupling, affects how much effective fetch is available to cause the growth of waves in ice-infested waters.
- 60

The combination of these effects ~~makes for complex dynamics happening~~ creates complex dynamics in the MIZ. This is ~~made~~ even more challenging by due to the intrinsic complexity of sea ice as a material: depending on temperature, salinity, and the history of the mechanical stress and temperature experienced by sea ice, its mechanical properties can vary by up to 1 order of magnitude, ~~with significant changes possibly taking and significant changes could possibly take~~ place even within a timescale of a few days (Williams et al., 2013; Karulina et al., 2019; Voermans et al., 2023). Moreover, ~~a number of~~ additional variables, such as the floe size distribution (FSD) (Wang et al., 2016; Roach et al., 2019; Horvat et al., 2016; Herman et al., 2018), are making the whole picture even more complex, as, e.g., FSD can change quickly through the effect of wind and waves (Wang et al., 2016), and modulate all aspects of sea ice dynamics.

65

In addition to the intrinsically complex physics involved in sea ice dynamics and the MIZ, sea ice and ~~waves in ice in situ~~ waves in ice in situ data are relatively scarce. ~~While Although~~ several expeditions are ~~taking place in the~~ conducted on sea ice every year, instrumentation deployments have traditionally been limited due to the intrinsic cost of ~~waves in ice buoys~~. ~~Recently, waves in ice buoys. Multi-buoy deployments have been performed for several decades, e.g. Doble et al. (2006); Thomson et al. (2016), and more similar studies. However, recently~~ a new trend has emerged, ~~which consists in deploying large consisting of the deployment of larger~~ numbers of waves in ice buoys, ~~leveraging utilizing~~ open source technologies to reduce the cost of individual buoys by ~~around approximately~~ an order of magnitude compared to the commercial instrumentation that has ~~been available traditionally~~ traditionally been available (Rabault et al., 2020, 2022; Kodaira et al., 2023). This approach, which has ~~been pioneered, among others, by~~ become more common following the development of low-cost open source instrumentation, e.g., the OpenMetBuoys (OMBs) series of instruments (Rabault et al., 2016, 2020, 2022)(~~developed by our group~~), and other sim-

70

75

ilar instruments (e.g. ~~the MicroSWIFT~~, (Thomson et al., 2023)), ~~is now starting the MicroSWIFT~~ of Thomson et al. (2023) and other similar devices described by Cavaleri et al. (2025)), helps to provide larger and more representative amounts of data about the MIZ. The reduced cost of the buoys allows the deployment of up to several tens of buoys during a single expedition (for example, 34 buoys in the course of a single 3-week expedition in Müller et al. (2025)). These larger dataset provide better statistical representations and samplings of the sea ice dynamics. Moreover, deploying large swarms of buoys increases the probability of randomly sampling interesting dynamics and to obtain clusters of buoys even several days or weeks after deployment despite complex ice motions, as is the case in our current dataset.

Better and more representative sampling of waves in ice is critical to help draw robust conclusions about the underlying physics and alleviate the risk of overfitting models to idiosyncrasies and noise in individual datasets. See, for example, the discussions in Kohout et al. (2020) that disprove surprising findings previously reported in Kohout et al. (2014), and attribute these now disproved findings to considering only a few buoys for a short period of time under specific conditions. See also Thomson et al. (2021a) that demonstrates that noise properties of close source buoys (which make noise characteristics harder to understand, quantify, audit, and detect) have caused spurious rollover in dataset, and cast doubts on the rollover observations of numerous previous studies.

Therefore, the use of larger swarms of open source buoys opens up much needed better sampling of the MIZ. This, combined with open data release policies, ~~is starting to enable new in-situ based studies of the MIZ~~ enables new MIZ in situ studies, focused on the use of ~~hi-density, hi-accuracy~~ high-density, high-accuracy waves in ice measurements (Rabault et al., 2023; Nose et al., 2023b, a). ~~Such a~~ This trend is now making it possible to improve the validation of models (Nose et al., 2023b), and will ~~also, possibly, possibly also~~ allow much needed further development of the geophysical transfer function ~~for interpreting to interpret~~ satellite images (Liu et al., 2021; Collard et al., 2022; Shen et al., 2017; Horvat et al., 2020), as well as ~~improving process understanding to improve the understanding of the physical processes happening in the ice~~. As a consequence, a number of campaigns are now deploying ~~OMB~~s e.g. OMBs or microSWIFTS or other similar buoys en masse, allowing to generate significant amounts of data about regions which have traditionally been undersampled, and providing new inputs to sea ice scientists and modelers.

In the present paper, we focus on ~~in-situ~~ in situ data retrieved from an OMB deployment ~~which~~. The deployment took place in 2021, and ~~that presents~~ contains complex patterns of waves in ice significant wave height (SWH) modulation. This is the first time, as far as we know, that such a drastic quasiperiodic modulation of the SWH is reported and specifically analyzed in the sea ice. We show that the evolution in the SWH very likely cannot be explained by neither classical mechanisms such as wave-current interaction, nor ~~by present~~ existing wave models including state-of-the-art waves in ice damping parameterization. Therefore, we ~~conjecture~~ conclude that this observation ~~that cannot be reproduced in state-of-the-art numerical models is likely the signature that some physics are currently missing in these models~~ is due to the effect on the ice cover and is the signature of complex dynamics happening in the ice.

The structure of the manuscript is as follows. We first present the different sources of data and numerical models available to perform our case study. We then proceed ~~on analysing to analyze~~ the results of the models and in-situ data, investigating if these are able to reproduce the in-situ observations. Finally, we discuss possible explanations for the observed dynamics, and

we both formulate a conjecture around the nature of candidate mechanisms that could produce the ~~features-observed-observed~~ features, as well as suggest how this conjecture could be tested in further measurement campaigns.

2 Data sources

In this section, we present the different sources of data used in the analysis and discussion ~~;~~ and show their main features.

2.1 Observation data sources

2.1.1 Buoy data: direct observations of drift and 1-dimensional wave spectra

The core of the observations presented here is a series of waves in ice ~~buoys-buoy~~ trajectories and wave observations collected between February and March 2021 in the Barents Sea, South East of Svalbard, using ~~OMBs-OMB~~ v2018 (Rabault et al., 2020) and v2021 (Rabault et al., 2022) ~~(the- In this deployment, the OMBs v2021 deployed-were-were still~~ prototypes, and not all OMBs v2021 were equipped with wave measurement hardware). These data are already openly released and presented in detail in Rabault et al. (2023), and we refer the reader curious of technical details to the corresponding publication and the cruise report (Nilsen et al., 2021). ~~To summarize~~ In summary, OMBs report sea ice drift tracks (as observed from GPS measurements) and waves in ice 1-dimensional spectra (as observed from Inertial Motion ~~Units-Unit~~ (IMU) measurements), both transmitted in near-real-time over the iridium network.

The deployment of the OMBs used in this study took place in February 2021 in the Barents Sea East of Svalbard, with the deployment details ~~being~~-reported in Nilsen et al. (2021). A synoptic view of the whole deployment is provided in Fig. 1. Although 17 buoys were deployed in total in a wider area, we focus on analyzing the data from a group of 4 buoys (with IDs 200913, 13319, 200905, 19648) that are clustered around the south-west tip of Svalbard. The other buoys were, at the time of the event we consider, either spread further away from the key area of interest, or OMB-v2021 prototypes without wave measurement ability, and their data are not considered here. We want to underline that while we focus on only a few buoys that are closely distributed in space in the following analysis, the reason why such a set of closely distributed buoys is obtained is that a larger set of 17 buoys were deployed initially, which drastically improves the probability to get a buoy cluster even several days to weeks after the deployment has taken place. The specific wave event that we focus on took place between March 1st 2021 and March 4th 2021. ~~As visible in Fig. 2, 9 OMBs were present in the area, and covered a range of depths in the MIZ. The SWH reported by these instruments is-~~ The SWH and trajectories reported by the 4 instruments we consider are presented in Fig. 2, and the wave ~~spectrum-for-the-instruments~~ spectra for the 3 buoys furthest into the MIZ (IDs 19648, 200905, 13319) are visible in Fig. 3. ~~In-~~ The buoy furthest out of the MIZ (200913) is only discussed quickly to provide a reference observation where no modulation is present, and in the following, we will refer to the buoys with IDs 19648, 200905, and 13319, as the "buoys of interest" (BOIs), which will be the focus of our analysis.

The dominating feature visible in Figs. 2, 3 is the strong modulation, with a period of around 12 hours, that is visible in the SWH and the 1D wave spectrum of the instruments inside the MIZ. This modulation is visible consistently across ~~several~~

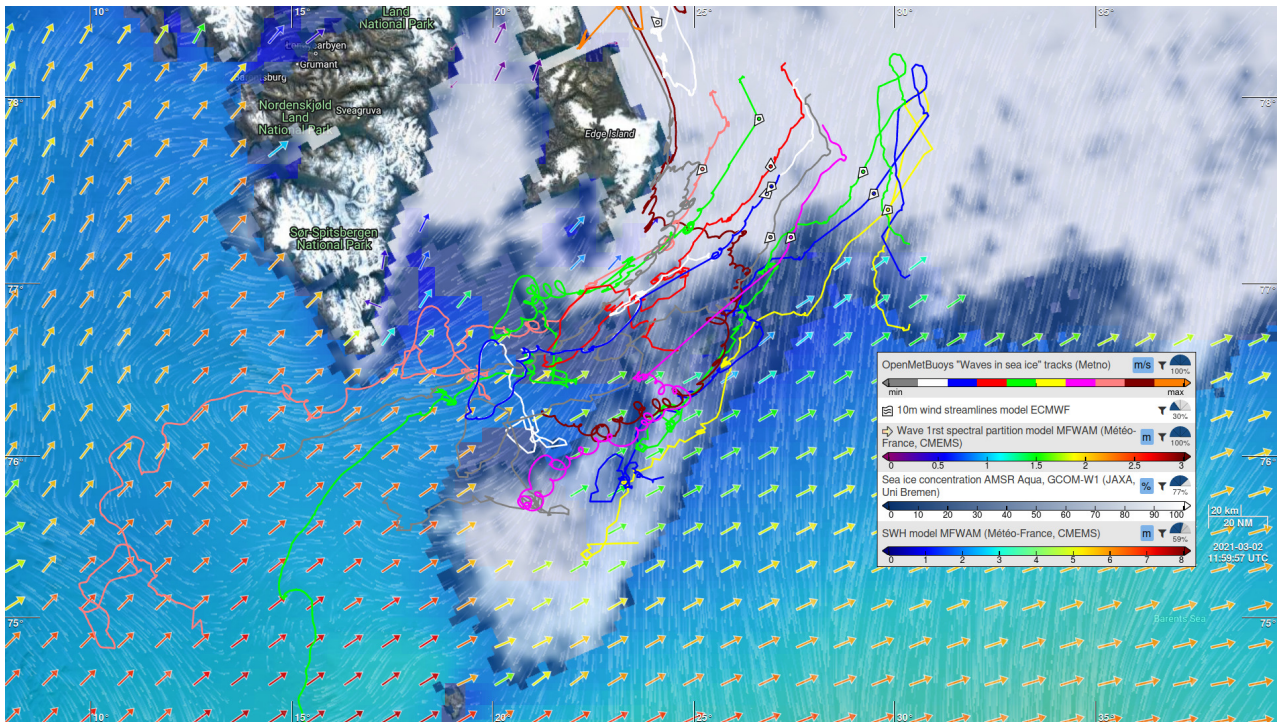


Figure 1. Synoptic overview of the conditions in the area of the buoys during the modulated SWH event. As visible, the buoys (and in particular the 3 BOIs - the reader is invited to browse the data online to individually select buoy trajectories) are well within the MIZ (the positions of the buoys taken closest to the reference time 2021-03-02T12Z are indicated with markers). Wind comes from the North and, due to the presence of the sea ice, contributes little to the local SWH. Swell incoming from the South-West is propagating through an open water opening before penetrating the MIZ and propagating to the location of the buoys. This figure is representative of the synoptic conditions over the time extent of the wave modulation event. The data can be viewed interactively online by following the permalink: <https://odl.bzh/gVOsfRnq> (accessed November 2023).

145 instruments located in the MIZ, both the 3 BOIs, that include 2 v2018 and 1 v2021 buoy models. Instruments situated on the very edge, or outside, of the MIZ, do not display such modulated SWH patterns, as visible from the SWH timeseries from the instrument with ID 200913 (a similar conclusion is obtained from other buoys in the area, not shown here). This modulated SWH pattern is an outstanding feature in the present dataset, and the following analysis will be focused focus on understanding this specific event. While-Although rapid increases in the SWH observed in sea ice have been observed in the past and related to are related, e.g., sea-ice-breakup to the breakup of sea ice induced by propagating wave trains (Collins III et al., 2015), the present data are unique in that a periodic increase and decrease in the SWH is observed.

For the-BOI 19648, which is the deepest in the MIZ and has the highest temporal resolution (since it is an instrument v2021), a significant wave height $SWH_{T00}/SWH_{T06}=0.33\text{m}$ is observed at 2021-03-02T00:00Z, before reducing to $SWH_{T06}/SWH_{T06}=0.03\text{m}$ at T06:01Z, and increasing again to $SWH_{T12}/SWH_{T12}=0.34\text{m}$ at T12:00Z. This represents a modulation ratio between the max-

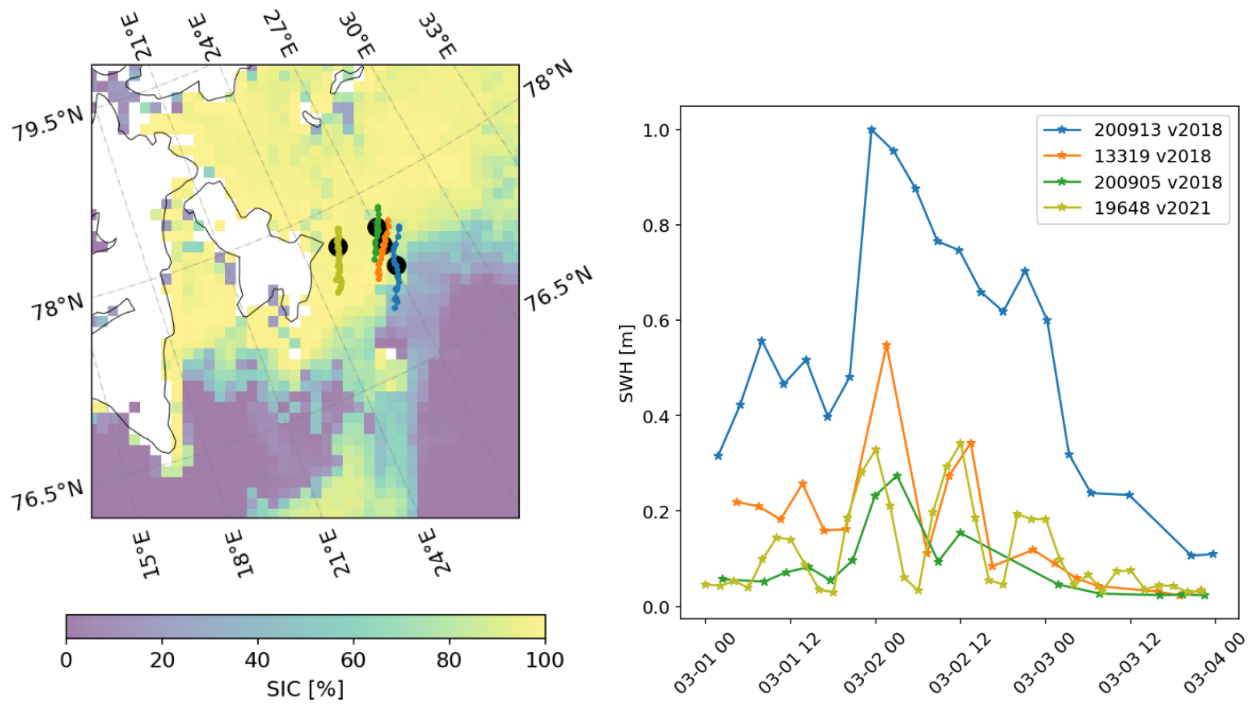


Figure 2. Overview of the buoys considered during the modulated significant wave height event. The overview map subfigure (left) presents the sea ice concentration (SIC, data source: internal product at the Norwegian Meteorological Institute, obtained from combining AMSR2 passive microwave observations and Sentinel-1 SAR observations) at 2021-03-02T06:00Z, around the middle of the time window of the SWH modulation event. The black dots indicate the position of the buoys at the corresponding time, and the trajectory for each buoy is indicated in a separate color, corresponding to the caption on the SWH subfigure. The SWH subfigure (right) shows the timeseries of the SWH. The instruments furthest into the MIZ show clear SWH modulation with a period of around 12 hours (instruments with IDs 19648, 200905, 13319 in particular, which we call "buoys of interest" (BOIs) in the following; these are the ones we focus on in the rest of this work). Instrument 19648, which is the deepest into the MIZ, displays a modulation ratio between the maximum and minimum SWH it observes over 12 hours of up to 90%. Instrument 200913, which is furthest outside of the MIZ, does not show a similar modulated SWH pattern.

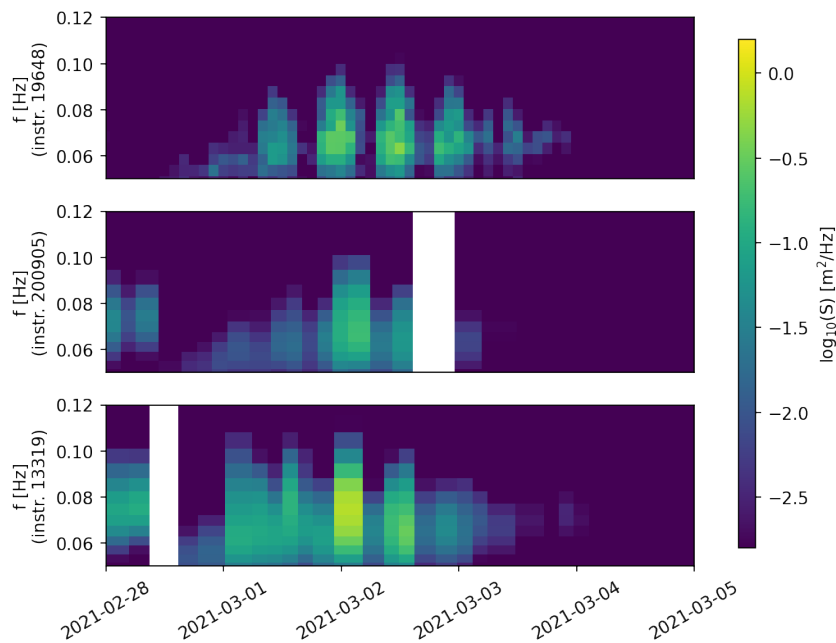


Figure 3. 1-dimensional wave spectrum for the 3 instruments furthest in the MIZ that are equipped with wave measurement capability (referred to as the Buoys Of Interest (BOIs) with IDs 19648, 200905, 13319), obtained during the time of the modulated SWH wave event. The instrument ID 19648 is a v2021 prototype, with higher wave measurement rate, a higher frequency resolution for the transmitted 1D spectra, and more sophisticated wave spectrum buffering and iridium transmission retry strategy than the 2 other v2018 instruments, resulting in better resolution of the wave spectra in both time and frequency and fewer missing measurements. The modulation in the wave activity is clearly visible on all instruments, and is particularly striking on the instrument ID 19648 thanks to its higher temporal resolution. The wave spectra shown here confirm that the SWH oscillatory event observed in Fig. 2 corresponds to an increase and decrease of the wave activity over the full frequency range, is observed consistently across the 3 BOIs, and is not the result of some measurement artifacts.

imum and minimum SWH reported ~~within in~~ 12 hours, ~~$(SWH_{T00} - SWH_{T06}) / SWH_{T00}$~~ , of ~~over~~ ~~$(SWH_{T00} - SWH_{T06}) / SWH_{T00}$~~ , ~~of more than~~ 90%. We note that the actual modulation ratio may be even higher than our analysis reveals, since (i) the 0.03m SWH reported at T06:01Z comes close to the noise background of the instrument, so that the SWH value reported then may include some level of noise and may be slightly higher than the actual SWH at the location of the instrument. Moreover, (ii) the time resolution of the SWH measurements for instrument 19648, though higher than for the other instruments, is still only every 2 hours, so it is likely that the "coarsely sampled" minimum (resp. maximum) measured does not match exactly the time when the actual minimum (resp. maximum) SWH is reached in reality. The typical peak wave period in the outer part of the MIZ is around 12s, and at the BOIs it is around 14s through the event, as visible in Fig. 3. These values are typical for records of waves in ice in the area.

~~Overview of the buoy deployment during the modulated significant wave height event. A total of 9 buoys are clustered in the same area at the South East of Svalbard around 2021-03-01. The overview map subfigure (left) presents the sea ice concentration (SIC, data source: internal product at the Norwegian Meteorological Institute, obtained from combining AMSR2 passive microwave observations and Sentinel-1 SAR observations) at 2021-03-02T06:00Z, around the middle of the time window of the SWH modulation event. The black dots indicate the position of the buoys at the corresponding time, and the trajectory for each buoy is indicated in a separate color, corresponding to the caption on the SWH subfigure. The SWH subfigure (right) shows the timeseries of the SWH for the instruments for which these are available without excessive dropout rates. The instruments furthest into the MIZ show clear SWH modulation with a period of around 12 hours (instruments with IDs 19648, 200905, 13319 in particular, which we call "buoys of interest" (BOIs) in the following; these are the ones we focus on in the rest of this work). Note that not all prototypes of instruments v2021 are equipped with an IMU and wave measurement capability. The key feature of this dataset is the 12-hour modulation in the SWH observed by the buoys into the ice. Instrument 19648, which is the deepest into the MIZ, displays a modulation ratio between the maximum and minimum SWH it observes over 12 hours of up to 90%.~~

~~1-dimensional wave spectrum for the 3 instruments furthest in the MIZ that are equipped with wave measurement capability (referred to as the Buoys Of Interest (BOIs) with IDs 19648, 200905, 13319), obtained during the time of the modulated SWH wave event. The instrument ID 19648 is a v2021 prototype, with higher wave measurement rate, a higher frequency resolution for the transmitted 1D spectra, and more sophisticated wave spectrum buffering and iridium transmission retry strategy than the 2 other v2018 instruments, resulting in better resolution of the wave spectra in both time and frequency and fewer missing measurements. The modulation in the wave activity is clearly visible on all instruments, and is particularly striking on the instrument ID 19648 thanks to its higher temporal resolution. The wave spectra shown here confirm that the SWH oscillatory event observed in Fig. 2 corresponds to an increase and decrease of the wave activity over the full frequency range, is observed consistently across instruments, and is not the result of some measurement artifacts.~~

A clear general drift pattern is visible ~~in on~~ the GPS tracks of the buoys. All buoys drift generally to the ~~South-South-West over south-west during~~ the duration of the event, with additional motion taking place at a period of around 12 hours, likely due to a combination of inertial oscillation and tidal currents (both have around the same period in this area), as visible specifically for the BOIs in Fig. 4. This general sea ice drift motion is accompanied by strong shear and convergence / divergence motion in

190 the sea ice. To illustrate this, we ~~analyse~~analyze the triangle element obtained by combining the 3 BOIs ~~and we~~and compute the associated divergence by (i) interpolating the position of the buoys on a common time base, (ii) using a ~~first-order~~first-order finite difference in time to compute an estimate of the velocity of the 3 BOIs on this common time base, and (iii) computing the local divergence following the methodology of Kwok et al. (2008):

$$\nabla \cdot \mathbf{u} = u_x + v_y, \quad (1)$$

195 where $\nabla \cdot \mathbf{u}$ is the ~~sea ice velocity divergence~~divergence of the velocity of the sea ice, with $\mathbf{u} = (u, v)$ the ~~sea ice velocity in the East-West and North-South~~velocity of the sea ice in the east-west and north-south directions, and u_x and v_y are the spatial gradients in ~~BOIs motion computed~~the motion of the BOIs calculated using a line integral along the boundary of the triangle:

$$u_x = \frac{1}{A} \oint u dy, v_y = -\frac{1}{A} \oint v dx, \quad (2)$$

where A is the triangle area. ~~The line~~Line integrals are approximated based on the motion of the BOIs at the edges of the triangle element interpolated in time on the common time base, similar to Kwok et al. (2008). For example, we compute $\oint u dy$ as:

$$\oint u dy = \sum_{i=1}^3 \frac{1}{2} (u_{i+1} + u_i) (y_{i+1} - y_i), \quad (3)$$

where the subscripts are cyclical (i.e., $u_4 = u_1$), and we have used centered finite differences for $u \approx (u_{i+1} + u_i)/2$ and $dy \approx (y_{i+1} - y_i)$, similar to Kwok et al. (2008). Following Kwok et al. (2008), this results in a trapezoidal rule for the linear interpolation of u between BOIs. Similar formulas can be written ~~down~~ for the other partial derivatives, and the area A is computed as:

$$A = \frac{1}{2} \sum_{i=1}^3 (x_i y_{i+1} - y_i x_{i+1}). \quad (4)$$

The algorithm and code used for the computation of the divergence are available in a notebook on the GitHub ~~data and code release~~Data and Code Release page. The divergence coefficient obtained is presented in Fig. 4. Strong patterns of sea ice convergence and divergence ~~patterns~~ are observed, ~~consistently~~consistent with previous reports in the same area (Marchenko et al., 2011). As visible ~~there, in Fig. 4, there is~~ a clear correlation ~~exists~~ between the modulation observed in the SWH ~~and~~ the local divergence rate. This will be discussed in ~~details~~detail later in the manuscript.

2.1.2 Sea ice imaging using SAR satellite data

We also look directly into satellite images available over the area to further visually confirm, based purely on direct satellite observations, that the sea ice conditions correspond to the models and that the instruments are well inside the MIZ during the

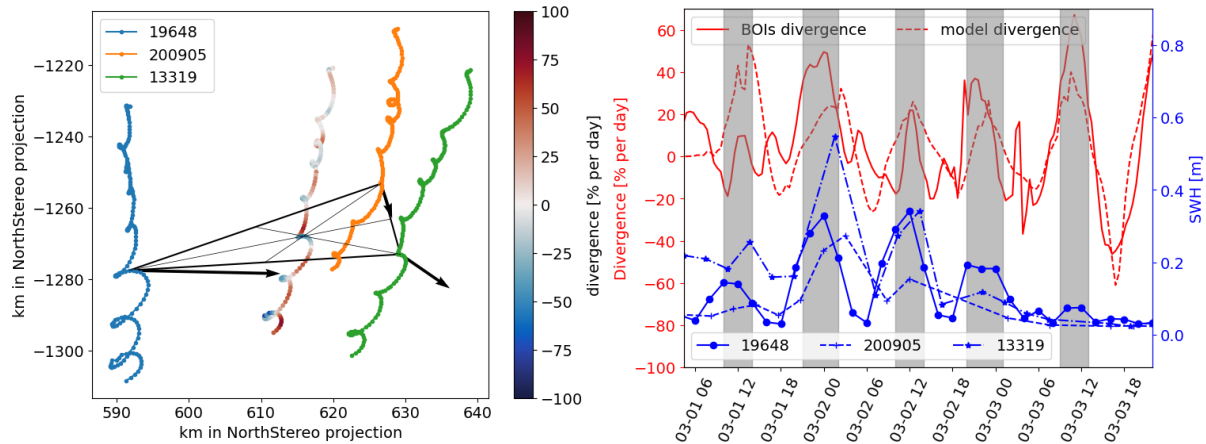


Figure 4. Details of the drift pattern observed for the 3 BOIs. Left: zoom-in onto the drift trajectories for the BOIs over the period 2021-02-29 to 2021-03-03. A clear drift pattern from North to South is observed. In addition, higher frequency motion (with a period of around 12 hours) is visible. We also show the barycenter of the 3 BOIs, which we color by the instantaneous value of the motion divergence, computed based on the triangle element formed by the 3 BOIs. The black triangle and arrows illustrate one instantaneous triangle element, its associated barycenter, and the velocity of the 3 BOIs at the corresponding time. Right: illustration of the instantaneous divergence rate computed for the BOIs triangle ("BOIs divergence" curve), alongside the SWH measured by the BOIs; a clear correlation is observed. The locally averaged sea ice divergence from the sea ice numerical model (curve "model divergence", see section 2.2.3) is also included, and shows good agreement with our in-situ measurements, which is a cross validation of the sea ice model quality.

event. An overview of the [sea drifters buoys](#) and sea ice conditions observed directly from Synthetic Aperture Radar (SAR, gamma-0 from Sentinel-1 in EW mode (Torres et al., 2012)) is provided in Fig. 5. As visible there [and in good agreement with the figures presented above, the BOIs are well within the MIZ over the duration of the modulated SWH event \(the reader is invited to browse the online data, where individual trajectories can be selected\).](#)

220 The SAR images can also be used to [estimate cross-check](#) the kind of sea ice conditions locally present in both the outer MIZ and around the BOIs. Several SAR [images image](#) zoom-ins are presented in Fig. 6, both in the outer MIZ (subfigures (a) and (b)), at the location of BOI 19648 (subfigure (c)), and much further [North-north](#) (subfigure (d)), used as a reference to illustrate conditions with large unbroken ice floes). [The broader perspective SAR images visible in Fig. 5 can be used as a reference to understand the meaning of the colors in Fig. 6 \(observing the wider area is necessary to understand the meaning of the grayscale colors in the figures, as the grayscale color depends on the SAR mode and polarization, as well as the postprocessing applied\).](#) In particular, it is clear from Fig. 5 that given the polarization and post-processing used with the specific swath of data considered, the "whiter" areas correspond to ice and the "darker" areas correspond to water. Fig. 6 confirms that waves propagate [from the South-West direction](#) over the ice tongue [South-West from the BOIs](#), and that [floe sizes of typically a few hundreds of meters are observed around the BOIs](#) south-west of the BOIs (wave crests in the ice are visible with the naked eye) and that ice conditions are most likely dominated by broken ice floes pressed together and refrozen areas (no large-scale

230

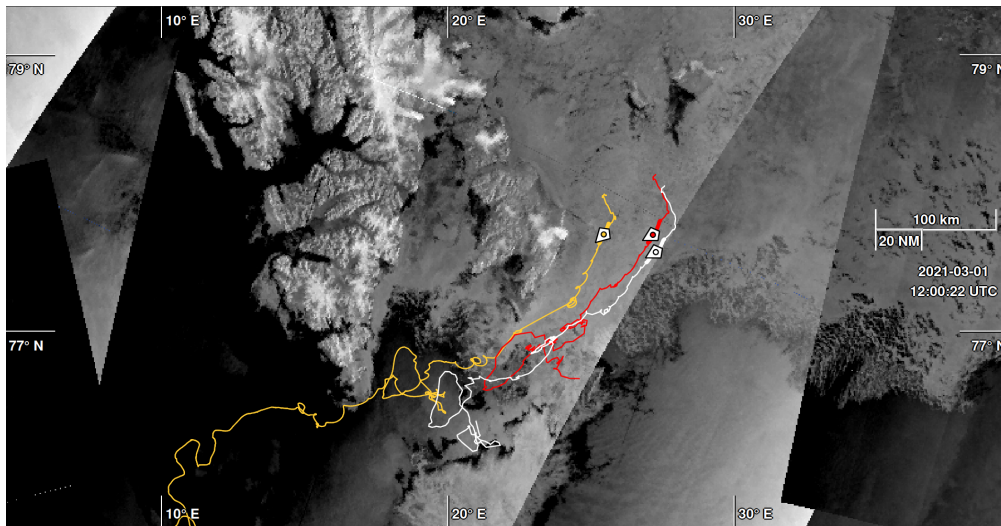


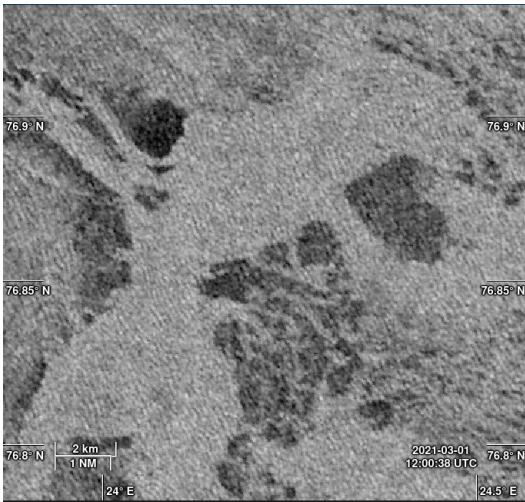
Figure 5. SAR overview of the OMB-3 BOIs locations East of Svalbard at the reference time 2021-03-01T12Z. There are more buoys in the area than just the 3 BOIs considered in the present study, and the reader is invited to browse the online data, where individual trajectories can be selected. Sea ice is clearly visible from Sentinel-1 SAR gamma-0 EW observations (the time width for collocation matching is taken equal to 1 day). Each line indicates an OMB trajectory, and the position of each buoy at the reference time is indicated by a marker. As visible on the SAR image (more information can be obtained by following the link below and interacting online with the data), the BOIs are well within the MIZ, in the middle of an area of broken ice floes. The illustration is generated using the Ocean Virtual Laboratory online viewer (Collard et al., 2015), and it can be re-generated and explored interactively using the permalink: <https://odl.bzh/jG7KkYvJ> (accessed November 2023 June 2025).

consistent floes can be observed). This is especially visible in comparison to the image obtained much further north (Fig. 6 (d)), where, by contrast, large individual ice floes are observed. Therefore, this ~~further confirms~~ indicates that the sea ice around the BOIs is constituted of most likely constituted of broken ice floes with dimensions typically smaller than or at most comparable to the wavelength, pressed together, and that the sea ice likely does not behave like a single continuous solid plate, similar to what is reported ~~by~~, e.g., by Sutherland and Rabault (2016) when cracks and discontinuities are present in the ice cover. This is also consistent with the observation of strong sea ice convergence and divergence patterns. Indeed, in order for the ice cover to be able to sustain large divergence and convergence, there must be enough areas of open water leads that can open and close in order to sustain the "compression", respectively, "extension", of the ice cover.

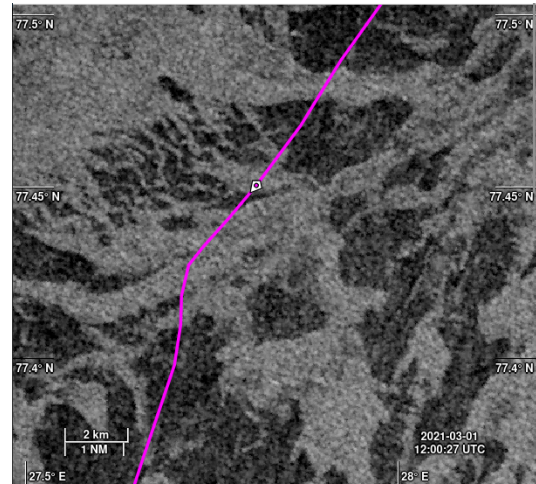
2.1.3 **Historic-wave measurements in the area using satellite measurements over ice-free water**

240 ~~We use the open source tool wavy¹ to retrieve satellite measurements of the SWH when no sea ice is present in our region of interest. A consistent and homogeneous dataset over many years should be the best starting point when trying to determine if modulations of significant wave height due to tides and currents is taking place in the area, independently of the effect of sea~~

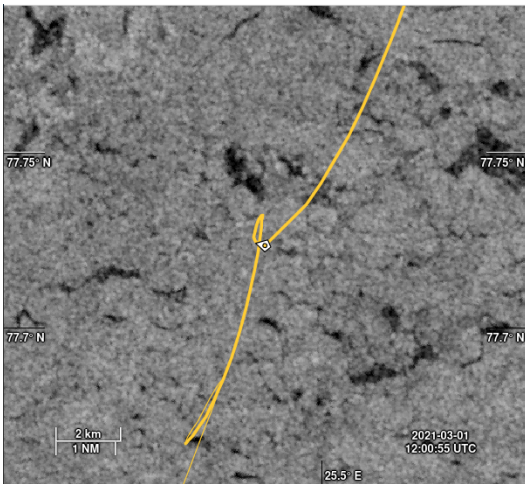
¹



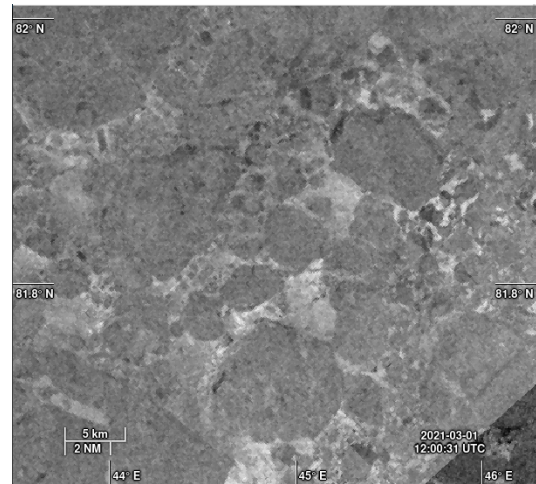
(a) SAR image from the outer MIZ, over the ice tongue South West of the BOIs between Hopen and Svalbard, through which the dominant incoming swell waves travel on their way to the BOIs. Permalink: <https://odl.bzh/oeWZ8UtD>.



(b) SAR image from the outer MIZ, in the neighborhood of buoy 19643 (marker indicates position at 12UTC), South from the BOIs. Permalink: <https://odl.bzh/0j3fBx8k>.



(c) Selection of illustrative SAR images zoom-ins acquired on 2021-03-01 at around 12UTC in image from the general area of the buoys (except for subfigure (d), which is much further North). The outer MIZ (subfigures (a) and (b)) presents a mixture of areas of broken floes and open water leads around BOI 19648. The relatively high sea ice concentration and the limited extent of the open water leads implies that the fetch available for wave development under the influence position of wind quickly becomes negligible into the sea ice. Waves are clearly seen propagating from the South West over the ice tongue (subfigure (a)), as also observed in the models (see sections below). By contrast, the ice concentration around instrument BOI 19648 (subfigure (c)) is high, however, many smaller leads, cracks, and a lot of complex structure at 12UTC is visible in the SAR images. This indicates that the sea ice around instrument 19648 is not as solid as indicated by the BOI's own measurements.



(d) SAR image far North from the area of the BOIs, where clear unbroken ice floes with typical size O(1-10km) are present. Permalink: https://odl.bzh/M1wrLH_v.

ice. The Sea State CCI dataset v1 (Dodet et al., 2020) (CCIv1) is used for this purpose. CCIv1 consists of data from 10 satellite missions and is free from discontinuities in the data due to changes in processing or satellite mission. More specific, we use the level 3 processing from CCIv1 where only valid and good-quality measurements from all altimeters are retained. We chose the time period 1992 to 2018 and use the dataset as is without any further along-track processing, as e.g. in Bohlinger et al. (2019). This allows to gather a large dataset of significant wave height satellite observations in the area, when no sea ice is present. The corresponding dataset is used for the analysis presented in section 3.3.

2.2 Model-based data sources

2.2.1 Synoptic view of the ocean and atmosphere conditions in the area of interest

A synoptic view of the situation at 2021-03-02T12Z is presented in [was presented as a part of Fig. 1](#). To make the synoptic view as interactive as possible, and offer more exploration freedom than what is allowed by presenting a few static plots, the view is generated using the Ocean Virtual Laboratory (OVL) online tool, and the users can follow the permalink <https://odl.bzh/gVOsfRnq> (accessed ~~November 2023~~ [June 2025](#)) to access the same map and be able to move forward and ~~backwards~~ [backward](#) in time, as well as switch on and off different map layers. The map presented in Fig. 1 shows the Svalbard area where the buoys are drifting, together with layers reporting (i) interactive markers representing the wind, (ii) the local sea ice concentration obtained from the ARTIST Sea Ice (ASI) algorithm on the AMSR2 sensor of the JAXA GCOM-W1 satellite (data provided by Institute of Environmental Physics, University of Bremen (Spreen et al., 2008; Melsheimer and Spreen, 2019)), (iii) the total significant wave height obtained from the global wave model MFWAM of Météo-France with ECMWF forcing and satellite data assimilation (Aouf et al., 2019; Dalphin et al., 2022), (iv) the direction and SWH associated to the swell first partition, also obtained from MFWAM. We encourage the reader to view the synoptic map interactively online following the permalink provided above to observe the conditions at neighboring times.

As visible in Fig. 1, the permalink, and in good agreement with Fig. 2 and Fig. 5, the BOIs are well into the ice area during the SWH modulation event. ~~The local~~ [Local](#) wave conditions are dominated by incoming ~~swells~~ [swells](#), originating from the South West, ~~that propagates through an open water~~ [which propagate through an open water](#) opening before penetrating the sea ice. The wind comes mostly from the ~~North~~ [north](#), which is covered by sea ice, and ~~, therefore,~~ [therefore](#) we expect little locally generated wind wave contributions in the sea ice. The map is generally representative of the situation over the time extent of the SWH modulation event reported, though the SWH of the incoming waves varies in time (but with a much slower typical SWH variation timescale and without the 12-hour modulation we observe in the sea ice), and the direction of propagation of the swell first partition shows minor fluctuations.

~~Synoptic overview of the conditions in the area of the buoys during the modulated SWH event. As visible, the buoys (in particular the BOIs) are well within the MIZ (the positions of the buoys taken closest to the reference time 2021-03-02T12Z are indicated with markers). Wind comes from the North and, due to the presence of the sea ice, contributes little to the local SWH. Swell incoming from the South West is propagating through an open water opening before penetrating the MIZ and~~

275 propagating to the location of the buoys. This figure is representative of the synoptic conditions over the time extent of the wave modulation event. The data can be viewed interactively online by following the permalink: (accessed November 2023).

Sudden, large-amplitude changes in the temperature of the ice, usually caused by changes in the air temperature above, can also influence sea-ice mechanical properties and the mechanical properties of sea ice and the wave in ice propagation and damping. Therefore, we also consider the 2-meter temperature in the area, as provided by the ERA5 reanalysis (Hersbach et al., 2020). We could observe (figure not reproduced for brevity) only moderate temperature changes in the atmosphere over the duration of the modulated SWH event, typically within 4 degrees, and no periodicity is visible in the temperature signal.

2.2.2 Custom wave model data in the MIZ during the oscillatory event

In order to investigate if whether well-known physics, such as wave-current interaction, local wind-wave generation, and established wave-in-ice wave-in-ice attenuation mechanisms, are able to explain for the oscillatory damping we observe, we run a series of custom local spectral wave models in the area of interest. The wave model used is a third generation WAM Cycle 4.7 developed at Helmholtz-Zentrum Geesthacht (Group, 1988; Günther et al., 1992) with modifications made at the Norwegian Meteorological Institute, Norway (MET-Norway). These modifications consist in allowing of allowing the propagation of waves under the sea ice following the wave attenuation (Yu et al., 2022), and a correction of wave-growth wave growth in very high winds (Breivik et al., 2022). The wave-

The parameterization from Yu et al. (2022) is chosen as we have observed experimentally in several studies in the past years, both at the Norwegian Meteorological Institute and at MeteoFrance, that this is the one that performs best without ad hoc tuning. This was briefly reported in a report¹ and a proceeding (Aouf et al., 2024), and has been independently confirmed by model runs of both WAM and WW3 performed by coauthors of this work from both institutions. Although this may seem surprising at first, since the model from Yu et al. (2022) was developed from data from the Southern Ocean Autumn, this may indicate that the same general viscous dynamics play a role in a wide variety of sea ice conditions.

Wave propagation in ice-covered areas is modeled by weighting the energy source and sink terms used in the spectral model by the relative sea ice concentration. E.g. For example, the sink term used in the model to represent wave in ice damping is weighted by the local sea ice concentration value (i.e., $SIC_{local}(x,y)$ that is, $SIC_{local}(x,y)$, the sea ice concentration expressed as a fraction between 0 and 1), while source terms arising from winds are weighted by $1 - SIC_{local}(x,y)$. Similarly to the findings obtained in the case of sea ice drift by Sutherland et al. (2022), this allows for a smoother and more realistic representation of the MIZ, compared to what is obtained by setting an arbitrary threshold separating areas where a purely open water vs. sea ice model parameterization is used. The spatial resolution of the model is 2.5 km. The spectral resolution is 24 directions and 30 frequencies with the first frequency equal to 0.034523 Hz. The boundary conditions for the wave spectra come from two sources: the European Center for Medium Weather Forecast when sea ice is included as forcing, and a coarser domain with no ice run at MET-Norway otherwise (Bengtsson et al., 2017; Batrak et al., 2018; Röhrs et al., 2023). The forcing fields used are surface winds from Arome Arctic (Müller et al., 2017), sea ice concentration and thickness

¹<https://documentation.marine.copernicus.eu/QUID/CMEMS-ARC-QUID-002-014.pdf>, accessed 2025-06-10

from CICE5 (Bailey et al., 2018), and ocean surface currents, ~~which include~~ including tides, from ROMS (Shchepetkin and McWilliams, 2005).

310 The domain of interest around the buoys is a coastal area with strong currents and tides, and a natural candidate to the observed modulation could be the effect of wave-bathymetry, wave-current, and wave-tide interaction. Moreover, there are ~~regions of open water~~ South open water regions south of Svalbard, so locally generated wind waves could also be a potential candidate explanation. Finally, the sea ice in the area is moving under the influence of tides, ~~large-scale~~ large-scale currents, and winds, which could participate in changing the wave in ice propagation distance \bar{r} and the resulting wave height observed
315 at the location of the BOIs. In order to take into account these different effects and to investigate the impact of each physical mechanism on the local sea ice dynamics, either in isolation or in combination with each other, different model flavors are run, which we will refer to in the following as:

- W: including the locally generated wind waves, but not the effect of wave-current interaction nor the sea ice,
- WC: including both local wind wave generation and wave current interaction, but not the effect of the sea ice,
- 320 – WI: including both wind wave generation and the effect of the sea ice, but not the effect of wave-current interaction,
- WCI: including all 3 effects, i.e. wind wave generation, wave-current interaction, and the sea ice.

~~Two-dimensional~~ The two-dimensional directional wave spectra from the model runs in these different configurations were stored along the tracks of the BOIs.

~~In addition to the local domain model runs and the current information used therein, timeseries for local tidal information at~~
325 ~~any specific location in the domain can also be generated. For this, we are using the pyTMD python package (Sutterley, 2023; Sutterley et al.~~
~~to leverage the modal information from the Arc2kmTM Arctic tide model (Howard and Padman, 2021). The Arc2kmTM is a~~
~~forward barotropic tide model that includes pre-computed maps for the tidal elevation and currents and resolves the influence~~
~~of 8 principal tidal constituents (4 semidiurnal (M2, S2, K2, N2) and 4 diurnal (K1, O1, P1, Q1)) on a 2km X 2km uniform~~
~~idealized polar stereographic grid. The area is subject to strong tides due to the features of the local bathymetry, as it has been~~
330 ~~documented in a number of previous studies taking place in the region (Marchenko et al., 2021b; Turnbull and Marchenko, 2022; Kowalik et al.~~
~~–~~

When more information about sea ice ~~are~~ is needed, we use data from the CICE5 model directly, which is run operationally at MET-Norway in the context of the Barents2.5 model and combines the CICE and ROMS models to simulate the dynamics of the sea ice sheet (Fritzner et al., 2018, 2019; Duarte et al., 2022). Bathymetry information is included in these models and
335 taken into ~~accounts in resolving the~~ account in resolving wave propagation physics. In particular, Barents2.5 uses a 2.5km smoothed bathymetry map (to keep the numerics stable) ~~bathymetry map~~.

2.2.3 Numerical model of sea ice dynamics

We have already highlighted in Fig. 4 that strong convergence and divergence are present in the sea ice \bar{r} and that these seem to correlate well with the observed SWH modulation observed at the location of the drifters. The existence of significant patterns

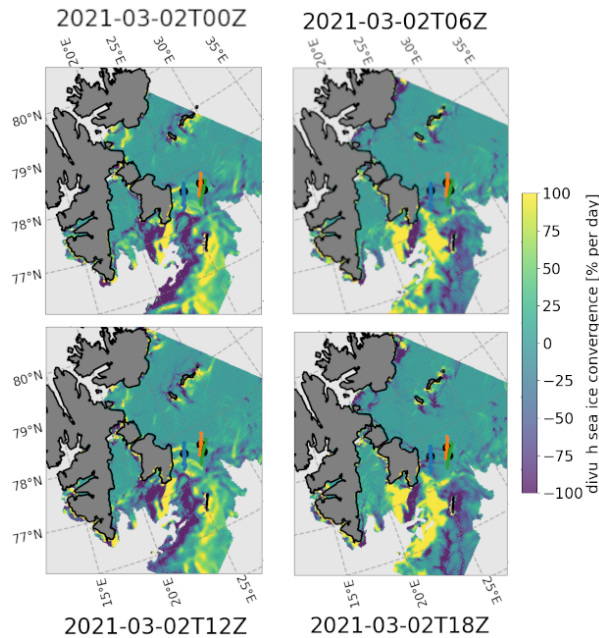


Figure 7. Illustration of the sea ice convergence and divergence pattern in the area of the buoys, as obtained from the sea ice velocity divergence field produced by the CICE5 model output. A clear pattern is visible both in space and in time, with the same 12 hours periodicity as observed in the SWH modulation. Further visualization of the animated video of the sea ice model divergence shows the existence of a dipole that rotates in the neighborhood of the location of the buoys, leading to a periodic transition between phases of sea ice convergence and divergence at any point of the area considered.

340 of sea ice convergence and divergence dynamics is confirmed by visual inspection of maps of the sea ice convergence from the CICE5 model mentioned above, see Fig. 7. In particular, Fig. 7 confirms that the sea ice divergence and convergence of sea ice observed from the buoys trajectories is buoy trajectories are present in the whole area, and shows and show consistent patterns in space and time. Moreover, we observe that the dynamics and periodicity of the pattern oscillation between a strong state of convergence and divergence matches match the 12 hours hour periods observed in the SWH modulation, corresponding to a
 345 dipole-like structure propagating in the sea ice.

In order to further compare these model observations with the BOIs data, the sea ice divergence from the CICE5 model is extracted at the position of the barycenter of the 3 BOIs shown in Fig. 4 (left). The numerical model has some level of noise in both space and time, so we then compute computed the average between the divergence obtained for the neighboring grid points around the location of the barycenter (taking points that are in a box of +/- 1 grid cell around) to get a smoother estimate.
 350 The obtained sea ice convergence is part of Fig. 4 (right). As visible there, the model data are in good agreement agree well with the value of the sea ice divergence derived from the observations.

Although the main point of this paper is not to study the sea ice convergence and divergence per se, experiments with and without tides have been performed in the MetROMS model data used to force the CICE5 runs (not reproduced here). Without

355 tides, only weak sea ice convergence and divergence undulations of much smaller magnitude, with varying frequency and phase, are obtained. This confirms that the observed convergence and divergence of sea ice is most likely caused by tidal currents.

3 **Data-Model data analysis: what role is played by wave-current interaction, compared to wave-ice interaction, in the modulation observed by the buoys?**

In this section, we investigate what categories of physical processes can explain ~~for~~ the waves in ice SWH modulation that we observe. In particular, two categories of mechanisms are candidates ~~to explain our observations~~for explaining our observations, as previously highlighted:-

365 – M.1: Wave-current, wave-bathymetry, and wave-tide interaction: ~~these~~These mechanisms are well known for modulating the SWH in areas where strong tides and tidal currents are present. ~~Such a~~This category of mechanisms is independent of the presence or absence of sea ice in the area, and should be observed both in open water and ~~ice-covered~~in ice-covered conditions.

370 – M.2: Wave-ice interaction and wave attenuation by ~~the~~ sea ice. If this category of physical mechanisms is responsible for the observed SWH modulation, the effect of ~~the~~ sea ice should be a key ingredient in reproducing the modulation observed, and such a modulation should not be observed without the sea ice. This does not mean that the currents and tides do not play a role: for example, the currents and tides may be the physical forcing that ~~cause~~causes the changes in sea ice behavior~~that,~~ which in turn explains ~~for~~ the modulation observed. However, in such a case, it would be the sea ice, not the tides and currents per se, that would be causing the physics at the origin of the wave attenuation and SWH modulation observations. As a consequence, similar modulations would, in this case, not be observed ~~in ice-free~~under ice-free conditions.

Our goal in this section will consist ~~in~~of estimating the likely importance and variability of mechanisms belonging to M.1 and M.2 for which we can produce a quantitative estimate, that could be involved in causing the modulation we observe. We will perform such an analysis ~~by~~ relying on both the ~~in-situ data collected,~~ as well as in situ data collected and the numerical simulations and models that are available in the area.

380 We note that the physics at play in both M.1 and M.2 are highly complex, ~~in particular~~ particularly in the Barents Bank, where complex bathymetry, tides, and currents are present. Therefore, the following analysis will necessarily rely on a number of approximations and simplifications, and none of them ~~taken individually,~~ taken individually, is a compelling conclusive proof. However, our aim is to compare different approaches, and check if they arrive at the same typical conclusions and order-of-magnitude estimates.

385 We also want to highlight that some potential mechanisms are well established and can be quantified, while some others are more challenging to estimate. For example, regarding possible explanations belonging to the M.1 category, the models should provide reasonable estimates of wave-bathymetry and wave-current interaction, including the refraction of waves by current

gradients, since these are the result of complex but well established physics. Similarly, in the M.2 category, the effect of MIZ edge displacement under the influence of strong currents and winds, and ,hence, hence increased wave in ice attenuation due to increased wave propagation distance in the sea ice, should be well captured by ice models corrected from with assimilated satellite measurements. However, some other mechanisms, like an a hypothetical change in the wave in ice energy dissipation following modifications of the sea ice state of divergence and "compactness", cannot be readily estimated from current models.

Therefore, the following analysis can either reveal that a known mechanism belonging to the M.1 or M.2 category is able to explain for the SWH modulation observed at the BOIs, or, if unsuccessful at explaining the observations, that additional physics must be considered.

3.1 Investigation of current-induced wave field modulations using the wave action and wave ray approximations

In this section, we want to investigate how much wave-current modulation can be expected following the influence of tides and tidal currents and their interaction with bathymetry trapping effects, as an order-of-magnitude. For this, we leverage simplified models, including the wave action and wave ray models. While they are not as complex as the full wave models used in the next section, such simplified models provide a good physical and phenomenological understanding of the wave-current modulation phenomena happening in the area. These approximate models should not be taken as a ground truth, as they make many simplifications and approximations, and they neglect important phenomena including, e.g., non-linear interaction. Despite these limitations, they are useful for providing a high level view of the main phenomena.

Wave field modulations due to currents are a combination of local and non-local effects. For instance, the conservation of wave action on quasi-stationary currents causes an increase in SWH on counter-currents that can be considered and computed as a local modulation (Longuet-Higgins and Stewart, 1964). However, in-situ observations also include the signal of non-local modulations, or simply cumulative effects, since waves are constantly interacting with the local currents along their propagation path (Masson, 1996; Vincent, 1979; Saetra et al., 2021). One such non-local effect is current-induced refraction, which is considered to be the dominating cause in creating spatially dependent wave height variability at scales of kilometers (Quilfen and Chapron, 2019; Bôas et al., 2020). These effects are both linked to the wave kinematics which are incorporated in spectral wave models. However, simplified theoretical considerations are helpful in determining their relative contributions (Holthuijsen and Tolman, 1991).

When considering the local wave action effect on SWH, the deep-water modulation in wave amplitude a for a steady current having the same (resp opposite) direction to the wave propagation direction can be expressed as (Phillips, 1977)

$$\frac{a}{a_0} = \frac{c_0}{\sqrt{c^2(1 \pm \frac{2U}{c})}},$$

where c is the wave phase velocity, U is the current speed, the subscript $_0$ denotes the wave amplitude and celerity value when $U=0$, and the \pm value corresponds to current having the same, resp. opposing, direction as the waves. Here, the wave celerities c_0 and c are related quadratically through the Doppler shift equation (Phillips, 1977): $c/c_0 = (1 + \sqrt{1 \pm 4U/c_0})/2$.

In our case, the current field has a strong tidal signal and the maximum current speeds in the vicinity of the BOIs are typically about 0.4 m s^{-1} (this value can be either extracted from the Barents2.5 model output not shown, or from pyTMD and the Are2kmTM model, see the Fig. 14, noting that slightly stronger tides can be obtained at some other locations in the area of interest than what is presented there). The energy modulation according to Eq. (6) is sensitive to the wave celerity, and thus wavenumber, such that longer waves are less modulated than shorter waves for a given current speed. Consequently, the amplitude modulation in Eq. (6) for waves with initial periods $T = 8 \text{ s}$ and $T = 12 \text{ s}$, opposing (or following, with a sign change including in the Doppler effect on c) a $U = 0.4 \text{ m s}^{-1}$ current from rest, is about $\pm 7\%$ and $\pm 5\%$, respectively.

To assess the current-induced modulation due to refraction along the propagation path of the waves, we perform a ray tracing analysis using the solver by Halsne et al. (2023). Currents are taken from the Barents 2.5km ROMS model mentioned above, and fully allowed to vary in time during the wave ray propagation. Propagation paths are found to be very sensitive to their initial direction and location, which is a well known fact for this kind of simplified models (Smit and Janssen, 2019). Therefore, we establish a representative ensemble of wave rays by perturbing the initial direction θ_0 two times in the relative positive and negative angle direction, following the typical amount of directional spread present in the incoming wave spectrum. Furthermore, we also included the wave periods $T \in [10, 11, 12, 13, 14] \text{ s}$, to include, similarly, the frequency spread of the incoming waves. Consequently, the ensemble was created in order to be representative to the WAM directional wave spectrum and consistent with what is presented in Fig. 8. The full ensemble consisted of 40 (initial propagation times) \times 5 (ensemble representing wave directional spread) \times 5 (ensemble representing wave periods spread) = 1000 wave ray realizations. A subset of the results are shown in Fig. 11 for illustration purposes. It is clear that the longest waves are sensitive to the bathymetry, which can act locally as a wave guide and trap these. In such cases, the ambient current may increase the spreading of the wave rays such that additional rays gets caught by the bathymetry. However, the wave rays are not always spread more due to the tidal currents since current-induced refraction depends on the vorticity of the ambient current along the wave ray propagation direction (Kenyon, 1971), which changes in time along the wave ray track.

An illustrative subset of the 1000 ensemble wave ray simulations performed. Results are shown with (red) and without (yellow, used as a baseline) current forcing. Rows from top to bottom show the ray paths for 10s, 12s, and 14s period waves, respectively. Columns from left to right show (i) wave rays corresponding to the average wave direction (θ_0) for an initial propagation time corresponding to waves following the currents, (ii) wave rays corresponding to one of the perturbed wave directions ($\theta_0 + \Delta\theta$, where $\Delta\theta$ is a deviation from the average wave direction) for an initial propagation time corresponding to waves following the currents, (iii) wave rays corresponding to the average wave direction (θ_0) for an initial propagation time corresponding to waves opposing the currents. Note that the currents evolve in time as the wave rays propagate. The track of BOI 19648 is shown in the upper middle panel, together with the black square indicating the region for the wave ray density analysis. As visible across the figure, the exact refraction of the waves is sensitive to both the current conditions, the wave period, and the exact wave direction. As a consequence, while individual ensemble members may give strong modulation effects, their averaging partially cancels out (see further discussion and analysis of this aspect in Fig. 12).

Wave ray density is representative of the amount of wave energy (i.e., the square of the SWH) that is obtained in a given area at the corresponding time. Therefore, the wave ray density can be used to derive a proxy estimate for the SWH modulation

obtained due to wave-current-bathymetry interaction. More specifically, we perform a normalized wave ray density analysis for a $12.5 \text{ km} \times 12.5 \text{ km}$ region along the track of BOI 19648 (upper middle panel Fig. 11). Here, we count the number of rays within the region and normalize it on the number of rays within the same region, obtained in an additional baseline case without currents (i.e., the baseline case only takes depth-induced refraction into account). As a consequence, this quantifies the amount of modulation introduced in the corresponding region. The relative ray density square root (RD_{sr_r}) is computed as:

$$\text{RD}_{\text{sr}_r} = \sqrt{\frac{\text{RD}_c}{\text{RD}_{\text{nc}}}},$$

where subscripts r , c and nc denote quantities that are considered as relative, with current, and without current, respectively. We take the square root since the wave action density propagates along rays and is proportional to the square of the wave amplitude a , while the observations correspond to a measure of the SWH, which is linearly related to the wave amplitude.

The time series evolution in RD_{sr_r} averaged over all ensemble members for the region of interest, is shown in Fig. 12c. As mentioned, there are large fluctuations in the single ray tracing realizations (Fig. 12b, d). These fluctuations are filtered out when averaging over the directional and frequency spread representative of the incoming wave conditions (Fig. 12a). The average over all the directions and wave periods shows a clear tidal modulation, which translates into a SWH modulation of around 20–25 % (Fig. 12e). Therefore, we expect refraction to play an important role in the wave field modulation. The analysis presented here does not take into account important dynamics like non-linear wave-wave interactions and wave attenuation, and is, as a consequence, only a typical order of magnitude estimate. Moreover, the ray theory approximation is known to fail at focal points and at caustics, in which case, wave phases and local interference patterns need to be considered (Smit and Janssen, 2013). However, such patterns are usually observed in very localized areas (typically covering a spatial extent just a few wavelengths), so that this explanation is incompatible with the fact that similar modulation is observed at the 3 BOIs separated by several tens of kilometers (see Fig. 4 for an overview of the distances in km between the 3 BOIs).

Therefore, our analysis suggests that we can expect a tidal signal in the modulations, which agrees qualitatively with the modulations in the swell 1 partition from the spectral wave model (see next section, Fig. 9). However, the modulation level expected due to wave-current interaction is by far not enough to explain the observations by the BOIs presented in Fig. 3.

Estimates of the expected SWH from wave ray density analysis. Panel a) shows the expected SWH modulation at the location of the BOI 19648, averaged over directions for each frequency used in the rays ensemble, respective to the baseline case without currents. Panels b) and d) show wave ray analysis predictions at the location of the BOI 19648, obtained by perturbing the propagation direction at a fixed frequency. This illustrates the sensitivity of the wave ray dynamics to the ensemble member parameters. Panel c) shows the mean normalized ray density RD_{sq_r} prediction following the track of BOI 19648, obtained by averaging over the ensemble respectively to both frequencies and directions, which is our best estimate for the expected SWH modulation following the wave ray analysis.

3.1 Numerical models analysis of the effect of bathymetry, currents, and tides on significant wave height

Our objective in the present section is to determine whether wave-current interaction ~~or simple sea-ice or simple sea-ice~~ dynamics (such as ~~sea-ice sea-ice~~ drift leading to a change in the wave in ice propagation distance) can explain ~~for~~ the modulation observed, according to advanced, state-of-the-art numerical model runs that include the wave-current interaction and estimates of the ~~sea-ice sea-ice~~ attenuation. Compared with the ~~wave-ray analysis in the previous section~~ wave-ray analysis discussed in Appendix A, these models include additional physics (such as ~~non-linear interactions~~, nonlinear interactions and dynamics of the full wave spectrum during wave propagation).

A subset of the directional spectra obtained from the different model runs along the trajectory of BOI 19648 are presented in Fig. 8. The sea state was bimodal for all the wave model runs. Compared to the results presented in Fig. 1, the ~~main dominating dominant main~~ swell propagating from the South-West towards the North-East is well reproduced. In addition, the model reveals a secondary lower amplitude slightly higher frequency swell signal propagating ~~towards the North-West~~ toward the north-west, which was not visible in Fig. 1, since only the ~~dominating dominant~~ swell component was shown there. The shorter ~~wind-waves wind-wave~~ frequencies are, as expected, not present in the model runs including sea ice effects, due to both the attenuation effect by the sea ice, and the fetch blocking effect of the sea ice that prevents wave growth in ice covered areas since the wind is generally blowing from the sea ice towards the open ocean during the period considered. In order to quantify the current-induced modulation on the different components in model runs without sea ice, we perform a spectral partitioning in direction, since the dominating directions were more or less stationary throughout the study period (not shown here). The swell components within the range (330° , 90°) (sector indicated by the red limits on one of the directional spectra at Fig. 8) are hereinafter denoted as "Swell 1", and will be used when analyzing model outputs without sea ice included (i.e., model outputs from W and WC runs), since the dynamics of the swell-current interactions of interest here are otherwise hidden in the locally generated wind wave signals that are forced in the models in the absence of ice.

The temporal evolution in SWH obtained by integrating over the directional spectra, along the position of the BOI 19648 (which is furthest into the sea ice and shows the strongest modulation) where these are taken, for the W, WC, WI ~~and~~ WCI cases, are presented in Fig. 9. For cases without sea ice, only the Swell 1 partition is considered as discussed above. For cases with ice, the whole directional ~~spectra~~ spectrum is considered. Several interesting aspects are visible there.

First, the Swell 1 partition in the models without sea ice (W and WC) predicts ~~far a much~~ too high SWH at the location of the instrument, as expected. If we add the wind sea and secondary swell component, the SWHs for the models W and WC would be about 1–2 m higher than what is observed at the BOI 19468 throughout the period (not shown). The higher SWH obtained in model runs without the sea ice is of course expected, as the sea ice induces a strong energy dissipation, resulting in attenuation of the waves. This effect is naturally not included in the W and WC cases.

Second, model runs with included sea ice attenuation ~~included~~ (WI and WCI runs) produce qualitatively reasonable SWH values in the MIZ at the location of the instrument, except for the "modulated" attenuation effect that is not reproduced. This is interesting on two aspects: first, it indicates that the ~~waves wave~~ in ice attenuation parameterization used, which was not tuned specifically for the present case but used default values from Yu et al. (2022), is reasonably effective at capturing the typical

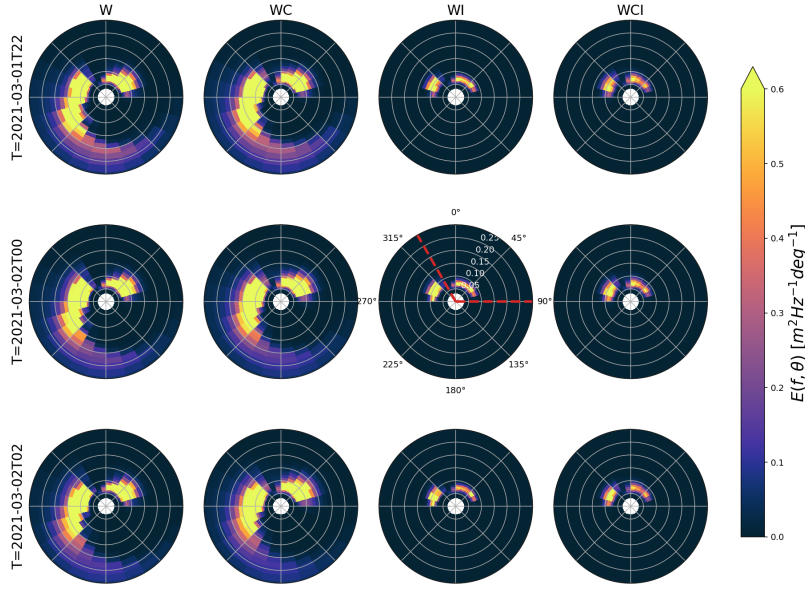


Figure 8. Directional spectra from the custom WAM model runs. Columns from left denote W, WC, WI, and WCI model runs, respectively, while rows from top denote the temporal evolution with steps of 2hrs following the track of the BOI 19648. Red lines in the middle panel in the WI column denote the sector for the swell components that undergoes most tidal modulations due to currents, and are thus used for the spectral partitioning "S1".

intensity of the wave in ice attenuation effect, and the resulting SWH at the location of the BOI 19648. Second, it shows that, while the case we study displays strongly modulated SWH values, the modulation we observe is likely an additional effect that comes on top of the wave attenuation mechanisms that are robustly captured by the established attenuation parameterizations.

In order to estimate the impact of the wave-current interaction on the SWH predicted by the models, we ~~compute~~computed the relative difference between model runs with and without wave-current interaction, defined as:

$$R_{WC(I),W(I)} R_{WC(I),W(I)} = \frac{SWH[WC(I)] - SWH[W(I)]}{SWH[W(I)]} \frac{[WC(I)] - SWH[W(I)]}{SWH[W(I)]}, \quad (5)$$

where the case pairs without (WC vs. W) and with (WCI vs. WI) the ice effect are considered. We find that the modulations calculated for ~~the~~ SWH are mostly between 10 %–30 % for both W against WC (using the Swell 1 partition), and WI against WCI (upper panel Fig. 9). Such relative differences are similar to what is reported elsewhere in terms of the intensity of current-induced modulations ~~intensity~~ (Ardhuin et al., 2017; Halsne et al., 2022). This 12h modulation is less evident when considering the ~~wind-sea~~wind-sea part as well as the full spectrum in the WC vs. W case, indicating that the swells propagating across long distances and that do not receive a locally generated energy input are the most affected by the current modulation effect.

Finally, since (i) we observe that no or only little modulation ~~in is~~ present in the WI and WCI cases, and (ii) the sea ice input is provided by the CICE5 model, which includes sea ice drift, melting, and freezing, as simulated by a numerical model and corrected by assimilated satellite data, we conclude that simple sea ice changes, such as large displacements in the MIZ edge, or rapid changes in the sea ice thickness, are unlikely to be the cause of the SWH modulation we observe. Indeed, these effects should be, if not perfectly, at least reproduced overall by the WI and WCI model runs.

These results suggest that, according to the numerical model runs, the observed SWH modulation observed by the buoys, which shows a modulation ratio of up to 90%, as previously highlighted, cannot be explained by the wave-current interaction (which is predicted to be at least 3 times smaller even when it is at its strongest), nor by simple sea ice dynamics included in present sea ice models and wave in ice attenuation parameterizations. Moreover, the modulation observed in the sea ice due to the wave-current interaction is only around 5-10% when the strongest modulation ratio is observed from the buoys around 2021-03-02T00:00 to T06:00, which is an order of magnitude weaker than the modulation measured by the buoys. ~~While~~ Although this is not an absolute proof that wave-current interaction cannot explain ~~for~~ the observations we report, since numerical models are not perfect, this is an evidence going in this direction. The wave-current modulation obtained in the models, which is typically 10–30% at most, is also ~~typically~~ generally in agreement with what has been observed at other locations away from the shore, where strong tidal currents are present (Ardhuin et al., 2017; Halsne et al., 2022).

3.2 Analysis Investigation of significant current-induced wave height satellite observations in ice free conditions, field modulations using the wave action and correlation with tidal signal wave ray approximations

~~In order to further investigate if the SWH modulation observed could arise from the effect of wave-current and wave-tide interaction per se independently of the presence of the sea ice, we look into the direct satellite altimeter observations of the significant wave height in ice free conditions gathered by the wavy package, and we compare these to the corresponding tide information generated from the pyTMD package and Are2kmTM model described above. The underlying idea is that, if the modulation we observe is due to the wave-current or wave-tide interaction per se and is independent of the presence of sea ice, it should then be observed also by the satellites measuring the local SWH in the absence of sea ice.~~

Ideally, we would like to gather a dataset of N pairs of SWH observations, $(SWH_+, SWH_-)_i, i = 1..N$, with both observations in a pair being obtained with a 6-hours time difference for a variety of different tide phases, so that the SWH at the tidal phase corresponding to maximum and minimum of the SWH following wave-current interaction can be obtained. One could, from such a dataset, compute the average modulation ratio $R = \left\langle \frac{SWH_{+,i} - SWH_{-,i}}{SWH_{+,i}} \right\rangle_i$, where $\langle \cdot \rangle_i$ means "average over sample pairs i ", $+$ and $-$ refer to the time when maximum and minimum SWH are obtained due to the wave-tidal currents interaction, and R is the SWH modulation ratio due to tidal currents (which can be turned into a percentage by multiplying by 100 for convenience). To make sure that similar wave-current conditions are performed, one could, if enough such pairs are available, ~~limit~~ Although full spectral wave models provide the most detailed analysis of the wave propagation and attenuation in the MIZ, they also introduce a lot of complexity. Simpler and robust approaches can also be used to cross-check the results. In particular, current- and bathymetry-induced wave refraction can be analyzed using the wave-ray method. We have performed such an analysis to wave conditions that present similarities in spectrum direction and frequencies with the current case. Unfortunately,

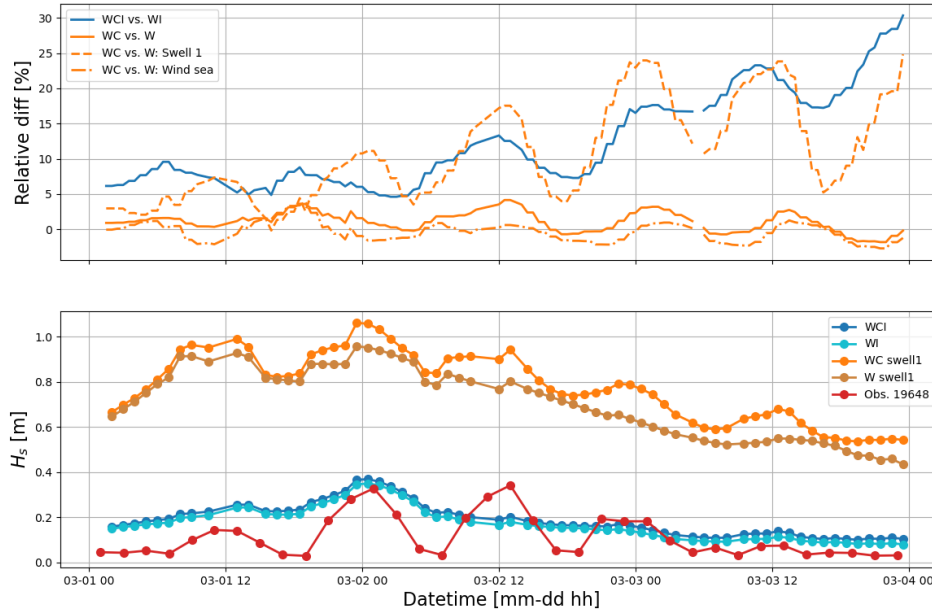


Figure 9. Temporal evolution in SWH (lower panel), and the relative difference due to the effect of currents (upper panel), for the WAM wave model runs. Different model runs, with (if the letter is present in the run case) or without Wind energy input (W), Current effects (C), and Ice effect (I), and combinations of these, are presented following the track of the instrument ID 19648, which is the instrument deepest into the MIZ, and has highest time resolution. Relative differences are computed using Eqn. (5) for WI vs. WCI (blue line), WC vs. W (orange line), Swell 1 of WC vs. W (dashed orange line), and the wind sea component of WC vs. W (dash-dotted orange line). The WAM model is able, overall, to reproduce the envelope of the SWH attenuation by the MIZ. However, the wave in ice modulation effect measured by the buoys, with an observed modulation ratio of up to 90%, is not reproduced by the model runs. The effect of currents, both with and without ice, is limited to a modulation of the SWH within 5–30% of the no-current value (W vs. WC, and WI vs. WCI runs). During the strongest modulation phase (2021-03-02T00:00 to T 06:00), a modulation ratio of 90% is observed by the buoy 19648, while the wave-current interaction computed by our model induces only a 5–10% modulation. Note that the strong increase in the relative difference at the end of the timeseries may, to some extent, be amplified due to the reducing baseline SWH value, which corresponds to a reduction of the denominator in Eqn. (5).

since there is no long-term in-situ buoy data available at the location of interest, and satellite observations we know of in this area have a repeat rate significantly slower than the 6 hours that this direct approach would request (and a 6 hours repeat rate would be the absolute lowest bound: in order to gather 6 hours pairs of observations covering different tidal phases, an even higher repeat rate would actually be needed), this method is not directly applicable.

Therefore, we instead leverage our dataset of direct satellite observations by performing a linear regression between the SWH measured by the satellites and the tidal currents, which is described in detail in Appendix A. The results of the wave-ray analysis agree well with the results obtained from the Are2kmTM tide model. Our goal is to compute an estimate of the typical average intensity of the tidal current-induced SWH modulation that can be expected for the average representative incoming wave spectrum and SWH conditions obtained in the area. This is not a perfect approach, since one can expect the actual modulation observed at any time to be dependent on the incoming wave directional spectrum, including its direction and peak frequencies properties, as previously mentioned. However, this can still provide an indication of the typical magnitude of the tide-induced open water SWH modulation effect to be expected. Moreover, since the location considered is close to the coast, the direction for the incoming waves is mostly limited to incoming from the South South West and the Norwegian sea (as we observe in our dataset), or the South South East and the East Barents sea; other directions do not have the fetch necessary to produce significant swells, due to the close proximity of coastlines and spectral wave model, and confirm that the SWH modulation observed is most likely not the sea ice edge. This approach also assumes that the SWH modulation effect is, in first approximation, linear relative to the incoming SWH value so that a linear model captures the averaged variability; we believe that this linearization hypothesis is reasonable in first approximation to get a proxy estimate direct consequence of bathymetry and currents on the wave propagation.

In order to perform this regression analysis and check that it is robust to the details of the choice of the exact collocation area, we select a set of local areas around the position of the buoy with ID 19648 during the event, with different spatial extents for the collocation box width, ranging from 30 to 60 km. Such relatively large boxes (relatively to the footprints of the satellite measurements, which are typically on the order of 1-10km depending on the satellite and its embarked instrument) are needed to obtain enough collocations to obtain reasonable statistical averages. The most representative such box, corresponding to a side of 45km, is presented in Fig. 13 (left). The center of the boxes is chosen so that the trajectory of the BOI 19648, which shows the strongest SWH modulation, is well covered. For each of these collocation boxes, we find all measurements from satellite altimeter observations obtained from the wavy package that are within the corresponding areas, resulting in sets of satellite collocations SWH measurements $\{SWH\}_d$, with d the collocation box size within the set $\{30, 35, 40, 45, 50, 60\}$ kms. We then compute the tidal currents at the middle of the box for each collocation time, using pyTMD and the Are2kmTM model data, resulting in the sets of predicted tidal current values. We make the choice of using the middle of the areas for all tidal calculations both for simplicity, and because extracting and computing the tidal modes using pyTMD and Are2kmTM is relatively expensive computationally if many different spatial locations are considered. Since the boxes are relatively small relatively to the typical spatial scale for the tide amplitude and phase variability, the resulting mismatch is small, in particular regarding tidal elevation and current phase variations within each local area, as illustrated in Fig. 13 (right), which compares

the pyTMD tidal prediction at the center of the 45 km box to the tidal prediction obtained at the locations following the displacement in time of the BOI-19648.

600 Left: illustration of the 45km-width box used to select satellite data SWH measurement collocations. The box contains the trajectory of the BOI-19648, which is deepest into the MIZ and shows the strongest SWH modulation ratio. The position of the instrument 19648 during the most intense modulation event is indicated by the black dot, and is close to the middle of the box which is indicated by the cross. Right: illustration of the tide currents and elevation at the center of the box ("mid" quantities), compared to the ones obtained following the trajectory of the instrument ID 19648 ("19648" quantities). The signals phases and order of magnitude for their obtained amplitudes is similar between the two, indicating that the box extent is correctly chosen. Naturally, the sign of the currents depends on the choice of the referential axis (here, East-West for u and North-South for v), so the apparently opposed phase between tide and current has no particular physical meaning.

605

3.3 Analysis of significant wave height satellite observations in ice free conditions, and correlation with tidal signal

From these data, we can then compute, for each box side d , the linear regression between the tide current estimates from pyTMD and the satellite SWH observations. This linear regression analysis is valid for the statistically averaged ice free wave conditions. An additional possible method to check that wave-current interactions per se are unlikely to cause the modulations observed is to consider the correlation between SWH in the area ÷

610

$$\overline{SWH}_{average} = SWH_0 + \alpha_{u,v} pyTMD_{u,v},$$

where $\overline{SWH}_{average}$ indicates the statistically averaged SWH in the dataset observed for given current conditions, $\alpha_{u,v}$ represents, for the same average SWH conditions, the linear variability of the SWH observed as a function of the tide currents, and $pyTMD_{u,v}$ represents the tidal current estimates obtained from pyTMD. Either u or v , which indicate the tidal currents in the East-West and North-South directions, respectively, can be used to perform the regression. Since, as visible in Fig. 13 (right), the tidal conditions in the area correspond to a propagating wave where the currents and tide elevation are at first approximation in phase and proportionally scaled versions of each others, the difference between both choices remains moderate.

615

Based on this estimate, the typical average modulation ratio for each box width d , obtained for ice-free waters in the statistically averaged wave conditions sampled by the satellite measurements, can be obtained as:

$$620 \quad \underline{modulation_ratio_{u,v} = \frac{SWH_{max_modulation} - SWH_{min_modulation}}{SWH_{max_modulation}} = 1 - \frac{SWH_0 + \alpha_{u,v} \min(pyTMD_{u,v})}{SWH_0 + \alpha_{u,v} \max(pyTMD_{u,v})},}$$

where we assume that α is positive (if α is negative, the signs in front of α and use of min and max should be switched).

Results for the modulation ratio are presented in Table 1. At this point, we want to insist again that these results are statistical averages, obtained based on satellite observations, that present the typical amount of tide-induced SWH modulation for the statistically averaged local wave conditions, based on a linear regression analysis. Moreover, the correlation is performed

625 based on local tidal information, while effects happening along the wave propagation may also play a role and be out of phase with the local tide and currents signal. This means that these results should be taken only as a proxy, or an order of magnitude estimate, for the tide induced SWH modulation effect to expect in the area. Specific cases may result in different values, but the results presented in Table 1 can be expected to give an estimate of the typical modulation intensity to be expected in average.

Box width d (km) number of satellite collocations linear regression expected SWH modulation ratio (%), u lin. reg., v (%)
630 30 825 25 28 35 1106 24 26 40 1451 28 26 45 1772 22 27 50 2175 24 28 60 3091 25 29

Summary of the linear regression analysis between local tidal currents produced from pyTMD using the Are2kmTM model, and satellite observations collected using the wavy package of the SWH in a box of width d around the area of interest. Enough collocations are obtained to derive statistically significant modulation ratio values. The modulation ratio values derived are roughly similar when derived from either the u (E-W) or v (N-S) current components of the pyTMD tidal current estimate, which is consistent with the observation
635 from Fig. 13 (right), that the local tide signal is dominated by a propagating wave, with both u, v, and the tide elevation moving in phase. The typical modulation ratio observed is between 20 and 30%. The standard deviation uncertainty on the regression slope, and, therefore, on the SWH tide-driven modulation ratio, is typically within 15% of the estimates obtained (not reported here), which confirms the confidence in the values of the statistically averaged modulation ratios presented. The modulation ratio found shows no strong dependence on the box width, which confirms that the analysis is not overly sensitive to this
640 parameter. The table columns indicate the box width used for each analysis, the number of satellite collocations obtained for the corresponding box width, and the SWH modulation ratios derived using Eqn. 9 based on either the u or v tidal current components, respectively.

Despite these methodological limitations, the values presented in Table 1 are typically consistent with the findings presented in the previous section, including the results shown in Fig. 9. A typical statistically averaged modulation of 20-30% is obtained
645 from our analysis, which corresponds well to the relative differences found above. This would indicate, similarly to the findings from the previous section, that the wave-tidal current interaction per se is unlikely to explain for the modulation we observe from the BOIs. This is also similar to the typical amount of modulation reported in other areas such as, e.g., Gemmrich and Garrett (2012).

We have applied a scaled version of Eqn. 8 to the specific modulation case observed at the BOI 19648. By scaling the
650 SWH and SWH modulation obtained in Table 1 to match the peak SWH obtained for BOI 19648, and computing the tide from pyTMD at the exact positions reported by its GPS track, we can compute the statistically averaged wave-tidal current modulation expected for the SWH reported by BOI 19648. Results are presented in Fig. 14. As visible there, and in agreement with the discussion above, the SWH modulation observed is not explained by the statistically averaged tidal current effect. Moreover, the phase of the modulation obtained from the linear regression analysis applied to the predicted tide at the location reported by
655 the GPS track for BOI 19648 is also partially mismatched with the SWH modulation observation. While we acknowledge that our tide current estimates are imperfect as they are obtained from a numerical model with a finite resolution, we consider that this is an additional evidence that another mechanism is likely to explain for the observed SWH modulation. We also observe that the tidal currents amplitude at the location following the track of instrument 19648 increases towards the end of the event, which is in agreement with the findings in Fig. 9 that a stronger current induced modulation is obtained towards the end of the

660 ~~timeseries as measured by satellites when no ice is present, and tidal currents. For brevity, the technical details of this analysis are reported in Appendix B. There we conclude that, while it is well known that very strong SWH modulation can be obtained locally for very specific cases due to currents and bathymetry (see, e.g. Halsne et al. (2022); Saetra et al. (2021); Halsne et al. (2024)), this is most likely not the explaining factor for the modulation reported in the present case.~~

665 ~~Application of the linear regression analysis results to the BOI 19648. The tidal currents and tide elevation following the position of the BOI 19648 (as reported by its GPS track) are computed using pyTMD and Arc2kmTM. Based on this, the linear regression corresponding to Eqn. (8) is scaled linearly to match the peak SWH recorded by the BOI 19648, and the associated statistically averaged modulation in the area is computed (indicated by the "lin. mod" curve). The obtained linear modulation is not able to reproduce the observation reported by the BOI 19648 in the neighborhood of the strongest modulation event (03-01T12 to 03-02T18). This indicates that the modulation observed at the BOI 19648 does not match with the statistically~~
670 ~~averaged tide-induced modulation observed by performing a linear regression locally in the area, which suggests that another mechanism is possibly the driver for the modulation observed at BOI 19648.~~

4 Discussion: what wave-ice interaction physics and mechanisms are likely explanations for the waves in ice modulation observed?

675 ~~A natural first candidate for explaining the 12-hour period SWH modulation observed at the BOIs is the effect of tide and tidal currents on the wave field, due to either wave-current interaction, induced water depth changes, or more exotic effects such as increased turbulence levels in the ocean following the passing of the tidal wave, leading to a subsequent increase in wave energy dissipation.~~

~~However, a~~ Our detailed analysis including a combination of ~~wave ray paths~~, numerical model runs including wave-current interaction, wave ray paths, and a correlation analysis between local tides and SWH satellite observations when the ice is absent
680 from the area, indicate that the tidal current can likely probably only explain for a SWH modulation ratio of typically at most around 30%, well below the modulation ratio of around 90% that we obtain in our in-situ in situ buoy observation timeseries. While numerical models are not perfect, we would expect state-of-the-art models to capture a much larger part of the intrinsic wave-current interaction if this was the dominating factor, especially as the 3 BOIs are spread over a domain about 50 km wide, so that the modulation we report can be seen on a wide area that covers several grid points at the model resolution of 2.5
685 km, rather than a very localized small-scale effect. Moreover, if the ~~phenomenon observed~~ observed phenomenon was due to one of the intrinsic effects of tide and tidal currents mentioned above, it could be expected to take place either whether or not sea ice is present in the area ~~or not~~. However, the correlation analysis between satellite SWH observations in ice-free ice-free conditions and tidal currents only explains for a modulation typically equal to what is predicted by the numerical model runs (which, incidentally, is a ~~cross-validation~~ cross-validation of the accuracy of the tidal and wave-current modeling used).

690 Therefore, it appears that mechanisms independent of the ~~sea ice presence~~ presence of sea ice and its damping effect on sea ice consistently fail ~~at reproducing to reproduce~~ the observations from the BOIs. As a consequence, we deduce from these evidences that the modulation we observe is likely related to the effect of the sea ice on wave propagation, and more specifically

to wave in ice attenuation. However, while the model runs with sea ice attenuation successfully reproduce the typical envelope of the observed SWH, the modulation effect is not visible there either. ~~Since the~~ The wave model simulations performed with sea ice take into account the sea ice conditions provided from a complete sea ice model that includes time dynamics of the sea ice cover (including changes in the sea ice location, concentration, and thickness); ~~-. In particular, Fig. 4 confirms that good agreement is obtained between the sea ice divergence measured from the buoys and the one obtained from the CICE model. Other quantities, such as sea ice concentration and the associated "closedness" of the ice, cannot be directly measured by the buoys and compared to the model. However, these are closely related to the sea ice divergence, so these must most likely be represented well enough by the model to obtain the reasonable value obtained for the divergence. Therefore, we expect that, if these dynamics were the origin of the modulation we observe, this effect would be (at least imperfectly) visible in the wave-model output.~~

~~Since this is not the case, this is strong evidence that~~ the modulation observed cannot come from simple effects such as changes in the sea ice cover ~~extent~~, or changes in the shape of large ice tongues leading to changes in the effective wave in ice propagation distance, ~~as these are already reproduced in the simulations~~. This is further confirmed by a visual inspection of the SAR satellite images of the area over the duration of the modulation event, which confirms that the instruments are evolving relatively deep into the MIZ, and that no drastic changes or surprising features are observed on the ice cover as a whole over the duration of the SWH modulation event. Moreover, the timescale of the modulation event, which shows a period of 12 hours and a total duration of around 3 days, would ~~anyways anyway~~ limit the amount of, for example, ice melting or freezing that can take place. In addition, the WCI model run successfully reproduces the bulk attenuation and the general envelope of the SWH observed at the BOIs, ~~which indicates~~ indicating that the attenuation mechanisms included in the WCI model successfully represent the dominating wave in ice attenuation contribution. Therefore, we conclude that the WCI model is successfully representing a range of physical mechanisms ~~;~~ but that there must exist ~~an additional contribution a modulation~~ to wave in ice attenuation, currently not included in the parameterization included in the WCI model, that must cause a periodic increase in wave in ice damping, resulting in the SWH modulation we observe.

In order to quantify our hypothesis, we estimate a proxy for the average attenuation coefficient applicable on waves that have propagated through the MIZ up to the position of the BOI 19648. For this, we can compute a simple estimate using the ERA5 spectrum value E_{out} outside the sea ice for the peak open water incoming wave frequency $f = 1/12\text{Hz}$, and compare it to the energy content at the same frequency at the location of the buoys as reported by the instruments inside the sea ice E_{in} . We can then consider the distance of effective sea ice propagation dx to be equal to the depth of the MIZ having a sea ice concentration of at least 0.5 according to the AMSR2 dataset. After correcting for the propagation time lag δt by matching the peak of the incoming wave energy to the peak of the SWH envelope at the buoys, we can estimate the effective bulk attenuation coefficient α (with unit m^{-1}) as $\alpha = -\ln[E_{in}/E_{out}]/dx$. Note that this estimate is only a coarse proxy to be used to estimate typical orders of magnitude involved, and that it neglects several important effects, e.g. the frequency dependence of the attenuation rate and the associated changes in the mean wave period. Moreover, we do not know for sure if the wave in ice attenuation modulation responsible for the SWH modulation we observe occurs in the whole sea ice length through which the waves propagate or if the modulation of the attenuation is concentrated in a smaller sea ice area. Therefore, this approach provides

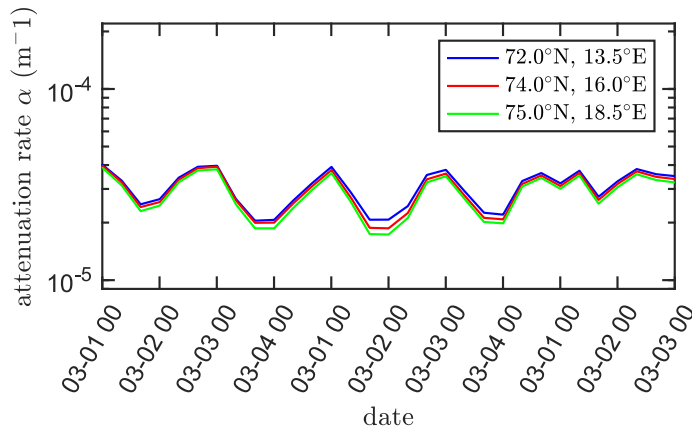


Figure 10. Estimates of the bulk waves in ice attenuation coefficient α for $T = 12$ s period waves across the MIZ for the BOI with ID 19648. The distance between the ice edge and the buoy was estimated from AMSR2 sea ice concentration. Incoming wave energy E_{in} was estimated using the ERA5 reanalysis data. Three different coordinates were used as an ERA5 input, for controlling the insensitivity of the results to changes in the exact choice of the ERA5 data selection location (see figure legend for the exact locations). This confirms that our bulk attenuation coefficient proxy estimate is robust.

a lower bound for the amount of waves in ice damping modulation necessary to reproduce the SWH modulation observed, in the case where the waves in ice damping modulation is distributed over as long a distance as physically possible. If only a smaller length of the wave propagation track in the ice is responsible for the SWH modulation we observe, this can result in a significantly higher local wave in ice attenuation modulation.

The results are presented in Fig. 10. As visible there, the lower bulk attenuation coefficient α over the whole length of the wave propagation in the ice has a typical value of $2 \cdot 10^{-5} \text{m}^{-1}$, respectively $4 \cdot 10^{-5} \text{m}^{-1}$, during high, respectively, low, SWH events at the BOI 19648. In other words, the modulation of attenuation corresponds to a doubling of the effective wave attenuation rate averaged over the whole length of the wave propagation in the ice. We note that these values of the attenuation coefficient are typically within the range of values previously observed: Voermans et al. (2021) reports that typical values for α are within the range $1 \cdot 10^{-5} \text{m}^{-1}$ from broken pack ice (Kohout and Williams, 2013; Thomson et al., 2018), to $2 \cdot 10^{-4} \text{m}^{-1}$ for solid landfast ice, for the typical frequency range considered. Similarly, Wahlgren et al. (2023) reports a typical swell attenuation rate of $4 \cdot 10^{-6} \text{m}^{-1}$ to $7 \cdot 10^{-5} \text{m}^{-1}$ in the Antarctic spring MIZ.

Unfortunately, calculating the detailed spectral attenuation or the attenuation between buoys is not realistic in the current case study. In fact, the array of buoys was deployed long before the event considered, and the buoys are very far from being aligned with the wave propagation direction. Given the complexity of the MIZ shape and limit, as well as of the bathymetry in the area, and the absence of buoy measurements directly at the edge of the MIZ, we believe that this would make calculating a (spectral) attenuation rate between the buoys or from the open water to the buoys highly unreliable. Therefore, we limit

745 ourselves to considering the SWH modulation pattern and the robust bulk damping estimate, as we believe that looking at finer grain data would be very error prone and highly sensitive to additional factors.

At this point, we need to review which mechanism(s) can explain ~~for~~ the periodic increase in the wave in ice damping we observe, evaluate ~~if whether~~ they are plausible explanations for our observations, and look for the possible signatures or side effects of these mechanisms. A review of the existing literature provides a number of candidate mechanisms for wave in ice
750 attenuation. These are: (i) wave ~~refraction-reflection-and-diffusion-scattering~~ due to the hydrodynamic response of the ice floes, (ii) viscoelastic damping in the sea ice, (iii) ~~either~~-laminar or turbulent water-ice friction under the ice due to the wave-induced water velocity, ~~and~~-(iv) floe-floe interactions including hydrodynamic interaction between adjacent floes, collisions, rafting, ridging, and crushing, and (v) other phenomena, such as overwash.

If the modulation observed is related to (i: ~~hydrodynamic-floe-responsescattering phenomena~~), this would imply that a
755 major ~~quasi-cyclical-quasicyclical~~ change in the ~~floe-floes packing or floes~~ sizes or shapes takes place, so that the response amplitude operator of the floes (which is a function of their ~~geometryindividual geometry and relative positions~~), and the level of wave diffraction in the MIZ and wave refraction at the ice edge ~~;~~ drastically changes back and forth over a timescale of 12 hours. ~~However, while we know that e.g. some level of refraction may happen at the MIZ edge under certain conditions (Wahlgren et al., 2023), it~~ Regarding the array effect of multiple scattering caused by the floes arrangement, this may be a
760 possible explanation given that the ice divergence changes strongly over a 12-hour period and exhibits nearly periodic variations correlated with the SWH modulation. This translates into a modulation of the closedness between adjacent floes and their level of packing, which can influence the level of wave scattering (Meylan and Squire, 1994; Bennetts and Squire, 2009). The other explanation, i.e. changes in the floes shape, appears less likely. It is not realistic to expect ~~such a~~ major back-and-forth change of ice floe geometry over such a short timescale: while it is possible for floes to break relatively fast under the influence of
765 waves, consolidating large floes through re-freezing in an effective enough way so that previously broken floes start behaving as single floe is a slower process.

For (ii: ~~viscoelastic-viscoelastic-induced~~ damping) to be the explanation of the modulation, viscoelastic effects would need to be significant and the viscoelastic properties of the sea ice would need to change with a ~~12-hours-period. While 12-hour period. This is unlikely for several reasons. First, in the conditions encountered here, where the ice cover is composed of~~
770 broken ice floes and is nonhomogeneous, floes flexion and viscoelasticity are likely not a dominating mechanism. Moreover, even making the hypothesis that viscoelastic damping could play a role, it is unclear how the viscoelastic properties of the ice could vary with a 12-hour period. Indeed, while it is well established that ~~sea-ice-mechanical-properties the mechanical properties of sea ice~~ can be drastically degraded ~~following, e.g. after, for example,~~ temperature changes and the impact this has on brine content (Ji et al., 2011; Karulina et al., 2019; Marchenko et al., 2013), which can lead to a ~~fast-degradation-of-sea-ice~~
775 Young modulus-rapid degradation of the Young modulus of sea ice, this cannot explain ~~for~~ the ice recovering its mechanical properties. Moreover, the atmospheric temperature variations during the ~~wave-modulated-wave-modulated~~ event are moderate. Therefore, the fact that we observe a periodic change in the effective SWH attenuation, combined with the lack of evidence for large temperature variations in the area during the modulated wave event, makes this explanation unlikely.

Regarding (iii: under ice friction), since the total amount of ice varies relatively little in the area over a ~~12-hours~~12-hour period, and we would a fortiori not expect that significant melting and re-icing can happen with the 12-hour periodicity we observe, we do not believe that a large change in the water-ice contact area takes place, so that changes to the water-ice area and the implied laminar flow energy dissipation does not appear as a credible explanation. A change in the turbulence level under the ice could modulate the effective eddy viscosity appearing in the equation driving the water-ice stress and the associated energy dissipation, even if the total ice-water area does not change. Such modulation in the amount of turbulence under the ice can come from several sources, in particular, the propagation of the tidal wave through the area of interest, floe-floe collisions, or changes in the relative ice-water velocity. However, if the level of turbulence was strongly modulated in the area due to some phenomenon external to the sea ice, for example tides, more damping would have been observed from satellite altimeter data also in the absence of sea ice. This, in turn, makes us believe that if turbulence level changes participate in causing the observed SWH modulation, these are likely introduced due to some ice mechanisms, such as floe-floe interaction and collision. Change in effective roughness of the sea ice-water interface can also modulate the ice-water stress and dissipation, but for this to play a role here, a periodic 12-hour increase and decrease in the sea ice roughness would be needed. This seems little realistic, as icing and melting mechanisms under the sea ice are not expected to present such strong periodicity, and phenomena such as rafting and ridging would lead to an increase, but no subsequent decrease, in the ice roughness - so that this likely cannot explain for the periodicity we observe. An additional possible mechanism could be that, while the water-ice area of contact and the turbulence level under the ice are not strongly modulated, the degree to which the motion of the ice is horizontally constrained could change with time, following sea ice convergence and divergence. More specifically, when the ice cover, which is constituted of many broken floes of moderate ~~typical~~-size, is "open" following a period of sea ice divergence, ice floes could be able to move to some degree in the horizontal direction, so that the slip velocity between the wave-induced water motion and the ice is reduced. By contrast, when the ice is "closed" following a period of sea ice convergence, the horizontal motion of the floes compressed together and acting as a larger ice sheet may be more strongly constrained, and the slip velocity may be higher. This could lead to different boundary conditions determining the shape of the boundary layer under the ice, and influence the damping induced by under ice boundary layers, as previously discussed in Marchenko et al. (2019). This also could be seen as a secondary effect of floe-floe interaction, since it is the close contact between floes that would prevent the ice to follow the waves. However, the sea ice concentration never reaches 100% in our models in the area of interest, and SAR images confirm that leads and water openings seem to always be observed around the BOIs, and that floes have moderate sizes compared to the typical wavelength. Therefore, the hypothesis that the sea ice may get so tightly packed that ice floe motion get strongly constrained in the horizontal direction at some times compared to others seems unlikely.

The ~~last~~-mechanism (iv: floe-floe interaction) can influence the wave in ice damping in several ways. First, collisions per se can dissipate energy, through both sea ice crushing, inelastic collisions, and hydrodynamic pumping effect between ~~the~~ colliding floes (Rabault et al., 2019; Løken et al., 2022; Noyce et al., 2023). Second, collisions, through the hydrodynamic pumping effect and the water jets this creates, inject significant amounts of turbulence under the sea ice (Rabault et al., 2019). This can possibly modulate the amount of turbulent kinetic energy and the effective turbulent eddy viscosity, and create an increase of the damping from the mechanism (iii) previously discussed. The question of the existence and importance of

collisions in the MIZ has been ~~slightly polemic debated~~ in the last few years ~~(while no article explicitly mentions this as being polemic, as far as the authors are aware, this~~, and our feeling is that the community is currently divided on this topic. This assessment is based on personal communications and discussions received by some of the authors, and reviews received during the publication process of ~~Løken et al. (2022))~~ Løken et al. (2022); Dreyer et al. (2024). In particular, ~~there are arguments that floes while some works conclude that floes can slide on top of waves, which combined with the existence of inertia and added mass, suggests that collisions may happen (Shen et al., 1987; her, 2018; Smith and Thomson, 2020), we have also received arguments during previous review processes that floes mostly~~ follow the waves in synchronization, so that there are no collisions actually happening between the floes even if all floes move. However, this ~~last~~ argument disregards several aspects of waves in ice and the MIZ. First, floes are not identical: as reported by the width of the floe size distribution, different floes have different size and shape, leading to different response amplitude operator characteristics in waves, which would imply the existence of collisions. Second, even though waves in ice at any depth in the MIZ are usually dominated by long-crested ~~swells~~swells, there is still stochasticity in the amplitude and wavelength of individual waves. Therefore, even two identical floes next to each other, with the same RAO, can experience collisions if two consecutive waves have ~~different enough a~~ height and wavelength ~~different enough~~. Finally, sea ice cover has many features, such as ridges and keels, that can induce relative motion between floes and create collisions. ~~Similarly, several reviewers have reported during the peer-review of Løken et al. (2022) that they had not observed collisions when they were working in the sea ice, and are, therefore, skeptical around the actual occurrence of collisions. However, we believe that this feeling may suffer~~ More generally, we believe that the rarely reporting of floe-floe interactions and collisions may arise, at least partially, from a selection bias: to be allowed to deploy, operate, and recover SD-card-containing instruments ~~that can measure such events~~, sea ice conditions ~~have to must~~ be calm enough to allow safe work on sea ice. This is typically not the case for conditions in which sea ice breakup and collisions may ~~happen occur~~, therefore, potentially limiting the amount of such events in timeseries records available for analysis. We also note that collisions are the most extreme realization of ~~the~~ floe-floe interaction. In particular, it may be possible to have significant floe-floe interaction, including ~~the~~ creation of water pumping and water jets between floes, even without a full collision to take place: ~~these~~. ~~These~~ effects will take place as soon as a significant change in the ~~short range short range~~ floe-floe distance takes place, even in the absence of collisions.

~~We also observe that our findings are roughly similar to what has been reported by Løken et al. (2022): in the corresponding work, collisions and water pumping increasing the turbulent kinetic energy dissipation under the ice floes were found to dissipate around 40% of the total energy input. If we would assume that the dominating factor in the change of α is due to the switching on / off of floe-floe interactions, collisions, and enhanced turbulent dissipation, the doubling of α between low and high SWH conditions would similarly correspond to up to 50% of the energy being dissipated by these mechanisms in the cases when α is highest. Naturally, these are only proxy estimates, and the exact numbers would be slightly modulated by a number of factors, including the effect of wave-current interaction, which, while it was found too weak to explain for the modulation observations, does contribute to the exact values obtained.~~

~~Finally, it is possible that (v) other mechanisms may play a role in the present observations. One such mechanism could be overwash. However, there are no drastic changes in the incoming wave field, so it is unclear how overwash levels, which one~~

could expect to be related to the incoming wave steepness, may drastically change. More generally, while one cannot rule out that other mechanisms could play a role, these are, if such is the case, not easily identifiable by the authors and not widely discussed in the literature.

Therefore, the results obtained in the Data Analysis section do not seem to be compatible with ~~neither explanations (i) nor (ii) explanations (ii) or (v)~~, and explanation (iii) can be a contributing factor, but could be present as a ~~bi-product~~ bi-product of (iv). As a consequence, this lets us with the possibility that explanations (i) and / or (iv), (possibly in combination to its effect on modulating (iii), ~~appears following our review of possible mechanisms as~~) are the most likely ~~phenomenon~~ phenomena that can explain for our in situ observations. However, this conclusion is obtained by a combination of elimination of other possible explanations, ~~and high level and high-level~~ discussion of the mechanisms at play. Therefore, more ~~in-situ in situ~~ data will be needed in order to bring a direct positive proof of our circumstanced hypothesis that either a strong change in the scattering properties of the array of floes, or floe-floe interaction, is the explanation for our SWH modulation observation. ~~While~~ Although this is not attainable for this specific event from 2021, we can suggest additions to the functionality of future OMBs and similar buoys that would allow us to provide positive evidence of our conjecture. In particular, it should be easily possible to measure floe-floe collisions, since the signature of such events in the acceleration timeseries recorded by instruments on the sea ice is very characteristic (~~Løken et al., 2022~~)(Løken et al., 2022; Dreyer et al., 2024). As a consequence, we believe that extending the OMB firmware with on-board processing for collision detection to quantify the occurrence of events similar to what is described in ~~Løken et al. (2022)~~Dreyer et al. (2024), and transmitting this information together with the wave spectrum as additional data fields, is a natural next step that could help to distinguish between explanations (i) and (iv). This should be easily implementable, since the full time series of the sea ice acceleration is already available on the OMB, as it is used ~~for computing to calculate~~ the wave spectrum. It should, therefore, be easy to include a ~~high pass high-pass~~ filtering analysis of the signal to the firmware, and to use this to count collision events and measure their strength relative to the smoother wave-induced signal. We intend to perform such firmware extensions and include ~~it these~~ in these in our buoys in the near future.

~~Our conjecture that increased damping could be related to floe-floe interactions being strengthened by sea ice convergence that presses floes together, while reduced damping could be related to floe-floe interaction being reduced by floes being separated under sea ice divergent conditions, seems to be in good agreement with the overall picture provided by Fig. 4 (right). As visible there on the right panel, there is a strong correlation and agreement between sea ice divergence and higher SWH in the MIZ, and sea ice convergence (i.e., negative divergence) and reduced SWH in the MIZ.~~

~~In order to quantify our hypothesis, we estimate a proxy for the average attenuation coefficient applicable on waves that have propagated through the MIZ up to the position of the BOI 19648. For this, we can compute a simple estimate using the ERA5 spectrum value E_{out} outside of the sea ice for the peak open water incoming wave frequency $f = 1/12\text{Hz}$, and compare it to the energy content at the same frequency at the location of the buoys as reported by the instruments inside the sea ice, E_{in} . We can then consider the distance of effective sea ice propagation dx as being equal to the MIZ depth having a sea ice concentration of at least 0.5 according to the AMSR2 dataset. After correcting for the propagation time lag δt by matching the peak of the incoming wave energy to the peak of the SWH envelope at the buoys, we can estimate the effective bulk attenuation coefficient α (with unit m^{-1}) as $\alpha = -\ln[E_{in}/E_{out}]/dx$. Note that this estimate is only a coarse proxy to be used to estimate typical~~

orders of magnitude involved, and that it neglects several important effects, e.g. the frequency dependence of the attenuation rate and the associated changes in the mean wave period. Results are presented in Fig. 10. As visible there, the bulk attenuation coefficient α has a typical value of $2 \cdot 10^{-5} \text{m}^{-1}$, respectively $4 \cdot 10^{-5} \text{m}^{-1}$, during high, respectively low, SWH events at the BOI 19648. In other words, the modulation of attenuation corresponds to a doubling of the effective wave attenuation rate. We note that these values are typically within the expected range: Voermans et al. (2021) reports that typical values for α are within the range $1 \cdot 10^{-5} \text{m}^{-1}$ from broken pack ice (Kohout and Williams, 2013; Thomson et al., 2018), to $2 \cdot 10^{-4} \text{m}^{-1}$ for solid landfast ice, for the typical frequency range considered. Similarly, Wahlgren et al. (2023) reports a typical swell attenuation rate of $4 \cdot 10^{-6} \text{m}^{-1}$ to $7 \cdot 10^{-5} \text{m}^{-1}$ in the Antarctic spring MIZ. We also observe that our findings are roughly similar to what has been reported by Løken et al. (2022): in the corresponding work, collisions and water pumping increasing the turbulent kinetic energy dissipation under the ice floes were found to dissipate around 40% of the total energy input. If we assume that the dominating factor in the change of α is due to the switching on/off of floe-floe interactions, collisions, and enhanced turbulent dissipation, the doubling of α between low and high SWH conditions would similarly correspond to up to 50% of the energy being dissipated by these mechanisms in the cases when α is highest. Naturally, these are only proxy estimates, and the exact numbers would be slightly modulated by a number of factors, including the effect of wave-current interaction which, while it was found too weak to explain for the modulation observations, does contribute to the exact values obtained.

Estimates of the bulk waves in ice attenuation coefficient α for $T = 12 \text{ s}$ period waves across the MIZ for the BOI with ID 19648. The distance between the ice edge and the buoy was estimated from AMSR2 sea ice concentration. Incoming wave energy E_{in} was estimated using the ERA5 reanalysis data. Three different coordinates were used as an ERA5 input, for controlling the insensitivity of the results to changes in the exact choice of the ERA5 data selection location (see figure legend for the exact locations). This confirms that our bulk attenuation coefficient proxy estimate is robust.

In the present discussion about waves in ice attenuation, we have been focusing on the local processes happening in the neighborhood of the buoys. However, the SWH observed at the location of the buoys is the result of both the local processes happening in the sea ice, but also of the integrated attenuation taking place in the MIZ when the waves travel towards the instruments. Therefore, the complete explanation for the observations may include some non-local effects, and the SWH observed should, in theory, be related to the effect of the sea ice state, including its convergence and divergence rate if these indeed play a role, over the propagating ray of the waves. We have attempted to perform such an analysis. However, the amount of data collected was not sufficient to reach clear conclusions. This points to the need for performing even larger scale deployments involving larger instruments arrays, by continuing to leverage low cost instrumentation such as the OMB. We hope that such deployments will allow, in the future, to measure the progressive attenuation of the SWH through an array covering the entirety of the MIZ, and not just at a few locations deep into the ice.

The present observations are likely related, as we have discussed, to the convergence and divergence of the sea ice induced by the strong tidal currents in the area, and the effect this has on the wave in ice attenuation. This makes the present area particularly interesting to study further, as such tide-driven dynamics should, ~~therefore,~~ be observed reliably in a relatively wide area where strong tidal motions are present. However, the applicability of these observations is likely more general. ~~Indeed~~In fact, we expect ~~that~~ strong sea ice convergence and divergence effects ~~can also happen to also occur~~ without strong

driving tidal currents. For example, sudden wind events trigger inertial oscillations, which, when they hit the MIZ, will interact with the gradient in sea ice concentration and cause sea ice ~~closing and opening~~ to close and open. This implies that the dynamics we observe may play a role in storm conditions anywhere in the MIZ, both in the Arctic and Antarctic, though such events may be less reproducible and less regular than in the present tide-driven conditions. Such modulated waves in ice amplitude events have possibly been observed previously in some satellite observations of the MIZ following the passing of storms (internal correspondence and communication), and should also deserve attention in the future, independently of location and the presence of tidal currents. We also show in Appendix C that similar modulation events can be observed in the MIZ in at least another dataset, which is acquired at a different geographical location and season.

A natural question arising after this study is why such modulation has not been reported in the past. In particular, if our most likely explanation that the modulation is ultimately caused by the effect of currents and tides on the sea ice concentration and compactness is correct, similar features could be observed in other contexts. We believe that there can be several explanations as to why we are, as far as we know, the first to report such a modulation. i) Waves in ice data are still relatively scarce and limited in volume. A modulation sufficiently pronounced to attract the attention of someone browsing through their data may rely on a combination of broken sea ice conditions, strong tidal currents, and possibly land masses that provide a fixed boundary condition for the ice motion in part of the domain, or another mechanism that allows currents to cause strong changes in the ice compactness. All in all, observing an 80-90% modulation rate, as we do here and initially attracted our attention, may be quite rare, even in the case if lower levels of modulation may happen relatively commonly. ii) To clearly resolve the modulation, relatively high-frequency sampling of the wave conditions is needed: for example, the modulation in Fig. 3 is significantly easier to see in the OMB-v2021 data (which are sampled every 2 hours), compared to the older OMB-v2018 (which are sampled every 4 hours). Not all buoys may have sampled data at the higher rate of the OMB-v2021, in particular to cut costs and save battery.

However, once we first know that such modulations may be present in the data and actively look for them, it seems to us that these may actually be quite common. Although the point of the present (already long) paper is not to do meta-studies of when such modulations are observed, we can report that a quick browsing through, e.g., OMB-v2021 data collected north west of Svalbard (i.e., a different location) during summer 2022 (i.e., a different year and season), present similar features, as seen in Fig. 15 in Appendix C. A more systematic look at the occurrence of such modulation and an investigation of whether other mechanisms (for example, the impact of currents or wind or inertial oscillation acting on a MIZ presenting a gradient of sea ice concentration) can cause similar features in other datasets would be an exciting direction for future studies. We conjecture that such a study could possibly allow one to indirectly gain more understanding about the key physical mechanisms that play a role in waves in ice attenuation.

5 Conclusions

We report direct ~~in-situ observations from~~ in situ observations from a set of wave buoys in the Arctic MIZ that contain strongly modulated waves-in-ice significant wave height (SWH) records, with a ~~12-hours~~ 12-hour SWH modulation period. The mod-

955 ulation ratio observed between consecutive SWH maxima and minima ~~at the buoy deepest into the MIZ~~ goes up to 90%. We show, through a combination of analyses including numerical models, ray tracing analysis, and direct satellite observations in the same area in ice-free conditions, that while tidal modulation takes place in the area, the observed modulation ~~likely~~ probably cannot be explained by mechanisms such as wave-current interaction, ice drift, or changes of effective wave propagation distance in the sea ice alone. More specifically, our estimations for the strength of wave-current and ice-independent SWH modulation, either these are based on numerical models or satellite data analysis in ~~ice-free~~ ice-free conditions, conclude that a modulation of typically around 30% at most can be expected due to the tidal wave-current interaction in the absence of sea ice. Moreover, numerical models including the sea ice effect indicate that the commonly used wave in ice attenuation parameterizations can explain ~~for~~ the typical bulk attenuation coefficient and the envelope of the SWH observed in the sea ice, but that these cannot explain ~~for~~ the SWH modulation we observe. These results, though they are obtained from numerical models which contain sources of uncertainty and are not an absolute truth, suggest that some additional mechanisms are playing a role in the observations we report.

965 Therefore, we deduce by elimination that the mechanism(s) explaining ~~for~~ the modulation we observe is likely to be related to ~~the sea ice,~~ sea ice and, more specifically, to a modulation of the waves in ice attenuation coefficient. For this, we hypothesize that a time-varying contribution in the wave attenuation is likely playing to play a key role in the MIZ area we observe, ~~and that such a time-varying component is missing from current state-of-the-art waves in ice attenuation models.~~

970 Moreover, we observe that the modulation in the SWH is strongly correlated ~~to~~ with the local state of sea ice convergence and divergence. Therefore, we conjecture that the missing variability in the waves in ice attenuation coefficient is possibly arising from the effect of either scattering or floe-floe interaction, which intensity can be modulated by the strong state of convergence and divergence in the sea ice observed in the area and the resulting change in ice compactness, as visible in both satellite data, buoys trajectories, and model predictions. In particular, we hypothesize that sea ice convergence and divergence, by affecting the closeness between neighboring floes, may ~~switch~~ either modify the scattering properties of floe arrays, and / or strongly modulate the intensity of floe-floe interactions and floe-floe collisions ~~on and off. This by changing the closedness and compactness of the floes field. This second hypothesis~~ is consistent with other recent observations obtained from ~~in-situ~~ in situ instruments, where the full timeseries of the ice motion were recovered, which analysis indicates that collisions can take place in the MIZ under certain sea ice and wave conditions. This conjecture is also consistent with recent idealized field experiments, in which collisions and the associated forced water motion and turbulence were reported to be able to contribute significantly to the overall wave energy dissipation. ~~Therefore, we observe a convergence of indices that indicate that floe-floe interaction is a likely explanation for the peculiar features present in our in-situ observations.~~

985 However, we acknowledge that our ~~results are~~ interpretation of the physical cause for the wave in ice damping modulation is, at present, speculative to some degree, and should be considered as a circumstanced conjecture. In order to firmly confirm our conjecture, ~~indisputable in-situ~~ regarding floe-floe interaction, indisputable in situ evidence of floe-floe interaction dynamics or other modulated waves in ice attenuation mechanism should be collected through a ~~well defined~~ well-defined metrics, alongside collocated observations of wave in ice attenuation across the MIZ extent, and the correlation between both phenomena should be examined. ~~While~~ Although this cannot be achieved in the data from 2021 that we report, we suggest that this information

can be obtained in the future by programming waves in ice buoys to report statistics about collisions happening in sea ice, in addition to the information traditionally transmitted. We argue that such additional information should be easy to add to the firmware running on, e.g. ~~the~~ OpenMetBuoys, by applying ~~a~~ simple firmware upgrade to buoys to be deployed in the future.

990 Providing direct positive evidence of the existence and importance of such a mechanism would be a major contribution to our understanding of what mechanisms play a role in determining the variability of the observed wave in ice attenuation, and will be an objective for our future measurement campaigns. [Testing for the impact of a modulated level of scattering could also be done, either by elimination if a floe-floe interaction metrics is added to future buoys, or by obtaining timeseries from a compact array of buoys and performing a careful measurement of the level of scattered energy.](#)

995 We also conclude that the area considered, South-East from Svalbard, is very well suited to investigating complex waves in ice and waves-current interaction phenomena. Indeed, sea ice has historically been very reliably observed in the area during the late Arctic winter, and complex sea ice dynamics in the area are forced by strong tidal currents in a reliable and reproducible way that seems well captured by state-of-the-art models. Therefore, we believe that this area deserves further investigation ~~;~~ and that it is well suited for a range of measurements, from using large numbers of ~~low-cost~~ [low-cost](#) OMB-like buoys in open water and

1000 sea ice ~~;~~ to, e.g., ~~long-term deployment of bottom-mounted acoustic doppler~~ [long-term deployment of bottom-mounted acoustic Doppler](#) current profiler (ADCP) and pressure sensors, which should be easy to deploy and recover thanks to the limited water depth (typically 35-50m) in the area. We expect possible future findings and improved physical modeling developed based on such measurements to be applicable also in other situations in the MIZ where the sea ice convergence and divergence are due not to tides, but to, e.g., passing storms and inertial oscillations that lead to a sudden series of convergences and extensions of

1005 the MIZ. [In particular, we report the observation of similar-looking modulation events in other datasets, that consider waves in ice at another location and season. This suggests that the present modulation event may be a relatively general phenomenon and not purely a one-off curiosity.](#)

Code and data availability. All buoy observation data used in the present study are already released as open source data following the publication of Rabault et al. (2023), see the data available on the Arctic Data Center at <https://adc.met.no/datasets/10.21343/azky-0x44>, or

1010 on Github at: https://github.com/jerabaul29/data_release_sea_ice_drift_waves_in_ice_marginal_ice_zone_2022.

Some key codes and scripts used in the present manuscript are available at: https://github.com/jerabaul29/article_data_modulated_attenuation_waves_in_ice_2021_03 (will be released upon acceptance of the manuscript for publication in the peer reviewed literature). Please use the issue tracker there for any further queries.

SAR satellite data can be seen on Ocean Virtual Laboratory (OVL) viewer, see, for example, the view of the corresponding area available

1015 at <https://odl.bzh/c840-gF3>.

Satellite wave measurements can be recovered using the wavy Python package: <https://github.com/bohlinger/wavy>. Ray tracing analysis can be reproduced using the ocean wave tracing Python package: https://github.com/hevgyrt/ocean_wave_tracing.

[Appendix A: wave ray analysis](#)

1020 In this appendix, we investigate how much wave-current modulation can be expected following the influence of tides and
 tidal currents and their interaction with bathymetry trapping effects, as an order of magnitude. Although not as advanced
 as the full-feature spectral wave model used above, wave ray analysis provides good phenomenological understanding of
 the wave propagation under the influence of bathymetry and currents, and this can be used as a way to cross-check results
 and as a consistency check of more complex models. To do so, we leverage simplified models, including the wave action
 and wave ray models. These approximate models should not be taken as a ground truth, as they make many simplifications
 1025 and approximations, and neglect important phenomena including, e.g., nonlinear interaction, which are included in the more
 advanced spectral wave models. Despite these limitations, they are useful for providing a high-level view of the main phenomena.

Wave-field modulations due to currents are a combination of local and non-local effects. For example, the conservation of
 wave action on quasi-stationary currents causes an increase in SWH on countercurrents that can be considered and computed
 1030 as a local modulation (Longuet-Higgins and Stewart, 1964). However, in situ observations also include the signal of non-local
 modulations, or simply cumulative effects, since waves are constantly interacting with local currents along their propagation
 path (Masson, 1996; Vincent, 1979; Saetra et al., 2021). One such non-local effect is current-induced refraction, which is considered
 to be the dominant cause in creating spatially dependent wave height variability at scales of kilometers (Quilfen and Chapron, 2019; Bôas et
 al., 2021). These effects are linked to wave kinematics, which is incorporated in spectral wave models. However, simplified theoretical
 1035 considerations are helpful in determining their relative contributions (Holthuijsen and Tolman, 1991).

When considering the effect of local wave action on SWH, the deep-water modulation in wave amplitude a for a steady
 current having the same (resp. opposite) direction to the wave propagation direction can be expressed as (Phillips, 1977)

$$\frac{a}{a_0} = \frac{c_0}{\sqrt{c^2(1 \pm \frac{2U}{c})}}, \quad (6)$$

1040 where c is the wave phase velocity, U is the current speed, the subscript $_0$ denotes the wave amplitude and celerity value
 when $U = 0$, and the value \pm corresponds to current having the same, resp. opposing direction as the waves. Here, the wave
 celerities c_0 and c are quadratically related through the Doppler shift equation (Phillips, 1977): $c/c_0 = (1 + \sqrt{1 \pm 4U/c_0})/2$.
 In our case, the current field has a strong tidal signal and the maximum current speeds in the vicinity of the BOIs are typically
 about 0.4 m s^{-1} (this value can be extracted either from the Barents2.5 model output [not shown], or from pyTMD and the
 Arc2kmTM model; see Fig. 14, noting that slightly stronger tides can be obtained at some other locations in the area of interest
 1045 than what is presented there). The energy modulation according to Eq. (6) is sensitive to wave celerity, and thus wavenumber,
 such that longer waves are less modulated than shorter waves for a given current speed. Consequently, the modulation of the
 amplitude is as in Eq. (6) for waves with initial periods $T = 8 \text{ s}$ and $T = 12 \text{ s}$, opposing (or following, with a sign change
 including the Doppler effect on c) a $U = 0.4 \text{ m s}^{-1}$ current from rest, is about $\pm 7\%$ and $\pm 5\%$, respectively.

To assess the current-induced modulation due to refraction along the propagation path of the waves, we perform a ray tracing
 1050 analysis using the solver of Halsne et al. (2023). Currents are taken from the Barents 2.5km ROMS model mentioned above

and are fully allowed to vary in time during the wave ray propagation. The propagation paths are found to be very sensitive to their initial direction and location, which is a well-known fact for this kind of simplified model (Smit and Janssen, 2019). Therefore, we establish a representative ensemble of wave rays by perturbing the initial direction θ_0 both in the relative positive and negative angle directions, following the typical amount of directional spread present in the incoming wave spectrum. Furthermore, we also included the wave periods $T \in [10, 11, 12, 13, 14]$ s, to include, similarly, the frequency spread of the incoming waves. Consequently, the ensemble was created to be representative of the WAM directional wave spectrum and consistent with what is presented in Fig. 8. The complete ensemble consisted of 40 (initial propagation times) \times 5 (ensemble representing wave directional spread) \times 5 (ensemble representing wave periods spread) = 1000 wave ray realizations. A subset of the results are shown in Fig. 11 for illustration purposes. It is clear that the longest waves are sensitive to bathymetry, which can act locally as a wave guide and trap these. In such cases, the ambient current may increase the spreading of the wave rays such that additional rays get caught by the bathymetry. However, wave rays do not always spread more due to the tidal currents, since current-induced refraction depends on the vorticity of the ambient current along the wave ray propagation direction (Kenyon, 1971), which changes in time along the wave ray track.

The wave ray density is representative of the amount of wave energy (i.e., the square of the SWH) that is obtained in a given area at the corresponding time. Therefore, the wave-ray density can be used to derive a proxy estimate for the SWH modulation obtained due to the wave-current-bathymetry interaction. More specifically, we perform a normalized wave ray density analysis for a 12.5 km \times 12.5 km region along the track of BOI 19648 (upper middle panel Fig. 11). Here, we count the number of rays within the region and normalize it on the number of rays within the same region, obtained in an additional baseline case without currents (i.e., the baseline case only takes depth-induced refraction into account). As a consequence, this quantifies the amount of modulation introduced in the corresponding region. The square root of the relative density of rays (RD_{sr_r}) is computed as:

$$RD_{sr_r} = \sqrt{\frac{RD_c}{RD_{nc}}}, \quad (7)$$

where subscripts r, c and nc denote quantities that are considered relative, with current, and without current, respectively. We take the square root since the wave action density propagates along the rays and is proportional to the square of the wave amplitude a , while the observations correspond to a measure of the SWH, which is linearly related to the wave amplitude.

The time series evolution in RD_{sr_r} , averaged over all ensemble members for the region of interest is shown in Fig. 12c. As mentioned, there are large fluctuations in the single-ray tracing realizations (Fig. 12b, d). These fluctuations are filtered out by averaging the directional and frequency spread representative of the incoming wave conditions (Fig. 12a). The average over all the directions and wave periods shows a clear tidal modulation, which translates into a SWH modulation of around 20–25 % (Fig. 12c). Therefore, we expect refraction to play an important role in the wave-field modulation. The analysis presented here does not take into account important dynamics like nonlinear wave-wave interactions and wave attenuation, and is, as a consequence, only a typical order-of-magnitude estimate. Moreover, the ray theory approximation is known to fail at focal points and at caustics, in which case, wave phases and local interference patterns need to be considered

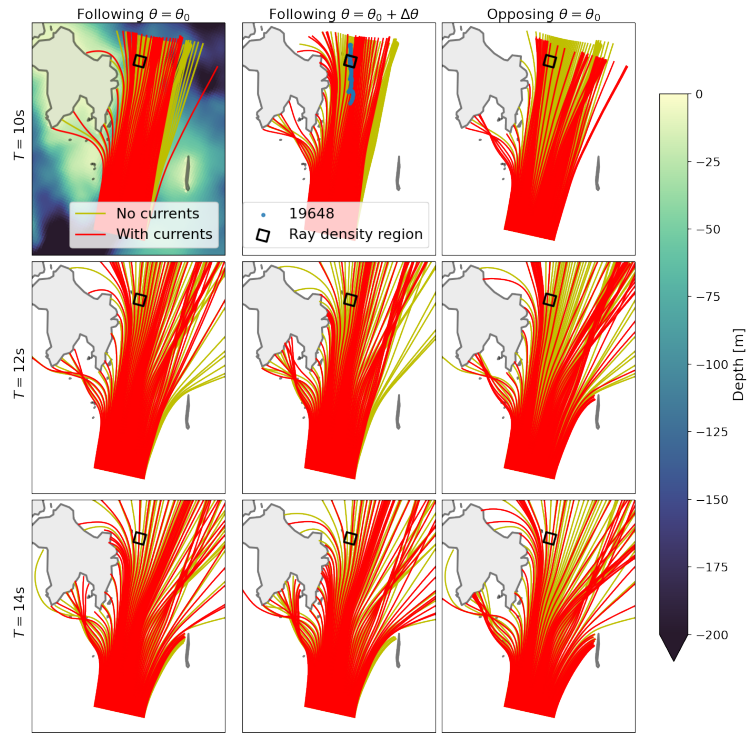


Figure 11. An illustrative subset of the 1000 ensemble wave ray simulations performed. Results are shown with (red) and without (yellow, used as a baseline) current forcing. Rows from top to bottom show the ray paths for 10s, 12s, and 14s period waves, respectively. Columns from left to right show (i) wave rays corresponding to the average wave direction (θ_0) for an initial propagation time corresponding to waves following the currents, (ii) wave rays corresponding to one of the perturbed wave directions ($\theta_0 + \Delta\theta$, where $\Delta\theta$ is a deviation from the average wave direction) for an initial propagation time corresponding to waves following the currents, (iii) wave rays corresponding to the average wave direction (θ_0) for an initial propagation time corresponding to waves opposing the currents. Note that the currents evolve in time as the wave rays propagate. The track of BOI 19648 is shown in the upper middle panel, together with the black square indicating the region for the wave ray density analysis. As visible across the figure, the exact refraction of the waves is sensitive to both the current conditions, the wave period, and the exact wave direction. As a consequence, while individual ensemble members may give strong modulation effects, their averaging partially cancels out (see further discussion and analysis of this aspect in Fig. 12).

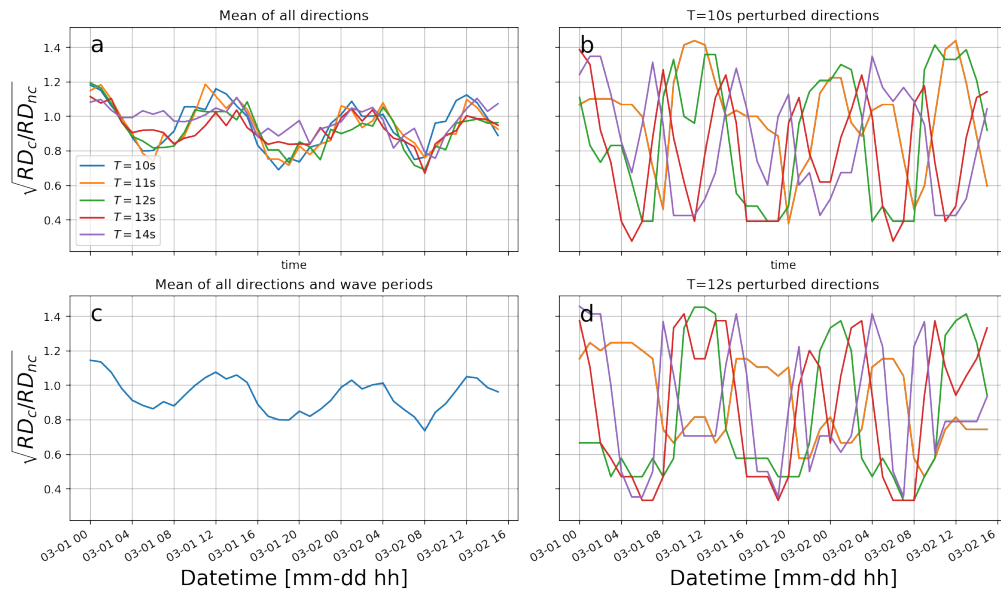


Figure 12. Estimates of the expected SWH from wave ray density analysis. Panel a) shows the expected SWH modulation at the location of the BOI 19648, averaged over directions for each frequency used in the rays ensemble, respective to the baseline case without currents. Panels b) and d) show wave ray analysis predictions at the location of the BOI 19648, obtained by perturbing the propagation direction at a fixed frequency. This illustrates the sensitivity of the wave ray dynamics to the ensemble member parameters. Panel c) shows the mean normalized ray density RD_{sq} prediction following the track of BOI 19648, obtained by averaging over the ensemble respectively to both frequencies and directions, which is our best estimate for the expected SWH modulation following the wave ray analysis.

(Smit and Janssen, 2013). However, such patterns are usually observed in very localized areas (typically covering a spatial extent just a few wavelengths), so that this explanation is incompatible with the fact that similar modulation is observed at the 3 BOIs separated by several tens of kilometers (see Fig. 4 for an overview of the distances in km between the 3 BOIs).

Therefore, our analysis suggests that we can expect a tidal signal in the modulations, which is qualitatively in agreement with the modulations in the swell 1 partition from the spectral wave model (see Fig. 9). However, the modulation level expected due to the wave-current interaction is by far not enough to explain the observations by the BOIs presented in Fig. 3. This further confirms the results obtained with the full spectral wave model.

Appendix B: Historic open water satellite measurements in the area, and comparison with tides

In this appendix, we study open water data from the same area to determine whether wave-current or tide-current interaction without the presence of the ice can be observed.

Retrieval of satellite measurements over ice-free water

1095 We use the open-source tool wavy² to retrieve satellite measurements of the SWH when there is no sea ice in our region of
interest. A consistent and homogeneous dataset over many years should be the best starting point when trying to determine
whether modulations of significant wave height due to tides and currents are taking place in the area, independently of the
effect of sea ice. The Sea State CCI dataset v1 (Dodet et al., 2020) (CCIv1) is used for this purpose. CCIv1 consists of data
from 10 satellite missions and is free of discontinuities in the data due to changes in processing or satellite mission. More
1100 specifically, we used level 3 processing from CCIv1 where only valid and good quality measurements from all altimeters were
retained. We chose the time period 1992 to 2018 and use the dataset as is without any further along-track processing, as e.g.
in Bohlinger et al. (2019). This allows us to gather a large dataset of significant wave height satellite observations in the area
when there is no sea ice present. The corresponding dataset is used for the analysis presented in section 3.3.

5.1 Calculation of tidal currents at specific positions

1105 Timeseries for local tidal information at any specific location in the domain are generated using the pyTMD python package
(Sutterley, 2023; Sutterley et al., 2019) to leverage modal information from the Arc2kmTM Arctic tide model (Howard and Padman, 2021)
. The Arc2kmTM is a forward barotropic tide model that includes precomputed maps for the tidal elevation and currents and
resolves the influence of 8 principal tidal constituents (4 semidiurnal (M2, S2, K2, N2) and 4 diurnal (K1, O1, P1, Q1)) on a 2km
X 2km uniform idealized polar stereographic grid. The area is subject to strong tides due to the features of the local bathymetry,
1110 as documented in a number of previous studies that have taken place in the region (Marchenko et al., 2021b; Turnbull and Marchenko, 2022

Correlation analysis between open water SWH from satellite measurements and tidal currents

In order to further investigate whether the observed SWH modulation could arise from the effect of wave-current and wave-tide
interaction per se independently of the presence of the sea ice, we looked into the direct satellite altimeter observations of the
1115 significant wave height in ice-free conditions gathered by the wavy package, and we compared these with the corresponding
tide information generated from the pyTMD package and Arc2kmTM model described above. The underlying idea is that if
the modulation we observe is due to the wave-current or wave-tide interaction per se and is independent of the presence of sea
ice, then it should also be observed by the satellites measuring the local SWH in the absence of sea ice.

Ideally, we would like to gather a dataset of N pairs of SWH observations, $(SWH_+, SWH_-)_i, i = 1..N$, with both observations
1120 in a pair being obtained with a 6-hours time difference for a variety of different tide phases, so that the SWH at the tidal phase
corresponding to maximum and minimum of the SWH following wave-current interaction can be obtained. One could, from
such a dataset, compute the average modulation ratio $R = \left\langle \frac{SWH_{+,i} - SWH_{-,i}}{SWH_{+,i}} \right\rangle_i$, where $\langle \cdot \rangle_i$ means "average over sample pairs i ",
+ and - refer to the time when maximum and minimum SWH are obtained due to the wave-tidal currents interaction, and R is
the SWH modulation ratio due to tidal currents (which can be turned into a percentage by multiplying by 100 for convenience).
1125 To make sure that similar wave-current conditions are performed, one could, if enough such pairs are available, limit such an
analysis to wave conditions that present similarities in spectrum direction and frequencies with the current case. Unfortunately,

²github.com/bohlinger/wavy

1130 since there are no long-term in situ buoy data available at the location of interest, and satellite observations we know of in this area have a repeat rate significantly slower than the 6 hours that this direct approach would request (and a 6 hour repeat rate would be the absolute lowest bound: in order to gather 6-hour pairs of observations covering different tidal phases, an even higher repeat rate would actually be needed), this method is not directly applicable.

1135 Therefore, we instead used our dataset of direct satellite observations by performing a linear regression between the SWH measured by the satellites and the tidal currents obtained from the Arc2kmTM tide model. Our goal is to compute an estimate of the typical average intensity of the tidal current-induced SWH modulation that can be expected for the average representative incoming wave spectrum and SWH conditions obtained in the area. This is not a perfect approach, since one can expect the actual modulation observed at any time to be dependent on the incoming wave directional spectrum, including its direction and peak frequency properties, as previously mentioned. However, this can still provide an indication of the typical magnitude of the tide-induced open-water SWH modulation effect to be expected. Moreover, since the location considered is close to the coast, the direction for the incoming waves is mostly limited to incoming from the South South West and the Norwegian sea (as we observe in our dataset), or the South South East and the East Barents sea; other directions do not have the fetch necessary to produce significant swells, due to the close proximity of coastlines and the sea ice edge. This approach also assumes that the SWH modulation effect is, in the first approximation, linear relative to the incoming SWH value so that a linear model captures the averaged variability; we believe that this linearization hypothesis is reasonable in first approximation to get a proxy estimate.

1145 In order to perform this regression analysis and check that it is robust to the details of the choice of the exact collocation area, we select a set of local areas around the position of the buoy with ID 19648 during the event, with different spatial extents for the collocation box width, ranging from 30 to 60 km. Such relatively large boxes (relative to the footprints of the satellite measurements, which are typically on the order of 1-10km depending on the satellite and its embarked instrument) are needed to obtain enough collocations to obtain reasonable statistical averages. The most representative such box, corresponding to a side of 45km, is presented in Fig. 13 (left). The center of the boxes is chosen so that the trajectory of the BOI 19648, which shows the strongest SWH modulation, is well covered. For each of these collocation boxes, we find all measurements from satellite altimeter observations obtained from the wavy package that are within the corresponding areas, resulting in sets of satellite collocation SWH measurements $\{SWH\}_d$, with d the collocation box size within the set $\{30, 35, 40, 45, 50, 60\}$ kms. We then calculated the tidal currents in the middle of the box for each collocation time, using pyTMD and Arc2kmTM model data, resulting in the sets of predicted tidal current values. We make the choice of using the middle of the areas for all tidal calculations both for simplicity and because extracting and computing the tidal modes using pyTMD and Arc2kmTM is computationally relatively expensive if many different spatial locations are considered. Since the boxes are relatively small relative to the typical spatial scale for the tide amplitude and phase variability, the resulting mismatch is small, in particular with respect to tidal elevation and current phase variations within each local area, as illustrated in Fig. 13 (right), which compares the pyTMD tidal prediction at the center of the 45 km box to the tidal prediction obtained at the locations following the displacement in time of BOI 19648.

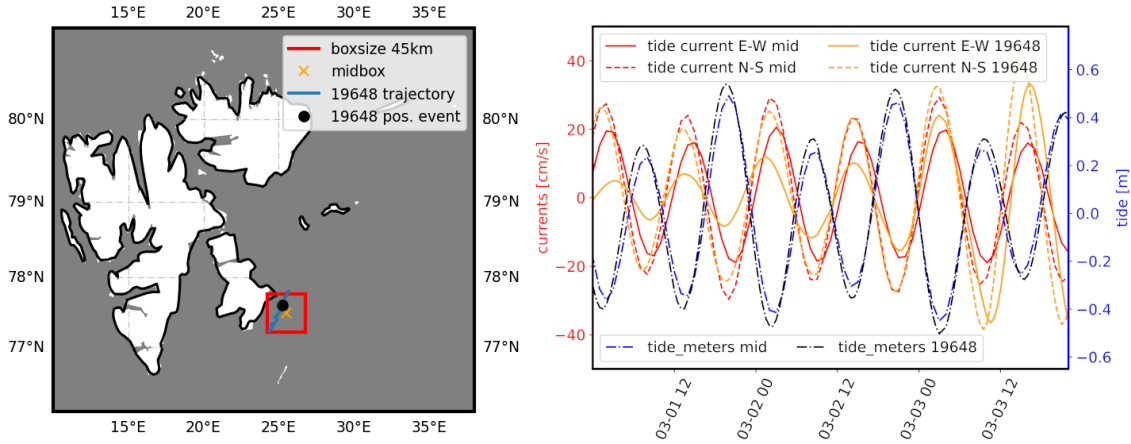


Figure 13. Left: illustration of the 45km-width box used to select satellite data SWH measurement collocations. The box contains the trajectory of the BOI 19648, which is deepest into the MIZ and shows the strongest SWH modulation ratio. The position of the instrument 19648 during the most intense modulation event is indicated by the black dot, and is close to the middle of the box which is indicated by the cross. Right: illustration of the tide currents and elevation at the center of the box ("mid" quantities), compared to the ones obtained following the trajectory of the instrument ID 19648 ("19648" quantities). The signals phases and order of magnitude for their obtained amplitudes is similar between the two, indicating that the box extent is correctly chosen. Naturally, the sign of the currents depends on the choice of the referential axis (here, East-West for u and North-South for v), so the apparently opposed phase between tide and current has no particular physical meaning.

From these data, we can then compute, for each box side d , the linear regression between the tide current estimates from pyTMD and the satellite SWH observations. This linear regression analysis is valid for the statistically averaged ice-free wave conditions in the area:

$$\text{SWH}_{\text{average}} = \text{SWH}_0 + \alpha_{u,v} \text{pyTMD}_{u,v}, \quad (8)$$

1165 where $\text{SWH}_{\text{average}}$ indicates the statistically averaged SWH in the dataset observed for given current conditions, $\alpha_{u,v}$ represents, for the same average SWH conditions, the linear variability of the observed SWH as a function of tide currents and pyTMD _{u,v} represents the estimates of the tidal current obtained from pyTMD. Either u or v , which indicate the tidal currents in the East-West and North-South directions, respectively, can be used to perform the regression. Since, as visible in Fig. 13 (right), the tidal conditions in the area correspond to a propagating wave where the currents and tide elevation are at first approximation

1170 in phase and proportionally scaled versions of each other, the difference between both choices remains moderate.

Based on this estimate, the typical average modulation ratio for each box width d , obtained for ice-free waters in the statistically averaged wave conditions sampled by the satellite measurements, can be obtained as

Box width d (km)	number of satellite collocations	linear regression expected SWH modulation ratio (%), u	lin. reg., v (%)
30	825	25	28
35	1106	24	26
40	1451	28	26
45	1772	22	27
50	2175	24	28
60	3091	25	29

Table 1. Summary of the linear regression analysis between local tidal currents produced from pyTMD using the Arc2kmTM model, and satellite observations collected using the wavy package of the SWH in a box of width d around the area of interest. Enough collocations are obtained to derive statistically significant modulation ratio values. The modulation ratio values derived are roughly similar when derived from either the u (E-W) or v (N-S) current components of the pyTMD tidal current estimate, which is consistent with the observation from Fig. 13 (right), that the local tide signal is dominated by a propagating wave, with both u, v, and the tide elevation moving in phase. The typical modulation ratio observed is between 20 and 30%. The standard deviation uncertainty on the regression slope, and, therefore, on the SWH tide-driven modulation ratio, is typically within 15% of the estimates obtained (not reported here), which confirms the confidence in the values of the statistically averaged modulation ratios presented. The modulation ratio found shows no strong dependence on the box width, which confirms that the analysis is not overly sensitive to this parameter. The table columns indicate the box width used for each analysis, the number of satellite collocations obtained for the corresponding box width, and the SWH modulation ratios derived using Eqn. 9 based on either the u or v tidal current components, respectively.

$$\text{modulation_ratio}_{u,v} = \frac{\text{SWH}_{\text{max_modulation}} - \text{SWH}_{\text{min_modulation}}}{\text{SWH}_{\text{max_modulation}}} = 1 - \frac{\text{SWH}_0 + \alpha_{u,v} \min(\text{pyTMD}_{u,v})}{\text{SWH}_0 + \alpha_{u,v} \max(\text{pyTMD}_{u,v})}, \quad (9)$$

where we assume that α is positive (if α is negative, the signs in front of α and the use of min and max should be switched).

1175 The results of the modulation ratio are presented in Table 1. At this point, we want to insist again that these results are statistical averages, obtained based on satellite observations, that present the typical amount of tide-induced SWH modulation for the statistically averaged local wave conditions, based on a linear regression analysis. Moreover, the correlation is performed on the basis of local tidal information, while effects occurring along the wave propagation may also play a role and be out of phase with the local tide and current signal. This means that these results should be taken only as a proxy, or an
1180 order-of-magnitude estimate, for the tide-induced SWH modulation effect to expect in the area. Specific cases may result in different values, but the results presented in Table 1 can be expected to give an estimate of the typical modulation intensity expected on average.

Despite these methodological limitations, the values presented in Table 1 are typically consistent with the findings presented earlier in the manuscript, in particular the results from wave ray analysis and from the wave model runs shown in Fig. 9.
1185 A typical statistically averaged modulation of 20-30% is obtained from our analysis, which corresponds well to the relative differences found above. This would indicate, similarly to the findings from the previous section, that the wave-tidal current

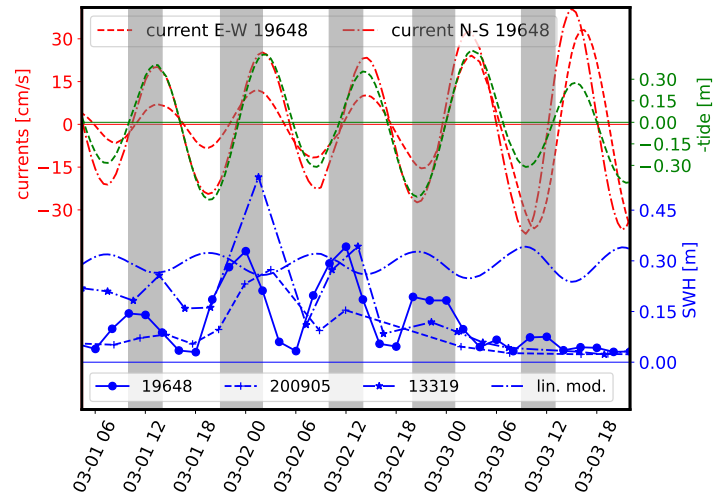


Figure 14. Application of the linear regression analysis results to the BOI 19648. The tidal currents and tide elevation following the position of the BOI 19648 (as reported by its GPS track) are computed using pyTMD and Arc2kmTM. Based on this, the linear regression corresponding to Eqn. (8) is scaled linearly to match the peak SWH recorded by the BOI 19648, and the associated statistically averaged modulation in the area is computed (indicated by the "lin. mod" curve). The obtained linear modulation is not able to reproduce the observation reported by the BOI 19648 in the neighborhood of the strongest modulation event (03-01T12 to 03-02T18). This indicates that the modulation observed at the BOI 19648 does not match with the statistically averaged tide-induced modulation observed by performing a linear regression locally in the area, which suggests that another mechanism is possibly the driver for the modulation observed at BOI 19648.

interaction per se is unlikely to explain the modulation we observe from the BOIs. This is also similar to the typical amount of modulation reported in other areas such as, e.g., Gemmrich and Garrett (2012).

1190 We have applied a scaled version of Eqn. 8 to the specific modulation case observed in the BOI 19648 data. By scaling
the SWH and the SWH modulation obtained in Table 1 to match the peak SWH obtained for BOI 19648, and computing
the tide from pyTMD at the exact positions reported by its GPS track, we can compute the statistically averaged wave-tidal
current modulation expected for the SWH reported by BOI 19648. The results are presented in Fig. 14. As visible there and in
agreement with the discussion above, the observed SWH modulation is not explained by the statistically averaged tidal current
effect. Moreover, the phase of the modulation obtained from the linear regression analysis applied to the predicted tide at the
1195 location reported by the GPS track for BOI 19648 is also partially mismatched with the observation of the SWH modulation.
Although we acknowledge that our tide current estimates are imperfect as they are obtained from a numerical model with
finite resolution, we consider that this is additional evidence that another mechanism is likely to explain the observed SWH
modulation. We also observe that the tidal current amplitude at the location following the track of instrument 19648 increases
toward the end of the event, which is in agreement with the findings in Fig. 9 that a stronger current-induced modulation is
1200 obtained toward the end of the timeseries.

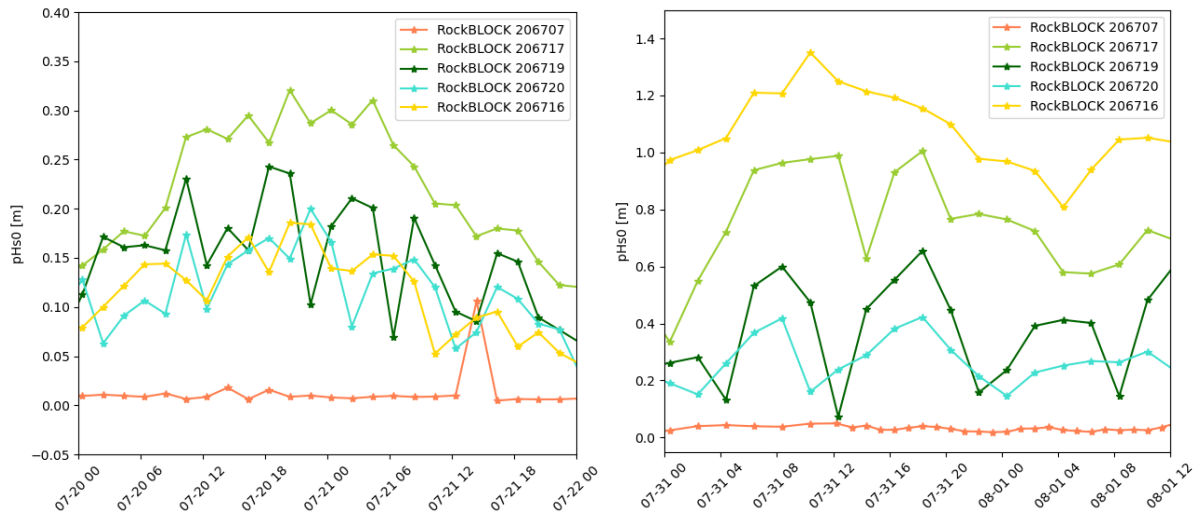


Figure 15. [Two other examples of waves in ice modulation.](#) These examples are from the summer 2022 (a different year and season), North-West of Svalbard (a different location). While the modulation discussed in the main body of the present paper is particularly strong and well defined, we observe many more similar examples of candidate modulation events in other OMB dataset. pHS_0 stands for "processed" (i.e., where the low-frequency noise has been cut as necessary, see Rabault et al. (2022)) significant wave height from the 0th order moment of the PSD.

[Appendix C: An example of similar modulation from another OMB-v2021 dataset](#)

Similar looking, though slightly less pronounced, modulation can be observed in other datasets. For example, the OMB-v2021 AWI-UTOKYO-2022 data from the data release paper Rabault et al. (2024)³ contain a similar modulation, as visible in Fig. 15. The modulations shown here are only the most obvious ones, observed after a quick browsing of the data with the naked eye, and many more events that can correspond to weaker modulations are visible in this and a range of other datasets.

1205

Author contributions. **Conceptualization:** J.R., T.H., A.C., A.C. **Data collection and curation:** J.R., M.M., Ø.B., G.H., F.C., S.H., A.J., G.S., P.B., J.B.D. **Formal analysis and Software:** J.R., T.H., A.C., A.K., J.V., N.H., A.B., A.M. **Funding acquisition:** J.R., Ø.B., K.H.C., A.B., L.A., A.J., A.M., T.W. **Investigation:** J.R., T.H., A.C., A.K., J.V., P.B., N.H., Q.Z., A.B., L.A., L.W.D., K.C. **Methodology:** J.R., T.H., A.C., A.K., J.V., N.H., Q.Z., A.B., C.P., T.W. **Project administration:** M.M., Ø.B., F.C., K.H.C., A.B., J.R., A.M., T.W. **Validation:** J.R., A.C., T.H., T.N., G.H., L.A., G.S. **Visualization:** J.R., T.H., A.C., S.H., F.C. **Writing - original draft preparation:** all. **Writing - review & editing:** all.

1210

³[this specific data record is available at: https://github.com/jerabaul29/2024_OpenMetBuoy_data_release_MarginalIceZone_Sealce_OpenOcean/tree/main/Data/2022_AWI_UTOKYO](https://github.com/jerabaul29/2024_OpenMetBuoy_data_release_MarginalIceZone_Sealce_OpenOcean/tree/main/Data/2022_AWI_UTOKYO)

Competing interests. The authors declare no competing interests.

Acknowledgements. We gratefully acknowledge funding from the Research Council of Norway project 276730 (The Nansen Legacy). MM gratefully acknowledges funding from the FOCUS project, funded by the Norwegian Research Council (grant NFR-301450), which also
1215 funded the instruments v2021 used in this study. We want to thank the crew of the icebreaker Research Vessel Kronprins Haakon for the invaluable help and support deploying the OMBs buoys during the PC-2 winter process cruise in February 2021.

References

- Wave-Induced Surge Motion and Collisions of Sea Ice Floes: Finite-Floe-Size Effects, *Journal of Geophysical Research: Oceans*, 123, 7472–7494, 2018.
- 1220 Aouf, L., Dalphiné, A., Hauser, D., Delaye, L., Tison, C., Chapron, B., Hermozo, L., and Tourain, C.: On the assimilation of CFOSAT wave data in the wave model MFWAM: Verification phase, in: *IGARSS 2019-2019 IEEE international geoscience and remote sensing symposium*, pp. 7959–7961, IEEE, 2019.
- Aouf, L., Bedossa, E., Law Chune, S., Rabault, J., Carasco, A., and Hauser, D.: On the validation of wave/ice interactions in the model MFWAM: Analysis with CFOSAT data, in: *EGU General Assembly Conference Abstracts*, p. 18430, 2024.
- 1225 Arduin, F., Gille, S. T., Menemenlis, D., Rocha, C. B., Rasclé, N., Chapron, B., Gula, J., and Molemaker, J.: Small-scale open ocean currents have large effects on wind wave heights, *Journal of Geophysical Research: Oceans*, 122, 4500–4517, 2017.
- Bailey, D., DuVivier, A., Holland, M., Hunke, E., Lipscomb, B., Briegleb, B., Bitz, C., and Schramm, J.: *CESM CICE5 Users Guide*, Release CESM CICE5, 2018.
- Batrak, Y., Kourzeneva, E., and Homleid, M.: Implementation of a simple thermodynamic sea ice scheme, SICE version 1.0-38h1, within the ALADIN–HIRLAM numerical weather prediction system version 38h1, *Geoscientific Model Development*, 11, 3347–3368, 2018.
- 1230 Bengtsson, L., Andrae, U., Aspelien, T., Batrak, Y., Calvo, J., de Rooy, W., Gleeson, E., Hansen-Sass, B., Homleid, M., Hortal, M., et al.: The HARMONIE–AROME model configuration in the ALADIN–HIRLAM NWP system, *Monthly Weather Review*, 145, 1919–1935, 2017.
- Bennetts, L. and Squire, V.: Wave scattering by multiple rows of circular ice floes, *Journal of Fluid Mechanics*, 639, 213–238, 2009.
- 1235 Bennetts, L. G., Peter, M. A., Squire, V., and Meylan, M. H.: A three-dimensional model of wave attenuation in the marginal ice zone, *Journal of Geophysical Research: Oceans*, 115, 2010.
- Bennetts, L. G., Williams, T. D., and Porter, R.: A thin-plate approximation for ocean wave interactions with an ice shelf, *Journal of Fluid Mechanics*, 984, A48, 2024.
- Bohlinger, P., Breivik, Ø., Economou, T., and Müller, M.: A novel approach to computing super observations for probabilistic wave model validation, *Ocean Modelling*, 139, 101404, <https://doi.org/https://doi.org/10.1016/j.ocemod.2019.101404>, 2019.
- 1240 Breivik, Ø., Carrasco, A., Haakenstad, H., Aarnes, O. J., Behrens, A., Bidlot, J.-R., Björkqvist, J., Bohlinger, P., Furevik, B., Staneva, J., and Reistad, M.: The impact of a reduced high-wind Charnock parameter on wave growth with application to the North Sea, the Norwegian Sea, and the Arctic Ocean, *Journal of Geophysical Research: Oceans*, 127, <https://doi.org/10.1029/2021JC018196>, 2022.
- Brenner, S. and Horvat, C.: Scaling simulations of local wind-waves amid sea ice floes, *Journal of Geophysical Research: Oceans*, 129, e2024JC021629, 2024.
- 1245 Budikova, D.: Role of Arctic sea ice in global atmospheric circulation: A review, *Global and Planetary Change*, 68, 149–163, 2009.
- Bôas, A. B. V., Cornuelle, B. D., Mazloff, M. R., Gille, S. T., and Arduin, F.: Wave-Current Interactions at Meso- and Submesoscales: Insights from Idealized Numerical Simulations, *Journal of Physical Oceanography*, 50, 3483 – 3500, <https://doi.org/10.1175/JPO-D-20-0151.1>, place: Boston MA, USA Publisher: American Meteorological Society, 2020.
- 1250 Cavaleri, L., Alari, V., Benetazzo, A., Björkqvist, J.-V., Breivik, O., Davis, J., Hope, G., Kleven, A., Leirvik, F., Nordam, T., et al.: More room at the top: how small buoys help reveal the detailed dynamics of the air-sea interface, *Bulletin of the American Meteorological Society*, 2025.

- Collard, F., Quartly, G., Konik, M., Johannessen, J., Korosov, A., Chapron, B., Piollé, J., Herlédan, S., Darecki, M., Isar, A., et al.: Ocean Virtual Laboratory: A new way to explore multi-sensor synergy demonstrated over the Agulhas region, in: Proceedings of Sentinel-3 for Science Workshop (2-5 June 2015, Venice, Italy), ESA, 2015.
- Collard, F., Marié, L., Nouguier, F., Kleinherenbrink, M., Ehlers, F., and Ardhuin, F.: Wind-Wave Attenuation in Arctic Sea Ice: A Discussion of Remote Sensing Capabilities, *Journal of Geophysical Research: Oceans*, 127, e2022JC018654, 2022.
- Collins III, C. O., Rogers, W. E., Marchenko, A., and Babanin, A. V.: In situ measurements of an energetic wave event in the Arctic marginal ice zone, *Geophysical Research Letters*, 42, 1863–1870, 2015.
- Dai, H.-J., McWilliams, J. C., and Liang, J.-H.: Wave-driven mesoscale currents in a marginal ice zone, *Ocean Modelling*, 134, 1–17, 2019.
- Dalphinnet, A., Aouf, L., Low-Chune, S., Tressol, M., and Fernandez, E.: Product user manual for global ocean wave analysis and forecasting product issue 1.3, 2022.
- Doble, M., Mercer, D. J., Meldrum, D., and Peppe, O. C.: Wave measurements on sea ice: developments in instrumentation, *Annals of Glaciology*, 44, 108–112, 2006.
- Dodet, G., Piolle, J.-F., Quilfen, Y., Abdalla, S., Accensi, M., Ardhuin, F., Ash, E., Bidlot, J.-R., Gommenginger, C., Marechal, G., Passaro, M., Quartly, G., Stopa, J., Timmermans, B., Young, I., Cipollini, P., and Donlon, C.: The Sea State CCI dataset v1: towards a sea state climate data record based on satellite observations, *Earth System Science Data*, 12, 1929–1951, <https://doi.org/10.5194/essd-12-1929-2020>, 2020.
- Dreyer, L. W., Rabault, J., Jensen, A., Dæhlen, I., Breivik, Ø., Hope, G., and Kristoffersen, Y.: Direct in-situ observations of wave-induced floe collisions in the deeper Marginal Ice Zone, arXiv preprint arXiv:2404.02750, 2024.
- Duarte, P., Brændshøi, J., Shcherbin, D., Barras, P., Albretsen, J., Gusdal, Y., Szapiro, N., Martinsen, A., Samuelsen, A., Wang, K., et al.: Implementation and evaluation of open boundary conditions for sea ice in a regional coupled ocean (ROMS) and sea ice (CICE) modeling system, *Geoscientific Model Development*, 15, 4373–4392, 2022.
- Dumont, D.: Marginal ice zone dynamics: history, definitions and research perspectives, *Philosophical Transactions of the Royal Society A*, 380, 20210253, 2022.
- Fritzner, S., Graverson, R., Christensen, K. H., Rostosky, P., and Wang, K.: Impact of assimilating sea ice concentration, sea ice thickness and snow depth in a coupled ocean–sea ice modelling system, *The Cryosphere*, 13, 491–509, 2019.
- Fritzner, S. M., Graverson, R. G., Wang, K., and Christensen, K. H.: Comparison between a multi-variate nudging method and the ensemble Kalman filter for sea-ice data assimilation, *Journal of Glaciology*, 64, 387–396, 2018.
- Gao, X., Fan, P., Jin, J., He, J., Song, M., Zhang, H., Fei, K., Zhang, M., and Zeng, Q.: Evaluation of Sea Ice Simulation of CAS-ESM 2.0 in Historical Experiment, *Atmosphere*, 13, 1056, 2022.
- Gao, Y., Sun, J., Li, F., He, S., Sandven, S., Yan, Q., Zhang, Z., Lohmann, K., Keenlyside, N., Furevik, T., et al.: Arctic sea ice and Eurasian climate: A review, *Advances in Atmospheric Sciences*, 32, 92–114, 2015.
- Gemmrich, J. and Garrett, C.: The signature of inertial and tidal currents in offshore wave records, *Journal of physical oceanography*, 42, 1051–1056, 2012.
- Group, T. W.: The WAM model—A third generation ocean wave prediction model, *Journal of Physical Oceanography*, 18, 1775–1810, 1988.
- Günther, H., Hasselmann, S., and Janssen, P.: Wamodel Cycle 4 (revised version) (tech. Rep. No. 4), 1992.
- Halsne, T., Bohlinger, P., Christensen, K. H., Carrasco, A., and Breivik, Ø.: Resolving regions known for intense wave–current interaction using spectral wave models: A case study in the energetic flow fields of Northern Norway, *Ocean Modelling*, 176, 102071, 2022.

- 1290 Halsne, T., Christensen, K. H., Hope, G., and Breivik, Ø.: Ocean wave tracing v.1: a numerical solver of the wave ray equations for ocean waves on variable currents at arbitrary depths, *Geoscientific Model Development*, 16, 6515–6530, <https://doi.org/10.5194/gmd-16-6515-2023>, publisher: Copernicus GmbH, 2023.
- Halsne, T., Benetazzo, A., Barbariol, F., Christensen, K. H., Carrasco, A., and Breivik, Ø.: Wave modulation in a strong tidal current and its impact on extreme waves, *Journal of Physical Oceanography*, 54, 131–151, 2024.
- 1295 Herman, A.: Wave-induced stress and breaking of sea ice in a coupled hydrodynamic discrete-element wave–ice model, *The Cryosphere*, 11, 2711–2725, 2017.
- Herman, A., Evers, K.-U., and Reimer, N.: Floe-size distributions in laboratory ice broken by waves, *The Cryosphere*, 12, 685–699, 2018.
- Herman, A., Cheng, S., and Shen, H. H.: Wave energy attenuation in fields of colliding ice floes–Part 1: Discrete-element modelling of dissipation due to ice–water drag, *The Cryosphere*, 13, 2887–2900, 2019.
- 1300 Hershbach, H., Bell, B., Berrisford, P., Hirahara, S., Horányi, A., Muñoz-Sabater, J., Nicolas, J., Peubey, C., Radu, R., Schepers, D., et al.: The ERA5 global reanalysis, *Quarterly Journal of the Royal Meteorological Society*, 146, 1999–2049, 2020.
- Holthuijsen, L. H. and Tolman, H. L.: Effects of the Gulf Stream on ocean waves, *Journal of Geophysical Research: Oceans*, 96, 12 755–12 771, <https://doi.org/10.1029/91JC00901>, eprint: <https://onlinelibrary.wiley.com/doi/pdf/10.1029/91JC00901>, 1991.
- Horvat, C.: Floes, the marginal ice zone and coupled wave-sea-ice feedbacks, *Philosophical Transactions of the Royal Society A*, 380, 20210 252, 2022.
- 1305 Horvat, C., Tziperman, E., and Campin, J.-M.: Interaction of sea ice floe size, ocean eddies, and sea ice melting, *Geophysical Research Letters*, 43, 8083–8090, 2016.
- Horvat, C., Blanchard-Wrigglesworth, E., and Petty, A.: Observing waves in sea ice with ICESat-2, *Geophysical Research Letters*, 47, e2020GL087 629, 2020.
- 1310 Howard, S. L. and Padman, L.: Arc2kmTM: Arctic 2 kilometer Tide Model, <https://doi.org/https://doi.org/10.18739/A2PV6B79W>, 2021.
- Iwasaki, S.: Increase in the wave power caused by decreasing sea ice over the Sea of Okhotsk in winter, *Scientific Reports*, 13, 2539, 2023.
- Ji, S.-y., Wang, A.-l., Su, J., and Yue, Q.-j.: Experimental studies on elastic modulus and flexural strength of sea ice in the Bohai Sea, *Journal of Cold Regions Engineering*, 25, 182–195, 2011.
- Karulina, M., Marchenko, A., Karulin, E., Sodhi, D., Sakharov, A., and Chistyakov, P.: Full-scale flexural strength of sea ice and freshwater ice in Spitsbergen Fjords and North-West Barents Sea, *Applied Ocean Research*, 90, 101 853, 2019.
- 1315 Kenyon, K. E.: Wave refraction in ocean currents, *Deep Sea Research and Oceanographic Abstracts*, 18, 1023–1034, [https://doi.org/10.1016/0011-7471\(71\)90006-4](https://doi.org/10.1016/0011-7471(71)90006-4), 1971.
- Kodaira, T., Katsuno, T., Nose, T., Itoh, M., Rabault, J., Hoppmann, M., Kimizuka, M., and Waseda, T.: An affordable and customizable wave buoy for the study of wave-ice interactions: design concept and results from field deployments, *arXiv preprint arXiv:2308.14361*, 2023.
- 1320 Kohout, A. and Williams, M.: Waves in-ice observations made during the SIPEX II voyage of the Aurora Australis, 2012, Australian Antarctic Data Centre, doi:10.4225/15/53266BEC9607F, updated 2015, 2013.
- Kohout, A., Williams, M., Toyota, T., Lieser, J., and Hutchings, J.: In situ observations of wave-induced sea ice breakup, *Deep Sea Research Part II: Topical Studies in Oceanography*, 131, 22–27, 2016.
- 1325 Kohout, A. L. and Meylan, M. H.: An elastic plate model for wave attenuation and ice floe breaking in the marginal ice zone, *Journal of Geophysical Research: Oceans*, 113, 2008.

- Kohout, A. L., Williams, M., Dean, S., and Meylan, M.: Storm-induced sea-ice breakup and the implications for ice extent, *Nature*, 509, 604–607, 2014.
- 1330 Kohout, A. L., Smith, M., Roach, L. A., Williams, G., Montiel, F., and Williams, M. J.: Observations of exponential wave attenuation in Antarctic sea ice during the PIPERS campaign, *Annals of Glaciology*, 61, 196–209, 2020.
- Kowalik, Z. and Marchenko, A.: Tidal Motion Enhancement on Spitsbergen Bank, Barents Sea, *Journal of Geophysical Research: Oceans*, 128, e2022JC018 539, 2023.
- Kwok, R., Hunke, E. C., Maslowski, W., Menemenlis, D., and Zhang, J.: Variability of sea ice simulations assessed with RGPS kinematics, *Journal of Geophysical Research: Oceans*, 113, <https://doi.org/https://doi.org/10.1029/2008JC004783>, 2008.
- 1335 Liu, M., Zhang, X., Chen, P., Wang, J., and Zhong, S.: Arctic Sea-ice Type Recognition Based on the Surface Wave Investigation and Monitoring Instrument of the China-French Ocean Satellite, in: 2021 Photonics & Electromagnetics Research Symposium (PIERS), pp. 2362–2369, IEEE, 2021.
- Løken, T. K., Rabault, J., Jensen, A., Sutherland, G., Christensen, K. H., and Müller, M.: Wave measurements from ship mounted sensors in the Arctic marginal ice zone, *Cold Regions Science and Technology*, 182, 103 207, 2021.
- 1340 Løken, T. K., Marchenko, A., Ellevold, T. J., Rabault, J., and Jensen, A.: Experiments on turbulence from colliding ice floes, *Physics of Fluids*, 34, 2022.
- Longuet-Higgins, M. S. and Stewart, R.: Radiation stresses in water waves; a physical discussion, with applications, *Deep-Sea Res II*, 11, 529–562, [https://doi.org/10.1016/0011-7471\(64\)90001-4](https://doi.org/10.1016/0011-7471(64)90001-4), 1964.
- Marchenko, A.: Wave attenuation in marginal ice zone of Arctic pack ice to the north of Spitsbergen, in: ISOPE International Ocean and Polar Engineering Conference, pp. ISOPE–I, ISOPE, 2018.
- 1345 Marchenko, A., Kvamstad, B., Fjørtoft, K., Hoyland, K., and Brazhnikov, D.: Characteristics of Ice Drift in the Western Barents Sea Reconstructed by the Data of Ice Trackers Deployed on Drifting Ice of the Barents Sea in 2008 and 2010, in: Proceedings of the International Conference on Port and Ocean Engineering Under Arctic Conditions, POAC11-147, 2011.
- Marchenko, A., Morozov, E., and Muzylev, S.: Measurements of sea-ice flexural stiffness by pressure characteristics of flexural-gravity waves, *Annals of Glaciology*, 54, 51–60, 2013.
- 1350 Marchenko, A., Wadhams, P., Collins, C., Rabault, J., and Chumakov, M.: Wave-ice interaction in the north-west barents sea, *Applied Ocean Research*, 90, 101 861, 2019.
- Marchenko, A., Haase, A., Jensen, A., Lishman, B., Rabault, J., Evers, K.-U., Shortt, M., and Thiel, T.: Laboratory investigations of the bending rheology of floating saline ice and physical mechanisms of wave damping in the hsva hamburg ship model basin ice tank, *Water*, 13, 1080, 2021a.
- 1355 Marchenko, A., Morozov, E., Kozlov, I., and Frey, D.: High-amplitude internal waves southeast of Spitsbergen, *Continental Shelf Research*, 227, 104 523, 2021b.
- Masson, D.: A Case Study of Wave–Current Interaction in a Strong Tidal Current, *Journal of Physical Oceanography*, 26, 359–372, [https://doi.org/10.1175/1520-0485\(1996\)026<0359:ACSOWI>2.0.CO;2](https://doi.org/10.1175/1520-0485(1996)026<0359:ACSOWI>2.0.CO;2), _eprint: [https://journals.ametsoc.org/jpo/article-pdf/26/3/359/4424891/1520-0485\(1996\)026_0359_acsowi_2_0_co_2.pdf](https://journals.ametsoc.org/jpo/article-pdf/26/3/359/4424891/1520-0485(1996)026_0359_acsowi_2_0_co_2.pdf), 1996.
- 1360 Meier, W. N. and Stroeve, J.: An updated assessment of the changing Arctic sea ice cover, *Oceanography*, 35, 10–19, 2022.
- Melsheimer, C. and Spreen, G.: AMSR2 ASI sea ice concentration data, Antarctic, version 5.4 (NetCDF) (July 2012 - December 2019), <https://doi.org/10.1594/PANGAEA.898400>, 2019.
- Meylan, M. and Squire, V. A.: The response of ice floes to ocean waves, *Journal of Geophysical Research: Oceans*, 99, 891–900, 1994.

- 1365 Mokus, N. G. A. and Montiel, F.: Wave-triggered breakup in the marginal ice zone generates lognormal floe size distributions: a simulation study, *The Cryosphere*, 16, 4447–4472, 2022.
- Montiel, F. and Squire, V. A.: Modelling wave-induced sea ice break-up in the marginal ice zone, *Proceedings of the Royal Society A: Mathematical, Physical and Engineering Sciences*, 473, 20170258, 2017.
- Montiel, F., Squire, V., and Bennetts, L.: Attenuation and directional spreading of ocean wave spectra in the marginal ice zone, *Journal of Fluid Mechanics*, 790, 492–522, 2016.
- 1370 Mosig, J. E., Montiel, F., and Squire, V. A.: Comparison of viscoelastic-type models for ocean wave attenuation in ice-covered seas, *Journal of Geophysical Research: Oceans*, 120, 6072–6090, 2015.
- Müller, M., Batrak, Y., Kristiansen, J., Kjøltzow, M. A., Noer, G., and Korosov, A.: Characteristics of a convective-scale weather forecasting system for the European Arctic, *Monthly Weather Review*, 145, 4771–4787, 2017.
- 1375 Müller, M., Knol-Kauffman, M., Jeurig, J., and Palerme, C.: Arctic shipping trends during hazardous weather and sea-ice conditions and the Polar Code’s effectiveness., *NPJ Ocean Sustainability*, <https://doi.org/10.1038/s44183-023-00021-x>, 2023.
- Müller, M., Rabault, J., Abdel-Fattah, D., and Sutherland, G.: Distributed observation networks in the Arctic Marginal Ice Zone to advance forecasting systems, *Bulletin of the American Meteorological Society*, pp. BAMS–D, 2025.
- Nilsen, F., Fer, I., Baumann, T. M., Breivik, Ø., Czyz, C., Frank, L., Kalhagen, K., Koenig, Z., Kolås, E. H., Kral, S. T., et al.: Pc-2 winter process cruise (wpc): Cruise report, *The Nansen Legacy Report Series*, 2021.
- 1380 Nose, T., Katsuno, T., Waseda, T., Ushio, S., Rabault, J., Kodaira, T., and Voermans, J.: Observation of wave propagation over 1,000 km into Antarctica winter pack ice, *arXiv preprint arXiv:2309.13714*, 2023a.
- Nose, T., Rabault, J., Waseda, T., Kodaira, T., Fujiwara, Y., Katsuno, T., Kanna, N., Tateyama, K., Voermans, J., and Aleekseva, T.: A comparison of an operational wave-ice model product and drifting wave buoy observation in the central Arctic Ocean: investigating the effect of sea ice forcing in thin ice cover, *arXiv preprint arXiv:2302.02820*, 2023b.
- 1385 Noyce, M., Verrinder, R., and Vichi, M.: Identification of Ice Floe Impacts in an Inertial Time Series and Implications for Wave Measurement In Pancake Ice, in: *IGARSS 2023-2023 IEEE International Geoscience and Remote Sensing Symposium*, pp. 149–152, IEEE, 2023.
- NSIDC: National Snow and Ice Data Center: Cryosphere and Sea Ice, <https://nsidc.org/learn/parts-cryosphere/sea-ice>, accessed 2024-03.
- Olsen, J., Hovelsrud, G. K., and Kaltenborn, B. P.: Increasing shipping in the Arctic and local communities’ engagement: A case from Longyearbyen on Svalbard, *Arctic marine sustainability: arctic maritime businesses and the resilience of the marine environment*, pp. 305–331, 2020.
- 1390 Overland, J. E., Wood, K. R., and Wang, M.: Warm Arctic—cold continents: climate impacts of the newly open Arctic Sea, *Polar Research*, 30, 15787, 2011.
- Parkinson, C., Claire, L., et al.: *Earth from above: using color-coded satellite images to examine the global environment*, University science books, 1997.
- 1395 Phillips, O. M.: *The Dynamics of the Upper Ocean*, Cambridge University Press, Cambridge, 2 edn., 1977.
- Quilfen, Y. and Chapron, B.: Ocean Surface Wave-Current Signatures From Satellite Altimeter Measurements, *Geophysical Research Letters*, 46, 253–261, <https://doi.org/https://doi.org/10.1029/2018GL081029>, [_eprint: https://agupubs.onlinelibrary.wiley.com/doi/pdf/10.1029/2018GL081029](https://agupubs.onlinelibrary.wiley.com/doi/pdf/10.1029/2018GL081029), 2019.
- 1400 Rabault, J., Sutherland, G., Ward, B., Christensen, K. H., Halsne, T., and Jensen, A.: Measurements of waves in landfast ice using inertial motion units, *IEEE Transactions on Geoscience and Remote Sensing*, 54, 6399–6408, 2016.

- Rabault, J., Sutherland, G., Gundersen, O., and Jensen, A.: Measurements of wave damping by a grease ice slick in Svalbard using off-the-shelf sensors and open-source electronics, *Journal of Glaciology*, 63, 372–381, 2017.
- 1405 Rabault, J., Sutherland, G., Jensen, A., Christensen, K. H., and Marchenko, A.: Experiments on wave propagation in grease ice: combined wave gauges and particle image velocimetry measurements, *Journal of Fluid Mechanics*, 864, 876–898, 2019.
- Rabault, J., Sutherland, G., Gundersen, O., Jensen, A., Marchenko, A., and Breivik, Ø.: An open source, versatile, affordable waves in ice instrument for scientific measurements in the Polar Regions, *Cold Regions Science and Technology*, 170, 102955, 2020.
- Rabault, J., Nose, T., Hope, G., Müller, M., Breivik, Ø., Voermans, J., Hole, L. R., Bohlinger, P., Waseda, T., Kodaira, T., et al.: Openmetbuoy-v2021: An easy-to-build, affordable, customizable, open-source instrument for oceanographic measurements of drift and waves in sea ice and the open ocean, *Geosciences*, 12, 110, 2022.
- 1410 Rabault, J., Müller, M., Voermans, J., Brazhnikov, D., Turnbull, I., Marchenko, A., Biuw, M., Nose, T., Waseda, T., Johansson, M., et al.: A dataset of direct observations of sea ice drift and waves in ice, *Scientific Data*, 10, 251, 2023.
- Rabault, J., Taelman, C., Idžanović, M., Hope, G., Nose, T., Kristoffersen, Y., Jensen, A., Breivik, Ø., Bryhni, H. T., Hoppmann, M., et al.: A position and wave spectra dataset of Marginal Ice Zone dynamics collected around Svalbard in 2022 and 2023, *Scientific Data*, 11, 1417, 2024.
- 1415 Ren, H., Zhang, C., and Zhao, X.: Numerical simulations on the fracture of a sea ice floe induced by waves, *Applied Ocean Research*, 108, 102527, 2021.
- Roach, L. A., Bitz, C. M., Horvat, C., and Dean, S. M.: Advances in modeling interactions between sea ice and ocean surface waves, *Journal of Advances in Modeling Earth Systems*, 11, 4167–4181, 2019.
- 1420 Röhrs, J., Gusdal, Y., Rikardsen, E. S., Durán Moro, M., Brændshøj, J., Kristensen, N. M., Fritzner, S., Wang, K., Sperrevik, A. K., Idžanović, M., et al.: Barents-2.5 km v2.0: an operational data-assimilative coupled ocean and sea ice ensemble prediction model for the Barents Sea and Svalbard, *Geoscientific Model Development*, 16, 5401–5426, 2023.
- Saetra, Ø., Halsne, T., Carrasco, A., Breivik, Ø., Pedersen, T., and Christensen, K. H.: Intense interactions between ocean waves and currents observed in the Lofoten Maelstrom, *Journal of Physical Oceanography*, -1, <https://doi.org/10.1175/JPO-D-20-0290.1>, publisher: American Meteorological Society Section: *Journal of Physical Oceanography*, 2021.
- 1425 Shao, Z.-D. and Ke, C.-Q.: Spring–summer albedo variations of Antarctic sea ice from 1982 to 2009, *Environmental Research Letters*, 10, 064001, 2015.
- Shchepetkin, A. F. and McWilliams, J. C.: The regional oceanic modeling system (ROMS): a split-explicit, free-surface, topography-following-coordinate oceanic model, *Ocean modelling*, 9, 347–404, 2005.
- 1430 Shen, H. H., Hibler III, W. D., and Leppäranta, M.: The role of floe collisions in sea ice rheology, *Journal of Geophysical Research: Oceans*, 92, 7085–7096, 1987.
- Shen, X., Zhang, J., Zhang, X., Meng, J., and Ke, C.: Sea ice classification using Cryosat-2 altimeter data by optimal classifier–feature assembly, *IEEE Geoscience and Remote Sensing Letters*, 14, 1948–1952, 2017.
- Shi, Y., Yang, Y., Teng, Y., Sun, M., and Yun, S.: Mechanism of sea ice formation based on comprehensive observation data in Liaodong Bay, China, *Journal of Oceanology and Limnology*, 37, 1846–1856, 2019.
- 1435 Smit, P. and Janssen, T.: The evolution of inhomogeneous wave statistics through a variable medium, *Journal of Physical Oceanography*, 43, 1741–1758, 2013.
- Smit, P. B. and Janssen, T. T.: Swell Propagation through Submesoscale Turbulence, *Journal of Physical Oceanography*, 49, 2615–2630, <https://doi.org/10.1175/JPO-D-18-0250.1>, 2019.

- 1440 Smith, M. and Thomson, J.: Pancake sea ice kinematics and dynamics using shipboard stereo video, *Annals of Glaciology*, 61, 1–11, 2020.
- Spreen, G., Kaleschke, L., and Heygster, G.: Sea ice remote sensing using AMSR-E 89-GHz channels, *Journal of Geophysical Research: Oceans*, 113, 2008.
- Squire, V. A.: Ocean wave interactions with sea ice: A reappraisal, *Annual Review of Fluid Mechanics*, 52, 37–60, 2020.
- Squire, V. A., Dugan, J. P., Wadhams, P., Rottier, P. J., and Liu, A. K.: Of ocean waves and sea ice, *Annual Review of Fluid Mechanics*, 27, 115–168, 1995.
- 1445 Sutherland, G. and Rabault, J.: Observations of wave dispersion and attenuation in landfast ice, *Journal of Geophysical Research: Oceans*, 121, 1984–1997, 2016.
- Sutherland, G., Rabault, J., Christensen, K. H., and Jensen, A.: A two layer model for wave dissipation in sea ice, *Applied Ocean Research*, 88, 111–118, 2019.
- 1450 Sutherland, G., Martins de Aguiar, V. C., Hole, L. R., Rabault, J., Dabboor, M., and Breivik, Ø.: Estimating a mean transport velocity in the marginal ice zone using ice-ocean prediction systems, *The Cryosphere*, 16, 2103–2114, 2022.
- Sutterley, T.: *tsutterley/pyTMD: v2.0.8*, <https://doi.org/10.5281/zenodo.8347168>, 2023.
- Sutterley, T. C., Markus, T., Neumann, T. A., van den Broeke, M., van Wessem, J. M., and Ligtenberg, S. R.: Antarctic ice shelf thickness change from multitemission lidar mapping, *The Cryosphere*, 13, 1801–1817, 2019.
- 1455 Thomson, J.: Wave propagation in the marginal ice zone: connections and feedback mechanisms within the air–ice–ocean system, *Philosophical Transactions of the Royal Society A*, 380, 20210 251, 2022.
- Thomson, J. and Rogers, W. E.: Swell and sea in the emerging Arctic Ocean, *Geophysical Research Letters*, 41, 3136–3140, 2014.
- Thomson, J., Squire, V., Ackley, S., Rogers, E., Babanin, A., Guest, P., Maksym, T., Wadhams, P., Stammerjohn, S., Fairall, C., et al.: Sea state and boundary layer physics of the emerging arctic ocean, Washington Univ Seattle Applied Physics Laboratory, Report No. APL-UW-1306, 2013.
- 1460 Thomson, J., Ackley, S., Girard-Arduin, F., Arduin, F., Babanin, A., Boutin, G., Brozena, J., Cheng, S., Collins, C., Doble, M., et al.: Overview of the arctic sea state and boundary layer physics program, *Journal of Geophysical Research: Oceans*, 123, 8674–8687, 2018.
- Thomson, J., Hošeková, L., Meylan, M. H., Kohout, A. L., and Kumar, N.: Spurious rollover of wave attenuation rates in sea ice caused by noise in field measurements, *Journal of Geophysical Research: Oceans*, 126, e2020JC016 606, 2021a.
- 1465 Thomson, J., Lund, B., Hargrove, J., Smith, M. M., Horstmann, J., and MacKinnon, J. A.: Wave-driven flow along a compact marginal ice zone, *Geophysical Research Letters*, 48, e2020GL090 735, 2021b.
- Thomson, J., Bush, P., Castillo Contreras, V., Clemett, N., Davis, J., de Klerk, A., Iseley, E., Rainville, E. J., Salmi, B., and Talbert, J.: Development and testing of microSWIFT expendable wave buoys, *Coastal Engineering Journal*, pp. 1–13, 2023.
- Torres, R., Snoeij, P., Geudtner, D., Bibby, D., Davidson, M., Attema, E., Potin, P., Rommen, B., Floury, N., Brown, M., et al.: GMES Sentinel-1 mission, *Remote sensing of environment*, 120, 9–24, 2012.
- 1470 Turnbull, I. D. and Marchenko, A. V.: Deformation of an ice pack influenced by waves and topographic enhancement of tidal motion near Hopen Island in the Barents Sea, *Cold Regions Science and Technology*, 194, 103 463, 2022.
- Vincent, C. E.: The Interaction of Wind-Generated Sea Waves with Tidal Currents, *Journal of Physical Oceanography*, 9, 748 – 755, [https://doi.org/10.1175/1520-0485\(1979\)009<0748:TIOWGS>2.0.CO;2](https://doi.org/10.1175/1520-0485(1979)009<0748:TIOWGS>2.0.CO;2), place: Boston MA, USA Publisher: American Meteorological Society, 1979.
- 1475 Voermans, J., Babanin, A., Thomson, J., Smith, M., and Shen, H.: Wave attenuation by sea ice turbulence, *Geophysical Research Letters*, 46, 6796–6803, 2019.

- Voermans, J. J., Rabault, J., Filchuk, K., Ryzhov, I., Heil, P., Marchenko, A., Collins III, C. O., Dabboor, M., Sutherland, G., and Babanin, A. V.: Experimental evidence for a universal threshold characterizing wave-induced sea ice break-up, *The Cryosphere*, 14, 4265–4278, 2020.
- 1480 Voermans, J. J., Liu, Q., Marchenko, A., Rabault, J., Filchuk, K., Ryzhov, I., Heil, P., Waseda, T., Nose, T., Kodaira, T., et al.: Wave dispersion and dissipation in landfast ice: comparison of observations against models, *The Cryosphere*, 15, 5557–5575, 2021.
- Voermans, J. J., Rabault, J., Marchenko, A., Nose, T., Waseda, T., and Babanin, A. V.: Estimating the elastic modulus of landfast ice from wave observations, *Journal of Glaciology*, pp. 1–11, 2023.
- 1485 Wahlgren, S., Thomson, J., Biddle, L. C., and Swart, S.: Direct Observations of Wave-Sea Ice Interactions in the Antarctic Marginal Ice Zone, *Journal of Geophysical Research: Oceans*, 128, e2023JC019948, 2023.
- Wang, Y., Holt, B., Erick Rogers, W., Thomson, J., and Shen, H. H.: Wind and wave influences on sea ice floe size and leads in the Beaufort and Chukchi Seas during the summer-fall transition 2014, *Journal of Geophysical Research: Oceans*, 121, 1502–1525, 2016.
- Williams, T. D., Bennetts, L. G., Squire, V. A., Dumont, D., and Bertino, L.: Wave–ice interactions in the marginal ice zone. Part 1: Theoretical foundations, *Ocean Modelling*, 71, 81–91, 2013.
- 1490 Yu, J., Rogers, W. E., and Wang, D. W.: A new method for parameterization of wave dissipation by sea ice, *Cold Regions Science and Technology*, 199, <https://doi.org/10.1016/j.coldregions.2022.103582>, 2022.
- Zhang, C. and Zhao, X.: Theoretical model for predicting the break-up of ice covers due to wave-ice interaction, *Applied Ocean Research*, 112, 102614, 2021.
- 1495 Zhao, X. and Shen, H.: A diffusion approximation for ocean wave scatterings by randomly distributed ice floes, *Ocean modelling*, 107, 21–27, 2016.
- Zhao, X. and Shen, H. H.: Wave propagation in frazil/pancake, pancake, and fragmented ice covers, *Cold Regions Science and Technology*, 113, 71–80, 2015.
- Zhao, X. and Shen, H. H.: Three-layer viscoelastic model with eddy viscosity effect for flexural-gravity wave propagation through ice cover, *Ocean Modelling*, 131, 15–23, 2018.
- 1500 Zhao, X., Shen, H. H., and Cheng, S.: Modeling ocean wave propagation under sea ice covers, *Acta Mechanica Sinica*, 31, 1–15, 2015.