

TAMS: A Tracking, Classifying, and Variable-Assigning Algorithm for Mesoscale Convective Systems in Simulated and Satellite-Derived Datasets

Kelly M. Núñez Ocasio¹ and Zachary L. Moon^{1,2}

¹NSF National Center for Atmospheric Research, Boulder, CO, USA

²Earth Resources Technology (ERT), Inc., Laurel, MD, USA

Correspondence: Kelly M. Núñez Ocasio (knocasio@ucar.edu)

Abstract. The Tracking Algorithm for Mesoscale Convective Systems (TAMS) is a tracking, classifying, and variable-assigning algorithm for mesoscale convective systems (MCSs). TAMS was initially developed to analyze MCSs over Africa and their relation to African easterly waves using satellite-derived datasets. This paper describes TAMSv2.0, an open-source MCS tracking and classifying Python-based package that can be used to study both observed and simulated MCSs. Each step of the algorithm is described with examples showing how to make use of visualization and post-processing tools within the package. A unique and valuable feature of this MCS tracker is its support for unstructured grids in the MCS identification stage and grid-independent tracking of MCSs, enabling application across various native modeling grids and satellite-derived products. A description of the available settings and helper functions is also provided. Finally, we share some of the current development goals for TAMS.

10 1 Introduction

~~Robustness in statistical analysis of mesoscale~~ Mesoscale convective systems (MCSs) ~~data are defined as large, contiguous areas of precipitation, of around 100 km in scale, produced by convective cloud systems (Houze Jr., 2004). About 75 % of the annual global rainfall occurs in the tropics (Evans and Shemo, 1996). Across the global tropics, MCSs are responsible for up to 90 % of rainfall in selected land regions (Nesbitt et al., 2006). Due to their significant impact on the global hydrological cycle and society, especially as these systems propagate over populated regions, a fundamental understanding of these systems and their impacts across weather and climate scales is imperative for improving forecasting.~~

~~With observational and model data ever increasing and readily available, the statistical and climatological analysis of MCS data~~ has been possible in large part due to objective tracking methods. Automated tracking algorithms became more feasible with the advent of satellites in the 1980s. These algorithms, which initially made use of infrared (IR) or a combination of IR and visible images, enabled the detection and tracking of MCSs globally (Williams and Houze, 1987; Velasco and Fritsch, 1987; Augustine and Howard, 1991; Laing and Fritsch, 1993; Machado et al., 1998; Mathon and Laurent, 2001; Vila et al., 2008). Testing has been conducted on brightness temperature (T_b) thresholds ~~for feature/object detection~~, which range from 253 K for the highest ~~brightness temperature~~ T_b associated with convection to 213 K for very deep convection, to detect convective cloud

areas (Maddox, 1980; Mapes and Houze, 1993; Machado et al., 1998; Goyens et al., 2012). [The cloud areas or approximate cloud areas like polygons or convex hull-shapes that resemble the cloud area are then used to track the systems in time.](#) In the context of tracking, the overlapping technique, which is still widely used today, relies on consecutive satellite image overlaps to establish time continuity (Williams and Houze, 1987; Evans and Shemo, 1996; Mathon and Laurent, 2001). Since then, other tracking methods have been developed, including those based on the minimization of a cost function related to the speed and direction of the MCS (Hodges, 1995), the assessment of the magnitude of spatial correlation (Carvalho and Jones, 2001), considering the system's propagation speed (Woodley et al., 1980), and employing a projecting centroid technique for forecasting the feature's location in the current or next time step (Johnson et al., 1998).

Radar data have also played a crucial role in facilitating the nowcasting and forecasting of MCSs enabling the detection of storm cells using radar volume scan data. This data is used to match storms across scans and forecast their position, either based on the storm centroid or through cross-correlation methods that utilize 2-D reflectivity data to calculate motion vectors (Johnson et al., 1998; Dixon and Wiener, 1993). At present, we observe the use of automated methods that leverage these techniques, detection methods, or a combination thereof, along with other satellite-derived products and methods. In the review that follows, our focus is on recent MCS and storm-tracking algorithms that are currently available as open-source code or packages, facilitating ongoing research on MCSs and promoting open and inclusive research, in line with the strong encouragement from the international scientific community.

The "Grab 'em Tag 'em, Graph 'em" (GTG) algorithm (Whitehall et al., 2015) (<https://kwhitehall.github.io/grab-tag-graph/>, last access: 29 October 2023) identifies [and tracks](#) cloud clusters using IR ~~and a corresponding graph node to track via~~, the area overlap method, [and graph algorithms](#). GTG is a Python-based tracker, and it can be applied to remote-sensed datasets. The Tracking and Object-Based Analysis of Clouds (tobac; Heikenfeld et al., 2019; Sokolowsky et al., 2023) (<https://github.com/tobac-project/tobac>, last access: 29 October 2023) is a community-developed Python package with three main modules: detection, segmentation, and linking. In contrast to the area overlap, tobac assigns a center point to a track when it falls within a predicted radius of motion, which is done using trackpy (<http://soft-matter.github.io/trackpy>). Unlike area-overlap algorithms where the feature geographical area is treated as the segmentation area and is not separated from the identified feature, in tobac, the original identified feature can be different from the segmentation area, which is calculated with a watershed method. Similar to tobac is the TempestExtremes ([Ullrich et al., 2021](#)) (<https://github.com/ClimateGlobalChange/tempestextremes>) ([Ullrich et al., 2021](#), <https://github.com/ClimateGlobalChange/tempestextremes>) algorithm which is a flexible tool box [in-with](#) which the user can ~~choose to~~ track different extreme events ~~not limited to MCSs~~ like tropical cyclones and extratropical cyclones. The Python FLEXible object TRAcKeR (PyFLEXTRKR; Feng et al., 2023) (<https://github.com/FlexTRKR/PyFLEXTRKR>, last access: 29 October 2023) uses both IR and surface precipitation to identify and track convective features using the renown area-overlap method. The PyFLEXTRKR includes several multi-object identification algorithms to track from cells to MCSs and can explicitly handle merging and splitting. It also has a 2-D convective cell advection estimate functionality specific for reflectivity data using preexisting Python packages. The Multi-Object Analysis of Atmospheric Phenomenon ([MOAAP; Prein et al., 2021, 2023](#)) (<https://github.com/AndreasPrein/AndreasPrein-MCS-tracker-in>, last access: 30 October 2023) ([MOAAP; Prein et al., 2021, 2023](#), <https://github.com/AndreasPrein/MOAAP>, <https://github.com/AndreasPrein/MOAAP>) algorithm is a Python-based MCS tracker that uses T_b to connect convective features via preexisting image-processing tools

rather than using an overlap threshold. MOAAP can also be used to track other atmospheric features. Of the trackers reviewed, PyFLEXTRKR and tobac offer parallelization capability for at least one step of the algorithm. Lastly, convective-cell trackers specifically for radar volume scans that are available as open-source codes are the Thunderstorm Identification, Tracking, Analysis, and Nowcasting (TITAN; Dixon and Wiener, 1993) (<https://github.com/NCAR/lrose-titan>, last access: 30 October 2023) and similarly TINT (Raut et al., 2021) (<https://github.com/openradar/TINT>, last access: 30 October 2023).

Two tracking algorithms, the Forecasting and Tracking the evolution of Cloud Clusters (ForTraCC; Machado et al., 1998) and the Tracking Of Organized Convection Algorithm (TOOCAN; Fiolleau and Roca, 2013), are not publicly available. These trackers are reviewed here because their development has provided and continues to provide publicly available data on MCSs over South America (ForTraCC) and globally (TOOCAN); <https://sigma.cptec.inpe.br/fortracc/>, last access: 07 June 2024) and the global tropics (TOOCAN; Fiolleau and Roca, 2024). ForTraCC is currently employed operationally for nowcasting at the Brazilian Center for Forecast and Climate Studies of the National Institute of Spatial Research. It can utilize input data from radar, precipitation, or outgoing longwave radiation and employs an area-overlapping tracking approach. TOOCAN identifies the most convective cores of the cloud top, which are characterized by the lowest brightness temperature T_b . Using clustering methods, it associates these cloud clusters over time. This approach enables the study of MCSs by decomposing them into their numerous small-scale features, facilitating earlier detection in their life cycle.

1.1 [The Original TAMSv1.0](#)

In this paper, we will describe the new open-source Python-based tracker known as the Tracking Algorithm for Mesoscale Convective Systems (TAMS). However, before discussing [the Python-based TAMS](#), we will review the first version (“[TAMS v1.0](#)”-original TAMS”) which was written in MATLAB[®]. TAMS was initially developed to track and analyze tropical MCSs over Africa associated with African easterly waves (Núñez Ocasio et al., 2020a, b). These MCSs are directly associated with the formation of tropical cyclones (TCs) in the Atlantic (Núñez Ocasio et al., 2020b; Rajasree et al., 2023), the intensity of the West African Monsoon (Núñez Ocasio et al., 2021), and initiation by topography (Hamilton et al., 2020, 2017), which all together, adds layers of complexity to study them. This first version of TAMS comprised four main steps: identification, tracking, classification, and the assignment of precipitation. A cloud element (CE) identified as a potential MCS candidate had to meet specific criteria, including a T_b area of 235 K or lower, with an area $\geq 4000 \text{ km}^2$ of embedded 219 K T_b regions (cold cores). The [embedded cold core has to always be identified during the MCS lifetime, otherwise it is not identified as an MCS. The](#) tracking step involved a combination of the area-overlap technique and a modified version of the centroid-projection technique. In this modified approach, with the longitudinal component of the CE centroid, the CE was projected using a fixed climatological zonal propagation speed, for which projected distance depended on the temporal resolution of the data. In Núñez Ocasio et al. (2020a), the CEs were projected two hours into the future. If CEs of the current time sufficiently overlapped (i.e., 55%) with CEs of the next satellite image (and thus, forward linking), then the future CE was flagged as a ‘kid’ of the current satellite image CE ‘parent’. The flagged ‘families’ of CEs were then grouped (the actual track) using a recursive graph-walking function. The entire track of an MCS was then classified into one MCS class following specific area, shape, and time criteria (see Núñez Ocasio et al. (2020b), their Table 1). There were four main classes defined in [TAMS v1.0 original](#)

TAMS comprising two main group: organized and disorganized systems. The four specific classes were: Mesoscale Convective Complexes (MCCs), Convective Cloud Clusters (CCCs), Disorganized Long-Lived (DLLs), and Disorganized Short-Lived (DSLs). The last step of ~~TAMS v1.0~~ original TAMS was the assignment of precipitation, which used IMERG data interpolated for compatibility with the ~~3-km~~ 4-km IR data. At the time, regridding from higher-resolution precipitation estimates, such as IMERG, rather than coarser TRMM 3B42 estimates, represented a significant improvement in TAMS compared to other MCS tracking algorithms.

~~TAMS v1.0~~ The original TAMS allowed Núñez Ocasio et al. (2020a) to analyze the morphology and climatology of MCSs in Africa, a region with various spatial- and time-scale atmospheric phenomena that interact (e.g., West African Monsoon, African easterly waves (AEWs), African easterly jet (AEJ), and the ITCZ), especially over the northern summer months. It was found that a realistic representation of MCS propagation over Africa is dependent on the AEJ, and realistic MCS tracks are only attained when the tracking technique accounts for the AEJ mean background flow through cloud projection (Núñez Ocasio et al., 2020a). These results were important as they showed that tracking technique differences can bias the lifetimes of longer-lived convective systems that, over Africa during the northern summer, tend to be coupled to AEWs. The projection of cloud edges using a climatological MCS propagation speed facilitated the area-overlap method by enhancing the probability of connecting ~~cloud elements (CEs)~~ CEs that belonged to the same system. Additionally, this projection approach also facilitated the handling of splits and mergers.

~~TAMS v1.0~~ The original TAMS was also applied to a study that investigated MCSs coupled to AEWs. With a combination of MCS tracks using ~~TAMS v1.0~~ original TAMS and AEW tracks (Brammer et al., 2018), a wave-relative framework was developed in order to study the complex interactions between MCSs and AEWs. Núñez Ocasio et al. (2020b) found that there are significant differences between the MCSs of AEWs that become ~~tropical cyclones (TCs)~~ TCs and the MCSs of AEWs that do not undergo TC genesis. MCSs of developing AEWs (those that become TCs) are more likely to be of the squall line type over Africa and the Eastern Atlantic. These MCSs are more likely to move at the same speed and positioned at the wave vortex they are coupled to.

~~TAMS v1.0~~ The original TAMS was written in MATLAB, and it was not an open-source code. Unlike some other trackers, it did not use a preexisting package to track or link CEs detected; rather, the code was written entirely from scratch using some MATLAB image processing. The objective of this paper is to introduce and describe the new ~~"TAMS v2.0"~~ TAMS Python-based open-source project. ~~TAMS v2.0~~ The new TAMS retains the essence of ~~TAMS V1.0~~ original TAMS while introducing new capabilities, configurations, and settings to make it more user-friendly and flexible. It also provides visualization and post-processing tools.

The following sections are organized as follows: Section 2 will provide an overall description of ~~TAMS v2.0~~ the new TAMS with subsections that detail each of the algorithm's steps and related utilities. Section 3 will focus on introducing additional settings and helper functions as part of the software. Section 4 will be a summary, including a subsection for the caveats and development goals.

2 TAMS ~~v2.0~~ Open-Source Python package – Overall Description

The ~~Tracking Algorithm for Mesoscale Convective Systems (TAMS) v2.0~~ new version of TAMS (hereon TAMS) is an open-source MCS tracking and classifying Python-based package. A standard workflow using TAMS ~~v2.0~~ follows the same main four steps as its predecessor: 1) Identify, 2) Track, 3) Classify, and 4) Assign variable(s) (Figure 1), but the steps can also, to some extent, be run independently. TAMS ~~v2.0~~ now includes the capability to assign any desired variable or atmospheric field of choice (not limited to precipitation as in ~~TAMS v1.0~~ original TAMS) to each mesoscale convective system (MCS) for calculating corresponding statistics of the variable within the cloud area. This new variable assignment functionality, which will be discussed in detail in the following sections, allows TAMS ~~v2.0~~ to be customized to identify and track using additional criteria specified by the user, rather than solely relying on T_b -dependent criteria. An example of this is the study by Prein et al. (2024) for which TAMS's identification criteria were modified to follow the study's identification criteria.

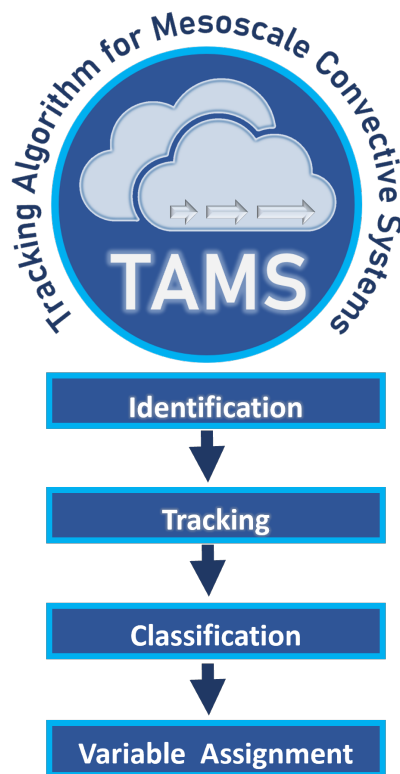


Figure 1. Schematic of TAMS logo and the four main algorithm steps.

The TAMS documentation page (<https://tams.readthedocs.io/>) provides a set of instructions for Conda/Mamba or pip installation methods. The package includes a set of visualization, sample datasets, and post-processing tools including functionalities that will be discussed in the following sections. One unique functionality of TAMS ~~v2.0~~ is that, like ~~TAMS v1.0~~ original TAMS, it is grid-independent for tracking, making it a valuable tool for validating simulated MCSs against observed systems. TAMS

140 ~~v2.0~~ is additionally grid-independent for assigning variables and supports unstructured grid input in the identification stage. TAMS ~~v2.0~~ provides optional parallelization for (1) CE identification and (2) calculation of statistics of gridded data within MCS and cold-core areas. ~~TAMS v2.0's~~ [The TAMS](#) core dependencies are: GeoPandas (den Bossche et al., 2023), Matplotlib (Hunter, 2007), NumPy (Harris et al., 2020), pandas (Wes McKinney, 2010; The pandas development team, 2023), scikit-image (van der Walt et al., 2014), Shapely (Gillies et al., 2023), and xarray (Hoyer and Hamman, 2017). The documentation
145 examples are provided as Jupyter Notebooks. The output format is a GeoPandas GeoDataFrame, but this can be transformed into a gridded mask representation, as done for the Prein et al. (2024) tracker intercomparison project (code available in [TAMS GitHub](#) [the TAMS GitHub repository](#)). Next, each step of the algorithm will be discussed in detail. ~~From hereon, TAMS v2.0 will be addressed as TAMS.~~

2.1 Identification

150 The default TAMS identification [step](#) follows the approach of the first version, using contours of T_b or cloud-top temperature (CTT) data (if using model data) to identify cloud regions (i.e., CEs) of 235 K areas containing embedded 219 K area(s) $\geq 4000 \text{ km}^2$. The field used must have associated latitude and longitude coordinate variables. Extremely small 219 K areas ($\leq 10 \text{ km}^2$) are discarded, as well as 235 K areas that do not meet the 4000 km^2 threshold. These contours definitions are converted to Shapely polygons, with the convex hull operation applied in order to smooth out the shapes and reduce the number points
155 required to represent them (to reduce memory requirements and speed up computations). The `tams.identify` function returns a GeoDataFrame of these shapes. This is the first step of the TAMS workflow and it can also be ran within the `tams.run` function which runs all the steps of the workflow with one command (note that if using `tams.run`, the input xarray DataArray should have both cloud-top temperature and precipitation rate variables). [The user is able to modify the identification criteria through the use of the variable-assigning functionality as was done for Prein et al. \(2024\). This functionality will be described in the next sections. The user does not need to provide timestep and grid spacing information to TAMS but they should be aware of it when considering overlap threshold and the addition of cloud projection for the tracking step discussed in the next section.](#)

Other parameters in this identification step include enabling parallelization (for input data with a time dimension), ~~ctt_threshold~~ (cloud-top temperature threshold for cloud boundary) and the ~~ctt_core_threshold~~ [the CTT threshold for the cloud boundary, and an additional CTT threshold](#) used to identify the deep convective areas and embedded cold cores, ~~respectively~~.
165 Figure 2 is a visual example using the Meteosat Second Generation (MSG) geostationary satellite (Schmetz et al., 2002), specifically the $10.8 \mu\text{m}$ spectral band of the Spinning Enhanced Visible and Infrared Imager (SEVIRI) data on September 16, 2022. MCSs coupled to an AEW that were active during research flight seven of field campaign CPEX-CV (<https://espo.nasa.gov/cpex-cv/content/CPEX-CV>, last access: 31 October 2023) were identified. The red crosses show the track of the AEW up to that
170 time using AEW tracker by Lawton et al. (2022). The TAMS package includes sample MSG satellite data that can be loaded [using API functions](#) as either the satellite IR radiance (channel 9) ~~using the `tams.data.load_example_ir` function or the `tams.data.load_example_tb` function which loads or~~ derived T_b . The user can compute the T_b by using [function](#)

`tams.data.tb_from_ir` with an API function that takes MSG SEVIRI IR satellite radiance and channel number as input (<https://www.eumetsat.int/media/8571>).

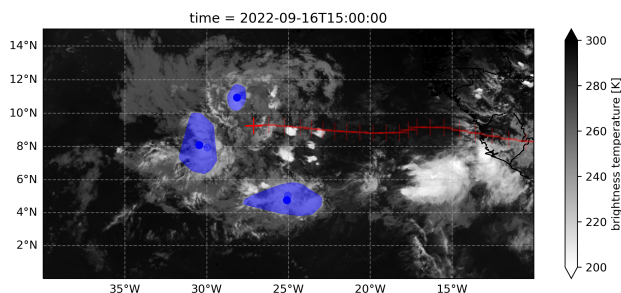


Figure 2. Identified MCSs using MSG data during research flight seven of CPEX-CV field campaign. CEs (convex-hull, warm-core 235-K areas) are in blue and IR in shade. Blue dots represent geographical centroid position. Red crosses are the track of the AEW. Time is in UTC.

175 2.1.1 Grid-Independent Identification

TAMS includes sample data taken from a 15-km global-mesh MPAS simulation from 2006-09-08 12:00 UTC to 2006-09-13 18:00 UTC initialized with [IFS Núñez-Ocasio and Rios-Berrios \(2023, 2022\)](#) the Integrated Forecast System (IFS) (Núñez Ocasio and Rios). This includes native unstructured-grid model output and output regridded to a 0.25° lat/lon grid using a first-order conservative method [Jones \(1999\) via CDO](#). (Jones, 1999) via Climate Data Operators (CDO; <https://code.mpimet.mpg.de/projects/cdo>, last access: 10 June 2024). To keep file sizes down, the versions included in TAMS are spatial subsets of the original model outputs and include only selected variables. The sample datasets can be automatically downloaded `with tams.data.download_examples` and then loaded using `tams.load_example_mpas` and `tams.load_example_mpas_ug`, respectively then loaded as xarray objects using API functions.

TAMS is able to identify CEs in both MPAS datasets by contouring the [Cloud-top temperature \(CTT\) threshold cloud-top temperature \(235 K by default\)](#). For unstructured-grid data, this currently uses Matplotlib’s `tricontourf` function. [By default](#) [In this case, by default](#), the Delauney triangulation of the lat/lon coordinates is used. Note that this is only an approximation of the true MPAS grid, which is mostly made up of hexagons, but we expect this effect to be insignificant for our high-resolution example. MPAS grids can be decomposed into triangles (e.g. 6 per hexagon) and the resulting triangulation can be used instead if desired (<https://mpas-dev.github.io/MPAS-Tools/stable/visualization.html#mpas-mesh-to-triangles>) for a faithful representation but with increased contouring compute time. [We refer to the identification as grid-independent because we can support unstructured-grid data in addition to structured-grid data with 1- or 2-D lat/lon coordinates.](#)

Figure 3 shows a comparison of MPAS [unstructured-grid unstructured-grid](#) identified CEs compared to those identified from the MPAS [data: regridded data](#). The native output is the most faithful to the true model state. Regridding is often done from a higher to a lower spatial resolution, and, depending on the techniques used, CEs may become connected. For example, the CE

195 near 5° N, 105° E in Figure 3b is separate from the larger CE in the identification using the native MPAS data but not in that using the regridded data.

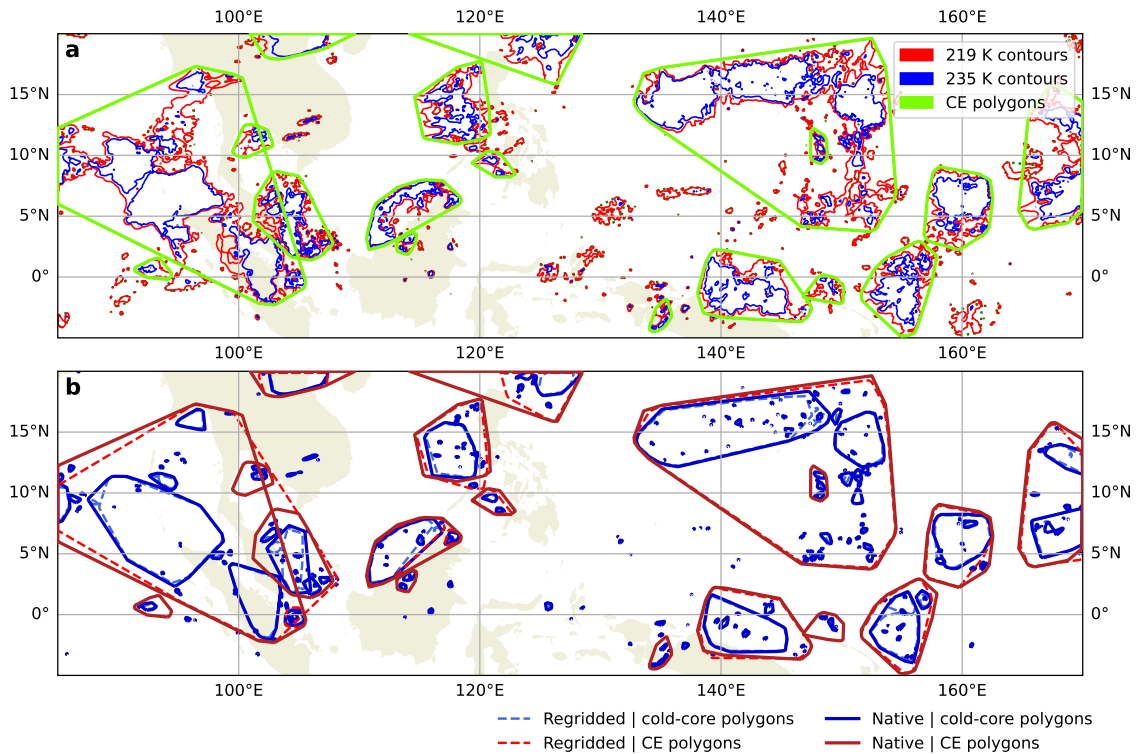


Figure 3. CEs identified at 2006-09-08 22:00 UTC (10 hours in) for the sample MPAS datasets. a) contours of the native MPAS output and associated CE polygons. b) CEs derived from native (solid lines) MPAS output and regridded (dashed lines) MPAS output.

2.2 Tracking

By default, the track of an MCS is obtained by linking CEs of the current CTT to CEs of the previous CTT at the current time to CEs at the previous time (backward linking) based on maximum CE polygon overlap (`tams.overlap`). Since the polygons are defined by a set of coordinates (not, e.g., by integer masks on a grid), the tracking can be considered grid-independent. A CE at time t_i has one ‘parent’ at t_{i-1} , but multiple CEs can have the same parent (e.g. splitting). Optionally, you can choose to have only the largest CE continue a given track as done in Evans and Shemo (1996). Forward linking is also available, and other linking methods are in development.

Overlap thresholds are based on normalized area (0 – 1), so it is important to consider which area to use when normalizing the overlap area. Núñez Ocasio et al. (2020a) used the minimum area between the two CEs being compared. In this version of TAMS, by default, the area of the CE at the current time when linking is used, but `tams.overlap` TAMS provides other options: the minimum CE area, maximum CE area, the average, the current CE, or the CE at the other time. As in the first

version, there is a setting to project the CE (`tams.project function`) in the x direction before computing overlap, which proves useful when MCSs are propagating in an environment with prevalent zonal background flow, especially when hourly or
 210 higher-time-resolution data is not available (Núñez Ocasio et al., 2020a; Feng et al., 2023). The user could estimate what value to use based on a climatology of wind data but we leave it to the user's discretion to decide on the specific value to choose. Accounting for background flow by projecting the CE before calculating overlap ensures that those MCSs that move fast are being tracked. For example, over Africa, the African easterly jet accounts for a large part of the MCS propagation speed. Thus, depending on the resolution being used the user may want to add a projection of -10 m s^{-1} (Núñez Ocasio et al., 2020a). The
 215 track of an MCS is then defined as the record of all CEs linked. It is important to note that, for a given MCS(~~ID~~), there may be more than one CE at a given time. To define a single point-wise track in this case, we use the centroid of the combined 'multi-polygon' at each time.

Figure 4 shows MCSs identified and tracked through time (darker shades represent later times) from the sample MSG satellite data using `the tams.plot_tracked a TAMS API` function to plot the tracks. How different setting combinations
 220 can be used to link and subsequently, alter the track of an MCS is shown in Table 1 for the MCS in the red box in Figure 4. In order to capture the full track of an MCS that evolved from a larger area to a smaller area as in the example, projection and overlap normalization settings should be carefully selected. Only the two cases with u projection -15 m s^{-1} and average or minimum overlap normalization continue this track (cases 3 and 4 in Table 1).

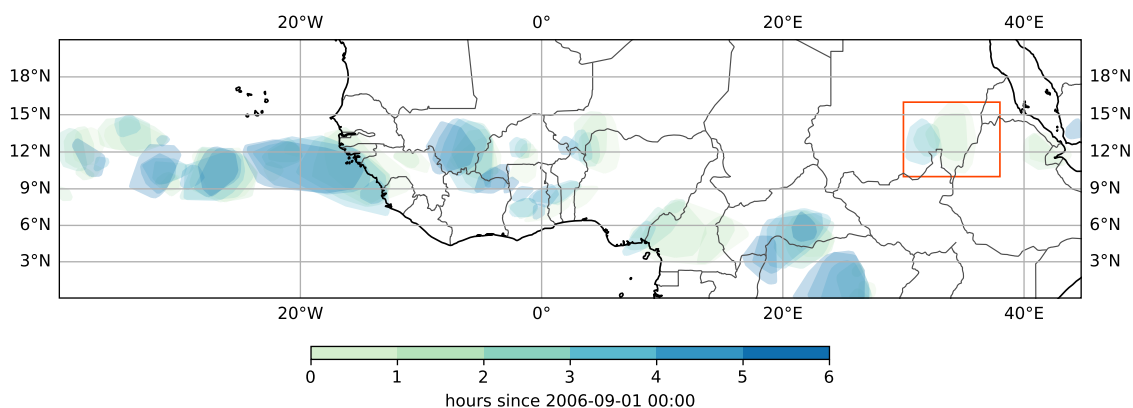


Figure 4. MCS tracks in time (darker shades represent later times) from sample MSG satellite data.

A variable that can be analyzed strictly based on the information from the CE and MCS shapes is the area of the systems.
 225 Figure 5 shows how the area of simulated MCSs in MPAS is sensitive to threshold temperature selection for identification and to projection speed for tracking. The area is more sensitivity to temperature tuning than projection speed, since there is little noticeable change between the distributions within a certain column. For example, the most likely area range is around ~~10^5~~
 ~~km^2~~ 10^5 km^2 (consistent with Feng et al. (2023) their Table 1) for all cases in the first column. However, higher projection
 speed results in a larger number of MCSs in all temperate threshold cases, suggesting that less linking is occurring. Warmer
 230 temperature thresholds compared to the defaults (rightmost column) lead to increased system counts and a smoother distribution

Table 1. Example using different tracking options for an observed MCS case.

case	u proj [m s ⁻¹]	linking	overlap norm	continued?
0	0	backward	average	no
1	0	forward	minimum	no
2	0	forward	maximum	no
3	-15	backward	average	yes
4	-15	forward	minimum	yes
5	-15	forward	maximum	no

covering a broader area range. A warmer threshold leads to mergers in the contouring, but also provides more new shapes (in this case the latter wins out). On the other hand, much cooler temperature thresholds (left column) pick up about half as many systems, with a distribution that favors larger areas. In this case, the cold-core area criterion is more restrictive.

Another way in which the area of MCSs can be analyzed is by comparing it with other MCS characteristics such as duration. Figure 6 shows duration versus area 2-D KDEs for simulated MCSs from MPAS sample data. In this example we see that the systems with the longest duration are not necessarily the largest. Here, except for some outliers, the systems with the longest duration are [here](#) of low–moderate area, while the largest systems are of low–moderate duration. Moreover, there are different relationship between area and duration between different core thresholds (e.g., the slope is steeper for the colder cases).

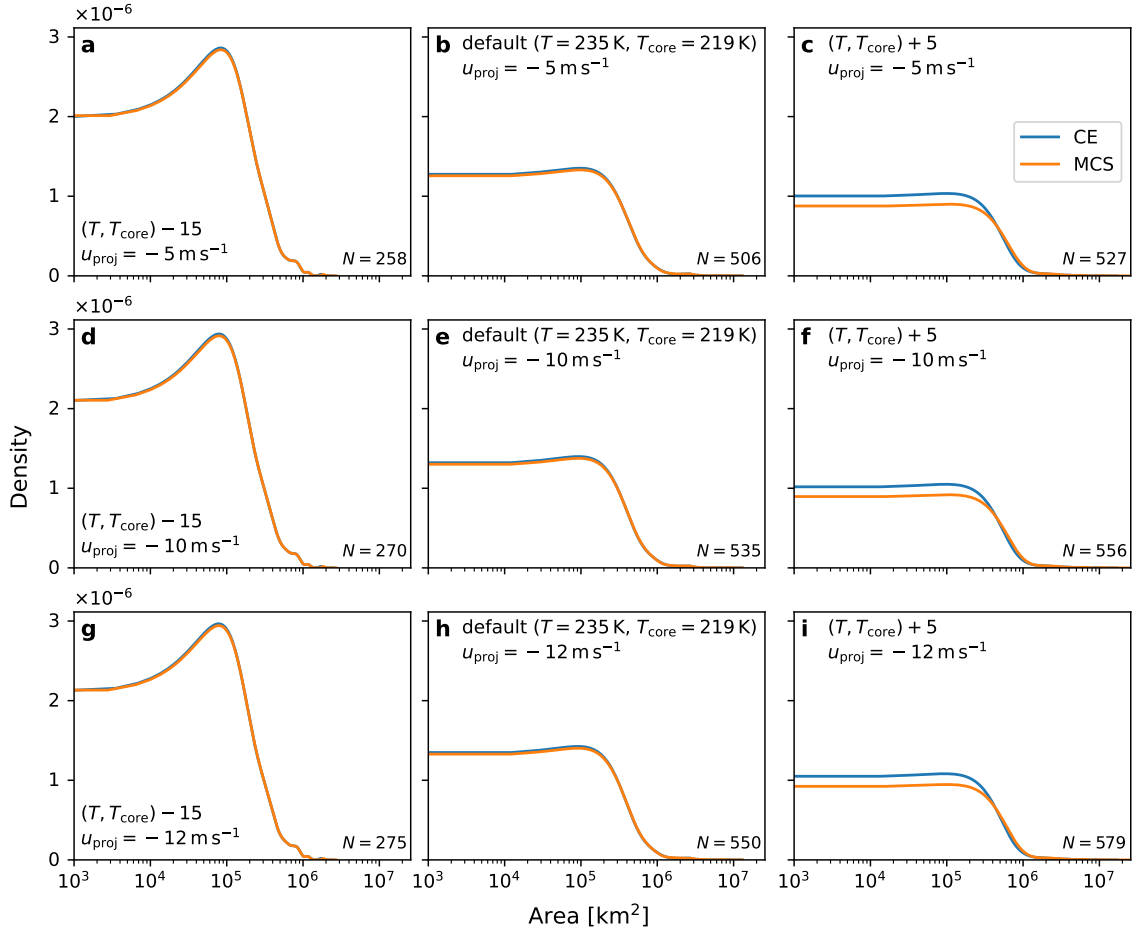


Figure 5. Maximum area kernel density estimates (KDEs) for simulated MCSs from MPAS sample data interpolated to a latitude/longitude grid. Rows represent results using the same projection speed for tracking while columns represent different temperature thresholds for identification. The data ~~is~~ are for the period of 2006-09-08 12:00 UTC to 2006-09-13 18:00 UTC.

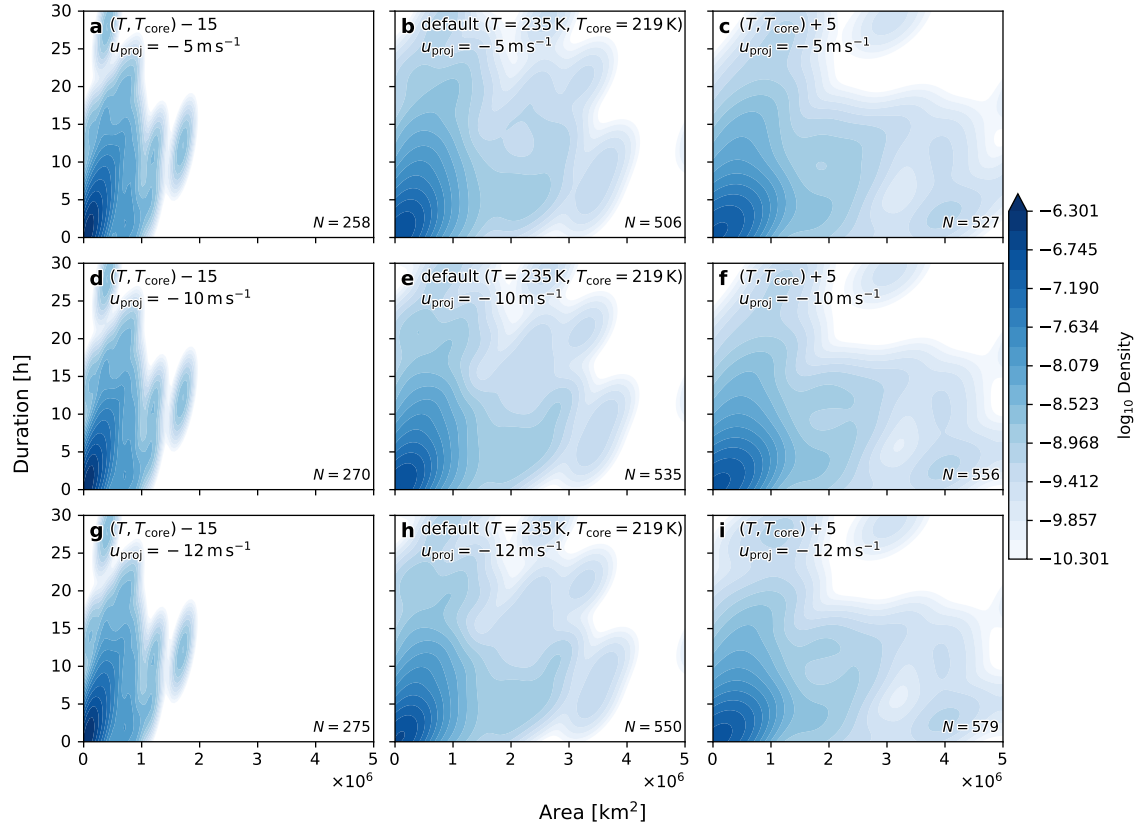


Figure 6. Duration versus maximum area 2-D kernel density estimates (KDEs) for simulated MCSs from MPAS sample data interpolated to a latitude/longitude grid. Rows represent results using the same projection speed for tracking while columns represent different temperature thresholds for identification. The data is [is-arc](#) for the period of 2006-09-08 12:00 UTC to 2006-09-13 18:00 UTC.

2.3 Classification

240 The TAMS software allows for the user to classify the entire lifetime of an MCS into one class based on the area, shape, and time criteria described in Table 2. There are four main classes defined in TAMS within two main groups: organized and disorganized systems. The four specific classes are: Mesoscale Convective Complexes (MCCs), Convective Cloud Clusters (CCCs), Disorganized Long-Lived (DLLs), and Disorganized Short-Lived (DSLs). These criteria mostly follow those of the first version in Núñez Ocasio et al. (2020a) with the distinction that DSLs are classified as anything with duration shorter than
 245 6 hours (rather than 3 hours or less). Note that this criteria need not to be met for consecutive times but for at least for 6 hours within the lifetime of the system. Recall that all TAMS CEs meet the cold-core criterion.

Table 2. Criteria to Categorize the four Classes of MCSs

Organized Systems	Disorganized Systems
<i>Mesoscale Convective Complex (MCC)</i>	<i>Disorganized Long-Lived (DLL)</i>
Size: < 219 K region has area $\geq 25,000 \text{ km}^2$ < 235 K region has area $\geq 50,000 \text{ km}^2$ Duration: Size definitions are met for ≥ 6 hours Shape: $\varepsilon = \sqrt{1 - \frac{b^2}{a^2}} \leq 0.7$	Temperature: < 219 K Duration: Sustains for ≥ 6 hours No size or shape criterion
<i>Convective Cloud Cluster (CCC)</i>	<i>Disorganized Short-Lived (DSL)</i>
Size: < 219 K region has area $\geq 25,000 \text{ km}^2$ Duration: Size definitions are met for ≥ 6 hours Shape: No shape criterion	Temperature: < 219 K Duration: Sustains for ≤ 6 hours No size or shape criterion

In order for each MCS to be classified, the user can input the GeoDataFrame obtained from running `tams.track` into the `tams.classify` function. The result will be a GeoDataFrame with an additional categorical `mes_class` MCS class column added to the input frame. This GeoDataFrame retains information associated with each CE, and ~~in addition to the~~
 250 ~~med_id~~column, it allows for analyzing the number of CEs versus the number of MCSs by category, as shown in Figure 7.

Over western Africa during the Figure 7 example period, the majority of the convection is classified as DSL. This prevalence of DSLs is notable, as a significant portion of the convection in this region belongs to this category (Figure 7a and b). Disorganized convective systems are known to be the most frequent type of convective systems in the tropics (Rossow et al., 2013; Tan et al., 2013; Semunegus et al., 2017; Núñez Ocasio et al., 2020a). Furthermore, the number of organized MCSs
 255 (i.e., ~~MCSs~~ MCCs and CCCs) is greatly influenced by the ITCZ, West African Monsoon, and AEWs, particularly during the northern summer months (Berry and Thorncroft, 2005; Núñez Ocasio et al., 2020b, 2021; Núñez Ocasio and Rios-Berrios, 2023).

As expected, the number of CEs is much greater than the count of MCSs. (An MCS only gets counted once for its lifetime, while CE counts include counts at each time in the period.) Organized systems (~~MCSs~~ MCCs and CCCs) were less common,
 260 with their count below 100. Note that MCCs are defined following Maddox (1980), which defined an MCC as a distinct intense

organized and circular convective system (thus, the eccentricity criterion). CCCs, which include squall-line type convection ; (and thus, those that are too elliptically-shaped or elongated to be MCCs), were the second most prominent category during this time. The number of DSL MCSs is comparable to the number of DSL CEs due to the shorter MCS durations. Duration box plots, as shown in Figure 7c, can help the user discern differences in the duration of the systems across categories. Although 265 CCCs and MCCs share the same time criterion, it is evident that over September 2022, MCCs, based on the median, lasted longer than CCCs.

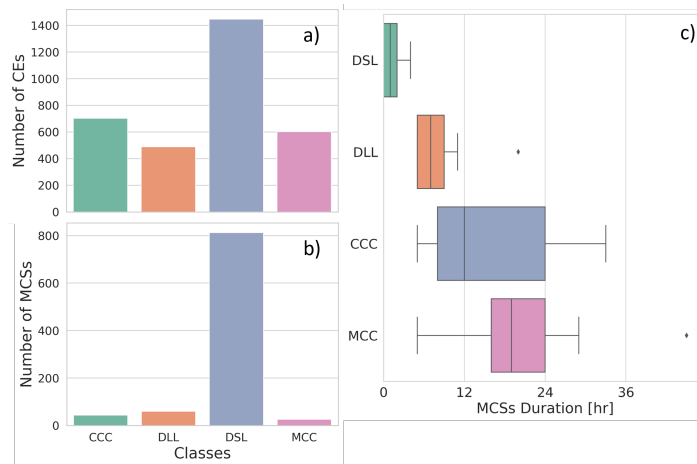


Figure 7. Example statistics of observed number of CEs (a) and MCSs (b), and duration of MCSs by category (c) during September 4th through the 30th, 2002-2022, period of CPEX-CV field campaign, over a western Africa domain.

Figure 8 displays MCS area distributions from the CPEX-CV field campaign, categorized by their respective types. During this period, disorganized systems (DSLs and DLLs) were generally smaller than organized systems (MCCs and CCCs), with MCCs, as expected, having the largest median area.

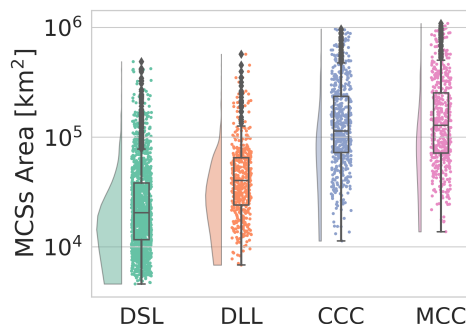


Figure 8. Raincloud plots of MCS area (note the log scale) by category for the same period and domain as in Figure 7.

270 2.4 Variable Assignment

Another unique functionality of TAMS, in addition to identifying and tracking systems using CE polygons and being grid-independent, is its ability to assign any variable of choice to CE or MCS shapes and compute related statistics (e.g., mean and standard deviation) on the data within using `the_tams_data_in_contours` function—a TAMS API function. The statistics are computed over the entire MCSs but users can also apply the tooling to compute statistics over the CEs. If `tams.run` is used instead of running each step separately, the statistics will also include mean and standard deviation of the cold core temperature and mean precipitation rates. This allows for users to assess the evolution, characteristics, and nature of the systems under study using different atmospheric variables. This function is not limited to a specific data type, spatial resolution, or a specific grid, as demonstrated in the previous sections. Same Having the same temporal resolution, or at least data that includes the same times allows the user to match variables to each MCS across various datasets. The geospatial selection process treats the input data as points; only latitude and longitude coordinates are needed, and these need not be the same as those of the data used for CE identification. A visual example of how the variable assignment works is shown in Figure 9, which demonstrates that the geospatial selection also works for unstructured-grid data.

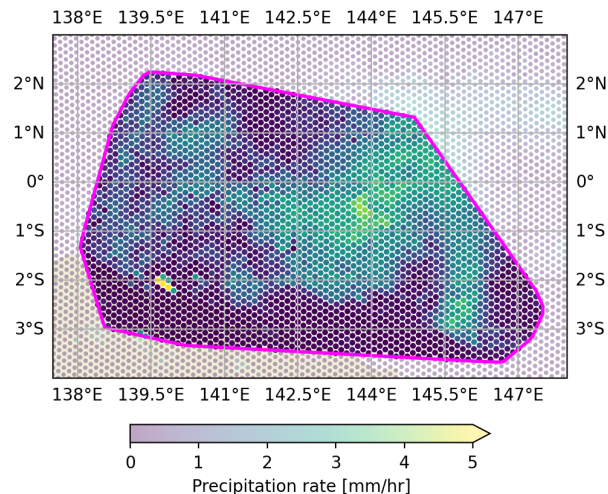


Figure 9. Visualization of the variable assignment of precipitation within a CE selected from Figure 3b.

One common example is assigning precipitation to each MCS from satellite-derived products like IMERG, as shown in Figure 10a for the example period of observed MCSs. The statistics include each of the time steps of the MCSs (the CEs of an MCS are combined before creating the plot). DSLs, which had the greatest number of counts, were the rainiest type of MCSs. However, the precipitation rate median of CCCs and MCCs were slightly above that of DSLs, at about 3 mm h^{-1} .

Through this function, the user can also extract the minimum T_b as a diagnostic for convection intensity. In Figure 10b, the most intense and coldest cloud tops were observed in MCCs during the example period. If the user or researcher is analyzing

model data that provides a full array of 2-D and 3-D variables at each grid cell, they are not limited to just cloud-top temperature
290 or precipitation. With this functionality, they can assign many other variables and compute relevant statistics.

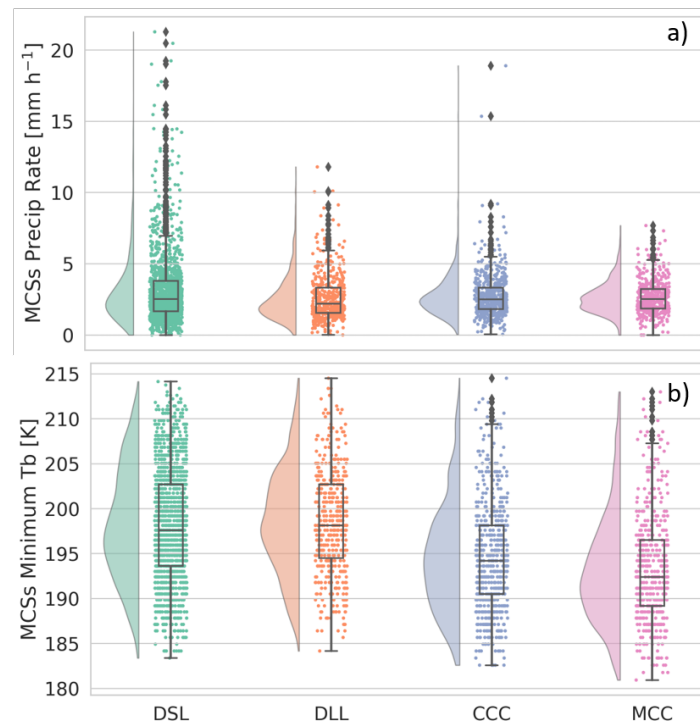


Figure 10. Raincloud plots of MCS ~~minimum T_b and~~ area-mean rain rates (a) and MCS minimum T_b (b) by category for the same period as in Figure 7.

As another example, Figure 11 shows 2-D distributions of simulated precipitation rate versus minimum T_b across different setting options. For this particular subset of data, there is no distinct relationship between minimum T_b and average precipitation rates. Most of the differences across the setting options are due to sensitivity to the change in temperature threshold for identification than to the selected projection speed as discussed in Section 2.2. The sample simulated precipitation rate dataset
295 ~~is available in the package and~~ can be loaded ~~via `tams.load_example_mpas`~~ with an API function.

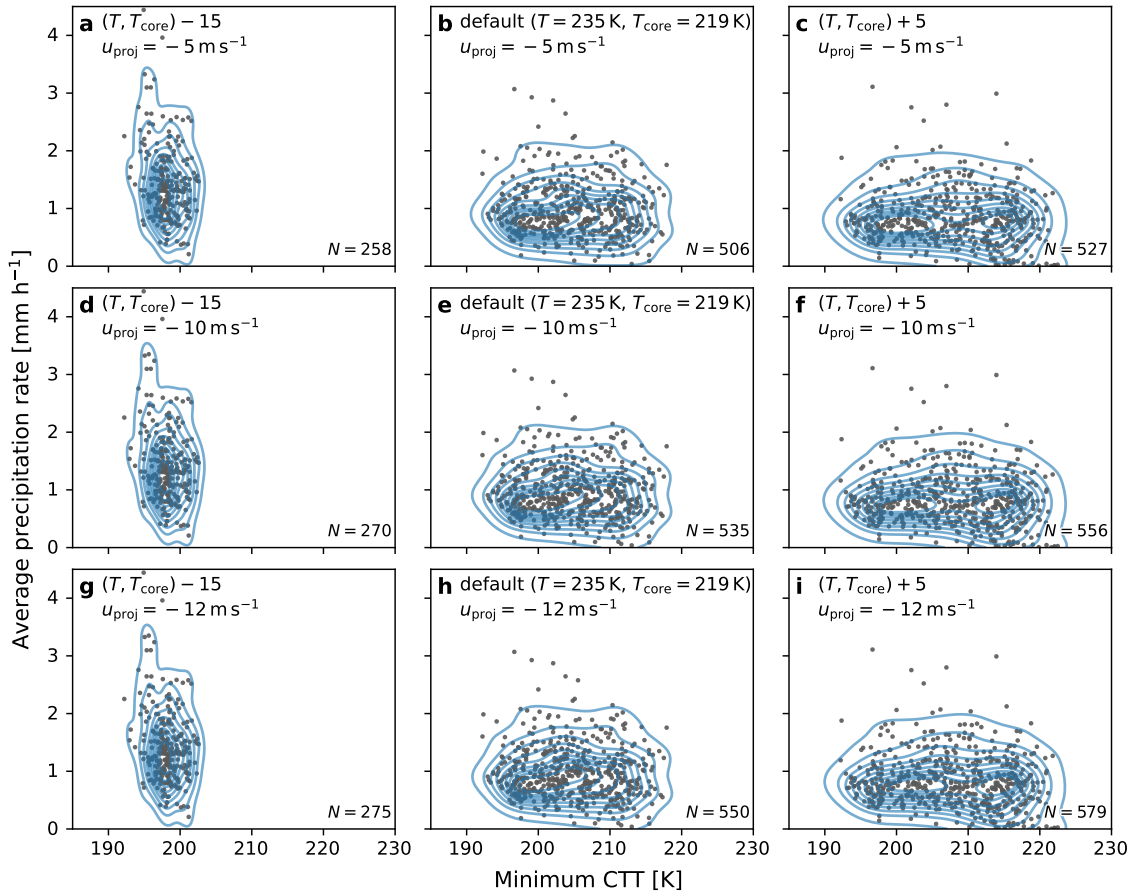


Figure 11. 2-D precipitation rate versus minimum T_b kernel density estimates (KDEs) for simulated MCSs from MPAS sample data interpolated to a latitude/longitude grid. Rows represent results using same projection speeds for tracking while columns represent different temperature thresholds for identification. The data is ~~is~~ are for the period of 2006-09-08 12:00 UTC to 2006-09-13 18:00 UTC, as in Figure 5.

3 Additional Tools and Helper Functions

3.1 Eccentricity ~~calculation~~ Calculation

A quantity that can provide information about the structure of the system is eccentricity (Evans and Shemo, 1996; Núñez Ocasio et al., 2020a). ~~The `tams.calc_ellipse_eeen`~~ A TAMS API function can be used to calculate the first eccentricity ($\epsilon = \sqrt{1 - b^2/a^2}$) of the least-squares best-fit ellipse to the coordinates of the polygon's exterior. If the first eccentricity is ≤ 0.7 , the system is considered more circular (a circle has $\epsilon = 0$). This is used in the default MCS classification.

Figure 12 displays the evolution of eccentricity over time, along with other relevant variables, for an observed MCS identified and tracked during research flight eight of the CPEX-CV field campaign on September 20, 2022. This system persisted for four hours, and TAMS classified it as a DLL. Initially, the system exhibited a more elongated shape, reaching its ~~peak precipitation~~ precipitation rates peak one hour after initiation. As time progressed, the system gradually expanded and became more circular. By the time of dissipation, it had evolved into a large and nearly circular system, indicative of a dissipating anvil.

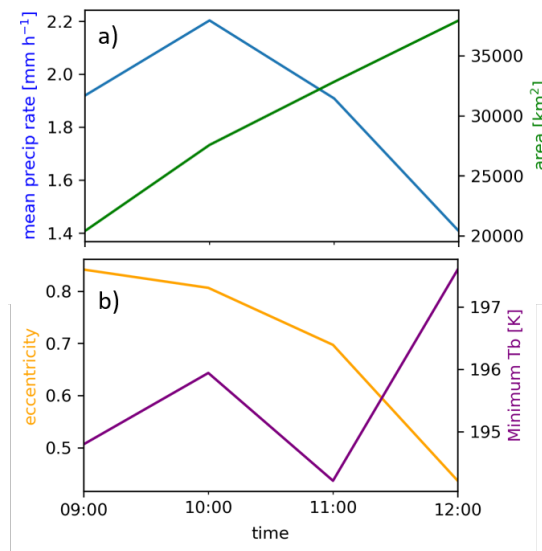


Figure 12. Time series of the observed MCS during research flight eight of the CPEX-CV field campaign of precipitation rate (blue line) and area (green line) (a), and eccentricity (yellow line) and minimum T_b (orange line) (b).

3.2 ~~Calculating cloud-top temperature~~ Estimating Cloud-Top Temperature from ~~simulated~~ Simulated OLR

TAMS also includes code to ~~calculate the cloud-top~~ estimate the cloud-top temperature from simulated ~~top-of-the-atmosphere~~ top-of-the-atmosphere outgoing longwave radiation (OLR) following the Stefan–Boltzmann law. This is used within ~~`tams.load_mpas_precip`, the function~~ the function that was used used to load simulations nearing near-realtime application for the PRECIP field campaign. The ~~Yang and Sligo (2001) method~~ Yang and Slingo (2001) method, which puts observed

[infrared brightness temperature and that derived from model OLR on a more equal footing](#), has also been implemented, and others are planned. [It is important to note that these methods really give infrared brightness temperature, which is related to but not the same as the cloud-top temperature.](#)

315 **3.3 Post-processing Post-Processing and Visualization**

Additional examples featuring the sample data and visualizations can be found within the documentation (<https://tams.readthedocs.io/>) [like the plotting of spatial maps including the convex hull outlines of CEs as in Figure 4](#). Example applications can be found in the examples directory of the GitHub repository. Post-processing and code for Figures 4, 5, 6, and 11 which show the different tracking and identification options, as well as the use of the `tams.load_example_mpas` [function example dataset loader functions](#), can be found in the documentation under examples. [These examples also show the statistics that can be derived quickly via high-level functions](#). Similarly, the code for Figure 3, demonstrating tracking on unstructured-grid data, is published in the documentation.

4 Summary

We have introduced and described TAMS, an open-source MCS tracking and classifying Python-based package available through GitHub that can be used to study both observed and simulated MCSs. In addition to describing each of the core steps of the algorithm ([1] Identify, 2) Track, 3) Classify, and 4) Assign variable(s)], we have introduced visualization and post-processing tools within the package to facilitate the analysis of MCSs for users. What distinguishes TAMS from other tracking packages is its specific design for tracking MCSs. However, the identification and tracking components are flexible and could easily be applied to variables other than cloud-top temperature for different tracking situations. The identification of MCSs is grid-independent, and the user can assign any desired variable to compute statistics on it within the MCS area over time. Current settings and helper functions enable various ways to calculate overlap and account for background flow. The user can select the preferred threshold temperature for the larger convective area to be detected and tracked, as well as the threshold for the corresponding cold cores. Options to select the desired linking method (backward or forward, keep largest, etc.) are also available. Through the sample data available, we have shown that TAMS works with satellite and model data, as well as with unstructured-grid native MPAS data.

4.1 Applications

Recently, TAMS was applied as an MCS forecasting tool using MPAS near-real-time forecast in recent PRECIP (<http://precip.org/>, last access: 12 December 2023) and CPEX-CV (<https://ghrc.nsstc.nasa.gov/home/field-campaigns/cpex-cv>, last access: 12 December 2023) field campaigns. In addition, TAMS is one of six MCS tracking algorithms participating in a multi-MCS-tracking intercomparison study (Prein et al., 2024), which is part of the NSF NCAR South America Affinity Group (SAAG; Dominguez and Co-authors, 2023) (<https://ral.ucar.edu/projects/south-america-affinity-group-saag>, last access: 12 December

2023) to study MCSs over South America. The specific TAMS SAAG application can be located under `examples/mosa` in the GitHub repository. PyFLEXTRKR, MOAPP, ForTraCC, tobac, and TOOCAN are also involved in this study.

345 TAMS is being used internationally for MCS detection and tracking. Currently, TAMS is part of a second multi-MCS-tracking intercomparison study that is making use of high-resolution global simulations from DYAMOND (<https://www.esiwace.eu/the-project/past-phases/diamond-initiative>, last access: 12 December 2023) to analyze MCSs globally. We hope TAMS can serve the scientific and research community worldwide, facilitating the study of observed and simulated MCSs. We very much welcome contributors to the code.

4.2 Caveats

350 There are a couple of caveats associated with the software that are worth noting. The use of convex hull to define CEs introduces some systematic bias towards larger areas. This could potentially lead to an artificial increase in the calculated system's propagation speed relative to the geographical centroid. More generally, however, computing overlap with convex hull shapes allows for larger likelihood of linking compared to more strict contour shapes. Additionally, for users interested in analyzing a convective system from its very early initiation stages as a convective cell, the TAMS identification criterion of requiring an
355 embedded 219-K core can sometimes inhibit the detection of these early system stages. However, it's important to mention that users have the flexibility to alter the criteria used in the software's settings.

4.3 Development Goals

Our development goals encompass the incorporation of additional settings into our system. These new settings include, but are not limited to:

- 360 1. Include other methods for computing CTT from T_b .
2. Implement a projection option based on trajectory history.
3. Implement the original TAMS linking method for comparison.
4. Implement a graph-based linking method with pruning, for better handling of (and recording of) both merging and splitting.
- 365 5. In CE identification, make the application of the convex hull operation optional, and support other shape-simplification options such as buffer.
6. Combine an AEW tracker (Lawton et al., 2022) with TAMS, as detailed in the study by Núñez Ocasio et al. (2020b).
7. Extract the code for reducing the CE dataframe to the MCS dataframe and the reduction from the MCS dataframe to the MCS stats dataframe, so that it can be used in custom workflows outside of `tams.run`.
- 370 8. ~~More~~ [Add more](#) documentation examples, including testing of generated idealized cases.

Code and data availability. The TAMS open-source code described in this work is publicly available via the following GitHub repository: <https://github.com/knubez/TAMS> (last access: 28 January 2024). TAMS can be installed using pip or conda/mamba. Jupyter Notebooks and sample MSG and MPAS data can be found in TAMS documentation page: <https://tams.readthedocs.io/en/latest/>. The version of the code used in this paper is available at <https://doi.org/10.5281/zenodo.8393890> (Núñez Ocasio, K. M. and Moon, Z. L., 2023). MSG satellite data for figures related to CPEX-CV can be downloaded via EUMETSAT with a user account: <https://eoportal.eumetsat.int>.

Author contributions. KMNO and ZLM together led the overall development of the TAMS Python code. Both authors contributed to the translation of original TAMS from MATLAB to Python while ZLM led the technical aspect of the translation. ZLM led the optimization of the code performance, packaging, and workflow. Both KMNO and ZLM contributed to the development of new features compared to the original TAMS. Both KMNO and ZLM contributed to the analysis, visualization, and writing of this paper.

380 *Competing interests.* The contact author has declared that none of the authors has any competing interests.

Acknowledgements. We thank the reviewers, [who provided valuable comments that improved the quality of this manuscript](#). This work was completed while the first author held an NSF NCAR Advanced Study Program Postdoctoral Fellowship. This material is based upon work supported by the NSF National Center for Atmospheric Research, which is a major facility sponsored by the U.S. National Science Foundation under Cooperative Agreement No. 1852977. We acknowledge the high-performance computing support from Cheyenne (doi: 10.5065/D6RX99HX) and Derecho (<https://doi.org/10.5065/qx9a-pg09>) through the NSF NCAR Computational and Information Systems Laboratory.

References

- Augustine, J. A. and Howard, K. W.: Mesoscale convective complexes over the United States during 1986 and 1987, *Monthly Weather Review*, 119, 1575–1589, [https://doi.org/10.1175/1520-0493\(1991\)119<1575:MCCOTU>2.0.CO;2](https://doi.org/10.1175/1520-0493(1991)119<1575:MCCOTU>2.0.CO;2), 1991.
- 390 Berry, G. J. and Thorncroft, C.: Case Study of an Intense African Easterly Wave, *Monthly Weather Review*, 133, 752–766, <https://doi.org/https://doi.org/10.1175/MWR2884.1>, 2005.
- Brammer, A., Thorncroft, C. D., and Dunion, J. P.: Observations and Predictability of a Nondeveloping Tropical Disturbance over the Eastern Atlantic, *Monthly Weather Review*, 146, 3079–096, <https://doi.org/10.1175/MWR-D-18-0065.1>, 2018.
- Carvalho, L. M. V. and Jones, C.: A Satellite Method to Identify Structural Properties of Mesoscale Convective Systems Based
395 on the Maximum Spatial Correlation Tracking Technique (MASCOTTE), *Journal of Applied Meteorology*, 40, 1683–1701, [https://doi.org/10.1175/1520-0450\(2001\)040<1683:ASMTIS>2.0.CO;2](https://doi.org/10.1175/1520-0450(2001)040<1683:ASMTIS>2.0.CO;2), 2001.
- den Bossche, J. V., Jordahl, K., Fleischmann, M., McBride, J., Wasserman, J., Richards, M., Badaracco, A. G., Snow, A. D., Tratner, J., Gerard, J., Ward, B., Perry, M., Farmer, C., Hjelle, G. A., Taves, M., ter Hoeven, E., Cochran, M., rraymondgh, Gillies, S., Caria, G., Culbertson, L., Bell, R., Bartos, M., Eubank, N., sangarshanan, Flavin, J., Rey, S., Gardiner, J., maxalbert, and Bilogur, A.: *geopandas/*
400 *geopandas*: v0.14.1, <https://doi.org/10.5281/zenodo.2650956>, 2023.
- Dixon, M. and Wiener, G.: TITAN: Thunderstorm Identification, Tracking, Analysis, and Nowcasting—A Radar-based Methodology, *Journal of Atmospheric and Oceanic Technology*, 10, 785–797, [https://doi.org/10.1175/1520-0426\(1993\)010<0785:TTITAA>2.0.CO;2](https://doi.org/10.1175/1520-0426(1993)010<0785:TTITAA>2.0.CO;2), 1993.
- Dominguez, F. and Co-authors: Advancing South American Water and Climate Science Through Multi-Decadal Convection-Permitting Modeling, *Bulletin of the American Meteorological Society*, <https://doi.org/10.1175/BAMS-D-22-0226.1>, 2023.
- 405 Evans, J. L. and Shemo, R. E.: A Procedure for Automated Satellite-Based Identification and Climatology Development of Various Classes of Organized Convection, *Journal of Applied Meteorology and Climatology*, 35, 638–652, [https://doi.org/10.1175/1520-0450\(1996\)035<0638:APFASB>2.0.CO;2](https://doi.org/10.1175/1520-0450(1996)035<0638:APFASB>2.0.CO;2), 1996.
- Feng, Z., Hardin, J., Barnes, H. C., Li, J., Leung, L. R., Varble, A., and Zhang, Z.: PyFLEXTRKR: a flexible feature tracking Python software for convective cloud analysis, *Geoscientific Model Development*, 16, 2753–2776, <https://doi.org/10.5194/gmd-16-2753-2023>, 2023.
- 410 Fiolleau, T. and Roca, R.: An Algorithm for the Detection and Tracking of Tropical Mesoscale Convective Systems Using Infrared Images From Geostationary Satellite, *IEEE Transactions on Geoscience and Remote Sensing*, 51, 4302–4315, <https://doi.org/10.1109/TGRS.2012.2227762>, 2013.
- Fiolleau, T. and Roca, R.: A Deep Convective Systems Database Derived from the Intercalibrated Meteorological Geostationary Satellite Fleet and the TOOCAN algorithm (2012–2020), *Earth System Science Data Discussions*, 2024, 1–42, [https://doi.org/10.5194/essd-2024-](https://doi.org/10.5194/essd-2024-36)
415 36, 2024.
- Gillies, S., van der Wel, C., Van den Bossche, J., Taves, M. W., Arnott, J., Ward, B. C., and others: *Shapely*, <https://doi.org/10.5281/zenodo.5597138>, 2023.
- Goyens, C., Lauwaet, D., Schröder, M., Demuzere, M., and Van Lipzig, N. P. M.: Tracking mesoscale convective systems in the Sahel: relation between cloud parameters and precipitation, *International Journal of Climatology*, 32, 1921–1934, <https://doi.org/10.1002/joc.2407>, 2012.
- 420 Hamilton, H. L., Young, G. S., Evans, J. L., Fuentes, J. D., and Núñez Ocasio, K. M.: The relationship between the Guinea Highlands and the West African offshore rainfall maximum, *Geophysical Research Letters*, 44, 1158–1166, <https://doi.org/10.1002/2016GL071170>, 2017.

- Hamilton, H. L., Núñez Ocasio, K. M., Evans, J. L., Young, G. S., and Fuentes, J. D.: Topographic Influence on the African Easterly Jet and African Easterly Wave Energetics, *Journal of Geophysical Research: Atmospheres*, 125, e2019JD032138, <https://doi.org/10.1029/2019JD032138>, 2020.
- 425 Harris, C. R., Millman, K. J., van der Walt, S. J., Gommers, R., Virtanen, P., Cournapeau, D., Wieser, E., Taylor, J., Berg, S., Smith, N. J., Kern, R., Picus, M., Hoyer, S., van Kerkwijk, M. H., Brett, M., Haldane, A., del Río, J. F., Wiebe, M., Peterson, P., Gérard-Marchant, P., Sheppard, K., Reddy, T., Weckesser, W., Abbasi, H., Gohlke, C., and Oliphant, T. E.: Array programming with NumPy, *Nature*, 585, 357–362, <https://doi.org/10.1038/s41586-020-2649-2>, 2020.
- Heikenfeld, M., Marinescu, P. J., Christensen, M., Watson-Parris, D., Senf, F., van den Heever, S. C., and Stier, P.: tobac 1.2: towards a flexible framework for tracking and analysis of clouds in diverse datasets, *Geoscientific Model Development*, 12, 4551–4570, <https://doi.org/10.5194/gmd-12-4551-2019>, 2019, 2019.
- 430 Hodges, K. I.: Feature Tracking on the Unit Sphere, *Monthly Weather Review*, 123, 3458–3465, [https://doi.org/10.1175/1520-0493\(1995\)123<3458:FTOTUS>2.0.CO;2](https://doi.org/10.1175/1520-0493(1995)123<3458:FTOTUS>2.0.CO;2), 1995.
- Houze Jr., R. A.: Mesoscale convective systems, *Reviews of Geophysics*, 42, <https://doi.org/10.1029/2004RG000150>, 2004.
- 435 Hoyer, S. and Hamman, J.: xarray: N-D labeled arrays and datasets in Python, *Journal of Open Research Software*, 5, <https://doi.org/10.5334/jors.148>, 2017.
- Hunter, J. D.: Matplotlib: A 2D graphics environment, *Computing in Science & Engineering*, 9, 90–95, <https://doi.org/10.1109/MCSE.2007.55>, 2007.
- Johnson, J. T., MacKeen, P. L., Witt, A., Mitchell, E. D. W., Stumpf, G. J., Eilts, M. D., and Thomas, K. W.: The Storm Cell Identification and Tracking Algorithm: An Enhanced WSR-88D Algorithm, *Weather and Forecasting*, 13, 263–276, [https://doi.org/10.1175/1520-0434\(1998\)013<0263:TSCIAT>2.0.CO;2](https://doi.org/10.1175/1520-0434(1998)013<0263:TSCIAT>2.0.CO;2), 1998.
- 440 Jones, P. W.: First- and Second-Order Conservative Remapping Schemes for Grids in Spherical Coordinates, *Monthly Weather Review*, 127, 2204–2210, [https://doi.org/10.1175/1520-0493\(1999\)127<2204:FASOCR>2.0.CO;2](https://doi.org/10.1175/1520-0493(1999)127<2204:FASOCR>2.0.CO;2), 1999.
- Laing, A. G. and Fritsch, J. M.: Mesoscale convective complexes in Africa, *Monthly Weather Review*, 121, 2254–2263, [https://doi.org/10.1175/1520-0493\(1993\)121<2254:MCCIA>2.0.CO;2](https://doi.org/10.1175/1520-0493(1993)121<2254:MCCIA>2.0.CO;2), 1993.
- 445 Lawton, Q. A., Majumdar, S. J., Dotterer, K., Thorncroft, C., and Schreck, C. J.: The Influence of Convectively Coupled Kelvin Waves on African Easterly Waves in a Wave-Following Framework, *Monthly Weather Review*, 150, 2055–2072, <https://doi.org/10.1175/MWR-D-21-0321.1>, 2022.
- Machado, L., Rossow, W., Guedes, R., and Walker, A.: Life cycle variations of mesoscale convective systems over the Americas, *Monthly Weather Review*, 126, 1630–1654, [https://doi.org/10.1175/1520-0493\(1998\)126<1630:LCVOMC>2.0.CO;2](https://doi.org/10.1175/1520-0493(1998)126<1630:LCVOMC>2.0.CO;2), 1998.
- 450 Maddox, R. A.: Mesoscale convective complexes, *Bulletin of the American Meteorological Society*, pp. 1374–1387, 1980.
- Mapes, B. E. and Houze, R. A.: Cloud Clusters and Superclusters over the Oceanic Warm Pool, *Monthly Weather Review*, 121, 1398–1416, [https://doi.org/10.1175/1520-0493\(1993\)121<1398:CCASOT>2.0.CO;2](https://doi.org/10.1175/1520-0493(1993)121<1398:CCASOT>2.0.CO;2), 1993.
- Mathon, V. and Laurent, H.: Life cycle of Sahelian mesoscale convective cloud systems, *Quarterly Journal of the Royal Meteorological Society*, 127, 377–406, <https://doi.org/10.1002/qj.49712757208>, 2001.
- 455 Nesbitt, S. W., Cifelli, R., and Rutledge, S. A.: Storm Morphology and Rainfall Characteristics of TRMM Precipitation Features, *Monthly Weather Review*, 134, 2702–2721, <https://doi.org/10.1175/MWR3200.1>, 2006.
- Núñez Ocasio, K. M. and Rios-Berrios, R.: AEW hindcast using the Model for Prediction Across Scales-Atmosphere (MPAS-A) version 7.1. National Center for Atmospheric Research. [Dataset], NCAR/UCAR - GDEX, <https://doi.org/10.5065/t224-6s94>, 2022.

- 460 Núñez Ocasio, K. M. and Rios-Berrios, R.: African Easterly Wave Evolution and Tropical Cyclogenesis in a Pre-Helene (2006) Hindcast Using the Model for Prediction Across Scales-Atmosphere (MPAS-A), *Journal of Advances in Modeling Earth Systems*, 15, e2022MS003181, <https://doi.org/10.1029/2022MS003181>, 2023.
- Núñez Ocasio, K. M., Evans, J. L., and Young, G. S.: Tracking Mesoscale Convective Systems that are Potential Candidates for Tropical Cyclogenesis, *Monthly Weather Review*, 148, 655–669, <https://doi.org/10.1175/MWR-D-19-0070.1>, 2020a.
- 465 Núñez Ocasio, K. M., Evans, J. L., and Young, G. S.: A Wave-Relative Framework Analysis of AEW–MCS Interactions Leading to Tropical Cyclogenesis, *Monthly Weather Review*, 148, 4657–4671, <https://doi.org/10.1175/MWR-D-20-0152.1>, 2020b.
- Núñez Ocasio, K. M., Brammer, A., Evans, J. L., Young, G. S., and Moon, Z. L.: Favorable Monsoon Environment over Eastern Africa for Subsequent Tropical Cyclogenesis of African Easterly Waves, *Journal of the Atmospheric Sciences*, 78, 2911–2925, <https://doi.org/10.1175/JAS-D-20-0339.1>, 2021.
- 470 Núñez Ocasio, K. M. and Moon, Z. L.: Tracking Algorithm for Mesoscale Convective Systems (TAMS) [software] , <https://doi.org/10.5281/zenodo.8393890>, 2023.
- Prein, A., Rasmussen, R., Wang, D., and Giangrande, S.: Sensitivity of organized convective storms to model grid spacing in current and future climates, *Philosophical Transactions of the Royal Society A*, 379, 20190546, <https://doi.org/10.1098/rsta.2019.0546>, 2021.
- Prein, A. F., Mooney, P. A., and Done, J. M.: The Multi-Scale Interactions of Atmospheric Phenomenon in Mean and Extreme Precipitation, *Earth's Future*, 11, e2023EF003534, <https://doi.org/10.1029/2023EF003534>, 2023.
- 475 Prein, A. F., Feng, Z., fiolleau, T., Moon, Z., Ocasio, K. M. N., Kukulies, J., Roca, R., Varble, A., Rehbein, A., Liu, C., Ikeda, K., Mu, Y., and Rasmussen, R.: Km-Scale Simulations of Mesoscale Convective Systems (MCSs) Over South America - A Feature Tracker Intercomparison, *ESS Open Archive*, <https://doi.org/10.22541/essoar.169841723.36785590/v1>, 2024.
- Rajasree, V., Cao, X., Ramsay, H., Núñez Ocasio, K. M., Kilroy, G., Alvey, G. R., Chang, M., Nam, C. C., Fudeyasu, H., Teng, H.-F., and Yu, H.: Tropical cyclogenesis: Controlling factors and physical mechanisms, *Tropical Cyclone Research and Review*, 12, 165–181, <https://doi.org/10.1016/j.tcr.2023.09.004>, 2023.
- 480 Raut, B. A., Jackson, R., Picel, M., Collis, S. M., Bergemann, M., and Jakob, C.: An Adaptive Tracking Algorithm for Convection in Simulated and Remote Sensing Data, *Journal of Applied Meteorology and Climatology*, 60, 513–526, <https://doi.org/10.1175/JAMC-D-20-0119.1>, 2021.
- 485 Rossow, W. B., Mekonnen, A., Pearl, C., and Goncalves, W.: Tropical Precipitation Extremes, *Journal of Climate*, 26, 1457–1466, <https://doi.org/10.1175/JCLI-D-11-00725.1>, 2013.
- Schmetz, J., Pili, P., Tjemkes, S., Just, D., Kerkmann, J., Rota, S., and Ratier, A.: AN INTRODUCTION TO METEOSAT SECOND GENERATION (MSG), *Bulletin of the American Meteorological Society*, 83, 977–992, [https://doi.org/10.1175/1520-0477\(2002\)083<0977:AITMSG>2.3.CO;2](https://doi.org/10.1175/1520-0477(2002)083<0977:AITMSG>2.3.CO;2), 2002.
- 490 Semunegus, H., Mekonnen, A., and Schreck III, C. J.: Characterization of convective systems and their association with African easterly waves, *International Journal of Climatology*, 37, 4486–4492, <https://doi.org/10.1002/joc.5085>, 2017.
- Sokolowsky, G. A., Freeman, S. W., Jones, W. K., Kukulies, J., Senf, F., Marinescu, P. J., Heikenfeld, M., Brunner, K. N., Bruning, E. C., Collis, S. M., Jackson, R. C., Leung, G. R., Pfeifer, N., Raut, B. A., Saleeby, S. M., Stier, P., and van den Heever, S. C.: *tobac* v1.5: Introducing Fast 3D Tracking, Splits and Mergers, and Other Enhancements for Identifying and Analysing Meteorological Phenomena, *EGUsphere*, 2023, 1–37, <https://doi.org/10.5194/egusphere-2023-1722>, 2023.
- 495 Tan, J., Jakob, C., and Lane, T. P.: On the Identification of the Large-Scale Properties of Tropical Convection Using Cloud Regimes, *Journal of Climate*, 26, 6618–6632, <https://doi.org/10.1175/JCLI-D-12-00624.1>, 2013.

- The pandas development team: pandas-dev/pandas: Pandas, <https://doi.org/10.5281/zenodo.7549438>, 2023.
- Ullrich, P. A., Zarzycki, C. M., McClenny, E. E., Pinheiro, M. C., Stansfield, A. M., and Reed, K. A.: TempestExtremes v2.1: a community framework for feature detection, tracking, and analysis in large datasets, *Geoscientific Model Development*, 14, 5023–5048, <https://doi.org/10.5194/gmd-14-5023-2021>, 2021.
- van der Walt, S., Schönberger, J. L., Nunez-Iglesias, J., Boulogne, F., Warner, J. D., Yager, N., Gouillart, E., Yu, T., and the scikit-image contributors: scikit-image: image processing in Python, *PeerJ*, 2, e453, <https://doi.org/10.7717/peerj.453>, 2014.
- Velasco, I. and Fritsch, J. M.: Mesoscale convective complexes in the Americas, *Journal of Geophysical Research: Atmospheres*, 92, 9591–9613, <https://doi.org/10.1029/JD092iD08p09591>, 1987.
- Vila, D. A., Machado, L. A. T., Laurent, H., and Velasco, I.: Forecast and Tracking the Evolution of Cloud Clusters (ForTraCC) using satellite infrared imagery: Methodology and validation, *Weather and Forecasting*, 23, 233–245, <https://doi.org/10.1175/2007WAF2006121.1>, 2008.
- Wes McKinney: Data Structures for Statistical Computing in Python, in: *Proceedings of the 9th Python in Science Conference*, edited by Stéfan van der Walt and Jarrod Millman, pp. 56 – 61, <https://doi.org/10.25080/Majora-92bf1922-00a>, 2010.
- Whitehall, K., Mattmann, C. A., Jenkins, G., Rwebangira, M., Demoz, B., Waliser, D., Kim, J., Goodale, C., Hart, A., Ramirez, P., Joyce, M. J., Boustani, M., Zimdars, P., Loikith, P., and Lee, H.: Exploring a graph theory based algorithm for automated identification and characterization of large mesoscale convective systems in satellite datasets, *Earth Science Informatics*, 8, 663–675, <https://doi.org/10.1007/s12145-014-0181-3>, 2015.
- Williams, M. and Houze, R. A.: Satellite-Observed Characteristics of Winter Monsoon Cloud Clusters, *Monthly Weather Review*, 115, 505–519, [https://doi.org/10.1175/1520-0493\(1987\)115<0505:SOCOWM>2.0.CO;2](https://doi.org/10.1175/1520-0493(1987)115<0505:SOCOWM>2.0.CO;2), 1987.
- Woodley, W. L., Griffith, C. G., Griffin, J. S., and Stromatt, S. C.: The Inference of GATE Convective Rainfall from SMS-1 Imagery, *Journal of Applied Meteorology and Climatology*, 19, 388–408, [https://doi.org/10.1175/1520-0450\(1980\)019<0388:TIOGCR>2.0.CO;2](https://doi.org/10.1175/1520-0450(1980)019<0388:TIOGCR>2.0.CO;2), 1980.
- Yang, G.-Y. and Slingo, J.: The Diurnal Cycle in the Tropics, *Monthly Weather Review*, 129, 784 – 801, [https://doi.org/10.1175/1520-0493\(2001\)129<0784:TDCITT>2.0.CO;2](https://doi.org/10.1175/1520-0493(2001)129<0784:TDCITT>2.0.CO;2), 2001.