

High Resolution Model Intercomparison Project phase 2 (HighResMIP2) towards CMIP7

Malcolm J. Roberts¹, Kevin A. Reed², Qing Bao³, Joseph J. Barsugli^{4,5}, Suzana J. Camargo⁶, Louis-Philippe Caron⁷, Ping Chang⁸, Cheng-Ta Chen⁹, Hannah M. Christensen¹⁰, Gokhan Danabasoglu¹¹, Ivy Frenger¹², Neven S. Fućkar^{13,14}, Shabeh ul Hasson¹⁵, Helene T. Hewitt¹, Huanping Huang^{16,17}, Daehyun Kim¹⁸, Chihiro Kodama¹⁹, Michael Lai¹, Lai-Yung Ruby Leung²⁰, Ryo Mizuta²¹, Paulo Nobre²², Pablo Ortega²³, Dominique Paquin⁷, Christopher D. Roberts²⁴, Enrico Scoccimarro²⁵, Jon Seddon¹, Anne Marie Treguier^{26,27}, Chia-Ying Tu²⁸, Paul A. Ullrich²⁹, Pier Luigi Vidale³⁰, Michael F. Wehner³¹, Colin M. Zarzycki³², Bosong Zhang³³, Wei Zhang³⁴, Ming Zhao³⁵

10

¹ Met Office, FitzRoy Road, Exeter EX1 3PB, UK

² School of Marine and Atmospheric Sciences, Stony Brook University, USA

³ Institute of Atmospheric Physics, Chinese Academy of Sciences, Beijing

⁴ CIRES, University of Colorado, Boulder, CO, USA

15 ⁵ NOAA Physical Sciences Laboratory, Boulder, CO, USA

⁶ Lamont-Doherty Earth Observatory, Columbia University, Palisades, NY, USA

⁷ Ouranos, Montréal, Quebec, Canada

⁸ Department of Oceanography, Texas A&M University, College Station, TX 77840 USA

⁹ Department of Earth Sciences, National Taiwan Normal University, Taipei

20 ¹⁰ Department of Physics, University of Oxford, UK

¹¹ US National Science Foundation National Center for Atmospheric Research, Boulder, CO, USA

¹² GEOMAR Helmholtz Centre for Ocean Research Kiel, Kiel, Germany

¹³ Environmental Change Institute, University of Oxford, Oxford, UK

¹⁴ Earth Sciences Department, Barcelona, Spain

25 ¹⁵ HAREME Lab, Institute of Geography, CEN, Universität Hamburg, Germany

¹⁶ Department of Geography and Anthropology, Louisiana State University, Baton Rouge, LA, USA

¹⁷ Climate and Ecosystem Sciences Division, Lawrence Berkeley National Lab, Berkeley, CA, USA

¹⁸ School of Earth and Environmental Sciences, Seoul National University, Seoul, South Korea

¹⁹ Japan Agency for Marine-Earth Science and Technology, Yokohama, Japan

30 ²⁰ Pacific Northwest National Laboratory, USA

²¹ Meteorological Research Institute, Japan

²² National Institute for Space Research, São José dos Campos, SP, Brazil

²³ Barcelona Supercomputing Center, Spain

²⁴ ECMWF, Shinfield Park, Reading, UK

35 ²⁵ CMCC Foundation - Euro-Mediterranean Center on Climate Change, Italy

²⁶ Laboratoire d'Océanographie Physique et Spatiale (LOPS), University of Brest, Brest, France

²⁷ CNRS, IRD, Ifremer, IUEM, Brest, France

²⁸ Research Center for Environmental Changes, Academia Sinica, Taipei

²⁹ Lawrence Livermore National Laboratory, USA

40 ³⁰ National Centre for Atmospheric Science, Dept. of Meteorology, University of Reading, Reading, UK

³¹ Lawrence Berkeley National Laboratory, USA

³² Department of Meteorology and Atmospheric Science, Pennsylvania State University, University Park, PA USA

³³ Program in Atmospheric and Oceanic Sciences, Princeton University, Princeton, USA

³⁴ Department of Plants, Soils and Climate, Utah State University, USA

45 ³⁵ Geophysical Fluid Dynamics Laboratory, National Oceanic and Atmospheric Administration (NOAA), Princeton, USA

Correspondence to: Malcolm J. Roberts (malcolm.roberts@metoffice.gov.uk)

Abstract. Robust projections and predictions of climate variability and change, particularly at regional scales, rely on the driving processes being represented with fidelity in model simulations. Consequently, the role of enhanced horizontal resolution in improved process representation in all components of the climate system continues to be of great interest. Recent simulations suggest both the possibility of significant changes in large-scale aspects of the ocean and atmospheric circulations and the regional responses to climate change, as well as improvements in representations of small-scale processes and extremes, when resolution is enhanced.

55 The first phase of HighResMIP (HighResMIP1) was successful in producing a baseline multi-model assessment of global simulations with model grid spacings of 25-50 km in the atmosphere and 10-25 km in the ocean, a significant increase when compared to models with standard resolutions of order 1-degree typically used as part of the Coupled Model Intercomparison Project (CMIP) experiments. In addition to over 250 peer-reviewed manuscripts using the published HighResMIP1 datasets, the results were widely cited in the Intergovernmental Panel on Climate Change report and were the basis for a variety of derived datasets, including tracked cyclones (both tropical and extratropical), river discharge, storm surge, and others that were used for impact studies. There were also suggestions from the few ocean eddy-rich coupled simulations that aspects of climate variability and change might be significantly influenced by improved process representation in such models.

65 The compromises that HighResMIP1 made should now be revisited, given the recent major advances in modelling and computing resources. Aspects that will be reconsidered include experimental design and simulation length, complexity, and resolution. In addition, larger ensemble sizes and a wider range of future scenarios would enhance the applicability of HighResMIP.

70 Therefore, we propose an updated HighResMIP2 to improve and extend the previous work, to address new science questions, and to further advance our understanding of the role of horizontal resolution (and hence process representation) in state-of-the-art climate simulations. With further increases in high-performance computing resources and modelling advances along with the ability to take full advantage of these computational resources, an enhanced investigation of the drivers and consequences of variability and change in both large- and synoptic-scale weather and climate is now made possible. With the arrival of global cloud-resolving models (currently run for relatively short timescales), there is also an opportunity to improve links between such models and more traditional CMIP models, with HighResMIP providing a bridge to link understanding between these domains. HighResMIP also aims to link to other CMIP projects and international efforts such as the World Climate Research Program lighthouse activities and various Digital Twin initiatives, as well as having the potential to be used as training and validation data for the fast evolving Machine Learning climate models.

1 Introduction

Understanding the connections between large-scale climate change and local impacts remains a significant challenge. One approach used by the scientific community to advance our capabilities in this area is through the development of higher horizontal resolution (i.e., reduced grid spacing) General Circulation Models (GCMs) (e.g. Satoh et al., 2008; Small et al., 2014; Wehner et al., 2014; Zhao et al., 2009) to better represent key components of the Earth system (e.g., Athanasiadis et al., 2022; Camargo and Wing, 2016; Chen and Lin, 2011; Shaevitz et al., 2014). Over the last five decades, the horizontal resolutions that are used for the World Climate Research Programme (WCRP) Coupled Model Intercomparison Project (CMIP6; Eyring et al., 2016) have continually improved. More recently, efforts to simulate the global atmosphere and ocean at grid spacings of less than 50 km have become more commonplace in the community (e.g., Caldwell et al., 2019; Chang et al., 2020; Giorgetta et al., 2018; Roberts et al., 2019; Scoccimarro et al., 2022) with advancements in numerical models and high-performance computing. Storm-resolving models with grid spacings of 10 km and less (e.g., Stevens et al., 2019) allow us to further expand our scientific understanding of climate processes and impacts at regional and local scales.

The High Resolution Model Intercomparison Project phase 1 (hereafter HighResMIP1; Haarsma et al., 2016) was a new project within CMIP Phase 6. Its main focus was to develop a better understanding of the role of increased horizontal resolution in climate simulations via a simple experimental design which would be affordable for many modelling groups. It proposed using around 25 km grid spacing in atmosphere (and ocean) as the baseline high-resolution model configuration, with a comparable lower resolution counterpart at ~100 km (consistent with an equivalent CMIP6 model configuration). As of early 2024, 17 modelling groups using 40 different models (including both lower and higher resolution versions) had contributed data to the Earth System Grid Federation (ESGF CMIP6 HighResMIP Data Holdings, 2024) linked to HighResMIP1, of which 21 models were coupled atmosphere-ocean-sea-ice (IPCC, 2021: Annex II: Models, Table AII.6). More than 250 peer-reviewed papers using HighResMIP data have been published to date (Fig. 1 displays a word cloud compiled from these papers), the HighResMIP1 paper has been cited over 580 times, and there were more than 150 direct references to HighResMIP in the Intergovernmental Panel on Climate Change (IPCC) Sixth Assessment Report of Working Group I (IPCC, 2021) putting it in the top three most directly referenced MIPs. Given the broad impacts of the HighResMIP1 outcomes and continuing needs for improved high-resolution climate data in climate change impact assessments, it is important to extend HighResMIP towards CMIP7 and hence continue to provide important insights in time for the next IPCC report.

125 hence provide deeper insights into how these might change in the future (e.g., Bian et al., 2023; Chang et al., 2023; Liu et al.,
2021; Priestley and Catto, 2022; Roberts et al., 2020b; Yamada et al., 2021; Yin et al., 2020; Zhao, 2020, 2022). In addition
to these fundamental scientific insights, HighResMIP outputs were also used to produce datasets useful for impacts and
event attribution studies, such as winter windstorms (Lockwood et al., 2022), synthetic tropical cyclones (Bloemendaal et al.,
2022), and global water level change (Muis et al., 2023).

130 We also recognise that the HighResMIP1 experimental design had limitations, often due to deliberate choices to make it
more tractable and to enhance process understanding. The relatively short length of simulations made examination of
decadal and longer variability difficult. The strongly parsimonious use of ensembles raised questions about robustly
disentangling externally forced signals from internally-driven variability, including extremes. The suggested use of
simplified aerosol forcing and lack of tuning for these high-resolution models improved the comparability with their lower
resolution counterparts, but was not conducive to producing optimal simulations (as is commonplace for model
135 development). The short spin-up for the coupled models (based on 1950's conditions) means that the ocean continued to drift
in these HighResMIP1 simulations (Caldwell et al., 2019; Roberts et al., 2019). As a result, it was also difficult to
characterise the models as is conventionally done with CMIP Diagnostic, Evaluation and Characterization of Klima (DECK)
simulations, hence limiting the uptake of the data by the scientific community more broadly. We propose to address some of
these limitations in HighResMIP2, though some compromises will remain to keep the simulations affordable.

140 In discussions with the scientific community, one important question came up often: Why propose an update to HighResMIP
now? In particular, and given that the CMIP7 experimental design and forcings are not yet available, the community already
has access to existing HighResMIP1 data from simulations that were computationally expensive and take considerable time
to complete. However, the proposed time scale is primarily driven by the HighResMIP community (i.e., the groups with the
computational resources to complete such simulations), with several groups expressing interest in starting new simulations as

145 soon as 2024. A key reason for this keenness is the increased maturity of models optimised to run at high-resolution, both
scientifically and technically. It was therefore important to give modelling groups (see Table 1) an early sign of the
HighResMIP2 simulation design (prior to CMIP7 forcings being available), so that they could make informed choices about
when to start new simulations, and how HighResMIP1 and HighResMIP2 simulations would relate to each other. Although
such simulations cannot yet use CMIP7 forcings, knowledge of the proposed HighResMIP2 design and confidence that new
simulations would still be relevant as part of HighResMIP2 analysis, was very important for these modelling groups (see
150 Table 1). In addition, any simulations following HighResMIP1 protocols can still have their data published as part of
CMIP6. It is noted that for the HighResMIP1 results cited above, the forcings used were standard CMIP6, and so we have
evidence that the details of the forcings (and hence any difference between CMIP6 and CMIP7 forcings) are not central to
our high-resolution insights thus far. Another factor that was considered is the time needed to develop high-resolution

155 configurations, particularly of coupled climate models with eddy-rich ocean components, which often lags a standard
resolution model by years, as well as forward planning to access the large computational resources necessary. If we want the
unique insights from global high-resolution coupled simulations, that are simply not available from standard-resolution

Commented [MR2]: It was therefore important to give modelling groups (see Table 1) an early sign of the HighResMIP2 simulation design (prior to CMIP7 forcings being available), so that they could make informed choices about when to start new simulations, and how CMIP6 and CMIP7 HighResMIP simulations would relate to each other.

160 models, to feed into the next IPCC cycle with its fast-approaching deadlines, we need considerably more lead time for such models. The new HighResMIP2 described here enables this by providing a future path and giving groups time to plan. We accept that at the time of this paper, HighResMIP2 is effectively bridging across both CMIP6 and CMIP7, and consequently there may be some confusion in this manuscript when new simulations are described but not all the information is yet available. We have attempted to be as clear as possible, and further details will be documented via standard CMIP protocols at the earliest opportunity.

Model name	Contact institution	Atmosphere resolution mid-latitude (km)	Ocean resolution mid-latitude (km)	CMIP era (i.e. forcings-used)
ICON	Max-Planck-Institute for Meteorology (MPI-M)	10	5	CMIP6
IFS-FESOM2	Alfred Wegener Institute (AWI)	9	Variable, 13-4.5	CMIP6
IFS-NEMO	Barcelona Supercomputing Center (BSC)	9	8	CMIP6
HadGEM3-GC5	UK Met Office	20	8	CMIP7
CAS-ESM2	Chinese Academy of Sciences (CAS)	25	10	CMIP7
FGOALS-f4	Chinese Academy of Sciences (CAS)	12.5	10	CMIP7
BCC-CSM3-HR	Chinese Meteorological Agency (CMA) Earth System Modeling and Prediction Centre	30	25	CMIP7
MRI-ESM3	Meteorological Research Institute (MRI)	20	10	CMIP7
NICAM, NICOCO	Japan Agency for Marine-Earth Science and Technology	14	10	CMIP7
GFDL-	Geophysical Fluid	25	25 with a	CMIP6/CMIP7

Commented [MR3]: Forcings

C384CM4	Dynamics Laboratory / NOAA		possibility for 10	
---------	----------------------------	--	--------------------	--

Table 1: Modelling groups proposing to contribute to HighResMIP2 with coupled model simulations (which are more challenging and for which the model diversity was low in HighResMIP1). Many more atmosphere-only simulations are anticipated (not shown).

Given this timing, what can we hope to gain from new simulations? Key limitations of the HighResMIP1 simulation data included: unoptimised high-resolution models (i.e. configured as similar as possible to the standard-resolution counterpart, including simplified aerosol forcing); few ensemble members (generally only one); small diversity of models particularly with coupled simulations; and resolutions that were generally 25 km or coarser. We have ambition for new simulations to have further enhanced resolution (aiming for around 10 km in atmosphere and ocean, see Table 1), producing larger ensembles and using models that are optimised for high-resolution (scientifically and technically). In addition, we propose new experiments that will help to better characterise the models and build links with other communities. One emerging area where global high-resolution simulation data could play a key role is that of machine learning, which is clearly making huge advances but is constrained by the quality and quantity of training and assessment data. Results from CMIP6, HighResMIP1, and conclusions from IPCC AR6 also suggest that significant scientific uncertainties remain in future projections due to lack of resolution. With such new simulations building on the HighResMIP1 archive, we believe that existing and new science questions proposed in Section 2 can be addressed in a more complete way.

Throughout the paper we refer to “high-resolution” global climate models, which will be defined as models that have smaller grid spacings than are typical of CMIP6 DECK climate simulations, where the vast majority of models had grid spacings of 100-200 km in the atmosphere and 50-100 km in the ocean (IPCC, 2021, Fig. 1.19). Our current understanding is that such resolutions (henceforth described as standard-resolution) will likely remain typical of CMIP7 (Dunne et al. in prep), given historic rates of increase in model resolution (Hewitt et al., 2022). We will also refer to climate models and Earth System models (ESMs) interchangeably in the text, though we expect that most models in HighResMIP2 will have limited Earth System complexity (but may, for example, include interactive aerosols which were not recommended in HighResMIP1).

HighResMIP, however, is just one part of community efforts to produce climate information at resolutions beyond the standard CMIP model capabilities, and we aim to enhance our collaborations with these other related initiatives. The DYAMOND project (Stevens et al., 2019; Takasuka et al., 2024) pushed forward the evolution of global storm-resolving climate simulation in a multi-model framework, and this is being expanded with both national efforts and potential international initiatives such as Earth Virtualization Engines (EVE; Stevens et al., 2024). These global storm-resolving modelling (GSRM) efforts share with HighResMIP a lack of basic characterisation - one example would be metrics of climate sensitivity - and so several new experiments are proposed in HighResMIP2 to improve the links with CMIP models

and potentially address this lack of metrics. [GSRM models would obviously be welcome in HighResMIP2, especially if they can complete the full HighResMIP2 Tier 1 simulations.](#) This work also builds and complements other WCRP activities, including those with similar goals to explore climate change impacts at regional scales using other techniques such as

200 downscaling via the Coordinated Regional Climate Downscaling Experiment (CORDEX) with often similar resolutions at the regional scale. Furthermore, new international efforts such as the WCRP lighthouse activities, including Digital Earths, Explaining and Predicting Earth System Change, and Safe Landing Climates activities (Sherwood et al., 2024), as well as the European Destination Earth programme (Hoffmann et al., 2023; Wedi et al., 2022), are well-positioned to make use of HighResMIP2 simulations for exploring extreme events and regional impacts of climate change.

205 This paper is structured as follows. Section 2 outlines the specific goals of HighResMIP2, as well as the general simulation approach. Section 3 details the experimental design and HighResMIP2 protocols. The data issues are discussed in Section 4, and Section 5 provides an overview of the evaluation and metrics framework to be used for analysis. Finally, Section 6 discusses the main takeaways of the effort.

2 Science questions

210 Three overarching questions frame the scientific scope of HighResMIP2:

Can HighResMIP simulations help to better quantify and even reduce key structural uncertainties of future climate projections discussed in the IPCC AR6 report, and can it contribute to and supplement the CMIP7 AR7 FastTrack science goals, particularly around future weather extremes, the pattern effect (interaction of forcings, feedbacks and natural variability) and tipping points?

215 What resolution-dependent atmospheric or oceanic processes are missing from standard-resolution CMIP6 models that might explain recent changes in our climate, and produce different future climate projections over the next few decades?

Can we combine information from HighResMIP2 and CMIP7, together with other data sources and processing (e.g., bias correction), to produce more robust plans for future adaptation and climate risk planning?

220 The main reason that such questions cannot already be answered with existing data is that the HighResMIP1 high-resolution models were configured to be as similar as possible to their standard-resolution counterparts, and used simplified aerosol forcings. This provided an important baseline for scientific understanding of the role of horizontal resolution on simulation quality, but crucially did not produce optimal simulations of present and future climate at high resolution. In addition, most of the existing simulations do not have eddy-rich ocean resolutions, which limits the processes they are able to explicitly simulate and hence our ability to quantify future uncertainty (e.g. (Chang et al., 2020; Yeager et al., 2023).

225 As noted above, CMIP6 HighResMIP1 enabled significant progress in studying the role of horizontal resolution in global climate simulations. Various aspects of global and regional climate have been assessed (HighResMIP publications, 2024), including scale interactions, circulation in the atmosphere and ocean, the role of ocean eddies in upwelling systems, extremes and hydrological cycles, and tropical and extratropical cyclones. The poor representation of these processes due to lack of

230 resolution lead to key uncertainties in future projections (e.g., as described in the IPCC AR6 report, with specific examples below). The main objective of HighResMIP2 is to build on the HighResMIP1 baseline, to further our understanding of how model resolution affects various aspects of climate simulation, and to assess the implications for future climate projections and climate risk and adaptation planning with optimised high-resolution models. ~~In addition, new simulations are proposed that will enable new science questions around forcings and feedbacks in the climate system and the role of high resolution in the pattern effect (i.e. how large-scale sea surface temperature patterns interact with aspects of the climate).~~

235 To scope our ambitions, it is useful to consider what model resolutions may be possible for CMIP7 HighResMIP2, given ongoing advancements in models and supercomputing. (Chang et al., (2020, 2023) have demonstrated that it is now possible to produce long CMIP DECK-style simulations (with multiple ensemble members) using coupled model resolutions of 25 km in the atmosphere and 10 km in the ocean component while several groups used similar eddy-rich ocean resolutions (below 10 km) in CMIP6 HighResMIP1 (Caldwell et al., 2019; Chang et al., 2020; Grist et al., 2021; Roberts et al., 2019).

240 Hence we anticipate more coupled models with such ocean resolution that can more accurately represent the ocean's mesoscale, including eddies, boundary currents, and Southern Ocean processes (see Table 1). We also expect enhancements in atmosphere resolution perhaps to 10 km or finer; this may lead to challenges related to spatial scales at which resolved model physics and dynamics may overlap with convective parameterisation (Hong and Dudhia, 2012), the so-called “grey zone”, but has the potential to produce more realistic climate extremes and upscale feedbacks (Scaife et al., 2019). In addition to resolution alone, many model developments (both scientific and technical) flowing from storm-resolving modelling approaches can also help to optimise model configurations for HighResMIP2. ~~We emphasise that choices of model physics and dynamics settings with resolution (such as the treatment of atmospheric deep convection or implementation of aerosol forcing) is left with the modelling groups.~~

245 It is likely that most, if not all, of HighResMIP2 simulations will only include the physical climate and will lack many aspects of Earth System complexity (for example the carbon cycle and biogeochemistry), given the cost, but such simulations would be warmly welcomed to begin exploring the interactions between resolution and complexity. Other aspects of complexity, such as representation of ocean tides, ocean waves, ice-ocean interactions including ice shelves and sheets, may be represented in some models. ~~but likely not all.~~

250 We organise the science questions into several broad areas that are enabled by the different simulation types (as detailed in Section 3), atmosphere-only and coupled. We recognise the relative strengths and limitations of prescribed SST or sea ice configurations on the realism of upscale feedbacks, which are complementary to coupled simulations which allow us to explore a fully interactive system, as well as understand the potential role of SST biases in the coupled simulations.

255 Atmosphere-only simulations allow us to ask: given external forcings and prescribed sea surface temperature (SST) and sea-ice, how does the coupled atmosphere-land system respond, via processes and extremes? We can hence ask whether increasing model resolution can lead to fundamentally different insights into large-scale climate variability and future trends, with implications for policy and climate risk. ~~Furthermore, atmosphere-only simulations have the potential to bring new insights into long-standing questions about model capability and suitability for different applications. Extreme precipitation~~

events ~~like precipitation~~ and mesoscale convective systems (MCSs) also require further investigation (e.g., Na et al., 2022; Zhao, 2022). These events have a significant impact on the environment and can cause severe damage to infrastructure and human life. It may also be possible to identify potential future risks associated with specified patterns and levels of warming (Zhao and Knutson, 2024). Atmospheric resolutions of around 10 km and higher are anticipated to offer a much more realistic range of intensities for extreme events, such as tropical cyclones (TCs; Li et al., 2021) and MCSs. This enhancement could offer new insights into how TC genesis and rapid intensification, as well as MCSs, may change in a warmer climate.

Such processes can also be assessed in fully coupled models, which enable a full range of interactions and feedbacks.

With horizontal resolutions beginning to edge into the “grey zone”, aspects of climate variability, such as the Madden–Julian Oscillation, the diurnal cycle, and hot spots with complex terrain like the Pan-Tibetan Plateau, can be addressed (Bao et al., 2020). This opens up new avenues for research and allows us to better understand the underlying mechanisms relevant to these phenomena and regions. For this reason we propose new short simulations (one year) to incorporate contributions from models with resolutions ranging from standard CMIP through to storm-resolving (e.g. linking with DYAMOND3; Takasuka et al., 2024). These simulations will focus on process-based analysis and linking understanding across different communities.

Coupled simulations will investigate the robustness of projected large-scale changes to the climate as ocean grids are refined, ideally down to eddy-rich scales. The ocean mesoscale, which refers to the physical processes that occur on a scale of 10-100 km, plays a crucial role in key aspects of ocean circulation (e.g., Chang et al., 2020; Chassignet et al., 2020; Hewitt et al., 2022; Small et al., 2014) and shows evidence for substantial changes in a warming world (Beech et al., 2022; Martínez-Moreno et al., 2021); but it is unresolved in standard-resolution CMIP simulations. However, the IPCC AR6 report acknowledges that there is considerable uncertainty in predicting future trends in regions such as the Southern Ocean due to insufficient model resolution (Fox-Kemper et al., 2022), since eddies control the Southern Ocean overturning by compensating wind-driven changes (e.g. Bishop et al., 2016; Farneti et al., 2010, 2015; Gent and Danabasoglu, 2011; Meredith et al., 2012). This uncertainty could have significant implications for sea-level rise (Li et al., 2022), as well as the

uptake of heat and carbon (Xu et al., 2023), for example with new observations suggesting an important role for ocean eddies in Antarctic ice shelf melting (Gao et al., 2024). The ocean mesoscale is also important in Eastern Boundary Upwelling Systems, EBUS (Chang et al., 2023), which are nutrient-rich and provide a large proportion of productive biomes. Refined ocean resolution in EBUS leads to narrower and stronger along-shore ocean flow and coastal upwelling, resulting in larger cross-shore temperature gradients than in coarse-resolution models (Small et al., 2024). In terms of ocean boundary

currents such as the Gulf Stream, nearly all CMIP6 models (including most of HighResMIP1) have a common bias in which the current separates from the coastline too far north (Chassignet et al., 2020), which can be improved at eddy-rich resolutions with implications for regional climate (Grist et al., 2021; Moreno-Chamarro et al., 2021). Enhancing the representation of ocean transports through narrow straits, such as the Bering Strait, has been demonstrated to have significant upscaling effects on large-scale climate responses, such as Arctic Amplification (Xu et al., 2024). Models with an ocean

resolution of 25 km or finer are beginning to explore these emerging features and their implications for present and future climate (e.g., Chang et al., 2023; Moreno-Chamarro et al., 2021; Rackow et al., 2022). Hence new simulations and more

multi-model studies will better constrain, and may be able to reduce, structural uncertainty in future projections in all these regions.

Ongoing analysis of the only existing CMIP6-style multi-centennial simulation with an eddy-rich ocean (Chang et al., 2020) has demonstrated how such model resolutions can open up new science. In addition to exploring the impacts on mean state and variability, ongoing work (Yeager et al., 2023) indicates that these higher resolution models may capture SST trends of the recent historical period, particularly the relative cooling in the Southern Ocean and tropical Eastern Pacific, which are poorly represented in all CMIP6 models (Seager et al., 2019, 2022). Such results have important implications for climate risk and adaptation planning over the next few decades (Sobel et al., 2023; Zhao and Knutson, 2024), because the state of the tropical Pacific has implications for teleconnections and regional extremes both at large-scales (e.g., floods and droughts as seen during El Nino - Southern Oscillation (ENSO) events) and for the distribution of extreme events such as TCs. The model used in Chang et al. (2020) also has improved skill and signal-to-noise properties (Yeager et al. 2023), suggesting that reducing biases in the Southern Ocean is important for better decadal predictions.

In addition to the role that increased resolution might have for the large-scale climate, high-resolution simulations underpin new science endeavours on scale interactions and upscale effects of small-scale processes which are relatively unexplored due to the lack of available simulations. Scoccimarro et al. (2020) show how tropical cyclones can lead to drying of large areas such as the Maritime Continent. For questions such as: How do extreme events impact the main modes of climate variability (e.g., TCs and ENSO modulation), we need models that faithfully represent chains of processes from extreme events back to the large-scale. In a similar vein, Schemm (2023) shows how small-scale diabatic processes can play a key role in addressing long-standing mid-latitude storm track biases. ~~In the ocean, the role of eddies in driving large-scale ocean circulation (for example the Atlantic Meridional Overturning Circulation, AMOC; Hewitt et al., 2020) is a relatively new area for both models and observations to explore (Hirschi et al., 2020). Eddies control the Southern Ocean overturning by compensating wind-driven changes (e.g., Bishop et al., 2016; Farneti et al., 2010, 2015; Gent and Danabasoglu, 2011; Meredith et al., 2012), and this mechanism could evolve in the future as eddy activity increases (Beech et al., 2022). The improvement of the Gulf Stream dynamics in an eddy-rich ocean model has a significant impact on the projected sea level rise on the East Coast of the US (Li et al., 2022).~~

By using eddy-rich or km-scale models, we might obtain new insights into abrupt changes or tipping points (Armstrong McKay et al., 2022). Abrupt changes can include events like the collapse of the AMOC or Amazon rainforest, or melting of Arctic or Antarctic ice sheets and the consequences for the global climate and extremes. For example, enhanced atmospheric resolution improves the spatio-temporal distribution of rainfall over the Amazon basin due to improved representation of atmospheric dynamics (Monerie et al., 2020). Ocean eddies have also been shown to be important in the development and properties of marine heatwave extremes (Bian et al., 2023).

The IPCC AR6 chapter on extremes described uncertainties in future changes to processes such as TCs, which need both high-resolution and decade-to-century time scale simulations to assess variability and change. It is hoped that HighResMIP2 simulations can help to further address some of these uncertainties. Using a one-year [atmosphere-only](#) experiment (see

Section 3) as a common baseline for models from CMIP6 resolution down to km-scale, we hope to better understand the drivers and processes that govern such extremes (e.g., pre-cursor TC seeds such as MCSs) and hence better constrain likely future changes. As indicated in the Introduction, many of the HighResMIP areas of interest are strongly aligned with national and international projects. We will be working in collaboration with these projects, both via coordinated experiments and data sharing as well as analysis, and we anticipate that this will make HighResMIP2 an invaluable platform for both scientific research and stakeholder engagement.

3 Experimental design and protocol

HighResMIP1 focused on the time period 1950-2014 (historical) and 2015-2050 (future) for atmosphere-only and coupled simulations, using only one future scenario (SSP5-8.5 from ScenarioMIP; (O'Neill et al., 2016)) with standard and high-resolution versions of each model, as a balance between affordability by as many modelling groups as possible, while still retaining multi-decadal timescales to examine model biases, climate variability, and extremes. The standard-resolution versions of the models were meant to have a counterpart in CMIP6 DECK and hence be characterised there. It should be noted that in CMIP6 the historical period was defined as 1850-2014, and future scenarios started from 2015. In CMIP7 we anticipate that the historical period will extend to 2022. Once the CMIP7 forcings (Dunne et al. in prep) are available, HighResMIP2 will provide details of how these should be implemented in our proposed simulations.

Based on feedback from users and producers of the HighResMIP output data, we propose some key changes to the experimental designs used in HighResMIP1 (see Fig. 2):

1. Extend the coupled future simulation (*highres-future*) to at least 2100, with a change of future scenario away from the high emission SSP5-8.5 to one with lower radiative forcing magnitude (CMIP7 ScenarioMIP Medium scenario; (van Vuuren et al., n.d.)), also enabling stronger links with CMIP, CORDEX, and impacts communities;

2. Encourage groups to produce simulations with models optimised for use at high-resolution (e.g. Hourdin et al., 2017), with methods transparent and documented;

3. Allow use of any aerosol scheme desired (rather than utilising the MacV2-SP aerosol properties scheme (Stevens et al., 2017) as in HighResMIP1) - this is a significant change, to reduce the burden of developing and tuning a separate model from that used for other modelling activities including CMIP;

4. Reduce the length of the *highresSST-present* experiment (atmosphere-only) to 1980-2022 to focus on a period with better observations, and enable use of a satellite-derived product for SST and sea-ice with a native resolution of $\sim 1/20^\circ$, also suitable as a boundary condition for much higher resolution simulations;

5. Remove the *highresSST-future* experiment (atmosphere-only). This attempted to extend *highresSST-present* into the future (2015-2050) by constructing SST and sea-ice forcings combining observations and model projections. However it was a source of some misinterpretations and highlighted the difficulty in joining the historical forcing to a projected future change in a meaningful way.

Commented [MR4]: Awaiting GMD preprint for proper citation

We also propose several new experiments, based on our science questions and on an aspiration to better connect with the CMIP DECK simulations:

- 365 1. Specific warming level experiments using patterned SST and sea-ice changes, parallel to *highresSST-present* over the 2003-2022 period, as an idealised way to investigate the impact on climate extreme processes;
2. Uniform +4K SST experiment in the atmosphere-only experiment, in order to calculate some overall HighResMIP model metrics and characterisation useful for comparison with CMIP and DYAMOND efforts (this is a standard experiment in the Cloud Feedback Model Intercomparison project, CFMIP; (Webb et al., 2017));
- 370 3. Add a 4xCO₂ experiment to the coupled simulations, in order to diagnose Effective Climate Sensitivity (EffCS), though here that measure will be relative to a 1950-control rather than the standard CMIP DECK experiment relative to 1850. There is some evidence that 20-30 years of this simulation may be adequate to estimate the final EffCS (usually after 150 years; Dong et al., 2020);
- 375 4. Add a short experiment (~1 year in length) to enhance collaboration across more modelling groups, from standard CMIP-type models through to km-scale global models, and including numerical weather prediction centres. This atmosphere-only simulation would be in support of the process intercomparison projects (PIPs) advocated by WCRP (World Climate Research Programme, 2022), and have strong links to DYAMOND3 (Takasuka et al., 2024), and enable coordinated detailed analysis (with an expanded diagnostics list).

380 Figure 2 illustrates the experiments envisioned for HighResMIP2. As with HighResMIP1, we consider several Tiers of experiments (Table 2), but Tier 1 remains the essential entry card to HighResMIP2, while the others are optional but individually stand as useful community simulations. Figure 3 illustrates how these simulations link to existing simulations in CMIP and other community MIPs.

CMIP7 HighResMIP2 simulation design

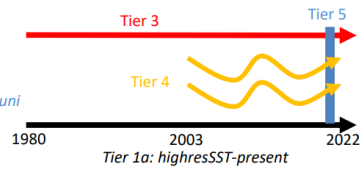
Atmosphere-land-only simulations

Tier 1a – *highresSST-present*

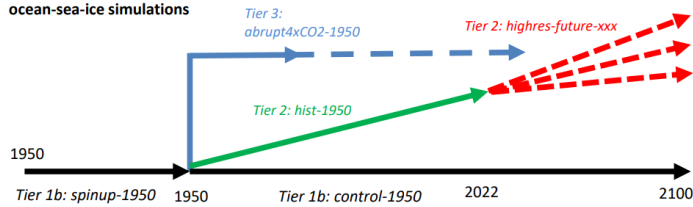
Tier 3 – *highresSST-p4kuni*

Tier 4 – *highresSST-pxxkpat*

Tier 5 – e.g. *highres-yr2020*, *highres-yr2020-p4kuni*



Coupled atmosphere-land-ocean-sea-ice simulations



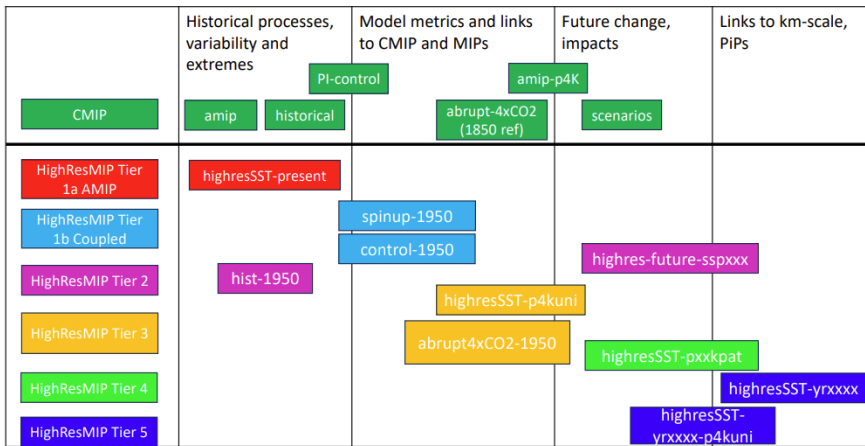
385 Figure 2: Illustration of the HighResMIP2 simulations in Tiers 1-5 for (upper) atmosphere-only and (lower) coupled model experiments. The experiment names (in italics) and Tiers refer to the information in Table 2.

390

Tier	Experiment	Years	Total years	Desired ensemble size
1a. Atmosphere-only historic	<i>highresSST-present</i>	1980 - 2022	43	3
1b. Coupled control	<i>spinup-1950</i>	~50 years	50	1
	<i>control-1950</i>	>=100 years (ideally 150 years)	100-150	1
2. Coupled historical and future	<i>hist-1950</i> <i>highres-future-sspxxx</i>	1950-2022 starting from end of <i>spinup-1950</i>	73	3

	xxx=CMIP7 scenario <u>(M recommended)</u>	2023-2100+ using given future scenario, starting from end of <i>hist-1950</i>	78	3
3. Idealised experiments for CMIP-comparable metrics	<i>highresSST-p4kuni</i> - uniform +4K SST AMIP-style <i>abrupt4xCO2-1950</i> - abrupt 4xCO2 starting from the end of <i>spinup-1950</i>	1980-2022 >= 30 years (ideally 150 years)	43 30-150	1 1
4. Atmosphere-only warming levels	<i>highresSST-pxxkpat</i> pxx=warming level, e.g. +2K, +4K etc <u>patt=patterned</u> (i.e. not uniform)	2003-2022	20 per warming level	3 per warming level
5. One year experiment	<i>highres-yrxxxx</i> , xxxx=2020 ₂ or similar historical year. <i>highres-yrxxxx-p4kuni</i> , add uniform +4K to SSTs	1 year in historical period <u>1 year</u>	1 <u>1</u>	3 <u>3</u>

Table 2: Proposed HighResMIP2 experiments, including Tier, name, model years, total lengths and desired minimum ensemble size.



395

Figure 3: Illustration of the different Tiers of HighResMIP2 simulations and how they align with applications and correspond to CMIP simulations.

3.1 Detailed description of Tiered experiments

The entry card to HighResMIP2 will require at least one of the Tier 1 simulations (1a or 1b) to be completed at high-resolution, to allow groups with different capabilities (i.e., atmosphere-only or coupled modelling) to contribute, ~~as well as some comparison to HighResMIP1.~~ As stated before, we consider high-resolution to be 25 km or finer in both atmosphere and ocean/sea-ice components. Both Tier 1 simulations can be completed using the recommended initial conditions for atmosphere and ocean, with forcings available either via CMIP inputs4MIPs or other open access datasets (detailed below), and hence do not require any previous simulation or spin-up (Haarsma et al., 2016). Groups unable to complete the Tier 1 simulations are still encouraged to participate in other experiments, but their data will not be able to be published to ESGF as HighResMIP2.

For HighResMIP2, we do not require a parallel standard-resolution simulation (i.e. using a CMIP-class model), given the existing archive from CMIP and HighResMIP1, ~~but We recognise that such simulations still have value for understanding the impact of resolution and these~~ will still be welcomed if produced, ~~but for some groups HighResMIP itself is “low” resolution and we do not want to exclude such groups.~~ For coupled models, we advocate for more models with an eddy-rich ocean (~10 km resolution or finer), as there is increasing evidence that such models can provide new insights into climate variability and change (e.g., Chang et al., 2020; Zhang et al., 2022).

410

Providing multiple ensemble members for each simulation is very important to enable some measure of variability and uncertainty, as well as increasing the sample size of any event sets. Although one ensemble member will remain the entry point for participating in HighResMIP2, we advocate that at least three members for each simulation would give more confidence in the results of model analysis (e.g., (Bacmeister et al., 2018; Kay et al., 2015; Roberts et al., 2020a; Rodgers et al., 2021; Stansfield et al., 2020) and the role of external forcing, particularly given that eddy-rich oceans might enhance variability (Penduff et al., 2018). The provision of even larger ensemble sizes (likely at standard-resolution) would be welcome to enable detection of differences with a smaller ensemble of high-resolution simulations.

Given the costs involved, we anticipate that most HighResMIP2 models will not include the Earth System components to enable the simulation of a carbon cycle, and hence the following will assume the use of concentration-driven rather than emissions-driven simulations.

As noted above, appropriate CMIP7 forcings should be used where possible. If complexity is reduced (for example aerosol forcing being prescribed rather than prognostic), then full details of the implementation should be documented so that users of the data can be fully informed. In the choice of future scenarios, we will be guided by advice from ScenarioMIP and their official CMIP7 scenarios (van Vuuren et al., n.d.) - given the small ensemble sizes likely from HighResMIP2 simulations, we propose to recommend the Medium scenario in order to produce a larger multi-model ensemble, but welcome additional simulations exploring uncertainty in future warming. However, the main goal of HighResMIP2 is not to explore this uncertainty, but to understand the implications of a given scenario in terms of future climate extremes, impacts and feedbacks, at resolutions well beyond those typically used in CMIP.

Commented [MR5]: Need GMD preprint doi

Tier 1a: highresSST-present

This is an atmosphere-only simulation similar to CMIP Atmosphere Model Intercomparison Project phase 2 (AMIP, Gates et al. 1999). The period 1980-2022 is chosen to maximise comparability with observational datasets, to align better with CMIP AMIP, to enable new science (e.g., Meroni et al., 2023) and to enable ensembles of simulations to be produced. At the model resolutions used in HighResMIP, the resolution of the forcing has been shown to be important in the simulation of extremes (Liu et al., 2021), and hence HighResMIP retains the use of high resolution, daily forcing (in contrast to CMIP AMIP). However, we propose switching from the previous daily 1/4° HadISST.2.2.0 dataset (Kennedy et al., 2017) to the 0.05° European Space Agency (ESA) SST Climate Change Initiative (CCI) Analysis v3.0 and associated sea-ice concentration data from the EUMETSAT Ocean and Sea Ice Satellite Application Facility (OSI-SAF) (Embury et al., 2024; Good and Embury, 2024), for both its high resolution and its regular update cycles. We continue to use daily-mean fields with no diurnal cycle, which modelling groups should interpolate to their model grid in the usual way. A comparison of the trends in surface temperature from these various SST products is shown in Fig. 4 (calculated following Sobel et al., 2023), as the trends have important consequences for the model simulations (Sobel et al., 2023; Zhao and Knutson, 2024) and are

generally not replicated in coupled model simulations (Seager et al., 2022). The noise seen in Fig. 4(b) is thought to be a result of how that dataset was constructed (specifically for CMIP6 HighResMIP).

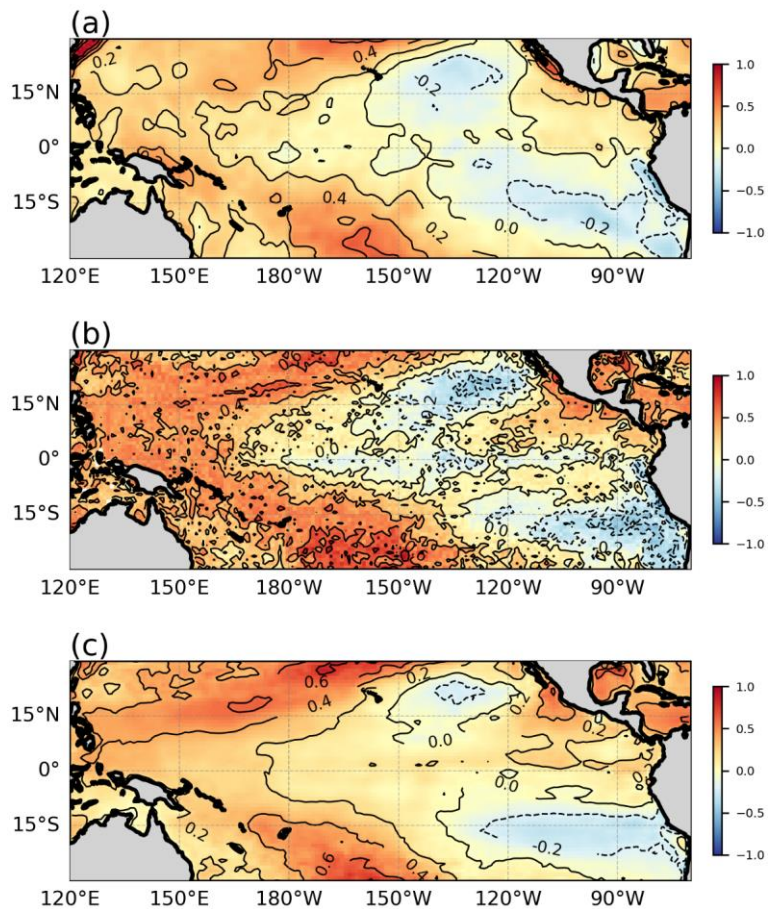


Figure 4: Sea surface temperature trends (per time period, i.e., 36 years, 1980-2015 using annual means) for different datasets. (a) HadISST1; (b) HighResMIP dataset used in HighResMIP1; (c) ESA CCI SST dataset proposed for HighResMIP2. The common

time period is constrained by HighResMIP1 only reaching 2015 with observed data, and ESA CCI only starting in 1980. The units are K / 36 years.

We recommend using the European Centre for Medium Range Weather Forecasting (ECMWF) Reanalysis v5 (ERA5; Hersbach et al., 2020) for the atmosphere and land initial conditions for 1980-01-01. These can be obtained as described in Appendix A. The first two years 1980-81 will be considered as spin-up for the land surface, so detailed analysis should be done on the period 1982-2022. Other forcings are the same as for CMIP7 AMIP. However, we recognise that two years may be too short for the land surface to spin-up, and so alternative methods to produce its initialisation are acceptable but should be fully documented.

We recognise the many limitations in SST-driven simulations, particularly in terms of unrealistic surface heat fluxes in both extratropics (e.g. Kim et al., 2024; O'Reilly et al., 2023) and tropics (Wang et al., 2005) that potentially worsen as resolution increases and more features are resolved. However, it remains the simplest, most accepted and comparable experimental design.

Tier 1b: spinup-1950

This experiment provides a multi-decadal spin-up for the coupled model simulations and its final output is used as initial conditions for both *control-1950*, *hist-1950*, and *highres-4xCO2*. It is essentially the same as in HighResMIP1. Most groups in HighResMIP1 ran the *spinup-1950* simulation for 50 years starting from initial conditions defined in Appendix B. There are trade-offs between the length of this simulation (to produce a more equilibrated ocean), against the non-zero Top-of-atmosphere (TOA) in 1950 providing net heating of the ocean and hence forcing it away from its initial conditions. Other methods to provide improved ocean initial conditions and spin-up are being sought, led by the WCRP ESMO (Earth System Modelling and Observations) group (World Climate Research Programme ESMO, 2024).

All forcings should be set to values representative of a constant 1950's state, but the precise form may vary by forcing. For solar and ozone forcings, it is suggested to produce a 11-year climatology centred on 1950 to average the solar cycle.

Greenhouse gas (GHG) concentrations can simply use the values reached in 1950 as defined in CMIP. For aerosol emissions and volcanic forcing, a mean over 10 years is suggested around 1950 (i.e., 1946-1955 if available, or 1950-1959 if not).

Tier 1b: control-1950

This will be a backward-compatible simulation design (though with updated forcings) to HighResMIP1 and remains a valuable way to gauge model variability without changes in interannual forcing. It is initialised from the end of *spinup-1950*, with constant 1950's forcings as used there. It will be essential to compare the optimised high-resolution model versions in HighResMIP2 to those submitted previously in HighResMIP1. This simulation should be run for at least 100 years, ideally 150 years if the future scenarios are also going to be produced (see below), to act as a reference to the simulations with varying forcing and hence enable some comparison of model drift against forced changes.

Tier 2: hist-1950

485 This is similarly backward-compatible to HighResMIP1, and is initialised from the end of *spinup-1950*. It uses time-varying forcings from CMIP7, mimicking the CMIP7 historical simulation but running from 1950 to 2022.

Tier 2: highres-future-sspxxx

This is the coupled future projection simulation, and is initialised from the end of the *hist-1950* simulation. HighResMIP1 only used the “high emissions” future scenario SSP5-8.5 in the simulation design, but based on current policy given recent
490 policy pledges and actions, the current level of CO₂ emissions is well below this scenario (Hausfather and Peters, 2020) (Meinshausen et al., 2024), making it less attractive for use. Factors influencing our choice include: the need to explore plausible worst-case scenarios; examining the implications of a wide-range of warming levels, including the possibility of tipping points; a desire for enhanced collaboration with other groups (e.g., CORDEX used SSP3-7.0 as one of their scenarios) and advice from the CMIP Panel. ~~Noting that future scenarios for CMIP7 are still in development~~ Based on the
495 CMIP7 ScenarioMIP proposals (van Vuuren et al., n.d.), we propose to recommend their Medium a-CMIP7 future scenario that will produce an additional radiative forcing, at the end-of-century, of around 5.37 W m⁻². Simulations using other scenarios will still be accepted, but a larger multi-model ensemble using this preferred scenario would enable more coordinated science.

We propose adding several idealised simulations to mirror those in CMIP DECK, so that we can build a comparison of metrics between DECK and HighResMIP2 and hence have some characterisation of HighResMIP2 models.

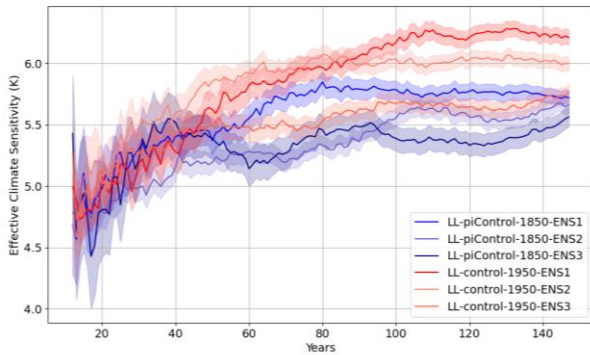
Tier 3: highresSST-p4kuni

To this end we propose a uniform +4K experiment. This simulation is parallel to *highresSST-present*, using all the same forcings apart from SST, with +4K added to all SST points uniformly. It is analogous to the CFMIP experiment *amip-p4k*, but using the HighResMIP2 SST forcing rather than AMIP. It will be used to look at climate feedbacks and precipitation
505 responses, with further work needed to build a correspondence between metrics from this simulation and comparable ones from CMIP/CFMIP simulations.

Tier 3: abrupt4xCO2-1950

In addition, we propose an abrupt 4xCO₂ simulation. This coupled simulation starts from the end of the *spinup-1950* experiment, and enforces an instantaneous increase of 4xCO₂ (analogous to the CMIP experiment *abrupt-4xCO2*) but
510 referenced to 1950, and parallel to the *control-1950* simulation. Evidence suggests (Dong et al., 2020) that for the abrupt 4xCO₂ simulation, years 1-20 of simulation produces metrics (such as Effective Climate Sensitivity, EffCS) that strongly correlate with the longer term (21-150 year) feedback, but may be considerably smaller in magnitude. Given the expense of high-resolution simulations, just 20-30 years of this simulation could produce useful information for the community. Further work will be needed to understand the relationship between the 4xCO₂ experiment referenced to 1850 (as in CMIP) and
515 1950 (as here in HighResMIP), and the role of ongoing model drift. An illustrative example comparing the EffCS calculated from CMIP and HighResMIP simulations (three ensemble members each) using the same model science configuration from one model is shown in Fig. 5.

Commented [MR6]: GMD preprint needed



520 Figure 5: An illustrative example of model metrics enabled by new HighResMIP2 simulations: Effective Climate Sensitivity
 (EffCS) calculated with successively more years of data for two simulations using one model, in this case a ~130-km atmosphere
 coupled to a ~100-km ocean. Blue shades show three ensemble members using the standard CMIP6 DECK piControl and
 abrupt-4xCO2 simulations to calculate EffCS over 150 years; Red shades show three ensemble members using the standard
 HighResMIP experimental design, 50 years of spinup-1950, and then control-1950 and abrupt4xCO2-1950 simulations in parallel.
 525 Using only 30 years of simulation clearly does not define the final (150 year) EffCS, but may at least give a useful lower bound. To
establish a Any relationship across experimental designs will need more (multi-model) analysis.

Tier 4: highresSST-pxxkpat

530 In order to make the SST-forced simulations more clearly actionable than in HighResMIP1, we propose to create different
 global warming level experiments to be run in parallel with the *highresSST-present* simulation. Such atmosphere-only
 experiments use patterned SST (and sea-ice) changes imposed on the observed 2003-2022 period (a 20-year subset to reduce
 the global trend within the period), with the globally-averaged warming levels of surface air temperature calculated above
 the historical values, and with appropriate changes to other forcings. The approach has been demonstrated by the “Half a
 degree Additional warming, Projections, Prognosis and Impacts” (HAPPI) experiment (Mitchell et al., 2017; Wehner et al.,
 535 2018) and the database for policy decision-making for future climate changes framework (Ishii and Mori, 2020). Similar to
 the Global Warming Levels methodology used in IPCC AR6 for global surface air temperature, these simulations can be
 linked to global mitigation policy targets and are shorter and less computationally expensive than fully coupled integrations,
 thus permitting ensembles of simulations. Structural uncertainty in SST changes (and consequences for climate impacts) can
 be directly examined by utilising multiple perturbed SST datasets constructed from individual large ensemble CMIP-class
 540 models or the entire CMIP database, or by explicitly encompassing different SST trend patterns such as in the tropical
 Pacific. Such simulations enable the study of impacts for a given warming level in a simplified atmosphere-only framework,

hence providing improved links with CMIP and insight into climate extremes processes. It is worth noting that the use of warming level experiments is commonplace in event storyline simulations as well (e.g., Huprikar et al., 2023).

545 *Tier 5: highres-yrxxxx (and highres-yrxxxx-p4kuni)*

These simulations are expected to be one year in duration, short enough to be feasible for km-scale models (finer resolution than Tier 1) as well as more typical climate resolutions (including those used for Tier 1 and CMIP7 more broadly), and hence enabling comparisons across classes of models. This will be designed to be as consistent with the DYAMOND3 protocol as possible (Takasuka et al., 2024), and is envisioned to enable faster testing and experimentation (compared to the Tier 1-4 simulations), and to allow assessment of basic aspects of climatology and daily-sub-daily aspects of variability.

550 ~~These will~~ It is likely to be atmosphere-only with prescribed SSTs and sea ice. Groups could consider using this simulation to test further increases in their underlying model component resolutions that approach those of DYAMOND. The preferred year is March 1, 2020-February 28, 2021 to match that used in DYAMOND3 and it lies within and towards the end of the time range of *highresSST-present* in Tier 1, in order to make most use of the newest observational datasets. Additional years could be added (e.g., to accompany new satellites such as EarthCARE, Illingworth et al., 2015). A uniform +4K experiment (*highres-yrxxxx-p4kuni*) following Cess and Potter (1988) is also likely, enabling a chain of metrics on climate feedbacks to be evaluated sequentially from this one year simulation, to the longer *highresSST-present*, to AMIP and hence CMIP. Pairing of the historical and +4K simulations would allow us to address questions related to the sensitivity of cloud feedbacks to model resolution, and related topics. It should be noted that this is not meant to repeat DYAMOND3, but to build a bridge between their GSRM (sub-5km resolution) models and CMIP communities.

560 between their GSRM (sub-5km resolution) models and CMIP communities.

4 Data requirements

As discussed in Haarsma et al., (2016), the output, storage, and publication of high-resolution model data are challenging issues. As the resolution of HighResMIP1 models approaches the scales necessary for realistic simulation of synoptic and mesoscale phenomena, daily and sub-daily multi-level data (in both ocean and atmosphere) are of increasing interest to allow the investigation of weather phenomena such as those related to mid-latitude storms, blocking, tropical cyclones, and monsoon systems as well as ocean mesoscale processes and ocean extremes such as marine heatwaves. In addition, they could be valuable data to train or evaluate new machine-learning (ML) models and approaches. However, increased data outputs can have significant impacts on: model speed due to I/O operations; the size of data archives to enable storage; the challenge of formatting via the Climate Model Output Rewriter (CMORisation of variables); and on publication to ESGF due to data volumes. Feedback from modelling groups after HighResMIP1 suggested the data volumes requested were narrowly manageable and data providers would not want to have them grow significantly. In the following we discuss options for managing data volumes.

570

The Data Request (DReq), the variables and frequencies that are required and suggested to be produced from a CMIP MIP to answer its science questions, is being developed for HighResMIP2, and will be informed by CMIP7 plans following on from CMIP6 (Jukes et al., 2020). The EU PRIMAVERA project undertook a study of the variables downloaded from the HighResMIP1 archive (either from ESGF or within the PRIMAVERA project over a six month period), and produced tables of data access by volume and by frequency (this is available at Seddon et al., 2020). Together with community engagement, we have used these tables as a basis for an initial updated Data Request for HighResMIP2, including prioritising the variable and frequency based on their access. We kept all monthly data requests the same as for HighResMIP1, and have listed the top 60 downloaded variables as priority 1 data as well. In addition, as part of the EU EERIE project (EERIE, 2024), we have added specific extra tables to the Data Request for high frequency outputs (Savage, 2023), but the applicability of this for the broader HighResMIP community will need to be reviewed. It is possible that limiting output variables in this way may restrict future novel analysis ideas, but the additional experiments suggested for HighResMIP2, specifically the shorter simulations, may give more scope for additional outputs tailored to these simulations. Based on the recommendations of the metrics section (Section 5), we will prioritise variables that can contribute to key metrics and assessment packages to be used for evaluating HighResMIP2 simulations (and CMIP models more generally).

By implementing the DReq in this way, we aim to keep the number of variables at a manageable level. However, the data volumes are also determined by the spatial resolution, precision and compression at which the variables are stored. Although the DReq states where native grid data is required, making such choices depends on the properties of the data and underlying processes, as well as what information is relevant for end users and the available observational products for comparison and evaluation. Generally, the most relevant data for impacts is at the planetary surface where observational datasets have the highest resolution. It is therefore desirable to store surface and near-surface variables at higher temporal and spatial resolutions than elsewhere. Furthermore, in order to evaluate the HighResMIP ensemble, the high-frequency output should contain variables for which high-frequency observations are available as well.

Guidance by the CMIP6 Panel and WGCM Infrastructure Panel on model grids (e.g. Griffies et al., 2016; CMIP6 Output Grid Guidance, 2024), will be used to help inform our choices. Consideration of effective model resolution (e.g. Klaver et al., 2020), based on kinetic energy spectra, can also help to inform choices about the “optimal” resolution to share data generated by HighResMIP2, and we encourage modelling groups to calculate and publish this metric to inform data users.

Models using unstructured meshes are becoming increasingly common, which produces new challenges for both data providers and users. Using conventional CMOR data standards can greatly increase the published volumes of such data (due to grid descriptors in every file), and so HighResMIP2 will (informally) experiment with ways to address this issue in addition to standard CMIP formats. There is a growing ecosystem to handle unstructured grids (e.g. UXarray Organisation, Chmielowiec et al., 2024), and we encourage data users to consider building new workflows to take advantage of these tools rather than simply regridding data to regular latitude-longitude meshes to fit with existing analysis codes. Using native grid data may also obviate producing a duplicate of the data on an alternative grid, hence saving storage and processing. For some analyses, there is no substitute for using data on the native model grid, particularly when calculating integrated transport

quantities where conservation is important or for some extreme events. Preserving as much data on native grids as feasible also maintains provenance and improves transparency and reproducibility by mitigating data loss associated with post-processing.

However, regridding to standard or target grids can still play an important role in some analyses, particularly when confronted with decisions in the face of limited resources. Away from the planetary surface, it may be more valuable to provide high-frequency output at a “useful” resolution (e.g. lower spatial resolution, but hourly) rather than making no compromises on horizontal grid spacing but having to limit temporal resolution (e.g., higher spatial resolution, but daily).

Using standard grids can also be sufficient to produce standard metrics (see Section 5), fit into existing workflows and be more comparable to existing observational datasets on regular grids.

If data volumes really become so large that they are impractical to work with (e.g. at the timestep level), then performing such calculations online (i.e. either within the model itself or as part of post-processing) may be much preferred for accuracy. A simple example is integrated vapour transport (IVT) which is commonly used to track atmospheric rivers (Section 5). IVT, at any given time, is a two-dimensional field that is the vertical integral of multiple three-dimensional fields. Calculating such variables as far “upstream” as possible reduces the data burden on scientists and other end users of HighResMIP2 data.

Data compression is another promising avenue to keep data volumes manageable regardless of output spatial and temporal resolution. This can range from relatively simple improved lossless compression settings in CMORised netCDF files that provide marginal filesize reduction, to lossy compression methods that reduce data storage more aggressively at the expense of bit-for-bit reproducibility (Baker et al., 2016; Klöwer et al., 2021). We will be advised by CMIP7 on any plans for enhanced data compression, as any method would still need to conform to CMOR standards.

An alternative way to reduce the data volumes is to only output a more demanding set of data over sub-periods of the full simulation (e.g., time-slice method). In an eddy-rich ocean model, daily or 3-daily three-dimensional output is needed to analyse the variability of western boundary currents and sub-surface eddies and to estimate the eddy contribution to the meridional overturning circulation in density space in z-coordinate models. To understand processes leading to TC development, sub-daily three-dimensional output and a variety of sub-daily radiative and surface flux data is needed to quantify cloud-radiative and surface flux feedbacks (Dirkes et al., 2023; Wing et al., 2019). Such time-slice methods can enable more detailed process-based analysis while not overwhelming processing capacity. A downside of this method is that it is more complicated to set up and run the simulations. We propose that for coupled simulations there are enhanced data output periods near the start, around present-day, and towards the end of the simulation (e.g., 1950-1960, 2010-2020, and 2090-2100), where we encourage modelling groups to produce more variables outside of priority 1 (which we expect to be produced throughout). The different Tiers of simulation in HighResMIP2 may also require an amended DReq, for example in the Tier 5 one year simulations where the focus will be on higher frequency processes.

We also encourage the modelling groups to produce more derived diagnostics for HighResMIP2, which to some extent can obviate the need to publish all the high frequency outputs at native resolution. Various analyses in HighResMIP1 made use of derived datasets that were created from multi-model output and then separately made available to the community (e.g.,

645 model TC tracks (Roberts, 2019) and synthetic tracks (Bloemendaal et al., 2022); sea level and storm surge (Muis et al., 2023); wind storm footprints (Lockwood et al., 2022)). As discussed in Section 5, there are several sets of algorithms and parameter settings that, if used by the modelling groups, could lead to extremely valuable datasets that have a common baseline and could be published. For such datasets to be published to ESGF might require some refinement of data standards, but this should be minimal as long as the variables within the derived dataset follow CMOR standards.

650 One strong recommendation from our past experience is to take the analysis tools to the data, where possible, in preference to moving the data. An example of this would be the UK CEDA-JASMIN platform (Seddon et al., 2023), where many of the simulations from HighResMIP1 were published and where collaborators could obtain access to the systems and analyse the data. Similarly, a large chunk of the HighResMIP1 archive was copied once to the U.S. National Energy Research Scientific Computing Center (NERSC, W. Collins, personal communication), enabling many US collaborators to access and analyse the data without further duplication. This was facilitated via the availability of Globus at JASMIN, enabling access to high-speed data transfer nodes and providing transfer speeds 100x faster than available via ESGF.

655 5 Towards standard metrics and diagnostics

In order to make use of HighResMIP2 simulations to advance the scientific questions outlined, we propose a standard set of metrics and diagnostics of both the mean climate and individual processes of interest. The various metrics and diagnostics that are anticipated to be used are summarised in Table 3. We also build on experiences and lessons-learned from the analysis and advances from HighResMIP1.

660

Phenomena	Preferred Software Package
Mean Climate	PMP
Precipitation	PMP
ENSO	PMP
MJO	PMP
Extratropical Variability	PMP
Monsoon	PMP
Tropical Cyclone	TempestExtremes
Extratropical Cyclones	TempestExtremes
Atmospheric Rivers	TempestExtremes
Mesoscale Convective Systems	TempestExtremes
Ocean Eddies	py-eddy-tracker

Table 3: Summary of planned metrics and diagnostics for HighResMIP2, [see text for explanation of software packages.](#)

665 Routine benchmarking used for ESMS' metrics are needed for each modelling group to quantify potential reductions in
existing biases, as well as for addressing stakeholder needs and applications (Reed et al., 2022). To this end, and following
the CMIP7 Model Benchmarking Task Team, HighResMIP2 can make use of the [Rapid Evaluation Framework \(REF¹\)](https://wcrp-cmip.org/cmip7/rapid-evaluation-framework/),
670 [which is built atop the Coordinated Model Evaluation Capabilities \(CMEC²\)](https://cmec.llnl.gov/). The PCMDI Metrics Package (PMP) (Lee et
al., 2024) ~~includes a CMEC interface, and~~ PMP is a publicly-available Python software package that has been developed to
provide objective comparisons of climate and Earth system models with one another. Thus HighResMIP2 participants can
675 readily compare their high-resolution simulations with conventional versions of their modelling systems that have been
submitted to CMIP6 and CMIP7, including DECK simulations. PMP includes typical metrics for mean climate, at the global
and regional scales, that allow for comparisons between simulations, as well as between a simulation and observations (or
reanalysis), for a variety of variables, including precipitation, sea level pressure, radiative fluxes, winds, and temperature.
These metrics use traditional measures like bias, root-mean-square differences, and pattern correlations. Additional metrics
680 for precipitation, including extremes, drought, and seasonal and daily cycles are also included. The PMP also contains
standard metrics for important modes of climate variability, including El Niño-Southern Oscillation (ENSO), Madden-Julian
Oscillation (MJO), and monsoon characteristics in various regions. In addition, PMP quantifies various important modes of
extratropical variability, including the Northern Annular Mode (NAM), the North Atlantic Oscillation (NAO), the Southern
Annular Mode (SAM), the Pacific North American pattern (PNA), the North Pacific Oscillation (NPO), the Pacific Decadal
685 Oscillation (PDO), and the North Pacific Gyre Oscillation (NPGO). Finally, the package also includes a standard metric for
cloud radiative feedbacks, including using *abrupt4xCO2-1950* Tier 3 experiment for estimating climate sensitivity.
In addition to documenting the output of PMP, we ask that participating modelling groups also provide monthly output of
standard mean climate fields on a 0.25 deg. latitude-longitude grid for each simulation (though details are left to the typical
approach by modelling groups for archiving CMIP output). This output could then be used to apply other variability and
690 mean climate metrics as needed, but also significantly cuts down on the data submission requirements. Given that this is
monthly data on a coarsened grid, we anticipate that these will be provided for all simulations.
Process-level analysis will be a critical component of HighResMIP2 science activities. Following HighResMIP1, individual
events such as TCs, extratropical cyclones, atmospheric rivers, and MCSs will be studied. Such events are often under-
resolved or not captured at all in traditional CMIP-class models as demonstrated in HighResMIP1 activities. Given the large-
695 data volumes typically required for objective tracking at high temporal resolutions, as well as the advantages of tracking
such events on the native grids of models, HighResMIP2 can make use of the open-source `TempestExtreme`s package
(Ullrich et al., 2021). To identify and track these features output will be required at frequent intervals of at least 6 hourly
using the specific parameters and thresholds documented in Ullrich et al., (2021) for TCs, extratropical cyclones, and
atmospheric rivers and in Hsu et al., (2023) for MCSs, as is common for model evaluation (e.g., Reed et al., 2023). Ocean

¹ REF: <https://wcrp-cmip.org/cmip7/rapid-evaluation-framework/>

² CMEC: <https://cmec.llnl.gov/>

695 features will also be a focus of HighResMIP2. It is expected that ocean eddies, and their role in the climate system, will become more prominent in HighResMIP2 simulations as model resolution increases (see Table 1). To detect and track eddies, the py-eddy-tracker toolbox will be used (Mason et al., 2014). Additional ocean extremes such as marine heatwaves (MHW) would also be welcome to be provided as outputs following an agreed method such as Hobday et al., (2016).

700 While it is strongly encouraged that modelling groups provide the feature characteristics and trajectories from these specific software packages, modelling groups that are interested in submitting trajectories from other techniques are welcome to do so to complement the standardised forms. In all cases, we recommend that the features be tracked for the full length of all simulations, but understand that in some cases modelling groups may need to prioritise feature tracking for a subset of the simulations given data loads.

705 In addition to the above metrics and diagnostics, as part of the Data Request for HighResMIP2 it is asked that the modelling groups also provide a standard set of 2D output for each simulation that could be used to help inform studies related to future adaptation and climate risk planning. In particular, precipitation, near-surface temperature, surface pressure, and surface winds at 6-hourly temporal resolution for the historical and future (both AMIP and coupled) are requested on a 0.25 deg. latitude-longitude grid, as discussed earlier, or the native grid of the model. This output could be used for additional extremes analysis, as well as to force other downscaling or relevant hazard models (e.g., storm surge, flooding, etc.), that focus more on climate impacts. By comparing different future scenarios and warming levels scientists and practitioners might be able to better inform resilience measures at regional-to-local scales given the high resolution of HighResMIP2. Again, it is expected that these 2D fields be provided for all simulations, but understand that some model groups may need to prioritise a subset of the simulations, or time periods.

715 **6 Summary and Discussion**

CMIP6 HighResMIP was the first global high-resolution model intercomparison as part of a CMIP effort, and as such it continues to expand our understanding of the role of grid-resolution in multi-model climate simulations, including new insights into large-scale variability and trends as well as extremes. With the rapid developments in this arena (e.g., via improved and optimised models capable of being deployed at global storm-permitting and global km-scales) over the last decade, as well as the fast evolution of machine-learning methods and requirement for training data, there is a demand for a new set of global high-resolution simulations. ~~We do recognise the considerable cost and carbon footprint of such high-resolution simulation, both in terms of supercomputing and storage, but consider that the new information and capabilities that they enable justify the expense.~~

725 The key advancement for HighResMIP2 will be to use models optimised for high-resolution, rather than being constrained to be as similar as possible to standard-resolution models. Together with anticipated increases in model resolution to better represent processes and address climate projection uncertainties (specifically towards ocean eddy-rich [and atmosphere](#)

[storm-resolving](#) resolutions), and relaxation of other constraints from HighResMIP1 (such as idealised aerosols), we believe that our new HighResMIP2 protocol will further advance our understanding of climate. Together with updated and new simulations, data requirements and metrics, HighResMIP2 outputs will be capable of making important contributions to impact and hazard modellers, climate risk assessments, and policy.

Our new idealised simulations should also enable improved characterisation of HighResMIP models and hence enable improved links to CMIP-class models, as well as giving some extra flexibility, such as encouraging the use of older models (already tested at high resolutions) rather than having to await new CMIP7 model versions.

The development of the approach for HighResMIP2 documented has been a collaborative process among the authors, the HighResMIP2 working group members, the CMIP panel, and the broader community. As a result, it is expected that there will be a natural integration of HighResMIP2 analysis and existing efforts within CMIP and the WCRP. An obvious example will be the comparison of the HighResMIP2 simulations to the CMIP7 DECK simulations, which will directly advance the stated science questions in Section 2. Another example is related to CORDEX as a leader in utilising regional models to downscale CMIP output to inform regional climate applications. This provides an opportunity to coordinate analysis approaches between CORDEX and HighResMIP2, allowing for the investigation of the relative strengths of the different approaches to regional climate and extreme event simulation. Furthermore, willing modelling centres could consider using HighResMIP2 output to drive their CORDEX models, which could further advance the scientific questions and shed light on potential approaches to high-resolution in future intercomparisons. In the broader context, HighResMIP2 will complement other CMIP activities and help advance the objectives of many of the WCRP lighthouse activities.

Data volumes are an ongoing concern for HighResMIP2 (and the community more generally), and we will continue to engage with others, including the Fresh Eyes on CMIP group, to understand which model variables at what frequencies are the most valuable to produce, and with other groups on new methods for reducing data sizes.

However, although model data at high spatial and temporal resolutions are difficult to manage and store, we must recognise that such data is important. Understanding the weather of the future (not just the climate) will be a key to [implementing climate mitigation action](#), adaptation planning and risk reduction ([C. Jakob, pers. comm.](#)). It will also become increasingly important with the rapid advance of machine learning technologies. The development of sub-grid parameterization processes, partly and fully utilising these technologies, has significantly improved the accuracy of climate and Earth system models while also reducing computing costs. Correction techniques by machine learning and deep learning can use historical HighResMIP dataset outputs as training data to improve future climate change projections, similar to the correction method used in numerical weather forecasting models. HighResMIP data could also be used to develop and challenge existing and new ML-based weather and climate models, ranging from testing specific processes through to use as global training data, and hence help the community to better understand what the weather of the future will look like.

Appendix A: Initial conditions for *highresMIP-present*

760 The atmosphere (and land and lakes if required) initial conditions for 1980-01-01 come from ERA5 reanalysis (Hersbach et al., 2020) on that day. These can be obtained via the Copernicus Climate Change Service (C3S) Climate Data Store (CDS) (DOI:10.24381/cds.adbb2d47) by constructing an API script using the <https://cds.climate.copernicus.eu/api-how-to> and variable selection from

[https://apps.ecmwf.int/data-](https://apps.ecmwf.int/data-catalogues/era5/?stream=oper&levtype=ml&expver=1&month=jan&year=1980&type=an&class=ea)

765 [catalogues/era5/?stream=oper&levtype=ml&expver=1&month=jan&year=1980&type=an&class=ea](https://apps.ecmwf.int/data-catalogues/era5/?stream=oper&levtype=ml&expver=1&month=jan&year=1980&type=an&class=ea)

The SST and sea-ice forcing for *highresSST-present* comes from the ESA CCI dataset at version 3.0, and can be obtained from Good and Embury (2024). This dataset does not include temperatures for inland lakes, so for models without their own lake parameterisations, lake temperatures can for example be obtained from the OSTIA dataset

770 https://data.marine.copernicus.eu/product/SST_GLO_SST_L4_REP_OBSERVATIONS_010_011/description

For the initialisation of ensembles, we recommend these be generated via perturbations of initial conditions rather than perturbation of forcing fields.

Appendix B: Initial conditions for *spinup-1950*

775 The initial conditions for the coupled *spinup-1950* experiment, by default, remain the same as in HighResMIP (Haarsma et al., 2016): ERA-20C reanalysis for atmosphere and land (Poli et al., 2016), and EN4 ocean analysis for ocean temperature and salinity (Good et al., 2013), specifically version EN.4.2.2.g10, taken as a climatology around 1950. The sea-ice can be initialised in any appropriate way. While we acknowledge that different ocean analysis products and other developments (e.g. Hermanson et al., 2023; Karspeck et al., 2017) may give “better” initial conditions, using a common approach will

780 make analysis and comparison of the multi-model dataset much more straightforward.

Data and code availability

The SST data used to construct Fig. 4 is freely available: HadISST1 (Rayner et al., 2003) from <https://www.metoffice.gov.uk/hadobs/hadist/data/download.html>; HighResMIP1 data, from inputs4MIPs (Kennedy et al., 2017); ESA-CCI SST data, from Good and Embury (2024). The trend files and code that produced the figure are available from [doi:10.5281/zenodo.14500187](https://doi.org/10.5281/zenodo.14500187) [doi:10.5281/zenodo.13312568](https://doi.org/10.5281/zenodo.13312568), and follows (Sobel et al., 2023).

The data and code used to produce Fig. 5 is available also from the [doi:10.5281/zenodo.14500187](https://doi.org/10.5281/zenodo.14500187) ~~[doi:10.5281/zenodo.13312568](https://doi.org/10.5281/zenodo.13312568)~~. These include timeseries of annual mean surface air temperature (TAS) and Top of Atmosphere radiation (TOA) from the three model simulations.

790

Author Contribution

The HighResMIP co-leads MJR, KAR and QB conceptualized the structure of the manuscript and led the writing of the original draft, as well as developing the visualizations of HighResMIP2. All other co-authors contributed to review and editing of the manuscript. MJR, ML provided software for Fig. 4, 5.

795

Competing interests

The authors declare that they have no conflict of interest.

Acknowledgements

Support for this work was provided by numerous funding sources and are summarised here (grouped by author's initials and/or funder):

800

MJR, HMC, ML, JS, PLV were supported by UK Research and Innovation (UKRI) under the UK government's Horizon Europe funding guarantee (grant numbers 10057890, 10049639, 10040510) as part of EU EERIE. MJR, HTH, ML were supported by the Met Office Hadley Centre Climate Programme funded by DSIT. KAR was supported by grants (NSF AGS2217620, NSF AGS2244917, Dept. of Energy DE-SC0016605, and Dept. of Energy DE-SC0023333). QB was funded by the National Key Research and Development Program of China (grant no. 2022YFF0802003). LPC and DP acknowledge the support of the Ministère des Relations internationales et de la Francophonie. SJC was supported by the National Science Foundation (AGS-2043142, AGS-2244918), the NOAA MAPP program (NA21OAR4310345, NA23OAR4310600, NA23OAR4310598) and the NOAA CVP program (NA22OAR4310610). PC and GD were supported by the National Science Foundation grant number AGS-2231237 and the National Academies of Science and Engineering Gulf Research Program grant number 2000013283. HMC was funded by Natural Environment Research Council grant number NE/P018238/1 and through a Leverhulme Trust Research Leadership Award. For GD, the US National Science Foundation (NSF) National Center for Atmospheric Research (NCAR) is a major facility sponsored by the US NSF under Cooperative Agreement 1852977. IF was funded/co-funded by the European Union (ERC, OSTIA, 1 101116545) - views and opinions expressed are however those of the author(s) only and do not necessarily reflect those of the European Union or the European Research Council. Neither the European Union nor the granting authority can be held responsible for them. NSF was funded by the European Union's Horizon 2020 research and innovation programme under the Marie Skłodowska-Curie grant agreement No. 846824, National Institute for Health and Care Research award NIHR204850, and Natural Environment Research Council grant number NE/Y503319/1. SH acknowledges support from the Deutsche Forschungsgemeinschaft

815

(DFG, German Research Foundation) under Germany's Excellence Strategy-EXC 2037 "CLICCS-Climate, Climatic
820 Change, and Society"-Project Number: 390683824, contribution to the Center for Earth System Research and Sustainability
(CEN) of Universität Hamburg. DK was funded New Faculty Startup Fund and Creative-Pioneering Researchers Program
from Seoul National University, the National Research Foundation of Korea (NRF) grant funded by the Korea government
(MSIT) (RS-2024-00336160), NASA MAP program (80NSSC21K1495), NOAA MAPP program (NA21OAR4310343),
and NOAA CVP program (NA22OAR4310608). CK was supported by JSPS KAKENHI Grant Number JP20H05728 and by
825 MEXT as "Feasibility Studies on Next-Generation Supercomputing Infrastructures." LRL was supported by Office of
Science, U.S. Department of Energy Biological and Environmental Research as part of the Regional and Global Model
Analysis program area; PNNL is operated by Battelle Memorial Institute for the U.S. Department of Energy under Contract
DEAC05-76RL01830. RM was supported by MEXT-Program for the advanced studies of climate change projection
(SENTAN) Grant Number JPMXD0722680734. PN was funded by INCT-MC2 under Grants: CNPq 465501/2014-1,
830 FAPESP 2014/50848-9, and CAPES 88887.136402/2017-00, and 88887.115872/2015. PO was supported by the Spanish
fellowship RYC-2017-22772. CDR and AMT were supported by the EERIE project (Grant Agreement No 101081383)
funded by the European Union as part of Horizon Europe. ES was funded by EU project BlueAdapt under Grant agreement
101057764. CYT was funded by NSTC: 112-2111-M-001-010 and Academia Sinica: AS-GCP-112-M03. PAU was
supported by the Program for Climate Model Diagnosis and Intercomparison (PCMDI) under the auspices of the US DOE by
835 Lawrence Livermore National Laboratory under Contract DE-AC52-07NA27344. PLV was supported by the NCAS core
grant. MFW was supported by the Director, Office of Science, Office of Biological and Environmental Research of the U.S.
Department of Energy under Contract No. DE340AC02-05CH11231 under the Regional and Global Model Analysis
(RGMA) program. CZ acknowledges support of the US Dept. of Energy (DE-SC0016605 and "Integrated Coastal
Modeling"). BZ is supported by the NOAA Climate Program Office through Climate Process Team 140Y8R1ES2/24P01;
840 the statements, findings, conclusions, and recommendations are those of the author(s) and do not necessarily reflect the
views of the National Oceanic and Atmospheric Administration, or the U.S. Department of Commerce. WZ acknowledges
the support from NOAA (Award NA23OAR4310611- T1-01), Utah Department of Natural Resources (Award 205396) and
the U.S. Geological Survey under Grant G24AP00051-00. We also thank Timothy Andrews (Met Office) for the original
code for Fig. 5.

845

References

- Armstrong McKay, D. I., Staal, A., Abrams, J. F., Winkelmann, R., Sakschewski, B., Loriani, S., Fetzer, I., Cornell, S. E.,
Rockström, J., and Lenton, T. M.: Exceeding 1.5°C global warming could trigger multiple climate tipping points, *Science*,
377, eabn7950, <https://doi.org/10.1126/science.abn7950>, 2022.
- 850 Athanasiadis, P. J., Ogawa, F., Omrani, N.-E., Keenlyside, N., Schiemann, R., Baker, A. J., Vidale, P. L., Bellucci, A.,
Ruggieri, P., Haarsma, R., Roberts, M., Roberts, C., Novak, L., and Gualdi, S.: Mitigating Climate Biases in the Midlatitude

- North Atlantic by Increasing Model Resolution: SST Gradients and Their Relation to Blocking and the Jet, *J. Clim.*, 35, 3385–3406, <https://doi.org/10.1175/JCLI-D-21-0515.1>, 2022.
- 855 Bacmeister, J. T., Reed, K. A., Hannay, C., Lawrence, P., Bates, S., Truesdale, J. E., Rosenbloom, N., and Levy, M.: Projected changes in tropical cyclone activity under future warming scenarios using a high-resolution climate model, *Clim. Change*, 146, 547–560, <https://doi.org/10.1007/s10584-016-1750-x>, 2018.
- 860 Bador, M., Boé, J., Terray, L., Alexander, L. V., Baker, A., Bellucci, A., Haarsma, R., Koenigk, T., Moine, M.-P., Lohmann, K., Putrasahan, D. A., Roberts, C., Roberts, M., Scoccimarro, E., Schiemann, R., Seddon, J., Senan, R., Valcke, S., and Vanniere, B.: Impact of Higher Spatial Atmospheric Resolution on Precipitation Extremes Over Land in Global Climate Models, *J. Geophys. Res. Atmospheres*, 125, e2019JD032184, <https://doi.org/10.1029/2019JD032184>, 2020.
- Baker, A. H., Hammerling, D. M., Mickelson, S. A., Xu, H., Stolpe, M. B., Naveau, P., Sanderson, B., Ebert-Uphoff, I., Samarasinghe, S., De Simone, F., Carbone, F., Gencarelli, C. N., Dennis, J. M., Kay, J. E., and Lindstrom, P.: Evaluating lossy data compression on climate simulation data within a large ensemble, *Geosci. Model Dev.*, 9, 4381–4403, <https://doi.org/10.5194/gmd-9-4381-2016>, 2016.
- 865 Bao, Q., Liu, Y., Wu, G., He, B., Li, J., Wang, L., Wu, X., Chen, K., Wang, X., Yang, J., and Zhang, X.: CAS FGOALS-f3-H and CAS FGOALS-f3-L outputs for the high-resolution model intercomparison project simulation of CMIP6, *Atmospheric Ocean. Sci. Lett.*, 13, 576–581, <https://doi.org/10.1080/16742834.2020.1814675>, 2020.
- Beech, N., Rackow, T., Semmler, T., Danilov, S., Wang, Q., and Jung, T.: Long-term evolution of ocean eddy activity in a warming world, *Nat. Clim. Change*, 12, 910–917, <https://doi.org/10.1038/s41558-022-01478-3>, 2022.
- 870 Bian, C., Jing, Z., Wang, H., Wu, L., Chen, Z., Gan, B., and Yang, H.: Oceanic mesoscale eddies as crucial drivers of global marine heatwaves, *Nat. Commun.*, 14, 2970, <https://doi.org/10.1038/s41467-023-38811-z>, 2023.
- Bishop, S. P., Gent, P. R., Bryan, F. O., Thompson, A. F., Long, M. C., and Abernathy, R.: Southern Ocean Overtaking Compensation in an Eddy-Resolving Climate Simulation, *J. Phys. Oceanogr.*, 46, 1575–1592, <https://doi.org/10.1175/JPO-D-15-0177.1>, 2016.
- 875 Bloemendaal, N., de Moel, H., Martinez, A. B., Muis, S., Haigh, I. D., van der Wiel, K., Haarsma, R. J., Ward, P. J., Roberts, M. J., Dullaart, J. C. M., and Aerts, J. C. J. H.: A globally consistent local-scale assessment of future tropical cyclone risk, *Sci. Adv.*, 8, eabm8438, <https://doi.org/10.1126/sciadv.abm8438>, 2022.
- 880 Bock, L., Lauer, A., Schlund, M., Barreiro, M., Bellouin, N., Jones, C., Meehl, G. A., Predoi, V., Roberts, M. J., and Eyring, V.: Quantifying Progress Across Different CMIP Phases With the ESMValTool, *J. Geophys. Res. Atmospheres*, 125, <https://doi.org/10.1029/2019JD032321>, 2020.
- 885 Caldwell, P. M., Mamatjanov, A., Tang, Q., Van Roekel, L. P., Golaz, J.-C., Lin, W., Bader, D. C., Keen, N. D., Feng, Y., Jacob, R., Maltrud, M. E., Roberts, A. F., Taylor, M. A., Veneziani, M., Wang, H., Wolfe, J. D., Balaguru, K., Cameron-Smith, P., Dong, L., Klein, S. A., Leung, L. R., Li, H.-Y., Li, Q., Liu, X., Neale, R. B., Pinheiro, M., Qian, Y., Ullrich, P. A., Xie, S., Yang, Y., Zhang, Y., Zhang, K., and Zhou, T.: The DOE E3SM Coupled Model Version 1: Description and Results at High Resolution, *J. Adv. Model. Earth Syst.*, 11, 4095–4146, <https://doi.org/10.1029/2019MS001870>, 2019.
- Camargo, S. J. and Wing, A. A.: Tropical cyclones in climate models, *Wiley Interdiscip. Rev. Clim. Change*, 7, 211–237, <https://doi.org/10.1002/wcc.373>, 2016.

- Cess, R. D. and Potter, G. L.: A methodology for understanding and intercomparing atmospheric climate feedback processes in general circulation models, *J. Geophys. Res. Atmospheres*, 93, 8305–8314, <https://doi.org/10.1029/JD093iD07p08305>, 1988.
- 890
- Chang, P., Zhang, S., Danabasoglu, G., Yeager, S. G., Fu, H., Wang, H., Castruccio, F. S., Chen, Y., Edwards, J., Fu, D., Jia, Y., Laurindo, L. C., Liu, X., Rosenbloom, N., Small, R. J., Xu, G., Zeng, Y., Zhang, Q., Bacmeister, J., Bailey, D. A., Duan, X., DuVivier, A. K., Li, D., Li, Y., Neale, R., Stössel, A., Wang, L., Zhuang, Y., Baker, A., Bates, S., Dennis, J., Diao, X., Gan, B., Gopal, A., Jia, D., Jing, Z., Ma, X., Saravanan, R., Strand, W. G., Tao, J., Yang, H., Wang, X., Wei, Z., and Wu, L.: An Unprecedented Set of High-Resolution Earth System Simulations for Understanding Multiscale Interactions in Climate Variability and Change, *J. Adv. Model. Earth Syst.*, 12, e2020MS002298, <https://doi.org/10.1029/2020MS002298>, 2020.
- 895
- Chang, P., Xu, G., Kurian, J., Small, R. J., Danabasoglu, G., Yeager, S., Castruccio, F., Zhang, Q., Rosenbloom, N., and Chapman, P.: Uncertain future of sustainable fisheries environment in eastern boundary upwelling zones under climate change, *Commun. Earth Environ.*, 4, 19, <https://doi.org/10.1038/s43247-023-00681-0>, 2023.
- 900
- Chassignet, E. P., Yeager, S. G., Fox-Kemper, B., Bozec, A., Castruccio, F., Danabasoglu, G., Horvat, C., Kim, W. M., Koldunov, N., Li, Y., Lin, P., Liu, H., Sein, D. V., Sidorenko, D., Wang, Q., and Xu, X.: Impact of horizontal resolution on global ocean–sea ice model simulations based on the experimental protocols of the Ocean Model Intercomparison Project phase 2 (OMIP-2), *Geosci. Model Dev.*, 13, 4595–4637, <https://doi.org/10.5194/gmd-13-4595-2020>, 2020.
- Chen, J. H. and Lin, S. J.: The remarkable predictability of inter-annual variability of Atlantic hurricanes during the past decade, *Geophys. Res. Lett.*, 38, 1–6, <https://doi.org/10.1029/2011GL047629>, 2011.
- 905
- Chmielowiec, P., Jain, R., Eroglu, O., Chen, H., Sizemore, M., Zacharias, A., Zedwick, A., J. M. A. R., Ullrich, P., Kootz, A., Franda, I., Ahijevych, D., Filipe, Galicia, D., Nam, K., Thyng, K., Liquet, M., and Gierz, P.: UXARRAY/uxarray: v2024.05.0, <https://doi.org/10.5281/zenodo.11218523>, 2024.
- Dirkes, C. A., Wing, A. A., Camargo, S. J., and Kim, D.: Process-Oriented Diagnosis of Tropical Cyclones in Reanalyses Using a Moist Static Energy Variance Budget, <https://doi.org/10.1175/JCLI-D-22-0384.1>, 2023.
- 910
- Docquier, D., Grist, J. P., Roberts, M. J., Roberts, C. D., Semmler, T., Ponsoni, L., Massonnet, F., Sidorenko, D., Sein, D. V., Iovino, D., Bellucci, A., and Fichefet, T.: Impact of model resolution on Arctic sea ice and North Atlantic Ocean heat transport, *Clim. Dyn.*, 53, 4989–5017, <https://doi.org/10.1007/s00382-019-04840-y>, 2019.
- Dong, Y., Armour, K. C., Zelinka, M. D., Proistosescu, C., Battisti, D. S., Zhou, C., and Andrews, T.: Intermodel Spread in the Pattern Effect and Its Contribution to Climate Sensitivity in CMIP5 and CMIP6 Models, *J. Clim.*, 33, 7755–7775, <https://doi.org/10.1175/JCLI-D-19-1011.1>, 2020.
- 915
- Embury, O., Merchant, C. J., Good, S. A., Rayner, N. A., Høyer, J. L., Atkinson, C., Block, T., Alerskans, E., Pearson, K. J., Worsfold, M., McCarroll, N., and Donlon, C.: Satellite-based time-series of sea-surface temperature since 1980 for climate applications, *Sci. Data*, 11, 326, <https://doi.org/10.1038/s41597-024-03147-w>, 2024.
- 920
- Eyring, V., Bony, S., Meehl, G. A., Senior, C. A., Stevens, B., Stouffer, R. J., and Taylor, K. E.: Overview of the Coupled Model Intercomparison Project Phase 6 (CMIP6) experimental design and organization, *Geosci. Model Dev. Discuss.*, 9, 1937–1958, <https://doi.org/10.5194/gmdd-8-10539-2015>, 2016.
- Farneti, R., Delworth, T. L., Rosati, A. J., Griffies, S. M., and Zeng, F.: The Role of Mesoscale Eddies in the Rectification of the Southern Ocean Response to Climate Change, <https://doi.org/10.1175/2010JPO4353.1>, 2010.

- 925 Farneti, R., Downes, S. M., Griffies, S. M., Marsland, S. J., Behrens, E., Bentsen, M., Bi, D., Biastoch, A., Böning, C., Bozec, A., Canuto, V. M., Chassignet, E., Danabasoglu, G., Danilov, S., Diansky, N., Drange, H., Fogli, P. G., Gusev, A., Hallberg, R. W., Howard, A., Ilicak, M., Jung, T., Kelley, M., Large, W. G., Leboissetier, A., Long, M., Lu, J., Masina, S., Mishra, A., Navarra, A., George Nurser, A. J., Patara, L., Samuels, B. L., Sidorenko, D., Tsujino, H., Uotila, P., Wang, Q., and Yeager, S. G.: An assessment of Antarctic Circumpolar Current and Southern Ocean meridional overturning circulation during 1958–2007 in a suite of interannual CORE-II simulations, *Ocean Model.*, 93, 84–120, <https://doi.org/10.1016/j.oceomod.2015.07.009>, 2015.
- 930 Fox-Kemper, B., Hewitt, H. T., Xiao, C., Aalgeirsdottir, G., Drijfhout, S. S., Edwards, T. L., Golledge, N. R., Hemer, M., Kopp, R. E., Krinner, G., Mix, A., Notz, D., Nowicki, S., Nurhati, I. S., Ruiz, L., Sallee, J.-B., Slinger, A. B. A., and Yu, Y.: Ocean, Cryosphere and Sea Level Change, in: *Climate Change 2021: The Physical Science Basis. Contribution of Working Group I to the Sixth Assessment Report of the Intergovernmental Panel on Climate Change*, edited by: Mason-Delmotte, V., Zhai, P., Pirani, A., Connors, S. L., Pean, C., Berger, S., Caud, N., Chen, Y., Goldfarb, L., Gomis, M. I., Huang, M., Leitzell, K., Lonnoy, E., Matthews, J. B. R., Maycock, K., Waterfield, T., Yelekci, O., Yu, R., and Zhou, B., Cambridge University Press, 2022.
- 935 Gao, L., Yuan, X., Cai, W., Guo, G., Yu, W., Shi, J., Qiao, F., Wei, Z., and Williams, G. D.: Persistent warm-eddy transport to Antarctic ice shelves driven by enhanced summer westerlies, *Nat. Commun.*, 15, 671, <https://doi.org/10.1038/s41467-024-45010-x>, 2024.
- 940 Gent, P. R. and Danabasoglu, G.: Response to Increasing Southern Hemisphere Winds in CCSM4, <https://doi.org/10.1175/JCLI-D-10-05011.1>, 2011.
- 945 Giorgetta, M. A., Brokopf, R., Crueger, T., Esch, M., Fiedler, S., Helmert, J., Hohenegger, C., Kornblueh, L., Köhler, M., Manzini, E., Mauritsen, T., Nam, C., Raddatz, T., Rast, S., Reinert, D., Sakradzija, M., Schmidt, H., Schneck, R., Schnur, R., Silvers, L., Wan, H., Zängl, G., and Stevens, B.: ICON-A, the Atmosphere Component of the ICON Earth System Model: I. Model Description, *J. Adv. Model. Earth Syst.*, 10, 1613–1637, <https://doi.org/10.1029/2017MS001242>, 2018.
- 950 Good, S. A., Martin, M. J., and Rayner, N. A.: EN4: Quality controlled ocean temperature and salinity profiles and monthly objective analyses with uncertainty estimates, *J. Geophys. Res. Oceans*, 118, 6704–6716, <https://doi.org/10.1002/2013JC009067>, 2013.
- Gore, M. J., Zarzycki, C. M., and Gervais, M. M.: Connecting Large-Scale Meteorological Patterns to Extratropical Cyclones in CMIP6 Climate Models Using Self-Organizing Maps, *Earths Future*, 11, e2022EF003211, <https://doi.org/10.1029/2022EF003211>, 2023.
- 955 Griffies, S. M., Danabasoglu, G., Durack, P. J., Adcroft, A. J., Balaji, V., Böning, C. W., Chassignet, E. P., Curchitser, E., Deshayes, J., Drange, H., Fox-Kemper, B., Gleckler, P. J., Gregory, J. M., Haak, H., Hallberg, R. W., Heimbach, P., Hewitt, H. T., Holland, D. M., Ilyina, T., Jungclaus, J. H., Komuro, Y., Krasting, J. P., Large, W. J., Marsland, S. J., Masina, S., McDougall, T. J., Nurser, A. J. G., Orr, J. C., Pirani, A., Qiao, F., Stouffer, R. J., Taylor, K. E., Treguier, A. M., Tsujino, H., Uotila, P., Valdivieso, M., Wang, Q., Winton, M., and Yeager, S. G.: {OMIP} contribution to {CMIP6}: experimental and diagnostic protocol for the physical component of the {Ocean} {Model} {Intercomparison} {Project}, *Geosci Model Devel.*, 9, 3231–3296, <https://doi.org/10.5194/gmd-9-3231-2016>, 2016.
- 960 Grist, J. P., Josey, S. A., Sinha, B., Catto, J. L., Roberts, M. J., and Coward, A. C.: Future Evolution of an Eddy Rich Ocean Associated with Enhanced East Atlantic Storminess in a Coupled Model Projection, *Geophys. Res. Lett.*, 48, <https://doi.org/10.1029/2021GL092719>, 2021.
- 965 Haarsma, R. J. J., Roberts, M. J. J., Vidale, P. L. L., Catherine, A., Bellucci, A., Bao, Q., Chang, P., Corti, S., Fučkar, N. S. S., Guemas, V., Von Hardenberg, J., Hazeleger, W., Kodama, C., Koenigk, T., Leung, L. R. R., Lu, J., Luo, J.-J., Mao, J.,

- Mizielinski, M. S. S., Mizuta, R., Nobre, P., Satoh, M., Scoccimarro, E., Semmler, T., Small, J., von Storch, J.-S., Senior, C. A., Bellucci, A., Bao, Q., Chang, P., Corti, S., Fučkar, N. S. S., Guemas, V., Von Hardenberg, J., Hazeleger, W., Kodama, C., Koenigk, T., Leung, L. R. R., Lu, J., Luo, J.-J., Mao, J., Mizielinski, M. S. S., Mizuta, R., Nobre, P., Satoh, M., Scoccimarro, E., Semmler, T., Small, J., and von Storch, J.-S.: High Resolution Model Intercomparison Project (HighResMIP-v1.0) for CMIP6, *Geosci. Model Dev.*, 9, 4185–4208, <https://doi.org/10.5194/gmd-9-4185-2016>, 2016.
- 970 Hausfather, Z. and Peters, G. P.: Emissions – the ‘business as usual’ story is misleading, *Nature*, 577, 618–620, <https://doi.org/10.1038/d41586-020-00177-3>, 2020.
- Hermanson, L., Dunstone, N., Eade, R., and Smith, D.: An ensemble reconstruction of ocean temperature, salinity and Atlantic Meridional Overturning Circulation 1960–2021, *Q. J. R. Meteorol. Soc.*, n/a, <https://doi.org/10.1002/qj.4587>, 2023.
- 975 Hersbach, H., Bell, B., Berrisford, P., Hirahara, S., Horányi, A., Muñoz-Sabater, J., Nicolas, J., Peubey, C., Radu, R., Schepers, D., Simmons, A., Soci, C., Abdalla, S., Abellan, X., Balsamo, G., Bechtold, P., Biavati, G., Bidlot, J., Bonavita, M., De Chiara, G., Dahlgren, P., Dee, D., Diamantakis, M., Dragani, R., Flemming, J., Forbes, R., Fuentes, M., Geer, A., Haimberger, L., Healy, S., Hogan, R. J., Hólm, E., Janisková, M., Keeley, S., Laloyaux, P., Lopez, P., Lupu, C., Radnoti, G., de Rosnay, P., Rozum, I., Vamborg, F., Villaume, S., and Thépaut, J.-N.: The ERA5 global reanalysis, *Q. J. R. Meteorol. Soc.*, 146, 1999–2049, <https://doi.org/10.1002/qj.3803>, 2020.
- 980 Hewitt, H., Fox-Kemper, B., Pearson, B., Roberts, M., and Klocke, D.: The small scales of the ocean may hold the key to surprises, *Nat. Clim. Change*, 12, 496–499, <https://doi.org/10.1038/s41558-022-01386-6>, 2022.
- Hobday, A. J., Alexander, L. V., Perkins, S. E., Smale, D. A., Straub, S. C., Oliver, E. C. J., Benthuisen, J. A., Burrows, M. T., Donat, M. G., Feng, M., Holbrook, N. J., Moore, P. J., Scannell, H. A., Sen Gupta, A., and Wernberg, T.: A hierarchical approach to defining marine heatwaves, *Prog. Oceanogr.*, 141, 227–238, <https://doi.org/10.1016/j.poccean.2015.12.014>, 2016.
- 985 Hoffmann, J., Bauer, P., Sandu, I., Wedi, N., Geenen, T., and Thiemert, D.: Destination Earth – A digital twin in support of climate services, *Clim. Serv.*, 30, 100394, <https://doi.org/10.1016/j.cliser.2023.100394>, 2023.
- Hong, S.-Y. and Dudhia, J.: Next-Generation Numerical Weather Prediction: Bridging Parameterization, Explicit Clouds, and Large Eddies, <https://doi.org/10.1175/2011BAMS3224.1>, 2012.
- 990 Hourdin, F., Mauritsen, T., Gettelman, A., Golaz, J.-C., Balaji, V., Duan, Q., Folini, D., Ji, D., Klocke, D., Qian, Y., Rausser, F., Rio, C., Tomassini, L., Watanabe, M., and Williamson, D.: The Art and Science of Climate Model Tuning, *Bull. Am. Meteorol. Soc.*, 98, 589–602, <https://doi.org/10.1175/BAMS-D-15-00135.1>, 2017.
- Hsu, W.-C., Kooperman, G. J., Hannah, W. M., Reed, K. A., Akinsanola, A. A., and Pendergrass, A. G.: Evaluating Mesoscale Convective Systems Over the US in Conventional and Multiscale Modeling Framework Configurations of E3SMv1, *J. Geophys. Res. Atmospheres*, 128, e2023JD038740, <https://doi.org/10.1029/2023JD038740>, 2023.
- 995 Huang, H., Patricola, C. M., and Collins, W. D.: The Influence of Ocean Coupling on Simulated and Projected Tropical Cyclone Precipitation in the HighResMIP-PRIMAVERA Simulations, *Geophys. Res. Lett.*, 48, e2021GL094801, <https://doi.org/10.1029/2021GL094801>, 2021.
- 1000 Huprikar, A. S., Stansfield, A. M., and Reed, K. A.: A storyline analysis of Hurricane Irma’s precipitation under various levels of climate warming, *Environ. Res. Lett.*, 19, 014004, <https://doi.org/10.1088/1748-9326/ad0c89>, 2023.
- Illingworth, A. J., Barker, H. W., Beljaars, A., Ceccaldi, M., Chepfer, H., Clerbaux, N., Cole, J., Delanoë, J., Domenech, C., Donovan, D. P., Fukuda, S., Hirakata, M., Hogan, R. J., Huenerbein, A., Kollias, P., Kubota, T., Nakajima, T., Nakajima, T. Y., Nishizawa, T., Ohno, Y., Okamoto, H., Oki, R., Sato, K., Satoh, M., Shephard, M. W., Velázquez-Blázquez, A.,

- 1005 Wandinger, U., Wehr, T., and Zadelhoff, G.-J. van: The EarthCARE Satellite: The Next Step Forward in Global Measurements of Clouds, Aerosols, Precipitation, and Radiation, <https://doi.org/10.1175/BAMS-D-12-00227.1>, 2015.
- Intergovernmental Panel on Climate Change (IPCC) (Ed.): Weather and Climate Extreme Events in a Changing Climate, in: Climate Change 2021 – The Physical Science Basis: Working Group I Contribution to the Sixth Assessment Report of the Intergovernmental Panel on Climate Change, Cambridge University Press, Cambridge, 1513–1766, <https://doi.org/10.1017/9781009157896.013>, 2023.
- 1010 IPCC: Climate Change 2021: The Physical Science Basis. Contribution of Working Group I to the Sixth Assessment Report of the Intergovernmental Panel on Climate Change, edited by: Mason-Delmotte, V., Zhai, P., Pirani, A., Connors, S. L., Pean, C., Berger, S., Caud, N., Chen, Y., Goldfarb, L., Gomis, M. I., Huang, M., Leitzell, K., Lonnoy, E., Matthews, J. B. R., Maycock, K., Waterfield, T., Yeleki, O., Yu, R., and Zhou, B., Cambridge University Press, 2021.
- 1015 Ishii, M. and Mori, N.: d4PDF: large-ensemble and high-resolution climate simulations for global warming risk assessment, *Prog. Earth Planet. Sci.*, 7, 58, <https://doi.org/10.1186/s40645-020-00367-7>, 2020.
- Jukes, M., Taylor, K. E., Durack, P. J., Lawrence, B., Mizielinski, M. S., Pamment, A., Peterschmitt, J.-Y., Rixen, M., and Sényesi, S.: The CMIP6 Data Request (DREQ, version 01.00.31), *Geosci. Model Dev.*, 13, 201–224, <https://doi.org/10.5194/gmd-13-201-2020>, 2020.
- 1020 Karspeck, A. R., Stammer, D., Köhl, A., Danabasoglu, G., Balmaseda, M., Smith, D. M., Fujii, Y., Zhang, S., Giese, B., Tsujino, H., and Rosati, A.: Comparison of the Atlantic meridional overturning circulation between 1960 and 2007 in six ocean reanalysis products, *Clim. Dyn.*, 49, 957–982, <https://doi.org/10.1007/s00382-015-2787-7>, 2017.
- 1025 Kay, J. E., Deser, C., Phillips, A., Mai, A., Hannay, C., Strand, G., Arblaster, J. M., Bates, S. C., Danabasoglu, G., Edwards, J., Holland, M., Kushner, P., Lamarque, J.-F., Lawrence, D., Lindsay, K., Middleton, A., Munoz, E., Neale, R., Oleson, K., Polvani, L., and Vertenstein, M.: The Community Earth System Model (CESM) Large Ensemble Project: A Community Resource for Studying Climate Change in the Presence of Internal Climate Variability, <https://doi.org/10.1175/BAMS-D-13-00255.1>, 2015.
- Kennedy, J., Titchner, H., Rayner, N., and Roberts, M.: input4MIPs.MOHC.SSTsAndSeaIce.HighResMIP.MOHC-HadISST-2-2-0-0-0, 2017.
- 1030 Kim, W. M., Ruprich-Robert, Y., Zhao, A., Yeager, S., and Robson, J.: North Atlantic Response to Observed North Atlantic Oscillation Surface Heat Flux in Three Climate Models, <https://doi.org/10.1175/JCLI-D-23-0301.1>, 2024.
- Klaver, R., Haarsma, R., Vidale, P. L., and Hazeleger, W.: Effective resolution in high resolution global atmospheric models for climate studies, *Atmospheric Sci. Lett.*, 21, e952, <https://doi.org/10.1002/asl.952>, 2020.
- Klöwer, M., Razingger, M., Dominguez, J. J., Düben, P. D., and Palmer, T. N.: Compressing atmospheric data into its real information content, *Nat. Comput. Sci.*, 1, 713–724, <https://doi.org/10.1038/s43588-021-00156-2>, 2021.
- 1035 Lee, J., Gleckler, P. J., Ahn, M.-S., Ordóñez, A., Ullrich, P. A., Sperber, K. R., Taylor, K. E., Planton, Y. Y., Guilyardi, E., Durack, P., Bonfils, C., Zelinka, M. D., Chao, L.-W., Dong, B., Doutriaux, C., Zhang, C., Vo, T., Boutte, J., Wehner, M. F., Pendergrass, A. G., Kim, D., Xue, Z., Wittenberg, A. T., and Krasting, J.: Systematic and objective evaluation of Earth system models: PCMDI Metrics Package (PMP) version 3, *Geosci. Model Dev.*, 17, 3919–3948, <https://doi.org/10.5194/gmd-17-3919-2024>, 2024.

- 1040 Li, D., Chang, P., Yeager, S. G., Danabasoglu, G., Castruccio, F. S., Small, J., Wang, H., Zhang, Q., and Gopal, A.: The Impact of Horizontal Resolution on Projected Sea-Level Rise Along US East Continental Shelf With the Community Earth System Model, *J. Adv. Model. Earth Syst.*, 14, e2021MS002868, <https://doi.org/10.1029/2021MS002868>, 2022.
- Li, J., Bao, Q., Liu, Y., Wang, L., Yang, J., Wu, G., Wu, X., He, B., Wang, X., Zhang, X., Yang, Y., and Shen, Z.: Effect of horizontal resolution on the simulation of tropical cyclones in the Chinese Academy of Sciences FGOALS-f3 climate system model, *Geosci. Model Dev.*, 14, 6113–6133, <https://doi.org/10.5194/gmd-14-6113-2021>, 2021.
- 1045 Liu, X., Ma, X., Chang, P., Jia, Y., Fu, D., Xu, G., Wu, L., Saravanan, R., and Patricola, C. M.: Ocean fronts and eddies force atmospheric rivers and heavy precipitation in western North America, *Nat. Commun.*, 12, 1268, <https://doi.org/10.1038/s41467-021-21504-w>, 2021.
- Lockwood, J. F., Guentchev, G. S., Alabaster, A., Brown, S. J., Palin, E. J., Roberts, M. J., and Thornton, H. E.: Using high-resolution global climate models from the PRIMAVERA project to create a European winter windstorm event set, *Nat. Hazards Earth Syst. Sci.*, 22, 3585–3606, <https://doi.org/10.5194/nhess-22-3585-2022>, 2022.
- 1050 Martínez-Moreno, J., Hogg, A. M., England, M. H., Constantinou, N. C., Kiss, A. E., and Morrison, A. K.: Global changes in oceanic mesoscale currents over the satellite altimetry record, *Nat. Clim. Change*, 11, 397–403, <https://doi.org/10.1038/s41558-021-01006-9>, 2021.
- 1055 Mason, E., Pascual, A., and McWilliams, J. C.: A new sea surface height-based code for oceanic mesoscale eddy tracking, *J. Atmospheric Ocean. Technol.*, 31, 1181–1188, <https://doi.org/10.1175/JTECH-D-14-00019.1>, 2014.
- Meredith, M. P., Garabato, A. C. N., Hogg, A. M., and Farneti, R.: Sensitivity of the Overturning Circulation in the Southern Ocean to Decadal Changes in Wind Forcing, <https://doi.org/10.1175/2011JCLI4204.1>, 2012.
- 1060 Mitchell, D., AchutaRao, K., Allen, M., Bethke, I., Beyerle, U., Ciavarella, A., Forster, P. M., Fuglestedt, J., Gillett, N., Haustein, K., Ingram, W., Iversen, T., Kharin, V., Klingaman, N., Massey, N., Fischer, E., Schleussner, C.-F., Scinocca, J., Seland, Ø., Shigama, H., Shuckburgh, E., Sparrow, S., Stone, D., Uhe, P., Wallom, D., Wehner, M., and Zaaoul, R.: Half a degree additional warming, prognosis and projected impacts (HAPPI): background and experimental design, *Geosci. Model Dev.*, 10, 571–583, <https://doi.org/10.5194/gmd-10-571-2017>, 2017.
- 1065 Monerie, P.-A., Chevuturi, A., Cook, P., Klingaman, N. P., and Holloway, C. E.: Role of atmospheric horizontal resolution in simulating tropical and subtropical South American precipitation in HadGEM3-GC31, *Geosci. Model Dev.*, 13, 4749–4771, <https://doi.org/10.5194/gmd-13-4749-2020>, 2020.
- Moon, Y., Kim, D., Wing, A. A., Camargo, S. J., Zhao, M., Leung, L. R., Roberts, M. J., Cha, D.-H., and Moon, J.: An Evaluation of Tropical Cyclone Rainfall Structures in the HighResMIP Simulations against Satellite Observations, *J. Clim.*, 35, 7315–7338, <https://doi.org/10.1175/JCLI-D-21-0564.1>, 2022.
- 1070 Moreno-Chamarro, E., Caron, L. P., Ortega, P., Loosveldt Tomas, S., and Roberts, M. J.: Can we trust CMIP5/6 future projections of European winter precipitation?, *Environ. Res. Lett.*, <https://doi.org/10.1088/1748-9326/abf28a>, 2021.
- Moreno-Chamarro, E., Caron, L.-P., Loosveldt Tomas, S., Vegas-Regidor, J., Gutjahr, O., Moine, M.-P., Putrasahan, D., Roberts, C. D., Roberts, M. J., Senan, R., Terray, L., Tourigny, E., and Vidale, P. L.: Impact of increased resolution on long-standing biases in HighResMIP-PRIMAVERA climate models, *Geosci. Model Dev.*, 15, 269–289, <https://doi.org/10.5194/gmd-15-269-2022>, 2022.
- 1075 Muis, S., Aerts, J. C. J. H., Á. Antolínez, J. A., Dullaart, J. C., Duong, T. M., Erikson, L., Haarsma, R. J., Apecechea, M. I., Mengel, M., Le Bars, D., O’Neill, A., Ranasinghe, R., Roberts, M. J., Verlaan, M., Ward, P. J., and Yan, K.: Global

- Projections of Storm Surges Using High-Resolution CMIP6 Climate Models, *Earths Future*, 11, e2023EF003479, <https://doi.org/10.1029/2023EF003479>, 2023.
- 1080 Na, Y., Fu, Q., Leung, L. R., Kodama, C., and Lu, R.: Mesoscale Convective Systems Simulated by a High-Resolution Global Nonhydrostatic Model Over the United States and China, *J. Geophys. Res. Atmospheres*, 127, e2021JD035916, <https://doi.org/10.1029/2021JD035916>, 2022.
- O'Neill, B. C., Tebaldi, C., van Vuuren, D. P., Eyring, V., Friedlingstein, P., Hurtt, G., Knutti, R., Kriegler, E., Lamarque, J.-F., Lowe, J., Meehl, G. A., Moss, R., Riahi, K., and Sanderson, B. M.: The Scenario Model Intercomparison Project (ScenarioMIP) for CMIP6, *Geosci. Model Dev.*, 9, 3461–3482, <https://doi.org/10.5194/gmd-9-3461-2016>, 2016.
- 1085 O'Reilly, C. H., Patterson, M., Robson, J., Monerie, P. A., Hodson, D., and Ruprich-Robert, Y.: Challenges with interpreting the impact of Atlantic Multidecadal Variability using SST-restoring experiments, *Npj Clim. Atmospheric Sci.*, 6, 1–12, <https://doi.org/10.1038/s41612-023-00335-0>, 2023.
- Penduff, T., Sérazin, G., Leroux, S., Close, S., and Molines, J.-M.: Chaotic Variability of Ocean Heat Content: Climate-Relevant Features and Observational Implications, *Oceanography*, 31, 63–71, <https://doi.org/10.5670/oceanog.2018.210>, 2018.
- 1090 Poli, P., Hersbach, H., Dee, D. P., Berrisford, P., Simmons, A. J., Vitart, F., Laloyaux, P., Tan, D. G. H., Peubey, C., Thépaut, J.-N., Trémolet, Y., Hólm, E. V., Bonavita, M., Isaksen, L., and Fisher, M.: ERA-20C: An Atmospheric Reanalysis of the Twentieth Century, *J. Clim.*, 29, 4083–4097, <https://doi.org/10.1175/JCLI-D-15-0556.1>, 2016.
- 1095 Priestley, M. D. K. and Catto, J. L.: Improved representation of extratropical cyclone structure in HighResMIP models, *Geophys. Res. Lett.*, n/a, e2021GL096708, <https://doi.org/10.1029/2021GL096708>, 2022.
- Rackow, T., Danilov, S., Goessling, H. F., Hellmer, H. H., Sein, D. V., Semmler, T., Sidorenko, D., and Jung, T.: Delayed Antarctic sea-ice decline in high-resolution climate change simulations, *Nat. Commun.*, 13, 637, <https://doi.org/10.1038/s41467-022-28259-y>, 2022.
- 1100 Rayner, N. A., Parker, D. E., Horton, E. B., Folland, C. K., Alexander, L. V., Rowell, D. P., Kent, E. C., and Kaplan, A.: Global analyses of sea surface temperature, sea ice, and night marine air temperature since the late nineteenth century, *J. Geophys. Res. Atmospheres*, 108, <https://doi.org/10.1029/2002JD002670>, 2003.
- Reed, K. A., Goldenson, N., Grotjahn, R., Gutowski, W. J., Jagannathan, K., Jones, A. D., Leung, L. R., McGinnis, S. A., Pryor, S. C., Srivastava, A. K., Ullrich, P. A., and Zarzycki, C. M.: Metrics as tools for bridging climate science and applications, *WIREs Clim. Change*, 13, e799, <https://doi.org/10.1002/wcc.799>, 2022.
- 1105 Reed, K. A., Stansfield, A. M., Hsu, W.-C., Kooperman, G. J., Akinsanola, A. A., Hannah, W. M., Pendergrass, A. G., and Medeiros, B.: Evaluating the Simulation of CONUS Precipitation by Storm Type in E3SM, *Geophys. Res. Lett.*, 50, e2022GL102409, <https://doi.org/10.1029/2022GL102409>, 2023.
- 1110 Rhoades, A. M., Hatchett, B. J., Risser, M. D., Collins, W. D., Bambach, N. E., Huning, L. S., McCrary, R., Siirila-Woodburn, E. R., Ullrich, P. A., Wehner, M. F., Zarzycki, C. M., and Jones, A. D.: Asymmetric emergence of low-to-no snow in the midlatitudes of the American Cordillera, *Nat. Clim. Change*, 12, 1151–1159, <https://doi.org/10.1038/s41558-022-01518-y>, 2022.
- Roberts, M.: CMIP6 HighResMIP: Tropical storm tracks as calculated by the TempestExtremes algorithm, 2019.

- 1115 Roberts, M. J., Baker, A., Blockley, E. W., Calvert, D., Coward, A., Hewitt, H. T., Jackson, L. C., Kuhlbrodt, T., Mathiot, P., Roberts, C. D., Schiemann, R., Seddon, J., Vannière, B., and Vidale, P. L.: Description of the resolution hierarchy of the global coupled HadGEM3-GC3.1 model as used in CMIP6 HighResMIP experiments, *Geosci. Model Dev.*, 12, 4999–5028, <https://doi.org/10.5194/gmd-12-4999-2019>, 2019.
- 1120 Roberts, M. J., Camp, J., Seddon, J., Vidale, P. L., Hodges, K., Vanniere, B., Mecking, J., Haarsma, R., Bellucci, A., Scoccimarro, E., Caron, L.-P., Chauvin, F., Terray, L., Valcke, S., Moine, M.-P., Putrasahan, D., Roberts, C., Senan, R., Zarzycki, C., and Ullrich, P.: Impact of Model Resolution on Tropical Cyclone Simulation Using the HighResMIP–PRIMAVERA Multimodel Ensemble, *J. Clim.*, 33, 2557–2583, <https://doi.org/10.1175/JCLI-D-19-0639.1>, 2020a.
- Roberts, M. J., Camp, J., Seddon, J., Vidale, P. L., and Al., E.: Projected future changes in tropical cyclones using the CMIP6 HighResMIP multi-model ensemble, *Geophys Res Lett*, <https://doi.org/10.1029/2020GL088662>, 2020b.
- 1125 Rodgers, K. B., Lee, S.-S., Rosenbloom, N., Timmermann, A., Danabasoglu, G., Deser, C., Edwards, J., Kim, J.-E., Simpson, I. R., Stein, K., Stuecker, M. F., Yamaguchi, R., Bóday, T., Chung, E.-S., Huang, L., Kim, W. M., Lamarque, J.-F., Lombardozzi, D. L., Wieder, W. R., and Yeager, S. G.: Ubiquity of human-induced changes in climate variability, *Earth Syst. Dyn.*, 12, 1393–1411, <https://doi.org/10.5194/esd-12-1393-2021>, 2021.
- 1130 Satoh, M., Matsuno, T., Tomita, H., Miura, H., Nasuno, T., and Iga, S.: Nonhydrostatic icosahedral atmospheric model (NICAM) for global cloud resolving simulations, *J. Comput. Phys.*, 227, 3486–3514, <https://doi.org/10.1016/j.jcp.2007.02.006>, 2008.
- Savage, N.: eerie-project/dreq_tools: Mint DOI , <https://doi.org/10.5281/zenodo.8296685>, 2023.
- Scaife, A. A., Camp, J., Comer, R., Davis, P., Dunstone, N., Gordon, M., MacLachlan, C., Martin, N., Nie, Y., Ren, H.-L., Roberts, M., Robinson, W., Smith, D., and Vidale, P. L.: Does increased atmospheric resolution improve seasonal climate predictions?, *Atmospheric Sci. Lett.*, 20, e922, <https://doi.org/10.1002/asl.922>, 2019.
- 1135 Schemm, S.: Toward Eliminating the Decades-Old “Too Zonal and Too Equatorward” Storm-Track Bias in Climate Models, *J. Adv. Model. Earth Syst.*, 15, e2022MS003482, <https://doi.org/10.1029/2022MS003482>, 2023.
- Scoccimarro, E., Fogli, P. G., Reed, K. A., Gualdi, S., Masina, S., and Navarra, A.: Tropical Cyclone Interaction with the Ocean: The Role of High-Frequency (Subdaily) Coupled Processes, *J. Clim.*, 30, 145–162, <https://doi.org/10.1175/JCLI-D-16-0292.1>, 2017.
- 1140 Scoccimarro, E., Gualdi, S., Bellucci, A., Peano, D., Cherchi, A., Vecchi, G. A., and Navarra, A.: The typhoon-induced drying of the Maritime Continent, *Proc. Natl. Acad. Sci.*, <https://doi.org/10.1073/pnas.1915364117>, 2020.
- Scoccimarro, E., Peano, D., Gualdi, S., Bellucci, A., Lovato, T., Fogli, P. G., and Navarra, A.: Extreme events representation in CMCC-CM2 standard and high-resolution general circulation models, *Geosci. Model Dev.*, 15, 1841–1854, <https://doi.org/10.5194/gmd-15-1841-2022>, 2022.
- 1145 Seager, R., Cane, M., Henderson, N., Lee, D.-E., Abernathy, R., and Zhang, H.: Strengthening tropical Pacific zonal sea surface temperature gradient consistent with rising greenhouse gases, *Nat. Clim. Change*, 9, 517–522, <https://doi.org/10.1038/s41558-019-0505-x>, 2019.
- Seager, R., Henderson, N., and Cane, M.: Persistent Discrepancies between Observed and Modeled Trends in the Tropical Pacific Ocean, *J. Clim.*, 35, 4571–4584, <https://doi.org/10.1175/JCLI-D-21-0648.1>, 2022.

- 1150 Seddon, J., Mizielinski, M. S., Roberts, M., Stephens, A., Hegewald, J., Semmler, T., Bretonnière, P.-A., Caron, L.-P., D’Anca, A., Fiore, S., Moine, M.-P., Roberts, C., Senan, R., and Fladrich, U.: Deliverable D9.6 Review of DMP and lessons learnt for future projects, 2020.
- Seddon, J., Stephens, A., Mizielinski, M. S., Vidale, P. L., and Roberts, M. J.: Technology to aid the analysis of large-volume multi-institute climate model output at a central analysis facility (PRIMAVERA Data Management Tool V2.10), 1155 *Geosci. Model Dev.*, 16, 6689–6700, <https://doi.org/10.5194/gmd-16-6689-2023>, 2023.
- Shaevitz, D. A., Camargo, S. J., Sobel, A. H., Jonas, J. A., Kim, D., Kumar, A., Larow, T. E., Lim, Y.-K., Murakami, H., Reed, K. A., Roberts, M. J., Scoccimarro, E., Vidale, P. L., Wang, H., Wehner, M. F., Zhao, M., and Henderson, N.: Characteristics of tropical cyclones in high-resolution models in the present climate, *J. Adv. Model. Earth Syst.*, 6, <https://doi.org/10.1002/2014MS000372>, 2014.
- 1160 Sherwood, S. C., Hegerl, G., Braconnot, P., Friedlingstein, P., Goelzer, H., Harris, N. R. P., Holland, E., Kim, H., Mitchell, M., Naish, T., Nobre, P., Otto-Bliesner, B. L., Reed, K. A., Renwick, J., and van der Wel, N. P. M.: Uncertain Pathways to a Future Safe Climate, *Earths Future*, 12, e2023EF004297, <https://doi.org/10.1029/2023EF004297>, 2024.
- Small, R. J., Bacmeister, J., Bailey, D., Baker, A., Bishop, S., Bryan, F., Caron, J., Dennis, J., Gent, P., Hsu, H., Jochum, M., Lawrence, D., Muñoz, E., DiNezio, P., Scheitlin, T., Tomas, R., Tribbia, J., Tseng, Y., and Vertenstein, M.: A new synoptic scale resolving global climate simulation using the Community Earth System Model, *J. Adv. Model. Earth Syst.*, 6, 1065–1094, <https://doi.org/10.1002/2014MS000363>, 2014.
- 1165 Small, R. J., Kurian, J., Chang, P., Xu, G., Tsujino, H., Yeager, S., Danabasoglu, G., Kim, W. M., Altuntas, A., and Castruccio, F.: Eastern Boundary Upwelling Systems in Ocean–Sea Ice Simulations Forced by CORE and JRA55-do: Mean State and Variability at the Surface, <https://doi.org/10.1175/JCLI-D-23-0511.1>, 2024.
- 1170 Sobel, A. H., Lee, C.-Y., Bowen, S. G., Camargo, S. J., Cane, M. A., Clement, A., Fosu, B., Hart, M., Reed, K. A., Seager, R., and Tippett, M. K.: Near-term tropical cyclone risk and coupled Earth system model biases, *Proc. Natl. Acad. Sci.*, 120, e2209631120, <https://doi.org/10.1073/pnas.2209631120>, 2023.
- Stansfield, A. M., Reed, K. A., and Zarzycki, C. M.: Changes in Precipitation From North Atlantic Tropical Cyclones Under RCP Scenarios in the Variable-Resolution Community Atmosphere Model, *Geophys. Res. Lett.*, 47, e2019GL086930, <https://doi.org/10.1029/2019GL086930>, 2020.
- 1175 Stevens, B., Fiedler, S., Kinne, S., Peters, K., Rast, S., Müsse, J., Smith, S. J., and Mauritsen, T.: MACv2-SP: A parameterization of anthropogenic aerosol optical properties and an associated Twomey effect for use in CMIP6, *Geosci. Model Dev.*, 10, 433–452, <https://doi.org/10.5194/gmd-10-433-2017>, 2017.
- Stevens, B., Satoh, M., Auger, L., Biercamp, J., Bretherton, C. S., Chen, X., Düben, P., Judt, F., Khairoutdinov, M., Klocke, D., Kodama, C., Kornblüeh, L., Lin, S.-J., Neumann, P., Putman, W. M., Röber, N., Shibuya, R., Vanniere, B., Vidale, P. L., Wedi, N., and Zhou, L.: DYAMOND: the DYnamics of the Atmospheric general circulation Modeled On Non-hydrostatic Domains, *Prog. Earth Planet. Sci.*, 6, 61, <https://doi.org/10.1186/s40645-019-0304-z>, 2019.
- 1180 Stevens, B., Adams, S., Ali, T., Anzt, H., Aslan, Z., Attinger, S., Bäck, J., Baehr, J., Bauer, P., Bernier, N., Bishop, B., Bockelmann, H., Bony, S., Brasseur, G., Bresch, D. N., Breyer, S., Brunet, G., Buttigieg, P. L., Cao, J., Castet, C., Cheng, Y., Dey Choudhury, A., Coen, D., Crewell, S., Dabholkar, A., Dai, Q., Doblas-Reyes, F., Durran, D., El Gaidi, A., Ewen, C., Exarchou, E., Eyring, V., Falkenhoff, F., Farrell, D., Forster, P. M., Frassoni, A., Frauen, C., Fuhrer, O., Gani, S., Gerber, E., Goldfarb, D., Grieger, J., Gruber, N., Hazeleger, W., Herken, R., Hewitt, C., Hoefler, T., Hsu, H.-H., Jacob, D., Jahn, A., Jakob, C., Jung, T., Kadow, C., Kang, I.-S., Kang, S., Kashinath, K., Kleinen-von Königslöw, K., Klocke, D., Kloenne, U., Klöwer, M., Kodama, C., Kollet, S., Kölling, T., Kontkanen, J., Kopp, S., Koran, M., Kulmala, M., Lappalainen, H., Latifi,

- 1190 F., Lawrence, B., Lee, J. Y., Lejeun, Q., Lessig, C., Li, C., Lippert, T., Luterbacher, J., Manninen, P., Marotzke, J., Matsouoka, S., Merchant, C., Messmer, P., Michel, G., Michielsen, K., Miyakawa, T., Müller, J., Munir, R., Narayanasetti, S., Ndiaye, O., Nobre, C., Oberg, A., Oki, R., Özkan-Haller, T., Palmer, T., Posey, S., Prein, A., Primus, O., Pritchard, M., Pullen, J., Putrasahan, D., et al.: Earth Virtualization Engines (EVE), *Earth Syst. Sci. Data*, 16, 2113–2122, <https://doi.org/10.5194/essd-16-2113-2024>, 2024.
- 1195 Takasuka, D., Satoh, M., Miyakawa, T., Kodama, C., Klocke, D., Stevens, B., Vidale, P. L., and Terai, C. R.: A protocol and analysis of year-long simulations of global storm-resolving models and beyond, <https://doi.org/10.21203/rs.3.rs-4458164/v1>, 23 May 2024.
- Ullrich, P. A., Zarzycki, C. M., McClenny, E. E., Pinheiro, M. C., Stansfield, A. M., and Reed, K. A.: TempestExtremes v2.1: a community framework for feature detection, tracking, and analysis in large datasets, *Geosci. Model Dev.*, 14, 5023–5048, <https://doi.org/10.5194/gmd-14-5023-2021>, 2021.
- 1200 Vanni ere, B., Demory, M.-E., Vidale, P. L., Schiemann, R., Roberts, M. J., Roberts, C. D., Matsueda, M., Terray, L., Koenigk, T., and Senan, R.: Multi-model evaluation of the sensitivity of the global energy budget and hydrological cycle to resolution, *Clim. Dyn.*, 52, 6817–6846, <https://doi.org/10.1007/s00382-018-4547-y>, 2019.
- van Vuuren, D. P., O’Neill, B. C., Tebaldi, C., and et al: The Scenario Model Intercomparison Project (ScenarioMIP) for CMIP7, *Geosci. Model Dev.*, submitted, n.d.
- 1205 Wang, B., Ding, Q., Fu, X., Kang, I.-S., Jin, K., Shukla, J., and Doblas-Reyes, F.: Fundamental challenge in simulation and prediction of summer monsoon rainfall, *Geophys. Res. Lett.*, 32, <https://doi.org/10.1029/2005GL022734>, 2005.
- Webb, M. J., Andrews, T., Bodas-Salcedo, A., Bony, S., Bretherton, C. S., Chadwick, R., Chepfer, H., Douville, H., Good, P., Kay, J. E., Klein, S. A., Marchand, R., Medeiros, B., Siebesma, A. P., Skinner, C. B., Stevens, B., Tselioudis, G., 1210 Tsushima, Y., and Watanabe, M.: The Cloud Feedback Model Intercomparison Project (CFMIP) contribution to CMIP6, *Geosci. Model Dev.*, 10, 359–384, <https://doi.org/10.5194/gmd-10-359-2017>, 2017.
- Wedi, N., Bauer, P., Sandu, I., Hoffmann, J., Sheridan, S., Cereceda, R., Quintino, T., Thiemert, D., and Geenen, T.: Destination Earth: High-Performance Computing for Weather and Climate, *Comput. Sci. Eng.*, 24, 29–37, <https://doi.org/10.1109/MCSE.2023.3260519>, 2022.
- 1215 Wehner, M. F., Reed, K. A., Li, F., Prabhat, Bacmeister, J., Chen, C.-T., Paciorek, C., Gleckler, P. J., Sperber, K. R., Collins, W. D., Gettelman, A., and Jablonowski, C.: The effect of horizontal resolution on simulation quality in the Community Atmospheric Model, *CAM5.1, J. Adv. Model. Earth Syst.*, 6, 980–997, <https://doi.org/10.1002/2013MS000276>, 2014.
- Wehner, M. F., Reed, K. A., Loring, B., Stone, D., and Krishnan, H.: Changes in tropical cyclones under stabilized 1.5 and 2.0 degreeC global warming scenarios as simulated by the Community Atmospheric Model under the HAPPI protocols, 1220 *Earth Syst. Dyn.*, 9, 187–195, <https://doi.org/10.5194/esd-9-187-2018>, 2018.
- Wing, A. A., Camargo, S. J., Sobel, A. H., Kim, D., Moon, Y., Murakami, H., Reed, K. A., Vecchi, G. A., Wehner, M. F., Zarzycki, C., and Zhao, M.: Moist Static Energy Budget Analysis of Tropical Cyclone Intensification in High-Resolution Climate Models, <https://doi.org/10.1175/JCLI-D-18-0599.1>, 2019.
- 1225 Xu, G., Chang, P., Ramachandran, S., Danabasoglu, G., Yeager, S., Small, J., Zhang, Q., Jing, Z., and Wu, L.: Impacts of Model Horizontal Resolution on Mean Sea Surface Temperature Biases in the Community Earth System Model, *J. Geophys. Res. Oceans*, 127, e2022JC019065, <https://doi.org/10.1029/2022JC019065>, 2022.

- Xu, G., Chang, P., Small, J., Danabasoglu, G., Yeager, S., Ramachandran, S., and Zhang, Q.: Enhanced Upper Ocean Warming Projected by the Eddy-Resolving Community Earth System Model, *Geophys. Res. Lett.*, 50, e2023GL106100, <https://doi.org/10.1029/2023GL106100>, 2023.
- 1230 Xu, G., Rencurrel, M. C., Chang, P., Liu, X., Danabasoglu, G., Yeager, S. G., Steele, M., Weijer, W., Li, Y., Rosenbloom, N., Castruccio, F., and Zhang, Q.: High-resolution modelling identifies the Bering Strait's role in amplified Arctic warming, *Nat. Clim. Change*, 1–8, <https://doi.org/10.1038/s41558-024-02008-z>, 2024.
- 1235 Yamada, Y., Kodama, C., Satoh, M., Sugi, M., Roberts, M. J., Mizuta, R., Noda, A. T., Nasuno, T., Nakano, M., and Vidale, P. L.: Evaluation of the contribution of tropical cyclone seeds to changes in tropical cyclone frequency due to global warming in high-resolution multi-model ensemble simulations, *Prog. Earth Planet. Sci.*, 8, 11, <https://doi.org/10.1186/s40645-020-00397-1>, 2021.
- Yeager, S. G., Chang, P., Danabasoglu, G., Rosenbloom, N., Zhang, Q., Castruccio, F. S., Gopal, A., Cameron Rencurrel, M., and Simpson, I. R.: Reduced Southern Ocean warming enhances global skill and signal-to-noise in an eddy-resolving decadal prediction system, *Npj Clim. Atmospheric Sci.*, 6, 107, <https://doi.org/10.1038/s41612-023-00434-y>, 2023.
- 1240 Yin, J., Griffies, S. M., Winton, M., Zhao, M., and Zanna, L.: Response of Storm-Related Extreme Sea Level along the U.S. Atlantic Coast to Combined Weather and Climate Forcing, <https://doi.org/10.1175/JCLI-D-19-0551.1>, 2020.
- Zhang, W., Kirtman, B., Siqueira, L., Xiang, B., Infanti, J., and Perlin, N.: Decadal Variability of Southeast US Rainfall in an Eddy Global Coupled Model, *Geophys. Res. Lett.*, 49, e2021GL096709, <https://doi.org/10.1029/2021GL096709>, 2022.
- 1245 Zhao, M.: Simulations of Atmospheric Rivers, Their Variability, and Response to Global Warming Using GFDL's New High-Resolution General Circulation Model, *J. Clim.*, 33, 10287–10303, <https://doi.org/10.1175/JCLI-D-20-0241.1>, 2020.
- Zhao, M.: A Study of AR-, TS-, and MCS-Associated Precipitation and Extreme Precipitation in Present and Warmer Climates, <https://doi.org/10.1175/JCLI-D-21-0145.1>, 2022.
- 1250 Zhao, M. and Knutson, T.: Crucial role of sea surface temperature warming patterns in near-term high-impact weather and climate projection, *Npj Clim. Atmospheric Sci.*, 7, 1–13, <https://doi.org/10.1038/s41612-024-00681-7>, 2024.
- Zhao, M., Held, I. M., Lin, S. J. S.-J., and Vecchi, G. A.: Simulations of global hurricane climatology, interannual variability, and response to global warming using a 50km resolution {GCM}, *J. Clim.*, 22, 6653–6678, <https://doi.org/10.1175/2009JCLI3049.1>, 2009.

1255