

# Cirrus formation regimes - Data driven identification and quantification of mineral dust effect

Kai Jeggle<sup>1</sup>, David Neubauer<sup>1</sup>, Hanin Binder<sup>1</sup>, and Ulrike Lohmann<sup>1</sup>

<sup>1</sup>Institute for Atmospheric and Climate Science, ETH Zurich, Zurich, Switzerland

**Correspondence:** Kai Jeggle (kai.jeggle@env.ethz.ch), Ulrike Lohmann (ulrike.lohmann@env.ethz.ch)

**Abstract.** The microphysical and radiative properties of cirrus clouds are strongly dependent on the ice nucleation mechanism and origin of the ice crystals. Due to sparse temporal coverage of satellite data and limited observations of ice nucleating particles (INPs) at cirrus levels it is notoriously hard to determine the origin of the ice and the nucleation mechanism of cirrus clouds in satellite observations. In this work we combine three years of satellite observations of cirrus clouds from the DARDAR-Nice retrieval product with Lagrangian trajectories of reanalysis data of meteorological and aerosol variables calculated 12 h backward in time for each observed cirrus cloud. In a first step, we identify typical cirrus cloud formation regimes by clustering the Lagrangian trajectories and characterize observed microphysical properties for in situ and liquid origin cirrus clouds in midlatitudes and the tropics. On average, in situ cirrus clouds have smaller ice water content (IWC) and lower ice crystal number concentration ( $N_{ice}$ ) and a strong negative temperature dependence of  $N_{ice}$ , while liquid origin cirrus have a larger IWC and higher  $N_{ice}$  and a strong positive temperature dependence of IWC. In a second step, we use MERRA2 reanalysis data to quantify the sensitivity of cirrus cloud microphysical properties to a change in the concentration of dust particles that may act as INPs. By identifying similar cirrus cloud formation pathways, we can condition on ice-origin, region, and meteorological dependencies, and quantify the impact of dust particles for different formation regimes. We find that at cloud top median  $N_{ice}$  decreases with increasing dust concentrations for liquid origin cirrus. Specifically, the sensitivities are between 6 % and 7 % per order of magnitude increase in dust in the tropics and between 15 % in the mid-latitudes. The decrease in  $N_{ice}$  can be explained by increased heterogeneous ice nucleation in the mixed-phase regime, leading to fewer cloud droplets freezing homogeneously once the cloud enters the cirrus temperatures and glaciates. The resulting fewer, but larger ice crystals are more likely to sediment, leading to reduced IWC, as for example observed for liquid origin cirrus in the mid-latitudes. In contrast, for high altitude in situ cirrus in the tropics, we find an increase of  $N_{ice}$  median values of 11 % and IWC median values of 17 % per unit increase of dust aerosol in logarithmic space. We assume that this is caused by heterogeneous nucleation of ice initiated by dust INPs in INP limited conditions with supersaturations between the heterogeneous and homogeneous freezing thresholds. Such conditions frequently occur at high altitudes, especially in tropical regions at temperatures below 200 K. Our results provide an observational line of evidence that the climate intervention method of seeding cirrus clouds with potent INPs may potentially result in an undesired positive cloud radiative effect (CRE), i.e. a warming effect. Instead of producing fewer but larger ice crystals, we show that additional INPs can lead to an increase in  $N_{ice}$  and IWC, an effect called *overseeding*.

## 1 Introduction

Cirrus clouds have a regional-dependent occurrence between 10 % and 50 %. When analyzing the zonal distribution from the poles towards the equator, the occurrence peaks in the mid-latitude storm tracks, followed by a decrease in the subtropics. The occurrence then increases again towards the intertropical convergence zone (ITCZ), with a particularly pronounced increase over the warm pool region (Heymsfield et al., 2017). Despite the high cirrus cloud cover and the resulting climatological relevance, cirrus are a source of large uncertainties in climate projections (Forster et al., 2021). Cirrus clouds occur primarily in the upper troposphere at temperatures below  $-38^{\circ}\text{C}$  and consist purely of ice crystals. Clouds modulate the Earth’s radiative budget via the reflection of shortwave radiation (cloud albedo effect) and the absorption and emission of infrared radiation into space (cloud greenhouse effect). Global climate model (GCM) and observational studies show that the greenhouse effect dominates in cirrus clouds, resulting in a positive CRE, meaning a net warming of the atmosphere (Gasparini and Lohmann, 2016; Hong et al., 2016). However, depending on the cloud microphysical properties (CMP) of cirrus, the magnitude of the CRE varies significantly and can even change to a negative CRE for lower-level optically thick cirrus (DeMott et al., 2010; Hong et al., 2016; Krämer et al., 2016; Heymsfield et al., 2017). Cirrus CMP, namely the IWC and  $N_{\text{ice}}$ , are in turn controlled by the competition between homogeneous and heterogeneous ice nucleation (e.g. Kärcher et al., 2006), ice origin (Krämer et al., 2016), geographical location (Heymsfield et al., 2017), environmental variables, mainly temperature and updraft velocities, as well as the aerosol environment (Gryspeerdt et al., 2018). Other studies like Muhlbauer et al. (2014) and Sassen and Comstock (2001) use a dynamical regime for the classification of cirrus. The heterogeneity of cirrus CMP and subsequent CRE require a better understanding of the formation pathways and their influence on cirrus CMP to reduce the uncertainties in CRE estimates and cirrus cloud representations in GCMs used for climate change projections.

In recent years there have been significant advances in the understanding of cirrus cloud formation and the resulting CMP using in situ aircraft data, global satellite data, as well as model simulations. Krämer et al. (2016) and Luebke et al. (2016) introduced a cirrus classification based on the origin of ice crystals in cirrus clouds. Cirrus that form directly from the gas phase at temperatures  $T < -38^{\circ}\text{C}$  are denoted in situ cirrus. In contrast, liquid origin cirrus evolve from mixed phase clouds, where cloud droplets freeze heterogeneously via ice nucleating particles (INP) (Kanji et al., 2017) at temperatures  $T > -38^{\circ}\text{C}$ . Once the cloud is lifted to temperatures  $T < -38^{\circ}\text{C}$  it glaciates spontaneously by homogeneous freezing of the remaining cloud droplets. Krämer et al. (2016) combined in situ aircraft observations with model simulations to study the CMP associated with the two ice-origin regimes. The authors find that in situ cirrus form at higher altitudes, are optically thinner and consist of fewer ice crystals. Liquid origin cirrus on the other hand are thicker clouds found at lower altitudes consisting of many ice crystals. Their study suggests that liquid origin clouds have a cooling and in situ a warming effect on the atmosphere.

Multiple other studies have adopted the classification of cirrus with respect to ice origin. For instance, Wernli et al. (2016) analyzed 12 years of ERA-Interim trajectories in the North Atlantic to identify the relative occurrence of liquid origin and in situ cirrus; Gasparini et al. (2018) compared satellite observations from the CALIPSO satellite (Hunt et al., 2009) with simulation data from GCMs to study CMP of in situ and liquid origin cirrus. While data from active satellite instruments like CALIPSO’s lidar provide an unprecedented vertically resolved global view on real cirrus clouds, the observations suffer from

60 the long revisiting time of the satellite of 16 days which only allows for a temporal snapshot perspective on cirrus clouds. To still approximate the ice origin of satellite observed cirrus, Gasparini et al. (2018) used a heuristic approach to determine ice origin, in which cirrus are considered liquid origin if they extend to temperatures warmer than  $-35^{\circ}\text{C}$ . However, due to the temporal snapshot perspective, anvil cirrus and frontal cirrus are falsely classified as in situ cirrus in this approach. The above mentioned studies all agree that liquid origin cirrus clouds occur at lower altitudes and contain more IWC and higher  $N_{\text{ice}}$  than

65 in situ cirrus clouds, which occur at higher altitudes and are typically thinner with less IWC and lower  $N_{\text{ice}}$ . Apart from studying cirrus ice-origin, the relationships between meteorological and aerosol cirrus drivers and CMP have also been studied extensively using observational data. Gryspeerd et al. (2018) found that next to ice-origin, mainly temperature, updraft by controlling supersaturation, and the aerosol environment determine the CMP. Aerosols can influence CMP by acting as INPs for heterogeneous freezing. In addition to temperature and particle morphology, the ability of INPs to initiate hetero-

70 geneous freezing in cirrus clouds is strongly dependent on ambient supersaturations. Recent analysis of 65 airborne relative humidity measurements at cirrus levels have shown that both in midlatitudes and the tropics, regions with supersaturations between the homogeneous and heterogeneous freezing thresholds exist both in cloudy and cloud-free regions (Krämer et al., 2020; Dekoutsidis et al., 2023). We refer to these conditions as INP limited, as the availability of (additional) INPs could induce heterogeneous freezing and hence increase  $N_{\text{ice}}$  in existing clouds and also form new clouds. The frequency of such conditions

75 is more prevalent in tropical regions below 200 K. Mineral dust is considered the most important INP in the atmosphere (Kanji et al., 2017). Kuebbeler et al. (2014) found in a GCM-based study that an increase in dust INP leads to a global reduction of ice mass and an increase of crystal size, caused by a partial switch from homogeneous to heterogeneous nucleation. The exact effect of INPs on cirrus in observed cirrus is still uncertain and difficult to study in observational data as INPs generally only represent a small subset of the overall aerosol population (Lacher et al., 2018; Forster et al., 2021) and the INP effect may be

80 masked by other dependencies such as regional influences, meteorological conditions, and ice-origin. An additional motivation to study the impact of INPs on cirrus cloud properties is the assessment of the climate intervention method of cirrus cloud thinning (CCT) which aims at altering the radiative properties of cirrus clouds to counteract global warming. CCT was first proposed by Mitchell and Finnegan (2009), building on results by Lohmann et al. (2008) who found in a modeling study that a change of the dominant ice nucleation mechanism from homogeneous to heterogeneous nucleation

85 leads to a large reduction of the cirrus CRE by  $-2.0 \text{ W m}^{-2}$ . The idea behind CCT is to induce a shift of the dominant nucleation mechanism by injecting INPs into cirrus regimes with the aim of *producing* fewer, but larger ice crystals, which reflect less shortwave radiation, but more importantly, trap less longwave radiation. Storelvmo et al. (2013) simulated CCT in a global climate model and found two opposing effects. A substantial cooling effect was achieved when injecting the *optimal* amount of INPs into cirrus regimes, namely  $18 \text{ L}^{-1}$ . However, at higher concentrations of injected INPs more and smaller ice crystals

90 were observed, which resulted in a substantial warming effect. This undesirable response to CCT is termed *overseeding*. Multiple other studies with different global climate models and seeding strategies report a negligible cooling potential of CCT, but confirm an *overseeding* effect at high seeding concentrations (Penner et al., 2015; Gasparini and Lohmann, 2016; Gasparini et al., 2017; Tully et al., 2022).

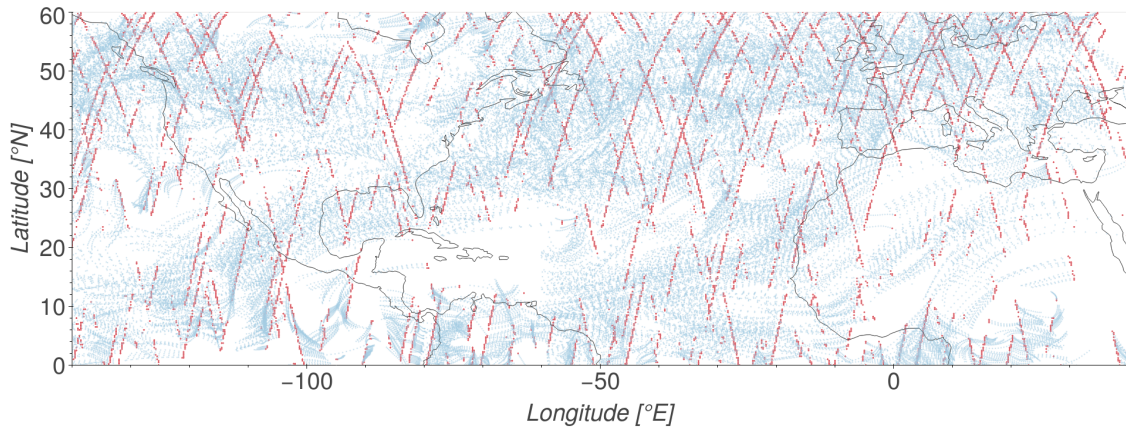
Due to uncertainties in parameterizing subgrid processes, modeling studies have inherent uncertainty. Studies based on observational data can provide additional evidence to support and validate the outcome of these model studies. In this study we combine instantaneous satellite observations with Lagrangian backward trajectories of meteorological and aerosol reanalysis data on a large regional and temporal scale. With this approach, we extend the temporal snapshots obtained by satellite observations with an evolutionary perspective on cloud formation and development. Our goal is to classify observed cirrus clouds by means of their trajectories and to investigate the influence of typical formation pathways on observed cirrus CMP. We follow a data-driven approach by using k-means clustering of Lagrangian trajectories with dynamic time warping (DTW) as distance metric to identify typical cirrus formation regimes. Our second objective is to quantify the effect of mineral dust particle concentrations on cirrus CMP. By identifying cirrus clouds that have formed in similar meteorological environments in midlatitudinal and tropical regions in the first step, we are able to disentangle the influence of ice-origin, meteorological conditions, and regional occurrence from the dust effect.

## 2 Methods

### 2.1 Data

In this work, three years of satellite observations of cirrus clouds are extended with Lagrangian backward trajectories of meteorological variables and aerosol properties. DARDAR (Delanoë and Hogan, 2008) and its extension DARDAR- $N_{ice}$  (Sourdeval et al., 2018) are widely used satellite products that provide vertically resolved retrievals for IWC and  $N_{ice}$ . DARDAR is a synergistic product combining CloudSat’s radar with CALIPSO’s lidar and is hence able to penetrate through deep convective clouds, while still being sensitive to optically thin cirrus clouds. Due to the long 16-day revisiting times, DARDAR only provides temporal snapshots along its narrow satellite overpass. The locations of observed cirrus for 10,000 randomly sampled cirrus clouds, representing approximately 1% of the dataset used in this study, are visualized as red dots in Fig. 1. The satellite overpasses are clearly detectable in the figure.

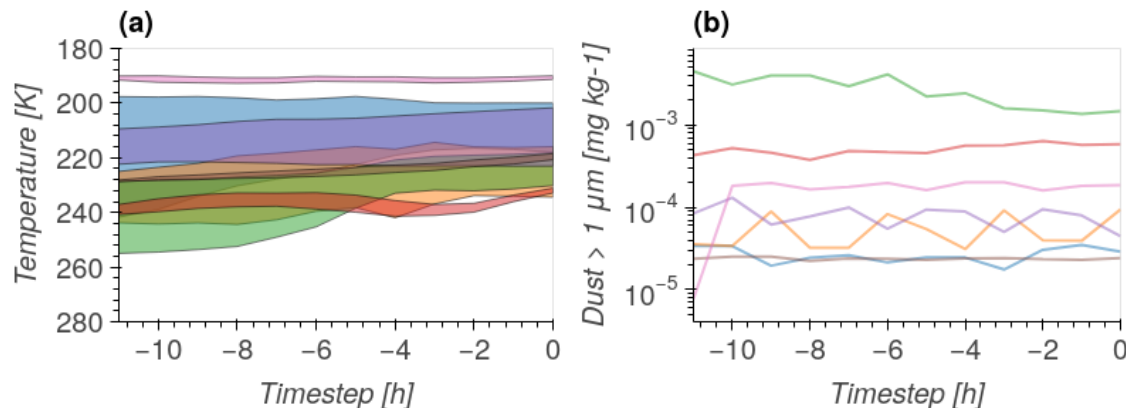
To add a notion of temporal development to observed cirrus clouds, Lagrangian trajectories are calculated 12 hours back in time based on hourly wind fields using LAGRANTO (Sprenger and Wernli, 2015) for each grid point containing an observed cirrus cloud. Hereby, a grid point is considered to contain a cirrus cloud if  $IWC > 0$  and  $T < -38^\circ\text{C}$ . Since LAGRANTO calculates trajectories based on ERA5 wind fields (Hersbach et al., 2018), DARDAR cirrus observations are first regridded onto the ERA5 grid of  $0.25^\circ \times 0.25^\circ$  and a vertical resolution of 300 m, which approximately corresponds to the model layer thickness in ERA5 at cirrus altitudes. After regridding, only grid points with a fractional cloud cover  $> 0.1$  are considered to be cirrus cloud observations. Blue dots in Fig.1 mark the trajectories for 10,000 randomly sampled cirrus (red dots). We trace temperature from ERA5 along the trajectories. Cloud properties available from ERA5 are intentionally omitted in this work, since IWC is substantially underestimated compared to DARDAR, especially in the cirrus regime (Duncan and Eriksson, 2018). The data source for dust concentration is the MERRA2 (Buchard et al., 2017; Gelaro et al., 2017) reanalysis product, which contains data for dust aerosols in five size bins. For this study we aggregate the four size bins with radii  $> 1 \mu\text{m}$  into a single super-micron size bin. Given that larger particles are more likely to act as INPs (Kanjani et al., 2017), we use the super-micron dust



**Figure 1.** Visualization of 10,000 randomly sampled cirrus cloud observations in the study domain (red dots) with their corresponding 12 h Lagrangian backward trajectories (blue dots). For visualization purposes only the trajectories of the cloud top layers are shown.

bin as proxy for dust particle concentration for this study. In order to trace MERRA2 data along the ERA5 trajectory, the data is regridded to the spatio-temporal resolution of ERA5 data. MERRA2 was chosen as a data source for aerosol concentration in this study as it has been shown to better represent aerosol properties than the CAMS reanalysis product (Benedetti et al., 2009; Inness et al., 2019) when compared to remote sensing observations (Gueymard and Yang, 2020; Gandham et al., 2022). In this study, we define cirrus clouds as all clouds with a cloud-top temperature colder than  $-38^{\circ}\text{C}$ . This definition includes, for example, the top part of deep convective cores, which are not classified as cirrus clouds in some other studies. However, our clustering approach, based on backward trajectory reanalysis data, aims to capture all evolutionary stages of cirrus clouds. Therefore, we adopt this broad definition. For the remainder of this study, we refer to a cirrus cloud as all consecutive vertical layers in a DARDAR observation containing  $\text{IWC} > 0 \text{ mg m}^{-3}$  and located at  $T < -38^{\circ}\text{C}$ , instead of considering each vertical level separately. This approach enables a more holistic view on the whole cloud. In order to also get a holistic view of the history for each cloud, while ensuring comparability between clouds, we define the meteorological history of a cloud by its 12 h temperature evolution along the trajectories starting at cloud top and cloud base. Correspondingly, we consider the dust particle concentration along the trajectory starting at cloud center. Figure 2 visualizes these trajectories for seven randomly sampled cirrus clouds.

The domain of this study is defined from  $140^{\circ}\text{W}$  to  $40^{\circ}\text{E}$  and  $0^{\circ}\text{N}$  to  $60^{\circ}\text{N}$  and contains data from 2007 - 2009. The chosen domain covers a wide range of climatological regimes and surface types and can be considered representative for tropical and midlatitudinal regions, where cirrus clouds occurring at latitudes  $\leq 30^{\circ}\text{N}$  are considered tropical and cirrus clouds occurring at latitudes  $> 30^{\circ}\text{N}$  are considered midlatitudinal. The dataset contains 1.1 million cirrus cloud observations with 7.2 million separate cloud layers, for each of which a 12 h Lagrangian backward trajectory has been calculated. As cirrus clouds typically do not persist more than 12 hours (Lohmann et al., 2016), it can be assumed that the observed cirrus clouds have formed within the time frame of the 12 h trajectories. This is also in line with Jeggle et al. (2023) who found that the last 15 h of a trajectory contain all information for predicting cirrus cloud properties.



**Figure 2.** Lagrangian backward trajectories of seven randomly sampled cirrus clouds. The clouds are observed at timestep  $t = 0$ , from which the Lagrangian trajectories are calculated backwards in time. Each color is representing trajectories for a single cloud across the three panels. Panel (a) shows temperature along trajectories starting from cloud top and cloud base of observed cirrus, panel (b) shows concentration of dust particles with radii  $> 1 \mu\text{m}$  along the trajectory at the cloud center. Note that for clouds extending to  $T > -38^\circ\text{C}$ , the cloud base is defined as the last layer with  $T < -38^\circ\text{C}$  at  $t = 0$ .

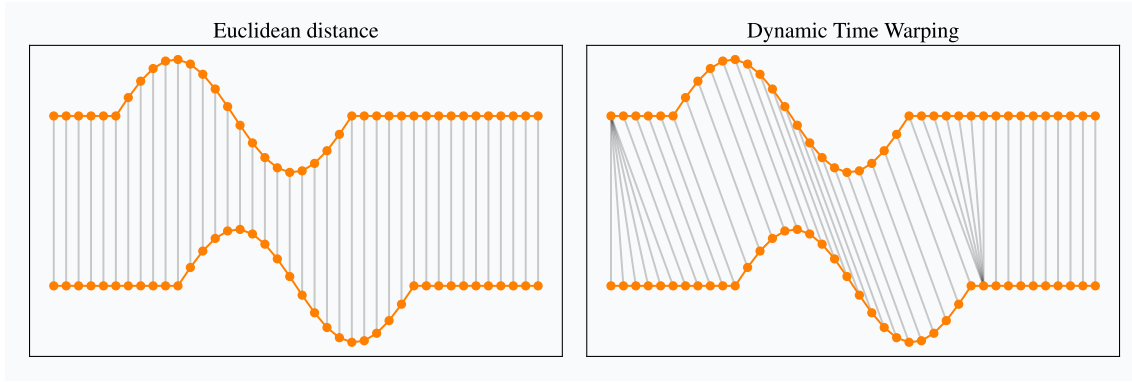
## 2.2 Trajectory Clustering

150 To identify different formation regimes of cirrus clouds in our dataset, we follow a data-driven approach by applying k-means clustering using dynamic time warping (DTW) as distance metric (Sakoe and Chiba, 1978). The algorithm separates time series (i.e. Lagrangian backward trajectories) into  $k$  clusters where similar trajectories are grouped together in the same cluster. Instead of using point-to-point comparisons to calculate the similarity between time series using Euclidean distance, we apply DTW to account for time shifts in the backward trajectories. DTW is a similarity measure that calculates the Euclidean distance on temporally aligned time series, aiming at an improved similarity assessment compared to a point-to-point comparison. 155 Figure 3 visualizes the differences between standard Euclidean distance and DTW. In both cases the calculated similarity is the sum of distances between matched points. It can be seen that DTW is invariant to the temporal shift of the two time series by aligning the sinusoidal pattern of the two time series along the temporal axis. We use the Python library *tslearn* (Tavenard et al., 2020) for the k-means clustering of time series with DTW and refer to its documentation for further details.

160 To improve the readability of this paper, the following nomenclature is defined:

- **temperature trajectory:** ERA5 temperature along a Lagrangian trajectory (as shown in Fig. 2 (a)).
- **dust trajectory:** MERRA2 dust concentration along a Lagrangian trajectory (as shown in Fig. 2 (b)).
- **trajectory start:** Starting point of a Lagrangian backward trajectory, i.e.  $t = 0$ . At this point a DARDAR cirrus cloud observation is available.

165



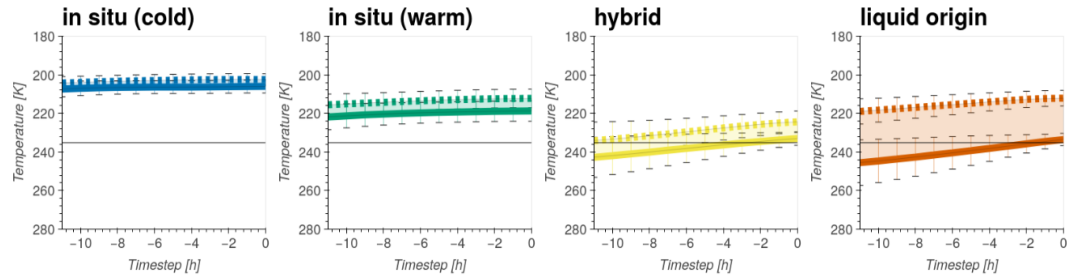
**Figure 3.** Comparison between Euclidean distance and DTW for two time series that are shifted along the temporal axis. Reprinted from Tavenard (2021)

In a first step, temperature trajectories starting at cloud top and cloud base are clustered, resulting in  $k_T$  clusters per region, which are associated with respect to their ice origin. For instance, if both cloud top and cloud base trajectories remain at temperatures below  $-38^\circ\text{C}$ , the cluster can be considered to be formed in situ in the ice phase. Given the assumption that an air parcel’s history containing a cirrus cloud provides information about the cloud formation and development mechanisms, our approach allows an analysis of observed cloud snapshots with respect to their formation history, which was formerly only possible for model and reanalysis data. Cirrus formation regimes may differ depending on the region in which they occur, and we analyze the results of the clustering for tropical cirrus and midlatitudinal cirrus separately. By grouping cirrus of similar temperature pathways, the meteorological dependence of cirrus CMP ( $\text{IWC}, N_{\text{ice}}$ ) can be disentangled from aerosol-cloud interactions.

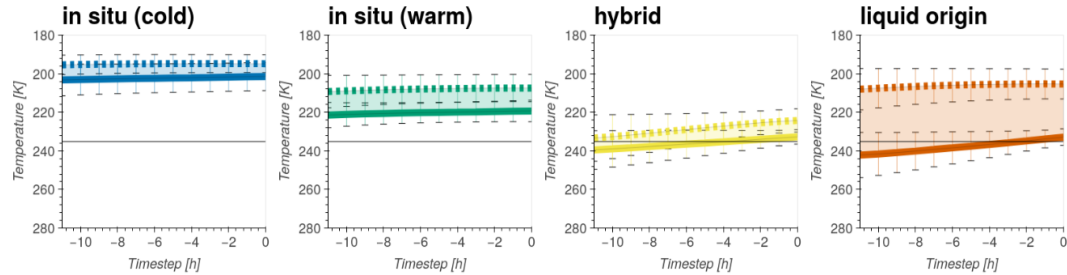
### 2.3 Dust effect quantification

To estimate the sensitivity of  $\text{IWC}$  and  $N_{\text{ice}}$  in the identified formation regimes, a multivariate linear regression model is fitted for both variables in each formation regime. The required input to a linear regression is a single data point rather than a time series (i.e. dust along trajectory), which is why we take the dust particle concentration at the time of cirrus cloud observation ( $t = 0$ ) as a proxy for the dust concentration along the trajectory. The small mean standard deviation of  $0.14 \log \text{mg kg}^{-1}$  along trajectories is supporting the validity of this simplifying assumption. We are interested in analyzing possible distribution shifts of cirrus CMP caused by varying dust particle concentrations, rather than the effect of dust on individual clouds. Hence, we create dust concentration bins with a width of  $\frac{1}{10}$  of an order of magnitude and calculate median  $\text{IWC}$  and  $N_{\text{ice}}$  values, which are used as target variables for the regression. The width of the dust concentration bins is chosen to account for relatively small variations in dust concentrations while guaranteeing a sufficient number of cirrus observations per bin. While having reduced the dependence of cloud ice properties on the formation regime and meteorological conditions through the trajectory clustering, it is still necessary to adjust for meteorological dependencies within each cluster. Therefore, in addition

### (a) Midlatitudes



### (b) Tropics



**Figure 4.** Mean temperatures along 12 h backward trajectories for four identified clusters of cirrus clouds in the midlatitudes (a) and tropics (b).  $t = 0$  indicates the starting point of the backward trajectories, that is, the DARDAR observed cirrus clouds. Dashed lines indicate trajectories at cloud top and solid lines trajectories at cloud base. The error bars represent the standard deviations at each timestep. The horizontal black line at 235 K marks the homogeneous freezing threshold, and hence the shift from the mixed-phase to the cirrus regime.

to dust concentration as a regressor, temperature ( $T$ ) and large-scale vertical velocity ( $\omega$ ) at the time of the observation ( $t = 0$ ) are also used as regressors, resulting in the following multivariate linear regression equations:

$$\text{IWC} = \beta_1^{\text{IWC}} T + \beta_2^{\text{IWC}} \omega + \beta_3^{\text{IWC}} \text{Dust} + \epsilon \quad (1)$$

$$190 \quad \text{N}_{\text{ICE}} = \beta_1^{\text{NICE}} T + \beta_2^{\text{NICE}} \omega + \beta_3^{\text{NICE}} \text{Dust} + \epsilon \quad (2)$$

Once fitted and the significance of the regression coefficients is tested ( $p < 0.05$ ), the coefficients for  $\text{Dust}$  can be interpreted as the sensitivity of IWC and  $\text{N}_{\text{ice}}$  to a unit change in the concentration of dust. Note that throughout this study, a unit change in dust concentration corresponds to a change of one order of magnitude, as we use log-transformed concentrations.

## 3 Data-driven formation regime identification

195 By clustering the temperature trajectories as described in section 2.2, four distinct trajectory pathways can be identified. We refer to appendix A for a discussion on the choice of  $k$  clusters. Each cirrus cloud in the dataset is assigned to the cluster

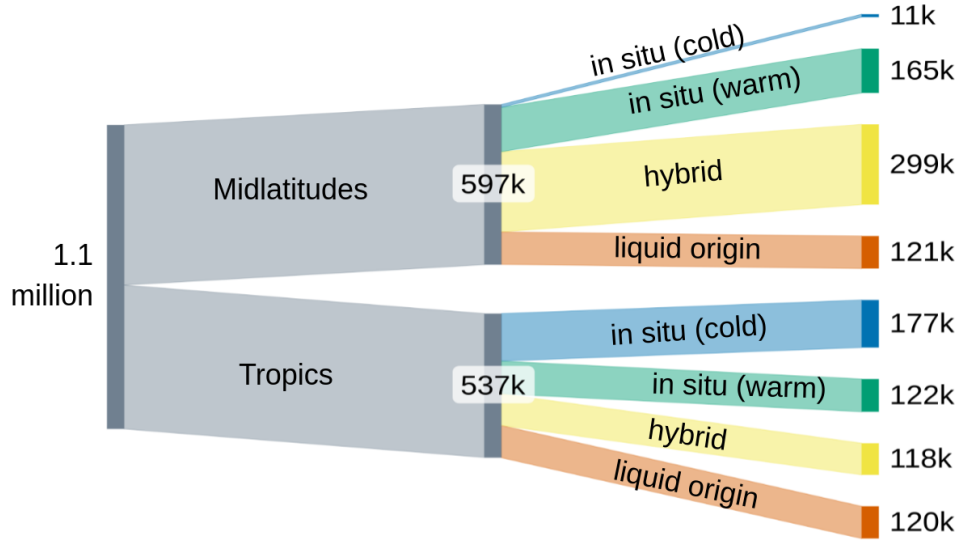


with the minimum distance of its temperature trajectory at cloud top and cloud base. Figure 4 shows the mean temperature trajectories of cirrus clouds belonging to the four clusters for cirrus clouds in the midlatitudes (Fig. 4a) and tropics (Fig. 4b). Given the characteristics of the trajectories, the clusters are named according to their ice origin. We identify two clusters for which the temperatures remain below 235 K along the whole 12 h trajectory. Assuming that the observed cirrus at  $t = 0$  formed at any point in the 12 h prior to its observation, we are confident that cirrus belonging to these clusters formed directly in the ice phase, i.e. in situ. Based on the temperature differences, the clusters are named *in situ (cold)* (blue color) and *in situ (warm)* (green color). Both in situ clusters are characterized by a negligible temperature decrease along the trajectory with cloud top temperatures  $\sim 190$  K for cirrus clouds of the *in situ (cold)* cluster and  $\sim 205$  K for cirrus clouds of the *in situ* cluster in the tropics. Due to the increased height of the tropopause in the tropics, in situ origin cirrus can occur at higher altitudes, resulting in a shift to colder temperatures of the mean cloud top temperatures of approximately 15 K compared to the midlatitudes. The third cluster (yellow color) may contain both in situ and liquid origin cirrus, given that its trajectory is gradually surpassing the homogeneous freezing temperature threshold of 235 K. Whether clouds belonging to this cluster have formed in situ or have ascended from the mixed-phase depends on the time of cloud formation. Since the moment of cloud formation is unknown, and hence the ice origin is ambiguous, this cluster is named *hybrid*. The temperature trajectories and cloud vertical extent of the remaining cluster suggest that cirrus clouds belonging to this formation regime are likely to have formed in the mixed-phase regime. Thus, this cluster is named *liquid origin* (orange color). Figure 5 visualizes the absolute occurrence of cirrus clouds in the dataset that belong to each cluster for both midlatitudes and tropics. In the tropics, cirrus clouds are fairly equally distributed between the four clusters, whereas in the midlatitudes, there are almost no *in situ (cold)* (2%) cirrus and half of the cirrus clouds belong to the *hybrid* regime.

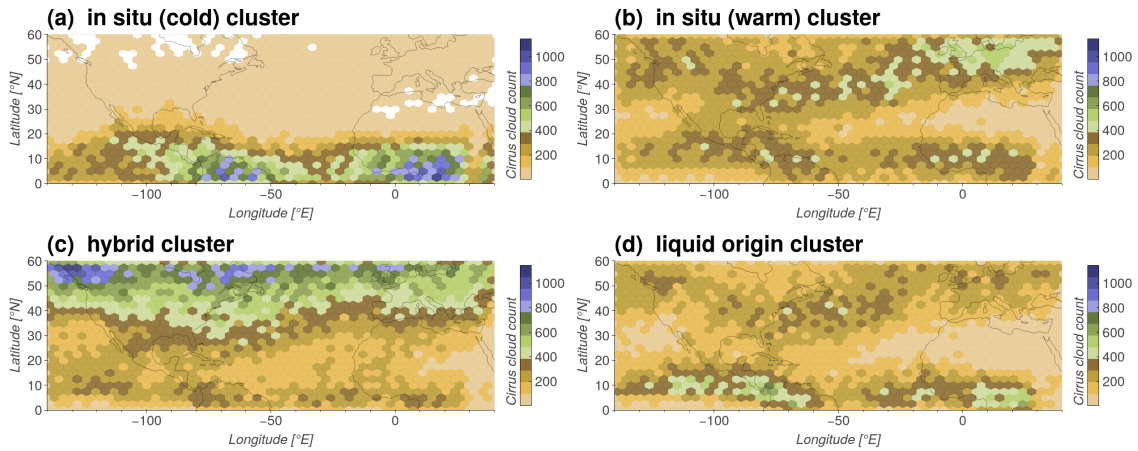
Fig. 6 visualizes the spatial distribution of cirrus clouds belonging to each cluster in the study domain. Cirrus clouds of the *in situ (cold)* cluster occur almost exclusively in the ITCZ, cirrus in the *in situ (warm)* and *liquid origin* clusters also occur often in the ITCZ, but also in the northern Atlantic and Europe. A majority of cirrus belonging to the *hybrid* cluster occur at latitudes between  $40^{\circ}\text{N}$  -  $60^{\circ}\text{N}$ .

Cirrus cloud properties are typically characterized as a function of temperature, hence we analyze and compare the temperature dependence of the observed cloud ice properties for the identified temperature trajectory clusters. Figure 7 shows the median values of IWC (Fig. 7 a,c) and  $N_{\text{ice}}$  (Fig. 7 b,d) for 1 K temperature bins for each cluster as well as the median values for all clouds (dashed black line). Consistent with Krämer et al. (2016), we observe higher IWC for liquid origin cirrus compared to in situ cirrus with an increasing spread at higher temperatures, which means that the effect of ice origin on cirrus CMP decreases with temperature and therefore altitude. At 220 K, for instance, *liquid origin* cirrus have a median IWC that is twice as large compared to median *in situ* cirrus, in both the tropics and midlatitudes. Notably, median IWC values are decreasing for *in situ* cirrus at temperatures  $> 215$  K in the midlatitudes. We assume that updrafts for cirrus in this temperature regime are too small to nucleate new ice crystals, leading to the reversal of the normally positive IWC - temperature dependence. Low median  $N_{\text{ice}}$  values  $< 0.05 \text{ cm}^{-3}$  (Fig. 7 b) support this hypothesis.

The same effect can be observed in a weaker form in the tropics. Generally, a stronger positive IWC - temperature dependence can be observed for cirrus of liquid origin, while in situ cirrus exhibit a stronger negative  $N_{\text{ice}}$  - temperature dependence. The



**Figure 5.** Sankey plot visualizing the classification of 1.134.000 cirrus cloud observations into formation regimes based on k-means clustering of Lagrangian trajectories. The number of clouds contained in each cluster is proportional to the thickness of each link in the Sankey diagram and is also displayed at each node. In a first step cirrus clouds are divided by region, next reanalysis trajectories are clustered by temperature pathways. Temperature trajectories are named with respect to the ice origin of the corresponding cirrus clouds.



**Figure 6.** Occurrence of observed cirrus clouds for each temperature trajectory cluster on a 2.5°x2.5° grid for the years 2007 - 2009.

relative temperature dependence is exemplarily quantified in Table 1 as the relative change in median IWC and  $N_{ice}$  values for cirrus occurring at 210 K compared to cirrus occurring at 220 K.  $N_{ice}$  decreases by 52 % (43 %) between 210 K and 220 K for *in situ (warm)* cirrus in the midlatitudes (tropics) probably due to a scarcity of INPs at higher temperatures. *Liquid origin*

**Table 1.** Relative change of IWC and  $N_{ice}$  median values from 210 K to 220 K for *in situ (warm)* and *liquid origin* clusters for cirrus in tropics and midlatitudes

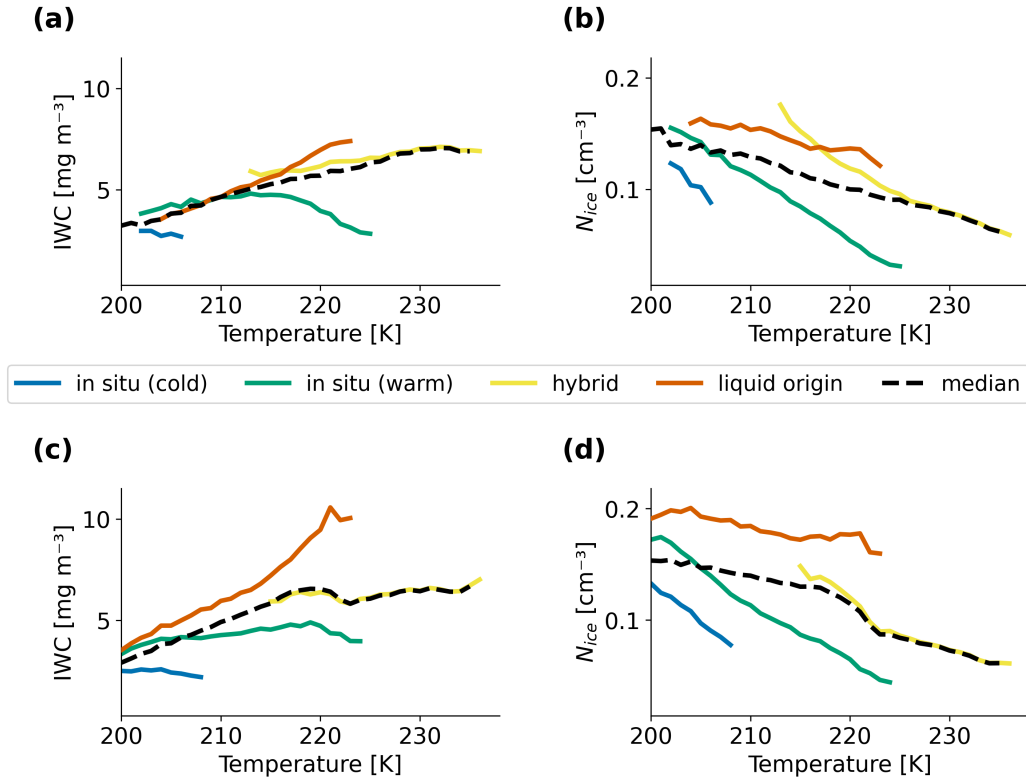
	Midlatitudes		Tropics	
	<i>in situ (warm)</i>	<i>liquid origin</i>	<i>in situ (warm)</i>	<i>liquid origin</i>
IWC	- 15 %	50 %	11 %	58 %
$N_{ice}$	- 52 %	- 11 %	- 43 %	- 4 %

235 cirrus clouds have a five (ten) times lower dependency of  $N_{ice}$  on temperature compared to *in situ* cirrus clouds. As liquid origin cirrus clouds form by glaciating cloud droplets of mixed-phase clouds that are lifted to the cirrus temperature regime, it cannot necessarily be expected to observe larger ice crystal concentrations with decreasing temperatures. The fact that, although only slightly,  $N_{ice}$  is increasing with decreasing temperatures for liquid origin clouds suggests the nucleation of new ice crystals through INPs enabled heterogeneous freezing or homogeneous freezing of solution droplets triggered by cloud top cooling (Hartmann et al., 2018) or gravity waves (Kim et al., 2016; Chang and L’Ecuyer, 2020; Atlas and Bretherton, 2023). Another possible explanation for the negative temperature dependence of  $N_{ice}$  for liquid origin cirrus clouds is that clouds observed at warmer temperatures are aged clouds (e.g. aged anvil cirrus) that have sedimented to lower (i.e. warmer) altitudes (Doswell, 1985). Since we do not have information about the time of cloud formation, it is impossible to disentangle the described effects.

245 Cirrus clouds belonging to the *in situ (cold)* cluster occur in a narrow temperature band below  $\sim 210$  K. Cirrus clouds of this cluster are characterized by the lowest IWC and  $N_{ice}$  median values at any given temperature. Clouds belonging to the *hybrid* cluster sit in the middle between *liquid origin* and *in situ* clusters, supporting the hypothesis that both *in situ* and liquid origin cirrus clouds belong to this cluster.

#### 4 Quantification of dust aerosol effect

250 Our goal is to isolate the effect of dust on cirrus cloud properties from other dependencies such as temperature and formation regime. By classifying cirrus into different trajectory clusters, we can analyze the effect of dust on cirrus clouds for different cloud regimes and at the same time reduce the effect of ice origin on IWC and  $N_{ice}$ . Figure 8 d and h show the distributions of dust particle concentration for the different temperature trajectory clusters for midlatitudes and tropics, respectively. It can be seen that the dust concentration distributions span over four orders of magnitude. Fig. 8 a, b, e, f show median IWC and  $N_{ice}$  as a function of dust particle concentration. Following the approach described in section 2.3, we analyse if the amount of available dust has an influence on observed cirrus CMP. While clouds in the same regime occur at similar meteorological conditions, there is still a spread in both temperature and vertical velocity. As dust concentrations generally decrease with height, and therefore temperature (Fig 8 c, g), and cloud ice properties are functions of temperature (Fig. 7), the remaining meteorological effect must be taken into account when considering the influence of dust on the CMP of cirrus.

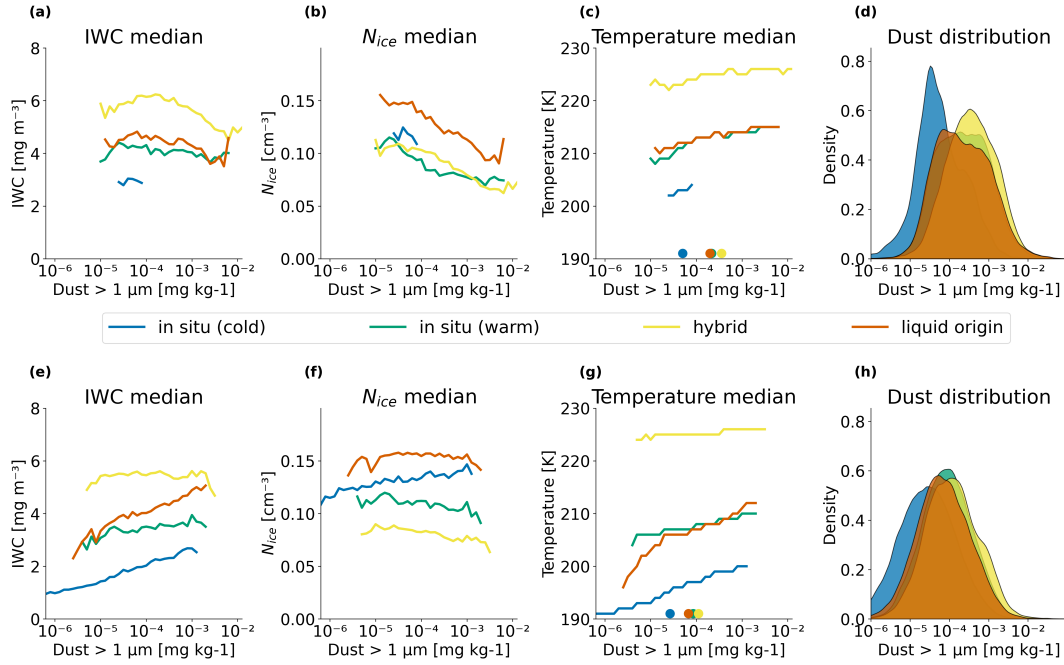


**Figure 7.** Median IWC (a) and  $N_{ice}$  (b) in cloud layers with a distance to cloud top  $< 600$  m of temperature trajectory clusters calculated for 1 K temperature bins in the midlatitudes. (c) and (d) are analogous for the tropics. The dashed black lines represent the median value for cirrus clouds in a given region. Median values are shown for 1 K temperature bins containing  $> 2500$  cirrus cloud observations. The temperatures represent the ERA5 temperature at the trajectory start points ( $t = 0$ ).

260 To account for the remaining dependency of cirrus properties on temperature and vertical velocity, we conduct a multivariate regression onto median IWC and  $N_{ice}$  values with temperature, vertical velocity, and dust concentration as regressors (see eq. 1 and eq. 2). Since ice nucleation occurs at cloud top, we expect the largest effect of dust acting as INPs close to cloud top and hence use data from the cloud top layer in the regression. Fig. 9 a and b show the regression coefficient for dust ( $\beta_3$  in eq. 2) in the regression onto IWC and  $N_{ice}$ , respectively. The regression coefficients can be interpreted as the sensitivity of the median values of IWC and  $N_{ice}$  to a unit change in dust particle concentration. Grey fields in Fig. 9 indicate that the dust concentration did not have a significant effect on the target variable ( $p < 0.05$ ). Panels c and d show the sensitivity of IWC and  $N_{ice}$  to dust as a percentage of the median IWC and  $N_{ice}$  values.

As expected,  $N_{ice}$  is generally more sensitive to the amount of dust aerosol than IWC, with all regression coefficients except for the two in situ cirrus clusters in the midlatitudes being significant. An increased availability of dust aerosols can lead to a regime shift from homogeneous freezing of solution droplets or cloud droplets to heterogeneous freezing catalyzed by the

270

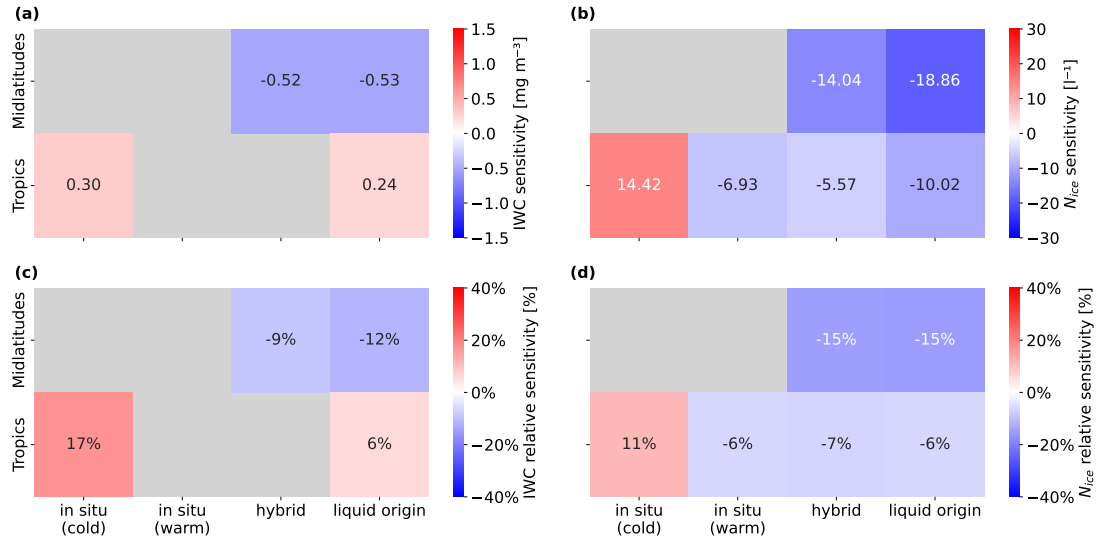


**Figure 8.** Median IWC (a),  $N_{ice}$  (b), and temperature values (c) for given dust bins in the midlatitudes in cloud layers within 325 m from cloud top. Each dust concentration bin represents  $\frac{1}{10}$  of an order of magnitude. Median values are shown for data points with > 1000 cirrus cloud observations per dust bin. Filled circles in panel (c) mark the median dust particle concentration per cirrus cluster. Panel (d) shows the density plot of dust particle concentration for different cirrus clusters in the midlatitudes. Panels (e)-(h) are the same plots for tropical cirrus clouds.

availability of INPs in the form of dust aerosols. Depending on the region and formation regime this regime shift leads to a decrease in  $N_{ice}$  between 6% and 15%, which results in an increase in ice crystal size. The effect is strongest in the midlatitudes for cirrus clouds of the *hybrid* and *liquid origin* regimes. Due to the sedimentation of larger ice crystals, the regime shift in the ice nucleation mechanism can lead to a reduction of IWC, as can be observed for cirrus clouds in *hybrid* and *liquid origin* regimes in the midlatitudes. For liquid origin cirrus the suppression of homogeneous ice nucleation by heterogeneous ice nucleation occurs with a temporal delay. An increased availability of INPs leads to an increase of heterogeneous ice nucleation while the cloud is still in the mixed-phase regime. This leads to a growth of ice crystals at the expense of cloud droplets via the Wegener-Bergeron-Findeisen process (Wegener, 1911) or even full glaciation of the cloud at temperatures > -38°C and ultimately resulting in less homogeneous ice nucleation and thus fewer ice crystals at cirrus temperatures ( $T < -38^\circ\text{C}$ ).

280

For cirrus clouds of the *in situ (cold)* cluster in the tropics a substantial positive sensitivity of 11% for  $N_{ice}$  and 17% for IWC can be observed, in contrast to the negative dust aerosol sensitivities discussed so far. We assume that this effect is caused by heterogeneous nucleation of ice in regions with supersaturations between the heterogeneous and homogeneous freezing



**Figure 9.** Regression coefficients  $\beta_3$  in eq. 1 (a) and eq. 2 (b) representing the sensitivity of IWC and  $N_{ice}$  to a unit change of dust aerosol in logarithmic space. Panels c and d represent the sensitivity as a percentage of the median IWC and  $N_{ice}$  values, respectively, for each region / cirrus cluster combination. The grey fields indicate that  $\beta_3$  has a p-value  $> 0.05$ , and is therefore considered statistically insignificant.

thresholds and low updraft velocities, i.e. in conditions that are INP limited and in which ice nucleation would not have  
 285 happened homogeneously. Aircraft-based in situ measurements of relative humidities in fact show that these conditions are frequently occurring at high altitudes, especially in the tropics at temperatures below 200 K (Krämer et al., 2020).

Our findings provide observational evidence that an increased abundance of INPs in cirrus regimes, can lead to an *overseeding* effect for CCT. Meaning, that instead of an INP induced shift from homogeneous to heterogeneous ice nucleation, more  
 numerous ice crystals form heterogeneously in conditions where homogeneous ice nucleation would not have occurred. Our  
 290 results confirm findings from studies with global climate models that have found an *overseeding* effect (Storelvmo et al., 2013; Penner et al., 2015; Gasparini and Lohmann, 2016; Gasparini et al., 2017; Tully et al., 2022).

Also, for cirrus clouds of liquid origin, a positive IWC dependence of 6% is detected, while the  $N_{ice}$  dependence remains negative at -6%. We assume that an increased availability of INPs induces a shift from homogeneous to heterogeneous freezing, leading to a decrease in  $N_{ice}$ . At the same time, additional INPs may facilitate new freezing events that would not have occurred  
 295 otherwise. These two effects partially offset each other, influencing the overall cloud properties.

We note that with our simplified assumption of linearity between median IWC and  $N_{ice}$  values and the regressors, we might miss non-linear effects and are also only able to retrieve a noisy estimate given different microphysical processes with opposing effects. For example, despite the overall positive dust sensitivity for *in situ (cold)* cirrus in the tropics, there may still be some  
 300 *in situ (cold)* cirrus in the tropics that are subject to a regime shift from homogeneous to heterogeneous nucleation due to an increase of dust concentration leading to a reduction of  $N_{ice}$ . While being able to explain the observed sensitivities with our

theoretical understanding of microphysical processes, the identified sensitivities do not necessarily constitute causal effects and could also be confounded by other factors.

As some cirrus clouds persist for more than 12 hours, we repeated the trajectory clustering and dust sensitivity analysis using 24 h backward trajectories. The median temperature trajectories of the identified clusters and their corresponding dust sensitivities are presented in Appendix A. The longer trajectories allow for the identification of more dynamic regimes; for example, the *hybrid* regime exhibits a stronger ascent of air parcels along the trajectory. To ensure comparability, the cluster names remain consistent with those used for the 12-hour clustering. The sensitivity of cirrus cloud properties to dust aerosol exposure largely aligns with the 12 h clustering results, except for the positive IWC sensitivity of *liquid origin* cirrus in the tropics, which is not detected, suggesting that this result is less robust.

## 310 5 Limitations

Cloud-scale updrafts are a core driver of cirrus cloud formation and have a substantial influence on their CMP. Like all other studies working with satellite and reanalysis data, this work is limited to the use of proxies for cloud-scale updrafts. While ERA5 can represent large-scale vertical velocity, small-scale updrafts like gravity waves and cloud-scale convection are not resolved. Additionally, uncertainties in ERA5 are higher in the tropics due to the frequent occurrence of convection, which, in turn, increases the uncertainty of our findings in the tropics. It is likely that a portion of cirrus clouds that we have classified as in situ cirrus in the tropics are in fact liquid origin cirrus formed by convection that is not resolved in ERA5. Analogue to uncertainties in meteorological variables, aerosol concentrations obtained from MERRA2 are associated with region-dependent uncertainties and may not necessarily represent the actual occurrence of dust. The study domain is a region with the highest annual mean atmospheric dust concentrations (Gavrouzou et al., 2021) and may therefore be less representative for the Southern Hemisphere or more remote regions. While DARDAR IWC and  $N_{ice}$  agree well with co-located in-situ observations of cirrus clouds (Krämer et al., 2016; Sourdeval et al., 2018; Krämer et al., 2020), uncertainties associated with measurement errors of the satellite instruments as well as the retrieval algorithms remain. Due to the absence of observational information about the time of cloud formation, cirrus clouds that have recently formed and cirrus clouds that are in a dissolving stage may belong to the same formation regime identified in this work, resulting in noisier results. If we were able to accurately determine the time of cloud formation, a more fine-grained classification of cirrus clouds could be conducted, leading also to an increase of the signal to noise ratio in the dust effect quantification. Knowledge about cloud age would allow also to estimate the effect of gravitational size sorting by ice crystal sedimentation. Since we focus on cloud top data, large ice crystals may have already sedimented from cloud-top reducing IWC compared to younger clouds.  $N_{ice}$  should be less affected by this unquantifiable effect of gravitational size sorting as  $N_{ice}$  is dominated by the more numerous small ice crystals, which will remain at cloud-top for several hours (Jensen et al., 2018).

## 6 Conclusions

In this study, we combined three years (2007 - 2009) of vertically resolved satellite retrievals from DARDAR-Nice of cirrus clouds in the domain from 140°W to 40°E and 0°N to 60°N with Lagrangian 12h backward trajectories of meteorological and aerosol variables from reanalysis data, resulting in 1.1 million cirrus clouds and their corresponding trajectories. Extending  
335 satellite data with trajectories enables an evolutionary perspective on observed cirrus clouds in contrast to the usual snapshot perspective studied with satellite data.

By clustering cirrus trajectories with k-means and DTW as distance metric, we identified four main formation regimes (*in situ (cold)*, *in situ (warm)*, *hybrid*, *liquid origin*). Consistent with existing studies, we confirm increased IWC and  $N_{ice}$  values for liquid origin cirrus compared to *in situ* cirrus. However, in contrast to existing research that classified cirrus cloud ice-origin  
340 in reanalysis data or *in situ* observations of single case studies, our method enables the classification of cirrus clouds based on their formation pathway in a large-scale satellite dataset. Furthermore, we find that IWC of liquid origin cirrus has a strong positive temperature dependence, whereas *in situ* cirrus have a strong negative temperature dependence on  $N_{ice}$ .

The identification of cirrus formation regimes helps to disentangle the effect of dust particle concentration on cirrus cloud IWC and  $N_{ice}$  from other dependencies. In line with recent evidence showing that mineral dust plays a dominant role in cirrus  
345 cloud formation in the Northern Hemisphere (Froyd et al., 2022), we find significant sensitivities of satellite observed cirrus cloud properties, i.e. IWC and  $N_{ice}$ , to dust particle concentrations from MERRA2 reanalysis data. We find that increasing dust concentrations can induce sensitivities of opposing signs caused by varying dominant microphysical processes for different cirrus cloud formation regimes. Except for tropical *in situ (cold)* cirrus, we detect a decrease in median  $N_{ice}$  with increasing dust concentrations, with sensitivities ranging from 6% to 7% in the tropics and 15% in midlatitudinal regions per unit increase of  
350 dust concentration in logarithmic space. We attribute this decrease to a shift from homogeneous to heterogeneous ice nucleation, resulting in fewer, but larger ice crystals. Conversely, *in situ (cold)* cirrus in the tropics show an 11% increase in median  $N_{ice}$  per dust aerosol unit increase in logarithmic space. We assume this is caused by heterogeneous ice nucleation initiated by dust INPs in INP limited conditions with supersaturations between heterogeneous and homogeneous freezing thresholds, which are frequently found at high altitudes, especially in tropical regions. Cold, thin cirrus have on average a net positive CRE due to  
355 their stronger longwave CRE compared to their shortwave CRE. An increase in these clouds could contribute to additional warming. However, their CRE may be relatively small because these clouds remain quite thin (Krämer et al., 2020). These results add observational evidence towards the ineffectiveness and potential undesired warming effects due to *overseeding* of CCT as a climate intervention strategy.

IWC is generally less sensitive to the ice nucleation mechanism than  $N_{ice}$ , and hence to a change in the concentration of dust  
360 aerosol. At midlatitudes, we find a negative sensitivity of IWC of 9 % and 12 % to dust particle concentrations for *hybrid* and *liquid origin* cirrus, likely caused by the faster sedimentation of larger ice crystals produced by heterogeneous freezing. Faster updraft velocities in the tropics may counteract this effect. An IWC sensitivity to dust of 17% for *in situ (cold)* cirrus and 6% sensitivity for *liquid origin* cirrus is detected in the tropics, suggesting that the effect of new nucleation events is dominating here.



365 To validate the effects of formation regime and dust aerosol on cirrus cloud properties, we suggest extending the study to the Southern Hemisphere and additionally conducting both modeling studies and further studies exploring satellite data.

A core limitation of this work is the absence of knowledge about when an observed cloud was initially formed and where in the cloud development life cycle it was observed by the satellite. Aircraft observations show that the impact of large aerosol particles like dust on IWC and  $N_{ice}$  depends on the evolutionary phase of cirrus clouds (Patnaude and Diao, 2020; Maciel et al., 2023). Modeling studies would enable a full evolutionary view but are limited by assumptions about cloud microphysics schemes and coarse resolutions. Studies with satellite data could include the use of geostationary data, with its high temporal resolution but with the limitation of only integrated retrievals, in contrast to vertically resolved data. Recent advancements in combining multiple satellite sources with machine learning have enabled the creation of a fully 3D-resolved dataset of cloud ice properties with the spatio-temporal coverage of geostationary satellites (Jeggle et al., 2024), enabling future studies to track

370 cloud trajectories, analyze cloud properties, and study dust sensitivity using observation-based data.

The clustering approach applied to a dataset that combines backward trajectories of reanalysis data with vertically resolved satellite observations, introduced in this paper, may provide insights about formation regimes and aerosol-cloud interactions beyond cirrus clouds. This method could be applied to liquid and mixed-phase clouds in a similar fashion.

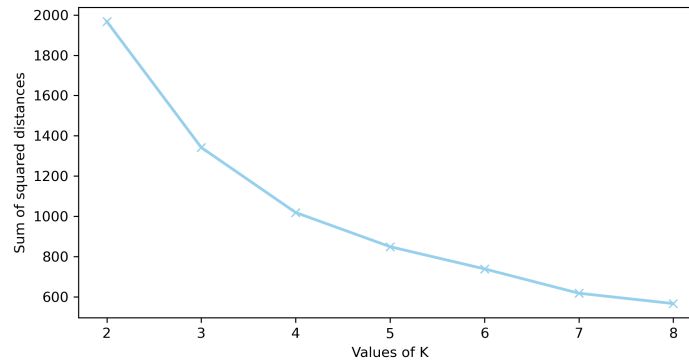
375

## Appendix A: Determining number of clusters $k$

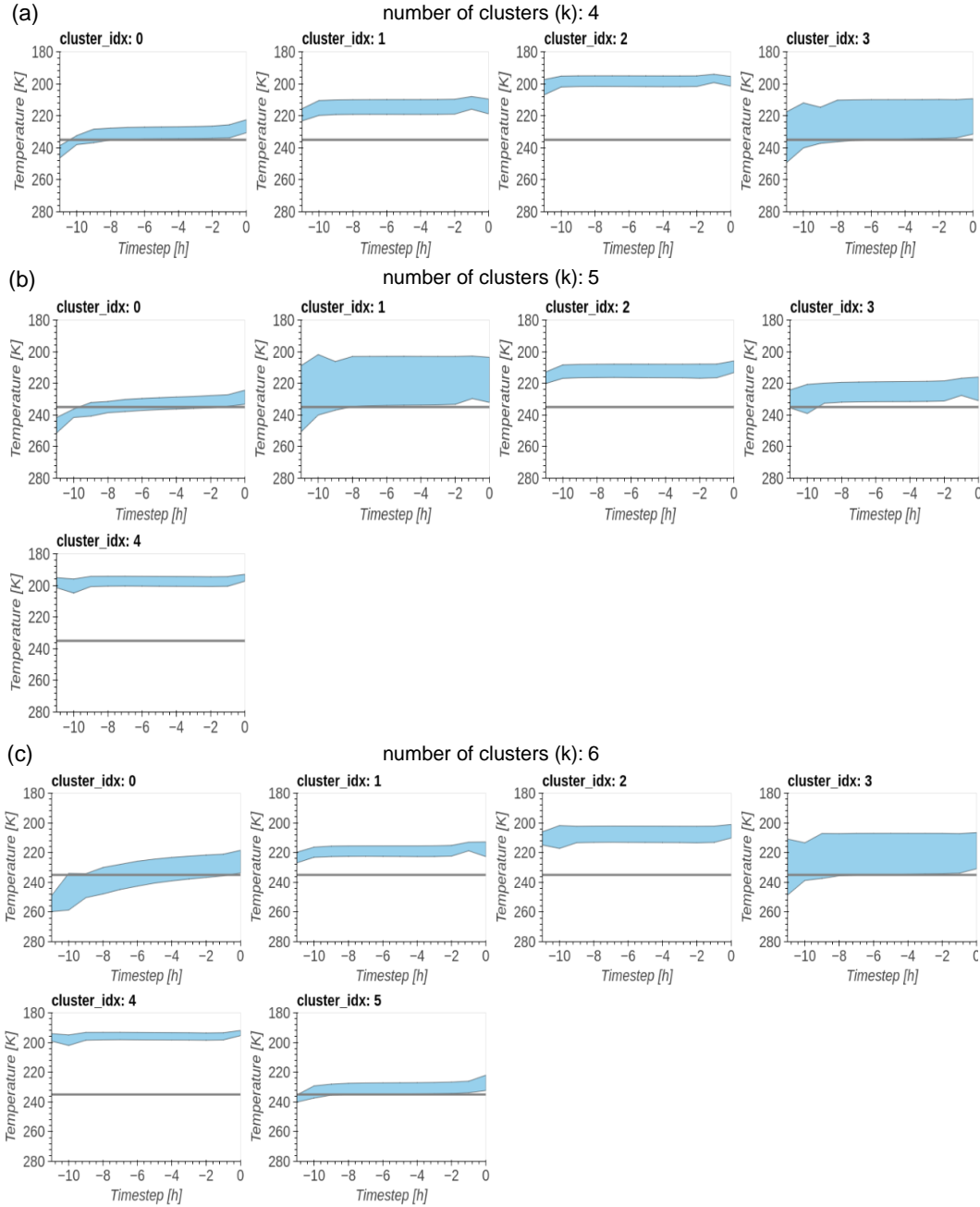
380 The choice of the number of clusters  $k$  is crucial for the efficacy of k-means clustering. Ideally,  $k$  is chosen such that the algorithm maximizes the homogeneity of samples within a cluster and the separation of samples of different clusters. Various methods such as the "elbow" (Kodinariya and Makwana, 2013) and the silhouette method (Rousseeuw, 1987) can be used to heuristically determine  $k$ . The "elbow" method involves plotting the sum of squared distances of samples to their nearest cluster center as a function of the number of clusters  $k$ . The point where the plot bends or makes an "elbow" typically suggests  
385 a good value for  $k$ , indicating a balance between compactness and separation of clusters.

The silhouette method measures the quality of clustering by calculating the silhouette score for each sample, which is the difference between the intra-cluster distance and the nearest-cluster distance normalized by the maximum of these distances. Beyond these quantitative heuristics, domain knowledge is a key factor when determining  $k$ . Understanding the specific context and characteristics of the data can guide the selection of  $k$ , ensuring that the clusters are meaningful and relevant to the task at  
390 hand (Jain, 2010). The computation of the silhouette scores scales quadratically with the number of samples and timesteps and is thus computationally prohibitive for our setting. To determine  $k$ , we combine the "elbow" method with visual interpretation and domain knowledge. Figure A1 visualizes the sum of squared distances of samples (cirrus cloud trajectories) to their nearest cluster centers as a function of  $k$ .

The optimal choice of  $k$  is not unambiguously identifiable according to the elbow method, but can be restricted to values  
395 between four and six. We finalize the choice of  $k$  by visually interpreting the identified clusters. Figure A2 shows the identified cluster centers for  $k = 4$  (a),  $k = 5$  (b), and  $k = 6$  (c). It can be seen that the differentiation of additional clusters in the  $k = 5$  and  $k = 6$  setting does not provide much additional insight for the task of identifying cirrus formation regimes. Thus,  $k = 4$  is chosen for the analysis presented in this study.

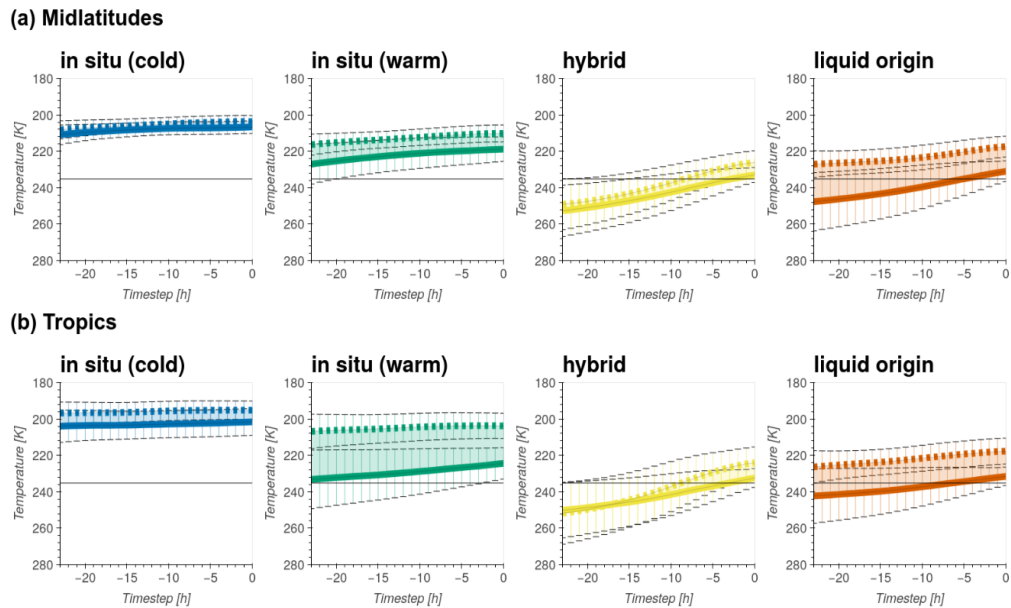


**Figure A1.** Sum of squared distances of samples (cirrus trajectories) to their nearest cluster center as a function of the number of clusters  $k$ .

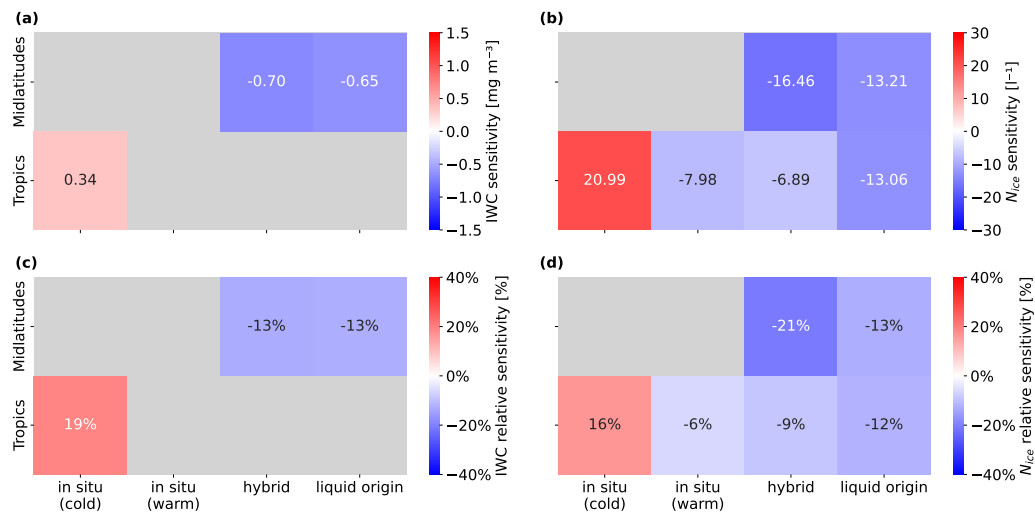


**Figure A2.** Cluster centers computed by k-means for 1.1 million cirrus cloud trajectories for  $k = 4$  (a),  $k = 5$  (b),  $k = 6$  (c) clusters.

## Appendix B: Analysis with 24h trajectories



**Figure B1.** Analogue to Fig. 4, but based on 24 h trajectories instead of 12 h trajectories.



**Figure B2.** Analogue to Fig. 9 but based on clustering with 24 h trajectories

400 *Code and data availability.* The co-located datasets, containing cirrus cloud and trajectory data, used for the analysis conducted in this paper can be downloaded from 10.5281/zenodo.13168762. The raw data can be provided by the corresponding authors upon request. The code containing the time series clustering routine and data analysis is hosted on [https://github.com/tabularaza27/cloud\\_clustering](https://github.com/tabularaza27/cloud_clustering).

*Author contributions.* KJ had the initial research idea, created the dataset, developed the method and conducted the data analysis; DN and UL supported and guided the data analysis and method development; HB provided expertise and training to calculate the trajectory data ; KJ  
405 wrote the manuscript draft; UL, DN, and HB reviewed and edited the manuscript

*Competing interests.* The authors declare that they have no conflict of interest.

*Acknowledgements.* We are grateful for the funding from the European Union’s Horizon 2020 research and innovation program iMIRACLI under Marie Skłodowska-Curie grant agreement No 860100. The authors thank Heini Wernli, Michael Sprenger, and Martina Krämer for insightful discussions, Tom Beucler for his comments on the manuscript and Odran Sourdeval for the DARDAR-Nice data. We sincerely  
410 thank Blaž Gasparini and an anonymous reviewer for their valuable feedback, which helped us improve the manuscript.

## References

- Atlas, R. and Bretherton, C. S.: Aircraft observations of gravity wave activity and turbulence in the tropical tropopause layer: prevalence, influence on cirrus clouds, and comparison with global storm-resolving models, *Atmospheric Chemistry and Physics*, 23, 4009–4030, <https://doi.org/10.5194/acp-23-4009-2023>, 2023.
- 415 Benedetti, A., Morcrette, J.-J., Boucher, O., Dethof, A., Engelen, R. J., Fisher, M., Flentje, H., Huneeus, N., Jones, L., Kaiser, J. W., Kinne, S., Mangold, A., Razinger, M., Simmons, A. J., and Suttie, M.: Aerosol analysis and forecast in the European Centre for Medium-Range Weather Forecasts Integrated Forecast System: 2. Data assimilation, *Journal of Geophysical Research: Atmospheres*, 114, <https://doi.org/10.1029/2008JD011115>, \_eprint: <https://onlinelibrary.wiley.com/doi/pdf/10.1029/2008JD011115>, 2009.
- Buchard, V., Randles, C. A., Silva, A. M. d., Darmenov, A., Colarco, P. R., Govindaraju, R., Ferrare, R., Hair, J., Beyersdorf, A. J., Ziemba, L. D., and Yu, H.: The MERRA-2 Aerosol Reanalysis, 1980 Onward. Part II: Evaluation and Case Studies, *Journal of Climate*, 30, 6851–6872, <https://doi.org/10.1175/JCLI-D-16-0613.1>, publisher: American Meteorological Society Section: Journal of Climate, 2017.
- 420 Chang, K.-W. and L'Ecuyer, T.: Influence of gravity wave temperature anomalies and their vertical gradients on cirrus clouds in the tropical tropopause layer – a satellite-based view, *Atmospheric Chemistry and Physics*, 20, 12 499–12 514, <https://doi.org/10.5194/acp-20-12499-2020>, 2020.
- 425 Dekoutsidis, G., Groß, S., Wirth, M., Krämer, M., and Rolf, C.: Characteristics of supersaturation in midlatitude cirrus clouds and their adjacent cloud-free air, *Atmospheric Chemistry and Physics*, 23, 3103–3117, <https://doi.org/10.5194/acp-23-3103-2023>, publisher: Copernicus GmbH, 2023.
- Delanoë, J. and Hogan, R. J.: A variational scheme for retrieving ice cloud properties from combined radar, lidar, and infrared radiometer, *Journal of Geophysical Research: Atmospheres*, 113, <https://doi.org/https://doi.org/10.1029/2007JD009000>, \_eprint: <https://agupubs.onlinelibrary.wiley.com/doi/pdf/10.1029/2007JD009000>, 2008.
- 430 DeMott, P. J., Prenni, A. J., Liu, X., Kreidenweis, S. M., Petters, M. D., Twohy, C. H., Richardson, M. S., Eidhammer, T., and Rogers, D. C.: Predicting global atmospheric ice nuclei distributions and their impacts on climate, *Proceedings of the National Academy of Sciences*, 107, 11 217–11 222, <https://doi.org/10.1073/pnas.0910818107>, publisher: National Academy of Sciences Section: Physical Sciences, 2010.
- Doswell, C. A.: The operational meteorology of convective weather: Storm scale analysis, Report, National Oceanic and Atmospheric Administration (NOAA)., Tech. rep., Environmental Research Laboratories (U.S.), Environmental Sciences Group., <https://repository.library.noaa.gov/view/noaa/11215>, 1985.
- 435 Duncan, D. I. and Eriksson, P.: An update on global atmospheric ice estimates from satellite observations and reanalyses, *Atmospheric Chemistry and Physics*, 18, 11 205–11 219, <https://doi.org/10.5194/acp-18-11205-2018>, publisher: Copernicus GmbH, 2018.
- Forster, P., Storelvmo, T., Armour, K., Collins, W., Dufresne, J.-L., Frame, D., Lunt, D., Mauritsen, T., Palmer, M., Watanabe, M., Wild, M., and Zhang, H.: The Earth's Energy Budget, Climate Feedbacks, and Climate Sensitivity., in: *Climate Change 2021: The Physical Science Basis. Contribution of Working Group I to the Sixth Assessment Report of the Intergovernmental Panel on Climate Change*, edited by Masson-Delmotte, V. and others, pp. 923–1054, Cambridge University Press, Cambridge, United Kingdom and New York, NY, USA, <https://doi.org/10.1017/9781009157896.009>, 2021.
- 440 Froyd, K. D., Yu, P., Schill, G. P., Brock, C. A., Kupc, A., Williamson, C. J., Jensen, E. J., Ray, E., Rosenlof, K. H., Bian, H., Darmenov, A. S., Colarco, P. R., Diskin, G. S., Bui, T., and Murphy, D. M.: Dominant role of mineral dust in cirrus cloud formation revealed by global-scale measurements, *Nature Geoscience*, 15, 177–183, <https://doi.org/10.1038/s41561-022-00901-w>, number: 3 Publisher: Nature Publishing Group, 2022.

- Gandham, H., Dasari, H. P., Karumuri, A., Ravuri, P. M. K., and Hoteit, I.: Three-dimensional structure and transport pathways of dust aerosols over West Asia, *npj Climate and Atmospheric Science*, 5, 1–15, <https://doi.org/10.1038/s41612-022-00266-2>, 2022.
- 450 Gasparini, B. and Lohmann, U.: Why cirrus cloud seeding cannot substantially cool the planet, *Journal of Geophysical Research: Atmospheres*, 121, 4877–4893, <https://doi.org/10.1002/2015JD024666>, \_eprint: <https://onlinelibrary.wiley.com/doi/pdf/10.1002/2015JD024666>, 2016.
- Gasparini, B., Münch, S., Poncet, L., Feldmann, M., and Lohmann, U.: Is increasing ice crystal sedimentation velocity in geoengineering simulations a good proxy for cirrus cloud seeding?, *Atmospheric Chemistry and Physics*, 17, 4871–4885, [https://doi.org/10.5194/acp-17-](https://doi.org/10.5194/acp-17-4871-2017)
- 455 4871-2017, publisher: Copernicus GmbH, 2017.
- Gasparini, B., Meyer, A., Neubauer, D., Münch, S., and Lohmann, U.: Cirrus Cloud Properties as Seen by the CALIPSO Satellite and ECHAM-HAM Global Climate Model, *Journal of Climate*, 31, 1983–2003, <https://doi.org/10.1175/JCLI-D-16-0608.1>, 2018.
- Gavrouzou, M., Hatzianastassiou, N., Gkikas, A., Korras-Carraca, M.-B., and Mihalopoulos, N.: A Global Climatology of Dust Aerosols Based on Satellite Data: Spatial, Seasonal and Inter-Annual Patterns over the Period 2005–2019, *Remote Sensing*, 13, 359, <https://doi.org/10.3390/rs13030359>, 2021.
- 460 Gelaro, R., McCarty, W., Suárez, M. J., Todling, R., Molod, A., Takacs, L., Randles, C. A., Darmenov, A., Bosilovich, M. G., Reichle, R., Wargan, K., Coy, L., Cullather, R., Draper, C., Akella, S., Buchard, V., Conaty, A., Silva, A. M. d., Gu, W., Kim, G.-K., Koster, R., Lucchesi, R., Merkova, D., Nielsen, J. E., Partyka, G., Pawson, S., Putman, W., Rienecker, M., Schubert, S. D., Sienkiewicz, M., and Zhao, B.: The Modern-Era Retrospective Analysis for Research and Applications, Version 2 (MERRA-2), *Journal of Climate*, 30, 5419–5454, <https://doi.org/10.1175/JCLI-D-16-0758.1>, publisher: American Meteorological Society Section: Journal of Climate, 2017.
- 465 Gryspeerdt, E., Sourdeval, O., Quaas, J., Delanoë, J., Krämer, M., and Kühne, P.: Ice crystal number concentration estimates from lidar–radar satellite remote sensing – Part 2: Controls on the ice crystal number concentration, *Atmospheric Chemistry and Physics*, 18, 14 351–14 370, <https://doi.org/https://doi.org/10.5194/acp-18-14351-2018>, 2018.
- Gueymard, C. A. and Yang, D.: Worldwide validation of CAMS and MERRA-2 reanalysis aerosol optical depth products using 15 years of AERONET observations, *Atmospheric Environment*, 225, 117 216, <https://doi.org/10.1016/j.atmosenv.2019.117216>, 2020.
- 470 Hartmann, D. L., Gasparini, B., Berry, S. E., and Blossey, P. N.: The Life Cycle and Net Radiative Effect of Tropical Anvil Clouds, *Journal of Advances in Modeling Earth Systems*, 10, 3012–3029, <https://doi.org/10.1029/2018MS001484>, \_eprint: <https://onlinelibrary.wiley.com/doi/pdf/10.1029/2018MS001484>, 2018.
- Hersbach, H., Bell, B., Berrisford, P., Horányi, A., Muñoz-Sabater, J., Nicolas, J., Peubey, C., Radu, R., Schepers, D., Simmons, A., Soci, C., Biavati, G., Dee, D., and Thépaut, J.: ERA5 hourly data on pressure levels from 1959 to present, Copernicus Climate Change Service (C3S) Climate Data Store (CDS), <https://doi.org/10.24381/cds.bd0915c6>, 2018.
- 475 Heymsfield, A. J., Krämer, M., Luebke, A., Brown, P., Cziczo, D. J., Franklin, C., Lawson, P., Lohmann, U., McFarquhar, G., Ulanowski, Z., and Van Tricht, K.: Cirrus Clouds, *Meteorological Monographs*, 58, 2.1–2.26, <https://doi.org/10.1175/AMSMONOGRAPHIS-D-16-0010.1>, 2017.
- 480 Hong, Y., Liu, G., and Li, J.-L. F.: Assessing the Radiative Effects of Global Ice Clouds Based on CloudSat and CALIPSO Measurements, *Journal of Climate*, 29, 7651–7674, <https://doi.org/10.1175/JCLI-D-15-0799.1>, publisher: American Meteorological Society Section: Journal of Climate, 2016.
- Hunt, W. H., Winker, D. M., Vaughan, M. A., Powell, K. A., Lucker, P. L., and Weimer, C.: CALIPSO Lidar Description and Performance Assessment, *Journal of Atmospheric and Oceanic Technology*, 26, 1214–1228, <https://doi.org/10.1175/2009JTECHA1223.1>, publisher: American Meteorological Society Section: Journal of Atmospheric and Oceanic Technology, 2009.
- 485

- Inness, A., Ades, M., Agustí-Panareda, A., Barré, J., Benedictow, A., Blechschmidt, A.-M., Dominguez, J. J., Engelen, R., Eskes, H., Fleming, J., Huijnen, V., Jones, L., Kipling, Z., Massart, S., Parrington, M., Peuch, V.-H., Razinger, M., Remy, S., Schulz, M., and Suttie, M.: The CAMS reanalysis of atmospheric composition, *Atmospheric Chemistry and Physics*, 19, 3515–3556, <https://doi.org/10.5194/acp-19-3515-2019>, publisher: Copernicus GmbH, 2019.
- 490 Jain, A. K.: Data clustering: 50 years beyond K-means, *Pattern Recognition Letters*, 31, 651–666, <https://doi.org/10.1016/j.patrec.2009.09.011>, 2010.
- Jeggle, K., Neubauer, D., Camps-Valls, G., and Lohmann, U.: Understanding cirrus clouds using explainable machine learning, *Environmental Data Science*, 2, e19, <https://doi.org/10.1017/eds.2023.14>, 2023.
- Jeggle, K., Czerkawski, M., Serva, F., Saux, B. L., Neubauer, D., and Lohmann, U.: IceCloudNet: 3D reconstruction of cloud ice from  
 495 Meteosat SEVIRI, <https://doi.org/10.48550/arXiv.2410.04135>, arXiv:2410.04135 [physics], 2024.
- Jensen, E. J., van den Heever, S. C., and Grant, L. D.: The Life Cycles of Ice Crystals Detained From the Tops of Deep Convection, *Journal of Geophysical Research: Atmospheres*, 123, 9624–9634, <https://doi.org/10.1029/2018JD028832>, 2018.
- Kanji, Z. A., Ladino, L. A., Wex, H., Boose, Y., Burkert-Kohn, M., Cziczo, D. J., and Krämer, M.: Overview of Ice Nucleating Particles, *Meteorological Monographs*, 58, 1.1–1.33, <https://doi.org/10.1175/AMSMONOGRAPHS-D-16-0006.1>, 2017.
- 500 Kim, J.-E., Alexander, M. J., Bui, T. P., Dean-Day, J. M., Lawson, R. P., Woods, S., Hlavka, D., Pfister, L., and Jensen, E. J.: Ubiquitous influence of waves on tropical high cirrus clouds, *Geophysical Research Letters*, 43, 5895–5901, <https://doi.org/10.1002/2016GL069293>, 2016.
- Kodinariya, T. and Makwana, P.: Review on Determining of Cluster in K-means Clustering, *International Journal of Advance Research in Computer Science and Management Studies*, 1, 90–95, 2013.
- 505 Krämer, M., Rolf, C., Luebke, A., Afchine, A., Spelten, N., Costa, A., Meyer, J., Zöger, M., Smith, J., Herman, R. L., Buchholz, B., Ebert, V., Baumgardner, D., Borrmann, S., Klingebiel, M., and Avallone, L.: A microphysics guide to cirrus clouds – Part 1: Cirrus types, *Atmospheric Chemistry and Physics*, 16, 3463–3483, <https://doi.org/https://doi.org/10.5194/acp-16-3463-2016>, 2016.
- Krämer, M., Rolf, C., Spelten, N., Afchine, A., Fahey, D., Jensen, E., Khaykin, S., Kuhn, T., Lawson, P., Lykov, A., Pan, L. L., Riese, M., Rollins, A., Stroh, F., Thornberry, T., Wolf, V., Woods, S., Spichtinger, P., Quaas, J., and Sourdeval, O.: A microphysics guide  
 510 to cirrus – Part 2: Climatologies of clouds and humidity from observations, *Atmospheric Chemistry and Physics*, 20, 12 569–12 608, <https://doi.org/https://doi.org/10.5194/acp-20-12569-2020>, 2020.
- Kuebbeler, M., Lohmann, U., Hendricks, J., and Kärcher, B.: Dust ice nuclei effects on cirrus clouds, *Atmospheric Chemistry and Physics*, 14, 3027–3046, <https://doi.org/10.3929/ethz-b-000095523>, 2014.
- Kärcher, B., Hendricks, J., and Lohmann, U.: Physically based parameterization of cirrus cloud formation for use in global atmospheric  
 515 models, *Journal of Geophysical Research: Atmospheres*, 111, <https://doi.org/https://doi.org/10.1029/2005JD006219>, 2006.
- Lacher, L., DeMott, P. J., Levin, E. J. T., Suski, K. J., Boose, Y., Zipori, A., Herrmann, E., Bukowiecki, N., Steinbacher, M., Gute, E., Abbatt, J. P. D., Lohmann, U., and Kanji, Z. A.: Background Free-Tropospheric Ice Nucleating Particle Concentrations at Mixed-Phase Cloud Conditions, *Journal of Geophysical Research: Atmospheres*, 123, 10,506–10,525, <https://doi.org/10.1029/2018JD028338>, [\\_eprint: https://onlinelibrary.wiley.com/doi/pdf/10.1029/2018JD028338](https://onlinelibrary.wiley.com/doi/pdf/10.1029/2018JD028338), 2018.
- 520 Lohmann, U., Spichtinger, P., Jess, S., Peter, T., and Smit, H.: Cirrus cloud formation and ice supersaturated regions in a global climate model, *Environmental Research Letters*, 3, 045 022, <https://doi.org/10.1088/1748-9326/3/4/045022>, publisher: IOP Publishing, 2008.
- Lohmann, U., Lüönd, F., and Mahrt, F.: *An Introduction to Clouds: From the Microscale to Climate*, Cambridge University Press, Cambridge, <https://doi.org/10.1017/CBO9781139087513>, 2016.



- Luebke, A. E., Afchine, A., Costa, A., Groß, J.-U., Meyer, J., Rolf, C., Spelten, N., Avallone, L. M., Baumgardner, D., and Krämer, M.:  
 525 The origin of midlatitude ice clouds and the resulting influence on their microphysical properties, *Atmospheric Chemistry and Physics*,  
 16, 5793–5809, <https://doi.org/https://doi.org/10.5194/acp-16-5793-2016>, publisher: Copernicus GmbH, 2016.
- Maciel, F. V., Diao, M., and Patnaude, R.: Examination of aerosol indirect effects during cirrus cloud evolution, *Atmospheric Chemistry and  
 Physics*, 23, 1103–1129, <https://doi.org/10.5194/acp-23-1103-2023>, 2023.
- Mitchell, D. L. and Finnegan, W.: Modification of cirrus clouds to reduce global warming, *Environmental Research Letters*, 4, 045 102,  
 530 <https://doi.org/10.1088/1748-9326/4/4/045102>, publisher: IOP Publishing, 2009.
- Muhlbauer, A., Ackerman, T. P., Comstock, J. M., Diskin, G. S., Evans, S. M., Lawson, R. P., and Marchand, R. T.: Impact of large-  
 scale dynamics on the microphysical properties of midlatitude cirrus, *Journal of Geophysical Research: Atmospheres*, 119, 3976–3996,  
<https://doi.org/10.1002/2013JD020035>, \_eprint: <https://onlinelibrary.wiley.com/doi/pdf/10.1002/2013JD020035>, 2014.
- Patnaude, R. and Diao, M.: Aerosol Indirect Effects on Cirrus Clouds Based on Global Aircraft Observations, *Geophysical Research Letters*,  
 535 47, e2019GL086 550, <https://doi.org/10.1029/2019GL086550>, 2020.
- Penner, J. E., Zhou, C., and Liu, X.: Can cirrus cloud seeding be used for geoengineering?, *Geophysical Research Letters*, 42, 8775–8782,  
<https://doi.org/10.1002/2015GL065992>, \_eprint: <https://onlinelibrary.wiley.com/doi/pdf/10.1002/2015GL065992>, 2015.
- Rousseeuw, P. J.: Silhouettes: A graphical aid to the interpretation and validation of cluster analysis, *Journal of Computational and Applied  
 Mathematics*, 20, 53–65, [https://doi.org/10.1016/0377-0427\(87\)90125-7](https://doi.org/10.1016/0377-0427(87)90125-7), 1987.
- 540 Sakoe, H. and Chiba, S.: Dynamic programming algorithm optimization for spoken word recognition, *IEEE Transactions on Acoustics,  
 Speech, and Signal Processing*, 26, 43–49, <https://doi.org/10.1109/TASSP.1978.1163055>, conference Name: IEEE Transactions on Acous-  
 tics, Speech, and Signal Processing, 1978.
- Sassen, K. and Comstock, J. M.: A Midlatitude Cirrus Cloud Climatology from the Facility for Atmospheric Remote Sensing. Part III:  
 Radiative Properties, [https://journals.ametsoc.org/view/journals/atsc/58/15/1520-0469\\_2001\\_058\\_2113\\_amcccf\\_2.0.co\\_2.xml](https://journals.ametsoc.org/view/journals/atsc/58/15/1520-0469_2001_058_2113_amcccf_2.0.co_2.xml), 2001.
- 545 Sourdeval, O., Gryspeerdt, E., Krämer, M., Goren, T., Delanoë, J., Afchine, A., Hemmer, F., and Quaas, J.: Ice crystal number concentration  
 estimates from lidar–radar satellite remote sensing – Part 1: Method and evaluation, *Atmospheric Chemistry and Physics*, 18, 14 327–  
 14 350, <https://doi.org/https://doi.org/10.5194/acp-18-14327-2018>, 2018.
- Sprenger, M. and Wernli, H.: The LAGRANTO Lagrangian analysis tool – version 2.0, *Geoscientific Model Development*, 8, 2569–2586,  
<https://doi.org/https://doi.org/10.5194/gmd-8-2569-2015>, publisher: Copernicus GmbH, 2015.
- 550 Storelvmo, T., Kristjansson, J. E., Muri, H., Pfeffer, M., Barahona, D., and Nenes, A.: Cirrus cloud seeding has po-  
 tential to cool climate, *Geophysical Research Letters*, 40, 178–182, <https://doi.org/10.1029/2012GL054201>, \_eprint:  
<https://onlinelibrary.wiley.com/doi/pdf/10.1029/2012GL054201>, 2013.
- Tavenard, R.: An introduction to Dynamic Time Warping, <https://rtavenar.github.io/blog/dtw.html>, 2021.
- Tavenard, R., Faouzi, J., Vandewiele, G., Divo, F., Androz, G., Holtz, C., Payne, M., Yurchak, R., Rußwurm, M., Kolar, K., and Woods, E.:  
 555 Tsllearn, A Machine Learning Toolkit for Time Series Data, *Journal of Machine Learning Research*, 21, 1–6, <http://jmlr.org/papers/v21/>  
 20-091.html, 2020.
- Tully, C., Neubauer, D., Omanovic, N., and Lohmann, U.: Cirrus cloud thinning using a more physically based ice microphysics scheme in  
 the ECHAM-HAM general circulation model, *Atmospheric Chemistry and Physics*, 22, 11 455–11 484, <https://doi.org/10.5194/acp-22-11455-2022>, publisher: Copernicus GmbH, 2022.
- 560 Wegener, A.: *Thermodynamik der atmosphäre*, JA Barth, 1911.

Wernli, H., Boettcher, M., Joos, H., Miltenberger, A. K., and Spichtinger, P.: A trajectory-based classification of ERA-Interim ice clouds in the region of the North Atlantic storm track, *Geophysical Research Letters*, 43, 6657–6664, <https://doi.org/https://doi.org/10.1002/2016GL068922>, 2016.