

# Supplementary material

## Quantifying the spread in Sudden Stratospheric Warming wave forcing in CMIP6

Verónica Martínez-Andradas<sup>1,2</sup>, Alvaro de la Cámara<sup>1</sup>, Pablo Zurita-Gotor<sup>1,2</sup>, François Lott<sup>3</sup>, Federico Serva<sup>4</sup>

<sup>1</sup> Dpto. Física de la Tierra y Astrofísica, Universidad Complutense de Madrid, Madrid, Spain.

<sup>2</sup> Instituto de Geociencias (IGEO) UCM-CSIC, Madrid, Spain.

<sup>3</sup> Laboratoire de Météorologie Dynamique, École Normale Supérieure, Paris, France.

<sup>4</sup> Consiglio Nazionale delle Ricerche, Institute of Marine Sciences (CNR-ISMAR), Rome, Italy.

# 1 Figures

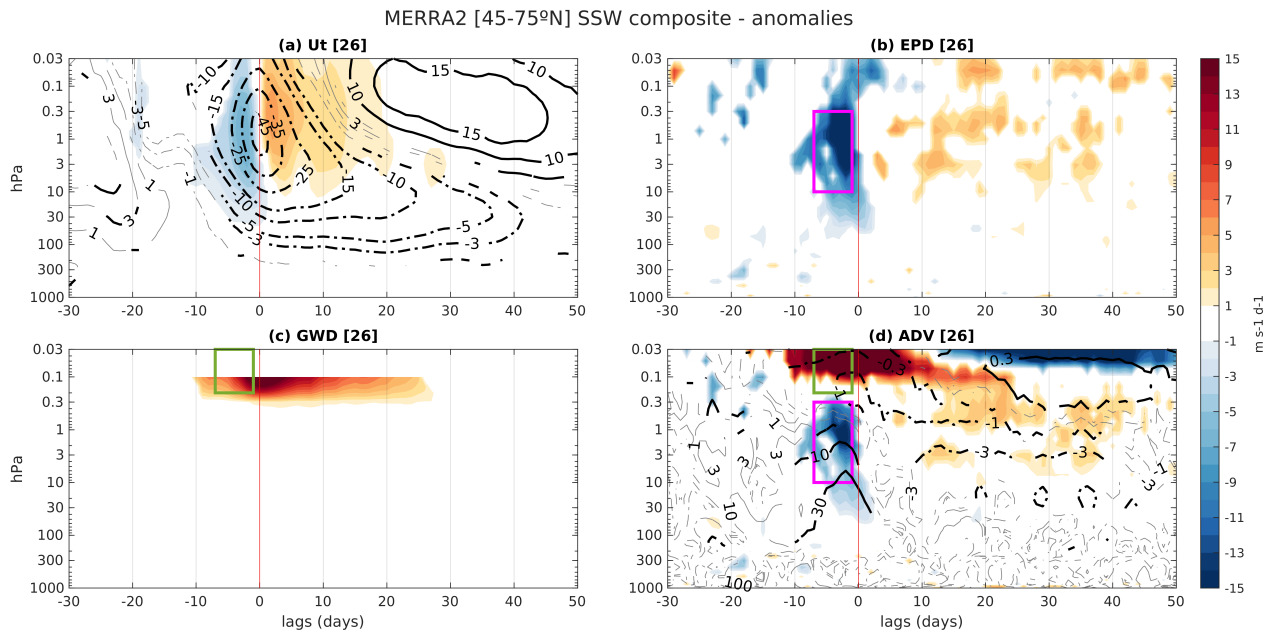


Figure S1: As in Figure 2 but for MERRA2 reanalysis.

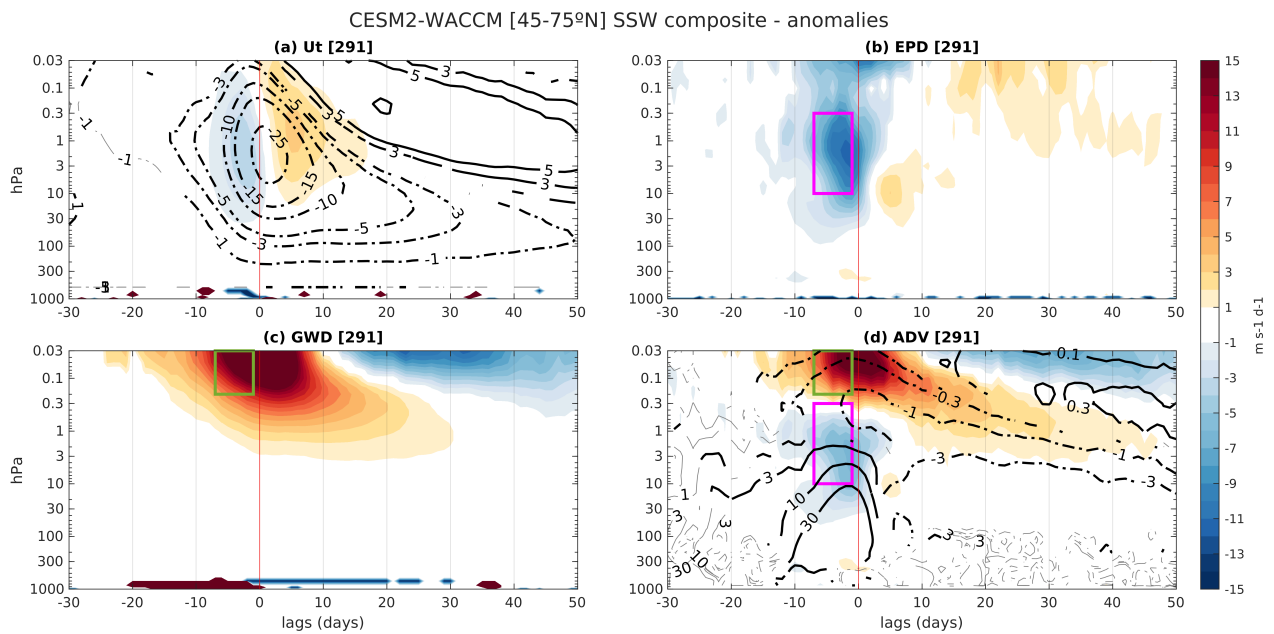


Figure S2: As in Figure 2 but for CESM2-WACCM model.

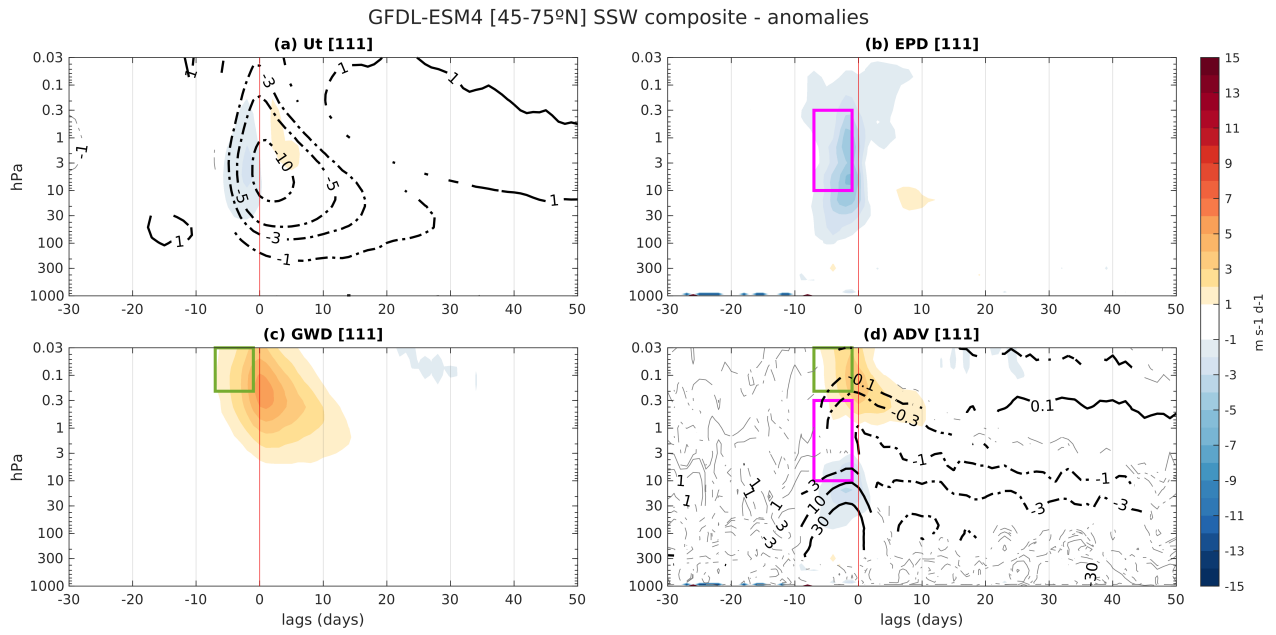


Figure S3: As in Figure 2 but for GFDL-ESM4 model.

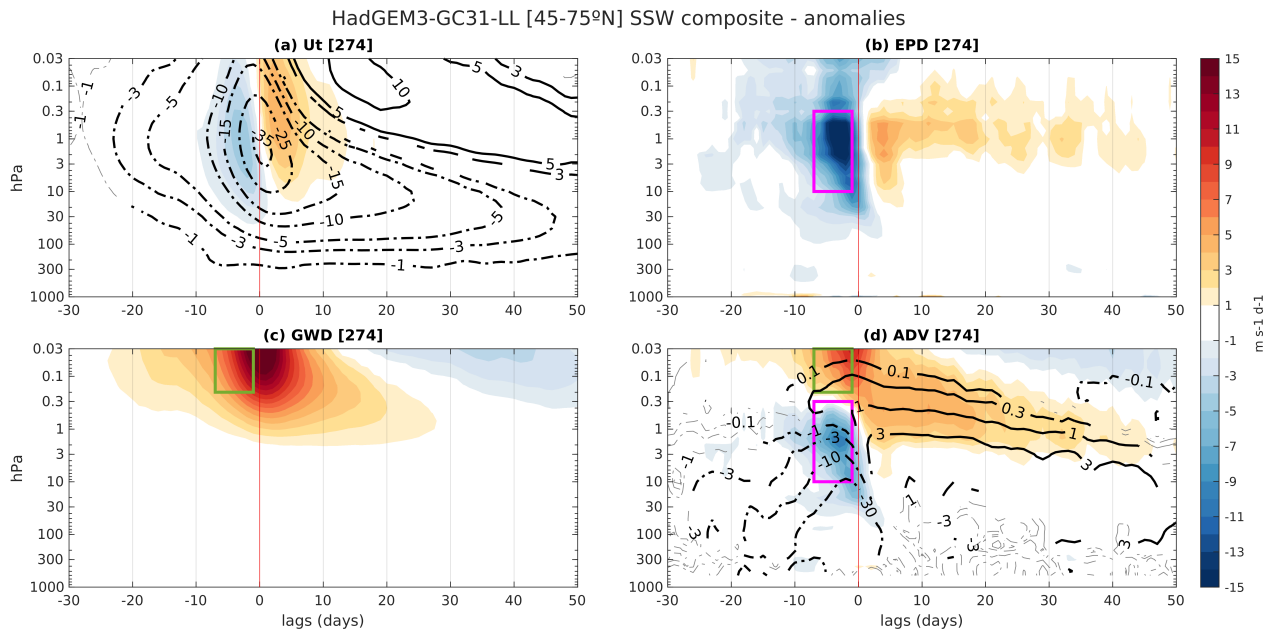


Figure S4: As in Figure 2 but for HadGEM3-GC31-LL model.

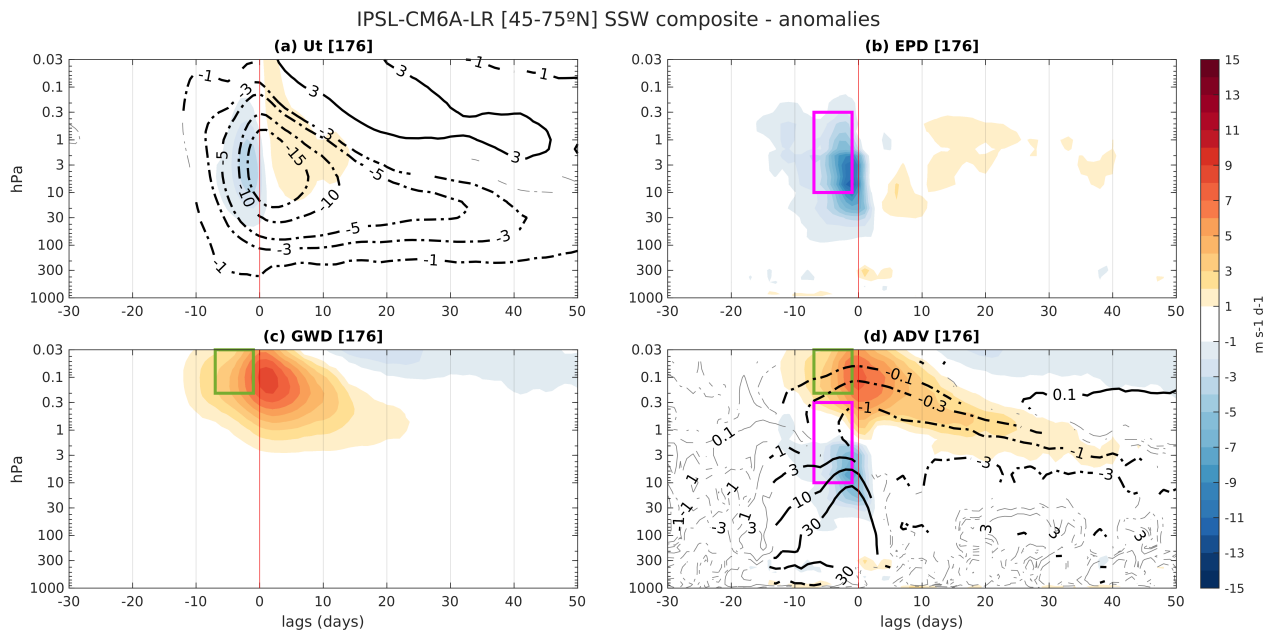


Figure S5: As in Figure 2 but for IPSL-CM6A-LR model.

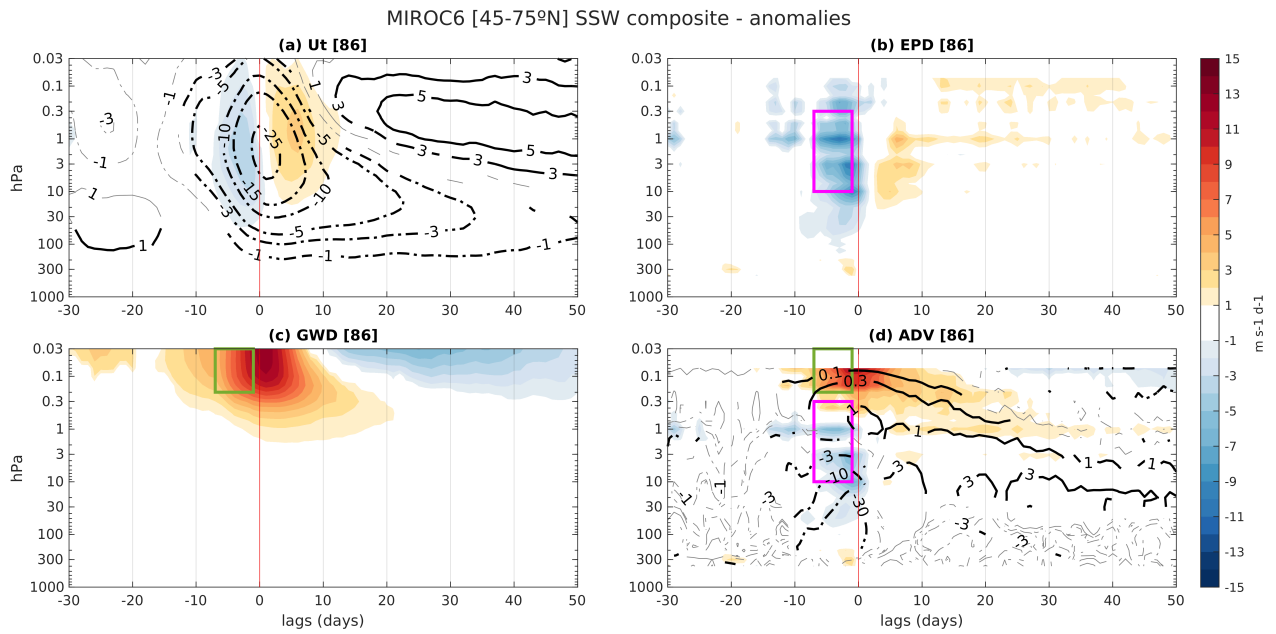


Figure S6: As in Figure 2 but for MIROC6 model.

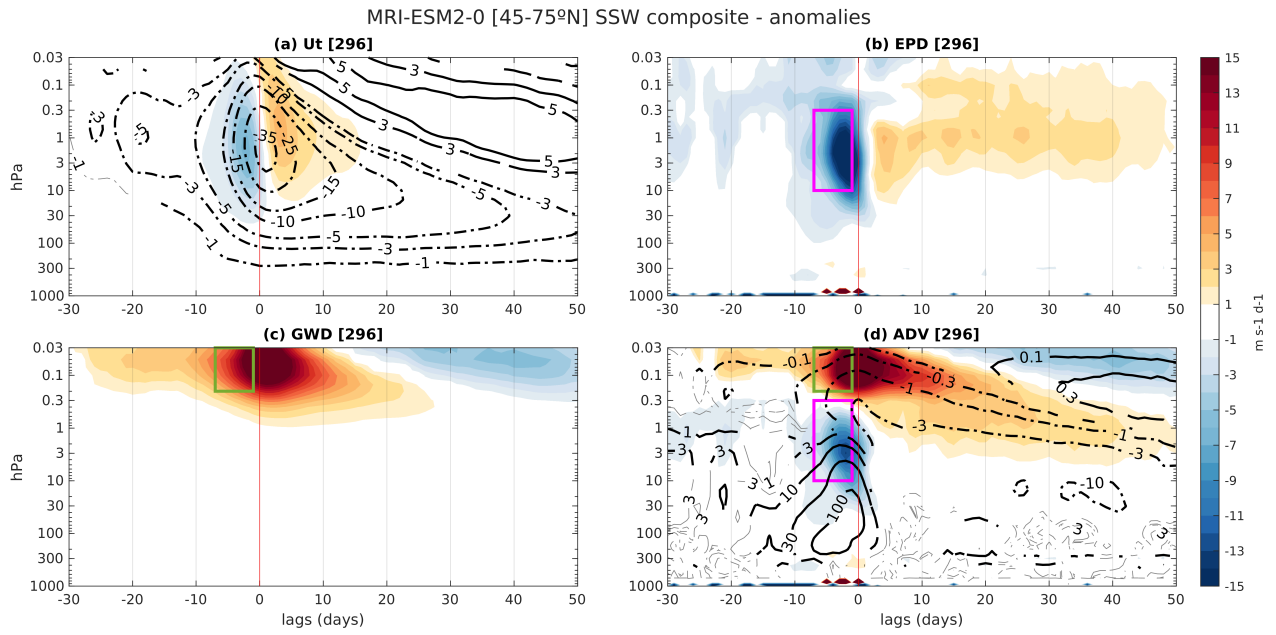


Figure S7: As in Figure 2 but for MRI-ESM2-0 model.

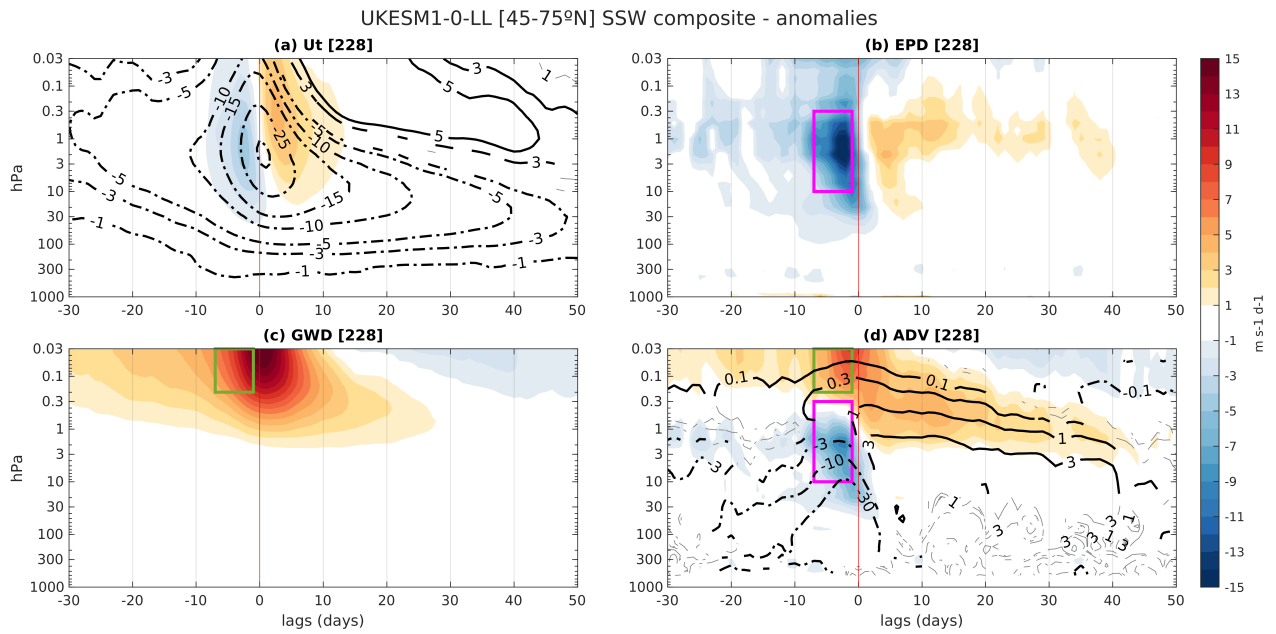


Figure S8: As in Figure 2 but for UKESM1-0-LL model.

ERA5 -7 to -1 - anomalies

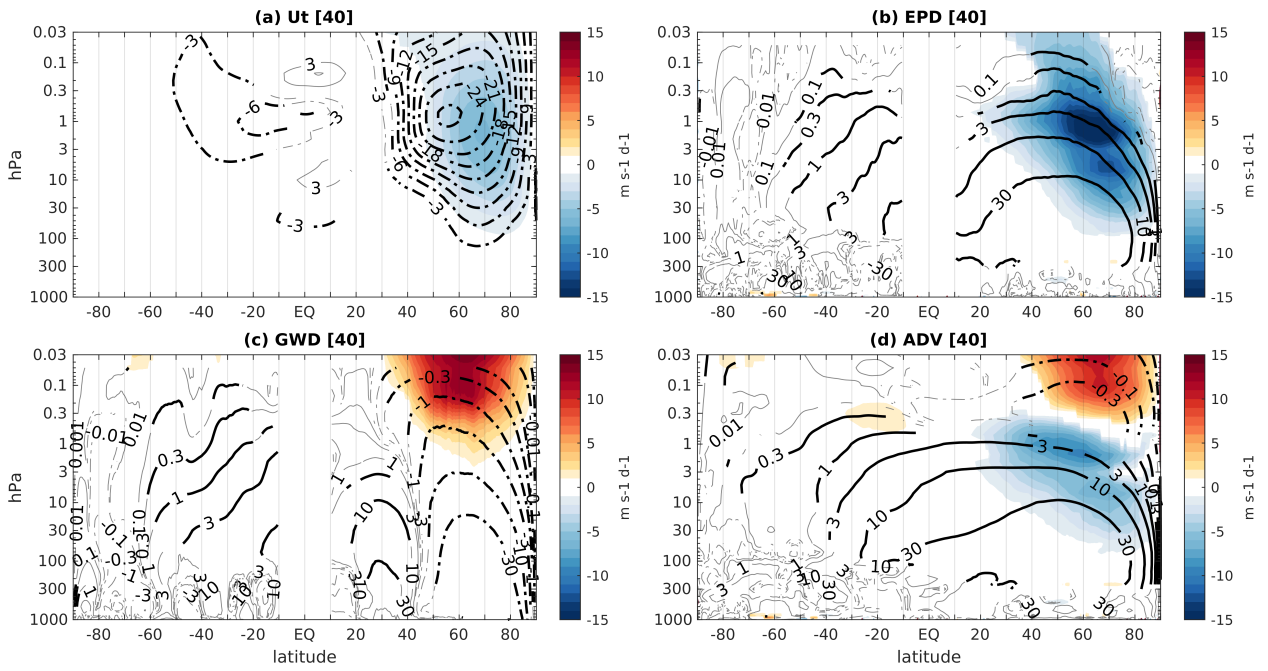


Figure S9: Latitude-height SSW composite of zonal mean [-7 to -1] lags averaged anomalies of (a) tendency of the zonal wind, (b) planetary Rossby waves 'drag', (c) gravity waves 'drag' and (d) the Coriolis torque of the residual circulation in shading for ERA5 reanalysis. Contours show anomalies of zonal wind in (a) and the mass stream function in (b-d). In (b) and (c) the mass stream function is calculated using only *EPD* and *GWD* as the forcing, respectively. Units are  $\text{m s}^{-1} \text{d}^{-1}$  for shading and  $\text{m s}^{-1}, \text{kg m}^{-1} \text{s}^{-1}$  in (a,b-d) for contours, respectively. Shaded colors and black thick contours indicate values significant at 95 % confidence with a two-tailed t-test. The number of SSWs in the composite is shown in brackets.

MERRA2 -7 to -1 - anomalies

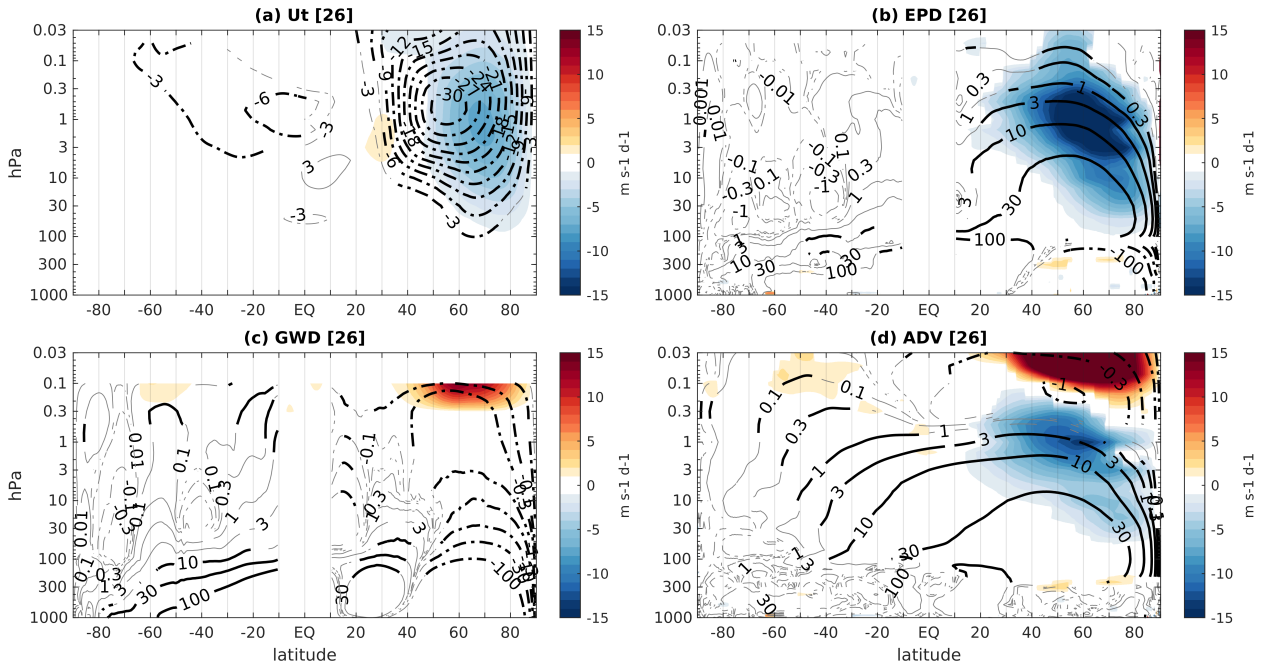


Figure S10: As in Figure S9 but for MERRA2 reanalysis.

CESM2-WACCM -7 to -1 - anomalies

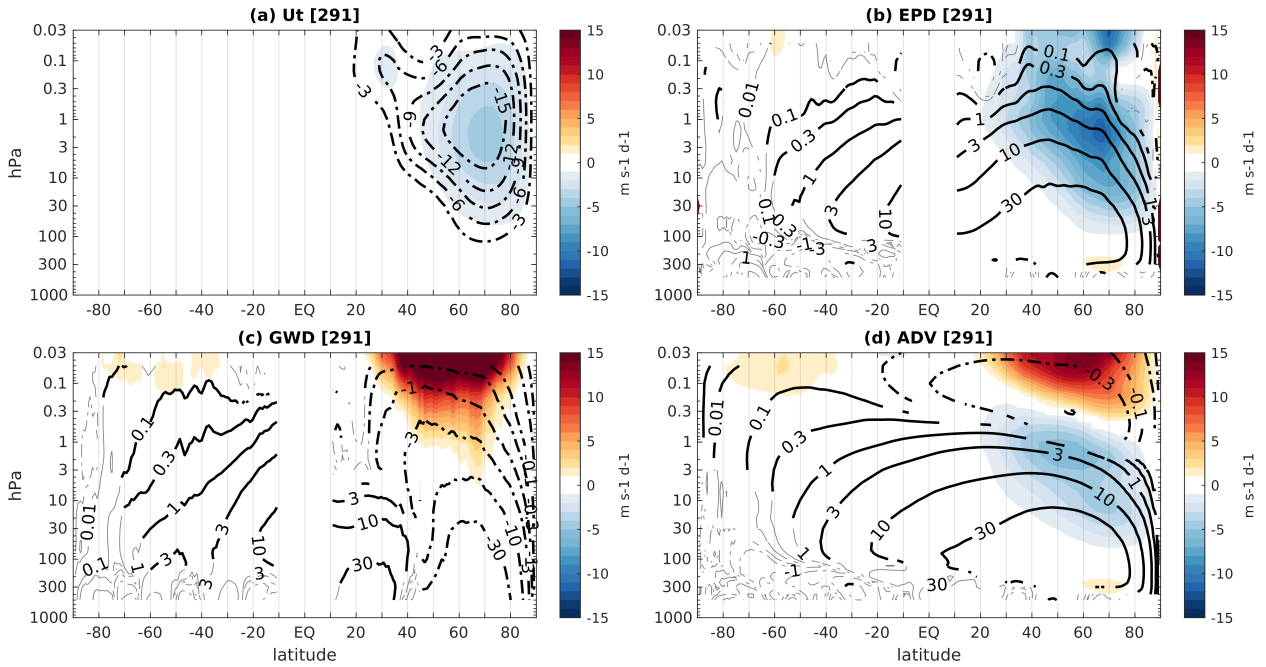


Figure S11: As in Figure S9 but for CESM2-WACCM model.

GFDL-ESM4 -7 to -1 - anomalies

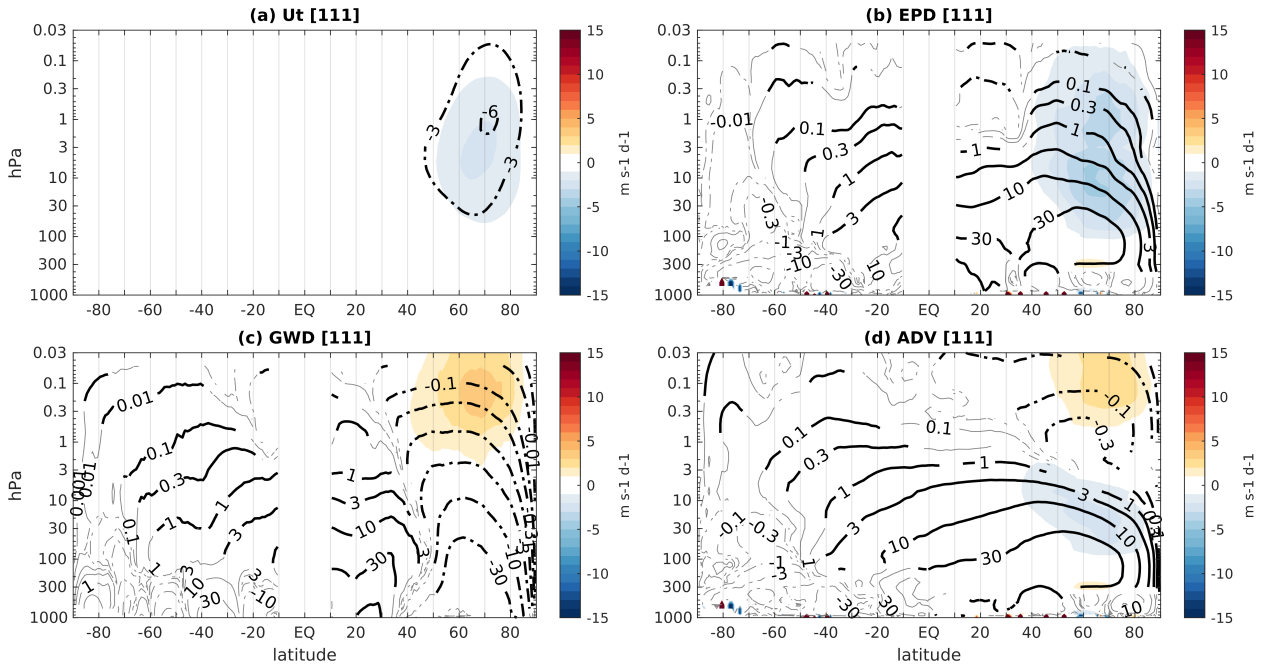


Figure S12: As in Figure S9 but for GFDL-ESM4 model.

HadGEM3-GC31-LL -7 to -1 - anomalies

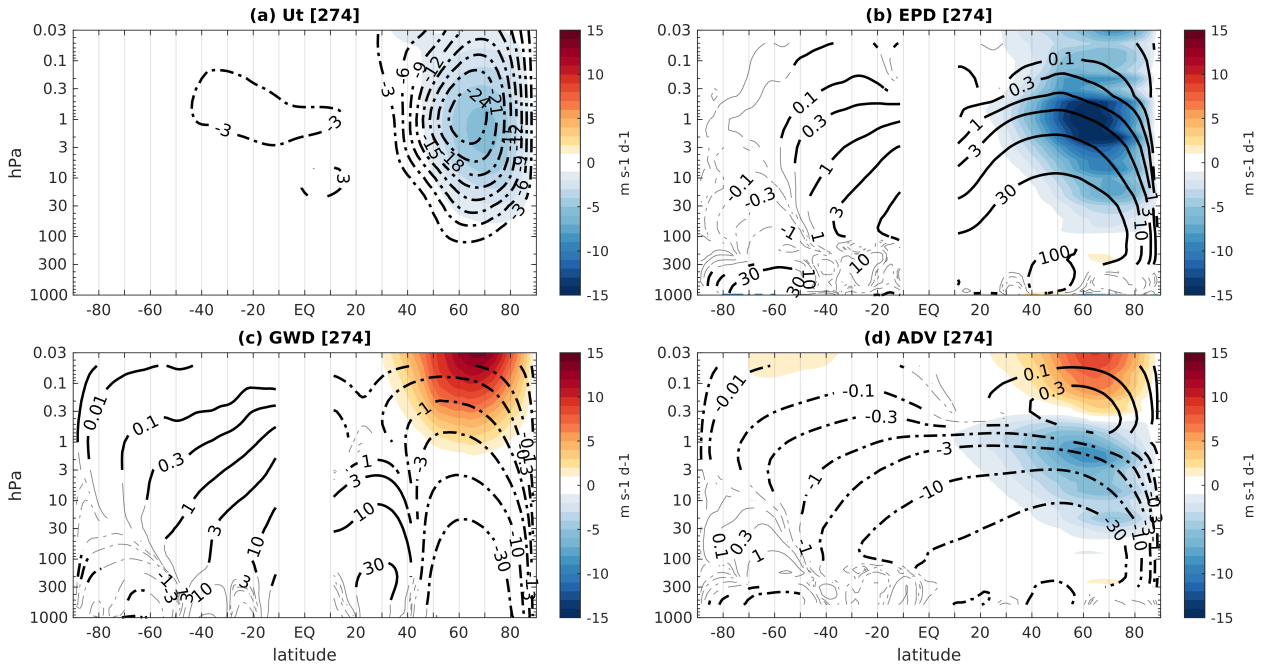


Figure S13: As in Figure S9 but for HadGEM3-GC31-LL model.



IPSL-CM6A-LR -7 to -1 - anomalies

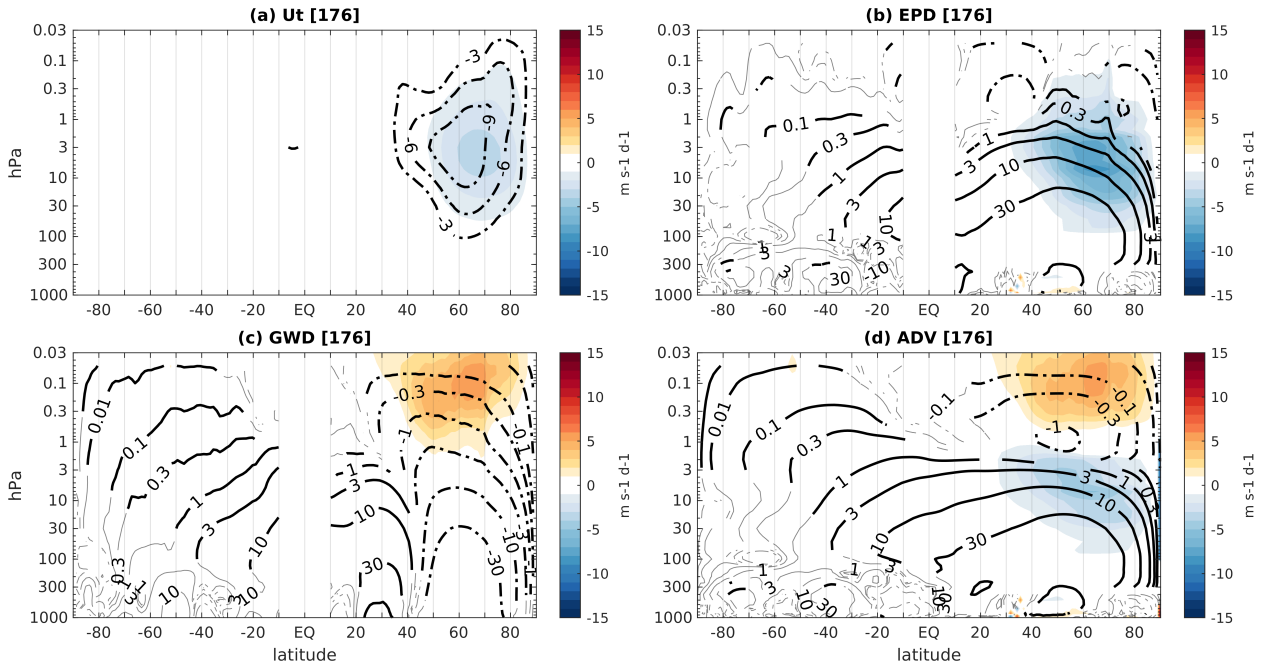


Figure S14: As in Figure S9 but for IPSL-CM6A-LR model.

MIROC6 -7 to -1 - anomalies

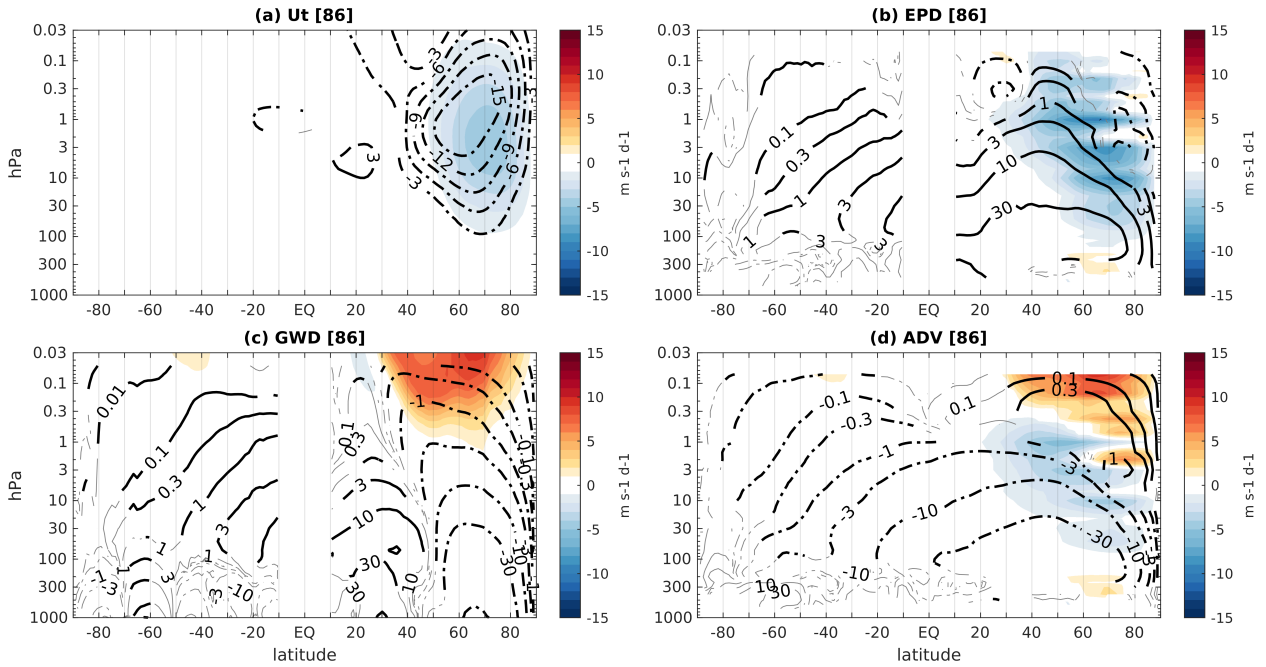


Figure S15: As in Figure S9 but for MIROC6 model.

MRI-ESM2-0 -7 to -1 - anomalies

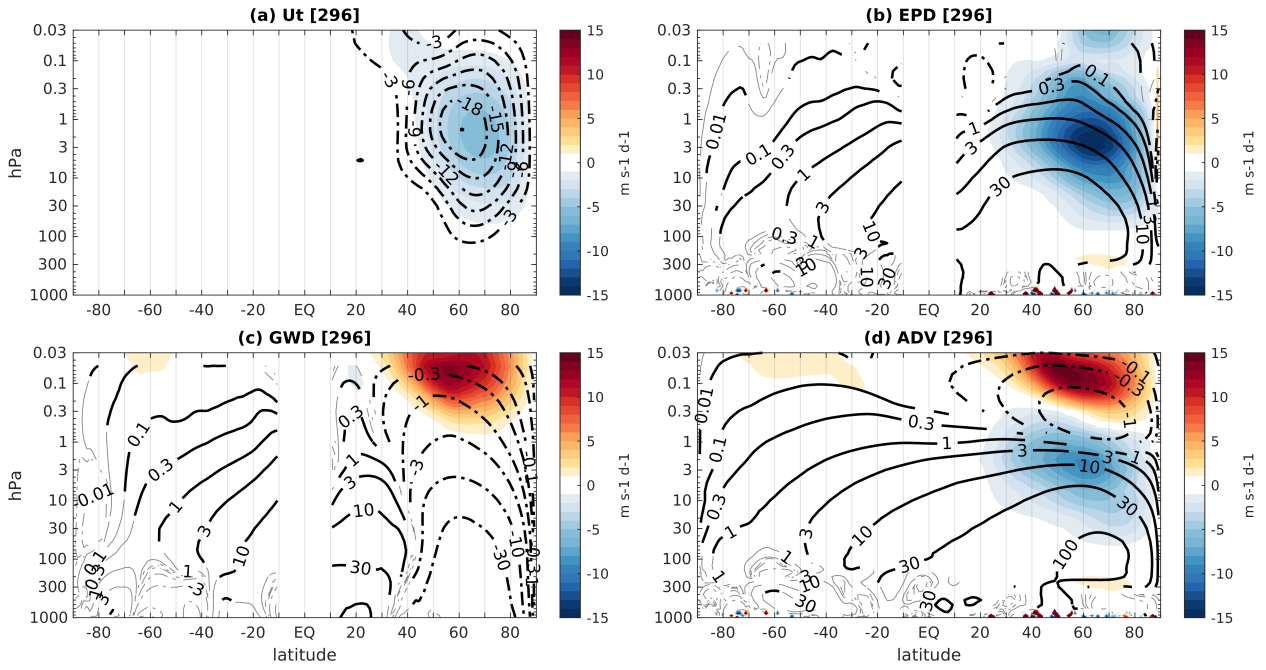


Figure S16: As in Figure S9 but for MRI-ESM2-0 model.

UKESM1-0-LL -7 to -1 - anomalies

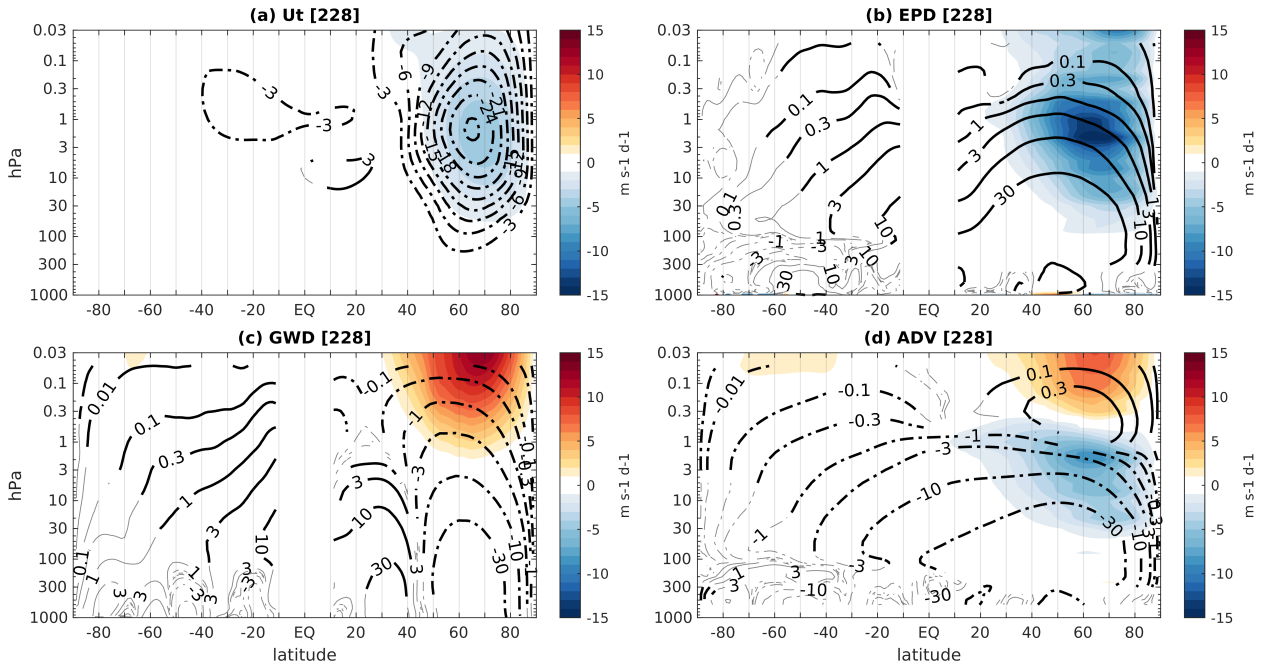


Figure S17: As in Figure S9 but for UKESM1-0-LL model.

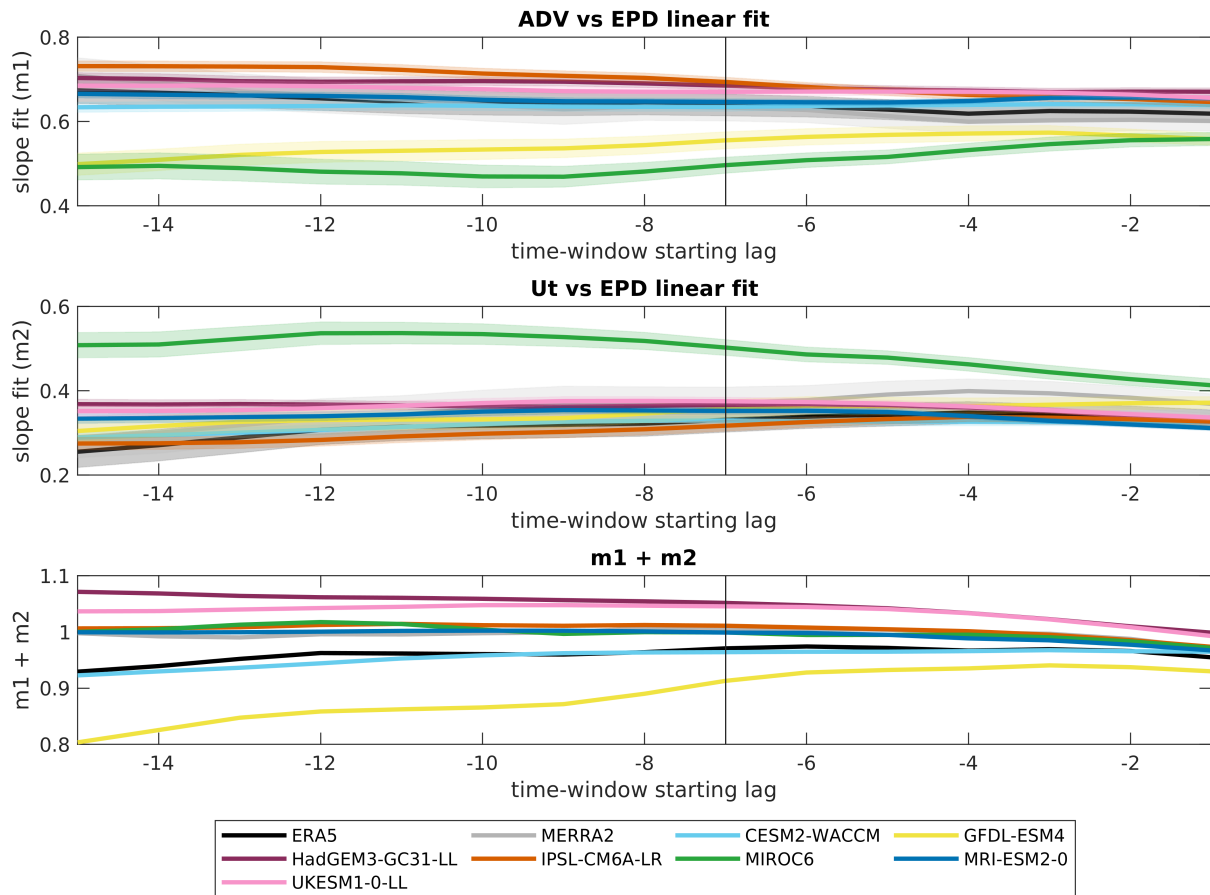


Figure S18: Sensitivity test on the linear fit slope for different time-window averages of the variables in the stratosphere ( $[10\ 0.3]$  hPa). The x-axis indicates the lag at which the time-window starts, keeping the end in -1 lag, i.e.,  $[x -1]$  lags. The y-axis shows the value of the slope for the linear fit, with the standard error in shaded.

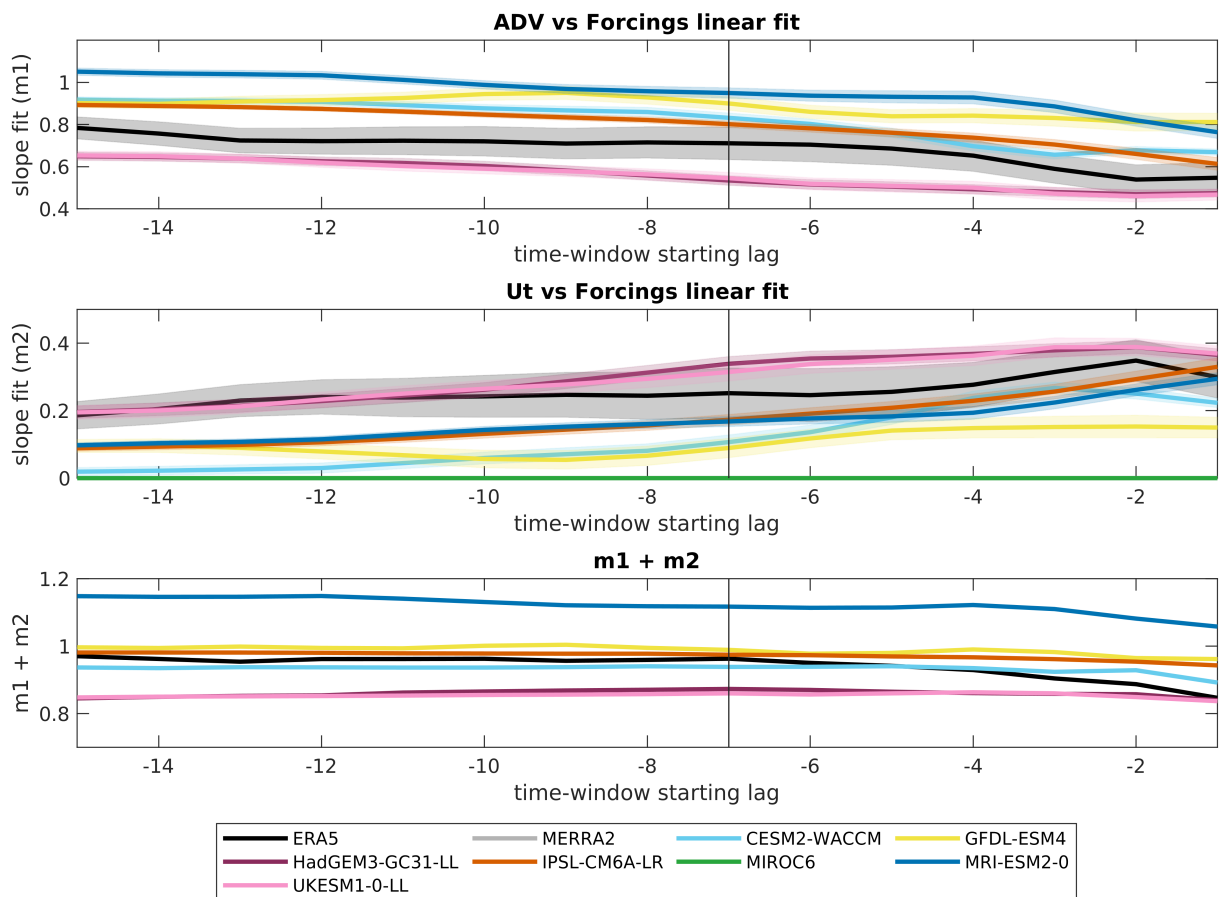


Figure S19: As in Fig. S18 but for the mesosphere ( $[0.2 \text{ to } 0.03] \text{ hPa}$ ) and the total forcing ( $EPD+GWD$ ).