

Quantifying the spread in Sudden Stratospheric Warming wave forcing in CMIP6

Verónica Martínez-Andradas^{1,2}, Alvaro de la Cámara¹, Pablo Zurita-Gotor^{1,2}, François Lott³, and Federico Serva⁴

¹Dpto. Física de la Tierra y Astrofísica, Universidad Complutense de Madrid, Madrid, Spain

²Instituto de Geociencias (IGEO) UCM-CSIC, Madrid, Spain

³Laboratoire de Météorologie Dynamique, École Normale Supérieure, Paris, France

⁴Consiglio Nazionale delle Ricerche, Institute of Marine Sciences (CNR-ISMAR), Rome, Italy

Correspondence: Verónica Martínez-Andradas (vemart05@ucm.es)

Abstract. Sudden stratospheric warmings (SSWs) show large spread across climate models in characteristics such as frequency of occurrence, seasonality and strength. This is reflective of inherent model biases. A well-known source of inter-model variability is the parameterized gravity wave forcing, as the parameterization schemes vary from model to model. This work compares the simulation of boreal SSWs in historical runs for seven high-top Climate Model Intercomparison Project Phase 6 models and in two reanalyses. The analysis is focused on the evolution of the different terms in the Transformed Eulerian Mean zonal-mean zonal momentum equation. A large spread is found between models and with reanalyses in the mean magnitude of the resolved and parameterized wave forcing and the responses (wind deceleration and anomalous residual circulation). The results reveal that, in the stratosphere, both the wind deceleration and the strengthening of the residual circulation during SSWs correlate linearly across the models with anomalies in the resolved wave forcing. In the mesosphere, the forcing is a combination of resolved waves and, predominantly, parameterized gravity waves. Models with larger gravity-wave forcing anomalies produce larger changes in the residual circulation, while models with larger resolved wave forcing anomalies produce stronger wind deceleration, which we attribute to differences in the spatial shape of resolved and parametrized wave forcing. Although the forcing-response relation across individual SSW events is similar for each model in the stratosphere, this does not hold in the mesosphere. Our results are useful for interpreting the spread in projections of the dynamical forcing of SSWs in a changing climate.

1 Introduction

Temperatures in the stratosphere have been observed to decrease in recent decades in response to increasing greenhouse gases concentrations (Randel et al., 2016; Maycock et al., 2018), and are consistently expected to continue doing so in the future (Lee et al., 2021). The dynamical response of the wintertime polar vortex in the Northern Hemisphere is, however, much more uncertain (Manzini et al., 2014; Karpechko et al., 2022). Using different scenarios of increasing CO₂ in experiments of the Climate Model Intercomparison Project Phases 5 and 6 (CMIP5 and CMIP6, respectively), Karpechko et al. (2022) concluded that half of the model spread in the future vortex mean state is related to model uncertainties. Later, Karpechko et al. (2024)

attributed much of this spread in the polar vortex in CMIP6 to changes in stationary planetary wave fluxes. The projected changes in vortex variability also suffer from large uncertainty, with individual models producing robust changes of different signs in the frequency of sudden stratospheric warmings (Ayarzagüena et al., 2018; Ayarzagüena et al., 2020).

This model spread in the representation of the vortex is not only present in future climate projections but also in simulations of the present climate, i.e. historical runs. In this context, understanding the inherent multi-model spread in the polar vortex climatology and variability is important.

It is known that the frequency of sudden stratospheric warmings (SSWs) in CMIP6 models differs from that observed in reanalyses (Ayarzagüena et al., 2020; Hall et al., 2021). This has been linked to biases in the climatological strength of the polar vortex and the upward wave activity fluxes in the lower stratosphere (Wu and Reichler, 2020). Regarding the SSW type, Hall et al. (2021) found an underestimation of split events in CMIP6, related to vortex geometry and to high filtering of wavenumber 2 and higher waves because of a stronger lower stratospheric vortex. However, Zhao et al. (2022) found that although the spatial pattern of the polar vortex is well reproduced in CMIP6 models, it is weaker than in reanalysis, which could be linked to less accumulated wave activity flux in the stratosphere in models. The main focus of these studies has been on the simulated frequency of SSWs in models, and much less attention has been given to quantifying the wave forcing of SSWs and the response of the stratospheric circulation.

The zonal-mean dynamics during the development of SSWs is the following. The strong zonal wind deceleration is driven by the anomalous Rossby wave activity flux convergence through wave breaking in the winter stratosphere (Limpasuvan et al., 2004). Using ERA5 reanalysis Cullens and Thuraijah (2021) concluded that although SSWs main drivers are planetary Rossby waves, gravity waves also contribute to their occurrence. Also, for the austral polar vortex breakdown, both resolved and parameterized gravity waves in ERA5 were found to be important (Gupta et al., 2021). Wave breaking in the extratropical stratosphere not only decelerates the vortex but also induces a strengthened poleward residual circulation (e.g., de la Cámara et al., 2018). This motion causes downwelling and adiabatic heating over the polar stratosphere. Weakened westerlies allow more eastward gravity waves to propagate up to the mesosphere. Consequently, the mesosphere experiences anomalous positive gravity wave forcing (more eastward gravity waves), decelerating the mesospheric residual circulation (Liu and Roble, 2002), cooling it over the pole and sinking the stratopause down to lower levels (Von Zahn et al., 1998; Limpasuvan et al., 2012). Once the zonal wind reversal has taken place, stationary planetary waves can not propagate upward and the wave forcing rapidly decreases, allowing westerly winds to recover at upper levels while they stay weak in the lower stratosphere due to the longer radiative damping time scales (Newman and Rosenfield, 1997).

The relatively broad spatial resolution of climate models limits the wavelengths that can be explicitly resolved, and a large part of the gravity wave spectrum needs to be parameterized, even in high-resolution models. The parameterization schemes varies in each model giving rise to a wide variety of gravity wave representation and interactions with the resolved flow, which introduces a source of discrepancy among models.

In this work we analyze the model spread in resolved and parameterized wave forcing during SSWs in seven CMIP6 models and two reanalyses. We study, for the SSWs in each model, how the circulation responses change for different forcings and how this is reproduced in models. How much of the wave activity flux convergence is translated into advection of the residual circu-

lation and how much into wind deceleration across models? How different are the contributions of resolved and parameterized waves? The answer to these questions in historical simulations, comparable with reanalyses, will be valuable for understanding future projections of a changing climate.

The article is organized as follows: datasets characteristics and methods are described in sections 2 and 3. An analysis on the spread in the representation of sudden stratospheric warmings in the datasets is presented in section 4, first focused on the mean representation of SSWs and then on their variability. Finally, the conclusions are summarised in section 5.

2 Data

In the present work we use seven high-top models in CMIP6 with historical (all-forcing simulation of the recent past) experiments, from 1850 to 2014 (to 2009 in some models) and one or three runs, depending on the model. They are listed in Table 1 with information about their resolution, model top and parameterization schemes on orographic (OGW) and non-orographic gravity waves (NOGW). These models provide the output of the contributions to the momentum balance in the TEM formulation as described in Gerber and Manzini (2016). For HadGEM3-GC31-LL and UKESM1-0-LL tendencies due to meridional and vertical momentum advection terms are not available and have been calculated from other outputs, possibly leading to numerical errors. Both models are developed by the Met Office so they share most of their components, e.g. gravity waves parameterization scheme. Also MIROC6 and MRI-ESM2-0 share NOGW parameterization. We highlight that CESM2-WACCM includes NOGW sources by convection and frontal systems and IPSL-CM6A-LR also includes NOGW due to precipitation (Lott and Guez, 2013) and from frontal systems via a spontaneous adjustment mechanism (De la Cámara and Lott, 2015).

Model	Variant_id	Top	Levels	Resolution	OGWs	NOGWs
CESM2-WACCM	r[1,2,3]i1p1f1	4.5e-6 hPa	L70	288x192	Scinocca and McFarlane (2000)	Richter et al. (2010), Beres et al. (2005)
GFDL-ESM4	r[1]i1p1f1	0.01 hPa	L49	360x180	Garner (2005)	Alexander and Dunkerton (1999)
HadGEM3-GC31-LL	r[1,2,3]i1p1f3	85 km	L85	192x144	Vosper (2015)	Warner and McIntyre (2001)
IPSL-CM6A-LR	r[1,2,4]i1p1f1	80 km	L79	144x143	Lott (1999)	Lott and Guez (2013), De la Cámara and Lott (2015)
MIROC6	r[1]i1p1f1	0.004 hPa	L81	256x128	McFarlane (1987)	Hines (1997)
MRI-ESM2-0	r[1,2,3]i1p1f1	0.01 hPa	L80	320x160	Iwasaki et al. (1989)	Hines (1997)
UKESM1-0-LL	r[1,2,3]i1p1f2	85 km	L85	192x144	Vosper (2015)	Warner and McIntyre (2001)

Table 1. CMIP6 models with historical experiments used and their characteristics. In column *Variant_id* brackets show the different runs used. The historical experiment covers from 1850 to 2014, except for GFDL-ESM4 and IPSL-CM6A-LR that only extends to 2009.

Additionally, we use reanalysis data for comparison. We use the Transformed Eulerian Mean data set from the MERRA-2 and ERA5 reanalyses, as presented in Serva et al. (2024). The products are obtained by computation from 6-hourly data following Gerber and Manzini (2016). For MERRA-2 native vertical 72 levels to 1 Pa and native spatial resolution $0.5^\circ \times 0.625^\circ$ (Gelaro et al., 2017) is used for the computation, covering from 1980 to 2021. For ERA5 native vertical 137 levels to 1

Pa and $0.5^\circ \times 0.5^\circ$ grid is used, while native spatial grid is of $0.25^\circ \times 0.25^\circ$ (Hersbach et al., 2020), covering from 1959 to 2021.

80 In both data sets the contribution of gravity wave 'drag' (GWD) is provided as a single term, not separated into OGW and NOGW as in the models. Therefore, in this work we will analyse it together as a GWD. In MERRA-2 GWD is only available up to 0.1 hPa.

3 Methods

We identify boreal SSWs in every climate model and the two reanalyses. The detection of SSWs is based on the criterion
 85 proposed by Charlton and Polvani (2007). The onset day of the event (lag 0) is set when the zonal mean zonal wind at 60°N and 10 hPa crosses zero, provided no other event has been detected in the previous 20 days. The generation of SSWs by different models varies in total frequency and month of the year (Ayarzagüena et al., 2020; Wu and Reichler, 2020; Hall et al., 2021). This can be due to different vertical resolution and lid's height (Wu and Reichler, 2020) and should be taken into account when comparing the models. Figure 1 shows the distribution of SSW occurrence through the extended winter in each model
 90 of the present study, with the relative frequency of detected SSWs over the number of years in brackets. Only the common period with ERA5 has been taken, i.e. from 1959 to 2009 (1980 to 2009 for MERRA2). Except for IPSL-CM6A-LR and GFDL-ESM4, all models generate fewer SSWs than observed with both reanalyses. However, IPSL-CM6A-LR is the only one statistically significant at 95% confidence, using a parametric test as in Gu et al. (2008). Reanalyses also slightly differ with each other as the datasets do not fully match in time, but they agree over their common period (1980-2021, see Serva et al.,
 95 2024). We can also see that there is no agreement in the monthly distribution between models and reanalyses, as shown in Ayarzagüena et al. (2020). While in reanalyses January and February are the months with the highest frequency of SSWs, in models we find a more uniform distribution throughout the winter, with some biases towards late winter. Furthermore, some results are tested with the approach of sudden stratospheric decelerations (SSDs) as is Birner and Albers (2017). Differently from the absolute threshold for the event detection of Charlton and Polvani (2007), this criterion uses a relative threshold of 2
 100 standard deviations in wind deceleration, whose value is model dependent. In Figure S18 of the supplementary material it can be seen that there are also discrepancies between models and reanalyses in the frequency and seasonality of SSD occurrence.

In this work we focus on analyzing the terms of the momentum balance equation in the Transformed-Eulerian Mean (TEM) formulation. Following Andrews et al. (1987), the meridional residual circulation in the TEM framework has a northward and a vertical component (\bar{v}^*, \bar{w}^*) , respectively. The TEM zonal momentum equation is then written as follows:

$$105 \quad \bar{u}_t + \{ -\bar{v}^* \hat{f} + \bar{w}^* \bar{u}_z \} = \left\{ \frac{e^{\frac{z}{H}}}{a \cos \phi} \nabla \cdot \mathbf{F} + \bar{\chi}_{param} \right\} + \varepsilon \quad (1)$$

where

$$\hat{f} = f - \frac{1}{a \cos \phi} (\bar{u} \cos \phi)_\phi$$

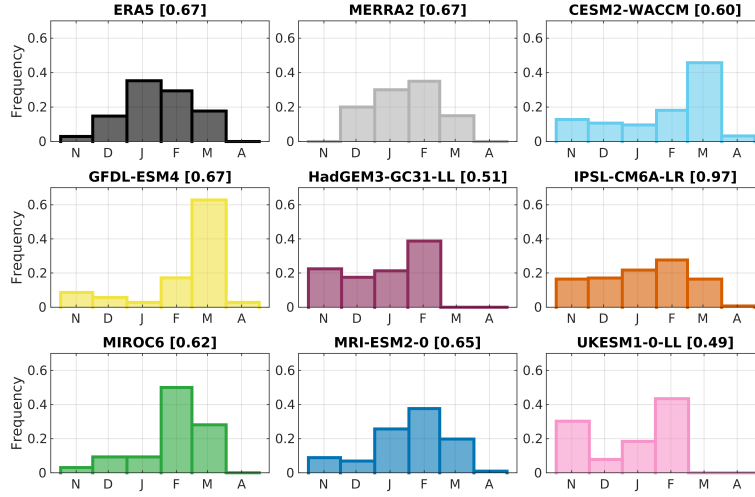


Figure 1. Monthly distribution of SSW frequency relative to the total number of events in each model and reanalyses on the common period (1959-2009). Brackets show the SSW total frequency (number of events per year).

and f is the Coriolis parameter, F is the Eliassen-Palm flux, $\overline{\chi}_{param}$ is the parameterized physics forcing and ε the residual, computed by the imbalance between both sides of the equation.

110 The terms in eq. 1 represent (from left to right) the following. On the left-hand side there is the temporal derivative of the zonal mean zonal wind (Ut) and in braces the meridional and vertical advection of absolute angular momentum by the residual circulation (ADV). On the right-hand side the term in braces provides the total eddy-induced zonal mean force. This includes a contribution from resolved waves (EPD), basically from planetary waves, as the divergence of the Eliassen-Palm flux, and a contribution from parameterized waves (GWD), basically gravity waves.

115 The residual mean velocities \overline{v}^* and \overline{w}^* (defined in Andrews et al., 1987) may be expressed in terms of a stream function Ψ , where Ψ can be calculated as:

$$\Psi(\phi, z) = \rho_0 \cos(\phi) \int_z^\infty \overline{v}^* e^{-\frac{z'}{H}} dz' \quad (2)$$

Finally, anomalies are calculated as the departure from the smoothed daily evolving annual cycle of each model, which is in turn defined based on a running 30-year mean. The statistical significance of the anomalies is assessed applying a two-tailed Student's t-test.

120

4 Results

4.1 SSW evolution in models and reanalyses

Before comparing the performance of different models, Figure 2 shows the composite evolution of the anomalies of the different terms in equation (1) during SSWs in ERA5, and displays well-known features of the life cycle of SSWs. There is a strong
125 deceleration of the zonal-mean winds during the 7 days before the central date (Figure 2a), followed by an acceleration that is stronger in the upper levels than in the lower stratosphere, where the negative wind anomalies persist for at least one month. This contrasting evolution of the winds at different levels in the aftermath of SSWs is mainly the result of the faster radiative timescales at upper levels (Hitchcock et al., 2013b).

The initial wind deceleration is driven by the negative resolved wave forcing anomalies with a peak at around 1 hPa and
130 lag -3 (Figure 2b). This deceleration ceases abruptly after lag zero and there even appear weak positive anomalies in the upper stratosphere and lower mesosphere during the following 50 days. The parameterized forcing induces anomalous acceleration mainly from lags -10 to 20 at mesospheric levels (above 1 hPa, Figure 2c), likely as a result of reduced eastward GW filtering by the weak winds in the stratosphere below. Both the build-up and the disappearance of these anomalies is more gradual than that of the resolved forcing. The positive anomalies at positive lags have been previously suggested to contribute to the
135 upper-level westerly wind recovery in the aftermath of SSWs (Hitchcock et al., 2013a).

The evolution of the residual mean momentum advection is determined by the combination of the resolved and parameterized forcings (Figure 2d). At negative lags during the wind deceleration, there are negative anomalies in the stratosphere below 1 hPa (forced by the resolved forcing) and positive anomalies above (forced by the parameterized forcing); at positive lags the evolution resembles that of the parameterized forcing.

140 Similar figures to Figure 2 but for the climate models and MERRA-2 can be found in the supplementary material (Figures S1-S8), with qualitatively similar evolutions. To facilitate the inter-model comparison we show in Figure 3 the evolution of *EPD* (solid) and *GWD* (dashed) in the left column, and *U_t* (solid) and *ADV* (dashed) in the right column at some selected layers for the SSW composite mean anomalies. Each line represents the evolution of a different model mean.

We can see that there is agreement on the sign of the evolving anomalies among the models but with large inter-model
145 spread, especially in the mesosphere. Different sponge layer thicknesses and biases in the climatologies (Figure 4) are likely to play a role for these model differences.

The spread in the mesospheric *GWD* anomalies around the onset date is comparable to the multimodel-mean, with values across models from 5 to 19 $ms^{-1}d^{-1}$ (see panels of [0.03-0.2 hPa]). ERA5 reanalysis and the models CESM2-WACCM and MRI-ESM2-0 produce the largest *GWD* anomalies in the mesosphere, whereas GFDL-ESM4 and IPSL-CM6A-LR have the
150 weakest.

The largest anomalies and spread in *EPD* are found in the upper-stratosphere-lower-mesosphere (see panels of [0.3-3 hPa]) around one week prior the onset date. Again a wide range of values can be found across models, varying from -5 to -20 $ms^{-1}d^{-1}$. In the mesosphere and stratosphere the anomalies are weaker, with less spread in the stratosphere.

ERA5 [45-75°N] SSW composite - anomalies

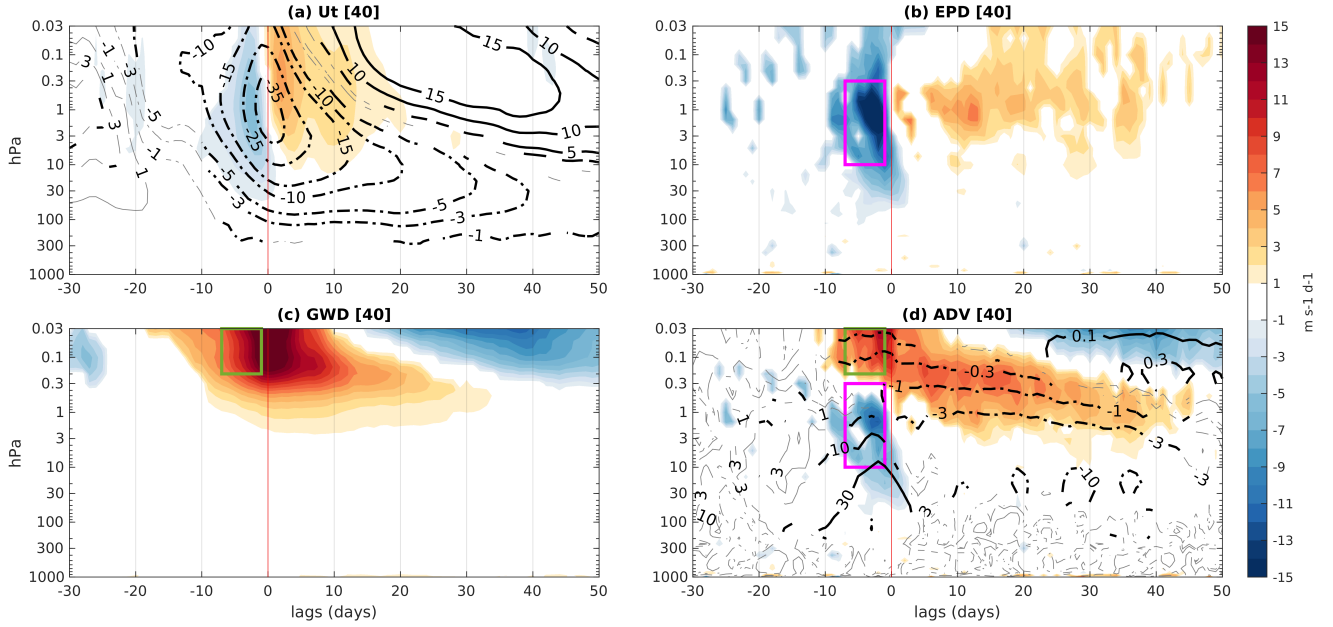


Figure 2. Lag-height SSW composite evolution of zonal mean [45-75°N] area averaged anomalies of (a) tendency of the zonal wind, (b) planetary Rossby waves 'drag', (c) gravity waves 'drag' and (d) the Coriolis torque of the residual circulation in shading for ERA5 reanalysis. Contours show anomalies of zonal wind in (a) and the mass stream function in (d). Units are $\text{ms}^{-1}\text{d}^{-1}$ for shading and ms^{-1} , $\text{kgm}^{-1}\text{s}^{-1}$ in (a,d) for contours, respectively. Shaded colors and black thick contours indicate values significant at 95 % confidence with a two-tailed t-test. The number of SSWs in the composite is shown in brackets. The pink (10-0.3 hPa, [45-75°N], -7 to -1 lags) and green (0.2-0.03 hPa, [45-75°N], -7 to -1 lags) boxes are used to average fields in subsequent analyses.

The responses also show large spread across models. Prior to the onset date in the mesosphere the anomalies have opposite sign, as well as the forcings. Wind acceleration and *EPD* anomalies are negative at all levels, while *ADV* is positive in the mesosphere, as *GWD*, and negative below.

We argue that in the stratosphere *EPD* drives both responses as *GWD* is relatively low. However, in the mesosphere positive *ADV* is driven by positive *GWD* and negative *Ut* by negative *EPD* anomalies. We come back to this point below.

4.2 Model mean spread during the SSW development stage

A burst of *EPD* and strong wind deceleration occurs approximately one week before the onset date (Figures 2 and 3). We will focus on this period for the subsequent analysis, referring to it as development stage. To characterize it we have selected -7 to -1 lags, as marked by the pink and green boxes in Figure 2. The sensitivity to the choice of these lags has been tested for some relevant results, as explained later. In this section we compare the SSW composite mean and quantify the biases across models during the development stage.

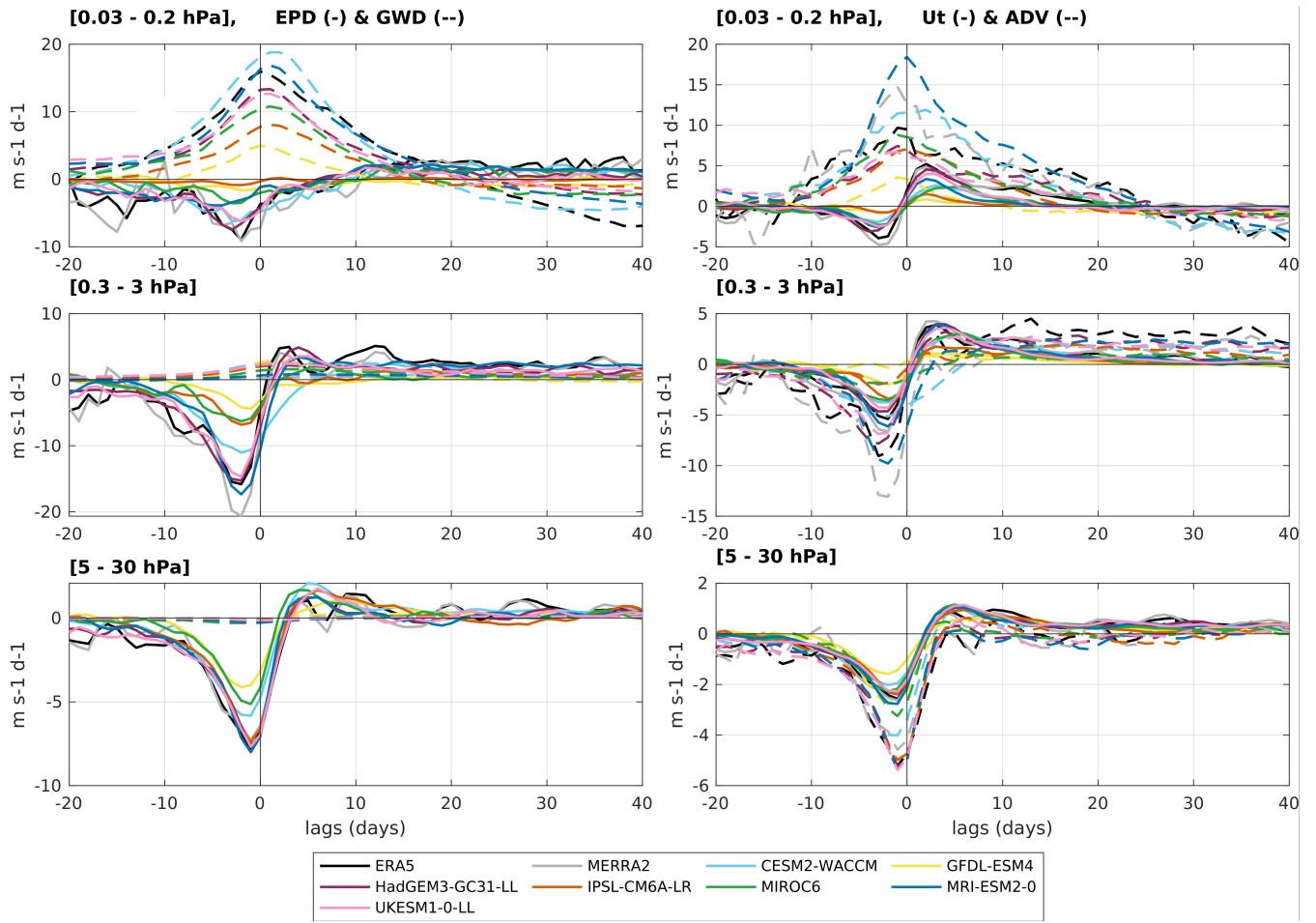


Figure 3. Evolution of *EPD* (solid) and *GWD* (dashed) in the left column and *Ut* (solid) and *ADV* (dashed) in the right column for the SSW composite mean. Each colored line represents a CMIP6 model or a reanalysis. Rows show the average at different pressure layers. Variables are zonal mean and area-averaged [45-75°N].

165 During the development stage the main contribution to the total forcing (*EPD*+*GWD*) anomalies in the stratosphere is *EPD*,
 with much weaker *GWD* anomalies (Figure 4a). The spread through the models is notable, with the largest differences around
 1 hPa. However, in the mesosphere the anomalous wave forcing is dominated by the reduction in the climatological westward
GWD (Figure 4b), producing positive anomalies. The spread through the models is large in stratospheric *EPD* and mesospheric
GWD anomalies. Below 30 hPa the values converge. This also happens in the climatology (Figure 4b) with the spread growing
 170 with height.

Even though the total forcing anomalies reverse from negative in the stratosphere to positive in the mesosphere, the wind is
 decelerated at all levels, with maximum values occurring between 1 and 5 hPa depending on the model. In the mesosphere all
 models underestimate *Ut* compared to the reanalyses, as well as the climatological zonal-mean zonal wind. In contrast with *Ut*,

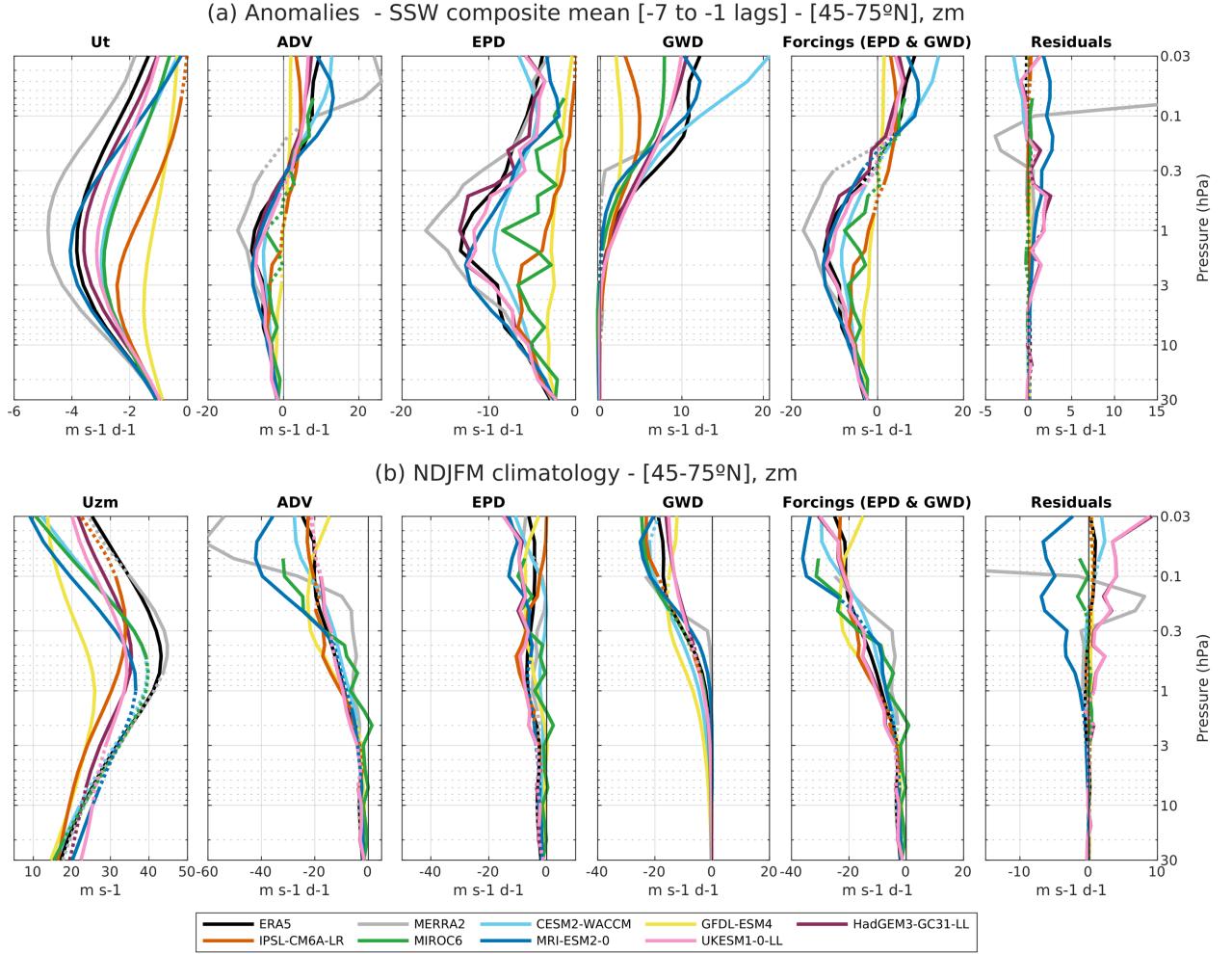


Figure 4. Vertical profiles of (a) SSW composite mean anomalies and (b) extended winter climatology of the models and reanalyses, [45-75°N] area averaged. Each colored line represents a CMIP6 model or a reanalysis. Panels (from left to right) show the following variables: zonal mean zonal wind tendency/climatology, advection by the residual circulation & Coriolis effect, tendency of eastward wind due to Eliassen-Palm flux divergence, parameterized non-orographic and orographic gravity wave 'drag', the total wave forcing (sum of the previous two terms) and the residual errors in eq. 1. Dotted lines indicate non-significance (a) at 0.95 with a t-test in the composite mean and (b) in differences from ERA5 reanalysis.

175 *ADV* anomalies do reverse like the total forcing. While this change of sign occurs in all models, models differ on the height at which this happens.

One should note that the balance is not fully closed as there are still some residuals, even in the climatology. The MERRA-2 residual in particular stands out. This reanalysis has strong wind deceleration and anomalous residual advection in the mesosphere, but a comparable *EPD* to the rest of the models. This can only be compatible with very strong anomalous *GWD*,

but as this field is not provided above 0.1 hPa the residual is necessarily large. Similar outstanding residuals of eq. 1 in
180 MERRA-2 are found in the tropical mesosphere by Ern et al. (2021).

To quantify the spread across models we separate between the stratosphere and the mesosphere based on the sign change. Taking into account that above 0.2 hPa all models produce positive *ADV* and forcing anomalies, we will characterize the stratospheric and mesospheric anomalies in the following vertically averaging over the pink and green boxes in Figure 2, i.e., from 10 to 0.3 hPa and from 0.2 to 0.03 hPa respectively. For MIROC6 the mesospheric averages are computed from 0.2 to
185 0.07 hPa, as data above that level was not available for this model.

Using 'strat' and 'meso' to refer to the regions defined as stratosphere and mesosphere, Figure 5 shows various relations between the variables in Figure 4a vertically integrated as indicated above.

As expected from eq. 1, *EPD* in the stratosphere is linearly correlated with *Ut* and *ADV* (Figures 5 a,b). In both cases the correlation increases slightly when *GWD* is also included (not shown). The wind deceleration is also highly correlated with the
190 advection in the stratosphere (Figure 5c).

In the mesosphere, the total forcing is a combination of *EPD* and *GWD*. We can see that the total forcing correlates well with *ADV* but not with *Ut* (Figure 5d,e). When looking at the forcings separately, we find that *GWD* is only correlated with *ADV* and *EPD* is only correlated with *Ut* (Figures 5f,i). The latter is consistent with the findings in Figure 3 (top) that the smaller *EPD* forcing plays a more important role than *GWD* for driving the zonal wind variability at mesospheric levels. To assess
195 robustness we have repeated the analysis with composites of SSDs (Figure S19 in supplementary material), obtaining the same relations but with a somewhat larger scatter.

These results suggest that the *GWD* forcing is in quasi-steady balance with the residual advection, driving only a small part of the zonal wind variability. Because the total forcing is dominated by *GWD* but the zonal wind variability is driven primarily by *EPD*, there is no significant correlation between the total forcing and the wind tendency as noted above (Figure 5d).

200 The different character of the responses to *GWD* and *EPD* may reflect differences in the spatial structure of the forcings. The aspect ratio of a forcing determines how much of the response translates into zonal wind deceleration and how much into residual advection (Nakamura, 2024; Pfeffer, 1987). As shown in the Appendix in eqs. A1 and A2, *Ut* is forced by the second meridional derivative of the wave forcing, while *ADV* is forced by the second vertical derivative. Thus, shallow forcings will produce a stronger *ADV* response and deep forcings will produce a stronger *Ut* response. As shown in Figure 2, the planetary
205 forcing *EPD* is deep, as it follows the polar vortex across the stratosphere and mesosphere, while the parameterized forcing *GWD* is shallow and concentrated at mesospheric levels (for more detail see latitude-height cross sections in the supplementary material, Figures S9-S17). This is consistent with their corresponding responses.

Another factor that may play a role for the different responses to *EPD* and *GWD* is their different time scales. As is also apparent in Figure 2 (and clearer in non-composited timeseries, not shown), *GWD* evolves more slowly than *EPD*, so we expect
210 the response to *GWD* to vary in longer time scales than the response to *EPD*. We speculate that the different time scale of the two forcings may be due to the filtering effect of the stratospheric mean flow, essentially a time-integration of the stratospheric *EPD* anomalies.

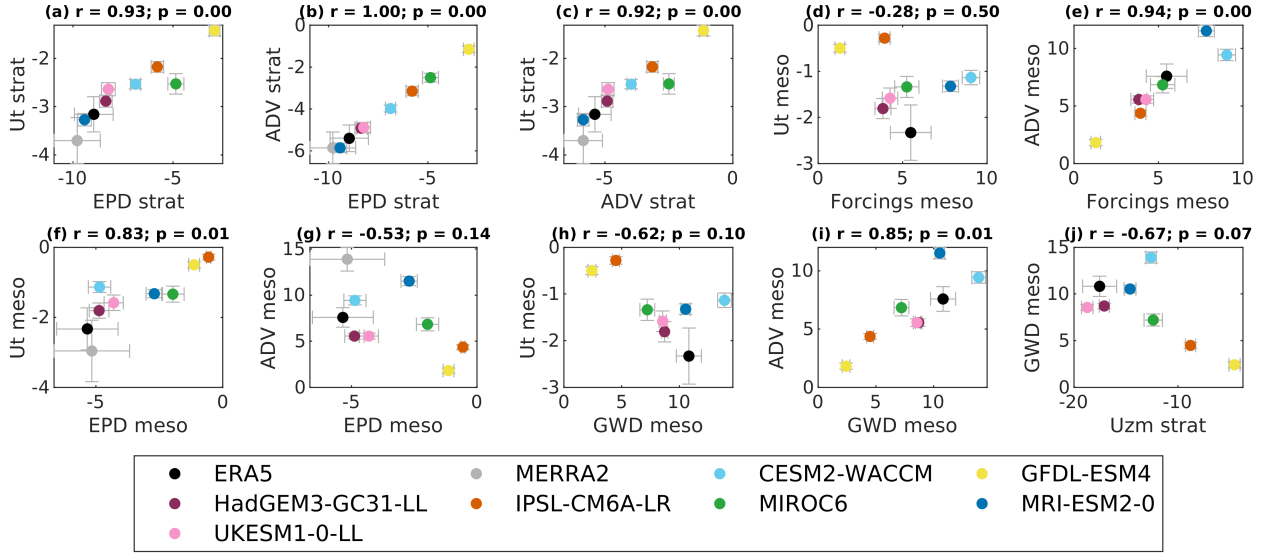


Figure 5. Scatter plots for the SSW composite mean of area-averaged fields at [45-75°N] and [-7 to -1 lags]. Variables are area-averaged from 10 to 0.3 hPa ('strat') and from 0.2 to 0.03 hPa* ('meso'). Units are $\text{ms}^{-1}\text{d}^{-1}$. Error bars show the standard error of the mean, taking into account all SSWs for each model and panel titles indicate the linear correlation coefficient (r) and p -value. *From 0.2 to 0.07 hPa for MIROC6.

Finally, Figure 6 shows that part of the spread across models can be explained by the inherent spread in their climatologies (Kim et al., 2017). Models with large climatological *EPD* values tend to also display large anomalies in the SSW composite. The same can be seen for the wind deceleration and the climatological zonal-mean zonal wind. Interestingly, IPSL-CM6A-LR produces large *EPD* climatological values while it has the weakest climatological zonal wind. The opposite occurs for MIROC6. In contrast, GFDL-ESM4 has both weak *EPD* and *Uzm* climatologies.

4.3 Inter-event variability in models during the SSW development stage

After having studied the biases between models in the mean SSW representation, we will now analyse the event-to-event variability in the forcings and circulation responses during the development stage of SSWs. We quantify how much of the resolved and parameterized wave deposition of momentum is translated into advection by the residual circulation and wind deceleration for every SSW simulated in the datasets.

Starting with the stratosphere we quantify the relationship between the main forcing during the development stage, *EPD*, and the two responses, *ADV* and *Ut*. Since *GWD* is negligible in this region, it will not be taken into account. As expected from eq. 1 the relation between *EPD* and the sum of *Ut* and *ADV* anomalies is completely linear (not shown). When separating the responses we also find linearity between *EPD* and both *ADV* and *Ut*, especially with *ADV*. This is shown in Figure 7a,

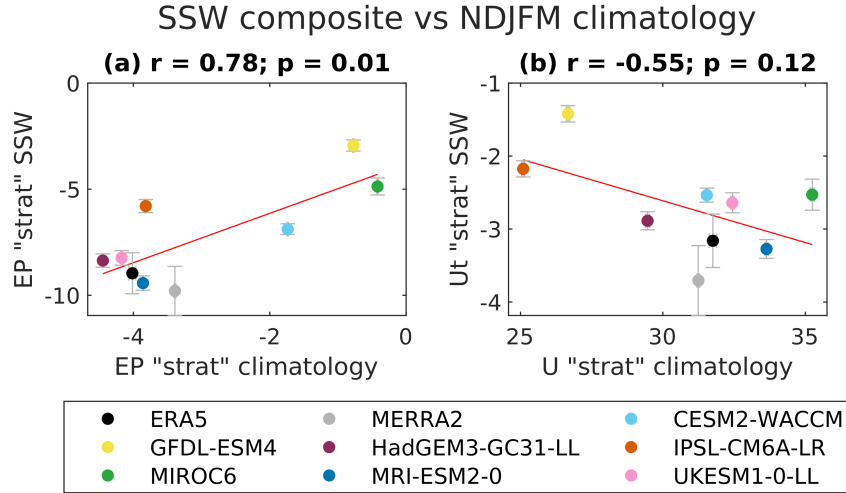


Figure 6. Scatter plots of SSW composite mean anomalies and climatology of *EPD* (a) and *Ut* (b) in the extratropical stratosphere (10 to 0.3 hPa and [45 to 75 °N]).

which also provides the linear correlation coefficient and the least-squares fit for both responses: $ADV \sim m1 \text{ EPD} + c1$; $Ut \sim m2 \text{ EPD} + c2$.

We find large correlation coefficients with values between 0.93/0.98 for *ADV* and 0.84/0.95 for *Ut*. The linear fit reveals that in both cases almost all models have similar slopes. This suggests that the dynamical relationship between both variables is similar for all models although there is some spread in the composite mean. Almost all models agree that approximately 2/3 of the *EPD* forcing is translated into *ADV* and 1/3 to wind deceleration, irrespective of the magnitude of the forcing. The exception is MIROC6, for which the response is translated equally into *ADV* and the deceleration of the wind. We can see that MIROC6 is also an outlier in Figure 5a. GFDL-ESM4 also differs for the *ADV* relation. This 2/3-1/3 ratio is roughly consistent with the findings of Nakamura et al. (2020) that about 60% of the wave forcing is balanced by residual advection and 40% is used to decelerate the zonal wind for ERA-Interim and MERRA-2 SSWs.

Moreover, we can see that for all models the slopes in both regressions are complementary so that they approximately add up to 1. A sensitivity test (Figure S20 in the supplementary material) shows that these slopes are robust when changing the lags used to average.

In contrast, we find that *EPD* is not linearly correlated with the wind anomaly (not shown). It is also interesting that no events with positive *EPD* anomalies are observed in the reanalyses, while they can be produced by the models.

In the mesosphere (Figure 8) the behavior is a bit more complex since gravity waves also play a role and the residuals are larger. However, the residuals do not seem to bias the relations as the correlation between the total forcings and both responses together is still close to one (not shown). The only exception is MRI-ESM2-0, which has the largest residuals (Figure 4a).

Before discussing the relative impact of *EPD* and *GWD*, we first analyze how the response to the total forcing (*EPD*+*GWD*)

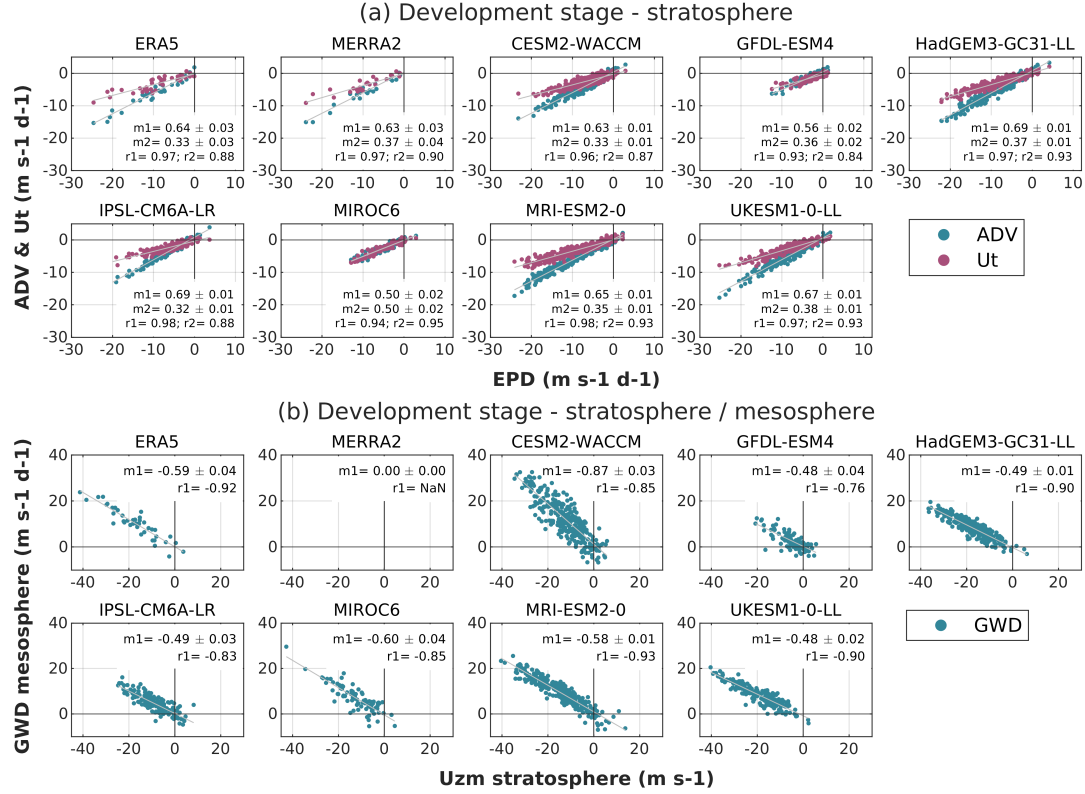


Figure 7. Scatter plots of the same variables in Figure 5 for all SSWs in the models and reanalyses. (a) *EPD* versus *ADV* and *Ut* in the stratosphere and (b) zonal mean zonal wind in the stratosphere versus *GWD* in the mesosphere. Stratospheric variables are averaged from 10 to 0.3 hPa and mesospheric variables from 0.2 to 0.03 hPa, and both are area-averaged from [45-75°N]. Linear fits $y \sim mx + c$ are also shown (grey lines), and the corresponding slopes ($m1/m2$ for *ADV* / *Ut* in (a) and $m1$ for *GWD* in (b)) are indicated in the text. The corresponding linear correlation coefficients, $r1$ and $r2$, are also provided.

is split between *ADV* and *Ut*. As in the previous section, we consider in Figure 8 averages from -7 to -1 lags, 0.2 to 0.03 hPa and [45-75 °N]. For MIROC6 the vertical average only extends up to 0.07 hPa, as data for some variables was not available at higher levels for this model. Figure 8a shows that there is again a good correlation between the total forcing and *ADV*, though the scatter is larger than in the stratosphere. This may be due to higher inter-event variability in the partition of the response between *ADV* and *Ut*.

We also note that the slope of the fit can vary substantially across models. The fact that all slopes exceed 0.5 implies that *ADV* dominates the response to the forcing. However, this happens to different degrees in different models. In some models (CESM2-WACCM, GFDL-ESM4, MIROC6 and MRI-ESM2.0) the slope is close to 1, suggesting that zonal wind variability plays little role in the response to the forcing for these models. Flatter slopes $O(0.7)$ are found for ERA5 and IPSL-CM6A-LR, while the two MetOffice models have the smallest slopes, $O(0.6)$. We have also analyzed the sensitivity of this linear

fitting to the lags used for averaging (see Figure S21 in supplementary material). The slope for the U_t (ADV) fitting slightly decreases (increases) when extending the time-windows at negative lags. This is consistent with the transient nature of U_t : for long time averages U_t should vanish and the full forcing be balanced by ADV . As shown in Figure 8a, in general the linear correlation between the forcing and U_t is better (and the slope of the fit is larger) for the models with smaller ADV slope, such as UKESM1-0LL and HadGEM3-GC31-LL. In contrast, there is only noise in the scatter plot between the forcing and U_t for models such as CESM2-WACCM and GFDL-ESM4, for which ADV alone balances the response to the forcing.

We next investigate the relative role of GWD and EPD for producing these responses (Figure 8b and c). Consistent with the composite results, EPD is strongly biased to negative values and GWD to positive values, though there is significant inter-event variability (including values of the opposite sign) in most models. We recall that in the composite mean, GWD is the dominant forcing. Moreover, there is no linearity in the GWD versus EPD relation (not shown) pointing out that there is not a fixed balance between them. Most models produce a linear relation between GWD and ADV (Figure 8c), although the slopes of the fit varies substantially across models. In contrast, there is no linearity with U_t .

As regards EPD , we showed before that in the composite-mean this term is smaller than GWD in most models (though this small term was responsible for the zonal wind anomalies). When considering the intra-model variability, this is not necessarily the case and EPD may be larger than GWD in some events and models. For those models with significant EPD variability, there is a weak correlation between EPD and both ADV and U_t , in general larger for the latter.

Finally, we note the differences in the intercept for all these fits (values not shown). The regression lines (grey lines) nearly cross the origin for the EPD/U_t and GWD/ADV fits, but not for EPD/ADV and GWD/U_t . This means that the absence of EPD (GWD) anomalies does not imply the absence of ADV (U_t) anomalies.

These results together with the previous ones lead us to conclude the following. As the linear correlation with the responses is higher for the combination of EPD and GWD , both forcings contribute to the ADV and U_t anomalies but with different proportions. GWD contributes more to ADV and EPD to U_t , possibly because of differences in their aspect ratios or time scales as discussed in section 4.2. However, this partition is highly model dependent as the slopes vary substantially across models. Additionally, the relatively high scatter indicates that the proportion also varies across the different SSWs in each model.

Finally, we investigate the relationship between the stratospheric wind and the mesospheric GWD . As shown in the previous section, the mean GWD anomalies are correlated with the wind profile beneath. When looking at the even-to-event variability in these two variables (Figure 7b), we find a linear relationship with correlation coefficients over 0.76 in all models. Interestingly, the linear regression slopes vary across the models. This is related to the various schemes used in the parametrizations. In particular, CESM2-WACCM stands out for having a considerably different slope from all other models. This model is an outlier in Figure 5j. One possible explanation could be that the parametrization scheme used in CESM2-WACCM has interactive non-orographic gravity waves, i.e. some parameters in the gravity wave emission depend on other variables outside the parametrization (Richter et al., 2010). However, IPSL-CM6A-LR also has an interactive scheme (De la Cámara and Lott, 2015) but the relationship is not different from other models, so the source may not be the reason. We also observe agreement in the slopes across models that share the same parametrization, such as HadGEM3-GC31-LL and UKESM1-0-LL, or MIROC6 and MRI-ESM2-0 for the non-orographic waves.

5 Summary and Conclusions

This study performs an intercomparison of seven high-top CMIP6 models and ERA5 and MERRA-2 reanalyses in the representation of Northern Hemisphere sudden stratospheric warmings (SSWs). We focus on the terms of the zonal-mean zonal momentum balance in the Transformed Eulerian Mean formulation. Our analysis separates the wave forcing into resolved
295 (*EPD*) and parameterized (*GWD*) waves, and investigates their effects on both the advection by the residual circulation (*ADV*) and the deceleration of the zonal mean wind (*Ut*).

First, we compare biases in the SSW composite mean across the models and reanalyses, finding a large spread in the anomalous forcing and circulation responses. Part of this spread is related to climatological biases in the vortex strength and planetary wave forcing. In the stratosphere, we find that models with larger *EPD* anomalies have larger *Ut* and *ADV* anomalies,
300 with a high linear correlation across models. The contribution of parameterized gravity waves is negligible at this altitude. However, in the mesosphere the total forcing is a combination of resolved and parameterized waves. Models with larger *GWD* anomalies produce larger changes in the residual circulation, while models with larger *EPD* anomalies produce stronger wind deceleration.

Second, we compare the inter-event variability in all the models, also focusing on the development stage of SSWs. We quantify how much of the wave forcing, resolved and parameterized, is translated into each of the responses. One important finding
305 is that in the stratosphere the relationship between both responses and the resolved wave forcing is linear and quantitatively similar in most models: approximately 2/3 of the anomalous *EPD* translates into anomalous *ADV*, and 1/3 into *Ut*, showing that the response of the residual circulation is larger than the wind deceleration. The large correlation coefficient indicates low inter-event variability in this result.

In the mesosphere, the response-to-forcing relation is also linear but with a larger spread across models, i.e. larger inter-event variability. At those heights the presence of sponge layers near the top boundary may be acting in many models together with the dynamics. The total forcing primarily drives *ADV* anomalies, while the *Ut* response is noisy. But this relation is highly model dependent. We provide two possible explanations. First, we argue that the smoother evolution of *GWD* in the mesosphere should provide a stronger *ADV* response, while the pulse-like evolution of *EPD* primarily drives the transient
315 wind deceleration. Another argument relies on the different aspect ratio of the two forcings (Nakamura, 2024), with the *GWD* anomalies being shallower.

We conclude that while there is a large model spread in the wave forcing of SSWs in historical CMIP6 integrations, the stratospheric response in most models is split in a similar proportion into zonal wind deceleration and meridional residual advection. In the mesosphere, the parameterized gravity wave forcing is dominant but the planetary forcing is also important,
320 and the two forcings produce very different responses. Thus, for the same total forcing the response will be sensitive to how this forcing is partitioned into the resolved and parameterized components, consistent with the large variability seen in Figure 3. These results suggest that tuning the gravity wave parametrization in models to compensate for biases in the resolved waves and produce the same total forcing/climatological wind may produce the wrong temporal evolution during SSWs. It is hoped

that the results presented here for historical simulations will also be useful for understanding the evolution of the SSW forcings
325 in future climate projections.

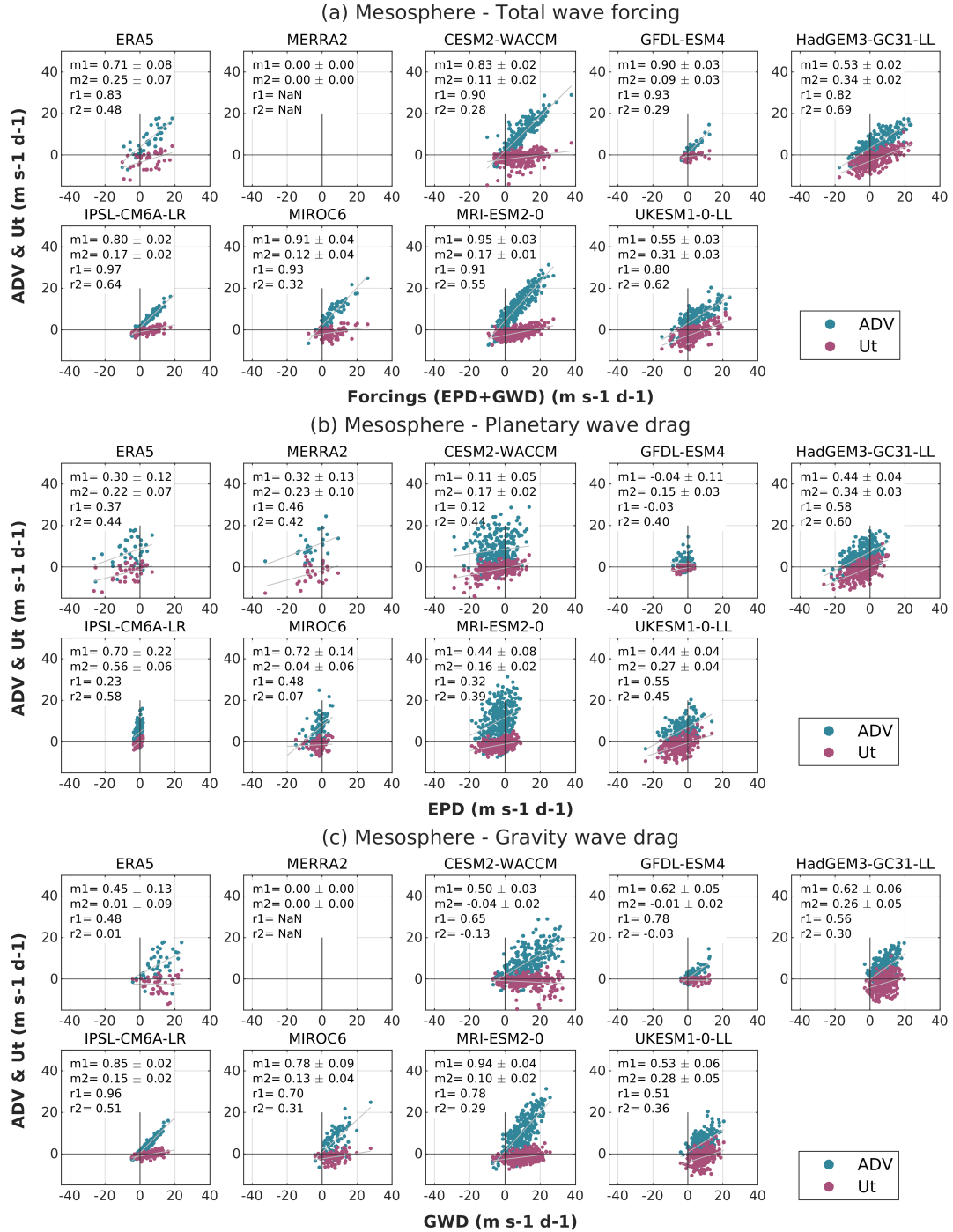


Figure 8. As in Figure 7 but relating (a) the total wave forcing (*EPD*+*GWD*), (b) *EPD* and (c) *GWD* both with *ADV* and *Ut* in the mesosphere (0.2 to 0.03 hPa* and 45 to 75 °N). *From 0.2 to 0.07 hPa in MIROC6 for data-unavailability.

Data availability. Data of the momentum balance products in TEM formulation for the reanalyses are available in <https://zenodo.org/record/6959944> (Serva, 2022b) for MERRA-2 and <https://zenodo.org/record/7081436> (Serva, 2022a) for ERA5.

Appendix A

From the transformed-Eulerian mean zonal momentum equation (eq. 1) one can see that although the wave forcing decelerates the wind, part of this forcing is partially balanced by the Coriolis torque of the residual circulation. This equation alone does not provide enough information to assess the extent to which a given eddy forcing will decelerate the zonal wind. Following Nakamura (2024), one can use the thermal wind equation to derive the following equations for the slow, balanced evolution of the flow:

$$\left(\frac{\partial^2}{\partial y^2} + \frac{1}{\rho_0} \frac{\partial}{\partial z} \left(\rho_0 \epsilon_0 \frac{\partial}{\partial z} \right) \right) \frac{\partial u}{\partial t} = \frac{\partial^2}{\partial y^2} \left(\frac{1}{\rho_0} \nabla \cdot \mathbf{F} + \bar{X} \right) - \frac{f_0}{\rho_0} \frac{\partial}{\partial z} \left(\rho_0 \frac{d\theta_0}{dz} \frac{\partial \dot{\theta}}{\partial y} \right), \quad (\text{A1})$$

$$\left(\frac{\partial^2}{\partial y^2} + \frac{1}{\rho_0} \frac{\partial}{\partial z} \left(\rho_0 \epsilon_0 \frac{\partial}{\partial z} \right) \right) f_0 v^* = - \frac{1}{\rho_0} \frac{\partial}{\partial z} \left[\rho_0 \epsilon_0 \frac{\partial}{\partial z} \left(\frac{1}{\rho_0} \nabla \cdot \mathbf{F} + \bar{X} \right) \right] - \frac{f_0}{\rho_0} \frac{\partial}{\partial z} \left(\rho_0 \frac{d\theta_0}{dz} \frac{\partial \dot{\theta}}{\partial y} \right), \quad (\text{A2})$$

where $\epsilon_0(z) = \frac{f_0^2}{N_0^2(z)}$, θ_0 is the background potential temperature and $\dot{\theta}$ is the zonal-mean non-adiabatic heating. Eqs. A1 and A2 show that the second-order derivatives of the forcing drive the zonal acceleration (horizontal derivative) and the residual circulation (vertical derivative). Consequently, the aspect ratio of the forcing will determine the partition of the response into the acceleration of the zonal-mean zonal wind and the Coriolis torque of the residual circulation (Pfeffer, 1987; Nakamura and Solomon, 2010).

Author contributions. Alvaro de la Cámara and Pablo Zurita-Gotor conceived of the presented idea and designed the project. Verónica Martínez-Andradas performed the computations with the guidance of Alvaro de la Cámara, Pablo Zurita-Gotor and François Lott. Federico Serva provided the reanalyses data. Verónica Martínez-Andradas took the lead in writing the manuscript with the help of Alvaro de la Cámara and Pablo Zurita-Gotor. All authors provided critical feedback and helped shape the research, analysis and manuscript

Competing interests. The authors declare that they have no conflict of interest.

Acknowledgements. The authors thank the constructive comments of Alexey Karpechko and an anonymous reviewer. We acknowledge the scientific guidance of the World Climate Research Programme to motivate this work, coordinated in the framework of APARC and the DynVar activity in particular.

This work has been funded by the Spanish Research Agency project DYNWARM (PID2022-136316NB-I00). Author Martínez-Andradas
350 has been supported by a predoctoral research fellowship funded by the Spanish Ministry for Science and Innovation (PRE2020-091812).

References

- Alexander, M. and Dunkerton, T.: A spectral parameterization of mean-flow forcing due to breaking gravity waves, *Journal of the Atmospheric Sciences*, 56, 4167–4182, 1999.
- Andrews, D. G., Holton, J. R., and Leovy, C. B.: *Middle atmosphere dynamics*, 40, Academic press, 1987.
- 355 Ayarzagüena, B., Polvani, L. M., Langematz, U., Akiyoshi, H., Bekki, S., Butchart, N., Dameris, M., Deushi, M., Hardiman, S. C., Jöckel, P., Klekociuk, A., Marchand, M., Michou, M., Morgenstern, O., O'Connor, F. M., Oman, L. D., Plummer, D. A., Revell, L., Rozanov, E., Saint-Martin, D., Scinocca, J., Stenke, A., Stone, K., Yamashita, Y., Yoshida, K., and Zeng, G.: No robust evidence of future changes in major stratospheric sudden warmings: a multi-model assessment from CCMI, *Atmospheric Chemistry and Physics*, 18, 11 277–11 287, <https://doi.org/10.5194/acp-18-11277-2018>, 2018.
- 360 Ayarzagüena, B., Charlton-Perez, A. J., Butler, A. H., Hitchcock, P., Simpson, I. R., Polvani, L. M., Butchart, N., Gerber, E. P., Gray, L., Hassler, B., et al.: Uncertainty in the response of sudden stratospheric warmings and stratosphere-troposphere coupling to quadrupled CO₂ concentrations in CMIP6 models, *Journal of Geophysical Research: Atmospheres*, 125, e2019JD032 345, 2020.
- Beres, J. H., Garcia, R. R., Boville, B. A., and Sassi, F.: Implementation of a gravity wave source spectrum parameterization dependent on the properties of convection in the Whole Atmosphere Community Climate Model (WACCM), *Journal of Geophysical Research: Atmospheres*, 110, 2005.
- 365 Birner, T. and Albers, J. R.: Sudden stratospheric warmings and anomalous upward wave activity flux, *Sola*, 13, 8–12, 2017.
- Charlton, A. J. and Polvani, L. M.: A new look at stratospheric sudden warmings. Part I: Climatology and modeling benchmarks, *Journal of climate*, 20, 449–469, 2007.
- Cullens, C. Y. and Thuraijah, B.: Gravity wave variations and contributions to stratospheric sudden warming using long-term ERA5 model output, *Journal of Atmospheric and Solar-Terrestrial Physics*, 219, 105 632, 2021.
- 370 De la Cámara, A. and Lott, F.: A parameterization of gravity waves emitted by fronts and jets, *Geophysical Research Letters*, 42, 2071–2078, 2015.
- de la Cámara, A., Abalos, M., and Hitchcock, P.: Changes in Stratospheric Transport and Mixing During Sudden Stratospheric Warmings, *Journal of Geophysical Research: Atmospheres*, 123, 3356–3373, <https://doi.org/10.1002/2017JD028007>, 2018.
- 375 Ern, M., Diallo, M., Preusse, P., Mlynczak, M. G., Schwartz, M. J., Wu, Q., and Riese, M.: The semiannual oscillation (SAO) in the tropical middle atmosphere and its gravity wave driving in reanalyses and satellite observations, *Atmospheric Chemistry and Physics*, 21, 13 763–13 795, <https://doi.org/10.5194/acp-21-13763-2021>, 2021.
- Garner, S. T.: A topographic drag closure built on an analytical base flux, *Journal of the Atmospheric Sciences*, 62, 2302–2315, 2005.
- Gelaro, R., McCarty, W., Suárez, M. J., Todling, R., Molod, A., Takacs, L., Randles, C. A., Darmenov, A., Bosilovich, M. G., Reichle, R., 380 et al.: The modern-era retrospective analysis for research and applications, version 2 (MERRA-2), *Journal of climate*, 30, 5419–5454, 2017.
- Gerber, E. P. and Manzini, E.: The Dynamics and Variability Model Intercomparison Project (DynVarMIP) for CMIP6: assessing the stratosphere–troposphere system, *Geoscientific Model Development*, 9, 3413–3425, 2016.
- Gu, K., Ng, H. K. T., Tang, M. L., and Schucany, W. R.: Testing the ratio of two poisson rates, *Biometrical Journal: Journal of Mathematical Methods in Biosciences*, 50, 283–298, 2008.
- 385 Gupta, A., Birner, T., Dörnbrack, A., and Polichtchouk, I.: Importance of gravity wave forcing for springtime southern polar vortex breakdown as revealed by ERA5, *Geophysical Research Letters*, 48, e2021GL092 762, 2021.

- Hall, R. J., Mitchell, D. M., Seviour, W. J., and Wright, C. J.: Persistent model biases in the CMIP6 representation of stratospheric polar vortex variability, *Journal of Geophysical Research: Atmospheres*, 126, e2021JD034 759, 2021.
- 390 Hersbach, H., Bell, B., Berrisford, P., Hirahara, S., Horányi, A., Muñoz-Sabater, J., Nicolas, J., Peubey, C., Radu, R., Schepers, D., et al.: The ERA5 global reanalysis, *QJ Roy. Meteor. Soc.*, 146, 1999–2049, 2020.
- Hines, C. O.: Doppler-spread parameterization of gravity-wave momentum deposition in the middle atmosphere. Part 1: Basic formulation, *Journal of Atmospheric and Solar-Terrestrial Physics*, 59, 371–386, 1997.
- Hitchcock, P., Shepherd, T. G., and Manney, G. L.: Statistical Characterization of Arctic Polar-Night Jet Oscillation Events, *Journal of*
395 *Climate*, 26, 2096–2116, <https://doi.org/10.1175/JCLI-D-12-00202.1>, 2013a.
- Hitchcock, P., Shepherd, T. G., Taguchi, M., Yoden, S., and Noguchi, S.: Lower-Stratospheric Radiative Damping and Polar-Night Jet Oscillation Events, *J. Atmos. Sci.*, 70, 1391–1408, <https://doi.org/10.1175/JAS-D-12-0193.1>, 2013b.
- Iwasaki, T., Yamada, S., and Tada, K.: A parameterization scheme of orographic gravity wave drag with two different vertical partitionings part I: Impacts on Medium-range forecasts, *Journal of the Meteorological Society of Japan. Ser. II*, 67, 11–27, 1989.
- 400 Karpechko, A. Y., Afargan-Gerstman, H., Butler, A. H., Domeisen, D. I., Kretschmer, M., Lawrence, Z., Manzini, E., Sigmond, M., Simpson, I. R., and Wu, Z.: Northern Hemisphere Stratosphere-Troposphere Circulation Change in CMIP6 Models: 1. Inter-Model Spread and Scenario Sensitivity, *Journal of Geophysical Research: Atmospheres*, 127, e2022JD036 992, 2022.
- Karpechko, A. Y., Wu, Z., Simpson, I. R., Kretschmer, M., Afargan-Gerstman, H., Butler, A. H., Domeisen, D. I., Garny, H., Lawrence, Z., Manzini, E., et al.: Northern Hemisphere stratosphere-troposphere circulation change in CMIP6 models: 2. Mechanisms and sources of
405 the spread, *Journal of Geophysical Research: Atmospheres*, 129, e2024JD040 823, 2024.
- Kim, J., Son, S.-W., Gerber, E. P., and Park, H.-S.: Defining sudden stratospheric warming in climate models: Accounting for biases in model climatologies, *Journal of climate*, 30, 5529–5546, 2017.
- Lee, J.-Y., Marotzke, J., Bala, G., Cao, L., Corti, S., Dunne, J., Engelbrecht, F., Fischer, E., Fyfe, J., Jones, C., Maycock, A., Mutemi, J., Ndiaye, O., Panickal, S., and Zhou, T.: Climate Change 2021: The Physical Science Basis. Contribution of Working Group I to the
410 Sixth Assessment Report of the Intergovernmental Panel on Climate Change, chap. Chapter 4: Future Global Climate: Scenario-Based Projections and Near-Term Information, p. 553–672, Cambridge University Press, Cambridge, United Kingdom and New York, NY, USA, <https://doi.org/doi:10.1017/9781009157896.006>, 2021.
- Limpasuvan, V., Thompson, D. W. J., and Hartmann, D. L.: The Life Cycle of the Northern Hemisphere Sudden Stratospheric Warmings, *Journal of Climate*, 17, 2584–2596, [https://doi.org/10.1175/1520-0442\(2004\)017<2584:TLCOTN>2.0.CO;2](https://doi.org/10.1175/1520-0442(2004)017<2584:TLCOTN>2.0.CO;2), 2004.
- 415 Limpasuvan, V., Richter, J. H., Orsolini, Y. J., Stordal, F., and Kvissel, O.-K.: The roles of planetary and gravity waves during a major stratospheric sudden warming as characterized in WACCM, *Journal of Atmospheric and Solar-Terrestrial Physics*, 78-79, 84–98, <https://doi.org/https://doi.org/10.1016/j.jastp.2011.03.004>, structure and Dynamics of Mesosphere and Lower Thermosphere, 2012.
- Liu, H.-L. and Roble, R.: A study of a self-generated stratospheric sudden warming and its mesospheric–lower thermospheric impacts using the coupled TIME-GCM/CCM3, *Journal of Geophysical Research: Atmospheres*, 107, ACL–15, 2002.
- 420 Lott, F.: Alleviation of stationary biases in a GCM through a mountain drag parameterization scheme and a simple representation of mountain lift forces, *Monthly weather review*, 127, 788–801, 1999.
- Lott, F. and Guez, L.: A stochastic parameterization of the gravity waves due to convection and its impact on the equatorial stratosphere, *Journal of Geophysical Research: Atmospheres*, 118, 8897–8909, 2013.

- Manzini, E., Karpechko, A. Y., Anstey, J., Baldwin, M., Black, R., Cagnazzo, C., Calvo, N., Charlton-Perez, A., Christiansen, B., Davini, P., et al.: Northern winter climate change: Assessment of uncertainty in CMIP5 projections related to stratosphere-troposphere coupling, *Journal of Geophysical Research: Atmospheres*, 119, 7979–7998, 2014.
- Maycock, A. C., Randel, W. J., Steiner, A. K., Karpechko, A. Y., Christy, J., Saunders, R., Thompson, D. W. J., Zou, C.-Z., Chrysanthou, A., Luke Abraham, N., Akiyoshi, H., Archibald, A. T., Butchart, N., Chipperfield, M., Dameris, M., Deushi, M., Dhomse, S., Di Genova, G., Jöckel, P., Kinnison, D. E., Kirner, O., Ladstädter, F., Michou, M., Morgenstern, O., O’Connor, F., Oman, L., Pitari, G., Plummer, D. A., Revell, L. E., Rozanov, E., Stenke, A., Visionsi, D., Yamashita, Y., and Zeng, G.: Revisiting the Mystery of Recent Stratospheric Temperature Trends, *Geophysical Research Letters*, 45, 9919–9933, <https://doi.org/https://doi.org/10.1029/2018GL078035>, 2018.
- McFarlane, N.: The effect of orographically excited gravity wave drag on the general circulation of the lower stratosphere and troposphere, *Journal of the atmospheric sciences*, 44, 1775–1800, 1987.
- Nakamura, N.: Large-Scale Eddy-Mean Flow Interaction in the Earth’s Extratropical Atmosphere, *Annual Review of Fluid Mechanics*, 56, 349–377, 2024.
- Nakamura, N. and Solomon, A.: Finite-amplitude wave activity and mean flow adjustments in the atmospheric general circulation. Part I: Quasigeostrophic theory and analysis, *Journal of the Atmospheric Sciences*, 67, 3967–3983, 2010.
- Nakamura, N., Falk, J., and Lubis, S. W.: Why are stratospheric sudden warmings sudden (and intermittent)?, *Journal of the Atmospheric Sciences*, 77, 943–964, 2020.
- Newman, P. A. and Rosenfield, J. E.: Stratospheric thermal damping times, *Geophysical research letters*, 24, 433–436, 1997.
- Pfeffer, R. L.: Comparison of conventional and transformed in the troposphere, *Quarterly Journal of the Royal Meteorological Society*, 113, 237–254, 1987.
- Randel, W. J., Smith, A. K., Wu, F., Zou, C.-Z., and Qian, H.: Stratospheric Temperature Trends over 1979–2015 Derived from Combined SSU, MLS, and SABER Satellite Observations, *Journal of Climate*, 29, 4843 – 4859, <https://doi.org/10.1175/JCLI-D-15-0629.1>, 2016.
- Richter, J. H., Sassi, F., and Garcia, R. R.: Toward a physically based gravity wave source parameterization in a general circulation model, *Journal of the Atmospheric Sciences*, 67, 136–156, 2010.
- Scinocca, J. and McFarlane, N.: The parametrization of drag induced by stratified flow over anisotropic orography, *Quarterly Journal of the Royal Meteorological Society*, 126, 2353–2393, 2000.
- Serva, F.: Transformed Eulerian mean data from the ERA5 reanalysis (daily means), <https://doi.org/10.5281/zenodo.7081436>, 2022a.
- Serva, F.: Transformed Eulerian mean data from the MERRA-2 reanalysis (daily means), <https://doi.org/10.5281/zenodo.6959944>, 2022b.
- Serva, F., Christiansen, B., Davini, P., von Hardenberg, J., van den Oord, G., Reerink, T., Wyser, K., and Yang, S.: Changes in stratospheric dynamics simulated by the EC-Earth model from CMIP5 to CMIP6, *Journal of Advances in Modeling Earth Systems*, 16, e2023MS003 756, 2024.
- Von Zahn, U., Fiedler, J., Naujokat, B., Langematz, U., and Krüger, K.: A note on record-high temperatures at the northern polar stratopause in winter 1997/98, *Geophysical Research Letters*, 25, 4169–4172, 1998.
- Vosper, S.: Mountain waves and wakes generated by South Georgia: Implications for drag parametrization, *Quarterly Journal of the Royal Meteorological Society*, 141, 2813–2827, 2015.
- Warner, C. and McIntyre, M.: An ultrasimple spectral parameterization for nonorographic gravity waves, *Journal of the atmospheric sciences*, 58, 1837–1857, 2001.
- Wu, Z. and Reichler, T.: Variations in the frequency of stratospheric sudden warmings in CMIP5 and CMIP6 and possible causes, *Journal of Climate*, 33, 10 305–10 320, 2020.

Zhao, S., Zhang, J., Zhang, C., Xu, M., Keeble, J., Wang, Z., and Xia, X.: Evaluating long-term variability of the Arctic stratospheric polar vortex simulated by CMIP6 models, *Remote Sensing*, 14, 4701, 2022.