

A gradient-boosted tree framework to model the ice thickness of the World's glaciers (IceBoost v1.1)

Niccolò Maffezzoli^{1,2,3}, Eric Rignot^{2,4}, Carlo Barbante^{1,3}, Troels Petersen⁵, and Sebastiano Vascon¹

¹Ca' Foscari University of Venice, Venezia, Italy

²University of California Irvine, Irvine, USA

³Institute of Polar Sciences, National Research Council, Venezia, Italy

⁴Jet Propulsion Laboratory, Pasadena, USA

⁵Niels Bohr Institute, University of Copenhagen, Copenhagen, Denmark

Correspondence: Niccolò Maffezzoli (niccolo.maffezzoli@unive.it)

Abstract. Knowledge of glacier ice volumes is crucial for constraining future sea level potential, evaluating freshwater resources, and assessing impacts on societies, from regional to global. Motivated by the disparity in existing ice volume estimates, we present IceBoost, a global ~~Machine Learning framework to model individual glacier ice thickness distributions~~machine learning framework trained to predict ice thickness at arbitrary coordinates, thereby enabling the generation of spatially distributed thickness maps for individual glaciers. IceBoost is an ensemble of two gradient-boosted trees trained with 3.7 million ~~globally-available~~globally-available ice thickness measurements and an array of ~~34~~39 numerical features. The model error is similar to existing models outside ~~the~~ polar regions and up to 30-40% lower at high latitudes. Providing supervision by exposing the model to available glacier thickness measurements reduces the error by up to a factor ~~of~~ 2 to 3. A feature ranking analysis reveals that geodetic information ~~is~~are the most informative ~~input variables~~input variables, while ice velocity can improve ~~the~~ model performance by 6% at high latitudes. A major feature of IceBoost is ~~the ability~~a capability to generalize outside the training domain, i.e. ~~producing meaningful ice thickness distributions maps~~ in all regions of the ~~world~~World, including in the ice sheet peripheries.

1 Introduction

Under atmospheric heating by human forcing, with few exceptions, glaciers have been retreating worldwide at unprecedented rates (Hugonnet et al., 2021), with projections predicting one third of the mass loss at the end of the century in the most optimal +1.5°C scenario (Rounce et al., 2023). At present, glacier melting contributes to sea level rise equally to ice sheets (Zemp et al., 2019; Masson-Delmotte et al., 2021), with far reaching implications for coastal communities worldwide (Pörtner et al., 2019). Ice mass loss from glacier shrinkage also impacts water availability for an estimated population of 1.9 billion people living in or depending on glacier-sourced freshwater (Huss and Hock, 2018; Rodell et al., 2018; Immerzeel et al., 2020).

Accurate and continuous knowledge of glacier ice thickness spatial distributions over time is thus of critical importance to inform and refine numerical models to better simulate future scenarios under a fast-changing climate (Zekollari et al., 2022). Measurement campaigns and surveys have led to direct ice thickness measurements for about 3,000 of the existing more

than 216,000 glaciers (Welty et al., 2020). The data is unsurprisingly sparse, albeit radar surveys from airborne campaigns have significantly increased the amount of measurements and coverage, particularly over polar regions. Knowledge of absolute glacier volume thus heavily relies on models, or physical and mathematical interpolations.

An array of models has been proposed over time, with varying degrees of applicability (Farinotti et al., 2017). Only two ~~exist for~~ have been applied to all glaciers on Earth. They are based on principles of ice flow dynamics and use surface characteristics, including ice surface velocity. The mass conservation approach by Huss and Farinotti (2012) has been extended with four additional regional models to produce a global consensus ensemble (Farinotti et al., 2019). More recently, Millan et al. (2022) also provided a global solution, leveraging a complete coverage of glacier velocities and using a shallow-ice approximation (Cuffey and Paterson, 2010) ~~-with basal sliding~~. The degree of applicability of thickness inversion methods is broad. The main challenges relate to the validity of the underlying physical assumptions, parameter calibration, and availability and quality of model input data. As an example, the shallow ice approximation simplifies the stress field by neglecting longitudinal stresses, lateral drag, and vertical stress gradients. This setup works well in the interior of ice sheet, or with ice masses with small depth to width ratios. On mountain glaciers, Le Meur et al. 2004 found that this approach can be acceptable for slope values less than 20%. In relation to challenges of parameter calibration, Millan et al. 2022 tuned the creep parameter A on regional-basis, using ice thickness measurements, if present, and, if not, from other regional averaged values. The basal sliding was parametrized indirectly by imposing assumptions of surface ice velocity-to-slope ratios. Input data are crucial - for example, a shallow ice approximation can only be used if the ice velocity product is available. For glaciers not covered by this data, the method cannot be applied. Previous methods have also suffered from incomplete surface ice velocity, which is now becoming a globally available, as well as quality surface mass balance data. We refer the readers to Farinotti et al. 2017 for a comprehensive overview of thickness inversion models, their advantages and limitations.

A parallel line of research is exploring machine learning methods. Few approaches based solely on deep learning have been explored so far. Clarke et al. (2009) proposed a multilayer perceptron trained on neighboring deglaciated regions to reconstruct glacier bedrocks. This method does not invoke physics but assumes similarity between glacier bedrocks and topography of nearby ice-free landscapes. Convolutional neural networks (CNN) are now the state-of-the-art architectures for physical models emulators, and they have gained traction in glaciology with Jouvet et al. (2022); Jouvet (2023). Trained to represent physical models with much cheaper computation cost, emulators have the versatility to both compute forward modeling and to invert for ice thickness. Uroz et al. (2024) trained a CNN to produce ice thickness maps on 1,400 Swiss glaciers, by ingesting surface velocity and Digital Elevation Model (DEM) maps, with their ground truth consisting of ice thickness fields obtained by a combination of experimental data and glaciological modeling. Growing attention is being directed to physics-informed neural networks, as they provide a natural setup to both generate an approximate solution of a differential equation and minimize the misfit with observational data, if any. For a review, we refer the readers to Liu et al. (2024).

In this work, we present IceBoost, a ~~comprehensive, data-driven~~ machine learning system designed for modeling ice thickness across all of Earth's glaciers, including continental glaciers, ice caps, and ice masses at the edges of ice sheets. The method is not explicitly based on any physical law. It is fully data-driven, yet contains the versatility to incorporate many relevant features, that do not easily lend themselves to classical physics modeling. The only theoretical consideration of significance

relates to the the architecture choice. We approach the problem as a machine learning regression task, predicting ice thickness at any arbitrary point within a glacier’s boundary. IceBoost employs an ensemble of two gradient-boosted decision tree models, XGBoost ~~and CatBoost, which are trained using~~ (Chen and Guestrin, 2016) and CatBoost (Prokhorenkova et al., 2018), both trained with ice thickness as target. The target data is naturally tabular-structured (localized-in-space measurements) and is extracted from the Global Ice Thickness Database (GlaThiDa, or GTD hereafter), a centralized effort by the World Glacier Monitoring Service (WGMS)~~and~~, detailed by Welty et al. (2020). ~~We inform the model~~ The model is informed using a set of ~~34-39~~ numerical features, extracted from an array of (either gridded or tabular) products and organized in a tabular structure. While ~~convolutional layers and deep learning CNN~~ are best suited ~~for images in this context, when features are heterogeneous and arranged in a tabular structure~~ to operate on gridded products (images), when data is tabular-structured, tree-based ~~regressors models~~ often provide a much faster and ~~more powerful alternative~~ (Grinsztajn et al., 2022). ~~powerful alternative to neural networks,~~ as highlighted from theoretical considerations (Grinsztajn et al., 2022) and empirically from machine learning practitioners. CNNs are also typically very demanding in terms of training data, computation power, and ~~require elaborate methods for the interpretability of internal layers.~~ Instead, gradient-boosted systems allows for a straightforward interpretability in terms of which features are important for the thickness inversion of individual glaciers, using Shapley values (Lundberg and Lee, 2017)

In the following sections we introduce the model concepts (Sect. 2), describe its feature interpretability (Sect. 3), illustrate the model inference ~~on a global scale~~ and compare its performance against existing global solutions (~~Seets. 4-??~~, Sect. 4), ~~describe some limitations and possible improvements (Sect. 5)~~, consider the computational cost (Sect. 6), before we conclude (Sect. 7).

2 Methods

Hereafter, we describe the datasets used to ~~produce the features needed to construct the training set, as well as to generate the model inputs at inference time. A more detailed description of the features, as well as the imputation policies, is provided~~ generate the features for model training and inference. The mass balance feature is presented in Appendix A for brevity.

2.1 Dataset collection and training dataset Datasets

As ground truth, we use the GlaThiDa v. 3.1.0 dataset (GlaThiDa Consortium 2020; Welty et al. 2020), ~~with which comprises 3.8 million ice thickness measurements~~, integrated with an additional 11,000 measurements from 44 glaciers included in the IceBridge MCoRDS L2 Ice Thickness product (Paden et al., 2010). The model is trained using the glacier geometries digitized and stored in the Randolph Glacier Inventory (RGI) version v.62 (Pfeffer et al., 2014). This version extends version 6 with additional 1,000 ice bodies from the Greenland periphery (connectivity level 2 to the ice sheet), hereafter still referred to as glaciers. RGI v.62 thus provides the opportunity to train and test the model ability to reproduce thickness patterns in an ice sheet flow domain, a region with an extensive amount of available thickness data from the IceBridge mission. RGI glacier

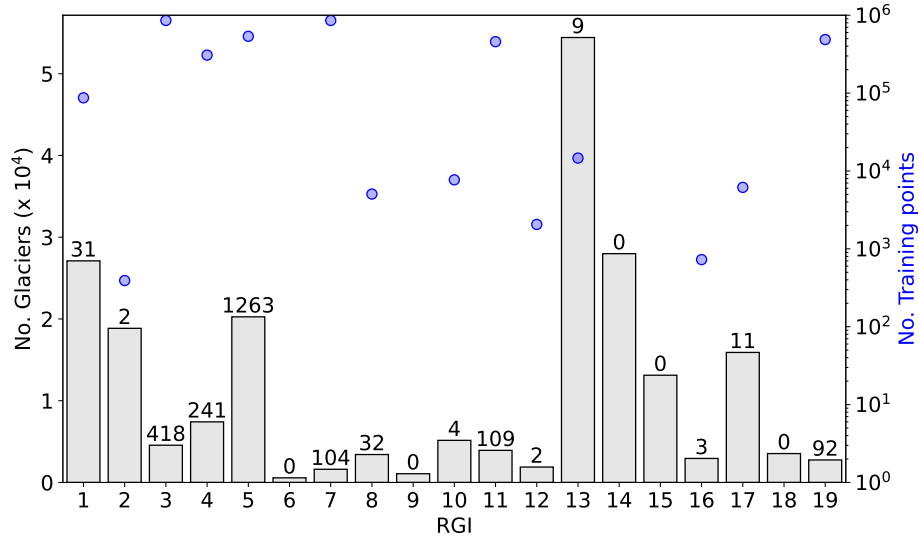


Figure 1. Statistics of glaciers and training data for each Randolph Glacier Inventory (RGI) region. The ~~numbers~~ total number of glaciers in each region is represented by bar lengths on the ~~bars~~ left axis (in units of 10^4). The numbers over each bar represent the ~~count~~ absolute counts of glaciers with available training data (blue circles, right axis). Out of 216,000 glaciers worldwide, only 2,300 contain at least one training point. RGI regions 6, 9, 14 and 15 have no training data.

geometries include both the glacier external boundaries and the ice-free regions contained therein (hereafter referred to as nunataks). At inference time, IceBoost supports geometries from either RGI v.62 ($n=216,502$) or RGI v.70 ($n=274,531$).

The features used to train the model are computed from various datasets ~~and products~~, presented hereafter (Table 1). Elevation and geodetic information are ~~extracted or calculated~~ computed from the global Tandem-X 30m Edited Digital Elevation Model (EDM, Bueso-Bello et al. 2021; González et al. 2020; Martone et al. 2018). ~~The DEM choice is determined by best trade-off between accuracy, resolution, and computational cost.~~ Mass balance information Modeled spatially distributed surface mass balance from Greenland and Antarctica is obtained from the Regional Atmospheric Climate Model (RACMO2) products, available at different spatial resolutions (Noël et al. 2018; Noël and van Kampenhout 2019; Noël et al. 2023) ~~as well as from the Hugonnet et al. (2021) dataset of glacier integrated values.~~ Glacier-integrated mass balance values are imported from Hugonnet et al. (2021). Temperature at 2-meter (t2m, hereafter) fields are taken from ERA5 and ERA5-Land (Hersbach et al., 2020; Muñoz-Sabater et al., 2021). ~~We use Millan et al. (2022) surface~~ Surface ice velocity fields are taken from Millan et al. (2022), except for ~~the Antarctic glaciers listed in Antarctica~~ (RGI 19) and Greenland (RGI 5) peripheries, where we leverage use the velocity products from Mouginot et al. 2019 and Joughin et al. 2016, respectively. ~~These datasets are the most comprehensive and up-to-date products available for glacier and ice sheet velocities. All the other features are directly imported or calculated based on datasets available from the Open Global Glacier Model (OGGM, v. 1.6.1, Maussion et al. 2023).~~

Our solutions are compared with existing global models, while acknowledging that additional solutions exist with regional validity. Outside the ice sheets, we compare ~~our model solutions~~ with Farinotti et al. (2019)’s ensemble and ~~with the shallow ice approximation by~~ Millan et al. (2022). In the Antarctic periphery (RGI 19), we compare with Farinotti et al. (2019) and BedMachine v3 (Morlighem, 2022a). In the Greenland periphery, we compare with Farinotti et al. (2019) and BedMachine v5 Morlighem (2022b). ~~The latter uses Millan et al. (2022) for isolated glaciers and ice caps, and mass conservation or kriging interpolation elsewhere.~~

We employ OGGM’s version (v.62) of glacier geometries, which provides a slight revision of the official Randolph Glacier Inventory (RGI) v. 6 version, and at the same time adds an additional 1,000 ice bodies located in the Greenland periphery with direct connection to the ice sheet, hereafter still referred to as glaciers. OGGMv62 thus provides the opportunity to also train and test the model ability to reproduce thickness patterns in an ice sheet flow domain, a region with an extensive amount of available thickness data. We point out that in this work only the thickness data contained in GlaThida has been used, rather than the whole set of measurements used by the two BedMachine models. OGGM glacier geometries include both the glacier external boundaries and ~~BedMachine Greenland and Antarctica are complete modeled bed topographies and ice thickness maps of the ice-free regions contained therein (hereafter referred to as nunataks).~~ IceBoost is deployed globally on the full set of 216,502 existing glaciers as defined in OGGMv62 ~~two ice sheets.~~ They are constructed using different methods, in different regions, and continuously updated. Mass conservation is typically applied where the knowledge of surface speed is robust and sufficient. Elsewhere, other methods like kriging interpolation and streamline diffusion are adopted. At the time of writing, BedMachine Greenland v5 uses Millan et al. (2022) for isolated glaciers and ice caps, and mass conservation or kriging interpolation elsewhere.

A total set of 38 features are extracted from the above-mentioned datasets and used for training (Table 1). Some features are local, i.e., vary within the glacier, while some are per-glacier constants. The per-glacier features are: glacier area, mean aspect, maximum length and average slope, minimum, median, and maximum elevations, and difference between maximum and minimum elevation. These latter four features are directly imported from OGGM at training time, while at inference time they are calculated from Tandem-X DEMs. The 2000–2020 mean glacier mass balance values are imported from Hugonnet et al. (2021). We inform the model with the distance to the closest ice-free location (d_{noice} , Appendix ??) and with the distance from the ocean (d_{ocean}). The model is also informed with mean annual 2-meter temperature (Appendix 2.3.3). The local elevation, curvature, aspect, slopes, and velocity features are described in Appendix 2.3.

2.2 Time tagging and data pre-processing ~~Training features~~

~~The datasets used in this~~ The model is trained with a set of 39 numerical features, extracted from the above-mentioned datasets (Table 1). Some features are local, i.e., vary within the glacier; others are per-glacier constants. We use the main variables used for a steady-state mass conservation-based inversion or physical-based approximations (Huss and Farinotti, 2012; Millan et al., 2022) : ice velocity, mass balance and spatial first and second-order gradients of the elevation field (hereafter referred to as slope and curvature, respectively). We extend the amount of information with geometrical features that relate to topographies (e.g. U-shaped valleys) crafted in alpine landscapes (distance to margins or internal deglaciated patches), and metrics of glacier size

which are typical of scaling approaches (Bahr et al., 2015). We also use variables that carry a fingerprint of thermal regime and climate setting (temperature and distance from the ocean). It is worth mentioning that in a gradient-boosted tree approach, the same variable can be used more than once in the decision tree scheme. For training, the features are calculated and stored offline in a training dataset. At inference time, all features are calculated on-the-fly.

2.2.1 Constant features

The following features are per-glacier constants: area ($Area$), perimeter ($Perimeter$), glacier minimum (z_{min}), maximum (z_{max}) and median (z_{med}) elevation, glacier elevation delta ($\Delta z = z_{max} - z_{min}$), length (L_{max}), area of glacier cluster ($A_{cluster}$).

The elevations are calculated from the DEM. The areas, perimeter and glacier length are calculated from the glacier geometries. The areas only include the iced region and exclude nunataks. The area of a glacier cluster is determined by summing the areas of all glaciers connected to the glacier under investigation, considering connections up to a maximum level of 3. This feature indicates whether a glacier is isolated ($Area = A_{cluster}$) or part of a larger system. The glacier length (L_{max}) is calculated as the maximum distance between any pair of points that lie on the glacier convex hull (Appendix A1). The glacier convex hull is referred to as the smallest convex set that contains the glacier itself. Except for the elevations, the other constant features are metrics of glacier size. Extensive previous research has been directed to empirical scaling laws to relate glacier volume to, for example, its area (Bahr et al., 2015). IceBoost retains the information carried by metrics of glacier size in a machine-learning approach, without imposing explicit laws.

2.2.2 Distance from ice free regions (d_{noice}) and distance from the ocean (d_{ocean})

Given a point x_0 inside a glacier g , we calculate the distance to the closest free pixel. Such a target point may lie within or outside the glacier. We define a glacier cluster as the collection of all neighboring glaciers. For example, three glaciers $\{g_1, g_2, g_3\}$ form a cluster if g_1 shares a pixel with g_2 and g_2 shares a pixel with g_3 , despite g_1 and g_3 not being necessarily adjacent glaciers. The glacier cluster is calculated by detecting, starting from the glacier that contains the point x_0 , all its proximal neighbors. The procedure is repeated iteratively for every neighboring glacier until no further neighbors are found. In discrete mathematics, this structure is a graph. Once the cluster is computed, all internal shared borders (the ice divides) of the cluster are removed, while internal ice-free nunataks are kept. This procedure potentially results in collections of up to thousands of geometries per cluster. The calculations to create the cluster are made by setting up a graph-network structure, using the NetworkX python library (Hagberg et al., 2008).

The minimum distance from the point x_0 to an ice-free region (d_{noice}) is the minimum of distance between x_0 and all points x lying on the cluster's valid geometries:

$$d_{noice}(x_0) = \arg \min_{x \in \text{cluster}} d(x_0, x) \quad (1)$$

The valid geometries can either be the cluster's external boundaries or all the cluster's nunataks. The distances are computed by querying K-dimensional trees, an approximate nearest neighbor lookup method, on the geometries defined in the Universal Transverse Mercator (UTM) projection. We compare the proximal points obtained from this method with those from a brute-force calculation and find indiscernible results. The pipeline is computed both as a feature for the creation of the training dataset and at inference time for every generated point. For computational speedup, at inference time, the number of geometries K used by the KD-tree can be capped to the closest 10,000 geometries. An example for d_{noince} is shown in Figure A1.

Similar to the distance to ice-free regions, we calculate the closest distance to the ocean. We use the Global Self-consistent, Hierarchical, High-resolution Geography Database (GSHHG), containing all the world's shoreline geometries, in resolution "f" (full). Like d_{noince} , d_{ocean} is calculated by querying a KD-tree on the geometries, in UTM projection. We find this feature to be relatively unimportant on continental glaciers far from the coasts, but increasingly informative at high latitudes where many marine-terminating glaciers are located.

2.3 Elevation, curvature, slope

We use the DEM to calculate the following features: local elevation z , elevation above the glacier lowest elevation $z - z_{min}$, elevation normalized between 0 and 1 $z_{01} = (z - z_{min}) / (z_{max} - z_{min})$, curvature and slope.

To calculate the slopes, the DEM tiles are first projected in UTM, differentiated and the resulting vector magnitude is convoluted using Gaussian filters of different kernel widths to capture the variability across different spatial scales: 50m, 75m, 100m, 125m, 150m, 300m, 450m and an adaptive filter af , Eq. 2:

$$af = \frac{2A}{\pi L_{max}} \quad (2)$$

where A and L_{max} are the area and glacier maximum length features. af corresponds to the semi-minor axis of an ellipse of area A , and semi-major axis $L_{max}/2$. This kernels aims at estimating the glacier spatial size. For values lower than 100 or above 2000 meters, af is capped to these values. Each training point yields eight slope features. The purpose of using many kernels is to allow the model the freedom to account for different glacier spatial scales. For small glaciers the small kernels are found to be more important than the bigger kernels, and vice versa (Fig. 2).

To limit the computational cost, for the calculation of the curvature, the elevation field is smoothed using only the 50, 100, 150, 300, 450 and af kernels, thus resulting in 6 features per point. All geodetic features are obtained from linear interpolation.

The model is also informed with glacier-integrated (i.e. mean) values of slope, curvature, and aspect (*Slope*, *Curvature* and *Aspect*, in Table 1).

2.3.1 Mass balance

Glacier thickness is controlled by ice flow and mass balance (Cuffey and Paterson, 2010). The latter is the net result of positive precipitation and mass loss mechanisms both at the surface and at the glacier bed. We use two different mass balance features.

200 The first is the glacier-mean 2000-2020 mass balance values imported as-is from Hugonnet et al. (2021). Such dataset is available for RGI v6, and is therefore suitable to train our model and for inference over RGI v6. For inference on the latest RGI v7 geometries, we reference the two RGI datasets, or impute the regional mean for missing ids. The second mass balance feature is local map of mass balance, obtained by downscaling glacier-integrated values for non-polar glaciers, or directly interpolating RACMO for ice sheet glaciers. It is discussed in Appendix A2.

205 2.3.2 Surface velocity

Presently, the surface ice velocity is available with almost global coverage, and is therefore used as input feature. The velocity magnitude fields are smoothed with the six kernels: 50m, 100m, 150m, 300m, 450m and *af*, and linearly interpolated. The velocity products used have different resolution: Millan et al. (2022) (all regions except for Greenland and Antarctica), Joughin et al. (2016) (Greenland) and Mouginot et al. (2019) have resolutions of 50m, 250 and 450 meters, respectively. If
210 the product resolution is higher than any kernel size, the kernels are set to match the product resolution. For every training point a total of six velocity features are obtained. At inference time, the missing velocity features are treated according to the imputation policy described in Appendix B2.

2.3.3 Temperature

The model is informed with local 2-meter temperature (t2m), as a loose regional indicator of thermal regime and ice thickness.
215 Although a weak indicator, this variable may still be useful in a decision tree, helping to split the data at earlier stages and enabling more powerful features to drive predictions at deeper levels of the tree structure. We also use this feature to provide regional context to a global model. We use ERA-5 Land (0.1 degree grid spacing, Muñoz-Sabater et al. 2021) and, for the missing pixels caused by imperfect fractional land masks along the coastlines and islands, we incorporate the ERA5 t2m field (0.25 degree resolution, Hersbach et al. 2020), bilinearly interpolated to the ERA-5 0.1 degree resolution. We consider monthly
220 maps over the 2000-2010 and average them over this time period to generate one single global temperature field. This map is linearly interpolated the at the measurement points (training) or at the generated points (inference time).

2.4 Data pre-processing and time tagging

A significant number of zero-thickness measurements are found in GlaThiDa. While some of these measurements are found close to glacier boundaries, at times they are found inside glacier geometries. We decided to discard all GlaThiDa zero-thickness
225 entries. GlaThiDa thickness data from glacier 'RGI60-19.01406' (peripheral glacier in Antarctica, 65.5 S, 100.8 E, maximum elevation 500 m a.s.l.) is erroneously registered with a factor 10 too much (up to more than 3,000 meters of ice). We divide this data by 10. All datasets used in this work are tied to different time intervals. The glacier outlines refer to 2000-2010 for most glaciers (Pfeffer et al., 2014). The ice surface velocity outside the ice sheets is tied to 2017-2018 (Millan et al., 2022). Tandem-X EDEM results from acquisitions between 2011 and 2015. The GlaThiDa dataset stores ice thickness measurements
230 from 1936 up to 2017. The ERA5 and ERA5-Land fields are tagged to 2000-2010. To homogenize temporally as much as

possible all datasets in the creation of the training set, while maximizing its size, all ice thickness measurements older than 2005 are discarded. In addition, we discard all measurements that lie outside glacier boundaries or inside nunataks. Overall, the model is conservatively estimated to be trained on data spanning from 2005 to 2017.

235 The resulting GlaThiDa dataset comprises 3.7 million points collected from 2300 glaciers (Fig. 1). To reduce the amount of correlated data close to each other and reduce computational costs, the training dataset is spatially downsampled. Each glacier is divided into a grid of 100x100 lat-lon pixels, and the per-pixel average is computed for all features and thickness data. The original 3.7 million point dataset is thus encoded into a 300,000-point final training dataset. ~~For comparison with existing solutions of 300,000 entries. For baseline comparison,~~ the thickness fields ~~of from~~ Millan et al. (2022) and Farinotti et al. (2019) ~~have been similarly were also~~ downsampled.

240 2.5 Model

We utilize two Gradient-Boosting decision Tree (GBDT) models (Friedman, 2001). A GBDT model consists of multiple additive decision trees and is trained iteratively. In each iteration, a new decision tree is added and tasked to fit the residuals of the previous tree by minimizing an objective function. Training continues until a stopping criterion is met, either reaching a maximum number of iterations or detecting overfitting through a separate validation dataset. IceBoost is an ensemble model
245 comprising two GBDT variants: XGBoost (Chen and Guestrin, 2016) and CatBoost (Prokhorenkova et al., 2018). Both models use a second order Taylor approximation of the objective function and employ a depth-wise tree growth scheme. However, CatBoost builds symmetric trees, which tends to act as a regularizer against overfitting, and handles categorical features natively without requiring one-hot encoding. We train both models independently using a squared loss, $l = (y - \hat{y})^2$, ~~where y~~
 $l = (h - \hat{h})^2$, ~~where h~~ represents the target thickness data from GlaThiDa and ~~\hat{y} represent the predicted values~~ \hat{h} ~~represents the~~
250 modeled thickness. The IceBoost ensemble combines them by averaging their respective predictions.

Despite the different climates and glacier ice flow regimes in various regions, we decide not to specialize IceBoost regionally but rather to build one single model and optimize its hyperparameters globally. The decision is driven by the ease of deployment and the availability of certain features (particularly mass balance, temperature and distance from the ocean) that can provide some regional context to the model. It should be noted that the model optimal parameters may reflect the imbalance of
255 the training data among different regions, potentially making it slightly more biased towards polar regions where more training data is available. Potential solutions to specializing the model regionally would include optimizing the hyperparameters separately for each region and/or applying a heavier penalty within the regions of interest. We note that high thickness values are underrepresented in the training dataset (Supp. Info, Fig. 1). However, no significant bias is observed in regions with the thickest ice, such as Greenland and Antarctica (Table 2).

260 2.6 Model training, hyperparameter optimization and performance

Hyperparameter tuning is conducted independently for both XGBoost and CatBoost, both referred to as "model" for simplicity, and in an identical manner, using a Bayesian hyperparameter optimization framework (*Optuna*, Akiba et al. 2019). The best parameters are determined by training ~~the each~~ model over $n=200$ trials. In each trial, a different set of hyperparameters is

selected, the model is trained on an 80% random split of the data, and the objective error loss is evaluated and monitored on the remaining 20% split. ~~To mitigate the~~ Considering that the target ice thickness variable is not uniformly distributed (Supp. Info. Fig. 1), ~~to reduce the risk of overfitting by tuning parameters tailored to a particular split, we randomize data split,~~ the 80%-20% data split in each trial. We acknowledge that typically, hyperparameter optimization is carried out by leaving out a test set for offline performance evaluation. However, given the extreme heterogeneity of the glacier regimes, thickness and feature space, ~~we decided to find the best parameters by exposing the entirety of the data~~ random split is recreated every time the optimizer calls the objective function during hyperparameter search. This approach ~~avoids the risk of overfitting by specializing the best parameters to the peculiarities of a specific~~ effectively incorporates the dataset's variability as part of the data considered during hyperparameter search ~~noise~~. Its main advantage is that it helps identify hyperparameters that generalize well across different data splits, aiming for a more robust model. The trade-off ~~of our approach~~ is that randomizing the data splits in each trial introduces variability in the objective function. ~~This variability can potentially make it harder to converge to,~~ which can make convergence to the optimal hyperparameters more challenging. However, ~~it also helps in identifying hyperparameters that generalize well across different data splits, leading to a more robust model. Additionally, such~~ variability in the loss can generally be handled in Bayesian optimization is generally manageable within Bayesian optimization frameworks. To further prevent overfitting by reducing the model complexity, we enforce early stopping in each ~~trial~~ optimization trial (for both XGBoost and CatBoost). Early stopping is a form of regularization that halts training if performance on the 20% split does not improve for ~~n consecutive rounds, with n set to a fixed number of rounds, n=50~~. The best hyperparameters are identified as those selected in the trial for which the objective loss is minimized (Appendix A3). ~~The XGBoost model is also optimized with respect to the following parameters that combat overfitting: λ , α , and subsample.~~

We acknowledge that hyperparameter optimization is typically performed by leaving out a smaller third set for offline evaluation. However, we found that such evaluations were highly dependent on the data split, due to the stochasticity of the random split and the non-uniformity of the target variable. This dependency made the results less informative. For example, if Antarctic high-thickness data were included in the test set, the test set error would be disproportionately high. Consequently, no separate test set was created, and the entire dataset was allocated to training (80%) and validation (20%).

IceBoost performance is quantified by fixing the best set of hyperparameters, training the model and evaluating its performance regionally, using a cross-validation scheme (Table 2). ~~Performance metrics include accuracy (We evaluate i) the median of the residual distribution $res = GTD - IceBoost$) and precision (root mean squared error). Evaluation is conducted and ii) the root mean squared error (RMSE),~~ on a test set consisting of a 20% random split of the regional data. Cross-validation involves training the model $n=100$ times, each time randomizing the regional 20% test split. Two different routines are considered to produce the 20% test split. In the first routine ('with supervision'), the 20% measurements are taken from glaciers where other data is considered for the 80% training split. This approach allows the model to be trained on one glacier data and tested on other locations within the same glacier (no data used for training is ever used for testing). In the second routine ('without supervision'), we impose a stricter constraint by creating the 20% test from completely unseen glaciers.

~~Due to insufficient or limited data, the evaluation of~~ The model performance is reported in Table 2 for regions with sufficient data in the training set (Fig. 1). We cannot evaluate the model performance ~~is not considered robust~~ in regions 2, 6, 9, 14, 15,

16, and 18, hence it is not reported. Performance evaluations in [due to too few or absent data](#). For regions 10, 12, 13, and 17 ~~are~~
300 ~~considered indicative~~, where the limited data is available, statistics are provided but considered only indicative of regional
performance. Nevertheless, ~~similar errors are a similar model behavior is likely~~ expected for regions ~~with comparable that are~~
~~geographically close~~, have a similar ice flow regime and ~~mean thickness~~ similar mean thickness or feature values: 13-14-15
~~, and 6-7-8-9, and 11-12-18, (extensive Himalayan glaciers), and 6-7-9 (high latitude glaciers and ice caps), and 8-11-12-18~~
~~(small-to-medium size mountain glaciers). An example of one iteration of training without supervision is displayed in the~~
305 ~~Supplementary Information (Supp. Info., Figs. 3-4).~~

~~We observe an improvement in both accuracy and precision of up to 10% across all regions when combining the predictions~~
~~The performance of XGBoost and CatBoost, compared to using XGBoost alone. Such an improvement supports the effectiveness~~
~~of a model ensemble. Overall, IceBoost evaluated individually on ground truth data, is comparable within 1-sigma statistical~~
~~fluctuations, with neither consistently outperforming the other (Supp. Info., Table 1). A qualitative comparison at inference~~
310 ~~time on selected glaciers suggests the same conclusion holds, with similar predicted patterns even in the absence of ground~~
~~truth data (Academy of Sciences ice cap shown in Supp. Info., Fig. 2). We create IceBoost by taking an unweighted mean of~~
~~XGBoost and CatBoost. Alternative approaches, such as applying regional weighting or per-glacier weighting based on feature~~
~~explainability, could be explored but are left for future work.~~

[Evaluated against ground truth data](#), IceBoost error is comparable to state-of-the-art global solutions outside polar regions
315 and up to 30-40% lower in polar regions (Table 2). The much lower errors when training with supervision indicate that pro-
viding the model with glacier context proves to be beneficial. While this conclusion seems consistent on a regional scale,
we find that on a glacier-by-glacier basis, the model is not always sensitive to additional tie points, regardless of where
the context is provided (further discussion in Sect. 4). In the Greenland and Antarctic peripheries, it is noteworthy that
~~Model-2 (Farinotti et al., 2019)~~ [Farinotti et al. \(2019\) model](#) performance is only evaluated on glaciers not connected to the ice
320 sheet. ~~Model-1 performance in Greenland combines Millan et al. 2022~~ [In Greenland \(RGI 5\), the reported statistics combine](#)
[Millan et al. \(2022\)](#) shallow ice approximation for glaciers and ice caps not connected to the ice sheet, ~~and with~~ Morlighem
2022b kriging/mass conservation elsewhere. In [the Antarctic periphery \(RGI 19\)](#), as ground truth data are only found in the
Antarctic ~~periphery (continent and none in the Subantarctic islands)~~, ~~Model-1 is entirely BedMachine v3~~ [the reported statistics](#)
[refers entirely to BedMachine v.3](#) (Morlighem, 2022a).

325 ~~IceBoost-trained modules (XGBoost and CatBoost) are deposited on Zenodo as .json and .ebm files, respectively.~~

3 Model interpretability

To understand the relative strengths of the features for the model prediction, we carry out a feature ranking analysis using
SHapley Additive exPlanations (SHAP, Lundberg and Lee 2017). For the analysis we consider the XGBoost model. ~~SHAP~~
[Shapely](#) is a framework based on cooperative game theory where the goal is to equitably distribute the total gains to players
330 (i.e. the model features) based on their individual contributions. A feature SHAP value reflects its marginal contribution to
the model, specifically the change in the model's prediction when the feature is added or removed. Positive (negative) SHAP

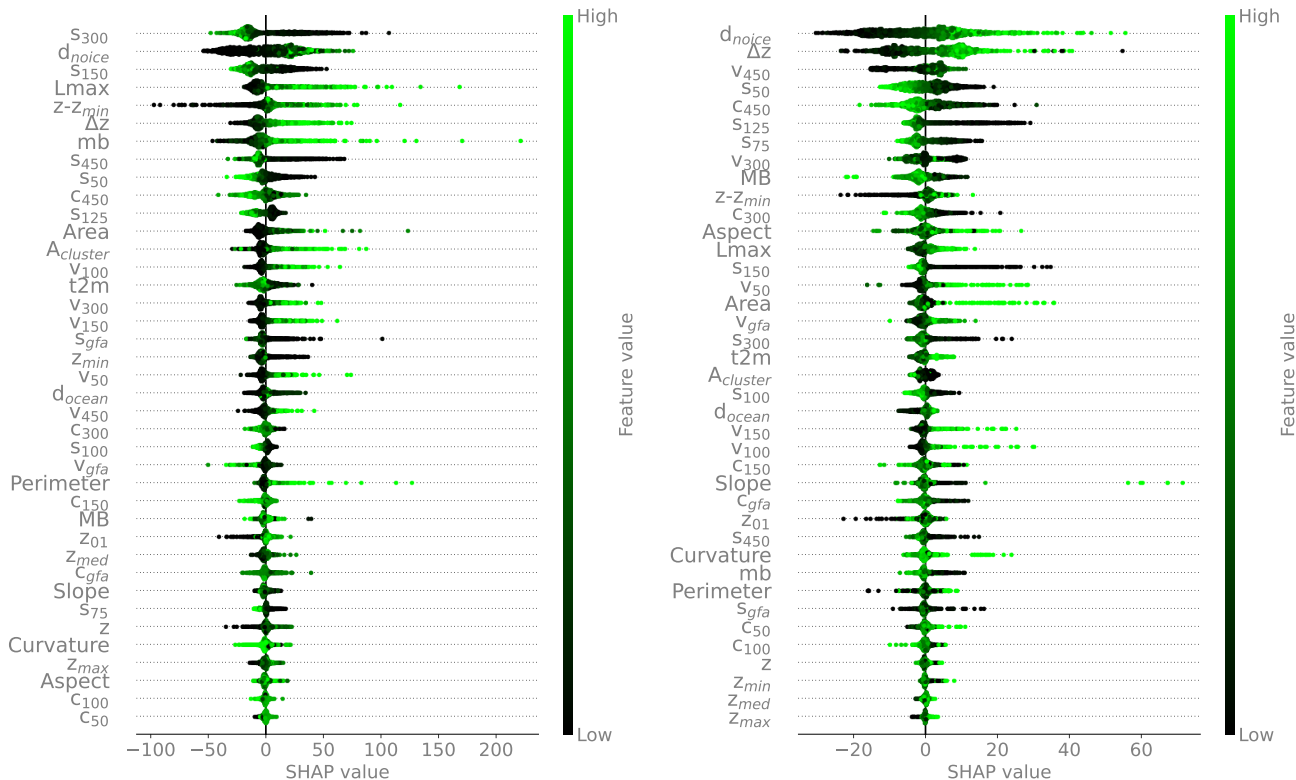


Figure 2. Left: SHAP analysis of n=2,000 random instances (each ice measurement instance is represented by a dot on each feature row). Features are ordered from top to bottom by decreasing mean absolute SHAP values: top features are more important. The horizontal coordinate indicates how the model output changes with respect to its baseline, in a positive or negative direction, hence how predictive are the features. The color bar reflects the normalized feature variability range. See Table 1 for the variable names. Right: the same analysis is carried out on a random set of points in RGI 11 (Central Europe). See Fig. A3 for the feature rankings based solely on absolute mean SHAP values.

values indicate that the feature increases (decreases) the model prediction with respect to its average baseline (the sum of all SHAP values for a given instance equals the model’s prediction for that instance), while SHAP absolute values represent the magnitude of the feature contribution to the model prediction, regardless of the direction.

335 A SHAP analysis is shown in Figure 2 for a random [global](#) subset of n=2,000 training data points. Each instance is represented by a dot. The features are ordered from top to bottom by decreasing mean absolute values, i.e. more important features are on top (a less informative but more compact visualization is shown in Figure A3). The feature SHAP values are the x-coordinates, while the feature values are represented in the color bar. As an example, points with high distance-from-ice-free regions values typically have higher SHAP values, i.e., will ~~lead the model to~~ [push the model towards](#) higher thickness pre-

340 ditions. For almost all features except for the slope and the curvature, higher feature values will lead to higher ice thickness predictions.

Local slopes and curvature are important features, highlighting the DEM quality as a crucial input for accurate glacier thickness estimates ([see Appendix B5 for DEM-driven model artifacts](#)). The elevation from the glacier minimum, rather than [absolute](#) elevation above sea level, is found to be most informative.

345 The closest distance to ice-free areas is a powerful feature ~~-. Often that often mirrors ice thickness spatial distribution in continental valley glaciers, the distribution of this feature mimics well the distribution of ice thickness.~~ This feature retains its power even in large glacier systems with multiple nunataks (e.g., Fig. A1).

As known from area-volume scaling models (Bahr et al., 2015), metrics for glacier extent ($Area$, L_{max}) are found to be powerful predictors. By providing regional context for different flow regimes and [glacier types metrics of continentality](#), the 2-meter temperature ~~is, $t2m$, and distance to the ocean d_{ocean} , are~~ found to be ~~useful~~ [moderately informative](#). The local mass balance [mb](#) (Appendix A2), is also found to be relatively informative, despite our ~~simplified approach in modeling the glacier mass balance rate of change with elevation on a regional scales~~ [simple elevation-based downscaling mass balance approach](#). We also acknowledge that most glaciers are currently out of equilibrium, likely resulting in the accumulation and ablation zones being altered by the climate signal. Ice velocity is found to be a major predictor but, perhaps surprisingly, not as strong as those 355 mentioned above [globally](#). Possibly, the wide range of variability across over three orders of magnitude in velocity makes this information difficult to account for, in addition, possibly, to data uncertainty. The role of surface velocity is further investigated by training the model without velocity information. We find that the error increases up to 6% maximum for high-latitude regions, ~~where most geodetic information is relatively more constant across wider glaciers,~~ while no substantial difference is found elsewhere. [We speculate that at high latitudes, where more extensive glaciers are located, geodetic information becomes](#) 360 [relatively less informative \(low and uniform values of slope and curvature, absolute elevations of glaciers less informative\), increasing the ranking of surface velocity.](#) Since the largest ice volumes are stored at high latitudes, ~~the all~~ velocity features are retained in the model.

Except for the metrics related to glacier size [and the glacier elevation difference \$\Delta z\$](#) , all other glacier-integrated features (~~see Table 1~~ [Slope, Aspect, Curvature](#)) are found to be relatively unimportant, including glacier geodetic mass balance values. 365 ~~Regional context related to glacier locations and metrics of continentality, derived from temperature and distance to the ocean, are found to be moderately informative, but significantly less so than local geodetic information, MB .~~ Overall, the analysis highlights the crucial importance of high-quality DEMs.

The analysis provides a general overview of the predicting power of the feature set by accounting for a random [global](#) set of training [points entries](#). A slight reshuffling of the feature ranking is expected, [however](#), if evaluating glaciers individually ([an example is discussed in Sect. 4](#)) or regionally (e.g., RGI 11 in Fig. 2). ~~Some features are consistently found to be relatively uninformative and~~ The SHAP analysis proves very instructive to access the information gain provided to the model by each feature. It can be used to decide which features should be retained and which ones can be dropped without ~~loss of predicting power.~~ The local aspect features (a_{50} , a_{300} , a_{gfa}) as well as the glacier type feature *Form* are dropped hereafter. The total number of features retained by IceBoost is therefore 34. ~~substantial loss of performance.~~

At deploy time, the model ensemble is tasked to produce a continuous glacier ice thickness solution. The pipeline consists in generating n discrete points randomly inside the glacier boundary and outside nunataks, calculating the feature vector \mathbf{x}_n and querying the model locally $h_n = \text{IceBoost}(\mathbf{x}_n)$. The feature vector \mathbf{x}_n is calculated on-the-fly (Appendix, B1). The glacier volume is calculated by Monte Carlo ~~approximation~~ (Appendix, B3). An approximately continuous solution can be obtained
 380 in the limit $\lim_{n \rightarrow \infty} h_n(\mathbf{x}_n)$. Typically $n = 10,000$ provides a good representation even for relatively big glaciers.

To investigate the effect of added supervision, we consider the Malaspina glacier (RGI60-01.13696). The glacier, located in coastal southern Alaska, is the world's largest piedmont glacier with an area of 3900 km². ~~The terminus~~ Its piedmont lobe is largely grounded below sea level. Measurements on this glacier are found in our training dataset. A recent campaign has vastly increased the amount of measurements on the glacier and provided a detailed overview of the terminus thickness distribution
 385 and bedrock topography (see Fig. 5 in Tober et al. 2023).

We train the model with and without the available measurements included in the training dataset (hereafter referred to as "with and without supervision", respectively). We ~~point-out-note~~ that, contrary to a kriging technique, IceBoost does not use the data explicitly, but rather adjusts its parameters at training time. The model trained without supervision predicts an ice thickness of up to 700-800 m at the terminus and in other deepest parts of the glacier. Next, we include the measurements in
 390 the training set and train the model with supervision. The model output changes drastically at the terminus, with the solution values closer to the ground truth, although the model still struggles to fully capture the high thickness values that correspond to localized deep subglacial channels found by radar surveys (Tober et al., 2023). Note that the solution changes in other parts of the terminus as well and also relatively far from the data. Training IceBoost with supervision greatly improves the model skill, suggesting that a significant advantage compared to existing approaches is achieved when data is available by:
 395 i) improving the general model performance by increasing the training data; and ii) improving the prediction on individual glaciers. While it is not trivial to understand why IceBoost prediction without supervision deviates from the ground truth for the Malaspina ~~Glacier~~ glacier, the model error is consistent with what has been found in this region at cross-validation (RGI 1, Table 2). The RMSE evaluated on ground truth data (n=588) for this glacier is 147 m when the model is trained without supervision. Incorporating supervision with 20% of the data reduces the RMSE to 31 m on the remaining 80%, representing a
 400 4.7-fold improvement. This experiment also shows that, although the model does not ~~account-for-an-explicit~~ explicitly account for dependence between points (opposite to a neural network structure), ~~the model-it~~ produces a meaningful covariant pattern in both cases.

~~Although adding supervision has shown to increase solution accuracy for the Malaspina Glacier, we conclude that in general, adding supervision does not change the solution substantially, and the model is able to generalize well. Thus, the error reduction shown in Table 2 likely reflects an improvement in performance of~~ The same analysis is carried out for Mittie Glacier, a large and surge-type glacier in Arctic Canada North (Fig. 4). The RMSE is 68 m when training without supervision, and 27 m with supervision, a reduction by a factor of 2.5 - approximately half the improvement observed for the Malaspina glacier. The comparison would suggest that not all modeled glaciers equally benefit from added supervision. We speculate

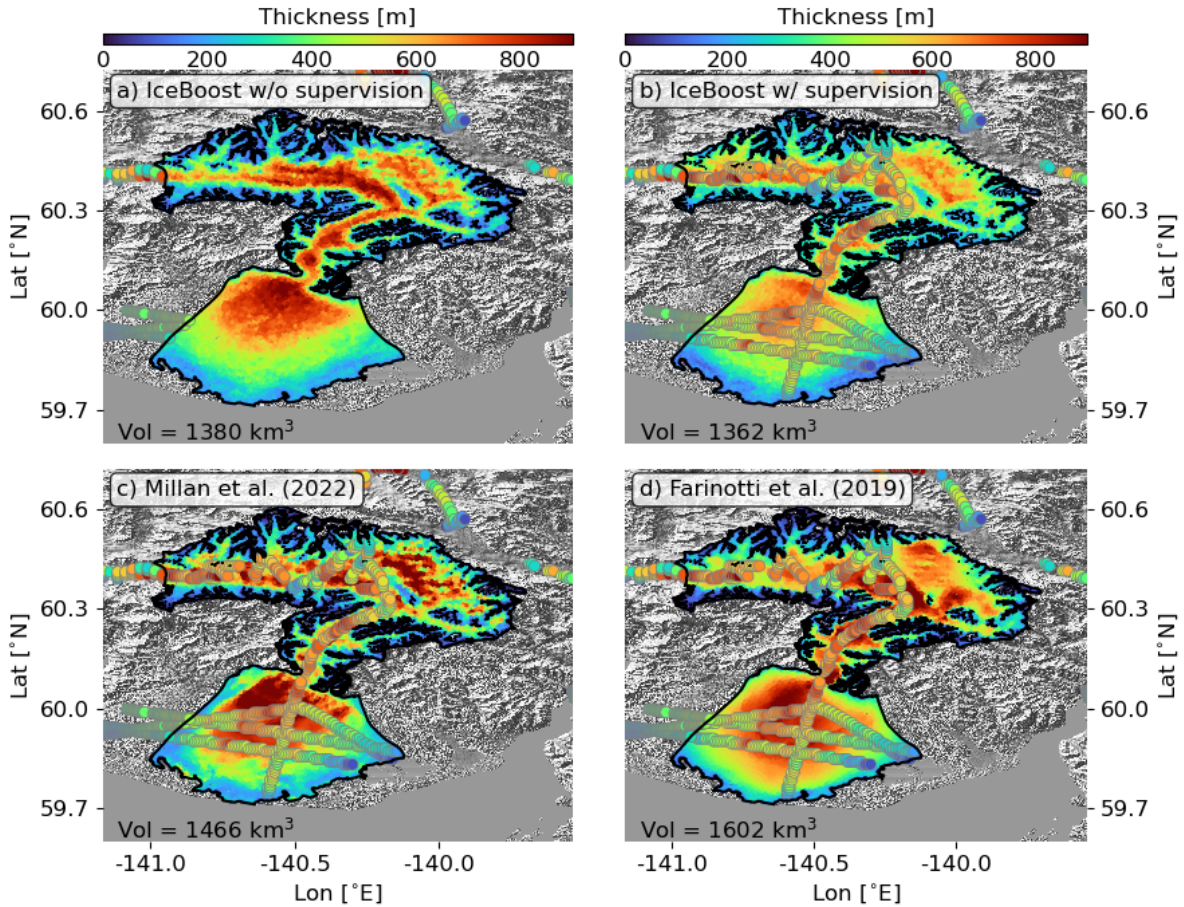


Figure 3. Modeling of the Malaspina glacier (RGI60-01.13696, [Alaska](#)) by IceBoost (this work, [panels a and b](#)), Millan et al. 2022 ([Model1](#) [panel c](#)) and Farinotti et al. 2019 ([Model2](#) [panel d](#)). IceBoost is trained without [supervision](#) ([top](#)) and with supervision ([bottom](#), respectively in [panels a](#)) and [b](#)). The [glacier ice volume](#) difference [in-predicted-volumes-between-the-two-cases](#) is [3.91.3%](#). The [circles](#) [reflect](#) In [panels b](#)), [c](#)), and [d](#)), the [measurements](#) ground truth thickness data are represented as large circles. The Tandem-X EDEM hillshade is shown in transparency.

that the improvement in model performance obtained with supervision is likely attributable to the inclusion of high-thickness data (and/or out-of-distribution feature values), which provide valuable information for modeling deep glaciers with a rather complicated feature-space. As an example, the same analysis carried out for

To assess how the feature set influences the model prediction, we conducted a SHAP analysis of the Mittie Glacier, evaluating feature SHAP values using the XGBoost module (Figs. 5, 6). At each point, the sum of all feature SHAP values, $\sum_f |SHAP(f)|$, reflect the overall contribution of the feature set to the model prediction (Fig 5a). On the Mittie Glacier, a large and surge-type glacier in Arctic Canada N. (Fig the feature set provides the most information in the deep ice rivers of the

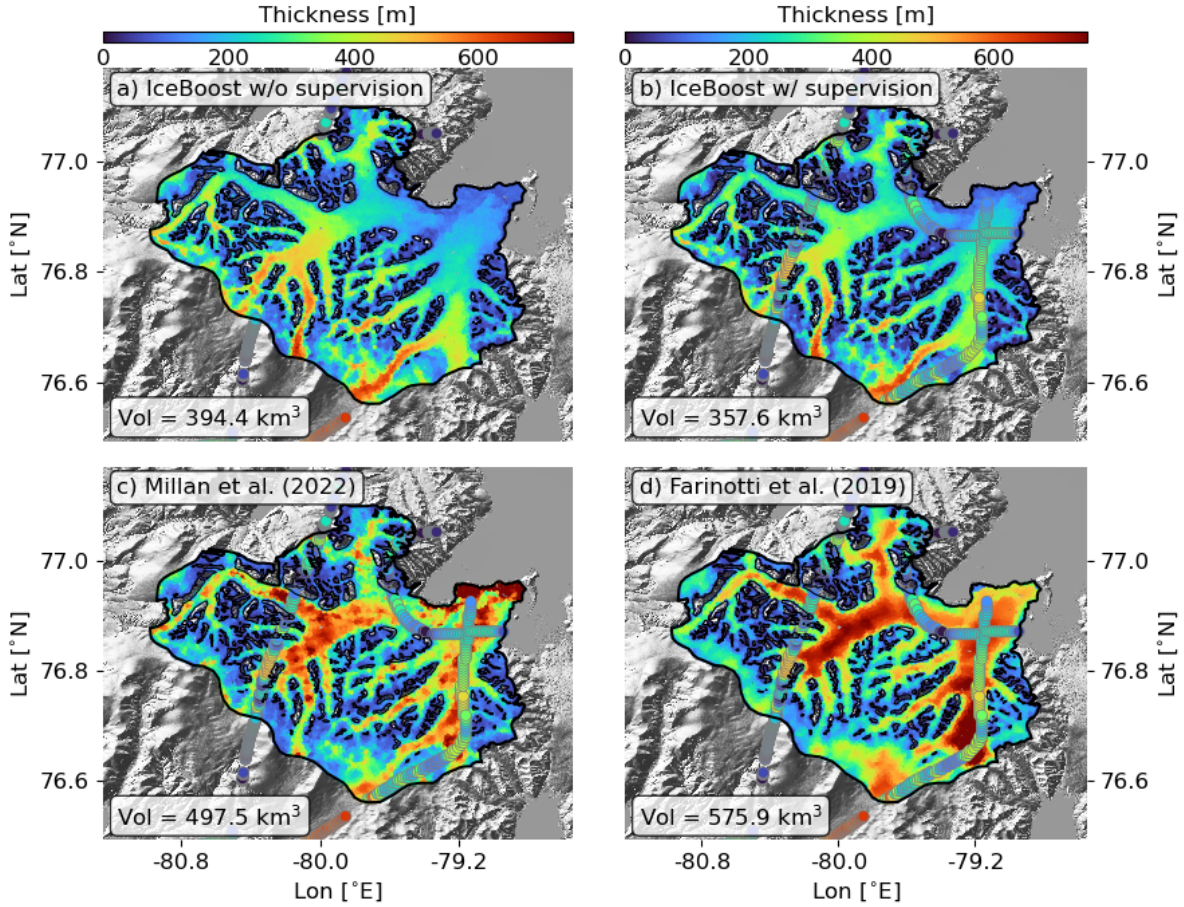


Figure 4. Modeling of Mittie Glacier (RGI60-03.01517, Arctic Canada N.) by IceBoost (this work, panels a and b), Millan et al. 2022 (panel c) and Farinotti et al. 2019 (panel d). IceBoost is trained without and with supervision, respectively in panels a) and b). The glacier ice volume difference between the two cases is 9.5%. In panels b), c), and d), the ground truth thickness data are represented as large circles. The Tandem-X EDEM hillshade hillshade is shown in transparency.

south and at the marine terminus in the northeast. Difference between XGBoost and CatBoost individual predictions reach up to 150-200 meters in the deepest regions (Fig 5b). These differences mimics the IceBoost averaged output (Fig 4b). Averaged across the whole glacier, the five most important features (inset in Fig. 5a) are the slope (s_{300} , s_{150} , s_{450}), the elevation above the glacier base ($z - z_{min}$), and the distance to ice-free regions (d_{noice}). The spatial variability in SHAP values reveals the areas where each feature contributes most (Fig. 6). The slope field smoothed with the widest kernel (s_{450}) is particularly informative near broad, flat glacier streams, while the slope smoothed with the smallest kernel (s_{150}) provides value over the steep, mountainous terrain located in between nunataks. The d_{noice} feature is also most informative near nunataks, whereas the elevation above the base ($z - z_{min}$) is especially valuable at the marine terminus, and less so elsewhere. While the IceBoost

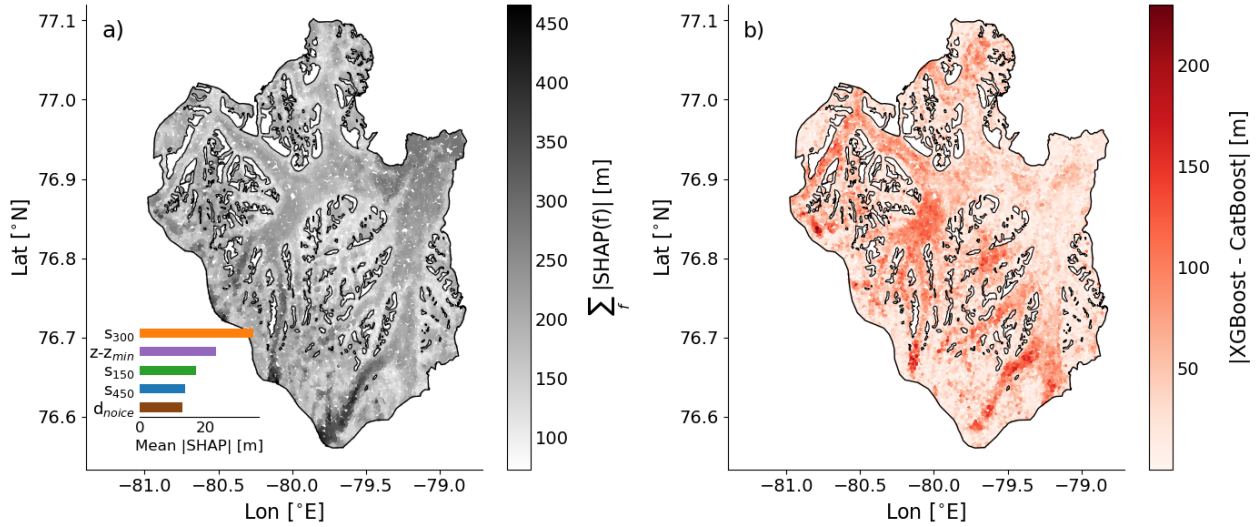


Figure 5. a) Sum of absolute SHAP values of all features, calculated for the Mittie glacier. Higher (lower) values indicate greater (weaker) contribution from the feature set to the model. The top-5 features are displayed in the inset, ranked from the most important to the least important by decreasing mean SHAP values. b) Absolute difference between the XGBoost and CatBoost individual modules. The reader is referred to Fig. 4 for the geographical setting of the glacier.

model does not inherently provide an uncertainty estimate on predicted ice thickness, valuable insights can be derived using the Shapely analysis on the feature set, and to some extent by comparing the separate predictions of XGBoost and CatBoost. 4) shows that training with or without supervision does not change the model prediction substantially.

The satellite products used by IceBoost have different spatial resolution, ranging spatial resolution of the IceBoost model is considered hereafter. The input features are extracted from products with varying resolution (Table 1). For example, the satellite products range from 30 m (DEM) up to 250 m for surface velocity fields over the ice sheets. Convolution with various kernels of different size are also implemented when generating the features, enlarging the receptive field. Conversely, the features not based on satellite products are not discrete. Other features are per-glacier constants. The minimal spatial variation of the thickness distributions maps generated by IceBoost, loosely referred to as the model resolution, is evaluated by visually assessing the predictions (examples in Figures 7), and is estimated to be $\simeq 100$ m. The model has neither the capabilities (it is not trained to) nor the resolution to predict smaller-scale basal features, unless their fingerprints are captured clearly reflected on the surface.

The model is able to predict. We note that the model predicts at times rather fine-grained details in ice thickness, such as glacier front transitions to ice shelves across marine terminating glaciers (e.g. Devon Ice cap, close to ice shelf transitions or in the proximity of high elevation gradients (Fig. 7), likely informed by the following features: d_{ocean} , $h - H_{min}$, $TermType$, curvature, and slope.

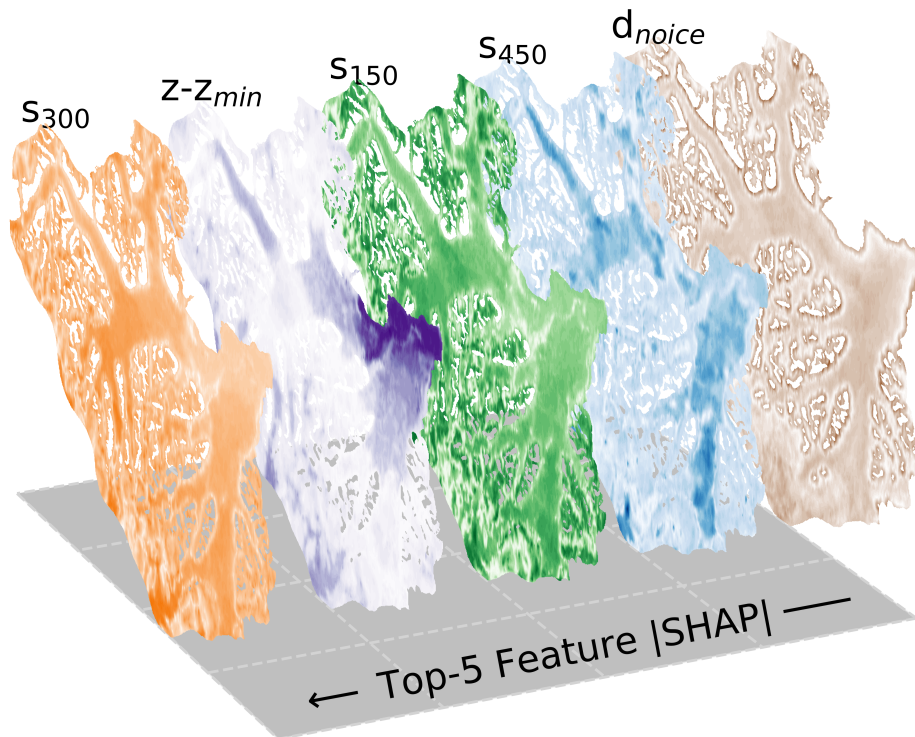


Figure 6. Modeling Absolute SHAP spatial variability of Mittie Glacier (RGI60-03.01517) the top-5 ranked features, Arctic Canada (calculated for the Mittie glacier.) by IceBoost, Millan et al. 2022. The colors range from white (Model1 low values) and Farinotti et al. 2019 to saturated colors (Model2 high values). IceBoost d_{noice} is trained without (top) and with supervision (bottom) important close to the glacier ice free regions. The difference in predicted volumes is 3.8%. Slope features s_{150} , s_{300} , s_{450} show similar patterns, with the widest 450m-slope more informative on the broad ice rivers, and less valuable elsewhere. The circles reflect $z - z_{min}$ feature is very informative close to the measurements marine terminus.

4.1 Comparison with existing global models

A more extensive comparison between IceBoost and other models is can be found in the Supplementary Information ; released on Zenodo at . We produce the ice distribution for 10 glaciers in (see Data Availability), for 190 glaciers. For each one of the 19 RGI regions. In every plot, Model1 refers, n=10 glaciers are modeled with IceBoost, and compared to Millan et al. 2022 or BedMachine (whenever applicable, RGI 5: Morlighem 2022b, RGI 19: Morlighem 2022a) ; Model2 refers to and with the ensemble by Farinotti et al. 2019.

5 Applications, improvements, and limitations

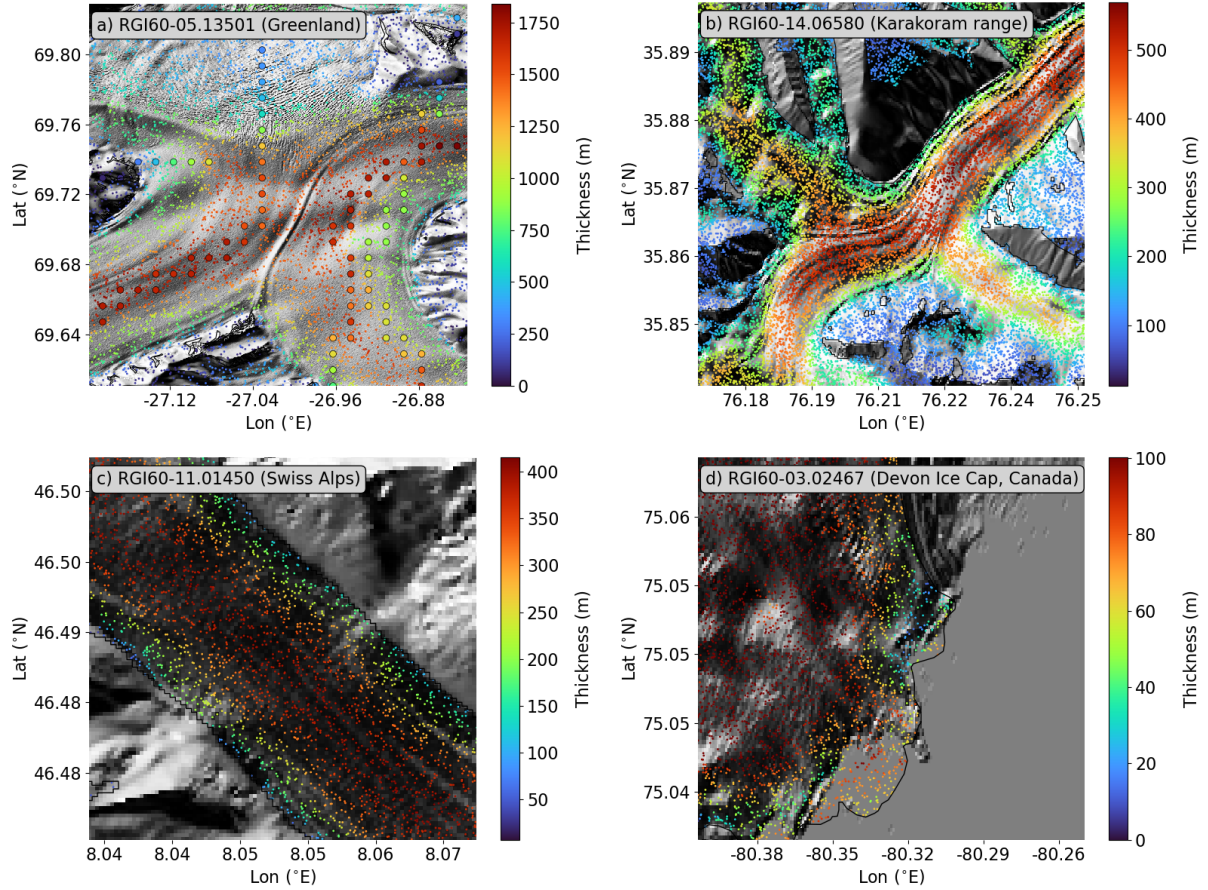


Figure 7. IceBoost solutions across Iceboost-modeled glaciers at different spatial scales. From top-left in clockwise order: RGI60-05.13501 (Greenland, big—overlayed to the Tandem-X EDEM hillshade. The small circles are—reflect the modeled ice thickness measurements), RGI60-14.06580 (Yanatsugat glacier, Karakoram range—evaluated at random locations. In panel a), RGI60-03.02467 (Devon Ice Cap, Arctic Canada), RGI60-11.01450 (Aletsch glacier, Swiss Alps, Central Europe)—the ground truth thickness data are represented as large circles. Zoom in for best view.

The ice thickness maps produced by IceBoost have significant potential in numerical modeling of future glacier evolution, by providing a modern initial condition. Valuable insights can also be gained by utilizing IceBoost-derived maps, compared to outputs from other inversion techniques, such as those by (Millan et al., 2022) and (Farinotti et al., 2019). A notable advantage of a machine learning model operating on tabular data is its flexibility to predict point estimates of other variables, such as surface ice velocity or mass balance, by setting them as training target. In these cases, ice thickness, if known, can serve as additional input feature. Ice velocity maps (or mass balance) can be generated *ex-novo* or used to fill gaps in existing datasets. Additionally, modeling the ice thickness of past glaciers can be explored, if their geometry is known, by leveraging knowledge of past feature records, or by using present-day features under specific assumptions.

455 Improvements to IceBoost can be explored by expanding the training dataset, both in the number of entries and the inclusion of more informative features. Prioritizing an increase in high-thickness data would be particularly beneficial. Ensembling with other machine learning models, such as a multi-layer perceptron, may further enhance performance by reducing point estimate error and improving the smoothness of the output solution, an important factor for numerical modeling. Additionally, implementing or running in parallel other machine learning schemes that generate probability distributions as output (e.g. 460 NGBoost (Duan et al., 2020)) could yield valuable uncertainty maps alongside predictions.

Enhancing the quality of the products used to generate the features, particularly the DEM, will certainly improve the model. Artifacts in the input DEM are the primary source of error in the generated thickness maps. They are directly reflected in the model outputs, leading to visible inaccuracies in the proximity of the artifact (Fig. B3). Artifacts can also occur when the smoothing kernels applied to the input products are not appropriately sized. For instance, in the case of glacier RGI60-19.00134 465 (Alexander Island, Antarctica, Fig. B3), the kernels used in this study may be too small to adequately capture and remove the elevation roughness present at the spatial scales of this glacier ($\sim 4000 \text{ km}^2$). This mismatch results in artifacts manifesting as (likely unrealistic) high ice thickness gradients (Fig. B3).

6 Computational cost

The memory load for creating the training dataset is 80 Gbytes, primarily due to memory necessary to import, merge and 470 operate on the DEM tiles. Downgrading to Tandem-X 90m would certainly reduce the computational cost, at the expense of accuracy. Model training and deploy ~~is done on GPU; however, it can be easily run on~~ can be done on either GPU or CPU. Model training requires a few minutes. The inference ~~time, ca. 0.06 for XGBoost and 0.03 for CatBoost, is almost completely driven by the generation of features arrays, which is carried out on 20 CPUs with parallelization wherever applicable: for $n = 10^4$ query points, the time required varies~~ phase requires generating the feature vector on-the-fly and querying the model. 475 ~~The former requires~~ between 1 second to 1 minute for the most complex glaciers. ~~If~~, almost independently of the choice of number of points to generate ($10^4 - 10^5$). The latter is faster and requires ca. 10^{-1} s/glacier. The feature generation dominates the computational cost, and parallelization with multiple processors is implemented in the model for regional simulations. For higher spatial details ~~is needed~~, the point density can be selectively increased locally up to $O(10^5)$. We recommend not increasing n above a million points as the information gain is limited by the model resolution ($\simeq 100 \text{ m}$). Hard disk memory 480 recommendations are 10-500 Gbytes. All of Earth's glaciers can be conservatively run on 1 Tbytes hard disk, 128 Gbytes RAM and 1-20 CPUs. ~~A~~ Unless feature calculation is moved to GPU (for e.g. see RAPIDS Development Team 2023), a graphics card is ~~not necessary~~ deemed unnecessary since time overhead of data transferring surpasses the benefit of a marginally faster model query on GPU.

7 Conclusions

485 ~~IceBoost is to~~ To the best of our knowledge, IceBoost is the first machine-learning ~~based approach able to estimate the ice~~
~~thickness distribution of all Earth's glaciers~~ model capable of predicting ice thickness at arbitrary coordinates, enabling the
creation of distributed ice thickness maps for glaciers worldwide. The model operates using a set of ~~34-39~~ numerical features;
its parameters are optimized globally. The model error is similar to state-of-the-art models in mid-to-low latitude glaciers,
and up to 30-40% lower at high latitudes. However limited, the comparison with BedMachine demonstrates the skills of the
490 machine-learned approach also in the ice sheet peripheries. As typical of machine learning methods, the model performance
~~will is expected to~~ improve by increasing the training dataset size. ~~Future measurement campaigns will be beneficial for~~ Data
from future measurement campaigns should be integrated into the training dataset. The large amount of training data available at
high latitudes and the model errors in these regions suggest that, for our modeling approach, providing more data is more bene-
ficial than providing more accurate data. ~~In the ice sheet peripheries, IceBoost is only trained with those measurements included~~
495 ~~in the GlaThiDa dataset, and does not leverage the whole set of existing measurements. Extending the training with all available~~
~~measurements is expected to further improve IceBoost. However limited, the comparison with BedMachine demonstrates the~~
~~skills of the machine-learned approach also in this region. We summarize the following conclusions:-~~

~~The model error is similar to state-of-the-art models in mid-to-low latitude glaciers, and up to 30-40% lower at high latitudes.~~

500 Providing supervision (i.e. measurements) further reduces the model error by roughly a factor $\simeq 2$ to 3. Measurement cam-
paigns targeting deep ice zones would prove extremely beneficial for improving IceBoost estimates of ice volumes. However,
we find that not all glaciers benefit equally from added supervision –

on an individual basis. With the exception of DEMs which are available at high resolution and increasing accuracy, our
modeling approach is not hard-constrained by the availability of specific input feature, notably ice velocity. ~~The imputation~~
505 ~~policies enable the production of skillful thickness distributions even when some input features are completely unavailable.~~ Ice
velocity improves the model by up to 6% at high latitudes, though no improvement is found elsewhere. Despite its marginal
impact, this area holds the majority of the Earth ice volume.

The most informative features are the distance to ice-free regions, surface slopes, surface curvature, and metrics of glacier
size. An improved mass balance feature will likely improve the model performance. We consider that our current local mass
510 balance feature is only a simplified estimate. Our machine-learning approach is fully data-driven, with its primary advantage
being the ability to learn directly from data. However, deeper insights can be achieved by integrating physical principles into
machine-learning systems. Research in this direction would be a logical step forward.

Code and data availability. IceBoost source code is released on GitHub: <https://github.com/nmaffe/iceboost>. IceBoost trained modules (XG-
Boost and CatBoost) are deposited on Zenodo as .json and .cbm files, respectively: <https://doi.org/10.5281/zenodo.13145836>. On Zenodo we
515 also archive the Supplementary material: the training dataset, the model outputs for selected glaciers, alongside the comparisons with other
models discussed in the text.

Author contributions. N.M. conceived and designed the research. N.M., E.R., S.V., T.P contributed to the development of the input feature set. N.M. wrote the model pipeline, performed the experiments and analyzed the results, with inputs from all authors. N.M. drafted the manuscript, to which all the authors contributed.

520 *Competing interests.* The authors declare that they have no conflict of interest.

Acknowledgements. We would like to thank Gianluca Lagnese [and Fabien Maussion](#) for valuable and constructive discussions [and comments](#). We thank the following students from the Niels Bohr Institute - Applied Machine Learning 2024 class for their valuable ideas, analyses and parameter optimization: Emma Hvid Møller, Marcus Benjamin Newmann, Cerina von Bruhn, Jonas Richard Damsgaard, Josephine Gondán Kande, Luisa Elisabeth Hirche and Simon Wentzel Lind. This work has received funding from the European Union’s Horizon 2020 research and innovation programme, under the Marie Skłodowska-Curie grant agreement No 101066651. This work was also funded by the Climate Change AI Innovation Grants program, hosted by Climate Change AI with the additional support of Canada Hub of Future Earth, under the project name ICENET.

525

| Feature | Variable name | Local | Unit | MethodNo. <u>variables</u> | Primary dataset | NoteHorizontal <u>resolution</u> |
|--|---|-----------------------|------------------------|-------------------------------|--|---|
| Aspect a_{50}, a_{300}, a_{gfa} • calculated Tandem-X EDEM see Appendix Curvature | $c_{50}, c_{100}, c_{150},$ $c_{300}, c_{450}, c_{gfa}$ | • | 0.01m^{-1} | calculated-6 | Tandem-X EDEM | see Appendix <u>30 m</u> |
| Distance from no ice | d_{noice} | • | km | calculated-1 | OGGM-RGI | see Appendix <u>30 m</u> |
| Distance from ocean | d_{ocean} | • | km | calculated-1 | <u>RGI</u> GSHHG | see Appendix <u>200 m</u> |
| Elevation | h z | • | m | calculated-1 | Tandem-X EDEM | see Appendix <u>30 m</u> |
| Elevation <u>normalized</u> | <u>z_{01}</u> | • <u>~</u> | m | <u>1</u> | <u>Tandem-X EDEM</u> | <u>30 m</u> |
| <u>Elevation</u> above base | h H_{min} z z_{min} | • | m | calculated-1 | Tandem-X EDEM | see Appendix <u>30 m</u> |
| Glacier <u>cluster</u> area | <u>$A_{cluster}$</u> | | km^2 | <u>1</u> | <u>RGI</u> | <u>30 m</u> |
| <u>Glacier area</u> | $Area$ | | km^2 | calculated-1 | OGGM-RGI | <u>30 m</u> |
| Glacier aspect | $Aspect$ | | degrees | imported-1 | OGGM Tandem-X <u>EDEM</u> | <u>30 m</u> |
| Glacier <u>curvature</u> | <u>$Curvature$</u> | | 0.01m^{-1} | <u>1</u> | <u>Tandem-X EDEM</u> | <u>30 m</u> |
| <u>Glacier</u> elevation delta | ΔH Δz | | m | calculated-1 | Tandem-X EDEM | see Appendix <u>30 m</u> |
| Glacier length | L_{max} | | m | imported-1 | OGGM-RGI | <u>30 m</u> |
| Glacier mass balance (geodetic) | MB | | m w.e.yr^{-1} | imported-1 | Hugonnet et al. (2021) | <u>~</u> |
| Glacier perimeter | $Perimeter$ | | m | calculated-1 | OGGM-RGI | <u>30 m</u> |
| Glacier slope | $Slope$ | | - | imported-1 | OGGM Tandem-X <u>EDEM</u> | <u>30 m</u> |
| Glacier Type Form → imported OGGM see Appendix Glacier Terminus Type Form → | $H_{min}, H_{max}, H_{med}$ $z_{min}, z_{max}, z_{med}$ | | m 23 | imported-3 | OGGM Tandem-X <u>EDEM</u> | <u>30 m</u> |

T0.7emT3.5emT2.1emT2.2emT2.2emT1.5emT1.5em

| RGI | Region | GTD - IceBoost | rmse RMSE IceBoost w/ supervision | rmse RMSE IceBoost superv |
|-----|----------------------------|-----------------------------------|--|--|
| 1 | Alaska | 23 (19) <u>16</u> (20) | 47 (2) | 114 (23) <u>1</u> |
| 2 | Western Canada and US | - | - | - |
| 3 | Arctic Canada North | -3 <u>-5</u> (4) | 32 (1) | 82 (68) <u>8</u> |
| 4 | Arctic Canada South | 0 (5) | 18 (1) | 54 <u>58</u> |
| 5 | Greenland Periphery | -5 (24) | 28 (2) | 80 (189) <u>9</u> |
| 6 | Iceland | - | - | - |
| 7 | Svalbard | 0 (10) <u>-8</u> (9) | 14 (1) | 52 (6) |
| 8 | Scandinavia | -1 (79) | 20 (1) | 42 (6) |
| 9 | Russian Arctic | - | - | - |
| 10 | North Asia | -10 (2) <u>-8</u> (5) | 4 (1) | 18 <u>15</u> |
| 11 | Central Europe | -7 (45) | 10 (1) | 34 <u>35</u> |
| 12 | Caucasus and Middle East | 16 (1) | 9 (1) | 54 <u>56</u> |
| 13 | Central Asia | -8 (7) <u>-6</u> (6) | 8 (1) | 33 (73) <u>3</u> |
| 14 | South Asia West | - | - | - |
| 15 | South Asia East | - | - | - |
| 16 | Low Latitudes | - | - | - |
| 17 | Southern Andes | -5 (6) <u>-22</u> (16) | 12 (1) | 34 (54) <u>5</u> |
| 18 | New Zealand | - | - | - |
| 19 | Antarctic and Subantarctic | 6 (114) <u>10</u> | 47 (2) | 115 (221) <u>1</u> |

Table 2. IceBoost performance and comparison with existing models, as measured by RMSE, on a regional basis. All units are in meters.

The numbers in parentheses refer to 1 standard deviation across n=100 regional cross-validation runs. GTD: GlaThiDa.

* ~~Glaciers from the RGI v6 repository. The evaluation is limited to glaciers~~ with no connectivity to the GrISice sheet.

~~† Model 1 = Milhan et al. (2022)~~ § In RGI 5 and RGI 19, this column refers to BedMachine ~~v5 in v.5~~ (RGI 5(Morlighem, 2022b), Morlighem 2022b) and BedMachine ~~v3 in v.3~~ (RGI 19(Morlighem, 2022a), Morlighem 2022a). ~~§ Model 2 = Farinotti et al. (2019).~~

Appendix A: Training features

A1 ~~Glaciery Type~~ $Lmax$, distance from ice free regions ($Form$ d_{noice}) ~~and and Terminus Type ($TermType$)~~

530 Both features are extracted from OGGM. The values are discrete:-

- **Form** = {'0': 'Glacier', '1': 'Ice cap', '2': 'Perennial snowfield', '3': 'Seasonal snowfield', '9': 'Not assigned' }.-
- **TermType** = {'0': 'Land-terminating', '1': 'Marine-terminating', '2': 'Lake-terminating', '3': 'Dry calving', '4': 'Regenerated', '5': 'Shelf-terminating', '9': 'Not assigned', }.-

A2 ~~Distance from ice free regions (d_{noice})~~

535 Given a point x inside a glacier g , we calculate the distance to the closest free pixel. Such a target point may lie within or outside the glacier.-

We define a glacier cluster as the collection of all neighboring glaciers. For example, three glaciers $\{g_1, g_2, g_3\}$ form a cluster if g_1 shares a pixel with g_2 and g_2 shares a pixel with g_3 , despite g_1 and g_3 not being adjacent glaciers.-

540 The glacier cluster is calculated by detecting, starting from the glacier that contains the point x_0 , all its proximal neighbors. The procedure is repeated iteratively for every neighboring glacier until no further neighbors are found. Once the cluster is computed, all internal shared borders (the ice divides) of the cluster are removed, while internal ice-free nunataks are kept. This procedure potentially results in collections of up to thousands of geometries per cluster (Fig. A1).-

The minimum distance from the point x_0 to an ice-free region (d_{noice}) is the minimum of distance between x_0 and all points x lying on the cluster's valid geometries.-

545
$$d_{noice}(x_0) = \underset{x}{\operatorname{argmin}} d(x_0, x), x \in cluster$$

The valid geometries can either be the cluster's external boundaries or all the cluster's nunataks. The distances are computed by querying K-dimensional trees, an approximate nearest neighbor lookup method, on the geometries defined in the Universal Transverse Mercator (UTM) projection. We compare the proximal points obtained from this method with those from a brute-force calculation and find indiscernible results. The pipeline is computed both as a feature for the creation of the training
550 dataset and at inference time for every generated point. For computational speedup, at inference time, the number of geometries K used by the KD-tree can be capped to 10,000.-

A2 ~~Distance from the ocean (d_{ocean})~~

Similar to the distance to ice-free regions, we calculate the closest distance to the ocean. We use the Global Self-consistent, Hierarchical, High-resolution Geography Database (GSHHG), containing all the world's shoreline geometries, in resolution
555 "f" (full). Like d_{noice} , d_{ocean} is calculated by querying a KD-tree on the geometries, in UTM projection. We find this feature to be relatively unimportant on continental glaciers far from the coasts, but increasingly informative at high latitudes.-

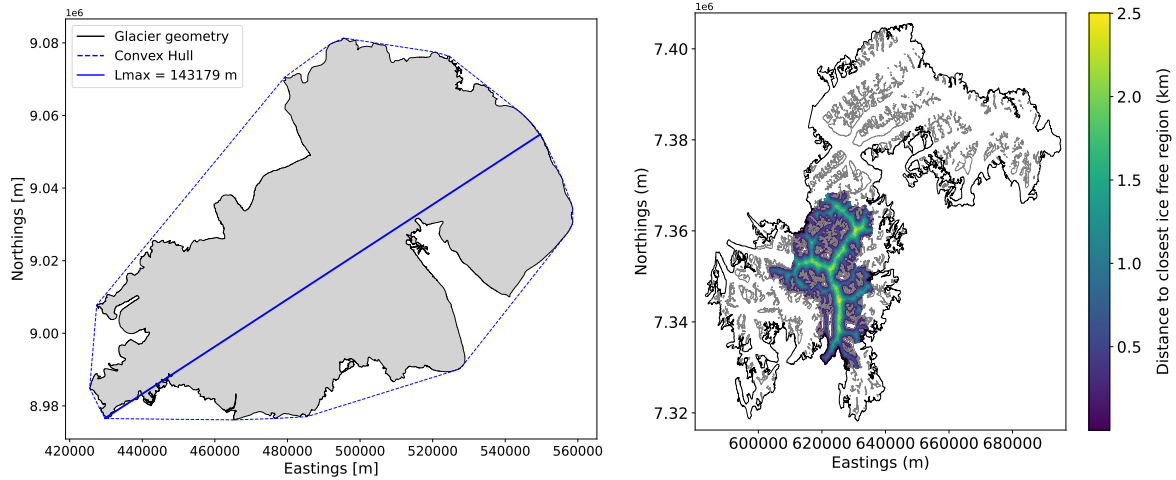


Figure A1. The feature d_{noice} is shown for Left: 'RGI60-10315' glacier length (L_{max}). Right: 'RGI60-05.13995' , South-East Greenland glacier feature d_{noice} . The cluster external geometry with ice divides removed is shown in black. All cluster nunatak geometries are shown in grey.

A2 Geodetic features: elevation, aspect, curvature and slope

We use Tandem-X EDEM to calculate the following features: local elevation $h(x, y)$, elevation above the glacier lowest elevation $h_{gl, min}$, aspect, curvature and slope. The elevation above the glacier lowest elevation is simply obtained by subtracting the elevation to the glacier lowest elevation: $h(x, y) - h_{gl, min}$. The elevation delta ΔH is the glacier elevation difference between minimum and maximum.

To calculate the slopes, the elevation tiles are first projected in UTM, differentiated and the resulting vector magnitude is convoluted using Gaussian filters of different kernel widths to capture the variability across different spatial scales: 50m, 75m, 100m, 125m, 150m, 300m, 450m and an adaptive filter af , Eq. 2:

$$af = \frac{A}{\pi 0.5 L_{max}}$$

where A and L_{max} are the area and glacier maximum length features. This kernel aims at estimating the glacier spatial size. For values lower than 100 or above 2000 meters, af is constrained to these values. Each training point entry results in eight slope features. The purpose of using an array of kernels is to allow the model the freedom to account for different glacier spatial scales. For small glaciers the small kernels are found to be more important than the bigger kernels, and vice-versa.

To limit the computational cost, for the calculation of the aspect and the curvature, the elevation field is smoothed using only the 50m and 300m kernels, thus resulting in 2 + 2 features per point. All geodetic features are obtained from linear interpolation.

A2 ~~Velocity~~

575 ~~The velocity magnitude field is smoothed with the six kernels: 50m, 100m, 150m, 300m, 450m and αf and linearly interpolated. The velocity products used have different resolution: Millan et al. (2022) (all regions except for Greenland and Antarctica), Joughin et al. (2016) (Greenland) and Mouginot et al. (2019) have resolutions of 50m, 250 and 450 meters, respectively. If the product resolution is higher than any kernel size, the kernels are set to match the product resolution. For every training point a total of six velocity features are obtained. At inference time, the missing velocity features are treated according to the imputation policy described in Appendix B2.~~

580 A2 Mass balance

A2.1 Polar ice sheet peripheries

In addition to glacier-averaged mass balance data from Hugonnet et al. (2021), we inform the model with local mass balances values. For the Greenland and Antarctic peripheries, we leverage the RACMO2 (Noël et al., 2018) product versions, down-scaled, respectively, to 1 km (Noël and van Kampenhout, 2019) and 2 km (Noël et al., 2023). Before linearly interpolating the
585 mass balance fields, we i) compute the time average over the 1961-1990 and 1979-2021 time periods respectively, and ii) fill some gaps in the dataset by convolving with Gaussian kernels of 1 km and 2 km respectively. Few gaps still remain in the mass balance fields, along some areas and glaciers (sub Antarctic islands and a few glaciers off the coasts of the Antarctic peninsula) not covered by these datasets. For these areas, as well as for all other glaciers, we use the approach described below.

A2.2 Glaciers outside polar ice sheets

590 For all glaciers outside the Greenland and Antarctic peripheries, we use the 2000-2020 mean glacier-integrated mass balance values from Hugonnet et al. (2021) and estimate the local variability by downscaling using approximate elevation-mass balance rates. In particular, for all glaciers within the same region, we assume a linear variation of mass balance with elevation:

$$y = s \cdot h + q \tag{A1}$$

where y is the mass balance and h is the elevation. s expresses the rate of change of mass balance with elevation, while q
595 reflects the mass balance at zero elevation. For any pairs of glaciers:

$$y_1 = s_1 \cdot h_1 + q_1 \tag{A2}$$

$$y_2 = s_2 \cdot h_2 + q_2 \tag{A3}$$

By using the glacier mean values $mb = \bar{y}$ from (Hugonnet et al., 2021) and further assuming that for close glaciers $s_1 = s_2 = m$ and $q_1 = q_2 = q$, we obtain:

$$s = \frac{mb_1 - mb_2}{\bar{h}_1 - \bar{h}_2} \quad (\text{A4})$$

$$q = mb_1 - s\bar{h}_1 = mb_2 - s\bar{h}_2 \quad (\text{A5})$$

For a given a glacier i , compute its mean rate s_i by extending the calculation in Eq. A4 to all the other glaciers in the region $j \neq i$, weighting the mean by the inverse of the glacier distances:

$$s_i = \frac{\sum_{j \neq i} \frac{\Delta mb_{ij}}{\Delta h_{ij}} \cdot \frac{1}{d_{ij}^2}}{\sum_{j \neq i} \frac{1}{d_{ij}^2}} \quad (\text{A6})$$

$$q_i = mb_i - s_i \bar{h}_i \quad (\text{A7})$$

where $\Delta mb_{ij} = mb_i - mb_j$ and $\Delta h_{ij} = \bar{h}_1 - \bar{h}_2$ are the differences in glacier mass balance and average elevation between glacier i and some glacier j , while d_{ij} is the distance between the two glacier center values.

As an example, the distribution of (s_i, q_i) calculated for all glaciers in RGI 11 (Central Europe, 3927 glaciers) is shown:

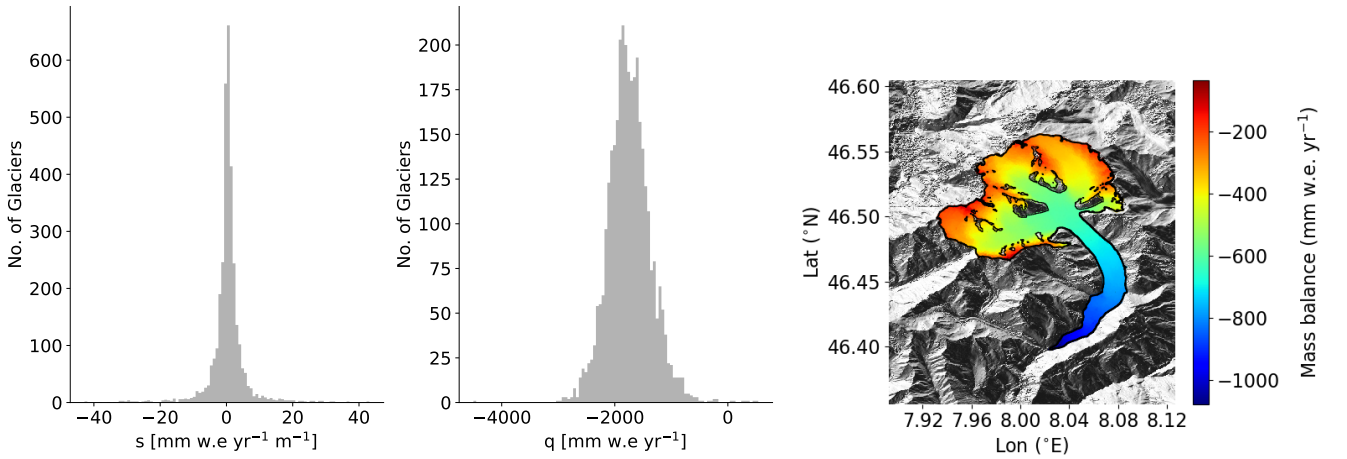


Figure A2. Distribution of (s_i, q_i) for RGI 11 along with the mass balance distribution for the Aletsch glacier.

To compute mass balance maps for each glacier in each region, we use the regional mean values \bar{s} and \bar{q} , listed in Table A1.

Using this method we can replicate the glacier-integrated mass balance values (Hugonnet et al., 2021) within a factor ≈ 2 -3. Given all the hypotheses made, we consider our downscaling approach as an attempt to provide the model with crude, yet local, mass balance approximations.

A3 Temperature

| RGI | 1 | 2 | 3 | 4 | 5 | 6 | 7 | 8 | 9 | 10 |
|---|-------|-------|-------|------|-------|-------|-------|-------|------|-------|
| \bar{s} (mm w.e. yr ⁻¹ m ⁻¹) | 0.46 | 0.34 | 0.22 | 0.65 | 0.55 | 0.84 | 0.86 | 0.56 | 0.64 | 0.30 |
| \bar{q} (mm w.e. yr ⁻¹) | -1038 | -1019 | -485 | -879 | -703 | -1082 | -524 | -1088 | -405 | -1034 |
| RGI | 11 | 12 | 13 | 14 | 15 | 16 | 17 | 18 | 19 | |
| \bar{s} (mm w.e. yr ⁻¹ m ⁻¹) | 0.41 | 0.14 | 0.46 | 0.16 | 0.32 | 0.52 | 0.45 | 0.14 | 0.41 | |
| \bar{q} (mm w.e. yr ⁻¹) | -1739 | -919 | -1956 | -919 | -2054 | -2889 | -1051 | -440 | -191 | |

Table A1. Regional values of \bar{s} and \bar{q} .

Local 2m temperature (t2m) is added as feature to the training data. We use ERA-5 Land (0.1 degree grid spacing, Muñoz-Sabater et al. 2021) and, for the missing pixels caused by imperfect fractional land masks along the coastlines and islands, we incorporate the ERA5 t2m field (0.25 degree resolution, Hersbach et al. 2020), bilinearly interpolated to 0.1 degree resolution. We consider monthly maps averaged over the 2000-2010 time period to generate one single global temperature field, which is linearly interpolated the at the measurement points (training) or at the generated points (inference time).

A3 IceBoost hyperparameters

The best XGBoost hyperparameters found during the Bayesian optimization pipeline are: tree_method=hist, lambda=76.814, alpha=76.374, colsample_bytree=0.9388, subsample=0.741501, learning_rate=0.079244, max_depth=20, min_child_weight=19, gamma=0.18611. We use 1000 trees (num_boost_round) with early_stopping_rounds=50. For CatBoost: iterations=10,000, early_stopping_rounds=50, depth=6, learning_rate=0.1. For the parameter description, we refer to the XGBoost documentation at <https://xgboost.readthedocs.io/en/stable/parameter.html> and CatBoost at <https://catboost.ai/en/docs/concepts/parameter-tuning>.

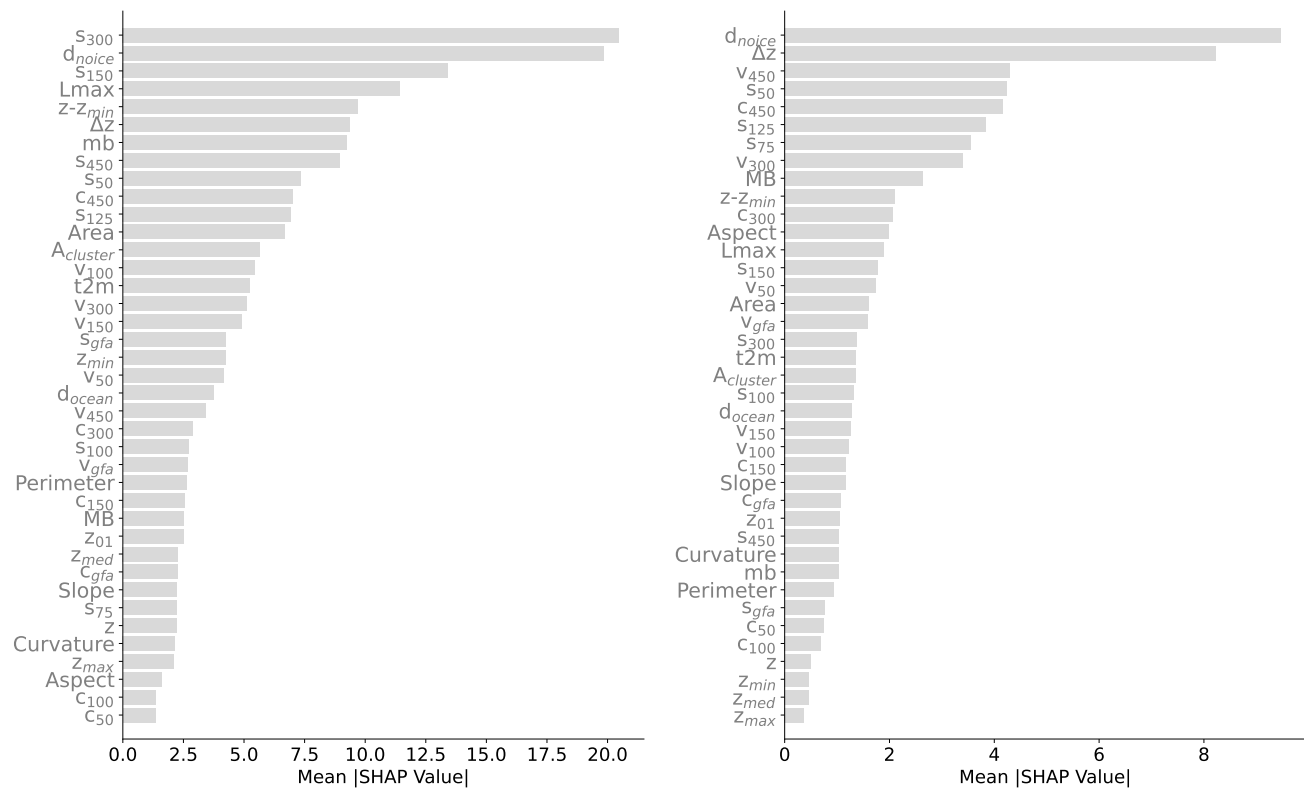


Figure A3. ~~Global feature importance plot~~Feature ranking: the ~~importance ranking~~ of each feature is taken to be the mean absolute shape value for that feature over n=2,000 random samples (left) and over n=2,000 samples from Central Europe (RGI 11, right).

Appendix B: Model inference

B1 Fetching features on-the-fly

At inference time, the features are generated on-the-fly following the same pipeline described for the creation of the training set. As an example, Figure B1 shows the extraction of the v_{50} feature for $n=1500$ random points.

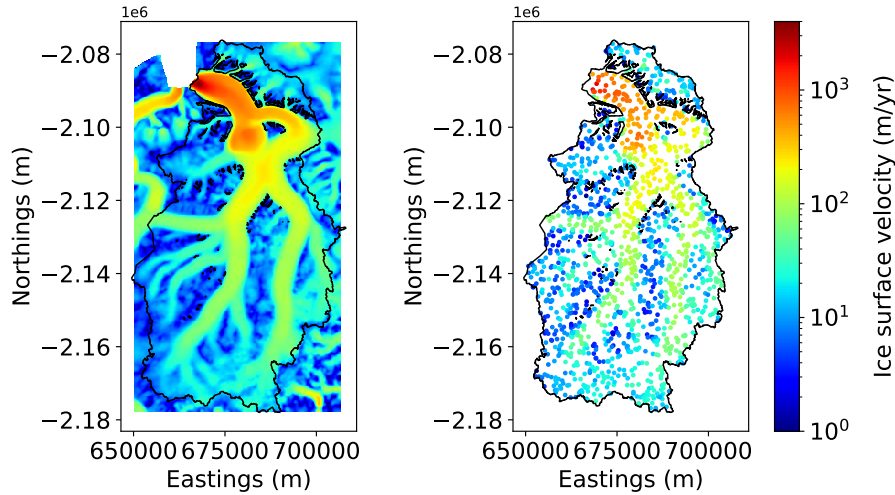


Figure B1. Pipeline for feature generation at inference time. Left: ice velocity (v_{50} , from Joughin et al. (2016) over glacier RGI60-05.13501 in East Greenland. Right: feature calculated for $n=1500$ random points.

630 B2 Feature imputation policies

Feature imputation is need whenever any feature is not available either for the creation of the training dataset or at inference time. Unless specified, we adopt the same policy in both cases. Hereafter is a list of the features that may require imputation and their imputation policies.

~~Glacier aspect~~The glacier aspect is set to zero.~~Glacier length~~If no glacier length is available from OGGM, it is calculated by first reprojecting the glacier external geometry in UTM coordinates, then by calculating the the matrix of pairwise distances and extracting the maximum using a KD-tree.~~Glacier mass balance (geodetic)~~The Hugonnet et al. (2021) mass balance dataset is tied to the RGI v.6 glacier dataset, while we use OGGM's v. 62 extension. We impute the missing glaciers with a regional median value.~~Glacier median elevation~~ H_{med} values are extracted from OGGM, and quite a few data is missing. At training time the glacier median elevation is imputed as the average between the glacier minimum and maximum elevations. At inference time no imputation is needed since this feature is calculated directly from Tandem-X EDEM.

~~Ice velocity~~

No imputation is implemented at training time: if any velocity feature is missing at any point, the point is not included in the training dataset. This condition occurs if the training point falls outside the velocity field (old measurement or measurement

inside a nunatak or incomplete velocity coverage) or if it is too close to the geometry such that the interpolation fails. At inference time, a complete velocity feature coverage is required as input for the model. A 3-layer progressive policy is implemented to fill any missing data and ensure complete coverage of all velocity features: i) kernel-based interpolation using a Fast Fourier Transform convolution and Gaussian kernels, ii) glacier-median imputation and iii) regional-median imputation.

Mass balance

- Glacier-mean values: for glacier ids listed in RGI v. 62 but not present in Hugonnet et al. (2021) mass balance dataset, which is tied to RGI v.6 glacier dataset, we impute a regional median value. RGI v7 glaciers, the product by Hugonnet et al. (2021) is not available. To be able to use it, we link all glacier ids from RGI v6 to RGI v7, by finding the glacier in RGI v7 that has the maximum area overlap with any RGI v6 glacier. If no glacier is found, we impute a regional median value from RGI v6.
- The RACMO products used for Greenland and Antarctica do not cover some glaciers located on islands ~~far from~~ proximal the ice sheets. These include almost all glaciers from the sub-Antarctic islands. For these, we use the downscaling approach described in Appendix A2.2.

B3 Glacier volume calculation

The glacier volume is approximated by Monte Carlo as $V_{gl} = A_{gl} N^{-1} \cdot \sum_{x,y} h(x,y)$, where A_{gl} is the glacier area, $h(x,y)$ is the modelled thickness at point (x,y) inside the glacier, N is the total number of generated points. This method, tested by comparing Farinotti's interpolated thickness values against their true values allows to estimate the Monte Carlo error to less than 1%, even for the biggest glaciers. While $N = 10^4$ allows for a precise volume estimate, to better evaluate the spatial variability of the solution over scales of tens of meters, N can be increased to $O(10^5)$, depending on glacier size, or increased locally to target specific regions.

B4 Comparison with BedMachine Greenland

665 Figure B2 shows a comparison between IceBoost and BedMachine v5 (Morlighem, 2022b) for a glacier with direct connection to the ice sheet. Note the additional complexity of the fjord system predicted by IceBoost, compared to BedMachine. While an extensive comparison with BedMachine is beyond the scope of this work, we highlight the potential of IceBoost in the ice sheet peripheriesas well.

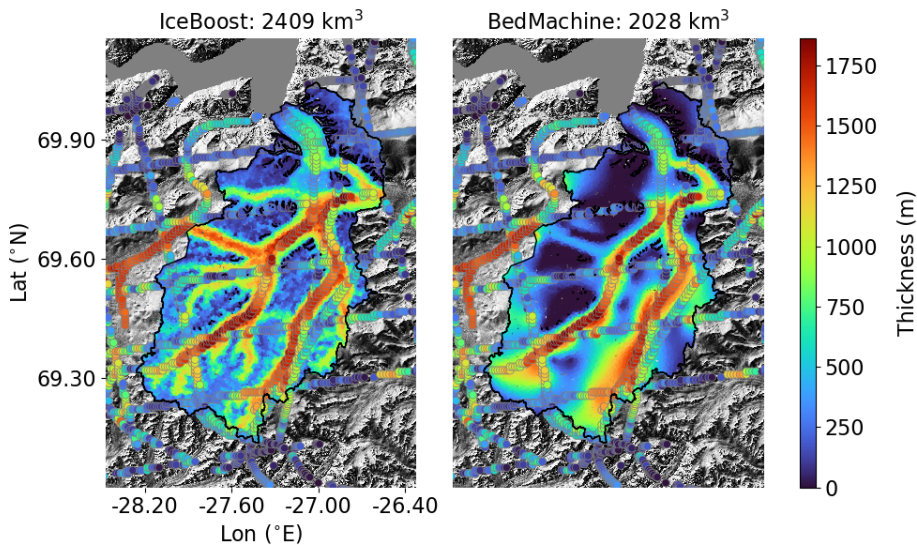


Figure B2. Glacier RGI60-05.13501 modeled by IceBoost, and BedMachine v5 (Model1, Morlighem 2022b).~~Model2 (Farinotti et al., 2019)~~ is not available.

B5 Artifacts in the modeled output

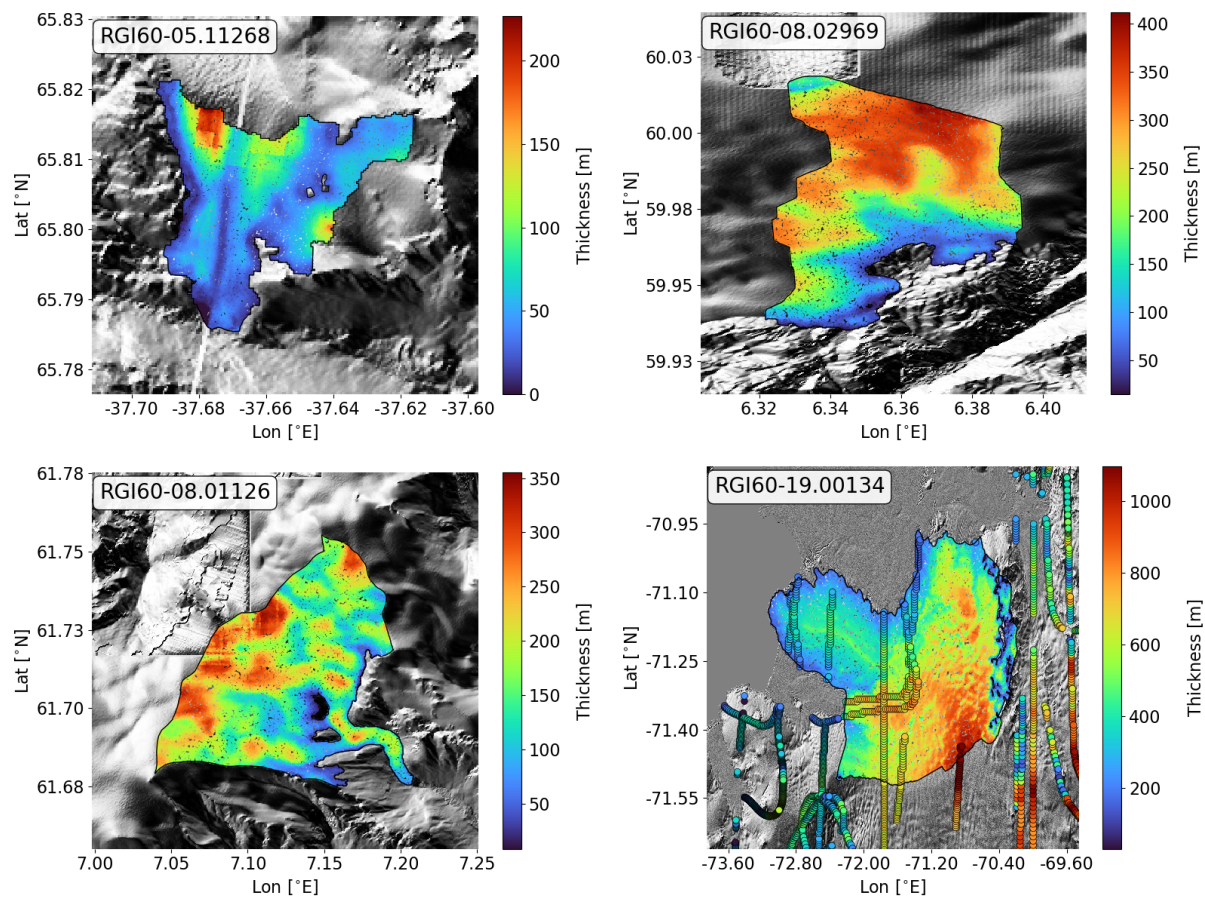


Figure B3. Modeled glacier ice thickness. Artifacts in the Tandem-X DEM are visible for glaciers RGI60-05.11268, RGI60-08.02969, and RGI60-08.01126. The effects of such artifacts is visible in the modeled thickness map. Glacier RGI60-19.00134 modeled thickness shows some high frequency noise, which mimics the roughness of the surface.

- Akiba, T., Sano, S., Yanase, T., Ohta, T., and Koyama, M.: Optuna: A Next-generation Hyperparameter Optimization Framework, in: Proceedings of the 25th ACM SIGKDD International Conference on Knowledge Discovery and Data Mining, 2019.
- Bahr, D. B., Pfeffer, W. T., and Kaser, G.: A review of volume-area scaling of glaciers, *Reviews of Geophysics*, 53, 95–140, 2015.
- Bueso-Bello, J.-L., Martone, M., González, C., Sica, F., Valdo, P., Posovszky, P., Pulella, A., and Rizzoli, P.: The global water body layer
675 from TanDEM-X interferometric SAR data, *Remote Sensing*, 13, 5069, 2021.
- Chen, T. and Guestrin, C.: Xgboost: A scalable tree boosting system, in: Proceedings of the 22nd acm sigkdd international conference on knowledge discovery and data mining, pp. 785–794, 2016.
- Clarke, G. K., Berthier, E., Schoof, C. G., and Jarosch, A. H.: Neural networks applied to estimating subglacial topography and glacier volume, *Journal of Climate*, 22, 2146–2160, 2009.
- 680 Cuffey, K. M. and Paterson, W. S. B.: The physics of glaciers, Academic Press, 2010.
- Duan, T., Anand, A., Ding, D. Y., Thai, K. K., Basu, S., Ng, A., and Schuler, A.: Ngboost: Natural gradient boosting for probabilistic prediction, in: International conference on machine learning, pp. 2690–2700, PMLR, 2020.
- Farinotti, D., Brinkerhoff, D. J., Clarke, G. K., Fürst, J. J., Frey, H., Gantayat, P., Gillet-Chaulet, F., Girard, C., Huss, M., Leclercq, P. W., et al.: How accurate are estimates of glacier ice thickness? Results from ITMIX, the Ice Thickness Models Intercomparison eXperiment,
685 The Cryosphere, 11, 949–970, 2017.
- Farinotti, D., Huss, M., Fürst, J. J., Landmann, J., Machguth, H., Maussion, F., and Pandit, A.: A consensus estimate for the ice thickness distribution of all glaciers on Earth, *Nature Geoscience*, 12, 168–173, 2019.
- Friedman, J. H.: Greedy function approximation: a gradient boosting machine, *Annals of statistics*, pp. 1189–1232, 2001.
- GlaThiDa Consortium, Zurich, S.: Glacier Thickness Database 3.1.0. World Glacier Monitoring Service, <https://doi.org/10.5904/wgms-glathida-2020-10>, 2020.
690
- González, C., Bachmann, M., Bueso-Bello, J.-L., Rizzoli, P., and Zink, M.: A fully automatic algorithm for editing the tandem-x global dem, *Remote Sensing*, 12, 3961, 2020.
- Grinsztajn, L., Oyallon, E., and Varoquaux, G.: Why do tree-based models still outperform deep learning on typical tabular data?, *Advances in neural information processing systems*, 35, 507–520, 2022.
- 695 Hagberg, A. A., Schult, D. A., and Swart, P. J.: Exploring Network Structure, Dynamics, and Function using NetworkX, in: Proceedings of the 7th Python in Science Conference, edited by Varoquaux, G., Vaught, T., and Millman, J., pp. 11 – 15, Pasadena, CA USA, 2008.
- Hersbach, H., Bell, B., Berrisford, P., Hirahara, S., Horányi, A., Muñoz-Sabater, J., Nicolas, J., Peubey, C., Radu, R., Schepers, D., Simmons, A., Soci, C., Abdalla, S., Abellan, X., Balsamo, G., Bechtold, P., Biavati, G., Bidlot, J., Bonavita, M., De Chiara, G., Dahlgren, P., Dee, D., Diamantakis, M., Dragani, R., Flemming, J., Forbes, R., Fuentes, M., Geer, A., Haimberger, L., Healy, S., Hogan, R. J.,
700 Hólm, E., Janisková, M., Keeley, S., Laloyaux, P., Lopez, P., Lupu, C., Radnoti, G., de Rosnay, P., Rozum, I., Vamborg, F., Villaume, S., and Thépaut, J.-N.: The ERA5 global reanalysis, *Quarterly Journal of the Royal Meteorological Society*, 146, 1999–2049, <https://doi.org/https://doi.org/10.1002/qj.3803>, 2020.
- Hugonnet, R., McNabb, R., Berthier, E., Menounos, B., Nuth, C., Girod, L., Farinotti, D., Huss, M., Dussailant, I., Brun, F., et al.: Accelerated global glacier mass loss in the early twenty-first century, *Nature*, 592, 726–731, 2021.
- 705 Huss, M. and Farinotti, D.: Distributed ice thickness and volume of all glaciers around the globe, *Journal of Geophysical Research: Earth Surface*, 117, 2012.

- Huss, M. and Hock, R.: Global-scale hydrological response to future glacier mass loss, *Nature Climate Change*, 8, 135–140, 2018.
- Immerzeel, W. W., Lutz, A. F., Andrade, M., Bahl, A., Biemans, H., Bolch, T., Hyde, S., Brumby, S., Davies, B., Elmore, A., et al.: Importance and vulnerability of the world's water towers, *Nature*, 577, 364–369, 2020.
- 710 Joughin, I., Smith, B., Howat, I., and Scambos, T.: MEaSURES Multi-year Greenland Ice Sheet Velocity Mosaic, Version 1, <https://doi.org/10.5067/QUA5Q9SVMSJG>, 2016.
- Jouvet, G.: Inversion of a Stokes glacier flow model emulated by deep learning, *Journal of Glaciology*, 69, 13–26, 2023.
- Jouvet, G., Cordonnier, G., Kim, B., Lüthi, M., Vieli, A., and Aschwanden, A.: Deep learning speeds up ice flow modelling by several orders of magnitude, *Journal of Glaciology*, 68, 651–664, 2022.
- 715 Le Meur, E., Gagliardini, O., Zwinger, T., and Ruokolainen, J.: Glacier flow modelling: a comparison of the Shallow Ice Approximation and the full-Stokes solution, *Comptes rendus. Physique*, 5, 709–722, 2004.
- Liu, Z., Koo, Y., and Rahnemounfar, M.: Physics-Informed Machine Learning On Polar Ice: A Survey, arXiv preprint arXiv:2404.19536, 2024.
- Lundberg, S. M. and Lee, S.-I.: A unified approach to interpreting model predictions, *Advances in neural information processing systems*, 30, 2017.
- 720 Martone, M., Rizzoli, P., Wecklich, C., González, C., Bueso-Bello, J.-L., Valdo, P., Schulze, D., Zink, M., Krieger, G., and Moreira, A.: The global forest/non-forest map from TanDEM-X interferometric SAR data, *Remote sensing of environment*, 205, 352–373, 2018.
- Masson-Delmotte, V., Zhai, P., Pirani, A., Connors, S. L., Péan, C., Berger, S., Caud, N., Chen, Y., Goldfarb, L., Gomis, M., et al.: Climate change 2021: the physical science basis, Contribution of working group I to the sixth assessment report of the intergovernmental panel on climate change, 2, 2391, 2021.
- 725 Maussion, F., Rothenpieler, T., Dusch, M., Schmitt, P., Vlug, A., Schuster, L., Champollion, N., Li, F., Marzeion, B., Oberrauch, M., Eis, J., Fischer, A., Landmann, J., Jarosch, A., Iuzpaz, Hanus, S., Rounce, D., Castellani, M., Bartholomew, S. L., Minallah, S., Bowen-Bellington, Merrill, C., Otto, D., Loibl, D., Rosa, G., Ultee, L., Thompson, S., Antonov, and Gregor, P.: OGGM/oggm: v1.6.1, <https://doi.org/10.5281/zenodo.8287580>, 2023.
- 730 Millan, R., Mouginot, J., Rabatel, A., and Morlighem, M.: Ice velocity and thickness of the world's glaciers, *Nature Geoscience*, 15, 124–129, 2022.
- Morlighem, M.: MEaSURES BedMachine Antarctica, Version 3, <https://doi.org/10.5067/FPSU0V1MWUB6>, 2022a.
- Morlighem, M. e. a.: IceBridge BedMachine Greenland, Version 5, <https://doi.org/10.5067/GMEVBWFLWA7X>, 2022b.
- Mouginot, J., Rignot, E., and Scheuchl, B.: MEaSURES Phase-Based Antarctica Ice Velocity Map, Version 1, <https://doi.org/10.5067/PZ3NJ5RXRH10>, 2019.
- 735 Muñoz-Sabater, J., Dutra, E., Agustí-Panareda, A., Albergel, C., Arduini, G., Balsamo, G., Boussetta, S., Choulga, M., Harrigan, S., Hersbach, H., et al.: ERA5-Land: A state-of-the-art global reanalysis dataset for land applications, *Earth system science data*, 13, 4349–4383, 2021.
- Noël, B., van de Berg, W. J., van Wessem, J. M., van Meijgaard, E., van As, D., Lenaerts, J. T. M., Lhermitte, S., Kuipers Munneke, P., Smeets, C. J. P. P., van Ulft, L. H., van de Wal, R. S. W., and van den Broeke, M. R.: Modelling the climate and surface mass balance of polar ice sheets using RACMO2 – Part 1: Greenland (1958–2016), *The Cryosphere*, 12, 811–831, <https://doi.org/10.5194/tc-12-811-2018>, 2018.
- 740 Noël, B. and van Kampenhout, L.: Downscaled 1 km RACMO2 data used in CESM2 Greenland SMB evaluation paper, <https://doi.org/10.5281/zenodo.3367211>, 2019.

- 745 Noël, B., van Wessem, M., Wouters, B., Trusel, L., Lhermitte, S., and van den Broeke, M.: Data set: "Higher Antarctic ice sheet accumulation and surface melt rates revealed at 2 km resolution", <https://doi.org/10.5281/zenodo.10007855>, 2023.
- Paden, J., Li, J., Leuschen, C., Rodriguez-Morales, F., and Hale, R.: IceBridge MCoRDS L2 Ice Thickness, Version 1, <https://doi.org/10.5067/GDQ0CUCVTE2Q>, 2010.
- Pfeffer, W. T., Arendt, A. A., Bliss, A., Bolch, T., Cogley, J. G., Gardner, A. S., Hagen, J.-O., Hock, R., Kaser, G., Kienholz, C., et al.: The
750 Randolph Glacier Inventory: a globally complete inventory of glaciers, *Journal of glaciology*, 60, 537–552, 2014.
- Pörtner, H.-O., Roberts, D. C., Masson-Delmotte, V., Zhai, P., Tignor, M., Poloczanska, E., Weyer, N., et al.: The ocean and cryosphere in a changing climate, IPCC special report on the ocean and cryosphere in a changing climate, 1155, 2019.
- Prokhorenkova, L., Gusev, G., Vorobev, A., Dorogush, A. V., and Gulin, A.: CatBoost: unbiased boosting with categorical features, *Advances in neural information processing systems*, 31, 2018.
- 755 RAPIDS Development Team: RAPIDS: Libraries for End to End GPU Data Science, <https://rapids.ai>, 2023.
- Rodell, M., Famiglietti, J. S., Wiese, D. N., Reager, J., Beaudoing, H. K., Landerer, F. W., and Lo, M.-H.: Emerging trends in global freshwater availability, *Nature*, 557, 651–659, 2018.
- Rounce, D. R., Hock, R., Maussion, F., Hugonnet, R., Kochtitzky, W., Huss, M., Berthier, E., Brinkerhoff, D., Compagno, L., Copland, L., et al.: Global glacier change in the 21st century: Every increase in temperature matters, *Science*, 379, 78–83, 2023.
- 760 Tober, B., Holt, J., Christoffersen, M., Truffer, M., Larsen, C., Brinkerhoff, D., and Mooneyham, S.: Comprehensive radar mapping of Malaspina Glacier (Sít'Tlein), Alaska—The world's largest piedmont glacier—Reveals potential for instability, *Journal of Geophysical Research: Earth Surface*, 128, e2022JF006 898, 2023.
- Uroz, L. L., Yan, Y., Benoit, A., Rabatel, A., Giffard-Roisin, S., and Lin-Kwong-Chon, C.: Using Deep Learning for Glacier Thickness Estimation at a Regional Scale, *IEEE Geoscience and Remote Sensing Letters*, 2024.
- 765 Welty, E., Zemp, M., Navarro, F., Huss, M., Fürst, J. J., Gärtner-Roer, I., Landmann, J., Machguth, H., Naegeli, K., Andreassen, L. M., et al.: Worldwide version-controlled database of glacier thickness observations, *Earth System Science Data Discussions*, 2020, 1–27, 2020.
- Zekollari, H., Huss, M., Farinotti, D., and Lhermitte, S.: Ice-Dynamical Glacier Evolution Modeling—A Review, *Reviews of Geophysics*, 60, e2021RG000 754, 2022.
- Zemp, M., Huss, M., Thibert, E., Eckert, N., McNabb, R., Huber, J., Barandun, M., Machguth, H., Nussbaumer, S. U., Gärtner-Roer, I., et al.:
770 Global glacier mass changes and their contributions to sea-level rise from 1961 to 2016, *Nature*, 568, 382–386, 2019.