



Impact on the stratocumulus-to-cumulus transition of the interaction of cloud microphysics and macrophysics with large-scale circulation

Je-Yun Chun¹, Robert Wood¹, Peter N. Blossey¹, and Sarah J. Doherty^{1,2}

¹Department of Atmospheric Sciences, University of Washington, Seattle, USA

²Cooperative Institute for Climate, Ocean and Ecosystems Studies, University of Washington, Seattle, USA

Correspondence: Robert Wood (robwood2@uw.edu)

Abstract.

This study examines the impact of the interaction of cloud microphysics and macrophysics with the large-scale circulation on stratocumulus-to-cumulus transition (SCT) by combining large-eddy simulation (LES) with a parameterization of weak temperature gradient (WTG) stratified adjustment. The WTG approximates the interaction with the large-scale circulation by inducing domain-mean subsidence to compensate for buoyancy perturbations with respect to a reference thermodynamic profile. A stationary sea-salt sprayer perturbs the transitioning clouds over the Lagrangian domain moving along the trajectory. It is revealed that the cloud response to aerosol perturbation is markedly different depending on whether stratified adjustments in the large-scale circulation in response to buoyancy perturbations are considered. In both cases, aerosol injection into heavily precipitating clouds suppresses precipitation and enhances entrainment. Without application of WTG, cloud-top height rises without a compensating adjustment in subsidence, and the drizzle-induced thinning of the stratocumulus layer is delayed by several days. When WTG adjustment is applied, intensified large-scale subsidence restrains the growth of cloud top height, and increases warming and drying of the stratocumulus layer leads to cloud thinning. The thinned clouds, characterized by reduced emissivity and weakened longwave (LW) radiative cooling efficiency, become more susceptible to cloud breakup. Simultaneously, the reduced sensible heat flux from the surface by precipitation suppression reduces turbulence within the boundary layer. For lightly precipitating clouds, the transition, mainly driven by the warming effect due to enhanced entrainment by increased sea-surface temperature (‘deepening-warming’ mechanism), is hastened by aerosol injection due to accelerated cloud thinning. For heavily precipitating stratocumulus, in which the pace of SCT is fast due to the loss of clouds by drizzle (‘drizzle-depletion’ feedback), aerosol injection delays the transition by only a few hours because the deepening-warming mechanism becomes more important by intensified subsidence. Our results imply that the magnitude of the cooling effects of aerosol may be overestimated by as much as $\sim 15\text{-}30 \text{ W m}^{-2}$ when the adjustment in large-scale circulation is not accounted for in a limited-domain model simulations.



1 Introduction

Subtropical marine clouds are a focal area in climate research due to their pivotal role in shaping the Earth's energy balance (Wood, 2012). The cooling influence of overcast low marine clouds results from their efficient reflection of solar insolation and by their emission of outgoing longwave radiative flux being comparable in intensity to that from the ocean surface. As air masses flow equatorward along the trade winds, these clouds undergo cloud breakup within a few days, a process referred to as the stratocumulus-to-cumulus transition (SCT). The SCT is driven by rising sea surface temperatures (SSTs) and evolving meteorological dynamics associated with the descending branches of the Hadley circulation (e.g., Albrecht et al., 1995; Norris, 1998; Wood and Bretherton, 2006). The large-scale circulation modulates large-scale subsidence (e.g., Myers and Norris, 2013; van der Dussen et al., 2016) and inversion instability (e.g., Wood and Bretherton, 2006; Sandu et al., 2010), both of which significantly impact the SCT. The large-scale circulation, in turn, responds to variations in the heat balance caused by changes in the meridional gradient of SST (e.g., Bjerknes, 1966) and by radiative forcing. The current generation of weather and climate models have particular difficulty in constraining the radiative effects of clouds along the SCT because the pivotal processes relevant to the clouds span such a broad range of scales and because interactions between scales are complex (Bony and Dufresne, 2005; Zelinka et al., 2017).

One fundamental mechanism causing the SCT is the 'deepening-warming' feedback (Krueger et al., 1995; Bretherton and Wyant, 1997; Wyant et al., 1997). As air masses are advected with the trade winds over a warming ocean surface, surface latent heat flux (LHF) increases, thereby deepening the marine boundary layer (MBL). Cloud-top cooling, which is a main source of boundary layer turbulence over the shallow stratocumulus-topped MBL, becomes insufficient to overcome warming caused by the entrainment of free-tropospheric air. Simultaneously, the enhanced surface LHF promotes the formulation of cumulus clouds, inducing penetrative entrainment by cumulus updrafts. This further promotes the entrainment of dry and warm air from the free troposphere (FT). The combined effect accelerates the dissipation of the stratocumulus layer, thereby resulting in the SCT. Another process that can drive the SCT is the 'drizzle-depletion' feedback (Wood et al., 2011; Xue et al., 2008; Yamaguchi et al., 2017). Once drizzle is initiated, rain droplets accrete cloud droplets (collision-coalescence, Wood, 2006) and scavenge aerosol particles, both of which ultimately reduce the number of cloud-forming aerosols. The reduced aerosol loading results in larger rain droplets which more effectively collide with other droplets, further reducing aerosol concentrations. This positive feedback loop can quickly deplete the stratocumulus layer, thereby resulting in the SCT.

Aerosols have been identified as an important modulator of cloud and MBL properties, and thus potentially of the SCT and resulting cloud radiative effect. An increase in the concentration of aerosol that act as cloud condensation nuclei results in more numerous and smaller cloud droplets, thereby increasing cloud albedo when cloud macrophysical properties are unchanged (Twomey effect, Twomey, 1974, 1977). This change in cloud droplet size can, however, then influence the cloud macrophysical properties and therefore the SCT. The SCT is delayed and even inhibited when typical pristine low cloud precipitation is suppressed by aerosol perturbations. The reduced cloud droplet and raindrop sizes reduce the collision-coalescence efficiency, thereby interrupting the positive feedback loop of the 'drizzle-depletion' process (Lifetime effect, Albrecht, 1989). On the other hand, with smaller and more numerous cloud droplets the overall droplet sedimentation velocity is reduced, so more droplets



remain closer to the inversion layer (Bretherton et al., 2007). Cloud droplets in contact with the dry and warm free troposphere are efficiently evaporated and, in turn, hasten the mixing of free-tropospheric air into the cloud layer (Zhou et al., 2017). This tends to desiccate the stratocumulus layer, thereby hastening the SCT. Another possible process weakening the aerosol effect of enhancing cloud lifetime is that the cloud deepening caused by drizzle suppression, in turn, increases the potential for rain production enough to offset the initial suppression of precipitation (Stevens and Feingold, 2009; Seifert et al., 2015). These complex, sometimes countervailing cloud responses, are strongly dependent on atmospheric conditions and are entangled with each other (Stevens and Feingold, 2009; Gryspeerdt et al., 2019) such that the net impact on the cloud radiative effect remains very uncertain.

Large-eddy simulation (LES) is a useful tool to investigate the impact of aerosols on SCT because it explicitly resolves processes fundamental to cloud physics and dynamics (e.g., Sandu and Stevens, 2011; Yamaguchi et al., 2017; Blossey et al., 2021). However, it is not yet feasible to routinely run larger regional or global-scale LES simulations due to the huge computational cost. Simulations with more limited (e.g., <100 km) domains, which have been widely used, cannot represent the interactions between all the relevant scales of physics and dynamics ranging from microphysics to the large-scale circulation, all of which play an important role in the SCT. Previous studies have demonstrated that the modification of large-scale thermodynamics and dynamics can modulate the SCT. Diamond et al. (2022) shows that the adjustment in subsidence can modify the thermodynamic profiles as well as the entrainment drying and warming. Dagan (2022) reveals that the large-scale changes in the thermodynamic and dynamic conditions by subtropical rain suppression potentially enhance tropical cloudiness. This interplay between the modification in microphysics and large-scale conditions complicates the response of clouds to aerosol perturbation.

The primary objective of this study is to comprehensively explore the intricate interplay between various scales, spanning microphysics to the large-scale circulation, and their impact on SCT. Within this context, our investigation focuses on evaluating the potential effectiveness and practicality of implementing a climate intervention approach known as Marine Cloud Brightening (MCB) (Latham, 1990). MCB involves the deliberate injection of sea-salt aerosols into subtropical low clouds as a means to counteract anthropogenic global warming.

A question is whether cloud macrophysical changes resulting from aerosol perturbations characteristic of MCB would be affected by the adjustment of the large-scale circulation. Localized perturbations in convection, which can be caused by a strong horizontal gradient of precipitation, significantly modify marine boundary layer buoyancy profiles. Yet, as validated from observations such as in pockets of open cells and ship tracks, horizontal gradients in buoyancy and boundary layer depth are small (Bretherton et al., 2010). This results from an adjustment in subsidence, which acts as a remote feedback that homogenizes the buoyancy profile (Sobel and Bretherton, 2000).

To quantify the effect of this adjustment on cloud evolution, we employ a Large-Eddy Simulation (LES) model integrated with a Weak-Temperature Gradient (WTG) approximation, where the latter parameterizes the remote adjustments of subsidence facilitated by gravity waves, thereby minimizing tropical buoyancy perturbations (Sobel and Bretherton, 2000; Blossey et al., 2009a; Bretherton and Blossey, 2017). Aerosol-cloud interactions in deep convective clouds have been studied using WTG methods (e.g., Anber et al., 2019; Abbott and Cronin, 2021). WTG methods have also been extended to model the interactions



and exchanges between two separate simulations (e.g., Daleu et al., 2012), and Dagan (2022) used such a two-column WTG method to study the impact of aerosol perturbations on the coupled evolution of tropical and subtropical columns, finding that subtropical aerosol perturbations could have downstream impacts if they reach deep convective regions. Because our focus on the SCT places our simulations far from deep convective regions and for simplicity, our implementation of WTG includes only a single column (our LES simulation) and uses fixed large-scale buoyancy soundings. Such single-column WTG methods do not, in general, account for the impact of local heating anomalies on the large-scale buoyancy sounding that might result from dense and basin-wide application of MCB. Larger-scale and possible global simulations might be required to understand such coupling, though such models struggle to resolve the small-scale processes driving cloud adjustments to aerosol perturbations.

This article is structured as follows: in Section 2, we provide detailed insights into our model configurations and WTG setup, while in Section 3, we present a comparative analysis of simulation outcomes, contrasting scenarios with and without WTG and with and without aerosol injection.

2 Methods

2.1 Model

For the LES modeling we use the System for Atmospheric Modeling (SAM) version 6.10, built with a finite difference representation of the anelastic system on the Arkawa C-grid spatial discretization (Khairoutdinov and Randall, 2003). The horizontal grid spacing is 50 meters in both the x and y directions, and the vertical resolution is 10 meters near the cloud layer (600-2000 meters altitude), gradually stretching to 15 meters down to the surface (0-600 meters) and up to 100 meters at the top of the model domain (3600 meters). The horizontal domain size is $51.2 \times 12.8 \times 3.6 \text{ km}^3$, with grid numbers $1024 \times 256 \times 216$. The model time step is adaptive with a typical value of ~ 0.5 -1 seconds. Doubly periodic boundary conditions are used for both the x and y directions. Advection of scalar fields, such as moisture, liquid-ice static energy, and aerosols, is treated using an advection scheme that preserves monotonicity (Blossey and Durran, 2008). The subgrid-scale turbulence is parameterized using a 1.5-order turbulent closure model with a prognostic formulation of turbulent kinetic energy. The Rapid Radiative Transfer Model for GCM application (RRTMG, Mlawer et al., 1997) calculates short- and long-wave radiative transfer and includes the overlying atmosphere above the LES model top ($\sim 3.6 \text{ km}$) in the computation of radiative heating rates and fluxes. Sensible and latent heat fluxes from the ocean surface in each grid box are estimated considering interaction with the surface turbulence based on Monin–Obukhov theory.

The two-moment Morrison microphysics scheme predicts the number concentrations and mixing ratios of liquid water cloud droplets and rain droplets. The cloud microphysics scheme is coupled with a bulk aerosol scheme (Berner et al., 2013), predicting the number and dry mass of a single lognormal accumulation mode with a fixed geometric standard deviation of 1.5. The conversion among dry aerosols, clouds, and rain droplets is represented using activation (Abdul-Razzak and Ghan, 2000), autoconversion and accretion (Khairoutdinov and Kogan, 2000), precipitation evaporation, and scavenging of interstitial aerosol by cloud droplets and rain (see appendix in Berner et al., 2013).



The natural sea-salt spray aerosol number and mass fluxes are diagnosed based on the wind speed and all of these aerosols are in a single, lognormal accumulation mode with a characteristic radius of 130 nm (Clarke et al., 2006; Berner et al., 2013).
125 In the PLUME runs, the injected aerosols also have a mean dry diameter of 255 nm, because the model version used here has a single-mode aerosol scheme with a fixed width, and is not set up to accurately represent aerosol particles with a wide range of sizes. This size is larger than that been identified as the optimal size for the purpose of MCB (30-100 nm in diameter, Wood, 2021).

Condensation occurs when the water vapor mixing ratio exceeds the saturation mixing ratio, which is estimated using saturation adjustment. Thus, only the influence of cloud droplet size and number on droplet sedimentation is considered, while
130 their impact on droplet evaporation is not (see e.g., Ackerman et al., 2004, 2009). Ice-phase hydrometeor species are not considered because the simulation domain is below the freezing level everywhere.

2.2 Weak temperature gradient (WTG)

The WTG scheme used in this study is based on the approach given in Appendix A in Blossey et al. (2009b). The basic
135 principle of the WTG approximation is that domain-mean anomalies of virtual temperature and diabatic heating with respect to diagnosed buoyancy profiles in the simulated column are the primary drivers of perturbation in the column mean vertical motion. Sandu et al. (2010) demonstrate the similarity between the composite transition built from the Lagrangian analysis and a climatological transition built in an Eulerian frame. Thus, we assume that the climatological buoyancy profiles along the composite trajectory are valid for the background buoyancy profiles. We use ERA5 climatology from 2002-2005 JJA along the
140 climatological trajectory over the Northeast Pacific given by Table C1 in Sandu et al. (2010). The details of how the adjustment in subsidence is applied using WTG are given in Appendix A. See Appendix A in Blossey et al. (2009b) for the detailed algorithm of the WTG.

2.3 Data

The SCT simulations are based on the setup used for the 3-day Lagrangian advection of a composite climatological, low-
145 level isobaric trajectory over the summertime Northeast Pacific developed by Sandu and Stevens (2011); therefore, the detailed descriptions of the setups are provided there. Here, we mainly focus on the reference (REF) and the fast (FAST) transition cases. The FAST case has a higher SST, weaker large-scale divergence, deeper initial boundary layer depth, and higher moisture in the MBL and FT than the REF case (see Figs. 2 and 5 in Sandu and Stevens (2011)). The potential temperature jump across the inversion layer is much weaker in the FAST than in the REF case.

Table 1 summarizes the cases analyzed in this study. This study mainly focuses on three cases. The first case (REF_{NO}) is
150 the REF case without implementation of the WTG, and thus, subsidence is prescribed as given in Sandu and Stevens (2011). The remaining two cases (REF_{WTG} and FAST_{WTG}) are the REF and FAST cases with the implementation of the WTG, respectively, so that subsidence is adjusted based on the ERA5 climatological thermodynamic profiles as described in Section 2.2. To test the sensitivity to aerosol loadings, three additional REF cases with WTG are conducted: (i) the aerosol injection
155 rate for the PLUME run is reduced to one fourth of that in other cases (REF_{weak}); (ii) N_a in the lower FT is reduced from



100 to 55 cm^{-3} (REF_{FT}); (iii) background N_a in the MBL is increased to 300 cm^{-3} (REF_{MBL}). Since the results from the additional three cases are consistent with the conclusions from the main cases, we briefly investigate them in Appendix C.

After 18 hours of spin-up for each case to allow the MBL and clouds to sufficiently evolve, the simulations are branched into runs with (PLUME) and without (CTRL) aerosol injection. A stationary point sprayer on the ocean surface injects 1.2×10^{16} aerosols per second for ~ 4.16 hours. As noted above, this injected aerosol has a dry diameter of 255 nm. We acknowledge that this is larger than the optimally-sized aerosol for MCB, but as noted above this is necessary to accommodate the model limitation of only being able to accommodate a single aerosol size mode.

The domain is rotated to align the geostrophic background wind with the y-axis (i.e., the x component of background wind velocity is approximately zero). Due to the Lagrangian framework, the sprayer effectively moves in the negative y-axis direction and, due to the periodic boundary conditions, passes through the domain about five times. This is analogous to a situation in which air masses traverse a region where several stationary sprayers are spaced at intervals of 12 km along their trajectory, similar to MCB scenarios given in Wood (2021). Because the point sprayer moves through the domain along the background winds (the y-axis), the diffusion of the injected aerosols is mainly in the x direction. The plume of injected aerosol is quickly dispersed and covers the whole domain within 24 hours (Figure 1). Thus, the impact of mesoscale variability of aerosols on the transitioning clouds is not represented on days 2 and 3.

3 Results

3.1 Overview of the SCT with and without WTG

Figures 2 and 3 illustrate the evolution of the MBL and cloud properties in the REF_{NO} , REF_{WTG} and FAST_{WTG} cases for both the CTRL (solid lines) and PLUME (dashed lines) runs. In Subsection 3.1.1, the CTRL runs are described, and Subsection 3.1.2 discusses the response of the MBL and clouds to aerosol injection.

3.1.1 Baseline (CTRL) runs

SCT occurs as a response to the increasing SST in all CTRL cases, as indicated by a gradual decrease in cloud fraction, f_c , throughout the 3-day simulations (Figure 2c). As in the climatology, the MBL depth increases with SST and reaches 1500 m at the end of the simulations (Figure 2a). In REF_{NO} , f_c exceeds 50 percent, and the surface precipitation rate (R_{sfc}) is lower than 0.5 mm d^{-1} on Day 1 (Figure 2e). As the clouds deepen with the MBL, R_{sfc} increases to $\sim 0.5 \text{ mm d}^{-1}$ on Day 3. After the onset of strong precipitation, the supply of the CCN from the natural sea-salt spray becomes lower than the depletion of cloud droplets by accretion, leading to a decrease in N_c to 10 cm^{-3} , and f_c becomes lower than 30 percent without significant diurnal variation. This indicates that the SCT is mainly driven by the combined effects of drizzle depletion of clouds and the weakening of overturning circulation in the MBL by the evaporation of strong precipitation below the cloud base.

The adjustment in subsidence through the WTG approximation greatly affects the evolution of clouds and the MBL. The SCT in the REF_{WTG} case is slower than in the REF_{NO} case (e.g. Figure 2c). As illustrated in Appendix A, WTG intensifies the



subsidence in order to reduce the buoyancy perturbation with respect to climatology. Since the aerosol number concentration in the lower FT is higher than in the MBL, the intensified subsidence in REF_{WTG} delivers more CCN into the MBL. The stronger supply of CCN reduces the precipitation rate and, thus, delays the SCT. f_c gradually decreases from 90 to 20 percent with an
190 apparent diurnal cycle driven by solar heating. N_c and N_a remain greater than 20 cm^{-3} , and R_{sfc} is lower than 0.2 mm d^{-1} for the first two days, which implies that the cloud breakup is likely to be caused by cloud thinning by entrainment warming and drying rather than strong precipitation (Figure 3). As the MBL deepens further on Day 3, R_{sfc} increases to $\sim 0.4 \text{ mm d}^{-1}$, and precipitation starts to contribute to cloud breakup.

In the FAST_{WTG} case, the pace of the SCT is faster than for the REF_{WTG} case and comparable to the reference case without
195 WTG (REF_{NO}). Despite the greater supply of FT aerosol due to stronger entrainment in the FAST_{WTG} case, a moister FT produces sufficient precipitation to hasten the SCT, as indicated by a similar evolution of f_c and R_{sfc} . The similarity between REF_{NO} and FAST_{WTG} makes analysis of the impact of the adjustment in subsidence on the SCT feasible.

3.1.2 Runs with aerosol injections (PLUME)

Aerosol injection quickly elevates aerosol concentrations throughout the MBL. N_a and N_c rapidly increase to 250 and
200 200 cm^{-3} , respectively, during the period of the injection. Notably, most of the injected aerosols are activated despite being injected during the daytime when boundary layer turbulence weakens. This result runs counter to the argument from Jenkins et al. (2013) that most of the injected aerosols are not activated because the turbulence during daytime is not strong enough to deliver the injected aerosols to the cloud base to activate them. A smaller activation fraction in Jenkins et al. (2013) may also reflect a greater fraction of aerosol smaller than 100 nm used in that study.

For the REF_{NO} case, aerosol injection induces increased entrainment and rapid growth of the MBL, which raises the cloud-
top height (Fig. 2a). On Day 1, f_c becomes close to overcast at night and early the following day, but rapidly decreases to 30 % in the afternoon. On days 2-3, however, despite the deepening and decoupling of the MBL, the cloud-layer motions — intensified by suppression of cloud-base precipitation — still supply enough moisture to maintain a stratocumulus layer below the inversion. This is why the stratocumulus layer is not dissipated, although the w_e enhancement (Fig. 2f) elevates the cloud
210 base by drying and warming the MBL. In response to the increase in cloud number concentration with aerosol injection, R_{sfc} in the REF_{NO} decreases to $< 0.1 \text{ mm d}^{-1}$ on Days 1 and 2 (Figure 2e). On Day 3, R_{sfc} becomes greater in the PLUME run than in the CTRL run, because the deeper (~ 1500 meters) cumulus cloud depth (Figure 3d) can produce strong precipitation despite having a higher cloud droplet number concentration. This implies that when the adjustment in subsidence is not considered, the suppression of significant precipitation by aerosol injection is likely to delay the transition from overcast stratocumulus to
215 cumulus for a couple of days (Erfani et al., 2022). We can expect from the significant R_{sfc} on Day 3 that a few days following the aerosol injection, the SCT starts to occur due to a positive feedback loop in which strong precipitation scavenges aerosols, leading to low cloud droplet number concentrations and thus greater precipitation (Yamaguchi et al., 2017).

Allowing subsidence to respond to buoyancy anomalies induced by aerosol perturbations strongly affects the MBL and cloud evolution. As the aerosol injection in the REF_{WTG} and FAST_{WTG} cases increases entrainment and induces boundary
220 layer deepening, subsidence intensifies to bring the sounding in the LES model closer to the reference (ERA JJA climatolog-



ical) sounding along the trajectory. The intensified subsidence from aerosol injection suppresses the MBL deepening in the REF_{WTG} and FAST_{WTG} cases (Figure 2c), consistent with Dagan et al. (2022) who found a similar response to aerosol enhancement in shallow convective clouds. Without an adjustment in subsidence in the REF_{NO} case, the boundary layer depth increases by 700 m in three days, while those in the REF_{WTG} and FAST_{WTG} deepen only by 100-400 meters. In all three cases, precipitation suppression results in increased turbulence and entrainment.

When subsidence adjustment is accounted for (i.e., REF_{WTG}), aerosol injection hastens the SCT compared with REF_{NO}. The combined effects of the enhanced w_e and intensified subsidence induce a much faster cloud thinning, leading to the earlier dissipation of the stratocumulus layer (Figure 3). Even in the FAST_{WTG} case, where precipitation is significantly suppressed, and thus LWP and f_c increase, the stratocumulus layer completely dissipates within the three-day simulation. This indicates that accounting for the subsidence adjustment has a major effect on the cloud evolution and, thus, the timing of the SCT.

One notable feature of the effect on cloud evolution of aerosol injection in the REF_{WTG} and FAST_{WTG} cases is a rapid decrease in f_c and in LWP in the afternoon (Figure 2a). Even in the FAST_{WTG} case, where precipitation is significantly suppressed, the f_c and LWP in the PLUME case become smaller than in the CTRL case on the second afternoon. Since reflection of solar SW radiation only occurs during daytime, this diurnal variation should significantly account for the variation in the cloud radiative effect. In the REF_{NO} case, on the other hand, after Day 1.5 f_c and LWP are always greater in the PLUME run than in the CTRL run. In Section 3.2 and Appendix B, the characteristics of boundary-layer turbulence are investigated to more deeply understand the impact of the adjustment in subsidence and the aerosol perturbation on the SCT.

3.2 Boundary layer turbulence

In the MBL, the main sources of turbulence are cloud-top cooling, surface buoyancy flux, and latent heating, which in decoupled or cumulus-coupled boundary layers, occurs in cumulus updrafts. Cloud-top cooling dominates the stratocumulus regime due to the high cloud cover and low SSTs, while surface buoyancy flux and latent heating in Cu updrafts dominate in the cumulus regime due to low cloud cover and high SSTs. Figure B1 demonstrates the relationship between cloud radiative heating rate and cloud thickness, as measured by cloud LWP. LW radiative cooling linearly increases with cloud depth below a threshold (in-cloud LWP $\sim 20 \text{ gm}^{-2}$), likely due in part to lower cloud fractions associated with smaller LWP values, and then saturates above it (Figure B1b). On the other hand, SW radiative heating sub-linearly increases with LWP (Figure B1c). Appendix B discusses how the cloud thickness and subsidence rate can influence cloud breakup. The surface buoyancy flux is determined by sensible and latent heat fluxes, which can be quantified by $B_0 = \overline{w'b'}_{z=0+} = SHF + 0.61 \frac{c_p \bar{T}}{L} LHF$. Since $0.61 \frac{c_p \bar{T}}{L} \sim 0.07$, changes in SHF play a leading role in changes in the surface buoyancy flux in these simulations.

Figure 4 shows the daily-averaged cloud radiative heating in the upper MBL. The SW cloud radiative heating and LW cooling by at the upper MBL, R_{SW}^{up} and R_{LW}^{up} , are calculated by averaging the cloudy-sky (all-sky minus clear-sky) SW and LW radiative heating rates, respectively, in the upper half of the boundary layer. The LW emission from the cloud top to space induces net cooling in the upper MBL, which is partially offset by solar SW absorption. Since the area of clouds with in-cloud LWP exceeding 20 gm^{-2} becomes smaller with the SCT, R_{net}^{up} also weakens with time (i.e., along the trajectory). The



weakening of R_{net}^{up} along the trajectory in the CTRL runs is less rapid in REF_{WTG} than in REF_{NO} and FAST_{WTG}, due to
255 the slower cloud breakup.

Changes in R_{net}^{up} in response to aerosol injections greatly differ depending on whether the WTG adjustment is implemented. When the adjustment is not included, the radiative cooling of the cloud top in REF_{NO} becomes extremely effective in response to aerosol injection, and it weakens quite slowly with time (Fig. 4a). This is why the stratocumulus layer is not dissipated, although the MBL is deeper than 2000 m and the surface buoyancy production is smaller in the PLUME run. In the REF_{WTG}
260 (Fig. 4b) and FAST_{WTG} (Fig. 4c) cases, on the other hand, the net cooling by clouds in the PLUME runs decreases more rapidly along the trajectory. This can largely be attributed to the thinning of clouds under intensified subsidence with consequently smaller outgoing LW emissions. In REF_{WTG}, R_{net}^{up} is stronger on Day 1 in the PLUME run but weakens after this relative to the CTRL run. This implies that the aerosol perturbation enhances cloud cover on the first day, but the polluted clouds break up more easily afterward. In the FAST_{WTG} case, the significant suppression of drizzle with aerosol injection in
265 turn significantly enhances LWP and f_c . While this effect also weakens with time, it is more persistent in the FAST_{WTG} case than in REF_{WTG}, possibly because drizzle-depletion plays a stronger role in the SCT in the FAST_{WTG} CTRL simulation.

The diurnally-averaged differences in the entrainment rate ($dw_e = w_{e,PLUME} - w_{e,CTRL}$), surface buoyancy flux ($dB_0 = B_{0,PLUME} - B_{0,CTRL}$) and net radiative heating by clouds in the upper MBL ($dR_{net}^{up} = R_{net,PLUME}^{up} - R_{net,CTRL}^{up}$) are shown in Figure 5. The bars for each value indicate the interquartile range of the differences. In all cases, the surface buoyancy
270 flux decreases in the PLUME runs due to drizzle suppression, leading to the reduced evaporative cooling of drizzle in the sub-cloud layer (Figure 5a). On Day 1, dB_0 becomes increasingly negative as the plume track spreads, then is unchanged or becomes slightly less negative on Days 2-3 once the plume track covers the whole domain. Notable is that variation on Days 2 and 3 (i.e., the interquartile range) is marginal, indicating that the change in dB_0 is robust throughout the whole day. The enhanced entrainment rate makes the lowest layer drier, intensifying the LHF. However, the contribution of entrainment drying
275 and warming to the surface buoyancy flux is negligible, as the MBL becomes more decoupled.

Although the values of dB_0 and dR_{net}^{up} (Figures 5b and c) do not quantitatively represent their contribution to the MBL turbulence, they qualitatively represent the turbulence changes in the MBL induced by the aerosol perturbation. Among the three cases, the decrease in B_0 is greatest for REF_{NO}, but the increased magnitude of dR_{net}^{up} ($\sim 15 \text{ W m}^{-2}$ on Day 3) is about 2.5 times greater than that of B_0 ($\sim 6 \text{ W m}^{-2}$ on Day 3). This implies that turbulence generated by increased cloud-top cooling
280 surpasses turbulence dissipation by the decreased surface buoyancy flux, so the MBL turbulence is intense enough to sustain the stratocumulus layer. In the REF_{WTG} case, dR_{net}^{up} even becomes positive after Day 2, indicating that both a decreased surface buoyancy flux and cloud-top cooling dissipate the turbulence in the PLUME run. In the FAST_{WTG} run, dR_{net}^{up} is slightly more negative than dB_0 on Day 2 but less negative on Day 3, which implies that the MBL turbulence should be much weaker in the PLUME than CTRL runs despite having similar amounts of precipitation suppression to REF_{NO}.

285 The entrainment rate is enhanced by the aerosol perturbation due to the more effective evaporation of cloud water lying at the inversion layer. On Day 1, dw_e increases with time as the plume track spreads and the aerosol-cloud interaction is not yet saturated (Glassmeier et al., 2021). In the REF_{NO} case, where the SCT is inhibited by the aerosol perturbation, the enhanced cloud-top cooling (Fig.4a) intensifies the turbulence at the inversion layer. In the REF_{WTG} and FAST_{WTG} cases, on the



other hand, the entrainment enhancement does not increase on Day 2, because the cloud-top cooling is less effective due to
290 cloud breakup. On Day 3, dw_e becomes much weaker, such that the interquartile range of dw_e includes zero. This implies that
entrainment enhancement, which is a dominant process for LWP adjustment over stratocumulus cloud decks, becomes less
pronounced as the clouds break up.

Figure 6 illustrates the vertical structure of the diurnally-averaged MBL turbulence on each day. The vertical profiles of
buoyancy flux B (Figures 6a-c) are consistent with the findings from Figs. 4 and 5. In general, B is weaker in the subcloud
295 layer in the PLUME runs than in the CTRL runs due to the decrease in B_0 . In particular, a more negative B at the cloud base
in the PLUME run indicates that the MBL becomes more decoupled, driven by enhanced w_e . In the cloud layer, B is greater
in the PLUME runs than in the CTRL runs because of the stronger radiative cooling associated with greater cloud cover due to
rain suppression by the aerosol perturbation. It is notable that B in the cloud layer does not decrease with time in the REF_{NO}
case, but in the REF_{WTG} and FAST_{WTG} cases it decreases on Days 2-3 due to the SCT, as illustrated in Fig. 5c.

300 Figures 6d-f show the vertical profile of vertical-velocity skewness, $S_w = \overline{w'^3} / (\overline{w'^2})^{3/2}$. In subtropical, stratocumulus-
capped marine boundary layers, negative S_w generally indicates that turbulence and convection are dominated by downdrafts
associated with cloud top cooling, while positive S_w is related to cumulus convection and/or subcloud layer turbulence driven
by positive surface buoyancy fluxes (B_0). In the CTRL runs, S_w is positive throughout the simulation, due to significant B_0 ,
which increases along the trajectory as SST increases. When aerosols are injected into drizzling clouds, S_w at the cloud layer
305 decreases due to smaller B_0 , the suppression of cloud-base precipitation, and with the increase in cloud-layer turbulence in-
duced by stronger cloud-top cooling. This indicates that the contribution of cloud-top cooling to MBL turbulence is greater in
a polluted than in a pristine MBL. On Day 3 (Figure 6f), the decreases in S_w at the cloud layer with aerosol injection become
less significant. This is mainly attributed to a weaker turbulence production at cloud-top (Fig.6c) and an increase of SST and
cumulus convection with time.

310 To understand the diurnal variation of clouds in the PLUME and CTRL runs shown in Section 3.1.1, turbulence properties
in the night, morning, and afternoon are shown in Figs. 7 and 8. In all cases, buoyancy production in the near-inversion cloud
layer ($z/z_{inv} \sim 0.8$) is strongest at night, due to the absence of shortwave (SW) solar absorption and the significant longwave
(LW) radiative cooling (Figures 7 and 8a). Near-inversion buoyancy production is greater in the PLUME runs than CTRL runs,
since the aerosol perturbation's impact on drizzle suppression (resulting in a positive LWP adjustment) is more significant
315 than its impact on entrainment enhancement (negative LWP adjustment). Before noon (Morning), clouds exert a consistent
LW radiative cooling since f_c is still high, but the cloud-top cooling effect starts to be partly offset by SW solar absorption
(Figures 7 and 8b).

In the afternoon, LW radiative cooling and SW solar absorption both weaken as f_c decreases. Changes in R_{SW}^{up} and R_{LW}^{up}
roughly offset each other in the PLUME run for the REF_{NO} case, so the net cooling rate does not vary during the daytime
320 (Figure 7c) and the buoyancy production in the near-inversion cloud layer remains significant (Figure 8c). In the PLUME runs
for the REF_{WTG} and FAST_{WTG} cases, however, R_{LW}^{up} significantly decreases so that the net cooling rate in the afternoon
is much smaller than in the morning. The significant decrease in R^{up} (and thus weak buoyancy production at cloud layer) is
mainly attributed to the cloud thinning and breakup, with LWP in an increasing fraction of falling below 20 g m^{-2} , due to the



impacts of the adjustment in subsidence. The greater S_w within the cloud layer also suggests a complete breakup of Sc layers
325 (Figures 8f). The analysis of diurnal variation in turbulence implies that the application of the WTG method has a pronounced
impact on Sc layers during daytime.

3.3 Cloud Radiative Effect (CRE)

Previous sections illustrate the adjustments in cloud properties that result from aerosol injections. To analyze the radiative
effect of aerosol perturbations over the various cases, we quantify the changes in the cloud radiative effect (computed at top of
330 atmosphere) caused by changes in cloud properties. Here $dCRE = CRE_{\text{PLUME}} - CRE_{\text{CTRL}}$ so that positive dCRE indicates
a net warming effect, and negative a net cooling effect. The SW cloud radiative effect is decomposed into the components
caused by changes in the cloud droplet number concentration ($dCRE_{N_c}$), cloud thickness ($dCRE_{\text{LWP}}$) and cloud fraction
($dCRE_{f_c}$), as illustrated in Appendix B in Chun et al. (2023). Here, we also consider the LW cloud radiative effect ($dCRE_{\text{LW}}$)
since changes in f_c and inversion height by aerosol injection are not negligible through the SCT.

335 Table 2 and Figure 9 summarize the decomposed dCRE on each day. As expected, the increase in N_c enhances the cloud
albedo throughout the 3-day simulations in all the cases. On Day 1, the injected aerosols are quickly activated to cloud droplets,
but the plume track is still narrow. As the plume quickly fills the domain during the first 20 hours and the decrease in domain-
mean N_c is slow, the negative $dCRE_{N_c}$ does not significantly decrease in the REF_{NO} and FAST_{WTG} cases, and even increases
in the REF_{WTG} case, due to a slow decrease in f_c . On Day 3, decreases in the magnitude of $dCRE_{N_c}$ occur in all the cases
340 because of the combined effects of decreased f_c and N_c in the PLUME runs on Day 3.

There is a significant difference in $dCRE_{f_c}$ between the cases with and without the WTG adjustment. In the REF_{NO} case,
 $dCRE_{f_c}$ is -10.8 W m^{-2} and the cooling effect increases four-fold on Days 2 and 3 (-44.1 and -46.2 W m^{-2} , respectively)
because the SCT is inhibited. In the REF_{WTG} case, $dCRE_{f_c}$ on Day 1 is negative (-2.6 W m^{-2}), but becomes positive on
Day 2 (1.8 W m^{-2}) and increases to 10.4 W m^{-2} on Day 3. In the FAST_{WTG}, the negative $dCRE_{f_c}$ on Day 1 (-12.8 W m^{-2}),
345 caused by a delayed SCT, becomes more negative on Day 2 (-30.3 W m^{-2}). On Day 3, the magnitude of $dCRE_{f_c}$ is smaller
(-10.6 W m^{-2}) due to the SCT in the PLUME run. The radiative effect of changes in cloud thickness (i.e., $dCRE_{\text{LWP}}$) is
minor on Day 1 in the three cases but becomes more pronounced on Day 2. On Day 3, $dCRE_{\text{LWP}}$ weakens, suggesting that
the time scale of adjustment in cloud thickness is roughly one day, as pointed out by Glassmeier et al. (2021). This timescale is
also consistent with the observed timescale for the relaxation of LWP fluctuations in the subtropical regions where SCT occurs
350 (Eastman et al., 2016).

The change in outgoing LW radiative flux, which has not received as much attention in previous studies of low clouds'
radiative effect, is nontrivial when the background precipitation is significantly suppressed, and cloud cover increases in re-
sponse. Since the MBL depths increase along the trajectory, the difference between cloud-top temperature (CTT) and SST
increases. Thus, changes in cloud cover exert a nontrivial change in the LW cloud radiative effect. In the REF_{NO} case, as the
355 SCT is completely inhibited during the 3-day simulation and the MBL depth rapidly increases in the PLUME run, $dCRE_{\text{LW}}$
increases along the trajectory (from 2.8 W m^{-2} on Day 1 to 17.1 W m^{-2} on Day 3). The magnitude of $dCRE_{\text{LW}}$ is smaller in
the FAST_{WTG} case than in the REF_{NO}, because the MBL deepening is suppressed by intensified subsidence. In the weakly



precipitating MBL of the (REF_{WTG}) case, dCRE_{LW} does not account for the total dCRE, since the decrease in f_c during daytime is compensated at night and CTT does not significantly change due to the adjustment in subsidence. These mostly positive changes in LW CRE with increased aerosols differ from Zhou et al. (2017), solar-absorbing aerosols in the lower FT.

The total dCRE (i.e., dCRE averaged across the 3-day simulations) differs greatly between the cases with and without WTG. In the REF_{NO} case, a significant total cooling effect (-38.9 W m^{-2}) results from roughly equal contributions from the Twomey effect (-17.3 W m^{-2}) and changes in cloud macrophysics (-21.6 W m^{-2}), associated mostly with the delay in SCT. In the REF_{WTG} case, the slightly larger dCRE_{Nc} (-20.5 W m^{-2}) is partially offset, by 58 percent, by the change in cloud macrophysics (together, 11.9 W m^{-2}), resulting in a smaller, but still significant, net cooling effect of -8.5 W m^{-2} . In the FAST_{WTG} case, a smaller decrease in cloud LWP and an increase in cloud fraction augment the negative CRE from the increase in dCRE_{Nc}. Here, the CRE from the change in cloud macrophysical properties (-10.3 W m^{-2}) is three quarters of dCRE_{Nc} (-14.2 W m^{-2}). The total dCRE is -24.6 W m^{-2} , which is only 63 percent of that in the REF_{NO} case, where the change in precipitation is comparable. This implies that if we do not consider the interaction between the aerosol-cloud interactions and the larger-scale circulation, the cloud radiative effect will be overestimated.

4 Discussion

One key finding of this study is that incorporating the adjustment in the large-scale circulation to the background thermodynamic state in response to an aerosol perturbation has a crucial impact on the lifetime of stratocumulus clouds. With fixed large-scale dynamics, the aerosol perturbation inhibits a large amount of precipitation, thereby leading to the destabilization and the rapid growth of the boundary layer. Consequently, this inhibits the stratocumulus-to-cumulus transition (SCT). It is anticipated from our results that as marine boundary layer (MBL) continuously deepens with time, or along the trajectory, for a couple of days precipitation is initiated in the clouds deepened through aerosol injection, despite the clouds having a larger number of cloud droplets. This is a type of buffering or deepening effect (Stevens and Feingold, 2009; Seifert et al., 2015), which results in the SCT. With a framework that accounts for an interactive large-scale circulation, on the other hand, intensified subsidence from buoyancy perturbations suppress cloud deepening (Dagan et al., 2022). As a result, the cloud becomes thinner and loses the potential to generate turbulence by cloud-top cooling, inducing cloud breakup. This suggests that the aerosol perturbation does not inhibit the SCT but changes the transition regime from a precipitation-driven ‘drizzle-depletion’ to an entrainment-driven ‘deepening-warming’ mechanism.

The stark contrast in the pace of the SCT indicates that the cloud radiative effect will be overestimated if the interplay between the aerosol-cloud interactions and the large-scale circulation is not accounted for. For strongly precipitating MBLs, the reduced longevity of the stratocumulus layer by aerosol perturbation associated with the subsidence intensification reduces the cooling effect to a third compared to cases without the subsidence intensification. For lightly precipitating MBLs, positive LWP adjustments cancel fifty percent of the Twomey effect. This implies that integrating the interplay of aerosol-cloud interactions (ACI) with the large-scale circulation more accurately constrains the radiative forcing associated with anthropogenic climate



390 change and the deliberate injection of targeted aerosols to mitigate anthropogenic global warming (i.e., climate intervention by marine cloud brightening, MCB).

Our research findings also highlight the contrast in fundamental processes inherent to stratocumulus and cumulus cloud regimes, emphasizing the significance of adopting a regime-centered approach, as recommended by Stevens and Feingold (2009). In the context of overcast shallow stratocumulus, characterized by well-mixed boundary layers, we observe that the intensification of cloud-top entrainment due to an aerosol perturbation drives cloud thinning (i.e., negative cloud adjustments), but that thinning is partly or, in the heavily precipitating state, more than compensated by positive adjustments associated with precipitation suppression and increased surface heat fluxes (Chun et al., 2023). However, as clouds undergo the transition, the influence of cloud-top entrainment adjustments diminishes, owing to a weakened contribution from cloud tops to boundary layer turbulence. Simultaneously, an adjustment in surface buoyancy production becomes more pronounced since the deeper cumulus clouds tend to produce more precipitation than shallower stratocumulus clouds. Given that the impact of subsidence adjustments emerges as the dominant factor when significant changes in precipitation occur, the influence of subsidence adjustments tends to be less pronounced in this regime. In contrast, deeper cumulus clouds exhibit a greater susceptibility to modulation through the interplay between aerosol perturbations and the large-scale circulation.

The realization of the interactive large-scale circulation used in this model, the weak-temperature gradient (WTG), is limited because this method is simplified. For this approximation, the background thermodynamic states for the WTG (e.g., lower free-tropospheric temperature and moisture) do not respond to the background dynamic adjustment. This approximation might be acceptable for 3-day simulations. As the pollution track is widespread, however, the thermodynamic reference state should be changed, thereby affecting the cloud adjustment. In addition, the localized but persistent radiative forcing caused by the aerosol perturbation potentially causes an imbalance in the energy budget, inducing perturbations in the large-scale circulation and thereby, winds, surface fluxes, and clouds across the tropics and subtropics (Dagan, 2022). Diamond et al. (2022) showed that cloud adjustments caused by large-scale smoke-circulation interactions cannot be explained by a single variable due to the complicated interactions among the processes ranging from microphysical to large-scale thermodynamic and dynamical responses. Although their experiment setup is basically different in that the source of the aerosol perturbation is smoke layer right above the planetary boundary layer, their results provide insight into the potential implications of the interplay between the large-scale dynamics and thermodynamics caused by aerosol perturbations on the SCT.

The experiments presented in this study offer valuable insights into the impact of aerosol perturbations on the SCT. However, it is important to acknowledge their limitations in fully constraining the radiative effects of aerosol perturbations on the SCT. The analysis primarily focuses on two composite trajectories, the REF and FAST cases derived from Sandu and Stevens (2011), which, while informative, do not fully capture the diverse variability of the boundary layer and cloud behavior during transitions. Additionally, the utilization of a single climatological profile for the WTG in this investigation provides valuable insights but may not comprehensively account for the intricate interactions between cloud microphysics, macrophysics, and large-scale circulations. Therefore, it is imperative for future research to expand upon these findings by conducting experiments representative of various geographic locations where compact low clouds are prevalent, so their breakup processes can be more comprehensively studied.



425 5 Summary

This study explores the interaction of cloud microphysics and macrophysics with large-scale circulation impacts in large-eddy simulations of the stratocumulus-to-cumulus transition (SCT). To account for the interaction of large-scale dynamics with changes in microphysics and macrophysics, we utilized the weak-temperature gradient (WTG) approach. The WTG approach approximates the large-scale dynamical responses to buoyancy perturbations with respect to a reference climatological thermodynamic condition. We investigate two climatological trajectories over the Northeast Pacific (Sandu and Stevens, 2011), where the SCT frequently occurs. These cases are systematically examined through simulations both with and without aerosol injections, providing insights into the intricate response to aerosol perturbations.

Throughout the preceding sections, we have highlighted the pivotal influence of adjustments in the large-scale circulation and its subsequent response to aerosol perturbations on the SCT. The growth of the marine boundary layer (MBL) triggered by aerosol injection introduces a negative buoyancy perturbation, thereby altering the thermodynamic state and inducing enhancement of the subsidence. This intensified subsidence suppresses cloud-top height growth, as observed in previous work (van der Dussen et al., 2016), and simultaneously elevates cloud-base height due to enhanced cloud-top entrainment warming and drying processes. Consequently, this intricate interplay results in an accelerated thinning of the cloud layer.

Due to the intensified subsidence, there is an increase in the fraction of clouds with LWP lower than a critical threshold ($\sim 20 \text{ g m}^{-2}$), characterized by a reduced emissivity and weakened longwave radiative cooling efficiency, where clouds become more susceptible to cloud breakup, thereby hastening the SCT. Meanwhile, a reduction in cloud-base precipitation driven by the aerosol perturbation makes the sub-cloud layer warmer, leading to weakened surface buoyancy fluxes. Since cloud depth diurnally decreases with solar absorption and surface buoyancy weakens throughout the day, the cloud breakup driven by the aerosol perturbation becomes more pronounced during daytime.

In a weakly precipitating MBL in which enhanced entrainment drives a ‘deepening-warming’ transition, the SCT is accelerated due to the decreases in turbulent generation from decreases in both cloud-top cooling and the surface buoyancy flux. In a strongly precipitating MBL in which precipitation drives a ‘drizzle-depletion’ transition, the cloud amount increases due to the retention of liquid water through suppressed precipitation, but this does not inhibit the SCT. Without accounting for the subsidence adjustment triggered by the aerosol perturbation, the free growth of the MBL through precipitation suppression inhibits the stratocumulus breakup, a phenomenon in alignment with a recent study Prabhakaran et al. (2023).

The MBL and cloud adjustments resulting from the interaction of an aerosol perturbation with the large-scale circulation strongly modulates the cloud radiative effect (CRE). For a lightly drizzling MBL, the Twomey effect brightens the clouds, and this is largely offset by accelerated cloud breakup. Despite the decrease in cloud cover during daytime, the cloud recovery at night makes longwave (LW) radiative forcing a marginal contribution to the total radiative forcing. For a heavily precipitating MBL, a positive LWP adjustment driven by reduced precipitation augments the Twomey brightening, but this enhancement in LWP is smaller than in the case without subsidence adjustment. The increase in cloud cover, especially at night, reduces LW radiative emission into space and partially cancels the SW radiative cooling. Nonetheless, the total change in the cloud radiative effect with aerosol injection exerts a cooling impact across all cases.



Appendix A: Adjustment in Large-scale Subsidence by the Weak Temperature Gradient

460 The inversion height (z_{inv}) from the climatology, which represents the large-scale background thermodynamic profiles, is slightly lower than those in the model simulations (Figure 2a). This results in a negative buoyancy perturbation in the upper part of the boundary layer compared to the background. Subsidence is intensified to reduce the negative buoyancy deviation by inducing adiabatic warming (Figure 2b and Figure A1b). The reduction in cloud-base precipitation by an influx of the FT aerosol intensifies in-cloud turbulence, leading to deepening of the MBL. The tendency toward the MBL deepening further intensifies subsidence in order to reduce the virtual potential temperature, θ_v , anomaly in the background state. θ_v in the FAST_{WTG} case is higher than in the REF_{WTG} case due to the higher SST and greater latent heat release by precipitation formation (Figure 2e), leading to weaker subsidence in the FAST_{WTG} case than in the REF_{WTG} case. As a result of the subsidence adjustment, the inversion height (z_{inv}) in the cases with the WTG remains close to that in the background state. The entrainment rate (w_e) is higher in the REF_{WTG} and FAST_{WTG} cases than in the REF_{NO} case, because the deepening rate is comparable, but subsidence is intensified (Figure 2f).

The aerosol injections in the cases with the WTG adjustment (dashed lines in Fig.A1) perturb the buoyancy profile and, thus, the large-scale vertical motion. The decrease in precipitation flux down to the surface with aerosol injection reduces θ_v in the MBL and, in turn, intensifies subsidence to dampen the decrease in θ_v . In addition, the tendency of the MBL deepening by enhanced w_e leads to an additional negative θ_v perturbation at the upper part of the boundary layer, resulting in the further intensification of subsidence. The subsidence is intensified further in the FAST_{WTG} case than in the REF_{WTG} case due to a greater reduction in precipitation and increased w_e . The prescribed feedback loop illustrates that the boundary layer deepening by aerosol enhancement is buffered by intensified subsidence as illustrated in Dagan et al. (2022).

Appendix B: Cloud radiative heating rate and MBL collapse as a response to a decrease in cloud thickness

Figure B1 illustrates the dependency of the cloud radiative heating rate on in-cloud LWP in the afternoon. Individual scatter plots indicate radiative heating by clouds in each column. LW radiative cooling sharply increases with cloud depth for in-cloud LWP up to 20 g m^{-2} , then becomes saturated above 20 g m^{-2} . SW radiative heating, on the other hand, sublinearly increases with LWP. As a result, the net cloud radiative cooling rate sharply strengthens up to a LWP of 20 g m^{-2} , then weakens above 20 g m^{-2} . As discussed in Bretherton et al. (2010), when the boundary layer depth decreases (i.e., $dz_{inv}/dt = w_e - w_{z=z_{inv}} < 0$), clouds thinner than 20 g m^{-2} quickly dissipate through a positive feedback loop (MBL depth decreases - decrease in cloud thickness - decrease in radiative driving of turbulence and entrainment - decrease in cloud thickness). With the WTG implementation, both weakened turbulence in the MBL (e.g., Figs.4 and 5) and intensified subsidence (Appendix A) by an aerosol perturbation make the stratocumulus more vulnerable to cloud breakup.



Appendix C: Sensitivity to aerosol conditions

To test the sensitivity of accounting for large-scale circulation responses to aerosol conditions, the REF_{WTG} case is repeated
490 with three different sets of aerosol conditions, as given in Table 1. The evolution of the cloud and MBL properties are illustrated
in Figure C1, similar to Fig.2.

The only difference between the REF_{weak} and REF_{WTG} cases is the aerosol injection rate, so the CTRL run is exactly the
same as for the REF_{WTG} case in Fig. 2. In the REF_{WTG} case PLUME run, N_a in the MBL and N_c are both enhanced to 90
cm⁻³ – a factor of three smaller aerosol perturbation than in the REF_{WTG} PLUME case (~ 300 cm⁻³) (Figure C1g,h). This
495 case examines the sensitivity to aerosol perturbation in the SCT with weak precipitation.

In the REF_{FT} case, the stratocumulus layer has a weaker supply of aerosol from the lower FT. Clouds rapidly break up
on the first night due to the rapid scavenging of the larger cloud droplets by stronger precipitation (Figure C1c,e). Due to the
stabilization by rain evaporation below the cloud base, z_{inv} is slightly lower than that in the climatology. Due to the polluted
MBL, the precipitation rate in the REF_{MBL} case is too weak to reach the surface ($R_{sfc} < 0.1$ mm d⁻¹), so the change in R_{sfc}
500 by aerosol injection is negligible. This case examines the impact of aerosol injection on the SCT in a non-precipitating MBL.

With aerosol injections, the clouds and MBL evolve similarly to that in the REF_{WTG} case. As discussed in Sections 3.1.2 and
3.1.3, the stratocumulus layer gradually thins, with a significant diurnal variation (thinning during the daytime and recovering
at night). The decreases in f_c and LWP are comparable in the REF_{weak} and REF_{WTG} cases, although N_c enhancement is three
times weaker in the former case. This result is consistent with Manshausen et al. (2023), revealing that liquid water increases
505 driven by aerosol perturbations in raining clouds are constant over the emission ranges observed. One discernible feature is a
slightly higher f_c and LWP on Day 2 in the REF_{weak} case than in the REF_{WTG} case. In the REF_{FT} case, aerosol injections
effectively reduce R_{sfc} and thus increase f_c , LWP, w_e , and subsidence. The difference in f_c and LWP between the CTRL
and PLUME runs is quickly reduced along the trajectory due to the enhanced subsidence, as in the FAST_{WTG} case. Due to a
pristine lower FT, the aerosol number concentration in the MBL and cloud number concentration rapidly decreases with time.
510 In the REF_{MBL} case, the perturbations caused by aerosol injection are much smaller due to small changes in w_e and R_{sfc} .

Changes in cloud radiative effects in the REF_{weak} case are broadly similar to those in REF_{WTG} case but weaker in mag-
nitude with an overall dCRE that is negative but about half as strong as in the REF_{WTG} case. In the REF_{FT} case, dCRE is
more negative than for the FAST_{WTG} case, due to earlier cloud breakup in the REF_{FT} case than in the FAST_{WTG} case. In
the REF_{MBL} case, dCRE on Day 1 is negative, but increases with time and becomes positive on Day 3, leading to a small
515 radiative forcing across all three days.

Code and data availability. The original model source code is publicly available: <http://rossby.msrc.sunysb.edu/marat/SAM/> (further infor-
mation can be found at <http://rossby.msrc.sunysb.edu/marat/SAM.html>, Khairoutdinov, 2022). The modified model source codes and case
setups for these simulations are available at <https://doi.org/10.5281/zenodo.7353468> (Chun, 2022). Python analysis codes for this study are
available on request.



520 *Author contributions.* JYC, RW, and PB formulated the original model study. JYC and PB set up the model runs. JYC conducted and analyzed the runs with input from RW, PB, and SJD. JYC drafted the paper, and RW, PB, and SJD provided edits and revisions.

Competing interests. The contact author has declared that none of the authors has any competing interests.

525 *Acknowledgements.* This study was primarily supported by NOAA's Climate Program Office Earth's Radiation Budget (ERB) Program, Grant NA22OAR4310474, as well as through the University of Washington's Marine Cloud Brightening Program, which is funded by the generous support of a growing consortium of individual and foundation donors. This publication is also partially funded by the Cooperative Institute for Climate, Ocean and Ecosystem Studies (CICOES) under NOAA Cooperative Agreement NA20OAR4320271, Contribution No. 2024-1349.



References

- 530 Abbott, T. H. and Cronin, T. W.: Aerosol invigoration of atmospheric convection through increases in humidity, *Science*, 371, 83–85, 2021.
- Abdul-Razzak, H. and Ghan, S. J.: A parameterization of aerosol activation: 2. Multiple aerosol types, *Journal of Geophysical Research: Atmospheres*, 105, 6837–6844, <https://doi.org/10.1029/1999JD901161>, 2000.
- Ackerman, A. S., Kirkpatrick, M. P., Stevens, D. E., and Toon, O. B.: The impact of humidity above stratiform clouds on indirect aerosol climate forcing, *Nature*, 432, 1014–1017, <https://doi.org/10.1038/nature03174>, 2004.
- 535 Ackerman, A. S., VanZanten, M. C., Stevens, B., Savic-Jovicic, V., Bretherton, C. S., Chlond, A., Golaz, J.-C., Jiang, H., Khairoutdinov, M., Krueger, S. K., Lewellen, D. C., Lock, A., Moeng, C.-H., Nakamura, K., Petters, M. D., Snider, J. R., Weinbrecht, S., and Zulauf, M.: Large-eddy simulations of a drizzling, stratocumulus-topped marine boundary layer, *Monthly Weather Review*, 137, 1083–1110, <https://doi.org/10.1175/2008MWR2582.1>, 2009.
- Albrecht, B. A.: Aerosols, cloud microphysics, and fractional cloudiness, *Science*, 245, 1227–1230, <https://doi.org/10.1126/science.245.4923.1227>, 1989.
- 540 Albrecht, B. A., Jensen, M. P., and Syrett, W. J.: Marine boundary layer structure and fractional cloudiness, *Journal of Geophysical Research: Atmospheres*, 100, 14 209–14 222, <https://doi.org/https://doi.org/10.1029/95JD00827>, 1995.
- Anber, U. M., Wang, S., Gentine, P., and Jensen, M. P.: Probing the response of tropical deep convection to aerosol perturbations using idealized cloud-resolving simulations with parameterized large-scale dynamics, *Journal of the Atmospheric Sciences*, 76, 2885–2897, <https://doi.org/10.1175/JAS4148.1>, 2019.
- 545 Berner, A., Bretherton, C., Wood, R., and Muhlbauer, A.: Marine boundary layer cloud regimes and POC formation in a CRM coupled to a bulk aerosol scheme, *Atmospheric Chemistry and Physics*, 13, 12 549–12 572, <https://doi.org/10.5194/acp-13-12549-2013>, 2013.
- Bjerknes, J.: A possible response of the atmospheric Hadley circulation to equatorial anomalies of ocean temperature, *Tellus*, 18, 820–829, <https://doi.org/10.3402/tellusa.v18i4.9712>, 1966.
- 550 Blossey, P. N. and Durran, D. R.: Selective monotonicity preservation in scalar advection, *Journal of Computational Physics*, 227, 5160–5183, <https://doi.org/https://doi.org/10.1016/j.jcp.2008.01.043>, 2008.
- Blossey, P. N., Bretherton, C. S., and Wyant, M. C.: Subtropical Low Cloud Response to a Warmer Climate in a Superparameterized Climate Model. Part II: Column Modeling with a Cloud Resolving Model, *Journal of Advances in Modeling Earth Systems*, 1, <https://doi.org/https://doi.org/10.3894/JAMES.2009.1.8>, 2009a.
- 555 Blossey, P. N., Bretherton, C. S., and Wyant, M. C.: Subtropical Low Cloud Response to a Warmer Climate in a Superparameterized Climate Model. Part II: Column Modeling with a Cloud Resolving Model, *Journal of Advances in Modeling Earth Systems*, 1, <https://doi.org/https://doi.org/10.3894/JAMES.2009.1.8>, 2009b.
- Blossey, P. N., Bretherton, C. S., and Mohrmann, J.: Simulating observed cloud transitions in the northeast Pacific during CSET, *Monthly Weather Review*, 149, 2633–2658, <https://doi.org/10.1175/MWR-D-20-0328.1>, 2021.
- 560 Bony, S. and Dufresne, J.-L.: Marine boundary layer clouds at the heart of tropical cloud feedback uncertainties in climate models, *Geophysical Research Letters*, 32, <https://doi.org/https://doi.org/10.1029/2005GL023851>, 2005.
- Bretherton, C., Blossey, P. N., and Uchida, J.: Cloud droplet sedimentation, entrainment efficiency, and subtropical stratocumulus albedo, *Geophysical research letters*, 34, <https://doi.org/10.1029/2006GL027648>, 2007.
- Bretherton, C. S. and Blossey, P. N.: Understanding Mesoscale Aggregation of Shallow Cumulus Convection Using Large-Eddy Simulation, *Journal of Advances in Modeling Earth Systems*, 9, 2798–2821, <https://doi.org/https://doi.org/10.1002/2017MS000981>, 2017.
- 565



- Bretherton, C. S. and Wyant, M. C.: Moisture Transport, Lower-Tropospheric Stability, and Decoupling of Cloud-Topped Boundary Layers, *Journal of the Atmospheric Sciences*, 54, 148 – 167, [https://doi.org/https://doi.org/10.1175/1520-0469\(1997\)054<0148:MTLTA>2.0.CO;2](https://doi.org/https://doi.org/10.1175/1520-0469(1997)054<0148:MTLTA>2.0.CO;2), 1997.
- Bretherton, C. S., Uchida, J., and Blossey, P. N.: Slow manifolds and multiple equilibria in stratocumulus-capped boundary layers, *Journal of Advances in Modeling Earth Systems*, 2, <https://doi.org/10.3894/JAMES.2010.2.14>, 2010.
- 570 Chun, J.-Y., Wood, R., Blossey, P., and Doherty, S. J.: Microphysical, macrophysical, and radiative responses of subtropical marine clouds to aerosol injections, *Atmospheric Chemistry and Physics*, 23, 1345–1368, <https://doi.org/10.5194/acp-23-1345-2023>, 2023.
- Clarke, A. D., Owens, S. R., and Zhou, J.: An ultrafine sea-salt flux from breaking waves: Implications for cloud condensation nuclei in the remote marine atmosphere, *Journal of Geophysical Research: Atmospheres*, 111, <https://doi.org/10.1029/2005JD006565>, 2006.
- 575 Dagan, G.: Sub-Tropical Aerosols Enhance Tropical Cloudiness-Remote Aerosol-Cloud Lifetime Effect, *Journal of Advances in Modeling Earth Systems*, 14, e2022MS003368, <https://doi.org/10.1029/2022MS003368>, _eprint: <https://onlinelibrary.wiley.com/doi/pdf/10.1029/2022MS003368>, 2022.
- Dagan, G., Stier, P., Spill, G., Herbert, R., Heikenfeld, M., van den Heever, S. C., and Marinescu, P. J.: Boundary conditions representation can determine simulated aerosol effects on convective cloud fields, *Communications Earth Environment*, 3, 71, <https://doi.org/10.1038/s43247-022-00399-5>, 2022.
- 580 Daleu, C. L., Woolnough, S. J., and Plant, R.: Cloud-resolving model simulations with one-and two-way couplings via the weak temperature gradient approximation, *Journal of the Atmospheric Sciences*, 69, 3683–3699, 2012.
- Diamond, M. S., Saide, P. E., Zuidema, P., Ackerman, A. S., Doherty, S. J., Fridlind, A. M., Gordon, H., Howes, C., Kazil, J., Yamaguchi, T., Zhang, J., Feingold, G., and Wood, R.: Cloud adjustments from large-scale smoke-circulation interactions strongly modulate the southeastern Atlantic stratocumulus-to-cumulus transition, *Atmospheric Chemistry and Physics*, 22, 12 113–12 151, <https://doi.org/10.5194/acp-22-12113-2022>, publisher: Copernicus GmbH, 2022.
- 585 Eastman, R., Wood, R., and Bretherton, C. S.: Time scales of clouds and cloud-controlling variables in subtropical stratocumulus from a Lagrangian perspective, *Journal of the Atmospheric Sciences*, 73, 3079–3091, <https://doi.org/10.1175/JAS-D-16-0050.1>, 2016.
- Erfani, E., Blossey, P., Wood, R., Mohrmann, J., Doherty, S. J., Wyant, M., and O, K.-T.: Simulating Aerosol Lifecycle Impacts on the Subtropical Stratocumulus-to-Cumulus Transition Using Large-Eddy Simulations, *Journal of Geophysical Research: Atmospheres*, 127, e2022JD037258, <https://doi.org/https://doi.org/10.1029/2022JD037258>, e2022JD037258 2022JD037258, 2022.
- 590 Glassmeier, F., Hoffmann, F., Johnson, J. S., Yamaguchi, T., Carslaw, K. S., and Feingold, G.: Aerosol-cloud-climate cooling overestimated by ship-track data, *Science*, 371, 485–489, <https://doi.org/10.1126/science.abd3980>, 2021.
- Gryspeerdt, E., Goren, T., Sourdeval, O., Quaas, J., Mülmenstädt, J., Dipu, S., Unglaub, C., Gettelman, A., and Christensen, M.: Constraining the aerosol influence on cloud liquid water path, *Atmospheric Chemistry and Physics*, 19, 5331–5347, <https://doi.org/10.5194/acp-19-5331-2019>, 2019.
- 595 Jenkins, A., Forster, P., and Jackson, L.: The effects of timing and rate of marine cloud brightening aerosol injection on albedo changes during the diurnal cycle of marine stratocumulus clouds, *Atmospheric Chemistry and Physics*, 13, 1659–1673, 2013.
- Khairoutdinov, M. and Kogan, Y.: A new cloud physics parameterization in a large-eddy simulation model of marine stratocumulus, *Monthly weather review*, 128, 229–243, [https://doi.org/10.1175/1520-0493\(2000\)128<0229:ANCPPI>2.0.CO;2](https://doi.org/10.1175/1520-0493(2000)128<0229:ANCPPI>2.0.CO;2), 2000.
- 600 Khairoutdinov, M. F. and Randall, D. A.: Cloud Resolving Modeling of the ARM Summer 1997 IOP: Model Formulation, Results, Uncertainties, and Sensitivities, *Journal of the Atmospheric Sciences*, 60, 607–625, <https://doi.org/10.1175/1520->



- 0469(2003)060<0607:CRMOTA>2.0.CO;2, publisher: American Meteorological Society Section: Journal of the Atmospheric Sciences, 2003.
- 605 Krueger, S. K., McLean, G. T., and Fu, Q.: Numerical Simulation of the Stratus-to-Cumulus Transition in the Subtropical Marine Boundary Layer. Part I: Boundary-Layer Structure, *Journal of Atmospheric Sciences*, 52, 2839 – 2850, [https://doi.org/https://doi.org/10.1175/1520-0469\(1995\)052<2839:NSOTST>2.0.CO;2](https://doi.org/https://doi.org/10.1175/1520-0469(1995)052<2839:NSOTST>2.0.CO;2), 1995.
- Latham, J.: Control of global warming?, *Nature*, 347, 339–340, <https://doi.org/10.1038/347339b0>, 1990.
- Manshausen, P., Watson-Parris, D., Christensen, M. W., Jalkanen, J.-P., and Stier, P.: Rapid saturation of cloud water adjustments to shipping emissions, *EGUsphere*, 2023, 1–16, <https://doi.org/10.5194/egusphere-2023-813>, 2023.
- 610 Mlawer, E. J., Taubman, S. J., Brown, P. D., Iacono, M. J., and Clough, S. A.: Radiative transfer for inhomogeneous atmospheres: RRTM, a validated correlated-k model for the longwave, *Journal of Geophysical Research: Atmospheres*, 102, 16 663–16 682, <https://doi.org/10.1029/97JD00237>, 1997.
- Myers, T. A. and Norris, J. R.: Observational Evidence That Enhanced Subsidence Reduces Subtropical Marine Boundary Layer Cloudiness, *Journal of Climate*, 26, 7507 – 7524, <https://doi.org/https://doi.org/10.1175/JCLI-D-12-00736.1>, 2013.
- 615 Norris, J. R.: Low Cloud Type over the Ocean from Surface Observations. Part I: Relationship to Surface Meteorology and the Vertical Distribution of Temperature and Moisture, *Journal of Climate*, 11, 369 – 382, [https://doi.org/https://doi.org/10.1175/1520-0442\(1998\)011<0369:LCTOTO>2.0.CO;2](https://doi.org/https://doi.org/10.1175/1520-0442(1998)011<0369:LCTOTO>2.0.CO;2), 1998.
- Prabhakaran, P., Hoffmann, F., and Feingold, G.: Effects of Intermittent Aerosol Forcing on the Stratocumulus-to-Cumulus Transition, *EGUsphere*, pp. 1–27, <https://doi.org/10.5194/egusphere-2023-1720>, publisher: Copernicus GmbH, 2023.
- 620 Sandu, I. and Stevens, B.: On the factors modulating the stratocumulus to cumulus transitions, *Journal of Atmospheric Sciences*, 68, 1865–1881, <https://doi.org/10.1175/2011JAS3614.1>, 2011.
- Sandu, I., Stevens, B., and Pincus, R.: On the transitions in marine boundary layer cloudiness, *Atmospheric Chemistry and Physics*, 10, 2377–2391, <https://doi.org/10.5194/acp-10-2377-2010>, 2010.
- 625 Seifert, A., Heus, T., Pincus, R., and Stevens, B.: Large-eddy simulation of the transient and near-equilibrium behavior of precipitating shallow convection, *Journal of Advances in Modeling Earth Systems*, 7, 1918–1937, <https://doi.org/10.1002/2015MS000489>, <https://onlinelibrary.wiley.com/doi/pdf/10.1002/2015MS000489>, 2015.
- Sobel, A. H. and Bretherton, C. S.: Modeling Tropical Precipitation in a Single Column, *Journal of Climate*, 13, 4378 – 4392, [https://doi.org/https://doi.org/10.1175/1520-0442\(2000\)013<4378:MTPIAS>2.0.CO;2](https://doi.org/https://doi.org/10.1175/1520-0442(2000)013<4378:MTPIAS>2.0.CO;2), 2000.
- 630 Stevens, B. and Feingold, G.: Untangling aerosol effects on clouds and precipitation in a buffered system, *Nature*, 461, 607–613, <https://doi.org/10.1038/nature08281>, 2009.
- Twomey, S.: Pollution and the planetary albedo, *Atmospheric Environment* (1967), 8, 1251–1256, [https://doi.org/https://doi.org/10.1016/0004-6981\(74\)90004-3](https://doi.org/https://doi.org/10.1016/0004-6981(74)90004-3), 1974.
- Twomey, S.: The influence of pollution on the shortwave albedo of clouds, *Journal of the atmospheric sciences*, 34, 1149–1152, [https://doi.org/10.1175/1520-0469\(1977\)034<1149:TIOPOP>2.0.CO;2](https://doi.org/10.1175/1520-0469(1977)034<1149:TIOPOP>2.0.CO;2), 1977.
- 635 van der Dussen, J. J., de Roode, S. R., and Siebesma, A. P.: How large-scale subsidence affects stratocumulus transitions, *Atmospheric Chemistry and Physics*, 16, 691–701, <https://doi.org/10.5194/acp-16-691-2016>, publisher: Copernicus GmbH, 2016.
- Wood, R.: Rate of loss of cloud droplets by coalescence in warm clouds, *Journal of Geophysical Research: Atmospheres*, 111, <https://doi.org/https://doi.org/10.1029/2006JD007553>, 2006.
- 640 Wood, R.: Stratocumulus clouds, *Monthly Weather Review*, 140, 2373–2423, <https://doi.org/10.1175/MWR-D-11-00121.1>, 2012.



- Wood, R.: Assessing the potential efficacy of marine cloud brightening for cooling Earth using a simple heuristic model, *Atmospheric Chemistry and Physics Discussions*, 21, 14 507–14 533, <https://doi.org/10.5194/acp-21-14507-2021>, 2021.
- Wood, R. and Bretherton, C.: On the Relationship between Stratiform Low Cloud Cover and Lower-Tropospheric Stability, *Journal of Climate*, 19, 6425–6432, <https://doi.org/10.1175/jcli3988.1>, 2006.
- 645 Wood, R., Bretherton, C. S., Leon, D., Clarke, A. D., Zuidema, P., Allen, G., and Coe, H.: An aircraft case study of the spatial transition from closed to open mesoscale cellular convection over the Southeast Pacific, *Atmospheric Chemistry and Physics*, 11, 2341–2370, <https://doi.org/10.5194/acp-11-2341-2011>, 2011.
- Wyant, M. C., Bretherton, C. S., Rand, H. A., and Stevens, D. E.: Numerical Simulations and a Conceptual Model of the Stratocumulus to Trade Cumulus Transition, *Journal of the Atmospheric Sciences*, 54, 168 – 192, [https://doi.org/10.1175/1520-0469\(1997\)054<0168:NSAACM>2.0.CO;2](https://doi.org/10.1175/1520-0469(1997)054<0168:NSAACM>2.0.CO;2), 1997.
- 650 Xue, H., Feingold, G., and Stevens, B.: Aerosol Effects on Clouds, Precipitation, and the Organization of Shallow Cumulus Convection, *Journal of the Atmospheric Sciences*, 65, 392 – 406, <https://doi.org/10.1175/2007JAS2428.1>, 2008.
- Yamaguchi, T., Feingold, G., and Kazil, J.: Stratocumulus to Cumulus Transition by Drizzle, *Journal of Advances in Modeling Earth Systems*, 9, 2333–2349, <https://doi.org/10.1002/2017MS001104>, 2017.
- 655 Zelinka, M. D., Randall, D. A., Webb, M. J., and Klein, S. A.: Clearing clouds of uncertainty, *Nature Climate Change*, 7, 674–678, <https://doi.org/10.1038/nclimate3402>, 2017.
- Zhou, X., Ackerman, A. S., Fridlind, A. M., Wood, R., and Kollias, P.: Impacts of solar-absorbing aerosol layers on the transition of stratocumulus to trade cumulus clouds, *Atmospheric Chemistry and Physics*, 17, 12 725–12 742, <https://doi.org/10.5194/acp-17-12725-2017>, publisher: Copernicus GmbH, 2017.

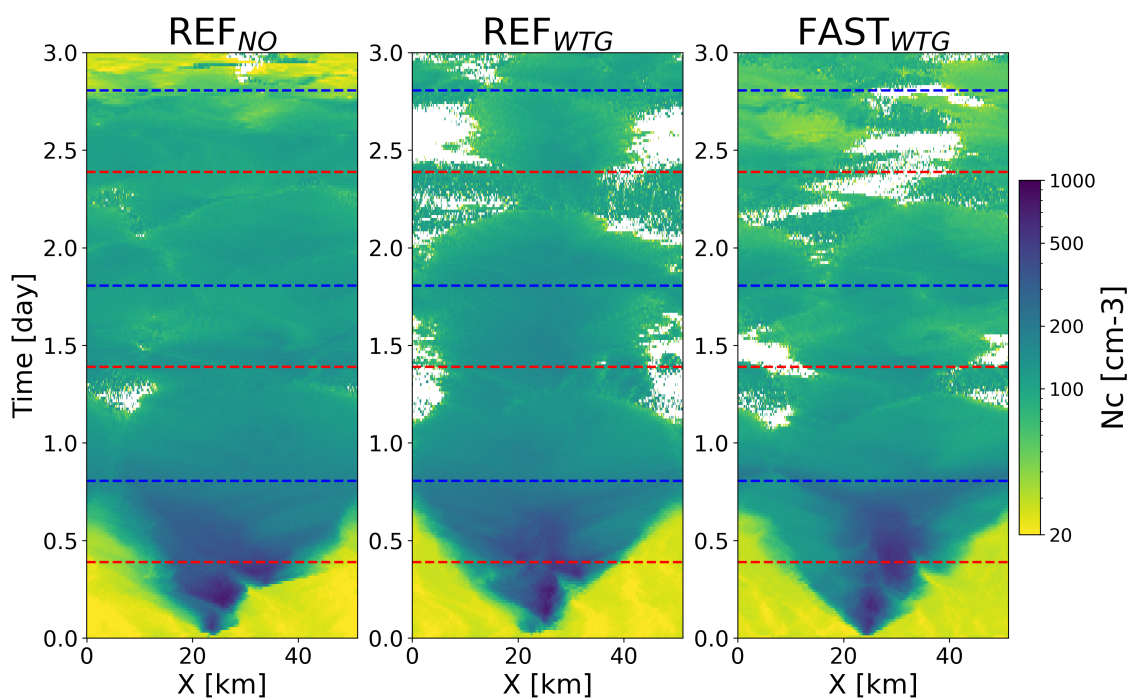


Figure 1. Hovmöller plots of $\langle N_c \rangle$ in the *PLUME* runs for the (a) REF_{NO}, (b) REF_{WTG} and (c) FAST_{WTG} cases, showing the dispersion of the plume in the model domain.

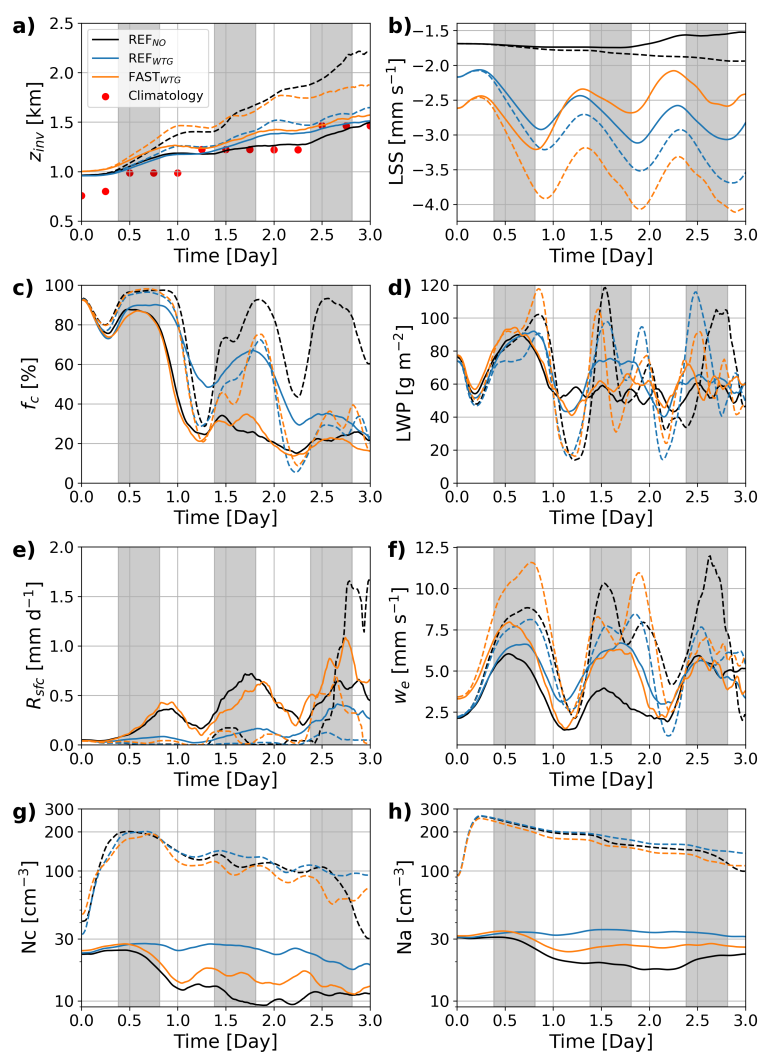


Figure 2. Time evolution of cloud and marine boundary layer properties: (a) inversion height, (b) vertical velocity at inversion height, (c) cloud cover (f_c), (d) cloud liquid water path (LWP), (e) surface rain rate (R_{sfc}), (f) entrainment rate (w_e), (g) cloud droplet number concentration, (h) total (cloud+aerosol) aerosol number concentration. The solid lines indicate the values for the CTRL runs and the dashed lines for the PLUME runs. The black, blue and orange colors denote the runs for the REF_{NO}, REF_{WTG} and FAST_{WTG} cases, respectively. The red dots in (a) indicate the inversion height in the climatology along the composite trajectory.

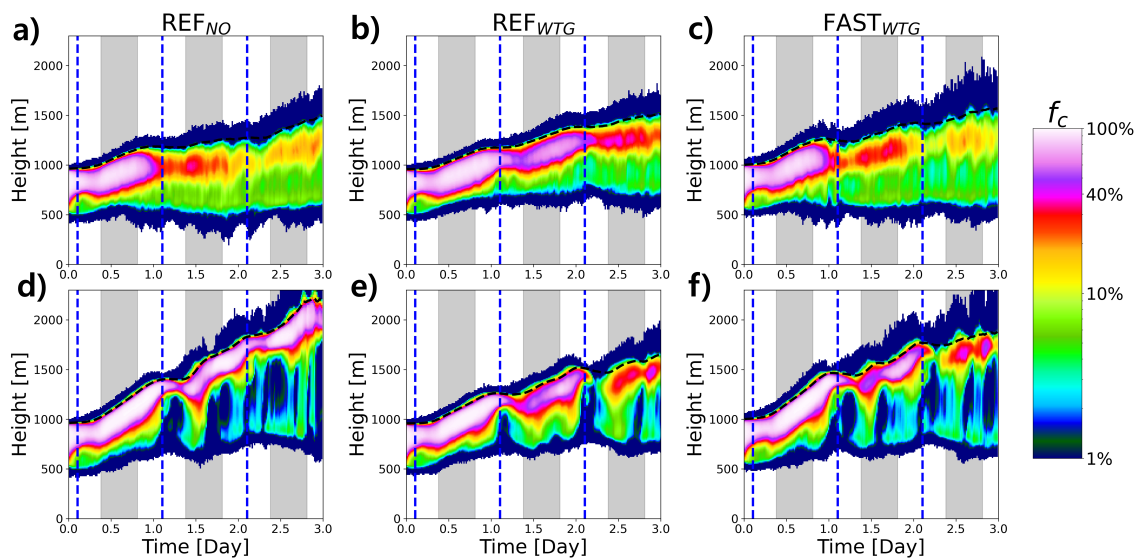


Figure 3. Time evolution of the vertical profiles in cloud cover (f_c). The left (a,d), middle (b,e) and right (c,f) columns are for the REF_{NO}, REF_{WTG} and FAST_{WTG} cases, respectively. The upper (a-c) and lower (d-f) rows represent the CTRL and PLUME runs, respectively. The black dashed line denotes the inversion height, and the blue dashed line represents the time of local noon.

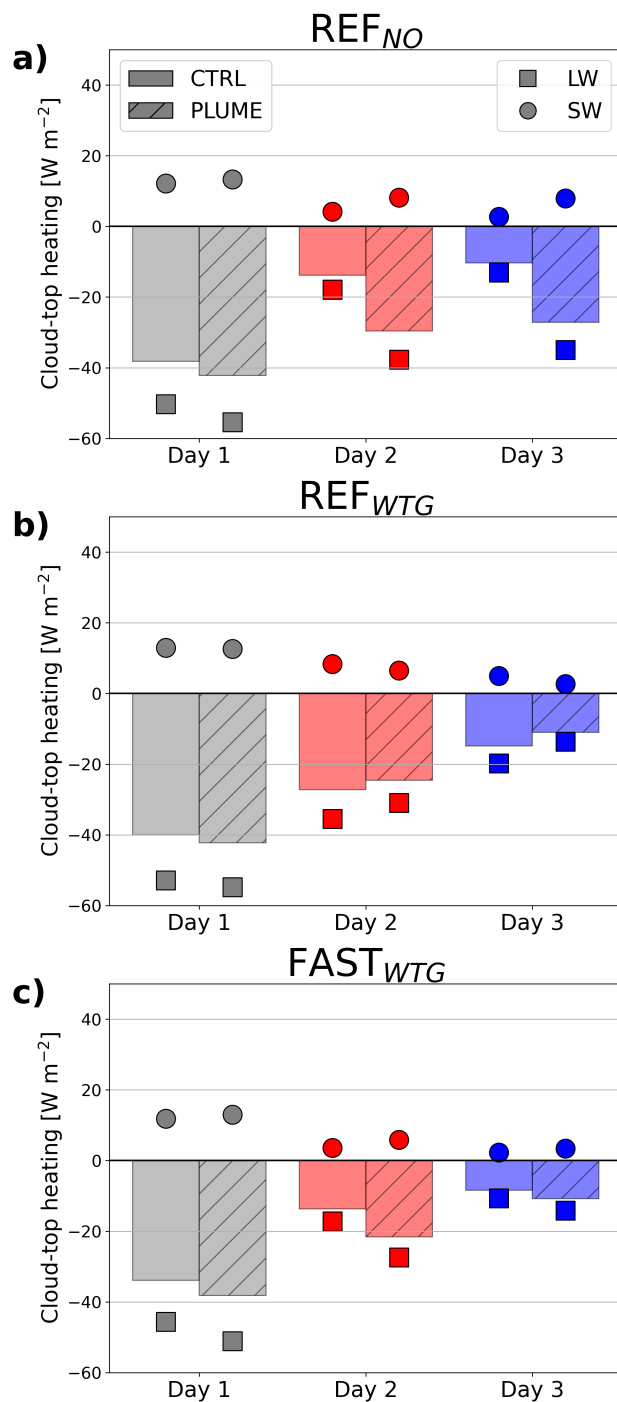


Figure 4. Cloud-top radiative heating rates in the CTRL and PLUME runs on Day 1, 2, and 3 for the (a) REF_{NO} , (b) REF_{WTG} , and (c) FAST_{WTG} cases. Bars denote the net (LW+SW) cloud-top radiative heating rate. The smaller squares and circles indicate the average LW and SW radiative heating rates, respectively.

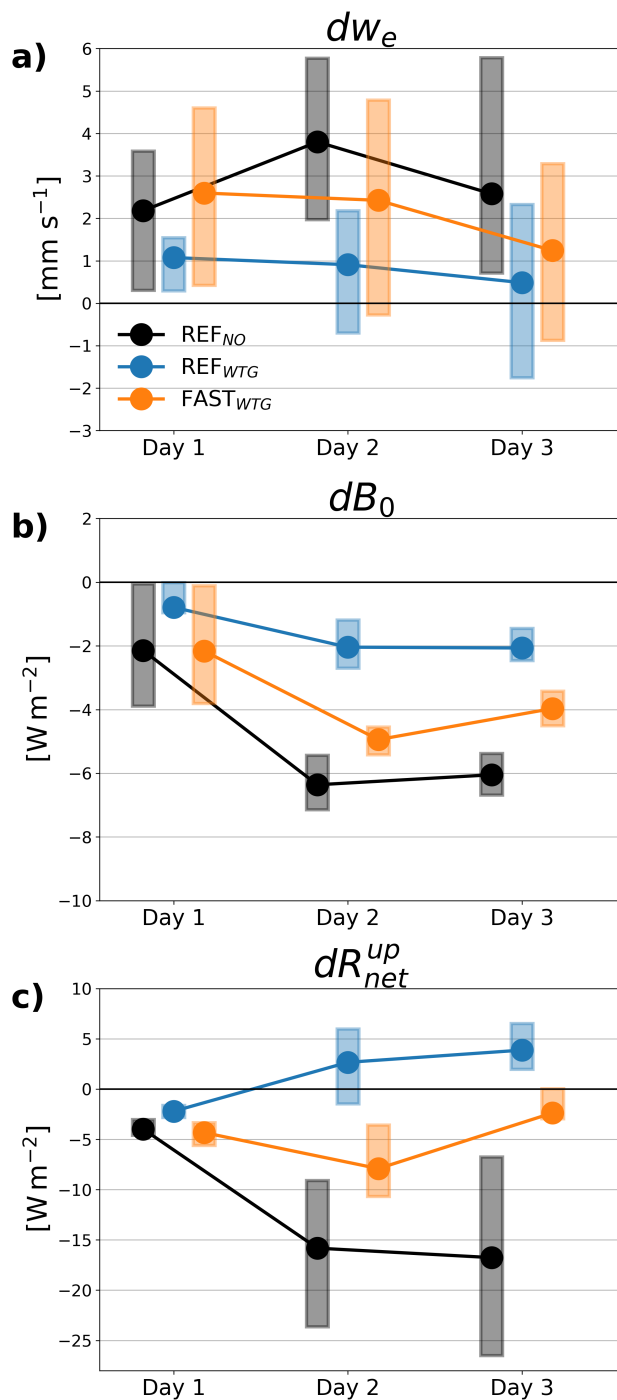


Figure 5. Changes in the (a) entrainment rate (w_e), (b) surface buoyancy flux (B_0) and (c) cloud radiative heating rate at the upper MBL (dR_{net}^{up}) caused by aerosol injections. Solid dots denote the diurnal means of the changes, while the shaded bars represent the interquartile range of the changes.

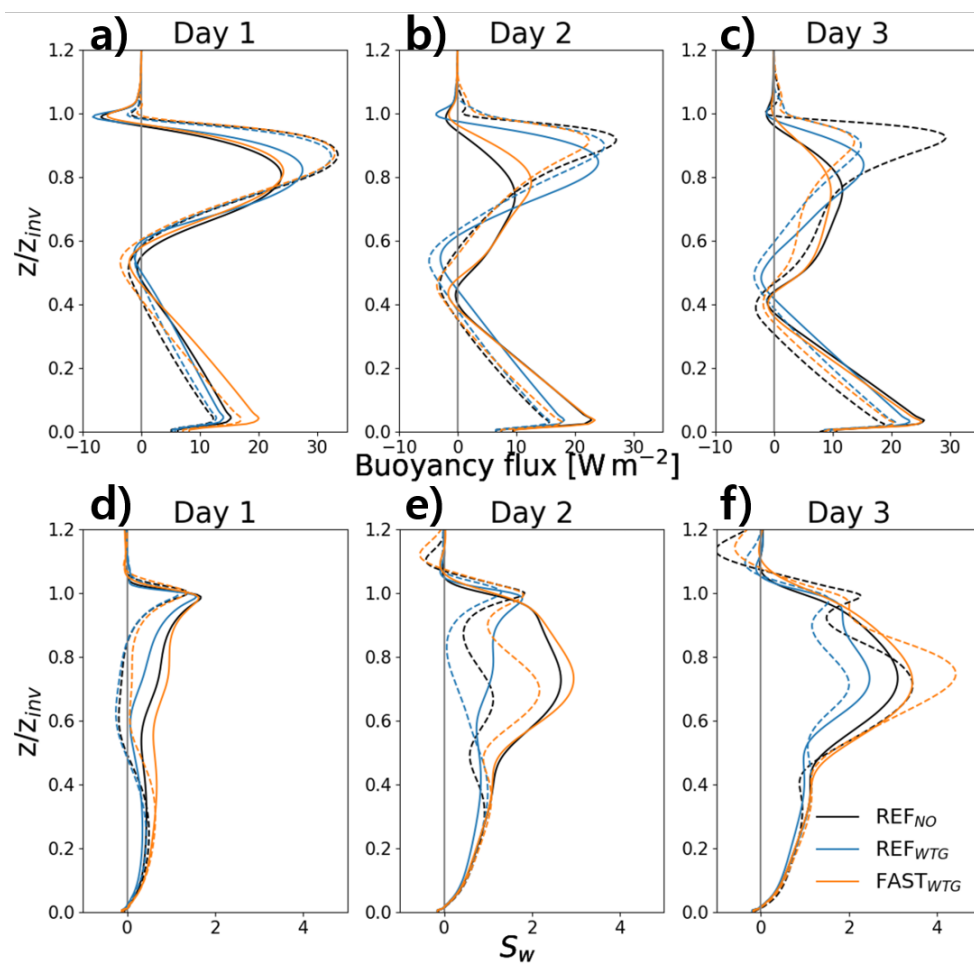


Figure 6. Diurnal-mean vertical profiles of buoyancy flux (a-c) and skewness of the vertical wind speed (d-f) for the REF_{NO} (a,d), REF_{WTG} (b,e) and FAST_{WTG} (c,f) cases. Black, red and blue lines denote the profiles on Day 1, 2 and 3, respectively. Solid and dashed lines represent the profiles for the CTRL and PLUME runs, respectively.

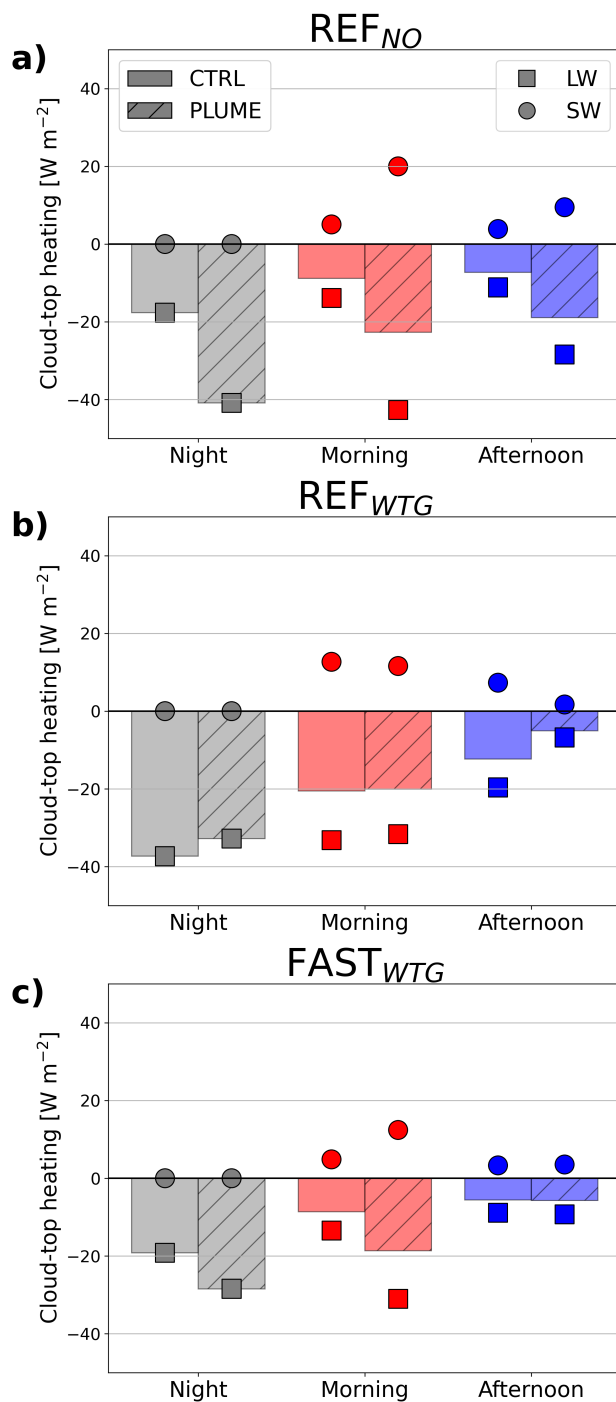


Figure 7. Same as Fig.3, but for different three time ranges (Night, Morning, and Afternoon), on Day 2.

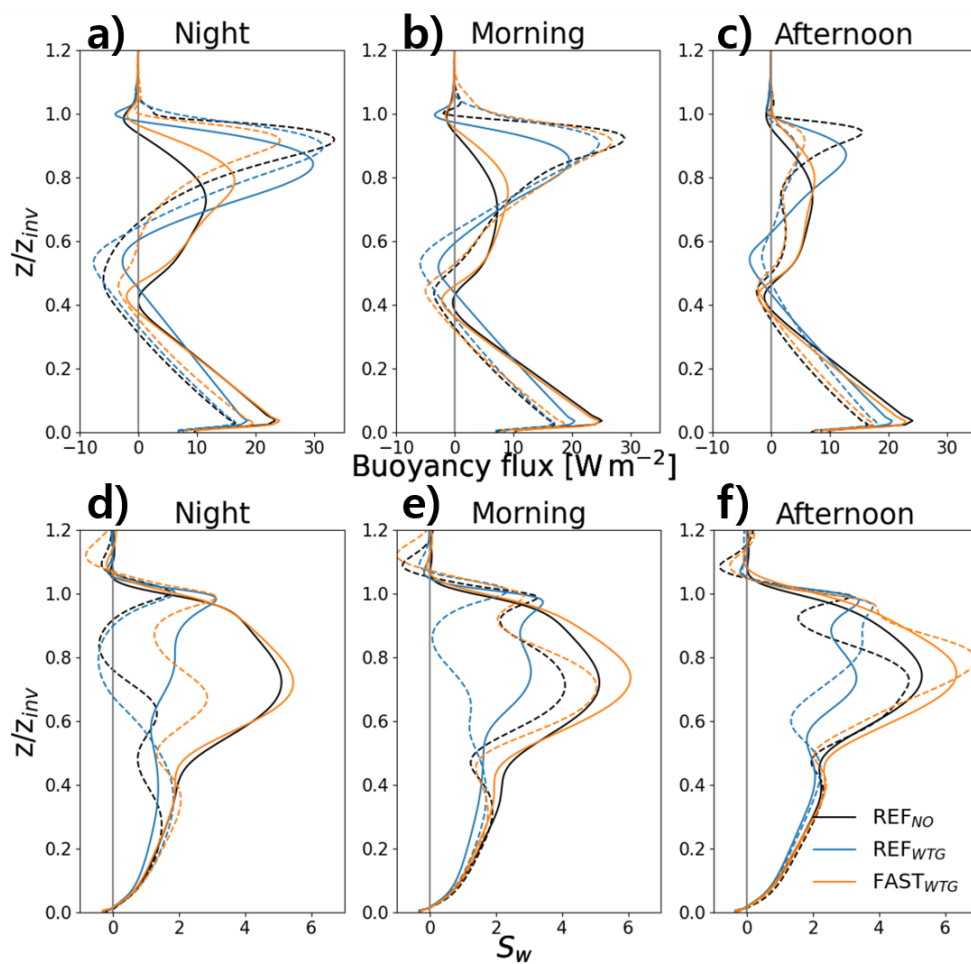


Figure 8. Same as Fig.5, but for different three time ranges (Night, Morning, and Afternoon), on Day 2.

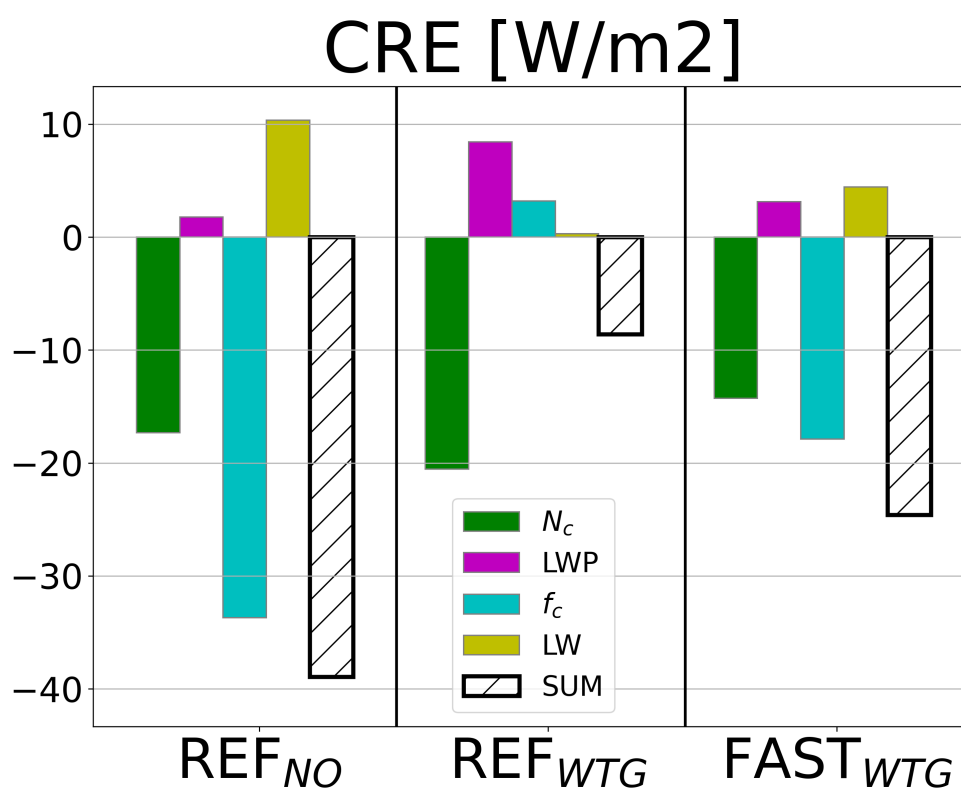


Figure 9. The difference in the decomposed 3 day cloud radiative effect between the PLUME and CTRL runs (dCRE) for each case, showing contributions from $dCRE_{N_c}$ (green), $dCRE_{LWP}$ (magenta), and $dCRE_{f_c}$ (blue) and $dCRE_{LW}$ (yellow). See Table 2 for the values on each day.



Table 1. Description of the cases analyzed in this study.

Case Name	REF _{NO}	REF _{WTG}	FAST _{WTG}	REF _{weak}	REF _{FT}	REF _{MBL}
Case in Sandu and Stevens (2011)	REF	REF	FAST	REF	REF	REF
WTG	Off	On	On	On	On	On
Initial N_a in MBL [cm^{-3}]	33	33	33	33	33	300
N_a in FT [cm^{-3}]	100	100	100	100	55	100
Aerosol injection rate [10^{16} particles s^{-1}]	1.2	1.2	1.2	0.3	1.2	1.2

Table 2. Summary of diurnal-average and total changes in cloud radiative effect [W m^{-2}] for the PLUME runs relative to the CTRL runs.

Case		dCRE _{N_c}	dCRE _{LWP}	dCRE _{f_c}	dCRE _{LW}	dCRE
REF _{NO}	Day 1	-19.8	-1.0	-10.8	2.8	-28.7
	Day 2	-20.1	6.5	-44.1	11.1	-46.6
	Day 3	-12.1	-0.2	-46.2	17.1	-41.4
2-7	Total	-17.3	1.8	-33.7	10.3	-38.9
REF _{WTG}	Day 1	-17.5	2.4	-2.6	1.2	-16.4
	Day 2	-28.0	13.2	1.8	0.3	-12.7
	Day 3	-16.1	9.7	10.4	-0.6	3.4
2-7	Total	-20.5	8.4	3.2	0.3	-8.5
FAST _{WTG}	Day 1	-18.2	0.1	-12.8	2.9	-27.9
	Day 2	-15.6	6.8	-30.3	6.4	-32.6
	Day 3	-9.0	2.5	-10.6	4.0	-13.1
2-7	Total	-14.2	3.1	-17.9	4.5	-24.6

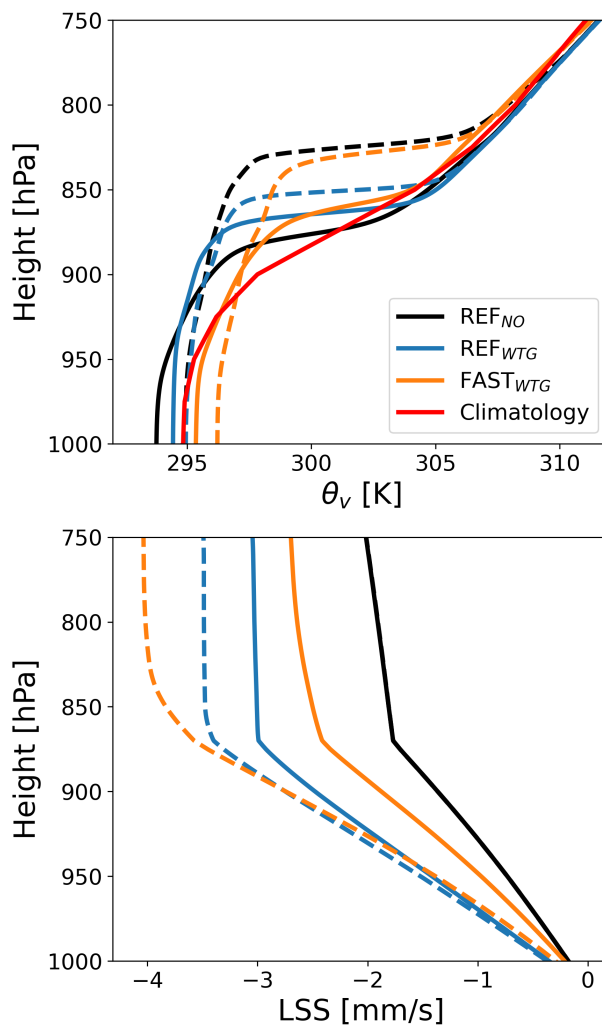


Figure A1. Vertical profiles of (a) virtual potential temperature θ_v and (b) large-scale subsidence for the CTRL (solid) and PLUME (dashed) runs on Day 2 for the three cases. The red line represent the ERA5 climatology at the location of climatological trajectory on Day 2 used for the background profile for the WTG.

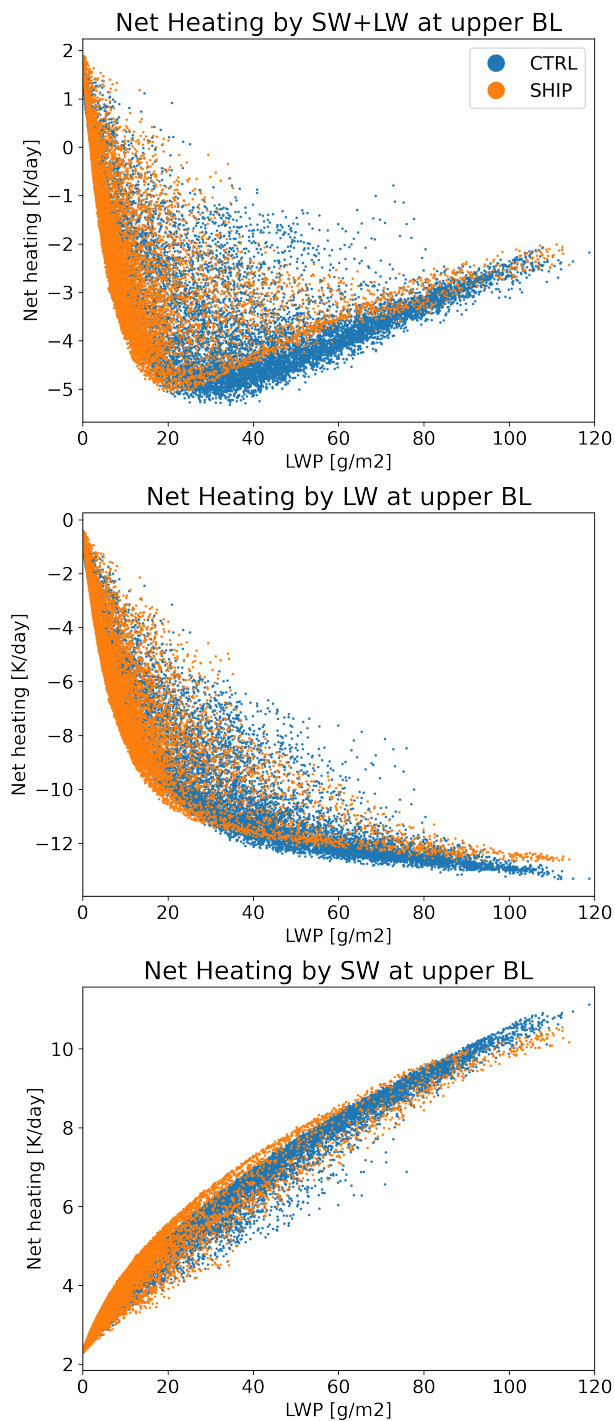


Figure B1. (a) SW and LW radiative heating rates by clouds in the upper part of BL (i.e., the mean at the levels in the upper half of the MBL) on Day 1.25 for the CTRL (blue) and PLUME (orange) runs. (b,c) same as (a), but for the LW and SW only, respectively.

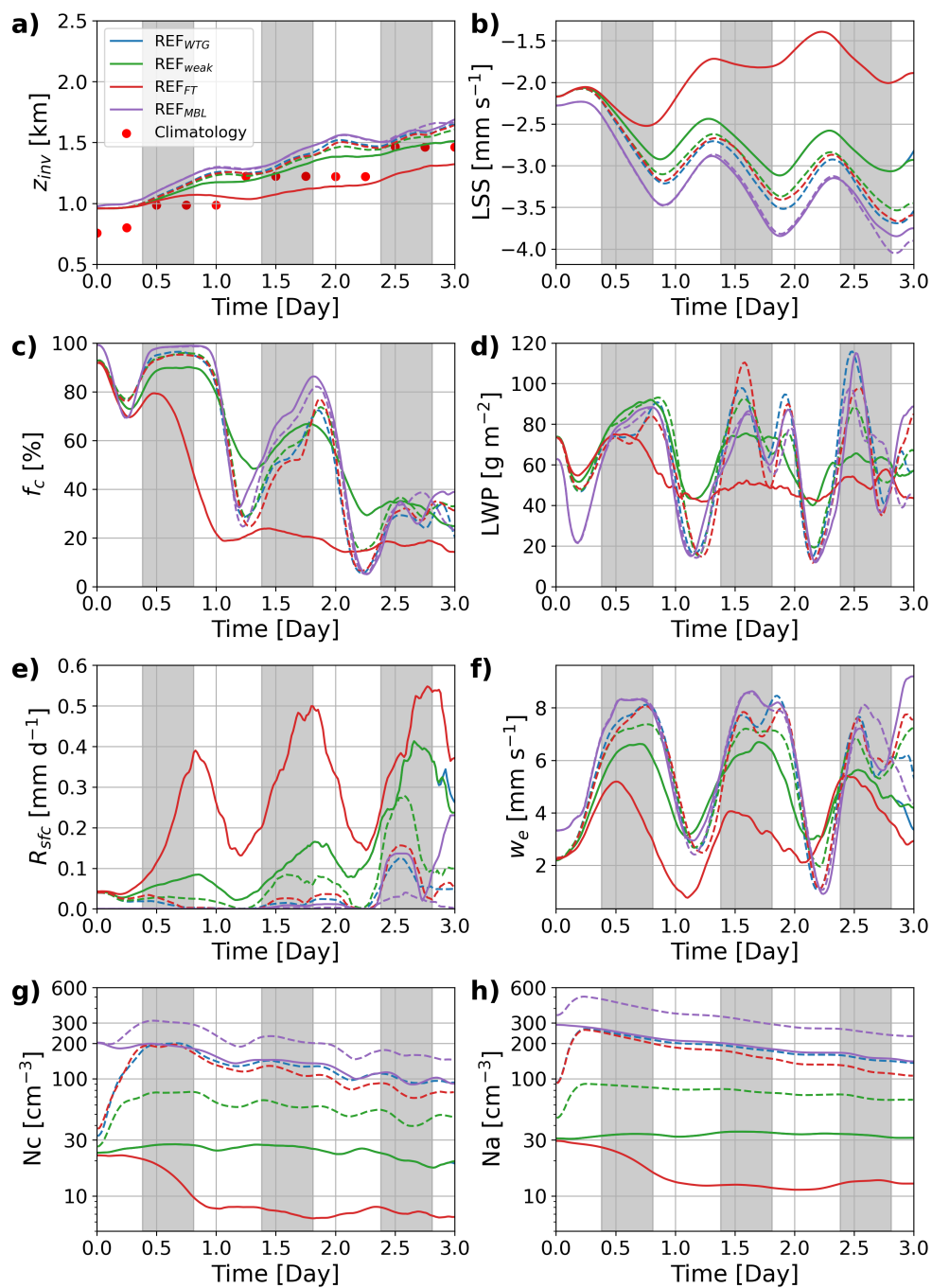


Figure C1. Same as Fig.1, but for the REF_{WTG} (blue), REF_{weak} (green), REF_{FT} (red) and REF_{MBL} (purple) cases.



Table C1. Same as Table 2, but for the REF_{weak} , REF_{FT} and REF_{MLB} cases

Case		$dCRE_{N_c}$	$dCRE_{LWP}$	$dCRE_{f_c}$	$dCRE_{LW}$	$dCRE$
REF_{weak}	Day 1	-10.3	0.7	-2.4	1.0	-11.0
	Day 2	-13.9	10.7	-0.9	0.2	-3.9
	Day 3	-7.9	6.3	2.0	0.3	0.8
2-7	Total	-10.7	5.9	-0.4	0.5	-4.7
REF_{FT}	Day 1	-16.1	1.3	-20.0	3.9	-30.8
	Day 2	-16.7	1.9	-42.8	7.2	-50.5
	Day 3	-11.8	0.8	-8.8	4.1	-15.6
2-7	Total	-14.9	1.3	-23.9	5.1	-32.3
REF_{MLB}	Day 1	-3.7	0.2	-0.1	0.0	-4.0
	Day 2	-6.4	3.1	2.0	-0.7	-1.9
	Day 3	-4.0	5.2	2.8	0.1	4.0
2-7	Total	-4.7	2.7	1.6	-0.2	-0.6