

# Reviews and syntheses: Tufa microbialites on rocky coasts: towards an integrated terminology

Thomas W. Garner<sup>1</sup>, J. Andrew. G. Cooper<sup>1,2</sup>, Alan M. Smith<sup>2</sup>, Gavin M. Rishworth<sup>3</sup>, Matt Forbes<sup>4</sup>

<sup>1</sup>School of Geography and Environmental Science, Ulster University, Coleraine, BT52 1SA, Northern Ireland

5 <sup>2</sup>Discipline of Geology, School of Agriculture, Earth and Environmental Sciences, University of KwaZulu-Natal, P. Bag X54001 Durban, 4000, South Africa

<sup>3</sup>Department of Zoology, Nelson Mandela University, Gqeberha (Port Elizabeth), 6031, South Africa

<sup>4</sup>ARC Centre for Excellence for Australian Biodiversity and Heritage, University of Wollongong, Australia

Correspondence to: Thomas W. [Garner \(Garner-T@ulster.ac.uk\)](mailto:Garner-T@ulster.ac.uk)

10 **Abstract.** Microbialites are known from a range of terrestrial, freshwater, marine, and marginal settings ~~with the applied. The~~ descriptive terminology ~~depending used in each instance depends~~ largely on the historical legacy derived from previous studies in similar ~~environmental settings environments~~. This has led to a diversity of nomenclature and a lack of conformity in the terms used to describe and categorise microbialites. As the role of microbial mats and biofilms is increasingly recognised in the formation of tufa and terrestrial carbonates, deposits such as tufa microbialites bridge the spectrum of microbialites and

15 terrestrial carbonate deposits.

Groundwater spring-fed tufa microbialites in supratidal rock coast environments ~~that~~ occur at the interface of terrestrial and marine domains ~~and necessitated demonstrate~~ the ~~adoption of need for~~ an integrative and systematic nomenclature approach. To date, their global distribution and complex relationships with pre-defined deposits have resulted in the application of a variety of descriptive terminologies, most frequently at the macro- and meso-scale. Here we review and consolidate the multi-scale

20 library of terminologies for microbialites and present a new geomorphological scheme for their description and classification. This scheme has greater alignment with terrestrial carbonate nomenclature at the macroscale and with marine and lacustrine microbialites at the mesoscale. The proposed terminology can primarily be applied to tufa microbialites in spring-fed supratidal ~~settings environments~~ but may also be ~~applied to applicable in~~ other relevant ~~environmental settings, depositional environments~~ ~~including~~ terrestrial carbonates, microbial mats and other microbialites.

## 25 1 Introduction

Burne and Moore (1987) ~~defined define~~ microbialites as “*organosedimentary deposits that have accreted as a result of a benthic microbial community trapping and binding detrital sediment and/or forming the locus of mineral precipitation*”. They have been described from a diverse range of depositional environments in both fossil and modern settings. These include marine ~~settings environments~~ with hypersaline conditions, (e.g. Hamelin Pool, Western Australia (~~Jahnert and Collins, 2012,~~

30 ~~2011; Logan, 1961; Logan et al., 1964; Suosaari et al., 2022, 2019a, 2016)~~), normal salinity conditions (e.g., Bahamas (~~Dill et~~

al., 1986; Reid et al., 1995)(Jahnert and Collins, 2011, 2012; Logan, 1961; Logan et al., 1964; Suosaari et al., 2016, 2019a, 2022)), normal salinity conditions (e.g., Bahamas (Dill et al., 1986; Reid et al., 1995, 2024)), and a range of non-marine environments including, but not limited to: hyposaline (e.g., Moore and Burne, 1994); freshwater fluvial (e.g., Arenas et al., 2019; Caudwell et al., 2001); open lacustrine (e.g., Doddy et al., 2019); ice-covered lacustrine (e.g., Mackey et al., 2015); hot springs (e.g., Walter et al., 1976) and caves (e.g., Brunet and Revuelta, 2014; Lundberg and McFarlane, 2011). Marine and non-marine forms have traditionally been studied independently and a distinct suite of definitions and nomenclature has been applied in each setting. As noted by Shapiro (2005, p.73) “[because] *universal terminology have not been ratified by the general community, clear descriptions will facilitate future research*”. Recently, the Handbook for the study and description of microbialites (Grey and Awramik, 2020) attempted to consolidate and refine the terminology applied to microbialites. This, however, explicitly excluded tufa microbialites and microbial mats from consideration due to these lacking detailed morphological description. This includes ‘rock ~~east~~coast’ microbialites, which along with other tufa microbialites and microbial mats are termed ‘non-classical’ microbialites here.

~~Microbialites on~~ Tufa microbialites occurring in groundwater springs in the supratidal zone of high-energy rock coastlines have affinities with both terrestrial and marine forms (Rishworth et al., 2020), and their study brings into sharp focus the need for unifying terminology. To date, the terminology applied to rock coast microbialites has been varied and often complex. This is due to the application of terminology from various research areas including ‘classical’ microbialites (both fossil and contemporary), ‘non-classical’ microbialites (including tufa microbialites and microbial mats) and terrestrial carbonates, predominantly tufa. Their apparently scattered distribution in widely separated locations led to variability in the descriptive terminology applied by independent research groups. Now that they are known to have a global distribution, there is a need for clear and unambiguous terminology.

At the nexus of terrestrial and marine domains, rock coast microbialites afford the opportunity to assess the utility of existing terminology from both fields of research, to identify *inter alia* duplication and redundancy, and in so doing to present a unifying terminology- for rock coast microbialite. This study specifically aims to:

- Review the classification and description of rock coast microbialites using different disciplinary approaches-;
- Review and integrate terrestrial and marine microbialite terminology applied to rock coast ~~settings-environments; and~~ on that basis.
- Produce a ~~synthesised~~ geomorphological terminology for rock coast microbialites at the macro- and meso-scale.

To that end, this paper begins by reviewing the various contexts in which rock coast microbialites have been studied (microbial structures, geomorphological features and habitats). It then reviews the terminology that has been applied to rock coast

65 [microbialites and distils these to present an integrated geomorphological classification and terminology for rock coast microbialites.](#)

## 2 Defining rock coast microbialites [through research approaches](#)

70 [Rock coast microbialites are a microbialite carbonate facies formed through microbial and microalgal biofilm fixation in groundwater-fed springs in the supratidal rock coast environment \(Forbes et al., 2024; Rishworth et al., 2020\).](#) The term ‘rock coast’ is applied here to describe a specific depositional environment of “*rock coast settings in high intertidal to supratidal locations that are affected by occasional marine storms and/or high swells and the effects of sea spray*” (Cooper et al., 2022). Generally, rock coasts are characterised by resistant bedrock and/or hardground superficial deposits. [The rock coast environment is considered a key control on their occurrence; dependent on the partial exclusion of competing organisms and alternations between terrestrial and marine states, resulting in extreme conditions, facilitating microbialite development \(Forbes et al., 2024\).](#) After a historic description at Bonza Bay, South Africa by Mountain (1937), the first modern rock coast microbialite was documented by Smith and Uken (2003) from supratidal pools at Kei River mouth (Cape Morgan) on the south-eastern coastline of South Africa. Subsequent occurrences were reported along the southern African coastline from Port Elizabeth to Tofu, Inhambane, Mozambique (Perissinotto et al., 2014; Smith et al., 2011); Southern and Western Australia (Forbes et al., 2010; Lipar and Webb, 2015), Northern Ireland, Scotland and Ireland (~~Cooper et al., 2022, 2013; Smith et al., 2018~~)([Cooper et al., 2013, 2022; Smith et al., 2018](#)).

80 Rock coast microbialites are considered a tufa microbialite, “*a tufa forming as a result of microbial activity*” (Grey and Awramik, 2020) with tufa being defined as the “*products of calcium carbonate precipitation under cool, ambient temperature freshwater*” (Pedley, 1990). Tufa is increasingly considered to have significant biological influence in its formation (Capezzuoli et al., 2014; Perri et al., 2012) and hence, tufa microbialites may be considered a biogenic facies of tufa formed by a benthic microbial community. As such, these deposits may also be considered part of contemporary tufa-forming environments and habitats such as ‘petrifying springs’. Petrifying spring and tufa formations have been recognised in a variety of coastal settings in Europe ([EC, 2016; Farr and Graham, 2017; Faulkner and Crae, 2018; Howie and Ealey, 2009, 2010; Lyons and Kelly, 2016; Rodríguez Guitián et al., 2020](#)). [Research on rock coast microbialites has been approached in numerous ways, including as ‘classical’ and ‘non-classical’ microbialites, as terrestrial carbonate, predominantly tufa, and as part of a wider ecological system or habitat. Each of these approaches is described and discussed below.](#)(~~EC, 2016; Farr and Graham, 2017; Faulkner and Crae, 2018; Howie and Ealey, 2010, 2009; Lyons and Kelly, 2016; Rodríguez Guitián et al., 2020~~).

95 ~~Research on rock coast microbialites has been approached in numerous ways, including as ‘classical’ and ‘non-classical’ microbialites, as terrestrial carbonate, predominantly tufa, and as part of a wider ecological system or habitat. Each of these approaches is described and discussed below.~~

## 2.1 ~~Defining microbialites~~Microbialites and microbial mats

Microbial mats are stratified, highly organised, and diverse microbial communities ~~that form a biofilm~~ defined as “*discrete benthic structures constructed by microorganisms (eukaryotic and prokaryotic; photosynthetic and nonphotosynthetic)*” (Bauld, 1981; in Grey and Awramik, 2020). ~~Grey and Awramik (2020) state that the term microbial mat should only be applied to living mats. They are found in a variety of settings~~Dependent on the benthic microbial community including hypersaline, coastal and intertidal, oligotrophic, extreme low temperature, hot spring and acid environments (Prieto-Barajas et al., 2018). ~~Dependent on the benthic microbial community or biocenosis,~~ microbial mats may be termed ‘algal’ or ‘cyanobacterial’ mats if the microbial mat’s primary constituent is eukaryotic (algal) or cyanobacterial respectively (Bauld, 1981; in Grey and Awramik, 2020); however, use of the term ‘algal’ should be avoided due to the lack of a generally accepted definition of this informal term.

~~Microbial mats~~They are the principal constructional layer of microbialites, including stromatolites, thrombolites and microbially induced sedimentary structures (MISS) (Noffke et al., 2001; Noffke and Awramik, 2013). They are found in a variety of environments including hypersaline, coastal and intertidal, oligotrophic, extreme low temperature, hot spring and acid environments (Prieto-Barajas et al., 2018). In coastal settings, they are predominantly described from the soft-substrate intertidal zone (Gerdes and Krumbein, 1994; Prieto-Barajas et al., 2018) and the rock coast environment, in the supratidal zone, where microbial mats have been described from Northern Ireland and South Africa as thin mats that may develop on sub-horizontal surfaces in shallow water, often in a discharge apron (Cooper et al., 2013; Edwards et al., 2017).

MISS are defined as “*sedimentary structures in siliciclastic sediments and rocks induced by microbial activity*” (Noffke et al., 1996). ~~They occur in siliciclastic, evaporitic, and carbonate settings (Bose and Chafetz, 2012; Noffke and Awramik, 2013)~~They occur in siliciclastic, evaporitic, and carbonate settings (Bose and Chafetz, 2012; Noffke and Awramik, 2013) and have been described globally, notably in the North Sea (Gerdes et al., 2000), the Mediterranean (Aref, 1998; Gerdes et al., 2000; Lakhdar et al., 2020; Sanchez-Cabeza et al., 1999), the north-west Atlantic (Cameron et al., 1985), and the Gulf of Mexico (Bose and Chafetz, 2009). ~~They~~MISS form due to the trapping, baffling, binding and biostabilisation of detrital sediment by a biofilm or microbial mat and the interaction with the extrinsic environment ~~(Noffke, 2010, 2008; Noffke and Awramik, 2013).~~(Noffke, 2008, 2010; Noffke and Awramik, 2013). The formation of MISS contrasts with other microbialites, including stromatolites, which require repeated primary mineral precipitation in the microbial mat’s extracellular polymeric substances (EPS) to accrete into a layered structure (Noffke, 2010; Noffke and Awramik, 2013). ~~Regarding rock coast microbialites, microbial mats have been recorded from coastal environments, predominantly from the intertidal zone (Gerdes and Krumbein, 1994; Prieto-Barajas et al., 2018). Microbial mats in rock coast settings have been described from Northern Ireland and South Africa as thin mats that may develop on sub-horizontal surfaces in shallow water, often in discharge apron settings (Cooper et al., 2013; Edwards et al., 2017). While the repeated accretion of microbial mats may result in the formation of tufa stromatolites, the interaction~~

of microbial mats with the rock coast setting may also result in microbial mat features such as ‘blister mats’ described by Edwards et al. The interaction of microbial mats with the rock coast environment may also result in microbial mat features such as ‘blister mats’ described by Edwards et al. (2017). Thin mats with limited repeat layering or mineralisation share many similarities with MISS due to their comparable interactions with the environment. However, despite their ubiquity, there has been a general lack of description of such microbial mat features.

The repeated trapping and binding of detrital sediment and/or the mineral precipitation by the benthic microbial community may form a stromatolite through repeated stacking of microbial mats (Logan et al., 1964; Noffke and Awramik, 2013). (Logan et al., 1964; Noffke and Awramik, 2013; Reid et al., 2024). Stromatolites are “a laminated organosedimentary structure produced by precipitation, or by sediment trapping and binding, as a result of the growth, behaviour, and metabolic activity of micro-organisms, principally cyanobacteria” (Grey and Awramik, 2020) based upon definitions provided by Awramik and Margulis in Walter (1976). They are considered a subset of ‘microbialites’, a term first applied by Burne and Moore (1987) as an umbrella term for stromatolites, thrombolites, dendrolites, leiolites and MISS. These subset forms of microbialites arise through different primary depositional or secondary post depositional and diagenetic processes, and sometimes the nature of the structural drivers is obscure. For example, thrombolites might develop because of distinct microbial communities that give rise to clotted structure, or through bioturbation that destroys primary lamination (Burne and Moore, 1987; Harwood Theisen and Sumner, 2016; Moore and Burne, 1994; Shapiro, 2000).

‘Microbialite’ has also been used as a more generic term referring to structures that appear to be microbial in genesis, regardless of their internal structure which may not be visible or initially apparent, or might vary at any given location, as suggested by Suosaari et al. (2019b). The term ‘microbialite’ was first applied on rock coasts by Smith et al. (2011) and subsequently a variety of mesostructures has been described. Rock coast microbialites may be considered to cover a range of deposits including thin microbial mats and thicker repeated units forming stromatolites and other microbialites that accrete in a rock coast setting.

## **2.2 Defining tufa Terrestrial and terrestrial/marginal-marine carbonates**

### **2.2.1 Terrestrial carbonate**

Terrestrial (non-marine/continental) carbonate deposits accumulate in a variety of depositional settings/environments including lacustrine, palustrine, cave, fluvial, subaerial, spring, and hypogean environments (Della Porta, 2015). As a result a spectrum of carbonate deposits can develop, including pedogenic carbonates, palaeosols, and caliche/calcretes; palustrine carbonates; cave carbonates, speleothems and karst; eolian carbonates; glacial carbonates; travertine, calcareous tufa and sinter; lacustrine and fluvial carbonates (Flügel, 2010). ~~In addition, carbonates also accumulate in transitional marine environments including beach (foreshore), barriers and coastal lagoons and peritidal environments (Flügel, 2010).~~ Within the study of terrestrial

carbonates, there is no universally accepted classification (Della Porta, 2015). In addition, carbonates also accumulate in transitional marginal-marine environments including beach (foreshore), barriers and coastal lagoons and peritidal environments (Flügel, 2010).

### 2.2.2 Tufa

165 Tufa, a terrestrial carbonate deposit, has an often controversial and complex nomenclature, with core definitions frequently contested, most notably the distinction between tufa and travertine (Capezzuoli et al., 2014; Della Porta, 2015; Ford and Pedley, 1996; Pentecost, 2005). While definitions based upon carbon dioxide source and the chemical mechanism of precipitation have been proposed for tufa (see Capezzuoli et al., 2014), it is often defined as “*the products of calcium carbonate precipitation under cool, ambient temperature freshwater: they typically contain remains of micro-and macrophytes, invertebrates and*  
170 *bacteria*” (Ford and Pedley, 1996; Pedley, 1990) as described by Della Porta (2015). This distinguishes between tufa (meteoene travertine) and travertine *sensu stricto* (thermogene travertine), both constituents of travertine *sensu lato*. If rock coast microbialites are viewed as a biogenic facies of travertine *s.l.*, the term tufa is best applied due to the ambient temperature of the source springs of microbialite occurrences (Cooper et al., 2013; Dodd et al., 2018; Forbes et al., 2010; Perissinotto et al., 2014; Rishworth et al., 2017, 2016); (Cooper et al., 2013; Dodd et al., 2018; Forbes et al., 2010; Perissinotto et al., 2014;  
175 Rishworth et al., 2016, 2017). Furthermore, the cool water temperature definition for tufa often refers to, or requires, cyanobacteria, heterotrophic bacteria and algae to be present and dependent on ambient temperatures <30°C (Capezzuoli et al., 2014), supporting microbialite facies. It is worth noting that while a temperature-based definition is frequently applied to tufa, there are issues determining the depositional temperature of the carbon dioxide source of inactive or fossil deposits (Jones and Renaut, 2010; Pentecost et al., 2011). Despite numerous coastal tufa deposits being described (Faulkner and Crae, 2018; e.g., Forbes et al., 2010; Howie and Ealey, 2009, 2010; Rodríguez Guitián et al., 2020), they are not considered typical  
180 transitional marginal-marine carbonates.

The presence of biofilms is ubiquitous in terrestrial carbonate and tufa deposits, as demonstrated by Della Porta (2015) and increasingly tufa is considered to be a microbially induced/ influenced sedimentary deposit (Capezzuoli et al., 2014; Perri et al., 2012). This position does not exclude an abiotic control on calcium carbonate precipitation (Ford and Pedley, 1996; Merz-  
185 Preiß and Riding, 1999) but suggests that biofilms may have a substantial or dominant role in the formation of tufa. This has been observed in the field with investigation suggesting that tufa precipitation frequently requires a biofilm, and without the presence of biofilm no carbonate precipitation occurs (e.g., Manzo et al., 2012), even in waters supersaturated with calcium carbonate (Shiraishi et al., 2008). In addition, field experiments with fluvial tufa (e.g., Gradziński, 2010) and in vitro mesocosm  
190 experiments (e.g., Pedley et al., 2009; Rogerson et al., 2010) have demonstrated that biofilms control carbonate precipitation through the presence of EPS, and are required for efficient development of tufa. While it may be tempting to classify any microbially-influenced tufa as microbialites, it has been the position that while terrestrial carbonates such as lake crusts and laminated travertines *s.l.* are frequently cited as stromatolites, the use of the term has been applied too loosely (Pentecost and Viles, 1994).

195 **2.3 Integration: tufa** Tufa microbialite facies and evidence of biogenicity

Rock coast microbialites are considered a distinct biologically-mediated tufa facies which includes carbonate-precipitating microbial tufa facies?

~~The role of biofilms and microbial mats in the formation of tufa is increasingly considered to be crucial in their formation. This is also evident in the numerous descriptions of stromatolitic tufa facies within the terrestrial carbonate and tufa focused literature such as fluvio-lacustrine, fluvial and lacustrine tufa deposits (e.g., Arenas et al., 2000, 2019, 2010; Guo and Chafetz, 2012; Manzo et al., 2012; Pedley et al., 1996; Ritter et al., 2017; Rodríguez Berriguete, 2020; Valero Garcés et al., 2008). This is also extended to thermal travertine s.s., spring deposits (e.g., Gandin and Capezzuoli, 2014). These facies may be considered to be ‘tufa stromatolites’, a subset of tufa microbialites, bridging the gap between tufa and microbialites and bringing stromatolitic tufa facies under the umbrella of stromatolites and microbialites.~~

205 Tufa microbialite, “*a tufa forming as a result of microbial activity (that may be) ... laminated, clotted or shrubby*” (Grey and Awramik, 2020) describes a variety of microbially induced deposits, but is most commonly applied to tufa stromatolites. Introduced by Riding (1991), it describes stromatolites “*dominated by the precipitation of minerals on (as opposed to within) organic substrates*” predominantly by cyanobacteria in freshwater lakes and streams. They are distinguished from other forms of tufa such as moss tufa by their lamination. The tufa thrombolite description was subsequently applied by Riding (2000) to describe tufa microbialites with clotted fabrics. Riding (1991) notes that tufa stromatolites can grade into skeletal stromatolites, that preserve the stromatolite building organisms as calcified fossils.

There are a variety of superseded and alternative terms for tufa microbialites including:

- 215 — Microbial tufa: “*formed when microorganic material is incorporated during inorganic carbonate precipitation*” (Burne and Moore, 1987);
- Algal tufa: an algal boundstone originally described from Sleaford Mere, Southern Australia (Warren, 1982);
- Cryptalgal tufa: a term applied by Monty (1976), for microbialites in Green Lake, New York, to describe a “*a tufa inferred to have formed through microbial activity*” (Grey and Awramik, 2020); and
- 220 — Cryptomicrobial tufa: “*a tufa that is inferred to have formed through microbial activity*” (Grey and Awramik, 2020).

~~Tufa and tufa microbialites have been excluded from much ‘classical’ microbialite work, including guides to their description and classification due to a lack of detailed morphological description (Grey and Awramik, 2020). However, the integration of tufa, along with travertines, speleothems, sinter, and microbial crusts within microbialite classification has been advocated (Grey and Awramik, 2020).~~

230 mats (i.e., not MISS), and thicker repeated units forming stromatolites and other microbialites that form in the rock coast environment. Lithologically, in situ tufa microbialites (excluding mobile oncoids and detrital tufa microbialites) ~~can be considered, and~~ have been described as autochthonous tufa deposits as they are “*phytohermal constructions where there is an in situ organic framework*” (Ford and Pedley, 1996). As a tufa facies, stromatolitic ~~tufas have~~ tufa has been described and classified in multiple studies, such as phytoherm boundstones as defined by Pedley (1990), as “*in situ stromatolitic build-ups with fringe-cements and often associated with oncoids*” (Pedley, 1990; in Pentecost, 2005). While the tufa microbialite facies appears dominant at recognised localities, other associated carbonate facies are frequently present within the same supratidal groundwater spring system and care should be taken to identify and delineate these facies. This includes non-microbialite tufas (e.g., bryophyte phytoherm framestone): both surface and hypogean; speleothem, pedogenic carbonates (e.g., palaeosols) and beachrock/carbonate cements.

240 While the biogenicity of ~~rock coast tufa microbialites~~ this facies has been demonstrated in South African occurrences (e.g., Perissinotto et al., 2014; Smith et al., 2005; Smith and Uken, 2003), the role of microbiota in the formation of other rock coast microbialite localities has not yet been thoroughly assessed such as those in Co. Sligo, Ireland (e.g., Cooper et al., 2022). For such deposits that appear to be microbial in origin, the terms ‘cryptomicrobialite’ or ‘cryptomicrobial tufa’ have been proposed (Grey and Awramik, 2020).

245 A greater understanding of the role of microbiota and microbialite builders in global occurrences of rock coast microbialites is required to establish biogenicity. ~~It would also allow for and accurate delimitation of this distinct facies to be distinguished from; allowing for~~ other associated terrestrial and marginal-marine carbonate facies. ~~Rock coast microbialites are often associated with other non-biogenic tufas (e.g., bryophyte tufas): both surface and hypogean; speleothem, pedogenic carbonates (e.g., paludal carbonates and calcrete) and beachrock and carbonate cements to be distinguished.~~ Associated non-microbialite terrestrial carbonate facies have been described in association with rock coast microbialites including rhizoliths described by Edwards et al. (2017) and surface-cemented rudites, also called beachrock (Edwards et al., 2017), shell conglomerate (Perissinotto et al., 2014), and sand beach deposits (Cooper et al., 2022). More detailed study of biogenicity and physico-chemical and vs. biological controls over carbonate precipitation will allow for the refinement of the relationships between transitional carbonates such as where cave resurgence associated speleothem grades into tufa microbialite (Pedley and Rogerson, 2010).

255 The role of biofilms and microbial mats in the formation of tufa is increasingly considered to be crucial in their formation. This is also evident in the numerous descriptions of stromatolitic tufa facies within the terrestrial carbonate and tufa focused literature such as fluvio-lacustrine, fluvial and lacustrine tufa deposits (e.g., Arenas et al., 2000, 2010, 2019; Guo and Chafetz, 2012; Manzo et al., 2012; Pedley et al., 1996; Ritter et al., 2017; Rodríguez-Berriguete, 2020; Valero Garcés et al., 2008). This is also extended to thermal travertine s.s., spring deposits (e.g., Gandin and Capezzuoli, 2014). These facies may be considered



260 to be ‘tufa stromatolites’, a subset of tufa microbialites, bridging the gap between tufa and microbialites and bringing stromatolitic tufa facies under the umbrella of stromatolites and microbialites.

265 Tufa microbialites, including tufa stromatolites (Riding, 1991) and tufa thrombolites (Riding, 2000), are “a tufa forming as a result of microbial activity (that may be)... laminated, clotted or shrubby” (Grey and Awramik, 2020), dominated by mineral precipitation on (opposed to within) organic substances predominantly by cyanobacteria in freshwater lakes and streams (Riding, 1991). Tufa stromatolites may grade into skeletal stromatolites, if stromatolite-building organisms are preserved as calcified fossils (Riding, 1991). The term ‘tufa microbialite’ supersedes alternative terms such as microbial tufa (Burne and Moore, 1987), algal tufa (Warren, 1982), cryptalgal tufa (Monty, 1976), and cryptomicrobial tufa (Grey and Awramik, 2020). Tufa and tufa microbialites have been excluded from much ‘classical’ microbialite work, including guides to their description  
270 and classification due to a lack of detailed morphological description (Grey and Awramik, 2020). However, the integration of tufa, along with travertines, speleothems, sinter, and microbial crusts within microbialite classification has been advocated (Grey and Awramik, 2020).

#### **2.4 Habitat and wider ecological implications**

##### **2.4 Habitats and ecology**

275 The occurrence of active tufa deposits ~~forms~~form a distinct and ecologically unique habitat. Within Europe, the habitat type ‘H7220 Petrifying springs with tufa formation (*Cratoneurion*)’ is recognised by the Habitats Directive (Council Directive 92/43/EEC on the Conservation of natural habitats and of wild fauna and flora) as “*hard water springs with active formation of travertine or tufa. These formations are found in such diverse environments as forests or open countryside. They are generally small (point or linear formations) and dominated by bryophytes (Cratoneurion commutati).*” (EC, 2013). This  
280 corresponds to the UK National Vegetation Classification of ‘M37 *Cratoneuron commutatum-Festuca rubra* spring community’ and the ‘M38 *Cratoneuron commutatum-Carex nigra* spring community’ (EC, 2013; Rodwell, 1992). In Ireland, Lyons and Kelly (2016), define eight petrifying spring plant communities including the group 1 plant community ‘*Eucladium verticillatum- Pellia endiviifolia* Tufa Cascades’. This plant community describes often near-vertical, steep, tufa cascades that occur on coastal rocky cliffs within the supralittoral spray zone (Lyons and Kelly, 2016). While Lyons and Kelly (2016) do  
285 not systematically survey the microbial fauna of these coastal tufa occurrences, a red alga *Chroothoece* sp., was recorded at numerous coastal occurrences and cyanobacteria *Rivularia biasolettiana* and Xanthophyte *Vaucheria* spp. at other inland occurrences. The recognition of rock coast microbialites as part of these habitats may lead to their future identification at other  
sites. Furthermore, Lismore, Argyll, Scotland has ubiquitous terrestrial carbonate deposits (Faulkner and Crae, 2018), which appear near identical in setting and morphology to other British and Irish occurrences of rock coast microbialites.localities.

290

Other attempts to map global occurrences of rock coast microbialites with greater recognition have been undertaken with the aim to acknowledge and protect their biodiversity. South African occurrences have been recognised in the National Biodiversity Assessment of South Africa (Rishworth et al., 2019) and in south-western Western Australia as ‘Augusta Microbial Threatened Ecological Communities’ (Forbes et al., 2010; Onton et al., 2009). One key component to the successful continued presence of these unique habitats is the maintenance of their eco-hydrological habitat requirements. These active tufa deposits can serve as sensitive indicators of water quantity or quality changes due to either direct anthropogenic modification or climate change which may upset the intricate hydrological balance within groundwater dependent rock coast fringe habitats.

### 3. Classifying and describing rock coast microbialites

The following section reviews the numerous classification schemes that may be applied to rock coast microbialites from a number of different research areas including ‘classical’ microbialites, ‘non-classical’ microbialites and terrestrial carbonates.

#### 3.1 ~~Classification~~ Previous classification schemes and description with a ‘classical’ microbialite view

##### 3.1.1 Microbialites

Microbialite classification has been much debated and divided, with application of a great variety in terminology and schemes across the globe. ~~The following briefly summarises these classification schemes. Grey and Awramik (2020) provide a detailed history of microbialite classification and nomenclature.~~

~~The earliest naming of stromatolites involving application of binomial Linnaean nomenclature with the upper Cambrian age (Grey and Awramik, 2020). Early attempts at microbialite classifications involve the application of binomial Linnaean nomenclature; with the first description of the upper Cambrian age stromatolite *Cryptozoön* (Hall, 1883) ~~has been~~, documented from New York State, USA (Grey and Awramik, 2020; Lee and Riding, 2021). Since then, a wide variety of additional classification schemes (eg., Cao and Bian, 1985; Donaldson, 1963; Szulczewski, 1968) have been proposed; ~~including descriptive polynomial schemes suggested by Maslov (1960, 1953) and Hofmann (1969) which were subsequently abandoned due to “unwieldy terminolog(ies)” (Grey and Awramik, 2020).~~~~

~~One of the most widely cited classifications was proposed by Logan et al. (1964) who used a descriptive geometric formulae which abandoned the binomial naming of stromatolites based upon a perceived lack of morphological consistency of biological species. Logan et al. (1964) describes hemispheroids and spheroids (oncolites) as basic geometric units that can be arranged into complex geometric arrangements, e.g. laterally linked hemispheroids (LLH), discrete, vertically stacked hemispheroids (SH), and spheroidal structures (SS). However, this classification system has not been widely adopted, due to its inability to describe more complex microbialite forms (Grey and Awramik, 2020). A vast array of naming classifications and systems~~

325 ~~have been applied to stromatolites and microbialites including descriptive polynomial schemes (Hofmann, 1969; Maslov, 1953, 1960) and descriptive geometric formulae (Logan et al., 1964). A vast array of naming classifications and systems have been applied, with many abandoned due to inadequacies, such as lack of consistency and unweidly terminologies, resulting in the current state of classification being undoubtedly messy and confusing (Grey and Awramik, 2020).~~

330 ~~Microbialites, by definition, can be classified by their builders, depositional processes and their products. Living microbial mats can be classified based upon the microbial mat/stromatolite builders. For example, Freytet and Verrecchia (1998) identify algae that form stromatolites through biocrystalization and classify biocenoses based on their ecology (e.g., “Aquatic environments that are permanently or periodically immersed... form(ing) coatings on the bottom and side of dams, coatings on living or dead organic debris and oncoliths corresponding to the *Phormidium incrustatum* community originally described by Fritsch and Pantin (1946).”). In some cases, tufa stromatolites have been classified by a dominant builder (e.g., *Schizothrix tufa* of Irion and Müller (1968)). These depositional processes (e.g., biologically influenced/biochemical calcification) are intrinsically linked to their products and this has lead to a number of attempts to genetically classify microbialites (e.g., Burne and Moore, 1987; Riding, 1991).~~

340 ~~In addition to ‘classical’ microbialites and an ecological view of microbial mats, numerous authors have considered the classification of the features of microbial mats and MISS with genetic schemes for MISS by Gerdes et al. (2000), Noffke et al. (2001), Schieber (2004) and (Eriksson et al., 2007a).~~

345 ~~Microbialite workers have typically avoided the application of established carbonate classifications of Folk (1959) and Dunham (1962), (Bosence et al., 2015), and instead morphogenetic classifications are frequently applied; through the description of internal structure/organisation, or fabric, intrinsically linked to depositional process and products (Burne and Moore, 1987; Riding, 1991).~~

350 The description of microbialites is most commonly aided through the use of the traditional heirarchical scale of observation from mega-, macro-, meso- to micro-structure as defined by Shapiro (2005) and discussed by Grey and Aramik (2020) (Fig. 1a). These levels are not mutually exclusive and are partially open-ended (Grey and Awramik, 2020). Other spatio-temporal scales have been suggested. For example Ibarra and Corsetti (2016) define scales of control as either local, a process at the scale of the stromatolitic structure, at the metre to micrometre scale, (e.g., crystal growth; biofilm trapping and binding; post-depositional dissolution); or non-local, refering to processes greater than the stromatolitic structure at the kilometre or larger scale (e.g., seasonality; post-depositional burial and deformation).

## 3.2 Classification and description with a terrestrial carbonate view

### 3.1.2 Terrestrial carbonates

355 Due to the morphological and geochemical similarities at the macroscale, rock coast microbialite classifications have also been  
closely aligned to other terrestrial carbonate deposits. This is despite a current lack of a universal nomenclature for terrestrial  
carbonates (Della Porta, 2015). For example, calcite and aragonite speleothems may be considered hypogean travertines  
(Pentecost, 2005), although the classification of speleothems is distinct from other terrestrial carbonates, with a vast array of  
types (see Hill and Forti (1997)). ~~Tufa can be classified through a variety of non-mutually exclusive criteria, commonly through  
geochemical, fabric and morphological criteria (see Pentecost, 2005; Pentecost and Viles, 1994)~~ Tufa can be classified through  
360 a variety of non-mutually exclusive criteria, commonly through geochemical, fabric and morphological criteria (see Pentecost,  
2005; Pentecost and Viles, 1994) and these classification schemes are briefly summarised here.

Recognised by Pentecost (1993), tufa can be classified based upon geochemistry, and the origin of the carrier carbon dioxide  
has been used to distinguish between travertine *s.s.* and tufa. The origin of the carrier affects the isotopic composition of the  
365 deposit and influences the morphology and fabric (Pentecost, 2005). Pentecost (1993) considers meteogene travertines  
(classified here as tufa) deposited from a meteoric water source and thermogene travertine (travertine *s.s.*) deposited from a  
thermal water source (Pentecost, 1993; Pentecost and Viles, 1994). Tufa fabric, “*the architecture of the deposit (i.e., the  
arrangement, density and size of the building units)*” (Pentecost and Viles, 1994) can also be classified, often with a focus on  
the biological influences. It is present at the micro- and meso-scale, referred to as the micro- and meso-fabrics, with the former  
370 relating to fabrics identifiable at the microscopic level through the use of thin section analysis and SEM, and the latter referring  
to fabrics visible by eye in a hand specimen (Pentecost, 2005). One of the most commonly applied classifications is that of  
tufa morphology or geomorphology. A seminal classification corresponding to environmental setting by Pedley (1990) has  
been adapted by Pentecost (1993) and Pentecost and Viles (1994) and was further expanded upon by Ford and Pedley (1996).  
This thread of geomorphological classifications has been frequently applied to British and Irish tufa deposits (e.g., Farr and  
375 Graham, 2017; Lyons and Kelly, 2016), partially due to its British and north west European scope (Pentecost, 1993);  
occasionally, they have also been applied globally (Forbes et al., 2010). Tufa systems are commonly described and classified  
through facies approaches that can integrate the above classifications. One of the most frequently applied is that of Ford and  
Pedley (1996) who divide tufas into allochthonous and autochthonous tufa deposits, the latter of which is subclassified into  
facies (Jones and Renaut, 2010), based upon established carbonate classification schemes.

380 ~~Tufa systems are commonly described and classified through facies approaches that can integrate the above classifications.  
One of the most frequently applied is that of Ford and Pedley (1996) who divide tufas into allochthonous and autochthonous  
tufa deposits, the latter of which is subclassified into three facies (Jones and Renaut, 2010), based upon established carbonate  
classification schemes.~~

385 ~~—‘Boundstone sheets of micrite and peloids (stromatolith-like and bacterioherms)’~~

~~—‘Microherm shrubby framework of bacterial colonies’~~

~~—‘Framework true “reef” framework of macrophytic coated with mixed micritic and sparry calcite fringes’~~

390 Comparable to the hierarchical mega- to micro-structure scale applied to microbialites, similar classifications have been proposed for terrestrial carbonates. For example, Ordonez et al., (1986), considered a hierarchical scale describing tufas through macrostructure, controlled by the relative position of the water table to topography; mesostructure, controlled by the ecology and encrustation nuclei, and microstructure, controlled by the efficiency and type of degassing. Guo and Riding (1998) also applied a three-part classification scheme to a Late Pleistocene travertine system, considering lithotypes (e.g., reed travertine, shrub travertine), depositional systems (e.g., mound depositional system, slope depositional system), and facies 395 (e.g., waterfall facies, terrace slope facies).

### **3.3 Integrated classification and towards a rock2 Rock coast microbialite classification classifications and description**

Rock coast microbialites have been described and classified based upon a wide range of sources and schemes. The global distribution of rock coast microbialites, despite the majority of research output being based upon localities in South Africa (Rishworth et al., 2020), has lead to inconsistencies in the terminology applied, and the need for consolidation, unification and 400 definition. As with tufas, rock coast microbialites may be classified based upon their geochemistry and fabric. However, as a microbialite facies of tufa that occurs in a specific setting, it can be considered, given the current investigations, to be of a relatively consistent geochemistry and fabric. Rock coast microbialites are partially defined by their characteristic carrier carbon dioxide source of supratidal feshwater

405 Early descriptions consider deposits with different approaches to this dependent on a microbialite (e.g., Perissinotto et al., 2014; Smith and Uken, 2003) or terrestrial carbonate (e.g., Forbes et al., 2010) outlook. As with terrestrial carbonates and other tufa facies, rock coast microbialites may be sub-classified based upon their geochemistry and fabric. Rock coast microbialites are partially defined by their characteristic carrier carbon dioxide source of supratidal freshwater springs emerging from a carbonate saturated groundwater source (Rishworth et al., 2020). This results in the bulk mineralogy for rock coast microbialites dominated by calcite and aragonite (Dodd, 2019; Forbes et al., 2010; Rishworth et al., 2020). As fabric is 410 examined, rockRock coast microbialites are defined as a tufa microbialite facies withalso have distinct fabrics (i.e.g., clotted thrombolites, laminated stromatolites and aphanitic leiolites). While the classification of geochemistry and fabric may be suitable to apply to rock coast microbialite occurrences, a geomorphological classification of rock coast microbialites is frequently applied and is equated to microbialite macrostructure (e.g., barrages).the macroscale geomorphology, equated to 415 microbialite macrostructure, is the most frequently applied classifier requiring a unified classification. This macrostructure geomorphology is typically taken from tufa geomorphological classifications (Ford and Pedley, 1996; Pedley, 1990; Pentecost, 1993; Pentecost and Viles, 1994), and adjusted for the rock coast environment. Recently, a facies approach to rock coast

microbialites has been applied by Cooper et al., (2022), which considers a general ~~model~~[classification scheme](#) of microbialite facies on siliclastic rock coasts. A similar approach was undertaken by Forbes et al., (2010).

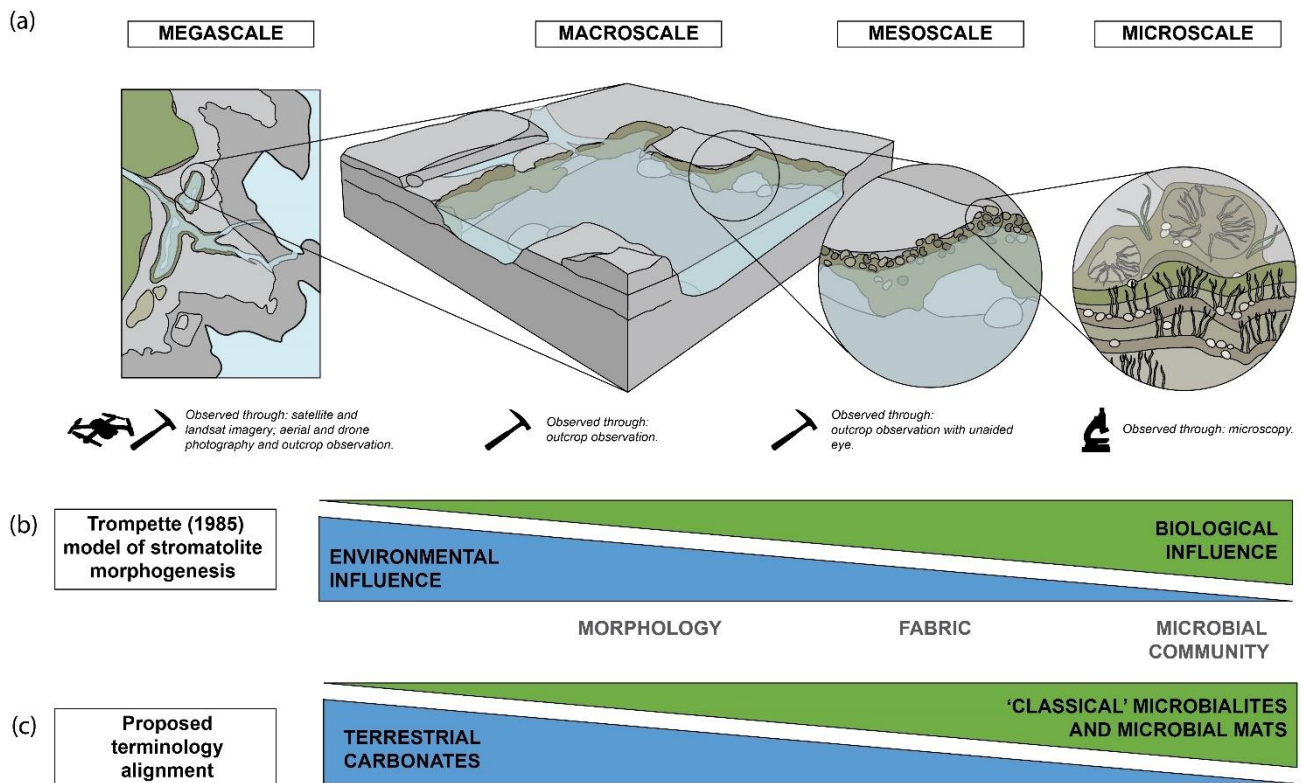
420

In order to address the presence of synonyms, duplications, omissions, and the wide variety of terms applied to the same morphological features, predominantly at the macro- and meso-scale, the following proposed classification system will consider microbialite, terrestrial carbonate and past rock coast microbialite terminology and classifications. This is approached using the hierarchical microbialite scale as defined by Shapiro (2005) and discussed by Grey and Awramik (2020).

425

Trompette (1982) proposed a morphogenetic model, suggesting that the environment ([abiotic influence](#)) was the dominant influence on stromatolite formation at the macroscale, and that the biological influences predominated at the microscale (Suosaari et al., 2019b; Trompette, 1982) (Fig. 1b). This model was modified by Suosaari et al., (2019b) on examination of microbialite systems in Hamelin Pool and the Bahamas. These hierachal structural models for both tufas and microbialites demonstrate comparable controls on morphology, and subsequently may be applied to tufa microbialites; however, such models would need to be tested. Therefore, the approach taken here is that of a hierachal scale that equates to microbialite mega-, macro-, meso- and micro-structure with the application of terminology from terrestrial carbonates. While this appears most suitable at the macro-scale where environmental influene is greatest and microbialite terminology may also be applied at the meso- and micro-scale (Fig. 1b-c).

430



435

Figure 1: (a) Diagram of hierachial structural scale from megascale to microscale (based on Grey and Awramik, 2020; Shapiro, 2005); (b) Trompette (1982) model of stromatolite morphogenesis, adapted from Suosaari et al., (2019b); (c) the proposed terminology alignment between terrestrial carbonates and 'classical' microbialites and microbial mats.

#### 4 An integrated geomorphological classification for rock coast microbialites

440 ~~As discussed, the terminology used for rock coast microbialites is somewhat divided between 'classical' microbialite and~~  
~~terrestrial carbonate terminology. In combination with this, the global distribution of rock coast microbialites, despite the~~  
~~majority of research output being based upon localities in South Africa (Rishworth et al., 2020), has lead to inconsistencies in~~  
~~the terminology applied, and the need for consolidation, unification and definition. Thus, an integrated rock coast microbialite~~  
~~classification is required for future research of rock coast microbialite systems and, importantly, the comparision with~~  
445 ~~terrestrial and marine carbonates. The proposed classification system will address the presence of synonyms, duplications,~~  
~~omissions, and the wide variety of terms applied to the same morphological features, predominantly at the macro and meso-~~  
~~scale. This is approached using the hierarchical microbialite scale as defined by Shapiro (2005) and discussed by Grey and~~  
~~Awramik (2020), with discussion on the strengths and weaknesses of terms and their source classification schemes.~~

450 While a rock coast microbialite classification system is considered to be important for future research, care must be taken to  
avoid excessive categorisation, especially upon morphogenesis which remains poorly understood in rock coast microbialites.  
Current understanding of terrestrial carbonate morphogenesis is already much more advanced and may be comparable at  
macro scale, yet the relationships between these deposits are not understood well enough for direct correlation. While terrestrial  
carbonates can already be classified based upon fabric and geochemistry, the current lack of description and sufficiently large  
455 datasets concerning rock coast microbialites, currently excludes such classification schemes.

## 4 An integrated geomorphological classification for rock coast microbialites

### **4.1 Megastructure**

Megastructure addresses the largest- (meter to decimeter) scale aspects of microbialite occurrence and their respective beds,  
examining the bed-scale or stratum-scale structures, including buildups such as the largest bioherms or biostromes (Grey and  
460 Awramik, 2020; Shapiro, 2005). This may refer to the location (e.g., aerial extent and stratigraphic setting); surrounding strata  
relationships (substrate, initiation, interface and growth direction); mode of occurrence (e.g., buildup, bioherm and biostrome)  
and shape (Grey and Awramik, 2020). For the study of rock coast microbialites, the megastructure has been commonly  
described within the study site setting.

### **4.2 Macrostructure**

465 Following Grey and Awramik (2020), macrostructure refers to aspects of the majority of bioherms and biostromes, including  
features of microbialite gross morphology, and describes features such as shape (e.g., stratiform, oncoidal, and columnar), plan  
view, and linkage.

Rock coast microbialite macrostructure has followed the definition for microbialite macrostructure relatively closely (Edwards  
470 et al., 2017); however, there is generally a focus on the gross morphology of microbialite occurrences opposed to shape (e.g.,  
columnar), which is generally considered a feature of mesostructure. ~~Terminology has also frequently been adapted from  
terrestrial carbonate nomenclature (Fig. 2). For example, Forbes et al., (2010) and Edwards et al., (2017) presented depositional  
models for coastal tufa microbialites following the classification scheme of Ford and Pedley (1996). In comparable terrestrial  
carbonates, the classification is frequently based upon criteria like botanical content, depositional processes, geochemistry,  
475 fabric, facies and morphology which produces a number of different schemes (Fig. 2). Pedley (1990), Ford and Pedley (1996)  
and Pentecost and Viles (1994) provide comparable morphology and environmental setting based classifications, broadly  
equivalent to tufa macrostructure proposed by Ordonez et al., (1986) and considered to be controlled by the position relative  
to the water table and topography.~~



Terminology has also frequently been adapted from terrestrial carbonate nomenclature (Fig. 2) due to the evident similarity in geomorphology. For example, Forbes et al.

480

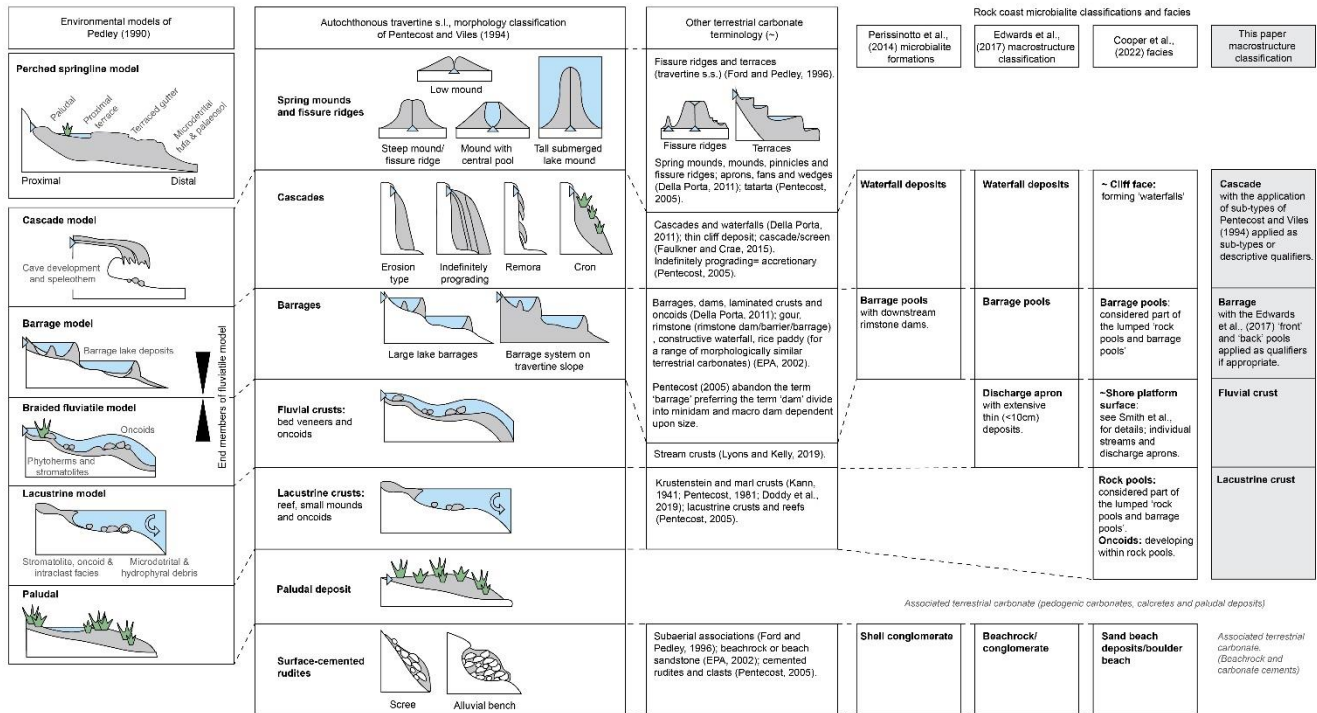


Figure 2. Comparison of terrestrial carbonate terminology (applying key classification schemes of Pedley (1990), Pentecost and Viles (1994) and other terminology (Della Porta, 2011; Faulkner and Crae, 2018; Ford and Pedley, 1996; Lyons and Kelly, 2016; Pentecost, 2005; Field, 2002)) and rock-coast microbialite terminology (Cooper et al., 2022; Edwards et al., 2017; Perissinotto et al., 2014)

485

Following the adaptation of tufa nomenclature by Forbes et al. (2010) to produce applied tufa nomenclature, producing two depositional models featuring the perched springline model, fluvial barrage model and cascade of Ford and Pedley (1996).

This was referred to and built upon by Perissinotto et al. (2014) considers, that consider 'stromatolite formations' consisting of barrage pools with downstream rimstone dams, waterfall deposits (sensu Forbes et al. (2010)) and associated 'shelly conglomerates'.

490

These seminal works strongly influenced subsequent studies such as Edwards et al. (2017) who along with the previous detailed macrostructures also included discharge aprons. The shore platform setting Despite frequent reference to the geomorphology of these deposits, there is scant published data on their thickness and geometry, with the majority of information supplied by Forbes et al., (2010), Perissinotto et al., (2014) and Edwards et al., (2017).

495

The shore platform environment (Smith et al., 2018), contains microbialites composed of thin crusts, barrage pools, and shallow rock pools. This shore platform setting was considered in a microbialite 'modes of occurrence' facies approach by Cooper et al. (2022) alongside cliff face, boulder beach, rock pool and barrage pools, oncoids and sand beach deposits. The consistent inclusion of surface cemented rudites (shell conglomerate, beachrock, sand beach deposits etc.) without direct

evidence of biogenicity means that they are not included within the current classification, however, that is not to say they should not be included within wider study of rock coast terrestrial [and marginal-marine carbonates](#) (Fig. 3).

500

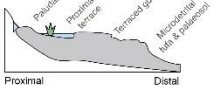
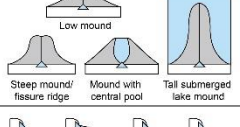
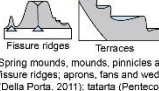
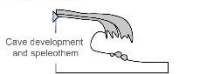

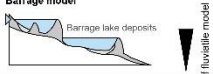
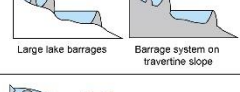
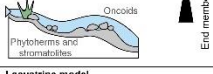
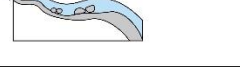
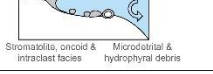
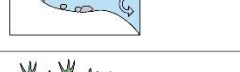
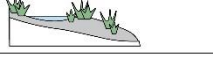
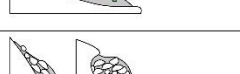
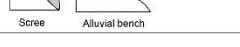
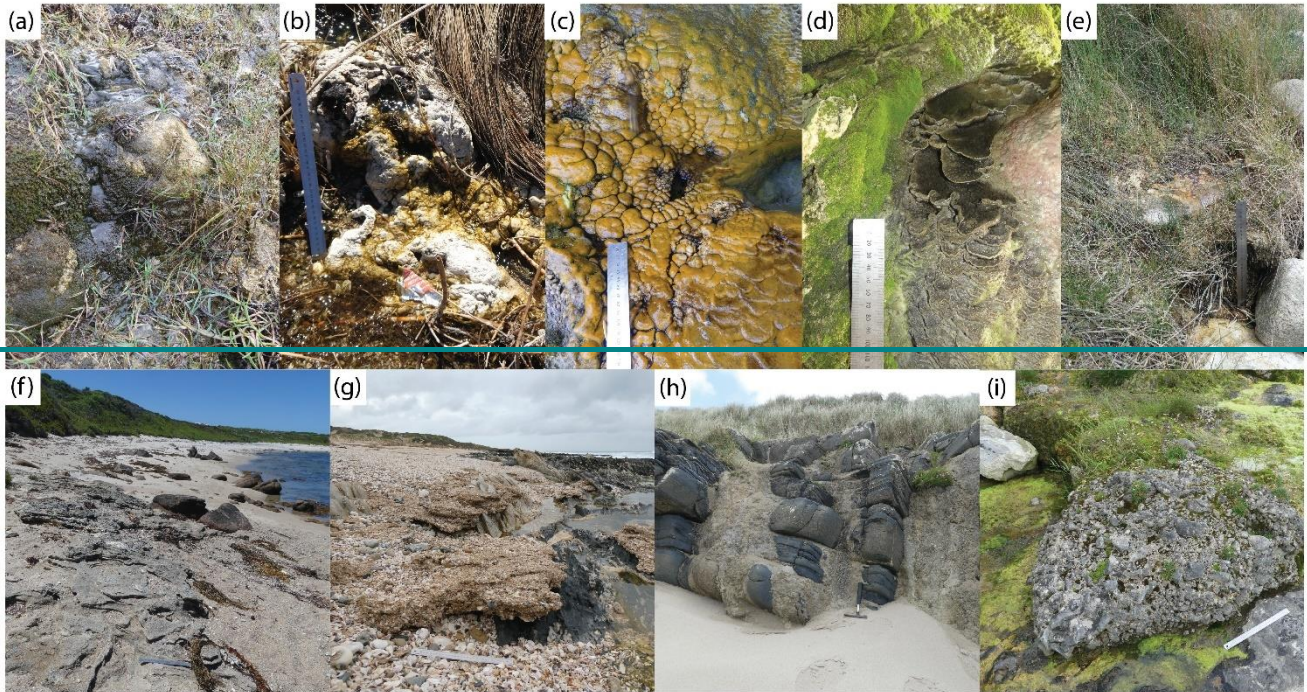
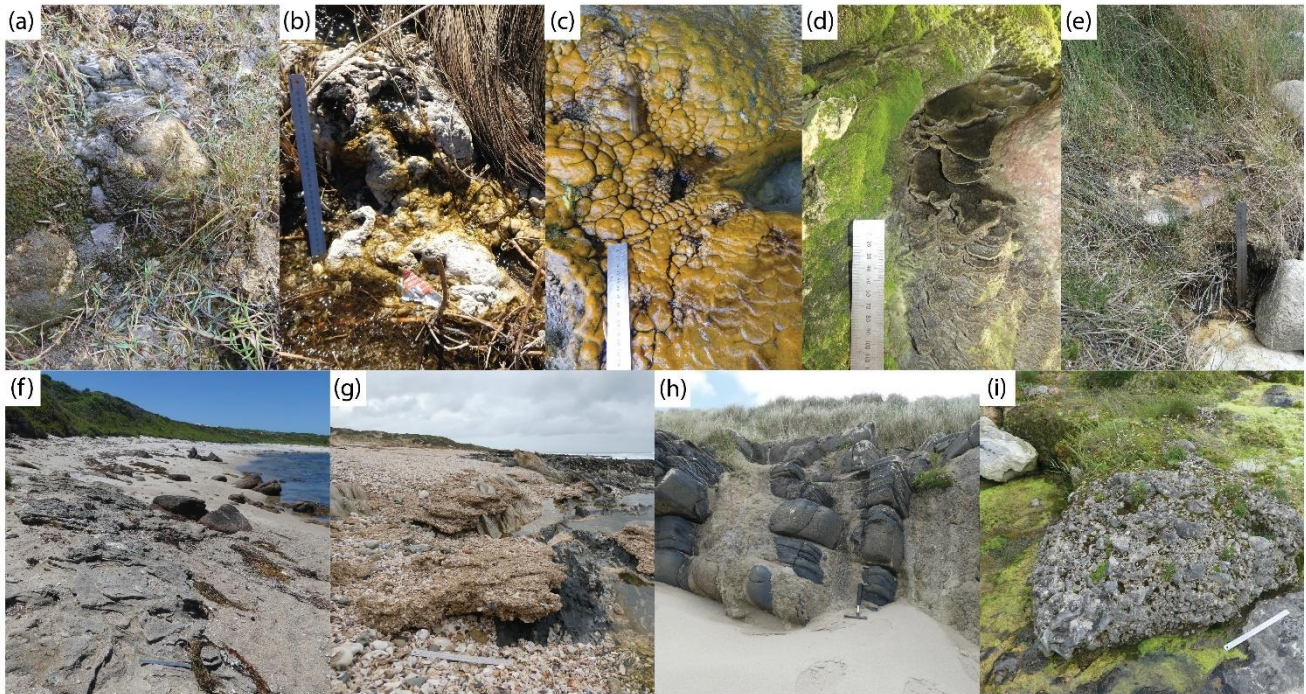
Environmental models of Pedley (1990)	Autochthonous travertine s.l., morphology classification of Pentecost and Viles (1994)	Other terrestrial carbonate terminology (-)	Rock coast microbialite classifications and facies			
<p><b>Perched springline model</b></p>  <p>Proximal, Proximal terrace, Terraced gutter, Microtopical life &amp; paludology</p> <p>Proximal, Distal</p>	<p><b>Spring mounds and fissure ridges</b></p>  <p>Low mound, Steep mound/fissure ridge, Mound with central pool, Tall submerged lake mound</p>	<p><b>Fissure ridges and terraces (travertine s.s.) (Ford and Pedley, 1996)</b></p>  <p>Fissure ridges, Terraces</p>	Perissinotto et al., (2014) microbialite formations	Edwards et al., (2017) macrostructure classification	Cooper et al., (2022) facies	This paper macrostructure classification
<p><b>Cascade model</b></p>  <p>Cave development and speleothem</p>	<p><b>Cascades</b></p>  <p>Erosion type, Indefinitely prograding, Remora, Cron</p>	<p><b>Cascades and waterfalls (Della Porta, 2011); thin cliff deposit; cascade/screen (Faulkner and Crae, 2015). Indefinitely prograding= accretionary (Pentecost, 2005).</b></p>	<b>Waterfall deposits</b>	<b>Waterfall deposits</b>	~ <b>Cliff face:</b> forming 'waterfalls'	<b>Cascade</b> with the application of sub-types of Pentecost and Viles (1994) applied as sub-types or descriptive qualifiers.
<p><b>Barrage model</b></p>  <p>Barrage lake deposits</p>	<p><b>Barrages</b></p>  <p>Large lake barrages, Barrage system on travertine slope</p>	<p><b>Barrages, dams, laminated crusts and oncoids (Della Porta, 2011); gour, rimstone (rimstone dam/barrier/barrage) constructive waterfall, rice paddy (for a range of morphologically similar terrestrial carbonates) (EPA, 2002).</b></p>	<b>Barrage pools</b> with downstream rimstone dams.	<b>Barrage pools</b>	<b>Barrage pools:</b> considered part of the lumped rock pools and barrage pools'	<b>Barrage</b> with the Edwards et al., (2017) 'front' and 'back' pools applied as qualifiers if appropriate.
<p><b>Braided fluvialite model</b></p>  <p>Oncoids, Phytoblems and stromatolites</p>	<p><b>Fluvial crusts: bed veneers and oncoids</b></p> 	<p><b>Pentecost (2005) abandon the term 'barrage' preferring the term 'dam' divide into minidam and macro dam dependent upon size.</b></p> <p><b>Stream crusts (Lyons and Kelly, 2019).</b></p>	<b>Barrage pools</b> with downstream rimstone dams.	<b>Discharge apron</b> with extensive thin (<10cm) deposits.	~ <b>Shore platform surface:</b> see Smith et al., for details; individual streams and discharge aprons.	<b>Fluvial crust</b>
<p><b>Lacustrine model</b></p>  <p>Stromatolite, oncoid &amp; intraclast facies, Microtopical &amp; hydrophytal debris</p>	<p><b>Lacustrine crusts: reef, small mounds and oncoids</b></p> 	<p><b>Krustenstein and marl crusts (Kann, 1941; Pentecost, 1981; Duddy et al., 2019); lacustrine crusts and reefs (Pentecost, 2005).</b></p>			<b>Rock pools:</b> considered part of the lumped 'rock pools and barrage pools'	<b>Lacustrine crust</b>
<p><b>Paludal</b></p> 	<p><b>Paludal deposit</b></p> 					
<p><b>Surface-cemented rudites</b></p>  <p>Scree, Alluvial bench</p>		<p><b>Subaerial associations (Ford and Pedley, 1996); beachrock or beach sandstone (EPA, 2002); cemented rudites and crists (Pentecost, 2005).</b></p>	<b>Shell conglomerate</b>	<b>Beachrock/ conglomerate</b>	<b>Sand beach deposits/boulder beach</b>	Associated terrestrial carbonates, (Beachrock and carbonate cements)

Figure 2. Comparison of terrestrial carbonate terminology (applying key classification schemes of Pedley (1990), Pentecost and Viles (1994) and other terminology



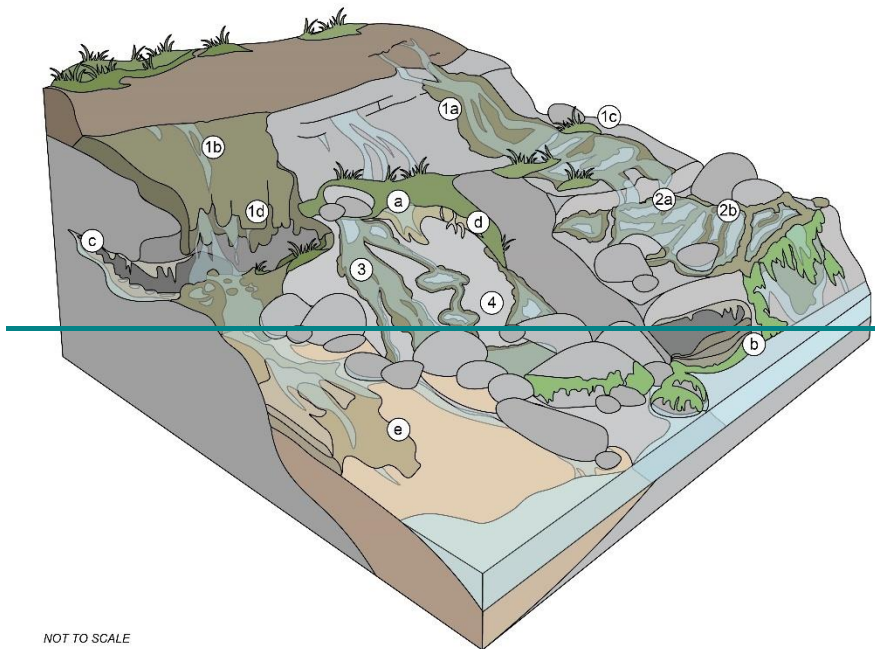
505

(Della Porta, 2011; Faulkner and Crae, 2018; Field, 2002; Ford and Pedley, 1996; Lyons and Kelly, 2016; Pentecost, 2005)) and rock coast microbialite terminology (Cooper et al., 2022; Edwards et al., 2017; Perissinotto et al., 2014)



510 **Figure 3. Terrestrial carbonate structures commonly associated with rock coast microbialites: (a) bryophyte phytoherm framestone tufa cushions (Ardglass, Northern Ireland); (b) surface (non-microbialite) tufa (Schoenmakerskop, South Africa); (c) hypogean tufa (Quarry Bay, Western Australia); (d) Speleothem (Mullaghmore, Ireland); (e) paludal tufa (Canal Rocks, Western Australia); (f)-(i) incipient beachrocks and carbonate cements: (f) Quarry Bay, Western Australia; (g) Lauries Bay, South Africa; (h) Saligo Bay, Isle of Islay, Scotland; (i) Sligo Bay; Ireland).**

515 The following geomorphological classification distinguishes between the geomorphology of the microbialite deposit and the settingenvironment or mode of occurrence wider setting (e.g., fluvial and lacustrine crust macrostructures present in a discharge apron or in the shore platform settingenvironment). Due to this complex nomenclature, the following terminology is suggested (Fig. 4).



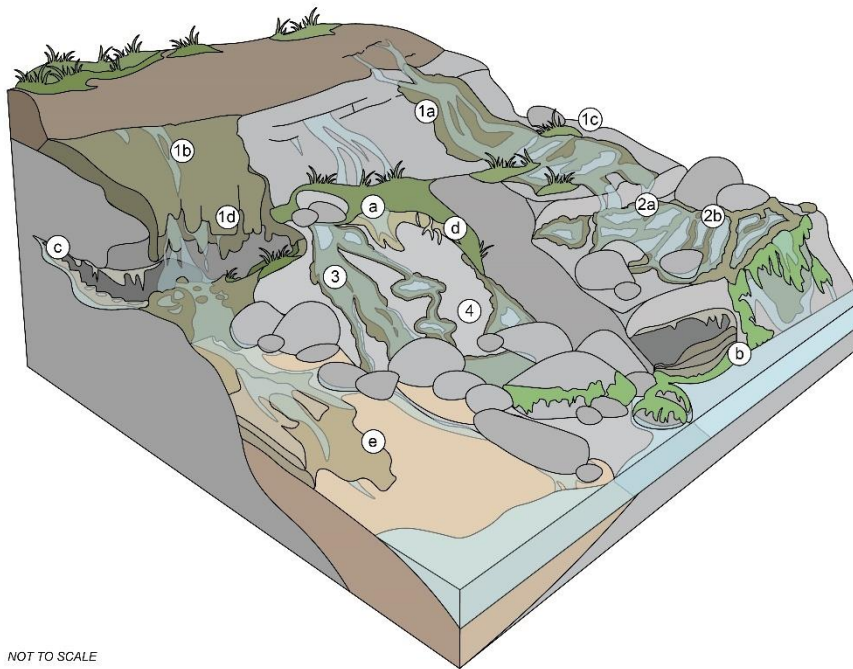
NOT TO SCALE

**Rock coast microbialite macrostructures**

- ① Cascade
  - ①a Erosively-shaped *Pentecost and Viles, 1994.*
  - ①b Accretionary *Pentecost and Viles, 1994.*
  - ①c Cron *Sensu Symoens et al., 1951; See Pedley 1990.*
  - ①d Remora *Aussen stalakiten of Lehmann, 1954; see Pentecost, 1993*
- ② Barrage/Barrage pool
  - ②a Back pool *Sensu Edwards et al., (2017).*
  - ②b Front pool *Sensu Edwards et al., (2017).*
- ③ Fluvial crust
- ④ Lacustrine crust

**Associated terrestrial carbonate deposits**

- Ⓐ Surface (non-microbialite) tufa
- Ⓑ Hypogean tufa
- Ⓒ Speleothen
- Ⓓ Pedogenic carbonates, calcretes and paludal deposits
- Ⓔ Beachrock and carbonate cements



NOT TO SCALE

**Rock coast microbialite macrostructures**

- ① Cascade
  - ①a Erosively-shaped *Pentecost and Viles, 1994.*
  - ①b Accretionary *Pentecost and Viles, 1994.*
  - ①c Cron *Sensu Symoens et al., 1951; See Pedley 1990.*
  - ①d Remora *Aussen stalakiten of Lehmann, 1954; see Pentecost, 1993*
- ② Barrage/Barrage pool
  - ②a Back pool *Sensu Edwards et al., (2017).*
  - ②b Front pool *Sensu Edwards et al., (2017).*
- ③ Fluvial crust
- ④ Lacustrine crust

**Associated terrestrial carbonate deposits**

- Ⓐ Other surface tufa facies (e.g., bryophyte phytotherm framesstone)
- Ⓑ Hypogean tufa
- Ⓒ Speleothen
- Ⓓ Pedogenic carbonates, calcretes and paludal deposits
- Ⓔ Beachrock and carbonate cements

520 **Figure 4. Block diagram of rock coast microbialite macrostructure and associated terrestrial carbonate deposits.**





Figure 5. Rock coast microbialite macrostructures: (a) erosively-shaped cascade (Cape St Francis, South Africa); (b) remora (Quarry Bay, Western Australia); (c) accretionary cascades (Aughris Head, Ireland); (d) fluvial crust (Sligo Bay, Ireland); (e) fluvial crust (Sligo Bay, Ireland); (f) barrages (Sligo Bay, Ireland); (g) barrages (Lauries Bay, South Africa); (h) inactive barrages (Quarry Bay, Western Australia); (i) lacustrine crust (Bundoran, Ireland); (j) lacustrine crust (Mullaghmore, Ireland).

#### 4.2.1 Cascade

Cascades are tufa microbialite deposits deposited on steep shore topographies producing a ‘waterfall’-like morphology, ranging from a few millimetres to 30 cm in thickness (Cooper et al., 2022).

In rock coast microbialite nomenclature, a variety of terms have been used to describe tufa microbialite deposits on steep gradients; however, cascade deposits (Fig. 5a-c) have been rarely termed as such. Workers have frequently cited the ‘waterfall deposit’ of Forbes et al., (2010) (Edwards et al., 2017; Perissinotto et al., 2014) despite considering that such deposits bear a

striking resemblance to the morphology of tufa deposits (Edwards et al., 2017). The cliff face microbialite facies described by Cooper et al., (2022), is considered to be dominated by the cascade macrostructure, as the cliff face facies is partially defined by its steep shore topography that produces cascade macrostructures.

Pentecost and Viles (1994) considered tufa ‘cascades’ and identified two distinct forms controlled by variable erosion/deposition rates. The first form is ‘erosively-shaped’ deposits, paraboloid in section, with the surface morphology controlled by spate water trajectory (Fig. 5a) and a second form: ‘accretionary’ deposits, where the rate of deposition is greater than the rate of erosion resulting in progradation (Fig. 5c). This second form consists of subtypes. ~~These include keeled cascades which consist of a narrow slot constricting water flow before falling over a travertine s.l., nose and ‘tubes’ forming a travertine spout at the top of cascades (Pentecost, 2005, 1993).~~ These include keeled cascades which consist of a narrow slot constricting water flow before falling over a travertine s.l., nose and ‘tubes’ forming a travertine spout at the top of cascades (Pentecost, 1993, 2005). ‘Cron’ is a poorly observed cascade subtype, of small staggered dams with boggy pools, and an intermediate between cascades and barrage pools (Pedley, 1990; Pentecost, 2005, 1993; Symoens et al., 1951)(Pedley, 1990; Pentecost, 1993, 2005; Symoens et al., 1951). Considered a form of speleothem by Pentecost (2005), ‘Aussen stalaktiten’ (Lehmann, 1954), renamed remora (Pentecost, 1993), is a stalactite-like mass of terrestrial carbonate that develops on steep slopes in slow or periodic water flow (Pentecost, 2005) (Fig. 5b). Preferential precipitation of carbonate may result in remora extending from a vertical surface, potentially due to algal growth (Dobat, 1966; Rong et al., 1996) resulting in a ‘phototrophic stalactite’ (Pentecost, 2005). Ford and Pedley (1996) also consider waterfall or cascade tufas, but consider that these forms may be constituents of larger systems and that elements of cascade and paludal models described by Pedley (1990) may be encompassed by the proximal element of the perched springline (slope) model. In addition, comparable descriptive terms have been applied to cascade or cascade-like tufa deposits including waterfalls and thin cliff deposits and screens (e.g., Faulkner and Crae, 2018).

In the future, the resumption of the term ‘cascade’ describing this specific macrostructure is suggested for further work, in order to agree with terrestrial carbonate and tufa nomenclature with macrostructures such as cron and remora applied as qualifiers or subtypes.

#### 560 **4.2.2 Barrage**

Barrages are the most distinctive and best morphologically described of rock coast microbialite deposits. They range in size from small barrage pools <1 m diameter (or inter-dam distance (Pentecost, 2005) with walls ca. 15 cm height up to large pools 1-5 m diameter with walls ca. 20 cm height at Canal Rocks and Quarry Bay, Western Australia, respectively (Forbes et al., 2010). At South African localities, barrages are of comparable sizes, with small barrages pools (<1 m diameter) at Schoenmakerskop (Perissinotto et al., 2014) and larger barrage pools up to 5-7 m diameter, up to 1 m depth and with extensive lateral growth of the barrage up to 1 m thick at Seaview and surrounding localities (Edwards et al., 2017)



In rock coast microbialite nomenclature, barrage deposits (Fig. 5f-h) have been relatively consistently described as such. Perissionotto et al. (2014) and Edwards et al. (2017) describe barrage pools, with rimstone dams (Edwards et al., (2017) considers rimstone itself to be a distinct mesostructure). Edwards et al. (2017), also distinguishes between ‘back pools’ and ‘front pools’ based upon their position in relation to sea-level and morphology. In relation to morphology, back pools form due to microbialite growth on both the pool bottom and margins, forming rims that ultimately close the pool; and front pools form with limited growth at the rims. Edwards et al. (2017) ascribes the morphology of these pools to their level of maturity, however, this morphogenetic classification is yet to be applied outside of the South Africa. Cooper et al. (2022) also describes the barrage pool morphology as part of a lumped rock pool and barrage pool facies, combining barrage pool and lacustrine crust macrostructures. The barrage macrostructure is not mutually exclusive to this depositional facies and may also be present on shore-platform surfaces and merge with cascade macrostructures in cliff face [settingsenvironment](#).

Pentecost and Viles (1994) differentiate barrages from cascades based upon vertical accretion of ‘barrages’ resulting in water impoundment forming ‘barrage pools’ of which two forms are recognised. The first form are those forming large lake barrages forming on obstructions or breaks in gradient on the accretion surface, and the second are barrage systems that form on [preexistingpre-existing](#) travertine *s.l.* slopes. Ford and Pedley (1996) describe the barrage model, following the fluvial barrage model of Pedley (1990). Pentecost (2005) re-describes barrages stating that the term barrage suggests a specific obstruction, and applies the term ‘dam’ instead. Dams are divided into two groups based upon the the distance between consecutive dams (or inter-dam distance) with dam systems with an inter-dam distance of 1cm - 1m described as minidams and those with inter-dam distances of 1m - 100m termed macrodams. However, this division is purely artificial with no bimodality or discontinuity between forms (Pentecost, 2005). In addition to tufa barrages, similar barrage-like morphologies occur in other terrestrial carbonates such as speleothem deposits where approximate terms ‘rimstone’ and ‘gours’ are applied, with ‘microgours’ used to refer to morphologies at the cm-scale and travertine *s.s.* and silica sinter where they are termed terraces (Hammer et al., 2010; Pentecost, 2005). A scaled approach to barrage terminology is also applied by Fouke et al. (2000) and Bargar (1978) to describe travertine morphologies of Yellowstone National Park, USA, who use terraces, terracettes and microterraces.

For further work, the term ‘barrage’ or ‘barrage pool’ is suggested in line with both terrestrial carbonate and rock coast microbialite nomenclature, with constituents of a ‘barrage’, the outer wall of the structure, backed by a barrage ‘pool’. The morphogenetic classification of ‘front’ and ‘back’ barrage pools of Edwards et al., (2017), may be applied as qualifiers if appropriate; however, these models should be further tested globally.

#### **4.2.3 Fluvial crust and lacustrine crust**

[Fluvial](#)The fluvial and lacustrine crusts macrostructures form some of the largest areas of rock coast microbialite up to 10 m at sites between Seaview and Schoenmakerskop, South Africa (Edwards et al., 2017). However, these deposits are also

600 [characterised by being thin, with subaerial exposed fluvial crusts 3-5 cm thick at the Kei River Mouth locality \(Smith and Uken, 2003\) and <10 cm at Eastern Cape localities, South Africa \(Edwards et al., 2017\); <4 cm thick inactive crusts at Western Australian localities \(Forbes et al., 2010\) and as thin as 2-4 mm veneers of lacustrine crust at the Giant's Causeway locality, Northern Ireland \(Cooper et al., 2013\).](#)

605 [However, fluvial](#) and lacustrine crusts (Fig. 5d-e, i-j) are ~~often readily~~ not distinguished in rock coast microbialite nomenclature with both forms being 'lumped' within a singular setting or facies. Initially, Edwards et al. (2017), described 'discharge aprons' as a distinct macrostructure, describing microbialite growth typically <10cm, on inclined bedrock with flowing freshwater. Inactive and active discharge apron fans are also described by Forbes et al. (2010) from Western Australia. This macrostructure is encompassed by the shore-platform [settingenvironment](#) described by Smith et al. (2018), with stromatolites accreting on the  
610 subhorizontal element of rocky coasts, typically within rock pools of shore platforms. At the macrostructure level they are simply described as being thin crusts (1-30cm thick) in addition to low mounds, barrages, and oncoids, as described by Edwards et al. (2017). The shore platform surface facies is also documented by Cooper et al. (2022) to describe rock coast microbialites that develop on the horizontal element of rock coasts, which are thin mats covered by a freshwater film.

615 Fluvial crusts, also called stream/spring crusts, are characterised by thin crust deposits under flowing water that intergrade with other macrostructures including cascades and barrages (~~Pentecost, 2005, 1993; Pentecost and Viles, 1994~~)([Pentecost, 1993, 2005; Pentecost and Viles, 1994](#)) as part of the fluvial model of Pedley (1990). There is recognition that these deposits are frequently associated with cyanobacteria and algae (~~Pentecost, 2005, 1993~~)([Pentecost, 1993, 2005](#)). Ford and Pedley (1996) consider low-angle sheet like deposits as part of the distal component of the perched springline (slope) model and  
620 stream bed deposits of cyanobacteria dominated lenses and small bioherms of stromatolite boundstone as part of the braided fluvial model. A comparable speleothem morphology is flowstone, which is considered analogous by Pentecost (2005); however the surface morphology/texture is smoother due to the lack of macrophyte growth and incorporation of detritus.

Microbial carbonates are considered a distinct lacustrine carbonate facies, identified by MISS and "carbonate biostructures"  
625 that include coated grains (e.g., ooids and oncoids), other microbialites (e.g., stromatolites, thrombolites, and other microbial mats) and tufa mounds (~~Alonso Zarza and Tanner, 2010~~)([Gierlowski-Kordesch, 2010](#)). These are separated from fluvial crusts by Pentecost (2005), who divides lake deposits into lacustrine crusts and lacustrine reefs. The former, lacustrine crusts have been defined similarly to fluvial crusts, consisting of superficial crusts and oncoids in static bodies of water (Ford and Pedley, 1996; Pentecost and Viles, 1994). The latter, reef-like deposits are also classified in this lacustrine [settingenvironment](#), with  
630 acknowledgement that such reefs are commonly laminated and microbially precipitated, i.e., stromatolitic (Ford and Pedley, 1996; Pentecost and Viles, 1994). This recognition of microbial influence has led to the term 'krustenstein' (Kann, 1941), which has been applied to tufa/marl microbialite crusts (Doddy et al., 2019; Pentecost, 1981).

635 There is a clear discrepancy between the terminology applied to rock coast tufa microbialite macrostructure and the equivalent  
tufa morphologies, based upon the unusual setting that rock coast microbialites form, with the [settingenvironment](#) (e.g., shore  
platform or discharge apron) frequently adopted as a macrostructure, reserved here for fluvial and lacustrine crusts. Fluvial  
crusts should be applied to thin crusts with no water impoundment from barrages with flowing freshwater, while lacustrine  
crusts should be applied to crusts beneath predominantly no flow in a topographically controlled basin (e.g., a rock pool) (Fig.  
5i-j). In reality these two macrostructures may form a gradient covering a range of hydrodynamic conditions on a sub-  
640 horizontal surface (e.g., on a shore platform surface) and may grade into other macrostructures such as barrages.

### 4.3 Mesostructure

Mesostructure, according Grey and Awramik (2020), refers to the visible internal organisation and is the hierarchical level that  
allows for the differentiation of microbialites as stromatolites, thrombolites, dendrolites and leiolites. In living microbial mats,  
the mesostructure has also been termed ‘mat topography’ and refers to the surface features as opposed to the visible internal  
645 organisation (Bauld, 1992 in; Grey and Awramik, 2020) with ‘architecture’ proposed as a fossil equivalent (Grey and  
Awramik, 2020). The internal organisation of microbialites has been referred to as macrofabric (e.g., Riding, 2011) and  
mesofabric (e.g., Edwards et al., 2017), however, Grey and Awramik (2020) suggest that fabric is best used in its  
sedimentological meaning as a constituent of microstructure.

650 The first mat topography mesostructure of rock coast microbialites was described by Smith and Uken (2003) as coalescing  
domal structures, now termed colloform, and following this initial description, Smith et al. (2005) examined the laminated  
internal organisation further. The first substantial observation of mesostructure was undertaken by Smith et al. (2011), who  
described three growth forms: pustular, laminar/columnar and colloform. Described as mesofabrics Perissinotto et al. (2014)  
also observed these three forms on the South African coast and Cooper et al. (2013), compared these to occurrences in Northern  
655 Ireland, describing colloform and laminar forms. This was greatly expanded upon by Edwards et al. (2017) who also classified  
rimstone, rootcasts, wrinkles, and blister mat mesostructures. Comparably with surface-cemented rudites, or beachrock, the  
rootcast mesostructure, forming at vegetated cascades resulting in the precipitation of carbonate on roots, is not explicitly  
biogenic and cannot be included within a classification of rock coast microbialite mesostructure. In the description of the  
mesostructure of rock coast microbialites, both the growth pattern (visible internal organisation) and the surface morphology  
660 (mat topography) have been considered, in some cases mutually exclusively.

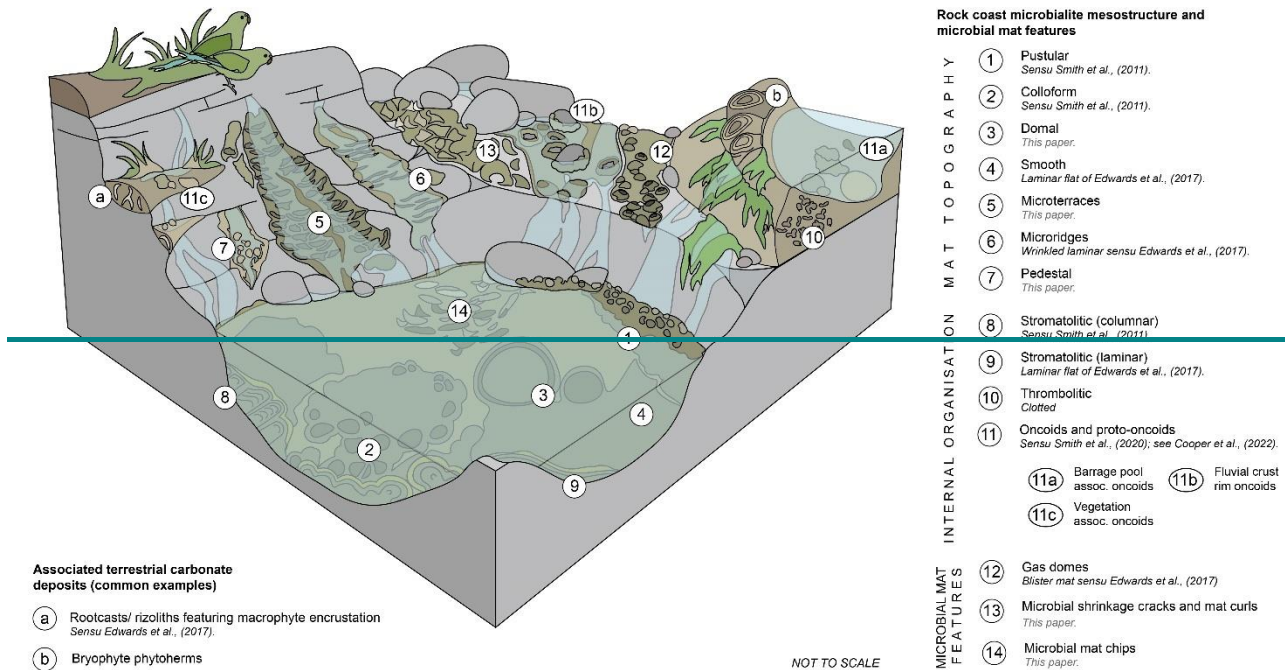
The surface morphology of microbial mats and single-taxa microbial colonies can be classified. Whitton et al., (2000) classify  
the shape of cyanobacterial colonies as: spherical/subspherical, hemispherical, cube, plate, cathrate, floc/amorphous,  
tuft/bushy, film/mat and crust/fleck. These colonies may form part of the greater surface morphology of microbialites, and  
665 demonstrate the biological control on mesostructure; this in combination with the equal environmental control, is the genesis  
of mesostructure (Suosaari et al., 2019b; Trompette, 1982). Mesostructure is frequently described and classified on a case-

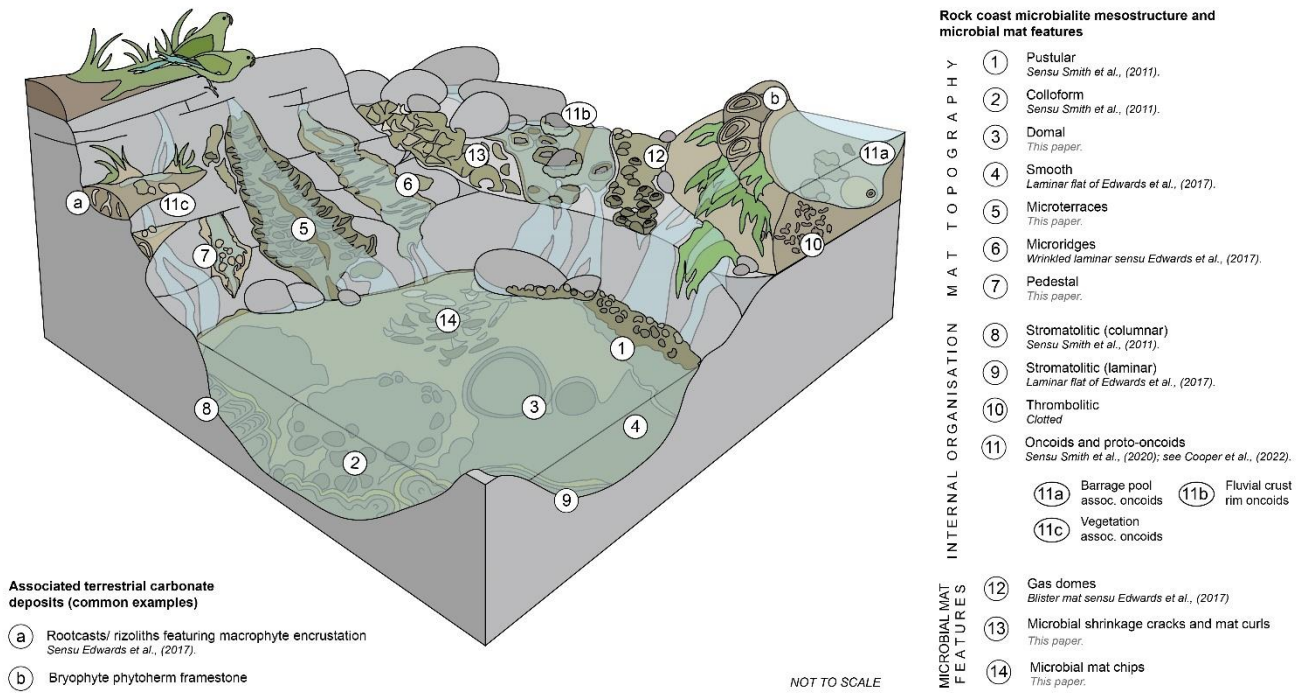
study basis, for example, microbialites at Shark Bay, Western Australia, are classified based upon the surface morphology and degree of lamination. This identified pustular, smooth, colloform, and cerebroid morphologies (Jahnert and Collins, 2012, 2011; Logan et al., 1974; Suosaari et al., 2019a)(Jahnert and Collins, 2011, 2012; Logan et al., 1974; Suosaari et al., 2019a).

670 However, as noted by Jahnert and Collins (2012), classification based on surface morphology may not be useful regarding the fabric and internal morphologies due to complex or compound microbialites with possible growth hiatuses. The same terms, pustular, smoot and colloform, are also applied to Exuma Cay and Highborne Cay Bahamas (Reid et al., 1995; Stolz et al., 2009) and have also been applied to the external biofilm surface of tufa deposits (e.g., Perri et al., 2012).

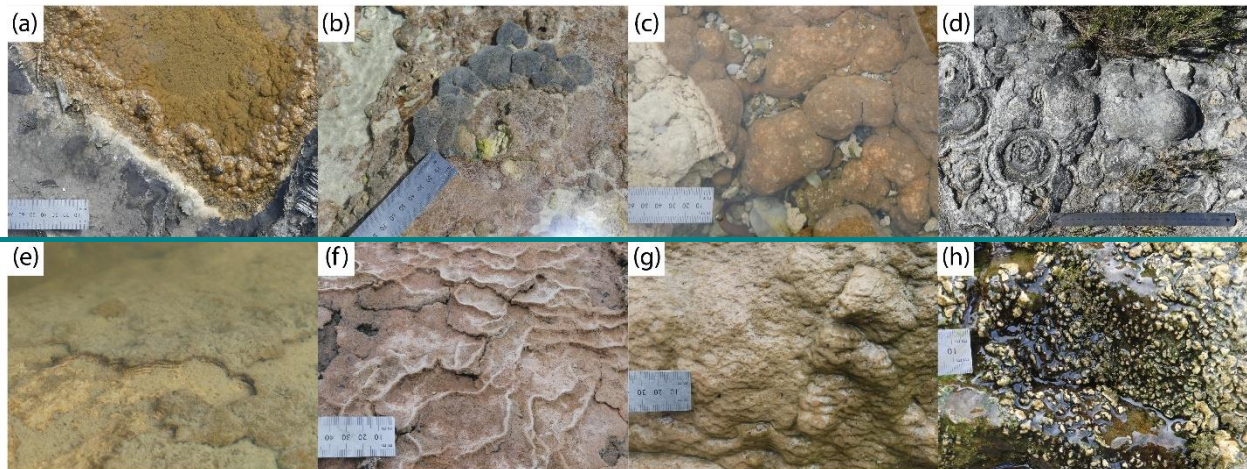
The term ‘mat topography’ has been applied to the surface mesostructure of living microbial mats (Bauld, 1992; Grey and Awramik, 2020). Rock coast microbialite terminology has used a wide variety of terms to describe both the mat topography and the internal organisation/laminar profile with terms often being combined (e.g., laminar flat mesostructure of Edwards et al. (2017)); however, care should be taken so as not to consider these two aspects of mesostructure mutually exclusive unless there is sufficient evidence. This may be addressed through the application of the hierarchical mega- to micro-structure approach. The following classification distinguishes between the mat topography (visible from the exterior) and the internal organisation (which requires examination in section) (Fig. 6).

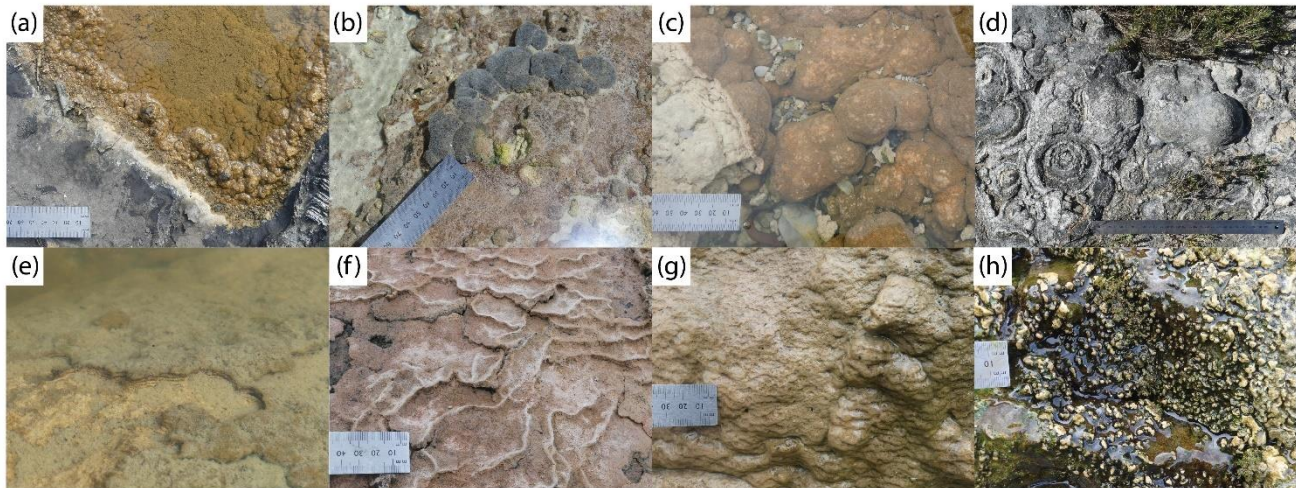
680





685 **Figure 6. Block diagram of rock coast microbialite mesostructures including mat topography (surface morphology), internal organisation, and microbial mat features; and associated features of terrestrial carbonate deposits.**





**Figure 7. Rock coast microbialite mat topographies (mesostructure):** (a) pustular (Streedagh, Ireland); (b) colloform (Quarry Bay, Western Australia); (c) colloform (Lauries Bay, South Africa); (d) domal (Conto Spring, Western Australia); (e) smooth (Mullaghmore, Ireland); (f) microterraces (Sligo Bay; Ireland); (g) microridges (Bundoran, Ireland); (h) pedestal (Sligo Bay, Ireland).

#### 4.3.1 Mat topographies: smooth, pustular, colloform, and domes

Smooth, pustular and colloform mat topographies have been described from rock coast microbialites and microbial mat and ‘classical’ microbialite systems, including Shark Bay, Western Australia (Jahnert and Collins, 2012, 2011) and the Exuma Cay and Highborne Cay Bahamas (Reid et al., 1995; Stolz et al., 2009). These terms have also been applied to the external biofilm surface of tufa deposits (e.g., Perri et al., 2012). The terms smooth, pustular and colloform, have each been applied to describe mat topographies of rock coast microbialites.

A laminar mesostructure was initially identified as LLH-C (see Logan et al., 1964) in the wind-shadow margins of pools by Smith et al. (2011). This ‘laminar flat’ mesostructure was also identified by Edwards et al., (2017) and Smith et al. (2018) as continuous stromatolite growth forming in the wind shadow margin of shallow pools, discharge aprons and ephemerally wet environments (Fig. 7e). It is similar to the ‘flat sheet’ form of microbial laminates described by Forbes et al. (2010). Smooth mesostructure is associated with a flat laminar internal fabric (Edwards et al., 2017; Smith et al., 2011); however, as with other mat topographies, the relationship with internal structure is not well resolved. Comparable smooth surface morphologies have been described from Shark Bay as “flat, smooth surfaces with a beige colour either as mats or sub-spherical heads” (Jahnert and Collins, 2011), with a laminated, ~~stromatolitic~~ fabric and smooth mats in peritidal settingszone (Gerdes and Krumbein, 1994) and Highborne Cay, Bahamas as smooth mats (Stolz et al., 2009). The term ‘smooth’ is frequently applied to microbialites and microbial mats and is recommended for further use.

710 A pustular mesostructure was initially described in the rock coast [settingenvironment](#) by Smith et al. (2011) ~~from~~, partially  
emergent ~~settings~~, surrounding pool rims and shallow water and has subsequently been identified frequently (Edwards et al.,  
2017; Smith et al., 2018) (Fig. 7a). Edwards et al., (2017) further define the pustular mesostructure as being formed of “*small*  
*(0.5-2cm wide) irregular shaped nodules which often grow on discharge aprons or at shallow margins of barrage pools*”. A  
715 “*brown surfaces of gelatinous pustules composed of mucilage (1-2cm thick)*” (Jahnert and Collins, 2011) from the shallow  
intertidal environment. The pustular morphology is described as having a clotted fabric and is therefore thrombotic (Jahnert  
and Collins, 2012). It has also been described from normal salinity marine environments in Exuma Cays, associated with  
*Schizothrix* mats, (Reid et al., 1995) and Highbourne Cays, Bahamas, to describe *Schizothrix* and *Solentia* mats, and biofilms  
(Stolz et al., 2009); hypersaline *Rivularia*-rich microbial mats of Laguna Negra, Argentina (Gomez et al., 2018; Mlewski et  
720 al., 2018) and peritidal environments (Gerdes and Krumbein, 1994). The term ‘pustular’ as a mat topography mesostructure is  
recommended with respect to rock coast microbialites to describe the upper surface of microbial mats.

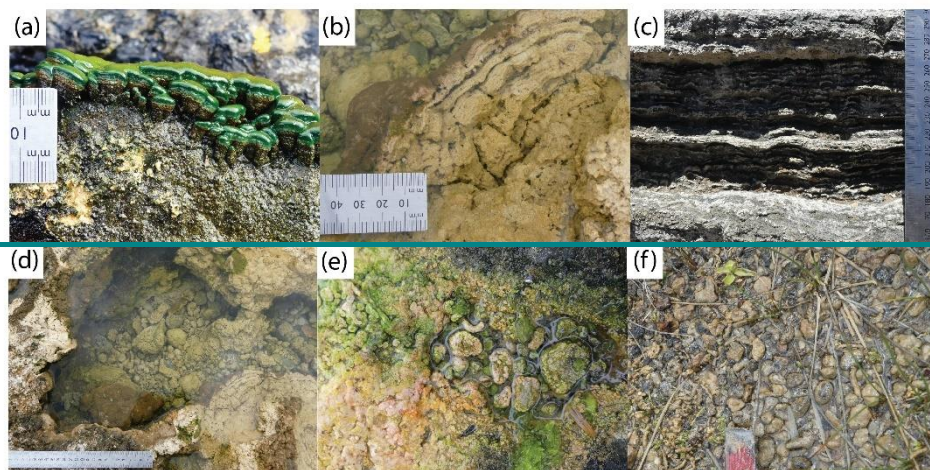
The colloform mesostructure was also initially described by Smith et al. (2011) from deeper water than the pustular  
mesostructure to depths of 20-30cm (Fig. 7b-c). The colloform mesostructure has been frequently described (Cooper et al.,  
725 2013; Edwards et al., 2017; Smith et al., 2018). Edwards et al. (2017) also considers colloform mesostructure as being depth  
controlled, being found on barrage pools and pool walls. It is defined as having “*an interconnected bulbous appearance similar*  
*to that of malachite*” (Edwards et al., 2017). This colloform mesostructure is similar to the phytohermal ‘bubble form’ from  
Western Australian microbial laminates described by Forbes et al. (2010). Based upon the pustular and colloform  
mesostructures at Seaview west, South Africa, Edwards et al. (2017) conclude that a depth controlled continuum exists between  
730 the two growth morphologies. The colloform mesostructure is described as “*beige to brown elongate prismatic, spherical and*  
*club shaped structures*” with each hemispherical head being 1-5cm in size (Jahnert and Collins, 2011) from subtidal Shark  
Bay, Western Australia. The colloform mesostructure is well understood and used within other microbialite literature so is  
suitable for further use.

735 Larger interconnected hemispherical structures with heads up to 15cm in diameter have been observed between Cape Freycinet  
and Conto Spring, Western Australia, at an inactive microbialite barrage pool (Fig. 7d). While their morphology is comparable  
to colloform, the structures are much larger and could be considered a distinct mesostructure/morphology. Indeed as with  
pustular and colloform, it is likely that a continuum exists between these mesostructures. The term ‘domal’ is suggested  
although this does not refer to mat features such as gas domes, petees and mat expansion structures forming from gas  
740 accumulation (e.g., microbial mat decay (Bouougri et al., 2007)).

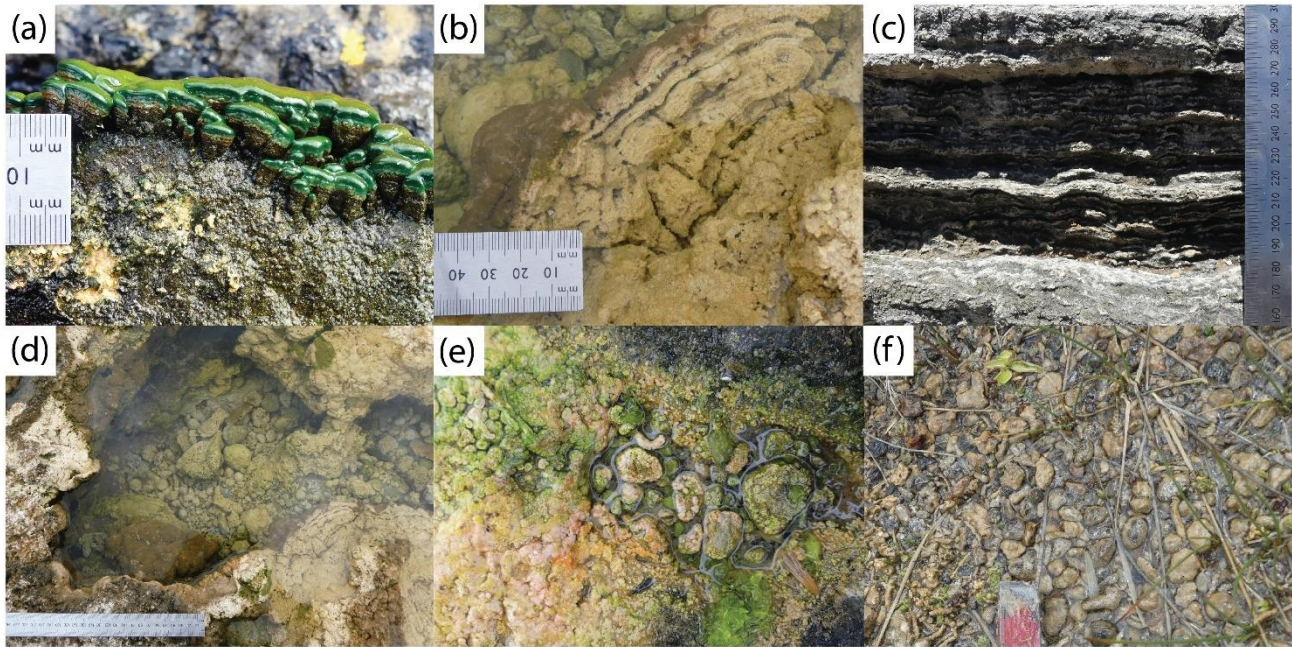
### 4.3.2 Mat topographies: microterrace, microridge and pedestal

Edwards et al. (2017) described ‘wrinkles’ as “*small (1-5cm wide) drooping layers*” forming on a sub-vertical faces that merge with a laminar flat mesostructure, potentially controlled by gradient and/or water flow velocity (Fig. 7g). In addition to these formally described wrinkle structures, similar structures have been observed to merge with microterrace structures at sites/localities in County Sligo, Ireland and Eastern Cape, South Africa (Fig. 7f). The terminology for terrace or barrage structures is complex, as discussed when examining the barrage macrostructure but might be resolved by separate consideration of the macro- and meso-structure. At the meso-, cm-scale, speleothem deposits have been termed ‘microgours’ (Hammer et al., 2010), corresponding to ‘microterrace’ for travertine *s.s.* (Bargar, 1978; Fouke et al., 2000) and for travertine *s.l.*, ‘minidam’ (Pentecost, 2005). Microterraces and microridges are terms applied predominantly to travertine *s.l.*, commonly travertine *s.s.* and speleothems (Pentecost, 2005). Hammer et al. (2010) recognise that on travertine *s.l.* deposits, where the gradient is so steep that backing pools do not form, a gradation into ‘microridges’ normal to flow may form. These microridges are considered here to be analogous with the wrinkles described by Edwards et al. (2017). It is recommended that the terms microterraces and microridges be applied to rock coast microbialite nomenclature, in line with other terrestrial carbonate literature and the term ‘wrinkles’ be abandoned. ~~However, before these terms are applied to rock coast microbialites, care must be taken to establish biogenicity given the occurrence of morphologically similar structures in typically non-biogenic deposits.~~ Similarly, on sub-vertical surfaces, a distinct ‘pedestal’-like topography is apparent, where small groundwater channels flow over the tufa surface, with growth of island-like pedestals in between channels (Fig. 7h). Although this is an uncommon structure it has been observed across a very wide geographic range with locations at the Eastern Cape, South Africa, Western Australia and Ireland.

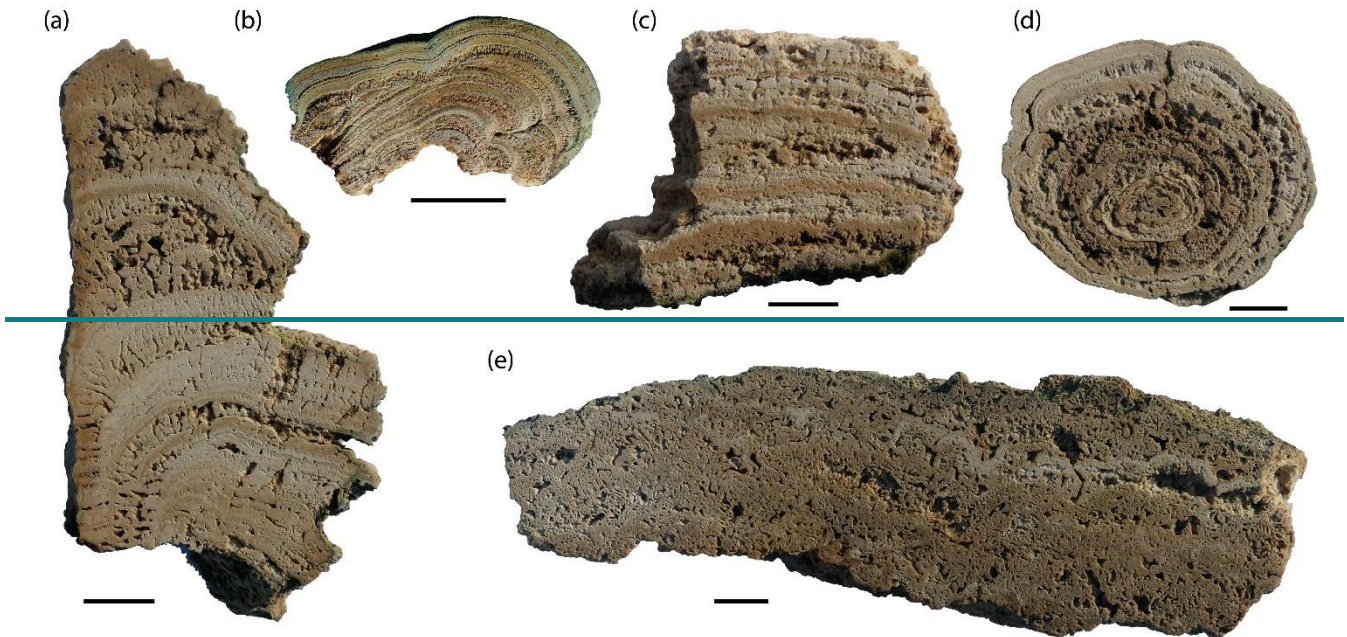
### 760 4.3.3 Internal organisation: stromatolites, thrombolites and leiolites

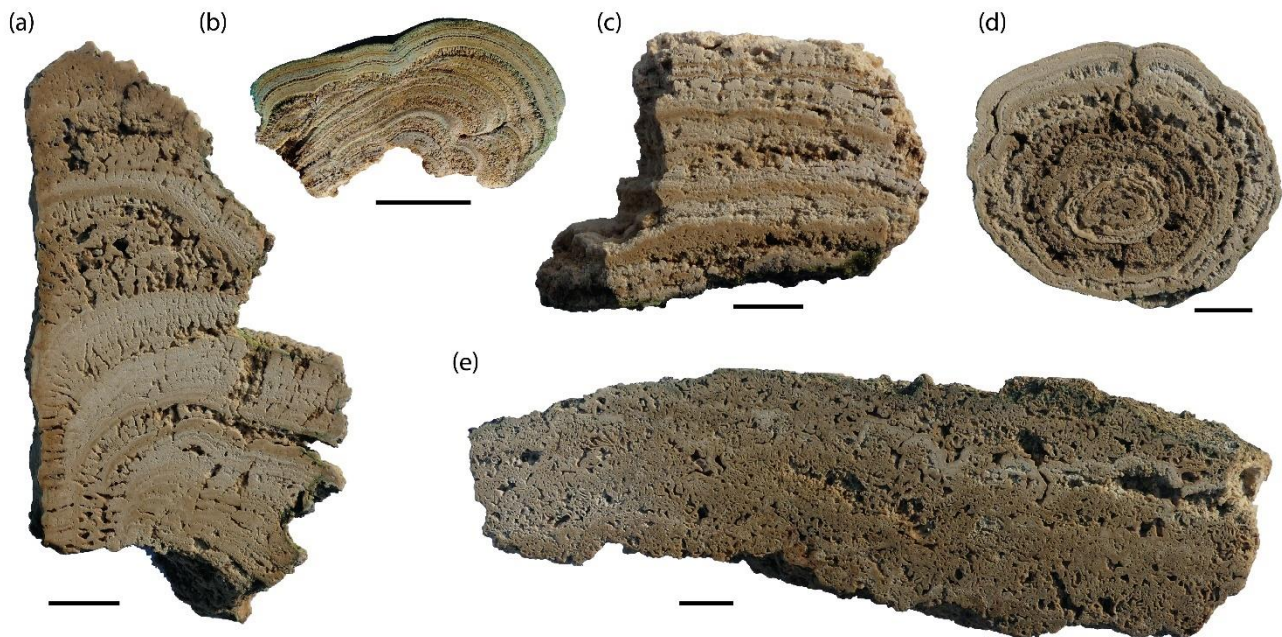






765 **Figure 8. Rock coast microbialite internal organisation (mesostructure): (a) stromatolitic columns coalescing to form colloform mat topography (Bundoran, Ireland); (b) stromatolitic (laminar) internal organisation of a colloform stromatolite (Lauries Bay, South Africa); (c) stromatolite (laminar) barrage (Quarry Bay, Western Australia); (d) barrage pool associated oncoids; (e) fluvial crust with small oncoids and proto-oncoids (Sligo Bay, Ireland); (f) vegetation-associated oncoids (Islay, Scotland).**





**Figure 9. Example sections of internal organisation (scale bar: 1cm): a: composite microbialite (Lauries Bay, South Africa); b: top of columnar stromatolite (from field photograph a (Bundoran, Ireland); c: barrage pool-associated oncoid (from field photograph D) (Lauries Bay, South Africa); d: stromatolite (laminar) (Aughris Head; Ireland); e: thrombolite with macro-laminae partially preserved (Sligo Bay, Ireland).**

The dominant internal organisation of rock coast microbialites is laminated and, as such they are stromatolites (Fig. 8a-c, Fig. 9a-c). The lamination of South African stromatolites has been examined by Smith et al. (2005, 2011), describing laminated (LLH-C (Logan et al., 1964)) and columnar (SH-C) mesostructure, and later by Edwards et al. (2017) and Smith et al. (2018) recognising columnar mesostructure.

Smith et al. (2011) described the rimstone mesostructure and the rimstone morphology which was subsequently recognised by Edwards et al. (2017) as a bioturbated irregular morphology with a matted fabric that forms at barrage rims. Edwards et al. (2017) explicitly state that lamination is not present. Rimstone tufa was also described from the barrage rims of Western Australian [sites/localities](#) (Forbes et al., 2010). The rimstone mesostructure is seen as intrinsically linked to the barrage macrostructure; however, these two structures are not mutually exclusive. The well-laminated stromatolitic internal organisation within the barrage macrostructure at Quarry Bay, Western Australia, for example, indicates that rimstone mesostructures are not exclusively thrombolitic.

This thrombolitic internal organisation has multiple geneses related to the trapping and binding of peloids (Castro-Contreras et al., 2014); the morphology of the microbialite builders (Kennard and James, 1986), and the disruption, destruction, and

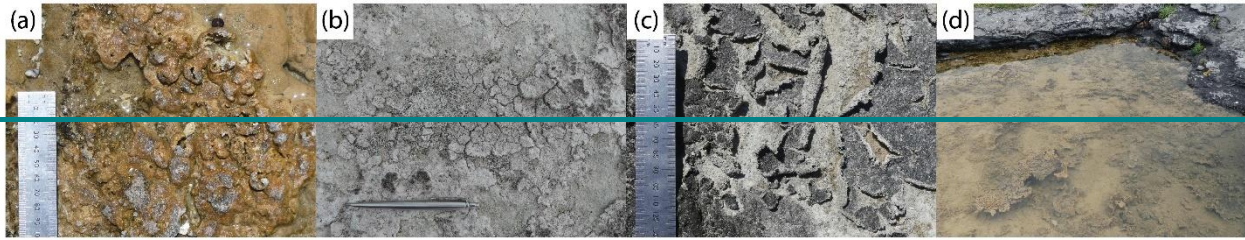
alteration of stromatolitic internal organisation by biota: bioturbation (Walter and Heys, 1985). The latter has been suggested as a mechanism for the formation of thrombolites in South African rock coast microbialites, predominantly by metazoans and potentially by foraminifera and coccoids (Dodd et al., 2021; Weston et al., 2018). This may also be involved in the genesis of leiolitic (*sensu* Braga et al., (1995)), or structureless, mesofabrics (Dodd et al., 2021). While stromatolitic, thrombolitic and leiolitic internal organisation has been observed in the rock coast [settingenvironment](#), future work is required to describe these structures, and further subsets (e.g., dendrolites), before they can be confidently attributed to process.

#### 4.3.4 Internal organisation: oncoids and proto-oncoids

795 Oncoids have not been comprehensively described from rock coast [settingenvironment](#), however, Smith et al. (2020) describes clasts entirely- (oncoid) and partially-encrusted (proto-oncoid) from rock pools on shore-platforms at Cape Morgan, South Africa. These are described by Cooper et al. (2022) as a rock coast microbialite facies. These brief accounts describe barrage pool associated oncoids; oncoids forming in the barrage pool basin of variable degrees of encapsulating lamination around a cortex (spherical to irregular debris) (Fig. 8d, Fig. 9d). In addition, oncoids form in other supratidal groundwater [settingenvironment](#), with variable morphologies and characteristic environments. Fluvial crust ‘rim’ oncoids are oncoids and 800 proto-oncoids with tonsure-like rims that form around debris on fluvial crusts on bare bedrock (Fig. 8e). Proximally to the groundwater spring efflux, vegetation associated oncoids form in paludal conditions, commonly associated with vegetation (e.g., *Phragmites australis* in the Eastern Cape, South Africa) (Fig. 8f).

805 Oncoids are defined by Grey and Awramik (2020) as “*unattached, generally spherical to ovoidal, stromatolite with a cortex of encapsulating or nearly encapsulating laminae*”. They are considered a form of tufa or skeletal microbialite and, as such, have distinct biofabrics (Pentecost, 2005), frequently formed by cyanobacteria, in which case they may be termed cyanoid (Riding, 1991). The term proto-oncoid has been applied to clasts with partially encapsulating laminae although this term is not widely applied (e.g., Andrews and Trewin, 2014; Rodríguez and Cózar, 1999). They form within fluvial and lacustrine [settingenvironment](#) alongside other microbialite constituents such as microbial crusts, and are commonly considered to be 810 indicators of agitated water, with the turbulence rotating and overturning cortexes forming encapsulating lamination. However, in situ growth of oncoids has also been described (Lencina et al., 2023). As such, oncoids are frequently described as a constituent of the terrestrial carbonate models or classification schemes such as the braided fluvial model (Pedley, 1990) and fluvial and lacustrine crust (Pentecost and Viles, 1994). While these are considered in this morphological classification of 815 rock coast microbialites to equate to macrostructures, oncoids are frequently described as having macro- and meso-structure (e.g., Casanova, 1994; Lencina et al., 2023; Villafañe et al., 2021); hence, a flexible approach to the structural level should be considered.

#### 4.3.5 Microbial mat features



820 ~~Figure 10. Rock coast microbialite mat features: (a) Gas domes (Quarry Bay, Western Australia); (b) (c) microbial shrinkage cracks and mat curls (Sligo Bay, Ireland); (d) microbial mat chips (Sligo Bay, Ireland).~~

Microbial mats are ubiquitous in the rock coast [settingenvironment](#) and where they do not readily accrete they may develop MISS-like features, rather than stromatolites. Observations to date show that a spectrum of MISS, microbial mat features and stromatolite mesostructures are present on rock coasts and they exhibit varying degrees of stacking/accretion and mineral precipitation.

825

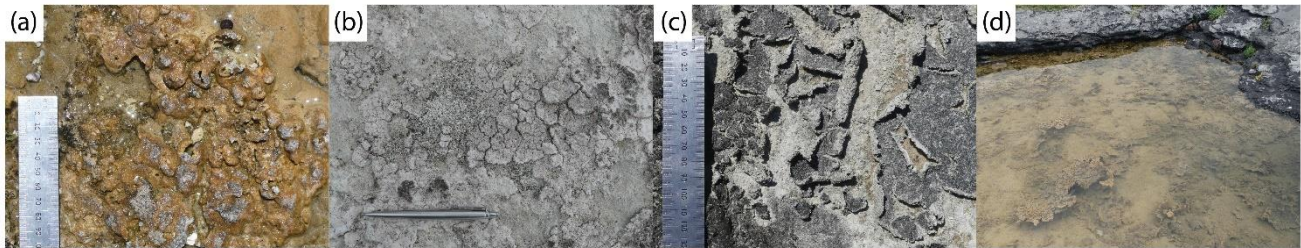


Figure 10. Rock coast microbialite mat features: (a) Gas domes (Quarry Bay, Western Australia); (b)-(c) microbial shrinkage cracks and mat curls (Sligo Bay, Ireland); (d) microbial mat chips (Sligo Bay, Ireland).

830 Few microbial mat features have been described explicitly from rock coast microbialites, however, the ‘blister mat’ mesostructure described by Edwards et al. (2017) as “1-3cm wide dome-like structures (that) appear to have burst open at the top resulting in a surface morphology that resembles blistering” may be considered to resemble burst gas domes (Fig. 10). Blister mats accrete on low gradient substrates subject to frequent subaerial exposure (Dodd et al., 2021; Edwards et al., 2017) and Edwards et al. (2017) suggest that their formation is a result of subaerial exposure of microbial mats, splitting domal structures and releasing trapped gases produced by the mat decomposition, as described by Gerdesi and Krumbein (1994).

835 These structures are similar to the gas domes described by Noffke (2010) which can blister or collapse, releasing the trapped gas and resulting in a crater-like morphology. These structures may be recolonised by microbial mats (Lakhdar et al., 2020) potentially resulting in laminoid and irregular fenestrae in section as suggested by Dodd et al. (2021).

840 Smith et al. (2020) describe wave rip-up clasts of stromatolite within rock pools and areas stabilised by vegetation on a shore  
platform [settingenvironment](#) on the South African coast, that form due to increased wave energy and/or water level during  
storm conditions. These deposits may accumulate and form an allochthonous tufa microbialite breccia (Cooper et al., 2022;  
Smith et al., 2020). These wave-rip-up clasts are common on shore platform surfaces where deposits of laminar stromatolites  
or microbial mats are most common (Cooper et al., 2022; Smith et al., 2020) (Fig. 10d). The descriptions of these features are  
845 similar to MISS due to comparable environmental interactions; however, due to mineral precipitation they cannot be classified  
as such. These should instead be regarded as microbial mat features. Wave-rip-up clasts are comparable to MISS microbial  
mat chip, referring to chip and flake-shaped centimetre-sized fragments detached by mechanical erosion of a parent microbial  
mat through water agitation, predominantly by waves or bottom currents during tides or storm events as well as potentially  
wind action (~~Eriksson et al., 2007b; Noffke et al., 2001~~)([Eriksson et al., 2007; Noffke et al., 2001](#)).

850

While microbial mat chips have been described from rock coast microbialite systems, microbial shrinkage cracks, also called  
synaeresis cracks or dessication cracks, despite their ubiquity, have not. Microbial shrinkage cracks are a “*surface of thin  
microbial mats marked with isolated lenticular, sinuously curved and even subcircular cracks, spindle shaped and tri-radiate  
shrinkage cracks*” (~~Eriksson et al., 2007b~~)([Eriksson et al., 2007](#)) formed due to subaerial dessication in the upper intertidal to  
855 lower supratidal zones of tidal flats (~~Eriksson et al., 2007b~~)([Eriksson et al., 2007](#)). These cracks may have curled margins,  
that may mature to flipped-over edges and eventually may become a rolled-up mat fragment (Fig. 10b-c). Although these  
microbial shrinkage cracks and mat curls have not yet been formally described in detail, their presence warrants inclusion in  
this scheme.

#### 4.4 Microscale: microstructure and microfabric

860 Microstructure was initially described as ‘the fine-scale structure of the stromatolite lamination, in particular the distinctness,  
continuity, thickness and composition of the laminae’ (Preiss, 1974); however, this definition has been subsequently refined  
with some aspects of laminae architecture having been redefined as mesostructure by Grey and Awramik (2020).  
Microstructure is considered here to refer to features visible under the microscope and includes texture, fabric, and  
microfossils/microorganisms (Grey and Awramik, 2020). It has been proposed as a classifier for microbialites; however, this  
865 has not been universally accepted due to doubt over the consistency and concurrency of microstructure preservation through  
diagenesis (Grey and Awramik, 2020; Semikhatov and Raaben, 2000). Therefore, Grey and Awramik (2020) suggest that  
microstructure and other associated features (e.g., petrography, interspace filling and diagenetic modification) should be  
described thoroughly, providing definitions for various commonly applied microstructural terms.

870 Rock coast microbialite microstructure has been described from South African localities, first by Smith and Uken (2003) and  
Smith et al. (2005) and most comprehensively recently by Edwards (2019). The microstructure of West Australian and Irish

localities was described by Forbes et al. (2010) and by Cooper et al. (2013), respectively. The study of rock coast microbialite microstructure has utilised terminology and classification from terrestrial carbonate research, commonly tufa (e.g., thin section analysis by Edwards (2019) applies a tufa classification by Ford and Pedley (1996), revised by Jones and Renaut (2010)).  
875 Microstructural terminology is considered relatively consistent, with terminology applicable to a wide variety of terrestrial carbonates. For future work on rock coast microbialite microstructure there should be a focus on the application of established terminology from key literature (e.g., Flügel, 2010; Ford and Pedley, 1996; Grey and Awramik, 2020; Pentecost, 2005).

## 5 ~~Conclusions~~Summary, integration of nomenclature and recommendations for future work

Rock coast microbialite research has expanded greatly in the twenty years since the first formal description by Smith and Uken  
880 (2003) with the terminology for characterisation borrowed from both ‘classical’ microbialite, ‘non-classical’ microbialite and terrestrial carbonate nomenclature. Therefore, an integrated rock coast microbialite classification is essential in future research on rock coast microbialite systems. We have considered the existing approaches and propose a new, integrated geomorphological terminology and classification scheme, to promote future consistency. This classification addresses the presence of synonyms, duplications, omissions, and the wide variety of terms applied to the same morphological features,  
885 predominantly at the macro- and meso-scale and it is approached through a hierarchical scale (Grey and Awramik, 2020; Shapiro, 2005). We propose the following guidelines.

The terminology and overarching classification proposed here are focused on the geomorphology of macrostructures and mesostructures. The review of the literature, however, reveals that drivers and relationships between them are less well  
890 understood (e.g., testing and resolving the relationships between mat topography and internal organisation). In addition to this, ~~further investigation into the classification of global rock coast microbialite fabric and geochemistry is suggested in order to better understand their abiotic qualitative and quantitative geomorphological description is required at the macro- and biotic drivers~~meso-scale.

895 Establishing biogenicity of rock coast microbialites and associated carbonate deposits (e.g., beachrock and rhizoliths) is also crucial, considering the genetic definition of microbialites. While Edwards et al. (2017) acknowledge that degassing of carbon dioxide inorganically can contribute to microbialite facies, alongside microbial activity, the respective contribution of both carbonate-forming mechanisms is not well understood with respect to different macro- and meso-structures. Greater understanding of this may allow for better integration with both terrestrial carbonate and ‘classical’ microbialites.

900 The global distribution and variability in rock coast microbialites also requires further research, with consideration of drivers such as groundwater seep chemistry, geology/topography and microbialite builders (Rishworth et al., 2020) in order to better understand their morphogenesis. Since some of the more intricate drivers of microbialite genesis, especially regarding rock

coast microbialites, are currently only partly understood, this classification scheme is out of necessity based on morphology rather than morphogenesis. While this is appropriate and relevant for the interpretation of rock coast microbialites in the fossil record (Cooper et al., 2022) where the specific drivers cannot be easily observed, better understanding of the current drivers in their formation would make comparisons to deep time microbialites more meaningful.

The strong focus on British and north west European studies on tufa and travertine, especially during the establishment of classification schemes (e.g., Pentecost, 1993) diminished their global value (Pentecost and Viles, 1994). This was also recognised by Jones and Renault (2010), who state that the tufa classification of Ford and Pedley (1996) accounts for tufa deposition predominantly in a cool, temperate climate and does not sufficiently consider other (e.g. tropical) climates (Carthew et al., 2003; Shiraishi et al., 2022). A global view of rock coast microbialite classification relies upon detailed description, study and comparison of sites/localities around the globe. As new rock coast microbialite sites/localities are inevitably discovered and described, consistency in their description and the terminology applied is vital for advances in our understanding of these deposits.

*Author contributions:* TG proposed, developed, and wrote the manuscript draft, with contributions from JAGC, AMS, GMR and MF.

*Competing interests:* The authors declare that they have no conflict of interest.

*Acknowledgements:* The authors would like to thank the Extant Peritidal Stromatolite Network (EPStromNet) team and the Supratidal Spring-Fed Living Microbialite Ecosystems (SSLiME) team for in-field discussion and support; notably, Professor Graham J. C. Underwood, Carla Dodd and Tristin O’Connell as well as Dr Joerg Arnscheidt.

*Financial support:* This review was made possible through and the Department for the Economy (DfE) sponsorship for postgraduate studentship; with the support of the EPStromNet- Extant Peritidal Stromatolite Network NERC grant award (NERC Reference NE/V00834X/1) and the Quaternary Research Association (QRA) New Research Workers Grant.

## 930 **References**

~~Alonso Zarza, A. M. and Tanner, L. H.: Carbonates in Continental Settings: Facies, Environments and Processes, Elsevier, Amsterdam, 2010.~~

Andrews, S. D. and Trewin, N. H.: Palaeoenvironmental significance of lacustrine stromatolite forms from the Middle Old Red Sandstone of the Orcadian Basin, Geol. Mag., 151, 414–429, <https://doi.org/10.1017/S0016756813000290>, 2014.

- Aref, M. A. M.: Holocene stromatolites and microbial laminites associated with lenticular gypsum in a marine-dominated environment, Ras El Shetan area, Gulf of Aqaba, Egypt, *Sedimentology*, 45, 245–262, <https://doi.org/10.1046/j.1365-3091.1998.00136.x>, 1998.
- 940 Arenas, C., Gutiérrez, F., Osácar, C., and Sancho, C.: Sedimentology and geochemistry of fluvio-lacustrine tufa deposits controlled by evaporite solution subsidence in the central Ebro Depression, NE Spain, *Sedimentology*, 47, 883–909, <https://doi.org/10.1046/j.1365-3091.2000.00329.x>, 2000.
- Arenas, C., Osácar, M. C., Sancho, C., Vázquez-Urbez, M., Auqué, L., and Pardo, G.: Seasonal record from recent fluvial tufa deposits (Monasterio de Piedra, NE Spain): Sedimentological and stable isotope data, *Geol. Soc. Lond. Spec. Publ.*, 336, 119–142, <https://doi.org/10.1144/SP336.7>, 2010.
- 945 Arenas, C., Osácar, M. C., Auqué, L. F., and Sancho, C.: Coupling textural and stable-isotope variations in fluvial stromatolites: Comparison of Pleistocene and recent records in NE Spain, *J. Palaeogeogr.*, 8, <https://doi.org/10.1186/s42501-019-0021-y>, 2019.
- Bargar, K. E.: Geology and Thermal History of Mammoth Hot Springs, Yellowstone National Park, Wyoming, *Geology and Thermal History of Mammoth Hot Springs, Yellowstone National Park, Wyoming, U.S. Geological Survey*, 950 <https://doi.org/10.3133/b1444>, 1978.
- Bauld, J.: 8. Occurrence of benthic microbial mats in saline lakes, *Hydrobiologia*, 81, 87–111, <https://doi.org/10.1007/BF00048708>, 1981.
- Bauld, J.: Modern microbial mats, in: *Evolution of the Proterozoic biosphere: a multidisciplinary study*, vol. 259, Cambridge University Press, New York, 250–252, 1992.
- 955 Bose, S. and Chafetz, H.: Topographic control on distribution of modern microbially induced sedimentary structures (MISS): A case study from Texas coast, *Sediment. Geol.*, 213, 136–149, <https://doi.org/10.1016/j.sedgeo.2008.11.009>, 2009.
- Bose, S. and Chafetz, H. S.: Morphology and Distribution of Miss: A Comparison Between Modern Siliciclastic and Carbonate Settings, in: *Microbial Mats in Siliciclastic Depositional Systems Through Time*, vol. 101, edited by: Noffke, N. and Chafetz, H., SEPM Society for Sedimentary Geology, 0, 960 <https://doi.org/10.2110/sepmssp.101.003>, 2012.
- [Bosence, D., Gibbons, K., Le Heron, D. P., Morgan, W. A., Pritchard, T., and Vining, B. A.: Microbial carbonates in space and time: introduction, \*Geol. Soc. Lond. Spec. Publ.\*, 418, 1–15, <https://doi.org/10.1144/SP418.14>, 2015.](https://doi.org/10.1144/SP418.14)
- 965 Bouougri, E., Gerdes, G., and Porada, H.: 6(c). Inherent problems of terminology: definition of terms frequently used in connection with microbial mats, in: *Atlas of Microbial Mat Features Preserved within the Siliciclastic Rock Record*, Elsevier, Amsterdam, 8, 2007.
- Braga, J. C., Martin, J. M., and Riding, R.: Controls on Microbial Dome Fabric Development along a Carbonate-Siliciclastic Shelf-Basin Transect, Miocene, SE Spain, *PALAIOS*, 10, 347–361, <https://doi.org/10.2307/3515160>, 970 1995.



- Brunet, R. and Revuelta, M. Á.: Exceptional silica speleothems in a volcanic cave: A unique example of silicification and sub-aquatic opaline stromatolite formation (Terceira, Azores), *Sedimentology*, 61, 2113–2135, <https://doi.org/10.1111/sed.12130>, 2014.
- 975 Burne, R. and Moore, L.: Microbialites: Organosedimentary Deposits of Benthic Microbial Communities, *Palaios*, 2, 241–254, <https://doi.org/10.2307/3514674>, 1987.
- Cameron, B., Cameron, D., and Jones, J. R.: Modern Algal Mats in Intertidal and Supratidal Quartz Sands, Northeastern Massachusetts, U.S.A., in: *Biogenic Structures: Their Use in Interpreting Depositional Environments*, vol. 35, edited by: Curran, H. A., SEPM Society for Sedimentary Geology, 0, <https://doi.org/10.2110/pec.85.35.0211>, 1985.
- 980 Cao, R. and Bian, L.: An attempt to codify the morphological characteristic numbers of stromatolites, *Acta Palaeontol. Sin.*, 25, 629–634, 1985.
- Capezzuoli, E., Gandin, A., and Pedley, M.: Decoding tufa and travertine (fresh water carbonates) in the sedimentary record: The state of the art, *Sedimentology*, 61, 1–21, <https://doi.org/10.1111/sed.12075>, 2014.
- 985 Carthew, K. D., Taylor, M., and Drysdale, R.: Are current models of tufa sedimentary environments applicable to tropical systems? A case study from the Gregory River, *Sediment. Geol.*, 162, 199–218, [https://doi.org/10.1016/S0037-0738\(03\)00151-9](https://doi.org/10.1016/S0037-0738(03)00151-9), 2003.
- Casanova, J.: Stromatolites from the East African Rift: A Synopsis, in: *Phanerozoic Stromatolites II*, edited by: Bertrand-Sarfati, J. and Monty, C., Springer Netherlands, Dordrecht, 193–226, [https://doi.org/10.1007/978-94-011-1124-9\\_8](https://doi.org/10.1007/978-94-011-1124-9_8), 1994.
- 990 Castro-Contreras, S. I., Gingras, M. K., Pecoits, E., Aubet, N. R., Petrash, D., Castro-Contreras, S. M., Dick, G., Planavsky, N., and Konhauser, K. O.: Textural and Geochemical Features of Freshwater Microbialites from Laguna Bacalar, Quintana Roo, Mexico, *PALAIOS*, 29, 192–209, 2014.
- Caudwell, C., Lang, J., and Pascal, A.: Lamination of swampy-rivulets *Rivularia haematites* stromatolites in a temperate climate, *Sediment. Geol.*, 143, 125–147, [https://doi.org/10.1016/S0037-0738\(00\)00191-3](https://doi.org/10.1016/S0037-0738(00)00191-3), 2001.
- 995 Cooper, A., Smith, A., and Arnscheidt, J.: Contemporary stromatolite formation in high intertidal rock pools, Giant’s Causeway, Northern Ireland: Preliminary observations, *J. Coast. Res.*, 1675–1680, <https://doi.org/10.2112/SI65-283.1>, 2013.
- Cooper, A., Smith, A., Rishworth, G., Dodd, C., Forbes, M., Cawthra, H., and Anderson, C.: Microbialites of modern siliciclastic rock coasts, *J. Sediment. Res.*, 92, 619–634, <https://doi.org/10.2110/jsr.2021.071>, 2022.
- 1000 Della Porta, G.: Non-Marine Carbonates - Facies, Diagenesis and Porosity Development, #30173 (2011), 2011.
- Della Porta, G.: Carbonate build-ups in lacustrine, hydrothermal and fluvial settings: comparing depositional geometry, fabric types and geochemical signature, in: *Microbial Carbonates in Space and Time: Implications for Global Exploration and Production*, vol. 418, edited by: Bosence, D. W. J., Gibbons, K. A., Heron, D. P. L.,

- 1005 Morgan, W. A., Pritchard, T., and Vining, B. A., Geological Society of London, 0, <https://doi.org/10.1144/SP418.4>, 2015.
- Dill, R. F., Shinn, E. A., Jones, A. T., Kelly, K., and Steinen, R. P.: Giant subtidal stromatolites forming in normal salinity waters, *Nature*, 324, 55–58, <https://doi.org/10.1038/324055a0>, 1986.
- Dobat, K.: Die Kryptogamenvegetation der Höhlen und Halbhöhlen im Bereich der Schwäbischen Alb, *Abt. Für Karst- Höhlenkd.*, 1–153, 1966.
- 1010 Dodd, C.: A Geochemical Comparison of Southern African Stromatolites and Stromatolite Pools, Unpublished M.Sc., Nelson Mandela University, 2019.
- Dodd, C., Anderson, C. R., Perissinotto, R., du Plooy, S. J., and Rishworth, G. M.: Hydrochemistry of peritidal stromatolite pools and associated freshwater inlets along the Eastern Cape coast, South Africa, *Sediment. Geol.*, 373, 163–179, <https://doi.org/10.1016/j.sedgeo.2018.06.002>, 2018.
- 1015 Dodd, C., Anderson, C. R., Rishworth, G. M., Perissinotto, R., and van Niekerk, X.: Metazoan activity facilitates passive sediment trapping in modern supratidal microbialites: Revealed using  $\mu$ -CT-scanning and microscopy, *Geobiology*, 19, 585–600, <https://doi.org/10.1111/gbi.12456>, 2021.
- Doddy, P., Roden, C. M., and Gammell, M. P.: Microbialite crusts in Irish limestone lakes reflect lake nutrient status, *Biol. Environ. Proc. R. Ir. Acad.*, 119B, 1–11, <https://doi.org/10.3318/bioe.2019.01>, 2019.
- 1020 Donaldson, J. A.: Stromatolites in the Denault Formation, Marion Lake, Coast of Labrador, Newfoundland, Report Number: 102DOI: 10.4095/123903, 102, <https://doi.org/10.4095/123903>, 1963.
- [Dunham, R. J.: Classification of Carbonate Rocks According to Depositional Textures, 38, 108–121, 1962.](#)
- EC, (European Commission): Interpretation Manual of European Union Habitats, version EUR 28, 2013.
- 1025 EC, (European Commission): C2.1b Calcareous spring and spring brook, Publications Office of the European Union, Luxembourg, 2016.
- Edwards, M. J. K.: Micro-structures, mineralogy and chemistry of peritidal tufa stromatolites along the Eastern Cape Coast, Unpublished M.Sc., Nelson Mandela University, 2019.
- 1030 Edwards, M. J. K., Anderson, C. R., Perissinotto, R., and Rishworth, G. M.: Macro- and meso-fabric structures of peritidal tufa stromatolites along the Eastern Cape coast of South Africa, *Sediment. Geol.*, 359, 62–75, <https://doi.org/10.1016/j.sedgeo.2017.08.006>, 2017.
- [Eriksson, P. G., Schieber, J., Bouougri, E., Gerdes, G., Porada, H., Banerjee, S., Bose, P. K., and Sarkar, S.: 3. Classification of Structures Left by Microbial Mats in Their Host Sediments, in: Atlas of Microbial Mat Features Preserved within the Siliciclastic Rock Record, Elsevier, Amsterdam, 29, 2007a.](#)

- 1035 ~~Eriksson, P. G.~~, Porada, H., Banerjee, S., Bouougri, E., Sarkar, S., and Bumby, A. J.: 4(c). Mat-destruction features, in: Atlas of Microbial Mat Features Preserved within the Siliciclastic Rock Record, Elsevier, Amsterdam, 47, ~~2007b~~2007.
- Farr, G. and Graham, J.: Survey, characterisation and condition assessment of Palustriella dominated springs “H7220 Petrifying springs with tufa formation (Cratoneurion)” in Gloucestershire, England, 2017.
- 1040 Faulkner, T. and Crae, J.: Distribution of tufa and speleothem deposits on the island of Lismore, Argyll, Scotland, Cave Karst Sci., 45, 101–110, 2018.
- Field, M.: A Lexicon of Cave and Karst Terminology with Special Reference to Environmental Karst Hydrology, 221, 2002.
- Flügel, E.: Microfacies of Carbonate Rocks: Analysis, Interpretation and Application, Springer, Berlin, Heidelberg, <https://doi.org/10.1007/978-3-642-03796-2>, 2010.
- 1045 ~~Folk, R. L.:~~ [Folk, R. L.: Practical Petrographic Classification of Limestones, AAPG Bull., 43, 1–38, https://doi.org/10.1306/0BDA5C36-16BD-11D7-8645000102C1865D, 1959.](https://doi.org/10.1306/0BDA5C36-16BD-11D7-8645000102C1865D)
- Forbes, M., Vogwill, R., and Onton, K.: A characterisation of the coastal tufa deposits of south–west Western Australia, Sediment. Geol., 232, 52–65, <https://doi.org/10.1016/j.sedgeo.2010.09.009>, 2010.
- 1050 ~~Forbes, M., Rishworth, G., Underwood, G., Cooper, A., Garner, T., Hicks, N., Dodd, C., Mcgenity, T., Smith, A., Cawthra, H., Adams, J., and Clark, D.:~~ [Rocky coastline bio-mediated carbonate deposits: Quaternary archive, modern environmental stress indicator or both?, Australian Quaternary Association 2024, North Stradbroke Island, 2024.](#)
- Ford, T. D. and Pedley, H. M.: A review of tufa and travertine deposits of the world, Earth-Sci. Rev., 41, 117–175, [https://doi.org/10.1016/S0012-8252\(96\)00030-X](https://doi.org/10.1016/S0012-8252(96)00030-X), 1996.
- 1055 Fouke, B. W., Farmer, J. D., Des Marais, D. J., Pratt, L., Sturchio, N. C., Burns, P. C., and Discipulo, M. K.: Depositional facies and aqueous-solid geochemistry of travertine-depositing hot springs (Angel Terrace, Mammoth Hot Springs, Yellowstone National Park, U.S.A.), J. Sediment. Res. Sect. Sediment. Petrol. Process. Int. J. SEPM Soc. Sediment. Geol., 70, 565–585, <https://doi.org/10.1306/2dc40929-0e47-11d7-8643000102c1865d>, 2000.
- 1060 ~~Freytet, P. and Verrecchia, E. P.:~~ [Freshwater organisms that build stromatolites: a synopsis of biocrystallization by prokaryotic and eukaryotic algae, Sedimentology, 45, 535–563, https://doi.org/10.1046/j.1365-3091.1998.00155.x, 1998.](#)
- ~~Fritsch, F. E. and Pantin, C. F. A.:~~ [Calcareous Concretions in a Cambridgeshire Stream, Nature, 157, 397–399, https://doi.org/10.1038/157397a0, 1946.](#)
- 1065 Gandin, A. and Capezzuoli, E.: Travertine: Distinctive depositional fabrics of carbonates from thermal spring systems, Sedimentology, 61, 264–290, <https://doi.org/10.1111/sed.12087>, 2014.

- Gerdes, G. and Krumbein, W. E.: Peritidal Potential Stromatolites — A Synopsis, in: Phanerozoic Stromatolites II, edited by: Bertrand-Sarfati, J. and Monty, C., Springer Netherlands, Dordrecht, 101–129, [https://doi.org/10.1007/978-94-011-1124-9\\_5](https://doi.org/10.1007/978-94-011-1124-9_5), 1994.
- 1070 Gerdes, G., Klenke, T., and Noffke, N.: Microbial signatures in peritidal siliciclastic sediments: a catalogue, *Sedimentology*, 47, 279–308, <https://doi.org/10.1046/j.1365-3091.2000.00284.x>, 2000.
- [Gierlowski-Kordesch, E. H.: Chapter 1 Lacustrine Carbonates, in: \*Developments in Sedimentology\*, vol. 61, edited by: Alonso-Zarza, A. M. and Tanner, L. H., Elsevier, 1–101, \[https://doi.org/10.1016/S0070-4571\\(09\\)06101-9\]\(https://doi.org/10.1016/S0070-4571\(09\)06101-9\), 2010.](https://doi.org/10.1016/S0070-4571(09)06101-9)
- 1075 Gomez, F., Mlewski, C., Boidi, F., Farías, M., and Gérard, E.: Calcium Carbonate Precipitation in Diatom-rich Microbial Mats: The Laguna Negra Hypersaline Lake, Catamarca, Argentina, *J. Sediment. Res.*, 88, <https://doi.org/10.2110/jsr.2018.37>, 2018.
- Gradziński, M.: Factors controlling growth of modern tufa: results of a field experiment, *Geol. Soc. Lond. Spec. Publ.*, 336, 143–191, <https://doi.org/10.1144/SP336.8>, 2010.
- 1080 Grey, K. and Awramik, S.: *Handbook for the study and description of microbialites*, 2020.
- Guo, L. and Riding, R.: Hot-spring travertine facies and sequences, Late Pleistocene, Rapolano Terme, Italy, *Sedimentology*, 45, 163–180, <https://doi.org/10.1046/j.1365-3091.1998.00141.x>, 1998.
- Guo, X. and Chafetz, H.: Large tufa mounds, Searles Lake, California, *Sedimentology*, 59, 1509–1535, <https://doi.org/10.1111/j.1365-3091.2011.01315.x>, 2012.
- 1085 Hall, J.: *Cryptozoön, n.g.; Cryptozoön proliferum, nsp.*, 1883.
- Hammer, O., Dysthe, D., and Jamtveit, B.: Travertine terracing: patterns and mechanisms. In: *Tufas and Speleothems: Unravelling the Microbial and Physical Controls*, *Geol. Soc. Lond. Spec. Publ.*, 336, 345–355, <https://doi.org/10.1144/SP336.18>, 2010.
- Harwood Theisen, C. and Sumner, D. Y.: Thrombolite fabrics and origins: Influences of diverse microbial and metazoan processes on Cambrian thrombolite variability in the Great Basin, California and Nevada, *Sedimentology*, 63, 2217–2252, <https://doi.org/10.1111/sed.12304>, 2016.
- 1090 Hill, C. and Forti, P.: *Cave Minerals of the World*, 2nd ed., National Speleological Society, Huntsville, 1997.
- Hofmann, H. J.: *Attributes of stromatolites*, Dept. of Energy, Mines and Resources, Ottawa, 58 pp., 1969.
- Howie, F. and Ealey, P.: Tufa and speleothem occurrence in north and west Cornwall, *Geosci. South-West Engl.*, 12, 109–114, 2009.
- 1095 Howie, F. and Ealey, P.: An appraisal of Quaternary calcium carbonate deposits in Cornwall, *Geosci. South-West Engl.*, 12, 233–240, 2010.

- Ibarra, Y. and Corsetti, F.: Lateral Comparative Investigation of Stromatolites: Astrobiological Implications and Assessment of Scales of Control, *Astrobiology*, 16, <https://doi.org/10.1089/ast.2015.1388>, 2016.
- 1100 ~~Irion, G. and Müller, G.: Mineralogy, Petrology and Chemical Composition of Some Calcareous Tufa from the Schwäbische Alb, Germany, in: Recent Developments in Carbonate Sedimentology in Central Europe, Berlin, Heidelberg, 157–171, [https://doi.org/10.1007/978-3-642-88052-0\\_19](https://doi.org/10.1007/978-3-642-88052-0_19), 1968.~~
- Jahnert, R. J. and Collins, L. B.: Significance of subtidal microbial deposits in Shark Bay, Australia, *Mar. Geol.*, 286, 106–111, <https://doi.org/10.1016/j.margeo.2011.05.006>, 2011.
- 1105 Jahnert, R. J. and Collins, L. B.: Characteristics, distribution and morphogenesis of subtidal microbial systems in Shark Bay, Australia, *Mar. Geol.*, 303–306, 115–136, <https://doi.org/10.1016/j.margeo.2012.02.009>, 2012.
- Jones, B. and Renaut, R. W.: Calcareous Spring Deposits in Continental Settings, in: *Developments in Sedimentology*, vol. 61, edited by: Alonso-Zarza, A. M. and Tanner, L. H., Elsevier, 177–224, [https://doi.org/10.1016/S0070-4571\(09\)06104-4](https://doi.org/10.1016/S0070-4571(09)06104-4), 2010.
- 1110 Kann, E.: Krustenstein in Seen, *Arch. Für Hydrobiol.*, 37, 432–504, 1941.
- Kennard, J. M. and James, N. P.: Thrombolites and Stromatolites: Two Distinct Types of Microbial Structures, *PALAIOS*, 1, 492–503, <https://doi.org/10.2307/3514631>, 1986.
- Lakhdar, R., Soussi, M., and Talbi, R.: Modern and Holocene microbial mats and associated microbially induced sedimentary structures (MISS) on the southeastern coast of Tunisia (Mediterranean Sea), *Quat. Res.*, 100, 1–21, <https://doi.org/10.1017/qua.2020.91>, 2020.
- 1115 Lee, J.-H. and Riding, R.: The ‘classic stromatolite’ *Cryptozoön* is a keratose sponge-microbial consortium, *Geobiology*, 19, 189–198, <https://doi.org/10.1111/gbi.12422>, 2021.
- Lehmann, H.: Der Tropische Kegelkarst Auf Den Grossen Antillen, *Erdkunde*, 8, 130–139, 1954.
- Lencina, A. I., Soria, M. N., Colla, M. F., Cury, L. F., Fariás, M. E., and Gomez, F. J.: In situ growth of modern oncoids from Salado river, Salar de la Laguna Verde Complex, Argentina, *Sediment. Geol.*, 451, 106396, <https://doi.org/10.1016/j.sedgeo.2023.106396>, 2023.
- 1120 Lipar, M. and Webb, J.: The Middle–Late Pleistocene Bridgewater Formation on Cape Bridgewater, southwestern Victoria: chronostratigraphy and palaeoclimatic significance, *Proc. R. Soc. Vic.*, 127, 81, <https://doi.org/10.1071/RS15020>, 2015.
- 1125 Logan, B. W.: Cryptozoon and Associate Stromatolites from the Recent, Shark Bay, Western Australia, *J. Geol.*, 69, 517–533, <https://doi.org/10.1086/626769>, 1961.
- Logan, B. W., Rezak, R., and Ginsburg, R. N.: Classification and Environmental Significance of Algal Stromatolites, *J. Geol.*, 72, 68–83, 1964.

- Logan, B. W., Read, J. F., Hagan, G. M., Hoffman, P., Brown, R. G., Woods, P. J., and Gebelein, C. D.: Evolution and Diagenesis of Quaternary Carbonate Sequences, Shark Bay, Western Australia, American Association of Petroleum Geologists, <https://doi.org/10.1306/M22379>, 1974.
- 1130 Lundberg, J. and McFarlane, D. A.: Subaerial freshwater phosphatic stromatolites in Deer Cave, Sarawak — A unique geobiological cave formation, *Geomorphology*, 128, 57–72, <https://doi.org/10.1016/j.geomorph.2010.12.022>, 2011.
- 1135 Lyons, M. and Kelly, D.: Monitoring Guidelines for the Assessment of Petrifying Springs in Ireland., National Parks and Wildlife Service, Department of Arts, Heritage, Regional, Rural and Gaeltacht Affairs, Ireland, 2016.
- Mackey, T. J., Sumner, D. Y., Hawes, I., Jungblut, A. D., and Andersen, D. T.: Growth of modern branched columnar stromatolites in Lake Joyce, Antarctica, *Geobiology*, 13, 373–390, <https://doi.org/10.1111/gbi.12138>, 2015.
- 1140 Manzo, E., Perri, E., and Tucker, M. E.: Carbonate deposition in a fluvial tufa system: processes and products (Corvino Valley – southern Italy), *Sedimentology*, 59, 553–577, <https://doi.org/10.1111/j.1365-3091.2011.01266.x>, 2012.
- Maslov, V., P.: Printsipy nomenklatury i sistematiki stromatolitov, *Izv. Akad. Nauk SSSR Seriya Geol.*, 4, 105–112, 1953.
- 1145 Maslov, V., P.: Stromatolity (ikh genezis, metod izucheniya svyaz's fatsiyami i geologicheskoe znachenie na primere ordovika sibirskoy platformy), *Tr. Akad. Nauk SSSR Geol. Inst.*, 41, 188, 1960.
- Merz-Preiß, M. and Riding, R.: Cyanobacterial tufa calcification in two freshwater streams: ambient environment, chemical thresholds and biological processes, *Sediment. Geol.*, 126, 103–124, [https://doi.org/10.1016/S0037-0738\(99\)00035-4](https://doi.org/10.1016/S0037-0738(99)00035-4), 1999.
- 1150 Mlewski, E. C., Pisapia, C., Gomez, F., Lecourt, L., Soto Rueda, E., Benzerara, K., Ménez, B., Borensztajn, S., Jamme, F., Réfrégiers, M., and Gérard, E.: Characterization of Pustular Mats and Related Rivularia-Rich Laminations in Oncoids From the Laguna Negra Lake (Argentina), *Front. Microbiol.*, 9, 2018.
- Monty, C. L. V.: Chapter 5.1 The Origin and Development of Cryptalgal Fabrics, in: *Developments in Sedimentology*, vol. 20, edited by: Walter, M. R., Elsevier, 193–249, [https://doi.org/10.1016/S0070-4571\(08\)71137-3](https://doi.org/10.1016/S0070-4571(08)71137-3), 1976.
- 1155 Moore, L. S. and Burne, R. V.: The Modern Thrombolites of Lake Clifton, Western Australia, Dordrecht, Book Title: Phanerozoic Stromatolites IIDOI: 10.1007/978-94-011-1124-9\_1, 3–29, [https://doi.org/10.1007/978-94-011-1124-9\\_1](https://doi.org/10.1007/978-94-011-1124-9_1), 1994.
- Mountain, E. D.: Tufa-lined basins in coastal platforms, *South Afr. J. Sci.*, 33, 242–247, [https://doi.org/10.10520/AJA00382353\\_8109](https://doi.org/10.10520/AJA00382353_8109), 1937.
- 1160 Noffke, N.: Turbulent lifestyle: Microbial mats on Earth's sandy beaches—Today and 3 billion years ago, *GSA Today*, 18, 4, <https://doi.org/10.1130/GSATG7A.1>, 2008.

- Noffke, N.: *Geobiology: Microbial Mats in Sandy Deposits from the Archean Era to Today*, 1 pp., <https://doi.org/10.1007/978-3-642-12772-4>, 2010.
- 1165 Noffke, N. and Awramik, S. M.: *Stromatolites and MISS—Differences between relatives*, *GSA Today*, 23, 4–9, <https://doi.org/10.1130/GSATG187A.1>, 2013.
- Noffke, N., Gerdes, G., Klenke, T., and Krumbein, W. E.: *Microbially induced sedimentary structures – examples from modern sediments of siliciclastic tidal flats*, *Zentralblatt Für Geol. Paläontol. Teil I*, 307–316, 1996.
- 1170 Noffke, N., Gerdes, G., Klenke, T., and Krumbein, W. E.: *Microbially Induced Sedimentary Structures: A New Category within the Classification of Primary Sedimentary Structures*, *J. Sediment. Res.*, 71, 649–656, <https://doi.org/10.1306/2DC4095D-0E47-11D7-8643000102C1865D>, 2001.
- Onton, K., Clarke, V., and Wa, K.: *Monitoring Protocol: Augusta Microbial Threatened Ecological Community Version 1.0*, Department of Environment and Conservation, Western Australia, 2009.
- 1175 Ordonez, S., Gonzales, J. A., and Garcia del Cura, M. A.: *Péetrographie et morphologie des édifices tuffeux quaternaires du centre de l’Espagne, Méditerranée*, 57, 52–60, <https://doi.org/10.3406/medit.1986.2368>, 1986.
- Pedley, H. M.: *Classification and environmental models of cool freshwater tufas*, *Sediment. Geol.*, 68, 143–154, [https://doi.org/10.1016/0037-0738\(90\)90124-C](https://doi.org/10.1016/0037-0738(90)90124-C), 1990.
- Pedley, H. M. and Rogerson, M.: *Introduction to tufas and speleothems*, *Geol. Soc. Lond. Spec. Publ.*, 336, 1–5, 1180 <https://doi.org/10.1144/SP336.1>, 2010.
- Pedley, M., Andrews, J., Salvador, O., del-Cura, M. Á., Martin, J.-A., and Taylor, D.: *Does climate control the morphologic fabric of freshwater carbonates? A comparative study of Holocene barrage tufas from Spain and Britain*, *Palaeogeogr. Palaeoclimatol. Palaeoecol.*, 121, 239–257, [https://doi.org/10.1016/0031-0182\(95\)00080-1](https://doi.org/10.1016/0031-0182(95)00080-1), 1996.
- 1185 Pedley, M., Rogerson, M., and Middleton, R.: *Freshwater calcite precipitates from in vitro mesocosm flume experiments: a case for biomediation of tufas*, *Sedimentology*, 56, 511–527, <https://doi.org/10.1111/j.1365-3091.2008.00983.x>, 2009.
- Pentecost, A.: *The tufa deposits of the Malham district, north Yorkshire.*, *Field Stud.*, 5, 365–387, 1981.
- Pentecost, A.: *British travertines: a review*, *Proc. Geol. Assoc.*, 104, 23–39, [https://doi.org/10.1016/S0016-7878\(08\)80152-6](https://doi.org/10.1016/S0016-7878(08)80152-6), 1190 1993.
- Pentecost, A.: *Travertine*, Springer, 2005.
- Pentecost, A. and Viles, H.: *A Review and Reassessment of Travertine Classification*, *Géographie Phys. Quat.*, 48, 305–314, <https://doi.org/10.7202/033011ar>, 1994.

- 1195 Pentecost, A., Jones, B., and Renaut, R.: What is a hot spring?, *Can. J. Earth Sci.*, 40, 1443–1446, <https://doi.org/10.1139/e03-083>, 2011.
- Perissinotto, R., Bornman, T. G., Steyn, P.-P., Miranda, N. A. F., Dorrington, R. A., Matcher, G. F., Strydom, N., and Peer, N.: Tufa stromatolite ecosystems on the South African south coast, *South Afr. J. Sci.*, 110, 01–08, <https://doi.org/10.1590/sajs.2014/20140011>, 2014.
- 1200 Perri, E., Manzo, E., and Tucker, M.: Multi-scale study of the role of the biofilm in the formation of minerals and fabrics in calcareous tufa, *Sediment. Geol. - SEDIMENT GEOL*, 263, <https://doi.org/10.1016/j.sedgeo.2011.10.003>, 2012.
- Preiss, W.: The systematics of South Australian Precambrian and Cambrian stromatolites, Part I, *Trans. R. Soc. S. Aust.*, 98, 1–246, 1974.
- 1205 Prieto-Barajas, C. M., Valencia-Cantero, E., and Santoyo, G.: Microbial mat ecosystems: Structure types, functional diversity, and biotechnological application, *Electron. J. Biotechnol.*, 31, 48–56, <https://doi.org/10.1016/j.ejbt.2017.11.001>, 2018.
- Reid, R. P., Macintyre, I. G., Browne, K. M., Steneck, R. S., and Miller, T.: Modern marine stromatolites in the Exuma Cays, Bahamas: Uncommonly common, *Facies*, 33, 1–17, <https://doi.org/10.1007/BF02537442>, 1995.
- 1210 [Reid, R. P., Suosaari, E. P., Oehlert, A. M., Pollier, C. G. L., and Dupraz, C.: Microbialite Accretion and Growth: Lessons from Shark Bay and the Bahamas, \*Annu. Rev. Mar. Sci.\*, 16, 487–511, <https://doi.org/10.1146/annurev-marine-021423-124637>, 2024.](https://doi.org/10.1146/annurev-marine-021423-124637)
- Riding, R.: Calcareous Algae and Stromatolites, 21–51, [https://doi.org/10.1007/978-3-642-52335-9\\_2](https://doi.org/10.1007/978-3-642-52335-9_2), 1991.
- Riding, R.: Microbial carbonates: the geological record of calcified bacterial–algal mats and biofilms, *Sedimentology*, 47, 179–214, <https://doi.org/10.1046/j.1365-3091.2000.00003.x>, 2000.
- 1215 Riding, R.: The Nature of Stromatolites: 3,500 Million Years of History and a Century of Research, in: *Advances in Stromatolite Geobiology*, edited by: Reitner, J., Quéric, N.-V., and Arp, G., Springer, Berlin, Heidelberg, 29–74, [https://doi.org/10.1007/978-3-642-10415-2\\_3](https://doi.org/10.1007/978-3-642-10415-2_3), 2011.
- 1220 Rishworth, G., Perissinotto, R., and Bornman, T.: Box 3. South African peritidal stromatolites. South African National Biodiversity Assessment 2018: Technical Report Volume 5: Coast. Harris, LR, Sink, KJ, Skowno, AL, & Van Niekerk, L (eds). South African National Biodiversity Institute, Pretoria., 2019.
- Rishworth, G. M., van Elden, S., Perissinotto, R., Miranda, N. A. F., Steyn, P.-P., and Bornman, T. G.: Environmental influences on living marine stromatolites: insights from benthic microalgal communities, *Environ. Microbiol.*, 18, 503–513, <https://doi.org/10.1111/1462-2920.13116>, 2016.
- 1225 Rishworth, G. M., Perissinotto, R., Bornman, T. G., and Lemley, D. A.: Peritidal stromatolites at the convergence of groundwater seepage and marine incursion: Patterns of salinity, temperature and nutrient variability, *J. Mar. Syst.*, 167, 68–77, <https://doi.org/10.1016/j.jmarsys.2016.11.010>, 2017.



- Rishworth, G. M., Dodd, C., Perissinotto, R., Bornman, T. G., Adams, J. B., Anderson, C. R., Cawthra, H. C., Dorrington, R. A., du Toit, H., Edworthy, C., Gibb, R.-L. A., Human, L. R. D., Isemonger, E. W., Lemley, D. A., Miranda, N. A. F., Peer, N., Raw, J. L., Smith, A. M., Steyn, P.-P., Strydom, N. A., Teske, P. R., and Welman, S.:  
1230 Modern supratidal microbialites fed by groundwater: functional drivers, value and trajectories, *Earth-Sci. Rev.*,  
210, 103364, <https://doi.org/10.1016/j.earscirev.2020.103364>, 2020.
- Ritter, S. M., Schröter, M. I.-, Schröder-Ritzrau, A., Scholz, C., and Frank, N.: Geochemical Insights Into an  
Active Calcareous Tufa Depositing System in Southern Germany, *Procedia Earth Planet. Sci.*, 17, 328–331,  
<https://doi.org/10.1016/j.proeps.2016.12.083>, 2017.
- 1235 Rodríguez Guitián, M. A., Real, C., Ramil-Rego, P., Franco, R. R., and Castro, H. L.: Characteristics,  
vulnerability and conservation value of active tufa-forming springs on coastal cliffs in the NW Iberian Peninsula,  
*Ocean Coast. Manag.*, 189, 105122, <https://doi.org/10.1016/j.ocecoaman.2020.105122>, 2020.
- Rodríguez, S. and Cózar, P.: Descripción e interpretación de los afloramientos del Carbonífero Inferior en las  
proximidades de Peñarroya-Pueblonuevo (Córdoba, España), *Coloq. Paleontol. ISSN 1132-1660 N° 50 1999*  
1240 Pags 161-200, 50, 1999.
- Rodríguez-Berriguete, Á.: Early diagenetic features in Holocene travertine and tufa from a volcanic setting  
(Azuaje, Gran Canaria, Spain), *Facies*, 66, 17, <https://doi.org/10.1007/s10347-020-00602-z>, 2020.
- Rodwell, J. S. (Ed.): *British Plant Communities: Volume 2: Mires and Heaths*, Cambridge University Press,  
Cambridge, <https://doi.org/10.1017/9780521391658>, 1992.
- 1245 Rogerson, M., Pedley, H. M., and Middleton, R.: Microbial influence on macroenvironment chemical conditions  
in alkaline (tufa) streams: perspectives from in vitro experiments, *Geol. Soc. Lond. Spec. Publ.*, 336, 65–81,  
<https://doi.org/10.1144/SP336.5>, 2010.
- Rong, K., Li, J., An, Y., and He, F.: A study of biogenesis of karst speleothem: an example from Zhijin Cave of  
Guizhou, *Guizhou Geol.*, 13, 177–180, 1996.
- 1250 Sanchez-Cabeza, J.-A., Masqué, P., Martínez-Alonso, M., Mir, J., and Esteve, I.: 210Pb Atmospheric Flux and  
Growth Rates of a Microbial Mat from the Northwestern Mediterranean Sea (Ebro River Delta), *Environ. Sci.*  
*Technol.*, 33, 3711–3715, <https://doi.org/10.1021/es9900205>, 1999.
- [Schieber, J.: Microbial Mats in the Siliclastic Rock Record: A Summary of Diagnostic Features., in: The Precambrian Earth: Tempos and Events, Elsevier, Amsterdam, 2004.](#)
- 1255 Semikhatov, M. A. and Raaben, M. E.: Proterozoic Stromatolite Taxonomy and Biostratigraphy, in: *Microbial  
Sediments*, edited by: Riding, R. E. and Awramik, S. M., Springer, Berlin, Heidelberg, 295–306,  
[https://doi.org/10.1007/978-3-662-04036-2\\_32](https://doi.org/10.1007/978-3-662-04036-2_32), 2000.
- Shapiro, R.: A field guide to microbialites, *Pac. Sect. Am. Assoc. Pet. Geol. Guideb.* 99, 68–80, 2005.
- Shapiro, R. S.: A Comment on the Systematic Confusion of Thrombolites, *PALAIOS*, 15, 166–169,  
1260 <https://doi.org/10.2307/3515503>, 2000.

- Shiraishi, F., Bissett, A., de Beer, D., Reimer, A., and Arp, G.: Photosynthesis, Respiration and Exopolymer Calcium-Binding in Biofilm Calcification (Westerhöfer and Deinschwanger Creek, Germany), *Geomicrobiol. J.*, 25, 83–94, <https://doi.org/10.1080/01490450801934888>, 2008.
- 1265 Shiraishi, F., Hanzawa, Y., Asada, J., Cury, L. F., and Bahniuk, A. M.: Microbial influences on tufa deposition in a tropical climate, *Sediment. Geol.*, 427, 106045, <https://doi.org/10.1016/j.sedgeo.2021.106045>, 2022.
- Smith, A. and Uken, R.: Living marine stromatolites at Kei River mouth, *South Afr. J. Sci.*, 99, 2003.
- Smith, A., Uken, R., and Thackeray, Z.: Cape Morgan peritidal stromatolites: The origin of lamination, *South Afr. J. Sci.*, 101, 107–108, 2005.
- 1270 Smith, A., Cooper, A., Misra, S., Bharuth, V., Guastella, L., and Botes, R.: The extant shore platform stromatolite (SPS) facies association: a glimpse into the Archean?, *Biogeosciences*, 15, 2189–2203, <https://doi.org/10.5194/bg-15-2189-2018>, 2018.
- Smith, A., Cooper, A., Guastella, L., and Bharath, V.: Wave influences in contemporary and Mesoarchaeal stromatolites, *Sediment. Geol.*, 396, 105558, <https://doi.org/10.1016/j.sedgeo.2019.105558>, 2020.
- 1275 Smith, A. M., Andrews, J. E., Uken, R., Thackeray, Z., Perissinotto, R., Leuci, R., and Marca-Bell, A.: Rock pool tufa stromatolites on a modern South African wave-cut platform: partial analogues for Archean stromatolites?, *Terra Nova*, 23, 375–381, <https://doi.org/10.1111/j.1365-3121.2011.01022.x>, 2011.
- 1280 Stolz, J., Reid, R., Visscher, P., Decho, A., Norman, R., Aspden, R., Bowlin, E., Franks, J., Foster, J., Paterson, D., Przekop, K., Underwood, G., and Prufert-Bebout, L.: The Microbial Communities of the Modern Marine Stromatolites at Highborne Cay, Bahamas, *Atoll Res. Bull.*, 567, <https://doi.org/10.5479/si.00775630.567.1>, 2009.
- Suosaari, E. P., Reid, R. P., Playford, P. E., Foster, J. S., Stolz, J. F., Casaburi, G., Hagan, P. D., Chirayath, V., Macintyre, I. G., Planavsky, N. J., and Eberli, G. P.: New multi-scale perspectives on the stromatolites of Shark Bay, Western Australia, *Sci. Rep.*, 6, 20557, <https://doi.org/10.1038/srep20557>, 2016.
- 1285 Suosaari, E. P., Reid, R. P., Oehlert, A. M., Playford, P. E., Steffensen, C. K., Andres, M. S., Suosaari, G. V., Milano, G. R., and Eberli, G. P.: Stromatolite Provinces of Hamelin Pool: Physiographic Controls On Stromatolites and Associated Lithofacies, *J. Sediment. Res.*, 89, 207–226, <https://doi.org/10.2110/jsr.2019.8>, 2019a.
- Suosaari, E. P., Reid, R. P., and Andres, M. S.: Stromatolites, so what?! A tribute to Robert N. Ginsburg, *Depositional Rec.*, 5, 486–497, <https://doi.org/10.1002/dep2.72>, 2019b.
- 1290 Suosaari, E. P., Reid, R. P., Mercadier, C., Vitek, B. E., Oehlert, A. M., Stolz, J. F., Giusfredi, P. E., and Eberli, G. P.: The microbial carbonate factory of Hamelin Pool, Shark Bay, Western Australia, *Sci. Rep.*, 12, 12902, <https://doi.org/10.1038/s41598-022-16651-z>, 2022.
- Symoens, J.-J., Duvigneaud, P., Berghen, C. V., Dewit, J., and Kiwak, A.: Aperçu Sur La Végétation Des Tufts Calcaires De La Belgique, *Bull. Société R. Bot. Belg. Bull. Van K. Belg. Bot. Ver.*, 83, 329–352, 1951.

- 1295 Szulczewski, M.: Stromatolity jurajskie v Polsce, *Acta Geol. Pol.*, 13, 1–99, 1968.
- Trompette, R.: Upper Proterozoic (1800-570 Ma) stratigraphy: A survey of lithostratigraphic, paleontological, radiochronological and magnetic correlations, *Precambrian Res.*, 18, 27–52, [https://doi.org/10.1016/0301-9268\(82\)90035-3](https://doi.org/10.1016/0301-9268(82)90035-3), 1982.
- 1300 Valero Garcés, B. L., Moreno, A., Navas, A., Mata, P., Machín, J., Delgado Huertas, A., González Sampérez, P., Schwalb, A., Morellón, M., Cheng, H., and Edwards, R. L.: The Taravilla lake and tufa deposits (Central Iberian Range, Spain) as palaeohydrological and palaeoclimatic indicators, *Palaeogeogr. Palaeoclimatol. Palaeoecol.*, 259, 136–156, <https://doi.org/10.1016/j.palaeo.2007.10.004>, 2008.
- 1305 Villafañe, P. G., Lencina, A., Soria, M., Saona, L. A., Gomez, F., Alonso, G., and Farías, M.: Las Quínoas oncoids: a new deposit of microbialites in the Salar de Antofalla (Catamarca, Argentina), *Andean Geol.*, 48, <https://doi.org/10.5027/andgeoV48n2-3292>, 2021.
- Walter, M. R.: *Stromatolites*, 1st ed., Elsevier, Amsterdam, 1976.
- Walter, M. R. and Heys, G. R.: Links between the rise of the metazoa and the decline of stromatolites, *Precambrian Res.*, 29, 149–174, [https://doi.org/10.1016/0301-9268\(85\)90066-X](https://doi.org/10.1016/0301-9268(85)90066-X), 1985.
- 1310 Walter, M. R., Bauld, J., and Brock, T. D.: Chapter 6.2 Microbiology and Morphogenesis of Columnar Stromatolites (Conophyton, Vacerrilla) from Hot Springs in Yellowstone National Park, in: *Developments in Sedimentology*, vol. 20, edited by: Walter, M. R., Elsevier, 273–310, [https://doi.org/10.1016/S0070-4571\(08\)71140-3](https://doi.org/10.1016/S0070-4571(08)71140-3), 1976.
- 1315 Warren, J. K.: The hydrological significance of Holocene tepees, stromatolites, and boxwork limestones in coastal salinas in South Australia, *J. Sediment. Res.*, 52, 1171–1201, <https://doi.org/10.1306/212F80F8-2B24-11D7-8648000102C1865D>, 1982.
- Weston, R.-L. A., Perissinotto, R., Rishworth, G. M., and Steyn, P.-P.: Macroinvertebrate variability between microhabitats of peritidal stromatolites along the South African coast, *Mar. Ecol. Prog. Ser.*, 605, 37–47, <https://doi.org/10.3354/meps12741>, 2018.
- 1320 Whitton, B. A., Gemmell, J. J., and Robinson, P. J.: *Identification of Blue Green Algae of the British Isles: Guide to the Genera and Use of the Interactive CD-ROM for Identification of Species*, Environment Agency, University of Durham, 2000.