

# OMPS-LP Aerosol Extinction Coefficients And Their Applicability in GloSSAC

Mahesh Kovilakam<sup>1,2</sup>, Larry W. Thomason<sup>2</sup>, Magali Verkerk<sup>3</sup>, Thomas Aubry<sup>3</sup>, and Travis N. Knepp<sup>2</sup>

<sup>1</sup>ADNET Systems Inc, MD, USA

<sup>2</sup>NASA Langley Research Center, Hampton, Virginia, USA

<sup>3</sup>Department of Earth and Environmental Sciences, University of Exeter, UK

**Correspondence:** Mahesh Kovilakam (mahesh.kovilakam@nasa.gov)

**Abstract.** The Global Space-based Stratospheric Aerosol Climatology (GloSSAC) is essential for understanding and modeling the climatic impacts of stratospheric aerosols. It primarily relies on data from the Stratospheric Aerosol Gas Experiment (SAGE) satellite series, supplemented by the Optical Spectrograph and Infrared Imaging System (OSIRIS) and the Cloud-Aerosol Lidar and Infrared Pathfinder Satellite Observations (CALIPSO). GloSSAC currently provides [the](#) stratospheric aerosol extinction coefficients and aerosol optical depths at 525 and 1020 nm. With CALIPSO decommissioned and OSIRIS nearing the end of its operational life, SAGE III/ISS will soon become the sole data source for GloSSAC, but it will only be available as long as the International Space Station (ISS) is operational, around 2030. Therefore, incorporating other measurements, such as those from the Ozone Mapping and Profiler Suite limb profiler (OMPS-LP), is critical. OMPS-LP has provided continuous aerosol extinction coefficient measurements since 2012 with a retrieval algorithm developed by NASA (OMPS(NASA)). However, OMPS(NASA) has been shown to overestimate [the](#) aerosol extinction coefficients, particularly after the 2022 Hunga Tonga eruption, compared to the tomographic retrieval of OMPS developed by the University of Saskatchewan (OMPS(SASK)) and SAGE III/ISS. Our analysis shows that OMPS(NASA) indeed exhibits a consistently high bias (>50%) following large volcanic eruptions and pyrocumulonimbus plumes from intense wildfires, while OMPS(SASK) shows reasonable agreement with SAGE III/ISS between 40°S and 40°N. This overestimation by OMPS(NASA) leads to an overestimation of the aerosol effective radiative forcing (ERF) and the associated model-simulated global surface temperature response by about a factor of two.

## 1 Introduction

Stratospheric aerosols play a crucial role in influencing the radiative and chemical equilibrium of Earth's atmosphere, in part due to their episodic enhancements associated with volcanic activity that can almost instantaneously enhance the total mass of aerosol in the stratosphere by several orders of magnitude (e.g., Thomason and Vernier, 2013). As a result, constraining stratospheric aerosol radiative forcing and understanding its climatic impacts is a major focus of many climate studies (e.g., Lacis et al., 1992; Myhre et al., 2013; Zanchettin et al., 2016; Timmreck et al., 2018; Krishnamohan et al., 2019). As a result, stratospheric aerosols are a key forcing in the 6th phase of the World Climate Research Programme's (WCRP) Coupled Model Intercomparison Project (CMIP6) (Eyring et al., 2016), as well as in the ongoing phase 7 (CMIP7). Most global climate models

25 (GCMs) participating in CMIP do not simulate the stratospheric aerosol life cycle interactively from emission; instead, they  
rely on prescribed aerosol optical properties based on global measurements (Stenchikov et al., 2006; Berdahl and Robock,  
2013; Fyfe et al., 2013). GCMs with interactive stratospheric aerosols also often employ measurements to help evaluate their  
simulations (Aquila et al., 2013; Mills et al., 2016; Timmreck et al., 2018). To serve these needs, the Global Space-based  
Stratospheric Aerosol Climatology (GloSSAC) was first released in 2018 (Thomason et al., 2018). It is an outgrowth of the  
30 SPARC Assessment of Stratospheric Properties (ASAP) and is an extensive multi-sensor climatology of stratospheric aerosol  
optical properties since 1979 that has been widely used by atmospheric modeling groups. It has played a crucial role in  
validating interactive aerosol schemes (e.g., Timmreck et al., 2018; Quaglia et al., 2023) and developing simple aerosol models  
that can be applied to provide aerosol optical properties to GCM without interactive schemes (Aubry et al., 2020). GloSSAC  
consists primarily of [the](#) visible and near infrared aerosol extinction coefficient values in monthly, 5-degrees of latitude, and  
35 0.5 km altitude grid that currently extends, as version 2.2, from 1979 through 2023 (NASA/LARC/SD/ASDC, 2024).

Stratospheric Aerosol and Gas Experiment (SAGE) measurements provide the backbone to GloSSAC and are available  
from 1979 to 1981 (SAGE), 1984 to 2005 (SAGE II) and 2017 to the present (SAGE III/ISS). Breaks in these time periods  
are filled with a combination of other space-based data, point-based data sets including lidar and balloon-borne instruments,  
and aircraft data (Thomason et al., 2018; Kovilakam et al., 2020). The ‘filling’ of missing data also includes the aftermath of  
40 the Mt. Pinatubo eruption through where SAGE II observations were not possible in the lower stratosphere for several years.  
Improving this filling process remains the focus of ongoing research efforts. During the 2005-2017 gap, single wavelength  
measurements by OSIRIS and CALIOP were employed to fill the void (Thomason et al., 2018; Kovilakam et al., 2020). One  
disadvantage is that measurements of [the](#) aerosol extinction coefficients at multiple wavelengths are crucial for inferring aerosol  
properties that is a primary application for GloSSAC data. Another issue is that the quality of even the single channel data  
45 degrades during a number of small to moderate volcanic eruptions and intrusions of smoke during this period. While GloSSAC  
incorporates data from multiple sensors, its limitations must also be acknowledged. Solar occultation measurements, such as  
SAGE, are relatively straightforward measurements that are robust over a large range of ~~stratosphere~~ [stratospheric](#) aerosol  
levels and provide near-global coverage. However, the measurement rate is slow and full zonal coverage requires about a  
month. In contrast, OSIRIS and CALIPSO offer daily near-global aerosol measurements opening a broad range of potential  
50 research opportunities not provided by solar occultation. They are, however, limited in data quality by a retrieval process that  
relies on assumptions about aerosol microphysical properties, particularly size distribution and composition (e.g., Bourassa  
et al., 2012; Rieger et al., 2015, 2019; Kar et al., 2019). For the 2005-2017 gap in SAGE coverage and as a supplement in  
other periods, a conformance process has been implemented in GloSSAC (Kovilakam et al., 2020), serving as a mechanism  
to remove instrument-to-instrument bias. During periods when OSIRIS and CALIOP instruments have temporal overlap with  
55 a SAGE instrument, this conformance process revealed that both data sets varied in their consistency when converting to the  
standard GloSSAC measurement wavelengths. This variation could be substantial and extend beyond variations associated with  
aerosol properties alone, particularly following volcanic and smoke events (Kovilakam et al., 2020).

With the end of the CALIPSO mission in 2023 and the impending end of OSIRIS’s operational lifespan, only SAGE III/ISS  
will remain among the current ensemble of instruments used to create GloSSAC into the future. Realistically, even this instru-

60 ment cannot be expected to survive much beyond 2030 or whenever the ISS is de-orbited ( $\approx 2030$ ). It is worth noting that there are currently no plans among the various space agencies to fly a solar occultation instrument in the future. As a result, our ability to extend GloSSAC into the future hinges on identifying a set of measurements that will be available that are of sufficient data quality and comparable spatial and temporal coverage. One obvious possibility is OMPS which has been operational since 2012 with additional flights sufficient to extend its observations into the foreseeable future. This data set is available from two  
65 different groups using different retrieval approaches. OMPS(NASA) provides [the](#) aerosol extinction coefficient retrievals at six wavelengths (510, 600, 675, 745, 869, and 997 nm) in version 2.1 (Taha et al., 2021). The University of Saskatchewan (~~SASK~~) offers a tomographic version of the OMPS retrieval, ~~producing~~ [\(OMPS\(SASK\)\)](#), [producing the](#) aerosol extinction coefficient data at only 745 nm. These data sets are generally in good agreement in background periods; however, large differences between the OMPS(NASA) and OMPS(SASK) products occur following events like the Hunga Tonga eruption in January 2022  
70 (Bourassa et al., 2023). Similar differences have been observed following other perturbations to the stratospheric aerosol levels including the 2019/2020 Australian bush fires. The Hunga Tonga event is of particular interest since it is one of the largest stratospheric events since that of Mt. Pinatubo in 1991 and because it is a period during which [the](#) aerosol extinction coefficient measurements by OMPS, SAGE III/ISS, and OSIRIS exhibit differences.

Our goal in this paper is to examine and evaluate the two different products of OMPS data, OSIRIS and SAGE III/ISS  
75 following the Hunga Tonga eruption and other stratospheric aerosol events since 2017. Ultimately, we aim to assess the best retrieval approach to integrate OMPS data into GloSSAC in the future without relying on constraining solar occultation observations. We will also assess the potential limitations of using these data sets to depict future volcanic and smoke events to understand the degree to which the GloSSAC data quality will be affected by this change.

## 2 Data and Methods

### 80 2.1 OMPS

The Ozone Mapping and Profiler Suite Limb Profiler (OMPS-LP) is a component of the Suomi National Polar-orbiting Partnership (Suomi NPP) satellite and the Joint Polar Satellite System (JPSS) satellites, launched in October 2011 (Flynn et al., 2006). While its primary focus is on monitoring the vertical structure of the ozone layer, OMPS-LP utilizes the limb-scatter technique to retrieve information about aerosols and related gases. Operating in a midday sun-synchronous orbit, OMPS provides  
85 near-global coverage on a daily basis.

The retrieval methodology employed in OMPS-LP version 2.0, referred to as OMPS(NASA), involves establishing a one-to-one correspondence between a single limb radiance image and the retrieval of a singular aerosol extinction coefficient profile. This approach assumes horizontal homogeneity of the atmosphere along the line of sight. The retrieval is executed across six spectral bands at 510, 600, 675, 745, 869, and 997 nm (Taha et al., 2021). In the latest iteration (version 2.1), the incorporation  
90 of more comprehensive convergence checks has improved the retrieval process, especially in the presence of volcanic plumes (Taha et al., 2022). Similar to other limb scatter measurements, the OMPS(NASA) procedure requires an assumption regarding the particle size distribution for deriving the scattering phase function. In the case of OMPS(NASA), a constant gamma function

size distribution derived from the Community Aerosol and Radiation Model for Atmospheres (CARMA) is utilized with  $\alpha = 1.8$ ,  $\beta=20.5$ , where  $\alpha$  and  $\beta$  are shape parameter and rate parameter respectively (Chen et al., 2018). We utilize version 2.1 of OMPS(NASA) product for the analyses.

The OMPS LP instrument's imaging and rapid sampling capabilities facilitate the merging of consecutive limb images to create a two-dimensional retrieval of [the](#) aerosol extinction coefficient. This method captures [the](#) aerosol extinction coefficient simultaneously in altitude and along the orbit track. The University of Saskatchewan utilizes this ability to produce an alternative version of the OMPS data products, ~~known~~ [\(in the following referred to](#) as OMPS(SASK)), in a tomographic retrieval approach. The limb scatter tomographic retrieval using OMPS-LP measurements was initially developed by Zawada et al. (2018). While this algorithm initially focused on ozone, it also incorporated the preliminary retrieval of [the](#) aerosol extinction coefficient. The aerosol extinction coefficient is reported at 745 nm, featuring a vertical resolution of 1 km and a horizontal span of 125 km. Similar to other limb scatter retrievals, this algorithm operates based on assuming a particle size distribution, in this instance, employing a single-mode lognormal size distribution with  $r_1 = 0.08$  and  $\sigma = 1.6$ , where  $r_1$  is the median radius and  $\sigma$  is the distribution width. For our study, we will utilize version 1.3 of OMPS(SASK). Another alternative version of OMPS data has been developed by IUP, University of Bremen (Rozanov et al., 2024) and may be considered for use in GloSSAC in the future.

## 2.2 OSIRIS

The Optical Spectrograph and InfraRed Imaging System (OSIRIS), a limb scatter instrument launched aboard the Odin satellite in 2001, retrieves  $O_3$ ,  $NO_2$ , and [the](#) aerosol extinction coefficient data (McLinden et al., 2012). Odin is positioned in a Sun-synchronous orbit, providing coverage from  $82^{\circ}S$  to  $82^{\circ}N$ , excluding polar winter due to insufficient sunlight for measurements. The Optical Spectrograph instrument operates within the wavelength range of 284 to 810 nm with an approximate 1 nm resolution. A typical scan takes about 90 seconds, offering a vertical resolution of about 1 km, resulting in 100 to 400 profiles a day. The aerosol extinction coefficient retrieval is performed at 750 nm following a multiplicative relaxation technique, as detailed in Bourassa et al. (2012).

For GloSSAC, OSIRIS version 7.2 is currently used and plays a vital role in bridging the gap between the SAGE II period (1984-2005) and the SAGE III/ISS mission (June 2017-present). Significant improvements have been made to version 7.2 data (Rieger et al., 2019) compared to version 5.07 data (Bourassa et al., 2012). The retrieval in version 7.2 enhances the accuracy of the aerosol extinction coefficient product by minimizing the sensitivity to the unknown particle size distribution during inversion. This version aligns more closely with SAGE II and SAGE III/ISS compared to the previous version (v5.07) in GloSSAC 1.0. While the mission is on-going, limitations to instrument operations have reduced the overall number of measurements made per orbit and concomitantly affect latitudinal coverage. Additionally, following [the Hunga](#) Tonga eruption, OSIRIS aerosol extinction coefficient is about 50% less than those measured by SAGE III/ISS during this period. This discrepancy remains under study by the OSIRIS team<sup>1</sup>.

---

<sup>1</sup>The OSIRIS team is actively investigating potential causes for underestimation, examining assumptions regarding size distribution in the retrieval algorithm and the impact of plume altitude on stray light (Adam Bourassa, personal communication).

SAGE III/ISS utilizes the solar occultation technique (McCormick et al., 1979), which measures the attenuation of solar radiation caused by the scattering and absorption of atmospheric constituents during sunrise and sunset events. SAGE III/ISS commenced data collection in June 2017 and represents an upgraded version of the SAGE III on Meteor (SAGE III/M3M) instrument. Operating in a manner akin to its predecessors (e.g. Mauldin et al., 1985; Thomason et al., 2010), SAGE III/ISS  
 130 retrieves vertical profiles of multi-wavelength aerosol extinction coefficients (384, 449, 521, 602, 676, 756, 864, 1022, and 1544 nm), along with gas-phase species. The SAGE instrument family, renowned for its high precision (<5%), has a legacy of providing vertical profiles of global stratospheric aerosols. These profiles serve as a benchmark for various correlative measurements, facilitating comparisons and validation (e.g. Hervig and Deshler, 2002; Deshler et al., 2003, 2019; Rieger et al., 2019; Bourassa et al., 2019). Due in part to a relatively straightforward process for inferring particularly mid-visible to near  
 135 infrared measurements of the aerosol extinction coefficient, we consider observations by this instrument to be the standard against which other approaches are evaluated. Furthermore, the SAGE series of measurements play a crucial role in creating GloSSAC in conjunction with other space-based observations (Thomason et al., 2018; Kovilakam et al., 2020).

We have utilized version 5.3 of SAGE III/ISS data for all the analyses detailed in this paper. The modifications introduced in version 5.3 are outlined in the release notes, available at [https://asdc.larc.nasa.gov/documents/sageiii-iss/guide/ReleaseNotes\\_G3B\\_v05.30.pdf](https://asdc.larc.nasa.gov/documents/sageiii-iss/guide/ReleaseNotes_G3B_v05.30.pdf). Notable changes in the solar product in version 5.3 encompass Disturbance Monitoring Package (DMP) corrections specifically applied to solar products and a shift to using MERRA-2 72-layer data for meteorological input. While  
 140 SAGE III/ISS aerosol extinction coefficient measurements have been extensively employed for validation, comparison, and long-term climatology purposes (e.g. Bourassa et al., 2019; Rieger et al., 2019; Kar et al., 2019; Kovilakam et al., 2020), a negative bias has been observed in the aerosol channels (521, 602, and 676 nm) close to the Chappuis ozone absorption band in the v5.2 aerosol data (Wang et al., 2020). Caution is advised when using these aerosol extinction coefficient measurements  
 145 at the above wavelengths due to the reported bias, and ongoing investigations are being conducted to address this issue.

## **2.4 Modeling of Effective Radiative Forcing and associated Surface Temperature Response**

To assess the importance of differences among the aerosol optical property datasets considered in this study, we estimate the global mean effective radiative forcing (ERF) and the associated temperature response for each dataset. To estimate the global  
 150 mean ERF, we use the relationship from Marshall et al. (2020):

$$\text{ERF} = -20.7 \times (1 - e^{-\Delta\text{SAOD}}) \quad (1)$$

where  $\Delta\text{SAOD}$  is the global mean 550 nm stratospheric aerosol optical depth (SAOD) anomaly. We calculate this anomaly as the deviation of SAOD from its minimum over 2017-2023. Due to spatial coverage limitations and to preserve the temporal resolution of the SAOD time series, we apply this relationship to the monthly 60°S-60°N mean  $\Delta\text{SAOD}$  instead of the annual  
 155 global mean used by Marshall et al. (2020) for the calibration of Equation 1. We assume this approximation still provides a reasonable estimate of the global mean ERF. Previous studies have typically assumed a linear relationship between ERF and

SAOD, with Forster et al. (2021) estimating a best value of  $-20 \pm 5 \text{ W m}^{-2}$  per unit SAOD for the proportionality factor. Using a non-linear relationship better reflects the expected physical relationship between radiative forcing and SAOD and accurately captures the ERF-SAOD relationship in an extensive set of stratospheric aerosol injection simulations with the UM-UKCA interactive stratospheric aerosol model (Marshall et al., 2020).

To calculate the global mean surface temperature response associated with each stratospheric aerosol dataset, we use the Finite Amplitude Impulse Response (FaIR) model, a three-box impulse response model designed to mimic the behavior of complex Earth System Models (ESM) (Millar et al., 2017; Smith et al., 2018; Leach et al., 2021). This model transforms emissions of greenhouse gases and short-lived climate forcers into a concentration and radiative forcing time series, which is then used to estimate global temperature anomalies. We performed six 1000-member ensembles corresponding to the five aerosol optical property datasets used in our study (OMPS(NASA), OMPS(SASK), OSIRIS, SAGE III/ISS, GloSSAC), plus an ensemble with no stratospheric aerosols-induced ERF. Each member is run with FaIR at monthly resolution with a different set of parameters (heat capacity, heat exchange coefficient for each box, climate feedback parameter, and forcing efficacy), effectively quantifying the climate modeling uncertainty. We run each ensemble with climate forcings from the Reduced Complexity Model Intercomparison Project (Nicholls et al., 2021), replacing the volcanic forcing time series with the ERF time series calculated from Equation 1 using the SAOD time series corresponding to each aerosol optical property dataset tested. We do not propagate uncertainty related to climate variability, SAOD uncertainty, or SAOD-ERF conversion to keep the focus on differences between the stratospheric aerosol datasets and the expected mean temperature response.

### 3 Results

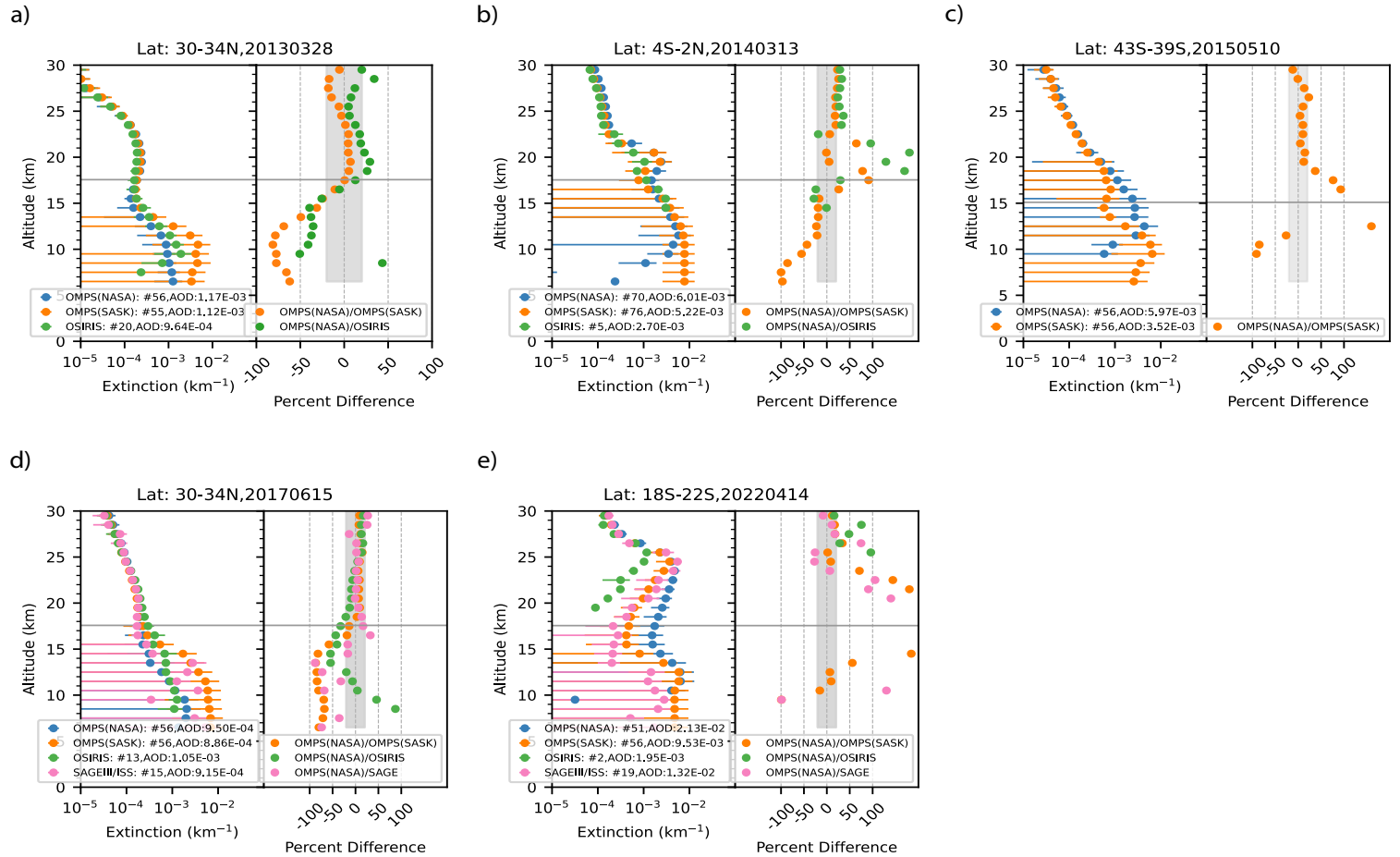
For consideration in GloSSAC, all datasets are required to be publicly available at a recognized data center and to have undergone peer-reviewed validation for their stratospheric aerosol products, among other requirements (Thomason et al., 2018). Both OMPS(NASA) (Taha et al., 2021, 2022) and OMPS(SASK) (Bourassa et al., 2023) products satisfy these criteria, and are both valid, albeit competing, candidates for integration into the GloSSAC framework.

#### 3.1 Evaluation of OMPS Aerosol Extinction Coefficient at 745 nm within the GloSSAC Framework

Given variations in measurement frequency and coverage across instruments, we utilize zonally averaged daily measurements to facilitate meaningful comparisons. Our analysis focuses on [the](#) aerosol extinction coefficient data at 745 nm from OMPS(NASA), OMPS(SASK), and OSIRIS at 750 nm, starting from January 2012 when OMPS data became available, extending to SAGE III/ISS measurements from June 2017 to the present. We opt to compare daily zonally averaged profiles from each instrument within a 4-degree latitude band, ensuring ample data for statistical analysis. Figure 1a illustrates daily zonally averaged aerosol extinction coefficient profiles for OMPS(NASA), OMPS(SASK), and OSIRIS, representing a relatively unperturbed period (28 March 2013). The horizontal bars in the aerosol extinction coefficient profiles depict  $\pm 1$  standard deviation of the averaged profiles. The averaged aerosol extinction coefficient profiles for 28 March 2013 in the latitude band 30-34° N from each instrument exhibit good agreement above the tropopause, as shown in the percent difference plot in Figure 1a.

Percent differences remain mostly within  $\pm 20\%$  between the tropopause and 25 km, suggesting reasonable agreement between OMPS(NASA), OMPS(SASK), and OSIRIS for a period with relatively low aerosol levels. Notably, differences within the scale of 20% are relevant to GloSSAC (Thomason et al., 2018; Kovilakam et al., 2020), provided the behavior of each instrument remains consistent and they vary systematically. Therefore, aerosol profiles during periods of low aerosol loading appear satisfactory within the context of GloSSAC. However, during perturbed periods, such as those caused by recent volcanic or smoke events, results may differ significantly, as observed following the Kelud volcanic eruption on 13 February 2014 at 8°S and the Calbuco volcanic eruption on 28 April 2015 at 41°S.

Figure 1b presents daily zonally averaged aerosol extinction coefficient profiles for OMPS(NASA), OMPS(SASK), and OSIRIS following the Kelud eruption. The averaged aerosol extinction coefficient profiles for 13 March 2014 in the latitude band 4°S-2°N from each instrument reveal differences between the tropopause and approximately 23 km, where volcanic aerosol loading is evident. In this case, the difference not only exceeds the permissible difference criteria of  $\pm 20\%$  used for GloSSAC but also frequently exceeds 50%, and occasionally even more significantly, far surpassing acceptable bounds. While the stratospheric aerosol optical depth (SAOD) from OMPS(NASA) and OMPS(SASK) does not exhibit significant differences, the SAOD difference between OMPS(NASA) and OSIRIS is notably distinct by more than 70%.



**Figure 1.** Daily zonally averaged profiles of [the](#) aerosol extinction coefficient. OMPS(NASA) at 745 nm, OMPS(SASK) at 745 nm, along with OSIRIS at 750 and SAGE III/ISS at 756 nm, are used for comparison. The zonally averaged aerosol extinction coefficient is depicted for (a) the latitude band 30-34<sup>0</sup>N for 28 March 2013 (relatively background stratosphere), (b) the latitude band 4<sup>0</sup>S-2<sup>0</sup>N for 13 [April March](#) 2014 following the Kelud volcanic eruption on 13 February 2014, (c) the latitude band 43<sup>0</sup>S-39<sup>0</sup>S for 10 May 2015 following the Calbuco volcanic eruption on 28 April 2015, (d) the latitude band 30-34<sup>0</sup>N for 15 June 2017 (relatively background stratosphere), and (e) the latitude band 18<sup>0</sup>S-22<sup>0</sup>S [for 14 April 2022](#) following [the](#) Hunga Tonga eruption on January 15, 2022. The percent difference between OMPS (NASA) and other measurements for these events are shown in the adjacent plots as ((OMPS(NASA)-other)/other)\*100, respectively. The gray shaded region in the percent difference plot indicates the permissible discrepancies between instruments ( $\pm 20\%$ ) within the framework of GloSSAC. The error bars on [the](#) aerosol extinction coefficient profiles represent [the](#) aerosol extinction coefficient  $\pm 1$  standard deviation. The number of profiles used for averaging [the](#) aerosol extinction coefficient profiles is also shown as #. The horizontal line represents the tropopause height. SAOD is computed by vertically integrating [the](#) aerosol extinction coefficient between tropopause and 25 km.



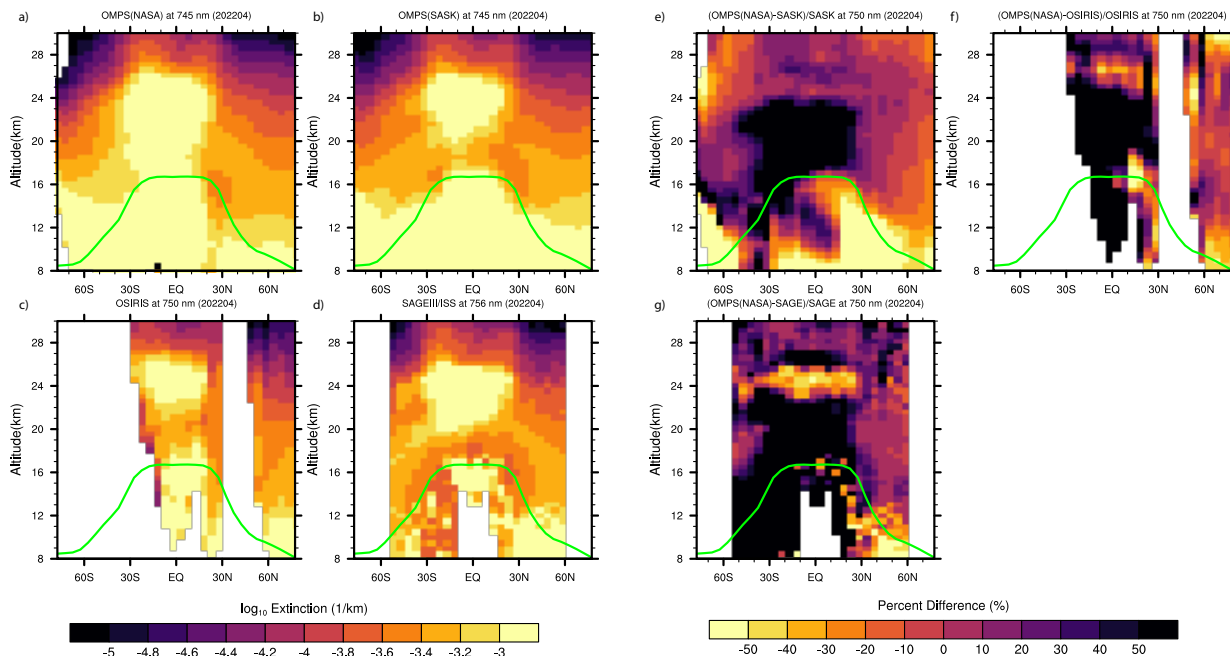
Figure 1c illustrates daily zonally averaged aerosol extinction coefficient profiles following the Calbuco eruption for OMPS(NASA) and OMPS(SASK). The averaged aerosol extinction coefficient profiles for 10 April 2015 in the latitude band 43°S-39°S from each instrument show differences between the tropopause and 18 km, where volcanic aerosol loading is evident. This contrast is highlighted in Figure 1c, illustrating percent differences between OMPS~~and SASK~~(NASA) and OMPS(SASK), exceeding 70%. Furthermore, SAOD from OMPS(NASA) significantly exceeds that of OMPS(SASK) by more than 50% as data between the tropopause and 18 km contributes more toward this difference as evident from the percent difference plots. No measurements are available from OSIRIS for this comparison.

We also conducted an analysis of the aerosol extinction coefficient data from OMPS(NASA) and OMPS(SASK) at 745 nm, starting from June 2017, during which corresponding measurements were available from SAGE III/ISS. While a reasonable agreement between OMPS(NASA), OMPS(SASK), and SAGE III/ISS (within  $\pm 20\%$ ) is seen during relatively unperturbed period in the stratosphere such as June 2017 (Figure 1d), the scenario is completely different following the volcanic eruption of Hunga Tonga on January 15, 2022, at 21°S and the level of agreement among the instruments degrades dramatically. Figure 1e displays the zonally averaged aerosol extinction coefficient profiles for the latitude band 18°S-22°S on April 14, 2022, revealing that OMPS(NASA) significantly overestimates the aerosol extinction coefficient by approximately 80% or more relative to OMPS(SASK) and SAGE III/ISS. This finding corroborates the results of Bourassa et al. (2023). Notably, the percent difference between OMPS(NASA) and ~~SASK~~-OMPS(SASK) versions also exhibits significant differences, although not as those between OMPS(NASA) and SAGE III/ISS. While overestimation in the lower stratosphere (approximately between the tropopause and at about 20 km for the tropics) is a known issue for limb scatter measurements, mainly attributable to cloud contamination at these altitudes (Rieger et al., 2015; Kovilakam et al., 2020), the percent difference of OMPS(NASA)/OMPS(SASK) and OMPS(NASA)/SAGE III/ISS at altitudes between 25 and 20 km shows a clear overestimation within OMPS(NASA) data set, exceeding 80% or more. Additionally, the computed SAOD between the tropopause and 25 km for the averaged aerosol extinction coefficient profile (Figure 1e) shows that the OMPS(NASA) product (SAOD: ~~2.13~~  $\times 10^{-2}$  ~~2.13~~  $\times 10^{-2}$ ) overestimated by approximately 60% compared to both OMPS(SASK) (SAOD: ~~1.23~~  $\times 10^{-2}$  ~~9.53~~  $\times 10^{-3}$ ) and SAGE III/ISS (SAOD: ~~1.32~~  $\times 10^{-2}$  ~~1.32~~  $\times 10^{-2}$ ), reinforcing the fact that OMPS(NASA) overestimates the aerosol extinction coefficient below the peak, in accordance with the findings of Bourassa et al. (2023). Although, we present the result from OSIRIS here for comparison purposes, due to declining coverage and low-frequency measurements in the southern hemisphere, OSIRIS only provides two profiles for this comparison and may not properly represent aerosol profiles in the stratosphere following the eruption. Additionally, caution must be exercised while using OSIRIS data after 2021 (Rozañov et al., 2024) due to underestimation of the aerosol extinction coefficient.

In addition to the daily zonal averages, we also analyzed ~~zonally averaged gridded data into~~ the zonally averaged aerosol extinction coefficient profiles from various instruments and gridded them to match GloSSAC's spatial resolution of 5 degree latitude bands ~~degrees latitude~~. While other eruptions such as Kelud, and Calbuco shows similar significant difference between OMPS(NASA) and other measurements, we only show here an instance following the Hunga Tonga eruption on January 15, 2022 for which all measurements were available. Figure 2(a-d) illustrates the zonally averaged aerosol extinction coefficient from OMPS(NASA), OMPS(SASK), OSIRIS, and SAGE III/ISS for April 2022 following the Hunga Tonga eruption. Fig-

ure 2e distinctly shows a significant difference (OMPS(NASA) exceeding [the](#) aerosol extinction coefficient by 50% or more) between OMPS(NASA) and OMPS(SASK) in the latitude band 30<sup>0</sup>S to 30<sup>0</sup>N and for altitudes between the tropopause and about 24 km. Similar differences are observed in Figure 2f between OMPS(NASA) and OSIRIS. Figure 2g also reveals a significant difference between OMPS(NASA) and SAGE III/ISS. However, in addition to the overestimation of OMPS(NASA) aerosol extinction coefficient below the peak of the aerosol layer at about 25 km, OMPS(NASA) underestimates [the](#) aerosol extinction coefficient by about 50% at the peak of the aerosol layer, around 25 km, within the latitude band 30<sup>0</sup>S and 30<sup>0</sup>N. Similar underestimation by OMPS(SASK) is observed when comparing OMPS(SASK) against SAGE III/ISS (not shown), suggesting that underestimation at the peak of the aerosol layer by OMPS retrieval, regardless of whether it is OMPS(NASA) or OMPS(SASK), is common for both OMPS products. This suggests that the underestimation could be attributable to the retrieval of OMPS aerosol extinction coefficient, where a fixed background size distribution assumption is used to derive the phase function (Taha et al., 2021; Bourassa et al., 2023).

The current analysis reveals a significant disparity between OMPS(NASA) and other datasets during essentially all perturbed events (eg., Kelud, Calbuco, and [Hunga](#) Tonga). Given the permissible difference of  $\pm 20\%$  between instruments in the context of GloSSAC framework (Thomason et al., 2018; Kovilakam et al., 2020), OMPS(NASA) significantly exceeds the bounds that are relevant to GloSSAC.



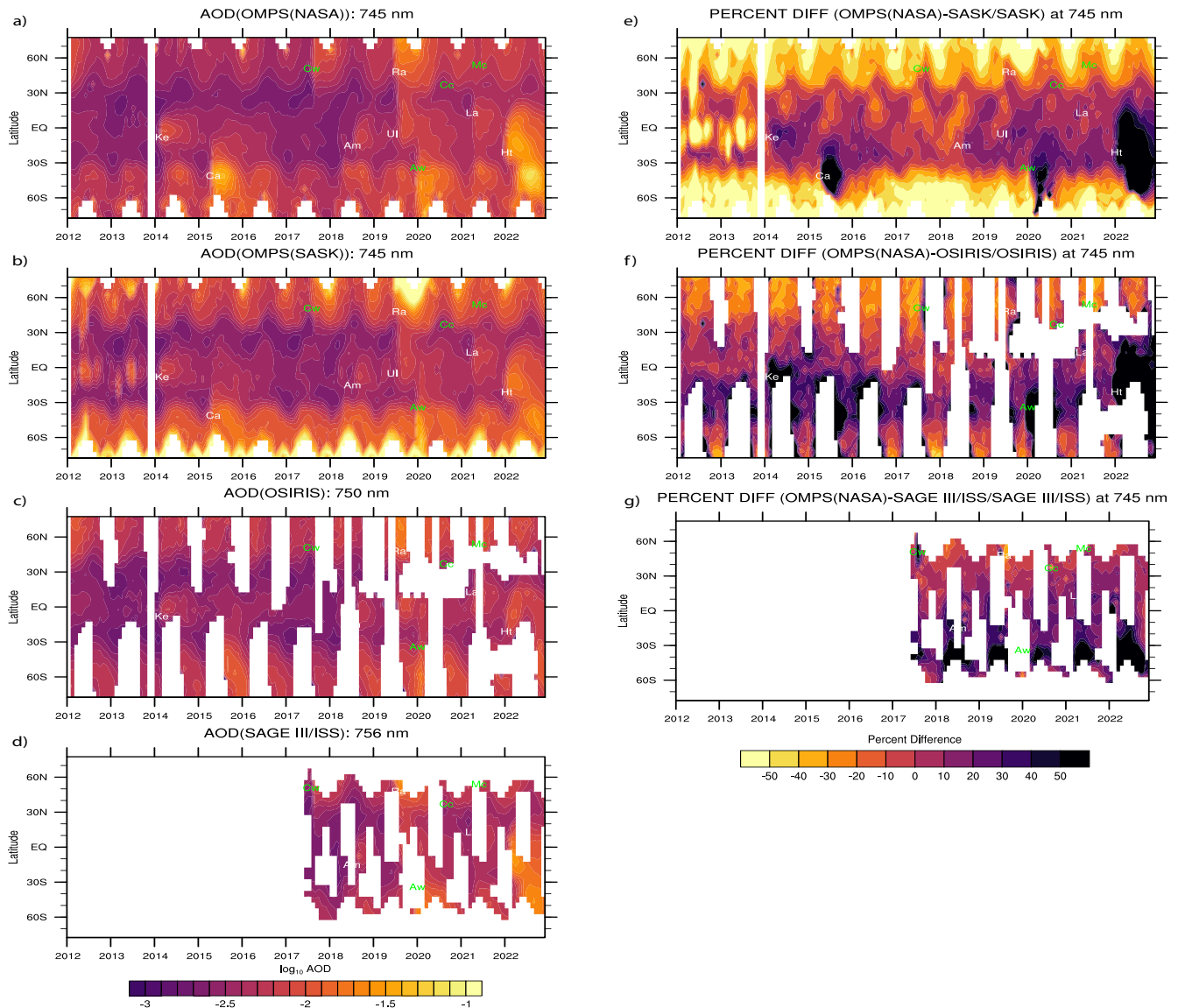
**Figure 2.** ~~Zonally~~The zonally averaged gridded monthly aerosol extinction coefficient and percent difference for April 2022 following the Hunga Tonga eruption on 15 April 2022 at 21<sup>0</sup>S. (a) Altitude versus latitude~~The~~ zonally averaged aerosol extinction coefficient from OMPS (NASA) at 745 nm, (b) same as in (a) but for OMPS(SASK), (c) same as in (a) but for OSIRIS at 750 nm, and (d) same as in (a) but for SAGE III/ISS at 756 nm. (d) shows the percent difference of the zonally averaged aerosol extinction coefficient between OMPS(NASA)(a) and OMPS(SASK)(b), (e) illustrates the percent difference of the zonally averaged aerosol extinction coefficient between OMPS(NASA)(a) and OSIRIS(c) and (f) shows percentage difference between OMPS(NASA) and SAGE III/ISS. The green solid line shows monthly averaged tropopause from OMPS(SASK).

In addition to the aerosol extinction coefficient comparison, SAODs at 745 nm are also computed for the entire period from 2012 to 2022. The SAOD was computed by integrating the aerosol extinction coefficient between the tropopause and 255 30 km using zonally averaged gridded data. Figure 3(a-d) presents time series plots of SAOD for OMPS(NASA) at 745 nm, OMPS(SASK) at 745 nm, OSIRIS at 750 nm, and SAGE III/ISS at 756 nm. All SAOD time series plots show an increase in SAOD following major volcanic/fire events. However, when examining the percent differences between SAOD values from different products, notable distinctions emerge. Figure 3e illustrates the percent difference between OMPS(NASA) and OMPS(SASK), revealing significant overestimation of OMPS(NASA) aerosol optical depth following the Calbuco volcanic eruption in April 2015, Australian bushfire in January 2020, and the Hunga Tonga volcanic eruption in January 2022. These differences exceed 50% or more, persisting even 10 months after the Hunga Tonga eruption. While OMPS(SASK) demonstrates improved consistency following perturbed events, our analysis underscores the need for further evaluation, especially in instances of aerosol overestimation poleward of 40<sup>0</sup>S/40<sup>0</sup>N in the ~~SASK~~OMPS(SASK) product. This discrepancy is likely 260

265 attributed to cloud contamination in the data, as evidenced by the overestimation of [the](#) aerosol extinction coefficient in the lower stratosphere in the monthly zonally averaged gridded product (not shown). We anticipate that a more robust cloud filter could enhance accuracy in such cases. Additionally, a seasonal cycle is observed in the percent difference plot, particularly poleward of 40<sup>0</sup>S and 40<sup>0</sup>N, which could be attributed to changes in the scattering angle of OMPS. We also note significant overestimation of OMPS(SASK) between 20<sup>0</sup>S and 20<sup>0</sup>N in the first couple of years of OMPS operations (Figure 3e), which could be attributed to changes in the Level 1 OMPS product. The OMPS(SASK) team is currently investigating this issue, 270 including the potential of moving the retrieval wavelength to 869 nm, which does not appear to have these issues (Adam Bourassa, personal communication).

A notable overestimation of OMPS(NASA) SAOD is also evident when computing percent differences in SAOD between OMPS(NASA) and OSIRIS. Figure 3f displays the time series of percent differences in stratospheric SAOD between OMPS(NASA) and OSIRIS. The plot clearly depicts an overestimation of [the](#) OMPS(NASA) aerosol extinction coefficient 275 following the Kelud eruption, Australian wildfires, and the Hunga Tonga eruption. OMPS(NASA) overestimates SAOD by approximately 50% or more following these events. [The](#) OSIRIS aerosol extinction coefficient measurements during the Hunga Tonga time period exhibit a substantial low bias and deviate from patterns observed in previous events. The potential causes of this bias, including particle size assumptions, instrumental stray light, and sampling geometry, are currently under investigation (Adam Bourassa, personal communication). Therefore, while the overestimation of [the](#) OMPS(NASA) aerosol extinction coef- 280 ficient/SAOD following major events aligns with other products, the low bias from OSIRIS may have amplified the discrepancy between OMPS(NASA) and OSIRIS.

The SAOD from OMPS(NASA) at 745 nm tends to overestimate relative to SAGE III/ISS (Figure 3g), particularly poleward of 30<sup>0</sup>S, regardless of any volcanic event. Figure 3g also depicts a significant positive bias (> 50%) in the southern tropics following [the Hunga](#) Tonga eruption in January 2022. This discrepancy between OMPS(NASA) and SAGE III/ISS is in 285 agreement with previous studies (Bourassa et al., 2023). The results so far shows a clear discrepancy between OMPS(NASA) and other space-based measurements, reinforcing the fact that [the](#) OMPS(NASA) aerosol extinction at 745 nm is beyond the permissible discrepancy limit ( $\pm 20\%$ ) between the instruments, in the context of GloSSAC.

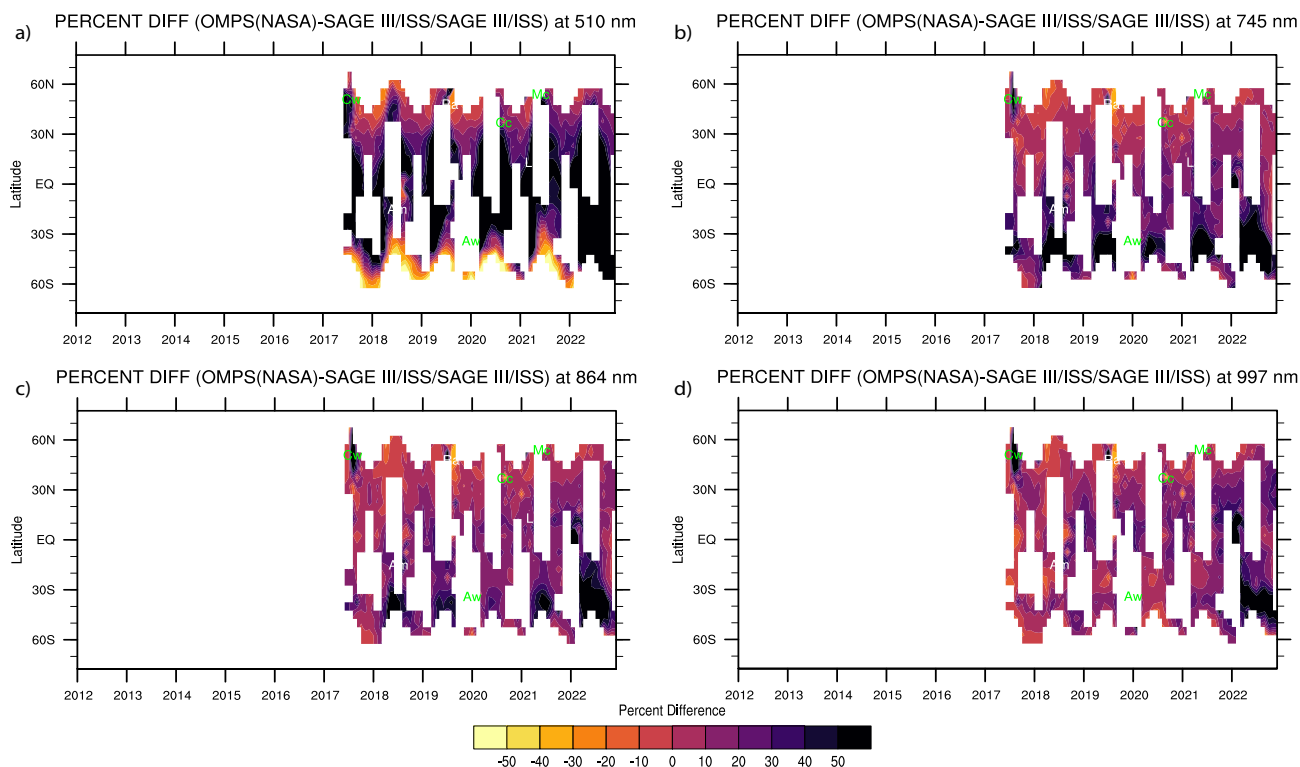


**Figure 3.** Stratospheric SAOD time series. (a) Time series of stratospheric SAOD (Latitude versus time) for OMPS(NASA) at 745 nm, (b) same as in (a) but for OMPS(SASK), (c) same as in (a) but for OSIRIS at 750 nm, and (d) same as in (a) but for SAGE III/ISS at 756 nm. (d) shows the percent difference of SAOD time series between OMPS(NASA)(a) and OMPS(SASK)(b), (e) illustrates the percent difference of stratospheric SAOD between OMPS(NASA)(a) and OSIRIS(c) and (f) shows percentage difference between OMPS(NASA) and SAGE III/ISS. Major volcanic eruptions (white) and wild fire events (green) with abbreviated two-letter code with their respective latitude and time of occurrence that are listed here. The event names shown are Kelud (Ke), Calbuco (Cb), Canadian wildfire (Cw), Ambae (Am), Raikoke (Rk), Ulawun (Ul), Australian wildfire (Aw), California Creek Fire (Cc), La Soufriere (La), McKay Creek fire (Mc) and Hunga Tonga (Ht).

### 3.2 Multi-wavelength Aerosol Extinction Coefficients from OMPS(NASA) and SAGE III/ISS

290 Despite its lower frequency measurements compared to limb scatter instruments, SAGE III/ISS remains valuable with its direct  
multi-wavelength aerosol extinction coefficient measurements, which provide ~~valuable~~-important information about particle  
295 sizes, particularly when the stratosphere is perturbed (Thomason et al., 2021). The OMPS(NASA) product also provides multi-  
wavelength aerosol measurements, offering an opportunity to evaluate OMPS(NASA).

Figure 4 illustrates the time series of percent differences in SAOD between OMPS(NASA) and SAGE III/ISS at four wave-  
lengths. While the 510 nm channel appears biased high throughout the entire time period (Figure 4a), regardless of any per-  
295 turbed event, 745 nm shows better agreement (Figure 4b) relative to 510 nm. However, we note a consistent overestimation  
( $> 50\%$ ) of OMPS(NASA) at 745 nm poleward of  $30^{\circ}\text{S}$ . At 869 nm (Figure 4c), the differences are similar to 745 nm except  
that the overestimation of OMPS(NASA) poleward of  $30^{\circ}\text{S}$  is improved relative to 745 nm. For 997 nm, Figure 4d depicts  
a different pattern compared to Figure 4a, 4b, and 4c, showing that the overestimation only occurs following the Canadian  
Wildfire and Hunga Tonga. Notably, 510, 745, 864, and 997 nm channels from OMPS(NASA) exhibit inconsistent behavior  
300 across the spectrum, behaving differently in each channel relative to 521, 756, 864, and 1022 nm channels in SAGE III/ISS.

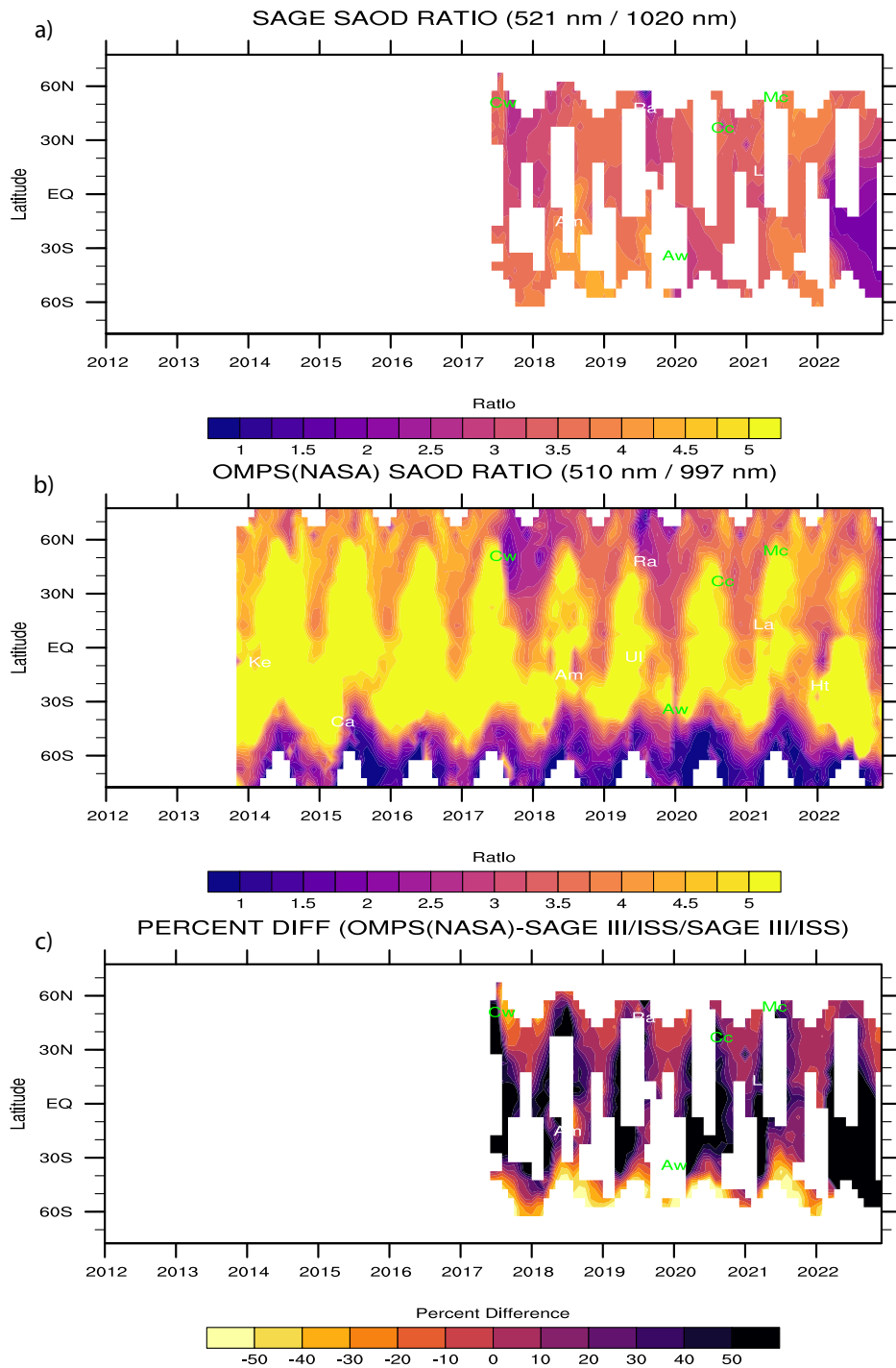


**Figure 4.** Stratospheric SAOD time series. (a) shows the percent difference of SAOD time series between OMPS(NASA) and SAGE III at 510 nm, (b) the percent difference of SAOD time series between OMPS(NASA) and SAGE III at 745 nm, (c) the percent difference of SAOD time series between OMPS(NASA) and SAGE III at 864 nm and (c) the percent difference of SAOD time series between OMPS(NASA) and SAGE III at 997 nm. Note that for the percent difference we use 510, 745, 864, and 997 nm from OMPS(NASA) and 521, 756, 869, and 1022 nm from SAGE III/ISS. Major volcanic eruptions (white) and wild fire events (green) are same as in Figure 3.

In the context of GloSSAC, 510, and 997 nm from OMPS(NASA) and 521, and 1022 nm of SAGE III/ISS are particularly relevant. OMPS(NASA) product below 675 nm is not robust due to the low sensitivity of shorter wavelengths to aerosols (Taha et al., 2021). However, we use 510 nm for the comparison purposes with SAGE III/ISS as GloSSAC provides extinction coefficient at 525 nm, a channel close to OMPS(NASA)'s 510 nm and therefore relevant to evaluate OMPS(NASA) at 510 nm. For the analysis here, instead of examining extinction coefficient or SAOD, we examine stratospheric SAOD ratios between the channels from both OMPS(NASA) and SAGE III/ISS as extinction/SAOD ratios provide valuable information about the size of the aerosol particles (Thomason et al., 2021; Knepp et al., 2023; Kovilakam et al., 2023). For SAGE series of measurements, 525 and 1020 nm extinction coefficient measurements are generally used for inferring particle size information (Thomason et al., 2021; Knepp et al., 2023) and therefore, we evaluate OMPS(NASA) 510/997 nm SAOD ratios against SAGE III/ISS 525/1020 nm SAOD ratio. Figure 5 depicts stratospheric SAOD ratio computed from SAGE III/ISS (Figure 5a) and OMPS(NASA)(Figure 5b). An important difference between these two plots are the difference in the SAOD ratios. While following each perturbed event, the SAOD ratio from SAGE (Figure 5a) clearly show changes in SAOD ratios, particularly

following Canadian wild fire, Raikoke eruption and Hunga Tonga eruption for which decrease in SAOD ratios are observed, suggesting larger particles (Thomason et al., 2021; Knepp et al., 2023), whereas other moderate eruptions like Ambae and  
315 Ulawun shows increase in SAOD ratios, suggesting increased amount of smaller particles. In contrast, OMPS(NASA) SAOD ratios (Figure 5b) are completely inconsistent with SAGE III/ISS measured values and thus unlikely to be useful inferring any correct information regarding aerosol size. The percent difference plot between SAGE and OMPS (Figure 5c) clearly suggests that the OMPS(NASA) SAOD ratios are of significant bias ( $> 50\%$ ), mostly due to the bias in 510 nm channel as mentioned earlier and therefore are not suitable for GloSSAC purpose.





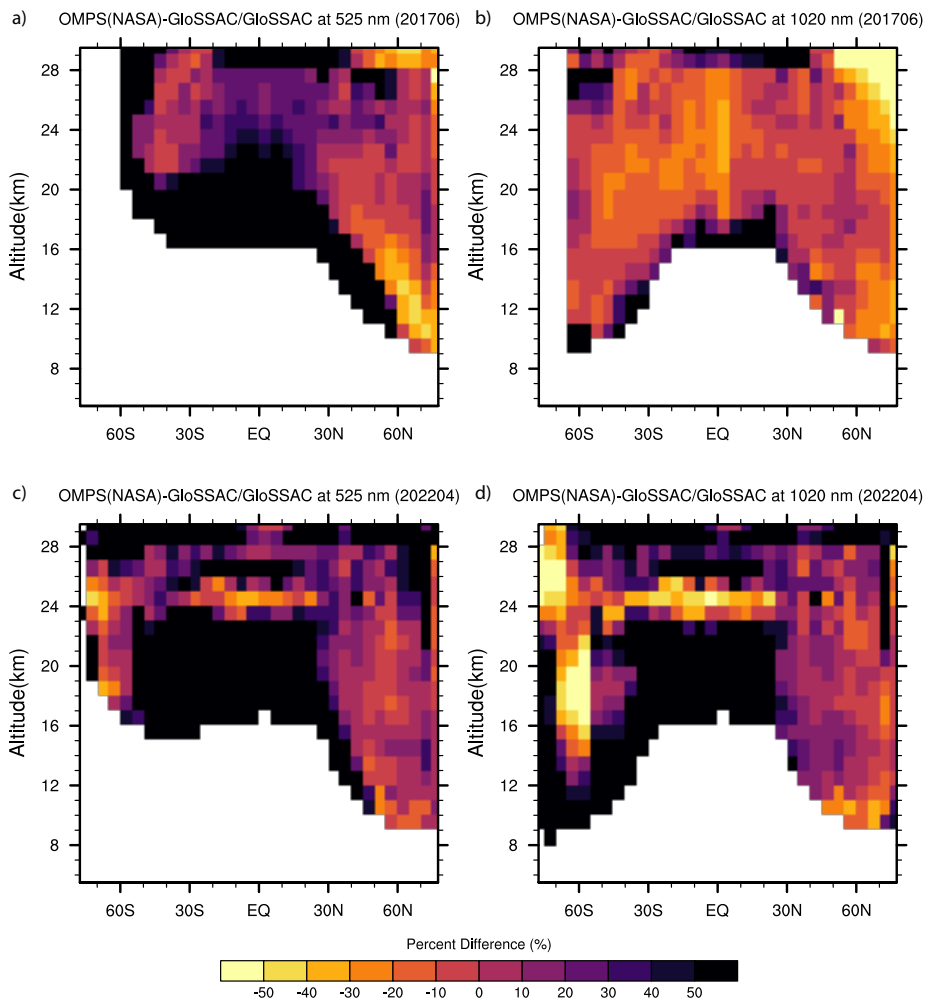
**Figure 5.** Stratospheric SAOD ratio time series. (a) shows stratospheric SAOD ratio between 521 and 1020 nm from SAGE III/ISS, (b) shows stratospheric SAOD ratio between 510 and 997 nm from OMPS(NASA), and (c) the percent difference of SAOD ratios between (a) SAGEIII/ISS and (b) OMPS(NASA). Major volcanic eruptions (white) and wild fire events (green) are same as in Figure 3.

320 From the aforementioned comparisons, it is evident that OMPS(NASA) tends to overestimate [the](#) aerosol extinction coefficient and SAOD following major events in comparison to SAGE III/ISS and other space-based aerosol measurements. Moreover, the multi-wavelength measurements from OMPS at 510, 745, 869, and 997 are inconsistent across the channels, suggesting OMPS(NASA) multi-wavelength measurements lack to provide accurate information to infer particle size.

### 3.3 Evaluating OMPS(NASA) multi-wavelength measurements in the context of GloSSAC

325 For the purpose of comparison, we initially generated [the](#) zonally averaged aerosol extinction coefficient profiles of OMPS(NASA) and gridded them to the same spatial resolution as GloSSAC (5-degree latitude resolution). Given that GloSSAC has a higher altitude resolution (0.5 km) than OMPS (1 km), we utilized GloSSAC at the OMPS altitude resolution to avoid any interpolation along altitudes. While OSIRIS and CALIPSO have been components of GloSSAC version 2.22, the unavailability of CALIPSO data since January 2022 and the decreased coverage of OSIRIS resulted in GloSSAC relying predominantly on SAGE III/ISS  
330 since January 2022. We utilized the publicly available GloSSAC version 2.22 data (NASA/LARC/SD/ASDC, 2024) for the analyses. In our analysis, we first selected data for June 2017, representing a relatively stable period, and another case following the Hunga Tonga eruption. The upper panel of Figure 6 (a, b) depicts the percentage difference of OMPS(NASA) and GloSSAC at 525 and 1020 nm for June 2017 for a relatively background stratosphere. While a reasonable agreement between OMPS(NASA) and GloSSAC was observed at 1020 nm ( $\pm 20\%$ ), except in the lower tropical stratosphere, significant discrepancies between the two datasets persisted at 525 nm. Similar differences were noted between the tropopause and approximately  
335 24 km in the tropics and southern mid-latitudes.

For the data following the Hunga Tonga eruption in January 2022, we conducted a similar comparison for April 2022 (Figure 6 c, d), by which time the volcanic plume had largely dispersed. We note that the overestimation of OMPS(NASA) persisted in both the 525 nm and 1020 nm channels between the tropopause and approximately 25 km. Interestingly, at the  
340 peak of the aerosol layer, OMPS(NASA) underestimated GloSSAC by about 40%, while it overestimated below the peak of the aerosol layer by about 50% or more, exceeding the permissible limits ( $\pm 20\%$ ) between different data sets in the context of GloSSAC. The underestimation at the peak could be attributed to the fixed particle size distribution assumption, while the cause of the difference below the peak could be attributed to the difference in the retrieval algorithms between OMPS(NASA) and OMPS(SASK) and/or not converging the OMPS(NASA) product properly below the peak due to retrieval technique and  
345 number of iterations.



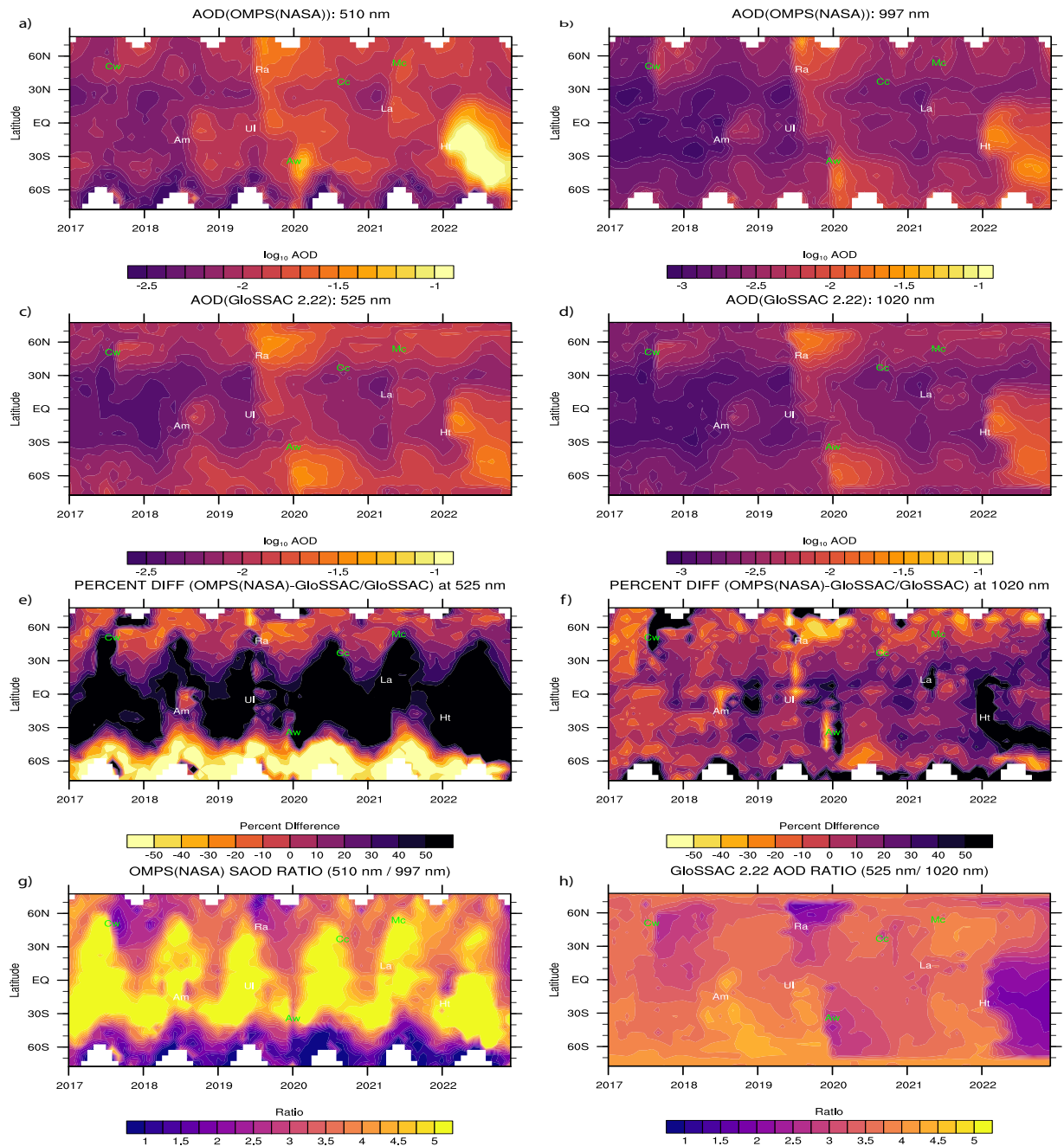
**Figure 6.** Zonally monthly averaged percentage difference of OMPS(NASA) and GloSSAC (version 2.22) for 525 and 1020 nm on an altitude versus latitude plot. (a, b) for June 2017 and (c, d) for April 2022 following [the](#) Hunga Tonga eruption.

In addition to evaluating [the](#) aerosol extinction coefficient, we computed SAOD ~~as outlined as described~~ in §3.1. Figure 7a, b displays latitude-versus-time ~~a-d shows latitude-time~~ plots of OMPS (NASA) SAOD at 510 and 997 nm ~~while Figure 7e, d illustrates that of and~~ GloSSAC 2.22 at 525 and 1020 nm. ~~All plots reveal an enhancement in aerosol extinction coefficient following, highlighting aerosol enhancements after~~ major events. However, ~~the percent difference between OMPS(NASA) and GloSSAC at 525 nm (Figure 7e ) shows reveals a consistent~~ overestimation of SAOD ~~regardless of volcanic events, and by~~ OMPS (NASA) ~~consistently exhibits a high bias throughout the entire record. Therefore, OMPS(NASA) aerosol extinction coefficient at 510 nm is not suitable for the GloSSAC purpose. The percent difference, regardless of volcanic/fire activity, suggesting it is unsuitable for GloSSAC. While the agreement~~ between OMPS(NASA) and GloSSAC at 1020 nm (Figure 7f)

aligns better than Figure 7e. However, Figure 7f clearly shows overestimation of SAOD following Kelud, Calbuco, Canadian Wildfire, Australian Wildfire, and Hunga Tonga, suggesting that there is an inherent issue is better, significant overestimations follow major events, indicating potential issues with OMPS(NASA), especially following perturbed events, and caution should be exercised in its use particularly during perturbed conditions.

Latitude versus time dependence of zonally averaged SAOD from OMPS(NASA) and GloSSAC (v 2.22). OMPS(NASA) SAODs are computed for 510 and 997 nm (a,b), while for GloSSAC SAODs are computed at 525 and 1020 nm (c, d). Percent difference between OMPS(NASA) and GloSSAC are also shown in (e) for 525 nm and (f) for 1020 nm. Major volcanic eruptions (white) and wild fire events (green) are same as in Figure 3.

Additionally, we computed the SAOD ratio between We also compared SAOD ratios (510 and /997 nm of OMPS and compared it against SAOD ratio of GloSSAC between for OMPS and 525 and /1020 nm (Figure ??e, f). This comparison provides insights into how two wavelengths can provide information on aerosol extinction coefficient ratios, eventually aiding in the inference of aerosol particle sizes for GloSSAC, Figure 7g, h) to infer particle size variations. Previous studies have demonstrated how the aerosol extinction coefficient ratios can be leveraged to infer particle sizes using the SAGE series of measurements (e.g., Thomason et al., 2021; Wrana et al., 2021; Knepp et al., 2023). We considered only the time series from 2017 through 2022 due to the availability of SAGE III/ISS multi-wavelength measurements from 2017. Figure ??e clearly shows that the SAOD ratios do not provide meaningful information, suggesting that these wavelengths cannot be used to infer any size information. However, on the other hand, the SAOD ratio from GloSSAC provides valuable insights (Figure ??f) into how ratios change following each volcanic The OMPS ratios provide limited size information, while GloSSAC ratios offer valuable insights into particle size changes post-volcanic/fire event, particularly after the Canadian Wildfire, Ambae, Ulawun, Raikoke, Australian Wildfire, and Hunga Tonga. Each event behaves differently in terms of the SAOD ratio. For example, Canadian wildfire, Raikoke, Australian wildfire, events. For instance, the Canadian wildfire and Hunga Tonga show a smaller SAOD ratio, suggesting relatively events suggest larger particles, while Ambae and Ulawun eruptions show a larger SAOD ratio, suggesting indicate smaller particles. Therefore, it's crucial to emphasize that This underscores the importance of multi-wavelength aerosol extinction coefficients from solar occultation measurements, such as SAGE, is vital in providing important information on aerosol particle size-related details in measurements, like those from SAGE, in capturing aerosol size information critical for GloSSAC.

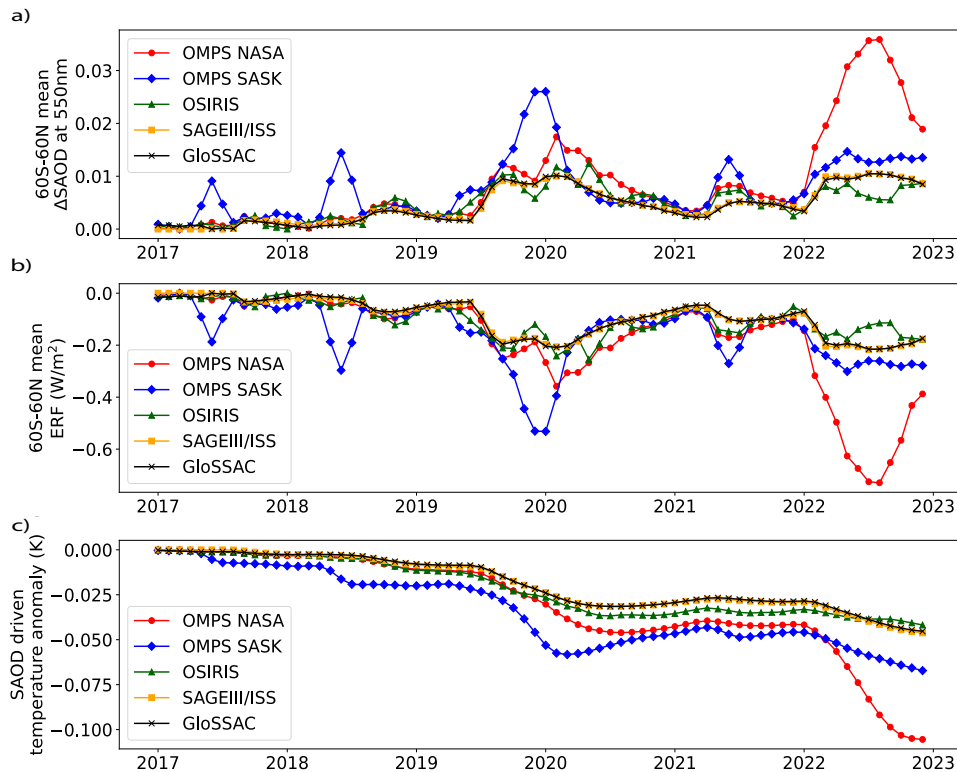


**Figure 7.** Latitude versus time dependence of zonally averaged **stratospheric aerosol optical depth (SAOD)** from OMPS(NASA) and GloSSAC (v 2.22). OMPS(NASA) SAODs are computed for 510 and 997 nm (a,b), while for GloSSAC SAODs are computed at 525 and 1020 nm (c, d). Percent difference between OMPS(NASA) and GloSSAC are also shown in (e) for 525 nm and (f) for 1020 nm. Ratio between 510 and 997 nm of OMPS(NASA) SAOD is shown in (eg), while (fh) shows ratio between 525 and 1020 nm of GloSSAC 2.22 for the same time period. Major volcanic eruptions (white) and wild fire events (green) are same as in Figure 3.

Figure 8 shows  $\Delta$ SAOD averaged between 60°S-60°N and corresponding global mean ERF estimates (see §2.4) for the period 2017-2022.  $\Delta$ SAOD from OMPS(NASA) is significantly different from other measurements, particularly following [the Hunga](#) Tonga eruption in January 2022. The largest discrepancy occurs in August 2022, where the OMPS(NASA) SAOD peak is 0.036, whereas OMPS(SASK), SAGE III/ISS, GloSSAC, and OSIRIS SAOD values are approximately 0.013, 0.01, 0.01, and 0.006 respectively. On average, the  $\Delta$ SAOD difference between OMPS(NASA) and other measurements is about a factor of 3. Additionally, the discrepancy in OMPS(SASK)  $\Delta$ SAOD, relative to SAGE III/ISS and GloSSAC, is largely caused by an overestimation of extinction coefficient poleward of 40°S and 40°N as shown in Figure 3e**b**. We then estimated ERF from the  $\Delta$ SAOD time series using Equation 1 (Marshall et al., 2020). In August 2022, at the peak of OMPS(NASA)  $\Delta$ SAOD, the OMPS(NASA) ERF of  $-0.73 \text{ W m}^{-2}$  is about a factor of 3.0 ~~higher~~ ~~stronger~~ than SAGE III/ISS/GloSSAC as shown in Figure 8 b. This difference in ERF could be significant in terms of surface temperature impact (e.g., Ridley et al., 2014). Ridley et al. (2014) used a simple climate model to compute global volcanic aerosol forcing between 2000 and 2014, estimating it at  $-0.19 \pm 0.09 \text{ W m}^{-2}$ , which translates to an estimated global cooling of 0.05 to  $0.12 \text{ }^{\circ}\text{C}$ .

We utilized the FaIR model to estimate the global mean surface temperature response from the estimated monthly ERF time series shown in Figure 8b (see §2.4). ~~We obtain a peak cooling of 0.064 K induced by the OMPS(NASA) ERF, against a cooling of 0.021, 0.008, 0.018, and 0.017 K for OMPS(SASK), OSIRIS, SAGE III/ISS and GloSSAC respectively (Figure 8c).~~ These results clearly indicate a cooling of about 0.092 K induced by OMPS(NASA) ERF, compared to cooling of 0.061, 0.039, 0.042, and 0.041 K for OMPS(SASK), OSIRIS, SAGE III/ISS and GloSSAC respectively, for August 2022. The global surface temperature continues to cool even months after the peak of OMPS(NASA) SAOD in August 2022, which is attributed to the higher heat capacity of the ocean resulting in a slow temperature response. For December 2022, we note a cooling of 0.105, 0.067, 0.042, 0.046, and 0.044 K for OMPS(NASA), OMPS(SASK), OSIRIS, SAGE III/ISS, and GloSSAC respectively. The temperature response from OMPS(NASA) exceeds a factor of two relative to SAGE III/ISS and GloSSAC.

For the [Hunga](#) Tonga eruption, we also calculated the difference between the peak cooling in December 2022 and the mean 2021 temperature response from Figure 8c. The OMPS(NASA) ERF induced a cooling of 0.064 K, compared a cooling of 0.021, 0.008, 0.018, and 0.017 K for OMPS(SASK), OSIRIS, SAGE III/ISS and GloSSAC respectively (Figure 8c). On average, over 2017-2022 time period, we estimate that SAOD forcing cooled climate by 0.031, 0.034, 0.022, 0.019 and 0.019 K ~~on average~~ in the OMPS(NASA), OMPS(SASK), OSIRIS, SAGE III/ISS and GloSSAC respectively. Thus, the OMPS(NASA) extinction coefficient product must be used with caution in stratospheric aerosol and climate studies, particularly following major volcanic events such as [the Hunga](#) Tonga eruption.



**Figure 8.** Time series of near global 550 nm  $\Delta$ SAOD (panel a), Effective Radiative Forcing (panel b), and temperature response (panel c) from OMPS(NASA), OMPS(SASK), OSIRIS, SAGEIII/ISS, and GloSSAC. To compute  $\Delta$ SAOD at 550 nm from 745 nm OMPS(NASA), OMPS(SASK), and OSIRIS, we used a constant Angstrom coefficient of 2.393, while for SAGE III/ISS and GloSSAC we used 1.97 to convert extinction from 525 to 550 nm. The resulting monthly surface temperature response in panel c is estimated from the FaIR model.

## 5 Summary and Conclusions

410 We have examined and assessed two publicly available OMPS aerosol extinction coefficient products namely OMPS(NASA) and OMPS(SASK) with other available space-based measurements within the context of GloSSAC framework. The analysis thus far revealed persistent disparities in the aerosol extinction coefficient, especially in the OMPS(NASA) product, demonstrating overestimation ( $> 50\%$ ) following the Hunga Tonga eruption at 745 nm, which aligns with the findings of Bourassa et al. (2023). While Bourassa et al. (2023) focused on the period following [the](#) Hunga Tonga and specifically at the 745 nm

415 wavelength, our analysis extends back to the year 2012, when OMPS began its measurements. This extended time frame has enabled us to assess the consistent nature of these differences between OMPS(NASA) and other datasets, particularly in the context of volcanic eruptions/ Fire events. Furthermore, we leveraged this situation to evaluate OMPS(NASA) against OMPS(SASK), utilizing data from a couple of volcanic eruptions during that period, such as Kelud on February 13, 2014, at

8<sup>0</sup>S, and Calbuco on April 22, 2015, at 41<sup>0</sup>S, and OMPS(NASA) is significantly overestimating (> 50%) the aerosol extinction  
420 coefficient for these events as well.

In addition to the significant differences in the OMPS(NASA) aerosol extinction coefficient at 745 nm, other wavelengths  
from OMPS(NASA) also show inconsistency across different channels. As OMPS(NASA) provides the aerosol extinction  
coefficient data at multiple wavelengths, giving us the opportunity to compare the measurements at 510, 745, 869, and 997  
nm with those at 521, 756, 864, and 1020 nm from SAGE III/ISS. The comparison between OMPS 510 nm and SAGE  
425 III/ISS 521 nm reveals significant differences, with OMPS(NASA) consistently exhibiting a high bias (> 50%) throughout  
the record, regardless of any perturbed events. However, the overall agreement improves toward longer wavelengths. Despite  
this, overestimation of the OMPS(NASA) aerosol extinction coefficient persists relative to SAGE III/ISS following major  
perturbed events, showing a high bias in OMPS(NASA) measurements during periods of elevated stratospheric aerosol loading.  
Additionally, we have computed SAOD from OMPS (NASA) and assessed with other products. The results clearly exhibit  
430 overestimation (> 50%) of SAOD following major volcanic events. While the permissible differences between instruments  
used in the GloSSAC framework are  $\pm 20\%$  (Thomason et al., 2018; Kovilakam et al., 2020), the differences exceeding 50%  
or more in most of the perturbed cases makes OMPS(NASA) product not suitable for GloSSAC.

Additionally, we assessed the consistency in OMPS(NASA) SAOD ratio between 510 and 997 nm compared to SAGE  
III/ISS/GloSSAC SAOD ratio between 525 and 1020 nm for the period between 2017 and 2022, when SAGE III/ISS multi-  
435 wavelength measurements are available. The OMPS SAOD ratios do not provide any meaningful information, suggesting that  
510 and 997 nm wavelengths cannot be used to infer any size information (Figure ~~??e7g~~). In contrast, SAGEIII/ISS/GloS-  
SAC SAOD ratios exhibit consistency following each perturbed event, providing valuable insights into how ratios change  
following each volcanic/fire event, particularly after the Canadian Wildfire, Ambae, Ulawun, Raikoke, Australian Wildfire,  
and Hunga Tonga (Figure ~~??f7h~~). Moreover, the aerosol extinction coefficients across different channels of OMPS(NASA)  
440 (510, 745, 869, and 997 nm) are not consistent, particularly following perturbed events. Therefore, it is ~~crucial-important~~  
to emphasize that while limb scatter measurements are valuable, ~~they have not yet demonstrated the capacity to produce robust~~  
their ability to produce reliable multi-wavelength aerosol extinction measurements. ~~They continue to produce lower quality~~  
~~data following remains limited. Following~~ volcanic and smoke events ~~affecting the stratosphere and, consequently, meaningful~~  
in the stratosphere, the quality of these measurements can be affected, which can affect the accuracy of aerosol extinction  
445 coefficient ratios ~~by which and the inference of~~ aerosol size information ~~can be inferred.~~. In contrast, the multi-wavelength  
aerosol extinction coefficient from solar occultation measurements, such as SAGE, plays a vital role in providing important  
multi-wavelength information on aerosol particle size-related details in GloSSAC.

We also estimated SAOD-driven ERF from each instrument, finding that the OMPS(NASA) driven ERF has a larger impact  
on radiative forcing compared to other datasets. At the peak of SAOD in August 2022, the OMPS(NASA) induced ERF is  
450  $-0.73 \text{ W m}^{-2}$ , which is about three times higher-stronger than the ERF from SAGEIII/ISS and GloSSAC (Figure 8b). We used  
the ERF time series to estimate surface temperature response using the FaIR model. The results show a significant cooling  
of approximately 0.092 K induced by OMPS(NASA) ERF, compared to cooling of 0.061, 0.039, 0.042, and 0.041 K for  
OMPS(SASK), OSIRIS, SAGE III/ISS and GloSSAC respectively, for August 2022 (Figure 8c).



Based on our analysis, the OMPS(NASA) product consistently exhibits a high bias (exceeding 50%), particularly in the  
455 aftermath of perturbed events and in the GloSSAC context, the bias exceeds the allowable differences between the instru-  
ments ( $\pm 20\%$ ). In contrast, OMPS(SASK) demonstrates improved agreement with other space-based measurements. While  
OMPS(SASK) aligns reasonably well (within  $\pm 20\%$ ) with SAGE III/ISS at 745 nm, it overestimates extinction coefficient  
poleward of  $40^{\circ}\text{S}$  and  $40^{\circ}\text{N}$ , potentially attributed to cloud contamination in the OMPS(SASK) data and a seasonal cycle.  
Enhancing the cloud-clearing algorithm and potentially removing the seasonal cycle may address this issue and improve data  
460 quality in these regions. Additionally, we note an overestimation of OMPS(SASK) extinction in the tropics in the first couple of  
years of OMPS operations. Excluding the data quality issues in the first couple of years, the OMPS(SASK) product appears use-  
able in GloSSAC. However, challenges arise when converting ~~OMPS-SASK~~the OMPS(SASK) aerosol extinction coefficient  
from 745 to 525 and 1020 nm, as GloSSAC provides the aerosol extinction coefficient data at these wavelengths. Previous  
studies have employed a constant Angstrom exponent for this conversion (Rieger et al., 2015), but this approach may not be  
465 suitable, especially considering the curvature in the aerosol spectrum following perturbed events such as volcanic eruptions or  
wildfires. To address this, we plan to explore the potential of using a pseudo-Angstrom exponent, following the methodology  
developed in Kovilakam et al. (2020, 2023). This process entails utilizing ~~OMPS-SASK~~the OMPS(SASK) aerosol extinc-  
tion coefficient at 745 nm in conjunction with SAGE III/ISS aerosol extinction coefficient at 525 and 1020 nm to establish a  
monthly median pseudo-Angstrom exponent climatology. Although employing a monthly median climatology proves effec-  
470 tive, it may not sufficiently capture variations in the aerosol extinction coefficient at each wavelength, especially following a  
volcanic eruption or wildfire event, as highlighted in Kovilakam et al. (2020). To address this limitation, we intend to refine the  
method by introducing a time-varying pseudo-Angstrom exponent when both ~~OMPS-SASK~~OMPS(SASK) and SAGE III/ISS  
data are available. For data prior to June 2017, where we did not have any SAGE measurements, we propose reverting to using  
a monthly median climatology of the pseudo-Angstrom exponent.

475 In addition to the differences between OMPS(SASK) and SAGE III/ISS mentioned above, some differences between  
OMPS(SASK) and SAGE III/ISS persist, especially at the peak of the aerosol layer following the Hunga Tonga eruption.  
Our future work will include addressing this issue by investigating the sensitivity of the OMPS(SASK) algorithm to the parti-  
cle size distribution assumption, which is currently implemented as a constant lognormal size distribution. We plan to test the  
algorithm with variable size distributions from SAGE III/ISS (e.g., Knepp et al., 2023; Ernest et al., 2024) to determine if this  
480 assumption contributes to the underestimation of the aerosol extinction coefficient at the peak of any enhanced aerosol layer.  
Preliminary studies suggest that seeding the retrieval of limb-scatter measurements with size distributions inferred from solar  
occultation measurements improves the quality of the limb-scatter instrument derived aerosol products. It may be possible to  
extend this capacity to a post-occultation future but substantial and obvious hurdles will need to be overcome before this could  
be expected to result in an acceptable data set for climate research and data sets like GloSSAC.

485 As previously highlighted, the SAGE series of measurements plays a pivotal role in GloSSAC, offering indispensable data  
from 1979 to the present, albeit with a hiatus between August 2005 and May 2017. With the aim of developing stratospheric  
aerosol properties for the upcoming phase 7 of the Coupled Model Intercomparison Project (CMIP7) forcing, GloSSAC has  
been designated as the observational dataset, spanning the satellite era from 1979 onward. Therefore, the continued main-

tenance of the GloSSAC data record is essential, serving the crucial purpose of quantifying uncertainties in climate forcing  
490 within CMIP7 and independently assessing the output of climate models.

*Data availability.* The GloSSAC v2.22 netCDF file is available from the NASA Atmospheric Data Center ([https://asdc.larc.nasa.gov/data/GloSSAC/GloSSAC\\_V2.22.nc](https://asdc.larc.nasa.gov/data/GloSSAC/GloSSAC_V2.22.nc)) (NASA/LARC/SD/ASDC, 2024). The SAGE III/ISS and CALIOP data used in this study are available from NASA Atmospheric Data Center, while OSIRIS version 7.2 data are downloaded from <https://research-groups.usask.ca/osiris>.

*Author contributions.* MK and LWT developed the idea and methodology used in this paper. MK carried out all the analyses except for ERF  
495 and surface temperature analysis, which were performed by MV and TA, while TK participated in the scientific discussion. MK wrote the manuscript, while all authors reviewed the manuscript and provided advice on the manuscript and figures.

*Competing interests.* The authors declare that they have no conflict of interest.

*Acknowledgements.* We acknowledge the support of NASA Science Mission Directorate and the SAGE II and III/ISS mission teams. The SAGE mission is supported by the NASA Science Mission Directorate. ADNET personnel are supported through the RSES contract and  
500 NASA Grant 80NSSC 24K1185. MV acknowledges support from the faculty of environment, science and economy of the university of Exeter through a doctoral scholarship. We also acknowledge the International Space Science Institute (ISSI) team [project \(23-579\)](#) on “Perspectives on Stratospheric Aerosol Observations” for their valuable scientific discussions.

## References

- Aquila, V., Oman, L. D., Stolarski, R., Douglass, A. R., and Newman, P. A.: The Response of Ozone and Nitrogen Dioxide to the Eruption  
505 of Mt. Pinatubo at Southern and Northern Midlatitudes, *Journal of the Atmospheric Sciences*, 70, 894–900, <https://doi.org/10.1175/JAS-D-12-0143.1>, 2013.
- Aubry, T. J., Toohey, M., Marshall, L., Schmidt, A., and Jellinek, A. M.: A New Volcanic Stratospheric Sulfate Aerosol Forcing Emulator (EVA\_H): Comparison With Interactive Stratospheric Aerosol Models, *Journal of Geophysical Research: Atmospheres*, 125, e2019JD031303, <https://doi.org/10.1029/2019JD031303>, e2019JD031303 10.1029/2019JD031303, 2020.
- 510 Berdahl, M. and Robock, A.: Northern Hemispheric cryosphere response to volcanic eruptions in the Paleoclimate Modeling Intercomparison Project 3 last millennium simulations, *Journal of Geophysical Research: Atmospheres*, 118, 12,359–12,370, <https://doi.org/10.1002/2013JD019914>, 2013.
- Bourassa, A., Rieger, L., Lloyd, N., and Degenstein, D.: Odin-OSIRIS stratospheric aerosol data product and SAGE III intercomparison, *Atmos. Chem. Phys.*, 12, 605–614, 2012.
- 515 Bourassa, A. E., Rieger, L. A., Zawada, D. J., Khaykin, S., Thomason, L. W., and Degenstein, D. A.: Satellite Limb Observations of Unprecedented Forest Fire Aerosol in the Stratosphere, *Journal of Geophysical Research: Atmospheres*, 124, 9510–9519, <https://doi.org/10.1029/2019JD030607>, 2019.
- Bourassa, A. E., Zawada, D. J., Rieger, L. A., Warnock, T. W., Toohey, M., and Degenstein, D. A.: Tomographic Retrievals of Hunga Tonga-Hunga Ha’apai Volcanic Aerosol, *Geophysical Research Letters*, 50, e2022GL101978, <https://doi.org/https://doi.org/10.1029/2022GL101978>, e2022GL101978 2022GL101978, 2023.  
520
- Chen, Z., Bhartia, P. K., Loughman, R., Colarco, P., and DeLand, M.: Improvement of stratospheric aerosol extinction retrieval from OMP-S/LP using a new aerosol model, *Atmospheric Measurement Techniques*, 11, 6495–6509, <https://doi.org/10.5194/amt-11-6495-2018>, 2018.
- Deshler, T., Hervig, M. E., Hofmann, D. J., Rosen, J. M., and Liley, J. B.: Thirty years of in situ stratospheric aerosol size distribution  
525 measurements from Laramie, Wyoming (41°N), using balloon-borne instruments, *Journal of Geophysical Research: Atmospheres*, 108, <https://doi.org/https://doi.org/10.1029/2002JD002514>, 2003.
- Deshler, T., Luo, B., Kovilakam, M., Peter, T., and Kalnajs, L. E.: Retrieval of Aerosol Size Distributions From In Situ Particle Counter Measurements: Instrument Counting Efficiency and Comparisons With Satellite Measurements, *Journal of Geophysical Research: Atmospheres*, 124, 5058–5087, <https://doi.org/https://doi.org/10.1029/2018JD029558>, 2019.
- 530 Ernest, N., Thomason, L. W., and Deshler, T.: Producing aerosol size distributions consistent with optical particle counters measurements using space-based measurements of aerosol extinction coefficient, *Atmospheric Measurement Techniques Discussions*, 2024, 1–18, <https://doi.org/10.5194/amt-2024-62>, 2024.
- Eyring, V., Bony, S., Meehl, G. A., Senior, C. A., Stevens, B., Stouffer, R. J., and Taylor, K. E.: Overview of the Coupled Model Intercomparison Project Phase 6 (CMIP6) experimental design and organization, *Geoscientific Model Development*, 9, 1937–1958, <https://doi.org/10.5194/gmd-9-1937-2016>, 2016.  
535
- Flynn, L. E., Seftor, C. J., Larsen, J. C., and Xu, P.: The ozone mapping and profiler suite, in: *Earth science satellite remote sensing*, pp. 279–296, Springer, 2006.
- Forster, P., Storelvmo, T., Armour, K., Collins, W., Dufresne, J.-L., Frame, D., Lunt, D., Mauritsen, T., Palmer, M., Watanabe, M., Wild, M., and Zhang, H.: The Earth’s Energy Budget, Climate Feedbacks, and Climate Sensitivity. In *Climate Change 2021: The Physical Science*

- 540 Basis. Contribution of Working Group I to the Sixth Assessment Report of the Intergovernmental Panel on Climate Change [Masson-Delmotte, V. and Zhai, P. and Pirani, A. and Connors, S.L. and Péan, C. and Berger, S. and Caud, N. and Chen, Y. and Goldfarb, L. and Gomis, M.I. and Huang, M. and Leitzell, K. and Lonnoy, E. and Matthews, J.B.R. and Maycock, T.K. and Waterfield, T. and Yelekçi, O. and Yu, R. and Zhou, B. (eds.)], pp. 923–1054, Cambridge University Press, Cambridge, United Kingdom and New York, NY, USA, <https://doi.org/10.1017/9781009157896.009>, 2021.
- 545 Fyfe, J. C., von Salzen, K., Cole, J. N. S., Gillett, N. P., and Vernier, J.-P.: Surface response to stratospheric aerosol changes in a coupled atmosphere–ocean model, *Geophysical Research Letters*, 40, 584–588, <https://doi.org/10.1002/grl.50156>, 2013.
- Hervig, M. and Deshler, T.: Evaluation of aerosol measurements from SAGE II, HALOE, and balloonborne optical particle counters, *Journal of Geophysical Research: Atmospheres*, 107, AAC 3–1–AAC 3–12, <https://doi.org/https://doi.org/10.1029/2001JD000703>, 2002.
- Kar, J., Lee, K.-P., Vaughan, M. A., Tackett, J. L., Trepte, C. R., Winker, D. M., Lucker, P. L., and Getzewich, B. J.: CALIPSO level 3 stratospheric aerosol profile product: version 1.00 algorithm description and initial assessment, *Atmospheric Measurement Techniques*, 12, 6173–6191, <https://doi.org/10.5194/amt-12-6173-2019>, 2019.
- 550 Knepp, T. N., Kovilakam, M., Thomason, L., and Miller, S. J.: Characterization of Particle Size Distribution Uncertainties using SAGE II and SAGE III/ISS Extinction Spectra, *Atmospheric Measurement Techniques Discussions*, 2023, 1–42, <https://doi.org/10.5194/amt-2023-207>, 2023.
- 555 Kovilakam, M., Thomason, L. W., Ernest, N., Rieger, L., Bourassa, A., and Millán, L.: The Global Space-based Stratospheric Aerosol Climatology (version 2.0): 1979–2018, *Earth System Science Data*, 12, 2607–2634, <https://doi.org/10.5194/essd-12-2607-2020>, 2020.
- Kovilakam, M., Thomason, L., and Knepp, T.: SAGE III/ISS aerosol/cloud categorization and its impact on GloSSAC, *Atmospheric Measurement Techniques*, 16, 2709–2731, <https://doi.org/10.5194/amt-16-2709-2023>, 2023.
- Krishnamohan, K.-P. S.-P., Bala, G., Cao, L., Duan, L., and Caldeira, K.: Climate system response to stratospheric sulfate aerosols: sensitivity to altitude of aerosol layer, *Earth System Dynamics*, 10, 885–900, <https://doi.org/10.5194/esd-10-885-2019>, 2019.
- 560 Lacis, A., Hansen, J., and Sato, M.: Climate forcing by stratospheric aerosols, *Geophysical Research Letters*, 19, 1607–1610, <https://doi.org/https://doi.org/10.1029/92GL01620>, 1992.
- Leach, N. J., Jenkins, S., Nicholls, Z., Smith, C. J., Lynch, J., Cain, M., Walsh, T., Wu, B., Tsutsui, J., and Allen, M. R.: FaIRv2.0.0: a generalized impulse response model for climate uncertainty and future scenario exploration, *Geoscientific Model Development*, 14, 3007–3036, <https://doi.org/10.5194/gmd-14-3007-2021>, 2021.
- 565 Marshall, L. R., Smith, C. J., Forster, P. M., Aubry, T. J., Andrews, T., and Schmidt, A.: Large Variations in Volcanic Aerosol Forcing Efficiency Due to Eruption Source Parameters and Rapid Adjustments, *Geophysical Research Letters*, 47, e2020GL090241, <https://doi.org/https://doi.org/10.1029/2020GL090241>, e2020GL090241 2020GL090241, 2020.
- Mauldin, L. E., Zaun, N. H., McCormick, M. P., Guy, J. H., and Vaughn, W. R.: Stratospheric aerosol and gas experiment II instrument: A functional description, *Optical Engineering*, 24, 307–312, <https://doi.org/10.1117/12.7973473>, 1985.
- 570 McCormick, M., Hamill, P., Chu, W., Swissler, T., McMaster, L., and Pepin, T.: Satellite studies of the stratospheric aerosol, *Bulletin of the American Meteorological Society*, 60, 1038–1046, 1979.
- McLinden, C., Bourassa, A., Brohede, S., Cooper, M., Degenstein, D., Evans, W., Gattinger, R., Haley, C., Llewellyn, E., Lloyd, N., et al.: OSIRIS: A decade of scattered light, *Bulletin of the American Meteorological Society*, 93, 1845–1863, 2012.
- 575 Millar, R. J., Nicholls, Z. R., Friedlingstein, P., and Allen, M. R.: A modified impulse-response representation of the global near-surface air temperature and atmospheric concentration response to carbon dioxide emissions, *Atmospheric Chemistry and Physics*, 17, 7213–7228, <https://doi.org/10.5194/acp-17-7213-2017>, 2017.

- Mills, M. J., Schmidt, A., Easter, R., Solomon, S., et al.: Global volcanic aerosol properties derived from emissions, 1990-2014, using CESM1(WACCM), *J. Geophys. Res. Atmos.*, 121, 2332–2348, 2016.
- 580 Myhre, G., Shindell, D., Bréon, F.-M., Collins, W., Fuglestedt, J., Huang, J., Koch, D., Lamarque, J.-F., Lee, D., Mendoza, B., Nakajima, T., Robock, A., Stephens, G., Takemura, T., and Zhang, H.: Anthropogenic and Natural Radiative Forcing. In: *Climate Change 2013: The Physical Science Basis. Contribution of Working Group I to the Fifth Assessment Report of the Intergovernmental Panel on Climate Change* [Stocker, T. F. and Qin, D. and Plattner, G.-K. and Tignor, M. and Allen, S. K. and Doschung, J. and Nauels, A. and Xia, Y. and Bex, V. and Midgley, P. M. (eds.)], pp. 659–740, Cambridge University Press, Cambridge, UK, 585 <https://doi.org/10.1017/CBO9781107415324.018>, 2013.
- NASA/LARC/SD/ASDC: Global Space-based Stratospheric Aerosol Climatology Version 2.22, <https://doi.org/10.5067/GLOSSAC-L3-V2.22>, 2024.
- Nicholls, Z., Meinshausen, M., Lewis, J., Corradi, M. R., Dorheim, K., Gasser, T., Gieseke, R., Hope, A. P., Leach, N. J., McBride, L. A., Quilcaille, Y., Rogelj, J., Salawitch, R. J., Samset, B. H., Sandstad, M., Shiklomanov, A., Skeie, R. B., Smith, 590 C. J., Smith, S. J., Su, X., Tsutsui, J., Vega-Westhoff, B., and Woodard, D. L.: Reduced Complexity Model Intercomparison Project Phase 2: Synthesizing Earth System Knowledge for Probabilistic Climate Projections, *Earth's Future*, 9, e2020EF001900, <https://doi.org/https://doi.org/10.1029/2020EF001900>, e2020EF001900 2020EF001900, 2021.
- Quaglia, I., Timmreck, C., Niemeier, U., Visioni, D., Pitari, G., Brodowsky, C., Brühl, C., Dhomse, S. S., Franke, H., Laakso, A., Mann, G. W., Rozanov, E., and Sukhodolov, T.: Interactive stratospheric aerosol models' response to different amounts and altitudes of SO<sub>2</sub> 595 injection during the 1991 Pinatubo eruption, *Atmospheric Chemistry and Physics*, 23, 921–948, <https://doi.org/10.5194/acp-23-921-2023>, 2023.
- Ridley, D., Solomon, S., et al.: Total volcanic stratospheric aerosol optical depths and implications for global climate change, *Geophys. Res. Lett.*, 41, 7763–7769, 2014.
- Rieger, L. A., Bourassa, A. E., and Degenstein, D. A.: Merging the OSIRIS and SAGE II stratospheric aerosol records, *J. Geophys. Res. Atmos.*, 120, 8890–8904, <https://doi.org/10.1002/2015JD023133>, 2015. 600
- Rieger, L. A., Zawada, D. J., Bourassa, A. E., and Degenstein, D. A.: A Multiwavelength Retrieval Approach for Improved OSIRIS Aerosol Extinction Retrievals, *Journal of Geophysical Research: Atmospheres*, 124, 7286–7307, <https://doi.org/10.1029/2018JD029897>, 2019.
- Rozanov, A., Pohl, C., Arosio, C., Bourassa, A., Bramstedt, K., Malinina, E., Rieger, L., and Burrows, J. P.: Retrieval of stratospheric aerosol extinction coefficients from OMPS-LP measurements, *EGUsphere*, 2024, 1–26, <https://doi.org/10.5194/egusphere-2024-358>, 2024.
- 605 Smith, C. J., Forster, P. M., Allen, M., Leach, N., Millar, R. J., Passerello, G. A., and Regayre, L. A.: FAIR v1.3: a simple emissions-based impulse response and carbon cycle model, *Geoscientific Model Development*, 11, 2273–2297, <https://doi.org/10.5194/gmd-11-2273-2018>, 2018.
- Stenchikov, G., Hamilton, K., Stouffer, R. J., Robock, A., Ramaswamy, V., Santer, B., and Graf, H.-F.: Arctic Oscillation response to volcanic eruptions in the IPCC AR4 climate models, *Journal of Geophysical Research: Atmospheres*, 111, <https://doi.org/10.1029/2005JD006286>, 610 2006.
- Taha, G., Loughman, R., Zhu, T., Thomason, L., Kar, J., Rieger, L., and Bourassa, A.: OMPS LP Version 2.0 multi-wavelength aerosol extinction coefficient retrieval algorithm, *Atmospheric Measurement Techniques*, 14, 1015–1036, <https://doi.org/10.5194/amt-14-1015-2021>, 2021.

- Taha, G., Loughman, R., Colarco, P. R., Zhu, T., Thomason, L. W., and Jaross, G.: Tracking the 2022 Hunga Tonga-Hunga Ha'apai Aerosol  
615 Cloud in the Upper and Middle Stratosphere Using Space-Based Observations, *Geophysical Research Letters*, 49, e2022GL100091,  
<https://doi.org/https://doi.org/10.1029/2022GL100091>, e2022GL100091 2022GL100091, 2022.
- Thomason, L. W. and Vernier, J.-P.: Improved SAGE II cloud/aerosol categorization and observations of the Asian tropopause aerosol layer:  
1989-2005, *Atmospheric Chemistry and Physics*, 13, 4605–4616, <https://doi.org/10.5194/acp-13-4605-2013>, 2013.
- Thomason, L. W., Moore, J. R., Pitts, M. C., Zawodny, J. M., and Chiou, E. W.: An evaluation of the SAGE III version 4 aerosol extinction  
620 coefficient and water vapor data products, *Atmospheric Chemistry and Physics*, 10, 2159–2173, [https://doi.org/10.5194/acp-10-2159-](https://doi.org/10.5194/acp-10-2159-2010)  
2010, 2010.
- Thomason, L. W., Ernest, N., Millán, L., Rieger, L., Bourassa, A., Vernier, J.-P., Manney, G., Luo, B., Arfeuille, F., and Peter, T.: A global  
space-based stratospheric aerosol climatology: 1979–2016, *Earth System Science Data*, 10, 469–492, [https://doi.org/10.5194/essd-10-](https://doi.org/10.5194/essd-10-469-2018)  
469-2018, 2018.
- 625 Thomason, L. W., Kovilakam, M., Schmidt, A., von Savigny, C., Knepp, T., and Rieger, L.: Evidence for the predictability of changes in the  
stratospheric aerosol size following volcanic eruptions of diverse magnitudes using space-based instruments, *Atmospheric Chemistry and*  
*Physics*, 21, 1143–1158, <https://doi.org/10.5194/acp-21-1143-2021>, 2021.
- Timmreck, C., Mann, G. W., Aquila, V., Hommel, R., Lee, L. A., Schmidt, A., Brühl, C., Carn, S., Chin, M., Dhomse, S. S., Diehl, T., English,  
J. M., Mills, M. J., Neely, R., Sheng, J., Toohey, M., and Weisenstein, D.: The Interactive Stratospheric Aerosol Model Intercomparison  
630 Project (ISA-MIP): motivation and experimental design, *Geoscientific Model Development*, 11, 2581–2608, [https://doi.org/10.5194/gmd-](https://doi.org/10.5194/gmd-11-2581-2018)  
11-2581-2018, 2018.
- Wang, H. J. R., Damadeo, R., Flittner, D., Kramarova, N., Taha, G., Davis, S., Thompson, A. M., Strahan, S., Wang, Y., Froidevaux,  
L., Degenstein, D., Bourassa, A., Steinbrecht, W., Walker, K. A., Querel, R., Leblanc, T., Godin-Beekmann, S., Hurst, D., and Hall,  
E.: Validation of SAGE III/ISS Solar Occultation Ozone Products With Correlative Satellite and Ground-Based Measurements, *Journal*  
635 *of Geophysical Research: Atmospheres*, 125, e2020JD032430, <https://doi.org/https://doi.org/10.1029/2020JD032430>, e2020JD032430  
2020JD032430, 2020.
- Wrana, F., von Savigny, C., Zalach, J., and Thomason, L. W.: Retrieval of stratospheric aerosol size distribution parameters using satellite  
solar occultation measurements at three wavelengths, *Atmospheric Measurement Techniques*, 14, 2345–2357, [https://doi.org/10.5194/amt-](https://doi.org/10.5194/amt-14-2345-2021)  
14-2345-2021, 2021.
- 640 Zanchettin, D., Khodri, M., Timmreck, C., Toohey, M., Schmidt, A., Gerber, E. P., Hegerl, G., Robock, A., Pausata, F. S. R., Ball, W. T.,  
Bauer, S. E., Bekki, S., Dhomse, S. S., LeGrande, A. N., Mann, G. W., Marshall, L., Mills, M., Marchand, M., Niemeier, U., Poulain,  
V., Rozanov, E., Rubino, A., Stenke, A., Tsigaridis, K., and Tummon, F.: The Model Intercomparison Project on the climatic response to  
Volcanic forcing (VolMIP): experimental design and forcing  
input data for CMIP6, *Geoscientific Model Development*, 9, 2701–2719, <https://doi.org/10.5194/gmd-9-2701-2016>, 2016.
- 645 Zawada, D. J., Rieger, L. A., Bourassa, A. E., and Degenstein, D. A.: Tomographic retrievals of ozone with the OMPS Limb Profiler:  
algorithm description and preliminary results, *Atmospheric Measurement Techniques*, 11, 2375–2393, [https://doi.org/10.5194/amt-11-](https://doi.org/10.5194/amt-11-2375-2018)  
2375-2018, 2018.