

Assessing the different components of the Modeling Lake Titicaca's water balance of Lake Titicaca: The dominant roles of precipitation and evaporation

Nilo Lima-Quispe¹, Denis Ruelland², Antoine Rabatel¹, Waldo Lavado-Casimiro³, Thomas Condom¹

5 ¹Univ. Grenoble Alpes, IRD, CNRS, INRAe, Grenoble-INP, Institut Geosciences Environnement (IGE, UMR 5001), 460 rue de la Piscine, 38058 Grenoble cedex 9, FRANCE

²CNRS, HydroSciences Laboratory, University of Montpellier, 15 avenue Flahault, 34093 Montpellier Cedex 5, FRANCE

³Servicio Nacional de Meteorología e Hidrología (SENAMHI), 15072 Lima, PERU

Correspondence to: Nilo Lima-Quispe (nilo-roberto.lima-quispe@univ-grenoble-alpes.fr)

10 **Abstract.** ~~This study estimates~~In the face of climate change and increasing anthropogenic pressures, a reliable water balance ~~of a is crucial for understanding the drivers of water level fluctuations in large lakes. However, in~~ poorly-gauged ~~large-lake~~ using hydrosystems such as Lake Titicaca, most components of the water balance are not directly measured. Previous estimates ~~for this lake have relied on scaling factors to close the water balance, which introduces additional uncertainty. This study presents~~ an integrated modeling framework ~~that accounts for~~based on conceptual models to quantify natural hydrologic ~~processes and net irrigation consumption. The modeling framework~~It was ~~tested on Lake Titicaca, located in the Altiplano of the Central Andes of South America. We used a conceptual approach based on~~implemented in the Water Evaluation and Planning System (WEAP) platform at a daily time step for the period 1982–2016, considering the following terms of the water balance: upstream inflows, direct precipitation and evaporation over the lake, and downstream outflows. To estimate upstream inflows, we evaluated the impact of snow and ice processes and net irrigation withdrawals on predicted streamflow and lake ~~water levels. We also evaluated the role of heat storage change in evaporation from the lake. The results showed that the proposed modeling framework makes it possible to simulate lake water levels ranging from 3,808 to 3,812 m a.s.l. with good accuracy (RMSE = 0.32 m d⁻¹) under a wide range of long-term hydroclimatic conditions. The estimated water balance of Lake Titicaca shows that upstream inflows account for 56% (958 mm yr⁻¹) and direct precipitation over the lake for 44% (744 mm yr⁻¹) of the total inflows, while 93% (1,616 mm yr⁻¹) of total outflows are due to evaporation and the remaining 7% (121 mm yr⁻¹) to downstream outflows. The water balance closure has an error of -15 mm yr⁻¹.~~At the scale of the Lake Titicaca ~~catchment, snow without applying scaling factors. Snow~~ and ice processes, and net irrigation withdrawals had minimal impact ~~on predicted upstream inflow variations in lake water level.~~ Thus, Lake Titicaca is primarily driven by variations in precipitation and high evaporation rates. ~~The proposed modeling framework could be replicated in other poorly gauged large lakes, as~~we ~~These results will be useful to support decision-making in water resources management. We~~ demonstrate that a simple ~~representation of natural~~ hydrologic processes and irrigation enables accurate simulation of water levels. The proposed

15

20

25

30

modeling framework could be replicated in other poorly-gauged large lakes because it is relatively easy to implement, requires few data, and is computationally inexpensive.

1 Introduction

1.1 Lake water level fluctuations and On the need for an integrated water balance in large lakes

Lakes are water reservoirs of vital importance for the development of regions as they provide many ecosystem services, including fisheries, water supply, tourism and energy generation (Sterner et al., 2020). However, these services can be impacted by fluctuating lake water levels. For instance, Yao et al. (2023) showed that, in the period from 1992 to 2020, there was a significant decrease in water levels in 43% of natural lakes (457), an increase in 22% (234), and non-significant trends were observed in 35% (360). ~~Knowing the main drivers of fluctuations in water levels is crucial for better lake management. This knowledge can be obtained by assessing the water balance, by quantifying water inflows, outflows, and storage change over a given period of time. Ideally the water balance is only based on measured data. However, since all flows in the hydrological cycle are far from being measured, estimating the components of the lake water balance, including direct precipitation and evaporation, upstream inflows, downstream outflows, net groundwater exchanges and storage change, remains a complex challenge.~~ Understanding the main drivers of fluctuations in water levels is crucial for effective lake management, which requires a realistic water balance that accounting for both natural processes and anthropogenic pressures (Wurtsbaugh et al., 2017). Several studies on large lakes (>500 km²) (e.g. Rientjes et al., 2011; Vanderkelen et al., 2018; Wale et al., 2009) have estimated water balance under the assumption that net water withdrawals in the contributing catchments are negligible. However, this assumption may no longer be valid due to changing climate conditions and increased competition for water uses, potentially leading to reduced upstream inflow (Wurtsbaugh et al., 2017). For example, Schulz et al. (2020) demonstrated that net withdrawals for irrigation exacerbate the decline in storage at Lake Urmia, which is also impacted by climate change.

1.2 Methods to estimate the individual components of a lake water balance

Direct precipitation over a lake can be estimated using interpolation methods based on data recorded by ground stations (Chebud and Melesse, 2009), remotely sensed observations (Vanderkelen et al., 2018) and meteorological reanalysis (Minallah and Steiner, 2021). Interpolation methods are generally based on stations most of which are located in the surrounding areas (Kizza et al., 2012). This can lead to significant inaccuracies because large lakes (>500 km²) In large lakes, it is essential to adopt integrated water balance modeling, which represents the interactions and feedbacks between natural hydrological processes and water management within a single modeling framework (Niswonger et al., 2014). Unlike traditional decision support systems applied to large lakes (Hassanzadeh et al., 2012), which typically simulate natural flows and irrigation water requirements independently, integrated modeling enables these processes to be simulated in a coupled and dynamic manner.

Formatted: English (United States)

Formatted: English (United States)

Formatted: English (United States)

Formatted: Not Highlight

Formatted: Footer

Few studies have attempted to address an integrated water balance in large lake hydrosystem (e.g. Hosseini-Moghari et al., 2020; Lima-Quispe et al., 2021). These studies tend to focus on some components of the water balance, while others are addressed superficially. For example, Hosseini-Moghari et al. (2020) focused on estimating upstream inflow of Lake Urmia, with less emphasis on direct precipitation over the lake and evaporation, which both play very important roles in the water balance of large lakes (Gronewold et al., 2016). This is partly because large lake hydrosystems involve numerous hydrological processes, and there is often insufficient data to represent these processes in detail and evaluate them comprehensively. The issue is further complicated in transboundary lake hydrosystems, where hydrometeorological monitoring is not always coordinated (Gronewold et al., 2018).

1.2 Challenges in estimating the water balance of large lakes

It is widely recognized that large lakes have a major influence on regional climate (Scott and Huff, 1996; Su et al., 2020). For example, it has been observed that direct precipitation over many lakes in the African Great Lakes is more intense than in their surrounding areas (Anyah et al., 2006; Kizza et al., 2012; Nicholson, 2023; Thiery et al., 2015). According to Scott and Huff (1996) this is due to the differences in heat capacities between the lake surfaces and the surrounding area, and the large amount of moisture that lakes provide to the lower atmosphere, which can lead to increased cloudiness and precipitation over lakes (Scott and Huff, 1996). Regarding the remotely sensed datasets, Vanderkelen et al. (2018) obtained, for example, satisfactory precipitation estimates using Precipitation Estimation from Remotely Sensed Information using Artificial Neural Networks - Climate Data Record (PERSIANN-CDR) for Lake Victoria in Africa. On the other hand, in South America, Satgé et al. (2019) showed that 12 satellite-based products underestimated precipitation in Lake Titicaca. Similarly, Hong et al. (2022) noted the shortcomings of satellite products in reliably representing precipitation over the Great Lakes in North America due to the lack of precipitation gauging over the lakes to calibrate the satellite images. Regarding meteorological reanalysis, Minallah and Steiner (2021) showed that the ECMWF Reanalysis version 5 (ERA5) (Hersbach et al., 2020) captured synoptic-scale precipitation patterns in three regions with the largest lakes in the world (Laurentian Great Lakes, Lake Baikal, and African Great Lakes) and that areas with intense precipitation coincided with the presence of those lakes. However, other studies based on ERA5 (e.g. Xu et al., 2022) reported overestimation of precipitation over the Great Lakes of North America.

Direct evaporation from the lakes, Estimating precipitation based on ground stations, which are mainly located in the surrounding areas, can lead to inaccuracies. Despite the current availability of remotely sensed datasets, they have been shown to still have significant biases (Hong et al., 2022; Satgé et al., 2019). Regarding direct evaporation, it depends not only on meteorological conditions, but also on the size of the lake, water depth and water clarity, which all influence the energy balance due to changes in water temperature and vertical mixing (Lenters et al., 2005). Thus, estimating lake evaporation based on meteorological data alone can lead to inaccuracies (Bai and Wang, 2023). The best known methods include eddy covariance (Blanken et al., 2000; Liu, 2023; Shao et al., 2020), energy balance (Croley II, 1989; Gianniu and Antonopoulos, 2007; Lenters et al., 2005; Sturrock et al., 1992; Wang et al., 2014; Yu et al., 2011), Penman (Penman, 1948, 1956) and mass transfer

Formatted: Space Before: 6 pt

Formatted: Footer

(Dalton, 1802). Eddy covariance enables direct measurements of evaporation (Blanken et al., 2000), but few lakes have this type of instrumentation (Vesala et al., 2012). The energy balance method is considered to be one of the most appropriate and accurate for estimating evaporation (Lenters et al., 2005), but requires large quantities of data, meaning it is generally difficult to implement. The original Penman formulation, which does not include changes in heat storage, has been used to estimate lake evaporation (e.g. Kebede et al., 2006; Lima-Quispe et al., 2021). However, Blanken et al. (2011) observed a 5-month delay between peak net radiation and evaporation due to heat storage in Lake Superior in North America. One of the limitations of estimating the change in heat storage is the lack of water temperature data at different depths, and so models are used to simulate the thermal stratification dynamics of the water (e.g. Antonopoulos and Giannou, 2003).

For upstream inflow, ideally, measured streamflow data will be available. However, there are always areas in the catchments that contribute to the lakes that are ungauged (Wale et al., 2009). In addition, historical records of measured streamflow may have many missing or inconsistent data (Tencaliec et al., 2015). An alternative to generating continuous time series in gauged and ungauged catchments is using hydrological models driven by climate data and physiographic characteristics, calibrated and evaluated against any available measured streamflow. Upstream inflow is mostly estimated with hydrologic models (e.g. Rientjes et al., 2011; Zhang and Post, 2018). For ungauged catchments, regionalization methods are applied based on the parameters obtained in the gauged catchments (e.g. Guo et al., 2021). Rientjes et al. (2011) addressed the parameter regionalization of the Lake Tana catchment using the HBV-96 model, where 62% of the area is ungauged. Similar studies (e.g. Wale et al., 2009) have been conducted to provide a methodological basis for estimating upstream inflow in both gauged and ungauged catchments. However, basic lumped rainfall-runoff simulations may not be sufficient because the catchments that contribute to the lake involve very large areas with varied topography, and many natural hydrological processes are involved, as well as water uses. This means that modeling that integrates both natural hydrological processes and water uses may be necessary in hydrosystems undergoingBasic lumped rainfall-runoff simulations may fall short due to the complex interplay of natural hydrological processes and water management. Integrating both aspects is essential for hydrosystems under significant anthropogenic pressure (e.g. Ashraf Vaghefi et al., 2015; Fabre et al., 2015; Hublart et al., 2016). In high mountain catchments, snow and ice processes can play a very important role in the hydrological response of catchments. For example, Li et al. (2020) showed that although the glacierized area account for only 21% of the Kumalak catchment in Asia, snowmelt and ice melt account for 43% of total catchment runoff. Moreover, accelerated glacier retreat linked with global warming can be increasing catchment runoff, and several studies (e.g. Song et al., 2014; Sun et al., 2018) have reported the expansion and emergence of new lakes due to accelerated glacier retreat in the Tibetan Plateau. Estimating melt in glacierized upstream catchments may be key to a better understanding of the drivers of lake fluctuations. However, estimating accumulation and ablation processes is complex because it is difficult to obtain accurate forcing data (e.g. In high mountain catchments, snow and ice processes significantly impact hydrological responses. Estimating melt is challenging because it is difficult to obtain accurate forcing data (e.g. precipitation and temperature) in high elevation areas where the measurement network is very sparse (Ruelland, 2020), as well as control data (e.g. upstream-area streamflow and glacier mass balance). In this context, temperature-index

approaches (Hock, 2003) are more suitable than energy balance approaches and can produce simulations with acceptable accuracy using a reduced number of parameters and forcing data (e.g. Ruelland, 2023). In terms of water ~~use management~~, according to Wu et al. (2022), 60% of freshwater withdrawals worldwide are made for agricultural irrigation. ~~Accounting for net irrigation use in irrigated catchments may thus be critical.~~ Catchment scale irrigation has been addressed using approaches based on soil water deficit (Kannan et al., 2011; Shadkam et al., 2016) and those that additionally consider irrigation scheduling (Githui et al., 2016; McInerney et al., 2018). Regardless of the approach chosen, one of the limitations is the lack of measured irrigation data (McInerney et al., 2018), which hinders the evaluation of irrigation simulations. This evaluation can consequently only be undertaken indirectly by attempting to more realistically reproduce observed outlet discharges by accounting for net consumption for water uses within the catchments (e.g. Fabre et al., 2015; Hublart et al., 2016). ~~Nevertheless, in some regions, even spatial and temporal information on irrigable area and irrigated area is barely available (Lima-Quispe et al., 2021), making estimating the impact of water use very uncertain. Approaches based on soil water deficit are relatively easy to implement because they require few data (e.g., reference evapotranspiration, irrigable area, and crop phenology). However, some studies (e.g. Githui et al., 2016) argue that this type of approach simulates unrealistic water withdrawals and that consistent simulations can only be obtained by including irrigation scheduling. Nevertheless, in a French catchment, Soutif Bellenger et al. (2023) demonstrated that approaches based on soil water deficit can produce simulations with acceptable accuracy. Similarly, Hublart et al. (2016) obtained reliable simulations in an Andean catchment in Chile.~~

~~Net groundwater exchanges are another component of lake water balance that are difficult to quantify (Rosenberry et al., 2015). They~~ Net groundwater exchanges are neglected in some studies under the assumption that these fluxes are very small (Duan et al., 2018; Lima-Quispe et al., 2021). ~~The interaction between Lake-groundwater and lakes interactions~~ has been addressed using conceptual (Parizi et al., 2022) and physically-based models (Vaquero et al., 2021; Xu et al., 2021), chemical and isotopic balances (Bouchez et al., 2016), and the water balance (Chavoshi and Danesh-Yazdi, 2022). The water balance is a fairly easy option, as the net flux is the results of the other components. However, it is crucial to dispose of accurate measurements or estimates of the other water balance terms to avoid propagating uncertainty (Chavoshi and Danesh-Yazdi, 2022). Hydrochemical or isotopic analyses are considered accurate (Bouchez et al., 2016), but can be very costly for a large lake.

Modeling approaches are often limited by data availability (Barthel and Banzhaf, 2016), ~~especially particularly~~ when using models ~~are used that rely on physical laws and to~~ dynamically simulate ~~the interaction between~~ surface water ~~and~~ groundwater interactions (Xu et al., 2021). On the other hand, downstream outflow ~~is a component of the water balance to take into consideration~~ in exorheic lakes ~~that~~ can be estimated ~~in several ways including by~~ direct measurements (Chebud and Melesse, 2009), ~~the use of~~ a rating curve relating lake level to outflow (Sene and Plinston, 1994), and as a residual of ~~other the~~ water balance ~~terms~~ (Duan et al., 2018).

1.3 Integrated-Placing Lake Titicaca in the context of an integrated water balance in

Lake Titicaca, located on the Altiplano of the tropical Andes of South America, is one of the highest large lakes in the world and an interesting case study for an integrated water balance. This lake is part of a vast endoreic catchment, and is connected by the Desaguadero River to Lake Poopo in Bolivia (see Fig. 1) (Lima-Quispe et al., 2021). As a transboundary lake shared by Peru and Bolivia and a poorly-gauged hydrosystem, it faces many of the aforementioned challenges. The region experiences significant interannual climate variability (Garreaud and Aceituno, 2001), which, coupled with complex water management issues (Revollo, 2001), intensifies the difficulties of managing Lake Titicaca. These challenges include extreme hydrological events (droughts and floods), lake releases, and water pollution (Revollo, 2001; Rieckermann et al., 2006). Water levels measured in Puno (Peru) have fluctuated by approximately six meters over the past century, with the lowest recorded in 1943–1944 and the highest in 1984–1986 (Sulca et al., 2024), causing US\$125 million in flood damage (Revollo, 2001). In response to these challenges, a management plan was developed in the early 1990s for both Lake Titicaca and the Altiplano hydrosystem (Revollo, 2001). A key component of this plan was the construction of an outflow gate to regulate lake releases and the establishment of operating rules. Although the outflow gate was completed in 2001, lake releases remain nearly the same as under natural conditions because the operating rules have not yet been implemented. Addressing these water management challenges requires an accurate integrated water balance allowing a better knowledge on the drivers of the lake water level variations.

In addition to the challenges involved in estimating the individual components of the water balance of large lakes, considering these processes in an integrated modeling framework is even more challenging and complex. The complexity increases when the aim is to include water uses in upstream catchments. Several studies (e.g. Rientjes et al., 2011; Vanderkelen et al., 2018; Wale et al., 2009) have estimated the water balance under the assumption that net water withdrawals are negligible. However, this may not be valid in the future due to changing climate conditions and increased competition over water use, which could result in a decrease in upstream inflow (Wurtsbaugh et al., 2017). For example, in Lake Urmia, Schulz et al. (2020) showed that net withdrawals for irrigation exacerbate the decline in storage caused by climate change. A credible water balance considering both natural flows and water uses is needed to identify the drivers of fluctuations in water level (Wurtsbaugh et al., 2017). Few studies have attempted to address an integrated water balance in lake hydrosystems (e.g. Niswonger et al., 2014; Hosseini-Moghari et al., 2020). Niswonger et al. (2014) evaluated several management scenarios for the restoration of Walker Lake in the USA as part of a collaborative process with stakeholders. These authors implemented a modified version of the GSFLOW hydrologic model to dynamically simulate surface-groundwater interactions, reservoir management, water withdrawals, irrigation, and total concentrations of dissolved solids. Although Walker Lake is a small lake (<500 km²), this approach could be replicated for large lakes, but heterogeneity in data availability in space and over time is often a limitation. Hosseini-Moghari et al. (2020) ran the global water balance model, WaterGAP, with locally measured data to quantify the contributions of climate variability and human activities to the drop in the water level of Lake Urmia in Iran. However, their study mainly focused on estimating upstream inflow, with less emphasis on direct precipitation over the lake and evaporation,

Formatted: English (United States)

Formatted: Normal, Space Before: 6 pt

Formatted: English (United States)

Formatted: Footer

190 which both play very important roles in the water balance (Gronewold et al., 2016). In addition, Hosseini Moghari et al. (2020)
used a simulation period of 11 years, which may be too short to understand the rise and fall dynamics of large lakes in the long
term (Gronewold et al., 2013). To better manage large lakes, it is crucial to understand how long-term climate variability and
anthropogenic pressures affect water level fluctuations. This could help identify the main drivers of lake fluctuations over time.
However, in poorly-gauged regions, this task is complicated by heterogeneous data availability (Duan et al., 2018). The task
is even more challenging in the case of transboundary lake hydrosystems, where hydrometeorological monitoring is not always
195 coordinated (Gronewold et al., 2018). Therefore, seeking a good trade-off between data availability and complexity in the
representation of processes, without compromising the accuracy of simulations, remains an under-researched area in the
context of long-term integrated water balance in large lakes.

200 Unlike other large lakes, very few studies have been conducted on Lake Titicaca. The only study modeling the water balance
of Lakes Titicaca and Poopó was the one by Lima-Quispe et al. (2021) using the Water Evaluation and Planning System
(WEAP) platform with a monthly time step for the period 1980–2015. The study aimed to distinguish the relative contributions
of climate and irrigation management to water level fluctuations. However, the modeling approach proposed by the authors
has a significant limitation because it is based on a scaling factor for precipitation over the lake to close the water balance,
which clearly introduces additional uncertainty. Other methodological shortcomings include: (i) the omission of snow and ice
205 processes, which can play non-negligible role in this high-elevation region; (ii) the estimation of evaporation using the Penman
method, without accounting for changes in heat storage; and (iii) the use of historical monthly averages (humidity, wind speed
and incoming solar radiation) to calculate reference evapotranspiration and evaporation, without considering interannual
variability.

1.4 Scope and objectives

210 The objective of the present study is to simulate the components of the water balance of a poorly-gauged large lake in an
integrated modeling framework capable of capturing variations in water level under a wide range of long-term hydroclimatic
conditions. The modeling framework was tested using Lake Titicaca, which is located in the Altiplano of the Central Andes
of South America. This study area presents interesting challenges, as it is a poorly-gauged transboundary hydrosystem (Peru
and Bolivia), with high mountain hydrological processes under a semi-arid tropical climate, with extreme climate variability,
and where irrigation is the main water use. To our knowledge, only Lima-Quispe et al. (2021) estimated the water balance of
215 Lake Titicaca. However, their study has limitations, such as neglecting snow and ice processes, and the fact their estimation
of lake evaporation using Penman's method did not consider heat storage change. In addition, evaporation was estimated using
monthly-averaged climate data (humidity, wind speed, and solar radiation), meaning it does not capture the physical processes
and is not suitable for non-stationary conditions in the face of a changing climate. We provide new insights into the following
aspects of the Lake Titicaca water budget: (i) the impact of snow and ice processes, and of net irrigation withdrawals on the
220 prediction of daily streamflow and lake water levels; (ii) the importance of including heat storage change for a more accurate

estimation of evaporation from the lake; and (iii) an integrated water balance approach capable of accurately predicting the amplitude and frequency of long-term water level fluctuations at a daily time step.

In addressing the challenges and limitations of representing hydrologic processes in poorly-gauged large lakes such as Lake Titicaca, we pose the following key question: How can a reliable water balance be estimated? To answer this, we present an integrated modeling framework based on conceptual models to estimate the water balance of Lake Titicaca more reliably. The modeling framework is applied at a daily time step for the period 1982–2016, allowing us to represent water level fluctuations over a wide range of hydroclimatic conditions. The specific questions are: To what extent are water level variations sensitive to net irrigation withdrawals and to snow and ice processes? What is the role of heat storage change in evaporation from the lake? To address these questions, new approaches are introduced for: (i) predicting upstream inflow, including hydrologic sensitivity to net irrigation consumption and snow and ice processes; and (ii) estimating evaporation from the lake using the Penman method, while accounting for changes in heat storage.

2 Material

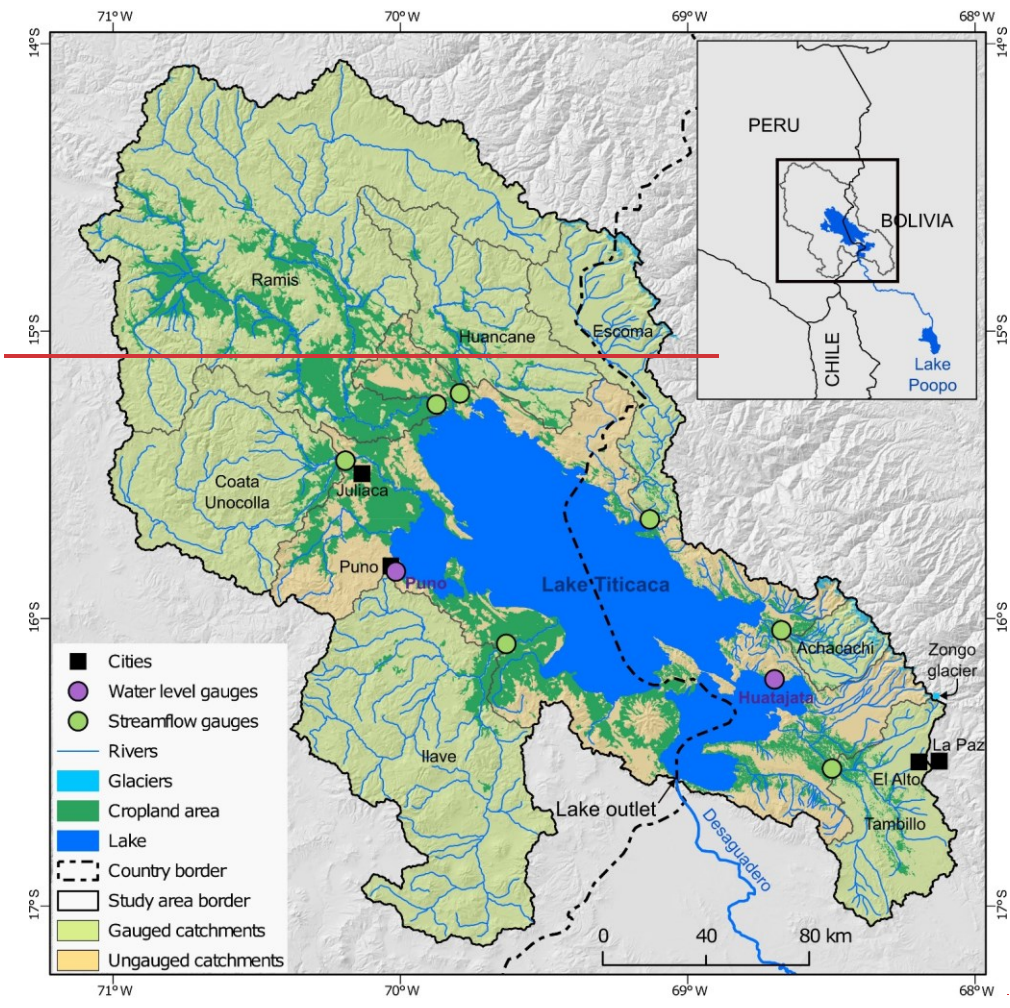
2.1 The Lake Titicaca hydrosystem

Lake Titicaca is located at 3,812 m a.s.l. in the Altiplano of the central tropical Andes of South America. It covers an area of approximately 8,340 km² in size and crosses the borders of Peru and Bolivia. The elevation of the catchments that contribute to the lake ranges between 3,812 and 6,300 m a.s.l. (average 4,200 m a.s.l.) and cover an area of approximately 48,780 km². The lake has an average volume of 958 km³ and a maximum depth of 277 m according to the bathymetry carried out between 2016 and 2019 (Autoridad Binacional del Lago Titicaca, 2021). Lake Titicaca belongs to a wide endoreic catchment, and is connected by the Desaguadero river to Lake Poopo in Bolivia (see Fig. 1). Lake Titicaca is of regional hydrological importance and the outflows of Lake Titicaca represent up to 79% of the inflows of Lake Poopo (Lima-Quispe et al., 2021). As a result, a significant reduction in the water level of Lake Titicaca can have a significant impact on inflows into Lake Poopo, as was the case in the 1990s (Lima-Quispe et al., 2021; Pilleo Zola and Bengtsson, 2006). This has serious consequences for downstream water supplies for irrigation and fishing, and has led to high levels of emigration and impoverishment (Perreault, 2020). The Lake Titicaca Authority (Spanish acronym ALT) was also created as an autonomous binational entity with the mission to manage the lake.

The main challenges for the management of the lake are extreme hydrological events (droughts and floods), proper operation of lake releases, and pollution of the water bodies (Revollo, 2001; Rieckermann et al., 2006). Measurements in Puno (Peru) show that the water level has fluctuated over a range of about 6 m in the last century. The lowest levels were measured in 1943 and 1944. The highest levels were measured between 1984 and 1986 due to heavy precipitation that caused major flooding in the surrounding plain and downstream of the lake. Flooding caused damage estimated at \$125 million (Revollo, 2001). As a transboundary lake, one of the main challenges is the use of water resources by Peru and Bolivia (Revollo, 2001). On the

Peruvian side, the priority is maintaining an acceptable water level for the development of tourism, fishing and wetlands. On the Bolivian side, in addition to the above-mentioned priorities, it is essential to guarantee downstream releases for irrigation and the maintenance of Lake Poopó. Reconciling the priorities of each country is certainly an issue that needs to be considered. In addition to the challenges associated with the quantity of water, the importance of water quality should not be overlooked. Large cities are located in the upstream catchment of the lake. On the Bolivian side is the city of El Alto with more than 1 million inhabitants. On the Peruvian side, the cities of Puno (125,018) and Juliaca (217,743) had about 342,761 inhabitants in 2017. These cities lack efficient sewage treatment, resulting in pollution of the rivers that eventually flow into Lake Titicaca (Arehundia et al., 2016; Maldonado et al., 2023).

To address these challenges, a management plan for water resources was formulated in the early 1990s, not only for Lake Titicaca, but for the entire water system of the Altiplano (Revollo, 2001). This plan aimed to improve drought and flood management and to design and implement projects to satisfy water requirements. One of the main agreements was the construction of a dam to regulate releases from the lake and the establishment of operating rules. The dam was completed in 2001, but the lake releases are still almost the same as under natural conditions because the operating rules have not yet been applied. The Lake Titicaca Authority (Spanish acronym ALT) was also created as an autonomous binational entity with the mission of implementing the master plan.



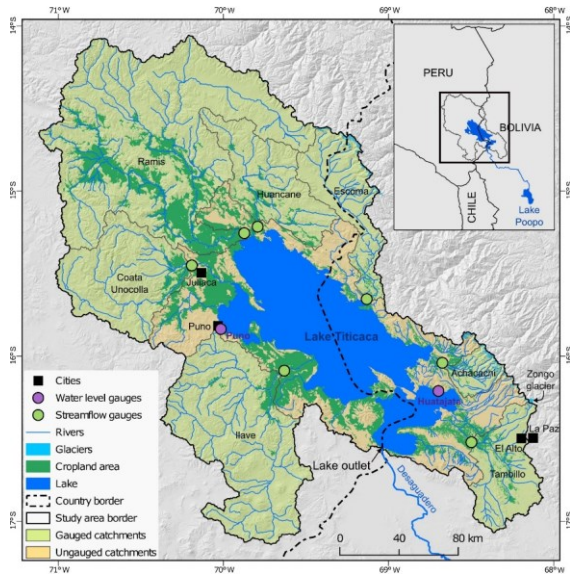


Figure 1: Main geographical features of the Lake Titicaca hydrosystem and location of the main streamflow gauges. The reference year for the limits of the glacier is 2000 (RGI Consortium, 2017). The reference year for croplands is 2010 (Ministerio de Desarrollo Rural y Tierras, 2010; Ministerio del Ambiente, 2015).

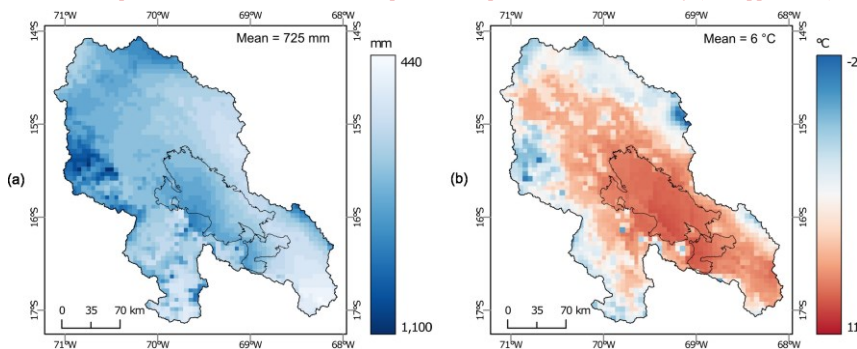
2.2 Climate data

Daily precipitation and air temperature (see Fig. 2) were obtained from the data generated in Bolivia (Ministerio de Medio Ambiente y Agua, 2018) with the gridded meteorological ensemble tool (GMET) (Clark and Slater, 2006; Newman et al., 2015). GMET has a spatial resolution of 0.05° for the period 1980–2016. ~~It is based on a probabilistic method using ground station data (for more details see Clark and Slater (2006), and Newman et al. (2015)). GMET is run sequentially in two stages, where the first stage performs a locally weighted spatial regression for each day, including considering variations in elevation of the terrain. In the second stage, ensemble members are created from the spatial regression to sample the regression uncertainty. For Bolivia, 30 ensemble members were generated for the period 1980–2016. The mean ensemble was used in the present study. GMET Bolivia (hereafter GMET) considered ground stations on the Peruvian side and the spatial domain consequently also includes the Peruvian catchments. It is based on a probabilistic method using ground station data, with further details provided by Clark and Slater (2006) and Newman et al. (2015). Lima-Quispe et al. (2021) used the same data.~~ In some catchments in the study area, Satgé et al. (2019) evaluated 12 satellite-based products and found that MSWEP and CHIRPS products were the most promising at the 10-day time step. As a result, for daily precipitation, four datasets including GMET,

285 MSWEP, CHIRPS, and basic interpolation of ground station data with inverse distance weighting (IDW) (Ruelland, 2020)
were initially tested according to daily hydrological sensitivity analyses. The results showed that GMET led to more accurate
simulations in most catchments and Lake Titicaca (not shown here for the sake of brevity).

290 Figure 2 shows the spatial pattern of precipitation (Fig. 2a) and air temperature (Fig. 2b) based on GMET for the period 1980–
2016. Annual precipitation varies between 440 and 1,100 mm (mean 725 mm). The wettest areas are concentrated in the
northwest and over Lake Titicaca. The driest areas are to the south. The spatial distribution does not show generalized
dependence on elevation, but there are small areas on the eastern and western margin where precipitation increases with
elevation. The annual mean air temperature varies between -2°C and 11°C (average 6°C). The coldest areas are on the western
and eastern areas, coinciding with the highest mountains. The warmest areas are located over Lake Titicaca. The spatial
distribution of air temperature depends on elevation.

295 Daily data on relative humidity, wind speed, and solar radiation are very scarce in space and over time. Many values were
missing in the time series from the weather stations, thus calling their quality and representativeness into question. For this
reason, we used reanalysis data from ERA5-Land (Muñoz-Sabater et al., 2021) which is available from 1950 to the present at
a spatial resolution of 0.1° and a hourly time resolution. Data were aggregated at a daily time step for the present study. The
quality of the ERA5-Land dataset was evaluated using data recorded at a station located at El Alto airport as it was the only
300 one with reliable humidity and wind speed data and relatively long time series. For relative humidity, the performance was
acceptable, as ERA5-Land was able to adequately reproduce both the annual magnitudes and the seasonal cycle. For wind
speed, ERA5-Land satisfactorily represented the seasonal cycle but with a significant systematic bias. The bias evaluated at
the El Alto airport was used to correct the wind speed in the spatial domain of the study. (see Appendix A).



305 Figure 2 shows the spatial pattern of precipitation (Fig. 2a) and air temperature (Fig. 2b) based on GMET for the period 1980–
2016. Annual precipitation varies between 440 and 1,100 mm (mean 725 mm). The wettest areas are concentrated in the
northwest and over Lake Titicaca. The driest areas are to the south. The spatial distribution does not show generalized
dependence on elevation, but there are small areas on the eastern and western margin where precipitation increases with

elevation. The annual mean air temperature varies between -2°C and 11°C (average 6°C). The coldest areas are on the western and eastern areas, coinciding with the highest mountains. The warmest areas are located over Lake Titicaca. The spatial distribution of air temperature depends on elevation.

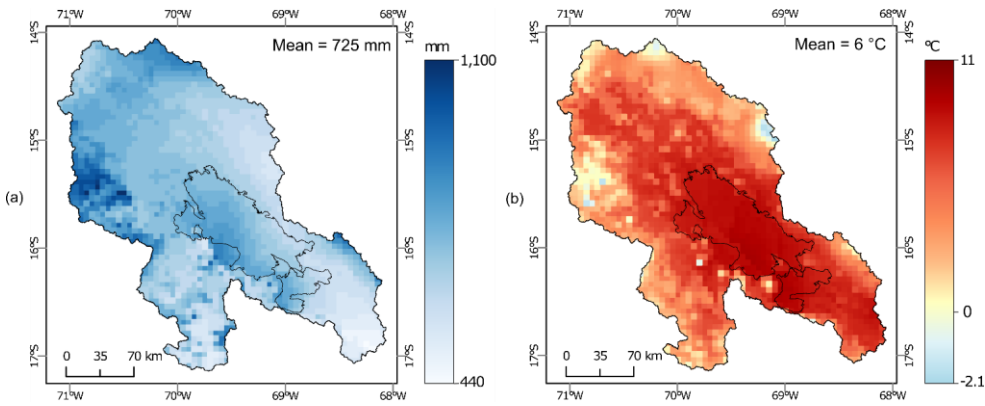


Figure 2. Spatial distribution of (a) annual precipitation and (b) mean temperature for the hydrological period 1980–2016 according to GMET (Gridded Meteorological Ensemble Tool).

2.3 Snow and glacierized areas

According to MODIS snow cover (Hall et al., 2002) computed over the period 2000–2016 based on a method described in Ruelland (2020), 80% of the upstream catchments are completely free of snow throughout the year. Areas where the snow cover persists for more than 20% of the year are located above 4,700 m a.s.l. These high elevations areas represent less than 0.5% of the total surface area. Glacierized areas are located above 4,600 m a.s.l. and represented 231 km² in the early 2000s (RGI Consortium, 2017), i.e. less than 0.5% of the total area. The estimated glacier volume is ~12 km³ (Farinotti et al., 2019), which represents ~1.3% of the mean volume of Lake Titicaca (958 km³). As a result, the contribution of snow and ice processes to streamflow (and lake dynamics) might be low in the catchments that contribute to the lake. However, this must be demonstrated by the water balance of the hydrosystem.

2.4 Croplands and irrigable area

According to the 2010-land cover maps (Ministerio de Desarrollo Rural y Tierras, 2010; Ministerio del Ambiente, 2015) (see Fig. 1), cropland in the catchments covers 8,069 km², representing 17% of the total area in the upstream catchments. Agriculture is largely traditional, rainfed, and constrained by frequent droughts, periods of frosts, and hailstorms (Garcia et al., 2007). The main crops include forage grasses, potatoes, grain barley, and quinoa (INTECSA et al., 1993c). A

- Formatted: French (France)
- Field Code Changed
- Formatted: French (France)
- Formatted: French (France)
- Formatted: French (France)
- Formatted: French (France)
- Formatted: French (France)
- Field Code Changed
- Formatted: Footer

330 ~~significant portion~~ Only 40% of the arable land is not cultivated due to crop rotation ~~practices~~ and agroclimatic ~~constraints~~. For example, the ratio of cultivated land to arable land does not exceed 40% ~~constraints~~ (INTECSA et al., 1993c). In terms of cropping calendar, potatoes are planted between October and November and their growing cycle lasts approximately six months until harvest. Quinoa is planted in September and their cycle is similar to that of potatoes. Some crops, such as beans and onions, are mostly irrigated and are planted between July and September. A crop coefficient (K_c) was generated using information on the cropping calendar and crop type available for some of the catchments (Autoridad Nacional del Agua, 2009, 2010; Instituto Nacional de Estadística, 2015; Instituto Nacional de Recursos Naturales, 2008). Figure 3a shows the seasonal cycle of K_c for the main crops. Most agriculture takes place between October and April. Alfalfa is cropped almost continuously throughout the cropping period.

340 The land cover maps of Peru and Bolivia Potatoes are planted in October-November and harvested after six months, while quinoa has a similar cycle. Beans and onions, mostly irrigated, are planted from July to September. The land cover maps (Ministerio de Desarrollo Rural y Tierras, 2010; Ministerio del Ambiente, 2015) do not distinguish between rainfed and irrigated areas (see Fig. 1). This is an important limitation to identifying changes in irrigated areas over time. The only information available is the inventory of irrigation systems (1), limiting the identification of changes in irrigated areas over time. The ESA CCI-LC dataset (ESA, 2017) also does not identify irrigated areas in the Altiplano.

345 Available data comes from inventory of irrigation systems. The inventory on the Bolivian side was carried out in 2012 (Ministerio de Medio Ambiente y Agua, 2012). For the Peruvian side, the "rights of use" granted by the Autoridad Nacional del Agua (ANA) until 2023 were used (<https://snirh.ana.gob.pe>). These inventories provide information on location (latitude, and longitude), irrigable area, and volume granted (Peru) or reference volume of irrigation (Bolivia). Figure 3b3 illustrates the available information on irrigation systems in terms of location and irrigable area. The irrigable area is 767 km² (see Table 1), which represents 1.6% of the upstream catchments that contribute to Lake Titicaca. Only 9.5% of the croplands are located in 'irrigable areas', i.e., cropland within the area of influence of an irrigation system that can potentially be irrigated. However, not all of the irrigable area is irrigated because irrigation depends on the availability of water in space and over time.

350 Due to the lack of information Then, we assumed the irrigable area was constant over the period 1980–2016. Figure 3b3 also shows that most of the irrigation systems cover an area of less than 5 ha, i.e. small-scale irrigation predominates. Also, irrigation is mostly practiced by smallholder farmers. Furrow irrigation is the most common system and irrigation network's efficiency is about 35% (Autoridad Nacional del Agua, 2009; Instituto Nacional de Recursos Naturales, 2008; Ministerio de Medio Ambiente y Agua, 2012). The main sources of water are rivers and reservoirs (see Fig. 3) located in the upper parts of the upstream catchments. The main reservoir is Lagunillas (see Fig. 3b), built in 1995 for irrigation and drinking water (3), with a capacity of 500 million m³. The remaining 15 reservoirs have capacities of less than 30 million m³. Due to lack of data on dam management, streamflow regulation from these dams was not accounted for in this study and we assumed that streamflow regulation, assuming it has a limited impact minimal on natural flows.

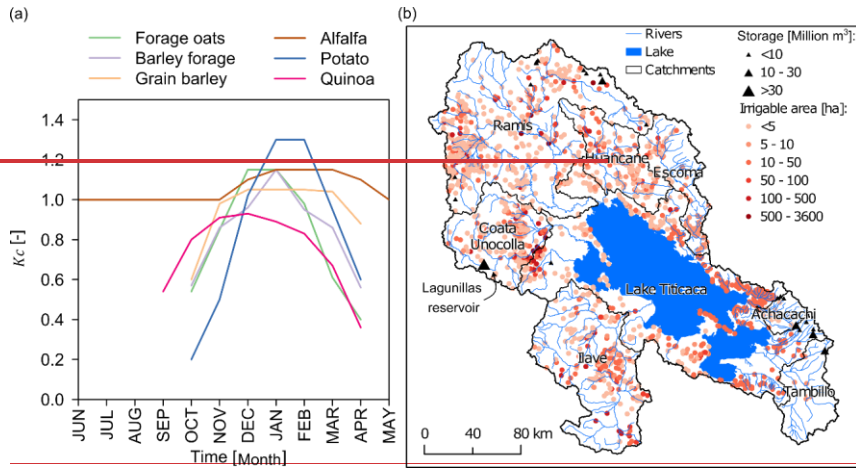
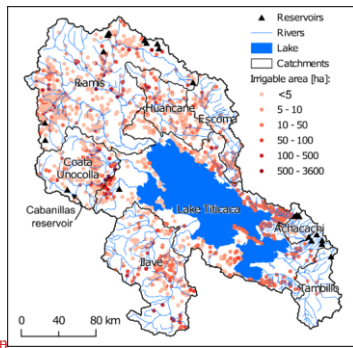


Figure 3. Agricultural features in catchments located upstream of Lake Titicaca. (a) K_c showing the phenological cycle of the main crops (Instituto Nacional de Recursos Naturales, 2008; Autoridad Nacional del Agua, 2009, 2010; Instituto Nacional de



365 Estadística, 2015). (b) location of irrigation systems in terms of irrigable area (Ministerio de Medio Ambiente y Agua, 2012; <https://snirh.ana.gob.pe>).

2.5 Glaciological and hydrological control data

2.5.1 Geodetic mass balance of the glaciers

370 Within the study area, no observations are available at the scale of small glacierized catchments. However, since the 1990s, French and Bolivian glaciologists have been taking measurements on the Zongo catchment, which is the glacier-dominated

catchment adjacent to our study area (see Fig. 1). Streamflows are measured at the Tubo gauge for a catchment of 3.5 km² of which 52% is glacierized area. Some data are missing in the records (see Fig. 6a). The annual mass balance estimated by the glaciological method (based on direct sampling of changes in the mass of the glacier) was also available for the hydrological period 1991–2016 (see Fig. 6b). Only geodetic mass balance data are computed at the scale of the entire Lake Titicaca hydrosystem (e.g. Dussaillant et al., 2019; Hugonnet et al., 2021). The Hugonnet et al. (2021) dataset, which is based on ASTER satellite stereo imagery, is available for the period 2000–2019. The mass balance at a 5-year time step is provided for RGI 6.0 glacier outlines. These data are not strictly direct observations and therefore include inaccuracies. Both data include the error associated with the mass balance of each glacier. The error range of the Hugonnet et al. (2021) dataset is smaller than the Dussaillant et al. (2019) dataset, and the interpolation of glacier elevation changes is based on Gaussian process regressions. For this reason, therefore, we used the Hugonnet et al. (2021) dataset.

2.5.2 Streamflow records

Seven streamflow gauges (see Table 1 and Fig. 1) with daily records were used in this study. The gauged (ungauged) area represents 76% (24%) of the total area of the catchments that feed the lake. The quality of the Peruvian gauge data can be considered satisfactory since monthly streamflow gauging is performed to calibrate the rating curves, but on the Bolivian side, the quality of the Escoma and Achacachi data is questionable. According to SENAMHI–Bolivia, the river stage measured in Escoma and Achacachi are prone to systematic errors due to erroneous measurements made by the observers with limited measurement training (Escoma), and/or due to changes in the geomorphology of the riverbed (Achacachi). Streamflow gauging is only carried out twice in a hydrological year.

Table 1. Main characteristics of the gauged and ungauged catchments that contribute to the lake. Glacier area was estimated using RGI 6.0 glacier outlines (RGI Consortium, 2017). Cropland area (including rainfed and irrigated area) was estimated using the 2010 land cover maps of Peru and Bolivia (Ministerio de Desarrollo Rural y Tierras, 2010; Ministerio del Ambiente, 2015). Irrigable area was estimated using data from the inventories of agricultural land use rights (Peru) (<https://snirh.ana.gob.pe>), and irrigation systems (Bolivia) (Ministerio de Medio Ambiente y Agua, 2012). The reference year for irrigable area in Bolivia is 2012, and in Peru it has been updated to 2023. Elevations were extracted from a digital elevation model (DEM) at 90m spatial resolution from the Shuttle Radar Topographic Mission (SRTM, Jarvis et al., 2008).

River	Streamflow gauges	Source	Area [km ²]	Glacier area in 2000 [km ²]	Cropland in 2010 [km ²]	Irrigable area [km ²]	Elevation [m a.s.l.]	
							Min	Max
Ramis	Ramis	SENAMHI–Peru	14,943	19	2,680	150	3,812	5,735
Ilave	Ilave	SENAMHI–Peru	7,814	0	262	39	3,813	5,587
Coata Unocolla	Coata Unocolla	SENAMHI–Peru	4,475	0	261	113	3,813	5,447
Huancane	Huancane	SENAMHI–Peru	3,518	0	333	19	3,814	5,079
Suchez	Escoma	SENAMHI–Bolivia	2,933	101	68	19	3,819	5,939
Katari	Tambillo	SENAMHI–Bolivia	2,612	3	255	31	3,832	5,905
Keka	Achacachi	SENAMHI–Bolivia	802	53	70	68	3,835	6,024
Ungauged catchments	-		11,680	54	4,140	328	3,812	6,300

2.5.3 Lake water levels

We had access to data recorded at two water level gauges: Puno and Huatajata (see Fig. 1). The Puno gauge (also known as Muelle ENAFER) is managed by SENAMHI, Peru while the Huatajata gauge is managed by SENAMHI, Bolivia. The daily historical water levels from Puno are more reliable. In the case of Huatajata, inconsistencies were detected in the records made prior to 1998. Additionally, during a field visit, it was observed that the Huatajata measurement scale is prone to displacement. Therefore, in this study we used data from Puno, which provides continuous daily water levels (in m a.s.l.) over the period 1982–2016.

3 Method

3.1 Modeling chainframework used to quantify the water balance in a high mountain lake hydrosystem

The water balance of Lake Titicaca was modeled at a daily time step for the hydrological period from September 1, 1981 to August 31, 2016 (hereafter 1982–2016). ~~The water balance was modeled in~~ using a lumped mode store following the equation:

$$P_{lake} + Q_{in} - E_{lake} - Q_{out} = \frac{dh}{dt} \pm Q_{gw} \pm \varepsilon \quad (1)$$

where P_{lake} , Q_{in} , E_{lake} and Q_{out} are, respectively, direct precipitation over the lake, inflow from upstream catchments, evaporation from the lake, and downstream outflow. The term dh/dt represents the storage change in the lake over a time window. Q_{gw} represents net groundwater exchange and ε represents the error that cannot be explained by the components of the water balance. The unit of the water balance terms is mm d^{-1} .

The WEAP platform (Yates et al., 2005) was adapted and used to represent the water balance dynamics. ~~WEAP offers several ways to simulate natural and influenced flows by considering water allocation in the context of water resources management.~~

The models in WEAP typically seek a compromise between data availability and the complex representation of hydrologic processes. This is essential in the context of poorly-gauged regions, where it is not possible to represent all hydrological processes in sufficient detail. ~~Figure 4 shows the main processes and parameters of the modeling chain used. The approach used to estimate the components of the water balance with the proposed modeling chain are described in the following sections~~ Unlike the study by Lima-Quispe et al. (2021), which also uses WEAP, this study uses a daily time step and a different approach to simulating irrigation water allocation. We acknowledge that there is an overlap in the precipitation and air temperature data, and in the irrigable area on the Bolivian side. However, in order to implement the model at daily time step, it was necessary to collect new data updated to the required time scale. In addition, new data were available, such as lake bathymetry and irrigable area on the Peruvian side. Figure 4 shows the main processes and parameters of the modeling chain used.

425 **3.1.1 Direct precipitation over the lake**

~~*P_{lake}* was extracted from GMET for the outline of the lake. It is well known that large lakes have both a local and regional influence on precipitation (Scott and Huff, 1996).~~**3.1.1 Direct precipitation over the lake**

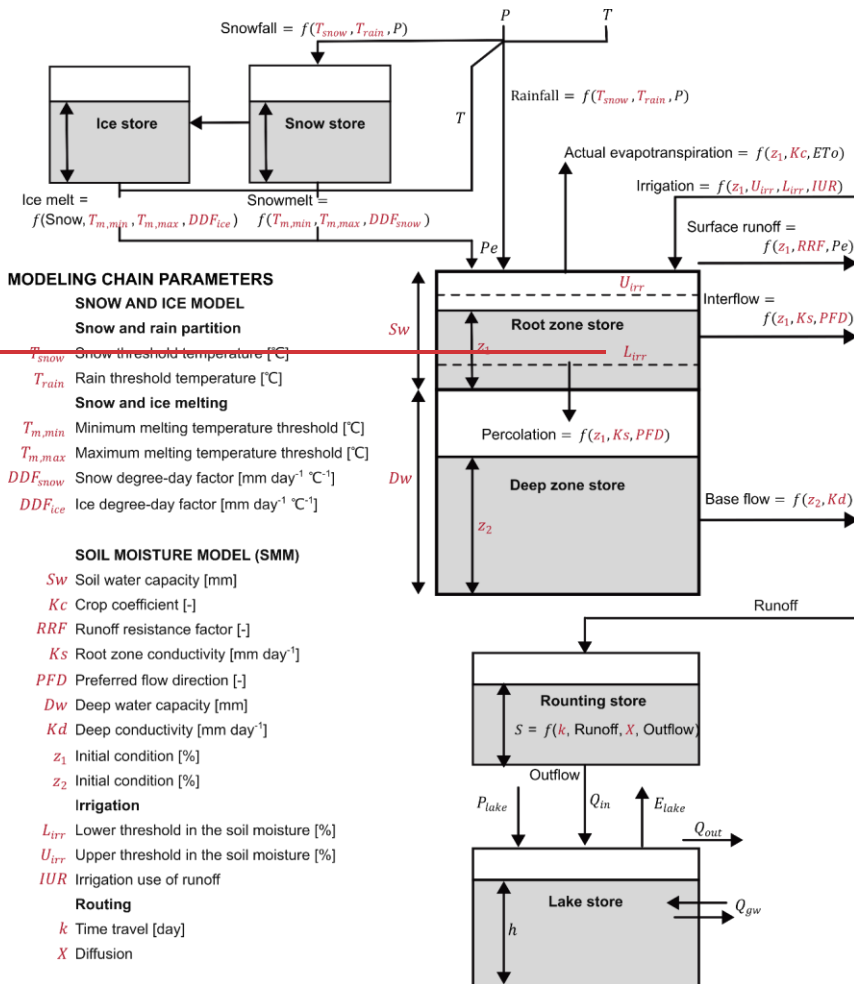
430 *P_{lake}* was extracted from GMET for the outline of the lake. The large area and volume of Lake Titicaca favor absorption of solar radiation and results in higher water temperatures than the surrounding area, which, in turn, induce convection and higher precipitation over the center of the lake (Roche et al., 1992). However, the magnitude and spatial distribution of precipitation over the lake are not well understood. GMET included two precipitation gauges located on two different islands in the lake. In this study, the extracted data were used directly without correcting for scaling factors. Significant underestimation of precipitation could lead to a significant error.

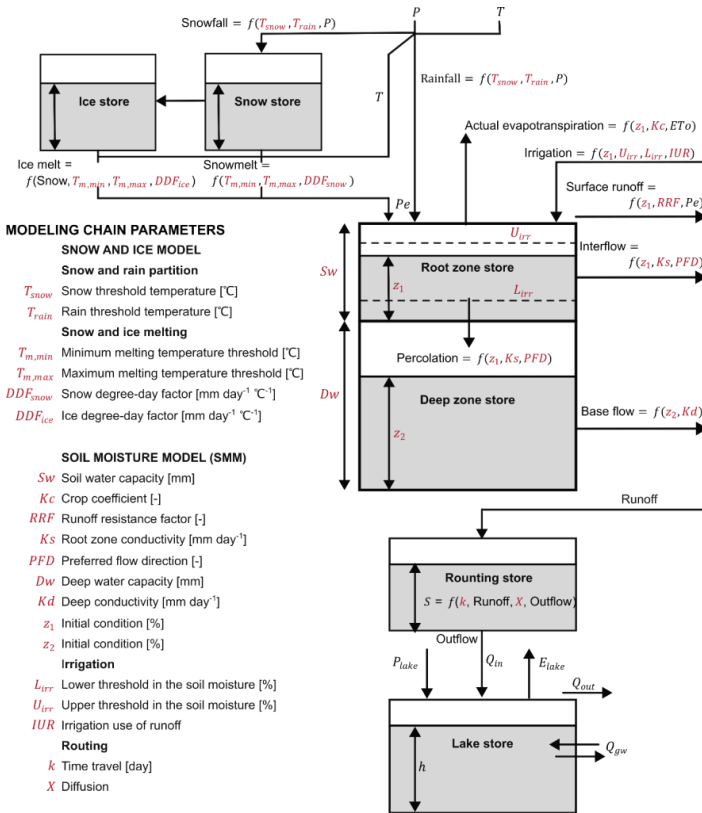
3.1.2 Upstream inflow

435 *Q_{in}* was estimated using a conceptual modeling approach that ~~considers natural hydrological processes and irrigation in the upstream catchments, combines a degree-day model to simulate snow and ice processes with the soil moisture model (SMM, part of WEAP) (Yates et al., 2005) to simulate the processes contributing to the generation and regulation of water storage and water flow in the catchments, including irrigation.~~ The model was applied using the same 100-m elevation bands in each catchment to account for snow and ice accumulation and melt, and glacierized and non-glacierized areas were distinguished in each elevation band. ~~To estimate the contribution of snow and ice to streamflow, a different degree-day model from the one available in WEAP was developed. The soil moisture model (SMM, part of WEAP) (Yates et al., 2005) that includes an irrigation module was used to simulate production and routing processes in the catchments.~~

Formatted: Space Before: 0 pt

Formatted: Footer





445 **Figure 4. Main processes and parameters (in red) of the modeling chain used to simulate the water balance of Lake Titicaca. P , T , ET_0 , Pe , P_{lake} , Q_{in} , E_{lake} , Q_{gw} , Q_{out} , and h stand for, respectively, precipitation, air temperature, reference evapotranspiration, effective precipitation, direct precipitation over the lake, upstream catchment inflow, evaporation from the lake, net groundwater exchange, downstream outflow and lake storage. Root zone and deep zone stores were modified based on Yates et al. (2005).**

450 For snow and ice processes, a degree-day model was applied that considered two stores: one for ice and one for snow (see Fig. 4) in a semi-distributed mode with 100m elevation bands. However, each glacier in each catchment was simulated separately. For snow accumulation, the liquid (P_{rain} , in mm) and solid (P_{snow} , in mm) fractions of total precipitation were estimated from a linear separation between the snow (T_s) and rain (T_l) temperature thresholds according to values (see Table 2) recommended in Ruelland (2023). Potential (maximum) snowmelt was calculated as $DDF_{snow}(T - T_m)$, where DDF_{snow} is the degree-day factor in mm day⁻¹°C⁻¹, T is the air temperature in °C, and T_m is the melting temperature threshold in °C. T_m was calibrated

455 according to two values ($T_{m,max}$ and $T_{m,min}$), where the maximum value occurs in austral summer and the minimum value in winter. In outer tropical regions, the amplitude of the diurnal range of air temperature is indeed considerable in winter. This means that it is warmer during the daytime, which can increase melting, while cold conditions prevail at night. The seasonal variation of T_m was calculated using the following equation:

$$T_m = \frac{T_{m,max} + T_{m,min}}{2} + \frac{T_{m,max} - T_{m,min}}{2} \sin\left(2\pi \frac{D+81}{365}\right) \quad (2)$$

460 where $T_{m,max}$ and $T_{m,min}$ are the maximum and minimum temperature thresholds in °C, and D is the Julian day. The maximum value of T_m was assumed to occur on January 10 and the minimum on July 12.

Actual snowmelt (M_{snow}) was determined as a function of maximum snowmelt and snow accumulation. For ice melt (M_{ice}), the same approach was used as for potential snowmelt, except that DDF_{snow} was replaced by an ice degree-day factor (DDF_{ice}). Ice melts when it is not covered by the snowpack. The daily mass balance (B , in mm w.e.) and effective precipitation in

465 glacierized areas (Pe_g , in mm w.e.) in each elevation band (j) were computed as follows:

$$B_j = P_{snow,j} - M_{snow,j} - M_{ice,j} \quad (3)$$

$$Pe_{g,j} = P_{rain,j} + M_{snow,j} + M_{ice,j} \quad (4)$$

The annual mass balance in each evaluation band, $B_{a,j}$, was estimated as the sum of the daily mass balance in a hydrological year. The annual mass balance was also calculated for individual glaciers ($B_{a,g}$) for comparison with the available glaciological

470 and geodetic mass balance. $B_{a,g}$ was calculated as:

$$B_{a,g} = \frac{\sum_{j=1}^n (B_{a,j} \times A_{g,j})}{A_g} \quad (5)$$

where $A_{g,j}$ and A_g are glacier area in the elevation band j and total glacier area, respectively.

The glacierized surface area (RGI Consortium, 2017) was fixed for the period simulated. The area provided for the year 2000 was considered as an intermediate value for the period 1982–2016. Ice thickness was also assumed to be infinite. The air temperature in each elevation band (T_j) was estimated as $T_{GMET,j} + \Gamma(Z_{GMET} - Z_j)$, where $T_{GMET,j}$ is the air temperature derived from GMET for each elevation band, Z_{GMET} is the mean areal elevation signal from GMET in the elevation band j , Z_j is the mean elevation of the elevation band, and Γ is a constant temperature lapse rate that was set to the value calculated from GMET (i.e. 5.8°C km⁻¹). The precipitation extracted from GMET for each elevation band was used directly with no modification.

480 ~~SMM (formerly WatBal) (Yates et al., 2005; Yates, 1996) was used for production and transfer processes, including irrigation net consumption. SMM is a one-dimensional model based on two stores (see Fig. 4). It uses a differential equation and empirical functions to quantify evapotranspiration, surface runoff, interflow, deep percolation, and subsurface~~

runoff. Regarding SMM, it is a one-dimensional model based on two stores (see Fig. 4). The first store represents the root zone and the second the deep zone (Yates et al., 2005). Because of its differential approach, the model can be run at different time steps (Yates, 1996). However, when SMM is used in relatively large catchments at fine time steps (e.g., daily), it may be necessary to consider runoff routing. The model without irrigation has seven free parameters as shown in Figure 4, of which Kc can be set using reference values from the literature (see Fig. 3a). The model without irrigation has seven free parameters as shown in Figure 4, of which crop coefficient (Kc) can be set using reference values from the literature. In addition, there are two parameters associated with the initial state of the two stores called z_1 and z_2 . Since this study used a daily time step and catchments are up to 15,000 km² in size, an additional store parameter was considered included for runoff routing with using the Muskingum equation. SMM is driven by precipitation and reference evapotranspiration estimated by the modified Penman-Monteith method (Maidment, 1993) for a grass crop 0.12 m in height and with a surface resistance of 69 s m⁻¹. The climate input data are detailed in Sect. 2.2. The effective precipitation in the elevation band j of both the non-glacierized and glacierized fractions is given as:

$$Pe_j = (P_{rain,ng,j} + M_{snow,ng,j})A_{ng,j} + Pe_{g,j}(1 - A_{ng,j}) \quad (6)$$

where $P_{rain,ng}$ and $M_{snow,ng}$ refer to rainfall and snowmelt in the non-glacierized fraction in mm. The term A_{ng} is the relative area of the non-glacierized fraction.

In SMM, water requirements (WR) for irrigation are a function of determined by crop evapotranspiration (from seasonal crop coefficients (Kc) and reference evapotranspiration) and the depletion of available water in the root zone store (see Fig. 4). Kc adjusts the reference evapotranspiration to reflect crop-specific characteristics (Allen et al., 1998), such as phenology. It was derived using cropping calendar and crop type data (Autoridad Nacional del Agua, 2009, 2010; Instituto Nacional de Estadística, 2015). The lower and upper irrigation threshold parameters (L_{irr} and U_{irr} , see Table 2 and Fig. 4) dictate both the timing and quantity of water used for irrigation (Yates et al., 2005). When the relative soil moisture of the root zone store drops below the lower threshold, a water requirement is triggered and irrigation is supposed to be applied up to the upper threshold (Yates et al., 2005). The irrigation use of runoff (IUR) method was used to allocate water. This method consists of setting or calibrating a percentage (IUR) of a catchment's runoff (before the runoff reaches the main river) that can be used for internal irrigation. IUR focuses on water allocation at the catchment scale, especially when hundreds of irrigation systems are to be represented together. Simulating each of the irrigation systems shown in Figure 3 individually would not be feasible at the scale of this study, the IUR approach is thus better suited. The irrigation net consumption, IRR_{net} , was calculated as:

$$IRR_{net} = \min(Q_{wi} \times IUR, WR) \times (1 - IRR_{rf}) \quad (7)$$

where Q_{wi} is runoff without irrigation in mm, IUR is a calibration parameter expressed as a percentage, WR is the irrigation water requirement in mm, and IRR_{rf} is the irrigation runoff fraction expressed as a percentage. The term $\min(Q_{wi} \times IUR, WR)$ is the water withdrawn for irrigation. IRR_{rf} is calculated as: (i) in the first iteration, SMM simulates

Q_{wi} ; (ii) in the second iteration, runoff is simulated assuming that the full WR is supplied; and (iii) finally, the IRR_{rf} is estimated based on how much runoff would flow due to irrigation alone.

3.1.3 Evaporation from the lake

E_{lake} was estimated using the Penman method for open water (Penman, 1948). This method is justified because it requires fewer data than an energy balance approach but is not as simple as a temperature-based approach. The Penman method also attempts to incorporate the energy balance in a simplified manner and includes mass transfer. The equation is given as:

$$E_{lake} = \frac{\Delta}{\Delta + \gamma} \frac{R_n - G}{\lambda} + \frac{\gamma}{\Delta + \gamma} f(U_2)(e_s - e_a) \quad (8)$$

where E_{lake} is the evaporation in mm d^{-1} , Δ is the slope of the vapor pressure curve in $\text{kPa } ^\circ\text{C}^{-1}$, λ is the latent heat vaporization set at 2.45 MJ kg^{-1} , and γ is the psychrometric constant $\text{kPa } ^\circ\text{C}^{-1}$. The terms R_n and G are net radiation at the water surface and heat storage changes in $\text{MJ m}^{-2} \text{ d}^{-1}$, respectively. $f(U_2)$ is the function of wind speed measured at 2 m above the lake surface that is equal to $c(a + bU_2)$, where the constant of $a = 10$, $b = 5.4$, and $c = 0.26$ for Lake Titicaca were taken from Delclaux et al. (2007). Also, e_s is the vapor pressure at the evaporating surface in kPa, and e_a is the vapor pressure at 2 m above the lake surface in kPa. Δ is given as $(e_s - e_a)/(T_w - T)$, where T_w and T are evaporating surface temperature and air temperature in $^\circ\text{C}$, respectively.

R_n is the sum of net shortwave (K) and net longwave radiation (L). K is given as $K_{in}(1 - \alpha)$, where K_{in} is the incident solar radiation ($\text{MJ m}^{-2} \text{ d}^{-1}$) and α is the albedo of the water surface. The L component is the difference between the incident flux (L_{in}) emitted by the atmosphere and clouds and outgoing radiation (L_{out}) from the evaporating surface. L_{in} and L_{out} can be estimated with Eq. (9) and Eq. (10), respectively. For L_{in} , we used the equation calibrated by Sicart et al. (2010) on the Zongo Glacier which is located at a distance of about 100 km from Lake Titicaca. The authors suggest that the calibration can be used in the ~~central~~^{eastern} tropical Andes.

$$L_{in} = C \left(\frac{e_a}{T + 273.15} \right)^{1/7} (1.67 - \tau_{atm} 0.83) \sigma (T + 273.15)^4 \quad (9)$$

$$L_{out} = \varepsilon_w \sigma (T_w + 273.15)^4 \quad (10)$$

where for a daily time step, C is equal to 1.24, e_a is the vapor pressure in hPa, σ is the Stefan–Boltzmann constant (set at $4.90 \times 10^{-9} \text{ MJ m}^{-2} \text{ K}^{-4} \text{ d}^{-1}$), τ_{atm} is the atmospheric transmissivity (-) that can be approximated as K_{in}/S_{extra} , S_{extra} is theoretical shortwave irradiance ($\text{MJ m}^{-2} \text{ d}^{-1}$) at the top of the atmosphere, and ε_w is water emissivity set at 0.98 (-).

The term G (heat storage changes) in Eq. (8) was estimated using the approach and assumptions of the study conducted by Pillco Zolá et al. (2019) on Lake Titicaca.

$$G = c_w \rho_w \frac{V_{mix}}{A_{lake}} \frac{dT_w}{dt} \quad (11)$$

where c_w is the specific heat of water ($4.18 \times 10^3 \text{ MJ kg}^{-1} \text{ }^\circ\text{C}^{-1}$), ρ_w is the water density (1000 kg m^{-3}), V_{mix} is the volume above the mixing depth in m^3 and A_{lake} is the surface area of the lake in m^2 . dT_w/dt is the change in water temperature ($^\circ\text{C}$) over the time interval (day).

545 In terms of input data, air temperature was obtained from GMET, while all the other meteorological variables were obtained from ERA5-Land (see Sect. 2.2). Lake surface water temperature (LSWT) time series are difficult to obtain and are not available for Lake Titicaca. A conceptual lumped model called Air2Water was thus used to estimate LSWT from air temperature (Piccolroaz et al., 2013; Toffolon et al., 2014). The Air2waterR 2.0.0 version available in R was used. ARC-Lake V3 data (MacCallum and Merchant, 2012) available for the period 1995–2012 were used to calibrate and evaluate the 550 Air2waterR model. The spatial resolution of ARC-Lake V3 is 0.05° and the temporal resolution is daily. The model was calibrated for the period 1995–2003 and evaluated using the period 2004–2012 (see Appendix B1). The performance of Air2Water in the independent control period was acceptable and captured seasonal and interannual variations very well. LSWT of ARC-Lake V3 had previously been compared with data measured at a buoy located in Lake Titicaca that recorded LSWT between 2019 and 2023. The comparison was made between the cell intersecting the measurement point and compared the 555 range of fluctuations and seasonality, since there is no temporal link between the two sources of data. Measured LSWT and LSWT obtained from ARC-Lake V3 fluctuated in a similar range and showed the same seasonal cycle (see Appendix B2).

Air temperature was obtained from GMET, while all the other meteorological variables were obtained from ERA5-Land (see Sect. 2.2). Since there are no long-term measurements of lake surface water temperature (LSWT) and the remotely sensed data sets do not cover the entire study period, the Air2Water model (Piccolroaz et al., 2013; Toffolon et al., 2014) was used to 560 simulate LSWT. Calibration and evaluation were performed against ARC-Lake V3 remotely sensed data (MacCallum and Merchant, 2012) (see Appendix B).

3.1.4 Downstream outflow

Q_{out} was simulated using the rating curve shown in Figure 5a. This curve was established 30 years ago based on a hydrodynamic simulation of the Desaguadero river (INTECSA et al., 1993b). The elevation corresponds to the vertical datum 565 of Peru. The rating curve was used for the entire study period. ~~The rating curve was~~ and implemented in the model in combination with lake bathymetry (see Fig. 5b) carried out between 2016 and 2019 by the ALT.

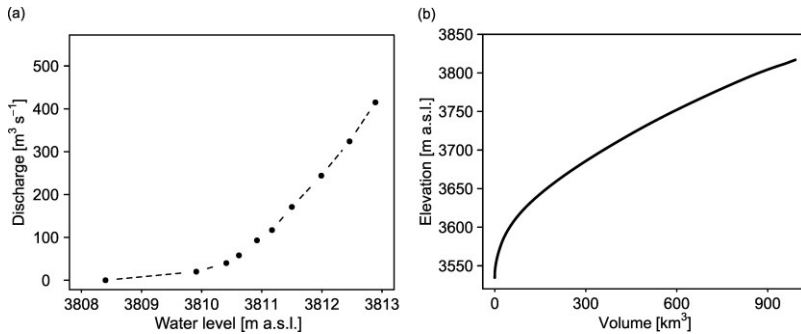


Figure 5. Information used to simulate Q_{out} for (a) the rating curve and (b) bathymetry. The rating curve of the lake outlet to the Desaguadero river was obtained from the master plan (INTECSA et al., 1993b). In both figures the elevation is referenced to the Peruvian vertical datum. The bathymetry (i.e. the relationship between lake water level and storage volume) was recorded by ALT between 2016 and 2019.

3.1.5 Storage change

dh/dt was calculated directly from the water levels measured in Puno gauge. Storage change is basically the difference between the water level of a current time step and the previous time step.

3.1.6 Net groundwater exchange

Q_{gw} was considered negligible. According to INTECSA et al. (1993a) the leakage from Lake Titicaca to the aquifers is very limited and the lake can be considered as an almost completely closed surface system. This is because the lake bed is composed of sediments with very low permeability. In this case, the only areas of high permeability would be limited to alluvial deposits saturated by water that flows mostly towards the lake. According to the same study, the inputs from alluvial deposits were $0.56 \text{ m}^3 \text{ s}^{-1}$. Therefore, omitting Q_{gw} from the water balance is justified.

3.2 Assessment/Evaluation of the modeling chain/framework

The performance of the lake water balance model was evaluated using both the error term of Eq. (1) and root mean square error ($RMSE$) computed between observed and simulated water levels. Since the Q_{in} and E_{lake} terms of the lake water balance were estimated with models were modeled, intermediate calibration and evaluation were necessary. Evaporation measurements are not available in the study area to evaluate the performance of the E_{lake} . Therefore, a formal calibration and evaluation procedure was implemented only for the Q_{in} estimates. The procedure was applied sequentially, first to obtain the model parameters simulating snow and ice processes, (see Appendix C), and then to calibrate and evaluate the production and transfer model parameters at the scale of the catchments that contribute to the lake. The procedure used is described below.

3.2.1 Parameters of the snow and ice model

The approach used was to obtain the snow and ice model parameters (see parameters in Fig.4 and Table 2) in the Zongoupstream catchment and then transfer them directly to the Titicaca modeling chain. Firstly, the catchment model parameters were calibrated against the streamflow of the Tubo gauge for the hydrological period 2000–2010. The previous two hydrological years were used as a warm-up period. The irrigation module was disabled because the non-glacierized area was completely dominated by rocks and no crops are cultivated at the high elevations of the Zongo catchment. The parameters with the best performance against observed streamflow were obtained from 10,000 simulations generated with random hypercube sampling of the Monte Carlo approach. The range of parameters tested is shown in Table 2. The model using the Nash-Sutcliffe efficiency index (Nash and Sutcliffe, 1970) calculated on the root-mean-square transformed streamflow (NSE_{sqr}) was used as the objective function to select the best performing parameter sets for the calibration period. NSE_{sqr} was selected because we were looking for good compromise between high and low flows. According to Oudin et al. (2006) the NSE_{sqr} provides an intermediate fit of the unit hydrograph. Secondly, the model was evaluated against the mass balance observed from glaciological method (see Sect. 2.5.1.) for the period 1992–2016 using the $RMSE$ criterion. The evaluation was performed with other internal variables of the model, because the goal was to obtain the set of parameters associated with the snow and ice stores. Good internal consistency of the glacier model was thus desirable. In addition, the 25-year time window made it possible to evaluate the ability of the model to simulate the interannual and decadal variation in the mass balance of the Zongo glacier. Figure 6 shows the model's calibration (see Fig. 6a) and evaluation (see Fig. 6b) performances. Figure 6a shows that the model reproduced streamflow reasonably well. Mass balance was also simulated reasonably well. The $RMSE$ obtained (349 mm) is in the range of the error of the mass balance based on the glaciological method (400 mm) (Sicart et al., 2007) in order to provide an intermediate fit between high and low flows (Oudin et al., 2006).

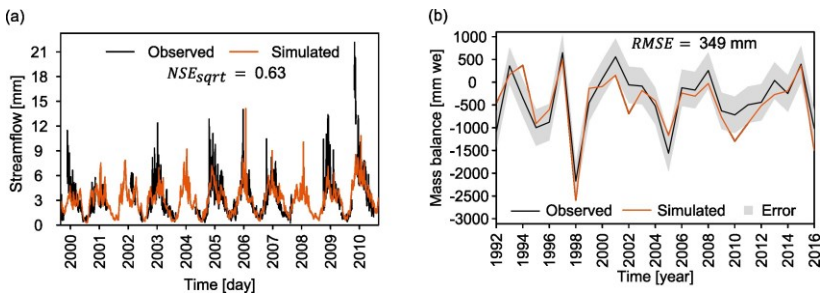


Figure 6. Performance of the catchment model in the Zongo catchment versus (a) observed streamflow at the Tubo gauge, and (b) annual mass balance estimated using the glaciological method. The mass balance estimated using the glaciological method has an error of 400 mm year^{-1} (Sicart et al., 2007). 3.2.1

Table 2. Parameters of the model implemented in the Zongo catchment and their associated fixed values or ranges tested in order to obtain the parameters of the snow and ice model.

Parameter	Meaning	Unit	Fixed values or ranges tested
T_x	Snow threshold temperature	$^{\circ}\text{C}$	-1
T_r	Rain threshold temperature	$^{\circ}\text{C}$	3
$T_{m,max}$	Maximum melting temperature threshold	$^{\circ}\text{C}$	[-0.5; 1]
$T_{m,min}$	Minimum melting temperature threshold	$^{\circ}\text{C}$	[-3; -0.5]
DDF_{snow}	Snow degree-day factor	$\text{mm d}^{-1}\text{ }^{\circ}\text{C}^{-1}$	[1; 6]
DDF_{ice}	Ice degree-day factor	$\text{mm d}^{-1}\text{ }^{\circ}\text{C}^{-1}$	[2; 15]
Sw	Soil water capacity	mm	[150; 250]
RRF	Runoff resistance factor	-	[4; 15]
Ks	Root zone conductivity	mm d^{-1}	[1; 6]
PFd	Preferred flow direction	-	[0.3; 0.87]
Dw	Deep water capacity	mm	[300; 600]
Kd	Deep conductivity	mm d^{-1}	[1; 3]
Z_x	Initial condition	%	30
Z_z	Initial condition	%	30
L_{irr}	Lower threshold	%	0
U_{irr}	Upper threshold	%	0
IUR	Irrigation use of runoff	%	0
k	Time travel	d	[0.5; 5]
X	Diffusion	-	0.2
# of free parameters			11

615 3.2.2 Upstream catchment model

The upstream catchment model shown in Figure 4 has 15 parameters. However, seven of the parameters were set to reduce the number of free parameters. Four parameters ($T_{m,max}$, $T_{m,min}$, DDF_{snow} and DDF_{ice}) related to snow and ice store were set to values obtained in the Zongo catchment (see Appendix C). The simulated mass balance of all glaciers of the Titicaca hydrosystem was compared with the geodetic mass balance (Hugonnet et al., 2021) for the period 2000–2009. Similarly, two parameters of the irrigation module, L_{irr} and U_{irr} , were set to 80%. Winter et al. (2017) used a threshold of 100% for furrow irrigation in California. However, a value of 80% is reasonable for our study area because it is irrigated in conditions of limited water availability. X (routing store) was set to default value (0.2) in WEAP. A total of eight free parameters were kept, as shown in Table 32. The procedure used to obtain the set of parameters with the best performance and subsequent evaluation consisted of the four steps described below.

625 First (Step 1 in Fig. 76), the model was run for the period 1980–2016 (of which the first two years were used as a warm-up period) with 10,000 parameter sets generated from a random sample of hypercubes from the Monte Carlo approach within the parameter intervals tested (see Table 32). Second (Step 2 in Fig. 76), the best performing parameter sets in terms of $NSE_{sqr,t}$ were identified along with subperiods consisting of (i) five continuous years (i.e. seven subperiods between 1982 and 2016); and (ii) five discontinuous years identified as the coldest, warmest, driest, and wettest (i.e. four discontinuous subperiods between 1982 and 2016). The 11 best performing parameter sets were selected using different subperiods. Third (Step 3 in Fig. 76), the mean of 11 streamflow simulations generated with the selected parameter sets was calculated. Fourth (Step 4 in

Formatted: Space Before: 6 pt

Formatted: Footer

Fig. 76), the performance of the mean of the streamflow simulations over the 11 subperiods was evaluated using the $NSE_{sqr t}$ criterion.

Two objectives justify the use of seven continuous and four discontinuous subperiods. The first objective was to evaluate the transferability of the model parameters to non-stationary conditions within the period 1982–2016, including particularly contrasted subperiods in terms of precipitation and temperature. In addition, continuous subperiods were suitable for assessing the transferability of the water allocation parameter (IUR). If there had been a significant and sustained increase in irrigation withdrawals, the IUR parameter would not be transferable over time and would therefore vary over the period 1982–2016. However, it is important to note that irrigable area, crop types, and Kc remain under the assumption of stationarity. The second objective was to consider the parameterization uncertainty through uncertainty envelopes and confidence intervals in the simulations resulting from the 11 parameter sets used over the whole 1982–2016 period.

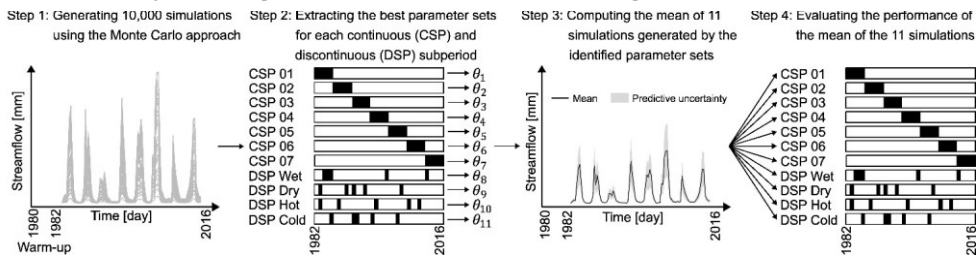


Figure 76. Procedure used to evaluate the upstream catchment model to estimate the Q_{in} in each gauged catchment.

3.2.32 Sensitivity assessment of model predictability to irrigation and to snow and ice processes

To evaluate the sensitivity of the modeling chain to net irrigation consumption and to snow and ice processes, different processes were progressively excluded from the modeling structure. Three model structures were tested under the following configuration: (i) **Model-A** BasicModel+IRR+SNOW/ICE, which **is represents** the full reference model structure (as **shown** in Fig. 4); (ii) **Model-B** BasicModel+IRR, where the processes associated with snow and ice **proecesses** (accumulation and ablation) **were are** excluded, but irrigation **was is** maintained; and (iii) **Model-C** BasicModel, where both snow and ice processes and irrigation consumption **were are** excluded. The objective was to evaluate whether a simpler structure in terms of the hydrological processes considered performed better or worse than a more complex structure in simulations of catchment streamflow and lake water levels. This is justified because, *a priori*, snowfall as well as the proportion of glacierized area and irrigable area are very limited in the catchments that contribute to the lake (see Table 1) and their impact on the streamflow and water level prediction may be negligible. In addition, the data used to represent and control these processes are very limited, which can lead to inaccuracies that could worsen the simulations of streamflow and lake water levels instead of improving them. Table 32 shows the active and inactive parameters in the three model structures.

Table 32. Parameters of the upstream catchments model of Lake Titicaca and associated fixed values or ranges tested. The ranges presented were used to generate the random sample of hypercubes in the Monte Carlo approach.

Parameter	Name	Unit	Model A BasicModel+IRR+SNOW/ICE	Model B BasicModel+IRR	Model C BasicModel
T_s	Snow threshold temperature	°C	-1	-	-
T_i	Rain threshold temperature	°C	3	-	-
$T_{m,max}$	Melting temperature threshold	°C	-0.2	-	-
$T_{m,min}$	Melting temperature threshold	°C	-2.5	-	-
DDF_{snow}	Snow degree-day factor	mm d ⁻¹ °C ⁻¹	2.3	-	-
DDF_{ice}	Ice degree-day factor	mm d ⁻¹ °C ⁻¹	7.7	-	-
Sw	Soil water capacity	mm	[150; 250]	[150; 250]	[150; 250]
RRF	Runoff resistance factor	-	[4; 15]	[4; 15]	[4; 15]
Ks	Root zone conductivity	mm d ⁻¹	[1; 6]	[1; 6]	[1; 6]
F	Preferred flow direction	-	[0.3; 0.87]	[0.3; 0.87]	[0.3; 0.87]
Dw	Deep water capacity	mm	[300; 600]	[300; 600]	[300; 600]
Kd	Deep conductivity	mm d ⁻¹	[1; 3]	[1; 3]	[1; 3]
Z_1	Initial condition	%	30	30	30
Z_2	Initial condition	%	30	30	30
L_{irr}	Lower threshold	%	80	80	-
U_{irr}	Upper threshold	%	80	80	-
IUR	Irrigation use of runoff	%	[30; 80]	[30; 80]	-
k	Time travel	d	[0.5; 5]	[0.5; 5]	[0.5; 5]
X	Diffusion	-	0.2	0.2	0.2
# of free parameters			8	8	7

Formatted Table

3.2.43 Transferring parameters to the ungauged catchments

The approach used to transfer the parameters to the ungauged catchments consisted of the following steps: (i) the median of the parameter sets obtained for the seven gauged catchments was calculated for each subperiod, thus generating 11 parameter sets; (ii) the upstream catchment model was run for the 11 parameter sets; and (iii) the mean of the 11 streamflow simulations was calculated, including the confidence interval.

Formatted: Footer

4 Results

4.1. Modeling chain performance

675 4.1.1 Performance of the geodetic mass balance simulated by the model for Titicaca glaciers

Figure 87 shows the comparison between the simulated and geodetic mass balance ~~for the glaciers located in the different upstream catchments of Lake Titicaca.~~ The scatter plots ~~show~~reveal significant variability in model performance, with some glaciers (represented by each point) ~~distributed~~ close to the identity line, ~~while and~~ others ~~deviated~~deviating significantly ~~from the identity line,~~ indicating variability in the simulation performance depending on the spatial distribution of glaciers. For this purpose, the scatter plots are presented as The model simulates a function of the catchment (the color of each dot), the surface area of the more negative glacier (see Fig. 8a), and mass balance compared to the mean geodetic glacier mass balance. Figure 7a displays glaciers according to their surface area, while Figure 7b shows them based on their mean elevation (see Fig. 8b).

680 The model performed more effectively in the catchments that concentrate 92% of the glacierized area (Achacachi, Ungauged catchments, Tambillo and Escoma). The model performed very poorly in Ramis (see Table 43), but the proportion of glacierized area in that catchment is very small (0.1%). Therefore, the proportion is expected to have a limited impact on streamflow predictions. Additionally, the model performs much better in the case of large glaciers than small glaciers (see Table 43). For example, for large glaciers representing 84% of the glacierized area, the weighted simulated mass balance for all catchments has a bias of 11%, which is within the error range of the geodetic mass balance (see Table 43). Much more obvious is the dependence on elevation (see Fig. 8b7b). The model performed very poorly on glaciers with mean elevations below 5,100 m a.s.l., which represent only 10% of the simulated glaciers. At elevations above 5,200 m a.s.l., i.e. 68% of the glaciers, the points are distributed around the identity line. ~~This distribution could also be due to precipitation inaccuracies in some catchments. In this case, precipitation could be overestimated (underestimated) at higher (lower) elevations. The notable variability in model performance (Fig. 7b) could be attributed to inaccuracies in precipitation data for some catchments, as estimating precipitation in high-elevation remote areas remains a complex challenge (Ruelland, 2020). At the catchment scale, the underestimation and overestimation of glacier-wide mass balance are compensated for, and the biases are relatively small (Table 3).~~

685

690

695

The transfer of the snow and ice parameters identified on the Zongo catchment to all the Titicaca catchments revealed interesting aspects, for example: (i) the limitations of applying the parameters to all glaciers, and (ii) an apparent dependency on elevation, although the inaccuracies may also be associated with inaccuracies in precipitation and air temperature. Despite these issues, acceptable simulations were obtained for high elevation and large area glaciers. At the catchment scale, the underestimation and overestimation of glacier wide mass balance (GMB) are compensated for, and the biases are relatively small. However, this is not the case in Ramis where the GMB of all the glaciers is overestimated. The sensitivity of streamflow prediction to snow and ice processes described in Sect. 4.1.2 below provide more clarity concerning the impact of accumulation and ablation estimates.

700

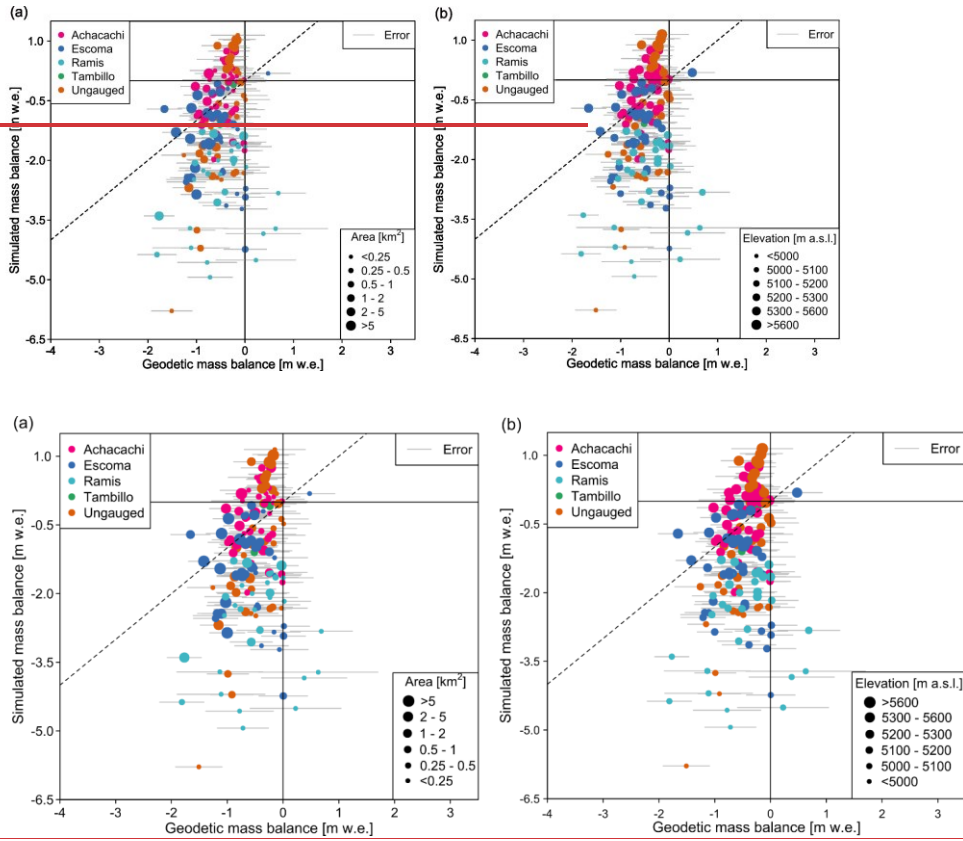


Figure 87. Scatter plots comparing the simulated mass balance and the geodetic glacier mass balance for the period 2000–2009. The simulations are compared with the geodetic mass balance of, based on the remotely-sensed observation from Hugonnet et al. (2021) where the dot size of the dots is a function of represents (a) glacier area and (b) mean glacier elevation. The dashed line indicates the identity line is indicated by the dashed lines. The geodetic mass balance error is indicated by, while the gray line represents the error in geodetic glacier mass balance.

Table 43. Comparison of the simulated and geodetic glacier mass balance (MB) in upstream catchments for the period for 2000–2009. The catchment scale mass balance was calculated as an area weighted average of each glacier. The error corresponds to the geodetic glacier mass balance and was calculated as a weighted average for each catchment.

Catchment	Small glaciers (<1 km ²)				Large glaciers (≥1 km ²)			
	Area [km ²]	Simulated MB [mm we]	Geodetic MB [mm we]	Error [mm we]	Area [km ²]	Simulated MB [mm we]	Geodetic MB [mm we]	Error [mm we]
Achacachi	13	-330	-395	402	40	-306	-610	299
Escoma	6	-1,973	-453	428	95	-1,246	-929	313
Ramis	5	-2,331	-656	453	14	-2,002	-624	329
Tambillo	2	-506	-352	364	2	-43	-343	326
Ungauged	11	-1,505	-464	411	43	-251	-462	311
All glaciers	37	-1,322	-462	414	194	-760	-683	311

4.1.2 Performance and sensitivity of the upstream catchment model to irrigation and to snow and ice processes

Figure 98 shows the distribution of the performance of the three modeling options (~~Model A~~, ~~Model B~~ ~~BasicModel+IRR+SNOW/ICE~~, ~~BasicModel+IRR~~, and ~~Model C~~ ~~BasicModel~~) in the evaluation made for each catchment. A striking feature is that the performance in the catchments on the Peruvian side (Ramis, Ilave, Coata Unocolla and Huancane) was significantly better than in the catchments on the Bolivian side (Escoma, Tambillo and Achacachi). The performance of the three models is distributed symmetrically in the boxplots in each catchment. This suggests that there are no significant differences in performance between the three models. Therefore, Q_{in} is not very sensitive to net irrigation consumption nor to snow and ice processes. This reflects the fact that the upstream catchments of Lake Titicaca are dominated by a pluvial monsoonal climate regime and that contributions from glacierized areas and snow have little influence on the Q_{in} prediction. However, in terms of mean and median $NSE_{sqr,t}$, ~~Models A~~ ~~BasicModel+IRR+SNOW/ICE~~ and ~~B~~ ~~BasicModel+IRR~~ generally performed slightly better than ~~Model C~~ ~~(from which both snow and ice as well as irrigation processes were excluded)~~, ~~BasicModel~~, but the differences are marginal, in most cases the difference is between 1% and 3%. However, in Achacachi, the $NSE_{sqr,t}$ obtained with the full model A is 6% higher than the value obtained with models B and C. This suggests that accounting for processes associated with snow and ice accumulation and melt is relatively more important in catchments with more glacierized area. *A priori*, these results show that when irrigation and snow and ice processes are taken into consideration, Q_{in} prediction only improves marginally. However, this must be confirmed by evaluating the sensitivity of the simulated water levels in Lake Titicaca to the different model structures (see Sect. 4.1.3.) obtained with the ~~BasicModel+IRR+SNOW/ICE~~ is 6% higher than the value obtained with models ~~BasicModel+IRR~~ and ~~BasicModel~~.

Formatted: Space After: 6 pt

Formatted: Footer

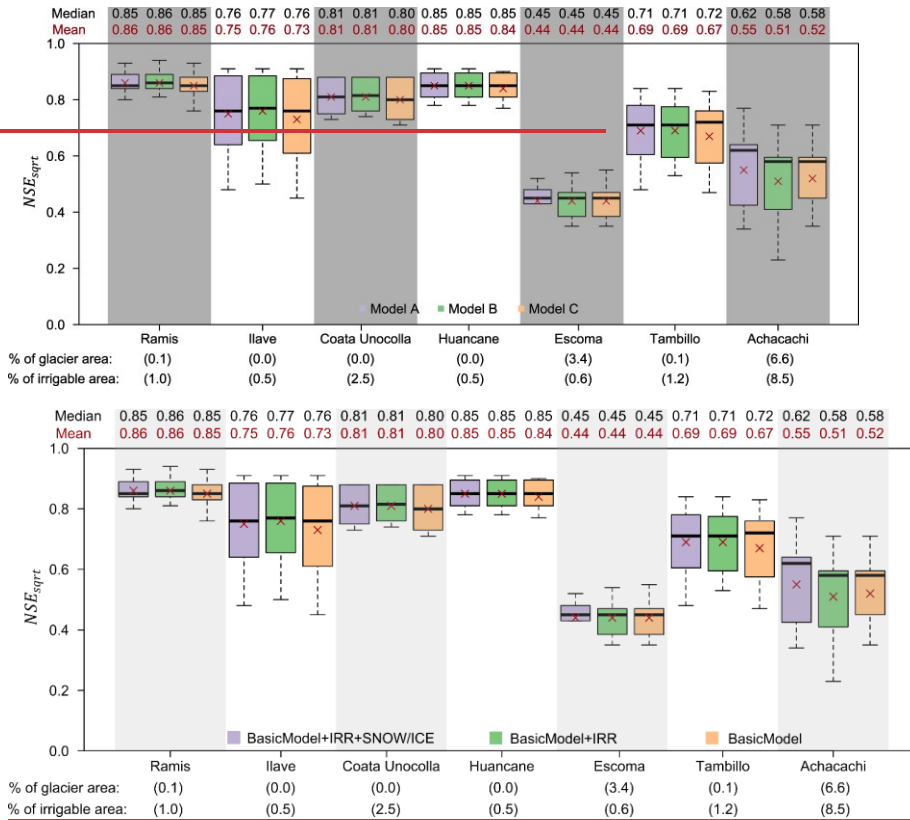


Figure 98. Performance distributions of the three modeling options (A) **BasicModel+IRR+SNOW/ICE**, (B) **BasicModel+IRR** and (C) **BasicModel** in each gauged catchment in evaluation. The size of the sample in each boxplot is 11 (resulting from the procedure presented in Figure 7). Model A is the full reference model structure (see Fig. 4), Model B accounts for irrigation water consumption but not for snow and ice processes, and Model C includes neither snow and ice processes, nor consumption of water for irrigation. (6)

4.1.3 Performance of the modeling chain with respect to lake water levels

Figure 109 shows the simulation of daily water levels in Lake Titicaca over the 1982–2016 period. Three different estimates of Q_{in} , were used, one from **Model A**—**BasicModel+IRR+SNOW/ICE**, one from **Model B**—**BasicModel+IRR**, and one from **Model C**—**BasicModel**. The results show that the models are able to simulate the amplitude and frequency of annual, interannual, and decadal water level fluctuations reasonably well. Visually, the performances of the three Q_{in} estimates appear to be relatively

similar. Based on the ε term, ~~Model-B~~BasicModel+IRR performed better than ~~Models-A~~BasicModel+IRR+SNOW/ICE and ~~C~~BasicModel. The difference in the ε term between ~~models-A~~BasicModel+IRR+SNOW/ICE and ~~B~~BasicModel+IRR was 0.01 mm. When both snow and ice processes and net irrigation consumption were excluded, the error increased by 0.03 mm d⁻¹.

750 However, the differences in error were marginal. Figure 499 shows that in the mostly dry years of the 1990s, ~~Models-A~~BasicModel+IRR+SNOW/ICE and ~~B~~BasicModel+IRR simulated daily water levels better. However, the performance measured by the RMSE differed in the error term. In that case, ~~Model-C~~BasicModel performed best. This is because the RMSE was calculated using daily water level data (cumulative change in storage over time), whereas the ε term was computed directly from the water balance at each time step. Inaccuracies in some time steps were then propagated to later time steps due to the

755 slow response of the lake. The RMSE obtained was very small compared to the average water level (3,809.7 m a.s.l.).

A striking feature of Figure 499 is the systematic underestimation of daily water levels between 2001 and 2010. This is related to inaccuracies in the estimation of water balance terms. The hydrological response of Lake Titicaca is relatively slow, and it was possible to verify that significant errors were present between 2001 and 2004, but were not underestimated over the whole decade (2001–2010) (see Appendix C+Fig. D1). In 2001, the ~~dam-built~~outflow gate to regulate outflows into the Desaguadero river was completed and dredging of the Desaguadero river had begun. This could mean fewer outflows into the Desaguadero and consequently more storage in the lake. However, even assuming there were no downstream outflows in those years would not compensate for the underestimation. Looking for other sources of error, discussions with the Lake Titicaca Authority (ALT) revealed that the lake sometimes received inflows from the Desaguadero river, especially in wet years. This could be the case, since 2001 and 2004 were wet hydrological years, but other than verbal communication, there are no records to

760 support such a claim.

765 Concerning streamflow in the catchments that contribute to the lake, the results suggest that water level prediction is also not very sensitive to net irrigation consumption and snow and ice processes. ~~Model-A~~BasicModel+IRR+SNOW/ICE produced a reasonably realistic simulation with an even smaller error, with marginal differences, than ~~model-C~~BasicModel. Consequently, ~~Model-A (including irrigation and snow and ice processes)~~BasicModel+IRR+SNOW/ICE can be considered as a reference structure to provide an estimate of the water balance of the Lake Titicaca hydrosystem.

770

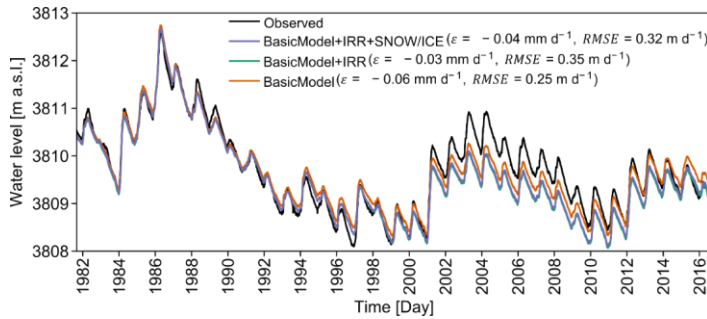
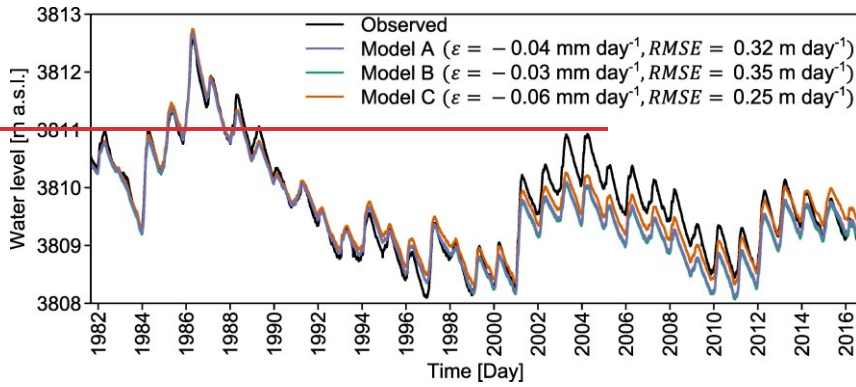


Figure 499. Performance of the modeling chain compared with the water levels of Lake Titicaca measured in Puno. Modeling was evaluated using the error (ϵ) term of the lake water balance and $RMSE$. Three simulations of water levels are presented because the models produced three different estimates of Q_{in} .

4.2. Water Simulated water balance simulated by the modeling chain

4.2.1. Simulated water balance in upstream catchments

Table 54 shows the mean annual water balance for the hydrological period 1982–2016 simulated by Model A: BasicModel+IRR+SNOW/ICE. Some terms (AE_{ni} , IRR , and Q_{in}) presented in Table 5 were calculated as the average of 11 ensemble members. At the scale of all upstream catchments (Table 54), annual precipitation is 723 mm, of which 6% is estimated to be snowfall. Thus, despite the elevations at which the study area is located ($>3,810$ m a.s.l.), the precipitation regime is clearly dominated by rainfall. This regime has a unimodal pattern with a strong seasonal cycle between the rainy and dry seasons (see Fig. 410). This is very characteristic of the outer tropical areas, where precipitation occurs mainly in the summer and the dry season in winter. In the upstream catchments, snowmelt accounts for 6% of total input ($P_{rain} + M_{snow} +$

785 M_{ice}). Snow remains on the ground for only a very short time, as there is practically no time lag between snowfall and snowmelt
 (see Fig. 4410). Snowfall and snowmelt have a less accentuated seasonal cycle, as the rare precipitation that occurs in the dry
 season is mostly snow. The contribution of ice melt was simulated to be 6 mm yr⁻¹ on average, which represents only 1% of
 the total input in upstream catchments. However, the contribution of ice melt is slightly higher in the Achacachi and Escoma
 catchments, where the simulated value is 7%. Most ice melt occurs between October and November (see Fig. 4410) because
 790 the temperature is above the melting threshold and glaciers are mostly free of snow cover. Δ_{ice} is negative, indicating a loss in
 ice stock. ~~However, it is worth noting that the morphometric change of the glacier was not dynamically simulated in this study.
 This limitation does not have a major impact on the water balance of Lake Titicaca, as the glacier contributes very little to the
 streamflow at the catchment outlet.~~

Annual actual evapotranspiration (AE) was simulated at 570 mm of which 2% corresponds to net irrigation water consumption
 795 (IRR). AE is highest between January and March, and lowest between July and
 September (see Fig. 4410). IRR is concentrated in the transition season (see Fig. 4410). The simulated streamflow is about
 153 mm, which represents 21% of the total outflow in upstream catchments ($AE + Q_{in}$), the remaining 79% being actual
 evapotranspiration. IRR represents 7% of Q_{in} . The seasonal cycle of Q_{in} shows that the peak is in February, while Q_{in} is low
 from June to November. The predictive uncertainty associated with the upstream catchment model parameters is shown in Fig.
 800 4410 for the terms AE , IRR and Q_{in} . The prediction range of AE is very narrow (see Fig. 4410) compared to that of IRR and
 Q_{in} indicating that evapotranspiration is less sensitive to the model parameters. The range of prediction of IRR is quite wide
 (see Fig. 4410), indicating that the simulations are very sensitive to SMM parameters. The range of the prediction of Q_{in} , is
 also wide (see Fig. 4410). However, the average predictions fitted the measured streamflow and model performance reasonably
 well (see Fig. 98).

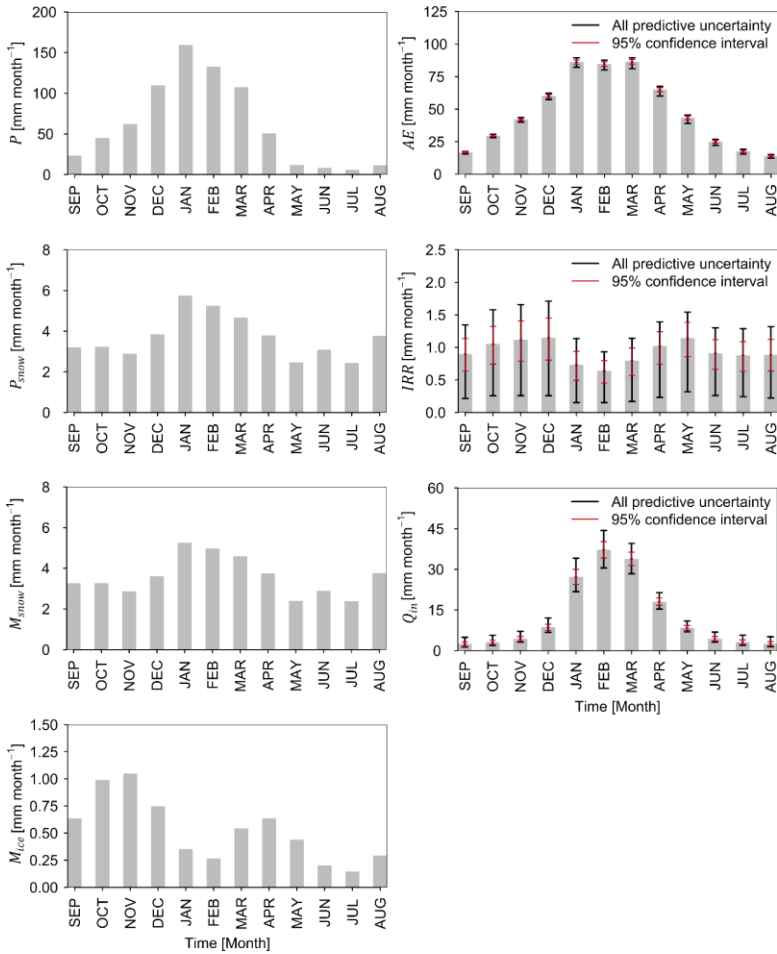
805

810

Table 54. Mean annual water balance [mm] in the upstream catchments for the hydrological period 1982–2016 simulated with Model A-BasicModel+IRR+SNOW/ICE. P , P_{rain} , P_{snow} , M_{snow} , M_{ice} , AE_{ni} , IRR , Δ_{ice} , Δ_{snow} , Δ_{SM} and Q_{in} represent total precipitation, rainfall, snowfall, snowmelt, ice melt, actual evapotranspiration in non-irrigated area, net consumption of irrigation water, variation in ice storage, variation in snow storage, variation in soil moisture storage, and streamflow in upstream catchments, respectively. The water balance follows the equation $Q_{in} = P - AE_{ni} - IRR - \Delta_{ice} - \Delta_{snow} - \Delta_{SM}$.

Catchment	P	P_{rain}	P_{snow}	M_{snow}	M_{ice}	AE_{ni}	IRR	Δ_{ice}	Δ_{snow}	Δ_{SM}	Q_{in}
Ramis	777	726	51	51	3	610	7	-3	0	2	162
Ilave	685	656	29	29	0	528	5	0	0	0	153

Coata	889	776	113	113	0	615	21	0	0	0	253
Huancane	664	647	17	17	0	498	5	0	0	-1	163
Escoma	618	533	85	82	56	490	5	-53	0	1	175
Tambillo	537	526	11	10	1	447	7	0	0	49	33
Achacachi	741	573	168	142	49	524	40	-24	0	11	190
Ungauged	699	683	16	13	5	558	20	-2	0	2	121
All catchments	723	679	44	43	6	559	11	-5	0	5	153



820 **Figure 4-10.** Seasonal cycle (monthly average for the period 1982–2016) of the water balance in the upstream catchments of Lake
 Titicaca simulated with **Model-A-BasicModel+IRR+SNOW/ICE**. P , P_{snow} , M_{snow} , M_{ice} , AE , IRR , and Q_{in} represent, total
 precipitation, snowfall, snowmelt, ice melt, actual evapotranspiration, irrigation net water consumption, and streamflow in the
 upstream catchments, respectively. For some terms (AE , IRR , and Q_{in}) the gray bars were estimated as the mean of the 11 ensemble
 825 members resulting from the procedure shown in Fig. 7-6. The predictive uncertainty is presented for both the entire prediction range
 (i.e. all predictive uncertainty) and for the 95% confidence interval. "All predictive uncertainty" was estimated as the maximum

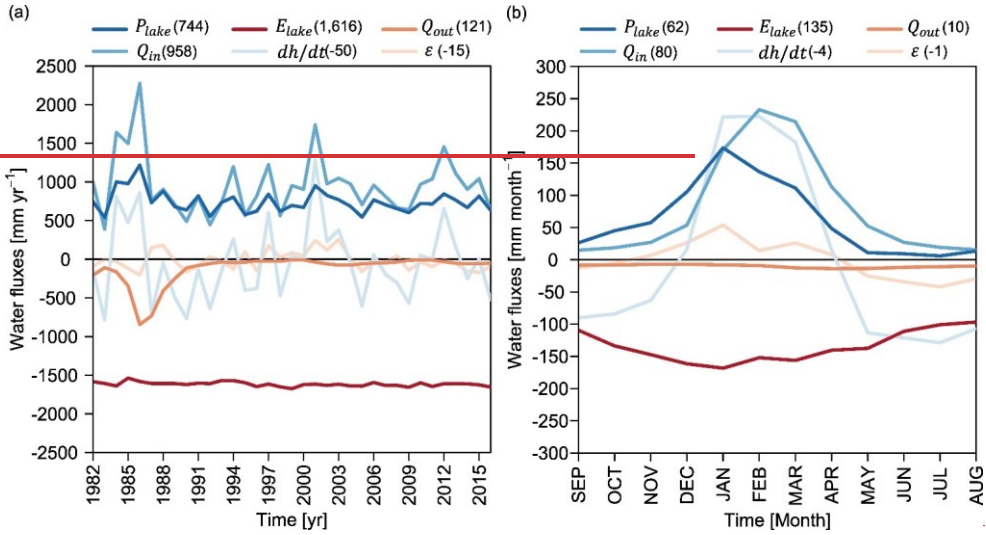
and minimum values of the ensemble members. The terms associated with snow and ice are not subject to predictive uncertainty because fixed parameters were used (see Table 32).

4.2.2 Simulated water balance in the lake

Figure 42a11a shows the annual evolution of the water balance terms of Lake Titicaca and Table 5 shows long-term average values. Over the period 1982–2016, average annual precipitation over the lake was 744 mm ($\sigma = 144$ mm) and inflow from upstream catchments 958 mm ($\sigma = 392$ mm). This means that 44% (56%) of the inflows come from direct precipitation over the lake (while the remaining portion (56%) comes from upstream watersheds/catchments. Regarding outflows, annual evaporation over the lake is 1,616 mm ($\sigma = 28$ mm) and the downstream outflow is 121 mm ($\sigma = 191$ mm), thus. Thus 93% of the losses are due to evaporation and 7% to downstream outflow. The measured storage change for the period 1982–2016 was -50 mm, indicating a drop in water level. The simulated change in storage was -35 mm, which indicates an overestimation. Therefore, the water balance closure has an error of about -15 mm. Compared to evaporation, P_{lake} and Q_{in} showed significant interannual variability (see Fig. 42a11a). E_{lake} was subject to less pronounced interannual variability, but showed an increasing trend over the period 1982–2016 due to the increase in temperature (about +0.1°C/decade). This means that the interannual variability of water levels depends to a large percent on variations in precipitation over the lake and in the upstream catchments. The highest values of both P_{lake} and Q_{in} occurred between 1985 and 1986 and caused large floods around the lake and in the Desaguadero river, where discharges reached about 900 mm yr⁻¹. In the 1990s, inflows were the lowest in the period studied, resulting in a mostly negative change in storage. Substantial inflows to the lake in the early 2000s led to a significant positive change in storage, although this was followed by another dry period that lasted until 2012.

Figure 42b11b shows a very marked seasonal cycle for precipitation and upstream inflow. For example, the monthly peak in upstream inflow is about 230 mm (in February), while in the dry season the values are very close to 15 mm (in September). One of the features is the lag of upstream inflow with respect to direct precipitation over the lake, evidence for the relatively slow hydrological response in the upstream catchments because of the size of the catchment area. The seasonal cycle of evaporation is less marked than that of precipitation and upstream inflow. Although air temperature shows strong seasonality, evaporation is also influenced by other meteorological variables, and heat storage plays a critical role in the seasonal cycle. The peak of the mean monthly evaporation is around 170 mm (in January), while the minimum value is around 95 mm (in August). In Figure 42b11b, it is also interesting to observe the seasonal cycle of the error term, which is mostly positive in the rainy season and mostly negative in the dry season. This could indicate that the lake receives net groundwater inflow during the rainy season and is subject to net outflow during the dry season. However, the magnitudes cannot be directly attributed to net groundwater flow because the error term includes both the uncertainty associated with estimating the other terms of the water balance (P_{lake} , Q_{in} , E_{lake} , and Q_{out}) and assumptions concerning the groundwater flow.

Table



5. Lake Titicaca water balance components simulated for the period 1982–2016. The lake water balance follows the equation $P_{lake} + Q_{in} - E_{lake} - Q_{out} - dh/dt + \varepsilon = 0$.

Components	mm yr ⁻¹	mm month ⁻¹
P_{lake}	744	62
Q_{in}	958	80
E_{lake}	1,616	135
Q_{out}	121	10
dh/dt	-50	-4
ε	-15	-1

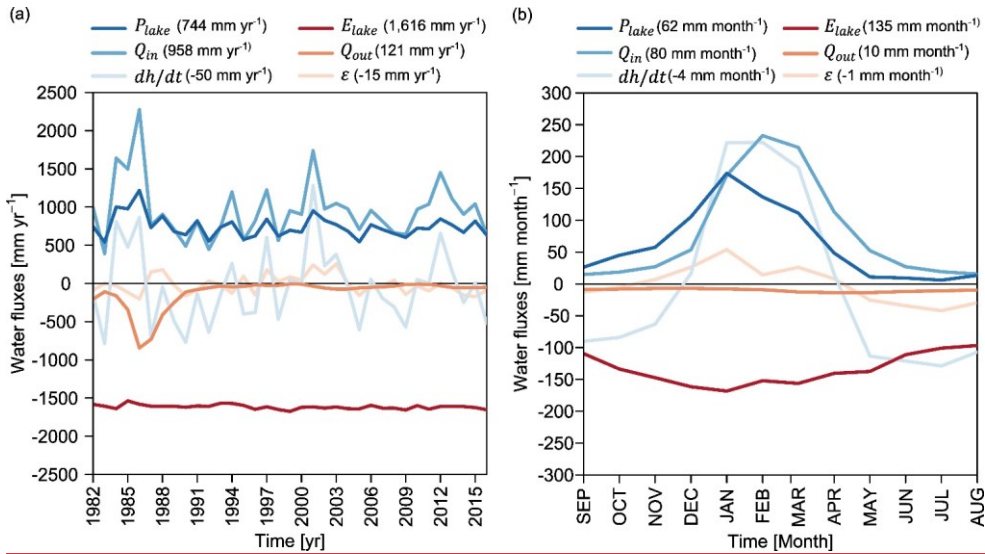


Figure 12.11. Water balance of Lake Titicaca for the period 1982–2016 in terms of (a) interannual variability and (b) seasonal cycle. The values in parentheses correspond to the mean annual or monthly values (in mm) for the period 1982–2016. The lake water balance follows the equation $P_{lake} + Q_{in} - E_{lake} - Q_{out} - dh/dt + \varepsilon = 0$.

870 5 Discussion and conclusions

5.1 Main findings

In this study, the hydrologic processes that occur in a large lake hydrosystem were simulated using an integrated modeling framework. The aim of the simulation was find a balance between serious problems such as data availability, the complexity of representing the processes, and reliability of predictions despite uncertain and incomplete observed data. The originality of this modeling framework lies in its ability to integrate and simulate natural hydrologic processes and irrigation in a poorly-gauged large lake hydrosystem at a daily time step. Unlike other studies (e.g. Hosseini Moghari et al., 2020) that attempted to integrate natural hydrological processes and anthropogenic pressures in large lakes, our study takes a long-term approach making it possible to understand variations in water balance components over a multidecadal period. This enables a better understanding of the drivers of variations in water level under a wide range of climate variability conditions and anthropogenic pressure. In addition, our modeling framework includes the majority of components of the water balance (direct precipitation over the lake, evaporation from the lake, upstream inflow, and downstream outflow) except net groundwater exchanges. While Hosseini Moghari et al. (2020) focused on estimating upstream inflow to Lake Urmia, they paid little attention to other

885 components such as direct precipitation over the lake and evaporation that have a major impact on the water balance of large lakes, as shown in the current study. Our results for Lake Titicaca show that the modeling framework makes it possible to capture variations in the lake water level reasonably well. Our simulations are significantly more accurate than those of Lima-Quispe et al. (2021), who overestimated water levels during the predominantly dry period of the 1990s. In contrast to the previous study, our modeling framework was implemented at a daily time step and included high mountain hydrological processes such as the contribution of snow and ice, as well as a better representation of irrigation thanks to new data on irrigable area. In addition, our estimates of reference evapotranspiration and evaporation from the lake capture the non-stationarity of the climate, whereas the Lima-Quispe et al. (2021) study used monthly average data for some climatic variables (relative humidity, solar radiation and wind speed). These improvements resulted in more accurate water level simulations that adequately reflect long-term variability in the face of a changing climate. The main contributions of this study are detailed below.

895 Our approach to estimate upstream inflow considers the natural hydrological processes (including snow and ice accumulation and melt) and irrigation including water allocation. One advantage of this type of approach is that water requirement and allocation in the face of climate variability are implicitly simulated, which is not the case when fixed water requirement values are imposed. The approach we used improved our understanding of the role of tropical glaciers and irrigation in the hydrological functioning of Lake Titicaca. Hydrologic sensitivity analysis revealed that snow and ice processes had minimal an impact on the predicted streamflow in the catchments that contribute to the lake. Also, the water balance presented in Table 900 5 shows that the proportion of snow and ice melt is very small compared to the proportion of rainfall at the scale of the whole Titicaca hydrosystem. This suggests that the study area is dominated by a rainfall regime. Therefore, the role of snow and ice melt in the functioning of the lake could be considered negligible. That said, we do not intend to underestimate the contribution of glaciers. In fact, they are relevant at the scale of the headwater catchments, especially for the supply of This study presents three main novelties. First, our integrated modeling framework accurately simulates the daily water balance of Lake Titicaca without requiring scaling factors. Consequently, the propagation of uncertainty in estimating components of the water balance is significantly reduced. For instance, Figure 12 illustrates how omitting the calibrated precipitation scaling factor used by Lima-Quispe et al. (2021) leads to unrealistic simulations of lake water levels. Our modeling approach also benefits from: (i) a rigorous calibration and evaluation procedure for simulating upstream inflows (see Fig. 6); (ii) the estimation of evaporation from the lake using the Penman method, while accounting for lake surface water temperature (LSWT) and heat storage; and 910 (iii) estimates of reference evapotranspiration and lake evaporation that accounts for climate variability, using ERA5-land dataset for humidity, wind speed, and solar radiation. This study provides a realistic water balance that estimates most hydrologic processes (see Table 4 and Table 5), although the role of groundwater remains a major unknown. Its magnitude is expected to be a small component of the total water balance.

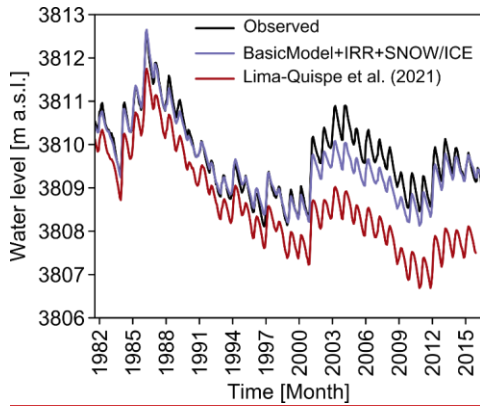


Figure 12. Comparison of simulated water levels by BasicModel+IRR+SNOW/ICE (aggregated to monthly time step) with those obtained by Lima-Quispe et al. (2021) without applying the scaling factor on precipitation over the lake.

Second, through the hydrologic sensitivity analysis, we demonstrate that net irrigation withdrawals and snow and ice melt have minimal impact on lake level fluctuations, indicating that it is primarily driven by rainfall and evaporation variability. However, this does not diminish the importance of glaciers. In fact, glaciers are significant at the scale of the headwater catchments, particularly for supplying water to large cities such as El Alto and La Paz (Buytaert et al., 2017; Soruco et al., 2015), maintenance of maintaining wetlands like the *bofedales* (Herrera et al., 2015), and for supporting irrigation (Buytaert et al., 2017). The impact of net irrigation consumption was also shown to be of little significance for streamflow prediction. In most of the gauged catchments, only minimal improvements in the modeling performance were achieved when irrigation was taken into account. This approach nevertheless made it possible to estimate the net consumption due to irrigation at the scale of the catchments that contribute to the lake. Even if this consumption remains low compared to consumption of water used for other purposes, it is likely to increase significantly in the future linked to the climatic and anthropogenic changes the study area may undergo. It should also be noted that this process was not accounted for solely on the basis of the soil water deficit and that local knowledge of farmers' practices in terms of irrigation scheduling was also taken into account. Although some authors (e.g. Githui et al., 2016) mentioned that such information is readily available, this is not entirely true in contexts such as the Titicaca hydrosystem, where traditionally managed small irrigation systems predominate. However, incorporating the details of water management of the numerous irrigation systems is not feasible at the scale of the upstream catchment of large lakes. In most gauged catchments, incorporating irrigation resulted in only slight improvements in modeling performance. Nonetheless, this approach made it possible to estimate the net consumption due to irrigation at the scale of the catchments that contribute to the lake. Although this consumption is currently low, it is expected to increase significantly due the climatic and

935 anthropogenic changes in the study area. It should also be noted that this process was based not only on soil water deficit but
also on local knowledge of farmers' water allocation practices.

The periods of rising and falling water levels are closely linked to direct precipitation over the lake and upstream inflow (see
Fig. 12a), which is mostly influenced by interannual precipitation variability. As such, understanding the effects of climate
oscillations on precipitation variability is crucial to understand water level. Third, we disentangle the role of the change in heat
940 storage in estimating E_{lake} . Annual evaporation ($1,616 \text{ mm yr}^{-1}$) is comparable to the evaporation ($\sim 1,600$) of other low-
latitudes lakes. Some authors (e.g. Garreaud and Aceituno, 2001; Jonaitis et al., 2021) noted that the interannual variability of
precipitation in the region is mainly driven by the El Niño Southern Oscillation (ENSO). During its warm phase conditions
are usually dry, while during the cold phase conditions are usually wet, although this relationship is not always absolutely true
(Garreaud et al., 2003). For example, Jonaitis et al. (2021) observed negative precipitation anomalies during the La Niña phase
945 and positive anomalies during the El Niño phase in the Lake Titicaca region, although they note that the anomalies were not
statistically significant. Segura et al. (2016) argue that El Niño plays an important role in the interannual precipitation
variability and that decadal and interdecadal variations are influenced by sea surface temperature (SST) anomalies in the
central-western Pacific. Consequently, variations in water level cannot be attributed to ENSO alone, but may also be influenced
by other climatic oscillations. Sulca et al. (2024) found that interannual variation in water levels is related to SST anomalies
950 in the southern South Atlantic, and that this interdecadal and multidecadal variability can be explained by Pacific and Atlantic
SST anomalies. Furthermore, they noted that multidecadal variation is related to North Atlantic SST anomalies and the
southern South Atlantic SST anomalies. Complex teleconnections between multiple climate oscillations and variation in the
components of the water balance (including water levels) were also observed by Saber et al. (2023) in the Great Lakes of North
America. These authors found that the effect of climatic oscillations on the water balance of lakes mostly occurred at
955 interannual to interdecadal scale. It would be interesting to analyze the influence of atmospheric teleconnections on water
levels in Lake Titicaca, like in the study of Saber et al. (2023) but it was clearly beyond the scope of the present study.

Annual evaporation ($1,616 \text{ mm yr}^{-1}$), the biggest component of the lake water balance, is in the same range as the evaporation
($\sim 1,600$) of other lakes located at low latitudes (Wang et al., 2018) and also within the ranges reported in previous studies of
Lake Titicaca ($\sim 1,600$) (Delclaux et al., 2007; Pilleo Zolá et al., 2019; Lima-Quispe et al., 2021). The evaporation rate is quite
960 high ($1,616 \text{ mm yr}^{-1}$), even though the air temperature over Lake Titicaca is low due to its high altitude. Thus, evaporation
depends mostly on net radiation, although humidity, wind speed, and changes in heat storage play an important role in the
seasonal variation. Regarding heat storage change, the maximum heat gain of the lake is reached in October and the maximum
heat loss in May (Fig. 13a). Neglecting changes in heat storage results in overestimation of evaporation in the months the lake
is heating and in underestimation of evaporation during the months the lake is cooling (Fig. 13b). The same result was
965 also aligns with previous studies of Lake Titicaca ($\sim 1,600$) (Delclaux et al., 2007; Pilleo Zolá et al., 2019). Despite the low air
temperature over Lake Titicaca due to its high altitude, the evaporation rate is quite high. This is largely due to net radiation,
although humidity, wind speed, and changes in heat storage also play a significant role in the seasonal variation. Regarding

Formatted: English (United States)

Formatted: Footer

heat storage changes, the lake reaches maximum heat gain in October and the maximum heat loss in May (Fig. 13a). Neglecting changes in heat storage leads to overestimating evaporation during the lake's heating period and underestimating it during the cooling period (Fig. 13b). A similar finding was reported by Bai and Wang (2023) for Lake Taihu in China. Although several studies ~~on have investigated~~ evaporation from Lake Titicaca ~~have been carried out using a variety of various~~ methods (Carmouze, 1992; Delclaux et al., 2007; Pillco Zolá et al., 2019), our estimates are innovative because they are based on long-term ~~but also cover a data, including recent period. Moreover periods. Additionally,~~ the accuracy of our estimates was evaluated in the context of the underpinned by a water balance with a small error term, which ~~adds an additional level of~~ enhances the reliability ~~to of~~ our findings.

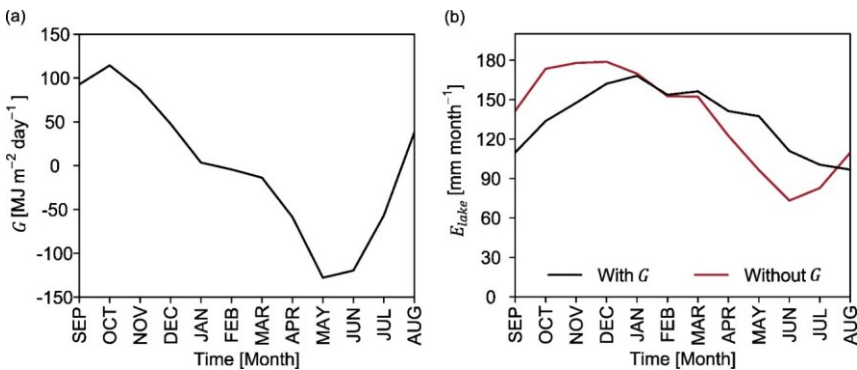


Figure 13. Seasonal variations in (a) heat storage and (b) the role of heat storage in seasonal variation of evaporation from the lake. Figures are based on long-term (1982–2016) average values.

The periods of rising and falling water levels are closely linked to direct precipitation over the lake and upstream inflows (see Fig. 11a), which is mostly influenced by interannual precipitation variability. Understanding the effects of climate oscillations on precipitation variability is therefore crucial for understanding water level changes. Some authors (e.g. Garreaud and Aceituno, 2001; Jonaitis et al., 2021) noted that the interannual variability of precipitation in the region is mainly driven by the El Niño Southern Oscillation (ENSO). During its warm phase, conditions are typically dry, while during the cold phase, conditions are usually wet, although this relationship is not always consistent (Garreaud et al., 2003). For instance, Jonaitis et al. (2021) observed negative precipitation anomalies during La Niña phase and positive anomalies during El Niño phases in the Lake Titicaca region, though these anomalies were not statistically significant. Segura et al. (2016) argue that El Niño plays an important role in interannual precipitation variability, and that decadal and interdecadal variations are influenced by sea surface temperature (SST) anomalies in the central-western Pacific. Therefore, variations in water level cannot be attributed to ENSO alone. Sulca et al. (2024) found that interannual variations in water levels are related to SST anomalies in the southern South Atlantic, and that interdecadal and multidecadal variability can be explained by Pacific and Atlantic SST anomalies.

Formatted: English (United States)

Formatted: Footer

~~Additionally, they noted that multidecadal variations are linked to North Atlantic SST anomalies and southern South Atlantic SST anomalies.~~

5.2 Limitations of the modeling framework

~~The results provided by the proposed modeling framework may be affected by a number of uncertainties and limitations that are discussed below.~~

Model forcing and evaluation data are the main sources of uncertainty. Daily precipitation and air temperature from GMET rely strongly on the spatial representativeness of ground-based measurements that are very sparse at elevations above 4,000 m a.s.l. As a result, the estimated snow and ice processes above that elevation may be affected by significant inaccuracies. In part, this could explain the poorly simulated mass balances at some glaciers compared to geodetic observations (which are also uncertain). As shown by Ruelland (2020), the lack of high-altitude stations can have serious implications for correct estimations of precipitation and temperature lapse rates, and thus the difficulty of realistically representing the accumulation and ablation processes. ~~It is difficult to assess the reliability of GMET based on hydrological sensitivity analyses in high mountain areas because measured streamflow is not available at the headwater scale.~~ The precipitation estimated by GMET on the lake can also be questioned because it is only based on a few stations located on certain islands, which does not guarantee they correctly represent local convective phenomena (Gu et al., 2016; Nicholson, 2023) due to the very large surface area of the lake. Consequently, the underestimation of lake water levels in the early 2000s may be associated with underestimation of precipitation.

The simulation of snow and ice processes also needs discussing. The degree-day approach used in the present study might not be perfectly suited to simulate the melting of snow and ice at daily time steps in tropical glaciers, where melting energy is not always correlated with air temperature (Sicart et al., 2008; Rabatel et al., 2013). It may be more appropriate to use models based on energy balance, although they require large quantities of data. For instance, Frans et al. (2015) applied the DHSVM model driven by reanalysis data fitted with local measurements in the Zongo catchment. For streamflow prediction over the period 1992–2010, while the performance they obtained at the monthly time step was satisfactory, this was not the case when the evaluation was conducted at a daily time step. The authors argue that the poor performance was due to inaccuracies in the forcing data. This suggests that using a more sophisticated model does not necessarily lead to more realistic streamflow simulations and that uncertainty in the input data may be more important than the structure of the model used. Another limitation is the direct transfer of snow and ice model parameters obtained in the Zongo catchment to the whole Titicaca hydrosystem. Although temperature index-based model parameter transfer has been shown to work relatively well, i.e., with only a small reduction in model performance in southern Swiss Alps (Carenzo et al., 2009) and in western Canada (Shea et al., 2009). The unsatisfactory performance of mass balance simulations on some glaciers may rather be due to inaccurate precipitation and air temperature data. ~~On the other hand, the estimated mass balances did not consider changes in glacier area, thickness and volume over time. This is a significant limitation in terms of capturing non-stationary conditions. As the surface~~

1025 area of the glaciers in our model was obtained in 2000 and considering glacier shrinkage worldwide, melting before the year 2000 may be underestimated, and after the year 2000, it may be overestimated. However, on the Zongo glacier, no significant differences were observed between the simulated and observed mass balance. In any case, it is worth noting that the assumptions made to simulate the glaciological functioning actually have minimal influence on the water balance of Lake Titicaca. On the other hand, the estimated glacier mass balances did not consider changes in glacier area, thickness and volume over time. The variation in ice stock over the period 1982–2016 is negative (-5 mm yr⁻¹), which is consistent with the effects of global warming and in agreement with in-situ observations (Rabatel et al., 2013). As the surface area of the glaciers in our model was obtained in 2000 and considering glacier shrinkage worldwide, melting before the year 2000 may be underestimated, and after the year 2000, it may be overestimated. However, the biases are limited to some extent by the choice of an intermediate glacier area for the modeled period. If it is intended to simulate future changes in glaciers, it may be beneficial to include morphometric glacier changes in the model, drawing inspiration from simple approaches in the literature (e.g., Seibert et al., 2018). To initialize the model, global glacier thickness datasets could be used (e.g., Farinotti et al., 2019; Millan et al., 2022)

1030
1040
1045
Estimates of lake evaporation and reference evapotranspiration have also certain limitations that are worth mentioning. Reanalysis data were used for some forcing data (humidity, solar radiation and wind speed). Wind speed data were adjusted using the bias found at one meteorological station, which is not necessarily representative of the entire spatial domain. However, we believe that the impact is not very significant because the aerodynamic component accounts for only about 20% of the reference evapotranspiration and evaporation. This is consistent with previous research in the study area, which indicated that, rather than the aerodynamic component, it is the radiative component that contributes significantly to reference evapotranspiration (Garcia et al., 2004) and evaporation from the lake (Delclaux et al., 2007). ~~The predictive uncertainty of actual evapotranspiration is small, suggesting that the catchment streamflow predictions are not very sensitive to the reference evapotranspiration.~~ Concerning evaporation, the estimated change in heat storage is based on certain assumptions that could be questionable. Instead of water temperature at different depths, we used lake surface water temperature (LSWT), as suggested by Pillco Zolá et al. (2019), and the magnitude and seasonal variation in our evaporation estimates are in agreement with those of Carmouze (1992) based on temperature measurements taken at different depths.

1050
1055
Concerning irrigation, the main limitations are linked to the stationarity of the irrigable area and crop types. ~~Better model performance (albeit marginal) was obtained when irrigation was included. However, we did not consider changes in irrigable area.~~ Some authors (e.g., Geerts et al., 2006) reported an increase in quinoa production in the Altiplano. However, quinoa is usually a rainfed crop and consequently requires limited irrigation. Information was also missing concerning changes in the crops cultivated over time. *K_c* derived from satellite images (Pôças et al., 2020) could be an interesting way to fill this gap. However, small irrigation systems predominate in our study area, which could have implications for the accuracy of the estimates. In addition, the location of the inventoried irrigation systems is referential, since there are no maps showing delimited areas and it would consequently first be necessary to delimit the irrigable area and then to use spectral indices to

derive the crop coefficients. Despite these limitations, it should be noted that reference evapotranspiration was driven by time-varying meteorological data. The water requirement is thus not entirely stationary.

1060 ~~Although WEAP has the ability to dynamically simulate groundwater-surface water interactions (e.g. Dehghanipour et al., 2019), they were not physically modeled due to lack of forcing and control data.~~ The contributions of groundwater in the catchments were only simulated with the deep store of the SMM. This is an important simplification because it neglects the dynamic interaction between rivers and aquifers. The use of pumped groundwater for irrigation was also not taken into consideration because irrigation inventories (Ministerio de Medio Ambiente y Agua, 2012) indicated that the proportion of groundwater in the supply was very small. Therefore, we would expect the impacts on streamflow prediction and water supply results to be negligible. Groundwater-lake interaction was also neglected. ~~The simulated and observed lake water levels showed small discrepancies, suggesting that the net groundwater exchanges are slight compared to interactions among other components of the water balance. Figure 11b shows that the error term exhibits a seasonal variation, being positive during the rainy season and predominantly negative during the dry season. Linking the error term to net groundwater flow suggests that groundwater-lake interactions are seasonally variable. Lake water levels fluctuate by an average of 67 cm over the hydrological year, reaching a maximum in April and a minimum in December. In Figure 11b, the error term has the highest positive values between December (26 mm) and January (54 mm), indicating a gain in net groundwater flow to the lake. When the lake reaches high water levels, losses to groundwater tend to dominate. This dynamic suggests that there could be a reversal of the hydraulic gradient throughout the year depending on the water level of the lake and the groundwater. However, it is important to note that the error term reflects not only the net groundwater flow, but also the uncertainty in estimating the other components of the water balance.~~

075 **5.3 Prospects**

080 ~~Despite the aforementioned limitations, our modeling framework and its associated results on the water balance components will be useful to support decision-making in water resources management in Lake Titicaca because they represent climatic, glacio-snow hydrological, and water allocation components. Up to this stage, the approach has helped us to quantify the hydrological cycle and thus understand the hydrological functioning of Lake Titicaca. In the next stage, water management scenarios could be evaluated in the context of climate change. Some of the management scenarios that could be explored include increasing the irrigable area, the efficiency of irrigation systems, and releases from the lake. However, it is first necessary to remedy certain existing shortcomings in the modeling framework, such as changes in the surface area and volume of glaciers, drawing inspiration from simple approaches that can be found in the literature (e.g. Seibert et al., 2018). To initialize the model, global glacier thickness datasets could be used (e.g. Farinotti et al., 2019; Millan et al., 2022). On the other hand, the design of water management scenarios would require collaborative work with stakeholders, in particular with the Lake Titicaca Authority. Exploring future scenarios will be crucial to identify and plan intervention actions to ensure the sustainability of Lake Titicaca. Such experiments could also serve as a replicable model for other large lakes around the world.~~

Formatted: English (United Kingdom)

Formatted: Footer

Appendices

Appendix A. Performance of the ERA5 Land dataset

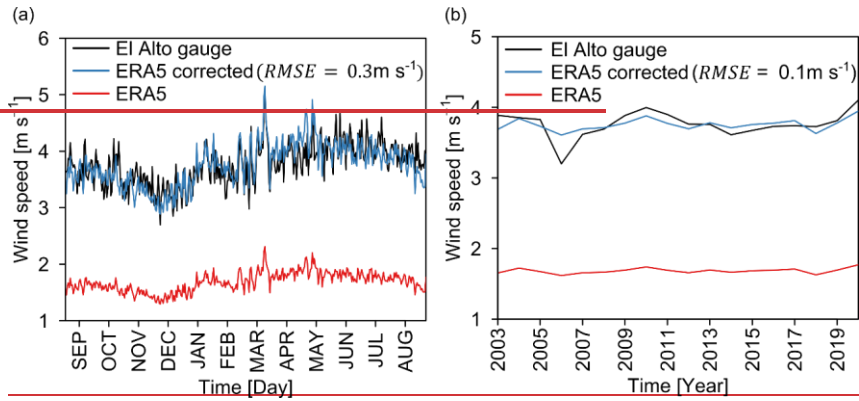


Figure A1. Wind speed performance of ERA5 evaluated at El Alto gauge in terms of (a) seasonal cycle and (b) interannual variation for the period 2003–2020.

Appendix B. Simulation of lake water surface temperature (LSWT)

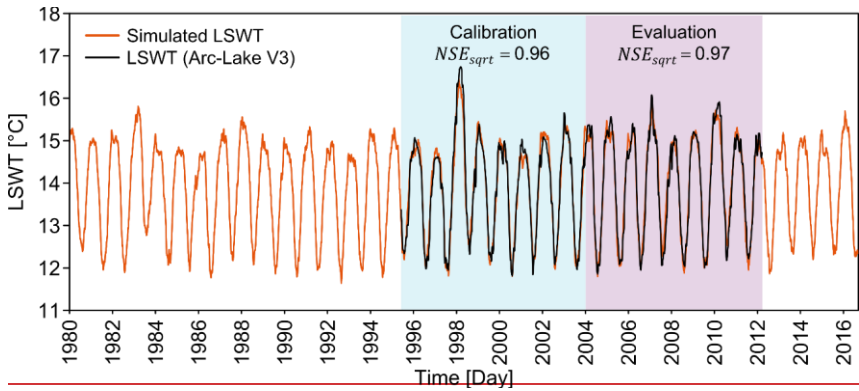


Figure B1. Lake surface water temperature (LSWT) simulated with the Air2waterR model (Piccolroaz et al., 2013; Toffolon et al., 2014) for Lake Titicaca and its calibration and evaluation performances.

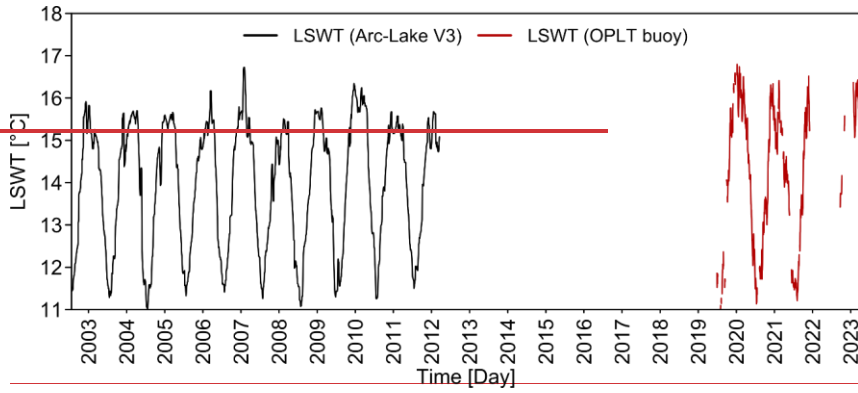


Figure B2. Lake surface water temperature (LSWT) obtained from the buoy site (16.25°S, 68.68°W) in Arc-Lake V3 (MacCallum and Merchant, 2012) and OPLT (Lazzaro et al., 2021)

Appendix C. Simulated and observed water levels

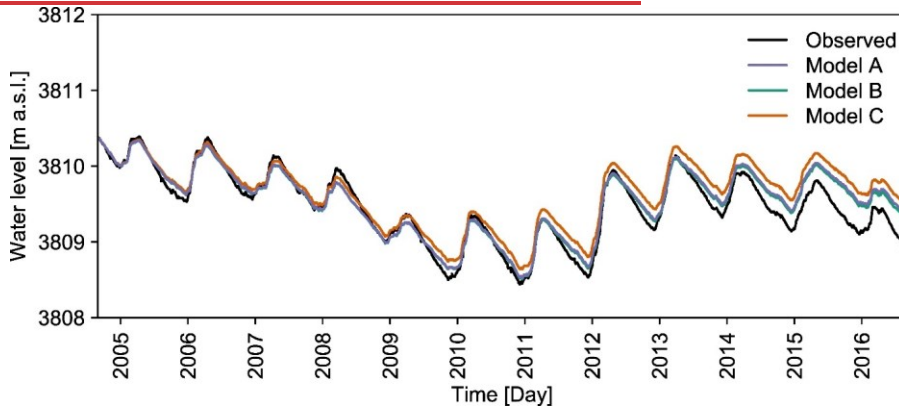


Figure C1. Performance of the modeling chain compared with the water levels of Lake Titicaca measured in Puno. Three simulations of water levels are presented because the models produced three different estimates of Q_{in} .

110 *Data availability.* The data used in this study are available at their respective websites: GMET (can be accessed directly at WEAP), ERA5-Land (<https://eds.climate.copernicus.eu/edsapp#!dataset/reanalysis-era5-land>), CLACIOCLIM (<https://glacioelim.osug.fr/Glacier-du-Zongo-127>), Observatorio Permanente del Lago Titicaca (<https://olt.geovisorumsa.com/Datos.html>), geodetic mass balance (<https://www.theia-land.fr/en/product/rate-of-glacier-elevation-changes-from-2000-to-2019/>) and ARC-Lake v3 (<https://researchdata.reading.ac.uk/186/>). Measured streamflow and lake water levels should be requested from SENAMHI Peru and SENAMHI Bolivia.

115 *Author contributions.* NLQ, DR and TC conceptualized and designed the study approach. AR provided support in the methodological design of the glacier simulation. WLC provided the hydrological and climatic data for the Peruvian side. NLQ and DR implemented the integrated model and analyzed the simulations, and prepared the original version of the manuscript. All the authors contributed to reviewing and editing the manuscript.

120 *Competing interests.* The authors declare they have no conflict of interest.

125 *Financial support.* This research was funded by AFD and IRD under the CECC project (Water cycle and climate change) in the framework of a PhD funding. This study is also conducted as part of the International Research Network (IRN) ANDES-C2H, a joint initiative of the IRD and universities and institutions in Colombia, Bolivia, Peru, Ecuador, Chile, and Argentina.

130 *Acknowledgements.* The authors are grateful to IRD for funding the study. Our special thanks to SENAMHI Peru and SENAMHI Bolivia for providing the ground-based hydroclimatic data. We also thank Javier Núñez (HIGEO-UMSA) and Xavier Lazzaro (IRD) for providing the data from the buoy of the Permanent Observatory of Lake Titicaca. Finally, we thank other data providers including GLACIOCLIM (for Zongo glacier data), THEIA (for access to geodetic mass balance data), ESA (for access to ARC-Lake V3 data), ECMWF (for access to ERA5 Land data), and SEI (for access to GMET data).

140 **References**

- Antonopoulos, V. Z., and Gianniou, S. K.: Simulation of water temperature and dissolved oxygen distribution in Lake Vegoritis, Greece, *Ecol. Model.*, 160, 39–53, [https://doi.org/10.1016/S0304-3800\(02\)00286-7](https://doi.org/10.1016/S0304-3800(02)00286-7), 2003.
- Anyah, R. O., Semazzi, F. H. M., and Xie, L.: Simulated Physical Mechanisms Associated with Climate Variability over Lake Victoria Basin in East Africa, *Mon. Weather Rev.*, 134, 3588–3609, <https://doi.org/10.1175/MWR3266.1>, 2006.
- 145 Archundia, D., Duwig, C., Spadini, L., Uzu, G., Guédron, S., Morel, M. C., Cortez, R., Ramos-Ramos, O., Chincheros, J., and Martins, J. M. F.: How Uncontrolled Urban Expansion Increases the Contamination of the Titicaca Lake Basin (El Alto, La Paz, Bolivia), *Water, Air, Soil Pollut.*, 228, 44, <https://doi.org/10.1007/s11270-016-3217-0>, 2016.
- Ashraf Vaghefi, S., Mousavi, S. J., Abbaspour, K. C., Srinivasan, R., and Arnold, J. R.: Integration of hydrologic and water allocation models in basin-scale water resources management considering crop pattern and climate change: Karkheh River Basin in Iran, *Reg. Environ. Change*, 15, 475–484, <https://doi.org/10.1007/s10113-013-0573-9>, 2015.
- 150 Autoridad Binacional del Lago Titicaca: Levantamiento hidrográfico convenio binacional del Lago Titicaca, La Paz, Bolivia, 2021.
- Autoridad Nacional del Agua: Evaluación de los recursos hídricos en la cuenca del río Have, Puno, Perú, 2009.
- Autoridad Nacional del Agua: Evaluación de los recursos hídricos en las cuencas de los ríos Huancané y Suches, Huancané, Perú, 2010.
- 155 Bai, P., and Wang, Y.: The Importance of Heat Storage for Estimating Lake Evaporation on Different Time Scales: Insights From a Large Shallow Subtropical Lake, *Water Resour. Res.*, 59, e2023WR035123, <https://doi.org/10.1029/2023WR035123>, 2023.
- Barthel, R., and Banzhaf, S.: Groundwater and Surface Water Interaction at the Regional scale—A Review with Focus on Regional Integrated Models, *Water Resour. Manag.*, 30, 1–32, <https://doi.org/10.1007/s11269-015-1163-z>, 2016.
- 160 Blanken, P. D., Rouse, W. R., Culf, A. D., Spence, C., Boudreau, L. D., Jasper, J. N., Koeltubajda, B., Schertzer, W. M., Marsh, P., and Verseghy, D.: Eddy covariance measurements of evaporation from Great Slave Lake, Northwest Territories, Canada, *Water Resour. Res.*, 36, 1069–1077, <https://doi.org/10.1029/1999WR900338>, 2000.
- Blanken, P. D., Spence, C., Hedstrom, N., and Lenters, J. D.: Evaporation from Lake Superior: 1. Physical controls and processes, *J. Gl. Lakes Res.*, 37, 707–716, <https://doi.org/10.1016/j.jglr.2011.08.009>, 2011.
- 165 Bouchez, C., Gonalves, J., Deschamps, P., Vallet-Coulomb, C., Hamelin, B., Doumnang, J. C., and Sylvestre, F.: Hydrological, chemical, and isotopic budgets of Lake Chad: a quantitative assessment of evaporation, transpiration and infiltration fluxes, *Hydrol. Earth Syst. Sci.*, 20, 1599–1619, <https://doi.org/10.5194/hess-20-1599-2016>, 2016.
- Buytaert, W., Moulds, S., Aeosta, L., Bièvre, B. D., Olmos, C., Villacis, M., Tovar, C., and Verbist, K. M. J.: Glacial melt content of water use in the tropical Andes, *Environ. Res. Lett.*, 12, 114014, <https://doi.org/10.1088/1748-9326/aa926e>, 2017.
- 170 Carenzo, M., Pellicciotti, F., Rimkus, S., and Burlando, P.: Assessing the transferability and robustness of an enhanced temperature index glacier melt model, *J. Glaciol.*, 55, 258–274, <https://doi.org/10.3189/002214309788608804>, 2009.

- 175 Carmouze, J. P.: The energy balance, in: *Lake Titicaca, a Synthesis of Limnological Knowledge*, KLUWER ACADEMIC PUBLISHERS, 1992.
- Chavoshi, A. and Danesh-Yazdi, M.: Quantifying the uncertainty of lake-groundwater interaction using the forward uncertainty propagation framework: The case of Lake Urmia, *J. Hydrol.*, 610, 127878, <https://doi.org/10.1016/j.jhydrol.2022.127878>, 2022.
- 180 Chebud, Y. A. and Melesse, A. M.: Modelling lake stage and water balance of Lake Tana, Ethiopia, *Hydrol. Process.*, 23, 3534–3544, <https://doi.org/10.1002/hyp.7416>, 2009.
- Clark, M. P. and Slater, A. G.: Probabilistic Quantitative Precipitation Estimation in Complex Terrain, *J. Hydrometeorol.*, 7, 3–22, <https://doi.org/10.1175/JHM474.1>, 2006.
- Croley II, T. E.: Verifiable evaporation modeling on the Laurentian Great Lakes, *Water Resour. Res.*, 25, 781–792, <https://doi.org/10.1029/WR025i005p00781>, 1989.
- 185 Dalton, J.: Experimental essays, on the constitution of mixed gases; on the force of steam or vapour from water and other liquids in different temperatures, both in a Torricellian vacuum and in air; on evaporation; and on the expansion of elastic fluids by heat, *Mem. Lit. Philos. Soc. Manch.*, 5, 535–602, 1802.
- Dehghanipour, A. H., Zahabiyou, B., Schoups, G., and Babazadeh, H.: A WEAP-MODFLOW surface water-groundwater model for the irrigated Miyandoab plain, Urmia lake basin, Iran: Multi-objective calibration and quantification of historical drought impacts, *Agric. Water Manag.*, 223, 105704, <https://doi.org/10.1016/j.agwat.2019.105704>, 2019.
- 190 Deleclaux, F., Coudrain, A., and Condom, T.: Evaporation estimation on Lake Titicaca: a synthesis review and modelling, *Hydrol. Process.*, 21, 1664–1677, <https://doi.org/10.1002/hyp.6360>, 2007.
- Duan, Z., Gao, H., and Ke, C.: Estimation of Lake Outflow from the Poorly Gauged Lake Tana (Ethiopia) Using Satellite Remote Sensing Data, *Remote Sens.*, 10, 1060, <https://doi.org/10.3390/rs10071060>, 2018.
- 195 Dussailant, I., Berthier, E., Brun, F., Masiokas, M., Hugonnet, R., Favier, V., Rabatel, A., Pitte, P., and Ruiz, L.: Two decades of glacier mass loss along the Andes, *Nat. Geosci.*, 12, 802–808, <https://doi.org/10.1038/s41561-019-0432-5>, 2019.
- Fabre, J., Ruelland, D., Dezetter, A., and Grouillet, B.: Simulating past changes in the balance between water demand and availability and assessing their main drivers at the river basin scale, *Hydrol. Earth Syst. Sci.*, 19, 1263–1285, <https://doi.org/10.5194/hess-19-1263-2015>, 2015.
- 200 Farinotti, D., Huss, M., Fürst, J. J., Landmann, J., Machguth, H., Maussion, F., and Pandit, A.: A consensus estimate for the ice thickness distribution of all glaciers on Earth, *Nat. Geosci.*, 12, 168–173, <https://doi.org/10.1038/s41561-019-0300-3>, 2019.
- Frans, C., Istanbuluoglu, E., Lettenmaier, D. P., Naz, B. S., Clarke, G. K. C., Condom, T., Burns, P., and Nolin, A. W.: Predicting glacio-hydrologic change in the headwaters of the Zongo River, Cordillera Real, Bolivia, *Water Resour. Res.*, 51, 9029–9052, <https://doi.org/10.1002/2014WR016728>, 2015.
- 205 Garcia, M., Raes, D., Allen, R., and Herbas, C.: Dynamics of reference evapotranspiration in the Bolivian highlands (Altiplano), *Agric. For. Meteorol.*, 125, 67–82, <https://doi.org/10.1016/j.agrformet.2004.03.005>, 2004.

- Garcia, M., Raes, D., Jacobsen, S. E., and Michel, T.: Agroclimatic constraints for rainfed agriculture in the Bolivian Altiplano, *J. Arid Environ.*, 71, 109–121, <https://doi.org/10.1016/j.jaridenv.2007.02.005>, 2007.
- 210 Garreaud, R. and Aceituno, P.: Interannual Rainfall Variability over the South American Altiplano, *J. Clim.*, 14, 2779–2789, [https://doi.org/10.1175/1520-0442\(2001\)014<2779:IRVOTS>2.0.CO;2](https://doi.org/10.1175/1520-0442(2001)014<2779:IRVOTS>2.0.CO;2), 2001.
- Garreaud, R., Vuille, M., and Clement, A. C.: The climate of the Altiplano: observed current conditions and mechanisms of past changes, *Palaeogeogr. Palaeoclimatol. Palaeoecol.*, 194, 5–22, [https://doi.org/10.1016/S0031-0182\(03\)00269-4](https://doi.org/10.1016/S0031-0182(03)00269-4), 2003.
- 215 Geerts, S., Raes, D., Garcia, M., Del-Castillo, C., and Buytaert, W.: Agro-climatic suitability mapping for crop production in the Bolivian Altiplano: A case study for quinoa, *Agric. For. Meteorol.*, 139, 399–412, <https://doi.org/10.1016/j.agrformet.2006.08.018>, 2006.
- Giannou, S. K. and Antonopoulos, V. Z.: Evaporation and energy budget in Lake Vegoritis, Greece, *J. Hydrol.*, 345, 212–223, <https://doi.org/10.1016/j.jhydrol.2007.08.007>, 2007.
- 220 Githui, F., Thayalakumaran, T., and Selle, B.: Estimating irrigation inputs for distributed hydrological modelling: a case study from an irrigated catchment in southeast Australia, *Hydrol. Process.*, 30, 1824–1835, <https://doi.org/10.1002/hyp.10757>, 2016.
- Gronewold, A. D., Fortin, V., Lofgren, B., Clites, A., Stow, C. A., and Quinn, F.: Coasts, water levels, and climate change: A Great Lakes perspective, *Clim. Change*, 120, 697–711, <https://doi.org/10.1007/s10584-013-0840-2>, 2013.
- 225 Gronewold, A. D., Bruxer, J., Durnford, D., Smith, J. P., Clites, A. H., Seglenieks, F., Qian, S. S., Hunter, T. S., and Fortin, V.: Hydrological drivers of record-setting water level rise on Earth's largest lake system, *Water Resour. Res.*, 52, 4026–4042, <https://doi.org/10.1002/2015WR018209>, 2016.
- Gronewold, A. D., Fortin, V., Caldwell, R., and Noel, J.: Resolving Hydrometeorological Data Discontinuities along an International Border, <https://doi.org/10.1175/BAMS-D-16-0060.1>, 2018.
- 230 Gu, H., Ma, Z., and Li, M.: Effect of a large and very shallow lake on local summer precipitation over the Lake Taihu basin in China, *J. Geophys. Res. Atmospheres*, 121, 8832–8848, <https://doi.org/10.1002/2015JD024098>, 2016.
- Guo, Y., Zhang, Y., Zhang, L., and Wang, Z.: Regionalization of hydrological modeling for predicting streamflow in ungauged catchments: A comprehensive review, *WIRES Water*, 8, e1487, <https://doi.org/10.1002/wat2.1487>, 2021.
- 235 Hall, D. K., Riggs, G. A., Salomonson, V. V., DiGirolamo, N. E., and Bayr, K. J.: MODIS snow cover products, *Remote Sens. Environ.*, 83, 181–194, [https://doi.org/10.1016/S0034-4257\(02\)00095-0](https://doi.org/10.1016/S0034-4257(02)00095-0), 2002.
- Herrera, S. L., Meneses, R. I., and Anthelme, F.: Comunidades vegetales de los bofedales de la Cordillera Real (Bolivia) bajo el calentamiento global, *Ecol. En Boliv.*, 50, 39–56, 2015.
- 240 Hersbach, H., Bell, B., Berrisford, P., Hirahara, S., Horányi, A., Muñoz-Sabater, J., Nicolas, J., Peubey, C., Radu, R., Schepers, D., Simmons, A., Soci, C., Abdalla, S., Abellan, X., Balsamo, G., Bechtold, P., Biavati, G., Bidlot, J., Bonavita, M., De Chiara, G., Dahlgren, P., Dee, D., Diamantakis, M., Dragani, R., Flemming, J., Forbes, R., Fuentes, M., Geer, A., Haimberger, L., Healy, S., Hogan, R. J., Hólm, E., Janisková, M., Keeley, S., Laloyaux, P., Lopez, P., Lupu, C., Radnoti, G., de Rosnay, P., Rozum, I., Vamborg, F., Villaume, S., and Thépaut, J. N.: The ERA5 global reanalysis, *Q. J. R. Meteorol. Soc.*, 146, 1999–2049, <https://doi.org/10.1002/qj.3803>, 2020.

- 245 Hoek, R.: Temperature index melt modelling in mountain areas, *J. Hydrol.*, 282, 104–115, [https://doi.org/10.1016/S0022-1694\(03\)00257-9](https://doi.org/10.1016/S0022-1694(03)00257-9), 2003.
- Hong, Y., Xuan Do, H., Kessler, J., Fry, L., Read, L., Rafieei-Nasab, A., Gronewold, A. D., Mason, L., and Anderson, E. J.: Evaluation of gridded precipitation datasets over international basins and large lakes, *J. Hydrol.*, 607, 127507, <https://doi.org/10.1016/j.jhydrol.2022.127507>, 2022.
- 250 Hosseini-Moghari, S. M., Araghinejad, S., Tourian, M. J., Ebrahimi, K., and Döll, P.: Quantifying the impacts of human water use and climate variations on recent drying of Lake Urmia basin: the value of different sets of spaceborne and in situ data for calibrating a global hydrological model, *Hydrol. Earth Syst. Sci.*, 24, 1939–1956, <https://doi.org/10.5194/hess-24-1939-2020>, 2020.
- 255 Hublart, P., Ruelland, D., García-de Cortázar-Atauri, I., Gaseoin, S., Lhermitte, S., and Ibañeta, A.: Reliability of lumped hydrological modeling in a semi-arid mountainous catchment facing water use changes, *Hydrol. Earth Syst. Sci.*, 20, 3691–3717, <https://doi.org/10.5194/hess-20-3691-2016>, 2016.
- Hugonnet, R., McNabb, R., Berthier, E., Menounos, B., Nuth, C., Girod, L., Farinotti, D., Huss, M., Dussailant, I., Brun, F., and Kääb, A.: Accelerated global glacier mass loss in the early twenty-first century, *Nature*, 592, 726–731, <https://doi.org/10.1038/s41586-021-03436-z>, 2021.
- Instituto Nacional de Estadística: Censo agropecuario 2013 Bolivia, 2015.
- 260 Instituto Nacional de Recursos Naturales: Actualización del Balance Hídrico de la Cuenca del río Ramis, Ayaviri, Perú, 2008.
- INTECISA, AIC, and CNR: Plan Director Global Binacional de Protección — Prevención de Inundaciones y Aprovechamiento de los Recursos del Lago Titicaca, Río Desaguadero, Lago Poopó y Lago Salar Coipasa (Sistema T.D.P.S.): Estudio de hidrogeología, 1993a.
- 265 INTECISA, AIC, and CNR: Plan Director Global Binacional de Protección — Prevención de Inundaciones y Aprovechamiento de los Recursos del Lago Titicaca, Río Desaguadero, Lago Poopó y Lago Salar Coipasa (Sistema T.D.P.S.): Modelo Matemáticos del Sistema Hídrico T.D.P.S., 1993b.
- INTECISA, AIC, and CNR: Plan Director Global Binacional de Protección — Prevención de Inundaciones y Aprovechamiento de los Recursos del Lago Titicaca, Río Desaguadero, Lago Poopó y Lago Salar de Coipasa (Sistema T.D.P.S.): Diagnóstico Socioeconómico, 1993c.
- 270 Jarvis, A., Reuter, H. I., Nelson, A., and Guevara, E.: Hole-filled SRTM for the globe Version 4, Available CGIAR-CSI SRTM 90m Database <https://srtm.csi.cgiar.org>, 15, 5, 2008.
- Jonaitis, J. A., Perry, L. B., Soule, P. T., Thaxton, C., Andrade-Flores, M. F., Vargas, T. I., and Ticona, L.: Spatiotemporal patterns of ENSO precipitation relationships in the tropical Andes of southern Peru and Bolivia, *Int. J. Climatol.*, 41, 4061–4076, <https://doi.org/10.1002/joc.7058>, 2021.
- 275 Kannan, N., Jeong, J., and Srinivasan, R.: Hydrologic Modeling of a Canal Irrigated Agricultural Watershed with Irrigation Best Management Practices: Case Study, *J. Hydrol. Eng.*, 16, 746–757, [https://doi.org/10.1061/\(ASCE\)HE.1943-5584.0000364](https://doi.org/10.1061/(ASCE)HE.1943-5584.0000364), 2011.
- Kebede, S., Travi, Y., Alemayehu, T., and Mare, V.: Water balance of Lake Tana and its sensitivity to fluctuations in rainfall, Blue Nile basin, Ethiopia, *J. Hydrol.*, 316, 233–247, <https://doi.org/10.1016/j.jhydrol.2005.05.011>, 2006.

- 280 Kizza, M., Westerberg, I., Rodhe, A., and Ntale, H. K.: Estimating areal rainfall over Lake Victoria and its basin using ground-based and satellite data, *J. Hydrol.*, 464–465, 401–411, <https://doi.org/10.1016/j.jhydrol.2012.07.024>, 2012.
- Lazzaro, X., Achá Cordero, D., Cruz Hernández, V., Duarte Tejerina, J., Justiniano Ayllón, M., Lanza Aguilar, G., Maldonado Alfaro, J., Molina Arzabe, C., Nuñez Villalba, J., Ormachea Rojas, M., and Sterling, P.: HydroMet: La primera boyea automática perfiladora con alta frecuencia en el Lago Titicaca, el más alto de los Grandes Lagos del mundo, *Ecol. En Bolív.*, 56, 65–67, 2021.
- 285 Lenters, J. D., Kratz, T. K., and Bowser, C. J.: Effects of climate variability on lake evaporation: Results from a long-term energy budget study of Sparkling Lake, northern Wisconsin (USA), *J. Hydrol.*, 308, 168–195, <https://doi.org/10.1016/j.jhydrol.2004.10.028>, 2005.
- 290 Li, Z., Shi, X., Tang, Q., Zhang, Y., Gao, H., Pan, X., Déry, S. J., and Zhou, P.: Partitioning the contributions of glacier melt and precipitation to the 1971–2010 runoff increases in a headwater basin of the Tarim River, *J. Hydrol.*, 583, 124579, <https://doi.org/10.1016/j.jhydrol.2020.124579>, 2020.
- Lima Quispe, N., Escobar, M., Wickel, A. J., von Kaenel, M., and Purkey, D.: Untangling the effects of climate variability and irrigation management on water levels in Lakes Titicaca and Poopó, *J. Hydrol. Reg. Stud.*, 37, 100927, <https://doi.org/10.1016/j.ejrh.2021.100927>, 2021.
- 295 Liu, Z.: Accuracy of methods for simulating daily water surface evaporation evaluated by the eddy covariance measurement at boreal flux sites, *J. Hydrol.*, 616, 128776, <https://doi.org/10.1016/j.jhydrol.2022.128776>, 2023.
- MacCallum, S. N. and Merchant, C. J.: Surface water temperature observations of large lakes by optimal estimation, *Can. J. Remote Sens.*, 38, 25–45, <https://doi.org/10.5589/m12-010>, 2012.
- Maidment, D. R.: *Handbook of hydrology*, McGraw-Hill, New York, 1993.
- 300 Maldonado, I., Miranda Mamani, J., and Paredes Espinal, C.: Heavy metals and ecological alterations resulting from wastewater discharge in Inner Puno Bay, Lake Titicaca, *Environ. Nanotechnol. Monit. Manag.*, 20, 100903, <https://doi.org/10.1016/j.enmm.2023.100903>, 2023.
- 305 McInerney, D., Thyer, M., Kavetski, D., Githui, F., Thayalakumaran, T., Liu, M., and Kuezera, G.: The Importance of Spatiotemporal Variability in Irrigation Inputs for Hydrological Modeling of Irrigated Catchments, *Water Resour. Res.*, 54, 6792–6821, <https://doi.org/10.1029/2017WR022049>, 2018.
- Millan, R., Mougnot, J., Rabatel, A., and Morlighem, M.: Ice velocity and thickness of the world's glaciers, *Nat. Geosci.*, 15, 124–129, <https://doi.org/10.1038/s41561-021-00885-z>, 2022.
- Minallah, S. and Steiner, A. L.: The Effects of Lake Representation on the Regional Hydroclimate in the ECMWF Reanalyses, *Mon. Weather Rev.*, 149, 1747–1766, <https://doi.org/10.1175/MWR-D-20-0421.1>, 2021.
- 310 Ministerio de Desarrollo Rural y Tierras: *Mapa de Cobertura y Uso Actual de la Tierra*, La Paz, Bolivia, 2010.
- Ministerio de Medio Ambiente y Agua: *Inventario Nacional de Sistemas de Riego 2012*, 2012.
- Ministerio de Medio Ambiente y Agua: *Balance hídrico superficial de Bolivia (1980–2016)*, 2018.
- Ministerio del Ambiente: *Mapa Nacional de Cobertura Vegetal*, Lima, Perú, 2015.

- 315 Muñoz-Sabater, J., Dutra, E., Agustí-Panareda, A., Albergel, C., Arduini, G., Balsamo, G., Boussetta, S., Choulga, M., Harrigan, S., Hersbach, H., Martens, B., Miralles, D. G., Piles, M., Rodríguez-Fernández, N. J., Zsoter, E., Buontempo, C., and Thépaut, J.-N.: ERA5-Land: a state-of-the-art global reanalysis dataset for land applications, *Earth Syst. Sci. Data*, 13, 4349–4383, <https://doi.org/10.5194/essd-13-4349-2021>, 2021.
- Nash, J. E. and Sutcliffe, J. V.: River flow forecasting through conceptual models part I — A discussion of principles, *J. Hydrol.*, 10, 282–290, [https://doi.org/10.1016/0022-1694\(70\)90255-6](https://doi.org/10.1016/0022-1694(70)90255-6), 1970.
- 320 Newman, A. J., Clark, M. P., Craig, J., Nijssen, B., Wood, A., Gutmann, E., Mizukami, N., Brekke, L., and Arnold, J. R.: Gridded ensemble precipitation and temperature estimates for the contiguous United States, *J. Hydrometeorol.*, 16, 2481–2500, 2015.
- Nicholson, S. E.: Lake effect rainfall over Africa’s great lakes and other lakes in the rift valleys, *J. Gt. Lakes Res.*, 49, 101971, <https://doi.org/10.1016/j.jglr.2021.12.004>, 2023.
- 325 Niswonger, R. G., Allander, K. K., and Jeton, A. E.: Collaborative modelling and integrated decision support system analysis of a developed terminal lake basin, *J. Hydrol.*, 517, 521–537, <https://doi.org/10.1016/j.jhydrol.2014.05.043>, 2014.
- Oudin, L., Andréassian, V., Mathevet, T., Perrin, C., and Michel, C.: Dynamic averaging of rainfall-runoff model simulations from complementary model parameterizations, *Water Resour. Res.*, 42, <https://doi.org/10.1029/2005WR004636>, 2006.
- 330 Parizi, E., Hosseini, S. M., Ataie-Ashtiani, B., and Nikraftar, Z.: Quantifying lake-aquifer water exchange: the case of Lake Urmia, Iran, *Hydrol. Sci. J.*, 67, 725–740, <https://doi.org/10.1080/02626667.2022.2044044>, 2022.
- Penman, H. L.: Natural evaporation from open water, bare soil and grass, *Proc. R. Soc. Lond. Ser. Math. Phys. Sci.*, 193, 120–145, 1948.
- Penman, H. L.: Estimating evaporation, *Eos Trans. Am. Geophys. Union*, 37, 43–50, 1956.
- 335 Perreault, T.: Climate Change and Climate Politics: Parsing the Causes and Effects of the Drying of Lake Poopó, Bolivia, *J. Lat. Am. Geogr.*, 19, 26–46, <https://doi.org/10.1353/lag.2020.0070>, 2020.
- Piccolroaz, S., Toffolon, M., and Majone, B.: A simple lumped model to convert air temperature into surface water temperature in lakes, *Hydrol. Earth Syst. Sci.*, 17, 3323–3338, <https://doi.org/10.5194/hess-17-3323-2013>, 2013.
- Pilleo Zola, R. and Bengtsson, L.: Long term and extreme water level variations of the shallow Lake Poopó, Bolivia, *Hydrol. Sci. J.*, 51, 98–114, 2006.
- 340 Pilleo Zolá, R., Bengtsson, L., Berndtsson, R., Martí-Cardona, B., Satgé, F., Timouk, F., Bonnet, M. P., Mollericon, L., Gamarra, C., and Pasapera, J.: Modelling Lake Titicaca’s daily and monthly evaporation, *Hydrol. Earth Syst. Sci.*, 23, 657–668, <https://doi.org/10.5194/hess-23-657-2019>, 2019.
- Pôças, I., Calera, A., Campos, I., and Cunha, M.: Remote sensing for estimating and mapping single and basal crop coefficients: A review on spectral vegetation indices approaches, *Agric. Water Manag.*, 233, 106081, <https://doi.org/10.1016/j.agwat.2020.106081>, 2020.
- 345 Rabatel, A., Francou, B., Soruco, A., Gomez, J., Cáceres, B., Ceballos, J. L., Basantes, R., Vuille, M., Sicart, J. E., Huggel, C., Scheel, M., Lejeune, Y., Arnaud, Y., Collet, M., Condom, T., Consoli, G., Favier, V., Jomelli, V., Galarraga, R., Ginot, P., Maisincho, L., Mendoza, J., Ménégoz, M., Ramirez, E., Ribstein, P., Suarez, W., Villacis, M., and Wagnon,

- 350 P.: Current state of glaciers in the tropical Andes: a multi-century perspective on glacier evolution and climate change, *The Cryosphere*, 7, 81–102, <https://doi.org/10.5194/te-7-81-2013>, 2013.
- Revollo, M. M.: Management issues in the Lake Titicaca and Lake Poopo system: Importance of developing a water budget, *Lakes Reserv. Sci. Policy Manag. Sustain. Use*, 6, 225–229, <https://doi.org/10.1046/j.1440-1770.2001.00151.x>, 2001.
- RGI Consortium: Randolph Glacier Inventory – A Dataset of Global Glacier Outlines, Version 6 [DatSet], 2017.
- 355 Rieckermann, J., Daebel, H., Ronteltap, M., and Bernauer, T.: Assessing the performance of international water management at Lake Titicaca, *Aquat. Sci.*, 68, 502–516, <https://doi.org/10.1007/s00027-006-0863-0>, 2006.
- Rientjes, T. H. M., Perera, B. U. J., Haile, A. T., Reggiani, P., and Muthuwatta, L. P.: Regionalisation for lake level simulation — the case of Lake Tana in the Upper Blue Nile, Ethiopia, *Hydrol. Earth Syst. Sci.*, 15, 1167–1183, <https://doi.org/10.5194/hess-15-1167-2011>, 2011.
- 360 Roche, M. A., Bourges, J., Cortes, J., and Mattos, R.: Climatology And Hydrology, in: *Lake Titicaca: A Synthesis of Limnological Knowledge*, edited by: Dejoux, C. and Itis, A., Springer Netherlands, Dordrecht, 63–88, https://doi.org/10.1007/978-94-011-2406-5_4, 1992.
- Rosenberry, D. O., Lewandowski, J., Meinikmann, K., and Nützmann, G.: Groundwater—the disregarded component in lake water and nutrient budgets. Part 1: effects of groundwater on hydrology, *Hydrol. Process.*, 29, 2895–2921, <https://doi.org/10.1002/hyp.10403>, 2015.
- 365 Ruelland, D.: Should altitudinal gradients of temperature and precipitation inputs be inferred from key parameters in snow hydrological models?, *Hydrol. Earth Syst. Sci.*, 24, 2609–2632, <https://doi.org/10.5194/hess-24-2609-2020>, 2020.
- Ruelland, D.: Development of the snow and ice accounting routine (SIAR), *J. Hydrol.*, 129867, <https://doi.org/10.1016/j.jhydrol.2023.129867>, 2023.
- 370 Saber, A., Cheng, V. Y. S., and Arhonditsis, G. B.: Evidence for increasing influence of atmospheric teleconnections on water levels in the Great Lakes, *J. Hydrol.*, 616, 128655, <https://doi.org/10.1016/j.jhydrol.2022.128655>, 2023.
- Satgé, F., Ruelland, D., Bonnet, M. P., Molina, J., and Pilleo, R.: Consistency of satellite-based precipitation products in space and over time compared with gauge observations and snow hydrological modelling in the Lake Titicaca region, *Hydrol. Earth Syst. Sci.*, 23, 595–619, <https://doi.org/10.5194/hess-23-595-2019>, 2019.
- 375 Schulz, S., Darehshouri, S., Hassanzadeh, E., Tajrishy, M., and Schüth, C.: Climate change or irrigated agriculture — what drives the water level decline of Lake Urmia, *Sci. Rep.*, 10, 236, <https://doi.org/10.1038/s41598-019-57150-y>, 2020.
- Seott, R. W. and Huff, F. A.: Impacts of the Great Lakes on Regional Climate Conditions, *J. Gt. Lakes Res.*, 22, 845–863, [https://doi.org/10.1016/S0380-1330\(96\)71006-7](https://doi.org/10.1016/S0380-1330(96)71006-7), 1996.
- Segura, H., Espinoza, J. C., Junquas, C., and Takahashi, K.: Evidencing decadal and interdecadal hydroclimatic variability over the Central Andes, *Environ. Res. Lett.*, 11, 094016, <https://doi.org/10.1088/1748-9326/11/9/094016>, 2016.
- 380 Seibert, J., Vis, M. J. P., Kohn, I., Weiler, M., and Stahl, K.: Technical note: Representing glacier geometry changes in a semi-distributed hydrological model, *Hydrol. Earth Syst. Sci.*, 22, 2211–2224, <https://doi.org/10.5194/hess-22-2211-2018>, 2018.

- Sene, K. J. and Plinston, D. T.: A review and update of the hydrology of Lake Victoria in East Africa, *Hydrol. Sci. J.*, 39, 47–63, <https://doi.org/10.1080/02626669409492719>, 1994.
- 385 Shadkam, S., Ludwig, F., van Oel, P., Kirmitt, Ç., and Kabat, P.: Impacts of climate change and water resources development on the declining inflow into Iran's Urmia Lake, *J. Gt. Lakes Res.*, 42, 942–952, <https://doi.org/10.1016/j.jglr.2016.07.033>, 2016.
- Shao, C., Chen, J., Chu, H., Stepien, C. A., and Ouyang, Z.: Intra-Annual and Interannual Dynamics of Evaporation Over Western Lake Erie, *Earth Space Sci.*, 7, e2020EA001091, <https://doi.org/10.1029/2020EA001091>, 2020.
- 390 Shea, J. M., Moore, R. D., and Stahl, K.: Derivation of melt factors from glacier mass-balance records in western Canada, *J. Glaciol.*, 55, 123–130, <https://doi.org/10.3189/002214309788608886>, 2009.
- Sieart, J. E., Ribstein, P., Francou, B., Pouyaud, B., and Condom, T.: Glacier mass balance of tropical Zongo glacier, Bolivia, comparing hydrological and glaciological methods, *Glob. Planet. Change*, 59, 27–36, <https://doi.org/10.1016/j.gloplacha.2006.11.024>, 2007.
- 395 Sieart, J. E., Hock, R., and Six, D.: Glacier melt, air temperature, and energy balance in different climates: The Bolivian Tropics, the French Alps, and northern Sweden, *J. Geophys. Res. Atmospheres*, 113, <https://doi.org/10.1029/2008JD010406>, 2008.
- Sieart, J. E., Hock, R., Ribstein, P., and Chazarin, J. P.: Sky longwave radiation on tropical Andean glaciers: parameterization and sensitivity to atmospheric variables, *J. Glaciol.*, 56, 854–860, <https://doi.org/10.3189/002214310794457182>, 2010.
- 400 Song, C., Huang, B., Richards, K., Ke, L., and Hien Phan, V.: Accelerated lake expansion on the Tibetan Plateau in the 2000s: Induced by glacial melting or other processes?, *Water Resour. Res.*, 50, 3170–3186, <https://doi.org/10.1002/2013WR014724>, 2014.
- Soruco, A., Vincent, C., Rabatel, A., Francou, B., Thibert, E., Sieart, J. E., and Condom, T.: Contribution of glacier runoff to water resources of La Paz city, Bolivia (16° S), *Ann. Glaciol.*, 56, 147–154, <https://doi.org/10.3189/2015AoG70A001>, 2015.
- 405 Soutif-Bellenger, M., Thirel, G., Therond, O., and Villerd, J.: As simple as possible but not simpler?: the case of irrigation modeling at catchment scale in southwestern France, *Irrig. Sci.*, 41, 713–736, <https://doi.org/10.1007/s00271-023-00846-x>, 2023.
- Sterner, R. W., Keeler, B., Polasky, S., Poudel, R., Rhude, K., and Rogers, M.: Ecosystem services of Earth's largest freshwater lakes, *Ecosyst. Serv.*, 41, 101046, <https://doi.org/10.1016/j.ecoser.2019.101046>, 2020.
- Sturrock, A. M., Winter, T. C., and Rosenberry, D. O.: Energy budget evaporation from Williams Lake: A closed lake in north central Minnesota, *Water Resour. Res.*, 28, 1605–1617, <https://doi.org/10.1029/92WR00553>, 1992.
- Su, D., Wen, L., Gao, X., Leppäranta, M., Song, X., Shi, Q., and Kirillin, G.: Effects of the Largest Lake of the Tibetan Plateau on the Regional Climate, *J. Geophys. Res. Atmospheres*, 125, e2020JD033396, <https://doi.org/10.1029/2020JD033396>, 2020.
- 415 Sulea, J., Apaestegui, J., and Tacea, J.: New insights into the biennial to multidecadal variability of the water level fluctuation in Lake Titicaca in the 20th century, *Front. Clim.*, 5, <https://doi.org/10.3389/fclim.2023.1325224>, 2024.

- 420 Sun, J., Zhou, T., Liu, M., Chen, Y., Shang, H., Zhu, L., Shedayi, A. A., Yu, H., Cheng, G., Liu, G., Xu, M., Deng, W., Fan, J., Lu, X., and Sha, Y.: Linkages of the dynamics of glaciers and lakes with the climate elements over the Tibetan Plateau, *Earth-Sci. Rev.*, 185, 308–324, <https://doi.org/10.1016/j.earseirev.2018.06.012>, 2018.
- Tenealiec, P., Favre, A. C., Prieur, C., and Mathevet, T.: Reconstruction of missing daily streamflow data using dynamic regression models, *Water Resour. Res.*, 51, 9447–9463, <https://doi.org/10.1002/2015WR017399>, 2015.
- Thiery, W., Davin, E. L., Panitz, H. J., Demuzere, M., Lhermitte, S., and Lipzig, N. van: The Impact of the African Great Lakes on the Regional Climate, *J. Clim.*, 28, 4061–4085, <https://doi.org/10.1175/JCLI-D-14-00565.1>, 2015.
- 425 Toffolon, M., Piccolroaz, S., Majone, B., Soja, A. M., Pecters, F., Schmid, M., and Wüest, A.: Prediction of surface temperature in lakes with different morphology using air temperature, *Limnol. Oceanogr.*, 59, 2185–2202, <https://doi.org/10.4319/lo.2014.59.6.2185>, 2014.
- Vanderkelen, I., van Lipzig, N. P. M., and Thiery, W.: Modelling the water balance of Lake Victoria (East Africa) — Part I: Observational analysis, *Hydrol. Earth Syst. Sci.*, 22, 5509–5525, <https://doi.org/10.5194/hess-22-5509-2018>, 2018.
- 430 Vaquero, G., Siavashani, N. S., García-Martínez, D., Elorza, F. J., Bila, M., Candela, L., and Serrat-Capdevila, A.: The Lake Chad transboundary aquifer. Estimation of groundwater fluxes through international borders from regional numerical modeling, *J. Hydrol. Reg. Stud.*, 38, 100935, <https://doi.org/10.1016/j.ejrh.2021.100935>, 2021.
- Vesala, T., Eugster, W., and Ojala, A.: Eddy Covariance Measurements over Lakes, in: *Eddy Covariance: A Practical Guide to Measurement and Data Analysis*, edited by: Aubinet, M., Vesala, T., and Papale, D., Springer Netherlands, Dordrecht, 365–376, https://doi.org/10.1007/978-94-007-2351-1_15, 2012.
- 435 Wale, A., Rientjes, T. H. M., Gieske, A. S. M., and Getachew, H. A.: Ungauged catchment contributions to Lake Tana’s water balance, *Hydrol. Process.*, 23, 3682–3693, <https://doi.org/10.1002/hyp.7284>, 2009.
- Wang, W., Xiao, W., Cao, C., Gao, Z., Hu, Z., Liu, S., Shen, S., Wang, L., Xiao, Q., Xu, J., Yang, D., and Lee, X.: Temporal and spatial variations in radiation and energy balance across a large freshwater lake in China, *J. Hydrol.*, 511, 811–824, <https://doi.org/10.1016/j.jhydrol.2014.02.012>, 2014.
- 440 Wang, W., Lee, X., Xiao, W., Liu, S., Schultz, N., Wang, Y., Zhang, M., and Zhao, L.: Global lake evaporation accelerated by changes in surface energy allocation in a warmer climate, *Nat. Geosci.*, 11, 410–414, <https://doi.org/10.1038/s41561-018-0114-8>, 2018.
- 445 Winter, J. M., Young, C. A., Mehta, V. K., Ruane, A. C., Azarderakhsh, M., Davitt, A., McDonald, K., Haden, V. R., and Rosenzweig, C.: Integrating water supply constraints into irrigated agricultural simulations of California, *Environ. Model. Softw.*, 96, 335–346, <https://doi.org/10.1016/j.envsoft.2017.06.048>, 2017.
- Wurtsbaugh, W. A., Miller, C., Null, S. E., DeRose, R. J., Wilcock, P., Hahnenberger, M., Howe, F., and Moore, J.: Decline of the world’s saline lakes, *Nat. Geosci.*, 10, 816–821, <https://doi.org/10.1038/ngeo3052>, 2017.
- 450 Xu, S., Frey, S. K., Erler, A. R., Khader, O., Berg, S. J., Hwang, H. T., Callaghan, M. V., Davison, J. H., and Sudicky, E. A.: Investigating groundwater-lake interactions in the Laurentian Great Lakes with a fully integrated surface-water-groundwater model, *J. Hydrol.*, 594, 125911, <https://doi.org/10.1016/j.jhydrol.2020.125911>, 2021.
- Xu, X., Frey, S. K., and Ma, D.: Hydrological performance of ERA5 and MERRA-2 precipitation products over the Great Lakes Basin, *J. Hydrol. Reg. Stud.*, 39, 100982, <https://doi.org/10.1016/j.ejrh.2021.100982>, 2022.

455 Yao, F., Livneh, B., Rajagopalan, B., Wang, J., Crétaux, J. F., Wada, Y., and Berge-Nguyen, M.: Satellites reveal widespread decline in global lake water storage, *Science*, 380, 743–749, <https://doi.org/10.1126/science.abc2812>, 2023.

Yates, D., Sieber, J., Purkey, D., and Huber Lee, A.: WEAP21— A demand-, priority-, and preference-driven water planning model: part 1: model characteristics, *Water Int.*, 30, 487–500, 2005.

Yates, D. N.: WatBal: An Integrated Water Balance Model for Climate Impact Assessment of River Basin Runoff, *Int. J. Water Resour. Dev.*, 12, 121–140, <https://doi.org/10.1080/07900629650041902>, 1996.

460 Yu, S., Liu, J., Xu, J., and Wang, H.: Evaporation and energy balance estimates over a large inland lake in the Tibet Himalaya, *Environ. Earth Sci.*, 64, 1169–1176, <https://doi.org/10.1007/s12665-011-0933-z>, 2011.

Zhang, Y. and Post, D.: How good are hydrological models for gap-filling streamflow data?, *Hydrol. Earth Syst. Sci.*, 22, 4593–4604, <https://doi.org/10.5194/hess-22-4593-2018>, 2018.

5.3 Prospects

465 Despite the aforementioned limitations, our modeling framework and its associated results on the water balance components will be useful to support decision making in water resources management in Lake Titicaca because they represent climatic, glacio-snow-hydrological, and water allocation components. Contrary to the perceptions of some stakeholders, who often attribute the lake's water level variations to water withdrawals for irrigation or glacier retreat, this study demonstrates that Lake Titicaca's variations are primarily driven by rainfall and evaporation variability. In the next stage, water management scenarios could be evaluated in the context of climate change. Some of the management scenarios that could be explored include increasing the irrigable area, the efficiency of irrigation systems, and releases lake. Designing these scenarios would require collaborative work with stakeholders, in particular with the Lake Titicaca Authority. Exploring future scenarios will be crucial to identify and plan intervention actions to ensure the sustainability of Lake Titicaca. Such experiments could also serve as a replicable model for other poorly-gauged large lakes around the world. The conceptual models within the modeling framework are easy to apply, require minimal data, and are computationally inexpensive. Several of these models are part of the WEAP platform, which is openly accessible for developing countries (for academic purposes and public institutions). Additionally, we provide in the current article detailed equations for models that are not included in this platform.

475

Appendices

Appendix A. Performance of the ERA5-Land dataset

1480 ERA-Land (Muñoz-Sabater et al., 2021) dataset is available from 1950 to the present at a spatial resolution of 0.1° and a hourly time resolution. Data were aggregated at a daily time step. The quality of the ERA5-Land dataset was evaluated using data recorded at a station located at El Alto airport as it was the only one with reliable humidity and wind speed data and relatively long time series. For relative humidity, the performance was acceptable, as ERA5-Land was able to adequately reproduce both the annual magnitudes and the seasonal cycle. For wind speed, ERA5-Land satisfactorily represented the seasonal cycle but

1485 with a significant systematic bias (see Figure A1a). The bias evaluated at the El Alto airport was used to correct the wind speed (Figure A1b) in the spatial domain of the study.

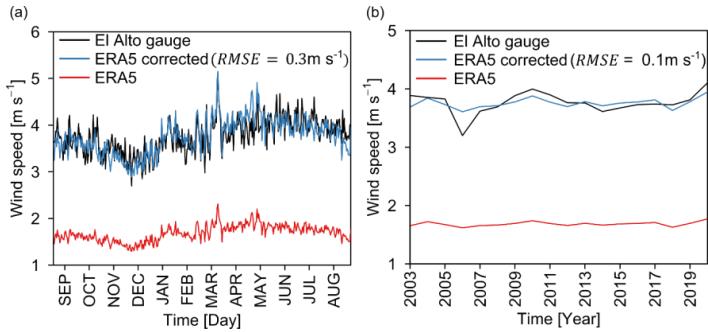


Figure A1. Wind speed performance of ERA5-Land evaluated at El Alto gauge in terms of (a) seasonal cycle and (b) interannual variation for the period 2003–2020.

1490 Appendix B. Simulation of lake water surface temperature (LSWT)

A conceptual lumped model called Air2Water was thus used to estimate LSWT from air temperature (Piccolroaz et al., 2013; Toffolon et al., 2014). The Air2waterR 2.0.0 version available in R was used. ARC-Lake V3 data (MacCallum and Merchant, 2012) available for the period 1995–2012 were used to calibrate and evaluate the Air2waterR model. The spatial resolution of ARC-Lake V3 is 0.05° and the temporal resolution is daily. The model was calibrated for the period 1995–2003 and evaluated using the period 2004–2012 (see Figure B1). The performance of Air2Water in the independent control period was acceptable and captured seasonal and interannual variations very well. LSWT of ARC-Lake V3 had previously been compared with data measured at a buoy located in Lake Titicaca that recorded LSWT (Lazzaro et al., 2021) between 2019 and 2023. The comparison was made between the cell intersecting the measurement point and compared the range of fluctuations and seasonality, since there is no temporal link between the two sources of data. Measured LSWT and LSWT obtained from ARC-Lake V3 fluctuated in a similar range and showed the same seasonal cycle (see Figure B2).

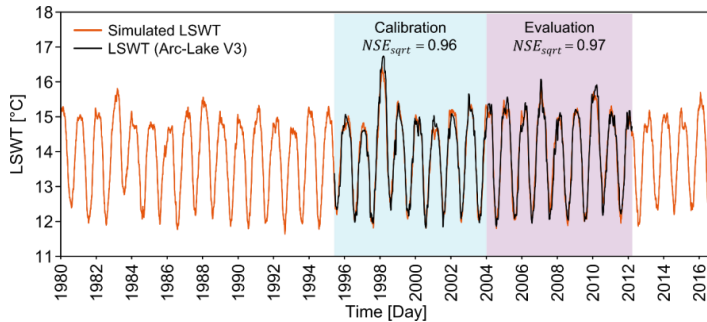
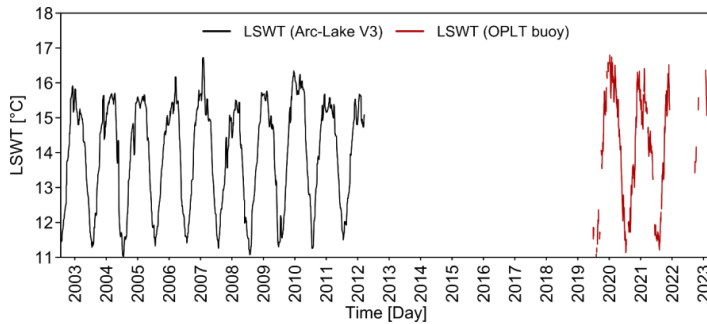


Figure B1. Lake surface water temperature (LSWT) simulated with the Air2waterR model (Piccolroaz et al., 2013; Toffolon et al., 2014) for Lake Titicaca and its calibration and evaluation performances.



1505 Figure B2. Lake surface water temperature (LSWT) obtained from the buoy site (16.25°S, 68.68°W) in Arc-Lake V3 (MacCallum and Merchant, 2012) and OPLT (Lazzaro et al., 2021).

Appendix C. Parameters of the snow and ice model

On-site observations are only available on the Zongo catchment, which is the glacier-dominated catchment adjacent to our study area (see Fig. 1). Streamflow are measured at the Tubo gauge for a catchment of 3.5 km² of which 52% is glacierized area. The annual mass balance estimated by the glaciological method (based on direct sampling of changes in the mass of the glacier) was also available for the hydrological period 1991–2016 (see Fig. C1b). The approach used was to obtain the snow and ice model parameters (see parameters in Fig. 4 and Table C1) in the Zongo catchment and then transfer them directly to BasicModel+IRR+SNOW/ICE. Firstly, the catchment model parameters were calibrated against the streamflow of the Tubo gauge for the hydrological period 2000–2010. The previous two hydrological years were used as a warm-up period. The irrigation module was disabled because the non-glacierized area was completely dominated by rocks and no crops are cultivated at the high elevations of the Zongo catchment. The parameters with the best performance against observed

1510

1515

streamflow were obtained from 10,000 simulations generated with random hypercube sampling of the Monte Carlo approach. The range of parameters tested is shown in Table C1. NSE_{sqrt} was used as the objective function to select the best-performing parameter sets for the calibration period. Secondly, the model was evaluated against the mass balance observed from glaciological method (see Sect. 2.5.1.) for the period 1992–2016 using the $RMSE$ criterion. The evaluation was performed with other internal variables of the model, because the goal was to obtain the set of parameters associated with the snow and ice stores. Good internal consistency of the glacier model was thus desirable. In addition, the 25-year time window made it possible to evaluate the ability of the model to simulate the interannual and decadal variation in the mass balance of the Zongo glacier. Figure C1 shows the model's calibration (see Fig. C1a) and evaluation (see Fig. C1b) performances. Figure C1a shows that the model reproduced streamflow reasonably well. Mass balance was also simulated reasonably well. The $RMSE$ obtained (349 mm) is in the range of the error of the mass balance based on the glaciological method (400 mm) (Sicart et al., 2007).

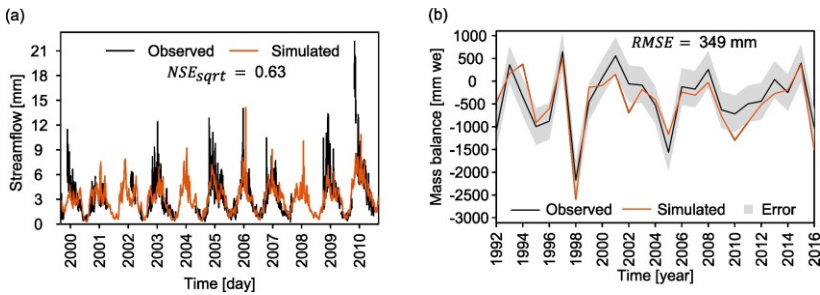


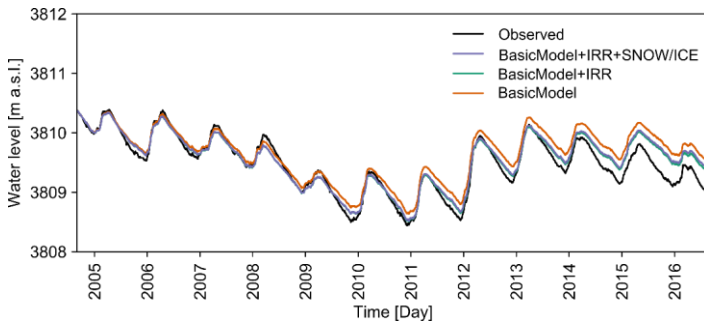
Figure C1. Performance of the catchment model in the Zongo catchment versus (a) observed streamflow at the Tubo gauge, and (b) annual mass balance estimated using the glaciological method. The mass balance estimated using the glaciological method has an error of 400 mm year⁻¹ (Sicart et al., 2007).

Table C1. Parameters of the model implemented in the Zongo catchment and their associated fixed values or ranges tested in order to obtain the parameters of the snow and ice model.

Parameter	Meaning	Unit	Fixed values or ranges tested
T_s	Snow threshold temperature	°C	-1
T_l	Rain threshold temperature	°C	3
$T_{m,max}$	Maximum melting temperature threshold	°C	[-0.5; 1]
$T_{m,min}$	Minimum melting temperature threshold	°C	[-3; -0.5]
DDF_{snow}	Snow degree-day factor	mm d ⁻¹ °C ⁻¹	[1; 6]
DDF_{ice}	Ice degree-day factor	mm d ⁻¹ °C ⁻¹	[2; 15]
Sw	Soil water capacity	mm	[150; 250]
RRF	Runoff resistance factor	-	[4; 15]
Ks	Root zone conductivity	mm d ⁻¹	[1; 6]
PPD	Preferred flow direction	-	[0.3; 0.87]
Dw	Deep water capacity	mm	[300; 600]
Kd	Deep conductivity	mm d ⁻¹	[1; 3]
Z_1	Initial condition	%	30
Z_2	Initial condition	%	30
L_{irr}	Lower threshold	%	0
U_{irr}	Upper threshold	%	0

IUR	Irrigation use of runoff	%	0
k	Time travel	d	[0.5; 5]
X	Diffusion	-	0.2
# of free parameters			11

Appendix D. Simulated and observed water levels



1535 **Figure D1. Performance of the modeling chain compared with the water levels of Lake Titicaca measured in Puno. Three simulations of water levels are presented because the models produced three different estimates of Q_{in} .**

Code availability. SMM (https://www.weap21.org/webhelp/Two-bucket_Method.htm) and the lake water balance model (https://www.weap21.org/WebHelp/River_Reservoir_Flows.htm) are part of the WEAP platform (<https://www.weap21.org/>).

1540 The models used for snow processes and lake evaporation are not part of WEAP; therefore, the detailed equations are presented in the Methods section. These models were implemented in WEAP using the user-defined variables (https://www.weap21.org/webhelp/User_Defined_Variables.htm).

Data availability. The data used in this study are available at their respective websites: GMET (can be accessed directly at WEAP), ERA5-Land (<https://cds.climate.copernicus.eu/cdsapp#!/dataset/reanalysis-era5-land>), CLACIOCLIM (<https://glacioclim.osug.fr/Glacier-du-Zongo-127>), Observatorio Permanente del Lago Titicaca (<https://olt.geovisorumsa.com/Datos.html>), geodetic mass balance (<https://www.theia-land.fr/en/product/rate-of-glacier-elevation-changes-from-2000-to-2019/>) and ARC-Lake v3 (<https://researchdata.reading.ac.uk/186/>). Measured streamflow and lake water levels should be requested from SENAMHI-Peru and SENAMHI-Bolivia.

1550 *Author contributions.* NLQ, DR and TC conceptualized and designed the study approach. AR provided support in the methodological design of the glacier simulation. WLC provided the hydrological and climatic data for the Peruvian side. NLQ and DR implemented the integrated model and analyzed the simulations, and prepared the original version of the manuscript. All the authors contributed to reviewing and editing the manuscript.

1555

Competing interests. The authors declare they have no conflict of interest.

Financial support. This research was funded by AFD and IRD under the CECC project (Water cycle and climate change) in the framework of a PhD funding. This study is also conducted as part of the International Research Network (IRN) ANDES-C2H, a joint initiative of the IRD and universities and institutions in Colombia, Bolivia, Peru, Ecuador, Chile, and Argentina.

1560

Acknowledgements. The authors are grateful to IRD for funding the study. Our special thanks to SENAMHI-Peru and SENAMHI-Bolivia for providing the ground-based hydroclimatic data. We also thank Javier Núñez (IIGEO-UMSA) and Xavier Lazzaro (IRD) for providing the data from the buoy of the Permanent Observatory of Lake Titicaca. Finally, we thank other data providers including GLACIOCLIM (for Zongo glacier data), THEIA (for access to geodetic mass balance data), ESA (for access to ARC-Lake V3 data), ECMWF (for access to ERA5-Land data), and SEI (for access to GMET data). The authors are very grateful to Benjamin Kraemer and one anonymous reviewer who provided a thorough review of this work, which helped to improve the final manuscript.

1565

References

1570

Allen, R. G., Pereira, L. S., Raes, D., and Smith, M.: Crop evapotranspiration-Guidelines for computing crop water requirements-FAO Irrigation and drainage paper 56, FAO Rome, 300, D05109, 1998.

Antonopoulos, V. Z. and Gianniou, S. K.: Simulation of water temperature and dissolved oxygen distribution in Lake Vegoritis, Greece, *Ecol. Model.*, 160, 39–53, [https://doi.org/10.1016/S0304-3800\(02\)00286-7](https://doi.org/10.1016/S0304-3800(02)00286-7), 2003.

1575

Anyah, R. O., Semazzi, F. H. M., and Xie, L.: Simulated Physical Mechanisms Associated with Climate Variability over Lake Victoria Basin in East Africa, *Mon. Weather Rev.*, 134, 3588–3609, <https://doi.org/10.1175/MWR3266.1>, 2006.

Ashraf Vaghefi, S., Mousavi, S. J., Abbaspour, K. C., Srinivasan, R., and Arnold, J. R.: Integration of hydrologic and water allocation models in basin-scale water resources management considering crop pattern and climate change: Karkheh River Basin in Iran, *Reg. Environ. Change*, 15, 475–484, <https://doi.org/10.1007/s10113-013-0573-9>, 2015.

1580

Autoridad Binacional del Lago Titicaca: Levantamiento hidrográfico convenio binacional del Lago Titicaca, La Paz, Bolivia, 2021.

Autoridad Nacional del Agua: Evaluación de los recursos hídricos en la cuenca del río Ilave, Puno, Perú, 2009.

Bai, P. and Wang, Y.: The Importance of Heat Storage for Estimating Lake Evaporation on Different Time Scales: Insights From a Large Shallow Subtropical Lake, *Water Resour. Res.*, 59, e2023WR035123, <https://doi.org/10.1029/2023WR035123>, 2023.

1585

Barthel, R. and Banzhaf, S.: Groundwater and Surface Water Interaction at the Regional-scale – A Review with Focus on Regional Integrated Models, *Water Resour. Manag.*, 30, 1–32, <https://doi.org/10.1007/s11269-015-1163-z>, 2016.

- Blanken, P. D., Spence, C., Hedstrom, N., and Lenters, J. D.: Evaporation from Lake Superior: 1. Physical controls and processes, *J. Gt. Lakes Res.*, 37, 707–716, <https://doi.org/10.1016/j.jglr.2011.08.009>, 2011.
- 1590 Bouchez, C., Goncalves, J., Deschamps, P., Vallet-Coulomb, C., Hamelin, B., Doumnang, J.-C., and Sylvestre, F.: Hydrological, chemical, and isotopic budgets of Lake Chad: a quantitative assessment of evaporation, transpiration and infiltration fluxes, *Hydrol. Earth Syst. Sci.*, 20, 1599–1619, <https://doi.org/10.5194/hess-20-1599-2016>, 2016.
- Buytaert, W., Moulds, S., Acosta, L., Bièvre, B. D., Olmos, C., Villacis, M., Tovar, C., and Verbist, K. M. J.: Glacial melt content of water use in the tropical Andes, *Environ. Res. Lett.*, 12, 114014, <https://doi.org/10.1088/1748-9326/aa926c>, 2017.
- 1595 Carezzo, M., Pellicciotti, F., Rimkus, S., and Burlando, P.: Assessing the transferability and robustness of an enhanced temperature-index glacier-melt model, *J. Glaciol.*, 55, 258–274, <https://doi.org/10.3189/002214309788608804>, 2009.
- Carmouze, J.-P.: The energy balance, in: *Lake Titicaca, a Synthesis of Limnological Knowledge*, KLUWER ACADEMIC PUBLISHERS, 1992.
- Chavoshi, A. and Danesh-Yazdi, M.: Quantifying the uncertainty of lake-groundwater interaction using the forward uncertainty propagation framework: The case of Lake Urmia, *J. Hydrol.*, 610, 127878, <https://doi.org/10.1016/j.jhydrol.2022.127878>, 2022.
- 1600 Chebud, Y. A. and Melesse, A. M.: Modelling lake stage and water balance of Lake Tana, Ethiopia, *Hydrol. Process.*, 23, 3534–3544, <https://doi.org/10.1002/hyp.7416>, 2009.
- Clark, M. P. and Slater, A. G.: Probabilistic Quantitative Precipitation Estimation in Complex Terrain, *J. Hydrometeorol.*, 7, 3–22, <https://doi.org/10.1175/JHM474.1>, 2006.
- 1605 Delclaux, F., Coudrain, A., and Condom, T.: Evaporation estimation on Lake Titicaca: a synthesis review and modelling, *Hydrol. Process.*, 21, 1664–1677, <https://doi.org/10.1002/hyp.6360>, 2007.
- Duan, Z., Gao, H., and Ke, C.: Estimation of Lake Outflow from the Poorly Gauged Lake Tana (Ethiopia) Using Satellite Remote Sensing Data, *Remote Sens.*, 10, 1060, <https://doi.org/10.3390/rs10071060>, 2018.
- 1610 Dussailant, I., Berthier, E., Brun, F., Masiokas, M., Hugonnet, R., Favier, V., Rabatel, A., Pitte, P., and Ruiz, L.: Two decades of glacier mass loss along the Andes, *Nat. Geosci.*, 12, 802–808, <https://doi.org/10.1038/s41561-019-0432-5>, 2019.
- ESA: Land Cover CCI Product User Guide Version 2.0, 2017.
- Fabre, J., Ruelland, D., Dezetter, A., and Grouillet, B.: Simulating past changes in the balance between water demand and availability and assessing their main drivers at the river basin scale, *Hydrol. Earth Syst. Sci.*, 19, 1263–1285, <https://doi.org/10.5194/hess-19-1263-2015>, 2015.
- 1615 Farinotti, D., Huss, M., Fürst, J. J., Landmann, J., Machguth, H., Maussion, F., and Pandit, A.: A consensus estimate for the ice thickness distribution of all glaciers on Earth, *Nat. Geosci.*, 12, 168–173, <https://doi.org/10.1038/s41561-019-0300-3>, 2019.
- Frans, C., Istanbuluoglu, E., Lettenmaier, D. P., Naz, B. S., Clarke, G. K. C., Condom, T., Burns, P., and Nolin, A. W.: Predicting glacio-hydrologic change in the headwaters of the Zongo River, Cordillera Real, Bolivia, *Water Resour. Res.*, 51, 9029–9052, <https://doi.org/10.1002/2014WR016728>, 2015.

- 1620 Garcia, M., Raes, D., Allen, R., and Herbas, C.: Dynamics of reference evapotranspiration in the Bolivian highlands (Altiplano), *Agric. For. Meteorol.*, 125, 67–82, <https://doi.org/10.1016/j.agrformet.2004.03.005>, 2004.
- Garcia, M., Raes, D., Jacobsen, S.-E., and Michel, T.: Agroclimatic constraints for rainfed agriculture in the Bolivian Altiplano, *J. Arid Environ.*, 71, 109–121, <https://doi.org/10.1016/j.jaridenv.2007.02.005>, 2007.
- Garreaud, R. and Aceituno, P.: Interannual Rainfall Variability over the South American Altiplano, *J. Clim.*, 14, 2779–2789, [https://doi.org/10.1175/1520-0442\(2001\)014<2779:IRVOTS>2.0.CO;2](https://doi.org/10.1175/1520-0442(2001)014<2779:IRVOTS>2.0.CO;2), 2001.
- 1625 Garreaud, R., Vuille, M., and Clement, A. C.: The climate of the Altiplano: observed current conditions and mechanisms of past changes, *Palaeogeogr. Palaeoclimatol. Palaeoecol.*, 194, 5–22, [https://doi.org/10.1016/S0031-0182\(03\)00269-4](https://doi.org/10.1016/S0031-0182(03)00269-4), 2003.
- Geerts, S., Raes, D., Garcia, M., Del Castillo, C., and Buytaert, W.: Agro-climatic suitability mapping for crop production in the Bolivian Altiplano: A case study for quinoa, *Agric. For. Meteorol.*, 139, 399–412, <https://doi.org/10.1016/j.agrformet.2006.08.018>, 2006.
- 1630 Githui, F., Thayalakumaran, T., and Selle, B.: Estimating irrigation inputs for distributed hydrological modelling: a case study from an irrigated catchment in southeast Australia, *Hydrol. Process.*, 30, 1824–1835, <https://doi.org/10.1002/hyp.10757>, 2016.
- Gronewold, A. D., Bruxer, J., Durnford, D., Smith, J. P., Clites, A. H., Seglenieks, F., Qian, S. S., Hunter, T. S., and Fortin, V.: Hydrological drivers of record-setting water level rise on Earth’s largest lake system, *Water Resour. Res.*, 52, 4026–4042, <https://doi.org/10.1002/2015WR018209>, 2016.
- 1635 Gronewold, A. D., Fortin, V., Caldwell, R., and Noel, J.: Resolving Hydrometeorological Data Discontinuities along an International Border, <https://doi.org/10.1175/BAMS-D-16-0060.1>, 2018.
- Gu, H., Ma, Z., and Li, M.: Effect of a large and very shallow lake on local summer precipitation over the Lake Taihu basin in China, *J. Geophys. Res. Atmospheres*, 121, 8832–8848, <https://doi.org/10.1002/2015JD024098>, 2016.
- 1640 Guo, Y., Zhang, Y., Zhang, L., and Wang, Z.: Regionalization of hydrological modeling for predicting streamflow in ungauged catchments: A comprehensive review, *WIREs Water*, 8, e1487, <https://doi.org/10.1002/wat2.1487>, 2021.
- Hall, D. K., Riggs, G. A., Salomonson, V. V., DiGirolamo, N. E., and Bayr, K. J.: MODIS snow-cover products, *Remote Sens. Environ.*, 83, 181–194, [https://doi.org/10.1016/S0034-4257\(02\)00095-0](https://doi.org/10.1016/S0034-4257(02)00095-0), 2002.
- 1645 Hassanzadeh, E., Zarghami, M., and Hassanzadeh, Y.: Determining the Main Factors in Declining the Urmia Lake Level by Using System Dynamics Modeling, *Water Resour. Manag.*, 26, 129–145, <https://doi.org/10.1007/s11269-011-9909-8>, 2012.
- Herrera, S. L., Meneses, R. I., and Anhelme, F.: Comunidades vegetales de los bofedales de la Cordillera Real (Bolivia) bajo el calentamiento global, *Ecol. En Boliv.*, 50, 39–56, 2015.
- Hock, R.: Temperature index melt modelling in mountain areas, *J. Hydrol.*, 282, 104–115, [https://doi.org/10.1016/S0022-1694\(03\)00257-9](https://doi.org/10.1016/S0022-1694(03)00257-9), 2003.
- 1650 Hong, Y., Xuan Do, H., Kessler, J., Fry, L., Read, L., Rafieei Nasab, A., Gronewold, A. D., Mason, L., and Anderson, E. J.: Evaluation of gridded precipitation datasets over international basins and large lakes, *J. Hydrol.*, 607, 127507, <https://doi.org/10.1016/j.jhydrol.2022.127507>, 2022.

- 1655 Hosseini-Moghari, S.-M., Araghinejad, S., Tourian, M. J., Ebrahimi, K., and Döll, P.: Quantifying the impacts of human water use and climate variations on recent drying of Lake Urmia basin: the value of different sets of spaceborne and in situ data for calibrating a global hydrological model, *Hydrol. Earth Syst. Sci.*, 24, 1939–1956, <https://doi.org/10.5194/hess-24-1939-2020>, 2020.
- Hublart, P., Ruelland, D., García de Cortázar-Atauri, I., Gascoin, S., Lhermitte, S., and Ibacache, A.: Reliability of lumped hydrological modeling in a semi-arid mountainous catchment facing water-use changes, *Hydrol. Earth Syst. Sci.*, 20, 3691–3717, <https://doi.org/10.5194/hess-20-3691-2016>, 2016.
- 1660 Hugonnet, R., McNabb, R., Berthier, E., Menounos, B., Nuth, C., Girod, L., Farinotti, D., Huss, M., Dussaillant, I., Brun, F., and Käab, A.: Accelerated global glacier mass loss in the early twenty-first century, *Nature*, 592, 726–731, <https://doi.org/10.1038/s41586-021-03436-z>, 2021.
- Instituto Nacional de Recursos Naturales: Actualización del Balance Hídrico de la Cuenca del río Ramis, Ayaviri, Perú, 2008.
- 1665 INTECSA, AIC, and CNR: Plan Director Global Binacional de Protección – Prevención de Inundaciones y Aprovechamiento de los Recursos del Lago Titicaca, Río Desaguadero, Lago Poopó y Lago Salar Coipasa (Sistema T.D.P.S.): Estudio de hidrogeología, 1993a.
- INTECSA, AIC, and CNR: Plan Director Global Binacional de Protección – Prevención de Inundaciones y Aprovechamiento de los Recursos del Lago Titicaca, Río Desaguadero, Lago Poopó y Lago Salar Coipasa (Sistema T.D.P.S.): Modelo Matemáticos del Sistema Hídrico T.D.P.S., 1993b.
- 1670 INTECSA, AIC, and CNR: Plan Director Global Binacional de Protección – Prevención de Inundaciones y Aprovechamiento de los Recursos del Lago Titicaca, Río Desaguadero, Lago Poopó y Lago Salar de Coipasa (Sistema T.D.P.S.): Diagnostico Socioeconómico, 1993c.
- Jarvis, A., Reuter, H. I., Nelson, A., and Guevara, E.: Hole-filled SRTM for the globe Version 4, Available CGIAR-CSI SRTM 90m Database <https://srtm.csi.cgiar.org>, 15, 5, 2008.
- 1675 Jonaitis, J. A., Perry, L. B., Soulé, P. T., Thaxton, C., Andrade-Flores, M. F., Vargas, T. I., and Ticona, L.: Spatiotemporal patterns of ENSO-precipitation relationships in the tropical Andes of southern Peru and Bolivia, *Int. J. Climatol.*, 41, 4061–4076, <https://doi.org/10.1002/joc.7058>, 2021.
- Kannan, N., Jeong, J., and Srinivasan, R.: Hydrologic Modeling of a Canal-Irrigated Agricultural Watershed with Irrigation Best Management Practices: Case Study, *J. Hydrol. Eng.*, 16, 746–757, [https://doi.org/10.1061/\(ASCE\)HE.1943-5584.0000364](https://doi.org/10.1061/(ASCE)HE.1943-5584.0000364), 2011.
- 1680 Kebede, S., Travi, Y., Alemayehu, T., and Marc, V.: Water balance of Lake Tana and its sensitivity to fluctuations in rainfall, Blue Nile basin, Ethiopia, *J. Hydrol.*, 316, 233–247, <https://doi.org/10.1016/j.jhydrol.2005.05.011>, 2006.
- Kizza, M., Westerberg, I., Rodhe, A., and Ntale, H. K.: Estimating areal rainfall over Lake Victoria and its basin using ground-based and satellite data, *J. Hydrol.*, 464–465, 401–411, <https://doi.org/10.1016/j.jhydrol.2012.07.024>, 2012.
- 1685 Lazzaro, X., Achá Cordero, D., Cruz Hernández, V., Duarte Tejerina, J., Justiniano Ayllón, M., Lanza Aguilar, G., Maldonado Alfaro, J., Molina Arzabe, C., Nuñez Villalba, J., Ormachea Rojas, M., and Sterling, P.: HydroMet: La primera boya automática perfiladora con alta-frecuencia en el Lago Titicaca, el más alto de los Grandes Lagos del mundo, *Ecol. En Bolív.*, 56, 65–67, 2021.

- 1690 Lenters, J. D., Kratz, T. K., and Bowser, C. J.: Effects of climate variability on lake evaporation: Results from a long-term energy budget study of Sparkling Lake, northern Wisconsin (USA), *J. Hydrol.*, 308, 168–195, <https://doi.org/10.1016/j.jhydrol.2004.10.028>, 2005.
- Lima-Quispe, N., Escobar, M., Wickel, A. J., von Kaenel, M., and Purkey, D.: Untangling the effects of climate variability and irrigation management on water levels in Lakes Titicaca and Poopó, *J. Hydrol. Reg. Stud.*, 37, 100927, <https://doi.org/10.1016/j.ejrh.2021.100927>, 2021.
- 1695 MacCallum, S. N. and Merchant, C. J.: Surface water temperature observations of large lakes by optimal estimation, *Can. J. Remote Sens.*, 38, 25–45, <https://doi.org/10.5589/m12-010>, 2012.
- Maidment, D. R.: *Handbook of hydrology*, McGraw-Hill, New York, 1993.
- McInerney, D., Thyer, M., Kavetski, D., Githui, F., Thayalakumaran, T., Liu, M., and Kuczera, G.: The Importance of Spatiotemporal Variability in Irrigation Inputs for Hydrological Modeling of Irrigated Catchments, *Water Resour. Res.*, 54, 6792–6821, <https://doi.org/10.1029/2017WR022049>, 2018.
- 1700 Millan, R., Mouginot, J., Rabatel, A., and Morlighem, M.: Ice velocity and thickness of the world’s glaciers, *Nat. Geosci.*, 15, 124–129, <https://doi.org/10.1038/s41561-021-00885-z>, 2022.
- Ministerio de Desarrollo Rural y Tierras: *Mapa de Cobertura y Uso Actual de la Tierra*, La Paz, Bolivia, 2010.
- Ministerio de Medio Ambiente y Agua: *Inventario Nacional de Sistemas de Riego 2012*, 2012.
- 1705 Ministerio de Medio Ambiente y Agua: *Balance hídrico superficial de Bolivia (1980-2016)*, 2018.
- Ministerio del Ambiente: *Mapa Nacional de Cobertura Vegetal*, Lima, Perú, 2015.
- Muñoz-Sabater, J., Dutra, E., Agustí-Panareda, A., Albergel, C., Arduini, G., Balsamo, G., Boussetta, S., Choulga, M., Harrigan, S., Hersbach, H., Martens, B., Miralles, D. G., Piles, M., Rodríguez-Fernández, N. J., Zsoter, E., Buontempo, C., and Thépaut, J.-N.: ERA5-Land: a state-of-the-art global reanalysis dataset for land applications, *Earth Syst. Sci. Data*, 13, 4349–4383, <https://doi.org/10.5194/essd-13-4349-2021>, 2021.
- 1710 Nash, J. E. and Sutcliffe, J. V.: River flow forecasting through conceptual models part I — A discussion of principles, *J. Hydrol.*, 10, 282–290, [https://doi.org/10.1016/0022-1694\(70\)90255-6](https://doi.org/10.1016/0022-1694(70)90255-6), 1970.
- Newman, A. J., Clark, M. P., Craig, J., Nijssen, B., Wood, A., Gutmann, E., Mizukami, N., Brekke, L., and Arnold, J. R.: Gridded ensemble precipitation and temperature estimates for the contiguous United States, *J. Hydrometeorol.*, 16, 2481–2500, 2015.
- 1715 Nicholson, S. E.: Lake-effect rainfall over Africa’s great lakes and other lakes in the rift valleys, *J. Gt. Lakes Res.*, 49, 101971, <https://doi.org/10.1016/j.jglr.2021.12.004>, 2023.
- Niswonger, R. G., Allander, K. K., and Jeton, A. E.: Collaborative modelling and integrated decision support system analysis of a developed terminal lake basin, *J. Hydrol.*, 517, 521–537, <https://doi.org/10.1016/j.jhydrol.2014.05.043>, 2014.
- 1720 Oudin, L., Andréassian, V., Mathevet, T., Perrin, C., and Michel, C.: Dynamic averaging of rainfall-runoff model simulations from complementary model parameterizations, *Water Resour. Res.*, 42, <https://doi.org/10.1029/2005WR004636>, 2006.

- Parizi, E., Hosseini, S. M., Ataie-Ashtiani, B., and Nikraftar, Z.: Quantifying lake-aquifer water exchange: the case of Lake Urmia, Iran, *Hydrol. Sci. J.*, 67, 725–740, <https://doi.org/10.1080/02626667.2022.2044044>, 2022.
- 1725 Penman, H. L.: Natural evaporation from open water, bare soil and grass, *Proc. R. Soc. Lond. Ser. Math. Phys. Sci.*, 193, 120–145, 1948.
- Piccolroaz, S., Toffolon, M., and Majone, B.: A simple lumped model to convert air temperature into surface water temperature in lakes, *Hydrol. Earth Syst. Sci.*, 17, 3323–3338, <https://doi.org/10.5194/hess-17-3323-2013>, 2013.
- 1730 Pillco Zolá, R., Bengtsson, L., Berndtsson, R., Martí-Cardona, B., Satgé, F., Timouk, F., Bonnet, M.-P., Mollericon, L., Gamarra, C., and Pasapera, J.: Modelling Lake Titicaca's daily and monthly evaporation, *Hydrol. Earth Syst. Sci.*, 23, 657–668, <https://doi.org/10.5194/hess-23-657-2019>, 2019.
- Pôças, I., Calera, A., Campos, I., and Cunha, M.: Remote sensing for estimating and mapping single and basal crop coefficients: A review on spectral vegetation indices approaches, *Agric. Water Manag.*, 233, 106081, <https://doi.org/10.1016/j.agwat.2020.106081>, 2020.
- 1735 Rabatel, A., Francou, B., Soruco, A., Gomez, J., Cáceres, B., Ceballos, J. L., Basantes, R., Vuille, M., Sicart, J.-E., Huggel, C., Scheel, M., Lejeune, Y., Arnaud, Y., Collet, M., Condom, T., Consoli, G., Favier, V., Jomelli, V., Galarraga, R., Ginot, P., Maisincho, L., Mendoza, J., Ménégou, M., Ramirez, E., Ribstein, P., Suarez, W., Villacis, M., and Wagnon, P.: Current state of glaciers in the tropical Andes: a multi-century perspective on glacier evolution and climate change, *The Cryosphere*, 7, 81–102, <https://doi.org/10.5194/tc-7-81-2013>, 2013.
- 1740 Revollo, M. M.: Management issues in the Lake Titicaca and Lake Poopo system: Importance of developing a water budget, *Lakes Reserv. Sci. Policy Manag. Sustain. Use*, 6, 225–229, <https://doi.org/10.1046/j.1440-1770.2001.00151.x>, 2001.
- RGI Consortium: Randolph Glacier Inventory - A Dataset of Global Glacier Outlines, Version 6 [DatSet], 2017.
- Rieckermann, J., Daebel, H., Ronteltap, M., and Bernauer, T.: Assessing the performance of international water management at Lake Titicaca, *Aquat. Sci.*, 68, 502–516, <https://doi.org/10.1007/s00027-006-0863-0>, 2006.
- 1745 Rientjes, T. H. M., Perera, B. U. J., Haile, A. T., Reggiani, P., and Muthuwatta, L. P.: Regionalisation for lake level simulation – the case of Lake Tana in the Upper Blue Nile, Ethiopia, *Hydrol. Earth Syst. Sci.*, 15, 1167–1183, <https://doi.org/10.5194/hess-15-1167-2011>, 2011.
- Roche, M. A., Bourges, J., Cortes, J., and Mattos, R.: Climatology And Hydrology, in: *Lake Titicaca: A Synthesis of Limnological Knowledge*, edited by: Dejoux, C. and Iltis, A., Springer Netherlands, Dordrecht, 63–88, https://doi.org/10.1007/978-94-011-2406-5_4, 1992.
- 1750 Ruelland, D.: Should altitudinal gradients of temperature and precipitation inputs be inferred from key parameters in snow-hydrological models?, *Hydrol. Earth Syst. Sci.*, 24, 2609–2632, <https://doi.org/10.5194/hess-24-2609-2020>, 2020.
- Ruelland, D.: Development of the snow- and ice-accounting routine (SIAR), *J. Hydrol.*, 129867, <https://doi.org/10.1016/j.jhydrol.2023.129867>, 2023.
- 1755 Satgé, F., Ruelland, D., Bonnet, M.-P., Molina, J., and Pillco, R.: Consistency of satellite-based precipitation products in space and over time compared with gauge observations and snow- hydrological modelling in the Lake Titicaca region, *Hydrol. Earth Syst. Sci.*, 23, 595–619, <https://doi.org/10.5194/hess-23-595-2019>, 2019.

- Schulz, S., Darehshouri, S., Hassanzadeh, E., Tajrishy, M., and Schüth, C.: Climate change or irrigated agriculture – what drives the water level decline of Lake Urmia, *Sci. Rep.*, 10, 236, <https://doi.org/10.1038/s41598-019-57150-y>, 2020.
- 1760 Scott, R. W. and Huff, F. A.: Impacts of the Great Lakes on Regional Climate Conditions, *J. Gt. Lakes Res.*, 22, 845–863, [https://doi.org/10.1016/S0380-1330\(96\)71006-7](https://doi.org/10.1016/S0380-1330(96)71006-7), 1996.
- Segura, H., Espinoza, J. C., Junquas, C., and Takahashi, K.: Evidencing decadal and interdecadal hydroclimatic variability over the Central Andes, *Environ. Res. Lett.*, 11, 094016, <https://doi.org/10.1088/1748-9326/11/9/094016>, 2016.
- Seibert, J., Vis, M. J. P., Kohn, I., Weiler, M., and Stahl, K.: Technical note: Representing glacier geometry changes in a semi-distributed hydrological model, *Hydrol. Earth Syst. Sci.*, 22, 2211–2224, <https://doi.org/10.5194/hess-22-2211-2018>, 2018.
- 1765 Sene, K. J. and Plinston, D. T.: A review and update of the hydrology of Lake Victoria in East Africa, *Hydrol. Sci. J.*, 39, 47–63, <https://doi.org/10.1080/02626669409492719>, 1994.
- Shadkam, S., Ludwig, F., van Oel, P., Kirmitt, C., and Kabat, P.: Impacts of climate change and water resources development on the declining inflow into Iran’s Urmia Lake, *J. Gt. Lakes Res.*, 42, 942–952, <https://doi.org/10.1016/j.jglr.2016.07.033>, 2016.
- 1770 Shea, J. M., Moore, R. D., and Stahl, K.: Derivation of melt factors from glacier mass-balance records in western Canada, *J. Glaciol.*, 55, 123–130, <https://doi.org/10.3189/002214309788608886>, 2009.
- Sicart, J. E., Ribstein, P., Francou, B., Pouyaud, B., and Condom, T.: Glacier mass balance of tropical Zongo glacier, Bolivia, comparing hydrological and glaciological methods, *Glob. Planet. Change*, 59, 27–36, <https://doi.org/10.1016/j.gloplacha.2006.11.024>, 2007.
- 1775 Sicart, J. E., Hock, R., and Six, D.: Glacier melt, air temperature, and energy balance in different climates: The Bolivian Tropics, the French Alps, and northern Sweden, *J. Geophys. Res. Atmospheres*, 113, <https://doi.org/10.1029/2008JD010406>, 2008.
- Sicart, J. E., Hock, R., Ribstein, P., and Chazarin, J. P.: Sky longwave radiation on tropical Andean glaciers: parameterization and sensitivity to atmospheric variables, *J. Glaciol.*, 56, 854–860, <https://doi.org/10.3189/002214310794457182>, 2010.
- 1780 Soruco, A., Vincent, C., Rabatel, A., Francou, B., Thibert, E., Sicart, J. E., and Condom, T.: Contribution of glacier runoff to water resources of La Paz city, Bolivia (16° S), *Ann. Glaciol.*, 56, 147–154, <https://doi.org/10.3189/2015AoG70A001>, 2015.
- Sterner, R. W., Keeler, B., Polasky, S., Poudel, R., Rhude, K., and Rogers, M.: Ecosystem services of Earth’s largest freshwater lakes, *Ecosyst. Serv.*, 41, 101046, <https://doi.org/10.1016/j.ecoser.2019.101046>, 2020.
- 1785 Su, D., Wen, L., Gao, X., Leppäranta, M., Song, X., Shi, Q., and Kirillin, G.: Effects of the Largest Lake of the Tibetan Plateau on the Regional Climate, *J. Geophys. Res. Atmospheres*, 125, e2020JD033396, <https://doi.org/10.1029/2020JD033396>, 2020.
- Sulca, J., Apaéstegui, J., and Tacza, J.: New insights into the biennial-to-multidecadal variability of the water level fluctuation in Lake Titicaca in the 20th century, *Front. Clim.*, 5, <https://doi.org/10.3389/fclim.2023.1325224>, 2024.
- Thiery, W., Davin, E. L., Panitz, H.-J., Demuzere, M., Lhermitte, S., and Lipzig, N. van: The Impact of the African Great Lakes on the Regional Climate, *J. Clim.*, 28, 4061–4085, <https://doi.org/10.1175/JCLI-D-14-00565.1>, 2015.

- 1790 Toffolon, M., Piccolroaz, S., Majone, B., Soja, A.-M., Peeters, F., Schmid, M., and Wüest, A.: Prediction of surface temperature in lakes with different morphology using air temperature, *Limnol. Oceanogr.*, 59, 2185–2202, <https://doi.org/10.4319/lo.2014.59.6.2185>, 2014.
- Vanderkelen, I., van Lipzig, N. P. M., and Thiery, W.: Modelling the water balance of Lake Victoria (East Africa) – Part 1: Observational analysis, *Hydrol. Earth Syst. Sci.*, 22, 5509–5525, <https://doi.org/10.5194/hess-22-5509-2018>, 2018.
- 1795 Vaquero, G., Siavashani, N. S., García-Martínez, D., Elorza, F. J., Bila, M., Candela, L., and Serrat-Capdevila, A.: The Lake Chad transboundary aquifer. Estimation of groundwater fluxes through international borders from regional numerical modeling, *J. Hydrol. Reg. Stud.*, 38, 100935, <https://doi.org/10.1016/j.ejrh.2021.100935>, 2021.
- Wale, A., Rientjes, T. H. M., Gieske, A. S. M., and Getachew, H. A.: Ungauged catchment contributions to Lake Tana’s water balance, *Hydrol. Process.*, 23, 3682–3693, <https://doi.org/10.1002/hyp.7284>, 2009.
- 1800 Wang, W., Lee, X., Xiao, W., Liu, S., Schultz, N., Wang, Y., Zhang, M., and Zhao, L.: Global lake evaporation accelerated by changes in surface energy allocation in a warmer climate, *Nat. Geosci.*, 11, 410–414, <https://doi.org/10.1038/s41561-018-0114-8>, 2018.
- Winter, J. M., Young, C. A., Mehta, V. K., Ruane, A. C., Azarderakhsh, M., Davitt, A., McDonald, K., Haden, V. R., and Rosenzweig, C.: Integrating water supply constraints into irrigated agricultural simulations of California, *Environ. Model. Softw.*, 96, 335–346, <https://doi.org/10.1016/j.envsoft.2017.06.048>, 2017.
- 1805 Wurtsbaugh, W. A., Miller, C., Null, S. E., DeRose, R. J., Wilcock, P., Hahnenberger, M., Howe, F., and Moore, J.: Decline of the world’s saline lakes, *Nat. Geosci.*, 10, 816–821, <https://doi.org/10.1038/ngeo3052>, 2017.
- Xu, S., Frey, S. K., Erler, A. R., Khader, O., Berg, S. J., Hwang, H. T., Callaghan, M. V., Davison, J. H., and Sudicky, E. A.: Investigating groundwater-lake interactions in the Laurentian Great Lakes with a fully-integrated surface water-groundwater model, *J. Hydrol.*, 594, 125911, <https://doi.org/10.1016/j.jhydrol.2020.125911>, 2021.
- 1810 Yao, F., Livneh, B., Rajagopalan, B., Wang, J., Crétaux, J.-F., Wada, Y., and Berge-Nguyen, M.: Satellites reveal widespread decline in global lake water storage, *Science*, 380, 743–749, <https://doi.org/10.1126/science.abo2812>, 2023.
- Yates, D., Sieber, J., Purkey, D., and Huber-Lee, A.: WEAP21—A demand-, priority-, and preference-driven water planning model: part 1: model characteristics, *Water Int.*, 30, 487–500, 2005.
- 1815 Zhang, Y. and Post, D.: How good are hydrological models for gap-filling streamflow data?, *Hydrol. Earth Syst. Sci.*, 22, 4593–4604, <https://doi.org/10.5194/hess-22-4593-2018>, 2018.