

Exploring ship track spreading rates with a physics-informed Langevin particle parameterization

Lucas A. McMichael ¹, Michael J. Schmidt ², Robert Wood ¹, Peter N. Blossey ¹, and Lekha Patel ²

¹University of Washington, Seattle, WA, USA

²Sandia National Laboratories, Albuquerque, NM, USA

Correspondence: Lucas A. McMichael (mcmic@uw.edu)

Abstract. The rate at which aerosols spread from a point source injection, such as from a ship or other stationary pollution source, is critical for accurately representing subgrid plume spreading in a climate model. Such climate model results will guide future decisions regarding the feasibility and application of large-scale intentional marine cloud brightening (MCB). Prior modeling studies have shown that the rate at which ship plumes spread may be strongly dependent on meteorological conditions, such as precipitating versus non-precipitating boundary layers and shear. In this study, we apply a Lagrangian particle model (PM-ABL v1.0), governed by a Langevin stochastic differential equation, to create a simplified framework for predicting the rate of spreading from a ship-injected aerosol plume in sheared, precipitating, and non-precipitating boundary layers. The velocity and position of each stochastic particle is predicted with the acceleration of each particle being driven by the turbulent kinetic energy, dissipation rate, momentum variance, and mean wind. These inputs to the stochastic particle-velocity equation are derived from high-fidelity large-eddy simulations (LES) equipped with a prognostic aerosol-cloud microphysics scheme (UW-SAM) to simulate an aerosol injection from a ship into a cloud-topped marine boundary layer. The resulting spreading rate from the reduced-order stochastic model is then compared to the spreading rate in the LES. The stochastic particle-velocity representation is shown to reasonably reproduce spreading rates in sheared, precipitating, and non-precipitating cases using domain-averaged turbulent statistics from the LES.

1 Introduction

Lying beneath regions of large-scale subsidence and above cool subtropical eastern ocean basins, stratocumulus clouds exert a strong negative radiative forcing (cooling effect) on the climate as these bright low clouds are able to efficiently reflect shortwave radiation back to space in comparison to the relatively dark ocean surface below (Hartmann and Short, 1980). Stratocumulus decks observed from space often reveal narrow bands of enhanced albedo (known as ship tracks) as a result of ship emissions (Conover, 1966). The underlying physical mechanism behind the observed cloud brightening in ship tracks is referred to as the Twomey effect, which describes the relationship between increasing the number of cloud condensation nuclei (CCN) and the corresponding higher albedo as the increased surface area of the resulting smaller, more numerous droplets act as a more reflective surface than a lower CCN environment (Twomey, 1974, 1977). However, the Twomey effect does

not act in isolation and various additional aerosol-cloud interactions may occur with an increase of CCN, such as reduced collision-coalescence efficiency and the suppression of precipitation (Albrecht, 1989).

Because the Twomey effect could be enhanced by increased liquid water path (LWP) and/or extended cloud lifetime associated with precipitation suppression, Latham (1990) postulated that the injection of sea salt aerosols into stratocumulus-topped boundary layers (Marine Cloud Brightening; MCB) may be a viable method to offset a substantial portion of greenhouse warming and potentially circumvent climate tipping points, such as a collapse of the arctic ice sheet (Rasch et al., 2009). However, the clouds do not always increase in brightness when aerosol concentrations are increased. For example, aerosol increases in non-precipitating clouds can lead to decreases in cloud fraction and liquid water path (Ackerman et al., 2004; Toll et al., 2017). In models, the smaller droplets (that result from the increase in CCN with added aerosols) more readily evaporate (Wang et al., 2003), in part because they remain near cloud top for longer periods of time as a result of decreased sedimentation rates (Ackerman et al., 2004; Bretherton et al., 2007). The aforementioned properties of smaller droplets promote increased entrainment efficiency, which may decrease LWP/cloud fraction and act to darken the cloud (Wood, 2007). Observational estimates of the degree to which an aerosol perturbation may act to alter LWP shed little light on the aerosol-cloud response, with studies finding depleted LWP (Christensen et al., 2023; Sato et al., 2018; Diamond and Wood, 2020; Gryspeerd et al., 2019; Segrin et al., 2007; Coakley and Walsh, 2002), augmented LWP (Gryspeerd et al., 2019; McCoy et al., 2018), and background meteorological condition dependence (Bender and Sentelhas, 2018; Christensen and Stephens, 2011, 2012).

Given the muddled results from satellite retrievals and the grid spacing required to numerically resolve both ship tracks and mesoscale circulations, process studies regarding the response of low clouds to aerosol injections often employ large-eddy simulation (LES), capable of resolving fine-scale turbulent structures that are crucial for estimating local aerosol/microphysical process rates and cloud-top entrainment rates (Lewellen and Lewellen, 1998). Previous LES studies of ship tracks have shown the LWP response to be dependent on background aerosol concentrations, with clean boundary layers exhibiting larger LWP in the ship track region and polluted boundary layers experiencing the opposite (Wang et al., 2011; Berner et al., 2015; Chun et al., 2023). In a LES study of an idealized summertime subtropical stratocumulus regime, Chun et al. (2023) found that regardless of background aerosol or free tropospheric moisture, the Twomey effect remained larger than the cloud fraction and LWP adjustments in all cases and resulted in cloud brightening of varying magnitudes over a 2-day period. Considering these promising LES results and a greater understanding of the environments in which MCB would be most effective, global modeling efforts of aerosol injections are a critical component in determining the feasibility of large-scale deployment and illuminating potential downsides related to regional climate variability brought about by inhomogeneous radiative forcing (Latham et al., 2008; Jones et al., 2009; Rasch et al., 2009).

Global climate model (GCM) studies of regional aerosol/CCN perturbations of the eastern subtropical oceans have suggested that MCB may be able to offset much of, if not all, the warming from a doubling of CO₂ (Jones et al., 2009; Rasch et al., 2009; Hill and Ming, 2012; Ahlm et al., 2017). However, the nature of the regional and global climate responses may differ substantially across the perturbation strategies and the assumed size distributions of aerosols (Wood, 2021). One major complicating factor of using GCMs to probe MCB feasibility is that they suffer from insufficient low cloud cover over the eastern subtropical ocean regions in comparison to observations (Xie et al., 2018), primarily as a result of under-resolved vertical and horizontal

processes (Lee et al., 2022). Global-scale high-resolution (2-5 km horizontal grid spacing) simulations have recently become possible; however, such configurations are only practical for the simulation of a few days to months (Khairoutdinov et al., 2022), and not the decades or centuries that are required of GCMs. Future GCM runs of MCB strategies that do not involve instantaneous perturbations of entire ocean basins will require information about how injected aerosol plumes spread within the grid, and such information will need to be relayed to the radiation and microphysics parameterizations to better capture the spatial heterogeneity at small scales. In addition to MCB, a computationally efficient model of aerosol spreading tied to turbulent dynamics may be broadly applicable to injected stratospheric aerosols and the spread of hazardous chemicals/aerosols.

Previous attempts to constrain ship track spreading rates from satellite images aimed to estimate average lateral plume spreading behavior (Durkee et al., 2000; Patel and Shand, 2022), but assuming a constant rate of plume spreading may result in subgrid plume-fraction imprecision that leads to compounding, non-linear errors on the resolved-scale properties as prior LES modeling studies have shown that the rate at which ship plumes spread may be strongly dependent on meteorological conditions, such as precipitating versus non-precipitating boundary layers (Prabhakaran et al., 2024), or wind shear (Berner et al., 2015). Recent efforts to represent subgrid plumes, such as the Plume-in-grid (PIG) method with adaptive grids (Sun et al., 2022), allow for time-dependent changes in the horizontal spreading rate as a function of wind shear but require grid refinements in the presence of plumes. The associated increase in computational demand may be a bottleneck for the assessment of large-scale injection strategies. Alternatively, by leveraging Lagrangian particle-based methods, subgrid plumes may be characterized by statistical descriptions of the flow field at singular points in space and time and not bound by standard Gaussian diffusion/dispersion that assumes fixed plume dispersion rates (Pope, 2000). The utilization of scalable approaches necessitates an accurate and computationally efficient representation of subgrid particle trajectories.

In this study, we formulate a turbulence-driven Lagrangian particle model, governed by a Langevin stochastic differential equation, to create a simplified and computationally efficient framework for predicting the rate of horizontal spreading from a ship-injected aerosol plume. The velocity and position of each stochastic particle is controlled by the acceleration of the surrounding fluid, which depends on the turbulent kinetic energy (TKE), dissipation rate, momentum variance, and mean wind. These inputs to the stochastic particle-velocity equation are derived from high-fidelity, large-domain (204.8 km \times 25.6 km) large-eddy simulations (LES) equipped with a prognostic aerosol-cloud microphysics scheme (Berner et al., 2013) to simulate aerosol injection from a ship into a cloud-topped marine boundary layer. By minimizing the error between the Gaussian fits of the Lagrangian particle model and LES ship track widths, we constrain a free parameter within the particle model established in Pope (2000). Using the fully-parameterized particle model, we then study horizontal ship track spreading rates across a range of plausible vertical shear magnitudes in the northeast Pacific boundary layer under precipitating and non-precipitating conditions. Conditionally-averaged turbulent statistics both from within the ship plume and across the entire domain are used to judge spreading rate sensitivity and behavior in the particle model.

The paper is organized as follows: Section 2 describes the theoretical background of the Langevin particle model and details the numerical implementation of the approach. Section 3 outlines the LES configurations, Langevin particle model input parameters, and the plume width calculation used to compare the LES to the particle model. Section 4 compares the

LES and particle model plume widths across the different shear cases and discusses the input parameters needed for optimal performance. Section 5 summarizes and discusses the findings of this work.

95 2 Description of Plume Model

This work aims to efficiently model the turbulent dispersion of atmospheric aerosols in the marine boundary layer for potential use as a subgrid plume parameterization in a GCM. In service of that effort, we consider a simplified but appropriately parameterized Langevin model and employ notation that is largely based on that used in Pope (2000). Specifically, we consider the unbounded, $d = 1, 2, 3$ -dimensional, turbulent dispersion of a passive, conserved (no sources or sinks) scalar tracer, $\phi(\mathbf{x}, t)$ with arbitrary units (e.g., temperature, concentration, etc.) and known initial condition, $\phi_0(\mathbf{x})$. Being *passive*, this tracer has no effect on the material properties of the air or flow field through which it is transported (i.e., density, kinematic viscosity, molecular diffusion— ρ, ν, Γ) and thus has no effect on its own transport mechanism.

In the following sections, we will lay out the equations that govern our atmospheric plume model. We will begin with the Eulerian formulation representative of the LES framework and from there, work towards the Lagrangian formulation that corresponds to the numerical particle model we introduce in Section 2.3.

2.1 Governing Equations

The Eulerian conservation equation that governs the evolution of the scalar tracer field is the advection-diffusion equation

$$\frac{\partial \phi}{\partial t} + \nabla \cdot (\mathbf{U} \phi) = \Gamma \nabla^2 \phi, \quad (1)$$

with the initial condition at $t_0 = 0$

$$\phi(\mathbf{x}, t_0) = \phi_0(\mathbf{x}). \quad (2)$$

The unbounded domain assumption along with the diffusive nature of the spreading process implies the following decay condition and long-time asymptotic solution

$$\lim_{x_i \rightarrow \infty} \phi(\mathbf{x}, t) = 0, \quad t \geq 0, \quad i \in \{1, 2, 3\}, \quad (3)$$

$$\lim_{x_i \rightarrow -\infty} \phi(\mathbf{x}, t) = 0, \quad t \geq 0, \quad i \in \{1, 2\}, \quad (4)$$

$$\lim_{x_3 \rightarrow 0} \phi(\mathbf{x}, t) = f(\mathbf{y}, t), \quad t \geq 0, \quad \mathbf{y} \in \mathbb{R}^2 \quad (5)$$

$$\lim_{t \rightarrow \infty} \phi(\mathbf{x}, t) = 0, \quad \mathbf{x} \in \mathbb{R}^3. \quad (6)$$

Here, $\mathbf{U}(\mathbf{x}, t) \in \mathbb{R}^3$ [ms^{-1}] is the fluid velocity, $\Gamma \in \mathbb{R}$ [m^2s^{-1}] is the constant diffusion coefficient (exact formulation depending on the definition of ϕ), and $f(\mathbf{y}, t)$ is an arbitrary boundary condition at the earth's surface ($x_3 = 0$). Note that we formulate this for $d = 3$, though, formulations for $d = 1, 2$ may be written similarly.

120 The evolution of the fluid velocity field, $\mathbf{U}(\mathbf{x}, t)$ is governed by the Navier-Stokes equations

$$\frac{D\mathbf{U}}{Dt} = -\frac{1}{\rho_0}\nabla p + \nu\nabla^2\mathbf{U} + F_s, \quad (7)$$

where we make the assumption that the base-state fluid density only varies in the vertical, $\rho_0(z)$ [kg m^{-3}] (anelastic approximation). Within (7), the kinematic viscosity is defined as $\nu := \mu/\rho$ [$\text{m}^2 \text{s}^{-1}$], wherein μ is the coefficient of viscosity that is assumed to be a constant in a Newtonian fluid. The mean fluid pressure is denoted by p [$\text{kg m}^{-1}\text{s}^{-2}$] and any additional
 125 sources or sinks of momentum (e.g., apparent forces such as Coriolis, centrifugal, or the buoyancy contributions in the vertical velocity component) are captured by the forcing term, F_s . Finally, the D/Dt operator is the material derivative defined as

$$\frac{D}{Dt} := \frac{\partial}{\partial t} + \mathbf{U} \cdot \nabla. \quad (8)$$

By introducing a filtering operation which separates resolved fluid motion (U_i) from unresolved, subgrid motion (u_i), (7) becomes the Reynolds-averaged Navier Stokes (RANS) equation

$$130 \frac{\partial U_i}{\partial t} + U_j \frac{\partial U_i}{\partial x_j} = -\frac{1}{\rho} \frac{\partial p}{\partial x_i} + \nu \frac{\partial^2 U_i}{\partial x_j \partial x_j} - \frac{\partial \tau_{ij}}{\partial x_j} + F_s, \quad (9)$$

where the subgrid Reynolds stresses, $\tau_{ij} := \overline{u_i u_j}$ [$\text{m}^2 \text{s}^{-2}$], represent a sink of momentum brought about by unresolved (subgrid-scale) fluctuations in velocity. A turbulence closure for τ_{ij} is necessary to close the system of equations given in (9). Once a relationship between the mean flow and subgrid flow has been established and an equation for pressure and conservation of energy have been solved, the mean fluid velocity can be updated in time and space, but as is the case with LES, this
 135 requires substantial computing power at fine spatial and temporal resolution and we instead wish to describe the flow field that dictates tracer transport in a simplified manner.

2.2 Lagrangian governing equations

Given a turbulent flow field, defined in terms of its mean velocity, $\overline{\mathbf{U}}(\mathcal{X}, t)$, over the region $\mathcal{X} \subset \mathbb{R}^3$, Reynolds stresses τ_{ij} , and scalar dissipation rate ϵ [$\text{m}^2 \text{s}^{-3}$], we are concerned with modeling the mean field of our aerosol plume, $\overline{\phi}(\mathbf{x}, t)$, based on its
 140 initial condition $\phi_0(\mathbf{x})$. The Lagrangian nature of our model indicates that rather than describing our system with continuous fields in time and space, we will instead follow parcels of fluid that are characterized by their position and velocity, and we deploy the notation $\mathbf{X}^{(n)}(t)$, $\mathbf{U}^{(n)}(t)$, $n = 1, \dots, N_p$. Under this notational convention, N_p is the number of particles in the system and each carries an equal portion (m_p) of the total mass of fluid, \mathcal{M} , contained in a fixed volume \mathcal{V} such that

$$m_p := \frac{\mathcal{M}}{N_p} \equiv \frac{\rho \mathcal{V}}{N_p}. \quad (10)$$

145 We note that the assumption of equal mass for all particles is convenient but not required, as many Lagrangian models allow for unequal particle masses that may also vary in time (Monaghan, 2012; Tartakovsky et al., 2016; Avesani et al., 2015; Cherfils et al., 2012; Bosler et al., 2017; Schmidt et al., 2020, 2019; Engdahl et al., 2019; Jiao et al., 2022).

	Particle Moment		Fluid Property	
	First	$\overline{\mathbf{U}^* \mathbf{x}}$	$\equiv \overline{\mathbf{U}}(\mathbf{x}, t)$	Mean Velocity
	Second	$\overline{\mathbf{u}_i^* \mathbf{u}_j^* \mathbf{x}}$	$\equiv \overline{\mathbf{u}_i \mathbf{u}_j}$	Reynolds Stresses

Table 1.

The particles in this model are all independently and identically distributed—i.e., two particles beginning at the same position and under the same fluid conditions (or at identical times) will be governed by equivalent position and velocity densities and thus have the same underlying probability density function (PDF). Further, their corresponding trajectories do not depend on one another. For this reason, we only need consider the dynamics of a single, arbitrary particle to describe this model, and we will denote its properties as $\mathbf{X}^*(t)$, $\mathbf{U}^*(t)$. If we accept the argument of GI Taylor (1921) that for the considered problem of atmospheric transport with a relatively high Reynolds number (Re), the molecular diffusion provides a negligible contribution to the transport of the aerosol plume, as compared to the mean fluid flow and turbulent motions. In the case where molecular diffusion is neglected, (6) is no longer valid given that the plume will fail to spread indefinitely in a flow with no turbulence. As such, the tracer ϕ is conserved along the path of a fluid parcel (particle), and the evolution of the mean aerosol plume field $\overline{\phi}$ is fully specified by the statistical properties of the fluid particles in motion. It is then convenient that the particle velocity PDF $f^*(\mathbf{U}|\mathbf{x}; t)$ is equivalent to the fluid velocity PDF $f(\mathbf{U}; \mathbf{x}, t)$. Note here that \mathbf{U} is the independent, or dummy, variable for the PDF of the velocity random variable, \mathbf{U}^* —e.g., employing the notation more common to probability theory, the PDF could also be written as $f_{\mathbf{U}^*}(\mathbf{u}^*|\mathbf{x}; t)$. Also, note that f^* is a density for the velocity \mathbf{U}^* conditioned on the particle being located at position \mathbf{x} , which is also a function of the time, t , at which the velocity is sampled; whereas, f is a density for \mathbf{U} but is not conditional and is strictly a function of \mathbf{x} and t . This directly implies that the first and second moments of the particle velocity are equal to the mean fluid velocity and Reynolds stresses, as given in Table 1.

Due to the properties presented above, as well as other correspondences between the fluid and particle systems that are given in (Pope, 2000, Table 12.1), we obtain the governing equations for the particles. The position of a particle evolves according to

$$\frac{d\mathbf{X}^*(t)}{dt} = \mathbf{U}^*(t), \quad (11)$$

with the particle velocity obeying an Ornstein-Uhlenbeck (diffusion) process defined by the stochastic differential equation (SDE)

$$d\mathbf{U}^*(t) = \mathbf{a}(\mathbf{U}^*(t), \mathbf{X}^*(t), t) dt + b(\mathbf{X}^*(t), t) d\mathbf{W}(t). \quad (12)$$

Here, $\mathbf{a}(\mathbf{U}, \mathbf{x}, t)$ and $b(\mathbf{x}, t)$ are generically formulated drift and diffusion functions, respectively, and $\mathbf{W}(t)$ denotes the d -dimensional (standard) Brownian motion. The Fokker-Planck equation associated with (11) and (12) governing the behavior of the particle velocity-position joint PDF, $f_P^*(\mathbf{U}, \mathbf{x}; t)$ is

$$\frac{\partial f_P^*}{\partial t} + \mathcal{U}_i \frac{\partial f_P^*}{\partial x_i} = - \frac{\partial}{\partial \mathcal{U}_i} [f_P^* a_i(\mathbf{U}, \mathbf{x}, t)] + \frac{[b(\mathbf{x}, t)]^2}{2} \frac{\partial^2 f_P^*}{\partial \mathcal{U}_i \partial \mathcal{U}_i}. \quad (13)$$

175 Note than in (13) and going forward, we apply Einstein notation to represent sums over the spatial coordinate indices $\{i, j, k\}$. Finally, after traversing a small jungle of mathematical manipulations (Pope, 2000), we arrive at the *generalized Langevin model* (GLM) for the particle-velocity stochastic process

$$dU_i^*(t) = -\frac{1}{\rho} \frac{\partial P}{\partial x_i} dt + \mathbf{G}_{ij} \left[U_j^*(t) - \overline{U_j^* | \mathbf{X}^*(t)} \right] dt + \sqrt{C_0 \epsilon(\mathbf{X}^*(t), t)} dW_i(t). \quad (14)$$

This SDE contains some previously-undefined terms, including the particle-pressure field $P(\mathbf{x}, t)$ that directly corresponds to
 180 the mean fluid pressure $\bar{p}(\mathbf{x}, t)$. Additionally, we introduce the constant C_0 and the time-variable drift coefficient $\mathbf{G}_{ij}(\mathbf{X}^*(t), t)$, where \mathbf{G}_{ij} depends on local values of Reynolds stresses $(\overline{u_i u_j})$, ϵ (a function of \mathbf{X}^* and time), and cross-derivatives of the mean velocity $(\partial \overline{U_i} / \partial x_j)$. The reason (14) is referred to as generalized is because it defines a class of models that are specified according to choices for \mathbf{G}_{ij} and C_0 .

2.2.1 Simplified Langevin model

185 There are some attractive properties of boundary-layer flows that allow us to eliminate terms from the GLM and arrive at a modification of what is referred to as the *simplified Langevin model* (Pope, 2000). First we assume that, in the boundary layer, the large-scale (mean) pressure gradients are small enough to be negligible, i.e.,

$$\frac{\partial P}{\partial x_i} \equiv 0. \quad (15)$$

Second, we impose an isotropic weight coefficient for the drift term, namely

$$190 \mathbf{G}_{ij} := -\frac{3}{4} C_0 \frac{\epsilon}{k} \delta_{ij}, \quad (16)$$

where ϵ and k [$\text{m}^2 \text{s}^{-2}$] are, respectively, the scalar dissipation rate and turbulent kinetic energy (TKE).

Equivalently, (16) can be formulated as a constraint on the evolution of kinetic energy in homogeneous turbulence,

$$\frac{3}{2} C_0 \epsilon + \mathbf{G}_{ij} (\overline{u_i u_j}) = 0. \quad (17)$$

This constraint also serves to define the Lagrangian integral timescale, T_L , that can be related to the system's TKE, dissipation
 195 rate, and the scalar Langevin isotropic drift coefficient, \mathcal{G} as follows:

$$T_L = \frac{k}{\frac{3}{4} C_0 \epsilon} = -\frac{\delta_{ij}}{\mathbf{G}_{ij}} := -\mathcal{G}^{-1}. \quad (18)$$

T_L is also referred to as the “relaxation timescale” for turbulent mixing/spreading because it characterizes the time scale over which turbulent fluctuating velocity reverts to the background mean velocity. Lastly, in isotropic turbulence, the velocity variance σ^2 can be related to the turbulent kinetic energy k as

$$200 \sigma^2 = \frac{2}{3} k, \quad (19)$$

which is equivalently stated as

$$\frac{2\sigma^2}{T_L} = C_0 \epsilon. \quad (20)$$

Taken together, and imposing a scalar, isotropic $\mathbf{G} \equiv \mathcal{G}\delta_{ij}$, equations (15)-(18) result in the Langevin model we consider in this work, namely

$$205 \quad dU_i^*(t) = -\frac{1}{\rho} \frac{\partial P}{\partial x_i} dt + \overset{0}{\mathcal{G}} [U_j^*(t) - \overline{U}_j^*] dt + \sqrt{C_0\epsilon} dW_i(t), \quad (21)$$

$$= \frac{\overline{U}_i^* - U_i^*}{T_L} dt + \sqrt{\frac{2\sigma^2}{T_L}} dW_i(t), \quad (22)$$

or in a more compact, vectorized notation,

$$d\mathbf{U}_t^* = \underbrace{\frac{\overline{\mathbf{U}}_t^* - \mathbf{U}_t^*}{T_L} dt}_{\text{deterministic drift term}} + \underbrace{\sqrt{\frac{2\sigma^2}{T_L}} d\mathbf{W}_t}_{\text{Brownian motion term}}. \quad (23)$$

Here, the first bracketed term captures the memory effects of the relaxation timescale, over which the Lagrangian velocity
 210 returns to the mean, and the second bracketed term is the Brownian motion contribution. Conceptually, the deterministic drift term is related to the representation of larger-scale flow features, while the Brownian motion term attempts to represent the random, smaller-scale turbulent fluctuations. The structure of (23) permits a broader range of behaviors than a traditional purely diffusive Gaussian plume model that represents turbulent mixing as a constant eddy diffusivity and is restricted to \sqrt{t} growth (as discussed in Section 4.1). While the above equation is able to represent three-dimensional ($d = 3$) flows, we
 215 restrict the following analysis to the horizontal dimensions (in particular, the x -dimension) by vertically averaging boundary-layer quantities. Vertical averaging simplifies the particle model and focuses on horizontal plume spreading, which is the most GCM-relevant given the vertical spreading of the plume throughout boundary-layer depth occurs on much shorter spatial and temporal scales. The vertical dimension reduction contains the implicit assumption that the boundary layer remains in an approximately well-mixed state, which is oftentimes the case in shallow, cloud-topped marine boundary layers.

220 2.3 Numerical Implementation of Langevin Particle Model

The particle model we consider is composed of a collection of N_p particles that approximate the initial condition (IC) of the passive, conserved tracer (2) as a field composed of weighted kernel functions $k(\mathbf{x}, \mathbf{y})$. First, we note that, hereafter, we abandon the single arbitrary particle analysis applied in Section 2.2 and consider a full ensemble of particles, identified by subscript index $i \in [1, N_p]$. We formulate the model for the previously-described boundary layer flows in $d = 2$ spatial dimensions in the
 225 horizontal, or xy -plane. The IC may be formulated to be

$$\phi_0(\mathbf{x}) = \sum_{i=1}^{N_p} \int_{\mathbb{R}^2} m_i k(\mathbf{x} - \mathbf{z}) \delta(\mathbf{z} - \mathbf{X}_i^*(0)) d\mathbf{z} \quad (24)$$

$$= \sum_{i=1}^{N_p} m_i k(\mathbf{x} - \mathbf{X}_i^*(0)). \quad (25)$$

We specify here that these kernels possess the standard properties that they are symmetric, translation-invariant, non-negative, and integrate to unity; i.e.,

$$230 \quad k(\mathbf{x} - \mathbf{y}) \equiv k(\mathbf{y} - \mathbf{x}) := k(\mathbf{z}), \quad (26)$$

$$k(\mathbf{z}) \geq 0, \quad \forall \mathbf{z} \in \mathbb{R}^2, \quad (27)$$

$$\int_{\mathbb{R}^2} k(\mathbf{z}) d\mathbf{z} = 1. \quad (28)$$

The evolution of the tracer field is driven by the fluctuating Lagrangian velocities that follow (23), and the particle positions change according to

$$235 \quad \frac{d\mathbf{X}_i^*(t)}{dt} = \mathbf{U}_i^*(t). \quad (29)$$

To solve the Langevin model (LM) governed by (23), we integrate the Langevin equation for velocity over a time step of length Δt employing the Euler-Maruyama method

$$\mathbf{U}_i^*(t) = \mathbf{U}_i^*(t - \Delta t) + \frac{\overline{\mathbf{U}_i^*(t - \Delta t)} - \mathbf{U}_i^*(t - \Delta t)}{T_L} \Delta t + \sqrt{\frac{2\sigma^2 \Delta t}{T_L}} \boldsymbol{\xi}_i(t). \quad (30)$$

Above, $\sqrt{\Delta t} \boldsymbol{\xi}_i(t) = \Delta \mathbf{W}_i \approx d\mathbf{W}_i(t)$, and $\boldsymbol{\xi}_i$ is a 2-dimensional vector with independent and identically distributed entries drawn from a standard Normal distribution, i.e., $\boldsymbol{\xi}_i(t) \sim \mathcal{N}(\mathbf{0}, \mathbf{I})$. Finally, we use this updated Lagrangian velocity to update particle positions, again using forward Euler, given by

$$\mathbf{X}_i^*(t + \Delta t) = \mathbf{X}_i^*(t) + \mathbf{U}_i^*(t) \Delta t. \quad (31)$$

3 Large-eddy simulation configuration used to inform particle model

The LES configuration in this study largely follows that of Chun et al. (2023), using version 6.10.9 of the System for Atmospheric Modeling (SAM; Khairoutdinov and Randall (2003)) with additional capabilities for representing the aerosol accumulation mode developed at the University of Washington (UW-SAM; Berner et al. (2013)) to simulate an evolving ship plume with varying background aerosol conditions. The LES forcing profiles for the CONTROL simulation are derived from averaging shallow coastal stratocumulus boundary layers (400-800 m deep) in the northeast Pacific during July 2003 using ECMWF Interim Reanalysis (Zhang et al., 2012; Blossey et al., 2013), and the mean forcings are constant in time for the duration of the simulations. Surface fluxes of latent and sensible heat respond to local conditions according to Monin-Obukhov similarity theory, and radiative transfer calculations were performed every 15 s (every 5 model time steps) using the Rapid Radiative Transfer Model for GCM applications (RRTMG; Mlawer et al. (1997)) with a diurnally varying zenith angle. The evolution of liquid hydrometeors (cloud and rain droplets) was handled by the two-moment Morrison microphysics parameterization (Morrison and Grabowski, 2008) and cloud water was diagnosed via saturation adjustment. The subgrid turbulence was represented using a 1.5-order TKE closure, which allowed for anisotropic diffusivity (Deardoff, 1980). Scalar advection was calculated using

the fifth-order Ultimate-Macho scheme (Yamaguchi et al., 2011) and momentum advection was calculated using second-order finite differencing. All simulations were run for 12 hours to fully develop turbulence overnight (spin-up period) and for an additional 39.5 hours post-ship injection, with the initial injection occurring just before sunrise. The injection time was chosen to maximize the impact of the aerosol-cloud interaction, as sunrise is associated with a diurnal peak in the precipitation rate (Wood, 2012) and injecting during the nighttime hours would result in unchanged shortwave radiative forcing. The LES domain is turned so that the mean wind blows from north to south and is translated along with the mean wind at -10.5 m s^{-1} , which is the strength of the mean wind at 315 m altitude). The ship traverses the domain at the east-west centerpoint (102.4 km) over a 50-minute period with a domain-relative speed of 10.5 m s^{-1} and an aerosol injection rate of $10^{16} \text{ particles s}^{-1}$.

The vertical grid contains 144 levels with variable grid spacing from 15 m near the surface to 5 m in the cloud layer and in the vicinity of the inversion layer. Grid spacing in the free troposphere increases to near 70 m at the domain top (1.555 km). In this study, our focus is on the zonal (cross-wind) spreading of an injected ship plume and as such, high aspect ratio (bowling alley) domain geometries are necessary to maximize the amount of time in which it takes the injected plume to fill the entire domain and to limit east-west plume-edge interactions as a result of periodic lateral boundary conditions. Simulations in Chun et al. (2023) use a $96 \text{ km} \times 9.6 \text{ km}$ bowling alley domain with a uniform grid spacing of 50 m. Initial test simulations for the CONTROL run were done on a $102.4 \text{ km} \times 25.6 \text{ km}$ horizontal grid (50 m grid spacing), requiring nearly 450,000 core hours, which translates to roughly 9 days of computational time on 2,048 processors. After Gaussian curve fitting of the average boundary-layer aerosol concentration, the estimated 2σ ship plume width was approaching the domain size by hour 20 of the simulation, necessitating a wider x -dimension to prevent plume-edge overlap. Modeling a $204.8 \text{ km} \times 25.6 \text{ km}$ domain at 50 m grid spacing is computationally cost prohibitive and demands a larger horizontal grid spacing (100 or 200 m). Tests of larger grid spacing on the $102.4 \text{ km} \times 25.6 \text{ km}$ domain revealed grid spacing sensitivities to coarsening, most notably at 200 m grid spacing (Figure 1a; Figure 2); although, characteristic mesoscale cell sizes as determined from LWP power spectra show minimal sensitivity to grid spacing (Figure 1b).

At $\Delta x = \Delta y = 100$ and 200 m, the LWP at the end of the spin-up period remains consistent with that for a 50 m grid spacing (Figure 2a), but coarser grid spacing results in larger boundary-layer aerosol concentrations, weaker surface precipitation, and slightly deeper boundary layers (Figure 2). Given that large-scale prescribed vertical motion remains the same between runs, an increase in boundary layer depth in comparison to the CONTROL run indicates higher entrainment rates. In an attempt to reconcile the coarse grid simulations with the 50 m configuration we apply “hyperdiffusion” to reduce entrainment rates and dampen grid-scale noise (Wyant et al., 2018) in the momentum equations using

$$\frac{d\mathbf{U}}{dt} = -\frac{(\Delta x \Delta y)^2}{\tau_{\text{hyper}}} \nabla^4 \mathbf{U}, \quad (32)$$

where τ_{hyper} is the diffusion timescale and has a value of 1200 s and 60 s for $\Delta x = \Delta y = 100$ and 200 m, respectively. For the 200 m simulation, strong hyperdiffusion effectively mutes entrainment resulting in excessive LWP and a shallow boundary-layer depth, all while continuing to underestimate the surface precipitation in comparison to the 50 m run. The inability of the 200 m simulation to match 50 m surface precipitation despite larger LWP and in-line aerosol concentrations suggests

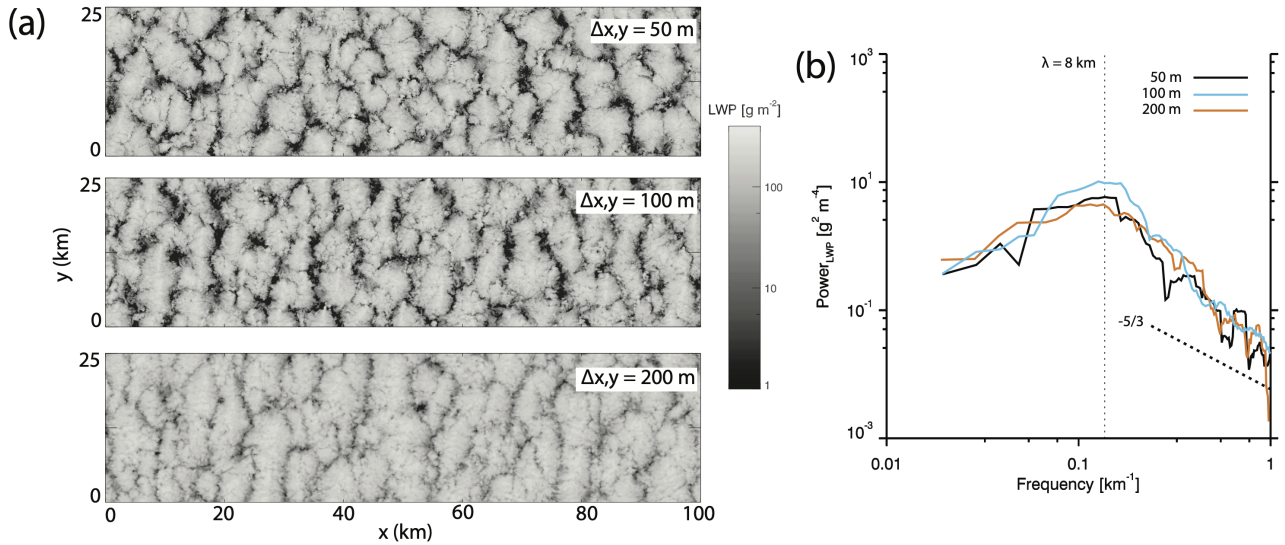


Figure 1. Left panel (a): LWP cross-sections at the end of the spin-up period (hr 12) in 100 km x 25 km simulations with 50 m horizontal grid spacing (top), 100 m grid spacing (middle), and 200 m grid spacing (bottom). Right panel (b): The smoothed LWP power spectra for the three different horizontal grid spacings. The sloped dashed line represents the $-5/3$ power law from satellite observations (Wood and Hartmann, 2006) and the vertical dashed line denotes the characteristic wavelength at the spectral peak (≈ 8 km cell size).

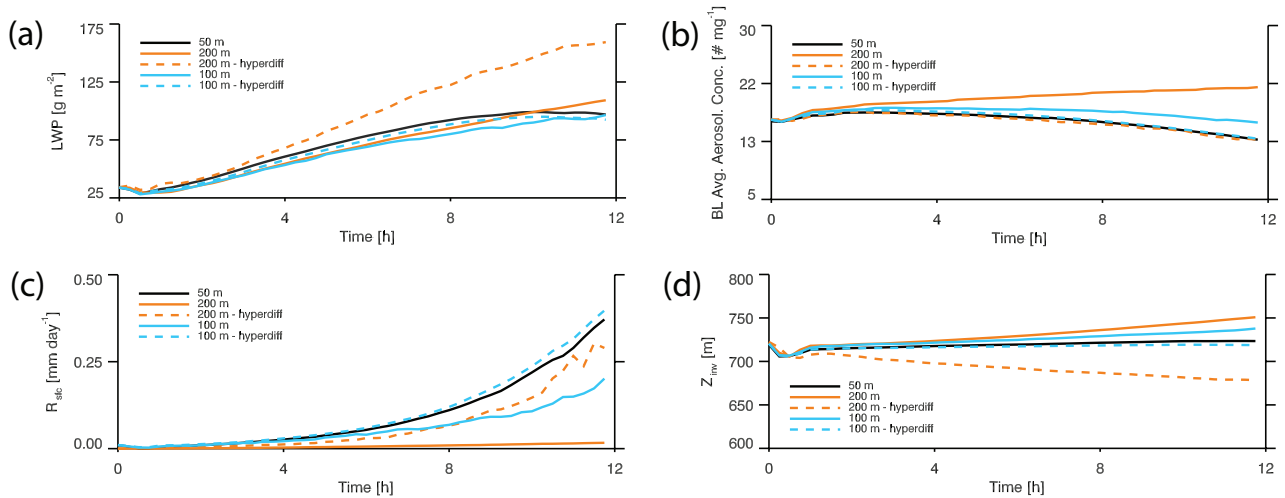


Figure 2. Spin-up period (first 12 hours of the simulation) time series for (a) LWP, (b) Boundary-layer-averaged aerosol concentration, (c) surface rain rate, and (d) inversion height. Dashed lines indicate that the simulation included hyperdiffusion.

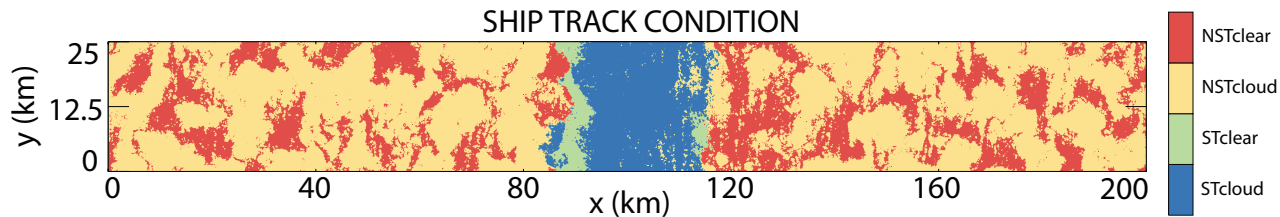


Figure 3. CONTROL run snapshot at 12 hours after ship injection (6 PM PDT) illustrating the different regions being conditionally sampled in the LES: STcloud - ship track and cloudy, STclear - ship track and not cloudy, NSTcloud - no ship track and cloudy, NSTclear - no ship track and not cloudy.

that there may be grid sensitivity to precipitation rates independent of entrainment. Using 100 m horizontal grid spacing with
 290 $\tau_{\text{hyper}} = 1200$ s results in boundary-layer depths, aerosol concentrations, rain rates, and LWP that are in agreement with the 50 m baseline simulation (Figure 2) and consequently, we make use of 100 m grid spacing with hyperdiffusion in order to use sufficiently large domains (204.8 km \times 25.6 km).

To explore the sensitivity of the particle model to input parameters from various regions within LES domain, the TKE, variances, and dissipation are conditionally sampled. The ship track (plume) is present if the grid-space-weighted aerosol
 295 concentration in the lowest 30 model grid levels is 3 times larger than the maximum column deviation. This stringent criteria ensures that non-ship columns are not incorrectly identified while potentially underestimating the fraction of the grid covered by the ship plume. Figure 3 shows the four conditional statistic categories identified in the LES, with the main conditional average of interest in this study being the cloudy region with ship track present (STcloud or in-plume). Statistics were output every 15 minutes and 3-D files were output every 30 minutes.

300 Given the previously established spreading rate dependence on both wind shear (Berner et al., 2015) and precipitation (Prabhakaran et al., 2024), our sensitivity studies attempt to span a realizable range of zonal wind shear magnitudes and both precipitating and non-precipitating cases to assess the ability of the particle model to represent a broad range of environmental conditions.

3.1 Shear sensitivity tests

305 Previous modeling studies of stratocumulus have generally focused on the impact of shear across the inversion layer that acts to deplete liquid water through enhanced entrainment and reduce overall TKE (Wang et al., 2008; McMichael et al., 2019; Zapata et al., 2021), while in this study we wish to explore wind shear “within” the boundary layer. The span of zonal shear (cross-plume wind) magnitudes in this study was achieved by altering the geostrophic wind profile to land at a post-spin-up shear that does not dramatically alter vertical shear near cloud top and restricts the majority of the wind shear to the subcloud
 310 layer. In addition to adjusting the forcing wind profile, the weak shear case (WEAK) neglects the apparent Coriolis force. To better constrain zonal shear magnitudes in our simulations, we analyze 2,208 Lagrangian trajectories from 6 different source regions in the northeast Pacific during June-August, 2018-2021 using ECMWF Reanalysis v5 (ERA5) (Eastman and Wood,

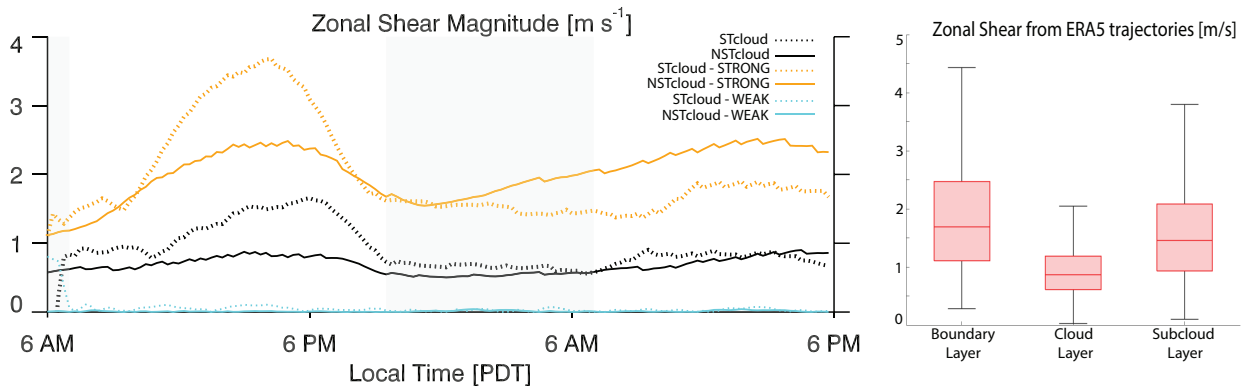


Figure 4. Left plot: Time series of bulk boundary-layer zonal shear magnitude in the cloudy, ship track region (STcloud; dashed lines) and the cloudy, non-ship environment (NSTclear; solid lines). 6 AM corresponds to the initial injection time. Right plot: Maximum zonal shear magnitudes estimated from ERA5 Lagrangian trajectories in the northeast Pacific.

2016; Mohrmann et al., 2019; Erfani et al., 2022). Restricting the analysis to grid levels in ERA5 may result in substantial errors and we instead linearly interpolate the zonal wind to the estimated boundary-layer and cloud-base heights. The surface
 315 wind speed is approximated by the 10 m wind speed. If the cloud base is found to be below the estimated boundary-layer height and the cloud depth exceeds 50 m we compute the boundary-layer, cloud-layer, and subcloud-layer zonal shear magnitudes as a bulk wind (vector) difference between the top and bottom of the layer. Median maximum boundary-layer zonal shear magnitudes in the ERA5 trajectories are $\approx 1.7 \text{ m s}^{-1}$, with median subcloud layer shear being almost double that of the cloud layer (Figure 4).

320 The CONTROL case maximum zonal shear magnitude in the NSTcloud region is 0.9 m s^{-1} which is near the 25th percentile of shear magnitudes from ERA5 trajectories, with shear magnitudes of up to 1.5 m s^{-1} in STcloud during the first evening period when weak decoupling occurs (Figure 4). For the strong shear case (STRONG), maximum zonal shear magnitudes in NSTcloud are 2.5 m s^{-1} (75th percentile) with STcloud shear magnitudes exceeding 3.5 m s^{-1} (>90 th percentile). During the overnight period, the STRONG case zonal shear in STcloud becomes weaker than the non-plume environment and remains
 325 weaker for the duration of the run (Figure 4). The WEAK case maintains less than 0.1 m s^{-1} of zonal shear, representing an extreme case of low wind shear not seen in the ERA5 trajectories (Figure 4).

3.1.1 Macroscale evolution of shear simulations

The varying shear magnitudes result in broadly similar x - y LWP evolution with no conspicuous signal of a ship perturbation one hour after the initial injection (Figure 5). All shear simulations exhibit cloud clearing near the ship-plume edge (with the
 330 plume-edge being easily identifiable in Figure 6) during the first evening period (hour 13) with the clear region recovering by the following morning (hour 25) (Figure 5). This cloud-clearing feature arises from a buoyancy anomaly in the ship-track region that induces a mesoscale circulation and results in subsidence near the plume edge that creates an inhospitable environment

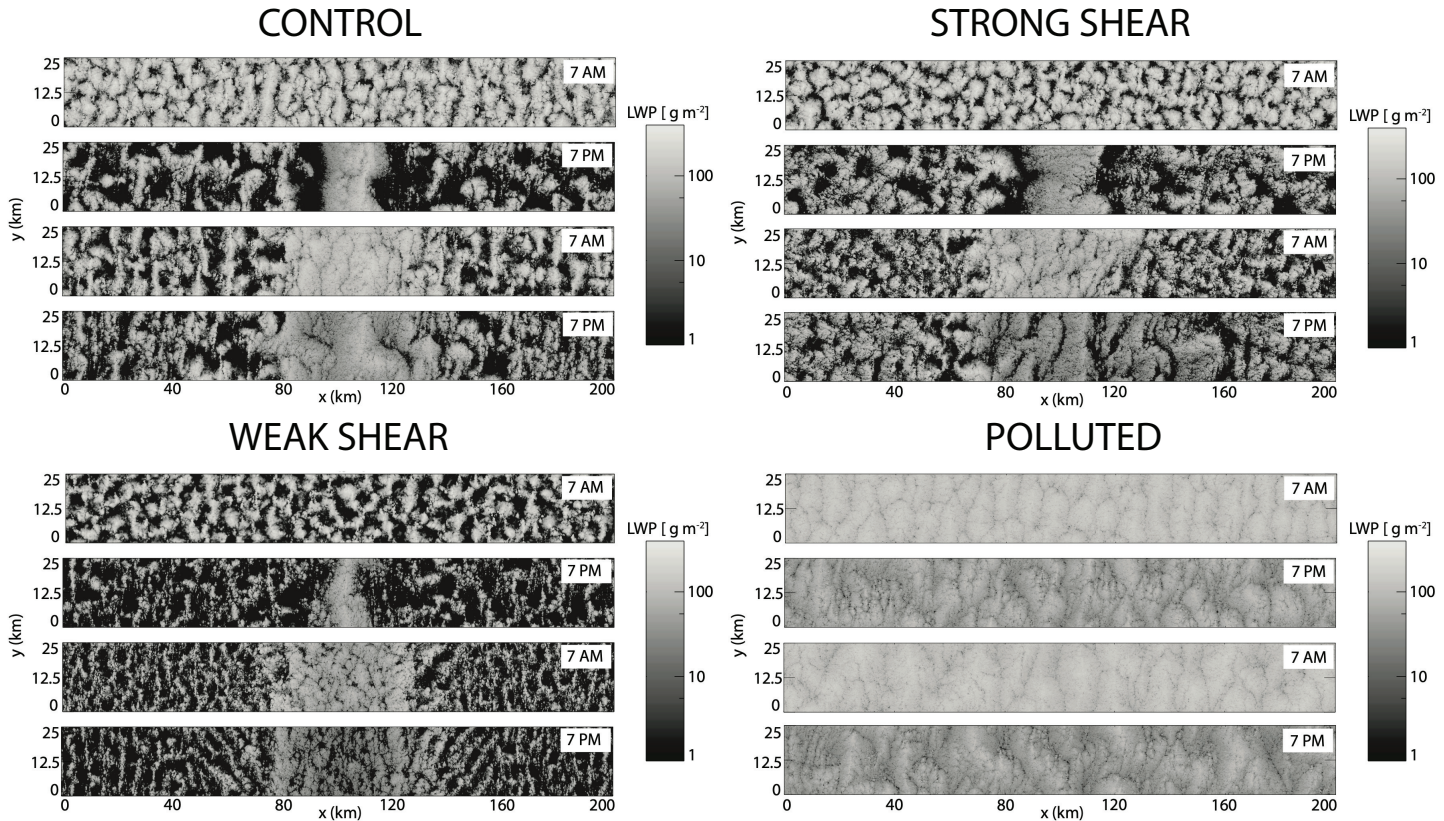


Figure 5. Liquid water path (LWP) evolution of the four large-domain LESs from a bird's-eye view (x - y plane) beginning one hour after ship injection (7 AM) and at 12 hour intervals thereafter. Zonal shear vector in CONTROL and STRONG is from right to left.

for cloud development (Chun et al., 2023; Wang et al., 2011; Prabhakaran et al., 2024). The CONTROL and STRONG cases initially contain homogeneous, closed-cell convection which transitions to more broken cloud conditions in the non-ship region, with the ship track region maintaining near-overcast conditions for the first 25 hours (Figure 5). The overcast ship track region begins to break up during the second evening period, with the STRONG and WEAK cases experiencing more severe fragmentation than the CONTROL (Figure 5). Non-ship-region mesoscale LWP structure is notably different in the WEAK case, with narrow bands of cloud from the first evening onward, indicative of open-cell convection (Figure 5). Precipitation suppression brought about by the increase of CCN is evident in all shear simulations (Figure 7). At one hour after injection, the WEAK case has the most intense precipitating cells (Figure 7), with a decrease in precipitation intensity later in the day in all cases, which is consistent with the typical diurnal cycle of stratocumulus precipitation (Wood, 2012). Local precipitation enhancement occurs on the down-shear side of the plume edge in the CONTROL and STRONG cases, becoming especially prominent during the second daytime period (Figure 7). The background aerosol concentration is modified by the precipitation rate through scavenging, with lower environmental aerosol concentrations during the early morning hours, coinciding with

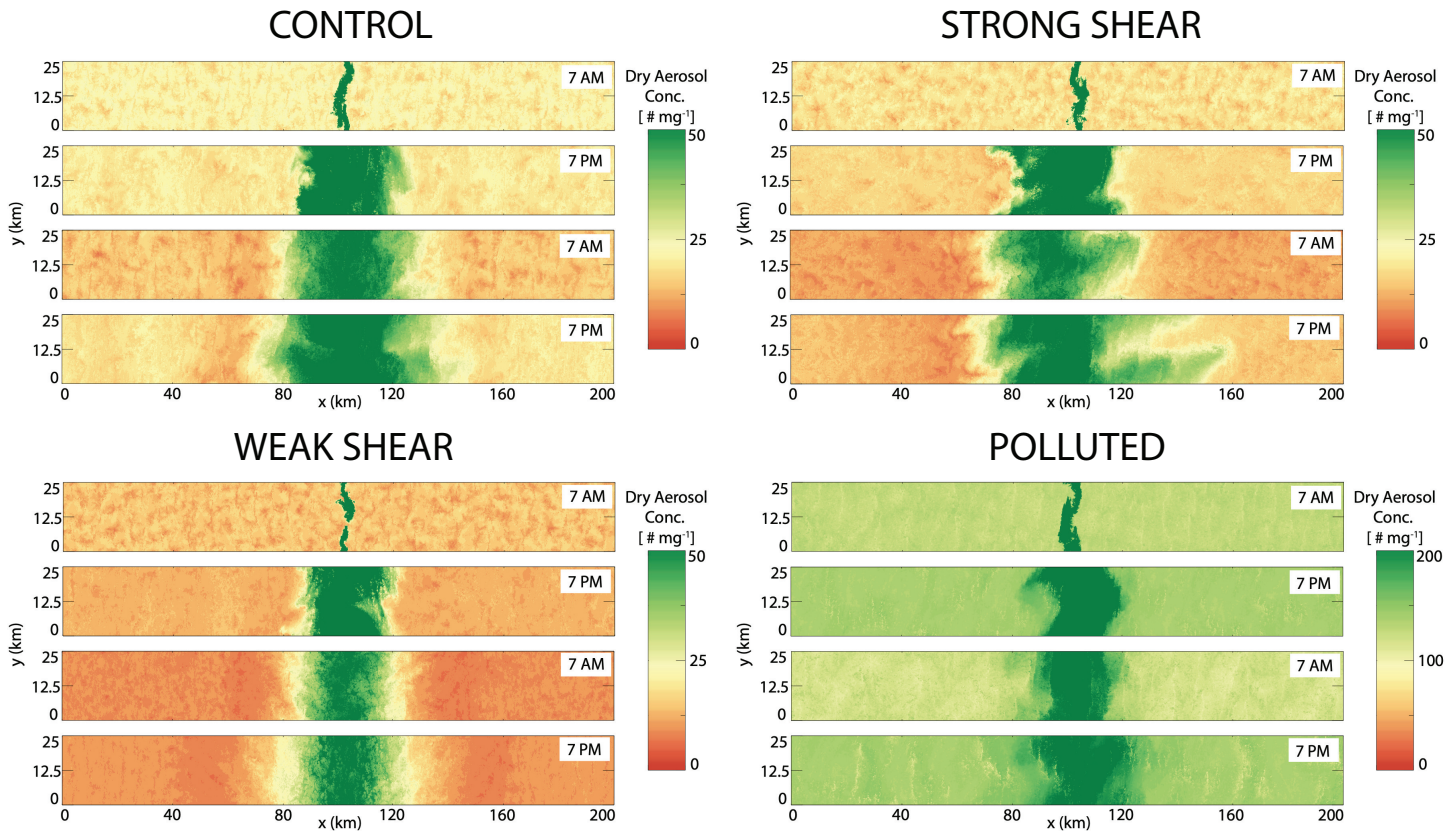


Figure 6. Average dry aerosol number concentration of the bottom 30 grid levels for the four large-domain LESs from a bird's-eye view (x - y plane) beginning one hour after ship injection (7 AM) and at 12 hour intervals thereafter.

345 the strongest precipitation (Figure 6, 7). Background aerosol is able to recover during the second evening as entrainment and surface aerosol sources are larger than the aerosol losses from precipitation (Figure 6).

The CONTROL and STRONG cases have comparable domain-averaged LWP, inversion heights, entrainment rates, surface precipitation rates, and surface fluxes during the first 15 hours of the simulations, with the strongest divergence during the first overnight period as the STRONG case experiences less domain-averaged entrainment and an attendant lower average inversion height (Figure 8). Surface precipitation rates in the WEAK case are more than twice as large as the CONTROL which depletes
 350 LWP, reduces the entrainment rate, and results in a boundary layer depth that is $\approx 15\%$ shallower than the CONTROL. Surface sensible heat fluxes remain similar between the shear cases, although surface latent heat fluxes in the WEAK case are $\approx 20\%$ smaller than the CONTROL (Figure 8e,f).

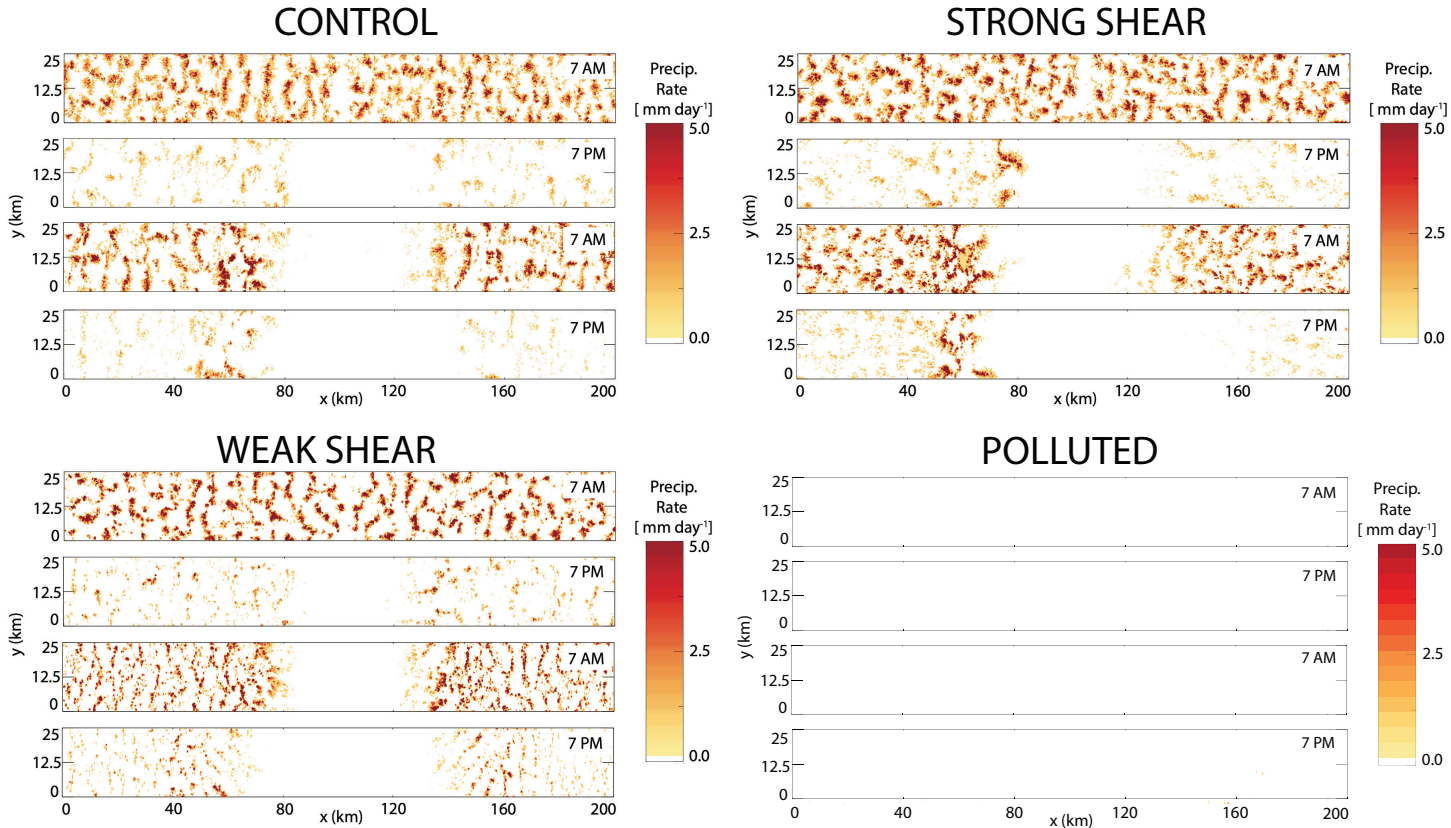


Figure 7. Surface precipitation rate evolution for the four large-domain LESs from a bird’s-eye view (x - y plane) beginning one hour after ship injection (7 AM) and at 12 hour intervals thereafter. Zonal shear vector in CONTROL and STRONG is from right to left.

3.2 Background aerosol sensitivity test

355 For the CONTROL case, the initial boundary-layer aerosol concentration is 20 \# mg^{-1} and the free-tropospheric aerosol concentration is 50 \# mg^{-1} . For the POLLUTED case, the initial boundary-layer aerosol concentration is 130 \# mg^{-1} and the free-tropospheric aerosol concentration is 100 \# mg^{-1} . The injection rate in the POLLUTED case is increased to $3.25 \times 10^{16} \text{ s}^{-1}$ to generate an aerosol perturbation that is roughly the same size as the CONTROL on a percentage basis (Chun et al., 2023). The POLLUTED case large-scale subsidence is increased by 50% in comparison to the CONTROL as a means to attain

360 a similar boundary-layer depth in the presence of much larger LWP and entrainment rates (Figure 8).

3.2.1 Macroscale evolution of polluted simulation

The POLLUTED case has a markedly different mesoscale structure than the three shear cases, with cloud fraction near unity and convective cells that remain closed for the duration of the simulation, along with no discernible ship track region in the LWP field (Figure 5). While background aerosol concentrations in the shear cases decrease during the overnight period as a

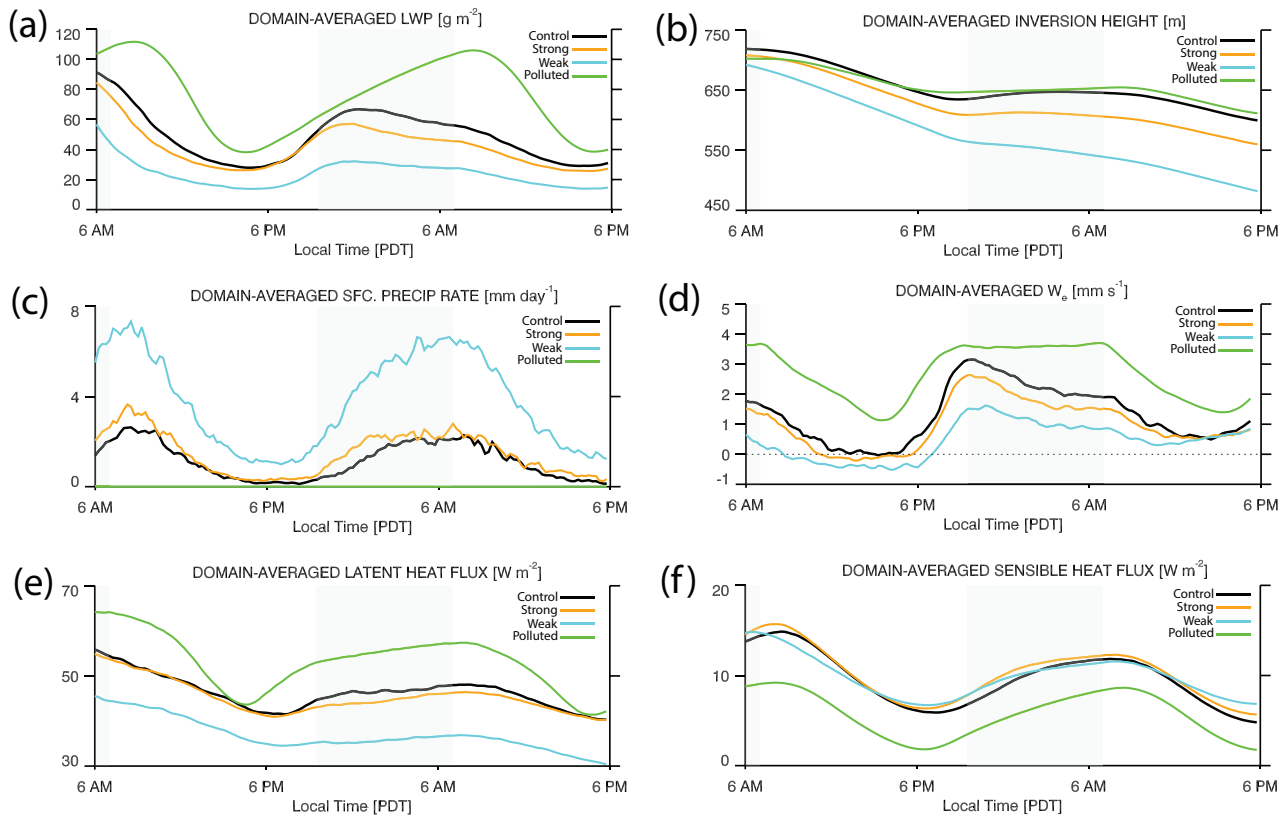


Figure 8. Domain-averaged time series of (a) Liquid water path, (b) inversion height, (c) surface precipitation rate, (d) entrainment rate, (e) surface latent heat flux, and (f) surface sensible heat flux. 6 AM corresponds to the initial injection time. Gray shaded region is the time period with no shortwave radiation present.

365 result of precipitation scavenging, the decrease in average aerosol concentration in the POLLUTED case is a result of the free
 370 troposphere being cleaner than the boundary-layer and the entrainment acting as a sink instead of a source (Figure 6). The
 increased aerosol concentration in the POLLUTED case is sufficient to shut down precipitation production for the duration of
 the simulation (Figure 7) and provides an opportunity to explore the ability of the particle model to represent precipitation- or
 aerosol-concentration-induced responses.

370 3.3 Langevin particle model input parameters

3.3.1 Domain-averaged input parameters

Zonal variances fluctuate modestly diurnally, with a $\approx 20\%$ reduction in zonal variance from the overnight period into the
 evening period as the buoyancy production of TKE driven by radiative cooling near cloud-top is stunted by solar absorption
 (Figure 9a). The meridional variance remains nearly constant for the entire simulation. The diurnal signal is most evident in the

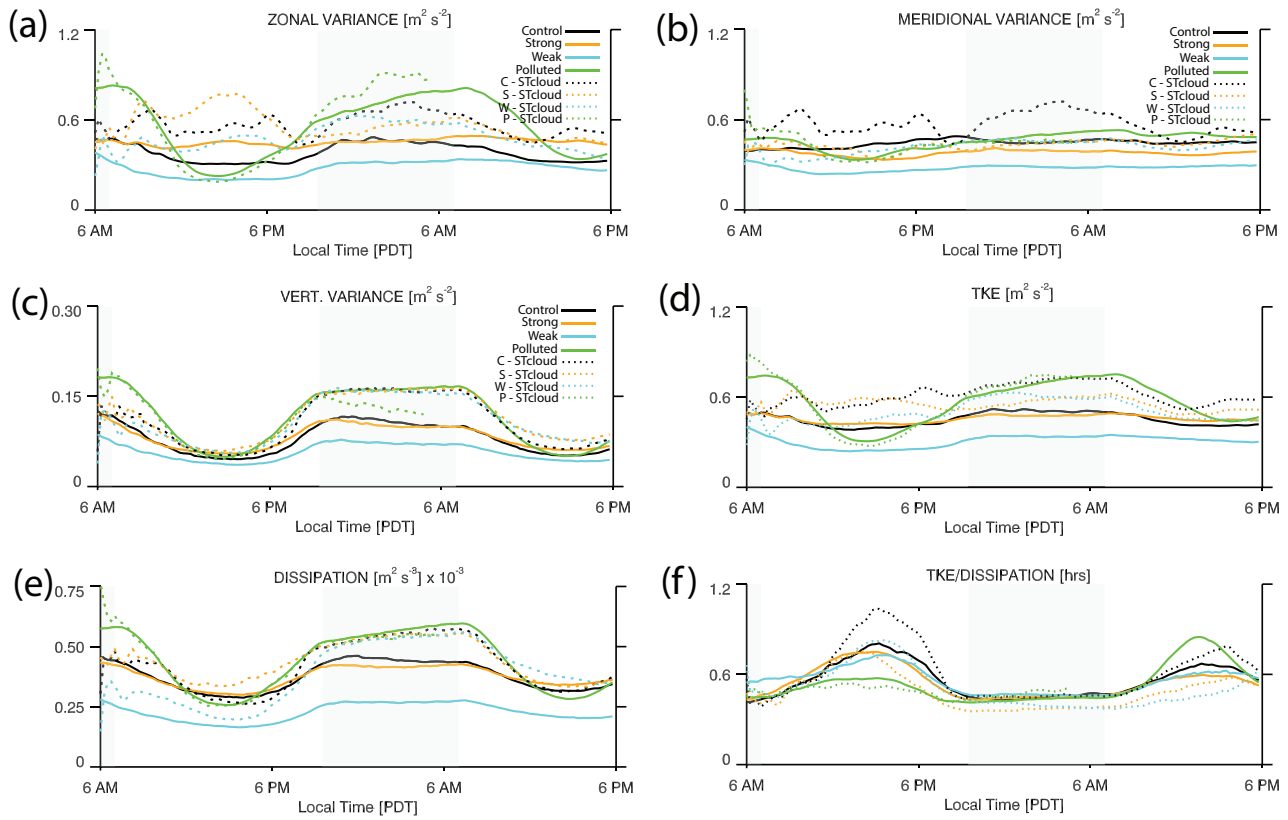


Figure 9. Turbulence-related input parameter time series relevant to the Langevin particle model: (a) zonal (east-west) velocity variance, (b) meridional (north-south) velocity variance, (c) vertical velocity variance, (d) the resolved TKE, (e) the resolved dissipation rate (ϵ), and (f) the relaxation timescale (T_L) without the C_0 correction. All quantities are averaged over the entire boundary-layer depth. Solid lines correspond to domain-averaged time series and dashed lines correspond to in-plume (STcloud) averaged time series.

375 vertical velocity variance, with the variance decreasing by nearly 50% by 4 PM of the first day (Figure 9c). Vertical velocity variance ramps up after 6 PM as solar insolation decreases (Figure 9c). The dissipation rate generally mirrors the TKE, with a minimum in dissipation rate in the evening with greater dissipation overnight associated with invigorated turbulence (Figure 9d,e); however, the relationship between TKE and dissipation can be complex and vary in space and time, depending on local flow geometry, turbulent length scales and stratification. The TKE divided by dissipation, k/ϵ , yields a timescale, which is
 380 related to the relaxation of a particle's velocity to the mean velocity, and longer relaxation timescales (T_L) can be interpreted as a longer leash on any individual particle, allowing the particle to deviate farther from the mean wind profile before being tugged back strongly. The relaxation timescale for the CONTROL run peaks around 3 PM and is smallest and nearly constant during the night (Figure 9f).

The STRONG case domain-averaged zonal and meridional velocity variance shows little evidence of a diurnal cycle with
 385 nearly constant variance for the entire period (Figure 9a,b). Vertical velocity variance does have a diurnal cycle and is almost

indistinguishable from that of the CONTROL simulation (Figure 9c). The overall TKE remains similar between the two cases, despite the STRONG case having a slightly dampened diurnal cycle (Figure 9d). From 3 pm until sunset the first day, the nearly equal TKE between the CONTROL and STRONG case coupled with a STRONG case dissipation rate that is marginally larger gives rise to a smaller relaxation timescale in the STRONG case (Figure 9d,e,f). The WEAK case has an analogous
390 diurnal cycle in zonal variance to the CONTROL, but the magnitude of all components of the variance is lower (Figure 9a,b,c). The evening restrengthening of vertical velocity variance is less pronounced in the WEAK case but the relaxation timescale is in-line with the CONTROL and STRONG case.

The diurnal cycle of zonal and vertical velocity variance is much larger in the POLLUTED case (Figures 9a,c), with zonal variances that plummet during the afternoon to values seen in the WEAK case and a rebound in zonal variance overnight that
395 is nearly double that of the CONTROL by the early morning hours of day 2 (Figure 9a). The POLLUTED case relaxation timescale remains lower than all of the shear cases during the first day, with comparable relaxation timescales overnight (Figure 9f). During the second day, the POLLUTED case relaxation timescale is considerably larger than the three other cases, suggesting a different relationship between TKE and dissipation from day 1 to day 2 (Figure 9f).

3.3.2 In-plume-averaged input parameters

400 Now focusing on the conditionally-sampled ship track region (STcloud), the CONTROL run experiences enhanced TKE in comparison to the domain average (Figure 9d). The diurnal cycle of zonal velocity variance is not as apparent in the ship plume, while the diurnal cycle of vertical velocity variance is magnified with large increases in vertical variance overnight (Figure 9a,c). This is consistent with the findings of Chun et al. (2023), where plume turbulence intensification through the suppression of drizzle dominated over other potential factors such as increased entrainment efficiency in the ship track region.
405 Although the TKE in the ship track region is larger than the domain-averaged TKE, the dissipation is smaller during the evening of day 1 (Figure 9d,e), suggesting that the energy cascade at small scales is fundamentally different. There are several factors which may contribute to less efficient dissipation and an altered energy cascade. We speculate that the mesoscale circulation which develops in precipitating cases may cause reduced dissipation rates as a result of changing flow geometry, as larger coherent structures within the circulation have smaller internal velocity gradients. The dissipation rate is also dependent on
410 stability, as more stable environments dissipate energy to smaller scales at a slower rate. In comparison to the non-ship track region, the ship track region is more stable and experiences larger negative buoyancy fluxes near cloud base and stronger daytime decoupling, which also leads to longer ship-track relaxation timescales as a result of less efficient dissipation (smaller dissipation rate) given a fixed amount of TKE. Additionally, organized horizontal TKE transport in the ship region region may be causing the TKE to be dissipated in the non-ship region. The relative importance of each of these dissipation-modulating
415 mechanisms is currently unknown. The relaxation timescale in the plume is $\approx 25\%$ longer than the domain average during the first daytime period but converges to the domain-averaged relaxation timescale during the overnight period, pointing to a return to more isotropic, homogeneous turbulence. The presence of decoupling challenges the well-mixed assumption; however, LES spreading rates in the subcloud and cloud layers differ negligibly from the boundary-layer averaged spreading rate.

Similar to the CONTROL case, the WEAK and STRONG cases both show stronger turbulence in STcloud in comparison to the domain averages (Figure 9). The STRONG case has a peak in zonal velocity variance around 4 PM while the WEAK case zonal variance peaks during the overnight hours (Figure 9a). In-plume relaxation timescales in the STRONG and WEAK cases are lower than their respective domain averages after 6 PM of day 1, indicating a more efficient dissipation of energy from then on.

As a consequence of being non-precipitating, the POLLUTED case does not exhibit large differences between in-plume and domain-averaged turbulent statistics over the first 15 hours (Wang et al., 2011; Chun et al., 2023; Prabhakaran et al., 2024). In-plume data points after hour 15 are questionable given that conditionally-sampled plume fraction underwent a rapid decrease as the aerosol concentration criteria established before ship injection became too restrictive for the POLLUTED case.

3.4 Plume width calculation for particle model comparison

The particle model lends itself to easily identifying the 1σ plume width simply by computing the standard deviation of the particle-position PDF and multiplying by two to obtain the full width. The LES plume width is complicated by the presence of the background aerosol variability and we employ a Gaussian curve fitting procedure on the boundary-layer-average aerosol concentration to define the 1σ plume width. We use the following curve fitting equation

$$f(x) = A \exp \left[-\frac{(x-B)^2}{2C^2} \right] + D, \quad (33)$$

where A represents the the amplitude of the aerosol perturbation ($\# \text{ mg}^{-1}$) in the ship plume, x is the position along the x -axis (km), B is the location of the ship plume center (km), C is the standard deviation (km), and D is the background aerosol concentration ($\# \text{ mg}^{-1}$). The algorithm must be provided with initial guesses of A, B, C, D , which were $[130.0, 102.4, 8.0, 20.0]$ for the CONTROL and shear cases and $[350.0, 102.4, 8.0, 130.0]$ for the POLLUTED case. Gaussian curve fitting along the x -dimension was performed at each y -location and then averaged along the entire y -dimension to create a single 1σ plume width estimate, which is then multiplied by two to get an actual plume width.

4 Results

4.1 Large-eddy simulation plume width results

For an initial delta function injection and purely diffusive plume spreading, we define the time-varying width of the plume as

$$\mathcal{W}(t) = 2\sqrt{2\mathcal{D}t}, \quad (34)$$

where \mathcal{D} is the coefficient for eddy diffusivity and t is time.

When analyzing the eddy diffusivity output from the 1.5-order TKE closure in the LES, maximum subgrid diffusivity values are near $0.75 \text{ m}^2 \text{ s}^{-1}$, which results in a plume width of 500 m at hour 10 after injection while the CONTROL 1σ plume width at hour 10 is 24 km (Figure 10). It is then immediately obvious that the spreading of the aerosol is not solely related to

mixing done by the smallest scales.. As an alternative calculation, \mathcal{D} can be estimated as the product of a characteristic zonal eddy velocity (u_c) and a characteristic length scale (l) on which the transport occurs ($\mathcal{D} = u_c l$). In the CONTROL run, the characteristic zonal eddy velocity is $\approx 0.3 \text{ m s}^{-1}$ and the characteristic length scale may potentially be driven by mesoscale eddies which are initially $\approx 8 \text{ km}$ wide. The resulting constant Gaussian diffusion equation estimates a width of 26.3 km at hour 10, which is much closer to the LES plume width (Figure 10). While assuming the larger scales are doing a majority of the transport related to the ship track spreading does improve the simple Gaussian diffusion model performance, it fails to capture the accelerating growth (growth rates grow from 2 km/hr in the first 9 hours, to near 3 km/hr during hours 9-13) in the first 15 hours after injection in the CONTROL run (Figure 10). Given the inaccuracies of the Gaussian diffusion assumption in the first 15 hours along with uncertainties regarding the characteristic velocity and time-dependent characteristic length scales, an approach tied to the turbulence properties in the LES is desired and motivates the model developed in Section 2 .

The CONTROL run plume grows at $2\text{-}3 \text{ km hr}^{-1}$ during the first 13 hours before decreasing around sunset and remaining near 1 km hr^{-1} during the night. Further reductions in plume growth ($< 1 \text{ km hr}^{-1}$) during day 2 lead to a final plume width of 48.8 km (Figure 10). The STRONG case plume growth remains similar to the CONTROL for the first 5 hours after injection before a burst of 3 km hr^{-1} growth (Figure 10) and by hour 10 the STRONG case plume is $> 3 \text{ km}$ wider than the CONTROL. Similarly to the CONTROL, the STRONG case plume growth rate lessens during the first evening and remains nearly constant at 1 km hr^{-1} throughout the night and into day 2 period, resulting in a final plume width of 60.8 km (Figure 10). WEAK case growth rates are initially slower than the CONTROL case with a plume width of 18 km at hour 10 (6 km narrower than CONTROL), but overnight spreading rates are consistent with the STRONG and CONTROL cases (Figure 10). Day 2 WEAK case plume spreading persists at $\approx 1 \text{ km hr}^{-1}$ and the final plume width is 44 km . The POLLUTED case experiences rapid growth in the first few hours after injection but average spreading rates between hours 5-15 are slower in comparison to the three other cases (Figure 10) and consistent with previous modeling studies indicating slower growth in non-precipitating boundary layers (Prabhakaran et al., 2024). Again, overnight and Day 2 spreading rates for the POLLUTED case are $\approx 1 \text{ km hr}^{-1}$, suggesting overnight horizontal spreading rates may be independent of zonal variance intensity. In the sensitivity cases examined here, the difference in LES plume width at hour 15 between the STRONG and POLLUTED cases is 14 km , emphasizing the importance of accounting for different background conditions when estimating plume growth rates.

4.2 Particle model results for sheared cases

The particle model requires initial conditions for both particle position and particle velocity, with the standard deviation of particle position being initialized as half of the first available plume width in the LES and the standard deviation of particle velocity being set to 0. Additionally, the particle model contains a free parameter, C_0 , that is found by spanning a range of C_0 values using 20,000 particle simulations with 2-minute time steps and determining the value associated with the minimum cumulative least squares error compared to the LES. Since we have two different input parameter categories (domain average and in-plume) we find two distinct C_0 values for the CONTROL, which are $C_0 = 0.37$ for domain-averaged statistics and $C_0 = 0.69$ for the in-plume statistics. These constants are then applied to the sensitivity cases in hopes of being physically representative of broad-ranging turbulence behavior. By running numerous ensemble members with a low particle number,

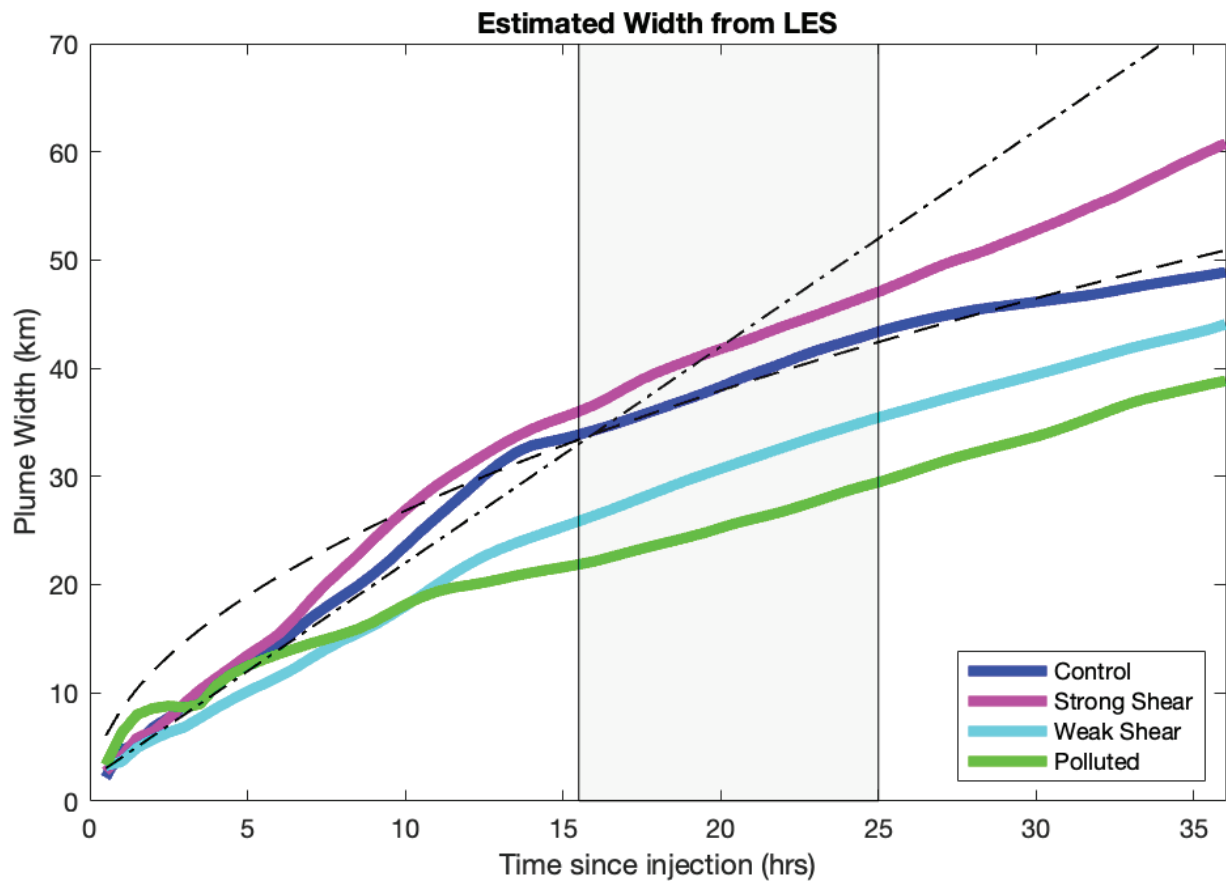


Figure 10. The one standard deviation (multiplied by 2 to get plume width) width estimated from the Gaussian curve fitting procedure applied to the LES aerosol concentrations at 30-minute intervals. Hour 0 corresponds to 6 AM. The dot-dashed line represents a constant plume growth rate of 2 km/hr (Heffter, 1965; Durkee et al., 2000). The dashed line represents a Gaussian diffusion curve (34) where $u_c = 0.3 \text{ m s}^{-1}$ and $l = 8 \text{ km}$. The shaded region is the nighttime period.

Original Relaxation Timescale Formulation

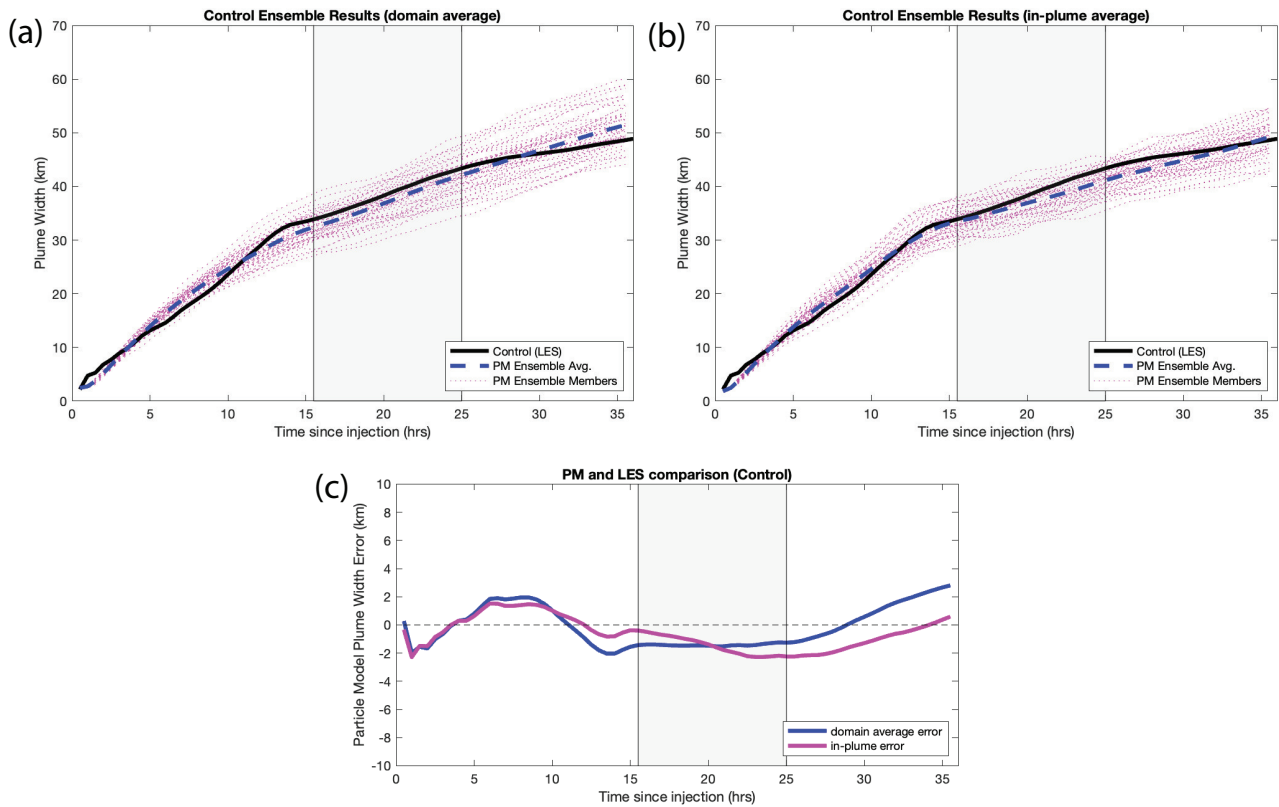


Figure 11. Ensemble particle model results for the CONTROL run using the original relaxation timescale formulation (T_L) laid out in Eq. 18. (a) Particle model results using the domain-averaged input parameters, (b) particle model results using the in-plume (STcloud) averages, and (c) the error between the particle model and the LES plume width for domain-averaged and in-plume input parameters. Individual dashed lines represent each ensemble member.

the number of total particles modeled can be reduced to near 1,000 (50 ensemble members, 20 particles each) with minimal deterioration in model performance and consistency. The results shown here use 50 ensemble members of 100 particles each, with each separate realization of the ensemble mean being stable and in agreement with simulations with 20,000 particles (or
485 greater).

The domain-averaged input parameters are able to largely capture the plume spreading throughout the entire simulation, with errors at any point not exceeding 2.5 km (Figure 11). While the particle model broadly captures the spread, subtleties such as the downward inflection in the spreading rate near hour 13 are only captured when the model is forced with turbulence data from within the ship plume (Figure 11b). Neither the domain averages or in-plume averages capture the day 2 slowing of
490 plume growth shortly after sunrise (near hour 25) (Figure 11). When the particle model is applied to the two shear sensitivity cases the performance becomes case-dependent. Both the domain-averaged and in-plume particle model forcings are able to

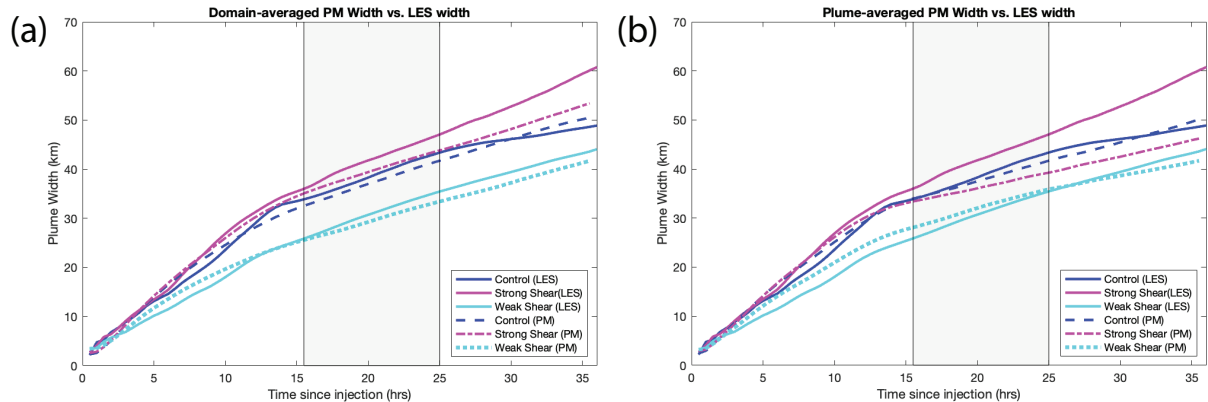


Figure 12. Ensemble particle model results (only ensemble averages shown) from the particle model are dashed lines and solid lines are LES plume widths. (a) Particle model forced with domain-averaged statistics and (b) particle model forced with in-plume (STcloud) statistics. C_0 is 0.37 and 0.69 for the domain-averaged and in-plume runs, respectively. The original relaxation timescale formulation (T_L) was used.

time the deceleration in spreading rate adeptly, though plume widths in the STRONG case are underestimated substantially (Figure 12).

It is desirable for the particle model to capture the clear divergence in LES spreading rates between the STRONG case and CONTROL between hours 7–10 after injection. Zonal variance in the STRONG case is larger during this time frame and on its own would result in faster spreading; however, the STRONG case relaxation timescale is equal to or less than that of the CONTROL, leading to particle model spreading rates that are nearly identical. The original formulation of the relaxation timescale assumes isotropic turbulence, but we are instead interested in the variance along the dimension of the spread, which in this case is the zonal variance. We introduce a modified relaxation timescale calculation (T_m) that only considers the spread-
500 dimension variance but also maintains an assumption of isotropic dissipation

$$T_m = \frac{\frac{1}{2}u'^2}{\frac{3}{4}C_m\epsilon}, \quad (35)$$

where u'^2 is the zonal variance and C_m is a new constant that must be found through another round of CONTROL run optimization. The C_m constant is 0.15 for the domain-averaged forcing and 0.29 for the in-plume forcing. The new C_m values account for the magnitude of T_m being smaller in comparison to T_L , but the diurnal cycle of T_m is more amplified in the
505 STRONG case (Figure 13).

The use of T_m resolves the relatively slow spread in the STRONG case during the 7–10 hour period, with final plume widths in line with the LES when using domain-averaged forcings. Changing T_m does not appreciably change the CONTROL or WEAK case results using domain average or in-plume statistics (Figure 14). Using T_m with in-plume forcing results in good performance through hour 15 followed by poor performance during the nighttime and day 2 periods (Figure 14b). By applying
510 T_m and $C_m = 0.15$, the CONTROL, STRONG, and WEAK case particle model results all agree well with LES plume widths, with changes in diurnal-cycle-related spreading rates being captured using only domain-averaged turbulent statistics.

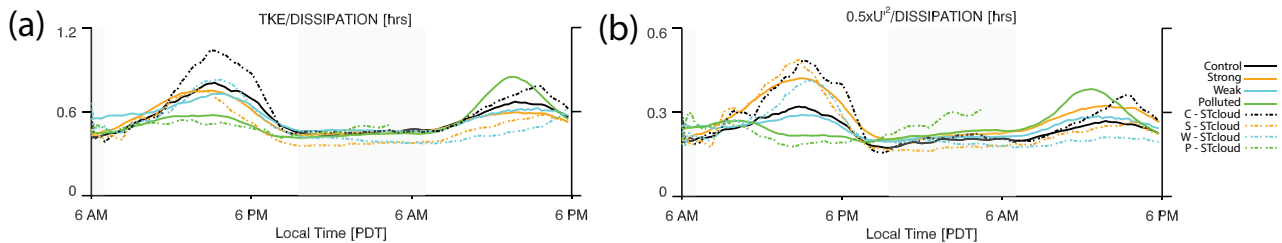


Figure 13. (a) The original relaxation timescale formulation (T_L) and (b) the modified version of the relaxation timescale (T_m), which focuses only on the zonal variance. Solid lines correspond to domain-averaged time series and dot-dashed lines correspond to the in-plume (STcloud) averaged time series.

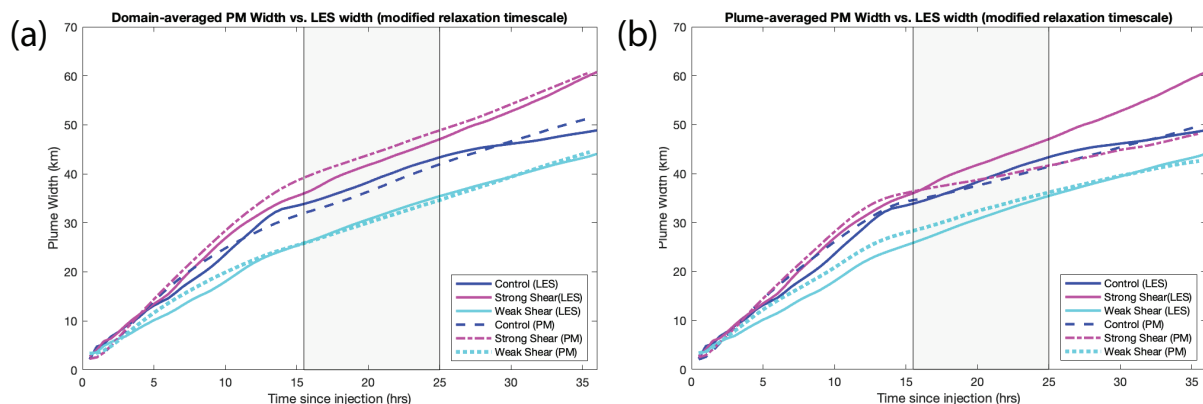


Figure 14. Ensemble particle model results (ensemble averages only shown) from the particle model using the modified relaxation timescale (T_m). Particle model results are dashed lines and solid lines are LES plume widths. (a) Particle model forced with domain-averaged statistics and (b) particle model forced with in-plume (STcloud) statistics. C_m is 0.15 and 0.29 for the domain-averaged and in-plume runs, respectively.

4.3 Particle model results for polluted case

The POLLUTED case forced with domain-averaged statistics, using both T_L and T_m performs poorly in comparison to LES plume width with growth that is much too extreme in the first 10 hours of the particle simulation (Figure 15), signifying that C_0 and C_m are not translating as “universal” constants to the non-precipitating, POLLUTED case. All precipitating cases (CONTROL, STRONG, WEAK) develop mesoscale circulations shortly after ship injection that intensify until sunset, when stronger boundary-layer turbulence interferes with the circulation (Figure 16). These mesoscale circulations are believed to arise from the suppression of precipitation and the associated buoyancy anomaly in the ship track region (Prabhakaran et al., 2024; Chun et al., 2023; Wang et al., 2011), but what mechanisms sustain, intensify, or destroy them is currently unknown. Even in the absence of a complete understanding of mesoscale circulation dynamics, it remains a critical deviation from

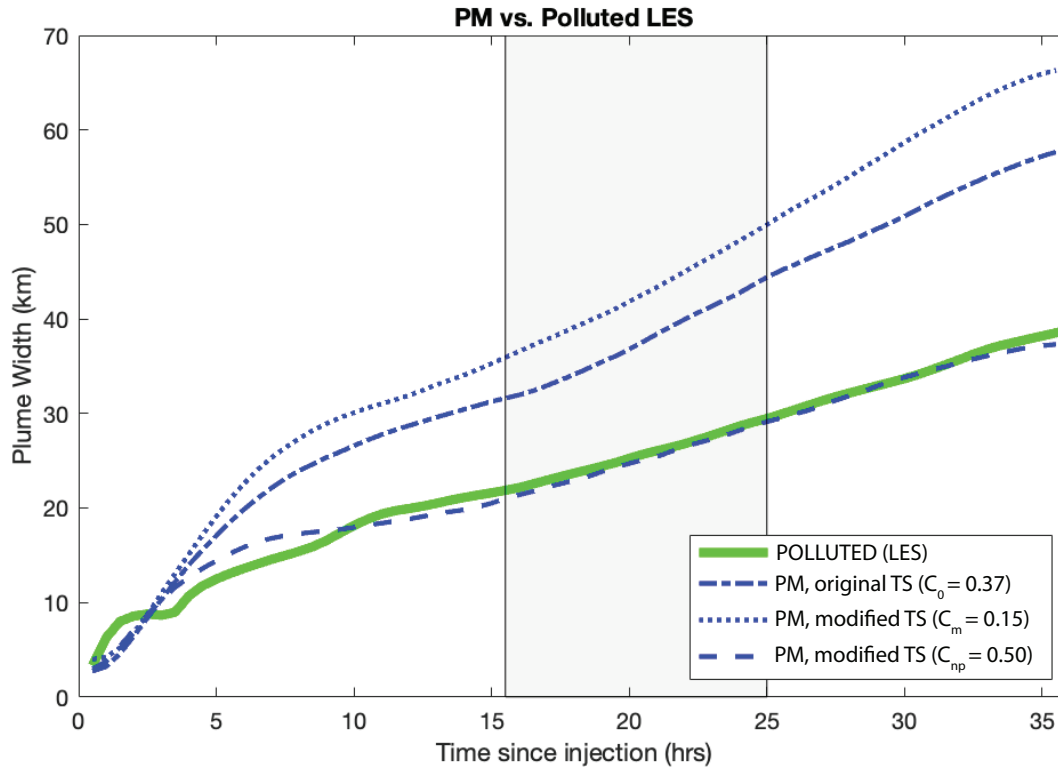


Figure 15. Ensemble average particle model result for the POLLUTED case. Particle model results are dashed lines and solid line is the LES plume widths. PM ($C_0 = 0.37$) is using the original relaxation timescale formulation T_L and C_0 . PM, modified TS ($C_m = 0.15$) uses T_m and the CONTROL optimized C_m . PM, modified TS ($C_{np} = 0.50$) uses T_m and a new optimized constant C_{np} that applies to non-precipitating cases.

homogeneous, isotropic turbulence for which the particle model was developed. In this sense, C_0 and C_m are specifically optimized to represent cases with mesoscale circulations present. Increased spreading rates are achieved through a reduction of isotropic dissipation in (35) through multiplication with (C_0, C_m) , allowing for more rapid spread than would otherwise be possible given the domain-averaged forcings. Accounting for anisotropy with the Langevin model is commonly done by
525 adding a correction term dependent on spatial derivatives of the variance (Legg and Raupach, 1982; Dehbi, 2008); however, such a correction is not desirable given that the purpose of this simplified model is to be used as a subgrid parameterization wherein variance gradients are not accessible. Therefore, we optimize C_0 for the POLLUTED case separately and propose the use of two constants for domain-averaged statistics using T_m : one for precipitating cases where mesoscale circulations develop ($C_p = 0.15$) and one for non-precipitating cases where turbulence remains nearly isotropic ($C_{np} = 0.50$). By correcting the
530 POLLUTED case to not implicitly represent a mesoscale circulation the particle model is aligned with the LES width.

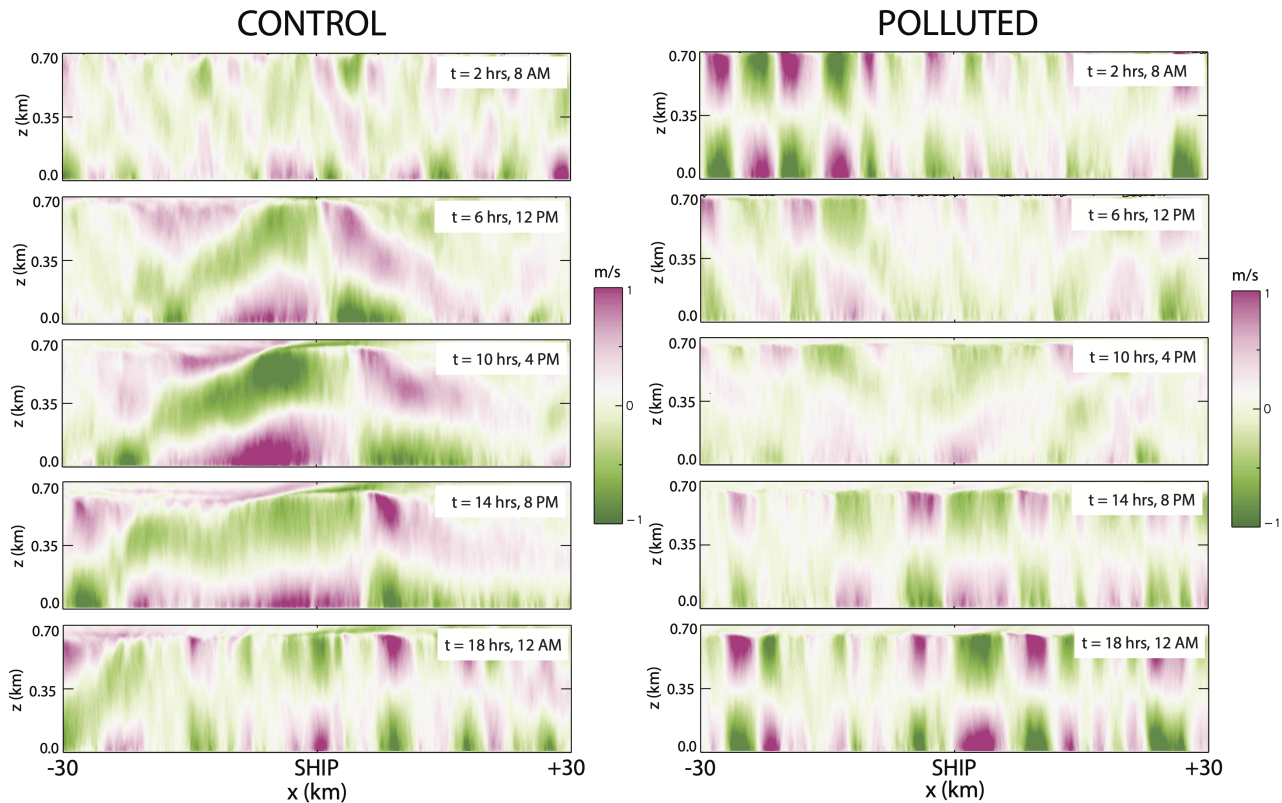


Figure 16. x - z cross-sections of zonal velocity with pink going left to right and green going right to left. The CONTROL run containing a strong mesoscale circulation in the vicinity of the ship is on the left. The POLLUTED case containing no mesoscale circulation is shown on the right.

5 Conclusions

Estimating subgrid plume fraction in a climate model grid box necessitates a method of approximating the rate at which the plumes grow. Neglecting such growth, or assuming constant or Gaussian-diffusion-based growth, may cause non-linear errors that lead to unreliable or unrealistic responses to MCB. We employ a Lagrangian particle model, driven by large-domain LES
 535 output of ship tracks, and assess the reduced-order model's ability to represent plume spreading in environments with different shear magnitudes and environments with or without precipitation.

Using only 5000 particles (50 ensemble members with 100 particles) in the naturally-parallel stochastic particle model, both the domain average and conditionally-sampled plume TKE, variances, and dissipation rates result in good agreement with the LES CONTROL plume width. Extending the CONTROL-optimized free parameter C_0 to the STRONG case resulted in
 540 poor performance as the original relaxation timescale formulation T_L assumes that each component of the variance is equally contributing to the zonal spread. Instead, we apply a modified relaxation timescale T_m which focuses on the variance only in the direction of the spread (zonal direction in this study). This modified formulation results in appropriately larger spreading rates

in the STRONG case and minimally impacts the CONTROL and WEAK case spreading rates. The particle model formulation that performs best in comparison to the LES shear sensitivity case widths uses domain-averaged input parameters, the modified
545 relaxation timescale T_m , and a re-optimized C_0 , named C_m , which accounts for the new relaxation timescale formulation.

In-plume turbulent statistics perform better than domain-averaged quantities during the first 15 hours after injection, but as nocturnal turbulence disrupts the mesoscale circulation the daytime relationship between the plume-optimized turbulence constant (C_m) and the dissipation rate breaks down and results in larger errors thereafter. As the sun sets, the domain-averaged statistics continue to represent spreading rates well during the night and into day 2, potentially as a result of the domain-
550 averaged C_m being less sensitive to the termination of the mesoscale circulation.

Applying the best-performing particle model conditions (domain-averaged input parameters, T_m , C_m) to the POLLUTED case generates excessive day 1 spreading rates as the CONTROL case that C_m was optimized for contained a large mesoscale circulation that aided in plume dispersion and no mesoscale circulation exists in the POLLUTED case. Using C_m in the POL-
555 LUTED, non-precipitating environment C_{np} , we find that the particle model is again able to accurately recreate the spreading rate geometry in the LES.

The particle model is able to capture the impacts of an anisotropic, spread-accelerating mesoscale feature in precipitating cases using only domain-averaged input parameters through a change in the free parameter, C_0 . Using $C_m = 0.15$ for precipi-
560 tating environments that behave anisotropically during the daytime and $C_{np} = 0.50$ for non-precipitating environments is one potential way of easily dealing with anisotropic drift without the addition of an extra term that would require information not available to the subgrid parameterization, such as the spatial gradient of variance. The Langevin particle model is able to represent spreading rates better than traditional methods of constant Gaussian diffusion, all while using domain-averaged turbulence statistics. Considering that domain-averaged information from the turbulence parameterization within a climate grid box is the only available input into a would-be subgrid particle model, the particle model performance in this study is promising, suggest-
565 ing such an approach may be a viable method of cheaply and accurately modeling plume spreading in different environments. Having access to subgrid horizontal variances to calculate T_m within a GCM grid box would require a higher-order closure such as CLUBB (Larson and Golaz, 2005; Guo et al., 2015) or perhaps an additional parameterization based on resolved wind shear and boundary-layer-integrated radiative cooling.

While we have examined a broad range of shear magnitudes in this paper, only a small portion of the variance/relaxation
570 timescale parameter space has been explored. Deeper boundary-layer cases associated with stratocumulus-to-cumulus transitions can have accelerating spreading rates overnight (Prabhakaran et al., 2024) with spreading rates in excess of 4 km/hr. Future plans are to apply the particle model to a much broader range of conditions. It is also worth noting that with a sufficiently large library of high-resolution LES, it may be possible to machine learn a time-dependent \mathcal{D} in (34); however, the computational cost of multi-day ship track simulations currently precludes the creation of such a library.

575 *Code and data availability.* The LES case setup and forcing files for the shear sensitivity tests and the non-precipitating case can be found on github at https://github.com/lmcmichael/S12_CGILS_LES_forcing (<https://zenodo.org/doi/10.5281/zenodo.10557703>). Matlab and IDL code to perform the Gaussian curve fitting procedure, the particle model code (PM-ABL v1.0), calculation of input parameters from LES output, routines for calculating boundary-layer averaged aerosol from 3-D LES output, figure plotting procedures, and LES input parameters are available at <https://github.com/lmcmichael/ParticleModel> (<https://zenodo.org/doi/10.5281/zenodo.10557564>). UW-SAM source code (SAM 580 v6.10.9), additional LES source code to calculate ship track conditional averages and add momentum hyperdiffusion in SAM, and a workflow document is available here: https://github.com/lmcmichael/SAM_SHIP_TRACK_STATS/ (<https://zenodo.org/doi/10.5281/zenodo.10557826>). High-resolution, 3-D LES output is available upon request.

Author contributions. All coauthors contributed to the conceptualization of the LES-informed particle model, with RW and LP guiding the project initiatives and providing funding. MS and LM developed particle model code and performed simulations. LM and PB designed and 585 carried out LES simulations. LM and MS prepared the manuscript. All coauthors took part in editing the manuscript and regular discussions regarding methods and results.

Competing interests. The authors declare that no competing interests are present.

Acknowledgements. This paper describes objective technical results and analysis. Any subjective views or opinions that might be expressed in the paper do not necessarily represent the views of the U.S. Department of Energy or the United States Government. This work was supported 590 by the Laboratory Directed Research and Development program at Sandia National Laboratories, a multimission laboratory managed and operated by National Technology and Engineering Solutions of Sandia, LLC, a wholly-owned subsidiary of Honeywell International, Inc., for both the U.S. Department of Energy's National Nuclear Security Administration under contract DE-NA0003525. This material is based in part upon work supported by the National Science Foundation under Grant No. AGS-1912130 (PB). Special thanks to Je-Yun Chun for providing LES forcing and initialization profiles for the CONTROL and POLLUTED cases. This publication is partially funded by the Cooperative 595 Institute for Climate, Ocean, and Ecosystem Studies (CICOES) under NOAA Cooperative Agreement NA20OAR4320271, Contribution No. 2024-1350. This work used Bridges-2 (Brown et al., 2021) at Pittsburgh Supercomputing Center through allocation EES210037 from the Advanced Cyberinfrastructure Coordination Ecosystem: Services and Support (ACCESS) program (Boerner et al., 2023), which is supported by National Science Foundation Grants 2138259, 2138286, 2138307, 2137603, and 2138296.

References

- 600 Ackerman, A. S., Kirkpatrick, M. P., Stevens, D. E., and Toon, O. B.: The impact of humidity above stratiform clouds on indirect aerosol climate forcing, *Nature*, 432, 1014–1017, 2004.
- Ahlm, L., Jones, A., Stjern, C. W., Muri, H., Kravitz, B., and Kristjánsson, J. E.: Marine cloud brightening—as effective without clouds, *Atmospheric Chemistry and Physics*, 17, 13 071–13 087, 2017.
- Albrecht, B. A.: Aerosols, cloud microphysics, and fractional cloudiness, *Science*, 245, 1227–1230, 1989.
- 605 Avesani, D., Herrera, P., Chiogna, G., Bellin, A., and Dumbser, M.: Smooth Particle Hydrodynamics with nonlinear Moving-Least-Squares WENO reconstruction to model anisotropic dispersion in porous media, *Advances in Water Resources*, 80, 43–59, <https://doi.org/http://dx.doi.org/10.1016/j.advwatres.2015.03.007>, 2015.
- Bender, F. D. and Sentelhas, P. C.: Solar radiation models and gridded databases to fill gaps in weather series and to project climate change in Brazil, *Advances in Meteorology*, 2018, 1–15, 2018.
- 610 Berner, A., Bretherton, C., and Wood, R.: Large eddy simulation of ship tracks in the collapsed marine boundary layer: a case study from the Monterey area ship track experiment, *Atmospheric Chemistry and Physics*, 15, 5851–5871, 2015.
- Berner, A. H., Bretherton, C. S., Wood, R., and Muhlbauer, A.: Marine boundary layer cloud regimes and POC formation in a CRM coupled to a bulk aerosol scheme, *Atmospheric Chemistry and Physics*, 13, 12 549–12 572, <https://doi.org/10.5194/acp-13-12549-2013>, 2013.
- Blossey, P. N., Bretherton, C. S., Zhang, M., Cheng, A., Endo, S., Heus, T., Liu, Y., Lock, A. P., de Roode, S. R., and Xu, K.-M.: Marine low
615 cloud sensitivity to an idealized climate change: The CGILS LES intercomparison, *Journal of Advances in Modeling Earth Systems*, 5, 234–258, 2013.
- Boerner, T. J., Deems, S., Furlani, T. R., Knuth, S. L., and Towns, J.: ACCESS: Advancing Innovation: NSF’s Advanced Cyberinfrastructure Coordination Ecosystem: Services Support. In *Practice and Experience in Advanced Research Computing (PEARC23)*, ACM, <https://doi.org/https://doi.org/10.1145/3569951.3597559>, 2023.
- 620 Bosler, P. A., Kent, J., Krasny, R., and Jablonowski, C.: A Lagrangian particle method with remeshing for tracer transport on the sphere, *Journal of Computational Physics*, 340, 639–654, <https://doi.org/https://doi.org/10.1016/j.jcp.2017.03.052>, 2017.
- Bretherton, C., Blossey, P. N., and Uchida, J.: Cloud droplet sedimentation, entrainment efficiency, and subtropical stratocumulus albedo, *Geophysical research letters*, 34, 2007.
- Brown, S. T., Buitrago, P., Hanna, E., Sanielevici, S., Scibek, R., and Nystrom, N. A.: Bridges-2: A platform for
625 rapidly-evolving and dataintensive research, In *Practice and Experience in Advanced Research Computing*, pp. 1–4, <https://doi.org/https://doi.org/10.1145/3437359.3465593>, 2021.
- Cherfils, J., Pinon, G., and Rivoalen, E.: JOSEPHINE: A parallel SPH code for free-surface flows, *Computer Physics Communications*, 183, 1468–1480, <https://doi.org/https://doi.org/10.1016/j.cpc.2012.02.007>, 2012.
- Christensen, M. W. and Stephens, G. L.: Microphysical and macrophysical responses of marine stratocumulus polluted by underlying ships:
630 Evidence of cloud deepening, *Journal of Geophysical Research*, 116, 2011.
- Christensen, M. W. and Stephens, G. L.: Microphysical and macrophysical responses of marine stratocumulus polluted by underlying ships: 2. Impacts of haze on precipitating clouds, *Journal of Geophysical Research*, 117, 2012.
- Christensen, M. W., Ma, P.-L., Wu, P., Varble, A. C., Mülmenstädt, J., and Fast, J. D.: Evaluation of aerosol–cloud interactions in E3SM using a Lagrangian framework, *Atmospheric Chemistry and Physics*, 23, 2789–2812, 2023.

- 635 Chun, J.-Y., Wood, R., Blossey, P., and Doherty, S. J.: Microphysical, macrophysical, and radiative responses of subtropical marine clouds to aerosol injections, *Atmospheric Chemistry and Physics*, 23, 1345–1368, 2023.
- Coakley, J. A. and Walsh, C. D.: Limits to the Aerosol Indirect Radiative Effect Derived from Observations of Ship Tracks, *Journal of the Atmospheric Sciences*, 59, 668–680, 2002.
- Conover, J. H.: Anomalous Cloud Lines, *Journal of the Atmospheric Sciences*, 23, 778–785, <https://api.semanticscholar.org/CorpusID:121555729>, 1966.
- 640 Dearnoff, J.: Stratocumulus-capped mixed layers derived from a three-dimensional model, *Boundary-Layer Meteorology*, 18, 495–527, 1980.
- Dehbi, A.: Turbulent particle dispersion in arbitrary wall-bounded geometries : A coupled CFD-Langevin-equation based approach, *International Journal of Multiphase Flow*, 34, 819–828, <https://api.semanticscholar.org/CorpusID:122341085>, 2008.
- Diamond, M. S. and Wood, R.: Limited regional aerosol and cloud microphysical changes despite unprecedented decline in nitrogen oxide pollution during the February 2020 COVID-19 shutdown in China, *Geophysical Research Letters*, 47, e2020GL088913, 2020.
- 645 Durkee, P. A., Chartier, R. E., Brown, A., Trehubenko, E. J., Rogerson, S., Skupniewicz, C. E., Nielsen, K. E., Platnick, S. E., and King, M. D.: Composite ship track characteristics, *Journal of the Atmospheric Sciences*, 57, 2542–2553, 2000.
- Eastman, R. M. and Wood, R.: Factors Controlling Low-Cloud Evolution over the Eastern Subtropical Oceans: A Lagrangian Perspective Using the A-Train Satellites, *Journal of the Atmospheric Sciences*, 73, 331–351, <https://api.semanticscholar.org/CorpusID:119850884>,
- 650 2016.
- Engdahl, N. B., Schmidt, M. J., and Benson, D. A.: Accelerating and Parallelizing Lagrangian Simulations of Mixing-Limited Reactive Transport, *Water Resources Research*, 55, <https://agupubs.onlinelibrary.wiley.com/doi/abs/10.1029/2018WR024361>, 2019.
- Erfani, E., Blossey, P. N., Wood, R., Mohrmann, J., Doherty, S. J., Wyant, M., and O, K.-T.: Simulating aerosol lifecycle impacts on the subtropical stratocumulus-to-cumulus transition using large-eddy simulations, *Journal of Geophysical Research: Atmospheres*, 127, e2022JD037258, <https://doi.org/10.1029/2022JD037258>, 2022.
- 655 Gryspeerdt, E., Goren, T., Sourdeval, O., Quaas, J., Mülmenstädt, J., Dipu, S., Unglaub, C., Gettelman, A., and Christensen, M.: Constraining the aerosol influence on cloud liquid water path, *Atmospheric Chemistry and Physics*, 19, 5331–5347, 2019.
- Guo, H., Golaz, J., Donner, L., Wyman, B., Zhao, M., and Ginoux, P. A.: CLUBB as a unified cloud parameterization: Opportunities and challenges, *Geophysical Research Letters*, 42, 4540 – 4547, 2015.
- 660 Hartmann, D. L. and Short, D. A.: On the use of earth radiation budget statistics for studies of clouds and climate, *Journal of Atmospheric Sciences*, 37, 1233–1250, 1980.
- Heffter, J. L.: The Variation of Horizontal Diffusion Parameters with Time for Travel Periods of One Hour or Longer, *Journal of Applied Meteorology*, 4, 153–156, 1965.
- Hill, S. and Ming, Y.: Nonlinear climate response to regional brightening of tropical marine stratocumulus, *Geophysical Research Letters*,
- 665 39, 2012.
- Jiao, T., Ye, M., Jin, M., and Yang, J.: An Interactively Corrected Smoothed Particle Hydrodynamics (IC-SPH) for Simulating Solute Transport in a Nonuniform Velocity Field, *Water Resources Research*, 58, e2021WR031017, <https://doi.org/https://doi.org/10.1029/2021WR031017>, e2021WR031017 2021WR031017, 2022.
- Jones, A., Haywood, J., and Boucher, O.: Climate impacts of geoengineering marine stratocumulus clouds, *Journal of Geophysical Research: Atmospheres*, 114, 2009.
- 670 Khairoutdinov, M. F. and Randall, D. A.: Cloud resolving modeling of the ARM summer 1997 IOP: model formulation, results, uncertainties, and sensitivities, *Journal of the Atmospheric Sciences*, 60, 607–625, 2003.

- Khairoutdinov, M. F., Blossey, P. N., and Bretherton, C. S.: Global system for atmospheric modeling: Model description and preliminary results, *Journal of Advances in Modeling Earth Systems*, 14, e2021MS002 968, 2022.
- 675 Larson, V. E. and Golaz, J.: Using Probability Density Functions to Derive Consistent Closure Relationships among Higher-Order Moments, *Monthly Weather Review*, 133, 1023–1042, 2005.
- Latham, J.: Control of global warming?, *Nature*, 347, 339–340, 1990.
- Latham, J., Rasch, P., Chen, C.-C., Kettles, L., Gadian, A., Gettelman, A., Morrison, H., Bower, K., and Choullarton, T.: Global temperature stabilization via controlled albedo enhancement of low-level maritime clouds, *Philosophical Transactions of the Royal Society A: Mathematical, Physical and Engineering Sciences*, 366, 3969–3987, 2008.
- 680 Lee, H.-H., Bogenschutz, P., and Yamaguchi, T.: Resolving away stratocumulus biases in modern global climate models, *Geophysical Research Letters*, 49, e2022GL099 422, 2022.
- Legg, B. J. and Raupach, M. R.: Markov-chain simulation of particle dispersion in inhomogeneous flows: The mean drift velocity induced by a gradient in Eulerian velocity variance, *Boundary-Layer Meteorology*, 24, 3–13, <https://api.semanticscholar.org/CorpusID:122090643>,
- 685 1982.
- Lewellen, D. and Lewellen, W.: Large-eddy boundary layer entrainment, *Journal of the atmospheric sciences*, 55, 2645–2665, 1998.
- McCoy, D. T., Field, P. R., Schmidt, A., Grosvenor, D. P., Bender, F. A.-M., Shipway, B. J., Hill, A. A., Wilkinson, J. M., and Elsaesser, G. S.: Aerosol midlatitude cyclone indirect effects in observations and high-resolution simulations, *Atmospheric Chemistry and Physics*, 18, 5821–5846, 2018.
- 690 McMichael, L. A., Mechem, D. B., Wang, S., Wang, Q., Kogan, Y., and Teixeira, J.: Assessing the mechanisms governing the daytime evolution of marine stratocumulus using large-eddy simulation, *Quarterly Journal of the Royal Meteorological Society*, 145, 845–866, <https://doi.org/10.1002/qj.3469>, 2019.
- Mlawer, E. J., Taubman, S. J., Brown, P. D., Iacono, M. J., and Clough, S. A.: Radiative transfer for inhomogeneous atmospheres: RRTM, a validated correlated-k model for the longwave, *Journal of Geophysical Research*, 102, 16 663–16 682, [https://api.semanticscholar.org/](https://api.semanticscholar.org/CorpusID:54031652)
- 695 [CorpusID:54031652](https://api.semanticscholar.org/CorpusID:54031652), 1997.
- Mohrman, J., Bretherton, C. S., McCoy, I. L., McGibbon, J., Wood, R., Ghate, V. P., Albrecht, B. A., Sarkar, M., Zuidema, P., and Palikonda, R.: Lagrangian Evolution of the Northeast Pacific Marine Boundary Layer Structure and Cloud during CSET, *Monthly Weather Review*, <https://api.semanticscholar.org/CorpusID:204203526>, 2019.
- Monaghan, J.: Smoothed Particle Hydrodynamics and Its Diverse Applications, *Annual Review of Fluid Mechanics*, 44, 323–346, <https://doi.org/10.1146/annurev-fluid-120710-101220>, 2012.
- 700 Morrison, H. and Grabowski, M. M.: Modeling supersaturation and subgrid-scale mixing with two-moment bulk warm microphysics, *Journal of the Atmospheric Sciences*, 65, 792–812, <https://doi.org/10.1175/2007JAS2374.1>, 2008.
- Patel, L. and Shand, L.: Toward data assimilation of ship-induced aerosol-cloud interactions, *Environmental Data Science*, 1, e31, 2022.
- Pope, S.: *Turbulent Flows*, Cambridge University Press, 2000.
- 705 Prabhakaran, P., Hoffmann, F., and Feingold, G.: Effects of intermittent aerosol forcing on the stratocumulus-to-cumulus transition, *Atmospheric Chemistry and Physics*, <https://doi.org/10.5194/acp-24-1919-2024>, 2024.
- Rasch, P. J., Latham, J., and Chen, C.-C. J.: Geoengineering by cloud seeding: influence on sea ice and climate system, *Environmental Research Letters*, 4, 045 112, 2009.
- Sato, Y., Goto, D., Michibata, T., Suzuki, K., Takemura, T., Tomita, H., and Nakajima, T.: Aerosol effects on cloud water amounts were successfully simulated by a global cloud-system resolving model, *Nature Communications*, 9, 985, 2018.
- 710

- Schmidt, M. J., Pankavich, S. D., Navarre-Sitchler, A., and Benson, D. A.: A Lagrangian Method for Reactive Transport with Solid/Aqueous Chemical Phase Interaction, *Journal of Computational Physics*: X, p. 100021, <https://doi.org/https://doi.org/10.1016/j.jcpx.2019.100021>, 2019.
- Schmidt, M. J., Engdahl, N. B., Pankavich, S. D., and Bolster, D.: A mass-transfer particle-tracking method
715 for simulating transport with discontinuous diffusion coefficients, *Advances in Water Resources*, 140, 103577, <https://doi.org/https://doi.org/10.1016/j.advwatres.2020.103577>, 2020.
- Segrin, M. S., Coakley, J. A., and Tahnk, W. R.: MODIS Observations of Ship Tracks in Summertime Stratus off the West Coast of the United States, *Journal of the Atmospheric Sciences*, 64, 4330–4345, 2007.
- Sun, H., Eastham, S., and Keith, D.: Developing a Plume-in-Grid Model for Plume Evolution in the Stratosphere, *Journal of Advances in
720 Modeling Earth Systems*, 14, e2021MS002816, 2022.
- Tartakovsky, A. M., Trask, N., Pan, K., Jones, B., Pan, W., and Williams, J. R.: Smoothed particle hydrodynamics and its applications for multiphase flow and reactive transport in porous media, *Computational Geosciences*, 20, 807–834, <https://doi.org/10.1007/s10596-015-9468-9>, 2016.
- Taylor, G.: Diffusion by continuous movement, *Proceedings of the London society of mathematics*, Series, pp. 2–20, 1921.
- 725 Toll, V., Christensen, M., Gassó, S., and Bellouin, N.: Volcano and ship tracks indicate excessive aerosol-induced cloud water increases in a climate model, *Geophysical Research Letters*, 44, 12–492, 2017.
- Twomey, S.: Pollution and the planetary albedo, *Atmospheric Environment* (1967), 8, 1251–1256, 1974.
- Twomey, S.: The influence of pollution on the shortwave albedo of clouds, *Journal of the atmospheric sciences*, 34, 1149–1152, 1977.
- Wang, H., Rasch, P., and Feingold, G.: Manipulating marine stratocumulus cloud amount and albedo: a process-modelling study of aerosol-
730 cloud-precipitation interactions in response to injection of cloud condensation nuclei, *Atmospheric Chemistry and Physics*, 11, 4237–4249, 2011.
- Wang, S., Wang, Q., and Feingold, G.: Turbulence, condensation, and liquid water transport in numerically simulated nonprecipitating stratocumulus clouds, *Journal of the atmospheric sciences*, 60, 262–278, 2003.
- Wang, S., Golaz, J. C., and Wang, Q.: Effect of intense wind shear across the inversion on stratocumulus clouds, *Geophysical Research
735 Letters*, 35, L15814, <https://doi.org/10.1029/2008GL033865>, 2008.
- Wood, R.: Cancellation of Aerosol Indirect Effects in Marine Stratocumulus through Cloud Thinning, *Journal of the Atmospheric Sciences*, 64, 2657–2669, <https://api.semanticscholar.org/CorpusID:2825003>, 2007.
- Wood, R.: Stratocumulus clouds, *Monthly Weather Review*, 140, 2373–2423, 2012.
- Wood, R.: Assessing the potential efficacy of marine cloud brightening for cooling Earth using a simple heuristic model, *Atm. Chem. Phys.*,
740 21, 14507–14533, <https://doi.org/10.5194/acp-21-14507-2021>, 2021.
- Wood, R. and Hartmann, D. L.: Spatial variability of liquid water path in marine low cloud : The importance of mesoscale cellular convection, *Journal of Climate*, 19, 1748–1764, <https://api.semanticscholar.org/CorpusID:39603520>, 2006.
- Wyant, M. C., Bretherton, C. S., and Blossey, P. N.: The sensitivity of numerical simulations of cloud-topped boundary layers to cross-grid flow, *Journal of Advances in Modeling Earth Systems*, 10, 466–480, <https://doi.org/10.1002/2017MS001241>, 2018.
- 745 Xie, S., Lin, W., Rasch, P. J., Ma, P.-L., Neale, R., Larson, V. E., Qian, Y., Bogenschutz, P. A., Caldwell, P., Cameron-Smith, P., et al.: Understanding cloud and convective characteristics in version 1 of the E3SM atmosphere model, *Journal of Advances in Modeling Earth Systems*, 10, 2618–2644, 2018.

- Yamaguchi, T., Randall, D. A., and Khairoutdinov, M.: Cloud Modeling Tests of the ULTIMATE–MACHO Scalar Advection Scheme, *Monthly Weather Review*, 139, 3248–3264, <https://api.semanticscholar.org/CorpusID:121147454>, 2011.
- 750 Zapata, M., Heus, T., and Kleissl, J.: Effects of surface and top wind shear on the spatial organization of marine stratocumulus-topped boundary layers, *Journal of Geophysical Research: Atmospheres*, 126, e2020JD034162, <https://doi.org/10.1029/2020JD034162>, 2021.
- Zhang, M., Bretherton, C. S., Blossey, P. N., Bony, S., Brient, F., and Golaz, J.-C.: The CGILS experimental design to investigate low cloud feedbacks in general circulation models by using single-column and large-eddy simulation models, *Journal of Advances in Modeling Earth Systems*, 4, 2012.