

# Lidar measurements of noctilucent clouds at Rio Grande, Tierra del Fuego, Argentina

Natalie Kaifler<sup>1</sup>, Bernd Kaifler<sup>1</sup>, Markus Rapp<sup>1</sup>, Guiping Liu<sup>2</sup>, Diego Janches<sup>2</sup>, Gerd Baumgarten<sup>3</sup>, and Jose-Luis Hormaechea<sup>4</sup>

<sup>1</sup>Deutsches Zentrum für Luft- und Raumfahrt, Institut für Physik der Atmosphäre, Oberpfaffenhofen, Germany

<sup>2</sup>Heliophysics Science Division, NASA Goddard Space Flight Center, Greenbelt, MD, USA

<sup>3</sup>Institut für Atmosphärenphysik, Kühlungsborn, Germany

<sup>4</sup>Estación Astronómica Rio Grande, Facultad de Ciencias Astronómicas y Geofísicas, Universidad Nacional de La Plata & CONICET, Argentina

**Correspondence:** Natalie Kaifler (natalie.kaifler@dlr.de)

**Abstract.** Noctilucent clouds (NLC) are sensitive tracers of upper mesospheric temperature, water vapor and dynamics and thus open windows to study our atmosphere from very large to very small scales, including topics of climate, circulation, waves and turbulence. NLC are weaker in the southern hemisphere compared to the northern hemisphere where there are numerous observations, but no vertical soundings at southern hemisphere mid-latitudes had been available until now. We determine the properties of NLC above a southern-hemisphere mid-latitude site at 53.8°S in southern Argentina. The Compact Rayleigh Autonomous Lidar provides high-resolution vertical lidar soundings since 2017. Noctilucent clouds are detected every summer, with the earliest (latest) detection on 29 November (29 January), in total 19 events of 33.8 h length, at an average height of 83.3 km, with a maximum brightness of  $24 \times 10^{-10}$  /m/sr, an occurrence rate of 7 % and a maximum in the morning hours (5–7 UT, i.e. 2–4 LT). The latter coincides with a positive amplitude of the semi-diurnal tide of the meridional wind as measured by the Southern Argentina Agile Meteor Radar. The ambient temperature above the site is on average too high to support local ice formation. We find no correlation with the solar flux; indeed, the latest season of 2023/2024 shows the most NLC detections. This leaves transport from more southerly, colder regions and potentially increasing upper mesospheric water vapor levels as a result of increasing space traffic as possible explanations for the occurrence and unexpectedly large brightness of NLC above Rio Grande.

## 1 Introduction

Noctilucent clouds (NLC) were discovered at northern-hemispheric mid-latitudes by visual observation of the horizon in twilight conditions (Backhouse, 1885; Jesse, 1885; Leslie, 1885; Tseraskii, 1887). Ground-based camera networks were very successful in systematically observing the skies for the occurrence of noctilucent clouds (Witt, 1962; Fogle and Haurwitz, 1966; Dalin et al., 2008; Dubietis et al., 2010). A hundred years after the initial observations, measurements with satellite instruments and ground-based lidars confirmed the peak occurrence and brightness of the ice clouds poleward of the polar circle (Olivero and Thomas, 1986; Hansen et al., 1989), where they remain invisible to ground-based observers in the polar

daylight. Historical observations from the southern hemisphere are rare and limited to the reports by Jesse (1889), Fogle (1965) and Fogle and Haurwitz (1966) from Punta Arenas located at the southern tip of South America, the only landmass within the 50° to 60° latitude band of the southern hemisphere except for small and remote islands. Satellite and lidar soundings of NLC  
25 above Antarctica revealed significantly higher altitudes, lower brightness, and lower occurrence compared to soundings from conjugate latitudes in the northern hemisphere (Gardner et al., 2001; Chu et al., 2003, 2006; Bailey et al., 2007; Lübken and Berger, 2007; Chu et al., 2011; Hervig et al., 2013), making ground-based observations of NLC in the southern hemisphere even more challenging. The formation of NLC sensitively depends on temperature and the available water vapour (Hervig et al., 2016), making them a potential indicator of climate change (Thomas, 1996). Establishing long-term trends however requires  
30 careful analysis of datasets and correction of varying responses of NLC to the solar cycle and planetary waves (DeLand et al., 2003; Kirkwood and Stebel, 2003; Gerding et al., 2013a; Russell III et al., 2014; Hervig et al., 2019). Although with the rise of digital cameras amateur reports from Europe and North America are now numerous, studies of long-term ground-based and satellite records found no general long-term trend (Kirkwood et al., 2008; Dubietis et al., 2010; Pertsev et al., 2014; Zalcik et al., 2014, 2016; Dalin et al., 2020). In the summer of 2009, mid-latitude NLC were caused by meridional transport of cooler  
35 polar air masses to mid-latitudes by means of tidal winds, sometimes influenced by planetary wave activity (e.g. Nielsen et al., 2011; Hultgren et al., 2011). In one case of a NLC detected by lidar at 48°N in Germany in 2016, NLC particles were likely transported confined within the cold phases of a gravity wave that propagated from higher latitudes to the observation site in an upper mesospheric duct generated by a 2-day planetary wave (Kaifler et al., 2018). Another mechanism that is discussed is the direct injection of water vapour into the lower thermosphere by exhaust of orbital rockets, which can be transported within  
40 few days over large distances (Siskind et al., 2003; Stevens et al., 2005a; Dalin et al., 2013).

The development of DLR's Compact Rayleigh Autonomous lidar (CORAL) made it possible to deploy powerful lidar systems for middle atmosphere research to locations worldwide without the need for sophisticated local infrastructure and availability of on-site operators (Kaifler and Kaifler, 2021). With the purpose of studying gravity waves within the stratospheric hotspot of South America, the CORAL system was deployed to Rio Grande, Tierra del Fuego, Argentina (53.8°S, 67.8°W, 18 m  
45 above sea level), in November 2017 (Kaifler et al., 2020). This site in the lee of the Andes is often free of tropospheric clouds and thus provides better observation conditions than sites at the South American west coast or the Antarctic Peninsula. Prior to the deployment, no recent NLC observations were known from this latitude. So the detection of NLC by the CORAL instrument was rather unexpected, given that NLC observed in ground-based images are typically located 500 to 1000 km poleward of the observation site. After the first detection of NLC by CORAL, we installed ground-based cameras in 2019 for potential joint  
50 observations of NLC above Tierra del Fuego. The instruments are described in Sec. 2. In Sec. 3.1 we present the set of NLC detections obtained with the CORAL instrument during seven summer seasons since November 2017, as well as simultaneous and additional detections of NLC in images of the ground-based cameras (Sec. 3.2). To characterize the thermal background, we analyze lidar temperature measurements in the upper mesosphere in Sec. 3.3. The NLC parameters height and brightness are discussed in Sec. 4.1, and possible mechanisms facilitating the occurrence of NLC at mid-latitudes, considering meridional  
55 winds, tides and planetary waves based on observations provided by the co-located Southern Argentina Agile Meteor Radar

(SAAMER), are explored in Sec. 4.2. We discuss influences on the start of the NLC season and intra- and interannual variations of the occurrence rate in Sec. 4.3 before concluding in Sec. 5.

## 2 Instruments

### 2.1 CORAL lidar

60 The CORAL lidar at Estación Astronómica Río Grande, Argentina, is primarily used to study gravity waves by means of analyzing temperature perturbations in the stratosphere and mesosphere between 30 and 90 km altitude (Reichert et al., 2021). The instrument is a high-power Rayleigh backscatter lidar with capabilities for nighttime autonomous operation, thus maximizing the observation time by taking measurements whenever weather conditions allow for operation of the instrument. In the seven summers since 2017, CORAL measured temperature during 282 h (120 nights) in November, 231 h (120 nights) in  
65 December and 269 h (125 nights) in January (updated from Reichert et al., 2021). The number of measurement hours per day is significantly reduced compared to winter due to the short nights. Between 20 November and 31 January, measurements were generally undertaken between 1:53 UT and 7:41 UT (22:53 and 4:41 LT), and within  $\pm 10$  days from solstice the maximum measurement duration per night was 5.2 h. Because the scientific focus of the instrument is on gravity waves that propagate freely into the middle atmosphere only in winter, no daylight filters were included in the initial instrument design.

70 NLC are detected in lidar data by comparing the backscatter signal to a model density profile fitted to the measured profile below NLC altitudes in a similar way as described in Kaifler et al. (2022). The NLC retrieval uses photon counts of the upper channel of CORAL that are binned to 100 m vertical resolution. A detector dead-time correction is applied and the data are rebinned in time to 10 s and 10 min to obtain a high- and a lower-resolution NLC dataset. To obtain an error estimate, we carry out 200 Monte Carlo simulations where we perturb the photon counts with a random factor between 0 and 1 multiplied by their  
75 square root (Poisson statistics). We remove a linear background estimated between 125–220 km altitude and account for range by multiplication with the range squared. The resulting profiles that are now proportional to air density are then normalized to a reference density profile between 45–50 km altitude. For this, the NRL-MSIS2 density profile of 10 Jan 2018 at 4 UT at 54° S and 292° E is used. The profile has a vertical spacing of 1 km and ranges from 0 to 100 km altitude. Before the normalization, we interpolate this reference profile to match the altitude vector of the lidar observations. The volume backscatter coefficient  
80  $\beta$  in units of  $10^{-10}/\text{m}/\text{sr}$  (also termed "NLC brightness") is calculated from Eqn. 2 of Kaifler et al. (2022). The final  $\beta(z)$  is calculated as the mean of the 200 Monte Carlo runs and the uncertainty  $\Delta\beta(z)$  as the standard deviation. We discriminate between the NLC layer and the background using the condition  $\beta(z) > s\Delta\beta(z)$  with a threshold of  $s = 2.5$ . For CORAL,  $\Delta\beta(z)$  is on the order of  $0.03 \times 10^{-10}/\text{m}/\text{sr}$ .

The capability of the instrument for the detection of even faint NLC, as well as for measuring the temperature in the upper  
85 mesosphere in regions without NLC, was demonstrated by Kaifler et al. (2018). A detailed description of the temperature retrieval is given by Kaifler and Kaifler (2021). Following a pyramid structure, profiles with increasing resolution are computed using seed temperatures from previously retrieved lower-resolution profiles. The initial seed temperature is taken from the closest temperature profile of the Sounding of the Atmosphere using Broadband Emission Radiometry satellite instrument. In

this work, we use two CORAL temperature data sets: nightly mean profiles and hourly profiles. Both data sets have a vertical  
90 resolution of 900 m.

## 2.2 NLC cameras

Encouraged by the lidar's initial NLC detections, we installed three automatic GoPro cameras for NLC observations in Ar-  
gentina. The sites and viewing directions were chosen such that the cameras' field of views include the CORAL lidar beam and  
extend the observed area towards south, enabling comparisons between the vertical lidar soundings and the spatial imaging in  
95 a common volume. A further goal was the detection of NLC events at latitudes south of Rio Grande. Starting on 14 November  
2019, two cameras located at Rio Gallegos at the Observatorio Atmosferico de la Patagonia Austral ( $51.6^\circ$  S,  $69.3^\circ$  W, about  
260 km north of Rio Grande) and Ushuaia ( $54.8^\circ$  S,  $68.3^\circ$  W, 120 km south of Rio Grande) observe the sky in direction of the  
southern horizon. A third camera was installed in Rio Grande in December 2020.

## 2.3 Meteor radar

100 Co-located with the CORAL instrument in Rio Grande is the SAAMER radar (Fritts et al., 2010). SAAMER is a high-power,  
eight-beam meteor radar operating at 32.55 MHz. The inferred radial velocities of advected meteor trails at off-zenith angles  
between  $15^\circ$  and  $50^\circ$  are used to derive mean hourly zonal and meridional winds between approximately 70 km and 110 km  
altitude at 3 km vertical resolution. SAAMER measurements have revealed significant tidal and planetary wave amplitudes  
(Fritts et al., 2010). Most relevant for this work are a significant semidiurnal tide and planetary waves with periods between 2 d  
105 and 16 d.

# 3 Results

## 3.1 Lidar NLC detections

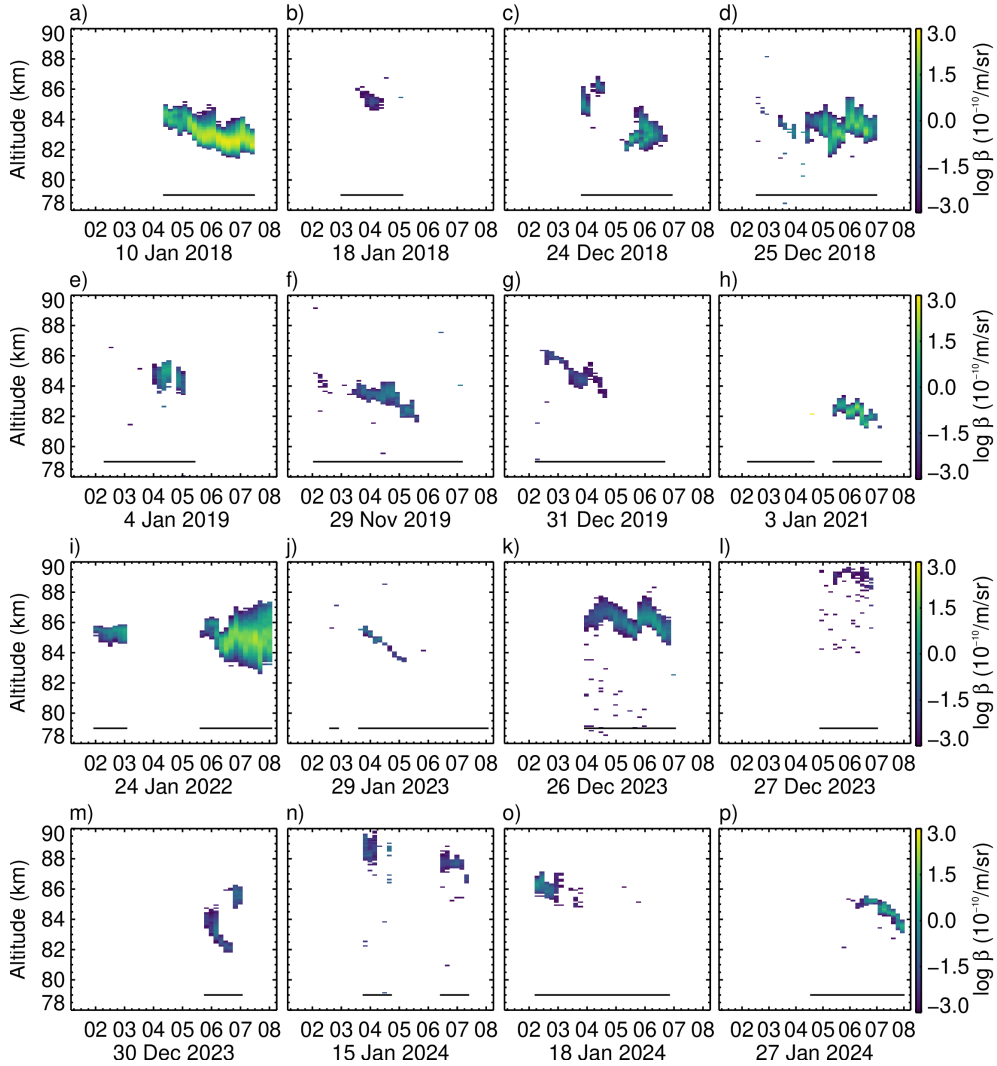
Using the CORAL instrument, NLC were detected above the site in Rio Grande in every season since the beginning of mea-  
surements in 2017. The first detection succeeded on 10 January 2018 and included a 3 h-long and unexpectedly bright NLC  
110 display. The NLC was also visible in camera images used to monitor the surroundings for tropospheric clouds. The detection  
by the vertically pointed lidar implies that the ice cloud must have been visible from more equatorward locations looking  
towards the southern horizon as well, but no sightings were reported, likely due to the lack of incidental observers in the very  
early morning hours. The first season ended with a second weak detection one week later, on 18 January 2018, with measured  
backscattered coefficients that were barely above the detection threshold. The next season started two weeks earlier than the  
115 2017/2018 season, on 24 December 2018, with a bright two-night display, followed by two weaker displays on 4 January and  
9 January 2019. The 2019/2020 season offered no bright displays but started very early on 29 Nov 2019 and ended on 31  
Dec 2019. The 2020/2021 season held only one display on 3 January 2021, yet it was again of high brightness. This event is  
exceptional because it includes the lowest altitude of any NLC detections at Rio Grande (81.7 km). The single detection of

**Table 1.** List of all lidar NLC soundings above Rio Grande in the seven summer seasons of 2017/2018 to 2023/2024 based on 10 min resolution. dfs denotes days from summer solstice on 21 December. Times indicate the first and last NLC detection in this night.

Date	dfs	Hours (UT)	Duration (h)	Altitude (km)	$\beta_{\max}(10^{-10}/\text{m}/\text{sr})$
10 Jan 2018	19	4:19 – 7:29	3.3	$82.7 \pm 0.6$	18.1
18 Jan 2018	27	3:18 – 4:48	1.3	$85.2 \pm 0.4$	0.2
24 Dec 2018	2	3:47 – 6:37	2.7	$83.0 \pm 1.4$	3.1
25 Dec 2018	3	2:30 – 7:00	4.3	$83.4 \pm 0.5$	7.4
4 Jan 2019	13	2:36 – 4:56	2.2	$84.8 \pm 1.7$	2.0
9 Jan 2019	18	3:35 – 6:25	1.8	$82.3 \pm 1.4$	0.1
29 Nov 2019	-23	2:01 – 7:01	4.0	$83.3 \pm 1.0$	0.8
26 Dec 2019	4	2:44 – 5:04	0.8	$83.0 \pm 2.4$	0.3
29 Dec 2019	7	6:42 – 6:53	0.3	$85.2 \pm 0.1$	0.6
31 Dec 2019	9	2:27 – 6:07	2.5	$84.8 \pm 1.6$	0.4
3 Jan 2021	12	2:11 – 7:11	3.0	$82.3 \pm 2.5$	7.0
24 Jan 2022	33	1:56 – 7:56	3.7	$84.5 \pm 0.4$	10.5
29 Jan 2023	38	2:35 – 7:55	2.3	$84.9 \pm 1.1$	0.6
26 Dec 2023	5	3:54 – 6:54	3.2	$86.0 \pm 0.9$	1.5
27 Dec 2023	6	4:52 – 6:42	2.0	$88.6 \pm 0.5$	0.2
30 Dec 2023	9	5:44 – 7:04	1.5	$84.5 \pm 1.4$	0.6
15 Jan 2024	24	3:44 – 7:24	2.2	$88.0 \pm 2.5$	0.5
18 Jan 2024	27	2:11 – 5:41	2.7	$86.1 \pm 1.8$	1.1
27 Jan 2024	36	5:12 – 7:52	2.7	$84.5 \pm 1.8$	3.0

the next season occurred very late. On 23/24 January 2022, NLC were detected right after sunset, but, due to forecasted rain, the lidar turned itself off in the middle of the night. After a manual start of the instrument at 5:30 UT, the NLC layer turned out to be very bright and at remarkably high altitudes. In the 2022/2023 season, again, a single detection happened even later on 29 Jan 2023, but the NLC were of low brightness. Interestingly, in 2023/2024, a total of six events of low brightness were recorded. Table 1 summarizes the key parameters of all NLC observed to date.

Fig. 1 shows the measured NLC brightness for main NLC events from 2017 to 2024. The coarse temporal resolution of 10 min results in an increased signal-to-noise ratio that facilitates the detection of weak events. Many NLC detections span multiple hours and occur in coherent layers. The NLC layer width is highly variable, from few hundred meters (e.g. Fig. 1j) to 4 km (Fig. 1i). Weaker layers emerging at high altitudes descend to altitudes around 82 km while increasing in brightness, e.g. Fig. 1a,f,g,j,p. This behaviour is rather typical and also known from lidar observations in the northern hemisphere (e.g.



**Figure 1.** Main NLC detections at  $100 \text{ m} \times 10 \text{ min}$  resolution. Figure axes are identical to facilitate easy visual comparisons. The horizontal lines at 79 km altitude indicate measurement times.

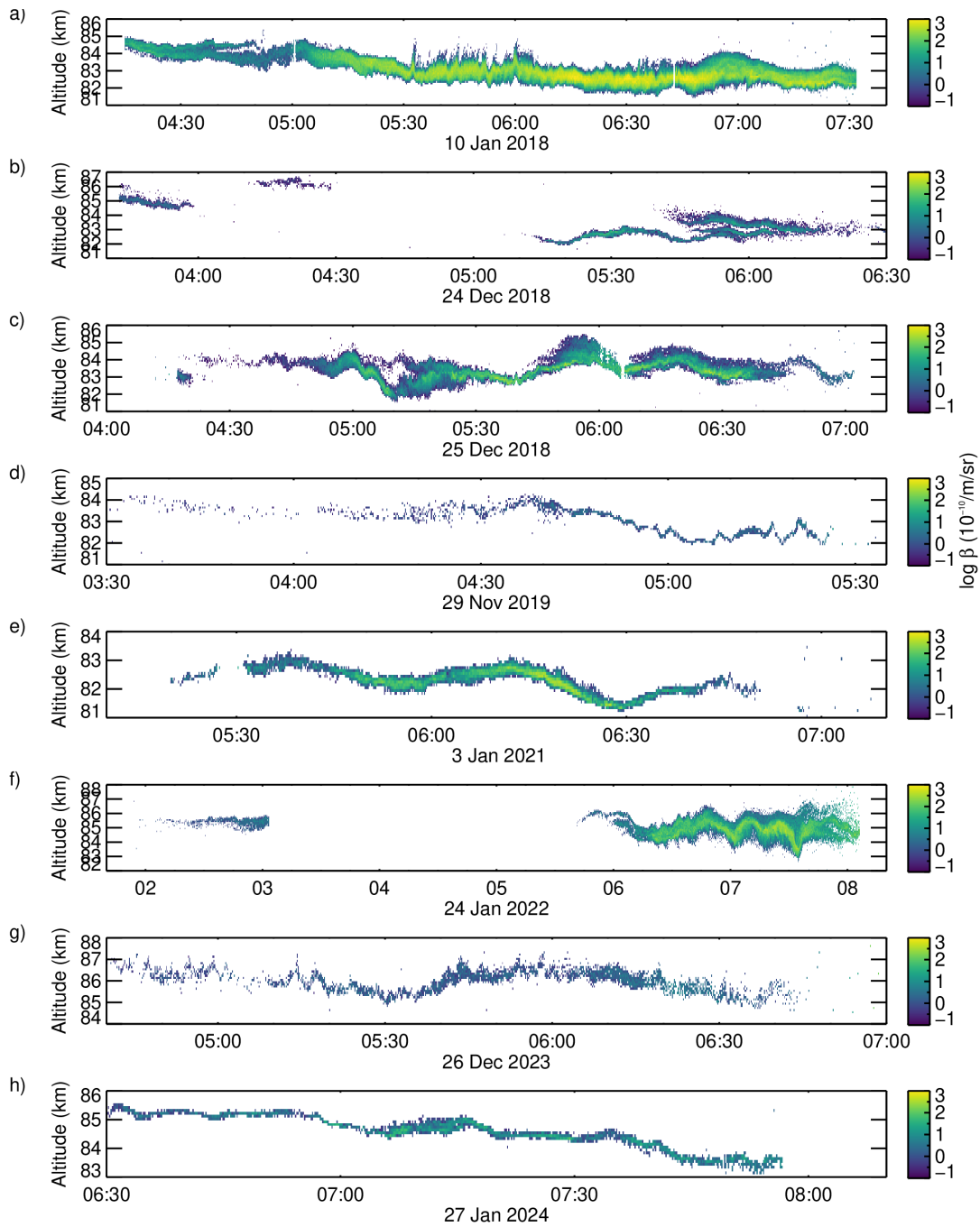
Nussbaumer et al., 1996). On many days sudden changes in NLC layer altitude occur (see Fig. 1a,d,f,h,i). These changes are likely due to the vertical motion of the background atmosphere induced by gravity waves. For bright NLC displays that offer a high signal-to-noise ratio, we were able to increase the temporal resolution to 10 s. The high-resolution data sets shown in Fig. 2 reveal a range of oscillations imprinted on the NLC layers by gravity waves and instabilities produced by breaking of these waves, with periods ranging from few minutes to about one hour. In particular, on 10 January 2018 between 5:20 UT to 6:50 UT (Fig. 2a), possibly until the end of measurement at 7:30 UT, the NLC layer is perturbed at periods below the Brunt-Vaisälä period, indicative of instabilities. During the 30 min from 5:30 UT to 6:00 UT, modulations of the wide NLC layer

with displacements of almost 2 km were likely caused by Kelvin-Helmholtz instabilities exhibiting tube and knot dynamics (Fritts et al., 2023). Some NLC layers are very thin with widths below 500 m, e.g. Fig. 1d,h. A stack of three narrowly-spaced layers was detected on 24 December 2018 shortly before 6 UT (Fig. 2b). Other layers are very wide, e.g. a layer approaching a vertical extent of 4 km was detected on January 2022 (Fig. 1i and 2f). Except for the two brightest NLC recorded on 10 January 2018 and 24 January 2022, the layers seem to have (mostly) faded by the time the lidar turned off due to sunrise, which occurs at Rio Grande between 7:08 and 8:07 UT in the relevant period of time. The accumulation of NLC at the end of the night is discussed with respect to the effect of thermal tides in Sec. 4.2.

### 3.2 Camera observations

Coincident and common-volume observations of NLC with ground-based lidars and cameras are challenging, as only a narrow latitude band offers the right combination of background conditions for both instruments. Optimal observing conditions are twilight for cameras and darkness for lidars. Difficulties with the interpretation of ground-based images concern mostly the foreground that obstructs the view towards the horizon and may also degrade the image quality due to unfavourable lighting conditions, e.g. by reflections from street lights in haze. Moreover, the analysis of images is often complicated by a partly overcast sky that allows for only fragments of the NLC layer to be seen. For joint observations with the cameras in Rio Gallegos and the lidar at Rio Grande, observing conditions must be good at both places. But even in cases with good observing conditions, detections of NLC using cameras are much more likely given that the FOV of cameras are extremely large compared to lidars. If the NLC layer is very patchy, it might be possible that although NLC is visible at locations close to lidar beam, it is not detected in the small spot observed by the lidar. In Table 2 we list all visual detections of NLC. It is remarkable that for nights with detections of NLC by lidar, NLC were visually confirmed by at least one camera in almost all cases since the cameras were installed. In the 2019/2020 summer season, we identified a total of ten occurrences of NLC detected by a cameras, among them are five cases where the visual detection is without doubt. For two of the events with uncertain detections, the presence of NLC was confirmed by lidar. In comparison, and also in agreement with the lidar observations, the summer season 2020/2021 offered fewer nights with NLC. 16 nights in December 2020 were without NLC detections from either Rio Gallegos or Rio Grande and the remaining nights were overcast. A first coincident observation with lidar and cameras succeeded on 3 January 2021, followed by another detection of NLC in camera images one week later. Towards the very end of the 2021/2022 season, NLC were sighted in a region east of CORAL in the morning hours of 19 January 2022 from both Rio Grande and Rio Gallegos, followed five days later by a bright and wide display with coincident detections by lidar and cameras. In the 2023/2024 season, four coincident events were recorded. Overall, our data suggest that NLC can be observed visually from Tierra del Fuego two to ten nights per season, either after sunset or before sunrise. The total hours of visual observations in five seasons is more than 23 h.

The coincident detections on 3 January 2021 and 24 January 2022 showed bright and structured NLC. In the morning of 3 January 2021, bright NLC covered large parts of the sky (one image is shown in Fig.3). The projected and geo-located images suggest that the area covered by NLC is at least  $500 \text{ km} \times 800 \text{ km}$ . Furthermore, the images show evidence of localized small-scale gravity waves of few kilometers horizontal wavelength that move in different directions and interfere with each other.



**Figure 2.** Selection of the strongest NLC displays shown at  $100 \text{ m} \times 10 \text{ s}$  resolution.

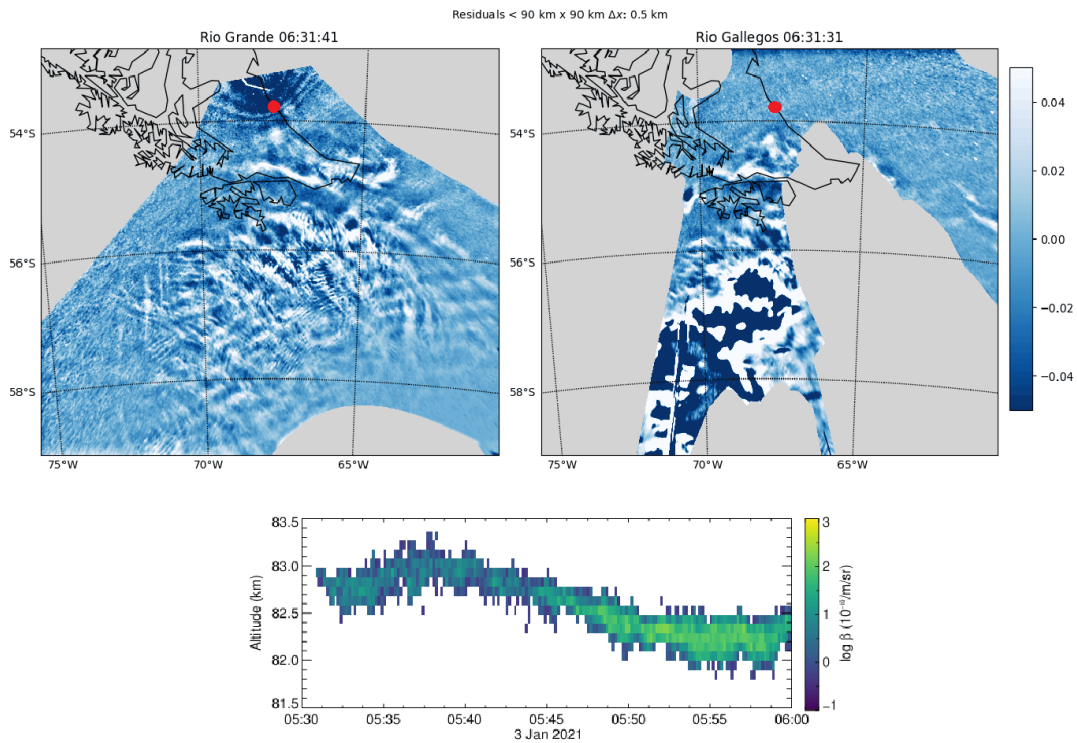
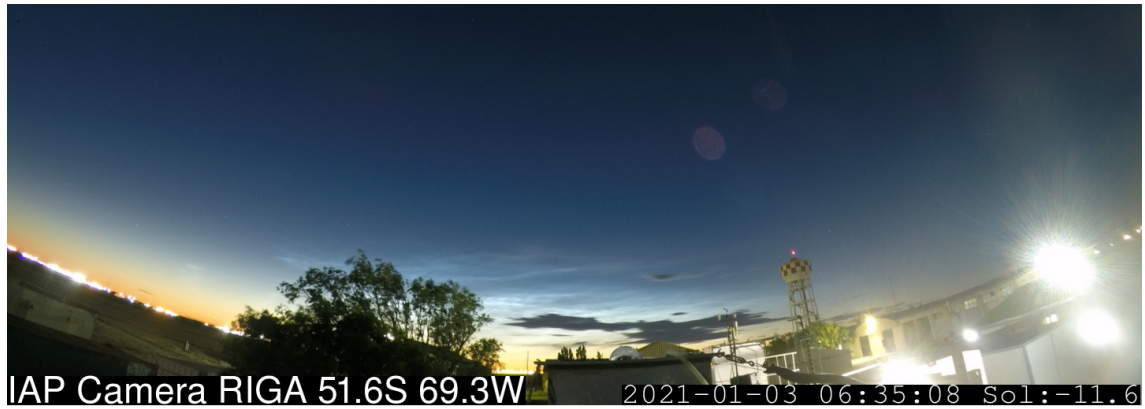
170 The strongest activity appears at latitudes south of Tierra del Fuego. Above Rio Grande, the NLC layer, although confirmed by the lidar soundings, is too weak to show up in the twilight images, making a direct comparison between the height-resolved



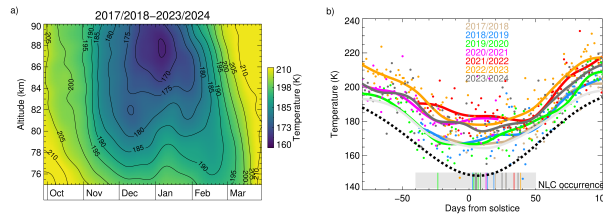
**Table 2.** List of NLC detections using cameras in Rio Gallegos (RIGA), Ushuaia (USHU), and Rio Grande (RIOG). An x denotes a successful detection, a '~' a possible detection, a '-' the confirmed absence, and a blank that the instrument was not operational or that it was cloudy. In the column 'Hours' the first and last NLC detection of the night is noted. Lidar detections are noted in the last column for reference.

Date	dfs	Hours (UT)	Duration (h)	RIGA	USHU	RIOG	Lidar
5 Dec 2019	-16	1:31 – 2:43	1.2	x			-
10 Dec 2019	-11	2:50 – 3:50	1.0	~	~		-
11 Dec 2019	-10	2:08 – 2:35	0.5	-	x		-
23 Dec 2019	2	2:40 – 3:30	0.8	~	~		-
26 Dec 2019	5	5:10 – 5:30	0.3	-	~		x
29 Dec 2019	8	2:40 – 4:00	1.3	-	x		x
30 Dec 2019	9	5:10 – 6:20	1.2	x	x		-
31 Dec 2019	10	2:40 – 3:21	0.7		~		x
6 Jan 2020	16	2:20 – 3:56	1.5	~			x
18 Jan 2020	28	2:45 – 6:00	2.8	x			-
3 Jan 2021	13	5:20 – 7:19	2.0	~		~	x
10 Jan 2021	20	6:20 – 7:10	0.8	x			-
19 Jan 2022	29	6:30 – 7:00	0.5	~		~	-
24 Jan 2022	34	6:30 – 8:12	1.8	x		x	x
26 Dec 2023	5	5:29 – 6:40	1.2			x	x
29 Dec 2023	8	4:49 – 7:10	2.4	x		x	
30 Dec 2023	9	2:48 – 7:07		x		x	x
18 Jan 2024	28	1:52 – 3:29	1.6	x		x	x
27 Jan 2024	37	7:05 – 8:22	1.3	x		x	x

backscatter signal and the imaged NLC layer impossible. Yet observations from both instruments agree qualitatively. The lidar profiling shows a periodic modulation of the NLC layer with 1 km to 1.5 km vertical displacement with maxima around 6:14 UT and 6:45 UT. The modulation is likely caused by gravity waves that give rise to smaller-scale variability that is imaged above the Drake passage. Evidence for the very same small-scale dynamics are also found throughout the lidar soundings in the form of very short-period (around 1 min) modulations of the NLC layer with vertical displacements of few hundred meters. A detailed analysis of the second coincident and common-volume observation on 24 January 2022 will be presented in a separate work, which will include additional OH imaging and meteor radar datasets that are available for this particular event.



**Figure 3.** Top: Image taken at Rio Gallegos on 3 January 2021 6:35 UT. The silvery-white clouds above the horizon are NLC, while tropospheric clouds appear dark. Middle: Two images from Rio Grande and Rio Gallegos projected to 83 km altitude on an UTM grid. The foreground has been masked, the sky background removed, and the contrast enhanced to highlight structures within NLC. The red dots mark the location of Rio Grande. Bottom: Part of the lidar observations showing small-scale perturbations.



**Figure 4.** (a) Nightly mean CORAL temperatures, excluding nights with NLC, smoothed with Hanning windows of 30 d and 2 km. (b) Nightly mean CORAL temperatures averaged between 82 km and 85 km altitude, excluding nights with NLC. The time series are smoothed with a Hann filter of 50 d length (solid lines, per season). The nights with NLC detections are marked by vertical lines at the bottom. The grey line shows mean SABER temperatures of up to 800 km distance to CORAL. The black dotted line shows the mean temperature at 84 km altitude at Kühlungsborn ( $54^{\circ}\text{N}$ ) which is close to the conjugated point in the northern hemisphere (Gerding et al., 2008).

### 3.3 Lidar temperature

180 Inherently, no temperature can be measured within NLC layers by Rayleigh lidar, as scattering by ice particles contaminates the lidar return signal, which normally, without the presence of ice particles, just comprises Rayleigh scattering from air at these altitudes. However, for all nights without NLC (which account for most measurements), upper mesospheric temperatures can be retrieved from lidar measurements. Fig. 4a shows a smoothed composite of seven years of measurements in the summer months. Minimum temperatures of about 160 K are reached at around 88 km altitude in the beginning of January. The transition  
 185 from winter to summer and summer to winter conditions occurs in the first half of November and in the second half of February, respectively. Fig. 4b allows a more detailed look at temperature variations within and between years. It shows all nightly mean temperatures measured by CORAL between October and March and averaged between 82 km and 85 km altitude as colored dots. The yearly series are smoothed with a Hanning window of 50 d length (solid lines) to highlight the seasonal variation. The typical variation in temperature from one night to another (dots) is in the order of 20 K. This variability is not due to  
 190 measurement errors, which are around 3 K. It should be noted that nights are short in the summer season, and taking the nightly means is unlikely to average out the effect of gravity waves. Hence, we believe that the large variability is indicative of the upper mesosphere being disturbed by gravity waves. There is also significant variation between years, with the first three seasons exhibiting lower temperatures than the last four.

As demonstrated by Fig. 4b, NLC detections occur well within the period of time when the upper mesosphere is coldest.  
 195 Although nightly mean temperatures below 160 K are occasionally measured, the mean temperature on days without NLC is generally above 170 K, and thus more than 20 K above the temperature that is required for the formation of NLC. The 2002–2007 mean for Kühlungsborn at  $54^{\circ}\text{N}$  (dashed black line in Fig. 4b) shows temperatures much closer to and below the frost point in the middle of the season (gray box). In comparing the temperatures at both places, one would expect fewer NLC at Rio Grande and a shorter season, but neither is the case (see the discussion in Sec. 4.3). We conclude that the NLC detections  
 200 are unexpected with respect to the thermal background that seems, in general, not favourable for local formation of NLC.

## 4 Discussion

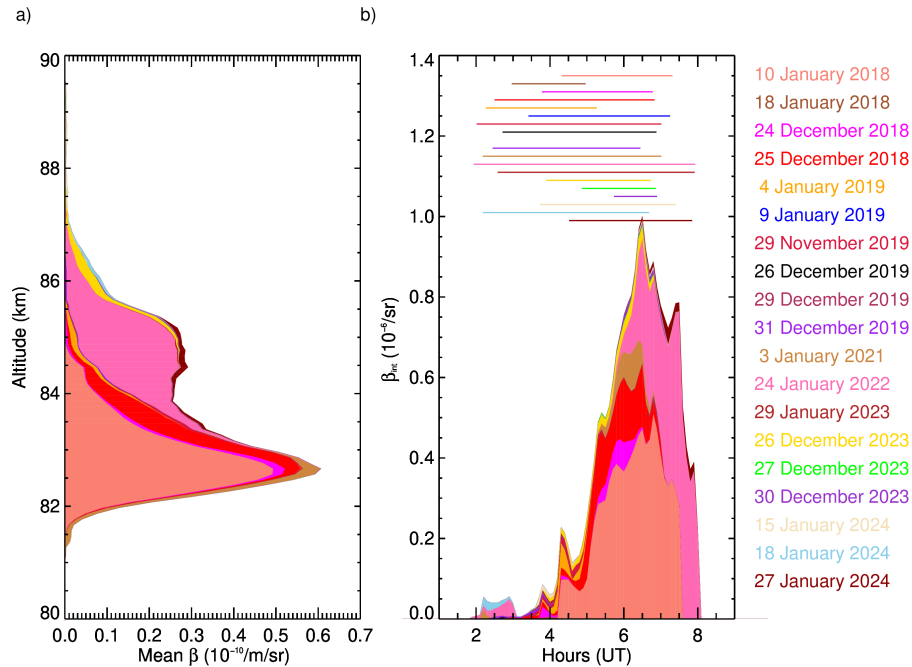
### 4.1 NLC brightness and altitude

We turn to statistical analysis of the NLC parameters measured by lidar. Fig. 5a shows the mean brightness profile, i.e the sum of all profiles with significant NLC divided by the number of profiles. Colors indicate the date of the observation. NLC backscatter originates from the 81–87 km altitude region and is dominated by a number of bright events, most notably 10 January 2018 around 82.6 km altitude and 24 January 2022 around 85 km altitude. The brightness of four out of the 19 events is above  $\beta = 14 \times 10^{-10}/\text{m}/\text{sr}$ , while 14 events are of low brightness below  $\beta = 4 \times 10^{-10}/\text{m}/\text{sr}$ . A similar distribution was reported by Gerding et al. (2013b) from multi-year observations at 54°N in the northern hemisphere. The weighted mean altitude of all CORAL profiles is 83.3 km. Extrapolating the NLC altitude from South Pole, McMurdo and Rothera (Fig. 2 of Chu et al., 2011) to 54°S, one would expect a mean NLC altitude at Rio Grande of approximately 83.5 km. This is surprisingly close to our value despite our statistics being limited by the number of observations. The mean centroid altitude from Gerding et al. (2013b, 54°N) is 82.7 km and thus 600 m below our value. Gerding et al. note that strong NLC tend to occur at lower altitudes and have a smaller vertical extent compared to weak NLC. This is in contrast to our NLC observations in the southern hemisphere which can be characterized as high altitude and having a large vertical extent. But we also note that our observations are dominated by singular events, most notably the event on 24 January 2022.

### 4.2 Local time dependence

NLC were detected by lidar more often in the early morning hours before sunrise than after sunset. Considerable local time variations with peak occurrence frequency and brightness in the early morning are known from northern hemisphere observations (Fiedler et al., 2017). In Fig. 5b we show detections of NLC as function of time of day. The peak in brightness between 5–7:30 UT (2–4:30 LT) suggest that the occurrence of NLC is tied to the phase of the meridional wind. The analysis of radar wind data presented in Liu et al. (2020, their Fig. 1) reveals signatures of a strong semi-diurnal tide in the upper mesosphere with meridional winds exceeding 10 m/s above Rio Grande between 6–8 UT in the yearly mean. Low zonal winds and positive meridional winds at Rothera (1500 km south of Rio Grande) around 0 UT and lasting a few hours favor transport of cold air masses from more southerly regions to Rio Grande. But a steady mean flow of 10 m/s over a period of time of 8 h is not sufficient for transporting NLC particles from polar latitudes south of 60° S to Rio Grande. We therefore investigate SAAMER data for the specific dates of our NLC measurements.

We analyze hourly values of the meridional wind component at 84 km altitude that was measured by the SAAMER radar during five seasons from 2017–2022. Specifically, we look at the hourly winds at times when the NLC were brightest, and determine the mean wind 6 h, 12 h and 24 h prior to these times as done by Pokhotelov et al. (2019, their Fig. 6). Table 3 lists our results. Indeed, in quite a few cases the wind speeds were significantly larger than 10 m/s. It is obvious that the larger the wind speed, the more likely is transport from polar latitudes toward Rio Grande. The only dates where transport from the south seems unlikely based on this analysis are 9 Jan 2019, 26 Dec 2019 and 3 Jan 2021. The former two dates represent very weak NLC events.



**Figure 5.** Mean brightness of all NLC events (10 min resolution data set) stacked on top of each other as a function of a) altitude and b) local time. Dates are indicated by color as shown in the legend.

To study the influence of planetary waves and tides on NLC in more detail, we performed a wavelet analysis of the meridional  
 235 wind at 84 km using a Morlet wavelet. Spectral power for periods between 6 h and 16 d are presented in Fig. 6. The most  
 prominent feature is the concentration of spectral power at periods of around 2 days, in particular in January, indicating a  
 quasi-2 day planetary wave (Baumgaertner et al., 2008). Only one NLC observation, the short and weak detection on 4 January  
 2019 (Fig. 6b), coincides with significant planetary wave activity (1.6 d period). For all other NLC detections there was no  
 significant planetary wave activity. This result is in agreement with the finding of Siskind and McCormack (2014) that periods  
 240 of time with enhanced quasi-2 day wave activity are related to high-latitude temperature enhancements that are linked to  
 disappearance of NLC. Patterns in noctilucent cloud brightness related to the 5-day planetary wave are known from satellite  
 measurements (Merkel et al., 2003, 2008; Dalin et al., 2011). At Rio Grande in the summers of 2017–2021, the 5-day planetary  
 wave however was weak. We conclude that the observed recurrence of NLC after 2, 3 or 5 days in some seasons happened by  
 chance and is not related to planetary waves. Focusing on tidal periods below 1 d, note that the majority of NLC detections  
 245 happened at times when the wave activity was low, i.e. times with no significant spectral power.

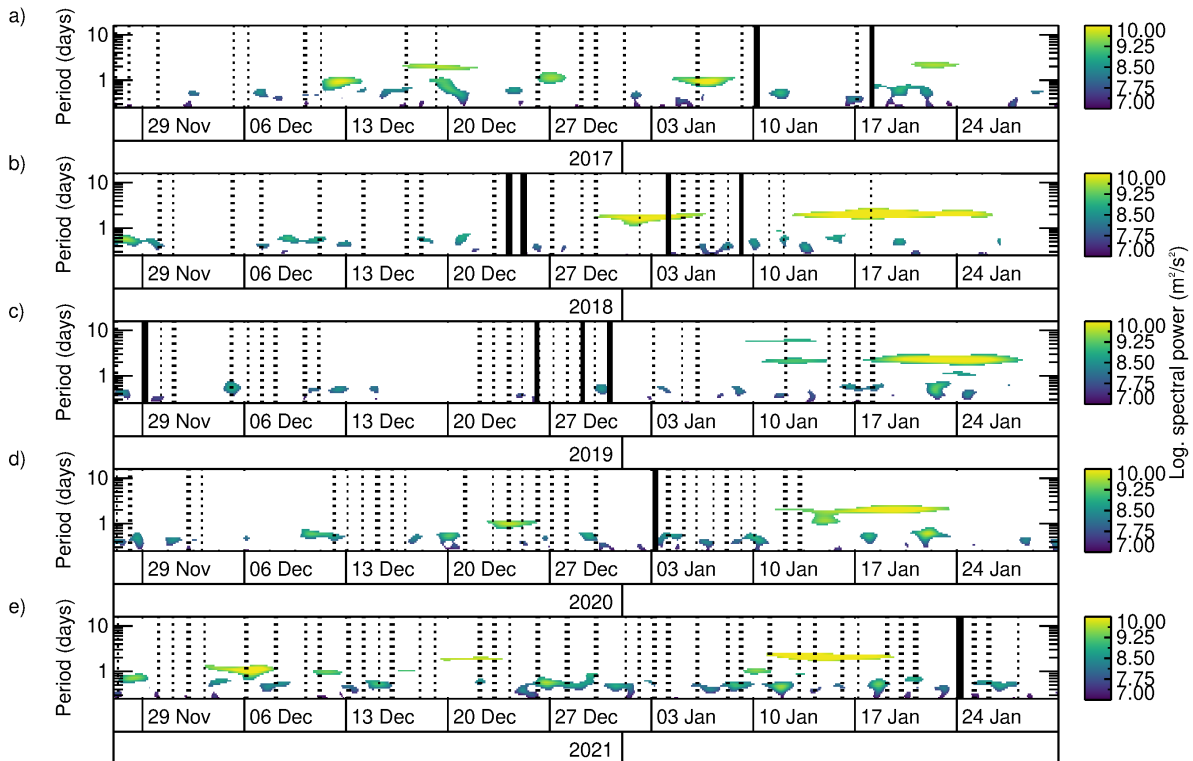
**Table 3.** The meridional wind  $v$  measured by SAAMER at 84 km altitude for NLC events.  $v_6$  ( $v_{12}, v_{24}$ ) denotes the mean meridional wind during a period of time of 6 h (12 h, 24 h) prior to the time of maximum NLC brightness. Significant tidal and planetary wave (PW) periods of  $v$  are taken from the analysis presented in Fig. 6.

Date	$v$	$v_6$	$v_{12}$	$v_{24}$ (m/s)	tidal period (h)	PW period (d)
10 Jan 2018	5	29	20	9	-	-
18 Jan 2018	30	26	24	23	16	-
24 Dec 2018	42	54	30	21	-	-
25 Dec 2018	-	29	22	19	6	-
4 Jan 2019	31	4	36	13	-	1.6
9 Jan 2019	-10	4	6	15	-	-
29 Nov 2019	11	34	25	23	-	-
26 Dec 2019	-7	10	7	10	7	-
29 Dec 2019	19	27	17	8	-	-
31 Dec 2019	1	24	26	24	-	-
3 Jan 2021	13	0	11	15	9	-
24 Jan 2022	10	19	25	22	-	-

### 4.3 Start of the NLC season

Given that there are summer seasons with just a single NLC detection, using the term 'NLC season' in these cases may be deceptive. However, we decided to stick with this term since it is used in many studies. At any rate, our data show that the first NLC detection of a summer season is highly variable, ranging from -23 days from solstice to 38 days past solstice. These late first NLC occurrences are much later and seemingly uncorrelated with the onsets of the southern hemisphere polar mesospheric cloud (another term for noctilucent clouds used for observations from space) season as determined from two satellite experiments with values between -36 and -30 days from solstice (DeLand and Gorkavyi, 2021, their Fig. 10, 2017–2020, south of 60°S).

Karlsson et al. (2011) have shown that the timing of the breakdown of the southern hemisphere polar vortex influences the onset of the southern hemisphere NLC season. Fig. 7 shows zonal mean zonal winds at 0 UT and 60°S from ERA5 at 10 hPa. The Antarctic minor sudden stratospheric warming in September 2019 caused a reduction in wind speed that is visible at around -95 days from solstice (green curve in Fig. 7). The warming event weakened the polar vortex, resulting in an earlier breakdown. It is evident from Fig. 4b that temperatures in the NLC altitude region were low in 2019 (green curve) compared to other years. The lower mesospheric temperature due to the stratospheric warming and thus the earlier start of summer has

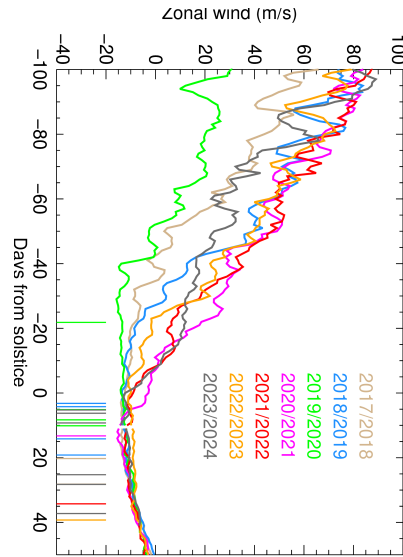


**Figure 6.** Significant spectral power of the meridional wind at 84 km altitude, tested against red noise with 95 % confidence level, between 6 h and 10 d period. Hourly lidar measurements are indicated by dotted vertical lines, and such with NLC detected by solid lines. Significant matches are listed in Table 3.

260 likely contributed to the early detection of NLC that occurred on 29 Nov 2019. This event is the so far only detection of NLC by CORAL at Rio Grande before summer solstice.

#### 4.4 Occurrence rate

The middle of the season at Rio Grande is found on 2 Jan (12 days from solstice, median of column 2 of Table. 1). We define the occurrence rate as the accumulated time of NLC detections divided by the accumulated measurement time between  
 265 27 November and 31 January of each season. These dates were chosen to include our earliest and latest observation dates, and are very similar to the dates used by Gerding et al. (2013a) (that would be 1 December to 4 February in the southern hemisphere). Measurement nights and hours per season are listed in Tab. 4. NLC were detected in one to six nights per season, with occurrence rates ranging between 2% and 12%. Considering all seasons, in total 523.7 h with lidar observations, of which 33.8 h are with certain NLC detections, results in an occurrence rate of 6%. This compares well to the value of 6%  
 270 from 21 h with NLC detections in 2005/2006 at Davis (68.6°S) in East Antarctica found by Klekociuk et al. (2008). Chu



**Figure 7.** ERA5 zonal mean zonal wind at 0 UT, 10 hPa and  $-60^\circ$  latitude. Solstice refers to 21 December. NLC occurrences observed by CORAL are indicated by vertical lines at the bottom.

**Table 4.** Measurement statistics and NLC occurrence rate between 27 Nov and 31 Jan based on 10 min resolution with  $s = 4$ . Mean Ly-alpha is taken from Machol et al. (2019).

Season	Measurement (nights)	Measurement (h)	NLC (nights)	NLC (h)	Occurrence rate (%)	Ly-alpha ( $10^{-3}\text{W/m}^2$ )
2017/2018	20	37.8	2	4.0	11	6.3
2018/2019	39	85.8	4	6.6	8	6.1
2019/2020	38	74.1	4	5.4	7	6.1
2020/2021	28	51.8	1	1.7	3	6.6
2021/2022	42	98.8	1	3.8	4	7.0
2022/2023	41	83.1	1	1.5	2	8.2
2023/2024	50	92.3	6	10.8	12	8.6
all		523.7	19	33.8	6	

et al. (2006) derived higher values with a mean of 27.9% from three seasons of NLC observations (2002/2003 to 2004/2005, 128 h with NLC) at Rothera ( $67.5^\circ\text{S}$ ), which is located at a comparable longitude but higher latitude than Rio Grande. Their values were however calculated from a shorter core season and vary significantly over the three seasons (as in our case) since dominated by singular events in individual years. Indications of strong inter-annual variability also come from Gerding et al.



275 (2013a), who report a variability between 0 and 19% from 15 years of lidar observations (1997–2011) at Kühlungsborn (54°N). Surprisingly, the 15-year mean is 6%, the same value we find for Rio Grande. From satellite measurements in the two seasons 2017/2018 and 2018/2019 DeLand and Thomas (2019, their Fig. 4) derived an occurrence rate in the 50°–64° latitude band of the southern hemisphere of just 0.5%. This rate is a factor of four smaller compared to about 2% for the same band in the northern hemisphere. Given the obviously large variability, it is hard to reliably compare occurrence rates at different sites, but  
280 looking at the available data, the occurrence rate at Rio Grande seems to be higher than what would be expected in terms of ambient temperature, latitude and inter-hemispheric differences.

A potential source of inter-annual variability is the variation of the solar flux with the solar cycle. Solar Lyman alpha radiation photodissociates water vapour, resulting in fewer NLC during solar maximum (Garcia, 1989). DeLand et al. (2003) found an anti-correlation with no phase lag in the southern hemisphere from a satellite record spanning two solar cycles. After 2020,  
285 however, satellite and model results suggest a significantly reduced response of noctilucent clouds to solar variations (Hervig et al., 2019; Vellalassery et al., 2023). Our observations are limited to seven years within solar cycles 24 and 25. As evident from Tab. 4, the occurrence rate is high during the first three seasons (solar minimum) and seemingly low thereafter when the composite solar Ly- $\alpha$  index increases. The last season of 2023/2024 at the peak of the solar maximum however showed unexpectedly high occurrence rates and durations. In fact, this is the season with the most NLC events (six nights) so far. We  
290 conclude that for our observations at a mid-latitude site in the southern hemisphere solar activity with solar Lyman alpha as proxy is not a main driver for the observed variability.

An additional source of water vapour in the upper mesosphere and lower thermosphere that might trigger bright NLC especially at mid-latitudes is rocket engine exhaust (Stevens et al., 2012; Siskind et al., 2013; Dalin et al., 2013; Stevens et al., 2022). The first evidence was presented by Stevens et al. (2005a) who found increased NLC occurrence rates and larger ice  
295 mass in the northern hemisphere up to 8 days after a space shuttle launch. Soon after, the thermospheric transport of a space shuttle exhaust plume containing water vapour and iron into the southern hemisphere was investigated using lidar and satellite measurements. Stevens et al. (2005b) showed that the exhaust plume reached the Antarctic Peninsula within three days. Since then, the number of rocket launches has dramatically increased. We looked at launch dates of rockets launched from major space centers that may potentially be linked to NLC observed above Rio Grande. These centers are the Guiana Space Center in  
300 Kourou, French Guiana (6700 km to the north), the Kennedy Space Center and Cape Canaveral Space Force Station (9300 km to the north), and New Zealand's Mahia peninsula which is 8000 km west of Rio Grande. Exhaust from the Electron rockets launched at Mahia peninsula may be transported to Rio Grande by the eastward winds above 85 km altitude as shown by Hindley et al. (2021), however these smaller rockets inject only a small amount of water vapour into the lower thermosphere. Close temporal proximity of Electron rocket launches and NLC observations by lidar at Rio Grande are found for 16 December  
305 2018 (8 days prior to a NLC event), 24 January 2023 (5 days prior) and 15 December 2023 (11 days prior). Soyuz launches from Kourou took place on 19 December 2018, 18 December 2019, 29 December 2020, and 21 January 2022, that is 5, 8, 5, and 3 days prior to NLC observations at Rio Grande. For almost all NLC events we find Falcon 9 launches from Kennedy Space Center within 3 to 12 days prior to NLC observations. Given the large number of possibilities, better modelling of the transport of the rocket exhaust by wind, taking into accounts the strong tidal winds in the lower thermosphere, is needed to

310 confirm a potential direct effect of rocket exhaust on the occurrence of NLC. At this point, the temporal proximity and large number of rocket launches make space traffic a potential factor contributing to the unexpectedly large number of NLC events observed above Rio Grande.

There was also major natural event which potentially contributed to the large number of NLC observations in the 2023/2024 season. The eruption of the Hunga Tonga undersea volcano in January 2022 injected large amounts of water vapour into  
315 the stratosphere, which then reached the mesosphere several months later (Nedoluha et al., 2023). The eruption also induced changes in circulation patterns of the middle atmosphere with effects on mesospheric temperature (Yu et al., 2023). However, detailed model studies and observations of water vapour in particular are necessary to investigate these effects. Such work is beyond the scope of this paper.

## 5 Conclusions

320 We reported on NLC observations by lidar at Rio Grande, Tierra del Fuego, which is located at mid-latitudes in the southern hemisphere (53.8°S). The 19 events detected in seven summer seasons represent the first NLC observations by lidar in the southern hemisphere outside of Antarctica. The occurrence rate of about 6% is unexpectedly high and comparable to measurements at a conjugate latitude in the northern hemisphere. The mean altitude (83.3 km) is higher than in the northern hemisphere. We observed several events of high brightness that lasted several hours. The local time dependence of NLC observations reveals  
325 the influence of a pronounced semi-diurnal tidal wind that transports ice particles from Antarctic latitudes to the north towards Rio Grande. Northward transport seems to be crucial because, as confirmed by our measurements, the mean temperature at the height of NLC above Rio Grande is well above the frost point and thus effectively prevents local formation of ice particles. Our lidar temperature measurements agree with previous assessments of inter-hemispheric differences of the local thermal background. Another factor might be increased amounts of water vapour by man-made or natural causes. Whether there are direct  
330 links to orbital rocket launches should be studied with modelling in the future. Here, we conclude that unexpectedly bright NLC occurred above Rio Grande. These NLC displays must be visible by naked eye possibly up to hundreds of kilometers to the north. That there are very few visual reports from South America, unlike in the northern hemisphere, may be attributed to populated areas being few and sparse. Whether the appearance of bright NLC above Tierra del Fuego is anomalous with respect to longitude, similar to the winter stratospheric GW hotspot caused by the Andes, is unknown.

335 *Data availability.* Lidar data are available from the HALO database <https://halo-db.pa.op.dlr.de/mission/111>. ERA5 reanalysis data is available from <https://cds.climate.copernicus.eu>. SABER data is available from <https://saber.gats-inc.com/>. Lyman alpha index is accessible via the LASP Interactive Solar Irradiance Datacenter (LISIRD, <https://lasp.colorado.edu/lisird/>).

*Author contributions.* BK and NK built and operated the CORAL lidar. BK and NK performed the data analysis and wrote the manuscript. GL and DJ provided meteor radar data. GB provided camera images and projections. JH supported lidar operations in Rio Grande. All authors  
340 revised the manuscript.

*Competing interests.* The authors declare no competing interests.

*Acknowledgements.* NK and BK thank Alejandro de la Torre for his support in bringing CORAL to Rio Grande, and Robert Reichert for help with the initial installation and servicing of the instrument. GB and NK acknowledge the work of the members of the German forum Arbeitskreis Meteore (<https://www.meteoros.de/>), Simon Herbst in particular, who screen and discuss sightings of NLC from all available  
345 online sources including the IAP camera network, and who discovered several of the NLC events mentioned here in the real-time camera images. GB thanks Michael Priester for screening the IAP camera images. NK thanks Isabell Krisch for comments.

## References

- Backhouse, T. W.: The luminous cirrus cloud of June and July, *Meteorol. Mag.*, 20, 133–133, 1885.
- Bailey, S. M., Merkel, A. W., Thomas, G. E., and Rusch, D. W.: Hemispheric differences in Polar Mesospheric Cloud morphology observed by the Student Nitric Oxide Explorer, *Journal of Atmospheric and Solar-Terrestrial Physics*, 69, 1407–1418, <https://doi.org/https://doi.org/10.1016/j.jastp.2007.02.008>, 2007.
- Baumgaertner, A., McDonald, A., Hibbins, R., Fritts, D., Murphy, D., and Vincent, R.: Short-period planetary waves in the Antarctic middle atmosphere, *Journal of Atmospheric and Solar-Terrestrial Physics*, 70, 1336–1350, <https://doi.org/https://doi.org/10.1016/j.jastp.2008.04.007>, 2008.
- 355 Chu, X., Gardner, C. S., and Roble, R. G.: Lidar studies of interannual, seasonal, and diurnal variations of polar mesospheric clouds at the South Pole, *Journal of Geophysical Research: Atmospheres*, 108, <https://doi.org/https://doi.org/10.1029/2002JD002524>, 2003.
- Chu, X., Espy, P. J., Nott, G. J., Dietrich, J. C., and Gardner, C. S.: Polar mesospheric clouds observed by an iron Boltzmann lidar at Rothera (67.5°S, 68.0°W), Antarctica from 2002 to 2005: Properties and implications, *Journal of Geophysical Research: Atmospheres*, 111, <https://doi.org/10.1029/2006JD007086>, 2006.
- 360 Chu, X., Huang, W., Fong, W., Yu, Z., Wang, Z., Smith, J. A., and Gardner, C. S.: First lidar observations of polar mesospheric clouds and Fe temperatures at McMurdo (77.8°S, 166.7°E), Antarctica, *Geophysical Research Letters*, 38, <https://doi.org/10.1029/2011GL048373>, 2011.
- Dalin, P., Pertsev, N., Zadorozhny, A., Connors, M., Schofield, I., Shelton, I., Zalcik, M., McEwan, T., McEachran, I., Frandsen, S., Hansen, O., Andersen, H., Sukhodoev, V., Perminov, V., and Romejko, V.: Ground-based observations of noctilucent clouds with a northern hemisphere network of automatic digital cameras, *Journal of Atmospheric and Solar-Terrestrial Physics*, 70, 1460–1472, <https://doi.org/https://doi.org/10.1016/j.jastp.2008.04.018>, 2008.
- 365 Dalin, P., Pertsev, N., Dubietis, A., Zalcik, M., Zadorozhny, A., Connors, M., Schofield, I., McEwan, T., McEachran, I., Frandsen, S., Hansen, O., Andersen, H., Sukhodoev, V., Perminov, V., Baliunas, R., and Romejko, V.: A comparison between ground-based observations of noctilucent clouds and Aura satellite data, *Journal of Atmospheric and Solar-Terrestrial Physics*, 73, 2097–2109, <https://doi.org/https://doi.org/10.1016/j.jastp.2011.01.020>, layered Phenomena in the Mesopause Region, 2011.
- 370 Dalin, P., Perminov, V., Pertsev, N., Dubietis, A., Zadorozhny, A., Smirnov, A., Mezentsev, A., Frandsen, S., Grønne, J., Hansen, O., Andersen, H., McEachran, I., McEwan, T., Rowlands, J., Meyerdierks, H., Zalcik, M., Connors, M., Schofield, I., and Veselovsky, I.: Optical studies of rocket exhaust trails and artificial noctilucent clouds produced by Soyuz rocket launches, *Journal of Geophysical Research: Atmospheres*, 118, 7850–7863, <https://doi.org/https://doi.org/10.1002/jgrd.50549>, 2013.
- 375 Dalin, P., Perminov, V., Pertsev, N., and Romejko, V.: Updated Long-Term Trends in Mesopause Temperature, Airglow Emissions, and Noctilucent Clouds, *Journal of Geophysical Research: Atmospheres*, 125, e2019JD030814, <https://doi.org/https://doi.org/10.1029/2019JD030814>, e2019JD030814 2019JD030814, 2020.
- DeLand, M. T. and Gorkavyi, N.: PMC observations from the OMPS Limb Profiler, *Journal of Atmospheric and Solar-Terrestrial Physics*, 213, 105 505, <https://doi.org/https://doi.org/10.1016/j.jastp.2020.105505>, 2021.
- 380 DeLand, M. T. and Thomas, G. E.: Extending the SBUV polar mesospheric cloud data record with the OMPS NP, *Atmospheric Chemistry and Physics*, 19, 7913–7925, <https://doi.org/10.5194/acp-19-7913-2019>, 2019.

- DeLand, M. T., Shettle, E. P., Thomas, G. E., and Olivero, J. J.: Solar backscattered ultraviolet (SBUV) observations of polar mesospheric clouds (PMCs) over two solar cycles, *Journal of Geophysical Research: Atmospheres*, 108, <https://doi.org/https://doi.org/10.1029/2002JD002398>, 2003.
- 385 Dubietis, A., Dalin, P., Baliūnas, R., and Kazimierasernis: Observations of noctilucent clouds from Lithuania, *Journal of Atmospheric and Solar-Terrestrial Physics*, 72, 1090–1099, <https://doi.org/https://doi.org/10.1016/j.jastp.2010.07.004>, 2010.
- Fiedler, J., Baumgarten, G., Berger, U., and Lübken, F.-J.: Long-term variations of noctilucent clouds at ALOMAR, *Journal of Atmospheric and Solar-Terrestrial Physics*, 162, 79 – 89, <https://doi.org/https://doi.org/10.1016/j.jastp.2016.08.006>, Layered Phenomena in the Mesopause Region, 2017.
- 390 Fogle, B.: Noctilucent Clouds over Punta Arenas, Chile, *Nature*, 207, 66, <https://doi.org/10.1038/207066a0>, 1965.
- Fogle, B. and Haurwitz, B.: Noctilucent clouds, *Space Science Reviews*, 6, 279–340, 1966.
- Fritts, D. C., Janches, D., Iimura, H., Hocking, W. K., Mitchell, N. J., Stockwell, R. G., Fuller, B., Vandeppeer, B., Hormaechea, J., Brunini, C., and Levato, H.: Southern Argentina Agile Meteor Radar: System design and initial measurements of large-scale winds and tides, *Journal of Geophysical Research: Atmospheres*, 115, <https://doi.org/https://doi.org/10.1029/2010JD013850>, 2010.
- 395 Fritts, D. C., Baumgarten, G., Pautet, P.-D., Hecht, J. H., Williams, B. P., Kaifler, N., Kaifler, B., Kjellstrand, C. B., Wang, L., Taylor, M. J., and Miller, A. D.: Kelvin–Helmholtz Instability “Tube” and “Knot” Dynamics. Part I: Expanding Observational Evidence of Occurrence and Environmental Influences, *Journal of the Atmospheric Sciences*, 80, 2419 – 2437, <https://doi.org/10.1175/JAS-D-22-0189.1>, 2023.
- Garcia, R. R.: Dynamics, radiation, and photochemistry in the mesosphere: Implications for the formation of noctilucent clouds, *Journal of Geophysical Research: Atmospheres*, 94, 14 605–14 615, <https://doi.org/https://doi.org/10.1029/JD094iD12p14605>, 1989.
- 400 Gardner, C. S., Papen, G. C., Chu, X., and Pan, W.: First lidar observations of middle atmosphere temperatures, Fe densities, and polar mesospheric clouds over the north and south poles, *Geophysical Research Letters*, 28, 1199–1202, <https://doi.org/https://doi.org/10.1029/2000GL012622>, 2001.
- Gerding, M., Höffner, J., Lautenbach, J., Rauthe, M., and Lübken, F.-J.: Seasonal variation of nocturnal temperatures between 1 and 105 km altitude at 54N observed by lidar, *Atmospheric Chemistry and Physics*, 8, 7465–7482, <https://doi.org/10.5194/acp-8-7465-2008>, 2008.
- 405 Gerding, M., Höffner, J., Hoffmann, P., Kopp, M., and Lübken, F.-J.: Noctilucent cloud variability and mean parameters from 15 years of lidar observations at a mid-latitude site (54°N, 12°E), *Journal of Geophysical Research: Atmospheres*, 118, 317–328, <https://doi.org/https://doi.org/10.1029/2012JD018319>, 2013a.
- Gerding, M., Kopp, M., Hoffmann, P., Höffner, J., and Lübken, F.-J.: Diurnal variations of midlatitude NLC parameters observed by daylight-capable lidar and their relation to ambient parameters, *Geophysical Research Letters*, 40, 6390–6394, <https://doi.org/https://doi.org/10.1002/2013GL057955>, 2013b.
- 410 Hansen, G., Serwazi, M., and von Zahn, U.: First detection of a noctilucent cloud by lidar, *Geophysical Research Letters*, 16, 1445–1448, <https://doi.org/https://doi.org/10.1029/GL016i012p01445>, 1989.
- Hervig, M. E., Siskind, D. E., Stevens, M. H., and Deaver, L. E.: Inter-hemispheric comparison of PMCs and their environment from SOFIE observations, *Journal of Atmospheric and Solar-Terrestrial Physics*, 104, 285–298, <https://doi.org/https://doi.org/10.1016/j.jastp.2012.10.013>, 2013.
- 415 Hervig, M. E., Gerding, M., Stevens, M. H., Stockwell, R., Bailey, S. M., Russell, J. M., and Stober, G.: Mid-latitude mesospheric clouds and their environment from SOFIE observations, *Journal of Atmospheric and Solar-Terrestrial Physics*, 149, 1–14, <https://doi.org/https://doi.org/10.1016/j.jastp.2016.09.004>, 2016.

- Hervig, M. E., Siskind, D. E., Bailey, S. M., Merkel, A. W., DeLand, M. T., and Russell III, J. M.: The Missing Solar Cycle Response of the Polar Summer Mesosphere, *Geophysical Research Letters*, 46, 10 132–10 139, <https://doi.org/https://doi.org/10.1029/2019GL083485>, 2019.
- Hindley, N. P., Cobbett, N., Fritts, D. C., Janchez, D., Mitchell, N. J., Moffat-Griffin, T., Smith, A. K., and Wright, C. J.: Radar observations of winds, waves and tides in the mesosphere and lower thermosphere over South Georgia island (54°S, 36°W) and comparison to WACCM simulations, *Atmospheric Chemistry and Physics Discussions*, 2021, 1–36, <https://doi.org/10.5194/acp-2021-981>, 2021.
- Hultgren, K., Körnich, H., Gumbel, J., Gerding, M., Hoffmann, P., Lossow, S., and Megner, L.: What caused the exceptional mid-litudinal Noctilucent Cloud event in July 2009?, *Journal of Atmospheric and Solar-Terrestrial Physics*, 73, 2125–2131, <https://doi.org/https://doi.org/10.1016/j.jastp.2010.12.008>, Layered Phenomena in the Mesopause Region, 2011.
- Jesse, O.: Auffallende erscheinungen am abendhimmel, *Met. Zeit*, 2, 311–312, 1885.
- Jesse, O.: Die leuchtenden Nachtwolken, *METZ*, 5, 184–186, 1889.
- Kaifler, B. and Kaifler, N.: A Compact Rayleigh Autonomous Lidar (CORAL) for the middle atmosphere, *Atmospheric Measurement Techniques*, 14, 1715–1732, <https://doi.org/10.5194/amt-14-1715-2021>, 2021.
- Kaifler, N., Kaifler, B., Wilms, H., Rapp, M., Stober, G., and Jacobi, C.: Mesospheric Temperature During the Extreme Mid-latitude Noctilucent Cloud Event on 18/19 July 2016, *Journal of Geophysical Research: Atmospheres*, 123, 13,775–13,789, <https://doi.org/10.1029/2018JD029717>, 2018.
- Kaifler, N., Kaifler, B., Dörnbrack, A., Rapp, M., Hormaechea, J. L., and de la Torre, A.: Lidar observations of large-amplitude mountain waves in the stratosphere above Tierra del Fuego, Argentina, *Scientific reports*, 10, 1–10, 2020.
- Kaifler, N., Kaifler, B., Rapp, M., and Fritts, D. C.: The polar mesospheric cloud dataset of the Balloon Lidar Experiment BOLIDE, *Earth System Science Data Discussions*, 2022, 1–17, <https://doi.org/10.5194/essd-2022-158>, 2022.
- Karlsson, B., Randall, C., Shepherd, T., Harvey, V., Lumpe, J., Nielsen, K., Bailey, S., Hervig, M., and Russell III, J.: On the seasonal onset of polar mesospheric clouds and the breakdown of the stratospheric polar vortex in the Southern Hemisphere, *Journal of Geophysical Research Atmospheres*, 116, <https://doi.org/10.1029/2011JD015989>, 2011.
- Kirkwood, S. and Stebel, K.: Influence of planetary waves on noctilucent cloud occurrence over NW Europe, *Journal of Geophysical Research: Atmospheres*, 108, <https://doi.org/https://doi.org/10.1029/2002JD002356>, 2003.
- Kirkwood, S., Dalin, P., and Réchou, A.: Noctilucent clouds observed from the UK and Denmark: trends and variations over 43 years, *Annales Geophysicae*, 26, 1243–1254, <https://doi.org/10.5194/angeo-26-1243-2008>, 2008.
- Klekociuk, A. R., Morris, R. J., and Innis, J. L.: First Southern Hemisphere common-volume measurements of PMC and PMSE, *Geophysical Research Letters*, 35, <https://doi.org/10.1029/2008GL035988>, 2008.
- Leslie, R. C.: Sky glows, *Nature*, 32, 245–245, 1885.
- Liu, G., Janches, D., Lieberman, R. S., Moffat-Griffin, T., Fritts, D. C., and Mitchell, N. J.: Coordinated Observations of 8- and 6-hr Tides in the Mesosphere and Lower Thermosphere by Three Meteor Radars Near 60°S Latitude, *Geophysical Research Letters*, 47, e2019GL086629, <https://doi.org/https://doi.org/10.1029/2019GL086629>, e2019GL086629 2019GL086629, 2020.
- Lübken, F.-J. and Berger, U.: Interhemispheric comparison of mesospheric ice layers from the LIMA model, *Journal of Atmospheric and Solar-Terrestrial Physics*, 69, 2292–2308, <https://doi.org/https://doi.org/10.1016/j.jastp.2007.07.006>, vertical Coupling in the Atmosphere/Ionosphere System, 2007.
- Machol, J., Snow, M., Woodraska, D., Woods, T., Viereck, R., and Coddington, O.: An Improved Lyman-Alpha Composite, *Earth and Space Science*, 6, 2263–2272, <https://doi.org/https://doi.org/10.1029/2019EA000648>, 2019.

- Merkel, A. W., Thomas, G. E., Palo, S. E., and Bailey, S. M.: Observations of the 5-day planetary wave in PMC measurements from the Student Nitric Oxide Explorer Satellite, *Geophysical Research Letters*, 30, <https://doi.org/https://doi.org/10.1029/2002GL016524>, 2003.
- Merkel, A. W., Garcia, R. R., Bailey, S. M., and Russell III, J. M.: Observational studies of planetary waves in  
460 PMCs and mesospheric temperature measured by SNOE and SABER, *Journal of Geophysical Research: Atmospheres*, 113, <https://doi.org/https://doi.org/10.1029/2007JD009396>, 2008.
- Nedoluha, G. E., Gomez, R. M., Boyd, I., Neal, H., Allen, D. R., Lambert, A., and Livesey, N. J.: Mesospheric Water Vapor in 2022, *Journal of Geophysical Research: Atmospheres*, 128, e2023JD039196, <https://doi.org/https://doi.org/10.1029/2023JD039196>, e2023JD039196 2023JD039196, 2023.
- 465 Nielsen, K., Nedoluha, G. E., Chandran, A., Chang, L. C., Barker-Tvedtnes, J., Taylor, M. J., Mitchell, N. J., Lambert, A., Schwartz, M. J., and Russell III, J. M.: On the origin of mid-latitude mesospheric clouds: The July 2009 cloud outbreak, *Journal of Atmospheric and Solar-Terrestrial Physics*, 73, 2118–2124, <https://doi.org/https://doi.org/10.1016/j.jastp.2010.10.015>, layered Phenomena in the Mesopause Region, 2011.
- Nussbaumer, V., Fricke, K. H., Langer, M., Singer, W., and von Zahn, U.: First simultaneous and common volume observations of noctilucent  
470 clouds and polar mesosphere summer echoes by lidar and radar, *Journal of Geophysical Research: Atmospheres*, 101, 19 161–19 167, <https://doi.org/https://doi.org/10.1029/96JD01213>, 1996.
- Olivero, J. J. and Thomas, G. E.: Climatology of polar mesospheric clouds, *Journal of Atmospheric Sciences*, 43, 1263–1274, 1986.
- Pertsev, N., Dalin, P., Perminov, V., Romejko, V., Dubietis, A., Baliunas, R., and et al.: Noctilucent clouds observed from the ground: sensitivity to mesospheric parameters and long-term time series, *Earth, Planets and Space*, 66, 1–9, 2014.
- 475 Pokhotelov, D., Stober, G., and Chau, J. L.: Statistical climatology of mid-latitude mesospheric summer echoes characterised by OSWIN (Ostsee-Wind) radar observations, *Atmospheric Chemistry and Physics*, 19, 5251–5258, <https://doi.org/10.5194/acp-19-5251-2019>, 2019.
- Reichert, R., Kaifler, B., Kaifler, N., Dörnbrack, A., Rapp, M., and Hormaechea, J. L.: High-Cadence Lidar Observations of Middle Atmospheric Temperature and Gravity Waves at the Southern Andes Hot Spot, *Journal of Geophysical Research: Atmospheres*, 126, e2021JD034683, <https://doi.org/https://doi.org/10.1029/2021JD034683>, e2021JD034683 2021JD034683, 2021.
- 480 Russell III, J. M., Rong, P., Hervig, M. E., Siskind, D. E., Stevens, M. H., Bailey, S. M., and Gumbel, J.: Analysis of northern midlatitude noctilucent cloud occurrences using satellite data and modeling, *Journal of Geophysical Research: Atmospheres*, 119, 3238–3250, <https://doi.org/https://doi.org/10.1002/2013JD021017>, 2014.
- Siskind, D. E. and McCormack, J. P.: Summer mesospheric warmings and the quasi 2 day wave, *Geophysical Research Letters*, 41, 717–722, <https://doi.org/https://doi.org/10.1002/2013GL058875>, 2014.
- 485 Siskind, D. E., Stevens, M. H., Emmert, J. T., Drob, D. P., Kochenash, A. J., Russell III, J. M., Gordley, L. L., and Mlynczak, M. G.: Signatures of shuttle and rocket exhaust plumes in TIMED/SABER radiance data, *Geophysical Research Letters*, 30, <https://doi.org/https://doi.org/10.1029/2003GL017627>, 2003.
- Siskind, D. E., Stevens, M. H., Hervig, M. E., and Randall, C. E.: Recent observations of high mass density polar mesospheric clouds: A link to space traffic?, *Geophysical Research Letters*, 40, 2813–2817, <https://doi.org/https://doi.org/10.1002/grl.50540>, 2013.
- 490 Stevens, M. H., Englert, C. R., DeLand, M. T., and Hervig, M.: The polar mesospheric cloud mass in the Arctic summer, *Journal of Geophysical Research: Space Physics*, 110, <https://doi.org/https://doi.org/10.1029/2004JA010566>, 2005a.
- Stevens, M. H., Meier, R. R., Chu, X., DeLand, M. T., and Plane, J. M. C.: Antarctic mesospheric clouds formed from space shuttle exhaust, *Geophysical Research Letters*, 32, <https://doi.org/https://doi.org/10.1029/2005GL023054>, 2005b.

- 495 Stevens, M. H., Lossow, S., Fiedler, J., Baumgarten, G., Lübken, F.-J., Hallgren, K., Hartogh, P., Randall, C. E., Lumpe, J., Bailey, S. M., Niciejewski, R., Meier, R. R., Plane, J. M. C., Kochenash, A. J., Murtagh, D. P., and Englert, C. R.: Bright polar mesospheric clouds formed by main engine exhaust from the space shuttle's final launch, *Journal of Geophysical Research: Atmospheres*, 117, <https://doi.org/https://doi.org/10.1029/2012JD017638>, 2012.
- 500 Stevens, M. H., Randall, C. E., Carstens, J. N., Siskind, D. E., McCormack, J. P., Kuhl, D. D., and Dhadly, M. S.: Northern Mid-Latitude Mesospheric Cloud Frequencies Observed by AIM/CIPS: Interannual Variability Driven by Space Traffic, *Earth and Space Science*, 9, e2022EA002217, <https://doi.org/https://doi.org/10.1029/2022EA002217>, e2022EA002217 2022EA002217, 2022.
- Thomas, G.: Is the polar mesosphere the miner's canary of global change?, *Advances in Space Research*, 18, 149–158, [https://doi.org/https://doi.org/10.1016/0273-1177\(95\)00855-9](https://doi.org/https://doi.org/10.1016/0273-1177(95)00855-9), *thermosphere-Ionosphere-Middle Atmosphere Coupling and Dynamics*, 1996.
- 505 Tseraskii, V. K.: Astronomichesky fotometr i ego prilozhenia (Astronomical photometer and its applications), *Matematicheskii sbornik*, 13, 76–81, 1887.
- Vellalassery, A., Baumgarten, G., Grygalashvyly, M., and Lübken, F.-J.: Greenhouse gas effects on the solar cycle response of water vapour and noctilucent clouds, *Annales Geophysicae*, 41, 289–300, <https://doi.org/10.5194/angeo-41-289-2023>, 2023.
- Witt, G.: Height, structure and displacements of noctilucent clouds, *Tellus*, 14, 1–18, <https://doi.org/10.3402/tellusa.v14i1.9524>, 1962.
- 510 Yu, W., Garcia, R., Yue, J., Smith, A., Wang, X., Randel, W., Qiao, Z., Zhu, Y., Harvey, V. L., Tilmes, S., and Mlynczak, M.: Mesospheric Temperature and Circulation Response to the Hunga Tonga-Hunga-Ha'apai Volcanic Eruption, *Journal of Geophysical Research: Atmospheres*, 128, e2023JD039636, <https://doi.org/https://doi.org/10.1029/2023JD039636>, e2023JD039636 2023JD039636, 2023.
- Zalcik, M. S., Noble, M. P., Dalin, P., Robinson, M., Boyer, D., Dzik, Z., Heyhurst, M., Kunnunpuram, J. G., Mayo, K., Toering, G., et al.: In Search of Trends in Noctilucent Cloud Incidence from the La Ronge Flight Service Station (55N 105W)., *Journal of the Royal Astronomical Society of Canada*, 108, 148–155, 2014.
- 515 Zalcik, M. S., Lohvinenko, T. W., Dalin, P., and Denig, W.: North American Noctilucent Cloud Observations in 1964-77 and 1988-2014: Analysis and Comparisons., *Journal of the Royal Astronomical Society of Canada*, 110, 8–15, 2016.