

Response (black) to the reviewer's comments (blue italics) by the authors:

We thank the reviewer for careful reading and especially pointing to present and past works on the topic.

Page 1, L.3: "At northern hemisphere mid-latitudes, the occurrence of NLC seems to increase with time." This sentence should be removed from the abstract since it is debatable in the literature and it is beyond the scope of the present manuscript.

The sentence was deleted as suggested.

Page 1, L.16-17: "Noctilucent clouds (NLC) were discovered at northern-hemispheric midlatitudes by visual observation of the horizon in twilight conditions (Backhouse, 1885; Jesse, 1885; Leslie, 1885)." Please add here the paper by Tseraskii (1887) who observed, photographed and estimated the NLC altitude for the first time already in June 1885.

The reference was added as suggested, thank you.

Page 2, L.25-28: " In recent decades, the number of observations in the northern hemisphere appeared to increase, and efforts were made to uncover the origins of mid-latitude NLC and study their possible relation to climate change (von Cossart et al., 1996; Nielsen et al.,2011; Hultgren et al., 2011; Gerding et al., 2013a; Russell III et al., 2014; Hervig et al., 2016)." This is not the whole story of the topic regarding "the number of in the northern hemisphere appeared to increase...". The authors traditionally highlight one side of this topic only, and traditionally forgetting another side of this problem. There is a series of scientific publications clearly demonstrating a slight positive statistically insignificant trend or about zero trend in the NLC occurrence number and NLC brightness at middle latitudes (Dalín et al., 2020, Dubietis et al., 2010; Kirkwood et al., 2008; Kirkwood and Stebel, 2003; Pertsev et al., 2014; Zalcik et al., 2014, 2016). If the authors really want to highlight this topic then the authors should illuminate another side of this problem on about zero trend in the NLC occurrence at mid-latitudes as well (see Dalín et al., 2020 and references therein). Otherwise, this topic should be removed since it is beyond the scope of the present manuscript.

We admit that the introduction was kept too short, although some references dealing with this complex topic were given. As some aspects like solar cycle and planetary wave effects are discussed later in the manuscript, we chose to extend the introduction and included all suggested citations (thank you) as well as the two noted by the other reviewer. The text was changed to:

"The formation of NLC sensitively depends on temperature and the available water vapour \citep{Hervig2016}, making them a potential indicator of climate change \citep{Thomas1996}. Establishing long-term trends however requires careful analysis of datasets and correction of varying responses of NLC to the solar cycle and planetary waves \citep{DeLand2002,Kirkwood2003,Gerding2012,Russell2013,Hervig2019}. Although with the rise of digital cameras amateur reports from Europe and North America are now numerous, studies of long-term ground-based and satellite records found no general long-term trend \citep{Kirkwood2008,Dubietis2010,Pertsev2014,Zalcik2014,Zalcik2016,Dalín2020}."

Page 2, L.40-42: "Prior to the deployment, no sightings of NLC north of 54°S have ever been reported from this or any other longitude in the southern hemisphere." This sentence sounds strange. It is well-known that a big network of NLC observing stations was established in the southern hemisphere (between 45°S and 90°S) in the 1960s. 2 In particular, there were registered and photographed several NLC displays from Punta Arenas 53.1°S, 71.0°W (Chile). Besides, one can read the following statement from Fogle and Haurwitz (1966): "The brightest and most widespread displays observed on

the expedition occurred during the period January 1-4 with the best display taking place on the night of January 3 (this display was also observed by personnel at the weather stations at Port Stanley (51.7°S, 57.9°W) in the Falkland Islands...". Thus, this is certainly "north of 54°S". Please see publications by Fogle (1964, 1965), Fogle and Haurwitz (1966) on NLC observations in the SH.

That's true. The observations by Benson Fogle in the 1960s were mentioned in the first paragraph. He himself doubted two historic reports from Punta Arenas. He observed one display in Januar 1965. In the austral summer of 1965/1966, a dedicated observation campaign including aircraft resulted in nine observations between 25 Dec and 20 Jan, two of them bright. That matches quite well actually with our observations. These are the only reported results from the network shown in Fig. 5 of Fogle and Haurwitz (1966). Until a photograph from New Zealand from 1 Dec 2019, I found no further reports of visual NLC from outside the Antarctic continent. This is likely for lack of observers. The sentence was modified and the references to Fogle added more prominently to the introduction.

"Ground-based camera network were very successfull in systematically observing the skies for the occurrence of noctilucent clouds (Witt1962, Fogle and Haurwitz, 1966, Dalin et al., 2009, Dubietis et al., 2010)."

"Historical observations from the southern hemisphere are rare and limited to the reports by Jesse (1889) and (Fogle, 1965; Fogle and Haurwitz, 1966) from Punta Arenas.."

"Prior to the deployment, no recent NLC observations were known from this latitude."

Page 6, L.128-129: "... the NLC layer is perturbed at periods below the Brunt-Vaisala period." Some comment is needed here to explain how it is possible to observe periods in an NLC layer below the Brunt-Vaisala period.

Instabilities such as Kelvin-Helmholtz instabilities induced by breaking waves could exhibit such short periods. The process is mentioned in the paragraph and the sentence modified to "at periods below the Brunt-Vaisala period, indicative of instabilities."

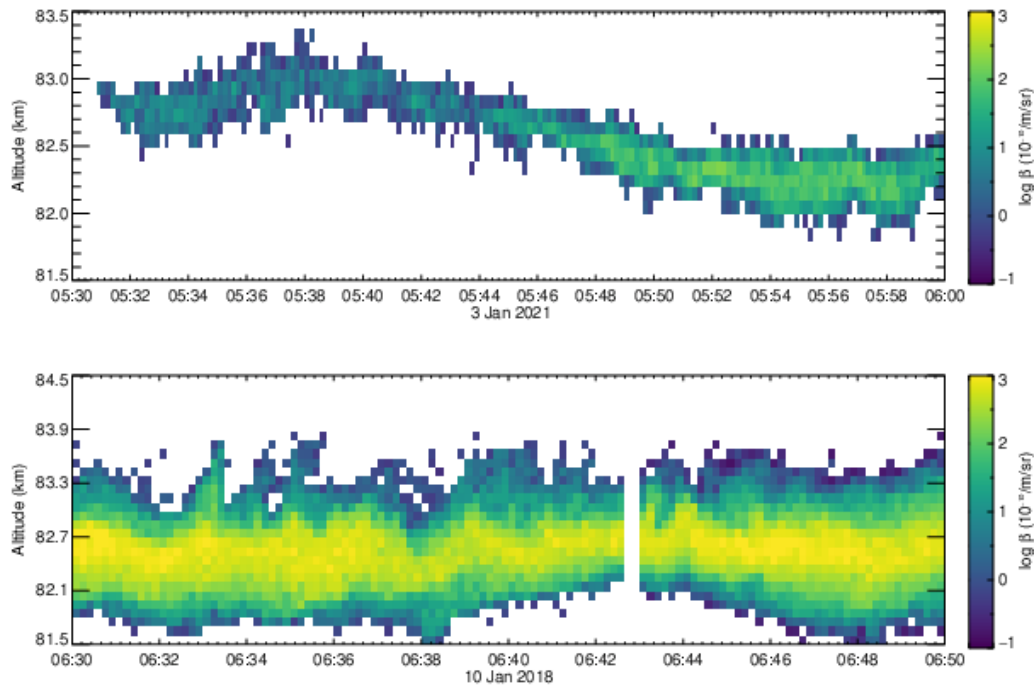
Page 7, L.146-147: "In fact, NLC can be detected in camera images at locations close to the lidar beam and yet remain invisible to the lidar." Some comment is needed here to explain why NLC might be invisible to the lidar, having NLC in images close to the position of the lidar beam.

That might occur due to local variability in the NLC layer, that is sometimes patchy or has holes. The lidar only has a very small field of view and thus footprint at the NLC layer on the order of 1 m, which makes it very sensitive to local variations of NLC brightness. Thus seeing NLC in the general direction is no guarantee that it can be detected in that exact spot the lidar points to.

The sentence was changed to: "If the NLC layer is very patchy, it might be possible that although NLC is visible at locations close to lidar beam, it is not detected in the small spot observed by the lidar."

Page 8-9, L.168-169: "Evidence for the very same small-scale dynamics are also found throughout the lidar soundings in the form of very short-period (around 1 min) modulations of the NLC layer with vertical displacements of few hundred meters." In my opinion, this is a very interesting result which is better to demonstrate it in a figure. Please add a figure showing small-scale short-period (1 min) dynamics of the lidar sounding for this case.

Here is a zoomed-in version of Fig. 2e showing very short scale motions if rather low amplitude that are superposed on the brighter layer. We add this as suggested as sub-figure to Fig. 3. Another nice example of also about 1-min oscillations occurs on 10 Jan 2018 (Fig. 2a), enlarged also below, showing that this is not an uncommon feature.



Page 12, L.211: *“The peak in brightness between 5–7:30 UT...”* Please add LT here as well.

changed to 5--7:30~UT (2--4:30~LT) as Argentina time zone is UTC-3

Page 12, L.226: *“Spectral power for periods between 6 h and 16 d are presented in Fig. 6”* In Fig. 6, one can see the period scale until 10 days. Where can I find periods of more than 10 days?

Thank you for pointing this discrepancy out. Indeed I modified the plot axis because no significant periods of more than 10 days were detected. The time series might also be too short to reliably detect 16-day waves by this technique. We adjusted the figure axis.

Page 13, L.232-233: *“(Merkel et al., 2003) and (Merkel et al., 2008) detected a pattern in noctilucent cloud brightness related to the 5-day planetary wave from satellite measurements.”* Here it is worth mentioning two papers by Dalin et al. (2008; 2011) which clearly demonstrated the influence of 2- and 5-day planetary waves on NLC activity.

Thank you, the references were added in this paragraph and in the introduction.

Page 17, L.281-282: *“An additional source of water vapour in the upper mesosphere and lower thermosphere that might trigger bright NLC especially at mid-latitudes is rocket engine exhaust (Stevens et al., 2012; Siskind et al., 2013; Stevens et al., 2022).”* Here it is worth mentioning the paper by Dalin et al. (2013) which clearly demonstrated the direct formation of NLC in the rocket exhaust trail.

The reference was added.