

Supplementary material:

Use of simple analytical solutions in the calibration of Shallow Water Equations debris flow models

Bonomelli Riccardo¹, Marco Pilotti¹, Gabriele Farina¹

5 ¹DICATAM, Università degli Studi di Brescia, Brescia, 25123, Italy

Correspondence to: Riccardo Bonomelli (riccardo.bonomelli@unibs.it)

1 Photo survey of the debris flow occurred in the Blè basin

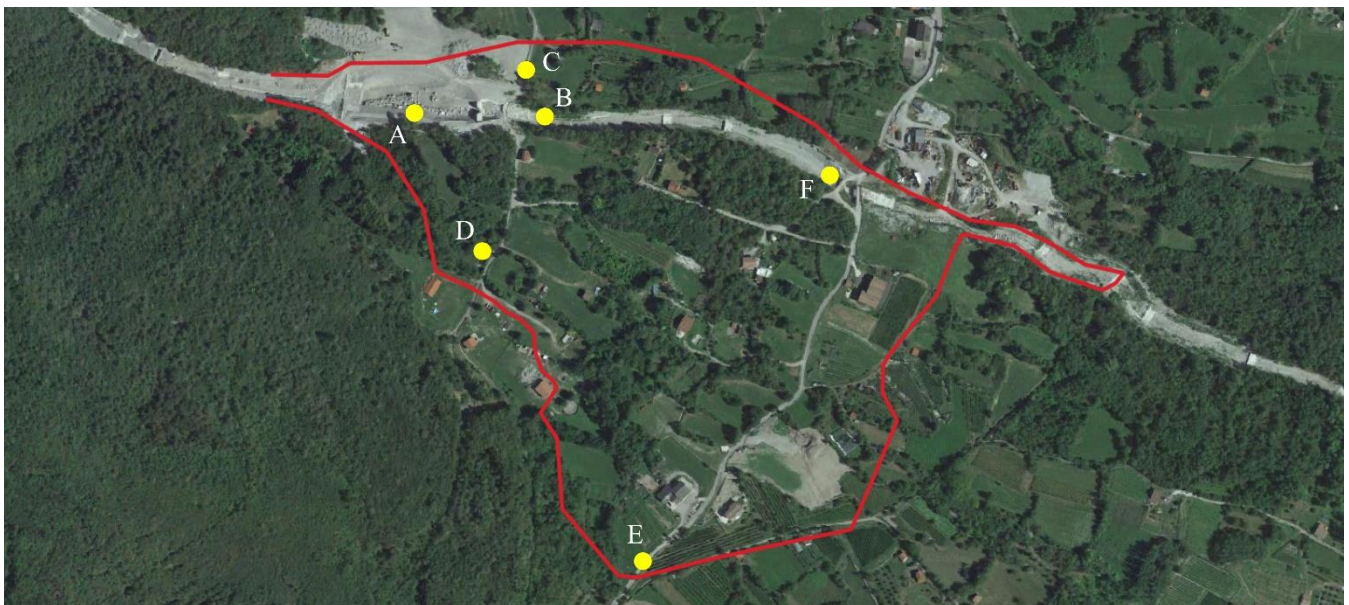


Figure 1. Map showing some photos taken after the debris flow event, (© Google Earth 2019).



10

Figure 2. Photo A.



Figure 3. Photo B.



15 **Figure 4. Photo C.**



Figure 5. Photo D.



Figure 6. Photo E.



20

Figure 7. Photo F.