



Method development and application for the analysis of chiral organic marker species in ice-cores

Johanna Schäfer¹, Anja Beschnitt¹, François Burgay^{2,3}, Thomas Singer^{2,3,4}, Margit Schwikowski^{2,3,4}, Thorsten Hoffmann¹

- 5 ¹Department of Chemistry, Johannes Gutenberg University, Mainz, 55099, Germany
²Laboratory of Environmental Chemistry (LUC), Paul Scherrer Institute, Villigen PSI, 5232, Switzerland
³Oeschger Centre for Climate Change Research, University of Bern, 3012 Bern, Switzerland
⁴Department of Chemistry, Biochemistry and Pharmaceutical Sciences, University of Bern, 3012 Bern, Switzerland
Correspondence to: Thorsten Hoffmann (t.hoffmann@uni-mainz.de)

10 **Abstract.** Glaciers are valuable environmental archives that preserve organic compounds from atmospheric aerosols that can be used as marker species for their respective emission sources. Most environmental studies do not distinguish between the enantiomers of chiral compounds, although these compounds, mostly from biogenic sources, are very common in the atmosphere. We have developed a two-dimensional liquid chromatography (mLC-LC) method that allows the simultaneous determination of the chiral ratios of the monoterpene oxidation products cis-pinonic acid and cis-pinonic acid in ice-core samples.
15 The method combines a reversed-phase column in the first dimension and a chiral column in the second dimension in a simple instrumental setup with only one additional six-port valve. This novel method was successfully applied to selected ice-core samples from the Belukha glacier in the Siberian Altai spread over the period 1870-1970 CE. The chiral ratio of cis-pinonic acid showed fluctuating values, while the chiral ratio of cis-pinonic acid remained more constant with an excess of the (–)-enantiomer.

20 1 Introduction

Volatile organic compounds (VOCs) are emitted by all plant species and thus enter the atmosphere in large quantities. The most common classes of these biogenic VOCs are isoprene and monoterpenes such as α - and β -pinene, which form low-volatile compounds after reaction with atmospheric ozone, OH and NO₃ radicals (Guenther et al. 1995; Kroll und Seinfeld 2008). Gas-to-particle conversion of the reaction products leads to the formation of secondary organic aerosols (SOA), which then directly
25 influence the Earth's radiation budget via absorption, reflection or scattering of incoming sunlight, or indirectly via their function as cloud condensation nuclei (Jokinen et al. 2015; Kourtev et al. 2008). Many biogenic VOCs are chiral, i.e., they have stereoisomers whose structures are like mirror images of each other. In an achiral environment, these enantiomers share most physical and chemical properties, so in most studies no distinction is made in the analysis. However, in a stereogenic and therefore natural environment, chirality has a major impact on biological processes. Many organisms only release a certain enantiomer or at least a certain ratio of enantiomers, e.g., in the diverse interactions between plants and insects (Phillips et al.
30 2003; Mori 2014; Malik et al. 2023) Prominent examples are the monoterpenes α - and β -pinene, each of which has an enantiomeric (+) and (-) form. The stereo information of chiral compounds can be retained in oxidation reactions and can therefore be found not only in the volatile precursors, but also in some of the low-volatile biogenic SOAs compounds. For example, the four-membered ring of the α - and β -pinene, which carries the stereo information, remains intact during their
35 oxidation to cis-pinonic acid or to cis-pinonic acid (Leppla et al. 2021; Ebben et al. 2011; Leppla et al. 2023). Interestingly, measurements at the ATTO tower (Amazonian Tall Tower Observatory) in Brazil have shown that the chiral ratio of cis-pinonic acid does not always correlate with the chiral ratio of its main precursor, α -pinene. In this case it is assumed that the chiral ratio of the short-lived precursors (α - and β -pinene) depends more on local emissions, whereas the chiral ratios of the SOA components tend to reflect the larger-scale emissions (Zannoni et al. 2020; Leppla et al. 2021). Overall, there are only a few



40 enantioselective studies on pinene that have been carried out in ambient air. However, the measurements performed to date
indicate a high degree of regiospecificity as well as temporal variations in the chiral composition of the measured VOCs
(Williams et al. 2007; Staudt et al. 2019; Zannoni et al. 2020; Byron et al. 2022). The emission of pinene enantiomers strongly
depends on the type of vegetation, even tree species. Yassaa et al. analyzed different chemotypes of Scots pine and spruce and
were able to show that each of these different conifers emits different ratios of pinene enantiomers (Yassaa et al. 2012). In
45 spruce, for example, (-)- α -pinene predominates. The pinene composition in atmospheric aerosols is therefore strongly
dependent on the local flora. In addition, different chiral signatures were found in the canopy, trunk and soil regions of a
maritime pine forest (Staudt et al. 2019) and in the Brazilian rainforest (Zannoni et al. 2020). Byron et al. investigated the
emissions of monoterpenes, including (+)- α -pinene, (-)- α -pinene and (-)- β -pinene, in a closed tropical rainforest ecosystem
under extreme climatic conditions (Byron et al. 2022). Again, the enantiomers showed unique responses to drought and rain
50 phases, suggesting that enantiomer distribution is key to understanding the underlying processes driving monoterpene
emissions from forest ecosystems and should be understood to predict atmospheric feedbacks in response to climate change.

Insights into past atmospheric conditions are essential for understanding recent environmental and climate change. A historical
record of chiral monoterpenes could therefore shed light on the underlying dynamics of their emissions. Mid- and high-latitude
55 glaciers are particularly valuable environmental archives, because they are located close to the emission sources. Monoterpenes
have short lifetimes of a few minutes to a few hours in the atmosphere (Kesselmeier et al. 2000) and have therefore not yet
been measured directly in ice-cores. In contrast, the longer lifetimes of less reactive SOA compounds such as *cis*-pinic acid
and *cis*-pinonic acid enable their atmospheric transport to glaciers, where they have already been successfully analyzed
(Beschnitt et al. 2022; Müller-Tautges et al. 2016; Pokhrel et al. 2016; Fu et al. 2016; King et al. 2019a; King et al. 2019b;
60 Vogel et al. 2019), although no chiral distinction has been made so far. The aim of this study is therefore to develop a method
to analyze the chiral distribution of these compounds in ice-core samples. Since the separation of the complex sample matrix
with a simple chiral column is difficult due to its limited chemical selectivity, a multiple heart-cutting 2D-LC method (mLC-
LC) was developed. The optimized method was applied to several samples of an ice-core originating from the Belukha glacier
of the Siberian Altai in Central Asia.

65

2 Materials and methods

2.1 Materials

Ultrapure methanol (MeOH, LC/MS grade), water (LC/MS grade) and acetonitrile (ACN, LC/MS grade) were purchased from
70 Fisher Scientific. Formic acid (99%, LC/MS) was obtained from VWR Chemicals. Ammonium hydroxide solution (analytical
grade, 25%) was obtained from Honeywell Fluka. Hydrochloric acid (HCl, suprapure, 30%) was purchased from Merck KGaA.
Enantiomerically pure (-) and (+)- α -pinene (99%, optical purity ee: 97%) as well as *cis*-pinonic acid (99%) were purchased
from Sigma-Aldrich. Ultrapure water with 18.2 M Ω cm resistance was produced using a water purification system from Merck
Millipore. A standard compound of *cis*-pinic acid was synthesized according to (Mogliani et al. 2000).

75

2.2 Sample preparation

The ice-core was recovered from the Belukha glacier (4062 m.a.s.l. - 49°48'27.7"N; 86°34'46.5"E) by a team of the Paul
Scherrer Institut (PSI, Villigen, Switzerland) together with scientist from the Institute of Water and Environmental Problems
(IWEP, Barnaul, Russia) in 2018 and was stored at -20 °C in a cold room at the PSI (Burgay et al. 2024). For analysis, the



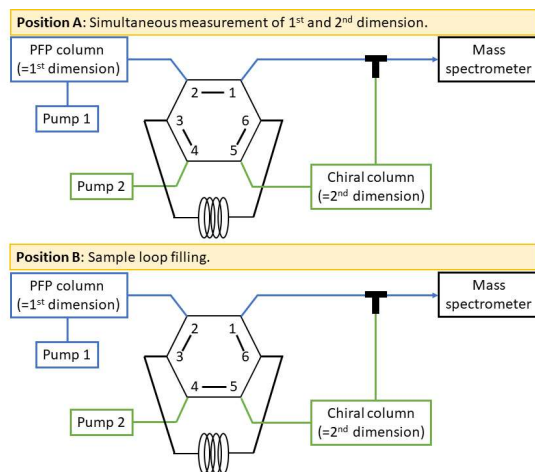
80 outer layer was removed to minimize potential contamination. The inner part was cut into sections, melted under helium-atmosphere and then filtered through a quartz-fiber filter. Samples were transferred to pre-cleaned amber glass vials with PTFE coated screw caps and stored at $-25\text{ }^{\circ}\text{C}$ until analysis. The cleaning procedure of the vials involved rinsing with ultrapure water and LC-MS grade methanol three times each and a bake-out at $450\text{ }^{\circ}\text{C}$ for 8 hours (Bosle et al. 2014; Burgay et al. 2023). For analysis, the samples were melted at room temperature and aliquots of 10 mL were taken and set to pH 8 with 10 μL of a
85 methanolic 5% ammonium hydroxide solution. The samples were loaded onto SPE cartridges (WAX, 3cc, 60 mg, Waters, Milford USA), which were preconditioned with methanol and 0.1% formic acid in ultrapure water (6 mL each). The cartridges were then rinsed with 6 mL of ultrapure water and dried by blowing air through the cartridges. The compounds were eluted with three portions of 500 μL methanol, followed by three portions of 500 μL 5% methanolic ammonium hydroxide solution. The eluate was evaporated to dryness under a gentle stream of nitrogen at $30\text{ }^{\circ}\text{C}$ and the residue was dissolved in 200 μL of
90 $\text{H}_2\text{O}/\text{ACN}$ (1:1, v/v) supported by sonification at $30\text{ }^{\circ}\text{C}$ for 10 min. The samples were then filtered through PTFE filters (3mm, 0.2 μm , Altmann Analytik, Germany) and stored in the freezer at $-25\text{ }^{\circ}\text{C}$. Standard solutions of racemic cis-pinonic acid and cis-pinonic acid were prepared in $\text{H}_2\text{O}/\text{ACN}$ (1:1, v/v).

95 2.3 Chromatography and mass spectrometry

Measurements were performed using a UHPLC unit (Dionex Ultimate 3000, Thermo Fisher Scientific, Germany) coupled to a Q-Exactive Hybrid Quadrupole-Orbitrap mass spectrometer (Thermo Fisher Scientific, Germany). The ion source used was an ESI source operated in negative mode. The ESI probe was heated to $150\text{ }^{\circ}\text{C}$, and the capillary temperature was set to $320\text{ }^{\circ}\text{C}$. The sheath gas pressure was set to 60 psi, the auxiliary gas pressure to 20 psi, and the spray voltage to -3.5 kV . The mass
100 spectrometer was operated in full-scan mode with a mass range of m/z 80–500 and a mass resolution of 70,000. The instrument was operated using XCalibur 4.3 software. Chromatographic separation of the analytes, cis-pinonic acid and cis-pinonic acid, was performed using an Acquity UPLC CSH Fluoro-Phenyl (PFP) column (100x2.1 mm, 1.7 μm , Waters, USA). This corresponds to the first dimension of the 2D LC method and is referred to as such below. In the second dimension, chiral separation of enantiomers was performed on an amylose-based tris(3-chloro-5-methylphenylcarbamate) column (150x2.1 mm
105 ID, 5 μm , Daicel, CHIRALPAK IG). In both dimensions, separation was achieved with eluents A (water containing 2% ACN and 0.04% formic acid) and B (ACN containing 2% water) at a constant flow of 200 $\mu\text{L}/\text{min}$ and a column oven temperature of $40\text{ }^{\circ}\text{C}$. The respective gradients are summarized in Table 1.

2.3.1 Two-dimensional separation

110 Two-dimensional separation was performed on the previously mentioned columns connected to two separate pumps. The target analytes were transferred from the first dimension (PFP) to the second dimension (chiral) via a second six-way valve and a 20 μL sample loop. Both pathways were combined before being introduced into the mass spectrometer (Fig. 1), so that both dimensions were measured simultaneously in position A. In this position, the sample loop is flushed with the eluents from pump 2 (second dimension). In position B, the valve is switched over so that the sample loop is filled from the first dimension
115 via pump 1. Position B is maintained for the duration of the analyte peak, then switched back to position A. Now the pre-cut volume is transferred to the chiral column in the second dimension via pump 2 and then transferred to the mass spectrometer. The optimal time windows for maximum analyte transfer proved to be at 2.70–2.80 min and 3.76–3.86 min for cis-pinonic acid and cis-pinonic acid, respectively. The valve was therefore only in position B during these periods, otherwise position A was maintained.



120

Figure 1: Instrumental setup of the heartcut-2D-LC method. In the first dimension, separation is performed using a PFP column; in the second dimension, the target enantiomers are separated on a chiral column. In position A, the sample loop is rinsed with solvent from pump 2. The heartcut is performed by switching to position B, whereby the target analyte from the first dimension is rinsed into the sample loop and then transferred to the chiral column by switching to A again. Both dimensions are combined via a T-piece and fed together into the mass spectrometer.

125

Table 1: Solvent conditions and valve positions of the 2D-LC method. Pump 1 operates the 1st dimension, pump 2 operates the 2nd dimension. Eluents A and C are 98% H₂O with 2% ACN and 0.04% formic acid, eluents B and D are 98% ACN with 2% H₂O. Flow is 0.2 mL/min in both cases.

Pump 1		Pump 2		Valve	
Time (min)	A (%)	Time (min)	C (%)	Time (min)	Position
0	80	0	85	0	A
15	80	8	85	2.7	B
15.5	1	8.1	80	2.8	A
17	1	15	80	3.76	B
17.5	80	15.5	1	3.86	A
18	80	16.6	1		
		17.5	85		
		18	85		

130

2.4 Chamber experiments

The identification of the two enantiomers of cis-pinonic acid and cis-pinonic acid requires enantiomerically pure standards. Since these are not commercially available, ozonolysis experiments were performed with enantiomerically pure (+)- α -pinene and (-)- α -pinene (Sigma Aldrich, 99%, optical purity 97% ee). The experiments were carried out in a 100 L glass reaction chamber, which was darkened beforehand to exclude light-induced reactions. The chamber was connected to three gas inlets through which humidified air, ozone, and the volatile organic compound, in this case α -pinene, were introduced. For this purpose, ambient air was drawn in through a compressor and organic compounds were removed from the air stream using an activated carbon trap. The dry air was fed into an internal ozone generator of an ozone analyzer (Dasibi, 1008-RS, USA), where ozone was generated by irradiation with UV light (flow rate 3 L/min). To generate humidified air, the airflow was passed through a gas wash bottle containing ultrapure water at a flow rate of 4 L/min. A vial of α -pinene was placed in a VOC test gas apparatus, which was operated at a constant temperature of 40 °C and a flow rate of 1 l/min (Thorenz et al. 2012). In addition, the chamber

140



was connected to a condensation particle counter (CPC, Porta Count Plus, TSI Corp., USA) to monitor the particle number and thus the progress of the ozonolysis reaction. Since a slight overpressure was to be maintained in the chamber to prevent ambient air from entering the chamber, pressure equalization was ensured via two wash bottles containing kerosene oil. In order to be able to collect the desired ozonolysis products on a filter, a pump was connected behind the filter holder and a rotameter and needle valve were connected in between in order to be able to regulate the gas flow. A flow rate of 5.5 l/min was selected. The filters were made of borosilicate glass microfibers bonded with PTFE (Pallflex® Emfab, 70 mm diameter). Before conducting an experiment, the chamber was flushed overnight with humidified air to remove residual organic compounds from the chamber. The vial of enantiomerically pure α -pinene was weighed and then placed in the test gas source. The gas streams from the humidified air and the test gas source were adjusted to their respective values to introduce pinene into the chamber. After approximately two hours, the CPC and ozone generator were switched on. The particle count was monitored and after about 90 minutes sampling was started by switching on the pump behind the filter holder. Depending on the run, sampling took between 2 and 4 hours. The VOC vial was then weighed again to determine the amount of pinene released from the test gas source. For analysis, the filters were cut into small pieces and extracted three times with 1.5 mL 9:1 H₂O/MeOH on a rotary shaker for 40 min each. The solutions were filtered through PTFE filters (3 mm, 0.2 μ m, Altmann Analytik, Munich, Germany) and then evaporated under a gentle stream of nitrogen. After reconstitution in 9:1 ACN/H₂O, they were sonicated at 30 °C for 10 min and stored in the freezer until measurement.

160 **3 Results and discussion**

160 **3.1 Method development of heart-cut two-dimensional LC (m2D-LC)**

Before using the two-dimensional approach, the separation of the analytes in each dimension was first optimised. The separation of cis-pinonic acid enantiomers on the CHIRALPAK IG column is achieved with isocratic conditions (80:20) using eluents A (water containing 2% ACN and 0.04% formic acid) and eluent B (ACN containing 2% water), as well as a flow rate of 200 μ L/min and an oven temperature of 25 °C, as described in (Leppla et al. 2021). This method just about achieves baseline separation. However, poorer separation in the second dimension of the 2D LC method was expected because the analyte is less compactly transferred from the sample loop to the second dimension (Stoll und Carr 2017). To improve the separation further, different eluent compositions, gradients, flow rates as well as oven temperatures were tested. A summary of all conditions tested can be found in the Supplementary Material (Table S1, Table S2). A significant reduction in peak width was achieved by increasing the oven temperature to 40 °C and a slight alteration of the initial isocratic solvent composition to 85% eluent A. The optimized method was also tested with a cis-pinonic acid standard, and baseline separation was obtained. The final method thus includes isocratic conditions using eluents A (water containing 2% ACN and 0.04% formic acid) and B (ACN containing 2% water) with 85:15 until 8.0 min, followed by 80:20 at a constant flow of 200 μ L/min and a column oven temperature of 40 °C.

175 In order to transfer cis-pinonic acid and cis-pinonic acid sequentially to the chiral column in a mLC-LC approach, their retention times in the first dimension were determined and optimized. The retention times of the two analytes must differ such that it is possible to transfer the first peak to the sample loop and to rinse it completely before making the next cut. Both the size of the sample loop and the flow rates of both pumps were considered. Since the CHIRALPAK IG column is operated in reverse phase-mode in the second dimension, the same eluents A and B can be used in the first dimension for the PFP column. Sufficient separation of the analytes cis-pinonic acid and cis-pinonic acid was achieved under the same isocratic conditions (80:20) used for the separation of the enantiomers in the second dimension. This eliminates all the disadvantages that can occur in 2D-LC due to solvent incompatibilities, such as peak broadening and poor resolution (Pirok et al. 2019).



Three sample loop sizes, 100 μL , 50 μL and 20 μL , were tested for suitability. As the sample loop volume decreased, the separation of the enantiomers improved significantly. The 50 μL loop already showed a significant improvement over the
185 100 μL loop, which only achieved a rudimentary separation. The 20 μL sample loop then achieved baseline separation for both cis-pinic acid and cis-pinonic acid. Large sample loop sizes have the advantage of transferring a large amount of analyte, i.e. the entire analyte peak of the first dimension. If the sample loop volume is larger than the cut volume or the analyte peak in general, so-called “undersampling” can occur, where analytes that have been resolved in the first dimension experience remixing in the sample loop (Stoll und Carr 2017). The sample loop also acts as the injection volume of the second dimension,
190 meaning the analyte cannot be compactly transferred to the column, because it is distributed over a large volume (for comparison, the injection volume of the first dimension is 10 μL). Small volumes allow a much more compact transfer of the analyte to the second dimension, but only a fraction of the peak from the first dimension can be transferred. It is therefore of great importance that the optimal time window is chosen to capture the maximum of the peak and thus the highest amount of analyte. In order to improve separation with the 50 μL sample loop and to counteract peak broadening, higher flow rates were
195 tested to flush the analytes as compactly as possible from the sample loop onto the chiral column. For cis-pinic acid, a significantly improved separation of the enantiomers was achieved at 0.4 mL/min, but baseline separation was still not obtained. For each tested sample loop volume and flow rate, the optimal time window for both heart-cuts was redetermined. Ultimately, the 20 μL sample loop was chosen because it provides baseline separation along with good detection limits. The final method conditions and valve positions are summarized in Table 1.

200

3.2 Chamber experiments

For comparison of the retention times, a standard solution containing cis-pinic acid and cis-pinonic acid was measured. As can be seen in Figure 2, this standard shows equal peak areas of the enantiomers in both cases after integration, indicating a racemic mixture. Ozonolysis of (+)- α -pinene led to the formation of the oxidation product with the shorter retention time, i.e., the left
205 peak E1. Accordingly, the signal emerging at longer retention times, i.e. the right peak E2, can be assigned to the oxidation products of (-)- α -pinene. Traces of the other enantiomer were detected in both cases, but this can be attributed to memory effects (Doussin et al. 2023). Traces of both cis-pinic acid and cis-pinonic acid remain attached to the chamber wall and are again evaporated and detected in subsequent experiments. Nevertheless, both enantiomers of cis-pinic acid and cis-pinonic acid E1 and E2 can be clearly assigned to (+)- α -pinene and (-)- α -pinene, respectively.

210

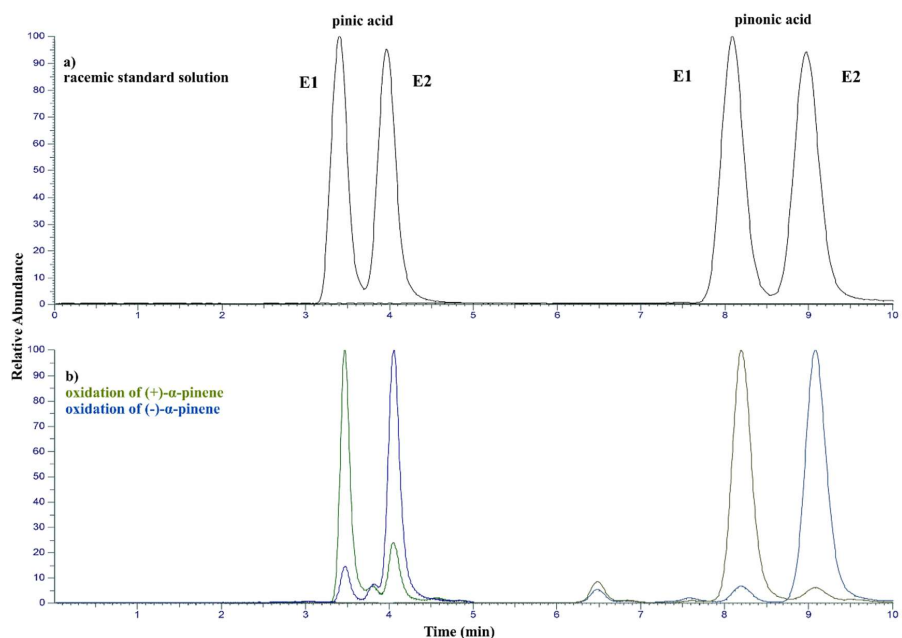


Figure 2: Overlay of the extracted ion chromatogram (XIC) of cis-pinonic acid ($[M-H]^-$ m/z 185.0819) and the XIC of cis-pinonic acid ($[M-H]^-$ m/z 183.1026) of **a)** a racemic standard solution containing both enantiomers (E1 and E2) of the target compounds and **b)** the chamber experiment products with (+)- α -pinene (green) and (-)- α -pinene (blue) as precursors. For both cis-pinonic acid and cis-pinonic acid, the enantiomer E1 (left peak) results from the ozonolysis of (+)- α -pinene, whereas the enantiomer E2 results from the ozonolysis of (-)- α -pinene. Note, that these measurements were not made using the developed m2D-LC method but with the chiral column alone, thus the retention times differ from those in Table 2.

220 3.3 Method validation

To validate the method, a calibration series of racemic standard solutions of cis-pinonic acid and cis-pinonic acid and a blank sample of the composition 1:1 H₂O/ACN were measured. The instrumental limit of detection (LOD) was determined using the linear calibration method as the ratio of the threefold standard deviation of the blank and the respective slope of the calibration line. To assess the linearity, the regression coefficient R^2 of the calibration line was determined and the ratio of the signal intensity of the calibration standards and concentration S/c was plotted against the logarithmic concentration $\log(c)$. In addition to $R^2 > 0.999$ for all four enantiomers, good linearity was found for 10-100 ppb with a deviation of less than 5% from the mean value (Huber 2007). The instrumental repeatability was calculated as the standard deviation of multiple injections of a 100 ppb standard.

Table 2: Name, m/z value ($[M-H]^-$), retention time in the final method t_R , instrumental limit of detection LOD and instrumental repeatability.

Compound	m/z $[M-H]^-$	t_R (min)	LOD (ppb)	Instr. repeatability (%RSD)
Cis-pinonic acid E1	185.0819	6.55	0.14	3.1
Cis-pinonic acid E2	185.0819	7.29	0.29	3.2
Cis-pinonic acid E2	183.1026	13.48	2.77	4.1
Cis-pinonic acid E2	183.1026	14.17	2.11	2.4



3.4 Application of the method to selected ice-core samples

235 Figure 3 shows typical chromatograms of the final method applied to a racemic standard solution of cis-pinonic acid and cis-
pinonic acid and a sample of the Belukha ice-core. Both enantiomers of cis-pinonic acid and cis-pinonic acid are present in the
ice-core sample. The amounts of all four enantiomers are clearly above the detection limit of the developed method and could
be successfully separated from other components with identical m/z values. In some ice samples, other signals with m/z
185.0819 were observed, which partially overlap with the signal of the target enantiomer cis-pinonic acid E2. This mass
240 represents the deprotonated anion of $C_9H_{14}O_4$ and is typical for oxidation products of various other monoterpenes such as
sabinic acid, 3-carenoic acid or limonic acid (from sabinene, Δ -3-carene and limonene) (Larsen et al. 2001; Kourtchev et al.
2015). The identification of these signals is beyond the scope of this study. In the case of cis-pinonic acid, complete separation
of both enantiomers was achieved without overlap with other signals, demonstrating that the mL-C-LC approach is also suitable
for highly complex samples.

245

The enantiomeric ratio E1/E2 of cis-pinonic acid and cis-pinonic acid was determined for each of the seven selected Belukha
samples. These samples were selected because they showed baseline separation of the cis-pinonic acid enantiomer E2 from other
compounds with the same m/z value, which ensures an unambiguous determination of the chiral ratio. Figure 4 shows the ratios
determined. E1 is the enantiomer formed by the oxidation of (+)- α -pinene, E2 is formed by the oxidation of (-)- α -pinene. The
250 diagram shows that the enantiomeric ratio of cis-pinonic acid fluctuates strongly, in the range between 1.6 and 0.4. In contrast,
the enantiomeric ratio of cis-pinonic acid is much more constant and fluctuates around a mean value of E1/E2 0.51 ± 0.16 .
Thus, very similar proportions of cis-pinonic acid enantiomers are present in all samples. The cis-pinonic acid ratio also shows
that the concentration of the enantiomer E2 is approximately a factor of 2 higher than that of E1, indicating a temporally
constant excess of the precursor (-)- α -pinene. The observation that the ratios of the two enantiomers for cis-pinonic acid and cis-
255 pinonic acid are different in the various samples may initially be surprising, since cis-pinonic acid and cis-pinonic acid are
associated in particular with the oxidation of α -pinene, i.e., they are formed from the same precursor compound and should
therefore contain the same stereogenic information. However, there are other variables that can influence the enantiomeric
ratios of the oxidation products. For example, cis-pinonic acid is also formed during the oxidation of β -pinene, whereas this
reaction does not lead to the formation of cis-pinonic acid (Glasius et al. 2000; Ma and Marston 2008; Larsen et al. 2001). This
260 is simply due to the fact that the methyl ketone group of cis-pinonic acid cannot originate from the exocyclic methylene group
of β -pinene, whereas the corresponding further oxidized carboxyl group of cis-pinonic acid can. The E1/E2 cis-pinonic acid ratios
in Figure 4 can therefore also contain contributions from the β -pinene oxidation, which can change the enantiomeric ratio of
cis-pinonic acid, but not that of cis-pinonic acid. However, due to a lack of information on both the β -pinene precursor
concentrations in comparison to the α -pinene concentration and the corresponding ratios of the precursor enantiomers, no
265 further statements can be made.

In principle, the particular conditions prevailing at the time of formation during the oxidation of the biogenic VOCs can also
contribute to changes in the E1/E2 ratios, simply because the oxidation of both α - and β -pinene is initiated by both ozone and
OH radicals, whose reaction pathways can lead to different product yields in relation to the measured organic acids. The loss
270 pathways of α -pinene due to reactions with OH and O_3 are comparable, while under typical daytime conditions the OH
oxidation of β -pinene is an order of magnitude faster than ozonolysis (Lee et al. 2023). From this point of view, conclusions
about the respective oxidation regimes at the time of BVOC oxidation would of course be extremely interesting, but cannot be
drawn with the present data set due to the insufficiently determinable boundary conditions (especially with regard to the chiral
ratios of the precursor compounds).

275



The data shown here are the first reporting the enantiomeric ratios of SOA components from monoterpenes in ice-cores and thus on a chronological scale extending back in time. Unfortunately, there are very few enantioselective studies on pinenes in general. However, measurements have been carried out in the atmosphere above tropical forests in South America (Williams et al. 2007; Leppla et al. 2021; Zannoni et al. 2020) or boreal forests in northern Europe (Williams et al. 2007; Yassaa et al. 2012). In these studies, (+)- and (-)- α -pinene as well as (+)- and (-)- β -pinene were measured in ambient air. Leppla and coworkers have determined the concentrations of cis-pinic acid enantiomers in aerosol particles in the tropics (Leppla et al. 2023). Interestingly, the predominant α -pinene species found in boreal forests is the (+)-enantiomer (Williams et al. 2007), in contrast to the predominant (-)-enantiomer found in this work. Since the vegetation in the Altai region is dominated by boreal forests, it was expected that similar results would be obtained. These results are more in line with those observed for tropical forests (Williams et al. 2007). Here, both (-)- α -pinene and (+)- β -pinene dominate. In all studies, the enantiomeric ratios of α -pinene and β -pinene differ from each other. However, it should be noted that the emission of pinene enantiomers strongly depends on the local flora, even down to specific tree species (Yassaa et al. 2012). The varying ratios found in this study might therefore reflect changes in vegetation over time. These studies make evident, on the one hand, that information on the respective enantiomers has the potential to provide important insights into the respective climatic conditions and, on the other hand, how little research has been done to analyze chiral monoterpenes and their chiral oxidation products in general. Historical records of chiral monoterpene oxidation products, together with complementary information such as pollen abundance, could therefore shed light on the underlying dynamics of their emissions and possibly the environmental conditions prevailing during their formation.

295

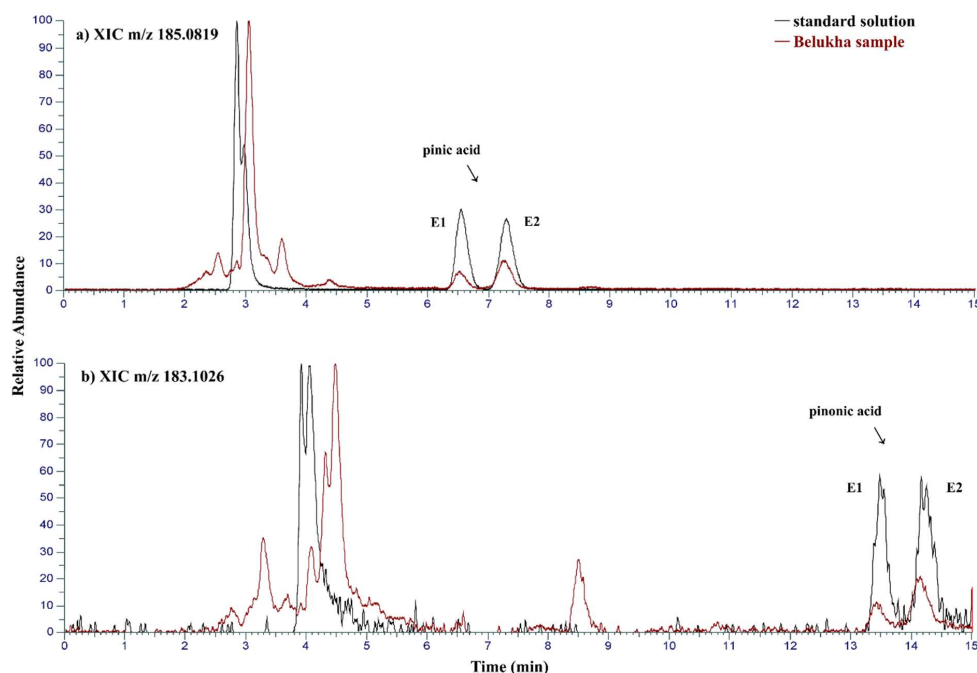


Figure 3: Typical chromatograms of the final method applied to a racemic standard solution of cis-pinic acid and cis-pinonic acid (black) and a Belukha sample (red). **a)** XIC of m/z 185.0819 (cis-pinic acid) and **b)** XIC of m/z 183.1026 (cis-pinonic acid).

300

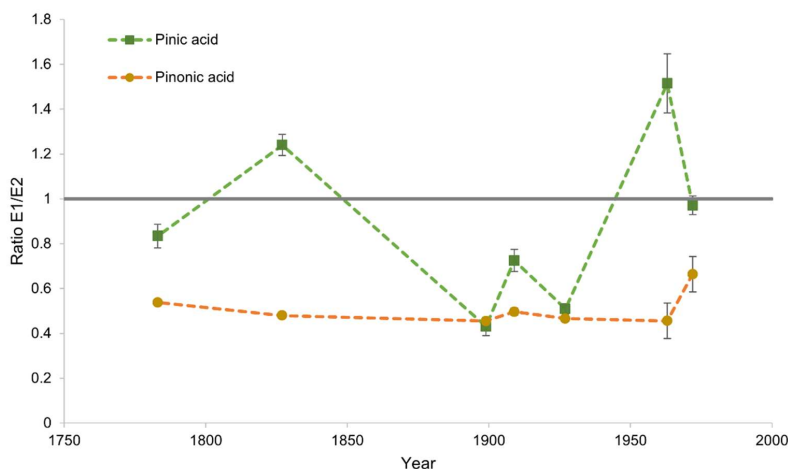


Figure 4: Chiral ratio E1/E2 cis-pinic acid (green) and cis-pinonic acid (yellow) in Belukha ice-core. In the previous chamber experiment it was proven that the enantiomer E1 of cis-pinic acid and cis-pinonic acid is the oxidation product of (+)- α -pinene and E2 of (-)- α -pinene (Figure 2). The chiral ratio of cis-pinonic acid remains relatively constant over the period under review with an excess of E2. The chiral ratio of cis-pinic acid strongly fluctuates over time. Error bars correspond to one standard deviation of twofold measurements. Note that some error bars are smaller than the shown data point. The grey line at E1/E2=1 indicates a racemic mixture. The dotted line through the data points is intended to lead the eye.

4. Conclusions

310 In this study, an m2D-LC method for the simultaneous determination of the enantiomeric ratios of chiral compounds in ice-cores is presented. Cis-pinic acid and cis-pinonic acid are some of the most prominent oxidation products of α - and β -pinene formed in the atmosphere by ozonolysis and OH oxidation and are therefore of great interest as specific marker compounds for natural secondary aerosol formation processes. First, the method was developed for each dimension, i.e. for the PFP column and the chiral column. Subsequently, a 2D LC setup was chosen in which the flows of the first dimension (PFP) and the second dimension (chiral) were combined via a T-piece before being detected by the mass spectrometer. For two-dimensional chromatography, the influence of the sample loop volume and the injection rates was investigated to determine the optimum time window for the transfer to the second dimension. The smaller the sample loop volume and the higher the wash-in rate, the better the separation on the chiral column, as the analyte can be transferred compactly and less diluted. Using a 20 μ L sample loop, baseline separation was achieved for the enantiomers of both analytes in the second dimension. Furthermore, the enantiomeric signals of cis-pinic acid and cis-pinonic acid were successfully assigned to their pinene precursors by performing ozonolysis chamber experiments with enantiomerically pure (+)- and (-)- α -pinene. The optimized method was applied to selected Belukha ice-core samples as a proof of concept, and the enantiomeric ratios of cis-pinic acid and cis-pinonic acid were successfully determined. The ratio of cis-pinic acid showed fluctuating values over time, while the ratio of cis-pinonic acid with an excess of the (-)-enantiomer remained rather constant over the observed period. Such historical records of the chiral composition of biogenic SOA markers from ice-cores can provide additional information on changing environmental conditions together with other proxies (pollens, major ions or other organics tracers), and thus expand our knowledge on past environmental conditions, e.g., the occurrence of droughts or different vegetation types.



Data availability

330 The data in the study are available upon request (t.hoffmann@uni-mainz.de).

Author contributions

JS, AB, MS and TH designed the research. JS and AB carried out the measurements. JS led the writing, with significant input from TH as well as further input from all other authors.

Competing interests

335 The authors declare that they have no conflict of interest.

Acknowledgments

The authors thank the Deutsche Forschungsgemeinschaft (DFG, Bonn Germany) for financial support (HO 1748/20-1 Project number: 421860192).

340

References

- Beschnitt, Anja; Schwikowski, Margit; Hoffmann, Thorsten (2022): Towards comprehensive non-target screening using heart-cut two-dimensional liquid chromatography for the analysis of organic atmospheric tracers in ice cores. In: *Journal of Chromatography A* 1661. DOI: 10.1016/j.chroma.2021.462706.
- 345 Bosle, Janine M.; Mischel, Simon A.; Schulze, Anna-Lena; Scholz, Denis; Hoffmann, Thorsten (2014): Quantification of low molecular weight fatty acids in cave drip water and speleothems using HPLC-ESI-IT/MS -- development and validation of a selective method. In: *Analytical and bioanalytical chemistry* 406 (13), S. 3167–3177. DOI: 10.1007/s00216-014-7743-6.
- Burgay, Francois; Salionov, Daniil; Singer, Thomas; Eichler, Anja; Brutsch, Sabina; Jenk, Theo et al. (2024): Non-target screening analysis reveals changes in the molecular composition of the Belukha Ice Core between the pre-industrial and
350 industrial periods (1830-1980 CE).
- Burgay, François; Salionov, Daniil; Huber, Carla Jennifer; Singer, Thomas; Eichler, Anja; Ungeheuer, Florian et al. (2023): Hybrid Targeted/Untargeted Screening Method for the Determination of Wildfire and Water-Soluble Organic Tracers in Ice Cores and Snow. In: *Analytical Chemistry* 95 (30), S. 11456–11466. DOI: 10.1021/acs.analchem.3c01852.
- Byron, Joseph; Kreuzwieser, Juergen; Purser, Gemma; van Haren, Joost; Ladd, S. Nemiah; Meredith, Laura K. et al. (2022):
355 Chiral monoterpenes reveal forest emission mechanisms and drought responses. In: *Nature* 609 (7926), S. 307–312. DOI: 10.1038/s41586-022-05020-5.
- Doussin, Jean-François; Fuchs, Hendrik; Kiendler-Scharr, Astrid; Seakins, Paul; Wenger, John (2023): A Practical Guide to Atmospheric Simulation Chambers. Cham: Springer International Publishing.
- Ebben, Carlana J.; Zorn, Soeren R.; Lee, Seung Bok; Artaxo, Paulo; Martin, Scot T.; Geiger, Franz M. (2011):
360 Stereochemical transfer to atmospheric aerosol particles accompanying the oxidation of biogenic volatile organic compounds. In: *Geophysical Research Letters* 38 (16). DOI: 10.1029/2011GL048599.



- Fu, Pingqing; Kawamura, Kimitaka; Seki, Osamu; Izawa, Yusuke; Shiraiwa, Takayuki; Ashworth, Kirsti (2016): Historical Trends of Biogenic SOA Tracers in an Ice Core from Kamchatka Peninsula. In: *Environmental Science and Technology Letters* 3 (10), S. 351–358. DOI: 10.1021/acs.estlett.6b00275.
- 365 Guenther, Alex; Hewitt, C. Nicholas; Erickson, David; Fall, Ray; Geron, Chris; Graedel, Tom et al. (1995): A global model of natural volatile organic compound emissions. In: *J. Geophys. Res.* 100 (D5), S. 8873–8892. DOI: 10.1029/94JD02950.
- Huber, Ludwig (2007): *Validation and Qualification in Analytical Laboratories*: CRC Press.
- Jokinen, Tuija; Berndt, Torsten; Makkonen, Risto; Kerminen, Veli-Matti; Junninen, Heikki; Paasonen, Pauli et al. (2015): Production of extremely low volatile organic compounds from biogenic emissions: Measured yields and atmospheric implications. In: *Proceedings of the National Academy of Sciences of the United States of America* 112 (23), S. 7123–7128. DOI: 10.1073/pnas.1423977112.
- 370 Kesselmeier, J.; Kuhn, U.; Wolf, A.; Andreae, M.O.; Ciccioli, P.; Brancaleoni, E. et al. (2000): Atmospheric volatile organic compounds (VOC) at a remote tropical forest site in central Amazonia. In: *Atmospheric Environment* 34 (24), S. 4063–4072. DOI: 10.1016/S1352-2310(00)00186-2.
- 375 King, Amy C. F.; Giorio, Chiara; Wolff, Eric; Thomas, Elizabeth; Karroca, Ornela; Roverso, Marco et al. (2019a): A new method for the determination of primary and secondary terrestrial and marine biomarkers in ice cores using liquid chromatography high-resolution mass spectrometry. In: *Talanta* 194, S. 233–242. DOI: 10.1016/j.talanta.2018.10.042.
- King, Amy C. F.; Giorio, Chiara; Wolff, Eric; Thomas, Elizabeth; Roverso, Marco; Schwikowski, Margit et al. (2019b): Direct Injection Liquid Chromatography High-Resolution Mass Spectrometry for Determination of Primary and Secondary Terrestrial and Marine Biomarkers in Ice Cores. In: *Analytical Chemistry* 91 (8), S. 5051–5057. DOI: 10.1021/acs.analchem.8b05224.
- 380 Kourtchev, I.; Doussin, J. F.; Giorio, C.; Mahon, B.; Wilson, E. M.; Maurin, N. et al. (2015): Molecular composition of fresh and aged secondary organic aerosol from a mixture of biogenic volatile compounds: A high-resolution mass spectrometry study. In: *Atmospheric Chemistry and Physics* 15 (10), S. 5683–5695. DOI: 10.5194/acp-15-5683-2015.
- 385 Kourtchev, I.; Ruuskanen, T. M.; Keronen, P.; Sogacheva, L.; Dal Maso, M.; Reissell, A. et al. (2008): Determination of isoprene and alpha-/beta-pinene oxidation products in boreal forest aerosols from Hyytiälä, Finland: diel variations and possible link with particle formation events. In: *Plant biology (Stuttgart, Germany)* 10 (1), S. 138–149. DOI: 10.1055/s-2007-964945.
- Kroll, Jesse H.; Seinfeld, John H. (2008): Chemistry of secondary organic aerosol: Formation and evolution of low-volatility organics in the atmosphere. In: *Atmospheric Environment* 42 (16), S. 3593–3624. DOI: 10.1016/j.atmosenv.2008.01.003.
- 390 Larsen, Bo. R.; Di Bella, Dario; Glasius, Marianne; Winterhalter, Richard; Jensen, Niels R.; Hjorth, Jens (2001): Gas-Phase OH Oxidation of Monoterpenes: Gaseous and Particulate Products. In: *Journal of Atmospheric Chemistry* 38 (3), S. 231–276. DOI: 10.1023/A:1006487530903.
- Lee, Ben H.; Iyer, Siddharth; Kurtén, Theo; Varelas, Jonathan G.; Luo, Jingyi; Thomson, Regan J.; Thornton, Joel A. (2023): Correction: Ring-opening yields and auto-oxidation rates of the resulting peroxy radicals from OH-oxidation of α -pinene and β -pinene. In: *Environmental science: atmospheres* 3 (12), S. 1847. DOI: 10.1039/d3ea90045b.
- 395 Leppla, Denis; Zannoni, Nora; Kremper, Leslie; Williams, Jonathan; Pöhlker, Christopher; Sá, Marta et al. (2021): Varying chiral ratio of Pinic acid enantiomers above the Amazon rainforest. DOI: 10.5194/acp-2021-150.



- 400 Leppä, Denis; Zannoni, Nora; Kremper, Leslie; Williams, Jonathan; Pöhlker, Christopher; Sá, Marta et al. (2023): Varying chiral ratio of pinic acid enantiomers above the Amazon rainforest. In: *Atmos. Chem. Phys.* 23 (2), S. 809–820. DOI: 10.5194/acp-23-809-2023.
- Malik, Tanzil Gaffar; Sahu, Lokesh Kumar; Gupta, Mansi; Mir, Bilal Ahmad; Gajbhiye, Triratnesh; Dubey, Rashmi et al. (2023): Environmental Factors Affecting Monoterpene Emissions from Terrestrial Vegetation. In: *Plants (Basel, Switzerland)* 12 (17). DOI: 10.3390/plants12173146.
- 405 Mogliani, A. G.; García-Expósito, E.; Aguado, G. P.; Parella, T.; Branchadell, V.; Moltrasio, G. Y.; Ortuño, R. M. (2000): Divergent routes to chiral cyclobutane synthons from (-)-alpha-pinene and their use in the stereoselective synthesis of dehydro amino acids. In: *The Journal of organic chemistry* 65 (13), S. 3934–3940. DOI: 10.1021/jo991773c.
- Mori, Kenji (2014): Stereochemical studies on pheromonal communications. In: *Proceedings of the Japan Academy. Series B, Physical and biological sciences* 90 (10), S. 373–388. DOI: 10.2183/pjab.90.373.
- 410 Müller-Tautges, C.; Eichler, A.; Schwikowski, M.; Pezzatti, G. B.; Conedera, M.; Hoffmann, T. (2016): Historic records of organic compounds from a high Alpine glacier: Influences of biomass burning, anthropogenic emissions, and dust transport. In: *Atmospheric Chemistry and Physics* 16 (2), S. 1029–1043. DOI: 10.5194/acp-16-1029-2016.
- Phillips, Michael A.; Wildung, Mark R.; Williams, David C.; Hyatt, David C.; Croteau, Rodney (2003): cDNA isolation, functional expression, and characterization of (+)-alpha-pinene synthase and (-)-alpha-pinene synthase from loblolly pine (Pinus taeda): stereocontrol in pinene biosynthesis. In: *Archives of biochemistry and biophysics* 411 (2), S. 267–276. DOI: 10.1016/s0003-9861(02)00746-4.
- Pirok, Bob W.J.; Stoll, Dwight R.; Schoenmakers, Peter J. (2019): Recent Developments in Two-Dimensional Liquid Chromatography: Fundamental Improvements for Practical Applications: American Chemical Society (91). In: *15206882* (1).
- 420 Pokhrel, Ambarish; Kawamura, Kimitaka; Ono, Kaori; Seki, Osamu; Fu, Pingqing; Matoba, Sumio; Shiraiwa, Takayuki (2016): Ice core records of monoterpene- and isoprene-SOA tracers from Aurora Peak in Alaska since 1660s: Implication for climate change variability in the North Pacific Rim. In: *Atmospheric Environment* 130, S. 105–112. DOI: 10.1016/j.atmosenv.2015.09.063.
- Staudt, Michael; Byron, Joseph; Piquemal, Karim; Williams, Jonathan (2019): Compartment specific chiral pinene emissions identified in a Maritime pine forest. In: *The Science of the total environment* 654, S. 1158–1166. DOI: 10.1016/j.scitotenv.2018.11.146.
- Stoll, Dwight R.; Carr, Peter W. (2017): Two-Dimensional Liquid Chromatography: A State of the Art Tutorial. In: *Analytical Chemistry* 89 (1), S. 519–531. DOI: 10.1021/acs.analchem.6b03506.
- Thorenz, Ute R.; Kundel, Michael; Müller, Lars; Hoffmann, Thorsten (2012): Generation of standard gas mixtures of halogenated, aliphatic, and aromatic compounds and prediction of the individual output rates based on molecular formula and boiling point. In: *Analytical and bioanalytical chemistry* 404 (8), S. 2177–2183. DOI: 10.1007/s00216-012-6202-5.
- Vogel, Alexander Lucas; Lauer, Anja; Fang, Ling; Arturi, Katarzyna Ratajczyk; Bachmeier, Franziska; Dällenbach, Kaspar R. et al. (2019): A Comprehensive Nontarget Analysis for the Molecular Reconstruction of Organic Aerosol Composition from Glacier Ice Cores. In: *Environmental Science and Technology*. DOI: 10.1021/acs.est.9b03091.
- 435 Williams, J.; Yassaa, N.; Bartenbach, S.; Lelieveld, J. (2007): Atmospheric Chemistry and Physics Mirror image hydrocarbons from Tropical and Boreal forests. In: *Atmos. Chem. Phys.* 7, S. 973–980. Online verfügbar unter www.atmos-chem-phys.net/7/973/2007/.



- Yassaa, N.; Song, W.; Lelieveld, J.; Vanhatalo, A.; Bäck, J.; Williams, J. (2012): Diel cycles of isoprenoids in the emissions of Norway spruce, four Scots pine chemotypes, and in Boreal forest ambient air during HUMPPA-COPEC-2010. In: 440 *Atmospheric Chemistry and Physics* 12 (15), S. 7215–7229. DOI: 10.5194/acp-12-7215-2012.
- Zannoni, Nora; Leppla, Denis; Lembo Silveira de Assis, Pedro Ivo; Hoffmann, Thorsten; Sá, Marta; Araújo, Alessandro; Williams, Jonathan (2020): Surprising chiral composition changes over the Amazon rainforest with height, time and season. In: *Communications Earth & Environment* 1 (1). DOI: 10.1038/s43247-020-0007-9.