

# Dynamics of stratospheric wave reflection over the North Pacific

Michael K. Schutte<sup>1</sup>, Alice Portal<sup>2</sup>, Simon H. Lee<sup>3</sup>, and Gabriele Messori<sup>1,4,5</sup>

<sup>1</sup>Department of Earth Sciences, Uppsala University, Uppsala, Sweden

<sup>2</sup>Institute of Geography, Oeschger Centre for Climate Change Research, University of Bern, Bern, Switzerland

<sup>3</sup>School of Earth and Environmental Sciences, University of St Andrews, St Andrews, UK

<sup>4</sup>Swedish Centre for Impacts of Climate Extremes, Uppsala University, Uppsala, Sweden

<sup>5</sup>Department of Meteorology and Bolin Centre for Climate Research, Stockholm University, Stockholm, Sweden

**Correspondence:** Michael Schutte (michael.schutte@geo.uu.se)

**Abstract.** Stratospheric wave reflection events involve the upward propagation of planetary waves, which are subsequently reflected downward by the stratospheric polar vortex. This phenomenon establishes a connection between the large-scale circulations in the troposphere and in the stratosphere. Here, we investigate wave reflection events characterised by an enhanced difference between poleward eddy heat flux over the Northwest Pacific and equatorward eddy heat flux over Canada. Previous research has pointed to a link between these events and anomalies in the tropospheric circulation over North America, with an associated abrupt continental-scale surface temperature decrease over the same region. In this study, we ~~aim to~~ elucidate the dynamical mechanisms governing this chain of events.

We find that ~~anomalies of meridional eddy heat flux~~ the evolution of meridional heat flux anomalies over the Northwest Pacific and Canada ~~change sign before and after reflection events~~. A around reflection events is explained by a westward-propagating ~~ridge, associated with a positive geopotential height anomaly, and the~~ geopotential-height ridge and by the downstream development of a trough ~~downstream can explain this sign change~~. The trough advects colder-than-average air southwards in the lower troposphere over North America, leading to an abrupt temperature decrease close to the surface. ~~This corresponds in the upper troposphere to negative and in the lower troposphere to positive anomalies of meridional eddy heat flux.~~ The evolution of this large-scale pattern resembles the shift from a Pacific Trough to an Alaskan Ridge weather regime. a transition that can also occur independently of reflection events. Furthermore, stratospheric wave reflection events exert a far-reaching influence ~~beyond North America~~ on the tropospheric circulation across the Northern mid- and high latitudes. ~~One example is the zonalisation and intensification of the North Atlantic eddy-driven jet stream resulting in more frequent occurrences of windy extremes over Europe~~ For example, a few days after the reflection-driven temperature decrease across North America the jet stream is more intense and zonal, favouring the occurrence of windy extremes over Europe.

The variability of the stratospheric polar vortex plays a crucial role in shaping tropospheric circulation patterns and influencing weather extremes on subseasonal to seasonal timescales (Baldwin and Dunkerton, 2001; Thompson and Wallace, 2001; Domeisen and Butler, 2020; Kodera et al., 2013; Afargan-Gerstman et al., 2020). One notable example is that of sudden stratospheric warmings (SSWs), characterised by a rapid temperature increase in the stratosphere over the polar regions and a disruption of the stratospheric polar vortex (Scherhag, 1952; Matthewman et al., 2009; Charlton and Polvani, 2007). The occurrence of SSWs is ~~favoured~~ favoured by upward propagation of Rossby waves from the troposphere, which break in the stratospheric westerlies and weaken them (Matsuno, 1971; Sjöberg and Birner, 2012; Polvani and Waugh, 2004; Reichler and Jucker, 2022), although enhanced tropospheric wave activity is neither a necessary nor a sufficient condition for the occurrence of an SSW (de la Cámara et al., 2019; Birner and Albers, 2017; Albers and Birner, 2014). The study of SSWs has received particular attention due to their potential to modulate the tropospheric circulation (Charlton-Perez et al., 2018; Hitchcock and Simpson, 2014) and hence surface weather; for example, by favouring large-scale cold-air outbreaks over Eurasia (Cohen et al., 2007; Kretschmer et al., 2018; Kidston et al., 2015).

A related but distinct phenomenon, stratospheric wave reflection, has been linked to cold-air outbreaks over North America (Millin et al., 2022; Kodera et al., 2016; Kretschmer et al., 2018; Messori et al., 2022; Matthias and Kretschmer, 2020; Guan et al., 2020). Stratospheric wave reflection events are characterized by a local maximum of zonal winds in the mid-stratosphere (Perlwitz and Harnik, 2004; Messori et al., 2022) and imply the downward reflection of upward-propagating Rossby waves from the troposphere (Harnik and Lindzen, 2001; Perlwitz and Harnik, 2003; Shaw et al., 2010; Shaw and Perlwitz, 2013). ~~There is no clear consensus on the definition of stratospheric-~~

Stratospheric wave reflection events have been defined in many different ways. Some studies focus on daily wave activity fluxes (~~Plumb, 1985; Kodera et al., 2008; Nath et al., 2014~~) (Kodera et al., 2008; Nath et al., 2014) or zonal-mean wave geometry diagnostics (Harnik and Lindzen, 2001; Shaw et al., 2010; Shaw and Perlwitz, 2013), which are insightful but ~~computationally intensive and may require~~ may require a linear stationary wave model or data that are usually not a standard output of ~~reanalysis products~~ reanalyses or climate models (Matthias and Kretschmer, 2020). Another approach uses a reflection index based on the difference in zonal-mean zonal winds at 2 and 10 hPa (Perlwitz and Harnik, 2003; Harnik, 2009; Nath et al., 2016), ~~but this index cannot~~ which however does not distinguish between SSWs and reflection events (Harnik, 2009). Alternatively, meridional eddy heat flux can be used to detect stratospheric wave reflection, since in a zonal mean framework it is proportional to the vertical component of the Eliassen-Palm (EP) flux ~~which, according to linear wave theory, indicates the vertical group velocity or the vertical component of the wave activity flux~~ (Takaya and Nakamura, 2001). Earlier studies have connected extremes of the zonal mean meridional eddy heat flux in the stratosphere to changes in stratospheric and tropospheric circulation (Dunn-Sigouin and Shaw, 2015; Shaw et al., 2014; Polvani and Waugh, 2004). However, due to the use of zonal averaging, these methods ~~identify~~ do not provide a spatial characterisation of wave reflection events ~~in time but not in space~~.

To overcome this challenge, Matthias and Kretschmer (2020) proposed an index based on regional averages of the meridional eddy heat flux that is able to capture wave reflection events over the North Pacific. ~~This index is motivated by the average~~ The

definition of this index is linked to the climatological pattern of the meridional eddy heat flux, which ~~consists of positive~~  
55 ~~vertical Rossby-wave group velocity is consistent with upward wave activity flux~~ over the Bering strait and ~~negative group~~  
~~velocity downward wave activity flux~~ over North Canada. Previous research has highlighted that this definition of stratospheric  
wave reflection captures events leading to a ~~significant decrease in 2m air temperatures over North America and a~~ transition  
from the Pacific Trough (PT) to the Alaskan Ridge (AKR) North American weather regime ~~and a significant decrease in 2m~~  
~~air temperatures over North America~~ (Messori et al., 2022; Matthias and Kretschmer, 2020; Cohen et al., 2022). However, the  
60 physical mechanisms linking such stratospheric wave reflection ~~to the subsequent episodes to the~~ tropospheric anomalies are  
not completely understood.

In this work, we aim to provide a deeper insight into the evolution of the atmosphere during and after reflection events over  
the North Pacific, with a particular focus on weather regimes over North America. We specifically seek to answer the following  
research questions:

- 65 1. ~~What is the vertical structure~~ How does the evolution of the meridional eddy heat flux ~~before, during and after reflection~~  
~~events?~~ relate to the tropospheric and stratospheric wave structure? Even though several studies have applied the  
definition of reflection events by Matthias and Kretschmer (2020), an analysis of the temporal evolution of meridional  
eddy heat flux at different vertical levels over East Siberia and North Canada is lacking. Exploring how meridional heat  
flux anomalies during stratospheric wave reflection events link to the wave structure can give additional insights on the  
70 vertical coupling between stratosphere and troposphere.
2. ~~How does Rossby wave activity change throughout~~ What is the mutual relation between stratospheric wave reflection  
events and ~~how is this change associated with the shift from PT to AKR regimes?~~ the North American regime transition  
from Pacific Trough to Alaskan Ridge? Stratospheric downward reflection of Rossby waves has been shown to influence  
tropospheric dynamics, including a change of weather regimes over North America (Messori et al., 2022; Kodera et al., 2008; Perlwi  
75 , which we would like to investigate further.
3. Do reflection events over the North Pacific affect the mid-latitude circulation beyond North America? Since little is  
known on possible remote effects of reflection events over the North Pacific, we explore this aspect further.

To address these questions, we first ~~analyze~~ analyse the evolution of reflection events with respect to meridional eddy heat  
flux and geopotential height anomalies. We further compare changes in geopotential height during reflection events to the shift  
80 from PT to AKR regimes. Furthermore, we investigate changes in the mid-latitude tropospheric Rossby wave activity through  
space-time spectral analysis. ~~In contrast to analyses focusing on circulation indices (Baldwin and Dunkerton, 2001; Thompson et al., 2006;~~  
~~, or weather regimes (Charlton-Perez et al., 2018; Domeisen et al., 2020; Hall et al., 2023; Messori et al., 2022; Lee et al., 2022)~~  
~~, this allows to study time-varying wave structures with different horizontal scales and phase speeds. Previous studies have~~  
~~already employed such a methodology to compare Rossby wave properties across data sets (Dell'Aquila et al., 2005) and time~~  
85 ~~periods (Riboldi et al., 2020; Sussman et al., 2020). Furthermore, the method has been proved useful to analyse circumpolar~~  
~~Rossby wave patterns during boreal winter (Riboldi et al., 2022) and the connection between the stratosphere and troposphere~~

during strong and weak stratospheric polar vortex events (Schutte et al., 2024) To prove a potential remote effect of reflection events, we investigate the modulation of the North Atlantic jet stream and its effect on windiness over Europe.



## 2 Methods

### 2.1 Data

The analysis is based on ERA5 reanalysis data (Hersbach et al., 2020) ~~with~~, obtained at a spatial resolution of  $1^\circ \times 1^\circ$  and ~~daily~~ 6 hourly temporal resolution, covering the extended winter season (DJFM) from 1 December 1979 to 31 March 2021. We analyse the daily mean of geopotential height, zonal and meridional wind, air temperature and the daily maximum of hourly 10-m wind speed, ~~and air temperature. Space-time.~~ Daily space-time Rossby wave spectra are obtained from the meridional wind at  $0.75^\circ \times 0.75^\circ$  and 6 hourly resolution. ~~We deseasonalised each dataset, except the meridional wind. The wave activity flux (WAF) is calculated following Takaya and Nakamura (2001) using the NCL script provided in Nishii (2016). Unless stated differently, we deseasonalize all quantities shown in the following analysis~~ by subtracting the daily seasonal cycle, computed with a 15-day centred running mean using data from 16 November to 15 April. Additionally, the temperature field is linearly detrended ~~to account for global warming. The wave activity flux (WAF) is calculated following Plumb (1985) using the NCL script provided in~~ at each grid point. The meridional eddy heat flux, WAF and space-time Rossby wave spectra are computed from the full fields and deseasonalized afterwards.

### 2.2 Event definition

To identify reflection events, we follow the procedure outlined in Messori et al. (2022). Firstly, deviations from the zonal mean of meridional wind and ~~air temperature~~ temperature at 100 hPa are multiplied together to obtain the meridional eddy heat flux,  $v'T'$ . Next, we compute the regional cosine-latitude weighted averages of  $v'T'$  over the Siberian domain ( $45\text{--}75^\circ\text{N}$ ,  $140\text{--}200^\circ\text{E}$ ) and the Canadian domain ( $45\text{--}75^\circ\text{N}$ ,  $230\text{--}280^\circ\text{E}$ ), shown in Fig. A1. These averages are then ~~standardized by removing the daily mean and subsequently dividing by the~~ divided by the standard deviation for each calendar day, ~~as indicated by asterisks~~ which we denote by an asterisk. The reflection index is then given by:

$$RI = (v'T')_{Sib}^* - (v'T')_{Can}^* \quad (1)$$

We identify stratospheric reflection events when RI exceeds a value of 1 for a minimum of 10 consecutive days, yielding 45 events during the months of December to March (DJFM). ~~Each event can be assigned either to its onset or to its~~ The events can be aligned either at their onset or end date. Previous studies have investigated the sensitivity of this definition to parameter choice (e.g. Matthias and Kretschmer, 2020; Messori et al., 2022).

The relationship between wave reflection events and the large-scale circulation over North America is investigated using the weather regime data provided by Lee et al. (2023b). This dataset contains ~~five year-round~~ four weather regimes defined over North America ( $20\text{--}80^\circ\text{N}$ ,  $180\text{--}330^\circ\text{E}$ ) through a  $k$ -means cluster analysis of 10-day low-pass filtered 500 hPa geopotential height fields. The ~~five~~ four regimes are Pacific Trough (PT), Pacific Ridge (PR), Alaskan Ridge (AKR), and Greenland High (GH), ~~and~~. Days where the 500 hPa geopotential height anomalies are closer to climatology than any of the four regimes are classified as No Regime (N). These are year-round regimes; although their occurrence frequency shows some seasonality,

120 [the reference spatial regime patterns are the same across all seasons](#). Further details of the regime classification can be found in Lee et al. (2023a). We then define North American weather regime ‘events’ as instances of more than 5 consecutive days with the same regime. Applying this criterion, we identified 91 events for AKR and 107 events for PT, with the central date considered as the event date. We further define a PT-to-AKR transition when the PT regime is present on at least one of the 15 days preceding an AKR event. Using this definition, we identified 62 such transition events with day 0 set as the midpoint of  
125 the AKR event. The corresponding large-scale patterns are qualitatively independent of the choice of thresholds.

To verify whether the hemispheric-scale space-time Rossby wave decomposition reflects the dynamics of North Pacific reflection events, we define a regionalized signal of reflection events. We specifically select days where the cosine-latitude weighted spatial correlation of 100 hPa geopotential height anomalies over 45°N to 75°N and 140°E to 80°W (purple box in Fig. A1) with the composite anomalies during reflection events exceeds 0.95. We compute regionalized events separately for the  
130 onset and end dates of the reflection events using the Pearson correlation coefficient. Subsequently, we merge high-correlation days that are separated by less than 10 days to one regionalized event by selecting the day with the highest correlation coefficient at 100 hPa as the regionalized event date. This gives 63 regionalized events with geopotential height anomalies correlated to the onset of reflection events and 54 events correlated to the end of reflection events. [With respect to a 69-day time window \(the longest duration of a single reflection event\), we found 39 of 54 instances with regionalized onset events being followed  
135 by regionalized end events. Computing the correlation on several vertical levels simultaneously to identify the high-correlation days results in qualitatively similar results \(not shown\).](#)

### 2.3 Space-time Rossby wave spectra

[In contrast to analyses focusing on circulation indices \(Baldwin and Dunkerton, 2001; Thompson et al., 2006; Hall et al., 2021; Kolstad et al., 2022\), or weather regimes \(Charlton-Perez et al., 2018; Domeisen et al., 2020; Hall et al., 2023; Messori et al., 2022; Lee et al., 2022\),  
140 space-time spectral analysis allows to study time-varying wave structures with different horizontal scales and phase speeds. Previous studies have already employed such a methodology to compare Rossby wave properties across data sets \(Dell’Aquila et al., 2005\) and time periods \(Riboldi et al., 2020; Sussman et al., 2020\). Furthermore, the method has proved useful to analyse circumpolar Rossby wave patterns during boreal winter \(Riboldi et al., 2022\) and the connection between the stratosphere and troposphere during strong and weak stratospheric polar vortex events \(Schutte et al., 2024\).](#)

145 Space-time wave spectra decompose a time-varying wave structure (as illustrated, for example, in an Hovmöller diagram) into distinct harmonics with varying horizontal scales and phase speeds. We obtain the space-time spectra of Rossby waves following the procedure described in Riboldi et al. (2022); Schutte et al. (2024). Rossby waves, represented by meridional wind between 35°N and 75°N, are decomposed in time and in space along each latitude circle using a double Fourier transform:

$$V(\lambda, t; \phi) = \sum_{j=-N_T/2}^{N_T/2} \sum_{n=-N_L/2}^{N_L/2} \hat{V}(n, \omega_j; \phi) e^{i(n\lambda - \omega_j t)}, \quad (2)$$

150 where  $\hat{V}(n, \omega_j; \phi)$  denotes the complex Fourier coefficient for a given wavenumber  $n$ , angular frequency  $\omega_j$  and latitude  $\phi$  of the meridional wind  $V(\lambda, t; \phi)$  at longitude  $\lambda$ , time  $t$  and latitude  $\phi$ . The number of grid points along a given latitude circle is  $N_L = 480$ , and  $\omega_j = 2\pi j/N_T$  is the angular frequency, with  $N_T = 244$  six-hourly time steps over 61 days. For the decomposition in time, each day is treated as the midpoint of a sliding 61-day time frame, ~~centered-centred~~ at 12 UTC. To minimize boundary effects, a double cosine tapering method ~~is applied, smoothing out the~~ reduces the weight of the first  
155 and last 12 days of each window. This yields periodograms  $S_{\overline{V'V'}}(n, \omega_j; \phi) = 2 \text{Re}(\hat{V}\hat{V}^*)$  as a function of frequency and wavenumber, where  $\hat{V}^*$  is the complex conjugate of the corresponding coefficient  $\hat{V}$  and the overline denotes the absolute value of the spectrum. Each periodogram undergoes ten iterations of smoothing in the frequency direction, employing a three-point window, as in Wheeler and Kiladis (1999). Subsequently, these periodograms are remapped to the phase speed domain along each latitude circle by interpolating the periodogram along lines of constant phase speed  $c_p = \omega/k$ , followed by re-scaling  
160 (Randel and Held, 1991). After averaging in the latitude band between 35°N and 75°N, one obtains the spectra  $S_{\overline{V'V'}}(n, c_p)$ . As for the other variables, the spectra are ~~deseasonalised~~ deseasonalized by subtracting the daily seasonal cycle, computed with a 15-day centred running mean using data from 16 November to 15 March. Further details can be found in the Supplement to Riboldi et al. (2022). Despite the extended time window used for the computation of Rossby wave space-time spectra, this metric can capture daily to weekly changes in Rossby wave behaviour (cf. Fig. 5 and A2 and see discussion in the end of section 3.1.3).

Based on the space-time spectra ~~obtained~~, two integral metrics can be defined to summarize the overall magnitude of Rossby wave activity and the direction of wave propagation. Firstly, the integrated spectral power (ISP) ~~as a measure of~~ measures the overall magnitude of spectral density of Rossby waves across all wavenumbers  $n$  and phase speeds  $c_p$ :

$$\text{ISP} = \sum_{n=1}^{15} \sum_{c_p=-30}^{30} S(n, c_p) \quad (3)$$

170 ~~To obtain the ISP of westward-propagating~~ The ISP of westward-(eastward-)propagating Rossby waves, ~~one can integrate between phase speeds from -30 ms<sup>-1</sup> to 0 ms<sup>-1</sup>. We denote this~~ which we denote as  $\text{ISP}_{\text{west}}$  ~~and, analogously, (ISP<sub>east</sub> for the ISP of Rossby waves with positive phase speeds integrated between -)~~ is obtained by integrating the spectral density between phase speeds from -30 ms<sup>-1</sup> to 0 ms<sup>-1</sup> (0 ms<sup>-1</sup> and 30 ms<sup>-1</sup>).

Secondly, the Rossby wave phase speed  $\overline{c_p}$ , defined in Riboldi et al. (2020), serves as a hemispherically-averaged estimate  
175 across the resolved harmonics and represents a weighted mean:

$$\overline{c_p} = \frac{\sum_{n=1}^{15} \sum_{c_p=-30}^{30} S_{\overline{V'V'}}(n, c_p) \cdot c_p}{\sum_{n=1}^{15} \sum_{c_p=-30}^{30} S_{\overline{V'V'}}(n, c_p)} = \frac{1}{\text{ISP}} \sum_{n=1}^{15} \sum_{c_p=-30}^{30} S_{\overline{V'V'}}(n, c_p) \cdot c_p \quad (4)$$

The phase speed associated with each  $(n, c_p)$  harmonic is weighted by the corresponding spectral energy density  $S_{\overline{V'V'}}(n, c_p)$ , ensuring that the ~~harmonies most active during each time period contribute more to the overall value of~~ most energetic harmonics contribute most to the  $\overline{c_p}$ . Both integral metrics, ISP and  $\overline{c_p}$ , are computed from the full space-time spectra and  
180 deseasonalized afterwards.

## 2.4 Significance assessment

The significance of composite anomalies, such as those indicated by hatching in Fig. 1 is assessed using 10 000 bootstrapping iterations (i.e., random sampling with replacement). Following the approach by Wilks (2016), we correct the significance assessment to account for multiple testing. Indeed, ~~for a given geographical map, a large since the~~ number of tests ~~are conducted~~  
 185 ~~(e.g. conducted over the gridpoints of a field is large (e.g.,~~  $N_{tests} = N_{lat} \cdot N_{lon} \approx 20\,000$ ), ~~and hence~~ the risk of erroneously  
 deeming a point significant ~~solely~~ by chance is high. Following equation (3) in Wilks (2016), we look for the largest percentile  
 $p_{FDR}^*$  that satisfies the condition:

$$p_{FDR}^* = \max_{i=1\dots N} \left[ p_i : p_i \leq \left( \frac{i}{N} \right) \cdot \alpha_{FDR} \right]_{i=1\dots N} \left[ p_i : p_i \leq \left( \frac{i}{N_{tests}} \right) \cdot \alpha_{FDR} \right], \quad (5)$$

where ~~N represents the number of significance tests, and  $p_i$  is the~~  $p_i$  represents the  $i$ -th entry in the sorted list of ~~percentile~~ percentiles.  
 190 Given the spatial and temporal correlation between data points, the chosen control level  $\alpha_{FDR}$  is set to 0.10 (Wilks, 2016).  
 Consequently,  $p_{FDR}^*$ , which in our analyses yields mostly values below 0.05, is selected as the new significance level.

### 3 Results

#### 3.1 Evolution of stratospheric reflection events

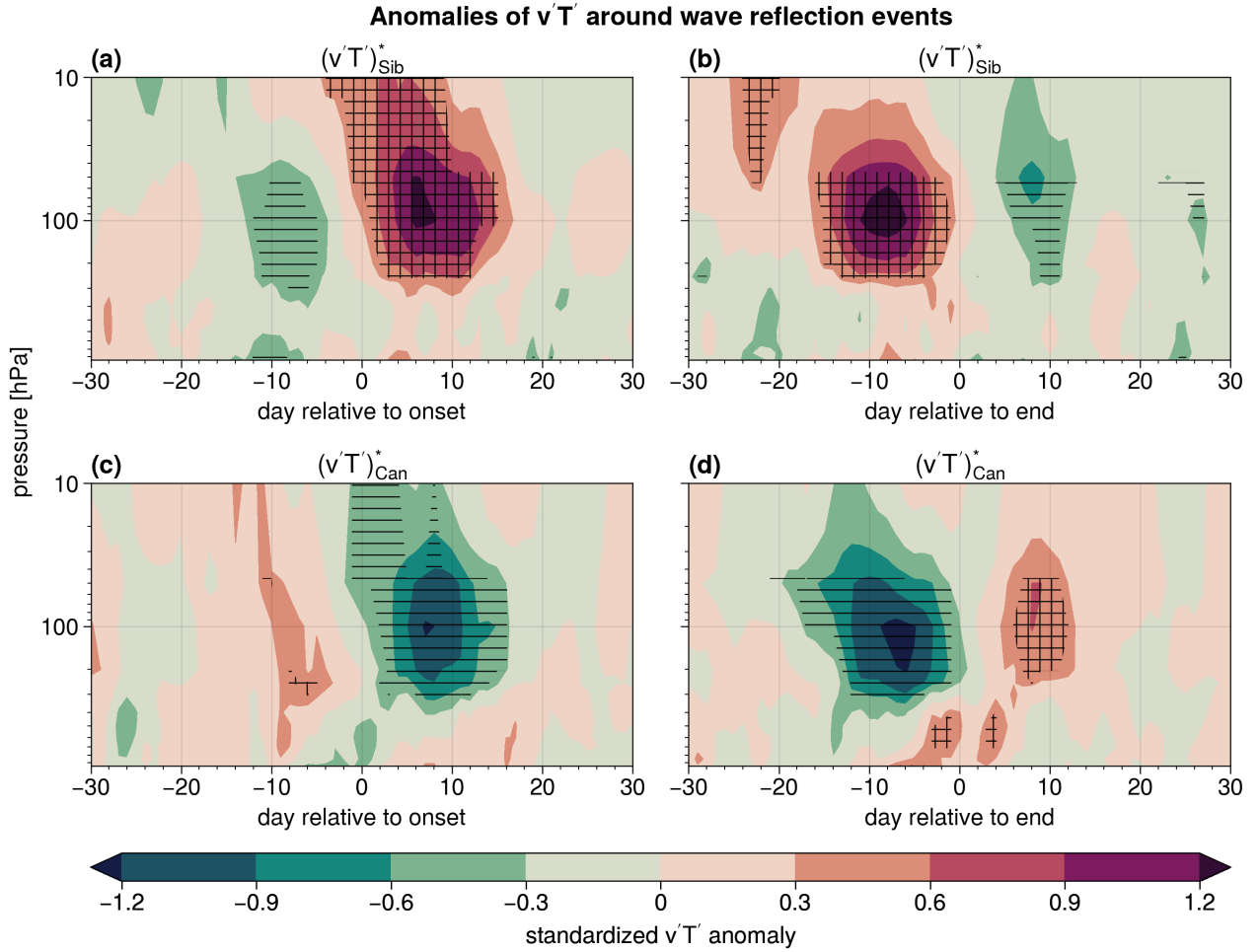
##### 3.1.1 Temporal and spatial patterns in meridional eddy heat flux

195 Following the definition of reflection events from [SeetSec. 2.2](#), the difference between  $v'T'$  anomalies in the Siberian domain and the Canadian domain is maximised during reflection events. This corresponds to positive  $v'T'$  anomalies and enhanced upward-propagating Rossby waves over Siberia and negative  $v'T'$  anomalies and enhanced downward-propagating Rossby waves over Canada.

The positive anomalies over Siberia during reflection events are preceded by negative anomalies with a distinct vertical structure. Both the negative and positive  $v'T'$  anomalies reach ~~down-into~~ the upper troposphere, ~~but-although~~ the positive anomalies are strongest in the stratosphere (Fig. 1 a). The lack of significant anomalies below 300 hPa could arise from greater tropospheric variability during reflection events. Furthermore, when ~~centered-centred~~ around the reflection onset date, significant positive anomalies in  $v'T'$  start four days earlier in the middle stratosphere (10 hPa) compared to the upper troposphere (200 hPa) (Fig. 1 a). This highlights the stratospheric onset of reflection events, connected to a local ~~vertical~~ maximum of zonal wind speeds at 10 hPa, which ~~plays a crucial role in pre-conditioning the stratosphere for wave reflection events~~ pre-conditions the stratosphere (cf. Fig. 2 in Messori et al. (2022)). ~~When centered around the end date, additional negative~~ Negative anomalies of Siberian  $v'T'$  emerge ~~(following the events when centring at the end date. (Fig. 1 b)).~~

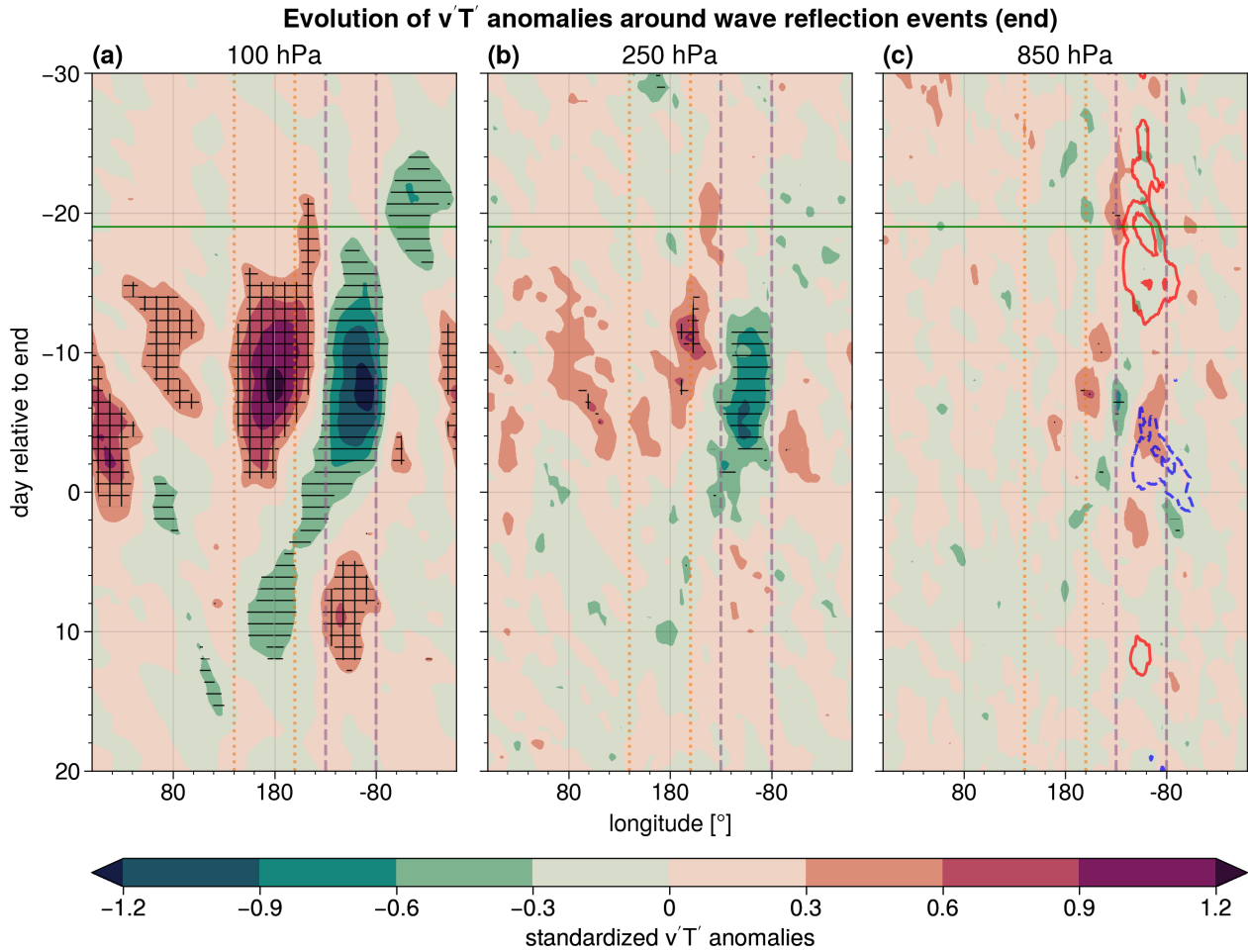
The alternation of different signed  $v'T'$  anomalies around reflection events is also evident in the Canadian domain (Fig. 1 c and d). Here, a more pronounced coupling to lower tropospheric levels is discernible, although most of the significant signal is above 300 hPa. When ~~centered-centred~~ around the end of reflection events, positive  $v'T'$  anomalies emerge close to the surface ~~around lag -8 days 8 days prior~~, later extending to higher levels (Fig. 1 d). The emergence of low-level positive  $v'T'$  anomalies is ~~possibly~~ connected to the southward advection of colder-than-average air near the surface. ~~At the same time,~~ while the negative upper-level anomalies weaken from higher stratospheric levels downward, consistent with decreasing wave reflection and increasing Rossby wave breaking in the middle stratosphere. This leads to anomalies of opposite sign at upper and lower levels in the days preceding the end of the reflection events.

To better understand this vertical structure, we consider the ~~spatiotemporal~~ spatio-temporal evolution of  $v'T'$  around the end of the reflection events, designated as day 0. ~~The  $v'T'$  anomalies in the stratosphere and upper troposphere show a clear oscillation over time in both the Siberian and Canadian domains.~~ During the peak of reflection events, the 100 hPa anomalies remain mostly confined within ~~these the Siberian and Canadian~~ domains. However, the negative 100-hPa  $v'T'$  anomaly above Canada starts to propagate westward around day 0 (Fig. 2 a) ~~-An additional positive anomaly emerges within the Canadian domain at lags and is replaced by a positive anomaly at~~ +5 to +12 days. Additional positive anomalies of meridional eddy heat flux during reflection events ~~are evident~~ over Asia and Europe ~~-suggesting a possible~~ suggest a connection between reflection events and hemispheric-scale circulation patterns. ~~Anomalies in the upper troposphere~~ The anomalies at 250 hPa mirror the behaviour of the lower stratosphere, albeit with weaker anomalies (Fig. 2 b), ~~as also seen in Fig. 1.~~



**Figure 1.** Vertical cross-section of standardized anomalies of composite meridional eddy heat flux  $v'T'$  averaged over the Siberian domain (45-75°N, 140-200°E) around (a) onset date and (b) end date of reflection events. In panels (c) and (d) the same is shown for the Canadian domain (45-75°N, 230-280°E). Horizontal hatching marks significant negative anomalies and cross-hatching significant positive anomalies. Anomalies of  $v'T'$  are obtained by subtracting the daily seasonal cycle, computed with a 15-day centred running mean (section 2.1).

225 The picture at 850 hPa is very different compared to the upper levels, notably in the positive anomalies that emerge in  
the Canadian domain at negative lags of a few days (Fig. 2 c). These correspond to ~~the~~ southward advection of colder-than-  
average air, associated with negative 2m air temperature anomalies (Fig. 2 c). This stands in stark contrast ~~to~~ with the positive  
temperature anomalies around the onset of the reflection events, associated with positive  $v'T'$  anomalies over the Northeast  
Pacific ~~which correspond to northward warm air advection~~ advecting warm air northward. Investigating the evolution of air  
230 temperature anomalies confirms the ~~similar behaviour between the two upper levels, which differs from the behaviour at~~  
difference between the upper levels and 850 hPa (Fig. A3).



**Figure 2.** Hovmöller diagram of standardized anomalies of composite meridional eddy heat flux  $v'T'$  averaged between  $45^{\circ}\text{N} - 75^{\circ}\text{N}$  centered-centred around the end date of reflection events at (a) 100 hPa, (b) 250 hPa and (c) 850 hPa. Horizontal hatching marks significant negative anomalies and cross-hatching significant positive anomalies. Continuous red and dashed blue contours in (c) show standardized positive and negative 2m air temperature anomalies, respectively, averaged between  $40^{\circ}\text{N} - 55^{\circ}\text{N}$  ( $1\text{ std} \approx 3.8\text{ K}$ ). The contours start at  $\pm 0.5\text{std}$  with steps of  $0.3\text{std}$ . The continuous horizontal green line shows the median onset day of reflection events. The vertical lines mark longitudes of the Siberian (orange, dotted) and Canadian domains (purple, dashed) domains.

In summary, the majority of significant  $v'T'$  anomalies are observed in the upper-troposphere-and-stratosphere-stratosphere and upper troposphere during reflection events. The oscillation of  $v'T'$  anomalies in the stratosphere over the Siberian and Canadian domain originates from the westward propagation of negative  $v'T'$  anomalies and the subsequent formation of new positive  $v'T'$  anomalies downstream, and is mostly linked to changes in the meridional wind (Fig. A4). Furthermore, the contrasting  $v'T'$  anomalies before the onset and after the end of reflection events relate to times with spatially more

uniform, weakly positive meridional eddy heat fluxes over both regions, while the more-pronounced anomalies during reflection events can be interpreted as bursts in  $v'T'$  (Fig. A5). In the Canadian domain, ~~positive anomalies are also evident at lower tropospheric levels~~ opposite anomalies between the upper levels and the lower troposphere appear a few days before the end of the reflection events, ~~exhibiting an opposite sign to upper levels at that time. These positive~~, ~~The positive~~ low-level  $v'T'$  anomalies ~~correspond to~~ are associated with a large-scale decrease in 2m air temperatures ~~during reflection events~~.



### 3.1.2 Evolution of geopotential height anomalies

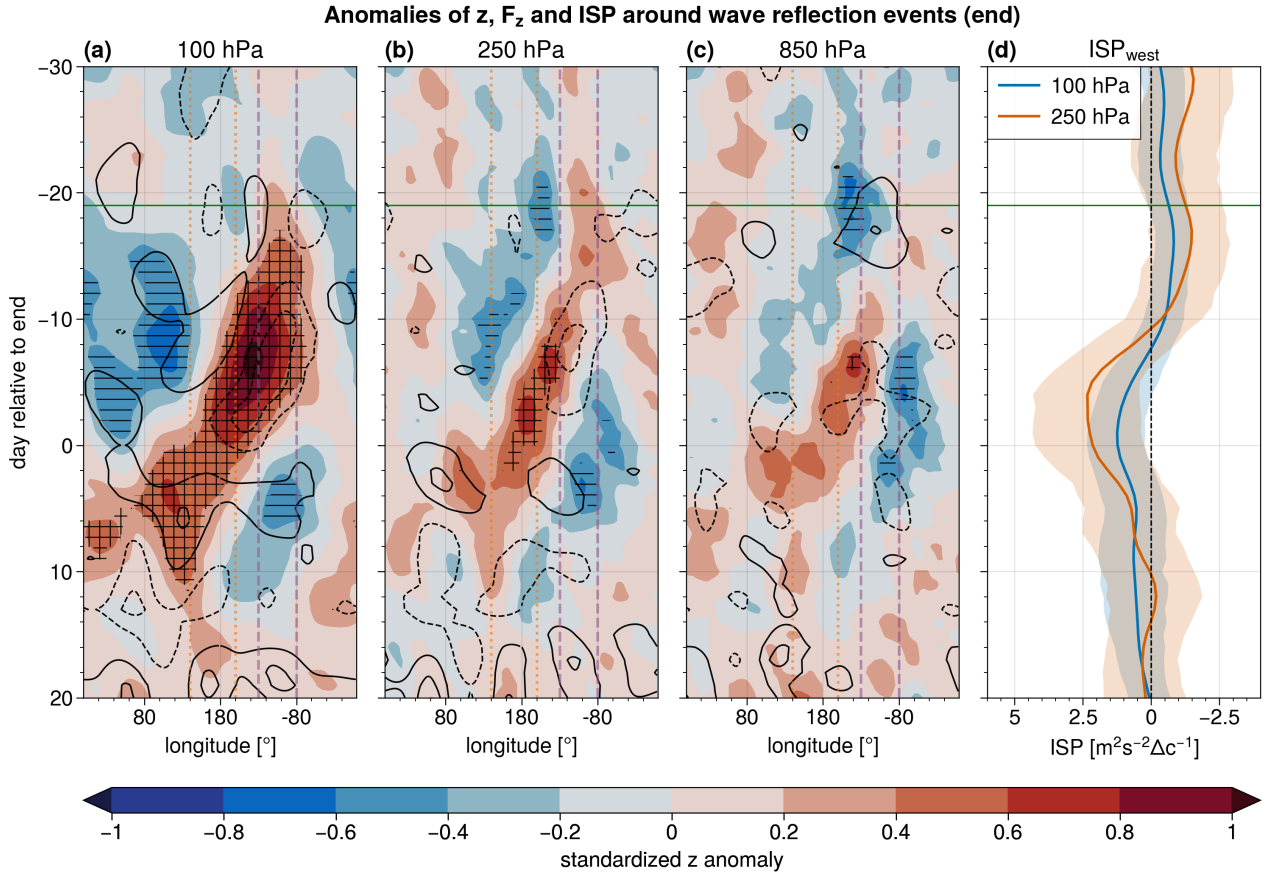
After highlighting westward-propagating  $v'T'$  anomalies around the end of reflection events, we now connect this behaviour to the evolution of geopotential height anomalies and vertical WAF.

245 A westward propagating ridge stands out as a characteristic feature of reflection events. The positive geopotential height anomaly associated with the ridge forms during the onset at 100 hPa over the Canadian domain (Fig. 3 a). This anomaly intensifies and exhibits westward propagation as the events progress, reaching Europe by day +6. Shortly after the formation of the ridge, a trough forms over Eurasia and persists throughout the duration of the reflection events. After the end of the event, a new trough develops over North America, downstream of the westward propagating ridge. West of the ridge, upward WAF  
250 anomalies match the positive  $v'T'$  anomalies observed over the Siberian domain in the stratosphere (cf. Figs. 2 a and 3 a), ~~and exhibit a stronger-than-average eastward component from day -15 to 0. Enhanced~~ while enhanced downward WAF east of the ridge ~~corresponds to~~ is consistent with the negative anomalies of  $v'T'$  over North America. The behaviour of geopotential height and WAF at 250 hPa closely resembles that observed at 100 hPa, albeit with slightly weaker anomalies (Fig. 3 b). While the significant strengthening of the ridge at 250 hPa occurs a few days later than at 100 hPa, the negative geopotential  
255 height anomaly downstream of the ridge precedes that at 100 hPa by a few days (cf. Fig. 3 a and b).

As in the case of the  $v'T'$  anomalies, the pattern of ~~geopotential-and~~ WAF anomalies is different at lower levels. ~~Downward~~ Upward 850 hPa WAF anomalies over North America around the onset of reflection events are replaced, around day ~~-10-8~~, by enhanced ~~upward-and-eastward~~ downward anomalies (Fig. 3 c). ~~The mid-tropospheric convergence of WAF occurring before the end of reflection events has been connected to the emergence of a trough over Canada by Millin et al. (2022).~~ At  
260 the same time, the ~~geopotential height anomalies propagate~~ positive geopotential height anomaly propagates to the west and ~~replace~~ replaces the negative anomaly over the North Pacific, similarly to the upper levels. The downstream development of the negative 850 hPa geopotential height anomaly occurs at around -10 days, earlier than at upper levels.

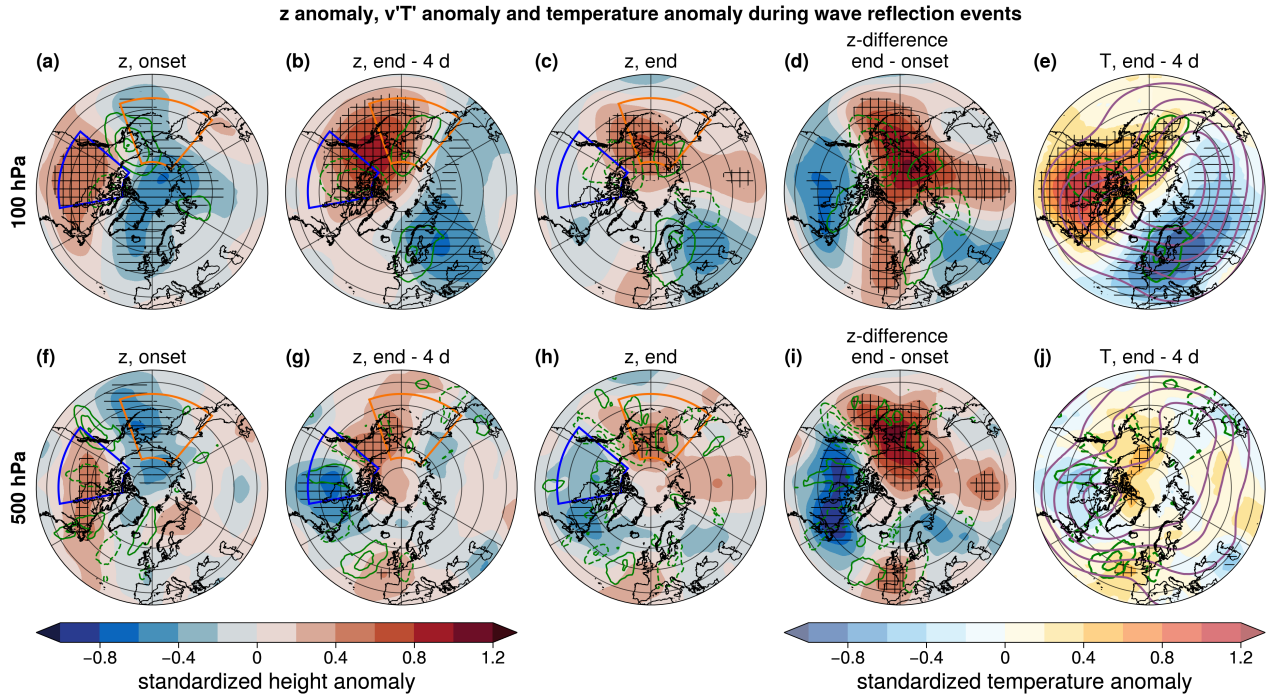
The westward propagation of the ridge around the end of reflection events corresponds to increasing ISP for Rossby waves with westward phase speed (Fig. 3 d). ~~The reflection events exhibit initially~~ In particular, suppressed values of  $ISP_{west}$  ~~after~~ observed around the median onset day ~~are~~ followed by a roughly monotonic increase ~~until~~, peaking a few days before their end date. The spectral properties of Rossby waves are further analysed in Section 3.1.3.

The evolution of the spatial pattern of geopotential height anomalies highlights the hemispheric scale of the reflection events (Fig. 4). In addition to the westward-propagating ridge and subsequent development of a trough downstream ~~consistent with~~ (Fig. 3; ~~we also~~), we observe clear geopotential height anomalies over Eurasia (first three columns in Fig. 4). Specifically, a  
270 Rossby wave train pattern extending from the North Atlantic to East Siberia suggests a hemispheric-scale circulation pattern around the end of reflection events (Fig. 4 c and h). This pattern, as well as the shift of geopotential height anomalies over North America and the Pacific, are even more pronounced when ~~contrasting reflection event~~ comparing the onset and end of reflection events (Fig. 4 d and i). Furthermore, the ~~evolution in~~ vertical coherence in the evolution of geopotential height anomalies ~~is coherent between 100 and 850 (Fig. A6), highlighting the largely~~ highlights the equivalent barotropic character  
275 of reflection events ~~(Fig. A6)~~.



**Figure 3.** Hovmöller diagram of standardized anomalies of geopotential height averaged between  $45^{\circ}\text{N}$  -  $75^{\circ}\text{N}$  centered-centred around the end date of reflection events at (a) 100 hPa, (b) 250 hPa and (c) 850 hPa in shading. Horizontal hatching marks significant negative anomalies and cross-hatching significant positive anomalies. Arrows-Black lines indicate standardized anomalies of the zonal-and-vertical component of WAF (Plumb, 1985) (blue: significantly negative vertical component (Takaya and Nakamura, 2001) filtered for wavenumbers-1 to 4, red: significantly positive vertical component). Only values larger than in steps of 0.1 std are shown, excluding the zero-line. (d) Time series of ISP for westward-propagating Rossby waves and the 95% confidence interval (shaded area) at 100 hPa and 250 hPa with the x-axis being flipped, so that enhanced activity of westward-propagating Rossby waves lies to the left of the zero line. The continuous horizontal green line shows the median onset time of reflection events. The vertical lines mark longitudes of the Siberian (orange, dotted) and Canadian domains (purple, dashed) domains.

The temperature anomalies associated with the ridge formation over the North Pacific align with the previously discussed  $v'T'$  anomalies. Warm air is advected northward at higher levels over the North Pacific around the ridge and redirected southward over North America (Fig. 4 e). The temperature anomalies at lower levels exhibit a more distinct pattern than at 100 hPa, with warmer-than-average air predominantly directed poleward over Alaska around day -4 (Fig. 4 j) and colder-than-average air advected over Canada. The resulting vertical sign-change of temperature anomalies over Canada links to the opposite



**Figure 4.** Geopotential height anomalies in shading and  $v'T'$  anomalies in green contours (a, f) during onset, (b, g) 4 days before end, (c, h) at the end date and (d, i) difference between onset and end of reflection events at 100 hPa (first row) and 500 hPa (second row). Horizontal hatching marks significant negative geopotential height anomalies and cross-hatching significant positive anomalies. (e, j) Temperature anomalies in shading, geopotential height field in purple and  $v'T'$  anomalies in green 4 days before end.

sign of  $v'T'$  anomalies between stratosphere and lower troposphere, as discussed in the previous section. Since geopotential height anomalies are proportional to the vertical integral of the underlying temperature anomalies, we expect a local minimum in geopotential height in correspondence of the change in sign from low-level negative to upper-level positive temperature anomalies (Fig. A7 a, see also Harnik and Lindzen (2001)).

285 In summary, the onset of reflection events is ~~characterised~~characterized by a vertically coherent positive geopotential height anomaly at upper levels over North Canada. This propagates westward, reaching Siberia by the end of the events. At the same time, a negative geopotential height anomaly emerges downstream over eastern Canada, first at lower levels and later extending into the stratosphere. At upper levels enhanced upward WAF is observed over the Siberian domain west of the ridge, and enhanced downward WAF over Canada east of the ridge. Positive WAF anomalies close to the surface over North America  
290 emerge 10 days before the end of reflection events.

### 3.1.3 Rossby wave characteristics during reflection events

We next ~~leverage-use the~~ space-time spectral analysis ~~;~~ described in Section 2.3 ~~;~~ to investigate the Rossby wave behaviour at the onset and end of reflection events.

Rossby wave spectra indicate an enhancement of westward-propagating Rossby waves from the onset to the end of reflection.

295 During the onset at 100 hPa, ~~the strong activity for~~ eastward-propagating waves 2 to 5 ~~are amplified and westward-propagating waves are damped, suggesting is likely related to~~ the presence of an accelerated stratospheric flow, ~~under the assumption that this affects all wavenumbers equally by shifting the whole spectra towards higher phase speeds than climatology~~ (Fig. 5 a). This is followed by ~~higher-enhanced~~ activity for westward-propagating Rossby waves during the end of the events, which agrees with the ~~above findings regarding presence of~~ westward-propagating anomalies (Fig. 5 b). The deceleration of Rossby waves

300 ~~wave propagation~~ during the evolution of the reflection events is ~~characterised-characterized~~ by a significant enhancement of westward-propagating wave 1 ~~and- 3 + and- and 4 and~~ by a decreased activity for eastward-propagating waves 2 to 4-5 (Fig. 5 c). The ~~higher-wavenumber anomalies-anomalies for the high-frequency waves~~ lie in a phase-space region with low spectral power. ~~Although-, hence~~ they contribute less to the overall Rossby wave energy ~~and-to the formation of troughs and ridges; they further support- .~~ At the end of reflection events, their enhanced westward activity is related to the presence of increased

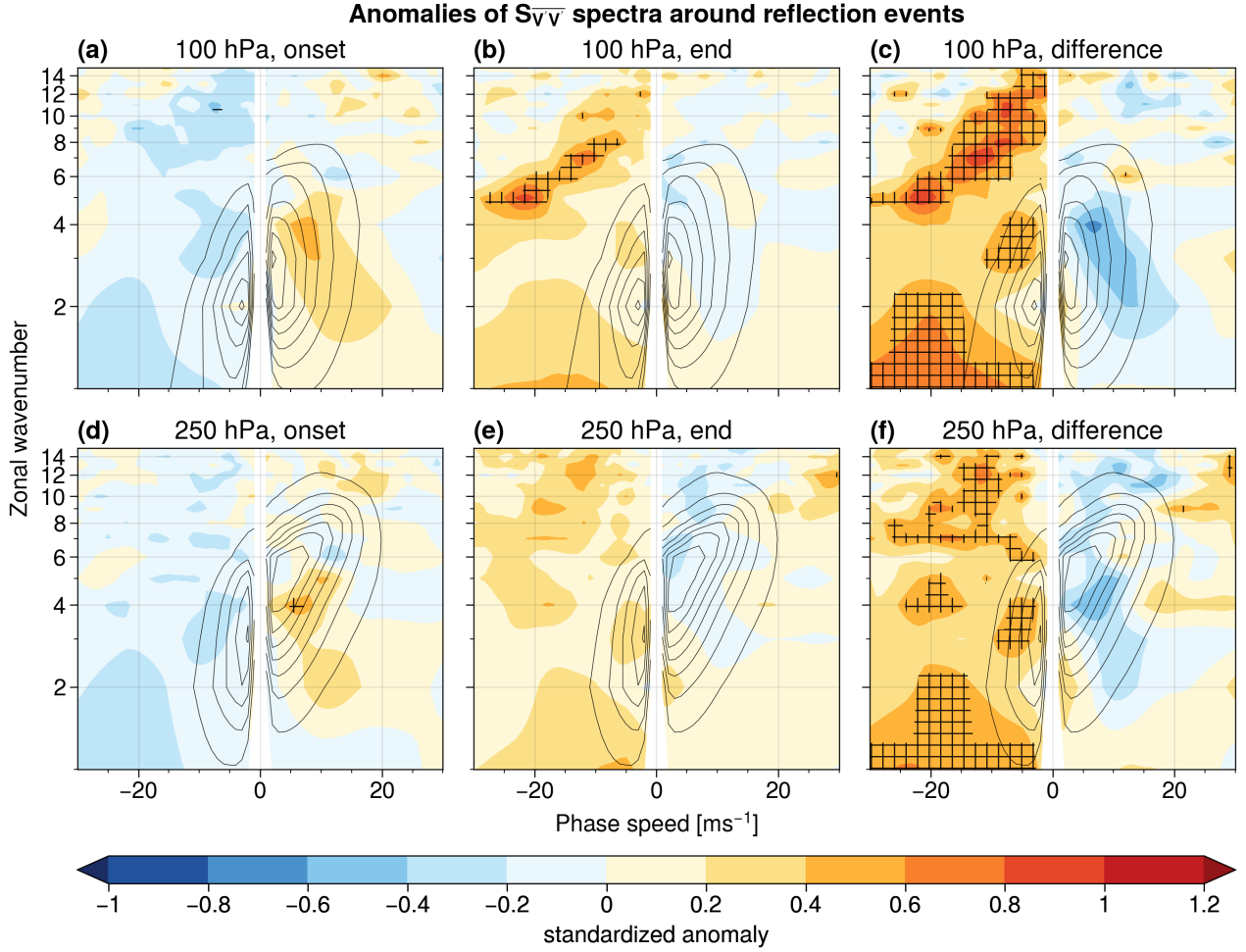
305 activity for retrograding Rossby waves at the end of reflection events. The upper troposphere displays a similar pattern to the stratosphere, albeit with a weaker change in the retrograding planetary-scale Rossby waves, which form the background where the high-frequency waves propagate. Westward-propagating Rossby wave activity increases also at higher stratospheric levels (Fig. A9) and in the upper troposphere, albeit the tropospheric change in westward-propagating wave-1 is weaker (Fig. 5 d to f). ~~Finally, westward-propagating Rossby wave activity increases also at stratospheric levels above 100 (Fig. A9)-~~

310 The phase speed of Rossby waves in the vertical column between 850 hPa and 10 hPa thus decreases during the course of reflection events (Fig. 6 a). Higher phase speed  $\bar{c}_p$  in the lower stratosphere and troposphere around the onset of reflection events ~~could indicate a-is consistent with the~~ faster zonal flow ~~;-in line with-and with the~~ enhanced activity of eastward-propagating Rossby waves. Around the end, the phase speed drops below average across the entire vertical column. Additionally, the phase speed stays below average after reflection events have ended ~~and-decreases in the stratosphere even further around +10 days,~~

315 potentially indicating a weakening of the stratospheric circulation after reflection events. However, as ~~Messori et al. (2022)-noted-noted by Messori et al. (2022)~~, this weakening is not sufficient to cause a significant drop in zonal-mean zonal winds, but could rather be connected to a stretched stratospheric polar vortex ~~;-displaced towards Eurasia.~~

Anomalies in ISP confirm the change of Rossby wave behaviour during reflection events, but highlight differences in the vertical structure. The overall Rossby wave activity mostly remains close to its climatological average and only increases in

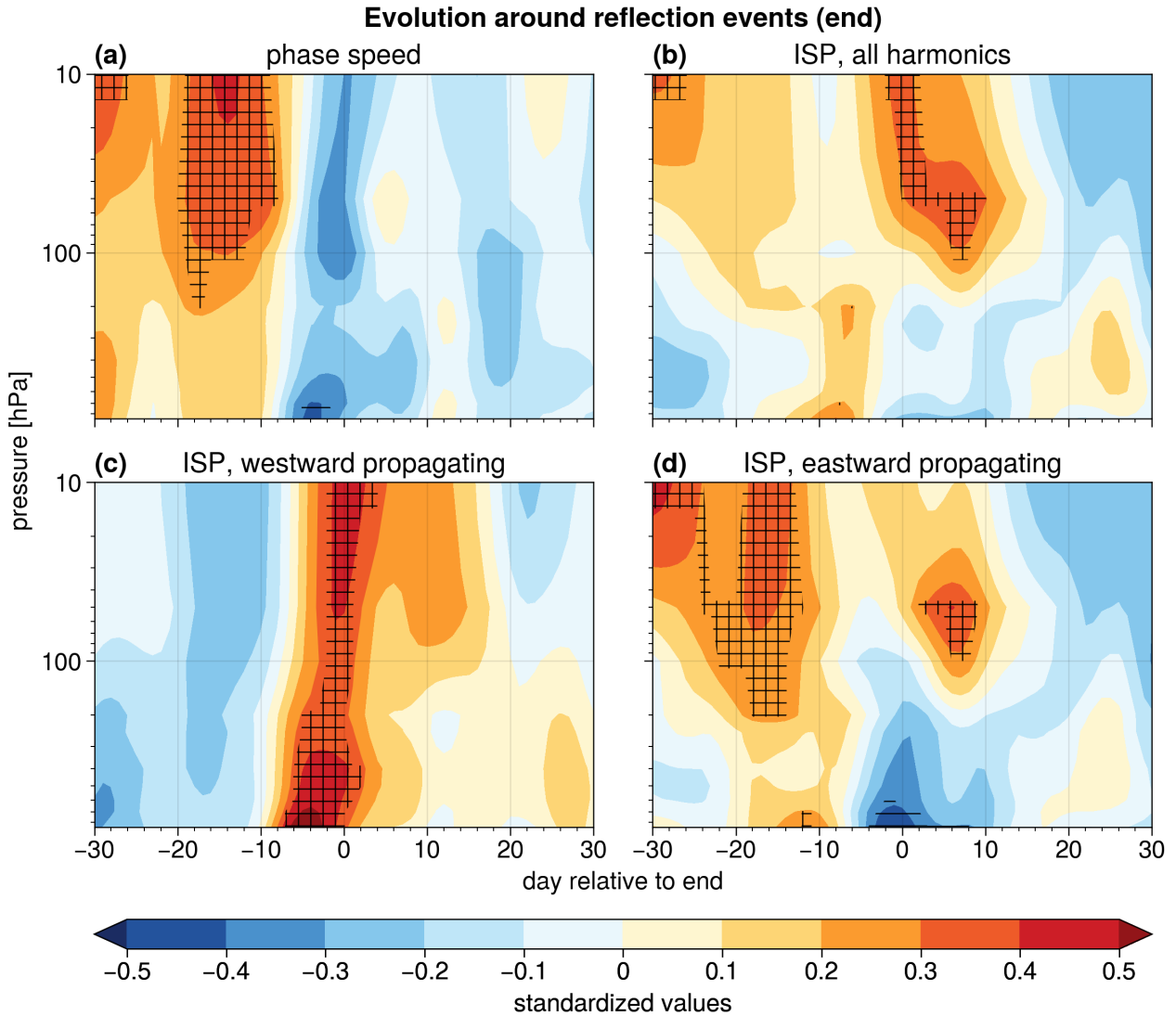
320 the stratosphere after the end of reflection events (Fig. 6 b). ~~Positive anomalies of  $ISP_{east}$  align with periods of enhanced phase speed around the onset of reflection events (cf. Fig. 6 a and d).~~ However, when focusing on  $ISP_{west}$ , an increase in Rossby wave activity becomes discernible prior to the end of reflection events. This begins in the lower troposphere around day -9 and in the stratosphere only around day -4 (Fig. 6 c). ~~Simultaneously,  $ISP_{east}$  is suppressed in the lower troposphere, while Rossby waves are more active in the stratosphere.~~ The enhanced westward propagation of Rossby waves beginning in the lower



**Figure 5.** Standardized anomalies of spectral power  $S_{\bar{v}\bar{v}}$  of each harmonic at 100 hPa during (a) reflection event onset, (b) end and (c) difference between onset and end are represented in shading. Sub-panels (d) - (e) show the same, but for 250 hPa. Black contours show the DJFM mean for all years (100 hPa: steps of  $0.05 \text{ m}^2 \text{ s}^{-2} \Delta \text{c}^{-1}$  from  $0.05 \text{ m}^2 \text{ s}^{-2} \Delta \text{c}^{-1}$  to  $0.35 \text{ m}^2 \text{ s}^{-2} \Delta \text{c}^{-1}$ ; 250 hPa: steps of  $0.1 \text{ m}^2 \text{ s}^{-2} \Delta \text{c}^{-1}$  from  $0.1 \text{ m}^2 \text{ s}^{-2} \Delta \text{c}^{-1}$  to  $0.7 \text{ m}^2 \text{ s}^{-2} \Delta \text{c}^{-1}$ ). Horizontal hatching indicates significant negative anomalies, cross-hatching indicates significant positive anomalies.

325 troposphere coincides temporally with the previously-mentioned strong decrease of 2m air temperatures over North America and influences the upper levels only at a later stage. ~~Positive anomalies of  $ISP_{east}$  align with periods of enhanced phase speed around the onset of reflection events (cf. Fig. 6 a and d). During the end of reflection events,  $ISP_{east}$  is suppressed in the lower troposphere, while Rossby waves are more active in the stratosphere.~~

To summarize, space-time spectral analysis highlights the enhancement of westward-propagating Rossby waves towards  
 330 the end of reflection events. This is particularly pronounced in westward-propagating waves 1, 3 and 4, and coincides with a



**Figure 6.** Vertical cross-section of standardized anomalies of (a) phase speed, (b) ISP, (c)  $ISP_{west}$  and (d)  $ISP_{east}$  derived from spectral power  $S_{\sqrt{V/V}}$  between 850 hPa and 10 hPa centered-centred around the end date of reflection events. Horizontal hatching marks significant negative anomalies, cross-hatching significant positive anomalies.

~~lower phase speed than normal. Westward-propagating decrease in phase speed.~~ The vertical structure of geopotential anomalies confirms the importance of waves 2 to 4 in the troposphere and wave 1 in the stratosphere (Fig. A7). The westward propagation of large-scale anomalies in the lower stratosphere and upper troposphere can be understood by Rossby wave phase lines, that are normally tilted westward with height, not displaying any tilt over the North Pacific during stratospheric wave reflection (Fig. A8). The absence of vertical tilt is the result of a stronger enhancement of eastward phase speeds at higher stratospheric levels

335



than below (Fig. 6 a). Additionally, westward-propagating Rossby waves become more active at first in the lower troposphere, approximately 9 days before the end of reflection events, and then in the stratosphere a few days later. This matches the strengthening of the blocking ridge over Alaska, which will be discussed in the next section.

340 A possible limitation of this analysis is that the spectra are computed over a full hemispheric domain and may present difficulties in resolving a regional signal. To connect the spectra to reflection events, we build a set of “regionalized events” based on the correlation of the 100 hPa geopotential height field over the North Pacific with reflection events (section 2.2). These events show a spectral shift to enhanced westward-propagating Rossby waves similar to reflection events, demonstrating the effectiveness of the spectral analysis in quantifying changes in Rossby waves during North Pacific reflection events (cf. Fig. 5 and A16). Even though geopotential height anomalies over Eurasia differ between regionalized and reflection events, the key  
345 feature of a westward propagating ridge over the North Pacific is well represented in regionalized events (cf. Fig. 3 and A17).

A second potential limitation consists in the large time window (61 days) over which the spectra are computed, which could smooth out short signals and prevent to effectively capture the events in time. However, only 37 days fully contribute to each day’s space-time spectra due to tapering at the edges (Sec. 2.3). Choosing a shorter time window could lead to the inability to measure the phase speeds of slow propagating Rossby waves, which are crucial for understanding wave behaviour during  
350 reflection events. Furthermore, Hovmöller diagrams for geopotential height anomalies reveal a westward propagation of the waves during reflection events (e.g., Fig. 3 or A2) that is qualitatively consistent with the results obtained from space-time spectra. This shows the performance of the spectral analysis in resolving the temporal evolution of waves during reflection events.

### 3.2 Connecting reflection events to tropospheric weather regime evolution

355 Messori et al. (2022) ~~attested-an-~~were able to assess the association between reflection events and transitions from the Pacific Trough (PT) to the Alaskan Ridge (AKR) weather regime. Given that the spatial patterns shown in Section 3.1.2 are consistent with this transition, we now discuss the characteristics of the regime shift and its similarity to reflection events.

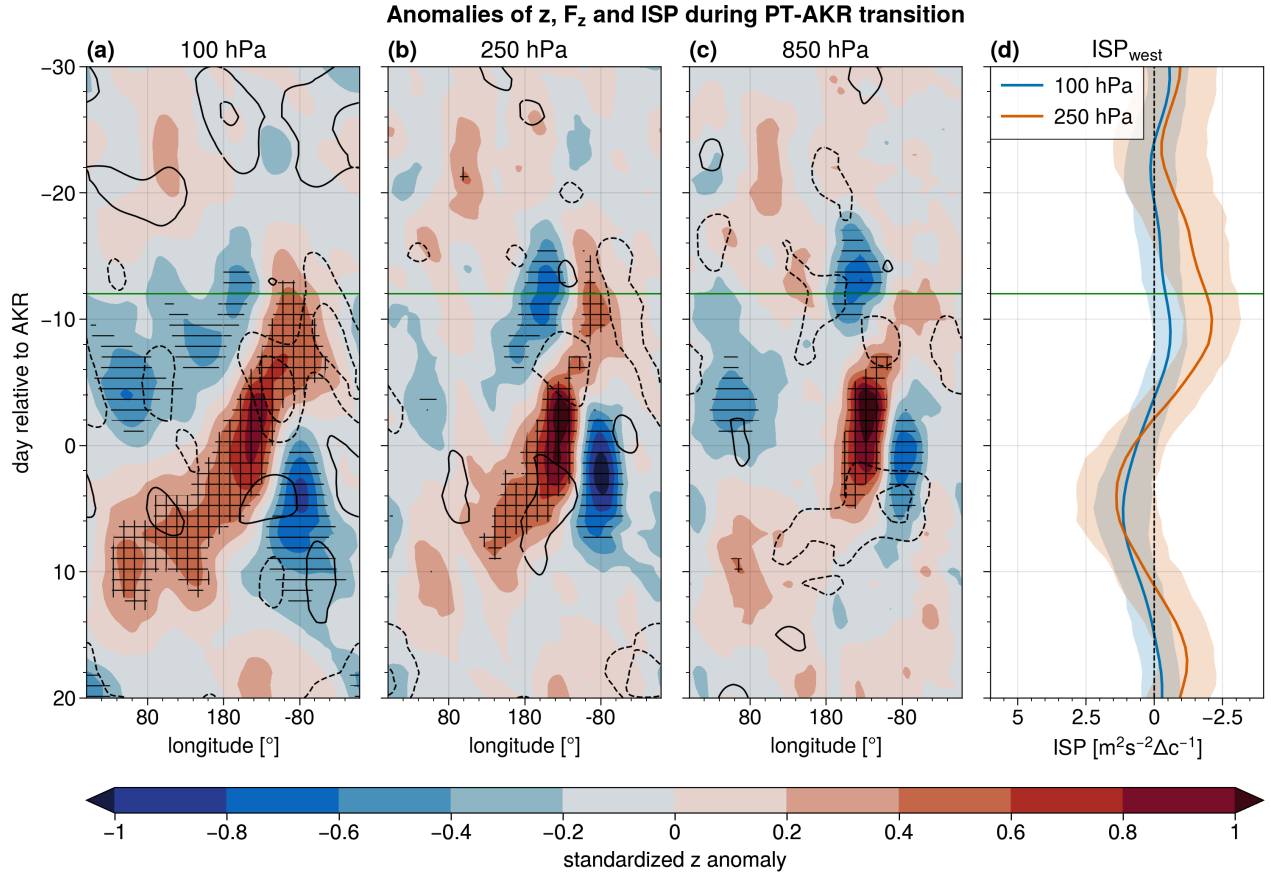
During transitions from PT to AKR, the signal in geopotential height anomalies extends from the stratosphere to the lower troposphere, with ~~a-clear-an equivalent~~ barotropic character similar to that during reflection events (Fig. 7 a–c). The transition begins about 12 days before the central date of AKR with a negative geopotential height anomaly ~~centered-centred~~ at approximately 140 °W, i.e., the circulation anomaly characteristic of the PT. This is followed by a positive geopotential height anomaly, i.e. the AKR, which replaces the PT. ~~Both-As in the case of reflection events, both~~ anomalies propagate westward ~~;~~ ~~as-observed-during-reflection-events~~ (cf. Figs. 3 and 7). In parallel, a new negative anomaly downstream of the ridge forms at approximately 80°W during the AKR regime, and persists for some time afterwards (Fig. 7 a–c). The geopotential anomalies are most pronounced in the ~~mid-upper-troposphere, in-part troposphere,~~ likely due to the regimes being defined at 500 hPa (Lee et al., 2023a). Anomalies in WAF behave similarly during the regime transition compared to reflection events, ~~with-the-only differences-being-a-stronger-eastward-component-at-higher-levels-and-a-more-pronounced-upward-WAF-at-850-i.e., downward WAF anomalies east of the geopotential height anomaly at 100 hPa during PT-AKR transitions, before and during the peak intensity of the ridge~~ (cf. Figs. 3 a and 7 a).

370 During the regime transition from PT to AKR, the evolution of  $ISP_{west}$  anomalies is also comparable to that during reflection events. ~~In-agreement-with-the-westward-propagation-of-the-ridge,~~  $ISP_{west}$  takes anomalously weak values during the PT regime and stronger-than-average values during AKR, ~~evidencing-a-change-in-the-Rossby-wave-behaviour-resembling-that-between resembling the change in Rossby wave evolution between the~~ onset and end of reflection events (cf. Figs. 3 d and 7 d).

Changes in the Rossby wave spectrum from PT to AKR are also ~~in-agreement~~ consistent with those observed during reflection events, except for the lack of significant differences for wave-1 ~~-(Fig. 3.3 a, b).~~ The difference between the AKR and PT spectra highlights the enhancement of spectral power for westward-propagating waves-3 and ~~4-4~~ (Fig. 3.3 c). Additional significant anomalies occur in phase-space regions with low spectral power ~~(Fig. 3.3 a, b, d, e).~~ ~~This agrees-with-the-change-of Rossby-wave-behaviour-during-reflection-events~~ (cf. Figs. 5 e, f and 3.3 e, f). As in the case of geopotential height anomalies, Rossby wave spectra anomalies of PT and AKR are more pronounced at 250 hPa than in the stratosphere (cf. Figs. 3.3 and 380 A10).

In summary, the transition from a PT to an AKR weather regime resembles the atmospheric evolution during reflection events, confirming previous research (Messori et al., 2022). This includes the transition from a negative geopotential height anomaly over the Northeast Pacific around the onset to a ridge before the end of reflection events, which subsequently propagates westward and facilitates the formation of a new trough downstream over North America. About one-third of the transition events occur during reflection events (21 out of 62), and more than half of the reflection events (24 out of 45) include a PT-AKR regime transition if one includes transition events with the central date of AKR after the end of reflection events. We also note that ~~reflection-events-happening-without-PT-around-the-onset, or-without-AKR-around-the-end, show-a-weaker~~





**Figure 7.** As in Fig. 3, but centred around the central date of AKR during PT-AKR transitions (Sec. 2.2).

signal in tropospheric circulation (not shown) PT-AKR weather regime transitions that do not occur during reflection events exhibit a different evolution of stratospheric geopotential height anomalies compared to those transitions happening during reflection events (cf. Figs. A11 and A12). Our analysis further points to the enhancement of westward-propagating wave-3 and wave-4 during reflection events being related to the PT to AKR regime shift. In contrast, the lack of a signal in significant wave-1 anomalies in the spectra of weather regimes-weather-regime transitions suggests that the latter signal arises from the stratosphere during reflection events (cf. Figs. 5 c, f and 3.3 c, f).-

As Fig. 5, but for (a, d) PT regimes, (b, e) AKR regimes and (c, f) difference between PT and AKR regimes at 100 and 250-

### 3.3 Signal regionalization

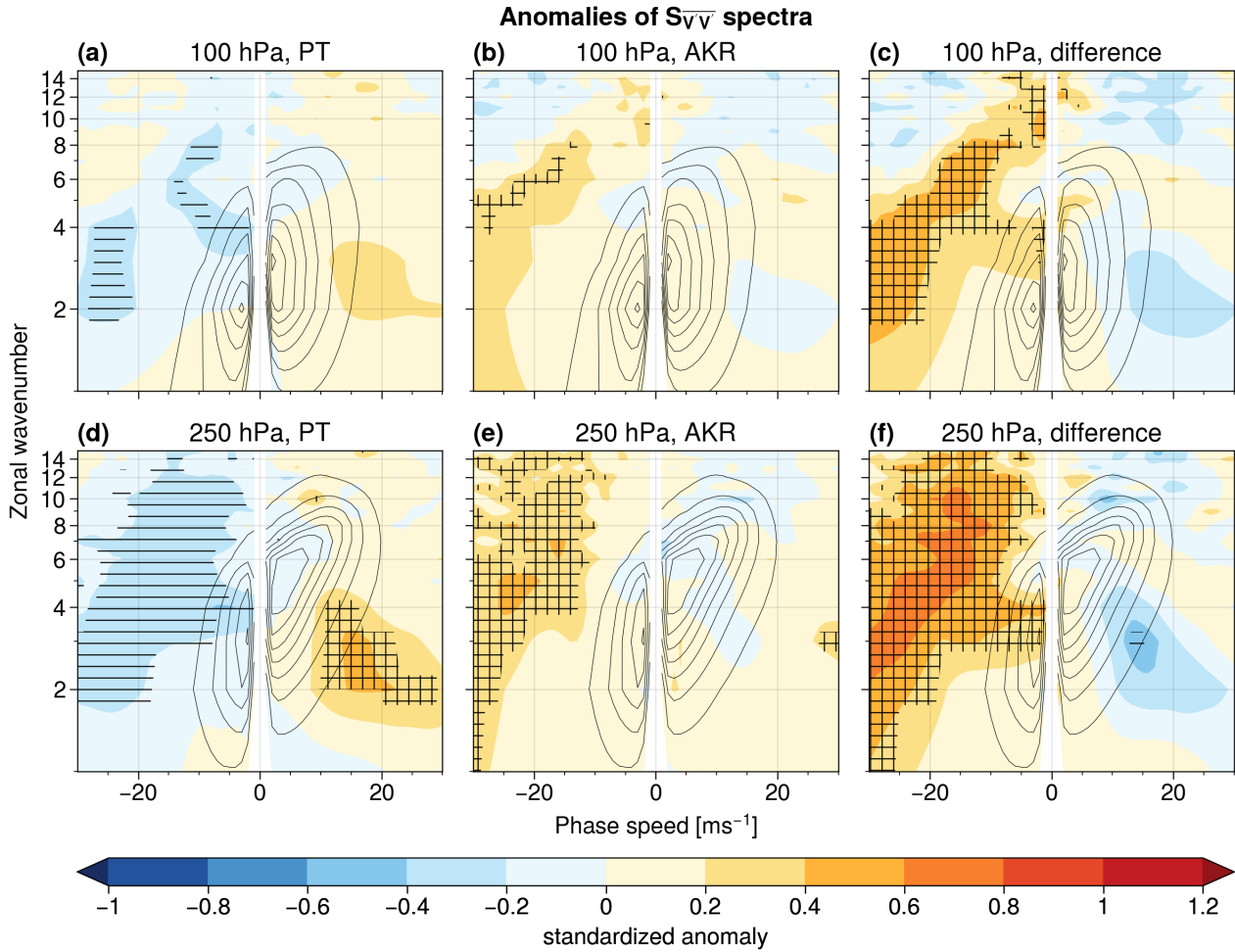
The preceding sections focus on the dynamics over the North Pacific, but also highlight the possible impact of reflection events on other regions of the Northern Hemisphere. In contrast to the reflection index, space-time wave spectra are computed over a full hemispheric domain, raising the question if the overall signal is dominated by reflection events or if unrelated Rossby

400 waves contribute to the spectral signature. To address this, we evaluate the spectral properties of a new sample of “regionalized events”, selected based on the correlation of the 100 geopotential height field over the North Pacific with reflection events (section 2.2).

As Fig. 4, but for regionalized events (Sec. 2.2).

405 The geopotential height anomalies of the regionalized events composite exhibit (by definition) an alignment with those in reflection events in the Siberian and Canadian domains, albeit with larger amplitude (cf. Figs. 4 and A17). A second similarity with the reflection events consists in the westward propagation of the Canadian ridge (first three columns in Fig. A17). However, when comparing regionalized events with reflection events, there is a lower level of agreement over Eurasia. This is particularly evident for the difference between onset and end days (cf. Figs. 4 d, i and 4 d, i) and points to the uniqueness of reflection events and their connection to the hemispheric circulation. Despite the difference in geopotential height anomalies, 19 out of 63 regionalized onset events overlap with the onset of reflection events, and 17 of the 54 regionalized end events overlap with the end of reflection events. This overlap indicates that the definition of reflection events using  $v'T'$  anomalies over the North Pacific corresponds to a relatively systematic pattern of geopotential height anomalies over that region. The regionalized events show similar temperature anomalies to the reflection events, albeit with weaker anomalies in the stratosphere over Canada, and is not present in the PT-AKR transitions occurring outside stratospheric reflection events (cf. Figs. 4 e, j and 4 e, j, A13 and A14).

415 To summarize, the shift to enhanced westward-propagating Rossby waves is similar both in regionalized events and reflection events. Even though geopotential height anomalies over Eurasia differ between these events, the key feature of a westward propagating ridge over the North Pacific is represented in regionalized events. The similar behaviour of Rossby wave space-time spectra in both types of events emphasizes the effectiveness of hemispheric space-time spectral analysis for quantifying changes of Rossby wave dynamics associated with North Pacific reflection events.



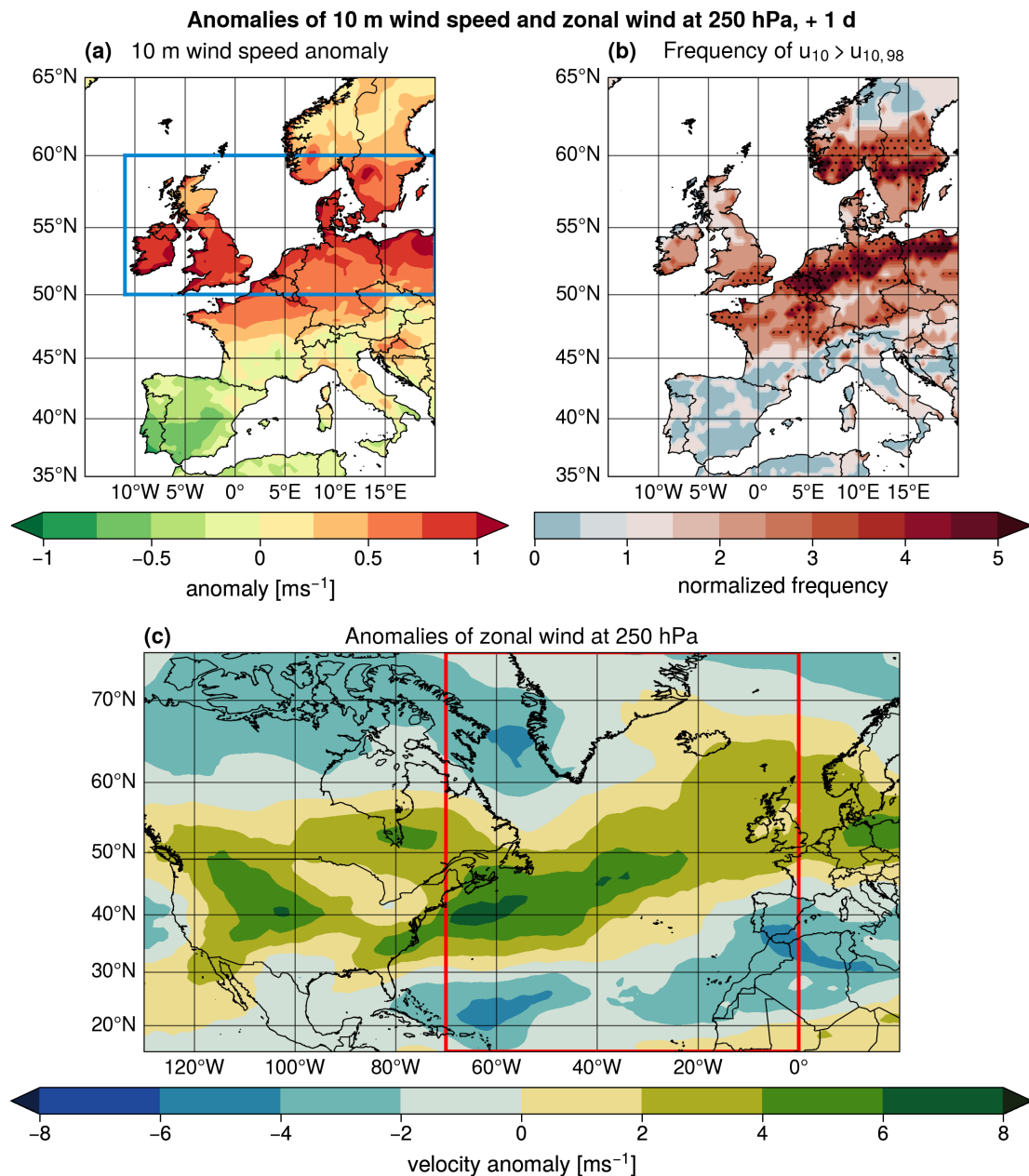
The signature in space-time spectra of regionalized events is similar to reflection events (cf. Figs. 5 and A16). During the regionalised-onset events, eastward-propagating waves are more active with respect to climatology, while enhanced activity for westward-propagating Rossby waves characterizes the end events. The lack of a significant difference between regionalized-onset and end events in westward wave-1 PT regimes, (b, e) AKR regimes and (c, f) difference between PT and AKR regimes at 100 hPa could arise from an already-enhanced westward-propagating wave-1 during the onset time (Fig. A16 a and c). Nevertheless, the difference between regionalized-onset and end events agrees in most other climatologically relevant phase-space regions with the difference between onset and end of reflection events, including wave-1 at and 250 hPa (cf. Figs. 5 c, f and A16 c, f). Furthermore, the decrease of Rossby wave activity for eastward-propagating waves is more pronounced for regionalized events than for reflection events, yet over a similar range of wavenumbers.

The signature in space-time spectra of regionalized events is similar to reflection events (cf. Figs. 5 and A16). During the regionalised onset events, eastward-propagating waves are more active with respect to climatology, while enhanced activity for westward-propagating Rossby waves characterizes the end events. The lack of a significant difference between regionalized onset and end events in westward wave-1 PT regimes, (b, e) AKR regimes and (c, f) difference between PT and AKR regimes at 100 hPa could arise from an already-enhanced westward-propagating wave-1 during the onset time (Fig. A16 a and c). Nevertheless, the difference between regionalized-onset and end events agrees in most other climatologically relevant phase-space regions with the difference between onset and end of reflection events, including wave-1 at and 250 hPa (cf. Figs. 5 c, f and A16 c, f). Furthermore, the decrease of Rossby wave activity for eastward-propagating waves is more pronounced for regionalized events than for reflection events, yet over a similar range of wavenumbers.

~~There is a growing literature connecting~~ A growing literature connects cold spells in North America to wet and/or windy extremes in Europe, sometimes termed pan-Atlantic extremes (~~Messori et al., 2016; Ding et al., 2022; Leeding et al., 2023a, b; Riboldi et al.,~~ (Messori et al., 2016; Leeding et al., 2023a, b; Riboldi et al., 2023; Messori and Faranda, 2023)). In our study, we confirm previous results showing that reflection events over the North Pacific are connected to a drop in temperatures over North America (Messori et al., 2022; Kodera et al., 2016; Kretschmer et al., 2018; Matthias and Kretschmer, 2020). Additionally, we highlight the presence of hemispheric-scale anomalies in the mid-latitude circulation. Based on these results and on the literature on pan-Atlantic extremes, we ~~now~~ investigate whether the reflection events ~~correspond to~~ are associated with near-surface (i.e., 10m) wind anomalies in Europe. Recently, Riboldi et al. (2023) highlighted two possible pathways connecting cold temperatures over North America and extreme wind events in Europe. The atmospheric evolution during reflection events resembles the first pathway. ~~This, which~~ involves the propagation of a Rossby wave train from the North Pacific ~~resulting~~. ~~This results~~ in an intensification of the North Atlantic eddy-driven jet and windy extremes over northwestern Europe a few days after the North American cold spell peak ~~over North America~~. The similar atmospheric configuration underscores the previously unreported connection between reflection events in the North Pacific and wind extremes in Europe.

As the coldest temperatures over North America typically occur a few days before the end of a reflection event (Messori et al., 2022; Millin et al., 2022), one would expect windy extremes over Europe around the end of reflection events. Confirming this expectation, one day after the end date there is a noticeable increase in average wind speeds across northwestern Europe, albeit only ~~in~~ of the order of  $1 \text{ ms}^{-1}$  (Fig. 9 a and Fig. A15). Despite ~~that~~ this, wind speeds exceed the local 98th percentile – often used to identify damaging wind extremes – two to five times more often than on average (Fig. 9 b). Consistent with the first pathway outlined by Riboldi et al. (2023), we ~~also~~ observe a strengthening of the jet stream over the North Atlantic, with the jet exit region over northwestern Europe (Fig. 9 c and Fig. A15).

~~This highlights a previously unreported connection between wind extremes in Europe and reflection events in the North Pacific.~~ The jet stream anomalies that we find are in line with earlier findings about the connection between reflection events and atmospheric dynamics over the North Atlantic (Kodera et al., 2016) and with the impact ~~on the tropospheric circulation of zonally-averaged hemispheric downward-propagating stratospheric wave events~~ of stratospheric downward wave events on the tropospheric circulation (Dunn-Sigouin and Shaw, 2015; Shaw et al., 2014; Shaw and Perlwitz, 2013).



**Figure 9.** (a) Composite 10-m wind speed anomaly in Europe one day after the end of the reflection events. (b) Frequency of 10-m wind speed exceeding the local 98th percentile at each grid point, normalized with respect to the climatological frequency of 2% ( $\geq 1$ : above average,  $\leq 1$ : below average). (c) 250 hPa zonal wind anomalies. Stippling in (b) indicates regions where the 98th percentile of 10-m wind speed is exceeded at least 2.5 times more often than the DJFM average. The blue box in (a) and the red box in (c) indicate the regions used to calculate the mean 10-meter wind and jet strength, respectively, shown in Fig. A15.

## 4 Discussion and conclusions

Stratospheric During stratospheric wave reflection events, identified by anomalies in over the North Pacific - North American sector, anomalies of meridional eddy heat flux  $v'T'$  at 100 across the North Pacific, show a distinct vertical structure. Most of the significant  $v'T'$  anomalies are located in the stratosphere and show a pattern alternating are most pronounced in the lower stratosphere, and alternate in sign before the onset and after the end of the reflection events. This alternation is connected to the westward propagation of a ridge formation of a large-scale ridge and its westward propagation from Canada to Siberia and beyond, resembling a shift from a Pacific Trough (PT) -type circulation to an Alaskan Ridge (AKR) -Space-time circulation. As already mentioned in earlier research (e.g., Messori et al., 2022; Cohen et al., 2022), around the end of reflection events positive  $v'T'$  anomalies at lower tropospheric levels over Canada correspond to a 2-m air temperature decrease. In this work we additionally show the connection of reflection events over the North Pacific to anomalously frequent wind extremes over Europe.

A space-time spectral analysis of Rossby waves indicates an increased activity in westward-propagating waves that stratospheric wave reflection events over the North Pacific involve different scales of waves. The change in tropospheric circulation is connected to an enhancement of westward propagating waves-3 and 4, which is similar between reflection events and regime transitions equally present in the shift from PT to AKR. However, a stronger stratospheric signal is found during reflection events. Since the Rossby wave spectra are based on hemispheric data, we implement a regionalised analysis to confirm that the signals displayed in the spectra originate chiefly from dynamics linked to weather regimes. The westward propagation of medium scale Rossby waves in the upper troposphere could be linked to stratospheric downward reflections because of the superposition with planetary-scale waves from the stratosphere. Indeed, we observe the enhancement of westward-propagating wave-1 during stratospheric wave reflection events, which highlights the importance of non-stationary Rossby waves in the reflection events. We further find that the reflection events correspond to a temperature decrease over North America, as noted in earlier research, but we also connect them for the first time to anomalously frequent wind extremes over Europe stratosphere during reflection events.

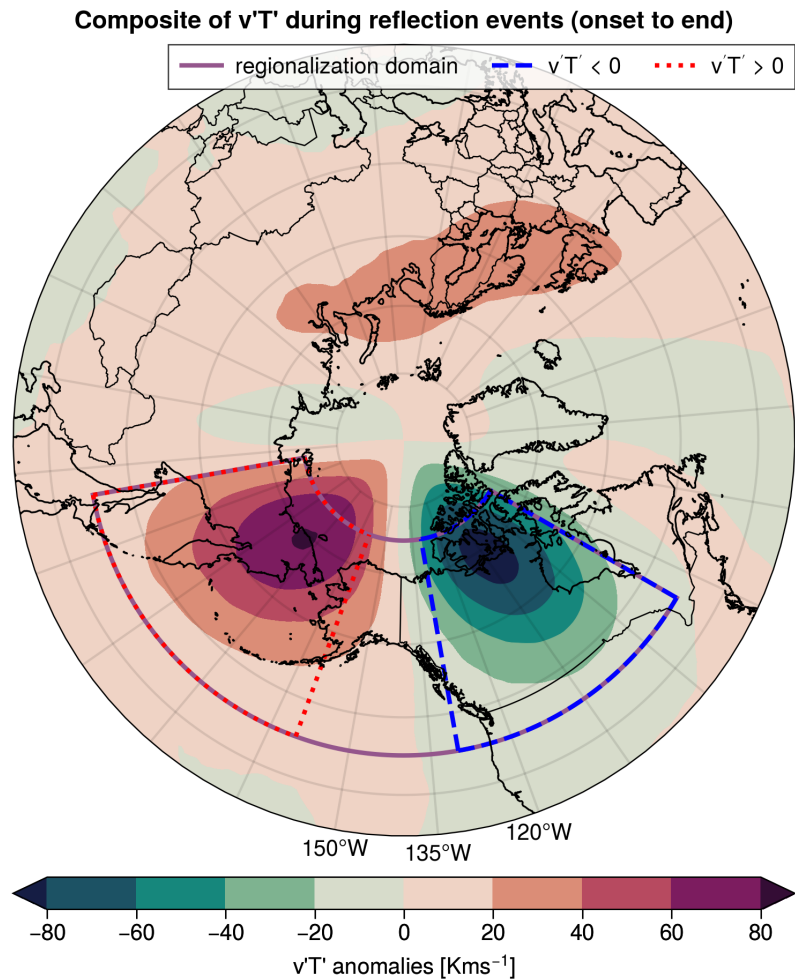
A key result of our analysis is the accelerating westward The vertical alignment of Rossby waves, typical of reflection events and differing from the normal westward tilt with height (see Perlwitz and Harnik, 2003), can be induced by the westward propagation of Rossby waves in the troposphere during reflection events. This may be explained by the slowdown of the circulation due to A mechanism that possibly further enhances the westward propagation of Rossby waves is the deceleration of zonal-mean zonal winds in the stratosphere (Fig. A5 in Messori et al. (2022)) and upper troposphere (Fig. A18), resulting from Rossby wave absorption in the stratosphere and downward propagation of the signal. Following the period of wave reflection over the North Pacific, upward propagating Rossby waves from the northwest Pacific could eventually Northwest Pacific can be absorbed, disrupting and weakening the stratospheric polar vortex (Matsuno, 1971; Sjoberg and Birner, 2012; Polvani and Waugh, 2004; Reichler and Jucker, 2022). This is supported by the In most cases, the disruption of the stratospheric polar vortex seems to be not sufficient to cause SSWs, as Messori et al. (2022) only reported a weak correspondence between SSWs and reflection events reported by Messori et al. (2022). Furthermore reflection events and SSWs. On the other hand, the

480 anomalously strong planetary Rossby waves in the stratosphere are in line with the ~~observed stretching~~potential ‘stretching’ of the stratospheric polar vortex connected to reflection events (Messori et al., 2022; Cohen et al., 2022). ~~As a result of the changed circulation~~In line with the enhanced westward-propagating Rossby waves, the strengthened Alaskan Ridge that characterizes reflection events propagates westward. This weakens the positive  $v'T'$  anomalies over the Siberian domain and ~~ends the puts~~an end to reflection events.

485 While wave amplification over Eurasia can trigger reflection events over the North Pacific (Cohen et al., 2022), the tropical Pacific could also play a role due to its link with blocking ~~at higher latitudes over the North Pacific and Alaska~~ (e.g., Renwick and Wallace, 1996; Henderson and Maloney, 2018; Carrera et al., 2004). Indeed, previous work has connected blocking patterns and stratospheric wave ~~reflections~~reflection over the North Pacific, highlighting their role in modulating 2-m air-temperature over North America (Guan et al., 2020; Kodera et al., 2013; Millin et al., 2022). In this context, the activity of wave-1 plays a crucial role (Ding et al., 2022; Kodera et al., 2016) by contributing to troposphere-stratosphere coupling (Dunn-Sigouin and Shaw, 2015; Shaw and Perlwitz, 2013). This agrees with our analysis highlighting the ~~additional role importance~~ of wave-1 during stratospheric reflection events, ~~while we attest changes in wave-3 and 4 to a transition of tropospheric weather regimes~~. Complementary to the role of wave-1, a ~~vertical~~maximum of zonal winds in the middle stratosphere ~~is suggested to be a necessary precondition~~has been suggested as a necessary condition for stratospheric wave reflection (Perlwitz and Harnik, 2004; Messori et al., 2022). ~~Given the enhancement of~~Another aspect deserving further investigation is the connection between reflection events and the presence of westward-propagating ~~Rossby waves during reflection events~~, ~~there could also exist a connection to occurrences of retrograding~~ (retrograding) waves (Branstator, 1987; Kushnir, 1987; Madden and Speth, 1989; Raghunathan and Huang, 2019), ~~or to the recently defined~~together with the link to ‘Stratosphere-Troposphere ~~Oscillation~~Oscillations’ (Shen et al., 2023). ~~These open questions point to future research pathways for deepening~~The answers to these questions will increase our understanding of the ~~tropospheric mechanisms driving wave reflection events over the North Pacific and their interactions between tropospheric Rossby waves and North-Pacific wave reflections and of the latters’~~ connection to other modes of stratosphere-troposphere coupling.

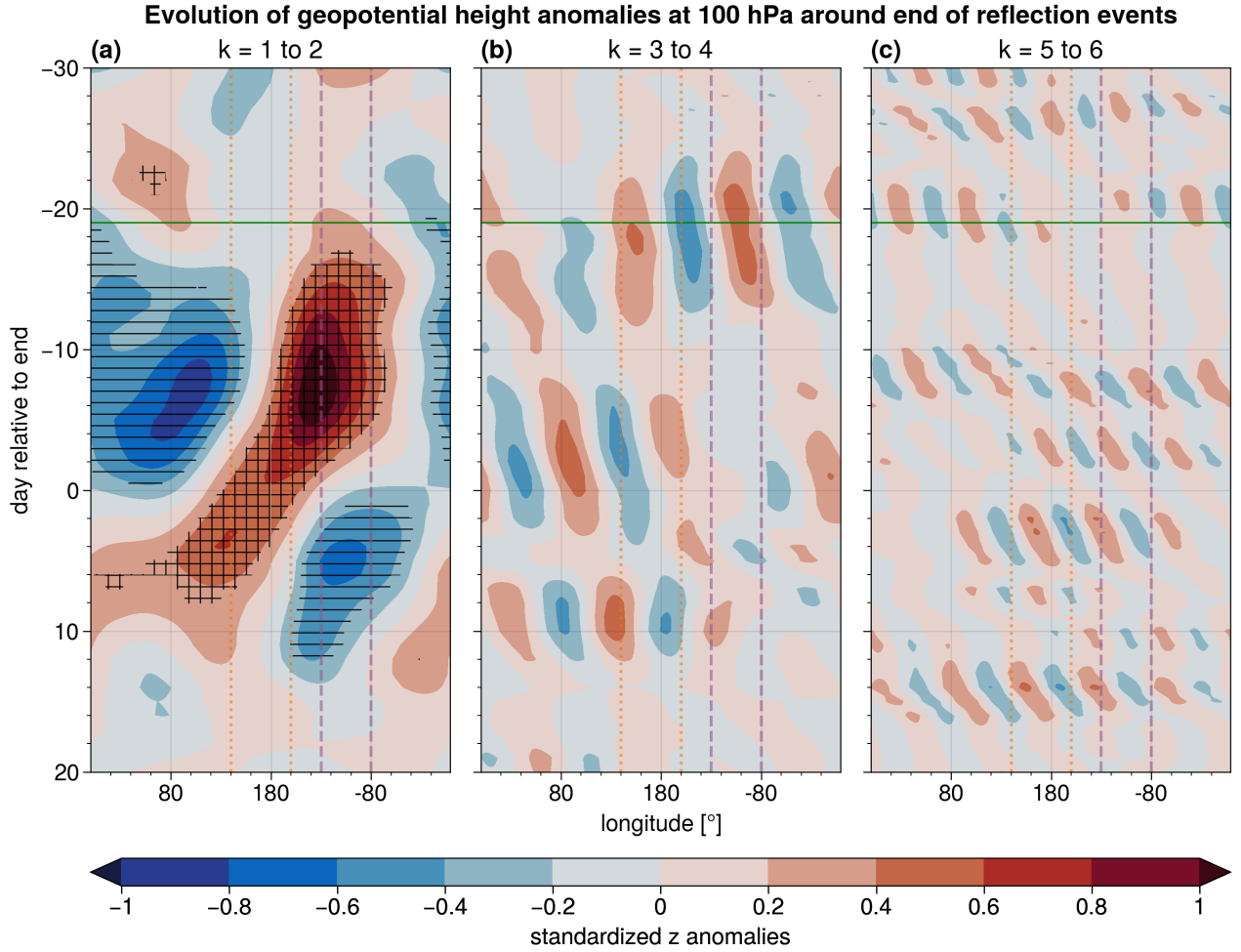
Although the exact mechanisms driving the ~~end or onset~~onset or end of stratospheric reflection events over the North Pacific remain to be unravelled, our study has highlighted the presence of a systematic dynamical evolution~~during these events. We~~ ~~have further found a possible connection between reflection events and European wind extremes. Both this and the previously noted temperature drop over North America could provide.~~ The connection between large-scale reflection events, characterised by inherent extended-range predictability, and surface weather conditions, such as North American cold spells and European windy extremes, provides valuable information for ~~extended-range prediction~~extending the forecast timescales of impactful weather events.



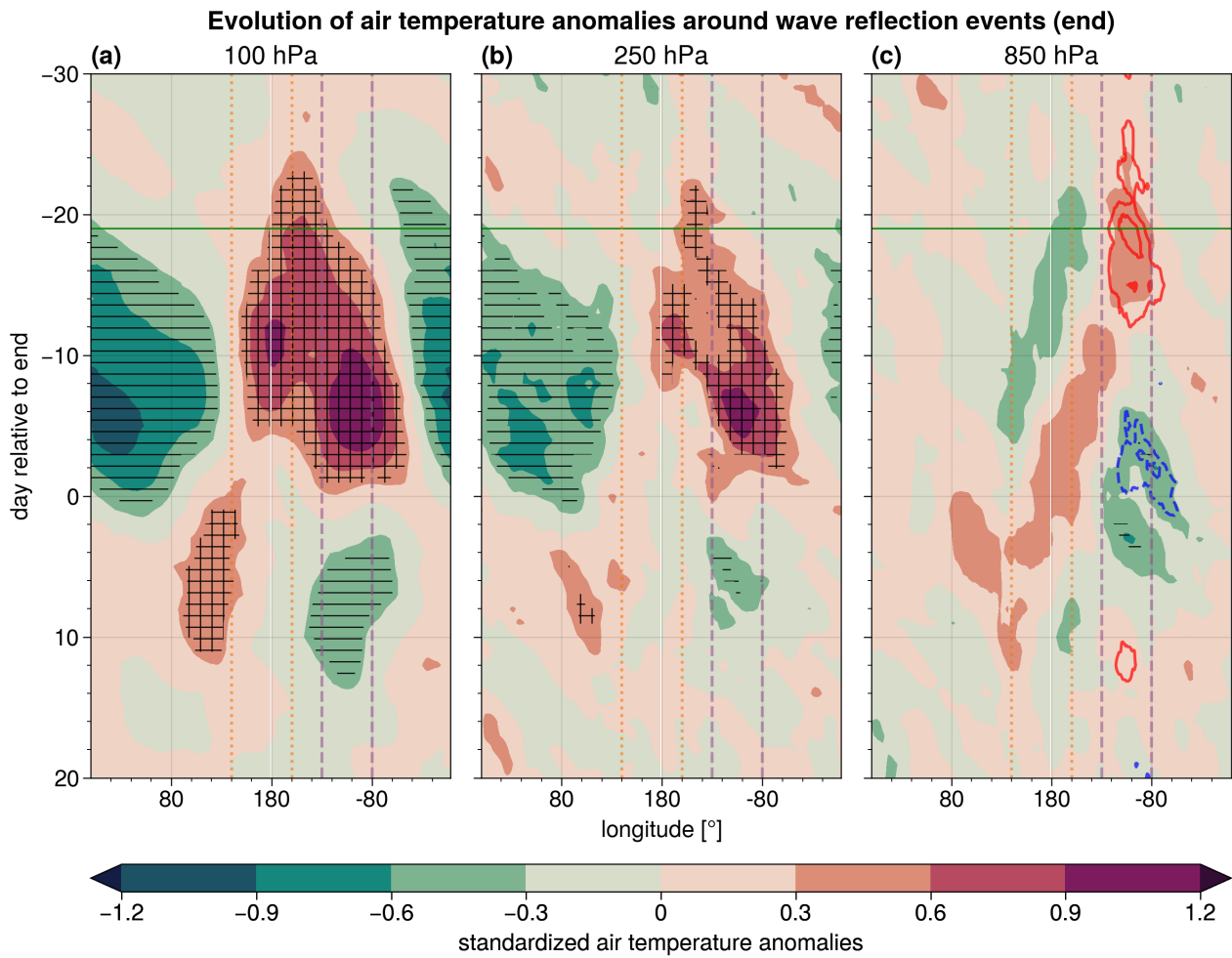


**Figure A1.** Contours: composite of  $v'T'$  anomalies during all days of reflection events from their onset until the end; boxes: Boxes indicate the location of (red, dotted) the Siberian domain located between 45-75°N, 140-200°E, (blue, linedashed) Canadian domain located between 45-75°N, 230-280°E, used to define reflection events, and (purple) the domain used to obtain regionalized events (Section 2.2).

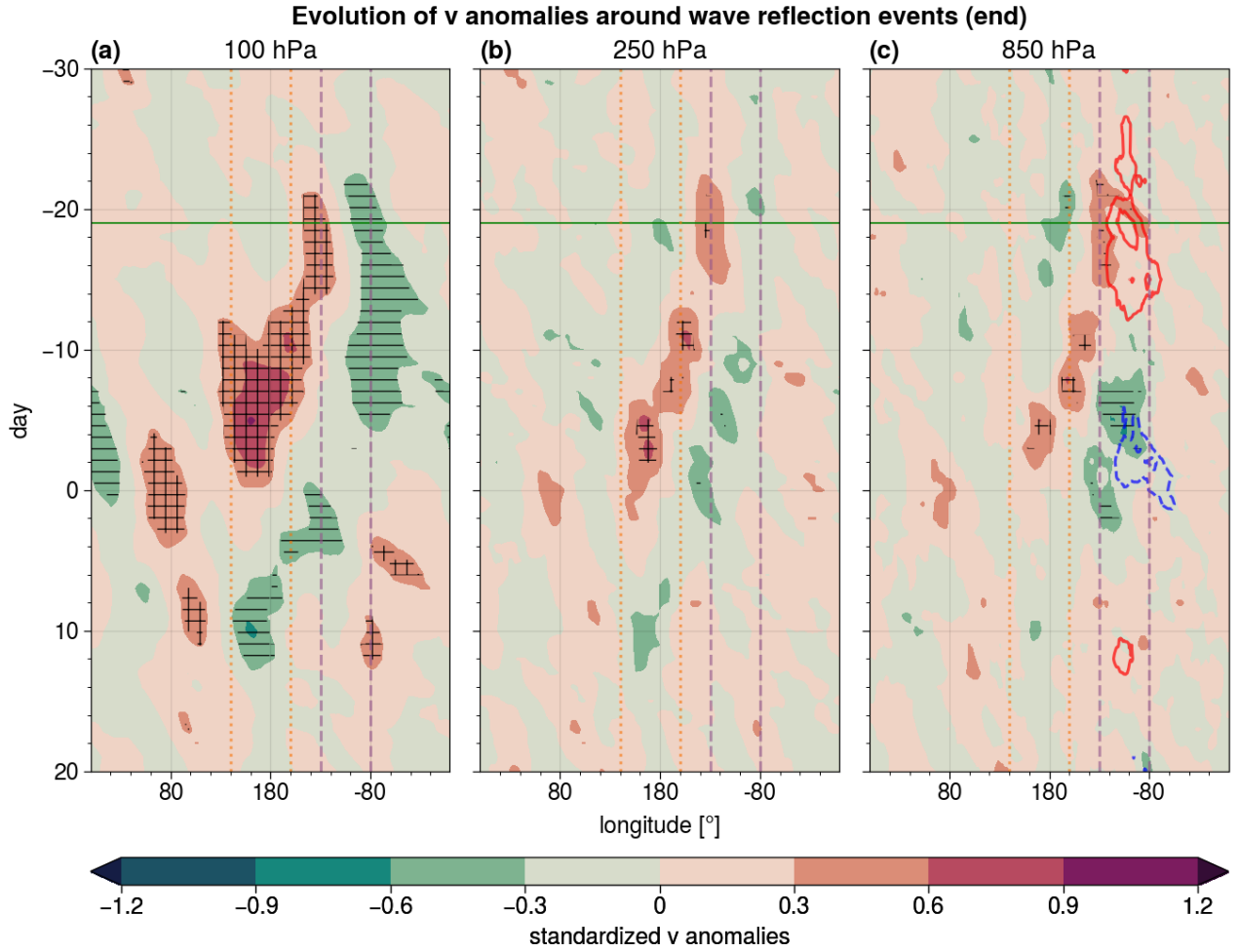




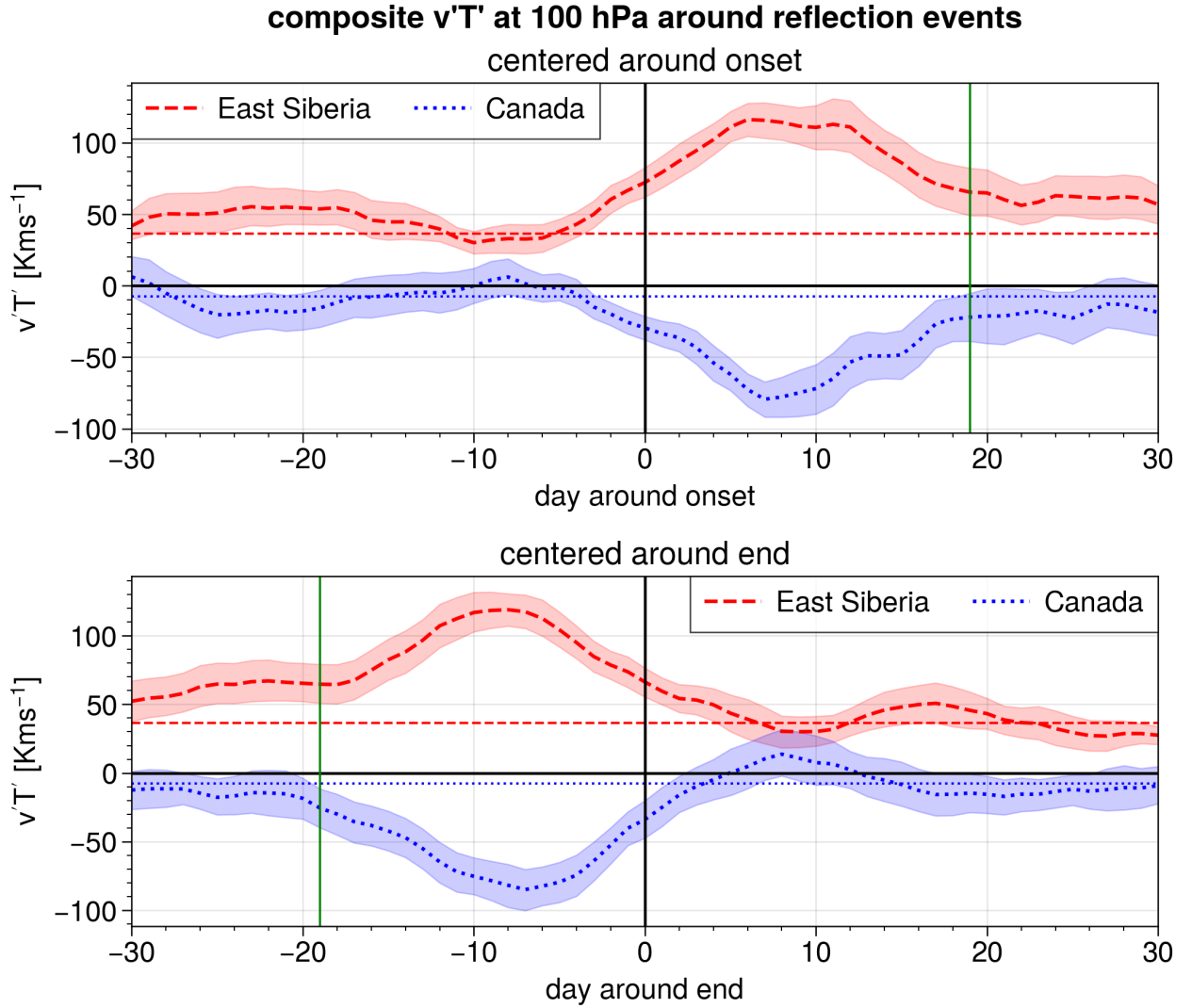
**Figure A2.** Hovmöller diagram of standardized anomalies of geopotential height averaged between 45°N - 75°N centred around the end date of reflection events at 100 hPa for (a) wave-1 to 2, (b) wave-3 to 4 and (c) wave-5 to 6 in shading. Horizontal hatching marks significant negative anomalies and cross-hatching significant positive anomalies. The continuous horizontal green line shows the median onset time of reflection events. The vertical lines mark longitudes of the Siberian (orange, dotted) and Canadian (purple, dashed) domains.



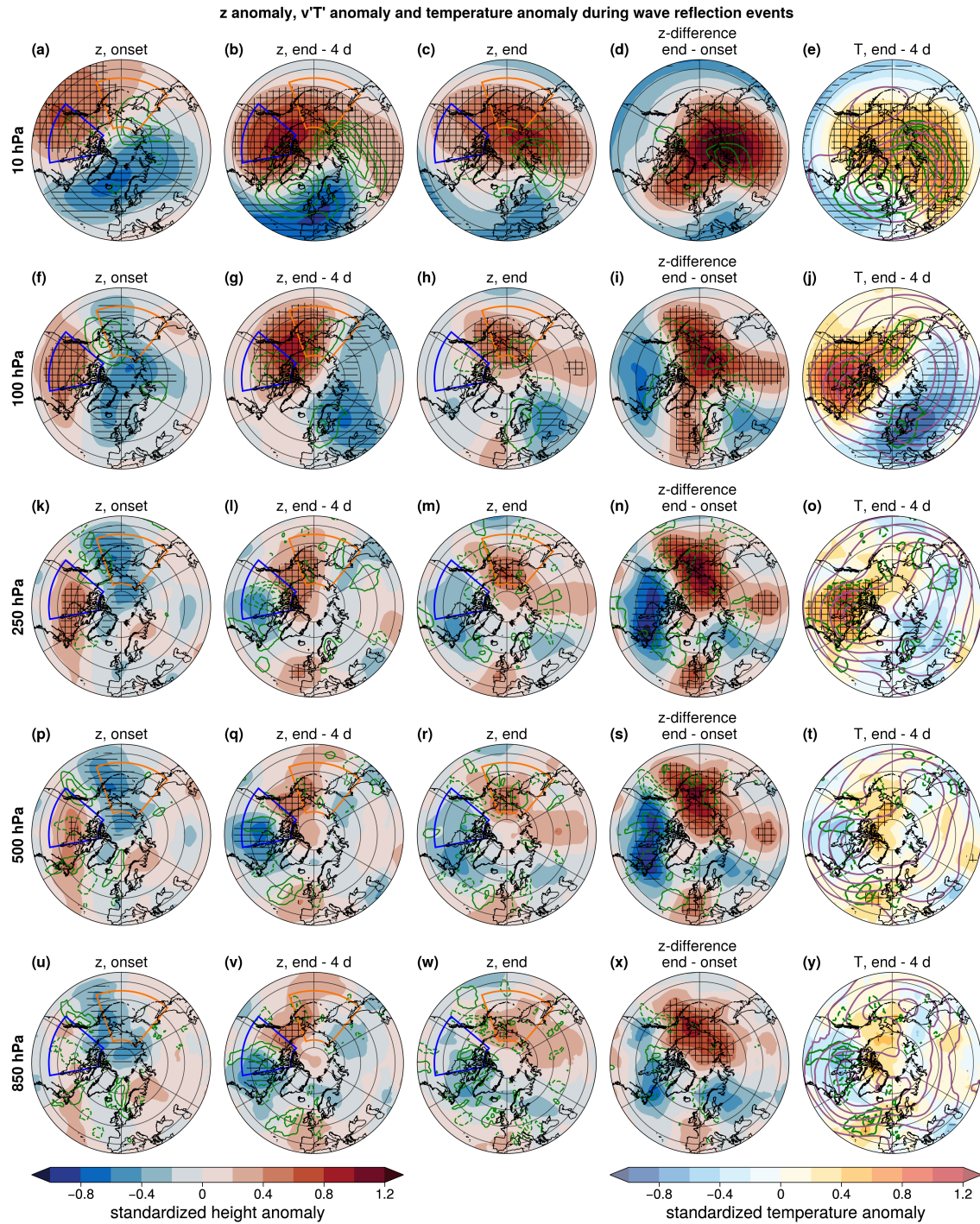
**Figure A3.** As Fig. 2, but for air temperature at (a) 100 hPa, (b) 250 hPa and (c) 850 hPa.



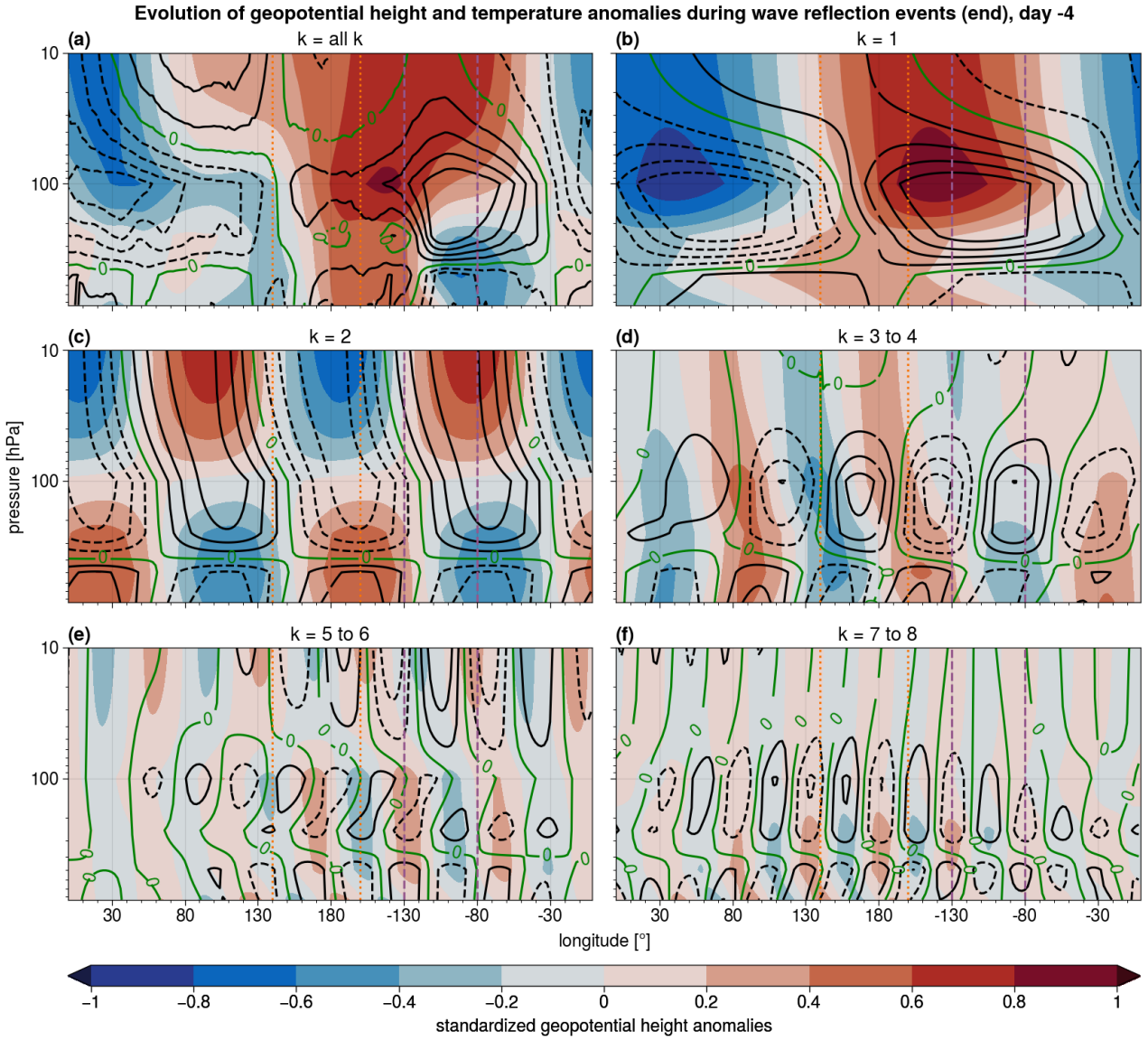
**Figure A4.** As Fig. 2, but for meridional wind speed at (a) 100 hPa, (b) 250 hPa and (c) 850 hPa.



**Figure A5.** Meridional eddy heat flux  $v'T'$  at 100 hPa over East Siberia (red, dashed) and Canada (blue, dotted), (a) centred around the onset date, (b) centred around the end date of reflection events. The thin horizontal lines show the DJFM mean in the respective region, shading indicates the 95% confidence interval on the mean, assessed with bootstrapping. The vertical green line in (a) shows the median end, and in (b) the median onset of reflection events.

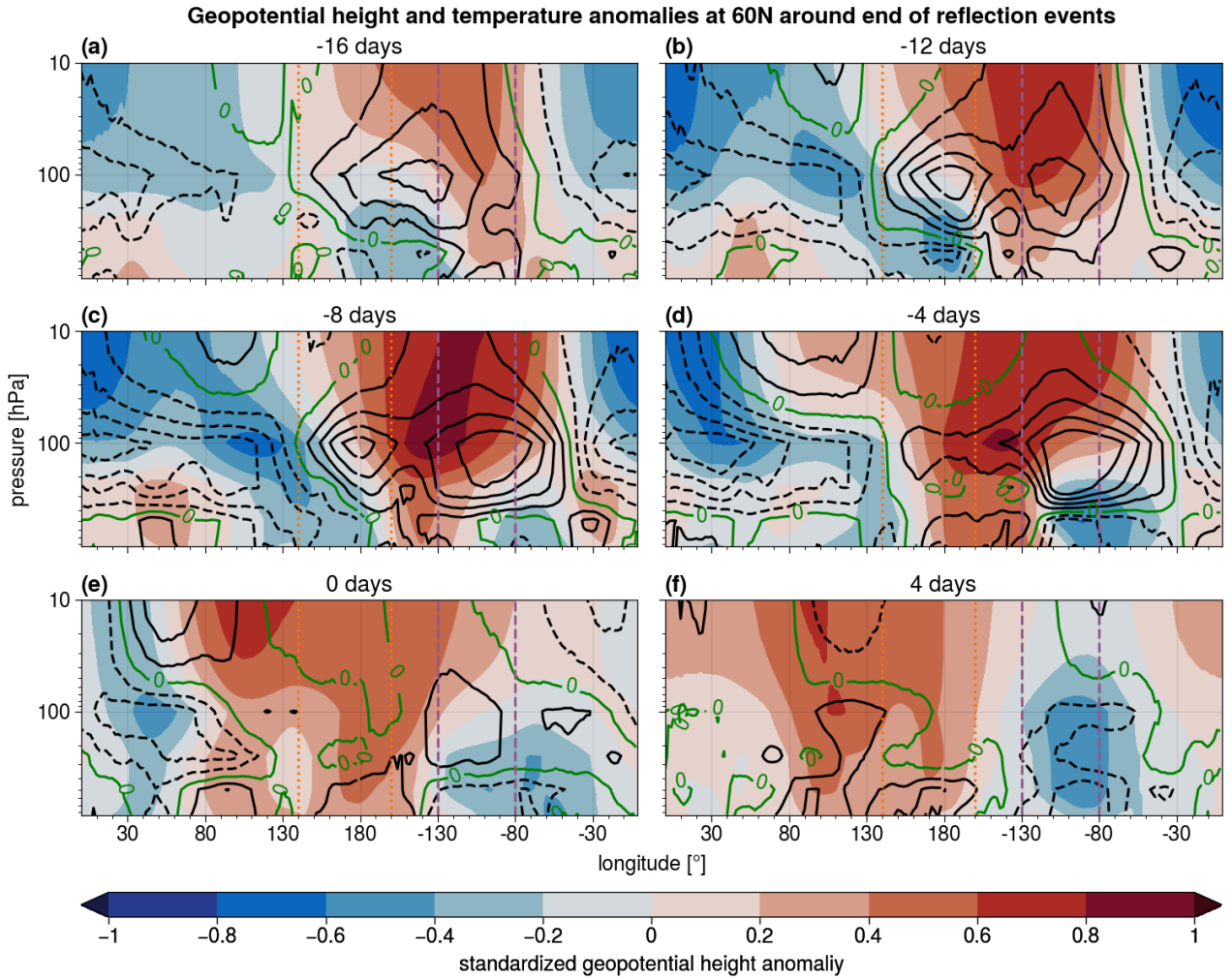


**Figure A6.** As Fig. 4, but for pressure levels 10 hPa, 100 hPa, 250 hPa, 500 hPa and 850 hPa.



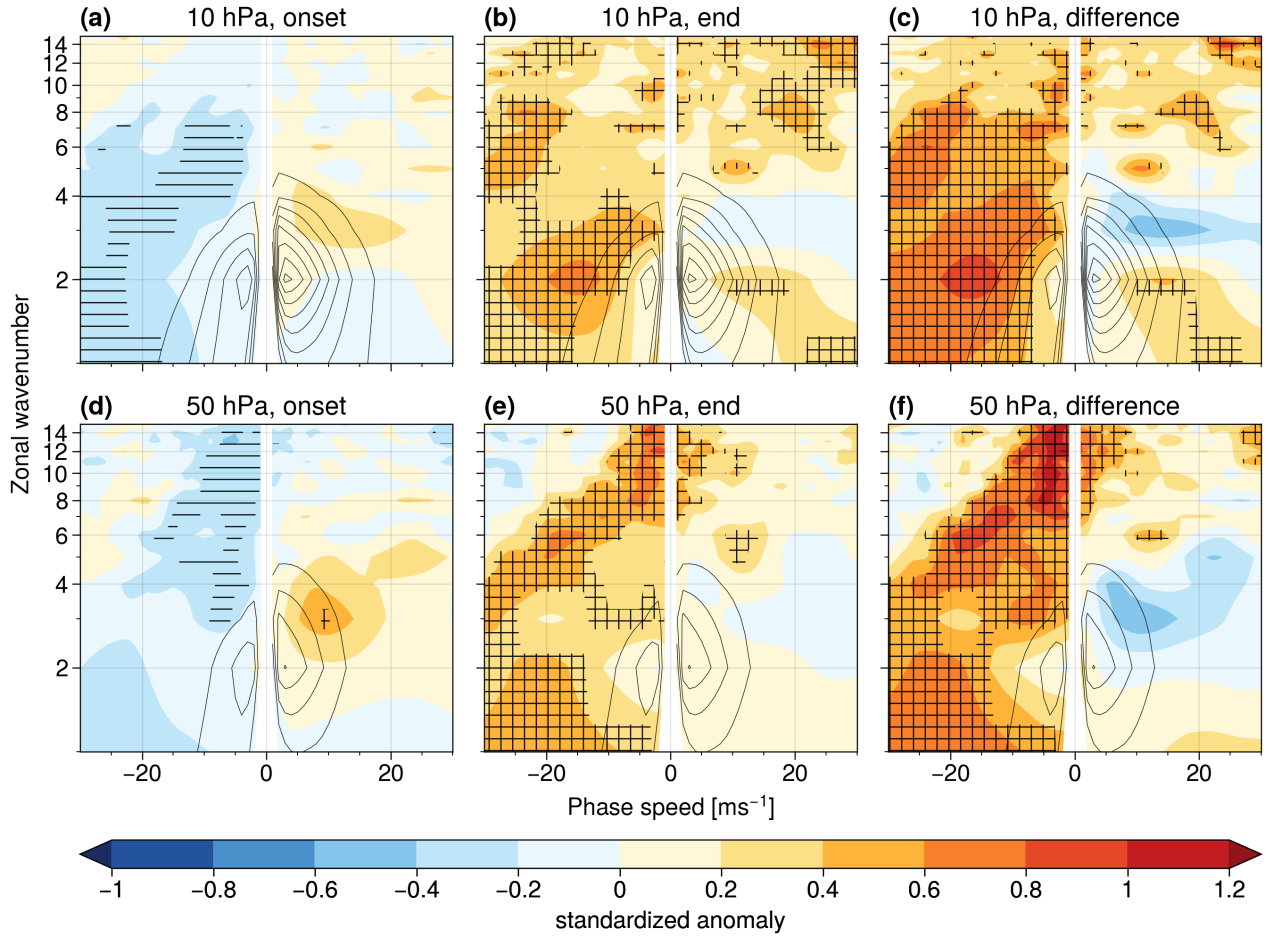
**Figure A7.** Vertical cross-section of standardized geopotential height anomalies (shading) and standardized temperature anomalies (black contours in steps of 0.2) at 60°N four days before the end of reflection events for (a) all wavenumbers, (b) wave-1 (c) wave-2, (d) wave-3 to 4, (e) wave-5 to 6 and (f) wave-7 to 8. The vertical lines mark longitudes of the Siberian (orange, dotted) and Canadian (purple, dashed) domains.





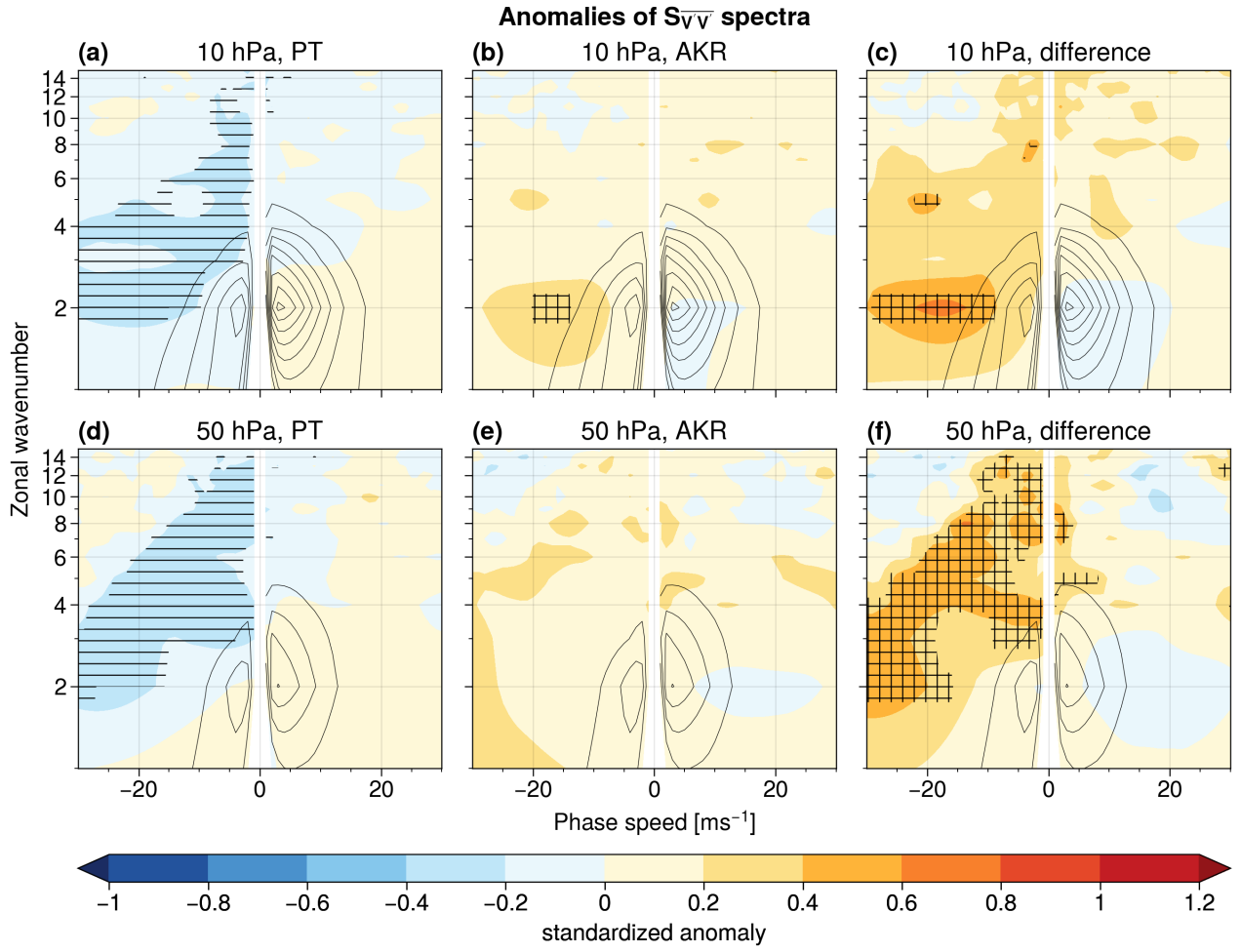
**Figure A8.** Vertical cross-section of standardized geopotential height anomalies (shading) and standardized temperature anomalies (black contours in steps of 0.2) at 60°N for different time lags between (a) 16 days before to (f) 4 days after the end of reflection events. The vertical lines mark longitudes of the Siberian (orange, dotted) and Canadian (purple, dashed) domains.

### Anomalies of $S_{VV}$ spectra around reflection events

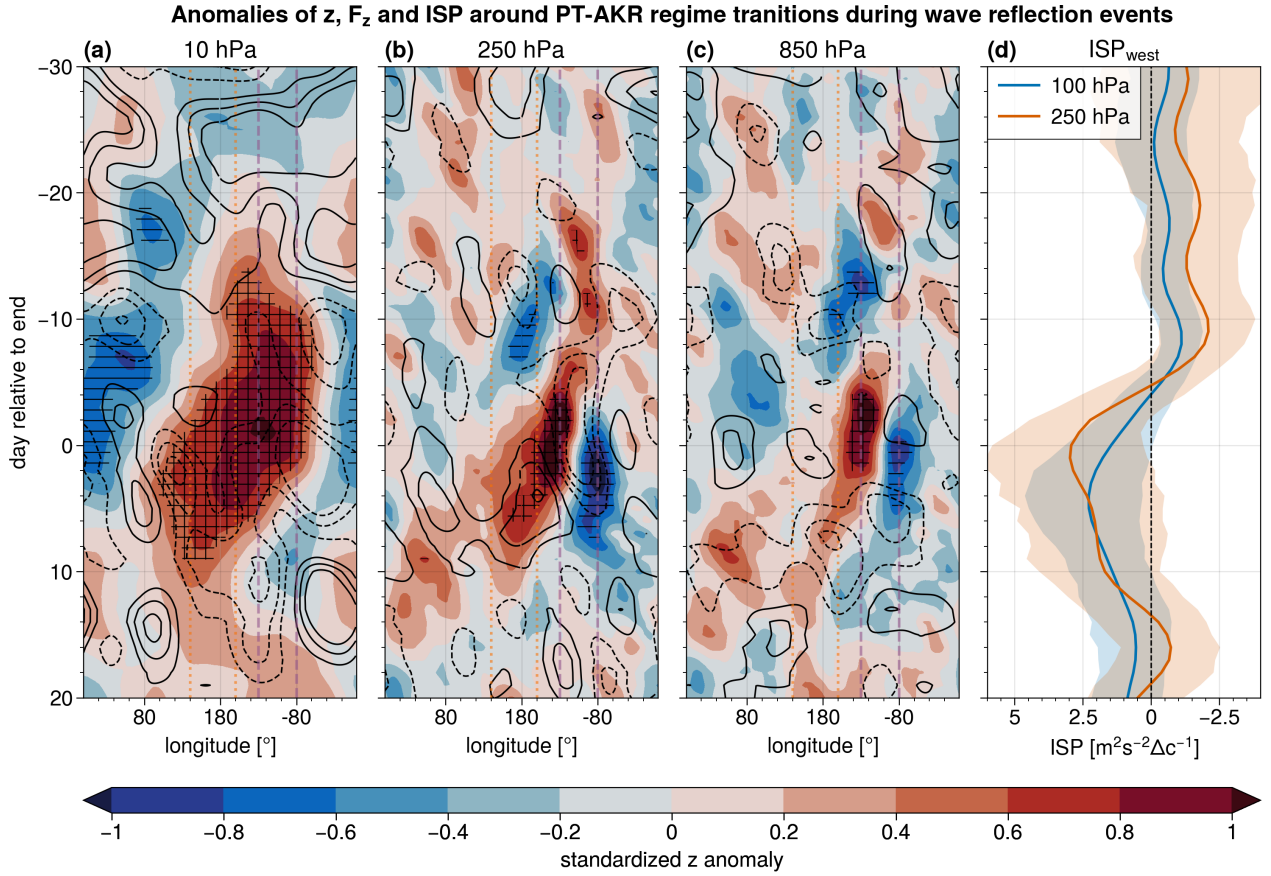


**Figure A9.** As Fig. 5, but for pressure levels 10 hPa and 50 hPa.

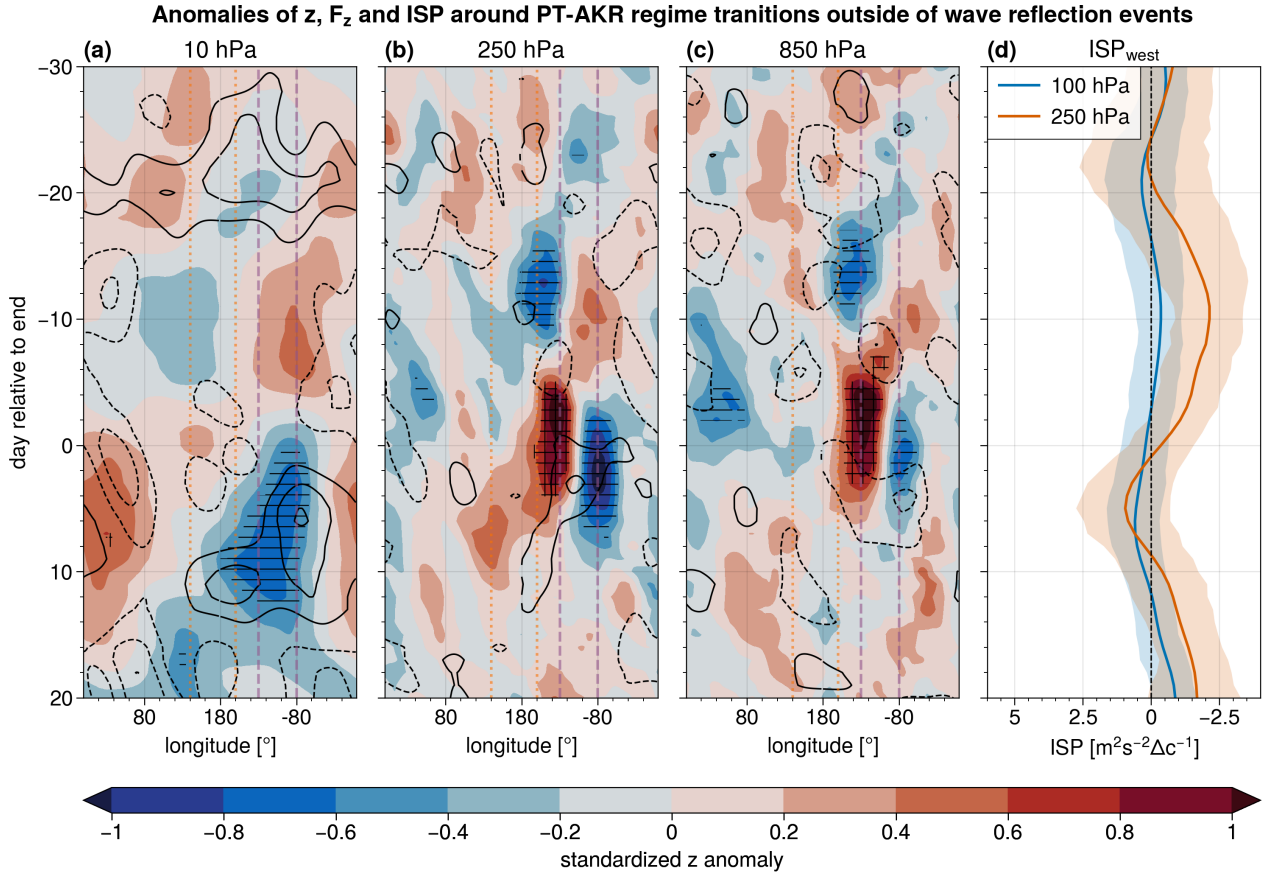




**Figure A10.** As Fig. 5, but for (a, d) PT regimes, (b, e) AKR regimes and (c, f) difference between PT and AKR regimes at 10 hPa and 50 hPa.

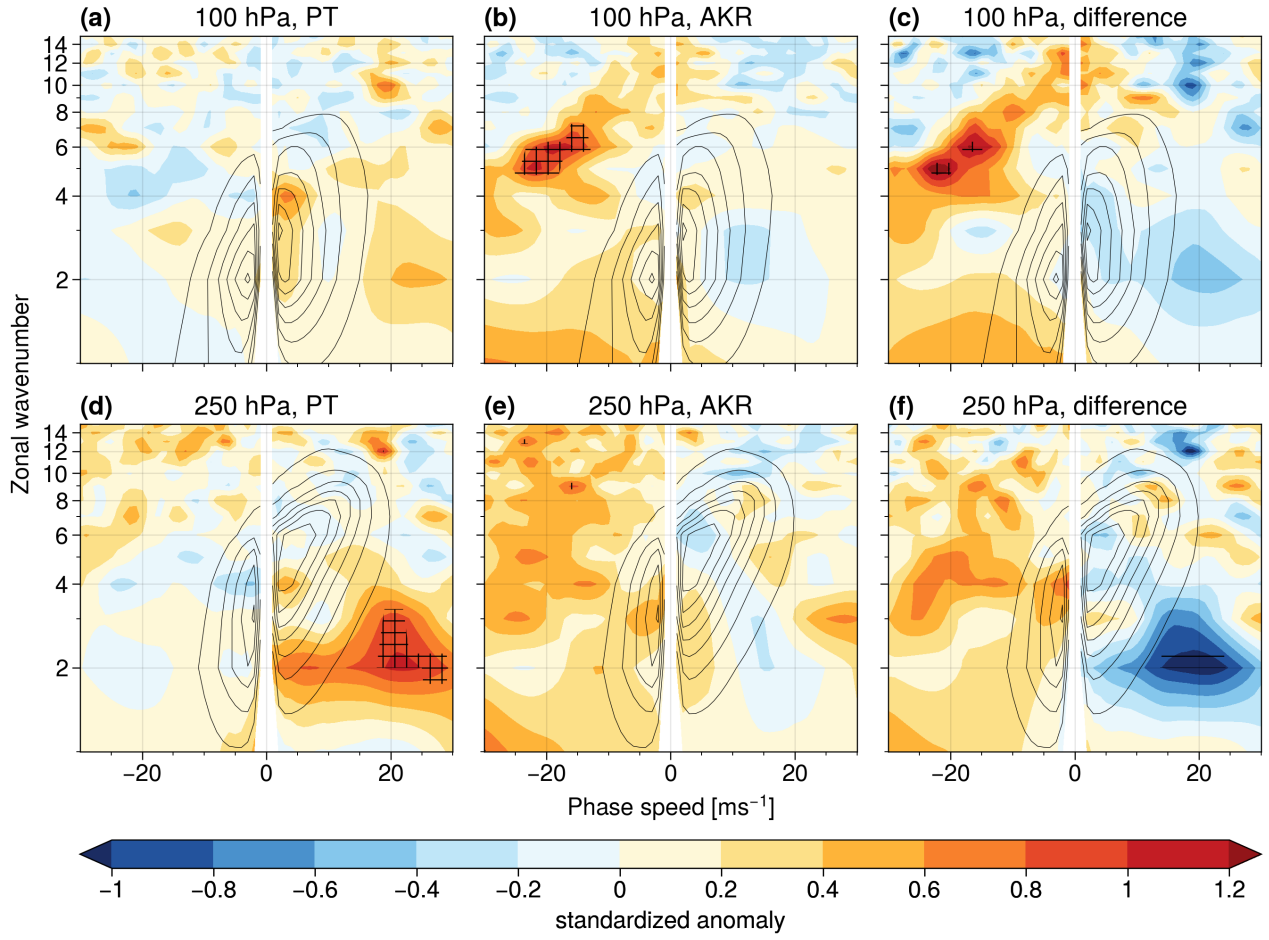


**Figure A11.** Anomaly of cosine-latitude-weighted-mean-of-10-wind-speed over land grid points of Northern Europe (50-60°N, 11°W-20°E; blue box in [As Fig. 9 a](#)) and anomaly of the jet strength. The jet strength is computed similarly to [Woollings et al. \(2010\)](#)<sup>3</sup>, but adapted to our study: The zonal average of the 250 zonal wind over the North Atlantic (15-75°N, 70-0°W; red box in Fig. 9 c) is smoothed with a centered 10-day running mean at each latitude. Subsequently the maximum wind speed is identified to define the jet strength centred on a given day which is then deseasonalized following [Sec. 2.1](#). Shading indicates the 95% confidence interval central date of the mean and triangles highlight dates where the composite anomaly is above the 95th percentile of a resampled distribution of 10 000 means of 45 randomly selected days from the climatology AKR for PT-AKR transitions occurring during reflection events.

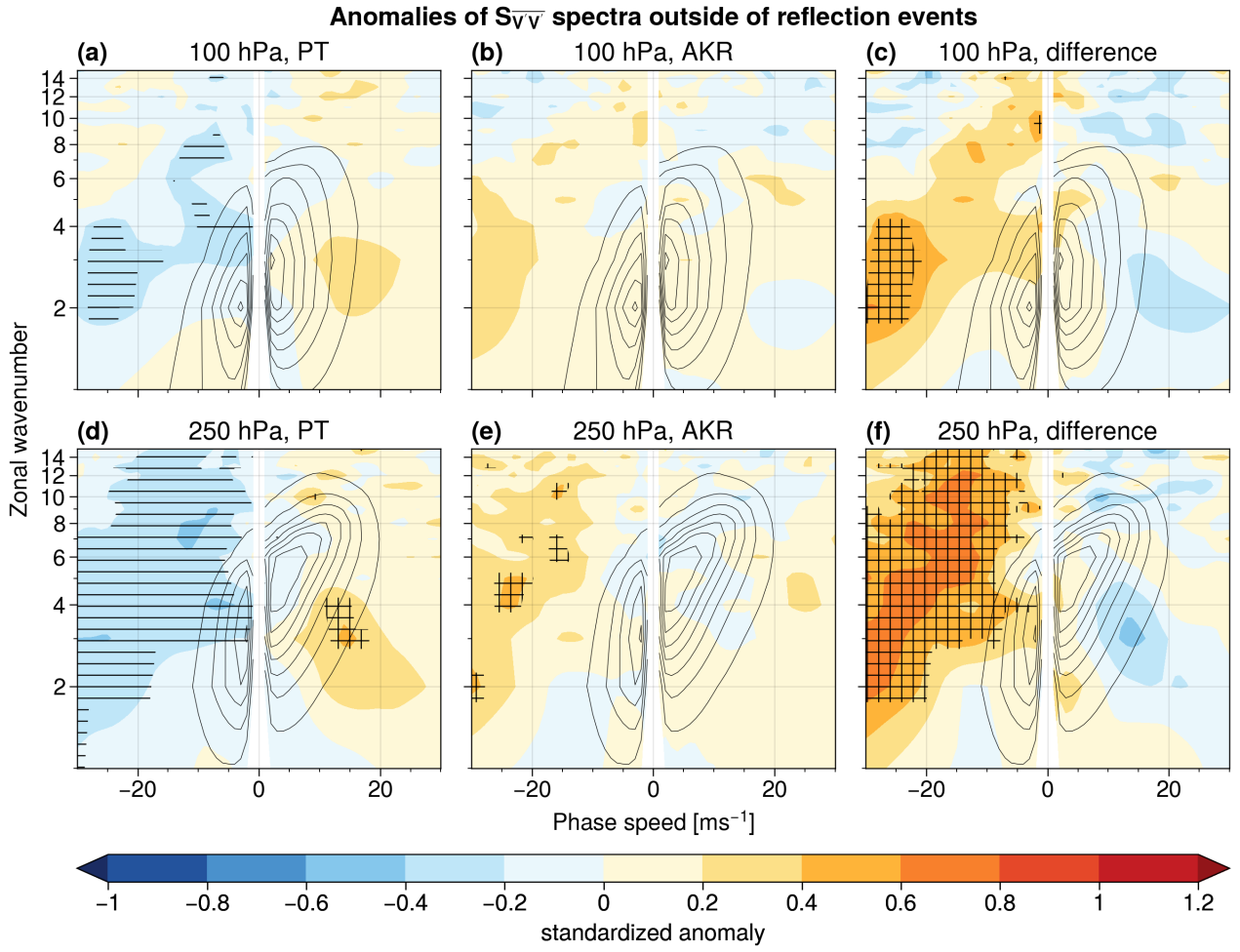


**Figure A12.** As Fig. 3, but centred on the central date of AKR for PT-AKR transitions occurring outside reflection events.

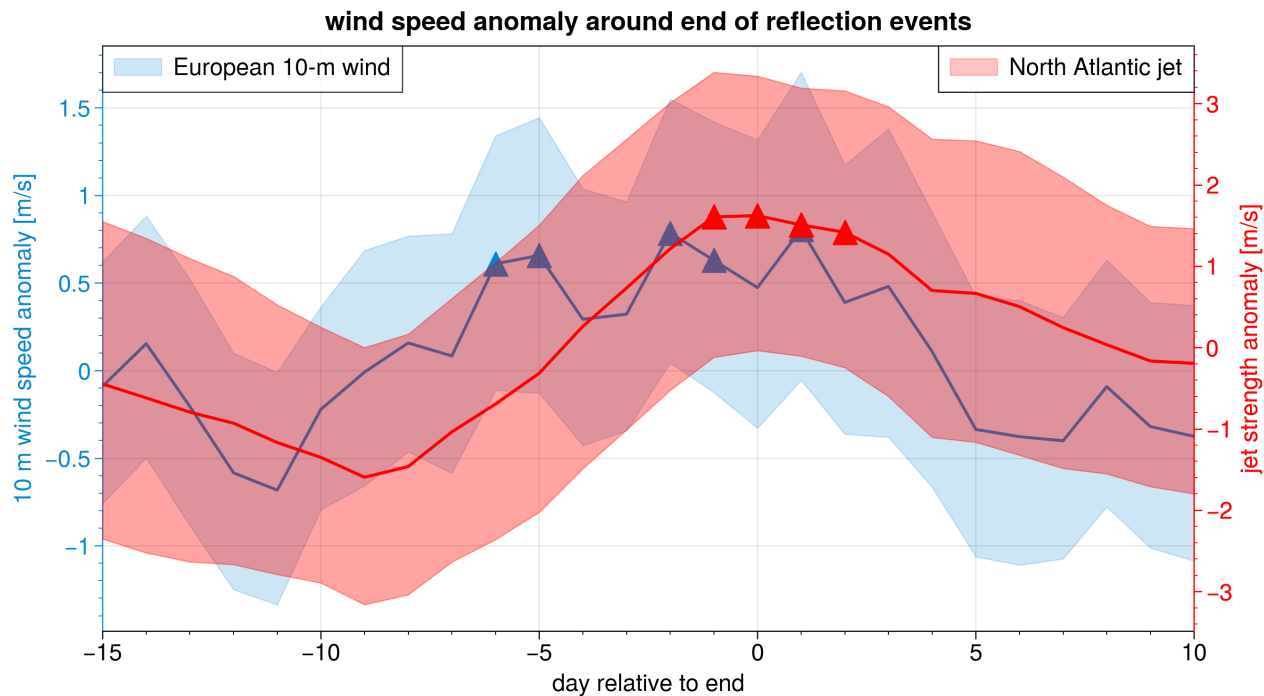
### Anomalies of $S_{VV}$ spectra during reflection events



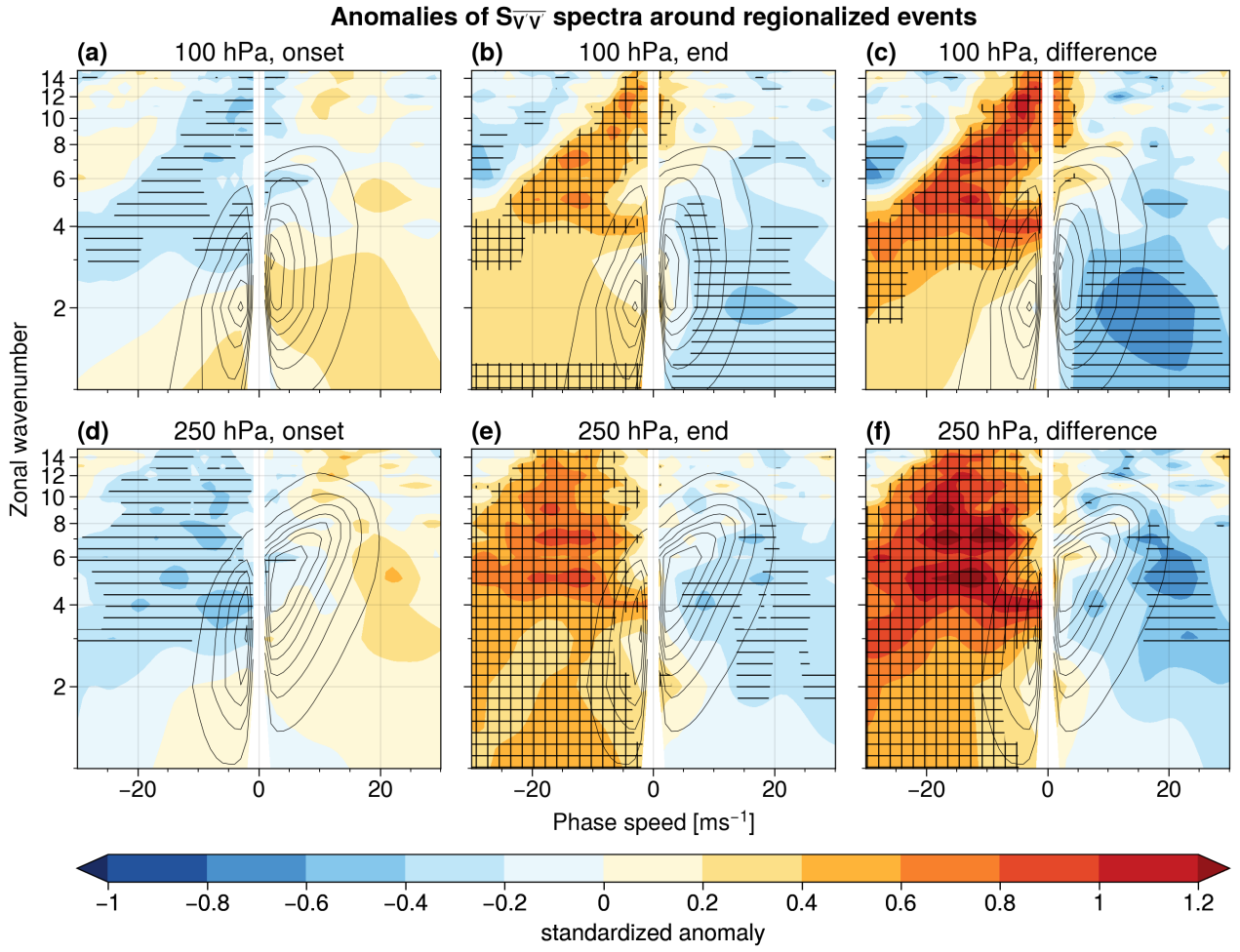
**Figure A13.** As Fig. 5, but for (a, d) PT regimes, (b, e) AKR regimes and (c, f) difference between PT and AKR regimes occurring during reflection events.



**Figure A14.** As Fig. 5, but for (a, d) PT regimes, (b, e) AKR regimes and (c, f) difference between PT and AKR regimes occurring outside reflection events.

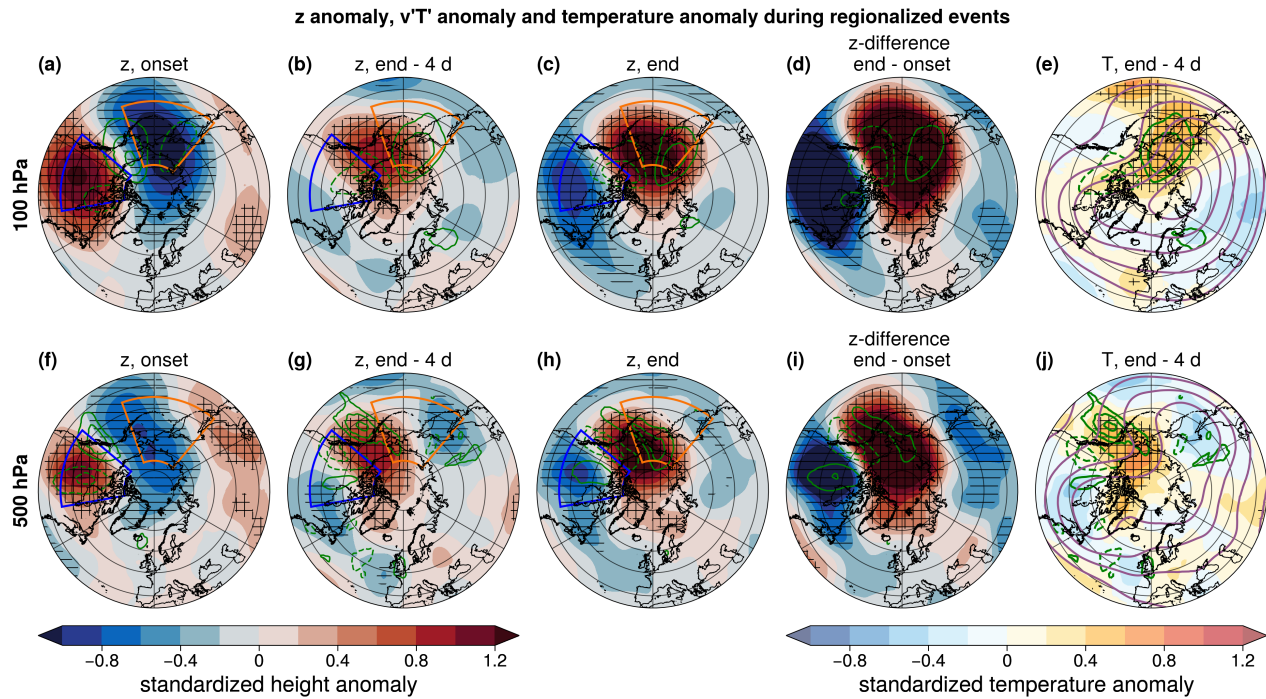


**Figure A15.** Anomaly of cosine-latitude weighted mean of 10-m wind speed over land grid points of Northern Europe (blue curve; 50-60°N, 11°W-20°E; blue box in Fig. 9 a) and anomaly of the jet strength (red curve). The jet strength is computed similarly to Woollings et al. (2010), but adapted to our study: The zonal average of the 250 hPa zonal wind over the North Atlantic (15-75°N, 70-0°W; red box in Fig. 9 c) is smoothed with a centred 10-day running mean at each latitude. Subsequently the maximum wind speed is identified to define the jet strength on a given day which is then deseasonalized following Sec. 2.1. Shading indicates the 95% confidence interval of the mean and triangles highlight dates where the composite anomaly is above the 95th percentile of a resampled distribution of 10 000 means of 45 randomly selected days from the climatology.

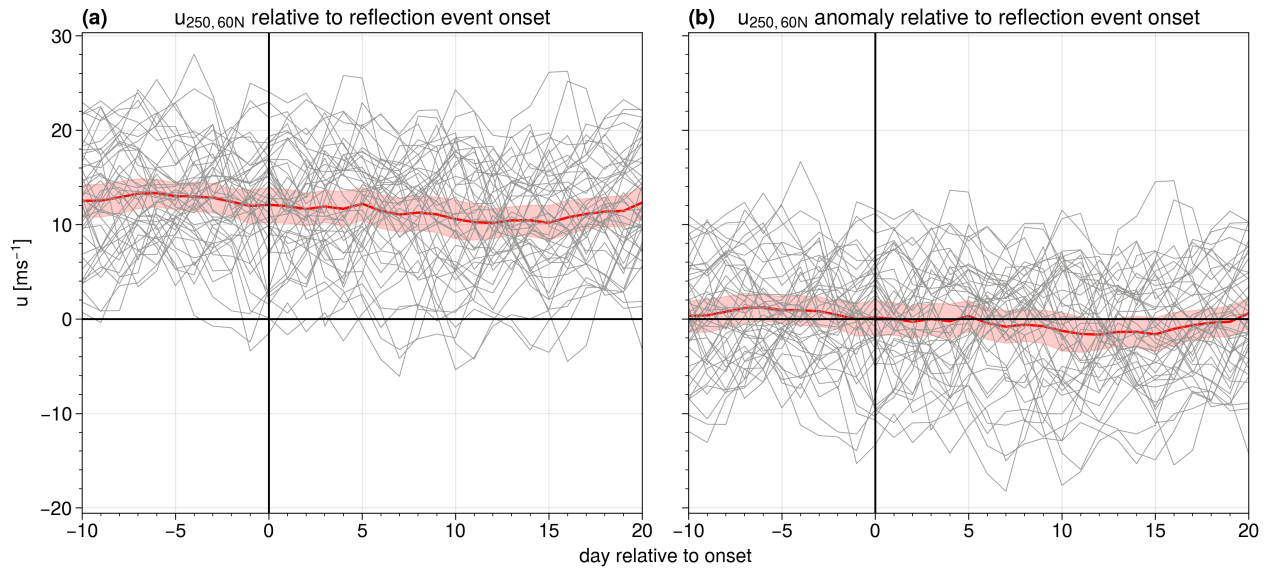


**Figure A16.** [As Fig. 5, but for regionalized events \(defined in Sec. 2.2\).](#)





**Figure A17.** [As Fig. 4, but for regionalized events \(defined in Sec. 2.2\).](#)



**Figure A18.** Evolution of (a) 250 hPa 60°N zonal mean zonal wind and (b) anomalies relative to seasonal cycle, centred around onset date of reflection events. The thick red line shows the average over all events, red shading indicates the 95% confidence interval on the mean, assessed with bootstrapping.

*Code and data availability.* The ERA5 data used to compute the reflection events and the wave spectra is freely available from <https://doi.org/10.24381/cds.bd0915c6> (Hersbach et al., 2024). The code for the wave spectra is available from the authors upon request. An example data set of space-time spectra of Rossby waves at 10 hPa and 250 hPa is available at <https://snd.se/en/catalogue/dataset/preview/440eef3a-c462-458a-bdf1-b83e8c10b4f3/1> (Riboldi and Schutte, 2024).

515 *Author contributions.* MS and GM designed the analysis. MS analyzed the data and prepared the figures with feedback from GM, AP and SL. MS drafted the first version of the manuscript and revised it in collaboration with all co-authors.

*Competing interests.* The authors declare that they have no conflict of interest.

*Acknowledgements.* [The authors would like to thank Nili Harnik and the anonymous reviewer for their comments, that helped to improve the quality of the manuscript.](#) We thank Jacopo Riboldi for computing the space-time spectra of Rossby waves. MS thanks Meriem Krouma, Iana Strigunova, Richard Leeding and Leonardo Olivetti for valuable input resulting from discussions about the results. MS and GM acknowledge funding from the European Research Council (ERC) under the European Union's Horizon 2020 research and innovation program (grant agreement no. 948309, CENÆ project) [and the Swedish Research Council Vetenskapsrådet through grant agreement no. 2022-06599.](#) AP is funded from the Swiss National Science Foundation (SNF) Grant Number IZCOZ0\_205461. [The data handling was also enabled by resources provided by the National Academic Infrastructure for Supercomputing in Sweden \(NAISS\), partially funded by the Swedish](#)  
525 [Research Council Vetenskapsrådet through grant agreement no. 2022-06725.](#)

## References

- Afargan-Gerstman, H., Polkova, I., Papritz, L., Ruggieri, P., King, M. P., Athanasiadis, P. J., Baehr, J., and Domeisen, D. I. V.: Stratospheric influence on North Atlantic marine cold air outbreaks following sudden stratospheric warming events, *Weather Clim. Dynam.*, 1, 541–553, <https://doi.org/10.5194/wcd-1-541-2020>, 2020.
- 530 Albers, J. R. and Birner, T.: Vortex Preconditioning due to Planetary and Gravity Waves prior to Sudden Stratospheric Warmings, *J. Atmos. Sci.*, 71, 4028 – 4054, <https://doi.org/10.1175/JAS-D-14-0026.1>, 2014.
- Baldwin, M. P. and Dunkerton, T. J.: Stratospheric Harbingers of Anomalous Weather Regimes, *Science*, 294, 581–584, <https://doi.org/10.1126/science.1063315>, 2001.
- Birner, T. and Albers, J. R.: Sudden Stratospheric Warmings and Anomalous Upward Wave Activity Flux, *SOLA*, 13A, 8–12, 535 <https://doi.org/10.2151/sola.13A-002>, 2017.
- Branstator, G.: A Striking Example of the Atmosphere’s Leading Traveling Pattern, *J. Atmos. Sci.*, 44, 2310 – 2323, [https://doi.org/10.1175/1520-0469\(1987\)044<2310:ASEOTA>2.0.CO;2](https://doi.org/10.1175/1520-0469(1987)044<2310:ASEOTA>2.0.CO;2), 1987.
- Carrera, M. L., Higgins, R. W., and Kousky, V. E.: Downstream Weather Impacts Associated with Atmospheric Blocking over the Northeast Pacific, *J. Climate*, 17, 4823 – 4839, <https://doi.org/10.1175/JCLI-3237.1>, 2004.
- 540 Charlton, A. J. and Polvani, L. M.: A New Look at Stratospheric Sudden Warmings. Part I: Climatology and Modeling Benchmarks, *J. Climate*, 20, 449–469, <https://doi.org/10.1175/JCLI3996.1>, 2007.
- Charlton-Perez, A. J., Ferranti, L., and Lee, R. W.: The influence of the stratospheric state on North Atlantic weather regimes, *Q. J. Roy. Meteor. Soc.*, 144, 1140–1151, <https://doi.org/10.1002/qj.3280>, 2018.
- Cohen, J., Barlow, M., Kushner, P. J., and Saito, K.: Stratosphere–Troposphere Coupling and Links with Eurasian Land Surface Variability, 545 *J. Climate*, 20, 5335 – 5343, <https://doi.org/10.1175/2007JCLI1725.1>, 2007.
- Cohen, J., Agel, L., Barlow, M., Furtado, J. C., Kretschmer, M., and Wendt, V.: The “Polar Vortex” Winter of 2013/2014, *J. Geophys. Res. Atmospheres*, 127, e2022JD036493, <https://doi.org/10.1029/2022JD036493>, 2022.
- de la Cámara, A., Birner, T., and Albers, J. R.: Are Sudden Stratospheric Warmings Preceded by Anomalous Tropospheric Wave Activity?, *J. Climate*, 32, 7173 – 7189, <https://doi.org/10.1175/JCLI-D-19-0269.1>, 2019.
- 550 Dell’Aquila, A., Lucarini, V., Ruti, P. M., and Calmanti, S.: Hayashi spectra of the northern hemisphere mid-latitude atmospheric variability in the NCEP–NCAR and ECMWF reanalyses, *Clim. Dynam.*, 25, 639–652, <https://doi.org/10.1007/s00382-005-0048-x>, 2005.
- Ding, X., Chen, G., Sun, L., and Zhang, P.: Distinct North American Cooling Signatures Following the Zonally Symmetric and Asymmetric Modes of Winter Stratospheric Variability, *Geophys. Res. Lett.*, 49, e2021GL096076, <https://doi.org/10.1029/2021GL096076>, 2022.
- Domeisen, D. I. V. and Butler, A. H.: Stratospheric drivers of extreme events at the Earth’s surface, *Commun. Earth Environ.*, 1, 555 e2019JD030923, <https://doi.org/10.1038/s43247-020-00060-z>, 2020.
- Domeisen, D. I. V., Grams, C. M., and Papritz, L.: The role of North Atlantic–European weather regimes in the surface impact of sudden stratospheric warming events, *Weather. Clim. Dynam.*, 1, 373–388, <https://doi.org/10.5194/wcd-1-373-2020>, 2020.
- Dunn-Sigouin, E. and Shaw, T. A.: Comparing and contrasting extreme stratospheric events, including their coupling to the tropospheric circulation, *J. Geophys. Res. Atmospheres*, 120, 1374–1390, <https://doi.org/10.1002/2014JD022116>, 2015.
- 560 Guan, W., Jiang, X., Ren, X., Chen, G., Lin, P., and Lin, H.: The Leading Intraseasonal Variability Mode of Wintertime Surface Air Temperature over the North American Sector, *J. Climate*, 33, 9287 – 9306, <https://doi.org/10.1175/JCLI-D-20-0096.1>, 2020.

- Hall, R. J., Mitchell, D. M., Seviour, W. J. M., and Wright, C. J.: Tracking the Stratosphere-to-Surface Impact of Sudden Stratospheric Warmings, *J. Geophys. Res.-Atmos.*, 126, e2020JD033 881, <https://doi.org/10.1029/2020JD033881>, 2021.
- Hall, R. J., Mitchell, D. M., Seviour, W. J. M., and Wright, C. J.: Surface hazards in North-west Europe following sudden stratospheric warming events, *Environ. Res. Lett.*, 18, 064 002, <https://doi.org/10.1088/1748-9326/acd0c3>, 2023.
- Harnik, N.: Observed stratospheric downward reflection and its relation to upward pulses of wave activity, *J. Geophys. Res. Atmospheres*, 114, <https://doi.org/10.1029/2008JD010493>, 2009.
- Harnik, N. and Lindzen, R. S.: The Effect of Reflecting Surfaces on the Vertical Structure and Variability of Stratospheric Planetary Waves, *J. Atmos. Sci.*, 58, [https://doi.org/10.1175/1520-0469\(2001\)058<2872:TEORSO>2.0.CO;2](https://doi.org/10.1175/1520-0469(2001)058<2872:TEORSO>2.0.CO;2), 2001.
- 570 Henderson, S. A. and Maloney, E. D.: The Impact of the Madden–Julian Oscillation on High-Latitude Winter Blocking during El Niño–Southern Oscillation Events, *J. Climate*, 31, 5293 – 5318, <https://doi.org/10.1175/JCLI-D-17-0721.1>, 2018.
- Hersbach, H., Bell, B., Berrisford, P., Hirahara, S., Horányi, A., Muñoz-Sabater, J., Nicolas, J., Peubey, C., Radu, R., Schepers, D., Simmons, A., Soci, C., Abdalla, S., Abellan, X., Balsamo, G., Bechtold, P., Biavati, G., Bidlot, J., Bonavita, M., De Chiara, G., Dahlgren, P., Dee, D., Diamantakis, M., Dragani, R., Flemming, J., Forbes, R., Fuentes, M., Geer, A., Haimberger, L., Healy, S., Hogan, R. J., Hólm, E., Janisková, M., Keeley, S., Laloyaux, P., Lopez, P., Lupu, C., Radnoti, G., de Rosnay, P., Rozum, I., Vamborg, F., Villaume, S., and Thépaut, J.-N.: The ERA5 global reanalysis, *Q. J. Roy. Meteor. Soc.*, 146, 1999–2049, <https://doi.org/10.1002/qj.3803>, 2020.
- 575 Hersbach, H., Bell, B., Berrisford, P., Biavati, G., Horányi, A., Muñoz Sabater, J., Nicolas, J., Peubey, C., Radu, R., Rozum, I., Schepers, D., Simmons, A., Soci, C., Dee, D., and Thépaut, J.-N.: ERA5 hourly data on pressure levels from 1940 to present [data set], <https://doi.org/10.24381/cds.bd0915c6>, 2024.
- 580 Hitchcock, P. and Simpson, I. R.: The Downward Influence of Stratospheric Sudden Warmings, *J. Atmos. Sci.*, 71, 3856 – 3876, <https://doi.org/10.1175/JAS-D-14-0012.1>, 2014.
- Kidston, J., Scaife, A. A., Hardiman, S. C., Mitchell, D. M., Butchart, N., Baldwin, M. P., and Gray, L. J.: Stratospheric influence on tropospheric jet streams, storm tracks and surface weather, *Nat. Geosci.*, 8, 433–440, <https://doi.org/10.1038/ngeo2424>, 2015.
- Kodera, K., Mukougawa, H., and Itoh, S.: Tropospheric impact of reflected planetary waves from the stratosphere, *Geophys. Res. Lett.*, 35, <https://doi.org/10.1029/2008GL034575>, 2008.
- 585 Kodera, K., Mukougawa, H., and Fujii, A.: Influence of the vertical and zonal propagation of stratospheric planetary waves on tropospheric blockings, *J. Geophys. Res. Atmospheres*, 118, 8333–8345, <https://doi.org/10.1002/jgrd.50650>, 2013.
- Kodera, K., Mukougawa, H., Maury, P., Ueda, M., and Claud, C.: Absorbing and reflecting sudden stratospheric warming events and their relationship with tropospheric circulation, *Journal of Geophysical Research: Atmospheres*, 121, 80–94, <https://doi.org/10.1002/2015JD023359>, 2016.
- 590 Kolstad, E. W., Lee, S. H., Butler, A. H., Domeisen, D. I. V., and Wulff, C. O.: Diverse Surface Signatures of Stratospheric Polar Vortex Anomalies, *J. Geophys. Res. Atmospheres*, 127, e2022JD037 422, <https://doi.org/10.1029/2022JD037422>, 2022.
- Kretschmer, M., Cohen, J., Matthias, V., Runge, J., and Coumou, D.: The different stratospheric influence on cold-extremes in Eurasia and North America, *npj Clim. Atmos. Sci.*, 1, 44, <https://doi.org/10.1038/s41612-018-0054-4>, 2018.
- 595 Kushnir, Y.: Retrograding Wintertime Low-Frequency Disturbances over the North Pacific Ocean, *J. Atmos. Sci.*, 44, 2727 – 2742, [https://doi.org/10.1175/1520-0469\(1987\)044<2727:RWLFDO>2.0.CO;2](https://doi.org/10.1175/1520-0469(1987)044<2727:RWLFDO>2.0.CO;2), 1987.
- Lee, S. H., Charlton-Perez, A. J., Woolnough, S. J., and Furtado, J. C.: How Do Stratospheric Perturbations Influence North American Weather Regime Predictions?, *J. Climate*, 35, 5915 – 5932, <https://doi.org/10.1175/JCLI-D-21-0413.1>, 2022.

- Lee, S. H., Tippett, M. K., and Polvani, L. M.: A New Year-Round Weather Regime Classification for North America, *J. Climate*, 36, 7091 – 7108, <https://doi.org/10.1175/JCLI-D-23-0214.1>, 2023a.
- Lee, S. H., Tippett, M. K., and Polvani, L. M.: Data for "A New Year-Round Weather Regime Classification for North America"[data set], <https://doi.org/10.5281/zenodo.8165165>, 2023b.
- Leeding, R., Riboldi, J., and Messori, G.: On Pan-Atlantic cold, wet and windy compound extremes, *Weather Clim. Extr.*, 39, 100524, <https://doi.org/10.1016/j.wace.2022.100524>, 2023a.
- 605 Leeding, R., Riboldi, J., and Messori, G.: Modulation of North Atlantic extratropical cyclones and extreme weather in Europe during North American cold spells, *Weather Clim. Extr.*, 42, 100629, <https://doi.org/10.1016/j.wace.2023.100629>, 2023b.
- Madden, R. A. and Speth, P.: The Average Behavior of Large-Scale Westward Traveling Disturbances Evident in the Northern Hemisphere Geopotential Heights, *J. Atmos. Sci.*, 46, 3225 – 3239, [https://doi.org/10.1175/1520-0469\(1989\)046<3225:TABOL>2.0.CO;2](https://doi.org/10.1175/1520-0469(1989)046<3225:TABOL>2.0.CO;2), 1989.
- Matsuno, T.: A Dynamical Model of the Stratospheric Sudden Warming, *J. Atmos. Sci.*, 28, 1479 – 1494, [https://doi.org/10.1175/1520-0469\(1971\)028<1479:ADMOTS>2.0.CO;2](https://doi.org/10.1175/1520-0469(1971)028<1479:ADMOTS>2.0.CO;2), 1971.
- 610 Matthewman, N. J., Esler, J. G., Charlton-Perez, A. J., and Polvani, L. M.: A New Look at Stratospheric Sudden Warmings. Part III: Polar Vortex Evolution and Vertical Structure, *J. Climate*, 22, 1566 – 1585, <https://doi.org/10.1175/2008JCLI2365.1>, 2009.
- Matthias, V. and Kretschmer, M.: The Influence of Stratospheric Wave Reflection on North American Cold Spells, *Mon. Weather Rev.*, 148, 1675 – 1690, <https://doi.org/10.1175/MWR-D-19-0339.1>, 2020.
- 615 Messori, G. and Faranda, D.: On the Systematic Occurrence of Compound Cold Spells in North America and Wet or Windy Extremes in Europe, *Geophys. Res. Lett.*, 50, e2022GL101008, <https://doi.org/10.1029/2022GL101008>, 2023.
- Messori, G., Caballero, R., and Gaetani, M.: On cold spells in North America and storminess in western Europe, *Geophys. Res. Lett.*, 43, 6620–6628, <https://doi.org/10.1002/2016GL069392>, 2016.
- Messori, G., Kretschmer, M., Lee, S. H., and Wendt, V.: Stratospheric downward wave reflection events modulate North American weather regimes and cold spells, *Weather Clim. Dynam.*, 3, 1215–1236, <https://doi.org/10.5194/wcd-3-1215-2022>, 2022.
- 620 Millin, O. T., Furtado, J. C., and Basara, J. B.: Characteristics, Evolution, and Formation of Cold Air Outbreaks in the Great Plains of the United States, *J. Climate*, 35, 4585 – 4602, <https://doi.org/10.1175/JCLI-D-21-0772.1>, 2022.
- Nath, D., Chen, W., Wang, L., and Ma, Y.: Planetary wave reflection and its impact on tropospheric cold weather over Asia during January 2008, *Adv. Atmos. Sci.*, 31, 851–862, <https://doi.org/10.1007/s00376-013-3195-8>, 2014.
- 625 Nath, D., Chen, W., Zelin, C., Pogoreltsev, A. I., and Wei, K.: Dynamics of 2013 Sudden Stratospheric Warming event and its impact on cold weather over Eurasia: Role of planetary wave reflection, *Sci. Rep.*, 6, 24174, <https://doi.org/10.1038/srep24174>, 2016.
- Nishii, K.: Programs [code], <https://www.atmos.rcast.u-tokyo.ac.jp/nishii/programs/index.html>, 2016.
- Perlwitz, J. and Harnik, N.: Observational Evidence of a Stratospheric Influence on the Troposphere by Planetary Wave Reflection, *J. Climate*, 16, 3011 – 3026, [https://doi.org/10.1175/1520-0442\(2003\)016<3011:OEOASI>2.0.CO;2](https://doi.org/10.1175/1520-0442(2003)016<3011:OEOASI>2.0.CO;2), 2003.
- 630 Perlwitz, J. and Harnik, N.: Downward Coupling between the Stratosphere and Troposphere: The Relative Roles of Wave and Zonal Mean Processes, *J. Climate*, 17, 4902 – 4909, <https://doi.org/10.1175/JCLI-3247.1>, 2004.
- Plumb, R. A.: On the Three-Dimensional Propagation of Stationary Waves, *J. Atmos. Sci.*, 42, 217 – 229, [https://doi.org/10.1175/1520-0469\(1985\)042<0217:OTTDPO>2.0.CO;2](https://doi.org/10.1175/1520-0469(1985)042<0217:OTTDPO>2.0.CO;2), 1985.
- Polvani, L. M. and Waugh, D. W.: Upward Wave Activity Flux as a Precursor to Extreme Stratospheric Events and Subsequent Anomalous Surface Weather Regimes, *J. Climate*, 17, 3548 – 3554, [https://doi.org/10.1175/1520-0442\(2004\)017<3548:UWAF>2.0.CO;2](https://doi.org/10.1175/1520-0442(2004)017<3548:UWAF>2.0.CO;2), 2004.
- 635

- Raghunathan, G. N. and Huang, H.-P.: An Updated Analysis of Northern Hemisphere Submonthly Retrograde Waves, *Journal of the Atmospheric Sciences*, 76, 3941 – 3954, <https://doi.org/10.1175/JAS-D-19-0143.1>, 2019.
- Randel, W. J. and Held, I. M.: Phase Speed Spectra of Transient Eddy Fluxes and Critical Layer Absorption, *J. Atmos. Sci.*, 48, 688 – 697, [https://doi.org/10.1175/1520-0469\(1991\)048<0688:PSSOTE>2.0.CO;2](https://doi.org/10.1175/1520-0469(1991)048<0688:PSSOTE>2.0.CO;2), 1991.
- 640 Reichler, T. and Jucker, M.: Stratospheric wave driving events as an alternative to sudden stratospheric warmings, *Weather Clim. Dynam.*, 3, 659–677, <https://doi.org/10.5194/wcd-3-659-2022>, 2022.
- Renwick, J. A. and Wallace, J. M.: Relationships between North Pacific Wintertime Blocking, El Niño, and the PNA Pattern, *Mon. Weather Rev.*, 124, 2071 – 2076, [https://doi.org/10.1175/1520-0493\(1996\)124<2071:RBNPWB>2.0.CO;2](https://doi.org/10.1175/1520-0493(1996)124<2071:RBNPWB>2.0.CO;2), 1996.
- Riboldi, J. and Schutte, M.: Space-time spectra of Northern Hemispheric Rossby waves during extended winter [data set], <https://doi.org/https://snd.se/en/catalogue/dataset/preview/440eef3a-c462-458a-bdf1-b83e8c10b4f3/1>, 2024.
- 645 Riboldi, J., Lott, F., D’Andrea, F., and Rivière, G.: On the Linkage Between Rossby Wave Phase Speed, Atmospheric Blocking, and Arctic Amplification, *Geophys. Res. Lett.*, 47, e2020GL087796, <https://doi.org/10.1029/2020GL087796>, 2020.
- Riboldi, J., Rousi, E., D’Andrea, F., Rivière, G., and Lott, F.: Circumglobal Rossby wave patterns during boreal winter highlighted by space–time spectral analysis, *Weather Clim. Dynam.*, 3, 449–469, <https://doi.org/10.5194/wcd-3-449-2022>, 2022.
- 650 Riboldi, J., Leeding, R., Segalini, A., and Messori, G.: Multiple Large-Scale Dynamical Pathways for Pan–Atlantic Compound Cold and Windy Extremes, *Geophys. Res. Lett.*, 50, e2022GL102528, <https://doi.org/10.1029/2022GL102528>, 2023.
- Scherhag, R.: Die explosionsartigen Stratosphaerenerwärmungen des Spaetwinters 1951/52, *Berichte des Deutschen Wetterdienstes in der US-Zone*, 6, 51–63, 1952.
- Schutte, M. K., Domeisen, D. I. V., and Riboldi, J.: Opposite spectral properties of Rossby waves during weak and strong stratospheric polar vortex events, *Weather Clim. Dynam.*, 5, 733–752, <https://doi.org/10.5194/wcd-5-733-2024>, 2024.
- 655 Shaw, T. A. and Perlwitz, J.: The Life Cycle of Northern Hemisphere Downward Wave Coupling between the Stratosphere and Troposphere, *J. Climate*, 26, 1745 – 1763, <https://doi.org/10.1175/JCLI-D-12-00251.1>, 2013.
- Shaw, T. A., Perlwitz, J., and Harnik, N.: Downward Wave Coupling between the Stratosphere and Troposphere: The Importance of Meridional Wave Guiding and Comparison with Zonal-Mean Coupling, *J. Climate*, 23, 6365 – 6381, <https://doi.org/10.1175/2010JCLI3804.1>, 2010.
- 660 Shaw, T. A., Perlwitz, J., and Weiner, O.: Troposphere-stratosphere coupling: Links to North Atlantic weather and climate, including their representation in CMIP5 models, *J. Geophys. Res. Atmospheres*, 119, 5864–5880, <https://doi.org/10.1002/2013JD021191>, 2014.
- Shen, X., Wang, L., Scaife, A. A., Hardiman, S. C., and Xu, P.: The Stratosphere–Troposphere Oscillation as the Dominant Intraseasonal Coupling Mode between the Stratosphere and Troposphere, *J. Climate*, 36, 2259 – 2276, <https://doi.org/10.1175/JCLI-D-22-0238.1>, 2023.
- 665 Sjoberg, J. P. and Birner, T.: Transient Tropospheric Forcing of Sudden Stratospheric Warmings, *J. Atmos. Sci.*, 69, 3420–3432, <https://doi.org/10.1175/JAS-D-11-0195.1>, 2012.
- Sussman, H., Raghavendra, A., Roundy, P., and Dai, A.: Trends in northern midlatitude atmospheric wave power from 1950 to 2009, *Clim. Dyn.*, 54, 2903–2918, <https://doi.org/10.1007/s00382-020-05143-3>, 2020.
- Takaya, K. and Nakamura, H.: A Formulation of a Phase-Independent Wave-Activity Flux for Stationary and Migratory Quasi-geostrophic Eddies on a Zonally Varying Basic Flow, *J. the Atmos. Sci.*, 58, 608 – 627, [https://doi.org/10.1175/1520-0469\(2001\)058<0608:AFOAPI>2.0.CO;2](https://doi.org/10.1175/1520-0469(2001)058<0608:AFOAPI>2.0.CO;2), 2001.
- 670 Thompson, D. W. J. and Wallace, J. M.: Regional Climate Impacts of the Northern Hemisphere Annular Mode, *Science*, 293, 85–89, <https://doi.org/10.1126/science.1058958>, 2001.



- Thompson, D. W. J., Furtado, J. C., and Shepherd, T. G.: On the Tropospheric Response to Anomalous Stratospheric Wave Drag and Radiative Heating, *J. Atmos. Sci.*, 63, 2616–2629, <https://doi.org/10.1175/JAS3771.1>, 2006.
- Wheeler, M. and Kiladis, G. N.: Convectively coupled equatorial waves: Analysis of clouds and temperature in the wavenumber–frequency domain, *J. Atmos. Sci.*, 56, 374–399, [https://doi.org/10.1175/1520-0469\(1999\)056<0374:CCEWAO>2.0.CO;2](https://doi.org/10.1175/1520-0469(1999)056<0374:CCEWAO>2.0.CO;2), 1999.
- Wilks, D. S.: “The Stippling Shows Statistically Significant Grid Points”: How Research Results are Routinely Overstated and Overinterpreted, and What to Do about It, *B. Am. Meteorol. Soc.*, 97, 2263 – 2273, <https://doi.org/10.1175/BAMS-D-15-00267.1>, 2016.
- Woollings, T., Hannachi, A., and Hoskins, B.: Variability of the North Atlantic eddy-driven jet stream, *Q. J. Roy. Meteor. Soc.*, 136, 856–868, <https://doi.org/10.1002/qj.625>, 2010.