

## Response to comment by Referee #1: Nili Harnik

This paper examines the dynamics of North Pacific downward wave reflection events, in which the wave activity propagation is upward over the NW Pacific, zonal in the lower stratosphere and downward over E. Canada. These events have been studied in Messori et al (2022) which related them to N. American cold spells and a transition from a Pacific Trough (PT) weather regime to an Alaskan Ridge (AKR) regime. In this paper the authors build upon this work and further examine the following things which Messori et al 2022 did not focus on:

The latitude-height-time evolution of meridional heat flux (alongside atmospheric temperature anomalies), Rossby wave activity and Rossby wave phase speeds based on a space-time spectral analysis, and surface wind extremes over Europe. The analysis was done with a focus on the onset and end of the Pacific reflection events. The main findings are a concentration of the heat-flux anomalies in the upper troposphere-lower stratosphere, with oppositely signed anomalies in the lower troposphere, and a clear signature of westward propagation of waves during the reflection event at all levels and for a range of zonal wavenumbers, and an increase in the occurrence of extreme wind events over Europe.

In addition, the authors also compare the heat flux and Rossby wave evolution of these events to regional geopotential height events of similar structure and compared the onset/end of reflection events to anomalies related to PT and AKR regimes, respectively. For both the regional geopotential height anomalies and PT/AKR regimes they find the above heat flux and Rossby wave anomalies, with some divergences.

The results point out to interesting dynamics and the analysis raises lots of interesting questions. At the same time, the paper can be improved significantly by better motivating the specific calculations and scientific questions, in a way that can tie the results into a more coherent story. Following are some more specific comments and some thoughts on possible ways to improve the focus of the work.

In addition, the methodology needs to be explained better, and in the case of the phase speed analysis, also better justified.

*Thank you very much for your very thoughtful review of our manuscript. We greatly appreciate the time and effort put into providing such helpful comments. We agree with your suggestion that the paper can be improved by a clearer motivation of the scientific questions, and explaining or justifying parts of the methodology better. In the following, we will address each of your comments in more detail.*

The authors discuss various ways to detect downward reflection, specifically, the detection of localized vs global events, and discuss the importance of these events for extreme event. They then do on to state on line 53, as underlying motivation to the paper, that the physical mechanisms linking stratospheric wave reflection to the subsequent tropospheric anomalies are not completely understood. As part of their aim to develop a deeper understanding of the evolution of the flow during these events, they pose 3 questions. While the questions are answered in the paper, it is not really clear why these are chosen, beyond the fact that the analysis done happens to answer them. The paper can be greatly improved if some of the main dynamical questions regarding these waves are more explicitly posed, and the reasons for studying heat fluxes, Rossby wave activity, and weather regimes is explained.

Question 1 specifically (*What is the vertical structure of the meridional eddy heat flux before, during and after reflection events?*) is not well motivated in my mind. Why did the authors choose to look at

the vertical structure of heat fluxes and what do the results contribute to our understanding of these events?

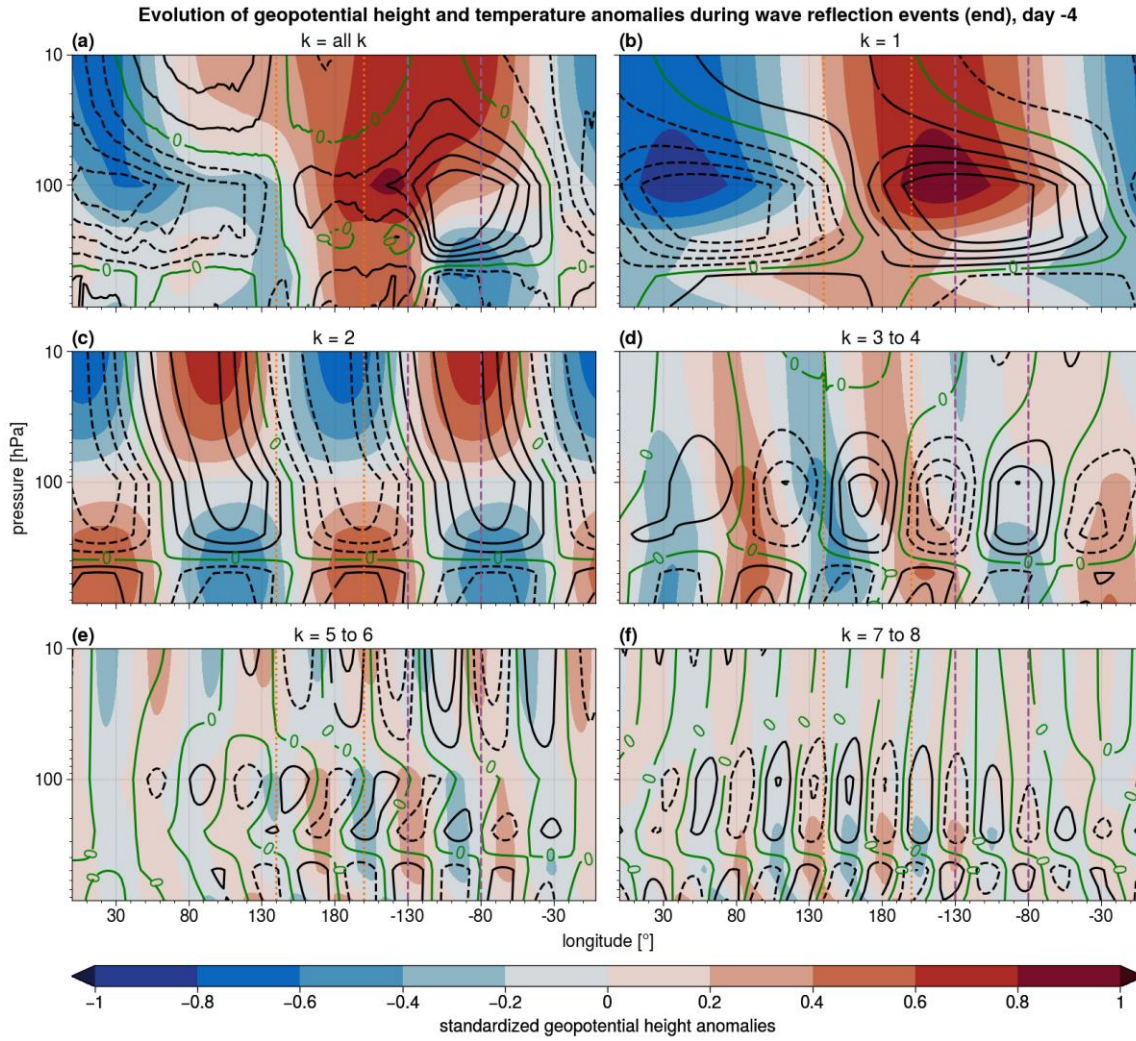
The change in sign between lower and upper tropospheric heat fluxes, which accompanied the temporal change in sign, is interesting, but was not totally surprising to me because for the stratospheric case at least, it is related to the wave geopotential height ( $F$ ) peaking in height (at the downward reflection level), e.g. Fig. 4 of Harnik and Lindzen (2001). This peak in  $F$  wave amplitude leads to the temperature waves having a node at the level at which  $F$  peaks ( $T' \sim dF'/dz$ ). This will lead to a change in sign of  $v'T'$ .

*The first question, investigating the vertical structure of meridional heat flux,  $v'T'$ , is motivated by the definition of reflection events: Using  $v'T'$  at 100 hPa to detect reflection events raised the question, how this signal is represented at other levels. With respect to the atmospheric behavior, we were also expecting a sign-change over Canada, since Messori et al. (2022) have shown that colder-than-usual air is advected southward at lower levels (positive  $v'T'$  anomalies).*

*Additionally, we were curious about the vertical extent of positive and negative  $v'T'$  anomalies and at which level the sign would change. The proportionality between  $v'T'$  and vertical wave propagation motivated us to investigate at which height we can observe a strong upward/downward signal. This contributes to understanding the vertical structure, i.e., at which height we can observe wave reflection, and how it connects to the advection of colder-than-usual air close to the surface.*

*Your explanation of sign-change makes sense and could complement our discussion. Your explanation, as also shown in Fig. 4 in Harnik and Lindzen (2001), applies in our context, as well, with the only difference that we find the reversed structure in the upper troposphere. This includes a local minimum of geopotential height over Canada, as temperature anomalies change vertically from colder than normal at lower levels to warmer than normal in the upper troposphere and lower stratosphere. In line with your expectation, we can observe the vertical temperature node over Canada at approximately 400 hPa, just above the minimum of a geopotential height anomaly at approximately 500 hPa (Fig. R1a).*

*We will add a short motivation to each question in lines 58-61, e.g., for question 1: “As reflection events are defined by  $v'T'$  anomalies at 100 hPa, we would like to investigate the vertical extent of these anomalies. Furthermore, Messori et al. (2022) have pointed out, that colder-than-usual air is advected southward at lower levels over Canada, which leads to opposite anomalies closer to the surface than at 100 hPa. This motivates to investigate additionally at which vertical level  $v'T'$  anomalies are changing sign.” Furthermore, we will extend the discussion of geopotential height in the manuscript by the result about the vertical temperature node with respect to Figure R1.*



**Figure R1.** Vertical cross-section of standardized geopotential height anomalies (shading) and temperature anomalies (lines in steps of 0.2) at 60°N four days before the end of reflection events (a) for all wavenumbers, (b) for wave-1 (c) for wave-2, (d) for wave-3 to 4, (e) for wave-5 to 6 and (f) for wave-7 to 8. The vertical lines mark longitudes of the Siberian (orange, dotted) and Canadian domains (purple, dashed).

It seems that in this case the heat flux signature comes from the medium scale waves having such a node - this can be examined easily, and can thus give us a better understanding of where the downward reflection signal is coming from. Specifically, how much of the evolution is tropospheric vs stratospheric dynamics? Understanding this can lead to more understanding of the sources of their predictability.

*We share your impression that medium scale waves in the troposphere (~wave-2 to 4) play an important role in the context of reflection events over the North Pacific, which can also be seen in the space-time spectra (Fig. 5 in the manuscript). As shown in Fig. R1, the vertical temperature node in the troposphere over Canada is mostly linked to waves-2 to 4 in temperature and geopotential height anomalies four days before the end of reflection events.*

*In the stratosphere, wave-1 to 2 contribute most to the observed anomalies during reflection events with wave-2 having the opposite phase between stratosphere and troposphere. Thus, wave-1 is likely most important for the stratospheric setup during reflection events, while wave-2 is relevant in stratosphere and troposphere. Conversely, wave-3 to 4 contribute more to the overall anomalies in the troposphere than in the stratosphere.*

*We will address your comment by mentioning the relevance of wave-3 to 4 in the troposphere in discussion about Rossby wave spectra (e.g., line 270), e.g., “The vertical structure of geopotential anomalies confirms the importance of waves-3 and 4 in the troposphere and wave-1 in the stratosphere (Fig. R1).”, and by adding Fig. R1 to the appendix.*

Another main result of the analysis is the westward phase speed of the waves during the downward reflection events. This again can be explained for the pure stratospheric wave reflection quite simply, but is more interesting in a way for the current case of the tropospheric waves propagating westward.

The following schematic shows how downward reflection naturally involves westward phase propagation at lower levels (due to the vertical tilting of the phase lines of the wave). A westward phase speed on top and eastward on bottom is characteristic of a tilting of the climatologically westward tilted waves to a more vertical tilting.

I also thought of another option which can give a more tropospheric-induced downward reflection, as follows. The schematic below shows how a westward propagation of smaller scale tropospheric anomalies can lead to upward to the west - downward to the east wave propagation.

In this case the downward reflection occurs due to the superposition of the waves and not due to a downward reflection of the wave 1 (*see drawings in original answer*).

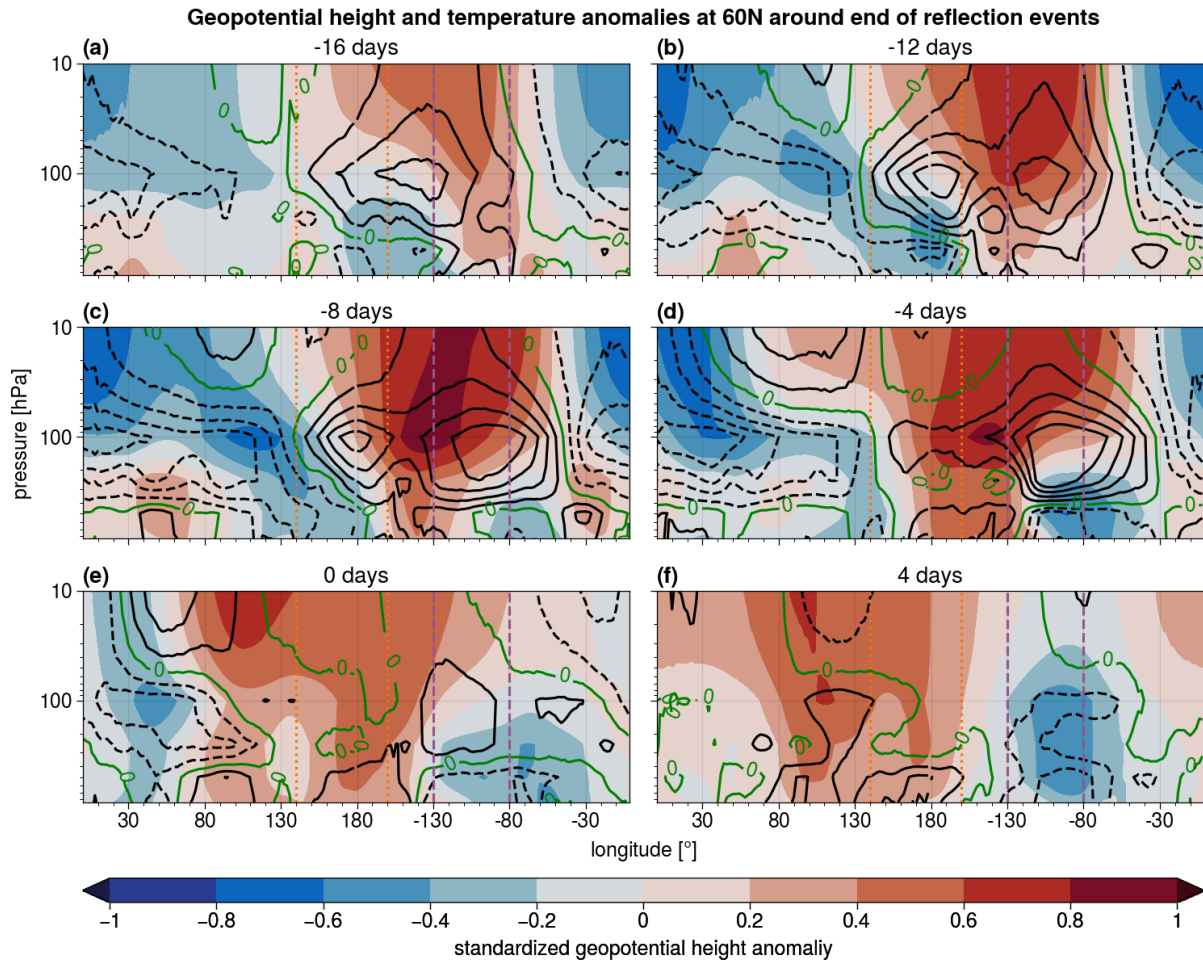
Thinking of these two scenarios raises a few questions about the role of stratospheric wave 1 in these events - do these events involve both of the above scenarios or only one, or something else? See also my comments about the discussion section.

*Thank you for elaborating on these two mechanisms to potentially explain the westward phase speed. Both could be relevant for the observed westward-propagation of Rossby waves. A discussion on this could benefit our manuscript.*

*The first mechanism (phase lines tilting vertically during reflection) seems like a very reasonable explanation for the observed enhancement of westward-propagating Rossby waves in the lower and middle stratosphere. In line with your first schematic, we see enhanced phase speed in the middle stratosphere (~10 hPa), and positive anomalies with a lower amplitude in lower stratosphere (~100 hPa) during reflection events (Fig. R3a). We also observe the vertical alignment of the positive geopotential height anomaly during reflection events, supporting your suggestion (Fig. R2).*

*The second mechanism (constant stratospheric field, evolving tropospheric field) likely also plays a role, as synoptic-scale disturbances in the troposphere are replaced by their opposite anomaly (e.g., Fig. 4f to i in the manuscript). During the course of reflection events this would result in the proposed evolution, as in your second schematic. At the same time, larger-scale anomalies have also a greater influence on the upper troposphere (see later comments connected to Fig. R4) and the stratospheric field is not constant during reflection events (e.g., westward-propagation of positive anomaly in Fig. A3 in the manuscript). Thus, the first mechanism likely plays a larger role in the stratospheric evolution, while the second scenario could still be of importance for the tropospheric evolution. It might also be less clear to assess the role of the second mechanism due to a larger variability in the troposphere.*

*We will mention that the westward propagation of anomalies in the lower stratosphere can be understood by the mechanism of phase lines aligning vertically in the discussion of geopotential height anomalies.*



**Figure R2.** Time series of standardized geopotential height anomalies (shading) and temperature anomalies (lines in steps of 0.2) at 60°N, ranging from (a) 16 days before the end of reflection events to (f) four days after the end of reflection events. The vertical lines mark longitudes of the Siberian (orange, dotted) and Canadian domains (purple, dashed).

## Methods:

The description of the analysis is partial and thus confusing: In section 2.1 (line 77) you state that you deseasonalize all the variable except for the meridional wind. Why not the meridional wind? I assume you calculate  $v'T'$  from the full zonal anomalies before deseasonalizing, and not using deseasonalized  $T'$  and non-deseasonalized  $v'$ ..?

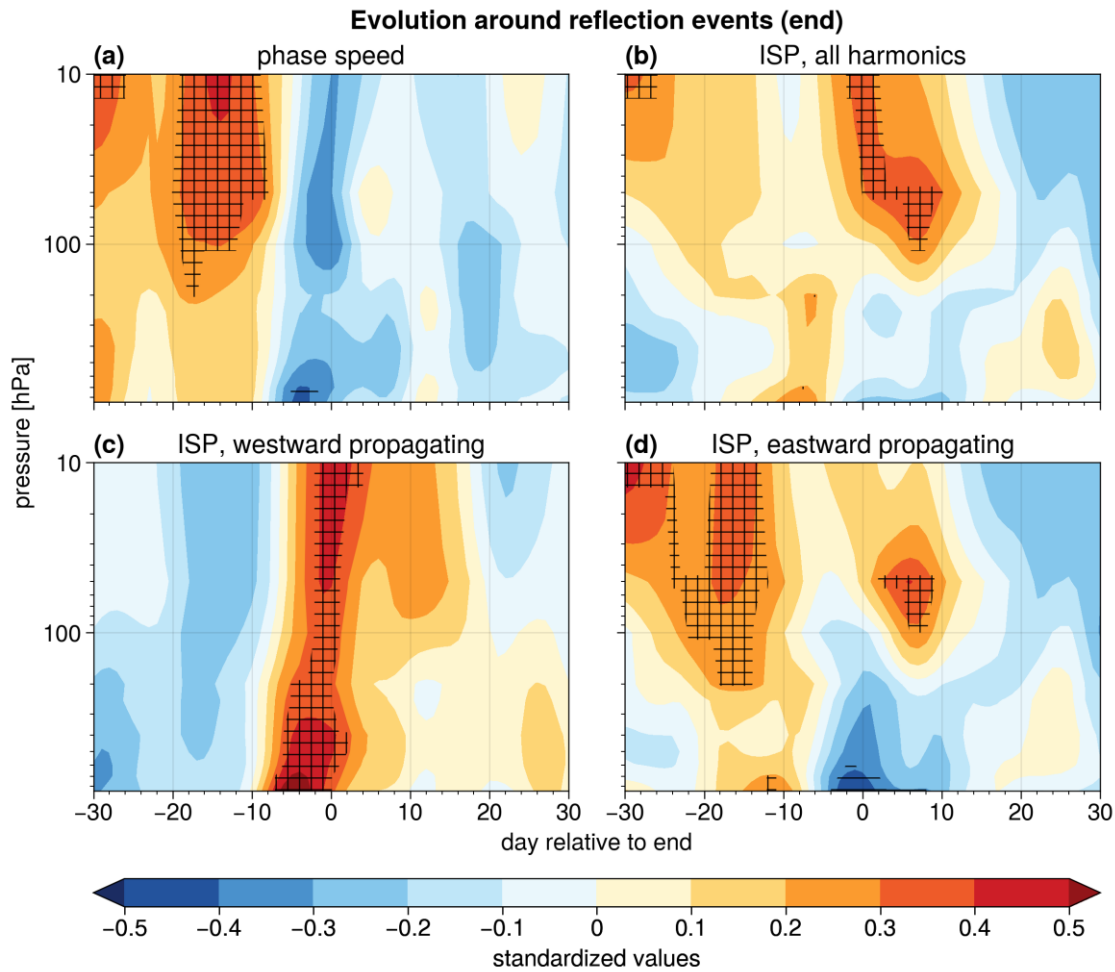
*Thank you for highlighting this unclarity. We calculate  $v'T'$  from the full zonal anomalies and deseasonalize only afterwards, as you stated. We will refine this description the manuscript by modifying the data description in lines 77-78: “Unless stated differently, we deseasonalized each field shown in the following analysis by subtracting the daily seasonal cycle, computed...”, and by adding a sentence to end of paragraph: “The meridional eddy heat flux, WAF and space-time Rossby wave spectra are computed from the full fields and deseasonalized afterwards.”*

Section 2.3- the Space time Rossby wave spectra: The deseasonalization process is not explained clearly. Specifically, is ISP of equation 3 an anomaly or not. The right way is to calculate each of the

quantities- S, ISP and  $\bar{C}_p$  is using the full fields and only then calculate the anomaly from the climatological seasonal cycle. Maybe this is what is done but then please clarify in the text.

*We have computed the Space-time Rossby wave spectra on the full fields of meridional wind and deseasonalized the spectra afterwards. Thank you for highlighting this aspect, we will improve the explanation here.*

*Regarding the spectrally derived metrics, ISP and  $\bar{C}_p$ , we computed them from the full spectra and from the deseasonalized spectra separately, but did not deseasonalize them. For ISP, this makes no big difference, as this is just the sum of spectral power, and hence the sum of anomalies is approximately the same. However, the mean  $\bar{C}_p$ , that is weighted with the phase speed of each harmonic individually (Eq. 4), shows a slightly different behavior, depending on if one computes it from the deseasonalized spectra or if one computes  $\bar{C}_p$  from the full spectra and deseasonalizes the mean phase speed  $\bar{C}_p$  afterwards (cf. Fig. R3a to the manuscript's Fig. 6). The general behavior of a drop of mean phase speed  $\bar{C}_p$  towards the end of reflection events is still very pronounced, albeit with stronger positive anomalies during the event and weaker negative anomalies around the end. Thank you for spotting this inconsistency, we will update the manuscript on that aspect in line 140: "Both integral metrics (ISP and  $\bar{C}_p$ ) are computed from the full space-time spectra and deseasonalized afterwards.", and replace Fig. 6 in the manuscript by Fig. R3 and update the discussion of Fig. 6 in lines 251-271 accordingly.*



**Figure R3.** Vertical cross-section of standardized anomalies of (a) phase speed, (b) ISP, (c) ISPwest and (d) ISPeast derived from spectral power  $SVV'$  between 850 hPa and 10 hPa centered around the end date of

*reflection events. Horizontal hatching marks significant negative anomalies, cross-hatching significant positive anomalies. ISP and phase speed anomalies were obtained by deseasonalizing their full time series and not from deseasonalized space-time spectra, as in Fig. 6 in the manuscript.*

Another issue which is more fundamental is the ability of the spectral analysis to correctly resolve these relatively fast events, given that the spectra are calculated from 61-day time series (or shorted due to tapering). A possible way to check things is to compare just zonal spectra and then look at Hovmöller diagrams of waves that dominate each time period to see if the results you get show similar changes of the wave phase speeds during the events.

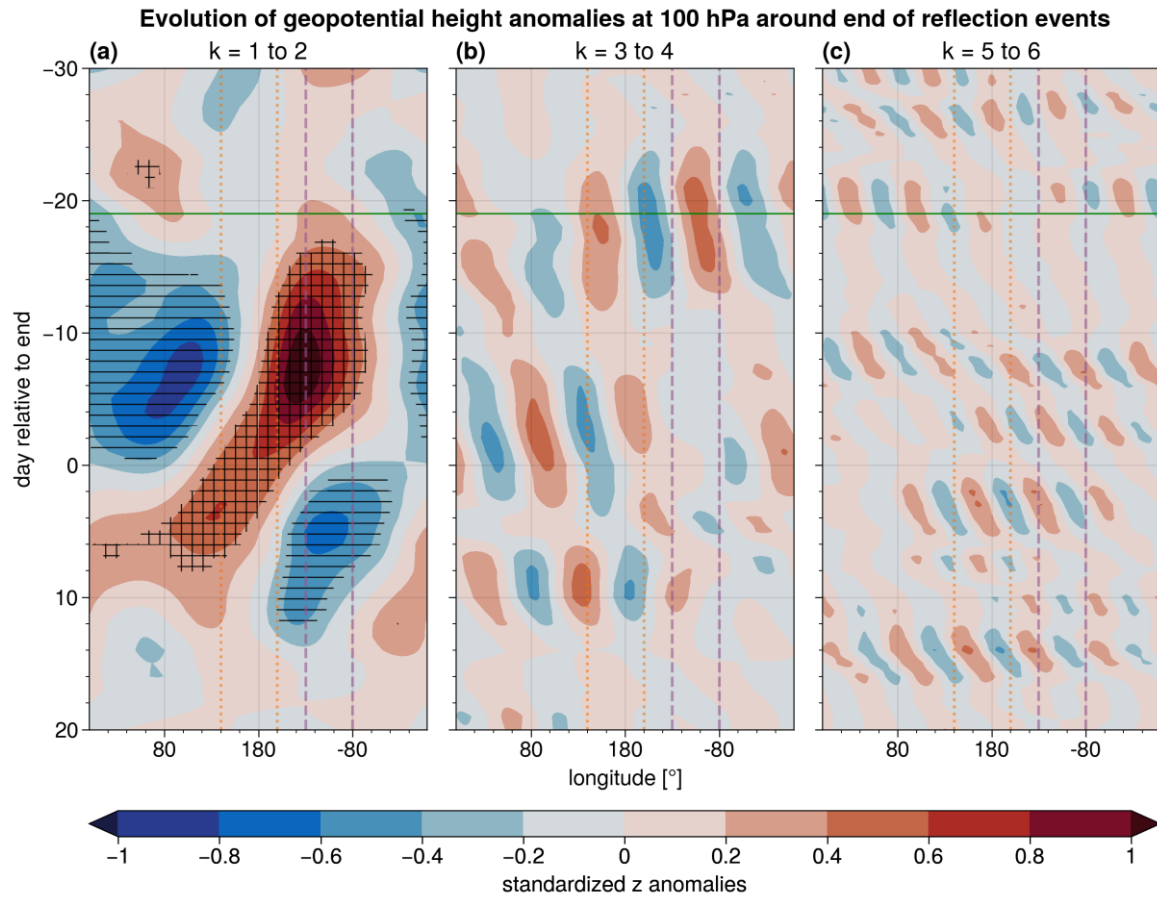
*We acknowledge that the relatively large time window of 61 days can potentially smooth out the signal of events with a short duration. However, reflection events still happen on weekly time scales (median duration of 19 days, as the green line in the Hovmöller plots, e.g., Fig. 3 in the manuscript), which is long enough for space-time spectral analysis with the underlying 61-day time window to pick up on that signal. Due to the additional tapering of the first and last 12 days, only 37 days count fully into the space-time spectra of each day (section 2.3 in the manuscript). Furthermore, variability before and after events likely averages out other signals, so that only changes connected to reflection events become apparent in the composite space-time spectra.*

*The motivation for this time window was to resolve also slowly propagating Rossby waves with low absolute phase speeds, even though standing waves can still not be resolved. For example, in the case of your first scenario proposed earlier (phase lines tilting vertically during reflection), low phase speeds become important to describe the wave behavior in the middle stratosphere. Additionally, earlier results on extreme states of the stratospheric polar vortex suggest that sudden changes can be captured by space-time spectra computed this way (Schutte et al., 2024). See also the later comment on Section 3.1.2: Line 215 - figure 3d.*

*Following your suggestion, Hovmöller diagrams of specific wavenumbers reveal a similar behavior, as the space-time spectra. For example, at 100 hPa, we observe mainly large-scale anomalies propagating westward (Fig. R4). Comparing the wave propagation during median onset (day -19) with end (day 0) shows even some of the changes explored with help of space-time Rossby wave spectra, e.g., a change of slowly eastward-propagating waves-1 and 2 during the median onset to a more rapid westward-propagation during reflection events and around the end (Fig. R4a).*

*This behavior can even be seen in a similar way in the Hovmöller diagrams of geopotential height without zonal wave decomposition (Fig. 3a in the manuscript). In the lower stratosphere and upper troposphere, large-scale waves dominate and exhibit a tendency to propagate westward around the end of reflection events.*

*We will address your comment by adding in line 128: “Despite the time filtering applied during the computation of Rossby wave space-time spectra, we note that this metric can also capture daily to weekly changes in Rossby wave behavior (Fig. R4).”, and we will add Fig. R4 to the appendix.*



**Figure R4.** Hovmöller diagram of standardized anomalies of geopotential height averaged between 45N - 75N centered around the end date of reflection events at 100 hPa for (a) wave-1 to 2, (b) wave-3 to 4 and (c) wave-5 to 6 in shading. Horizontal hatching marks significant negative anomalies and cross-hatching significant positive anomalies. The continuous horizontal green line shows the median onset time of reflection events. The vertical lines mark longitudes of the Siberian (orange, dotted) and Canadian domains (purple, dashed).

## Results:

Section 3.1.1 Figure 1 and its discussion: As noted above, the change of sign of wave temperature anomalies, alongside no change of sign of the geopotential height, necessarily gives a change in sign of the heat fluxes, and this could be a result of the wave geopotential height structure. Have you looked at longitude-height plots of  $T'$  alongside  $v'$  or geopotential height? I think these would be very telling.

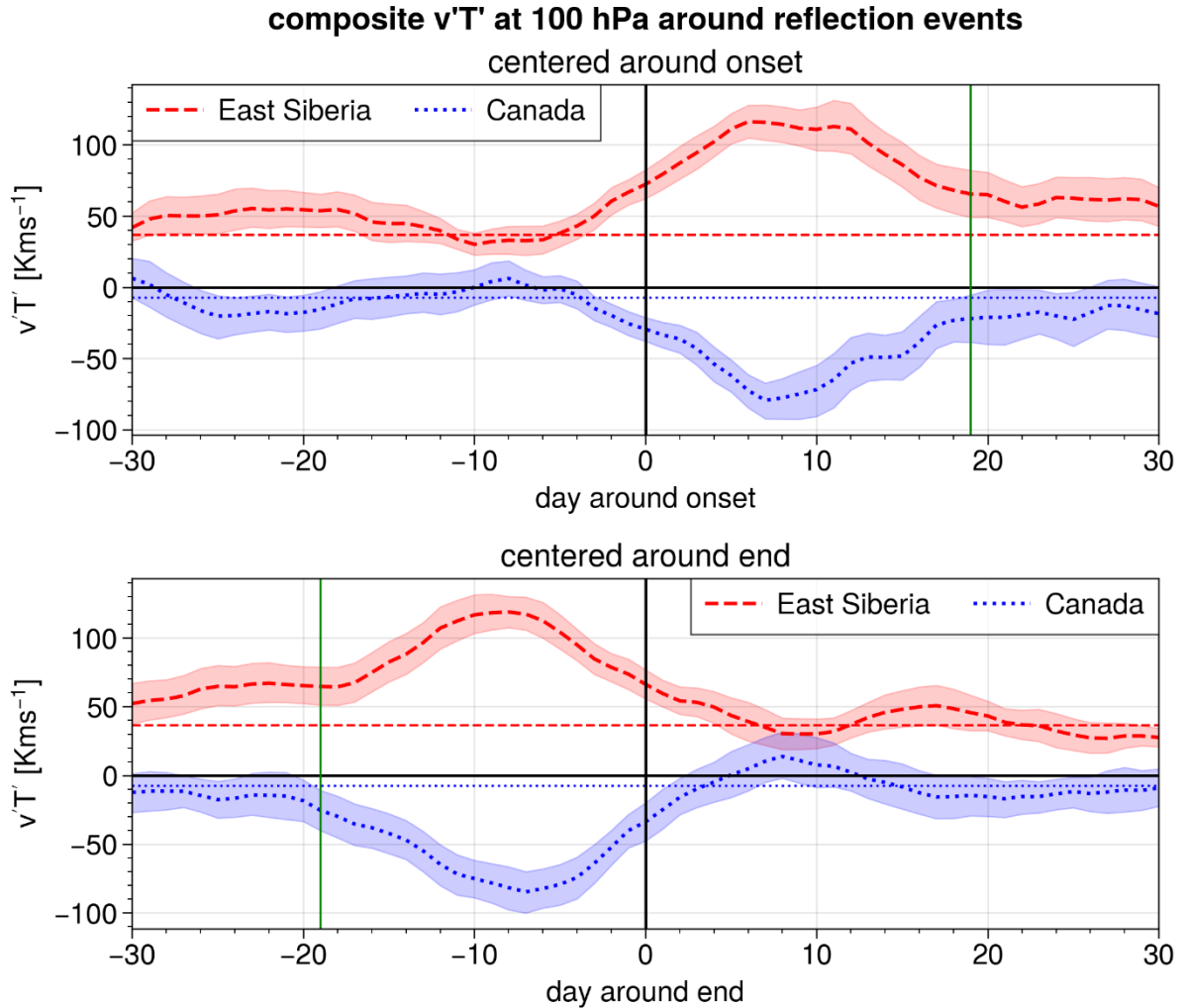
*Thank you for the idea to investigate longitude-height plots of  $T'$ ,  $v'$  or geopotential height. We have looked at longitude height plots of geopotential height and temperature with respect to your earlier comments (see answers referring to Fig. R1).*

Also, regarding the negative  $v'T'$  anomaly which precedes the wave onset (fig 1a) and its corresponding positive  $v'T'$  - how much of this is due to the wave events occurring in bursts, meaning that preceding a wave event there is no heat flux, i.e. the upward flux starts after a period of "quiet", which is climatologically a negative heat flux anomaly

*Thank you for your suggestion about seeing wave reflection events as bursts in heat flux. This 'quiet' period before could be an additional hint at some preconditioning needed for reflection events. We*

observe a more uniform, positive meridional eddy heat flux before and after the burst connected to reflection events (Fig. R5). However,  $v'T'$  is not completely suppressed, but remains rather close to climatology during these ‘quiet’ periods.

In line with your comment, we will add in line 190: “Furthermore, the opposite  $v'T'$  anomalies before the onset and after the end of reflection events relate to times with more uniform, weakly positive meridional eddy heat fluxes over both regions (Fig. R5).”, and add Fig. R5 to the appendix.



**Figure R5.** Meridional eddy heat flux  $v'T'$  at 100 hPa over East Siberia (red, dashed) and Canada (blue, dotted), (a) centered around the onset date, (b) centered around the end date of reflection events. The thin horizontal lines show the DJFM mean in the respective region, shading indicates the 95% confidence interval on the mean, assessed with bootstrapping. The vertical green line in (a) shows the median end, and in (b) the median onset of reflection events.

Summary paragraph and specifically the statement starting on line 189: " The oscillation of  $v'T'$  anomalies in the Siberian and Canadian domain originates from the westward propagation of negative  $v'T'$  anomalies"

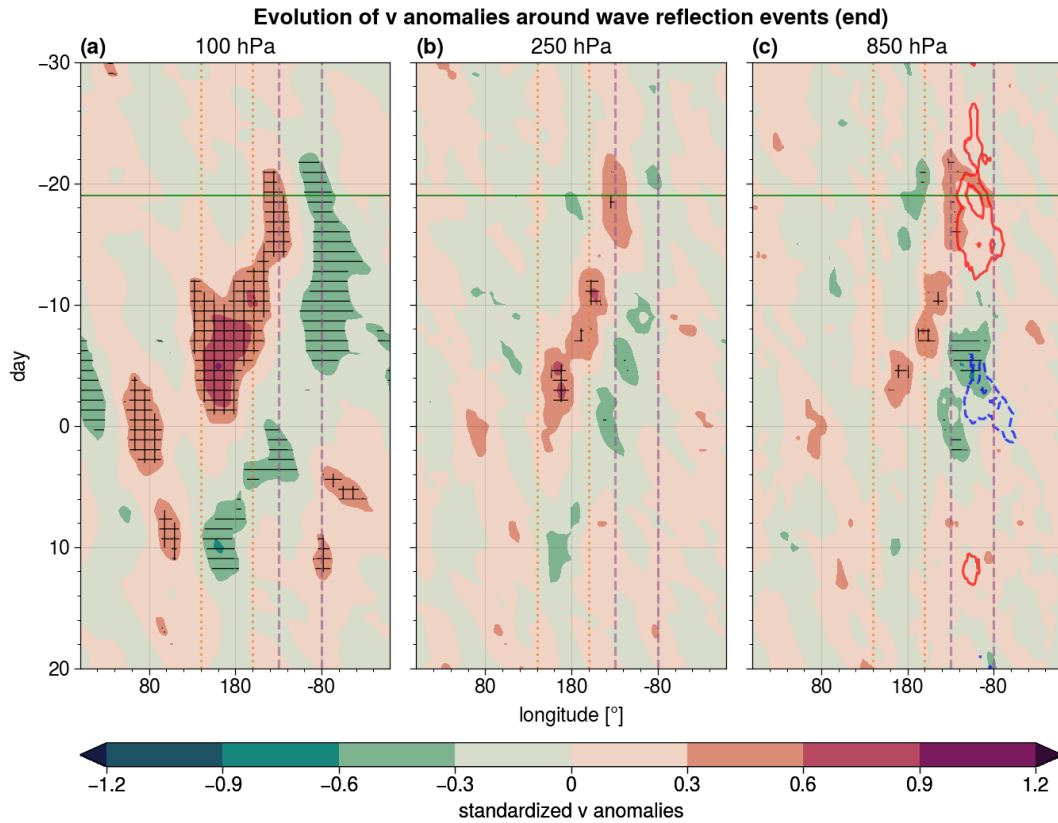
I assume this pertains to figure 2a. I find it hard to physically understand the propagation of  $v'T'$  anomalies, because it depends on two fields with a complex vertical structure (temperature). Specifically, a small change in the morphology of the plotted fields can change the appearance of the anomalies from a westward propagation to a simple standing oscillation, as in Figure A2a which shows temperature. Is this westward propagation meaningful in terms of a westward modal propagation? It could be resulting from a wave vertical structure change, rather than a modal propagation. Such questions can also motivate the space-time spectral analysis.

I think it will help to understand the phase propagation in terms of the wave geopotential height field evolution. The authors should consider switching the order of sections 3.1.1 and 3.1.2 - start with geopotential height anomaly evolution, and then examine how it manifests in terms of  $v'T'$ .

*As you assumed, the cited statement refers mostly to the lower stratosphere. We will clarify this in the manuscript. Furthermore, we share your impression that the propagation of  $v'T'$  anomalies is not so clear to understand or to interpret. In line with the westward propagation of geopotential height anomalies we understand the resulting evolution of  $v'T'$  anomalies being mostly driven by a westward propagation of  $v'$  (see also Fig. R6). Thank you for the hint that this can be an additional motivation to motivate space-time spectral analysis.*

*We understand the logic of elaborating on the evolution of geopotential height anomalies before discussing  $v'T'$  anomalies. Our motivation for the current order of sections is to begin with the investigation of  $v'T'$  anomalies, as they are used to define reflection events, and explain this behavior in the following section through the evolution of geopotential height anomalies. Thus, we would like to keep the current order of sections 3.1.1 and 3.1.2.*

*With respect to your comment, we will modify sentence in line 189 to: “The oscillation of  $v'T'$  anomalies in the stratosphere over the Siberian and Canadian domain ...”. Further, we will add in line 190: “As this evolution of  $v'T'$  anomalies is mostly linked to the meridional wind (Fig. R6), this motivates to investigate the corresponding geopotential height anomalies and Rossby wave spectra of meridional wind, focusing also on the emerging westward propagation in the following sections.”, and add figure R6 to the appendix.*



**Figure R6.** Hovmöller diagram of standardized anomalies of composite meridional wind  $v'$  averaged between 45N - 75N centered around the end date of reflection events at (a) 100 hPa, (b) 250 hPa and (c) 850 hPa. Horizontal hatching marks significant negative anomalies and cross-hatching significant positive anomalies. Continuous red and dashed blue contours in (c) show standardized positive and negative 2m air temperature anomalies, respectively, averaged between 40N - 55N (1 std  $\approx 3.8$  K). The contours start at  $\pm 0.5$ std with steps of  $0.3$ std. The continuous horizontal green line shows the median onset day of reflection events. The vertical lines mark longitudes of the Siberian (orange, dotted) and Canadian domains (purple, dashed)

Section 3.1.2: Line 215 - figure 3d –

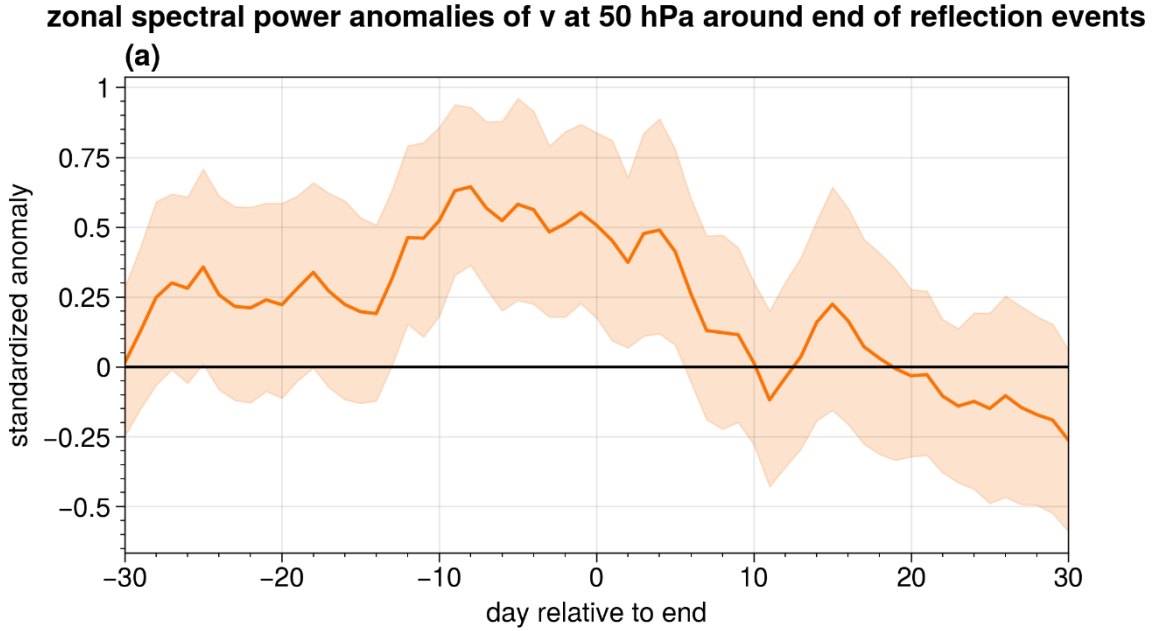
Repeating my comment from above: Is the ISP diagnostic able to capture the temporal evolution well given that it is based on spectra that are calculated from 61-day time series (or shorted due to tapering)? A possible way to check things is to compare just zonal spectra and then look at composites of the temporal changes of wave activity summed over the wavenumbers only.

*The ISP diagnostic is able to capture the temporal evolution of reflection events, in line with our answers to your earlier comment about Rossby wave spectra capturing reflection events. Furthermore, ISP can also capture other stratospheric events, such as stratospheric warmings or strong polar vortex events (Fig. 8 in Schutte et al, 2024), so we are convinced that it can capture the temporal evolution of reflection events, as well.*

*Since Fig. 3d in the manuscript shows only ISP for westward-propagating waves, detecting Rossby wave behavior with a specific propagation direction requires some sort of decomposition in time, which we obtained from the time/frequency component of space-time spectral analysis. However, comparing ISP for all wavenumbers with the sum of spectral power obtained from zonal decomposition reveals a very similar behavior, confirming that space-time spectra are able to capture the relevant changes of Rossby wave behavior during reflection events (e.g., compare zonal spectral power at 250 hPa in Fig. R7 to ISP in Fig. R2b). One potential reason for differences is the smoothing*

in the frequency direction during the computation of space-time spectra, as described in section 2.3. in the manuscript.

We will adjust the manuscript in line with the earlier with respect to figure R4.



**Figure R7.** Standardized anomalies of zonal spectral power of meridional wind at 50 hPa, obtained from the sum over wavenumbers 1 to 15. The thick orange line shows the average over all events, orange shading indicates the 95% confidence interval of the mean, assessed with bootstrapping.

### Section 3.1.3

Here as well- the use of the spectral diagnostic for this specific problem needs more justification, specifically for figure 6 which shows a temporal evolution over a period which is of the same length as the date used for each of the phase speed calculations. Here too, a zonal Fourier analysis can help - you can find the zonal wavenumbers which dominate each stage, and then look at the composited Hovmöller diagrams filtered only for the dominant zonal wavenumbers to see if the waves change their phase speed and how.

*Thank you for your suggestion. As highlighted with respect to earlier comments, we believe that the method of space-time spectral analysis can be applied to analyze this type of reflection events. The decrease in phase speed during the end of reflection events, as observed in Fig. R3, is also discernible in Hovmöller diagrams for large-scale waves (e.g., at 100 hPa in Fig. R4).*

We will adjust the manuscript in line with the earlier with respect to figure R4.

Also, anomalies in  $C_p$  shown in figures 5-6 do not necessarily indicate a westward propagation of the waves - a decrease in  $C_p$  can be due to specific zonal wavenumbers slowing down or propagating westward, but also to a weakening of the faster waves during a specific time period. How much do "background" synoptic waves affect the results of these figures?

*Thank you for highlighting this caveat of the averaged phase speed  $\bar{C}_p$ . As it is weighted by the spectral power of each harmonic, one cannot obtain the detailed change in Rossby wave behavior, but rather some dominant effect. Since synoptic-scale waves dominate in the troposphere and large-scale waves dominate in the stratosphere, the different scales affect the phase speed depending on the specific level. Differences in phase speed can also be driven by large-scale waves affecting synoptic-scale waves which propagate on the large-wave background. Furthermore, the shift of wave-3 to 4 from an eastward to a westward propagation is likely relevant for the observed decrease of phase speed (Fig. 5 and 6 a in the manuscript).*

### Section 3.2:

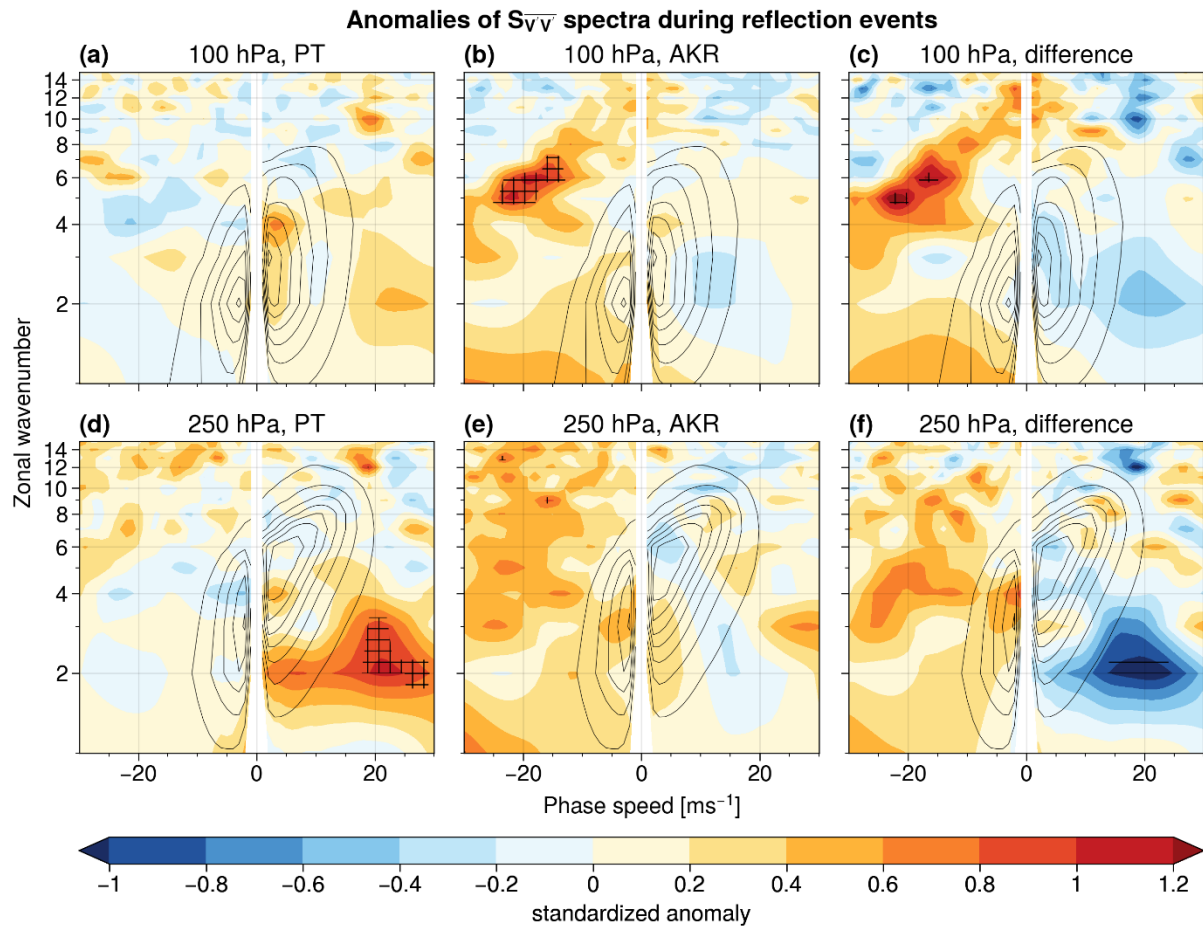
The reference to the regimes and their transition in the context of the tropospheric waves' westward propagation is interesting, and could be emphasized more in terms of the overall picture the authors have of what is going on. A more explicit motivation for this will improve the paper.

The lack of wave 1 dominance in the regime plots suggests maybe that wave 1 westward propagation is not crucial for the downward reflection signal to occur?

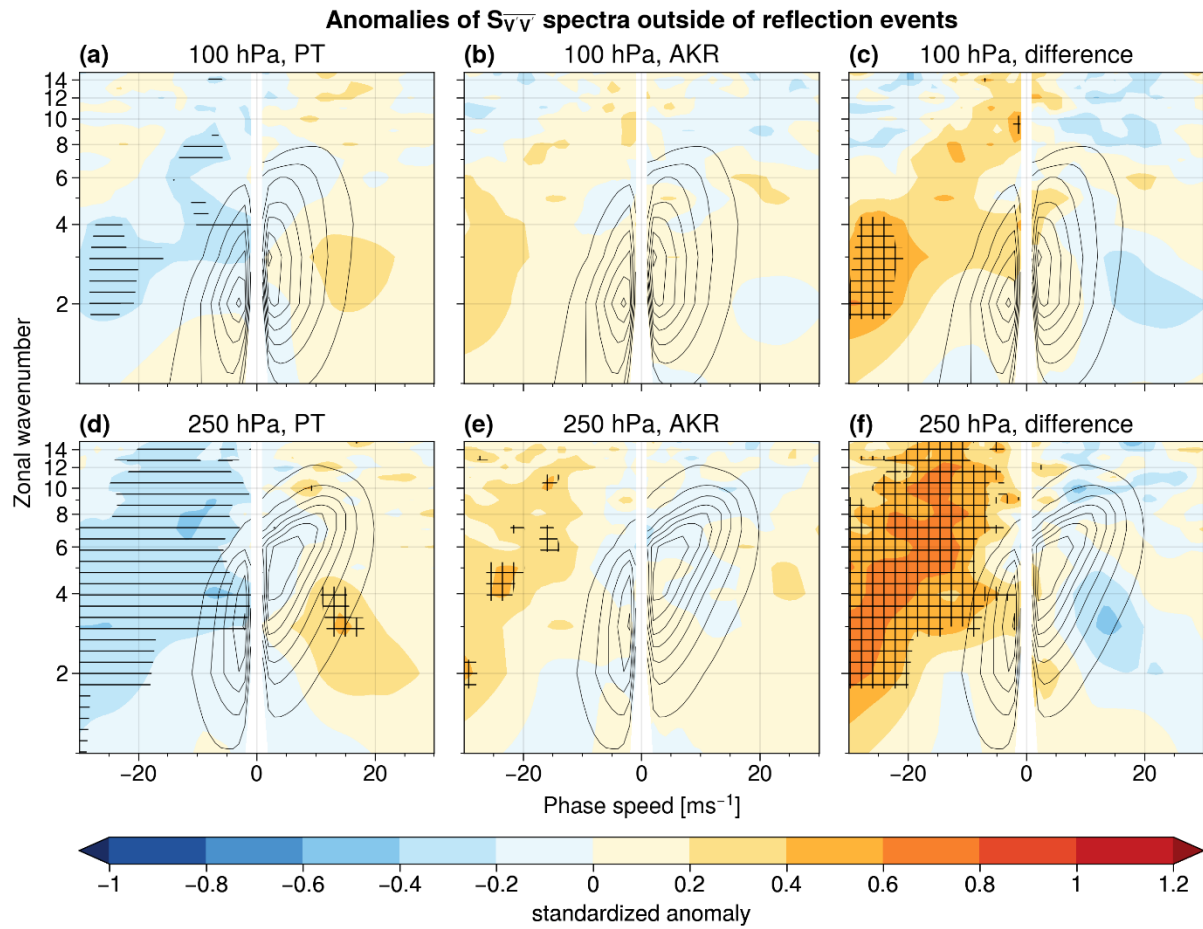
*Thank you for the suggestion to emphasize the transition of regimes more with respect to the overall picture. Since Messori et al. (2022) had suggested that reflection events are dominated by the transition from Pacific trough (PT) to Alaskan Ridge (AKR), we were curious if the emerging AKR connects also to the westward propagation of the positive anomaly during reflection events. This would confirm earlier research linking the end of blocking over Alaska to a westward-propagation of geopotential height anomalies (Carrera et al., 2004). In line with the earlier comment about the two different mechanisms linking reflection events to a decrease of phase speed during reflection events, the comparison between reflection events and PT-AKR weather regime transitions can even be used to assess the role of tropospheric anomalies during reflection events.*

*However, we would like to emphasize that this regime transition can also happen without the stratospheric counterpart. Thus, only the difference between PT and AKR events happening during reflection events shows an enhancement in westward propagating wave-1 (17 of 107 PT and 23 of 91 AKR events during reflection), while those regimes occurring outside of reflection events (90 of 107 PT and 68 of 91 AKR) don't show this signal (Fig. R8 and R9). This makes us conclude that the wave-1 signal is a feature that differentiates reflection events from the normal PT-AKR regime transition, which we emphasize in the manuscript (e.g., line 300-302).*

*We will address your comment by adding in line 297: "This includes the replacement of the negative geopotential height anomaly around the onset by a ridge before the end of reflection events, which subsequently propagates westward and facilitates the formation of a trough downstream over North America.", and we will add figures R8 and R9 to the appendix. Additionally, we will add in line 302 "... differentiating PT-AKR transitions from reflection events. Separating between PT-AKR transitions happening during reflection events and those outside of reflection events, also highlights the relevance of wave-1 for reflection events (see R8 and R9)."*



**Figure R8.** Standardized anomalies of spectral power  $SV'V'$  of each harmonic at 100 hPa during reflection events with (a) PT, (b) AKR (c) difference between PT and AKR weather regimes in shading. Sub-panels (d) - (e) show the same, but for 250 hPa. Black contours show the DJFM mean for all years (100 hPa: steps of  $0.05 \text{ m}^2 \text{ s}^{-2} \Delta c^{-1}$  from  $0.05 \text{ m}^2 \text{ s}^{-2} \Delta c^{-1}$  to  $0.35 \text{ m}^2 \text{ s}^{-2} \Delta c^{-1}$ ; 250 hPa: steps of  $0.1 \text{ m}^2 \text{ s}^{-2} \Delta c^{-1}$  from  $0.1 \text{ m}^2 \text{ s}^{-2} \Delta c^{-1}$  to  $0.7 \text{ m}^2 \text{ s}^{-2} \Delta c^{-1}$ ). Horizontal hatching indicates significant negative anomalies, cross-hatching indicates significant positive anomalies.



**Figure R9.** Same as Fig. R6, but for PT and AKR regimes outside of reflection events.

### Discussion:

By better motivating the research questions, the discussion can be more focused. I am not sure how, but here is a possible flow of summarizing the results:

- The Pacific downward reflection events involve tropospheric medium scale waves, alongside planetary scale waves which dominate in the stratosphere.
- The tropospheric waves propagate westward during the events and also evolve downstream (is there also a clear westward propagation of the stratospheric wave 1?)
- This co-evolution leads to a specific evolution of heat fluxes.
- Given this picture, what is the role of the tropospheric wave evolution relative to the stratospheric wave evolution? Is it the downward reflection of stratospheric waves which causes the tropospheric waves to retrograde, or is it the westward propagation of the tropospheric waves which leads to a pattern of wave reflection? Is reflection from the stratosphere a contributing factor, or is it crucial for the occurrence of the wave reflection events defined by the regional 100mb  $v'T$ ?

Understanding the involvement of the stratosphere has implications for influences over Europe, and predictability. Rereading the discussion, all of this is sort of mentioned but it does not come across as a coherent story, with one or two focusing questions.

*Thank you for providing this suggestion of discussion flow. We will edit this chapter with respect to your ideas. Furthermore, we will extend the discussion about the stratospheric role with respect to your two suggested mechanisms, highlighting the question for future investigation about the role of tropospheric and stratospheric dynamics during reflection events.*

### **Minor comments:**

Lines 38-39- the reference to the wave reflection diagnostics of Harnik, Perlwitz, Shaw as "computationally intensive and may require data that are usually not a standard output of reanalysis products or climate models" is not quite right. The SVD time-lagged correlation is not time-specific (though the space-time spectra are not as well) while the wave geometry calculation takes a few seconds on a simple laptop, but it requires a linear stationary wave model which most people don't have, and can give quite messy results which are hard to interpret especially for the troposphere.

*Thank you for highlighting this inconsistency. We were referring here to the computation of wave activity fluxes, which may be computationally intensive if one is interested in a larger region and several levels. To avoid this misunderstanding, we will adapt the introduction with respect to your input.*

*With respect to your comment, we will edit the sentence to "...which are insightful but may require specific models or data that are usually not a standard output of reanalyses or climate models."*

line 85- remove the word "daily" - it sounds like you remove the daily mean for each day.

*Thank you, we will clarify the description by replacing "... the daily mean" with "the mean for each calendar day" in line 85.*

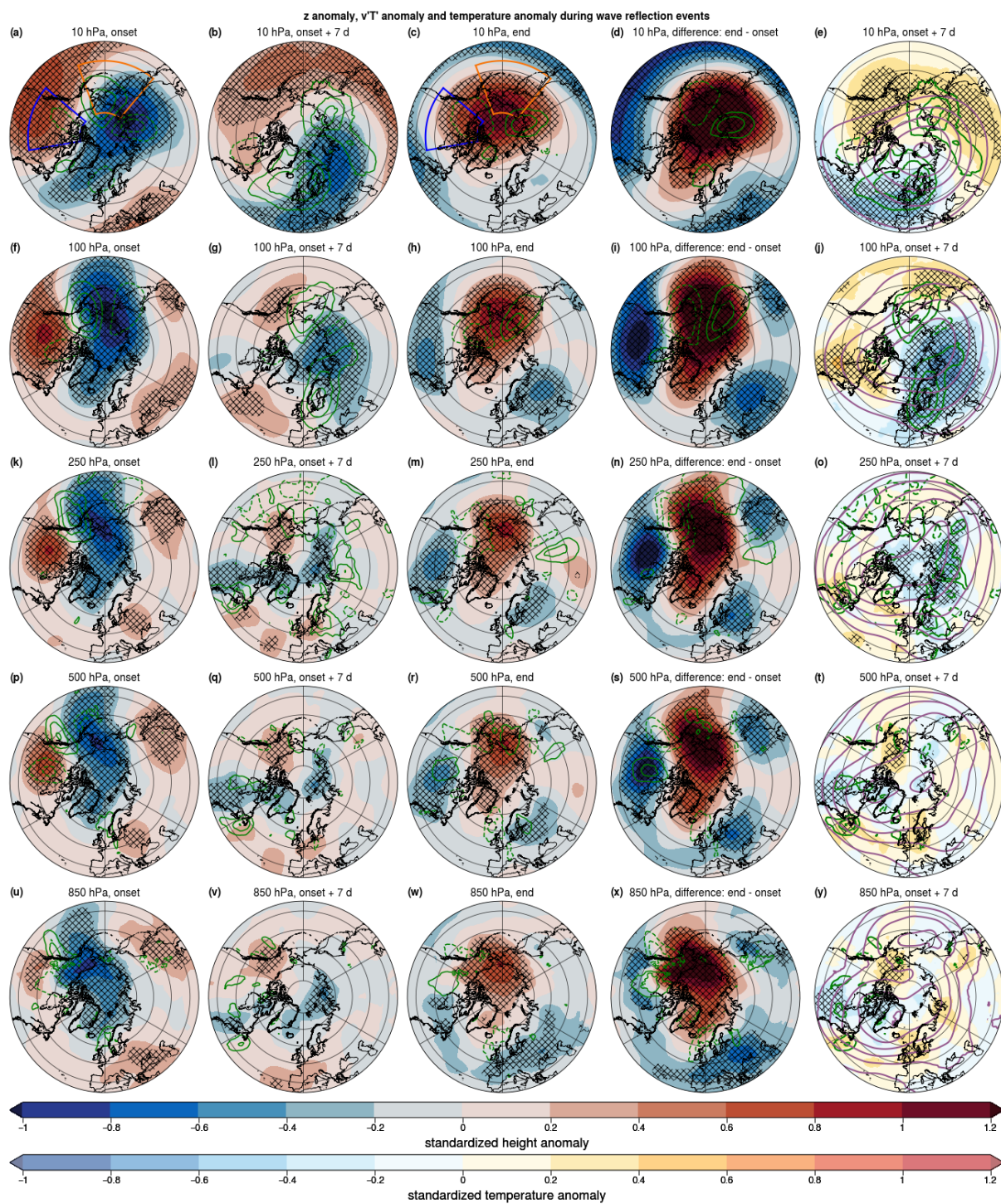
line 86 - change "as indicated by asterisks" to "which we denote by an asterisk"

*Good suggestion, thank you. We will change the wording in line 86 to "which we denote by an asterisk".*

line 103-105- definition of the regional signal. Why did you choose 100hPa? Have you tried projecting on other levels, specifically in the troposphere, or on a vertical-longitude (latitude averaged) or on the regional 3D structure in the upper troposphere-lower stratosphere?

*We chose 100 hPa to be consistent with the definition of reflection events using  $v'T'$  anomalies at 100 hPa. Nevertheless, we performed this type of analysis also for other levels, e.g., 10 hPa and 250 hPa simultaneously instead of 100 hPa. This led to qualitatively similar results with lower amplitudes than for the chosen 100 hPa, which is likely due to conditioning on a similar pattern at two levels simultaneously (Fig. R10).*

*With respect to your comment, we will mention in line 105: "Projecting this method on other levels results in qualitatively similar results (not shown)."*



**Figure R10.** Geopotential height anomalies in shading and  $v'T'$  anomalies in green contours (first column) during regionalized onset, (second column) 7 days after regionalized onset, (third column) at regionalized end, and (fourth column) difference between regionalized onset and end events. Horizontal hatching marks significant negative geopotential height anomalies and cross-hatching significant positive anomalies. (last column) Temperature anomalies in shading, geopotential height field in purple and  $v'T'$  anomalies in green 7 days after regionalized onset. Regionalized onset and end events were computed with respect to high spatial correlation at 10 hPa and 250 hPa simultaneously.

line 108-109: How many of these onset high-correlation dates are followed by a highly-correlated end date, meaning how many events do you find which correspond to the wave reflecting life cycle do these include?

*Thank you for that question. With respect to a 69-day time window (longest duration of reflection events), we found 39 of 54 instances with regionalized onset events being followed by regionalized end events. As the median duration is with 30 days longer than that of reflection events (19 days), we checked also with a shorter maximum duration of 58 days (median duration of reflection events + 3 standard deviations). In this case, 31 of the 54 regionalized onset events are followed by an end, with a median duration of 24 days.*

*We will address your comment by mentioning in line 109: “With respect to a 69-day time window (longest duration of reflection events), we found 39 of 54 instances with regionalized onset events being followed by regionalized end events.”*

line 225: the use of the term "barotropic" in this context is confusing, because barotropic dynamics strictly speaking do not involve heat fluxes. I think it is more exact to say that the tropospheric part of the wave is equivalent barotropic, which is consistent with the heat fluxes being concentrated in the upper troposphere and stratosphere rather than in mid troposphere (and with the heat fluxes changing sign in the vertical).

*We agree with your objection against the term ‘barotropic’ and will reformulate it to “equivalent barotropic”, also in line 277.*

Figure 3d: Why is the x axis is flipped? A quick skim of the figure suggests there are less westward propagating waves during the event. At the very least note in the caption that the axis is flipped.

*Thank you very much for pointing out the potential confusion with the flipped x-axis in Figure 3d. As ISP of westward propagating waves is shown there, the motivation was that positive anomalies, would go to the left, indicating enhanced activity of Rossby waves moving to the west, which is the same direction as the anomalies. Nevertheless, we agree that one should at least mention the flipped x-axis in the caption.*

*We will add to caption of Fig. 3 in the manuscript: “The x-axis of panel (d) is flipped, so that enhanced activity of westward-propagating Rossby waves shows anomalies to the left”.*

Line 242: why is an enhancement of eastward propagating wave indicative of the presence of an accelerated stratospheric flow?

*We followed here the rule of thumb that was discussed in Schutte et al. (2024), that the background flow contribution equally affects to first order all wavenumbers by shifting the spectra towards lower/higher phase speeds than climatology. Of course, this is a simplification, but showed agreement in space-time spectra during states of a very strong or weak stratospheric polar vortex. Thus, the presence of both suppressed westward propagating waves and enhanced propagating waves (Fig. 5 a and d in the manuscript) motivated this statement.*

*We will address your comment by adding in line 242: “... [presence of an accelerated stratospheric flow] under the assumption that the background flow equally affects all wavenumbers by shifting the spectra towards lower/higher phase speeds than climatology.”*

Line 244: what do you mean by \*deceleration\* of Rossby waves? Do you mean the increase in westward Rossby wave activity? If so it is confusing. The change of a stationary feature to westward propagation is actually an "acceleration"...

*Thank you for highlighting this formulation. In line with the previous comment we meant here the deceleration of Rossby wave propagation. With respect to your comment, we will change "Rossby waves" to "Rossby wave propagation" in line 244.*

Line 269: why do you state that it is these wavenumbers? figure 5 seems to indicate wave 2 has strengthened just as much as 3,4 and larger wavenumbers

*You are absolutely right with respect to the standardized anomalies in the space-time spectra. However, considering the range of climatologically relevant harmonics, indicated by the black contours, only these specific waves seemed to have also some energetically meaningful contribution. While westward-propagating wave-2 showed some indication of enhancement, this signal is weaker in the range of climatologically relevant harmonics than for the other waves and, moreover, non-significant. Thus, the role of wave-2 seems to be less clear during reflection events. The same applies for larger wavenumbers within climatologically relevant harmonics (within the black lines in Fig. 5 c and f in the manuscript).*

Figure 5: Is the y axis plotted in equal distances of  $1/k$ ? So the slope is one over the frequency, or the period, right? These plots made me try and deduce the group speeds for each period but its too complicated. Switching the x and y axes would make it easier but this is maybe not the focus of the paper, though the authors do indicate downstream development, which is essentially an eastward group propagation (alongside westward phase propagation).

*The y-axis in the space-time spectra is plotted in distances of  $\ln(k)$  in line with earlier visualizations of space-time spectra (e.g., Schutte et al., 2024; Riboldi et al., 2022). For more details, we would like to refer to these and the supplement of Riboldi et al. (2022). For our discussion about west-and eastward propagating Rossby waves we would like to keep the phase speed on the x-axis.*

Figure 7: The significant upward region in figure 7c is different from the downward reflection events. Can you explain this upward propagation and this divergence?

*As the positive geopotential height anomaly is more pronounced at 850 hPa during the weather regime shift than during reflection events, we suspect that the stronger upward wave activity flux is connected to the higher amplitude. Furthermore, the level of 850 hPa is close enough to the surface that topography, i.e., the Rocky Mountains could play a role, as well.*

*With respect to RC2's comments, we will use the wave activity flux proposed by Takaya and Nakamura (2001) instead of the one suggested by Plumb (1985). In that case, the WAF signal of the PT-AKR transition resembles that of reflection events more closely.*

Lines 305-307: I think the question of the ability of the spectral analysis to represent the temporally concentrated (episodic) events, rather than spatially localized events is more of an issue, because the spatial localization will simply be manifest as a projection on a few zonal wavenumbers. It would be good to see a similar analysis focusing on time localization rather than spatial localization.

*As elaborated earlier, the time window would only result in a smoothing of the signal, thus making it harder to detect changes in Rossby wave behavior. With respect to our previous replies on that topic we would like to point out that we can detect changes in Rossby wave spectra during shorter time scales than the averaging window, including reflection events. Nevertheless, the question about temporally representation could be elaborated in the discussion section.*

*In line with the second reviewer's comment on this part, we will skip section 3.3 and discuss both spatial and temporal resolution in section 4.*

line 369: remove the word "accelerating"

*Thank you, we will remove "accelerating" in line 369.*

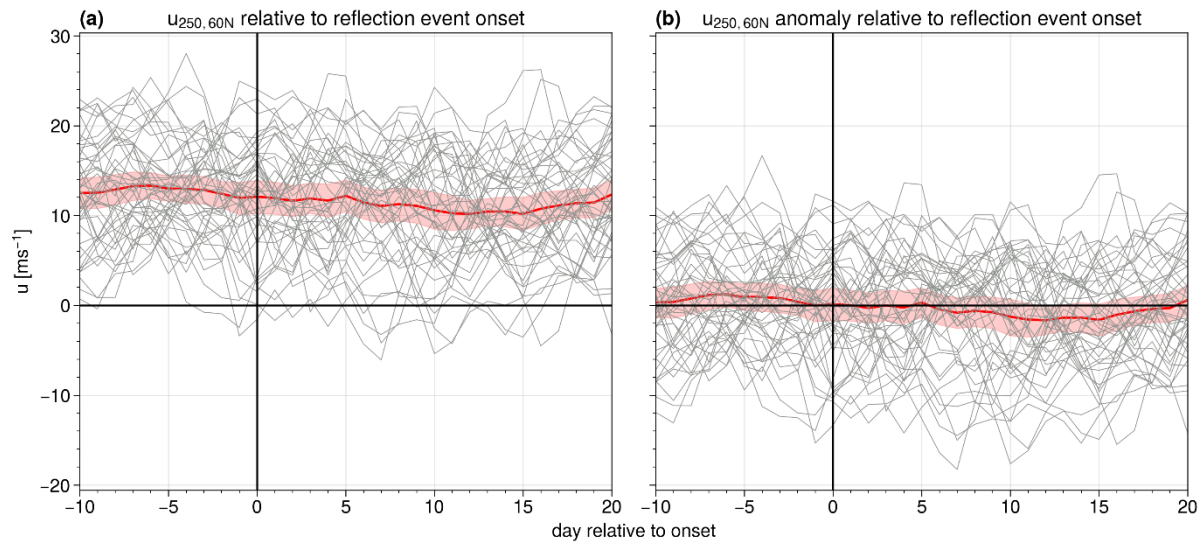
Also on line 369 it is stated: "A key result of our analysis is the accelerating westward propagation of Rossby waves during reflection events. This may be explained by the slowdown of the circulation due to Rossby wave absorption in the stratosphere." I am not sure what the authors mean. I can think of two things:

- 1) A deceleration of the zonal mean zonal winds will cause the wave phase speed to slow down. However, the authors do not show a slowdown of the flow in the troposphere or lower stratosphere where the phase speed change is taking place (I think), even though it is an easy thing to check. Messori et al (2022) shows for these events, they are accompanied by a slowdown of zonal winds in the stratosphere, but the westward phase speed anomalies do not occur at these levels.
- 2) Another possible meaning has to do with the westward propagation being due to the tilting of the waves to the vertical. In this case- the slowdown of zonal mean zonal winds which Messori et al (2022) showed that occurs in the upper stratosphere, could indeed lead to downward reflection (as shown in Perlwitz and Harnik, 2003).

The authors should better state what they mean.

*Thank you for highlighting the potential for misunderstanding in this statement. While the westward propagation could be associated with the vertical tilting of the waves, our intention was to convey that the increased westward propagation of Rossby waves could be linked to the deceleration of zonal mean zonal winds. In line with the slowdown of zonal mean zonal winds at 10 hPa shown by Messori et al. (2022), we observe this tendency also at lower levels, albeit with much lower amplitudes making it hardly noticeable (Fig. R11). This could also be linked to the higher variability in zonal winds across the entire hemisphere at 250 hPa compared to 10 hPa, as reflection events have a more regionalized impact at tropospheric levels (e.g., Fig. A3 k to x in the manuscript).*

*With respect to your comment, we will replace the second sentence in line 369-370 with: "This may be linked to waves tilting to the vertical and subsequent downward reflection as shown in Perlwitz and Harnik (2003). Another possible mechanism is the deceleration of zonal mean zonal winds (Fig. R10), resulting from Rossby wave absorption in the stratosphere." and add Fig. R11 to the appendix.*



**Figure R11.** Evolution of (a) 250 hPa 60°N zonal mean zonal wind and (b) anomalies relative to seasonal cycle, centered around onset date of reflection events. The thick red line shows the average over all events, red shading indicates the 95% confidence interval on the mean, assessed with bootstrapping.

## References

- Carrera, M. L., Higgins, R. W., and Kousky, V. E.: Downstream Weather Impacts Associated with Atmospheric Blocking over the Northeast Pacific, *J. Climate*, 17, 4823 – 4839, <https://doi.org/10.1175/JCLI-3237.1>, 2004.
- Messori, G., Kretschmer, M., Lee, S. H., and Wendt, V.: Stratospheric downward wave reflection events modulate North American weather regimes and cold spells, *Weather Clim. Dynam.*, 3, 1215–1236, <https://doi.org/10.5194/wcd-3-1215-2022>, 2022.
- Plumb, R. A.: On the Three-Dimensional Propagation of Stationary Waves, *J. Atmos. Sci.*, 42, 217 – 229, [https://doi.org/10.1175/1520-0469\(1985\)042<0217:OTTDPO>2.0.CO;2](https://doi.org/10.1175/1520-0469(1985)042<0217:OTTDPO>2.0.CO;2), 1985.
- Riboldi, J., Rousi, E., D’Andrea, F., Rivière, G., and Lott, F.: Circumglobal Rossby wave patterns during boreal winter highlighted by space–time spectral analysis, *Weather Clim. Dynam.*, 3, 449–469, <https://doi.org/10.5194/wcd-3-449-2022>, 2022.
- Schutte, M. K., Domeisen, D. I. V., and Riboldi, J.: Opposite spectral properties of Rossby waves during weak and strong stratospheric polar vortex events, *Weather Clim. Dynam.*, 5, 733–752, <https://doi.org/10.5194/wcd-5-733-2024>, 2024.
- Takaya, K. and Nakamura, H.: A Formulation of a Phase-Independent Wave-Activity Flux for Stationary and Migratory Quasi-geostrophic Eddies on a Zonally Varying Basic Flow, *J. the Atmos. Sci.*, 58, 608 – 627, [https://doi.org/10.1175/1520-0469\(2001\)058<0608:AFOAPI>2.0.CO;2](https://doi.org/10.1175/1520-0469(2001)058<0608:AFOAPI>2.0.CO;2), 2001.