

Figure 1R: Comparison of turbidimeter measurements (in black) and trap camera NDTI index (in red) during long-term monitoring from February to April 2022

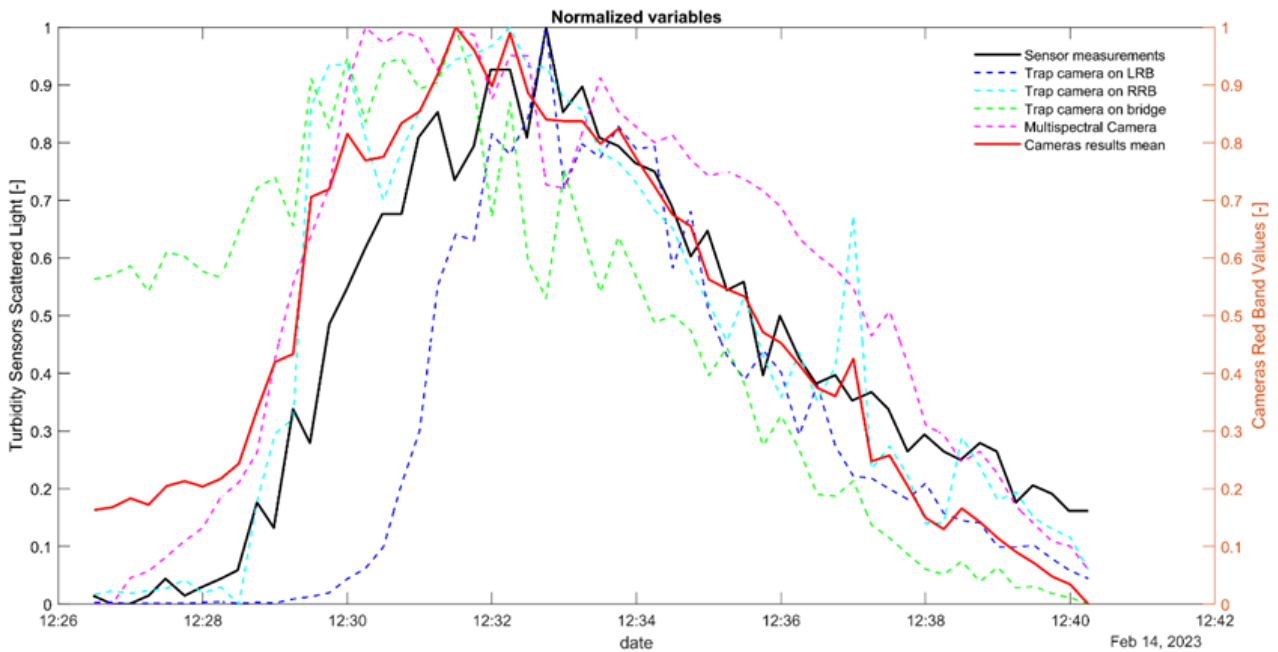


Figure 2R: Comparison of normalized turbidimeter measurements and cameras red band values during the short-term experiment of February 2023

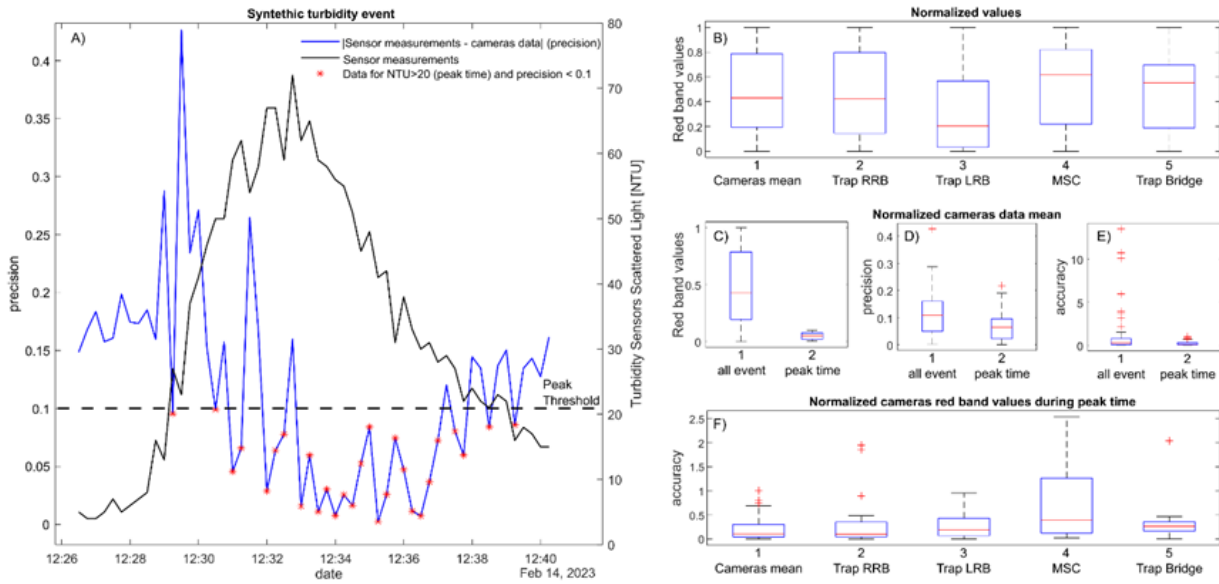


Figure 3R: Plots of results precision (A, D) and accuracy (E, F) for each camera (B), considering the entire turbidity event and only the peak time (C, D, E, F) during the short-term experiment of February 2023

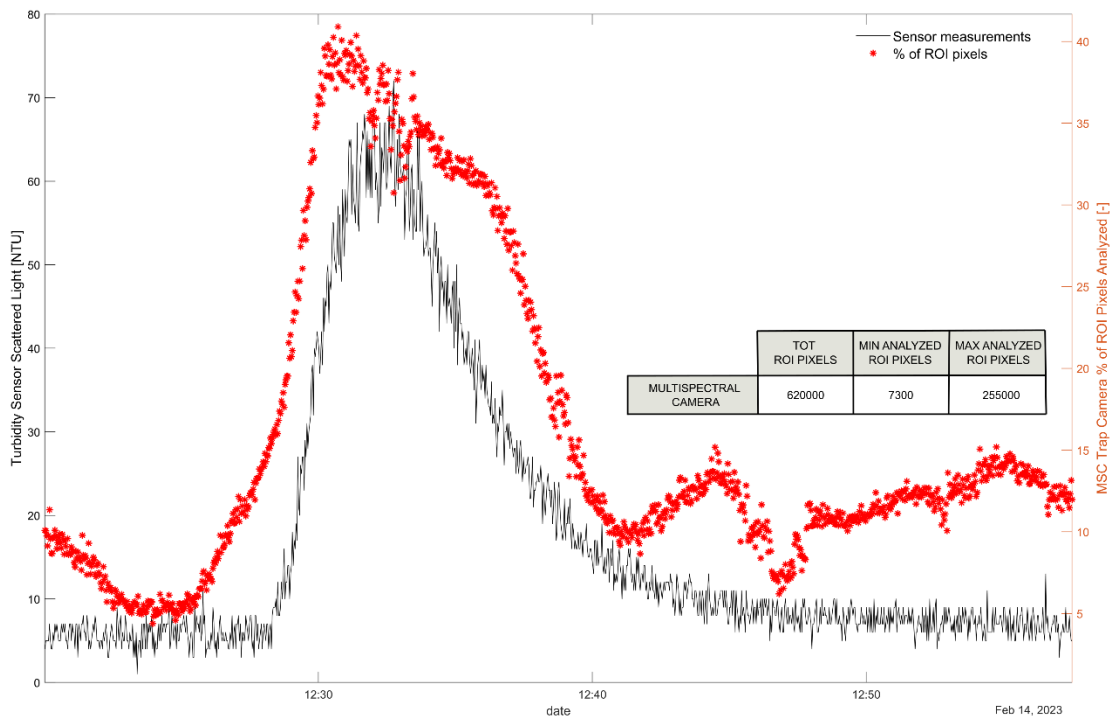


Figure 4R: Comparison of turbidimeter measurements (in black) and number of analyzed ROI pixels in MSC data (in red) during the short-term experiment of February 2023

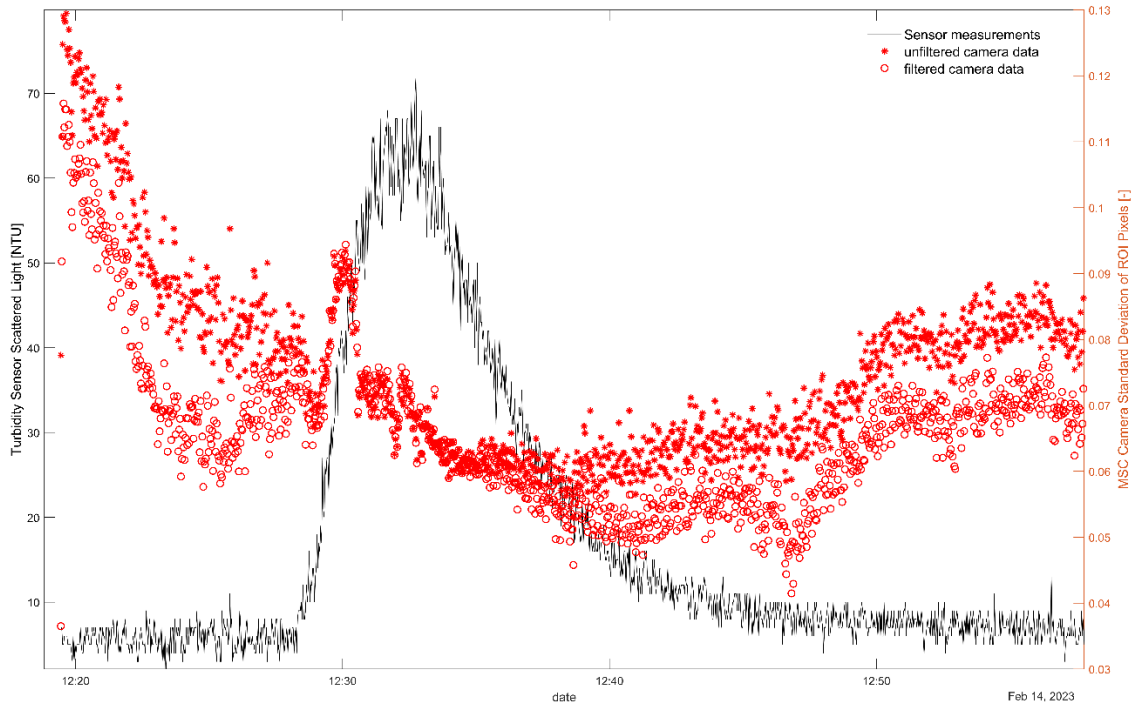


Figure 5R: Comparison of turbidimeter measurements (in black) and the standard deviation of ROI pixels intensity in multispectral camera red band (in red), during the short-term experiment of February 2023

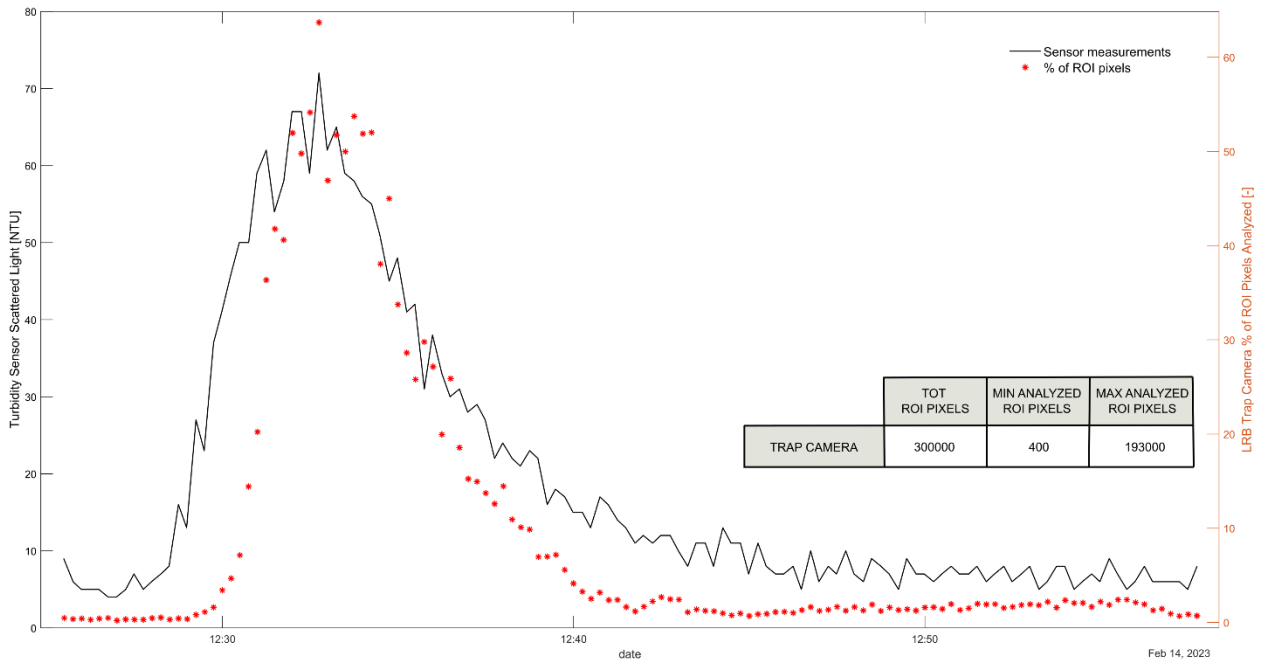


Figure 6R: Comparison of turbidimeter measurements (in black) and number of analyzed ROI pixels in LRB trap camera data (in red) during the short-term experiment of February 2023

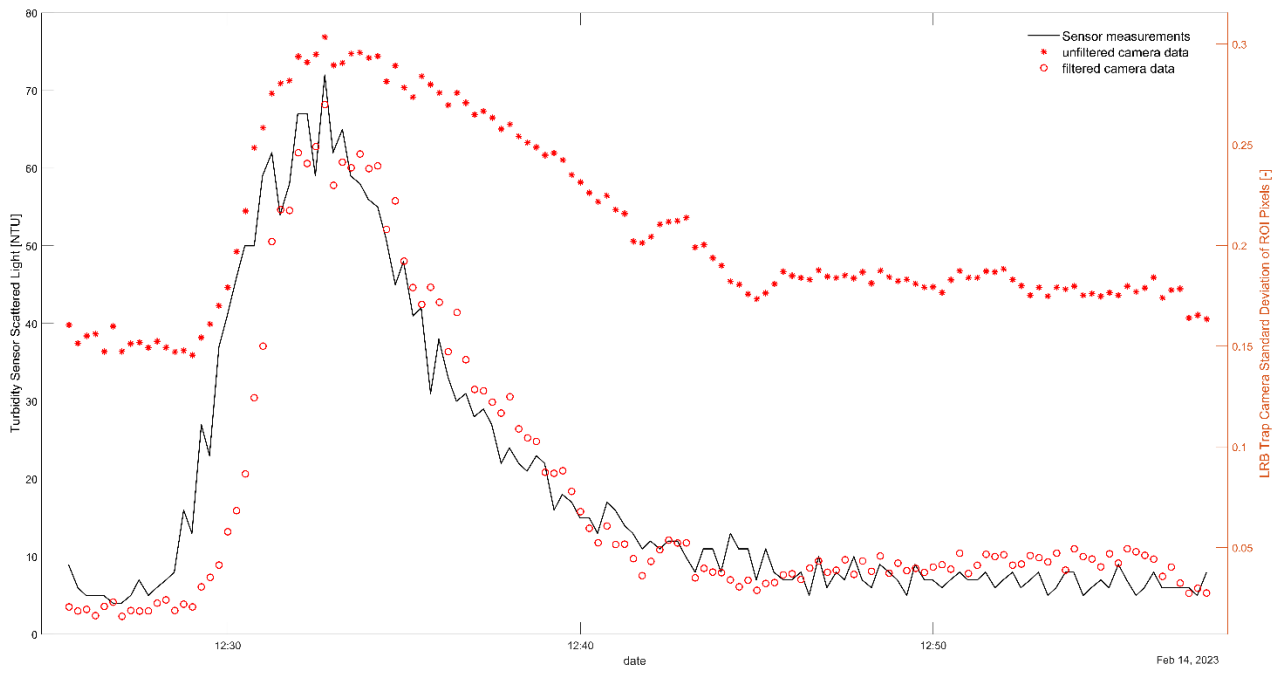


Figure 7R: Comparison of turbidimeter measurements (in black) and the standard deviation of ROI pixels intensity in LRB trap camera red band (in red), during the short-term experiment of February 2023