

# Exploring the ability of LSTM-based hydrological models to simulate streamflow time series for flood frequency analysis

Jean-Luc Martel<sup>1</sup>, Richard Arsenault<sup>1</sup>, Richard Turcotte<sup>2</sup>, Mariana Castañeda-Gonzalez<sup>1</sup>, François Brissette<sup>1</sup>, William Armstrong<sup>1</sup>, Edouard Mailhot<sup>2</sup>, Jasmine Pelletier-Dumont<sup>2</sup>, Simon Lachance-Cloutier<sup>2</sup>, Gabriel Rondeau-Genesse<sup>3</sup>, Louis-Philippe Caron<sup>3</sup>

<sup>1</sup>Hydrology, Climate and Climate Change (HC3) laboratory, École de technologie supérieure, Montreal, Canada, H3C 1K3

<sup>2</sup>Direction principale de l'expertise hydrique (DPEH), Ministère de l'Environnement et de la Lutte contre les changements climatiques, de la Faune et des Parcs (MELCCFP), Quebec, Canada, G1R 5V7

<sup>3</sup>Ouranos, Montreal, Canada, H3A 1B9

Correspondence to: Jean-Luc Martel (jean-luc.martel@etsmtl.ca)

**Abstract.** An increasing number of studies have shown the prowess of Long Short-Term Memory (LSTM) networks for hydrological modelling and forecasting. One ~~commonly cited~~ drawback of these methods, ~~however~~, is the requirement for large amounts of training data to properly reproduce streamflow events. For maximum annual streamflow, this can be problematic since they are by definition less common than mid- or low-flows, leading to under-representation in the model's training set ~~and, ultimately, parameterization~~. This study investigates six methods to improve peak streamflow simulation skill of LSTM models used for flood frequency analysis (FFA) in ungauged catchments. ~~Methods~~ These include adding meteorological data variables, providing streamflow simulations from a distributed hydrological model, oversampling peak streamflow events, adding multihead attention mechanisms, adding data from a large set of “donor” catchments and combining some of these elements in a single model. Furthermore, results are compared to those obtained by the distributed hydrological model HYDROTEL. The study is performed on 88 catchments in the province of Quebec using a leave-one-out cross-validation implementation and an FFA is applied using observations as well as model simulations. Results show that LSTM-based models are able to simulate peak streamflow as well (for a simple LSTM model implementation) or better (with hybrid LSTM-hydrological model implementations) than the distributed hydrological model. Multiple pathways forward to further improve the LSTM-based model's ability to predict peak streamflow are provided and discussed.

## 1 Introduction

In the context of increasing global awareness regarding the impacts of climate change and urbanization, ~~the accurate prediction and management of~~ flood risks have become more critical than ever (Martel et al., 2021). Floodplain mapping and the design of hydraulic structures such as bridges, culverts, dams, and sewer systems play a vital role in mitigating ~~the adverse effects of~~ flooding ~~events~~ impacts (Apel et al., 2004). These tasks demand precise estimates of flood events with long return periods, such as the 20-year and the 100-year flood events. ~~Such estimates are crucial not only for ensuring the safety and resilience of infrastructure but also for guiding policy and planning decisions in flood-prone areas.~~

The cornerstone of obtaining these critical design values lies in ~~the~~ flood frequency analysis (FFA). FFA aims to estimate the likelihood of flood events of various magnitudes within a given time frame, ~~thus providing a quantitative basis for infrastructure design and floodplain management.~~ This statistical analysis leverages long-term records of streamflow data, utilizing various models to predict the probability of extreme flood events (Laio et al., 2009). However, the reliability and accuracy of FFA are heavily contingent upon the availability of extensive streamflow time series (England Jr et al., 2019). Long-term data are essential to reduce epistemic uncertainty and improve flood frequency estimations. Such comprehensive datasets enable a more accurate assessment of ~~the risk and magnitude of~~ flood ~~events~~ risks, which is critical in designing infrastructure capable of withstanding these natural disasters.

Yet, a significant challenge in conducting FFA is the ~~frequent~~ scarcity of long-term hydrometric records. Many hydrometric gauges possess relatively short observational records. For example, a study from Do et al. (2017) showed that from the Global Runoff Data Center database, only 3558 out of 9213 stations had more than 30 years of available streamflow data, with only 1907 stations having more than 38 years of data. This limitation can introduce substantial epistemic uncertainty into the FFA, potentially compromising the accuracy of flood risk assessments ~~and the efficacy of the resulting infrastructure designs.~~ For example, Hu et al. (2020) showed that the 100-year flood estimation had 50% more uncertainty when using 35 years of data instead of the full 70-year record.

To overcome this limitation, methods have been developed to extend streamflow time series used to conduct FFAs. One such method is ~~the use of~~ hydrological models to transform known meteorological data into streamflow ~~on periods for which no hydrometric observations exist.~~ Traditionally, two types of hydrological models have been used for this task: lumped models and distributed models. These models can be trained over the study catchment (local, or catchment models) or over a region (regional models) to extend the time series, ~~and ultimately reduce epistemic uncertainty.~~ Local models allow calibrating a model on a single catchment ~~on a period with available streamflow~~, and then extending the period with meteorological data on the same catchment. Regional models, on the other hand, are designed to reproduce streamflow on a larger number of catchments within a region and are built specifically to be more robust over that sector. They can thus estimate streamflow

both at gauged and ungauged locations within the region, ~~allowing the estimation of long streamflow time-series for any~~  
60 ~~catchment~~. Local models can also be used to simulate streamflow in ungauged locations, albeit with less accuracy, using regionalization methods (Arsenault et al., 2019; Arsenault and Brissette, 2014; Tarek et al., 2021).

The advent of deep learning has marked a significant shift in the approach to modelling ~~and analysing complex systems,~~  
~~including~~ hydrology. At the heart of this revolution are artificial neural networks (ANNs), a form of machine learning that  
65 mimics the way human brains operate (Hydrology, 2000). These networks consist of layers of interconnected nodes or "neurons," each layer designed to recognize patterns of increasing complexity. Deep learning refers to the use of neural networks with many layers, enabling the modelling of highly complex patterns and relationships (Lecun et al., 2015). Among the various architectures of neural networks, Recurrent Neural Networks (RNNs) and, more specifically, Long Short-Term Memory (LSTM; Hochreiter and Schmidhuber, 1997) networks, have shown particular promise in hydrological applications.  
70 Unlike standard feedforward neural networks (ANNs), RNNs ~~possess the unique feature of maintaining a form of~~ memory across input sequences. This ability is crucial for processing time-series data, where the relationship between sequential data points is vital for accurate predictions. LSTMs further enhance this capability by incorporating mechanisms to remember and forget information over long sequences, making them ideally suited for modelling hydrological processes that depend on long-term dependencies (Kratzert et al., 2018; Shen and Lawson, 2021; Feng et al., 2020). Other machine learning algorithms have  
75 been tested in hydrology to estimate high-flows. Convolutional Neural Networks (CNN) combined with LSTMs (CNN-LSTM; Li et al., 2022) improved high-flow simulations for a catchment in Germany. Hao and Bai (2023) showed that LSTM models performed better than Support Vector Machines (SVM) and Extreme Gradient Boosting (XGBoost) for high flows, although XGBoost performed better for low flows. Research in ~~applications of~~ deep learning methods in hydrology are ongoing, with novel methods such as Temporal Fusion Transformers (TFT) now showing promise for peak flow simulation due to their  
80 integrated attention mechanism (Rasiya Koya and Roy, 2024) (Koya and Roy, 2024).

LSTM-based hydrological models have increasingly been utilized ~~in hydrological studies~~ due to their ability to accurately simulate streamflow at both gauged and ungauged locations. These models can learn complex nonlinear relationships between various hydrological variables and predict streamflow more accurately than conceptual or traditional hydrological models.  
85 They are thus prime candidates for extending streamflow time-series. For instance, Kratzert et al. (2018) highlighted the superior performance of LSTM models over traditional ~~hydrological~~ models for simulating streamflow, while (Shen and Lawson, 2021) showed similar results at multiple river catchments, showcasing the model's ability to different hydrological conditions. Kratzert et al. (2019a) and Arsenault et al. (2023a) showed that LSTM models outperformed traditional hydrological models in streamflow regionalization by predicting streamflow at ungauged sites with more accuracy ~~than the~~  
90 ~~traditional models~~ over a wide spatial domain. Wilbrand et al. (2023) advocated for using global datasets ~~and catchments to~~ improve streamflow prediction using LSTM networks after showing the strong potential over a large set of catchments worldwide. The strengths of LSTM-based modelling ~~in hydrology~~ are now established in the literature, but some limitations

still persist. A significant hurdle in the application of deep learning models to FFA is the need for extensive data to train them effectively. Given that extreme flood events are, by nature, rare occurrences, the scarcity of examples can limit the model's ability to learn and predict these events accurately. To address this challenge, researchers have explored various strategies, such as:

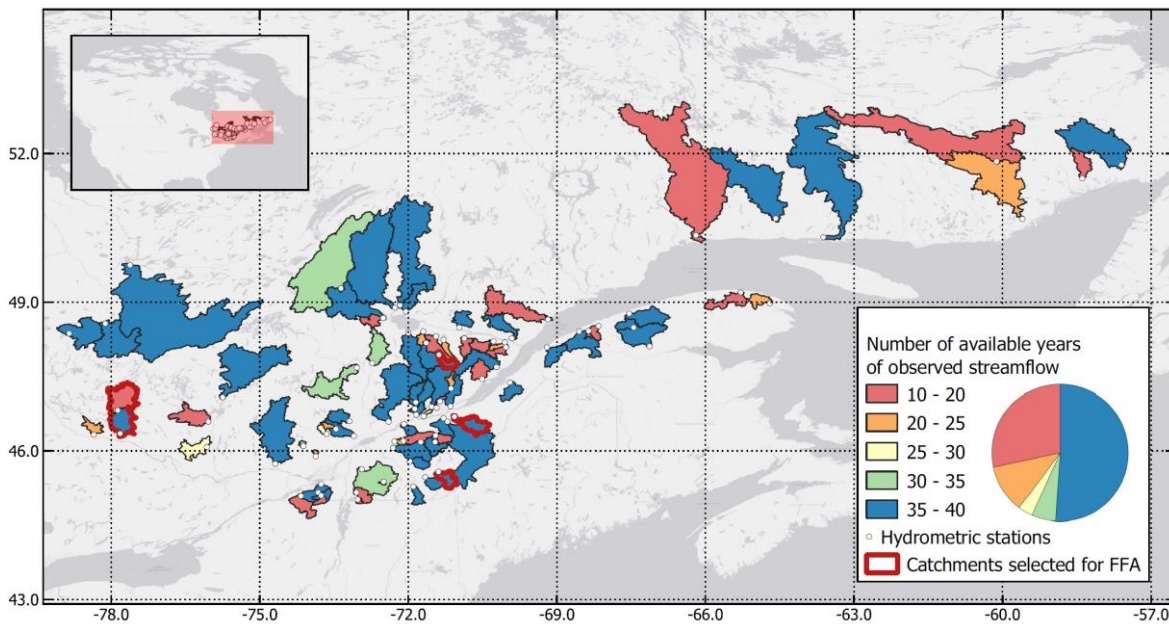
1. Incorporating additional variables such as climatic and land use data to better detect patterns ~~and relationships between meteorological and hydrometric time series~~ (Wilbrand et al., 2023);
2. Expanding the dataset to include more catchments, thus increasing the number of extreme event examples ~~the model is exposed to and enhancing its learning~~ (Fang et al., 2022);
3. Artificial data augmentation, by reintroducing copies of infrequent extreme events into the training datasets. This puts more weight on the optimization of model parameters by modifying the objective function's gradient (Snieder et al., 2021).

The main objective of this study is to determine whether LSTM-based hydrological models can generate accurate peak streamflow predictions essential for effective flood risk management. By achieving this, ~~it would be possible to conduct more accurate and reliable FFA in ungauged catchments, enhancing our ability to design infrastructure resilient to flood risks.~~

## 2 Methods

### 2.1 Study area

The study area is composed of 88 catchments in southern Quebec, Canada. These catchments are important for the province for various reasons, including hydropower generation and agriculture, ~~but can also affect populations due to flood risks.~~ In Québec, floods are caused by three distinct processes. First, snowmelt is the main mechanism ~~that leads to~~ causing floods ~~events~~, especially over larger catchments ( $>1\,000\text{ km}^2$ ). These typically happen between the months of March and June, leading to one major flood event per year ~~over these catchments~~. Second are synoptic extreme rainfall events, which occur mostly on medium to large-size catchments (between  $100$  and  $1\,000\text{ km}^2$ ), leading to similar or larger runoff volumes ~~that can happen during the snowmelt period~~. These events can happen multiple times per year, but they can also not occur for multiple years. The third process is convective extreme rainfall events, which occur only in very small catchments or urbanized areas, ~~which were excluded from this study~~. The 88 selected catchments therefore mirror a representative set of Quebec rivers ~~that are of particular interest for flood frequency analysis~~. [Figure 1](#) ~~Figure 1~~ presents the catchment locations and Table 12 presents the main properties of these 88 catchments.



**Figure 14:** Study site of the 88 catchments in the province of Quebec. The colours represent the number of available years of observed streamflow for each catchment, and white circles represent the location of the catchment outlets. The four catchments with the red borders were selected for the FFA conducted in section 3.2.

## 2.2 Data

Multiple datasets were required for this project: ~~m~~Meteorological data ~~was required~~ for model calibration and simulation, hydrometric data ~~was required~~ as the target of the modelling objectives, and catchment descriptors ~~were needed~~ to provide regional information to the deep learning models to ~~modulate~~ ~~inform~~ streamflow ~~predictions~~ ~~rates according to catchment properties~~. ~~Datasets for each of these sources of data are presented here.~~

### 2.2.1 Meteorological data

Two types of meteorological data were used in this study and are summarized in Table 1. First, an in-house gridded precipitation and air temperature dataset developed by the Quebec government using station observations (Bergeron, 2016). This product covers the period 1979-2017 and provides daily data at the  $0.1^\circ$  resolution. It was used to calibrate and perform simulations with the distributed hydrological model HYDROTEL, ~~a distributed hydrological model used for streamflow simulation and forecasting in the province of Quebec~~. The HYDROTEL model was used as the benchmark against which to evaluate the LSTMs, and its outputs were also used as an input to certain LSTM models, as described later.

The second type of meteorological data was the ERA5 reanalysis product (Hersbach et al., 2020), which is provided by the European Centre for Medium-Range Weather Forecasts through their Climate Data Store (CDS). These data cover the entirety

of the surface of the Earth at a resolution of  $0.25^\circ$  at an hourly time scale and were shown to be good proxies for observation stations for hydrological modelling (Tarek et al., 2020). Using ERA5 has the advantage of providing meteorological forcings without any missing data ~~over the entire domain (both in space and time)~~. This ensures a continuous spatial pattern for every day, as opposed to the previous gridded dataset that must interpolate to fill-in any missing data. ERA5 also provides more meteorological data than typical weather observation stations. Since LSTM models can ingest any number of variables as inputs, a set of hydrologically-relevant variables were selected as potential predictors of streamflow. The list of variables is presented in Table 1. All variables were downloaded for the period 1979-2023 ~~inclusively~~, and processed to cover the same temporal domain as the observed streamflow at the 88 gauges of interest. Furthermore, the data were corrected for UTC offsets and aggregated at the daily time step to allow modelling at the same temporal resolution as HYDROTEL and the observed streamflow dataset. Finally, data were spatially averaged at the catchment scale to ensure that all catchments had the same number of input features for LSTM model training, enabling the use of regional LSTM model training, which has been repeatedly shown to be the best way forward for LSTM-based hydrological models (Arsenault et al., 2023a; Kratzert et al., 2024; Kratzert et al., 2019a; Kratzert et al., 2019b).

**Table 1: Summary of hydrometeorological variables used as inputs to the LSTM models in this study.**

| Data variable  | Source   | Spatial resolution |
|--|--|--------------------|
| Maximum air temperature [°C]                         | ERA5 reanalysis  | 0.25° x 0.25°      |
| Minimum air temperature [°C]                         | ERA5 reanalysis  | 0.25° x 0.25°      |
| Total precipitation [mm]                             | ERA5 reanalysis  | 0.25° x 0.25°      |
| Rainfall [mm]  | ERA5 reanalysis  | 0.25° x 0.25°      |
| Snowfall [mm]  | ERA5 reanalysis  | 0.25° x 0.25°      |
| Snowmelt [mm]  | ERA5 reanalysis  | 0.25° x 0.25°      |
| Snow water equivalent [mm]                           | ERA5 reanalysis  | 0.25° x 0.25°      |
| Dew point temperature [°C]                           | ERA5 reanalysis  | 0.25° x 0.25°      |
| Wind velocity in east-west axis [m/s]                | ERA5 reanalysis  | 0.25° x 0.25°      |
| Wind velocity in north-south axis [m/s]              | ERA5 reanalysis  | 0.25° x 0.25°      |
| Wind speed [m/s]                                     | ERA5 reanalysis  | 0.25° x 0.25°      |
| Evaporation [mm]                                     | ERA5 reanalysis  | 0.25° x 0.25°      |
| Downward surface solar radiation [J/m <sup>2</sup> ] | ERA5 reanalysis  | 0.25° x 0.25°      |
| Surface pressure [hPa]                               | ERA5 reanalysis  | 0.25° x 0.25°      |
| Maximum air temperature [°C]                         | DPEH gridded observations                                | 0.1 ° x 0.1 °      |
| Minimum air temperature [°C]                         | DPEH gridded observations                                | 0.1 ° x 0.1 °      |
| Total precipitation [mm]                             | DPEH gridded observations                                | 0.1 ° x 0.1 °      |
| Simulated streamflow [m <sup>3</sup> /s]             | HYDROTEL hydrological model calibrated with DPEH dataset | Catchment scale    |

### 2.2.2 Hydrometric data

Hydrometric data were provided by the Government of the province of Quebec, namely the Water resources expertise directorate (~~Direction principale de l'expertise hydrique du Québec in French~~). These data are the official archives of the 88 stations containing daily average streamflow for each site. Depending on data availability, time ranges of station data ~~entirely or partially~~ cover the period 1979-2017. For this study, only stations with at least 10 years of available streamflow data were preserved to ensure sufficient data for training, validating and testing the LSTM models, as well as providing a lower bound on the number of available years of extreme events for the FFA. Studies have shown that 15 years of data is the lower bound for LSTM-based modelling (Kratzert et al., 2018), but some strategies are implemented to mitigate this limitation ~~in this study, as described later~~. The catchments as depicted in [Figure 1](#) ~~Figure 1~~ are color-coded to indicate the number of available years of streamflow data for each station. The observed hydrometric data are also the target of the objective function for the LSTM and HYDROTEL model training, and the basis against which the LSTM models are compared in this study.

### 2.2.3 Catchment descriptors

This study required a large set of catchment descriptors to help the LSTM models learn and build the relationships between meteorological time-series and streamflow. To this end, 24 catchment descriptors were extracted using the PAVICS-Hydro platform (Arsenault et al., 2023b) for each catchment. A summary of these catchment descriptors is presented in [Table S1 of the Supplementary materials](#) ~~Table 2~~. Overall, there are 8 descriptors related to the catchment shape and geographic properties (area, slope, elevation, aspect, Gravelius index, perimeter, centroid latitude and centroid longitude), 7 related to land-use

(fraction of crops, forests, grass, shrubs, water, wetlands and urban), and 9 related to hydrometeorology (mean snow water equivalent (SWE), mean potential evapotranspiration (PET), mean precipitation (pr), aridity index, fraction of precipitation falling as snow, frequency of high/low precipitation days, and duration of consecutive high/low precipitation days).

180 **Table 2: Summary statistics of catchment descriptors used as inputs to the LSTM models in this study.**

| Descriptor                      | Summary   | Minimum | Median | Maximum |
|---------------------------------|---|---------|--------|---------|
| Geographic descriptors          |   |         |        |         |
| Area [km <sup>2</sup> ]         | Drainage area at the outlet   | 44      | 980    | 21338   |
| Slope [m/m]                     | Average slope of the catchment  | 0.57    | 4.23   | 41.35   |
| Elevation [m]                   | Average elevation of the catchment  | 91      | 387    | 864     |
| Aspect [°]                      | Average orientation of the catchment <sup>†</sup>   | 14.3    | 190    | 359     |
| Gravelius index [-]             | Index representing the compactness of the catchment, with 1 representing a perfect circle and stretched catchments having larger values | 1.36    | 2.14   | 3.68    |
| Perimeter [km]                  | Length of the perimeter of the catchment  | 32      | 226    | 1779    |
| Centroid latitude [°N]          | Latitude coordinate of the centroid of the catchment  | 44.89   | 47.52  | 52.34   |
| Centroid longitude [°W]         | Longitude coordinate of the centroid of the catchment   | -78.56  | -71.52 | -58.10  |
| Land-use descriptors            |   |         |        |         |
| Crops [%]                       | Fraction of the surface covered by crops  | 0.0     | 1.3    | 53.9    |
| Forests [%]                     | Fraction of the surface covered by forests  | 31.6    | 84.2   | 95.8    |
| Grass [%]                       | Fraction of the surface covered by grass  | 0.1     | 1.0    | 7.6     |
| Shrubs [%]                      | Fraction of the surface covered by shrubs   | 0.0     | 1.0    | 14.7    |
| Water [%]                       | Fraction of the surface covered by water  | 0.0     | 3.9    | 12.7    |
| Wetlands [%]                    | Fraction of the surface covered by wetlands   | 0.0     | 0.5    | 16.5    |
| Urban [%]                       | Fraction of the surface covered by urban areas  | 0       | 1.2    | 11.2    |
| Hydrometeorological descriptors |   |         |        |         |
| Mean pr [mm/d]                  | Average daily precipitation   | 2.6     | 3.3    | 4.0     |
| Mean PET [mm/d]                 | Average daily potential evapotranspiration  | 1.0     | 1.4    | 1.8     |



|                         |  |       |       |       |
|-------------------------|--|-------|-------|-------|
| Mean SWE [mm/d]         | Average daily snow water equivalent                                | 0.009 | 0.037 | 0.094 |
| Aridity index [-]       | Ratio of precipitation to evapotranspiration                       | 0.32  | 0.43  | 0.55  |
| Snow fraction [%]       | Fraction of precipitation falling as snow on average               | 17.7  | 28.1  | 40.7  |
| High-pr frequency [d/y] | Frequency of days having more than 5x the mean daily precipitation | 2.9   | 4.2   | 5.2   |
| High-pr duration [d]    | Average duration of consecutive high-precipitation days            | 1.07  | 1.09  | 1.13  |
| Low-pr frequency [d/y]  | Frequency of days with < 1 mm of daily precipitation               | 46.0  | 54.0  | 61.3  |
| Low-pr duration [d]     | Average duration of consecutive low-precipitation days             | 2.35  | 2.71  | 3.04  |

<sup>†</sup> Note that the aspect is a direction and thus 0 and 360 are equivalent.

## 2.3 HYDROTEL

HYDROTEL is a semi-distributed physically-based hydrological model with ~~a total of~~ 27 parameters (Fortin et al., 2001b, a). HYDROTEL uses a modular approach to represent main hydrological processes with various algorithms. Different sub-models can ~~therefore~~ be selected to simulate snow accumulation and melt, PET, channel routing, and the vertical water budget (Fortin et al., 2001b). For this study, the Hydro-Québec formulation (Fortin 2000, Dallaire et al. 2021) was chosen to simulate PET as well as a modified degree-day ~~that estimat~~inges the daily evolution of the snowpack (Fortin et al. 2001a). The vertical water balance and channel routing are estimated with a three-layer soil model and a geomorphological hydrograph using the kinematic wave approximation, ~~respectively~~.

The model requires both hydrometeorological and geomorphological information ~~to be implemented~~. Hydrometeorological data can be provided from observation sites or gridded datasets at daily and sub-daily time steps. The modules selected for this study require daily series of total precipitation, as well as minimum and maximum temperatures. The geomorphological information of each catchment ~~that feeds HYDROTEL~~ is first processed by PHYSITEL (Rousseau et al., 2011), a GIS-based software that prepares ~~all the~~ catchment information (e.g., topography, soil type, land use). ~~More specifically,~~ PHYSITEL divides the catchment into relatively homogenous hydrological units (RHHUs), where HYDROTEL estimates ~~the different~~ hydrological processes.

This hydrological model has been used in the study region for diverse application, including extreme flood simulations (Lucas-Picher et al., 2015), climate change impact studies (Castaneda-Gonzalez et al., 2023), regionalization methods (Martel et al., 2023), and is currently applied in an operational context by the DPEH for climate change impact studies and daily hydrological forecasting in Quebec (Cehq, 2015).

A regional HYDROTEL model, pre-calibrated by the DPEH, served at the baseline for local recalibration on each of the selected 88 catchments. These locally calibrated models were then used in this study for comparison purposes and as an input for the LSTM-based hydrological model structures.

2.3.1 Regional model

The HYDROTEL platform used in this study was set up by the DPEH. The platform consists of 15 large regions covering a total of 771 403 km<sup>2</sup> in southern Quebec and (to a lesser extent) the province of Ontario and the United States (Cehq, 2015). The DPEH provided a fully calibrated HYDROTEL platform that includes a total of 259 calibrated gauges. This pre-calibrated HYDROTEL platform consists of two globally calibrated regions. In other words, one set of parameters was obtained for the gauges located on the North shore of the St-Lawrence River, and another one for the regions located on the South shore.

2.3.2 Local recalibration

A local recalibration was performed on each of the 88 selected catchments to ensure their best local performance. From the 27 internal parameters of HYDROTEL, 11 parameters were recalibrated and the remaining 16 were fixed following the previous recommendations of Turcotte et al. (2007) (see Table S2 of the Supplementary materials). This recalibration was performed using the Dynamically Dimensioned Search (DDS) algorithm (Huot et al., 2019; Tolson and Shoemaker, 2007) and the Kling-Gupta Efficiency criterion (KGE; Gupta et al., 2009; Kling et al., 2012) as objective function over the entire period of 1979-2017. The idea behind using the entire period is that the models may benefit from longer periods of data, especially from the limited number of peak streamflow events. This has been proposed in recent studies that highlighted the importance of including all available data in a final calibration to ensure a more robust set of parameters (Arsenault et al., 2018; Mai, 2023; Shen et al., 2022).

Table 3: List of HYDROTEL recalibrated parameters

| ID | Parameter  |
|----|--|
| 1  | Depth of the first soil layer                        |
| 2  | Depth of the second soil layer                       |
| 3  | Recession coefficient                                |
| 4  | Melting temperature threshold in a coniferous forest |
| 5  | Melting temperature threshold in a deciduous forest  |
| 6  | Melting temperature threshold in an open area        |

- 
- 7     ~~Maximum melt rate in a coniferous forest~~
  - 8     ~~Maximum melt rate in a deciduous forest~~
  - 9     ~~Maximum melt rate in an open area~~
  - 10    ~~PET multiplicative coefficient~~
  - 11    ~~Threshold temperature for rain to snow~~
- 

225

## 2.4 LSTM-based hydrological model structures

The different elements of the model structures are described in the following subsections.

### 2.4.1 General LSTM structure

230 In this study, a series of deep-learning models that leverage LSTM networks were implemented to model hydrological processes within catchments. The model architecture is designed to process both dynamic and static inputs, reflecting the temporal dynamics and invariant characteristics of the catchments, respectively.

235 The dynamic component of the model ingests time-series data, specifically designed to handle ~~sequences corresponding to 365-day~~ [input sequences](#) ~~intervals, corresponding to the 365 days of data~~ preceding the [target](#) ~~day for which the model is attempting to simulate the streamflow. This means that for each day of streamflow that must be simulated, a matrix of size [365 × number\_of\_features] must be constructed.~~ Once constructed, this input is processed through six parallel LSTM branches, each consisting of two initial LSTM layers with 128 units, followed by concatenation and another LSTM layer to further refine the temporal features. The design choice aims to capture a broad range of temporal dependencies and patterns within the data. Each branch incorporates a dropout layer with a rate of 0.2 to prevent overfitting. ~~This dropout sets 20% of the weights of that part of the model to zero, ensuring that the model generalizes well to unseen data.~~ 240 The outputs of all branches are then concatenated and processed through a final LSTM layer to synthesize the temporal information into a cohesive representation.

245 In parallel, the static inputs are processed through a dense layer with 256 units with a rectified linear unit (ReLU) activation function to [introduce](#) ~~add non-linearity to the model's regressive abilities.~~ A dropout rate of 20% is again applied. The processed dynamic and static features are then concatenated to form a comprehensive representation of the hydrological state. This combined feature vector is then passed through a dense layer of 256 units including a “Leaky-ReLU” activation function, ~~which is a more flexible ReLU activation function.~~ Finally, the outputs of this layer are passed to a single, ReLU-activated dense layer with a single unit. The final output is the prediction of the target variable, i.e., the streamflow value.

250

This general deep learning model was implemented in multiple variants by adjusting certain inputs, structure and hyperparameters to evaluate their ability to improve peak flow simulation. The first variant, considered as the reference LSTM model (referred to as “LSTM-Base” in this study), used the structure described here and presented in Figure S1. It was driven using all catchment descriptors but only the ERA5 meteorological data as dynamic features.

## 255 2.4.2 Addition of dynamic datasets

The first test to improve upon the LSTM-Base model was to increase the number of input variables by adding the daily precipitation and minimum and maximum air temperature from the DPEH dataset. While LSTM-Base already includes the same variables from the ERA5 dataset, it was previously shown that adding the same variables but originating from different datasets (such as observations, gridded or interpolated datasets, or reanalysis data) could help improve hydrological model simulations in a multi-model, multi-input setting (Arsenault et al., 2017). ~~The same has been shown for LSTM models previously.~~ For example, Kratzert et al. (2021) show that providing three different meteorological datasets to an LSTM model improved performance compared to using the LSTM models trained on each individual dataset. In this study, the model that integrates a supplementary dataset is referred to as “LSTM-Meteo”, and it uses the same structure and hyperparameters as LSTM-Base.

265 Another similar test was performed in which the simulations generated by the calibrated HYDROTEL hydrological model were added to the LSTM-Base model as a dynamic input. These hydrographs can be used as inputs to introduce “expert” knowledge in the model. Indeed, this can be used by the LSTM model as a starting point to converge towards a reasonable solution, ~~which would allow the models to use~~ the ERA5 time-series data to determine corrections or detect other patterns to further improve upon the HYDROTEL simulations. This process has been performed before for general hydrological modelling and has shown better performance than process-based models or LSTM models individually (e.g., Liu et al., 2022; Wei et al., 2024; Nearing et al., 2020). ~~In this study, the same concept will be applied with an emphasis on the determination of peak flow simulation capabilities.~~ The resulting model is referred to as “LSTM-HYDROTEL” in this study.

## 2.4.3 Multihead attention

275 Multihead attention mechanisms, when integrated with LSTM models, enhance the model's ability to process and interpret sequential data by allowing the model to focus on different parts of the input sequence simultaneously (Vaswani et al., 2017). LSTMs are inherently designed to remember information for long periods, and the addition of multihead attention enhances this capability by providing a more nuanced understanding of the sequence. ~~The LSTM layers can process the sequence with an awareness of both long-term dependencies and the importance of specific elements within the sequence, as highlighted by the attention mechanism.~~ This mechanism is particularly beneficial in tasks that involve complex dependencies over long sequences, which are common in hydrological modelling (Wang et al., 2023). Examples include snow accumulation and melt, and baseflow contribution to streamflow depending on precipitation and evapotranspiration in the previous weeks and months.

The essence of a multihead attention mechanism is its capability to generate multiple attention "heads." Each head learns to attend to different parts of the input sequence, capturing various aspects of the sequence's contextual relationships. This is achieved by parallelizing the attention process, enabling the model to aggregate information from different representational subspaces at different positions within the sequence. In this study, 4 heads of 32 nodes each were implemented in the model referred to as LSTM-Multihead. This mechanism was implemented in 4 of the 6 parallel branches of the LSTM-Base model, such that 2 parallel branches remain without the attention mechanism, to preserve some direct link to the previous models LSTM-Base, LSTM-Meteo and LSTM-HYDROTEL. The structure of the multihead attention model can be found in Figure S2.

#### 2.4.4 Oversampling

In addressing the challenge of accurately modelling peak streamflow events, a data augmentation strategy, namely oversampling, was implemented. The rationale ~~behind this strategy~~ is to ensure that more extreme values are used during the optimization process, forcing the weights of the model to account for these events more heavily during training (Snieder et al., 2021). ~~This~~ By artificially enhancing the representation of peak streamflow events, ~~we aim to~~ address the inherent imbalance in the dataset, where such events are vastly outnumbered by more common, lower-magnitude streamflow conditions.

The initial step ~~in the oversampling implementation involves~~ was the identification of peak streamflow events within the observed streamflow data. Peak streamflow events are defined as those observations that fall within the top 1% of all streamflow values recorded in the dataset. This criterion ensures that only the most extreme streamflow conditions are selected for augmentation, focusing the model's learning capacity on these critical events. Then, each selected peak streamflow event is replicated and reinjected into the training dataset. Specifically, each event is copied and randomly inserted into the training data ten times. This approach significantly increases the presence of peak streamflow events in the training set, thereby providing the model with more examples of these extreme conditions to learn from during mini-batch gradient descent and weights optimization.

This version of the LSTM model, referred to as "LSTM-Oversampling", uses only the ERA5 meteorological data as dynamic features, along with the full set of static features. It also uses the same structure and hyperparameters as models LSTM-Base, LSTM-Meteo and LSTM-HYDROTEL.

#### 2.4.5 Additional donors

To enhance the robustness and generalizability of our LSTM model, the training dataset was expanded beyond the initial 88 catchments by incorporating data from an additional 500 catchments. These catchments were taken from the HYSETS

315 database, a dataset containing hydrometeorological data and catchment descriptors for over 14 000 catchments in North America (Arsenault et al., 2020). Catchments were selected from HYSETS database according to the following criteria:

- Near the region of interest, bounded by latitudes [37; 59] degrees North and longitudes [-51; -90] degrees West;
- Drainage area between 50 and 50 000 km<sup>2</sup>;
- Minimum of 20 years of observed streamflow data available.

320 From these catchments, 500 were randomly selected, providing a wider range of ~~hydrometeorological data and catchment attributes~~ for the LSTM model ~~to learn from~~. The added variability from the supplementary donors should thus provide more diverse training data allowing the LSTM models to better learn the relationships between meteorological and hydrometric time-series, as shown in Fang et al. (2022). ~~This aimed to better capture the processes that generate larger peak streamflow.~~

325 This ~~LSTM model, named “LSTM-Donors” model,~~ uses the same setup as LSTM-Base, ~~(i.e., but it only uses ERA5 inputs), however it includes~~ with data from 588 catchments instead ~~of the usual 88 for training. It is important to note that the dataset sealing was performed using the training data of all 588 catchments to ensure the model accounted for the wider spread of possible hydrometeorological and catchment descriptor data.~~

**2.4.6 Combined model**

330 The final LSTM model variant combines the structure of the LSTM-Multihead model along with the extra meteorological data from LSTM-Meteo and the HYDROTEL simulated streamflow from LSTM-HYDROTEL. Oversampling was tested but showed to worsen results, leading it to be discarded from this combined model. Furthermore, it was not possible to add the 500 extra donors in this model either, as HYDROTEL had not been implemented on those catchments. This combined model is referred to as the “LSTM-Combined” model in this study. Table 2~~Table 4~~ presents a summary of the 7 LSTM model variants

335 for convenience.

**Table 24: Variants of the LSTM-based hydrological models used in this study.**

| Model name        | Differences with the LSTM-1 model   |
|-------------------|---|
| LSTM-Base         | -   |
| LSTM-Meteo        | DPEH meteorological data added as input                                       |
| LSTM-HYDROTEL     | HYDROTEL simulations added as input   |
| LSTM-Multihead    | Multihead attention added to the structure                                    |
| LSTM-Oversampling | Peak streamflow oversampling added to the training data                       |
| LSTM-Donors       | Addition of 500 donors during model training                                  |
| LSTM-Combined     | Combination of the best models (LSTM-Meteo, LSTM-HYDROTEL and LSTM-Multihead) |

**2.5 LSTM model training**

340 The seven variants of the LSTM models were developed ~~with the objective of~~ minimizing the standardized Nash-Sutcliffe Efficiency (NSE; Nash and Sutcliffe, 1970) loss function. This objective function was chosen due to its effectiveness in quantifying the predictive accuracy of hydrological models, where a higher NSE value indicates better model performance. However, given that multiple catchments are processed at the same time, streamflow was standardized by the size of the catchment to prevent larger catchments with higher streamflow ~~from dominating to weigh more heavily in the NSE function.~~

345 This method was first implemented for LSTM models ~~by (2019b)~~ and successfully applied in a previous streamflow regionalization study using LSTM models (Arsenault et al., 2023a).

Prior to training, all variables were normalized using a standard scaler. ~~The standard scaler standardizes values by subtracting the sample mean and dividing by the sample standard deviation, a process commonly known as Z score normalization or~~

350 ~~standardization.~~ This ~~pre-processing~~ step is crucial for ensuring that the LSTM models could efficiently learn from the data, as it mitigates the issue of different scales among the input features, which can significantly affect the convergence speed and stability of the training process. The models were then trained using the “AdamW” optimizer, an extension of the Adam optimization algorithm that includes weight decay to prevent overfitting (Loshchilov and Hutter, 2017, 2018). The training process was conducted over 300 epochs, with an early stopping mechanism. Specifically, the training would halt if there was

355 no improvement in the validation loss for a patience period of 25 epochs. This approach ensures that the model does not overfit to the training data and can generalize well to unseen data. To further enhance the training process, a “reduce learning rate on plateau” strategy was employed. This technique dynamically adjusts the learning rate when the validation loss stops improving. ~~for better convergence, reducing the learning rate to refine the training steps for better convergence.~~ In this study, the plateau duration was set to 8 epochs with a factor of 0.5, reducing the learning rate by 50% three times before the 25-epoch patience

360 is attained.

All LSTM models were trained regionally, using the datasets from the 88 catchments, providing a comprehensive and diverse range of hydrological behaviours for the LSTM models to learn from. The temporal data from each catchment were divided

into three subsets: training, validation, and testing. The first 60% of the available data for each catchment was used for training, the subsequent 20% for validation, and the final 20% for testing. This division ensures that the models are trained on a substantial portion of the data while still being validated and tested on distinct sets to evaluate their generalization performance accurately.

## 2.6 Evaluation of peak streamflow representation

To assess the performance of the LSTM models in hydrological modelling of catchments, and particularly peak streamflow, two metrics ~~that capture different aspects of model accuracy and reliability~~ were employed. These are the Kling-Gupta Efficiency (KGE) and Normalized Root Mean Square Error (NRMSE) of the Qx1day index. Both metrics were evaluated on the 88 individual catchments after model training, comparing the LSTM-simulated streamflow to the observed streamflow. As a reference, results obtained using the HYDROTEL model (which was used in calibration) are also evaluated using these same metrics.

The Kling-Gupta Efficiency (KGE; Gupta et al., 2009; Kling et al., 2012) is a widely used metric in hydrology that evaluates the overall performance of hydrological models by comparing simulated and observed values in terms of correlation, bias, and variability. It is defined as:

$$KGE = 1 - \sqrt{(r - 1)^2 + (\alpha - 1)^2 + (\beta - 1)^2}, \quad (1)$$

where  $r$  is the Pearson correlation coefficient between observed and simulated streamflow,  $\alpha$  is the ratio of the standard deviation of simulated streamflow to that of observed streamflow, and  $\beta$  is the ratio of the mean of simulated streamflow to that of observed streamflow. A KGE value of 1 indicates perfect agreement between simulated and observed data, while a value closer to 0 or negative indicates poor model performance.

For evaluating the model's accuracy in predicting extreme streamflow events, we utilize the Normalized Root Mean Square Error (NRMSE) specifically applied to the Qx1day metric. The Qx1day metric represents the maximum simulated and observed 1-day streamflow event for each year, focusing on the model's ability to capture extreme hydrological phenomena. The NRMSE for Qx1day is calculated as follows:

$$NRMSE \text{ of } Qx1day = \frac{\sqrt{\frac{1}{n} \sum_{i=1}^n (Q_{obs,i}^{1day} - Q_{sim,i}^{1day})^2}}{\sigma_{Q_{obs}^{1day}}}, \quad (2)$$



Here,  $Q_{obs,i}^{1\ day}$  and  $Q_{sim,i}^{1\ day}$  denote the observed and simulated maximum 1-day streamflow events, respectively,  $n$  is the total number of such events considered, and  $\sigma_{Q_{obs}^{1\ day}}$  is the standard deviation of the observed 1-day streamflow events. This metric specifically addresses the model's precision in forecasting the magnitude of peak streamflow events, with lower values indicating higher accuracy.

## 2.6 Flood frequency analyses

To assess the suitability of the annual maximum series (AMS) for flood frequency analysis (FFA), analyses were carried out on a selection of catchments using extreme value theory to estimate peak flow quantiles associated with various return periods. The GEV (Generalized Extreme Value) distribution, derived from the block maxima method, was used ~~for this purpose~~, as it is specifically designed to model the behavior of annual extremes (Coles et al., 2001). ~~This method is widely regarded as one of the most suitable approaches for modeling extreme hydrological events.~~ Within the GEV family, the Gumbel distribution—also known as the Extreme Value Type I distribution (EV-I)—represents a special case where the shape parameter is fixed at zero, reducing the distribution from a three-parameter to a two-parameter form.

Although the GEV distribution generally offers greater flexibility and a better fit to extreme value data, the estimation of its shape parameter can be unreliable when the AMS record is short. This limitation is common in streamflow timeseries. To address this, both the GEV and Gumbel distribution parameters were estimated using the maximum likelihood method (MLM), and their performance was compared using the likelihood-ratio test (LRT). The LRT, appropriate for nested models such as GEV and Gumbel, assesses whether the inclusion of the shape parameter in the GEV leads to a statistically significant improvement in model fit.

To construct empirical frequency plots, the Cunnane plotting position was applied to estimate the non-exceedance probability associated with each annual maximum value (Cunnane, 1978). The Cunnane formula is given by:

$$P = \frac{m-0.4}{n+0.2}, \quad (3)$$

where  $P$  is the non-exceedance probability,  $m$  is the rank (with  $m = 1$  being the smallest value), and  $n$  is the total number of observations. This method provides an approximately unbiased estimate of extreme quantiles and is widely used in hydrological frequency analyses, including those conducted by Environment and Climate Change Canada (ECCC). While the Gringorten plotting position is theoretically better suited for the Gumbel distribution (In-Na and Nyuyen, 1989), the Cunnane formula was adopted uniformly in this study to ensure methodological consistency across all cases, especially given that model selection was based on statistical testing rather than a priori preference.

3.1 Training, validation and testing period results

The first results presented are those related to the model training, validation and testing of the LSTM models. The results of the HYDROTEL model are also presented as a reference. Figure 2 presents the KGE and NRMSE Qx1day (which will be shortened to “NRMSE” in the text for clarity) results for each of the three periods. It is also important to reiterate that the periods vary from catchment to catchment, and that the training, validation and testing phases represent 60%, 20% and 20% of the overall available data for each catchment, respectively.

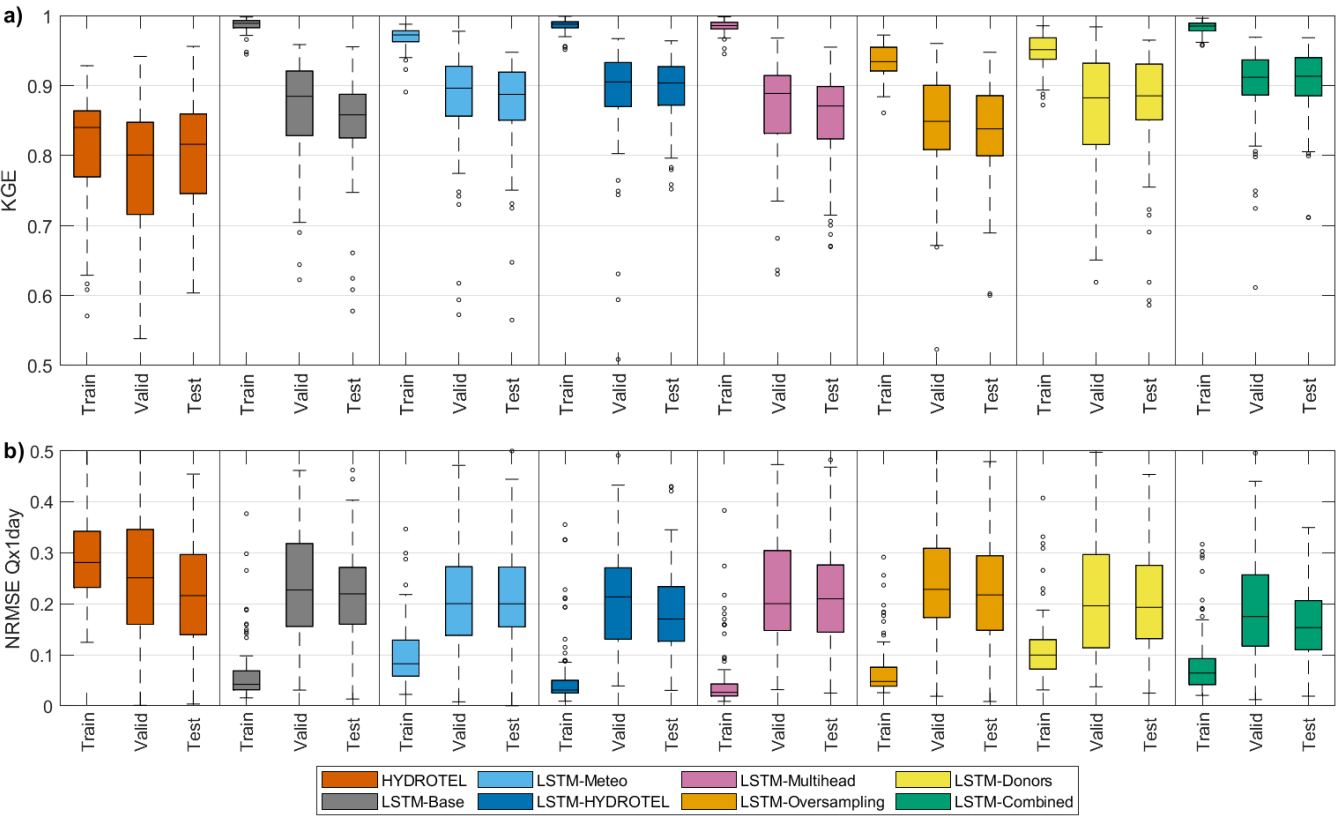
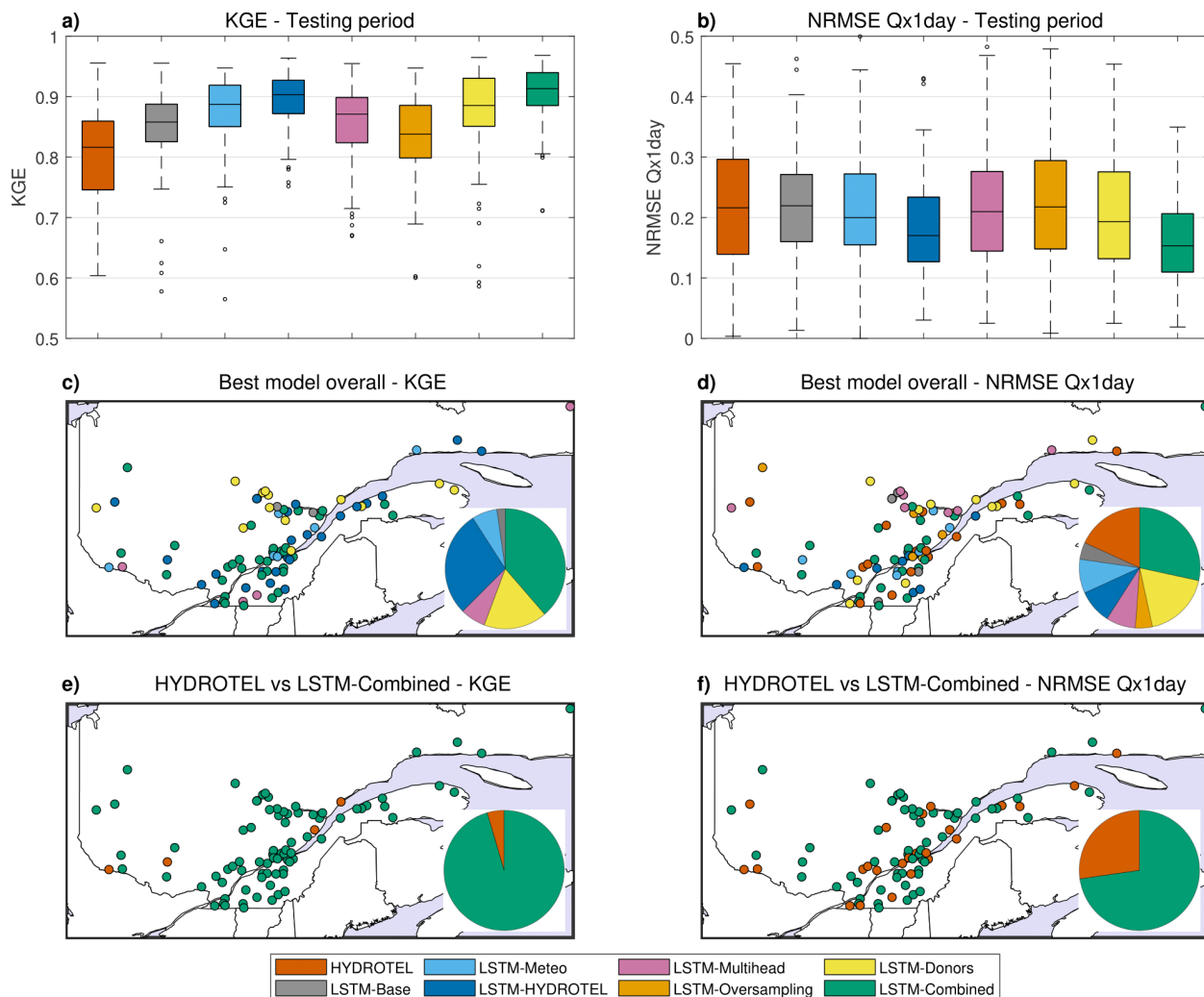


Figure 2: KGE and NRMSE of Qx1day for the 88 catchments when modelled with the HYDROTEL hydrological model and 7 LSTM model variants. Results are presented according to the training, validation and testing periods.

From Figure 2, it can be seen that the HYDROTEL model performance is relatively stable for both metrics across all three periods. This reflects the fact that HYDROTEL was calibrated on the entire period, therefore it had access to data in the testing period and is thus at an advantage compared to the LSTM models. On the other hand, LSTM models are completely blind to the testing period data. The LSTM models all display better KGE results than HYDROTEL, showing the strong capacity of

regional LSTM models to simulate streamflow for individual catchments and also confirming that the LSTM-based models were not subject to overfitting. Results also differ significantly within the LSTM model variants. First, simply adding the three meteorological variables (maximum and minimum temperature, as well as precipitation, which were already represented in the ERA5 data) improves results, as was the case in Arsenault et al. (2017) for multi-model averaging implementations. Then, it can be seen that simply adding the HYDROTEL model simulations as inputs dramatically increases the KGE, meaning that the LSTM is able to use the simulated streamflow as inputs but can correct them similarly to a post-processing implementation. The multihead implementation had mixed results depending on the catchment, but the oversampling strategy led to worse results than the LSTM-Base model. ~~On the other hand,~~ the LSTM-Donors model led to very promising results, similar to those of LSTM-Meteo. Finally, the LSTM-Combined model showed the best performance, indicating that adding more information and giving the model more flexibility within its structure is an advantageous strategy. Results for NRMSE show similar trends but with less dominance over HYDROTEL. This could be related to the limited number of peak streamflow events for training the LSTM models, which is one of their shortcomings. Nonetheless, the LSTM-Meteo, LSTM-HYDROTEL and LSTM-Combined models provide notably better NRSME results than the calibrated HYDROTEL model.

To further evaluate the relative performance of each model, results were compared on a per-catchment basis. Figure 3 presents a summary of the testing period results for KGE and NRMSE (Figure 3 a and b, respectively), as well as a map of the best-performing models for each metric (Figure 3 c and d), and, finally, a comparison between the HYDROTEL model and the LSTM-Combined model (Figure 3 e and f) which displays the best performance.

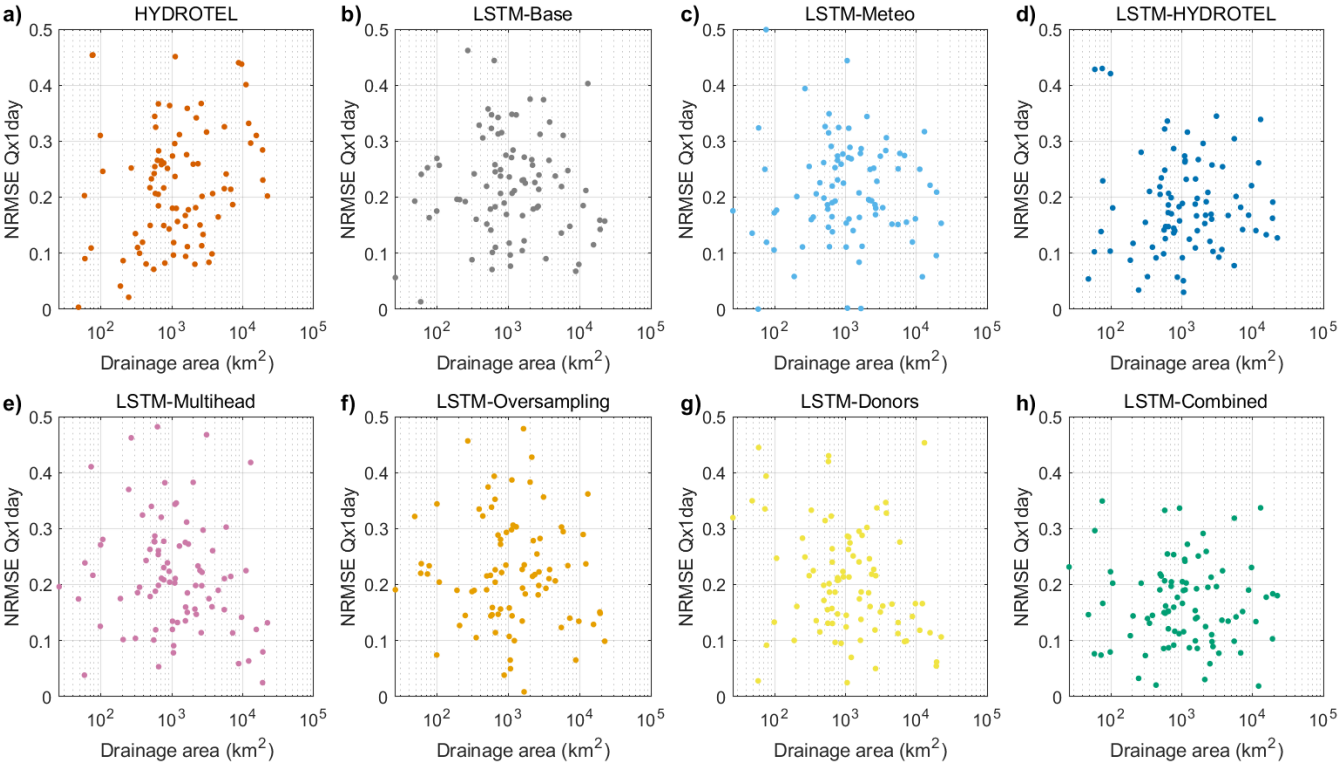


**Figure 3: Results over the testing period for the 88 catchments for the KGE (left column) and NRMSE of Qx1day (right column). Rows present the overall performance for the 8 models (HYDROTEL and 7 LSTM variants; top row), maps representing the best-performing model for each of the 88 catchments (middle row), and maps presenting the best model between HYDROTEL and LSTM-Combined for each catchment (bottom row). The pie charts represent the distribution of the best model.**

Figure 3 shows that the LSTM-Combined model is the best performing model according to the KGE metric, owing to its strong general streamflow simulation skill. For the NRMSE, the picture is more nuanced, with the 8 models sharing the top rank for the 88 catchments, with no clear spatial pattern that would allow predicting a “best model” based on catchment location. The LSTM-Combined model was selected in 38.6% (Figure 3c) and 28.4% (Figure 3d) of the catchments for the KGE and NRMSE respectively compared to 0% and 18.2% for HYDROTEL. When only the HYDROTEL and LSTM-Combined model are compared, the latter shows better performance in terms of KGE evaluation (95.5%; Figure 3e), and outperforms HYDROTEL on a majority of catchments for the NRMSE (72.7%; Figure 3f), although the results are again more nuanced.

475 [Figure 4](#) ~~Figure Error! Reference source not found.~~ (NRMSE Qx1day) and Figure S3 (KGE) present the results of a  
supplementary analysis done to evaluate the performance of the models as a function of catchment size to determine if it could  
help predict model skill. Similarly, [Figure S4](#) ~~Figure 5~~ (NRSME Qx1day) and Figure S54 (KGE) present the comparison  
between the performance of models as a function of the number of available years. Note that only Figure 4 is shown in the  
text. Figures S3, S4 and S5 are presented in the Supplementary materials.

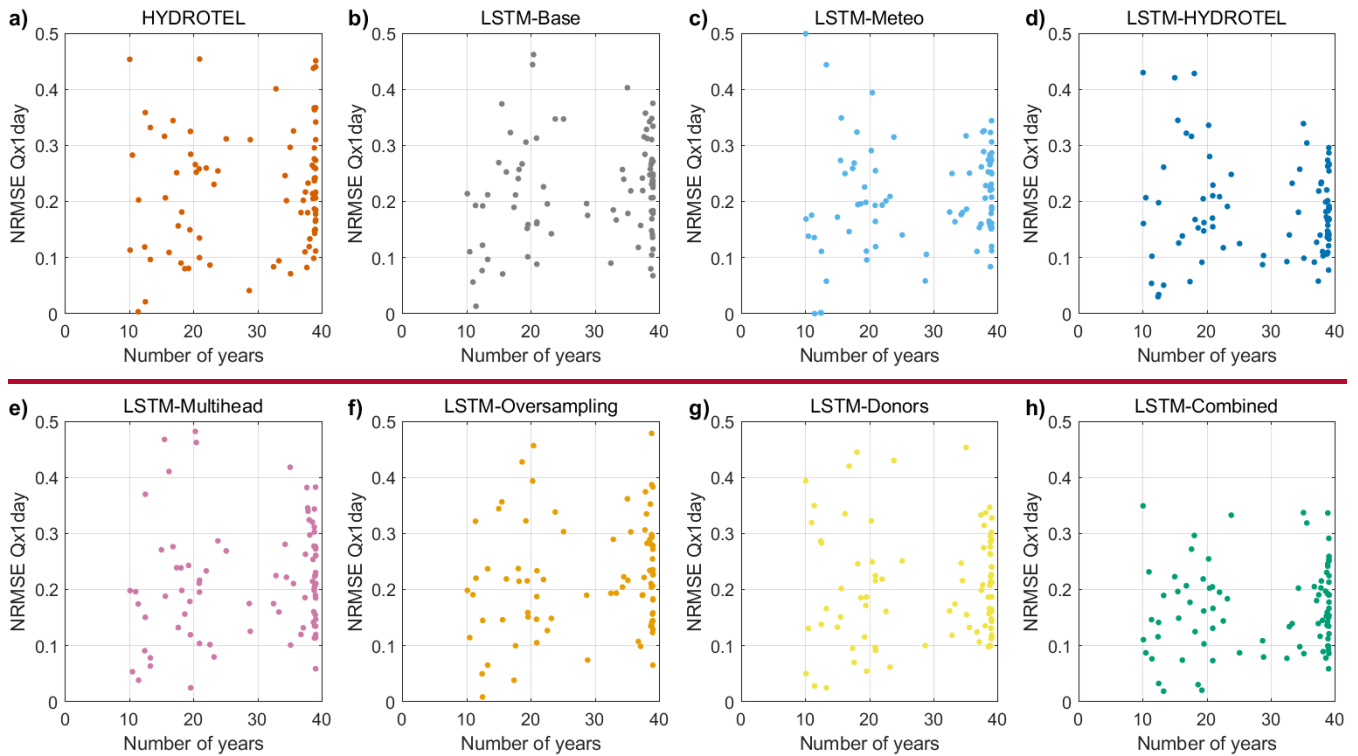
480



**Figure 4: NRMSE of Qx1day scores for each of the 8 models on the 88 catchments as a function of the catchment drainage area.**

485 As can be seen in Figures [4](#) ~~Figure 4~~ ~~Error! Reference source not found.~~ and S3, the drainage area of the catchments on a  
logarithmic scale does not seem to impact the LSTM model variants. Indeed, the scatterplots obtained suggest that no  
correlation would be found from fitting a linear regression. Only two models were found to be statistically significant with  
relatively small Pearson’s linear correlation coefficients: LSTM-Multihead (KGE = 0.31 and NRMSE = -0.28) and LSTM-  
Donors (KGE = 0.30 and NRMSE = -0.25).

490

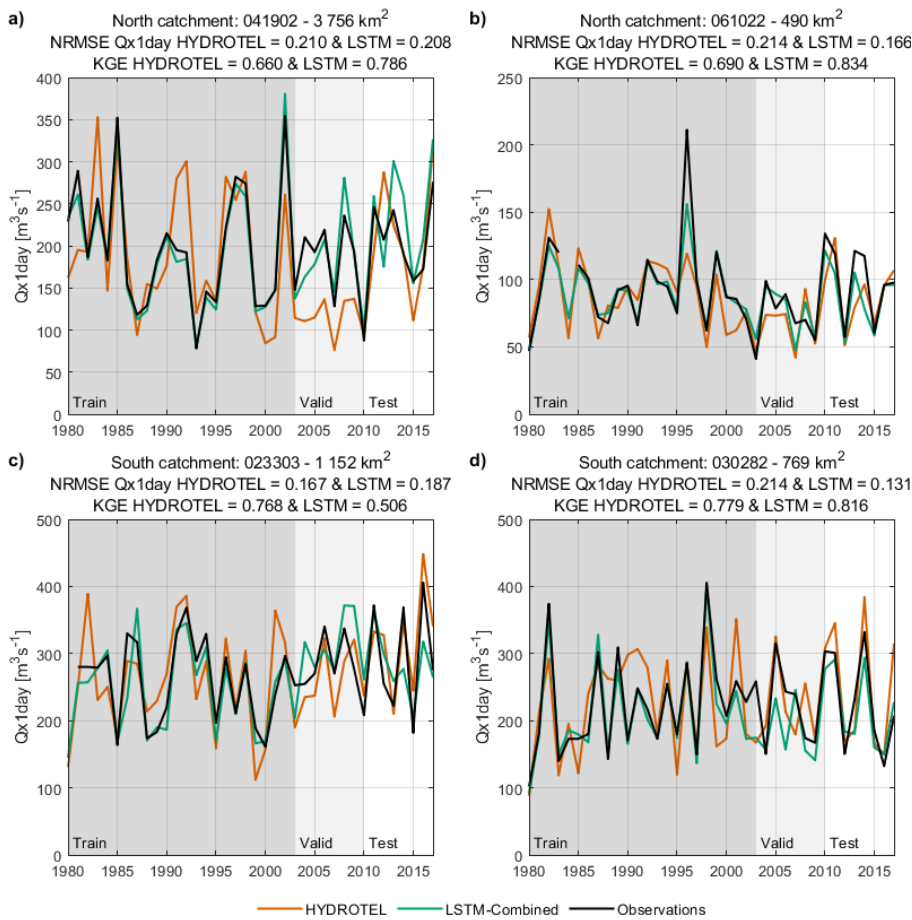


**Figure 5: NRMSE of Qx1day scores for each of the 8 models on the 88 catchments as a function of the number of years.**

The analysis revealed no significant correlations between the number of available years and the model performance (both KGE and NRMSE Qx1day) for either hydrological model. This suggests that model performance is not directly influenced by the length of the observational record.

### 3.2 Detailed evaluation on four selected catchments

The next results show the peak streamflow for each year in the datasets of four selected catchments with almost full observational records (catchments 061022 and 023303 are missing 1984 and 1980 respectively), including for the training, validation and testing periods. These catchments were selected to represent a relatively small and a large catchment in both north (3 756 and 490 km<sup>2</sup>) and south (1 152 and 769 km<sup>2</sup>) regions (see [Figure 1](#) [Figure 1](#)). They are also the same as those that are analysed in detail in Martel et al. (2023). Results of this analysis are presented in [Figure 5](#) [Figure 6](#).



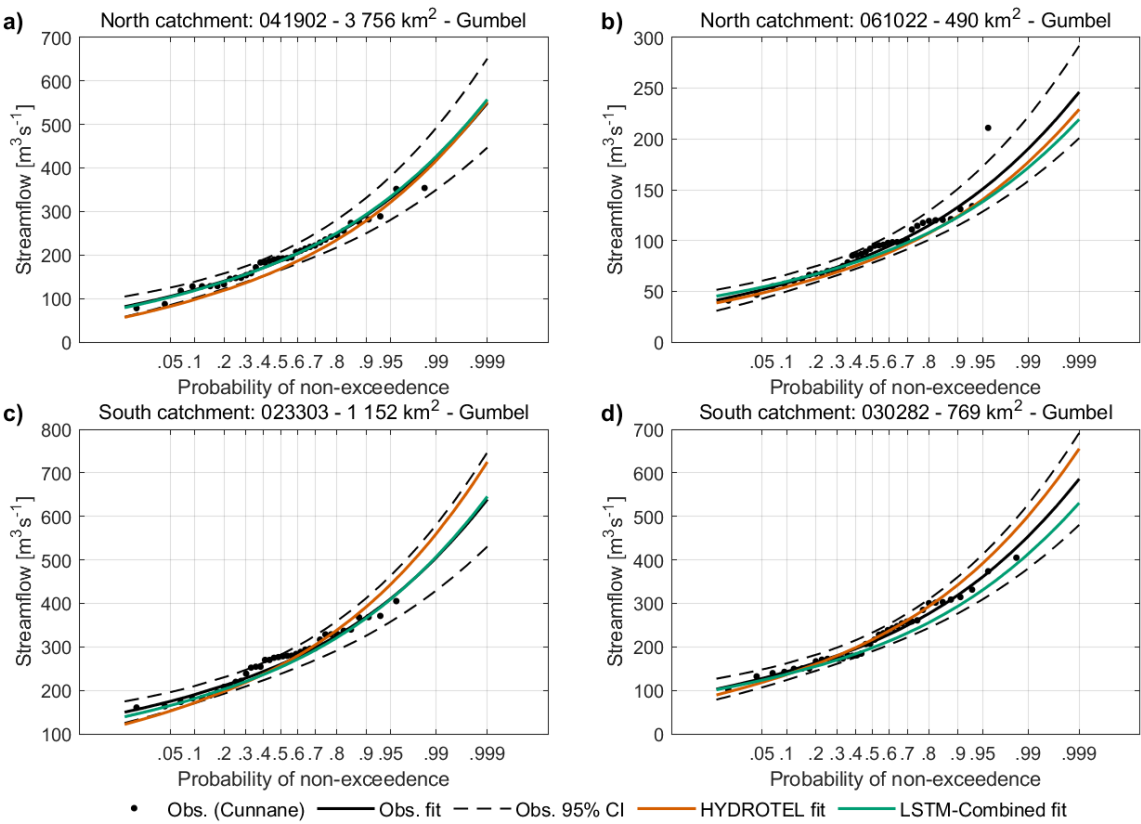
**Figure 56:** Qx1day of each year in the training, validation and testing periods for four representative catchments for HYDROTEL, LSTM-Combined and the observed streamflow. The four catchments represent a large northern (a), small northern (b), large southern (c) and small southern (d) catchment. The NRMSE of the Qx1day for HYDROTEL and the LSTM-Combined model on the testing period are shown in each figure's title.

Results in [Figure 5](#)~~Figure 6~~ show multiple interesting elements that can help understand the strengths and limitations of the HYDROTEL and LSTM-Combined models. First, the training period clearly demonstrates that the LSTM-Combined model is able to fit the data with surprising accuracy on most occasions, except for some extreme events in the observations (either low or high, such as the years 1980 and 1998 in catchment 061022, [Figure 5](#)~~Figure 6~~b). The validation period, which serves as the stopping criteria evaluation for the LSTM training process, is not directly used in training but is still used to determine the best parameter set, meaning that it is not independent. This can be seen in Figure 6 where the LSTM-Combined validation period Qx1day values are more similar to the observations compared to the HYDROTEL simulations. However, the more interesting case is for the testing period. Overall, the LSTM-Combined model outperforms HYDROTEL again, however HYDROTEL performs best for the large catchment in southern Quebec ([Figure 5](#)~~Figure 6~~c). It can also be seen that, overall,

the performance on the testing period is worse than on the training and validation period for the LSTM-Combined model. However, HYDROTEL shows similar errors across all periods, again due to the fact that it was calibrated on the entire period and therefore preserved similar skill on all three periods. ~~This also means that had HYDROTEL been calibrated on the same period as the LSTMs and used in predictive mode for the testing period, results would be less accurate than depicted in Figure 6.~~

Finally, results for the FFA are presented in ~~Figure 6~~ [Figure 7](#) for the four selected catchments. Results of the LRT indicated that the Gumbel distribution provided an adequate and more parsimonious fit for all four catchments examined (see Figure 7), with no significant gain from using the full GEV formulation. Consequently, the Gumbel distribution was selected as the preferred model for FFA and was fit to the observations, as well as the HYDROTEL and LSTM-combined model AMS.

530



**Figure 6:** Flood frequency analysis for the four selected catchments north-large (a), north-small (b), south-large (c) and south-small (d). Results are shown for the HYDROTEL model and for the LSTM-combined model..



535 It can be seen in ~~Figure 6~~Figure-7 that the LSTM-Combined and HYDROTEL model FFAs fall within the uncertainty bounds of the observations. However, it is interesting to note that the LSTM model seems to either match or underestimate the observed distribution, while HYDROTEL shows both over- and under-estimation.

## 4 Discussion

### 4.1 Strengths and weaknesses of each model in streamflow simulation

540 In this paper, ~~a series of~~LSTM-based deep learning models ~~is~~are compared to a distributed hydrological model for peak streamflow simulation. The HYDROTEL hydrological model was calibrated over the entire period, whereas the LSTM-based models were trained and evaluated on distinct periods, leading to a less favourable outcome for the LSTMs. Nonetheless, when the results are compared on the LSTMs validation period, it can be seen that the LSTM models outperform the HYDROTEL model in most cases for overall streamflow simulation (KGE metric) and are at least as good in terms of peak streamflow  
545 (NRMSE Qx1 day metric) depending on the LSTM modelling strategy, as displayed in Figures 2 and 3.

As for the peak streamflow specifically, the two best models are those that include HYDROTEL simulations. This is a clear signal that the LSTM models are able to learn from the first estimation of hydrological models and improve them further using exogenous data,~~as described in the next section~~. The other LSTM models tested provided mixed results depending on the  
550 catchments (Figure 3b, d and f), even though they outperformed HYDROTEL in the KGE metric. This clearly displays the limitations of LSTM models regarding peak streamflow. Indeed, while the attention mechanism, the oversampling and the addition of other meteorological data improved the overall simulation performance, the inherent lack of rare events in the training dataset limits the LSTM model's ability to generate these important streamflow.

555 The addition of meteorological data to the LSTM-base ~~model setup~~improved results, indicating that there is additional information that is not present in the original dataset, and that LSTM models can extract this added information~~to improve results~~. For example, it is possible that the datasets reflect slight differences in meteorological statistics based on their generation method, which could lead to biases. The LSTM could use these as a multi-input method to correct biases, as in Arsenault et al. (2017). These results mirror those of Kratzert et al. (2021).

560 The multihead attention LSTM was unable to improve results in an appreciable manner compared to the LSTM-Base model. ~~However, this might be related to the fact that the amount of data was the same in both cases, but the model was more complex with approximately four times more total parameters.~~This could lead to overfitting, and could be evaluated in another study with smaller model structures~~such that the LSTM multihead could make use of the additional complexity. However, f~~For this  
565 case, results suggest that the LSTM-Base model had sufficient complexity to maximize the performance from the available

data, limiting the potential of the multihead implementation. The attention mechanism similarly did not provide the desired increase in weights on the peak streamflow, again probably due to the few cases in the training period.

The LSTM-Oversampling model was the worst-performing model in this study in terms of peak streamflow, with worse results than the HYDROTEL model. ~~The integration of extra samples of peak streamflow in the training dataset was designed to help orient the gradient descent towards a region more favourable to extreme events. However, it seems this failed, still providing better KGE values than HYDROTEL but worsening the NRMSE Qx1day estimation. This implementation was rather rudimentary, and recent research has shown that some oversampling or undersampling methods could perform better, including generating synthetic data from regressions between underrepresented datasets (i.e., Synthetic Minority Over-sampling Technique; Maldonado et al., 2019; Wu et al., 2020), which could be tested in future studies. This could lead to better performance in all methods tested and could modify the rankings of method performance seen in this study depending on how they can manage the supplementary data. This could particularly benefit the model implementing the attention mechanism due to the added data, but this would need to be tested in future research.~~

Finally, the LSTM-Donors model provided interesting results given the fact that it used the same data types as the LSTM-Base model and performed better in both the KGE and NRMSE Qx1day metrics. Using more catchments ensures that more peak streamflow events are seen during training. ~~However, the relative weight of these extremes is still similar throughout the dataset. It could be interesting to use samples of peak streamflow from these donors to increase the relative weight of extreme events in the training dataset.~~

#### 4.2 On the effect of adding hydrological model simulations to the inputs of a LSTM network

The addition of the HYDROTEL simulations to the LSTM was done to guide the LSTM network in terms of physics that the LSTM alone cannot implement. For example, deep learning networks lack the ability to ensure that mass balance is respected and have no mechanism to do so, unless directly specified in the model objective function or by implementing custom mechanisms (such as the Mass-Conserving LSTM, or MC-LSTM; Frame et al., 2023). Physics-guided LSTMs, on the other hand, ingest data from an external source that respects these constraints. Since HYDROTEL is already able to provide adequate streamflow, this leads the LSTM to recognize that it is a useful input and then uses all the other inputs to condition the HYDROTEL simulations, as a form of post-processing. ~~Using this methodology allows building upon a system that respects the basic physics principles and then adds flexibility to better simulate the target variable.~~ This method was already implemented in other studies with success, and it was anticipated that the implementation of HYDROTEL would indeed increase the overall performance.

However, one element that was not known is how this would improve annual maximum streamflow. In theory, hydrological models are better suited to simulate peak streamflow than LSTMs due to their better extrapolation ability when applied to single catchments. Since extreme events are rare by definition, few examples appear in the training datasets, making these models less accurate. However, adding hydrological model simulations helps anchor the LSTM to a known quantity whereby the impacts of data extrapolation are reduced. The results presented in Figure 2 show that adding HYDROTEL simulations is the single most impactful addition from the tested methods in terms of both the KGE (overall streamflow simulation) and the NRMSE of the Qx1day indicator (for peak streamflow exclusively). It is therefore of interest for future research to evaluate the potential gains in performance that could be reaped by including other hydrological model simulations as inputs or, alternatively, other models that are designed and calibrated to better simulate peak streamflow. This would allow more degrees of freedom for the LSTM and allow it to learn from the strengths and weaknesses of each model. ~~This option, coupled to a multihead attention mechanism, could provide synergetic gains compared to the limited setup in this study.~~

#### 4.3 On the data availability requirements for flood frequency analysis

It is undeniable that having longer observational records helps reduce epistemic uncertainty related to the FFA, especially for more extreme events (Hu et al., 2020). Methods to extend streamflow records all have strengths and weaknesses, and LSTM-based methods are no exception. The main argument against using LSTM-based methods to extend streamflow series for FFA is that they require large amounts of data ~~in the first place~~ in order to ensure proper training. This means that models such as the LSTM-Base, ~~that require sufficient data to train,~~ will provide the least benefit to FFA implementations as there will already be a long data record. Nonetheless, there is still value to these methods. For example, Ayzel and Heistermann (2021) showed that simulation skill from LSTMs and gated recurrent units (GRUs; another type of RNN) models were comparable to those of the GR4H conceptual hydrological model when using 14 years of data, and Kratzert et al. (2018) showed similar results, setting a lower bound at 15 years of data. Therefore, a minimum of 15 years of data should be available at the target site to maximize the usefulness of the single-catchment LSTM models. It is unclear, however, how adding a simulation from a hydrological model (which requires less data to provide useful simulations, as per Ayzel and Heistermann, 2021) to the inputs, as was done with the LSTM-HYDROTEL model, might lower this bound. This should be investigated in future research. Nonetheless, previous research has shown that there are important gains to be made in reducing epistemic uncertainty for FFA by increasing the record length. As mentioned in Hu et al. (2020), increasing the dataset length from 20 to 70 years of data reduced uncertainty by 50%, and increasing from 35 years to 70 years reduced it by 33% for the 100-year flood event. ~~This means that a~~ Any lengthening of the dataset has a positive impact on the FFA results.

However, the LSTM-based models can also make use of donor catchments to estimate streamflow at even ungauged catchments (Arsenault et al., 2023a; Feng et al., 2023; Kratzert et al., 2019a), reducing or even eliminating the need for data ~~in the first place~~. In this study, data from the target catchment were still preserved to improve accuracy at the target site, but it would be possible to exclude the target catchment from the training set and evaluate the FFA results in a leave-one-out cross-

validation framework. Comparing these results to those of a regionally-calibrated (or regionalized) hydrological model would shed more light on the usefulness and ability of LSTM-based models to provide streamflow for FFA analysis. In all cases, the problem with peak streamflow representation is key and would need to be investigated further. It therefore seems that data availability is not as much of an issue, and might even allow for better performance than using conceptual hydrological models when few (or no) streamflow records exist. This would, however, strongly depend on the characteristics of the donor catchments and how well they encompass those of the target catchment to allow the LSTM models to interpolate correctly at the ungauged site.

#### 4.4 Should LSTM models be used for peak streamflow simulations?

Deep neural networks, including the LSTM-based models used in this study, have always had the drawback of requiring many training samples to allow them to reproduce patterns correctly. In the case of maximum annual streamflow, these are less common by definition. ~~This therefore means that s~~Strategies must be implemented to increase the representation of peak streamflow in the training dataset. The various methods used herein (using hydrological model simulations as inputs, peaks oversampling, attention mechanisms, extra donor sets) provided a heterogeneous response ~~to peak streamflow simulation~~. The addition of the hydrological model provided the best results individually, while combining this approach to a multi-input and multihead attention mechanism was even better, strongly outperforming the HYDROTEL model simulation. This seems to provide an answer to the question: Should LSTM models be used for peak streamflow simulations? ~~Indeed, it would seem that~~ ~~Using LSTM-based models can improve peak streamflow representations, but results indicate that they perform best by using them in a hybrid/post-processing manner in tandem with classical hydrological models. Doing so maximized the skill of each approach in this study, and should be strongly considered for similar studies. However, while one direct oversampling method~~ was implemented in this study, there is an increasingly large body of literature dedicated to generating synthetic data (such as CoSMoS-2s; Papalexiou, 2022) and creating ensembles of data that could be used instead of the relatively simple method ~~we devised in this paper~~. Doing so could unlock more potential from the implemented methods and could lead to better predictions of peak flows. ~~This should be investigated in future research.~~

The four catchments tested ~~in this study~~ for the FFA were also used in another study that compared multi-model averaging methods and statistical post-processing of streamflow for extreme flood events (Martel et al., 2023). The statistical interpolation technique improved streamflow overall, including streampeak flows, but led to the FFA for extreme return periods to extend beyond the confidence interval in some cases (Figure 12 in Martel et al. 2023). Multi-model averaging of simulations of multiple variants of HYDROTEL showed similar results. This indicates that using multiple hydrological models or post-processing can provide less reliable FFA results than combining hydrological models with LSTMs or other deep learning models, increasing confidence in this approach.

A potentially more robust and skillful approach would be to train hydrological models on large sets of catchments such as those in the donor set ~~of this study~~, and build a LSTM-Donor model that also includes hydrological model simulations as inputs. This would allow for the best of both worlds, as long as there is sufficient data to calibrate the hydrological model at the target site. ~~This would be required to provide streamflow simulations from the hydrological model to the LSTM model at the target site.~~ These future research prospects should be investigated to provide a clearer picture on the ability of LSTM-based (and other deep learning model architectures) to simulate peak streamflow, for FFA and other simulation purposes. This would also aid in reducing the risk of overfitting, which was not an issue in this study (as seen in Figure 2), but could alleviate such risks in regions with fewer available data.

Another point of note is that the Gumbel and GEV distributions were used for the FFA. These methods have been shown to generate larger amounts of uncertainty on the distribution when fewer numbers of years are used ~~to perform the distribution fitting~~ (Hu et al., 2020). However, for AMS, it was shown that the choice of a distribution did not contribute to the overall uncertainty when more than 20 years of data were provided, with all tested methods converging to similar levels of uncertainty. This is another advantage of extending time series for FFA. Furthermore, it can be seen that both the HYDROTEL and LSTM-based models FFAs fit within the uncertainty bounds as derived from the observations in [Figure 6](#) ~~Figure 7~~, indicating that both methods are able to simulate extreme flood events adequately. Using catchments with longer time series and using them as test cases for shorter or longer periods of data availability could help identify cases where conceptual hydrological models or LSTM-based models perform better, ~~which should be investigated in future studies.~~

## 5 Conclusion

In this study, seven LSTM-based hydrological models were presented and compared on their ability to simulate maximum annual streamflow on 88 catchments in ~~the province of~~ Quebec, Canada. The models were also compared to a distributed hydrological model. Results showed that LSTM-based models are indeed able to extend streamflow observation time series for FFA and do so with equivalent skill as the distributed hydrological model. However, combining both types of models in a physics-guided LSTM by providing the HYDROTEL simulations as inputs ~~to the LSTM models~~ showed the best results. ~~The application of~~ LSTM models to peak streamflow ~~applications~~ necessarily involves increasing their representation in the training dataset, and multiple pathways forward are provided.

Oversampling approaches and multihead attention mechanisms were shown to provided limited benefits ~~in this study~~. They could, however, become much more important if applied to different models or sets of conditions. One could argue that increasing the number of donor catchments and including more hydrological model simulations ~~on all donor datasets~~ could provide synergetic gains, leading to ~~what could be considered~~ a complex, post-processed, multi-model averaging mechanism ~~that uses~~ [using](#) hundreds or thousands of catchments ~~as training datasets~~. The attention mechanism could then prove to be more

695 impactful by selecting which models to prioritize depending on the reigning hydrometeorological conditions, as a dynamic  
and automatic model selection algorithm. Furthermore, ~~the process of~~ adding datasets, donors and model simulations would  
then allow increasing the LSTM model complexity, which was kept intact ~~for all phases of this present study~~. This would  
further increase the model's abilities to focus on peak streamflow and could, in the right conditions, become the new standard  
~~for extending peak streamflow simulations instead of using traditional hydrological models~~.

700

This study shows that LSTM models can already challenge hydrological models for ~~the purpose of~~ simulating peak streamflow,  
yet some limitations persist and should be evaluated and overcome in future research. First, this study was performed over a  
set of catchments in Quebec, Canada, whose streamflow signatures are strongly dominated by snowmelt. This in turn means  
that the models' ability to simulate peak streamflow is essentially tied to their ability to simulate snow accumulation and melt.  
705 Application to smaller catchments and to rainfall-dominated catchments could lead to different results, depending on the ability  
of the models to simulate the underlying processes. Second, the LSTM models tested herein all shared the same structure and  
complexity except for the multihead-attention version, limiting the gains made by integrating new and increased datasets.  
Accounting for this increase by increasing the model complexity in parallel could help assess the potential gains more  
accurately, at the expense of ~~losing in~~ comparability.

710

Overall, this study shows that LSTM-based models are not only able to match hydrological model performance, but have the  
ability to surpass it through ~~one of many pathways to be explored in the near future~~. But since hydrological model simulations  
seem to be a key input to the LSTM models, they are likely to still play an important role in the process, and as such, continued  
development of hydrological models is encouraged despite the recent trends towards replacing ~~hydrological models~~ them with  
715 deep learning alternatives. Future research should explore the potential of LSTM-based models to extend historical streamflow  
records, particularly in catchments ~~f~~with limited observational data. This would support more robust flood frequency analyses  
by reducing epistemic uncertainty through ~~the availability of~~ longer and more complete datasets.

### Code and data availability

The hydrometeorological data for this study were sourced from the HYSETS database (Arsenault et al., 2020)  
720 <https://doi.org/10.17605/OSF.IO/RPC3W>. The ERA5 reanalysis data can be obtained through the Copernicus Data Store at  
<https://climate.copernicus.eu/climate-reanalysis>. Processed data and the codes used in this research are available at  
<https://osf.io/zwtmq/>.

## Author contribution

JLM, RA, RT and FB designed the experiments and JLM, RA, MCG and WA performed them. JLM and RA analyzed and interpreted the results with significant contributions from RT, FB, EM, JPD, SLC, GRG, and LPC. JLM wrote the paper with significant contributions from RA. RT, FB, EM, JPD, SLC, GRG, and LPC provided editorial comments on initial drafts of the paper.

## Competing interests

The authors declare that they have no conflict of interest.

## Acknowledgements

The authors would like to thank the teams at the Direction Principale de l'Expertise Hydrique du Québec (DPEH) and Ouranos that made this project possible in the context of the INFO-Crue research program (project #711500).

## References

- Apel, H., Thielen, A. H., Merz, B., and Blöschl, G.: Flood risk assessment and associated uncertainty, *Natural Hazards and Earth System Sciences*, 4, 295-308, 10.5194/nhess-4-295-2004, 2004.
- Arsenault, R. and Brissette, F. P.: Continuous streamflow prediction in ungauged basins: The effects of equifinality and parameter set selection on uncertainty in regionalization approaches, *Water Resources Research*, 50, 6135-6153, 10.1002/2013WR014898, 2014.
- Arsenault, R., Brissette, F., and Martel, J.-L.: The hazards of split-sample validation in hydrological model calibration, *Journal of Hydrology*, 566, 346-362, 10.1016/j.jhydrol.2018.09.027, 2018.
- Arsenault, R., Essou, G. R. C., and Brissette, F. P.: Improving hydrological model simulations with combined multi-input and multimodel averaging frameworks, *Journal of Hydrologic Engineering*, 22, 04016066, 10.1061/(ASCE)HE.1943-5584.0001489, 2017.
- Arsenault, R., Breton-Dufour, M., Poulin, A., Dallaire, G., and Romero-Lopez, R.: Streamflow prediction in ungauged basins: analysis of regionalization methods in a hydrologically heterogeneous region of Mexico, *Hydrological Sciences Journal*, 64, 1297-1311, 10.1080/02626667.2019.1639716, 2019.
- Arsenault, R., Martel, J. L., Brunet, F., Brissette, F., and Mai, J.: Continuous streamflow prediction in ungauged basins: long short-term memory neural networks clearly outperform traditional hydrological models, *Hydrology and Earth System Sciences*, 27, 139-157, 10.5194/hess-27-139-2023, 2023a.

- Arsenault, R., Brissette, F., Martel, J.-L., Troin, M., Lévesque, G., Davidson-Chaput, J., Castañeda Gonzalez, M., Ameli, A., and Poulin, A.: A comprehensive, multisource database for hydrometeorological modeling of 14,425 North American watersheds, *Scientific Data*, 7, 243, 10.1038/s41597-020-00583-2, 2020.
- 755 Arsenault, R., Huard, D., Martel, J.-L., Troin, M., Mai, J., Brissette, F., Jauvin, C., Vu, L., Craig, J. R., Smith, T. J., Logan, T., Tolson, B. A., Han, M., Gravel, F., and Langlois, S.: The PAVICS-Hydro platform: A virtual laboratory for hydroclimatic modelling and forecasting over North America, *Environmental Modelling & Software*, 168, 105808, 10.1016/j.envsoft.2023.105808, 2023b.
- Ayzel, G. and Heistermann, M.: The effect of calibration data length on the performance of a conceptual hydrological model versus LSTM and GRU: A case study for six basins from the CAMELS dataset, *Computers & Geosciences*, 149, 104708, 10.1016/j.cageo.2021.104708, 2021.
- 760 Bergeron, O.: Guide d'utilisation 2016 - Grilles climatiques quotidiennes du Programme de surveillance du climat du Québec, version 1.2, Québec, ministère du Développement durable, de l'Environnement et de la Lutte contre les changements climatiques, Direction du suivi de l'état de l'environnement, 33 p., 2016.
- Castaneda-Gonzalez, M., Poulin, A., Romero-Lopez, R., and Turcotte, R.: Hydrological models weighting for hydrological projections: The impacts on future peak flows, *Journal of Hydrology*, 625, 130098, 10.1016/j.jhydrol.2023.130098, 2023.
- CEHQ: Hydroclimatic atlas of southern Québec. The impact of climate change on high, low and mean flow regimes for the 2050 horizon. , Centre d'expertise hydrique du Québec (CEHQ), 81, 2015.
- Coles, S., Bawa, J., Trenner, L., and Dorazio, P.: An introduction to statistical modeling of extreme values, Springer2001.
- 770 Cunnane, C.: Unbiased plotting positions — A review, *Journal of Hydrology*, 37, 205-222, 10.1016/0022-1694(78)90017-3, 1978.
- Do, H. X., Westra, S., and Leonard, M.: A global-scale investigation of trends in annual maximum streamflow, *Journal of Hydrology*, 552, 28-43, 10.1016/j.jhydrol.2017.06.015, 2017.
- England Jr, J. F., Cohn, T. A., Faber, B. A., Stedinger, J. R., Thomas Jr, W. O., Veilleux, A. G., Kiang, J. E., and Mason Jr, R. R.: Guidelines for determining flood flow frequency—Bulletin 17C, US Geological Survey1411342232, 2019.
- 775 Fang, K., Kifer, D., Lawson, K., Feng, D., and Shen, C.: The data synergy effects of time-series deep learning models in hydrology, *Water Resources Research*, 58, e2021WR029583, 10.1029/2021WR029583, 2022.
- Feng, D., Fang, K., and Shen, C.: Enhancing streamflow forecast and extracting insights using long-short term memory networks with data integration at continental scales, *Water Resources Research*, 56, e2019WR026793, 10.1029/2019WR026793, 2020.
- 780 Feng, D., Beck, H., Lawson, K., and Shen, C.: The suitability of differentiable, physics-informed machine learning hydrologic models for ungauged regions and climate change impact assessment, *Hydrology and Earth System Sciences*, 27, 2023.



Fortin, J.-P., Turcotte, R., Massicotte, S., Moussa, R., Fitzback, J., and Villeneuve, J.-P.: Distributed watershed model compatible with remote sensing and GIS data. II: Application to Chaudière watershed, *Journal of Hydrologic Engineering*, 6, 100-108, 10.1061/(ASCE)1084-0699(2001)6:2(100), 2001a.

Fortin, J.-P., Turcotte, R., Massicotte, S., Moussa, R., Fitzback, J., and Villeneuve, J.-P.: Distributed watershed model compatible with remote sensing and GIS data. I: Description of model, *Journal of Hydrologic Engineering*, 6, 91-99, 10.1061/(ASCE)1084-0699(2001)6:2(91), 2001b.

Frame, J. M., Kratzert, F., Gupta, H. V., Ullrich, P., and Nearing, G. S.: On strictly enforced mass conservation constraints for modelling the Rainfall-Runoff process, *Hydrological Processes*, 37, e14847, 10.1002/hyp.14847, 2023.

Gupta, H. V., Kling, H., Yilmaz, K. K., and Martinez, G. F.: Decomposition of the mean squared error and NSE performance criteria: Implications for improving hydrological modelling, *Journal of Hydrology*, 377, 80-91, 10.1016/j.jhydrol.2009.08.003, 2009.

Hao, R. and Bai, Z.: Comparative study for daily streamflow simulation with different machine learning methods, *Water*, 15, 1179, 2023.

Hersbach, H., Bell, B., Berrisford, P., Hirahara, S., Horányi, A., Muñoz-Sabater, J., Nicolas, J., Peubey, C., Radu, R., Schepers, D., Simmons, A., Soci, C., Abdalla, S., Abellan, X., Balsamo, G., Bechtold, P., Biavati, G., Bidlot, J., Bonavita, M., De Chiara, G., Dahlgren, P., Dee, D., Diamantakis, M., Dragani, R., Flemming, J., Forbes, R., Fuentes, M., Geer, A., Haimberger, L., Healy, S., Hogan, R. J., Hólm, E., Janisková, M., Keeley, S., Laloyaux, P., Lopez, P., Lupu, C., Radnoti, G., de Rosnay, P., Rozum, I., Vamborg, F., Villaume, S., and Thépaut, J.-N.: The ERA5 global reanalysis, *Quarterly Journal of the Royal Meteorological Society*, 146, 1999-2049, 10.1002/qj.3803, 2020.

Hochreiter, S. and Schmidhuber, J.: Long Short-Term Memory, *Neural Computation*, 9, 1735-1780, 10.1162/neco.1997.9.8.1735, 1997.

Hu, L., Nikolopoulos, E. I., Marra, F., and Anagnostou, E. N.: Sensitivity of flood frequency analysis to data record, statistical model, and parameter estimation methods: An evaluation over the contiguous United States, *Journal of Flood Risk Management*, 13, e12580, 10.1111/jfr3.12580, 2020.

Huot, P.-L., Poulin, A., Audet, C., and Alarie, S.: A hybrid optimization approach for efficient calibration of computationally intensive hydrological models, *Hydrological Sciences Journal*, 64, 1204-1222, 10.1080/02626667.2019.1624922, 2019.

Hydrology, A. T. C. o. A. o. A. N. N. i.: Artificial neural networks in hydrology. I: Preliminary concepts, *Journal of Hydrologic Engineering*, 5, 115-123, 10.1061/(ASCE)1084-0699(2000)5:2(115), 2000.

In-na, N. and Nyuyen, V.-T.-V.: An unbiased plotting position formula for the general extreme value distribution, *Journal of Hydrology*, 106, 193-209, 10.1016/0022-1694(89)90072-3, 1989.

Kling, H., Fuchs, M., and Paulin, M.: Runoff conditions in the upper Danube basin under an ensemble of climate change scenarios, *Journal of Hydrology*, 424-425, 264-277, 10.1016/j.jhydrol.2012.01.011, 2012.

Kratzert, F., Gauch, M., Klotz, D., and Nearing, G.: HESS Opinions: Never train an LSTM on a single basin, *Hydrology and Earth System Sciences*, 2024, 1-19, 10.5194/hess-2023-275, 2024.

- Kratzert, F., Klotz, D., Hochreiter, S., and Nearing, G. S.: A note on leveraging synergy in multiple meteorological data sets with deep learning for rainfall–runoff modeling, *Hydrology and Earth System Sciences*, 25, 2685–2703, 10.5194/hess-25-2685-2021, 2021.
- 820 Kratzert, F., Klotz, D., Brenner, C., Schulz, K., and Herrnegger, M.: Rainfall–runoff modelling using Long Short-Term Memory (LSTM) networks, *Hydrology and Earth System Sciences*, 22, 6005–6022, 10.5194/hess-22-6005-2018, 2018.
- Kratzert, F., Klotz, D., Herrnegger, M., Sampson, A. K., Hochreiter, S., and Nearing, G. S.: Toward improved predictions in ungauged basins: Exploiting the power of machine learning, *Water Resources Research*, 55, 11344–11354, 10.1029/2019WR026065, 2019a.
- 825 Kratzert, F., Klotz, D., Shalev, G., Klambauer, G., Hochreiter, S., and Nearing, G.: Towards learning universal, regional, and local hydrological behaviors via machine learning applied to large-sample datasets, *Hydrology and Earth System Sciences*, 23, 5089–5110, 10.5194/hess-23-5089-2019, 2019b.
- Laio, F., Di Baldassarre, G., and Montanari, A.: Model selection techniques for the frequency analysis of hydrological extremes, *Water Resources Research*, 45, 10.1029/2007WR006666, 2009.
- 830 LeCun, Y., Bengio, Y., and Hinton, G.: Deep learning, *Nature*, 521, 436–444, 10.1038/nature14539, 2015.
- Li, P., Zhang, J., and Krebs, P.: Prediction of flow based on a CNN-LSTM combined deep learning approach, *Water*, 14, 993, 2022.
- Liu, B., Tang, Q., Zhao, G., Gao, L., Shen, C., and Pan, B.: Physics-guided long short-term memory network for streamflow and flood simulations in the Lancang–Mekong River basin, *Water*, 14, 1429, 2022.
- 835 Loshchilov, I. and Hutter, F.: Decoupled weight decay regularization, arXiv preprint arXiv:1711.05101, 2017.
- Loshchilov, I. and Hutter, F.: Fixing weight decay regularization in adam, 2018.
- Lucas-Picher, P., Riboust, P., Somot, S., and Laprise, R.: Reconstruction of the spring 2011 Richelieu River flood by two regional climate models and a hydrological model, *Journal of Hydrometeorology*, 16, 36–54, 10.1175/JHM-D-14-0116.1, 2015.
- 840 Mai, J.: Ten strategies towards successful calibration of environmental models, *Journal of Hydrology*, 620, 129414, 10.1016/j.jhydrol.2023.129414, 2023.
- Maldonado, S., López, J., and Vairetti, C.: An alternative SMOTE oversampling strategy for high-dimensional datasets, *Applied Soft Computing*, 76, 380–389, 10.1016/j.asoc.2018.12.024, 2019.
- Martel, J.-L., P., B. F., Lucas-Picher, P., Troin, M., and Arsenault, R.: Climate change and rainfall Intensity–Duration–Frequency curves: Overview of science and guidelines for adaptation, *Journal of Hydrologic Engineering*, 26, 03121001, 10.1061/(ASCE)HE.1943-5584.0002122, 2021.
- 845 Martel, J.-L., Arsenault, R., Lachance-Cloutier, S., Castaneda-Gonzalez, M., Turcotte, R., and Poulin, A.: Improved historical reconstruction of daily flows and annual maxima in gauged and ungauged basins, *Journal of Hydrology*, 623, 129777, 10.1016/j.jhydrol.2023.129777, 2023.

- 850 Nash, J. E. and Sutcliffe, J. V.: River flow forecasting through conceptual models part I — A discussion of principles, *Journal of Hydrology*, 10, 282-290, 10.1016/0022-1694(70)90255-6, 1970.
- Nearing, G. S., Sampson, A. K., Kratzert, F., and Frame, J. M.: Post-processing a Conceptual Rainfall-runoff Model with an LSTM, *EarthArXiv*, 2020.
- Papalexiou, S. M.: Rainfall generation revisited: Introducing CoSMoS-2s and advancing copula-based intermittent time series  
855 modeling, *Water Resources Research*, 58, e2021WR031641, 10.1029/2021WR031641, 2022.
- Rasiya Koya, S. and Roy, T.: Temporal fusion transformers for streamflow prediction: Value of combining attention with recurrence, *Journal of Hydrology*, 637, 131301, 10.1016/j.jhydrol.2024.131301, 2024.
- Rousseau, A. N., Fortin, J.-P., Turcotte, R., Royer, A., Savary, S., Quévy, F., Noël, P., and Paniconi, C.: PHYSITEL, a specialized GIS for supporting the implementation of distributed hydrological models, *Water News*, 31, 18-20, 2011.
- 860 Shen, C. and Lawson, K.: Applications of deep learning in hydrology, in: *Deep Learning for the Earth Sciences*, 283-297, 10.1002/9781119646181.ch19, 2021.
- Shen, H., Tolson, B. A., and Mai, J.: Time to update the split-sample approach in hydrological model calibration, *Water Resources Research*, 58, e2021WR031523, 10.1029/2021WR031523, 2022.
- Snieder, E., Abogadil, K., and Khan, U. T.: Resampling and ensemble techniques for improving ANN-based high-flow forecast  
865 accuracy, *Hydrology and Earth System Sciences*, 25, 2543-2566, 10.5194/hess-25-2543-2021, 2021.
- Tarek, M., Brissette, F. P., and Arsenault, R.: Evaluation of the ERA5 reanalysis as a potential reference dataset for hydrological modelling over North America, *Hydrology and Earth System Sciences*, 24, 2527-2544, 10.5194/hess-24-2527-2020, 2020.
- Tarek, M., Arsenault, R., Brissette, F., and Martel, J.-L.: Daily streamflow prediction in ungauged basins: an analysis of  
870 common regionalization methods over the African continent, *Hydrological Sciences Journal*, 66, 1695-1711, 10.1080/02626667.2021.1948046, 2021.
- Tolson, B. A. and Shoemaker, C. A.: Dynamically dimensioned search algorithm for computationally efficient watershed model calibration, *Water Resources Research*, 43, 10.1029/2005WR004723, 2007.
- Turcotte, R., Fortin, L.-G., Fortin, V., Fortin, J.-P., and Villeneuve, J.-P.: Operational analysis of the spatial distribution and  
875 the temporal evolution of the snowpack water equivalent in southern Québec, Canada, *Hydrology Research*, 38, 211-234, 10.2166/nh.2007.009, 2007.
- Vaswani, A., Shazeer, N., Parmar, N., Uszkoreit, J., Jones, L., Gomez, A. N., Kaiser, Ł., and Polosukhin, I.: Attention is all you need, *Advances in neural information processing systems*, 30, 2017.
- Wang, Y.-Y., Wang, W., Chau, L.-W., Xu, D.-M., Zang, H.-F., Liu, C.-J., and Ma, Q.: A new stable and interpretable flood  
880 forecasting model combining multi-head attention mechanism and multiple linear regression, *Journal of Hydroinformatics*, 25, 2561-2588, 10.2166/hydro.2023.160, 2023.

- Wei, Y., Wang, R., and Feng, P.: Improving hydrological modeling with hybrid models: A comparative study of different mechanisms for coupling deep learning models with process-based models, *Water Resources Management*, 10.1007/s11269-024-03780-5, 2024.
- 885 Wilbrand, K., Taormina, R., ten Veldhuis, M.-C., Visser, M., Hrachowitz, M., Nuttall, J., and Dahm, R.: Predicting streamflow with LSTM networks using global datasets, *Frontiers in Water*, 5, 10.3389/frwa.2023.1166124, 2023.
- Wu, Y., Ding, Y., and Feng, J.: SMOTE-Boost-based sparse Bayesian model for flood prediction, *EURASIP Journal on Wireless Communications and Networking*, 2020, 78, 10.1186/s13638-020-01689-2, 2020.