

~~Weakening of meltwater plume reduces~~ Enhanced basal melting in ~~summer~~ winter and spring: Seasonal ice–ocean interactions at the Ekström Ice Shelf, East Antarctica

Ole Zeising¹, Tore Hattermann², Lars Kaleschke¹, Sophie Berger^{1,*}, Olaf Boebel¹, Reinhard Drews³, M. Reza Ershadi³, Tanja Fromm¹, Frank Pattyn⁴, Daniel Steinhage¹, and Olaf Eisen^{1,5}

¹Alfred-Wegener-Institut Helmholtz-Zentrum für Polar- und Meeresforschung, Bremerhaven, Germany

²Norwegian Polar Institute, Tromsø, Norway

³Department of Geosciences, Tübingen University, Tübingen, Germany

⁴Laboratoire de Glaciologie, Université Libre de Bruxelles, Brussels, Belgium

⁵Department of Geosciences, University of Bremen, Bremen, Germany

*Now at: European Commission

Correspondence: Ole Zeising (ole.zeising@awi.de)

Abstract. Basal melting of Antarctic ice shelves significantly contributes to ~~the mass loss of the Antarctic Ice Sheet. However,~~ little is known about the ocean-driven melting of the numerous ice shelves of ice sheet mass loss, with distinct regional disparities in melt rates driven by ocean properties. In East Antarctica, cold water predominantly fills the ice shelf cavities, resulting in generally low annual melt rates, as observed in Dronning Maud Land in East Antarctica (DML). ~~We present a~~ multi-year ~~In this study, we present a four-year record of basal melt rates at the Ekström Ice Shelf, obtained measured~~ using an autonomous phase-sensitive radar ~~system (ApRES).~~ Our data ~~Observations~~ reveal a low mean annual melt rate of 0.45 m a^{-1} , with ~~seasonal patterns showing reduced melt in summer and peaks in~~ unexpected seasonal variability. Enhanced melting occurs ~~in~~ winter and spring, peaking at over 1 m a^{-1} , while rates are decreased in summer and autumn. Sea-ice growth just in front of Ekström Ice Shelf correlates with the melt rate time series. A simple ice shelf water plume simulation suggests that melting is ~~reduced in summer in the presence of Antarctic Surface Water, which reduces the velocity of the ice shelf water plume due to the lower density contrast. In winter, when dense water from the sea ice~~ We hypothesise that the dense water formed during sea-ice formation erodes the stratification below the ice shelf, more vigorous plumes cause water column stratification during late winter and spring, leading to an increase in melt rates. Thus, meltwater plume velocity primarily drives the buoyancy of the ice shelf water plume. An idealised plume model supports this hypothesis, indicating that the plume velocity, is the primary ~~driver of seasonal~~ basal melt rate at the Ekström Ice Shelf, with variability, while changes in ambient water temperature being a secondary factor. Upscaling these observations to other ice shelves in this Antarctic sector will improve the overall assessment of the ~~plays a secondary role in the range of oceanographic conditions that are observed below the Ekström Ice Shelf. These findings offer new insights into the dynamics of ice-ocean interaction in East Antarctica, emphasising the need for further observations to refine our understanding of ocean variability within ice shelf cavities and improve assessments of ice-shelf~~ mass balance and improve future projections.

1 Introduction

The Antarctic Ice Sheet is progressively losing mass, mainly due to the ocean-driven melting of the ice shelves ~~which restrain the outflow of the grounded ice in West Antarctica~~ (Shepherd et al., 2018). Ice shelf thinning reduces the buttressing effect and causes the acceleration of outlet glaciers and ice streams (Dupont and Alley, 2005; Fürst et al., 2016; Reese et al., 2018). ~~However, the East Antarctic Ice Sheet has gained mass over the last decades (Shepherd et al., 2018)~~In contrast to West Antarctica, ice-shelf melting in East Antarctica is relatively low. Understanding the processes that contribute to basal melting is crucial to assessing the impact of a warming ocean on future ice shelf stability.

Jacobs et al. (1992) describes three modes in which ocean circulation affects basal melting. In mode 1 (cold-water cavity), the sea-ice formation in winter leads to dense shelf water with temperatures at the surface freezing point that sink to the seafloor. The dense water flows along the slope of the continental shelf which often deepens toward the grounding line. The dense water drains beneath the ice shelf and delivers heat to the ice-shelf base since the temperature of the dense shelf water exceeds the pressure-melting point of the ice-shelf base. The buoyant plume of fresh meltwater ~~mixed with~~mixes with the dense shelf water ~~called forming~~ Ice Shelf Water (ISW) ~~which~~ rises along the basal slope of the ice shelf ~~and~~. Temperatures may fall below the freezing point ~~when the pressure falls~~if the pressure reduces sufficiently during the upward trajectory. The super-cooled ISW may freeze on the ice-shelf base as marine ice, or it flows out of the cavity, where it forms a semi-consolidated layer below the sea ice, called platelet ice (Hoppmann et al., 2020). In mode 2 (warm-water cavity), Warm Deep Water (WDW) rises above the continental shelf break and flows into the ice shelf cavity, where it can cause high basal melt rates. In mode 3, warm and fresh (and hence less dense) Antarctic ~~surface water~~Surface Water (AASW) in summer is transported beneath the ice shelf front, leading to high basal melt rates (Hattermann et al., 2012; Lindbäck et al., 2019; Stewart et al., 2019).

Observing ~~the ice-ocean interaction~~interactions is challenging due to the ~~hardly accessible~~inaccessibility of the ice shelf-ocean interface. Oceanographic moorings beneath or in front of ice shelves allow the observation of ocean properties that can reveal ~~the~~ water masses and currents and their temporal variability. Due to the logistical effort required for the deployment and the risk of destruction by passing icebergs in case of deployment in front of the shelves, these moorings are rare. However, ice shelf basal melting can be estimated over large areas by satellite remote sensing (~~e.g. Rignot et al., 2013; Adusumilli et al., 2020~~) (e.g. Rignot et al., 2013; Adusumilli et al., 2020; Davison et al., 2023). The analysis of the time-averaged melt rate pattern allows conclusions to be drawn about whether there is rather cold or warm water in the sub-ice-shelf cavity, which could be linked to one of the three modes. High melt rates near the grounding line and near the ice front ~~with~~, accompanied by low melt rates or ~~even~~-refreezing in between ~~indicate~~, indicate the presence of a cold-water cavity ~~with~~ characterized by mode 1 and mode 3 melting. Such a pattern is found, among others, on the largest Antarctic ice shelves: Ross, Ronne, Filchner and Amery (Adusumilli et al., 2020). When high melt rates extend across the entire ice shelf, this indicates warm-water cavities with mode 2 melting as found in the Amundsen and Bellingshausen seas in West Antarctica (Adusumilli et al., 2020).

Numerous small ice shelves exist in Dronning Maud Land (DML) in East Antarctica, whose drainage basins translate into a sea-level equivalent of over 3 m (Rignot et al., 2019) ~~and whose different modes of melting contribute differently to the total mass loss~~. Due to relatively cold, fresh, and hence buoyant continental shelf water masses, the formation of dense High Salinity

Shelf Water (HSSW) is limited here (Thompson et al., 2018), ~~which is. Therefore,~~ the driver of mode-1 melting ~~in other regions of Antarctica (Nicholls, 2018). Instead, is not HSSW, but instead the lighter~~ Eastern Shelf Water (ESW) ~~with temperatures (Vernet et al., 2019). Similar to the HSSW, temperatures of the ESW are also close to the surface freezing point~~ ~~is assumed to be the dominant water mass that interacts with the DML ice shelves (Vernet et al., 2019), while seasonal downwelling of~~
60 ~~AASW beneath shallower parts of the ice shelves (Hattermann et al., 2014; Lauber et al., 2024) and intermittent inflows of~~ ~~WDW. However, in contrast to the HSSW, the ESW is less dense than the WDW that is observed to enter~~ through topographic depressions at the continental shelf break (Lauber et al., 2023) ~~provide. It provides~~ additional heat for melting ~~, while the solar heated and relatively fresh AASW may intrude deep below the ice shelf (Hattermann et al., 2014; Lauber et al., 2024) and affect the cavity circulation on seasonal timescales.~~

65 Basal melt rates from satellite remote sensing revealed in general low melt rates of $0.8 \pm 0.3 \text{ m a}^{-1}$ on average but higher melt rates exceeding ~~15 m a^{-1} at the 5 m a^{-1} in the freely floating areas near the~~ deep grounding lines of the Jelbart, Fimbul and Roi Baudouin ice shelves, where the local melting point temperature is reduced due to the higher pressure (Adusumilli et al., 2020). The outflow of potentially supercooled ISW (Nøst et al., 2011), as well as the accretion of significant amounts of platelet ice beneath coastal land fast ice (Arndt et al., 2020) have also been observed. However, for most of the DML ice shelves, a
70 detailed understanding of the year-round ice shelf cavity circulation, and the interaction of the different modes of melting is still lacking.

For a more detailed investigation of the ice–ocean interaction, especially with a higher temporal resolution, other methods must therefore be used. From oceanic conductivity, temperature and depth (CTD) observations, Hattermann et al. (2012) found a cold-water cavity at Fimbul Ice Shelf with temporal inflow of modified WDW (mWDW, mode 2) and fresh surface water in
75 summer and autumn (mode 3) that increase basal melt rates. A complementary method ~~is given by for studying basal melting is~~ phase-sensitive radio-echo sounding ~~to observe the change. This technique enables the observation of the ice shelf over a certain period and derive the changes over a specified period, allowing the determination of~~ basal melt rates ~~from observations based on the acquired data.~~ Two studies in Dronning Maud Land from Lindbäck et al. (2019) and Sun et al. (2019) used such an autonomous ground-based radar system that allows the determination of the basal melt rate with high temporal
80 resolution. At the Nivl Ice Shelf, Lindbäck et al. (2019) found a seasonal melt pattern 4 km from the ice shelf front with highest melt rates of up to 5.6 m a^{-1} in summer (0.8 m a^{-1} annual average), indicating that warm surface water was pushed in the ice shelf cavity (mode 3). At 35 km from the ice shelf front, no seasonality was observed, although the highest melt rate occurred in winter. Sun et al. (2019) observed the basal melt rate near the grounding line of Roi Baudouin Ice Shelf and found nearly no melting in winter and highest melt rates of up to 10 m a^{-1} in summer ~~which they linked to topographic ocean waves based on~~
85 ~~oceanic observations. No oceanic measurements were available to determine whether WDW could reach this location, but the moderate melt rates indicate primarily a mode-1 driven melting near the grounding line, while the analysis of Sun et al. (2019) hypothesised that the melt rate variability was caused by seasonally enhanced propagation of tidal oscillations into the ice shelf cavity, which increase the turbulent heat transfer near the ice base.~~ Accordingly, the three ice shelves all show increased melt rates in summer, partly on the ice shelf front (Fimbul and Nivl), but also near the grounding line (Roi Baudouin), albeit due to

90 different processes. This raises the question of temporal melt rate variability and the responsible processes at other ice shelves in DML.

In this study, we investigate the ice–ocean interaction at the Ekström Ice Shelf based on observations of basal melt rates from a 4-year-long time-series with an autonomous phase-sensitive radar and a time-series of sea-ice growth in front of the Ekström Ice Shelf. To further study the relation between sea-ice growth and melt rate, we used an idealized plume model to gain further insights into the processes leading to the observed seasonality of basal melting.

2 Study area

The Ekström Ice Shelf [ice shelf](#) is located in the western Dronning Maud Land, East Antarctica, and covers an area of $\sim 6800\text{ km}^2$ (Neckel et al., 2012). The two ice rises Søråsen and Halvfarryggen confine the Ekström Ice Shelf and partly separate it from the two smaller ice shelves Quar and Atka (Fig. 1). The ice thickness varies from 1000 m at the grounding line to 250 m at the calving front, where the ice velocity is roughly 220 m a^{-1} (Mouginot et al., 2019a, b; Morlighem et al., 2020; Morlighem, 2022). The bathymetry below the ice shelf consists of an inland-sloping trough that reaches a maximum depth of 1100 m below sea level near the grounding line (Eisermann et al., 2020; Smith et al., 2020). The [minimum seafloor-most shallowest point of the seafloor with a](#) depth of 320 m is located on the continental shelf break which is sufficiently shallow to prevent the inflow of WDW that circulates along the shelf break into the cavity below Ekström Ice Shelf (Eisermann et al., 2020). The water column thickness in the cavity below the Ekström Ice Shelf ranges from 220 m at the front to $> 400\text{ m}$ for larger parts in the centre of the trough (Eisermann et al., 2020; Smith et al., 2020). Observations from sub-ice-shelf [conductivity-temperature-depth \(CTD\) profiles showed that most of CTD profiles taken within the Sub-EIS-Obs project 30 km from the ice front showed that](#) the cavity below Ekström Ice Shelf is filled with relatively cold ESW (in situ temperatures of -1.9°C , practical salinity of 34.4), while a buoyant plume of ISW (colder, less saline) is present near the ice-shelf base (Smith et al., 2020). The [Warm Deep Water that is suppressed below the WDW potentially provides ocean heat for ice shelf melting. However, the WDW is suppressed by the Antarctic Slope Front to depths around 500 m \(Hattermann, 2018\), which is generally deeper than the](#) continental shelf break in this region, [is not expected to enter below the ice shelf \(Smith et al., 2020\). However, observations in](#). There is evidence that warmer inflows are restricted to topographic depressions (Lauber et al., 2024), which do not exist at Ekström Ice Shelf (Smith et al., 2020). Instead, observations along the front of the [ice shelf Dronning Maud Land ice shelves](#) (Nøst et al., 2011) and below the neighbouring [Fimbulisen-Fimbul](#) Ice Shelf (Hattermann et al., 2012; Lauber et al., 2024) indicate that remnants of fresher, solar-heated AASW may enter several hundred meters below the ice [shelves along the DML coast, draft in this region](#).

Estimated basal melt rates of the Ekström Ice Shelf from satellite remote sensing methods are relatively low. Adusumilli et al. (2020) found an average basal melt rate of $1.0 \pm 1.2\text{ m a}^{-1}$ (period [1994–2010](#) – 2018) over the entire ice shelf and a maximum melt rate exceeding 3 m a^{-1} near the grounding line as well as near the German station Neumayer III. [Slightly lower melt \(Fig. 1c\). Melt](#) rates of $< 1.1\text{ m a}^{-1}$ were found by Neckel et al. (2012) for the period between 1996 and 2006.

125 In this study, we investigate the ice–ocean interaction at the Ekström Ice Shelf based on observations of basal melt rates from a 4-year-long time series acquired using an autonomous phase-sensitive radar. We investigated current sea-ice growth rates and previous measurements of ocean temperature and salinity to explain the observed melt rate seasonality. Additionally, we employed an idealized plume model to gain deeper insights into the processes control the magnitude basal melting at the ApRES site.

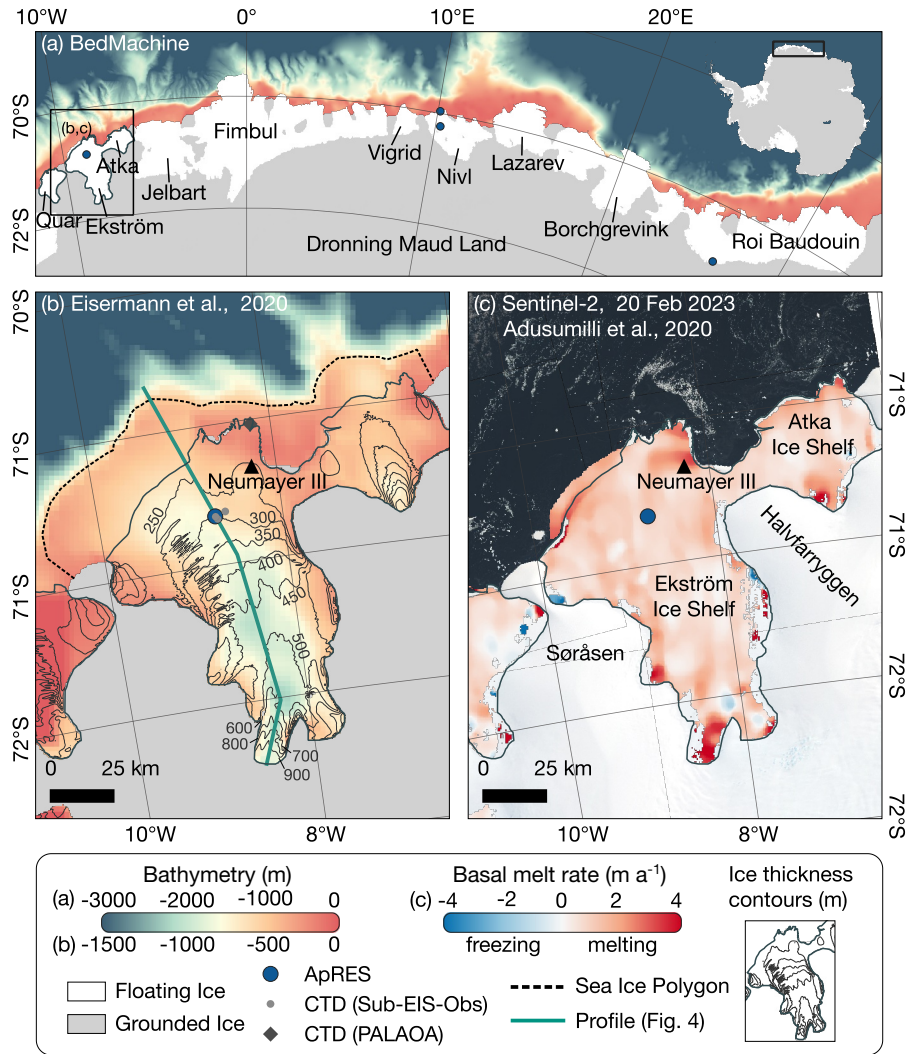


Figure 1. (a) Overview of Dronning Maud Land's ice shelves with the bathymetry in front of ice shelves from BedMachine [V3](#) (Morlighem et al., 2020; Morlighem, 2022). The blue dots show the location of the ApRES measurements at Ekström Ice Shelf (this study), Nivl Ice Shelf (Lindbäck et al., 2019) and Roi Baudouin Ice Shelf (Sun et al., 2019). (b) Bathymetry below and in front of Ekström Ice Shelf from Eisermann et al. (2020) [with ice thickness contours from BedMachine](#). The black triangle marks the location of the German station Neumayer III. The green line represents the location of the profile shown in Fig. 4. The dashed line marks the polygon within which the sea-ice growth has been estimated. [The grey dots show the CTD locations from the Sub-EIS-Obs project \(Smith et al., 2020\) and the rhombus shows the PALAOA site.](#) (c) Copernicus Sentinel-2 image from 20 February 2023, retrieved from the Copernicus SciHub on 31 July ~~2023~~ [2023](#), [overlain by satellite-derived basal melt rates from Adusumilli et al. \(2020\) for the period 2010 to 2018.](#)

2 Data and methods

2.1 Basal melt rates

To measure basal melt rates, we operated an autonomous phase-sensitive radio-echo sounder (ApRES, Brennan et al., 2014; Nicholls et al., 2015) on the Ekström Ice Shelf 25 km upstream of the ice shelf front (Fig. 1b; location at 70.82 °S, 8.73 °W on 02 April 2020 termed ~~MIMO-EIS-8~~MIMO-EIS8). An ApRES is a ground-penetrating frequency-modulated continuous-wave (FMCW) radar that transmits chirps throughout 1 s while it increases the frequency of the electromagnetic wave from 200 to 400 MHz. ~~The received signal is mixed with a replica of the transmitted signal to obtain a de-ramped signal that is sampled with 40 kHz~~ (Nicholls et al., 2015).

The ApRES and two skeleton slot antennas were placed below the surface for protection from wind and snowdrifts. It performed hourly measurements consisting of 20 chirps between April 2020 and November 2023. Short gaps of two to three days exist in the recorded time series (09–10 January 2021, 25–26 November 2021, 31 December 2022 – 02 January 2023), at which the device was dismounted and used for other measurements, and a longer gap from 1 April to 16 May 2021.

The signal processing we applied to the raw data follows the previous work by Brennan et al. (2014), Nicholls et al. (2015) and Stewart et al. (2019). First, we rejected the first chirp of each measurement and stacked the remaining chirps to get a better signal-to-noise ratio. Next, to obtain an amplitude and phase profile as a function of two-way travel time from the stacked ~~de-ramped~~ signal, we applied a ~~spectral analysis~~. ~~For further processing, an unambiguously determined range from the phase is necessary, which is achieved when the phase variation over a range bin is $< 2\pi$. Thus, we artificially increased the resolution using a zero-padding method with a pad-factor of 8 before the spectral analysis (Brennan et al., 2014). The outcome of the~~ spectral analysis is an amplitude and a phase profile as a function of two-way travel time. Fourier transformation. Finally, we obtained a range profile by converting the two-way travel time into a range using a propagation velocity of 168914 km s^{-1} according to the ordinary relative permittivity of 3.15. ~~The range resolution~~ (Fujita et al., 2000). The sample spacing due to zero-padding with a pad-factor of 8 is 0.053 m, while the resolution of the phase is about 1° , corresponding to 1 mm in range.

The determination of the basal melt rate from an ApRES time series is based on the analysis of the ice thickness change and the decomposing of the processes contributing to it (Nicholls et al., 2015). ~~Thus, the~~ The change in ice thickness ΔH within the time interval Δt is the sum of the thickness changes caused by firn compaction ΔH_f , vertical strain ΔH_ϵ and basal melting ΔH_b :

$$\frac{\Delta H}{\Delta t} = \frac{\Delta H_f}{\Delta t} + \frac{\Delta H_\epsilon}{\Delta t} + \frac{\Delta H_b}{\Delta t}. \quad (1)$$

~~Since the ApRES was located below the surface, the measured ice thickness was not affected by snow accumulation.~~ Solving Equation (1) for the melt rate a_b gives:

$$a_b = -\frac{\Delta H_b}{\Delta t} = -\left(\frac{\Delta H}{\Delta t} - \frac{\Delta H_f}{\Delta t} - \frac{\Delta H_\epsilon}{\Delta t}\right), \quad (2)$$

where positive a_b represents basal melting.

For the melt-rate analysis, we follow the method described by Zeising and Humbert (2021) and Humbert et al. (2022), which are based on the previous work by Nicholls et al. (2015) and Stewart et al. (2019). The ApRES time series allows the
160 ~~high-precision~~ determination of ΔH , ΔH_f , and ΔH_ε with millimetre accuracy. To this end, we divided the range profile into 6m long segments with 3m overlap below a depth of 10m. Around the basal reflection, identified by a strong increase in amplitude, we used a larger segment of 10m size (-9m to $+1\text{m}$ with respect to the basal reflection). For the basal segment, we derived displacements from complex-valued cross-correlation of the phase of all pairwise time-consecutive measurements. For ~~the internal segments, we calculated the complex~~ each internal segment, we obtained the displacement time-series from
165 a cross-correlation of the complex signal of the first measurement (t_1) with ~~the same segment of~~ each repeated measurement (t_i). We used the lag of the ~~highest amplitude correlation coefficient~~ correlation coefficient with the highest amplitude to find the correct phase-shift minimum, the sum of which gives the vertical displacement ~~of this segment since the time of the first measurement. During the three interruptions in the ApRES time series in January 2021, November 2021, and December 2022/January 2023, the ApRES and the antennas were locally repositioned, a few metres laterally away from the previous~~
170 location and placed again close to the surface to avoid burial over time. Therefore, we redefined t_1 as the first measurement after these interruptions.

The change in ice thickness and the processes contributing to it can now be determined based on the vertical displacements. The cumulative change in ice thickness results from the time series of the displacement of the basal segment. The contributions of firn compaction and vertical strain must be calculated based on the vertical displacement u_z of various englacial segments.
175 The vertical strain ε_{zz} is defined as the vertical derivative of the vertical displacement u_z :

$$\varepsilon_{zz} = \frac{\partial u_z}{\partial z}. \quad (3)$$

We calculated the derivative of the vertical displacements based on a linear regression analysis assuming constant strain over depth as expected for the shallow-shelf flow regime of ice shelves. Here, we considered only those segments below the range of 100m and ~~20m-30m~~ above the basal return to avoid firn compaction and the basal return to influence the strain rate analysis.
180 The linear regression analysis gives the cumulative displacement

$$u_z(z) = \varepsilon_{zz}z + \Delta H_f, \quad (4)$$

where the mean firn compaction ΔH_f is the intercept at the surface. The strain contribution to the change in ice thickness ΔH_ε is then the integral over the ice thickness H :

$$\Delta H_\varepsilon = \int_0^H \varepsilon_{zz} dz. \quad (5)$$

185 Appendix A shows the analysis of the basal melt rate for one example from ~~2020-~~ 2020 and the cumulative time series.

~~During the three interruptions in the ApRES time series in January 2021, November 2021, and December 2022/January 2023, the ApRES was locally repositioned, a few metres laterally away from the previous location and placed again close to the surface to avoid burial over time. Therefore, we redefined t_1 as the first measurement after these interruptions. We obtained~~

the time series of cumulative melt by subtracting the contributions of firm compaction and strain thinning from the cumulative ice thickness change. To determine the melt rate at a certain point in time, we smoothed the data cumulative melt time-series by applying a 36 h moving average-butterworth filter, and calculated the basal melt rates based on the gradient in a 7 d moving window -which gives the 7 d average melt rate.

To represent the variability of the melt rate on sub-weekly time scales, we also-calculated-the-7-d-standard-deviation-of-the-basal-melt-rates-based-on-additionally calculated the melt rate from the gradient in a 1 d moving window and calculated the 7 d standard deviation. The uncertainty of the basal-melt-rate-vertical displacements is based on the uncertainty-of-the-strain-estimation-and-the standard error of the radar phase which is in the order of sub-millimetres. The largest uncertainty originates from the strain analysis and its extrapolation to the ice base. The ApRES measurements at Ekström Ice Shelf allow the determination of the ice-thickness-change-depth profile of displacements from near the surface to about 90% of the ice thickness. The only assumption we made here is that the strain in the lowest 10% of the ice thickness is the same as above. Since the measurement location was on a freely floating part of an ice shelf, the vertical displacements are sufficiently represented by a constant strain. Thus, it is accurate to assume that the strain remains constant in the remaining 10% of the ice thickness. On average the uncertainty of the basal melt rate amounts to $0.02 \text{ m a}^{-1} \sim 0.02 \text{ m a}^{-1}$.

2.2 Sea-ice growth and concentration

To further-investigate the relation between sea-ice formation and an increase in melt rate, we determined sea-ice growth and concentration over the continental shelf in front of the Ekström and Atka ice shelves (Fig. 1b-e). Sea-ice growth was estimated using the simple model of Pease (1987), which relates the sea-ice growth to the heat loss at the ice-free ocean surface in a polynya. We used surface wind speed and air temperature from JRA-55 reanalysis (Kobayashi et al., 2015) to calculate heat loss over the ice-free ocean. The sea-ice concentration and open water area was-were derived from AMSR-2 passive microwave data twice daily on a 3.125 km grid (Beitsch et al., 2014). Time series of sea-ice growth and concentration were derived within a fixed polygon area (Fig. 1eb) for the same period as the ApRES measurements.

This study employs a heat budget method similar to previous approaches (e.g. Ohshima et al., 2016; Tamura et al., 2016) but with differences in methodology and satellite data. While this method likely overestimates sea-ice production due to simplifications such as neglecting ocean heat flux and solar radiation, it effectively captures temporal variability and seasonality. Comparisons with other resolutions and reanalysis forcing reveal consistent patterns in variability but differences in magnitude by up to a factor of two.

2.3 Ocean temperature, salinity and density

No observations of the oceanographic properties near the ApRES location have been made, except for a snapshot from the Sub-EIS-Obs ice shelf cavity CTD profiles taken in January 2019 (Smith et al., 2020). To assess the seasonal evolution of water masses within the cavity, we analysed hydrographic data from a CTD that was installed in December 2005 as part of the „PerenniAL Acoustic Observatory in the Antarctic Ocean“ (PALAOA; Boebel et al., 2006) near the front of the Ekström Ice Shelf (Fig. 1b). The CTD was deployed by means of hot-water drilling through the approximately 100 m thick ice shelf. At the

time of the deployment, the ice shelf cavity had a height of approximately 160 m (sea-floor to ice shelf base), and the CTD was initially located 70 m beneath the ice shelf base. Due to melting and advancement of the ice shelf, these initial measurements underwent slight variations over time. PALAOA yielded an almost eight-year long record of pressure, temperature and salinity from January 2006 to May 2014. The data record is interrupted for most of 2006, due to technical problems of the CTD's cable. It was repaired in January 2007, after which records were uninterrupted until the end of the time series in May 2014. The frozen-in CTD cable prevented the retrieval of the CTD and thus its post-deployment calibration. The CTD was operated in stand-alone mode, with the sensor automatically activated every 30 minutes (Klinck, 2008). After 09 January 2012, the sampling rate was increased to once every 10 minutes.

In-situ measurements from the Sub-EIS-Obs and PALAOA CTDs were converted to conservative temperature and absolute salinity (referred to temperature and salinity in the following for simplicity) using the TEOS-10 Gibbs thermodynamic potential for seawater (Feistel, 2008), which was also used to derive potential density from the observations. To compare the temperature, salinity, and density time series with the later observed melt rates, sea-ice growth and concentration, we calculated the seasonality for all products. We computed the weekly median, along with the 25% and 75% quartiles.

The PALAOA CTD is located approximately 40 km northeast of the ApRES location. Tidally modulated water flow velocities of $0.4\text{--}0.5\text{ ms}^{-1}$ were inferred at this site (Ivanciu, 2014), with evidence of intense mixing below the northeastern part of the ice shelf (Smith et al., 2020). Tidal model simulations (Padman et al., 2008) that align with observations at the Ekström Ice Shelf (Fromm et al., 2023) predict spring tide velocities of $0.2\text{--}0.3\text{ ms}^{-1}$ in the vicinity of the ApRES location. Given that the tidal energy is concentrated at the diurnal and semi-diurnal frequencies, this indicates tidal excursions in the order of 10 km d^{-1} , suggesting that water masses from the PALAOA site may influence the ApRES location at time scales of days.

On horizontal scales that exceed a few tidal excursions, the diffusive nature of such tidal transports is expected to become less important and, the coherent background flow becomes more relevant. Inside ice shelf cavities, buoyancy forces resulting from water mass transformation due to basal melting may induce a cavity-wide overturning circulation (Determann and Gerdes, 1994). With typical flow velocities ranging from 0.1 to 0.2 ms^{-1} , the advection time scale between the ice front and the approximately 140 km distant grounding line of the Ekström Ice Shelf is in the order of 8 to 16 d.

2.4 Plume model

To investigate the impact of varying ocean properties on basal melt rates beneath the Ekström Ice Shelf, we employed the idealised ice-shelf plume model of Jenkins (1991), which has previously been used to describe the larger-scale circulation beneath the ice shelves. Assuming that circulation and mixing beneath the ice shelf are primarily driven by thermohaline processes, the model describes a buoyant meltwater-laden plume that rises along the sloping ice base. The plume grows/expands through the entrainment of ambient ocean waters, and the heat brought into the plume, as a result, it drives melting at the ice-ocean interface. Conceptually, the plume gains buoyancy because the meltwater input reduces its density compared to the salinity stratified ambient ocean, while melt rates are parameterised as a function of the plume velocity and the difference between the plume temperature and local melting point based on a shear-driven turbulent heat flux formulation. Omitting Coriolis' effect, the system is parameterised along a one-dimensional flowline, described by four ordinary differential equations

with prognostic variables for the plume thickness D , speed U , temperature T , and salinity S with details of the formulation being given in Jenkins (1991). The model is steady in time, uniform in the across-flow direction, and depth-integrated, leaving the along-track distance X as the only independent variable (Jenkins, 2011).

Given the confined configuration of the Ekström Ice Shelf along a quasi-one-dimensional flowline geometry, we assume
260 that the idealised model adequately captures the basic features of the cavity circulation ~~of beneath~~ this ice shelf, ~~while tides superimpose to further modulate the melt rates~~. The limitations of this approach being addressed in the discussion. The plume dynamics are ~~then~~ largely governed by the slope of the ice base and the density difference between the plume and the ambient ocean properties. The former is prescribed based on BedMachine (Fig. 4a; Morlighem et al., 2020; Morlighem, 2022), ~~which includes and~~ a seismic profile running from the grounding line to the ice front of the Ekström Ice Shelf (Smith et al., 2020).
265 ~~We performed two simulations with different vertical profiles of ambient temperature and salinity to~~ To investigate the impact of ~~seasonally~~ varying water mass properties on the cavity circulation and melt rates. ~~In winter, we performed simulations employing different vertical profiles of ambient temperature and salinity. During late winter and spring, convection after sea-ice formation produces~~ generates a well-mixed body of Winter Water (WW) that occupies the continental shelf (Nøst et al., 2011). ~~We mimic these conditions with profiles of temperature and salinity that resemble the observed ESW properties inside the cavity (Smith et al., 2020), with a slight linear increase from -1.88°C to -1.8°C and from 34.30 to 34.34 of the in situ temperature and practical salinity from the surface to 900 m depth, assuring the stability~~ In late summer and autumn, stratified AASW enters the cavity, increasing the temperature and reducing the salinity (and consequently the density) in the upper portion of the water column. ~~For summer conditions, we adjust the linear profiles to mimic the presence of stratified AASW inside the cavity, by increasing the surface temperature to -1.7°C and decreasing the surface salinity to 33.80, to values which~~
270 ~~are representative of AASW below the ice shelf (Hattermann et al., 2012). Two profiles representing the seasonal extremes were constructed using a constant water mass end-member properties that have been observed with a bottom temperature of -1.85°C , salinity of $34.4 \text{ mathrm{gkg}^{-1}}$, which resembles the deep part of the Sub-EIS-Obs CTD profiles that is assumed to be approximately representative for the year-round conditions in the lower part of the cavity. This end member was linearly interpolated to the observed water masses at 150 m (constant to the surface) derived from the PALAOA CTD time series,~~
280 representing a late winter/autumn (Sept/Oct) WW extreme and a late summer/spring (Feb/Mar) AASW extreme. These values align with the observed seasonality in the open ocean in front of the DML ice shelves (Nøst et al., 2011) and below the neighbouring Fimbulisen Fimbul Ice Shelf (Hattermann et al., 2012). The potential density-depth profiles show that both profiles converge to the same ESW properties at depth, but with an enhanced stratification inside the cavity during the summer ease.

3.1 Basal-Observed basal melt rates

The time series from 2020 to 2023 reveals a low melt rate averaging $0.45 \pm 0.30 \text{ m a}^{-1}$ (mean \pm standard deviation) with a seasonal melt pattern (Tab. 1, FigFigs. 2, 3a). Basal melt rates are reduced to a minimum of $0.25 \pm 0.14 \text{ m a}^{-1}$ $0.24 \pm 0.15 \text{ m a}^{-1}$ in summer (December, January, February; DJF; 2020–2023 average), they increase slightly to $\sim 0.4 \text{ m a}^{-1}$ in autumn (March, 290 April, May; MAM) and during winter (June, July, August; JJA), and reach their maximum in spring (September, October, November; SON) with an average of $0.70 \pm 0.38 \text{ m a}^{-1}$ $0.71 \pm 0.38 \text{ m a}^{-1}$ (Tab. 1, Fig. 2). From-

A variability on monthly time scales is most pronounced when the largest absolute melt rates occur in winter and spring. During this time of the year, the difference between the minimum and maximum melt rate within a 28-d period exceeds 1 m a^{-1} . In summer and autumn, the variability within the same time window is less than 0.3 m a^{-1} . The largest melt events 295 that are observed from July/August until October/November, melt-events-occur-that-last-occurred with intervals ranging from two to four weeks, with an average duration of 21 d. At the beginning of these melt events, the melt rate increased abruptly to $\sim 1 \text{ m a}^{-1}$ 1 m a^{-1} and more. The strongest melt event occurred in September 2020, when the melt rate increased from 0.21 to 1.81 m a^{-1} (7-day average). After two weeks, the melt rate decreased again to 0.54 m a^{-1} , before the next melt event occurred.

The seasonality was strongest in 2020 with on average 5 times higher melt rates in spring than in summer 2020/21 (Tab. 1). 300 In 2021 and 2022, we see a weaker seasonality with only 2 times higher melt rates in spring compared to summer. The trend of weaker seasonality from 2020 and 2022 is caused by lower melt rates in spring that decreased from $1.08 \pm 0.31 \text{ m a}^{-1}$ in 2020 to $0.52 \pm 0.31 \text{ m a}^{-1}$ in 2022.

Table 1. Mean value and standard deviation of basal melt rate separated for austral autumn (MAM), winter (JJA), spring (SON), and summer (DJF). The annual mean represents the March–February average value.

Basal melt rate (m a^{-1})						
Year	2020/21*	2021/22	2022/23	2023/24**	Average	
Autumn	0.25 \pm 0.08 <u>0.25 \pm 0.09</u>	0.34 \pm 0.08 <u>0.33 \pm 0.11</u>	0.47 \pm 0.12 <u>0.46 \pm 0.12</u>	0.40 \pm 0.14 <u>0.40 \pm 0.15</u>	0.38 \pm 0.13 <u>0.37 \pm 0.14</u>	
Winter	0.32 \pm 0.19 <u>0.33 \pm 0.19</u>	0.53 \pm 0.36 <u>0.54 \pm 0.35</u>	0.46 \pm 0.15 <u>0.44 \pm 0.21</u>	0.37 \pm 0.21 <u>0.37 \pm 0.20</u>	0.42 \pm 0.25 <u>0.42 \pm 0.24</u>	
Spring	1.08 \pm 0.31 <u>1.08 \pm 0.32</u>	0.59 \pm 0.30 <u>0.59 \pm 0.28</u>	0.52 \pm 0.31 <u>0.56 \pm 0.32</u>	0.55 \pm 0.25 <u>0.56 \pm 0.28</u>	0.70 \pm 0.38 <u>0.71 \pm 0.37</u>	
Summer	0.23 \pm 0.13 <u>0.22 \pm 0.13</u>	0.27 \pm 0.16 <u>0.25 \pm 0.17</u>	0.24 \pm 0.13 <u>0.26 \pm 0.13</u>	–	0.25 \pm 0.14 <u>0.24 \pm 0.15</u>	
Annual	0.50 \pm 0.42* <u>0.47 \pm 0.42*</u>	0.43 \pm 0.28	0.42 \pm 0.22 <u>0.43 \pm 0.22</u>	0.43 \pm 0.22** <u>0.44 \pm 0.22**</u>	0.45 \pm 0.30	

*In 2020/21, the measurements cover only the months of April 2020 to February 2021.

**In 2023/24, the measurements cover only the months of March 2023 to October 2023.

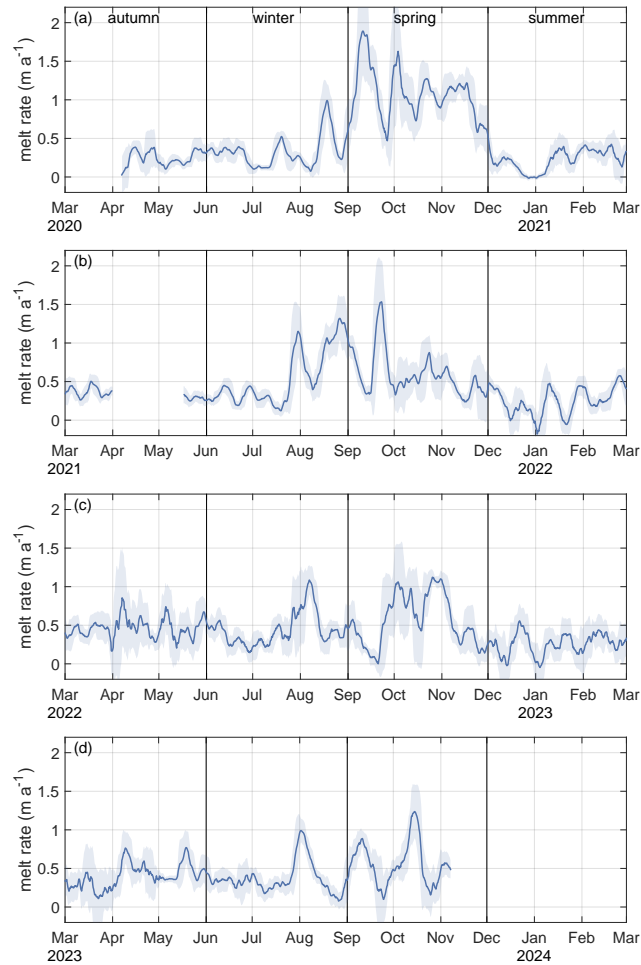


Figure 2. Time series of 7-day average basal melt rate from autumn 2020 to spring 2023 (blue line) with sub-weekly variability represented by the standard deviation (shaded area).

3.2 ~~Sea-ice~~ Seasonal sea-ice growth and ocean properties

A comparison of the melt rate and The sea-ice growth time-series with their average values for the individual seasons shows a similar pattern (Figs. ??, B1). Sea-ice growth in front of the Ekström Ice Shelf exhibits a distinct seasonal pattern, with the lowest growth rates occurring during the summer months and high rates in autumn and melt rates have a minimum in summer, followed by an increase in autumn and winter and a maximum in spring. Only in the spring of 2023 was the spring (Fig. 3b). In late summer and beginning of autumn, when sea-ice growth lower than in the autumn and winter of the same year. Despite the reduced concentration is at its lowest, the growth rate quickly increases, exceeding 2 m a^{-1} and leading to a rapid increase in sea ice concentration. When the sea-ice growth for spring, the melt rate appears to have continued to increase concentration reached a coverage of 90% in April and May, the growth rate initially declines, but increases again towards the end of winter. In

October and November, sea ice growth abruptly declines, reaching values close to zero by December and January. This decline in growth rate is followed by a decrease in sea-ice concentration with a delay of about 2 months. ~~Since the basal-melt rate time-series ended at the beginning of November and thus the observation does not cover the whole period, this value should be interpreted with caution.~~

The full time-series record of sea-ice growth and concentration is shown in Appendix Figures B1 and B2. Similar to the melt rate time series, the high-resolution time series of the sea-ice growth (Fig. B1) ~~shows events of higher sea-ice growth with a comparable duration~~ shows an oscillatory variability on weekly time scales that is comparable to the observed basal-melt events. Although some of the melt events can be connected to a previous increase in sea-ice growth, other events in sea-ice growth occurred in autumn without an increase in the melt rate being measured. ~~Additionally, A cross-correlation analysis between sea-ice formation and melt rate, calculated for each season, revealed predominantly moderate (0.5 — 0.75) or low (0.25 — 0.5) correlation values for various lags of up to 26 d. Particularly,~~ there is no apparent agreement in 2022 and 2023 between the sea-ice growth and the melt rate (Fig. B1e, d). ~~Generally, the time scale of this variability resembles the fortnightly spring-neap cycle, on which tidal currents strengthen and weaken in Atka-bay (Smith et al., 2009). It is easy to imagine that the varying intensity of the tides modulate the efficiency of the sea ice formation in coastal polynyas, as well as the exchange of water masses on the continental shelf with the ice shelf cavity, explaining the characteristic time scale of the observed variability.~~

3.3 Plume model

The seasonalities of ocean temperature and salinity as observed from PALAOA CTD measurements 70 m beneath the ice base near the ice shelf front are shown in Figure 3c. The temperature exhibits a peak in February at -1.78°C , followed by a rapid decline in March and April (Fig. 3c). During winter and spring, the ocean temperatures reached a minimum of -1.90°C and rose again in summer. The salinity reached its lowest value of 33.8 g kg^{-1} in February and March (Fig. 3c). Subsequently, the salinity continuously increased until September and reached its maximum value of 34.5 g kg^{-1} between September and November. This maximum was followed by a slight decrease and a subsequent sharp decline in February. The potential density derived from the combination of temperature and salinity exhibits a similar pattern (Fig. 3d). The highest densities, which exceed the cavity mean, coincide with the enhanced melt rates observed between August and November. Outside of this period, the densities occasionally experience significant reductions, as shown by the lower quartile envelope. The full time-series record of PALAOA temperature, salinity and density is shown in Appendix Figure B3.

~~The simulation results show no significant differences in the plume temperature, but differences in the plume velocity.~~

3.3 Plume model simulations and ISW buoyancy effects on melt rates

The results of the plume model simulations show how the seasonality of varying water masses inside the ice shelf cavity may affect the melt rates below at the Ekström Ice Shelf (Fig. 4). For the seasonal extremes representing autumn and spring, when densest WW is observed at the PALAOA CTD (Fig. 4b,c), a coherent plume ascends from the grounding line to the ice shelf front. This is evident from the smooth evolution of the plume temperature and velocities (Fig. 4d,e), which values exceeding

Three-month averages of sea-ice growth (black line) above continental shelf (dashed line in Figs. 1b,c) and basal melt rate from ApRES location (blue line) separated for austral autumn (March, April, May; MAM), winter (June, July, August; JJA), spring (September, October, November; SON), and summer (December, January, February; DJF) from 2020 to 2023. The markers show the mean rate for autumn/winter/spring/summer and the shaded areas show the standard deviation. In autumn 2020, the melt rate time series only covers the months of April and May and in spring 2023 only the months of September to early November. The non-average sea-ice growth is shown in

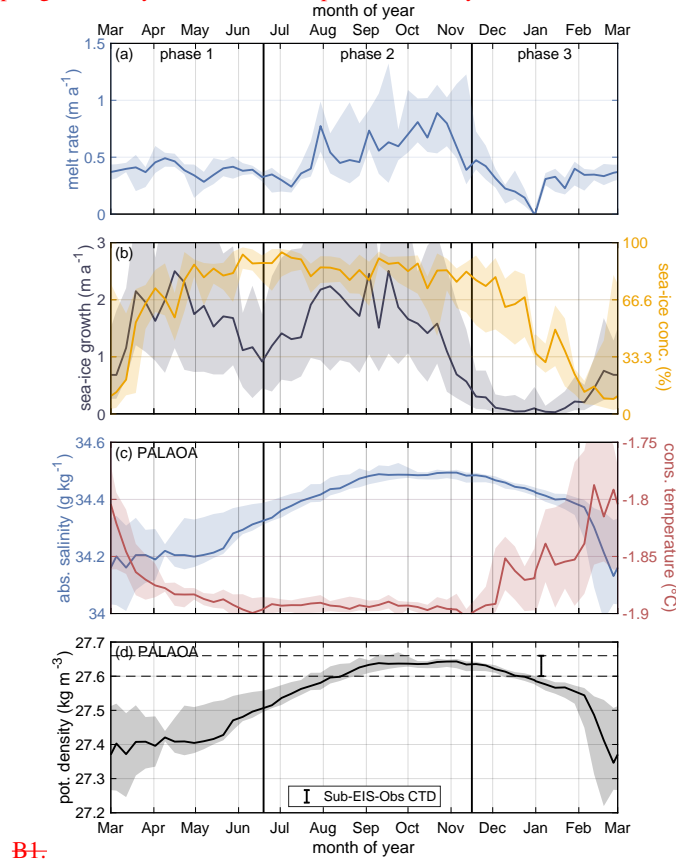


Figure 3. Seasonality of basal melt rate, sea-ice growth and concentration, and ocean temperature, salinity and density from autumn to summer. The solid line shows the multi-year average and the shaded area show the 25% to 75% quartile range.

0.10 ms⁻¹ along the entire flow path. In this case, the simulated melt rates at the ApRES location are 1.0 m a⁻¹ (Fig. 4f). In the winter simulation, the plume velocity is on average contrast, when AASW is present inside the cavity in late summer and autumn, discontinuities in the plume temperature (e.g., approximately 19 km and 102 km along the flow path) indicate that the ascending ISW detached and a new plume is initiated locally. The reduced density difference between the ascending ISW and the ambient water results in a reduced plume velocity, averaging 0.06 ms⁻¹ (or 165% above 57%) lower than that of the summer simulation. The increased simulation representing the WW case. The decreased flow velocity of the ISW plume enhances reduces the turbulent heat exchange at the ice-ocean interface, resulting in an increased melt rate of an average of 1.4 m a⁻¹. The difference in melt rate is largest between 15 and 30 km from the grounding line where the simulated melt

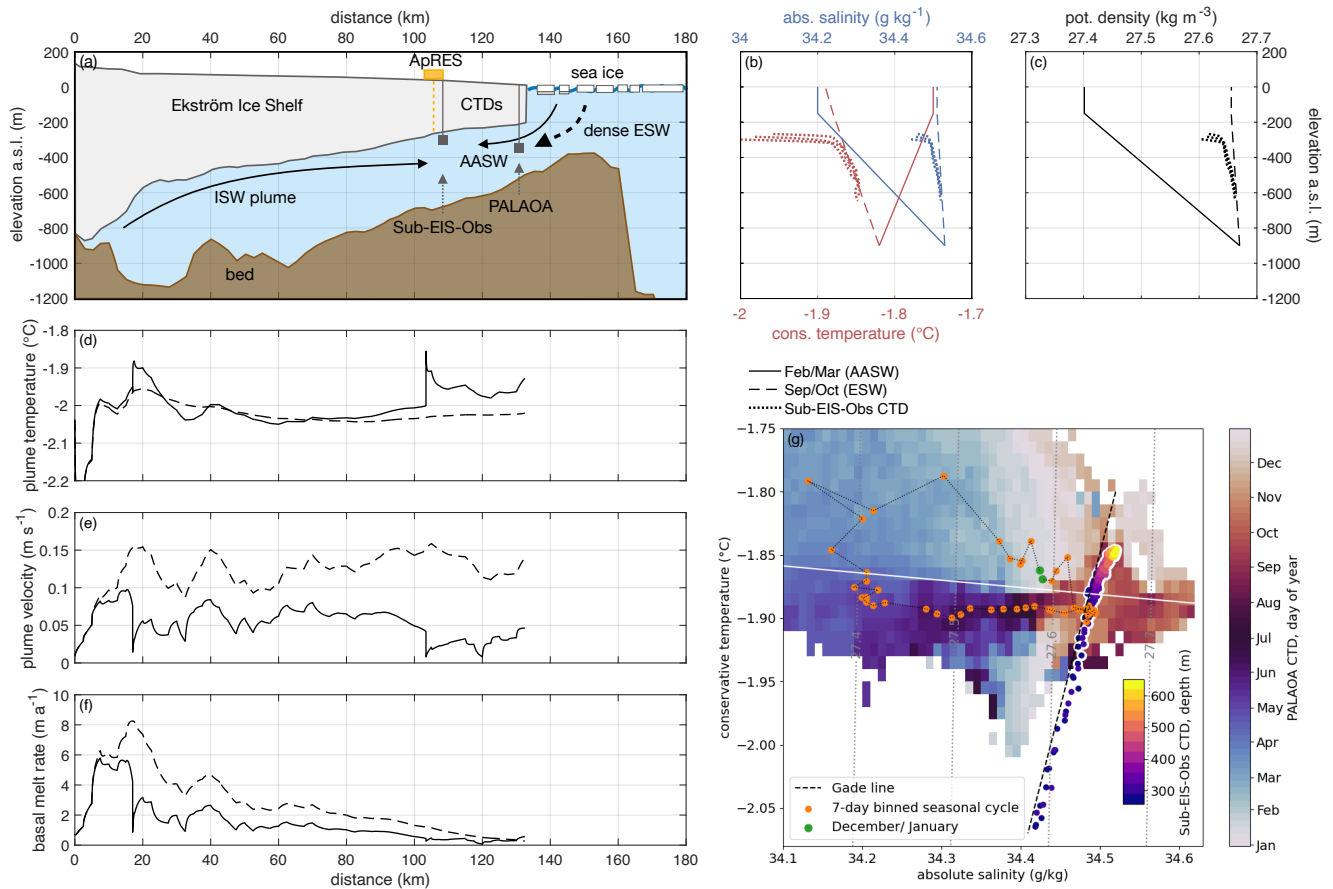


Figure 4. Simulation of ISW-plume in the cavity of Ekström ice shelf. (a) Sketch of ice shelf geometry (Morlighem et al., 2020; Morlighem, 2022), bathymetry (Smith et al., 2020) and ocean currents for ISW plume, AASW in summer and ESW in winter. The location of this transect is shown in Figure 1b,e. (b) Salinity–depth–Absolute salinity–depth (dashed–lines–blue) and conservative temperature–depth (red) profiles for summer (solid lines) and winter (dashed line) profiles conditions, and utilized for the plume simulation. Sub-EIS-Obs CTD observations from January 2019 are shown by dotted lines (Smith et al., 2020). (c) potential–Potential density–depth profiles for the given summer (AASW) and winter (ESW) conditions and from Sub-EIS-Obs CTD observations. Simulation results for (d) Plume–plume temperature and, (e) plume velocity, as well as and (f) basal melt rate for summer and winter conditions in–within the cavity are presented. (g) Conservative temperature–absolute salinity diagram of CTD measurements from PALAOA (2006–2014) and Sub-EIS-Obs (January 2019). The dotted lines show the resulting density contours. The color of PALAOA data (background) represents the seasonality as day of year. The orange dots show the 7 d binned seasonal cycle, with the green dots representing the first week of January and the last week of December. The color of Sub-EIS-Obs measurements represents the depth below sea level.

rate is 3 to 5 m a^{-1} above the summer melt rate. At leading to a reduced melt rate along the entire flow path and to reduced melt rates of 0.3 m a^{-1} at the ApRES location, the increase in melt rate is still 0.5 m a^{-1} and thus of similar size to our observations despite the local temperature increase.

4 Discussion

The results of the simulation allow the following interpretation for summer and winter conditions: In summer, The temperature–salinity diagram (Fig. 4g) compares the seasonal hydrography from the PALAOA site with the Sub-EIS-Obs CTD profiles, illustrating the relative density differences of different water masses inside the cavity. Water that interacts with the low-density contrast between the rising ISW and the AASW that is pushed below the ice shelf weakens the meltwater plume by reducing its velocity, or even lead to the detachment of inside the cavity will undergo a transformation along the meltwater mixing line (Gade, 1979) with a constant ratio of cooling and freshening as it melts the glacier ice. The end-member temperature of this transformation is determined by the plume from the ice base. Because the meltwater plume velocity is reduced and the additional heat provided by AASW is small at the ApRES site, melt rates are low in summer. In winter, sea-ice formation in front of the Ekström Ice Shelf erodes the stratification on the continental shelf and replaces the AASW pressure-dependent local melting point, which is approximately -2.05°C at the depth of the ice base at the ApRES site.

For water masses with temperatures close to the surface freezing point, as observed in the deeper part of the Sub-EIS-Obs CTD profile, the associated density decrease that may give rise to the meltwater plume is relatively small (0.06 kg m^{-3}) compared to the seasonal density variations that are observed the PALAOA site ($> 0.2\text{ kg m}^{-3}$ based on the 7d binned data). Therefore, a vivid buoyant plume circulation can only develop when winter time convection has eroded the stratification inside the cavity with a homogeneous body of ESW. The higher density contrast between the ambient ESW and Even the slight freshening observed at the PALAOA site in December and January (green dots) reduces the density in the upper part of the water column below that of the ascending ISW observed at the Sub-EIS-Obs CTD measurements. In this case, the ISW will not rise but detach from the ice base and mix with ambient water masses of equal density. Additional plume model simulations with an intermediate profile that resembles the Sub-EIS-Obs CTD at depth and transitions to the December/January properties observed at the PALAOA site confirm this behaviour, showing reduced melt rates of 0.6 m a^{-1} .

To further evaluate the impact of changes in plume buoyancy, we analyse the influence of ambient temperature and ocean velocity on the modulation of the melt rate, based on the three-equation formulation (Hellmer and Olbers, 1989; Jenkins and Doake, 1991) that is used for parameterising heat fluxes at the ice ocean interface in the rising plume is sufficient to drive turbulence at the ice–ocean interface. This increases the heat flux into the ice and thus enhances basal melting. When the plume rises further, plume model. For instance, to achieve a melt rate of 0.24 m a^{-1} that is observed during summer, a plume velocity of 0.015 m s^{-1} is required when assuming a water temperature of -2°C (Fig. 5), as observed at the pressure decreases and the temperature of the plume can fall below the freezing point. The super-cooled ISW plume is deposited as platelet ice beneath the sea ice in front of the ice shelf. This agrees with the results of Arndt et al. (2020), who found seasonality in platelet ice formation at Atka Bay with the highest accumulation rates in ice base during the early summer of 2018/19 (Smith et al., 2020). Higher melt rates, as are observed during late winter and spring.

The interpretation of the simulation suggests that the melt rate time series shows a reduced melt rate in summer while the reactivation of the plume restores normality. Thus, this process differs from mode 1 described in Jacobs et al. (1992). Mode 1 assumes that sea-ice formation enhances basal melting through thermal effects, supplying dense High Salinity Shelf Water

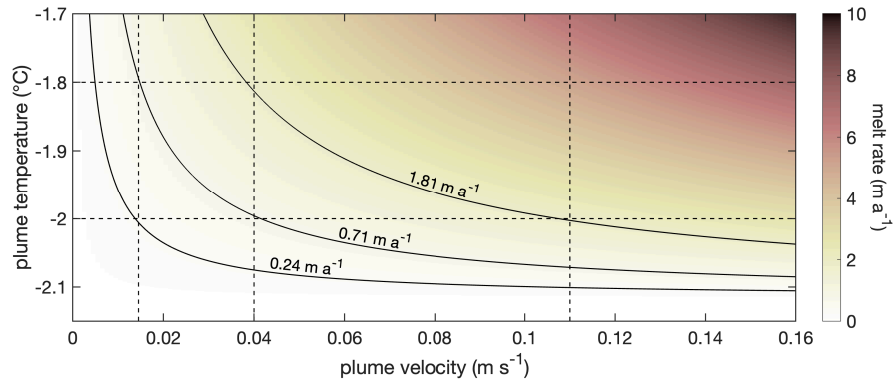


Figure 5. Basal melt rate as a function of plume temperature and velocity, calculated using the three-equation model of ice-shelf ocean interaction (Hellmer and Olbers, 1989; Jenkins and Doake, 1991). The solid lines represent the contours for the average melt rate in summer (0.24 m a^{-1}) and spring (0.71 m a^{-1}), as well as the maximum observed melt rate of 1.81 m a^{-1} . The horizontal dashed lines denote the grid for plume temperatures of -1.8 and -2°C , while the vertical lines indicate the plume velocities corresponding to the indicated melt rates.

with temperatures at the surface freezing point to the deeper parts of the Filchner-Ronne, Ross and Amery ice shelf cavities, which are normally filled by even colder ISW. In the case of, can be attributed to an increase in plume temperature and/or flow velocity. To obtain the average melt rate in spring of 0.71 m a^{-1} , a 0.2°C higher plume temperature would be necessary to maintain a constant plume velocity. Conversely, an increase in plume velocity to 0.04 m s^{-1} with a constant plume temperature of -2°C can also achieve the same melt rate. Both the plume temperature of -1.8°C and the velocities of 0.04 m a^{-1} appear to be within a plausible range. However, for a maximum observed melt rate of 1.81 m a^{-1} , a higher temperature of up to -1.3°C would be required to maintain a constant plume velocity of 0.015 m s^{-1} . Such a high plume temperature is not anticipated at the Ekström Ice Shelf, we assume that most of the cavity is filled with water close to the surface freezing point (Smith et al., 2020), such that the thermal effect of sea ice melt water is small (and with no evidence for High Salinity Shelf Water formation in this sector of Antarctica (Thompson et al., 2018)). Instead, the simulations show that the density contrast between the rising ISW and the ambient water in the cavity modulates the plume velocity and thus the basal which has the highest weekly median temperatures in the PALAOA CTD around -1.7°C , during a period of the year when the observed melt rates are lowest. If we assume that an increase in temperature alone was not the sole cause of the high melt rate, by affecting the turbulent heat transfer at the ice-ocean interface. In this regime, the temperature of the ambient water is only secondary to the increase or decrease in melt rate then the flow velocity of the plume must have also increased. At a constant temperature of -2°C , an increase in the flow velocity to 0.11 m s^{-1} could have also resulted in a melt rate of 1.81 m a^{-1} , which still falls within a plausible range. This analysis suggests that the increase in melt rates in winter and spring cannot be attributed solely by warmer water, but rather to higher plume velocities.

4 Discussion

Melt rates determined from in situ data, while this highlights the role of the sea-ice formation in the reactivation of the plume. We draw the conclusion that a reduced sea-ice formation in front of the ice shelf, such as widely observed in Antarctica in 2023, as well as a freshening of upper ocean properties, could result in a reduced mean annual melt rate. Hence, the effect of sea-ice formation and ice shelf cavity stratification will need to be taken into account together with other processes like potential warming of the AASW (Kusahara and Hasumi, 2013; Kusahara et al., 2023) and changes in coastal winds (Dinniman et al., 2015) that also influence the basal melt rate at Ekström Ice Shelf. Those derived from ApRES measurements, have a high accuracy and can therefore be used to validate melt rates estimated from satellite measurements. However, a detailed comparison of the melt rates determined from ApRES measurements in this study with those estimated from satellite observations is difficult due to different observational periods. The melt rates determined from Adusumilli et al. (2020) at the ApRES site for the period 2010 to 2018 are $0.91 \pm 0.82 \text{ m a}^{-1}$, which is higher than the ApRES-derived melt rates from 2020 to 2023. Detailed comparisons of the spatial distribution and temporal variability between ApRES measurements on the Filchner-Ronne Ice Shelf with the results from Adusumilli et al. (2020) have revealed large differences, which are due to uncertainties in the satellite-based method (Vaňková and Nicholls, 2022; Zeising et al., 2022). The latest satellite-based melt rate estimates from Davison et al. (2023) for the period 2010 to 2021 show lower melt rates of $0.65 \pm 0.13 \text{ m a}^{-1}$ near the ApRES site, which are still above the annual mean values derived from the ApRES data.

The seasonality of the melt rate and its sensitivity to the stratification inside the cavity at the Ekström Ice Shelf differs from from processes that have been observed at ice shelves in DML. At Nivl ice shelf, Lindbäck et al. (2019) found that observed higher melt rates of up to 5.6 m a^{-1} appear when warm fresh when warm AASW is pushed below beneath the ice shelf by winds. However, at greater distances of 35 km from the ice front, Lindbäck et al. (2019) found detected no pronounced seasonality and lower melt rates of below 2.0 m a^{-1} despite of one a single melt event in winter. The While it is plausible that downwelling of AASW during summer results in mode 3 melting near the ice front also beneath the Ekström Ice Shelf has an ice thickness, the melt rate seasonality at the ApRES location approximately 30 km from the ice shelf front at an ice draft depth of $\sim 250 \text{ m}$ at indicates a different effect of the seasonally varying hydrography. Ice shelf cavity moorings at the Fimbulisn Ice Shelf Observatory (Lauber et al., 2024) showed seasonal traces of AASW as far as 60 km from the ice shelf front and below 380 m deep ice. At this location, the AASW had depleted all of its additional heat for melting and primarily affected the cavity circulation by separating the ISW from the ice base. A similar mechanism is inferred for the ApRES location below the Ekström Ice Shelf. In contrast to Fimbulisn and the calving front, the Nivl Ice Shelf is about 90 m thinner. The lower ice thickness allows warmer AASW to be pushed under the Nivl Ice Shelf and therefore increases melt rates in summer near the calving front due to the additional heat (Lindbäck et al., 2019). While a similar effect might dominate the melt rate seasonality closer to the calving front of, the Ekström Ice Shelf, its more confined geometry and deeper grounding line promotes the development of coherent ISW plumes which modulate basal melting when interacting with the seasonally varying cavity stratification. The absence of seasonality further away from Ice Shelf also exhibits a more confined geometry and a deeper grounding line, which together promote the formation of coherent quasi-two-dimensional cavity overturning circulation that

is driven by the pressure-dependent formation of buoyant ISW. The interaction of this circulation with the seasonally varying upper ocean stratification appears to be the dominant driver of seasonal melt rate variability at the ApRES location.

We assume that an increase in plume velocity during late winter and spring is due to convective mixing of the ambient water column, caused by dense water masses generated during sea-ice formation. The convective mixing results in a homogenous water mass inside the cavity with properties similar to those of the lower portion of the Sub-EIS-Obs CTD profile. In this scenario, the meltwater input provides sufficient buoyancy for the plume to rise within the homogenous water column to the ice shelf front, maintaining substantial flow velocities that facilitate shear-driven melting at the ApRES site. The absence of the dense water formation and a restratification of the water column during the summer and autumn reduces the buoyancy of the ascending ISW, causing the arrest of the buoyant plume as it encounters water masses of the same density at the ApRES site. Conversely, the erosion of the stratification at the onset of convective mixing will potentially revitalise the plume-type circulation. This interpretation is supported by the plume model, which demonstrates how the seasonal extremes in temperature and salinity as observed with CTD measurements, affect the plume velocity and thus the basal melt rate.

Based on the aforementioned findings, we propose the following hypothesis of the sea ice-ice shelf-ocean interaction, which we divide into three phases (Fig. 3):

1. Phase of sea-ice regrowth (March to June): During the autumn and early winter months, the AASW cools to its freezing point. The initial sea-ice production over the open ocean is substantial until the regrown ice cover reduces further heat loss from the ocean. The remaining stratification within the cavity generates a low-density contrast between the rising ISW plume and the ambient water. The reduced density contrast diminishes the buoyancy and velocity of the meltwater plume, resulting in reduced melt rates.

2. Phase of convection (June to November): Cold mid-winter atmospheric temperatures and sustained sea-ice growth induce brine release, which convectively mixes and densifies the water column in front of the ice shelf. Once the surface density exceeds a certain threshold, it erodes the stratification on the continental shelf and descends along the seafloor towards the grounding line inside the ice shelf cavity. The observed density range of the Sub-EIS-Obs CTD profiles indicates that convection may occur during the period when enhanced melt rates are observed (Fig. 3). During this period, the density contrast to the ambient water accelerates the ISW plume, thereby enhancing the turbulent heat flux and melting at the ice-ocean interface. At the beginning of Winter, before dense water inflows have eroded the stratification within the entire cavity, transient fluctuations that enhance the density contrast for a finite duration, are causing the observed melt events.

3. Phase of restratification (November to February): The onset of sea-ice melt in November and December, coupled with melting at the ice shelf front ~~in conjunction with the low melt rate of $< 1 \text{ m a}^{-1}$ at Nivl Ice Shelf is consistent with less pronounced plume-driven melting throughout the year.~~ due to increased solar radiation, leads to a reduction in the upper ocean density. This causes the plumes to separate from the ice base, resulting in an abrupt decline in melt rates. In January and February, sustained accumulation and downwelling of AASW (Zhou et al., 2014) continue to freshen and stratify the continental shelf water masses. The stratification within the cavity generates a low-density contrast between the rising ISW and the ambient water. This reduced density contrast diminishes the buoyancy and velocity of the meltwater plume, leading to low melt rates in summer and autumn.

In the hypothesis presented, the formation of dense water through sea-ice formation emerges as a driver for the erosion of stratification. The direct comparison between sea-ice growth and melt rate revealed moderate correlations. Although a consistent temporal lag was not evident, an estimated advection time scale of 8 to 16 d from the ice front to the grounding line may well explain the observed approximate phase shift between the sea-ice formation and the melt rate response, as the dense water signal propagates through the cavity.

While the observed water mass evolution at the PALOAO site supports our hypothesis of the interaction of the buoyancy-driven cavity overturning circulation with the seasonal changes in upper ocean stratification, the plume model simulations only provide a simplified representation of the dynamics at play. In reality, the one-dimensional overturning captured by this model will be affected by rotation at the cavity scale, where the ISW flow would be deflected to the left to follow geostrophic contours and rise where it is constrained by topography to flow to upslope topography (Holland and Feltham, 2006). A three-dimensional circulation model of the Fimbulisen Ice Shelf cavity (Hattermann et al., 2014) shows that such constraints may be provided by a central keel that guides an upward flow of ISW along its eastern flank. A similar keel-like topographic feature is observed along the central flowline of the Ekström Ice Shelf (Fig. 1b), and with the ApRES being located along its eastern flank. Running the plume model with various (idealised) geometries confirms the robustness of results about the influence of the cavity stratification in the simulated melt rates regardless of choice of the detailed flow path of the plume. Another component that is not represented by the plume model is the estuarine-like aspect of the the cavity overturning circulation that relates the strength of dense water inflows at depth and buoyant outflows below the ice base through continuity (Olbers and Hellmer, 2010), or any other effects of the time varying ambient circulation that may play a role for shaping the observed melt rate oscillations. The plume model also does not explicitly capture tidal effects, such as the increase of entrainment of ambient water into the plume or turbulent mixing at the ice-ocean interface. However, since these effects superimpose linearly on the simulated processes, we assume that the proposed impact of seasonal stratification on the plume dynamics is a robust result, while the detailed modulation of these dynamics remains subject for further studies.

The existing melt rate measurements in DML as well as the plume simulation show that the melt rate as well as the intensity and type of seasonality can strongly depend on the relative position on the ice shelf. Further measurements are needed to better understand the spatial and temporal variation of the basal melt rate. In addition, ocean simulations indicate that an increase in melt rates of the eastern Weddell Sea ice shelves can trigger a melt regime change of Filchner-Ronne Ice Shelf (14 m sea-level equivalent (Rignot et al., 2019)) towards significant higher melt rates (Hoffman et al., 2024). For this reason, melt rates in DML and of other ice shelves in the Weddell Sea should be further monitored using a network of ApRES.

5 Conclusions

In this study, we investigated the ice–ocean interaction at the Ekström Ice Shelf using a combination of basal melt rate observations from a 4-year-long ApRES time series, a time series of sea-ice ~~growth and a~~ and ocean properties, as well as an ice shelf plume simulation. Our analysis provides valuable insights into the seasonality of basal melting, contributing to a deeper understanding of the processes driving ice shelf basal melting in East Antarctica. The ~~observed basal melt rates at the Ekström~~

510 ~~Ice Shelf were found to be relatively low, averaging 0.45 m a^{-1} , with a distinct seasonal pattern. The melt rates were~~ melt rates
~~were~~ lowest during the summer and autumn and highest in the spring, with a few ~~weeks-long~~ weeks-long melt events occurring
predominantly from late winter to early spring. ~~The~~ An investigation of the seasonality of sea-ice growth ~~revealed a similar~~
~~seasonal pattern that and ocean density~~ highlights the impact of sea-ice formation on ~~the~~ ocean conditions in the ice-shelf
cavity. Simulations with a meltwater plume model ~~suggests that the seasonal inflow of Antarctica surface water enhances the~~
515 ~~suggest that in summer and autumn, the enhanced~~ stratification inside the cavity ~~and~~ weakens the plume. Due to low contrast
in density, the velocity of the ice shelf water plume reduces and, as a result, the melt rates decrease. In ~~winter~~ spring, the plume
~~is reactivated-velocity is enhanced~~ due to dense water from the sea-ice formation that erodes the stratification and increases
the density contrast. We conclude that the melt rate is primarily affected by the plume velocity, while the temperature of the
ambient water is only secondary. ~~Thus, lower sea-ice growth in the future could result in a reduced mean annual melt rate.~~
520 Overall, our study underscores the importance of continuous and high-resolution observations to capture the temporal variabil-
ity of basal melt processes. The findings emphasise the need for further research to analyse the processes under the entire ice
shelf as well as of other ice shelves of the Dronning Maud Land to correlate melt rate trends with a climate signal. In addition,
the use of models that can capture complex processes is needed, as well as oceanic measurements to validate model results.
By enhancing our understanding of these ice–ocean interaction, we can better assess the future contributions of Antarctic ice
525 shelves to global sea-level rise.

Data availability. Time series of autonomous phase-sensitive radar (ApRES) measurements and determined basal melt rates are published at the World Data Center PANGAEA (<https://doi.org/10.1594/PANGAEA.972121>, Zeising et al., 2024).

Appendix A: ApRES analysis

Table A1. Derived quantities from ApRES measurements (03 April 2020 – 31 December 2020; Fig. A1) used for basal melt rate determination: Ice thickness change (ΔH), thickness change due to firn compaction (ΔH_f), due to vertical strain (ΔH_ε), the vertical strain itself ($\dot{\varepsilon}_{zz}$) and the basal melt rate (a_b). Negative values contribute to the thinning of the ice column, whereas a positive melt rate represents melting.

Year	$\Delta H \text{ (m a}^{-1}\text{)}$	$\Delta H_f \text{ (m a}^{-1}\text{)}$	$\dot{\varepsilon}_{zz} \text{ (a}^{-1}\text{)}$	$\Delta H_\varepsilon \text{ (m a}^{-1}\text{)}$	$a_b \text{ (m a}^{-1}\text{)}$
2020	-1.54 ± 0.01	-0.20 ± 0.01	-0.0024 ± 0.0001	-0.77 ± 0.01	0.57 ± 0.01

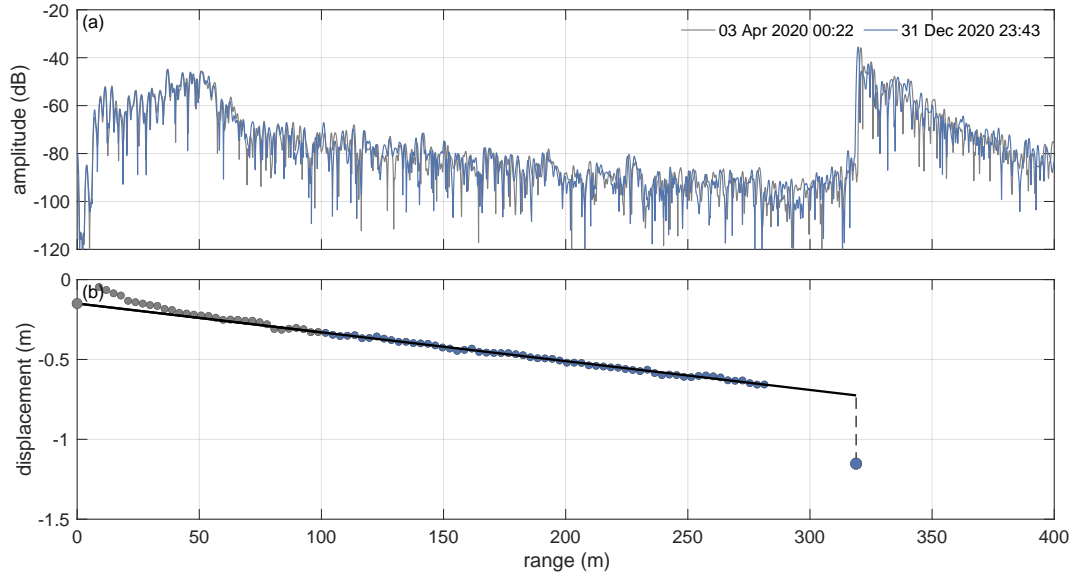


Figure A1. Basal melt rate analysis of ApRES data from 2020. (a) Amplitude profiles of the first (grey line) and last measurement (blue line) in 2020. (b) Vertical displacement of the basal segment (large blue dot) and of internal segments (small dots). Those internal segments used for strain rate analysis (gradient of solid black line) are coloured in blue. The dashed line represents the displacement caused by basal melting.

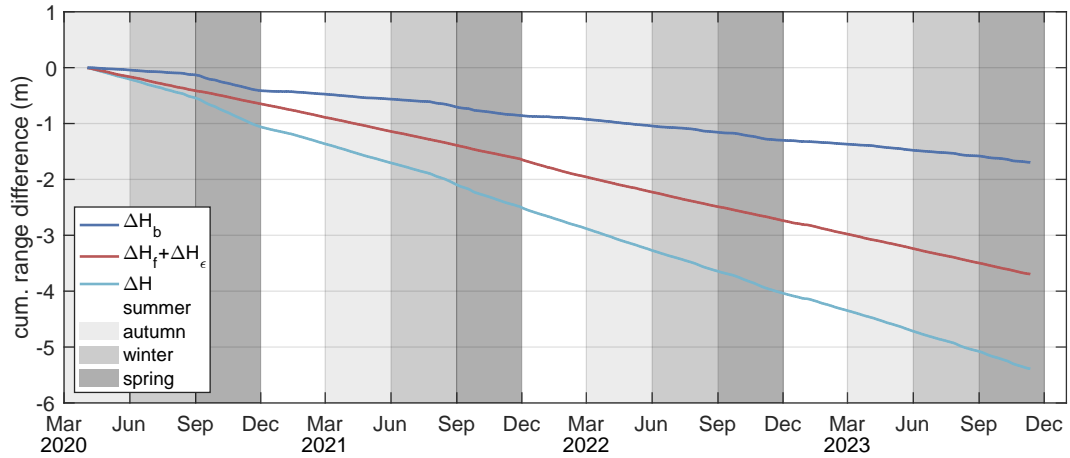


Figure A2. Cumulative change in ice thickness (ΔH), attributed to strain and firm compaction ($\Delta H_f + \Delta H_\epsilon$) as well as basal melting (ΔH_b) from April 2020 to November 2023. The vertical stripes denote the respective seasons.

Appendix B: Sea-ice growth and CTD time-series

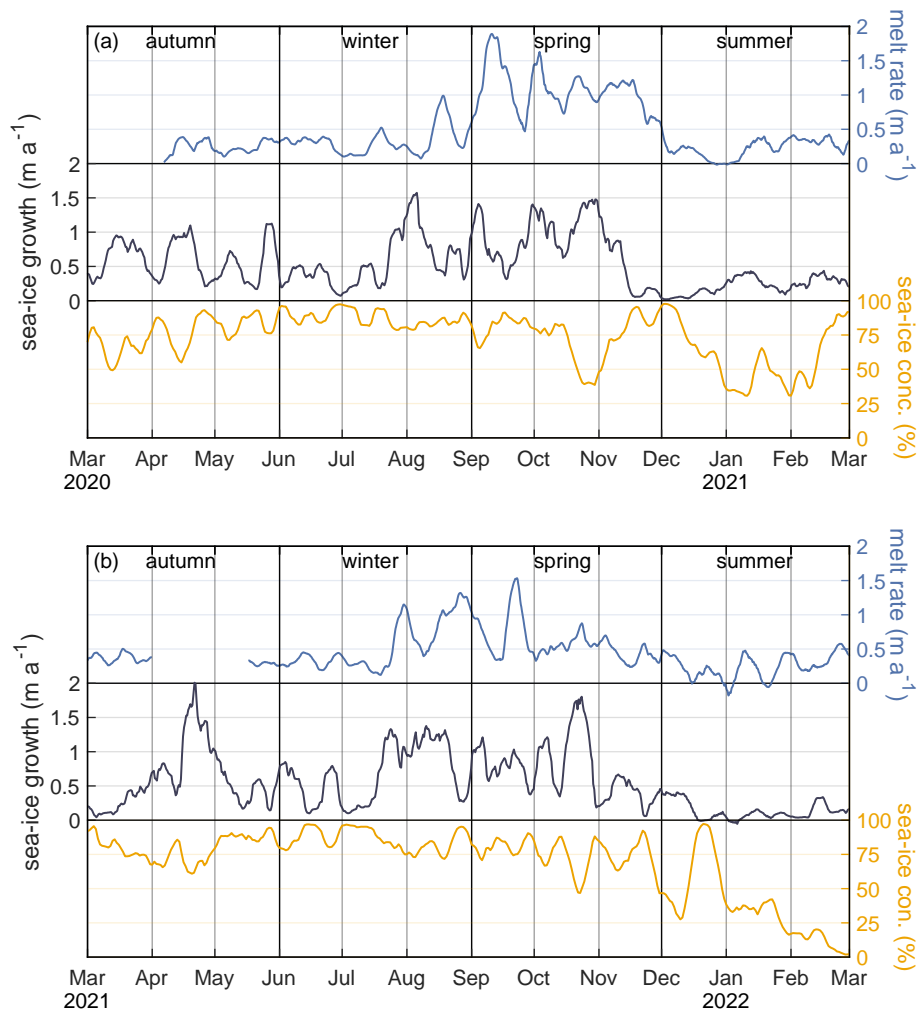


Figure B1. Average sea-ice growth and concentration (black lines) above continental shelf (Fig. 1b,e) and basal melt rate (blue line) from 2020/21 to 2023/24.

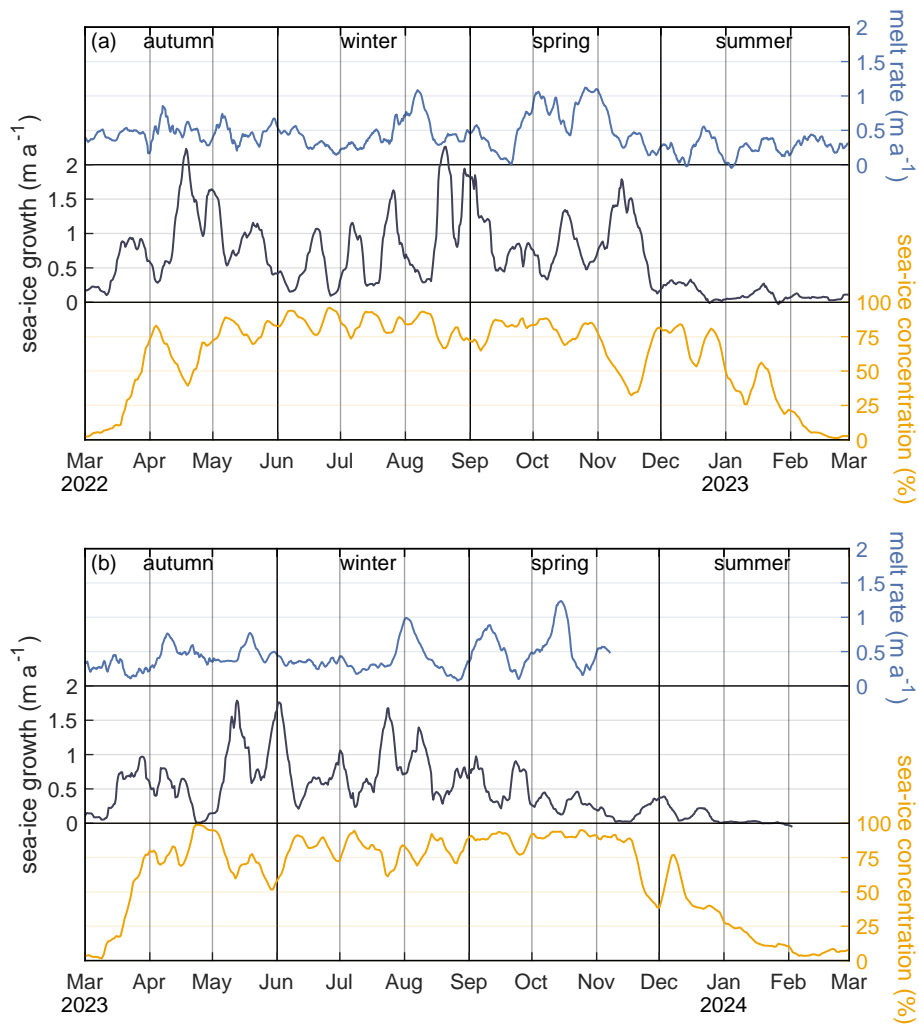


Figure B2. Mean-value and standard-deviation of Average sea-ice growth separated for austral autumn and concentration (March, April, May black lines) ; winter above continental shelf (June, July, August Fig. 1b) ; spring (September, October, November), and summer basal melt rate (December, January, February blue line) . The mean annual represents the March–February mean value. **Sea-ice growth** (m a^{-1}) Year 2020/21–2021/22 from 2022/23 to 2023/24 Average Autumn 0.60 ± 0.28 0.59 ± 0.45 0.86 ± 0.49 0.61 ± 0.44 0.66 ± 0.43 Winter 0.56 ± 0.36 0.68 ± 0.41 0.78 ± 0.56 0.77 ± 0.36 0.69 ± 0.44 Spring 0.80 ± 0.43 0.75 ± 0.41 0.87 ± 0.41 0.34 ± 0.23 0.69 ± 0.43 Summer 0.22 ± 0.12 0.13 ± 0.13 0.12 ± 0.10 0.08 ± 0.11 0.14 ± 0.13 Annual 0.55 ± 0.38 0.54 ± 0.44 0.67 ± 0.53 0.48 ± 0.41 0.56 ± 0.45 24.

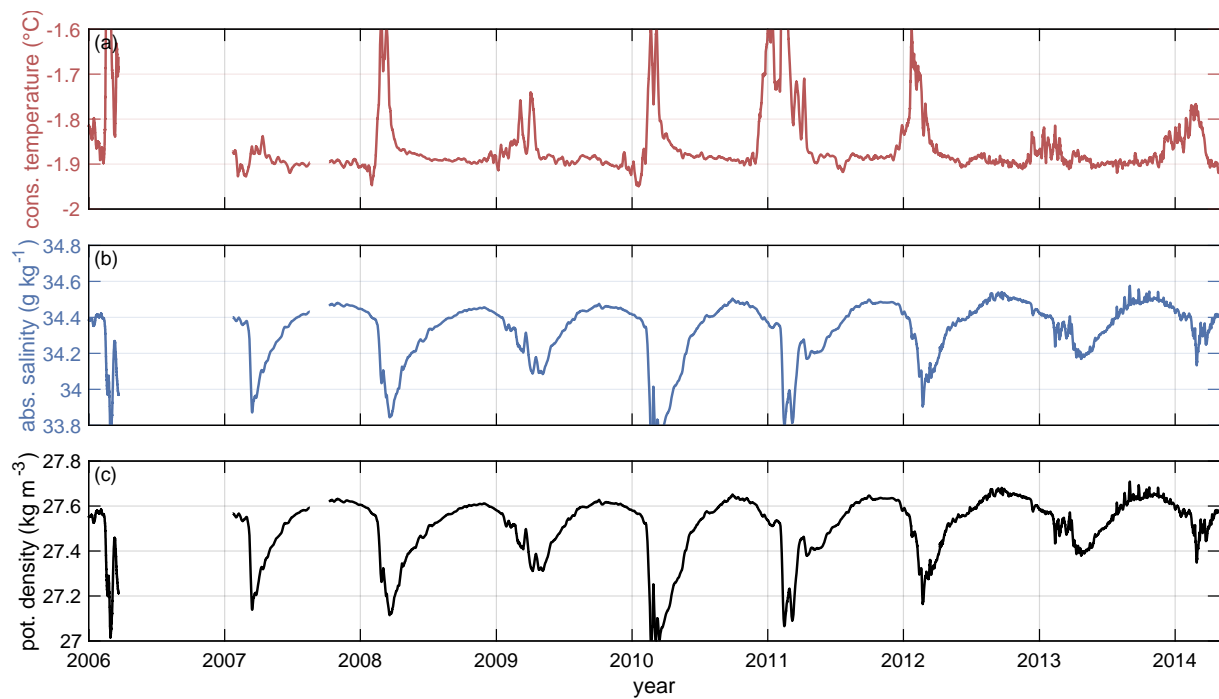


Figure B3. Time-series of conservative temperature, absolute salinity and potential density from PALAOA CTD measurements.

530 *Author contributions.* OZ and OE designed the study. OE initiated the long-term observations, with support from FP and RD, and implemented the logistic operations. DS and OZ assembled the hardware components. Measurements were performed by SB, MRE and OE in multiple years. TF guided the overwinterers as part of the Geophysical Observatory. OZ processed the ApRES data and wrote the manuscript with contributions from TH and LK. TH performed the plume simulations, and analysed the seasonality. LK processed the satellite data and determined the sea-ice growth and concentration. OB processed the CTD data from PALAOA. OE, RD, TH and LK contributed to data
535 discussion. All authors contributed to revising the manuscript.

Competing interests. At least one of the (co-)authors is a member of the editorial board of The Cryosphere.

Acknowledgements. The authors wish to thank the overwinterers and summer guests at the German research station Neumayer III (Alfred-Wegener-Institut Helmholtz-Zentrum für Polar- und Meeresforschung, 2016) who maintained the ApRES once a season: Noah Trumpik, Ina Wehner (2019/20 & 2020/21); Timo Dornhöfer, Lorenz Marten (2020/21 & 2021/22); Falk Oraschewski, Martin Petri, Maximilian Betz
540 (2022/23); Hameed Moqadam, Fyntan Shaw (2023/24). We thank Ralph Timmermann for discussion in an early stage of this study.

Financial Support

Initial funding was provided through the grant the Belgian Research Programme on the Antarctic (Belgian Federal Science Policy Office) through the BELSPO MIMO project (Stereo III). TH received support from iC3: Centre for ice, Cryosphere, Carbon and Climate ~~and was~~
545 ~~supported~~ which is funded by the Research Council of Norway through its Centres of Excellence funding scheme, project number 332635. The project MIMO-EIS in the framework of the quasi-Long-Term-Observatory Glaciology at Neumayer station III are supported by the Alfred-Wegener-Institut Helmholtz-Zentrum für Polar- und Meeresforschung (AWI), project GLAZ-NM (Grant-No. AWI_ANT_8).

References

- Adusumilli, S., Fricker, H. A., Medley, B., Padman, L., and Siegfried, M. R.: Interannual variations in meltwater input to the Southern Ocean from Antarctic ice shelves, *Nature Geoscience*, 13, 616–620, <https://doi.org/10.1038/s41561-020-0616-z>, 2020.
- Alfred-Wegener-Institut Helmholtz-Zentrum für Polar- und Meeresforschung: Neumayer III and Kohnen Station in Antarctica operated by the Alfred Wegener Institute, *Journal of large-scale research facilities*, 2, <https://doi.org/10.17815/jlsrf-2-152>, 2016.
- Arndt, S., Hoppmann, M., Schmithüsen, H., Fraser, A. D., and Nicolaus, M.: Seasonal and interannual variability of landfast sea ice in Atka Bay, Weddell Sea, Antarctica, *The Cryosphere*, 14, 2775–2793, <https://doi.org/10.5194/tc-14-2775-2020>, 2020.
- Beitsch, A., Kaleschke, L., and Kern, S.: Investigating High-Resolution AMSR2 Sea Ice Concentrations during the February 2013 Fracture Event in the Beaufort Sea, *Remote Sensing*, 6, 3841–3856, <https://doi.org/10.3390/rs6053841>, 2014.
- Boebel, O., Kindermann, L., Klinck, H., Bornemann, H., Plötz, J., Steinhage, D., Riedel, S., and Burkhardt, E.: Real-time underwater sounds from the Southern Ocean, *Eos, Transactions American Geophysical Union*, 87, 361–361, <https://doi.org/10.1029/2006EO360002>, 2006.
- Brennan, P. V., Lok, L. B., Nicholls, K., and Corr, H.: Phase-sensitive FMCW radar system for high-precision Antarctic ice shelf profile monitoring, *IET Radar, Sonar & Navigation*, 8, 776–786, <https://doi.org/10.1049/iet-rsn.2013.0053>, 2014.
- Davison, B. J., Hogg, A. E., Gourmelen, N., Jakob, L., Wuite, J., Nagler, T., Greene, C. A., Andreasen, J., and Engdahl, M. E.: Annual mass budget of Antarctic ice shelves from 1997 to 2021, *Science Advances*, 9, eadi0186, <https://doi.org/10.1126/sciadv.adi0186>, 2023.
- Determann, J. and Gerdes, R.: Melting and freezing beneath ice shelves: implications from a three-dimensional ocean-circulation model, *Annals of Glaciology*, 20, 413–419, <https://doi.org/10.3189/1994AoG20-1-413-419>, 1994.
- Dinniman, M. S., Klinck, J. M., Bai, L.-S., Bromwich, D. H., Hines, K. M., and Holland, D. M.: The Effect of Atmospheric Forcing Resolution on Delivery of Ocean Heat to the Antarctic Floating Ice Shelves, *Journal of Climate*, 28, 6067 – 6085, <https://doi.org/10.1175/JCLI-D-14-00374.1>, 2015.
- Dupont, T. K. and Alley, R. B.: Assessment of the importance of ice-shelf buttressing to ice-sheet flow, *Geophysical Research Letters*, 32, <https://doi.org/10.1029/2004GL022024>, 2005.
- Eisermann, H., Eagles, G., Ruppel, A., Smith, E. C., and Jokat, W.: Bathymetry Beneath Ice Shelves of Western Dronning Maud Land, East Antarctica, and Implications on Ice Shelf Stability, *Geophysical Research Letters*, 47, e2019GL086724, <https://doi.org/10.1029/2019GL086724>, 2020.
- Feistel, R.: A Gibbs function for seawater thermodynamics for -6 to 80 °C and salinity up to 120gkg⁻¹, *Deep Sea Research Part I: Oceanographic Research Papers*, 55, 1639–1671, <https://doi.org/10.1016/j.dsr.2008.07.004>, 2008.
- Fromm, T., Schlindwein, V., Helm, V., and Fofonova, V.: Observing tidal effects on the dynamics of the Ekström Ice Shelf with focus on quarterdiurnal and terdiurnal periods, *Journal of Glaciology*, 69, 1138–1148, <https://doi.org/10.1017/jog.2023.4>, 2023.
- Fujita, S., Matsuoka, T., Ishida, T., Matsuoka, K., and Mae, S.: A summary of the complex dielectric permittivity of ice in the megahertz range and its applications for radar sounding of polar ice sheets, in: *Physics of ice core records*, pp. 185–212, Hokkaido University Press, <http://hdl.handle.net/2115/32469>, (last access: 8 November 2024), 2000.
- Fürst, J. J., Durand, G., Gillet-Chaulet, F., Tavard, L., Rankl, M., Braun, M., and Gagliardini, O.: The safety band of Antarctic ice shelves, *Nature Climate Change*, 6, 479, <https://doi.org/10.1038/nclimate2912>, 2016.
- Gade, H. G.: Melting of Ice in Sea Water: A Primitive Model with Application to the Antarctic Ice Shelf and Icebergs, *Journal of Physical Oceanography*, 9, 189 – 198, [https://doi.org/10.1175/1520-0485\(1979\)009<0189:MOIISW>2.0.CO;2](https://doi.org/10.1175/1520-0485(1979)009<0189:MOIISW>2.0.CO;2), 1979.

- Hattermann, T.: Antarctic Thermocline Dynamics along a Narrow Shelf with Easterly Winds, *Journal of Physical Oceanography*, 48, 2419 – 2443, <https://doi.org/10.1175/JPO-D-18-0064.1>, 2018.
- Hattermann, T., Nøst, O. A., Lilly, J. M., and Smedsrud, L. H.: Two years of oceanic observations below the Fimbul Ice Shelf, Antarctica, *Geophysical Research Letters*, 39, <https://doi.org/10.1029/2012GL051012>, 2012.
- Hattermann, T., Smedsrud, L., Nøst, O., Lilly, J., and Galton-Fenzi, B.: Eddy-resolving simulations of the Fimbul Ice Shelf cavity circulation: Basal melting and exchange with open ocean, *Ocean Modelling*, 82, 28–44, <https://doi.org/10.1016/j.ocemod.2014.07.004>, 2014.
- Hellmer, H. H. and Olbers, D. J.: A two-dimensional model for the thermohaline circulation under an ice shelf, *Antarctic Science*, 1, 325–336, <https://doi.org/10.1017/S0954102089000490>, 1989.
- Hoffman, M. J., Branecky Begeman, C., Asay-Davis, X. S., Comeau, D., Barthel, A., Price, S. F., and Wolfe, J. D.: Ice-shelf freshwater triggers for the Filchner–Ronne Ice Shelf melt tipping point in a global ocean–sea-ice model, *The Cryosphere*, 18, 2917–2937, <https://doi.org/10.5194/tc-18-2917-2024>, 2024.
- Holland, P. R. and Feltham, D. L.: The Effects of Rotation and Ice Shelf Topography on Frazil-Laden Ice Shelf Water Plumes, *Journal of Physical Oceanography*, 36, 2312 – 2327, <https://doi.org/10.1175/JPO2970.1>, 2006.
- Hoppmann, M., Richter, M. E., Smith, I. J., Jendersie, S., Langhorne, P. J., Thomas, D. N., and Dieckmann, G. S.: Platelet ice, the Southern Ocean’s hidden ice: a review, *Annals of Glaciology*, 61, 341–368, <https://doi.org/10.1017/aog.2020.54>, 2020.
- Humbert, A., Christmann, J., Corr, H. F. J., Helm, V., Höyns, L.-S., Hofstede, C., Müller, R., Neckel, N., Nicholls, K. W., Schultz, T., Steinhage, D., Wolovick, M., and Zeising, O.: On the evolution of an ice shelf melt channel at the base of Filchner Ice Shelf, from observations and viscoelastic modeling, *The Cryosphere*, 16, 4107–4139, <https://doi.org/10.5194/tc-16-4107-2022>, 2022.
- Ivanciu, I.: On the role of supercooled water from beneath the Ekström Ice Shelf in the formation of a sub-ice platelet layer in Atka Bay, Antarctica, Ph.D. thesis, Jacobs University Bremen, Alfred-Wegener-Institut Helmholtz-Zentrum for Polar- und Meeresforschung, <http://hdl.handle.net/10013/epic.43578>, (last access: 17 December 2024), 2014.
- Jacobs, S., Helmer, H., Doake, C. S. M., Jenkins, A., and Frolich, R. M.: Melting of ice shelves and the mass balance of Antarctica, *Journal of Glaciology*, 38, 375–387, <https://doi.org/10.3189/S0022143000002252>, 1992.
- Jenkins, A.: A one-dimensional model of ice shelf-ocean interaction, *Journal of Geophysical Research: Oceans*, 96, 20 671–20 677, <https://doi.org/10.1029/91JC01842>, 1991.
- Jenkins, A.: Convection-driven melting near the grounding lines of ice shelves and tidewater glaciers, *Journal of Physical Oceanography*, 41, 2279–2294, <https://doi.org/10.1175/JPO-D-11-03.1>, 2011.
- Jenkins, A. and Doake, C.: Ice-ocean interaction on Ronne Ice Shelf, Antarctica, *Journal of Geophysical Research: Oceans*, 96, 791–813, <https://doi.org/10.1029/90JC01952>, 1991.
- Klinck, H.: Automated passive acoustic detection, localization and identification of leopard seals: from hydro-acoustic technology to leopard seal ecology *Automatisierte, passiv – akustische Detektion, Lokalisation und Identifikation von Seeleoparden : von hydro – akustischer Technologie zur Ökologie des Seeleoparden*, https://doi.org/10.2312/BzPM_0582_2008, 2008.
- Kobayashi, S., Ota, Y., Harada, Y., Ebata, A., Moriya, M., Onoda, H., Onogi, K., Kamahori, H., Kobayashi, C., Endo, H., Miyaoka, K., and Takahashi, K.: The JRA-55 reanalysis: general specifications and basic characteristics, *Journal of the Meteorological Society of Japan*. Ser. II, 93, 5–48, <https://doi.org/10.2151/jmsj.2015-001>, 2015.
- Kusahara, K. and Hasumi, H.: Modeling Antarctic ice shelf responses to future climate changes and impacts on the ocean, *Journal of Geophysical Research: Oceans*, 118, 2454–2475, <https://doi.org/10.1002/jgrc.20166>, 2013.

- Kusahara, K., Tatebe, H., Hajima, T., Saito, F., and Kawamiya, M.: Antarctic Sea Ice Holds the Fate of Antarctic Ice-Shelf Basal Melting in a Warming Climate, *Journal of Climate*, 36, 713 – 743, <https://doi.org/10.1175/JCLI-D-22-0079.1>, 2023.
- 625 Lauber, J., Hattermann, T., de Steur, L., Darelius, E., Auger, M., Nøst, O. A., and Moholdt, G.: Warming beneath an East Antarctic ice shelf due to increased subpolar westerlies and reduced sea ice, *Nature Geoscience*, 16, 877–885, <https://doi.org/10.1038/s41561-023-01273-5>, 2023.
- Lauber, J., Hattermann, T., de Steur, L., Darelius, E., and Fransson, A.: Hydrography and circulation below Fimbulisen Ice Shelf, East Antarctica, from 14 years of moored observations, *Ocean Science*, 20, 1585–1610, <https://doi.org/10.5194/os-20-1585-2024>, 2024.
- Lindbäck, K., Moholdt, G., Nicholls, K. W., Hattermann, T., Pratap, B., Thamban, M., and Matsuoka, K.: Spatial and temporal variations in basal melting at Nivlisen ice shelf, East Antarctica, derived from phase-sensitive radars, *The Cryosphere*, 13, 2579–2595, <https://doi.org/10.5194/tc-13-2579-2019>, 2019.
- 630 Morlighem, M.: MEaSURES BedMachine Antarctica. (NSIDC-0756, Version 3). [Data Set] Boulder, Colorado USA. NASA National Snow and Ice Data Center Distributed Active Archive Center, Accessed 21 September 2024, <https://doi.org/10.5067/FPSU0V1MWUB6>, 2022.
- Morlighem, M., Rignot, E., Binder, T., Blankenship, D., Drews, R., Eagles, G., Eisen, O., Ferraccioli, F., Forsberg, R., Fretwell, P., Goel, V., Greenbaum, J. S., Gudmundsson, H., Guo, J., Helm, V., Hofstede, C., Howat, I., Humbert, A., Jokat, W., Karlsson, N. B., Lee, W. S., Matsuoka, K., Millan, R., Mouginot, J., Paden, J., Pattyn, F., Roberts, J., Rosier, S., Ruppel, A., Seroussi, H., Smith, E. C., Steinhage, D., Sun, B., Broeke, M. R. v. d., Ommen, T. D. v., Wessem, M. v., and Young, D. A.: Deep glacial troughs and stabilizing ridges unveiled beneath the margins of the Antarctic ice sheet, *Nature Geoscience*, 13, 132–137, <https://doi.org/10.1038/s41561-019-0510-8>, 2020.
- 635 Mouginot, J., Rignot, E., and Scheuchl, B.: MEaSURES Phase-Based Antarctica Ice Velocity Map, Version 1. Boulder, Colorado USA. NASA National Snow and Ice Data Center Distributed Active Archive Center, Accessed 13 April 2021, <https://doi.org/10.5067/PZ3NJ5RXHR10>, 2019a.
- 640 Mouginot, J., Rignot, E., and Scheuchl, B.: Continent-Wide, Interferometric SAR Phase, Mapping of Antarctic Ice Velocity, *Geophysical Research Letters*, 46, 9710–9718, <https://doi.org/10.1029/2019GL083826>, 2019b.
- Neckel, N., Drews, R., Rack, W., and Steinhage, D.: Basal melting at the Ekström Ice Shelf, Antarctica, estimated from mass flux divergence, *Annals of Glaciology*, 53, 294–302, <https://doi.org/10.3189/2012AoG60A167>, 2012.
- 645 Nicholls, K. W.: The study of ice shelf-ocean interaction—techniques and recent results, *Advances in Polar Science*, 3, 222–230, <https://doi.org/10.13679/j.adyps.2018.3.00222>, 2018.
- Nicholls, K. W., Corr, H. F., Stewart, C. L., Lok, L. B., Brennan, P. V., and Vaughan, D. G.: A ground-based radar for measuring vertical strain rates and time-varying basal melt rates in ice sheets and shelves, *Journal of Glaciology*, 61, 1079–1087, <https://doi.org/10.3189/2015JoG15J073>, 2015.
- 650 Nøst, O. A., Biuw, M., Tverberg, V., Lydersen, C., Hattermann, T., Zhou, Q., Smedsrud, L. H., and Kovacs, K. M.: Eddy overturning of the Antarctic Slope Front controls glacial melting in the Eastern Weddell Sea, *Journal of Geophysical Research: Oceans*, 116, <https://doi.org/10.1029/2011JC006965>, 2011.
- Ohshima, K. I., Nihashi, S., and Iwamoto, K.: Global view of sea-ice production in polynyas and its linkage to dense/bottom water formation, *Geoscience Letters*, 3, 13, <https://doi.org/10.1186/s40562-016-0045-4>, 2016.
- 655 Olbers, D. and Hellmer, H.: A box model of circulation and melting in ice shelf caverns, *Ocean Dynamics*, 60, 141–153, <https://doi.org/10.1007/s10236-009-0252-z>, 2010.
- Padman, L., Erofeeva, S. Y., and Fricker, H. A.: Improving Antarctic tide models by assimilation of ICESat laser altimetry over ice shelves, *Geophysical Research Letters*, 35, <https://doi.org/10.1029/2008GL035592>, 2008.

- Pease, C. H.: The size of wind-driven coastal polynyas, *Journal of Geophysical Research: Oceans*, 92, 7049–7059, <https://doi.org/10.1029/JC092iC07p07049>, 1987.
- Reese, R., Gudmundsson, G. H., Levermann, A., and Winkelmann, R.: The far reach of ice-shelf thinning in Antarctica, *Nature Climate Change*, 8, 53–57, <https://doi.org/10.1038/s41558-017-0020-x>, 2018.
- Rignot, E., Jacobs, S., Mouginot, J., and Scheuchl, B.: Ice-Shelf Melting Around Antarctica, *Science*, 341, 266–270, <https://doi.org/10.1126/science.1235798>, 2013.
- Rignot, E., Mouginot, J., Scheuchl, B., van den Broeke, M., van Wessem, M. J., and Morlighem, M.: Four decades of Antarctic Ice Sheet mass balance from 1979 – 2017, *Proceedings of the National Academy of Sciences*, 116, 1095–1103, <https://doi.org/10.1073/pnas.1812883116>, 2019.
- Shepherd, A., Ivins, E., Rignot, E., Smith, B., van den Broeke, M., Velicogna, I., Whitehouse, P., Briggs, K., Joughin, I., Krinner, G., Nowicki, S., Payne, T., Scambos, T., Schlegel, N., A. G., Agosta, C., Ahlstrøm, A., Babonis, G., Barletta, V., Blazquez, A., Bonin, J., Csatho, B., Cullather, R., Felikson, D., Fettweis, X., Forsberg, R., Gallee, H., Gardner, A., Gilbert, L., Groh, A., Gunter, B., Hanna, E., Harig, C., Helm, V., Horvath, A., Horwath, M., Khan, S., Kjeldsen, K. K., Konrad, H., Langen, P., Lecavalier, B., Loomis, B., Luthcke, S., McMillan, M., Melini, D., Mernild, S., Mohajerani, Y., Moore, P., Mouginot, J., Moyano, G., Muir, A., Nagler, T., Nield, G., Nilsson, J., Noel, B., Otosaka, I., Pattle, M. E., Peltier, W. R., Pie, N., Rietbroek, R., Rott, H., Sandberg-Sørensen, L., Sasgen, I., Save, H., Scheuchl, B., Schrama, E., Schröder, L., Seo, K.-W., Simonsen, S., Slater, T., Spada, G., Sutterley, T., Talpe, M., Tarasov, L., van de Berg, W. J., van der Wal, W., van Wessem, M., Vishwakarma, B. D., Wiese, D., and Wouters, B.: Mass balance of the Antarctic Ice Sheet from 1992 to 2017, *Nature*, 558, 219–222, <https://doi.org/10.1038/s41586-018-0179-y>, 2018.
- Smith, B. E., Fricker, H. A., Joughin, I. R., and Tulaczyk, S.: An inventory of active subglacial lakes in Antarctica detected by ICESat (2003–2008), *Journal of Glaciology*, 55, 573–595, <https://doi.org/10.3189/002214309789470879>, 2009.
- Smith, E. C., Hattermann, T., Kuhn, G., Gaedicke, C., Berger, S., Drews, R., Ehlers, T. A., Franke, D., Gromig, R., Hofstede, C., Lambrecht, A., Läufer, A., Mayer, C., Tiedemann, R., Wilhelms, F., and Eisen, O.: Detailed Seismic Bathymetry Beneath Ekström Ice Shelf, Antarctica: Implications for Glacial History and Ice-Ocean Interaction, *Geophysical Research Letters*, 47, e2019GL086187, <https://doi.org/10.1029/2019GL086187>, 2020.
- Smith, E. C., Hattermann, T., Kuhn, G., Gaedicke, C., Berger, S., Gromig, R., Haas, C., Läufer, A., Tell, J., Tiedemann, R., Tison, J.-L., Wilhelms, F., and Eisen, O.: CTD profiles from beneath Ekstroem Ice Shelf and Atka Bay, PANGAEA [data set], <https://doi.org/10.1594/PANGAEA.914478>, 2020.
- Stewart, C. L., Christoffersen, P., Nicholls, K. W., Williams, M. J., and Dowdeswell, J. A.: Basal melting of Ross Ice Shelf from solar heat absorption in an ice-front polynya, *Nature Geoscience*, 12, 435–440, <https://doi.org/10.1038/s41561-019-0356-0>, 2019.
- Sun, S., Hattermann, T., Pattyn, F., Nicholls, K. W., Drews, R., and Berger, S.: Topographic Shelf Waves Control Seasonal Melting Near Antarctic Ice Shelf Grounding Lines, *Geophysical Research Letters*, 46, 9824–9832, <https://doi.org/10.1029/2019GL083881>, 2019.
- Tamura, T., Ohshima, K. I., Fraser, A. D., and Williams, G. D.: Sea ice production variability in Antarctic coastal polynyas, *Journal of Geophysical Research: Oceans*, 121, 2967–2979, <https://doi.org/10.1002/2015JC011537>, 2016.
- Thompson, A. F., Stewart, A. L., Spence, P., and Heywood, K. J.: The Antarctic Slope Current in a Changing Climate, *Reviews of Geophysics*, 56, 741–770, <https://doi.org/10.1029/2018RG000624>, 2018.
- Vaňková, I. and Nicholls, K. W.: Ocean Variability Beneath the Filchner-Ronne Ice Shelf Inferred From Basal Melt Rate Time Series, *Journal of Geophysical Research: Oceans*, 127, e2022JC018879, <https://doi.org/10.1029/2022JC018879>, 2022.

- Vernet, M., Geibert, W., Hoppema, M., Brown, P. J., Haas, C., Hellmer, H. H., Jokat, W., Jullion, L., Mazloff, M., Bakker, D. C. E., Brearley, J. A., Croot, P., Hattermann, T., Hauck, J., Hillenbrand, C.-D., Hoppe, C. J. M., Huhn, O., Koch, B. P., Lechtenfeld, O. J., Meredith, M. P., Naveira Garabato, A. C., Nöthig, E.-M., Peeken, I., Rutgers van der Loeff, M. M., Schmidtko, S., Schröder, M., Strass, V. H., Torres-Valdés, S., and Verdy, A.: The Weddell Gyre, Southern Ocean: Present Knowledge and Future Challenges, *Reviews of Geophysics*, 57, 623–708, <https://doi.org/10.1029/2018RG000604>, 2019.
- 700 Zeising, O. and Humbert, A.: Indication of high basal melting at the EastGRIP drill site on the Northeast Greenland Ice Stream, *The Cryosphere*, 15, 3119–3128, <https://doi.org/10.5194/tc-15-3119-2021>, 2021.
- Zeising, O., Steinhage, D., Nicholls, K. W., Corr, H. F. J., Stewart, C. L., and Humbert, A.: Basal melt of the southern Filchner Ice Shelf, Antarctica, *The Cryosphere*, 16, 1469–1482, <https://doi.org/10.5194/tc-16-1469-2022>, 2022.
- 705 Zeising, O., Steinhage, D., Berger, S., Drews, R., Ershadi, M. R., Fromm, T., Hattermann, T., Pattyn, F., and Eisen, O.: Time series of autonomous phase-sensitive radar (ApRES) measurements and determined basal melt rates on Ekström Ice Shelf, Antarctica, PANGAEA [data set], <https://doi.org/10.1594/PANGAEA.972121>, 2024.
- Zhou, Q., Hattermann, T., Nøst, O. A., Biuw, M., Kovacs, K. M., and Lydersen, C.: Wind-driven spreading of fresh surface water beneath ice shelves in the Eastern Weddell Sea, *Journal of Geophysical Research: Oceans*, 119, 3818–3833, <https://doi.org/10.1002/2013JC009556>, 2014.
- 710