

The cryostratigraphy of thermo-erosion gullies in the Canadian High Arctic demonstrates the resilience of permafrost

Samuel Gagnon^{1,3}, Daniel Fortier^{2,3}, Étienne Godin³, Audrey Veillette²

¹Département de Géographie, Université Laval, Québec, QC, G1V 0A6, Canada

²Département de Géographie, Université de Montréal, Montréal, QC, H2V 2B8, Canada

³Centre d'études nordiques, Université Laval, Québec, QC, G1V 0A6, Canada

Correspondence to: Samuel Gagnon (samuel.gagnon.1@gmail.com)

Abstract. Thermo-erosion gullies (TEGs) are one of the most common forms of abrupt permafrost degradation. They generally form in ice-wedge polygonal networks where the interconnected troughs can channel runoff water. Although TEG can form within a single thawing season, it takes them several decades for their complete stabilization. While the inception of TEGs has been examined in several studies, the processes of their stabilization remain poorly documented, especially the [cryostructures](#) that form following permafrost aggradation in stabilizing TEGs. For this study, we investigated the impacts of two TEGs in the Canadian High Arctic (Bylot Island, NU, Canada) on ground ice content, cryostratigraphic patterns, and geomorphology to examine permafrost recovery following thermal erosion in ice-wedge polygonal tundra. We sampled 17 permafrost cores from two TEGs – one still active (since 1999) and one stabilized (>100 years old) – to describe the surface conditions, interpret the cryostratigraphic patterns, and characterize the state of permafrost after TEG stabilization. Although the TEG caused discernable cryostratigraphic patterns in permafrost, ground ice content and [thaw front depth](#) in the TEGs were comparable to measurements made in undisturbed conditions. We also noted that once stabilized, TEGs permanently (at the Anthropocene scale) alter landscape morphology and hydrological connectivity. We concluded that although the formation of a TEG has profound effects on the short/medium term ([years to decades](#)) and leaves near permanent geomorphological and hydrological scars in periglacial landscapes, on the long term, ([decades to century](#)), High Arctic permafrost can recover and return to geocryological conditions similar to those pre-dating the initial disturbance. This suggests that in stable environmental conditions undergoing natural variability, permafrost can persist longer than the geomorphological landforms in which it forms.

Supprimé: ground ice patterns

Supprimé: We observed that although

Supprimé: active layer thickness of

Supprimé: ,

Supprimé: (Goudie, 2004), often occurs in ice-wedge polygonal networks due to the interconnected troughs that can channel runoff water (i.e., snowmelt, summer precipitations, melting of ground ice) along ice wedges (Fortier et al., 2007; French, 2007; Godin and Fortier, 2012b). TEGs in polygonal networks are initiated by the infiltration of runoff water (e.g., snowmelt, rainfall) into open cracks and cavities in the active layer and can develop over a single thawing season (e.g., Fortier et al. 2007). Over time, TEG can merge and form extensive gully systems which can eventually turn into thermo-erosion valleys (Fortier et al., 2007; French, 2017; Gagnon and Allard, 2019; Morgenstern et al., 2021; Aré et al., 1979; Godin and Fortier, 2012b). Although the formation of TEGs can significantly affect permafrost environments by altering landscape morphology and ecosystem functions (Bowden et al., 2008; Liljedahl et al., 2007; Toniolo et al., 2009; Lacelle et al., 2010; Lantz and Kokelj, 2008; Levy et al., 2008; Morgenstern et al., 2021; Grosse et al., 2006, 2005), TEG are an integral part of landscape evolution in areas of continuous permafrost

1. Introduction

Thermal erosion and the formation of thermo-erosion gullies (TEGs) are one of the most common forms of abrupt permafrost degradation (Abbott et al., 2015; Kokelj and Jorgenson, 2013; Olefeldt et al., 2016; Turetsky et al., 2020). Thermal erosion, which is defined as the erosion of ice-rich permafrost by the combined thermal and mechanical action of moving water ([Goudie, 2004](#)), often occurs in ice-wedge polygonal networks due to the interconnected troughs that can channel runoff water (i.e., snowmelt, summer precipitations, melting of ground ice) along ice wedges (Fortier et al., 2007;

French, 2017; Godin and Fortier, 2012b). TEGs in polygonal networks are initiated by the infiltration of runoff water (e.g., snowmelt, rainfall) into open cracks and cavities in the active layer and can develop over a single thawing season (e.g., Fortier et al. 2007). Over time, TEG can merge and form extensive gully systems which can eventually turn into thermo-erosion valleys (Arè et al., 1979; Fortier et al., 2007; French, 2017; Gagnon and Allard, 2019; Godin and Fortier, 2012b; Morgenstern et al., 2021). Although the formation of TEGs can significantly affect permafrost environments by altering landscape morphology, run-off hydrology, and ecosystem functions (Bowden et al., 2008; Grosse et al., 2005, 2006; Lacelle et al., 2010; Lantz and Kokelj, 2008; Levy et al., 2008; Liljedahl et al., 2007; Morgenstern et al., 2021; Toniolo et al., 2009), TEG are an integral part of landscape evolution in areas of continuous permafrost (Godin et al., 2014). However, the processes of stabilization of TEGs in polygoanl networks remain poorly documented, especially the ground ice patterns that form following permafrost aggradation in stabilizing TEG.

Ice-wedge polygons are among the most widespread landforms in permafrost environments (French, 2017). They occupy about 3% of the Arctic landmass (Minke et al., 2009) and are the result of ground thermal contraction cracking leading to the formation of ice wedges and ridges (Lachenbruch, 1962; Fortier and Allard, 2005; Sarrazin and Allard, 2015; O'Neill and Christiansen, 2018; Matsuoka et al., 2018). Tundra polygons can range from several meters to a few decameters (Ulrich et al., 2011) and are separated by depressions, i.e., troughs, where the ice wedges form (French, 2017). They can be categorized into two main types based on their relief (Black, 1982; Lara et al., 2015; French, 2017): low-centred polygons, which have raised rims and wet, depressed centres where water can accumulate, and high-centred polygons, which have elevated centres relative to their surroundings. Flat-centred polygons can also form during the initial phase of ice-wedge development or as an intermediary stage between low- and high-centred polygons (Jones et al., 2023; Tanguy et al., 2023). Low-centred polygons commonly form in poorly drained areas of continuous permafrost and can evolve into flat- or high-centred polygons when there is an improvement in drainage resulting in stream incision in the troughs and the preferential melt of wedge ice (Mackay, 2000; French, 2017). A transition in the type of polygon can therefore be indicative of changes in surface conditions (Liljedahl et al., 2016; Gagnon and Allard, 2019). While changes in polygon relief and vegetation following a disturbance have been documented (Lara et al., 2015; Perreault et al., 2016; Godin et al., 2016), the effects on ground ice content and cryostratigraphy are unknown.

Cryostratigraphy, which is the study of layering within permafrost, can provide valuable information on the conditions of permafrost formation and its potential response to warming and thawing based on the amount, distribution, and nature of ground ice within sediment or bedrock (Murton, 2013; Gilbert et al., 2016). Cryostrutures, i.e., structures that describe the shape, amount, and proportions of ice, sediment or rock within frozen ground, are the building blocks of cryostratigraphy and can be used to infer ground thermal and hydrological conditions at the time of their formation (French and Shur, 2010; Murton, 2013). For this reason, cryostrutures have been investigated in different environments such as coastlands (Burn, 1997; Murton and French, 1994), yedoma and drained thermokarst lake basin (Jongejans et al., 2018; Kanevskiy et al., 2011), lacustrine lowlands (Kanevskiy et al., 2014), and to study buried glacier ice (Coulombe et al., 2019). Such characterization has yet to be done in TEGs. This would help understand and predict the response of permafrost to

Supprimé :

Supprimé: However, the processes of stabilization of TEGs remain poorly documented, especially the ground ice patterns that form following permafrost aggradation in stabilizing TEG. Ground ice and its patterns of distribution, i.e., the cryostratigraphy and cryostrutures, can provide valuable information on the conditions of permafrost formation and its potential response to warming and thawing (Gilbert et al., 2016). Because they can provide insights about the ground freezing processes (Murton, 2013), cryostrutures have been investigated in different environments such as coastlands (Murton and French, 1994; Burn, 1997), yedoma and drained thermokarst lake basin (Kanevskiy et al., 2011; Jongejans et al., 2018), lacustrine lowlands (Kanevskiy et al., 2014), and to study buried glacier ice (Coulombe et al., 2019). Such characterization has yet to be done in TEGs. This would help understand and predict the response of permafrost to thermal erosion, i.e., its resilience, which we define permafrost resilience as the capacity of permafrost to recover to a pre-disturbance state (ground temperature below 0°C, similar ground ice contents and morphologies) following a disturbance and the associated perturbations (Chapin et al., 2009; Jorgenson et al., 2010; Piégay et al., 2020; Thoms et al., 2018). ¶

¶ For this study, we investigated the geocryological and geomorphological processes of permafrost recovery following thermal erosion in ice-wedge polygonal tundra. More specifically, this study aimed: 1) to characterize the cryostrutures and cryostratigraphic patterns of two TEGs in polygonal tundra, 2) to determine the impacts of thermal erosion on the ground ice content and surface characteristics of the two TEGs and compare them with undisturbed surrounding polygons, 3) to describe the stages of TEG stabilization based on changes in surface geomorphology and permafrost cryostratigraphy, and 4) to evaluate the stability and resilience of permafrost after thermal erosion based on ground ice content and cryostratigraphic patterns. To our knowledge, this study is the first to report ground ice contents and cryostratigraphic data in TEGs, which were used to discuss the evolution of periglacial landscapes following thermal erosion in areas with cold ice-rich permafrost. ¶

(... 11)

125 thermal erosion, i.e., its resilience, which we define as the capacity of permafrost to maintain ground temperatures below
0°C and similar ground ice contents and morphologies, and to recover to such state following a disturbance and the
associated perturbations (Chapin et al., 2009; Phillips, 2009; Jorgenson et al., 2010; Thoms et al., 2018; Piégay et al., 2020).

130 For this study, we investigated the geocryological and geomorphological processes of permafrost recovery
following thermal erosion in ice-wedge polygonal tundra. More specifically, this study aimed: 1) to characterize the
cryostructures and cryostratigraphic patterns of two TEGs in polygonal tundra, 2) to determine the impacts of thermal
erosion on the ground ice content and surface characteristics of the two TEGs and compare them with undisturbed
surrounding polygons, 3) to describe the stages of TEG stabilization based on changes in surface geomorphology and
permafrost cryostratigraphy, and 4) to evaluate the stability and resilience of permafrost after thermal erosion based on
ground ice content and cryostratigraphic patterns. To our knowledge, this study is the first to report ground ice contents and
cryostratigraphic data in TEGs, which were used to discuss the evolution of periglacial landscapes following thermal erosion
135 in areas with cold ice-rich permafrost.

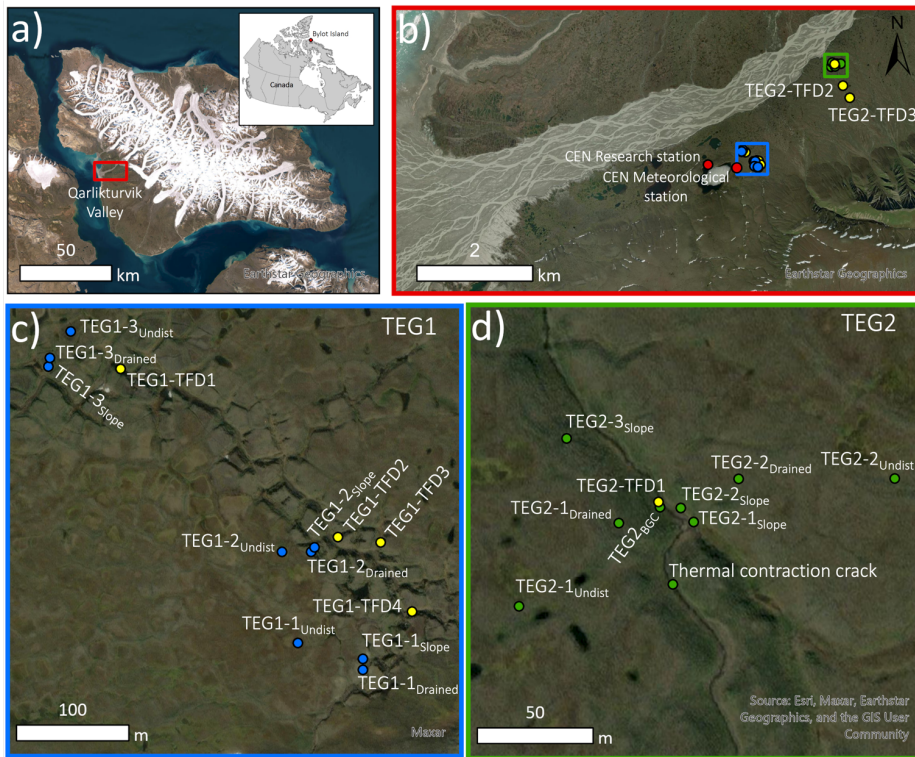


Figure 1: a) Bylot Island (NU, Canada) with the Qarlikturvik valley in red. b) Qarlikturvik valley with TEG1 in blue and TEG2 in green. The Centre for Northern Studies (CEN) research and meteorological stations are indicated with red dots. c) TEG1, the cores are indicated by blue dots. d) TEG2, the cores are indicated by green dots. For both TEG, thaw front depth (TFD) transects are indicated with yellow dots (centre of the transect). TEG2-TFD2 and TEG2-TFD3 are shown in b), upstream of the cores. Sources: Esri ArcGIS Pro World Imagery basemap, Earthstar Geographics (15 m resolution; top images), and Maxar (30 cm resolution; bottom images), and the GIS User Community.

2. Study site

The two TEGs studied for this research are located in the Qarlikturvik Valley on the southwestern plain of Bylot Island, Nunavut (Canada) (Figure 1). We selected Bylot Island for its cold ice-rich permafrost, the abundance of TEG developed in ice-wedge polygons in the Qarlikturvik Valley, and for the availability of meteorological and ground temperature data in the

- Supprimé: Location of the thermo-erosion gullies (TEG) in the Qarlikturvik valley,a)
- Supprimé:). The
- Supprimé: (blue (TEG1) and green (TEG2) dots) and
- Supprimé: (
- Supprimé: . center
- Supprimé:) for each TEG are indicated in the bottom images. Cores were retrieved in undisturbed polygons, drained polygons, in the slopes of the gullies, and at the bottom of the gully channel (BGC) of TEG2.)
- Supprimé: the top right image,
- Supprimé: boreholes. The Center for Northern Studies (CEN) research and meteorological stations are indicated with red
- Supprimé: thermal

area. The ~17 km-long glacial valley is oriented east-northeast west-southwest with a floor about 4-5 km wide. Two glaciers (C-79 and C-93) at the valley head feed a proglacial river that runs through braided channels in an outwash plain (Inland Waters Branch, 1969). The plain is bordered on both sides by terraces composed of over 4 to 5 m of organic-rich silty aeolian deposits and, in some areas, alluvial gravelly silty sands, overlying glaciofluvial deposits (Allard, 1996; Fortier et al., 2006). Well-developed networks of low-centred ice-wedge polygons that have formed syngenetically during the Late Holocene as well as thaw ponds, tundra lakes, and pingos cover the terraces (Fortier and Allard, 2004).

Supprimé: (Inland Waters Branch, 1969).

Supprimé: (Allard, 1996; Fortier et al., 2006).

Supprimé: centered

Supprimé: (Fortier and Allard, 2004)

The region has a high-Arctic climate and is underlain by continuous permafrost estimated to be more than 400 m in thickness in some areas (Maxwell, 1980; Smith and Burgess, 2002). Mean annual ground temperature recorded by a thermistor cable in a borehole in an undisturbed low-centred polygon about two kilometres west of the study area (BYLOTPD; Allard et al., 2024) was -10.8°C at a depth of 3 m for the 2011-2020 period (missing 2013). Based on meteorological data recorded by a station (73°9'21.6"N, 79°57'24.8"W, 12 m a.s.l.) near the Centre for Northern Studies (CEN) research station on Bylot Island (Figure 1), mean annual air temperature was -14.6°C for the 1995-2018 period (missing 1997, 1998, 2009, 2010, and 2014) (Centre d'études nordiques, 2022). At the Mattimatilik (Pond Inlet) Airport meteorological station (72°41'N, 77°58'W, 61.6 m a.s.l.), which is about 85 km southwest of the study area, mean annual air temperature was -13.7°C for the 1991-2020 period (Environment and Climate Change Canada, 2024). For the same period, the station recorded mean annual precipitations of 195 mm, 38% of which fell as rain between June and November. Surface vegetation in the valley floor is mainly composed of sedges, grasses, and mosses typical of wetlands and environments with a high water table (Perreault et al., 2016).

Supprimé: Based on meteorological data recorded near (73°9'21.6"N, 79°57'24.8"W, 12 m a.s.l.) the CenterMean annual

Thermo-erosion gully 1 (TEG1) has been studied since its initiation in 1999 (R08 in Fortier et al., 2007; Godin and Fortier, 2012b; Rioux, 2020). TEG1 is located on the southern terrace of the Qarlikturvik Valley, about 800 m east of the CEN research station and 5.5 km from the valley mouth (Figure 1). It cuts into the north-facing terrace, which is gently sloping (2%) toward the outwash river and about 20 m a.s.l., and stretches about 750 m from the base of the valley side to a stream that connects the lake near the CEN research station to the proglacial river (Godin and Fortier, 2012b). The gully was initiated in a sinkhole, from which it developed in opposite directions in the first year, then upstream and laterally (Godin and Fortier, 2012b). The rates of erosion of the gully were very high during the first ten years following its inception and decreased substantially after, from 75 m a⁻¹ to 5 m a⁻¹ for the 1999-2009 and 2013-2017 periods, respectively (Fortier et al., 2007; Godin and Fortier, 2012b; Rioux, 2020). TEG1 had a main axis length of 863±4 m and formed a hydrological network of 33 458±379 m² in 2017 (Rioux, 2020), and was still active in 2021 during fieldwork in the area. Thermo-erosion gully 2 (TEG2) (R05 in Godin and Fortier, 2012a; Veillette, 2019), is also located on the southern terrace of the valley, about 2.8 km east of the CEN research station and 7.4 km from the valley mouth (Figure 1). TEG2 had a main axis length of 1899 m and a surface area of 29 485 m² in 2010 (Godin and Fortier, 2012a). The head TEG2 is located at the junction between two alluvial fans that formed from sediments eroded in the deep ravines incising the plateau of sedimentary rocks (Veillette, 2019). TEG2 cuts through the polygonal terrace (1.2% slope) before reaching the proglacial river. Aerial photos (1958, 1961, 1972, 1982) and satellite imagery (2007, 2010) showed that TEG2 was already stabilized in 1958 and therefore much older than 65

Supprimé: The first TEG,

Supprimé: .

Supprimé: Fortier et al., 2007; Godin and Fortier, 2012b; Rioux, 2020)...

Supprimé: .

Supprimé: The gully showed high rates of erosion during the first years following its inception that decreased over the years (from 390 m a⁻¹ in 1999 to 5 m a⁻¹ for the 2013-2017 period)...

Supprimé: (Fortier et al., 2007; Godin and Fortier, 2012b, a; Rioux, 2020)...

Supprimé: The second TEG,

Supprimé: Godin and Fortier, 2012a; Veillette, 2019)

Supprimé: ant

years old (1958-2023) (Godin and Fortier, 2012a; Veillette, 2019). Based on stabilization rates by Godin and Fortier (2012a), the gully is likely >100 years old.

3. Methods

225 3.1 Fieldwork and laboratory analyses

Fieldwork was carried out between June and August in 2013, 2016, 2017 and 2018. To assess the impacts of the TEG on the permafrost thermal regime, thaw front depth (TFD) was measured at different locations at TEG1 and TEG2 (Figure 1). TFD was obtained by probing to refusal with a graduated steel rod in 2017 from 13 June to 29 July, and in 2018 from 12 June to 16 August. Measurements were made every 2-3 days along transects of ~30 points (10 to 30 m in length) perpendicular to the TEG and averaged into three sections (shoulders, slopes, and channel; Figure 2). TFD was also calculated from temperatures (Supplementary material 1) recorded by thermistor cables installed in two boreholes in undisturbed low-centred polygons, one adjacent to TEG1 (IP-A, see Godin et al. 2016) and the other one from BYLOTPD (Allard et al., 2024). The tundra polygons near the gullies were described based on their shape (low-centred, flat, high-centred) and the moisture level (standing water, mesic, dry). To measure ground ice content and analyse soil composition, the TEG and the surrounding polygons were drilled using a portable earth-drill, with a 10 cm-diameter core barrel. At TEG1, we drilled in 2013 along and in the TEG at three subsites of different ages to extract permafrost cores down to 0.95 to 1.46 m (Figure 2). At each subsite, one hole was drilled in an undisturbed low-centred polygon (TEG1-1_{Undist}, TEG1-2_{Undist}, TEG1-3_{Undist}), one in a drained polygon adjacent to the TEG (TEG1-1_{Drained}, TEG1-2_{Drained}, TEG1-3_{Drained}), and one in the gully slope adjacent to the drained polygon (TEG1-1_{Slope}, TEG1-2_{Slope}, TEG1-3_{Slope}). At TEG2, we drilled at eight locations in 2016 to extract permafrost cores down to 1.15 to 2.12 m. The holes were located on a ~170 m transect going across TEG2 and sampled undisturbed low-centred polygons (TEG2-1_{Undist}, TEG2-2_{Undist}), drained polygons adjacent to the TEG (TEG2-1_{Drained}, TEG2-2_{Drained}), gully slopes (TEG2-1_{Slope}, TEG2-2_{Slope}, TEG2-3_{Slope}), and the bottom of the gully channel (TEG2_{BGC}) (Figure 1; Figure 2). For both sites, drained polygons corresponded to low-centred polygons that drained when thermo-erosion gullying caused breaching and collapsing of their rims (Godin et al., 2016). All permafrost cores were kept frozen and brought back to Université de Montréal for laboratory analyses.

Supprimé: centered

Supprimé: about two kilometres west of TEG1 (

Supprimé: :

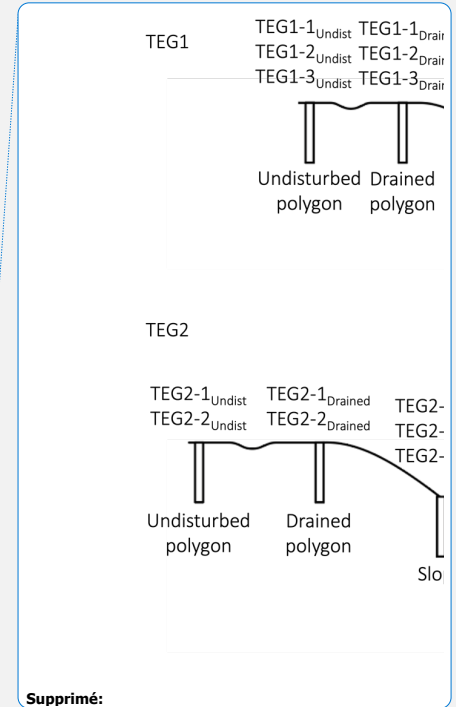
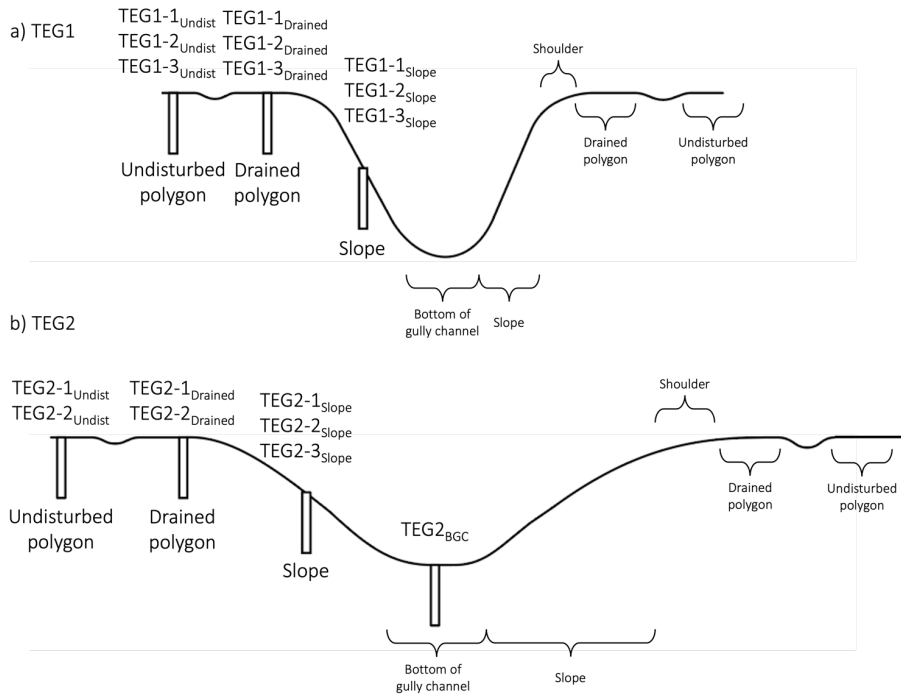
Supprimé: Allard et al., 2020).

Supprimé: centered

Supprimé: centered

Supprimé: drainage conditions

Supprimé: drained



Supprimé:

Supprimé: (
Supprimé:),

255 Figure 2. Conceptual cross-section of the two thermo-erosion gullies, TEG1 (a) and TEG2 (b), showing the sections of the TEGs where thaw front depth was probed (only one side is annotated, but for slopes and shoulders, both sides were probed), and the locations where we drilled into permafrost. While TEG1 was composed of three subsites, TEG2 had cores relatively close to one another. The locations of the cores are relative to the cross-section of the gullies, for their exact location see Figure 1. Figure not to scale.

260 The cores were first scanned using micro-computed tomodensitometric analysis (CT-scan SOMATOM Definition AS+128, Siemens®, resolution of 0.4 mm). The scans were used to characterize the cryostructures present in permafrost (Calmels and Allard, 2004). Cryostructures were described using a classification based on existing literature (French and Shur, 2010; Kanevskiy et al., 2013; Murton, 2013). Then, the cores were cut into samples ranging from 0.5 to 49 cm for TEG1 and 2 to 36 cm for TEG2 that corresponded to the main cryostructures and sediment textures. (TEG1 $n = 173$, TEG2 $n = 56$). The frozen samples were vacuum sealed in plastic bags to determine their total volume using the water displacement method (Strauss et al., 2013). After, the samples were weighed, dried in an oven at 105°C until dry, and reweighed to determine the water content. The volume and mass of the samples were used to calculate bulk (ρ_{bulk}) and dry (ρ_{dry}) densities,

Supprimé: corresponding

Supprimé: , and

Supprimé: (V_i)

Supprimé: weighted

Supprimé: reweighted

and the mass of water for volumetric ice content (VIC; $\text{cm}^3_{\text{ice}} \text{cm}^{-3}_{\text{soil}}$ Supplementary material 2). Grain size analyses were performed on the dry samples using a sieve column (0.5 phi increments, 1.0 mm, 1.4 mm, 2.0 mm, 2.8 mm, 4.0 mm, 5.6 mm, 8.0 mm, 11.2 mm, 16.0 mm) for particles >1.0 mm and a particle size analyzer (triplicate measurements; Horiba Partica LA-950V2) for particles ≤ 1.0 mm. Soil composition was determined by calculating the proportion (% of total mass) of gravel (>2 mm), sand ($>63 \mu\text{m}$ to ≤ 2 mm), silt ($>2 \mu\text{m}$ to $\leq 63 \mu\text{m}$), and clay ($\leq 2 \mu\text{m}$) in each sample. Organic matter content (OMC) was determined using the loss-on-ignition method (5-10g triplicates at 550°C for 5h, Gagnon and Allard, 2020) on samples representative of the main soil layers (TEG1 $n = 57$, TEG2 $n = 56$).

3.2 Data analyses

The weighted average VIC (VIC_{wa}) and OMC (OMC_{wa}) were calculated for each cryostructure, cores from a same hole (hereafter referred as cores), and TEG (Supplementary material 2). To facilitate comparison between cores, VIC_{wa} and OMC_{wa} down to one meter were used (VIC_{wa} and OMC_{wa} hereafter describe the weighted average down to 1 m). For TEG1-Undist and TEG1-Drained, which were 95 cm and 96 cm deep, respectively, the bottom cryostructure/stratigraphic unit and associated VIC/OMC were assumed to be the same down to 100 cm deep. Cryostructures were used to produce the cryostratigraphy for each core and for the interpretation of geocryological layers, i.e., layers that describe temporal changes in active-layer thickness (Shur et al., 2005). The interpretation of the geocryological layers was based on the cryostructures and VIC and was used to describe permafrost resilience and recovery to thermal erosion. The geocryological layers were: active layer (unfrozen and frozen); transient layer, which is an ice-rich layer in the uppermost part of permafrost that is susceptible to thawing due to sub-decadal to centennial variations in active-layer thickness; intermediate layer, a more ice-rich layer directly below the transient layer that is susceptible to thawing due to decadal to multi-centennial variations in active-layer thickness; buried intermediate layer, an intermediate layer that has been buried under layers of sediment in which permafrost has aggraded syngenetically; and permafrost (French and Shur, 2010; Murton, 2013; Gilbert et al., 2016; Kanevskiy et al., 2017).

To produce the generalized stratigraphy of each core, we used the grain size statistics combined with the photographs and CT-scans of the cores. Grain size analyses were performed with the GRADISTAT program (version 9.1) (Blott and Pye, 2001). Based on sediment size classes derived from sieving and the particle size analyzer, the program generated statistical parameters that were used to determine the textural groups and the types of sediment (Folk and Ward (1957) measures were used). We also performed statistical analyses to determine if VIC_{wa} , OMC_{wa} , or the weighted average mean grain size down to 1 m differed between the two TEG, between all sub-sites of the TEG, and between the position of the cores about the TEGs (i.e., undisturbed polygon, drained polygon, gully slope, gully channel) using RStudio software (RStudio Inc., version 1.4.1103). This was done using VIC_{wa} and OMC_{wa} down to 1 m of each core in a one-way analysis of variance (ANOVA) with a 95% confidence interval followed by a Tukey's HSD analysis.

Supprimé: and

Supprimé: (\leq)

Supprimé: (Supplementary material 3). Clay ($\leq 2 \mu\text{m}$) was not described as it accounted for $<1\%$ in all samples..

Supprimé: Gagnon and Allard, 2020.

Supprimé: stratigraphy and associated VIC/OMC were assumed to be the same down to 100 cm deep.stratigraph

a mis en forme : Anglais (R.-U.)

Supprimé: (Folk and Ward (1957)

Supprimé: VIC

4. Results

4.1 State of the TEG, polygon shape, and ~~thaw front depth~~

The two TEG differed significantly in their surface characteristics and general shape. TEG1 was characterized by a narrow ~~(10-15 m)~~ box-shaped main channel, i.e., high-angle slopes connecting to a flat gully channel bottom, and had many ramifications through the surrounding polygonal network. ~~The depth of the main channel varied between 1 m and 5 m, and younger areas where erosion was more active tended to be deeper, narrower, and with steeper slopes.~~ Erosion was apparent in all the channels, i.e., the sides of channels were steep and uneven with blocks of ground falling off, causing the soil to be exposed (Figure 3). It was also possible to see thermokarst mounds, i.e., baydzherakhi, in the main channel of TEG1 where ~~ice-wedge melt and thermal~~ erosion isolated polygons ~~centres~~. TEG2 was characterized by a well-developed main channel with few ramifications. The main channel was wide ~~(30-40 m from side to side)~~ with a flat bottom ~~(3-7 m)~~ and ~~was between 2 and 6 m deep.~~ The slopes were smooth and at low angle (Figure 3). Both the sides and bottom of the gully channel were stabilized with a continuous vegetation cover except at the bottom of the gully channel where water was flowing.

Supprimé: active layer thickness

Supprimé: (~

Supprimé: 20-

Supprimé: the

Supprimé: and the sides

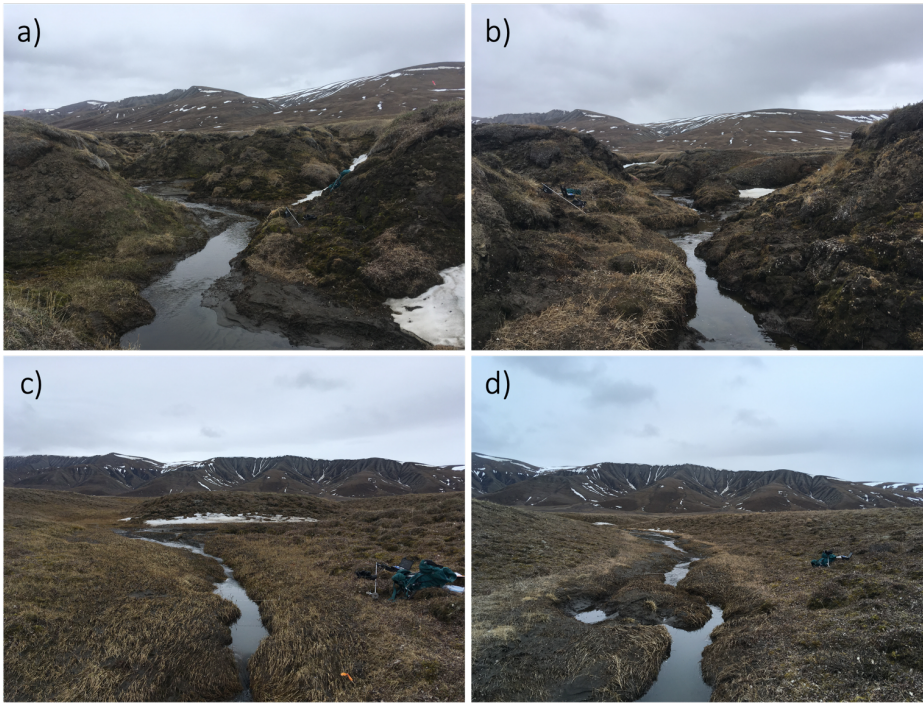


Figure 3. Thermo-erosion gullies 1 (TEG1, a-b) and 2 (TEG2, c-d). a) TEG1, near subsite TEG1-2, b) TEG1, near subsite TEG1-3. c) TEG2, near the transect where the cores were drilled, and d) TEG2, near TEG2_TFD2, about 400 m upstream of the cores. All pictures were taken on 24 June 2018 and point South-East. The backpack on the pictures is about 80 cm long.

For both TEG1 and TEG2, the polygons adjacent to the TEG were drained, i.e., mesic to dry (TEG1-1-2-3^{Drained}, TEG2-1-2^{Drained}), compared to undisturbed low-centred polygons away from the gully incisions where ponds at the centre of polygons as well as in the throughs separating them were common (TEG1-1-2-3^{Undist}, TEG2-1-2^{Undist}). At TEG1, the drained polygons adjacent to the TEG were low-centred. At TEG2, the drained polygons were flat or high-centred while the undisturbed polygons were low-centred. In addition, the area encompassing the drained polygons along the TEG was also higher in elevation than the surrounding low-centred polygons (based on a normalized topographic position index, see Veillette, 2019). Over 70 thermal contraction cracks were found in the flat bottom and in the slopes of TEG2 (Veillette, 2019). The cracks seemed to follow the same pre-disturbance polygonal network as many cracks were extending from the troughs of the surrounding network.

Supprimé: boreholes

Supprimé: other

Supprimé: standing water was

Supprimé: centered

Supprimé: centered

Supprimé: centered

Supprimé: centered

Supprimé:

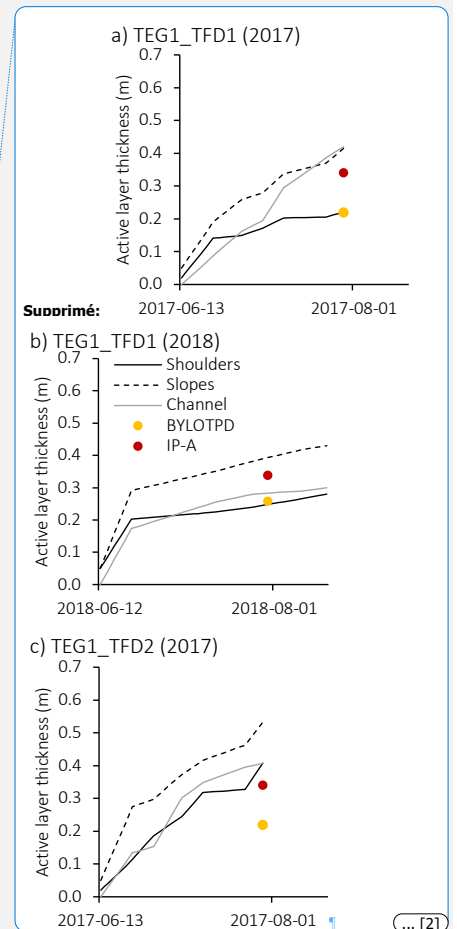
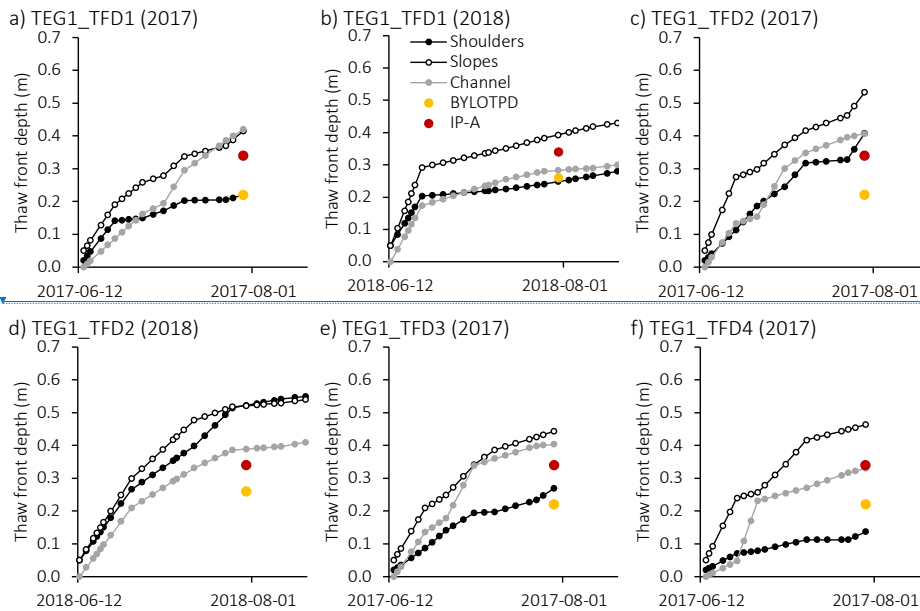
Supprimé: Veillette, 2019).

Supprimé: at

Supprimé: of the gully channel

Supprimé: on

TFD varied between the two TEG and depending on the location of the measurements in the TEG. At TEG1, TEG1_TFD1-2-3-4 averaged 26 cm, 46 cm, and 39 cm on 29 July 2017 for the shoulders, slopes, and bottom of the gully channel, respectively (Supplementary table 1). On 30 July 2018, TEG1_TFD1 and TEG1_TFD3 averaged 38 cm (shoulders), 46 cm (slopes), and 34 cm (bottom of gully channel). Although there was some variability (e.g., TEG1_TFD2 2018), the general trend in TFD at TEG1 was deepest on the slopes and shallowest on the shoulders, and measurements on the slopes and the gully channel were comparable to undisturbed TFD (BYLOTPD and IP-A) (Figure 4a-b-c-d-e-f). At TEG2, TEG2_TFD1-2-3 averaged 41 cm, 30 cm, and 56 cm on 30 July 2018 for the shoulders, slopes, and bottom of the gully channel, respectively (Supplementary table 1). All three locations at TEG2 showed the same trend: TFD was deepest at the bottom of the gully channel and shallowest on the slopes, which were similar to undisturbed TFD (Figure 4g-h-i). Shoulder values showed more variability than at TEG1.



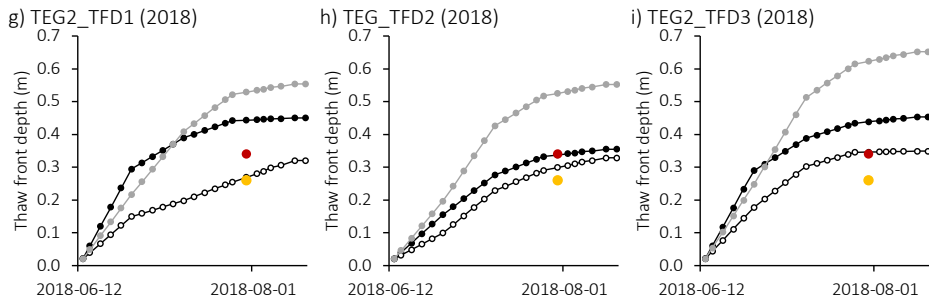


Figure 4. Thaw front depth (TFD) measured in 2017 (13 June to 29 July) and 2018 (12 June to 16 August) in cross-sectional transects of the thermo-erosion gullies (TEG; curves) and TFD calculated from ground temperature measurements (red and yellow dots). a) and b) TEG1_TFD1, near subsite TEG1-3, in 2017 and 2018, respectively, c) and d) TEG1_TFD2, near subsite TEG1-2, in 2017 and 2018 respectively, e) TEG1_TFD3, about 40 m upstream of TEG1_TFD2, f) TEG1_TFD4, about 90 m upstream of TEG1_TFD2, g) TEG2_TFD1, along the transect of the cores, h) TEG2_TFD2, about 400 m upstream of TEG2_TFD1, and i) TEG2_TFD3, about 640 m upstream of TEG2_TFD1. See figure 1 for the position of the TFD transects.

380 4.2 Soil profiles

The generalized stratigraphy of the cores at TEG1 showed that permafrost was characterized by silty sand or sandy silt sediment, with a larger proportion of peaty material than at TEG2 (Figure 5). There were also some gravelly ~~sediments~~ in cores TEG1-1_{Undist} and TEG1-1_{Slope}. OMC values varied between 3.1% and 47.8%, and the OMC weighted averages of each core varied between 5.6% and 20.0%. At TEG2, the cores were largely dominated by sandy silt sediment, sometime with peaty material (Figure 6). OMC values of the different strata varied between 4.0% and 25.0%, but the weighted averages of each core remained between 6.2% and 15.3% (Table 1). In general, there were more peaty sediment in the undisturbed and drained polygons than in the slopes and the bottom of the TEG.

A total of 10 main cryostructures were identified in the cores of both TEG: interstitial (pore ice not visible to the unaided eye), interstitial visible (pore ice visible), crustal, ice veins, layered, lenticular (includes micro-lenticular cryostructures and non-parallel ice lenses), isolated ice lens, organic matrix (ice-saturated peat), reticulate, and suspended (Figures 5 and 6, Table 2). Reticulate, suspended, organic matrix, and layered cryostructures accounted for 75.3% of the total length of all cores, while the seven other cryostructures covered the remaining length. Most of the cryostructures predominantly developed in sandy silt sediment (Table 2 and Supplementary table 2), except for crustal (silty sandy gravel) and interstitial/interstitial visible (silty sand) cryostructures. The poorly defined sections corresponded to transitional cryostructures, often composed of organic matter unevenly mixed with mineral sediment. VIC within ~~each cryostructure~~ varied between 28.9% and 100.0%, and the VIC range (max-min) averaged 27% (Table 2). ~~Sections with layered and reticulate cryostructures showed the widest VIC ranges (respectively 52.2% and 46.2%).~~ VIC_{wa} of all cores ranged between 47.0% and 81.5% and averaged 69.3% (Table 1). There was no statistical difference (p-value>0.05) in VIC_{wa}, ~~OMC_{wa}, or the~~

Supprimé: sediment

Supprimé: cryostructures

Supprimé: of the cryostructures

Supprimé: The

weighted average mean grain size between the TEG1 and TEG2, between any of the sub-sites, or between the positions of the cores. For both TEG, cores with higher OMC tended to have higher VIC (TEG1 $R^2 = 0.47$, TEG2 $R^2 = 0.28$), but VIC showed no trend with mean grain size (both $R^2 < 0.0$; Figure 7). Cores in undisturbed polygons (TEG1-1-2-3_{Undist}, TEG2-1-2_{Undist}) were mostly composed of layered, organic matrix, and reticulate cryostructures (Supplementary table 3). Cores in drained polygons (TEG1-1-2-3_{Drained}, TEG2-1-2_{Drained}) showed similar cryostructures, as well as some ice enrichment closer to the surface. In the slopes of the gullies, the cores (TEG1-1-2-3_{Slope}, TEG2-1-2-3_{Slope}) often displayed inclined layers of sediment/ice/air bubbles and were dominated by the reticulate cryostructure.

410 **Table 1. Weighted average and range (minimum/maximum) of volumetric ice content (VIC) and organic matter content (OMC) down to a depth of 1 m (excluding the surface thawed layer) for the two thermo-erosion gullies (TEG1 and TEG2) and for each core. n is the number of samples used for the calculations and the uncertainty is the weighted standard deviation (SD_{wa}).**

Core	VIC (%)				OMC (%)			
	$VIC_{wa} \pm SD_{wa}$	Min	Max	n	$OMC_{wa} \pm SD_{wa}$	Min	Max	n
TEG1	65±14	29	100	144	13±10	3	48	49
TEG1-1 _{Undist}	48±12	29	67	11	6±1	5	8	4
TEG1-2 _{Undist}	71±10	50	90	17	13±3	10	16	5
TEG1-3 _{Undist}	75±10	56	100	20	18±11	4	28	6
TEG1-1 _{Drained}	62±14	45	87	13	14±12	5	38	6
TEG1-2 _{Drained}	75±15	37	100	23	15±10	7	37	5
TEG1-3 _{Drained}	63±12	48	90	17	11±10	3	32	7
TEG1-1 _{Slope}	64±11	48	100	17	11±10	4	34	7
TEG1-2 _{Slope}	64±15	41	90	15	20±15	8	48	5
TEG1-3 _{Slope}	64±8	47	79	11	10±0	10	10	4
TEG2	74±10	48	100	44	11±5	4	25	44
TEG2-1 _{Undist}	73±11	50	88	6	11±2	5	8	6
TEG2-2 _{Undist}	80±10	64	87	5	15±10	4	10	5
TEG2-1 _{Drained}	75±10	62	100	7	13±4	8	16	7
TEG2-2 _{Drained}	77±7	64	89	6	9±3	4	25	6
TEG2-1 _{Slope}	72±9	51	88	8	12±4	6	14	8
TEG2-2 _{Slope}	81±8	68	88	4	8±1	7	9	4
TEG2-3 _{Slope}	69±6	58	74	5	7±1	7	17	5
TEG2 _{BGC}	64±11	51	74	3	6±2	8	18	3

Supprimé: borehole.

Borehole	VIC (%)			OM
	VIC_{wa}	Min	Max	
TEG1	65.5	28.9	100.0	13
TEG1-1 _{Undist}	47.9	28.9	67.1	5
TEG1-2 _{Undist}	70.5	49.7	90.0	12
TEG1-3 _{Undist}	75.4	55.8	100.0	17
TEG1-1 _{Drained}	61.5	44.6	87.3	13
TEG1-2 _{Drained}	75.1	36.8	100.0	14
TEG1-3 _{Drained}	63.0	47.8	90.4	11
TEG1-1 _{Slope}	63.8	48.0	100.0	11
TEG1-2 _{Slope}	64.2	40.7	89.8	20
TEG1-3 _{Slope}	63.7	46.6	79.2	10
TEG2	74.2	49.7	100.0	10
TEG2-1 _{Undist}	72.7	49.7	88.3	10
TEG2-2 _{Undist}	79.7	64.2	87.1	15
TEG2-1 _{Drained}	74.5	62.4	100.0	12
TEG2-2 _{Drained}	77.0	64.2	89.3	9
TEG2-1 _{Slope}	71.5	51.3	88.3	11
TEG2-2 _{Slope}	81.4	67.9	88.4	8
TEG2-3 _{Slope}	68.7	57.7	73.8	6
Supprimé: TEG2 _{BGC}	64.2	51.2	74.0	6

415 4.2.1 TEG1

Cores at had VIC_{wa} values ranging between 47.9% and 75.4% and averaged 65.5% (Figure 5 and Table 1). The cores extracted from undisturbed polygons varied in soil composition, stratigraphy, and cryostratigraphy (Figure 5a). TEG1-1_{Undist} contrasted with the other undisturbed cores due with its top layer of sandy gravel and by having the lowest VIC_{wa} (47.9%). The gravely sediments were characterized by crustal cryostructures, and ice casts of some of the stones were visible, directly below them (e.g., ice lens at 47-48 cm deep). TEG1-2_{Undist} was composed of layers of sandy silt and silty sand with a peaty

inclusion (organic matrix cryostructure) at 63-78 cm. There were ice-rich layers above and below the peaty inclusion at 31-63 cm and 88-115 cm. TEG1-3_{Undist} was characterized by a top half organic layer (organic matrix cryostructure) in silty sand sediment overlying a bottom half of mineral sediment with a layered cryostructure. The ice layers of [the bottom section](#) increased in thickness as the sediment changed from silty sand (62 to 90 cm) to sandy silt (>90 cm).

Table 2. Weighted average volumetric ice content (VIC_{wa}), [cryostructure proportion](#), and [proportion of the dominant soil compositions](#) of each cryostructure identified. The [cryostructure proportions](#) were calculated by dividing the total length of a cryostructure by the total length of [all cryostructures found in the cores](#), and the proportions of the dominant soil compositions were calculated by dividing the total length of a type of sediment within a cryostructure by the total length of the cryostructure. Only VIC values falling within one cryostructure (i.e., not sections overlapping two or more cryostructures) were used in the total proportion to obtain representative values.

Cryostructure	VIC (%)			Cryostructure proportion (%)	Proportion of the dominant soil composition (%)
	VIC _{wa}	Min	Max		
Ice veins	76.8	76.0	79.8	0.9	Sandy silt (100%)
Isolated ice lens	95.2	84.3	100.0	1.9	Sandy silt (74%), sandy silt peaty (12%)
Lenticular	52.8	49.7	55.5	2.1	Sandy silt (100%)
Crustal	42.8	28.9	56.3	2.5	Silty sandy gravel (81%)
Interstitial	50.7	44.6	57.7	4.3	Silty sand (68%), sandy silt (30%)
Poorly defined	64.1	36.8	76.1	5.1	Sandy silt (61%), silty sand peaty (22%)
Interstitial visible	59.0	46.6	84.1	7.9	Silty sand (79%), sandy silt (15%)
Suspended	81.8	70.0	100.0	13.2	Sandy silt (68%), silt (15%)
Layered	71.9	47.8	100.0	17.4	Sandy silt (63%), silty sand (37%)
Organic matrix	77.3	55.5	88.6	18.5	Sandy silt peaty (60%), silty sand peaty (40%)
Reticulate	69.3	54.6	97.2	26.2	Sandy silt (85%)

In drained polygons, the stratigraphic layers were mostly composed of silty sand and sandy silt, sometimes peaty (Figure 5b). TEG1-1_{Drained} was composed of sandy silt and silty sand layers with peaty inclusions at the surface and at 66-79 cm. Most of the core was characterized by interstitial and organic matrix cryostructures, except for an ice-rich layer (suspended cryostructure) at 55-66 cm. TEG1-2_{Drained} showed an ice-rich layer (suspended, reticulate cryostructures) at 44-88 cm with peaty (organic matrix cryostructure) sediment directly below it and at the surface of the core. The sediment in the suspended cryostructure was almost entirely composed of silt. TEG1-3_{Drained} was mostly composed of silty sand. Organic layers (organic matrix cryostructure) were observed both at the top and the bottom of the core. In the [centre](#), the only section composed of sandy silt was characterized by a layered cryostructure.

Cores from the gully slopes showed contrasting stratigraphy and cryostratigraphy (Figure 5c). TEG1-1_{Slope} was composed of three main sections: a top section (4-28 cm) with peaty-silty-sandy sediments, a middle section (28-68 cm) with silty sand sediment showing some cross-stratification, and a bottom section (68-116 cm) with coarser gravelly-silty-sandy sediments. The top section was characterized by an organic matrix cryostructure, the middle section by mostly interstitial visible cryostructures, and the bottom section by mostly reticulate cryostructures. TEG1-2_{Slope} displayed a thick ice lens at 110-120 cm separating the bottom silty sand sediment from the sandy silt sediment above and including a few oblique

Supprimé: this cryostructure

Supprimé: total

Supprimé: total

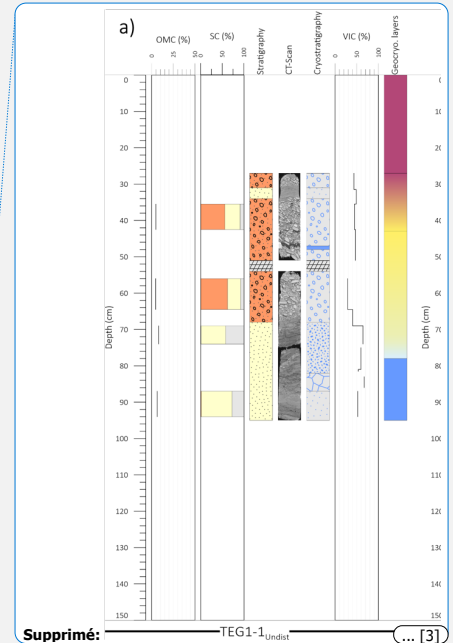
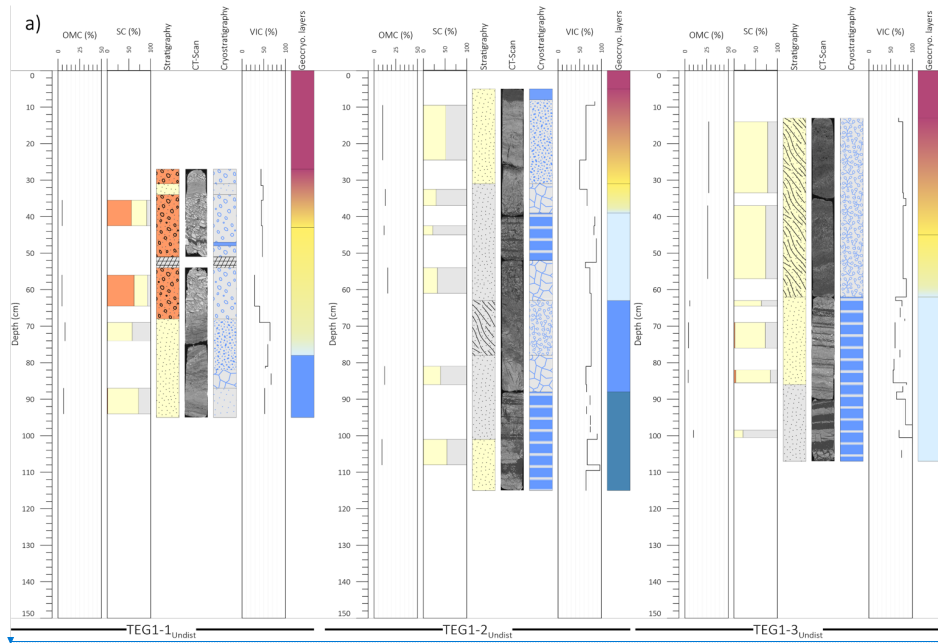
Supprimé: the

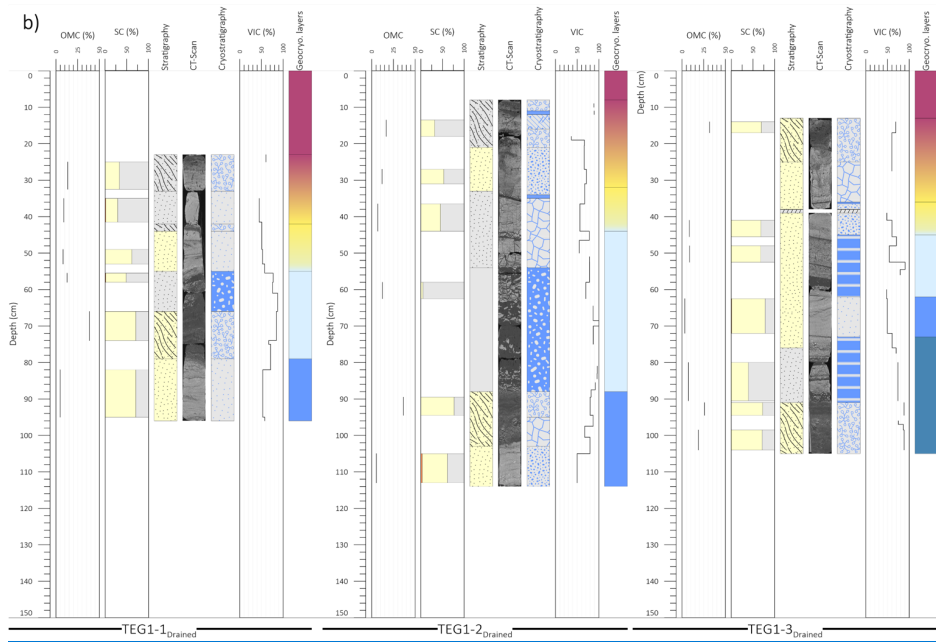
Cryostructure	VIC (%)		
	VIC _{wa}	Min	Max
Ice veins	76.8	76.0	79.8
Isolated ice lens	95.2	84.3	100.0
Lenticular	52.8	49.7	55.5
Crustal	42.8	28.9	56.3
Interstitial	50.7	44.6	57.7
Poorly defined	64.1	36.8	76.1
Interstitial visible	59.0	46.6	84.1
Suspended	81.8	70.0	100.0
Layered	71.9	47.8	100.0
Organic matrix	77.3	55.5	88.6
Reticulate	69.3	54.6	97.2

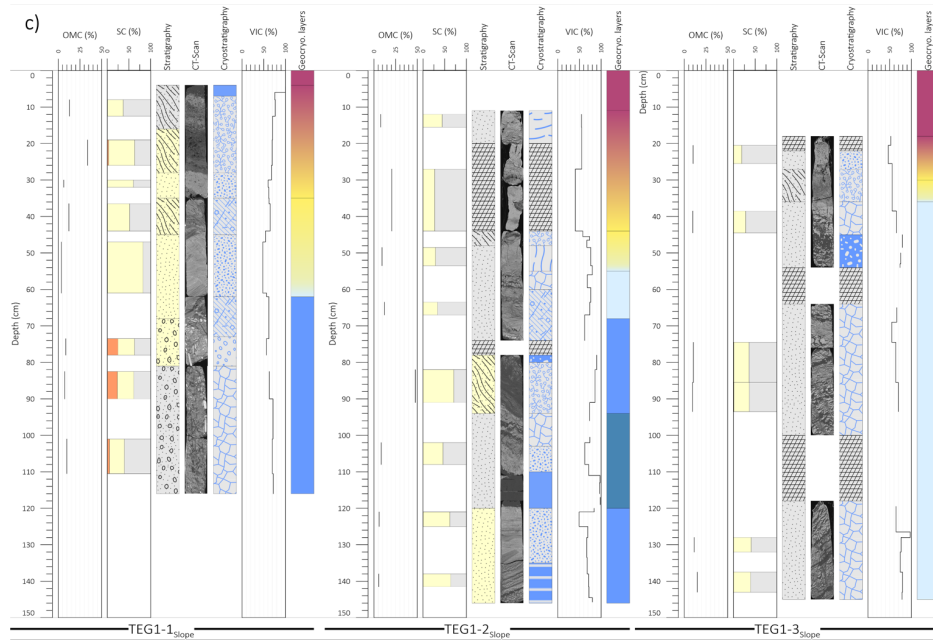
Supprimé:

Supprimé: center

455 streaks of bubbles (<0.5 cm). The bottom sandy sediment was characterized by horizontal and cross-stratification at 120-135
 460 cm (interstitial visible), and inclined stratification (>135 cm) with layered cryostructure aligned with the stratification plane. Above the ice lens and up to 78 cm deep, the sediments and the cryostructures were inclined. TEG1-3_{slope} contrasted with the
 two other cores by being more uniform in soil composition and cryostructures. Except at the top of the core (<36 cm),
 TEG1-3_{slope} was entirely composed of reticulate cryostructures in sandy silt sediment. Starting at 76 cm, the sediment/ice
 layers were inclined.







465 **Figure 5. Organic matter content (OMC; %), soil composition (SC; %gravel, %sand, %silt), soil stratigraphy, CT-scan imagery, soil cryostratigraphy, volumetric ice content (VIC; %), and geocryological layers for the cores at TEG1. a) Cores in undisturbed polygons, b) cores in drained polygons, and c) cores in slopes of TEG1. While delineations were used to mark the transitions between the frozen part of the active layer, the transient layer, and the intermediate layer, color gradients were also used to denote the uncertainty in the limits between these layers. Refer to figure 6 for the legend.**

470 **4.2.1 TEG2**

Cores at TEG2 had VIC_{wa} values ranging between 64.2% and 81.4% and averaged 74.2% (Figure 6; Table 1). TEG2-1_{Undist} and TEG2-2_{Undist} were mostly composed of sandy silt with some layers of peaty sandy silt (Figure 6a). TEG2-1_{Undist} was characterized by a succession of organic layers (organic matrix) underlain by ice-rich layers (suspended, reticulate, layered). Similarly, TEG2-2_{Undist} was dominated by an organic matrix cryostructure in the top section (13-52 cm) underlain by an ice-rich (suspended cryostructure) layer (61-81 cm) in sandy silt above a layered cryostructure with thin ice lenses in silty sand.

475 In drained polygons (TEG2-1_{Drained}, TEG2-2_{Drained}), the soil layers were mostly composed of sandy silt, sometimes peaty (Figure 6b). Both cores were characterized by an ice-rich layer (ice lens, suspended, reticulate, layered cryostructures) near the top of permafrost, (respectively 22-50 cm and 12-34 cm), a middle section (50-82 cm and 34-51 cm) with organic-

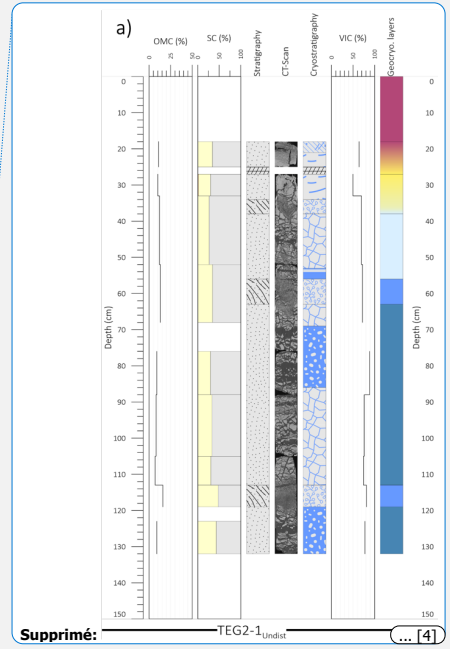
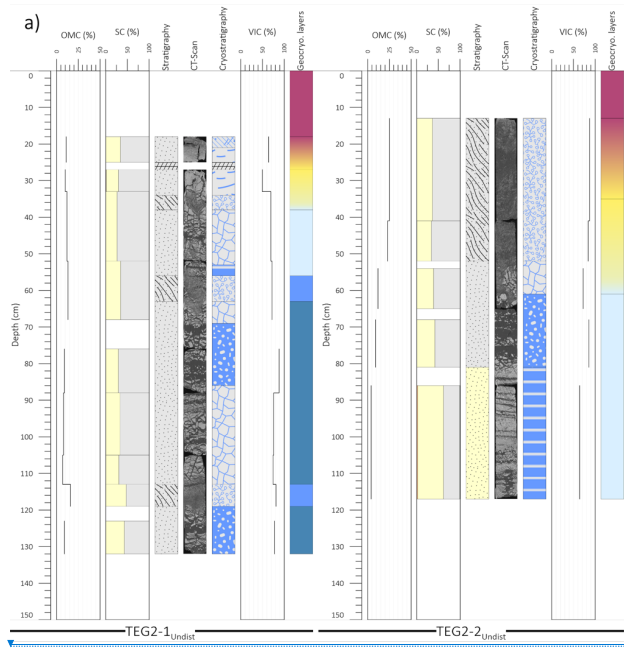
Supprimé: stratigraphic

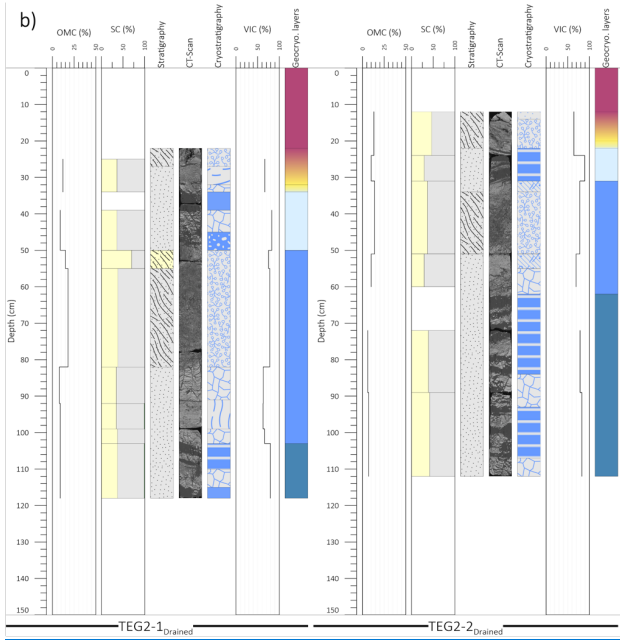
Supprimé: .

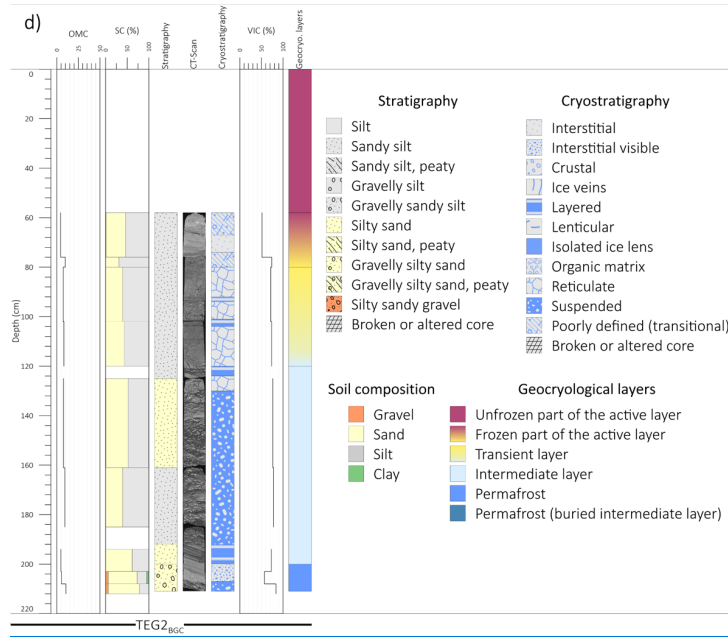
rich sediment (organic matrix cryostructure), and a bottom section ([82-118 cm and 51-112 cm](#)) characterized by more developed cryostructures (layered, reticulate, ice lens) and ice lenses.

In the gully slopes, while TEG2-2_{slope} and TEG2-3_{slope} were entirely composed of sandy silt, TEG2-1_{slope} also contained peaty sections (Figure 6c). In TEG2-1_{slope}, it was possible to see alternation of peaty sediment (organic matrix
485 cryostructure) and ice-rich (suspended, reticulate, layered cryostructures) sandy silt sediment. TEG2-2_{slope} was dominated by ice-rich cryostructures (layered, reticulate, suspended) transitioning from one to the other. The reticulate and layered cryostructures were well-developed, i.e., had high VIC values and were characterized by thick ice inclusions (and vice versa for poorly-developed). TEG2-3_{slope} was dominated by reticulate cryostructures, though they were often poorly-developed. The layered cryostructures at the bottom of the core were very clearly defined. Oblique streaks of bubbles (<1.5 cm) were
490 found in the suspended and reticulate cryostructures of the slope cores, i.e., parallel to the slope surface.

Finally, the stratigraphy of core at the bottom of the gully channel (TEG2_{BGC}) contrasted with the other cores of TEG2 with more sandy sediments and some gravel at the bottom of the core (Figure 6d). The core had the lowest VIC_{wa} of all cores at TEG2 (Table 1), though this only included the top 40 cm of the core, which was not representative of deeper layers where ice-rich cryostructures (reticulate, suspended, layered) were found. Starting at 192 cm deep, inclined layers of
495 coarser sediments formed inclined cryostructures.







500
 Figure 6. Organic matter content (OMC; %), soil composition (SC; %gravel, %sand, %silt), soil stratigraphy, CT-scan imagery, soil cryostratigraphy, volumetric ice content (VIC; %), and geocryological layers for the cores at TEG2. a) Cores in undisturbed polygons, b) cores in drained polygons, c) cores in slopes of TEG2, and d) core at the bottom of the gully channel of TEG2. While delineations were used to mark the transitions between the frozen part of the active layer, the transient layer, and the intermediate layer, color gradients were also used to denote the uncertainty in the limits between these layers.

Supprimé: boreholes

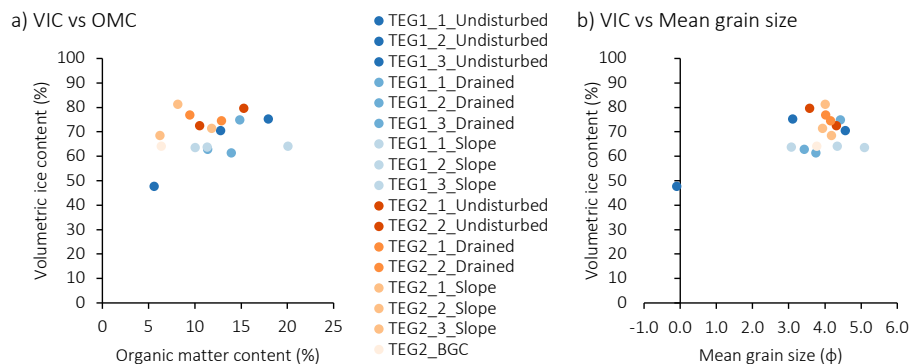


Figure 7. Volumetric ice content (VIC) against a) organic matter content (OMC) and b) mean grain size for each core of TEG1 and TEG2. Cores from TEG1 and TEG2 are in blue and orange shades, respectively. VIC, OMC, and mean grain size are weighted averages down to 1 m deep for each core.

5. Discussion

5.1 Cryostratigraphy

5.1.1 Cryostructures

Our results show that the development of cryostructures was largely influenced by soil [and organic matter](#) composition [of the](#) [deposits](#). The cold climate and permafrost at our study site also significantly affected freezing processes and thus the formation of the cryostructures. Here we present a more detailed description of four out of 11 cryostructures as those four accounted for [75.3%](#) of all cryostructures occurrences while most of the other ones accounted for [<5%](#).

The reticulate cryostructure was the most abundant one and formed almost exclusively in sandy silt, resulting in VIC_{wa} similar to what others have reported (Kanevskiy et al., 2013; Shur et al., 2021; Thévenin, 2023). Since permafrost in the study area is syngenetic, reticulate cryostructures likely formed by the hydraulic fracturing of the sediment ahead of an advancing freezing front followed by infilling of the resulting fractures with expelled and pressurized pore water (McRoberts and Nixon, 1975). Layered cryostructures formed in both predominantly silty (62%) and sandy (38%) sediments, though more well-developed (thicker) ice layers were generally found in silty sediment (e.g., TEG1-3_{Undist}), reflecting how ice segregation was facilitated in finer sediments. They likely formed due to prolonged periods of ice segregation when the thaw front was stationary and water was available, mirroring sediment deposition patterns, and consistent with syngenetic permafrost (French and Shur, 2010). Both the reticulate and layered cryostructures had a wide VIC range. While all cryostructures showed some variability in VIC, the reticulate and layered cryostructures were the most affected because of

Supprimé: and

Supprimé: stratigraphic sequences

Supprimé: 76

the variability in the thickness of the ice lattices (reticulate) or lenses (layered). Depending on the saturation of the host sediments, those cryostructures can be observed as much in ice-rich sediments as in sediment-poor ice in permafrost and reflect the surface conditions (e.g., water availability) during their formation (Paquette et al., 2022).

Supprimé: (Paquette et al., 2022)

535 Except for the isolated ice lenses, the suspended and organic matrix cryostructures had the highest VIC_{wa}. The suspended cryostructure predominantly (>80%) formed in silty sediment, which is consistent with ice segregation during periods of rapid sedimentation of fine sediments and sustained water availability (Murton, 2013). Suspended cryostructures were often found with grading cryostructures (e.g., reticulate, layered) before and/or after them leading to lower VIC. This suggests an acceleration and/or slowing down of ice segregation and thus of sedimentation during their formation, or that two freezing fronts contributed to the formation of the cryostructures. Organic matrix cryostructures were found in similar 540 proportions in peaty sandy silt (60%) and peaty silty sand (40%), thus making the presence of organic material rather than a specific grain size the main factor of formation.

Supprimé: sediment

5.1.2 Cryostratigraphic patterns

Most of the cryostructures in this study developed with syngenetic permafrost aggradation, irrespective of their position with regards to the TEG. In general, we observed that the inclusion of organic matter in the soil profiles largely affected the 545 cryostratigraphy due to the peaty material promoting ice aggradation below it. This was observed in cores from both TEG where it was common to see suspended, reticulate, layered, and isolated ice lens cryostructures either directly or 10-20 cm below the organic matter inclusion. This suggests that when organic matter accumulated, the top of permafrost not only moved up due to the new material accumulating (syngenetic permafrost growth), but also because of the low thermal conductivity of organic matter compared to mineral sediment (Andersland and Ladanyi, 2004), which promoted ice 550 enrichment in the layers below. Organic layers at depth also promoted ice enrichment in the mineral sediment above them by slowing down the progression of the thaw front and thus facilitating ice segregation.

The cryostratigraphy of the cores in undisturbed polygons (except TEG1-1_{Undist}) reflected the conditions during permafrost formation, i.e., reticulate, layered, and suspended cryostructures forming in fine-grained aeolian sediment coupled with layers of organic layers promoting ice enrichment below them. Some of the cores in drained polygons (TEG1- 555 3_{Drained}, TEG2-1_{Drained}, TEG2-2_{Drained}) also showed an ice-rich layer closer to the surface than in undisturbed polygons, which we attribute to permafrost aggradation after polygon drainage. This is supported by our TFD measurements at TEG1 showing shallower TFD on the shoulders of the TEG, by Godin et al. (2016) who noted that drained polygons had a thinner active layer causing upward (syngenetic) permafrost aggradation, and by Veillette's (2019) results showing general uplifting of the drained polygons along TEG2. In the slopes, the high values of TFD at TEG1 showed that after formation of the TEG, 560 the slopes experience greater thawing than in undisturbed conditions. This can be explained by the lack of vegetation protecting the ground surface from air convection and solar radiation which, after vegetation colonization, is substantially reduced. This is supported by the TFD at TEG2 where the slopes have values similar to undisturbed conditions. The oblique streaks of bubbles and inclined ice layers indicated that the permafrost table moved up following an inclined plane likely

Supprimé: natural

parallel to the slope surface during permafrost aggradation. For the core at the bottom of the gully channel, the stratigraphy and cryostratigraphy suggest that after the initial accumulation of coarser alluvial sediment, finer alluvial sediment accumulated relatively quickly, which led to rapid ice segregation.

570 Based on the type of cryostructure (e.g., suspended, well-developed reticulate) and their high VIC, we estimate that permafrost was able to re-aggrade relatively quickly and with sufficient water following stabilization of the TEG. We attribute this to the low permafrost temperatures of the study site ([Allard et al., 2024](#)), which promoted permafrost aggradation upward following TEG stabilization. There was ice enrichment in all sections affected by the TEG (drained, slope, bottom of the gully channel), which led to ice contents similar to undisturbed conditions. Though there was no statistical difference in VIC_{wa} between the position of cores in the TEG, between the TEG or between the sub-sites, some patterns deserve attention. First, looking at the cryostratigraphy beyond 1 m deep shows that re-aggradation of cold permafrost following a disturbance may lead to ice enrichment, i.e., the recovery from the disturbance may lead to more ice than initially. It is also possible that permafrost recovery leads to ice enrichment in more concentrated layers instead of throughout the entire permafrost column near the surface. However, new deeper cores would be necessary to confirm this. 580 Second, drainage of the polygons bordering the TEG could also cause ice enrichment, specifically near the surface. This could be a stabilization mechanism preventing further TEG enlargement. Finally, the slope cores had less peaty/organic material than at other positions because it was likely eroded away during the formation of the TEG. Although permafrost re-aggradation promoted ice enrichment in the mineral sediment, the slopes are now prone to greater thaw subsidence as organic material requires an external load to cause thaw settlement comparable to mineral soil with similar VIC ([Kanevskiy et al., 2012](#)).

Supprimé: (Allard et al., 2020), which promoted permafrost aggradation upward following TEG stabilization.

Supprimé: (Kanevskiy et al., 2012)

5.1.3 Geocryological layers

All cores were characterized by a transient layer, which we expected because it is the result of the interannual variations in the active layer thickness and all sites experience it ([French and Shur, 2010](#); [Shur et al., 2005](#); [Shur, 1988](#)). Most of the cores were interpreted to have an intermediate layer, except for TEG1-1_{Undist} and TEG1-1_{Slope}. Those two cores were both characterized by coarser sediments than in other cores, resulting in higher hydraulic conductivities and therefore better drainage and less water available to form ice-rich ground layers. The average depth of the top of the intermediate layers from cores in drained polygons and slopes was shallower than in undisturbed conditions, especially in the slope cores where the intermediate layers were also thicker. In drained polygons, this is consistent with the permafrost table moving up after the formation of a TEG causing drainage of the bordering polygons and their uplifting. For the slopes and TEG2_{BGC}, the increased thickness of the combined transient and intermediate layers suggests that permafrost recovery following TEG stabilization can increase permafrost resilience to thawing compared to undisturbed conditions. They form a protective layer against annual thawing that would require a strong disturbance at the surface to be degraded ([Kanevskiy et al., 2016, 2017](#)) and thus contribute to the long-term stabilization of the TEG. 595

Supprimé: ALT

Supprimé: (Shur, 1988; Shur et al., 2005; French and Shur, 2010).

Supprimé: natural

Supprimé: (Kanevskiy et al., 2016, 2017)

610 Finally, buried intermediate layers were interpreted in most of the TEG2 cores, but only in TEG1-2_{Undist}, TEG1-2_{Slope}, and TEG1-2_{Drained} at TEG1. Those intermediate layers were interpreted as buried because they represented different sequences of permafrost aggradation. In most cases, the buried intermediate layers were located under a layer of organic sediment, which promoted ice-enrichment in the mineral sediment below. Then, new mineral sediment accumulated over the organic layer and were part of the active layer, until organic matter started to accumulate again. This resulted in the gradual decrease in active layer thickness, i.e., permafrost aggradation and formation of aggradational ice (Burn, 1988; French and Shur, 2010; Mackay, 1972), which led to the formation of a new intermediate layer in the mineral sediment below the newly accumulated organic matter.

Supprimé: Mackay, 1972;

Code de champ modifié

5.2 Landscape evolution following thermo-erosion gullyng

615 By investigating an active and a stable TEG in the High Arctic, we were able to identify and characterize the main processes of formation and stabilization of a TEG and the long-term impacts of thermal erosion in ice-rich polygonal tundra. We summarize these processes in a conceptual model describing three main stages of TEG formation and stabilization in our study area (Figure 8). The following sections describe each stage in detail.

Supprimé: a recent

Supprimé: 7

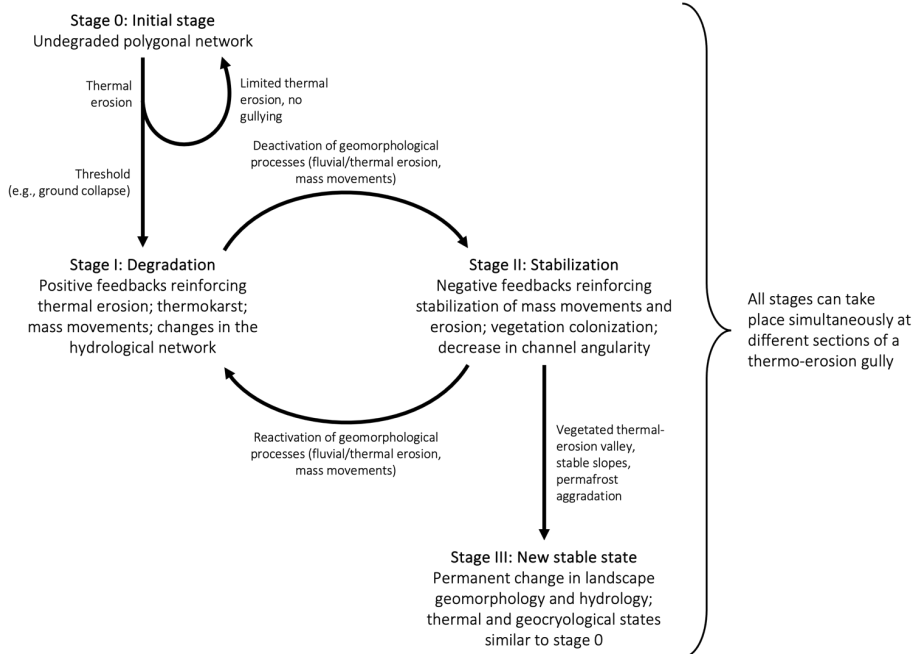
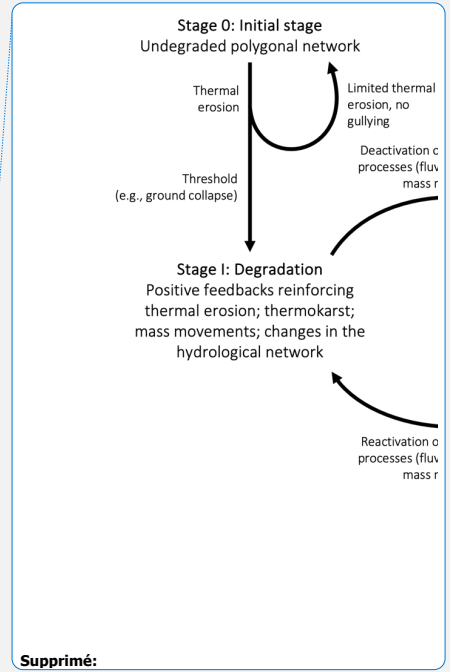


Figure 8. Conceptual model of thermo-erosion gully (TEG) evolution in cold permafrost. At stage 0, the polygonal network has well-developed ice wedges that can withstand some thermal erosion, until a threshold is surpassed and causes a TEG to form. At stage I, the thermal regime and geomorphological processes are in disequilibrium, which causes high rates of degradation. As the TEG reaches new thermal, hydrological, and geomorphological equilibria, geomorphological processes slow down, and stabilization begins. At stage II, stabilization takes place and the channel angularity gradually decreases. However, hydrological disturbances and changes in environmental conditions can reactivate geomorphological processes and cause further stage I degradation as the lack of a developed intermediate layer reduces the capacity of permafrost to withstand disturbances. If stabilization persists, the TEG enters a new state of the periglacial landscape. At stage III, the TEG is stabilized, and even though the permafrost thermal regime and ground ice content have recovered to conditions similar to stage 0, the TEG has caused long-lasting geomorphological and hydrological changes to the landscape.

5.2.1 Stage 0: Undisturbed polygonal network

In areas with cold continuous syngenetic permafrost where thick transient and intermediate layers have developed, permafrost is well-protected against interannual climatic variations and meteorological events (Kanevskiy et al., 2017; Shur et al., 2005). [Indeed, the infiltration of surface runoff water from snowmelt, summer precipitation, or thawing permafrost \(French, 2017\)](#) into open thermal contraction cracks and other types of cavities followed by thermal erosion of permafrost and ice wedges may be occurring on an annual basis, but not necessarily lead to gullying (Figure 8, Stage 0). The transient



Supprimé:

Supprimé: 7

Supprimé: Indeed, the infiltration of surface runoff water from snowmelt, summer precipitation, or thawing permafrost (French, 2007)...

Supprimé: 7

645 and intermediate layers act as buffers against disturbances due to the high latent heat of fusion of ice (Andersland and
Ladanyi, 2004; Jorgenson et al., 2010), and cold permafrost promotes rapid recovery. However, a change in surface
conditions (e.g., polygon drainage), a disturbance (e.g., heavy rainfalls, above average snow accumulation leading to
increased snowmelt, catastrophic lake drainage), or a shift in climate conditions (e.g., more precipitations, warmer air
temperatures increasing permafrost temperature) can trigger additional runoff and increase the power of thermal erosion,
650 eventually surpassing a threshold (e.g., tunnel collapse) and forming a TEG (Figure 8, Stage I).

Supprimé: (Jorgenson et al., 2010; Andersland and Ladanyi, 2004),
and cold permafrost promotes rapid recovery.

Supprimé: 7

5.2.2 Stage I: Degradation and disequilibrium

This first stage of thermo-erosion gullying is characterized by major geomorphic, hydrological, and thermal disequilibria.
This transitional stage is unstable and undergoes rapid changes (years to decades) through positive feedbacks caused by
thermal erosion of ice wedges and of the channel, thaw slumping, collapse of active layer and tunnel overhangs, slope
655 failure, and mudflows to reach a new equilibrium (Fortier et al., 2007; Godin et al., 2016; Godin and Fortier, 2012b). This
translates into a box-shaped channel with unstable slopes and multiple ramifications, sometime forming baydzherakhi.
Thermal erosion also progresses vertically into ice wedges and permafrost until it reaches its base level or enough sediment
is deposited at the bottom of the newly formed stream (French, 2017). Then, lateral thermal erosion occurs and contributes to
enlarge the TEG channels (Morgenstern et al., 2021). Thermokarst mounds become increasingly affected by thermal erosion
660 and thermokarst degradation due to the increased surface area when isolated and are eventually completely eroded from the
main channel if erosion persists.

Supprimé: (Godin and Fortier, 2012b; Godin et al., 2016; Fortier et
al., 2007)...

Supprimé: (French, 2007).

During this stage, sediment export is high because of the active erosion and collapsed material being remobilized
downstream in low gradient areas of the TEG channel (Godin and Fortier, 2012b; Rioux, 2020). The uncovered ground
material in the TEG becomes exposed to solar radiation and atmospheric heat, which both contribute to erosion, even
665 without running water (i.e., thermal erosion) (Fortier et al., 2007). In addition, the thaw front can penetrate deeper into
permafrost due to the lack of protective cover, causing degradation of the transient and intermediate layers of the slopes and
bottom of the gully channel and leading to deepening and widening of the gully.

5.2.3 Stage II: Stabilization and transition to a new state

While TEG inception can occur within a single thawing season, it often takes several decades for erosion, mass movement,
670 thermokarst, and sediment export to decrease, at which point stabilization can begin (Figure 8, Stage II). Over time, slope
angularity of the TEG decreases (Godin and Fortier, 2010), which contributes to reduce mass movements. In addition,
alluvial sediment deposited on the sides of main channel of the TEG can form alluvial levees that reduce gully wall
mechanical erosion by water (Godin and Fortier, 2012b). As the slopes become stable and erosion winds down, permafrost
re-aggradation takes place and vegetation starts to colonize exposed ground in the TEG. This creates a negative feedback on
675 mass movement and promotes further permafrost aggradation by shielding the ground surface from incoming solar radiation
and insulating it from atmospheric heat. The breaching and collapsing of the rims of the low-centred polygons encompassing

Supprimé: 7

Supprimé: The breaching and collapsing of the rims of the
polygons encompassing the TEG also contribute to TEG stabilization
(Godin and Fortier, 2012b; Godin et al., 2016)...

the TEG also contribute to TEG stabilization by causing drainage of the active layer and of ponds in the polygons, i.e., decreasing soil moisture content (Godin and Fortier, 2012b; Godin et al., 2016). This creates a dry porous top layer with reduced thermal conductivity (Fortier et al., 2007) resulting in a thinning of the active layer on the shoulders of the gully.

Supprimé: Active-layer and pond drainage of breached low-centered polygons

The drier conditions cause a shift in vegetation (Perreault et al., 2016, 2017), from wet to mesic, which also contributes to decrease thermal conductivity and active layer thickness, resulting in thin transient and intermediate layers to form closer to the surface than in undisturbed conditions. This ice enrichment contributes to increase the thermal resistance of the encompassing polygons and thus to reduce further widening of the TEG. Together, the accumulation of alluvial sediment, the growth of vegetation, and ice segregation lead to a decrease in the depth of the gully. It is important to note that not all sections of a TEG are at the same stage simultaneously and that sections of a TEG can go back and forth between stages I and II. Once the slopes of the TEG are vegetated and the gully no longer experiences erosion (decades to century), the permafrost environment supporting the TEG reaches a new state.

Supprimé: This causes a shift in vegetation (Perreault et al., 2016)

5.2.4 Stage III: New stable state of the periglacial landscape

Supprimé: ,

Supprimé: and permafrost resilience

The formation of TEG has profound impacts on ice-wedge polygonal networks, permanently (at the Anthropocene time scale) altering landscape morphology (Figure 8, Stage III). The stabilized TEG has now evolved into a thermo-erosional valley (Morgenstern et al., 2021) characterized by a broad, densely vegetated main channel with stable low-angle slopes and limited ramifications. Despite alluvial sedimentation at the bottom of the gully channel, the base level of the gully is now lower than the surrounding polygons, thus affecting local hydrological connectivity. Drainage in the troughs of the encompassing polygons toward the TEG has caused wedge ice melt and stream incision, which has led to broadening of the troughs and the lowering of the rims of the low-centred polygon (Mackay, 2000; French, 2017). As a result, the low-centred polygons along the margins of the TEG have changed into raised flat/high-centred ones. The changes in their thermal properties caused a thinning of the active layer and ground ice aggradation, ultimately raising the polygons and further affecting local hydrological patterns (Liljedahl et al., 2016; Jones et al., 2023).

Supprimé: and ecosystem functions

Supprimé: 7

Supprimé: The low-centered polygons along the margins of the TEG have changed into raised flat/high-centered ones due to their drainage. Drainage

In this new state, the TEG has caused long-lasting geomorphological and hydrological changes to the landscape, i.e., the polygonal network will not recover to its pre-disturbance state. In comparison, the permafrost affected by the TEG can recover similar ground ice content and temperature as in undisturbed permafrost pre-dating the disturbance and thus is resilient. However, permafrost re-aggradation now leads to the formation of thicker intermediate layers in areas that have been the most disturbed, i.e., the slopes and bottom of the gully channel. Thermal contraction cracking can resume following the same pre-disturbance network, causing ice-wedge formation or rejuvenation (Gagnon and Allard, 2019; Lewkowicz, 1994). While permafrost shows resilience, the local landscape does not because it has surpassed thresholds of recovery to pre-disturbance conditions. From a landscape-evolution perspective, this suggests that in stable environmental conditions undergoing natural variability, permafrost is able to persist longer than the geomorphological landforms in which it forms. This adds to the stabilizing effect of thermal erosion on tundra landscapes, which levels gradients and limits thermokarst processes by enhancing hydrological connectivity (Morgenstern et al., 2021).

Supprimé: .

Supprimé: even though

Supprimé: to conditions

Supprimé: to

Supprimé: , i.e., similar ground ice content and temperature,

Supprimé: (Lewkowicz, 1994; Gagnon and Allard, 2019).

a mis en forme : Police :Times New Roman

6. Conclusion

This study investigated the impacts of two TEGs in the Canadian High Arctic on ground ice content, cryostratigraphic patterns, and geomorphology to examine permafrost recovery following thermal erosion in ice-wedge polygonal tundra. Our results concurred with other research showing that thermal erosion affects hydrological connectivity, snow accumulation patterns and snowmelt dynamics, changes vegetation, causes the remobilization of soil material and nutrients, and showed that once stabilized, TEG permanently (at the Anthropocene scale) alter landscape morphology. In addition to the gully channel, the polygons bordering the TEG evolved from wet low-centred to dry/high-centred, causing changes in the ground thermal properties and ultimately leading to ice aggradation and raising the drained polygons encompassing the gully. This cryostratigraphic pattern, in addition to vegetation colonization and decrease in slope angularity, were interpreted as stabilization mechanisms leading to permafrost aggradation and TEG stabilization. The study also reported the first VIC values in the slopes and at the bottom of the gully channel of TEG. Although the TEG caused discernable cryostratigraphic patterns, the ice contents in the cores affected by the TEG were comparable to undisturbed polygons. The presence of ice-rich geocryological layers and cold ground temperatures played a significant role in the inception and stabilization of the TEG by both buffering against smaller disturbances and promoting permafrost aggradation following thermal erosion. Once stabilized, the TEG was in a new state characterized by long-lasting geomorphological and hydrological changes to the landscape, but is able to recover to pre-disturbance geocryological and thermal conditions, showing that permafrost is more resilient to thermal erosion disturbances than surface geomorphology. This suggests that in stable environmental conditions undergoing natural variability, permafrost can persist longer than the geomorphological landforms in which it forms.

Supprimé: and ecosystem functions.

Supprimé: centered

Supprimé: centered

7. Data availability

The data that support the findings of this study are openly available on NordicanaD (Fortier et al., 2024a, b).

8. Competing interests

The contact author has declared that none of the authors has any competing interests.

9. Acknowledgements

We thank Karine Rioux and Stéphanie Coulombe for their help during fieldwork. We also thank the Centre for Northern Studies for providing access and logistical support to its research station. We are also grateful to the Natural Sciences and Engineering Research Council of Canada, Parks Canada, Fonds de recherche du Québec - Nature et technologie, Northern Scientific Training Program and the Polar Continental Shelf Program (PCSP).

10. References

- Abbott, B. W., Jones, J. B., Godsey, S. E., Larouche, J. R., and Bowden, W. B.: Patterns and persistence of hydrologic carbon and nutrient export from collapsing upland permafrost, *Biogeosciences*, 12, 3725–3740, <https://doi.org/10.5194/bg-12-3725-2015>, 2015.
- 770 Allard, M.: Geomorphological Changes and Permafrost Dynamics: Key Factors in Changing Arctic Ecosystems. An Example from Bylot Island, Nunavut, Canada, *Geoscience Canada*, 23, 205–212, 1996.
- Allard, M., Sarrazin, D., and L'Hérault, E.: Borehole and near-surface ground temperatures in northeastern Canada, v. 1 **6.0** (1988-**2023**). *Nordicana D8*, doi: 10.5885/45291SL-34F28A9491014AFD., **2024**.
- Andersland, O. B. and Ladanyi, B.: *Frozen Ground Engineering*, 2nd edition., Wiley, 384 pp., 2004.
- 775 Arè, F. **É.**, Balobaev, V. **T.**, Bosikov, N. P., and Cold Regions Research and Engineering Laboratory (U.S.): Characteristics of the reshaping of shorelines of thermokarst lakes of central Yakutia., 1979.
- Black, R. F.: Ice-Wedge Polygons of Northern Alaska, in: Glacial Geomorphology, Dordrecht, 247–275, https://doi.org/10.1007/978-94-011-6491-7_9, 1982.**
- 780 Blott, S. J. and Pye, K.: GRADISTAT: a grain size distribution and statistics package for the analysis of unconsolidated sediments, *Earth Surf. Process. Landforms*, 26, 1237–1248, <https://doi.org/10.1002/esp.261>, 2001.
- Bowden, W. B., Gooseff, M. N., Balsler, A., Green, A., Peterson, B. J., and Bradford, J.: Sediment and nutrient delivery from thermokarst features in the foothills of the North Slope, Alaska: Potential impacts on headwater stream ecosystems: Thermokarst Impacts on Stream Ecosystems, *J. Geophys. Res.*, 113, **12**, <https://doi.org/10.1029/2007JG000470>, 2008.
- Burn, C. R.: The development of near-surface ground ice during the Holocene at sites near Mayo, Yukon Territory, Canada, *Journal of Quaternary Science*, 3, 31–38, <https://doi.org/10.1002/jqs.3390030106>, 1988.
- 785 Burn, C. R.: Cryostratigraphy, paleogeography, and climate change during the early Holocene warm interval, western Arctic coast, Canada, *Can. J. Earth Sci.*, 34, 912–925, <https://doi.org/10.1139/e17-076>, 1997.
- Calmels, F. and Allard, M.: Ice segregation and gas distribution in permafrost using tomodesitometric analysis, *Permafrost Periglac. Process.*, 15, 367–378, <https://doi.org/10.1002/ppp.508>, 2004.
- 790 **Centre d'études nordiques:** Climate station data from Bylot Island in Nunavut, Canada, v. 1.11 (1992-2019). *Nordicana D2*, doi: 10.5885/45039SL-EE76C1BDAADC4890, **Nordicana D, 2022.**
- Chapin, F. S., Kofinas, G. P., and Folke, C. (Eds.): *Principles of Ecosystem Stewardship: Resilience-Based Natural Resource Management in a Changing World*, Springer New York, New York, NY, <https://doi.org/10.1007/978-0-387-73033-2>, 2009.
- 795 Coulombe, S., Fortier, D., Lacelle, D., Kanevskiy, M., and Shur, Y.: Origin, burial and preservation of late Pleistocene-age glacier ice in Arctic permafrost (Bylot Island, NU, Canada), *The Cryosphere*, 13, 97–111, <https://doi.org/10.5194/tc-13-97-2019>, 2019.
- Environment and Climate Change Canada:** Climatic data of Pond Inlet, Nunavut, **1991-2020, 2024.**
- Folk, R. L. and Ward, W. C.: Brazos River bar [Texas]; a study in the significance of grain size parameters, *Journal of Sedimentary Research*, 27, 3–26, <https://doi.org/10.1306/74D70646-2B21-11D7-8648000102C1865D>, 1957.
- 800 Fortier, D. and Allard, M.: Late Holocene syngenetic ice-wedge polygons development, Bylot Island, Canadian Arctic Archipelago, *Canadian Journal of Earth Sciences*, 41, 16, <https://doi.org/10.1139/E04-031>, 2004.
- Fortier, D. and Allard, M.: Frost-cracking conditions, Bylot Island, eastern Canadian Arctic archipelago, *Permafrost Periglac. Process.*, 16, 145–161, <https://doi.org/10.1002/ppp.504>, 2005.**
- 805 Fortier, D., Allard, M., and Pivot, F.: A late-Holocene record of loess deposition in ice-wedge polygons reflecting wind activity and ground moisture conditions, Bylot Island, eastern Canadian Arctic, *The Holocene*, 16, 635–646,

a mis en forme : Normal, Espace Après : 6 pt, Autoriser lignes veuves et orphelines, Ne pas ajuster l'espace entre le texte latin et asiatique, Ne pas ajuster l'espace entre le texte et les nombres asiatiques

Supprimé : 5

Supprimé : 2019

Supprimé : 2020

Supprimé : Èrnestovich

Supprimé : Tikhonovich

a mis en forme : Normal, Espace Après : 6 pt, Autoriser lignes veuves et orphelines, Ne pas ajuster l'espace entre le texte latin et asiatique, Ne pas ajuster l'espace entre le texte et les nombres asiatiques

Supprimé : n/a-n/a

Supprimé :
<http://www.cen.ulaval.ca/nordicanad/dpage.aspx?doi=45039SL-EE76C1BDAADC4890>, Nordicana D, 2022

Supprimé : Historical

Supprimé : Data -

Supprimé : https://climate.weather.gc.ca/index_e.html, last access: 15 June 2022, 1991-2020, 2024

Supprimé : 41, 16

a mis en forme : Normal, Espace Après : 6 pt, Autoriser lignes veuves et orphelines, Ne pas ajuster l'espace entre le texte latin et asiatique, Ne pas ajuster l'espace entre le texte et les nombres asiatiques

820 <https://doi.org/10.1191/0959683606hl960rp>, 2006.

Fortier, D., Allard, M., and Shur, Y.: Observation of rapid drainage system development by thermal erosion of ice wedges on Bylot Island, Canadian Arctic Archipelago, *Permafrost Periglac. Process.*, 18, 229–243, <https://doi.org/10.1002/ppp.595>, 2007.

825 [Fortier, D., Gagnon, S., Veillette, A., and Godin, É.: Soil properties and computed tomography scans \(CT-scans\) of two thermo-erosion gullies and the adjacent tundra polygons on Bylot Island, Nunavut, Canada, v. 1.0 \(2013-2016\). Nordicana D135 \(1.0\), https://doi.org/10.5885/45900CE-763A49F2D1F2442A, 2024a.](https://doi.org/10.5885/45900CE-763A49F2D1F2442A)

[Fortier, D., Gagnon, S., Veillette, A., and Godin, É.: Thaw front depth at the bottom, on the slopes and on the adjacent tundra polygons of two thermo-erosion gullies on Bylot Island, Nunavut, Canada, \(2017-2018\). Nordicana D134 \(1.0\), https://doi.org/10.5885/45903CE-33A7E0A483AD4C3D, 2024b.](https://doi.org/10.5885/45903CE-33A7E0A483AD4C3D)

830 French, H. and Shur, Y.: The principles of cryostratigraphy, *Earth-Science Reviews*, 101, 190–206, <https://doi.org/10.1016/j.earscirev.2010.04.002>, 2010.

French, H. M.: *The periglacial environment*, Fourth edition., Wiley, Blackwell, Hoboken, NJ, 544 pp., 2017.

Gagnon, S. and Allard, M.: Changes in ice-wedge activity over 25 years of climate change near Salluit, Nunavik (northern Québec, Canada), *Permafrost and Periglac Process.*, 31, 69–84, <https://doi.org/10.1002/ppp.2030>, 2019.

835 Gagnon, S. and Allard, M.: Geomorphological controls over carbon distribution in permafrost soils: the case of the Narsajuaq river valley, Nunavik (Canada), *Arctic Science*, 6, 509–528, <https://doi.org/10.1139/as-2019-0026>, 2020.

Gilbert, G. L., Kanevskiy, M., and Murton, J. B.: Recent Advances (2008-2015) in the Study of Ground Ice and Cryostratigraphy: Recent Advances in the Study of Ground Ice and Cryostratigraphy, *Permafrost and Periglac. Process.*, 27, 377–389, <https://doi.org/10.1002/ppp.1912>, 2016.

840 Godin, E. and Fortier, D.: Geomorphology of thermo-erosion gullies – case study from Bylot Island, Nunavut, Canada, <https://doi.org/10.13140/2.1.4498.9120>, 2010.

Godin, E. and Fortier, D.: Fine Scale Spatio-Temporal Monitoring of Multiple Thermo-Erosion Gullies Development on Bylot Island, Eastern Canadian Archipelago, 7, 2012a.

845 Godin, E. and Fortier, D.: Geomorphology of a thermo-erosion gully, Bylot Island, Nunavut, Canada, *Can. J. Earth Sci.*, 49, 979–986, <https://doi.org/10.1139/e2012-015>, 2012b.

Godin, E., Fortier, D., and Coulombe, S.: Effects of thermo-erosion gullying on hydrologic flow networks, discharge and soil loss, *Environ. Res. Lett.*, 9, 105010, <https://doi.org/10.1088/1748-9326/9/10/105010>, 2014.

850 Godin, E., Fortier, D., and Lévesque, E.: Nonlinear thermal and moisture response of ice-wedge polygons to permafrost disturbance increases heterogeneity of high Arctic wetland, *Biogeosciences*, 13, 1439–1452, <https://doi.org/10.5194/bg-13-1439-2016>, 2016.

Goudie, A. (Ed.): *Encyclopedia of Geomorphology*, Routledge : International Association of Geomorphologists, London ; New York, 2 pp., 2004.

855 Grosse, G., Schirmermeister, L., Kunitsky, V. V., and Hubberten, H.-W.: The use of CORONA images in remote sensing of periglacial geomorphology: an illustration from the NE Siberian coast, *Permafrost and Periglacial Processes*, 16, 163–172, <https://doi.org/10.1002/ppp.509>, 2005.

Grosse, G., Schirmermeister, L., and Malthus, T. J.: Application of Landsat-7 satellite data and a DEM for the quantification of thermokarst-affected terrain types in the periglacial Lena–Anabar coastal lowland, *Polar Research*, 25, 51–67, <https://doi.org/10.3402/polar.v25i1.6238>, 2006.

860 Inland Waters Branch: *Glacier Atlas of Canada, Bylot Island area*, 46201, Inland Waters Branch., Ottawa, ON, Canada, 1969.

a mis en forme : Normal, Espace Après : 6 pt, Autoriser lignes veuves et orphelines, Ne pas ajuster l'espace entre le texte latin et asiatique, Ne pas ajuster l'espace entre le texte et les nombres asiatiques

Supprimé : M.: *The Periglacial Environment*, 3rd edition., John Wiley & Sons Ltd, Sussex, England, 458 pp., 2007.¶
French, H.

Supprimé : 1

Supprimé : geomorphology

Supprimé : atlas

Supprimé : Ontario,

- 870 [Jones, E. L., Hodson, A. J., Redeker, K. R., Christiansen, H. H., Thornton, S. F., and Rogers, J.: Biogeochemistry of low- and high-centered ice-wedge polygons in wetlands in Svalbard, *Permafrost and Periglacial Processes*, 34, 359–369, <https://doi.org/10.1002/ppp.2192>, 2023.](#)
- Jongejans, L. L., Strauss, J., Lenz, J., Peterse, F., Mangelsdorf, K., Fuchs, M., and Grosse, G.: Organic matter characteristics in yedoma and thermokarst deposits on Baldwin Peninsula, west Alaska, *Biogeosciences*, 15, 6033–6048, <https://doi.org/10.5194/bg-15-6033-2018>, 2018.
- 875 Jorgenson, M. T., Romanovsky, V., Harden, J., Shur, Y., O'Donnell, J., Schuur, E. A. G., Kanevskiy, M., and Marchenko, S.: Resilience and vulnerability of permafrost to climate change, *Can. J. For. Res.*, 40, 1219–1236, <https://doi.org/10.1139/X10-060>, 2010.
- Kanevskiy, M., Shur, Y., Fortier, D., Jorgenson, M. T., and Stephani, E.: Cryostratigraphy of late Pleistocene syngenetic permafrost (yedoma) in northern Alaska, Itkillik River exposure, *Quat. Res.*, 75, 584–596, <https://doi.org/10.1016/j.yqres.2010.12.003>, 2011.
- 880 Kanevskiy, M., Shur, Y., Connor, B., Dillon, M., Stephani, E., and O'Donnell, J.: Study of the Ice-Rich Syngenetic Permafrost for Road Design (Interior Alaska), *Tenth International Conference on Permafrost*, Boulders, Colorado, US, [191–196](#), 2012.
- Kanevskiy, M., Shur, Y., Jorgenson, M. T., Ping, C.-L., Michaelson, G. J., Fortier, D., Stephani, E., Dillon, M., and Tumskov, V.: Ground ice in the upper permafrost of the Beaufort Sea coast of Alaska, *Cold Regions Science and Technology*, 85, 56–70, <https://doi.org/10.1016/j.coldregions.2012.08.002>, 2013.
- 885 Kanevskiy, M., Jorgenson, T., Shur, Y., O'Donnell, J. A., Harden, J. W., Zhuang, Q., and Fortier, D.: Cryostratigraphy and Permafrost Evolution in the Lacustrine Lowlands of West-Central Alaska: Cryostratigraphy and Permafrost Evolution in the Lacustrine Lowlands, Alaska, *Permafrost and Periglac. Process.*, 25, 14–34, <https://doi.org/10.1002/ppp.1800>, 2014.
- 890 Kanevskiy, M., Shur, Y., Walker, D., Buchhorn, M., Jorgenson, T., Matyshak, G., Reynolds, M., Peirce, J., and Wirth, L.: Evaluation of Risk of Ice-Wedge Degradation, Prudhoe Bay Oilfield, AK., [Proceedings of the Eleventh International Conference on Permafrost, Potsdam, Germany, 1007–1009, 2016.](#)
- Kanevskiy, M., Shur, Y., Jorgenson, T., Brown, D. R. N., Moskalenko, N., Brown, J., Walker, D. A., Reynolds, M. K., and Buchhorn, M.: Degradation and stabilization of ice wedges: Implications for assessing risk of thermokarst in northern Alaska, *Geomorphology*, 297, 20–42, <https://doi.org/10.1016/j.geomorph.2017.09.001>, 2017.
- 895 Kokelj, S. V. and Jorgenson, M. T.: Advances in Thermokarst Research: Recent Advances in Research Investigating Thermokarst Processes, *Permafrost and Periglac. Process.*, 24, 108–119, <https://doi.org/10.1002/ppp.1779>, 2013.
- Lacelle, D., Bjornson, J., and Lauriol, B.: Climatic and geomorphic factors affecting contemporary (1950-2004) activity of retrogressive thaw slumps on the Aklavik Plateau, Richardson Mountains, NWT, Canada: Climatic and Geomorphic Factors affecting Thaw Slump Activity, *Permafrost Periglac. Process.*, 21, 1–15, <https://doi.org/10.1002/ppp.666>, 2010.
- 900 [Lachenbruch, A. H.: Mechanics of Thermal Contraction Cracks and Ice-Wedge Polygons in Permafrost, in: Geological Society of America Special Papers, vol. 70. Geological Society of America, 1–66, <https://doi.org/10.1130/SPE70-p1>, 1962.](#)
- Lantz, T. C. and Kokelj, S. V.: Increasing rates of retrogressive thaw slump activity in the Mackenzie Delta region, N.W.T., Canada, *Geophys. Res. Lett.*, 35, L06502, <https://doi.org/10.1029/2007GL032433>, 2008.
- 905 [Lara, M. J., McGuire, A. D., Euskirchen, E. S., Tweedie, C. E., Hinkel, K. M., Skurikhin, A. N., Romanovsky, V. E., Grosse, G., Bolton, W. R., and Genet, H.: Polygonal tundra geomorphological change in response to warming alters future CO₂ and CH₄ flux on the Barrow Peninsula, *Glob Change Biol*, 21, 1634–1651, <https://doi.org/10.1111/gcb.12757>, 2015.](#)
- Levy, J. S., Head, J. W., and Marchant, D. R.: The role of thermal contraction crack polygons in cold-desert fluvial systems, *Antarctic Science*, 20, 565–579, <https://doi.org/10.1017/S0954102008001375>, 2008.
- 910 Lewkowicz, A. G.: Ice-wedge rejuvenation, [Fosheim Peninsula, Ellesmere Island, Canada](#), *Permafrost Periglac. Process.*, 5, 251–268, <https://doi.org/10.1002/ppp.3430050405>, 1994.

a mis en forme : Normal, Espace Après : 6 pt, Autoriser lignes veuves et orphelines, Ne pas ajuster l'espace entre le texte latin et asiatique, Ne pas ajuster l'espace entre le texte et les nombres asiatiques

Supprimé : res

Supprimé : in: Proceedings of the Tenth International Conference on Permafrost, Tenth International Conference on Permafrost,

Supprimé : journalAbbreviation: Proceedings of the Tenth International Conference on Permafrost191–196

Supprimé : 2016.

a mis en forme : Normal, Espace Après : 6 pt, Autoriser lignes veuves et orphelines, Ne pas ajuster l'espace entre le texte latin et asiatique, Ne pas ajuster l'espace entre le texte et les nombres asiatiques

a mis en forme : Normal, Espace Après : 6 pt, Autoriser lignes veuves et orphelines, Ne pas ajuster l'espace entre le texte latin et asiatique, Ne pas ajuster l'espace entre le texte et les nombres asiatiques

Supprimé : fosheim peninsula, ellesmere

- Liljedahl, A., Hinzman, L., Busey, R., and Yoshikawa, K.: Physical short-term changes after a tussock tundra fire, Seward Peninsula, Alaska, *J. Geophys. Res.*, 112, F02S07, <https://doi.org/10.1029/2006JF000554>, 2007.
- 920 Liljedahl, A. K., Boike, J., Daanen, R. P., Fedorov, A. N., Frost, G. V., Grosse, G., Hinzman, L. D., Iijma, Y., Jorgenson, J. C., Matveyeva, N., Necsoiu, M., Reynolds, M. K., Romanovsky, V. E., Schulla, J., Tape, K. D., Walker, D. A., Wilson, C. J., Yabuki, H., and Zona, D.: Pan-Arctic ice-wedge degradation in warming permafrost and its influence on tundra hydrology, *Nature Geosci.*, 9, 312–318, <https://doi.org/10.1038/ngeo2674>, 2016.
- Mackay, J. R.: The World of Underground Ice, *Annals of the Association of American Geographers*, 62, 1–22, 1972.
- 925 Mackay, J. R.: Thermally induced movements in ice-wedge polygons, western arctic coast: a long-term study, *gpc*, 54, 41–68, <https://doi.org/10.7202/004846ar>, 2000.
- Matsuoka, N., Christiansen, H. H., and Watanabe, T.: Ice-wedge polygon dynamics in Svalbard: Lessons from a decade of automated multi-sensor monitoring, *Permafrost and Periglac. Process.*, 29, 210–227, <https://doi.org/10.1002/ppp.1985>, 2018.
- 930 Maxwell, J. B.: The climate of the Canadian Arctic islands and adjacent waters / Le climat des îles arctiques et des eaux adjacentes du Canada, Environment Canada, Atmospheric Environment Service., Hull, QC, Canada, 1980.
- McRoberts, E. C. and Nixon, J. F.: Reticulate Ice Veins in Permafrost, Northern Canada: Discussion, *Can. Geotech. J.*, 12, 159–162, <https://doi.org/10.1139/g75-017>, 1975.
- 935 Minke, M., Donner, N., Karpov, N., de Klerk, P., and Joosten, H.: Patterns in vegetation composition, surface height and thaw depth in polygon mires in the Yakutian Arctic (NE Siberia): a microtopographical characterisation of the active layer: Micro Scale Mapping of Low-centre Ice-wedge Polygons, *Permafrost Periglac. Process.*, 20, 357–368, <https://doi.org/10.1002/ppp.663>, 2009.
- Morgenstern, A., Overduin, P. P., Günther, F., Stettner, S., Ramage, J., Schirremeister, L., Grigoriev, M. N., and Grosse, G.: Thermo-erosional valleys in Siberian ice-rich permafrost, *Permafrost and Periglac. Process.*, 32, 59–75, <https://doi.org/10.1002/ppp.2087>, 2021.
- 940 Murton, J. B.: 8.14 Ground Ice and Cryostratigraphy, in: *Treatise on Geomorphology*, Elsevier, 173–201, <https://doi.org/10.1016/B978-0-12-374739-6.00206-2>, 2013.
- Murton, J. B. and French, H. M.: Cryostructures in permafrost, Tuktoyaktuk coastlands, western arctic Canada, *Can. J. Earth Sci.*, 31, 737–747, <https://doi.org/10.1139/e94-067>, 1994.
- 945 Olefeldt, D., Goswami, S., Grosse, G., Hayes, D., Hugelius, G., Kuhry, P., McGuire, A. D., Romanovsky, V. E., Sannel, A. B. K., Schuur, E. A. G., and Turetsky, M. R.: Circumpolar distribution and carbon storage of thermokarst landscapes, *Nat Commun.*, 7, 13043, <https://doi.org/10.1038/ncomms13043>, 2016.
- O'Neill, H. B. and Christiansen, H. H.: Detection of Ice Wedge Cracking in Permafrost Using Miniature Accelerometers, *J. Geophys. Res. Earth Surf.*, 123, 642–657, <https://doi.org/10.1002/2017JF004343>, 2018.
- 950 Paquette, M., Fortier, D., and Lamoureux, S. F.: Cryostratigraphical studies of ground ice formation and distribution in a High Arctic polar desert landscape, Resolute Bay, Nunavut, *Can. J. Earth Sci.*, 59, 759–771, <https://doi.org/10.1139/cjes-2020-0134>, 2022.
- Perreault, N., Lévesque, E., Fortier, D., and Lamarque, L. J.: Thermo-erosion gullies boost the transition from wet to mesic tundra vegetation, *Biogeosciences*, 13, 1237–1253, <https://doi.org/10.5194/bg-13-1237-2016>, 2016.
- 955 Perreault, N., Lévesque, E., Fortier, D., Gratton, D., and Lamarque, L. J.: Remote sensing evaluation of High Arctic wetland depletion following permafrost disturbance by thermo-erosion gully processes, *Arctic Science*, 3, 237–253, <https://doi.org/10.1139/as-2016-0047>, 2017.
- Phillips, J. D.: Changes, perturbations, and responses in geomorphic systems, *Progress in Physical Geography: Earth and Environment*, 33, 17–30, <https://doi.org/10.1177/0309133309103889>, 2009.
- Piégay, H., Chabot, A., and Le Lay, Y.-F.: Some comments about resilience: From cyclicity to trajectory, a shift in living

a mis en forme : Normal, Espace Après : 6 pt, Autoriser lignes veuves et orphelines, Ne pas ajuster l'espace entre le texte latin et asiatique, Ne pas ajuster l'espace entre le texte et les nombres asiatiques

a mis en forme : Normal, Espace Après : 6 pt, Autoriser lignes veuves et orphelines, Ne pas ajuster l'espace entre le texte latin et asiatique, Ne pas ajuster l'espace entre le texte et les nombres asiatiques

a mis en forme : Normal, Espace Après : 6 pt, Autoriser lignes veuves et orphelines, Ne pas ajuster l'espace entre le texte latin et asiatique, Ne pas ajuster l'espace entre le texte et les nombres asiatiques

a mis en forme : Normal, Espace Après : 6 pt, Autoriser lignes veuves et orphelines, Ne pas ajuster l'espace entre le texte latin et asiatique, Ne pas ajuster l'espace entre le texte et les nombres asiatiques

Supprimé: Nunavut1

a mis en forme : Normal, Espace Après : 6 pt, Autoriser lignes veuves et orphelines, Ne pas ajuster l'espace entre le texte latin et asiatique, Ne pas ajuster l'espace entre le texte et les nombres asiatiques

and nonliving system theory, *Geomorphology*, 367, 106527, <https://doi.org/10.1016/j.geomorph.2018.09.018>, 2020.

Rioux, K.: Impacts de la dégradation du pergélisol par thermo-érosion sur les processus hydrologiques et les flux de matières, M.Sc. géographie, Université de Montréal, Montréal, QC, Canada, 83 pp., 2020.

965 Sarrazin, D. and Allard, M.: [The thermo-mechanical behavior of frost- cracks over ice wedges: new data from extensometer measurements.](https://doi.org/10.1016/j.geomorph.2015.07.015), *GeoQuébec 2015*, Québec, QC, Canada, 7, 2015.

Shur, Y., Hinkel, K. M., and Nelson, F. E.: The transient layer: implications for geocryology and climate-change science, *Permafrost Periglac. Process.*, 16, 5–17, <https://doi.org/10.1002/ppp.518>, 2005.

970 Shur, Y., Jones, B. M., Kanevskiy, M., Jorgenson, T., Jones, M. K. W., Fortier, D., Stephani, E., and Vasiliev, A.: Fluvio-thermal erosion and thermal denudation in the yedoma region of northern Alaska: Revisiting the Itkillik River exposure, *Permafrost and Periglac Process*, 32, 277–298, <https://doi.org/10.1002/ppp.2105>, 2021.

Shur, Y. L.: The upper horizon of permafrost soils, in: Proceedings of the [Fifth International Conference on Permafrost, Fifth International Conference on Permafrost, Trondheim, Norway](https://doi.org/10.1002/ppp.2105), 867–871, 1988.

Smith, S. L. and Burgess, M. M.: A digital database of permafrost thickness in Canada, <https://doi.org/10.4095/213043>, 2002.

975 Strauss, J., Schirmer, L., Grosse, G., Wetterich, S., Ulrich, M., Herzsuh, U., and Hubberten, H.: The deep permafrost carbon pool of the Yedoma region in Siberia and Alaska, *Geophys. Res. Lett.*, 40, 6165–6170, <https://doi.org/10.1002/2013GL058088>, 2013.

980 Tanguy, R., Whalen, D., Prates, G., Pina, P., Freitas, P., Bergstedt, H., and Vieira, G.: [Permafrost degradation in the ice-wedge tundra terrace of Paulatuk Peninsula \(Darnley Bay, Canada\).](https://doi.org/10.1016/j.geomorph.2023.108754), *Geomorphology*, 435, 108754, <https://doi.org/10.1016/j.geomorph.2023.108754>, 2023.

Thévenin, E.: Les lithalses : étude d'un pergélisol marginal en dégradation dans la vallée Ä'y Chù, au Sud-Ouest du Yukon, Mémoire de maîtrise, Université de Montréal, Montréal, QC, Canada, 2023.

Thoms, M. C., Piégay, H., and Parsons, M.: What do you mean, 'resilient geomorphic systems'?, *Geomorphology*, 305, 8–19, <https://doi.org/10.1016/j.geomorph.2017.09.003>, 2018.

985 Toniolo, H., Kodial, P., Hinzman, L. D., and Yoshikawa, K.: Spatio-temporal evolution of a thermokarst in Interior Alaska, *Cold Regions Science and Technology*, 56, 39–49, <https://doi.org/10.1016/j.coldregions.2008.09.007>, 2009.

Turetsky, M. R., Abbott, B. W., Jones, M. C., Anthony, K. W., Olefeldt, D., Schuur, E. A. G., Grosse, G., Kuhry, P., Hugelius, G., Koven, C., Lawrence, D. M., Gibson, C., Sannel, A. B. K., and McGuire, A. D.: Carbon release through abrupt permafrost thaw, *Nat. Geosci.*, 13, 138–143, <https://doi.org/10.1038/s41561-019-0526-0>, 2020.

990 Ulrich, M., Hauber, E., Herzsuh, U., Härtel, S., and Schirmer, L.: [Polygon pattern geomorphometry on Svalbard \(Norway\) and western Utopia Planitia \(Mars\) using high-resolution stereo remote-sensing data.](https://doi.org/10.1016/j.geomorph.2011.07.002), *Geomorphology*, 134, 197–216, <https://doi.org/10.1016/j.geomorph.2011.07.002>, 2011.

995 Veillette, A.: Stabilisation du paysage périglaciaire suite à un épisode de ravinement par thermo-érosion : implication pour la structure et la stabilité thermique du pergélisol de surface, M.Sc. géographie, Université de Montréal, Montréal, QC, Canada, 91 pp., 2019.

a mis en forme : Français (Canada)

a mis en forme : Normal, Espace Après : 6 pt, Autoriser lignes veuves et orphelines, Ne pas ajuster l'espace entre le texte latin et asiatique, Ne pas ajuster l'espace entre le texte et les nombres asiatiques

Supprimé: fifth international conference on permafrost

a mis en forme : Français (Canada)

a mis en forme : Normal, Espace Après : 6 pt, Autoriser lignes veuves et orphelines, Ne pas ajuster l'espace entre le texte latin et asiatique, Ne pas ajuster l'espace entre le texte et les nombres asiatiques

a mis en forme : Français (Canada)

a mis en forme : Normal, Espace Après : 6 pt, Autoriser lignes veuves et orphelines, Ne pas ajuster l'espace entre le texte latin et asiatique, Ne pas ajuster l'espace entre le texte et les nombres asiatiques

a mis en forme : Espace Après : 6 pt, Interligne : simple

Page 2 : [1] Supprimé **Samuel Gagnon** **2024-07-26 12:57:00**

Page 11 : [2] Supprimé **Samuel Gagnon** **2024-07-26 12:57:00**

Page 15 : [3] Supprimé **Samuel Gagnon** **2024-07-26 12:57:00**

Page 19 : [4] Supprimé **Samuel Gagnon** **2024-07-26 12:57:00**