

~~Dust storms~~Asian dust transport proteinaceous matter from the Gobi Desert to Northern China

Ren-Guo Zhu^{1,2}, Hua-Yun Xiao^{3,*}, Meiju Yin³, Hao Xiao³, Zhongkui Zhou¹, Yuanyuan Pan¹, Guo Wei¹, Cheng Liu¹

5 ¹School of Water Resources and Environmental Engineering, East China University of Technology, Nanchang 330013, China.

²Jiangxi Provincial Key Laboratory of Genesis and Remediation of Groundwater Pollution, East China University of Technology, Nanchang 330013, China.

³School of Agriculture and Biology, Shanghai Jiao Tong University, Shanghai 200240, China.

10 *Corresponding author: Hua-Yun Xiao (Xiaohuayun@sjtu.edu.cn)*

Abstract. ~~Asian dust~~~~Dust storms~~ can greatly influence the ecosystem's productivity and biogeochemical ~~nitrogen~~-cycles by providing new nutrients. However, the transport of proteinaceous matter (combined amino acids, CAAs) by ~~dust storms~~Asian dust to downwind ecosystems remains unclear. Here, the concentrations and $\delta^{15}\text{N}$ values of individual CAAs in Gobi surface soil and vegetation, as well as in

15 $\text{PM}_{2.5}$ samples from four cities in Northern China were characterized. Proline dominated the total pool of CAAs in urban $\text{PM}_{2.5}$ during non-dust periods, whereas CAAs transported by Gobi dust were rich in alanine, glycine, and glutamic acid. The concentrations and percentages of these three CAAs in $\text{PM}_{2.5}$ from Northern China notably increased during dust periods. During non-dust periods, the $\delta^{15}\text{N}$ values of individual CAAs in urban $\text{PM}_{2.5}$ fell within their respective ranges in local urban sources, suggesting

20 CAAs in $\text{PM}_{2.5}$ were primarily influenced by local urban sources during non-dust periods. Compared to their values in urban $\text{PM}_{2.5}$ during non-dust periods, glycine and leucine in Gobi Desert sources exhibited $\delta^{15}\text{N}$ depletion by more than 6%. During dust periods, glycine and leucine in urban $\text{PM}_{2.5}$ all exhibited negative shifts in their $\delta^{15}\text{N}$ values, confirming that Gobi dust is a significant source of CAAs in $\text{PM}_{2.5}$ in Northern China. The dry deposition of protein-N from Gobi dust was calculated using nitrogen isotopic

25 mass balance based on the $\delta^{15}\text{N}$ values of glycine and leucine, yielding a value of up to $0.36 \text{ mg N m}^{-2} \text{ d}^{-1}$. The rapid accumulation of such considerable protein-N quantities may profoundly affect oligotrophic ecosystem productivity.

1 Introduction

~~Asian dust~~Asian dust storms, originating from the desert and Gobi regions of Inner Mongolia in China and southern Mongolia, are a significant source of atmospheric particulate matter, annually emitting approximately 1000-3000 teragrams (Tegen and Schepanski, 2009). Recent studies indicate that, in addition to mineral dust, these storms can transport substantial amounts of water-soluble organic nitrogen (WSON) to urban aerosols and even distant oceans (Liu et al., 2021; Mochizuki et al., 2016; Tsagkaraki et al., 2021). Importantly, primary biological particles present in desert soils can be lifted by dust storm particles into the stratosphere and transported over long distances (Favet et al., 2013).

Combined amino acids (CAAs), including proteins and peptides, are important constituents of atmospheric organic nitrogen (Jaenicke, 2005; Zhang and Anastasio, 2003). Recent studies reveal that they are ubiquitous in aerosols across various environments such as urban, suburban, rural, and remote areas (Li et al., 2022a, b). Protein-containing particles are expected to influence particle hygroscopicity, atmospheric chemistry, cloud formation processes and new particle formation and growth (Chan et al., 2005; Elbert et al., 2006; Haan et al., 2009; Jaber et al., 2021; Violaki and Mihalopoulos, 2010). Moreover, they serve as bioavailable nitrogen sources and greatly contribute to the biogeochemical nitrogen cycles (Matsumoto et al., 2017; Neff et al., 2002). Therefore, the nutrient enrichment resulting from dry deposition of proteinaceous matter attract attention in aerosol studies (Samy et al., 2013; Xu et al., 2020; Zhang and Anastasio, 2003).

However, the sources of CAAs in aerosols remain insufficiently elucidated. Generally, the suspension process of biological particles, including fungi, spores, bacteria, molds, animal dander, pollen, and fragments of plants and animals, along with soil particles, has been identified as primary sources of CAA in aerosols (Filippo et al., 2014; Matos et al., 2016; Samy et al., 2013). Besides that, atmospheric proteins are also suggested to originate from biomass burning (Kang et al., 2012; Song et al., 2017; Zhu et al., 2020a) and marine sources, such as bursting sea bubbles and suspended algae (Feltracco et al., 2019; Li et al., 2022a; Triesch et al., 2021). However, Matsumoto et al. (2021) found a significant correlation between the total CAAs concentration in fine particles at an urban site in Japan and the concentration of non-sea-salt calcium (nss-Ca²⁺), suggesting an influence of Asian dust particles on airborne CAAs. To date, no studies have directly compared the protein characteristics in PM_{2.5} from urban environments

with those in dust sources to conclusively determine the contribution of dust sources to proteinaceous materials in downwind urban PM_{2.5} during dust events.

Composition profiles of CAAs have been utilized to identify emission sources of primary biological aerosol particles (Abe et al., 2016; Matsumoto et al., 2021). Zhang and Anastasio (2003) noted a significant contribution of serine to the total CAAs pool in the PM_{2.5}, highlighting the direct emissions from biological sources such as plants and animals. Matsumoto et al. (2021) identified glutamic acid, glycine, and aspartic acid as the dominant amino acids in the total CAAs pool in fine aerosols, indicating that regional and locally derived biomass burning and fossil fuel combustion are the sources of CAAs in fine atmospheric particles. Moreover, our previous study suggested distinct differences between the CAA composition profiles in surface soil and plant sources; hydrophobic species (alanine, valine, leucine, and isoleucine) and neutral proline were the major CAA species in soil sources, while hydrophilic CAA species (glutamic acid, lysine, and aspartic acid) represented major fractions in plant sources (Zhu et al., 2020b). Unfortunately, the composition profiles of CAAs in distant dust sources and local urban aerosols remain inadequately characterized.

With the development of stable N isotope technology, compound-specific isotope analysis of amino acids has become an effective tool to trace the sources and cycling of dissolved organic nitrogen in marine environment (Batista et al., 2014; Ianiri and McCarthy, 2023; Yamaguchi and McCarthy, 2018). In atmospheric studies, $\delta^{15}\text{N}$ values of glycine have been employed as a novel method to identify the sources of proteinaceous matter in aerosols (Zhu et al., 2021). Our previous study suggested that the $\delta^{15}\text{N}$ values of Gly (glycine) in aerosol particles from biomass burning sources (averaged $+22.4\pm4.4\%$) were more positive than those of soil (averaged $+5.2\pm3.5\%$) and plant sources (averaged -13.4%) (Zhu et al., 2020b). Therefore, according to the $\delta^{15}\text{N}$ inventories of specific CAAs in potential emission sources, the main sources of CAAs in atmospheric particles could be identified. Changes in $\delta^{15}\text{N}$ values of specific CAAs in the aerosols could be close related to the variation in the primary emission sources of atmospheric proteinaceous matter (Zhu et al., 2020b). However, limited knowledge on the $\delta^{15}\text{N}$ inventories of individual CAAs in dust sources and local urban sources complicates the elucidation of CAA origins in urban PM_{2.5} on dusty days.

East Asia is the second-largest dust source region worldwide, with annual dust emissions estimated at 214 Tg yr⁻¹ (Tian et al., 2020). Furthermore, the westerlies in the Northern Hemisphere's middle latitudes

can transport Asian dust from upwind areas to distant downwind regions, potentially completing a global cycle and exerting far-reaching impacts (Xie et al., 2023; Zhou et al., 2019). Asian dust particles primarily originate from the arid and semi-arid areas of northwestern China and Mongolia, including the Taklamakan Desert, the Gobi Desert, the Badan Jaran Desert, the Tengger Desert, and others (Shao and Dong, 2006). Recent research indicates that the Gobi Desert, rather than the Taklamakan Desert, is the primary contributor to dust concentrations in East Asia in spring (Chen et al., 2017; Tang et al., 2018). Spring is considered the peak season for sand and Asian dust events in Northeast Asia, as positive surface pressure anomalies over the Tamil Peninsula intensify cold air outbreaks across the desert regions of northwestern China and Mongolia (Yang et al., 2008). A particularly intense and widespread dust event occurred between March 26–29, 2018, in the North China Plain, which was the most significant Asian dust event in recent years in China (Zhou et al., 2019). This dust event affected nearly two-thirds of China and parts of the Northwest Pacific (Tian et al., 2020). Therefore, PM_{2.5} sampling at four representative sites (Beijing, Tianjin, Shijiazhuang, and Taiyuan) located in the downwind areas of the Gobi Desert during the 26–29 March 2018 dust event provides a typical representation of Asian dust activity in northern China.

The overall goal of this present study was to evaluate the contribution of the Gobi dust sources to the proteinaceous matter (CAAs) in PM_{2.5} from four representative urban centers in Northern China on dusty days. Firstly, we analyzed the concentrations and $\delta^{15}\text{N}$ values of individual CAAs in the surface soil and prevalent plants in the Gobi Desert, along with surface soil and the predominant plant species in Beijing, Tianjin, Shijiazhuang, and Taiyuan. The objective was to examine the composition characteristics and nitrogen isotope signature of individual CAAs from both Gobi dust sources and local urban sources; Secondly, variations in the concentrations and $\delta^{15}\text{N}$ values of CAAs in PM_{2.5} samples from these four cities during non-dust and dust periods were analyzed to confirm whether Gobi dust sources contribute to CAAs in PM_{2.5} in Northern China and to quantify the extent of this contribution for each city. Finally, we quantified the dry deposition of protein-N transported by the Asian dust storm.

This work could potentially improve current knowledge on the influence of Asian dust storms on productivity and biogeochemical nitrogen cycles in downwind ecosystems.

2 Materials and Methods

2.1 Sample collection

An intensive ground monitoring network consisting of four sites (Beijing, Tianjin, Shijiazhuang, and
115 Taiyuan) in Northern China was set up to monitor the dust episodes (Figure S1). The MODIS satellite
image (<https://worldview.earthdata.nasa.gov/>), as shown in Figure ~~S1~~S2, shows a dust episode with
brown dust plumes clearly visible over these four sampling sites.

The PM_{2.5} samples on quartz fiber filters were simultaneously collected at Beijing, Tianjin, Shijiazhuang,
and Taiyuan by a high-volume air sampler (KC-1000, Qingdao Laoshan Electronic Instrument company,
120 China) at a flow rate of $1.05 \pm 0.03 \text{ m}^3 \text{ min}^{-1}$. The high-volume air sampler was set on the rooftop of a
building (approximately 12 m above ground) at each site. Quartz filters were pre-combusted at 450 °C
for 10 hours; then wrapped in pre-combusted (450 °C, 10hr) aluminum foil envelopes and placed in
separate plastic bags. Daily PM_{2.5} samples were collected from March 24, 2018 to ~~1~~from March 31,
2018 at four cities. The sampling duration time for each sample was generally 23.5 h from 9:00 to 8:30
125 LT (local time) of the next day. All sample filters were sealed individually in an aluminum foil bag and
stored at -20°C prior to analysis. Field blank samples were also collected and analyzed as the control.

Surface soil samples (~~0-10 cm~~n=5) and leaves from three common plants (n=12), *chenopodium*
ambrosioides, *Tripogon chinensis*, and *tamarix chinensis*, were collected in the Gobi area (~~44.5-4°E,~~
28.2°NTable S1), ranging between 43.46°N to 43.60°N and 112.00°E to 112.05°E, covering
130 approximately 45 km², as shown in Figure S1. The Gobi Desert is the major source of sand for Asian
dust events in Asia during the spring (An et al., 2013). Therefore, five sampling sites along the transport
pathway of the dust event that occurred from March 26 to 29, 2018 (Figure 2), were selected to represent
the Gobi Desert. Each site was free of anthropogenic interference. Surface sand samples, which are most
likely to be aerosolized, were collected from the tops of dunes using a plastic spatula and stored in sealed
135 plastic bags until transported to the laboratory. At each location, surface soil was collected from five
randomly selected sampling points within a radius of approximately 20 cm. These five sub-samples were
then combined to create one representative sample. situated in the heart of Inner Mongolia and a
significant dust source in Northern China. Additionally, to examine the local sources of combined amino
acids (CAAs) in PM_{2.5}, surface soil samples (~~0-10 cm~~) and leaves from the predominant plant, *Platanus*
140 *orientalis*, were collected in Beijing, Tianjin, Shijiazhuang, and Taiyuan.

2.2 Analyses of the concentration and $\delta^{15}\text{N}$ value of CAAs

Extraction methods for combined amino acids (CAAs) in $\text{PM}_{2.5}$ were detailed in our previous study (Zhu et al., 2020b). To convert all amino acids to free amino acids, a hydrolysis method was employed. The CAA concentrations were determined by subtracting free amino acid concentrations from total amino acid concentrations. Briefly, one-sixteenth of each filter sample ($\sim 80 \text{ m}^3$ of air) was cut into small pieces and hydrolyzed using 10 mL of 6 M hydrochloric acid at 110°C for 24 h. α -Aminobutyric acid was added as an internal reference. To prevent oxidation, $25 \mu\text{L}$ of $20 \mu\text{g} \mu\text{L}^{-1}$ ascorbic acid (500 μg absolute) was added to each filter sample, and each hydrolysis tube was flushed with nitrogen and tightly sealed before hydrolysis. The hydrolyzed solution was cooled, dried under a stream of nitrogen, and then redissolved in 0.1 N HCl (v/v). The extracts of total amino acids were then purified using a cation exchange column (Dowex 50W X 8H^+ , 200-400 mesh; Sigma–Aldrich, St Louis, MO, USA), eluted with 10 mL of 10% aqueous ammonia, and dried under nitrogen. Finally, tert-butyldimethylsilyl derivatives of total amino acids were prepared as described in Zhu et al. (2018).

Free amino acids were extracted following the procedure outlined in Zhu et al. (2020b), where one-quarter of each filter sample ($\sim 300 \text{ m}^3$ of air) was processed in a Nalgene tube with α -aminobutyric acid as the internal standard and ultrasonically extracted in ice-cold Milli-Q water. The extract underwent ultrasonication, shaking, centrifugation, and filtration through a $0.22 \mu\text{m}$ cellulose acetate membrane, followed by lyophilization and resuspension in 1 mL of 0.1 N HCl (v/v). The samples were then processed using the same purification and derivatization steps as the total amino acids. Field blank filters were also taken and treated using the same procedure, and all reported values were corrected for blanks. Plant and soil samples were ground separately in liquid nitrogen into fine powders using a mortar and pestle. Then, well ground and homogenized soil and plant power were hydrolyzed, purification and derivatization in the same way as the aerosol samples. For more details refer to our previous publication (Zhu et al., 2021).

The concentrations of CAAs were analyzed using a gas chromatograph–mass spectrometer (GC–MS). The GC–MS instrument was composed of a Thermo Scientific TRACE GC (Thermo Scientific, Bremen, Germany) connected to a Thermo Scientific ISQ QD single quadrupole MS. More details on instrument conditions, quality assurance and control (including recoveries, linearity, detection limits and quantitation limits) of CAAs are provided in our previous publications (Zhu et al., 2018, 2020b). [To](#)

170 evaluate the extraction efficiency, analytical method was applied to the samples were spiked with the
amino acid standard mixtures (100µl 1nmol µl⁻¹). The average recovery ratios of the individual amino
acids were shown in Table S2. The recoveries for the majority of CAAs ranged from 80.7% (tyrosine) to
106.5% (glycine). The precisions of the investigated AAs were better than 10%.

The $\delta^{15}\text{N}$ values of AA-tert-butyldimethylsilyl derivatives were analyzed using a Thermo Trace GC
175 (Thermo Scientific, Bremen, Germany) and a conflo IV interface (Thermo Scientific, Bremen, Germany)
interfaced with an isotope ratio mass spectrometry (IRMS, Thermo Delta V IRMS, Thermo Scientific,
Bremen, Germany). The internal standard with a known $\delta^{15}\text{N}$ value (α -aminobutyric acid, $-8.17\text{‰} \pm 0.03\text{‰}$) in each sample was checked to determine the reproducibility of the isotope measurements. The
analytical run was accepted when the differences between the $\delta^{15}\text{N}$ values of α -aminobutyric acid
180 measured by GC-IRMS and its true values were at most 1.5 ‰. The analytical precisions (SD, n=9) of
the $\delta^{15}\text{N}$ measurements for derivatized amino acid standards ranged from 0.5‰ to 1.4‰. The difference
between amino acid $\delta^{15}\text{N}$ values measured by using an elemental analysis/IRMS (EA/IRMS) and
GC/MS/IRMS after empirical correction ranged from 0.1‰ to 1.3‰. Each reported value is the mean of
at least three $\delta^{15}\text{N}$ determinations. The detailed instrument conditions and method validation were
185 described in our previous study (Zhu et al., 2018, 2020b). Since asparagine and glutamine are converted
to aspartic acid and glutamic acid in the hydrolysis process, respectively, ~~the concentrations and $\delta^{15}\text{N}$~~
~~values of combined asparagine and glutamine could not be determined by this method.~~ The
concentration and $\delta^{15}\text{N}$ value of combined aspartic acid represents the sum of aspartic acid and asparagine.
The concentration and $\delta^{15}\text{N}$ value of combined glutamic acid represents the sum of glutamic acid and
190 glutamine.

2.3 Analysis of the dry deposition fluxes

In this study, the atmospheric deposition fluxes of CAAs ($\text{mg N m}^{-2} \text{ d}^{-1}$) at four sampling sites are
estimated from equation 1:

$$F_{\text{dry}} = C \cdot V_d \quad (1)$$

195 where C is the atmospheric concentration (nmol N m^{-3}) and V_d is the dry deposition velocity (m s^{-1}). V_d
is controlled by the aerosol size, wind speed, aerosol hygroscopicity, relative humidity and underlying
surface.

Primary biological aerosols have been found to be distributed from nanometers up to about a tenth of a millimeter, with their size distribution influenced by their sources (Fröhlich-Nowoisky et al., 2016). However, we did not obtain data on the size distribution of CAAs. In this study, the deposition velocities of protein-N were assumed to be the same as those used to estimate water-soluble nitrogen (WSN) dry deposition (0.012 m s^{-1}), given that protein-N is a significant component of WSON in aerosols and WSON has also been detected in both coarse and fine fractions (Zamora et al., 2011; Zhang and Anastasio, 2003). The uncertainty in the value for the dry deposition velocity can lead to the uncertainty in dry flux estimates. For particles in the size range where gravitational setting is the controlling factor, V_d values obtained by model and field experiment were consistent (Spokes et al., 2000). Duce et al. (1991) reported that under wind speeds ranging from 0 to 13 m s^{-1} and relative humidity between 0% and 100%, the deposition velocity for submicrometer aerosol particles is $0.1 \text{ cm s}^{-1} \pm$ a factor of 3, while the deposition velocity for supermicrometer crustal particles is 1 cm s^{-1} , also with an uncertainty factor of 3. During the dust period, the wind speeds in Beijing, Tianjin, Shijiazhuang, and Taiyuan were $2.0\sim 2.4 \text{ m s}^{-1}$, $4.1\sim 6.1 \text{ m s}^{-1}$, $1.7\sim 2.6 \text{ m s}^{-1}$ and $4.6\sim 7.0 \text{ m s}^{-1}$, respectively, and the relative humidity were 25.8~28.4%, 24.3~28.0%, 24.3~29.1%, and 37.0~38.5%, respectively. The variations in wind speed and relative humidity across the four sampling cities were relative minor, and their ranges fell within those reported by Duce et al. (1991). Based on this, the uncertainty for the deposition velocity of aerosol protein-N in this study was set to a factor of 3. The detailed calculation method for the uncertainty range of protein-N deposition fluxes is provided in Supplementary Material, Text 1.

~~The average deposition velocity of CAAs was 0.012 m s^{-1} , which has also been widely used to estimate water soluble organic nitrogen (WSN) dry deposition (Zamora et al., 2011). However, actual V_d values were poorly quantified. The dry deposition flux may be under or overestimated by using a fixed deposition velocity (Luo et al., 2018; Zamora et al., 2011).~~

A “new” input of CAA-N (protein-N) supplied by the Gobi Desert for the ecosystems in the downwind region (Input F_{dry}) can be calculated from equation 2:

$$\text{Input } F_{dry} = F_{dry} \cdot f \quad (2)$$

where F_{dry} is the atmospheric deposition fluxes of protein-N, which is calculated from equation 1. f is the contribution of the Gobi dust source at each sampling site, which is obtained from the nitrogen isotopic mass balance (equation 3).

$$\delta^{15}\text{N}_{\text{AA during the dust period}} = \delta^{15}\text{N}_{\text{AA during the non-dust period}} \cdot (1-f) + \delta^{15}\text{N}_{\text{AA dust source}} \cdot f \quad (3)$$

where $\delta^{15}\text{N}_{\text{AA during the dust period}}$ is $\delta^{15}\text{N}$ value of the specific amino acid measured during the dust period, $\delta^{15}\text{N}_{\text{AA during the non-dust period}}$ is $\delta^{15}\text{N}$ value of the specific amino acid measured during the non-dust period and $\delta^{15}\text{N}_{\text{AA dust source}}$ is $\delta^{15}\text{N}$ value of the specific amino acid measured in the Gobi dust source. f is the contribution of the Gobi dust source at each sampling site.

2.4 Auxiliary Data

The meteorological data during the sampling period were collected from the Global Weather and Climate Information Network (<http://www.weatherandclimate.info/>). The MODIS satellite images were available at the following website: <https://worldview.earthdata.nasa.gov/>.

2.5 Statistics

Statistical analysis was conducted by Origin 2018 (OriginLab Corporation, USA). We performed a one-way analysis of variance (ANOVA) for the concentrations of PM_{10} , the ratios of Ala%/Pro%, Gly%/Pro% and Glu%/Pro%, $\delta^{15}\text{N}$ values of Glycine and leucine, testing the effect of [Asian dust events](#)~~dust storms~~. Tukey's honestly significant difference (Tukey-HSD) test was used to compare the significant difference. Further, the differences in the $\delta^{15}\text{N}$ values of combined glycine leucine, isoleucine, alanine and valine in $\text{PM}_{2.5}$ at four cities during the non-dust period and their corresponding values in the surface soil in the Gobi Desert were examined using the one-way ANOVA procedure and compared using the Tukey-HSD test. For all tests, statistically significant differences were considered at $p < 0.05$.

3 Results

3.1 Concentrations of $\text{PM}_{2.5}$ and PM_{10} in Northern China

Figure 1 illustrated the variations in atmospheric $\text{PM}_{2.5}$ and PM_{10} concentrations across Beijing (BJ), Tianjin (TJ), Shijiazhuang (SJZ), and Taiyuan (TY) throughout the sampling period. ~~—~~Periods when mass concentrations of PM_{10} exceeded $500 \mu\text{g m}^{-3}$ were as follows: in Beijing from 06:00 to 19:00 on March 28; in Tianjin from 09:00 to 13:00 on the same day; in Shijiazhuang from 11:00 to 18:00; and in Taiyuan from 21:00 on March 28 to 03:00 on March 29, as indicated by a yellow shadow in Figure 1. A MODIS satellite image from NASA (<https://worldview.earthdata.nasa.gov/>) revealed a dust episode on

March 28, 2018, with brown dust plumes visibly overlaying the North China Plain, and significant dust presence persisting on March 29, suggesting that the dust particles did not settle. Consequently, the filter samples from March 28 and 29 were categorized as the dust period, highlighted in yellow in Figure 1. The remaining days of the sampling period were classified as the non-dust period.

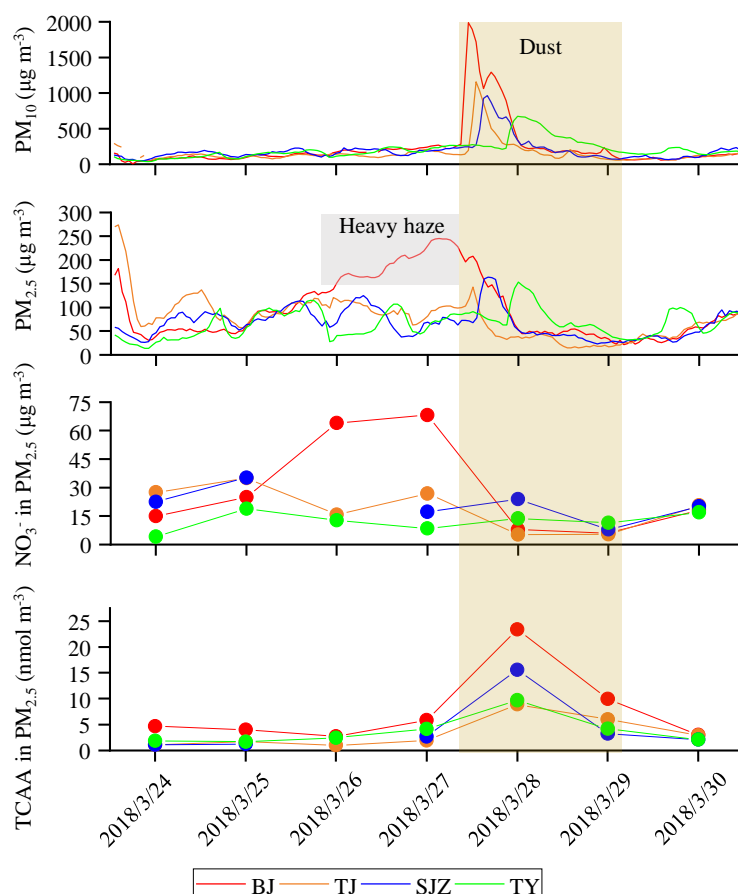


Figure 1. Time series of $\text{PM}_{2.5}$ and PM_{10} concentration, as well as NO_3^- , total combined amino acids (TCAA) in $\text{PM}_{2.5}$ at Beijing (BJ), Tianjin (TJ), Shijiazhuang (SJZ) and Taiyuan (TY) from March 24 to March 30, 2018. The timestamps indicate 21:00. The yellow shadow indicates the dust period. The grey shadow denotes a heavy haze period in BJ.

As shown in Figure 1, compared to the non-dust period, the concentrations of PM_{10} during the dust period exhibited a significant increase at four sampling sites, by factors of 8.7 in Beijing, 6.3 in Tianjin, 4.8 in Shijiazhuang, and 3.2 in Taiyuan ($p < 0.01$). Among four sampling sites, Beijing recorded the highest increase in PM_{10} concentration with the peak value of $1989 \mu\text{g m}^{-3}$ on 28 March (Figure 1). In comparison to PM_{10} , the increase in $\text{PM}_{2.5}$ concentration during the dust period was less pronounced. Beijing experienced a severe haze event two days before the dust invasion (March 26 and 27), with $\text{PM}_{2.5}$

concentrations surpassing $150 \mu\text{g m}^{-3}$. Following the dust invasion, Beijing's $\text{PM}_{2.5}$ rapidly dropped to $50 \mu\text{g m}^{-3}$ by 23:00 on March 28. In Tianjin, the $\text{PM}_{2.5}$ concentration first increased and peaked at $143 \mu\text{g m}^{-3}$ at 08:00 on March 28 (dusty day). Subsequently, similar to Beijing, Tianjin's $\text{PM}_{2.5}$ rapidly decreased to $36 \mu\text{g m}^{-3}$. Contrast to Beijing and Tianjin, $\text{PM}_{2.5}$ in Shijiazhuang and Taiyuan, showed an upward trend following the dust invasion, with daily averages rising from 62 and $78 \mu\text{g m}^{-3}$ on March 27 to 79 and $94 \mu\text{g m}^{-3}$ on March 28, respectively. Overall, there was a decrease in the $\text{PM}_{2.5}/\text{PM}_{10}$ ratio at all locations. This ratio declined from 0.7 to 0.1 in Beijing, 0.6 to 0.1 in Tianjin, 0.4 to 0.2 in Shijiazhuang, and 0.4 to 0.2 in Taiyuan (Table S4S3), further indicating a significant increase in coarse particulate matter due to the [Asian dust/dust storms](#).

The 48-h backward trajectories and clusters of air mass trajectories at the four sampling sites on March 28th, 2018 are displayed in Figure 2. The air masses arriving at the four sampling sites during the dust period primarily originated from the Gobi Desert. Observation from the MODIS satellite also confirmed that the occurrences of [Asian dust/dust storm](#) events across four sampling sites originated from the Gobi Desert (Figure S1). Tian et al. (2020) [also confirmed that an intensive dust event occurred in the North China Plain from 26–29 March 2018 originating from western Inner Mongolia.](#)

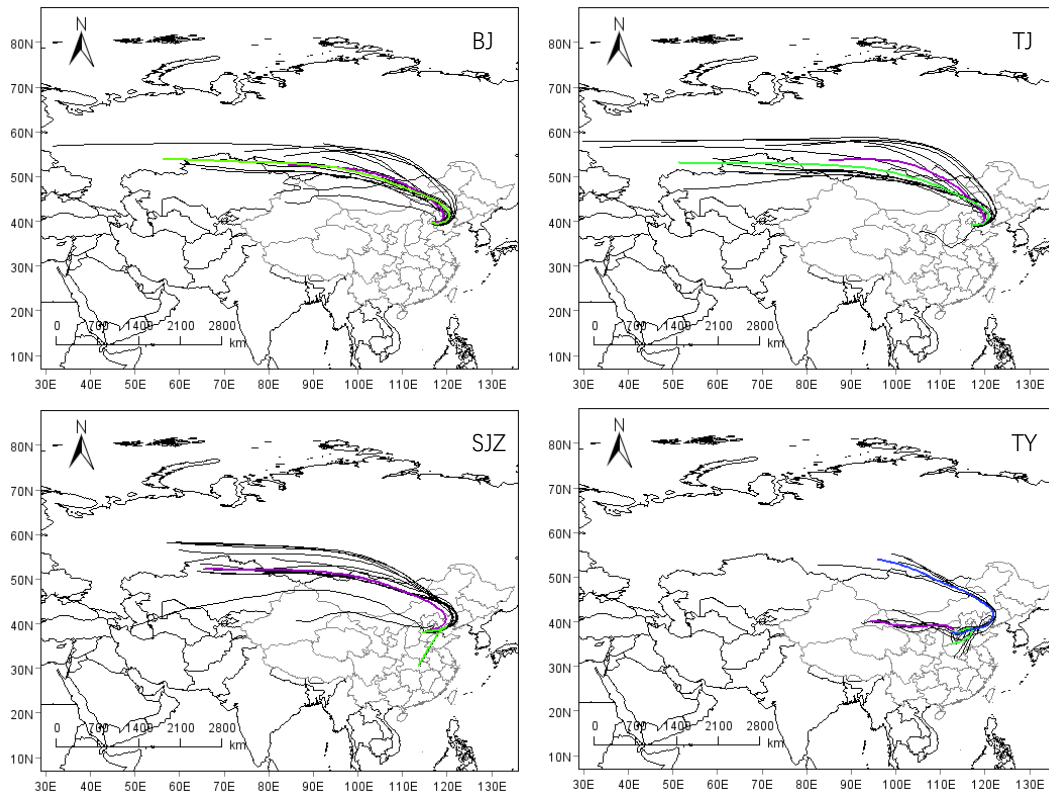


Figure 2. 48h backward trajectories of air masses arriving in reaching Beijing, Tianjin, Shijiazhuang and
Taiyuan at 500m above ground level during the dust period. Color lines show the cluster results of air mass
trajectories. Trajectories were divided into two or three clusters in four cities. The main contribution clusters
in these cities were found to be primarily originated from the Gobi Desert.

3.2 Concentrations and distribution of CAAs

3.2.1 CAAs in the Gobi Desert sources

Given that this ~~Asian dust event~~dust storm originated from the Gobi Desert (Figure 32), we investigated
the molar composition of CAAs in both the surface soils and dominant plants of the region to determine
the characteristic molar percentages of proteins transported from the Gobi Desert. In the surface soil of
the Gobi Desert, glycine and alanine were the most abundant combined amino acids, each contributing
approximately $20.4 \pm 5.6\%$ and $20.7 \pm 2.9\%$, respectively, to the total CAAs pool (Figure 3a). Glutamic
acid was the predominant CAA species in typical Gobi plants, accounting for 21.0%, 22.5%, and 69.3%
of the total CAAs pool in *chenopodium ambrosioides*, *Tripogon chinensis*, and *tamarix chinensis*,
respectively (Figure 3a).

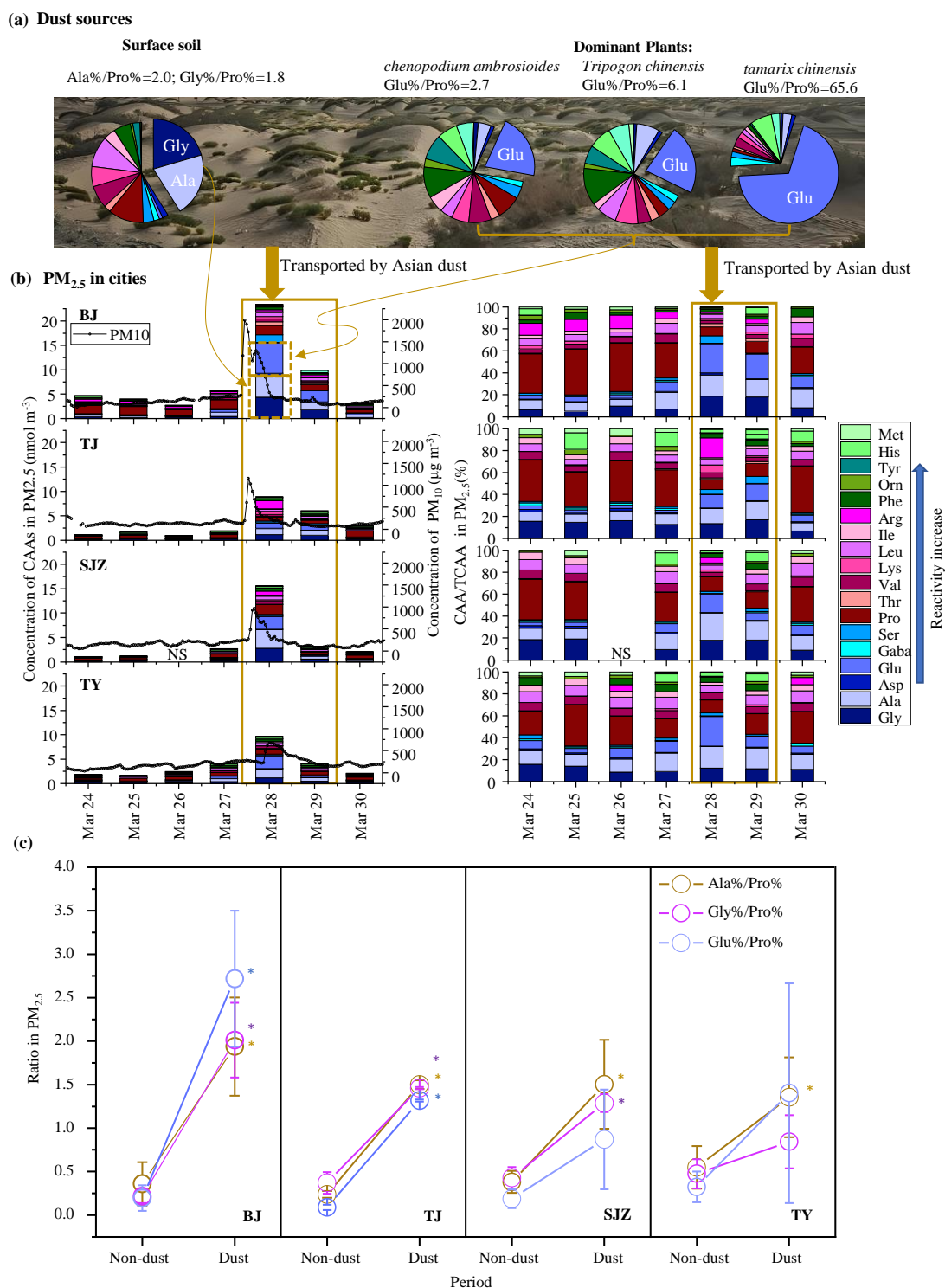


Figure 3. (a) The percent distributions of each individual CAAs (% of total CAAs) in the surface soils and three dominant plants (*chenopodium ambrosioides*, *Tripogon chinensis*, and *tamarix chinensis*) in the Gobi Desert. (b) Concentrations and distribution of individual CAAs at BJ, TJ, SJZ and TY. (c) the average ratios of the percentage of alanine, glycine, and glutamic acid to proline (Ala%/Pro%, Gly%/Pro%, Glu%/Pro%) in PM_{2.5} on dusty and non-dust days at four cities. Asterisks indicate a significant difference in the average ratio between dust and non-dust periods (one-way ANOVA, $p < 0.05$).

In both the surface soil and common plants of the Gobi Desert, the molar percentage of combined proline was lower than those of the amino acids mentioned earlier, contributing only $11.4 \pm 3.3\%$ to the total CAAs pool of the Gobi surface soil. Among the three common plants, the molar percentage of proline did not exceed 8%. Therefore, the proteins transported from Gobi Desert are predominantly composed of alanine, glycine, and glutamic acid (Figure 3a).

3.2.2 Total CAAs concentration in PM_{2.5} in Northern China

The temporal variations of total CAAs in PM_{2.5} measured at all sites during the sampling period were shown in Figure 1. A marked ~~increase increment~~ in the total CAAs in fine particles were observed at all sampling locations. The average concentrations of total CAAs in PM_{2.5} in Beijing, Tianjin, Shijiazhuang, and Taiyuan increased from the non-dust period of 4.0, 1.7, 1.8, and 2.5 nmol m⁻³ to 16.7, 7.5, 9.4, and 6.9 nmol m⁻³ during the dust period, respectively ($p < 0.01$). The temporal variation of the total CAAs concentration were consistent with that of PM₁₀ at four cities (Figure 1). The highest concentrations of total CAAs at four sites occurred on 28 March 2018 coincided with peaks in the enrichment of PM₁₀ concentrations.

As exhibited in Figure 1, the temporal variation pattern of NO₃⁻ concentration in PM_{2.5} was similar to that of PM_{2.5}, which was quite different from that of total CAAs concentrations in PM_{2.5} at Beijing and Tianjin. At Beijing and Tianjin, the highest concentration of NO₃⁻ in PM_{2.5} occurred on 27 March (non-dust day), but decreased on 28 March and 29 March (dust day). The difference in the temporal variations of total CAAs and NO₃⁻ in PM_{2.5} may point to the contribution of different sources during the sampling period.

3.2.3 Individual CAAs in PM_{2.5} in Northern China

For individual amino acid species in PM_{2.5}, the concentrations of alanine and glycine, which predominate in the surface soil of the Gobi Desert, increased markedly during the dust period (Figure 3b). Specifically, alanine concentrations in PM_{2.5} during the dust period were 3.0 ± 2.0 , 1.1 ± 0.2 , 2.2 ± 2.3 and 1.3 ± 0.8 nmol m⁻³ at Beijing, Tianjin, Shijiazhuang, and Taiyuan, being 7, 8, 10 and 4 times more than that during the non-dust period, respectively. Glycine concentrations in PM_{2.5} rose from 0.3 ± 0.1 , 0.2 ± 0.04 , 0.2 ± 0.03 and 0.3 ± 0.07 nmol m⁻³ during the non-dust period to 3.1 ± 1.8 , 1.1 ± 0.1 , 1.7 ± 1.6 and 0.8 ± 0.5 nmol m⁻³ during the dust period at Beijing, Tianjin, Shijiazhuang and Taiyuan, respectively. Similarly,

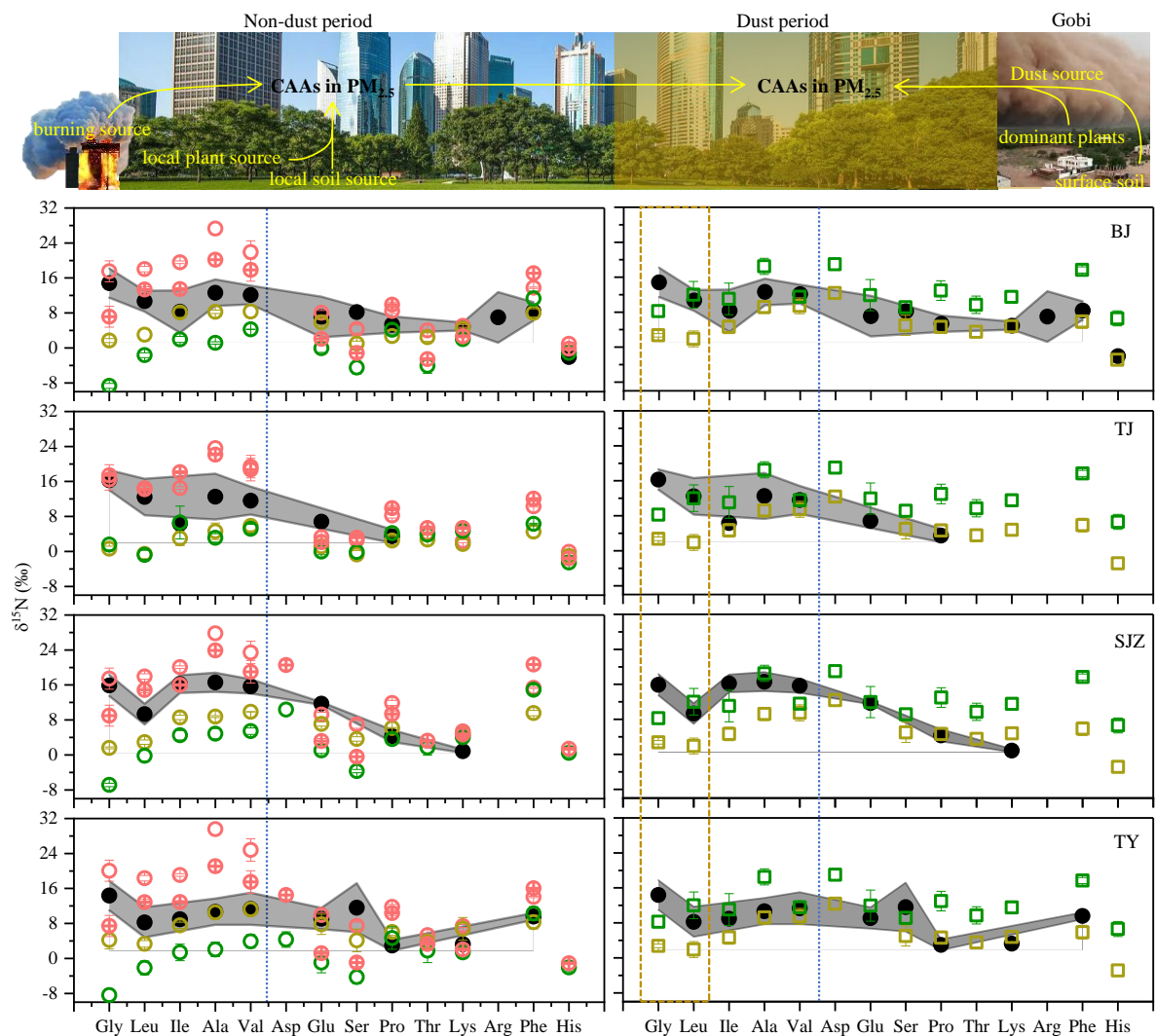
the concentrations of glutamic acid, which predominate in common plants of the Gobi Desert, increased markedly during the dust period, with concentrations 17, 15, 12 and 8 times higher than that of the non-dust period at Beijing, Tianjin, Shijiazhuang and Taiyuan, respectively (Figure 3b). In contrast, the concentrations of other CAAs displayed no significant variation between the dust and non-dust periods. During the dust period, the molar composition of CAAs in PM_{2.5} shifted significantly at all sampling locations, compared to the non-dust period (Figure 3b). In the non-dust period, combined proline dominated the total CAAs pool in PM_{2.5}, contributing to 35.4%, 36.3%, 32.3%, and 26.0% in Beijing, Tianjin, Shijiazhuang, and Taiyuan, respectively, as illustrated by the dark red shadow in Figure 2b. This prevalence diminished across all sites during the dust period, with molar percentages of combined proline dropping to 9.4%, 10.3%, 13.9%, and 14.9%, correspondingly. Concurrently, there was a marked increase in the molar percentages of combined alanine, glycine, and glutamic acid (blue shadow in Figure 3b). The average molar percentages of these three CAAs in fine particulates increased from 24.4%, 24.9%, 31.6%, and 31.9%, respectively, during the non-dust period to 61.1%, 44.2%, 50.4%, and 48.8% during the dust period, thus emerging as the dominant CAA species at these locations. Notably, in Beijing, the molar percentage of combined proline exhibited the largest decrease, while the sum of the molar percentage of combined alanine, glycine, and glutamic acid which is abundant in soil and plants of the Gobi Desert, showed the greatest increase.

Based on the variation trends in the percentage composition of CAAs in PM_{2.5} across four cities during the dust and non-dust period, the ratios of the percentage of alanine, glycine, and glutamic acid to proline (Ala%/Pro%, Gly%/Pro%, Glu%/Pro%) in PM_{2.5} on dusty days were compared to those on non-dust days across the four cities. The results showed that in Beijing and Tianjin, the ratios of Ala%/Pro%, Gly%/Pro% and Glu%/Pro% increased significantly on dusty days compared to non-dust days ($p < 0.05$) (Figure 3c). In Shijiazhuang, during the dust period, the ratios of Ala%/Pro% and Gly%/Pro% also showed significant increases relative to non-dust days ($p < 0.05$), whereas in Taiyuan, only the Ala%/Pro% ratio increased significantly during the dust period ($p < 0.05$) (Figure 3c).

3.3 Compound-specific nitrogen isotopes of CAAs ($\delta^{15}\text{N}$ -CAAs)

3.3.1 $\delta^{15}\text{N}$ -CAAs in Gobi Desert

360 $\delta^{15}\text{N}$ -CAAs of individual CAAs in the surface soil and predominant plants in the Gobi Desert were compared with those in $\text{PM}_{2.5}$ at four urban sites during non-dust period (Figure 4, right side). Glycine, leucine, isoleucine, alanine and valine were ^{15}N -depleted in the Gobi Desert surface soil compared to those in $\text{PM}_{2.5}$ at the urban sites during the non-dust period, whereas $\delta^{15}\text{N}$ values of other individual CAA species were close between these two sources (Figure 4, right side). Among these four CAA species, the
365 most significant $\delta^{15}\text{N}$ depletion was observed for glycine and leucine. The mean $\delta^{15}\text{N}$ values of glycine and leucine showed statistically significant differences between the Gobi Desert surface soil and urban $\text{PM}_{2.5}$ during the non-dust period (one way ANOVA, $p < 0.01$) (Figure 5). Specifically, glycine and leucine in Gobi Desert surface soil were depleted in ^{15}N by 12 to 14‰ and 6 to 11‰, respectively, relative to their corresponding values in urban $\text{PM}_{2.5}$ during the non-dust period (Figure 4, right side, yellow box).



○ Local soil burning
 ⊕ Local plant burning
 ○ Local soil
 ○ Local plant
 ● CAA in $PM_{2.5}$
□ Surface soil in Gobi
 □ Dominant plants in Gobi

Figure 4. Comparison of $\delta^{15}N$ -CAA patterns of in $PM_{2.5}$ at BJ, TJ, SJZ and TY with those in potential local sources and Gobi dust sources. CAAs species on the left side of blue dotted line were ^{15}N -depleted in the Gobi Desert surface soil compared to those in $PM_{2.5}$ at the urban sites during the non-dust period. CAAs species in the yellow dotted box exhibited the most significant $\delta^{15}N$ depletion compared to those in $PM_{2.5}$ at the urban sites during the non-dust period.

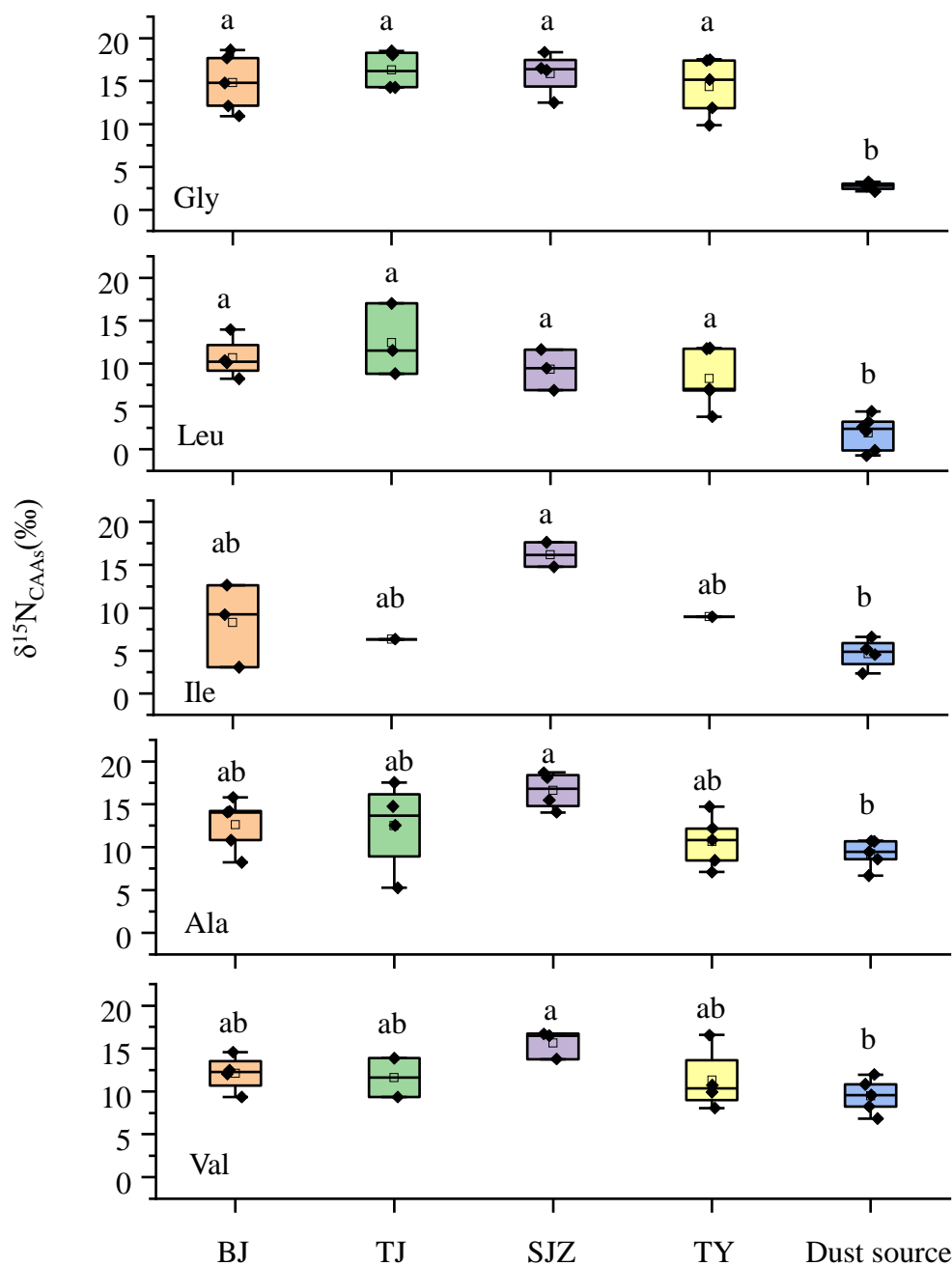


Figure 5. The $\delta^{15}\text{N}$ values of combined glycine (Gly), leucine (Leu), isoleucine (Ile), alanine (Ala) and valine (Val) in $\text{PM}_{2.5}$ at Beijing (BJ), Tianjin (TJ), Shijiazhuang (SJZ) and Taiyuan (TY) during the non-dust period and their corresponding values in the surface soil in the Gobi Desert. Different lower-case letter denote means found to be statistically different (one-way ANOVA, $p < 0.05$).

Compared to the surface soil of the Gobi Desert, predominant plants in the region exhibited significant ^{15}N enrichments of 2–12‰ for all CAA species (Figure 4, right side, green box). It is noteworthy that the average $\delta^{15}\text{N}$ value of combined glutamic acid ($11.9 \pm 3.6\%$), the predominant amino acid in these plants,

was close to its values in urban PM_{2.5} during the non-dust period at four cities (one-way ANOVA, $p > 0.05$).

3.3.2 $\delta^{15}\text{N}$ -CAAs in PM_{2.5} in Northern China

Figure 4 shows the $\delta^{15}\text{N}$ patterns of individual CAAs in PM_{2.5} (dark circle), local common plant (green circle) and local soil (yellow circle) as well as local burning sources (pink circle) from four urban sites. During the non-dust period, $\delta^{15}\text{N}$ -CAAs patterns in PM_{2.5} at four urban sites were generally consistent, with glycine, leucine, isoleucine, alanine and valine exhibiting relatively higher $\delta^{15}\text{N}$ values than other CAA species (Figure 4, left side). Besides that, $\delta^{15}\text{N}$ values of individual CAAs in PM_{2.5} all fell within their respective ranges observed in local dominant plants, soil, and burning sources at four cities (Figure 4, left side).

During the dust period, glycine, alanine, valine, leucine, and isoleucine showed negative shifts in $\delta^{15}\text{N}$ values compared to those observed during the non-dust periods (Figure 6). In contrast, the $\delta^{15}\text{N}$ shifts in other CAA species between the dust and non-dust periods were either relatively minimal or displayed $\delta^{15}\text{N}$ enrichments (Figure 6). A spatial variation in $\delta^{15}\text{N}$ depletions for these five amino acids was observed, with the largest depletions occurring in Beijing. The degree of $\delta^{15}\text{N}$ -CAA shifts decreased in the order of Beijing, Tianjin, Shijiazhuang, and Taiyuan. In Taiyuan, the $\delta^{15}\text{N}$ shifts in all five amino acids during the dust period were not observed.

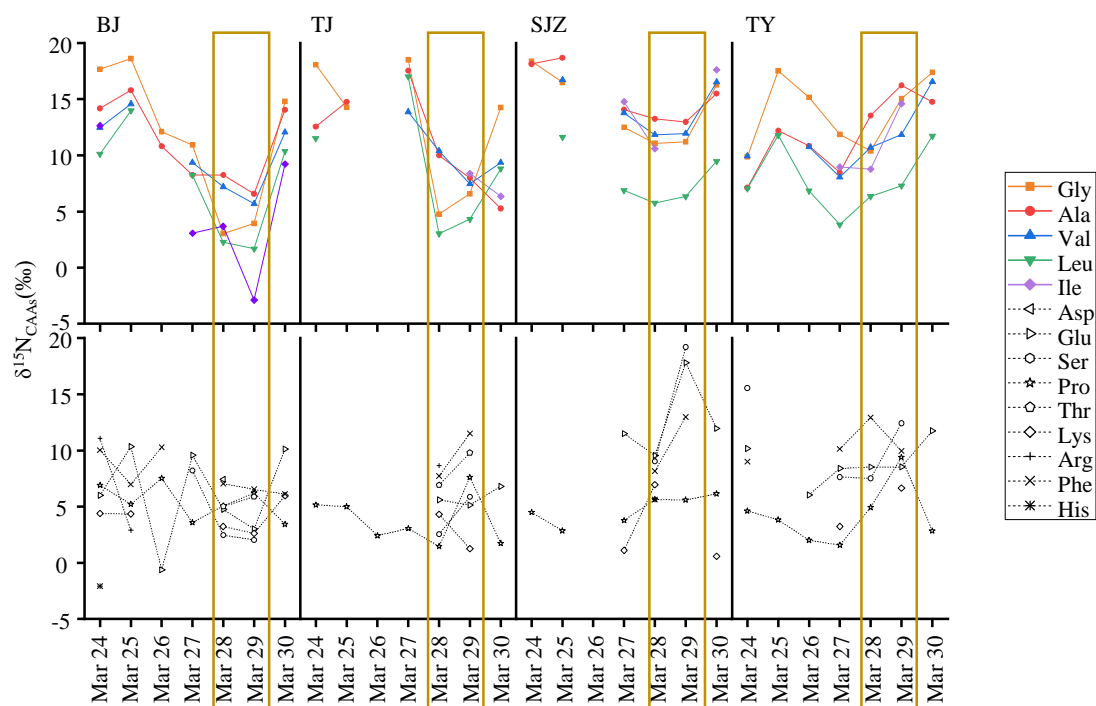


Figure 6. Time series of $\delta^{15}\text{N}$ of individual CAAs in $\text{PM}_{2.5}$ at BJ, TJ, SJZ and TY. The yellow box represents the dust period.

Among these five amino acids, glycine and leucine in $\text{PM}_{2.5}$ exhibited the most significant $\delta^{15}\text{N}$ depletion during the dust period at four sampling sites (Figure 6). The $\delta^{15}\text{N}$ values of combined glycine in $\text{PM}_{2.5}$ significantly decreased from 14.8‰, 16.3‰, and 15.9‰ during the non-dust period to 3.5‰, 5.7‰ and 11.1‰, respectively, during the dust period at Beijing, Tianjin and Shijiazhuang (one-way ANOVA, $p < 0.05$) (Figure 7a). At Taiyuan, the average $\delta^{15}\text{N}$ values of combined glycine in $\text{PM}_{2.5}$ during the non-dust (14.4‰) and dust period (12.7‰) were not significantly different ($p > 0.05$). Remarkably, the $\delta^{15}\text{N}$ values of combined glycine in Beijing's $\text{PM}_{2.5}$ during the dust period ranged from 3.0‰ to 3.9‰, closely aligning with those found in surface soils of the Gobi Desert, which ranged from +2.1‰ to +3.2‰ (Figure 7a). Similarly, the $\delta^{15}\text{N}$ values of combined leucine in $\text{PM}_{2.5}$ from Beijing and Tianjin sharply decreased from +10.7‰ and +12.4‰ during the non-dust period to +2.0‰ and +3.7‰, respectively, during the dust period (one-way ANOVA, $p < 0.05$) (Figure 7b). At Shijiazhuang and Taiyuan, there was no significant variation in the mean $\delta^{15}\text{N}$ values of leucine between the non-dust and dust period ($p > 0.05$) (Figure 7b).

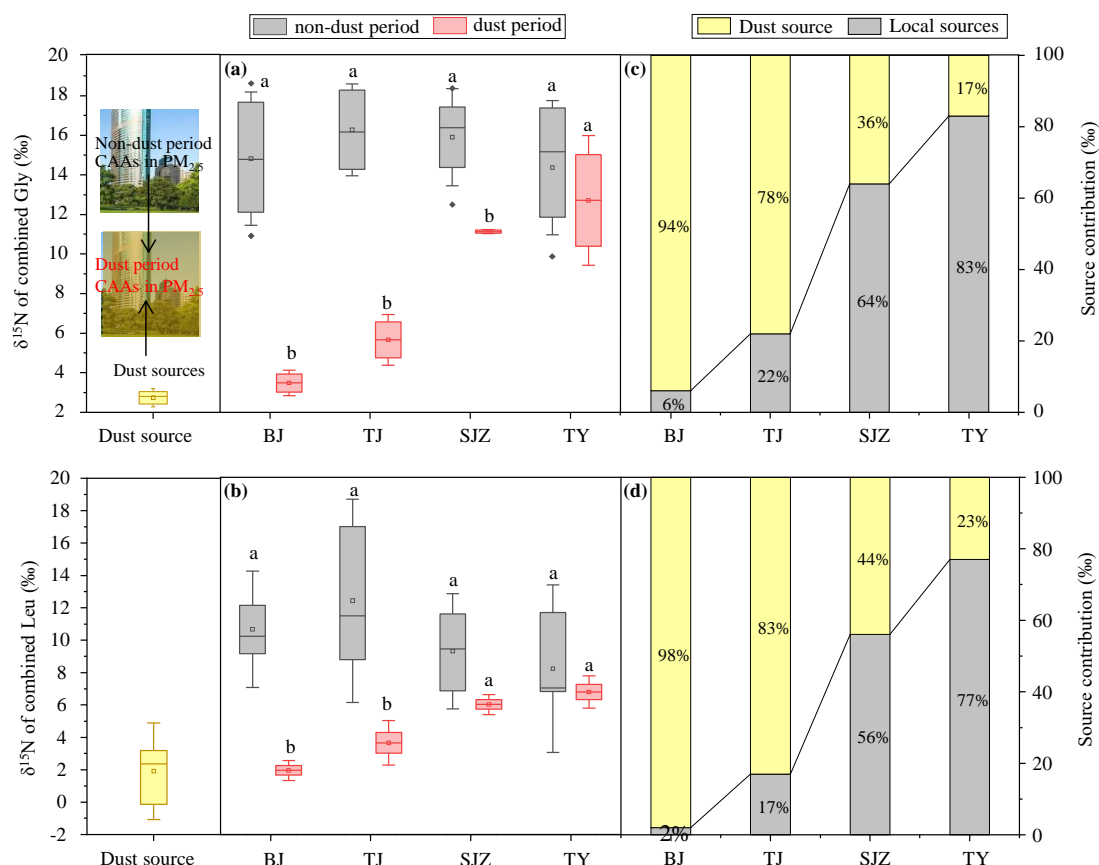
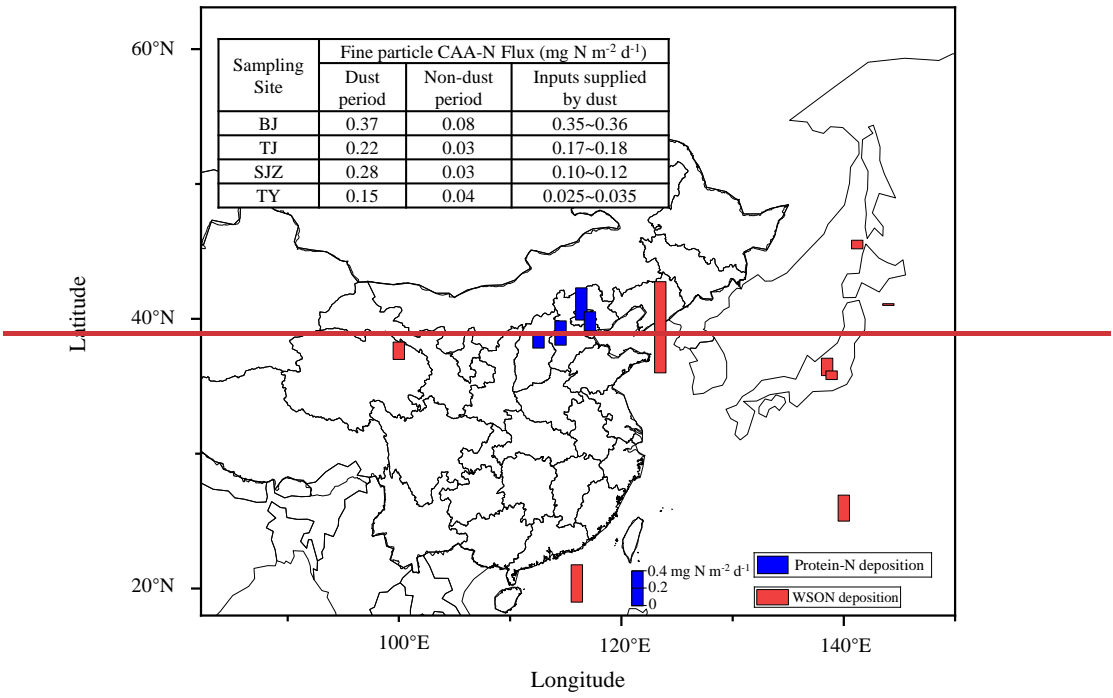


Figure 7. (a) $\delta^{15}\text{N}$ values of combined glycine in surface soil from Gobi Desert (yellow box) and in $\text{PM}_{2.5}$ during the non-dust (grey box) and dust (red box) period at Beijing, Tianjin, Shijiazhuang and Taiyuan; (b) $\delta^{15}\text{N}$ values of combined leucine in surface soil from Gobi Desert (yellow box) and in $\text{PM}_{2.5}$ during the non-dust (grey box) and dust (red box) period; (c) the contribution of Gobi dust sources and local urban sources to the CAA in $\text{PM}_{2.5}$ calculated by the nitrogen isotopic mass balance for glycine; (d) the contribution of Gobi dust sources and local urban sources to the CAA in $\text{PM}_{2.5}$ calculated by the nitrogen isotopic mass balance for leucine. Different lower-case letter denote means found to be statistically different (one-way ANOVA, $p < 0.05$) between the non-dust and dust period.

Moreover, as mentioned above, one-way ANOVA revealed significant differences in the $\delta^{15}\text{N}$ values of glycine and leucine between Gobi Desert surface soil and urban $\text{PM}_{2.5}$ during the non-dust period ($p < 0.01$; Figure 5). Therefore, a simple nitrogen isotopic mass balance was employed to estimate the contribution of long-range transported Gobi dust sources to proteinaceous matter in $\text{PM}_{2.5}$ at four cities. The results of the nitrogen isotopic mass balance for both glycine and leucine were consistent. During the dust period, long-range transported Gobi dust sources contributed 94~98%, 78~83%, 36~44% and 17~23% to proteinaceous matter in $\text{PM}_{2.5}$ at Beijing, Tianjin, Shijiazhuang and Taiyuan, respectively (Figure 7c and d).

3.4 Dry deposition fluxes of protein-N

A “new” input of CAA-N (protein-N) supplied by the Gobi Desert for the ecosystems in the downwind region were calculated from equation 2. The contribution of the Gobi dust source at each sampling site (f) was obtained from the nitrogen isotopic mass balance (Figure 7c and d). The average dry deposition of protein-N collected at each site during the non-dust period served as the background levels. The dry deposition flux of protein-N in PM_{2.5} sharply increased from the non-dust to the dust period at all four sampling sites. During the dust period, the dry deposition of protein-N (F_{dry}) in PM_{2.5} was 0.37, 0.22, 0.28, and 0.15 mg N m⁻² d⁻¹ in Beijing, Tianjin, Shijiazhuang and Taiyuan, respectively. The input of protein-N from the Gobi dust (Input F_{dry}) was approximately 4.5, 6.3, 3.3, and 1.3 times higher than the background levels in Beijing, Tianjin, Shijiazhuang, and Taiyuan, respectively (Figure 8).



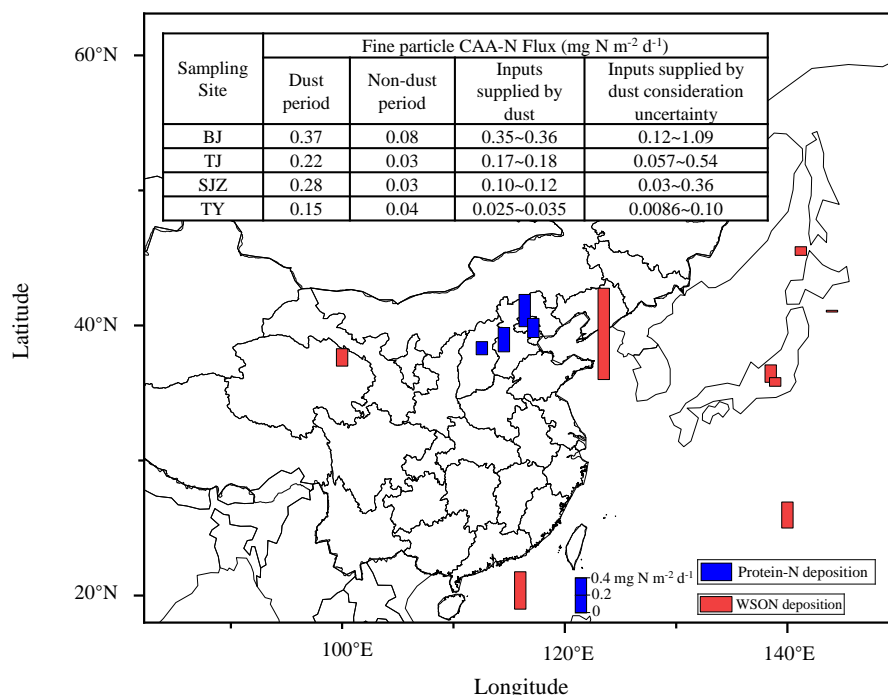


Figure 8. The dry deposition flux of protein-N at BJ, TJ, SJZ and TY during the dust period (blue bar) and published reports of the dry deposition flux of WSON measured in different atmospheric scenarios (red bar). The length of the bars represents the dry deposition flux of WSON and protein-N. The WSON deposition data were sourced from previous studies (Shi et al., 2010; Ho et al., 2015; Matsumoto et al., 2014; Tsagkaraki et al., 2021; Nakamura et al., 2006; Zhang et al., 2011). The method of calculating deposition fluxes of protein-N with the uncertainty range at the four sampling sites was provided in the supplementary manuscript (Text 1).

4 Discussion

4.1 Local urban Source-sources identification of CAAs in urban-PM_{2.5}

Amino acids constitute a major component of water-soluble organic nitrogen and play significant roles in biological activities. Previous studies focused on the levels and distribution of free amino acids in urban aerosols during the dust period (Mace et al., 2003; Shi et al., 2010), revealing that free amino acids typically represent a minor portion of the organic nitrogen, accounting for approximately 1% of the total organic nitrogen, with no significant increase in their average concentrations during dust periods. However, CAAs are the predominant form of the amino acid compounds in aerosols, with concentrations approximately five times higher than those of FAAs (Matsumoto et al., 2021; Wedyan and Preston, 2008).

Limited studies investigated that the variation of the sources of CAAs in urban aerosols from the non-dust to dust period.

Primary biological aerosol particles including bacteria, fungal spores, viruses, algae, pollen, biological crusts, and plant or animal fragments and detritus, are considered the major sources of CAAs in aerosols (Després et al., 2012; Matos et al., 2016; Xie et al., 2024). They are not only emitted from natural sources but also are associated with anthropogenic activities such as soil resuspension from traffic and construction, industry, agricultural practices, wastewater treatment and biomass burning (Kang et al., 2012; Matos et al., 2016; Song et al., 2017). During non-dust period, CAAs in aerosols at four urbans were mainly influenced by the local sources. The average concentrations of total CAAs in PM_{2.5} in Beijing, Tianjin, Shijiazhuang, and Taiyuan during non-dust period were 4.0, 1.7, 1.8, and 2.5 nmol m⁻³, respectively. Based on the molecular weight of amino acids, the molar concentrations were converted to mass concentrations, which were 0.5, 0.2, 0.2 and 0.3 µg m⁻³, respectively. These results are similar to levels previously measured in urban Beijing (average: 0.65±0.55 µg m⁻³) (Wang et al., 2019), and urban Nanchang, China (average: 0.3±0.3 µg m⁻³) (Zhu et al., 2020b), but higher than that observed in rural Guangzhou, southern China (average: 0.13±0.05 µg m⁻³) (Song et al., 2017) and a coastal site of Okinawa, Japan (average: 0.16±0.10 µg m⁻³) (Li et al., 2022a). However, significantly higher average protein concentrations were observed in PM_{2.5} in Xi'an during haze pollution periods (average: 5.46±3.32 µg m⁻³) (Li et al., 2022b) and in PM₁₀ in Hefei (average: 11.42 g m⁻³) (Kang et al., 2012). Clearly, cities with heavy traffic, agricultural production activities, construction activities, and various industries including machinery, electronics, chemistry, steel, textile, and cigarette manufacturing have higher atmospheric protein concentrations. Local road dust resuspension and anthropogenic activities in urban areas are important contributors to proteins in aerosols. Besides that, this study found a prevalent concentration of combined proline in the total CAAs pool of PM_{2.5} across all sampling sites during the non-dust period.

The compositional profiles of CAAs in aerosols have been utilized to identify the sources of primary aerosol particles (Abe et al., 2016; Matsumoto et al., 2021). The sampling occurred in spring, a period marked by rapid growth of plants and spore emissions. Proline has previously been reported as the major CAA species in urban plants and spores (Barbaro et al., 2015; Matsumoto et al., 2021; Zhu et al., 2020b). Therefore, the predominance of Pro among CAAs observed these four representative urbans in North China Plain points to the significant contribution of local plants and spores during spring.

As discussed above, local vegetation, road dust resuspension (traffic and construction activities), and anthropogenic industrial activities may be the major local sources of atmospheric CAAs. Therefore, we determined the nitrogen isotope values of individual CAAs in *Platanus orientalis*, the most typical plant of the North China Plain and commonly used for urban greening, to serve as the endpoint value for plant-emitted bioaerosols (green circle, Figure 4 left). The $\delta^{15}\text{N}$ values of individual CAAs measured in road dust sampled from each city (yellow circle, Figure 4 left) were used as the endpoint value for road dust resuspension. However, the $\delta^{15}\text{N}$ values of individual CAAs in $\text{PM}_{2.5}$ were more positive than those measured in local representative plant and road dust during the non-dust period, further confirming protein in $\text{PM}_{2.5}$ was significantly impacted by sources with $\delta^{15}\text{N}$ values of individual CAAs more positive than those of local plant and soil sources, particularly for glycine, leucine, isoleucine, alanine, and valine (Figure 4). Previous studies have suggested that anthropogenic industrial activities, such as the combustion of coal, biomass, or organic materials, contribute significantly to urban aerosol proteins, as indicated by the correlations between aerosol proteins and water-soluble ions (Khan et al., 2019; Li et al., 2022b). Thus, these sources with ^{15}N enrichment are likely anthropogenic industrial activities. Since CAAs are exposed to burning processes during these industrial activities, $\delta^{15}\text{N}$ values of CAAs emitted from these processes are influenced by nitrogen isotopic fractionation of each CAAs during the burning processes. Our earlier research showed that during combustion, the nitrogen isotope values of glycine, leucine, isoleucine, alanine, and valine increased by 15.8%, 15.0%, 11.5%, 19.0%, and 13.6%, respectively, compared to their initial values, while other amino acids showed an isotopic increase of less than 5.8% (Zhu et al., 2024). Clearly, the combustion process led to significant enrichment of nitrogen isotopes in specific amino acids, with the most substantial ^{15}N enrichment observed in glycine, leucine, isoleucine, alanine, and valine. We used $\delta^{15}\text{N}$ values of individual CAAs in local plant and road dust as initial values and the nitrogen isotopic fractionation of each CAA during the combustion process to calculate the $\delta^{15}\text{N}$ values of individual CAAs in local biological materials after undergoing combustion (pink circle, Figure 4 left). As shown in Figure 4, during the non-dust period, the $\delta^{15}\text{N}$ values of individual CAA in $\text{PM}_{2.5}$ from four cities all fell within their respective ranges in local common plants, soil, and burning sources across the four urban sites. This further supported that local dominant plants, surface road dust and anthropogenic industrial activities were the major sources of CAAs in $\text{PM}_{2.5}$ across Beijing, Tianjin, Shijiazhuang, and Taiyuan during the non-dust period.

520

4.2 Contribution Identification of long-range transported dust sources to the CAAs in PM_{2.5} at each city

525

Asian dust particles carry substantial microorganisms in desert soils and travel over long distances, leading to an increase in airborne microorganisms in remote downstream areas (Maki et al., 2017; Tang et al., 2018; Tong et al., 2023). Microbial particle concentrations in the atmosphere are proved to be positively related to coarse particles during the dust period (Hara and Zhang, 2012; Maki et al., 2019) (Puspitasari et al., 2016). The content of protein in the atmosphere is proved to be the combination of pollen, spore, bacteria, viruses, debris from humans, animals and plants, or fecal matter as well as nucleated combinations of these particles, which can serve as an indicator of all biological matter in the air (Boreson et al., 2004; Menetrez et al., 2007; Staton et al., 2015). It is reasonable to hypothesize that during the dust period, the proteinaceous matter in desert could be one of the potential sources of CAAs in aerosols in downwind cities.

530

535

This study presents the first simultaneous measurements of the levels and distribution of CAAs in PM_{2.5} across four urban areas during a dust event. The concentrations of total CAAs in PM_{2.5} increased sharply at all sampling sites during the dust period ($p < 0.01$) (Figure 1). Furthermore, the temporal variation pattern of total CAAs in PM_{2.5} was consistent with that of PM₁₀ (Figure 1). An increase in PM₁₀ indicates a rise in dust coarse particle levels (Wu et al., 2019). Similarly, Xie et al. (2024) reported that the concentration of aerosol proteins strongly correlated with the mass concentration of particles larger than 2.5 μm during the dust periods, indicating a close dependence of aerosol proteins on dust particles. Furthermore, the total CAAs concentrations in PM_{2.5} were not correlated with the local meteorological conditions (including temperature, humidity or wind speed), but were positively correlated with PM₁₀ concentration during the dust period (Table S4). Synchronous changes between the total CAAs and PM₁₀ during the dust period suggested suggesting the increase concentration of CAAs in PM_{2.5} during the dust period was not influenced by local meteorological conditions, but were directedly linked to the long-transported Gobi dust source.

540

545

Conversely, the concentration of total CAAs displayed an inverse temporal variation pattern with nitrate (NO_3^-) concentration (Figure 1). ~~In contrast,~~ NO_3^- is a key component of secondary inorganic aerosols in PM_{2.5}, which formed via photochemical oxidation reactions of NO_x (Song et al., 2021). Previous studies

demonstrated that local urban coal combustion, vehicle exhausts, biomass burning, and microbial N cycle
550 ~~was were~~ the major contributors to the atmospheric NO_3^- in Beijing (Song et al., 2019; Zhang et al., 2021).

Therefore, decreasing trend of NO_3^- concentration in Beijing and Tianjin during the dust period suggested
the lower contribution of local urban sources to CAAs in $\text{PM}_{2.5}$ at these ~~two~~ cities during the dust period.

During the dust period, the distribution profiles of CAAs in $\text{PM}_{2.5}$ at all observation sites changed,
exhibiting consistent variation patterns. Notably, there was a significant increase in the proportions of

555 combined glycine, alanine and glutamic acid, the most abundant amino acids in surface soil and
predominant plants from the Gobi Desert (Figure 3). Moreover, substantial amounts of alanine, glycine

and glutamic acid from Gobi Desert surface soil and plants into $\text{PM}_{2.5}$ in downwind areas led to increased
ratios of Ala%/Pro%, Gly%/Pro%, and Glu%/Pro% in $\text{PM}_{2.5}$ at four cities on dusty days (Figure 3). These

findings further support the hypothesis that long transported surface soil and plants from the Gobi Desert
560 significantly contribute to the proteinaceous matter in $\text{PM}_{2.5}$ in downwind areas during the dust period.

These newly protein transported from the Gobi Desert area has high proportions of combined glycine,
alanine and glutamic acid, which is abundant in surface soil and predominant plants in Gobi Desert.

The $\delta^{15}\text{N}$ values of specific amino acid have been utilized as a novel method to identify the sources of
amino acids (Batista et al., 2014; McCarthy et al., 2013; Zhu et al., 2021). The shift in $\delta^{15}\text{N}$ values of

565 specific CAAs in urban $\text{PM}_{2.5}$ during the dust period may be attributed to the inputs from long-range
transport amino acid sources. Combined glycine constitutes a high proportion of the total CAAs pool in

the surface soil of the Gobi Desert (averaging 20.4%), while its content is extremely low in common
Gobi plants (averaging 1.1%) (Figure 3). Therefore, during dust periods, the $\delta^{15}\text{N}$ values of glycine in

$\text{PM}_{2.5}$ in downwind cities are primarily influenced by the $\delta^{15}\text{N}$ values of glycine in the surface soil of the
570 Gobi Desert, rather than by those in Gobi plants. Since the mean $\delta^{15}\text{N}$ values of glycine in Gobi Desert

surface soil was more negative than that of urban $\text{PM}_{2.5}$ during the non-dust period, the mean $\delta^{15}\text{N}$ values
of glycine in $\text{PM}_{2.5}$ from cities impacted by Gobi dust sources would more negative. Leucine is present

in roughly equal amounts in both the surface soil and the common plants of the Gobi Desert (averaging
about 5.5% each) (Figure 3). The $\delta^{15}\text{N}$ values of leucine in predominant plants do not significantly differ

575 from those in $\text{PM}_{2.5}$ during the non-dust period, while $\delta^{15}\text{N}$ values of leucine in surface soil were
significantly lower (Figure 4). Similar to glycine, during dust periods, the $\delta^{15}\text{N}$ values of leucine in $\text{PM}_{2.5}$

in downwind cities are also primarily influenced by the $\delta^{15}\text{N}$ values of leucine in the surface soil of the

Gobi Desert. Therefore, the ^{15}N depletion of glycine and leucine in urban $\text{PM}_{2.5}$ indicated the contribution of Gobi dust source (Figure 5 and 7).

Combining the correlation between combined amino acids and PM_{10} , the variation in the distribution of the CAAs as well as the shift of the $\delta^{15}\text{N}$ values of individual amino acids in $\text{PM}_{2.5}$ during the dust period, we can conclude that CAAs in surface soil and predominant plants in the Gobi Desert are substantial contributors of combined amino acid in fine particles in Northern China during the dust period.

~~4.2 Contribution of dust sources to the CAAs in $\text{PM}_{2.5}$ at each city~~

4.3 Contribution of dust sources to the CAAs in $\text{PM}_{2.5}$ at each city

It is crucial to quantifying the contribution of dust sources to the CAAs in atmospheric $\text{PM}_{2.5}$ in different downwind regions. Although all four cities were affected by the same dust source (the Gobi Desert) during this dust event, the extent of increase in CAAs concentrations, the percentage increase in CAA species that are abundant in the Gobi Desert source (Ala%, Gly%, and Glu%), and the degree of $\delta^{15}\text{N}$ depletion in glycine and leucine varied among the four sampling sites (Figures 3 and 5). Notably, in Beijing, the increase in concentration and percentage of alanine, glycine, and leucine, as well as the degree of $\delta^{15}\text{N}$ depletion in glycine and leucine, were the most significant. These results suggest that the contribution of dust sources to the CAAs in atmospheric $\text{PM}_{2.5}$ varies across the four sites, with Beijing, being closest to the dust source, –most strongly affected by the Gobi dust sources. This result was consistent with the results of Xie et al. (2023). They examined the dissemination of bioaerosols in the westerly wind from the Asian continent to the northwestern Pacific. The concentration of bioaerosol increased significantly in all sites, which are located on the pathway of the Northern Hemisphere middle latitude westerly wind, during the dust period. However, increase rate of bioaerosols decreased with the distance from the Asian continent, suggesting the influence of dust on bioaerosol concentration along the transport pathway was in the decreasing order. They suggested that this decreasing trend was very likely dominated by the dry deposition of dust particles (Xie et al., 2023, 2024). (Adachi et al., 2020) Dry deposition flux refers to the mass of particles in the atmosphere that settle to the surface by non-precipitation events (Xie et al., 2023). However, it is challenging to accurately estimate the contribution of protein originating from the dust sources and its dry deposition flux. Compound-specific nitrogen isotope analyses of individual amino acids may offer a new approach to solving this problem.

This study represents the isotopic interpretation of individual CAAs in PM_{2.5} during the dust period to estimate the contribution of dust sources to CAAs in PM_{2.5} in Northern China. As discussed in Section 4.4.2, significant quantities of proteinaceous matter transported by Asian dust are expected to increase the concentrations of combined glycine and leucine in urban PM_{2.5} and decrease their $\delta^{15}\text{N}$ values.

Greater inputs of proteinaceous matter from Asian dust typically result in more negative $\delta^{15}\text{N}$ values of combined glycine and leucine in urban PM_{2.5}. Particularly in Beijing, $\delta^{15}\text{N}$ values of combined glycine and leucine in PM_{2.5} during the dust period were close to those in the surface soil of the Gobi Desert (Figure 7). Therefore, with known concentrations and isotopic values of specific amino acid in PM_{2.5} during the non-dust periods and during the dust period in downwind regions, as well as the isotopic

values of these amino acids from the dust source area, it is possible to calculate the contribution of dust sources to the protein in PM_{2.5} in these downwind regions using nitrogen isotope mass balance for the specific amino acid. Using this approach, the contributions of dust sources to Beijing, Tianjin, Shijiazhuang, and Taiyuan during this dust event were calculated for glycine as 94%, 78%, 36%, and 17% respectively. For leucine, the contributions were 98%, 83%, 44%, and 23%, respectively. The

contributions estimated through nitrogen isotope mass balance for glycine align with those derived from leucine (Figure 7). This demonstrates that isotopic mass balance based on the $\delta^{15}\text{N}$ values of glycine and leucine in PM_{2.5} is an effective tool for assessing the contribution of dust sources to proteinaceous material in downwind regions.

Using this nitrogen isotopic method, the calculated dry deposition of protein-N in PM_{2.5} was 0.12~1.09, 0.057~0.54, 0.03~0.36, and 0.0086~0.10 mg N m⁻² d⁻¹ in Beijing, Tianjin, Shijiazhuang and Taiyuan, respectively, which displaying a decreasing trend along the transport pathway (Figure 2). Consistent trend was also found in the dry deposition flux of Asian dust, which decreased exponentially along its transport pathway (Lyu et al., 2017; Park et al., 2010). This result confirmed that the increase of airborne protein concentration in downwind areas during the dust period may be controlled by dry deposition of dust particles with protein coagulated or condensed.

4.3.4 Implications of the Gobi Desert-supplied protein-N inputs

Proteinaceous matter in the atmosphere has been studied extensively because it can be a utilizable source of nitrogen for plants and microorganisms (Ho et al., 2015; Samy et al., 2013; Zhang and Anastasio,

2003). Nutrients (e.g., protein-N) whipped up from deserts by strong winds can travel long distances, including over remote oceans (Favet et al., 2013; Yang et al., 2021). Previous studies have shown that dust inputs can stimulate phytoplankton metabolism and thereby enhance new production in the ocean (Duarte et al., 2006; Gazeau et al., 2021). The positive correlation of dust events with chlorophyll a concentrations, primary production and spring algae blooms in the south Yellow Sea and East China Sea has been well characterized (Tan et al., 2011). Due to the high bioavailability of amino acids-N, it can serve as a source of nutrients for marine ecosystems and greatly contribute to ecological processes in the marginal seas of China via processes such as fertilization of phytoplankton and stimulation of nitrogen fixation (Duarte et al., 2006; Ho et al., 2015).

In this study, the Gobi Desert-supplied protein-N input (~~0.12~1.09, 0.057~0.54, 0.03~0.36, and 0.0086~0.10~~~~0.35~0.36, 0.17~0.18, 0.10~0.12 and 0.025~0.05~~ mg N m⁻² d⁻¹ in Beijing, Taiyuan, Shijiazhuang and Taiyuan, respectively) (Figure 8) was compared with published reports of the dry deposition flux of WSON measured in different atmospheric scenarios. Gobi Desert-supplied protein-N input was higher than that observed in a suburban site in northern California, U.S.A. (0.04 mg N m⁻² d⁻¹) (Zhang et al., 2002). Although the Gobi Desert-supplied protein-N input was lower than the dry deposition of WSON measured in urban sites in China and a coastal site in Qingdao, China, it was markedly higher than those previously measured in the remote Pacific Ocean and Atlantic Ocean areas, consistent with or even higher than those observed at the marginal seas of China (e.g., Yellow Sea and South China Sea) and forested, coastal and rural sites of Japan. Nakamura et al. (2006) suggested that WSON transported from East Asia is an important nitrogen component over the East China Sea. Our results showed that Gobi Desert-supplied protein-N inputs were comparable to or even higher than the dry deposition of WSON in the marginal seas of China (Figure 8). According to East Asian winter monsoon (from October to April) dynamics, a large quantity of protein-N supplied by Gobi dust found in this study can be deposited in a short period of the year ~~and potentially has important effects on the productivity of oligotrophic ecosystems under the influence of the East Asian dust belt, including China, Korea, Japan and the North Pacific. Although dust events happened within a few days, continuously occurring dust events and enhanced Asian dust supplied protein-N during the spring, coinciding with the algae bloom season, may exert widespread effects on the productivity of downwind ecosystems under the influence of the East Asian dust belt, including China, Korea, Japan and the North Pacific.~~

665 Additionally, during long-range transport, hydrophilic protein particles mix with mineral particles to form various internal mixtures. These mixed particles can absorb water efficiently, thereby increasing CCN activity and altering optical properties, which is important for understanding global climate and hydrological cycles (Adachi et al., 2020). Furthermore, (Li et al., (2022b) suggest that aerosol proteins might affect the generation of secondary aerosols. Under high relative humidity condition, water might condense onto protein aerosols due to their good hygroscopicity, resulting in forming a film of water on the aerosol surface. This water film is easy to adsorb gaseous pollutants in the atmosphere, including SO₂, NO_x, O₃ and VOCs. The oxidation rate of these gaseous pollutants in the liquid-solid heterogeneous system is much faster than that in gaseous phase. Thus, water film on the protein surface may accelerate the oxidation of the absorbed gaseous pollutants in the atmosphere.

5 Conclusion

675 In this study, the composition profiles of combined amino acids in both the surface soils and dominant plants in the Gobi Desert were characterized. Results indicated that the proteins transported with Gobi Desert dust contain large amounts of alanine, glycine and glutamic acid. Therefore, the concentration of these three CAAs significantly increased and ratios of Ala%/Pro%, Gly%/Pro%, and Glu%/Pro% in PM_{2.5} elevated at four cities on dusty days.

680 Moreover, $\delta^{15}\text{N}$ patterns of CAAs of the surface soil and predominant plants in the Gobi Desert were demonstrated, which were further used to interpretate the source variation in proteinaceous matter in PM_{2.5} at four cities from the non-dust to dust period. The mean $\delta^{15}\text{N}$ values of glycine and leucine in the Gobi Desert surface soil were significantly lower than those in urban PM_{2.5} during the non-dust period, which can be used to tracing Gobi dust sources. According to the $\delta^{15}\text{N}$ inventories of individual CAAs in potential emission sources, local plants, surface soil and burning sources were the major sources of CAAs in PM_{2.5} at Beijing, Tianjin, Shijiazhuang, and Taiyuan during the non-dust period. During the dust period, more negative $\delta^{15}\text{N}$ values of combined glycine and leucine were observed in PM_{2.5} in Northern China, also suggesting inputs of proteinaceous matter from the Gobi Desert.

690 The contribution of dust sources to the protein in PM_{2.5} in these downwind regions estimated through nitrogen isotope mass balance for glycine align with those derived from leucine, indicating that isotopic mass balance based on the $\delta^{15}\text{N}$ values of glycine and leucine is an effective tool for assessing the

contribution of dust sources to proteinaceous material in PM_{2.5}. The results showed that protein-N supplied by Gobi dust can reach 0.36 mg N m⁻² d⁻¹. This large quantity of protein-N deposited in a short period of the year and has important effects on the productivity of oligotrophic ecosystems under the influence of the East Asian dust belt.

695 **Competing interests**

The contact author has declared that none of the authors has any competing interests.

Acknowledgments

This work was supported by the National Natural Science Foundation of China (Grant Nos. 42363011).

We would like to thank the Global Weather and Climate Information Network
700 (<http://www.weatherandclimate.info/>) for providing meteorological parameters, including temperature (T), relative humidity (RH) and precipitation, during the sampling period. We would also like to thank the China Air Quality Online Monitoring and Analysis Platform for providing air quality data (<https://www.aqistudy.cn/>) and NASA's EOSDIS Worldview for providing MODIS satellite images (<https://worldview.earthdata.nasa.gov/>).

705 **Data Availability Statement**

Meteorological parameters, including temperature (T), relative humidity (RH), and windspeed (WD), during the sampling period are available at the following website: <http://www.weatherandclimate.info/>.

Air quality data, including PM_{2.5} and PM₁₀ concentrations, are available at the following website: <https://www.aqistudy.cn/>.

710 **References**

Abe, R. Y., Akutsu, Y., and Kagemoto, H.: Protein amino acids as markers for biological sources in urban aerosols, *Environmental Chemistry Letters*, 14, 155–161, <https://doi.org/10.1007/s10311-015-0536-0>, 2016.

Adachi, K., Oshima, N., Gong, Z., De Sá, S., Bateman, A. P., Martin, S. T., De Brito, J. F., Artaxo, P.,
715 Cirino, G. G., Sedlacek Iii, A. J., and Buseck, P. R.: Mixing states of Amazon basin aerosol particles

transported over long distances using transmission electron microscopy, *Atmospheric Chemistry and Physics*, 20, 11923–11939, <https://doi.org/10.5194/acp-20-11923-2020>, 2020.

An, S., Couteau, C., Luo, F., Neveu, J., and DuBow, M. S.: Bacterial Diversity of Surface Sand Samples from the Gobi and Taklamaken Deserts, *Microbial Ecology*, 66, 850–860, <https://doi.org/10.1007/s00248-013-0276-2>, 2013.

Barbaro, E., Zangrando, R., Vecchiato, M., Piazza, R., Cairns, W. R. L., Capodaglio, G., Barbante, C., and Gambaro, A.: Free amino acids in Antarctic aerosol: potential markers for the evolution and fate of marine aerosol, *Atmospheric Chemistry and Physics*, 15, 5457–5469, <http://www.atmos-chem-phys.net/15/5457/2015/>, 2015.

Batista, F. C., Ravelo, A. C., Crusius, J., Casso, M. A., and McCarthy, M. D.: Compound specific amino acid $\delta^{15}\text{N}$ in marine sediments: A new approach for studies of the marine nitrogen cycle, *Geochimica et Cosmochimica Acta*, 142, 553–569, <https://doi.org/10.1016/j.gca.2014.08.002>, 2014.

Boreson, J., Dillner, A. M., and Peccia, J.: Correlating bioaerosol load with PM_{2.5} and PM₁₀ concentrations: a comparison between natural desert and urban-fringe aerosols, *Atmospheric Environment*, 38, 6029–6041, <https://doi.org/10.1016/j.atmosenv.2004.06.040>, 2004.

Chan, M. N., Choi, M. Y., Ng, N. L., and Chan, C. K.: Hygroscopicity of Water-Soluble Organic Compounds in Atmospheric Aerosols: Amino Acids and Biomass Burning Derived Organic Species, *Environmental Science & Technology*, 39, 1555–1562, <https://doi.org/10.1021/es049584l>, 2005.

Chen, S., Huang, J., Li, J., Jia, R., Jiang, N., Kang, L., Ma, X., and Xie, T.: Comparison of dust emissions, transport, and deposition between the Taklimakan Desert and Gobi Desert from 2007 to 2011, *Science China Earth Sciences*, 60, 1338–1355, <https://doi.org/10.1007/s11430-016-9051-0>, 2017.

Després, V., Huffman, J. A., Burrows, S. M., Hoose, C., Safatov, A., Buryak, G., Fröhlich-Nowoisky, J., Elbert, W., Andreae, M., Pöschl, U., and Jaenicke, R.: Primary biological aerosol particles in the atmosphere: a review, *Tellus B: Chemical and Physical Meteorology*, 64, 15598, <https://doi.org/10.3402/tellusb.v64i0.15598>, 2012.

Duarte, C. M., Dachs, J., Llabrés, M., Alonso-Laita, P., Gasol, J. M., Tovar-Sánchez, A., Sañudo-Wilhemý, S., and Agustí, S.: Aerosol inputs enhance new production in the subtropical northeast Atlantic, *Journal of Geophysical Research: Biogeosciences*, 111, 2005JG000140, <https://doi.org/10.1029/2005JG000140>, 2006.

Duce, R. A., Liss, P. S., Merrill, J. T., Atlas, E. L., Buat-Menard, P., Hicks, B. B., Miller, J. M., Prospero, J. M., Arimoto, R., Church, T. M., Ellis, W., Galloway, J. N., Hansen, L., Jickells, T. D., Knap, A. H., Reinhardt, K. H., Schneider, B., Soudine, A., Tokos, J. J., Tsunogai, S., Wollast, R., and Zhou, M.: The atmospheric input of trace species to the world ocean, *Global Biogeochemical Cycles*, 5, 193–259, <https://doi.org/10.1029/91GB01778>, 1991.

Elbert, W., Taylor, P. E., Andreae, M. O., and Pöschl, U.: Contribution of fungi to primary biogenic aerosols in the atmosphere: active discharge of spores, carbohydrates, and inorganic ions by Asco- and

Basidiomycota, *Atmospheric Chemistry and Physics Discussions*, 6, 11317–11355, <https://hal.archives-ouvertes.fr/hal-00302269>, 2006.

755 Favet, J., Lapanje, A., Giongo, A., Kennedy, S., Aung, Y.-Y., Cattaneo, A., Davis-Richardson, A. G., Brown, C. T., Kort, R., Brumsack, H.-J., Schnetger, B., Chappell, A., Kroijenga, J., Beck, A., Schwibbert, K., Mohamed, A. H., Kirchner, T., De Quadros, P. D., Triplett, E. W., Broughton, W. J., and Gorbushina, A. A.: Microbial hitchhikers on intercontinental dust: catching a lift in Chad, *The ISME Journal*, 7, 850–867, <https://doi.org/10.1038/ismej.2012.152>, 2013.

760 Feltracco, M., Barbaro, E., Kirchgeorg, T., Spolaor, A., Turetta, C., Zangrando, R., Barbante, C., and Gambaro, A.: Free and combined L-and D-amino acids in Arctic aerosol, *Chemosphere*, 220, 412–421, <https://doi.org/10.1016/j.chemosphere.2018.12.147>, 2019.

Filippo, P. D., Pomata, D., Riccardi, C., Buiarelli, F., Gallo, V., and Quaranta, A.: Free and combined amino acids in size-segregated atmospheric aerosol samples, *Atmospheric Environment*, 98, 179–189, <https://doi.org/10.1016/j.atmosenv.2014.08.069>, 2014.

765 Fröhlich-Nowoisky, J., Kampf, C. J., Weber, B., Huffman, J. A., Pöhlker, C., Andreae, M. O., Lang-Yona, N., Burrows, S. M., Gunthe, S. S., Elbert, W., Su, H., Hoor, P., Thines, E., Hoffmann, T., Després, V. R., and Pöschl, U.: Bioaerosols in the Earth system: Climate, health, and ecosystem interactions, *Atmospheric Research*, 182, 346–376, <https://doi.org/10.1016/j.atmosres.2016.07.018>, 2016.

770 Gazeau, F., Van Wambeke, F., Marañón, E., Pérez-Lorenzo, M., Alliouane, S., Stolpe, C., Blasco, T., Leblond, N., Zäncker, B., Engel, A., Marie, B., Dinasquet, J., and Guieu, C.: Impact of dust addition on the metabolism of Mediterranean plankton communities and carbon export under present and future conditions of pH and temperature, *Biogeosciences*, 18, 5423–5446, <https://doi.org/10.5194/bg-18-5423-2021>, 2021.

775 Haan, D. O. D., Corrigan, A. L., Smith, K. W., Stroik, D. R., Turley, J. J., Lee, F. E., Tolbert, M. A., Jimenez, J. L., Cordova, K. E., and Ferrell, G. R.: Secondary Organic Aerosol-Forming Reactions of Glyoxal with Amino Acids, *Environmental Science & Technology*, 43, 2818–2824, <https://doi.org/10.1021/es803534f>, 2009.

Hara, K. and Zhang, D.: Bacterial abundance and viability in long-range transported dust, *Atmospheric Environment*, 47, 20–25, <https://doi.org/10.1016/j.atmosenv.2011.11.050>, 2012.

780 Ho, K. F., Ho, S. S. H., Huang, R.-J., Liu, S. X., Cao, J.-J., Zhang, T., Chuang, H.-C., Chan, C. S., Hu, D., and Tian, L.: Characteristics of water-soluble organic nitrogen in fine particulate matter in the continental area of China, *Atmospheric Environment*, 106, 252–261, <https://doi.org/10.1016/j.atmosenv.2015.02.010>, 2015.

785 Ianiri, H. L. and McCarthy, M. D.: Compound specific $\delta^{15}\text{N}$ analysis of amino acids reveals unique sources and differential cycling of high and low molecular weight marine dissolved organic nitrogen, *Geochimica et Cosmochimica Acta*, 344, 24–39, <https://doi.org/10.1016/j.gca.2023.01.008>, 2023.

- Jaber, S., Joly, M., Brissy, M., Leremboure, M., Khaled, A., Ervens, B., and Delort, A. M.: Biotic and abiotic transformation of amino acids in cloud water: experimental studies and atmospheric implications, *Biogeosciences*, 18, 1067–1080, <https://doi.org/10.5194/bg-18-1067-2021>, 2021.
- 790 Jaenicke, R.: Abundance of Cellular Material and Proteins in the Atmosphere, *Science*, 308, 73–73, <https://doi.org/10.1126/science.1106335>, 2005.
- Kang, H., Xie, Z., and Hu, Q.: Ambient protein concentration in PM₁₀ in Hefei, central China, *Atmospheric Environment*, 54, 73–79, <https://doi.org/10.1016/j.atmosenv.2012.03.003>, 2012.
- Khan, M. S., Deguchi, Y., Matsumoto, T., Nagaoka, H., Yamagishi, N., Wakabayashi, K., and Watanabe, 795 T.: Relationship of Asian Dust Events with Atmospheric Endotoxin and Protein Levels in Sasebo and Kyoto, Japan, in Spring, *Biological & Pharmaceutical Bulletin*, 42, 1713–1719, <https://doi.org/10.1248/bpb.b19-00383>, 2019.
- Li, X., Zhang, Y., Shi, L., Kawamura, K., Kunwar, B., Takami, A., Arakaki, T., and Lai, S.: Aerosol Proteinaceous Matter in Coastal Okinawa, Japan: Influence of Long-Range Transport and Photochemical 800 Degradation, *Environmental Science & Technology*, 56, 5256–5265, <https://doi.org/10.1021/acs.est.1c08658>, 2022a.
- Li, Y., Haoyue, Z., Aotang, L., Jiali, Z., and Shengli, D.: High time-resolved variations of proteins in PM_{2.5} during haze pollution periods in Xi'an, China, *Environmental Pollution*, 305, 119212, <https://doi.org/10.1016/j.envpol.2022.119212>, 2022b.
- 805 Liu, Q., Liu, Y., Zhao, Q., Zhang, T., and Schauer, J. J.: Increases in the formation of water soluble organic nitrogen during Asian dust storm episodes, *Atmospheric Research*, 253, 105486, <https://doi.org/10.1016/j.atmosres.2021.105486>, 2021.
- Lyu, Y., Qu, Z., Liu, L., Guo, L., Yang, Y., Hu, X., Xiong, Y., Zhang, G., Zhao, M., Liang, B., Dai, J., Zuo, X., Jia, Q., Zheng, H., Han, X., Zhao, S., and Liu, Q.: Characterization of dustfall in rural and urban 810 sites during three dust storms in northern China, 2010, *Aeolian Research*, 28, 29–37, <https://doi.org/10.1016/j.aeolia.2017.06.004>, 2017.
- Mace, K. A., Kubilay, N., and Duce, R. A.: Organic nitrogen in rain and aerosol in the eastern Mediterranean atmosphere: An association with atmospheric dust, *Journal of Geophysical Research: Atmospheres*, 108, 2002JD002997, <https://doi.org/10.1029/2002JD002997>, 2003.
- 815 Maki, T., Hara, K., Iwata, A., Lee, K. C., Kawai, K., Kai, K., Kobayashi, F., Pointing, S. B., Archer, S., Hasegawa, H., and Iwasaka, Y.: Variations in airborne bacterial communities at high altitudes over the Noto Peninsula (Japan) in response to Asian dust events, *Atmospheric Chemistry and Physics*, 17, 11877–11897, <https://doi.org/10.5194/acp-17-11877-2017>, 2017.
- Maki, T., Bin, C., Kai, K., Kawai, K., Fujita, K., Ohara, K., Kobayashi, F., Davaanyam, E., Noda, J., 820 Minamoto, Y., Shi, G., Hasegawa, H., and Iwasaka, Y.: Vertical distributions of airborne microorganisms over Asian dust source region of Taklimakan and Gobi Desert, *Atmospheric Environment*, 214, 116848, <https://doi.org/10.1016/j.atmosenv.2019.116848>, 2019.

- Matos, J. T. V., Duarte, R. M. B. O., and Duarte, A. C.: Challenges in the identification and characterization of free amino acids and proteinaceous compounds in atmospheric aerosols: A critical review, *TRAC Trends in Analytical Chemistry*, 75, 97–107, <https://doi.org/10.1016/j.trac.2015.08.004>, 2016.
- Matsumoto, K., Yamamoto, Y., Nishizawa, K., Kaneyasu, N., Irino, T., and Yoshikawa-Inoue, H.: Origin of the water-soluble organic nitrogen in the maritime aerosol, *Atmospheric Environment*, 167, 97–103, <https://doi.org/10.1016/j.atmosenv.2017.07.050>, 2017.
- Matsumoto, K., Kim, S., and Hirai, A.: Origins of free and combined amino acids in the aerosols at an inland urban site in Japan, *Atmospheric Environment*, 259, 118543, <https://doi.org/10.1016/j.atmosenv.2021.118543>, 2021.
- Matsumoto, K., Yamamoto, Y., Kobayashi, H., Kaneyasu, N., and Nakano, T.: Water-soluble organic nitrogen in the ambient aerosols and its contribution to the dry deposition of fixed nitrogen species in Japan, *Atmospheric Environment*, 95, 334–343, <https://doi.org/10.1016/j.atmosenv.2014.06.037>, 2014.
- Mccarthy, M. D., Lehman, J., and Kudela, R.: Compound-specific amino acid $\delta^{15}\text{N}$ patterns in marine algae: Tracer potential for cyanobacterial vs. eukaryotic organic nitrogen sources in the ocean, *Geochimica et Cosmochimica Acta*, 103, 104–120, <https://doi.org/10.1016/j.gca.2012.10.037>, 2013.
- Menetrez, M. Y., Foarde, K. K., Dean, T. R., Betancourt, D. A., and Moore, S. A.: An evaluation of the protein mass of particulate matter, *Atmospheric Environment*, 41, 8264–8274, <https://doi.org/10.1016/j.atmosenv.2007.06.021>, 2007.
- Mochizuki, T., Kawamura, K., and Aoki, K.: Water-Soluble Organic Nitrogen in High Mountain Snow Samples from Central Japan, *Aerosol and Air Quality Research*, 16, 632–639, <https://doi.org/10.4209/aaqr.2015.04.0256>, 2016.
- Nakamura, T., Ogawa, H., Maripi, D., and Uematsu, M.: Contribution of water soluble organic nitrogen to total nitrogen in marine aerosols over the East China Sea and western North Pacific, *Atmospheric Environment*, 40, 7259–7264, <https://doi.org/10.1016/j.atmosenv.2006.06.026>, 2006.
- Neff, J. C., Holland, E. A., Dentener, F. J., McDowell, W. H., and Russell, K. M.: The origin, composition and rates of organic nitrogen deposition: A missing piece of the nitrogen cycle?, *Biogeochemistry*, 57, 99–136, <https://doi.org/10.1023/A:1015791622742>, 2002.
- Park, S.-U., Choe, A., and Park, M.-S.: Estimates of Asian dust deposition over the Asian region by using ADAM2 in 2007, *Science of The Total Environment*, 408, 2347–2356, <https://doi.org/10.1016/j.scitotenv.2010.02.001>, 2010.
- Puspitasari, F., Maki, T., Shi, G., Bin, C., Kobayashi, F., Hasegawa, H., and Iwasaka, Y.: Phylogenetic analysis of bacterial species compositions in sand dunes and dust aerosol in an Asian dust source area, the Taklimakan Desert, *Air Quality, Atmosphere & Health*, 9, 631–644, <https://doi.org/10.1007/s11869-015-0367-y>, 2016.

- 860 Samy, S., Robinson, J., Rumsey, I. C., Walker, J. T., Hays, M. D., Robinson, J., Rumsey, I. C., and Hays, M. D.: Speciation and trends of organic nitrogen in southeastern U.S. fine particulate matter (PM_{2.5}), *Journal of Geophysical Research: Atmospheres*, 118, 1996–2006, <https://doi.org/10.1029/2012JD017868>, 2013.
- Shao, Y. and Dong, C. H.: A review on East Asian dust storm climate, modelling and monitoring, *Global and Planetary Change*, 52, 1–22, <https://doi.org/10.1016/j.gloplacha.2006.02.011>, 2006.
- 865 Shi, J., Gao, H., Qi, J., Zhang, J., and Yao, X.: Sources, compositions, and distributions of water-soluble organic nitrogen in aerosols over the China Sea, *Journal of Geophysical Research: Atmospheres*, 115, 2009JD013238, <https://doi.org/10.1029/2009JD013238>, 2010.
- Song, T., Wang, S., Zhang, Y., Song, J., Liu, F., Fu, P., Shiraiwa, M., Xie, Z., Yue, D., Zhong, L., Zheng, J., and Lai, S.: Proteins and Amino Acids in Fine Particulate Matter in Rural Guangzhou, Southern China: Seasonal Cycles, Sources, and Atmospheric Processes, *Environmental Science & Technology*, 51, 6773–6781, <https://doi.org/10.1021/acs.est.7b00987>, 2017.
- 870 Song, W., Wang, Y.-L., Yang, W., Sun, X.-C., Tong, Y.-D., Wang, X.-M., Liu, C.-Q., Bai, Z.-P., and Liu, X.-Y.: Isotopic evaluation on relative contributions of major NO_x sources to nitrate of PM_{2.5} in Beijing, *Environmental Pollution*, 248, 183–190, <https://doi.org/10.1016/j.envpol.2019.01.081>, 2019.
- 875 Song, W., Liu, X.-Y., Hu, C.-C., Chen, G.-Y., Liu, X.-J., Walters, W. W., Michalski, G., and Liu, C.-Q.: Important contributions of non-fossil fuel nitrogen oxides emissions, *Nature Communications*, 12, 243, <https://doi.org/10.1038/s41467-020-20356-0>, 2021.
- Spokes, L. J., Yeatman, S. G., Cornell, S. E., and Jickells, T. D.: Nitrogen deposition to the eastern Atlantic Ocean. The importance of south-easterly flow, *Tellus B*, 52, 37–49, <https://doi.org/10.1034/j.1600-0889.2000.00062.x>, 2000.
- 880 Staton, S. J. R., Woodward, A., Castillo, J. A., Swing, K., and Hayes, M. A.: Ground level environmental protein concentrations in various ecuadorian environments: Potential uses of aerosolized protein for ecological research, *Ecological Indicators*, 48, 389–395, <https://doi.org/10.1016/j.ecolind.2014.08.036>, 2015.
- 885 Tan, S.-C., Shi, G.-Y., Shi, J.-H., Gao, H.-W., and Yao, X.: Correlation of Asian dust with chlorophyll and primary productivity in the coastal seas of China during the period from 1998 to 2008, *Journal of Geophysical Research: Biogeosciences*, 116, <https://doi.org/10.1029/2010JG001456>, 2011.
- Tang, K., Huang, Z., Huang, J., Maki, T., Zhang, S., Shimizu, A., Ma, X., Shi, J., Bi, J., Zhou, T., Wang, G., and Zhang, L.: Characterization of atmospheric bioaerosols along the transport pathway of Asian dust during the Dust-Bioaerosol 2016 Campaign, *Atmospheric Chemistry and Physics*, 18, 7131–7148, <https://doi.org/10.5194/acp-18-7131-2018>, 2018.
- 890 Tegen, I. and Schepanski, K.: The global distribution of mineral dust, *IOP Conf. Ser.: Earth and Environmental Science*, 7, 012001, <https://doi.org/10.1088/1755-1307/7/1/012001>, 2009.

- 895 Tian, Y., Pan, X., Wang, Z., Wang, D., Ge, B., Liu, X., Zhang, Y., Liu, H., Lei, S., Yang, T., Fu, P., Sun, Y., and Wang, Z.: Transport Patterns, Size Distributions, and Depolarization Characteristics of Dust Particles in East Asia in Spring 2018, *Journal of Geophysical Research: Atmospheres*, 125, e2019JD031752, <https://doi.org/10.1029/2019JD031752>, 2020.
- Tong, D. Q., Gill, T. E., Sprigg, W. A., Van Pelt, R. S., Baklanov, A. A., Barker, B. M., Bell, J. E.,
900 Castillo, J., Gassó, S., Gaston, C. J., Griffin, D. W., Huneus, N., Kahn, R. A., Kuciauskas, A. P., Ladino, L. A., Li, J., Mayol-Bracero, O. L., McCotter, O. Z., Méndez-Lázaro, P. A., Mudu, P., Nickovic, S., Oyarzun, D., Prospero, J., Raga, G. B., Raysoni, A. U., Ren, L., Sarafoglou, N., Sealy, A., Sun, Z., and Vimic, A. V.: Health and Safety Effects of Airborne Soil Dust in the Americas and Beyond, *Reviews of Geophysics*, 61, e2021RG000763, <https://doi.org/10.1029/2021RG000763>, 2023.
- 905 Triesch, N., van Pinxteren, M., Engel, A., and Herrmann, H.: Concerted measurements of free amino acids at the Cabo Verde islands: high enrichments in submicron sea spray aerosol particles and cloud droplets, *Atmospheric Chemistry and Physics*, 21, 163–181, <https://doi.org/10.5194/acp-21-163-2021>, 2021.
- Tsagkaraki, M., Theodosi, C., Grivas, G., Vargiakaki, E., Sciare, J., Savvides, C., and Mihalopoulos, N.:
910 Spatiotemporal variability and sources of aerosol water-soluble organic nitrogen (WSO_N), in the Eastern Mediterranean, *Atmospheric Environment*, 246, 118144, <https://doi.org/10.1016/j.atmosenv.2020.118144>, 2021.
- Violaki, K. and Mihalopoulos, N.: Water-soluble organic nitrogen (WSO_N) in size-segregated atmospheric particles over the Eastern Mediterranean, *Atmospheric Environment*, 44, 4339–4345,
915 <https://doi.org/10.1016/j.atmosenv.2010.07.056>, 2010.
- Wang, S., Song, T., Shiraiwa, M., Song, J., Ren, H., Ren, L., Wei, L., Sun, Y., Zhang, Y., Fu, P., and Lai, S.: Occurrence of Aerosol Proteinaceous Matter in Urban Beijing: An Investigation on Composition, Sources, and Atmospheric Processes During the “APEC Blue” Period, *Environmental Science & Technology*, 53, 7380–7390, <https://doi.org/10.1021/acs.est.9b00726>, 2019.
- 920 Wedyan, M. A. and Preston, M. R.: The coupling of surface seawater organic nitrogen and the marine aerosol as inferred from enantiomer-specific amino acid analysis, *Atmospheric Environment*, 42, 8698–8705, <https://doi.org/10.1016/j.atmosenv.2008.04.038>, 2008.
- Wu, C., Wang, G., Cao, C., Li, J., Li, J., Wu, F., Huang, R., Cao, J., Han, Y., Ge, S., Xie, Y., Xue, G.,
925 and Wang, X.: Chemical characteristics of airborne particles in Xi’an, inland China during dust storm episodes: Implications for heterogeneous formation of ammonium nitrate and enhancement of N-deposition, *Environmental Pollution*, 244, 877–884, <https://doi.org/10.1016/j.envpol.2018.10.019>, 2019.
- Xie, W., Fan, C., Qi, J., Li, H., Dong, L., Hu, W., Kojima, T., and Zhang, D.: Decrease of bioaerosols in westerlies from Chinese coast to the northwestern Pacific: Case data comparisons, *Science of The Total Environment*, 864, 161040, <https://doi.org/10.1016/j.scitotenv.2022.161040>, 2023.

- 930 Xie, W., Kojima, T., Matsusaki, H., and Zhang, D.: Aerosol soluble proteins in Asian dust in southwestern Japan, *Science of The Total Environment*, 945, 174086, <https://doi.org/10.1016/j.scitotenv.2024.174086>, 2024.
- Yamaguchi, Y. T. and McCarthy, M. D.: Sources and transformation of dissolved and particulate organic nitrogen in the North Pacific Subtropical Gyre indicated by compound-specific $\delta^{15}\text{N}$ analysis of amino acids, *Geochimica et Cosmochimica Acta*, 220, 329–347, <https://doi.org/10.1016/j.gca.2017.07.036>, 2018.
- 935 Yang, Y., Bendle, J. A., Pancost, R. D., Yan, Y., Ruan, X., Warren, B., Lü, X., Li, X., Yao, Y., Huang, X., Yang, H., and Xie, S.: Leaf Wax and Sr-Nd Isotope Evidence for High-Latitude Dust Input to the Central South China Sea and Its Implication for Fertilization, *Geophysical Research Letters*, 48, e2020GL091853, <https://doi.org/10.1029/2020GL091853>, 2021.
- 940 Yang, Y. Q., Hou, Q., Zhou, C. H., Liu, H. L., Wang, Y. Q., and Niu, T.: Sand/dust storm processes in Northeast Asia and associated large-scale circulations, *Atmospheric Chemistry and Physics*, 8, 25–33, <https://doi.org/10.5194/acp-8-25-2008>, 2008.
- Yu Xu, Huayun Xiao, Daishe Wu, and Chaojun Long: Abiotic and Biological Degradation of Atmospheric Proteinaceous Matter Can Contribute Significantly to Dissolved Amino Acids in Wet Deposition, *Environmental Science & Technology*, 54, 6551–6561, <https://doi.org/10.1021/acs.est.0c00421>, 2020.
- Zamora, L. M., Prospero, J. M., and Hansell, D. A.: Organic nitrogen in aerosols and precipitation at Barbados and Miami: Implications regarding sources, transport and deposition to the western subtropical North Atlantic, *Journal of Geophysical Research*, 116, D20309, <https://doi.org/10.1029/2011JD015660>, 2011.
- 950 Zhang, Q. and Anastasio, C.: Free and combined amino compounds in atmospheric fine particles (PM_{2.5}) and fog waters from Northern California, *Atmospheric Environment*, 37, 2247–2258, [https://doi.org/10.1016/S1352-2310\(03\)00127-4](https://doi.org/10.1016/S1352-2310(03)00127-4), 2003.
- 955 Zhang, Q., Anastasio, C., and Jimenez-Cruz, M.: Water-soluble organic nitrogen in atmospheric fine particles (PM_{2.5}) from northern California, *Journal of Geophysical Research*, 107, AAC 3-1-AAC 3-9, <https://doi.org/10.1029/2001JD000870>, 2002.
- Zhang, Z., Guan, H., Xiao, H., Liang, Y., Zheng, N., Luo, L., Liu, C., Fang, X., and Xiao, H.: Oxidation and sources of atmospheric NO_x during winter in Beijing based on $\delta^{18}\text{O}$ - $\delta^{15}\text{N}$ space of particulate nitrate, *Environmental Pollution*, 276, 116708, <https://doi.org/10.1016/j.envpol.2021.116708>, 2021.
- 960 Zhou, C., Gui, H., Hu, J., Ke, H., Wang, Y., and Zhang, X.: Detection of New Dust Sources in Central/East Asia and Their Impact on Simulations of a Severe Sand and Dust Storm, *Journal of Geophysical Research: Atmospheres*, 124, 10232–10247, <https://doi.org/10.1029/2019JD030753>, 2019.

- 965 Zhu, R., Xiao, H.-Y., Zhang, Z., and Lai, Y.: Compound-specific $\delta^{15}\text{N}$ composition of free amino acids in moss as indicators of atmospheric nitrogen sources, *Scientific Reports*, 8, 14347, <https://doi.org/10.1038/s41598-018-32531-x>, 2018.
- Zhu, R., Xiao, H.-Y., Lv, Z., Xiao, H., Zhang, Z., Zheng, N., and Xiao, H.: Nitrogen isotopic composition of free Gly in aerosols at a forest site, *Atmospheric Environment*, 222, 117179, <https://doi.org/10.1016/j.atmosenv.2019.117179>, 2020a.
- 970 Zhu, R., Xiao, H., Zhu, Y., Wen, Z., Fang, X., and Pan, Y.: Sources and Transformation Processes of Proteinaceous Matter and Free Amino Acids in PM_{2.5}, *Journal of Geophysical Research: Atmospheres*, 125, e2020JD032375, <https://doi.org/10.1029/2020JD032375>, 2020b.
- 975 Zhu, R. G., Xiao, H. Y., Luo, L., Xiao, H., Wen, Z., Zhu, Y., Fang, X., Pan, Y., and Chen, Z.: Measurement report: Hydrolyzed amino acids in fine and coarse atmospheric aerosol in Nanchang, China: concentrations, compositions, sources and possible bacterial degradation state, *Atmospheric Chemistry and Physics*, 21, 2585–2600, <https://doi.org/10.5194/acp-21-2585-2021>, 2021.
- Zhu, R.-G., Xiao, H.-Y., Yin, M., Xiao, H., Zhou, Z., Wei, G., Liu, C., and Hu, C.: Kinetic nitrogen isotope effects of 18 amino acids degradation during burning processes, *Scientific Reports*, 14, 14559, <https://doi.org/10.1038/s41598-024-65544-w>, 2024.