

Biomass Yield Potential, Feedstock Quality, and Nutrient Removal of Perennial Buffer Strips under Continuous Zero Fertilizer Application

Cheng-Hsien Lin^{1,2}, Colleen Zumpf³, Chunhwa Jang², Thomas Voigt², Guanglong Tian⁴, Olawale Oladeji⁴, Albert Cox⁴, Rehnuma Mehzabin², and DoKyoung (D.K.) Lee^{2,3*}

5 ¹Department of Soil and Environmental Sciences, National Chung Hsing University, Taichung 40227, Taiwan

²Department of Crop Sciences, University of Illinois at Urbana-Champaign, Urbana, Illinois 61801, USA

³Argonne National Laboratory, Environmental Science Division, Illinois 60439, USA

⁴Monitoring and Research Department, Metropolitan Water Reclamation District of Greater Chicago, Cicero, Illinois 60804, USA

10 *Correspondence to:* DoKyoung (D.K.) Lee (leedk@illinois.edu)

Abstract. Perennial-based buffer strips have been promoted with the potential to improve ecosystem services from riparian areas while producing biomass as livestock feed or as a bioenergy feedstock. Both biomass production and nutrient removal of buffer strips are substantially influenced by the vegetation types for the multipurpose perennial buffers. In this 2016-2019 study in Western Illinois, two perennial cropping systems, including forage crops composed of cool-season grass mixtures (forage system) and bioenergy crops made up of warm-season grass mixtures (bioenergy system), were used to establish buffer strips for assessing biomass production, feedstock quality, nutrient removals, and buffer longevity. Treatments for this study reflecting agronomic practices included 1) two harvests occurring in summer (at anthesis) and fall (after complete senescence) and 2) one harvest in fall for forage system (2- vs. 1-cut forage), and 3) one fall harvest for bioenergy system (1-cut bioenergy). Successively harvesting without any fertilizer input resulted in a yield decline in forage biomass over three years by approximately 30% (6.3 to 4.4 DM Mg ha⁻¹ with the rate of 1.0 Mg ha⁻¹ yr⁻¹) in the 2-cut forage and by 35% (4.9 to 3.2 DM Mg ha⁻¹ with the rate of 0.9 Mg ha⁻¹ yr⁻¹) in the 1-cut forage systems. The feed quality also decreased over the years by showing declined rates of 12.9 (crucial protein), 0.9 (calcium), 0.7 (copper), and 1.3 (zinc) g kg⁻¹ DM yr⁻¹. Empirical models predicted enteric CH₄ emissions from cattle ranged from 225.7 to 242.6 g cow⁻¹ d⁻¹ based on the feed nutritive values. In contrast, bioenergy biomass yield increased by 27% from 4.9 to 6.7 DM Mg ha⁻¹ with consistent quality (cellulose ~ 397.9 g kg⁻¹; hemicellulose ~ 299.4 g kg⁻¹), corresponding to the increased total theoretical ethanol yield from 1.8×10³ to 2.4×10³ L ha⁻¹ (~33% increase). Annual nutrient removals of N, P, K, Ca, and Mg were significantly higher in the forage systems (e.g., 2-cut: 52.6~106.9 kg-N ha⁻¹; 1-cut: 44.5~84.1 kg-N ha⁻¹) than those in the bioenergy system (e.g., 25.9~34.4 kg-N ha⁻¹); however, the removal rate declined rapidly over three years (e.g., ~49% reduction) as the annual biomass yield declined in the forage systems. This on-farm field study demonstrated the potential of the perennial crop used as buffer strip options for biomass production and buffer sustainability at the edge of the field.

1 Introduction

The edges of cropped lands are usually less productive/profitable for conventional row crop cultivation due to rapid nutrient transportation via surface runoff and leaching (Dodds and Oakes, 2008; David et al., 2010). Field borders are hotspots for severe environmental degradation where substantial erosion and nutrient loss to adjacent water bodies can result in poor soil and water quality and contribute to downstream impacts such as the Gulf of Mexico Hypoxic Zone (Turner and Rabalais, 1994; Rabalais et al., 2002; Vitousek et al., 2009; Márquez et al., 2017). Planting buffer strips along field edges can effectively combat these problems by preventing sediment transportation and intercepting/removing excess nutrients (Lovell and Sullivan, 2006; Sweeney and Newbold, 2014; Schmitt et al., 1999; Gopalakrishnan et al., 2012). Perennial grasses such as tall fescue (cool-season/C3 forage grasses), switchgrass, and Miscanthus (warm-season/C4 bioenergy grasses) species are suggested as good candidates for buffer strips due to their high stress tolerances and efficient ~~uptake take-up~~ abilities (Dosskey, 2001; Clausen et al., 2000; Vogel et al., 2002; Mulkey et al., 2006; Varvel et al., 2008; van der Weijde et al., 2013). These perennials have shown great potential to provide numerous ecosystems services (e.g., the mitigation of soil erosion and greenhouse gas emissions, the improvement of soil health and biodiversity, soil carbon sequestration, etc.) for marginal areas (Lee et al., 2007; Monti et al., 2012; Yang et al., 2019). Also, a productive perennial system may provide landowners with alternative income sources through the sale of harvested biomass as either forage or bioenergy feedstocks (Lee et al., 2018; Mehmood et al., 2017; Eranki et al., 2013; Anderson et al., 2016; Golkowska et al., 2016).

A minimum requirement of a successful perennial buffer is to offer stable yield production with high-quality feedstock. The key is to establish a persistent buffer system to serve the agroecosystem of marginal croplands continuously. For perennial monocultures, a successively productive system can be achieved under appropriate management. For instance, well-managed alfalfa and switchgrass can last 5-10 years or longer under proper nutrient and harvest management (Bélanger et al., 2006; Parrish and Fike 2005; Fike et al. 2006a; Lee et al., 2018). Harvest management, mainly the harvest frequency (e.g., single-cut vs. multiple-cut) and timing (e.g., at anthesis/peak standing vs. at the end of growing season/after killing frost), can be identified as the most critical factors to influence the perennial's health and production (Guretzky et al., 2011). Frequent harvesting could improve the annual biomass yield, especially for cool-season grasses that typically have two growth cycles (spring and late-summer/autumn) per year (MacAdam and Nelson, 2003); however, intensive harvest (e.g., >3 harvests per year) likely reduces perennials regrowth vigor compared to the less intensive harvest management (e.g., 2 harvests per year) (Bélanger et al., 2006). For warm-season grasses, a single annual harvest has been suggested to optimize biomass yield, minimize energy inputs, and ~~sustain long-term biomass production maintain stand persistence~~ (Sanderson et al., 1999; Mitchell and Schmer, 2012). Harvest timing is another key factor to ensure a sustainable perennial system. Many studies show the delayed harvest after plant senescence substantially improves stand regrowth potentials and longevity by increasing internal nutrient cycling and lengthening the time for root development and productive tiller growth (Mitchell and Schmer, 2012; Vogel et al., 2002; Lee et al., 2014; Zumpf et al., 2019).

Compared to monoculture systems, [the perennial polyculture buffer strips polycultures](#) showed more advantages in terms of ecosystem services, resistances to weed and pest pressure, and biomass productivity (Carlsson et al., 2017; De Deyn et al., 2011; Dhakal & Islam, 2018; Jungers et al., 2015; Nyfeler et al., 2011; Quijas et al., 2010; Sanderson et al., 2012; Suter et al., 2015; Yang et al., 2019; Lin et al., 2022). Nevertheless, it is more complicated and challenging to optimize management practices in polycultures (e.g., grass mixtures) than in monoculture systems for simultaneously achieving stable productivity, feedstock quality, and system longevity because each species responds differently to different treatments. For instance, studies have observed increasing nitrogen (N) inputs usually benefited biomass yield of perennial grasses but [less so not so much](#) for legume production and persistence (Harmony et al., 2016; Lee et al., 2013; Lin et al., 2022). From a quality standpoint, additional N input improved the quality of forage feedstocks (e.g., cool-season grasses) by increasing protein content in plant tissue but lowered the quality of lignocellulosic feedstocks (e.g., warm-season grasses) by reducing the concentration of cell wall components and increasing the biomass-N and ash contents for bioenergy production (Hodgson et al., 2010. Ibrahim et al., 2017; Lin et al., 2022). For harvest management, our previous studies showed that delayed harvest after complete senescence and less frequent harvest practices can improve the sustainability of the legume-grass polycultures established on Conservation Reserve Program (CRP) lands, in terms of the long-term productivity and vegetative vigor (Lin et al., 2022).

Perennial-plant buffers designed for multifunctionality offer opportunities to bridge biomass production and ecosystem services in agricultural watersheds, however, limited regional information has identified optimal plant types coupled with specific practices for producers (Lovell and Sullivan, 2006; Golkowska et al., 2016). Research on site-specific and continuous cropping practices can provide local farmers with valuable information to develop strategic plans for improving [financial performance local economies](#) and the sustainability of buffer systems, simultaneously. The overall goals of this study were to evaluate the effect of minimum management efforts (only harvest without nutrient applications) on [biomass yield yield potential](#), feedstock quality, nutrient removal, and buffer sustainability of cool- and warm-season perennial mixtures cultivated on low-fertile [marginal](#) croplands. Since no additional fertilizer was applied to the buffer strips, the nutrients from parent soil materials and transported from the main crop fields via leaching and surface runoff were the only nutrient sources for the perennials. Thus, it was hypothesized that the warm-season perennial buffer (bioenergy system) could be more sustainable than the cool-season perennials (forage system) due to its high nutrient use efficiency, great ability of nutrient scavenging, and stress tolerance for the marginal area (van der Weijde et al., 2013; Pedroso et al., 2014; Lee et al., 2018). Besides the evaluation of the continuous biomass supply of both forage and bioenergy-type buffers under local common harvest practices, the specific objectives of this study were to assess their feedstock quality, including 1) nutritive values of crude protein (CP), crude fibers of neutral detergent fiber (NDF), acid detergent fiber (ADF), the digestibility-related indices, and other essential elements for ruminants feeds, [and -2\) dynamics of cell wall compositions \(e.g., cellulose, hemicellulose, and lignin\) for lignocellulosic biofuel productions.](#); [Furthermore, enteric methane \(CH₄\) from ruminants constitutes a significant portion \(approximately 32%\) of global anthropogenic methane emissions, with cattle alone accounting for about 75% of these emissions from livestock \(UNEP and CCAC report, 2021\). Since the production of methane is notably influenced by the intake and quality of feed, the](#)

last objective of this study was to employ empirical models to predict enteric CH₄ production based on forage nutritive qualities and 3) to predict the enteric methane (CH₄) production based these nutritive qualities.

100 2 Materials and Methods

2.1 Site description

This study was conducted during the 2016-2019 growing seasons in a riparian area of a 10-ha field located in Fulton County, Illinois (IL, 40°28'23" N; 90°6'44" W) with an annual corn-soybean (C-S) rotation cropping history (Fig. 1). The site is in a temperate climate region with a 30-year average annual temperature of 11°C and annual precipitation of 970 mm. Weather information, including monthly temperature and precipitation, and cumulative precipitation, from 2016 to 2019, along with 30-year averages (1990-2019) were obtained from the National Oceanic and Atmospheric Administration for Fulton County, IL (Peoria International Airport station, USW00014842) and shown in Figure 2. The field is mostly a Sawmill silty clay loam soil (Fine-silty, mixed, superactive, mesic Cumulic Endoaquolls), while Wakeland silt loam (Coarse-silty, mixed, superactive, nonacid, mesic Aeric Fluvaquents) is found at its southern edge along Big Creek (Soil survey, USDA, 2016). Nine soil cores (0-100 cm) were collected across the riparian area in 2016, and each core was segmented into 0-5, 5-10, 10-20, 20-30, 30-60, and 60-100 cm depths and analyzed for more soil details (Table 1).

2.2 Experimental design

Two crop systems (forage and bioenergy) and two harvest frequencies (2- or 1-cut annually) were used in the experiment. The forage-crop system (forage system) was composed of alfalfa (*Medicago sativa* L., AL) at a seeding rate of 5.6 kg ha⁻¹, and cool-season grasses at a total seeding rate of 28 kg ha⁻¹, which included smooth brome grass (*Bromus inermis* Leyss., 20%, SB), tall fescue (*Lolium arundinaceum* [Schreb.] S.J. Darbyshire, 20%, TF), orchardgrass (*Dactylis glomerata* L., 20%, OR), perennial ryegrass (*Lolium perenne* L. ssp. *perenne*, 15%, PR), Timothy grass (*Phleum pratense* L., 15%, TG), and meadow fescue (*Schedonorus pratensis* [Huds.] P. Beauv., 10%, MF). The bioenergy-crop system (bioenergy system) was composed of warm-season grasses at a seeding rate of 12 kg ha⁻¹, including switchgrass (*Panicum virgatum* L., 40%, SW), big bluestem (*Andropogon gerardii* Vitman, 20%, BB), Indiangrass (*Sorghastrum nutans* [L.] Nash, 20%, IN), and prairie cordgrass (*Spartina pectinata* Link, 20%, PC). The seeding rate of both cool- and warm-season grass mixtures was 323 pure live seed (PLS) m⁻². Based on the grass growing behavior, the forage system was either harvested twice, at anthesis in early summer (June) and at the end of the growing season (after complete senescence) in the fall (2-cut), or once in the fall (1-cut) annually (October - November). The bioenergy system was only harvested in the fall (Table 2). Thus, three treatments, including two forage (2-cut vs. 1-cut) and one bioenergy (1-cut) systems, were used in this experiment within a randomized complete block with three replicates at each location. For each treatment, the plot size was approximately 385 m².

2.3 Field management

The buffer strips were established in May of 2016. Disking was conducted for seedbed preparation and herbicide was used to control weeds prior to planting. Glyphosate was applied in the forage systems, and atrazine was applied in the bioenergy system. The seeds were directly drilled into a firm, non-tilled seedbed at approximately 10 mm deep with a row spacing of 15 cm using a Great Plains no-till drill (Salina, KS). Replanting was done for the bioenergy system in April of 2017 due to the substantial loss of grasses resulting from the herbicide drift from the C-S field. Before the replanting, the plots were burned to remove dead biomass residues and atrazine was applied two weeks later to control weeds. For the fertilizer management in the C-S field aqueous urea ammonium nitrate (UAN: 32-0-0) was used as the N source, and 202 kg N ha⁻¹ was applied before corn planting. Diammonium phosphate (DAP: 18-46-0) was applied to soybean at the rate of 28 kg P₂O₅ ha⁻¹ before planting. No fertilizers were applied to the buffer strips of either perennial system. The first harvest year was different between the two crop systems. For the forage system, the first harvest occurred in 2017 because of the insufficient biomass in the establishment year of 2016. For the bioenergy system, the first harvest year was delayed to 2018 due to the reestablishment in 2017.

2.4 Data collection, analysis, and calculations

Aboveground biomass from a 14 m × 2.8 m area in each forage and bioenergy system was harvested at a height of 10 cm using a biomass plot harvester (Cibus S, Wintersteiger, Salt Lake City, UT). The fresh weight of the harvested biomass from each plot was measured, and the dry matter (DM) weight was determined by placing wet-matter subsamples (~ 1 kg) in a forced-air oven at 60°C for five days. The oven-dried biomass was then weighed and ground to pass through a 1-mm screen using a Retsch cutting mill (Retsch Inc., Haan, Germany) for feedstock quality analysis and biomass nutrients. Fiber analyses were analyzed by measuring the concentrations of neutral detergent fiber (NDF), acid detergent fiber (ADF), and acid detergent lignin (ADL) which were analyzed using a sequential extraction and filtration process (Ankom Technology, 2002 and 2003) and an Ankom 200 Fiber Analyzer (ANKOM Technology, Fairport, NY, USA). Plant-tissue ash content was determined from the mass lost by placing the dry sample in a muffle furnace at 600°C for 8 hours. For the feedstock nutrient analysis, the dried biomass was analyzed by a dry combustion method using a LECO FP-528 N Determinator (Leco Inc., St. Joseph, MI). Other macro- and micro-nutrients were measured using inductively coupled plasma spectrometry with optical emission spectrometry (Thermo Scientific iCAP 6500 Duo ICP, Thermo Fisher Scientific Inc., Waltham, MA) following a concentrated nitrate acid and hydrochloric acid microwave digestion procedure in a MARSXpress vessel (CEM, Matthews, NC).

Feedstock quantity and quality indices were calculated on a dry matter basis using the measured fiber compositions (i.e., ~~NDF~~NDF, ADF, and ADL) and equations shown in Table 3 ([Ball et al., 2017](#); [Ameen et al., 2019](#)). Dry Matter Intake (DMI) served as a quantitative index of animal feed to estimate the daily feed consumption per animal on a dry basis using the biomass NDF concentration. Quality ~~i~~Indices ~~of animal feed~~ included crude protein (CP), dry matter intake (DMI), dry matter digestibility (DMD), total digestible nutrients (TDN), net energy for lactation (NEL), and relative feed value (RFV). For

bioenergy productions based on the biochemical process, the concentrations of cellulose and hemicellulose (Hemi-C),
160 theoretical ethanol yield (TEY), and total theoretical ethanol yield (TTEY) are commonly used indices. The TEY was estimated
based on the concentrations of cellulose and Hemi-C, and the TTEY was predicted by multiplying TEY with biomass yield.

Enteric CH₄ production from dairy and beef cattle was estimated using nine published models in this study (Table 4). The
predictions were based on the relationship between CH₄ production (a response variable) and forage nutritive quality (predictor
165 variables), including the chemical compositions (i.e., CP, NDF, ADF, and ADL) and derived indices (mainly DMI). These
models were developed using the dataset from 1) actual measurements of CH₄ productions [e.g., respiratory chamber or sulfur
hexafluoride (SF₆) tracers] and 2) the predictor variables with the lowest root mean square prediction error (RMSPE) shown
in the original articles (Ellis et al., 2007; Nielsen et al., 2013). Most of these models required the daily dry matter intake (dDMI,
kg d⁻¹ Although the DMI was commonly reported on a per unit animal basis, in this study, the dDMI was calculated by
170 multiplying the DMI (expressed in per unit of body weight for comparisons across different animals and regions, g kg⁻¹) with
the averaged body weight of cows across North America, Europe, Australia and New Zealand, which is 606 kg as reported by
Appuhamy (2016), which was calculated by multiplying the DMI (g kg⁻¹) with the averaged body weight of cows across
North America, Europe, Australia and New Zealand (i.e., 606 kg, from Appuhamy, 2016) in this study. The calculated dDMI
was used for further calculations of daily intake (kg d⁻¹) of ADF (ADFi) and ADL (ADLi). Some models required the nutritive
175 values that were not analyzed in this study [e.g., the daily metabolizable energy intake (MEi) in model #3 and dietary fatty
acid (FA) in models #4 and #5]. In this case, the MEi and FA were considered constants of 162 MJ d⁻¹ and 28 g kg⁻¹,
respectively (Dalley et al., 1999; Ominski et al., 2006; Hegarty et al., 2007).

2.5 Statistical analysis

Treatment effects on biomass yield, feedstock chemical compositions, quality indices, and enteric CH₄ productions were
180 analyzed using the two-way, repeated-measures Analysis of Variance (ANOVA) using the PROC MIXED procedure in SAS
(SAS Institute, Cary, NC, USA). The harvest year (2017, 2018, and -2019), cropping system (forage 2-cut, forage 1-cut, and
bioenergy 1-cut), and their interactions were considered fixed factors, while the replicates were considered random. The
measurement year was used as the repeated factor, and each plot was considered as a subject in the repeated measurement.
The data normality and homogeneity were assessed by the model-predicted residuals using a Shapiro-Wilk test and equal
185 variance test to meet the ANOVA assumption. Since the feedstock chemical compositions are substantially influenced by
harvest management (frequency coupled with timing), the summer- and fall-harvested biomass from the forage 2-cut system
were analyzed separately for comparing feedstock fiber compositions, quality indices, tissue nutrients, and CH₄ production
among other crop systems [i.e., forage 2-cut (Summer), forage 2-cut (Fall), forage 1-cut, and bioenergy 1-cut]. Also, the first
harvest year differed between the two crop systems, so the quality comparisons of the harvested biomass among crop systems
190 only included forage systems in 2017-2019 but contained both forage and bioenergy systems in 2018-2019. Statistical mean
differences among treatments were tested using the Tukey method at $\alpha = 0.05$.

3 Results

3.1 General soil and weather information

The ANOVA test showed that the sampling location and depth significantly affected soil properties even though no location ~~×~~ depth interaction was shown in this study (data not shown). Compared to the west (B1) and central sides (B2) of the buffer strip, the soil in the east (B3) (Table 1) was more acidic and its fertility was lower by showing lower contents of total soil carbon (~18.5% decrease), and other essential nutrients. For instance, the contents of total phosphorus (TP)~~TP~~, the exchangeable Ca, and Mg were lower by approximately 7.0%, 13.8%, and 18.9 %, respectively. Soil electrical conductivity (EC) is used to measure the ability of soil water to conduct electricity, which is highly correlated with the soil nutrient concentrations (e.g., NH₄⁺, K⁺, Na⁺, NO₃⁻, SO₄²⁻, and Cl⁻, etc.), and often used for an alternative indicator for fertility~~The soil EC, highly correlated with the soil nutrient concentrations (e.g., NH₄⁺, K⁺, Na⁺, NO₃⁻, SO₄²⁻, and Cl⁻, etc.), is an alternative indicator for fertility. Although the average soil EC across the 0-100 cm profile was similar at three sampling locations~~Although the soil EC (averages across depth) was similar in three sampling locations, the averages across locations showed that the EC in topsoil (0-10 cm) was around 3-4 times higher than in deeper soil (<10 cm). Monthly and cumulative precipitation during the study period (2016-2019) and their 30-year average (1990-2019) for this study site are shown in Figure 2. The 30-year average indicated that the monthly precipitation in Illinois is well-distributed throughout the year, with substantial amounts occurring in mid-spring (April) and early fall (September). Compared to the 30-year average, the 4-year average precipitation displayed a more variable pattern, except for the generally low precipitation in winter (December to February)~~Monthly precipitation showed an irregular pattern; however, the~~The cumulative data indicated that the precipitation in 2019 was substantially higher than in other years and the 30-year average precipitation. During the growing season of perennial grasses (Apr. to Nov.), the cumulative precipitation in 2019 (909 mm) increased by approximately 11% and 18.9%, respectively, compared to the 4-year (820 mm) and 30-year (765 mm) averages. The pattern of monthly temperature during the experimental year followed the 30-average data (Fig. 2c).

3.2 Biomass yield and nutrient removal

Two-way interaction between the year (2017-2019) and the cropping system (2-cut and 1-cut forage, and bioenergy crops) for biomass yield showed a significant yield reduction in forage systems but an increase in bioenergy crops (Fig. 3). From 2017 to 2019, biomass yield declined by approximately 30% in the 2-cut forage system (6.3 DM Mg ha⁻¹ to 4.4 DM Mg ha⁻¹ with a reduction rate of 1.0 Mg ha⁻¹ yr⁻¹) and 35% in the 1-cut forage system (4.9 DM Mg ha⁻¹ to 3.2 DM Mg ha⁻¹ with the rate of 0.9 Mg ha⁻¹ yr⁻¹). By contrast, the biomass yield of bioenergy feedstock increased by 27% from 4.9 DM Mg ha⁻¹ (2018) to 6.7 DM Mg ha⁻¹ (2019). Based on the harvest frequency, averages across years showed that the 2-cut forage system produced 33% more biomass than the 1-cut forage system (Fig. 3a). The year ~~×~~ cropping system interaction also influenced nutrient removals significantly (Fig. 3b). For both 2- and 1-cut forage, the maximum removal of N, P, K, Ca, and Mg occurred in the first harvest year (2017) and declined over time (Fig. 3b). Nutrient removal is a function of biomass productivity and biomass-

nutrient concentrations, and the decline in nutrient removal corresponded to the decreased biomass yield and nutrient concentrations in the forage system over the three years (Fig. 3 and 4). For instance, the total biomass N removal from the 2-cut forage system reached 106.9 kg ha⁻¹ in 2017 and reduced to 52.6 kg ha⁻¹ in 2019 (~50.8% reduction); the 1-cut forage system resulted in a total N removal of 84 kg ha⁻¹ in 2017, which reduced to 44.5 kg ha⁻¹ in 2019 (~47% reduction). For other nutrients, the P, K, Ca, and Mg removals from the 2-cut forage system were 19.8, 132.7, 37.9, and 15.0 kg ha⁻¹, respectively, in 2017 and reduced to 14.8, 93.7, 15.9, and 8.6 kg ha⁻¹ in 2019; the 1-cut forage system removed around 18.6 (P), 148.5(K), 25.9(Ca), and 12.4(Mg) kg ha⁻¹ in 2017, which reduced to 8.8, 55.7, 15.4, and 6.9 kg ha⁻¹ in 2019. Although the overall results of forage systems showed the ~~declining annual trend~~yearly declined trend for ~~annual~~-yield production and nutrient removals (besides P), comparisons between 2018 and 2019 were insignificant. For the bioenergy system, the biomass nutrient removals were also similar in 2018 and 2019 for both primary and secondary nutrients (Fig. 3b).

3.3 Feedstock chemical compositions and qualities

The ANOVA analysis showed that the ~~Effects~~effects of harvest year, cropping system, and their interaction on feedstock chemical compositions, nutrient concentrations, and quality indices (~~were shown in~~ Table 5). Comparisons of these compositional analyses and indices among the forage 2-cut summer harvest, 2-cut fall harvest, and 1-cut harvest were evaluated in 2017-2019 (forage biomass only), and these comparisons included the bioenergy 1-cut harvest in 2018 and 2019 (forage and bioenergy biomass). For the forage biomass, both the harvest year (2017-2019) and year ~~x~~ cropping system (i.e., harvest management) interaction significantly influenced the concentrations of NDF, ADF, macronutrients, and feed quality-related indices. Comparisons between forage and bioenergy systems in 2018-2019 showed substantial cropping system effects on all parameters except for Zn. For the forage biomass in 2017-2019, the effects of summer and fall harvest on the NDF and ADF concentrations were similar in the first two years. The NDF and ADF averages across 2017-2018 and three forage harvests were 650.6±9.5 g kg⁻¹ and 369.1±10.7 g kg⁻¹, respectively (Table 6). In 2019, the NDF and ADF of the 2-cut forage remained relatively constant under the summer harvest management but significantly decreased by approximately 15% under the fall harvest management, similar to the 1-cut forage. The reduced NDF and ADF concentrations likely enhanced digestibility-related indices (Table 6), and the averages across three forage harvests showed that the 2019 fall-harvested biomass resulted in 12.5, 4.0, 7.3, 6.0, and 26.8% higher DMI, DMD, TDN, NEL, and RFV, respectively than the 2017-2018 averages (Fig. 4b-e). The forage CP concentrations also decreased over the years with a reduction rate of 12.9 g kg⁻¹ yr⁻¹ (Fig. 4a). The bioenergy biomass tended to have higher fiber contents than the forage biomass (Table 6). The averages of the bioenergy cellulose, hemicellulose, and lignin concentrations and the predicted TEY in 2018-2019 were 397.9, 299.4, and 66.5 g kg⁻¹ of DM and 361.0 L Mg⁻¹, respectively, approximately 27.5, 16.7, 43.0, and 22.6% higher than forage feedstock (supplementary figure 1). The TTEY, the product of biomass yield and TEY, from the bioenergy system increased from 1.8×10³ L ha⁻¹ in 2018 to 2.4×10³ L ha⁻¹ in 2019 (~33% increase shown in Fig. 5). The TTEY from the forage systems, however, did not show significant differences between 2018 and 2019 even though the overall trend of the forage TTEY ~~was~~ declined. From 2017 to 2019, the TTEY from the forage system declined by 34.2% and 41.9% in the 2-cut and 1-cut forage systems, respectively (Fig. 5).

3.4 Nutrient analysis

For nutrient analysis, even though the ANOVA test (Table 5) showed a significant interaction effect between year and cropping systems on macronutrients, no consistent pattern was observed (supplementary table 1). Averages across three forage harvests showed that most of the macronutrients likely showed the highest concentration in the first harvest year of 2017 (Fig. 4). From 2017 to 2019, the N, K, Ca, and Mg concentrations decreased by approximately 24.1, 17.9, 30.9, and 16.3%, respectively (Fig. 4f). Both forage N and Ca concentrations were below the threshold of the recommended levels for dairy cows, approximately 27.5 g N kg⁻¹ DM and 6.2 g Ca kg⁻¹ DM shown in the red dashed line (NRC, 2001). For micronutrients, a similar declining trend of the ~~declined~~ concentrations was observed for Cu and Zn, reduced by around 22.1 and 10.0%, respectively; by contrast, the concentrations of Mn and Fe increased by 25.9 and 51.0%, respectively, from 2017 to 2019 (Fig. 4g and 4h). Both Cu and Zn were lower than the recommended nutrient levels of 11 and 43 mg kg⁻¹ DM. For nutrient ratios, ~~both~~ Ca:P and N:S decreased ~~were reduced~~ substantially from 1.76 to 1.31 and 7.27 to 5.72, respectively by 23.2 and 20.5%, respectively, in the third harvest year, and both ratios were lower than the recommendation levels (the red dash lines shown in Fig. 4i and 4j) the N:S ratio was 33% lower than the recommendation (Fig. 4j). In 2018 and 2019, the nutrient concentrations of the bioenergy feedstock were not significantly different besides Zn. The averages across two years indicated that the nutrient concentrations of the bioenergy feedstock were generally lower than the forage feedstock by approximately 29-69% and 32-80% for macro- and micro-nutrients, respectively (supplementary table 1).

3.5 Methane productions

The enteric CH₄ productions ~~were~~ was only predicted from forage crops using nine models and the box plots were shown in Figure 6. The averages of the modeled-CH₄ ranged from 207.8 to 380.5 g cow⁻¹ d⁻¹ with the standard deviation (SD) from 4.9 to 31.9 g cow⁻¹ d⁻¹ (Fig. 6). The M1-M3 models, trained by the dataset of beef cows, resulted in the CH₄ average of 234.8±42.1 g cow⁻¹ d⁻¹ with a coefficient of variation (CV) of 18%. The M4-M6 models, trained by the dataset of dairy cattle, led to a higher CH₄ average of 329.1±40.3 g cow⁻¹ d⁻¹ but a lower variation (CV = 12%) than the M1-M3 predictions. Increases in the M4-M6 average were driven by the highest estimation (380.5±11.2 g cow⁻¹ d⁻¹) using the M4 model, based on the dDMI, CP, and NDF predictors, among other models. The increased variation of the M1-M3 predictions, on the other hand, was due to the highest variation (CV = 17%) from the M1 model, based on the dDMI and ADLi predictors. The CH₄ predictions using the M7-M9 models, built based on the integrated dataset of beef and dairy cows, resulted in an average of 231.9±19.1 g cow⁻¹ d⁻¹ with the lowest variation (CV = 8%). For the individual model, the two-way ANOVA showed that most of the CH₄ predictions were sensitive to year variation, but only the M5-, M7-, and M8-predicted CH₄ significantly responded to the harvest management and their interaction (supplementary table 2). The averages from each category (e.g., M1-M3 average from the beef category) showed that the model-CH₄ increased over the years with the rates of 11.0 (beef), 8.1 (dairy), and 8.4 (combined) g cow⁻¹ d⁻¹, respectively (Table 7). No significant year ~~×~~ forage system interaction was observed for the CH₄ predicted from beef and dairy categories. The interaction effect was only shown in the “combined” category (*p*-value = 0.0074).

In the “combined” category, the modeled-CH₄ remained stable (i.e., 221.1~228.7 g cow⁻¹ yr⁻¹) in the first two harvest years of 2017 and 2018 but increased by approximately 10.8% under the fall harvest management in 2019 (i.e., 250.9 g cow⁻¹ d⁻¹) compared to the 2017-2018 average (i.e., 226.4 g cow⁻¹ d⁻¹).

4 Discussion

4.1 Biomass yield and nutrient removal

This study evaluated the feasibility of utilizing forage (perennial cool-season grass mixtures) and bioenergy (warm-season grass mixtures) systems for establishing a sustainable buffer strip (Table 2). For the forage buffer, Kelly et al. (2007) reported that the monoculture SB and AL produced annual biomass yields ranging from 5-6 Mg ha⁻¹ and 5-7 Mg ha⁻¹, respectively. The polyculture forage systems (PR-clover or SB-TG-Kentucky bluegrass mixtures) established in riparian areas produced annual yields from 2 to 10 Mg ha⁻¹, and the yields of grass mixtures cultivated on other marginal lands (e.g., on the CRP registered lands) were from 2.8 Mg ha⁻¹ (the AL-pubescent wheatgrass mixture in Montana), 3.4 (the TF-OR mixture in Georgia), 4.2 (the red clover-TF mixture in Missouri), respectively (Anderson et al., 2016; Christen et al., 2013; Lee et al., 2013; Tufekcioglu et al., 2003). For the bioenergy buffer, the monoculture SW showed a range of annual yield from 4 to 13 Mg ha⁻¹, and the grass mixtures (mainly SW, PC, BB, and IN) ranged from 2.8 to 10.7 Mg ha⁻¹ (Cooney et al., 2023; Ferrarini et al., 2017; Gamble et al., 2016; Gopalakrishnan et al., 2012; Kelly et al., 2007; Tufekcioglu et al., 2003; Zamora et al., 2013). This yield variation was likely due to the confounding effects of species, growth environment, and management practices (Cooney et al., 2023). Thus, the perennial buffers in this study showed their economic potential by producing substantial decent biomass yield (forage: 3.2-6.3 Mg ha⁻¹; bioenergy yield: 4.9-6.7 Mg ha⁻¹), especially under no fertilizer application.

Compared to the bioenergy system, greater nutrient concentrations in forage biomass (supplementary table 1) indicated that forage-type grasses have higher nutrient demand (Kering et al., 2012; Pedroso et al., 2014). The increased nutrient requirement also implied referred that cool-season forages require more available soil nutrients (e.g., high N fertilization) to produce similar amounts of dry biomass as warm-season bioenergy grasses, also suggesting that more nutrients are likely removed from soils by cool-season forage grasses (Minson, 1981; Mullahey et al., 1992; Follett and Wilkinson, 1995; Kering et al., 2012; Pedroso et al., 2014). In this study, the higher nutrient removal of the cool-season grasses resulted in possible depletion of soil nutrients over time and the declined soil nutrients presumably accounted for a gradual decline in biomass yield in the forage system (approximately 0.9 Mg ha⁻¹ yr⁻¹ reduction) even though the yearly changes in soil fertility were not assessed (even though the yearly changes in soil fertility were not assessed), presumably accounting for a gradual decline in biomass yield in the forage system (approximately 0.9 Mg ha⁻¹ yr⁻¹ reduction). From 2017 to 2019, decreases in biomass-N, -K, -Ca, and -Mg concentrations implied inferred that soil nutrients, including the nutrient transported from the main C-S field via runoff, might be inadequate to fully support the growth of the cool-season grasses in the forage system. Harvest management (frequency and timing) also influences biomass yield and crop nutrient removal. Our results support previous findings in which total annual

biomass yield and nutrient removal are usually increased by multiple cuttings in the forage system (Schultz et al., 1995; Fike et al., 2006b; Mitchell and Schmer, 2012). Harvest timing also plays a critical role in ~~yield sustainment stand persistence~~ and the ‘regrowth vigor’ potential, which influences long-term buffer strip production and sustainability (Mulkey et al., 2006; Mitchell et al., 2014). In this study, the delayed harvest to the end of the growing season was implemented in both forage systems or until after a killing frost for the bioenergy system. ~~This approach aimed~~ to improve feedstock stand longevity by providing extended time for vegetative development and reproductive tiller growth and to translocate nutrients to underground crop tissues that can be recycled for use in the following year (MacAdam and Nelson, 2003; Lee et al., 2014; Zumpf et al., 2019).

330 Compared to the forage systems in which biomass yield and nutrient concentrations declined over time, the bioenergy system showed an increased yield potential under continuously unfertilized conditions (Fig. 3). There was no biomass harvest in the bioenergy system in 2017 due to the reestablishment that year. Therefore, the first harvest year for the bioenergy biomass was in 2018. Based on the harvest year, the side-by-side comparisons showed that the 2-cut forage system produced a higher amount of biomass than the bioenergy system in the first harvest year, but its biomass yield declined in the following years; 335 conversely, the bioenergy system showed the highest yield potential in the second harvest year for any system (Fig. 3a). Although the bioenergy system was only harvested for two successive years in our case, many studies report that warm-season grasses have high nutrient-use efficiency and consistent biomass production across years (Brown, 1978; Sage et al., 1987; Ghannoum et al., 2011; Sage and Zhu, 2011; van der Weijde et al., 2013; Pedroso et al., 2014; Lee et al., 2018). For example, Lee et al. (2018) showed that maximum bioenergy feedstock biomass yield occurred in the third year after the establishment 340 (~2 times more than in the establishment year) and the stable yield production can be continuous for up to 7 years. For scavenging nutrients ~~leaching/runoff moved down~~ from the C-S field, however, a cool-season grass-based forage system can be considered an ideal short-term candidate for riparian zone filter strips by showing more effective erosion control, sediment trapping, and nutrient removal than a warm-season grass-based bioenergy system (Lynn, 2004). Based on the first two harvest events (2017 and 2018 in the forage system and 2018 and 2019 in the bioenergy system), the 2-cut and 1-cut forage systems 345 resulted in total N removal of 176.2 kg ha⁻¹ and 128.0 kg ha⁻¹ respectively in the harvested biomass, while only 60.3 kg ha⁻¹ was removed from the bioenergy system (Fig. 3b). These substantial N removal from the forage system mainly resulted from significantly high yield and biomass nutrient concentrations in the first harvest year (2017). On the other hand, the bioenergy system can be considered for long-term nutrient loss reduction plans as it produced consistently high biomass.

4.2 Feedstock quality

350 Biomass quality characteristics are defined by its use as livestock feed or biofuel feedstock. As forage feedstocks, biomass CP and crude fibers (NDF and ADF) are critical factors for animal performance and quality, such as livestock weight or milk production (Assefa and Ledin, 2001; Collins and Fritz, 2003). The biomass NDF and ADF can be used to evaluate the digestibility, palatability, and energy level of animal feeds based on their predictions of DMD, DMI, TDN, NEL, and RFV

indices (Guretzky et al., 2011). For example, the higher NDF generally lowers the ingestion of dry matter (DMI), and the
355 higher ADF likely reduces the overall digestibility (DMD), digestible nutrients (TDN), and energy level (NEL) of forage feeds
for animals and lowers forage qualities (Collins and Fritz, 2003). Delayed harvest usually reduced biomass CP and increased
fiber concentrations resulting from the N translocation to belowground rhizomes; however, no significant harvest effects on
CP or crude fibers (NDF and ADF) were shown in this study (Table 6), presumably due to a substantial environmental/~~climate~~
360 impact. In polyculture systems, the response of species compositions to management practices, along with biomass yield and
chemical compositions, was significantly modulated by environmental variations such as weather and soil conditions (Cooney
et al., 2023; Hong et al., 2014; Lin et al., 2023). In this study, the interaction between highly erodible zones and fluctuating
precipitation levels likely intensified the complexities of the growth environment (e.g., inconsistent nutrient input via leaching
and runoff), thereby diminishing the discernibility of experimental treatment effects. Without direct N fertilizer replenishment,
the three years of continuous crop harvests resulted in decreases in both biomass yield and CP content in the forage systems
365 (Fig. 3 and 4a). The forage NDF also gradually reduced with increasing N depletion over the years (Fig.4) even though several
studies showed that the cell wall compositions were not influenced by different N input/soil N contents (Liu et al., 2015;
Ameen et al., 2019). Several abiotic (e.g., severe drought, salinity, heat) or biotic (diseases or pests) stresses might damage
cell structure, inhibit crop growth, stunt tissue development, and reduce structural cell wall compositions (Hoover et al., 2018;
Fan et al., 2020). Thus, the abrupt NDF reduction in (~10.8%) in 2019 presumably resulted from the harsh environmental
370 stresses (i.e., the severe leaching and nutrient depletion resulting from intense precipitation in 2019, Fig. 2).

Mineral levels in forage are also essential for both livestock health and performance and the effectiveness of ruminal
microorganisms for fiber digestion. The mineral concentrations in biomass usually declined with advancing maturity (Fleming,
1973); however, this study did not observe the reduced mineral content in forage feedstock between two harvest timing (at the
375 anthesis in summer [June] vs. after complete senescence in fall [October/November]) possibly resulting from a substantial
environmental effect. Besides the N content, Ca and P deficiency are often considered critical among other macronutrients
because of their roles in the development of skeletal structure, metabolism, and milk production. Under the continuously
unfertilized management, the forage P concentrations (average across forage harvests) remained fairly adequate for cattle
requirements (~3.2 g kg⁻¹ shown in NRC, 2001). The continuously declining Ca concentrations, however, showed the feed Ca
380 content was insufficient for a dairy cow's daily diet (minimum requirement ~ 6.2 g kg⁻¹ DM; NRC, 2001). A long-term Ca
deficiency in animal diet could result in abnormalities of bone development and depression of milk yield (McDowell, 1992;
Suttle, 2022). Potassium, as the primary intracellular cation, recommendation for dairy cows ranges from 6 to 12 g kg⁻¹ of DM
and its deficiency is rarely observed in forage biomass given the high K content in grasses and legumes (Marijanušić et al.,
2017). Although excess dietary K uptake (e.g., 20-24 g kg⁻¹ DM in this study) could interfere with Ca homeostasis, K toxicity
385 is rare in cattle because dairy cattle showed a great ability to easily excrete excessive K intake (NRC, 2005). Most of the
micronutrients act as critical components of metalloenzymes or metalloproteins, significantly related to the metabolic function,
immune system, and antioxidant status of the livestock (Suttle, 2022). The Cu, Zn, and Fe deficiency in ruminant grazing

forages is a widespread issue in many areas of the world and ~~is~~ often ~~necessitates required for~~ supplementation (McDowell, 1992; Spears, 1994; Marijanušić et al., 2017). This study also showed the Cu and Zn deficiency in forages but not for Fe. Both
390 Cu and Zn concentrations were below the critical levels by approximately 50 and 43%, respectively. Furthermore, appropriate nutrient ratios are as critical as individual elements for animal growth and performance. For instance, the Ca:P ratio is important for supporting appropriate bone development (especially for young growing animals) and lactating cows for milk production. The ideal Ca:P ratio was recommended from 1.5:1 to 2.0:1 for dairy cows, but the ratio of the third-year forage (average across forage systems) was below this threshold due to substantial decreases in the tissue Ca concentration (Fig. 4i). The N:S ratio is
395 another important factor for ruminant microbial protein synthesis and S-containing amino acid production (NRC, 2005). The N:S ratio in this study (5.7 ~~–~~ 7.3) was ~~substantially way~~ below the recommended ratio ranging from 10:1 to 12:1.

The dietary composition for cattle typically includes forage (e.g., hay, silage, and pasture) and concentrates (e.g., grains, protein sources, and other energy-dense feeds), supplemented with minerals and vitamins. The ratio of forage to concentrate ranged
400 from 45:55 to 70:30 based on animal type, sex, target weight, and developmental stage (Aguerre et al., 2011; Briggs and Felix, 2021). For instance, forage constitutes approximately 50-70% of DMI to support proper rumen development during the growth phase, while in the finishing stage, forage usually reduced to about 30-40% to facilitate weight gain (Chen et al., 2015; Mialon et al., 2008). Although these results did not have conclusive impacts on overall diet quality of cattle, the gradual reductions in fiber (i.e., NDF) and nutrient (i.e., CP, Ca, Cu, Zn) concentrations, and nutrient ratio (i.e., Ca:P and N:S) provided valuable
405 data for tailoring the forage to concentrate ratio to meet specific nutritional requirements and deficiencies in cattle. Additionally, an increasing number of cattle nutritionists and producers are adopting least-cost feed formulation strategies, which consider the total costs associated with diet mixing and daily feeding (Briggs and Felix, 2021). The minimal management effort applied in this study likely met with low-cost strategies for animal feed.

410 As bioenergy feedstocks, the increased cell wall contents often observed in warm-season grasses are generally considered indications of desirable biofuel quality, especially the structural carbohydrates of cellulose and hemicellulose for producing bioethanol via the biochemical (i.e., fermentation) process (Li et al., 2016). Previous studies (Hong et al., 2012; Guo et al., 2017; Ameen et al., 2019) showed that the cellulose concentrations of the big bluestem (BB), Indiangrass (IND), switchgrass (SW), and prairie cordgrass (PC) monocultures were in ranges of 378-420, 380-451, 360-401, and 400-421 g kg⁻¹, respectively.
415 The polyculture system of BB, IND, and SW mixtures showed a similar cellulose range from 360 to 425 g kg⁻¹. For hemicellulose, the concentration ranges were 308-310 (BB), 278-315 (IND), 310-325 (SW), and 293-312 (PC) g kg⁻¹, respectively, and grass mixtures were also under a similar range (300-315 g kg⁻¹). This study showed that the grass-mixture bioenergy buffer can also offer feedstock with reasonable qualities (i.e., a two-year average of cellulose~ 397.9 g kg⁻¹; hemicellulose~299.4 g kg⁻¹) and a great potential for increasing ethanol yield productions based on the increased TTEY from
420 1.8×10³ (2018) to 2.4×10³ L ha⁻¹ (2019).

4.3 Environmental impact

The forage nutritive values not only influence cattle performance but highly correlate to the CH₄ production in the rumen. For instance, the increased feed quality likely increases feed consumption, usually expressed by DMI, and the increased DMI further accelerates cattle CH₄ emissions. Instead of direct CH₄ measurements, several empirical models have been used for the CH₄ predictions based on DMI, which is the most often used predictor, and other attributes, such as CP, NDF, ADF, and ADL (Ellis et al., 2007; Storlien et al., 2014; Appuhamy et al., 2016). Although the DMI of individual cows was not routinely measured due to the limited budget in commercial farms, the estimated DMI can also predict CH₄ emissions with a performance as good as the measured DMI using suitable models (Appuhamy et al., 2016). Enteric CH₄ emissions are highly variable among ruminants. Generally speaking, the species with heavier body weight tend to consume more feed as well as produce more CH₄ via feed fermentation (e.g., cattle > goat or sheep). For example, the average body weight of beef cattle was approximately 450 kg per cow with a daily DMI (dDMI) of 8.0 kg in North America, and the CH₄ emissions ranged from 50 to 250 g cow⁻¹ d⁻¹. The average weight of dairy cattle was around 644 kg with a dDMI of 21 kg, producing CH₄ from 200 to 600 g cow⁻¹ d⁻¹ (Ellis et al., 2007; Appuhamy et al., 2016; Hales et al., 2022). This study also showed a similar range of the CH₄ estimations, and the predicted CH₄ emissions increased with advancing DMI in the third harvest year. Furthermore, it is possibly misleading for farmers to optimize livestock management practices based on a simple judgment of the overall CH₄ emissions. For instance, although the overall CH₄ emissions of the dairy cows were higher (128 kg cow⁻¹ yr⁻¹) in North America than in the European Union (117 kg cow⁻¹ yr⁻¹) and [Oceania](#) (99 kg cow⁻¹ yr⁻¹) cows, the higher milk yield led to lower emission intensity in North America (FAO, 2014). Since livestock production is a consequence of the overall feed quality, which needs to consider both digestibility (e.g., DMD) and nutrient levels (e.g., CP and minerals), the overall high-quality forage likely increases animal production as well as mitigates CH₄ emission intensity (Lee et al., 2017).

5 Conclusions

Perennial grass mixtures are ideal polyculture systems for building productive and sustainable buffer stripes. The cool-season forage and warm-season bioenergy grasses showed different strengths as buffers by serving specific purposes. The forage-type buffer can be an ideal short-term candidate for riparian areas with high leaching potential due to its great efficiency of nutrient scavenging, which can be further improved under the multiple harvest management. The high nutrient demand of forage crops, however, likely compromised buffer sustainability under the successive nutrient starvation condition. From a quality perspective, the successively-harvested forage buffer without nutrient input through fertilizer application was incapable of providing livestock with adequate nutritive values, especially yearly reductions of crucial protein and major mineral contents (i.e., Ca, Cu, Zn), even though the forage digestibility seemed to increase in the third harvest year. [Without any forage/concentrate adjustments](#), ~~The~~ overall low-quality feed likely lower ruminants' performance and possibly aggravates the impact of enteric CH₄ emissions on the global greenhouse gas burden. On the other hand, although this is a short-term study, the bioenergy-type buffer showed better sustainability than the forage buffer and a potential of continuous and stable

yield supply based on our previous and other long-term studies, which could provide local stakeholders with a long-term
455 opportunity of offering extra economic benefits and ecosystem services, simultaneously.

Data Accessibility. Data can be directly obtained by contacting the lead author.

Supporting Information. Additional information may be found online in the supporting information tab for this article.

460

Competing interests. This research was funded by the Metropolitan Water Reclamation District (MWRD) of Greater Chicago. Any opinions, findings, and recommendations expressed in this paper are those of the author(s) and do not necessarily reflect the views of the MWRD of Greater Chicago. The authors do not have any other relevant affiliations or financial involvement with any organization with a financial interest in or financial conflict with the subject matter or materials discussed in the
465 manuscript apart from those disclosed.

Acknowledgements. This work was supported by the MWRD of Greater Chicago as part of the collaboration, the crop and field management from Jacob Baylor, and technical assistance from the Soils laboratory of MWRD.

Table 1. Basic physical and chemical properties of soil profiles (0-100 cm) of the buffer strips prior to the study in 2016. Three blocks were compared from different depths using a two-way ANOVA with a significance level of 0.05. The block (B), soil depth, and their interactions were considered fixed factors, while the replicates were considered random. The lowercase letters indicate mean separation organized from highest to lowest value for each column using the Tukey test (no mean separations were applied if the variable effect was not significant).

Factors		BD (g cm ⁻³)	pH	EC (dm m ⁻¹)	*TC ----- (g kg ⁻¹)	*TN ----- (g kg ⁻¹)	TP	K --- †Exchangeable (mg kg ⁻¹) ---	Ca	Mg
Location	West (B1)	1.67	6.91a	0.20	16.1a	1.13	0.56a	107.1	2391.7a	500.5a
	Central (B2)	1.67	7.05a	0.23	15.3ab	1.11	0.54ab	112.7	2477.8a	507.9a
	East (B3)	1.69	6.36b	0.23	12.8b	1.05	0.51b	105.6	2098.1b	409.1b
Soil depth (cm)	0-5	1.35c	6.59c	0.52a	17.7a	1.49a	0.65a	176.4a	2551.4a	460.4
	5-10	1.55b	6.52c	0.33b	17.8a	1.48a	0.62a	154.8a	2344.1ab	442.7
	10-20	1.80a	6.35c	0.16c	14.5ab	1.15b	0.53b	102.7b	2203.2ab	488.1
	20-30	1.83a	6.64c	0.11c	12.9b	0.93c	0.48bc	79.9bc	2040.4b	489.0
	30-60	1.77a	7.04b	0.10c	11.7b	0.73d	0.45c	70.2bc	2316.1ab	485.7
	60-100	1.76a	7.48a	0.10c	13.8ab	0.78cd	0.51bc	66.8c	2480.1a	469.2

BD: bulk density; **EC: electrical conductivity**; TC: total carbon; TN: total nitrogen; TP: total phosphorus (direct colorimetric method); *: TC and TN were determined by dry combustion method; †: exchangeable nutrients (K, Ca, Mg) determined by the Mehlich-3 method.

475 **Table 2 Cropping systems, plant species composition, harvest frequency (once and twice), and harvest dates from 2017 to 2019 for perennial buffer strips established at Fulton County, IL.**

Cropping system (CS)	Crop types and species	Harvest frequency (timing)	Harvest date		
			2017	2018	2019
F (2-cut; Sum.)	Forage (cool-season mixtures, including AL, MF, OR, PR, SB, TF, TG)	Twice	Jun. 26	Jun. 05	Jun. 26
F (2-cut; Fall)		(Summer & Fall)	Nov. 01	Oct. 30	Nov. 06
F (1-cut; Fall)		Once (Fall)	Nov. 01	Oct. 30	Nov. 06
†B (1-cut; Fall)	Bioenergy (warm-season mixtures, including BB, IN, PC, SW)	Once (Fall)	N/A	Oct. 30	Nov. 06

F (2-cut; Sum.): forages with two-harvest management (1st harvest in Summer ranging from Jun. 1st to Aug. 31st)

F (2-cut; Fall): forages with two-harvest management (2nd harvest in Fall ranging from Sept. 1st to Nov. 31st)

F (1-cut; Fall): Forages with one-harvest management in Fall

B (1-cut; Fall): Bioenergy crop with one harvest management in Fall

†Bioenergy crops were not harvested in 2017 for biomass nutrient analysis due to insufficient biomass production, and this system was reestablished in 2017.

AL: alfalfa; BB: big bluestem; IN: Indiangrass; MF: meadow fescue; OR: orchardgrass; PC: prairie cordgrass; PR: perennial ryegrass; SB: smooth bromegrass; SW: switchgrass; TF: tall fescue; TG: Timothy grass.

Table 3. Calculations of feedstock quality indices.

<u>Indices (abbreviation, unit)</u>	<u>Equations</u>	<u>Descriptions</u>	<u>Ref</u>
<u>Crude protein (CP, g kg⁻¹)</u>	$CP = N \times 6.25$	• <u>An amount of protein in a feed, estimated from the measured N content</u>	[1]
<u>Dry matter intake (DMI, g kg⁻¹)</u>	$DMI = 120 / NDF$	• <u>The measured amount of feed an animal consumes per day on a dry basis</u>	[1][2]
<u>Dry matter digestibility (DMD, g kg⁻¹)</u>	$DMD = 88.9 - (0.779 \times ADF)$	• <u>The portion of the dry matter in a feed that is digested by livestock at a certain level of feed intake</u>	[1][2]
<u>Total digestible nutrients (TDN, g kg⁻¹)</u>	$TDN = (-1.291 \times ADF) + 101.35$	• <u>The sum of the CP, lipid, digestible fiber, and non-structural carbohydrates</u>	[1][2]
<u>Net energy for lactation (NEL, g kg⁻¹)</u>	$NEL = [1.044 - (0.0119 \times ADF)] \times 2.205$	• <u>An estimate of energy in a feed that is available for body maintenance and milk production</u>	[1][2]
<u>Relative feed value (RFV, %)</u>	$RFV = DMD \times DMI \times 0.775$	• <u>An estimate of value combining a forage's digestibility and intake potential</u>	[1][2]
<u>Cellulose (g kg⁻¹)</u>	$Cellulose = ADF - ADL$	• <u>A structural carbohydrate mainly made up of long-chain polymers of glucose</u>	[1][2]
<u>Hemicellulose (Hemi-C, g kg⁻¹)</u>	$Hemi-C = NDF - ADF$	• <u>A structural carbohydrate mainly made up of long-chain polymers of xylose</u>	[1][2]
<u>†Theoretical ethanol yield (TEY, L Mg⁻¹)</u>	$TEY = (Cellulose + Hemi-C) \times F1 \times F2 \times F3 \times F4 \times 1000/\rho$	• <u>An estimate of ethanol yield derived from cellulose and hemicellulose contents using biological conversion techniques</u>	[2]
<u>Total theoretical ethanol yield (TTEY, L ha⁻¹)</u>	$TTEY = TEY \times \text{dry biomass yield}$	• <u>An estimate of total TEY based on the product of TEY and biomass yield</u>	[2]

†: $F1 = 0.51$ (the coefficient of conversion of sugar to ethanol); $F2 = 0.85$ (the conversion efficiency of sugar to ethanol); $F3 = 1.11$ (the coefficient of conversion of cellulose and hemicellulose to sugar); $F4 = 0.85$ (the conversion efficiency of cellulose and hemicellulose to sugar); $\rho = 0.79 \text{ g ml}^{-1}$ (the specific gravity of ethanol); [1]: Ball et al., 2017; [2]: Ameen et al., 2019.

<u>Indices (abbreviation, unit)</u>	<u>Equations</u>	<u>Descriptions</u>
<u>Crude protein (CP, g kg⁻¹)</u>	$CP = N \times 6.25$	• <u>An amount of protein in a feed, estimated from the measured N content</u>
<u>Dry matter intake (DMI, g kg⁻¹)</u>	$DMI = 120 / NDF$	• <u>The measured amount of feed an animal consumes per day on a dry basis</u>
<u>Dry matter digestibility (DMD, g kg⁻¹)</u>	$DMD = 88.9 - (0.779 \times ADF)$	• <u>The portion of the dry matter in a feed that is digested by livestock at a certain level of feed intake</u>
<u>Total digestible nutrients (TDN, g kg⁻¹)</u>	$TDN = (-1.291 \times ADF) + 101.35$	• <u>The sum of the CP, lipid, digestible fiber, and non-structural carbohydrates</u>

Net energy for lactation (NEL, g kg ⁻¹)	$NEL = [1.044 - (0.0119 \times ADF)] \times 2.205$	<ul style="list-style-type: none"> • An estimate of energy in a feed that is available for body maintenance and milk production
Relative feed value (RFV, %)	$RFV = DMD \times DMI \times 0.775$	<ul style="list-style-type: none"> • An estimate of value combining a forage's digestibility and intake potential
Cellulose (g kg ⁻¹)	$Cellulose = ADF - ADL$	<ul style="list-style-type: none"> • A structural carbohydrate mainly made up of long chain polymers of glucose
Hemicellulose (Hemi-C, g kg ⁻¹)	$Hemi-C = NDF - ADF$	<ul style="list-style-type: none"> • A structural carbohydrate mainly made up of long chain polymers of xylose
[‡] Theoretical ethanol yield (TEY, L Mg ⁻¹)	$TEY = (Cellulose + Hemi-C) \times F1 \times F2 \times F3 \times F4 \times 1000/\rho$	<ul style="list-style-type: none"> • An estimate of ethanol yield derived from cellulose and hemicellulose contents using biological conversion techniques
Total theoretical ethanol yield (TTEY, L ha ⁻¹)	$TTEY = TEY \times \text{dry biomass yield}$	<ul style="list-style-type: none"> • An estimate of total TEY based on the product of TEY and biomass yield

[‡]: $F1 = 0.51$ (the coefficient of conversion of sugar to ethanol); $F2 = 0.85$ (the conversion efficiency of sugar to ethanol); $F3 = 1.11$ (the coefficient of conversion of cellulose and hemicellulose to sugar); $F4 = 0.85$ (the conversion efficiency of cellulose and hemicellulose to sugar); $\rho = 0.79 \text{ g ml}^{-1}$ (the specific gravity of ethanol)

Table 4. A summary of the published equations for predicting methane (CH₄) production based on feedstock nutritive quality.

Model	Equations for CH ₄ estimation (MJ d ⁻¹) ^a	Cattle ^b	RMSPE ^c	R ²	Refs
1	$= 2.30 + 1.12 \times \text{dDMI (kg d}^{-1}) - 6.26 \times \text{ADLi (kg d}^{-1})$	Beef	18.7	0.74	Ellis et al., 2007
2	$= 5.70 + 1.41 \times \text{ADFi (kg d}^{-1})$	Beef	24.3	0.56	Ellis et al., 2007
3	$= 2.94 + 0.0585 \times \text{MEi (MJ d}^{-1}) + 1.44 \times \text{ADFi (kg d}^{-1}) - 4.16 \times \text{ADLi (kg d}^{-1})$	Beef	14.4	0.85	Ellis et al., 2007
4	$= 1.36 \times \text{dDMI (kg d}^{-1}) - 0.125 \times \text{FA (g kg}^{-1}) - 0.02 \times \text{CP (g kg}^{-1}) + 0.017 \times \text{NDF (g kg}^{-1})$	Dairy	13.8	0.77	Nielsen et al., 2013
5	$= 1.23 \times \text{dDMI (kg d}^{-1}) - 0.145 \times \text{FA (g kg}^{-1}) + 0.012 \times \text{NDF (g kg}^{-1})$	Dairy	14.3	0.75	Nielsen et al., 2013
6	$= 5.87 + 2.43 \times \text{ADFi (kg d}^{-1})$	Dairy	35.4	0.56	Ellis et al., 2007
7	$= 3.272 + 0.736 \times \text{dDMI (kg d}^{-1})$	Combined	28.2	0.68	Ellis et al., 2007
8	$= 3.41 + 0.520 \times \text{dDMI (kg d}^{-1}) - 0.996 \times \text{ADFi (kg d}^{-1}) + 1.15 \times \text{NDFi (kg d}^{-1})$	Combined	30.5	0.67	Ellis et al., 2007
9	$= 3.69 + 0.543 \times \text{dDMI (kg d}^{-1}) + 0.698 \times \text{NDFi (kg d}^{-1}) - 3.26 \times \text{ADLi (kg d}^{-1})$	Combined	29.6	0.71	Ellis et al., 2007

^a: dDMI (kg d⁻¹): daily dry matter intake, calculated by multiplying DMI (g kg⁻¹) and the averaged body weight of cow (606 kg, from Appuhamy, 2016); ADFi (kg d⁻¹): daily acid detergent fiber intake; ADLi (kg d⁻¹): daily acid detergent lignin intake; MEi (MJ d⁻¹): daily metabolizable energy intake (-162); FA (g kg⁻¹): dietary fatty acid (~28); CP (g kg⁻¹): crude protein concentration of DM; NDF: neutral detergent fiber concentration of DM.

^b: Combine = beef + dairy.

^c: RMSPE: square root of mean square prediction error reported by the original papers.

Table 5. Analysis of variance (ANOVA) showed the effects of main factors, including year (Y), cropping system (CS), and interactions on biomass fiber analysis, quality indices, and nutrients analysis of the forage and bioenergy feedstocks of the buffer strips with a significance level of 0.05.

Parameters	2017-2019			2018-2019		
	(forage only)			(forage + bioenergy)		
	Y	CS	$Y \times CS$	Y	CS	$Y \times CS$
----- Fiber analysis -----						
NDF (g kg ⁻¹)	****	*	**	***	***	*
ADF (g kg ⁻¹)	**	<i>ns</i>	*	**	**	*
ADL (g kg ⁻¹)	<i>ns</i>	<i>ns</i>	<i>ns</i>	<i>ns</i>	*	<i>ns</i>
----- Quantity & Quality indices -----						
DMI (g kg ⁻¹)	****	*	**	***	***	**
DMD (g kg ⁻¹)	**	<i>ns</i>	*	**	**	*
TDN (g kg ⁻¹)	**	<i>ns</i>	*	**	**	*
NEL (g kg ⁻¹)	**	<i>ns</i>	*	**	**	*
RFV (%)	****	*	**	***	**	**
Cellulose (g kg ⁻¹)	**	*	<i>ns</i>	**	**	<i>ns</i>
Hemi-C (g kg ⁻¹)	****	<i>ns</i>	<i>ns</i>	**	***	<i>ns</i>
TEY (L Mg ⁻¹)	****	**	<i>ns</i>	***	***	<i>ns</i>
Ash (g kg ⁻¹)	****	*	<i>ns</i>	****	**	<i>ns</i>
----- Nutrients analysis -----						
N/CP (g kg ⁻¹)	****	<i>ns</i>	***	*	***	**
P (g kg ⁻¹)	***	<i>ns</i>	****	<i>ns</i>	****	**
K (g kg ⁻¹)	**	<i>ns</i>	***	**	****	*
S (g kg ⁻¹)	**	<i>ns</i>	*	<i>ns</i>	****	*
Mg (g kg ⁻¹)	****	<i>ns</i>	*	<i>ns</i>	****	**
Ca (g kg ⁻¹)	****	<i>ns</i>	*	*	****	<i>ns</i>
B (mg kg ⁻¹)	***	<i>ns</i>	<i>ns</i>	**	*	<i>ns</i>
Zn (mg kg ⁻¹)	*	<i>ns</i>	<i>ns</i>	*	<i>ns</i>	**
Mn (mg kg ⁻¹)	*	*	<i>ns</i>	*	***	<i>ns</i>
Fe (mg kg ⁻¹)	***	<i>ns</i>	**	**	*	*
Cu (mg kg ⁻¹)	**	<i>ns</i>	<i>ns</i>	<i>ns</i>	*	<i>ns</i>
Al (mg kg ⁻¹)	***	<i>ns</i>	**	**	*	**
Ca:P	***	<i>ns</i>	***	*	*	*

Level-1 (*): $0.05 < p < 0.01$; Level-2 (**): $0.01 < p < 0.001$; Level-3 (***): $0.001 < p < 0.0001$;
Level-4 (****): $p < 0.0001$; ns: not significant

Table 6. Fiber analysis and the derived forage quality indices of the harvested biomass, influenced by the year and cropping system interaction (Y x CS) from 2017 to 2019. The superscript lowercase letters indicate the mean separation ($\alpha=0.05$) of the forage crops collected from 2017-2019. The subscript uppercase letters indicate the mean separation of both forage and bioenergy crops collected from 2018 and 2019 (no mean separations were applied if the variable effect was not significant).

Year	Cropping system	NDF	ADF	ADL	DMI	DMD	TDN	NEL	CP	RFV (%)
		Fiber analysis (g kg ⁻¹)			Quality indices (g kg ⁻¹)					
2017	F (2-cut; Sum.)	655.6 ^a	361.8 ^{ab}	49.3	18.3	607.2 ^{bc}	546.4 ^{bc}	1.4 ^{ab}	108.8 ^a	86.1 ^b
	F (2-cut; Fall)	660.2 ^a	363.9 ^{ab}	76.0	18.2	605.5 ^{bc}	543.6 ^{bc}	1.3 ^{ab}	105.0 ^{ab}	85.3 ^b
	F (1-cut; Fall)	641.9 ^a	354.0 ^{abc}	55.1	18.7	613.3 ^{abc}	556.5 ^{abc}	1.4 ^{ab}	106.3 ^{ab}	89.0 ^b
2018	F (2-cut; Sum.)	653.3 ^{ab}	379.5 ^{abBCD}	48.5	18.4 ^{BC}	593.4 ^{bcABC}	523.6 ^{bcABC}	1.3 ^{bABC}	104.4 ^{abA}	84.5 ^{CD}
	F (2-cut; Fall)	636.0 ^{BC}	376.1 ^{abBC}	53.4	18.9 ^B	596.0 ^{bcBC}	527.9 ^{bcBC}	1.3 ^{bBC}	81.9 ^{bcdAB}	87.6 ^{BC}
	F (1-cut; Fall)	656.4 ^{ab}	379.3 ^{abBCD}	48.6	18.3 ^{BC}	593.5 ^{bcABC}	523.8 ^{bcABC}	1.3 ^{bABC}	78.1 ^{cdAB}	84.1 ^{bCD}
2019	[†] B (1-cut; Fall)	775.3 ^A	468.7 ^A	66.0	15.5 ^b	523.9 ^D	408.4 ^D	1.1 ^D	42.5 ^{CD}	62.9 ^E
	F (2-cut; Sum.)	642.9 ^{ab}	386.7 ^{abBCD}	57.4	18.7 ^B	587.7 ^{cABCD}	514.2 ^{cABCD}	1.3 ^{bABCD}	65.0 ^{BC}	85.2 ^{bCD}
	F (2-cut; Fall)	547.8 ^b	302.9 ^c	37.2	22.0 ^A	653.1 ^a	622.5 ^a	1.5 ^a	92.5 ^{abcAB}	111.2 ^a
	F (1-cut; Fall)	554.1 ^{bCD}	326.6 ^{bcCD}	34.1	21.7 ^A	634.6 ^{abAB}	591.8 ^{abAB}	1.4 ^{abAB}	86.3 ^{abcdAB}	106.8 ^{aAB}
	[†] B (1-cut; Fall)	752.3 ^A	460.1 ^{AB}	67.1	16.0 ^D	530.6 ^{CD}	419.5 ^{CD}	1.1 ^{CD}	23.8 ^D	65.8 ^{DE}

F (2-cut; Sum.): Forage crop with two harvest management (1st harvest in Summer)

F (2-cut; Fall): Forage crop with two harvest management (2nd harvest in Fall)

F (1-cut; Fall): Forage crop with one harvest management in Fall

B (1-cut; Fall): Bioenergy crop with one harvest management in Fall

[†]Bioenergy crops were not harvested in 2017 for biomass nutrient analysis due to insufficient biomass production.

Table 6. Fiber analysis and the derived forage quality indices of the harvested biomass, influenced by the year and cropping system interaction (Y x CS) from 2017 to 2019. The superscript lowercase letters indicate the mean separation ($\alpha=0.05$) of the forage crops collected from 2017-2019. The subscript uppercase letters indicate the mean separation of both forage and bioenergy crops collected from 2018 and 2019 (no mean separations were applied if the variable effect was not significant).

Year	Cropping system	NDF	ADF	ADL	DMI	DMD	TDN	NEL	CP	RFV (%)
		----- Fiber analysis (g kg ⁻¹) -----								
		----- Quantity & Quality indices (g kg ⁻¹) -----								
2017	F (2-cut; Sum.)	655.6 ^a	361.8 ^{ab}	49.3	18.3 ^b	607.2 ^{bc}	546.4 ^{bc}	1.4 ^{ab}	108.8 ^a	86.1 ^b
	F (2-cut; Fall)	660.2 ^a	363.9 ^{ab}	76.0	18.2 ^b	605.5 ^{bc}	543.6 ^{bc}	1.3 ^{ab}	105.0 ^{ab}	85.3 ^b
	F (1-cut; Fall)	641.9 ^a	354.0 ^{abc}	55.1	18.7 ^b	613.3 ^{abc}	556.5 ^{abc}	1.4 ^{ab}	106.3 ^{ab}	89.0 ^b
2018	F (2-cut; Sum.)	653.3 ^{aB}	379.5 ^{abBCD}	48.5	18.4 ^{bBC}	593.4 ^{bcABC}	523.6 ^{bcABC}	1.3 ^{bABC}	104.4 ^{abA}	84.5 ^{bCD}
	F (2-cut; Fall)	636.0 ^{aBC}	376.1 ^{abBC}	53.4	18.9 ^{bB}	596.0 ^{bcBC}	527.9 ^{bcBC}	1.3 ^{bBC}	81.9 ^{bcdAB}	87.6 ^{bBC}
	F (1-cut; Fall)	656.4 ^{aB}	379.3 ^{abBCD}	48.6	18.3 ^{bBC}	593.5 ^{bcABC}	523.8 ^{bcABC}	1.3 ^{bABC}	78.1 ^{cdAB}	84.1 ^{bCD}
2019	[†] B (1-cut; Fall)	775.3 ^A	468.7 ^A	66.0	15.5 ^D	523.9 ^D	408.4 ^D	1.1 ^D	42.5 ^{CD}	62.9 ^E
	F (2-cut; Sum.)	642.9 ^{aB}	386.7 ^{aABCD}	57.4	18.7 ^{bB}	587.7 ^{cABCD}	514.2 ^{cABCD}	1.3 ^{bABCD}	65.0 ^{bBC}	85.2 ^{bCD}
	F (2-cut; Fall)	547.8 ^{bD}	302.9 ^{cD}	37.2	22.0 ^{aA}	653.1 ^{aA}	622.5 ^{aA}	1.5 ^{aA}	92.5 ^{abcAB}	111.2 ^{aA}
	F (1-cut; Fall)	554.1 ^{bCD}	326.6 ^{bcCD}	34.1	21.7 ^{aA}	634.6 ^{abAB}	591.8 ^{abAB}	1.4 ^{abAB}	86.3 ^{abcdAB}	106.8 ^{aAB}
	[†] B (1-cut; Fall)	752.3 ^A	460.1 ^{AB}	67.1	16.0 ^{CD}	530.6 ^{CD}	419.5 ^{CD}	1.1 ^{CD}	23.8 ^D	65.8 ^{DE}

F (2-cut; Sum.): Forage crop with two harvest management (1st harvest in Summer)

F (2-cut; Fall): Forage crop with two harvest management (2nd harvest in Fall)

F (1-cut; Fall): Forage crop with one harvest management in Fall

B (1-cut; Fall): Bioenergy crop with one harvest management in Fall

[†]Bioenergy crops were not harvested in 2017 for biomass nutrient analysis due to insufficient biomass production.

Table 7. The model-predicted CH₄ productions of the forage feedstock, influenced by the year and cropping system interaction (Y × CS) from 2017 to 2019. The superscript lowercase letters indicate the mean separation ($\alpha=0.05$) of the forage crops collected from 2017-2019 (no mean separations were applied if the variable effect was not significant).

Factor		Beef	Dairy	Combined
Y	CS			
		----- CH ₄ (g cow ⁻¹ d ⁻¹) -----		
2017	F (2-cut; Sum.)	231.1	321.1	227.4 ^b
	F (2-cut; Fall)	212.5	321.2	221.1 ^b
	F (1-cut; Fall)	227.7	322.7	228.6 ^b
2018	F (2-cut; Sum.)	235.3	324.9	226.7 ^b
	F (2-cut; Fall)	234.8	330.8	228.7 ^b
	F (1-cut; Fall)	234.7	327.5	226.4 ^b
2019	F (2-cut; Sum.)	232.8	333.1	225.9 ^b
	F (2-cut; Fall)	248.8	338.7	252.1 ^a
	F (1-cut; Fall)	255.6	342.0	249.8 ^a
<i>P-value</i>		<i>ns</i>	<i>ns</i>	**
Y mean	2017	223.8 ^b	321.7 ^c	225.7 ^b
	2018	235.0 ^{ab}	327.8 ^b	227.3 ^b
	2019	245.7 ^a	337.9 ^a	242.6 ^a
	Slope (R ²)	11.0 (1.0)	8.1 (1.0)	8.4 (0.8)
<i>p-value</i>		**	****	***

Level-1 (*): $0.05 < p < 0.01$; Level-2 (**): $0.01 < p < 0.001$; Level-3 (***): $0.001 < p < 0.0001$; Level-4 (****): $p < 0.0001$; ns: not significant

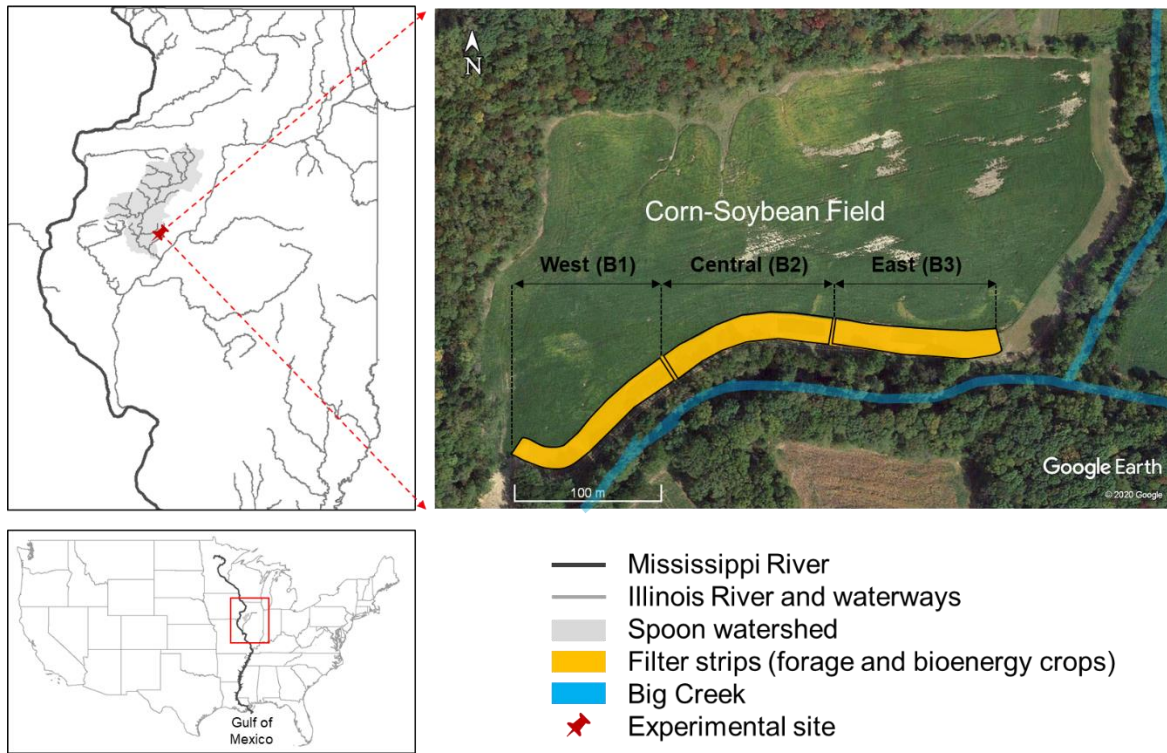
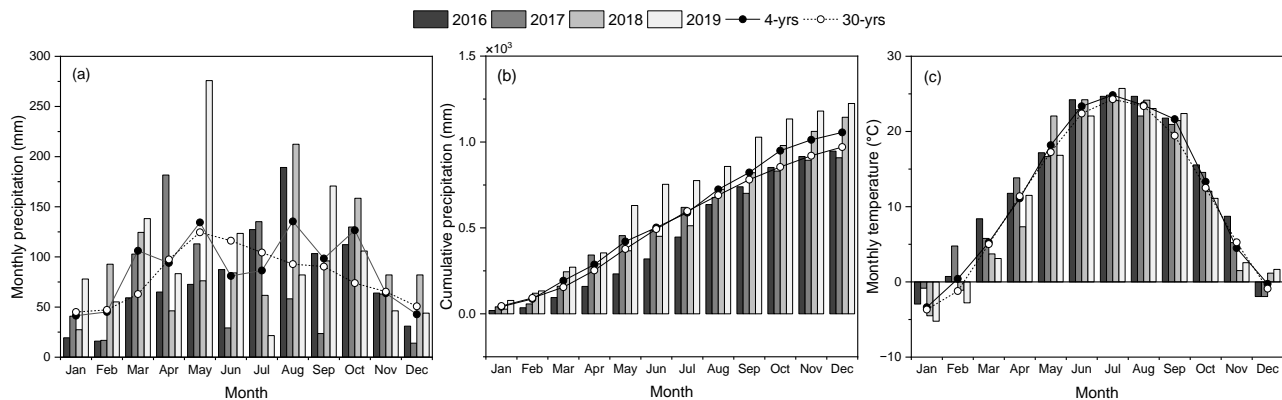
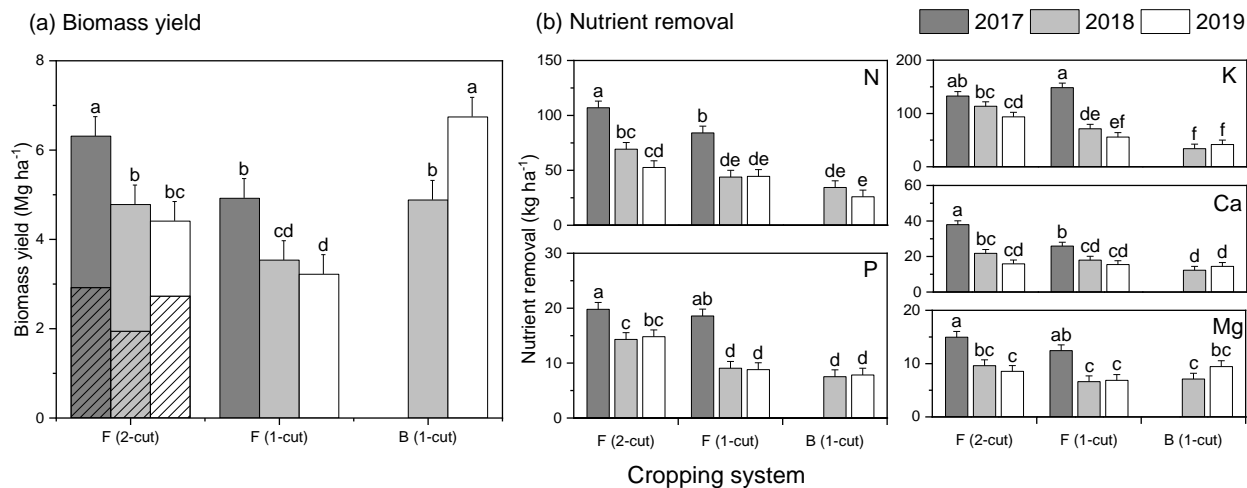


Figure 1. The research site was in the Spoon watershed in Fulton County, Illinois (IL, 40°28'23" N 90°6'44" W). The perennial-based buffer strips were established at the edge of the farm field with continuous corn-soybean rotation from 2016 to 2019 (footnote: the letter B means blocks for the experimental design).

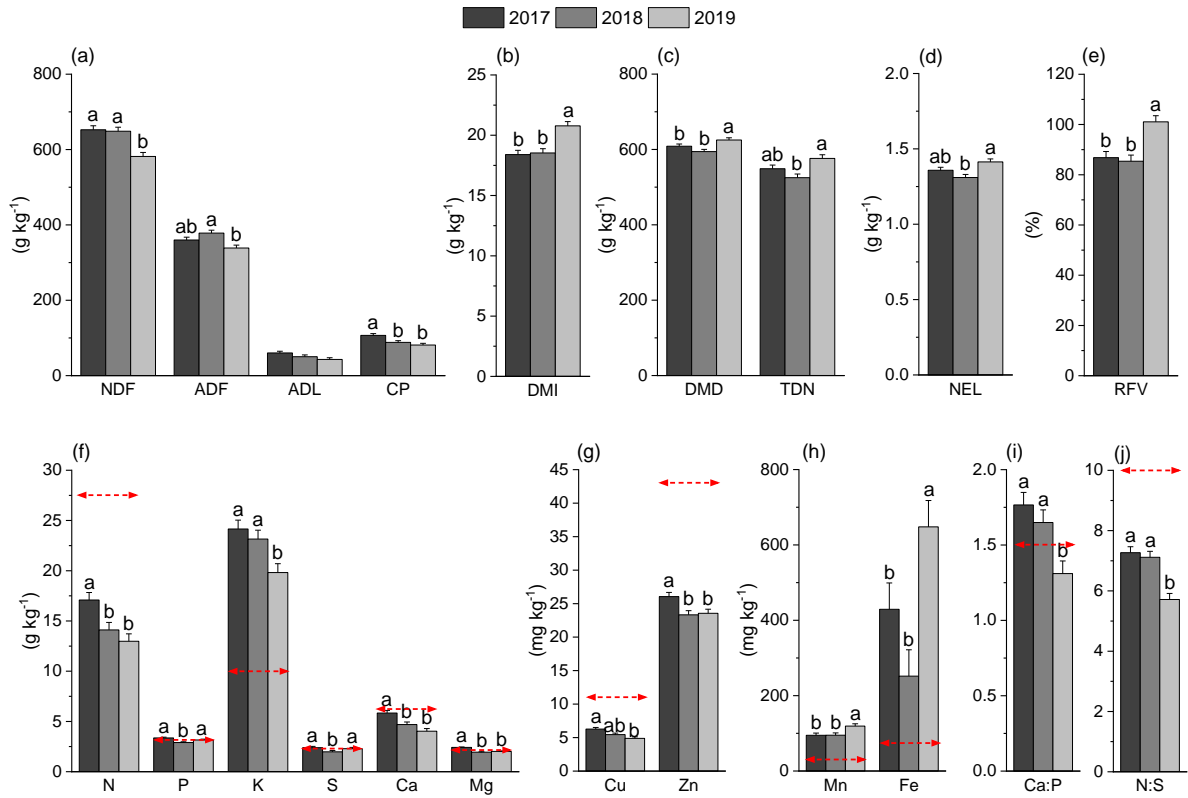


495

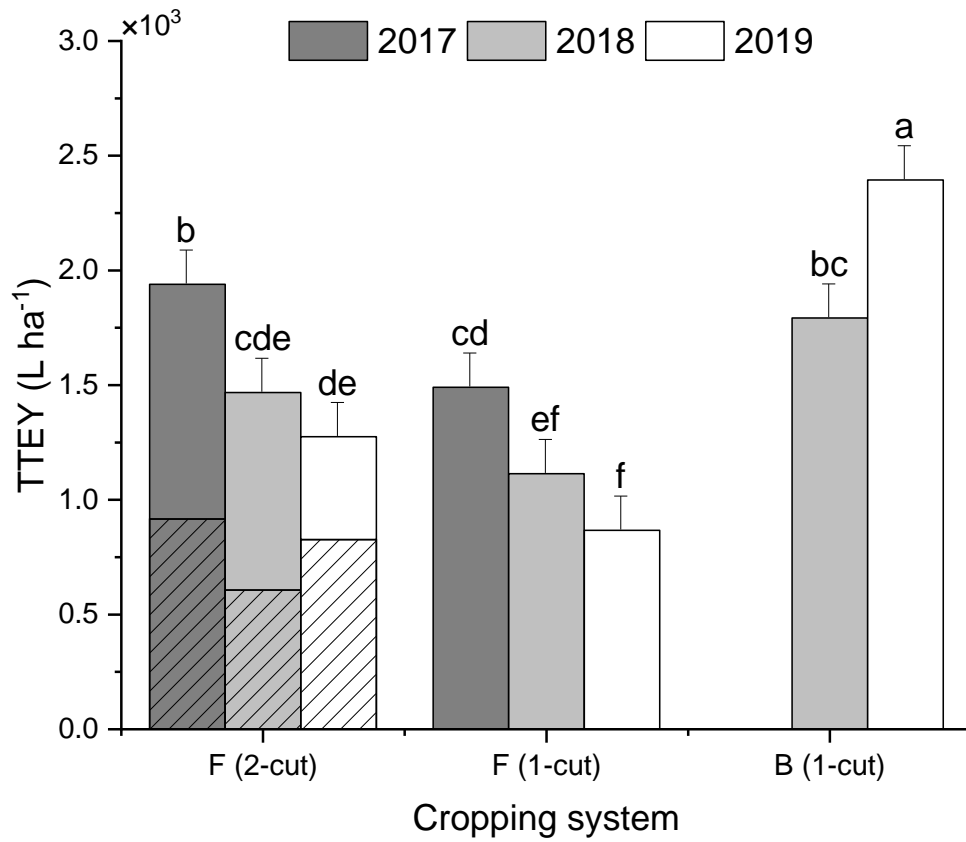
Figure 2. Local weather conditions at the experimental site located in Fulton County, IL, across the four years of study (2016-2019), including (a) monthly and (b) cumulative precipitation and (c) monthly average temperature and the 30-year monthly average (1990-2019) (data: NOAA).



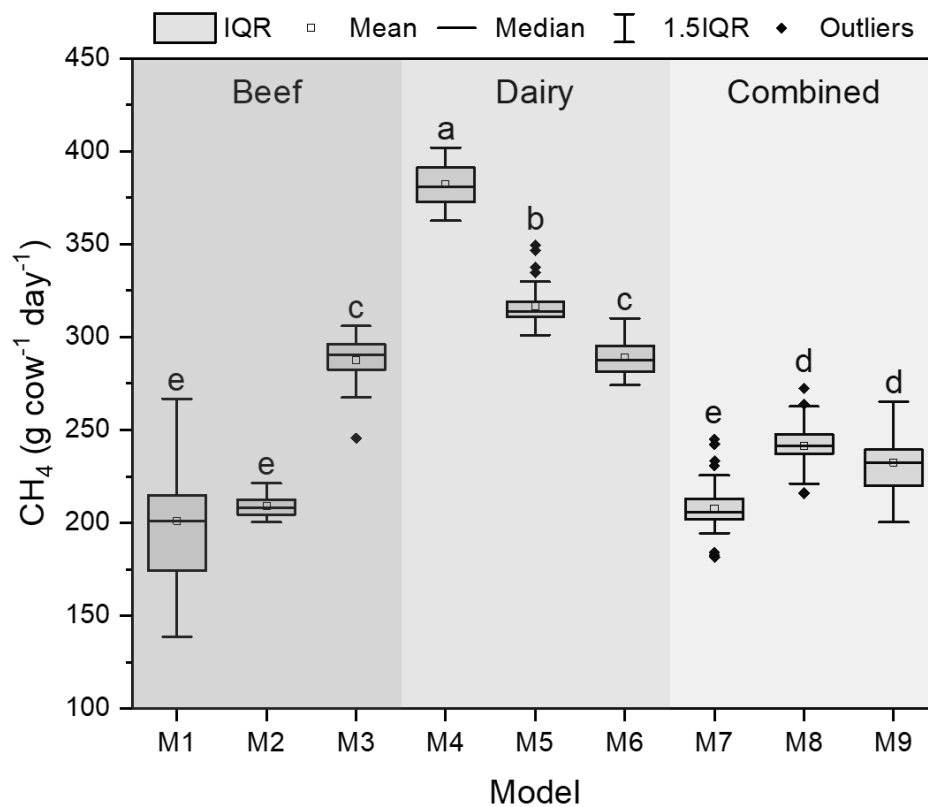
500 | **Figure 3.** Annual (a) biomass yields and (b) nutrient removal of forage and bioenergy feedstocks of the buffer strips, influenced by the harvest year and cropping system interaction ($Y \times CS$) from 2017 to 2019. In the 2-cut forage system, the Summer- and Fall-harvested biomass were combined to evaluate the annual biomass yield (the summer-harvested yield was indicated by the spare pattern).



505 **Figure 4.** The effect of cultivation year on feedstock quality of the harvested forage crops (averages of the 1- and 2-cut systems) from 2017 to 2019. The lowercase letters indicate mean separation ($\alpha=0.05$), and no mean separations were applied if the variable effect was not significant. The red dashed line indicated the critical level of minerals required by dairy cattle (NRC, 2001).



510 **Figure 5. The total theoretical ethanol yield (TTEY) of forage and bioenergy feedstocks, influenced by the harvest year and cropping system interaction (Y × CS) from 2017 to 2019. In the 2-cut forage system, the Summer- and Fall-harvested biomass were combined to evaluate the annual biomass yield (the summer-harvested yield was indicated by the spare pattern).**



515 **Figure 6. Box plots of the predicted methane (CH₄) production based on forage nutritive quality using different prediction models (M1-M9). The predicted-CH₄ of forage feedstock was compared using the one-way ANOVA with a significance level of 0.05. The lowercase letters indicate mean separation organized from the highest to the lowest value for each column using the Tukey test.**

References

- [Aguerre, M.J., Wattiaux, M.A., Powell, J.M., Broderick, G.A., Arndt, C. \(2011\). Effect of forage-to-concentrate ratio in dairy cow diets on emission of methane, carbon dioxide, and ammonia, lactation performance, and manure excretion. *Journal of Dairy Science*, 94\(6\), 3081-3093. doi:10.3168/jds.2010-4011.](#)
- 520 Ameen, A., Tang, C., Liu, J., Han, L., & Xie, G. H. (2019). Switchgrass as forage and biofuel feedstock: Effect of nitrogen fertilization rate on the quality of biomass harvested in late summer and early fall. *Field Crops Research*, 235, 154-162. doi:https://doi.org/10.1016/j.fcr.2019.03.009.
- Anderson, E. K., Aberle, E., Chen, C., Egenolf, J., Harmoney, K., Kakani, V. G., . . . Lee, D. (2016). Impacts of management practices on bioenergy feedstock yield and economic feasibility on Conservation Reserve Program grasslands. *GCB Bioenergy*, 8(6), 1178-1190. doi:10.1111/gcbb.12328.
- 525 Appuhamy, J., France, J., & Kebreab, E. (2016). Models for predicting enteric methane emissions from dairy cows in North America, Europe, and Australia and New Zealand. *Global Change Biology*, 22(9), 3039-3056. doi:10.1111/gcb.13339.
- Assefa, G., & Ledin, I. (2001). Effect of variety, soil type and fertiliser on the establishment, growth, forage yield, quality and voluntary intake by cattle of oats and vetches cultivated in pure stands and mixtures. *Animal Feed Science and Technology*, 92(1), 95-111. doi:https://doi.org/10.1016/S0377-8401(01)00242-5.
- 530 AOAC. 1980. Official Methods of Analysis, 11th ed. Association of Official Analytical Chemists, Washington, DC p. 125.
- Belanger, G., Castonguay, Y., Bertrand, A., Dhont, C., Rochette, P., Couture, L., . . . Michaud, R. (2006). Winter damage to perennial forage crops in eastern Canada: Causes, mitigation, and prediction. *Canadian Journal of Plant Science*, 86(1), 33-47. doi:10.4141/p04-171.
- 535 [Ball, D.M., Collins, M., Lacefield, G.D., Martin, N.P., Mertens, D.A., Olson K.E., Putnam, D.H., Undersander, D.J. and Wolf M.W. 2017. Understanding forage quality. American Farm Bureau Federation Publication 1-01, Park Ridge, IL. 21pp. https://fyi.extension.wisc.edu/forage/files/2017/04/FQ.pdf. \(accessed 14 May 2024\).](#)
- [Briggs, N., & Felix, T. L. \(2021\). Ration formulation for growing cattle \(Code EE0603\). Penn State Extension. http://https://extension.psu.edu/ration-formulation-for-growing-cattle. \(accessed on 16 May 2024\).](#)
- 540 Brown, R. H. (1978). A Difference in N Use Efficiency in C3 and C4 Plants and its Implications in Adaptation and Evolution 1. *Crop Science*, 18(1), 93-98. doi:10.2135/cropsci1978.0011183X001800010025x.
- Carlsson, G., Martensson, L. M., Prade, T., Svensson, S. E., & Jensen, E. S. (2017). Perennial species mixtures for multifunctional production of biomass on marginal land. *Global Change Biology Bioenergy*, 9(1), 191-201. doi:10.1111/gcbb.12373.
- 545 [Chen, G.J., Song, S.D., Wang, B.X., Zhang, Z.F., Peng, Z.L., Guo, C.H., Zhong, J.C., Wang, Y. \(2015\). Effects of Forage:Concentrate Ratio on Growth Performance, Ruminal Fermentation and Blood Metabolites in Housing-feeding Yaks. *Asian-Australas J Anim Sci*. 28\(12\):1736-41. doi:10.5713/ajas.15.0419.](#)
- Christen, B., & Dalgaard, T. (2013). Buffers for biomass production in temperate European agriculture: A review and synthesis on function, ecosystem services and implementation. *Biomass and Bioenergy*, 55, 53-67. doi:10.1016/j.biombioe.2012.09.053.
- 550 Clausen, J. C., Guillard, K., Sigmund, C. M., & Dors, K. M. (2000). Ecosystem restoration - Water quality changes from riparian buffer restoration in Connecticut. *Journal of Environmental Quality*, 29(6), 1751-1761. doi:10.2134/jeq2000.00472425002900060004x.
- 555 Collins, M. and J.O. Fritz. 2003. Forage quality. p. 363–390. In R.F Barnes et al. (eds.) Forages: An introduction to grassland agriculture. 6th ed. Iowa State Press, Ames, IA.
- Cooney, D. R., Namoi, N., Zumpf, C., Lim, S.-H., Villamil, M., Mitchell, R., & Lee, D. K. (2023). Biomass Production and Nutrient Removal by Perennial Energy Grasses Produced on a Wet Marginal Land. *Bioenergy Research*, 16(2), 886-897. doi:10.1007/s12155-022-10488-0.
- 560 Dalley, D. E., Roche, J. R., Grainger, C., & Moate, P. J. (1999). Dry matter intake, nutrient selection and milk production of dairy cows grazing rainfed perennial pastures at different herbage allowances in spring. *Australian Journal of Experimental Agriculture*, 39(8), 923-931. doi:10.1071/ea99022.

- David, M. B., Drinkwater, L. E., & McIsaac, G. F. (2010). Sources of Nitrate Yields in the Mississippi River Basin. *Journal of Environmental Quality*, 39(5), 1657-1667. doi:10.2134/jeq2010.0115.
- 565 De Deyn, G. B., Shiel, R. S., Ostle, N. J., McNamara, N. P., Oakley, S., Young, I., . . . Bardgett, R. D. (2011). Additional carbon sequestration benefits of grassland diversity restoration. *Journal of Applied Ecology*, 48(3), 600-608. doi:10.1111/j.1365-2664.2010.01925.x.
- Dhakal, D., & Islam, M. A. (2018). Grass-Legume Mixtures for Improved Soil Health in Cultivated Agroecosystem. *Sustainability*, 10(8). doi:10.3390/su10082718.
- 570 Dodds, W. K., & Oakes, R. M. (2008). Headwater Influences on Downstream Water Quality. *Environmental Management*, 41(3), 367-377. doi:10.1007/s00267-007-9033-y.
- Duchene, O., Celette, F., Ryan, M. R., DeHaan, L. R., Crews, T. E., & David, C. (2019). Integrating multipurpose perennial grains crops in Western European farming systems. *Agriculture Ecosystems & Environment*, 284, 8. doi:10.1016/j.agee.2019.106591.
- 575 Ellis, J. L., Kebreab, E., Odongo, N. E., McBride, B. W., Okine, E. K., & France, J. (2007). Prediction of methane production from dairy and beef cattle. *Journal of Dairy Science*, 90(7), 3456-3466. doi:10.3168/jds.2006-675.
- Eranki, P. L., Manowitz, D. H., Bals, B. D., Izaurralde, R. C., Kim, S., & Dale, B. E. (2013). The watershed-scale optimized and rearranged landscape design (WORLD) model and local biomass processing depots for sustainable biofuel production: Integrated life cycle assessments. *Biofuels, Bioproducts and Biorefining*, 7(5), 537-550. doi:10.1002/bbb.1426.
- 580 FAO (2014) FAO Statistical Yearbook. Food and Agriculture Organization of the United Nations, Rome, Italy.
- Fan, J. B., Zhang, W. H., Amombo, E., Hu, L. X., Kjorven, J. O., & Chen, L. (2020). Mechanisms of Environmental Stress Tolerance in Turfgrass. *Agronomy-Basel*, 10(4). doi:10.3390/agronomy10040522.
- 585 Ferrarini, A., Serra, P., Almagro, M., Trevisan, M., & Amaducci, S. (2017). Multiple ecosystem services provision and biomass logistics management in bioenergy buffers: A state-of-the-art review. *Renewable and Sustainable Energy Reviews*, 73, 277-290. doi:10.1016/j.rser.2017.01.052.
- Fike, J. H., Parrish, D. J., Wolf, D. D., Balasko, J. A., Green, J. T., Rasnake, M., & Reynolds, J. H. (2006). Long-term yield potential of switchgrass-for-biofuel systems. *Biomass & Bioenergy*, 30(3), 198-206. doi:10.1016/j.biombioe.2005.10.006.
- 590 Fike, J. H., Parrish, D. J., Wolf, D. D., Balasko, J. A., Green, J. T., Rasnake, M., & Reynolds, J. H. (2006). Switchgrass production for the upper southeastern USA: Influence of cultivar and cutting frequency on biomass yields. *Biomass & Bioenergy*, 30(3), 207-213. doi:10.1016/j.biombioe.2005.10.008.
- Fleming, G.A. 1973. Mineral composition of herbage. p. 529-566. In G.W. Butler and R.W. Bailey (ed.) *Chemistry and biochemistry of herbage*. Academic Press, New York.
- 595 Follett, R.F. and S.R. Wilkinson. 1995. Nutrient management of forages. In: R.F. Barnes, D.A. Miller and C.J. Nelson (eds.) *Forages, Vol. II. The Science of Grassland Agriculture*, 55-82. Ames: Iowa State Univ. Press.
- Gamble, J. D., Johnson, G., Current, D. A., Wyse, D. L., & Sheaffer, C. C. (2016). Species Pairing and Edge Effects on Biomass Yield and Nutrient Uptake in Perennial Alley Cropping Systems. *Agronomy Journal*, 108(3), 1020-1029. doi:10.2134/agronj2015.0456.
- 600 Ghannoum, O., Evans, J. R., & von Caemmerer, S. (2011). Chapter 8 Nitrogen and Water Use Efficiency of C4 Plants. In A. S. Raghavendra & R. F. Sage (Eds.), *C4 Photosynthesis and Related CO₂ Concentrating Mechanisms* (pp. 129-146). Dordrecht: Springer Netherlands.
- Golkowska, K., Rugani, B., Koster, D., & Van Oers, C. (2016). Environmental and economic assessment of biomass sourcing from extensively cultivated buffer strips along water bodies. *Environmental Science & Policy*, 57, 31-39. doi:10.1016/j.envsci.2015.11.014.
- 605 Gopalakrishnan, G., Negri, M. C., & Salas, W. (2012). Modeling biogeochemical impacts of bioenergy buffers with perennial grasses for a row-crop field in Illinois. *Global Change Biology Bioenergy*, 4(6), 739-750. doi:10.1111/j.1757-1707.2011.01145.x.
- 610 Guo, J., Thapa, S., Voigt, T., Owens, V., Boe, A., & Lee, D. K. (2017). Biomass Yield and Feedstock Quality of Prairie Cordgrass in Response to Seeding Rate, Row Spacing, and Nitrogen Fertilization. *Agronomy Journal*, 109(6), 2474-2485. doi:10.2134/agronj2017.03.0179.

- Guretzky, J. A., Biermacher, J. T., Cook, B. J., Kering, M. K., & Mosali, J. (2011). Switchgrass for forage and bioenergy: harvest and nitrogen rate effects on biomass yields and nutrient composition. *Plant and Soil*, 339(1-2), 69-81. doi:10.1007/s11104-010-0376-4.
- 615 Hales, K. E., Coppin, C. A., Smith, Z. K., McDaniel, Z. S., Tedeschi, L. O., Cole, N. A., & Galyean, M. L. (2022). Predicting metabolizable energy from digestible energy for growing and finishing beef cattle and relationships to the prediction of methane. *Journal of Animal Science*, 100(3). doi:10.1093/jas/skac013.
- Harmoney, K. R., Lee, D. K., Kallenbach, R. L., & Aberle, E. Z. (2016). Species Composition Changes in Conservation Reserve Program (CRP) Grassland When Managed for Biomass Feedstock Production. *Bioenergy Research*, 9(4), 1180-1188. doi:10.1007/s12155-016-9764-9.
- 620 Hegarty, R. S., Goopy, J. P., Herd, R. M., & McCorkell, B. (2007). Cattle selected for lower residual feed intake have reduced daily methane production. *Journal of Animal Science*, 85(6), 1479-1486. doi:10.2527/jas.2006-236.
- Hodgson, E. M., Fahmi, R., Yates, N., Barraclough, T., Shield, I., Allison, G., . . . Donnison, I. S. (2010). Miscanthus as a feedstock for fast-pyrolysis: Does agronomic treatment affect quality? *Bioresource Technology*, 101(15), 6185-6191. doi:10.1016/j.biortech.2010.03.024.
- 625 Hong, C. O., Owens, V. N., Lee, D. K., & Boe, A. (2013). Switchgrass, Big Bluestem, and Indiangrass Monocultures and Their Two- and Three-Way Mixtures for Bioenergy in the Northern Great Plains. *Bioenergy Research*, 6(1), 229-239. doi:10.1007/s12155-012-9252-9.
- Hong, C. O., Owens, V. N., Bransby, D., Farris, R., Fike, J., Heaton, E., Kim, S., Mayton, H., Mitchell, R., & Viands, D. (2014). Switchgrass response to nitrogen fertilizer across diverse environments in the USA: A regional feedstock partnership report. *Bioenergy Research*, 7(3), 777-788. doi:10.1007/s12155-014-9484-y.
- 630 Hoover, A., Emerson, R., Ray, A., Stevens, D., Morgan, S., Cortez, M., . . . Daubaras, D. (2018). Impact of Drought on Chemical Composition and Sugar Yields From Dilute-Acid Pretreatment and Enzymatic Hydrolysis of Miscanthus, a Tall Fescue Mixture, and Switchgrass. *Frontiers in Energy Research*, 6. doi:10.3389/fenrg.2018.00054.
- 635 Ibrahim, M., Hong, C. O., Singh, S., Kumar, S., Osborne, S., & Owens, V. (2017). Switchgrass Biomass Quality as Affected by Nitrogen Rate, Harvest Time, and Storage. *Agronomy Journal*, 109(1), 86-96. doi:10.2134/agronj2016.07.0380.
- Jungers, J. M., Clark, A. T., Betts, K., Mangan, M. E., Sheaffer, C. C., & Wyse, D. L. (2015). Long-Term Biomass Yield and Species Composition in Native Perennial Bioenergy Cropping Systems. *Agronomy Journal*, 107(5), 1627-1640. doi:10.2134/agronj15.0014.
- 640 Kelly, J. M., Kovar, J. L., Sokolowsky, R., & Moorman, T. B. (2007). Phosphorus uptake during four years by different vegetative cover types in a riparian buffer. *Nutrient Cycling in Agroecosystems*, 78(3), 239-251. doi:10.1007/s10705-007-9088-4.
- Kering, M. K., Butler, T. J., Biermacher, J. T., & Guretzky, J. A. (2012). Biomass Yield and Nutrient Removal Rates of Perennial Grasses under Nitrogen Fertilization. *Bioenergy Research*, 5(1), 61-70. doi:10.1007/s12155-011-9167-x.
- 645 Kering, M. K., Butler, T. J., Biermacher, J. T., Mosali, J., & Guretzky, J. A. (2013). Effect of Potassium and Nitrogen Fertilizer on Switchgrass Productivity and Nutrient Removal Rates under Two Harvest Systems on a Low Potassium Soil. *Bioenergy Research*, 6(1), 329-335. doi:10.1007/s12155-012-9261-8.
- Lee, D., Aberle, E., Chen, C. C., Egenolf, J., Harmoney, K., Kakani, G., . . . Castro, J. C. (2013). Nitrogen and harvest management of Conservation Reserve Program (CRP) grassland for sustainable biomass feedstock production. *GCB Bioenergy*, 5(1), 6-15. doi:10.1111/j.1757-1707.2012.01177.x.
- 650 Lee, D. K., Aberle, E., Anderson, E. K., Anderson, W., Baldwin, B. S., Baltensperger, D., . . . Owens, V. (2018). Biomass production of herbaceous energy crops in the United States: field trial results and yield potential maps from the multiyear regional feedstock partnership. *GCB Bioenergy*, 10(10), 698-716. doi:10.1111/gcbb.12493.
- Lee, D.K., A.S. Parrish and T. Voigt. 2014. Chapter 3 - Switchgrass and giant miscanthus agronomy. In Y. Shastri, A. Hansen, L. Rodriguez, & K. C. Ting (Eds.), *Engineering and science of biomass feedstock production and provision*. p. 37-59. New York, NY: Springer.
- 655 Lee, D. K., Doolittle, J. J., & Owens, V. N. (2007a). Soil carbon dioxide fluxes in established switchgrass land managed for biomass production. *Soil Biology & Biochemistry*, 39(1), 178-186. doi:10.1016/j.soilbio.2006.07.004.
- Lee, D. K., Owens, V. N., & Doolittle, J. J. (2007b). Switchgrass and soil carbon sequestration response to ammonium nitrate, manure, and harvest frequency on conservation reserve program land. *Agronomy Journal*, 99(2), 462-468. doi:10.2134/agronj2006.0152.
- 660

- Lee, M. A., Davis, A. P., Chagunda, M. G. G., & Manning, P. (2017). Forage quality declines with rising temperatures, with implications for livestock production and methane emissions. *Biogeosciences*, 14(6), 1403-1417. doi:10.5194/bg-14-1403-2017.
- 665 Li, Q., Yu, P. J., Li, G. D., & Zhou, D. W. (2016). Grass-legume ratio can change soil carbon and nitrogen storage in a temperate steppe grassland. *Soil & Tillage Research*, 157, 23-31. doi:10.1016/j.still.2015.08.021.
- Lin, C. H., Namoi, N., Hoover, A., Emerson, R., Cortez, M., Wolfrum, E., . . . Lee, D. K. (2023). Harvest and nitrogen effects on bioenergy feedstock quality of grass-legume mixtures on Conservation Reserve Program grasslands. *GCB Bioenergy*, 15(3), 283-302. doi:10.1111/gcbb.12980.
- 670 Liu, X.-J. A., Fike, J. H., Galbraith, J. M., Fike, W. B., Parrish, D. J., Evanylo, G. K., & Strahm, B. D. (2015). Effects of harvest frequency and biosolids application on switchgrass yield, feedstock quality, and theoretical ethanol yield. *GCB Bioenergy*, 7(1), 112-121. doi:10.1111/gcbb.12124.
- Lovell, S. T., & Sullivan, W. C. (2006). Environmental benefits of conservation buffers in the United States: Evidence, promise, and open questions. *Agriculture Ecosystems & Environment*, 112(4), 249-260. doi:10.1016/j.agee.2005.08.002.
- 675 Lynn J. 2004. Comparing warm-season and cool-season grasses for erosion control, water quality, and wildlife habitat. USDA-NRCS publication https://efotg.sc.egov.usda.gov/references/public/va/NWSG_CSG_comparison.pdf (accessed on 16 October 2023)
- MacAdam, J.W., and C.J. Nelson. 2003. Physiology of forage plants. p. 73–97. In R.F Barnes et al. (ed.) *Forages: An introduction to grassland agriculture*. 6th ed. Iowa State Press, Ames, IA.
- 680 Marijanušić, K., Manojlović, M., Bogdanović, D., Čabilovski, R., & Lombnaes, P. (2017). Mineral composition of forage crops in respect to dairy cow nutrition. *Bulgarian Journal of Agricultural Science*, 23(2).
- Marquez, C. O., Garcia, V. J., Schultz, R. C., & Isenhardt, T. M. (2017). Assessment of soil degradation through soil aggregation and particulate organic matter following conversion of riparian buffer to continuous cultivation. *European Journal of Soil Science*, 68(3), 295-304. doi:10.1111/ejss.12422.
- 685 McDowell, L.R 1992. Minerals in animal and human nutrition. Academic, Press, Inc., New York.
- Mehmood, M. A., Ibrahim, M., Rashid, U., Nawaz, M., Ali, S., Hussain, A., & Gull, M. (2017). Biomass production for bioenergy using marginal lands. *Sustainable Production and Consumption*, 9, 3-21. doi:10.1016/j.spc.2016.08.003.
- 690 Mialon, M. M., Martin, C., Garcia, F., Menassol, J. B., Dubroeuq, H., Veissier, I. and Micol, D. (2008). Effects of the forage-to-concentrate ratio of the diet on feeding behaviour in young Blond d'Aquitaine bulls. *Animal: an international journal of animal bioscience*. 2. 1682-91. doi:10.1017/S1751731108002905.
- Minson, D.J. 1981. Forage quality: Assessing the plant-animal complex. In: J.A. Smith and V.W. Hays (Ed.) *Proc. XIV Int. Grassl. Congr. p 23*. Westview Press, Inc., Boulder, CO.
- 695 Mitchell, R. and M. Schmer. 2012. Switchgrass Harvest and Storage. In: Monti, A. (Eds.) *Switchgrass. Green Energy and Technology*. Springer, London.
- Mitchell, R., D.K. Lee, and M. Casler. 2014. Switchgrass. In: Karlen, D.L. (Eds.) *Cellulosic Energy Cropping Systems*, 1st edn. Wiley, New York, pp 75-89.
- Monti, A., Barbanti, L., Zatta, A., & Zegada-Lizarazu, W. (2012). The contribution of switchgrass in reducing GHG emissions. *GCB Bioenergy*, 4(4), 420-434. doi:10.1111/j.1757-1707.2011.01142.x.
- 700 Mulkey, V. R., Owens, V. N., & Lee, D. K. (2006). Management of switchgrass-dominated conservation reserve program lands for biomass production in South Dakota. *Crop Science*, 46(2), 712-720. doi:10.2135/cropsci2005.04-0007.
- Mullahey, J. J., Waller, S. S., Moore, K. J., Moser, L. E., & Klopfenstein, T. J. (1992). In situ ruminal protein-degradation of switchgrass and smooth brome grass. *Agronomy Journal*, 84(2), 183-188. doi:10.2134/agronj1992.00021962008400020012x.
- 705 Nielsen, N. I., Volden, H., Akerlind, M., Brask, M., Hellwing, A. L. F., Storlien, T., & Bertilsson, J. (2013). A prediction equation for enteric methane emission from dairy cows for use in NorFor. *Acta Agriculturae Scandinavica Section a-Animal Science*, 63(3), 126-130. doi:10.1080/09064702.2013.851275.
- NRC (2001) *Nutrient Requirements of Dairy Cows*, 7th edn. National Academy of Sciences, Washington, DC.
- NRC (2005) *Mineral Tolerances of Animals*, 2nd edn. National Academy of Sciences, Washington, DC.

- 710 Nyfeler, D., Huguenin-Elie, O., Matthias, S., Frossard, E., & Luscher, A. (2011). Grass-legume mixtures can yield more nitrogen than legume pure stands due to mutual stimulation of nitrogen uptake from symbiotic and non-symbiotic sources. *Agriculture Ecosystems & Environment*, 140(1-2), 155-163. doi:10.1016/j.agee.2010.11.022.
- Ominski, K. H., Boadi, D. A., & Wittenberg, K. M. (2006). Enteric methane emissions from backgrounded cattle consuming all-forage diets. *Canadian Journal of Animal Science*, 86(3), 393-400. doi:10.4141/a05-051.
- 715 Parrish, D.J. and J.H. Fike. 2005. The biology and agronomy of switchgrass for biofuels. *Crit. Rev. Plant Sci.* 24: 423-459. doi:10.1080/07352680500316433.
- Pedroso, G. M., Hutmacher, R. B., Putnam, D., Six, J., van Kessel, C., & Linqvist, B. A. (2014). Biomass yield and nitrogen use of potential C4 and C3 dedicated energy crops in a Mediterranean climate. *Field Crops Research*, 161, 149-157. doi:https://doi.org/10.1016/j.fcr.2014.02.003.
- 720 Quijas, S., Schmid, B., & Balvanera, P. (2010). Plant diversity enhances provision of ecosystem services: A new synthesis. *Basic and Applied Ecology*, 11(7), 582-593. doi:10.1016/j.baae.2010.06.009.
- Rabalais, N. N., Turner, R. E., & Jr., W. J. W. (2002). Gulf of Mexico Hypoxia, A.K.A. "The Dead Zone". *Annual Review of Ecology and Systematics*, 33(1), 235-263. doi:10.1146/annurev.ecolsys.33.010802.150513.
- Sage, R. F., Percy, R. W., & Seemann, J. R. (1987). The Nitrogen Use Efficiency of C₃ and C₄ Plants. *III. Leaf Nitrogen Effects on the Activity of Carboxylating Enzymes in *Chenopodium album* (L.) and *Amaranthus retroflexus* (L.)*, 85(2), 355-359. doi:10.1104/pp.85.2.355.
- 725 Sage, R. F., & Zhu, X.-G. (2011). Exploiting the engine of C4 photosynthesis. *Journal of Experimental Botany*, 62(9), 2989-3000. doi:10.1093/jxb/err179.
- 730 Sanderson, M. A., Brink, G., Ruth, L., & Stout, R. (2012). Grass-Legume Mixtures Suppress Weeds during Establishment Better than Monocultures. *Agronomy Journal*, 104(1), 36-42. doi:10.2134/agronj2011.0130.
- Sanderson, M. A., Read, J. C., & Reed, R. L. (1999). Harvest Management of Switchgrass for Biomass Feedstock and Forage Production. *Agronomy Journal*, 91(1), 5-10. doi:10.2134/agronj1999.00021962009100010002x.
- SAS Institute. 2007. SAS/STAT 9.2 Users's guide. SAS Inst, Cary, NC.
- 735 Schmitt, T. J., Dosskey, M. G., & Hoagland, K. D. (1999). Filter Strip Performance and Processes for Different Vegetation, Widths, and Contaminants. *Journal of Environmental Quality*, 28(5), 1479-1489. doi:10.2134/jeq1999.00472425002800050013x.
- Schultz, R. C., Colletti, J. P., Isenhardt, T. M., Simpkins, W. W., Mize, C. W., & Thompson, M. L. (1995). DESIGN AND PLACEMENT OF A MULTISPECIES RIPARIAN BUFFER STRIP SYSTEM. *Agroforestry Systems*, 29(3), 201-226. doi:10.1007/bf00704869.
- 740 Spears, J. W. (1994). Minerals in Forages. In *Forage Quality, Evaluation, and Utilization* (pp. 281-317).
- Storlien, T. M., Volden, H., Almoy, T., Beauchemin, K. A., McAllister, T. A., & Harstad, O. M. (2014). Prediction of enteric methane production from dairy cows. *Acta Agriculturae Scandinavica Section a-Animal Science*, 64(2), 98-109. doi:10.1080/09064702.2014.959553.
- 745 Suter, M., Connolly, J., Finn, J. A., Loges, R., Kirwan, L., Sebastia, M. T., & Luscher, A. (2015). Nitrogen yield advantage from grass-legume mixtures is robust over a wide range of legume proportions and environmental conditions. *Global Change Biology*, 21(6), 2424-2438. doi:10.1111/gcb.12880.
- Suttle, N. F. (2022). *Mineral nutrition of livestock*: CABI.
- 750 Sweeney, B. W., & Newbold, J. D. (2014). Streamside Forest Buffer Width Needed to Protect Stream Water Quality, Habitat, and Organisms: A Literature Review. *JAWRA Journal of the American Water Resources Association*, 50(3), 560-584. doi:10.1111/jawr.12203.
- Tufekcioglu, A., Raich, J. W., Isenhardt, T. M., & Schultz, R. C. (2003). Biomass, carbon and nitrogen dynamics of multi-species riparian buffers within an agricultural watershed in Iowa, USA. *Agroforestry Systems*, 57(3), 187-198. doi:10.1023/A:1024898615284.
- 755 Turner, R. E., & Rabalais, N. N. (1994). COASTAL EUTROPHICATION NEAR THE MISSISSIPPI RIVER DELTA. *Nature*, 368(6472), 619-621. doi:10.1038/368619a0.
- [United Nations Environment Programme \(UNEP\) and Climate and Clean Air Coalition \(CCAC\). \(2021\). Global Methane Assessment: Benefits and Costs of Mitigating Methane Emissions. https://www.ccacoalition.org/resources/global-methane-assessment-full-report. \(accessed on 16 May 2024\).](https://www.ccacoalition.org/resources/global-methane-assessment-full-report)

- 760 Varvel, G. E., Vogel, K. P., Mitchell, R. B., Follett, R. F., & Kimble, J. M. (2008). Comparison of corn and switchgrass on marginal soils for bioenergy. *Biomass and Bioenergy*, 32(1), 18-21. doi:<https://doi.org/10.1016/j.biombioe.2007.07.003>.
- Vitousek, P. M., Naylor, R., Crews, T., David, M. B., Drinkwater, L. E., Holland, E., . . . Zhang, F. S. (2009). Nutrient Imbalances in Agricultural Development. *Science*, 324(5934), 1519-1520. doi:10.1126/science.1170261.
- 765 Vogel, K. P., Brejda, J. J., Walters, D. T., & Buxton, D. R. (2002). Switchgrass biomass production in the Midwest USA: Harvest and nitrogen management. *Agronomy Journal*, 94(3), 413-420. doi:10.2134/agronj2002.0413.
- Weijde, T., Alvim Kamei, C., Torres, A., Vermerris, W., Dolstra, O., Visser, R., & Trindade, L. (2013). The potential of C4 grasses for cellulosic biofuel production. *Frontiers in Plant Science*, 4(107). doi:10.3389/fpls.2013.00107.
- 770 Yang, Y., Reilly, E. C., Jungers, J. M., Chen, J., & Smith, T. M. (2019). Climate Benefits of Increasing Plant Diversity in Perennial Bioenergy Crops. *One Earth*, 1(4), 434-445. doi:<https://doi.org/10.1016/j.oneear.2019.11.011>.
- Zamora, D. S., Wyatt, G. J., Apostol, K. G., & Tschirner, U. (2013). Biomass yield, energy values, and chemical composition of hybrid poplars in short rotation woody crop production and native perennial grasses in Minnesota, USA. *Biomass and Bioenergy*, 49, 222-230. doi:10.1016/j.biombioe.2012.12.031.
- 775 Zumpf, C., Lee, M.-S., Thapa, S., Guo, J., Mitchell, R., Volenec, J. J., & Lee, D. (2019). Impact of warm-season grass management on feedstock production on marginal farmland in Central Illinois. *GCB Bioenergy*, 11(10), 1202-1214. doi:10.1111/gcbb.12627.