

Eddy covariance fluxes of CO₂, CH₄ and N₂O on a drained peatland forest after clearcutting

Olli-Pekka Tikkasalo¹, Olli Peltola¹, Pavel Alekseychik¹⁺, Juha Heikkinen¹⁺, Samuli Launiainen¹⁺, Aleksii Lehtonen¹⁺, Qian Li¹⁺, Eduardo Martínez-García¹⁺, Mikko Peltoniemi¹⁺, Petri Salovaara¹⁺, Ville Tuominen²⁺ and Raisa Mäkipää¹

¹Natural Resources Institute Finland (Luke), 00791 Helsinki, Finland

²Finnish Meteorological Institute (FMI), 00560 Helsinki, Finland

+ Authors are listed in an alphabetical order

10 *Correspondence to:* Olli-Pekka Tikkasalo, olli-pekka.tikkasalo@luke.fi

Abstract

~~Even-aged forestry~~ Rotation forestry based on ~~-~~clearcut harvesting, site preparation, planting, and intermediate one-to-three thinnings is currently the dominant management approach in Fennoscandia. However, ~~our~~ understanding of the greenhouse gas (GHG) emissions following clearcutting remains limited, particularly on drained peatland forests. In this study, we report eddy covariance-based (EC) net emissions of carbon dioxide (CO₂), methane (CH₄) and nitrous oxide (N₂O) from a boreal fertile drained peatland forest one year after the harvest. Our results show that on annual scale, the site was a net CO₂ source. The CO₂ emissions dominate the total annual GHG balance (23.3 t CO₂-eq ha⁻¹a⁻¹, 82.5% of the total), while the role of N₂O emissions (4.98 t CO₂-eq ha⁻¹a⁻¹, 17.1%) was also significant. The site was a weak CH₄ source (0.1 t CO₂-eq ha⁻¹a⁻¹, 0.4%). A statistical model was developed to estimate surface-type-specific CH₄ and N₂O emissions. The model was based on air temperature, soil moisture and ~~fraction-contribution~~ of specific surface-types within the EC flux footprint. The surface-types were classified using unmanned aerial vehicle (UAV) spectral imaging and machine learning. Based on the statistical models, the highest surface-type specific CH₄ emissions occurred from plant-covered ditches and exposed peat, while the surfaces dominated by living trees, dead wood, ~~and litter~~ and exposed peat along with plant-covered ditches were the main contributors to N₂O emissions. Our study provides new insights into how CH₄ and N₂O fluxes are affected by surface-type variation across clearcutting areas in boreal forested peatlands. Our findings highlight the need for integrating surface-type-specific flux modelling, EC-based data, and chamber-based flux measurements to comprehend the GHG emissions following clearcutting and regeneration. Results strengthen the accumulated evidence that recently clearcut peatland forests are significant GHG sources.

30 1 Introduction

Globally, peatland soils store 650000 Mt of carbon (C), which is equivalent to more than half of the C in the atmosphere (FAO, 2020). In Europe, the estimated peatland C stock is 43620 Mt C, with a total peatland area of 58.8 Mha of which 46% is drained (UNEP, 2022). Drainage lowers water table depth (WTD) and accelerates aerobic peat decomposition, resulting in carbon dioxide (CO₂) emissions and an annual loss of soil C stock equivalent to 160 Mt C (UNEP, 2022). Greenhouse gas (GHG) fluxes have been quantified (Ojanen et al., 2010), and the GHG balance of forests on organic soils at the national scale has been accounted for Finland (Alm et al., 2023; Statistics Finland, 2022). However, the short-term impact of clearcutting and following site preparation on the GHG fluxes of drained peatlands remains unclear and is not currently considered in the Intergovernmental Panel on Climate Change (IPCC) emission factors applied in the national GHG inventories or in reporting to the United Nations Framework Convention on Climate Change (UNFCCC). Therefore, estimates of the current GHG balance of drained forested peatlands under management are associated with high uncertainties.

Rotation forestry~~Even-aged forestry~~, is currently the dominant forest management method in Fennoscandia, both on mineral soils and on drained forested peatlands. It is characterized by forest stands with an even age structure, resulting from forest regeneration by clearcutting, usually followed by site preparation and single species planting, and later by intermediate thinning(s) from below (Kuuluvainen et al., 2012). In Finland, 4.7 Mha of peatlands have been drained for forestry purposes (Korhonen et al., 2021). A large fraction of fertile drained peatland forests is currently at mature stage and approaching the decision of final harvesting and regeneration (Lehtonen et al., 2023). In rotation-based peatland forestry, clearcutting typically leads to maintenance ditching to ensure adequate drainage for undisturbed tree growth (Päivänen and Hånell, 2012). However, ~~even-aged~~Rotation forestry that involves clearcutting and maintenance ditching has been found to have several short-term negative external effects (Nieminen et al., 2018). These include increases in nutrient and dissolved organic carbon (DOC) exports to watercourses (Palviainen et al., 2022), loss of biodiversity (Paillet et al., 2010; Rajakallio et al., 2021), and enhanced CO₂ emissions (Korkiakoski et al., 2023). However, the magnitude and duration of the major GHG fluxes – CO₂, methane (CH₄) and nitrous oxide (N₂O) – on boreal drained forested peatlands after clearcutting remain largely unclear. This is because there have been only a few studies assessing them to date (Korkiakoski et al., 2019, 2023; Mäkiranta et al., 2010; Tong et al., 2022). The lack of information on how clearcutting affects GHG emissions in boreal forestry-drained peatlands prevents the comparisons of climate change impacts of business-as-usual forestry (i.e., ~~even-aged~~rotation) and alternative forest management methods (e.g., continuous cover forestry) (Kaarakka et al., 2021; Mäkipää et al., 2023).

Tree removal alters the local microclimate of forested peatlands by changing e.g., the amount of radiation available on the ground (Tikkasalo et al., 2024). This can result in higher soil temperatures (Pumpanen et al., 2004; Wu et al., 2011), potentially increasing peat decomposition and CO₂ emission rates (Jandl et al., 2007). On the other hand, piles of harvest residues may decrease the soil temperature creating biotic and abiotic variation. Under drained or unsaturated moisture conditions, this

process may be further enhanced due to increased oxygen availability in soil (Maljanen et al., 2010; Ojanen et al., 2013; Drzymulska, 2016). The harvest of trees in peatland forests raise the ~~water table depth (WTD)~~ by decreasing transpiration and interception (Sarkkola et al., 2010; Leppä et al., 2020a, b). This, in turn, may result in a slower peat decomposition rate. Furthermore, the removal of trees and decline of forest-floor vegetation will lead to ~~a~~ strong immediate reduction in photosynthesis in clearcutting areas. ~~However, d~~Drainage can increase root aeration and nutrient availability, which may benefit the rapid establishment of initial forest-floor vegetation and tree seedlings (Mäkiranta et al. 2010) and enhances rates of ground vegetation carbon sequestration (Minkkinen et al., 2001). ~~However,~~ ground vegetation is insufficient to compensate for the increase in ecosystem respiration caused by the decomposition of logging residues (Mäkiranta et al., 2012; Ojanen et al., 2017; Korhonen et al., 2019; Tong et al., 2022). Consequently, clearcutting transforms forested peatland ecosystems into net CO₂ sources during the early stages of stand development (Mäkiranta et al., 2010; Tong et al., 2022; Korhonen et al., 2023).

Peatland drainage has decreased CH₄ emissions compared to pristine peatlands, due to improved soil aeration (Maljanen et al., 2010; Ojanen et al., 2010). After tree-removal WTD typically rises (Korhonen et al., 2019; Leppä et al., 2020a), which supports the production of CH₄ in the extended anaerobic zone. This can turn peatland sites from net CH₄ sinks into sources (Korhonen et al., 2019). However, Ojanen et al. (2010, 2013) found that CH₄ emissions only increase when the ~~WTD~~ is at shallow level (i.e., within 30 cm from the soil surface). Furthermore, the response of vegetation to drainage may affect the supply of substrate to methanogens (Minkkinen and Laine, 2006), which can further enhance or offset the hydrological effects of drainage on CH₄ fluxes.

Clearcutting not only affects C fluxes, but also leads to ~~increased~~ N₂O emissions (Robertson et al., 1987; Huttunen et al., 2003; Saari et al., 2009; Neill et al., 2006; Korhonen et al., 2019). This is due to the flush of decomposing logging residues and reduced nitrogen (~~N~~) uptake due to lower plant biomass, which both increase available soil N in the first years after the harvesting (Mäkiranta et al., 2012). N₂O production is also favoured by redox conditions that vary between oxidative and reductive, which exist in wet but unsaturated peat after clearcutting and drainage. The production of N₂O responds to changes in soil moisture, so the effect of drainage on N₂O emissions is likely to depend on the combination of ~~WTD~~ change and soil nutrient status (Tong et al., 2022). Additionally, drying-rewetting events occurring during the growing season have been identified as ‘hot moments’ for N₂O emissions (Groffman et al., 2009). Nevertheless, the accurate estimation of N₂O emissions has remained a significant challenge due to their considerable spatio-temporal variations (Rautakoski et al., 2024), which are a consequence of the inherent complexity of the various interacting processes. Furthermore, given that N₂O is a potent long-lived GHG and a stratospheric ozone-depleting substance that has been accumulating rapidly in the atmosphere over the last decades (Tian et al., 2024), it is important to determine the role of clearcutting in regulating the global GHG budget.

95

Considering the above, there is a great deal of uncertainty about the GHG dynamics and their key modulating processes on boreal drained peatland forests under forestry management, a shortcoming directly related to the limited number of studies available. Therefore, it is critical to improve our understanding on the clearcutting effects on CO₂, CH₄, and N₂O fluxes.

100 Most studies on GHG fluxes in boreal drained forested peatlands after clearcutting are based on manual chamber measurements (e.g., Mäkiranta et al., 2010; Tong et al., 2022). However, the magnitude and controls on CO₂, CH₄, and N₂O fluxes in these high-latitude northern ecosystems remain highly uncertain. This is mainly related to the poor spatial and temporal representation of manual chamber-based GHG measurements (Savage and Davidson, 2003). Clearcutting creates a highly heterogeneous surface, which makes it challenging to interpret ecosystem GHG fluxes due to variation in surface-specific
105 fluxes. Previous research has demonstrated that forest-floor vegetation heterogeneity, logging residues, and ditches cause significant spatial variability in GHG fluxes from drained peatlands and clearcut areas (Minkinen and Laine, 2006; Ojanen et al., 2010; Mäkiranta et al., 2012; Rissanen et al., 2023). In this context, eddy covariance (EC) has become a widely used technique for measuring the GHG exchange (Baldocchi, 2003) due to its ability to provide high-temporal resolution exchange rates integrated over a relatively large area. The EC footprint (i.e. source area of the measured flux) collects the contributions
110 of each element of the surface area to the measured vertical turbulent flux (Vesala et al., 2008). Therefore, this area could be divided into distinct surface-types that form a heterogeneous matrix, enabling direct assessments of each surface-type on the measured GHG fluxes. While studies attributing EC measured surface fluxes to specific surface-types at heterogeneous ecosystems exist (Forbrich et al., 2011; Franz et al., 2016; Tuovinen et al., 2019; Ludwig et al., 2024), none of them focus on heterogeneous clearcut areas. The likely reason for this is the lack of high-resolution data on surface-types within the EC
115 tower's footprint. The use of high-resolution georeferenced imagery from unmanned aerial vehicle (UAV) surveys, and the possibility to derive detailed surface maps, however, now enables the integration of footprint models and GHG flux measurements and attributing measured fluxes to specific surface features.

In light of the preceding considerations, there is a considerable degree of uncertainty associated with the magnitude of GHGs as well as their key modulating processes and spatial and temporal heterogeneity on boreal drained peatland forests under forestry management. This deficiency is directly attributable to the paucity of available studies on the subject. It is therefore imperative to improve our understanding on the impact of clearcutting and different surface types on GHG fluxes.

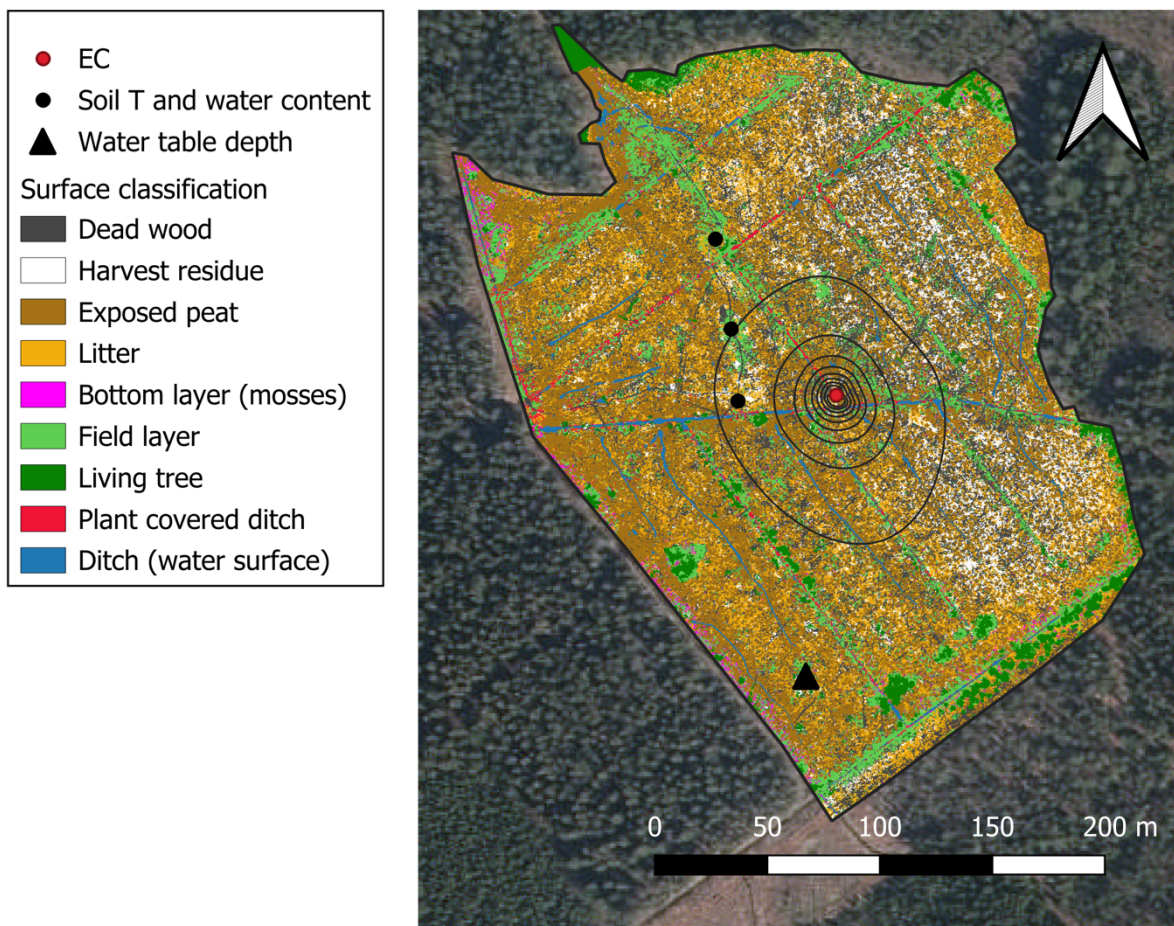
120 Here, we examined the CO₂, CH₄, and N₂O fluxes from a fertile boreal drained peatland forest located in southern Finland during the first full year (second growing season) after clearcutting. GHG fluxes were measured using an EC system during the year 2022, while clear-cutting was conducted during the winter and spring 2021. Information on surface-type variation across the footprint area was collected through drone imaging in June 2022. Our specific aims were to:

1. Quantify the magnitude and temporal variation of CO₂, CH₄, and N₂O fluxes along their annual balances.
2. Estimate the differences in surface-type specific CH₄ and N₂O fluxes, as well as their sensitivity to environmental variation.

130 2 Materials and methods

2.1 Measurement site

Ränskälänkorpi study site is a boreal peatland forest (ca. 24 ha) located in Southern Finland (61°11'N, 25°16'E, 144 m a.s.l.; Fig. 1, Fig. S1), which has been drained for forestry before 1960's. The climate is humid continental with a 30-year (1981–2022) mean annual temperature and precipitation sum of 4.2°C and 611 mm, respectively. The site maintains snow cover on average for 133 days, typically from early November to late April. The forest is dominated by Norway spruce (*Picea abies* (L.) Karst., about 70% of all trees), with some Scots pine (*Pinus sylvestris* L.) and Downy birch (*Betula pubescens* Ehrh.). The forest-floor vegetation is sparse and consists of mosses (mainly *Hylocomium splendens*, *Pleurozium schreberi* and *Dicranum polysetum*), dwarf shrubs (mainly *Vaccinium myrtillus* and *Vaccinium vitis-idaea*), as well as forbs such as *Dryopteris carthusiana*, *Gymnocarpium dryopteris*, *Trientalis europaea*, and *Oxalis acetosella*. The site consists of sedge-wood dominated peat, which is mainly more than 1 m deep. ~~The site peatland type is mainly nutrient rich (Rhtkg II) and *Vaccinium myrtillus* (Mtkg II).~~ [The site is a fertile and well-drained, Norway spruce dominated and represents mainly nutrient-rich Herb-rich \(Rhtkg II\) and *Vaccinium myrtillus* \(Mtkg II\) site types according to Finnish site types of drained peatland forests \(Laine et al., 2012\).](#) -In March 2021, the site was divided into three areas with different harvest treatments: non-harvested control (C, ca. 7.3 ha), selection harvest (CCF, ca. 10.0 ha), and clearcutting (CC, ca. 6.1 ha). The harvesting in the CCF and CC areas took place with harvester machinery primarily from 18th March to 1st April 2021 when the soil was frozen. It was completed in June 2021 in the north-western section of the CC area. This study was conducted in the CC area, where all the trees were cut. Some large, dead trees were retained on site, and the resulting logging residues (i.e., foliage, branches and stumps) were left on the ground. The understory vegetation was significantly impacted by the disturbance caused by the harvester and logging machines. The stand regeneration was carried out in summer 2021 through ditch mounding and planting of Norway spruce seedlings, with an approximate density of 1800 – 2000 seedlings ha⁻¹. The harvest and regeneration are according to common practices for operational forestry in Finland.



155 **Figure 1. Surface-type classification and aerial view of the experimental setup in the clearcut area.** Black triangle shows the location
of water table depth measurement, ~~black white~~ circles show the location of the soil temperature and moisture sensors, red circle shows the
location of the eddy covariance (EC) tower. The contour lines display the mean footprint area (10 to 90th percentiles) for the year 2022. The
pixel colour indicates the surface-type. The background aerial photo is acquired from the National Land Survey of Finland Topographic
Database (distributed with CC-BY 4.0 license, retrieved 06/2024).

160 2.2 EC measurements

Ecosystem-atmosphere greenhouse gas exchange was measured with the EC technique in the middle of the CC area with a
3.1 m tall tower (see Fig. 1). Distance from the tower to the forest edge was at minimum 100 m in all directions. High frequency
data on the three wind components and sonic temperature were acquired with an ultrasonic anemometer (uSonic-3 Cage MP,
METEK GmbH, Germany), CO₂ and water vapor (H₂O) mixing ratios with a nondispersive infrared sensor (LI-7200RS, LI-
165 COR Biosciences, NE, USA) and CH₄ and N₂O mixing ratios with Tunable Infrared Laser Direct Absorption Spectrometer

(TILDAS, Aerodyne Research Inc, USA). All the EC data were logged with 10 Hz frequency. TILDAS data were logged to separate files and combined with the other EC data during data post-processing. TILDAS was located in a small, air-conditioned measurement hut and it was sampling the air with a 9 m long heated Teflon tube. Rapid flow in the tube was created with a scroll pump (TriScroll 600, Agilent Technologies Inc, USA). LI-7200RS was situated in the measurement tower and it was sampling the air with a heated sampling tube distributed with the instrument (ca. 0.7 m long tube with 5.3 mm inner diameter) and pump. The gas analysers sampling inlets were located next to the sonic anemometer (0.18 m horizontal separation).

In addition to the EC fluxes, several environmental variables were continuously monitored at the EC station. These include photosynthetically active radiation (PAR; LI-190R Quantum Sensor, LI-COR Biosciences, USA), air temperature (T_{air}) and humidity (HMP155 Humidity and Temperature Probe, Vaisala Oyj, Finland), shortwave and longwave incoming and outgoing radiation component (CNR4 4-component Net Radiometer, Kipp & Zonen, the Netherlands), precipitation (P; TR-525M Rainfall sensor, Texas Electronics, USA), soil temperature (T_{soil}) and water content (θ) at 10 cm depth (Hydra Probe II, Stevens Water Monitoring Systems Inc., USA). These variables were logged with 1 min time step. Soil temperature and water were monitored also at other locations at the clearcut (see Fig. 1) with TMS-4 microclimate loggers (Standard datalogger, TOMST s.r.o, Prague, Czechia) and water table depth were measured with Odyssey Capacitance Water Level Logger (Dataflow Systems Ltd, New Zealand).

2.3 EC data processing

EC flux data processing followed international standards set e.g. by Integrated Carbon Observation System (ICOS) network (Franz et al., 2018) as much as feasible. Flux calculations were executed with the EddyPro open-source software (version 7.0.7, LI-COR Inc, USA). Fluxes were calculated using 30-min averaging time and turbulent fluctuations were separated from the measurements using block-averaging. The high frequency time series were despiked following Mauder et al (2013). High frequency gas data were already converted to dry mixing ratios internally by the measurement devices (LI-7200RS and TILDAS) and hence no conversions were done during post-processing. The gas sampling system (tubes and filters) induced time lags between wind and gas mixing ratio data. These time lags were estimated using cross-covariance maximisation and accounted for before flux calculations. Also, the flow coordinates were rotated using sector-wise planar fitting (Rannik et al., 2020) before calculating the covariances (i.e., fluxes) between the vertical wind component and gas mixing ratio time series. EC fluxes are always underestimated due to high frequency and low frequency dampening of the signal caused by the measurement system (e.g., dampening of the gas fluctuations in the sampling lines) and the need to use a finite flux averaging time, respectively. This underestimation of gas fluxes was corrected in this study following the approach by Fratini et al. (2012) and Moncrieff et al. (2005) with the exception that the cut-off frequencies characterising the high frequency dampening of each gas signal were estimated based on cospectra between vertical wind and gas time series and not from gas power spectra following Peltola et al. (2021).

200 The fully processed gas flux time series resulting from the processing procedure described above were quality filtered following Vitale et al. (2020) with few differences. First, flux data were discarded if the flux values were outside predefined limits, instrument diagnostics signalled erroneous measurement or site diaries suggested disturbance to the data. Then, the procedure by Vitale et al. (2020) was followed with the exception that the statistical model used in the quality filtering procedure was estimated using singular spectrum analysis and low-rank reconstruction of the time series (Golyandina et al., 2001; Mahecha et al., 2007) instead of the multiplicative model used in Vitale et al. (2020). After quality filtering, low turbulence periods during which EC fluxes do not represent surface-atmosphere exchange were identified using friction velocity and periods when friction velocity was below a site-specific threshold (0.09 m s^{-1}) were removed from further analysis. After this procedure the flux data coverages were 64 %, 57 % and 57 % for CO_2 , CH_4 and N_2O flux time series, respectively, with majority of the data gaps occurring during low wind nights.

210

For calculating daily mean fluxes or annual GHG balances, the gaps in flux time series needed to be filled. The gaps were filled separately with three machine learning (ML) algorithms: random forest (RF), extreme gradient boosting (XGB) and k nearest neighbours (kNN). These three algorithms were selected based on their good performance in filling gaps in flux time series in prior studies (e.g., Goodrich et al., 2021; Irvin et al., 2021; Vekuri et al., 2023). Ensemble median of the three gapfilled time series was then used to estimate annual GHG balances and daily fluxes, whereas the spread between the three estimates was used to evaluate the range of plausible annual GHG balance values. With this approach we minimize the uncertainty in annual balances stemming from the selection of a particular algorithm for gapfilling. “xgboost” (version 1.7.1) Python package was used for the XGB method, whereas “scikit-learn” (version 1.1.1) functions RandomForestRegressor and KNeighborsRegressor were utilized in RF and kNN methods, respectively. ML model training and testing of predictive performance was executed as follows: first model hyperparameters were tuned against a random subset of data with scikit-learn function RandomizedSearchCV. After hyperparameter tuning, artificial gaps (covering 15 % of the data) were introduced in random locations in the flux time series and the lengths of these gaps were drawn from a distribution describing the length of actual gaps in the time series (Irvin et al., 2021). Measured data from these gaps were used as independent test data, whereas all the other data were used in model training. Then the trained model predictive performance was evaluated against the test data and this training/testing procedure was executed independently five times. The final models used in gapfilling the flux time series were trained using all the measured data. The following predictors were used in this gapfilling procedure for CH_4 fluxes: normalized daily incoming potential solar radiation (RPOT) and its first time derivative, T_{air} , its average during the past 3 hours, 1 day and 7 days, incoming shortwave radiation, surface temperature calculated from upwelling longwave radiation, vapor pressure deficit, sine and cosine transformed wind direction and T_s . The list of predictors was the same for N_2O fluxes except also soil water content (θ) was included. For CO_2 flux time series gapfilling, otherwise the same predictors were used as for CH_4 , but also daily normalized RPOT and its first time derivative (within each day values range between 0 and 1) were included so that the models capture better the CO_2 flux daily cycle. For kNN, data were normalized to zero mean

and unit variance, whereas for RF and XGB data were not normalized. The predictive performance (R^2) of the ensemble models obtained with this procedure were 0.75 ± 0.04 (mean \pm standard deviation of the five predictions), 0.66 ± 0.05 , and 0.92 ± 0.01 for CO_2 , CH_4 , and N_2O fluxes, respectively, the slopes of linear fits between the predictions and observations were 0.97 ± 0.08 , 1.01 ± 0.02 and 1.01 ± 0.04 and the intercepts were $0.01 \pm 0.07 \mu\text{mol m}^{-2} \text{s}^{-1}$, $-0.01 \pm 0.04 \text{ nmol m}^{-2} \text{s}^{-1}$ and $-0.02 \pm 0.04 \text{ nmol m}^{-2} \text{s}^{-1}$, respectively. These results for the predictive performance differ from some of the aforementioned studies, however this is likely due to the nature of variability of these fluxes at our site (low photosynthesis and CO_2 flux variability, marked seasonal variability in N_2O fluxes and low CH_4 fluxes, see Sect. 3.1).

240

CO_2 fluxes (net ecosystem exchange, NEE_{NE} with positive sign denoting net emissions) were decomposed to ecosystem respiration (R_{eco}) and gross primary productivity (GPP) following the nighttime decomposition method by Reichstein et al. (2005) with the slight modifications by Wutzler et al. (2018). However, in contrast to Reichstein et al. (2005), here we forced nighttime GPP to zero by subtracting 1.5 day running median of the nighttime GPP from the GPP time series (and added it to R_{eco} time series) and forced any residual nighttime GPP to zero. This way $\text{NEE} = R_{\text{eco}} - \text{GPP}$ is valid at all time steps and GPP is zero when there is no incoming solar radiation.

245

2.4 EC flux footprint

250 Turbulent fluxes measured with EC relate to the surface fluxes via

$$F(t) = \iint \varphi(x, y, t) f(x, y, t) dx dy, \quad (1)$$

where $F = F(t)$ is the flux measured with EC at time t , $f = f(x, y, t)$ is the surface flux at location (x, y) at time t and $\varphi = \varphi(x, y, t)$ is so-called footprint function which describes the source area of EC flux measurements (Vesala et al., 2008) Footprint gives an estimate for the relative contribution of each location on the surface to the measured turbulent flux and with such information it is possible link surface features to measured fluxes. If we assume constant fluxes ($f_j(t)$) from surface-type j during time step t , then Eq. 1 can be simplified as

255

$$F(t) \approx \sum_j \varphi_j(t) f_j(t), \quad (2)$$

where φ_j is the overall contribution of surface-type j to the EC flux source area during time step t .

260

In this study, the source area, i.e., footprint, for the measured gas fluxes was estimated for each 30-min period with the Kljun et al. (2015) model, which is a simple two-dimensional analytical parameterisation of results obtained with backward Lagrangian stochastic particle dispersion model (Kljun et al., 2002). The model requires information on the flow, namely wind speed, boundary layer height, Obukhov length, standard deviation of lateral velocity fluctuations, friction velocity and wind

265 direction for rotating the footprint to prevailing direction. All these were measured with the EC equipment, except boundary
layer height which was retrieved from ERA5 reanalysis product (Hersbach et al., 2023). In addition to these measurements,
footprint calculations require information on EC measurement height (z), displacement height (d) and surface roughness length
(z_0). The CC surface is a complex mosaic of different surface-types and vegetation heights with small-scale topography. This
270 this issue, we opted to use varying values for d in the calculations and estimated them from the EC data via logarithmic wind
profile equation similarly as in (Helbig et al., 2016) with the exception that only near-neutral periods were used in this analysis
and the estimates for d were bin-averaged in wind direction and 30-day bins before using in footprint calculations for reducing
the noise stemming from the uncertain calculation procedure. The estimated values for d ranged between 0.8 and 2.0 m
(5th – 95th quantiles of the estimates) during the study period (Fig. S2). z_0 was implicitly included in the footprint calculations
275 via the ratio between wind speed and friction velocity (Kljun et al., 2015). With this footprint estimation procedure, we
accounted for the effect of temporally and spatially varying surface characteristics on the footprints.

2.5 Drone imaging

Orthomosaic of the CC area was generated by using drone images captured on June 8th 2022 between 12-14 h using DJI
Matrice 210 V2 drone equipped with Zenmuse X7 sensor for RGB and Micasense Altum sensor for multispectral images.
280 Flight altitude was 75 m and images were captured with 95% ~~front~~overlap and 85% ~~side~~lap. The weather conditions were
cloudy throughout the flight providing even spectral conditions. The images were georeferenced with 10 ground control points
measured with a Trimble R12 GNSS device and processed ~~into~~ an orthomosaic and ~~to~~ Digital Elevation Model (DEM) using
Agisoft Metashape 1.7.3 (Agisoft, 2021). ~~The r~~Resulting RGB orthomosaic had a ground sample distance (GSD) of
1.16 cm-~~px⁻¹~~ and multispectral orthomosaic of 3.23 cm-~~px⁻¹~~ resolution.

285 2.6 Surface type classification

The land surface classification is based on geographical object-based image classification approach similar to De Luca et al.
(2019) and was executed using the drone images (see Sect. 2.5). Orthomosaics from the CC area including RGB, Red Edge
(RE) and Near Infrared (NIR) channels were merged with the DEM and segmented by spectral signal Euclidian distance using
the Large-Scale Mean-Shift (LSMS) segmentation found in Orfeo Toolbox (Grizonnet et al., 2017). Parameters for LSMS
290 were ~~spatial~~r=1 range.r=5 and minsize=40. The LSMS segmentation resulted in 1.4 million polygons which ~~provide~~ enabled
detailed segmentation even of between the smallest objects at the sitesurface cover elements down to ca. 10 by 10 cm in size.

To classify the segments, training data consisting of samples of different surface ~~t~~types were used to train ~~the~~ Random Forest
classifier ~~found in the~~ within the Orfeo Toolbox using the means and variances of R, G, B, RE, NIR and DEM channels inside
the polygon. Random Forest uses multiple decision trees trained on bootstrap sets of training data and the classification is
295 based on majority vote of the decision trees (Breiman, 2001). The training data was manually labelled on the segmented

300 polygon in QGIS software using the RGB image and field surveys. The training data covered 0.27% of the CC area and included even numbers of samples for each ~~surface type class distributed~~ evenly ~~around across~~ the ~~area surveyed area~~ to account for small spectral changes ~~due to slight changes in cloud optical depth~~ during the flight. The classes (Table 1, Fig. 1, Fig. S3) were selected by prior field surveys to be a representative set of different surface ~~-~~types that could accurately be distinguished from the drone orthomosaic and were readily identifiable *in situ*. With the trained model, the rest of the segments were classified into different land cover types with mean balanced accuracy of 81.2% and Cohen's kappa coefficient of 0.64. As the number of segments in the different surface-types varies widely, ~~the~~ Table 1 shows also the User's Accuracy for class samples. Piles of harvest residue and dead wood are common throughout the area, and in many cases the difference between those classes is difficult to distinguish and the classification can be mixed. A moderate amount of precipitation occurred just before the flight, but this did not affect the classification of exposed peat, ~~even though it had small ponds despite the presence of small pond in the depressions~~. The plant ~~-~~covered ditches, however, can in some cases be classified as the bottom or the field layer.

310 **Table 1: Surface type classification.** Names of the surface-types, their definition, share of the clearcut area ~~and average footprint area~~, mean classification confidence level (share of votes for the majority class) of the Random Forest classifier, and the User's accuracy (share of correctly classified segments from the classification) for equal-sized sample of each class.

Surface type	Definition	Share of clearcut area (%)	Mean share of footprint area (%)	Mean classification confidence (%)	User's accuracy (%)
Dead wood	Tree trunks and connected branches	22.8	22.6	47.8	55.6
Harvest residue	Piles of branches left from clearcutting	7.9	3.7	53.6	82.2
Exposed peat	Peat piles for spruce saplings	29.0	40.6	76.7	75.6
Litter	Bare dry ground, conifer shoots	19.9	13.5	52.2	66.7
Bottom layer (mosses)	Mosses, small shrubs	1.4	0.6	28.2	51.1
Field layer	Small plants	11.8	9.3	49.7	68.9
Living tree	Larger trees (>ca. 0.5 m)	4.2	5.2	66.8	82.2
Plant - covered ditch	Water growing moss, sedge or other vegetation covering the ditch	1.1	2.4	41.2	73.3
Ditch (water surface)	Open water surfaces	1.9	2.1	70.9	95.4

2.7 Correlation analysis

To understand which environmental parameters should be included in the statistical flux models, we quantified the GHG flux correlation with environmental variables with the bivariate Spearman rank correlation coefficient (r_s). r_s was calculated for the 30-min, non-gap filled timeseries (except for GPP) by omitting those 30-min intervals which did not have observations recorded. For CO₂ flux we present both the NEE (F_{CO_2}) and GPP since the NEE consists of two components (GPP and R_{eco}). The environmental variables are precipitation (P), PAR, water content in air (w_{H_2O}), WTD, air and soil temperature (T_{air} , T_{soil}) and soil water content (θ). T_{air} , P , w_{H_2O} and PAR are measured at the EC tower and the locations of T_{soil} , WTD and θ measurements are shown in Fig. 1.

320

2.8 Splitting CH₄ and N₂O flux into surface-type and environmental controls

We developed a statistical model that can capture the spatiotemporal variability of the fluxes, F_{CH_4} and F_{N_2O} . We included the surface-type (ST; Table 1) and temperature and soil water availability effects to the model. Soil water availability was only included as a general term without ST specific contribution. We opted to use only air temperature as the single independent, ST specific environmental variable in our model since T_{air} can be expected to be uniform across whole clearcut area. The same assumption is more challenging to justify for soil temperature, soil moisture or WTD, which are influenced by soil processes and topography and expected to vary spatially within the study site.

Two-Six alternative models were fitted to the EC flux measurements. The response variable in both models was the natural logarithm of observed fluxes, either CH₄ or N₂O, and both models had a temperature dependency similar to the Q₁₀ temperature response. The first model (Eq. 3) is referred to as baseline model and assumes coherent responses of soil fluxes across the site. The second model (Eq. 4) is an extension of the baseline model and includes a soil moisture (θ) term. The second model is referred to as the baseline θ model. The third model (Eq. 5) is a ST specific model and allows soil-cover specific variation in fluxes similar to Ludwig et al. (2024) and in their temperature responses. Models 4-6 are modifications of the third model. Model 4 (Eq. 6) does not have a ST specific temperature term, model 5 (Eq. 7) includes a soil moisture term and model 6 (Eq. 8) is similar to model 5 but does not include the ST specific temperature term. Models 3-6 (Eqs. 5-8) are named full, full no δ , full θ and full θ no δ models, respectively.

335

$$\ln(F_i) = \alpha + \beta \frac{T_{air,i} - T_{ref}}{10^\circ\text{C}} \quad (3)$$

340

$$\ln(F_i) = \alpha + \beta \frac{T_{air,i} - T_{ref}}{10^\circ\text{C}} + \zeta\theta_i \quad (4)$$

$$\ln(F_i) = \alpha + \beta \frac{T_{air,i} - T_{ref}}{10^\circ\text{C}} + \sum_{j=1}^N \varphi_{i,j} \left(\gamma_j + \delta_j \frac{T_{air,i} - T_{ref}}{10^\circ\text{C}} \right) \quad (54)$$

$$\ln(F_i) = \alpha + \beta \frac{T_{air,i} - T_{ref}}{10^\circ\text{C}} + \sum_{j=1}^N \varphi_{i,j} \gamma_j \quad (6)$$

$$\ln(F_i) = \alpha + \beta \frac{T_{air,i} - T_{ref}}{10^\circ\text{C}} + \zeta \theta_i + \sum_{j=1}^N \varphi_{i,j} \left(\gamma_j + \delta_j \frac{T_{air,i} - T_{ref}}{10^\circ\text{C}} \right) \quad (7)$$

$$\ln(F_i) = \alpha + \beta \frac{T_{air,i} - T_{ref}}{10^\circ\text{C}} + \zeta \theta_i + \sum_{j=1}^N \varphi_{i,j} \gamma_j \quad (8)$$

355 where F_i is the observed 30-min flux, $\alpha, \beta, \gamma, \delta$ and $\zeta \theta$ are free parameters to be estimated, $\varphi_{i,j}$ is the fraction of surface-type j inside the footprint of observation i , and $T_{ref} = 10^\circ\text{C}$ is the reference temperature and θ is the mean soil moisture measured at three locations shown in Fig. 1. In Eq. (4) parameter α then relates to base source strength at 10°C , β to base temperature scale of a GHG flux, γ_j to surface type specific source / sink effect at 10°C and δ_j to surface type specific temperature dependency effect.

360

For the ST specific models (Eqs. (5)-(8)), we consider models with either 3, 4, 5, 6, or 9 surface-types (ST3, ST4, ST5, ST6 and ST9 respectively) bringing the total number of models that are considered to ~~22~~six for both GHG. ST9 considers all the classified surface-types. ST5 is built from ST9 by leaving out the bottom layer class which covers only ca 0.6% on average of the footprint areas and by combining dead wood and harvest residue classes, ditches with water surface (open ditches) and plant-covered ditch classes and living trees and field layer classes. Similarly, ST3 is built from ST5 by further combining all classes except exposed peat class and the class containing both ditch types. ST4 and ST6 are derived from ST3 and ST5, respectively, by separating allotting the open ditches and plant-covered ditches to their own classes. The different surface-type combinations are summarized in Table 2 (see also Fig. 1 and Fig. S3 for visualization of surface-types in the CC area).

370 **Table 2: Surface type combinations between ST specific models.** The table shows which surface-types are combined in different ST specific models. Same number in a column indicates that the surface-types are combined. X indicates that the surface-type is removed from the analysis.

Surface type	ST3	ST4	ST5	ST6	ST9
Dead wood	1	1	1	1	1
Harvest residue	1	1	1	1	2
Exposed peat	2	2	2	2	3
Litter	1	1	3	3	4
Bottom layer (mosses)	X	X	X	X	5
Field layer	1	1	4	4	6
Living tree	1	1	4	4	7
Plant-covered ditch	3	3	5	5	8
Ditch (water surface)	3	4	5	6	9

375 The free parameters of the models $\alpha, \beta, \zeta, \gamma, \delta$ and σ_ϵ (the standard deviation of the likelihood function) were estimated using Bayesian inference and Markov chain Monte Carlo (MCMC) methods using the “pyMC” package (Abril-Pla et al., 2023). The prior distribution of α and ζ was set to a normal distribution whose mean was zero and standard deviation was two—were calculated from the measured flux where air temperature was between 9–11°C. The prior distribution of γ follows a hierarchical design: the prior for each surface-type is normally distributed with mean μ_γ and standard deviation σ_γ and the prior distribution for mean μ_γ was the standard normal distribution $\mu_\gamma \sim \mathcal{N}(0,1)$. We used exponential distributions as priors for β and δ with rate parameters λ_β and λ_δ . We used a normally distributed likelihood function with standard deviation σ_ϵ . We set the prior distribution for σ_ϵ to be exponential distribution with rate parameter λ_ϵ . Finally, the rate parameters λ_l of the exponential distributions for $\beta, \delta, \sigma_\epsilon$ and σ_γ were set such that the full width at half maximum (FWHM) of prior predictive distributions (Fig. S4-S5) is at least 2 times wider than the FWHM of the observed flux distributions. For simplicity, same values were used for both GHGs $\sigma_\gamma = 2.0, \lambda_l = 1.0; l \in \{\beta, \delta, \epsilon\}$. The parameters were estimated using the *pymc.sampling.mcmc.sample* function of the pyMC package with 4 chains, 2000 samples per chain and a tuning period of 2000 steps, i.e., total 8000 individual parameters sets were drawn for further analysis. All the other sampler settings were left as default. The full, non gap-filled, EC flux data sets were used in the parameter estimation i.e., the artificial gaps introduced to the flux data sets for developing the gap-filling model were not present in this parameter estimation.

390

We evaluate the model performance based on ~~two metrics—the expected log posterior density~~ the of leave one out cross validation (ELPD-LOO) ~~and the adjusted coefficient of determination (R^2_{adj})~~. ELPD-LOO was calculated using the compare function of the “ArviZ” Python package which uses the Pareto smoothed importance sampling to re-fit the model parameters

(Vehtari et al., 2017). ~~The compare function ranks the models based on the expected log posterior density of the left out samples. While a single ELPD-LOO value is not easy to interpret in terms of model performance, models are straightforward to compare against each other as higher value of ELPD-LOO marks better performance.~~

We defined ~~the~~ Eqs. (3)-(84) on natural logarithm base since ln-transformations of the measured flux values were normally distributed based on quantile-quantile plotting. When transforming the measured 30-min fluxes to natural logarithm base, we omitted those CH₄ fluxes that were below -10 nmol m⁻²s⁻¹ and those N₂O values that were below 0 nmol m⁻²s⁻¹. We chose these limits since during low flux period CH₄ fluxes varied randomly around zero, whereas N₂O fluxes were clearly positive throughout the measurement period with only occasional negative flux observations. The CH₄ flux values were then shifted by 10 nmol m⁻²s⁻¹ before the natural logarithm was applied. This shift was accounted for also when the model results were transformed back into units of nmol m⁻²s⁻¹. Additionally, we accounted for natural logarithm transformation bias when transforming the modelled fluxes to nmol m⁻²s⁻¹. In total the back transformation is

$$F_i = \exp\left(F_{i,\ln} + \frac{\sigma_\epsilon^2}{2}\right) - S, \quad (95)$$

where $F_{i,\ln}$ is the modelled flux in natural logarithm base, σ_ϵ is the standard deviation of the likelihood function and S is the shift ($S = 0$ nmol m⁻²s⁻¹ for N₂O and $S = 10$ nmol m⁻²s⁻¹ for CH₄)

To further understand the GHG emissions from different surface-types, we calculated the surface-type specific fluxes by setting the contribution of each surface-type to unity ($\varphi_{i,j} = 1$ in Eq. 4) in turn, while zeroing others. ~~The measured T_{air} was used in calculating these model estimates. For each temperature we~~ We calculated 8000 different flux values with the parameters estimated in the MCMC sampling.

3 Results

3.1 Ecosystem scale greenhouse gas fluxes

The CC area in the Ränskälänkorpri study site was a strong net source of GHGs during the first full year (second growing season) after the clearcutting (Fig. 2 and Fig. S6). The eddy covariance measurements showed that the CO₂ was the dominant GHG flux in terms of emissions (expressed as CO₂-equivalents, $GWP100_{CH_4} = 28$, $GWP100_{N_2O} = 265$; Stocker et al. 2013). Specifically, the annual NEE was controlled by R_{eco} (38200 kg CO₂-eq ha⁻¹ a⁻¹; 1040 g C m⁻² a⁻¹) rather than by GPP (14900 kg CO₂-eq ha⁻¹ a⁻¹; 410 g C m⁻² a⁻¹). Consequently, the CC area showed high cumulative net CO₂ emissions during 2022 was (-23300 kg CO₂-eq ha⁻¹ a⁻¹; -(640 g C m⁻² a⁻¹), followed by relatively low N₂O emissions

(4800 kg CO₂-eq ha⁻¹ a⁻¹) and only minor ~~net~~-CH₄ emissions (100 kg CO₂-eq ha⁻¹ a⁻¹; 0.3 g C m⁻² a⁻¹). It should be noted that ~~t~~The contribution of the snow-free period emissions to annual emissions were 82%, 80%, and 98% for CO₂, N₂O and CH₄, respectively. ~~The annual R_{eco} was 38200 kg CO₂-eq ha⁻¹ a⁻¹ (1040 g C m⁻² a⁻¹) and GPP 14900 kg CO₂-eq ha⁻¹ a⁻¹ (410 g C m⁻² a⁻¹).~~

The seasonal cycle of NEE was characterized by small ~~-~~emissions (R_{eco}) during winter. R_{eco} increased rapidly after snowmelt, while GPP remained low until late May. The NEE was rather stable from late May to late Aug, while both component fluxes showed dual peak in late June and August. In autumn, GPP decreased along the reduced solar radiation but respiration remained at nearly constant level from September to November, causing the seasonal asymmetry seen in NEE (Fig. 2). On daily scale, the ecosystem was a net source of CO₂ to the atmosphere throughout the measurement period. CH₄ flux started to increase in the mid-June slightly over one month after snow melt and the daily CH₄ emissions fluctuated between 1 – 6 nmol m⁻²s⁻¹ until the end of August after which the flux was small (-1 – 1.6 nmol m⁻²s⁻¹). N₂O flux increased from 0.5– to 1.5 nmol m⁻²s⁻¹ from mid-April to mid-May and after a short decrease, it gradually increased to 2 nmol m⁻²s⁻¹ ~~-~~by mid-July. Between mid-July and mid-August N₂O flux experienced a strong peak with highest values of 6 nmol m⁻²s⁻¹. N₂O flux stayed then around 2 nmol m⁻²s⁻¹ until the snow covered the clearcut area after which the flux decreased below 1 nmol m⁻²s⁻¹.

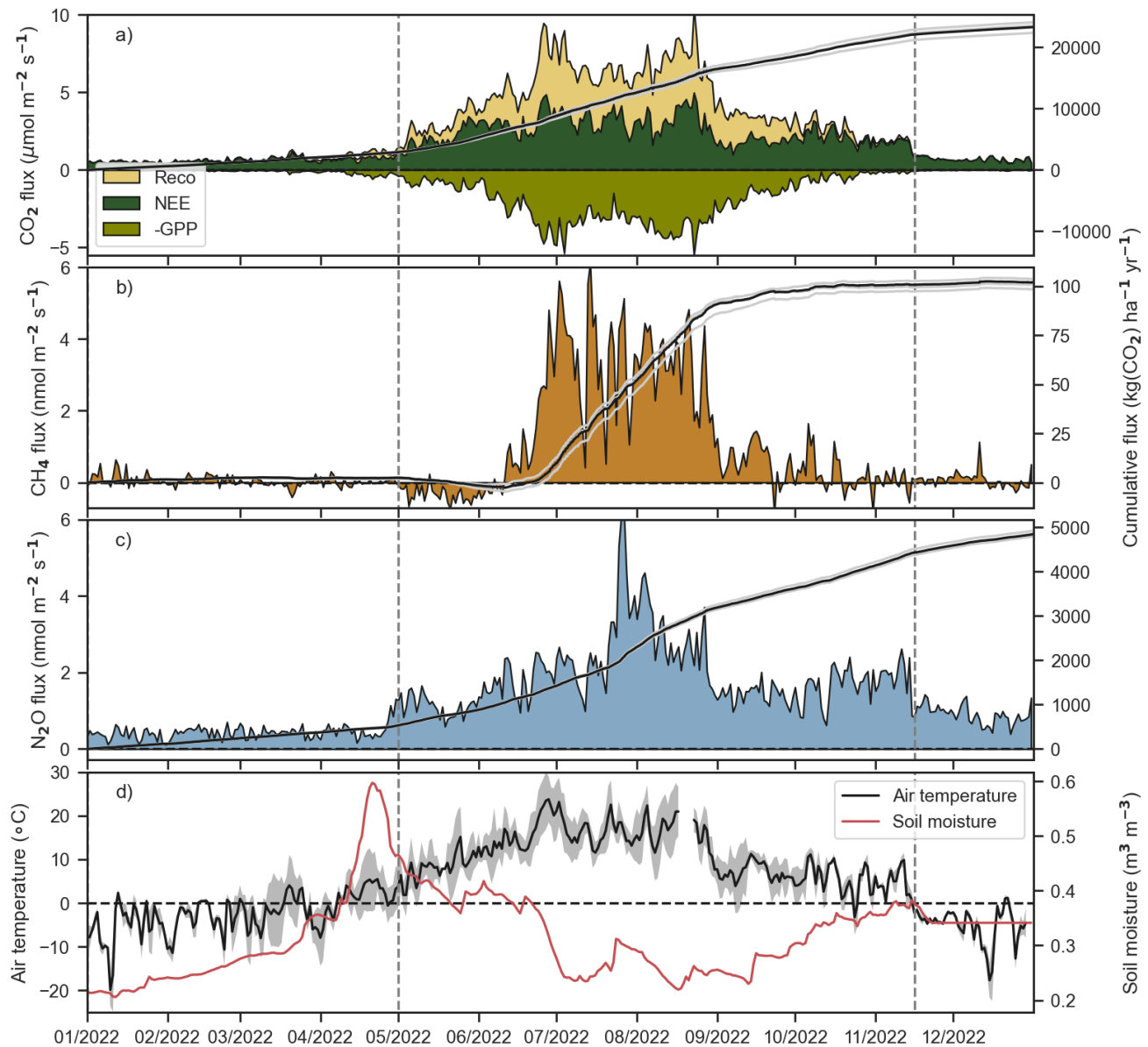
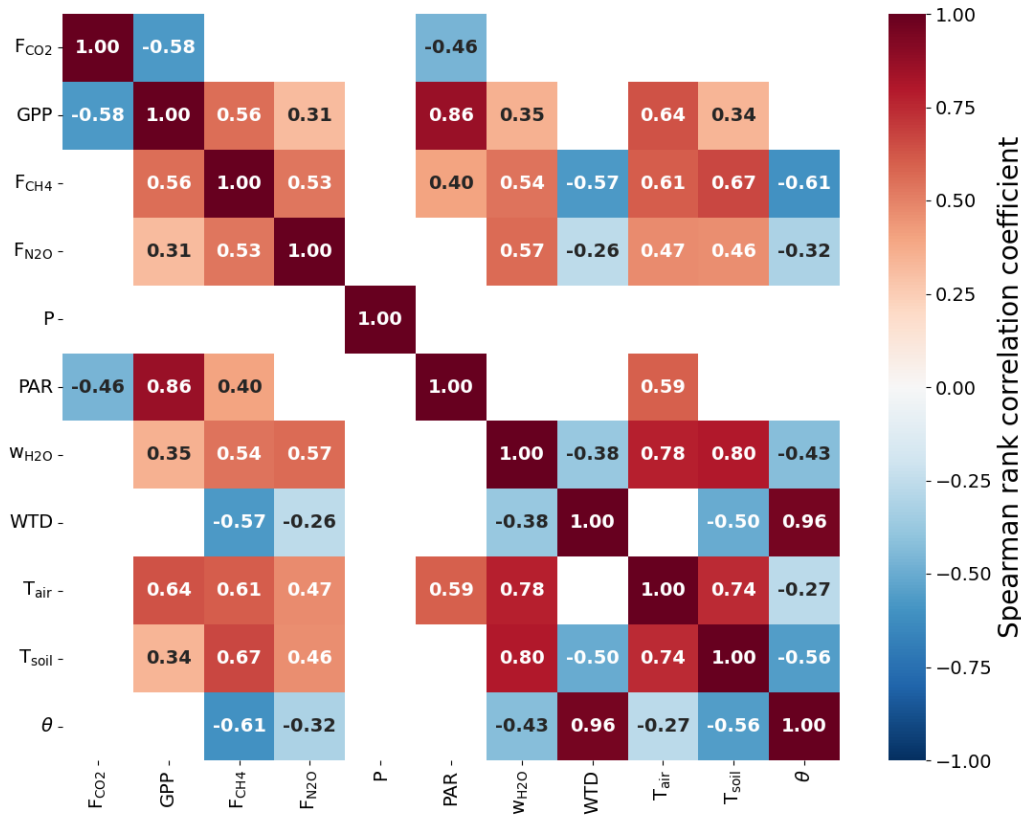


Figure 2. Time series of daily mean and cumulative sums of CO₂ (a), CH₄ (b) and N₂O (c) fluxes, and daily air temperature and soil moisture (d) during the year 2022. CO₂ flux is partitioned into components of gross primary production (GPP) and ecosystem respiration (R_{eco}) with methods described in Sect. 2.3. Vertical dash lines indicate the snow melt dates in spring and first snow in late autumn. Flux time series were gapfilled with three different ML algorithms (Sect. 2.3) and cumulative sums calculated from these time series are shown with grey lines. Black line shows the ensemble average of these three estimates. Shaded area in panel d shows daily temperature variability (standard deviation) around the mean.

445

3.2 Flux correlation with environmental parameters



450

Figure 3. Correlation heatmap reporting Spearman's rank correlation coefficients for GHG fluxes and selected environmental parameters. The abbreviations are: F_{CO_2} = CO₂ flux, GPP = gross primary production, F_{N_2O} = N₂O flux, F_{CH_4} = CH₄ flux, P = precipitation, PAR = photosynthetically active radiation, w_{H_2O} = water mixing ratio in air, WTD = water table depth, T_{air} = air temperature, T_{soil} = soil temperature at 5 cm depth (averaged value obtained from 3 different sensors located over the CC area; see white circles in Fig. 1), θ = soil water content at 5 cm depth (average value similar to T_{soil}). For further details on the measurement locations of other parameters, please refer to Fig. 1 and Sect. 2.2. Only correlations whose absolute value is higher than 0.25 are shown.

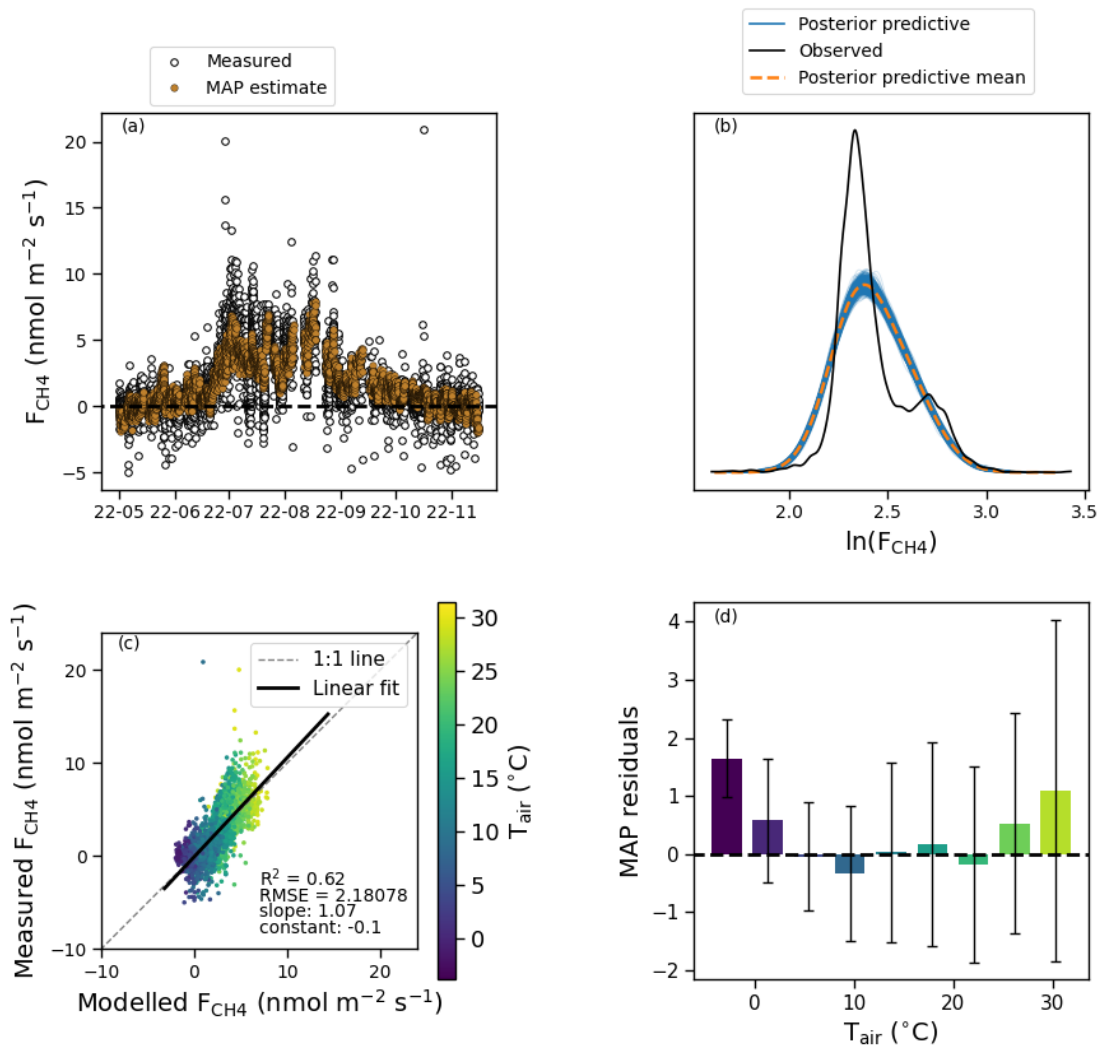
455

Figure 3 shows correlation coefficients between the 30-minute GHG fluxes and environmental variables. The NEE correlated well ($|r_s| > 0.25$) only with PAR while the GPP correlates with PAR, w_{H_2O} and both T_{air} and T_{soil} . F_{CH_4} correlated with all environmental variables besides P. The F_{CH_4} correlated positively with temperature, w_{H_2O} and PAR, and negatively with WTD (i.e., higher F_{CH_4} are observed when WTD is close to the surface) and θ . F_{N_2O} correlation with environmental factors was similar to F_{CH_4} except that it correlated weaker with PAR, WTD, θ , T_{air} and T_{soil} . Most of the environmental variables are correlated with each other due to their similar diel and annual cycles.

460

3.3 Models for CH₄ and N₂O fluxes to estimate surface-type specific fluxes

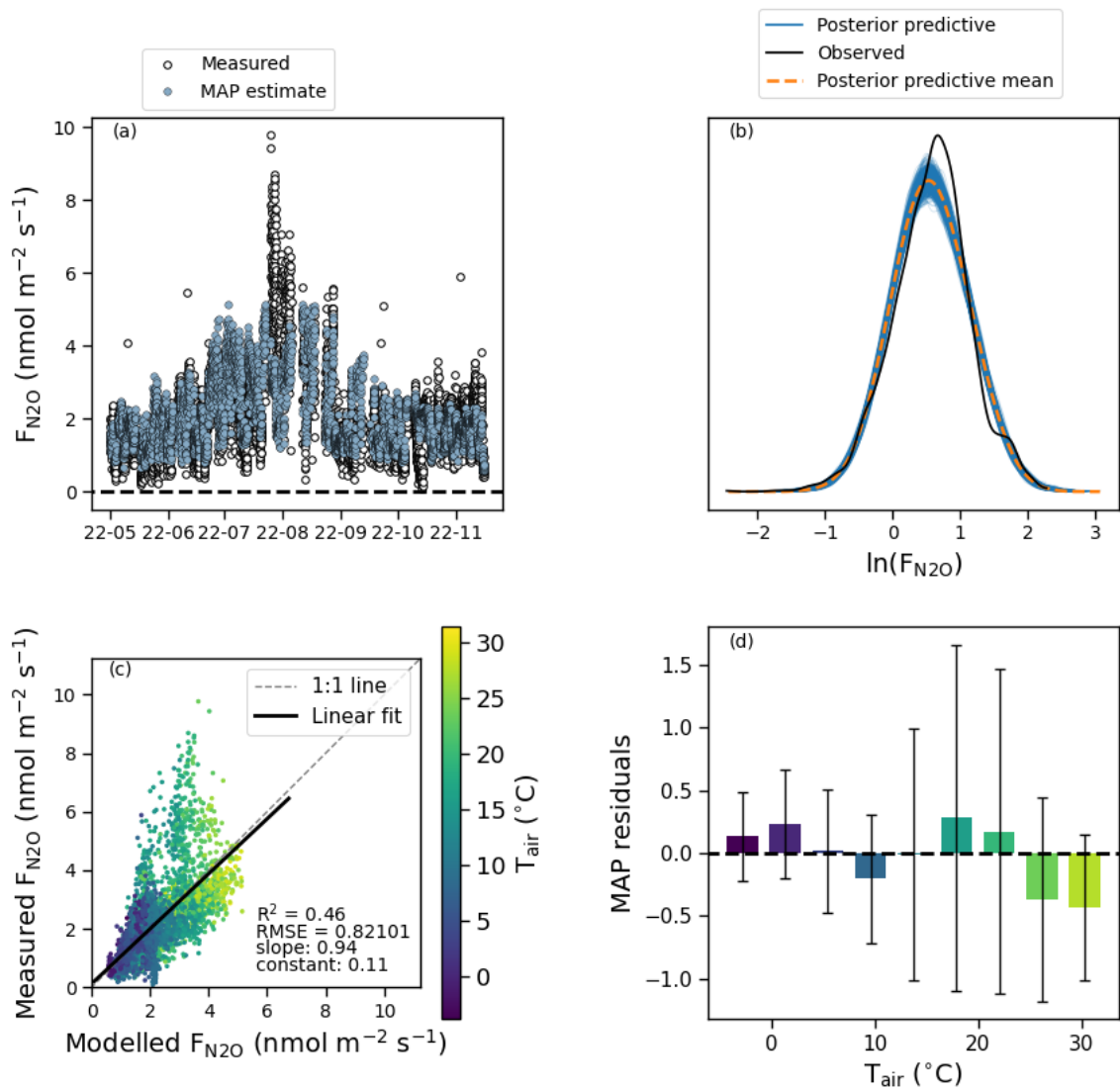
465 The performance of each model ~~variant (eq. 3 & 4)~~ are shown in Table S1. We selected the best models (based on ~~LOO and~~
~~R²_{adj}~~) for further analysis: Full θ _ST9 for both F_{N_2O} and F_{CH_4} , ~~and ST6 for F_{CH_4} .~~ ~~For F_{CH_4} , the ST9 model was nearly as good~~
~~as the ST6.~~



470

Figure 4. Time series of measured and modelled CH₄ flux (a), distribution of measured CH₄ flux and the posterior predictive distributions (b), scatter plot of modelled versus measured CH₄ flux (c) and the model residuals as function of air temperature (d). The model estimates are calculated with the maximum a posteriori (MAP) estimate of the parameters.

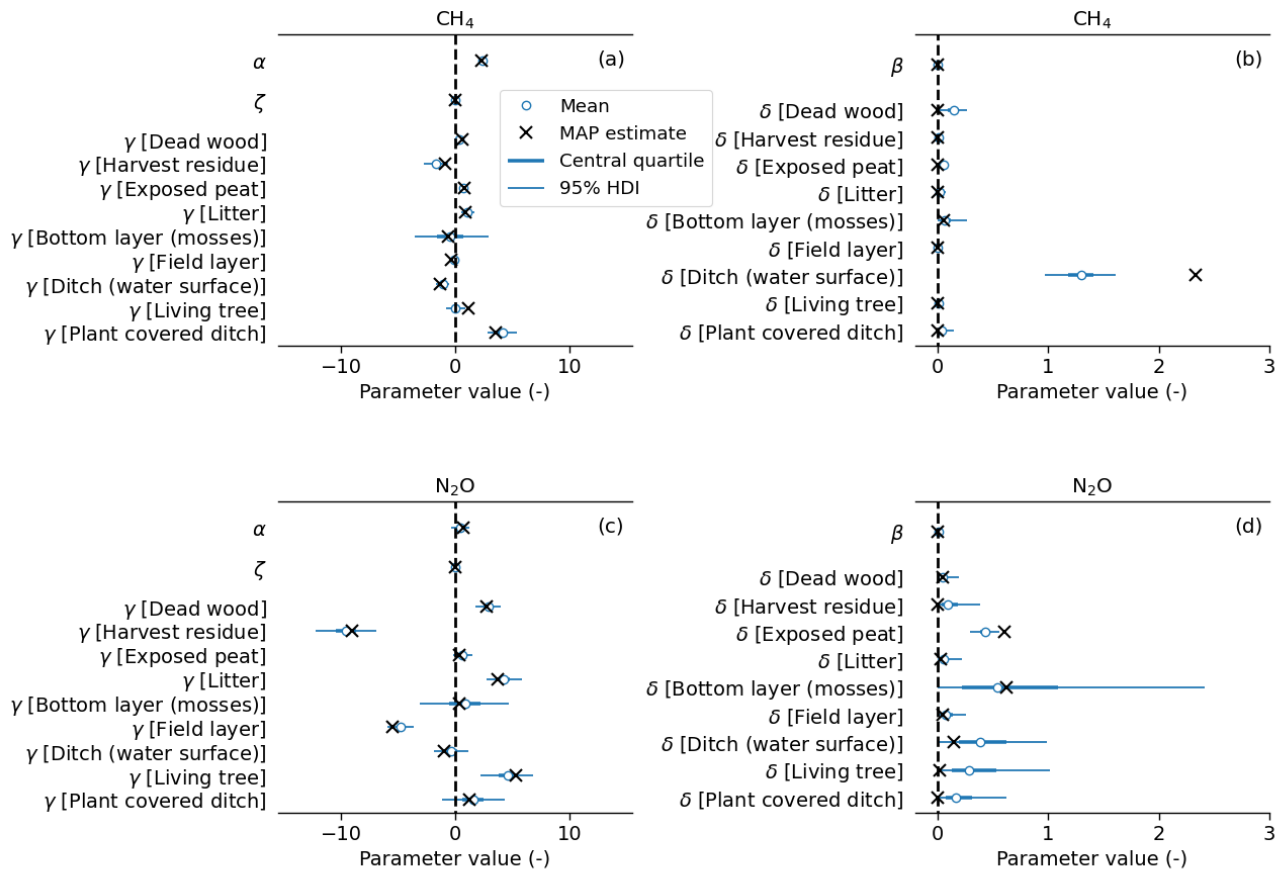
475



480 **Figure 5.** Time series of measured and modelled N₂O flux (a), distribution of measured N₂O flux and the posterior predictive distributions (b), scatter plot of modelled versus measured N₂O flux (c) and the model residuals as function of air temperature (d). The model estimates are calculated with the maximum a posteriori (MAP) estimate of the parameters.

For CH₄ the posterior predictive distribution (Fig. 4b) of ~~ST6~~ the best model showed that the model both over and underestimated the measurements, which were distributed very narrowly with two peaks at $\ln(F_{\text{CH}_4}) = 2.35$ (0.5 nmol m⁻²s⁻¹) and $\ln(F_{\text{CH}_4}) = 2.75$ (5.6 nmol m⁻²s⁻¹). The best model for CH₄ could capture ~~62~~ 48% of the variation in the measurements. The model parameters (Fig. 6 a-b) indicate the flux has weak temperature dependency except for ditches, high base source strength (α) and low surface-type specific base strength modifier (γ) except for plant covered ditches. This suggests that there are no major differences in source strengths between the surface-types, except for the plant covered ditches from which the emissions are clearly higher than from other parts of the CC area.

490 The posterior predictive distribution for the best $F_{\text{N}_2\text{O}}$ ~~ST9~~ model shows a better fit to the observations (Fig. 5b) but fails to capture the peak N₂O emissions observed at the end of July (Fig. 5a). The R^2 value between modelled and measured flux is 0.463, ~~slightly~~ lower than for the best F_{CH_4} ~~ST6~~ model. The best $F_{\text{N}_2\text{O}}$ ~~ST9~~ model indicates higher variation between fluxes from different surface-types than the model for F_{CH_4} (Fig. 6c). Similarly, the temperature dependency defining parameter δ varies more between different surface-types than it did for F_{CH_4} (Fig. 6d). The model residuals (calculated with the MAP estimate) for both GHGs do not show a clear dependency of the air temperature (Fig. 4d and Fig. 5d) indicating no clear over-
495 or underfitting with respect to certain temperature range. ~~except for the highest measured T_{air} bin for $F_{\text{N}_2\text{O}}$ model.~~



500

Figure 6. 95% highest posterior density interval for parameters of the best models for CH₄ (a-b) and N₂O (c-d). The bold line indicates the 25th and 75th percentiles of the distributions, white circles are the distribution means and black crosses show the maximum a posteriori (MAP) estimate. α indicates base source effect and γ its surface type specific modifier (i.e., surface type specific flux at 10°C is $\alpha + \gamma$). β indicates 10 type of temperature effect and δ its surface type specific modifier (i.e., surface type temperature modifier for the flux is $(\beta + \delta)(T_{\text{air}} - 10^\circ\text{C})/10^\circ\text{C}$).

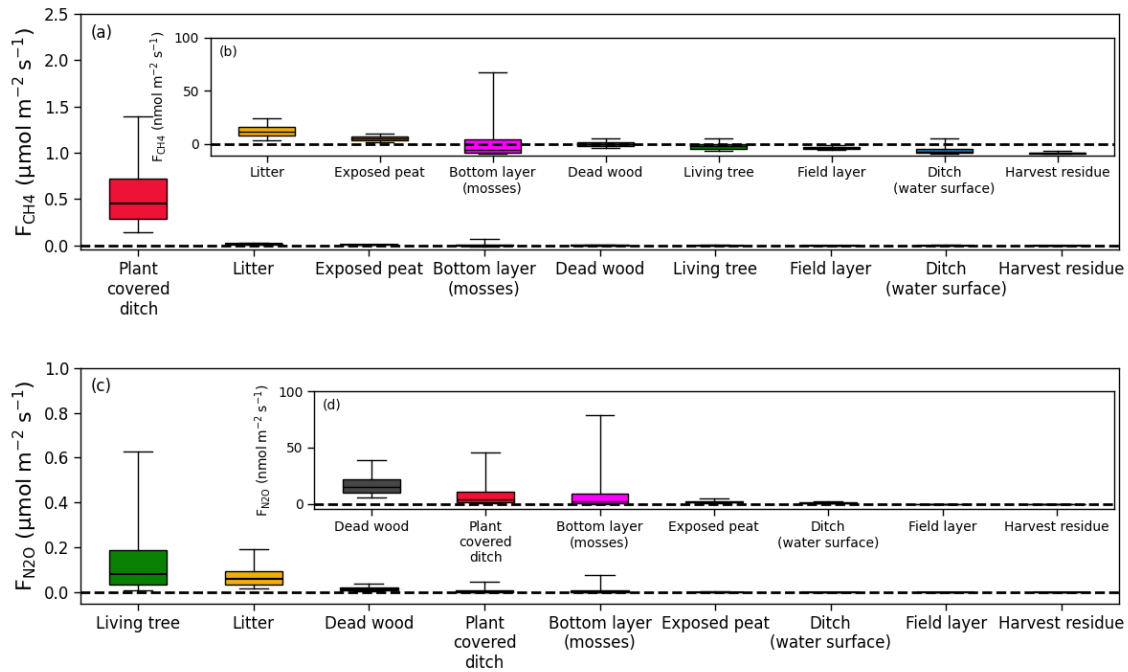
505

Fig. 7 shows the distribution of the modelled surface-type specific fluxes, -predicted by setting the corresponding surface-type contribution to unity ($\varphi_{i,j} = 1$ for each j in Eq. 74) and calculating the 95% highest density interval of the resulting model using the measured T_{air} . The results are extrapolations of the underlying model to visualize the model parameters in Fig. 6.

510

The highest CH₄ emissions originate from plant-covered ditches (Fig. 6a, Fig. 7a), while emissions from the exposed peat and litter are over antwo orders of magnitude smaller. The other surface-types show small uptake and emissions of CH₄. Living

515 trees and plant covered ditches show highest N₂O emissions (Fig. 6c-d, Fig. 7 c-d). The second highest N₂O emission come from litter and dead wood and plant covered ditches.



520 **Figure 7. Surface type specific flux of CH₄ (a-b) and N₂O (c-d) fluxes.** The surface-type specific fluxes are calculated by setting the
 corresponding surface-type contribution to unity ($\varphi_{i,j} = 1$ for each j in Eq. 74) and calculating the 95% highest density interval of the
 resulting model with the measured T_{air} . The boxplot whiskers represent 5th and 95th percentile of the flux value distribution, the edges of the
 post represent 25th and 75th percentile and the black horizontal line shows the median of the distribution. The boxplots are ordered by the
 75th percentile. Note the different scales of the y-axis for each panel and that the fluxes are per square meter of the respective surface type.
 525 To estimate the contribution of each surface type to the total flux values in this figure need to be multiplied by the fraction of the surface
type in the clearcut area or in the EC footprint presented in Table 1. See also Fig. S7-S8 for flux values as a function of air temperature.

Fig. S7-S8 shows the predicted surface specific flux as a function of air temperature and Fig. S79 and Fig. S810 show how
 the modelled flux changes when surface-types are added one by one to the model and how the model results agree with chosen
 530 measurements. From the analysis it is evident that the most important surface-types for the footprint-average CH₄ emissions
 are the plant-covered ditches (areal coverage 1.1%, Table 1) and, exposed peat (29%) and dead wood and residue (total
30.7%). For N₂O emissions the most important surface-types are exposed peat, litter (19.9%), and dead wood (22.8%) and
field layer (areal coverage 11.8%).

535 Fig. S9-S12 show the estimated parameters for the full θ models for the other number of STs. Interestingly, for CH₄ when the two types of ditches are lumped into one ST, their γ estimate is close to zero (Fig. S9 and S11) whereas when the ditches are considered as separate STs the estimated γ for the plant-covered ditch is the highest and the γ for the ditches with water surface is the lowest which is the same behaviour what we see in Fig. 6 for the best model.

540 The parameter estimates between different number of STs for N₂O models differ more than for CH₄ models. For example for ST6 (Fig. S12) the highest γ MAP estimate is for dead wood and residue whereas the γ for the field layer and trees is the smallest. The γ estimates for ST5 (Fig. S11) seem to also emphasize the role of litter and dead wood and residue as high N₂O emitting surface types. It should be noted that for all other number of STs the living trees are always lumped together with some other surface type or types. It might be for this reason that the full θ no δ ST9 model outperforms the full θ ST6 model
 545 clearly in N₂O but not for CH₄ (Table S1).

Finally, we calculated the total emissions for CH₄ and N₂O for the snow free period using the best models and compared them to EC measurements (Table 3). The model estimates were calculated using the areal fraction of each surface type in the whole clearcut (Table 1), instead of areal fraction of the surfaces in the EC footprints. This way the reported modelled flux estimates
 550 are representative for the whole clearcut area. The predicted cumulative CH₄ emission is an 60% smaller order-of-magnitude smaller than that based on EC whereas for N₂O, the emissions from EC are ca. 1.25 times higher than the median model prediction. This might be either due to model inaccuracies (see Figs. 4 and 5) or due to the EC observing a biased sample of the ecosystem-atmosphere exchange (i.e. certain surface types have higher/lower areal coverage in EC footprints than they have in the whole clearcut, see Table 1). However, the EC derived emission estimate is inside the 95% highest density interval
 555 for both GHGs.

Table 3. Comparison of methane and nitrous oxide emissions obtained from the EC measurements and predicted for the whole clearcut area by the models that best described the temporal variability of fluxes. Note that the snow-free period is from 1st May to 16th November. For the modelling approach, the first value represents the median model prediction, while the values in brackets present the 95% highest density interval of distribution of the snow-free period emissions calculated with the parameters estimated in the MCMC run. For the EC results, the values show the total emissions calculated from time series gapfilled with ML ensemble, while the values in brackets show the range of values calculated from time series gapfilled with different ML algorithms (see Sect. 2.3). Note that the share of each surface type in the whole clearcut were used to calculate the modelled flux estimates and hence they relate to the whole clearcut area, not to the EC footprint area.

Greenhouse gas	Modelling approach snow free period (kg CO ₂ -eq. ha ⁻¹)	Eddy covariance snow free period (kg CO ₂ -eq. ha ⁻¹)	Eddy covariance full year (kg CO ₂ -eq. ha ⁻¹)
CO ₂	-	19200 (18400 - 20000)	23300 (22400 - 24100)
CH ₄	4040 (-14090 - 24050)	100 (100 - 100)	100 (100 - 1000)
N ₂ O	3100 (12400 - 63200)	3900 (3800 - 4000)	4900 (4800 - 4900)

4 Discussion

4.1 Impact of surface types on CH₄ and N₂O fluxes

570 We built a statistical model to separate observed CH₄ and N₂O fluxes into their surface-type and environmental controls using the flux timeseries and surface type composition for each measurement period inferred from drone-based surface characterization and analytical footprint model. The aim of the analysis was to assess whether the fluxes vary across different surface types, and to detect the key surface types contributing to the net emissions. The models suggest that plant-covered ditches and exposed peat are the most important surface-types for CH₄ emissions (Fig. 6, Fig. 7, Fig. S79), while other surface-

575 types contributed much less or acted as CH₄ sinks. This is consistent with chamber measurement at this study site, which showed that the soils acted as CH₄ sinks, as the aerobic soil layer above the water table WT is able to consume CH₄ from both the deep soil and the atmosphere. The high CH₄ emissions observed in ditches can be attributed to two main factors: the high production of CH₄ in anaerobic ditch sediments and the transport of CH₄ from surrounding soils by drainage water. Rissanen et al. (2023) found that ditches with open water exhibited higher emissions than those covered by plants. In particular, ditches

580 covered by mosses showed very low emissions, as CH₄ can be oxidized in the moss layer. Minkinen and Laine (2006) reported that the CH₄ emissions from ditches varied considerably depending on the water movement and vegetation cover. They found that ditches with moving water showed higher emissions, likely due to the transportation of CH₄ from the surrounding areas. However, we found that the plant-covered ditch surface is the highest emissions sources, which probably because tThe main ditch in close proximity to the EC tower was classified as plant-covered ~~because of~~due to the vascular plants growing on

585 the ditch bank (Fig. S1). It contributed the majority of the CH₄ emissions according to our analysis. It should be noted that our classification did not distinguish between moss- and vascular plant-covered ditches. In contrast to mosses, which can act as a filter for CH₄ due oxidation (Kolton et al., 2022; Larmola et al., 2010), some vascular plants, such as *Eriophorum*, can enhance transport of CH₄ to the atmosphere (Minkinen and Laine, 2006). The second largest contributor to CH₄ emissions in our model was exposed peat. Pearson et al. (2012) observed that the contrasting effects of mounding with exposed peat on

590 CH₄ emissions from soil depends on the drainage condition ~~the surface.~~ Soil CH₄ emissions from soil depends on the production, consumption, and transportation processes. The production is mostly/largely controlled by the WTD, which determines the anoxic layer, whereas and the surface types in clearcut with distinct topography and ground vegetation can impact/affect the consumption and transportation.

595 Measured N₂O fluxes showed strong temporal variation over the studied year (Fig. 2). The short periods of high N₂O emissions observed during the snow-free period, which contribute significantly/considerably to the annual budget, have been previously

~~reported~~ documented in peatland sites through continuous measurements based on EC and automatic chambers (Pihlatie et al., 2010). Our model was, however, unable to predict the high N₂O emission period observed during late July and early August. The high emissions are likely driven by the activity of specific archaea and prevailing conditions, including temperature, moisture, C/N ratio, nitrate content, pH, and peat decomposition phase (Bahram et al., 2022). ~~O-and-our~~ modelling approach, unfortunately, lacked some of these details. Furthermore, our study demonstrated that N₂O emissions during the snow-covered period constituted a significant (20%) contribution to the annual budget. The winter under study was meteorologically typical, which may explain why the importance of these emissions is consistent with that reported in previous works (Rautakoski et al., 2024; Kim and Tanaka, 2002). However, the frequency of warm winters with lower snow cover and more freeze-thaw events is predicted to increase in northern latitudes (Ruosteenoja and Räisänen, 2021). As a result, snow-covered N₂O emissions are expected to increase in boreal forests. In terms of spatial variability, On the other hand, our model showed that the majority of N₂O emissions were attributable to surfaces with living trees, ~~plant-covered ditches,~~ exposed peat, dead wood and litters (Fig. 6, Fig. 7, Fig. S849). A previous study, which employed chamber measurements, corroborates our modelling findings (Mäkiranta et al., 2012). It was observed that soils in peatland forests covered by logging residues exhibited high N₂O emissions after harvesting, which was attributed to the decay of the logging residuals. Pearson et al. (2012) also found high N₂O emissions from the mounds (surfaces with exposed peat) following site preparation in a nutrient-poor clearcut peatland forest. N₂O emissions were found to be highly dependent on the availability of N in the soil (Ojanen et al., 2010). Therefore, it can be concluded that the observed variation in N₂O emissions from different surface-types may also be related to the spatial variability of nutrient conditions within the studied clearcut area.

Studies of soil microclimate and gas fluxes after clearcutting and site preparation are scarce on drained peatland forests, but the few done using manual chamber method (Pumpanen et al., 2004; Mjöfors et al., 2015; Strömngren et al., 2016, 2017) have showed that the spatial variability is typically very high. Pearson et al. (2012) applied the manual chamber method to assess the impact of varying microtopography following site preparation in a nutrient-poor clearcut peatland forest for CO₂, CH₄ and N₂O. Gas fluxes from ditches can be measured by manual chamber floating on ditch water (e.g., Minkkinen and Laine, 2006; Rissanen et al., 2023). However, while ditch banks, where the ditch materials are exposed and ~~possibly may~~ act as CH₄ hotspots, have rarely been ~~were rarely~~ measured due to the difficulty of installing chambers on uneven surfaces. Our surface-type model could facilitate the understanding of the contribution of surfaces ~~en-to~~ CH₄ and N₂O emissions, particularly those that are not or have been challenging to quantify previously. Furthermore, we identified the surface types that are likely to have high CH₄ and N₂O emissions after clearcutting. These, and those surface types should be targeted in ~~in~~ future chamber studies to accurately quantify the surface-specific emission fluxes (or emission factors).

4.2 Methodological issues and outlook

The models for F_{CH_4} and F_{N_2O} were found to explain slightly less than 62% and 46%, respectively, 50% of the observed temporal variation. Moreover, the model that best explained the variability in F_{CH_4} produced ~~an order of magnitude~~

630 ~~higher~~lower cumulative flux over the snow free season for the whole clearcut than what was measured by the EC from its footprint (Table 3). This disagreement might be either due to model inaccuracy or the slightly unrepresentative location of the EC tower (Table 1; see also Chu et al., 2021). However, ~~this the~~ estimates ~~were~~as still within the 95% HDI. The underlying assumptions in our model approach are i) surface type variability drives the variability of soil processes underlying the fluxes, an assumption that can be tested using e.g. chamber studies, ii) the relative contribution of surface types for each 30-min EC
635 flux can be determined by footprint analysis, and iii) the surface types can be reliably characterized from aerial RGB and multispectral images.

For both CH₄ and N₂O, we found a clear improvement in model predictions when the effect of surface-types ~~were~~was introduced in the models (Table S1). For CH₄ the deviation in model performance between different surface-type specific
640 models was minor, suggesting that the CH₄ emissions may be less dependent on the surface-type than N₂O emissions. The Bayesian inference method was selected for its capacity to incorporate prior knowledge into the model. With Bayesian framework, we were able to define the surface-type specific flux strength modifiers (parameters γ_j) in a hierarchical manner. This resulted in each surface-type having a distinct base production distribution, while the mean of each distribution was derived from a common underlying distribution. Furthermore, there are other types of prior knowledge that could be
645 incorporated to the model to improve the surface-type specific flux estimates. For instance, chamber measurements of surface-type specific flux could be employed to inform the model development, particularly as they could be used as a prior information to constrain the model (Ludwig et al., 2024). Results also revealed that there is a strong negative correlation between CH₄ and N₂O flux with soil water availability (Fig. 3), a finding that is consistent with previous observations in drained peatland forests (Ojanen et al., 2010). Inclusion of soil moisture dependent term in the model improved the model's predictive performance.
650 However, only a general soil moisture term was included. As moisture and~~This would suggest that either soil water content or water table depth should be incorporated into the model as an independent variable, as net CH₄ emissions increase and N₂O emissions decrease when WTD gets closer to the surface. As WTD and~~ microtopography vary across the clearcut, distributed measurements of water table (or soil moisture) would be necessary ~~to enable such extension for further refinement of the model.~~ We tested replacing the soil moisture with WTD but the models with WTD performed worse than the full θ ST9 models
655 for both compounds. Given that we only considered WTD measurement at one location, we cannot be sure that the soil moisture would outperform WTD as an independent variable also with more distributed measurements. Furthermore, the modelling approach for N₂O emissions might be improved by incorporating variables describing nutrient availability (e.g., C:N ratio).

A few previous studies have used surface-type information and EC measurements to elucidate surface-type specific fluxes. In
660 the tundra ecosystem, Tuovinen et al. (2019) and Ludwig et al. (2024) developed a model for CH₄ flux by decomposing the total flux into sum of fluxes from different surface-types. In both studies, the models captured more distinct surface type fluxes than our performed better than our model for CH₄. Similarly, in peatlands, Franz et al. (2016) and Forbrich et al. (2011) were able to achieve a better agreement and more distinct surface specific emissions with CH₄ modelled from surface-type specific

fluxes and EC measurements than our CH₄ model. Also Mazzola et al., (2021) found, based on chamber measurements, that there was a clear difference between surface type specific CH₄ emissions on a restored bog site in northern Scotland. One possible explanation for this discrepancy is that the surface-types in our model are rather homogeneously distributed in our drained peatland clearcut compared to the other sites, which makes the attribution of fluxes to different surface-types more challenging, as their relative contribution within the flux footprint does not strongly depend on wind direction. Regarding the N₂O emissions, we are not aware of any previous studies that have attempted to model surface-type specific fluxes based on EC-data. However, given that N₂O was the second largest GHG source from the clearcut area, it is evident that such studies are required in order to improve GHG budget estimation in the future.

For the best models we also tested replacing T_{air} with mean soil temperature measured at the tree locations shown in Fig. 1. For N₂O this produced slightly better fit in terms of ELPD-LOO (difference of 74 units). This suggests that especially for understanding N₂O emissions, measuring the surface type specific soil temperature would be beneficial.

Footprint calculations were sensitive to the input parameters used in the calculations, hence altering the estimation of surface-type specific CH₄ and N₂O fluxes. For instance, the displacement height (d) was empirically estimated from data (see Sect. 2.3) and changing the estimation procedure altered the footprint results. This was because changes in d directly affects the effective measurement height ($z - d$), which is one of the main factors for the footprint size (e.g., Rannik et al., 2012). These uncertainties essentially stem from the fact that the clearcut surface is heterogeneous, with varying plant height and small-scale topography. The spatial heterogeneity varies with wind direction, and this altered the flow field observed with the EC equipment. Therefore, the estimation of descriptive values for all the parameters needed by the footprint model, e.g., d , is uncertain.

Furthermore, it is important to note that simple footprint models, such as the Kljun model used in this study, are only strictly valid above the roughness sublayer, where individual surface roughness elements (e.g., trees, branch piles, etc) do not anymore locally alter the flow. Even above roughness sublayer they rely on simplified theories on the flow field, such as the Monin-Obukhov theory, which are unable to handle e.g., non-stationarities. Nevertheless, such models are utilised also in complex roughness sublayer flows (Chu et al., 2021) to link the observed turbulent fluxes to surface features (Stagakis et al., 2019). It is likely that our EC tower was frequently within the roughness sublayer. Although simple footprint models have been shown to produce reasonable estimates for flux source areas in ideal measurement locations (Arriga et al., 2017; Heidbach et al., 2017; Nicolini et al., 2017; Dumortier et al., 2019; Rey-Sanchez et al., 2022), it is unclear how the estimates are affected by the roughness sublayer flow. The presence of surface roughness elements increases turbulent mixing, which may result in shorter footprints than would be expected for flows above smoother surfaces. Nevertheless, the empirically estimated values for d and z_0 may already partly account for this. The methodology used here to derive surface-type specific fluxes did not

consider the aforementioned uncertainties. Furthermore, we assumed in the Bayesian framework that the footprints were observed perfectly. This simplification should be kept in mind when analysing the surface-type specific fluxes.

Our results suggest that the emission from multiple surface types (Fig. 6 & 7) are very similar, and that some surface types contribute little to the footprint-average fluxes (Fig. S79-S10S8). This implies that a more detailed surface type characterization would have improved the model performance. The methods used for surface characterization hold promise for following clearcut vegetation dynamics to address the vegetation recovery after site preparation and planting. More detailed vegetation classification was examined but found difficult as the vegetation after the clearcutting was sparse and the plant sizes were small. This caused the number of polygons for some vegetation classes in the training data to be very small. The vegetation growing on ditches had larger and more uniform surface area, and the classification of those would be easier than of individual saplings. ~~In addition,~~ the topography of the studied site is flat, which makes the classification between the ditch, tree and other vegetation types using the drone-derived elevation model to be more accurate. Here we could utilize precise georeferencing using Ground Control Point accurately measured in the open area of the site. For more detailed vegetation surveys, the resolution of the drone orthomosaic could still be increased to determine the leaf and branch structure of the smallest plants as the spectral differences are not only defined by species but also by e.g. plant health (Grybas and Congalton, 2021; Zhou et al., 2021). Parameters describing the structure, such as gray-level co-occurrence matrix, should be used additionally for classification. Alternatively, deep learning methods provide high classification accuracy by taking the structure into account without parametrisation (Onishi and Ise, 2021). Using the same sensors, increased resolution could be achieved by lowering the flight altitude resulting in increased flight time and battery capacity need. In addition, increased resolution can make generating training data and validating results more difficult as the number of segments increases and it is more difficult to decide which class the polygon represents, especially in sites like clearcut area with very detailed surface cover ~~and require~~ requiring multiple surface-type classes.

4.3 Clearcut peatland forests are net GHG sources

Despite the importance of peatland forests in the Nordic countries, little is known on the impacts of harvesting practices and alternative management chains on their GHG balance dynamics. ~~In particular, GHG fluxes occurring shortly after clear-cutting. Especially the fluxes soon after clear-cut~~ and stand establishment have been rarely quantified (Mäkiranta et al., 2010; Korkiakoski et al., 2019, 2023). ~~In this study, we employed the EC technique to quantify the~~ We measured CO₂, CH₄ and N₂O fluxes from a ~~recent clearcutting area, which was regenerated by planting after site preparation and ditch network maintenance with the eddy covariance technique and showed.~~ ~~The findings demonstrate that our~~ previously spruce-dominated fertile peatland forest was a major source of GHG emissions during the first full year (second growing season) after clearcutting and site preparation. The results indicate the CO₂ ~~is the primary contributor to the annual GHG balance~~ ~~dominates the total annual GHG balance~~, accounting for 83% (23.3. t CO₂-eq ha⁻¹a⁻¹) of the total global warming potential of the GHG emissions. ~~It is also important to note that the~~ ~~The first-year net~~ CO₂ ~~source strength of the clearcut area was~~ ~~emissions from the clearcutting~~

730 ~~site were~~ ca. 10 t CO₂-eq ha⁻¹a⁻¹ larger than NEE before the clearcutting (13.2 t CO₂-eq ha⁻¹a⁻¹, Laurila et al., 2021). Our results are consistent with those previous studies on forested peatlands. A relatively similar fertile drained mixed forested peatland (Lettosuo) in southern Finland was found to be CO₂ neutral before harvesting as observed by EC measurements (Korkiakoski et al., 2023). After clearcutting and site preparation, the ecosystem turned into a strong CO₂ source, emitting initially 31 t CO₂-eq ha⁻¹a⁻¹ but decreasing to 8.2 t CO₂-eq ha⁻¹a⁻¹ six years after the harvest. This decrease was attributed to as the emerging vegetation uptake increased and release of CO₂ uptake by emerging vegetation and the concomitant decrease in CO₂ release from decomposing cutting residues decreased (Korkiakoski et al., 2023). At our site, the recovery of ground vegetation was ~~observed~~ seen as significant GPP (14.9 t CO₂-eq ha⁻¹ a⁻¹) already at the second post-harvest growing season. This partially offset which partially offset more than 35% of R_{eco} ~~ecosystem respiration which was~~ mostly associated with from the soil CO₂ emissions. In a more southern minerotrophic drained forested peatland (Tobo) in the Uppsala region of Sweden, ~~the~~ CO₂ emissions were ~~measured~~ quantified using with chamber-based methods, with values and ranged from 27 to 50 t CO₂-eq ha⁻¹a⁻¹ in the second year following clearcut, depending on ditch management (Tong et al., 2022). Furthermore, ~~according to~~ Mäkiranta et al. (2010) ~~reported~~, chamber-based estimates of CO₂ emissions during the growing season from a clearcut drained oligotrophic peatland (Vesijako) located in southern Finland varied between 16 and 23 t CO₂-eq ha⁻¹ during the first three years after clearcutting.

745 The net CO₂ emissions from the our study site Ränskälänkorpi clearcut area are comparable to EC-based measurements by Ahmed (2019; 20 t CO₂-eq ha⁻¹a⁻¹) after clearcut of a fertile Norway spruce stand on mineral soil in Hyytiälä, Southern Finland. Furthermore, they are ~~and~~ 20 – 30% larger than the CO₂ emissions from 1-3 year old clearcuts on mineral soils in Southern and Central Sweden (16 – 18 t CO₂-eq ha⁻¹a⁻¹; Grelle et al., 2023). Kolari et al., (2004) ~~observed~~ smaller emissions (14 t CO₂-eq ha⁻¹a⁻¹) 4 years after clearcutting an infertile Scots pine stand on mineral soil in Southern Finland. 750 At Norunda, Sweden, a clearcut former Norway spruce forest on mineral soil with shallow water table was identified as net source of CO₂ (NEE 16 t CO₂-eq ha⁻¹yr⁻¹) during the first and second year after harvest (16 and 11 t CO₂-eq ha⁻¹a⁻¹, respectively at second post-harvest year). At ~~this~~ at site, GPP and R_{eco} exhibited fluctuations ranging ~~varied~~ between 5 and 5 – 14 t CO₂-eq ha⁻¹a⁻¹ and 210.8 – 232.8 t CO₂-eq ha⁻¹a⁻¹, respectively (Vestin et al., 2020).

755 The contribution of N₂O and CH₄ emissions to the total annual GHG balance remained small despite their much higher global warming potential. Specifically, the contribution of N₂O emissions was 17% (4.98 t CO₂-eq ha⁻¹a⁻¹), while the CH₄ had only marginal importance (0.4%; 0.1 t CO₂-eq ha⁻¹a⁻¹). The negligible share of CH₄ to net GHG emissions is in line with that found in Lettosuo and Tobo sites (Korkiakoski et al., 2019; Tong et al., 2022). Korkiakoski et al. (2019) estimated from chamber measurements that N₂O emissions from Lettosuo site were 3.7 g N₂O m⁻²a⁻¹ after clearcut, which makes more than 760 11 t CO₂-eq ha⁻¹a⁻¹. According to Tong et al. (2022), N₂O emissions after clearcut at Tobo site contributed only 0.5-1.3% to total GHG emissions, likely due to the fact that the biweekly chamber sampling may have missed some of the high emission

peaks and due to low soil moisture as the water table depth was low compared to similar studies. Note that the prior studies have utilized temporally and spatially discontinuous chamber measurements for observing N₂O and CH₄ fluxes. Vestin et al., (2020) observed net CH₄ emissions between 0.3 – 1.5 t CO₂-eq ha⁻¹a⁻¹ and N₂O emissions of 0.8 – 1.1 t CO₂-eq ha⁻¹a⁻¹ from the Norunda clearcut using flux-gradient approach. To the best of our knowledge, ~~our this~~ study is the first of its kind to ~~report document~~ EC-based N₂O and CH₄ fluxes from a forest ecosystem after clearcutting.

Our results confirm earlier findings (e.g., Korhonen et al., 2023) that clearcutting increases the GHG emissions from boreal forested peatlands, at least in short term when compared to mature forests (Minkkinen et al., 2001; Ojanen et al., 2010; Alm et al., 2023). To evaluate the climate effects of alternative harvesting methods (e.g. continuous cover forestry) in comparison to rotation forestry and clearcutting and even aged forestry, the post-harvest dynamics of GHG emissions must be better known, calling for more and longer follow-up studies (Korhonen et al., 2023). In Finland 390000 ha of fertile drained peatlands will soon be subject to choice between clearcutting and second even-aged rotation, or converting to other management regimes such as continuous cover forestry (Lehtonen et al., 2023) or partial rewetting. It is currently ~~it is~~ estimated that the conversion converting to continuous cover forestry (which excludes no clear-cutting but permits frequent heavy thinnings from above) could result in an annual reduction of the reduce annually clearcut area in fertile peatlands by 16000 ha a⁻¹ (Lehtonen et al., 2023). It is ~~thus therefore~~ evident that comparative long-term studies (but also modelling) between rotation forestry with clearcutting and alternative harvesting approaches across a spectrum of site characteristics are needed to facilitate the development of effective harvest management strategies to mitigate GHG emissions, especially those of CO₂ from peat decomposition, in boreal forested peatlands.

5 Conclusions

We measured CO₂, CH₄ and N₂O fluxes the second growing season after clearcutting of a Norway spruce dominated boreal drained peatland forest in southern Finland using eddy ~~covariance~~ based measurements. On the second growing season, the clearcut area was a significant source of GHG emissions with the annual total GHG balance dominated by the CO₂ emissions (23.3 t CO₂-eq ha⁻¹a⁻¹, 82.5% of total). The N₂O emissions (4.98 t CO₂-eq ha⁻¹a⁻¹) contributed 17.1 % while the role of CH₄ flux (0.1 t CO₂-eq ha⁻¹a⁻¹, 0.4%) was negligible. We note that our study represents only a partial overview snapshot of a rapidly evolving forest ecosystem and that longer studies are needed to better understand the GHG budget of clearcut boreal peatland forests. However, the results presented herein reinforce the recently established understanding that clearcut peatland forests are significant source of GHGs.

~~We used Bayesian statistical models, With Using the drone-based surface classification together with the EC measurements and statistical modelling, we established estimated flux footprint model to surface type specific predict the methane-CH₄ and nitrous oxide N₂O fluxes from based surface type and air temperature.~~ The best-fitting models captured around half of the

795 ~~observed variation in the measured CH₄ and N₂O fluxes, and revealed that the highest CH₄ emissions in the studied area~~
~~came originated~~ from the plant-covered ditches ~~and~~ ~~and~~ exposed peat, while the ~~and~~ highest N₂O emissions ~~came occurred~~
~~from from~~ the exposed peat, litter, dead wood and living trees.

800 The role of exposed peat as ~~both~~ CH₄ and N₂O emitter suggests the ~~raises a~~ need for more detailed studies to understand the
~~processes insidewithin~~ this surface-exposed peat type. Based on this study, ~~decreasingreducing~~ the amount of exposed peat
~~after post~~ clearcutting would be beneficial in decreasing the CH₄ and N₂O emissions to the atmosphere. Similarly, ~~reducing~~
~~the decreasing~~ litter input to the ground ~~whileduring~~ harvesting ~~is performed~~ would be ~~important~~ beneficial in ~~for~~ decreasing
N₂O emissions. The plant-covered ditches are important for the CH₄ emissions based on the modelling and therefore an
~~interesting future~~ question is that how the CH₄ emissions change with respect to different plant species.

805 Finally, we note that our results are based on statistical modelling, and, ~~therefore us, we recommended~~ that manual chamber-
~~based measurements be conducted in parallel with EC-based measurements to better constrain and validate surface-type~~
~~specific flux estimates for better forest management of drained boreal forested peatlands, plant covered ditches, living trees,~~
~~exposed peat, and litter surface types.~~

810 ~~Based on our findings, it is recommended that m~~Manual chamber measurements ~~be conducted~~ are needed to better constrain
~~and validate surface type specific flux estimates. In conclusion, the results presented herein reinforce~~The results strengthen
~~the recently established understanding that clearcut peatland forests are significant sources of GHG sources.~~

Data availability

815 The EC data will be made available upon manuscript acceptance. The data-analysis repository is available at GitHub
https://github.com/LukeEcomod/FI-Ran_GHG_2022

Author contribution

820 PS maintained the measurement infrastructure. OP processed eddy covariance data and QL, EMG and PS processed other data.
PA and VT performed the UAV flights and developed the surface-type classification together with MP. OPT and JH developed
the statistical models for GHG flux estimation. OPT, PA, JH, SL, AL, QL, EMG, OP, MP and RM analysed the statistical
model results. OPT, PA, AL, SL, QL, EMG, OP, PS, VT and RM wrote the manuscript. All authors commented on the
manuscript draft and gave permission to submission.

Competing Interests

The authors declare that they have no conflict of interest.

Acknowledgements

825 This study was funded by the Research Council of Finland (BiBiFe no.325680; PATCHEC 354298; Respeat 350184; Sompa
312932 and PREFER 348102), the European Union's (LIFE-IP CANEMURE-FINLAND project, grant number. LIFE17
IPC/FI/000002), the European Union's Horizon 2020 (HoliSoils project, grant agreement 101000289; Alfawetlands
101056844; Wethorizons 101056848, GreenFeedBack 101056921), and the Ministry of Agriculture and Forestry of Finland
(TURNEE project, no. 4400T-2105). Authors also wish to acknowledge that this study was conducted with affiliation to the
830 UNITE Flagship, which was funded by the Research Council of Finland (no. 337655). We also thank Anssi Liikanen and the
field staff of the Natural Resources Institute Finland for their contribution by collecting the field data used in this study.

References

- Abril-Pla, O., Andreani, V., Carroll, C., Dong, L., Fannesbeck, C. J., Kochurov, M., Kumar, R., Lao, J., Luhmann, C. C.,
835 Martin, O. A., Osthege, M., Vieira, R., Wiecki, T., and Zinkov, R.: PyMC: a modern, and comprehensive probabilistic
programming framework in Python, *PeerJ Comput Sci*, 9, e1516, <https://doi.org/10.7717/peerj-cs.1516>, 2023.
- Ahmed, T.: The carbon balance of a clear-cut forest in Finland, University of Eastern Finland, Kuopio, Finland, 2019.
- Alm, J., Wall, A., Myllykangas, J.-P., Ojanen, P., Heikkinen, J., Henttonen, H. M., Laiho, R., Minkkinen, K., Tuomainen, T.,
and Mikola, J.: A new method for estimating carbon dioxide emissions from drained peatland forest soils for the greenhouse
gas inventory of Finland, *Biogeosciences*, 20, 3827–3855, <https://doi.org/10.5194/bg-20-3827-2023>, 2023.
- 840 Anon: Agisoft Metashape Professional, 2021.
- Arriga, N., Rannik, Ü., Aubinet, M., Carrara, A., Vesala, T., and Papale, D.: Experimental validation of footprint models for
eddy covariance CO₂ flux measurements above grassland by means of natural and artificial tracers, *Agric. For. Meteorol.*,
242, 75–84, <https://doi.org/10.1016/j.agrformet.2017.04.006>, 2017.
- Bahram, M., Espenberg, M., Pärn, J., Lehtovirta-Morley, L., Anslan, S., Kasak, K., Kõljalg, U., Liira, J., Maddison, M., Moora,
845 M., Niinemets, Ü., Öpik, M., Pärtel, M., Soosaar, K., Zobel, M., Hildebrand, F., Tedersoo, L., and Mander, Ü.: Structure and
function of the soil microbiome underlying N₂O emissions from global wetlands, *Nat Commun*, 13, 1430,
<https://doi.org/10.1038/s41467-022-29161-3>, 2022.
- Baldocchi, D. D.: Assessing the eddy covariance technique for evaluating carbon dioxide exchange rates of ecosystems: past,
present and future, *Glob Change Biol*, 9, 479–492, <https://doi.org/10.1046/j.1365-2486.2003.00629.x>, 2003.
- 850 Breiman, L.: Random Forests, *Mach. Learn.*, 45, 5–32, <https://doi.org/10.1023/A:1010933404324>, 2001.
- Chu, H., Luo, X., Ouyang, Z., Chan, W. S., Dengel, S., Biraud, S. C., Torn, M. S., Metzger, S., Kumar, J., Arain, M. A.,
Arkebauer, T. J., Baldocchi, D., Bernacchi, C., Billesbach, D., Black, T. A., Blanken, P. D., Bohrer, G., Bracho, R., Brown,
S., Brunzell, N. A., Chen, J., Chen, X., Clark, K., Desai, A. R., Duman, T., Durden, D., Fares, S., Forbrich, I., Gamon, J. A.,
Gough, C. M., Griffis, T., Helbig, M., Hollinger, D., Humphreys, E., Ikawa, H., Iwata, H., Ju, Y., Knowles, J. F., Knox, S. H.,
855 Kobayashi, H., Kolb, T., Law, B., Lee, X., Litvak, M., Liu, H., Munger, J. W., Noormets, A., Novick, K., Oberbauer, S. F.,
Oechel, W., Oikawa, P., Papuga, S. A., Pendall, E., Prajapati, P., Prueger, J., Quinton, W. L., Richardson, A. D., Russell, E.
S., Scott, R. L., Starr, G., Staebler, R., Stoy, P. C., Stuart-Haëntjens, E., Sonnentag, O., Sullivan, R. C., Suyker, A., Ueyama,
M., Vargas, R., Wood, J. D., and Zona, D.: Representativeness of Eddy-Covariance flux footprints for areas surrounding
AmeriFlux sites, *Agric. For. Meteorol.*, 301–302, 108350, <https://doi.org/10.1016/j.agrformet.2021.108350>, 2021.
- 860 De Luca, G., N. Silva, J. M., Cerasoli, S., Araújo, J., Campos, J., Di Fazio, S., and Modica, G.: Object-Based Land Cover
Classification of Cork Oak Woodlands using UAV Imagery and Orfeo ToolBox, *Remote Sens.*, 11, 1238,
<https://doi.org/10.3390/rs11101238>, 2019.
- Drzymulska, D.: Peat decomposition – shaping factors, significance in environmental studies and methods of determination;

- a literature review, *Geologos*, 22, 61–69, 2016.
- 865 Dumortier, P., Aubinet, M., Lebeau, F., Naiken, A., and Heinesch, B.: Point source emission estimation using eddy covariance: Validation using an artificial source experiment, *Agric. For. Meteorol.*, 266–267, 148–156, <https://doi.org/10.1016/j.agrformet.2018.12.012>, 2019.
- FAO: Peatland mapping and monitoring: Recommendations and technical overview, FAO, Rome, Italy, 82 pp., <https://doi.org/10.4060/ca8200en>, 2020.
- 870 Forbrich, I., Kutzbach, L., Wille, C., Becker, T., Wu, J., and Wilkening, M.: Cross-evaluation of measurements of peatland methane emissions on microform and ecosystem scales using high-resolution landcover classification and source weight modelling, *Agric. For. Meteorol.*, 151, 864–874, <https://doi.org/10.1016/j.agrformet.2011.02.006>, 2011.
- Franz, D., Koebsch, F., Larmanou, E., Augustin, J., and Sachs, T.: High net CO₂ and CH₄ release at a eutrophic shallow lake on a formerly drained fen, *Biogeosciences*, 13, 3051–3070, <https://doi.org/10.5194/bg-13-3051-2016>, 2016.
- 875 Franz, D., Acosta, M., Altimir, N., Arriga, N., Arrouays, D., Aubinet, M., Aurela, M., Ayres, E., López-Ballesteros, A., Barbaste, M., Berveiller, D., Biraud, S., Boukir, H., Brown, T., Brümmer, C., Buchmann, N., Burba, G., Carrara, A., Cescatti, A., Ceschia, E., Clement, R., Cremonese, E., Crill, P., Darenova, E., Dengel, S., D’Odorico, P., Gianluca, F., Fleck, S., Fratini, G., Fuß, R., Gielen, B., Gogo, S., Grace, J., Graf, A., Grelle, A., Gross, P., Grünwald, T., Haapanala, S., Hehn, M., Heinesch, B., Heiskanen, J., Herbst, M., Herschlein, C., Hörtnagl, L., Hufkens, K., Ibrom, A., Jolivet, C., Joly, L., Jones, M., Kiese, R., Klemetsson, L., Kljun, N., Klumpp, K., Kolari, P., Kolle, O., Kowalski, A., Kutsch, W., Laurila, T., Ligne, A. D., Linder, S., Lindroth, A., Lohila, A., Longdoz, B., Mammarella, I., Manise, T., Marañón-Jimenez, S., Matteucci, G., Mauder, M., Meier, P., Merbold, L., Mereu, S., Metzger, S., Migliavacca, M., Mölder, M., Montagnani, L., Moureaux, C., Nelson, D., Nemitz, E., Nicolini, G., Nilsson, M. B., Beeck, M. O. de, Osborne, B., Löfvenius, M. O., Pavelka, M., Peichl, M., Peltola, O., Pihlatie, M., Pitacco, A., Pokorný, R., Pumpanen, J., Ratić, C., Schrumpf, M., Sedláč, P., Ortiz, P. S., Siebicke, L., Šigut, L.,
- 885 Silvennoinen, H., Simioni, G., Skiba, U., et al.: Towards long-term standardised carbon and greenhouse gas observations for monitoring Europe’s terrestrial ecosystems: a review, *Int. Agrophys.*, 32, 439–455, <https://doi.org/10.1515/intag-2017-0039>, 2018.
- Fratini, G., Ibrom, A., Arriga, N., Burba, G., and Papale, D.: Relative humidity effects on water vapour fluxes measured with closed-path eddy-covariance systems with short sampling lines, *Agric. For. Meteorol.*, 165, 53–63, <https://doi.org/10.1016/j.agrformet.2012.05.018>, 2012.
- 890 Golyandina, N., Nekrutkin, V., and Zhigljavsky, A. A.: Analysis of Time Series Structure: SSA and Related Techniques, Chapman and Hall/CRC, New York, 320 pp., <https://doi.org/10.1201/9780367801687>, 2001.
- Goodrich, J. P., Wall, A. M., Campbell, D. I., Fletcher, D., Wecking, A. R., and Schipper, L. A.: Improved gap filling approach and uncertainty estimation for eddy covariance N₂O fluxes, *Agric. For. Meteorol.*, 297, 108280, <https://doi.org/10.1016/j.agrformet.2020.108280>, 2021.
- 895 Grelle, A., Hedwall, P.-O., Strömgren, M., Håkansson, C., and Bergh, J.: From source to sink – recovery of the carbon balance in young forests, *Agric. For. Meteorol.*, 330, 109290, <https://doi.org/10.1016/j.agrformet.2022.109290>, 2023.
- Grizonnet, M., Michel, J., Poughon, V., Inglada, J., Savinaud, M., and Cresson, R.: Orfeo ToolBox: open source processing of remote sensing images, *Open Geospatial Data, Software and Standards*, 2, 15, <https://doi.org/10.1186/s40965-017-0031-6>, 2017.
- 900 Groffman, P. M., Butterbach-Bahl, K., Fulweiler, R. W., Gold, A. J., Morse, J. L., Stander, E. K., Tague, C., Tonitto, C., and Vidon, P.: Challenges to incorporating spatially and temporally explicit phenomena (hotspots and hot moments) in denitrification models, *Biogeochemistry*, 93, 49–77, <https://doi.org/10.1007/s10533-008-9277-5>, 2009.
- Grybas, H. and Congalton, R. G.: A Comparison of Multi-Temporal RGB and Multispectral UAS Imagery for Tree Species Classification in Heterogeneous New Hampshire Forests, *Remote Sens.*, 13, 2631, <https://doi.org/10.3390/rs13132631>, 2021.
- 905 Heidebach, K., Schmid, H. P., and Mauder, M.: Experimental evaluation of flux footprint models, *Agric. For. Meteorol.*, 246, 142–153, <https://doi.org/10.1016/j.agrformet.2017.06.008>, 2017.
- Helbig, M., Wischniewski, K., Kljun, N., Chasmer, L. E., Quinton, W. L., Detto, M., and Sonntag, O.: Regional atmospheric cooling and wetting effect of permafrost thaw-induced boreal forest loss, *Glob. Change Biol.*, 22, 4048–4066, <https://doi.org/10.1111/gcb.13348>, 2016.
- 910 Hersbach, H., Bell, B., Berrisford, P., Biavati, G., Horányi, A., Muñoz Sabater, J., Nicolas, J., Peubey, C., Radu, R., Rozum, I., Schepers, D., Simmons, A., Soci, C., Dee, D., and Thépaut, J.-N.: ERA5 hourly data on single levels from 1940 to present [Dataset]. Copernicus Climate Change Service (C3S) Climate Data Store (CDS), , Climate Data Store (CDS),

- <https://doi.org/10.24381/cds.adbb2d47>, 2023.
- 915 Huttunen, J. T., Nykänen, H., Martikainen, P. J., and Nieminen, M.: Fluxes of nitrous oxide and methane from drained peatlands following forest clear-felling in southern Finland, *Plant Soil*, 255, 457–462, <https://doi.org/10.1023/A:1026035427891>, 2003.
- Irvin, J., Zhou, S., McNicol, G., Lu, F., Liu, V., Fluet-Chouinard, E., Ouyang, Z., Knox, S. H., Lucas-Moffat, A., Trotta, C., Papale, D., Vitale, D., Mammarella, I., Alekseychik, P., Aurela, M., Avati, A., Baldocchi, D., Bansal, S., Bohrer, G., Campbell, 920 D. I., Chen, J., Chu, H., Dalmagro, H. J., Delwiche, K. B., Desai, A. R., Euskirchen, E., Feron, S., Goeckede, M., Heimann, M., Helbig, M., Helfter, C., Hemes, K. S., Hirano, T., Iwata, H., Jurasinski, G., Kalhori, A., Kondrich, A., Lai, D. Y., Lohila, A., Malhotra, A., Merbold, L., Mitra, B., Ng, A., Nilsson, M. B., Noormets, A., Peichl, M., Rey-Sanchez, A. C., Richardson, A. D., Runkle, B. R., Schäfer, K. V., Sonnentag, O., Stuart-Haëntjens, E., Sturtevant, C., Ueyama, M., Valach, A. C., Vargas, R., Vourlitis, G. L., Ward, E. J., Wong, G. X., Zona, D., Alberto, Ma. C. R., Billesbach, D. P., Celis, G., Dolman, H., Friborg, 925 T., Fuchs, K., Gogo, S., Gondwe, M. J., Goodrich, J. P., Gottschalk, P., Hörtnagl, L., Jacotot, A., Koebisch, F., Kasak, K., Maier, R., Morin, T. H., Nemitz, E., Oechel, W. C., Oikawa, P. Y., Ono, K., Sachs, T., Sakabe, A., Schuur, E. A., Shortt, R., Sullivan, R. C., Szutu, D. J., Tuittila, E.-S., Varlagin, A., Verfaillie, J. G., Wille, C., Windham-Myers, L., Poulter, B., and Jackson, R. B.: Gap-filling eddy covariance methane fluxes: Comparison of machine learning model predictions and uncertainties at FLUXNET-CH4 wetlands, *Agric. For. Meteorol.*, 308–309, 108528, 930 <https://doi.org/10.1016/j.agrformet.2021.108528>, 2021.
- Jandl, R., Lindner, M., Vesterdal, L., Bauwens, B., Baritz, R., Hagedorn, F., Johnson, D. W., Minkkinen, K., and Byrne, K. A.: How strongly can forest management influence soil carbon sequestration?, *Geoderma*, 137, 253–268, <https://doi.org/10.1016/j.geoderma.2006.09.003>, 2007.
- Karakka, L., Cornett, M., Domke, G., Ontl, T., and Dee, L. E.: Improved forest management as a natural climate solution: A 935 review, *Ecol. solut. evid.*, 2, e12090, <https://doi.org/10.1002/2688-8319.12090>, 2021.
- Kim, Y. and Tanaka, N.: Winter N₂O emission rate and its production rate in soil underlying the snowpack in a subboreal region, Japan, *J. Geophys. Res. Atmos.*, 107, ACH 14-1-ACH 14-13, <https://doi.org/10.1029/2001JD000833>, 2002.
- Kljun, N., Rotach, M. W., and Schmid, H. P.: A Three-Dimensional Backward Lagrangian Footprint Model For A Wide Range Of Boundary-Layer Stratifications, *Bound.-Layer Meteorol.*, 103, 205–226, <https://doi.org/10.1023/A:1014556300021>, 2002.
- 940 Kljun, N., Calanca, P., Rotach, M. W., and Schmid, H. P.: A simple two-dimensional parameterisation for Flux Footprint Prediction (FFP), *Geosci. Model Dev.*, 8, 3695–3713, <https://doi.org/10.5194/gmd-8-3695-2015>, 2015.
- Kolari, P., Pumpanen, J., Rannik, Ü., Ilvesniemi, H., Hari, P., and Berninger, F.: Carbon balance of different aged Scots pine forests in Southern Finland, *Glob. Change Biol.*, 10, 1106–1119, <https://doi.org/10.1111/j.1529-8817.2003.00797.x>, 2004.
- Kolton, M., Weston, D. J., Mayali, X., Weber, P. K., McFarlane, K. J., Pett-Ridge, J., Somoza, M. M., Lietard, J., Glass, J. B., 945 Lilleskov, E. A., Shaw, A. J., Tringe, S., Hanson, P. J., and Kostka, J. E.: Defining the Sphagnum Core Microbiome across the North American Continent Reveals a Central Role for Diazotrophic Methanotrophs in the Nitrogen and Carbon Cycles of Boreal Peatland Ecosystems, *Microb. Ecol.*, 13, e03714-21, <https://doi.org/10.1128/mbio.03714-21>, 2022.
- Korhonen, K. T., Ahola, A., Heikkinen, J., Henttonen, H. M., Hotanen, J.-P., Ihalainen, A., Melin, M., Pitkänen, J., Rätty, M., Sirviö, M., and Strandström, M.: Forests of Finland 2014–2018 and their development 1921–2018, *Silva Fennica*, 55, 2021.
- 950 Korkiakoski, M., Tuovinen, J.-P., Penttilä, T., Sarkkola, S., Ojanen, P., Minkkinen, K., Rainne, J., Laurila, T., and Lohila, A.: Greenhouse gas and energy fluxes in a boreal peatland forest after clear-cutting, *Biogeosciences*, 16, 3703–3723, <https://doi.org/10.5194/bg-16-3703-2019>, 2019.
- Korkiakoski, M., Ojanen, P., Tuovinen, J.-P., Minkkinen, K., Nevalainen, O., Penttilä, T., Aurela, M., Laurila, T., and Lohila, A.: Partial cutting of a boreal nutrient-rich peatland forest causes radically less short-term on-site CO₂ emissions than clear-cutting, *Agric. For. Meteorol.*, 332, 109361, <https://doi.org/10.1016/j.agrformet.2023.109361>, 2023.
- 955 Kuuluvainen, T., Tahvonen, O., and Aakala, T.: Even-Aged and Uneven-Aged Forest Management in Boreal Fennoscandia: A Review, *AMBIO*, 41, 720–737, <https://doi.org/10.1007/s13280-012-0289-y>, 2012.
- Laine, J., Vasander, H., Hotanen, J.-P., Nousiainen, H., Saarinen, M., and Penttilä, T.: Suotyypit ja turvekankaat-opas kasvupaikkojen tunnistamiseen, 2012.
- 960 Larmola, T., Tuittila, E.-S., Tirola, M., Nykänen, H., Martikainen, P. J., Yrjälä, K., Tuomivirta, T., and Fritze, H.: The role of Sphagnum mosses in the methane cycling of a boreal mire, *Ecology*, 91, 2356–2365, <https://doi.org/10.1890/09-1343.1>, 2010.
- Laurila, T., Aurela, M., Hatakka, J., Hotanen, J.-P., Jauhiainen, J., Korkiakoski, M., Korpela, L., Koskinen, M., Laiho, R., Lehtonen, A., Leppä, K., Linkosalmi, M., Lohila, A., Minkkinen, K., Mäkelä, T., Mäkiranta, P., Nieminen, M., Ojanen, P.,

- 965 Peltoniemi, M., Penttilä, T., Rainne, J., Rautakoski, H., Saarinen, M., Salovaara, P., Sarkkola, S., and Mäkipää, R.: Set-up and instrumentation of the greenhouse gas measurements on experimental sites of continuous cover forestry, Natural Resources Institute Finland (Luke), 2021.
- Lehtonen, A., Eyvindson, K., Härkönen, K., Leppä, K., Salmivaara, A., Peltoniemi, M., Salminen, O., Sarkkola, S., Launiainen, S., Ojanen, P., Rätty, M., and Mäkipää, R.: Potential of continuous cover forestry on drained peatlands to increase the carbon sink in Finland, *Sci Rep*, 13, 15510, <https://doi.org/10.1038/s41598-023-42315-7>, 2023.
- 970 Leppä, K., Hökkä, H., Laiho, R., Launiainen, S., Lehtonen, A., Mäkipää, R., Peltoniemi, M., Saarinen, M., Sarkkola, S., and Nieminen, M.: Selection Cuttings as a Tool to Control Water Table Level in Boreal Drained Peatland Forests, *Front. Earth Sci.*, 8, <https://doi.org/10.3389/feart.2020.576510>, 2020a.
- Leppä, K., Korkiakoski, M., Nieminen, M., Laiho, R., Hotanen, J.-P., Kieloaho, A.-J., Korpela, L., Laurila, T., Lohila, A., Minkkinen, K., Mäkipää, R., Ojanen, P., Pearson, M., Penttilä, T., Tuovinen, J.-P., and Launiainen, S.: Vegetation controls of water and energy balance of a drained peatland forest: Responses to alternative harvesting practices, *Agricultural and Forest Meteorology*, 295, 108198, <https://doi.org/10.1016/j.agrformet.2020.108198>, 2020b.
- 975 Ludwig, S. M., Schiferl, L., Hung, J., Natali, S. M., and Commane, R.: Resolving heterogeneous fluxes from tundra halves the growing season carbon budget, *Biogeosciences*, 21, 1301–1321, <https://doi.org/10.5194/bg-21-1301-2024>, 2024.
- Mahecha, M. D., Reichstein, M., Lange, H., Carvalhais, N., Bernhofer, C., Grünwald, T., Papale, D., and Seufert, G.: 980 Characterizing ecosystem-atmosphere interactions from short to interannual time scales, *Biogeosciences*, 4, 743–758, <https://doi.org/10.5194/bg-4-743-2007>, 2007.
- Mäkipää, R., Abramoff, R., Adamczyk, B., Baldy, V., Biryol, C., Bosela, M., Casals, P., Curiel Yuste, J., Dondini, M., Filipek, S., Garcia-Pausas, J., Gros, R., Gömöryová, E., Hashimoto, S., Hassegawa, M., Immonen, P., Laiho, R., Li, H., Li, Q., Luysaert, S., Menival, C., Mori, T., Naudts, K., Santonja, M., Smolander, A., Toriyama, J., Tupek, B., Ubeda, X., Johannes 985 Verkerk, P., and Lehtonen, A.: How does management affect soil C sequestration and greenhouse gas fluxes in boreal and temperate forests? – A review, *For. Ecol. Manag.*, 529, 120637, <https://doi.org/10.1016/j.foreco.2022.120637>, 2023.
- Mäkiranta, P., Riutta, T., Penttilä, T., and Minkkinen, K.: Dynamics of net ecosystem CO₂ exchange and heterotrophic soil respiration following clearfelling in a drained peatland forest, *Agric. For. Meteorol.*, 150, 1585–1596, <https://doi.org/10.1016/j.agrformet.2010.08.010>, 2010.
- 990 Mäkiranta, P., Laiho, R., Penttilä, T., and Minkkinen, K.: The impact of logging residue on soil GHG fluxes in a drained peatland forest, *Soil Biol. Biochem.*, 48, 1–9, <https://doi.org/10.1016/j.soilbio.2012.01.005>, 2012.
- Maljanen, M., Sigurdsson, B. D., Guðmundsson, J., Óskarsson, H., Huttunen, J. T., and Martikainen, P. J.: Greenhouse gas balances of managed peatlands in the Nordic countries – present knowledge and gaps, *Biogeosciences*, 7, 2711–2738, <https://doi.org/10.5194/bg-7-2711-2010>, 2010.
- 995 Mauder, M., Cuntz, M., Drüe, C., Graf, A., Rebmann, C., Schmid, H. P., Schmidt, M., and Steinbrecher, R.: A strategy for quality and uncertainty assessment of long-term eddy-covariance measurements, *Agric. For. Meteorol.*, 169, 122–135, <https://doi.org/10.1016/j.agrformet.2012.09.006>, 2013.
- Mazzola, V., Perks, M. P., Smith, J., Yeluripati, J., and Xenakis, G.: Seasonal patterns of greenhouse gas emissions from a forest-to-bog restored site in northern Scotland: Influence of microtopography and vegetation on carbon dioxide and methane 1000 dynamics, *European Journal of Soil Science*, 72, 1332–1353, <https://doi.org/10.1111/ejss.13050>, 2021.
- Minkkinen, K. and Laine, J.: Vegetation heterogeneity and ditches create spatial variability in methane fluxes from peatlands drained for forestry, *Plant Soil*, 285, 289–304, <https://doi.org/10.1007/s11104-006-9016-4>, 2006.
- Minkkinen, K., Laine, J., and Hökkä, H.: Tree stand development and carbon sequestration in drained peatland stands in Finland – a simulation study, *Silva Fenn.*, 35, <https://doi.org/10.14214/sf.603>, 2001.
- 1005 Mjöfors, K., Strömgren, M., Nohrstedt, H.-Ö., and Gärdenäs, A. I.: Impact of site-preparation on soil-surface CO₂ fluxes and litter decomposition in a clear-cut in Sweden, *Silva Fenn.*, 49, 2015.
- Moncrieff, J., Clement, R., Finnigan, J., and Meyers, T.: Averaging, Detrending, and Filtering of Eddy Covariance Time Series, in: *Handbook of Micrometeorology: A Guide for Surface Flux Measurement and Analysis*, edited by: Lee, X., Massman, W., and Law, B., Springer Netherlands, Dordrecht, 7–31, https://doi.org/10.1007/1-4020-2265-4_2, 2005.
- 1010 Neill, C., Piccolo, M. C., Cerri, C. C., Steudler, P. A., and Melillo, J. M.: Soil Solution Nitrogen Losses During Clearing of Lowland Amazon Forest for Pasture, *Plant. Soil.*, 281, 233–245, <https://doi.org/10.1007/s11104-005-4435-1>, 2006.
- Nicolini, G., Fratini, G., Avilov, V., Kurbatova, J. A., Vasenev, I., and Valentini, R.: Performance of eddy-covariance measurements in fetch-limited applications, *Theor. Appl. Climatol.*, 127, 829–840, <https://doi.org/10.1007/s00704-015-1673->

- x, 2017.
- 1015 Nieminen, M., Hökkä, H., Laiho, R., Juutinen, A., Ahtikoski, A., Pearson, M., Kojola, S., Sarkkola, S., Launiainen, S., Valkonen, S., Penttilä, T., Lohila, A., Saarinen, M., Haahti, K., Mäkipää, R., Miettinen, J., and Ollikainen, M.: Could continuous cover forestry be an economically and environmentally feasible management option on drained boreal peatlands?, *For. Ecol. Manag.*, 424, 78–84, <https://doi.org/10.1016/j.foreco.2018.04.046>, 2018.
- 1020 Ojanen, P., Minkkinen, K., Alm, J., and Penttilä, T.: Soil–atmosphere CO₂, CH₄ and N₂O fluxes in boreal forestry-drained peatlands, *For. Ecol. Manag.*, 260, 411–421, <https://doi.org/10.1016/j.foreco.2010.04.036>, 2010.
- Ojanen, P., Minkkinen, K., and Penttilä, T.: The current greenhouse gas impact of forestry-drained boreal peatlands, *For. Ecol. Manag.*, 289, 201–208, <https://doi.org/10.1016/j.foreco.2012.10.008>, 2013.
- Ojanen, P., Mäkiranta, P., Penttilä, T., and Minkkinen, K.: Do logging residue piles trigger extra decomposition of soil organic matter?, *For. Ecol. Manag.*, 405, 367–380, <https://doi.org/10.1016/j.foreco.2017.09.055>, 2017.
- 1025 Onishi, M. and Ise, T.: Explainable identification and mapping of trees using UAV RGB image and deep learning, *Sci Rep*, 11, 903, <https://doi.org/10.1038/s41598-020-79653-9>, 2021.
- Paillet, Y., Bergès, L., Hjältén, J., Ódor, P., Avon, C., Bernhardt-Römermann, M., Bijlsma, R.-J., De Bruyn, L., Fuhr, M., Grandin, U., Kanka, R., Lundin, L., Luque, S., Magura, T., Matesanz, S., Mészáros, I., Sebastia, M.-T., Schmidt, W., Standovár, T., Tóthmérész, B., Uotila, A., Valladares, F., Vellak, K., and Virtanen, R.: Biodiversity Differences between
1030 Managed and Unmanaged Forests: Meta-Analysis of Species Richness in Europe, *Conserv. Biol.*, 24, 101–112, <https://doi.org/10.1111/j.1523-1739.2009.01399.x>, 2010.
- Päivänen, J. and Hännel, B.: Peatland ecology and forestry – a sound approach, Helsingin yliopiston metsätieteiden laitos, Finland, 2012.
- 1035 Palviainen, M., Peltomaa, E., Laurén, A., Kinnunen, N., Ojala, A., Berninger, F., Zhu, X., and Pumpanen, J.: Water quality and the biodegradability of dissolved organic carbon in drained boreal peatland under different forest harvesting intensities, *Sci. Total Environ.*, 806, 150919, <https://doi.org/10.1016/j.scitotenv.2021.150919>, 2022.
- Pearson, M., Saarinen, M., Minkkinen, K., Silvan, N., and Laine, J.: Short-term impacts of soil preparation on greenhouse gas fluxes: A case study in nutrient-poor, clearcut peatland forest, *For. Ecol. Manag.*, 283, 10–26, <https://doi.org/10.1016/j.foreco.2012.07.011>, 2012.
- 1040 Peltola, O., Aslan, T., Ibrom, A., Nemitz, E., Rannik, Ü., and Mammarella, I.: The high-frequency response correction of eddy covariance fluxes – Part 1: An experimental approach and its interdependence with the time-lag estimation, *Atmos. Meas. Tech.*, 14, 5071–5088, <https://doi.org/10.5194/amt-14-5071-2021>, 2021.
- Pihlatie, M. K., Kiese, R., Brüggemann, N., Butterbach-Bahl, K., Kieloaho, A.-J., Laurila, T., Lohila, A., Mammarella, I., Minkkinen, K., Penttilä, T., Schönborn, J., and Vesala, T.: Greenhouse gas fluxes in a drained peatland forest during spring
1045 frost-thaw event, *Biogeosciences*, 7, 1715–1727, <https://doi.org/10.5194/bg-7-1715-2010>, 2010.
- Pumpanen, J., Westman, C. J., and Ilvesniemi, H.: Soil CO₂ efflux from a podzolic forest soil before and after forest clear-cutting and site preparation, *Boreal Env. Res.*, 9, 199–212, 2004.
- Rajakallio, M., Jyväsjärvi, J., Muotka, T., and Aroviita, J.: Blue consequences of the green bioeconomy: Clear-cutting intensifies the harmful impacts of land drainage on stream invertebrate biodiversity, *J. Appl. Ecol.*, 58, 1523–1532,
1050 <https://doi.org/10.1111/1365-2664.13889>, 2021.
- Rannik, Ü., Sogachev, A., Foken, T., Göckede, M., Kljun, N., Leclerc, M. Y., and Vesala, T.: Footprint Analysis, in: *Eddy Covariance: A Practical Guide to Measurement and Data Analysis*, edited by: Aubinet, M., Vesala, T., and Papale, D., Springer Netherlands, Dordrecht, 211–261, https://doi.org/10.1007/978-94-007-2351-1_8, 2012.
- Rannik, Ü., Vesala, T., Peltola, O., Novick, K. A., Aurela, M., Järvi, L., Montagnani, L., Mölder, M., Peichl, M., Pilegaard, K., and Mammarella, I.: Impact of coordinate rotation on eddy covariance fluxes at complex sites, *Agric. For. Meteorol.*, 287, 107940, <https://doi.org/10.1016/j.agrformet.2020.107940>, 2020.
- Rautakoski, H., Korhikoski, M., Mäkelä, J., Koskinen, M., Minkkinen, K., Aurela, M., Ojanen, P., and Lohila, A.: Exploring temporal and spatial variation of nitrous oxide flux using several years of peatland forest automatic chamber data, *Biogeosciences*, 21, 1867–1886, <https://doi.org/10.5194/bg-21-1867-2024>, 2024.
- 1060 Reichstein, M., Falge, E., Baldocchi, D., Papale, D., Aubinet, M., Berbigier, P., Bernhofer, C., Buchmann, N., Gilmanov, T., Granier, A., Grünwald, T., Havránková, K., Ilvesniemi, H., Janous, D., Knohl, A., Laurila, T., Lohila, A., Loustau, D., Matteucci, G., Meyers, T., Miglietta, F., Ourcival, J.-M., Pumpanen, J., Rambal, S., Rotenberg, E., Sanz, M., Tenhunen, J., Seufert, G., Vaccari, F., Vesala, T., Yakir, D., and Valentini, R.: On the separation of net ecosystem exchange into assimilation

- and ecosystem respiration: review and improved algorithm, *Glob. Change Biol.*, 11, 1424–1439, <https://doi.org/10.1111/j.1365-2486.2005.001002.x>, 2005.
- 1065 Rey-Sanchez, C., Arias-Ortiz, A., Kasak, K., Chu, H., Szutu, D., Verfaillie, J., and Baldocchi, D.: Detecting Hot Spots of Methane Flux Using Footprint-Weighted Flux Maps, *Journal of Geophysical Research: Biogeosciences*, 127, e2022JG006977, <https://doi.org/10.1029/2022JG006977>, 2022.
- 1070 Rissanen, A. J., Ojanen, P., Stenberg, L., Larmola, T., Anttila, J., Tuominen, S., Minkkinen, K., Koskinen, M., and Mäkipää, R.: Vegetation impacts ditch methane emissions from boreal forestry-drained peatlands—Moss-free ditches have an order-of-magnitude higher emissions than moss-covered ditches, *Front. Environ. Sci.*, 11, <https://doi.org/10.3389/fenvs.2023.1121969>, 2023.
- Robertson, G. P., Vitousek, P. M., Matson, P. A., and Tiedje, J. M.: Denitrification in a clearcut Loblolly pine (*Pinus taeda* L.) plantation in the southeastern US, *Plant Soil*, 97, 119–129, <https://doi.org/10.1007/BF02149830>, 1987.
- 1075 Ruosteenoja, K. and Räisänen, J.: Evolution of observed and modelled temperatures in Finland in 1901–2018 and potential dynamical reasons for the differences, *Int. J. Climatol.*, 41, 3374–3390, 2021.
- Saari, P., Saarnio, S., Kukkonen, J. V. K., Akkanen, J., Heinonen, J., Saari, V., and Alm, J.: DOC and N₂O dynamics in upland and peatland forest soils after clear-cutting and soil preparation, *Biogeochemistry*, 94, 217–231, <https://doi.org/10.1007/s10533-009-9320-1>, 2009.
- 1080 Sarkkola, S., Hökkä, H., Koivusalo, H., Nieminen, M., Ahti, E., Päivänen, J., and Laine, J.: Role of tree stand evapotranspiration in maintaining satisfactory drainage conditions in drained peatlands, *Can. J. For. Res.*, 40, 1485–1496, <https://doi.org/10.1139/X10-084>, 2010.
- Savage, K. E. and Davidson, E. A.: A comparison of manual and automated systems for soil CO₂ flux measurements: trade-offs between spatial and temporal resolution, *J. Exp. Bot.*, 54, 891–899, <https://doi.org/10.1093/jxb/erg121>, 2003.
- 1085 Stagakis, S., Chrysoulakis, N., Spyridakis, N., Feigenwinter, C., and Vogt, R.: Eddy Covariance measurements and source partitioning of CO₂ emissions in an urban environment: Application for Heraklion, Greece, *Atmos. Environ.*, 201, 278–292, <https://doi.org/10.1016/j.atmosenv.2019.01.009>, 2019.
- Statistics Finland: Greenhouse gas emissions in Finland 1990 to 2021. National inventory report under the UNFCCC and the Kyoto protocol, 2022.
- 1090 Stocker, T. F., Qin, D., Plattner, G.-K., Tignor, M., Allen, S. K., Boschung, J., Nauels, A., Xia, Y., Bex, V., Midgley, P. M., and others: Climate change 2013: The physical science basis, Cambridge University Press Cambridge, 2013.
- Strömrgren, M., Hedwall, P.-O., and Olsson, B. A.: Effects of stump harvest and site preparation on N₂O and CH₄ emissions from boreal forest soils after clear-cutting, *For. Ecol. Manag.*, 371, 15–22, <https://doi.org/10.1016/j.foreco.2016.03.019>, 2016.
- 1095 Strömrgren, M., Mjöfors, K., and Olsson, B. A.: Soil-surface CO₂ flux during the first 2 years after stump harvesting and site preparation in 14 Swedish forests, *Scand. J. For. Res.*, 32, 213–221, <https://doi.org/10.1080/02827581.2016.1221993>, 2017.
- 1100 Tian, H., Pan, N., Thompson, R. L., Canadell, J. G., Suntharalingam, P., Regnier, P., Davidson, E. A., Prather, M., Ciais, P., Muntean, M., Pan, S., Winiwarter, W., Zaehle, S., Zhou, F., Jackson, R. B., Bange, H. W., Berthet, S., Bian, Z., Bianchi, D., Bouwman, A. F., Buitenhuis, E. T., Dutton, G., Hu, M., Ito, A., Jain, A. K., Jeltsch-Thömmes, A., Joos, F., Kou-Giesbrecht, S., Krummel, P. B., Lan, X., Landolfi, A., Lauerwald, R., Li, Y., Lu, C., Maavara, T., Manizza, M., Millet, D. B., Mühle, J., Patra, P. K., Peters, G. P., Qin, X., Raymond, P., Resplandy, L., Rosentreter, J. A., Shi, H., Sun, Q., Tonina, D., Tubiello, F. N., van der Werf, G. R., Vuichard, N., Wang, J., Wells, K. C., Western, L. M., Wilson, C., Yang, J., Yao, Y., You, Y., and Zhu, Q.: Global nitrous oxide budget (1980–2020), *Earth System Science Data*, 16, 2543–2604, <https://doi.org/10.5194/essd-16-2543-2024>, 2024.
- 1105 Tikkasalo, O.-P., Leppä, K., Launiainen, S., Peltoniemi, M., Mäkipää, R., Rinne-Garmston, K. T., Sahlstedt, E., Young, G. H. F., Bokareva, A., Lohila, A., Korkiakoski, M., Schiestl-Aalto, P., and Lehtonen, A.: Modeling the response of Norway spruce tree-ring carbon and oxygen isotopes to selection harvest on a drained peatland forest, *Tree Physiol.*, 44, tpad119, <https://doi.org/10.1093/treephys/tpad119>, 2024.
- Tong, C. H. M., Nilsson, M. B., Sikström, U., Ring, E., Drott, A., Eklöf, K., Futter, M. N., Peacock, M., Segersten, J., and Peichl, M.: Initial effects of post-harvest ditch cleaning on greenhouse gas fluxes in a hemiboreal peatland forest, *Geoderma*, 426, 116055, <https://doi.org/10.1016/j.geoderma.2022.116055>, 2022.
- 1110 Tuovinen, J.-P., Aurela, M., Hatakka, J., Räisänen, A., Virtanen, T., Mikola, J., Ivakhov, V., Kondratyev, V., and Laurila, T.: Interpreting eddy covariance data from heterogeneous Siberian tundra: land-cover-specific methane fluxes and spatial representativeness, *Biogeosciences*, 16, 255–274, <https://doi.org/10.5194/bg-16-255-2019>, 2019.

- 1115 UNEP: Global Peatlands Assessment – The State of the World’s Peatlands: Evidence for action toward the conservation, restoration, and sustainable management of peatlands. Main Report., United Nations Environment Programme, Nairobi, <https://doi.org/10.59117/20.500.11822/41222>, 2022.
- Vehtari, A., Gelman, A., and Gabry, J.: Practical Bayesian model evaluation using leave-one-out cross-validation and WAIC, *Stat Comput*, 27, 1413–1432, <https://doi.org/10.1007/s11222-016-9696-4>, 2017.
- 1120 Vekuri, H., Tuovinen, J.-P., Kulmala, L., Papale, D., Kolari, P., Aurela, M., Laurila, T., Liski, J., and Lohila, A.: A widely-used eddy covariance gap-filling method creates systematic bias in carbon balance estimates, *Sci Rep*, 13, 1720, <https://doi.org/10.1038/s41598-023-28827-2>, 2023.
- Vesala, T., Kljun, N., Rannik, Ü., Rinne, J., Sogachev, A., Markkanen, T., Sabelfeld, K., Foken, Th., and Leclerc, M. Y.: Flux and concentration footprint modelling: State of the art, *Environ. Pollut.*, 152, 653–666, <https://doi.org/10.1016/j.envpol.2007.06.070>, 2008.
- 1125 Vestin, P., Mölder, M., Kljun, N., Cai, Z., Hasan, A., Holst, J., Klemedtsson, L., and Lindroth, A.: Impacts of Clear-Cutting of a Boreal Forest on Carbon Dioxide, Methane and Nitrous Oxide Fluxes, *Forests*, 11, 961, <https://doi.org/10.3390/fl1090961>, 2020.
- Vitale, D., Fratini, G., Bilancia, M., Nicolini, G., Sabbatini, S., and Papale, D.: A robust data cleaning procedure for eddy covariance flux measurements, *Biogeosciences*, 17, 1367–1391, <https://doi.org/10.5194/bg-17-1367-2020>, 2020.
- 1130 Wu, X., Brüggemann, N., Gasche, R., Papen, H., Willibald, G., and Butterbach-Bahl, K.: Long-term effects of clear-cutting and selective cutting on soil methane fluxes in a temperate spruce forest in southern Germany, *Environ. Pollut.*, 159, 2467–2475, <https://doi.org/10.1016/j.envpol.2011.06.025>, 2011.
- Wutzler, T., Lucas-Moffat, A., Migliavacca, M., Knauer, J., Sickel, K., Šigut, L., Menzer, O., and Reichstein, M.: Basic and extensible post-processing of eddy covariance flux data with REddyProc, *Biogeosciences*, 15, 5015–5030, <https://doi.org/10.5194/bg-15-5015-2018>, 2018.
- 1135 Zhou, R., Yang, C., Li, E., Cai, X., Yang, J., and Xia, Y.: Object-Based Wetland Vegetation Classification Using Multi-Feature Selection of Unoccupied Aerial Vehicle RGB Imagery, *Remote Sensing*, 13, 4910, <https://doi.org/10.3390/rs13234910>, 2021.