

A climate suitability index for ~~ecological habitats~~species distribution
modelling applied to terrestrial arthropods in the Mediterranean
Region

James M. Ciarlo^{1,2}, Monique Borg Inguanez³, Erika Coppola², Aaron Micallef^{4,5}, David Mifsud¹

¹Institute of Earth Systems, University of Malta, Msida, Malta

²Abdus Salam International Centre for Theoretical Physics, Trieste, Italy

³Department of Statistics and Operations Research, University of Malta, Msida, Malta

⁴Department of Geosciences, University of Malta, Msida, Malta

⁵Monterey Bay Aquarium Research Institute, Moss Landing, CA, USA

Correspondence to: James M. Ciarlo^{*} (james.ciarlo[at]um.edu.mt)

Abstract. Climate change poses significant threats to global biodiversity, particularly impacting arthropods due to their sensitivity to shifts in temperature and precipitation, as well as other environmental conditions. These changes impact the suitability of their habitats, alter ecological interactions, and consequently affect the distribution and survival of species. Understanding how climate variability influences the ecological niches of arthropods is crucial for predicting future biodiversity patterns and implementing effective conservation strategies. This study introduces a simple index designed to ~~assess model species' distribution on the basis of their climatic niche~~the climate suitability of ecological habitats, with a specific focus on terrestrial Mediterranean arthropods. This approach leverages Regional Climate Model data to construct a climatology of a species'~~s~~ preferred habitat, based on historically observed locations. This index offers a straightforward and rapid means to assess the resilience and vulnerability of arthropod populations, could be applied to future studies aiming to shed light on how climate change could affect the ~~ir~~ fundamental niches of terrestrial arthropods. The analysis revealed that the method is most reliable for species with observations exceeding 1000 points, and climate datasets of high resolutions (although the latter had a smaller influence on the results). This study offers a proof-of-concept for the proposed index, demonstrating its potential utility in guiding conservation strategies and mitigating the adverse effects of climate change on arthropod habitats.

1 Introduction

Arthropods are the largest and most diverse group of animals on Earth. They occupy nearly every ecological niche and are found in almost all terrestrial and aquatic habitats ~~–~~(Gullan and Cranston, 2014; Kotze et al., 2022; Schowalter, 2022). Arthropods play essential roles in maintaining ecosystem health and stability, serving as pollinators, predators, ~~decomposers~~ detritivores, and other important roles within their diverse habitats (Chakravorthy et al., 2016; Gullan and Cranston, 2014; Rundel and Gibson, 1996; Schowalter, 2022). Hence, they are present at various levels of the food web, and many are

extremely sensitive to changes in their environment, whose effects can quickly propagate up the food web. As a consequence of all these factors, many arthropods can act as indicators of ecosystem integrity (Maleque et al., 2006). The state of these ecosystems is often sensitive to variations in climate conditions, especially in the Mediterranean basin (Gritti et al., 2006; Santos et al., 2014; Vogel et al., 2021). In recent decades, the diversity of insect pollinators has faced numerous threats due to changes in the environment (Arce et al., 2023; Forister et al., 2021; Raven and Wagner, 2021; Wagner et al., 2021; Zattara and Aizen, 2021), among which climate change emerges as one of several important stressors (Botsch et al., 2024; Outhwaite et al., 2022; Potts et al., 2016; Uhl et al., 2022).

The ecological impacts of the climate crisis vary across the globe (Chen et al., 2021; Cui et al., 2021; Eyring et al., 2016), especially in vulnerable regions such as the Mediterranean basin (Giorgi, 2006; Lionello and Scarascia, 2018; Ranasinghe et al., 2021), and its numerous small islands. According to the Sixth Assessment Report (AR6) by the Intergovernmental Panel for Climate Change (IPCC) –droughts in the Mediterranean are already increasing, and the basin is projected to become increasingly arid together with a rise in extreme temperature (Doblas-Reyes et al., 2021; Gutiérrez et al., 2021; Ranasinghe et al., 2021). The impact of these changes on the ecosystem varies according to numerous factors, and the extent to which insects and other arthropods are affected remains uncertain (Arce et al., 2023). This is especially so when changes to a particular group of organisms (such as pollinators) can impact other members of the ecosystem (Mullin et al., 2023).

One approach to study the climate impacts on arthropods and their habitats is to map species distribution with the use of Ecological Niche Modelling (ENM; Fletcher Jr. et al., 2019; Haase et al., 2021; Hiller et al., 2019; Mammola et al., 2021; Mugumaarhahama et al., 2023; Phillips et al., 2004; Sillero et al., 2023; Tesfamariam et al., 2022). This approach offers the possibility of predicting potential shifts in species distributions under future climate scenarios, thereby providing valuable insights into the resilience and vulnerability of arthropod populations and their ecosystems. However, ENM can be especially challenging, when considering accurate presence-absence data, and additional non-climate factors that determine the distribution of a particular species (e.g. presence of predators, specific plants, competitors, and land-use). While access to climate data has become increasingly available (Mammola et al., 2021), this also has its limitations, as very high-resolution data (e.g. CHELSA with ≈ 1 km spatial resolution; Karger et al., 2017) is preferred. These datasets are not abundant, their temporal coverage is limited, as is their range of variables.

Some ecological studies (Adão et al., 2023; Fink and Scheidegger, 2018; Khan et al., 2020; Mauri et al., 2022), like those assessed in the AR6, have leveraged the extensive collection of Regional Climate Models (RCMs) from the Coordinated Regional Climate Downscaling Experiment (CORDEX; Coppola et al., 2021; Giorgi, 2014; Giorgi et al., 2009, 2022; Gutowski Jr. et al., 2016; Teichmann et al., 2021), driven by the Coupled Model Intercomparison Project (CMIP; Eyring et al., 2016; Meehl et al., 1997, 2000, 2007; Taylor et al., 2012). Models from these datasets (accessible on the Earth System Grid Federation), such as the EURO-CORDEX (Coppola et al., 2021a; Jacob et al., 2014, 2020) at ≈ 12.5 km spatial

resolution, have undergone thorough validation and offer a wide range of climate variables. RCMs offer a higher resolution compared to global datasets, and excel in representing the climate of ~~small and~~ complex regions, such as the Mediterranean (Ciarlo` et al., 2021; Giorgi et al., 2022b; Reale et al., 2022; Somot et al., 2018). Moreover, with recent advances in Convection Permitting (CP) simulations, which offer resolutions of approximately 3 km, the development of kilometre-scale RCM ensembles with diverse variables is within reach (Ban et al., 2021; Coppola et al., 2020; Pichelli et al., 2021).

Although most arthropods are relatively small-in-size and tend to occupy regions of specific microclimates (Clark and Johnson, 2024; Høye and Forchhammer, 2008), RCMs' ability to accurately depict climate variations of complex landscapes provides a good understanding of how such organisms may respond to climate change.

This study utilises RCM data to evaluate the effects-influence of climate change-parameters on terrestrial arthropod habitats, introducing a novel, simplified index for this purpose. The methodology hinges on analysing the climatology of sites where specific species have been documented, and, by integrating RCM data from various time periods and spatial resolutions(~~or experiments~~), it could offer insights into potential shifts in the fundamental niches of these species, or stress exerted by a changing climate. The fundamental niche, which describes an environment that an organism could survive in (but may not necessarily be present in), is represented by climatic (abiotic) parameters within this study. This differs from the realised niche, which is more restricted since it describes where the organism is actually present due to the inclusion of biotic factors (Putman and Wratten, 1984), which are not represented in the RCM data, or stress exerted by a changing climate. The findings detailed herein provide a proof-of-concept for this index and demonstrate its applicability in modelling arthropod species distribution on the basis of their climatic niches~~assessing climate change impacts on arthropod habitats.~~

2 Data & Methods

This study introduces a new simple metric designed to quantify the climate's influence on the distribution of certain terrestrial arthropod ~~s-habitats~~, a tool that can be critical in the future, analysis given the anticipated direct impacts of climate change ~~on countless species~~ (IPCC, 2023). This metric is based on the assumption that a living organism observed at a specific location will have favourable climatic conditions for its existence. Hence, a collection of locations where the organism was observed can describe the range of climate parameters ~~necessary for its survival~~of its fundamental niche.

For a potential species of interest (PSI; e.g., *Spilostethus pandurus*) s , with n_s sampling/observation locations, and a selection of climate indices (see Section 2.2), the value of an index at a sample location can be expressed as x_{sij} where i represents a specific climate index (examples of such indices include: annual mean of near-surface air temperature [t_{smean}], or annual sum of precipitation [pr_{sum}]) such that $i=1,...,p$; p denotes the number of indices considered, and j represents a specific location such that $j=1,...,n_s$. The corresponding mean for the i^{th} index of the population of s can be expressed as $\mu_{si} = \frac{1}{n_s} \sum_{j=1}^{n_s} x_{sij}$. The ideal-most appropriate conditions for s would occur when x_{sij} approaches the value of μ_{si} (difference at, or

close to, 0), hence we can define the preferred climate conditions, C_{si} , to be maximal (i.e. 1). As x_{sij} deviates from μ_{si} , the climate index ~~identifies less favourable conditions~~~~becomes less ideal~~, until it exceeds the limit, L_{si} . Thus, C_{sij} can be expressed as Equation (14) below.

$$(1) \quad C_{sij} = \begin{cases} 1, & \text{if } |x_{sij} - \mu_{si}| = 0 \\ 1 - \frac{d_{sij}}{L_{si}}, & \text{if } |x_{sij} - \mu_{si}| = d_{sij}\sigma_{si} \\ 0, & \text{if } |x_{sij} - \mu_{si}| = L_{si}\sigma_{si} \end{cases}$$

Using Equation (14), where σ_{si} is the standard deviation of the i^{th} index for the population s , and d_{sij} is the standardised distance to the mean, $(x_{sij} - \mu_{si})/\sigma_{si}$, C_{sij} can be reduced to Equation (24).

$$(2) \quad C_{sij} = 1 - \left| \frac{x_{sij} - \mu_{si}}{\sigma_{si}} \right| \frac{1}{L_{si}}$$

The limit, L_{si} , is expressed as Equations (34) and (44), which describe the largest deviation from the maximum or minimum of d_{sij} .

$$(3) \quad L_{si} = \max(d_{si,max}, d_{si,min})$$

$$(4) \quad d_{si,max} = \left| \frac{x_{si,max} - \mu_{si}}{\sigma_{si}} \right|, \quad d_{si,min} = \left| \frac{x_{si,min} - \mu_{si}}{\sigma_{si}} \right|$$

The different quantities of C_{sij} are combined into the **Eco-Climate Index** for species s at location j , EL_{sj} , which describes the climatological component of a species's ecological niche, as shown in Equation (54). The value of EL_{sj} is expressed relative to the maximum of all combined C_{si} at each location j (only for existing observation) to normalise the index. This produces a quantity that ranges between 0 and 1, where 0 describes climate conditions beyond the accepted limit for s , and 1 describes the apparent ideal climate conditions for s according to its sampling locations. It is important to note that a value of 1 does not imply the presence of s as non-climatological factors (e.g., human influence, presence of competitors, availability of food) are not included in this metric. Since EL_{sj} refers to the Eco-Climate Index of species s at location j , when referring to spatial maps this becomes EL_s .

$$(5) \quad EL_{sj} = \frac{C_{s1j} \times \dots \times C_{spj}}{\max(C_{s1j} \times \dots \times C_{spj})}$$

2.1 Biodiversity Data

In order to ~~test-evaluate~~ the Eco-Climate index introduced in Equation (54), an analysis was focused on the broader European region. This permitted the use of RCM data from the EURO-CORDEX ensemble, as well as a new ≈ 3 km CP simulation of the western and central Mediterranean (both described in Section 2.2). The analysis focused on terrestrial species occurring in the European and Mediterranean regions, and the data consisted of research-grade observations from the iNaturalist (iNaturalist community, 2023) database.

125 For the purposes of this study, eight arthropods (listed in Table 1) were selected as PSIs, where each play important roles in
the ecosystem, such as pollinators, predators, herbivores, and ~~decomposers~~detritivores. Each species was selected to cover a
variety of observed Mediterranean arthropods from different orders with varied number of occurrences and ecological roles.
One species, *Brachytrupes megacephalus*, was also chosen due to its status as a vulnerable (Buzzetti et al., 2016)(~~aeording~~
~~to the International Union for Conservation of Nature~~). The results of this analysis would depend greatly on n_k (some, such
130 as *Brachytrupes megacephalus*, have a very small number of observations). Having small values for n_k can produce less
reliable results when determining preferred habitats for PSIs. For this reason, this study also provides a comparative
assessment of how variation in n_k influences the product of this metric. Techniques that artificially inflate the sample size,
such as bootstrapping, were found to have minimal effect on results and hence were not included to avoid adding
unnecessary complexities to the metric.

135

**Table 1: Scientific names and order of the selected PSIs, together with the corresponding number of research-grade observations
accessed from the iNaturalist (iNaturalist community, 2023) database (~~starting sample size~~number of occurrences, n_s), and
additional rationale for selection.**

s	Scientific name (authority)	Order	n_s	<u>Additional Rationale</u>
1	<i>Ameles decolor</i> (Charpentier, 1825)	Mantodea	778	<u>predator</u>
2	<i>Argiope lobata</i> (Pallas, 1772)	Araneae	3062	<u>Arachnida; predator</u>
3	<i>Brachytrupes megacephalus</i> (Lefèvre, 1827)	Orthoptera	26	<u>vulnerable; omnivore</u>
4	<i>Polyommatus celina</i> (Austaut, 1879)	Lepidoptera	631	<u>pollinator</u>
5	<i>Scarabaeus variolosus</i> (Fabricius, 1787)	Coleoptera	143	<u>detritivore</u>
6	<i>Selysiothemis nigra</i> (Vander Linden, 1825)	Odonata	529	<u>predator</u>
7	<i>Spilostethus pandurus</i> (Scopoli, 1763)	Hemiptera	5037	<u>mainly herbivore</u>
8	<i>Xylocopa violacea</i> (Linnaeus, 1758)	Hymenoptera	5420	<u>pollinator</u>

140 **2.2 Climate Data**

The purpose of EL_s is to evaluate the climate ~~impacts~~influence on the fundamental niche of a particular organism, and hence
the choice of climate parameters is essential. Several climate indices (Coppola et al., 2021a; Giorgi et al., 2011, 2018;
Schwingshackl et al., 2021; Sylla et al., 2018) of varying complexity were considered (see Supplementary Information), but
ultimately eight were selected (described in Table 2). The first variables considered to assess the environmental conditions
145 preferred by a given species were temperature (due to its importance to an organism’s metabolism) and precipitation (due to
the importance of a water source). Given the importance of these variables and their variability throughout the year, the
mean conditions together with upper and lower extreme conditions were also deemed important. Thus, indices were selected
that represent these conditions for both temperature and precipitation. Given the size of arthropods, average windspeed was

also included. Finally, as organisms are known to have a preference to specific altitudes, elevation was also included. Beyond the proof-of-concept these criteria can be used to list starting indices but should not be used as strict rules to be satisfied. These include three temperature-related and three precipitation-related indices, which describe the average and extreme (upper and lower) conditions, as well as the average wind conditions, and elevation. It is important to note that this study adheres to these eight indices for the purposes of a homogeneous analysis; however, this metric may be used with any number of climate indices.

155

Table 2: The eight climate indices used in this study to describe the climatological component of an ecological niche.

<i>i</i>	Short Name	Long Name	Units
1	tFasmean	Annual mean of near-surface air temperature	°C
2	cCwfi	Cold-wave Frequency Index: Annual mean of 6+ consecutive days below 5-day 10th percentile temperature	days
3	hHwfi	Heat-wave Frequency Index: Annual mean of 6+ consecutive days above 5-day 90th percentile temperature	days
4	pPrsum	Sum of Annual precipitation	mm
5	cCdd	Annual mean of maximum consecutive dry days	days
6	rx1day	Maximum 1-day precipitation in time period	mm/day
7	wWindmean	Annual mean of near-surface wind speed	m/s
8	oOrog	Surface Altitude	m

The selection of climate indices was also based in-part on the parameters available from the climate observation dataset used for the analysis. The observations are the 30-year (1980-2010) daily variables of E-OBS v25e at 10° horizontal resolution (Cornes et al., 2018; Haylock et al., 2008), hereafter referred to as E-OBS.

160

The analysis was extended beyond the observation dataset to the 12 km EURO-CORDEX simulations (available on the Earth System Grid Federation), to showcase the application of this metric to climate models. An ensemble was constructed from simulations driven by the European Centre for Medium-Range Weather Forecasts ERA-Interim reanalysis, ECMWF-ERAINTeanalysis (ECMWF-ERAINT; Dee et al., 2011), The EURO-CORDEX data is extensive and has been evaluated in numerous past studies (Casanueva et al., 2016; Fantini et al., 2018; Kotlarski et al., 2014; Prein et al., 2016; Vautard et al., 2013), and the recent CMIP5-driven simulation members, which were used in this paper, have been extensively evaluated for temperature, precipitation, winds, and other variables (Ciario` et al., 2021; Molina et al., 2023; Sørland et al., 2021; Vautard et al., 2021). This ensemble was constructed only from simulations which provided the parameters necessary to construct the indices described in Table 2, for the 1980-2010 time period. The 6 RCMs that satisfied these criteria were selected for this

165

170

ensemble, which is hereafter referred to as Ens6 (detailed in Table 3). All ensemble members are at the same spatial resolution, however 2 members (CNRM-ALADIN63, and ICTP-RegCM4-6) required interpolation from their native grid to a common grid using a nearest-neighbour approach. To minimize errors, the indices listed in Table 2 were calculated individually before any interpolation. Furthermore, the final Ens6 product was obtained with the use of an ensemble mean of the indices associated with each member.

Table 3: A description (including the model, reference, and institute that ran the simulation) of the RCM simulations driven by ECMWF-ERAINT making up Ens6.

Institute	RCM	Reference
CLMcom-ETH	COSMO-crCLIM-v1-1	Sørland <i>et al.</i> , 2021
CNRM	ALADIN63	Nabat <i>et al.</i> , 2020
GERICS	REMO2015	Jacob, 2001; Jacob <i>et al.</i> , 2012
ICTP	RegCM4-6	Giorgi <i>et al.</i> , 2014
KNMI	RACMO22E	van Meijgaard <i>et al.</i> , 2012
SMHI	RCA4	Kupiainen <i>et al.</i> , 2011

The metric was also applied to a new ≈ 3 km resolution CP simulation of the western and central Mediterranean (hereafter referred to as WMD03). This new simulation was run using the fifth-generation regional climate modelling system, RegCM5 (Coppola et al., 2024; Giorgi et al., 2023), and driven by the fifth-generation ECMWF reanalysis for the global climate and weather ~~ECMWF-ERA5 reanalysis~~ (ECMWF-ERA5; Hersbach et al., 2020), and a parent ≈ 12 km EURO-CORDEX domain. Both the parent and CP simulations have been run with the non-hydrostatic Moloch core (Davolio et al., 2020; Malguzzi et al., 2006), and physics configuration as presented in Coppola et al., (2024) with the following differences: NoTo microphysics (Nogherotto et al., 2016), Xu & Randall (1996) cloud fraction, and Biosphere-Atmosphere Transfer Scheme land surface module (Dickinson et al., 1993)(Dickinson et al., 1993). The final CP simulation covers a 10-year period (1995-2004), which was included in the analysis to ~~test-evaluate~~ the performance of the metric for a very-high resolution climate dataset.

The eight climate indices obtained from the E-OBS dataset were computed for these modelled datasets and evaluated using the E-OBS-derived indices as a reference dataset. The comparison was performed with the use of a standard percentage bias as described in Equation (6).

(6)
$$\frac{(Model-Reference)}{Reference} \times 100$$

200 This data is brought together in the analysis with two time periods: 31-years (1980-2010) for the assessment of the observation and RCM data; and 10-years (1995-2004) for the inclusion and comparison of the CP data. The latter 10-year time period is also applied to the observation and RCM data, and while the individual 10-year assessment is shown in the Supplementary Information, the direct comparison of all datasets was performed on this common time period.

3 Data Analysis

3.1 Climate Indices

205 The EcoClimate Index needs to be constructed using climate indices that represent the environmental conditions of an arthropod's habitat. Therefore, the climate indices listed in Table 2 should represent the climatological component of an ecological niche in order to be used in the evaluation of this metric. In order to avoid cases of double sampling, correlations between prospective indices (described in Table 2 and S1) were analysed and only those with a correlation lower than 0.5 were selected for this analysis (the matrix of scatter plots and a summary of the correlation coefficients is presented in Figure S1 and Table S2). This study, serving as a proof-of-concept for this metric, was designed for a homogeneous inter-species
210 assessment, and hence this correlation limit was considered an acceptable constraint. However, for targeted in-depth analysis of individual species using the metric, it is advisable to construct the index from environmental parameters that are as independent as possible from those of other species. Ideally, these indices should exhibit even lower correlations than the set threshold to ensure greater precision.

215 The metric of EI_s (described in Section 2) is also computed based on two RCM datasets, a 12 km Europe ensemble of 6 simulations (Ens6), and a 3 km CP simulation of the western and central Mediterranean (WMD03). ~~The same eight climate indices obtained from the E-OBS dataset were computed for these simulations and compared to the E-OBS derived indices.~~ The percentage biases of each index (shown in Figure 1 and Figure 2, ~~as well as Figures S27 to S32 for each ensemble member~~) reveal ~~small differences to the reference data~~ limitations of the modelled datasets. The most prominent bias for Ens6 is a ~~prominent~~ wet bias ~~of up to 3%~~ for rx1day mostly in ~~Spain, South Italy, and~~ the East of the domain. ~~This is consistent throughout all models but to a lesser extent for RegCM and RACMO. A wetter (prsum) and colder (tasmean) bias is noticeable in mountainous regions, consistent with observational challenges associated with these areas, as noted in other studies (Adam and Lettenmaier, 2003; Ciarlo` et al., 2021)(Adam and Lettenmaier, 2003; Ciarlo` et al., 2021). All members of Ens6 also show a positive bias over Central Europe for cwfi and especially hwfi, as well as a windy bias throughout the~~
225 ~~domain. The biases for the WMD03 dataset are more pronounced than the Ens6. This could be partially attributed to the model configuration and/or increased resolution revealing similar issues to mountainous regions related to station density within the reference dataset (a more detailed assessment of the CP dataset is upcoming in a separate study). While these~~

230

biases will certainly influence the values of EL_s , this might not be prominent (see below) since the EL_s is based on the statistical descriptors ($\mu_{SL}, \sigma_{SL}, L_{SL}$) of the climate indices calculated within each location. This is noticeable in the actual values obtained for all statistical descriptors (see Supplementary Information Tables S3 to S7) compare well within datasets, revealing that the datasets are still comparable for the purposes of this study, which goes up to 4% or 5% in some parts of the WMD03. Similarly, the indices prsum, cwfi, hwfi, and windmean also show bias for WMD03. This implies that model datasets well validate compared to the reference, and no significant biases are present.

235

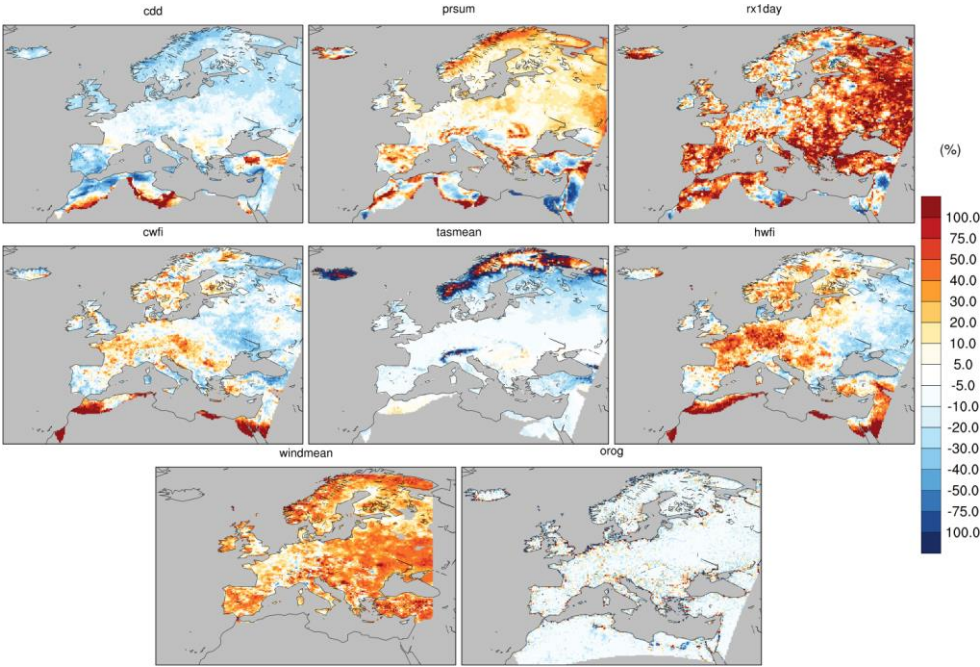


Figure 1: Percentage bias for climate indices from the 30-year Ens6 (see Table 3) compared to E-OBS dataset (1980-2010).

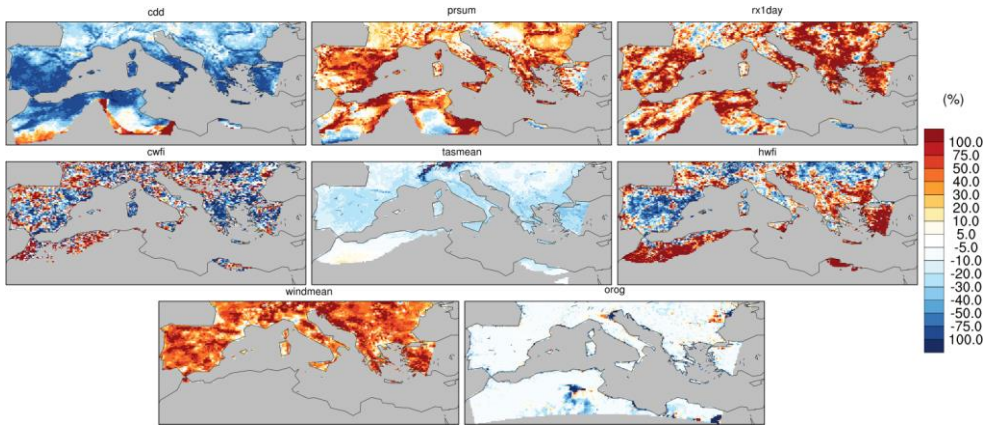


Figure 2: Percentage bias for climate indices from the 10-year WMD03 (driven by ERA5) compared to E-OBS dataset (1995-2004).

3.2 Eco-Climate Index analysis

To demonstrate the application of the Eco-Climate Index, described in Section 2, the E-OBS climate dataset was utilised first. *Spilostethus pandurus* was selected as the first case study, with over 5000 iNaturalist observations. This approach provides a detailed illustration of the index's capabilities, with results summarised in Figure 3, reflecting the index's performance using extensive empirical data. The spatial maps shown in Figure 3a-h illustrate the eight climate indices (expressed in terms of the preferred climate conditions, C_{st}) as separate components of the fundamental niche, each ranging from 0 to 1, which represent the worst and best state of the index respectively. For any PSI, each component can be analysed in detail, if necessary, for example, Figure 3a shows a broad area with climate conditions at or approaching 1. In this case, given that the lower limit of cdd is 0 days, these minimal drought conditions likely do not pose any additional stress to a PSI.

The observation locations of *Spilostethus pandurus* n_s (Figure 3i) is different from that given in Table 1. This is because some of the original 5037 points correspond to grid-cells not included in the E-OBS dataset (represented as 'miss.' in Figure 3j) and thus, in this case, n_s is reduced to 3644. When the spatial maps of Figure 3a-h are combined, the Eco-Climate indices of the species, EI_s (Figure 3k) is obtained. This spatial map thus describes the fundamental niche for *Spilostethus pandurus* according to the observed locations of iNaturalist and the climate conditions of E-OBS.

260 It should be noted that the value of EI_s extends to areas where no observations can be found. This does not imply that these are previously unknown habitats of *Spilostethus pandurus*, but rather that this ~~describes-represents~~ the fundamental niche for the species, and hence favourable climate conditions for the organism. The interaction with other species (host plants, predator-prey relationships, human presence) is not included in this metric and therefore it cannot describe the realised niche.

265 While the spatial distribution for EI_s (Figure 3k) is appreciably similar to the spatial distribution of the points of observation (Figure 3j), not all points result in a high EI_s . Figure 3k also includes points of observed locations where the corresponding EI_s value is less than 0.1, i.e. regions with the least likely chance of observation. This is quantified with the term $p_{0.1}$, which describes the percentage of valid points within this threshold, and is thus used as a measure of the metric's "effectiveness" in
270 this study.

Although the value of EI_s is a unitless quantity, it is constructed from statistical descriptors of climate parameters (as described above). The method allows for the determination of the ideal conditions of each climate index (in their respective units) associated with a particular species. All actual values of statistical descriptors associated with every dataset and time
275 period analysed within this study are defined in Tables S3 to S7 of the Supplementary Information. It's important to note that for the purposes of this study, these values represent a confirmation that no abnormal conditions are being considered. However, these quantities should not be interpreted as the actual parameters preferred by each species, since as described earlier, the climate indices were not selected to represent the precise preferences of each species but to allow for a homogenous assessment of the EI_s metric.

280 The distributions shown in Figure 3 could be applied within the context of a different study to extrapolate on expected impacts due to climate change. For instance, with the expected aridification of the Mediterranean (IPCC, 2023), one would expect that some impacted regions would become less hospitable to a PSI based on the importance of prsum (e.g., Figure 3b). Another example based on plots of tasmean (e.g., Figure 3e), could show northward migration of the ideal temperature conditions, as southern regions become less hospitable with increasing temperatures.
285

Spilostethus pandurus

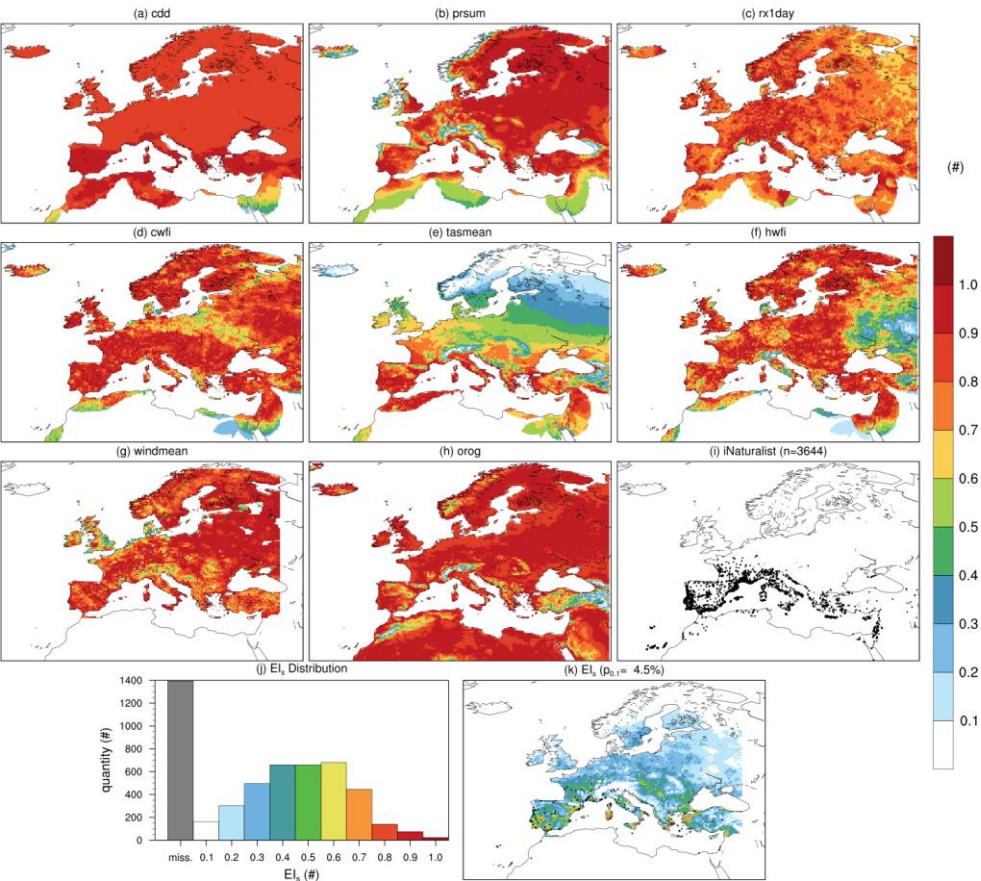


Figure 3: The EIs product and components for *Spilostethus pandurus* according to the 1980-2010 E-OBS dataset. (a-h) The climate indices expressed in terms of affinity to *Spilostethus pandurus*. (i) The observation points (iNaturalist) and quantity, n , applied. (j) The distribution of EI_s values, including the number of points from the original dataset that could not be applied (“miss.”). (k) The spatial distribution of EI_s , including the points less than 0.1 (quantified with percentage $p_{0.1}$).

The number of points, n_s , used in the initial assessment of the habitat could also influence $p_{0.1}$. The different PSIs listed in Table 1, provide the opportunity to test-evaluate the metric for datasets with different n_s . A summary of the spatial

distributions of El_s for all eight PSIs is shown in Figure 4 and the corresponding images analogous to Figure 3 are shown in Figures S2-S8. When investigating the lowest value for n_s , too few points from the *Brachytrapes megacephalus* dataset could be used with the E-OBS dataset, resulting in a constant El_s field of 0 (these results were maintained for consistency throughout this paper). PSIs with n_s greater than 100 have $p_{0.1}$ values of $\approx 20\%$, while those with n_s greater than 1000 have $p_{0.1}$ values between 4-6%. This suggests that with higher n_s , the method becomes more effective at reproducing the fundamental niche.

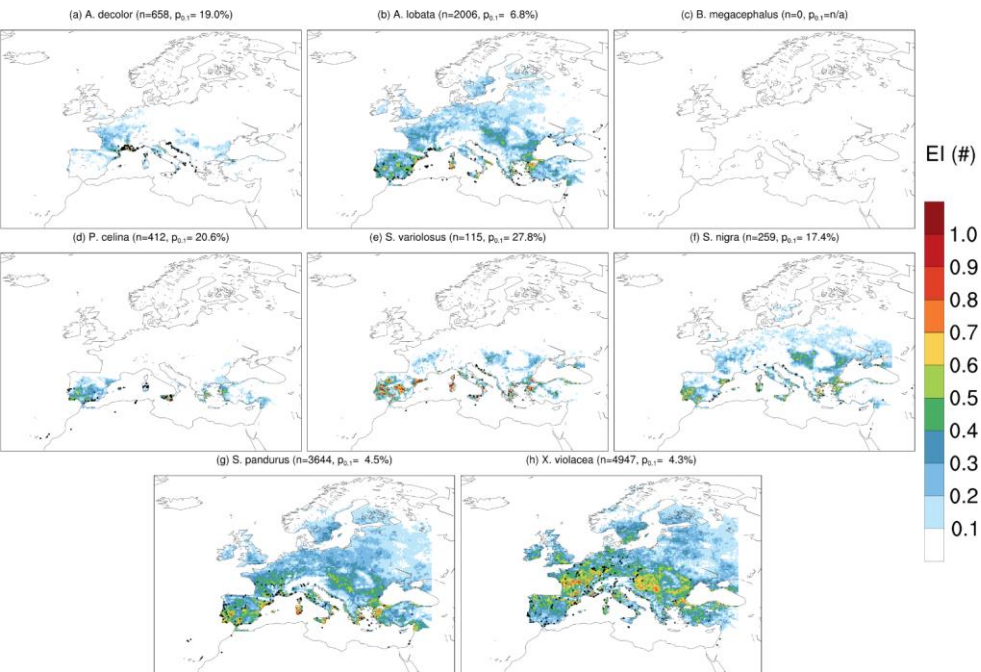
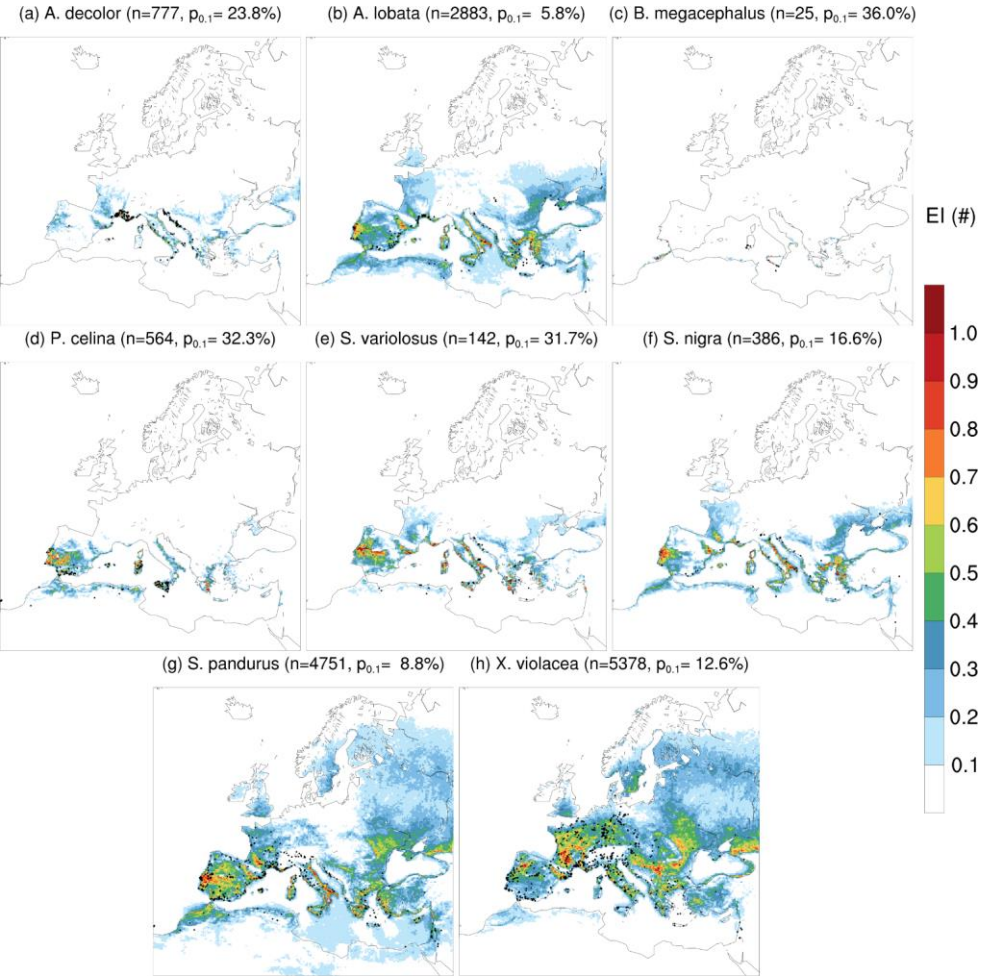


Figure 4. The spatial distribution of El_s for all eight PSIs applied to the 1980-2010 E-OBS dataset. Individual products of each PSI are shown in Figure 3 and Figures S2-S8.

Considering that several observations correspond to coastal areas or small islands, they cannot be properly represented within the E-OBS dataset as it is limited to the land. This is explored with the use of the Ens6 data (Figure 5) which makes

310 use of all iNaturalist coordinates within the EURO-CORDEX region. The results, while similar, do not reduce the value of $p_{0.1}$, and the small differences obtained may be due to model biases (Figure 1).



315 **Figure 5: The spatial distribution of EI_i for all eight PSIs applied to the 1980-2010 Ens6 dataset. Individual products of each PSI are shown in Figures S9-S16.**

The conditions leading to EI_s values lower than 0.1 may be a consequence of the spatial resolution of the climate data, where more complex geographic features such as streams, smaller valleys, gulleys, etc. (which can serve as micro-habitats) would not be properly represented in the dataset. The WMD03 data (Figure 6), which serves as a test for this hypothesis, also gives similar results to the previous two datasets, but with a is almost consistently decrease in $p_{0.1}$ better for almost all species when compared to than the Ens6 (this is mostly consistent when analysing Ens6 within the common time period; see Figure S26). This is expressed more clearly in Figure 7, which shows the relationship of n_s and $p_{0.1}$, and also highlights the differences between the three climate datasets. This reveals that the climate data, whilst resulting in some variation to the successful interpretation of the fundamental niche, is likely not a major factor in decreasing the value of $p_{0.1}$. Figure 7 clearly reveals that, instead, the most reliable results are obtained for species with a very high number of observations ($n_s > 1000$). When comparing the results of each species, the reference dataset almost always produces the most reliable results. This, together with the comparable $p_{0.1}$ values of the RCM and CP dataset (which sometimes is worst for the CP data), suggests that the reducing the bias of the model data can contribute towards improving the results of this metric.

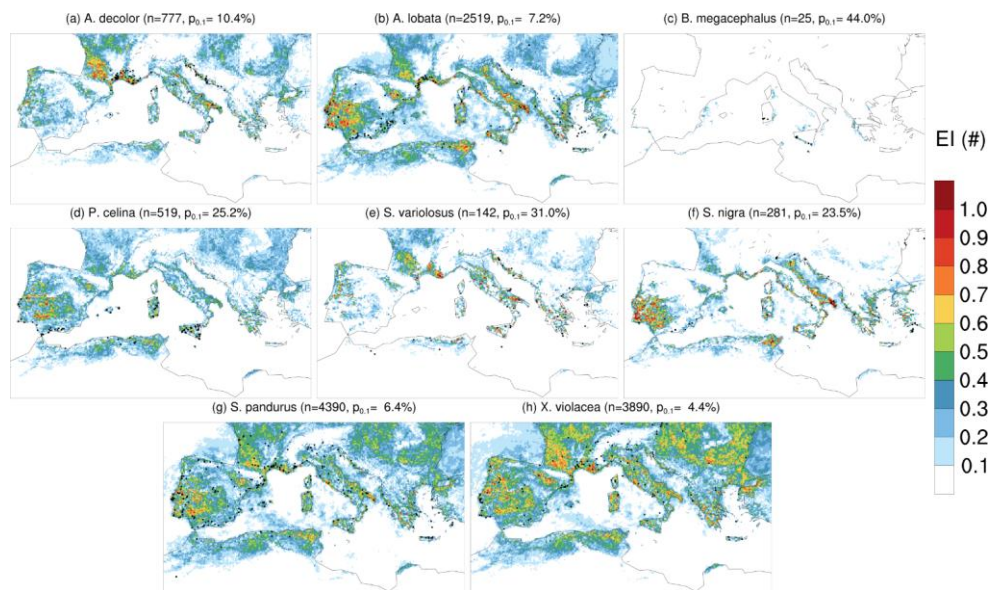


Figure 6: The spatial distribution of EI_s for all eight PSIs applied to the 1995-2004 WMD03 dataset. Individual products of each PSI are shown in Figures S17-S24.

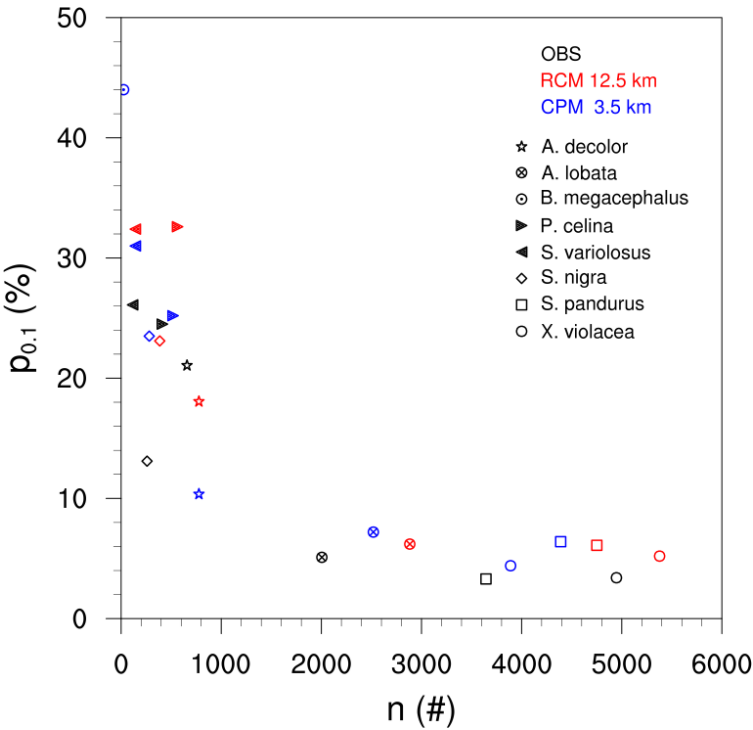


Figure 7: The relationship between the total points n_s used in each analysis and the corresponding $p_{0.1}$. Each species is presented with a unique marker, while results obtained from different climate datasets are presented with different colours.

4 Conclusions

340 This study has introduced and applied an efficient index for assessing the climate suitability for species' occurrences of ecological habitats, with a focus on terrestrial arthropods occurring in the Mediterranean region. Through the integration of RCM data, this research paper outlines a methodological framework that reflects the climatological preferences of terrestrial arthropod species based on their historically observed locations. This new metric allows a suitable representation of species distribution on the basis of their fundamental (or climatic) niche and hence might represent an important tool to model future

change in response to climate change. The findings underscore the index's efficacy in providing a swift and straightforward tool for evaluating the resilience and vulnerability of arthropod populations to climate change.

The application of a diverse range of climate data in this study has underscored the effectiveness of the proposed index in representing the fundamental niches of arthropod species across the Mediterranean region. Specifically, for species with observations exceeding 1000 points, the method captures the climatic preferences corresponding to approximately 95% of these observed points. While the index yields appreciable results with any climate dataset employed, the analysis indicates that CP data often provides some superior outcomes compared to RCM data with a lower resolution. This distinction highlights the index's versatility and its potential for adaptation to different data sources, ensuring its applicability and usefulness in a wide range of ecological and conservation planning scenarios. The positive aspects of this research pave the way for future investigations into the impacts of climate change on biodiversity, offering a promising tool for the assessment and preservation of arthropod populations in changing environmental conditions.

Despite the promising outcomes of this study, it is important to acknowledge its limitations, particularly in the context of data availability for various arthropod species. The methodology's reliance on a significant volume of observations ($n_s > 1000$) to accurately model the fundamental niches predominantly benefits well-documented, charismatic species, such as butterflies. This criterion, unfortunately, leaves out a vast number of arthropod species that may be less well-known or visually appealing but are equally or more critical from a conservation perspective. Notably, *Brachytripes megacephalus*, falls short of the observation threshold necessary for reliable niche modelling through this index. However, this limitation also opens avenues for future research and methodological refinement. By exploring and integrating alternative data sources, there is potential to enhance the model's applicability and extend its benefits to a broader spectrum of arthropod species, ensuring that conservation efforts can be more inclusively and effectively directed.

The successful application of the proposed metric critically hinges on the selection of appropriate climate indices tailored to the specific ecological requirements of each arthropod species. Recognising the unique set of conditions that define the habitat preferences of each species necessitates an individualised approach to determining the most relevant climate indices for accurate niche modelling. During this study, to explore the metric's boundaries and potential, a uniform set of climate indices was applied across all species examples. It is crucial to understand that the results derived from this methodology, while insightful, should not be interpreted as precise depictions of any given species's habitat. Instead, they should be viewed as illustrative examples demonstrating the metric's application. This approach underscores the necessity for nuanced, species-specific research to fully leverage the metric's capabilities in accurately representing the ecological niches of arthropods, thereby reinforcing the importance of customization in the pursuit of ecological understanding and conservation efforts.

In conclusion, the metric introduced in this study holds the potential for application across a variety of climate scenarios, including future projections from the CORDEX ensembles. Such applications promise to yield valuable insights into the direct impacts of climate change on the ecological niches of species at risk. Envisioned as the basis for follow-up studies, this metric could significantly enhance our comprehension of how climate variability affects biodiversity and ecosystem dynamics. By delineating potential shifts in the fundamental niches of key ecological actors, this research not only advances our understanding of the intricate relationships within ecosystems under the pressure of climate change but also provides practical guidance for conservation strategies. These strategies aim to address and mitigate the negative consequences of environmental changes, thereby supporting the resilience of biodiversity in the face of impending climatic challenges.

Funding

This work was supported by the Marie Skłodowska-Curie Actions Grant Agreement 101062427.

Acknowledgements

The authors would like to express their gratitude to Arthur Lamolier, Simone Cutajar, and Cyril Caminade for their insightful and constructive discussions that greatly enhanced this work. The authors acknowledge the E-OBS dataset from the EU-FP6 project UERRA (<http://www.uerra.eu>) and the Copernicus Climate Change Service, and the data providers in the ECA&D project (<https://www.ecad.eu>). They also acknowledge the World Climate Research Programme's Working Group on Regional Climate, and the Working Group on Coupled Modelling, former coordinating body of CORDEX and responsible panel for CMIP5. They also thank the climate modelling groups (listed in Table 3 of this paper) for producing and making available their model output, as well as the Earth System Grid Federation infrastructure, an international effort led by the U.S. Department of Energy's Program for Climate Model Diagnosis and Intercomparison, the European Network for Earth System Modelling and other partners in the Global Organisation for Earth System Science Portals (GO-ESSP). ChatGPT (GPT-3.5, OpenAI's large-scale language-generation model) has been used to improve the writing style of limited parts of this Article. JMC reviewed, edited, and revised the ChatGPT generated texts and takes ultimate responsibility for the content of this publication. The authors sincerely thank the reviewers for their constructive suggestions, which greatly contributed to improving the quality of this study.

Data Access

The scripts used for the analysis in this study are available on GitHub at: <https://github.com/ciarloj/PALEOSIM>. The data from the CP simulations is freely available upon request.

Competing Interests

The authors declare that they have no conflict of interest.

References

- Adam, J. C. and Lettenmaier, D. P.: Adjustment of global gridded precipitation for systematic bias, *Journal of Geophysical Research: Atmospheres*, 108, <https://doi.org/10.1029/2002JD002499>, 2003.
- Adão, F., Campos, J. C., Santos, J. A., Malheiro, A. C., and Fraga, H.: Relocation of bioclimatic suitability of Portuguese grapevine varieties under climate change scenarios, *Front Plant Sci*, 14, <https://doi.org/10.3389/fpls.2023.974020>, 2023.
- Arce, A. N., Cantwell-Jones, A., Tansley, M., Barnes, I., Brace, S., Mullin, V. E., Notton, D., Ollerton, J., Eatough, E., Rhodes, M. W., Bian, X., Hogan, J., Hunter, T., Jackson, S., Whiffin, A., Blagoderov, V., Broad, G., Judd, S., Kokkini, P., Livermore, L., Dixit, M. K., Pearse, W. D., and Gill, R. J.: Signatures of increasing environmental stress in bumblebee wings over the past century: Insights from museum specimens, *Journal of Animal Ecology*, 92, 297–309, <https://doi.org/10.1111/1365-2656.13788>, 2023.
- Ban, N., Caillaud, C., Coppola, E., Pichelli, E., Sobolowski, S., Adinolfi, M., Ahrens, B., Alias, A., Anders, I., Bastin, S., Belušić, D., Berthou, S., Brisson, E., Cardoso, R. M., Chan, S. C., Christensen, O. B., Fernández, J., Fita, L., Frisius, T., Gašparac, G., Giorgi, F., Goergen, K., Haugen, J. E., Hodnebrog, Ø., Kartsios, S., Katragkou, E., Kendon, E. J., Keuler, K., Lavin-Gullon, A., Lenderink, G., Leutwyler, D., Lorenz, T., Maraun, D., Mercogliano, P., Milovac, J., Panitz, H.-J., Raffa, M., Remedio, A. R., Schär, C., Soares, P. M. M., Srnec, L., Steensen, B. M., Stocchi, P., Tölle, M. H., Truhetz, H., Vergara-Temprado, J., de Vries, H., Warrach-Sagi, K., Wulfmeyer, V., and Zander, M. J.: The first multi-model ensemble of regional climate simulations at kilometer-scale resolution, part I: evaluation of precipitation, *Clim Dyn*, 57, 275–302, <https://doi.org/10.1007/s00382-021-05708-w>, 2021.
- Botsch, J. C., Zaveri, A. N., Nell, L. A., McCormick, A. R., Book, K. R., Phillips, J. S., Einarsson, Á., and Ives, A. R.: Disentangling the drivers of decadal body size decline in an insect population, *Glob Chang Biol*, 30, <https://doi.org/10.1111/gcb.17014>, 2024.
- Brachytrupes megacephalus* (Europe assessment). The IUCN Red List of Threatened Species 2016: e.T64550733A70738413: <https://www.iucnredlist.org/species/64550733/70738413>, last access: 23 March 2025.
- Casanueva, A., Kotlarski, S., Herrera, S., Fernández, J., Gutiérrez, J. M., Boberg, F., Colette, A., Christensen, O. B., Goergen, K., Jacob, D., Keuler, K., Nikulin, G., Teichmann, C., and Vautard, R.: Daily precipitation statistics in a EURO-CORDEX RCM ensemble: added value of raw and bias-corrected high-resolution simulations, *Clim Dyn*, 47, 719–737, <https://doi.org/10.1007/s00382-015-2865-x>, 2016.
- Chakravarthy, A. K., Kammar, V., and Shashank, P. R.: Arthropods: Evolution and Ecology, in: *Economic and Ecological Significance of Arthropods in Diversified Ecosystems*, edited by: Chakravarthy, A. and Sridhara, S., Springer Singapore, Singapore, 1–16, https://doi.org/10.1007/978-981-10-1524-3_1, 2016.

Chen, D., Rojas, M., Samset, B. H., Cobb, K., Niang, A. D., Edwards, P., Emori, S., Faria, S. H., Hawkins, E., Hope, P., Huybrechts, P., Meinshausen, M., Mustafa, S. K., Plattner, G.-K., and Tréguier, A.-M.: Framing, Context, and Methods, in: Climate Change 2021 – The Physical Science Basis, edited by: Masson-Delmotte, V., Zhai, P., Pirani, A., Connors, S. L., Péan, C., Berger, S., Caud, N., Chen, Y., Goldfarb, L., Gomis, M. I., Huang, M., Leitzell, K., Lonnoy, E., Matthews, J. B. R., Maycock, T. K., Waterfield, T., Yelekçi, O., Yu, R., and Zhou, B., Cambridge University Press, 147–286, <https://doi.org/10.1017/9781009157896.003>, 2021.

Ciarlo^{`,} J. M., Coppola, E., Fantini, A., Giorgi, F., Gao, X., Tong, Y., Glazer, R. H., Torres Alavez, J. A., Sines, T., Pichelli, E., Raffaele, F., Das, S., Bukovsky, M., Ashfaq, M., Im, E.-S., Nguyen-Xuan, T., Teichmann, C., Remedio, A., Remke, T., Bülow, K., Weber, T., Bunttemeyer, L., Sieck, K., Rechid, D., and Jacob, D.: A new spatially distributed added value index for regional climate models: the EURO-CORDEX and the CORDEX-CORE highest resolution ensembles, *Clim Dyn*, 57, 1403–1424, <https://doi.org/10.1007/s00382-020-05400-5>, 2021.

Clark, R. C. and Johnson, J. C.: The functional microclimate of an urban arthropod pest: Urban heat island temperatures in webs of the western black widow spider, *J Therm Biol*, 120, 103814, <https://doi.org/10.1016/j.jtherbio.2024.103814>, 2024.

Coppola, E., Sobolowski, S., Pichelli, E., Raffaele, F., Ahrens, B., Anders, I., Ban, N., Bastin, S., Belda, M., Belusic, D., Caldas-Alvarez, A., Cardoso, R. M., Davolio, S., Dobler, A., Fernandez, J., Fita, L., Fumiere, Q., Giorgi, F., Goergen, K., Güttler, I., Halenka, T., Heinzeller, D., Hodnebrog, Ø., Jacob, D., Kartsios, S., Katragkou, E., Kendon, E., Khodayar, S., Kunstmann, H., Knist, S., Lavín-Gullón, A., Lind, P., Lorenz, T., Maraun, D., Marelle, L., van Meijgaard, E., Milovac, J., Myhre, G., Panitz, H.-J., Piazza, M., Raffa, M., Raub, T., Rockel, B., Schär, C., Sieck, K., Soares, P. M. M., Somot, S., Srncic, L., Stocchi, P., Tölle, M. H., Truhetz, H., Vautard, R., de Vries, H., and Warrach-Sagi, K.: A first-of-its-kind multi-model convection permitting ensemble for investigating convective phenomena over Europe and the Mediterranean, *Clim Dyn*, 55, 3–34, <https://doi.org/10.1007/s00382-018-4521-8>, 2020.

Coppola, E., Nogherotto, R., Ciarlo^{`,} J. M., Giorgi, F., van Meijgaard, E., Kadyrov, N., Iles, C., Corre, L., Sandstad, M., Somot, S., Nabat, P., Vautard, R., Levavasseur, G., Schwingshackl, C., Sillmann, J., Kjellström, E., Nikulin, G., Aalbers, E., Lenderink, G., Christensen, O. B., Boberg, F., Sørland, S. L., Demory, M., Bülow, K., Teichmann, C., Warrach-Sagi, K., and Wulfmeyer, V.: Assessment of the European Climate Projections as Simulated by the Large EURO-CORDEX Regional and Global Climate Model Ensemble, *Journal of Geophysical Research: Atmospheres*, 126, 0–3, <https://doi.org/10.1029/2019JD032356>, 2021a.

Coppola, E., Raffaele, F., Giorgi, F., Giuliani, G., Xuejie, G., Ciarlo, J. M., Sines, T. R., Torres-Alavez, J. A., Das, S., di Sante, F., Pichelli, E., Glazer, R., Müller, S. K., Abba Omar, S., Ashfaq, M., Bukovsky, M., Im, E.-S., Jacob, D., Teichmann, C., Remedio, A., Remke, T., Kriegsmann, A., Bülow, K., Weber, T., Bunttemeyer, L., Sieck, K., and Rechid, D.: Climate hazard indices projections based on CORDEX-CORE, CMIP5 and CMIP6 ensemble, *Clim Dyn*, 57, 1293–1383, <https://doi.org/10.1007/s00382-021-05640-z>, 2021b.

Coppola, E., Giorgi, F., Giuliani, G., Pichelli, E., Ciarlo^{`,} J. M., Raffaele, F., Nogherotto, R., Reboita, M. S., Lu, C., Zazulie, N., Vargas-Heinz, L., Cardoso, A. A., and Leeuw, J. de: The Fifth Generation Regional Climate Modeling System,

RegCM5: the first CP European wide simulation and validation over the CORDEX-CORE domains, ESS Open Archive, <https://doi.org/https://doi.org/10.22541/essoar.170542078.80092084/v1>, 2024.

Cornes, R. C., van der Schrier, G., van den Besselaar, E. J. M., and Jones, P. D.: An Ensemble Version of the E-OBS
475 Temperature and Precipitation Data Sets, *Journal of Geophysical Research: Atmospheres*, 123, 9391–9409, <https://doi.org/10.1029/2017JD028200>, 2018.

Cui, F., Wang, B., Zhang, Q., Tang, H., De Maeyer, P., Hamdi, R., and Dai, L.: Climate change versus land-use change—
What affects the ecosystem services more in the forest-steppe ecotone?, *Science of The Total Environment*, 759, 143525, <https://doi.org/10.1016/j.scitotenv.2020.143525>, 2021.

480 Davolio, S., Malguzzi, P., Drofa, O., Mastrangelo, D., and Buzzi, A.: The Piedmont flood of November 1994: a testbed of
forecasting capabilities of the CNR-ISAC meteorological model suite, *Bulletin of Atmospheric Science and Technology*, 1,
263–282, <https://doi.org/10.1007/s42865-020-00015-4>, 2020.

Dee, D. P., Uppala, S. M., Simmons, A. J., Berrisford, P., Poli, P., Kobayashi, S., Andrae, U., Balmaseda, M. A., Balsamo,
G., Bauer, P., Bechtold, P., Beljaars, A. C. M., van de Berg, L., Bidlot, J., Bormann, N., Delsol, C., Dragani, R., Fuentes, M.,
485 Geer, A. J., Haimberger, L., Healy, S. B., Hersbach, H., Hólm, E. V., Isaksen, L., Kållberg, P., Köhler, M., Matricardi, M.,
McNally, A. P., Monge-Sanz, B. M., Morcrette, J. -J., Park, B. -K., Peubey, C., de Rosnay, P., Tavolato, C., Thépaut, J. -N.,
and Vitart, F.: The ERA-Interim reanalysis: configuration and performance of the data assimilation system, *Quarterly
Journal of the Royal Meteorological Society*, 137, 553–597, <https://doi.org/10.1002/qj.828>, 2011.

Dickinson, R. E., Henderson-Sellers, A., and Kennedy, P. J.: Biosphere-atmosphere Transfer Scheme (BATS) Version 1e as
490 Coupled to the NCAR Community Climate Model (No. NCAR/TN-387+STR), <https://doi.org/doi:10.5065/D67W6959>,
1993.

Doblas-Reyes, F. J., Sörensson, A. A., Almazroui, M., Dosio, A., Gutowski, W. J., Haarsma, R., Hamdi, R., Hewitson, B.,
Kwon, W.-T., Lamptey, B. L., Maraun, D., Stephenson, T. S., Takayabu, I., Terray, L., Turner, A., and Zuo, Z.: Linking
Global to Regional Climate Change, in: *Climate Change 2021 – The Physical Science Basis*, edited by: Masson-Delmotte,
495 V., Zhai, P., Pirani, A., Connors, S. L., Péan, C., Berger, S., Caud, N., Chen, Y., Goldfarb, L., Gomis, M. I., Huang, M.,
Leitzell, K., Lonnoy, E., Matthews, J. B. R., Maycock, T. K., Waterfield, T., Yelekçi, O., Yu, R., and Zhou, B., Cambridge
University Press, 1363–1512, <https://doi.org/10.1017/9781009157896.012>, 2021.

Eyring, V., Bony, S., Meehl, G. A., Senior, C. A., Stevens, B., Stouffer, R. J., and Taylor, K. E.: Overview of the Coupled
Model Intercomparison Project Phase 6 (CMIP6) experimental design and organization, *Geosci Model Dev*, 9, 1937–1958,
500 <https://doi.org/10.5194/gmd-9-1937-2016>, 2016.

Fantini, A., Raffaele, F., Torma, C., Bacer, S., Coppola, E., Giorgi, F., Ahrens, B., Dubois, C., Sanchez, E., and Verdecchia,
M.: Assessment of multiple daily precipitation statistics in ERA-Interim driven Med-CORDEX and EURO-CORDEX
experiments against high resolution observations, *Clim Dyn*, 51, 877–900, <https://doi.org/10.1007/s00382-016-3453-4>, 2018.

Fink, S. and Scheidegger, C.: Effects of barriers on functional connectivity of riparian plant habitats under climate change,
505 *Ecol Eng*, 115, 75–90, <https://doi.org/10.1016/j.ecoleng.2018.02.010>, 2018.

Fletcher Jr., R. J., Hefley, T. J., Robertson, E. P., Zuckerberg, B., McCleery, R. A., and Dorazio, R. M.: A practical guide for combining data to model species distributions, *Ecology*, 100, 1–15, 2019.

Forister, M. L., Halsch, C. A., Nice, C. C., Fordyce, J. A., Dilts, T. E., Oliver, J. C., Prudic, K. L., Shapiro, A. M., Wilson, J. K., and Glassberg, J.: Fewer butterflies seen by community scientists across the warming and drying landscapes of the American West, *Science* (1979), 371, 1042–1045, <https://doi.org/10.1126/science.abe5585>, 2021.

Giorgi, F.: Climate change hot-spots, *Geophys Res Lett*, 33, <https://doi.org/10.1029/2006GL025734>, 2006.

Giorgi, F.: Introduction to the special issue: the phase I CORDEX RegCM4 hyper-matrix (CREMA) experiment, *Clim Change*, 125, 1–5, <https://doi.org/10.1007/s10584-014-1166-4>, 2014.

Giorgi, F., Jones, C., and Asrar, G.: Addressing climate information needs at the regional level: The CORDEX framework, *World Meteorological Organization Bulletin*, 58, 175–183, 2009.

Giorgi, F., Im, E.-S., Coppola, E., Diffenbaugh, N. S., Gao, X. J., Mariotti, L., and Shi, Y.: Higher Hydroclimatic Intensity with Global Warming, *J Clim*, 24, 5309–5324, <https://doi.org/10.1175/2011JCLI3979.1>, 2011.

Giorgi, F., Coppola, E., and Raffaele, F.: Threatening levels of cumulative stress due to hydroclimatic extremes in the 21st century, *NPJ Clim Atmos Sci*, 1, 18, <https://doi.org/10.1038/s41612-018-0028-6>, 2018.

Giorgi, F., Coppola, E., Jacob, D., Teichmann, C., Abba Omar, S., Ashfaq, M., Ban, N., Bülow, K., Bukovsky, M., Bunttemeyer, L., Cavazos, T., Ciarlo`, J., da Rocha, R. P., Das, S., di Sante, F., Evans, J. P., Gao, X., Giuliani, G., Glazer, R. H., Hoffmann, P., Im, E.-S., Langendijk, G., Lierhammer, L., Llopart, M., Mueller, S., Luna-Nino, R., Nogherotto, R., Pichelli, E., Raffaele, F., Reboita, M., Rechid, D., Remedio, A., Remke, T., Sawadogo, W., Sieck, K., Torres-Alavez, J. A., and Weber, T.: The CORDEX-CORE EXP-I Initiative: Description and Highlight Results from the Initial Analysis, *Bull Am Meteorol Soc*, 103, E293–E310, <https://doi.org/10.1175/BAMS-D-21-0119.1>, 2022a.

Giorgi, F., Coppola, E., Jacob, D., Teichmann, C., Abba Omar, S., Ashfaq, M., Ban, N., Bülow, K., Bukovsky, M., Bunttemeyer, L., Cavazos, T., Ciarlo`, J., da Rocha, R. P., Das, S., di Sante, F., Evans, J. P., Gao, X., Giuliani, G., Glazer, R. H., Hoffmann, P., Im, E.-S., Langendijk, G., Lierhammer, L., Llopart, M., Mueller, S., Luna-Nino, R., Nogherotto, R., Pichelli, E., Raffaele, F., Reboita, M., Rechid, D., Remedio, A., Remke, T., Sawadogo, W., Sieck, K., Torres-Alavez, J. A., and Weber, T.: The CORDEX-CORE EXP-I Initiative: Description and Highlight Results from the Initial Analysis, *Bull Am Meteorol Soc*, 103, E293–E310, <https://doi.org/10.1175/BAMS-D-21-0119.1>, 2022b.

Giorgi, F., Coppola, E., Giuliani, G., Ciarlo`, J. M., Pichelli, E., Nogherotto, R., Raffaele, F., Malguzzi, P., Davolio, S., Stocchi, P., and Drofa, O.: The Fifth Generation Regional Climate Modeling System, RegCM5: Description and Illustrative Examples at Parameterized Convection and Convection-Permitting Resolutions, *Journal of Geophysical Research: Atmospheres*, 128, <https://doi.org/10.1029/2022JD038199>, 2023.

Gritti, E. S., Smith, B., and Sykes, M. T.: Vulnerability of Mediterranean Basin ecosystems to climate change and invasion by exotic plant species, *J Biogeogr*, 33, 145–157, <https://doi.org/10.1111/j.1365-2699.2005.01377.x>, 2006.

Gullan, P. J. and Cranston, P. S.: *The Insects: An Outline of Entomology*, 5th Edition, John Wiley & Sons, Inc., Chichester, UK, 2014.

540 Gutiérrez, J. M., Jones, R. G., Narisma, G. T., Alves, L. M., Amjad, M., Gorodetskaya, I. V., Grose, M., Klutse, N. A. B.,
 Krakovska, S., Li, J., Martínez-Castro, D., Mearns, L. O., Mernild, S. H., Ngo-Duc, T., Hurk, B. van den, and Yoon, J.-H.:
 Atlas, in: *Climate Change 2021 – The Physical Science Basis*, edited by: Masson-Delmotte, V., Zhai, P., Pirani, A., Connors,
 S. L., Péan, C., Berger, S., Caud, N., Chen, Y., Goldfarb, L., Gomis, M. I., Huang, M., Leitzell, K., Lonnoy, E., Matthews, J.
 B. R., Maycock, T. K., Waterfield, T., Yelekçi, O., Yu, R., and Zhou, B., Cambridge University Press, 1927–2058,
 545 <https://doi.org/10.1017/9781009157896.021>, 2021.

Gutowski Jr., W. J., Giorgi, F., Timbal, B., Frigon, A., Jacob, D., Kang, H.-S., Raghavan, K., Lee, B., Lennard, C., Nikulin,
 G., O'Rourke, E., Rixen, M., Solman, S., Stephenson, T., and Tangang, F.: WCRP COordinated Regional Downscaling
 EXperiment (CORDEX): a diagnostic MIP for CMIP6, *Geosci Model Dev*, 9, 4087–4095, [https://doi.org/10.5194/gmd-9-](https://doi.org/10.5194/gmd-9-4087-2016)
 4087-2016, 2016.

550 Haase, C. G., Yang, A., McNyset, K. M., and Blackburn, J. K.: GARPTools: R software for data preparation and model
 evaluation of GARP models, *Ecography*, 44, 1790–1796, <https://doi.org/10.1111/ecog.05642>, 2021.

Haylock, M. R., Hofstra, N., Klein Tank, A. M. G., Klok, E. J., Jones, P. D., and New, M.: A European daily high-resolution
 gridded data set of surface temperature and precipitation for 1950–2006, *Journal of Geophysical Research: Atmospheres*,
 113, <https://doi.org/10.1029/2008JD010201>, 2008.

555 Hersbach, H., Bell, B., Berrisford, P., Hirahara, S., Horányi, A., Muñoz-Sabater, J., Nicolas, J., Peubey, C., Radu, R.,
 Schepers, D., Simmons, A., Soci, C., Abdalla, S., Abellan, X., Balsamo, G., Bechtold, P., Biavati, G., Bidlot, J., Bonavita,
 M., De Chiara, G., Dahlgren, P., Dee, D., Diamantakis, M., Dragani, R., Flemming, J., Forbes, R., Fuentes, M., Geer, A.,
 Haimberger, L., Healy, S., Hogan, R. J., Hólm, E., Janisková, M., Keeley, S., Laloyaux, P., Lopez, P., Lupu, C., Radnoti, G.,
 de Rosnay, P., Rozum, I., Vamborg, F., Villaume, S., and Thépaut, J.: The ERA5 global reanalysis, *Quarterly Journal of the*
 560 *Royal Meteorological Society*, 146, 1999–2049, <https://doi.org/10.1002/qj.3803>, 2020.

Hiller, A. E., Koo, M. S., Goodman, K. R., Shaw, K. L., O'Grady, P. M., and Gillespie, R. G.: Niche conservatism
 predominates in adaptive radiation: comparing the diversification of Hawaiian arthropods using ecological niche modelling,
Biological Journal of the Linnean Society, 127, 479–492, <https://doi.org/10.1093/biolinnean/blz023>, 2019.

Høye, T. T. and Forchhammer, M. C.: The influence of weather conditions on the activity of high-arctic arthropods inferred
 565 from long-term observations, *BMC Ecol*, 8, 8, <https://doi.org/10.1186/1472-6785-8-8>, 2008.

Complete Research Grade Observations of *Polyommatus celina*: www.inaturalist.org, last access: 11 August 2023.

IPCC: *Climate Change 2021 – The Physical Science Basis*, Cambridge University Press,
<https://doi.org/10.1017/9781009157896>, 2023.

Jacob, D., Petersen, J., Eggert, B., Alias, A., Christensen, O. B., Bouwer, L. M., Braun, A., Colette, A., Déqué, M.,
 570 Georgievski, G., Georgopoulou, E., Gobiet, A., Menut, L., Nikulin, G., Haensler, A., Hempelmann, N., Jones, C., Keuler, K.,
 Kovats, S., Kröner, N., Kotlarski, S., Kriegsmann, A., Martin, E., van Meijgaard, E., Moseley, C., Pfeifer, S., Preuschmann,
 S., Radermacher, C., Radtke, K., Rechid, D., Rounsevell, M., Samuelsson, P., Somot, S., Soussana, J.-F., Teichmann, C.,

- Valentini, R., Vautard, R., Weber, B., and Yiou, P.: EURO-CORDEX: new high-resolution climate change projections for European impact research, *Reg Environ Change*, 14, 563–578, <https://doi.org/10.1007/s10113-013-0499-2>, 2014.
- 575 Jacob, D., Teichmann, C., Sobolowski, S., Katragkou, E., Anders, I., Belda, M., Benestad, R., Boberg, F., Buonomo, E., Cardoso, R. M., Casanueva, A., Christensen, O. B., Christensen, J. H., Coppola, E., De Cruz, L., Davin, E. L., Dobler, A., Domínguez, M., Fealy, R., Fernandez, J., Gaertner, M. A., García-Díez, M., Giorgi, F., Gobiet, A., Goergen, K., Gómez-Navarro, J. J., Alemán, J. J. G., Gutiérrez, C., Gutiérrez, J. M., Güttler, I., Haensler, A., Halenka, T., Jerez, S., Jiménez-Guerrero, P., Jones, R. G., Keuler, K., Kjellström, E., Knist, S., Kotlarski, S., Maraun, D., van Meijgaard, E., Mercogliano, P., Montávez, J. P., Navarra, A., Nikulin, G., de Noblet-Ducoudré, N., Panitz, H.-J., Pfeifer, S., Piazza, M., Pichelli, E., Pietikäinen, J.-P., Prein, A. F., Preuschmann, S., Rechid, D., Rockel, B., Romera, R., Sánchez, E., Sieck, K., Soares, P. M. M., Somot, S., Srnc, L., Sørland, S. L., Termonia, P., Truhetz, H., Vautard, R., Warrach-Sagi, K., and Wulfmeyer, V.: Regional climate downscaling over Europe: perspectives from the EURO-CORDEX community, *Reg Environ Change*, 20, 51, <https://doi.org/10.1007/s10113-020-01606-9>, 2020.
- 585 Karger, D. N., Conrad, O., Böhrer, J., Kawohl, T., Kreft, H., Soria-Auza, R. W., Zimmermann, N. E., Linder, H. P., and Kessler, M.: Climatologies at high resolution for the earth’s land surface areas, *Sci Data*, 4, 170122, <https://doi.org/10.1038/sdata.2017.122>, 2017.
- Khan, S. U., Ogden, N. H., Fazil, A. A., Gachon, P. H., Dueymes, G. U., Greer, A. L., and Ng, V.: Current and Projected Distributions of *Aedes aegypti* and *Ae. albopictus* in Canada and the U.S., *Environ Health Perspect*, 128, <https://doi.org/10.1289/EHP5899>, 2020.
- 590 Kotlarski, S., Keuler, K., Christensen, O. B., Colette, A., Déqué, M., Gobiet, A., Goergen, K., Jacob, D., Lüthi, D., van Meijgaard, E., Nikulin, G., Schär, C., Teichmann, C., Vautard, R., Warrach-Sagi, K., and Wulfmeyer, V.: Regional climate modeling on European scales: a joint standard evaluation of the EURO-CORDEX RCM ensemble, *Geosci Model Dev*, 7, 1297–1333, <https://doi.org/10.5194/gmd-7-1297-2014>, 2014.
- 595 Kotze, D. J., Lowe, E. C., MacIvor, J. S., Ossola, A., Norton, B. A., Hochuli, D. F., Mata, L., Moretti, M., Gagné, S. A., Handa, I. T., Jones, T. M., Threlfall, C. G., and Hahs, A. K.: Urban forest invertebrates: how they shape and respond to the urban environment, *Urban Ecosyst*, 25, 1589–1609, <https://doi.org/10.1007/s11252-022-01240-9>, 2022.
- Lionello, P. and Scarascia, L.: The relation between climate change in the Mediterranean region and global warming, *Reg Environ Change*, 18, 1481–1493, <https://doi.org/10.1007/s10113-018-1290-1>, 2018.
- 600 Maleque, M. A., Ishii, H. T., and Maeto, K.: The Use of Arthropods as Indicators of Ecosystem Integrity in Forest Management, *J For*, 104, 113–117, <https://doi.org/10.1093/jof/104.3.113>, 2006.
- Malguzzi, P., Grossi, G., Buzzi, A., Ranzi, R., and Buizza, R.: The 1966 “century” flood in Italy: A meteorological and hydrological revisitation, *Journal of Geophysical Research: Atmospheres*, 111, <https://doi.org/10.1029/2006JD007111>, 2006.
- Mammola, S., Pétiillon, J., Hacala, A., Monsimet, J., Marti, S., Cardoso, P., and Lafage, D.: Challenges and opportunities of species distribution modelling of terrestrial arthropod predators, *Divers Distrib*, 27, 2596–2614, <https://doi.org/10.1111/ddi.13434>, 2021.

- Mauri, A., Girardello, M., Strona, G., Beck, P. S. A., Forzieri, G., Caudullo, G., Manca, F., and Cescatti, A.: EU-Trees4F, a dataset on the future distribution of European tree species, *Sci Data*, 9, 37, <https://doi.org/10.1038/s41597-022-01128-5>, 2022.
- 610 Meehl, G. A., Boer, G. J., Covey, C., Latif, M., and Stouffer, R. J.: Intercomparison makes for a better climate model, *Eos, Transactions American Geophysical Union*, 78, 445–451, <https://doi.org/10.1029/97EO00276>, 1997.
- Meehl, G. A., Boer, G. J., Covey, C., Latif, M., and Stouffer, R. J.: The Coupled Model Intercomparison Project (CMIP), *Bull Am Meteorol Soc*, 81, 313–318, [https://doi.org/10.1175/1520-0477\(2000\)081<0313:TCMIPC>2.3.CO;2](https://doi.org/10.1175/1520-0477(2000)081<0313:TCMIPC>2.3.CO;2), 2000.
- Meehl, G. A., Covey, C., Delworth, T., Latif, M., McAvaney, B., Mitchell, J. F. B., Stouffer, R. J., and Taylor, K. E.: THE
615 WCRP CMIP3 Multimodel Dataset: A New Era in Climate Change Research, *Bull Am Meteorol Soc*, 88, 1383–1394, <https://doi.org/10.1175/BAMS-88-9-1383>, 2007.
- Molina, M. O., Careto, J. A. M., Gutiérrez, C., Sánchez, E., and Soares, P. M. M.: The added value of high-resolution EURO-CORDEX simulations to describe daily wind speed over Europe, *International Journal of Climatology*, 43, 1062–1078, <https://doi.org/10.1002/joc.7877>, 2023.
- 620 Mugumaarhahama, Y., Fandohan, A. B., and Glèlè Kakaï, R. L.: Performance of inhomogeneous Poisson point process models under different scenarios of uncertainty in species presence-only data, *Environmental Systems Research*, 12, 27, <https://doi.org/10.1186/s40068-023-00312-9>, 2023.
- Mullin, V. E., Stephen, W., Arce, A. N., Nash, W., Raine, C., Notton, D. G., Whiffin, A., Blagderov, V., Gharbi, K., Hogan, J., Hunter, T., Irish, N., Jackson, S., Judd, S., Watkins, C., Haerty, W., Ollerton, J., Brace, S., Gill, R. J., and Barnes, I.: First
625 large-scale quantification study of DNA preservation in insects from natural history collections using genome-wide sequencing, *Methods Ecol Evol*, 14, 360–371, <https://doi.org/10.1111/2041-210X.13945>, 2023.
- Nogherotto, R., Tompkins, A. M., Giuliani, G., Coppola, E., and Giorgi, F.: Numerical framework and performance of the new multiple-phase cloud microphysics scheme in RegCM4.5: precipitation, cloud microphysics, and cloud radiative effects, *Geosci Model Dev*, 9, 2533–2547, <https://doi.org/10.5194/gmd-9-2533-2016>, 2016.
- 630 Outhwaite, C. L., McCann, P., and Newbold, T.: Agriculture and climate change are reshaping insect biodiversity worldwide, *Nature*, 605, 97–102, <https://doi.org/10.1038/s41586-022-04644-x>, 2022.
- Phillips, S. J., Dudík, M., and Schapire, R. E.: A maximum entropy approach to species distribution modeling, in: *Twenty-first international conference on Machine learning - ICML '04*, 83, <https://doi.org/10.1145/1015330.1015412>, 2004.
- Pichelli, E., Coppola, E., Sobolowski, S., Ban, N., Giorgi, F., Stocchi, P., Alias, A., Belušić, D., Berthou, S., Caillaud, C.,
635 Cardoso, R. M., Chan, S., Christensen, O. B., Dobler, A., de Vries, H., Goergen, K., Kendon, E. J., Keuler, K., Lenderink, G., Lorenz, T., Mishra, A. N., Panitz, H.-J., Schär, C., Soares, P. M. M., Truhetz, H., and Vergara-Temprado, J.: The first multi-model ensemble of regional climate simulations at kilometer-scale resolution part 2: historical and future simulations of precipitation, *Clim Dyn*, 56, 3581–3602, <https://doi.org/10.1007/s00382-021-05657-4>, 2021.

Potts, S. G., Imperatriz-Fonseca, V., Ngo, H. T., Aizen, M. A., Biesmeijer, J. C., Breeze, T. D., Dicks, L. V., Garibaldi, L. A., Hill, R., Settele, J., and Vanbergen, A. J.: Safeguarding pollinators and their values to human well-being, *Nature*, 540, 220–229, <https://doi.org/10.1038/nature20588>, 2016.

Prein, A. F., Gobiet, A., Truhetz, H., Keuler, K., Goergen, K., Teichmann, C., Fox Maule, C., van Meijgaard, E., Déqué, M., Nikulin, G., Vautard, R., Colette, A., Kjellström, E., and Jacob, D.: Precipitation in the EURO-CORDEX 0.11 and 0.44 simulations: high resolution, high benefits?, *Clim Dyn*, 46, 383–412, <https://doi.org/10.1007/s00382-015-2589-y>, 2016.

Putman, R. J. and Wratten, S. D.: The Concept of the Niche, in: *Principles of Ecology*, Springer Netherlands, Dordrecht, 105–126, https://doi.org/10.1007/978-94-011-6948-6_6, 1984.

Ranasinghe, R., Ruane, A. C., Vautard, R., Arnell, N., Coppola, E., Cruz, F. A., Dessai, S., Islam, A. S., Rahimi, M., Ruiz Carrascal, D., Sillmann, J., Sylla, M. B., Tebaldi, C., Wang, W., and Zaaboul, R.: Climate Change Information for Regional Impact and for Risk Assessment, in: *Climate Change 2021 – The Physical Science Basis. Contribution of Working Group I to the Sixth Assessment Report of the Intergovernmental Panel on Climate Change*, edited by: Masson- Delmotte, V., Zhai, P., Pirani, A., Connors, S. L., Péan, C., Berger, S., Caud, N., Chen, Y., Goldfarb, L., Gomis, M. I., Huang, M., Leitzell, K., Lonnoy, E., Matthews, J. B. R., Maycock, T. K., Waterfield, T., Yelekçi, O., Yu, R., and Zhou, B., Cambridge University Press, 1767–1926, <https://doi.org/10.1017/9781009157896.014>, 2021.

Raven, P. H. and Wagner, D. L.: Agricultural intensification and climate change are rapidly decreasing insect biodiversity, *Proceedings of the National Academy of Sciences*, 118, <https://doi.org/10.1073/pnas.2002548117>, 2021.

Reale, M., Cabos Narvaez, W. D., Cavicchia, L., Conte, D., Coppola, E., Flaounas, E., Giorgi, F., Gualdi, S., Hochman, A., Li, L., Lionello, P., Podrascanin, Z., Salon, S., Sanchez-Gomez, E., Scoccimarro, E., Sein, D. V., and Somot, S.: Future projections of Mediterranean cyclone characteristics using the Med-CORDEX ensemble of coupled regional climate system models, *Clim Dyn*, 58, 2501–2524, <https://doi.org/10.1007/s00382-021-06018-x>, 2022.

Rundel, P. W. and Gibson, A. C.: Arthropods, in: *Ecological Communities and Processes in a Mojave Desert Ecosystem*, Cambridge University Press, Cambridge, 214–255, 1996.

Santos, F. D., Stigter, T. Y., Faysse, N., and Lourenço, T. C.: Impacts and adaptation to climate change in the Mediterranean coastal areas: the CIRCLE-MED initiative, *Reg Environ Change*, 14, 1–3, <https://doi.org/10.1007/s10113-013-0551-2>, 2014.

Schowalter, T. D.: *Insect Ecology: An Ecosystem Approach*, 5th Edition, Elsevier Inc., London, UK, 2022.

Schwingshackl, C., Sillmann, J., Vicedo-Cabrera, A. M., Sandstad, M., and Aunan, K.: Heat Stress Indicators in CMIP6: Estimating Future Trends and Exceedances of Impact-Relevant Thresholds, *Earths Future*, 9, <https://doi.org/10.1029/2020EF001885>, 2021.

Sillero, N., Campos, J. C., Arenas-Castro, S., and Barbosa, A. M.: A curated list of R packages for ecological niche modelling, *Ecol Modell*, 476, 110242, <https://doi.org/10.1016/j.ecolmodel.2022.110242>, 2023.

Somot, S., Ruti, P., Ahrens, B., Coppola, E., Jordà, G., Sannino, G., and Solmon, F.: Editorial for the Med-CORDEX special issue, *Clim Dyn*, 51, 771–777, <https://doi.org/10.1007/s00382-018-4325-x>, 2018.

- Sørland, S. L., Brogli, R., Pothapakula, P. K., Russo, E., Van de Walle, J., Ahrens, B., Anders, I., Buccignani, E., Davin, E. L., Demory, M.-E., Dosio, A., Feldmann, H., Früh, B., Geyer, B., Keuler, K., Lee, D., Li, D., van Lipzig, N. P. M., Min, S.-K., Panitz, H.-J., Rockel, B., Schär, C., Steger, C., and Thiery, W.: COSMO-CLM regional climate simulations in the Coordinated Regional Climate Downscaling Experiment (CORDEX) framework: a review, *Geosci Model Dev*, 14, 5125–5154, <https://doi.org/10.5194/gmd-14-5125-2021>, 2021.
- Sylla, M. B., Faye, A., Giorgi, F., Diedhiou, A., and Kunstmann, H.: Projected Heat Stress Under 1.5 °C and 2 °C Global Warming Scenarios Creates Unprecedented Discomfort for Humans in West Africa, *Earths Future*, 6, 1029–1044, <https://doi.org/10.1029/2018EF000873>, 2018.
- Taylor, K. E., Stouffer, R. J., and Meehl, G. A.: An Overview of CMIP5 and the Experiment Design, *Bull Am Meteorol Soc*, 93, 485–498, <https://doi.org/10.1175/BAMS-D-11-00094.1>, 2012.
- Teichmann, C., Jacob, D., Remedio, A. R., Remke, T., Bunttemeyer, L., Hoffmann, P., Kriegsmann, A., Lierhammer, L., Bülow, K., Weber, T., Sieck, K., Rechid, D., Langendijk, G. S., Coppola, E., Giorgi, F., Ciarlo, J. M., Raffaele, F., Giuliani, G., Xuejie, G., Sines, T. R., Torres-Alavez, J. A., Das, S., Di Sante, F., Pichelli, E., Glazer, R., Ashfaq, M., Bukovsky, M., and Im, E.-S.: Assessing mean climate change signals in the global CORDEX-CORE ensemble, *Clim Dyn*, 57, 1269–1292, <https://doi.org/10.1007/s00382-020-05494-x>, 2021.
- Tesfamariam, B. G., Gessesse, B., and Melgani, F.: MaxEnt-based modeling of suitable habitat for rehabilitation of Podocarpus forest at landscape-scale, *Environmental Systems Research*, 11, 4, <https://doi.org/10.1186/s40068-022-00248-6>, 2022.
- Uhl, B., Wölfling, M., and Bässler, C.: Mediterranean moth diversity is sensitive to increasing temperatures and drought under climate change, *Sci Rep*, 12, 14473, <https://doi.org/10.1038/s41598-022-18770-z>, 2022.
- Vautard, R., Gobiet, A., Jacob, D., Belda, M., Colette, A., Déqué, M., Fernández, J., García-Díez, M., Goergen, K., Güttler, I., Halenka, T., Karacostas, T., Katragkou, E., Keuler, K., Kotlarski, S., Mayer, S., van Meijgaard, E., Nikulin, G., Patarčić, M., Scinocca, J., Sobolowski, S., Suklitsch, M., Teichmann, C., Warrach-Sagi, K., Wulfmeyer, V., and Yiou, P.: The simulation of European heat waves from an ensemble of regional climate models within the EURO-CORDEX project, *Clim Dyn*, 41, 2555–2575, <https://doi.org/10.1007/s00382-013-1714-z>, 2013.
- Vautard, R., Kadyrov, N., Iles, C., Boberg, F., Buonomo, E., Bülow, K., Coppola, E., Corre, L., van Meijgaard, E., Nogherotto, R., Sandstad, M., Schwingshackl, C., Somot, S., Aalbers, E., Christensen, O. B., Ciarlo, J. M., Demory, M., Giorgi, F., Jacob, D., Jones, R. G., Keuler, K., Kjellström, E., Lenderink, G., Levvasseur, G., Nikulin, G., Sillmann, J., Solidoro, C., Sørland, S. L., Steger, C., Teichmann, C., Warrach-Sagi, K., and Wulfmeyer, V.: Evaluation of the Large EURO-CORDEX Regional Climate Model Ensemble, *Journal of Geophysical Research: Atmospheres*, 126, <https://doi.org/10.1029/2019JD032344>, 2021.
- Vogel, J., Paton, E., and Aich, V.: Seasonal ecosystem vulnerability to climatic anomalies in the Mediterranean, *Biogeosciences*, 18, 5903–5927, <https://doi.org/10.5194/bg-18-5903-2021>, 2021.

705 Wagner, D. L., Fox, R., Salcido, D. M., and Dyer, L. A.: A window to the world of global insect declines: Moth biodiversity trends are complex and heterogeneous, *Proceedings of the National Academy of Sciences*, 118, <https://doi.org/10.1073/pnas.2002549117>, 2021.

Xu, K.-M. and Randall, D. A.: A Semiempirical Cloudiness Parameterization for Use in Climate Models, *J Atmos Sci*, 53, 3084–3102, [https://doi.org/10.1175/1520-0469\(1996\)053<3084:ASCPFU>2.0.CO;2](https://doi.org/10.1175/1520-0469(1996)053<3084:ASCPFU>2.0.CO;2), 1996.

710 Zattara, E. E. and Aizen, M. A.: Worldwide occurrence records suggest a global decline in bee species richness, *One Earth*, 4, 114–123, <https://doi.org/10.1016/j.oneear.2020.12.005>, 2021.