

During the revision of the manuscript, we identified an error in the presentation of the error maps for PO_3 estimates. The errors had been incorrectly represented using daily TROPOMI data instead of the intended monthly data. As a result, the estimated errors for the monthly-averaged maps were significantly overestimated. The updated figure shows that the errors in PO_3 estimates are now presented as being within 10-20% over polluted regions, which is an improvement from the previous 40-60% range. Additionally, in remote regions, the errors can exceed 30% instead of the prior estimate of 100%. Although this update was unintended, it reinforces our claim regarding the feasibility of PO_3 estimates with even a smaller margin of error.

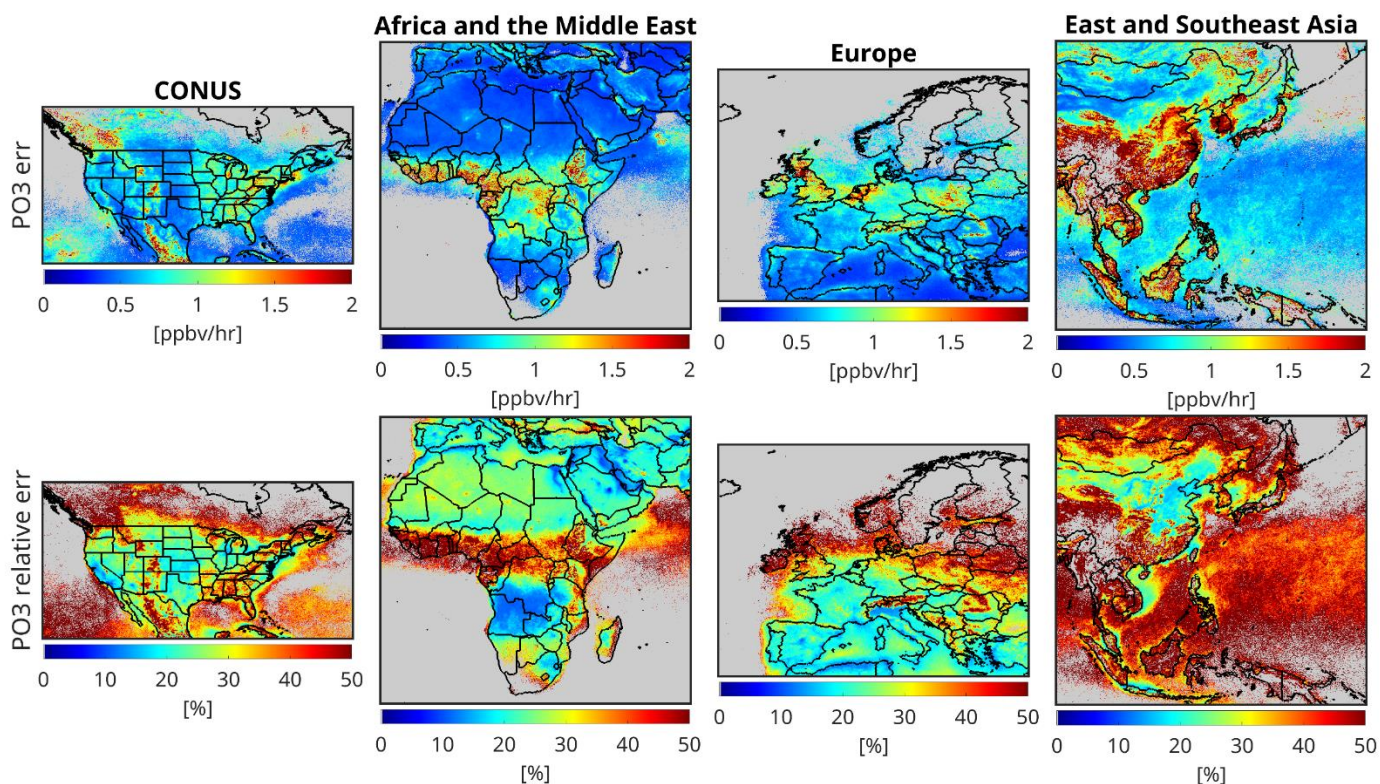


Figure 18. The influence of the satellite errors on PO_3 estimates (absolute and relative) over four major regions tackled in this work. The errors are based on monthly-averaged TROPOMI errors. The errors tend to be mild over polluted regions (10-20%) but they can exceed above 50% over pristine ones.