

Investigation of Understanding Seismic Anisotropy in the Undisturbed Rotondo Granite: Investigating Stress as a Potential Source

Kathrin Behnen¹, Marian Hertrich¹, Hansruedi Maurer¹, Alexis Shakas¹, Kai Bröker², Claire Epiney³, María Blanch Jover⁴, and Domenico Giardini¹

¹Department of Earth Sciences, ETH Zürich, Sonneggstrasse 5, 8092 Zürich, Switzerland

²Centre for Hydrogeology and Geothermics (CHYN), University of Neuchâtel, Rue Emile Argand 11, 2000 Neuchâtel, Switzerland

³Geo-Energie Suisse AG, Reitergasse 11, 8004 Zürich, Switzerland

⁴Geomar, Wischhofstrasse 1-3, 24148 Kiel, Germany

Correspondence: Kathrin Behnen (kathrin.behnen@erdw.ethz.ch)

Abstract. The hypothesis of stress-induced seismic anisotropy was tested in the Bedretto Lab, a deep underground rock laboratory in the Swiss alps. Several comprehensive crosshole seismic surveys were acquired to analyze the directional dependency of seismic wave velocities in the undisturbed host rock. This ~~required~~requires precise knowledge on the source and receiver positions as well as ~~a~~good data quality that ~~allow~~allows the determination of traveltimes for different wave types. A tilted transverse isotropic (TTI) model ~~could~~can be established that explains the measured data to a first order approximation. All relevant model parameters ~~could be~~are well constrained using P- and S-wave arrival times. However, a systematic misfit distribution indicates that a more complex anisotropy model might be required to fully explain the measurements. This is consistent with our hypothesis that seismic anisotropy has a significant stress-induced component. More controlled laboratory experiments on the centimeter to decimeter scale were performed to validate our field measurements. These measurements show a comparable order of P- and S-wave anisotropy in the rock volume. The knowledge on the driving mechanism for anisotropy in igneous rocks can potentially help to enhance the monitoring of stress field variations during geothermal operations, thereby improving hazard assessment protocols.

1 Introduction

The importance of seismic anisotropy, hereafter referred to as anisotropy, is well known and studied for decades. Neglecting anisotropy in seismic imaging can result in significant errors in terms of traveltime calculations and ray path determinations. Examples on an exploration scale include Eken et al. (2012); Daley and Hron (1977), and Thomsen (1986). ~~Also in~~In engineering applications, it is important to consider anisotropy as it affects the stability of excavations and boreholes, rock-cutting performance, and fracture propagation (Heng et al., 2015; Lee et al., 2012; Özbek et al., 2018). Beyond this, anisotropy should not only be considered to describe the in situ state of a rock volume, but it can also help to monitor changes over time (Crampin and Booth, 1989; Gerst and Savage, 2004).

Aligned minerals, foliation, fractures, faults, bedding of a rock and the ~~in-situ~~in situ stress field are known to cause seismic anisotropy in rocks (Barton, 2006; Al-Harhi, 1998; Song et al., 2004; Chan and Schmitt, 2015; Nur and Simmons, 1969; Sayers, 2002). The type of rock (sedimentary, igneous, or metamorphic) as well as the considered scale are decisive to determine which parameters control the elastic ~~behaviour~~behavior of the rock. Anisotropy of sedimentary rocks is often controlled by the internal bedding of the rock or alignment of minerals, while metamorphic rocks often show a foliation depending on the stress field while the rock was formed (Horne, 2013; Thomsen, 1986; Heng et al., 2015; Özbek et al., 2018). The controlling parameter can also vary on different scales, so that a fault zone can be the dominating feature on a regional scale, but mineral alignment can control the wave propagation on smaller samples of the same rock volume.

Nevertheless, it can be very valuable to overcome this challenge and characterize the source of a present anisotropy. Its variation in space and time give important insights into ongoing processes in the rock, especially if the anisotropy is stress induced. It can help to identify processes such as fracture opening or depressurization of magmatic systems and can therefore be used to observe and predict complex system behavior such as volcanic eruptions or geothermal energy extraction (Johnson et al., 2011; Crampin and

Most anisotropy studies have been carried out on sedimentary or metamorphic rocks, as these rock types are expected to have higher anisotropy (Al-Harhi, 1998). However, also igneous rocks can have a significant anisotropy, which should be incorporated, especially if the rocks are jointed or disturbed by fault zones (Ramamurthy et al., 1993). While both ~~the~~ source of anisotropy as well as the direction of the faster velocity ~~is~~are often obvious in sedimentary or metamorphic rocks, it might be harder to detect the symmetry direction and controlling parameters in igneous rocks. It becomes even more difficult when the controlling mechanism varies locally or regionally, as is often the case in heterogeneous rock volumes (Li and Peng, 2017; Johnson et al., 2011).

In our study, we ~~analyse~~analyze the anisotropy of an undisturbed igneous rock in an underground laboratory. Such laboratories provide the opportunity for ~~in-situ experiments for research on~~field scale in situ experiments, to understand processes relevant to geoenergy, nuclear waste disposal, earthquake nucleation, or engineering aspects (Plenkers et al., 2023; Ma et al., 2022). All these potential ~~application~~applications can benefit from the realistic scale that such laboratories offer (compared to small-scale laboratory experiments) (Gischig et al., 2020). In addition, we can compare our results with previous analyses on the geology, fracture network, and stress field around the test volume. Especially the link of the anisotropy to fractures and stress is highly important for the characterization of a geothermal reservoir, as these parameter control the reservoir creation and fluid flow during geothermal production (Amann et al., 2018).

In this contribution, we characterize the anisotropy of the rock volume of interest by active seismic measurements in three differently oriented boreholes. We evaluate the known sources of anisotropy by comparing our results to the other measurement campaigns and identify the controlling parameter in the undisturbed igneous rock.

The paper is structured as ~~followed~~follows: In the first part, the required theory used to describe the anisotropy is explained. Then the laboratory itself and the performed measurement campaigns are introduced. ~~In the end, the resulting model is explained and analysed and~~The last part explains and analyzes the resulting model and the results are discussed in a bigger context, comparing our results with other data sets.

2 Theory

The ~~most common~~ commonly studied type of anisotropy in earth's structures is a (tilted) transverse isotropic medium (TTI) (Aminzadeh et al., 2022; Horne, 2013). Such a medium is characterized by a velocity v_0 ~~in~~, given in m s^{-1} , in the direction of a symmetry axis and a ~~rotational~~ rotationally symmetric velocity distribution around it, resulting in a symmetry plane of (usually) higher velocity perpendicular to it. Lower symmetries, such as the orthorhombic symmetry, introduce more complexity to the system but also increase the number of unknowns drastically (Tsvankin, 1997). A TTI medium, or hexagonal material, is one of the simplest forms of anisotropy that can be used in geophysical applications and is well studied (Carcione et al., 1988; Thomsen, 1986). We therefore ~~also~~ start approximating our measurement data with a TTI medium.

The mathematical framework to describe such a medium is given, for example, in Daley and Hron (1977). They state that the velocity field in a TTI medium can be fully described by the five independent parameters C_{ij} of the elastic tensor, given in Pa, and the density of the rock ρ in kg m^{-3} . For the calculation of the velocity in a specific direction, also the inclination angle ξ , given in rad, between the wave front normal and the symmetry axis must be known. The ~~wave front normal~~ normal wave front can be described by the azimuth φ_r and the dip θ_r from ~~source to the source to the~~ receiver. So ~~additionally in addition~~ to the unknown elastic tensor parameters C_{ij} , also the orientation of the ~~symmetry axis, described by tensor itself in the principal~~ coordinate system is unknown in our case. The orientation of the tensor can be described by the azimuth φ_0 and the dip θ_0 ~~is unknown in our case~~ of the symmetry axis.

The phase velocities of the different wave types are then defined as:

$$v_P(\xi) = \sqrt{\frac{1}{2\rho} \left[C_{33} + C_{55} + (C_{11} - C_{33}) \sin^2(\xi) + D(\xi) \right]} \quad (1)$$

$$v_{S1}(\xi) = C_{66} \sin^2(\xi) + C_{55} \cos^2(\xi) \quad (2)$$

$$v_{S2}(\xi) = \sqrt{\frac{1}{2\rho} \left[C_{33} + C_{55} + (C_{11} - C_{33}) \sin^2(\xi) - D(\xi) \right]} \quad (3)$$

~~with:~~ with:

$$D(\xi) = \left[\left(C_{33} - C_{55} \right)^2 + 2 \left[2 \left(C_{13} + C_{55} \right)^2 - \left(C_{33} - C_{55} \right) \left(C_{11} + C_{33} - 2C_{44} \right) \right] \sin^2(\xi) + \left[\left(C_{11} + C_{33} - 2C_{44} \right)^2 - 4 \left(C_{13} + C_{55} \right)^2 \right] \sin^4(\xi) \right]^{1/2} \quad (4)$$

The elastic parameters C_{ij} can also be expressed by the Thomsen parameters α_0 , β_0 , γ , ϵ and δ . These parameters are defined by Thomsen (1986) as:

- α_0 : P-wave velocity along the symmetry axis $\sqrt{C_{33}/\rho}$
- β_0 : ~~S-Wave~~ S-wave velocity along the symmetry axis $\sqrt{C_{55}/\rho}$
- γ : fractional difference between vertical and horizontal ~~S1-Wave~~ S1-wave velocity $((C_{66} - C_{55})/2C_{55})$

- δ : controlling parameter for ~~near-vertical rays~~ rays subparallel to the symmetry axis
- 85 $((C_{13} + C_{55})^2 - (C_{33} - C_{55})^2) / (2C_{33}(C_{33} - C_{55})) - ((C_{13} + C_{55})^2 - (C_{33} - C_{55})^2) / (2C_{33}(C_{33} - C_{55}))$
- ϵ : fractional difference between vertical and horizontal **P-Wave** P-wave velocity $(C_{11} - C_{33}) / 2C_{33}$

The advantage of these parameters is that they have a direct physical meaning and are much easier to interpret than the elastic tensor parameters. We use ~~equation equations~~ 1 to 3, with C_{ij} expressed by the Thomsen parameters to describe the velocities in our medium.

- 90 ~~Unlike~~ It is important to mention two major differences between the wave propagation in an isotropic medium, the S-wave and an anisotropic medium. First, the group and phase velocities and angles are not the same in an anisotropic medium (Thomsen, 1986). The energy of a signal propagates along the ray (group angle) with the group velocity while eq. 1 to 3 describe the phase velocity along the wave front normal (phase angle). Second, the S-wave velocity does not only depend on its propagation direction but also on its polarization direction. This causes a splitting of the S-wave in a faster and a slower
- 95 S-wave in a fast and in a slow wave, described by ~~equation equations~~ 2 and 3. This splitting clearly indicates that the medium of interest is anisotropic.

We ~~determine the Thomsen parameters by minimizing the weighted L2-norm of the different wave forms. For that purpose, we consider the first arriving P-waves and the arriving of both, the faster S1-wave and the slower S2-wave. We assume that the velocity distribution in the medium of interest is sufficiently homogeneous, such that a straight ray assumption is~~

100 ~~justified, that is, the predicted travel times are the source-receiver distances divided by the velocity. Also, the phase and group velocity directions can be assumed to be the same in our case of weak anisotropy and the assumption of straight rays (Wang et al., 2017; Berryman, 1979). Thus, we can calculate the predicted traveltimes by dividing the distance based on the known source and receiver positions by the apparent velocities along the straight ray.~~

We minimize the weighted L2-norm of the different waveforms to determine the Thomsen parameters of our medium of

105 interest. For this purpose, we consider the first arriving P-waves and the arrival of both the faster and the slower S-wave. The arrival times of the P-waves are most accurate, so the more accurate than the corresponding S-waves. We therefore weight the L2-norm of the P-wave misfit is weighted higher compared to the L2-norm of the different S-waves. By this, we ensure that the resulting model is not biased by outliers in the S-wave picks.

The reliability of the estimated Thomsen parameters is important for the interpretation of the results. This reliability can be

110 estimated with tools from linear inverse theory. Here, we consider the model resolution matrix \mathbf{R} , relating the true model parameter \mathbf{m}^{true} to the estimated parameter \mathbf{m}^{est} . The relative values on the diagonal of \mathbf{R} give an estimate of how well we can determine the different parameters. The off-diagonal values show trade-offs between the different parameters and thus reveal dependencies between the model parameters.

We follow the definition of Menke (2018) to calculate $\mathbf{R} = (\mathbf{G}^T \mathbf{G} + \lambda \mathbf{I})^{-1} \mathbf{G}^T \mathbf{G}$. Matrix \mathbf{G} includes the sensitivities of the

115 data points d_i ($d = t_P, t_{S1}, t_{S2}$), which are the travel times of the different wave types, with respect to the model parameters $m_j = \alpha, \beta, \gamma, \delta, \epsilon, \varphi_0$ and θ_0 :

$$G_{ij} = \frac{\partial d_i}{\partial m_j}. \quad (5)$$

Table 1. Overview ~~over~~ of the ~~parameters of the~~ different boreholes used ~~for~~ in this ~~survey~~ study. ~~The TM refers to the location of the borehole mouth.~~

Borehole Name	TM	Length [m]	Dip [°]	Azimuth [°]
SB2.1	2066	30 m	89 °	150 °
SB2.2	2075	40 m	60 °	226 °
SB2.3	2094	40 m	71 °	134 °
<u>Tunnel</u>		<u>5218</u>	<u>0</u>	<u>137</u>

3 Site Description

The Bedretto Underground Laboratory for Geoennergies and Geosciences (Bedretto Lab) is located in southern Switzerland in the canton of Ticino. It is located in a 5.2 ~~km~~-km long tunnel that connects the Bedretto Valley with the Furka Base Tunnel, crossing from west to ~~north-east. Originally build as northeast.~~ Originally built as an auxiliary tunnel for the construction of the Furka railway tunnel, it is now maintained and operated by ETH Zurich.

The Bedretto Lab was established to study techniques and ongoing processes during the production and operation of Enhanced Geothermal Systems (EGS) (Rast et al., 2022). The main niche of the lab is located at tunnel meter (TM) 2000 to 2100 ~~m~~-m from the southern tunnel entrance with an approximate overburden of ~~1000m~~-1000 m (Bröker and Ma, 2022). The host rock of the lab is a mostly homogeneous granitic intrusion, the Rotondo granite. This geological setting is close to real EGS reservoir conditions, which is important to upscale the results of the different studies Gischig et al. (2020).

The Bedretto Lab hosts several boreholes of different lengths, partly equipped with permanently installed sensors. An overview ~~over~~ of the lab and the boreholes is shown in Fig. 1. For this study, the boreholes SB2.1, SB2.2, and SB2.3 were used for extensive active seismic surveys. These boreholes are also called "tripod boreholes", as they are pointing downwards in three different directions, spanning a tripod. ~~All three boreholes are water-filled, allowing the use of different seismic equipment, explained in Sect. 4.~~ The penetrated and analyzed Rotondo granite doesn't show any major fault or fracture zones close to the tripod, so that we can assume that the rock volume is homogeneous. The boreholes were originally drilled for stress measurements of the background rock so that the stress conditions around the boreholes and the Bedretto Lab in general are well known (Bröker et al., 2024; Bröker and Ma, 2022).

The boreholes are located at the end of the lab niche, at TM 2066 to TM 2094, measured from the southern entrance of the tunnel. The vertical and inclined boreholes ~~have~~ are assumed to be straight with a length of ~~30m and 40m, respectively~~ 30 m and 40 m, respectively, and a diameter of ~~101mm~~ 101 mm. They are completely water-filled and freely accessible, which allows the usage of different seismic sources and receivers, explained in Sect. 4. Detailed information on the borehole orientations are given in ~~Tab.~~ Table 1.

The borehole trajectories used for the following ~~analyses~~ analyzes are based on a combination of ~~logging and wireline logging~~ (with televiewer and other downhole tools) and laser measurements. Laser measurements allow a highly precise measurement of single points in the boreholes, used to interpolate the trajectories in between. In the lower part of the boreholes, laser

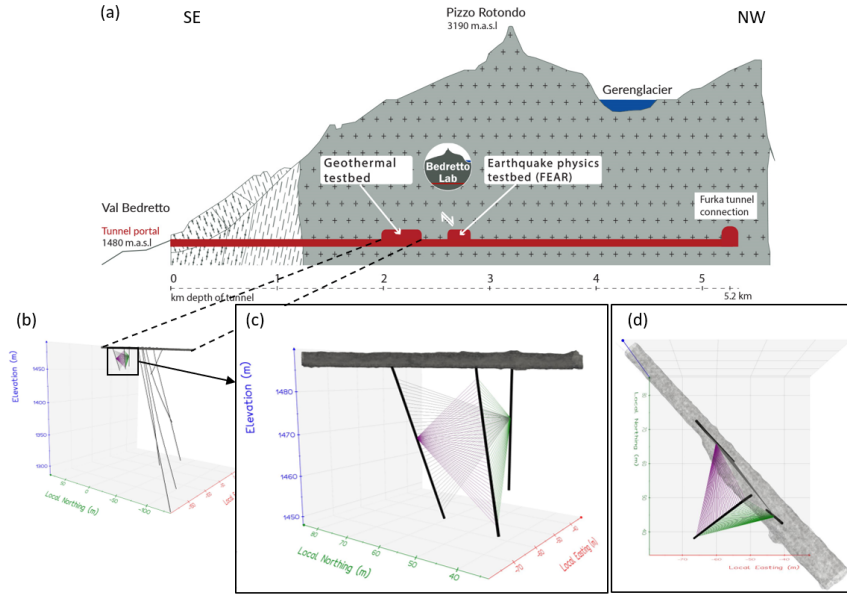


Figure 1. The ~~boreholes~~-used boreholes SB2.1, SB2.2, and SB2.3 are located in the Bedretto tunnel around TM2000. A cross-section of the tunnel, adapted from Keller and Schneider (1982), is shown in (a). The boreholes were used for extensive crosshole seismic surveys ~~with different involving various~~ sources and receivers. ~~The purple, grey tripod and green lines show exemplary surrounding boreholes in the geothermal testbed are depicted in (b).~~ Magnified views of the tripod are provided from the side and the top in (c) and (d), respectively. Exemplary rays in the three covered planes are represented by purple, gray, and green lines. ~~Cross section after Keller and Schneider (1982).~~

measurements were not feasible anymore, as the water in the boreholes couldn't be pumped out ~~of the complete borehole.~~
 145 ~~Instead completely. Instead,~~ information on the azimuth and dip from several logging runs in the boreholes were used to determine the trajectory of the boreholes in the lower part. The combination of these two data sets ~~allow-allow~~s a highly precise description of the borehole trajectories, which is crucial for anisotropy measurements.

4 Measurements

In the boreholes SB2.1, SB2.2, and SB2.3, introduced in Sect. 3, several different seismic crosshole surveys were performed.
 150 The boreholes span one straight and two curved planes, allowing the measurement of the wave propagation in several different directions. The location in the tunnel, as well as the orientation of the boreholes, are also shown in Fig. 1.

The measurements were performed in different campaigns from December 2021 to July 2023. An overview of the measurements is given in ~~Tab-~~Table 2. We started with a standard survey, using a P-wave sparker as a source and a hydrophone chain as receivers. The P-wave sparker used here is a monopole source discharging energy through two adjacent electrodes in
 155 a water-filled borehole. This energy discharge generates a pressure pulse, which initially spreads isotropically in the water and

Table 2. Overview ~~over~~ of the different measurement campaigns. The measurements used for this study are written in bold.

Date	Source Type	Receiver Type	Source Spacing [m]	Receiv
01./02.12.2021 <u>01./02.12.2021</u>	P-Wave Sparker <u>P-wave Sparker</u>	Hydrophone Chain <u>Hydrophone Chain</u>	1m <u>1</u>	
11.05.2022 <u>11.05.2022</u>	P-Wave Sparker <u>P-wave Sparker</u>	Hydrophone Chain <u>Hydrophone Chain</u>	1m <u>1</u>	
27.03.2023	S-Wave <u>S-wave</u> Sparker	Hydrophone Chain	Single-Individual Positions	
25.05.2023	P-Wave <u>P-wave</u> Sparker	3C-Geophone <u>3C geophone</u>	1m <u>1</u>	Single
05./06.07.2023	P-Wave <u>P-wave</u> Sparker	3C-Geophone <u>3C geophone</u> Chain	1m <u>1</u>	

Results of the last campaign are shown in App. A.

therefore also excites the borehole wall isotropically (Ellis and Singer, 2007). This creates a highly repeatable, high-frequency seismic signal ~~by discharging energy through two adjacent electrodes(Geotomographie GmbH). Its radiation characteristics is approximately isotropic~~ propagating through the rock volume (Geotomographie GmbH).

160 All recordings were sampled with the highest possible sampling frequency of 48 kHz, to record as much information as possible. The hydrophones, attached on a chain with ~~1m~~ **1** m spacing, can record pressure signals acting on the sensor from any direction, but the recorded data do not contain information about the incident angle of the seismic signal.

The recorded data of the first two surveys (12.2021 and 05.2022) do not only show the arrival of ~~a P-wave~~ **P-waves**, but also of S-waves. This can be explained by a ~~deformation of the source borehole itself, producing not only longitudinal but also transverse waves propagating~~ **P-S-wave conversion at the borehole wall near to the source. The S-waves traveling** through the
165 rock ~~. These waves are converted~~ **are back-converted** in longitudinal waves when they hit the water of the receiver borehole, acting **as a pressure impulse** on the hydrophones.

In a next step, we determined the traveltime of the different S-waves in more detail. ~~For that purpose, we employed~~ **We accomplished this by employing** a S-wave sparker as source, which emits a horizontally polarized, directed S-wave. The data recorded in this survey have a high noise level and do not show the desired signals of S-waves in the recordings, so we did not
170 further consider the S-wave sparker data.

Instead we proceeded to record the signal of the P-wave sparker on 3 component (3C) geophones. The geophones were clamped to the borehole wall, which allowed recording both ~~the~~ P- and S-waves directly on the rock surface on three mutually perpendicular components. Unfortunately, we were not able to determine the orientation of the sensor in the borehole, so that neither a statement about the incident direction of the arriving waves nor an alignment of the sensors towards the source position can
175 be made.

After some successful test measurements, we covered most of the test volume with ~~1m~~ **1** m spacing of both ~~sources~~ and receivers. Solely the edges of the test volume, in the uppermost and lowermost part of the boreholes, we increased the spacing between the receivers to ~~2m~~ **2** m for logistical reasons. The aim of this survey was to further separate the differently polarized S-waves from each other. During the data acquisition we had to face several challenges, such as problems with the triggering
180 of the recordings, the alignment of the sensors in the borehole and ~~an~~ **a** higher overall noise level so that this data set was

only used as a comparison to the hydrophone recordings and to verify the arrival time of the S-waves quantitatively. The data ~~analysed~~-analyzed in the following include the recordings of the first two surveys, using a P-wave sparker as source and the hydrophone chain as receiver.

5 Data Analysis

185 The wave propagation of a seismic wave is controlled by the properties of the rock it is propagating through. Analyzing the traveltimes of the wave from the source to a receiver is a simple way to extract information about these properties. In the following, the recorded data from the first two surveys (Dec. 2021 and May 2022) are presented and ~~analysed~~-analyzed to characterize the undisturbed Rotondo granite in the Bedretto Lab.

The amplitudes of the P-waves and most of the S-waves are clearly visible in the raw data due to the short distances between
190 source and receiver and a very low noise level in the test volume. The quality of the data was further increased by stacking three shots per position. No frequency filtering was applied. An exemplary receiver gather is shown in Fig. 2 (left) with single waveforms recorded on the hydrophones for selected traces (right). The receiver gather shows the signal recorded on a hydrophone in SB2.2 at ~~23m depth~~, 23 m depth for shot positions in SB2.3 from 3 to ~~38m~~38 m. The waveforms on the right correspond to the marked traces in the gather at shot positions of ~~9m, 25m and 32m~~9 m, 25 m, and 32 m depth. The same
195 geometrical setup with recordings on the 3C geophones is shown in Fig. A1.

The onset of the P-wave can clearly be identified for all shot positions (P1). The arrival of the S-waves is only visible for longer ray paths (here: source position 3 to 20 and 32 to 38, P2), where it is neither covered in the coda of the P-wave nor by reflected waves as it is often the case for deeper shot positions. For some source-receiver orientations, a splitting of the
200 S-wave in a faster wave, S1 (P2a), and a slower wave S2 can be identified (P2b). This is a feature ~~which~~-that can only occur in anisotropic media and is already a clear indicator that the ~~tested granite~~-granitic host rock is seismically anisotropic. A separation of different S-waves is mainly identified in the plane between borehole SB2.2 and SB2.3 while only one S-wave can be detected in the other two planes for most source-receiver pairs. In Fig. A2, more examples for different source-receiver geometries are shown for comparison.

205 The receiver gather in Fig. 2 also shows other wave types, such as reflected waves or tube waves, for deeper shot positions (P3). These signals are not considered in this study, as only the arrival time of the direct waves will be analyzed.

In the next step, the traveltimes for all unambiguous onsets were picked individually by hand and converted into apparent velocities, thereby assuming straight rays, which was judged to be a valid assumption in the relatively homogeneous host rock. The positions of ~~source and receiver~~ sources and receivers are derived from the borehole trajectories, based on the known depth
210 of the sensors along the borehole.

The apparent velocities (referred to as ray velocities in the following) must be evaluated with respect to their propagation direction to obtain information on the anisotropy of a medium. In Fig. 3, all source-receiver combinations are plotted as dots in a stereonet representation, colorized based on the velocity along the ray. We follow the geological convention of an azimuth

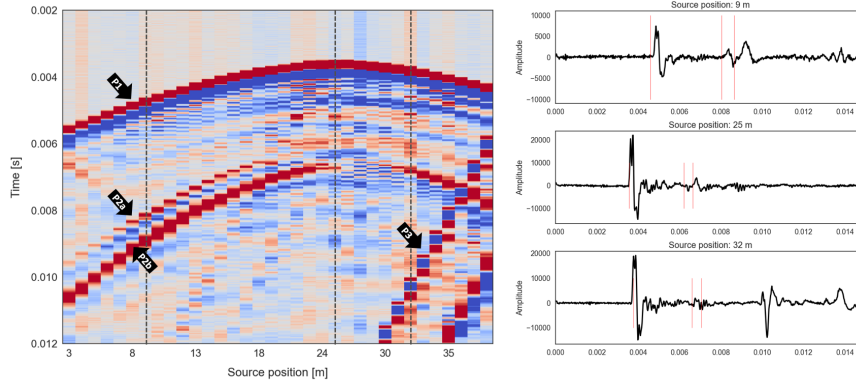


Figure 2. *Left column:* An exemplary receiver gather for shot positions in SB2.3 with 1 m spacing recorded on a hydrophone in SB2.2 at 23 m depth. The onset of the P-wave is clearly visible on all traces (P1). In the left part of the gather, the splitting of the S-Wave in a fast (P2a) and slow (P2b) S-wave is apparent. For shorter distances between source and receiver, the S-wave gets covered in the coda of the P-wave and the splitting is not visible anymore. In some parts of the signal, also other wave types, such as reflected or tube waves, are visible (P3), which are not further analysed. *Right column:* The waveforms show the marked traces (dashed vertical lines) of the receiver gather. The red lines represent the expected arrival times. On all three traces, the arrival of the P-wave is clearly visible. On the first trace, the S-waves separate and can be picked. On the second and third trace, the arrival of the different S-waves is less clear and can't be picked accurately.

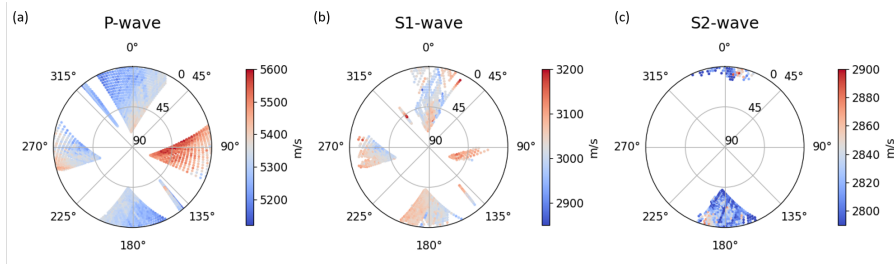


Figure 3. The stereonets show the apparent velocities of the three wave types, calculated based on the sensor positions and picked onset times. Each dot represents one source-receiver couple, colored by the apparent velocity of the (a) P-Wave, (b) S1-Wave, and (c) S2-wave. The amount of picks decreases as S-Waves can not be picked precisely on all datasets.

of 0° pointing towards magnetic North, increasing clockwise and a dip of 0° being horizontal, increasing downwards. The stereonet plots show the lower hemisphere representation.

The stereonet plots show the angular coverage in the volume that we obtained from our sensor positions, as well as the amount of picks we can determine for the different wave types. With our borehole orientation, we can cover mainly rays with N-S or E-W orientation for most dip directions. Only vertical rays ($\theta = 90^\circ$) and rays in NE-SW and NW-SE orientations can not be covered in our surveys, so that we have no information on the velocities in these directions.

Looking at the color pattern in Fig. 3, a clear trend of faster and slower velocities is recognized for both P- and S1-waves. Waves with E-W orientation travel faster than waves perpendicular to it with N-S orientation. The maximum of the P-wave velocity can be found in the right triangle, corresponding to rays in the plane between SB2.1 and SB2.2. Likewise, a trend of increasing velocities in a clockwise direction can be found for rays in plane SB2.2 to SB2.3 (upper and lower triangle) with minimum velocities in NNW-SSE orientation, perpendicular to the maximum velocity direction. While these trend is quite strong for P-waves, a similar but less dominant trend can also be observed for S1-waves.

In the velocity pattern of the S2-waves, no clear trend of a velocity change is visible. However, only for certain ray directions a splitting of S-waves can be detected. Different types of S-waves can only be detected in the N-S direction, while the S-waves are not clearly separated in the E-W direction. In general, the amount of clearly identifiable arrivals decreases from P- over S1- to S2-waves.

As mentioned in Sect. 4, the 3C geophone data were used to verify the recordings on the hydrophones. The arrival times of P- and S1-waves were also picked on the 3C geophones and plotted in a stereonet plot. The result is shown in Fig. A3. The velocity pattern matches the pattern of the hydrophone data in Fig. 3, but the data quality is lower so that less picks are available and higher uncertainties are expected.

Based on the variation of the measured data, the anisotropy factor can directly be calculated by $(v_{\max} - v_{\min})/v_{\text{mean}}$. It is describing the variation of the velocities, indicating how much they differ with respect to the propagation directions. Instead of using the maximum and minimum velocities, we used the average of the highest and lowest 5% of the data to avoid a distortion of the result by outliers. For the P-waves an anisotropy of 6.4% is determined, S1-waves show an anisotropy of 5.1%. However, for both wave types, the real value might be even higher, as not all ray directions can be measured and the maximum or minimum velocities might be missed.

We are aware that also uncertainties in the borehole trajectories and thus in the source and receiver positions can mimic anisotropy in an intrinsically isotropic rock (Maurer and Green, 1997). The fact that we can detect shear wave splitting for some ray directions, as well as the highly precise measurements of the borehole trajectories preclude the option of wrongly assuming anisotropy in our rock volume.

6 Results

In Sect. 5, we already mentioned that the picked traveltimes of the measured seismic signals show the expected velocity pattern of a TTI medium. Now we explain the measured data with an anisotropic velocity model defined by the Thomsen parameters to identify the potential sources causing the seismic anisotropy. Also, the sensitivities of the model parameters ~~needs to be analysed-need to be analyzed~~ to understand the reliability of the model.

In a first step, a grid search over the whole parameter space for ϕ_0 and θ_0 and the relevant parameter values for ϵ and δ was used to determine a set of parameters describing the P-wave data. After the first run, a second grid search with refined grid spacing close to the best fitting parameters was performed. The ~~values-value~~ of $\alpha_0 = 5115 \text{ m s}^{-1}$ was kept fixed for both runs, based on values from previous measurements (Schneider, 2022).

The refined grid search results were further improved by a downhill simplex algorithm, minimizing the root-mean-square error

Table 3. The table shows both the parameter range of the grid searches ([start value, end value, step size]) and initial values of the optimization as well as the optimized parameter sets after (a) the general grid search over the whole parameter space, (b) the refined grid search around the optimum of (a), and (c) the optimization algorithm. The last column shows the ~~root-mean-square~~ root-mean-square error of the P-waves for the grid search and the weighted ~~root-mean-square~~ root-mean-square error of all wave types for the optimization algorithm. All values are in the respective units.

Parameter Space (a and b) and Initial Guess (c)	Optimized Parameter [$\varphi_0, \theta_0, \epsilon, \delta$] [$\alpha_0, \beta_0, \gamma$] (for (c))	RMS
(a) General Grid Search [min, max, step size] φ_0 : [180°, 360°, 1°], θ_0 : [0°, 90°, 1°] ϵ : [0, 0.3, 0.02], δ : [-0.2, 0.2, 0.02]	[344°, 10°, 0.06, 0.16]	68.51
(b) Refined Grid Search [min, max, step size] φ_0 : [342°, 346°, 0.1°], θ_0 : [8°, 12°, 0.1°] ϵ : [0.04, 0.08, 0.01], δ : [0.14, 0.18, 0.01]	[344.3°, 10.0° <u>10.0°</u> , 0.06, 0.15]	68.18
(c) Optimization Algorithm $\varphi_0 = 344.3^\circ, \theta_0 = 10.0^\circ$ $\epsilon = 0.06, \delta = 0.15$ $\alpha_0 = 5115 \text{ m s}^{-1} \text{ m s}^{-1}, \beta_0 = 2840 \text{ m s}^{-1} \text{ m s}^{-1}, \gamma = 0.09$	[323.20°, 17.85°, 0.038, 0.047] [5221 m s ⁻¹ m s ⁻¹ , 2852 m s ⁻¹ m s ⁻¹ , 0.101]	54.38

(RMS) between the modeled and measured velocities of all three wave types. Here we assume that the faster S-wave in our data (P2a in Fig. 2) is horizontally polarized (with respect to the elastic tensor orientation) and can be described by Eq. 2. We will justify this assumption in Sect. 6.2 based on the picked data. The RMS of the different wave types was weighted to take the uncertainty of the different S-waves into account. The RMS of the P-waves was weighted higher with a value of 0.6, while S1- and S2-waves are weighted by 0.3 and 0.1, respectively. The parameter space and results of the grid search and optimization algorithm are summarized in ~~Tab-~~ Table 3.

~~Additionally~~ The optimized parameters indicate an inequality of $\epsilon < \delta$. While many studies report the opposite ratio, with $\epsilon > \delta$, there are also examples consistent with our findings (e.g., Thomsen (1986) or Horne (2013)). It is important to consider that many investigations of anisotropy focus on sedimentary rocks, which are only partially comparable to the igneous rock type examined in our study. Research on more comparable igneous rocks has also concluded that $\epsilon \leq \delta$ is a realistic scenario (Boese et al., 2021; Doetsch et al., 2020; Motra et al., 2018). However, the absolute values of the Thomsen parameters vary significantly with pressure, temperature, and mineral composition, making direct comparisons between studies challenging. Additionally to the model fitting, a sensitivity analysis was carried out to investigate the reliability of the optimized parameters. This is ~~particular~~ particularly important for the deeper understanding and interpretation of the optimized model. The model

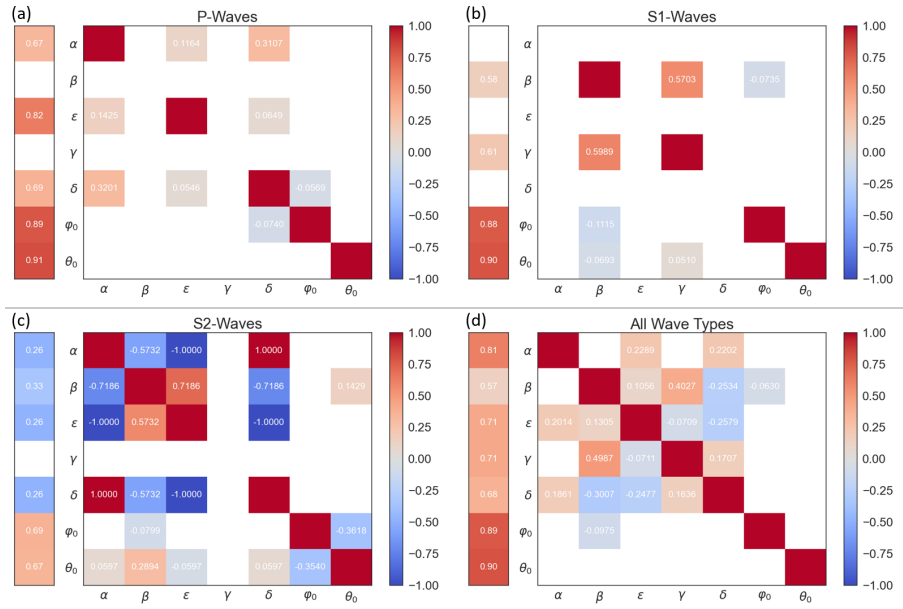


Figure 4. The model resolution matrices, using only one wave type ((a): P-waves, (b) S1-waves, (c) S2-waves) and combining the information of all three wave types (d). The column on the left shows the relative difference of the diagonal elements while the values in the matrix are normalized for each row by the diagonal element.

resolution matrix of all three wave types individually, as well as a matrix combining all three wave types is analysed, is analyzed to highlight the importance of combining information from all three wave types to fully describe the elastic tensor of the rock.

6.0.1 Sensitivity Analysis

6.1 Sensitivity Analysis

The results of the sensitivity analysis are shown in Fig. 4 for the analysis of the single wave types (a-c) and the combination of all wave types (d). In the matrix itself, the values as well as the colors are normalized by the diagonal element of each row to show the trade-off between the different parameters. The column on the left represents the absolute values of the diagonal entries of the matrix for each parameter to show how well the each parameter can be resolved based on our setting. White diagonal elements mean that the wave type does not provide any information on this parameters. White colors on the off-diagonal mean that there is (almost) no trade-off between the parameters (normalized values between -0.05 and +0.05 are also plotted in white to simplify the matrix).

Matrices (a) to (c) directly show that none of the wave types can provide information on all seven parameters describing the elastic properties of the rock volume. While all wave types provide information on the orientation of the symmetry axis (φ_0 and θ_0), each wave type contains only information about a subset of the Thomsen parameters. The matrices further show that the orientation of the symmetry axis is highly constrained, even if only one wave type is used in the analysis. This is expected,

as we can cover many different ray directions with our borehole orientation.

If only P-wave data are used to model the anisotropy, information on β and γ are completely missed. Combining the information of P-waves with the traveltimes of S1-waves can close this gap and fully describe all ~~parameter~~ parameters, as the different waves contain complementary information. The S1-wave is not controlled by δ , so that also the trade-off between φ_0 and δ , which is present for P-waves, can be eliminated by adding the S1-wave data to the model.

The absolute velocities of the waves along the axis, represented by α and β ~~are slightly~~, are affected by the parameters ϵ , δ , and γ for P- and S1-waves. Fig. 4(a) also shows a ~~slight~~ trade-off between ϵ and δ , however, this trade-off is ~~negligible~~ negligibly small. The small trade-offs between the different parameters are also apparent in the diagonal element values shown in the left column. Both angles have a value of about 0.9, showing that they are highly constrained by our data. The other parameters of both ~~P-~~ P- and S1-waves ~~are~~ are mostly larger than 0.6, indicating that ~~also~~ these parameters are also acceptable but still less constrained. Only β is slightly lower for S1-waves, as a stronger trade-off with γ is present.

The matrix of the S2-waves (Fig. 4(c)) shows a different ~~behaviour~~ behavior. S2-waves contain information ~~of~~ on almost all parameters, only γ is not controlling the S2-wave velocity.

As before, the orientation of the symmetry axis has the highest absolute values and indicates the least correlation to other parameters. However, the Thomsen ~~parameter~~ parameters show a very high trade-off between each other. Especially the contrary influence of δ and ϵ on α leads to inconclusive information on these parameters, as errors in one parameter might be compensated by the other parameter. The different parameters cannot be resolved independently, resulting in very low constrained absolute values for all Thomsen parameters, including the velocities α and β . Nevertheless, ~~also~~ information of the S2-wave velocity should be included in the final model to avoid artificially constraining the final model.

In Fig. 4(d), the model resolution matrix \mathbf{R} for the combined analysis of all three wave types is shown. Combining the information of all wave types results in a highly constrained model for all seven unknowns of a TTI model. The orientation of the symmetry axis has, as for all single wave information, no significant trade-off with any other parameters. Most of the other parameters show a small trade-off between each other with absolute values smaller-equal than 0.3, except from β to γ . The high diagonal elements for all parameters indicate that we can have a high confidence in the accuracy of the optimized parameters. The higher trade-off between β and γ results from the fact that γ is only controlling the wave propagation of the S1-wave, so that the other wave types can not compensate this trade-off, as it is the case for other parameter combinations. More measurement points of the ~~S1-wave~~ S1-waves could help to improve this correlation, however, the S1-wave is partly covered by the coda of the P-wave or tube and reflection waves, which makes an accurate determination of the travel time in some directions impossible.

6.1.1 Analysis of the model fit

6.2 Analysis of the model fit

The result of the optimized model in comparison with the measured data ~~are~~ is, shown in Fig. 5. The background color shows the velocity distribution based on the optimized parameters from ~~Tab-~~ Table 3(c), while the dots in the foreground show the

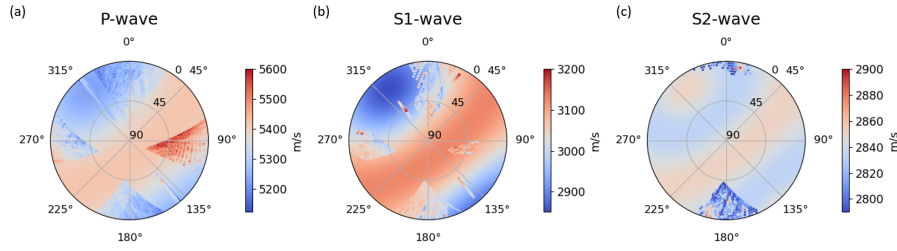


Figure 5. The background color shows the apparent velocities for the (a) P-Wave, (b) SH-Wave, and (c) SV-Wave based on the optimized TTI model. Dots in the foreground represent the measured apparent velocities for the covered ray directions. In (c) the difference of the traveltimes from the SH- and SV-Waves are additionally shown in grey for all measured data points.

actually measured data. The color range for both the measured and optimized data is the same, so that measurement points which that are hard to distinguish from the background represent a high accordance with the optimized model. In the right plot for the S2-waves, the expected travel-time difference between the S1- and S2-wave is shown in grey, with light colors for a small difference and darker colors for a higher difference.

320 The optimized model fits the pattern of the measured data of the P- and S1-waves quite well. This further confirms our assumption of a TTI medium. While the maximum magnitude of the P-waves is slightly underestimated, the magnitude of the S1-wave is in good accordance with the optimized model. Especially the trend of increasing velocities away from the symmetry axis at $\varphi_0 = 323.20^\circ$, $\theta_0 = 17.85^\circ$ towards the symmetry plane perpendicular to it, mainly visible in the upper and right triangle, fits very well to the measured velocities. S2-waves can only be picked in the plane between borehole SB2.2 and

325 SB2.3. In this plane, less interference with other wave types is disturbing the signal, and the traveltime difference between the S1- and S2-waves is large enough to separate the waves different waves. The measured S2-wave velocities do not show a strong velocity change with the ray direction but only small amplitude variations from 2800 m s⁻¹ up to 2900 m s⁻¹. This fits at least partly to

While Fig. 5 shows the measured data with respect to the ray orientation in the rock volume, Fig. 6 shows the same data but for the ray orientation with respect to the elastic tensor orientation. The apparent velocities of all three wave types are plotted against the angle ξ , clearly showing the increasing velocities of P- and S1-waves for increasing angles ξ . The S2-waves show only a poor variation in the velocity with the ray direction. The black lines represent the expected velocities based on the optimized TTI model, following the same trend as the real data. This shows that the model can explain the stronger variations of P- and S1-wave velocities and the poor variation of the S2-wave velocities at the same time.

335 This plot does not only show the good data fit but also verifies our assumption of the permanently faster S1-wave. In Fig. 6(b) the velocities of the faster S-wave are plotted in yellow, and the velocities of the slower S-wave are plotted in green. The different point clouds show clearly distinguishable velocities, which rules out the option that not one of the waves is permanently faster but that the order of the wave type arrival changes with different ray directions. Furthermore, the trend in the velocity of the S1-wave is constantly increasing up to its maximum in the symmetry plane (at $\xi = 90^\circ$), which indicates

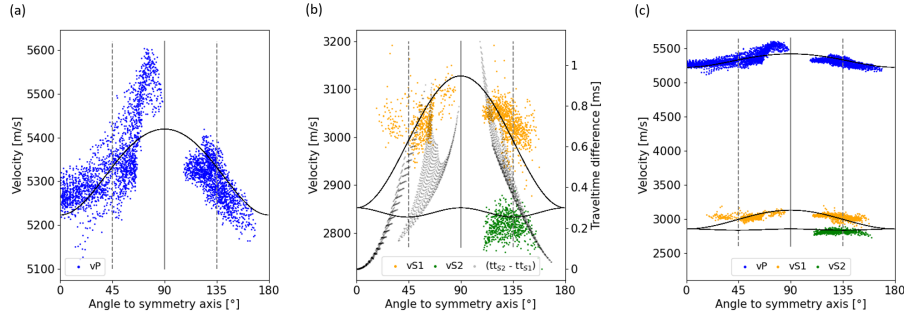


Figure 6. The measured velocities of (a) P-waves, (b) S-waves, and (c) all wave types plotted against the angle ξ between the straight ray and the optimized symmetry axis. The black line represents the expected velocities based on the optimized model parameters. The vertical lines represent angles of 45° , 90° (symmetry plane), and 135° to the symmetry axis.

that the faster wave is a horizontally polarized wave, described by Eq. 2. Additionally to the picked and expected apparent velocities, Fig. 6(b) also shows the expected differences in the traveltime of the S1- and S2-waves in black. As already mentioned, the expected traveltime difference, shown in grey colors in the Fig. 5. In white parts, S-waves only split up in certain directions if the velocity difference is large enough and the traveled distance is long enough. Indeed, we can pick the slower S-wave mainly in ray directions, where the expected traveltime difference is close to 0, no splitting of the waves was detected while for most parts with larger traveltime difference (dark), two different maximized (for angles around 120°). Not only the traveltime difference itself but also the overall data quality is important to pick the second S-wave arrivals can be picked. In general, the measured. While the data quality is rather high for rays with angles $>90^\circ$, the quality is either lower or parts of the signal are covered in reflection or tube waves for angles $<90^\circ$, so that the picking of the slower S-wave cannot be done for these rays. This explains why no S2-wave velocities do not show a strong velocity change with the ray direction but only small amplitude variations from 2800 m s^{-1} up to 2900 m s^{-1} picks are available for these angles even though the expected traveltime difference is similarly high.

Analogous to the anisotropy factor based on the measured data, the anisotropy factor can also be calculated for the model data. The P-waves show an anisotropy of 3.5% in the optimized model, the S1-waves show an anisotropy of 6.6%. These values are in the same order of magnitude as the anisotropy factors of the measured data in Sect. 5.

Even though the The optimized TTI model can explain the measured data to a first order, but it still shows a systematic misfit, shown in Fig. 7. The representation is the same as before, but the color refers to the absolute misfit for each ray direction. The maximum, absolute misfit of all wave types is in the range of about 200 m/s m s^{-1} , which corresponds to an offset of about 3 - 7%. This shows that the final anisotropic velocity model explains the measured data reasonable reasonably.

The stereonet shows the misfit between the optimized model and the measured apparent velocity for all picked data. The range of the colorbar is equalized for a better comparison of the misfits. A negative misfit means that the optimized model is overestimating the velocity. The misfit shows trends of over- and underestimated velocities for P- and S1-waves. For P-waves,

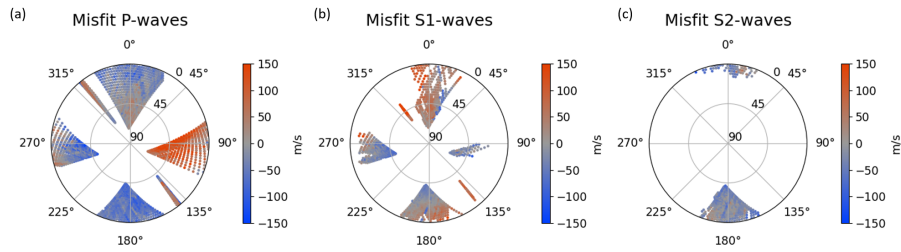


Figure 7. The stereonets show the misfit between the optimized model and the measured apparent velocity for all picked data. The range of the colorbar is equalized and clipped for a better comparison of the misfits and to avoid distortion by single outliers. A negative misfit means that the optimized model is overestimating the velocity.

velocities in EW-directions are mainly underestimated, while rays with ~~NS-orientation~~ NS orientation are overestimated by the model. The error of the S1-waves shows a less dominant pattern, but is still not randomly distributed and shows underestimated
365 velocities for mainly horizontal rays and rays in NW-SE direction such as overestimated velocities for steeper ray directions. The model overestimates the S2-wave velocities for most ray directions. It is also remarkable that the shear wave splitting is mainly detected in parts ~~;~~ where the P-wave velocity is overestimated, while the S1-wave velocity is underestimated. A model with a higher fit in these parts could potentially result in a higher expected traveltimes difference than assumed by our model, fitting to a splitting in these parts.

370 While such a systematic error is an indicator of an inadequate assumption in the model, the overall fit of our model is still adequate and it can be used for further characterizations of the rock volume. Potential sources for the observed anisotropy are discussed in the following Sect. 7 by comparing our results to other studies.

7 Discussion

The picked traveltimes of the P-waves give evidence for seismic anisotropy in the volume of interest, which can by ~~first~~
375 ~~order-first-order~~ be described as a TTI model. This symmetry is further confirmed by the two different shear waves following matching patterns. The high angular coverage in the tripod boreholes, ~~;~~ as well as the large amount of picked arrival times for all three wave types ~~allow-~~ allowed us to determine a well-constrained anisotropic velocity model.

While it is common to analyze the seismic anisotropy of a rock on the lab scale (David et al., 2020; Schneider, 2022; Sayers, 2002; Nur and Simmons, 1969) and for rock types other than igneous rocks (Al-Harhi, 1998; Chan and Schmitt, 2015; Song
380 et al., 2004), it is often not taken into account on the ~~field-scale~~ field-scale for igneous rocks. This can not only lead to flawed results in the velocity model but also important information on the rock characteristics are neglected.

The analysis of seismic anisotropy on the ~~field-scale~~ field-scale offers significant advantages over lab-scale experiments. While measurements in the laboratory give only insights on the features of the undisturbed rock, also fractured or brittle material can be tested on the field scale. It is known that open and filled fractures are crossing the volume of interest, potentially influencing
385 the wave propagation in our test bed. These effects are missed in lab-scale experiments.

Another advantage is the interpretation of the result in a larger context. The laboratory can only offer quantitative information about the elastic tensor but not about the orientation of it in the field. However, the orientation of the tensor, described by the symmetry axis, is of high importance to identify the causative factors of anisotropy. Not only the orientation of the sample but also the ~~in-situ~~ in situ conditions can not be preserved in the laboratory. During the exhumation of the rock, a non-reversible relaxation of the sample occurs, altering the external forces that control its elastic properties.

In the following, we consider various factors that may control anisotropy, and we discuss how ~~adequate~~ adequately they can describe our measured anisotropy. Different factors are known to cause seismic anisotropy on different scales (Barton, 2006):

- Interbedding of sedimentary rocks
- Fault zones
- Fabrics
- Natural Fractures
- Stress Field Orientation

The first two factors can be eliminated in our rock volume, as the tripod is placed in an undisturbed part of the Rotondo granite. Different logging runs proved that the boreholes are not crossing any major fault zones or larger fracture zones. The seismic data have also no indication for larger ~~heterogeneities~~ heterogeneities within the test volume, which is in good accordance with the geological characterization of Jordan (2019). The fabrics of the rock can also be excluded as ~~potential source~~ a potential source, as the thin sections and core samples of the undisturbed granite ~~don't~~ do not show any preferred orientation or mineral alignment (David et al., 2020; Ma et al., 2022; Jordan, 2019). The undeformed Rotondo granite is also fully isotropic under high pressures in the lab, indicating that the anisotropy is not intrinsic from the material itself but must be controlled by external factors (Schneider, 2022). Under high pressure, all cavities are closed, so that a preferred orientation of the minerals would cause anisotropic velocities.

The remaining factors ~~which~~ that are known to cause anisotropy are (natural) fractures and the predominant stress field in the rock volume. The occurrence and orientation of the fractures in the tripod boreholes are analyzed in Bröker et al. (2024). Jordan (2019) additionally mapped fractures along the tunnel wall. ~~The results~~ We use a combination of both studies to describe the fracture network around the tripod. This ensures that we do not underestimate the fracture density in a specific direction (sub-)parallel to the boreholes (Terzaghi, 1965). A detailed analysis of the undersampled fractures for each borehole and the tunnel is shown in Fig. A5.

The mapped fractures of both studies are summarized in Fig. 8. Black lines represent the strike direction of mapped fractures along the tunnel and turquoise lines represent the strike direction of the mapped fractures of the logging data. The fractures mapped in the tunnel show a slight trend of NS-striking fractures around the tripod boreholes, which is supplemented by ~~NW-SE-striking~~ NW-SE-striking fractures in the logging data. ~~The NW-SE-striking fractures are undersampled in the tunnel wall mapping, due to their subparallel orientation to the tunnel. This means that the data set based on the logging data is~~

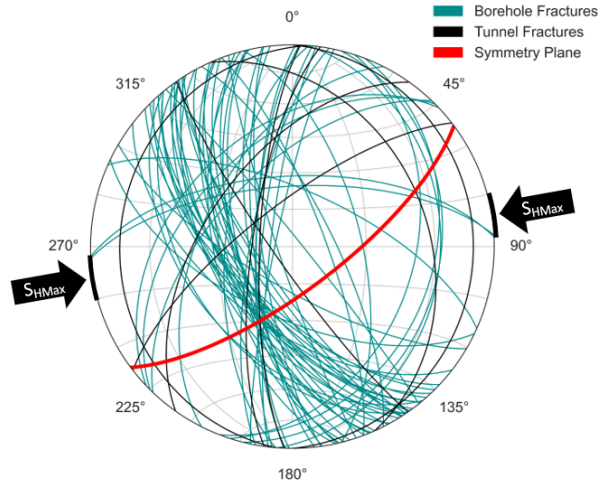


Figure 8. The stereonet represents the natural fractures along the tunnel wall from TM 2050 m - 2115 m (black) and in the boreholes (turquoise) and the symmetry plane (red) of the optimized anisotropy model. The black arrows point towards S_{HMax} around the tripod boreholes as estimated from mini-frac tests by Bröker et al. (2024).

~~assumed to be more representative for our rock volume.~~ In both data sets, the fractures are mainly sub-vertical. The fractures mapped in the borehole are mainly dipping towards ~~east or south-east~~ the east or southeast, the fractures mapped along the tunnel wall do not show a dominant dip direction.

However, in addition to the fractures, ~~also~~ stress-induced anisotropy is also a possible source for the measured anisotropy in the tripod. The magnitude and orientation of the stress field around the tripod is ~~analysed in~~ analyzed by Bröker and Ma (2022) and Bröker et al. (2024), respectively. They state that one of the principal stress components is vertically oriented (S_V) and in the same order of magnitude as the maximum horizontal stress (S_{HMax}), pointing in N75° E to N87° E direction around the tripod boreholes. The orientation of S_{HMax} , estimated from mini-frac tests, is also plotted in Fig. 8 by the black arrows.

Also, the variation of the stress field with increasing depth should be taken into account. The vertical stress component is assumed to increase with increasing depth as the overburden increases by about 3% along the tripod boreholes. However, horizontal stress component variations do not correlate with increasing depth, as they are mainly controlled by other factors such as the proximity to fractures (Bröker and Ma, 2022). The depth effect on the P-wave velocity is illuminated in Fig. 9. It shows both the effect of the measurement depths and the effect of the ray direction on the velocity. This makes clear that the effect due to increasing source or receiver depths is much smaller than the effect due to the ray direction. Rays with a similar orientation, i.e., similar colors, show an increase of not more than 100 m s⁻¹ for increasing depth, while the velocity variation due to the ray direction is in the range of 400 m s⁻¹.

Comparing the orientation of the fractures and the ~~in-situ~~ in situ stress field with the orientation of the anisotropy can reveal information about the correlation between the different characteristics. In the case of a purely fracture-dominated anisotropy,

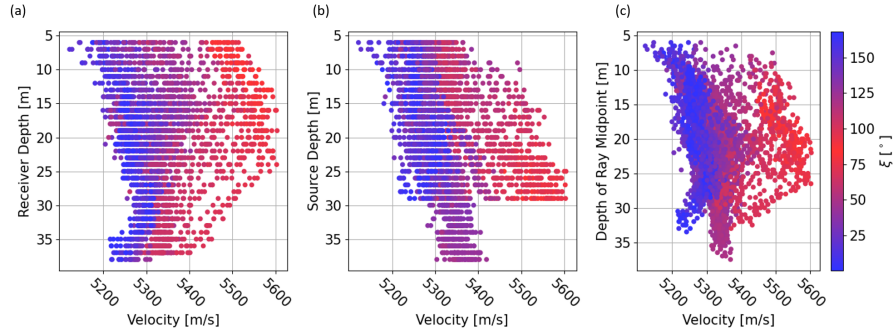


Figure 9. The figure plots the measured P-wave velocity against the depth of (a) the source, (b) the receiver, and (c) the midpoint of the ray. The color bar shows, in contrast to the measurement depth, the angle between the ray and the symmetry axis of the TTI model. Blue colors corresponds to rays that are (sub-)parallel to the symmetry axis and red colors corresponds to rays that are (sub-)parallel to the symmetry plane.

we would assume faster velocities along the fractures and minimum wave velocities perpendicular to it (Barton, 2006). In the tripod, this would correspond to faster velocities in a vertical plane with N-S to NW-SE orientation and a symmetry axis in E-W to NE-SW direction. In the case of a purely stress-induced anisotropy, faster wave velocities are expected along the maximum principle principal stress direction (Nur and Simmons, 1969; Barton, 2006; Song et al., 2004). This means that in the case of

440 $S_v \approx S_{HMax} S_v \approx S_{HMax}$, the seismic velocities are not just maximized in one specific direction but within the plane spanned by the two maximum stress directions. In the case of the tripod, this plane is oriented in an E-W to NE-SW direction. In Fig. 8 the relations between the fracture network (lines in black and turquoise), the stress field (black arrows), and the symmetry plane of maximum velocities (red) are summarized. The symmetry plane with maximum velocities is rather aligned with the maximum stress directions than with the preferred orientation of fractures in the tripod. Also the velocity pattern

445 corresponding to a mostly rotational-rotationally symmetric TTI medium fits the expectation of a stress-induced anisotropy with $S_v \approx S_{HMax} S_v \approx S_{HMax}$.

The stereonet represents the natural fractures along the tunnel wall from TM 2050m – 2115m (black) and in the boreholes (grey) and the symmetry plane (red) of the optimized anisotropy model. The black arrows point towards S_{HMax} around the tripod boreholes as estimated from mini-frac tests by Bröker et al. (2024). However, the orientation of the symmetry plane

450 cannot exclusively be explained by the stress field, which suggests that a combined effect of the fracture network and stress field is are controlling the anisotropy in the tripod. Also the systematic distribution of the misfit indicates that the assumption of a homogeneous TTI medium might be too strong and cannot fully cover our observations. The heterogeneous distribution of filled and unfilled fractures along the boreholes gives more complexity to the velocity field and potentially also reduces the symmetry from a hexagonal TTI medium towards a slightly orthorhombic medium.

455 Our measurements are not just in accordance with the orientation of the in-situ stress-field in situ stress field but also quantitatively with first lab measurements from David et al. (2020) and Wenning et al. (2018) on the Rotondo granite. They measure a

seismic anisotropy of about 6% under zero-confinement pressure and 30 MPa-MPa confinement pressure, respectively. However, in both studies only a limited amount of ray directions was measured, so the maximum and minimum velocity direction might be missed and the true anisotropy might also be higher.

460 A common explanation for seismic anisotropy on the lab scale is the preferred orientation of so-called ~~micro-cracks~~microcracks in the sample, which is controlled by the applied ~~stress-field~~stress field, closing cracks perpendicular to the maximum stress direction. This effect is not fully reversible so that the samples in the lab still behave anisotropic even without any applied differential pressure.

This explanation of the closure of ~~micro-cracks~~microcracks might be true for sedimentary rocks with a significant amount of
465 ~~micro-cracks~~microcracks between the grains. However, ~~micro-cracks~~microcracks are less dominant in igneous rocks~~so that~~
,so this effect is assumed to be small (Howarth, 1987). Maitra and Al-Attar (2021) ~~states~~state that the effect of differential stress on a solid medium can rather be explained by a change in the elastic tensor of the effective medium than by the effect on its cavities. The elastic tensor is affected by the ~~in-situ~~in situ stress field with three distinct principal stresses, causing a higher stiffness of the material along σ_{max} , increasing the wave velocity along it.

470 It is known ~~,that also~~that uncertainties in the borehole trajectory can cause a comparable velocity pattern, mimicking seismic anisotropy or change the TTI model (Maurer and Green, 1997; Hellmann et al., 2023). The velocity pattern based on an earlier and less accurate trajectory calculation is shown in Fig. A4. It shows a similar but rotated velocity pattern with faster velocities in the NE-SW direction, rather than in the E-W direction. This further demonstrates that the anisotropy model is highly sensitive to errors in the ~~boreholes~~borehole trajectories.

475 However, the occurrence of the splitting of the two differently polarized S-wave is ~~a~~ clear evidence for true seismic anisotropy in the volume of interest. Additionally, the trajectories of the boreholes used in this study are known with up to a millimeter precision. This allows the determination of a reliable final model ~~which~~that can be used for further analyses on the source of the anisotropy. The relation between borehole trajectories and seismic anisotropy calculations will be ~~analysed~~analyzed in more detail in an upcoming study.

480 8 Conclusions

The ~~cross-hole seismic data set~~crosshole seismic dataset measured in the tripod boreholes of the Bedretto Lab ~~allow~~allows a reliable determination of a TTI model. We were able to measure wave velocities in a large range of directions, covering most azimuth and dip directions. The detection of the different wave types (P-, S1- and S2-waves) further constrains the velocity model as the wave velocities contain supplementary information of the elastic tensor. The most likely cause of the
485 anisotropy is a combination of the stress field and the fracture network. The stress field can explain the main features of the velocity distributions, with a ~~rotational~~rotationally symmetric pattern around the symmetry axis pointing towards the minimum stress direction. However, deviations from this TTI model, which become particularly evident in the systematic misfit, can be assigned to the orientation of the fractures in the volume. A more complex model with a lower (orthorhombic) symmetry could

potentially account for these effects, but the lack of data, especially within the symmetry plane, makes a reliable calculation of
490 an orthorhombic medium impossible.

Data availability. All data used in this project are available through <https://doi.org/10.3929/ethz-b-000678987>.

—

Author contributions. KBe, MH, CE and MBL conducted the experiments; KBe, CE and MBL processed and analyzed the data; KBe, KBr, MH and HM interpreted the results in the bigger context of the BedrettoLab; AS provided and updated the borehole trajectories, KBe wrote the paper with contributions from all co-authors.

Competing interests. The authors declare that they have no conflict of interest.

Acknowledgements. In the "Bedretto Underground Laboratory for Geosciences and Geoenergies", ETH Zurich studies in close collaboration with national and international partners techniques and procedures for a safe, efficient, and sustainable use of geothermal heat and questions related to earthquake physics. The BedrettoLab is financed by the Werner Siemens Foundation, ETH Zürich and the Swiss National Science Foundation. The research in this publication was conducted within the project 200021_192151 and has received funding by the Swiss National Science Foundation (SNF). The BedrettoLab would like to thank Matterhorn Gotthard Bahn for providing access to the tunnel. This paper is BULGG publication BPN_026.

Appendix A: Additional Plots

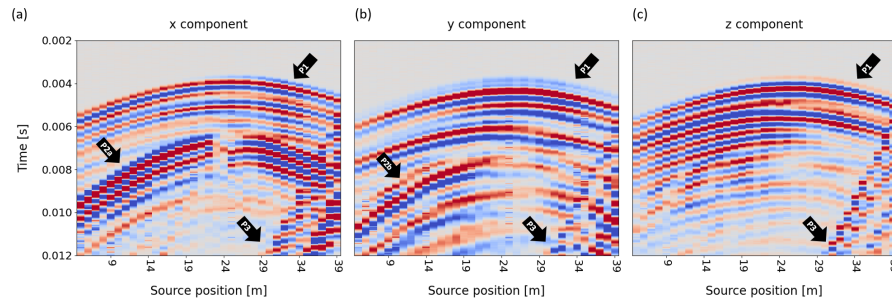


Figure A1. The receiver gathern for the same geometry as in Fig. 2 recorded on a 3C geophone (Receiver in SB2.2 at 23m 23m depth, source in SB2.3 with 1m 1m spacing). The P-wave arrival is clearly visible (P1). On the x-component, the arrival of the S1-wave is visible (P2a), the onset recorded on the y-component is slightly later and thus, corresponds to the S2-wave (P2b). On the z-component, no S-wave signal is recorded. All components also contain reflected or tube waves (P3).

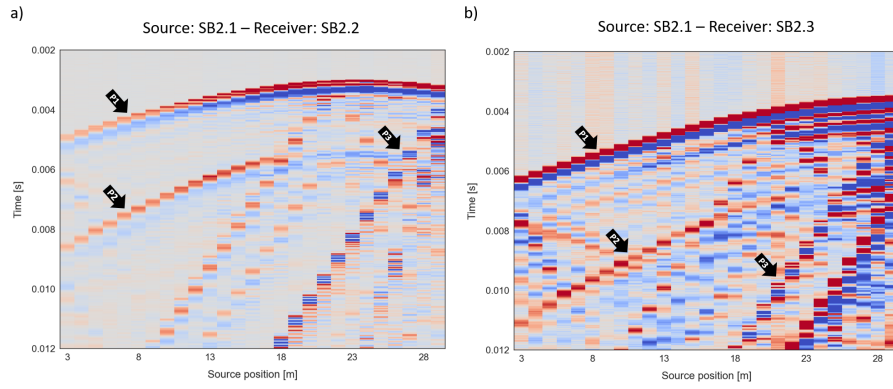


Figure A2. (a) Shot Gather of a source in borehole SB2.1 at 26m26 m depth, recorded on hydrophones in SB2.2 with 4m1 m spacing. (b) Shot Gather of a source in borehole SB2.1 at 32m32 m depth, recorded on hydrophones in SB2.3 with 4m1 m spacing. Arrows point to the P-wave arrival (P1), S1-wave arrival (P2) and reflected or tube waves (P3). In both geometries, no clear splitting of the S-waves is detected.

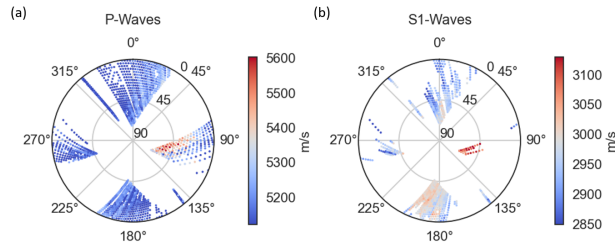


Figure A3. Calculated apparent velocities based on the picked traveltimes on the 3C geophones. The overall pattern fits the velocity pattern of the hydrophone data set, but the magnitudes are smaller compared to the hydrophone dataset. Problems in the data acquisition, triggering the recording, can explain this shift.

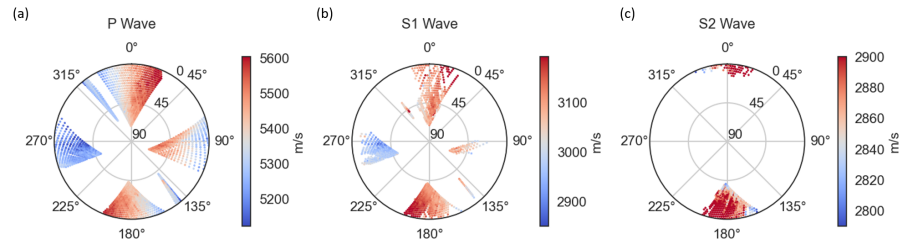


Figure A4. Apparent velocities for all three wave types, based on the old trajectories. These trajectories have a higher uncertainty as they are purely based on logging information.

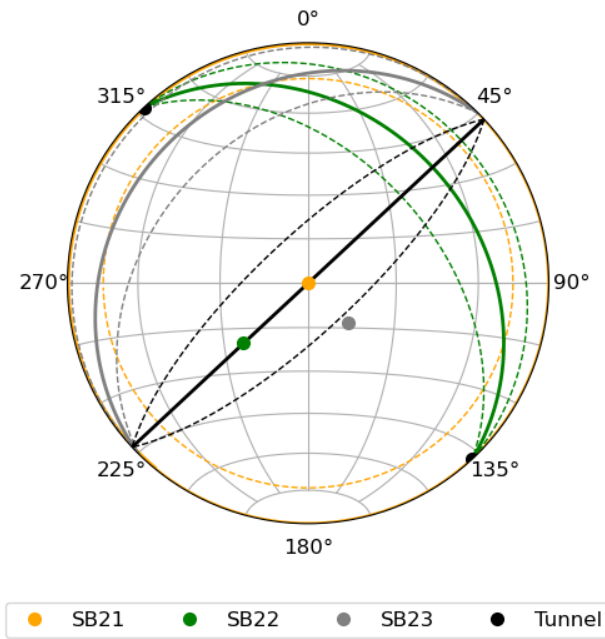


Figure A5. The stereonet shows the directions of undersampled fractures for each borehole and the tunnel. The solid line represents the poles of fractures parallel to the borehole, the dashed lines represents the poles of fractures with an angle of $\pm 16^\circ$ to the borehole and the tunnel direction, respectively. Palmström and Strömme (1996) state, that fractures with an angle of up to 16° to the borehole are underrepresented in the data. The single dots show the orientation of the boreholes and tunnel itself. Fractures with pole orientations within the dashed lines of each borehole are expected to be undersampled by logging data of the corresponding borehole or tunnel.

References

- Al-Harathi, A. A.: Effect of planar structures on the anisotropy of Ranyah sandstone, Saudi Arabia, *Engineering Geology*, 50, 49–57, [https://doi.org/10.1016/S0013-7952\(97\)00081-1](https://doi.org/10.1016/S0013-7952(97)00081-1), 1998.
- Amann, F., Gischig, V., Evans, K., Doetsch, J., Jalali, R., Valley, B., Krietsch, H., Dutler, N., Villiger, L., Brixel, B., Klepikova, M., Kittilä, A., Madonna, C., Wiemer, S., Saar, M. O., Loew, S., Driesner, T., Maurer, H., and Giardini, D.: The seismo-hydromechanical behavior during deep geothermal reservoir stimulations: Open questions tackled in a decameter-scale in situ stimulation experiment, *Solid Earth*, 9, 115–137, <https://doi.org/10.5194/se-9-115-2018>, 2018.
- Aminzadeh, A., Petružálek, M., Vavryčuk, V., Ivankina, T. I., Svitek, T., Petrílková, A., Staš, L., and Lokajíček, T.: Identification of higher symmetry in triclinic stiffness tensor: Application to high pressure dependence of elastic anisotropy in deep underground structures, *International Journal of Rock Mechanics and Mining Sciences*, 158, <https://doi.org/10.1016/j.ijrmms.2022.105168>, 2022.
- Barton, N.: *Rock quality, seismic velocity, attenuation and anisotropy*, CRC press, ISBN 0-415-39441-4, 2006.
- Berryman, J.: Long-wave elastic anisotropy in transversely isotropic media, *Geophysics*, 44, 896–917, <https://doi.org/10.1190/1.1440984>, 1979.
- Boese, C. M., Kwiatek, G., Fischer, T., Plenkers, K., Starke, J., Blümle, F., Janssen, C., and Dresen, G.: Seismic monitoring of the STIMTEC hydraulic stimulation experiment in anisotropic metamorphic gneiss, *Solid Earth Discussion*, 13, 323–346, <https://doi.org/10.5194/se-13-323-2022>, 2021.
- Bröker, K. and Ma, X.: Estimating the Least Principal Stress in a Granitic Rock Mass: Systematic Mini-Frac Tests and Elaborated Pressure Transient Analysis, *Rock Mechanics and Rock Engineering*, 55, 1931–1954, <https://doi.org/10.1007/s00603-021-02743-1>, 2022.
- Bröker, K., Ma, X., Zhang, S., Gholizadeh Doonechaly, N., Hertrich, M., Klee, G., Greenwood, A., Caspari, E., and Giardini, D.: Constraining the stress field and its variability at the BedrettoLab: Elaborated hydraulic fracture trace analysis, *International Journal of Rock Mechanics and Mining Sciences*, 178, 105 739, <https://doi.org/10.1016/J.IJRMMS.2024.105739>, 2024.
- Carcione, J. M., Kosloff, D., and Kosloff, R.: Wave-Propagation Simulation in an Elastic Anisotropic (Transversely Isotropic) Solid, *The Quarterly Journal of Mechanics and Applied Mathematics*, 41, 319–346, <https://doi.org/10.1093/qjmam/41.3.319>, 1988.
- Chan, J. and Schmitt, D. R.: Elastic Anisotropy of a Metamorphic Rock Sample of the Canadian Shield in Northeastern Alberta, *Rock Mechanics and Rock Engineering*, 48, 1369–1385, <https://doi.org/10.1007/s00603-014-0664-z>, 2015.
- Crampin, S. and Booth, D. C.: Shear-wave splitting showing hydraulic dilation of pre-existing joints in granite, *Scientific Drilling*, 1, 21–26, 1989.
- Daley, P. F. and Hron, F.: Reflection and Transmission Coefficients for Transversely Isotropic Media, *Bulletin of the Seismological Society of America*, 67, 661–675, <https://doi.org/10.1785/BSSA0670030661>, 1977.
- David, C., Nejati, M., and Geremia, D.: On petrophysical and geomechanical properties of Bedretto Granite, Tech. rep., ETH Zurich, <https://doi.org/10.3929/ethz-b-000428267>, 2020.
- Doetsch, J., Krietsch, H., Schmelzbach, C., Jalali, M., Gischig, V., Villiger, L., Amann, F., and Maurer, H.: Characterizing a decametre-scale granitic reservoir using ground-penetrating radar and seismic methods, *Solid Earth*, 11, 1441–1455, <https://doi.org/10.5194/se-11-1441-2020>, 2020.
- Eken, T., Plomerová, J., Vecsey, L., Babuška, V., Roberts, R., Shomali, H., and Bodvarsson, R.: Effects of seismic anisotropy on P-velocity tomography of the Baltic Shield, *Geophysical Journal International*, 188, 600–612, <https://doi.org/10.1111/j.1365-246X.2011.05280.x>, 2012.

- Ellis, D. V. and Singer, J. M.: Well Logging for Earth Scientists, chap. 18.5, Springer Science & Business Media, 2007.
- Geotomographie GmbH: <https://geotomographie.de/equipment/borehole-sources>, last accessed: 2024-06-03.
- Gerst, A. and Savage, M. K.: Seismic Anisotropy Beneath Ruapehu Volcano: A Possible Eruption Forecasting Tool, *Science*, 306, 1540–1543, <https://doi.org/10.1126/science.1103445>, 2004.
- 545 Gischig, V. S., Giardini, D., Amann, F., Hertrich, M., Krietsch, H., Loew, S., Maurer, H., Villiger, L., Wiemer, S., Bethmann, F., Brixel, B., Doetsch, J., Doonechaly, N. G., Driesner, T., Dutler, N., Evans, K. F., Jalali, M., Jordan, D., Kittilä, A., Ma, X., Meier, P., Nejati, M., Obermann, A., Plenkers, K., Saar, M. O., Shakas, A., and Valley, B.: Hydraulic stimulation and fluid circulation experiments in underground laboratories: Stepping up the scale towards engineered geothermal systems, *Geomechanics for Energy and the Environment*, 24, 100 175, <https://doi.org/10.1016/J.GETE.2019.100175>, 2020.
- 550 Hellmann, S., Grab, M., Patzer, C., Bauder, A., and Maurer, H.: A borehole trajectory inversion scheme to adjust the measurement geometry for 3D travel-time tomography on glaciers, *Solid Earth*, 14, 805–821, <https://doi.org/10.5194/se-14-805-2023>, 2023.
- Heng, S., Guo, Y., Yang, C., Daemen, J. J., and Li, Z.: Experimental and theoretical study of the anisotropic properties of shale, *International Journal of Rock Mechanics and Mining Sciences*, 74, 58–68, <https://doi.org/10.1016/J.IJRMMS.2015.01.003>, 2015.
- Horne, S. A.: A statistical review of mudrock elastic anisotropy, *Geophysical Prospecting*, 61, 817–826, [https://doi.org/10.1111/1365-](https://doi.org/10.1111/1365-2478.12036)
- 555 2478.12036, 2013.
- Howarth, D.: The effect of pre-existing microcavities on mechanical rock performance in sedimentary and crystalline rocks, *International Journal of Rock Mechanics and Mining Sciences & Geomechanics Abstracts*, 24, 223–233, [https://doi.org/10.1016/0148-9062\(87\)90177-X](https://doi.org/10.1016/0148-9062(87)90177-X), 1987.
- Johnson, J. H., Savage, M. K., and Townend, J.: Distinguishing between stress-induced and structural anisotropy at Mount Ruapehu volcano, New Zealand, *Journal of Geophysical Research*, 116, 12 303, <https://doi.org/10.1029/2011JB008308>, 2011.
- 560 Jordan, D.: Geological characterization of the Bedretto underground laboratory for geoenergies, Master’s thesis, ETH Zurich, Geological Institute, 2019.
- Keller, F. and Schneider, T. R.: *Geologie und Geotechnik*, Schweizer Ingenieur und Architekt, 100, 512–520, 1982.
- Lee, H., Ong, S. H., Azeemuddin, M., and Goodman, H.: A wellbore stability model for formations with anisotropic rock strengths, *Journal of Petroleum Science and Engineering*, 96–97, 109–119, <https://doi.org/10.1016/J.PETROL.2012.08.010>, 2012.
- 565 Li, Z. and Peng, Z.: Stress-and Structure-Induced Anisotropy in Southern California From Two Decades of Shear Wave Splitting Measurements, *Geophysical Research Letters*, 44, 9607–9614, <https://doi.org/10.1002/2017GL075163>, 2017.
- Ma, X., Hertrich, M., Amann, F., Bröker, K., Gholizadeh Doonechaly, N., Gischig, V., Hochreutener, R., Kästli, P., Krietsch, H., Marti, M., Nägeli, B., Nejati, M., Obermann, A., Plenkers, K., Rinaldi, A. P., Shakas, A., Villiger, L., Wenning, Q., Zappone, A., Bethmann, F.,
- 570 Castilla, R., Seberto, F., Meier, P., Driesner, T., Loew, S., Maurer, H., Saar, M. O., Wiemer, S., and Giardini, D.: Multi-disciplinary characterizations of the BedrettoLab – a new underground geoscience research facility, *Solid Earth*, 13, 301–322, <https://doi.org/10.5194/se-13-301-2022>, 2022.
- Maitra, M. and Al-Attar, D.: On the stress dependence of the elastic tensor, *Geophysical Journal International*, 225, 378–415, <https://doi.org/10.1093/gji/ggaa591>, 2021.
- 575 Maurer, H. and Green, A. G.: Potential coordinate mislocations in crosshole tomography: Results from the Grimsel test site, Switzerland, *Geophysics*, 62, 1696–1709, <https://doi.org/10.1190/1.1444269>, 1997.
- Menke, W.: *Geophysical data analysis: Discrete inverse theory*, Academic Press, Amsterdam, fourth edition edn., ISBN 9780128135556, 2018.

580 Motra, H. B., Mager, J., Ismail, A., Wuttke, F., Rabbel, W., Köhn, D., Thorwart, M., Simonetta, C., and Costantino, N.: Determining the influence of pressure and temperature on the elastic constants of anisotropic rock samples using ultrasonic wave techniques, *Journal of Applied Geophysics*, 159, 715–730, <https://doi.org/10.1016/j.jappgeo.2018.10.016>, 2018.

Nur, A. and Simmons, G.: Stress-induced velocity anisotropy in Rock: An Experimental Study, *Journal of Geophysical Research*, 74, 6667–6674, <https://doi.org/10.1029/jb074i027p06667>, 1969.

585 Özbek, A., Gül, M., Karacan, E., and Alca, : Anisotropy effect on strengths of metamorphic rocks, *Journal of Rock Mechanics and Geotechnical Engineering*, 10, 164–175, <https://doi.org/10.1016/J.JRMGE.2017.09.006>, 2018.

Palmström, A. and Strömme, B.: The Weighted Joint Density Method Leads to Improved Characterization of Jointing, *Conference on recent advances in tunnelling technology*, 1996.

Plenkers, K., Reinicke, A., Obermann, A., Doonechaly, N. G., Krietsch, H., Fechner, T., Hertrich, M., Kontar, K., Maurer, H., Philipp, J., Volksdorf, M., Giardini, D., and Wiemer, S.: Multi-Disciplinary Monitoring Networks for Mesoscale Underground Experiments: Advances
590 in the Bedretto Reservoir Project, *Sensors*, 23, 3315, <https://doi.org/10.3390/s23063315>, 2023.

Ramamurthy, T., Rao, G. V., and Singh, J.: Engineering behaviour of phyllites, *Engineering Geology*, 33, 209–225, [https://doi.org/10.1016/0013-7952\(93\)90059-L](https://doi.org/10.1016/0013-7952(93)90059-L), 1993.

Rast, M., Galli, A., Ruh, J. B., Guillong, M., and Madonna, C.: Geology along the Bedretto tunnel: kinematic and geochronological constraints on the evolution of the Gotthard Massif (Central Alps), *Swiss Journal of Geosciences*, 115, 8, <https://doi.org/10.1186/s00015-022-00409-w>, 2022.
595

Sayers, C. M.: Stress-dependent elastic anisotropy of sandstones, *Geophysical Prospecting*, 50, 85–95, <https://doi.org/10.1046/j.1365-2478.2002.00289.x>, 2002.

Schneider, C.: Seismic Velocity Anisotropy and Microstructural Characterization of Ductile Shear Zones in the Rotondo Granite, Masterarbeit, ETH Zürich, <https://doi.org/10.3929/ethz-b-000710435>, supervised by Dr. Quinn Wenning, 2022.

600 Song, I., Suh, M., Woo, Y. K., and Hao, T.: Determination of the elastic modulus set of foliated rocks from ultrasonic velocity measurements, *Engineering Geology*, 72, 293–308, <https://doi.org/10.1016/J.ENGGEOL.2003.10.003>, 2004.

Terzaghi, R. D.: Sources of Error in Jopint Surveys, *Géotechnique*, 15, 287–304, <https://doi.org/10.1680/geot.1965.15.3.287>, 1965.

Thomsen, L.: Weak elastic anisotropy, *Geophysics*, 51, 1954–1966, <https://doi.org/10.1190/1.1442051>, 1986.

Tsvankin, I.: Anisotropic parameters and P-wave velocity for orthorhombic media, *Geophysics*, 62, 1292–1309,
605 <https://doi.org/10.1190/1.1444231>, 1997.

Wang, H., Peng, S., and Du, W.: Azimuthal AVO for tilted TI medium, *Geophysics*, 82, C21–C33, <https://doi.org/10.1190/geo2015-0430.1>, 2017.

Wenning, Q., Madonna, C., de Haller, A., and Burg, J. P.: Permeability and seismic velocity anisotropy across a ductile-brittle fault zone in crystalline rock, *Solid Earth*, 9, 683–698, <https://doi.org/10.5194/se-9-683-2018>, 2018.