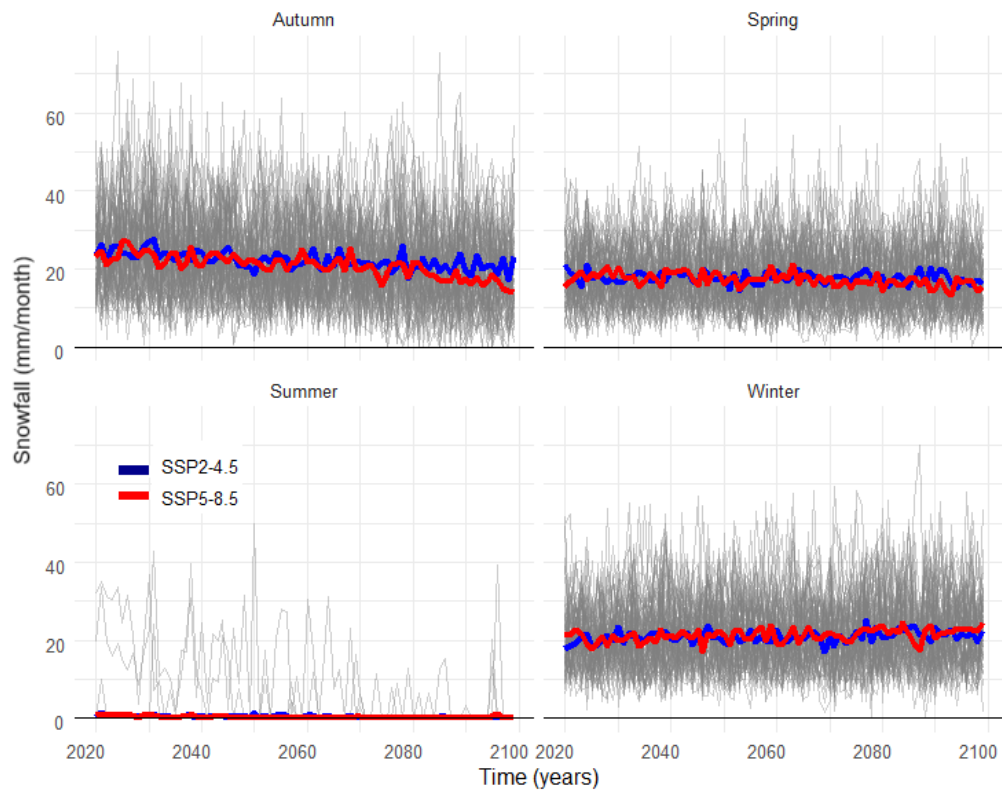
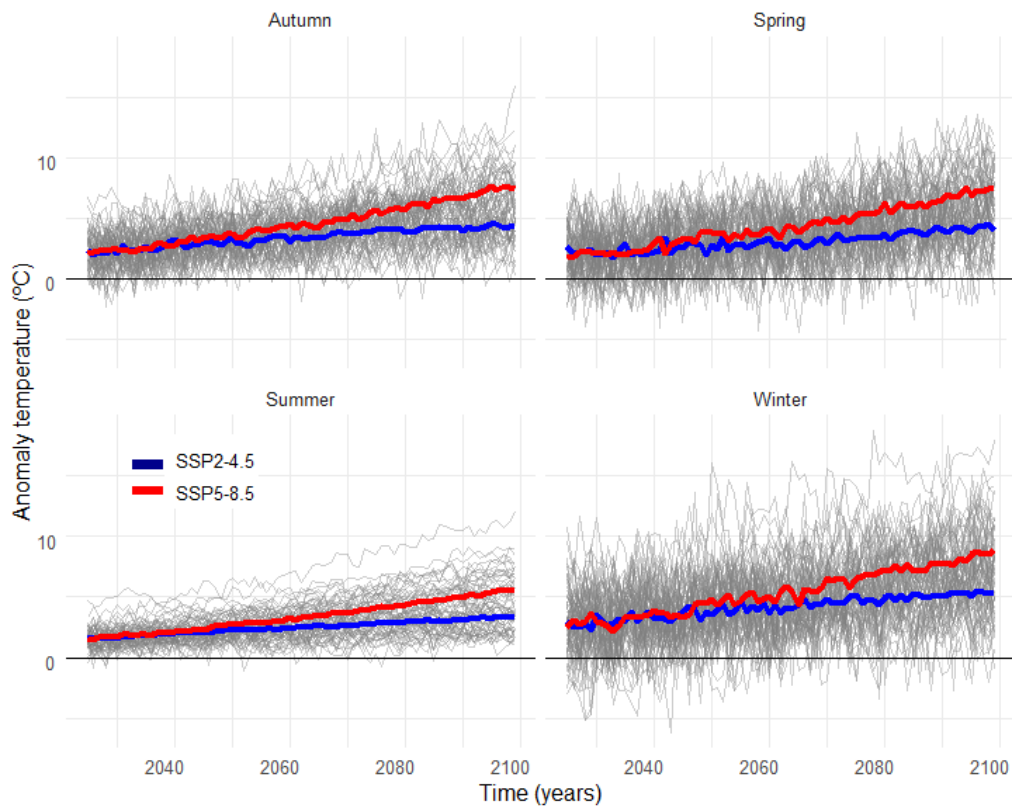


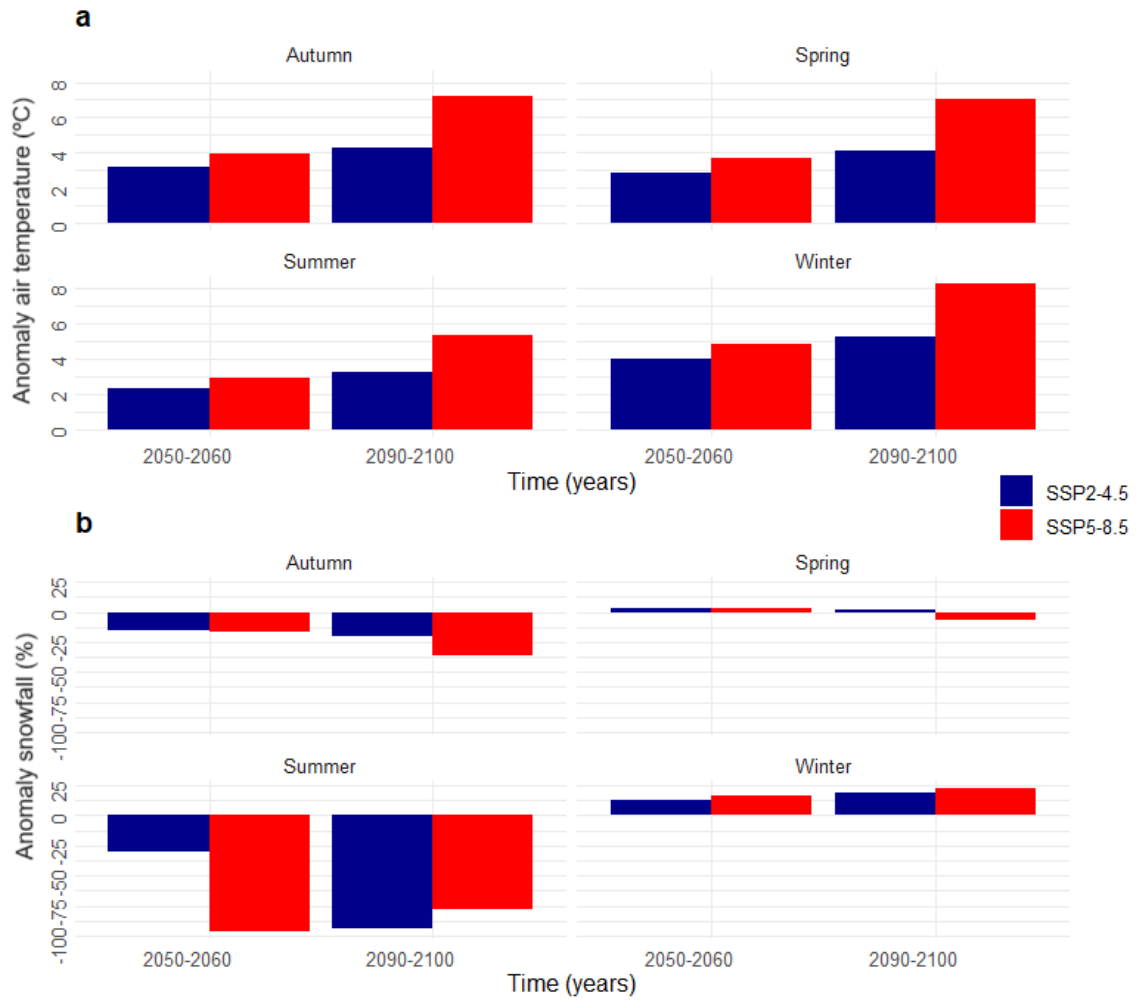
## Supplementary materials



**Figure S1.** Temporal evolution of CMIP6 SSP2-4.5 and SSP5-8.5 temperature anomalies with respect to the baseline climate period grouped by season.



**Figure S2.** Temporal evolution of CMIP6 SSP2-4.5 and SSP5-8.5 snowfall anomalies with respect to the baseline climate period grouped by season.



**Figure S3.** Comparison of CMIP6 SSP2-4.5 and SSP5-8.5 temperature (a) and snowfall (b) anomalies with respect to the baseline climate period for 2050-2060 and 2090-2100 temporal periods grouped by seasons.