

# Classification of North Atlantic and European extratropical cyclones using multiple measures of intensity

Joona Cornér<sup>1</sup>, Clément Bouvier<sup>1</sup>, Benjamin Doiteau<sup>2,3</sup>, Florian Pantillon<sup>2</sup>, and Victoria A. Sinclair<sup>1</sup>

<sup>1</sup>Institute for Atmospheric and Earth System Research / Physics, Faculty of Science, University of Helsinki, Finland

<sup>2</sup>Laboratoire d'Aérodynamique, Université de Toulouse, CNRS, UPS, IRD, Toulouse, France

<sup>3</sup>CNRM, Université de Toulouse, Météo-France, CNRS, Toulouse, France

**Correspondence:** Joona Cornér (joona.corner@helsinki.fi)

**Abstract.** The question of how to quantify the intensity of extratropical cyclones (ETC) does not have a simple answer. To offer some perspective on this issue, we analyze multiple measures of intensity ~~are analyzed in this study~~ for North Atlantic and European ~~extratropical cyclones~~ ETCs for the extended winter season between 1979 and 2022 using ERA5 reanalysis data. The most relevant intensity measures are identified by investigating relationships between them and by performing a sparse principal component analysis on the set of measures. We show that dynamical intensity measures correlate strongly with each other, while correlations are weaker for impact-relevant measures. Based on the correlations and the sparse principal component analysis, we find that five intensity measures, namely 850 hPa relative vorticity, 850 hPa wind speed, wind footprint, precipitation, and a storm severity index, describe ~~eyelone~~ ETC intensity comprehensively and non-redundantly. Using these five measures as input, we objectively classify the ~~extratropical cyclones~~ ETCs with a cluster analysis based on a Gaussian mixture model. The cluster analysis is able to produce four clusters between which ~~eyelones~~ ETCs differ in terms of their intensity, life cycle characteristics such as deepening rate and lifetime, and geographical location. A ~~clear majority (81%) of investigated impactful storms~~ fourth of all ETCs belong to the weakest cluster and occur mostly over Europe and in the Mediterranean area. Nearly half of all ETCs belong to the average intensity cluster and occur mostly at the northeastern parts of the main North Atlantic storm track. A fifth of all ETCs belong to the second most intense cluster, and occur mostly at the start of the North Atlantic storm track. Finally, less than a tenth of all ETCs belong to the most intense cluster and occur almost equally everywhere. This last cluster includes a clear majority of a set of investigated impactful storms (17 out of 21), which demonstrates the ability of the method to identify potentially damaging ~~extratropical cyclones~~ ETCs.

## 1 Introduction

Extratropical cyclones (~~ETCs~~ ETC), also ~~frequently~~ referred to as mid-latitude cyclones or low pressure systems, constitute a substantial part of the atmospheric circulation in the mid-latitudes and transport large amounts of heat, moisture, and momentum polewards (Hartmann, 2015). ETCs are also responsible for most of the day-to-day variability in ~~sensible~~ weather in the mid-latitudes and are the dynamical cause for most of the precipitation (Hawcroft et al., 2012). Furthermore, the most extreme ETCs can be associated with heavy precipitation and strong winds responsible for flooding, landslides, damage to infrastructure ~~and buildings~~, or diverse economic losses.

25 No two ETCs are the same and there is great variability in their shape, size, lifetime, and intensity (Nielsen and Dole, 1992). Thus, many attempts of classifications have been made and have often been driven by the desire to better understand the development or the structure of certain types of ETCs. For example, Zillman and Price (1972) and Browning (1990) classified ETCs based on their cloud patterns, whereas Field and Wood (2007) grouped ETCs based on their low-level wind speed and their water vapour path in an attempt to understand ETC precipitation. Attempts have also been made to classify ETCs by their dynamical forcing. For example, Thorncroft et al. (1993) and Schultz et al. (1998) separated ETCs that develop in different background flows, whereas Petterssen and Smebye (1971), Deveson et al. (2002), and Dacre and Gray (2009) grouped ETCs that are dominated either by low-level thermal advection or upper-level vorticity advection. However, perhaps the most common approach to group or classify ETCs is based on a measure of their intensity. Previous studies have grouped ETCs either by their maximum 850 hPa relative vorticity (VO), often focusing on the strongest storms (e.g., Catto et al., 2010; Sinclair et al., 2020), or by the decrease in minimum mean sea level pressure (MSLP) over a ~~24-hour~~ 24 h period, again commonly focusing on the most rapidly deepening storms (e.g., Sanders and Gyakum, 1980; Reboita et al., 2021).

Quantifying the intensity of any given ETC in a concise yet accurate manner is however a challenging task. Meteorologists and climate scientists have faced this challenge for many decades and as such many methods and diagnostics exist, but there is no clear “correct” way or “best” diagnostic. The most common metrics used to quantify ETC intensity, MSLP and VO, describe the synoptic-scale dynamics of the ETCs and are strongly related to the horizontal pressure gradient and large-scale winds. Historically, MSLP has been provided by records from surface stations, while nowadays VO is also commonly available from large gridded datasets such as reanalyses. However, in many cases, neither the minimum MSLP nor maximum VO correlates well with the impacts of a given ETC (e.g., [Field and Wood, 2007](#); [Roberts et al., 2014](#); [Sinclair and Catto, 2023](#)). This is mainly due to the presence of mesoscale features such as fronts, low-level jets and convergence bands which strongly influence the wind and precipitation fields (Hewson and Neu, 2015). Therefore, impact-relevant metrics which have no direct theoretical link to the traditional dynamically based metrics of MSLP and VO have been introduced. Such metrics include precipitation rates and accumulations (Hawcroft et al., 2012), sizes of wind footprints (Roberts et al., 2014), and storm severity indices (Leckebusch et al., 2008a).

Though challenging, quantifying the intensity of ETCs is crucial for climate studies, ~~given the large role these weather systems play in the climate system.~~ Firstly, many studies have used reanalysis datasets to quantitatively describe the state of the current climate in terms of number, location, and intensity of ETCs (e.g., Hoskins and Hodges, 2002; Rudeva and Gulev, 2007; Jeglum et al., 2010; Laurila et al., 2021a). Secondly, ~~concise metrics~~ a manageable number of metrics which are easy to compute (concise metrics) are needed to identify whether any trends in ETCs intensity have already occurred or may do in the future as the climate changes. For example, ~~simulations from~~ simulations from the Coupled Model Intercomparison Project (CMIP) ~~has been extensively analysed~~ have been extensively analyzed to determine how the intensity of ETCs may change in the future (e.g., [Zappa et al., 2013b](#); [Colle et al., 2013](#); [Seiler and Zwiers, 2016](#); [Chang, 2018](#)). ~~In multiple CMIP models and in four different emission scenarios, Priestley and Catto (2022) find that in the Northern Hemisphere winter, the most extreme cyclones have higher VO, lower MSLP, stronger wind speeds, and extreme wind speeds covering a larger area in the future compared to present day, whereas changes are minimal for average cyclones. In simulations performed with~~

60 ~~the Community Earth System Model Large Ensemble (CESM-LE) for North Atlantic ETCs, Dolores-Tesillos et al. (2022) find small changes for VO, a slight increase in the maximum wind speeds, and an increase in the size of wind footprints. (e.g., Zappa et al., 2013b; Colle et al., 2013; Seiler and Zwiers, 2016; Chang, 2018; Priestley and Catto, 2022; Dolores-Tesillos et al., 2022).~~ Thirdly, concise metrics of ETC intensity enable the comparison of representation of ETCs in different datasets. For example, ETC climatologies can differ between different ~~reanalyses because the reanalysis datasets because~~ ETCs differ in the underlying ~~model used to produce them, in the models,~~ data assimilation methods, or ~~in their the~~ spatial and temporal resolution ~~of the reanalyses~~ (Wang et al., 2016). Furthermore, by comparing ETCs in historical simulations to ETCs in reanalysis datasets, it is possible to determine how accurately ~~CMIP climate~~ models reproduce the current climate (Catto et al., 2010; Priestley et al., 2020).

Up to now, most studies have only quantified ETC intensity using a single metric, or, if more than one has been considered, 70 they have been used independently of each other. This may result in some information being omitted, as each metric only gives information about one aspect of ETCs. For example, two ETCs with the same minimum MSLP may have considerable different wind gusts associated with them, or be very different in size (Sinclair, 1997). Considering a vast number and diversity of measures would likely give an in-depth description of all ETCs, but this would become impractical to deal with, hard to visualize, and challenging for forecasters and researchers to easily comprehend. Therefore, an optimal balance should be 75 sought. In this context, automated and objective methods need to be applied to group ETCs using more than one metric or the spatial variation in a variable. ~~For this purpose, machine learning methods have gained popularity in recent years due to their predictive and classification abilities (e.g., Catto, 2018; Sinclair and Catto, 2023; Wang et al., 2024). Of the many ways to classify meteorological datasets, unsupervised learning (i.e., clustering) is often prioritized to group elements of the dataset without any a priori knowledge.~~ One such method is ~~k-means clustering (Lloyd, 1982), the Gaussian mixture model (GMM)~~ 80 which has been ~~applied extensively in atmospheric sciences and also in particular to cluster ETCs. This method has been based, for example, on the large-scale synoptic structure at genesis time (Catto, 2018), the track orientation (Wang et al., 2024), or the precipitation patterns associated with ETCs (Sinclair and Catto, 2023). Other cluster analysis methods have also been applied, including probabilistic methods such as regression mixture models (Gaffney et al., 2007), used in meteorological applications before (e.g., Vrac et al., 2005; Watanabe et al., 2020) but not widely in the context of ETCs.~~

85 The purpose of the study is to classify ETCs using multiple measures of intensity. The first aim is to identify how a number of commonly used ETCs intensity measures relate to each other, and then to identify the optimal metrics which, when considered together, ~~are fully describing fully describe~~ the intensity of ETCs. The second aim is to classify the wintertime ETCs in the North Atlantic and in the European region based on this subset of intensity measures, and to quantify the characteristics of each cluster. The last aim of this study is to show where some of the previously studied high-impact ETCs occur in our phase 90 space of intensity and ETCs classification.

The paper is structured as follows. Section 2 explains how the dataset of ETC tracks and intensity measures was created. Section 3 describes the methods used in the analysis of the data. Section 4 contains the results of the study ~~and Section 6 concludes and discusses them~~ which are then discussed in Section 5. Finally, 6 concludes the results.

## 2 Creation of ETC intensity dataset

### 95 2.1 ERA5 reanalysis

Reanalyses are considered to be the best estimate of the past state of the atmosphere. They are available globally, with high spatio-temporal resolution and long-term coverage, which makes them essential tools for studying phenomena with large spatial and temporal scales. ERA5 (Hersbach et al., 2020) is a [an open access](#) global reanalysis dataset provided by the European Centre for Medium-range Weather Forecasts (ECMWF). It ~~is produced with model forecasts of CY41R2 of the ECMWF's~~ Integrated Forecast System (IFS) and 4D-Var data assimilation. The original ERA5 dataset consists of 137 model levels, ~~however, data are also provided on 37 pressure levels.~~ It has a horizontal spectral resolution of  $T_1639$   ~~$T_1639$~~ , which corresponds to a grid spacing of  ~~$0.28028^\circ/31\text{ km}$~~   $31\text{ km}$  at the equator on the native regular Gaussian grid of ERA5. ~~ERA5 data are available from 1940 until the present in near real time, with a temporal resolution of one hour. However, we only utilize data from 1979 onwards since ERA5 data after 1979 is considered more reliable thanks to the availability of satellite observations assimilated.~~

105

We use ERA5 reanalysis as it is an open access and easy-to-use dataset which has been used extensively in previous mid-latitude cyclone research (e.g., Karwat et al., 2022; Dacre et al., 2023). ERA5 has been found to perform well in representing many variables (Hersbach et al., 2020, and references therein). For example, Molina et al. (2021) found reasonable representation of 10 m wind speed in Europe, and Lavers et al. (2022) showed that the smallest errors in precipitation are found in the extratropics during winter. However, like all reanalyses, ERA5 has some biases which are products of the model formulation and physical parameterizations as well as the observing system and data assimilation scheme. For example, Chen et al. (2024) evaluated ERA5's ability to correctly represent the 10 m wind speed and precipitation in the presence of ETCs in North America. They find that overall ERA5 represents 10 m winds well with a small overall bias, but overestimates weak winds and underestimates strong winds. Precipitation is less well captured than winds, and high values of precipitation are considerably ~~underestimated.~~ Minola et al. (2020) also find that ERA5 underestimates strong wind speeds and strong wind gusts in Sweden under various weather conditions. Despite some biases, we use ERA5 for all variables to have dynamical consistency between ~~all considered variables, spatial uniformity, and a high resolution in the data.~~

115

~~ERA5 data are used~~ [pressure level data and selected surface fields with 3-hourly resolution from 1979–2022](#) to both create ETC tracks (Sect. 2.2) and extract the ETC intensity measures (Sect. 2.3). ~~The data are used on pressure levels and selected surface fields, and are taken with a time resolution of three hours. The focus in this study is on the North Atlantic storm track during the extended Northern Hemisphere winter season from October to March in the 1979–2022 period.~~

120

### 2.2 ETC tracking

ETC tracks are identified with the objective feature tracking software TRACK (Hodges, 1994, 1995, 1999b). TRACK uses a Lagrangian approach of tracking individual cyclones by identifying extrema in a given field and following them through time. To track ETCs, we use ~~VO~~ like many other studies have previously done (e.g., Catto et al., 2011; Catto, 2018; Sinclair et al., 2020). ~~The benefits of using VO instead of MSLP include less influence from the background environment, and the fact that ETC~~

125

tracks are often found earlier in their life cycle (Hoskins and Hodges, 2002). Additionally, unlike VO, MSLP is an extrapolated field which is affected by the extrapolation method and the representation of orography in the model. A drawback of tracking with VO is that the ETC identification is not reliable in areas where the climatological value of surface pressure is close to or less than 850 hPa. However, this is the case only in areas of high orography, such as Greenland and the Alps.

To track ETCs, the VO field the 3-hourly VO field at the native horizontal resolution of ERA5 which is first truncated to T42 spectral resolution (310 km at the equator) to exclude small-seale-small-scale features and ensure that only synoptic-scale ETCs are identified. Wave numbers less than five are also removed to filter out planetary-scale waves. For the remaining wave numbers, local maxima are identified in the filtered VO field and a nearest neighbour approach is used to connect them into ETC tracks. The smoothest tracks are identified by minimizing a cost function (Hodges, 1994). Finally, TRACK produces output which consists of the horizontal location (longitude and latitude) and magnitude of the T42 VO maxima for each time step in each ETC track.

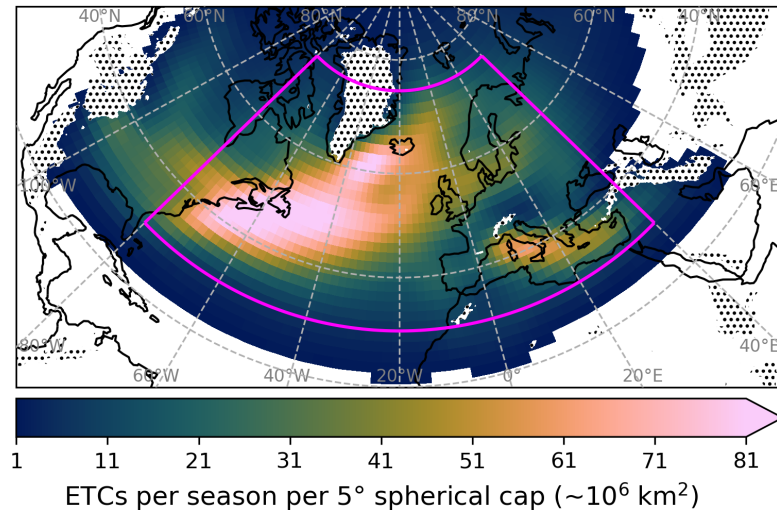
We further filter the ETC tracks using the following criteria:

1. To exclude stationary and short-lived systems, the tracks need to be at least 1000 km long and last for at least two days (16 time steps in the 3-hourly data).
2. Weak systems are excluded by using a minimum threshold of  $1 \times 10^{-5} \text{ s}^{-1}$  for the T42 VO.
3. Like in Sinclair and Catto (2023), the maximum T42 VO of the track must occur 24hours-h after genesis (the first time step) or later.
4. The maximum T42 VO needs to occur inside the area  $80^\circ \text{ W}$  to  $40^\circ \text{ E}$  in longitude and  $30^\circ \text{ N}$  to  $75^\circ \text{ N}$  in latitude (the magenta box in Fig. 1).

In total, in the 43 extended winters we find 7361 tracks with these criteria.

Statistical diagnostic fields of ETC tracks, such as track density, are calculated by using spherical kernel estimators provided by TRACK (Hodges, 1996, 1999a, 2008). Figure 1 shows the climatology of track density of the 7361 ETC tracks. At a given grid cell, track density is defined as the number of ETC tracks per season occurring within a spherical cap with a radius of five geodesic degrees. In Fig. 1 we see that track density is the largest along the North Atlantic storm track, beginning from-at the eastern coast of North America and extending northeastward towards Northern Europe. A local maximum in track density can also be seen in the Mediterranean basin. This is despite the fact that the tracking algorithm we use and the filters we applied are more designed to identify ETCs in the main storm tracks than in the Mediterranean, where ETCs tend to be smaller and shorter-lived (Campins et al., 2011). Similar distributions of track density during winter (DJF) were identified previously by Priestley et al. (2020) in historical CMIP6 simulations, and by Hoskins and Hodges (2002) in ECMWF analyses using the same tracking algorithm. Using MSLP from ERA5 as input to a different tracking algorithm, Feser et al. (2021) also found a similar distribution in the North Atlantic. Campins et al. (2011), Aragão and Porcù (2022), and Doiteau et al. (2024), who focused on the Mediterranean region, determined the Gulf of Genoa as the location of maximum track density during DJF, whereas we have a maximum in-over the Tyrrhenian Sea. This difference can be explained by the sensitivity of the tracking method in this

160 particular basin (see Flaounas et al. (2023) for details). However, the overall number of tracks in the Mediterranean area in these previous studies is in agreement with our distribution.



**Figure 1.** Climatology of ETC track density for the 43 ~~ONDJFM~~ October–March seasons in areas where on average at least one track per  $5^\circ$  spherical cap ( $\sim 10^6 \text{ km}^2$ ) occurs per season. The magenta box bounded by  $80^\circ \text{ W}$ ,  $40^\circ \text{ E}$ ,  $30^\circ \text{ N}$ , and  $75^\circ \text{ N}$  shows the area inside which the ETCs need to have their maximum T42 VO. The hatching indicates areas where the average monthly mean value of surface pressure between October 1979 and March 2022 is below 850 hPa and the tracks may therefore be non-physical.

### 2.3 Intensity measures

We use ERA5 reanalysis data to create a set of intensity measures for the tracked ETCs. We reduce the amount of data to ~~contain~~ obtain one value per intensity measure per track. All the intensity measures can be calculated from any other reanalysis dataset.

The intensity measures can be divided into two categories. The first category consists of dynamical measures which describe physical aspects of ETCs and ~~are available as is in the reanalysis~~ can be obtained from the reanalysis with no or minimal post-processing. The second category consists of what we call impact-relevant measures. These are diagnostic variables which are designed to quantify the aspects of ETCs that possibly have societal impacts. We emphasize that the impact-relevant measures do not necessarily directly translate into impacts, but are based on variables which quantify the ETC features that have been found to cause the most damage to infrastructure.

All intensity measures and the details of how they are produced are described in detail in the following subsections (Sect. 2.3.1 and Sect. 2.3.2), and the measures are summarized in Table 1. Most of the variables are on the native ERA5 grid with the horizontal resolution of  $0.28^\circ$ . The exceptions are 850 hPa wind speed and 10 m wind speed, which are on a  $0.25^\circ$  regular

175 longitude–latitude grid. This is solely because we already had this data locally available. However, this difference in resolution is small and very unlikely to ~~have an effect on~~ affect the results.

### 2.3.1 Dynamical measures

The baseline for the intensity measures is VO, a widely-used measure of ETC intensity. We use VO at the T42 resolution directly from the output of TRACK. For the sake of simplicity, we refer to the location of the VO maximum as the ETC  
180 ~~centre in the following~~, although the physical centre of the ETC is not necessarily located exactly at the same point.

The next dynamical variable we include is based on MSLP, which ~~is~~ along with VO, is a widely used measure of ETC intensity ~~. For example, Priestley et al. (2020) used VO and MSLP to assess future changes in ETC intensity. (e.g., Priestley et al., 2020)~~.  
To account for the effect of the background environment on the MSLP values (i.e., large-scale temporal variations and climatological dependence of latitude (Anderson et al., 2003)), we subtract a monthly mean value from the MSLP field to  
185 obtain an MSLP anomaly (MSLPa). We use the MSLPa field to find the nearest local minimum around the VO maximum. This is done by using bilinear spline interpolation and a steepest-descent method with TRACK. The local minimum MSLPa is found inside a circle centered around the VO maximum and has a radius of ~~six~~ 6 geodesic degrees (equivalent to about 670 km). Various values were tested for the radius, and ~~six~~ 6 geodesic degrees was discovered to be the most suitable (not shown). This value is also used by e.g. Li et al. (2014). Most of the MSLPa minima are within 100 km of the VO maxima, and very few  
190 values are actually found at a distance of 670 km (see Fig. S1). For a small number (3%) of maximum VO values, TRACK is unable to find an associated MSLPa value. These ETCs are omitted from the dataset.

Finally, we include winds from multiple levels as dynamical intensity measures. For a comprehensive overview of winds associated with ETCs, we include the maximum wind speed at 850 hPa (WS850), 925 hPa (WS925) and 10 m (WS10) within ~~six~~ 6 geodesic degrees from the VO centre, a radius also used by Zappa et al. (2013a) and Gramscianinov et al. (2020). We  
195 also include the wind gusts at 10 m (FG10) as the maximum within ~~six~~ 6 geodesic degrees, but unlike for the other three wind variables, we do not use an instantaneous value. Wind gust is highly variable in time and therefore we take the maximum value of the previous ~~three hours~~ 3 h. As for MSLPa, various values were explored for the radius of the area for all wind speed measures (not shown).

### 2.3.2 Impact-relevant measures

200 The first impact-relevant intensity measure is based on precipitation which is an hourly accumulated field in ERA5, ~~i. e., the value gives the rate of precipitation during the previous hour. Because of this, we~~. We sum precipitation values over ~~the three previous hours to get a precipitation rate which corresponds~~ 3 h to correspond to our time interval. ~~Based on this three-hour precipitation rate we and~~ define a precipitation diagnostic (PRECIP) as the average precipitation rate,  $\bar{P}_{ave}$ , within an area, ~~using with~~ a definition adapted from Sinclair and Catto (2023):

205 
$$\bar{P}_{ave} \text{PRECIP} = \frac{1}{A_T} \sum_{i=1}^m P_i A_i \quad (1)$$



where  $P_i$  is the ~~precipitation rate in 3-hourly precipitation rate at~~ grid point  $i$ ,  $A_i$  is the area of grid point  $i$ ,  $m$  is the number of grid points ~~within a certain geodesic radius from the ETC centre in which the precipitation rate in which  $P_i$  exceeds a~~ specific threshold value, and  $A_T$  is the total area of the  $m$  grid points. ~~Thus, The~~ precipitation is considered and averaged only ~~over the area where it exceeds the threshold. Sinclair and Catto (2023) used a radius of  $12^\circ$  on a spherical grid and a~~  
 210 ~~minimum precipitation rate of  $1 \text{ mm} (6 \text{ h})^{-1}$  within a specific geodesic radius around the ETC centre.~~ We use the same values ~~as Sinclair and Catto (2023)~~ adapted to our grid and time resolution, i.e., a geodesic radius of  $12^\circ$  and a minimum precipitation rate of  $0.5 \text{ mm} (3 \text{ h})^{-1}$ .

Next, we construct a wind footprint diagnostic to measure the area of the ETC wind field. The wind footprint (WFP) is defined as:

$$215 \quad \text{WFP} = \sum_{i=1}^m A_i \quad (2)$$

where  $A_i$  is the area of grid point  $i$  and  $m$  is the number of grid points within a ~~certain geodesic given~~ radius from the ETC centre in which the ~~maximum 3-hourly maximum of~~ 10 m wind gust ~~values within 3 hours exceed exceeds~~ a specific threshold. ~~We use a value of  $10^\circ$  geodesic for the radius. This radius~~ ~~A geodesic radius of  $10^\circ$~~  was found to be the best compromise between capturing winds associated with a given ETC from an area as large as possible, without contaminating the WFP with  
 220 winds related to neighbouring ETCs (see Fig. S2). For the ~~wind gust~~ threshold, we use a relatively small value of  $15 \text{ m s}^{-1}$  to have non-zero WFP for moderate ETCs as well. The ~~threshold value for wind gust value~~ was chosen by considering ~~values thresholds~~ used by various national weather services in Europe to issue the lowest level (yellow) wind warnings over land. In Finland this value is  $15 \text{ m s}^{-1}$  in summer and  $20 \text{ m s}^{-1}$  in winter (FMI), whereas the corresponding values in Norway are  $17 \text{ m s}^{-1}$  and  $19 \text{ m s}^{-1}$  (METNorway). In Ireland this value is  $25 \text{ m s}^{-1}$  (MetÉireann) whereas in Germany the threshold is  
 225  $14 \text{ m s}^{-1}$  (DWD). The ~~small wind gust value low threshold~~ selected here is also justified based on the fact that in ERA5, wind gust may be underestimated in some areas (Chen et al., 2024; Minola et al., 2020).

Finally, we include a storm severity index (SSI) to quantify the possible impact from wind associated with ETCs. Different SSI metrics have been previously used to successfully estimate the societal impact of ETCs (Klawa and Ulbrich, 2003; Pinto et al., 2007; Leckebusch et al., 2007). We use ~~here~~ an SSI metric adapted from Leckebusch et al. (2008a). ~~The Here,~~ SSI is  
 230 calculated ~~in at~~ each grid point within a circular area with a fixed radius (~~in geodesic degrees~~) around the ETC centre throughout the ETC life cycle, ~~whereas Leekebusch et al. (2008a) considered SSI only in time steps during which SSI is non-zero in a~~ ~~minimum threshold area~~. Our definition of SSI is as follows:

$$\text{SSI} = \frac{1}{A_{\text{ref}}} \sum_{i=1}^m \max\left(0, \frac{v_i}{v_{98,i}} - 1\right)^3 A_i, \quad (3)$$

where  $v_i$  is the maximum 10 m wind gust within ~~3 hours in grid point  $i$ , h and~~  $v_{98,i}$  is the climatological 98th percentile value  
 235 of 10 m wind gust ~~in at~~ grid point  $i$ ,  $A_i$  is the area of ~~grid point  $i$  the grid point~~,  $m$  is the number of grid points within a certain geodesic radius from the ETC centre, and  $A_{\text{ref}}$  is the area of the largest point in the grid (at the equator). Scaling SSI values with the relative area of each grid point ensures that ~~with the same wind gust exceedance, SSI values are higher in larger grid cells than smaller grid cells. In other words, the storm an ETC~~ is considered more severe because the impacted area is larger.



~~This also means that at higher latitudes where grid points have smaller area and thus there are more of them within the radius, the SSI values are on average smaller, leading to more consistent values independent of latitude.~~ independent of latitude. We use a geodesic radius of  $10^\circ$  to compute the SSI. This value was discovered to be the most suitable based on a similar analysis as the one performed for the WFP (see Fig. S4).

The climatology of 10 m wind gust is calculated for the whole period from October 1979 to March 2022, including the summer months as well. We include summer months in the climatology, since the justification for using the 98th percentile as a threshold for the wind gust is based on the finding that damage from winds occurs locally on 2% of all days (Palutikof and Skellern, 1991). In some regions (e.g., parts of Scandinavia, in the Mediterranean, or Southeastern Europe) the climatological 98th percentile values of 10 m wind gust are quite small (Fig. S3) and unlikely to cause severe damage. Karremann et al. (2014) avoided this discrepancy between the definition of SSI and actual wind gust values by implementing a fixed minimum threshold ( ~~$9 \text{ m s}^{-1}$  for 10 m wind speed~~). For impactful events in the Mediterranean region, Nissen et al. (2010) required a minimum duration of 18 ~~hours~~ h and minimum affected area of around  ~~$36000 \text{ km}^2$~~   $36,000 \text{ km}^2$ . We do not use a minimum wind gust or area threshold for the SSI, since such an approach is already evaluated by the WFP, which is based on a fixed gust threshold. ~~We use a geodesic radius of  $10^\circ$  as the maximum radius of the area also for the SSI, a value which was discovered to be the most suitable based on a similar analysis as was performed for the WFP (see Fig. S4).~~

For each ETC track, we restrict the analysis to only one time step per intensity measure. For all ~~other~~ intensity measures other than PRECIP, the value at the time of maximum VO along the track is chosen, since the maximum value of the intensity measures also occurs at the same time or at the adjacent time step on average (see Fig. S5). ~~For PRECIP, the chosen time is The maximum precipitation rate occurs on average 12 hours before the h before time of maximum VO, for the same reason (see Fig. S5f). For this reason, PRECIP is evaluated at this time step.~~

We also include accumulated versions of PRECIP and SSI. We construct an accumulated precipitation measure (PRECIPacc) by summing together ~~the PRECIP values~~ all PRECIP values along each track and an accumulated SSI measure (SSIacc) by ~~integrating the SSI values w.r.t. time along each whole~~ time-integrating successive SSI values along each track.

### 3 Methods

#### 3.1 Correlation analysis

We use two different correlation metrics to quantify co-occurrence relationships between the intensity measures. The first one is the widely-used Pearson's correlation coefficient,  $r$ , ~~to evaluate~~ which evaluates linear dependence. The second one is mutual information (MI) which we use to quantify non-linear dependencies. MI is a measure of dependence between two random variables based on their joint and marginal entropies (Cover and Thomas, 2006). In other words, it quantifies how much information can be obtained about one random variable by observing another random variable. MI has values in the interval  $[0, \infty)$  but it can be converted into a correlation coefficient,  $\rho$ , by normalizing it to a range  $[0, 1]$ . The normalization is computed using the Python package ennemi (Laarne et al., 2021, 2022) as follows:

Measure	Abbreviation	Type	Distance	Time step
850 hPa relative vorticity	VO	Maximum T42	0	0
Mean sea level pressure anomaly	MSLPa	Nearest local minimum	6	0
850 hPa wind speed	WS850	Maximum	6	0
925 hPa wind speed	WS925	Maximum	6	0
10 m wind speed	WS10	Maximum	6	0
10 m wind gust	FG10	Maximum	6	0
Precipitation	PRECIP	Avg. where $\geq 0.5 \text{ mm (3 h)}^{-1}$	12	-12
Accumulated precipitation	PRECIPacc	Avg. where $\geq 0.5 \text{ mm (3 h)}^{-1}$	12	Accumulated
Wind footprint	WFP	Area where gust $\geq 15 \text{ m s}^{-1}$	10	0
Storm severity index	SSI	Sum over area	10	0
Accumulated storm severity index	SSIacc	Sum over area	10	Time-integrated

**Table 1.** Summary of all 11 intensity measures. The columns are the full name, abbreviated name, the type of value extracted, [the maximum distance from ETC centre the VO maximum](#) (in geodesic degrees) [to which the values are searched for](#), and time step [w.r.t. with respect to the time of VO maximum vorticity](#) (in [hoursh](#)), [respectively](#). The horizontal line separates the measures into dynamical and impact-relevant ones.

$$\rho = \sqrt{1 - \exp(-2\text{MI})}. \quad (4)$$

Using two different kinds of correlation metrics is beneficial, because in addition to quantifying the strength of the relationship, we can learn about its type as well. Because MI is able to quantify non-linear relationships in addition to linear ones, similar values of  $r$  and  $\rho$  indicate a linear relationship between two variables, whereas higher  $\rho$  than  $r$  values [mean that the relationship has indicate a relationship with](#) a non-linear component.

### 3.2 Principal component analysis

Principal component analysis (PCA) [is a statistical method which](#) aims to find an orthogonal linear transformation that maximizes the variance projected onto each of the newly found axes. This method is [heavily](#) used in all fields of science, including meteorology (Statheropoulos et al., 1998; Nagendra and Khare, 2003), and has also been applied in studies on cyclones (Lou et al., 2012; Nakajo et al., 2014; Chen et al., 2019). One of the main features of PCA is its ability to reduce the dimensionality of a given problem by ignoring the axes explaining a negligible amount of the original variance. However, one of its main [drawback drawbacks](#) is the interpretability of the results as each axis is expressed by a linear combination of the original feature space, often mobilizing the entire space. Sparse PCA (sPCA) alleviates this issue by proposing a PCA with sparse loadings, i.e., setting some of the coefficients in the linear expression of the PCA's axes to zero (Zou et al., 2006; Zou and Xue, 2018). However, sPCA is a lossy compression technique with an important dependency on the dimension of the projective hyperplane.

Consequently, in this study we will guide the sPCA by a classical PCA analysis (respectively scikit-learn's SparsePCA and PCA (Pedregosa et al., 2011)). We apply the PCA to estimate the explained variance against the number of principal components (PC). Then, we select the number of components which explains more than 90 % of the variance. This number of components is then used as the main parameter of the sPCA and is applied to the same dataset. Therefore, we minimize the risk of losing too much information with PCA by conserving a satisfying interpretability with sPCA.

### 3.3 Cluster analysis

Based on the correlations and the sPCA results, we select a reduced subset of intensity measures to use as input for the cluster analysis. This subset is conceived to reduce information redundancy whilst maintaining the interpretability of the original set of measures. ~~As this set is created to provide a relevant and compact description of ETCs' intensities, it can also be used as an input for a machine learning analysis.~~

~~Machine learning (ML) methods have gained popularity in recent years due to their predictive and classification abilities, especially for ETCs (Watanabe et al., 2020; Sinclair and Catto, 2023; Kurth et al., 2023). Of the many ways to classify meteorological datasets, unsupervised learning (i.e., clustering) is often prioritized to group elements of the dataset without any *a priori* knowledge. The Gaussian mixture model (GMM) is a popular clustering method which~~

### 3.3 Cluster analysis

A cluster analysis using GMM aims to fit several multivariate Gaussian distributions to a dataset. As such, each cluster may be represented as a multidimensional Gaussian probability density function extending throughout the whole feature space, in our case the small subset of intensity measures produced by the sPCA analysis. The main drawback of GMM is that the number of clusters has to be input, and the optimal number of clusters cannot be known in advance. The elbow method is used to disambiguate this choice and select the number of clusters which 1) maximize Silhouette score (Shahapure and Nicholas, 2020) and 2) do not fall in the over-fitting learning plateau (i.e., when the Silhouette score is constant). In other words, the optimal number of clusters is the case avoiding both under- and over-fitting.

We use the GMM (scikit-learn's GaussianMixture (Pedregosa et al., 2011)) on the reduced subset of intensity measures selected by our sPCA method (~~cf. Sect. 3.2~~). To choose the correct number of clusters to be found, we first use the elbow method to select two values to test before the over-fitting plateau is reached, as shown in Fig. S6. Then, we use the following stability test to refine our decision to one value. Our stability test aims to verify if the clusters' centroids predicted by several instances of the GMM are intercomparable. We first compute the Euclidean distance between the reference centroids and the centroids predicted by 1000 other instances. Then, the arguments of the minimum of the Euclidean distances are taken for each predicted clusters. If the arguments of the minimum are not repeating, it means a permutation of the clusters is able to successfully compare two instances of GMM. In other words, we test the sensitivity of our cluster analysis to the chosen number of clusters. A stability score has been defined as the average number of clusters which are not intercomparable between two instances of GMM. Thus, a stability score of zero is considered optimal. Stability scores are shown in Table S1. As a result, we select  $n = 4$  as our optimal number of clusters as this value falls in the elbow criteria and has the lowest stability score.

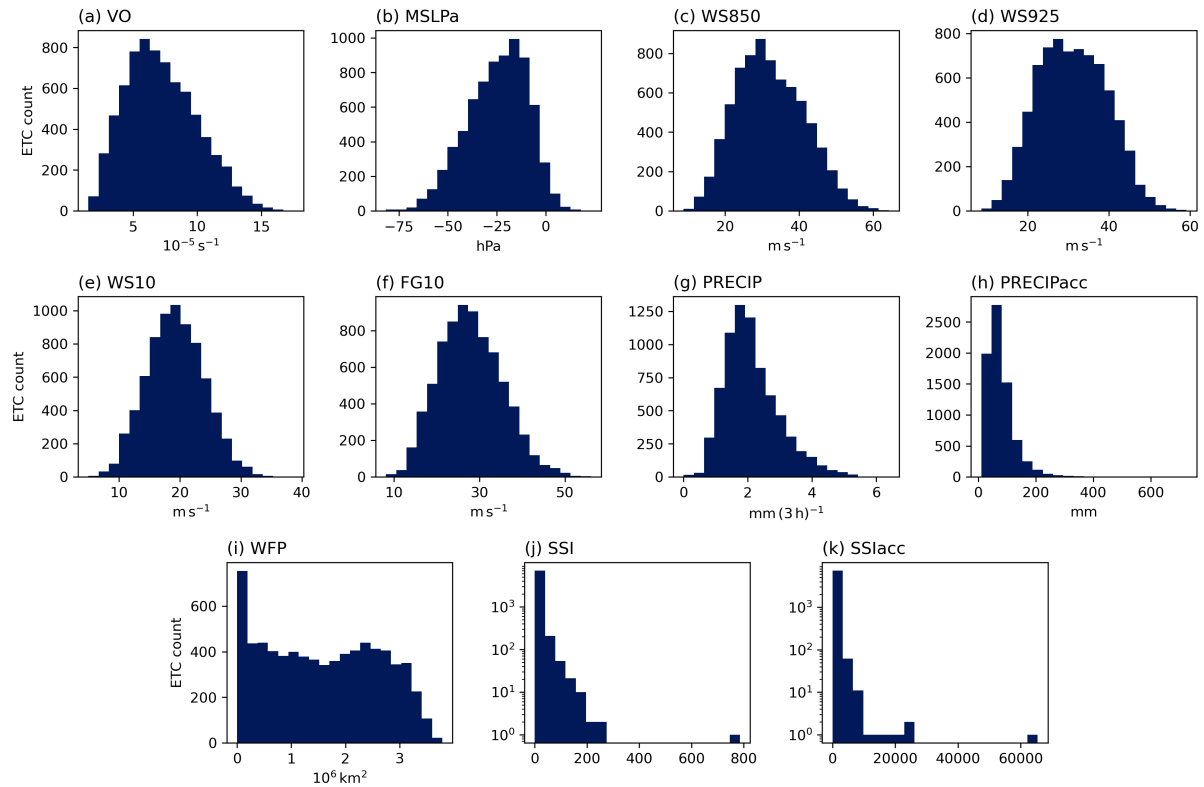
## 4 Results

### 4.1 Relationships between intensity measures

Distributions of all 11 ~~of the~~ intensity measures are shown in Fig. 2. We see in Fig. 2a–f that the dynamical intensity measures have Gaussian-like distributions. Distributions of VO, MSLPa, and WS850 (Fig. 2a–c) are slightly skewed towards more intense values. ~~The positive skewness is to be expected for VO because of the requirement for a minimum threshold value. The VO values range from  $1.5 \times 10^{-5} \text{ s}^{-1}$  to around  $17 \times 10^{-5} \text{ s}^{-1}$ . A similar distribution was found by Bengtsson et al. (2006) and Zappa et al. (2013a). For MSLPa there is no fixed threshold value, but the largest minimum values can be expected to be around 0 hPa, i.e., below the climatological average MSLP. Therefore, the distribution is skewed towards negative values. The most negative values are around  $-80 \text{ hPa}$  while the most positive values are around  $20 \text{ hPa}$ .~~ ~~whereas~~ WS925, WS10, and FG10 have more symmetric distributions (Fig. 2d–f) ~~than VO, MSLPa, or WS850. WS850, WS925, and FG10 have similar variances, with the mean value being around  $30 \text{ m s}^{-1}$  in all three. WS10 has a smaller variance than the other three wind speed measures and a mean value of around  $20 \text{ m s}^{-1}$ . Gramcianinov et al. (2020) found a comparable distribution of WS10 and Bengtsson et al. (2009) of WS925.~~

~~Similar distributions for these measures have been previously found by (e.g., Bengtsson et al., 2006, 2009; Zappa et al., 2013a; Gramcianinov et al., 2020).~~ Compared to the dynamical intensity measures, the distributions of the impact-relevant measures are much less Gaussian-like (Fig. 2g–k). Out of these, PRECIP has the most Gaussian-like distribution (Fig. 2g). ~~It is however but is~~ more positively skewed than any of the dynamical measures' distributions. ~~PRECIP values range from  $0 \text{ mm (3 h)}^{-1}$  to around  $6 \text{ mm (3 h)}^{-1}$ . With a slightly different definition, Zappa et al. (2013b) found a similar distribution with a slightly different definition for precipitation. The distribution of PRECIPacc (Fig. 2h) is even more positively skewed than that of PRECIP. The as the differences between ETCs are emphasized with the added effect of the duration of the track. PRECIPacc values range from about  $10 \text{ mm (3 h)}^{-1}$  to more than  $700 \text{ mm (3 h)}^{-1}$ . The same effect of the minimum threshold, as is the case for VO, can thus be seen in the precipitation distributions.~~ WFP (Fig. 2i) has a ~~very different distribution to the other intensity metrics with a~~ large peak at the smaller end of the distribution and is very flat almost until the largest values. ~~The first bin in the histogram contains ETCs with WFP values below  $0.2 \times 10^6 \text{ km}^2$ , which is equal to the area of a square with a side length of about  $440 \text{ km}$ . Only around 80 ETCs have a WFP of zero (not shown), which means that the first bin has the most ETCs with non-zero WFP. The WFP values decrease rapidly at the large end of the distribution as the radius threshold is reached (the theoretical maximum value of WFP is around  $3.9 \times 10^6 \text{ km}^2$ ).~~ The shapes of the SSI distributions are even more extreme (Fig. 2j–k, shown on semi-log axes). The cube of the wind exceedance in Equation (3) for SSI emphasizes differences between small and large values. Therefore, there are many very small values and few large values. For example, there are outlier ETCs in which the values of SSI and SSIacc are more than twice the value of the next largest one. These ~~outlier~~ ETCs are the 1993 Storm of the Century (Huo et al., 1995) and Ex-hurricane Wilma (Pasch et al., 2006), respectively.

We investigate the Pearson correlation coefficients ( $r$ ) in Fig. 3a and correlation coefficients from MI ( $\rho$ ) in Fig. 3b for relationships between all 11 intensity measures. The relationships can be roughly divided into two groups based on their



**Figure 2.** Distributions of intensity measures at the selected times ~~in~~ along the tracks (see text in Sect. 2.3 and Table 1 for details). Note that panels (j) and (k) are shown on logarithmic y-axes.

strength: the first group contains the six dynamical measures and WFP, and the second one the SSI and two SSI and two precipitation measures. All the Pearson correlations are statistically significant (not shown).

Correlations between all measures in the group consisting of the dynamical measures and WFP are strong—All the relationships in this group have, with a Pearson’s  $r$  of at least 0.7 for every combination (Fig. 3a). The strongest correlations are between the four wind speed measures (WS850, WS925, WS10, and FG10). A particularly strong correlation is between WS10 and FG10, with a Pearson’s  $r$  of 0.97. This is surprising, given that in the IFS, Integrated Forecast System, which is used to produce ERA5, the parameterization for wind gusts includes a term to represent the contribution of convective downdrafts and a term to account for surface roughness, in addition to the 10 m wind speed term (Bechtold and Bidlot, 2009). The very strong correlation between WS10 and FG10 found here indicates that the convective downdrafts and surface friction contribute a minimal amount to the wind gusts in ETCs in ERA5. The weakest correlations in the first group of measures are between MSLPa and the wind speed measures, with  $r$  values between 0.71 and 0.76. Correlation coefficients from MI (Fig. 3b) are consistently, yet only slightly, larger than Pearson’s  $r$  for the measures in the first group. The small differences between the two correlation coefficients suggests suggest that the relationships are linear.

365 Relationships ~~between the other measures are weaker, as well as between~~ of the measures in the second group, SSI and precipitation measures, are weaker than those of the measures in the first group. This can be explained by the different shapes of the distributions in Fig. 2. For both SSI and precipitation measures, the largest values of Pearson's  $r$  ~~, around 0.5, (around~~ 0.5) are between the corresponding accumulated and instantaneous versions. For any of ~~these four measures the measures in~~ the second group, the strongest correlation with ~~another measure is between precipitation (both PRECIP and PRECIPacc) and~~ VO ~~a measure in the first group is between PRECIP and VO~~, with a value of  $r = 0.47$ , ~~which, for PRECIP, may be related to the selection of the maximum precipitation value 12 hours before the time of maximum VO~~. This may be explained by ~~e.g.~~, precipitation-related diabatic heating producing a low-level potential vorticity anomaly which feeds back to the 850 hPa relative vorticity (Davis and Emanuel, 1991).

Correlations between SSI and precipitation measures are the weakest in terms of  $r$  and among the weakest in terms of  $\rho$ .  
375 ~~For the SSI and precipitation~~ For these measures, the  $\rho$  values are consistently larger than  $r$  values, and ~~this the~~ difference is larger than for measures in the first group. The relationships are thus more non-linear. The difference is also larger for SSI than precipitation measures. This is not unexpected given the highly non-Gaussian distribution of the SSI measures. However, the ~~correlation coefficients from MI~~  $\rho$  values are still not as high large as for the first group, with the strongest correlation coefficients from MI between FG10 and SSI having  $\rho = 0.71$ . ~~Coefficients increase more for SSI measures than precipitation~~ measures, to values of around  $0.6 \pm 0.1$ . This is not unexpected given the highly non-Gaussian distribution of the SSI measures.  
380  $\rho = 0.71$ .

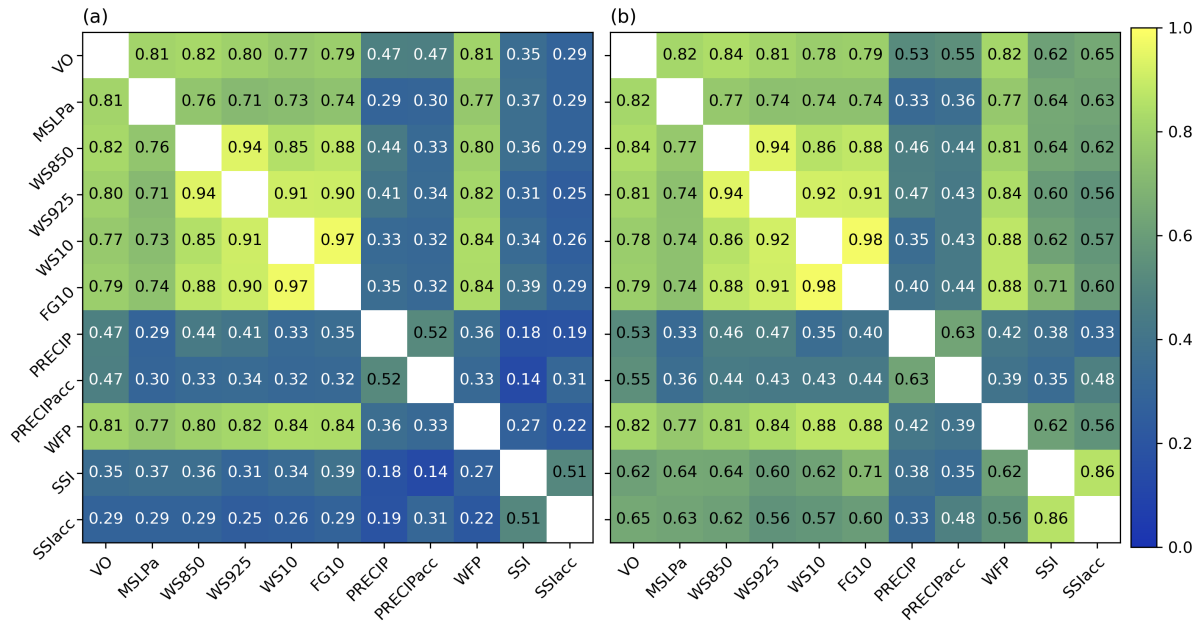
## 4.2 PCA and Sparse PCA

~~Figure 4 shows the~~ The result of the PCA is obtained with the 11 intensity measures as input. ~~By investigating the (Fig. 4),~~ The weights of the intensity measures in the first four PCs (Fig. 4b–e) ~~, we see indicate~~ that there are multiple measures with a contribution of similar magnitude in each PC. For example, in the first PC (Fig. 4b) WFP has the largest weight but VO, MSLPa, and all wind speed measures have similar, non-negligible weight. In Fig. 4a, which shows ETCs projected onto the first three PCs of the PCA space, this can be seen in the even spread of points all over the axes. Based on the result of the PCA, it is not straightforward to determine which intensity measures have redundancy between them and which do not. Therefore, it is difficult to use only the PCA for dimensionality reduction in the original dataset.

390 ~~(a) ETCs projected onto the PCA space. PC1 and PC2 are the horizontal and vertical axes, respectively, and PC3 is shown in colours. Inset in the bottom left corner shows cumulative proportion of explained variance (percent) as a function of number of PCs. Inset in the bottom right corner shows loadings of PC1 and PC2 as vectors. (b–e) The weights of input measures in the first four PCs. Weights with larger magnitude mean more contribution of the specific intensity measure to the PC. The numbers in parentheses indicate the proportion of total explained variance in a given PC.~~

395 However, we can use the fact that the first four PCs of the PCA contain 94 % of explained variance in the dataset to constrain the sPCA. The result of the sPCA constrained to four PCs with the 11 intensity measures as input is shown in Fig. 5. As opposed to the result of the PCA, now each of the four PCs consists almost completely of either a single intensity measure or a group of similar intensity measures. We see this in their larger weight compared to the other measures, which have a weight close to

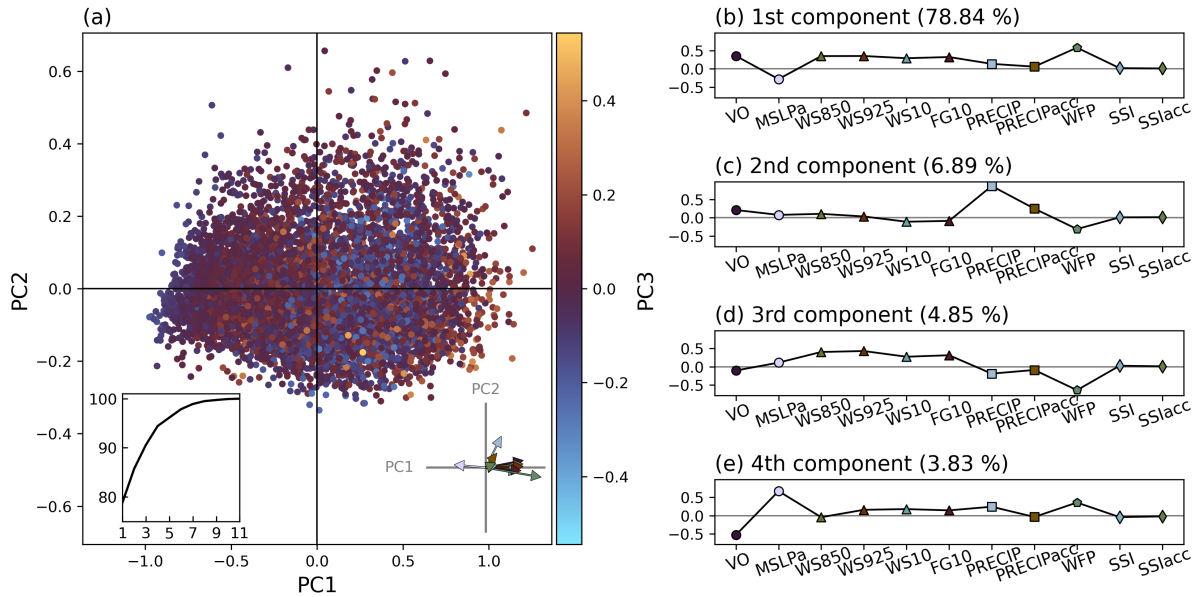




**Figure 3.** (a) Pearson's  $r$  and (b) MI correlation coefficients  $\rho$  for the ETC intensity measures. An absolute value All values of Pearson's  $r$  involving MSLPa are negative, but an absolute value is shown for correlations involving MSLPa them to aid comparison with other coefficients.

or exactly zero in the same PC (Fig. 5b–e). The PCs can therefore be labelled as mainly consisting of 1) the four dynamical  
400 wind speed measures (WS850, WS925, WS10, and FG10), 2) PRECIP, 3) WFP, and 4) VO and MSLPa. Minor contributions  
in terms of weight come from 1) VO, 2) PRECIPacc and VO, 3) WS10 and FG10, and 4) WS850. The only measures which  
have no weight in any of the PCs are the two SSI measures.

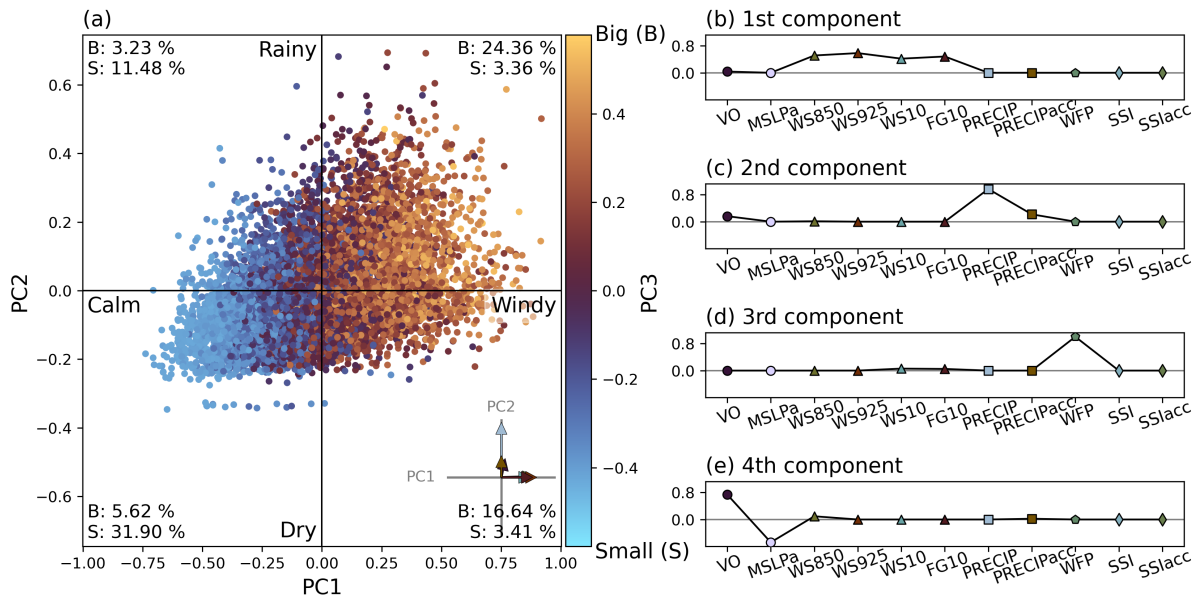
The PCs now have a straightforward physical interpretation, and we can label the axes in the sPCA space according to  
ETC features quantified by the most important intensity measures in the PCs (e.g., windiness). In Fig. 5a the ETCs are shown  
405 projected onto the first three PCs of the sPCA space in which PC1 goes from “calm” to “windy”, PC2 goes from “dry”  
to “rainy”, and PC3 goes from “small” to “big”. For reference, the most “average” ETC in the sPCA space (the smallest  
Euclidean distance from origin) has a WS850 value of  $30.2 \text{ m s}^{-1}$ , PRECIP of  $2.3 \text{ mm (3 h)}^{-1}$ , WFP of  $1.7 \times 10^6 \text{ km}^2$ , and  
VO of  $6.8 \times 10^{-5} \text{ s}^{-1}$ . Compared to the projection of the PCA space in Fig. 4a, the ETCs fall into the sPCA space much less  
symmetrically. The strong correlation between the wind speeds (PC1) and WFP (PC3) is evident as most of the tracks are on  
410 the same side of the mean of the PC (value 0) for PC1 and PC3 (either calm and small or windy and big). Precipitation (PC2)  
has a weaker correlation with the winds and WFP, which can be seen in the more even distribution of positive and negative  
PC3 values on either side of PC2 mean than of PC1 mean. However, more than half of the ETCs (56 %) are in sectors in which  
all the three PCs are on the same side of the mean, i.e., in the qualitative binary representation of the sPCA space are either  
calm, dry, and small (32 %) or windy, rainy, and big (24 %).



**Figure 4.** (a) ETCs projected onto the PCA space. PC1 and PC2 are the horizontal and vertical axes, respectively, and PC3 is shown in colours. Inset in the bottom left corner shows cumulative proportion of explained variance (percent) as a function of number of PCs. Inset in the bottom right corner shows loadings of PC1 and PC2 as vectors. (b–e) Weights of input measures in the first four PCs. Weights with larger magnitudes indicate more contribution of the specific intensity measure to the PC. The numbers in parentheses indicate the proportion of total explained variance in a given PC.

415 We use the result of the sPCA to reduce the number of necessary intensity measures in the dataset for comprehensive  
description of ETC intensity. Despite strong correlations between the winds, WFP, and VO, we retain them separately in the  
reduced set as they appear each on their own in the sPCA. We choose to keep five intensity measures in the final set for  
comprehensive and non-redundant representation of ETC intensity:

1. WS850: All four wind speed measures are highly correlated with each other and grouped in PC1 of the sPCA. WS850  
420 is chosen because of its link to VO in PC4.
2. PRECIP: From sPCA.
3. WFP: From sPCA.
4. VO: From sPCA. Preferred over MSLPa because of its minor weight in PC1 and PC2.
5. SSI: Although SSI has zero weight in sPCA, it is included since it is weakly correlated with the other intensity measures  
425 and has a more non-linear relationship with them. It can therefore be used to better separate the feature space **better**  
(non-linearly).



**Figure 5.** (a) ETCs projected onto the sPCA space. PC1 and PC2 are the horizontal and vertical axes, respectively, and PC3 is shown in colours. Inset in the bottom right corner shows loadings of PC1 and PC2 as vectors. The percentages indicate how large proportion of all tracks falls into each sector (on which side of the mean, i.e., negative or positive value of PC). The labels Calm & Windy, Dry & Rainy, and Small & Big refer to the qualitative interpretation of PC1, PC2, and PC3, respectively. (b–e) Weights of input measures in the four PCs.

### 4.3 Cluster analysis

The cluster analysis was performed using the method described in Sect. 3.3 with the reduced set of intensity measures identified in Sect. 4.2 as input. The number of clusters was chosen to be four. ~~With the GMM method we obtain a cluster centroid and a specific covariance structure for each cluster, i. e., in total four of both. Together the centroids and covariances define a multivariate normal distribution which is used to assign each ETC into the most probable cluster. Each ETC is assigned into the most probable cluster based on the multivariate Gaussian probability density distribution. The clusters are named based on the average magnitudes of the input measures and the average geographical locations of ETCs in them. These are explained in detail in the following sections.~~ The four obtained clusters are ~~named 1)~~ denoted as

1. HighSSI (proportion of total ETCs in the cluster: 8.57 %), ~~2)~~
2. Intense (21.46 %), ~~3)~~
3. AvgMST (average, main storm track; 44.42 %) ~~and 4)~~, and
4. Weak (25.54 %), ~~based on the average magnitudes of input features and the average geographical locations of ETCs in the clusters which are explained in detail in the following sections.~~

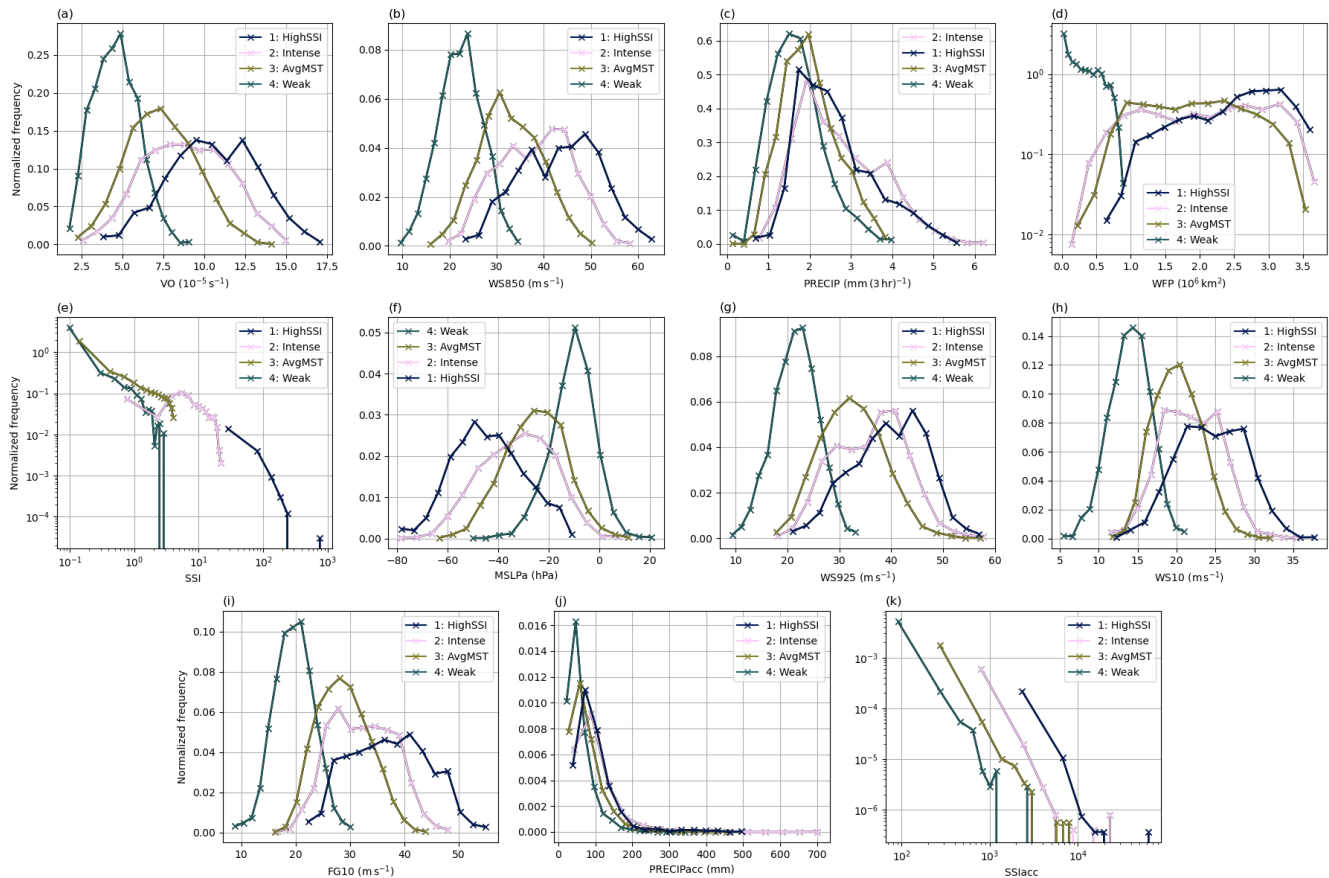
#### 440 4.3.1 ETC intensity measures

Distributions of all 11 intensity measures for ETCs in each of the clusters are shown in Fig. 6. For each intensity measure, the distributions are significantly different between the four clusters at the 5 % level based on ~~a~~the Mann–Whitney U-test (Mann and Whitney, 1947, not shown). The shapes of the intensity measures' distributions in different clusters are largely similar in nature as the full distributions shown in Fig. 2. For example, in each cluster the distribution of VO is Gaussian-like (Fig. 6a). In terms of both the mean and the median, the average magnitude of VO in the clusters in decreasing order is HighSSI, Intense, AvgMST, and Weak. ~~Clusters HighSSI and Intense have the widest (i.e., the most variance) VO distributions and cluster AvgMST has a slightly narrower one, whereas cluster Weak has an even narrower VO distribution.~~ All distributions of WS850 (Fig. 6b) and WS10 (Fig. 6h) are also Gaussian-like with similar shapes between the clusters ~~and the~~ The order of the average magnitudes is the same as for VO. For MSLPa (Fig. 6f) and WS925 (Fig. 6g) the shapes of HighSSI, Intense, and AvgMST distributions are more similar between each other than for the previously mentioned intensity measures, ~~but~~ However, the order of the average magnitudes of the intensity measures is the same. ~~FG10 distributions of~~ Finally, clusters HighSSI and Intense ~~are less Gaussian-like~~ both have broad, non-Gaussian distributions with almost flat tops (Fig. 6i). ~~Compared to the other dynamical intensity measures, the distribution of FG10 for cluster HighSSI is also wider relative to the other clusters.~~ The order of the average magnitudes is, however, the same as for the other dynamical measures.

445 Like the full distributions in Fig. 2, the distributions of the impact-relevant intensity measures in the clusters are less Gaussian-like than those of the dynamical measures. In the distributions of WFP for the different clusters, the order of average magnitudes is the same as in the dynamical measures, but there is more overlap between the three most intense clusters (Fig. 6d). ~~Cluster Weak is dominated by values at the small end of the WFP distribution.~~ For PRECIP, clusters Weak and AvgMST have narrow Gaussian-like distributions, while distributions of clusters Intense and HighSSI are positively skewed (Fig. 6c). The PRECIP distributions largely overlap, especially between clusters Intense and HighSSI. In fact, PRECIP is the only intensity measure for which the mean value is the largest for cluster Intense instead of cluster HighSSI. ~~Distributions of PRECIPacc also largely overlap but as opposed to PRECIP, all clusters have a long tail on the large end of the distribution (Fig. 6k). Although values of PRECIPacc are on average the largest in cluster HighSSI, the largest values for single ETCs are found in cluster Intense.~~ SSI distributions of clusters Weak and AvgMST heavily overlap and comprise most of the smallest SSI values (Fig. 6e). There is little overlap ~~between the other~~ with the other two clusters, as most SSI values in cluster Intense are larger than any value in the two weaker clusters (Weak and AvgMST), and almost all values in cluster HighSSI are larger than any value in the other three clusters. These three distinct ranges of SSI values are probably an effect of the highly skewed distribution of SSI, and they indicate that SSI creates a lot of separation between the clusters. For SSIacc there is a clear separation between the mean values in the clusters, but there is much more overlap between distributions than for SSI.

470 ~~Because of the relatively direct link between the PCs and the intensity measures, we can infer the distributions of the clusters in the sPCA space shown in Fig. 5a based on the means and shapes of the distributions of the intensity measures in Fig. 6a–d. We see that cluster Weak is very compact in the sPCA space since it is always in the smaller end of the intensity and has a very narrow distribution. Cluster AvgMST is also relatively compact as it always has the second smallest intensity on average and~~

has less spread than either cluster HighSSI or cluster Intense. The two most intense clusters, HighSSI and Intense, are the least compact in the sPCA space as they have the highest spread in their distributions. Overlap between the distributions indicates that there is overlap also in the sPCA space between ETCs belonging to different clusters. This means that the clusters are not completely distinct in the phase space determined by the intensity measures or the sPCA, but are formed from a continuous multidimensional distribution. The most overlap is between the distributions of clusters HighSSI and Intense (except in SSI), which suggests that cluster HighSSI is a subset of cluster Intense that contains the most extreme ETCs on average.



**Figure 6.** Probability densities of the intensity measures in ETC clusters. The legend in each panel is ordered based on the means of the distributions from largest to smallest. Note that panels (e) and (k) are shown on logarithmic axes.

### 480 4.3.2 ETC characteristics

In addition to the intensity measures, some of which are used to perform the cluster analysis, we compare additional we compare various ETC characteristics between the four clusters. Figure 7 shows the distributions of latitude of genesis, meridional displacement (latitude of lysis minus latitude of genesis), latitude of maximum VO, deepening rate (difference in MSLPa

24 hours before and at time of minimum MSLPa), lifetime, and mean displacement speed (averaged over the whole life cycle) of ETCs in the four clusters. ~~The distributions of~~ In general, compared to the intensity measures, the distributions of ETC characteristics have more overlap between the clusters. As was the situation with the intensity measures, in almost all ETC characteristics clusters HighSSI and Intense have the most similar distributions between each other. Despite this, all distributions are statistically different at a significance level of at least 5% in a Mann–Whitney U-test, except for the latitude of genesis of clusters HighSSI and Intense (not shown). This indicates that cluster analysis based on intensity measures is able to identify ETCs which are different in terms of their life cycle characteristics in addition to their intensity. These differences are described in detail in the following paragraphs.

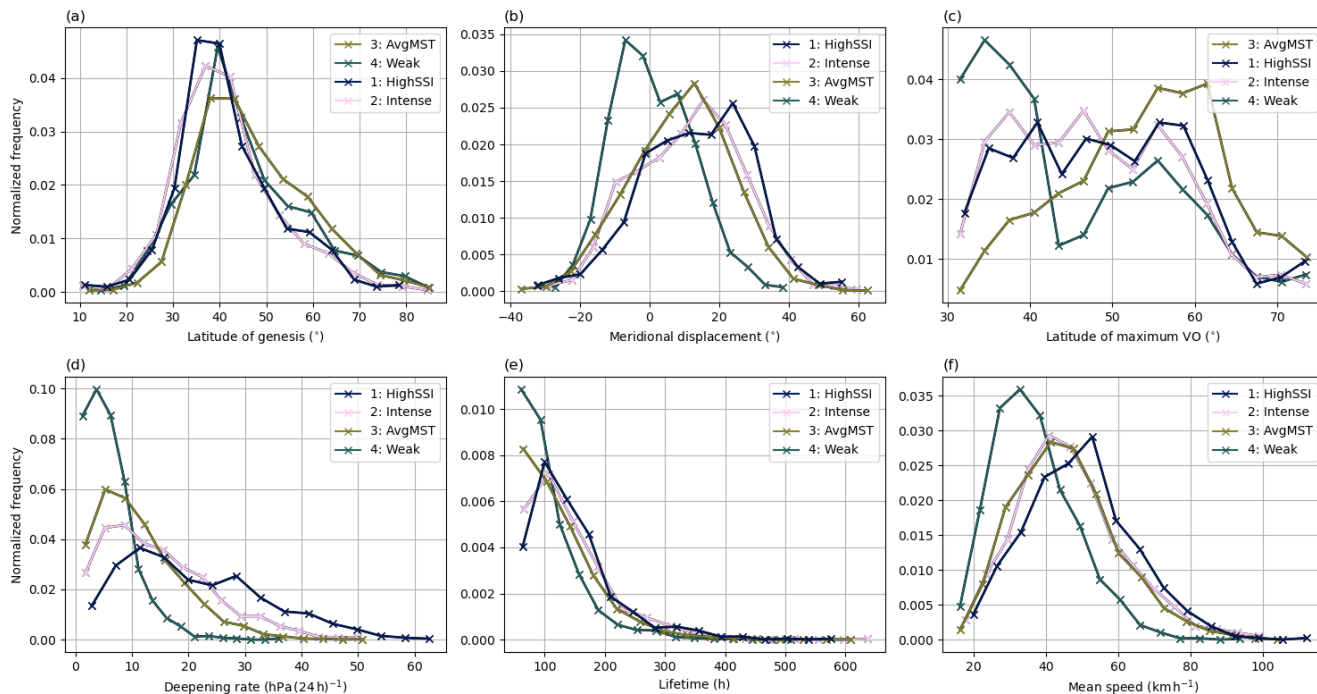
The distributions of genesis latitude overlap considerably between the clusters and they all peak around 40° N (Fig. 7a). ~~However, only distributions of HighSSI and Intense are not significantly different at the 5% level (not shown). On average, the highest latitude of genesis is in cluster AvgMST ETCs, followed by clusters Weak, HighSSI, and Intense, respectively.~~ Compared to latitude of genesis, there is more variation between clusters in the meridional displacement of ETCs (Fig. 7b). The largest meridional displacement is on average in cluster HighSSI with a peak around 25°. Slightly smaller displacements are found in clusters Intense and AvgMST while cluster Weak has the most negative displacement values (i.e., equatorward displacement) with a peak in the distribution around -5°. This causes ETCs in cluster Weak to have the smallest latitude of maximum VO on average, with a peak around 35° (Fig. 7c). Although ~~cluster Weak ETCs~~ ETCs in clusters HighSSI and Intense have on average a higher/lower latitude of genesis ~~than cluster HighSSI and Intense ETCs, the large meridional displacements in the latter two compared to cluster Weak, their larger meridional displacement~~ cause them to have on average higher latitudes/latitude of maximum VO ~~than the former. Despite.~~ In contrast, despite the slightly smaller meridional displacement values ~~in cluster AvgMST than in~~ compared to clusters HighSSI and Intense, the highest latitudes of genesis cause ETCs in ~~the former cluster AvgMST~~ to have on average the highest latitudes/latitude of maximum VO, with a peak in the distribution around 60° N.

All the distributions of deepening rate (Fig. 7d), lifetime (Fig. 7e), and mean speed (Fig. 7f) are skewed to the right. All of them also have the same order of average magnitude between the clusters: 1) HighSSI, 2) Intense, 3) AvgMST, and 4) Weak. This order is the same ~~order~~ as in most of the intensity measures in Fig. 6. ~~The order is also the same in meridional displacement, which can possibly be explained by longer-lasting and faster-moving ETCs leading to larger displacements. This link is, however, weaker in cluster Weak, in which many ETCs have equatorward displacement, and the effect of lifetime and mean speed to meridional displacement does not apply in the same way. Relationships between average magnitudes can also be seen between some of the ETC characteristics and intensity measures. For example as well as meridional displacement (Fig. 7b). An explanation for this similarity in the order of average magnitude between intensity and the characteristics is that, e.g., higher wind speeds lead to tend to relate to higher displacement speeds and, while larger deepening rates mean are likely to result in deeper ETCs in terms of MSLPa.~~

~~In general, the distributions of ETC characteristics have more overlap between clusters than the intensity measures. As was the situation with the intensity measures, in almost all ETC characteristics clusters HighSSI and Intense have the most similar distributions between each other. Despite this, all distributions are statistically different at a significance level of at least 5%~~



520 in a Mann–Whitney U-test, except for the latitude of genesis of clusters HighSSI and Intense (not shown). This indicates that the intensity-based cluster analysis is able to identify ETCs which are different in terms of their life cycle characteristics in addition to their intensity.



**Figure 7.** Probability densities of the ETC characteristics for the clusters. The legend in each panel is ordered based on the means of the distributions from largest to smallest.

### 4.3.3 Geographical distribution of ETCs

525 Figure 8 shows ~~where ETCs in different clusters geographically occur~~ the geographical distribution of ETCs in the different clusters compared to the full climatology. ~~Track densities in and Fig. 8a–d are calculated separately for the clusters and normalised by multiplying them with  $N_{tot}/N_c$ , where  $N_c$  is the number of tracks in a cluster and  $N_{tot}$  is the total number of tracks. Finally, the track density of the full climatology (9 shows the proportion of ETCs in each cluster in the boxes shown in Fig. 8e) is subtracted from them to highlight differences between clusters.~~

, which offers more insight into the geographical distribution. In Fig. 8d we see that ETCs in cluster Weak are mostly absent from the main North Atlantic storm track area (the southwest to northeast tilted area of large track densities in the North Atlantic in Fig. 8e). They are inversely the most abundant in the Mediterranean basin, ~~which is a local maximum area of track density in the full climatology.~~ Mediterranean cyclones are generally smaller and have shorter life cycles than ETCs in other larger basins (Campins et al., 2011), which may explain the larger number of Weak cyclones in this region as e.g., their WFPs tend

530

to be smaller. The high density of cluster Weak ETCs in the Mediterranean is also consistent with small values of latitude of maximum VO (Fig. 7c) and meridional displacement (Fig. 7b), given the location and orientation of the Mediterranean basin. In addition to the Mediterranean basin, ETCs in cluster Weak comprise most of the tracks in continental Europe (Fig. 8d). Occurrence in this area also explains the smaller WFP values, as near-surface wind speeds and gusts are lower over land than over sea areas (Laurila et al., 2021b). However, it does not explain the small SSI values, which depend on local FG10 values instead of an absolute threshold.

From a qualitative perspective, the occurrence areas of ETCs in cluster AvgMST (Fig. 8c) are a mirror image of the ones in cluster Weak. As the name suggests, ETCs in cluster AvgMST mostly occur along the main storm track, especially in its middle part with a maximum between Greenland and Iceland. In Fig. 9 we see that over the North Atlantic Ocean most ETCs are in this cluster, especially in the “Arctic” area where their proportion is more than 60%. However, we also see that in Europe almost half of ETCs are in cluster AvgMST. In general, ETCs in this cluster occur more in the northern parts of the domain and are largely absent from Europe and south of 45° N. This can be seen also in the northernmost values of genesis latitude (Fig. 7a) and latitude of maximum VO (Fig. 7c). The differences in normalized track density with the full climatology are however smaller in cluster AvgMST than in cluster Weak.

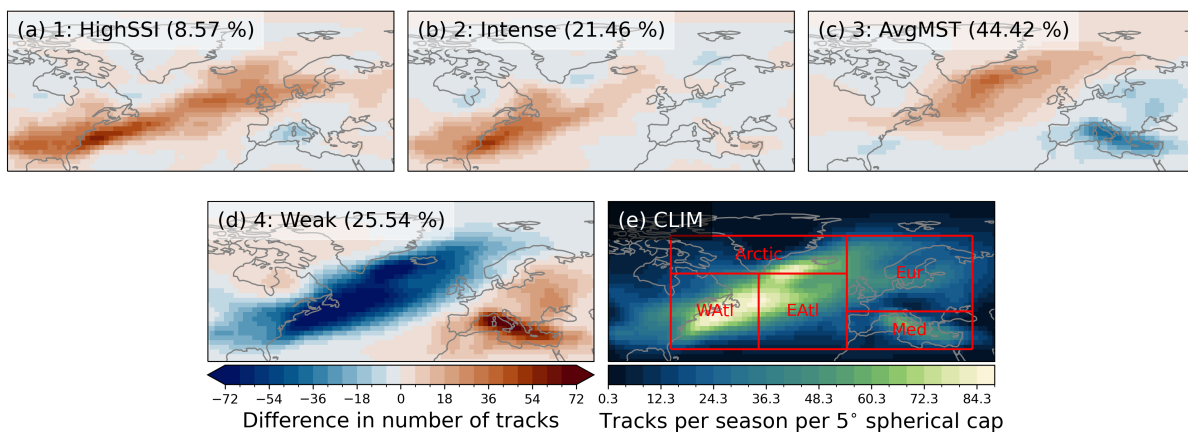
ETCs in cluster Intense have a maximum in track density over the northeastern-eastern coast of the United States (Fig. 8b). Most of them occur at the start of the storm track, and elsewhere. Elsewhere in the domain, differences are small compared to the full climatology. The location of many of the tracks in this cluster cluster Intense partly explains the large precipitation values in this cluster, as the ETCs many of its ETCs, as they occur in the southern-southwestern parts of the domain at the start of the storm track, which is an area with large ETC-associated precipitation (Hawcroft et al., 2012), and over oceans where surface moisture is abundant. Finally, Fig. 9 shows that also approximately 20% of Mediterranean ETCs belong to cluster Intense, indicating that strong ETCs do develop in this region.

Due to the small size of cluster HighSSI (8.57% of all tracks), the normalization of the track density by the total number of tracks in the full climatology affects the distribution greatly, with individual tracks having a larger contribution than in the other clusters. Despite this, the distribution of track density in cluster HighSSI (Fig. 8a) looks like what we one would expect based on its similarity to cluster Intense in terms of intensity and ETC characteristics. As in cluster Intense, areas of high track density are the highest track densities occur at the start of the storm track and elsewhere differences with the full climatology are small. However, the area of higher track density extends more to the northeast along the storm track (i.e., over the UK Ireland, Great Britain, and southern Scandinavia) than in cluster Intense, but the values in this area are more discontinuous with multiple local maxima, which is likely due to the effect of normalization.

(a-d) Anomalies of track density in the clusters compared to (e) the full climatology. Track densities are calculated separately for the clusters, normalised by multiplying them with  $N_{tot}/N_c$ , where  $N_c$  is the number of tracks in a cluster and  $N_{tot}$  is the total number of tracks, and the track density of the full climatology is subtracted from them. The percentages in parentheses indicate how large proportion of all tracks is in each cluster.

Figure 9 shows the geographical distribution of ETCs in different clusters from another perspective. It shows the proportion of ETCs in each cluster in the geographical boxes shown in Fig. 8e. Essentially, the results are consistent with the average

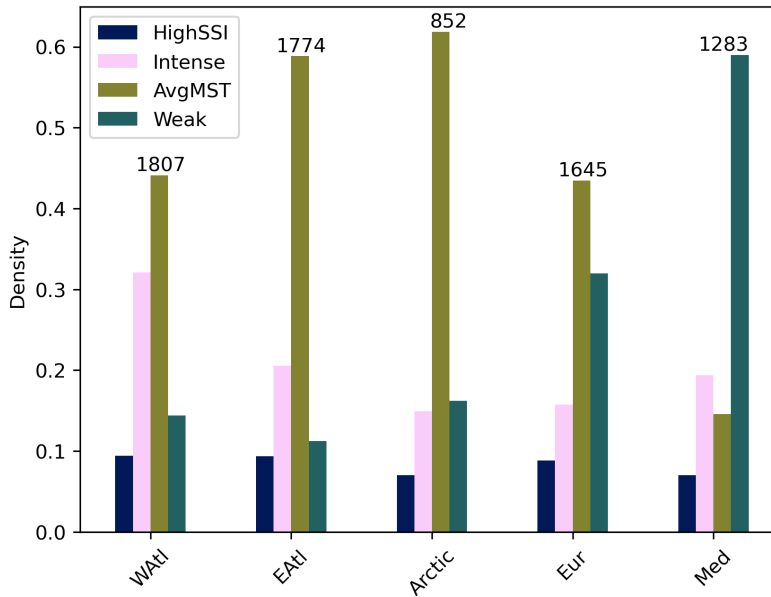
perspective in Fig. 8. There are mostly cluster Weak ETCs in the Mediterranean and Europe. Over the Atlantic Ocean, most ETCs are in cluster AvgMST, especially in the “Arctic” area where their proportion is more than 60%. At the start of the storm track in the Western Atlantic, cluster Intense ETCs comprise a third of all ETCs. However, in this representation we can also see information that is more difficult to see from Fig. 8: almost half of ETCs in Europe are in cluster AvgMST and each area 9 has a similar proportion of cluster HighSSI ETCs (around 10%). The latter finding indicates that, given the track density distribution, HighSSI ETCs occur as frequently in each area. This is consistent with the track density distribution in Fig. 8a in which the largest deviations from the climatology of track density occur on a narrow area across the Atlantic. Furthermore, while Fig. 8 may give the impression that almost all ETCs identified in the Mediterranean belong to cluster Weak, Fig. 9 shows that approximately 20% of ETCs in the Mediterranean belong to cluster Intense, indicating that strong ETCs do develop and are identified in the Mediterranean.



**Figure 8.** (a–d) Anomalies of track density in the clusters compared to (e) the full climatology. Track densities are calculated separately for the clusters, normalized by multiplying them with  $N_{tot}/N_c$ , where  $N_c$  is the number of tracks in a cluster and  $N_{tot}$  is the total number of tracks, and the track density of the full climatology is subtracted from them. The percentages in parentheses indicate the proportion of all tracks in each cluster.

#### 4.3.4 Temporal occurrence of ETCs

We investigate the temporal occurrence of the total number of ETCs and the number of ETCs in each cluster with a trend analysis. First, time series of how many ETCs occur ETC occurrence in each extended winter are smoothed by taking a 5-year running mean of them. A Mann–Kendall test (Mann, 1945; Kendall, 1948) is performed on these smoothed time series to detect trends using the Python package pyMannKendall (Hussain and Mahmud, 2019). We find that there is no trend in the total number of ETCs within the study period (not shown). The time series of the number of ETCs in each cluster and the results of the Mann–Kendall test are shown in Fig. 10. There is large interannual variability in the number of ETCs per season, especially in clusters Intense (Fig. 10b) and AvgMST (Fig. 10c), which is a similar result to that found by Laurila et al.

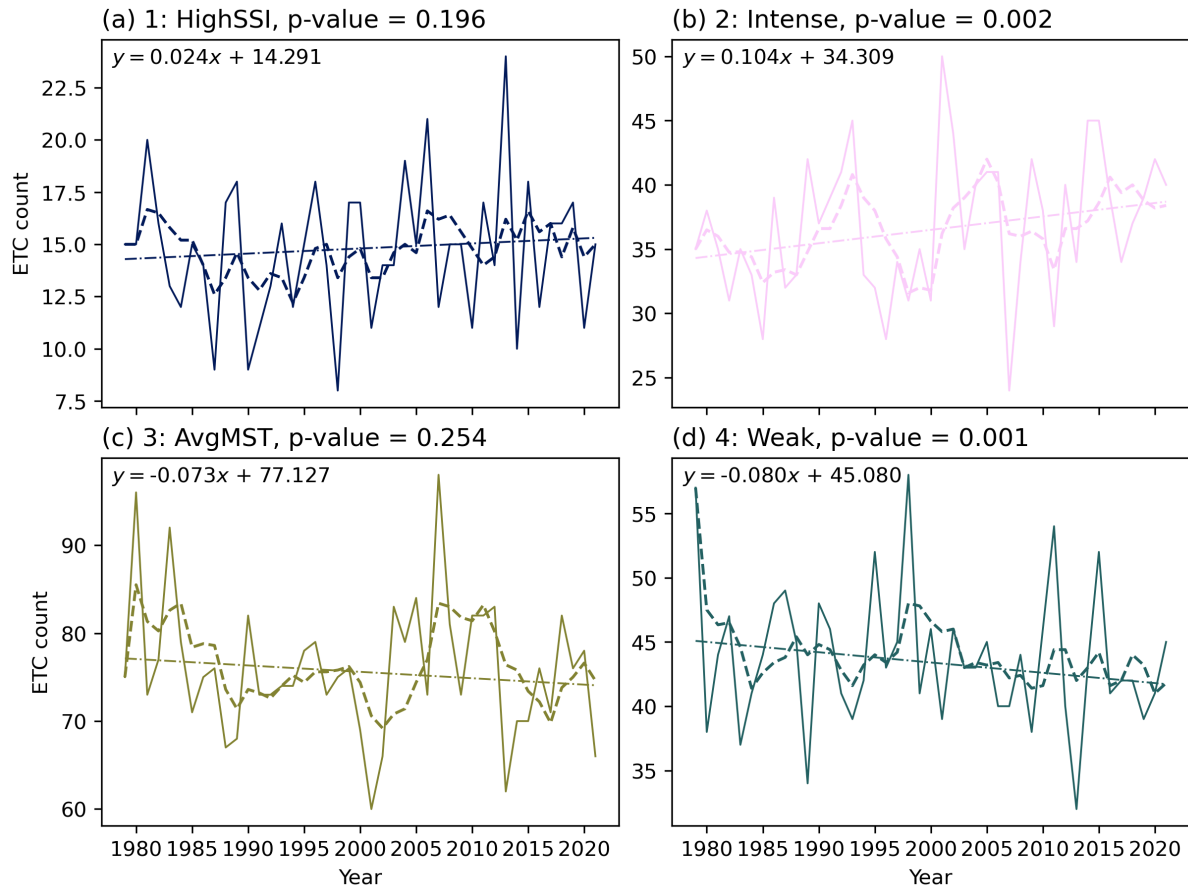


**Figure 9.** Proportion of ETCs in each cluster in the area boxes shown in Fig. 8e. The occurrence area of an ETC is allocated based on its location at time of maximum VO. The values are normalized by the number of ETCs occurring in each box, which is shown by the numbers at the top of the bars. Thus, the four bars for each area sum up to one. Explanations for the abbreviations are: WAtl = Western North Atlantic, EAtl = Eastern North Atlantic, Eur = Europe, Med = Mediterranean.

(2021a). The slope of the trend is positive in cluster HighSSI ( $0.024 \text{ ETC yr}^{-1}$ , Fig. 10a) and negative in cluster AvgMST  $-(-0.073 \text{ ETC yr}^{-1}$ , Fig. 10c), but these trends are not statistically significant. In contrast, statistically significant (at 1% significance level) increasing and decreasing trends are identified in clusters Intense **and Weak** ( $0.104 \text{ ETC yr}^{-1}$ , Fig. 10b **and** ) and Weak ( $-0.080 \text{ ETC yr}^{-1}$ , Fig. 10d), respectively. To understand why, we computed the trends in all eleven intensity

590 measures for all ETCs (not shown). PRECIP, PRECIPacc, and SSIacc have significantly increasing trends (at the 5% level) while none of the other intensity measures has a trend. The increase in the number of cluster Intense ETCs, which have the highest PRECIP values on average and the largest PRECIPacc values for single ETCs, is thus consistent with the increasing trend in precipitation in all ETCs. We can therefore say that within our study period, the intensity of ETCs has increased mostly in terms of precipitation. **This increasing trend in ETC precipitation is in agreement with Li et al. (2014) who compared**

595 **a recent warmer period (in average SST) as an analogue of future climate change to an earlier base period and found that while precipitation was larger in the warmer period than the base period, there was no consistent change in e.g., vorticity or wind speed. The significant increase in SSIacc, without an increase in FG10, can be explained by an increase in extreme wind gust values in North Atlantic ETCs from 1979 to 2021 found by Karwat et al. (2022).**



**Figure 10.** Temporal trends of the number of ETCs in each cluster. The solid lines show the number of ETCs in each extended winter season, and the dashed lines show 5-year running means of these. The dash-dotted lines show the slopes of the trend of the 5-year running means from a Mann–Kendall test. The trend is given by the equation  $y = ax + b$  where  $y$  is ETC count,  $x$  is the year minus 1979,  $a$  is the slope (in ETC yr<sup>-1</sup>), and  $b$  is the intercept in 1979 (in number of ETCs). Note that the vertical axes have different scales in each panel.

#### 4.4 Case study ETCs

600 In addition to the statistical approach, we investigate the clusters in terms of individual ETCs. We select named ETCs which mainly affected Europe and occur either in the XWS storm catalogue (Roberts et al., 2014) or a list of strong storms in Finland maintained by the Finnish Meteorological Institute (FMI, 2023), or are ~~well-known-well-known~~ intense Mediterranean cyclones. The 21 selected ETCs are listed in Table 2 and their tracks are shown in Fig. S7. Figure 11 shows these storms projected onto the first two PCs of the sPCA space and coloured by either their cluster (Fig. 11a) or the value of PC3 of the  
605 sPCA (Fig. 11b).

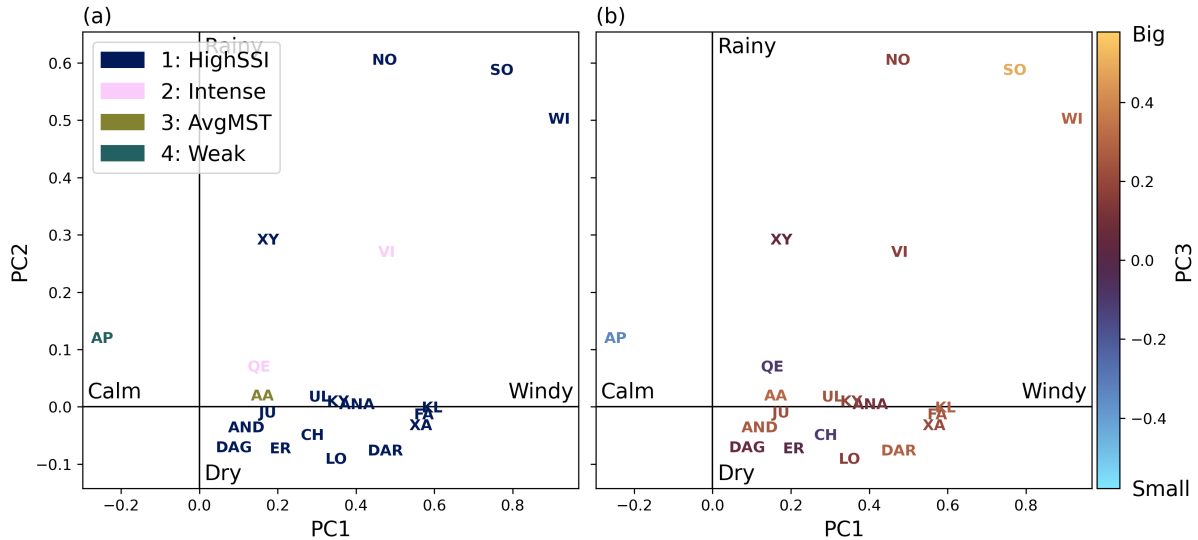
Figure 11a shows that cluster HighSSI is disproportionately represented in the set of named storms. Out of the 21 storms, 17 (~~81%~~) are assigned to cluster HighSSI despite it consisting of less than 10% of all ETC tracks in the dataset. The four storms which do not belong to cluster HighSSI (Apollo, Aapeli, Vivian, and Qendresa) have the smallest SSI values of the 21 case studies, which cannot be seen in the PCs in Fig. 5. ~~They are also~~ These four are among the five storms with the smallest  
610 PC4 values of the 21 case studies, which means they have low VO and/or high MSLPa values (not shown). In Fig. 11b we see that most of the 21 storms fall close to the mean value of PC2, meaning that they have near-average precipitation. ~~All~~ Most storms which affected Europe are relatively close to one another in the sPCA (e.g., Anatol, Kyrill, and Ulli), except for Vivian, Xynthia, and Apollo which had more precipitation and/or lower wind speeds. Although ~~the~~ cluster HighSSI is overwhelmingly the most common cluster among the named storms, only nine (~~43%~~) ~~of the~~ of the 21 storms have a positive value in all four  
615 PCs. ~~Therefore, we can conclude that the cluster analysis can also identify impactful storms which do not have high values in all PCs~~ (e.g., Christian/St. Jude has negative PC2 and PC3 values, and a small PC4 value but still is a HighSSI storm). This demonstrates the need to use more than one measure to quantify ETC intensity.

At the same time, there is only one storm, medicane Apollo, which has a negative PC1 value, i.e., smaller than average wind speed, and a PC3 close to the negative end, i.e., small WFP. Apollo, however, has the sixth largest PC2 value of the 21  
620 case study ETCs, which is to be expected since ~~in Apollo~~ most of the damage was caused by precipitation rather than wind. Apollo belongs to cluster Weak, since the cluster analysis discriminates intensity more based on wind than precipitation (cf. e.g., Fig. 6b and Fig. 6c). ~~In the case of Apollo, however, this may~~ However, this may also be due to the underestimation of the ~~medicane's intensity~~ intensity of medicanes in ERA5 (Pantillon et al., 2024).

There are a couple of reasons why most of the selected storms are more extreme in terms of wind (PC1) than precipitation  
625 (PC2). Firstly, the majority ~~of them~~ come from the XWS catalogue (Roberts et al., 2014), in which the storms are selected using wind-based diagnostics. Secondly, ETCs with the highest PC2 values, and thus the most precipitation, occur mostly over the ocean, where their effects are not felt and storms do not get named. ~~Moreover,~~ Thirdly, in our dataset ETCs which do have high precipitation values over land areas occur mostly over North America (~~not shown~~). This is demonstrated by the presence  
of three North American storms in the top right corner of the sPCA space in Fig. 11: Ex-hurricanes Noel and Wilma, and the  
630 northeaster 1993 Storm of the Century. ~~However, some of the storms (e.g., Xynthia, Vivian, and 1993 Storm of the Century)~~ The remaining selected storms with high PC2 values, Xynthia and Vivian, had compound impacts with both heavy rainfall and strong winds ~~associated with them~~.



635 This analysis indicates that SSI is important in determining the clusters of ETCs with similar PC values. Based on the case study storms, ETCs with large SSI values are allocated to cluster HighSSI even though they have less than average values in other intensity measures. However, cluster analysis is a statistical tool and we cannot say that all ETCs in cluster HighSSI are significantly impactful or that all impactful ETCs belong to cluster HighSSI. This is demonstrated by the two case study storms, which belong to clusters AvgMST and Weak.



**Figure 11.** Case study storms in the sPCA space, coloured by (a) their predicted cluster and (b) their PC3 value. See Table 2 for abbreviations of storm names.

## 5 Discussion

640 ~~Classes of ETCs with similar distinctions~~ Similar classes of ETCs have been found with cluster analysis methods in previous studies. Blender et al. (1997), who used  $k$ -means clustering on Lagrangian North Atlantic ETC tracks from ECMWF operational analyses, and found three clusters of North Atlantic ETC track orientations: stationary, northeastward, and zonal. Qualitatively, our findings match theirs well. Their stationary ETCs occurred mostly in the Mediterranean, Greenland, and Northern Canada and, as the name suggests, had small propagation speeds. This is similar to our cluster Weak. Likewise, their northeastward ETCs are similar to our clusters HighSSI and Intense, with large meridional displacements and propagation speeds. While their zonal ETCs match our cluster AvgMST in terms of the more moderate meridional movement, their zonal tracks are not concentrated at the end of the storm track in Northeastern Atlantic like our AvgMST ETCs are. ~~Instead, their northeastward and zonal clusters and the pressure patterns associated with them are reminiscent of the difference between North Atlantic ETC track regimes during positive and negative North Atlantic Oscillation (NAO) phases (Rogers, 1997; Hodges, 2008)~~ In addition to the similarity in track orientations, ETCs in their clusters had similar average intensities as ours. ~~Their~~ In terms

645

Name	Abbrev.	Occurrence	Affected area	Reference
Aapeli/Alfrida	AA	Jan. 2019	Northern Europe	ECMWF (2021)
Anatol	ANA	Dec. 1999	Northern Europe	Ulbrich et al. (2001)
Andrea (secondary)	AND	Jan. 2012	Mediterranean	Kouroutzoglou et al. (2013)
Apollo/Nearchus	AP	Oct. 2021	Mediterranean	Menna et al. (2023)
Christian/St. Jude	CH	Oct. 2013	Northwestern Europe	Hewson et al. (2014)
Dagmar/Patrick/Tapani	DAG	Dec. 2011	Northern Europe	Weijenborg and Spengler (2020)
Daria/Burns' Day Storm	DAR	Jan. 1990	Northwestern Europe	McCallum (1990)
Erwin/Gudrun	ER	Jan. 2005	Northwestern Europe	Suursaar et al. (2006), Baker (2009)
Fabien	FA	Dec. 2019	Mediterranean	Stojanovic et al. (2021)
Julia	JU	Feb. 2012	Mediterranean	Metheniti (2012)
Klaus	KL	Jan. 2009	Southwestern Europe	Liberato et al. (2011), Bertotti et al. (2012)
Kyrill	KY	Jan. 2007	Western Europe	Fink et al. (2009)
Lothar	LO	Dec. 1999	Western Europe	Ulbrich et al. (2001), Wernli et al. (2002)
Ex-Hurricane Noel	NO	Nov. 2007	Eastern North America	Brennan et al. (2009)
Qendresa	QE	Nov. 2014	Central Mediterranean	Coll-Hidalgo et al. (2022)
1993 Storm of the Century	SO	Mar. 1993	Eastern North America	Huo et al. (1995)
Ulli	UL	Jan. 2012	Northwestern Europe	Fox et al. (2012), Smart and Browning (2014)
Vivian	VI	Feb. 1990	Western Europe	Schüepp et al. (1994)
Ex-hurricane Wilma	WI	Oct. 2005	Eastern North America	Pasch et al. (2006)
Xaver	XA	Dec. 2013	Northern Europe	Hewson et al. (2014)
Xynthia	XY	Feb. 2010	Western Europe	Liberato et al. (2013), Ludwig et al. (2014)

**Table 2.** The named case study ETCs included in Fig. 11. The columns are the name of the ETC, abbreviation used in Fig. 11, time of occurrence, the area the ETC mostly affected, and a reference study for the ETC, respectively.

650 of geopotential height at 1000 hPa ( $Z_{1000}$ ), their stationary ETCs had on average the weakest 1000-hPa-geopotential-height  $Z_{1000}$  gradient (comparable to low-level winds) and the highest 1000-hPa-geopotential-height- $Z_{1000}$  (comparable to MSLP), while northeastward ETCs had the strongest 1000-hPa-geopotential-height- $Z_{1000}$  gradient and the lowest 1000-hPa-geopotential height- $Z_{1000}$  values.

655 Similarly, Gaffney et al. (2007) performed cluster analysis on Lagrangian North Atlantic ETC tracks between 1958 and 2002. They used the National Centers for Environmental Prediction (NCEP) NCAR reanalysis data and with regression mixture models, which are probabilistic methods like GMM. Like Blender et al. (1997), they found clusters with northeastward and zonal track orientations. They, however, identified also a cluster with northward track orientations, which could not be likened to any of the clusters of Blender et al. (1997), and they but did not find a cluster of stationary ETC tracks. Their northward-oriented cluster tracks were mostly found near the eastern coast of North America, which means it and were among the most 660 intense ETCs in terms of MSLP. This indicates that the northward-oriented tracks could contain many of the same tracks as

in our clusters HighSSI or Intense (e.g., post-tropical cyclones). ~~In terms of MSLP, their northward-oriented ETCs were the most intense but the~~ They also found that the northeastward-oriented ETCs were ~~faster-moving~~ the fastest-moving, while they found no significant differences in ETC lifetime between any of the clusters. ~~Gaffney et al. (2007) also performed analysis on the relationship between the ETC clusters and the large-scale background flow. They found that northeastward-oriented ETC tracks occur in positive NAO phases and zonally oriented ETC occur in negative NAO phases, which is qualitatively consistent with the results obtained by Blender et al. (1997).~~ This result is different from ours, as we found a link between average dynamical intensity and ETC speed and lifetime.

Leckebusch et al. (2008b) used ~~a different approach~~ similar methods as we did to relate large-scale flow patterns to different types of ETCs. ~~First, they performed PCA on the 1000 hPa geopotential height field from the NCEP–NCAR reanalysis dataset to reduce the amount of data. From the PCA,~~ From a PCA performed on a  $Z_{1000}$  field they identified six large-scale flow patterns over Europe ~~; which they then~~ which they used to classify winter storm situations with  $k$ -means clustering. ~~They identified~~ Of 55 clusters of pressure patterns, of which identified pressure pattern clusters, four were classified as primary storm clusters ~~and nine as secondary storm clusters. These.~~ These primary storm clusters were associated with more extreme ETCs, as 72 % of 46 important European winter storms occurred during ~~the four primary storm~~ these clusters, while the overall relative frequency of occurrence of ~~these~~ the four clusters was only 5 %. This result is reminiscent of our finding that the majority of ~~important~~ well-known impactful storms are found in cluster HighSSI despite its small proportion of all ETCs.

Others have also previously used phase spaces consisting of different variables to categorize ETCs. Many have subjectively divided phase spaces into various parts and analyzed ETCs in each part of the phase space separately. Graf et al. (2017) performed PCA on 30 ETC precursors to classify Northern Hemispheric cyclogenesis events ~~with ECMWF's ERA-Interim reanalysis data.~~ Although they found no obvious clusters in the continuous phase space determined by the genesis events, ~~using the first two components of the PCA~~ they were able to formulate five ETC classes:  $A_{\text{moist}}$ ,  $A_{\text{dry}}$ ,  $B_{\text{moist}}$ ,  $B_{\text{dry}}$ , and  $M$ . by using the first two components of the PCA. The first PC determined whether an ETC genesis was characterized by strong ~~(moist) or weak (dry) moist processes in its genesis, or weak moist processes~~ and the second PC split the genesis events based on ~~their likeness to the ETC life cycle classes of Petterssen and Smebye (1971), A and B. Their fifth class, M for "middle class", consisted of ETCs which fell close to the mean of the phase space defined by the first two PCs. Their~~ the type of forcing mechanisms, as in Petterssen and Smebye (1971). Their PCA classification was robust to the number of input features, with five precursors producing similar results as the initial 30. They also determined that a majority (67 %) of investigated well-known ETCs belonged to a single class, ~~namely  $A_{\text{moist}}$ .~~ All. Furthermore, all four case study ETCs that are shared between their and our studies (Klaus, Kyrill, Lothar, and Xynthia) belonged to ~~the class  $A_{\text{moist}}$ ,~~ this class, while in our investigation they were all found in cluster HighSSI. While they note that their analysis cannot be used to directly attribute cyclogenesis events to specific cyclone evolution, this is an interesting result.

Besson et al. (2021) investigated dry-dynamic forcing of Northern Hemispheric ETCs by studying their Eady growth rate and upper-level induced quasi-geostrophic ascent ~~calculated from ERA-Interim reanalysis.~~ They defined four categories of ETC forcing by selecting values at the extreme corners of a two-dimensional phase space determined by the two variables. They found that these four categories of ETC forcing occur in different geographical areas, and lead to ETCs which differ in their

deepening rates and have differences in their upper-level structure. Similarities between their categories and our clusters can be seen in the link between ~~the~~ ETC deepening rates and occurrence areas of the four categories of ETC forcing. For example, a combination of the two forcing mechanisms leading to large deepening rates are found mostly at the start of the North Atlantic storm track (cf. clusters HighSSI and Intense), while combinations leading to the smallest deepening rates occur more at the southern and southeastern parts of the North Atlantic ~~, towards the end of the storm track~~ (cf. cluster Weak). Deepening rates in between these extremes are associated with a combination of forcing mechanisms which occurs mostly in the northern parts of the North Atlantic with a maximum density between Greenland and Iceland (cf. cluster AvgMST). ~~Another similar analysis was~~ Similar analyses were done by Binder et al. (2016) and Binder et al. (2023), who determined three categories of ETC intensification for Northern Hemisphere ETCs from a phase space of ETC deepening rate and low-level warm conveyor belt air mass ~~using ERA-Interim reanalysis data and CESM-LE model data. They found differences in the structure and occurrence areas of ETCs between the three categories.~~

While these types of analyses are suitable for studying the precursors and forcing mechanisms of ETCs, we demonstrate that classification of ETCs based on their intensity benefits from an added level of objectivity via the cluster analysis. This can be seen in the overlap between the intensity measure distributions for different clusters in Fig. 6. Despite this overlap introduced by the objective method, our clusters can be at least qualitatively linked to classes of ETCs obtained with more subjective methods as described above. In fact, a possible course of future study is the identification of the variability in the ETC precursors and forcing mechanisms within our clusters. We believe that this form of analysis, which links the intensity and relevance for impacts to the genesis environment of ETCs, would offer a new perspective to the classification of ETC life cycles and possibly improve the predictability of ETC intensity.

An investigation of well-known case study ETCs showed that proportionally, the majority of impactful storms belong to cluster HighSSI (17 out of 21). This highlights the ability of the cluster analysis to identify intense storms. However, we cannot say that all ETCs in cluster HighSSI are impactful or damaging. In addition to the statistical nature of the cluster analysis, this is due to the fact that apart from SSI, which is based on local climatological values, the impact-relevant intensity measures do not discriminate between land and sea areas. ETCs have on average larger WFP values and/or more precipitation over the ocean and on the eastern coast of North America (Hawcroft et al., 2012; Laurila et al., 2021b), which inevitably leads to some non-impactful ETCs being classified as Intense or HighSSI. It also explains why many European storms in Fig. 11 have below-average precipitation and why medicane Apollo is classified as a cluster Weak storm. On the other hand, the analysis showed that SSI, which does not by definition have larger values over sea than land, is an important measure in determining the cluster of an ETC whose other intensity measures have close to average values. However, SSI alone cannot be used to identify impactful storms since it is relevant for impacts due to wind only, while other factors in ETCs such as precipitation can also cause significant damage (e.g., medicane Apollo). This emphasizes the fact that multiple intensity measures should be used to quantify the intensity of ETCs.

A limitation of our study is the use of only one data source (ERA5) and one ETC tracking algorithm (TRACK). Firstly, the representation of ETCs has been found to vary between reanalysis datasets (Hodges et al., 2011; Wang et al., 2016). Secondly, ERA5 underestimates precipitation and strong low-level winds in some areas (Chen et al., 2024; Minola et al., 2020). This

underestimation may cause our precipitation or wind distributions to be too narrow, which may have an effect on the cluster analysis through, e.g., creating more overlap in precipitation between the clusters than without the bias. Thirdly, earlier studies have shown that ETC climatologies may differ in distributions and trends due to sensitivity to the tracking algorithm because using different variables and thresholds leads to identifying different categories of ETCs (Raible et al., 2008; Neu et al., 2013; Flaounas et al., 2023). Another limitation of our study is that the criteria used for the ETC tracking are optimized for the North Atlantic. Therefore, e.g., some Mediterranean ETCs are excluded from our set of tracks since they can be more stationary, have shorter lifetimes, and have their maximum vorticity within the first 24 hours h. Flaounas et al. (2023) compared 10 ETC tracking algorithms in the Mediterranean area, one of which was TRACK. In their comparison, TRACK produced the longest lifetimes and largest propagation speeds for ETCs in the Mediterranean. Despite these limitations, our study brings valuable new knowledge on which intensity measures should be used to comprehensively and non-redundantly quantify the intensity of ETCs.

## 6 Conclusions

We created a dataset of ETC extratropical cyclone (ETC) intensity measures for 43 extended winters of North Atlantic and European ETC tracks and performed sPCA sparse principal component analysis (sPCA) to identify the measures which explain most of the variability in the dataset. Using the results of the sPCA and correlations between the intensity measures, we determined five measures for comprehensive and non-redundant representation of ETC intensity. ~~We used these five measures as input in a cluster analysis using GMM to create classes of ETCs based on their multidimensional intensity. The cluster analysis produced the best results with four clusters.:~~ 850 hPa relative vorticity, 850 hPa wind speed, wind footprint, precipitation, and a storm severity index (SSI).

Our analysis shows that while there is strong correlation between different dynamical ETC intensity measures, there is a much weaker link between the dynamical intensity and impact-relevant measures. A correlation of similar strength between wind speed and precipitation was found previously by Pfahl and Sprenger (2016) who determined a correlation coefficient of 0.36. Therefore, when using ETC intensity as a broad term, i.e., including the impacts as well as the meteorological intensity in the definition, we need to consider the non-linear and weakly correlated relationship between the two, and use more than one or two measures to describe the intensity. ~~Our analysis determined five measures which comprehensively describe ETC intensity: 850 hPa relative vorticity, 850 hPa wind speed, wind footprint, precipitation, and a storm severity index.~~ We recommend studies which aim to quantify future changes in ETC intensity to consider ~~these five variables~~ the five variables we determined.

~~Using these five~~ We used these five intensity measures as input to a cluster analysis performed with GMM, we a Gaussian mixture model (GMM) to create classes of ETCs. We found four clusters in which ETCs ~~were~~ are significantly different in terms of their intensity. ~~One cluster had on average weak ETCs (cluster Weak), another one average ones (cluster AvgMST Cluster Weak has on average the weakest ETCs (25.54% of all ETCs), cluster AvgMST contains average intensity ETCs (44.42%), and two clusters more intense ones (clusters Intense-Intense and HighSSI are composed of more intense ETCs (21.46% and HighSSI), with the most 8.57%, respectively).~~ For all intensity measures except for precipitation, the clusters

are in the same relative order in terms of average magnitude: HighSSI, Intense, AvgMST, and Weak. However, the clusters are not discrete in the feature space defined by the intensity measures since there is overlap in the distributions of the intensity measures in the latter two between the clusters. The most overlap is between clusters Intense and HighSSI. This overlap, the small size of cluster HighSSI, and the large SSI values in its ETCs indicate that cluster HighSSI is a subset of cluster Intense, which contains the most extreme and potentially impactful ETCs, is a subset of cluster Intense. Of all intensity measures, there is the least overlap between clusters in the distributions of SSI. This, along with the fact that a much larger proportion of large majority (17 out of 21) of named impactful storms than all ETCs belong to cluster HighSSI despite the cluster accounting for less than 10% of all ETCs, suggests that SSI is useful in identifying impactful ETCs, which is in agreement with previous studies (Klawa and Ulbrich, 2003; Leckebusch et al., 2007, 2008a; Donat et al., 2011). The clusters were

The clusters are different in terms of their characteristics and geographical location of occurrence as well. The average intensity of ETCs in the clusters can be qualitatively linked to their deepening rate, lifetime, and mean propagation speed. The weaker ETCs occur more frequently in Europe and in the Mediterranean basin than over the Atlantic Ocean, but HighSSI ETCs are almost as frequent everywhere, given the when normalized with respect to the climatological distribution of ETC occurrence in the domain. The number of ETCs in cluster Intense increased from 1979 to 2022 while the number of ETCs in cluster Weak decreased, which is mostly caused by a positive trend in precipitation. This increasing trend in ETC precipitation is in agreement with Li et al. (2014) who compared a recent warmer period (in average SST) as an analogue of future climate change to an earlier base period and found that while precipitation was larger in the warmer period than the base period, there was no consistent change in vorticity or wind speed. There is also a significant increase in accumulated SSI (SSIacc) which, without an increase in maximum wind gusts at 10 m (FG10), can be explained by an increase in extreme wind gust values in North Atlantic ETCs from 1979 to 2021 found by Karwat et al. (2022).

An investigation of well-known case study ETCs showed that proportionally, the majority of impactful storms belong to cluster HighSSI. This highlights the ability of the cluster analysis to identify intense storms. However, we cannot say that all ETCs in cluster HighSSI are impactful or damaging. In addition to the statistical nature of the cluster analysis, this is due to the fact that apart from SSI, which is based on local climatological values, the impact-relevant intensity measures do not discriminate between land and sea areas. Many ETCs with large WFPs and high precipitation values occur mostly over the ocean, which inevitably leads to some non-impactful ETCs being classified as Intense or HighSSI. On the other hand, the analysis showed that SSI, which does not by definition have larger values over sea than land, is an important measure in determining the cluster of ETCs whose other intensity measures have close to average values. However, SSI alone cannot be used to identify impactful storms since it is relevant for impacts due to wind only, while other factors in ETCs such as precipitation can also cause significant damage. This further emphasizes the fact that multiple intensity measures should be used to quantify ETC intensity.

Our objective classification of ETCs based on their intensity offers a new perspective to the multitude of ETC classifications reviewed in Catto (2016). Our classification is performed using variables which are available or easy to compute from both model and reanalysis data. Both the sPCA model and the GMM instance trained with our dataset are provided as downloadable Python objects in a repository (Cornér et al., 2024). For any dataset including ETC tracks and an associated value of each of the

intensity measures per track, the sPCA model can be used to project ETCs onto the sPCA space shown in Fig 5a. Moreover,  
800 to predict the cluster of each ETC in the same or a similar dataset, the GMM instance can be used with the five intensity  
measure listed above as input. Building on the work of Bengtsson et al. (2009) and Champion et al. (2011), who studied the  
intensity and extreme weather from ETCs in future climates, utilizing this kind of classification in climate projection studies  
could give insight into how different kinds of ETCs respond to climate change. In addition to climate applications, quantifying  
the intensity of ETCs is also important in terms of numerical weather prediction. This is especially true in the current age,  
805 when ensemble prediction systems are key to produce probabilistic forecasts and vast amounts of data. Being able to identify  
ETCs in each ensemble member and compute their intensity allows for an accurate estimate of the uncertainty in how strong,  
and potentially impactful a specific ETC will be. Furthermore, this allows a vast amount of information to be condensed to a  
level that is manageable for operational forecasters, who often are working under time pressure.

*Code and data availability.* ERA5 reanalysis data were downloaded from the Copernicus Climate Change Service (Hersbach et al., 2017).  
810 All processed data and Python code are available in a Zenodo repository (Cornér et al., 2024).

*Author contributions.* JC, CB, and VAS all contributed to the design of the study. JC performed most of the data analysis and visualization.  
JC, CB, and VAS all contributed to the interpretation of the results. BD contributed to the definition and analysis of the storm severity index.  
FP and BD contributed to the analysis over the Mediterranean region. JC wrote sections 2, 4, 5, and 6. CB wrote section 3. VAS and FP wrote  
section 1. All authors reviewed and edited the manuscript. VAS secured funding for the study.

815 *Competing interests.* The authors declare that they have no conflict of interest.

*Acknowledgements.* We wish to thank Kevin Hodges for providing the cyclone tracking software TRACK and support in its set-up and  
running, as well as four anonymous reviewers for their constructive comments that helped improve the paper. We acknowledge CSC – IT  
Centre for Science, Finland, for computational resources and ECMWF for producing ERA5 reanalysis. This research was supported by  
the Academy of Finland (grant no. 338615) and is a contribution to the COST Action CA19109 “MedCyclones: European Network for  
820 Mediterranean Cyclones in weather and climate”. JC was partly funded by the University of Helsinki Doctoral School. BD was funded by  
Région Occitanie and Météo-France through project PREVIMED. This study uses scientific colour maps (Cramer, 2023) to prevent visual  
distortion of the data and exclusion of readers with colour vision deficiencies.



## References

- Anderson, D., Hodges, K. I., and Hoskins, B. J.: Sensitivity of Feature-Based Analysis Methods of Storm Tracks to the Form of Background  
825 Field Removal, *Mon. Wea. Rev.*, 131, 565 – 573, [https://doi.org/10.1175/1520-0493\(2003\)131<0565:SOFBAM>2.0.CO;2](https://doi.org/10.1175/1520-0493(2003)131<0565:SOFBAM>2.0.CO;2), 2003.
- Aragão, L. and Porcù, F.: Cyclonic activity in the Mediterranean region from a high-resolution perspective using ECMWF ERA5 dataset, *Climate Dyn.*, 58, 1293–1310, <https://doi.org/10.1007/s00382-021-05963-x>, 2022.
- Baker, L.: Sting jets in severe northern European wind storms, *Weather*, 64, 143–148, <https://doi.org/10.1002/wea.397>, 2009.
- Bechtold, P. and Bidlot, J.-R.: Parametrization of convective gusts, <https://doi.org/10.21957/kfr42kfp8c>, 2009.
- 830 Bengtsson, L., Hodges, K. I., and Roeckner, E.: Storm Tracks and Climate Change, *J. Climate*, 19, 3518 – 3543, <https://doi.org/10.1175/JCLI3815.1>, 2006.
- Bengtsson, L., Hodges, K. I., and Keenlyside, N.: Will extratropical storms intensify in a warmer climate?, *J. Climate*, 22, 2276–2301, <https://doi.org/10.1175/2008JCLI2678.1>, 2009.
- Bertotti, L., Bidlot, J.-R., Bunney, C., Cavaleri, L., Delli Passeri, L., Gomez, M., Lefèvre, J.-M., Paccagnella, T., Torrì, L., Valentini, A., and  
835 Vocino, A.: Performance of different forecast systems in an exceptional storm in the Western Mediterranean Sea, *Quart. J. Roy. Meteor. Soc.*, 138, 34–55, <https://doi.org/10.1002/qj.892>, 2012.
- Besson, P., Fischer, L. J., Schemm, S., and Sprenger, M.: A global analysis of the dry-dynamic forcing during cyclone growth and propagation, *Wea. Climate Dyn.*, 2, 991–1009, <https://doi.org/10.5194/wcd-2-991-2021>, 2021.
- Binder, H., Boettcher, M., Joos, H., and Wernli, H.: The Role of Warm Conveyor Belts for the Intensification of Extratropical Cyclones in  
840 Northern Hemisphere Winter, *J. Atmos. Sci.*, 73, 3997 – 4020, <https://doi.org/10.1175/JAS-D-15-0302.1>, 2016.
- Binder, H., Joos, H., Sprenger, M., and Wernli, H.: Warm conveyor belts in present-day and future climate simulations – Part 2: Role of potential vorticity production for cyclone intensification, *Wea. Climate Dyn.*, 4, 19–37, <https://doi.org/10.5194/wcd-4-19-2023>, 2023.
- Blender, R., Fraedrich, K., and Lunkeit, F.: Identification of cyclone-track regimes in the North Atlantic, *Quart. J. Roy. Meteor. Soc.*, 123, 727–741, <https://doi.org/10.1002/qj.49712353910>, 1997.
- 845 Brennan, M. J., Knabb, R. D., Mainelli, M., and Kimberlain, T. B.: Atlantic Hurricane Season of 2007, *Mon. Wea. Rev.*, 137, 4061 – 4088, <https://doi.org/10.1175/2009MWR2995.1>, 2009.
- Browning, K. A.: Organization of clouds and precipitation in extratropical cyclones, in: *Extratropical Cyclones, The Erik Palmén Memorial Volume*, pp. 129–154, *Amer. Meteor. Soc.*, [https://doi.org/10.1007/978-1-944970-33-8\\_8](https://doi.org/10.1007/978-1-944970-33-8_8), 1990.
- Campins, J., Genovés, A., Picornell, M. A., and Jansà, A.: Climatology of Mediterranean cyclones using the ERA-40 dataset, *Int. J. Climatol.*,  
850 31, 1596–1614, <https://doi.org/10.1002/joc.2183>, 2011.
- Catto, J. L.: Extratropical cyclone classification and its use in climate studies, *Rev. Geophys.*, 54, 486–520, <https://doi.org/10.1002/2016RG000519>, 2016.
- Catto, J. L.: A New Method to Objectively Classify Extratropical Cyclones for Climate Studies: Testing in the Southwest Pacific Region, *J. Climate*, 31, 4683 – 4704, <https://doi.org/10.1175/JCLI-D-17-0746.1>, 2018.
- 855 Catto, J. L., Shaffrey, L. C., and Hodges, K. I.: Can climate models capture the structure of extratropical cyclones?, *J. Climate*, 23, 1621–1635, <https://doi.org/10.1175/2009JCLI3318.1>, 2010.
- Catto, J. L., Shaffrey, L. C., and Hodges, K. I.: Northern Hemisphere Extratropical Cyclones in a Warming Climate in the HiGEM High-Resolution Climate Model, *J. Climate*, 24, 5336 – 5352, <https://doi.org/10.1175/2011JCLI4181.1>, 2011.

- Champion, A. J., Hodges, K. I., Bengtsson, L. O., Keenlyside, N. S., and Esch, M.: Impact of increasing resolution and a warmer climate on extreme weather from Northern Hemisphere extratropical cyclones, *Tellus A*, 63, 893–906, <https://doi.org/10.1111/j.1600-0870.2011.00538.x>, 2011.
- Chang, E. K.-M.: CMIP5 Projected Change in Northern Hemisphere Winter Cyclones with Associated Extreme Winds, *J. Climate*, 31, 6527–6542, <https://doi.org/10.1175/JCLI-D-17-0899.1>, 2018.
- Chen, G., Chen, Z., Zhou, F., Yu, X., Zhang, H., and Zhu, L.: A semisupervised deep learning framework for tropical cyclone intensity estimation, in: 2019 10th International Workshop on the Analysis of Multitemporal Remote Sensing Images Multi-Temp, pp. 1–4, IEEE, <https://doi.org/10.1109/Multi-Temp.2019.8866970>, 2019.
- Chen, T.-C., Collet, F., and Di Luca, A.: Evaluation of ERA5 precipitation and 10-m wind speed associated with extratropical cyclones using station data over North America, *Int. J. Climatol.*, <https://doi.org/10.1002/joc.8339>, 2024.
- Coll-Hidalgo, P., Pérez-Alarcón, A., and Nieto, R.: Moisture Sources for the Precipitation of Tropical-like Cyclones in the Mediterranean Sea: A Case of Study, *Atmosphere*, 13, <https://doi.org/10.3390/atmos13081327>, 2022.
- Colle, B. A., Zhang, Z., Lombardo, K. A., Chang, E., Liu, P., and Zhang, M.: Historical Evaluation and Future Prediction of Eastern North American and Western Atlantic Extratropical Cyclones in the CMIP5 Models during the Cool Season, *J. Climate*, 26, 6882–6903, <https://doi.org/10.1175/JCLI-D-12-00498.1>, 2013.
- Cornér, J., Bouvier, C., Doiteau, B., Pantillon, F., and Sinclair, V. A.: Classification of extratropical cyclones using multiple measures of intensity: Data and Python code, <https://doi.org/10.5281/zenodo.11384417>, 2024.
- Cover, T. M. and Thomas, J. A.: *Elements of information theory* / Thomas M. Cover, Joy A. Thomas., Wiley-Interscience, Hoboken, N.J, 2nd ed. edn., ISBN 0471748811, <https://doi.org/10.1002/047174882X>, 2006.
- Crameri, F.: Scientific colour maps, <https://doi.org/10.5281/zenodo.8409685>, 2023.
- Dacre, H., Martinez-Alvarado, O., and Hodges, K.: Precipitation efficiencies in a climatology of Southern Ocean extratropical cyclones, *J. Geophys. Res.-Atmos.*, 128, e2023JD039239, <https://doi.org/10.1029/2023JD039239>, 2023.
- Dacre, H. F. and Gray, S. L.: The spatial distribution and evolution characteristics of North Atlantic cyclones, *Mon. Wea. Rev.*, 137, 99–115, <https://doi.org/10.1175/2008MWR2491.1>, 2009.
- Davis, C. A. and Emanuel, K. A.: Potential Vorticity Diagnostics of Cyclogenesis, *Mon. Wea. Rev.*, 119, 1929–1953, [https://doi.org/10.1175/1520-0493\(1991\)119<1929:PVD0C>2.0.CO;2](https://doi.org/10.1175/1520-0493(1991)119<1929:PVD0C>2.0.CO;2), 1991.
- Deveson, A., Browning, K., and Hewson, T.: A classification of FASTEX cyclones using a height-attributable quasi-geostrophic vertical-motion diagnostic, *Quart. J. Roy. Meteor. Soc.*, 128, 93–117, <https://doi.org/10.1256/00359000260498806>, 2002.
- Doiteau, B., Pantillon, F., Plu, M., Descamps, L., and Rieutord, T.: What determines the predictability of a Mediterranean cyclone?, *EGU-sphere*, 2024, 1–29, <https://doi.org/10.5194/egusphere-2024-675>, 2024.
- Dolores-Tesillos, E., Teubler, F., and Pfahl, S.: Future changes in North Atlantic winter cyclones in CESM-LE – Part 1: Cyclone intensity, potential vorticity anomalies, and horizontal wind speed, *Wea. Climate Dyn.*, 3, 429–448, <https://doi.org/10.5194/wcd-3-429-2022>, 2022.
- Donat, M. G., Leckebusch, G. C., Wild, S., and Ulbrich, U.: Future changes in European winter storm losses and extreme wind speeds inferred from GCM and RCM multi-model simulations, *Nat. Hazard Earth Sys.*, 11, 1351–1370, <https://doi.org/10.5194/nhess-11-1351-2011>, 2011.
- DWD: Wetter und Klima - Deutscher Wetterdienst - Gemeindewarnungen aktuell - Warnkriterien — [dwd.de](https://www.dwd.de/DE/wetter/warnungen_aktuell/kriterien/warnkriterien.html?nn=605882), [https://www.dwd.de/DE/wetter/warnungen\\_aktuell/kriterien/warnkriterien.html?nn=605882](https://www.dwd.de/DE/wetter/warnungen_aktuell/kriterien/warnkriterien.html?nn=605882), [Accessed 07-05-2024].

- ECMWF: 201901 - Windstorm - Alfrida/Aapeli — [confluence.ecmwf.int](https://confluence.ecmwf.int), <https://confluence.ecmwf.int/pages/viewpage.action?pageId=129123779>, [Accessed 24-05-2024], 2021.
- Feser, F., Krueger, O., Woth, K., and van Garderen, L.: North Atlantic Winter Storm Activity in Modern Reanalyses and Pressure-Based Observations, *J. Climate*, 34, 2411 – 2428, <https://doi.org/10.1175/JCLI-D-20-0529.1>, 2021.
- 900 Field, P. R. and Wood, R.: Precipitation and cloud structure in midlatitude cyclones, *J. Climate*, 20, 233–254, <https://doi.org/10.1175/JCLI3998.1>, 2007.
- Fink, A. H., Brücher, T., Ermert, V., Krüger, A., and Pinto, J. G.: The European storm Kyrill in January 2007: synoptic evolution, meteorological impacts and some considerations with respect to climate change, *Nat. Hazard Earth Sys.*, 9, 405–423, <https://doi.org/10.5194/nhess-9-405-2009>, 2009.
- 905 Flaounas, E., Aragão, L., Bernini, L., Dafis, S., Doiteau, B., Flocas, H., Gray, S. L., Karwat, A., Kouroutzoglou, J., Lionello, P., Miglietta, M. M., Pantillon, F., Pasquero, C., Patlakas, P., Picornell, M. A., Porcù, F., Priestley, M. D. K., Reale, M., Roberts, M. J., Saaroni, H., Sandler, D., Scoccimarro, E., Sprenger, M., and Ziv, B.: A composite approach to produce reference datasets for extratropical cyclone tracks: application to Mediterranean cyclones, *Wea. Climate Dyn.*, 4, 639–661, <https://doi.org/10.5194/wcd-4-639-2023>, 2023.
- FMI: Tuulivaroituksia niin maalle kuin merelle — [ilmatieteenlaitos.fi](https://www.ilmatieteenlaitos.fi), <https://www.ilmatieteenlaitos.fi/tuulivaroitukset>, [Accessed 07-05-910 2024].
- FMI: Merkittäviä myrskyjä ja rajuilmoja Suomessa — [ilmatieteenlaitos.fi](https://www.ilmatieteenlaitos.fi), <https://www.ilmatieteenlaitos.fi/merkittavia-myrskyja-suomessa>, [Accessed 22-05-2024], 2023.
- Fox, A., Sherwin, R., and Ralston, F.: Lessons learnt at the Met Office from the Great Storm of 1987 – a comparison with recent strong wind events, *Weather*, 67, 268–273, <https://doi.org/10.1002/wea.1981>, 2012.
- 915 Gaffney, S. J., Robertson, A. W., Smyth, P., Camargo, S. J., and Ghil, M.: Probabilistic clustering of extratropical cyclones using regression mixture models, *Climate Dyn.*, 29, 423–440, <https://doi.org/10.1007/s00382-007-0235-z>, 2007.
- Graf, M. A., Wernli, H., and Sprenger, M.: Objective classification of extratropical cyclogenesis, *Quart. J. Roy. Meteor. Soc.*, 143, 1047–1061, <https://doi.org/10.1002/qj.2989>, 2017.
- Gramscianinov, C., Campos, R., de Camargo, R., Hodges, K., Guedes Soares, C., and da Silva Dias, P.: Analysis of At-920 lantic extratropical storm tracks characteristics in 41 years of ERA5 and CFSR/CFSv2 databases, *Ocean Eng.*, 216, 108 111, <https://doi.org/10.1016/j.oceaneng.2020.108111>, 2020.
- Hartmann, D. L.: *Global Physical Climatology*, vol. 103, Elsevier, ISBN 978-0-12-328531-7, <https://doi.org/10.1016/C2009-0-00030-0>, 2015.
- Hawcroft, M. K., Shaffrey, L. C., Hodges, K. I., and Dacre, H. F.: How much Northern Hemisphere precipitation is associated with extrat-925 ropical cyclones?, *Geophys. Res. Lett.*, 39, <https://doi.org/10.1029/2012GL053866>, 2012.
- Hersbach, H., Bell, B., Berrisford, P., Hirahara, S., Horányi, A., Muñoz-Sabater, J., Nicolas, J., Peubey, C., Radu, R., Schepers, D., Simmons, A., Soci, C., Abdalla, S., Abellan, X., Balsamo, G., Bechtold, P., Biavati, G., Bidlot, J., Bonavita, M., De Chiara, G., Dahlgren, P., Dee, D., Diamantakis, M., Dragani, R., Flemming, J., Forbes, R., Fuentes, M., Geer, A., Haimberger, L., Healy, S., Hogan, R. J., Hólm, E., Janisková, M., Keeley, S., Laloyaux, P., Lopez, P., Lupu, C., Radnoti, G., de Rosnay, P., Rozum, I., Vamborg, F., Vil-930 laume, S., and Thépaut, J.-N.: Complete ERA5 from 1940: Fifth generation of ECMWF atmospheric reanalyses of the global climate, <https://doi.org/10.24381/cds.143582cf>, 2017.
- Hersbach, H., Bell, B., Berrisford, P., Hirahara, S., Horányi, A., Muñoz-Sabater, J., Nicolas, J., Peubey, C., Radu, R., Schepers, D., Simmons, A., Soci, C., Abdalla, S., Abellan, X., Balsamo, G., Bechtold, P., Biavati, G., Bidlot, J., Bonavita, M., De Chiara, G., Dahlgren, P., Dee,

- D., Diamantakis, M., Dragani, R., Flemming, J., Forbes, R., Fuentes, M., Geer, A., Haimberger, L., Healy, S., Hogan, R. J., Hólm, E.,  
935 Janisková, M., Keeley, S., Laloyaux, P., Lopez, P., Lupu, C., Radnoti, G., de Rosnay, P., Rozum, I., Vamborg, F., Villaume, S., and Thépaut,  
J.-N.: The ERA5 global reanalysis, *Quart. J. Roy. Meteor. Soc.*, 146, 1999–2049, <https://doi.org/10.1002/qj.3803>, 2020.
- Hewson, T., Magnusson, L., Breivik, O., Prates, F., Tsonevsky, I., and de Vries, J.: Windstorms in northwest Europe in late 2013, *ECMWF  
Newsletter*, 139, 122–128, 2014.
- Hewson, T. D. and Neu, U.: Cyclones, windstorms and the IMILAST project, *Tellus A*, 67, 27–128, <https://doi.org/10.3402/tellusa.v67.27128>,  
940 2015.
- Hodges, K. I.: A General Method for Tracking Analysis and Its Application to Meteorological Data, *Mon. Wea. Rev.*, 122, 2573 – 2586,  
[https://doi.org/10.1175/1520-0493\(1994\)122<2573:AGMFTA>2.0.CO;2](https://doi.org/10.1175/1520-0493(1994)122<2573:AGMFTA>2.0.CO;2), 1994.
- Hodges, K. I.: Feature Tracking on the Unit Sphere, *Mon. Wea. Rev.*, 123, 3458 – 3465, [https://doi.org/10.1175/1520-0493\(1995\)123<3458:FTOTUS>2.0.CO;2](https://doi.org/10.1175/1520-0493(1995)123<3458:FTOTUS>2.0.CO;2), 1995.
- 945 Hodges, K. I.: Spherical Nonparametric Estimators Applied to the UGAMP Model Integration for AMIP, *Mon. Wea. Rev.*, 124, 2914 – 2932,  
[https://doi.org/10.1175/1520-0493\(1996\)124<2914:SNEATT>2.0.CO;2](https://doi.org/10.1175/1520-0493(1996)124<2914:SNEATT>2.0.CO;2), 1996.
- Hodges, K. I.: Extension of Spherical Nonparametric Estimators to Nonisotropic Kernels: An Oceanographic Application, *Mon. Wea. Rev.*,  
127, 214 – 227, [https://doi.org/10.1175/1520-0493\(1999\)127<0214:EOSNET>2.0.CO;2](https://doi.org/10.1175/1520-0493(1999)127<0214:EOSNET>2.0.CO;2), 1999a.
- Hodges, K. I.: Adaptive Constraints for Feature Tracking, *Mon. Wea. Rev.*, 127, 1362 – 1373, [https://doi.org/10.1175/1520-0493\(1999\)127<1362:ACFFT>2.0.CO;2](https://doi.org/10.1175/1520-0493(1999)127<1362:ACFFT>2.0.CO;2), 1999b.  
950
- Hodges, K. I.: Confidence Intervals and Significance Tests for Spherical Data Derived from Feature Tracking, *Mon. Wea. Rev.*, 136, 1758 –  
1777, <https://doi.org/10.1175/2007MWR2299.1>, 2008.
- Hodges, K. I., Lee, R. W., and Bengtsson, L.: A Comparison of Extratropical Cyclones in Recent Reanalyses ERA-Interim, NASA MERRA,  
NCEP CFSR, and JRA-25, *J. Climate*, 24, 4888 – 4906, <https://doi.org/10.1175/2011JCLI4097.1>, 2011.
- 955 Hoskins, B. J. and Hodges, K. I.: New Perspectives on the Northern Hemisphere Winter Storm Tracks, *J. Atmos. Sci.*, 59, 1041 – 1061,  
[https://doi.org/10.1175/1520-0469\(2002\)059<1041:NPOTNH>2.0.CO;2](https://doi.org/10.1175/1520-0469(2002)059<1041:NPOTNH>2.0.CO;2), 2002.
- Huo, Z., Zhang, D.-L., Gyakum, J., and Staniforth, A.: A Diagnostic Analysis of the Superstorm of March 1993, *Mon. Wea. Rev.*, 123, 1740  
– 1761, [https://doi.org/10.1175/1520-0493\(1995\)123<1740:ADAOTS>2.0.CO;2](https://doi.org/10.1175/1520-0493(1995)123<1740:ADAOTS>2.0.CO;2), 1995.
- Hussain, M. M. and Mahmud, I.: pyMannKendall: a python package for non parametric Mann Kendall family of trend tests., *Journal of Open  
960 Source Software*, 4, 1556, <https://doi.org/10.21105/joss.01556>, 2019.
- Jeglum, M. E., Steenburgh, W. J., Lee, T. P., and Bosart, L. F.: Multi-reanalysis climatology of intermountain cyclones, *Mon. Wea. Rev.*, 138,  
4035–4053, <https://doi.org/10.1175/2010MWR3432.1>, 2010.
- Karremann, M. K., Pinto, J. G., Reyers, M., and Klawa, M.: Return periods of losses associated with European windstorm series in a changing  
climate, *Environ. Res. Lett.*, 9, 124016, <https://doi.org/10.1088/1748-9326/9/12/124016>, 2014.
- 965 Karwat, A., Franzke, C. L. E., and Blender, R.: Long-Term Trends of Northern Hemispheric Winter Cyclones in the Extended ERA5 Re-  
analysis, *J. Geophys. Res.*, 127, e2022JD036952, <https://doi.org/10.1029/2022JD036952>, 2022.
- Kendall, M. G.: Rank correlation methods, Griffin, London, <https://doi.org/10.5555/19521603271>, 1948.
- Klawa, M. and Ulbrich, U.: A model for the estimation of storm losses and the identification of severe winter storms in Germany, *Nat. Hazard  
Earth Sys.*, 3, 725–732, <https://doi.org/10.5194/nhess-3-725-2003>, 2003.
- 970 Kouroutzoglou, J., Flocas, H. A., Hatzaki, M., Keay, K., Simmonds, I., and Mavroudis, A.: Identification of the development mechanisms of  
an explosive cyclone in the central Mediterranean with the aid of the MSG satellite images, in: *Proc. Spie.*, edited by Hadjimitsis, D. G.,

- Themistocleous, K., Michaelides, S., and Papadavid, G., vol. 8795, p. 87951S, International Society for Optics and Photonics, SPIE, <https://doi.org/10.1117/12.2027584>, 2013.
- 975 Kurth, T., Subramanian, S., Harrington, P., Pathak, J., Mardani, M., Hall, D., Miele, A., Kashinath, K., and Anandkumar, A.: FourCast-Net: Accelerating Global High-Resolution Weather Forecasting Using Adaptive Fourier Neural Operators, in: Proceedings of the Platform for Advanced Scientific Computing Conference, PASC '23, Association for Computing Machinery, New York, NY, USA, ISBN 9798400701900, <https://doi.org/10.1145/3592979.3593412>, 2023.
- Laarne, P., Zaidan, M. A., and Nieminen, T.: ennemi: Non-linear correlation detection with mutual information, *Soft. X*, 14, 100686, <https://doi.org/10.1016/j.softx.2021.100686>, 2021.
- 980 Laarne, P., Amnell, E., Zaidan, M. A., Mikkonen, S., and Nieminen, T.: Exploring Non-Linear Dependencies in Atmospheric Data with Mutual Information, *Atmosphere*, 13, <https://doi.org/10.3390/atmos13071046>, 2022.
- Laurila, T. K., Gregow, H., Cornér, J., and Sinclair, V. A.: Characteristics of extratropical cyclones and precursors to windstorms in northern Europe, *Wea. Climate Dyn.*, 2, 1111–1130, <https://doi.org/10.5194/wcd-2-1111-2021>, 2021a.
- Laurila, T. K., Sinclair, V. A., and Gregow, H.: Climatology, variability, and trends in near-surface wind speeds over the North Atlantic and Europe during 1979–2018 based on ERA5, *Int. J. Climatol.*, 41, 2253–2278, <https://doi.org/10.1002/joc.6957>, 2021b.
- 985 Lavers, D. A., Simmons, A., Vamborg, F., and Rodwell, M. J.: An evaluation of ERA5 precipitation for climate monitoring, *Quart. J. Roy. Meteor. Soc.*, 148, 3152–3165, <https://doi.org/10.1002/qj.4351>, 2022.
- Leckebusch, G. C., Ulbrich, U., Fröhlich, L., and Pinto, J. G.: Property loss potentials for European midlatitude storms in a changing climate, *Geophys. Res. Lett.*, 34, <https://doi.org/10.1029/2006GL027663>, 2007.
- 990 Leckebusch, G. C., Renggli, D., and Ulbrich, U.: Development and application of an objective storm severity measure for the Northeast Atlantic region, *Meteorol. Z.*, 17, 575–587, <https://doi.org/10.1127/0941-2948/2008/0323>, 2008a.
- Leckebusch, G. C., Weimer, A., Pinto, J. G., Reyers, M., and Speth, P.: Extreme wind storms over Europe in present and future climate: a cluster analysis approach, *Meteorol. Z.*, 17, 67–82, <https://doi.org/10.1127/0941?2948/2008/0266>, 2008b.
- Li, M., Woollings, T., Hodges, K., and Masato, G.: Extratropical cyclones in a warmer, moister climate: A recent Atlantic analogue, *Geophys. Res. Lett.*, 41, 8594–8601, <https://doi.org/10.1002/2014GL062186>, 2014.
- 995 Liberato, M. L. R., Pinto, J. G., Trigo, I. F., and Trigo, R. M.: Klaus – an exceptional winter storm over northern Iberia and southern France, *Weather*, 66, 330–334, <https://doi.org/10.1002/wea.755>, 2011.
- Liberato, M. L. R., Pinto, J. G., Trigo, R. M., Ludwig, P., Ordóñez, P., Yuen, D., and Trigo, I. F.: Explosive development of winter storm Xynthia over the subtropical North Atlantic Ocean, *Nat. Hazard Earth Sys.*, 13, 2239–2251, <https://doi.org/10.5194/nhess-13-2239-2013>, 1000 2013.
- Lloyd, S.: Least squares quantization in PCM, *IEEE T. Inform. Theory*, 28, 129–137, <https://doi.org/10.1109/TIT.1982.1056489>, 1982.
- Lou, W.-p., Chen, H.-y., Qiu, X.-f., Tang, Q.-y., and Zheng, F.: Assessment of economic losses from tropical cyclone disasters based on PCA-BP, *Nat. Hazards*, 60, 819–829, <https://doi.org/10.1007/s11069-011-9881-x>, 2012.
- Ludwig, P., Pinto, J. G., Reyers, M., and Gray, S. L.: The role of anomalous SST and surface fluxes over the southeastern North Atlantic in the explosive development of windstorm Xynthia, *Quart. J. Roy. Meteor. Soc.*, 140, 1729–1741, <https://doi.org/10.1002/qj.2253>, 2014.
- 1005 Mann, H. B.: Nonparametric tests against trend, *Econometrica: Journal of the econometric society*, pp. 245–259, <https://doi.org/10.2307/1907187>, 1945.
- Mann, H. B. and Whitney, D. R.: On a Test of Whether one of Two Random Variables is Stochastically Larger than the Other, *The Annals of Mathematical Statistics*, 18, 50 – 60, <https://doi.org/10.1214/aoms/1177730491>, 1947.

- 1010 McCallum, E.: The Burns' Day Storm, 25 January 1990, *Weather*, 45, 166–173, <https://doi.org/10.1002/j.1477-8696.1990.tb05607.x>, 1990.
- Menna, M., Martellucci, R., Reale, M., Cossarini, G., Salon, S., Notarstefano, G., Mauri, E., Poulain, P.-M., Gallo, A., and Solidoro, C.: A case study of impacts of an extreme weather system on the Mediterranean Sea circulation features: Medicane Apollo (2021), *Sci. Rep.*, 13, 3870, <https://doi.org/10.1038/s41598-023-29942-w>, 2023.
- MetÉireann: Weather warnings explanation - Met Éireann - The Irish Meteorological Service — met.ie, <https://www.met.ie/>
- 1015 weather-warnings, [Accessed 07-05-2024].
- Metheniti, K.: Rapid cyclogenesis over Ionian Sea | EUMETSAT, 2012.
- METNorway: Vind over land — met.no, <https://www.met.no/vaer-og-klima/ekstremvaervarsler-og-andre-farevarsler/vaerfenomener-som-kan-gi-farevarsel-fra-met/vind-over-land>, [Accessed 07-05-2024].
- Minola, L., Zhang, F., Azorin-Molina, C., Pirooz, A. S., Flay, R., Hersbach, H., and Chen, D.: Near-surface mean and gust wind speeds in
- 1020 ERA5 across Sweden: towards an improved gust parametrization, *Climate Dyn.*, 55, 887–907, <https://doi.org/10.1007/s00382-020-05302-6>, 2020.
- Molina, M. O., Gutiérrez, C., and Sánchez, E.: Comparison of ERA5 surface wind speed climatologies over Europe with observations from the HadISD dataset, *Int. J. Climatol.*, 41, 4864–4878, <https://doi.org/10.1002/joc.7103>, 2021.
- Nagendra, S. S. and Khare, M.: Principal component analysis of urban traffic characteristics and meteorological data, *Transport Res. D-Tr.*
- 1025 E, 8, 285–297, [https://doi.org/10.1016/S1361-9209\(03\)00006-3](https://doi.org/10.1016/S1361-9209(03)00006-3), 2003.
- Nakajo, S., Mori, N., Yasuda, T., and Mase, H.: Global stochastic tropical cyclone model based on principal component analysis and cluster analysis, *J. Appl. Meteor. Climatol.*, 53, 1547–1577, <https://doi.org/10.1175/JAMC-D-13-08.1>, 2014.
- Neu, U., Akperov, M. G., Bellenbaum, N., Benestad, R., Blender, R., Caballero, R., Cocozza, A., Dacre, H. F., Feng, Y., Fraedrich, K., et al.:
- 1030 IMILAST: A community effort to intercompare extratropical cyclone detection and tracking algorithms, *Bull. Amer. Meteor. Soc.*, 94, 529–547, <https://doi.org/10.1175/BAMS-D-11-00154.1>, 2013.
- Nielsen, J. W. and Dole, R. M.: A survey of extratropical cyclone characteristics during GALE, *Mon. Wea. Rev.*, 120, 1156–1168, [https://doi.org/10.1175/1520-0493\(1992\)120<1156:ASOECC>2.0.CO;2](https://doi.org/10.1175/1520-0493(1992)120<1156:ASOECC>2.0.CO;2), 1992.
- Nissen, K. M., Leckebusch, G. C., Pinto, J. G., Renggli, D., Ulbrich, S., and Ulbrich, U.: Cyclones causing wind storms in the Mediterranean: characteristics, trends and links to large-scale patterns, *Nat. Hazard Earth Sys.*, 10, 1379–1391, [https://doi.org/10.5194/nhess-10-1379-](https://doi.org/10.5194/nhess-10-1379-2010)
- 1035 2010, 2010.
- Palutikof, J. P. and Skellern, A. R.: Storm Severity over Britain: a Report to Commercial Union General Insurance, Tech. rep., Climatic Research Unit, School of Environmental Sciences, University of East Anglia, Norwich, UK, 1991.
- Pantillon, F., Davolio, S., Avolio, E., Calvo-Sancho, C., Carrió, D. S., Dafis, S., Flaounas, E., Gentile, E. S., Gonzalez-Aleman, J. J., Gray, S., Miglietta, M. M., Patlakas, P., Pytharoulis, I., Ricard, D., Ricchi, A., and Sanchez, C.: The crucial representation of deep convection
- 1040 for the cyclogenesis of medicane Ianos, *EGUsphere*, 2024, 1–29, <https://doi.org/10.5194/egusphere-2024-1105>, 2024.
- Pasch, R. J., Blake, E. S., Cobb, H. D., and Roberts, D. P.: Tropical cyclone report: Hurricane Wilma 15–25 October 2005, [https://www.nhc.noaa.gov/data/tcr/AL252005\\_Wilma.pdf](https://www.nhc.noaa.gov/data/tcr/AL252005_Wilma.pdf), 2006.
- Pedregosa, F., Varoquaux, G., Gramfort, A., Michel, V., Thirion, B., Grisel, O., Blondel, M., Prettenhofer, P., Weiss, R., Dubourg, V., Vanderplas, J., Passos, A., Cournapeau, D., Brucher, M., Perrot, M., and Duchesnay, E.: Scikit-learn: Machine Learning in Python, *J.*
- 1045 *Mach. Learn. Res.*, 12, 2825–2830, <https://doi.org/10.5555/1953048.2078195>, 2011.
- Petterssen, S. and Smebye, S.: On the development of extratropical cyclones, *Quart. J. Roy. Meteor. Soc.*, 97, 457–482, <https://doi.org/10.1002/qj.49709741407>, 1971.

- Pfahl, S. and Sprenger, M.: On the relationship between extratropical cyclone precipitation and intensity, *Geophys. Res. Lett.*, 43, 1752–1758, <https://doi.org/10.1002/2016GL068018>, 2016.
- 1050 Pinto, J. G., Fröhlich, E. L., Leckebusch, G. C., and Ulbrich, U.: Changing European storm loss potentials under modified climate conditions according to ensemble simulations of the ECHAM5/MPI-OM1 GCM, *Nat. Hazard Earth Sys.*, 7, 165–175, <https://doi.org/10.5194/nhess-7-165-2007>, 2007.
- Priestley, M. D. and Catto, J. L.: Future changes in the extratropical storm tracks and cyclone intensity, wind speed, and structure, *Wea. Climate Dyn.*, 3, 337–360, <https://doi.org/10.5194/wcd-3-337-2022>, 2022.
- 1055 Priestley, M. D., Ackerley, D., Catto, J. L., Hodges, K. I., McDonald, R. E., and Lee, R. W.: An overview of the extratropical storm tracks in CMIP6 historical simulations, *J. Climate*, 33, 6315–6343, <https://doi.org/10.1175/JCLI-D-19-0928.1>, 2020.
- Raible, C. C., Della-Marta, P. M., Schwierz, C., Wernli, H., and Blender, R.: Northern Hemisphere Extratropical Cyclones: A Comparison of Detection and Tracking Methods and Different Reanalyses, *Mon. Wea. Rev.*, 136, 880 – 897, <https://doi.org/10.1175/2007MWR2143.1>, 2008.
- 1060 Reboita, M. S., Crespo, N. M., Torres, J. A., Reale, M., Porfírio da Rocha, R., Giorgi, F., and Coppola, E.: Future changes in winter explosive cyclones over the Southern Hemisphere domains from the CORDEX-CORE ensemble, *Climate Dyn.*, 57, 3303–3322, <https://doi.org/10.1007/s00382-021-05867-w>, 2021.
- Roberts, J., Champion, A., Dawkins, L., Hodges, K., Shaffrey, L., Stephenson, D., Stringer, M., Thornton, H., and Youngman, B.: The XWS open access catalogue of extreme European windstorms from 1979 to 2012, *Nat. Hazard Earth Sys.*, 14, 2487–2501, <https://doi.org/10.5194/nhess-14-2487-2014>, 2014.
- 1065 Rogers, J. C.: North Atlantic Storm Track Variability and Its Association to the North Atlantic Oscillation and Climate Variability of Northern Europe, *J. Climate*, 10, 1635 – 1647, [https://doi.org/10.1175/1520-0442\(1997\)010<1635:NASTVA>2.0.CO;2](https://doi.org/10.1175/1520-0442(1997)010<1635:NASTVA>2.0.CO;2), 1997.
- Rudeva, I. and Gulev, S. K.: Climatology of cyclone size characteristics and their changes during the cyclone life cycle, *Mon. Wea. Rev.*, 135, 2568–2587, <https://doi.org/10.1175/MWR3420.1>, 2007.
- 1070 Sanders, F. and Gyakum, J. R.: Synoptic-dynamic climatology of the “bomb”, *Mon. Wea. Rev.*, 108, 1589–1606, [https://doi.org/10.1175/1520-0493\(1980\)108<1589:SDCOT>2.0.CO;2](https://doi.org/10.1175/1520-0493(1980)108<1589:SDCOT>2.0.CO;2), 1980.
- Schüepp, M., Schiesser, H. H., Huntrieser, H., Scherrer, H. U., and Schmidtke, H.: The winterstorm “Vivian” of 27 February 1990: About the meteorological development, wind forces and damage situation in the forests of Switzerland, *Theor. Appl. Climatol.*, 49, 183–200, <https://doi.org/10.1007/BF00865533>, 1994.
- 1075 Schultz, D. M., Keyser, D., and Bosart, L. F.: The effect of large-scale flow on low-level frontal structure and evolution in midlatitude cyclones, *Mon. Wea. Rev.*, 126, 1767–1791, [https://doi.org/10.1175/1520-0493\(1998\)126<1767:TEOLSF>2.0.CO;2](https://doi.org/10.1175/1520-0493(1998)126<1767:TEOLSF>2.0.CO;2), 1998.
- Seiler, C. and Zwiers, F. W.: How will climate change affect explosive cyclones in the extratropics of the Northern Hemisphere?, *Climate Dyn.*, 46, 3633–3644, <https://doi.org/10.1007/s00382-015-2791-y>, 2016.
- Shahapure, K. R. and Nicholas, C.: Cluster Quality Analysis Using Silhouette Score, in: 2020 IEEE 7th International Conference on Data Science and Advanced Analytics (DSAA), pp. 747–748, <https://doi.org/10.1109/DSAA49011.2020.00096>, 2020.
- 1080 Sinclair, M. R.: Objective Identification of Cyclones and Their Circulation Intensity, and Climatology, *Wea. Forecasting*, 12, 595 – 612, [https://doi.org/10.1175/1520-0434\(1997\)012<0595:OIOCAT>2.0.CO;2](https://doi.org/10.1175/1520-0434(1997)012<0595:OIOCAT>2.0.CO;2), 1997.
- Sinclair, V. A. and Catto, J. L.: The relationship between extra-tropical cyclone intensity and precipitation in idealised current and future climates, *Wea. Climate Dyn.*, 4, 567–589, <https://doi.org/10.5194/wcd-4-567-2023>, 2023.



- 1085 Sinclair, V. A., Rantanen, M., Haapanala, P., Räisänen, J., and Järvinen, H.: The characteristics and structure of extra-tropical cyclones in a warmer climate, *Wea. Climate Dyn.*, 1, 1–25, <https://doi.org/10.5194/wcd-1-1-2020>, 2020.
- Smart, D. J. and Browning, K. A.: Attribution of strong winds to a cold conveyor belt and sting jet, *Quart. J. Roy. Meteor. Soc.*, 140, 595–610, <https://doi.org/10.1002/qj.2162>, 2014.
- Statheropoulos, M., Vassiliadis, N., and Pappa, A.: Principal component and canonical correlation analysis for examining air pollution and meteorological data, *Atmos. Environ.*, 32, 1087–1095, [https://doi.org/10.1016/S1352-2310\(97\)00377-4](https://doi.org/10.1016/S1352-2310(97)00377-4), 1998.
- 1090 Stojanovic, M., Gonçalves, A., Sorí, R., Vázquez, M., Ramos, A. M., Nieto, R., Gimeno, L., and Liberato, M. L. R.: Consecutive Extratropical Cyclones Daniel, Elsa and Fabien, and Their Impact on the Hydrological Cycle of Mainland Portugal, *Water*, 13, 1476, <https://doi.org/10.3390/w13111476>, 2021.
- Suursaar, Ü., Kullas, T., Otsmann, M., Saaremäe, I., Kuik, J., and Merilain, M.: Cyclone Gudrun in January 2005 and modelling its hydrodynamic consequences in the Estonian coastal waters, *Boreal Environ. Res.*, 11, 143, 2006.
- 1095 Thorncroft, C., Hoskins, B., and McIntyre, M.: Two paradigms of baroclinic-wave life-cycle behaviour, *Quart. J. Roy. Meteor. Soc.*, 119, 17–55, <https://doi.org/10.1002/qj.49711950903>, 1993.
- Ulbrich, U., Fink, A., Klawa, M., and Pinto, J. G.: Three extreme storms over Europe in December 1999, *Weather*, 56, 70–80, <https://doi.org/10.1002/j.1477-8696.2001.tb06540.x>, 2001.
- 1100 Vrac, M., Chédin, A., and Diday, E.: Clustering a Global Field of Atmospheric Profiles by Mixture Decomposition of Copulas, *J. Atmos. Ocean Tech.*, 22, 1445 – 1459, <https://doi.org/10.1175/JTECH1795.1>, 2005.
- Wang, J., Chen, L., and Li, S.: Characteristics of spring Mongolian cyclones in the recent 70 years: Background circulations and weather influences, *Int. J. Climatol.*, 44, 328–343, <https://doi.org/10.1002/joc.8342>, 2024.
- Wang, X. L., Feng, Y., Chan, R., and Isaac, V.: Inter-comparison of extra-tropical cyclone activity in nine reanalysis datasets, *Atmos. Res.*, 181, 133–153, <https://doi.org/10.1016/j.atmosres.2016.06.010>, 2016.
- 1105 Watanabe, T., Takenaka, H., and Nohara, D.: Framework of forecast verification of surface solar irradiance from a numerical weather prediction model using classification with a Gaussian mixture model, *Earth Space Sci.*, 7, e2020EA001260, <https://doi.org/10.1029/2020EA001260>, 2020.
- Weijenborg, C. and Spengler, T.: Diabatic Heating as a Pathway for Cyclone Clustering Encompassing the Extreme Storm Dagmar, *Geophys. Res. Lett.*, 47, e2019GL085777, <https://doi.org/10.1029/2019GL085777>, e2019GL085777 10.1029/2019GL085777, 2020.
- 1110 Wernli, H., Dirren, S., Liniger, M. A., and Zillig, M.: Dynamical aspects of the life cycle of the winter storm ‘Lothar’ (24–26 December 1999), *Quart. J. Roy. Meteor. Soc.*, 128, 405–429, <https://doi.org/10.1256/003590002321042036>, 2002.
- Zappa, G., Shaffrey, L. C., and Hodges, K. I.: The Ability of CMIP5 Models to Simulate North Atlantic Extratropical Cyclones, *J. Climate*, 26, 5379 – 5396, <https://doi.org/10.1175/JCLI-D-12-00501.1>, 2013a.
- 1115 Zappa, G., Shaffrey, L. C., Hodges, K. I., Sansom, P. G., and Stephenson, D. B.: A Multimodel Assessment of Future Projections of North Atlantic and European Extratropical Cyclones in the CMIP5 Climate Models, *J. Climate*, 26, 5846 – 5862, <https://doi.org/10.1175/JCLI-D-12-00573.1>, 2013b.
- Zillman, J. W. and Price, P. G.: On the thermal structure of mature Southern Ocean cyclones, *Aust. Meteorol. Mag.*, 20, 34–48, <https://cir.nii.ac.jp/crid/1572261549005376128>, 1972.
- 1120 Zou, H. and Xue, L.: A selective overview of sparse principal component analysis, *P. IEEE*, 106, 1311–1320, <https://doi.org/10.1109/JPROC.2018.2846588>, 2018.

Zou, H., Hastie, T., and Tibshirani, R.: Sparse principal component analysis, *J. Comput. Graph. Stat.*, 15, 265–286, <https://doi.org/10.1198/106186006X113430>, 2006.