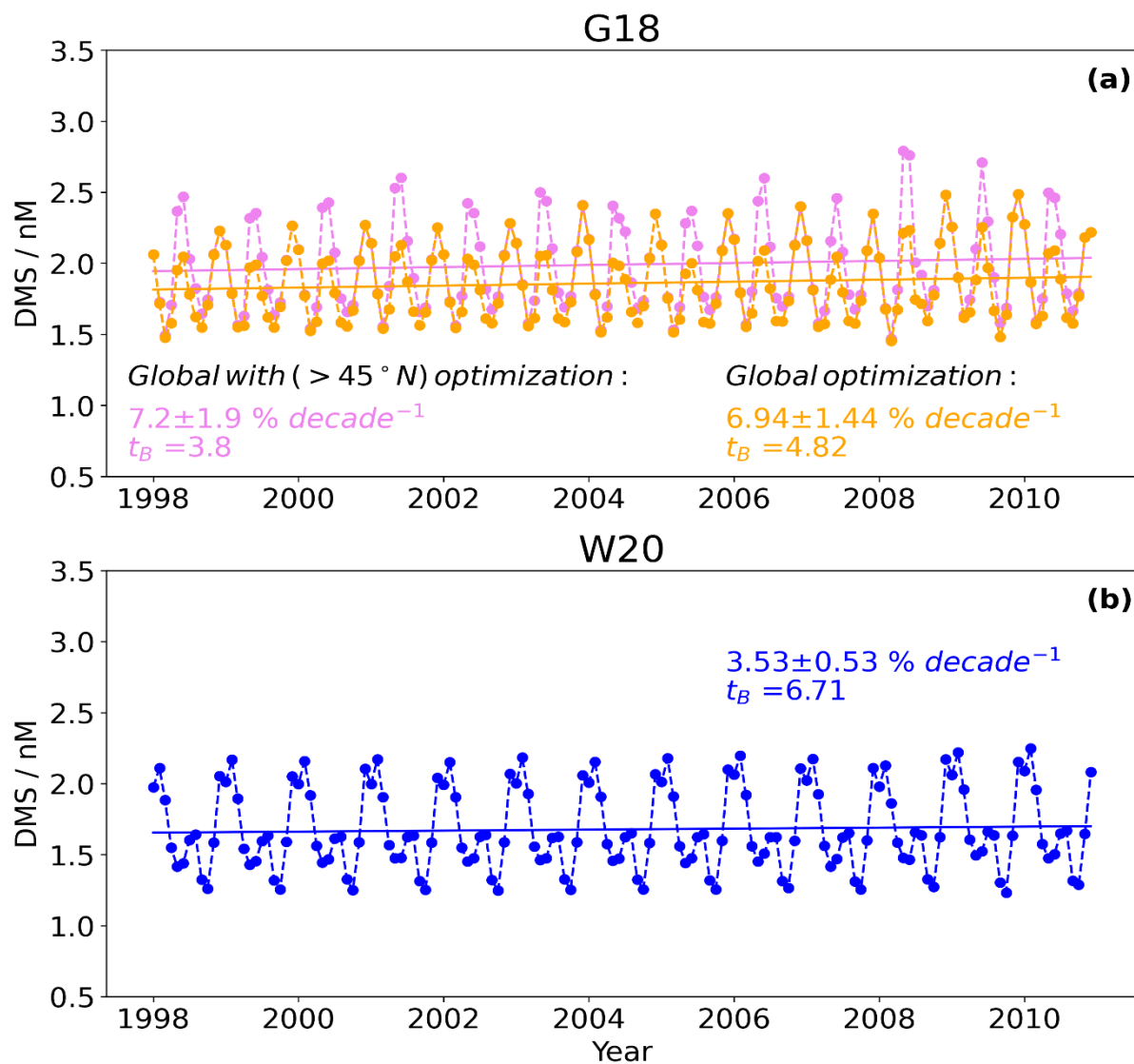


# Dimethyl sulfide (DMS) climatologies, fluxes and trends-Part A: Differences between seawater DMS estimations

Supplementary Figure :



5 **Figure S1:** Inter-annual trends in all the seawater DMS concentrations for (a) G18 and (b) W20. The inter-annual trend is significant and positive. The trend is calculated using the bootstrap resampling method. In G18, trend is again positive and significant if we use optimized coefficients in parametrization for  $> 45^\circ \text{N}$ .