

# Long-term changes in the thermodynamic structure of the lowermost stratosphere inferred from ERA5 reanalysis data

Franziska Weyland<sup>1</sup>, Peter Hoor<sup>1</sup>, Daniel Kunkel<sup>1</sup>, Thomas Birner<sup>2,3</sup>, Felix Plöger<sup>4,5</sup>, and Katharina Turhal<sup>4,5</sup>

<sup>1</sup>Institute for Atmospheric Physics, Johannes Gutenberg University Mainz, Germany

<sup>2</sup>Meteorological Institute, Ludwig-Maximilians-University Munich, Germany

<sup>3</sup>Institute for Physics of the Atmosphere, Deutsches Zentrum für Luft- und Raumfahrt, Oberpfaffenhofen, Germany

<sup>4</sup>Institute of Climate and Energy Systems, Stratosphere (ICE-4), Forschungszentrum Jülich, Jülich, Germany

<sup>5</sup>Institute for Atmospheric and Environmental Research, University of Wuppertal, Wuppertal, Germany

**Correspondence:** Franziska Weyland (franziska.weyland@uni-mainz.de)

**Abstract.** The lowermost stratosphere (LMS) plays an important role for stratosphere-troposphere coupling and the Earth's radiation balance. This study investigates the effects of long-term changes of the tropopause and the lower stratospheric isentropic structure on the mass of the LMS. We ~~use compare five modern reanalyses: ERA5 reanalysis data from 1979–2019, focusing-, ERA-Interim, MERRA-2, JRA-55 and JRA3Q.~~ The focus is on changes after 1998, which marks the anticipated beginning of stratospheric ozone recovery. The trend analysis is performed with a dynamic linear regression model (DLM), capable of modeling non-linear trends.

According to our study, ~~isentropes isentropic pressure~~ in the lower stratosphere (here 380–430 K) ~~show upward shows negative~~ trends in the tropics and ~~downward positive~~ trends in the extratropics. This is consistent with a strengthening of the Brewer-Dobson circulation. In the Northern ~~Hemisphere hemisphere~~ (NH), we find that the extratropical tropopause is rising ~~at a mean-, accompanied by decreasing pressure at an average~~ rate of  $-1$  hPa/decade. ~~For the- Additionally, our results indicate that the tropical tropopause in the NH has expanded polewards by  $0.5^\circ$  latitude between 1998–2019. In the~~ Southern hemispheric (SH) extratropics, the lapse rate tropopause shows a downward tendency of up to  $+2$  hPa/decade after ~~1998–1998, consistent across all reanalyses except JRA3Q.~~ The tropical tropopause and the cold point is rising ~~with an average trend of roughly  $-0.5$  hPa/decade-, consistent with increasing potential temperatures. Additionally, we find that-, accompanied by~~ ~~decreasing pressure at a rate of ca.  $-0.5$  hPa/decade in all reanalyses. The sign of~~ the tropical tropopause ~~in the NH has expanded polewards by  $0.5^\circ$  latitude~~ potential temperature trends, however, differs across the reanalyses. This can be attributed to contrasting (absolute) temperature trends in the tropical tropopause region, such as at the 100 hPa pressure level.

Consistent with the upward and poleward trend of the NH tropopause, the mass of the LMS is decreasing by 2–3 % between 1998–2019 if a fixed isentropic (380 K) is chosen as the upper LMS boundary. ~~This- In ERA5, as well as MERRA-2 and~~ ~~ERA-Interim, this~~ mass decline disappears if dynamical upper LMS boundaries are used, that take the upward trends of the tropical tropopause into account.

## 1 Introduction

The lowermost stratosphere (LMS), also referred to as stratospheric part of the "middle world", is defined as the region of the stratosphere where isentropic surfaces intersect with the tropopause (Holton et al., 1995). The "middle world" can be distinguished from the "overworld", where isentropes are situated entirely in the stratosphere, and the "underworld" with isentropes exclusively located in the troposphere (Hoskins, 1991). Along these intersecting isentropes, quasi-isentropic exchange between the tropical troposphere and the extratropical stratosphere is possible. The upper boundary of the LMS has often been approximated by the 380 K isentrope which, in turn, can be regarded as an approximation of the tropical tropopause (e.g., Appenzeller et al., 1996; Schoeberl, 2004; Olsen et al., 2013; Wang and Fu, 2021).

The LMS includes the extratropical transition layer (ExTL) (WMO, 2003), which has been defined on the basis of trace gas gradient changes in the LMS (e.g. Hoor et al., 2004), consistent with trajectory studies (Berthet et al., 2007). The ExTL is characterized by irreversible mixing across the tropopause and high variability of radiatively relevant trace gases like water vapor and ozone (Pan et al., 2004; Hoor et al., 2002; Fischer et al., 2000). The ExTL partly coincides with the tropopause inversion layer (TIL) as marked by a maximum of static stability (Birner et al., 2002; Birner, 2006). Further, the ExTL region is characterized by strong shear occurrence just around the extratropical tropopause (Kunkel et al., 2019; Kaluza et al., 2021). The LMS is essential for the Earth's radiation budget (e.g., Forster and Shine, 1997, 2002; Zhang et al., 2004; Riese et al., 2012) since it constitutes a region of strong composition gradients of, e.g., ozone and water vapor. Changes of the LMS composition affect local temperature gradients (e.g., Randel et al., 2007) with impacts on climate and circulation (e.g., Hegglin and Shepherd, 2009; Charlesworth et al., 2023). Furthermore, the LMS contains a significant proportion of stratospheric mass (ca. 20%), and thereby a considerable part of total column ozone, due to the exponential density decrease with altitude. LMS and stratospheric mass show a seasonal cycle, closely following the seasonal cycle of tropopause height (Appenzeller et al., 1996). On short time scales, LMS mass variations are linked to stratospheric-tropospheric mass exchange (e.g., Stohl, 2003; Schoeberl, 2004; Hegglin et al., 2010; Škerlak et al., 2014). This affects the abundance of trace gases such as ozone, which show sharp gradients in the UTLS ([Upper Troposphere - Lower Stratosphere](#)). Due to this transport barrier property, which gives rise to strong trace gas gradients, the tropopause location is of special importance.

The LMS is bounded below by the extratropical tropopause. The location of the (extratropical) tropopause can be defined thermally based on the temperature lapse rate (WMO, 1957) or the potential temperature gradient (Tinney et al., 2022), dynamically by choosing a characteristic value of potential vorticity (PV) (e.g., Hoerling et al., 1991) or by PV gradients (Kunz et al., 2011), and chemically via trace gas gradients (e.g., ozone) or trace gas correlations (e.g., Bethan et al., 1996; Fischer et al., 2000). The tropical tropopause level, which may serve as an upper boundary for the LMS can be defined thermally by the (potential) temperature lapse rate or the cold point, i.e., the local temperature minimum (Holton et al., 1995), or as an isentrope, e.g., the potential temperature level of 380 K.

55 Since the tropopause is strongly coupled to the temperature profile in the lower and middle atmosphere, the tropopause height is sensitive to climate changes and variability. Specifically, the tropopause height has been shown to be a robust fingerprint of anthropogenic climate change. Increasing concentrations of well-mixed greenhouse gases (GHG) lead to a warming of the troposphere and cooling of the stratosphere, reinforced by the depletion of stratospheric ozone. Warming of the troposphere and cooling of the stratosphere result in a tropopause rise (e.g., Seidel et al., 2001; Santer et al., 2004; Seidel and Randel, 60 2006). In addition to radiative effects, stratospheric dynamics, as manifested by the Brewer-Dobson circulation (BDC), affect the location of the tropopause and the equator-to-pole contrast in tropopause height (Birner, 2010b).

A rise of the global tropopause of the order of  $-1 \text{ hPa/decade}$   $50\text{--}100 \text{ m/decade}$  has been reported in many studies of radiosonde (e.g., Seidel and Randel, 2006; Xian and Homeyer, 2019; Meng et al., 2021) and satellite observations (e.g., Schmidt 65 et al., 2008; Meng et al., 2021) as well as in reanalysis data (e.g., Wilcox et al., 2012a; Xian and Homeyer, 2019) and climate models (e.g., Santer, 2003a) and for different tropopause definitions. Even though pressure surfaces are rising together with the tropopause as a result of the thermal expansion of the troposphere (e.g., Eichinger and Šácha, 2020), it has been found that tropopause pressure trends are negative of the order of  $-1 \text{ hPa/decade}$ , apparently exceeding isobaric height trends (e.g., Santer, 2003a; Seidel and Randel, 2006; Wilcox et al., 2012a). Natural variability has been found to play a minor role in 70 tropopause trends (Sausen and Santer, 2003; Meng et al., 2021). Instead, model experiments by Santer (2003b) suggest that 80 % of the tropopause rise between 1979–1999 are attributable to anthropogenic influence, primarily increasing greenhouse gas emissions and the resulting warming of the troposphere. The tropospheric warming was found to lead to a persistent lifting of the tropopause, despite the warming of the stratosphere due to the recovery of stratospheric ozone (Pisoft et al., 2021; Meng et al., 2021).

75 ~~Cold-point temperature trends in the tropics show large uncertainties, according to Tegtmeier et al. (2020), but suggest negative trends of  $-0.3$  to  $-0.6 \text{ K/decade}$  based on the JRA-25. In the tropics, JRA-55, MERRA and MERRA2 reanalyses. The negative temperature tendency goes along with a tendency towards lower cold point pressure of the order of  $-1 \text{ hPa/decade}$ . In ERA-Interim, on the other hand, the cold point temperature shows no trend ( $0 \text{ K/decade}$ ). The tropical tropopause layer (TTL) has been found to exhibit negative temperature trends of  $-0.5$  to  $-1 \text{ K/decade}$  during~~ is rising together with the lapse rate tropopause (e.g., Tegtmeier et al., 2020; Zou et al., 2023). Temperature trends in the tropical lower stratosphere and the cold point show large uncertainties. Tegtmeier et al. (2020) report small negative cold point temperature trends for the time period 1979–2005 ~~based on reanalysis data and radiosonde observations (Tegtmeier et al., 2020).~~ for different reanalyses. Results by Zou et al. (2023) agree for the same time period, but suggest a warming of the tropical tropopause from 2006–2021 in ERA5. A similar trend behavior has been reported by Fu et al. (2019) for TTL temperatures from satellite observations. Before 2000, 85 temperatures show small but significant negative trends, consistent with Tegtmeier et al. (2020), but no trend thereafter.

The largest trends in tropopause height are usually apparent in the subtropics around the tropopause break, which can be associated with a transition from lower extratropical values to significantly higher levels characteristic for the tropical tropopause. This effect can be understood as a broadening of the tropics and has been observed in radiosonde and satellite data (e.g., Seidel

90 and Randel, 2007; Meng et al., 2021) as well as reanalysis data (e.g., Lu et al., 2009; Birner, 2010a; Wilcox et al., 2012a).  
However, evidence for recent tropical narrowing has been reported by Zou et al. (2023). Xian and Homeyer (2019) find a  
dipole structure with regions of increasing and decreasing tropopause altitude around the mean tropopause break in different  
zonally resolved reanalyses for the time period 1981–2015. In latitude coordinates relative to the tropopause break, the dipole  
structure mostly disappears and tropopause trends become largest around the mean tropopause break which agrees with zonal  
95 mean analyses. Robust tropical widening has also been documented based on other metrics that, however, do not necessarily  
correlate well with variations in the location of the tropopause break (e.g., Staten et al., 2018; Grise et al., 2019). Turhal et al.  
(2024) report a tropical widening above 370 K and below 340 K but a narrowing of the tropospheric width in the region in  
between for the isentropic PV-gradient tropopause from reanalysis data between 1980–2017.  
In addition to the general widening of the tropics, the frequency of double tropopause events, i.e. poleward excursions of  
100 the tropical above the extratropical tropopause, is found to have increased (Castanheira et al., 2009; Xian and Homeyer, 2019).  
This trend likely reflects an increase in baroclinicity in UTLS, driven by the GHG-induced climate change (Castanheira et al., 2009)  
~

In addition to the observed long-term changes of the tropopause location, climate model projections agree on an accelera-  
105 tion of the Brewer-Dobson circulation (BDC) as a consequence of the greenhouse-gas induced climate change (e.g., Butchart,  
2014). According to Oberländer-Hayn et al. (2016) and Šácha et al. (2024), it is more precise to speak about a lifting of the  
circulation, which is connected to the tropopause expansion itself. Stratospheric temperature changes linked to stratospheric  
ozone additionally influence the BDC evolution. In response to the increased tropical upwelling (extratropical downwelling),  
resulting in adiabatic cooling (heating), the temperature structure of the stratosphere is expected to change.  
110 Observations of the BDC behavior are only possible indirectly and the different approaches give a less clear picture about recent  
BDC trends than model simulations. Thompson and Solomon (2009) for example, report trends of lower stratospheric tem-  
perature and ozone between 1979–2006 from satellite observations that agree with an increased BDC, consistent with findings  
by Tegtmeier et al. (2020) from reanalysis data and observations for the same time period (1979-2005). Fu et al. (2019) use  
satellite observations of stratospheric temperatures to estimate an acceleration of the mean BDC by 1.7%/decade between  
115 1980–2018 but a recent deceleration between 2000–2018, ~~especially in the Southern hemisphere (SH).~~ This is consistent with  
tropical lower stratospheric temperature trends close to zero within this period, inferred by Zou et al. (2023) from reanalyses  
data. The temperature reduction in the tropical tropopause region and at the cold point reported ~~by Tegtmeier et al. (2020) are~~  
~~for the time period 1979–2005 by Tegtmeier et al. (2020) is~~ consistent with increased tropical upwelling. However, different  
reanalyses often show a significant spread when compared, whether in terms of, e.g., temperature trends in the TTL region  
120 (e.g., Tegtmeier et al., 2020) or dynamical tropical upwelling (e.g., Šácha et al., 2024).

All in all, the thermodynamic structure of the lowermost stratosphere can be expected to change in response to increasing  
greenhouse gas concentrations and the recovery of stratospheric ozone (e.g. IPCC, 2023, Charlesworth et al., 2023). This study  
investigates the effect of long-term changes of the tropopause and the lower stratospheric potential temperature structure and

125 their impact on the mass of the lowermost stratosphere on the basis of ~~ERA5 reanalysis data~~. We reanalysis data for the time  
period 1979–2019. We compare results from five modern reanalyses: ERA5, ERA-Interim, MERRA-2, JRA-55 and JRA3Q.  
To illustrate our metrics for examining the LMS structure, we present results for ERA5 before generalizing our findings for all  
data sets. We focus on the time period after 1998, which marks the anticipated beginning of stratospheric ozone recovery.

130 The data and regression model used for this study are described in Sect. 2. Thereafter, Sect. 3 presents and discusses the  
results, divided into subsections concerning the temporal evolution of the tropopause (Sect. 3.1) and the lower stratospheric  
potential temperature structure (Sect. 3.2) as well as the mass of the lowermost stratosphere (Sect. 3.3). Sect. 3.3 is further  
divided into a consideration of the LMS boundary surfaces, an LMS climatology and LMS mass trends between 1998–2019.  
The final conclusions are presented in Sect. 4.

## 135 2 Data and methods

### 2.1 Data

Reanalysis data sets are valuable assets to study atmospheric features from the process to quasi-climatological scales. In the  
UTLS we know that differences between the various reanalysis exist as well as differences to observations (Fujiwara et al., 2022)  
. We therefore conduct our analysis for five reanalyses, four of which have been widely used in recent years, i.e. ERA5  
140 (Hersbach et al., 2020), ERA-Interim (Dee et al., 2011), MERRA-2 (Gelaro et al., 2017) and JRA-55 (Kobayashi et al., 2015)  
as well as the recently published JRA3Q (Kosaka et al., 2024). For the introduction and illustration of our metrics to assess the  
structure of the LMS, we use ERA5 before we generalize our findings to all other data sets.

For this study, ERA5 monthly mean data for the time period 1979–2019 has been used ~~-(Hersbach et al., 2020), 1979 marking~~  
145 the beginning of the satellite era. For the time period 2000–2006, the sub-reanalysis ERA5.1 replaces ERA5, correcting the  
reanalysis for a cold bias in the lower stratosphere (Simmons et al., 2020). We calculated the monthly mean data and the as-  
sociated standard deviations from the hourly available ERA5 data. ERA5 has 137 hybrid sigma-pressure model levels in the  
vertical. ERA5 thus has the finest vertical resolution among modern reanalyses. In addition to the model level data, ECMWF  
provides the model data interpolated onto 37 pressure levels between 1000 hPa and 1 hPa. On pressure levels, the vertical  
150 grid spacing of ERA5 in the UTLS is 25 hPa to 50 hPa, which corresponds to roughly 600–1200 m. Furthermore, model data  
interpolated on the 2 PVU surface is available from ECMWF directly (Hersbach et al., 2020). We use ERA5 data on pressure  
levels and 2 PVU on a regular horizontal grid with a constant grid spacing of  $0.25^\circ$  in longitude and latitude.

In addition, we use monthly mean data from ERA-Interim (Dee et al., 2011), MERRA-2 (Gelaro et al., 2017), JRA-55 (Kobayashi et al., 20  
155 and JRA3Q (Kosaka et al., 2024) for the same time period as ERA5. However, ERA-Interim is only available until 2018 and the  
MERRA-2 time series begins in 1980. We use all data on the provided pressure levels and regular horizontal grids. ERA-Interim  
provides 23 pressure levels, with the same spacing as ERA5 in the UTLS, interpolated from 60 hybrid sigma-pressure model

160 levels and a horizontal grid spacing of  $0.75^\circ$  latitude x  $0.75^\circ$  longitude. MERRA-2 comes with 42 pressure levels from 72 model levels and a horizontal grid of  $0.5^\circ$  x  $0.625^\circ$ . JRA-55 contains 37 pressure levels from 60 model levels and a horizontal grid of  $1.25^\circ$  x  $1.25^\circ$ . JRA3Q provides 40 pressure levels from 100 model levels and a horizontal grid of  $1.25^\circ$  x  $1.25^\circ$ . Tab.1 presents an overview of the vertical pressure levels available in the UTLS across the different reanalyses. A more detailed comparison of the vertical levels across the reanalysis can be found in Fujiwara et al. (2022) and JMA (2022).

Data set	UTLS pressure levels [hPa]														
ERA5	50	70		100	125	150	175	200	225	250	300	350	400	450	500
ERA-Interim	50	70		100	125	150	175	200	225	250	300	350	400	450	500
MERRA-2	50	70		100		150		200		250	300	350	400	450	500
JRA-55	50	70		100	125	150	175	200	225	250	300	350	400	450	500
JRA3Q	50	70	85	100		150	175	200	225			350	400		500

Table 1. Overview of the vertical pressure levels available in the UTLS across the reanalyses used in this study.

## 2.2 Tropopause detection

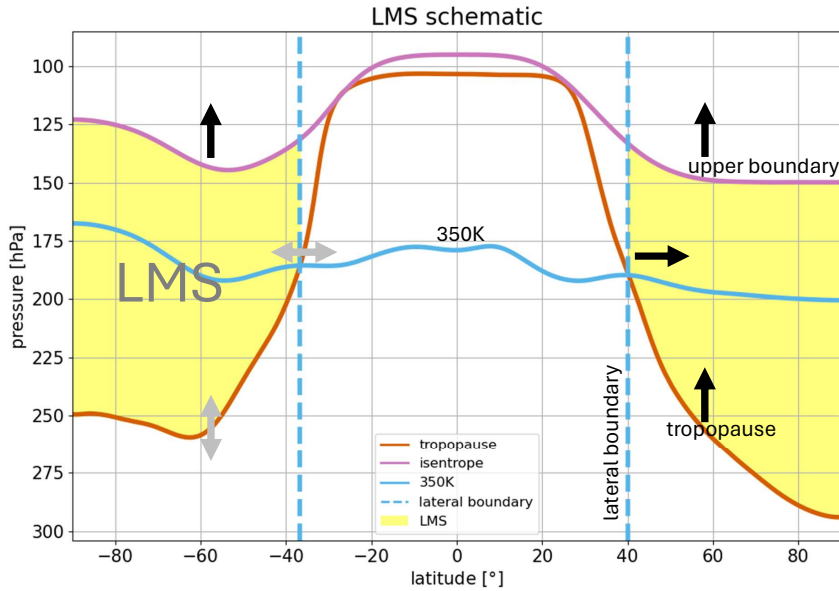
To determine the lapse rate tropopause according to WMO (1957) from ~~ERA5 data~~ all five reanalysis data sets, we apply an algorithm closely following that of Birner (2010a), based on the work of Reichler et al. (2003). The algorithm computes the temperature lapse rate on  $p^k = p^{R_d/c_p}$  half levels (where  $p$  is the pressure,  $R_d$  is the specific gas constant and  $c_p$  is the heat capacity at constant pressure for dry air), according to equations 1)–4) in Reichler et al. (2003). Subsequently, the algorithm identifies the lowest ~~pressure half~~ level at which the lapse rate ~~corresponds to~~ becomes smaller than 2 K/km. Following Birner (2010a), a preliminary tropopause is then identified by linear interpolation of  $p^k$  and all other variables to a lapse rate of exactly 2 K/km (stratification threshold) ~~and remains below this value on average~~. Second, the algorithm checks whether the lapse rate remains on average below 2 K/km for all higher levels within 2 km (thickness criterion). Therefore, a temporal level at 2 km distance to the preliminary tropopause is added and the algorithm successively checks the average lapse rate for all levels between the preliminary tropopause and 2 km distance. If the preliminary tropopause does not fulfill the thickness criterion, the next higher half level fulfilling the stratification threshold is tested. The search range is limited to 500–75 hPa ~~to avoid unreasonable values, for example due to surface inversions~~. At high latitudes, especially over the Antarctic continent in austral winter, it can be difficult to obtain a meaningful lapse rate tropopause due to weak stratification (Zängl and Hoinka, 2001). We therefore limit the tropopause pressure at latitudes  $>50^\circ$  to a minimum pressure of 150 hPa. If the detected tropopause pressure falls below this limit, the thickness criterion is suspended and the highest pressure ( $<500$  hPa) corresponding to a lapse rate of 2 K/km represents the tropopause. Missing values are filled by bilinear interpolation. ~~The detected lapse rate tropopause agrees well with the ERA-Interim lapse rate tropopause in Gettelman et al. (2010) and Wilcox et al. (2012b)~~.

In addition to the thermal tropopause, ~~a dynamical tropopause has been analyzed~~ we present an analysis of the dynamical tropopause in ERA5. ECMWF provides ERA5 model level data interpolated onto the 2PVU isosurface which serves as

the dynamical tropopause for this study. The 89 hPa isobar is taken as tropopause cap for cases when 2 PVU is ~~below at~~  
 185 ~~lower pressure than~~ 89 hPa to avoid unreasonably large altitudes for the tropopause towards the equator (Hersbach et al.,  
 2020; ECMWF, 2016). ~~Not all reanalyses provide data on the 2 PVU level or a potential vorticity variable in general. As~~  
~~consistency of the dynamical tropopause across the reanalyses is therefore not guaranteed, we present trends regarding the~~  
~~2 PVU tropopause only for ERA5 as an example.~~

190 Between 20°N–20°S, the cold point serves as an alternative metric to estimate the tropical tropopause (Holton et al., 1995).  
 To deduce the cold point tropopause ~~from all five reanalyses~~, we determine pressure and potential temperature at the level  
 corresponding to a lapse rate of 0 K/km.

### 2.3 LMS mass



**Figure 1.** Schematic of the LMS. The LMS mass is enclosed by a lower boundary (tropopause, red), an upper boundary (purple) and a lateral boundary (blue vertical lines). The lateral boundary in this study is defined as the intersection between the tropopause and the 350 K isentrope, approximating the location of the subtropical jet streams and the maximum PV-gradient, marking a transport barrier. The arrows indicate the long term changes of the boundary surfaces, affecting the LMS mass as presented in Sect. 3.1 and 3.3.1. Figure 7 shows the location of the different LMS boundary surfaces compared in this study.

195 ~~Following Appenzeller et al. (1996), In order to determine~~ the LMS mass  $M(t)$  ~~is obtained from the three-dimensional~~  
~~integral of the pressure differences between the tropopause  $p_1(\lambda, \Phi, t)$  and the pressure at the upper boundary  $p_2(\lambda, \Phi, t)$~~



at every grid point and time step:-

$$M(t) = \int_0^{2\pi} \int_{-\frac{\pi}{2}}^{\frac{\pi}{2}} \int_{p_1(\lambda, \Phi, t)}^{p_2(\lambda, \Phi, t)} -\frac{1}{g} dp \cos \Phi d\Phi d\lambda,$$

$g$  is the gravity constant,  $\lambda$  is the longitude,  $\Phi$  is the latitude and  $dp$  is the pressure difference. ERA5 data is used to calculate the LMS mass with respect to the lapse rate tropopause and the 2 PVU tropopause, appropriate LMS boundary surfaces have to be defined. The tropopause serves as the lower boundaries of the LMS. Differing from boundary. For the upper LMS boundary, unlike most approaches, we will not only use a fixed isentropic value for the upper boundary of the LMS. Instead, in this study the upper LMS boundary surface depends on the potential temperature at the tropical tropopause. Therefore, we determine the pressure at the isentrope corresponding to the mean potential temperature at the tropical (10°N–10°S) lapse rate tropopause (PPT10mean) as well as at the cold point (PPTcp10mean) for every time step. In many LMS studies, the 380 K isentrope has been used to approximate of the upper LMS edge (e.g., Appenzeller et al., 1996; Wang and Fu, 2021). In this study, we compare 380 K with the dynamically defined upper boundaries (PPT10mean and PPTcp10mean).

The lateral LMS boundary in this study is defined as the latitude at which the respective monthly mean tropopause intersects with the 350 K isentrope. This intersection is determined by the sign change of the pressure difference between the tropopause and the isentrope. The latitude of intersection between the tropopause and 350 K roughly marks the location of the subtropical jet stream (e.g., Manney et al., 2011; Gettelman et al., 2011). Specifically, at 350 K, the lapse rate tropopause and the 2 PVU surface are near the isentropic PV-gradient tropopause, a transport barrier separating the extratropical lower stratosphere from the tropical troposphere (Kunz et al., 2011; Turhal et al., 2024). The isentropic PV-gradient tropopause for the time period 1979–2019 was derived according to Turhal et al. (2024) and interpolated to pressure and potential temperature fields between 50°N–50°S to be directly comparable to the lapse rate tropopause and 2 PVU.

215

Following Appenzeller et al. (1996), the LMS mass  $M(t)$  is obtained from the three dimensional integral of the pressure differences between the tropopause  $p_1(\lambda, \Phi, t)$  and the pressure at the upper boundary  $p_2(\lambda, \Phi, t)$  at every grid point and time step:

$$M(t) = \int_0^{2\pi} \int_{-\frac{\pi}{2}}^{\frac{\pi}{2}} \int_{p_1(\lambda, \Phi, t)}^{p_2(\lambda, \Phi, t)} -\frac{1}{g} dp \cos \Phi d\Phi d\lambda, \quad (1)$$

$g$  is the gravity constant,  $\lambda$  is the longitude,  $\Phi$  is the latitude and  $dp$  is the pressure difference. All five reanalyses are used to calculate the LMS mass with respect to the lapse rate tropopause as the lower LMS boundary. For ERA5, the 2 PVU dynamical tropopause is used in addition.

220



## 2.4 Regression tools

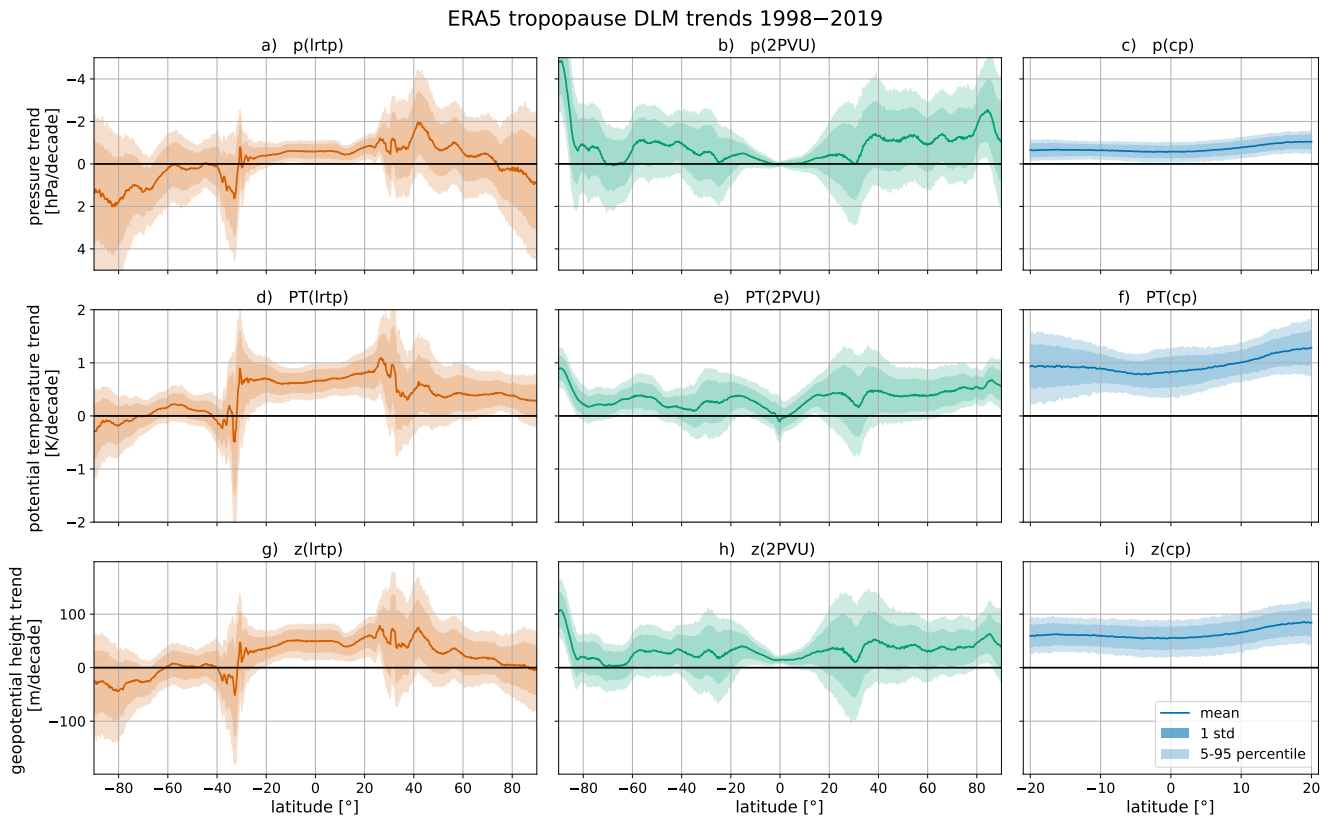
We use the dynamic linear regression model (DLM) by Laine et al. (2014) for the time series analyses in this study. The DLM has proved to be useful for trend estimation in many studies (e.g., Ball et al., 2017, 2018, 2019; Karagodin-Doyennel et al., 2022; Bognar et al., 2014; Laine et al., 2014; Ball et al., 2017, 2018, 2019; Karagodin-Doyennel et al., 2022; Bognar et al., 2022; Minganti et al., 2022) due to its ability to identify non-linear trends, smoothly varying in time without prior specification of possible inflection dates. ~~The DLM decomposes the data time series into~~ Another strength of DLM is the rigorous treatment of uncertainties in the data and the regression coefficients by simultaneously estimating all model components. These model components include a non-linear background trend, a seasonal cycle composed of a 6 and a 12 months period and an autoregressive process. The user is able to add regressor variables, assessing causes of natural variability. For the DLM trend analyses in this study, we use regressors to account for El-Niño/Southern Oscillation (NOAA), the quasi-biennial oscillation at 30 and 50 hPa (FU-Berlin) as well as for stratospheric (volcanic) aerosol (Thomason et al., 2018) optical depth (SAOD) (Thomason et al., 2018). The same regressors have been used in different studies investigating changes of UTLS characteristics (e.g., Seidel and Randel, 2006; Meng et al., 2018). All regressors are normalized and, except ~~SOAD~~SAOD, centered around zero. In order to assess the robustness of the trends and the effect of the regressors, we conducted sensitivity tests in which the DLM was run with and without regressors. Overall, the results showed no strong dependency on the used regressors. However, cold point pressure trends, for example, become more significant when regressors are used (not shown).

The DLM is a Bayesian model based on the principles of Kalman filtering. The algorithm estimates the future system state based on the previous estimates and the variance of the underlying data. The DLM uses an iterative process ~~;~~-based on the Markov chain Monte Carlo (MCMC) method ~~;~~to infer possible system state time series from the Kalman algorithm outputs. Further details about the DLM can be found in Laine et al. (2014). The python based model code (dlmmc) is publicly available (Alsing, 2019).

In this study, the DLM runs provide 2000 possible model state estimates ~~;~~~~after an additional 1000 samples that are considered as warm-up and discarded.~~ Sensitivity experiments conducted as part of this study have shown that increasing the number of DLM samples (to e.g. 10 000) does not significantly improve the results, but comes at a considerable computational cost. The focus is on the hidden mean trend estimates. In the following, the DLM mean trend state time series is referred to as DLM trend state. The terms "trend" or "change" denote the DLM trend state difference between two dates, usually between January 1998 and December 2019. The fraction of DLM samples resulting in a negative (positive) change between two dates serves as evaluation of the confidence of the trend. The use of the term "statistical significance" refers to the probability of an overall decrease (increase) >95 % instead of frequentist significance tests. Ball et al. (2018, 2019) use this approach to evaluate their ozone trend analysis.

### 3 Structural changes in the lowermost stratosphere based on ERA5 reanalysis data

#### 255 3.1 Temporal evolution of the tropopause

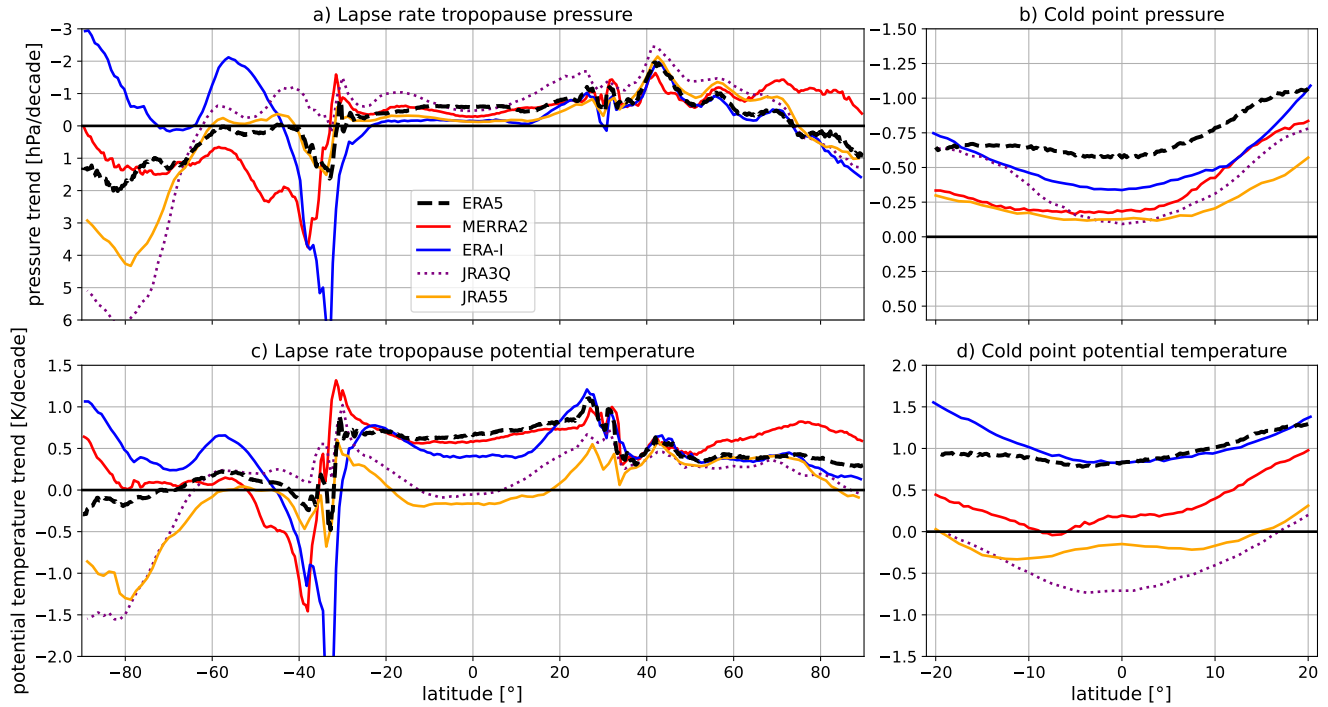


**Figure 2.** Zonal mean tropopause pressure (upper panels) and potential temperature (middle row) and geopotential height (lower panels) trends between 1998–2019 as estimated by the DLM from ERA5 data. Note that the pressure trend axis in (a) is inverted because decreasing pressure implies is associated with an upward trend in the pressure coordinate system. The lines show the mean DLM trends, the darker shading denotes the associated standard deviation. Colored and the lighter shading highlights regions with trends of at least 95% significance the 5–95 percentile. Regions with grey shading are considered to show statistically insignificant trends. Red color is associated with the lapse rate tropopause (left panels), green color (dashed line center column) indicates the 2 PVU dynamic tropopause (capped at 89 hPa in the tropics) and blue color (right panels) the cold point.

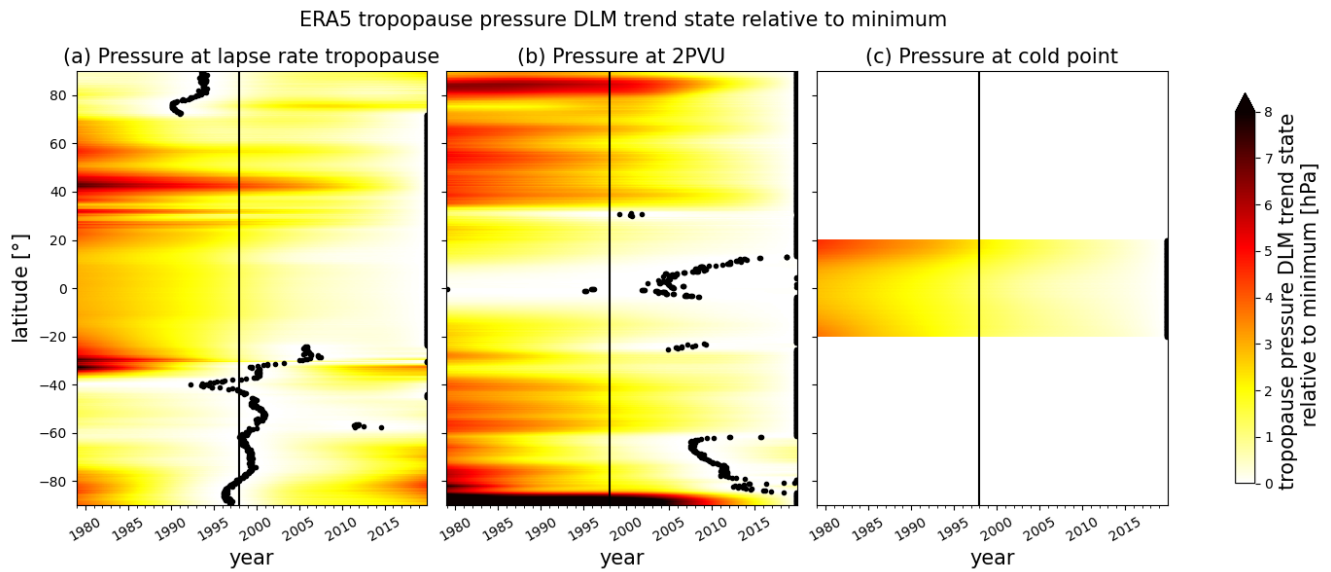
Figure 2 shows the DLM trend results over the period 1998–2019 for the zonal mean tropopause pressure (a) and upper panels), potential temperature (b). In the tropics and subtropics, the lapse rate tropopause pressure trends are negative and statistically significant (ca.  $-0.5$  hPa/decade). Potential temperature trends in this region are more pronounced and statistically significant as well (ca.  $0.7$  hPa/decade). Since the 2 PVU tropopause is capped at a fixed pressure of 89 hPa in the tropics, the respective pressure trends in the inner tropics are not meaningful (middle row) and geopotential height (lower panels) in ERA5. In the

260

### Tropopause DLM trends 1998–2019 across reanalyses



**Figure 3.** DLM trend state time-series of pressure at the 2-PVU tropopause (a), the Zonal mean lapse rate tropopause (b left panels) and the cold point between 20°N–20°S (right panels) for the time period 1998–2019 as estimated by the DLM from different reanalyses. The panels show the pressure trend state time-series for all latitudes reanalyses compared are ERA5 (y-axis black, dashed line), MERRA-2 (red, solid), ERA-Interim (blue, solid), JRA3Q (purple, dotted) and JRA-55 (orange, solid). The minimum upper panels displays pressure trend state for every grid point is highlighted by trends, the black dots and can indicate a lower panels show potential temperature trends. Note that the pressure trend reversal from axis is inverted because decreasing to increasing pressure. The is associated with an upward trend state time-series are presented relative to the respective minimum but in absolute numbers hPa (color shading) the pressure coordinate system. The black vertical line marks lines show the beginning mean DLM trends. For the sake of clarity, the year 1998 presentation of uncertainty has been omitted but is of the same order of magnitude as in Fig. 2a, c, d and f.



**Figure 4.** DLM trend state time series of pressure at the lapse rate tropopause (a), the 2 PVU dynamical tropopause (b) and the cold point between 20°N–20°S (c) in ERA5 for the time period 1979–2019. The panels show the pressure trend state time series for all latitudes (y-axis). The minimum pressure trend state for every grid point is highlighted by the black dots and can indicate a trend reversal from decreasing to increasing pressure. The trend state time series are presented relative to the respective minimum but in absolute numbers [hPa] (color shading). The black vertical line marks the beginning of the year 1998.

NH mid-latitudes, both the ERA5 lapse rate tropopause and the 2 PVU dynamical tropopause show negative pressure trends of around  $-1$  hPa/decade (Fig. 2a and b). This pressure decrease corresponds to a lifting of the tropopause and is consistent with the positive potential temperature trends. Similar tropopause trends (Fig. 2d and e). ERA-Interim, MERRA-2, JRA3Q and JRA-55 exhibit remarkably similar lapse rate tropopause trends, which enhances the robustness of the findings (Fig. 3a and c). Furthermore, similar tropopause trends have been reported by Wilcox et al. (2012a) for the time period 1989–2007 and Meng et al. (2021) for the time period 1980–2020.

In the SH mid-latitudes, on the other hand, the signs of the tropopause trends are reversed. The tropical and subtropical lapse rate tropopause in ERA5 exhibits statistically significant upward trends accompanied by negative trends in pressure (ca.  $-0.5$  hPa/decade, Fig. 2a and g) and more pronounced potential temperature trends compared to the extratropics (ca.  $0.7$  K/decade, Fig. 2d). Since the 2 PVU tropopause is capped at a fixed pressure of 89 hPa in the tropics, the respective pressure trends in the inner tropics are not meaningful (Fig. 2b, e and h).

As Figs. 2c and i reveal, the zonal mean cold point in ERA5 is rising, accompanied by a statistically significant pressure decrease of on average  $-0.7$  hPa/decade (Fig. 2c), which is in agreement with findings of Tegtmeier et al. (2020). The upward tendency of the cold point in ERA5 is joined by a potential temperature increase of on average  $1$  K/decade (Fig. 2f).

All considered reanalyses agree on decreasing pressure at the tropical lapse rate tropopause and 2 PVU the cold point, whereas

potential temperature trends differ significantly (Fig. 3). Specifically, while ERA5, ERA-Interim and MERRA-2 agree on positive potential temperature trends between 10°N–10°S, JRA3Q and JRA-55 suggest the opposite. These discrepancies can be attributed to contrasting absolute temperature trends in the TTL region suggested by the reanalyses, such as those visible at the 100 hPa pressure level (Fig. 13).

280

SH tropopause trends are less conclusive than in the NH. Within ERA5, lapse rate and 2 PVU dynamical tropopause pressure trends differ in sign at most latitudes (Fig. 2a and b). The ERA5 SH mid-latitude lapse rate tropopause in this study generally shows positive pressure trends ranging between 0 and +2 hPa/decade, corresponding to a sinking of the tropopause (Fig. 2a and g) while 2 PVU pressure trends in this region amount to around –0.8 hPa/decade (Fig. 2b). Throughout the reanalyses, lapse rate tropopause trends show a large spread in the SH extratropics (Fig. 3a and c). Like in ERA5, a positive pressure trend of the SH mid-latitude lapse rate tropopause between 30°–40°S is also evident in ERA-Interim, MERRA-2 and JRA-55 but not in JRA3Q (Fig. 3a). A similar tropopause behavior has been observed by Xian and Homeyer (2019) for the reanalyses JRA55, MERRA2, JRA-55, MERRA-2 and CFSR. On the other hand, Xian and Homeyer (2019) do not observe such a downward trend of the SH mid-latitude lapse rate tropopause in ERA-Interim and it seems to oppose the findings by Wilcox et al. (2012a) and Meng et al. (2021). However, it has to be noted that this study focuses on the in this study, we focus on tropopause changes after 1998. The non-linear DLM trend analysis for the entire time series 1979–2019 reveals a trend reversal of the ERA5 lapse rate tropopause pressure around the year 2000 (Fig. 4ba). Accordingly, the DLM results suggest an upward tendency of the ERA5 SH mid-latitude lapse rate tropopause before the year 2000 and a downward tendency thereafter.

295

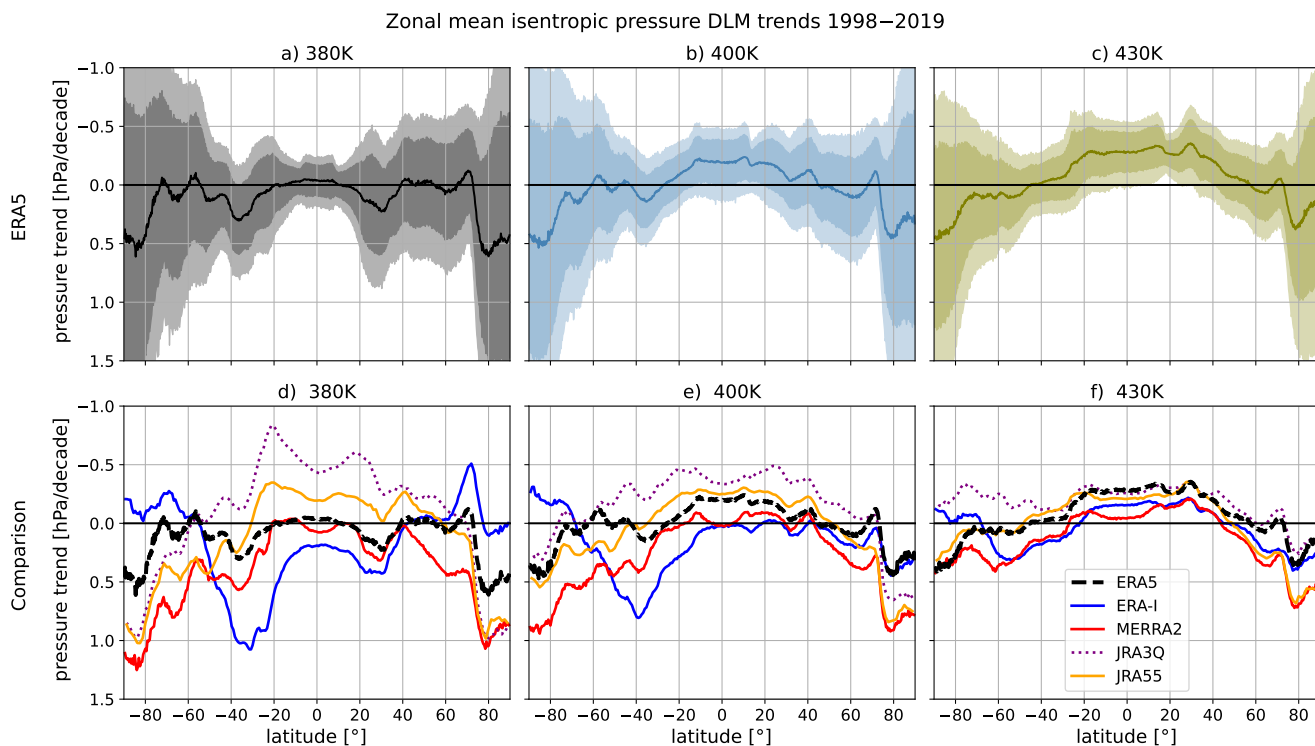
In the polar regions of both hemispheres, ERA5 suggests increasing tropopause pressure, which is evident in most reanalyses and highly significant in the SH in JRA3Q and JRA-55 (Figs. 2a and 3a). The positive pressure trends at the lapse rate tropopause above high latitudes could be the result of polar ozone recovery and associated increasing temperatures in the polar lower stratosphere (LS) after 1998. This is consistent with the minimum lapse rate tropopause pressure DLM trend state in the polar regions, estimated around the time of ozone trend reversal (around the year 2000) (Fig. 4a). A descent of the SH polar lapse rate tropopause has also been observed by Wilcox et al. (2012a) and in some of the reanalyses analyzed by Xian and Homeyer (2019). Moreover, the downward trend of the lapse rate tropopause at high and mid-latitudes could be linked to an acceleration of the BDC (Birner, 2010b). Indeed, age of air and long-lived trace gas measurements indicate an accelerating BDC in the SH after about the year 2000 (Strahan et al., 2020; Ploeger and Garny, 2022). The zonal-mean cold point shows a statistically significant pressure decrease of on average –0.7 hPa/decade, which is in agreement with findings of Tegtmeier et al. (2020). The upward tendency of the cold point is consistent with a potential temperature increase of on average 1 K/decade.

305

### 3.2 Temporal evolution of the lower stratospheric potential temperature structure

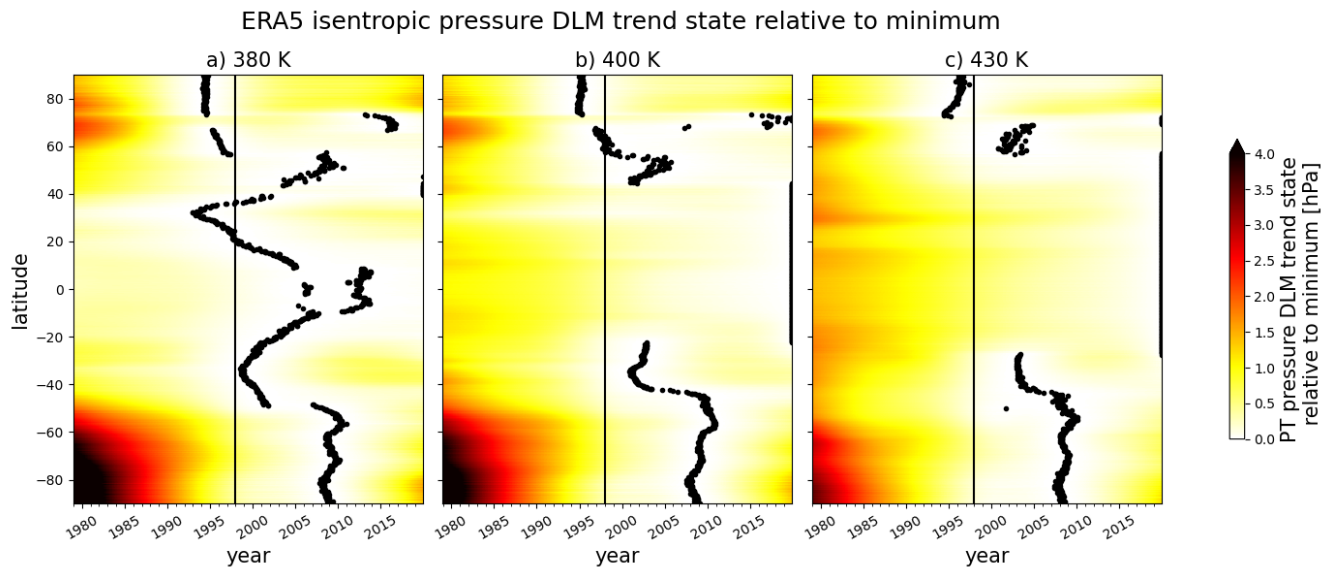
Zonal-mean pressure trends at isentropes between 380–430 K as estimated by the DLM for the time period 1998–2019. The trends are given in hPa/decade. Note that the pressure trend axis is inverted because decreasing pressure implies an upward

310 trend. Solid lines show the mean trend, the shading denotes the associated standard deviation. Colored shading marks regions with trends of at least 95 % significance. Regions with grey shading are considered to show statistically insignificant trends.



**Figure 5.** Isentropic Zonal mean pressure trends at isentropes 380 K (left panels), 400 K (middle column) 430 K (right panels) as estimated by the DLM trend state time series for the time period 1979 1998–2019 at a) 380 K. As an example, b) ERA5 isentropic pressure trends are depicted in the upper panels, showing the mean trend (solid line) 400 K and c) 430 K for all latitudes together with the associated standard deviation (y-axis dark shading) and the 5–95 percentile. The minimum pressure trend state lower panels compare results for every grid point is highlighted by the different reanalyses, i.e. ERA5 (black dots, dashed line), MERRA-2 (red, solid), ERA-Interim (blue, solid), JRA3Q (purple, dotted) and can indicate a JRA-55 (orange, solid). For the sake of clarity, the presentation of uncertainty has been omitted in the lower panels. Note that the pressure trend reversal from axis is inverted because decreasing to increasing pressure is associated with an upward trend in the pressure coordinate system. The pressure trend state time series trends are presented relative to the respective minimum but given in absolute numbers hPa (color shading)/decade. The black vertical line marks the beginning of the year 1998.

In addition to trends of the tropopause location, the location of isentropic surfaces is an important measure for structural changes of the UTLS region. Fig. ?? shows Using ERA5 as an example, Fig. 5a–c show the pressure trend on isentropes between 380–at 380 K, 400 K and 430 K for the time period 1998–2019 as estimated by the DLM. The average pressure trends 315 range between  $-0.3$  to  $+0.6$  hPa/decade, which corresponds to an absolute pressure change of up to 1 hPa during the 21 year period. The pressure trends between 380–430 K are positive in the extratropics, associated with decreasing altitude. In



**Figure 6.** Isentropic pressure DLM trend state time series for the time period 1979–2019 at 380 K (a), 400 K (b) and 430 K (c) in ERA5 for all latitudes (y-axis). The minimum pressure trend state for every grid point is highlighted by the black dots and can indicate a trend reversal from decreasing to increasing pressure. The pressure trend state time series are presented relative to the respective minimum but in absolute numbers [hPa] (color shading). The black vertical line marks the beginning of the year 1998.

the tropics and subtropics, on the other hand, the pressure for the isentropes above 380 K is found to be decreasing, which ~~corresponds to~~ is accompanied by a rise of the respective potential temperature isosurfaces. ~~However, the iso-surfaces (not shown).~~ The trends are hardly statistically significant ~~–Rising but robust within the reanalyses (except ERA-Interim) (Fig. 5d–f).~~ However, while the 380 K isentrope in ERA5 and MERRA-2 shows no trend in the tropics and subtropics, JRA-55 and JRA3Q show a significant pressure decrease (Fig. 5d). Decreasing pressure of lower stratospheric isentropes in the tropics and sinking-increasing pressure in the extratropics is consistent with a strengthened BDC, which is associated with adiabatic cooling in the tropical LS and warming in the extratropical LS.

The magnitude of the isentropic pressure trend for a given latitude bin varies at different potential temperatures. ~~Around 40°S for example, lower isentropes are sinking at a faster rate than higher ones.~~ In the tropics and subtropics in ERA5, higher isentropes are rising at a faster rate than lower ones (Fig. 5a–c). This indicates a weakening of the potential temperature gradient with pressure, and accordingly a change of the stratification in the lower stratosphere. ~~These Such~~ lower stratospheric isentropic pressure trends could potentially be linked to TIL changes (e.g., Gettelman and Wang, 2015; Boljka and Birner, 2022), at least in the tropics. In the extratropics, tropopause and THL are situated at lower potential temperature levels. However, this behavior is only evident in the ECMWF reanalyses (Fig. 5d–f).

In addition to the average isentropic pressure trends between 1998–2019, it is worth considering the entire DLM trend state



time series, as the DLM is able to identify nonlinear trends (Fig. 6). ~~In the extratropics, This can provide further insight into the physical reasons for trends and trend changes. Taking ERA5 as an example,~~ the DLM estimates ~~an inflection point a trend reversal~~ from decreasing to increasing pressure ~~between the years 2000–2005 for all at~~ isentropes between 380–430 K. ~~in the extratropics, spread around the year 2000 (Fig. 6).~~ At SH high latitudes, isentropes reach their minimum pressure trend state later, between 2006–2008, but pressure changes are most pronounced in this region. Especially in SH high latitudes, ~~the rise of isentropes decreasing isentropic pressure~~ between the 1980s ~~an and~~ the 2000s is consistent with a cooling of the lower stratosphere due to ozone decline. Ozone recovery leads to a warming of the stratosphere, consistent with ~~the descent of isentropes~~ ~~increasing isentropic pressure in the lower stratosphere~~ since the 2000s. This is in good agreement with the SH stratospheric temperature studies by Fu et al. (2019). In the SH high latitudes, ~~–~~this (potential) temperature increase is associated with a weakening of the SH polar vortex (Zambri et al., 2021), influencing polar winter ozone destruction and mixing of polar and mid-latitude air masses.

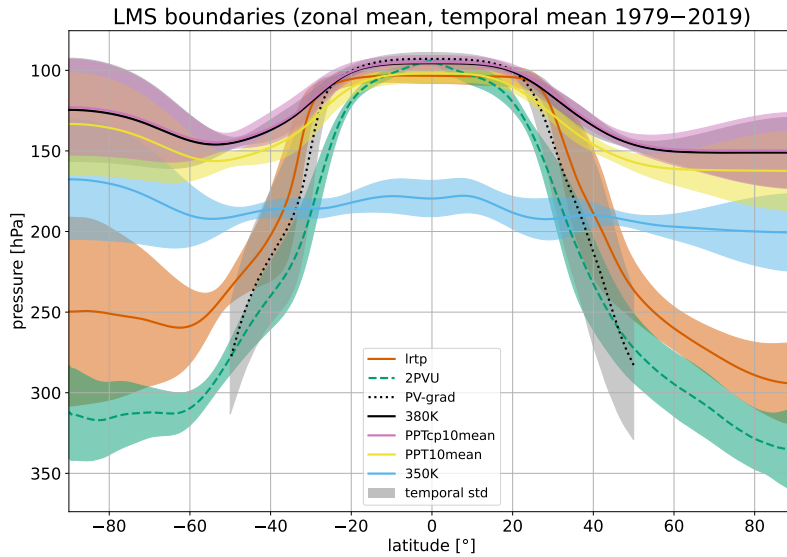
In the tropics and subtropics, ~~a continuous rise of the isentropes above 390 K is evident. continuous pressure decline accompanied~~ ~~by a rise of ERA5 isentropes above 380 K is evident (Fig. 6).~~ This is consistent with increased upwelling in the context of an enhanced BDC, associated with adiabatic cooling. Furthermore, diabatic cooling of the tropical lower stratosphere results from increasing GHG load in the troposphere and a continuous decline of lower stratospheric ozone. Such a cooling of the tropical stratosphere has been identified in observations (e.g., Scherllin-Pirscher et al., 2021) and reanalysis data (e.g., Tegtmeier et al., 2020) ~~and is consistent with our analysis.~~

### 3.3 The mass of the lowermost stratosphere

#### 3.3.1 LMS boundary surfaces

The tropopause marks the lower boundary of the lowermost stratosphere (LMS). For the upper boundary, many studies choose the 380 K isentrope (e.g., Appenzeller et al., 1996; Wang and Fu, 2021). Wang et al. (2022) point out the importance to consider long term changes of the tropical tropopause location in different climates for LMS mass budget analyses. Their approach is to fit an isentrope between 360–390 K to the tropical ~~lase~~ lapse rate tropopause. Similar to Wang et al. (2022), we define an upper LMS boundary with respect to the tropical lapse rate tropopause that allows for continuous variations of the boundary surface. To do so, we determine the mean isentropic pressure corresponding to the potential temperature at the tropical (10°N–10°S) lapse rate tropopause (PPT10mean). For comparison, we determine a second upper boundary surface based on the potential temperature at the cold point (PPTcp10mean) in the same way. The different boundary surfaces used for LMS definition are displayed in Fig. 7 –

~~Temporal evolution of the potential temperature at the tropical tropopause between 1979–2019 as used for LMS upper boundary surface definition. Shown are the mean potential temperature between 10°N–10°S at the lapse rate tropopause (PT10mean, yellow) and the cold point (PTcp10mean, purple). The black horizontal line marks 380 K. In addition to the time series (solid lines), the DLM trend state time series are depicted (dashed lines) together with the associated standard deviation (shading).~~



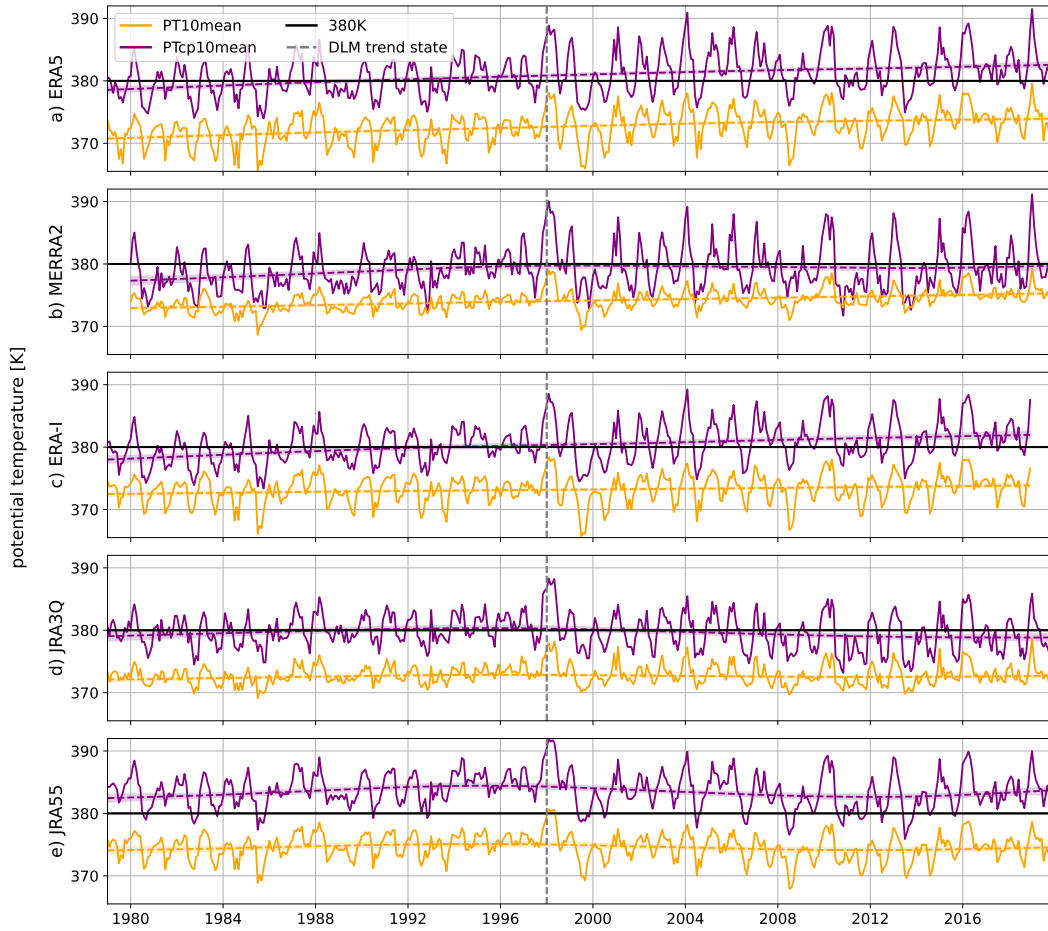
**Figure 7.** Zonal mean, temporal mean LMS boundaries between 1979–2019 [using ERA5 as an example](#). The lines denote the mean location of the respective surfaces, the shading indicates the temporal standard deviation. The lower LMS boundary is defined by the lapse rate tropopause (red) or the 2PVU dynamic tropopause (green, dashed line). The 380 K isentrope (black) can serve as the upper boundary. It is also possible to define dynamic upper boundaries depending on the potential temperature at the tropical tropopause. Here, the isentropes corresponding to the mean potential temperature between 10°N–10°S at the lapse rate tropopause (PPT10mean, yellow) and the cold point (PPTcp10mean, purple) are shown. The lateral LMS boundary can be approximated by the intersection between the 350 K isentrope (light blue) and the respective tropopause. This intersection is close to the isentropic PV-gradient tropopause (black, dotted line) at 350 K, which represents a transport barrier and serves as an approximation for the position of the subtropical jet stream.

~~Zonal-mean pressure trend at the LMS upper boundaries as estimated by the DLM for the time period 1998–2019. Shown are the isentropes corresponding to the mean potential temperature between 10°N–10°S at the lapse rate tropopause (PPT10mean, yellow) and at the cold point (PPTcp10mean, purple) as well as the 380 K isentrope. Solid lines show the mean trends, the shading denotes the associated standard deviation for the respective surface. Colored shading marks regions with trends of at least 95% significance. Regions with grey shading are considered to show statistically insignificant trends. Note that the pressure trend axis is inverted because decreasing pressure implies an upward trend.~~

~~[using ERA5 as an example.](#)~~

~~As evident from Fig. 8 and [??-show-that-9](#), a fixed upper LMS boundary (e.g., 380 K) cannot capture the variability and long-term evolution associated with the tropical tropopause. Specifically, [in ERA5](#), the dynamically defined upper boundary~~

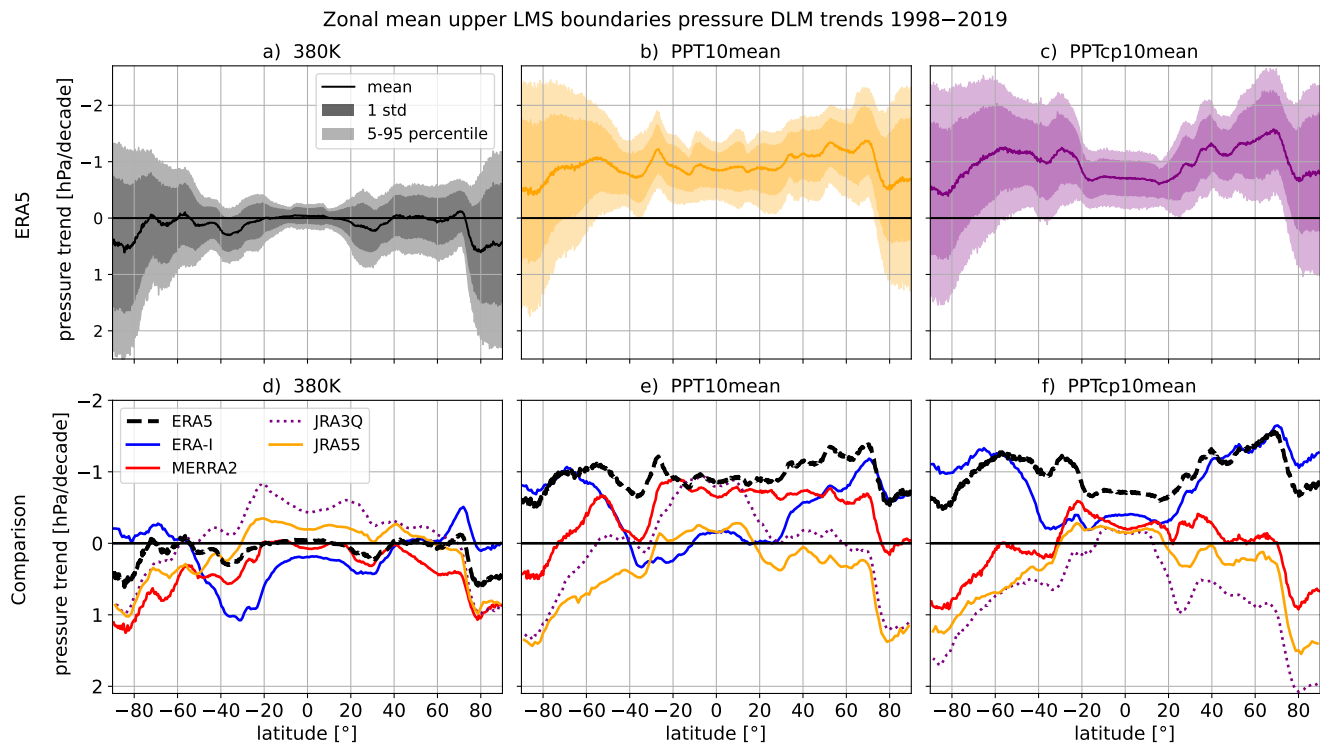
Potential temperature at tropical tropopause DLM trend state 1979-2019



**Figure 8.** Temporal evolution of the potential temperature at the tropical tropopause between 1979–2019 as used for LMS upper boundary surface definition. Shown are the mean potential temperature between  $10^{\circ}\text{N}$ – $10^{\circ}\text{S}$  at the lapse rate tropopause (PT10mean, yellow) and the cold point (PTcp10mean, purple) for the different reanalyses: ERA5 (a), MERRA-2 (b), ERA-Interim (c), JRA3Q (d) and JRA-55 (e). The black horizontal line marks 380 K, the dashed vertical line marks the beginning of the year 1998. In addition to the time series (solid lines), the DLM trend state time series are depicted (dashed lines) together with the associated standard deviation (shading).

surfaces (PPT10mean and PPTcp10mean)<sup>1</sup> show an opposite trend to the 380 K isentrope –(Fig. 9a–c). This is due to the fact that the potential temperature at the tropical tropopause exhibits a positive trend (Fig. 8a). For the mean potential temperature at the ERA5 lapse rate tropopause between  $10^{\circ}\text{N}$ – $10^{\circ}\text{S}$ , the DLM estimates an increase of  $1.561.33 \pm 0.33 \text{ K} - 0.40 \text{ K}$  between 1998–2019. The temporal evolution of the potential temperature corresponding to the cold point amounts to  $2.041.72 \pm 0.61 \text{ K}$

<sup>1</sup>PPT10mean and PPTcp10mean: Pressure interpolated onto the isentrope corresponding to the potential temperature at the tropical lapse rate tropopause and the cold point, respectively.

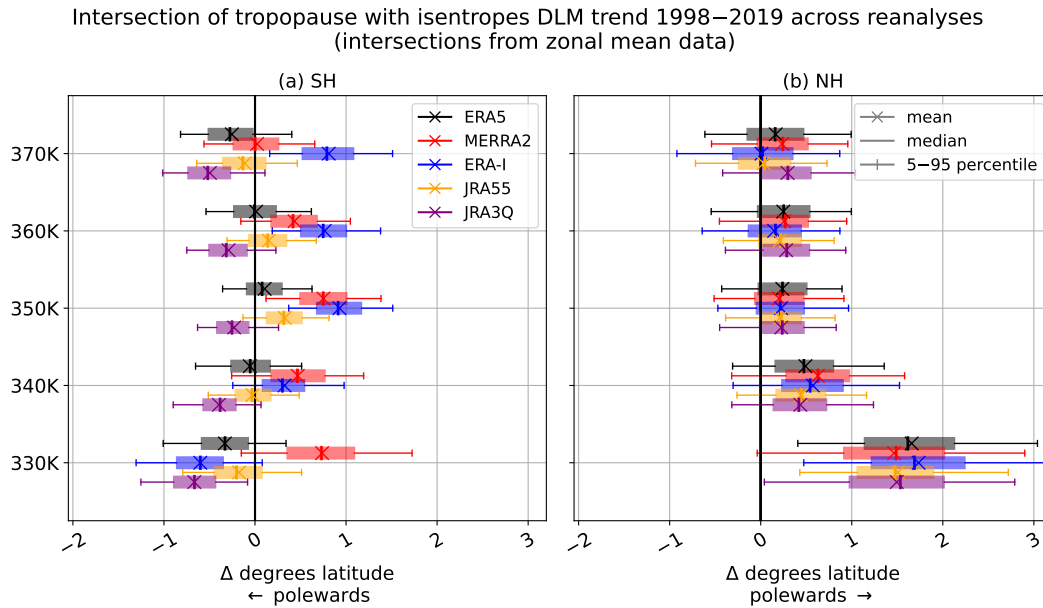


**Figure 9.** Zonal mean pressure trends at the LMS upper boundaries as estimated by the DLM for the time period 1998–2019. Shown are the 380 K isentrope (left panels) as well as the isentropes corresponding to the mean potential temperature between 10°N–10°S at the lapse rate tropopause (PPT10mean, middle column) and at the cold point (PPTcp10mean, right panels). As an example, ERA5 trends are depicted in the upper panels, showing the mean trend (solid line) together with the associated standard deviation (dark shading) and the 5–95 percentile (light shading). The lower panels compare results for the different reanalyses, i.e. ERA5 (black, dashed line), MERRA-2 (red, solid), ERA-Interim (blue, solid), JRA3Q (purple, dotted) and JRA-55 (orange, solid). For the sake of clarity, the presentation of uncertainty has been omitted in the lower panels. Note that the pressure trend axis is inverted because decreasing pressure is associated with an upward trend in the pressure coordinate system. The trends are given in hPa/decade.

380 0.53 K for the same time period. The potential temperature increase at the tropical tropopause leads to a global lifting of the defined upper LMS boundary surfaces in ERA5 (Fig. 29a–c). The upward trends of the PPT10mean and PPTcp10mean surfaces in ERA5 are statistically significant for most latitudes in the tropics and mid-latitudes. The average pressure trends of around  $-1$  hPa/decade are very similar to the trend of the 2 PVU tropopause and the lapse rate tropopause in the NH mid-latitudes (Fig. 2a and b). In the SH extratropics, the sign of the lapse rate tropopause pressure trend is opposite to that of the PPT surfaces.

Like in ERA5, a statistically significant potential temperature increase at the tropical lapse rate tropopause is also evident in ERA-Interim and MERRA-2 between 1998–2019 (Fig. 8a–c), resulting in a negative pressure trend of the respective upper

390 LMS boundary (PPT10mean). JRA-55 and JRA3Q on, the other hand, suggest the opposite (Fig. 9e). At the cold point, ERA5 and ERA-Interim agree on increasing potential temperatures between 1998–2019, whereas the JRA data sets show a negative trend and MERRA-2 no trend at all (Fig. 8), which is reflected in the trends of the PPTcp10mean surface (Fig. 9f). This contrasting behavior can at least partly be attributed to the temperature trends in the TTL region suggested by the reanalyses. As evident from Fig. 13, ERA5 and MERRA-2 suggest no temperature trend at 100 hPa between 1998–2019, whereas temperatures in JRA-55 and JRA3Q are decreasing by  $-0.4 \pm 0.2$  K and  $-0.7 \pm 0.2$  K, respectively. In ERA-Interim, temperatures at 100 hPa are significantly increasing after 1998.



**Figure 10.** Trend of lateral intersections—the latitude of intersection between the zonal mean lapse rate tropopause (red, lower boxes) and the 2-PVU tropopause (green, upper boxes) with isentropes between 330–370 K (y-axis) for all reanalyses. The reanalyses compared are ERA5 (black, uppermost box-plot), MERRA-2 (red, second box), ERA-Interim (blue, third box), JRA-55 (yellow, fourth box) and JRA3Q (purple, lowermost box-plot). The trends are DLM estimates for the time period 1998–2019. In the SH (a), negative trends are associated with a poleward tendency, in the NH (b), positive trends indicate a poleward shift. The DLM trend estimates are presented as box-whisker plots.

395 Like the upper and lower LMS boundaries, the boundaries separating the LMS laterally from the TTL-region are allowed to vary dynamically with time. For this purpose, the intersections between the monthly mean tropopause and the 350 K isentropes are identified via the sign change of the pressure difference between both surfaces. This intersection serves as a proxy for the position of the subtropical jet stream (e.g., Manney et al., 2011; Gettelman et al., 2011). Specifically, the lapse rate tropopause and the 2 PVU surface at 350 K are close to the isentropic PV-gradient tropopause, which marks a clear transport barrier  
400 between the tropical troposphere and the extratropical lower stratosphere, i.e. the LMS (Kunz et al., 2011; Turhal et al., 2024). For comparison, the intersections of the 2-PVU and lapse rate tropopause with isentropes between 330–370 K are determined in

addition. The 380 K isentrope often does not intersect with the respective tropopause, which is why it is not further considered. The zonal mean latitudes of the intersection between the lapse rate (2 PVU) tropopause and the 350 K isentrope, i.e. the lateral LMS boundaries in ~~this study~~ ERA5, vary between 29°N–48°N (26°N–40°N) and 31°S–~~45°S~~ 45°S (26°S–36°S), with the lapse rate tropopause intersection always poleward of the 2 PVU intersection. Other definitions of the lateral LMS boundaries have been used in the literature like the intersection between the respective upper and lower LMS boundary surfaces (Appenzeller et al., 1996; Hegglin et al., 2010) or the zero diabatic heating rate at the upper LMS boundary surface (Wang and Fu, 2021; Wang et al., 2022). We consider the latitude of the intersection between tropopause and the 350 K isentrope to be a practical approximation of the location of the physical transport barrier between the (extratropical) LMS and the tropical troposphere, marked by the isentropic PV-gradient tropopause.

Beside the seasonal variability, the DLM identifies a trend of the intersections between tropopause and 350 K isentrope (as shown in Fig. 10). Here, the intersections of the zonal mean tropopause and isentropes are considered. In the NH, this trend is directed poleward for the lapse rate tropopause in all reanalyses (Fig. 10b) as well as 2 PVU in ERA5 (Fig. A1b). Such a poleward tendency is also evident for intersections of the NH tropopause with isentropes at 360 K and 370 K, which indicates an expansion of the NH tropics. ~~This is~~ The results are robust across all examined reanalyses and consistent with evidence for a widening of the tropical belt, reported in many studies (Birner, 2010a; Wilcox et al., 2012a; Xian and Homeyer, 2019, e.g.); (e.g., Birner, 2010a; Wilcox et al., 2012a; Xian and Homeyer, 2019).

In the SH, on the other hand, the intersection between the ERA5 lapse rate tropopause and 350 K shows an equatorward tendency while the trend of the intersection with the 2 PVU surface is directed poleward (Fig. A1a). At 330 K and 370 K, both tropopauses show a poleward tendency in the SH as well. A similar shape of lateral tropopause trends with respect to potential temperature has is evident in most reanalyses (Fig. 10a) and has also been found for the PV-gradient tropopause by Turhal et al. (2024). The different magnitudes of the lateral trends for tropopause intersections with different isentropes suggests a shape change of the tropopause break. The larger poleward tendency of the tropopause around 370 K hints at a steeper tropopause. This could be associated with higher zonal wind speeds, i.e. an intensification of the subtropical jet (Manney and Hegglin, 2018; Maher et al., 2020). Furthermore, such a steepening of the tropopause break could be an indication of a strengthened BDC (Birner, 2010b).

As far as the LMS mass is concerned, the temporal evolution of the lower, upper and lateral LMS boundaries points towards a trend of the LMS mass, which will be addressed in Sect. 3.3.3.

### 3.3.2 LMS mass climatology

~~The~~ In ERA5, the average global LMS mass between the different boundary surfaces ranges from  $0.99 \pm 0.28 \cdot 10^{17}$  kg (lrtp-PPT10mean) to  $1.89 \pm 0.37 \cdot 10^{17}$  kg (2 PVU-PPTcp10mean) within the time period 1979–2019. Since the 2 PVU tropopause is located at higher pressure than the lapse rate tropopause, the LMS mass between 2 PVU and the respective upper boundary is always larger than the mass with respect to the thermal tropopause. The fact that the LMS mass with respect to the 2 PVU tropopause exceeds the mass with respect to the thermal tropopause by a factor of 1.6–1.8 highlights that lower layers contribute disproportionately more mass due to the exponential decrease of density with height. Accordingly, the LMS mass with respect

to the different upper boundary surfaces varies by less than 15 % for the same lower boundary and hemisphere. The mean LMS mass in ERA5 between all considered boundary surfaces on both hemispheres is listed in Tab. 2. LMS mass values in ERA-Interim, MERRA-2, JRA-55 and JRA3Q are very similar and the different boundary surfaces have the same effect as in ERA5 (Tab. A1). MERRA-2 generally suggests the smallest LMS mass, ERA5 the largest with relative differences smaller than 10 % in the NH and smaller than 20 % in the SH. The variations of LMS mass across the reanalyses can be primarily attributed to differences in tropopause pressure (not shown).

study and data	LMS	NH	SH
<b>this study</b> <a href="#">this study</a> :			
ERA5	lrtp-PPT10mean	0.49±0.20	0.50±0.08
	lrtp-PPTcp10mean	0.56±0.22	0.58±0.09
	lrtp-380K	0.55±0.20	0.57±0.10
	2PVU-PPT10mean	0.80±0.24	0.90±0.11
	2PVU-PPTcp10mean	0.89±0.25	1.00±0.12
	2PVU-380K	0.88±0.23	0.99±0.13
<b>Appenzeller et al. (1996)</b> <a href="#">Appenzeller et al. (1996)</a> :			
UKMO	2 PVU-380 K	2.3±0.4	2.4±0.1
<b>Hegglin et al. (2010)</b> <a href="#">Hegglin et al. (2010)</a> :			
NCEP	lrtp-100 hPa	1.6±0.3	1.5±0.1

**Table 2.** Mean LMS mass and associated standard deviation in  $10^{17}$  kg for different LMS definitions and data. ~~In~~ [As an example for LMS mass in](#) this study, ~~monthly~~-LMS mass [from ERA5](#) data is averaged over 1979–2019 and rounded to the second decimal. In Appenzeller et al. (1996) Fig. 5, daily LMS mass values from UKMO data are presented for the years 1992 and 1993. Fig. 6 in Hegglin et al. (2010) shows monthly mean LMS mass from NCEP data averaged over the time period 1990–1999. The LMS mass values from Appenzeller et al. (1996) and Hegglin et al. (2010) in this table are estimated from the respective figures.

~~The~~ [In general, the](#) NH mean LMS mass is smaller than the SH mass, independent of the boundary surfaces. This is due to the greater seasonal variability of the LMS mass in the NH, reaching smaller minima in summer than in the SH. Within one hemisphere, low latitudes contribute considerably more to the LMS mass than high latitudes due to the area decrease from equator to pole.

The LMS mass calculated [from ERA5 data in this study](#) between the respective boundary surfaces can be compared to results reported by Appenzeller et al. (1996) and Hegglin et al. (2010) (Tab. 2). ~~On average~~ [Using the example of ERA5](#), the LMS mass ~~from ERA5 (this study) is in this study is on average~~ 1.5 to 4.8 times smaller than previously reported. Reason for the discrepancies are [especially](#) the choice of the boundaries ~~and the different reanalysis data sets. ERA5, as used in this study, has the finest resolution with a horizontal grid spacing of 0.25° by 0.25° and a vertical spacing of about 25–50 hPa in the UTLS.~~ Appenzeller et al. (1996) integrate the pressure between the 2 PVU surface and the 380 K isentrope from UKMO (United Kingdom Meteorological Office) data with a horizontal grid of 2.5° latitude by 3.75° longitude and 50 hPa in the vertical, with



zonal mean daily data for the year 1993. The resulting UKMO dynamic tropopause is situated around 50–100 hPa lower than the ERA5 2 PVU surface. Hegglin et al. (2010) use NCEP (National Centers for Environmental Prediction) monthly mean, zonal mean reanalysis data for the time period 1990–1999 with a horizontal grid of 2.5° by 2.5°. They choose the thermal tropopause as the lower and the 100 hPa isobar as a fixed upper boundary for the mass computation. The upper boundaries used in this study are (on average) situated between 90–187 hPa. For the lateral boundaries, Hegglin et al. (2010) and Appenzeller et al. (1996) use the intersections between upper and lower boundary surfaces. The lateral LMS boundaries in this study are at considerably higher latitudes. Using the same LMS boundary definitions as Hegglin et al. (2010) ~~from and~~ ERA5 zonal mean data for the time period 1979–2019, we compute an average LMS mass of around  $1 \cdot 10^{17}$  kg for each hemisphere. With a downward shift of the 2 PVU surface by 60 hPa, we obtain the same LMS mass as Appenzeller et al. (1996).

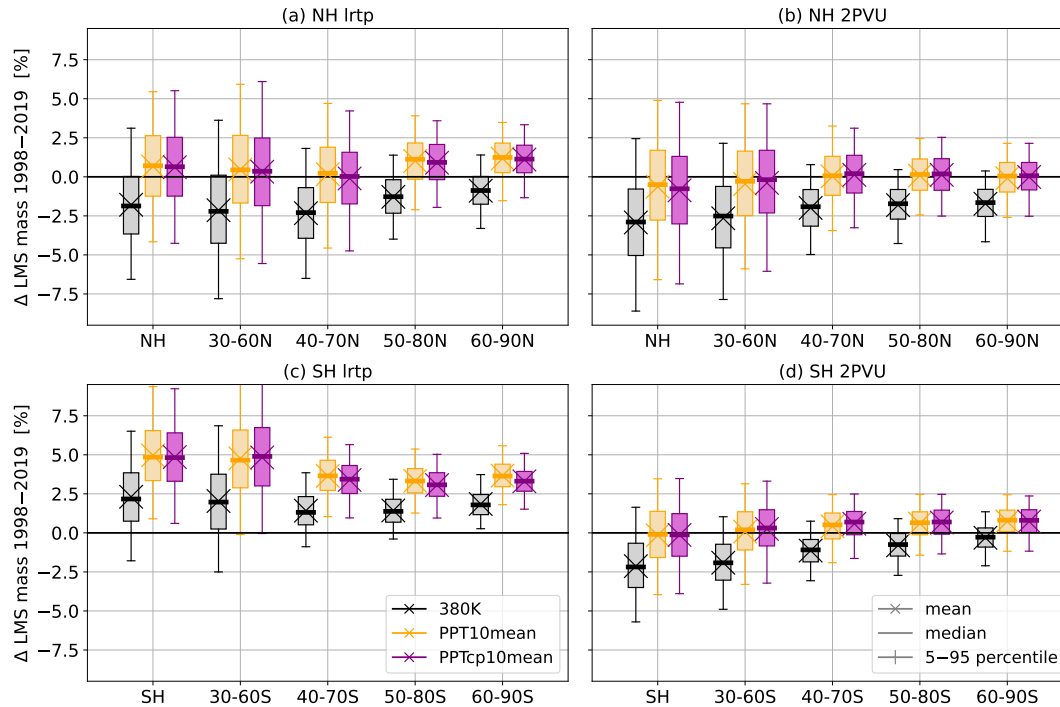
### 3.3.3 LMS mass trends

~~The~~

~~As presented in Sect. 3.1 and 3.3.1, the~~ trends of the LMS lower, upper and lateral boundaries ~~presented in Sect. 3.1 and 3.3.1 suggest a long-term suggest a long-term~~ change of the LMS mass enclosed by the respective boundary surfaces. ~~The In ERA5, the~~ observed extratropical tropopause trends (Sect. 3.1, Fig. 2) and the lifting trend of the tropical tropopause (Fig. 8 ~~and ??a and 9a–c~~) indicate that the rise of the upper LMS boundary could potentially compensate for the rising lower boundary and the poleward transition of the lateral boundary. The results illustrated in Fig. 11a, b and d confirm this expectation. For the ~~ERA5~~ LMS bounded with 380 K, the DLM analysis results in a statistically significant negative trend of the LMS mass between 1998–2019 (except for the LMS mass with respect to SH lapse rate tropopause). In contrast, the LMS defined with a dynamical upper boundary based on the tropical tropopause (PPT10mean and PPTcp10mean) shows mean mass trends close to zero or even positive trends. Focusing on the latitude bins poleward of the mean lateral LMS boundary (latitude bins 50°–80° and 60°–90°), LMS mass changes are positive or smaller negative but stay significantly negative if 380 K is used as the upper boundary. This shows three things: 1) The decreasing NH LMS mass for a fixed 380 K boundary is largely due to the rising NH extratropical tropopause. 2) A considerable proportion of this NH LMS mass decline can be attributed to the poleward trend of the lateral boundary which is the result of an expansion of the tropics. 3) The "dynamical" upper boundary surfaces based on the tropical tropopause are indeed able to largely compensate for the tropopause rise ~~, despite the density effect in ERA5.~~ ~~ERA-Interim, MERRA-2, JRA-55 and JRA3Q agree remarkably well on the mass decrease for the LMS defined between the lapse rate tropopause and 380 K (Fig. 12). In ERA-Interim and MERRA-2, the dynamical upper LMS boundaries defined with respect to the tropical tropopause have the same effect as in ERA5: They partly compensate for the tropopause rise. In JRA-55 and JRA3Q on the other hand, the dynamical boundary surfaces add to the LMS mass decline in the NH. This contrasting behavior can be attributed to the differing temperature trends at the tropical tropopause across the reanalyses. Such differing temperature trends are not only visible at the tropical lapse rate tropopause and the cold point (Fig. 3, 8), but also at pressure surfaces like 100 hPa (Fig. 13). Thus, the differences in the LMS mass trends between the JRA data sets and the other reanalyses are rather rooted in the reanalysis data sets themselves than in the analysis methods used in this study.~~

~~The SH-~~

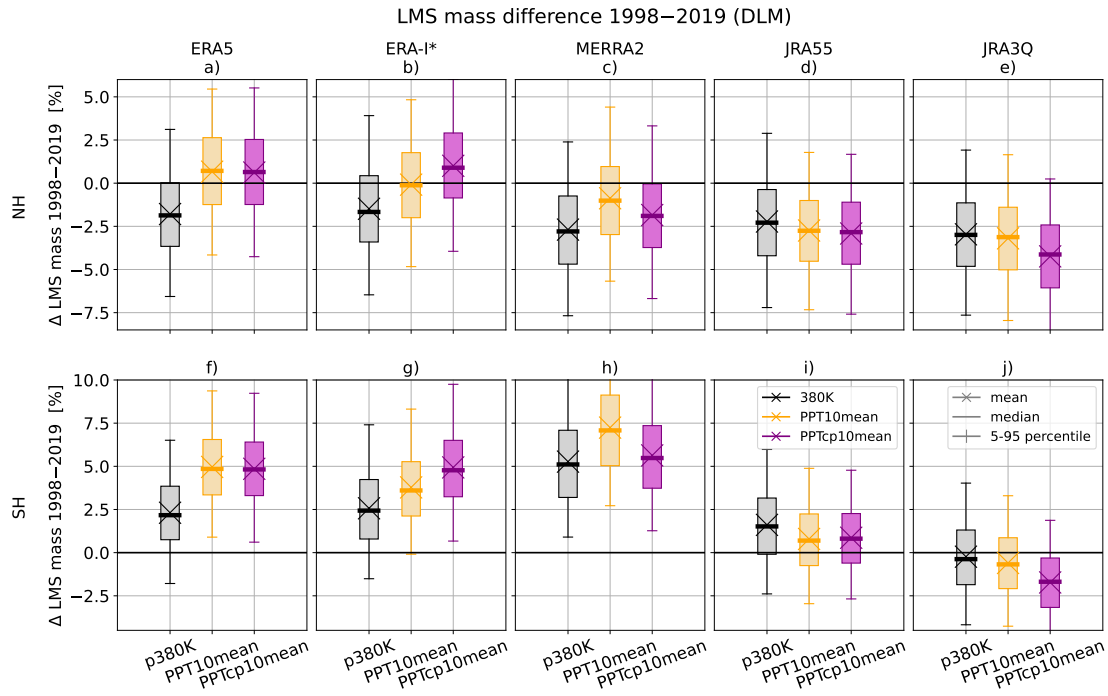
ERA5 LMS mass difference 1998–2019 according to DLM results



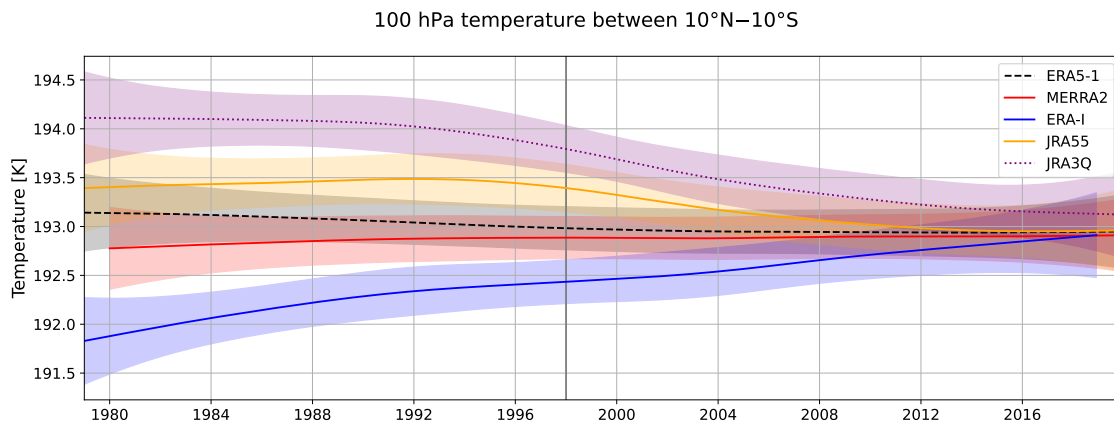
**Figure 11.** LMS mass change between 1998–2019 as estimated by the DLM [from ERA5 data](#). The DLM trend state differences are presented as box-whisker plots. The LMS mass has been analyzed for different latitude bins (x-axis) for both hemispheres (upper and lower panels). Moreover, different boundary surfaces have been compared. [Panel-panels](#) (a) and (c) show the results for the LMS defined with the lapse rate tropopause as the lower boundary. In [panel-panels](#) (b) and (d), the 2 PVU tropopause serves as the lower LMS edge. The results for the different upper boundary surfaces can be distinguished by the color of the box-whisker plots (380 K: black, PPT10mean: yellow, PPTcp10mean: purple).

[In Fig. 11c](#), the ERA5 LMS mass with respect to the SH lapse rate tropopause stands out with a significant LMS mass increase, regardless of the choice of the upper boundary ([Fig. 11c](#)). This is due to the [downward-increasing pressure](#) trend of the SH extratropical lapse rate tropopause (Fig. 2a). Moreover, the intersection of the SH lapse rate tropopause with 350 K, which serves as the lateral LMS boundary, shows a small equatorward tendency (Fig. 10a). Interesting are for example the respective LMS mass trends between 40°S–70°S. [Since the \(Fig. 11c\)](#). Since the ERA5 lapse rate tropopause change is close to zero between 40°S–70°S (Fig. 2a), the greater mass change for the SH LMS bounded with PPT10mean and PPTcp10mean compared to 380 K highlights the impact of the upper boundary surface.

[In the SH, LMS mass trends differ more strongly between the reanalyses than in the NH \(Fig. 12\). Nevertheless, all reanalyses,](#)



**Figure 12.** Similar to Fig. 11 but for LMS mass difference between 1998–2019 for different reanalyses (columns) on both hemispheres (rows). The lapse rate tropopause defines the lower LMS boundary. \*ERA-Interim time series ends in 2018



**Figure 13.** DLM trend state for the average tropical ( $10^{\circ}\text{N}$ – $10^{\circ}\text{S}$ ) temperature at 100 hPa in ERA5 (black, dashed line), MERRA-2 (red, solid), ERA-Interim (blue, solid), JRA-55 (orange, solid) and JRA3Q (purple, dotted) for the time period 1979–2019. Shading denotes the range of 2 standard deviations. The ERA-Interim time series ends in 2018, MERRA-2 begins in 1980.

495 except JRA3Q, suggest increasing LMS mass in the SH. In general, the LMS mass trends reflect the respective lapse rate tropopause trends suggested by the reanalyses (Fig. 3). Like in the NH, the use of the dynamical upper boundaries (PT10mean and PTcp10mean) has a positive effect on the LMS mass trends in ERA5, ERA-Interim and MERRA-2, whereas the opposite applies for JRA-55 and JRA3Q.

#### 4 Conclusions

500 In this study, we have analyzed long-term trends in the thermodynamic structure of the lowermost stratosphere based on ERA5 reanalysis data for the period 1979–2019. We compare results for five modern reanalyses: ERA5, ERA-Interim, MERRA-2, JRA-55 and JRA3Q.

Our DLM trend analysis shows that the zonal mean NH mid-latitude lapse rate tropopause as well as the 2 PVU surface are rising at a mean rate tropopause exhibits a negative pressure trend of about  $-1$  hPa/decade, consistent with increasing height trends between 1998–2019, although the trends are hardly statistically significant. Although the tropopause trends lack strong statistical significance, they are very robust across the reanalysis data sets and in line with observations (e.g., Xian and Homeyer, 2019; Meng et al., 2021). In the tropics and subtropics, the ERA5 lapse rate tropopause and the cold point show a statistically significant upward trend of about  $-0.5$  hPa/decade and  $-0.7$  hPa/decade, respectively, for the same time period. Consistent with the negative pressure trends, tropopause potential temperatures are increasing between 1979–2019, evident in pressure and geopotential height. The pressure trend amounts to about  $-0.5$  hPa/decade at the tropical lapse rate tropopause and  $-0.7$  hPa/decade at the cold point. These tropopause trends agree well with trends reported from different reanalyses (e.g., Wilcox et al., 2012a; Xian and Homeyer, 2019) and observational data (e.g., Meng et al., 2021), in other studies of reanalysis data (e.g., Wilcox et al., 2012a; Xian and Homeyer, 2019) and observations (e.g., Meng et al., 2021). While all reanalyses examined in this study agree on decreasing tropopause pressure in the tropics, temperature trends in the TTL region are less consistent between the data sets. For ERA5, we find potential temperatures at the tropical tropopause to be significantly increasing, consistent with results from ERA-Interim and MERRA-2, JRA-55 and JRA3Q, on the other hand, suggest the opposite tendency.

The tendency of the SH tropopause in this study is less clear. The In ERA5, the SH lapse rate tropopause shows a downward tendency trend, accompanied by pressure trends ranging between 0 and  $+2$  hPa/decade while, whereas the 2 PVU surface is rising at a mean rate of  $-1$  hPa/decade. This A positive pressure trend of the SH extratropical lapse rate tropopause is also evident in MERRA-2, JRA-55 as well as ERA-Interim and agrees with the trends found by Xian and Homeyer (2019) for the JRA-55, MERRA-2 and CFSR reanalyses. However, it this positive pressure trend of the SH extratropical lapse rate tropopause seems to contradict the results reported for ERA-Interim in the same study and by Wilcox et al. (2012a). Interestingly, our non-linear DLM trend analysis of the time series 1979–2019 reveals a trend reversal of the lapse rate tropopause around the year 2000. Accordingly, our results suggest an upward tendency decreasing pressure of the SH mid-latitude lapse rate tropopause before the year 2000 and a downward tendency increasing pressure thereafter. This could be consistent with expected effects of ozone recovery and an accelerating BDC in the SH on tropopause height in the SH (Birner, 2010b). An acceleration of the BDC in the SH after about the year 2000 has also been estimated from age of air and long-lived trace gas measurements

(Strahan et al., 2020; Ploeger and Garny, 2022).

530 The lateral positions of the intersections between the NH tropopause (~~lrtp as well as 2PVU~~) and isentropes between 330–370 K show a poleward shift after ~~1998. This 1998, consistent across all reanalyses.~~ The poleward tendency of the intersections can be associated with a widening of the tropics in the NH, which has been reported in many studies (e.g., Seidel and Randel, 2007; Meng et al., 2021; Wilcox et al., 2012a; Grise et al., 2019; Staten et al., 2018). ~~For In~~ the SH, the lateral trends of the intersections between lapse rate tropopause and 350 K are directed equatorwards, while 330 K and 370 K show a poleward  
535 tendency, even though not all reanalyses agree in this case. The different magnitude of the lateral trends with respect to the potential temperature on both hemispheres ~~and both tropopause definitions~~ suggests a steepening of the tropopause break. A similar shape of lateral tropopause trends with respect to potential temperature has been found for the PV-gradient tropopause by Turhal et al. (2024). Such a steepening of the tropopause break can be associated with an intensification of the SH subtropical jet (Manney and Hegglin, 2018; Maher et al., 2020) and could be linked to a strengthening of the BDC (Birner, 2010b).

540

Since the NH tropopause is rising and expanding towards the poles, the mass of the lowermost stratosphere (LMS) can be expected to decrease if the upper boundary is fixed. This expectation is confirmed by the robust mass decline of the northern hemispheric LMS bounded by the 380 K isentrope, which amounts to 2–3 % between 1998–2019, according to this study. However, as the upper LMS boundary is properly defined by the tropical tropopause, which is also rising, the negative  
545 LMS mass ~~trends disappear when using~~ trend is significantly reduced or even disappears when this dynamic upper boundary is used in the calculation. ~~According to this study, This is at least the case for ERA5, ERA-Interim and MERRA-2.~~ JRA-55 and JRA3Q show opposite temperature trends at the tropical tropopause. This by itself is an important finding, since TTL temperatures are a critical variable, not only impacting LMS mass, but also confining lower stratospheric water vapor (e.g., Randel et al., 2004) and influencing stratospheric dynamics (e.g., Charlesworth et al., 2023). Why the reanalyses show  
550 the aforementioned discrepancies is beyond the scope of this study but should be investigated further. Hints can be found in Fujiwara et al. (2022).

~~Due to the NH LMS masstrend for the period 1998–2019 changes from around –2 % for the LMS upper boundary defined by 380 K to around +1 % for an LMS upper boundary defined with respect to the downward trend of the SH lapse rate tropopause,~~  
555 ~~evident in all reanalyses except JRA3Q, which is accompanied by increasing pressure, the LMS mass in the SH is found to have increased by 1–7 % between 1998–2019. The different upper boundary surfaces have the same effect on the LMS mass in the SH as in the NH: adding to the mass increase in ERA5, ERA-Interim and MERRA-2 but reducing it in JRA-55 and JRA3Q. The LMS mass trend with respect to the 2 PVU isosurface stays negative but close to zero with dynamical upper boundaries. Even though pressure trends at the upper and lower boundary are comparable~~

In general, the lower boundary dominates LMS mass changes, owing to the exponential density decrease with altitude. Furthermore, a poleward expansion of the tropical ~~troposphere tropopause,~~ as is the case in the NH, can substantially decrease  
560 LMS mass due to the area decrease from low to high latitudes.

LMS mass changes are important to consider because the LMS mass makes up about 20 % of the stratospheric column and therefore contains a substantial fraction of, for example, column ozone. Since the interannual ozone variability in the LMS is  
565 mainly controlled by dynamics (e.g., Chipperfield et al., 2018), ozone changes are expected to be directly related to LMS mass changes. LMS ozone changes do not only have important implications on the radiative budget in the lower stratosphere but also on atmospheric chemistry and the UV radiation reaching the surface (e.g., Forster and Shine, 1997; Hegglin and Shepherd, 2009).

*Code and data availability.* ERA5 and ERA-Interim reanalysis data are available from the European Centre for Medium-range Weather  
570 Forecasts (ECMWF (b), 2024) and (ECMWF (a), 2024). The MERRA-2 data set is provided by Global Modeling And Assimilation Office and Pawson (2015) of the National Aeronautics and Space Administration (NASA). The JRA-55 reanalysis data is available at Japan Meteorological Agency/Japan (2013) and the JRA3Q data set at Japan Meteorological Agency/Japan (2024). The DLM model code (dlmmc) is publicly available at <https://github.com/justinalsing/dlmmc>. The code for LMS mass calculation and trend analysis, including the respective LMS boundary surfaces in all reanalyses, is available on zenodo (Weyland, 2024).

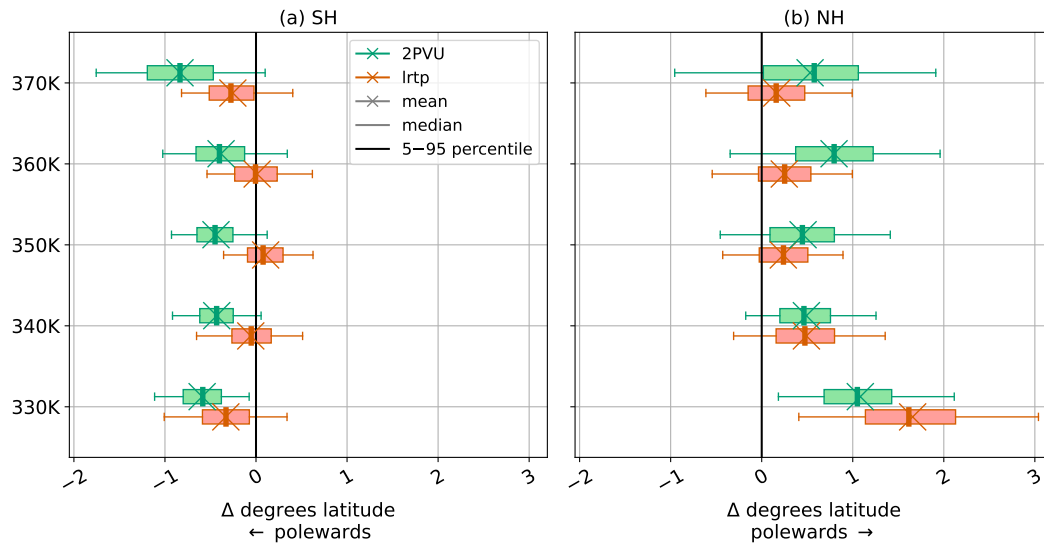
575 *Author contributions.* FW performed the analyses and wrote the first draft of the paper. PH and DK initiated the project and conceptualized the core research goals. FP and TB contributed valuable ideas. KT provided the PV-gradient tropopause data. All authors contributed in interpreting the results and improving the manuscript.

*Competing interests.* The authors declare that they have no conflict of interest.

*Acknowledgements.* This work was funded by the Deutsche Forschungsgemeinschaft (DFG, German Research Foundation) – TRR 301 –  
580 Project-ID 428312742: “The tropopause region in a changing atmosphere”. We further would like to thank the Dres. Göbel Klima-Stiftung for their financial support, which FW was able to benefit from as part of a Deutschlandstipendium during her Master’s programme.

Appendix A: [Appendix A](#)

ERA5 intersection of tropopause with isentropes DLM trend 1998–2019  
(intersections from zonal mean data)



**Figure A1.** Same as Fig. 10 but for the intersections between isentropes with the lapse rate tropopause (red) and the 2 PVU dynamic tropopause in ERA5.



<u>LMS definition</u>	<u>Reanalysis</u>	<u>NH</u>	<u>SH</u>
<u>lrtp-380K</u>	<u>ERA5</u>	<u>0.55±0.20</u>	<u>0.57±0.10</u>
	<u>MERRA-2</u>	<u>0.50±0.20</u>	<u>0.51±0.11</u>
	<u>ERA-Interim</u>	<u>0.54±0.20</u>	<u>0.57±0.11</u>
	<u>JRA-55</u>	<u>0.53±0.19</u>	<u>0.56±0.10</u>
	<u>JRA3Q</u>	<u>0.54±0.19</u>	<u>0.57±0.10</u>
<u>lrtp-PPT10mean</u>	<u>ERA5</u>	<u>0.49±0.20</u>	<u>0.50±0.08</u>
	<u>MERRA-2</u>	<u>0.46±0.19</u>	<u>0.46±0.10</u>
	<u>ERA-Interim</u>	<u>0.49±0.20</u>	<u>0.51±0.09</u>
	<u>JRA-55</u>	<u>0.49±0.19</u>	<u>0.51±0.09</u>
	<u>JRA3Q</u>	<u>0.49±0.18</u>	<u>0.51±0.08</u>
<u>lrtp-PPTcp10mean</u>	<u>ERA5</u>	<u>0.56±0.22</u>	<u>0.58±0.09</u>
	<u>MERRA-2</u>	<u>0.49±0.21</u>	<u>0.50±0.10</u>
	<u>ERA-Interim</u>	<u>0.55±0.22</u>	<u>0.57±0.10</u>
	<u>JRA-55</u>	<u>0.56±0.21</u>	<u>0.58±0.09</u>
	<u>JRA3Q</u>	<u>0.54±0.20</u>	<u>0.57±0.08</u>

**Table A1.** Mean LMS mass and associated standard deviation in  $10^{17}$  kg for different LMS definitions and reanalysis data sets.

## References

- Alsing, J.: dlmmc: Dynamical linear model regression for atmospheric time-series analysis, *Journal of Open Source Software*, 4, 1157, 585 <https://doi.org/10.21105/joss.01157>, 2019.
- Appenzeller, C., Holton, J. R., and Rosenlof, K. H.: Seasonal variation of mass transport across the tropopause, *Journal of Geophysical Research: Atmospheres*, 101, 15 071–15 078, <https://doi.org/10.1029/96JD00821>, 1996.
- Ball, W. T., Alsing, J., Mortlock, D. J., Rozanov, E. V., Tummon, F., and Haigh, J. D.: Reconciling differences in stratospheric ozone composites, *Atmospheric Chemistry and Physics*, 17, 12 269–12 302, <https://doi.org/10.5194/acp-17-12269-2017>, 2017.
- 590 Ball, W. T., Alsing, J., Mortlock, D. J., Staehelin, J., Haigh, J. D., Peter, T., Tummon, F., Stübi, R., Stenke, A., Anderson, J., Bourassa, A., Davis, S. M., Degenstein, D., Frith, S., Froidevaux, L., Roth, C., Sofieva, V., Wang, R., Wild, J., Yu, P., Ziemke, J. R., and Rozanov, E. V.: Evidence for a continuous decline in lower stratospheric ozone offsetting ozone layer recovery, *Atmospheric Chemistry and Physics*, 18, 1379–1394, <https://doi.org/10.5194/acp-18-1379-2018>, 2018.
- Ball, W. T., Alsing, J., Staehelin, J., Davis, S. M., Froidevaux, L., and Peter, T.: Stratospheric ozone trends for 1985–2018: sensitivity to recent 595 large variability, preprint, *Gases/Remote Sensing/Stratosphere/Physics (physical properties and processes)*, <https://doi.org/10.5194/acp-2019-243>, 2019.
- Berthet, G., Esler, J. G., and Haynes, P. H.: A Lagrangian perspective of the tropopause and the ventilation of the lowermost stratosphere, *Journal of Geophysical Research: Atmospheres*, 112, 2006JD008 295, <https://doi.org/10.1029/2006JD008295>, 2007.
- Bethan, S., Vaughan, G., and Reid, S. J.: A comparison of ozone and thermal tropopause heights and the impact of tropopause def- 600 inition on quantifying the ozone content of the troposphere, *Quarterly Journal of the Royal Meteorological Society*, 122, 929–944, <https://doi.org/10.1002/qj.49712253207>, 1996.
- Birner, T.: Fine-scale structure of the extratropical tropopause region, *Journal of Geophysical Research: Atmospheres*, 111, 2005JD006 301, <https://doi.org/10.1029/2005JD006301>, 2006.
- Birner, T.: Recent widening of the tropical belt from global tropopause statistics: Sensitivities, *Journal of Geophysical Research: Atmo- 605 spheres*, 115, 2010JD014 664, <https://doi.org/10.1029/2010JD014664>, 2010a.
- Birner, T.: Residual Circulation and Tropopause Structure, *Journal of the Atmospheric Sciences*, 67, 2582–2600, <https://doi.org/10.1175/2010JAS3287.1>, 2010b.
- Birner, T., Dörnbrack, A., and Schumann, U.: How sharp is the tropopause at midlatitudes?, *Geophysical Research Letters*, 29, <https://doi.org/10.1029/2002GL015142>, 2002.
- 610 Bogner, K., Tegtmeier, S., Bourassa, A., Roth, C., Warnock, T., Zawada, D., and Degenstein, D.: Stratospheric ozone trends for 1984–2021 in the SAGE II–OSIRIS–SAGE III/ISS composite dataset, *Atmospheric Chemistry and Physics*, 22, 9553–9569, <https://doi.org/10.5194/acp-22-9553-2022>, 2022.
- Boljka, L. and Birner, T.: Potential impact of tropopause sharpness on the structure and strength of the general circulation, *npj Climate and Atmospheric Science*, 5, 98, <https://doi.org/10.1038/s41612-022-00319-6>, 2022.
- 615 Butchart, N.: The Brewer-Dobson circulation, *Reviews of Geophysics*, 52, 157–184, <https://doi.org/10.1002/2013RG000448>, 2014.
- Castanheira, J. M., Añel, J. A., Marques, C. A. F., Antuña, J. C., Liberato, M. L. R., De La Torre, L., and Gimeno, L.: Increase of upper troposphere/lower stratosphere wave baroclinicity during the second half of the 20th century, *Atmospheric Chemistry and Physics*, 9, 9143–9153, <https://doi.org/10.5194/acp-9-9143-2009>, 2009.

- Charlesworth, E., Plöger, F., Birner, T., Baikhadzhaev, R., Abalos, M., Abraham, N. L., Akiyoshi, H., Bekki, S., Dennison, F., Jöckel, P.,  
620 Keeble, J., Kinnison, D., Morgenstern, O., Plummer, D., Rozanov, E., Strode, S., Zeng, G., Egorova, T., and Riese, M.: Stratospheric water  
vapor affecting atmospheric circulation, *Nature Communications*, 14, 3925, <https://doi.org/10.1038/s41467-023-39559-2>, 2023.
- Chipperfield, M. P., Dhomse, S., Hossaini, R., Feng, W., Santee, M. L., Weber, M., Burrows, J. P., Wild, J. D., Loyola, D., and  
Coldewey-Egbers, M.: On the Cause of Recent Variations in Lower Stratospheric Ozone, *Geophysical Research Letters*, 45, 5718–5726,  
<https://doi.org/10.1029/2018GL078071>, 2018.
- 625 Dee, D. P., Uppala, S. M., Simmons, A. J., Berrisford, P., Poli, P., Kobayashi, S., Andrae, U., Balmaseda, M. A., Balsamo, G., Bauer, P.,  
Bechtold, P., Beljaars, A. C. M., Van De Berg, L., Bidlot, J., Bormann, N., Delsol, C., Dragani, R., Fuentes, M., Geer, A. J., Haim-  
berger, L., Healy, S. B., Hersbach, H., Hólm, E. V., Isaksen, I., Kållberg, P., Köhler, M., Matricardi, M., McNally, A. P., Monge-  
Sanz, B. M., Morcrette, J., Park, B., Peubey, C., De Rosnay, P., Tavolato, C., Thépaut, J., and Vitart, F.: The ERA-Interim reanalysis:  
configuration and performance of the data assimilation system, *Quarterly Journal of the Royal Meteorological Society*, 137, 553–597,  
630 <https://doi.org/10.1002/qj.828>, 2011.
- ECMWF: ERA-Interim reanalysis, <https://apps.ecmwf.int/data-catalogues/era-interim/?class=ei>, last accessed: 26 September 2024, a.
- ECMWF: ERA5 reanalysis, <https://apps.ecmwf.int/data-catalogues/era5/?class=ea>, last accessed: 26 September 2024, b.
- ECMWF: IFS Documentation CY41R2 - Part VI: Technical and Computational Procedures, <https://doi.org/10.21957/5RWD87QEW>, pub-  
lisher: [object Object], 2016.
- 635 Eichinger, R. and Šácha, P.: Overestimated acceleration of the advective Brewer–Dobson circulation due to stratospheric cooling, *Quarterly  
Journal of the Royal Meteorological Society*, 146, 3850–3864, <https://doi.org/10.1002/qj.3876>, 2020.
- Fischer, H., Wienhold, F. G., Hoor, P., Bujok, O., Schiller, C., Siegmund, P., Ambaum, M., Scheeren, H. A., and Lelieveld, J.: Tracer  
correlations in the northern high latitude lowermost stratosphere: Influence of cross-tropopause mass exchange, *Geophysical Research  
Letters*, 27, 97–100, <https://doi.org/10.1029/1999GL010879>, 2000.
- 640 Forster, F. P. M. and Shine, K. P.: Radiative forcing and temperature trends from stratospheric ozone changes, *Journal of Geophysical  
Research: Atmospheres*, 102, 10 841–10 855, <https://doi.org/10.1029/96JD03510>, 1997.
- Forster, P. M. D. F. and Shine, K. P.: Assessing the climate impact of trends in stratospheric water vapor, *Geophysical Research Letters*, 29,  
<https://doi.org/10.1029/2001GL013909>, 2002.
- Fu, Q., Solomon, S., Pahlavan, H. A., and Lin, P.: Observed changes in Brewer–Dobson circulation for 1980–2018, *Environmental Research  
645 Letters*, 14, 114 026, <https://doi.org/10.1088/1748-9326/ab4de7>, 2019.
- FU-Berlin: The Quasi-Biennial oscillation (QBO) Data Serie, <https://www.geo.fu-berlin.de/met/ag/strat/produkte/qbo/qbo.dat>, last accessed:  
11 July 2023.
- Fujiwara, M., Manney, G. L., Gray, L. J., and Wright, J. S.: SPARC Reanalysis Intercomparison Project (S-RIP) Final Report, Tech. rep.,  
<https://elib.dlr.de/148623/>, 10th assessment report of the SPARC project, published by the International Project Office at DLR-IPA. also:  
650 WCRP Report 6/2021, 2022.
- Gelaro, R., McCarty, W., Suárez, M. J., Todling, R., Molod, A., Takacs, L., Randles, C. A., Darmenov, A., Bosilovich, M. G., Reichle,  
R., Wargan, K., Coy, L., Cullather, R., Draper, C., Akella, S., Buchard, V., Conaty, A., Da Silva, A. M., Gu, W., Kim, G.-K., Koster, R.,  
Lucchesi, R., Merkova, D., Nielsen, J. E., Partyka, G., Pawson, S., Putman, W., Rienecker, M., Schubert, S. D., Sienkiewicz, M., and Zhao,  
B.: The Modern-Era Retrospective Analysis for Research and Applications, Version 2 (MERRA-2), *Journal of Climate*, 30, 5419–5454,  
655 <https://doi.org/10.1175/JCLI-D-16-0758.1>, 2017.

- Gottelman, A. and Wang, T.: Structural diagnostics of the tropopause inversion layer and its evolution, *Journal of Geophysical Research: Atmospheres*, 120, 46–62, <https://doi.org/10.1002/2014JD021846>, 2015.
- 660 Gottelman, A., Hegglin, M. I., Son, S.-W., Kim, J., Fujiwara, M., Birner, T., Kremser, S., Rex, M., Añel, J. A., Akiyoshi, H., Austin, J., Bekki, S., Braesicke, P., Brühl, C., Butchart, N., Chipperfield, M., Dameris, M., Dhomse, S., Garny, H., Hardiman, S. C., Jöckel, P., Kinnison, D. E., Lamarque, J. F., Mancini, E., Marchand, M., Michou, M., Morgenstern, O., Pawson, S., Pitari, G., Plummer, D., Pyle, J. A., Rozanov, E., Scinocca, J., Shepherd, T. G., Shibata, K., Smale, D., Teyssèdre, H., and Tian, W.: Multimodel assessment of the upper troposphere and lower stratosphere: Tropics and global trends, *Journal of Geophysical Research*, 115, D00M08, <https://doi.org/10.1029/2009JD013638>, 2010.
- 665 Gottelman, A., Hoor, P., Pan, L. L., Randel, W. J., Hegglin, M. I., and Birner, T.: The Extratropical Upper Troposphere and Lower Stratosphere, *Reviews of Geophysics*, 49, RG3003, <https://doi.org/10.1029/2011RG000355>, 2011.
- Global Modeling And Assimilation Office and Pawson, S.: MERRA-2 instM\_3d\_asm\_Np: 3d,Monthly mean,Instantaneous,Pressure-Level,Assimilation,Assimilated Meteorological Fields V5.12.4, <https://doi.org/10.5067/2E096JV59PK7>, 2015.
- 670 Grise, K. M., Davis, S. M., Simpson, I. R., Waugh, D. W., Fu, Q., Allen, R. J., Rosenlof, K. H., Ummenhofer, C. C., Karauskas, K. B., Maycock, A. C., Quan, X.-W., Birner, T., and Staten, P. W.: Recent Tropical Expansion: Natural Variability or Forced Response?, *Journal of Climate*, 32, 1551–1571, <https://doi.org/10.1175/JCLI-D-18-0444.1>, 2019.
- Hegglin, M. I. and Shepherd, T. G.: Large climate-induced changes in ultraviolet index and stratosphere-to-troposphere ozone flux, *Nature Geoscience*, 2, 687–691, <https://doi.org/10.1038/ngeo604>, 2009.
- 675 Hegglin, M. I., Gottelman, A., Hoor, P., Krichevsky, R., Manney, G. L., Pan, L. L., Son, S.-W., Stiller, G., Tilmes, S., Walker, K. A., Eyring, V., Shepherd, T. G., Waugh, D., Akiyoshi, H., Añel, J. A., Austin, J., Baumgaertner, A., Bekki, S., Braesicke, P., Brühl, C., Butchart, N., Chipperfield, M., Dameris, M., Dhomse, S., Frith, S., Garny, H., Hardiman, S. C., Jöckel, P., Kinnison, D. E., Lamarque, J. F., Mancini, E., Michou, M., Morgenstern, O., Nakamura, T., Olivièd, D., Pawson, S., Pitari, G., Plummer, D. A., Pyle, J. A., Rozanov, E., Scinocca, J. F., Shibata, K., Smale, D., Teyssèdre, H., Tian, W., and Yamashita, Y.: Multimodel assessment of the upper troposphere and lower stratosphere: Extratropics, *Journal of Geophysical Research*, 115, D00M09, <https://doi.org/10.1029/2010JD013884>, 2010.
- 680 Hersbach, H., Bell, B., Berrisford, P., Hirahara, S., Ho`ranyi, A., Mu`noz-Sabater, J., Nicolas, J., Peubey, C., Radu, R., Schepers, D., Simmons, A., Soci, C., Abdalla, S., Abellan, X., Balsamo, G., Bechtold, P., Biavati, G., Bidlot, J., Bonavita, M., Chiara, G., Dahlgren, P., Dee, D., Diamantakis, M., Dragani, R., Flemming, J., Forbes, R., Fuentes, M., Geer, A., Haimberger, L., Healy, S., Hogan, R. J., H`olm, E., Janiskov`a, M., Keeley, S., Lalouaux, P., Lopez, P., Lupu, C., Radnoti, G., Rosnay, P., Rozum, I., Vamborg, F., Villaume, S., and Th`epaut, J.: The ERA5 global reanalysis, *Quarterly Journal of the Royal Meteorological Society*, p. qj.3803, <https://doi.org/10.1002/qj.3803>, 2020.
- 685 Hoerling, M., Schaack, T., and Lenzen, A.: Global objective tropopause analysis, pp. 1816–1831, 1991.
- Holton, J. R., Haynes, P. H., McIntyre, M. E., Douglass, A. R., Rood, R. B., and Pfister, L.: Stratosphere-troposphere exchange, *Reviews of Geophysics*, 33, 403, <https://doi.org/10.1029/95RG02097>, 1995.
- Hoor, P., Fischer, H., Lange, L., Lelieveld, J., and Brunner, D.: Seasonal variations of a mixing layer in the lowermost stratosphere as identified by the CO-O<sub>3</sub> correlation from in situ measurements, *Journal of Geophysical Research: Atmospheres*, 107, <https://doi.org/10.1029/2000JD000289>, 2002.
- 690 Hoor, P., Gurk, C., Brunner, D., Hegglin, M. I., Wernli, H., and Fischer, H.: Seasonality and extent of extratropical TST derived from in-situ CO measurements during SPURT, *Atmospheric Chemistry and Physics*, 4, 1427–1442, <https://doi.org/10.5194/acp-4-1427-2004>, 2004.
- Hoskins, B. J.: Towards a PV-theta view of the general circulation, *Tellus A*, 43, 27–35, <https://doi.org/10.1034/j.1600-0870.1991.t01-3-00005.x>, 1991.

IPCC, Calvin, K., Dasgupta, D., Krinner, G., Mukherji, A., Thorne, P. W., Trisos, C., Romero, J., Aldunce, P., Barrett, K., Blanco, G.,  
695 Cheung, W. W., Connors, S., Denton, F., Diongue-Niang, A., Dodman, D., Garschagen, M., Geden, O., Hayward, B., Jones, C., Jotzo, F.,  
Krug, T., Lasco, R., Lee, Y.-Y., Masson-Delmotte, V., Meinshausen, M., Mintenbeck, K., Mokssit, A., Otto, F. E., Pathak, M., Pirani, A.,  
Poloczanska, E., Pörtner, H.-O., Revi, A., Roberts, D. C., Roy, J., Ruane, A. C., Skea, J., Shukla, P. R., Slade, R., Slangen, A., Sokona, Y.,  
Sörensson, A. A., Tignor, M., Van Vuuren, D., Wei, Y.-M., Winkler, H., Zhai, P., Zommers, Z., Hourcade, J.-C., Johnson, F. X., Pachauri,  
S., Simpson, N. P., Singh, C., Thomas, A., Totin, E., Arias, P., Bustamante, M., Elgizouli, I., Flato, G., Howden, M., Méndez-Vallejo,  
700 C., Pereira, J. J., Pichs-Madruga, R., Rose, S. K., Saheb, Y., Sánchez Rodríguez, R., Ürge Vorsatz, D., Xiao, C., Yassaa, N., Alegría, A.,  
Armour, K., Bednar-Friedl, B., Blok, K., Cissé, G., Dentener, F., Eriksen, S., Fischer, E., Garner, G., Guivarch, C., Haasnoot, M., Hansen,  
G., Hauser, M., Hawkins, E., Hermans, T., Kopp, R., Leprince-Ringuet, N., Lewis, J., Ley, D., Ludden, C., Niamir, L., Nicholls, Z., Some,  
S., Szopa, S., Trewin, B., Van Der Wijst, K.-I., Winter, G., Witting, M., Birt, A., Ha, M., Romero, J., Kim, J., Haites, E. F., Jung, Y.,  
Stavins, R., Birt, A., Ha, M., Orendain, D. J. A., Igonon, L., Park, S., Park, Y., Reisinger, A., Cammaramo, D., Fischlin, A., Fuglestvedt,  
705 J. S., Hansen, G., Ludden, C., Masson-Delmotte, V., Matthews, J. R., Mintenbeck, K., Pirani, A., Poloczanska, E., Leprince-Ringuet, N.,  
and Péan, C.: IPCC, 2023: Climate Change 2023: Synthesis Report. Contribution of Working Groups I, II and III to the Sixth Assessment  
Report of the Intergovernmental Panel on Climate Change [Core Writing Team, H. Lee and J. Romero (eds.)]. IPCC, Geneva, Switzerland.,  
Tech. rep., Intergovernmental Panel on Climate Change (IPCC), <https://doi.org/10.59327/IPCC/AR6-9789291691647>, edition: First, 2023.

Japan Meteorological Agency/Japan: JRA-55: Japanese 55-year Reanalysis, Monthly Means and Variances,  
710 <https://doi.org/10.5065/D60G3H5B>, artwork Size: 1.368 Tbytes Pages: 1.368 Tbytes, 2013.

Japan Meteorological Agency/Japan: Near real-time monthly mean Japanese Reanalysis for Three Quarters of a Century (JRA-3Q),  
<https://doi.org/10.5065/CW01-2282>, artwork Size: 0.000 bytes Pages: 0.000 bytes, 2024.

JMA: Information Infrastructure Department, Japan Meteorological Agency, JRA-3Q Data Format - Model grid data, [https://jra.kishou.go.jp/JRA-3Q/document/JRA-3Q\\_TL479\\_format\\_en.pdf](https://jra.kishou.go.jp/JRA-3Q/document/JRA-3Q_TL479_format_en.pdf), last accessed: 01 October 2024.

715 Kaluza, T., Kunkel, D., and Hoor, P.: On the occurrence of strong vertical wind shear in the tropopause region: a 10-year ERA5 northern  
hemispheric study, *Weather and Climate Dynamics*, 2, 631–651, <https://doi.org/10.5194/wcd-2-631-2021>, 2021.

Karagodin-Doyennel, A., Rozanov, E., Sukhodolov, T., Egorova, T., Sedlacek, J., Ball, W., and Peter, T.: The historical ozone trends simulated  
with the SOCOLv4 and their comparison with observations and reanalyses, *Atmospheric Chemistry and Physics*, 22, 15 333–15 350,  
<https://doi.org/10.5194/acp-22-15333-2022>, 2022.

720 Kobayashi, S., Ota, Y., Harada, Y., Ebata, A., Moriya, M., Onoda, H., Onogi, K., Kamahori, H., Kobayashi, C., Endo, H., Miyaoka, K., and  
Takahashi, K.: The JRA-55 Reanalysis: General Specifications and Basic Characteristics, *Journal of the Meteorological Society of Japan*.  
Ser. II, 93, 5–48, <https://doi.org/10.2151/jmsj.2015-001>, 2015.

Kosaka, Y., Kobayashi, S., Harada, Y., Kobayashi, C., Naoe, H., Yoshimoto, K., Harada, M., Goto, N., Chiba, J., Miyaoka, K., Sekiguchi, R.,  
Deushi, M., Kamahori, H., Nakaegawa, T., Tanaka, T. Y., Tokuhiko, T., Sato, Y., Matsushita, Y., and Onogi, K.: The JRA-3Q Reanalysis,  
725 *Journal of the Meteorological Society of Japan*. Ser. II, 102, 49–109, <https://doi.org/10.2151/jmsj.2024-004>, 2024.

Kunkel, D., Hoor, P., Kaluza, T., Ungermann, J., Kluschat, B., Giez, A., Lachnitt, H.-C., Kaufmann, M., and Riese, M.: Evidence of  
small-scale quasi-isentropic mixing in ridges of extratropical baroclinic waves, *Atmospheric Chemistry and Physics*, 19, 12 607–12 630,  
<https://doi.org/10.5194/acp-19-12607-2019>, 2019.

Kunz, A., Konopka, P., Müller, R., and Pan, L. L.: Dynamical tropopause based on isentropic potential vorticity gradients, *Journal of Geo-*  
730 *physical Research*, 116, D01 110, <https://doi.org/10.1029/2010JD014343>, 2011.

- Laine, M., Latva-Pukkila, N., and Kyrölä, E.: Analysing time-varying trends in stratospheric ozone time series using the state space approach, *Atmospheric Chemistry and Physics*, 14, 9707–9725, <https://doi.org/10.5194/acp-14-9707-2014>, 2014.
- Lu, J., Deser, C., and Reichler, T.: Cause of the widening of the tropical belt since 1958, *Geophysical Research Letters*, 36, 2008GL036076, <https://doi.org/10.1029/2008GL036076>, 2009.
- 735 Maher, P., Kelleher, M. E., Sansom, P. G., and Methven, J.: Is the subtropical jet shifting poleward?, *Climate Dynamics*, 54, 1741–1759, <https://doi.org/10.1007/s00382-019-05084-6>, 2020.
- Manney, G. L. and Hegglin, M. I.: Seasonal and Regional Variations of Long-Term Changes in Upper-Tropospheric Jets from Reanalyses, *Journal of Climate*, 31, 423–448, <https://doi.org/10.1175/JCLI-D-17-0303.1>, 2018.
- Manney, G. L., Hegglin, M. I., Daffer, W. H., Santee, M. L., Ray, E. A., Pawson, S., Schwartz, M. J., Boone, C. D., Froidevaux, L., Livesey,  
740 N. J., Read, W. G., and Walker, K. A.: Jet characterization in the upper troposphere/lower stratosphere (UTLS): applications to climatology and transport studies, *Atmospheric Chemistry and Physics*, 11, 6115–6137, <https://doi.org/10.5194/acp-11-6115-2011>, 2011.
- Meng, L., Liu, J., Tarasick, D. W., Randel, W. J., Steiner, A. K., Wilhelmssen, H., Wang, L., and Haimberger, L.: Continuous rise of the tropopause in the Northern Hemisphere over 1980–2020, *Science Advances*, 7, eabi8065, <https://doi.org/10.1126/sciadv.abi8065>, 2021.
- Minganti, D., Chabrillat, S., Errera, Q., Prignon, M., Kinnison, D. E., Garcia, R. R., Abalos, M., Alsing, J., Schneider, M., Smale, D., Jones,  
745 N., and Mahieu, E.: Evaluation of the N<sub>2</sub>O Rate of Change to Understand the Stratospheric Brewer-Dobson Circulation in a Chemistry-Climate Model, *Journal of Geophysical Research: Atmospheres*, 127, e2021JD036390, <https://doi.org/10.1029/2021JD036390>, 2022.
- NOAA: Multivariate ENSO Index Version 2 (MEI.v2), <https://psl.noaa.gov/enso/mei/>, last accessed: 11 July 2023.
- Oberländer-Hayn, S., Gerber, E. P., Abalichin, J., Akiyoshi, H., Kerschbaumer, A., Kubin, A., Kunze, M., Langematz, U., Meul, S., Michou, M., Morgenstern, O., and Oman, L. D.: Is the Brewer-Dobson circulation increasing or moving upward?, *Geophysical Research Letters*,  
750 43, 1772–1779, <https://doi.org/10.1002/2015GL067545>, 2016.
- Olsen, M. A., Douglass, A. R., and Kaplan, T. B.: Variability of extratropical ozone stratosphere–troposphere exchange using microwave limb sounder observations, *Journal of Geophysical Research: Atmospheres*, 118, 1090–1099, <https://doi.org/10.1029/2012JD018465>, 2013.
- Pan, L. L., Randel, W. J., Gary, B. L., Mahoney, M. J., and Hints, E. J.: Definitions and sharpness of the extratropical tropopause: A trace gas perspective, *Journal of Geophysical Research: Atmospheres*, 109, 2004JD004982, <https://doi.org/10.1029/2004JD004982>, 2004.
- 755 Pisoft, P., Sacha, P., Polvani, L. M., Añel, J. A., De La Torre, L., Eichinger, R., Foelsche, U., Huszar, P., Jacobi, C., Karlicky, J., Kuchar, A., Miksovsky, J., Zak, M., and Rieder, H. E.: Stratospheric contraction caused by increasing greenhouse gases, *Environmental Research Letters*, 16, 064038, <https://doi.org/10.1088/1748-9326/abfe2b>, 2021.
- Ploeger, F. and Garny, H.: Hemispheric asymmetries in recent changes in the stratospheric circulation, *Atmospheric Chemistry and Physics*, 22, 5559–5576, <https://doi.org/10.5194/acp-22-5559-2022>, 2022.
- 760 Randel, W. J., Wu, F., Oltmans, S. J., Rosenlof, K., and Nedoluha, G. E.: Interannual Changes of Stratospheric Water Vapor and Correlations with Tropical Tropopause Temperatures, *Journal of the Atmospheric Sciences*, 61, 2133–2148, [https://doi.org/10.1175/1520-0469\(2004\)061<2133:ICOSWV>2.0.CO;2](https://doi.org/10.1175/1520-0469(2004)061<2133:ICOSWV>2.0.CO;2), 2004.
- Randel, W. J., Wu, F., and Forster, P.: The Extratropical Tropopause Inversion Layer: Global Observations with GPS Data, and a Radiative Forcing Mechanism, *Journal of the Atmospheric Sciences*, 64, 4489–4496, <https://doi.org/10.1175/2007JAS2412.1>, 2007.
- 765 Reichler, T., Dameris, M., and Sausen, R.: Determining the tropopause height from gridded data, *Geophysical Research Letters*, 30, 2003GL018240, <https://doi.org/10.1029/2003GL018240>, 2003.

- Riese, M., Ploeger, F., Rap, A., Vogel, B., Konopka, P., Dameris, M., and Forster, P.: Impact of uncertainties in atmospheric mixing on simulated UTLS composition and related radiative effects, *Journal of Geophysical Research: Atmospheres*, 117, n/a–n/a, <https://doi.org/10.1029/2012JD017751>, 2012.
- 770 Santer, B. D.: Behavior of tropopause height and atmospheric temperature in models, reanalyses, and observations: Decadal changes, *Journal of Geophysical Research*, 108, 4002, <https://doi.org/10.1029/2002JD002258>, 2003a.
- Santer, B. D.: Contributions of Anthropogenic and Natural Forcing to Recent Tropopause Height Changes, *Science*, 301, 479–483, <https://doi.org/10.1126/science.1084123>, 2003b.
- Santer, B. D., Wigley, T. M. L., Simmons, A. J., Kållberg, P. W., Kelly, G. A., Uppala, S. M., Ammann, C., Boyle, J. S., Brüggemann, W., Doutriaux, C., Fiorino, M., Mears, C., Meehl, G. A., Sausen, R., Taylor, K. E., Washington, W. M., Wehner, M. F., and Wentz, F. J.: Identification of anthropogenic climate change using a second-generation reanalysis, *Journal of Geophysical Research: Atmospheres*, 109, n/a–n/a, <https://doi.org/10.1029/2004JD005075>, 2004.
- 775 Sausen, R. and Santer, B. D.: Use of changes in tropopause height to detect human influences on climate, *Meteorologische Zeitschrift*, 12, 131–136, <https://doi.org/10.1127/0941-2948/2003/0012-0131>, 2003.
- 780 Scherllin-Pirscher, B., Steiner, A. K., Anthes, R. A., Alexander, M. J., Alexander, S. P., Biondi, R., Birner, T., Kim, J., Randel, W. J., Son, S.-W., Tsuda, T., and Zeng, Z.: Tropical Temperature Variability in the UTLS: New Insights from GPS Radio Occultation Observations, *Journal of Climate*, 34, 2813–2838, <https://doi.org/10.1175/JCLI-D-20-0385.1>, 2021.
- Schmidt, T., Wickert, J., Beyerle, G., and Heise, S.: Global tropopause height trends estimated from GPS radio occultation data, *Geophysical Research Letters*, 35, L11 806, <https://doi.org/10.1029/2008GL034012>, 2008.
- 785 Schoeberl, M. R.: Extratropical stratosphere-troposphere mass exchange, *Journal of Geophysical Research: Atmospheres*, 109, n/a–n/a, <https://doi.org/10.1029/2004JD004525>, 2004.
- Seidel, D. J. and Randel, W. J.: Variability and trends in the global tropopause estimated from radiosonde data, *Journal of Geophysical Research*, 111, D21 101, <https://doi.org/10.1029/2006JD007363>, 2006.
- Seidel, D. J. and Randel, W. J.: Recent widening of the tropical belt: Evidence from tropopause observations, *Journal of Geophysical Research*, 112, D20 113, <https://doi.org/10.1029/2007JD008861>, 2007.
- 790 Seidel, D. J., Ross, R. J., Angell, J. K., and Reid, G. C.: Climatological characteristics of the tropical tropopause as revealed by radiosondes, *Journal of Geophysical Research: Atmospheres*, 106, 7857–7878, <https://doi.org/10.1029/2000JD900837>, 2001.
- Simmons, A., Soci, C., Nicolas, J., Bell, B., Berrisford, P., Dragani, R., Flemming, J., Haimberger, L., Healy, S., Hersbach, H., Horányi, A., Inness, A., Muñoz-Sabater, J., Radu, R., and Schepers, D.: Global stratospheric temperature bias and other stratospheric aspects of ERA5 and ERA5.1, <https://doi.org/10.21957/RCXQFMG0>, publisher: ECMWF, 2020.
- 795 Staten, P. W., Lu, J., Grise, K. M., Davis, S. M., and Birner, T.: Re-examining tropical expansion, *Nature Climate Change*, 8, 768–775, <https://doi.org/10.1038/s41558-018-0246-2>, 2018.
- Stohl, A.: Stratosphere-troposphere exchange: A review, and what we have learned from STACCATO, *Journal of Geophysical Research*, 108, 8516, <https://doi.org/10.1029/2002JD002490>, 2003.
- 800 Strahan, S. E., Smale, D., Douglass, A. R., Blumenstock, T., Hannigan, J. W., Hase, F., Jones, N. B., Mahieu, E., Notholt, J., Oman, L. D., Ortega, I., Palm, M., Prignon, M., Robinson, J., Schneider, M., Sussmann, R., and Velazco, V. A.: Observed Hemispheric Asymmetry in Stratospheric Transport Trends From 1994 to 2018, *Geophysical Research Letters*, 47, <https://doi.org/10.1029/2020GL088567>, 2020.



- 805 Tegtmeier, S., Anstey, J., Davis, S., Dragani, R., Harada, Y., Ivanciu, I., Pilch Kedzierski, R., Krüger, K., Legras, B., Long, C., Wang, J. S., Wargan, K., and Wright, J. S.: Temperature and tropopause characteristics from reanalyses data in the tropical tropopause layer, *Atmospheric Chemistry and Physics*, 20, 753–770, <https://doi.org/10.5194/acp-20-753-2020>, 2020.
- Thomason, L. W., Ernest, N., Millán, L., Rieger, L., Bourassa, A., Vernier, J.-P., Manney, G., Luo, B., Arfeuille, F., and Peter, T.: A global space-based stratospheric aerosol climatology: 1979–2016, *Earth System Science Data*, 10, 469–492, <https://doi.org/10.5194/essd-10-469-2018>, 2018.
- 810 Thompson, D. W. J. and Solomon, S.: Understanding Recent Stratospheric Climate Change, *Journal of Climate*, 22, 1934–1943, <https://doi.org/10.1175/2008JCLI2482.1>, 2009.
- Tinney, E. N., Homeyer, C. R., Elizalde, L., Hurst, D. F., Thompson, A. M., Stauffer, R. M., Vömel, H., and Selkirk, H. B.: A Modern Approach to a Stability-Based Definition of the Tropopause, *Monthly Weather Review*, 150, 3151–3174, <https://doi.org/10.1175/MWR-D-22-0174.1>, 2022.
- 815 Turhal, K., Plöger, F., Clemens, J., Birner, T., Weyland, F., Konopka, P., and Hoor, P.: Variability and trends in the PV-gradient dynamical tropopause, <https://doi.org/10.5194/egusphere-2024-471>, 2024.
- Wang, M. and Fu, Q.: Stratosphere-Troposphere Exchange of Air Masses and Ozone Concentrations Based on Reanalyses and Observations, *Journal of Geophysical Research: Atmospheres*, 126, <https://doi.org/10.1029/2021JD035159>, 2021.
- Wang, M., Fu, Q., Solomon, S., Alexander, B., and White, R. H.: Stratosphere-Troposphere Exchanges of Air Mass and Ozone Concentration in the Last Glacial Maximum, *Journal of Geophysical Research: Atmospheres*, 127, <https://doi.org/10.1029/2021JD036327>, 2022.
- 820 Weyland, F.: The mass of the lowermost stratosphere (LMS): LMS mass calculation and trends in five reanalyses for the time period 1979–2019, <https://doi.org/10.5281/ZENODO.13890231>, 2024.
- Wilcox, L. J., Hoskins, B. J., and Shine, K. P.: A global blended tropopause based on ERA data. Part II: Trends and tropical broadening, *Quarterly Journal of the Royal Meteorological Society*, 138, 576–584, <https://doi.org/10.1002/qj.910>, 2012a.
- 825 Wilcox, L. J., Hoskins, B. J., and Shine, K. P.: A global blended tropopause based on ERA data. Part I: Climatology, *Quarterly Journal of the Royal Meteorological Society*, 138, 561–575, <https://doi.org/10.1002/qj.951>, 2012b.
- World Meteorological Organization (WMO): Definition of the tropopause, *WMO Bulletin*, 6, 136–138, 1957.
- World Meteorological Organization (WMO): Scientific assessment of ozone depletion, 2002, 498pp, World Meteorological Organisation Global Ozone Research and Monitoring Project - Report No.47, Geneva, Switzerland, 2003.
- 830 Xian, T. and Homeyer, C. R.: Global tropopause altitudes in radiosondes and reanalyses, *Atmospheric Chemistry and Physics*, 19, 5661–5678, <https://doi.org/10.5194/acp-19-5661-2019>, 2019.
- Zambri, B., Solomon, S., Thompson, D. W. J., and Fu, Q.: Emergence of Southern Hemisphere stratospheric circulation changes in response to ozone recovery, *Nature Geoscience*, 14, 638–644, <https://doi.org/10.1038/s41561-021-00803-3>, 2021.
- 835 Zhang, Y., Rossow, W. B., Laci, A. A., Oinas, V., and Mishchenko, M. I.: Calculation of radiative fluxes from the surface to top of atmosphere based on ISCCP and other global data sets: Refinements of the radiative transfer model and the input data, *Journal of Geophysical Research: Atmospheres*, 109, 2003JD004457, <https://doi.org/10.1029/2003JD004457>, 2004.
- Zou, L., Hoffmann, L., Müller, R., and Spang, R.: Variability and trends of the tropical tropopause derived from a 1980–2021 multi-reanalysis assessment, *Frontiers in Earth Science*, 11, 1177502, <https://doi.org/10.3389/feart.2023.1177502>, 2023.
- Zängl, G. and Hoinka, K. P.: The Tropopause in the Polar Regions, *Journal of Climate*, 14, 3117–3139, [https://doi.org/10.1175/1520-0442\(2001\)014<3117:TTITPR>2.0.CO;2](https://doi.org/10.1175/1520-0442(2001)014<3117:TTITPR>2.0.CO;2), 2001.

- 840 Škerlak, B., Sprenger, M., and Wernli, H.: A global climatology of stratosphere–troposphere exchange using the ERA-Interim data set from 1979 to 2011, *Atmospheric Chemistry and Physics*, 14, 913–937, <https://doi.org/10.5194/acp-14-913-2014>, 2014.
- Šácha, P., Zajíček, R., Kuchař, A., Eichinger, R., Pišoft, P., and Rieder, H. E.: Disentangling the Advective Brewer-Dobson Circulation Change, *Geophysical Research Letters*, 51, e2023GL105919, <https://doi.org/10.1029/2023GL105919>, 2024.