

Age, thinning and spatial origin of the Beyond EPICA ice from a 2.5D ice flow model

Ailsa Chung¹, Frédéric Parrenin¹, Robert Mulvaney², Luca Vittuari³, Massimo Frezzotti⁴, Antonio Zanutta³, David A. Lilien⁵, Marie Cavitte⁶, and Olaf Eisen^{7,8}

¹Université Grenoble Alpes, CNRS, INRAE, IRD, Grenoble INP, IGE, 38000 Grenoble, France

²British Antarctic Survey, Cambridge, UK

³Department of Civil, Chemical, Environmental and Materials Engineering, University of Bologna, Bologna, Italy

⁴Department of Science, University Roma Tre, Rome, Italy

⁵Department of Earth and Atmospheric Sciences, Indiana University, Bloomington, IN, USA

⁶Earth and Life Institute (ELI), Université catholique de Louvain-La-Neuve (UCLouvain), Louvain-la-Neuve, Belgium

⁷Glaciology, Alfred-Wegener-Institut Helmholtz-Zentrum für Polar-und Meeresforschung, Bremerhaven, Germany

⁸Fachbereich Geowissenschaften, Universität Bremen, Bremen, Germany

Correspondence: Ailsa Chung (ailsa.chung@univ-grenoble-alpes.fr), Frédéric Parrenin (frederic.parrenin@univ-grenoble-alpes.fr)

Abstract.

The Beyond EPICA – Oldest Ice project is a European project that aims to retrieve a continuous ice core up to 1.5 Ma through deep drilling at Little Dome C (LDC), Antarctica. In order to determine the age of the ice at a given depth before the ice is analysed in detail, 1D numerical models are often employed. However, they do not take into account any effects due to horizontal flow. We present a 2.5D inverse model that determines the age–depth profile along a flow line from Dome C (DC) to LDC that is assumed to be stable in time. This means that flow line features such as flow direction and dome location have not changed over the time period considered. The model is constrained by dated radar internal reflecting horizons. Surface velocity measurements are used to determine the flow line and flow tube width, which also allows the model to consider lateral divergence. This new inverse model therefore improves on the methods used by 1D models previously applied to the DC area. By inferring a mechanical ice thickness, the model predicts either the thickness of a basal layer of stagnant ice or a basal melt rate.

Results show that the deepest ice at Beyond EPICA Little Dome C (BELDC) originates from around 15 km upstream. The oldest ice with useful age resolution, i.e. with an age density of 20 kyr m⁻¹, is 1.12 Ma at BELDC according to the model. Over the LDC area, the thickness of a modelled basal layer is 200–250 m at the base of the ice sheet. Modelled ice particle trajectories suggest that this layer could be composed of stagnant ice, disturbed ice, or even accreted ice, possibly containing debris. We explore the possibilities, though this is an open question that may only be answered by analysis of the Beyond EPICA ice core itself. Finally, we look at other ice cores that have already been drilled and measured, where the model has been applied. We discuss in detail the thinning in the deepest section of these ice cores, which is less than predicted by the model. This could mean that modelled ages are significantly over-estimated in the deepest part of the ice column. Given that

20 the age estimate from the 2.5D model is younger than previous estimates, this work shows the importance of considering the representation of the effects of horizontal flow when modelling the age profile.

1 Introduction

The Beyond EPICA – Oldest Ice project aims to retrieve a continuous ice core record covering the past 1.5 Ma from Little Dome C (LDC)—a secondary dome ~35 km south-east of Dome C (DC) in Antarctica (Parrenin et al., 2017; Chung et al., 2023b). Age–depth models are invaluable for both selecting promising ice core drill sites and providing age constraints once the ice has been extracted. This is especially important for the deepest ice at the Beyond EPICA drill site (BELDC), as the age density (number of years per depth unit) is likely to be very high (Chung et al., 2023b), making extracting a paleoclimatic signal challenging.

There are many types of numerical schemes which can be used to model ice flow and the age–depth relationship in an ice sheet (Greve et al., 2002; Rybak and Huybrechts, 2003). Using radar internal reflecting horizons (IRHs) to constrain age–depth models is a well-established method that has been applied to many regions (Waddington et al., 2007; Koutnik, 2009; Steen-Larsen et al., 2010; Parrenin et al., 2017; Lilien et al., 2021; Obase et al., 2023; Chung et al., 2023b; Wang et al., 2023). By looking at the depth of IRHs at an ice core site, we can use existing ice core chronologies to attribute ages to IRHs, giving us isochronal layers throughout the ice sheet (e.g. Cavitte et al., 2020). Models can then compare the results to the observed isochrones to assess how well the model has performed. Or, isochrones can be used directly as constraints, with models fitting to these “tie points” on the age–depth profile.

A 1D inverse model constrained by radar isochrones was applied in the region of DC (Lilien et al., 2021; Chung et al., 2023b) and Dome Fuji (Wang et al., 2023) using an inferred mechanical ice thickness to determine a basal melt rate or the thickness of a layer of stagnant ice. At LDC, this basal unit has been observed in radar surveys presented by Cavitte (2017) and Lilien et al. (2021). Further evidence for a stagnant ice layer was presented by Chung et al. (2023b), who showed that the basal unit seen in radar surveys is of comparable thickness to a stagnant ice layer predicted by a 1D inverse age–depth model. They then corroborated this with vertical velocity measurements made with an autonomous phase-sensitive radio-echo sounder (ApRES). There is a general consensus that the basal layer is around 200–250 m thick at the BELDC drill site. Possible origins of this basal layer include shear between the top of the stagnant ice layer and the dynamic ice above, refrozen ice (Bell et al., 2011), an anisotropic crystal fabric that is resistant to compression, or a layer with considerable distortions on the micro-scale (Drews et al., 2009).

1D models are valuable tools as they are simple and can be run relatively quickly. However, they do not account for horizontal advection, which can be an important factor near a dome (Koutnik et al., 2016) as it can affect the interpretation of an ice core’s age–depth profile downstream (Fudge et al., 2020; Gerber et al., 2021). A 2.5D model considers vertical and horizontal velocity along the flow line, with a finite width of the flow tube perpendicular to the flow line. 2.5D inverse models that have been developed thus far have used a Monte Carlo method to fit to isochrones (i.e. random sampling rather than intentional minimization of misfit) and required a steady-state assumption (Steen-Larsen et al., 2010). A steady-state model assumes

that parameters such as ice thickness and accumulation rate have remained constant throughout the considered time period. Waddington et al. (2007) and Steen-Larsen et al. (2010) applied a steady-state 2.5D model to Taylor Mouth in Antarctica to determine past accumulation rates. Transient models can account for temporal changes but are computationally demanding due to the increased number of parameters allowed to vary (Koutnik and Waddington, 2012). The pseudo-steady assumption has the advantage of a steady vertical velocity profile and geometry but accumulation rates which vary over time (Parrenin et al., 2017). This offers some middle ground as it better represents real conditions than the steady state assumption but has lower computation time than a transient model.

In this study we use a 2.5D pseudo-steady model to assess the suitability of the 1D assumption at DC (i.e., that horizontal flow is negligible). Applying a 2.5D inverse model also allows us to investigate the trajectories of ice particles and therefore the location of their deposition upstream. This is of particular interest at the BELDC drill site because even slow flow can cause substantial horizontal displacement on the million-year timescales targeted by the core. The aim of this study is to investigate the impact of horizontal advection on our age predictions along the DC–LDC flow line and discuss the model’s applicability to other regions. In Sect. 2, we describe the 2.5D inverse model used in this study. We also give details on constraining observations including surface velocity measurements at LDC, used to determine the flow tube, and the radar IRHs. In Sect. 3, we present the ice particle trajectories, modelled ice age and implications for the BELDC ice core. In Sect. 4, we compare the model results to previous studies and discuss the advantages and limitations of our approach.

2 Methods

We present a 2.5D ice flow model that uses inverse methods, constrained by radar observed isochrones, to fit poorly known parameters. The basic forward ice flow model is based on the analytical development presented in Parrenin and Hindmarsh (2007). Their numerical scheme was then developed into a forward model by Parrenin et al. (2025). This method is particularly efficient, as it performs a coordinate transformation to a system where particle trajectories are linear and therefore straightforward to calculate. The forward model does this by considering the ice flux due to vertical compression and horizontal ice flow.

The main change from the numerical scheme presented in Parrenin et al. (2025), is that here, the forward model has no basal melting. The basal state of the ice sheet (including basal melting) is instead accounted for by the inverse model. The inverse model works by finding the best-fit value of physical ice flow parameters in the forward model, which lead to the current state of the ice sheet i.e. the shape of the radar isochrones. The inverse approach is similar to that of a 1D ice flow model presented by Chung et al. (2023b). We use three inferred parameters—the steady-state (i.e., time-independent) accumulation rate \bar{a} , the Lliboutry velocity profile parameter p and the mechanical ice thickness H_m . The inferred mechanical ice thickness is used to determine either a basal melt rate or the thickness of a stagnant ice layer as in Chung et al. (2023b).

The observation based constraints required for our 2.5D model are the flow tube width (forward model) and radar isochrones (inverse model). The width of the flow tube was determined using geodetic surface velocity measurements (Sect. 2.3). The inverse model is constrained by isochrones along a radar transect which approximately follows the flow line (Sect. 2.4). The

forward model is run for different values of the three inferred parameters, resulting in modelled ages for observed isochrones. The inverse model optimises a cost function by selecting the best-fit parameters, which minimise the age misfit of the isochrones generated by the forward model to the observed isochrones.

2.1 Forward model

90 The forward model is based on the analytical development of Parrenin and Hindmarsh (2007), with more recent improvements presented in our companion paper Parrenin et al. (2025). As the numerical scheme is fully described in these articles, here we outline the benefits of this method and the slight changes required to make this suitable for an inverse model. We use a pseudo-steady model that includes a steady-state geometry and velocity profile. The model determines the path of particles through the ice sheet by considering the total ice flux Q through a flow tube with width Y as in Parrenin et al. (2025). In this
95 study, the flow tube width is variable along the flow line in the x direction but constant in the vertical direction z .

We use the equation for ice particle trajectories presented in Parrenin and Hindmarsh (2007) and build a grid that follows these trajectories. This method has the advantage that ice particle trajectories pass exactly through grid nodes so no interpolation is required in the forward model. Given the increasing horizontal flow speed along the flow line, this means that the grid along the x axis is finer near the dome and coarser further downstream. In the z direction, the grid is coarse near the surface and
100 becomes finer towards the bed where ice layers have thinned considerably (for more information see Supplementary material and Fig. S1).

A multiplicative temporal variation factor is applied to the steady accumulation rate (\bar{a} , Parrenin et al., 2017; Chung et al., 2023b). The accumulation variations are those inferred from the AICC2023 chronology for EDC (Bouchet et al., 2023). The model is 2.5D meaning it accounts for vertical and horizontal flow, as well as divergence along the flow line. The horizontal
105 flux shape function is defined by the Lliboutry vertical velocity profile (ω , Lliboutry, 1979), which depends on the p parameter,

$$\omega(\zeta) = 1 - \frac{p+2}{p+1}(1-\zeta) + \frac{1}{p+1}(1-\zeta)^{p+2}, \quad (1)$$

where ζ is the vertical coordinate normalised to 0 at the bedrock (mechanical ice thickness) and 1 at the surface. There are several assumptions associated with the Lliboutry profile including that the ice is isotropic, bedrock variations are smooth and
110 the horizontal velocity is non-zero at the modelled location. However, changing the value of p , making the vertical velocity profile more or less linear, can approximate the effect of relaxing these assumptions.

A key difference from Parrenin and Hindmarsh (2007) is that the forward model has no basal melting parameter; it instead uses an inferred mechanical ice thickness from which a basal melt rate or the stagnant ice thickness can be determined (Sect. 2.2 and Chung et al., 2023b). A full description of the forward model is available in our companion article Parrenin et al.
115 (2025).

2.2 Inverse model

The inverse model performs an optimisation to infer three parameters at each horizontal position, x : steady accumulation, \bar{a} (as defined in Sect. 2.1); Lliboutry thinning parameter, p (Eq. 1); and mechanical ice thickness, H_m . The mechanical ice thickness (H_m , first defined in Chung et al., 2023b) is the best fit ice sheet thickness when considering the shape of the isochrones given no basal melt rate (Fig. 1 of Chung et al., 2023b). The difference between the mechanical ice thickness, H_m and the observed ice thickness H_{obs} is used to determine either a basal melt rate m or the thickness of a stagnant ice layer, as in Chung et al. (2023b). Where $H_m < H_{obs}$, there is a stagnant ice layer of thickness $H_{obs} - H_m$. The label “stagnant” is used as the vertical velocity is assumed to be zero at depths greater than H_m . Where $H_m > H_{obs}$, there is basal melting m which is calculated using the change in ice flux Δq over the horizontal distance interval Δx at depth H_{obs} ,

$$m = \frac{\Delta q(H_{obs})}{Y \Delta x}, \quad (2)$$

where Y is the flow tube width.

We perform the inversion at each point along the flow line simultaneously. In order to prevent $a < 0$, $H < 0$ and $p < -1$, we use variables $a = e^{a'}$, $p = e^{p'} - 1$ and $H_m = e^{H'_m}$. To optimise the model, we minimise the squared deviation of modelled ages and input parameters from expectations,

$$S = \sum \frac{(\chi_{obs}^i - \chi_{mod}(d_{obs}^i))^2}{(\sigma_{obs}^i)^2} + \frac{(p'_{prior} - p')^2}{(\sigma^{p'})^2} + \frac{(a'_{prior} - a')^2}{(\sigma^{a'})^2} + \frac{(H'_{obs} - H'_m)^2}{(\sigma^{H'_m})^2}, \quad (3)$$

where d_{obs}^i , χ_{obs}^i and σ_{obs}^i are the depths, ages and age uncertainties of the i^{th} observed isochrone, respectively. χ_{mod} is the modelled age. We use $p_{prior} = 3$ and $a_{prior} = 0.02 \text{ m yr}^{-1}$, similar values to EDC, and H_{obs} is the ice thickness observed in the radargram. The confidence intervals $\sigma^{a'}$, $\sigma^{p'}$ and $\sigma^{H'_m}$ are set to 1 to allow the function to vary within reasonable limits. We use the Python Scipy least squares optimisation with the Trust Region Reflective algorithm to find the parameters that best minimise S (Eq. 3). The inverse model uses fewer horizontal grid points than the forward model which reduces computation time without significant compromise to the final fit achieved.

2.3 GNSS surface velocity data

We determined horizontal ice flow in the DC–LDC region using an existing network of survey poles, supplemented by 14 additional poles (Figure 1). The existing network of 38 poles was installed in 1995/96 in the framework of the EPICA project (black arrows in Fig 1, Vittuari et al., 2004, 2025) and re-surveyed in 1999 and 2012/14. Using the Global Navigation Satellite Systems (GNSS) processed relative to a continuously operating base station (known as DCRU) located at Concordia station, geodetic measurements were made annually from 2005-2019, while the poles closest to LDC were re-surveyed in 2022/23 and 2023/24. The 14 additional poles placed around LDC were initially installed and measured by GNSS for 2–3 days in December, 2016, then resurveyed for 2–3 days in December, 2017, and further re-surveyed in 2022/23 and 2023/24 seasons (blue arrows in Fig. 1).

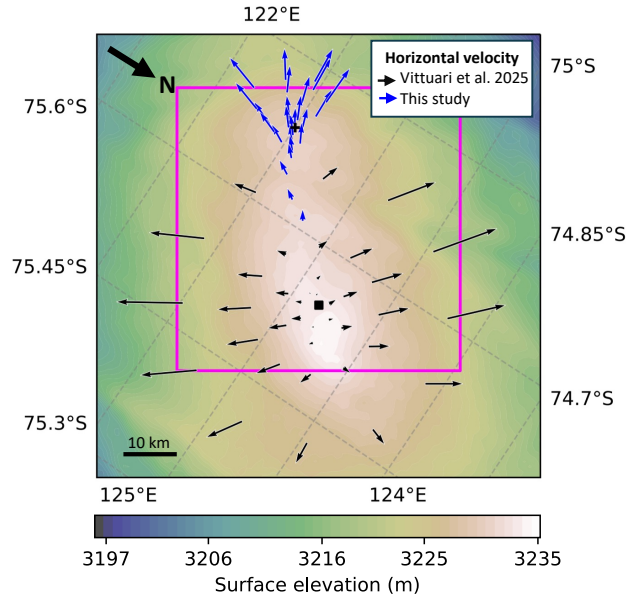


Figure 1. Contours show surface elevation from REMA (Howat et al., 2019). In blue are the new horizontal velocities at LDC. Black shows velocities from Vittuari et al. (2025). BELDC is marked by a black cross. EDC is marked by a black square (note: this is also the location of DCRU). The pink box highlights the area shown in Fig. 2.

The surface ice velocities observed at the top of DC are extremely small (a few cm per year), which is the same order of magnitude as motion due to plate tectonics. The observed displacements are the result of bedrock motion (due to continental drift) and ice flow due to deformation under the force of gravity. The analysis was carried out using the Bernese GNSS Software developed at the University of Bern which uses a classical differentiated approach. Given the small magnitude of the expected ice speeds, it was necessary to guarantee high repeatability in centring the geodetic antennas during the stationing phases at the different sites. For this reason, aluminium poles were used with a forced centring system of the antennas in the upper part of the pole.

In order to avoid misinterpreting tectonic plate movement as ice flow, the slow velocities necessitate considering ice motion relative to the top of DC. The absolute velocity (due to plate tectonics and ice dynamics) of DCRU over the period 2005-2019 was 10.4 ± 0.4 mm/yr at 275° relative to true north and the GNSS baselines at LDC were calculated using the position of DCRU as the reference. The poles at LDC were initially measured by GNSS for 2–3 days in December, 2016, then resurveyed for 2–3 days in December, 2017, and further re-surveyed in 2022/23 and 2023/24 seasons (Vittuari et al., 2025). From the comparison of the positions of the poles obtained in subsequent periods, the ice surface velocities were estimated, Table S1. The predicted motion of bedrock in the LDC region was obtained from the International Terrestrial Reference Frame 2014 Eulerian pole for the Antarctic plate, which gives an almost constant value of 11.5mm/yr at 180° relative to true north.

In order to account for ice flow divergence, the forward model requires a flow tube width which we determined using surface velocity data, derived by GNSS around DC and LDC. Using the Scipy grid data function, 2D interpolation of the velocity over the DC region was done. The direction of flow was determined by selecting a point downstream and backtracking i.e. following the direction of the surface velocity upstream to the dome. This backtracking process was repeated for two downstream points adjacent to the central flow line, the distance between the two resulting flow lines gave the flow tube width (grey shaded area in Fig. 2). The specific central flow line we look at was selected as it passes through both the EDC (-75.1°S, 123.395°E) and the BELDC (75.29917°S, 122.44516°E) drill sites. This allows us to date the IRHs using the EDC chronology (Bouchet et al., 2023), and model the age scale for BELDC.

2.4 Radar

In order to constrain our model, we require traced radar IRHs along the flow line from DC to LDC. There are currently no radar transects which follow the DC–LDC flow line exactly, so we map IRHs which pass close by (red line in Fig. 2). The radar transect begins at EDC whereas the flow line begins at the summit of DC, therefore we refer to the EDC–LDC radar transect and the DC–LDC flow line. We use 19 IRHs along the radar transect from EDC to LDC which were traced by Chung et al. (2023b) and dated between 73 and 476 ka (Chung et al., 2023a). Using the newest chronology for the EDC ice core AICC2023 (Bouchet et al., 2023), we have dated these IRHs again (Table 1), which explains why ages might differ from previous studies. Employing the newest chronology reduced the age uncertainties of shallower isochrones, though absolute ages only changed up to a maximum of ± 2.3 ka compared to previous studies with AICC2012 (Bazin et al., 2013). We map the radar IRHs onto the DC–LDC flow line by taking the point of intersection between the radar transect and a line perpendicular to the local direction of flow. This allows us to run the model along the flow line with IRH constraints.

3 Results

Here we present the results when the 2.5D model was applied to the DC–LDC flow line. We show the ice particle trajectories, inferences of the basal melt rate or stagnant ice thickness as well as the age of the deepest well-stratified ice.

3.1 DC–LDC flow line

The central flow line was determined by following the surface velocity direction upstream (Figure 2), backtracking from LDC towards DC (Sect. 2.3). The same process was then followed for two points 5 km either side of LDC, as this allows us to take into account the divergence along the ridge without incorporating too much flank flow on either side. The distance between the two offset flow lines gave the flow tube width, which was then normalised to its widest point (Figure 2). At the point where the flow tube width decreased to below 10 m, the process was restarted. This is because when the flow tube becomes too narrow, variations in the flow tube width drop below measurement precision. This method brought the flow tube to around 2 km from EDC, at which point the surface velocity is too low as we approach the dome and the flow tube width tends to zero too quickly. Therefore, the flow tube width was then exponentially extrapolated to the summit of the dome. The DC–LDC flow line is

Isochrone	TWT at EDC (ns)	Depth (m)	Age (ka)	Age uncertainty (\pm ka)
IRH_1	12689	1079	73.2	1.5
IRH_2	14192	1206	84.8	1.5
IRH_3	14958	1270	90.8	1.7
IRH_4	15808	1342	97.7	1.7
IRH_5	17772	1507	115.8	1.6
IRH_6	18827	1596	122.9	1.2
IRH_7	20616	1747	133.2	1.6
IRH_8	22303	1889	159.6	3.1
IRH_9	23349	1977	178.2	3.6
IRH_10	24748	2095	202.5	2.8
IRH_11	25575	2165	214.4	2.8
IRH_12	26873	2274	239.9	2.9
IRH_13	27135	2296	243.2	2.5
IRH_14	29380	2486	305.3	6
IRH_15	29851	2525	320.4	5.8
IRH_16	30555	2584	335.7	4.5
IRH_17	31287	2646	367.3	10.6
IRH_18	32004	2706	399.5	7.6
IRH_19	33417	2826	475.3	17.9
Bedrock	38325	3239	-	-

Table 1. These IRHs are traced in the radar transect shown by the red line in Fig. 2. The ages of the radar IRHs based on the AICC2023 chronology (Bouchet et al., 2023). IRH two-way travel times (TWTs) and depths are taken from Chung et al. (2023a).

defined as shown in Fig. 2 and we refer to this flow line in the subsequent figures. The EDC–LDC radar transect does not follow the exact flow line, so the isochrones were mapped onto the flow line (Sect. 2.4). Figure 2 shows the flow line starting at the high point of DC where flow tube width is near zero, then increases along the ridge and towards LDC. In all subsequent subsections, we consider the flow line with mapped isochrones, that starts at the high point of DC (0 km) and ends at LDC (at 40.7 km). However, we only show results starting at EDC which is 6.3 km downstream of the DC summit, as this is where there are traced isochrones to constrain the model. BELDC is located at 39.8 km along the flow line and its results are shown in Sect. 3.5.

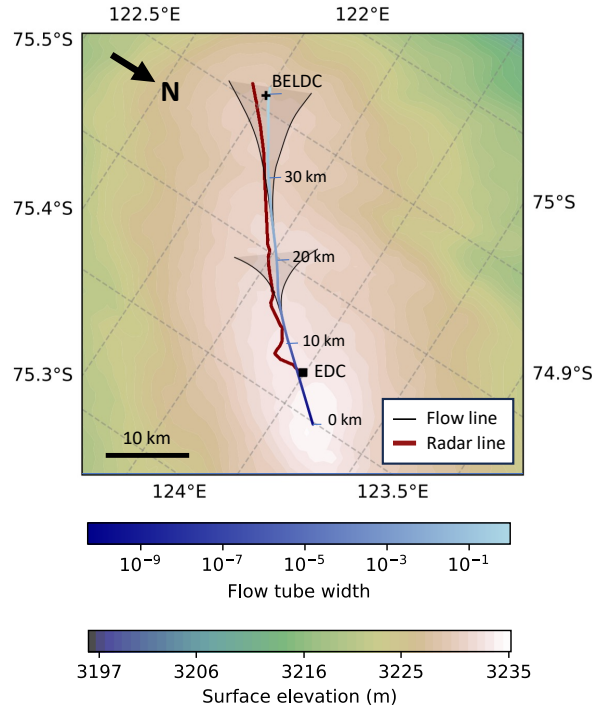


Figure 2. Map showing two flow tube section (shaded area spanned by black lines) from LDC to DC starting at two locations along the central flow line. We show two normalized flow tube sections along the same flow line for display clarity. The blue line indicates the central flow line, with shade corresponding to the overall flow tube width normalized to its widest point. Distance is marked along the flow line every 10 km and corresponds to distance on the x-axes of Figs. 3, 4, 5 and 6). Contours show surface elevation. BELDC is marked by a black cross and EDC is marked by a black square. The dark red line is the EDC–LDC radar transect from the LDC–VHF radar dataset in Chung et al. (2023b).

3.2 Ice particle trajectories

Figure 3 shows the ice particle trajectories originating from the surface as determined by the model. Through most of the upstream section of the flow line, including at EDC, ice particle trajectories reach the bedrock around 5 km downstream from where the snow was deposited on the surface.

Where the mechanical ice thickness from the model passes below the observed ice thickness, ice flow is still calculated. This results in some particle trajectories re-emerging from the observed bedrock. An example of this is the layer between the deepest trajectory which does not cross the observed bed and the top of the stagnant ice, over the LDC area beginning at distance > 32 km (blue, labelled “accreted ice” in Fig 3). Over LDC the thickness of this layer of potentially accreted ice is 120 m at 34 km, decreasing to ~ 40 m thickness at the end of the flow line, near BELDC. See Sect. 4.1 for a full discussion of this layer and its implications.

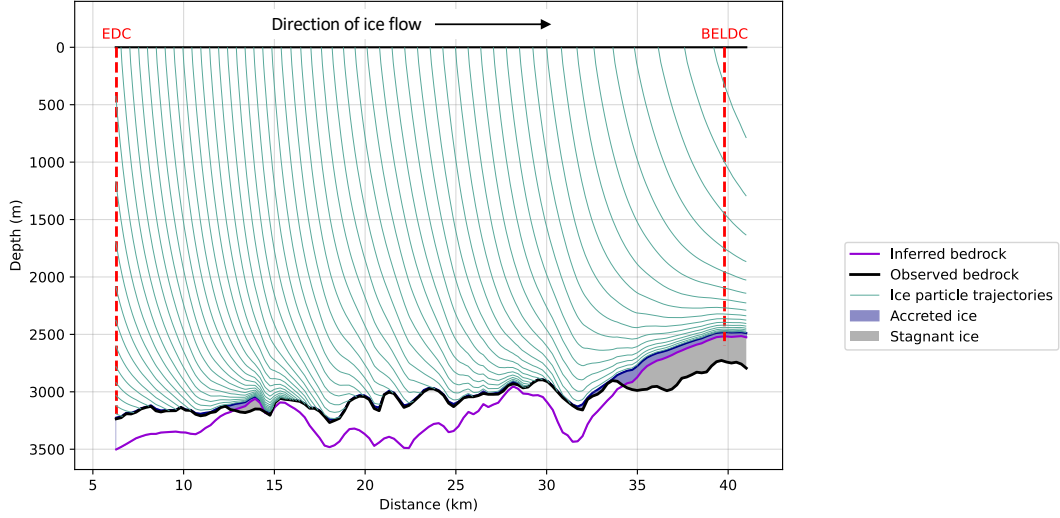


Figure 3. The thin green lines show ice particle trajectories along the DC–LDC flow line. The thick black line shows bedrock depth observed in the radar transect H_{obs} , the thick purple line is mechanical ice thickness H_m . Grey areas are modelled stagnant ice and the blue areas are possibly areas of accreted ice with trajectories originating near the bedrock. The locations of the EDC and BELDC ice core drill sites are marked by red dashed lines. The present day direction of horizontal ice flow is left to right, from DC to LDC.

3.3 Age of the ice

Figure 4 shows the age–depth relationship along the DC–LDC flow line. The modelled isochrones (in black) almost cover the observed isochrones which are in white behind, indicating a good fit. The associated age uncertainty is shown in Fig. S2.

In order to assess the validity of the model, we show the age misfit between modelled and observed isochrones (Figure 5). When comparing this to the age misfit of the 1D model in Chung et al. (2023b) applied to the DC–LDC flow line from this study (Figure S3), it is clear that the areas of over- and underestimation are similar.

3.4 Inferred parameters

Figure 6 shows the parameters inferred by the 2.5D model in this study compared to the results for the 1D model (Chung et al., 2023b) applied to the same flow line. The steady accumulation rate (Fig. 6) varies similarly for the 2.5D and 1D models in the upstream region. However, there are large variations and uncertainties downstream for the 2.5D model. This is due to the fact that \bar{a} at a given point affects the ice further downstream where there are no isochrone constraints and therefore residuals are unconstrained. The Llibouty parameter p has a strong peak at 28 km for the 2.5D model where there is a dip in the bedrock. Whereas the 1D model has a rounded peak as the averaging of the horizontal flow is taken into account. The Llibouty parameter p and the mechanical ice thickness H_m show a downstream offset of around 1–2 km relative the 1D model. The melt rate follows the same trend as the 1D model, however the variations are greater for the 2.5D model, again because the 1D inversion averages the inferred parameters along the horizontal travel of the ice. At EDC, the predicted melt rate is

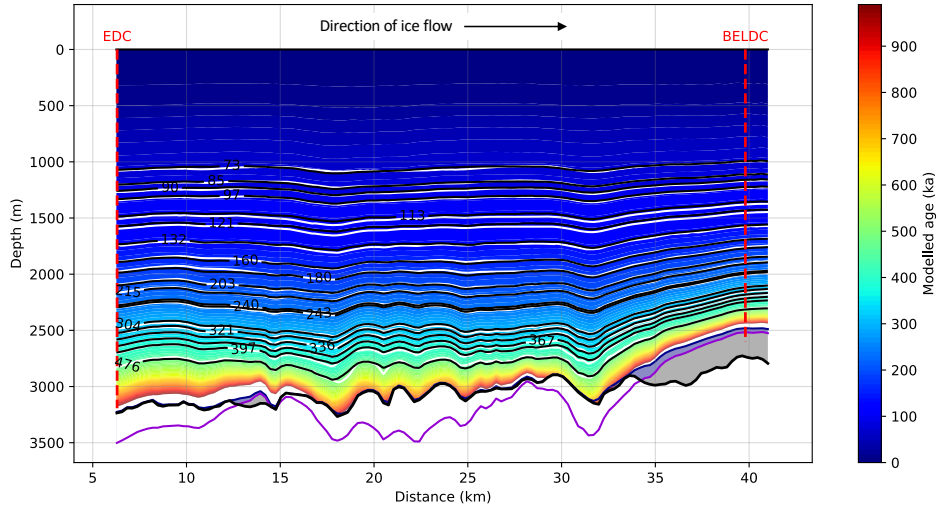


Figure 4. Age–depth profile from the 2.5D inversion model for the DC–LDC flow line. White lines show observed isochrones mapped from the radar transect onto the flow line and black lines show modelled isochrones. The thick black line shows bedrock depth observed in the radar transect, the thick purple line is mechanical ice thickness H_m . Grey areas are modelled stagnant ice and the blue areas are possibly areas of accreted ice with trajectories originating near the bedrock. The locations of the EDC and BELDC ice core drill sites are marked by red dashed lines. The present day direction of horizontal ice flow is left to right, from DC to LDC.

225 0.22 mm yr^{-1} which agrees with previous studies (Passalacqua et al., 2017; Chung et al., 2023b). There is a small section of stagnant ice at a distance of 13 km (max. thickness 63 m) and a large layer of stagnant ice around 200 m thick over the LDC relief with a thin layer of possibly accreted ice (see Sect. 3.2).

3.5 Results for the Beyond EPICA ice core (BELDC)

Here we look specifically at the results for the BELDC drill site, at a distance of 39.8 km along the flow line. The first novel
 230 result from this study is the origin of ice particles. Figure 7 shows that the deepest ice is formed from snow that fell around 15 km upstream. At a depth of 2452 m, the modelled age density of ice becomes $>20 \text{ kyr m}^{-1}$ —the threshold for a measurable paleoclimatic signal (Fischer et al., 2013). At this depth, the ice is 1.12 Ma, significantly younger than the 1.5 Ma Beyond EPICA target. A high value for the inferred p Lliboutry parameter of 14.0, results in an almost linear thinning function over the upper 2100 m of the ice sheet. For comparison, normalised vertical velocity measurements made with ApRES are shown
 235 in light blue in Fig. 7 with the dashed black line showing the best fit of these measurements from Chung et al. (2023b). The observed depth of the ice–bed interface H_{obs} is 2735 m, which differs slightly from previous values of 2764 m (Lilien et al., 2021) and 2757 m (Chung et al., 2023b) likely because the bed surface is mapped onto the flow line so the closest location to BELDC is slightly different (Sect. 2.4). The mechanical ice sheet thickness provided by the inverse model is $2522 \pm 23 \text{ m}$. This combined with the observed depth of the ice–bed interface, results in a $214 \pm 23 \text{ m}$ layer of stagnant ice, slightly larger
 240 than the value of 186 m from the 1D model with the same radar dataset (Chung et al., 2023b). There is a layer of accreted ice

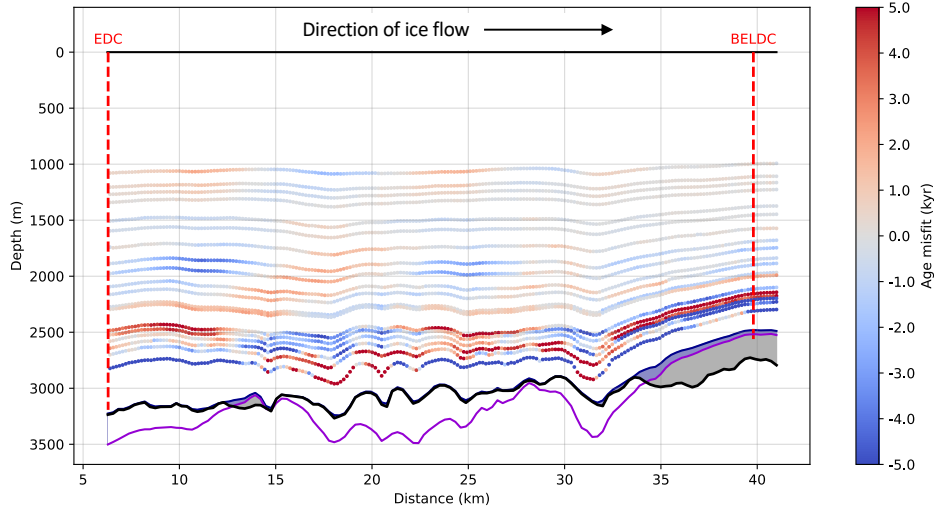


Figure 5. 2.5D model age misfit corresponds to the age of modelled isochrones minus the age of observed isochrones. The thick black line shows bedrock depth observed in the radar transect, the thick purple line is mechanical ice thickness H_m . Grey areas are modelled stagnant ice and the blue areas are possibly areas of accreted ice with trajectories originating near the bedrock. The locations of the EDC and BELDC ice core drill sites are marked by red dashed lines. The present day direction of horizontal ice flow is left to right, from DC to LDC.

37 m thick between the depth of the lowermost continuous trajectory (2485 m) and the top of the stagnant ice which is almost horizontally flowing according to the model (see Secs. 3.2 and 4.1). This combined with the stagnant ice leads to a total basal layer thickness of 251 m.

4 Discussion

245 4.1 Model limitations

The 2.5D model calculates the average basal melt rate at EDC to be 0.22 mm yr^{-1} (Sect. 3.4). However, it is likely that basal melting was slightly higher before 800 ka due to higher air temperatures (Lisiecki and Raymo, 2005; Passalacqua et al., 2017). Higher basal melt rate could mean that the maximum age predicted by the model is overestimated in the melting regions, as it could have resulted in some of the oldest ice being lost to melting as likely occurred at EDC. However at LDC where there appears to be a thick basal unit, the melting process may not have affected the oldest ice which modelling suggests is not directly above the bedrock. Figure 6a shows a large uncertainty in the steady accumulation rate further from the dome, especially at distance $>32 \text{ km}$ (i.e. at LDC). This is because accumulation rates are not well constrained since there are no isochrones beyond the LDC end of the radar transect. We provide a prior for accumulation (a_{prior} in Eq. 3) in order to avoid too high variations in the downstream ill-constrained region. In Fig. 6b there are strong peaks in the inferred Llibouty parameter p for the 2.5D model where there are dips in the bedrock, indicating the effect of very local basal processes. We note that the exact location of

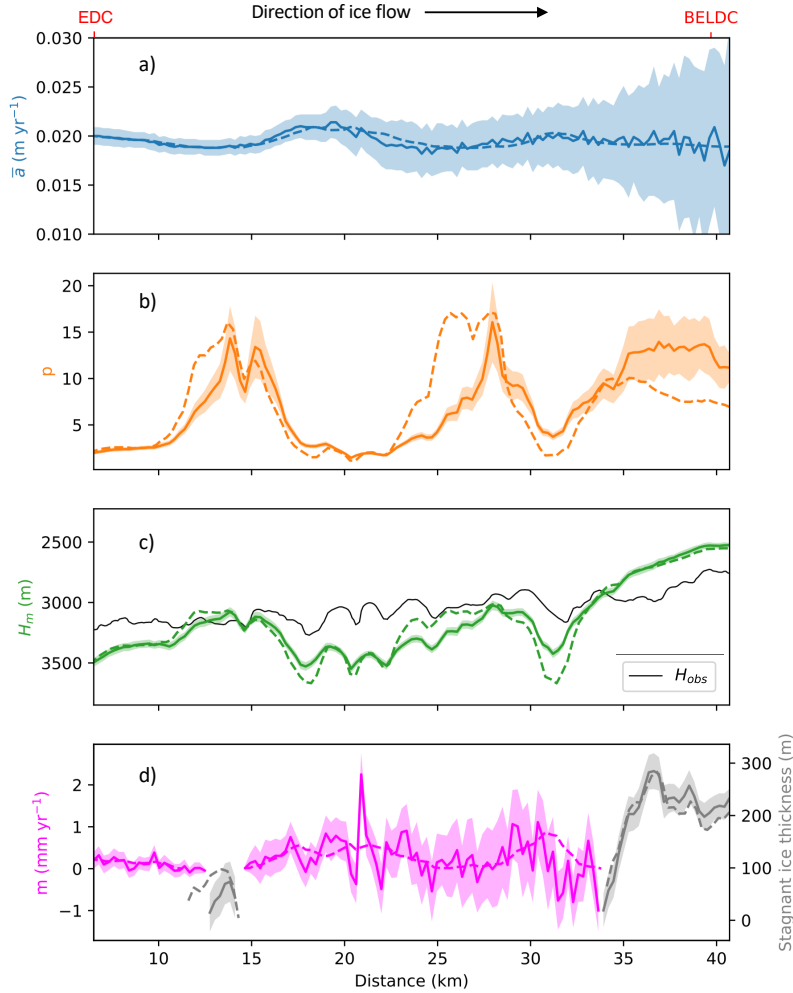


Figure 6. The parameters inferred by the 2.5D model with uncertainties shown by shaded areas. The 1D inferred parameters are shown by dashed lines. **(a)** average accumulation over the last 800 ka \bar{a} , **(b)** Lliboutry p parameter, **(c)** mechanical ice thickness H_m (green) and observed ice thickness from radar observations (H_{obs} , thin solid black line), **(d)** modelled basal melt rate (pink) and stagnant ice thickness (grey).

these dips are affected by the mapping of the isochrones from the radar transect onto the flow line (full discussion in Sect. 4.2). Looking at Figs. 6b and c, both p and the mechanical ice thickness H_m are offset downstream by around 1–2 km relative the 1D model. This can be explained when we consider that the two models may have found different solutions to account for the shape of the observed isochrones. As the thinning function is relatively linear up to the deepest isochrone, the models must therefore extrapolate to the bedrock. But since the observed bedrock is not used as a model constraint, there are two solutions; either H_m is small and p is large (leading to an almost linear thinning function); or H_m is large and p is small (leading to a nonlinear thinning function). Our two model approaches found these end-members of the solution space: the 2.5D model

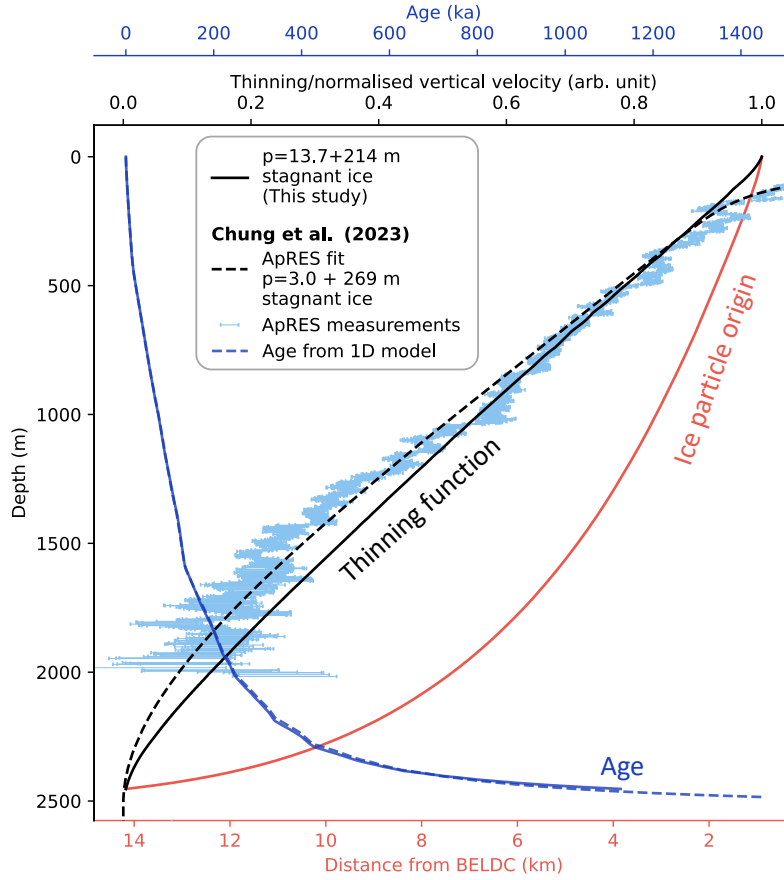


Figure 7. The dark blue solid line shows the age of ice changing with depth. The solid black line shows the normalised thinning function and the red line shows the horizontal distance origin of ice particles at BELDC from the 2.5D model. The dark blue dashed line is the age profile determined using the 1D model from (Chung et al., 2023b) applied to the DC–LDC flow line defined in this study. The light blue markers show ApRES of the normalised vertical velocity at LDC from (Chung et al., 2023b). The black dashed line shows the best fit for the profile, $p = 3.0$ and 269 m of stagnant ice.

found the first solution by taking into account the horizontal flow, the 1D model found the second solution, based on local calculations only. This suggests that horizontal flow is an important consideration, at least in these sections of the flow line.

As the 2.5D model takes into account more physical processes, it has more information to narrow down the solution space, we therefore favour the 2.5D model result.

We ran the 1D model (Chung et al., 2023b), applied to the DC–LDC flow line and show the age misfit of the observed isochrones for this run (Figure S3). When comparing the misfits of the 2.5D and 1D models (see Figs. 5 and S3), the areas of over- and underestimation are very similar. There are a few possible explanations for the misfit which apply to both models;

1. The Lliboutry assumption may not be appropriate for this location; 2. Traced radar IRHs may not be accurate due to

the resolution of the radargram; 3. The subjective nature of tracing the IRHs or; 4. The position of the constraining radar observations with respect to the model flow line. The similarity of Figs. 5 and S3 suggests that the horizontal flow considered only by the 2.5D model cannot entirely reconcile the model isochrone age misfits.

The ice particle trajectories of snow which falls at EDC and further upstream indicate that it reaches the bed around 5 km downstream from where it was deposited. This is due to basal melting, which means that the vertical velocity, even at depth, is not negligible compared the horizontal velocity. In the last 10 km downstream and including at BELDC, influence from a bedrock dip and the stagnant ice result in larger horizontal movement of ice particles, meaning that ice comes from snow deposited around 15-20 km upstream. Due to ice particle trajectories re-emerging from the observed bedrock, the 2.5D model produces a layer of ice from 40-120 m thick at LDC (>34 km), on top of the stagnant ice. Downstream of the mountain at around 34 km, according to the model some accretion is required to provide an upward component of the flow trajectory. The model would seem to indicate that this layer is flowing horizontally or that there is a shearing zone over the stagnant ice, though this does not seem physically likely. It could be that as the model setup does not permit accretion at the observed bed, it shows accretion at the mechanical bed instead. This accretion could explain where the stagnant ice originates. Therefore, as it makes more physical sense, we discuss this “basal layer” as a whole (blue+grey in Figs. 3, 4 and 5). If this basal layer does indeed consist of some sort of accreted material, it could contain debris carried from the bedrock rise at 34 km over to LDC at around 200-250 m above the bedrock (Franke et al., 2023). The horizontal flow component could result in disturbed ice which may explain fragmented reflected layers observed in the LDC-VHF radargram (Lilien et al., 2021). These hypotheses above rely on the assumption of a steady geometry i.e. that the direction of ice flow between EDC and LDC and the locations of the dome and secondary dome have not changed. Although accumulation is low in this region of Antarctica, recent polarimetry measurements suggest that these assumptions are not necessarily appropriate (pers. comm. Carlos Martín). A transient model could include the movement of the dome over time, which could perhaps give an indication of flow in the lateral direction perpendicular to the radar transect.

Passalacqua et al. (2016) assessed the suitability of a 2.5D model along a divide. They found that in reality the flow tube does not have completely vertical walls due to ice flow changes in the past. This means that ice coming from areas adjacent to the flow line (i.e. not directly upstream) is not taken into consideration. This could be especially important at LDC where the mountainous bedrock relief may cause some bulging at the base of the flow tube as ice flows around the undulations in the bedrock. Previous studies have indicated the presence of strong anisotropy across DC (Ershadi et al., 2022). Thus, there may also be a complex coupling between the vertical velocity profile and anisotropy, which is not represented by the simple Lliboutry velocity profile used in this study (Eq. 1). A more complex model could take into account the effects of anisotropy, as Seddik et al. (2011) showed for the Dome Fuji region. Multiple anisotropic modelling efforts used idealised (Gillet-Chaulet et al., 2005; Gillet-Chaulet, 2006) or observed (Lilien et al., 2023) topography to examine how crystal fabric might affect flow around DC, finding notable changes to the flow field as a result of the crystal fabric. However, these more complex models are not easily differentiated to permit their use in arbitrary inverse problems and are currently too computationally costly to run in an inverse framework like the one used here.

305 The 2.5D model in this study could be applied to other ice sheet flow lines where the location of the topographic dome has not moved significantly during the period of interest. Such locations include the flow line from Dome Fuji to the EPICA Dronning Maud Land ice core drill site (Steinhage et al., 2013), Dome B to Vostok (Siegert and Kwok, 2000) or even in Greenland from the GRIP to NorthGRIP and NEEM (Bucharadt, 2009) or from the GRIP to EGRIP ice core drill sites (Gerber et al., 2021). These flow lines already have some traced radar IRHs, so the model could be applied without the need for new
310 field campaigns.

4.2 Limitations of available observational data

In order to determine flow tube width, we use observed surface velocities from Vittuari et al. (2004) around DC and more recent observations over LDC (Sect. 2.3). As the horizontal flow is so low, continuing measurements over a longer time period would reduce uncertainties in the direction and magnitude of the surface velocity. The surface velocities were defined relative
315 to DCRU (at Concordia station). However, we extrapolated the flow line to start at the highest point of the dome, 6.3 km upstream. Given that the velocities are comparable in magnitude to tectonic movements, we consider any uncertainty due to this extrapolation negligible.

The method used to map the radar IRHs onto the flow line (Sect. 2.4) introduces significant uncertainties, as at this resolution there are local physical features (such as bedrock dips or rises) that are included in the radargram but don't exist along the flow
320 line and vice versa. The distance between the radar transect and flow line varies up to 1.9 km. There are clear deviations of the radar transect from the flow line at the EDC end where Concordia station and the clean air sector had to be avoided. At the LDC end, the deviation is due to the fact that the BELDC site had not yet been selected. This survey was done as well as it could be given the restrictions. However, as a rule of thumb for flow models, it would be beneficial to conduct a radar survey following the flow line where possible. For this radar transect, there are no isochrones shallower than 1000 m. This was the result of a
325 technical compromise so that the radar system could better image IRHs deeper in the ice sheet. Shallower isochrones are used to constrain accumulation rates and therefore it would be beneficial to include some. Such isochrones have been traced in other radar datasets (Chung et al., 2023b; Cavitte et al., 2021). However, given the different radar systems used and slightly different location of the transects, combining these observational data would lead to some isochrones having certain features where others from a different transect would not (Winter et al., 2017). Ideally, future surveys for similar purposes will tune settings
330 to capture both shallow and deep isochrones. The deepest isochrone used reaches around 89% of the ice thickness, which is already a significant achievement. With a future chronology at BELDC, we could date deeper IRHs which were traced in the radargram over LDC but did not reach EDC for dating. The grid that the forward model uses (Figure S1) is very dense close to the dome. However, as there are no radar horizons upstream of EDC, this means that there are no age constraints where the grid nodes are most dense. To improve this, future radar surveys could extend from EDC to the DC summit.

4.3 Relevance and implications for BELDC

The maximum modelled age of measurable ice at Beyond EPICA from the 2.5D model is 1.12 Ma at an age density of 20 kyr m^{-1} . This is significantly lower than previous estimates using 1D models which were all around 1.5 Ma (Fischer et al.,

2013; Parrenin et al., 2017; Lilien et al., 2021; Chung et al., 2023b). This is a direct result of the consideration of horizontal flow in this study, combined with basal melt along the path that ice follows to reach the BELDC site. As ice flowing from the direction of DC encounters the mountainous bedrock relief at LDC, the ice sheet thickness decreases, effectively squeezing the layers and increasing thinning. This increases the modelled age density. Therefore, the threshold of 20 kyr m^{-1} is reached when the ice is younger than the 1D modelling in Chung et al. (2023b). Lilien et al. (2021) applied a similar 1D model at BELDC. However, they used the threshold of 60 m above the mechanical ice depth to define the maximum age, as this was the basal layer thickness at EDC. Moreover, given the unknown nature of the stagnant ice layer, using this criterion at BELDC may not be appropriate.

Whether the 1D or 2.5D model value is more reliable is open to debate, as both approaches have their advantages and shortcomings. On one hand, the 2.5D model incorporates more physical processes. However, the steady state assumption of constant flow direction or a stationary dome, used in this study, may not be suitable in this area. For example, if the location of the dome was mostly around LDC during the past, this might mean that the 1D model is more appropriate for inferring the BELDC age scale. Preliminary analysis of the BELDC ice core drilled to bedrock in the 24/25 season suggests the ice to be at least 1.2 Ma (Rannard, 2025), already older than the 2.5D model predicts. This could indicate that the assumptions of the 2.5D are not appropriate for the glaciological conditions in this area.

From the comparison in Fig. 7 of the shapes of the thinning function from this study and the normalised vertical velocity from ApRES in Chung et al. (2023b), we can see that the 2.5D model has a much more linear shape due to the high value of p . This could be due to the different depth ranges covered by the constraining observations — ApRES; 0-2000 m and radar isochrones; 1000-2300 m. In the upper part of the ice sheet, the thinning function is generally more linear, it is the lower part of the ice sheet that affects the shape of the thinning function the most. Therefore, given the the model's use of deeper constraints, it's results may be closer to reality. It is important to note that ApRES is locally informed in space and time while the model is integrated in space and time, therefore care should be taken with a direct comparison. The modelled normalised vertical velocity profile would in fact be even more linear than the thinning function. This is because modelled thinning function accounts for higher ice thickness upstream which leads to more thinning.

In Sect. 4.1, we discussed the possible origin of the $\sim 250 \text{ m}$ thick stagnant/accreted basal layer. Each of the scenarios have notable implications for the deepest ice at BELDC: 1. Debris could be picked up by ice flowing over the bedrock rise at 34 km which would then be in the ice column at 200–250 m above the bedrock. This is much higher than previously suspected and could provide the unique opportunity to obtain samples from the subglacial environment beneath the ice sheet. 2. Ice disturbed either due to the presence of debris or folding would considerably complicate continuous paleoclimatic signal preservation. However, discrete or partially continuous signals may still be retrieved. 3. If the layer is made entirely of accreted ice due to the freezing of subglacial water, any paleoclimatic signal we have been eliminated. However, its presence and studying its isotopy may inform attempts to reconstruct past ice sheet dynamics, such as change in overall ice sheet thickness. Any combination of these scenarios is also possible. Although preliminary observations from the 24/25 field season preclude a debris rich basal layer, little more can be deduced until ice samples are fully analysed.

Another factor which should be taken into account when evaluating the current results is that numerical models using the Liboutry assumption significantly overestimate the age in the deepest part of the ice sheet for both the Dome Fuji (DF) and EDC ice cores. Wang et al. (2023) showed that at DF, there is an inflection point around 400 m above the bed (Fig. 8b) where

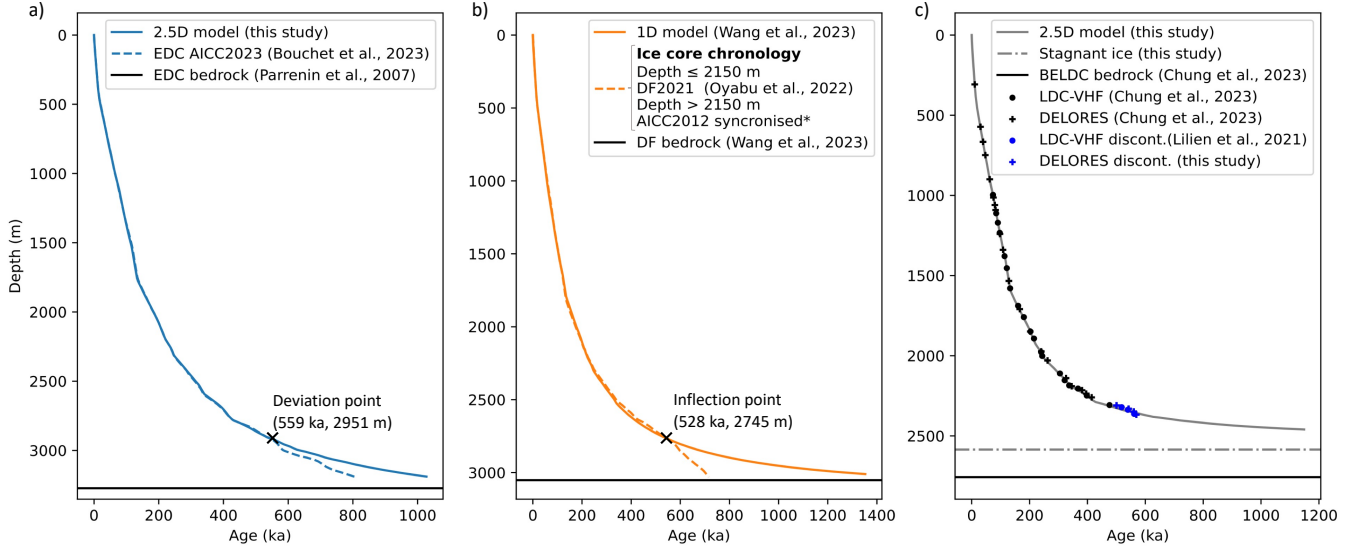


Figure 8. Modelled vs. observed ice core profiles. **a)** EDC age-scale from the 2.5D model presented in this study compared to the AICC2023 chronology (Bouchet et al., 2023). **b)** DF age-scale from a 1D model (Wang et al., 2023) compared to the combined ice core chronologies DF2021 (Oyabu et al., 2022) and a scale synchronised with AICC2012 proposed by *Dome Fuji Ice Core Project Members (2017). **c)** BELDC age-scale from the 2.5D model presented here. Black dots show isochrones used to constrain the model in this study from the LDC-VHF dataset. Black crosses show DELORES isochrones (Chung et al., 2023b) for comparison. Blue dots and crosses show discontinuous isochrones traced in the respective datasets.

age from the chronology based on direct ice core measurements (Dome Fuji Ice Core Project Members, 2017; Oyabu et al., 2022) deviates significantly from the exponential profile produced by a 1D pseudo-steady model using the Liboutry vertical velocity profile. Similarly, Obase et al. (2023) found this issue when using their 1D transient model to compute the age and temperature evolution for the DF ice core. In this study (Fig. 8a), we show that the modelled age scale for EDC also deviates from the observation constrained chronology AICC2023 (Bouchet et al., 2023) at around 200 m above the bed, though the effect is not as severe as at DF. However, it is important to note that both previous ice cores (EDC and DF) were subject to basal melting which may have contributed to decreased thinning near the base of the ice sheet. It is therefore difficult to judge how this affects the ice at BELDC given the unknown nature of the 200–250 m thick basal layer (Chung et al., 2023b).

Fig. 8c shows seven points from discontinuous isochrones traced from EDC to BELDC, three from the LDC-VHF dataset (previously published in Lilien et al., 2021) and four from the DELORES dataset (Chung et al., 2023b), deeper than those previously published. These discontinuous isochrones are only shown to indicate how the model compares at these depths where no other possible constraints currently exist. However, they are not reliable enough to use in the main simulation. It

seems that the three deepest discontinuous isochrones at BELDC may begin to show the downward trend of an inflection point in the age scale despite the fact that there is a basal layer between it and the bedrock. This could be a true inflection point as seen in the DF ice core (Fig. 8b) making the age significantly younger, or it may follow the step shape of the EDC ice core meaning that the difference from the model would be smaller. It is also possible that the inflection point does not occur due to the basal layer, and the deepest discontinuous isochrones are simply displaying oscillations around the smooth Lliboutry thinning profile.

5 Conclusions

We presented a 2.5D pseudo-steady state inverse ice flow model applied to the flow line from DC to LDC. We found melting between EDC and the edge of LDC which is in agreement with previous studies. At LDC we find a 200–250 m thick basal layer which could be stagnant, accreted or disturbed ice. Our model shows that the deepest ice at BELDC comes from around 15 km upstream with a maximum modelled age of 1.12 Ma and an age density of 20 kyr m^{-1} . The model could be applied to flow lines elsewhere in Antarctica if there are suitable radar data.

Our 2.5D model finds a different depth–age scale compared to 1D approaches, even in this area of slow horizontal ice flow. These differences arise due to melting and subsequent vertical strain along the flow line leading to BELDC. Such differences have to be taken into account when evaluating the reliability of age–depth relations based on 1D assumptions. Given the available constraints, a full 3D approach might not provide any greater accuracy than the 2.5D approach used here, unless a 3D observational radar data set for constraining the age–depth relation is used. However, this can only be answered definitively by a comparison of 2.5D and 3D approaches.

Code availability. Code for the 2.5D model will be made available on Zenodo

Author contributions. FP developed the forward age model and AC implemented the inverse method with input from FP. LV, MF and RM organised and conducted the collection of the surface velocity measurements and AZ was involved in processing the measurements. AC set up and ran all the simulations. AC prepared the first draft of the manuscript and all authors commented on and revised the manuscript.

Competing interests. The authors declare that they have no conflict of interest.

Acknowledgements. The authors would like to thank Carlos Martín for constructive discussions on the interpretation of modelled results and a radar observations. The UKRI-NERC-Geophysical Equipment Facility provided the instruments for the GNSS re-survey in 2022/23 and 2023/24. This publication was generated in the frame of Beyond EPICA. The project has received funding from the European Union's

Horizon 2020 research and innovation programme under grant agreement No. 730258 (Oldest Ice) and No. 815384 (Oldest Ice Core). It is supported by national partners and funding agencies in Belgium, Denmark, France, Germany, Italy, Norway, Sweden, Switzerland, The Netherlands and the United Kingdom. Logistic support is mainly provided by ENEA and IPEV through the Concordia Station system. This publication was generated in the frame of DEEPICE project. The project has received funding from the European Union's Horizon 2020 research and innovation programme under the Marie Skłodowska-Curie grant agreement No 955750. The opinions expressed and arguments employed herein do not necessarily reflect the official views of the European Union funding agency or other national funding bodies. This is Beyond EPICA publication number XX. Marie Cavitte is a postdoctoral researcher of the FRS-FNRS.

420 References

- Bazin, L., Landais, A., Lemieux-Dudon, B., Toyé Mahamadou Kele, H., Veres, D., Parrenin, F., Martinerie, P., Ritz, C., Capron, E., Lipenkov, V., Loutre, M. F., Raynaud, D., Vinther, B., Svensson, A., Rasmussen, S. O., Severi, M., Blunier, T., Leuenberger, M., Fischer, H., Masson-Delmotte, V., Chappellaz, J., and Wolff, E.: An optimized multi-proxy, multi-site Antarctic ice and gas orbital chronology (AICC2012): 120-800 ka, *Climate of the Past*, 9, 1715–1731, <https://doi.org/10.5194/cp-9-1715-2013>, 2013.
- 425 Bell, R. E., Ferraccioli, F., Creyts, T. T., Braaten, D., Corr, H., Das, I., Damaske, D., Frearson, N., Jordan, T., Rose, K., Studinger, M., and Wolovick, M.: Widespread persistent thickening of the east antarctic ice sheet by freezing from the base, *Science*, 331, 1592–1595, <https://doi.org/10.1126/science.1200109>, 2011.
- Bouchet, M., Landais, A., Grisart, A., Parrenin, F., Prié, F., Jacob, R., Fourré, E., Capron, E., Raynaud, D., Lipenkov, V. Y., Loutre, M. F., Extier, T., Svensson, A., Legrain, E., Martinerie, P., Leuenberger, M., Jiang, W., Ritterbusch, F., Lu, Z. T., and Yang, G. M.: The Antarctic
430 Ice Core Chronology 2023 (AICC2023) chronological framework and associated timescale for the European Project for Ice Coring in Antarctica (EPICA) Dome C ice core, *Climate of the Past*, 19, 2257–2286, <https://doi.org/10.5194/cp-19-2257-2023>, 2023.
- Buchardt, S. L.: Basal melting and Eemian ice along the main ice ridge in northern Greenland, p. 199, http://www.iceandclimate.nbi.ku.dk/publications/theses/PhD_Buchardt.pdf, 2009.
- Cavitte, M., Young, D., Mulvaney, R., Ritz, C., Greenbaum, J., Ng, G., Kempf, S., Quartini, E., Muldoon, G., Paden, J., Frezzotti, M.,
435 Roberts, J., Tozer, C., Schroeder, D., and Blankenship, D.: A detailed radiostratigraphic data set for the central East Antarctic Plateau spanning the last half million years, *Earth System Science Data Discussions*, pp. 1–27, <https://doi.org/10.5194/essd-2020-393>, 2021.
- Cavitte, M. G. P.: Flow Re-Organization of the East Antarctic Ice Sheet Across Glacial Cycles, Ph.D. thesis, The University of Texas at Austin, 2017.
- Cavitte, M. G. P., Young, D. A., Mulvaney, R., Ritz, C., Greenbaum, J., Ng, G., Kempf, S. D., Quartini, E., Muldoon, G. R., Paden, J.,
440 Frezzotti, M., Roberts, J., Tozer, C., Schroeder, D., and Blankenship, D. D.: Ice-penetrating radar internal stratigraphy over Dome C and the wider East Antarctic Plateau, <https://doi.org/10.15784/601411>, 2020.
- Chung, A., Parrenin, F., Steinhage, D., Mulvaney, R., Mart\`in, C., Cavitte, M. G. P., Lilien, D. A., Helm, V., Taylor, D., Gogineni, P., Ritz, C., Frezzotti, M., O’Neill, C., Miller, H., Dahl-Jensen, D., and Eisen, O.: Internal reflecting horizons at Little Dome C, Antarctica, <https://doi.org/10.1594/PANGAEA.957176>, 2023a.
- 445 Chung, A., Parrenin, F., Steinhage, D., Mulvaney, R., Mart\`in, C., Cavitte, M. G. P., Lilien, D. A., Helm, V., Taylor, D., Gogineni, P., Ritz, C., Frezzotti, M., O’Neill, C., Miller, H., Dahl-Jensen, D., and Eisen, O.: Stagnant ice and age modelling in the Dome C region, Antarctica, *The Cryosphere*, 17, 3461–3483, <https://doi.org/10.5194/tc-17-3461-2023>, 2023b.
- Dome Fuji Ice Core Project Members: State dependence of climatic instability over the past 720,000 years from Antarctic ice cores and climate modeling, *Science Advances*, 3, 1–13, <https://doi.org/10.1126/sciadv.1600446>, 2017.
- 450 Drews, R., Eisen, O., Weikusat, I., Kipfstuhl, S., Lambrecht, A., Steinhage, D., Wilhelms, F., and Miller, H.: Layer disturbances and the radio-echo free zone in ice sheets, *Cryosphere*, 3, 195–203, <https://doi.org/10.5194/tc-3-195-2009>, 2009.
- Ershadi, M. R., Drews, R., Martín, C., Eisen, O., Ritz, C., Corr, H., Christmann, J., Zeising, O., Humbert, A., and Mulvaney, R.: Polarimetric radar reveals the spatial distribution of ice fabric at domes and divides in East Antarctica, *Cryosphere*, 16, 1719–1739, <https://doi.org/10.5194/tc-16-1719-2022>, 2022.
- 455 Fischer, H., Severinghaus, J., Brook, E., Wolff, E., Albert, M., Alemany, O., Arthern, R., Bentley, C., Blankenship, D., Chappellaz, J., Creyts, T., Dahl-Jensen, D., Dinn, M., Frezzotti, M., Fujita, S., Gallee, H., Hindmarsh, R., Hudspeth, D., Jugie, G., Kawamura, K., Lipenkov,

- V., Miller, H., Mulvaney, R., Parrenin, F., Pattyn, F., Ritz, C., Schwander, J., Steinhage, D., Van Ommen, T., and Wilhelms, F.: Where to find 1.5 million yr old ice for the IPICS "Oldest-Ice" ice core, *Climate of the Past*, 9, 2489–2505, <https://doi.org/10.5194/cp-9-2489-2013>, 2013.
- 460 Franke, S., Gerber, T., Warren, C., Jansen, D., Eisen, O., and Dahl-Jensen, D.: Investigating the Radar Response of Englacial Debris Entrained Basal Ice Units in East Antarctica Using Electromagnetic Forward Modeling, *IEEE Transactions on Geoscience and Remote Sensing*, 61, 1–16, <https://doi.org/10.1109/TGRS.2023.3277874>, 2023.
- Fudge, T. J., Lilien, D. A., Koutnik, M., Conway, H., Max Stevens, C., D. Waddington, E., Steig, E. J., Schauer, A. J., and Holschuh, N.: Advection and non-climate impacts on the South Pole Ice Core, *Climate of the Past*, 16, 819–832, <https://doi.org/10.5194/cp-16-819-2020>, 465 2020.
- Gerber, T. A., Hvidberg, C. S., Rasmussen, S. O., Franke, S., Sinnl, G., Grinsted, A., Jansen, D., and Dahl-Jensen, D.: Upstream flow effects revealed in the EastGRIP ice core using Monte Carlo inversion of a two-dimensional ice-flow model, *Cryosphere*, 15, 3655–3679, <https://doi.org/10.5194/tc-15-3655-2021>, 2021.
- Gillet-Chaulet, F.: Flow-induced anisotropy in polar ice and related ice-sheet flow modelling, *Journal of Non-Newtonian Fluid Mechanics*, 470 134, 33–43, <https://doi.org/10.1016/j.jnnfm.2005.11.005>, 2006.
- Gillet-Chaulet, F., Gagliardini, O., Meyssonier, J., Montagnat, M., and Castelnau, O.: A user-friendly anisotropic flow law for ice-sheet modelling, *Journal of Glaciology*, 51, 3–14, <https://doi.org/10.3189/172756505781829584>, 2005.
- Greve, R., Wang, Y., and Mège, B.: Comparison of numerical schemes for the solution of the advective age equation in ice sheets, *Annals of Glaciology*, 35, 487–494, <https://doi.org/10.3189/172756402781817112>, 2002.
- 475 Howat, I. M., Porter, C., Smith, B. E., Noh, M. J., and Morin, P.: The reference elevation model of antarctica, *Cryosphere*, 13, 665–674, <https://doi.org/10.5194/tc-13-665-2019>, 2019.
- Koutnik, M. R.: Inferring Histories of Accumulation Rate, Ice Thickness, and Ice Flow from Internal Layers in Glaciers and Ice Sheets, Ph.D. thesis, University of Washington, https://earthweb.ess.washington.edu/Glaciology/dissertations/koutnik_dissertation.pdf, 2009.
- Koutnik, M. R. and Waddington, E. D.: Well-posed boundary conditions for limited-domain models of transient ice flow near an ice divide, 480 *Journal of Glaciology*, 58, 1008–1020, <https://doi.org/10.3189/2012JoG11J212>, 2012.
- Koutnik, M. R., Fudge, T. J., Conway, H., Waddington, E. D., Neumann, T. A., Cuffey, K. M., Buizert, C., and Taylor, K. C.: Holocene accumulation and ice flow near the West Antarctic Ice Sheet Divide ice core site, *Journal of Geophysical Research : Earth Surface*, pp. 1–18, <https://doi.org/10.1002/2015JF003668>, 2016.
- Lilien, D. A., Steinhage, D., Taylor, D., Parrenin, F., Ritz, C., Mulvaney, R., Martín, C., Yan, J. B., O'Neill, C., Frezzotti, M., Miller, H., Gogineni, P., Dahl-Jensen, D., and Eisen, O.: Brief communication: New radar constraints support presence of ice older than 1.5 Myr at Little Dome C, *Cryosphere*, 15, 1881–1888, <https://doi.org/10.5194/tc-15-1881-2021>, 2021.
- 485 Lilien, D. A., Rathmann, N. M., Hvidberg, C. S., Grinsted, A., Ershadi, M. R., Drews, R., and Dahl-Jensen, D.: Simulating higher-order fabric structure in a coupled, anisotropic ice-flow model: Application to Dome C, *Journal of Glaciology*, <https://doi.org/10.1017/jog.2023.78>, 2023.
- 490 Lisiecki, L. E. and Raymo, M. E.: A Pliocene-Pleistocene stack of 57 globally distributed benthic δ 18O records, *Paleoceanography*, 20, 1–17, <https://doi.org/10.1029/2004PA001071>, 2005.
- Liboutry, L.: A critical review of analytical approximate solutions for steady state velocities and temperatures in cold ice sheets, in: *Z. Gletscherkde. Glazialgeol.*, vol. 15, pp. 135–148, 1979.

- Obase, T., Abe-Ouchi, A., Saito, F., Tsutaki, S., Fujita, S., Kawamura, K., and Motoyama, H.: A one-dimensional temperature and age modeling study for selecting the drill site of the oldest ice core near Dome Fuji, Antarctica, *Cryosphere*, 17, 2543–2562, <https://doi.org/10.5194/tc-17-2543-2023>, 2023.
- Oyabu, I., Kawamura, K., Buizert, C., Parrenin, F., Orsi, A., Kitamura, K., Aoki, S., and Nakazawa, T.: The Dome Fuji ice core DF2021 chronology (0–207 kyr BP), *Quaternary Science Reviews*, 294, <https://doi.org/10.1016/j.quascirev.2022.107754>, 2022.
- Parrenin, F. and Hindmarsh, R.: Influence of a non-uniform velocity field on isochrone geometry along a steady flowline of an ice sheet, *Journal of Glaciology*, 53, 612–622, <https://doi.org/10.3189/002214307784409298>, 2007.
- Parrenin, F., Cavitte, M. G., Blankenship, D. D., Chappellaz, J., Fischer, H., Gagliardini, O., Masson-Delmotte, V., Passalacqua, O., Ritz, C., Roberts, J., Siegert, M. J., and Young, D. A.: Is there 1.5-million-year-old ice near Dome C, Antarctica?, *Cryosphere*, 11, 2427–2437, <https://doi.org/10.5194/tc-11-2427-2017>, 2017.
- Parrenin, F., Chung, A., and Martín, C.: age_flow_line-1.0: a fast and accurate numerical age model for a pseudo-steady flow tube of an ice sheet, *EGUsphere Preprint repository*, <https://doi.org/10.5194/egusphere-2024-3411>, 2025.
- Passalacqua, O., Gagliardini, O., Parrenin, F., Todd, J., Gillet-Chaulet, F., and Ritz, C.: Performance and applicability of a 2.5-D ice-flow model in the vicinity of a dome, *Geoscientific Model Development*, 9, 2301–2313, <https://doi.org/10.5194/gmd-9-2301-2016>, 2016.
- Passalacqua, O., Ritz, C., Parrenin, F., Urbini, S., and Frezzotti, M.: Geothermal flux and basal melt rate in the Dome C region inferred from radar reflectivity and heat modelling, *Cryosphere*, 11, 2231–2246, <https://doi.org/10.5194/tc-11-2231-2017>, 2017.
- Rannard, G.: Million year-old bubbles could solve ice age mystery, 2025.
- Rybak, O. and Huybrechts, P.: A comparison of Eulerian and Lagrangian methods for dating in numerical ice-sheet models, *Annals of Glaciology*, 37, 150–158, <https://doi.org/10.3189/172756403781815393>, 2003.
- Seddik, H., Greve, R., Zwinger, T., and Placidi, L.: A full Stokes ice flow model for the vicinity of Dome Fuji, Antarctica, with induced anisotropy and fabric evolution, *Cryosphere*, 5, 495–508, <https://doi.org/10.5194/tc-5-495-2011>, 2011.
- Siegert, M. J. and Kwok, R.: Ice-sheet radar layering and the development of preferred crystal orientation fabrics between Lake Vostok and Ridge B, central East Antarctica, *Earth and Planetary Science Letters*, 179, 227–235, [https://doi.org/10.1016/S0012-821X\(00\)00121-7](https://doi.org/10.1016/S0012-821X(00)00121-7), 2000.
- Steen-Larsen, H. C., Waddington, E. D., and Koutnik, M. R.: Formulating an inverse problem to infer the accumulation-rate pattern from deep internal layering in an ice sheet using a Monte Carlo approach, *Journal of Glaciology*, 56, 318–332, <https://doi.org/10.3189/002214310791968476>, 2010.
- Steinhage, D., Kipfstuhl, S., Nixdorf, U., and Miller, H.: Internal structure of the ice sheet between Kohnen station and Dome Fuji, Antarctica, revealed by airborne radio-echo sounding, *Annals of Glaciology*, 54, 163–167, <https://doi.org/10.3189/2013AoG64A113>, 2013.
- Vittuari, L., Vincent, C., Frezzotti, M., Mancini, F., Gandolfi, S., Bitelli, G., and Capra, A.: Space geodesy as a tool for measuring ice surface velocity in the Dome C region and along the ITASE traverse, *Annals of Glaciology*, 39, 402–408, <https://doi.org/10.3189/172756404781814627>, 2004.
- Vittuari, L., Zanutta, A., Gandolfi, S., Martelli, L., Ritz, C., Urbini, S., and Frezzotti, M.: Decadal Migration Of Dome C Inferred By Global Navigation Satellite System Measurements, *Journal of Glaciology*, pp. 1–48, <https://doi.org/10.1017/jog.2025.28>, 2025.
- Waddington, E. D., Neumann, T. A., Koutnik, M. R., Marshall, H.-P., and Morse, D. L.: Inference of accumulation-rate patterns from deep layers in glaciers and ice sheets, *Journal of Glaciology*, 53, 694–712, <https://doi.org/10.3189/002214307784409351>, 2007.

- 530 Wang, Z., Chung, A., Steinhage, D., Parrenin, F., Freitag, J., and Eisen, O.: Mapping age and basal conditions of ice in the Dome Fuji region, Antarctica, by combining radar internal layer stratigraphy and flow modeling, *The Cryosphere*, 17, 4297–4314, <https://doi.org/10.5194/tc-17-4297-2023>, 2023.
- Winter, A., Steinhage, D., Arnold, E. J., Blankenship, D. D., Cavitte, M. G., Corr, H. F., Paden, J. D., Urbini, S., Young, D. A., and Eisen, O.: Comparison of measurements from different radio-echo sounding systems and synchronization with the ice core at Dome C, Antarctica, *Cryosphere*, 11, 653–668, <https://doi.org/10.5194/tc-11-653-2017>, 2017.
- 535