

Opinion: Why all emergent constraints are wrong but some are useful - a machine learning perspective

Peer Nowack^{1,2} and Duncan Watson-Parris^{3,4}

¹Institute of Theoretical Informatics, Karlsruhe Institute of Technology, 76131 Karlsruhe, Germany

²Institute of Meteorology and Climate Research (IMK-ASF), Karlsruhe Institute of Technology, 76131 Karlsruhe, Germany

³Scripps Institution of Oceanography, University of California San Diego, San Diego, USA

⁴Halicioglu Data Science Institute, University of California San Diego, San Diego, USA

Correspondence: Peer Nowack (peer.nowack@kit.edu) and Duncan Watson-Parris (dwatsonparris@ucsd.edu)

Abstract. Global climate change projections are subject to substantial modelling uncertainties. A variety of emergent constraints, as well as several other statistical model evaluation approaches, have been suggested to address these uncertainties. However, they remain heavily debated in the climate science community. Still, the central idea to relate future model projections to already observable quantities has no real substitute. Here we highlight the validation perspective of predictive skill in the machine learning community as a promising alternative viewpoint. Specifically, we argue for quantitative approaches in which each suggested constraining relationship can be evaluated comprehensively on out-of-sample test data, on top of qualitative physical plausibility arguments that are already commonplace in the justification of new emergent constraints. Building on this perspective, we review machine learning ideas for new types of controlling factor analyses (CFA). The principal idea behind these CFA is to use machine learning to find climate-invariant relationships in historical data, which **also** hold approximately under strong climate change scenarios. On the basis of existing data archives, these climate-invariant relationships can be validated in perfect-climate-model frameworks. From a machine learning perspective, we argue that such approaches are promising for three reasons: (a) they can be objectively validated both for past data and future data, (b) they provide more direct - by design physically-plausible - links between historical observations and potential future climates and (c) they can take ~~higher-dimensional~~ high-dimensional and complex relationships into account ~~that better characterize the still complex nature of large-scale emerging relationships~~ in the functions learned to constrain the future response. We demonstrate these advantages for two recently published CFA examples in the form of constraints on climate feedback mechanisms (clouds, stratospheric water vapour), and discuss further challenges and opportunities using the example of a **climate-foreing rapid adjustment mechanism** (aerosol-cloud interactions). We highlight several avenues for future work, including strategies to address non-linearity, to tackle blind spots in climate model ensembles, to integrate helpful physical priors into Bayesian methods, to leverage physics-informed machine learning, and to enhance robustness through causal discovery and inference.

1 Introduction

Machine learning applications are now ubiquitous in the atmospheric sciences (e.g., Huntingford et al., 2019; Reichstein et al., 2019; Thomas et al., 2021; Hess et al., 2022; Hickman et al., 2023). However, there is not a single recipe for machine

learning to advance the field. Prominently, there is an important distinction between machine learning for weather forecasting (e.g., [Dueben and Bauer, 2018](#); [Rasp and Thuerey, 2021](#); [Keisler, 2022](#); [Bi et al., 2023](#); [Lam et al., 2023](#); [Kurth et al., 2023](#); [Bouallègue et al., 2024](#)) and machine learning for [accelerating and observationally constraining climate change projections](#) (e.g. [Mansfield et al., 2020](#); [Watson-Parris et al., 2022](#); [Watson-Parris et al., 2023](#); [Watson-Parris et al., 2024](#)) [climate modelling](#) ([Watson-Parris, 2021](#)). In weather forecasting, the aim is to predict a relatively short time-horizon over which any new influences of climate change are [supposedly typically](#) negligible. In stark contrast, the science of climate change is interested in how changing boundary conditions - [i.e. anthropogenic changes in climate forcings such as carbon dioxide \(CO₂\) or aerosols](#) - will affect Earth's climate system on long timescales. The need to go beyond what has previously been observed poses specific, hard challenges to the application of machine learning in climate science. It is the classic differentiation that is often coined as 'ML models are good at interpolation (weather forecasting) but not at extrapolation (climate change response)'. [As a result, machine learning in climate science has also largely focused on interpolation sub-tasks such as climate model emulation to speed up additional scenario projections](#) ([Mansfield et al., 2020](#); [Watson-Parris et al., 2022](#); [Kaltenborn et al., 2023](#); [?](#)) or [faster and better machine learning parameterizations for climate models](#) ([Nowack et al., 2018a, 2019](#); [Rasp et al., 2018](#); [Beucler et al., 2020](#)). In this Opinion Article, we highlight a few ideas of how machine learning can nonetheless help reduce the substantial modelling uncertainties in climate change projections; [addressing a major scientific challenge of this century. Specifically, we will focus on the example of observational constraint frameworks](#) ([Ceppi and Nowack, 2021](#); [Nowack et al., 2023](#)).

In the remaining sections of the introduction, we first briefly review the concept of model uncertainty as well as current observational constraint methods, including some of their limitations. In section 2, we discuss controlling factor analyses (CFA) using linear machine learning methods as an alternative approach [highlighting for observational constraints. We highlight](#) several advantages, exemplified for the cases of constraints on global cloud feedback and stratospheric water vapour feedback. In section 3, we discuss key challenges in constraining future responses on the basis of present-day data, in particular non-linearity and confounding. We illustrate these on the example of constraining the effective radiative forcing (ERF) from aerosol-cloud interactions. In section 4, we highlight potential avenues for future work, also in terms of addressing model uncertainty with machine learning frameworks more generally. In section 5, we summarize key ideas for observational constraints and suggest that machine learning ideas could also help to improve climate model tuning frameworks in the future.

1.1 Model uncertainty

Three sources of climate model projection uncertainty are commonly distinguished ([Hawkins and Sutton, 2009](#); [Deser et al., 2012](#); [O'Neill et al., 2014](#)):

1. *scenario uncertainty* given different anthropogenic emission scenarios of greenhouse gases and aerosols. Typical scenarios range from strong mitigation of climate change to unmitigated growth of emissions.
2. *internal variability uncertainty* due to noise from climate variability superimposed on any scenario-driven trends. For example, any given year might be colder or warmer than the climate-dependent expected average value for temperature.

3. *model uncertainty* arising from varying scientific design choices for climate models developed by different institutions. For example, climate models can differ in terms of which and how specific processes are represented, including parameterizations of cloud processes, aerosols, and convection (Carslaw et al., 2013a, b; Sherwood et al., 2014; Kasoar et al., 2016; Bellouin et al., 2020; Sherwood et al., 2020), or in their representations of the carbon cycle and atmospheric chemistry (Cox, 2019; Nowack et al., 2017, 2018a). Ultimately, the resulting model uncertainty describes the long-term projection uncertainty in e.g. regional surface temperature or precipitation changes under the same emissions scenario.

Despite decades-long model development efforts, model uncertainty in key climate impact variables such as temperature and precipitation, globally and regionally, has remained stubbornly high (Sherwood et al., 2020; IPCC, 2021). The apparent lack of net progress might be the result of the competition between (a) improved individual process representations in climate models and (b) the continuously growing number of (uncertain) climate processes being considered in the first place (Cox, 2019; Eyring et al., 2019; Saltelli, 2019). Whatever the reason may be; empirically, we probably need to accept large inter-model spread in climate change projections for the foreseeable future.

In Figure 1, we illustrate the three uncertainty contributions for temperature projections for an area in Central Europe. Scenario and model uncertainty clearly start to dominate over time, whereas at the beginning (around the years 2014-2030) internal variability uncertainty renders even very different forcing scenarios difficult to distinguish. In climate science, scenario and internal variability uncertainty are often taken as given. To characterize scenario uncertainty, it is common to consider a range of socioeconomic development pathways, from strong mitigation scenarios targeting e.g. less than 2° C global warming, to high forcing business-as-usual scenarios (O'Neill et al., 2016). Internal variability uncertainty, in turn, is usually ~~reduced by averaging responses across~~ characterized by considering multiple ensemble members for the same climate model and forcing scenario (~~Sippel et al., 2015; O'Reilly et al., 2020; Labe and Barnes, 2021~~)(Sippel et al., 2015; O'Reilly et al., 2020; Labe and Barnes, 2021). In this paper, we focus on methods that tackle model uncertainty.

Clearly, in order to make meaningful climate risk assessments, society and policymakers require better (more certain) information than the range of raw model ensembles are currently able to provide (Figure 1). Here we will suggest a machine learning perspective on this challenging yet important task, contrasting and comparing our view to other concepts to observationally constrain model uncertainty (e.g. Knutti, 2010; Eyring et al., 2019; Hall et al., 2019; Williamson et al., 2021). Our viewpoint still shares the fundamental idea that from the complexity of many small and large-scale processes involved in the climate system, ~~simpler-relatively simple~~ relationships may emerge over time and space, which may. These simple relationships may then be used to robustly compare climate model behaviour to observed relationships as to distinguish more realistic models from the rest (Allen and Ingram, 2002; Held, 2014; Huntingford et al., 2023), without having to constrain each micro- and macrophysical process individually.

1.2 Methods to address model uncertainty

As mentioned above, international climate model development efforts have not resulted in reduced model uncertainty over time (e.g. Zelinka et al., 2020). To address this longstanding issue, a variety of approaches have been suggested to evaluate climate

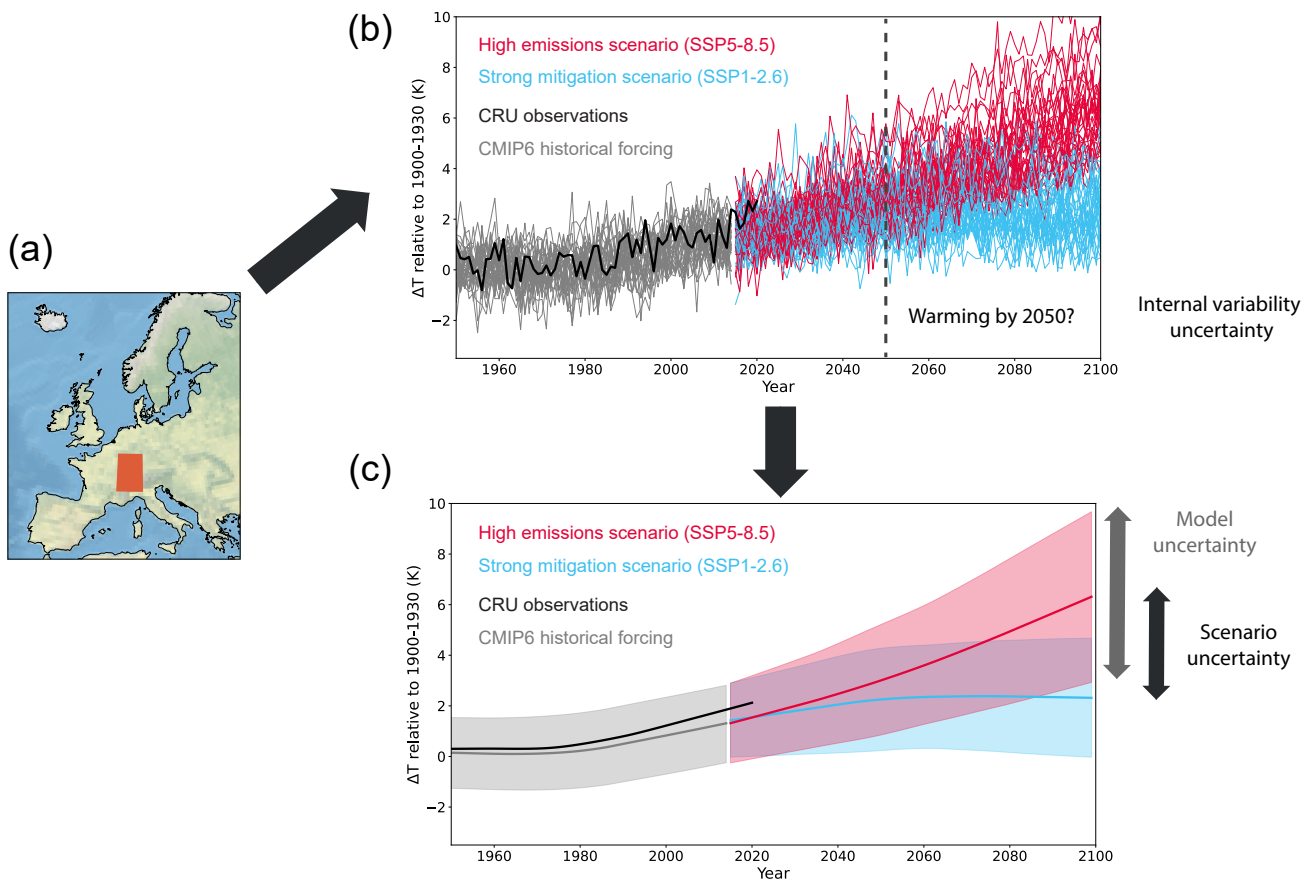


Figure 1. Surface air temperature climate model projections and observations for a $5^{\circ} \times 5^{\circ}$ grid box in Central Europe. The region is indicated in orange in (a). The raw projections, relative to their 1900-1930 average, are shown for 34 Coupled Model Intercomparison Project phase 6 (CMIP6) models in (b). Gray lines show one ensemble member of each model for simulations under historical forcing conditions. The same ensemble members and CMIP6 models are shown for the years 2014 to 2100 under a high emission (red) and a strong mitigation scenario (blue). SSP stands for Shared Socioeconomic Pathway. Observational data according to the Climatic Research Unit (CRU, version TS4.05, Harris et al., 2020) are shown in solid black. In (b), internal variability uncertainty for individual ensemble members across the 34 simulations makes it difficult to, e.g., answer the question of how much the region is projected to have warmed by the year 2050-2050, even in the absence of model uncertainty. This uncertainty could be better characterized-smoothed out by considering the average across over multiple ensemble members for each model (not done here). Instead, we applied a Lowess smoothing to approximately remove internal variability and indicate the remaining $\pm 2\sigma$ intervals for each scenario in (c). This, in turn, highlights more clearly the scenario uncertainty, best exemplified by the differences in the multi-model-means provided as solid central lines in (c). Finally, the model uncertainty - i.e. the spread in projection-projections for a given scenario after removing internal variability uncertainty - makes an evidently large contribution to the projections here. For example, for the high emission-emissions scenario, model responses range between ca. 3 and 10 K of warming by 2100. For the Lowess smoothing, we considered a data fraction of 0.5, individually for each time series.

models and to weight their projections, in particular through systematic comparisons of the modelled climate statistics and relationships against those found in Earth observations. Current methods can be broadly separated into two major groups: (a) statistical climate model evaluation approaches and (b) emergent constraints.

1.2.1 Statistical model evaluation frameworks

There are several widely used frameworks that use a defined set of standard statistical measures to compare model behaviour to observations. Model projections are for example weighted by performance ~~metrics-measures~~ relating to historical trends and variability in key variables such as temperature or precipitation (e.g. Giorgi and Mearns, 2002; Tebaldi et al., 2004; Reichler and Kim, 2008; Räisänen et al., 2010; Lorenz et al., 2018; Brunner et al., 2020a, b; Tokarska et al., 2020; Hegerl et al., 2021; Ribes et al., 2021; Douville et al., 2022; Ribes et al., 2022; Qasmi and Ribes, 2022; Douville, 2023; O'Reilly et al., 2024), with further examples found e.g. in atmospheric chemistry (Karpechko et al., 2013). In addition, methods to account for model-interdependencies (due to shared model development backgrounds, or components) in these weighting procedures have been proposed (Bishop and Abramowitz, 2013; Abramowitz and Bishop, 2015; Sanderson et al., 2015; Knutti et al., 2017; Sanderson et al., 2017; Abramowitz et al., 2019).

A disadvantage of many conventional model evaluation approaches is that past statistical measures used to compare models to observations (e.g. standard ~~deviation-deviations~~ or climatological means and trends) are not necessarily reliable indicators ~~for each-if one can rely more on a specific~~ model's future response. Instead, a model that performs worse on certain past performance measures might actually be more informative about the true future response. ~~Possible reasons for the missing direct correlation of past and future responses might be that simple metrics~~ For example, simple historical performance scores can be blind to offsetting model biases (Nowack et al., 2020) and could even be targeted by model tuning (Mauritsen et al., 2012; Hourdin et al., 2017), for example to better match historical temperature trends. From a machine learning perspective, this could lead to situations akin to overfitting training data (e.g., apparent skill on historical data used to tune climate models, ~~or selecting past evaluation metrics on the basis of seemingly constraining correlations), whereas the~~ The same model might - as a result - actually be less informative/predictive in new situations, i.e. in this case under climate change.

Overall, due to the indirect link between historical performance measures and future responses in conventional model evaluation frameworks, it is not a priori clear which of the evaluation ~~metrics-methods~~ to trust most. This point was for example demonstrated in the review by Hegerl et al. (2021). Basically, different weighting approaches provide different constraints (both in terms of median and uncertainty ranges) and it remains difficult to establish which approach to trust most and to find ways to make them directly comparable. Another practical limitation is that standard ~~model-evaluation-measures~~ methods used to constrain climate change projections are typically based on relatively large-scale spatial and long-term temporal averaging to find significant correlations between historical climate model skill and future projections. This, in turn, makes robust constraints on changes in extreme weather events particularly difficult to establish (Sippel et al., 2017; Lorenz et al., 2018).

1.2.2 Emergent constraints

~~Emergent constraints~~ “The emergent constraint approach uses the climate model ensemble to identify a relationship between an uncertain aspect of the future climate and an observable or variation or trend in the contemporary climate” (Williamson et al., 2021)

125 . Compared to statistical model evaluation criteria, emergent constraints therefore more directly target relationships between shorter-term variability within the Earth system (‘observables’, e.g. seasonal cycle characteristics, observed trends, and other aspects of internal and inter-annual variability) and future climate change, even under strong and century-long climate forcing scenarios (see also review papers by Hall et al., 2019; Eyring et al., 2019).

Among the prominent examples are proposed constraints on changes in snow albedo (Hall and Qu, 2006), the highly uncertain cloud feedback and equilibrium climate sensitivity (Sherwood et al., 2014; Klein and Hall, 2015; Tian, 2015; Brient and Schneider, 2016; Lipat et al., 2017; Cox et al., 2018; Dessler and Forster, 2018), climate-driven changes in the hydrological cycle (O’Gorman, 2012; Deangelis et al., 2015; Li et al., 2017; Chen et al., 2022; Shiogama et al., 2022; Thackeray et al., 2022) and in the carbon cycle (~~Cox et al., 2013; Wenzel et al., 2014; Cox, 2019; Winkler et al., 2019b, a~~) (Cox et al., 2013; Wenzel et al., 2014; Cox, 2019; Winkler et al., 2019a, b), wintertime Arctic amplification (Bracegirdle and Stephenson, 2013; Thackeray and Hall, 2019), marine primary production (Kwiatkowski et al., 2017), permafrost (Chadburn et al., 2017), atmospheric circulation (Wenzel et al., 2016), and mid-latitude daily heat extremes (Donat et al., 2018).

135 A central ~~aspect hypothesis~~ of emergent constraint definitions is that a measure of historical, already observable, climate ~~is consistently~~ can consistently be linked to future responses. ~~Since the~~ A classic example is the correlation between the contemporary seasonal cycle amplitude of snow albedo to the long-term snow albedo climate feedback under climate change (Hall and Qu, 2006). Of course, the latter is only available from climate model simulations (i.e. is ‘unobserved’) ~~it is self-explanatory that emergent constraint relationships can only be validated and, effectively, constructed using climate models.~~
140 ~~As a result, the identification of potential constraint candidates fundamentally requires climate change projections simulated by large ensembles of climate models, as for example widely available in the form of the CMIPs~~ so that the correlation between the past and future quantity can only quite literally ‘emerge’ across large climate model ensembles of historical and future scenario simulations. In comparison, the controlling factor approaches described later will also require validation of extrapolation skill to future climates across climate model ensembles. However, as a first step their predictive skill will be evaluated on historical
145 observable data only; i.e. the relationships used for the observational constraint will be obtained entirely from historical data rather than directly targeting a relationship between the past observable and the future response.

1.3 Limitations of current constraint frameworks

The challenge to constrain future projections on the basis of observations is a difficult one. Any attempt to establish robust relationships between the (observable) past and simulated future (unobservable) will be hampered by the non-stationary nature of the climate system (~~Beucler et al., 2024~~). Any information content that can be gained from observations will naturally, and
150 intuitively, diminish as the climate changes. In addition, once relationships of this kind have been put forward, the various methods discussed in section 1.2 typically lead to different suggested constraints for median climate change responses and confidence intervals (e.g. Brunner et al., 2020a; Hegerl et al., 2021). This raises the next central question: which of the methods

should we trust (most)? By any means, this is not a small question considering the significant possible impacts associated with
155 future changes in climate.

We identify three broad issues which make progress on this central question particularly difficult, and which we suggest can be addressed by incorporating machine learning ideas into observational constraint frameworks. Further limitations are for example discussed in section IV of Williamson et al. (2021). The three we wish to highlight here are:

1. *The indirect nature of the link between the past performance measures and the future response to be constrained.* While
160 nowadays most emergent constraints are suggested together with a plausible theoretical link between the observable measure and the future response (Williamson et al., 2021), the connection is ~~by design always~~ indirect (Caldwell et al., 2018). In many cases, this might indeed lead to a scientifically robust relationship, however, this robustness is in practice difficult to evaluate objectively. Clearly, the situation is not much different in model evaluation methods which, for example, aim to correlate the historical model-consistent standard deviation in precipitation with its future response. The
165 indirect nature of these links means that one can attempt to manipulate x (the ~~observed~~-‘observed’) in models to better match the observational record. If this leads to the desired improvement in y (i.e. the simulated response) that would be a targeted ~~away way~~ to improve climate models. However, there is clearly no guarantee that apparent improvements in modelling historical x will translate into constrained future responses (Hall et al., 2019).
2. *Low-dimensionality equals oversimplification?* The reliance on a few, relatively simple, historical performance measures
170 could be argued to have played a key role in limiting progress to date, even if they have the advantage to be relatively easy to conceptualize. For example, it is hard to imagine that very simple measures can truly reflect the complexity of the climate system driving model uncertainty (Caldwell et al., 2018; Bretherton and Caldwell, 2020; Schlund et al., 2020; Nowack et al., 2020). A natural focus on the best-performing of the resulting constraints, even if linked to plausible physical mechanisms, will likely overfit the relationships between past model performance and projected change, returning back to point 1. In addition, the constantly ongoing quest to find such relationships is somewhat akin to issues with
175 multiple hypothesis testing in statistics, which directly leads us to point 3.
3. *Risk of data mining correlations, even if based on a scientifically grounded search.* A key ~~issue with finding concern with~~ identifying relationships such as emergent constraints, which ~~aim for finding a high correlation seek strong correlations~~ between a past (uncertain) ~~metric~~-observable and future (uncertain) responses across climate model ensembles, ~~is the fact that correlations of this kind will always be present in big data climate archives~~ lies in the inherent risk of correlations that arise (largely) by chance. These correlations inevitably appear in large data archives representing complex systems such as climate models, which encompass a vast array of climate variables. As a result, if scientists keep searching for such relationships long enough, they will eventually find a few. Those relationships in turn, for a high-dimensional and highly coupled climate system, will likely be at least partly explainable on the basis of actual scientific mechanisms
180 operating in the system, whereas other correlations will occur entirely by chance. A natural focus on the best-performing of the resulting constraints, even if linked to plausible physical mechanisms, will likely overfit the relationships between

past model performance and projected change, often even falling victim to coincidental correlations. This "data mining" criticism has been prominently made in previous publications (e.g. Caldwell et al., 2014; Sanderson et al., 2021; Williamson et al., 2021; Breul et al., 2023).

190 ~~A good indicator for potentially non-robust, coincidental and statistically over-confident relationships can be seen in tendencies for emergent constraints to perform better on the CMIP archive for which they were suggested than for later phases. Indeed this was found for a number of constraints~~ Several emergent constraints were found to weaken or even vanish when moving from CMIP3 to CMIP5, or from CMIP5 to CMIP6 (Caldwell et al., 2018; Pendergrass, 2020; Schlund et al., 2020; Williamson et al., 2021; Simpson et al., 2021; Thackeray et al., 2021), suggesting that the previously identified relationships were indeed
195 likely over-confident or coincidental.

2 Climate-invariant controlling factor analysis

We suggest machine learning-guided CFAs controlling factor analysis (CFA) as a promising alternative to establish more robust relationships tested to hold across climate states and climate model ensembles. Specifically, these CFAs establish functions that are only trained on data representative of the observational record but which are subsequently also tested for future responses, as
200 can be evaluated across ensembles of future climate model projections. These functions therefore establish a direct link between the past and the future. This *climate-invariance* can be evaluated across sets of climate models, or even sets of CMIP ensembles, addressing limitation (1). The use of machine learning allows us to learn higher-dimensional, less simplifying, relationships, addressing limitation (2). Finally, the design of the CFA functions will be motivated by known physical relationships between target variables to be constrained (the predictand) and environmental controlling factors (the predictors) ~~, addressing which,~~
205 ~~- together with the comprehensive out-of-sample testing - addresses~~ limitation (3). The fact that the resulting functions can be validated both under past and future conditions ~~further~~ enables an objective validation and uncertainty quantification, and reduces the risk to fall victim to coincidental correlations.

Low-dimensional CFA frameworks have been popular in climate science for some time, especially in the context of constraining uncertainty on cloud feedback mechanisms (e.g. Klein et al., 2017), but also for understanding stratospheric water
210 vapour variability (Smalley et al., 2017). Here we focus on recent machine learning ideas to improve their performance for specific constraints on climate feedback mechanisms. We often found that CFA are at first interpreted as a type of emergent constraint. In the following, we instead highlight key differences between the two frameworks; arguing for a separate treatment. We will illustrate central aspects by reviewing two recently published examples of constraining highly uncertain changes in Earth's cloud cover (Ceppi and Nowack, 2021) and in stratospheric water vapour (Nowack et al., 2023).

The central idea behind CFA for observational constraints is the definition-training of a function f relating multiple large-scale environmental variables \mathbf{X} to a target variable y over time t

$$y(t) \approx f(\mathbf{X}(t); \theta) \tag{1}$$

Ultimately, we wish to constrain climate model uncertainty in projected changes in y (e.g. changes in clouds or stratospheric water vapour) given already observed relationships between \mathbf{X} and y . A first major difference to emergent constraints is that the functions are trained only on historical data (observations or, for consistency, climate model simulations under historical forcing conditions). The parameters θ , which characterize the function f , measure can later be considered as measures of the importance of the controlling factor relationships found. Again, in this data-driven framework, f (and thus θ) can be learned individually both from sets of observational (providing observational functions $f_{\text{obs}}, f_{\text{obs},m}$) and climate model data (providing model-derived functions $f_{\text{CMIP},k}$).

The workflow of the CFA framework is illustrated in Figure 2. Expert knowledge is pivotal when selecting the factors \mathbf{X} (yellow box) that are thought to ‘control’ y (violet box). Machine learning-However, in contrast to emergent constraints where similar arguments apply to select physically plausible constraints, the physical mechanisms suggested to link the predictors to the predictand can be far more granular in CFA. For example, in CFA distinct thermodynamic and dynamic phenomena driving variability in the predictand can be distinguished, e.g. linking cloud occurrence to a combination of large-scale patterns of sea surface temperatures, relative humidity, and atmospheric stability measures (Kemsley et al., 2024). Returning to Figure 2, machine learning (grey central box) is used to derive the strength of the relationships between the factors and y . The generalization skill of these functions trained on the historical data is easily validated on independent test data, which is a crucial component of any data-driven method. A good first test case is again the already observable data or historical simulations (e.g. left out years not used during training and cross-validation), especially on extreme historical events such as the 2015/2016 El Niño event (Kemsley et al., 2024)(Kemsley et al., 2024; Ceppi et al., 2024). Of course, this test data is not used during training and cross-validation/the hyperparameter tuning (see longer discussions on these issues in e.g. Bishop, 2006; Nowack et al., 2021). In Figure 2, an example is shown for a hypothetical observational test case for the year 2012, if data from that year was not used for training. We re-iterate that separate functions can be learned and then validated in such a fashion for both observational data ($f_{\text{obs}}, f_{\text{obs},m}$) and for simulations conducted with various climate models (typically, historical simulations run with different climate models, indexed by k , leading to functions $f_{\text{CMIP},k}$).

To clarify, emergent constraints in combination with machine learning frameworks have been suggested as well (e.g. Williamson et al., 2021). However, CFA are different in two ways: firstly, the relationships learned are established entirely on the already observed period, or equivalent individual climate model output. In contrast, emergent constraint functions learn from emergent behaviour across climate change responses of an entire model ensemble, by correlating variables characterizing the models’ past behaviour (e.g. a measure of internal variability) to the model-consistent future responses in a quantity of interest (e.g. the equilibrium climate sensitivity). CFA instead learns *from* internal variability and uses these relationships in a

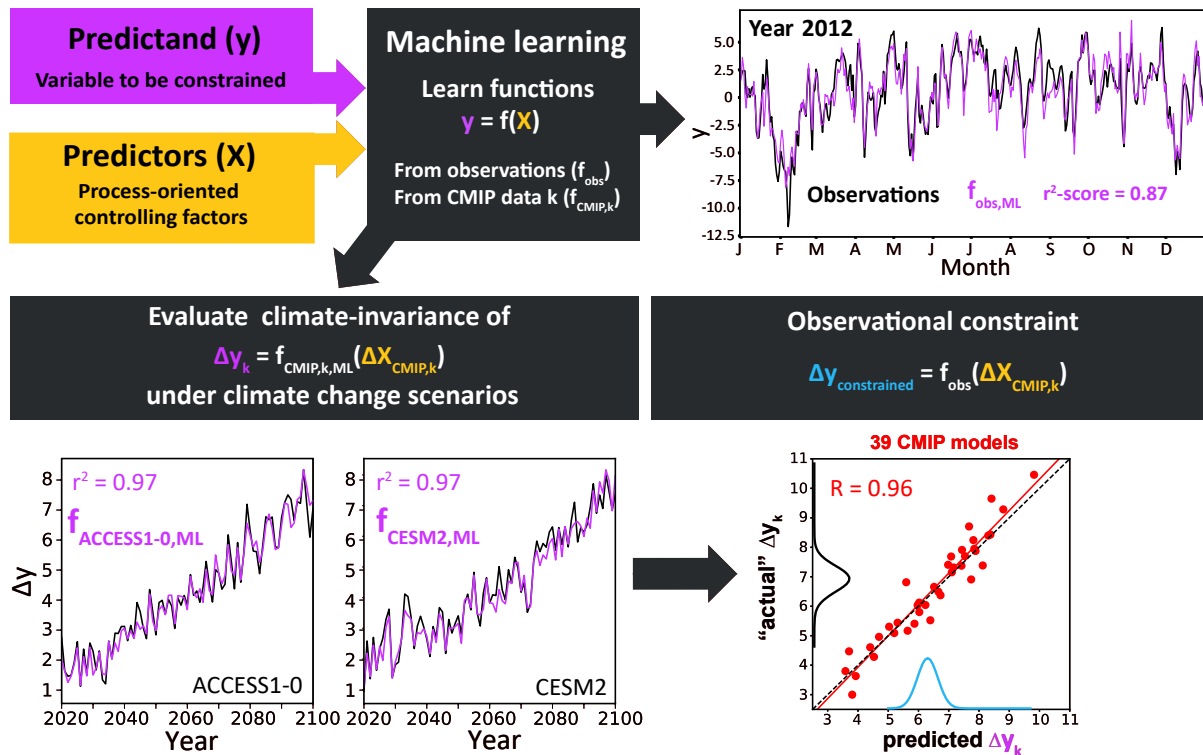


Figure 2. Example workflow for a CFA with machine learning. First, the regression set-up is defined so that the predictand y can be modelled well on the basis of a set of controlling factors X . These functions are learned individually for observational datasets and climate model simulations under historical climate forcing conditions. Out-of-sample predictive skill is evaluated in each case on held-out test data; illustrated here for a hypothetical test year [2012–2012 on daily data](#). Next, it is tested if the relationships learned also hold under climate change scenarios ([annually averaged for visualization purposes](#)). This step is only possible for climate models; demonstrated here for two example SSP projections. The black lines mark the [true-actual climate](#) model responses; the violet lines [mark](#) the predictions [of-if](#) the functions are fed with the model-consistent changes in the controlling factors ([which, if approximately climate-invariant relationships were indeed established, should replicate the actual responses](#)). Imperfections in the machine learning predictions can be measured across an ensemble of climate models, e.g. from the CMIPs, and as such incorporated into the overall uncertainty quantification. This is sketched in the bottom right for a set of 39 CMIP models (red dots), here showing 30-year averages of the predictions vs. true responses for the years 2070–2100. Finally, to obtain an observational constraint on model uncertainty in Δy (cf. inter-model spread along the y-axis), the function(s) f_{obs} are combined with the 39 different CMIP controlling factor responses, leading to an observationally constrained distribution for the predicted responses $\Delta y_{constrained}$. The latter is shown ([dashed-lightblue](#) distribution) on the x-axis in the bottom right figure. This preliminary distribution is then combined with the prediction error (cf. spread around the 1:1 line across the 39 CMIP models) to obtain a final observational constraint, indicated by the wider distribution ([light-blueblack](#)) along the y-axis.

climate-invariant context to also constrain the future response, without the latter being involved in the fitting process. Secondly, because the sample size for the relationships learned is no longer limited by the number of models in the ensemble (as is the case for emergent constraints; typically in the range of around 10-60 CMIP models), the general setting is more suitable for the application of machine learning, which strongly depends on the availability of a sufficient number of training samples. The review examples below used monthly-mean data. However, in principle, even much higher temporal resolutions could be used, up to e.g. daily extremes, which might open up new routes for constraining changes in specific [high-frequency extreme extreme weather](#) events (Wilkinson et al., 2023; Shao et al., 2024).

The next important step is to validate - across a representative climate model ensemble - that the functions learned on historical data also perform well under climate change scenarios, i.e. if $f_{\text{CMIP},k}$ can also skillfully predict the model-consistent climate change response (indicated by Δ) if provided with model-consistent changes in the controlling factors:

$$\Delta y_{\text{CMIP},k}(t) \approx f_{\text{CMIP},k}(\Delta \mathbf{X}_{\text{CMIP},k}(t)) \quad (2)$$

Note that for most predictand and controlling factor variables, this will pose an extrapolation step to previously unobserved value ranges. As discussed in the introduction, this extrapolation step under e.g. strong CO_2 forcing poses particular challenges for non-linear ML techniques that one might want to apply to any given CFA analysis. ~~In the stratospheric water vapour example, we will show how linearizations might help tackle~~ [Similarly, it might limit the scope of applying CFA to non-linear observational constraint problems. However, alternative approaches, e.g. to turn extrapolation into approximate interpolation problems \(Beucler et al., 2024\), might be one of many other helpful pathways to pursue. In the examples below, CFA-based constraints will be derived for annually-averaged responses normalized by the global mean surface temperature \$T_g\$, as is common in climate feedback analyses \(e.g. Andrews et al., 2012\). We see various pathways to address these challenges in CFA analyses, some of which have not yet been explored in the CFA literature. We will discuss these in Section 3.](#)

If the projections are reproduced well across the ensemble of climate models, this implies that the learned relationships are approximately climate-invariant, thus opening up a new link between historically observable relationships and the future climate response, at least to the degree that is currently represented in state-of-the-art climate models. This is exciting, because it provides a more direct approach to constrain model uncertainty than emergent constraints are able to provide. In the end, one can then simply obtain an observational constraint on each model's response by combining the observed function(s) f_{obs} with each individual model response in the controlling factors:

$$\Delta y_{\text{CMIP, constrained},k}(\text{CMIP, constrained},k,m)(t) = f_{\text{obs},m}(\Delta \mathbf{X}_{\text{CMIP},k}(t)) \quad (3)$$

Finally, since the machine learning predictions will not be perfect, the resulting distribution of observationally constrained climate model responses will further need to be combined with the method-intrinsic prediction error, see Figure 2 and the explanation in its caption, to obtain a final observationally constrained distribution for Δy . Note that we also indexed the function f_{obs} with the index m here, ~~to indicate~~. [The index indicates](#) that both Ceppi and Nowack (2021) and Nowack et al. (2023) trained a number of different observational functions to create the observationally constrained distribution [for each](#)

280 [model](#), to also sample and represent observational uncertainty in the relationships learned. [For simplicity, we have dropped this index in Figure 2.](#)

2.2 Taking a step back

Before we discuss the two specific applications of the machine learning-based CFA framework, it is important to point out two built-in assumptions in the nature of the resulting observational constraints:

- 285 1. By compartmentalising the prediction of y into two contributors in the form of parameters Θ and controlling factors \mathbf{X} , the constraint will be based on the observed θ_{obs} . However, current versions of CFA do not address uncertainty in the controlling factor responses across the climate model ensemble, which essentially remains untouched.
- 290 2. The CFA observational constraints are therefore conceptually closest to emergent constraints in the point that the choice of controlling factors will be crucial for finding a constraint. [If the-However, as already mentioned above, these choices require a far smaller leap of faith in linking the predictand response to e.g. thermodynamic and dynamic mechanisms.](#) [Still, if the](#) resulting sensitivities Θ for the controlling factors are not actually uncertain, there will be no constraint. For emergent constraints, this situation is akin to cases where there would be no spread along the x-axis for the observable quantity across the models. A key difference is that one first identifies process-oriented relationships between \mathbf{X} and y in climate model data and observations, representing internal climate variability (and, possibly, historical trends), instead of
- 295 directly targeting quantities that have a large spread across the model ensemble for both the predictors and the long-term response.

2.3 Application I: cloud-controlling factor analysis

Changes in [Earth's cloud cover-cloud properties \(amount, optical depth, altitude\)](#) are the leading uncertainty factor in global warming projections under increasing atmospheric CO_2 (Ceppi et al., 2017; Sherwood et al., 2020; Zelinka et al., 2020). A

300 driving force behind this uncertainty is the still relatively coarse spatial resolution of global models, meaning that processes involved in cloud formation have to be parameterized instead of being explicitly resolved. Improvements to parameterizations relying on machine learning ideas have been suggested elsewhere (e.g. Schneider et al., 2017) and will not be discussed further here. Instead, as first example, we will focus on CFA as an alternative viewpoint to constrain uncertainty in global cloud feedback. As such, CFA attempts to find constraining relationships at larger spatial scale, similar to - but as outlined above in

305 important points different to - emergent constraints. CFA have already been used extensively to constrain uncertainty related to specific cloud feedback types, however primarily with low-dimensional multiple linear regression approaches including < 10 controlling factors. A few CFA studies used non-linear machine learning methods as well, but only to understand historical cloud variations rather than to derive observational constraints on future projections (e.g. Andersen et al., 2017; Fuchs et al., 2018; Andersen et al., 2022).

310 Previous observational constraint studies with lower-dimensional multiple linear regression, in turn, mostly focused on regionally confined major low-cloud decks (e.g. Qu et al., 2015; Zhou et al., 2015; Myers and Norris, 2016; McCoy et al.,

2017; Scott et al., 2020; Cesana and Genio, 2021; Myers et al., 2021), because changes in their cumulative shortwave reflectivity contribute a large fraction to the overall uncertainty in global cloud feedback (Sherwood et al., 2020). Building on this work, Ceppi and Nowack (2021) developed a statistical learning analysis using ridge regression (Hoerl and Kennard, 1970) as a linear
 315 form of machine learning. This new approach to CFA allowed them to improve on previous CFA constraints and to expand the scope beyond the low cloud decks and to global scale; for both shortwave (clouds are reflective, thus cooling climate) and longwave (clouds can trap terrestrial radiation, thus warming climate) cloud radiative effects. Here, we will briefly review these results, as an example of how CFA can be developed to constrain model uncertainty more effectively, by including machine learning ideas. A sketch of the framework is shown in Figure 3.

320 As in previous lower-dimensional CFA for clouds, Ceppi and Nowack (2021) focused on a relatively short, well-observed period during the satellite era. In their set-up, this translates into a regression approach in which cloud-radiative anomalies at grid point r , $dC(r)$, ~~to be be are~~ approximated as a linear function of anomalies in a set of M meteorological cloud-controlling factors $d\mathbf{X}_i(r)$:

$$dC(r) \approx \sum_{i=1}^M \frac{\partial C(r)}{\partial \mathbf{X}_i(r)} \cdot d\mathbf{X}_i(r) = \sum_{i=1}^M \Theta_i(r) \cdot d\mathbf{X}_i(r). \quad (4)$$

325 where the parameters $\Theta_i(r)$ represent the learned sensitivities of $C(r)$ to the controlling factors. Here, $C(r)$ could in principle be different types of measures to characterize cloud contributions to shorter-term variations (here, monthly) and long-term changes (including the climate change response) in Earth’s energy budget. For example, Ceppi and Nowack (2021) separated shortwave from longwave cloud radiative effects, and further common decompositions are into high cloud and low cloud contributions, as well as changes in cloud fractions, cloud top pressure, and cloud optical depth (~~e.g. Kemsley et al., 2024~~)
 330 (Wilson Kemsley et al., 2024; Ceppi et al., 2024). As a key difference to previous studies, which focused on grid-point-wise relationships, e.g. between surface temperature at point r and $C(r)$, Ceppi and Nowack (2021) regressed cloud-radiative anomalies at grid point r as a function of the controlling factors within a $105^\circ \times 55^\circ$ (lon \times lat) gridded domain centered on r (Figure 3**b,c**), rendering the regression high-dimensional. The contribution of each controlling factor to $dC(r)$ is then obtained by the scalar product of the spatial vectors $\Theta_i(r)$ and $d\mathbf{X}_i(r)$.

335 An important choice is the set of controlling factors. Heuristics that motivate various predictors for low cloud decks can be found in Klein et al. (2017) and for high clouds in Wilson Kemsley et al. (2024). In Ceppi and Nowack (2021), the authors used five different patterns of cloud controlling factors, which were used to train the predictions on historical data. However, for an effective constraint on the cloud feedback under abrupt-4xCO₂ forcing across CMIP5 and CMIP6 models, they only considered two factors that drive the main part of the climate change response (rather than variability), at least when averaged
 340 globally. These were patterns of surface temperature (the most important factor) and of the estimated inversion strength (EIS, an important modulating factor; while a different stability measure was used over land). Overall, the study demonstrated that the use of machine learning ideas opens the door to consider a larger spatial context, which improved the CFA function in terms of its predictions, and eventually also the overall observational constraint (Figure 3d). It further allowed for the extension

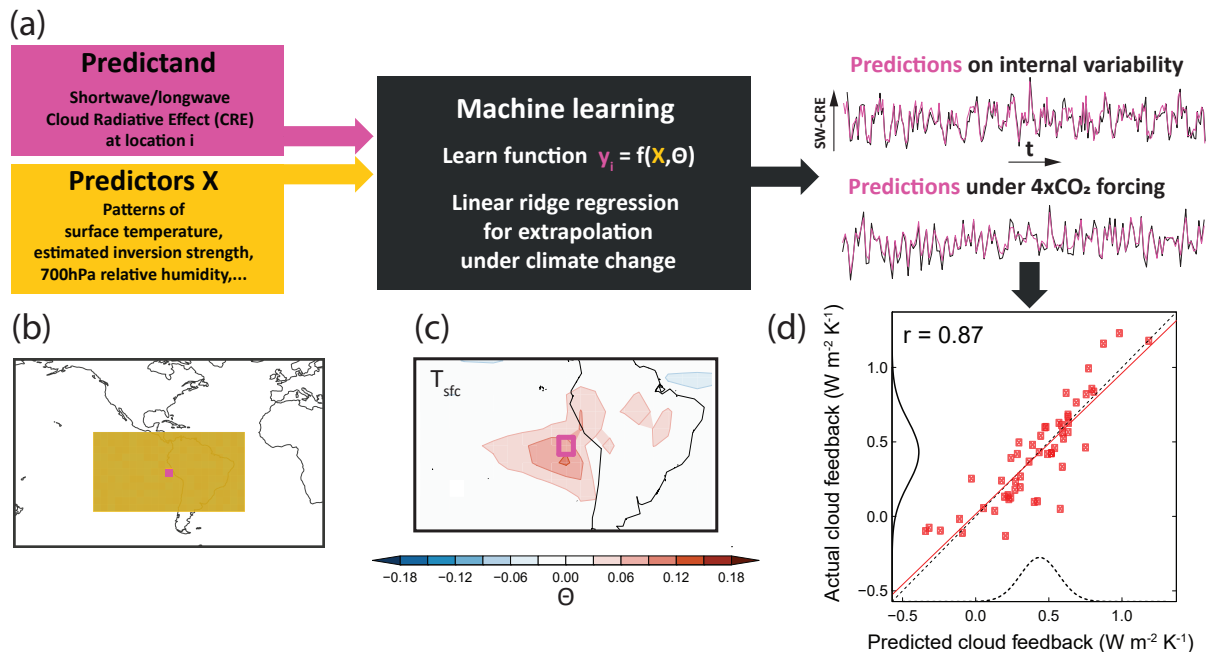


Figure 3. Cloud example for a CFA with machine learning. The workflow broadly follows the logic outlined in Figure 2. (a) Cloud radiative effects (CRE) are predicted at a given grid location as a function of a set of controlling factors. Linear machine learning approaches such as ridge regression are currently recommended due to the need to extrapolate when using the learned relationships for predictions under climate change scenarios. The functions for each grid point are first evaluated on monthly-mean data of historical simulations and observations, and afterwards for climate models on monthly predictions under 4xCO₂ forcing with model-consistent changes in the controlling factors. As a sketch this is illustrated on multi-annual predictions of a single climate model for a grid point in the tropical Pacific (top right). For comprehensive evaluations of such functions on historical data see for example the study by Wilson Kemsley et al. (2024). As the sketch for the 4xCO₂ scenario extends over 150 years, the monthly predictions and ground truth were averaged to annual means for visualization purposes. (b) Example sketch of the regional context (yellow) of many grid points surrounding a target grid point (purple) for which the cloud radiative effects (CRE) are predicted. (c) Example map of CMIP multi-model-mean ridge regression coefficients parameters Θ for one of the controlling factors - surface temperature - when predicting shortwave cloud radiative effects (CRE). In (d), the final constraint on the global cloud feedback is illustrated: using the predicted monthly climate model-specific predictions under 4xCO₂, these are subsequently annually averaged to calculate cloud feedback is obtained by combining the functions learned parameters from slices-Gregory-type regressions (Gregory et al., 2004; Andrews et al., 2010) of historical simulations top-of-the-atmosphere CRE anomalies against global mean surface temperature change. These feedback parameters (of same length as which are the satellite data observational record linear regression slopes of these fits) with model-consistent changes in are obtained separately for the controlling factors. This is regressed against ridge regression predictions and the actual cloud feedback of the same climate models 4xCO₂ simulations for each model. Afterwards, as inferred we compare the ridge-predicted CRE feedback parameters with those derived from the actual abrupt-4xCO₂ climate model simulations available from across the CMIP5/6 archives entire model ensemble. For the plot shown, we first integrated the contributions to the global shortwave and longwave CRE feedback parameter contributions across all grid points, before then combining the longwave and shortwave components to an overall global cloud feedback parameter. Plots for the components can be found in Ceppi and Nowack (2021) and its Supplementary Material. Across 52 CMIP models, a strong relationship ($r = 0.87$) is obtained. Here Following the combination of functions and controlling factor responses as outlined in Figure 2, four different observationally derived functions resulted in $4 \times 52 = 208$ observationally constrained projections, shown as uncertainty distribution along the x-axis (dashed line). This distribution is combined with the methodological uncertainty to provide a final observational constraint distribution for the global cloud feedback shown along the y-axis (solid line).

of CFA frameworks of cloud feedback from specific low-cloud analyses to global scale and to new cloud types (in particular, high clouds; cf. [Wilson](#) Kemsley et al. (2024)).

2.4 Application II: an observational constraint on the stratospheric water vapour feedback

The linearity assumption appears to work well to first order for global cloud feedback, but this is not guaranteed for many other uncertain Earth system feedbacks. A first counter-example can be found in Nowack et al. (2023) who adapted the framework presented in Ceppi and Nowack (2021) to constrain uncertainty in changes in specific humidity across the stratosphere. This ‘stratospheric water vapour feedback’ is indeed highly uncertain in CMIP models, with model responses ranging from virtually no response to more than a tripling of concentrations relative to present-day values in 4xCO₂ simulations. This, in turn, makes significant contributions to uncertainties in global warming projections ([Stuber et al., 2005](#); [Joshi et al., 2010](#); [Dietmüller et al., 2014](#); [Nowack et al., 2015, 2018b](#); [Keeble et al., 2021](#)), the tropospheric circulation response ([Joshi et al., 2006](#)) ([Joshi et al., 2006](#); [Charlesworth et al., 2023](#)), and the recovery of the ozone layer (Dvortsov and Solomon, 2001; Stenke and Grewe, 2005).

To address this uncertainty, Nowack et al. (2023) defined a CFA using ridge regression (Hoerl and Kennard, 1970) in which they predicted monthly-mean water vapour concentrations in the tropical lower stratosphere (q_{strat}) as a function of temperature variations in the upper troposphere and lower stratosphere (UTLS). Their analysis was directly motivated by the strong mechanistic link between tropical UTLS temperature and water vapour entry rates, see e.g. [Fueglistaler et al. \(2009\)](#) for a review [Fueglistaler et al. \(2005, 2009\)](#). Their final controlling factor function was defined as follows:

$$\log(q_{\text{strat}}(t)) = f(\Theta, \mathbf{T}; t, \tau_{\text{max}}) = \sum_i^{\text{lat}} \sum_j^{\text{lon}} \sum_k^{\text{p}} \sum_{\tau}^{\tau_{\text{max}}} \Theta_{ijk, \tau} dT_{ijk}(t - \tau) \quad (5)$$

which takes into account temperature anomalies dT across a whole longitude-latitude-altitude cube of the tropical to mid-latitude UTLS region, over τ_{max} monthly time lags. Using this function, both internal variability in q_{strat} (for observations and CMIP models) as well as the long-term climate change response (CMIP models) could be predicted well.

However, under abrupt-4xCO₂ forcing, the function notably only held true after log-transforming the predictand before training, which apparently led to a quasi-linearization of the relationships to be learned (Figure 4). The need for such a transformation is not unexpected due to the known approximately exponential relationship between temperature and saturation water vapour concentrations, and simply underlines that similar CFA could be designed for many other uncertain Earth system feedbacks, even if non-linear, if appropriate physics-informed transformations can be applied.

3 Challenges

3.1 Dealing with non-linearities

As already implied by the stratospheric water vapour example, not all relationships we wish to constrain will be linear. For example, while not typically considered in the emergent constraint literature, the aerosol effective radiative forcing (ERF) is

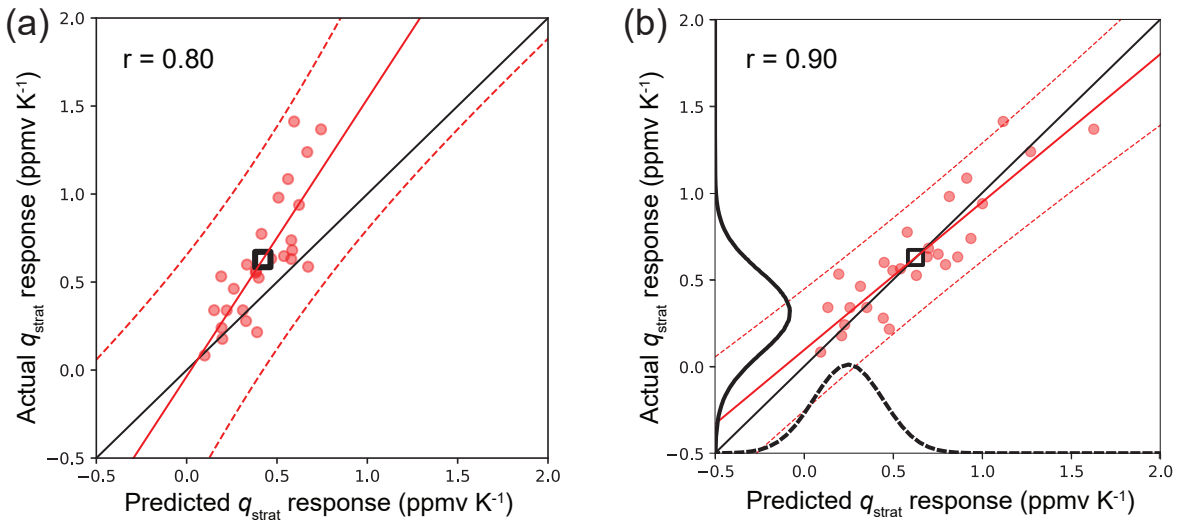


Figure 4. Constraint on stratospheric water vapour projections requiring a nonlinear transformation. (a) linear ridge regression without transformation of the predictand. (b) After log-transforming the predictand before training on historical data. Without the log-transformation, the predictions for large changes increasingly underestimate the actual responses in the corresponding abrupt-4xCO₂ simulations and the scatter in the predictions also increases (lowering r). With the transformation, the predicted water vapour responses agree well with the actual simulated responses (provided in parts per million volume/ppmv; normalized by model-consistent global mean surface temperature change [to convert the change into a feedback](#)). The final observational constraint is calculated similar to the cloud example; for further details see Nowack et al. (2023). The dashed red lines mark the [predictions prediction](#) intervals, [whereas](#) the solid red lines [the show](#) linear regressions [fitted to the data](#) (Wilks, 2006).

defined with reference to an un-observed pre-industrial atmospheric state and so faces many of the same challenges described above (see also Figure 5). Since the relationships between aerosol emissions and cloud properties, and cloud properties and radiative forcing are known to be non-linear (Carslaw et al., 2013a), extrapolating from observed to unobserved climate states, while necessary, is fraught with danger.

Besides the obvious risk that if we naively attempted to fit non-linear functions to such relationships we could easily over-fit our data, Figure 5 shows the opposite risk that assuming the non-linearities to be small based on the observed data (inset) could lead us to under-fitting the response over larger ranges. If at all possible we should look to collect observations in these outlying regions, perhaps looking at particularly clean atmospheric conditions in the case of aerosol (Carslaw et al., 2013a; Gryspeerd et al., 2023). ~~Failing that, we must either either rescale our data such that we are no longer extrapolating, or linearize the relationship using physical understanding (Beucler et al., 2024).~~

[Looking beyond emergent constraints and towards the CFA framework discussed in Section 2, we further highlight four strategies to address the extrapolation challenge in non-linear contexts. In our opinion, these strategies have not yet been exploited sufficiently in the existing literature and could be promising pathways for future work:](#)

- 390 – *(Quasi-)Linearizations.* In the stratospheric water vapour example, we demonstrated how linearizing relationships can help tackle non-linear observational constraint challenges. In particular, prior physical knowledge - such as the approximately exponential relationship between temperature and specific humidity - can be used to transform the regression problem towards a more linear behaviour, thus facilitating extrapolation.
- 395 – *Climate-invariant data transformations.* Another promising route could be to pursue ideas similar to variable transformations recently suggested for climate model parameterizations (Beucler et al., 2024). In essence, variables that require extrapolation in warmer climates could be transformed into substitute variables whose distribution ranges are approximately climate-invariant, for example because they cannot (or hardly ever) cross certain physical thresholds (e.g. relative humidity which can vary only between 0% and - mostly - 100%). Such ideas are not be discussed in detail here; we rather refer to Beucler et al. (2024)
- ~
- 400 – *Moving non-linear contributions to the controlling factor responses.* CFA aim to observationally constrain the parameters Θ that characterize the dependence of the predictand on the controlling factors. The controlling factor responses, however, are not constrained and can, of course, behave non-linearly. In a linear CFA framework, this description would be comparable to a linear function that depends on polynomial or logarithmic terms, etc.; one can still constrain the linear model parameters in that case. This idea is not distinct from the point on quasi-linearizations, but helps to underline the difference in approaches as to whether the predictand or the predictors are transformed to obtain an approximately linear model.
- 405 – *Non-linear methods incorporating prior physical knowledge to constrain the solution space.* In section 4, we will discuss ideas as to how non-linear machine learning methods could indeed be applied to CFA frameworks. For example, this concerns Gaussian Processes with appropriate choices of priors, or with the combination of linear and non-linear kernels to model both linear and non-linear variations in the predictand simultaneously. In addition, physics-informed machine learning approaches (Karniadakis et al., 2021) could help to a priori define saturation regimes in machine learning cost functions, or similar.

410 3.2 Confounding

Confounding occurs when an extraneous variable influences both the dependent variable and an independent variable, leading to a spurious association. This is particularly challenging in climate science, where numerous interacting processes can lead to complex relationships between variables. For instance, in the context of Figure 5, the apparent influence of an observed variable on an unobserved variable may actually be mediated or obscured by another uncontrolled variable, such as temperature.

415 This confounding can severely compromise the identification and validation of emergent constraints or controlling-factor relationships. Machine learning methods, though powerful in detecting patterns, are not inherently equipped to distinguish causal relationships from mere correlations unless specifically designed to do so. A possibility to address this challenge through causal discovery methods will be discussed in Section 4.2.

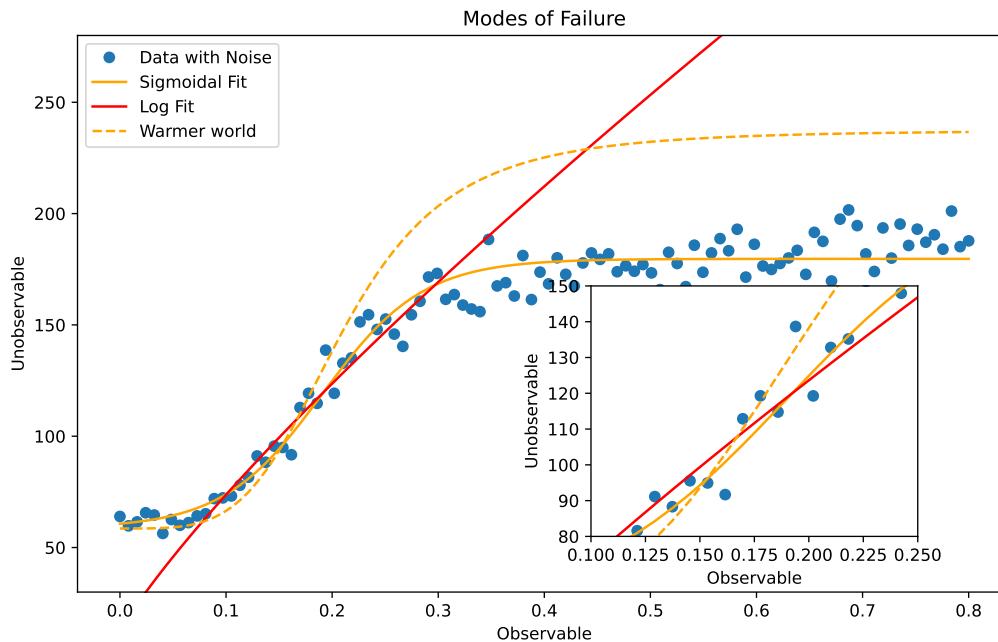


Figure 5. A schematic diagram of a typical emergent constraint showing the relationship between an unobserved quantity (Y; say effective radiative forcing/ERF) and an observed quantity (X). This holds well over a limited region of X (inset). This relationship may fail to hold outside the observed region though, particularly if the response is (or becomes) non-linear. This relationship can also breakdown if a (possibly) unobserved variable Z affects both X and Y, causing a confounding that changes the relationship in e.g. in a warmer world (or the past).

3.3 Blind spots in climate model ensembles

420 Clearly, any observational constraint approach that requires climate models to validate the mathematical model used to constrain the future response is potentially affected by blind spots in the ensemble. For example, blind spots could be potentially missing physical mechanisms across all models as e.g. implied in Kang et al. (2023) for Southern Hemisphere sea surface temperature changes. This limitation, however, applies in similar ways to all types of approaches discussed here including classic statistical climate model evaluation, emergent constraints, and CFA. For CFA, this affects the evaluation of the climate-invariance
 425 property of the relationships found if they are to be evaluated well beyond historical climate forcing levels.

Still, a well-chosen set of proxy variables as predictors for CFA can, to some extent, help to buffer against such effects. In the stratospheric water vapour example, the authors focused on the CO₂-driven climate feedback. As it stands, such an approach brackets out other potential mechanisms for future changes in stratospheric water vapour through chemical mechanisms related to methane (Nowack et al., 2023) or to changes in the background stratospheric aerosol loading (Kroll and Schmidt, 2024; Marshall et al., 2024).

430 . However, the monthly-mean temperature variations around the tropopause will naturally integrate multiple mechanisms contributing to water vapour variability, some of which the authors did not explicitly think of during their framework design. Notably, the same variations will never truly reflect the most intuitive mechanism of the immediate dehydration of air parcels during their ascent from the troposphere into the stratosphere. The latter would require a Lagrangian perspective and much higher temporal and spatial resolutions in the data the CFA is applied to. At the same time, other processes potentially
435 contributing to water vapour variations, such as convective overshooting, radiation-circulation interactions, or cirrus clouds (Dessler et al., 2016; Ming et al., 2016), will likely already have an effect present-day and would thus be part of the observationally derived parameters in the constraint functions (i.e. lower or increase the observationally-derived sensitivities).

Having said that, what always remains uncertain in CFA is whether the distribution of controlling factor changes in the ensemble of climate models truly encapsulates their future true response to CO₂ forcing. If not, constraining functions learned
440 from past data might provide a different constraint on the future feedback if combined with a set of controlling factor responses hypothesized to better represent suggested blind spot mechanisms. In any case, such tests could be valuable to explore the implications of potential climate model blind spots for the robustness of observational constraints. Specific simulations with a mechanistically supposedly more complete model, or simulations subject to larger ranges of values for uncertain climate model parameters (see also perturbed physics simulations discussed in Section 4.3) could be useful starting points in this regard. Tests
445 along these lines could provide valuable insights with respect to the sensitivity of CFA observational constraints to varying the assumptions inherent in state-of-the-art climate models.

4 Opportunities

~~With care~~In Section 3, we highlighted several challenges in the application of machine learning in observational constraints on state-of-the-art climate model ensembles. With careful consideration of these challenges, however, machine learning has the
450 potential to be a powerful tool to learn more sophisticated, objective (emergent) constraints that can be validated through cross-validation and perfect model tests. On top of the machine learning-augmented CFA outlined in section 2, we here highlight a few more ways in which machine learning can be used to find, and improve the robustness of, observational constraints.

4.1 Physical priors

In many cases we already have a reasonable approximation of the functional form of a physical response but would like
455 to capture uncertain elements, such as free parameters or closures, in a consistent and transparent way. In the stratospheric water vapour example above, this was the known non-linear relationship between temperature and saturation water vapour. In Bayesian terms, we already have an informative prior. As such, using a Bayesian approach can be a powerful way of encoding this information and updating it with observations to provide predictions with well calibrated uncertainties.

One recent example of this utilizes the functional form of a simple energy balance model (FaIR in this case; Leach et al.
460 (2021)) as a prior for a Gaussian process (GP) emulation of the temperature response to a given forcing (Bouabid et al., 2023). By constructing the statistical (machine learning) model to respect the physical form of the response, it is able to better predict

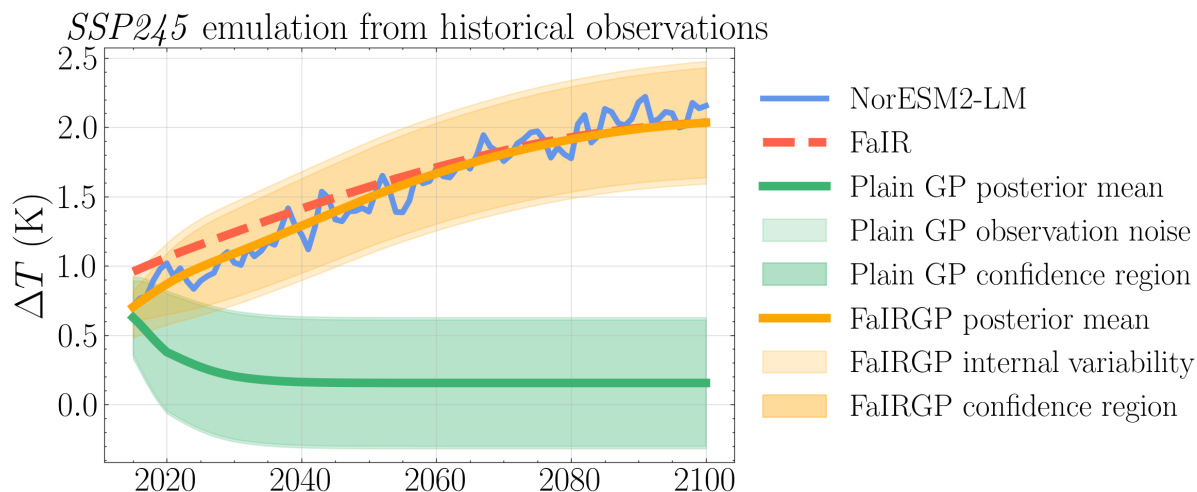


Figure 6. Example of using a Bayesian model with a physical prior to enable accurate and well calibrated *extrapolation* of climate projections. Both the FaIR model and the FaiRGP model (which encodes the FaIR response in the covariance function) accurately reproduce the NorESM2 warming under SSP2-4.5 - despite having only seen historical temperatures. The Plain GP has a no physical regularisation and quickly reverts to its mean function.

future warming. Importantly for this discussion, this approach performs significantly better than an unconstrained GP when making out-of-sample predictions (extrapolating). For example, by training both GPs only on outputs from a GCM representing the historical period, the physical GP is able to accurately predict future warming under SSP-2-4.5, while the plain GP quickly
 465 reverts to its mean function. This behaviour is not confined to GPs, any highly parameterised regression technique (such as a neural network) would produce spurious results without the strong regularisation that the physical form provides. Similarly, physical constraints imposed on machine learning cost functions, as is the case in physics-informed machine learning (Chen et al., 2021; Karniadakis et al., 2021; Kashinath et al., 2021), could be powerful tools to be used in this context.

4.2 Discovering controlling factors

470 Causal discovery and inference techniques allow us to robustly detect potential constraints and to address the challenge of confounding variables respectively (Runge et al., 2019; Camps-Valls et al., 2023). Methods such as causal discovery or the use of instrumental variables could help in distinguishing true climate signals from confounding noise. Furthermore, enhancing the datasets with more comprehensive metadata that captures potential confounders and applying robust statistical techniques to explicitly model these confounders can aid in mitigating their effects. Such approaches would strengthen the reliability of
 475 machine learning-driven analyses, ensuring that the emergent constraints or CFAs reflect more accurate and physically plausible relationships that hold under various climate change scenarios. An interesting analogy is that with CFA from section 2, significant confounding which might change the detected historical relationships under climate change should also lead to a corresponding decrease in predictive skill of the climate change response under, e.g., $4\times\text{CO}_2$ forcing. As such, poorly perform-

ing CFA extrapolations might be a good indicator of poorly designed causal (proxy) relationships among the controlling factors
480 and the predictand.

4.3 Perturbed parameter ensembles

Perturbed Physics Ensembles (PPEs) (Murphy et al., 2004; Mulholland et al., 2017) present a significant opportunity in the realm of CFA by allowing researchers to systematically explore the sensitivity of climate models to changes in physical parameterizations. By adjusting various parameters within a climate model, PPEs generate a range of plausible climate outcomes, which can then be analyzed to understand how specific processes impact model outputs. This systematic variation of parameters helps isolate the influence of individual factors, thereby providing deeper insights into the workings of climate models than is possible by simply comparing a small ensemble of qualitatively different models.
485

The utility of PPEs extends beyond the internal processes of models to potentially enhance our understanding of real-world observations. By identifying which parameters and model configurations yield the best alignment with observed climate data, researchers can infer which physical processes might be driving observed changes in the climate system. This transfer of learning from models to observations is crucial for improving the robustness and credibility of climate projections. Moreover, the knowledge gained through PPEs can guide the development of more refined machine learning algorithms that are capable of incorporating complex, non-linear interactions discovered in observations. Thus, combined with the causal discovery approaches outlined above, PPEs not only enrich our understanding of climate model behavior but can also serve as a resource for informing robust (physical) CFAs.
490
495

5 Conclusions

While all climate change studies with machine learning necessarily face the challenge of extrapolation in the presence of (potential) non-linearity, there are clearly opportunities and methods to make the power of machine learning accessible to the scientific challenge. Here, we took the perspective of how machine learning can help us provide better observational constraints on the still substantial uncertainties in climate model projections. In particular, we highlighted controlling factor analyses (CFA) combined with machine learning as a promising route to pursue, and contrasted this approach to emergent constraints. On the one hand, emergent constraints share common ground with CFA in that they still require expert knowledge in the choice of predictors and in that they require a leap of faith in the whole ensemble of state-of-the-art climate models. On the other hand, CFA learn functions that provide a more direct link between the past and future response, reduce oversimplification through the learning of more complex functional relationships, and allow for more comprehensive out-of-sample validation of predictive skill both on past (climate models and observations) and future data (models only). As such CFA, are arguably also less prone to the risk of data mining correlations that are a posteriori justified on a physical science basis.
500
505

Ultimately, CFA might also help to validate proposed emergent constraints in the future. In essence, for this to happen, one would have to set up an effective CFA targeting the same uncertain predictand. Existing emergent constraints could thus, in many ways, be considered as useful starting points for this new field, in the spirit of working towards ‘multiple lines
510

of evidence'. We further provided a wider perspective on the challenges of using machine learning for observational and, specifically, emergent constraints, such as non-linearity and confounding. Key opportunities to address these challenges we see in physics-informed data transformations, physics-informed machine learning, causal algorithms, perturbed physics ensembles, and in imposing physical knowledge through physical priors in Bayesian methods.

515 While we refrain from over-explaining our intentionally philosophical paper title, it is clear that emergent constraints tend to be low-dimensional and somewhat simplistic. Consequently, they will necessarily be various degrees of 'wrong', as are all models of the truly complex real world. As such they have commonalities with the climate models they are derived from. Nonetheless, emergent constraints, along with other statistical evaluation methods, are essential, because raw model ensembles alone would only offer limited insight when it comes to Earth's uncertain future. Emergent constraints have effectively
520 motivated research into poorly understood climate processes, contributing to scientific understanding and inspiring further model development. They will remain valuable tools for the climate science community for the foreseeable future. In this paper, we propose that CFA - a conceptually related yet distinct approach - could play an important role not only in validating and complementing but also even in moving beyond the current evidence provided by emergent constraints.

Finally, we underline an analogy between the development of machine learning and climate models. This analogy, in turn,
525 could motivate adjustments to frameworks for climate model development and evaluation cycles. Specifically, in the context of training machine learning models, the process bears some similarities to the tuning of climate models to historical observations (e.g. Mauritsen et al., 2012; Hourdin et al., 2017). As a result, one might argue that model intercomparisons, weightings, and evaluations against that same data are far less meaningful, similar to how one should not evaluate machine learning models against their training data (a good fit could simply - and in the most cases - imply overfitting rather than good generalizable
530 predictive skill). Of course, there are intrinsically regularizing features in the form of physical laws in any physics-based modelling system, which will somewhat mitigate such effects, as compared to fitting a neural network without physical constraints. Still, we see scope for defining dedicated historical test datasets as part of future model intercomparison exercises. These test datasets should not be included during climate model tuning. For example, one could agree that all model tuning should stop by the year 2005 (the typically last year of historical simulations for CMIP5), which would leave around two decades for objective
535 model evaluation of recent trends and variability. Through continued scientific exchange ~~, there might of ideas of this kind,~~ there will be many different ways for ~~academic transfer learning' of this kind between~~ the disciplines of machine learning and climate science to learn from one another.

Author contributions. Both authors co-designed and co-wrote the paper. For the initial draft, PN focused on sections 1 and 2, DWP on sections 3 and 4, with later additions by PN to address reviewer comments.

540 *Competing interests.* At least one of the (co-)authors is a member of the editorial board of Atmospheric Chemistry and Physics.

Acknowledgements. The authors were supported by the UK Natural Environment Research Council (grant no. NE/V012045/1). The authors thank Paulo Ceppi (Imperial College London) for helpful comments.

References

- Abramowitz, G. and Bishop, C. H.: Climate model dependence and the ensemble dependence transformation of CMIP projections, *Journal of Climate*, 28, 2332–2348, <https://doi.org/10.1175/JCLI-D-14-00364.1>, 2015.
- 545 Abramowitz, G., Herger, N., Gutmann, E., Hammerling, D., Knutti, R., Leduc, M., Lorenz, R., Pincus, R., and Schmidt, G. A.: ESD Reviews: Model dependence in multi-model climate ensembles: Weighting, sub-selection and out-of-sample testing, <https://doi.org/10.5194/esd-10-91-2019>, 2019.
- Allen, M. R. and Ingram, W. J.: Constraints on future changes in climate and the hydrologic cycle., *Nature*, 419, 224–232, <https://doi.org/10.1038/nature01092>, 2002.
- 550 Andersen, H., Cermak, J., Fuchs, J., Knutti, R., and Lohmann, U.: Understanding the drivers of marine liquid-water cloud occurrence and properties with global observations using neural networks, *Atmospheric Chemistry and Physics*, 17, 9535–9546, <https://doi.org/10.5194/acp-17-9535-2017>, 2017.
- Andersen, H., Cermak, J., Zipfel, L., and Myers, T. A.: Attribution of Observed Recent Decrease in Low Clouds Over the Northeastern Pacific to Cloud-Controlling Factors, *Geophysical Research Letters*, 49, 1–10, <https://doi.org/10.1029/2021gl096498>, 2022.
- 555 Andrews, T., Forster, P. M., Boucher, O., Bellouin, N., and Jones, A.: Precipitation, radiative forcing and global temperature change, *Geophysical Research Letters*, 37, <https://doi.org/10.1029/2010GL043991>, 2010.
- Andrews, T., Gregory, J. M., Webb, M. J., and Taylor, K. E.: Forcing, feedbacks and climate sensitivity in CMIP5 coupled atmosphere-ocean climate models, *Geophysical Research Letters*, 39, L09 712, <https://doi.org/10.1029/2012GL051607>, 2012.
- 560 Bellouin, N., Quaas, J., Gryspeerdt, E., Kinne, S., Stier, P., Watson-Parris, D., Boucher, O., Carslaw, K. S., Christensen, M., Daniau, A. L., Dufresne, J. L., Feingold, G., Fiedler, S., Forster, P., Gettelman, A., Haywood, J. M., Lohmann, U., Malavelle, F., Mauritsen, T., McCoy, D. T., Myhre, G., Mülmenstädt, J., Neubauer, D., Possner, A., Rugenstein, M., Sato, Y., Schulz, M., Schwartz, S. E., Sourdeval, O., Storelvmo, T., Toll, V., Winker, D., and Stevens, B.: Bounding Global Aerosol Radiative Forcing of Climate Change, *Reviews of Geophysics*, 58, e2019RG000 660, <https://doi.org/10.1029/2019RG000660>, 2020.
- 565 Beucler, T., Pritchard, M., Gentine, P., and Rasp, S.: Towards physically-consistent, data-driven models of convection, pp. 3987–3990, <https://doi.org/10.1109/IGARSS39084.2020.9324569>, 2020.
- Beucler, T., Gentine, P., Yuval, J., Gupta, A., Peng, L., Lin, J., Yu, S., Rasp, S., Ahmed, F., O’gorman, P. A., Neelin, J. D., Lutsko, N. J., and Pritchard, M.: Climate-invariant machine learning, *Science Advances*, 10, eadj7250, <https://www.science.org>, 2024.
- 570 Bi, K., Xie, L., Zhang, H., Chen, X., Gu, X., and Tian, Q.: Accurate medium-range global weather forecasting with 3D neural networks, *Nature*, 619, 533–538, <https://doi.org/10.1038/s41586-023-06185-3>, 2023.
- Bishop, C. H. and Abramowitz, G.: Climate model dependence and the replicate Earth paradigm, *Climate Dynamics*, 41, 885–900, <https://doi.org/10.1007/s00382-012-1610-y>, 2013.
- Bishop, C. M.: Pattern recognition and machine learning, Springer Science+Business Media, <https://link.springer.com/book/9780387310732>, 2006.
- 575 Bouabid, S., Sejdinovic, D., and Watson-Parris, D.: FaIRGP: A Bayesian Energy Balance Model for Surface Temperatures Emulation, arXiv, pp. 1–64, <http://arxiv.org/abs/2307.10052>, 2023.
- Bouallègue, Z. B., Weyn, J. A., Clare, M. C. A., Dramsch, J., Dueben, P., and Chantry, M.: Improving Medium-Range Ensemble Weather Forecasts with Hierarchical Ensemble Transformers, *Artificial Intelligence for the Earth Systems*, 3, e230027, <https://doi.org/10.1175/aies-d-23-0027.1>, 2024.

- 580 Bracegirdle, T. J. and Stephenson, D. B.: On the robustness of emergent constraints used in multimodel climate change projections of arctic warming, *Journal of Climate*, 26, 669–678, <https://doi.org/10.1175/JCLI-D-12-00537.1>, 2013.
- Bretherton, C. S. and Caldwell, P. M.: Combining emergent constraints for climate sensitivity, *Journal of Climate*, 33, 7413–7430, <https://doi.org/10.1175/JCLI-D-19-0911.1>, 2020.
- Breul, P., Ceppi, P., and Shepherd, T. G.: Revisiting the wintertime emergent constraint of the southern hemispheric midlatitude jet response
585 to global warming, *Weather and Climate Dynamics*, 4, 39–47, <https://doi.org/10.5194/wcd-4-39-2023>, 2023.
- Brient, F. and Schneider, T.: Constraints on climate sensitivity from space-based measurements of low-cloud reflection, *Journal of Climate*, 29, 5821–5835, <https://doi.org/10.1175/JCLI-D-15-0897.1>, 2016.
- Brunner, L., McSweeney, C., Ballinger, A. P., Befort, D. J., Benassi, M., Booth, B., Coppola, E., Vries, H. D., Harris, G., Hegerl, G. C., Knutti, R., Lenderink, G., Lowe, J., Nogherotto, R., O’Reilly, C., Qasmi, S., Ribes, A., Stocchi, P., and Undorf, S.: Comparing Methods to Constrain Future European Climate Projections Using a Consistent Framework, *Journal of Climate*, 33, 8671–8692,
590 <https://doi.org/10.1175/JCLI-D-19-0953.1>, 2020a.
- Brunner, L., Pendergrass, A., Lehner, F., Merrifield, A., Lorenz, R., and Knutti, R.: Reduced global warming from CMIP6 projections when weighting models by performance and independence, *Earth System Dynamics*, 11, 995–1012, <https://doi.org/10.5194/esd-11-995-2020>, 2020b.
- 595 Caldwell, P. M., Bretherton, C. S., Zelinka, M. D., Klein, S. A., Santer, B. D., and Sanderson, B. M.: Statistical significance of climate sensitivity predictors obtained by data mining, *Geophysical Research Letters*, 41, 1803–1808, <https://doi.org/10.1002/2014gl059205>, 2014.
- Caldwell, P. M., Zelinka, M. D., and Klein, S. A.: Evaluating Emergent Constraints on Equilibrium Climate Sensitivity, *Journal of Climate*, 31, 3921–3942, <https://doi.org/10.1175/JCLI-D-17>, 2018.
- Camps-Valls, G., Gerhardus, A., Ninad, U., Varando, G., Martius, G., Balaguer-Ballester, E., Vinuesa, R., Diaz, E., Zanna, L., and Runge, J.:
600 Discovering causal relations and equations from data, <https://doi.org/10.1016/j.physrep.2023.10.005>, 2023.
- Carslaw, K. S., Lee, L. A., Reddington, C. L., Mann, G. W., and Pringle, K. J.: The magnitude and sources of uncertainty in global aerosol, *Faraday Discussions*, 165, 495, <https://doi.org/10.1039/c3fd00043e>, 2013a.
- Carslaw, K. S., Lee, L. A., Reddington, C. L., Pringle, K. J., Rap, A., Forster, P. M., Mann, G. W., Spracklen, D. V., Woodhouse, M. T., Regayre, L. A., and Pierce, J. R.: Large contribution of natural aerosols to uncertainty in indirect forcing, *Nature*, 503, 67–71,
605 <https://doi.org/10.1038/nature12674>, 2013b.
- Ceppi, P. and Nowack, P.: Observational evidence that cloud feedback amplifies global warming, *Proc. Natl. Acad. Sci. USA*, 118, e2026290 118, <https://doi.org/10.1073/pnas.2026290118>, 2021.
- Ceppi, P., Brient, F., Zelinka, M., and Hartmann, D. L.: Cloud feedback mechanisms and their representation in global climate models, *Wiley Interdisciplinary Reviews: Climate Change*, 8, 1–21, <https://doi.org/10.1002/wcc.465>, 2017.
- 610 Ceppi, P., Myers, T. A., Nowack, P., Wall, C. J., and Zelinka, M. D.: Implications of a Pervasive Climate Model Bias for Low-Cloud Feedback, *Geophysical Research Letters*, 51, <https://doi.org/10.1029/2024GL110525>, 2024.
- Cesana, G. V. and Genio, A. D. D.: Observational constraint on cloud feedbacks suggests moderate climate sensitivity, *Nature Climate Change*, 11, 213–220, <https://doi.org/10.1038/s41558-020-00970-y>, 2021.
- Chadburn, S. E., Burke, E. J., Cox, P. M., Friedlingstein, P., Hugelius, G., and Westermann, S.: An observation-based constraint on permafrost
615 loss as a function of global warming, *Nature Climate Change*, 7, 340–344, <https://doi.org/10.1038/nclimate3262>, 2017.

- Charlesworth, E., Plöger, F., Birner, T., Baikhadzhaev, R., Abalos, M., Abraham, N. L., Akiyoshi, H., Bekki, S., Dennison, F., Jöckel, P., Keeble, J., Kinnison, D., Morgenstern, O., Plummer, D., Rozanov, E., Strode, S., Zeng, G., Egorova, T., and Riese, M.: Stratospheric water vapor affecting atmospheric circulation, *Nature Communications*, 14, <https://doi.org/10.1038/s41467-023-39559-2>, 2023.
- Chen, Z., Liu, Y., and Sun, H.: Physics-informed learning of governing equations from scarce data, *Nature Communications*, 12, 620 <https://doi.org/10.1038/s41467-021-26434-1>, 2021.
- Chen, Z., Zhou, T., Chen, X., Zhang, W., Zhang, L., Wu, M., and Zou, L.: Observationally constrained projection of Afro-Asian monsoon precipitation, *Nature Communications*, 13, 2552, <https://doi.org/10.1038/s41467-022-30106-z>, 2022.
- Cox, P. M.: Emergent Constraints on Climate-Carbon Cycle Feedbacks, <https://doi.org/10.1007/s40641-019-00141-y>, 2019.
- Cox, P. M., Pearson, D., Booth, B. B., Friedlingstein, P., Huntingford, C., Jones, C. D., and Luke, C. M.: Sensitivity of tropical carbon to climate change constrained by carbon dioxide variability, *Nature*, 494, 341–344, <https://doi.org/10.1038/nature11882>, 2013. 625
- Cox, P. M., Huntingford, C., and Williamson, M. S.: Emergent constraint on equilibrium climate sensitivity from global temperature variability, *Nature*, 553, 319–322, <https://doi.org/10.1038/nature25450>, 2018.
- Deangelis, A. M., Qu, X., Zelinka, M. D., and Hall, A.: An observational radiative constraint on hydrologic cycle intensification, *Nature*, 528, 249–253, <https://doi.org/10.1038/nature15770>, 2015.
- 630 Deser, C., Phillips, A., Bourdette, V., and Teng, H.: Uncertainty in climate change projections: The role of internal variability, *Climate Dynamics*, 38, 527–546, <https://doi.org/10.1007/s00382-010-0977-x>, 2012.
- Dessler, A., Ye, H., Wang, T., Schoeberl, M., Oman, L., Douglass, A., Butler, A., Rosenlof, K., Davis, S., and Portmann, R.: Transport of ice into the stratosphere and the humidification of the stratosphere over the 21 st century, *Geophysical Research Letters*, 43, 2323–2329, <https://doi.org/10.1002/2016GL067991>, 2016.
- 635 Dessler, A. E. and Forster, P. M.: An estimate of equilibrium climate sensitivity from interannual variability, *Journal of Geophysical Research: Atmospheres*, 123, 1–12, <https://doi.org/10.1029/2018JD028481>, 2018.
- Dietmüller, S., Ponater, M., and Sausen, R.: Interactive ozone induces a negative feedback in CO₂-driven climate change simulations, *Journal of Geophysical Research: Atmospheres*, 119, 1796–1805, <https://doi.org/10.1002/2013JD020575>, 2014.
- Donat, M. G., Pitman, A. J., and Angéilil, O.: Understanding and Reducing Future Uncertainty in Midlatitude Daily Heat Extremes Via Land Surface Feedback Constraints, *Geophysical Research Letters*, 45, 10,627–10,636, <https://doi.org/10.1029/2018GL079128>, 2018. 640
- Douville, H.: Robust and perfectible constraints on human-induced Arctic amplification, *Communications Earth and Environment*, 4, <https://doi.org/10.1038/s43247-023-00949-5>, 2023.
- Douville, H., Qasmi, S., Ribes, A., and Bock, O.: Global warming at near-constant tropospheric relative humidity is supported by observations, *Communications Earth and Environment*, 3, <https://doi.org/10.1038/s43247-022-00561-z>, 2022.
- 645 Dueben, P. D. and Bauer, P.: Challenges and design choices for global weather and climate models based on machine learning, *Geoscientific Model Development*, 11, 3999–4009, <https://doi.org/10.5194/gmd-11-3999-2018>, 2018.
- Dvortsov, V. L. and Solomon, S.: Response of the stratospheric temperatures and ozone to past and future increases in stratospheric humidity, *Journal of Geophysical Research*, 106, 7505–7514, <https://doi.org/10.1029/2000JD900637>, 2001.
- Eyring, V., Cox, P., Flato, G., Gleckler, P., Abramowitz, G., Caldwell, P., Collins, W., Gier, B., Hall, A., Hoffman, F., Hurtt, G., Jahn, A., Jones, C., Klein, S., Krasting, J., Kwiatkowski, L., Lorenz, R., Maloney, E., Meehl, G., and Pen, M.: Taking climate model evaluation to the next level, *Nature Climate Change*, 9, 102–110, <https://doi.org/10.1038/s41558-018-0355-y>, 2019. 650
- Fuchs, J., Cermak, J., and Andersen, H.: Building a cloud in the southeast Atlantic : understanding low-cloud controls based on satellite observations with machine learning, pp. 16 537–16 552, 2018.

- Fueglistaler, S., Bonazzola, M., Haynes, P. H., and Peter, T.: Stratospheric water vapor predicted from the Lagrangian temperature history of air entering the stratosphere in the tropics, *Journal of Geophysical Research: Atmospheres*, 110, D10S16, <https://doi.org/10.1029/2004JD005516>, 2005.
- Fueglistaler, S., Dessler, A. E., Dunkerton, T. J., Folkins, I., Fu, Q., and Ote, P. W.: Tropical tropopause layer, *Reviews of Geophysics*, 47, RG1004, 2009.
- Giorgi, F. and Mearns, L. O.: Calculation of average, uncertainty range, and reliability of regional climate changes from AOGCM simulations via the "Reliability Ensemble Averaging" (REA) method, *Journal of Climate*, 15, 1141–1158, [https://doi.org/10.1175/1520-0442\(2003\)016<0883:COCOAU>2.0.CO;2](https://doi.org/10.1175/1520-0442(2003)016<0883:COCOAU>2.0.CO;2), 2002.
- Gregory, J. M., Ingram, W. J., Palmer, M. A., Jones, G. S., Stott, P. A., Thorpe, R. B., Lowe, J. A., Johns, T. C., and Williams, K. D.: A new method for diagnosing radiative forcing and climate sensitivity, *Geophysical Research Letters*, 31, L03205, <https://doi.org/10.1029/2003GL018747>, 2004.
- Gryspeerd, E., Povey, A. C., Grainger, R. G., Hasekamp, O., Hsu, N. C., Mulcahy, J. P., Sayer, A. M., and Sorooshian, A.: Uncertainty in aerosol-cloud radiative forcing is driven by clean conditions, *Atmospheric Chemistry and Physics*, 23, 4115–4122, <https://doi.org/10.5194/acp-23-4115-2023>, 2023.
- Hall, A. and Qu, X.: Using the current seasonal cycle to constrain snow albedo feedback in future climate change, *Geophysical Research Letters*, 33, <https://doi.org/10.1029/2005GL025127>, 2006.
- Hall, A., Cox, P., Huntingford, C., and Klein, S.: Progressing emergent constraints on future climate change, *Nature Climate Change*, 9, 269–278, <https://doi.org/10.1038/s41558-019-0436-6>, 2019.
- Harris, I., Osborn, T. J., Jones, P., and Lister, D.: Version 4 of the CRU TS monthly high-resolution gridded multivariate climate dataset, *Scientific Data*, 7, 109, <https://doi.org/10.1038/s41597-020-0453-3>, 2020.
- Hawkins, E. and Sutton, R.: The potential to narrow uncertainty in regional climate predictions, *Bulletin of the American Meteorological Society*, 90, 1095–1108, <https://doi.org/10.1175/2009BAMS2607.1>, 2009.
- Hegerl, G. C., Ballinger, A. P., Booth, B. B., Borchert, L. F., Brunner, L., Donat, M. G., Doblas-Reyes, F. J., Harris, G. R., Lowe, J., Mahmood, R., Mignot, J., Murphy, J. M., Swingedouw, D., and Weisheimer, A.: Toward Consistent Observational Constraints in Climate Predictions and Projections, *Frontiers in Climate*, 3, 678 109, <https://doi.org/10.3389/fclim.2021.678109>, 2021.
- Held, I.: Simplicity amid complexity, <https://doi.org/10.1126/science.1248447>, 2014.
- Hess, P., Druke, M., Petri, S., Strnad, F. M., and Boers, N.: Physically constrained generative adversarial networks for improving precipitation fields from Earth system models, *Nature Machine Intelligence*, 4, 828–839, <https://doi.org/10.1038/s42256-022-00540-1>, 2022.
- Hickman, S. H. M., Griffiths, P. T., Nowack, P. J., and Archibald, A. T.: Short-term forecasting of ozone air pollution across Europe with transformers, *Environmental Data Science*, 2, e43, <https://doi.org/10.1017/eds.2023.37>, 2023.
- Hoerl, A. E. and Kennard, R. W.: Ridge Regression: Biased Estimation for Nonorthogonal Problems, *Technometrics*, 12, 55–67, <https://doi.org/10.2307/1271436>, 1970.
- Hourdin, F., Mauritsen, T., Gettelman, A., Golaz, J. C., Balaji, V., Duan, Q., Folini, D., Ji, D., Klocke, D., Qian, Y., Rauser, F., Rio, C., Tomassini, L., Watanabe, M., and Williamson, D.: The art and science of climate model tuning, *Bulletin of the American Meteorological Society*, 98, 589–602, <https://doi.org/10.1175/BAMS-D-15-00135.1>, 2017.
- Huntingford, C., Jeffers, E. S., Bonsall, M. B., Christensen, H. M., Lees, T., and Yang, H.: Machine learning and artificial intelligence to aid climate change research and preparedness, *Environ. Res. Lett.*, 14, 124 007, <https://doi.org/10.1088/1748-9326/ab4e55>, 2019.

- Huntingford, C., Cox, P. M., Williamson, M. S., Clarke, J. J., and Ritchie, P. D. L.: Emergent constraints for the climate system as effective parameters of bulk differential equations, *Earth System Dynamics*, 14, 433–442, <https://doi.org/10.5194/esd-14-433-2023>, 2023.
- IPCC: Climate Change 2021: The Physical Science Basis. Contribution of Working Group I to the Sixth Assessment Report of the Intergovernmental Panel on Climate Change, Cambridge University Press, <https://doi.org/10.1017/9781009157896>, 2021.
- 695 Joshi, M. M., Charlton, A. J., and Scaife, A. A.: On the influence of stratospheric water vapor changes on the tropospheric circulation, *Geophysical Research Letters*, 33, L09 806, <https://doi.org/10.1029/2006GL025983>, 2006.
- Joshi, M. M., Webb, M. J., Maycock, A. C., and Collins, M.: Stratospheric water vapour and high climate sensitivity in a version of the HadSM3 climate model, *Atmospheric Chemistry and Physics*, 10, 7161–7167, <https://doi.org/10.5194/acp-10-7161-2010>, 2010.
- Kaltenborn, J., Charlotte, L., Ramesh, V., Brouillard, P., Gurwicz, Y., Nagda, C., Runge, J., Nowack, P., and Rolnick, D.: ClimateSet: A
700 Large-Scale Climate Model Dataset for Machine Learning, *Advances in Neural Information Processing Systems*, 36, https://papers.nips.cc/paper_files/paper/2023/hash/44a6769fe6c695f8dfb347c649f7c9f0-Abstract-Datasets_and_Benchmarks.html, 2023.
- Kang, S. M., Yu, Y., Deser, C., Zhang, X., Kang, I. S., Lee, S. S., Rodgers, K. B., and Ceppi, P.: Global impacts of recent Southern Ocean cooling, *Proceedings of the National Academy of Sciences of the United States of America*, 120, <https://doi.org/10.1073/pnas.2300881120>, 2023.
- 705 Karniadakis, G. E., Kevrekidis, I. G., Lu, L., Perdikaris, P., Wang, S., and Yang, L.: Physics-informed machine learning, *Nature Reviews Physics*, 3, 422–440, <https://www.nature.com/articles/s42254-021-00314-5>, 2021.
- Karpechko, A. Y., Maraun, D., and Eyring, V.: Improving antarctic total ozone projections by a process-oriented multiple diagnostic ensemble regression, *Journal of the Atmospheric Sciences*, 70, 3959–3976, <https://doi.org/10.1175/JAS-D-13-071.1>, 2013.
- Kashinath, K., Mustafa, M., Albert, A., Wu, J. L., Jiang, C., Esmailzadeh, S., Azizzadenesheli, K., Wang, R., Chattopadhyay, A., Singh, A.,
710 Manepalli, A., Chirila, D., Yu, R., Walters, R., White, B., Xiao, H., Tchelepi, H. A., Marcus, P., Anandkumar, A., Hassanzadeh, P., and Prabhat: Physics-informed machine learning: Case studies for weather and climate modelling, *Philosophical Transactions of the Royal Society A: Mathematical, Physical and Engineering Sciences*, 379, 20200093, <https://doi.org/10.1098/rsta.2020.0093>, 2021.
- Kasoar, M., Voulgarakis, A., Lamarque, J. F., Shindell, D. T., Bellouin, N., Faluvegi, G., and Tsigaridis, K.: Regional and global temperature response to anthropogenic SO₂ emissions from China in three climate models, *Atmospheric Chemistry and Physics*, 16, 9785–9804,
715 <https://doi.org/10.5194/acp-16-9785-2016>, 2016.
- Keeble, J., Hassler, B., Banerjee, A., Checa-garcia, R., Chiodo, G., Davis, S., Eyring, V., Griffiths, P. T., Morgenstern, O., Nowack, P., Zeng, G., Zhang, J., Bodeker, G., Burrows, S., Cameron-Smith, P., Cugnet, D., Danek, C., Deushi, M., Horowitz, L. W., Kubin, A., Li, L., Lohmann, G., Michou, M., Mills, M. J., Nabat, P., Olivier, D., Park, S., Seland, O., Stoll, J., Wieners, K.-H., and Wu, T.: Evaluating stratospheric ozone and water vapour changes in CMIP6 models from 1850 to 2100, *Atmospheric Chemistry and Physics*, 21, 5015–5061,
720 <https://doi.org/10.5194/acp-21-5015-2021>, 2021.
- Keisler, R.: Forecasting Global Weather with Graph Neural Networks, <http://arxiv.org/abs/2202.07575>, 2022.
- Kemsley, S. W., Ceppi, P., Andersen, H., Cermak, J., Stier, P., and Nowack, P.: A systematic evaluation of high-cloud controlling factors, *Atmospheric Chemistry and Physics*, 24, 8295–8316, <https://doi.org/10.5194/acp-24-8295-2024>, 2024.
- Klein, S. A. and Hall, A.: Emergent Constraints for Cloud Feedbacks, *Current Climate Change Reports*, 1, 276–287,
725 <https://doi.org/10.1007/s40641-015-0027-1>, 2015.
- Klein, S. A., Hall, A., Norris, J. R., and Pincus, R.: Low-Cloud Feedbacks from Cloud-Controlling Factors: A Review, *Surveys in Geophysics*, 38, 1307–1329, <https://doi.org/10.1007/s10712-017-9433-3>, 2017.
- Knutti, R.: The end of model democracy?, *Climatic Change*, 102, 395–404, <https://doi.org/10.1007/s10584-010-9800-2>, 2010.

- Knutti, R., Rugenstein, M. A. A., and Hegerl, G. C.: Beyond equilibrium climate sensitivity, *Nature Geoscience*,
730 <https://doi.org/10.1038/ngeo3017>, 2017.
- Kroll, C. A. and Schmidt, A.: Indirect stratospheric moisture increase after a Pinatubo-magnitude eruption can be comparable to direct increase after 2022 Hunga, *Communications Earth and Environment*, 5, <https://doi.org/10.1038/s43247-024-01651-w>, 2024.
- Kurth, T., Subramanian, S., Harrington, P., Pathak, J., Mardani, M., Hall, D., Miele, A., Kashinath, K., and Anandkumar, A.: FourCast-Net: Accelerating Global High-Resolution Weather Forecasting Using Adaptive Fourier Neural Operators, Association for Computing
735 Machinery, Inc, <https://doi.org/10.1145/3592979.3593412>, 2023.
- Kwiatkowski, L., Bopp, L., Aumont, O., Ciais, P., Cox, P. M., Laufkötter, C., Li, Y., and Séférian, R.: Emergent constraints on projections of declining primary production in the tropical oceans, *Nature Climate Change*, 7, 355–358, <https://doi.org/10.1038/nclimate3265>, 2017.
- Labe, Z. M. and Barnes, E. A.: Detecting Climate Signals Using Explainable AI With Single-Forcing Large Ensembles, *Journal of Advances in Modeling Earth Systems*, 13, <https://doi.org/10.1029/2021ms002464>, 2021.
- 740 Lam, R., Sanchez-Gonzalez, A., Willson, M., Wirnsberger, P., Fortunato, M., Alet, F., Ravuri, S., Ewalds, T., Eaton-Rosen, Z., Hu, W., Merose, A., Hoyer, S., Holland, G., Vinyals, O., Stott, J., Pritzel, A., Mohamed, S., and Battaglia, P.: Learning skillful medium-range global weather forecasting, *Science*, 382, 1416–1421, <https://www.solarsystemscope.com/textures/>, 2023.
- Leach, N. J., Jenkins, S., Nicholls, Z., Smith, C. J., Lynch, J., Cain, M., Walsh, T., Wu, B., Tsutsui, J., and Allen, M. R.: FaIRv2.0.0: A generalized impulse response model for climate uncertainty and future scenario exploration, *Geoscientific Model Development*, 14,
745 <https://doi.org/10.5194/gmd-14-3007-2021>, 2021.
- Li, G., Xie, S. P., He, C., and Chen, Z.: Western Pacific emergent constraint lowers projected increase in Indian summer monsoon rainfall, *Nature Climate Change*, 7, 708–712, <https://doi.org/10.1038/nclimate3387>, 2017.
- Lipat, B. R., Tselioudis, G., Grise, K. M., and Polvani, L. M.: CMIP5 models' shortwave cloud radiative response and climate sensitivity linked to the climatological Hadley cell extent, *Geophysical Research Letters*, 44, 5739–5748, <https://doi.org/10.1002/2017GL073151>,
750 2017.
- Lorenz, R., Herger, N., Sedláček, J., Eyring, V., Fischer, E. M., and Knutti, R.: Prospects and Caveats of Weighting Climate Models for Summer Maximum Temperature Projections Over North America, *Journal of Geophysical Research: Atmospheres*, 123, 4509–4526, <https://doi.org/10.1029/2017JD027992>, 2018.
- Mansfield, L., Nowack, P., Kasoar, M., Everitt, R., Collins, W., and Voulgarakis, A.: Predicting global patterns of long-term climate change
755 from short-term simulations using machine learning, *npj Climate and Atmospheric Science*, 3, 44, <https://doi.org/10.1038/s41612-020-00148-5>, 2020.
- Marshall, L. R., Schmidt, A., Schurer, A. P., Abraham, N. L., Lücke, L. J., Wilson, R., Anchukaitis, K., Hegerl, G., Johnson, B., Otto-Bliesner, B. L., Brady, E. C., Khodri, M., and Yoshida, K.: Last Millennium Volcanic Forcing and Climate Response using SO₂ Emissions, <https://doi.org/10.5194/egusphere-2024-1322>, 2024.
- 760 Mauritsen, T., Stevens, B., Roeckner, E., Crueger, T., Esch, M., Giorgetta, M., Haak, H., Jungclaus, J., Klocke, D., Matei, D., Mikolajewicz, U., Notz, D., Pincus, R., Schmidt, H., and Tomassini, L.: Tuning the climate of a global model, *Journal of Advances in Modeling Earth Systems*, 4, M00A01, <https://doi.org/10.1029/2012MS000154>, 2012.
- McCoy, D. T., Eastman, R., Hartmann, D. L., and Wood, R.: The change in low cloud cover in a warmed climate inferred from AIRS, MODIS, and ERA-interim, *Journal of Climate*, 30, 3609–3620, <https://doi.org/10.1175/JCLI-D-15-0734.1>, 2017.
- 765 Ming, A., Hitchcock, P., and Haynes, P.: The double peak in upwelling and heating in the tropical lower stratosphere., *Journal of the Atmospheric Sciences*, 73, 1889–1901, <http://journals.ametsoc.org/doi/abs/10.1175/JAS-D-15-0293.1>, 2016.

- Mulholland, D. P., Haines, K., Sparrow, S. N., and Wallom, D.: Climate model forecast biases assessed with a perturbed physics ensemble, *Climate Dynamics*, 49, 1729–1746, <https://doi.org/10.1007/s00382-016-3407-x>, 2017.
- Murphy, J. M., Sexton, D. M. H., Barnett, D. N., Jones, G. S., Webb, M. J., Collins, M., and Stainforth, D. A.: Quantification of modelling uncertainties in a large ensemble of climate change simulations, *Nature*, 430, 768–772, <https://doi.org/10.1038/nature02770.1>, 2004.
- 770 Myers, T. A. and Norris, J. R.: Reducing the uncertainty in subtropical cloud feedback, *Geophysical Research Letters*, 43, 2144–2148, <https://doi.org/10.1002/2015GL067416>, 2016.
- Myers, T. A., Scott, R. C., Zelinka, M. D., Klein, S. A., Norris, J. R., and Caldwell, P. M.: Observational constraints on low cloud feedback reduce uncertainty of climate sensitivity, *Nature Climate Change*, 11, 501–507, <https://doi.org/10.1038/s41558-021-01039-0>, 2021.
- 775 Nowack, P., Braesicke, P., Haigh, J., Abraham, N. L., Pyle, J., and Voulgarakis, A.: Using machine learning to build temperature-based ozone parameterizations for climate sensitivity simulations, *Environmental Research Letters*, 13, 104016, <https://doi.org/10.1088/1748-9326/aae2be>, 2018a.
- Nowack, P., Ong, Q. Y. E., Braesicke, P., Haigh, J. D., Luke, A., Pyle, J., and Voulgarakis, A.: Machine learning parameterizations for ozone: climate model transferability, pp. 263–268, 2019.
- 780 Nowack, P., Runge, J., Eyring, V., and Haigh, J. D.: Causal networks for climate model evaluation and constrained projections, *Nature Communications*, 11, 1415, <https://doi.org/10.1038/s41467-020-15195-y>, 2020.
- Nowack, P., Konstantinovskiy, L., Gardiner, H., and Cant, J.: Machine learning calibration of low-cost NO₂ and PM₁₀ sensors: non-linear algorithms and their impact on site transferability, *Atmospheric Measurement Techniques*, 14, 5637–5655, <https://doi.org/https://doi.org/10.5194/amt-14-5637-2021>, 2021.
- 785 Nowack, P., Ceppi, P., Davis, S. M., Chiodo, G., Ball, W., Diallo, M. A., Hassler, B., Jia, Y., Keeble, J., and Joshi, M.: Response of stratospheric water vapour to warming constrained by satellite observations, *Nature Geoscience*, <https://doi.org/10.1038/s41561-023-01183-6>, 2023.
- Nowack, P. J., Abraham, N. L., Maycock, A. C., Braesicke, P., Gregory, J. M., Joshi, M. M., Osprey, A., and Pyle, J. A.: A large ozone-circulation feedback and its implications for global warming assessments, *Nature Climate Change*, 5, 41–45, <https://doi.org/10.1038/nclimate2451>, 2015.
- 790 Nowack, P. J., Braesicke, P., Abraham, N. L., and Pyle, J. A.: On the role of ozone feedback in the ENSO amplitude response under global warming, *Geophysical Research Letters*, 44, 3858–3866, <https://doi.org/10.1002/2016GL072418>, 2017.
- Nowack, P. J., Abraham, N. L., Braesicke, P., and Pyle, J. A.: The impact of stratospheric ozone feedbacks on climate sensitivity estimates, *Journal of Geophysical Research: Atmospheres*, 123, 4630–4641, <https://doi.org/10.1002/2017JD027943>, 2018b.
- 795 O’Gorman, P. A.: Sensitivity of tropical precipitation extremes to climate change, *Nature Geoscience*, 5, 697–700, <https://doi.org/10.1038/ngeo1568>, 2012.
- O’Neill, B. C., Kriegler, E., Riahi, K., Ebi, K. L., Hallegatte, S., Carter, T. R., Mathur, R., and van Vuuren, D. P.: A new scenario framework for climate change research: The concept of shared socioeconomic pathways, *Climatic Change*, 122, 387–400, <https://doi.org/10.1007/s10584-013-0905-2>, 2014.
- 800 O’Neill, B. C., Tebaldi, C., Vuuren, D. P. V., Eyring, V., Friedlingstein, P., Hurtt, G., Knutti, R., Kriegler, E., Lamarque, J. F., Lowe, J., Meehl, G. A., Moss, R., Riahi, K., and Sanderson, B. M.: The Scenario Model Intercomparison Project (ScenarioMIP) for CMIP6, *Geoscientific Model Development*, 9, 3461–3482, <https://doi.org/10.5194/gmd-9-3461-2016>, 2016.
- O’Reilly, C. H., Befort, D. J., and Weisheimer, A.: Calibrating large-ensemble European climate projections using observational data, *Earth System Dynamics*, 11, 1033–1049, <https://doi.org/10.5194/esd-11-1033-2020>, 2020.

- 805 O'Reilly, C. H., Brunner, L., Qasmi, S., Nogherotto, R., Ballinger, A. P., Booth, B., Befort, D. J., Knutti, R., Schurer, A. P., Ribes, A., Weisheimer, A., Coppola, E., and McSweeney, C.: Assessing observational constraints on future European climate in an out-of-sample framework, *npj Climate and Atmospheric Science*, 7, 95, <https://doi.org/10.1038/s41612-024-00648-8>, 2024.
- Pendergrass, A. G.: The Global-Mean Precipitation Response to CO₂-Induced Warming in CMIP6 Models, *Geophysical Research Letters*, 47, <https://doi.org/10.1029/2020GL089964>, 2020.
- 810 Qasmi, S. and Ribes, A.: Reducing uncertainty in local climate projections, *Science Advances*, 8, eab06872, <https://doi.org/doi.org/10.1126/sciadv.ab06872>, 2022.
- Qu, X., Hall, A., Klein, S. A., and Deangelis, A. M.: Positive tropical marine low-cloud cover feedback inferred from cloud-controlling factors, *Geophysical Research Letters*, 42, 7767–7775, <https://doi.org/10.1002/2015GL065627>, 2015.
- Rasp, S. and Thuerey, N.: Data-Driven Medium-Range Weather Prediction With a Resnet Pretrained on Climate Simulations: A New Model
815 for WeatherBench, *Journal of Advances in Modeling Earth Systems*, 13, <https://doi.org/10.1029/2020MS002405>, 2021.
- Rasp, S., Pritchard, M. S., and Gentine, P.: Deep learning to represent sub-grid processes in climate models, *Proceedings of the National Academy of Sciences*, 115, 9684–9689, <https://doi.org/10.1073/pnas.1810286115>, 2018.
- Reichler, T. and Kim, J.: How Well Do Coupled Models Simulate Today ' s Climate ?, *Bulletin of the American Meteorological Society*, 89, 303–311, <https://doi.org/10.1175/BAMS-89-3-303>, 2008.
- 820 Reichstein, M., Camps-Valls, G., Stevens, B., Jung, M., Denzler, J., Carvalhais, N., and Prabhat: Deep learning and process understanding for data-driven Earth system science, *Nature*, 566, 195–204, <https://doi.org/10.1038/s41586-019-0912-1>, 2019.
- Ribes, A., Qasmi, S., and Gillett, N. P.: Making climate projections conditional on historical observations, *Science Advances*, 7, eabc0671, <https://doi.org/10.1126/sciadv.abc0671>, 2021.
- Ribes, A., Boé, J., Qasmi, S., Dubuisson, B., Douville, H., and Terray, L.: An updated assessment of past and future warming over France
825 based on a regional observational constraint, *Earth System Dynamics*, 13, 1397–1415, <https://doi.org/10.5194/esd-13-1397-2022>, 2022.
- Runge, J., Nowack, P., Kretschmer, M., Flaxman, S., and Sejdinovic, D.: Detecting and quantifying causal associations in large nonlinear time series datasets, *Science Advances*, 5, aau4996, <https://doi.org/10.1126/sciadv.aau4996>, 2019.
- Räsänen, J., Ruokolainen, L., and Ylhäisi, J.: Weighting of model results for improving best estimates of climate change, *Climate Dynamics*, 35, 407–422, <https://doi.org/10.1007/s00382-009-0659-8>, 2010.
- 830 Saltelli, A.: A short comment on statistical versus mathematical modelling, <https://doi.org/10.1038/s41467-019-11865-8>, 2019.
- Sanderson, B. M., Knutti, R., and Caldwell, P.: Addressing interdependency in a multimodel ensemble by interpolation of model properties, *Journal of Climate*, 28, 5150–5170, <https://doi.org/10.1175/JCLI-D-14-00361.1>, 2015.
- Sanderson, B. M., Wehner, M., and Knutti, R.: Skill and independence weighting for multi-model assessments, *Geoscientific Model Development*, 10, 2379–2395, <https://doi.org/10.5194/gmd-10-2379-2017>, 2017.
- 835 Sanderson, B. M., Pendergrass, A. G., Koven, C. D., Brient, F., Booth, B. B., Fisher, R. A., and Knutti, R.: The potential for structural errors in emergent constraints, *Earth System Dynamics*, 12, 899–918, <https://doi.org/10.5194/esd-12-899-2021>, 2021.
- Schlund, M., Lauer, A., Gentine, P., Sherwood, S. C., and Eyring, V.: Emergent constraints on equilibrium climate sensitivity in CMIP5: Do they hold for CMIP6?, *Earth System Dynamics*, 11, 1233–1258, <https://doi.org/10.5194/esd-11-1233-2020>, 2020.
- Schneider, T., Lan, S., Stuart, A., and Teixeira, J.: Earth system modeling 2.0 : a blueprint for models that learn from observations and
840 targeted high-resolution simulations, *Geophysical Research Letters*, 44, 12 396–12 417, <https://doi.org/10.1002/2017GL076101>, 2017.
- Scott, R. C., Myers, T. A., and Norris, J. R.: Observed Sensitivity of Low Cloud Radiative Effects to Meteorological Perturbations over the Global Oceans, *Journal of Climate*, 33, 7717–7734, <https://doi.org/10.1175/JCLI-D-19-1028.1>, 2020.

- Shao, Y., Bishop, C. H., Hobeichi, S., Nishant, N., Abramowitz, G., and Sherwood, S.: Time Variability Correction of CMIP6 Climate Change Projections, *Journal of Advances in Modeling Earth Systems*, 16, <https://doi.org/10.1029/2023MS003640>, 2024.
- 845 Sherwood, S., Webb, M. J., Annan, J. D., Armour, K. C., Forster, P. M., Hargreaves, J. C., Hegerl, G., Klein, S. A., Marvel, K. D., Rohling, E. J., Watanabe, M., Andrews, T., Braconnot, P., Bretherton, C. S., Foster, G. L., Hausfather, Z., von der Heydt, A. S., Knutti, R., Mauritsen, T., Norris, J. R., Proistosescu, C., Rugenstein, M., Schmidt, G. A., Tokarska, K. B., and Zelinka, M. D.: An assessment of Earth's climate sensitivity using multiple lines of evidence, *Reviews of Geophysics*, 58, e2019RG000678, <https://doi.org/10.1029/2019RG000678>, 2020.
- Sherwood, S. C., Bony, S., and Dufresne, J.-L.: Spread in model climate sensitivity traced to atmospheric convective mixing, *Nature*, 505, 850 37–42, <https://doi.org/10.1038/nature12829>, 2014.
- Shiogama, H., Watanabe, M., Kim, H., and Hirota, N.: Emergent constraints on future precipitation changes, *Nature*, 602, 612–616, <https://doi.org/10.1038/s41586-021-04310-8>, 2022.
- Simpson, I. R., McKinnon, K. A., Davenport, F. V., Tingley, M., Lehner, F., Fahad, A. A., and Chen, D.: Emergent constraints on the large-scale atmospheric circulation and regional hydroclimate: Do they still work in CMIP6 and how much can they actually constrain the 855 future?, *Journal of Climate*, 34, 6355–6377, <https://doi.org/10.1175/JCLI-D-21-0055.1>, 2021.
- Sippel, S., Mitchell, D., Black, M. T., Dittus, A. J., Harrington, L., Schaller, N., and Otto, F. E.: Combining large model ensembles with extreme value statistics to improve attribution statements of rare events, *Weather and Climate Extremes*, 9, 25–35, <https://doi.org/10.1016/j.wace.2015.06.004>, 2015.
- Sippel, S., Zscheischler, J., Mahecha, M. D., Orth, R., Reichstein, M., Vogel, M., and Seneviratne, S. I.: Refining multi-model pro- 860 jections of temperature extremes by evaluation against land-Atmosphere coupling diagnostics, *Earth System Dynamics*, 8, 387–403, <https://doi.org/10.5194/esd-8-387-2017>, 2017.
- Smalley, K. M., Dessler, A. E., Bekki, S., Deushi, M., Marchand, M., Morgenstern, O., Plummer, D. A., Shibata, K., Yamashita, Y., and Zeng, G.: Contribution of different processes to changes in tropical lower-stratospheric water vapor in chemistry-climate models, *Atmospheric Chemistry and Physics*, 17, 8031–8044, <https://doi.org/10.5194/acp-17-8031-2017>, 2017.
- 865 Stenke, A. and Grewe, V.: Simulation of stratospheric water vapor trends: impact on stratospheric ozone chemistry, *Atmospheric Chemistry and Physics*, 5, 1257–1272, <https://doi.org/10.5194/acp-5-1257-2005>, 2005.
- Stuber, N., Ponater, M., and Sausen, R.: Why radiative forcing might fail as a predictor of climate change, *Climate Dynamics*, 24, 497–510, <https://doi.org/10.1007/s00382-004-0497-7>, 2005.
- Tebaldi, C., Mearns, L. O., Nychka, D., and Smith, R. L.: Regional probabilities of precipitation change: A Bayesian analysis of multimodel 870 simulations, *Geophysical Research Letters*, 31, L24 213, <https://doi.org/10.1029/2004GL021276>, 2004.
- Thackeray, C. W. and Hall, A.: An emergent constraint on future Arctic sea-ice albedo feedback, *Nature Climate Change*, 9, 972–978, <https://doi.org/10.1038/s41558-019-0619-1>, 2019.
- Thackeray, C. W., Hall, A., Zelinka, M. D., and Fletcher, C. G.: Assessing Prior Emergent Constraints on Surface Albedo Feedback in CMIP6, *Journal of Climate*, May, 3889–3905, <https://doi.org/10.1175/JCLI-D-20>, 2021.
- 875 Thackeray, C. W., Hall, A., Norris, J., and Chen, D.: Constraining the increased frequency of global precipitation extremes under warming, *Nature Climate Change*, 12, 441–448, <https://doi.org/10.1038/s41558-022-01329-1>, 2022.
- Thomas, C., Voulgarakis, A., Lim, G., Haigh, J., and Nowack, P.: An unsupervised learning approach to identifying blocking events : the case of European summer, *Weather and Climate Dynamics*, 2, 581–608, <https://doi.org/10.5194/wcd-2-581-2021>, 2021.
- Tian, B.: Spread of model climate sensitivity linked to double-Intertropical Convergence Zone bias, *Geophysical Research Letters*, 42, 4133– 880 4141, <https://doi.org/10.1002/2015GL064119>, 2015.

- Tokarska, K. B., Stolpe, M. B., Sippel, S., Fischer, E. M., Smith, C. J., Lehner, F., and Knutti, R.: Past warming trend constrains future warming in CMIP6 models, *Science Advances*, 6, eaaz9549, <https://doi.org/10.1126/sciadv.aaz9549>, 2020.
- Watson-Parris, D.: Machine learning for weather and climate are worlds apart, *Philosophical Transactions of the Royal Society A: Mathematical, Physical and Engineering Sciences*, 379, 20200 098, <https://doi.org/10.1098/rsta.2020.0098>, 2021.
- 885 Watson-Parris, D., Rao, Y., Oliví, D., Seland, , Nowack, P., Camps-Valls, G., Stier, P., Bouabid, S., Dewey, M., Fons, E., Gonzalez, J., Harder, P., Jeggle, K., Lenhardt, J., Manshausen, P., Novitasari, M., Ricard, L., and Roesch, C.: ClimateBench v1.0: A benchmark for data-driven climate projections, *Journal of Advances in Modeling Earth Systems*, 14, e2021MS002 954, <https://doi.org/10.1029/2021ms002954>, 2022.
- Wenzel, S., Cox, P. M., Eyring, V., and Friedlingstein, P.: Emergent constraints on climate-carbon cycle feedbacks in the CMIP5 Earth system models, *Journal of Geophysical Research: Biogeosciences*, 119, 794–807, <https://doi.org/10.1002/2013JG002591>, 2014.
- 890 Wenzel, S., Eyring, V., Gerber, E. P., and Karpechko, A. Y.: Constraining future summer austral jet stream positions in the CMIP5 ensemble by process-oriented multiple diagnostic regression, *Journal of Climate*, 29, 673–687, <https://doi.org/10.1175/JCLI-D-15-0412.1>, 2016.
- Wilkinson, S., Nowack, P., and Joshi, M.: Observations-based machine learning model constrains uncertainty in future regional warming projections, pp. EGU23–7869, European Geosciences Union, <https://doi.org/10.5194/egusphere-egu23-7869>, 2023.
- Wilks, D. S.: *Statistical Methods in the Atmospheric Sciences*, Academic Press, 2006.
- 895 Williamson, M. S., Thackeray, C. W., Cox, P. M., Hall, A., Huntingford, C., and Nijse, F. J.: Emergent constraints on climate sensitivities, *Reviews of Modern Physics*, 93, <https://doi.org/10.1103/RevModPhys.93.025004>, 2021.
- Wills, R. C., Dong, Y., Proistosescu, C., Armour, K. C., and Battisti, D. S.: Systematic Climate Model Biases in the Large-Scale Patterns of Recent Sea-Surface Temperature and Sea-Level Pressure Change, *Geophysical Research Letters*, 49, <https://doi.org/10.1029/2022GL100011>, 2022.
- 900 Winkler, A. J., Myneni, R. B., Alexandrov, G. A., and Brovkin, V.: Earth system models underestimate carbon fixation by plants in the high latitudes, *Nature Communications*, 10, <https://doi.org/10.1038/s41467-019-08633-z>, 2019a.
- Winkler, A. J., Myneni, R. B., and Brovkin, V.: Investigating the applicability of emergent constraints, *Earth System Dynamics*, 10, 501–523, <https://doi.org/10.5194/esd-10-501-2019>, 2019b.
- Zelinka, M. D., Myers, T. A., McCoy, D. T., Po-Chedley, S., Caldwell, P. M., Ceppi, P., Klein, S. A., and Taylor, K. E.: Causes of Higher Climate Sensitivity in CMIP6 Models, *Geophysical Research Letters*, 47, e2019GL085 782, <https://doi.org/10.1029/2019GL085782>, 2020.
- 905 Zhou, C., Zelinka, M. D., Dessler, A. E., and Klein, S. A.: The relationship between interannual and long-term cloud feedbacks, *Geophysical Research Letters*, 42, 10 463–10 469, <https://doi.org/10.1002/2015GL066698>, 2015.