

Carbon cycle and climate feedbacks under CO₂ and non-CO₂ overshoot pathways

Irina Melnikova^{1,2}, Philippe Ciais², Katsumasa Tanaka^{1,2}, Hideo Shiogama¹, Kaoru Tachiiri^{1,3}, Tokuta Yokohata¹ and Olivier Boucher⁴

5 ¹Earth System Division, National Institute for Environmental Studies (NIES), Tsukuba, 305-8506, Japan,
²Laboratoire des Sciences du Climat et de l'Environnement (LSCE), IPSL, CEA/CNRS/UVSQ, Université Paris-Saclay, Gif-sur-Yvette, 91191, France
³Research Institute for Global Change, Japan Agency for Marine-Earth Science and Technology, Yokohama, 236-0001, Japan
⁴Institut Pierre-Simon Laplace, Sorbonne Université / CNRS, Paris, 75005, France

10 *Correspondence to:* Irina Melnikova (melnikova.irina@nies.go.jp)

Abstract. Reducing emissions of non-CO₂ greenhouse gases, such as methane and nitrous oxide, complements CO₂ mitigation in limiting global warming. However, estimating carbon-climate feedback for these gases remains fraught with uncertainties, especially under overshoot scenarios. This study investigates the impact of CO₂ and non-CO₂ gases with nearly equal levels of effective radiative forcing on the climate and carbon cycle, using the Earth System Model IPSL-CM6A-LR. We first present
15 a method to recalibrate methane and nitrous oxide concentrations to align with published radiative forcings, ensuring accurate model performance. Next, we carry out a series of idealised ramp-up and ramp-down concentration-driven experiments and show that while the impacts of increasing and decreasing CO₂ and non-CO₂ gases on the surface climate are nearly equivalent (when their radiative forcing magnitudes are set to be the same), regional differences emerge. We further explore the carbon cycle feedbacks and demonstrate that they differ under CO₂ and non-CO₂ forcing. CO₂ forcing affects-leads to both carbon-climate and carbon-concentration feedbacks, whereas non-CO₂ gases influence-give rise to aonly-the carbon-climate feedback
20 only. We introduce a framework, building on previous studies that primarily addressed CO₂ forcing, to separate the carbon-climate feedback into a temperature term and a temperature-CO₂ cross term. We introduce a framework, consistent with previous studies, however, focused exclusively on CO₂ forcing, to separate the carbon-climate feedback into the temperature and-cross-terms. Our findings reveal that these feedback terms are comparable in magnitude for the global ocean. This
25 underscores the importance of considering both terms in carbon cycle feedback framework and climate change mitigation strategies.

Plain language summary. Mitigating non-CO₂ greenhouse gases, like methane and nitrous oxide, complements efforts to reduce CO₂ emissions in limiting global warming. In our study, we explore how reducing emissions of these gases compares
30 to CO₂ mitigation using an Earth System Model. Both types of gases contribute to global warming, but their effects on climate vary by region. Additionally, we highlight that the carbon cycle responds differently depending on whether climate change is

Formatted: Subscript

driven by CO₂ or non-CO₂ gases. This highlights the importance of considering both types of gases within carbon cycle analysis framework and climate change mitigation strategies.

1 Introduction

35 Increases in the atmospheric concentrations of carbon dioxide (CO₂), methane (CH₄), and nitrous oxide (N₂O), predominantly cause human-induced climate change since the preindustrial period. They contributed nearly 63%, 11% and 6%, respectively, to the total effective radiative forcing (ERF) ~~of the over~~ 1960–2019 period (Canadell et al., 2021). Anthropogenic CO₂ emissions are dominated by the combustion of fossil fuels (FF) and land-use change (LUC), CH₄ emissions by FF and the agricultural sector, and N₂O emissions by the use of nitrogen fertiliser and manure. CH₄ and N₂O have atmospheric lifetimes
40 of 11.8 ± 1.8 years and 109 ± 10 years and 100-year global warming potentials (GWP100) of 27.9 and 273, respectively (Forster et al., 2021; Myhre et al., 2013).

Mitigation of non-CO₂ greenhouse gases (GHGs) is an essential strategy to limit global warming in the context of the Paris Agreement's temperature target (Abernethy et al., 2021; Jones et al., 2018; Rao and Riahi, 2006; de Richter et al., 2017; Tanaka et al., 2021). The reduction of CH₄ emissions can lead to a rapid decrease in the radiative forcing and may limit the peak
45 warming (Mengis and Matthews, 2020; Montzka et al., 2011). To facilitate the achievement of the Paris Agreement temperature target, the Global Methane Pledge was adopted to reduce anthropogenic CH₄ emissions by 30% over the 2020–2030 period (CCAC, 2021). Several existing studies have confirmed the technical and socioeconomic capacities to reduce the global methane emissions and benefits for reducing atmospheric pollution (Höglund-Isaksson et al., 2020; Jackson et al., 2021; Malley et al., 2023; Nisbet et al., 2020). Atmospheric methane removal methods have also been discussed in some studies
50 (Boucher and Folberth, 2010; Jackson et al., 2021; Mundra and Lockley, 2023) but they are still in their infancy.

Numerous studies have investigated the impacts of changes in the emissions / concentrations of CO₂ and non-CO₂ GHGs on the Earth System. The Precipitation Driver and Response Model Intercomparison Project (PDRMIP) focused on the role of different climate change drivers on the mean and extreme precipitation changes using a set of idealised perturbed experiments (Myhre et al., 2017). Richardson et al. (2019) revealed spatial and temporal differences in the surface temperature response to
55 different forcings, such as CO₂ and CH₄, in part due to the physiological CO₂ warming over the densely vegetated regions that is absent under non-CO₂ forcing. This physiological warming occurs because plants close their stomata under elevated CO₂, reducing transpiration and decreasing latent heat loss which causes a local surface warming. Nordling et al. (2021) further demonstrated that change in long-wave clear-sky emissivity is the key driver for the temperature response differences between GHGs forcings. Using Earth System model simulations, Tokarska et al. (2018) showed that non-CO₂ forcing reduces the
60 remaining carbon budget due to its direct radiative effects on surface temperature, causing additional warming. Fu et al. (2020) showed that non-CO₂ GHG that have a shorter atmospheric lifetime than CO₂ may have long-term consequences on climate via their impacts on carbon cycle. Namely, warming from non-CO₂ GHG weakens land and ocean carbon sinks.

The weakening of land and ocean carbon sinks due to non-CO₂ GHGs underscores the importance of understanding the differences in carbon cycle feedbacks between CO₂ and non-CO₂ GHGs. Only the changes in CO₂ concentrations ~~are associated with give rise to the~~ a carbon-concentration (β)-feedback, that is the response of the land and ocean carbon uptake to the changes in CO₂ concentration, mainly via the stimulation of photosynthesis through CO₂ fertilisation effect over land and the solubility pump over the ocean. The changes in both CO₂ and non-CO₂ concentrations ~~are associated with~~ lead to the carbon-climate feedback (γ), that is the response of the land and ocean carbon uptake to climate change, mainly via the increased plant and soil respiration over land and reduction of the CO₂ solubility in the ocean with warming (Arora et al., 2013; Schwinger et al., 2014; Zickfeld et al., 2011). Under changing CO₂ concentrations, land and ocean carbon storages ~~respond to both~~ are simultaneously exposed to the carbon-concentration and carbon-climate feedbacks. However, the interaction between these feedbacks can introduce a non-linearity in the system, whereby the combined effect is not simply the sum of individual feedbacks. Thus, temperature-mediated feedback can differ under changing versus constant CO₂ levels, an important distinction when comparing CO₂ and non-CO₂ GHG feedback mechanisms. Here, it is also important to acknowledge that other factors, such as time lags and potential irreversibilities in the climate system, may also contribute to these differences (Boucher et al., 2012; Chimuka et al., 2023; Schwinger et al., 2014).

Previous studies investigated the ~~nonlinearity nonlinearities~~ in the carbon cycle feedback, ~~showing that the cross term—arising from interactions between changing atmospheric CO₂ and temperatures—can and revealed that the nonlinearity, or the cross term, may~~ be comparable in size with γ (Schwinger et al., 2014; Zickfeld et al., 2011). They attributed the nonlinearity to the different responses of the land biosphere to the temperature changes, depending on the presence or absence of the CO₂ fertilisation effect, as well as the weakening of ocean circulation and mixing between water masses of different temperatures. However, these studies did not consider non-CO₂ GHGs.

Previous studies have also examined the impact of declining atmospheric CO₂ concentration on the climate and carbon cycle (Boucher et al., 2012; Chimuka et al., 2023; Jones et al., 2016; Koven et al., 2023; Melnikova et al., 2021; Schwinger and Tjiputra, 2018). During the period of decreasing atmospheric CO₂ concentration and temperature (ramp-down), the β and γ feedbacks ~~are influenced by~~ arise from both the reduction in CO₂ levels and temperature and the inertia of the carbon cycle—specifically, the altered land and ocean carbon pools resulting from prior increases in the CO₂ concentration and temperature (Chimuka et al., 2023; Zickfeld et al., 2016). Melnikova et al. (2021) showed that this leads to an amplification of the β and γ feedbacks under decreasing CO₂ concentration and temperature. The effectiveness of non-CO₂ mitigation has been explored and is an integral part of the integrated assessment models (Ou et al., 2021; Rao and Riahi, 2006; Tanaka et al., 2021). However, few studies investigated the effects of declining non-CO₂ GHG concentrations on the climate and carbon cycle using Earth System Models (ESMs). Abernethy et al. (2021) used an ESM to demonstrate the effectiveness of methane removal in reducing global mean surface temperature, complementing negative CO₂ emissions. Thus, the purpose of this study is twofold:

- to clarify whether the climate and carbon cycle responses to declining CO₂ and non-CO₂ GHGs differ globally and regionally

Formatted: Subscript

- to investigate the nonlinearities of carbon cycle feedbacks ~~nonlinearity feedback~~ under CO₂ and non-CO₂ GHG decrease, and the ~~different~~ implications for climate change mitigation.

Here, we conduct a set of idealised CO₂ and non-CO₂ (CH₄ and N₂O) concentration-driven ramp-up and ramp-down experiments using the IPSL-CM6A-LR ESM. We then compare the global and spatial impacts of CO₂ and non-CO₂ concentration changes on climate and the carbon cycle, ~~with a focus on carbon-climate feedback,~~ under overshoot pathways.

2 Data and Methods

2.1 Recalibration of model's CH₄ and N₂O concentrations

We use Version 6 of the Institut Pierre-Simon Laplace (IPSL) low-resolution ESM, IPSL-CM6A-LR (Boucher et al., 2020), developed in the runup of the sixth phase of the Coupled Model Intercomparison Project (CMIP). It comprises the LMDZ atmospheric model Version 6A and the ORCHIDEE land surface model Version 2.0 with a 144×143 spatial resolution, and the NEMO oceanic model Version 3 with a resolution of 1°.

Previous studies showed that IPSL-CM6A-LR can adequately estimate the ERF of CO₂ (Lurton et al., 2020). However, it underestimates the CH₄ radiative forcing for the historical period due to known limitations in the parameterization of gaseous optical properties in the Rapid Radiative Transfer Model (see Fig. 8 in Hogan and Matricardi (2020)). CH₄ also absorbs in the shortwave spectrum, an effect that is not accounted for in the radiative transfer code used in IPSL-CM6A-LR and many other climate models. The Intergovernmental Panel on Climate Change (IPCC) Sixth Assessment Report (AR6) (Forster et al., 2021) estimated the CH₄ ERF to be 0.54 [0.43 to 0.65] W m⁻² for the 1750–2019 period. However, the estimated ERF of CH₄ at the top of the atmosphere (TOA) in IPSL-CM6A-LR is only 0.27 Wm⁻² for the 1850–2014 period. Note that in the above estimates, the ERF is defined as the difference in the net TOA flux between a model experiment with perturbed GHG concentration but fixed sea surface and ice temperatures and a control simulation with pre-industrial GHG concentrations. Thus, the estimates include (minimal) effects on the ERF from changes in land surface temperature because, unlike sea surface temperature, the land surface temperature is not prescribed (see Thornhill et al., (2021)). Likewise, the ERF of N₂O may not be accurate in the model. This problem may not be specific to IPSL-CM6A-LR: other climate models (e.g., CNRM-CM6) share the same radiative transfer code and most radiative transfer models used in some climate models have some degree of inaccuracy because they are designed to be computationally efficient (Collins et al., 2006; Fyfe et al., 2021; Pincus et al., 2016). Thus, there is a need to represent the ERF of CH₄ and N₂O more accurately in order to better understand the effects of non-CO₂ GHGs mitigation on the Earth system. As developing better parameterizations of the gaseous optical properties is beyond the scope of this study, we have developed an approach that adjusts CH₄ and N₂O concentrations to 'effective' concentrations that generate CH₄ and N₂O ERFs consistent with the reference estimates of IPCC AR6 (see Appendix A). The effective concentrations of CH₄ and N₂O are used as input to the radiative transfer scheme of the climate model throughout the rest of this study. In the text and figures, these are presented as the actual (equivalent) concentrations.

2.2 Experiment design

We perform and analyse a series of idealised global mean CO₂ and non-CO₂ concentration-driven ensemble experiments as summarised in Table 1 and Fig. 1. Including 50-year ramp-up, ramp-down, and stabilisation periods allows for the exploration of responses to increasing or decreasing CO₂ and non-CO₂ (CH₄ and N₂O) concentrations, as well as the long-term consequences and reversibility of their impacts on both the climate and the carbon cycle. The inclusion of CO₂ and non-CO₂ concentration-driven experiments—[CO₂] and [nonCO₂] (with comparable ERF levels), a combined CO₂ and non-CO₂ concentration-driven experiment [CO₂ + nonCO₂], a biogeochemically coupled (BGC) experiment where CO₂ forcing affects only the carbon cycle of land and ocean [CO₂bgc] (with minor temperature effects from CO₂ physiological forcing), that includes only CO₂ physiological forcing [CO₂bgc] (where CO₂ change affects the carbon cycle of land and ocean), and a radiatively coupled (RAD) experiment that includes only CO₂ radiative forcing [CO₂rad] (where CO₂ change does not affect the carbon cycle), enables exploring the impacts of different forcing components on the climate and carbon cycle as well as potential nonlinearities of feedbacks nonlinearities. Additionally, an experiment that combines nonCO₂ radiative forcing with CO₂ physiological forcing [CO₂bgc + nonCO₂] allows for the comparison of nonlinearities arising from combined carbon-concentration feedback and CO₂- and non-CO₂-driven carbon-climate feedback. It serves as the nonCO₂ counterpart of the [CO₂] experiment.

Formatted: Subscript

Table 1. Description of experiments. Note that all experiments are analysed relative to their [piControl] counterparts.

Experiment name	Description	Maximum ERF*	Included carbon cycle terms from Eq.2
[CO ₂]	0.7% CO ₂ concentration increase per year from piControl for 50 years followed by 0.7% CO ₂ decrease for 50 years. After CO ₂ level returns to piControl, 50 years of stable piControl CO ₂ concentrations.	1.88 W m ⁻²	$\Delta U_{\beta}, \Delta U_{y,CO_2}, \Delta U_{x,CO_2}$
[nonCO ₂]	2% CH ₄ and 2% N ₂ O concentration increase per year from piControl for 50 years followed by 2% CH ₄ and 2% N ₂ O decrease for 50 years. After CH ₄ and N ₂ O levels return to piControl, 50 years of stable piControl CH ₄ and N ₂ O concentrations.	1.83 W m ⁻²	$\Delta U_{y,nonCO_2}$
[CO ₂ + nonCO ₂]	Combined [CO ₂] and [nonCO ₂].	3.69 W m ⁻²	$\Delta U_{\beta}, \Delta U_{y,CO_2+nonCO_2}, \Delta U_{x,CO_2+nonCO_2}$
[CO ₂ bgc]	Biogeochemically coupled [CO ₂].		ΔU_{β}
[CO ₂ rad]	Radiatively coupled [CO ₂].		$\Delta U_{y,CO_2}$
[CO ₂ bgc + nonCO ₂]	[CO ₂ bgc] and [nonCO ₂] combined.		$\Delta U_{\beta}, \Delta U_{y,nonCO_2}, \Delta U_{x,nonCO_2}$
<i>Combinations of experiments</i>			
[CO ₂] – [CO ₂ bgc]	Combination for comparison with [CO ₂ rad]		$\Delta U_{y,CO_2}, \Delta U_{x,CO_2}$
[CO ₂ bgc + nonCO ₂] – [CO ₂ bgc]	Combination for comparison with [nonCO ₂]		$\Delta U_{y,nonCO_2}, \Delta U_{x,nonCO_2}$

*according to equations by Etminan et al. (2016), warming from the physiological CO₂ forcing is assumed to be negligible.

The experiment design uses a fixed land cover and constant (other than CO₂, CH₄ and N₂O) GHG and aerosol forcings that might otherwise interfere with the interpretation of the results. The maximum ERF in our experiments is 3.69 W m⁻², as estimated from the equations by Etminan et al. (2016) (see also Appendix A), which correspondings to (actual) CO₂ concentration of 403 ppm, CH₄ concentration of 2175 ppb and N₂O concentration of 735 ppb, as estimated from the equations by Etminan et al. (2016) (see also Appendix A). This ERF level (very much in line with the current CO₂ concentration level of ca. 420 ppm) makes our experiments and results relevant to mitigation efforts in the near future. The small differences in ERF between the [CO₂] and [nonCO₂] experiments are not significant when considering ramp-up, ramp-down and full periods at $p < 0.05$.

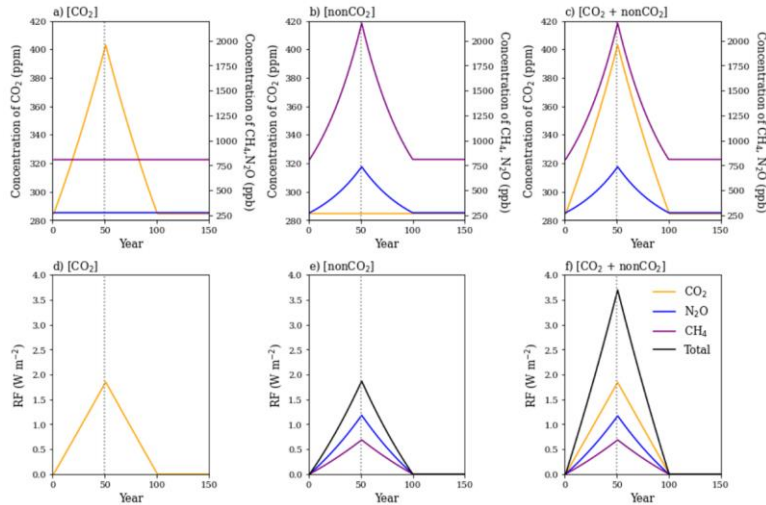


Figure 1: Time series of input (a-c) CO₂, CH₄ and N₂O concentrations and (d-f) their respective radiative ERFs according to Etminan et al. (2016) equations for (a, d) [CO₂], (b, e) [nonCO₂] and (c, f) [CO₂ + nonCO₂] experiments. Note the different scales on the y-axes in a-e panels a-c for CO₂ concentrations in ppm (left) and other GHG concentrations in ppb (right).

We investigate CO₂ and non-CO₂ impacts on the climate by looking at the difference between [CO₂] and [nonCO₂] experiments and [CO₂rad] and [nonCO₂rad] experiments, hereafter referred to as [CO₂] – [nonCO₂] and [CO₂rad] – [nonCO₂rad], respectively. The experiments simultaneously manipulate CH₄ and N₂O concentrations simultaneously because our primary focus is to compare the effects of CO₂ with those of non-CO₂ gases (i.e., CH₄ and N₂O collectively combined) in this study.

Three ensemble members are branched from years 1870, 2020, and 2170 of the CMIP6 piControl experiment, hereafter [piControl]. We estimate the changes relative to the corresponding [piControl] periods in order to avoid the effects of low-frequency internal climate variability from the piControl (Fig. S1), as discussed in Bonnet et al. (2021). When reporting carbon sink/source in the following sections, we refer to the fluxes relative to the [piControl]. For diagnosing Atlantic Meridional Overturning Circulation (AMOC), we utilised the ocean overturning mass streamfunction in depth space (*msfyz* variable in CMIP6). Specifically, we calculated the maximum annual mean value of the streamfunction in the Atlantic basin north of 20°N through all model's depth layers (up to ca. 5800 m).

170 2.3 Carbon cycle feedback attribution

Traditionally, carbon cycle feedback analysis relies on fully coupled [CO₂], biogeochemically-coupled [CO₂bgc] and radiatively-coupled [CO₂rad] simulations (Arora et al., 2013, 2020; Friedlingstein et al., 2006; Gregory et al., 2009; Schwinger et al., 2014; Schwinger and Tjiputra, 2018; Williams et al., 2019; Zickfeld et al., 2011). The carbon uptake (ΔU) can then be ~~estimated-derived~~ using the well-established carbon cycle feedback framework as a sum of carbon-concentration β parameter (GtC ppm⁻¹) multiplied by the changes in the atmospheric CO₂ concentration ΔC_{CO_2} (ppm) and carbon-climate γ feedback parameter (GtC K⁻¹) multiplied by the changes in surface temperature ΔT (K), using Eq. (1):

$$\Delta U = \beta \times \Delta C_{CO_2} + \gamma \times \Delta T + \varepsilon. \quad (1)$$

Here, term ε refers to a residual term.

The β parameter can be estimated from the [CO₂bgc] - [piControl], using Eq. (2):

$$180 \quad \beta = \frac{\Delta U_{BGC}}{\Delta C_{CO_2}}, \quad (2)$$

where ΔU_{BGC} is the carbon uptake in the BGC experiment [CO₂bgc]. The β feedback ~~is associated with~~reflects the strengthening of the land and ocean carbon sinks (positive ~~to~~for the land and ocean carbon uptake). ~~This positive response contributes to negative climate feedback by reducing. Thus, it acts as negative climate feedback (decreasing CO₂ content and dampening climate change).~~

185 ~~Existing studies derived the~~The γ feedback parameter can be estimated from the [CO₂rad] - [piControl] ~~combination of experiments, using Eq. (3), as well as from the difference between the [CO₂] and [CO₂bgc] experiments, hereafter referred to as [CO₂] - [CO₂bgc], using Eq. (4) (Arora et al., 2013, 2020; Asaadi et al., 2024; Friedlingstein et al., 2003, 2006; Melnikova et al., 2021):~~

$$\gamma = \frac{\Delta U_{RAD}}{\Delta T}, \quad (3)$$

$$190 \quad \gamma = \frac{\Delta U_{COU-BGC}}{\Delta T}, \quad (4)$$

where ΔU_{RAD} ~~and~~ $\Delta U_{COU-BGC}$ ~~are~~is the carbon uptake in the RAD experiment [CO₂rad], ~~and the difference between the fully-coupled (COU) and BGC experiments [CO₂] - [CO₂bgc].~~The γ feedback ~~is associated with~~reflects the weakening of the land and ocean carbon sinks globally, albeit with regional variability (negative to the land and ocean). Thus, it ~~acts as~~contributes to positive climate feedback ~~by~~(increasing CO₂ content and accelerating climate change).

195 ~~Many existing studies have estimated γ using the difference between the fully-coupled (COU) and BGC experiments, as a proxy for the RAD experiment (Arora et al., 2013, 2020; Asaadi et al., 2024; Friedlingstein et al., 2003, 2006; Melnikova et al., 2021). However,~~

Zickfeld et al. (2011) and Schwinger et al. (2014) ~~demonstrated have shown that Eq. (4) this substitution includes-introduces the a~~ residual term ϵ , which can be derived from the difference between $[\text{CO}_2] - [\text{CO}_2\text{bgc}]$ and $[\text{CO}_2\text{rad}] - [\text{piControl}]$, using

200 Eq. (54):

$$\epsilon = \Delta U_{\text{COU}} - \Delta U_{\text{BGC}} - \Delta U_{\text{RAD}}. \quad (54)$$

These studies ~~revealed-indicate~~ that the residual ‘nonlinearity’ term depends on both CO_2 concentration and climate change, and it can be of the same order of magnitude as the γ term. Here, we propose ~~that this residual nonlinearity be attributed to a cross term, γ attributing the residual nonlinearity to a cross-term, associated with the nonlinearity feedback γ .~~ Although many recent studies continued to ~~attribute-subsume χ to-under~~ the γ feedback—partly due to the absence of the $[\text{CO}_2\text{rad}]$ experiment in some experimental designs, and also because this approach has been widely established in earlier research (Friedlingstein et al., 2003, 2006)—we show that these metrics become less well-defined when examining the effects of both CO_2 and non- CO_2 GHGs on the carbon cycle.

210 ~~Following Eqs. (3) and (4), the non- CO_2 -driven γ feedback can be derived from the $[\text{nonCO}_2] - [\text{piControl}]$ but also from the difference between the $[\text{CO}_2 + \text{nonCO}_2]$ and $[\text{CO}_2]$ experiments, hereafter referred to as $[\text{CO}_2 + \text{nonCO}_2] - [\text{CO}_2]$, as well as from the difference between the $[\text{CO}_2\text{bgc} + \text{nonCO}_2]$ and $[\text{CO}_2\text{bgc}]$ experiments, hereafter referred to as $[\text{CO}_2\text{bgc} + \text{nonCO}_2] - [\text{CO}_2\text{bgc}]$ (Table 1). The latter two combinations, however, include the χ term. As these experiments are intentionally designed to minimise differences in respective ERF levels, they differ mainly in terms of their impact on the carbon cycle, particularly with respect to the inclusion or absence of the β feedback.~~

215 In order to investigate the associated carbon-climate feedback nonlinearities, we propose the following theoretical framework. The changes in carbon uptake $\Delta U(\Delta C_{\text{CO}_2}, \Delta T)$ (GtC year^{-1}) in the COU simulation can be defined as a function of changes in CO_2 concentration (ΔC_{CO_2}) and temperature (ΔT). Following Schwinger et al. (2014), the formulation can be expanded to a Taylor series up to the second-order terms:

$$\Delta U = \Delta U(\Delta C_{\text{CO}_2}, \Delta T) = \frac{\partial U}{\partial C_{\text{CO}_2}} \Delta C_{\text{CO}_2} + \frac{\partial U}{\partial T} \Delta T + \frac{\partial^2 U}{\partial C_{\text{CO}_2} \partial T} \Delta T \Delta C_{\text{CO}_2} + \frac{1}{2} \frac{\partial^2 U}{\partial C_{\text{CO}_2}^2} (\Delta C_{\text{CO}_2})^2 + \frac{1}{2} \frac{\partial^2 U}{\partial T^2} (\Delta T)^2 + \text{Res}. \quad (65)$$

220 where ΔC_{CO_2} and $\Delta T_{\text{forc.}}$ are the respective increments of CO_2 concentration and temperature relative to $[\text{piControl}]$. The ~~third and higher higher-order~~ terms are defined as a residual (Res.). We found them to be negligible in our case. We can disentangle the first- and second-order terms of the right-hand side of the Eq. (65) into terms that are purely dependent on CO_2 (ΔU_β), on temperature (ΔU_γ) and the cross term (ΔU_χ), as follows:

225

$$\Delta U_{\beta} = \frac{\partial U}{\partial C_{CO_2}} \Delta C_{CO_2} + \frac{1}{2} \frac{\partial^2 U}{\partial C_{CO_2}^2} (\Delta C_{CO_2})^2 + Res.,$$

(76)

$$\Delta U_{\gamma} = \frac{\partial U}{\partial T} \Delta T + \frac{1}{2} \frac{\partial^2 U}{\partial T^2} \Delta T^2 + Res.,$$

(87)

$$230 \quad \Delta U_{\chi} = \frac{\partial^2 U}{\partial C_{CO_2} \partial T} \Delta T \Delta C_{CO_2} + Res.. \quad (98)$$

For simplicity, the second-order terms of Eqs. (6) and (7) are included in *Res.*.

Combining Eqs. (54) and (98), the χ feedback parameter may be quantified from:

$$\chi = \frac{\Delta U_{COU-BGC} - \Delta U_{RAD}}{\Delta T \Delta C_{CO_2}}. \quad (109)$$

235 The carbon-concentration β feedback term ΔU_{β} may be estimated from [CO₂bgc] - [piControl], under the assumption that the physiological CO₂ warming and its impacts on the carbon cycle are negligible, consistent with findings of Asaadi et al., (2024). The γ feedback terms for CO₂ ($\Delta U_{\gamma,CO_2}$) and non-CO₂ ($\Delta U_{\gamma,nonCO_2}$) gases are estimated from [CO₂rad] - [piControl], and [nonCO₂] - [piControl], respectively. The difference between these terms ($\Delta U_{\gamma,CO_2} - \Delta U_{\gamma,nonCO_2}$) yields the difference between impacts of CO₂ and non-CO₂ forcing on the carbon-climate feedback. Finally, the cross term ΔU_{χ} , previously referred

240 to as nonlinearity term (Arora et al., 2013, 2020; Gregory et al., 2009; Schwinger et al., 2014; Schwinger and Tjiputra, 2018; Williams et al., 2019; Zickfeld et al., 2011), may be estimated by utilising a combination of experiments. The combination [CO₂] - [CO₂bgc] - [CO₂rad] gives $\Delta U_{\chi,CO_2}$, and the combination [CO₂bgc + nonCO₂] - [CO₂bgc] - [nonCO₂] gives $\Delta U_{\chi,nonCO_2}$. Analogously, the difference between these cross terms ($\Delta U_{\chi,CO_2} - \Delta U_{\chi,nonCO_2}$) yields the difference between the CO₂ and non-CO₂ forcings on the χ .

245 3 Results and discussion

3.1 Climate impacts

The analysis of global climate variables as a function of CO₂ concentration and GSAT shown in Fig. 2 follows a previous study by Boucher et al. (2012). Consistent with their findings, our results show that GSAT change lags behind GHG forcing by up to a decade. The lag increases with the increase in the forcing magnitude, so that the largest lag is in the [CO₂ + nonCO₂] experiment. Even after a ramp-down period and 50 years of constant GHG forcing at [piControl] levels, GSAT does not return to preindustrial values in all experiments (Fig. 2a). This can be explained by the inertia of the climate system, apparent in the changes in the ocean heat uptake (OHU). The OHU increases during the ramp-up and decreases during the ramp-down period, being positive, i.e., taking up energy away from the atmosphere, during the ramp-up and first half of the ramp-down period. OHU turns negative by the end of the ramp-down and stays negative during the 50 years of the stabilisation period, releasing

255 energy back into the atmosphere (Fig. 2c–e). The hysteresis of the climate system is evident from the nearly linear relationship between maximum GSAT and mean GSAT during the stabilisation period (Fig. S2). The thermosteric (unrelated to ice sheet melting) sea level increases in all experiments except for [CO₂bgc] and is closely related to the OHU. It does not recover (i.e. it is irreversible) within the time-horizon considered here (Fig. 2 i–k). The AMOC decreases with GSAT (with ~~maximum~~ the strongest decrease reached for GSAT = 2 °C under [CO₂ + nonCO₂]), but fully recovers (Fig. S1b).

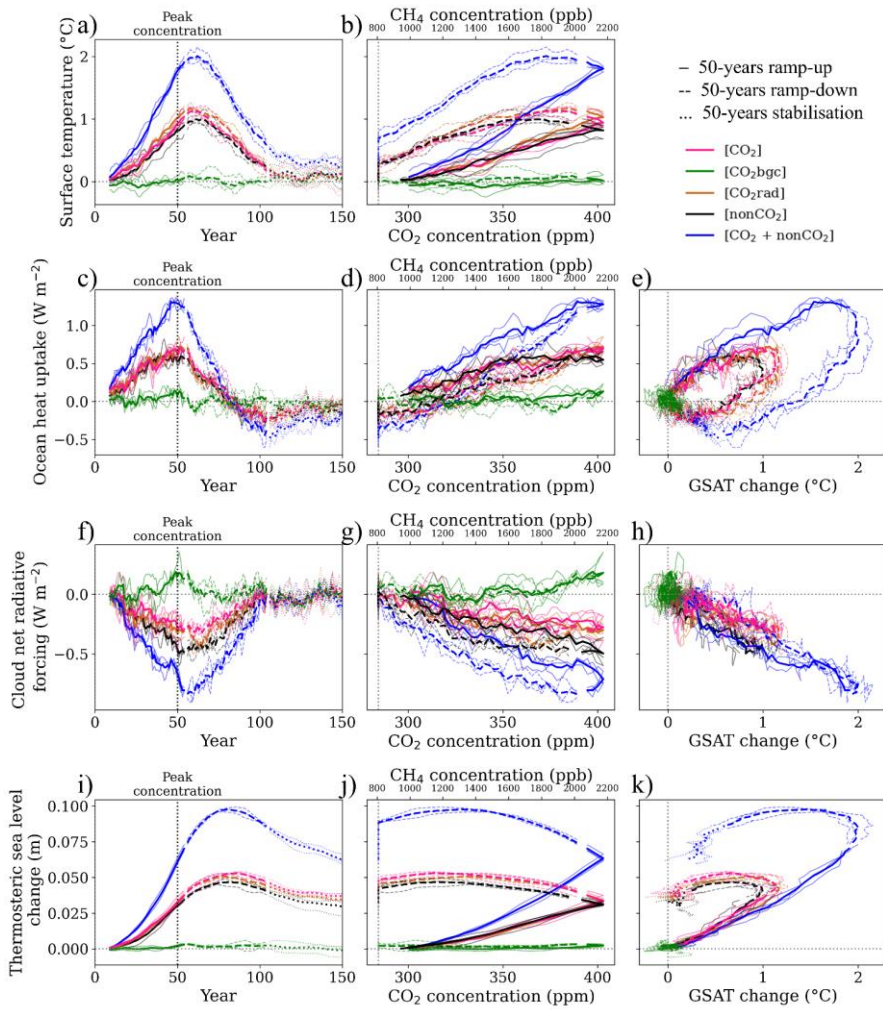


Figure 2: Globally- and annual-meanly-averaged changes in model climate variables as a function of (a, c, f, i) time (year), (b, d, g, j) CO₂ concentration (ppm) / CH₄ concentration (ppb, only for [nonCO₂]), (c, e, h, k) GSAT (°C) for (a, b) GSAT (°C), (c–e) ocean heat uptake (W m⁻²), (f–h) cloud net radiative forcing (W m⁻²), and (i–k) thermosteric sea level change (m) under selected scenarios. The ramp-up, ramp-down and stabilisation periods are indicated by different line styles in all panels. Thick lines indicate the ensemble means and thin lines correspond to three ensemble members.

The CO₂ physiological warming that can be quantified by comparing [CO₂bgc] with [piControl] is small (green line in Fig. 2). Spatially, some differences are ubiquitous over land, e.g., CO₂ physiological warming persists over Eurasia during the ramp-up period, and over the high latitudes of both land and ocean during the stabilisation period (Fig. S3a). A larger ensemble size of model simulations would be required to investigate these differences more thoroughly. In our following analysis on carbon cycle feedbacks, we assume the CO₂ physiological warming to be negligible, [consistent with previous findings of Asaadi et al., \(2024\)](#).

When comparing CO₂- and non-CO₂-induced forcing ([CO₂] and [nonCO₂] experiments) at a global scale, our results are consistent with Richardson et al. (2019) who show the higher surface temperature response of CO₂ when compared to CH₄. When comparing CO₂- and non-CO₂-induced radiative forcing ([CO₂rad] and [nonCO₂] experiments) at a global scale, the non-CO₂ forcing still leads to a lower GSAT peak and a slightly lower peak of thermosteric sea level rise compared to the CO₂ radiative forcing (brown and black lines of Fig. 2a, significant difference at $p < 0.05$). This cannot be explained just by a slightly higher ERF of the [CO₂rad] compared to [nonCO₂] experiment (Table 1, Figs. 2a, S4). Our results are consistent with Nordling et al. (2021) who show the higher effective temperature response for CO₂ forcing compared to non-CO₂ forcing, attributing it to the changes in clear-sky planetary emissivity.

The combined effects of CO₂ physiological and radiative forcing do not lead to more warming, as the radiative forcing alone ([CO₂rad] experiment) leads to a slightly higher global temperature increase compared to the coupled [CO₂] experiment (Fig. 2a, b). This temperature difference is particularly evident in the Arctic region (Fig. S3a). Our findings differ from those of a CMIP5 intercomparison study, which reported that CO₂ physiological warming amplifies the Arctic warming (Park et al., 2020). The study showed that the CO₂ physiological effect contributes to [high-latitude](#) warming by reducing evaporative cooling due to stomatal closure under elevated CO₂ levels. In contrast, we observe higher evapotranspiration in the [CO₂rad] compared to the [CO₂] experiment (Fig. S5), which is probably a consequence of the lower warming in the [CO₂] experiment. In our study, the greater warming in the [CO₂rad] experiment may be driven by increased surface albedo, especially over the Arctic Ocean (Fig. S3b). While the underlying causes remain unclear, this pattern appears consistent in other experiments conducted with IPSL-CM6A-LR under moderate CO₂ levels (not shown). Because the ensemble size in our study is limited and the effects of the model's internal variability should be considerable, future research should validate the robustness of our findings with larger ensemble simulations.

3.2 Carbon cycle feedback

3.3 Carbon-concentration feedback

The term $\Delta U_{\beta,CO_2}$ corresponds to the flux arising from variations in CO₂ concentration ([CO₂bgc] experiment). The $\Delta U_{\beta,CO_2}$ dominates the [carbon uptake](#) changes over the land and ocean through all three considered periods (Fig. 3, Tables 2, S1). Since the [considered](#) maximum surface warming levels ~~of all considered experiments~~ are below 2 °C, ~~the~~ land and ocean carbon fluxes are primarily controlled by the [β-feedback, which represents the CO₂-induced effects during the ramp-up period](#).

resulting in positive β carbon sink over land and ocean during the ramp-up period (Fig. 3 a-d). Yet, these effects are contribution of β is expected to decrease with higher warming (Arora et al., 2020; Melnikova et al., 2023). Nearly two-thirds of land and half of ocean carbon accumulated during the ramp-up period due to the atmospheric CO₂ increase is being released during the latter periods, which is consistent with previous studies (Asaadi et al., 2024; Chimuka et al., 2023). Over the ocean, β is positive (carbon sink) in all regions during the ramp-up period (Fig. 4). However, CO₂ concentration during the ramp-down, decrease in β induces a carbon source over all ocean regions, except for the Atlantic and Southern Oceans (Fig. 4). It drives a carbon source over all regions are carbon sources during the stabilisation period of the [CO₂bgc] experiment.

Table 2. Cumulative CO₂ and climate change-driven changes in the land and ocean carbon fluxes (GtC), shown as three-member ensemble mean. The \pm indicates one standard deviation among the three members. Note that all experiments are analysed relative to their [piControl] counterparts.

Experiment	Max. warming (K)*	Terms	Years 1-50 (ramp-up)		Years 51-100 (ramp-down)		Years 101-150 (stabilisation)		Total	
			Land	Ocean	Land	Ocean	Land	Ocean	Land	Ocean
[CO ₂ bgc]	0.1±0.0	$\Delta U_{\beta,CO_2}$	179.3±2.2	103.8±0.7	-	-	-	-	59.4±1.8	53.4±0.9
[CO ₂ rad]	1.1±0.1	$\Delta U_{\gamma,CO_2}$	-	-2.4±0.2	4.5±5.7	0.0±1.4	11.4±4.0	0.3±1.9	-2.2±2.0	2.1±0.6
[nonCO ₂]	0.9±0.1	$\Delta U_{\gamma,nonCO_2}$	-	-2.3±1.0	1.3±6.0	-0.5±1.3	10.2±2.4	1.3±0.5	-2.5±2.9	1.6±0.2
[CO ₂] - [CO ₂ bgc]	1.0±0.0	$\Delta U_{\gamma,CO_2} + \Delta U_{\chi,CO_2}$	-	-4.5±0.2	3.8±3.0	-1.4±1.0	8.2±1.9	0.6±0.5	-3.8±3.1	5.5±1.4
		$\Delta U_{\chi,CO_2}$	3.9±2.1	-2.2±0.4	-0.7±7.3	-1.4±0.5	-3.2±5.9	0.2±2.3	-1.6±5.0	3.4±2.0
		$\Delta U_{\chi,nonCO_2}$	3.5±1.5	-1.6±1.0	2.8±7.9	0.1±1.1	-1.6±1.5	-1.0±1.3	2.0±4.0	2.5±1.0
		$\Delta U_{\gamma,CO_2} - \Delta U_{\gamma,nonCO_2}$	-3.8±5.0	-0.1±0.9	3.2±3.6	0.5±0.9	1.2±2.6	-1.0±2.2	0.3±2.7	0.5±0.7
		$\Delta U_{\chi,CO_2} - \Delta U_{\chi,nonCO_2}$	0.4±3.5	-0.6±0.7	-3.5±3.4	-1.6±1.0	-1.6±7.4	1.3±3.3	-3.6±5.5	1.0±2.8

* defined as the mean Δ GSAT during years 41-60 in the experiments.

The transient behaviour change of the β feedback over land can be better explained by analysing the gross primary production (GPP) and the autotrophic and heterotrophic respiration (Ra and Rh) fluxes. Land GPP, representing photosynthetic uptake, increases during the ramp-up period under elevated CO₂ concentration and decreases almost linearly with decreasing CO₂, showing only a small hysteresis (Figs. S6-7). In contrast, both autotrophic and heterotrophic respiration (Ra and Rh) exhibit a larger hysteresis, which leads to an extended period of the carbon release to the atmosphere. This suggests that while there may be initial carbon sequestration benefits gained during elevated CO₂ periods, these benefits are susceptible to being lost as CO₂ concentrations decline due to decreased photosynthesis and increased respiration, albeit at a reduced rate.

The spatial variation of cumulative net carbon uptake provides further details on the feedback behaviour changes (Figs. 4, S8-S10). During the CO₂ ramp-up phase, CO₂ increase β -feedback triggers a land carbon sink in all regions. However, during the ramp-down phase, it induces a net carbon source over subtropical regions while still driving a land carbon sink in northern

high-latitudes, so that global land becomes a carbon source in the middle of the ramp-down phase. Finally, during the stabilisation period, ~~β feedback causes all land regions to transition into~~ become net carbon sources.

Subtropical and southern land regions exhibit a shorter hysteresis in response to decreasing CO₂ concentrations. This disparity arises from the larger proportion of carbon accumulated in aboveground vegetation biomass in southern regions, contrasting with the greater fraction stored in soils within northern latitudes (Figs. S9-S11). The extended period of ~~high positive large- β influence~~ in northern mid- to high latitudes ~~can be~~ attributed to the longer carbon turnover time, particularly in soils, compared to tropical regions (Fig. S8).

3.4 Carbon-climate feedback

The term ΔU_γ corresponds to the carbon flux arising from variations in radiative forcing (such as in the [nonCO₂] and [CO₂rad] experiments). The ΔU_γ for CO₂ and non-CO₂ ($\Delta U_{\gamma,CO_2}$ and $\Delta U_{\gamma,nonCO_2}$, respectively) are equivalent (within one standard deviation uncertainty range) under nearly equivalent levels of ERF (compare panels b and c of Fig. 4, see also $\Delta U_{\gamma,CO_2} - \Delta U_{\gamma,nonCO_2}$ in Table 2, see also Table S1). The γ is negative on a global scale over the land and ocean, with greater magnitude but also faster reversibility over land. Spatially, land γ is positive in the mid- to high latitudes and negative in the tropical regions (Figs. 4, S9-10, see also Melnikova et al. (2021)). During the ramp-up, ~~γ climate change~~ drives carbon sink over the northern mid- to high- latitudes and carbon source over the subtropical regions and the Southern Hemisphere, with larger magnitude of changes in the experiments, in which CO₂ concentration change is present (Figs. 4, S9-11).

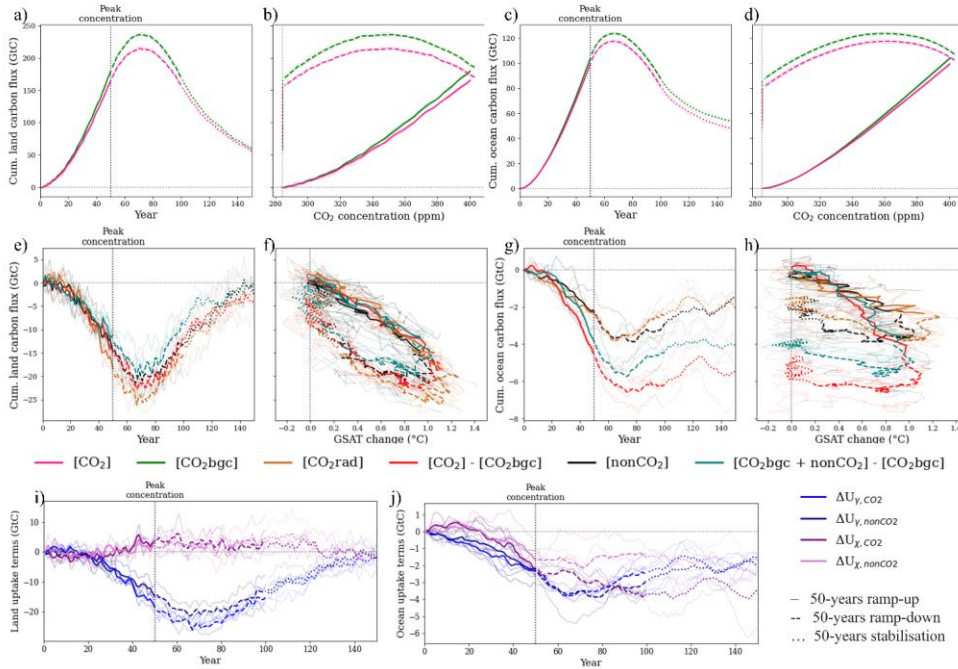


Figure 3. Global cumulative carbon fluxes (GtC) over (a, b, e, f, i) land and (c, d, g, h, j) ocean as a function of (a, c, e, g, i, j) time (year), (b, d) CO₂ concentration (ppm) and (f, h) GSAT changes (°C) under selected scenarios. The ramp-up, ramp-down and stabilisation periods are indicated by different line styles. Thick lines indicate the ensemble means and thin lines correspond to other ensemble members.

3.5 Nonlinearity in carbon cycle feedback

The cross term ΔU_χ induces non-negligible differences between climate change-induced carbon flux when comparing experiments with presence or absence of atmospheric CO₂ concentration change. It reaches ca. 20–23% of the land ΔU_γ and ca. 70–90% of the ocean ΔU_γ , cumulative over the ramp-up period (Table 2). During the ramp-up phase, the ΔU_χ corresponds to induces a decrease in the climate-driven γ -driven land carbon source and amplifies an increase in the climate-driven climate change-driven reduction of ocean carbon sink (Fig. 3). The χ feedback is positive (larger carbon sink) over the land and negative (larger carbon source) over the ocean (Table S1). It is nearly equivalent for CO₂ and non-CO₂ under similar levels of ERF for the land but not for the ocean (compare panels f and g of Fig. 4, see also Tables 2 and S1). Over the ocean, the cross-term

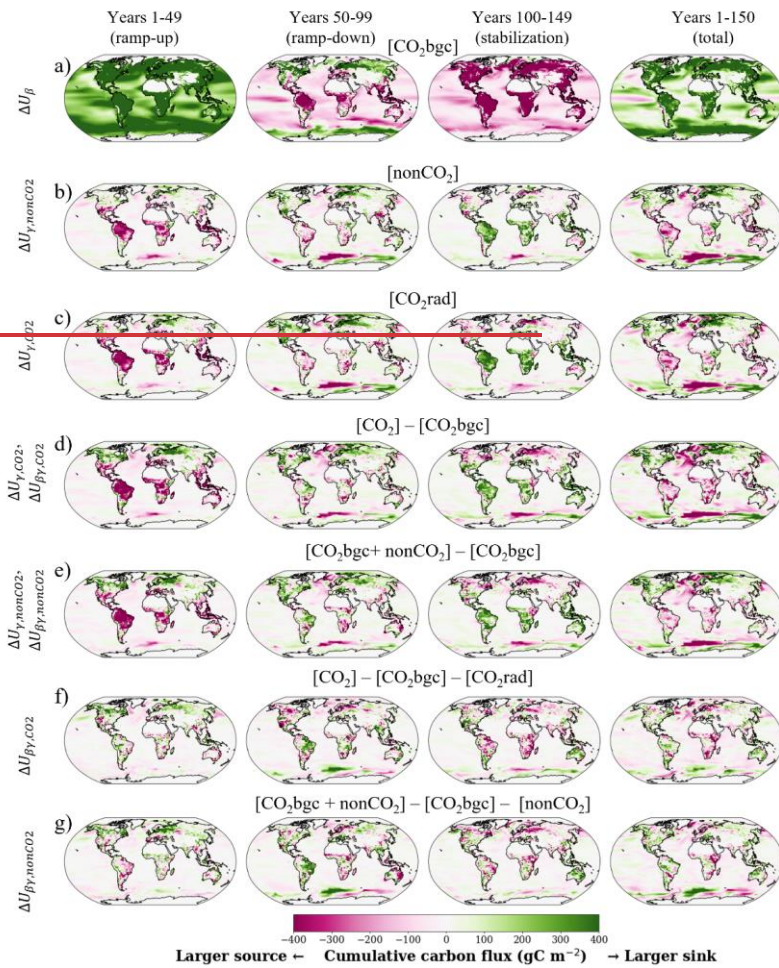
350 differences for CO₂ and non-CO₂ forcing arise already during the ramp-up and propagate during the ramp-down and stabilisation phases, spatially concentrating in the deep mixing region of the Southern Ocean area.

Over land, the positive χ makes results from more biomass ~~over at~~ high latitudes available for ~~a positive γ feedback climate change effects, leading to a~~ larger carbon sink (positive γ). During the ramp-down, ~~γ climate warming through lagged (after GHG concentrations) temperature change~~ increases the carbon sink over high latitudes and weakens the carbon source over

355 the tropics. Here the ΔU_χ ~~makes indicates that~~ more biomass becomes available globally ~~for exposed to negative climate change effects, resulting in a γ~~ (larger carbon source (negative γ), ~~driven by the lagged (after GHG concentrations) temperature change~~). The differences (under the presence / absence of cross term) ΔU_χ ~~diminish~~ diminish for land but not for the ocean during the ramp-down and stabilisation periods.

Over ocean, the contribution from the ~~χ nonlinearity of carbon cycle feedback term~~ leads to a greater reduction in the climate-driven carbon sink driven ~~by climate change~~ (Fig. 3). Unlike over the land, the contribution of the cross term ΔU_χ contribution to the total ΔU increases during the ramp-down phases of considered GHG concentration scenarios. Previously, Schwinger and Tjiputra (2018), who considered nonlinearity of carbon cycle feedback, warned that RAD experiments may underestimate the carbon-climate feedback (when compared to COU - BGC experiments), because “the reduction of sequestration of preformed dissolved inorganic carbon under high atmospheric CO₂ is not taken into account.” In this study, the ~~χ nonlinearity effects~~ nearly doubles climate change-driven carbon loss (compared to the RAD experiment, in which ~~to when~~ atmospheric

360 CO₂ is constant) relative to the total net 150-year net ocean carbon uptake under the [CO₂] experiment. Spatially, while the Southern Ocean remains the largest ocean carbon sink in all considered experiments involving atmospheric CO₂ changes, it, along with the Atlantic Ocean, undergoes the largest climate change-driven reduction in carbon sink (Fig. 4).



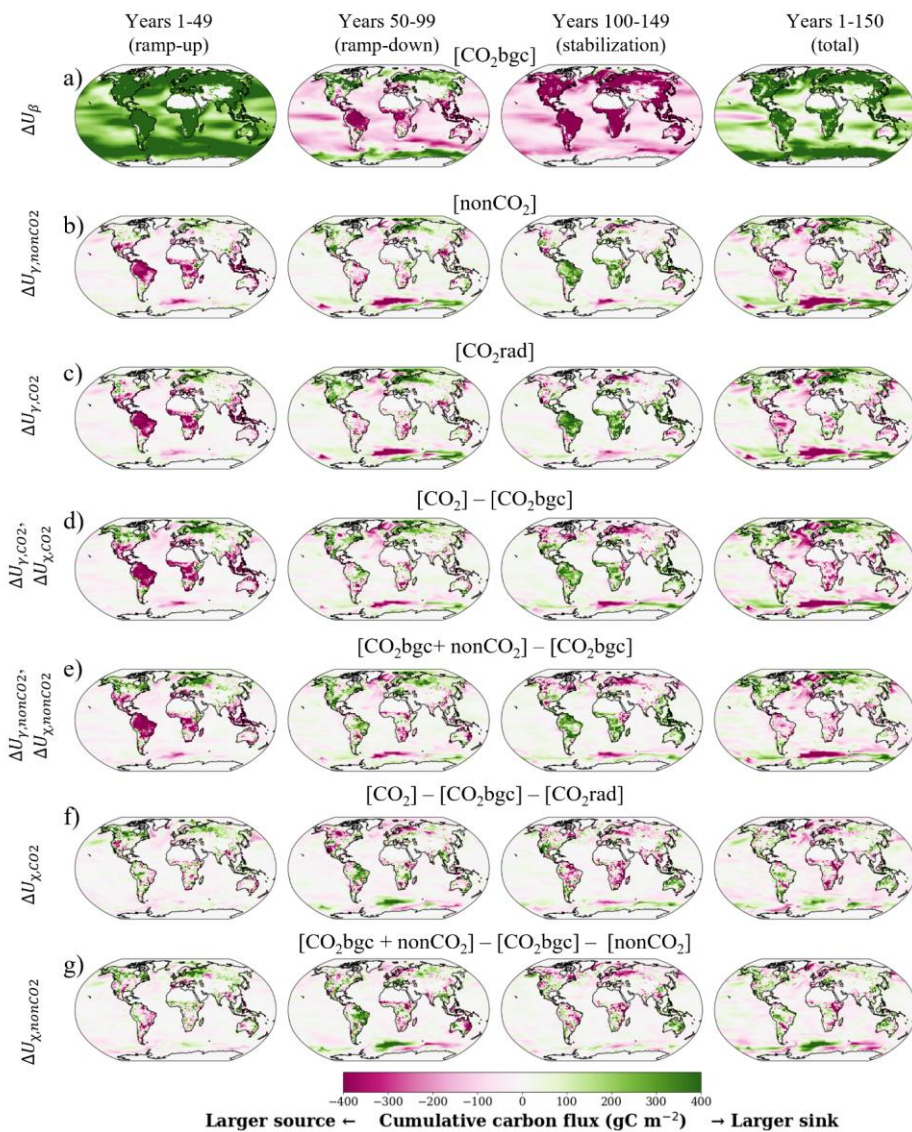


Figure 4. Spatial variation of land and ocean carbon fluxes (GtC, negative to the atmosphere) cumulative over 50 years of (first column) ramp-up, (second column) ramp-down, (third column) stabilisation phases and (last column) full 150-year period. The data for three-member-ensemble mean are used.

Our findings provide evidence on the effectiveness of non-CO₂ GHG mitigation. While it can effectively reduce GSAT peak, non-CO₂ GHG mitigation may also lead to smaller climate change-driven losses in the ocean carbon sink. In the real world, the presence / absence of ΔU_{χ} suggests disparities between CO₂ mitigation efforts (~~which involve carbon concentration feedback alterations~~) and non-CO₂ mitigation efforts. The CO₂- and non-CO₂-~~concentration~~-driven climate change leads to unequal decrease in carbon uptake, especially apparent for the ocean on a global scale (Fig. 3). Reducing CO₂ concentrations for climate mitigation implies alteration of all three terms of the proposed carbon cycle feedback attribution framework, namely ΔU_{β} , ΔU_{γ} and ΔU_{χ} . Reducing non-CO₂ GHG concentrations, such as CH₄ and N₂O, implies alteration of ΔU_{γ} and ΔU_{χ} terms. Reducing both CO₂ and non-CO₂ concentrations implies alteration of all ΔU_{β} , ΔU_{γ} and ΔU_{χ} terms but with larger change in ΔU_{γ} and ΔU_{χ} terms. From this point, combining CO₂ and non-CO₂ reduction measures may be more effective for climate change mitigation, compared to the CO₂ reduction measures alone. This finding should be confirmed with emission-driven experiments that consider GHGs atmospheric lifetimes.

3.6 Radiative forcing and carbon cycle feedback additivity

In order to overcome the small signal-to-noise ratio of the considered experiments as well as the regional differences in the radiative forcing between [CO₂] and [nonCO₂] experiments, we compare the (1) [CO₂ + nonCO₂] experiment that include both CO₂ and non-CO₂ effects with (2) the sum of two [CO₂] and [nonCO₂], that include CO₂ and non-CO₂ effects, accordingly (Figs. 5 and S12-13). The climate effects, defined via temperature change, differ during the ramp-up and ramp-down periods (Fig. S12). These differences imply non-additivity of radiative forcing and can also be attributed to biophysical feedback.

As for the carbon cycle feedback, the [CO₂ + nonCO₂] experiment that has all feedback is different from the sum of two experiments [CO₂] + [nonCO₂] both over the land and ocean (Fig. 5). The differences are larger and stay longer over the ocean. This implies non-additivity of carbon cycle feedback. From the proposed carbon cycle feedback attribution framework, the non-additivity arises from nonequality of $(\Delta U_{\gamma,CO_2+nonCO_2} + \Delta U_{\chi,CO_2+nonCO_2})$ and $(\Delta U_{\gamma,CO_2} + \Delta U_{\chi,CO_2} + \Delta U_{\gamma,nonCO_2} + \Delta U_{\chi,nonCO_2})$. The significant (~~$p < 0.1$~~) difference ($p < 0.1$) over the land is in the high-latitude region, where “all-effects together” [CO₂ + nonCO₂] experiment yields a larger carbon sink during the ramp-up phase. The largest difference over the ocean is in the Southern Ocean, followed by the North Atlantic Ocean. The [CO₂ + nonCO₂] experiment has large carbon sink in the Southern Ocean compared to the sum of two experiments. This might be related to the saturation of the decrease in the mixed layer depth with more warming, but a more thorough study is needed to confirm such phenomena.

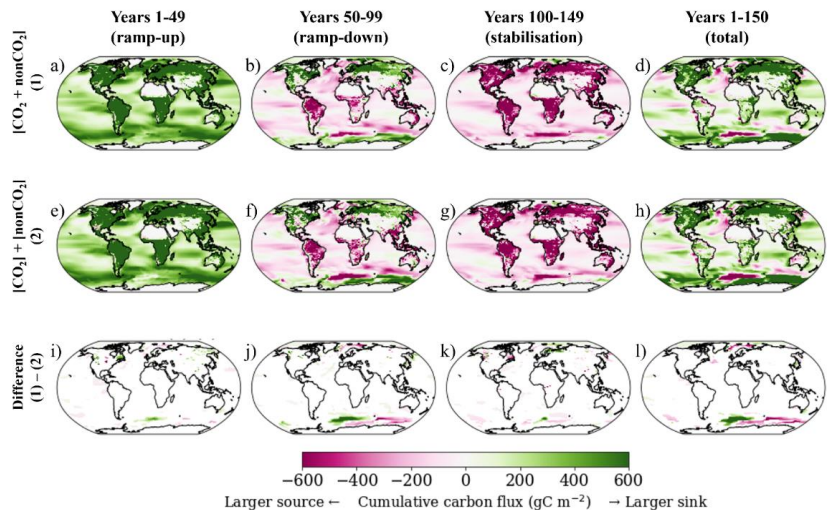


Figure 5. Spatial variation of three-member-ensemble mean land and ocean carbon fluxes (GtC, negative to the atmosphere) cumulative over 50 years of (a, e, i) ramp-up, (b, f, j) ramp-down, (c, g, k) stabilisation phases and (d, h, l) full 150-year period. We draw only significantly different grids between (1-1) $[\text{CO}_2 + \text{nonCO}_2]$ and $[\text{CO}_2] + [\text{nonCO}_2]$ experiments using three ensemble members ($p < 0.1$ based on t -test, $N=60$).

400

405 4 Limitations and future research directions

To our knowledge, this is the first study of its kind to comparing idealised CO_2 and non- CO_2 ramp-up and ramp-down scenarios for their effects on global temperature change and the carbon-climate-carbon concentration-cycle feedbacks. Below we draw attention to the caveats and limitations that should be addressed in future studies.

410 First, since IPSL-CM6A-LR, like all other ESMs participating in CMIP6, does not have interactive modules of the CH_4 and N_2O cycles, the changes in stratospheric water vapour, aerosols, and tropospheric ozone due to atmospheric CH_4 changes, as well as the effects of nitrogen deposition on the carbon cycle are not considered in this study. Future studies could consider simulations separately for CH_4 and N_2O . However for this study, the use of the model is justified because current changes in CH_4 and N_2O concentrations are primarily driven by anthropogenic sources, suggesting that the absence of interactive modules of natural sink/source processes does not significantly affect the representation of natural variability trends for the CH_4 and

415 N_2O concentration (Nakazawa, 2020; Palazzo Corner et al., 2023; Zhu et al., 2013).

Second, when interpreting the results, it should be kept in mind that some carbon cycle processes in IPSL-CM6A-LR such as permafrost and fire are not considered. Yet, these should have only a limited impact on our results, given the (relatively) small

warming levels in the considered experiments. Previous studies have shown that IPSL-CM6A-LR estimates one of the smallest soil carbon pools among CMIP6 models, which may lead to an underestimation of the carbon-climate feedback (Arora et al., 2020; Melnikova et al., 2021).

Third, the results of the present study are limited by the use of a single ESM and a small number of ensemble members. Conducting similar experiments with other ESMs and using larger ensemble runs, which are particularly valuable in the low warming scenarios, as well as complementing the findings of our study with emission-driven experiments, could contribute to validating and extending our findings.

425 5 Conclusions

This study first presents a novel approach to recalibrate the ERF of CH₄ and N₂O in ESMs without changing the radiative scheme of the model. We then discuss the effects of increases and decreases in the concentrations of the CO₂ and non-CO₂ GHGs on the surface climate and carbon cycle. We find only small differences between CO₂ and non-CO₂ ramp-up and ramp-down forcing on global and regional climate.

430 The differences in climate responses can be linked to differences in the carbon cycle feedbacks. We show that CO₂- and non-CO₂-driven carbon-climate feedback are nearly equivalent at a global scale. However, increasing atmospheric CO₂ amplifies the reduction the presence of carbon concentration feedback amplifies of the climate change-driven carbon ~~loss~~ sink, especially over the ocean. We propose a novel framework to disentangle the carbon-climate feedback into a component that is purely driven by climate change i.e., expressed as a temperature term, and a component driven by climate change and rising
435 atmospheric CO₂ at the same time under the presence of the carbon concentration feedback, i.e., a cross term. Since the cross term can be quantified from the difference between COU, BGC and RAD simulations, we advocate for continuing to carry out all three types of experiments in the future phases of CMIP. We further warn that the cross term and non-additivity of feedback should be considered in the simple climate models (emulators).

440 Finally, this study showcases the additional benefits of non-CO₂ GHG mitigation on a smaller reduction of the ocean carbon sinks under overshoot scenarios. We stress that our findings do not imply that non-CO₂ GHG mitigation should be given the priority to other means to mitigate climate change but provide an insight on the intricate interplay between the carbon-concentration and CO₂- and non-CO₂-driven carbon-climate feedbacks to inform comprehensive mitigation strategies.

Appendix A

445 A set of 40-year idealised IPSL-CM6A-LR simulations (840 years in total) has been carried out. In these experiments, the sea surface temperature (SST) and sea ice fractions were fixed to their preindustrial levels. CH₄ concentration levels were kept at

Formatted: Subscript

Formatted: Subscript

2×CH₄, 3×CH₄, 4×CH₄, 5×CH₄, 8×CH₄, and 12×CH₄, and N₂O concentration levels were kept at 1×N₂O, 1.25×N₂O, 1.5×N₂O, and 1.75×N₂O (Table A1).

Table A1. Description of idealised recalibration experiments using IPSL-CM6A-LR

№	Name	Concentration		
		CH ₄ (ppb)	N ₂ O (ppb)	CO ₂ (ppm)
0	<i>piClim</i>	808.25	273.02	284.32
1	2×CH ₄	1616.50	273.02	284.32
2	3×CH ₄	2424.75	273.02	284.32
3	4×CH ₄	3233.00	273.02	284.32
4	5×CH ₄	4041.25	273.02	284.32
5	8×CH ₄	6466.00	273.02	284.32
6	12×CH ₄	9699.00	273.02	284.32
7	1×CH ₄ -1d25N ₂ O	808.25	341.28	284.32
8	2×CH ₄ -1d25N ₂ O	1616.50	341.28	284.32
9	3×CH ₄ -1d25N ₂ O	2424.75	341.28	284.32
10	4×CH ₄ -1d25N ₂ O	3233.00	341.28	284.32
11	5×CH ₄ -1d25N ₂ O	4041.25	341.28	284.32
12	8×CH ₄ -1d25N ₂ O	6466.00	341.28	284.32
13	12×CH ₄ -1d25N ₂ O	9699.00	341.28	284.32
14	1×CH ₄ -1d5N ₂ O	808.25	409.53	284.32
15	2×CH ₄ -1d5N ₂ O	1616.50	409.53	284.32
16	3×CH ₄ -1d5N ₂ O	2424.75	409.53	284.32
17	4×CH ₄ -1d5N ₂ O	3233.00	409.53	284.32
18	5×CH ₄ -1d5N ₂ O	4041.25	409.53	284.32
19	8×CH ₄ -1d5N ₂ O	6366.00	409.53	284.32
20	12×CH ₄ -1d5N ₂ O	9699.00	409.53	284.32
21	1×CH ₄ -1d75N ₂ O	808.25	477.79	284.32

450 Fig. A1 shows the set of 40-year time series of global mean radiative forcing based on 21 idealised experiments. The *piClim* experiment holds pre-industrial levels of CO₂, CH₄ and N₂O concentrations. The mean interannual variation of the radiative forcings (one standard deviation) is 0.15 Wm⁻². The first 10 years of the experiments were dropped to allow the climate to adjust to the new radiative equilibrium after an abrupt change from the pre-industrial levels. The last 30 years were used to obtain eighteen data-points of mean global ERF by IPSL-CM6A-LR relative to the levels obtained from the *piClim* experiment.

455 The ERF is estimated as a TOA imbalance difference between each experiment and the *piClim*.

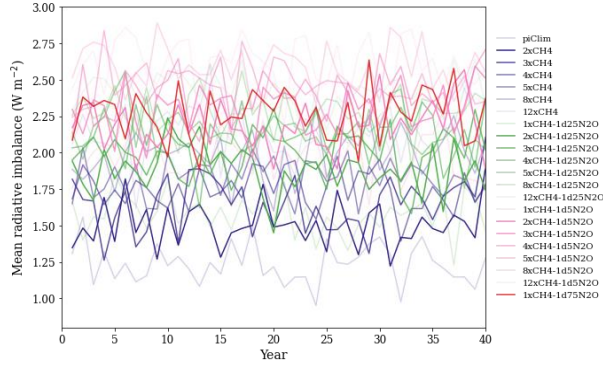


Figure A1. Time series of global mean radiative imbalance of IPSL-CM6A-LR idealised experiments

There are two frequently used sets of equations to derive radiative forcing of well mixed greenhouse gases, e.g., CO₂, CH₄ and N₂O, etc., based on their concentrations. The first set from Myhre et al. (Myhre et al., 1998), thereafter, M98, was used in

460 IPCC AR3:

$$\begin{aligned}
 RF(CO_2) &= 5.35 \times \ln(CO_2/CO_{2,t=0}) \\
 RF(CH_4) &= 0.036 \times (\sqrt{CH_4} - \sqrt{CH_{4,t=0}}) - (f(CH_4, N_2O_{t=0}) - f(CH_{4,t=0}, N_2O_{t=0})) \\
 RF(N_2O) &= 0.12 \times (\sqrt{N_2O} - \sqrt{N_{2O,t=0}}) - (f(CH_4, N_2O) - f(CH_{4,t=0}, N_{2O,t=0})) \\
 f(CH_4, N_2O) &= 0.47 \times \ln[1 + 2.01 \times 10^{-5} \times (CH_4 \times N_2O)^{0.75} + 5.31 \times 10^{-15} \times CH_4 \times (CH_4 \times N_2O)^{1.52}]
 \end{aligned} \tag{A1}$$

Here the CO₂, CH₄ and N₂O indicate their concentrations, where the units are ppm, ppb, and ppb.

Etminan et al. (2016), thereafter, E16, improved the IPCC AR3 equations by inclusion of the shortwave (near-infrared) bands of CH₄. Their set of equations was used in IPCC AR6. The radiative forcing of N₂O in the M98 equation depends on the CH₄ and N₂O concentrations, while the radiative forcing of N₂O in the equation by E16 depends on the CO₂, CH₄ and N₂O

465 concentrations:

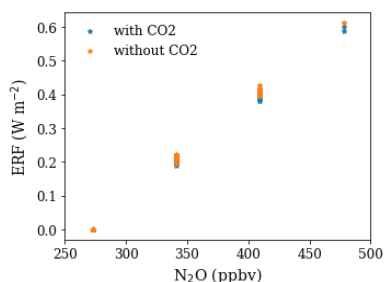
$$\begin{aligned}
 RF(CO_2) &= [-2.4 \times 10^{-7} \times (CO_2 - CO_{2,t=0})^2 + 7.2 \times 10^{-4} \times |CO_2 - CO_{2,t=0}| \\
 &\quad - 2.1 \times 10^{-4} \times \frac{1}{2} (N_2O + N_{2O,t=0}) + 5.36] \ln\left(\frac{CO_2}{CO_{2,t=0}}\right) \\
 RF(CH_4) &= \left[-1.3 \times 10^{-6} \times \frac{1}{2} (CH_4 + CH_{4,t=0}) - 8.2 \times 10^{-6} \times \frac{1}{2} (N_2O + N_{2O,t=0}) + 0.043 \right] \times (\sqrt{CH_4} \\
 &\quad - \sqrt{CH_{4,t=0}})
 \end{aligned} \tag{A2}$$

$$RF(N_2O) = [-8.0 \times 10^{-6} \times \frac{1}{2}(CO_2 + CO_{2,t=0}) + (4.2 \times 10^{-6} \times \frac{1}{2}(N_2O + N_{2O,t=0}) - 4.9 \times 10^{-6} \times \frac{1}{2}(CH_4 + CH_{4,t=0}) + 0.117] \times (\sqrt{N_2O} - \sqrt{N_{2O,t=0}})$$

In the sets of Eqs. (A2), the radiative forcing due to CH₄ depends not only on the CH₄ concentration but also on that of N₂O (and conversely) because CH₄ and N₂O absorption bands overlap to some extent. These simplified equations are therefore additive: the radiative forcing due to a change in CH₄ and N₂O concentrations (CH_4, N_2O) relative to reference (preindustrial) values ($CH_{4,t=0}, N_{2O,t=0}$) is equal to:

$$RF(CH_4, N_2O) = RF_{CH_4}(CH_4, N_2O) + RF_{N_2O}(CH_4, N_2O) \quad (A3)$$

The effect of CO₂ on the radiative forcing of N₂O is small (<5%), and thus, for simplicity, is neglected in the rest of this study (Fig. A2).



475 **Figure A2.** The ERF estimated from E16 with and without accounting for CO₂ impact on the N₂O forcing (including/excluding the term $-8.0 \times 10^{-6} \times 0.5 \times (CO_2 + CO_{2,t=0})$ in the equation) using the concentration values of the idealised experiments described in the Table 1 with preindustrial CO₂ concentration (284.32 ppm) and the same set of the experiments with 3 × CO₂ concentration (852.96 ppm).

Figure A3 shows the ERFs simulated by IPSL-CM6A-LR and those estimated from the two equations from the IPCC report and revised by E16. IPSL-CM6A-LR underestimates CH₄ ERF and overestimates N₂O ERF, relative to both equations.

480 Considering the improvements introduced by E16 to include the shortwave bands of CH₄, we use their equations (and not of IPCC AR3) to recalibrate the IPSL-CM6A-LR model.

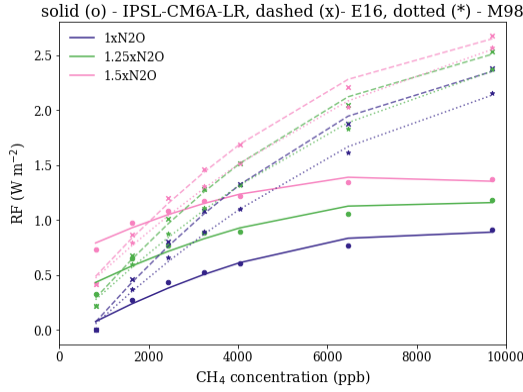


Figure A3. The ERF of CH₄ and N₂O from IPSL-CM6A-LR idealised experiments (points and fitted solid lines) and estimated from M98 (* and fitted dotted lines) and E16 (x and fitted dashed lines) equations, fitted to polynomial regressions for three levels of N₂O concentrations.

A system of equations can convert the input CH₄ and N₂O concentrations to the effective concentrations so that, if used in the climate model, would yield actual forcing from the equations by E16. Among several linear and nonlinear functions to relate the actual concentrations of CH₄ and N₂O with the concentrations seen by IPSL-CM6A model (effective concentrations) that have been tested, the following set of equations yielded the best fit:

$$\begin{aligned} CH_4^{effective} &= CH4_{t=0} + a \times (CH4^{actual} - CH4_{t=0})^c \times N2O^{effective} \\ N2O^{effective} &= N2O_{t=0} + b \times (N2O^{actual} - N2O_{t=0})^d \end{aligned} \quad (A4)$$

The initial values of CH₄ and N₂O concentrations are fixed at the preindustrial levels ($t = 0$). Those of the effective CH₄ and N₂O concentrations are also assumed to take the same respective preindustrial levels. The Eq. (A1) is used to relate the effective concentrations of CH₄ and N₂O of IPSL-CM6A-LR to the ERF estimated by E16:

$$\begin{aligned} RF_{Etm} &= RF_{CH_4, Etm} + RF_{N_2O, Etm} \\ &= \left(-1.3 \times 10^{-6} \times \frac{1}{2} (CH_4^{effective} + CH_4_{t=0}) - 8.2 \times 10^{-6} \times \frac{1}{2} (N_2O^{effective} + N_2O_{t=0}) \right. \\ &\quad \left. + 0.043 \right) \times (\sqrt{CH_4^{effective}} - \sqrt{CH_4_{t=0}}) + (4.2 \times 10^{-6} \times \frac{1}{2} (N_2O^{effective} + N_2O_{t=0}) \\ &\quad - 4.9 \times 10^{-6} \times \frac{1}{2} (CH_4^{effective} + CH_4_{t=0}) + 0.117) \times (\sqrt{N_2O^{effective}} - \sqrt{N_2O_{t=0}}) \end{aligned} \quad (A5)$$

We optimise the four parameters of Eq. (A4) by minimising the sum of squared residuals between ERF estimated by E16 equations and simulated by IPSL-CM6A-LR using a Python implementation of the Limited-memory Broyden–Fletcher–Goldfarb–Shanno bound-constrained algorithm (L-BFGS-B) that is an algorithm for solving large nonlinear optimization problems with simple bounds (Byrd et al., 1995). The cost function is defined as:

$$CF = \sum_{i=1}^{21} (RF_{IPSL} - RF_{Etm})^2 \quad (A6)$$

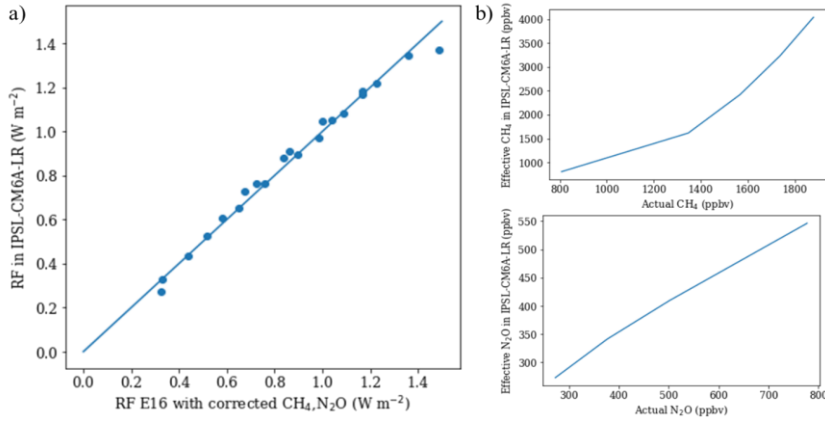


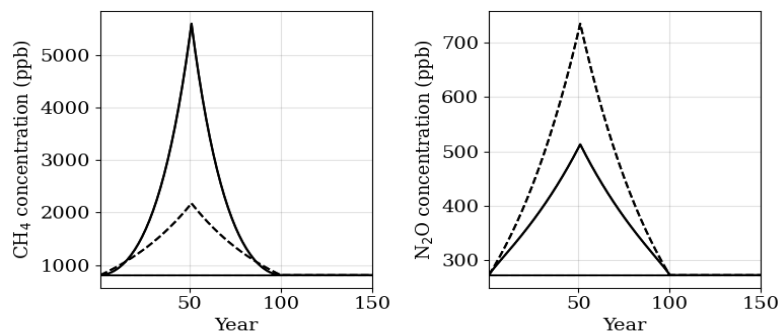
Figure A4. (a) Scatterplot of ERF simulated by IPSL-CM6A and estimated by E16 equations using the corrected effective concentrations from Eq. (A3), and (b) The effective IPSL-CM6A-LR concentrations of CH₄ and N₂O as a function of the actual concentrations derived via a system of nonlinear functions.

The residual error after fit equals 0.03 (Wm⁻²)² (Fig. A4). The solution of the cost function provides the estimates of four uncertain parameters for Equations 3, indicated in Table A2. The effective IPSL-CM6A-LR concentrations of CH₄ and N₂O are functions of the actual concentrations (Fig. A4b). Higher effective CH₄ and lower N₂O effective concentrations are needed for IPSL-CM6A-LR to reproduce the ERF in agreement with IPCC estimates.

Table A2. Estimated parameters in Eq. (A4)

Parameter	Estimate
a	19.44701978
b	0.84856644
c	0.49593024
d	1.13865386

The estimated parameters were applied to derive the effective IPSL-CM6A-LR concentrations for a target scenario (Fig. A5). Higher CH₄ and lower N₂O concentrations are required to reproduce the ERF correctly.



515 **Figure A5.** The actual (dashed lines) and new recalibrated effective CH₄ and N₂O IPSL-CM6A-LR concentrations (solid lines) for the CH₄-N₂O experiment of this study.

Data and materials availability

The piControl output data from the CMIP6 simulations are available from the CMIP6 archive: <https://esgf-node.llnl.gov/search/cmip6> (WCRP, 2022), additional IPSL-CM6A-LR outputs are available upon request. The Jupyter notebook and data to reproduce the figures ~~will be~~ stored in the Zenodo archive: <https://doi.org/10.5281/zenodo.12200056> ~~upon publication.~~

Acknowledgments

The IPSL-CM6 simulations were performed using the HPC resources of TGCC under the allocation 2022-A0120107732 and 2023-A0140107732 (project genmip6) provided by GENCI (Grand Equipement National de Calcul Intensif). This work benefited from the technical support and discussions with Adriana Sima and Nicolas Lebas at IPSL, Arnaud Caubel and Sébastien Nguyen at LSCE (France) and Michio Kawamiya at JAMSTEC (Japan).

Funding

This work benefited from State assistance managed by the National Research Agency in France under the Programme d'Investissements d'Avenir under the reference ANR-19-MPGA-0008. We further acknowledge the Program for the Advanced Studies of Climate Change Projection (SENTAN, grant number JPMXD0722681344) from the Ministry of Education, Culture, Sports, Science and Technology, Japan [and KAKENHI \(JP24K20979\) of the Japan Society for the Promotion of Science](#). We acknowledge the European Union's Horizon Europe research and innovation program under Grant Agreement N° 101056939

(RESCUE – Response of the Earth System to overshoot, Climate neUtrality and negative Emissions) and N° 101081193 (OptimESM – Optimal High Resolution Earth System Models for Exploring Future Climate Changes). P.C. acknowledges support from the CALIPSO (CArbon Losses in Plants, Soils and Ocean) project funded through the generosity of Eric and Wendy Schmidt by recommendation of the Schmidt Futures program.

Author contributions

IM and OB initiated the study. OB, Ktan and IM developed methodology and study ideas. IM and OB performed IPSL-CM6A-LR simulations. IM performed data analysis and wrote the initial draft. All authors contributed to the discussions, writing, and revising the paper.

Competing interests

Authors declare that they have no competing interests.

References

Abernethy, S., O'Connor, F. M., Jones, C. D., and Jackson, R. B.: Methane removal and the proportional reductions in surface temperature and ozone, *Philosophical Transactions of the Royal Society A: Mathematical, Physical and Engineering Sciences*, 379, 20210104, <https://doi.org/10.1098/rsta.2021.0104>, 2021.

Arora, V. K., Boer, G. J., Friedlingstein, P., Eby, M., Jones, C. D., Christian, J. R., Bonan, G., Bopp, L., Brovkin, V., Cadule, P., Hajima, T., Ilyina, T., Lindsay, K., Tjiputra, J. F., and Wu, T.: Carbon–Concentration and Carbon–Climate Feedbacks in CMIP5 Earth System Models, *J. Climate*, 26, 5289–5314, <https://doi.org/10.1175/JCLI-D-12-00494.1>, 2013.

Arora, V. K., Katavouta, A., Williams, R. G., Jones, C. D., Brovkin, V., Friedlingstein, P., Schwinger, J., Bopp, L., Boucher, O., Cadule, P., Chamberlain, M. A., Christian, J. R., Delire, C., Fisher, R. A., Hajima, T., Ilyina, T., Joetzjer, E., Kawamiya, M., Koven, C. D., Krasting, J. P., Law, R. M., Lawrence, D. M., Lenton, A., Lindsay, K., Pongratz, J., Raddatz, T., Séférian, R., Tachiiri, K., Tjiputra, J. F., Wiltshire, A., Wu, T., and Ziehn, T.: Carbon–concentration and carbon–climate feedbacks in CMIP6 models and their comparison to CMIP5 models, *Biogeosciences*, 17, 4173–4222, <https://doi.org/10.5194/bg-17-4173-2020>, 2020.

Asaadi, A., Schwinger, J., Lee, H., Tjiputra, J., Arora, V., Séférian, R., Liddicoat, S., Hajima, T., Santana-Falcón, Y., and Jones, C. D.: Carbon cycle feedbacks in an idealized simulation and a scenario simulation of negative emissions in CMIP6 Earth system models, *Biogeosciences*, 21, 411–435, <https://doi.org/10.5194/bg-21-411-2024>, 2024.

Bonnet, R., Swingedouw, D., Gastineau, G., Boucher, O., Deshayes, J., Hourdin, F., Mignot, J., Servonnat, J., and Sima, A.: Increased risk of near term global warming due to a recent AMOC weakening, *Nature Communications*, 12, 6108, <https://doi.org/10.1038/s41467-021-26370-0>, 2021.

- Boucher, O. and Folberth, G. A.: New Directions: Atmospheric methane removal as a way to mitigate climate change?, *Atmospheric Environment*, 44, 3343–3345, <https://doi.org/10.1016/j.atmosenv.2010.04.032>, 2010.
- 565 Boucher, O., Halloran, P. R., Burke, E. J., Doutriaux-Boucher, M., Jones, C. D., Lowe, J., Ringer, M. A., Robertson, E., and Wu, P.: Reversibility in an Earth System model in response to CO₂ concentration changes, *Environ. Res. Lett.*, 7, 024013, <https://doi.org/10.1088/1748-9326/7/2/024013>, 2012.
- Boucher, O., Servonnat, J., Albright, A. L., Aumont, O., Balkanski, Y., Bastrikov, V., Bekki, S., Bonnet, R., Bony, S., Bopp, L., Braconnot, P., Brockmann, P., Cadule, P., Caubel, A., Cheruy, F., Codron, F., Cozic, A., Cugnet, D., D’Andrea, F., Davini, P., Lavergne, C. de, Denvil, S., Deshayes, J., Devilliers, M., Ducharme, A., Dufresne, J.-L., Dupont, E., Éthé, C., Fairhead, L., Falletti, L., Flavoni, S., Foujols, M.-A., Gardoll, S., Gastineau, G., Ghattas, J., Grandpeix, J.-Y., Guenet, B., Guez, L., E., 570 Guilyardi, E., Guimberteau, M., Hauglustaine, D., Hourdin, F., Idelkadi, A., Joussaume, S., Kageyama, M., Khodri, M., Krinner, G., Lebas, N., Levavasseur, G., Lévy, C., Li, L., Lott, F., Lurton, T., Luyssaert, S., Madec, G., Madeleine, J.-B., Maignan, F., Marchand, M., Marti, O., Mellul, L., Meurdesoif, Y., Mignot, J., Musat, I., Otlé, C., Peylin, P., Planton, Y., Polcher, J., Rio, C., Rochetin, N., Rousset, C., Sepulchre, P., Sima, A., Swingedouw, D., Thiéblemont, R., Traore, A. K., 575 Vancoppenolle, M., Vial, J., Vialard, J., Viovy, N., and Vuichard, N.: Presentation and Evaluation of the IPSL-CM6A-LR Climate Model, *Journal of Advances in Modeling Earth Systems*, 12, e2019MS002010, <https://doi.org/10.1029/2019MS002010>, 2020.
- Byrd, R. H., Lu, P., Nocedal, J., and Zhu, C.: A Limited Memory Algorithm for Bound Constrained Optimization, *SIAM J. Sci. Comput.*, 16, 1190–1208, <https://doi.org/10.1137/0916069>, 1995.
- 580 Canadell, J. G., Monteiro, P. M., Costa, M. H., Da Cunha, L. C., Cox, P. M., Alexey, V., Henson, S., Ishii, M., Jaccard, S., and Koven, C.: Global carbon and other biogeochemical cycles and feedbacks., in: *Climate Change 2021: The Physical Science Basis. Contribution of Working Group I to the Sixth Assessment Report of the Intergovernmental Panel on Climate Change*, vol. Chapter 5, Cambridge University Press, 2021.
- Chimuka, V. R., Nzotungicimpaye, C.-M., and Zickfeld, K.: Quantifying land carbon cycle feedbacks under negative CO₂ emissions, *Biogeosciences*, 20, 2283–2299, <https://doi.org/10.5194/bg-20-2283-2023>, 2023. 585
- Collins, W. D., Ramaswamy, V., Schwarzkopf, M. D., Sun, Y., Portmann, R. W., Fu, Q., Casanova, S. E. B., Dufresne, J.-L., Fillmore, D. W., Forster, P. M. D., Galin, V. Y., Gohar, L. K., Ingram, W. J., Kratz, D. P., Lefebvre, M.-P., Li, J., Marquet, P., Oinas, V., Tsushima, Y., Uchiyama, T., and Zhong, W. Y.: Radiative forcing by well-mixed greenhouse gases: Estimates from climate models in the Intergovernmental Panel on Climate Change (IPCC) Fourth Assessment Report (AR4), *Journal of Geophysical Research: Atmospheres*, 111, <https://doi.org/10.1029/2005JD006713>, 2006. 590
- Etminan, M., Myhre, G., Highwood, E. J., and Shine, K. P.: Radiative forcing of carbon dioxide, methane, and nitrous oxide: A significant revision of the methane radiative forcing, *Geophysical Research Letters*, 43, 12,614–12,623, <https://doi.org/10.1002/2016GL071930>, 2016.
- Forster, P., Storelmo, T., Armour, K., Collins, W., Dufresne, J.-L., Frame, D., Lunt, D. J., Mauritsen, T., Palmer, M. D., 595 Watanabe, M., Wild, M., and Zhang, H.: The Earth’s Energy Budget, Climate Feedbacks, and Climate Sensitivity, edited by: Masson-Delmotte, V., Zhai, P., Pirani, A., Connors, S. L., Péan, C., Berger, S., Caud, N., Chen, Y., Goldfarb, L., Gomis, M. I., Huang, M., Leitzell, K., Lonnoy, E., Matthews, J. B. R., Maycock, T. K., Waterfield, T., Yelekçi, O., Yu, R., and Zhou, B., *Climate Change 2021: The Physical Science Basis. Contribution of Working Group I to the Sixth Assessment Report of the Intergovernmental Panel on Climate Change*, 923–1054, <https://doi.org/10.1017/9781009157896.009>, 2021.
- 600 Friedlingstein, P., Dufresne, J.-L., Cox, P. M., and Rayner, P.: How positive is the feedback between climate change and the carbon cycle?, *Tellus B: Chemical and Physical Meteorology*, <https://doi.org/10.3402/tellusb.v55i2.16765>, 2003.

- Friedlingstein, P., Cox, P., Betts, R., Bopp, L., von Bloh, W., Brovkin, V., Cadule, P., Doney, S., Eby, M., Fung, I., Bala, G., John, J., Jones, C., Joos, F., Kato, T., Kawamiya, M., Knorr, W., Lindsay, K., Matthews, H. D., Raddatz, T., Rayner, P., Reick, C., Roeckner, E., Schnitzler, K.-G., Schnur, R., Strassmann, K., Weaver, A. J., Yoshikawa, C., and Zeng, N.: Climate–Carbon Cycle Feedback Analysis: Results from the C4MIP Model Intercomparison, *J. Climate*, 19, 3337–3353, <https://doi.org/10.1175/JCLI3800.1>, 2006.
- 605 Fu, B., Gasser, T., Li, B., Tao, S., Ciais, P., Piao, S., Balkanski, Y., Li, W., Yin, T., Han, L., Li, X., Han, Y., An, J., Peng, S., and Xu, J.: Short-lived climate forcers have long-term climate impacts via the carbon–climate feedback, *Nature Climate Change*, 10, 851–855, <https://doi.org/10.1038/s41558-020-0841-x>, 2020.
- 610 Fyfe, J. C., Kharin, V. V., Santer, B. D., Cole, J. N. S., and Gillett, N. P.: Significant impact of forcing uncertainty in a large ensemble of climate model simulations, *Proceedings of the National Academy of Sciences*, 118, e2016549118, <https://doi.org/10.1073/pnas.2016549118>, 2021.
- Gregory, J. M., Jones, C. D., Cadule, P., and Friedlingstein, P.: Quantifying Carbon Cycle Feedbacks, *J. Climate*, 22, 5232–5250, <https://doi.org/10.1175/2009JCLI2949.1>, 2009.
- 615 Hogan, R. J. and Matricardi, M.: Evaluating and improving the treatment of gases in radiation schemes: the Correlated K-Distribution Model Intercomparison Project (CKDMIP), *Geosci. Model Dev.*, 13, 6501–6521, <https://doi.org/10.5194/gmd-13-6501-2020>, 2020.
- Höglund-Isaksson, L., Gómez-Sanabria, A., Klimont, Z., Rafaj, P., and Schöpp, W.: Technical potentials and costs for reducing global anthropogenic methane emissions in the 2050 timeframe –results from the GAINS model, *Environmental Research Communications*, 2, 025004, <https://doi.org/10.1088/2515-7620/ab7457>, 2020.
- 620 Jackson, R. B., Abernethy, S., Canadell, J. G., Cargnello, M., Davis, S. J., Féron, S., Fuss, S., Heyer, A. J., Hong, C., and Jones, C. D.: Atmospheric methane removal: a research agenda, *Philosophical Transactions of the Royal Society A*, 379, 20200454, 2021.
- Jones, A., Haywood, J. M., and Jones, C. D.: Can reducing black carbon and methane below RCP2.6 levels keep global warming below 1.5 °C?, *Atmospheric Science Letters*, 19, e821, <https://doi.org/10.1002/asl.821>, 2018.
- 625 Jones, C. D., Ciais, P., Davis, S. J., Friedlingstein, P., Gasser, T., Peters, G. P., Rogelj, J., van Vuuren, D. P., Canadell, J. G., Cowie, A., Jackson, R. B., Jonas, M., Krieglner, E., Littleton, E., Lowe, J. A., Milne, J., Shrestha, G., Smith, P., Torvanger, A., and Wiltshire, A.: Simulating the Earth system response to negative emissions, *Environmental Research Letters*, 11, 095012, <https://doi.org/10.1088/1748-9326/11/9/095012>, 2016.
- 630 Koven, C. D., Sanderson, B. M., and Swann, A. L. S.: Much of zero emissions commitment occurs before reaching net zero emissions, *Environmental Research Letters*, 18, 014017, <https://doi.org/10.1088/1748-9326/acab1a>, 2023.
- Lurton, T., Balkanski, Y., Bastrikov, V., Bekki, S., Bopp, L., Braconnot, P., Brockmann, P., Cadule, P., Contoux, C., Cozic, A., Cugnet, D., Dufresne, J.-L., Éthé, C., Foujols, M.-A., Ghattas, J., Hauglustaine, D., Hu, R.-M., Kageyama, M., Khodri, M., Lebas, N., Levvasseur, G., Marchand, M., Ottlé, C., Peylin, P., Sima, A., Szopa, S., Thiéblemont, R., Vuichard, N., and Boucher, O.: Implementation of the CMIP6 Forcing Data in the IPSL-CM6A-LR Model, *Journal of Advances in Modeling Earth Systems*, 12, e2019MS001940, <https://doi.org/10.1029/2019MS001940>, 2020.
- 635 Malley, C. S., Borgford-Parnell, N., Haeussling, S., Howard, I. C., Lefèvre, E. N., and Kuylensstierna, J. C. I.: A roadmap to achieve the global methane pledge, *Environmental Research: Climate*, 2, 011003, <https://doi.org/10.1088/2752-5295/acb4b4>, 2023.

- 640 Melnikova, I., Boucher, O., Cadule, P., Ciais, P., Gasser, T., Quilcaille, Y., Shiogama, H., Tachiiri, K., Yokohata, T., and Tanaka, K.: Carbon cycle response to temperature overshoot beyond 2 °C – an analysis of CMIP6 models, *Earth's Future*, 9, e2020EF001967, <https://doi.org/10.1029/2020EF001967>, 2021.
- Melnikova, I., Ciais, P., Boucher, O., and Tanaka, K.: Assessing carbon cycle projections from complex and simple models under SSP scenarios, *Climatic Change*, 176, 168, <https://doi.org/10.1007/s10584-023-03639-5>, 2023.
- 645 Mengis, N. and Matthews, H. D.: Non-CO2 forcing changes will likely decrease the remaining carbon budget for 1.5 °C, *npj Climate and Atmospheric Science*, 3, 19, <https://doi.org/10.1038/s41612-020-0123-3>, 2020.
- Montzka, S. A., Dlugokencky, E. J., and Butler, J. H.: Non-CO2 greenhouse gases and climate change, *Nature*, 476, 43–50, <https://doi.org/10.1038/nature10322>, 2011.
- Mundra, I. and Lockley, A.: Emergent methane mitigation and removal approaches: A review, *Atmospheric Environment: X*, 100223, <https://doi.org/10.1016/j.aeaoa.2023.100223>, 2023.
- Myhre, G., Highwood, E. J., Shine, K. P., and Stordal, F.: New estimates of radiative forcing due to well mixed greenhouse gases, *Geophysical Research Letters*, 25, 2715–2718, <https://doi.org/10.1029/98GL01908>, 1998.
- Myhre, G., Shindell, D., Bréon, F. M., Collins, W., Fuglestedt, J., Huang, J., Koch, D., Lamarque, J. F., Lee, D., and Mendoza, B.: Anthropogenic and natural radiative forcing, in: *Climate change 2013: the physical science basis. Contribution of Working Group I to the Fifth Assessment Report of the Intergovernmental Panel on Climate Change*, vol. Chapter 8, Cambridge University Press Cambridge, 2013.
- 655 Myhre, G., Forster, P. M., Samset, B. H., Hodnebrog, Ø., Sillmann, J., Aalberg, S. G., Andrews, T., Boucher, O., Faluvegi, G., Fläschner, D., Iversen, T., Kasoar, M., Kharin, V., Kirkevåg, A., Lamarque, J.-F., Olivie, D., Richardson, T. B., Shindell, D., Shine, K. P., Stjern, C. W., Takemura, T., Voulgarakis, A., and Zwiers, F.: PDRMIP: A Precipitation Driver and Response Model Intercomparison Project—Protocol and Preliminary Results, *Bulletin of the American Meteorological Society*, 98, 1185–1198, <https://doi.org/10.1175/BAMS-D-16-0019.1>, 2017.
- Nakazawa, T.: Current understanding of the global cycling of carbon dioxide, methane, and nitrous oxide, *Proceedings of the Japan Academy, Series B*, 96, 394–419, <https://doi.org/10.2183/pjab.96.030>, 2020.
- 665 Nisbet, E. G., Fisher, R. E., Lowry, D., France, J. L., Allen, G., Bakkaloglu, S., Broderick, T. J., Cain, M., Coleman, M., Fernandez, J., Forster, G., Griffiths, P. T., Iverach, C. P., Kelly, B. F. J., Manning, M. R., Nisbet-Jones, P. B. R., Pyle, J. A., Townsend-Small, A., al-Shalaan, A., Warwick, N., and Zazzeri, G.: Methane Mitigation: Methods to Reduce Emissions, on the Path to the Paris Agreement, *Reviews of Geophysics*, 58, e2019RG000675, <https://doi.org/10.1029/2019RG000675>, 2020.
- Nordling, K., Korhonen, H., Räisänen, J., Partanen, A.-I., Samset, B. H., and Merikanto, J.: Understanding the surface temperature response and its uncertainty to CO₂, CH₄, black carbon, and sulfate, *Atmos. Chem. Phys.*, 21, 14941–14958, <https://doi.org/10.5194/acp-21-14941-2021>, 2021.
- 670 Ou, Y., Roney, C., Alsalam, J., Calvin, K., Creason, J., Edmonds, J., Fawcett, A. A., Kyle, P., Narayan, K., O'Rourke, P., Patel, P., Ragnauth, S., Smith, S. J., and McJeon, H.: Deep mitigation of CO₂ and non-CO₂ greenhouse gases toward 1.5 °C and 2 °C futures, *Nature Communications*, 12, 6245, <https://doi.org/10.1038/s41467-021-26509-z>, 2021.
- 675 Palazzo Corner, S., Siegert, M., Ceppi, P., Fox-Kemper, B., Frölicher, T. L., Gallego-Sala, A., Haigh, J., Hegerl, G. C., Jones, C. D., Knutti, R., Koven, C. D., MacDougall, A. H., Meinshausen, M., Nicholls, Z., Sallée, J. B., Sanderson, B. M., Séférian, R., Turetsky, M., Williams, R. G., Zaehle, S., and Rogelj, J.: The Zero Emissions Commitment and climate stabilization, *Frontiers in Science*, 1, <https://doi.org/10.3389/fsci.2023.1170744>, 2023.

Park, S.-W., Kim, J.-S., and Kug, J.-S.: The intensification of Arctic warming as a result of CO₂ physiological forcing, *Nature Communications*, 11, 2098, <https://doi.org/10.1038/s41467-020-15924-3>, 2020.

680 Pincus, R., Forster, P. M., and Stevens, B.: The Radiative Forcing Model Intercomparison Project (RFMIP): experimental protocol for CMIP6, *Geosci. Model Dev.*, 9, 3447–3460, <https://doi.org/10.5194/gmd-9-3447-2016>, 2016.

Rao, S. and Riahi, K.: The Role of Non-CO₂ Greenhouse Gases in Climate Change Mitigation: Long-term Scenarios for the 21st Century, *The Energy Journal*, 27, 177–200, 2006.

685 Richardson, T. B., Forster, P. M., Smith, C. J., Maycock, A. C., Wood, T., Andrews, T., Boucher, O., Faluvegi, G., Fläschner, D., Hodnebrog, Ø., Kasoar, M., Kirkevåg, A., Lamarque, J.-F., Miltenstädt, J., Myhre, G., Olivé, D., Portmann, R. W., Samset, B. H., Shawki, D., Shindell, D., Stier, P., Takemura, T., Voulgarakis, A., and Watson-Parris, D.: Efficacy of Climate Forcings in PDRMIP Models, *J Geophys Res Atmos*, 124, 12824–12844, <https://doi.org/10.1029/2019JD030581>, 2019.

690 de Richter, R., Ming, T., Davies, P., Liu, W., and Caillol, S.: Removal of non-CO₂ greenhouse gases by large-scale atmospheric solar photocatalysis, *Progress in Energy and Combustion Science*, 60, 68–96, <https://doi.org/10.1016/j.pecs.2017.01.001>, 2017.

Schwinger, J. and Tjiputra, J.: Ocean Carbon Cycle Feedbacks Under Negative Emissions, *Geophysical Research Letters*, 45, 5062–5070, <https://doi.org/10.1029/2018GL077790>, 2018.

695 Schwinger, J., Tjiputra, J. F., Heinze, C., Bopp, L., Christian, J. R., Gehlen, M., Ilyina, T., Jones, C. D., Salas-Méla, D., Segsneider, J., Séférian, R., and Totterdell, I.: Nonlinearity of Ocean Carbon Cycle Feedbacks in CMIP5 Earth System Models, *Journal of Climate*, 27, 3869–3888, <https://doi.org/10.1175/JCLI-D-13-00452.1>, 2014.

Tanaka, K., Boucher, O., Ciais, P., Johansson, D. J. A., and Morfeldt, J.: Cost-effective implementation of the Paris Agreement using flexible greenhouse gas metrics, *Sci Adv*, 7, eabf9020, <https://doi.org/10.1126/sciadv.abf9020>, 2021.

700 Thornhill, G. D., Collins, W. J., Kramer, R. J., Olivé, D., Skeie, R. B., O'Connor, F. M., Abraham, N. L., Checa-Garcia, R., Bauer, S. E., Deushi, M., Emmons, L. K., Forster, P. M., Horowitz, L. W., Johnson, B., Keeble, J., Lamarque, J.-F., Michou, M., Mills, M. J., Mulcahy, J. P., Myhre, G., Nabat, P., Naik, V., Oshima, N., Schulz, M., Smith, C. J., Takemura, T., Tilmes, S., Wu, T., Zeng, G., and Zhang, J.: Effective radiative forcing from emissions of reactive gases and aerosols – a multi-model comparison, *Atmos. Chem. Phys.*, 21, 853–874, <https://doi.org/10.5194/acp-21-853-2021>, 2021.

Tokarska, K. B., Gillett, N. P., Arora, V. K., Lee, W. G., and Zickfeld, K.: The influence of non-CO₂ forcings on cumulative carbon emissions budgets, *Environmental Research Letters*, 13, 034039, <https://doi.org/10.1088/1748-9326/aaafdd>, 2018.

705 World Climate Research Programme (WCRP) Coupled Model Intercomparison Project (Phase 6): <https://esgf-node.llnl.gov/search/cmip6/>, last access: 6 July 2022.

Williams, R. G., Katavouta, A., and Goodwin, P.: Carbon-Cycle Feedbacks Operating in the Climate System, *Current Climate Change Reports*, 5, 282–295, <https://doi.org/10.1007/s40641-019-00144-9>, 2019.

710 Zhu, X., Zhuang, Q., Gao, X., Sokolov, A., and Schlosser, C. A.: Pan-Arctic land-atmospheric fluxes of methane and carbon dioxide in response to climate change over the 21st century, *Environmental Research Letters*, 8, 045003, <https://doi.org/10.1088/1748-9326/8/4/045003>, 2013.

Zickfeld, K., Eby, M., Matthews, H. D., Schmittner, A., and Weaver, A. J.: Nonlinearity of Carbon Cycle Feedbacks, *Journal of Climate*, 24, 4255–4275, <https://doi.org/10.1175/2011JCLI3898.1>, 2011.

715 Zickfeld, K., MacDougall, A. H., and Matthews, H. D.: On the proportionality between global temperature change and cumulative CO₂ emissions during periods of net negative CO₂ emissions, *Environ. Res. Lett.*, 11, 055006, <https://doi.org/10.1088/1748-9326/11/5/055006>, 2016.

Formatted: Bibliography