

1 **Supplementary Materials for**
2 **Source-resolved atmospheric metal emissions, concentrations, and**
3 **their deposition fluxes into the East Asian Seas**

4 Shenglan Jiang¹, Yan Zhang^{1,2,3*}, Guangyuan Yu¹, Zimin Han¹, Junri Zhao¹, Tianle Zhang⁴, Mei Zheng⁴

5
6 ¹Shanghai Key Laboratory of Atmospheric Particle Pollution and Prevention (LAP3), National Observations and Research
7 Station for Wetland Ecosystems of the Yangtze Estuary, Department of Environmental Science and Engineering, Fudan
8 University, Shanghai 200438, China

9 ²Shanghai Institute of Eco Chongming (SIEC), Shanghai 200062, China

10 ³MOE laboratory for National Development and Intelligent Governance, Shanghai institute for energy and carbon neutrality
11 strategy, IRDR ICoE on Risk Interconnectivity and Governance on Weather/Climate Extremes Impact and Public Health,
12 Fudan University, China, Fudan University, Shanghai 200433, China

13 ⁴SKL-ESPC and SEPKL-AERM, College of Environmental Sciences and Engineering, and Centre for Environment and Health,
14 Peking University, Beijing 100871, China

15 *Correspondence to:* Yan Zhang (yan_zhang@fudan.edu.cn)

16 **This Supplementary Materials include:**

17 Supplementary Text S1-S3, Figure S1-S4, and Table S1-S10.

18

19 **Text S1. Technical details of the modified CMAQ.** For the revisions of modules for simulate metals in CMAQ, we
20 modified desid_vars.F to add metals emission information. To have tracers undergo the same diffusion, advection, and
21 deposition as PM, we modified AERO_DATA.F, CMAQ_Control_DESID_cb6r5_ae7_aq.nml, AE_cb6r5_ae7_aq.nml files.

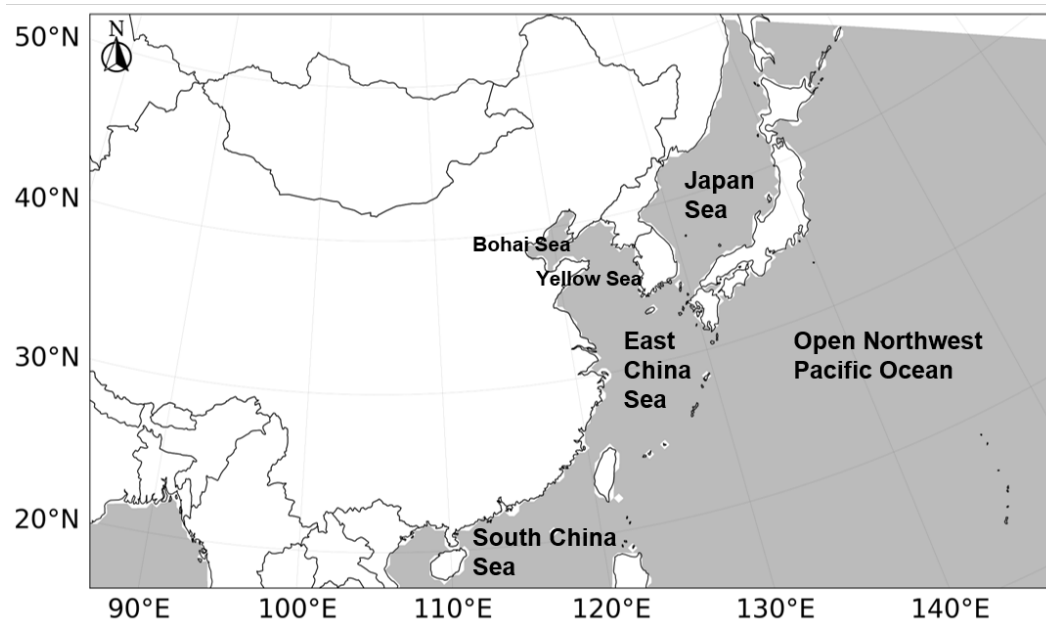
22 **Text S2. Technical details of the WRF/CMAQ.** The WRF physics scheme configuration included the Pleim-Xiu land
23 surface model (Xiu and Pleim, 2001), the Rapid Radiative Transfer Model (RRTMG) for shortwave and longwave schemes
24 (Clough et al., 2005), the Asymmetric Convective Model version 2 for the PBL scheme (Pleim, 2007), the Kain–Fritsch
25 cumulus scheme (Kain, 2004) for cumulus parameterization, and the MODIS land cover data (20 categories) employed in
26 this study. In the CMAQ model, two grids on WRF lateral boundary were removed, and thus there were 257×117 grids in
27 d01.

28 **Text S3. Establishment of emission inventory of pollutants other than metals.**

29 For SO₂, NO_x, CO, nonmethane volatile organic compounds (NMVOCs), PM₁₀, PM_{2.5} and NH₃, we categorized them into
30 land anthropogenic and ship sources. For anthropogenic sources, we used the Multiresolution Emission Inventory for China
31 (MEIC) in 2020 (Zheng et al., 2021) in mainland China and the MIX emission data in 2010 (Li et al., 2017) in Asia
32 excluding mainland China. For ship sources, we used A bottom-up ship emission model based on the Automatic
33 Identification System (AIS) data to calculate the emission inventories of these species. Detailed information on the
34 establishment of the ship emission model can be found in the previous studies (Chen et al., 2017; Fan et al., 2016).

35

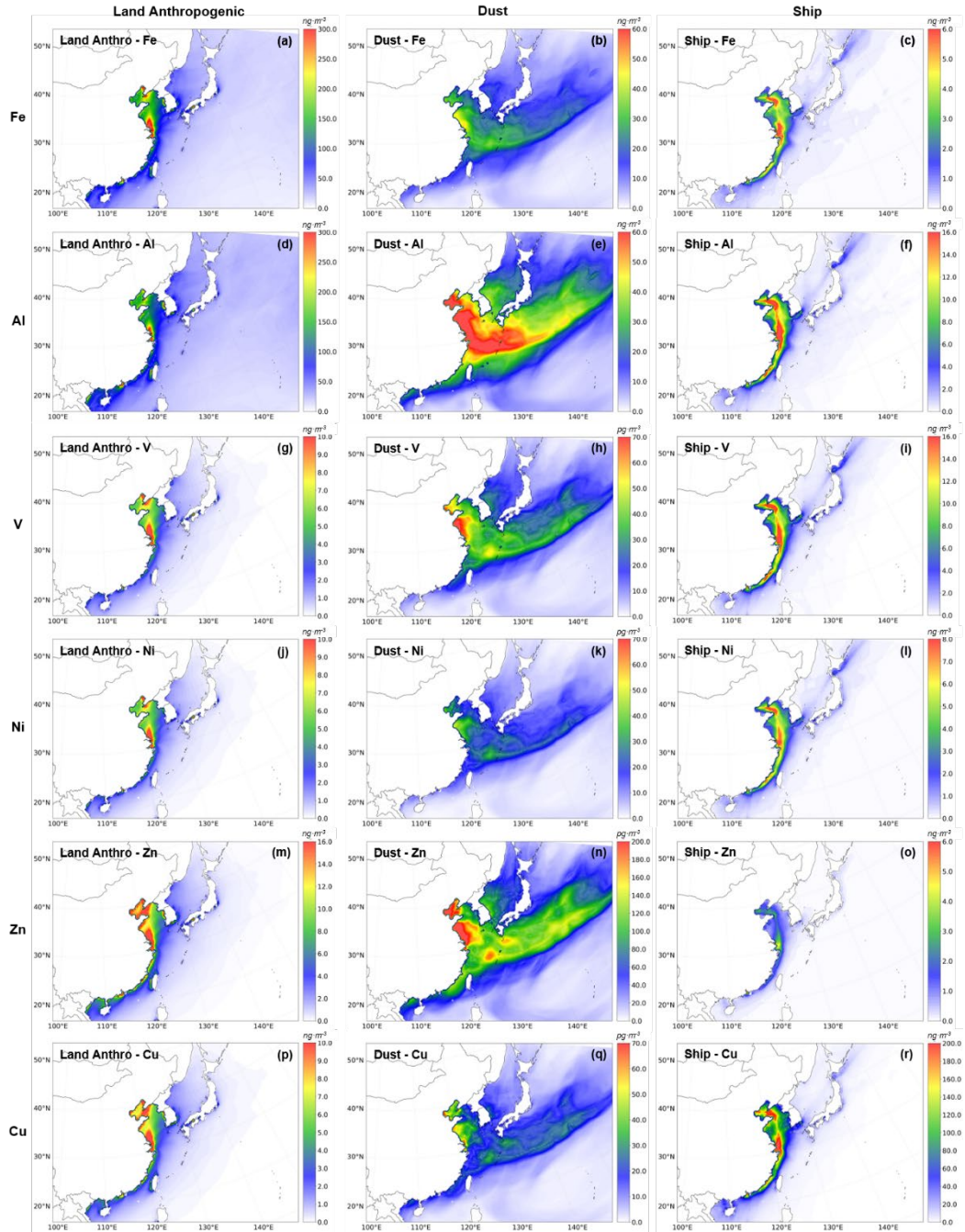
36 **Figure S1.** The simulation area.



37

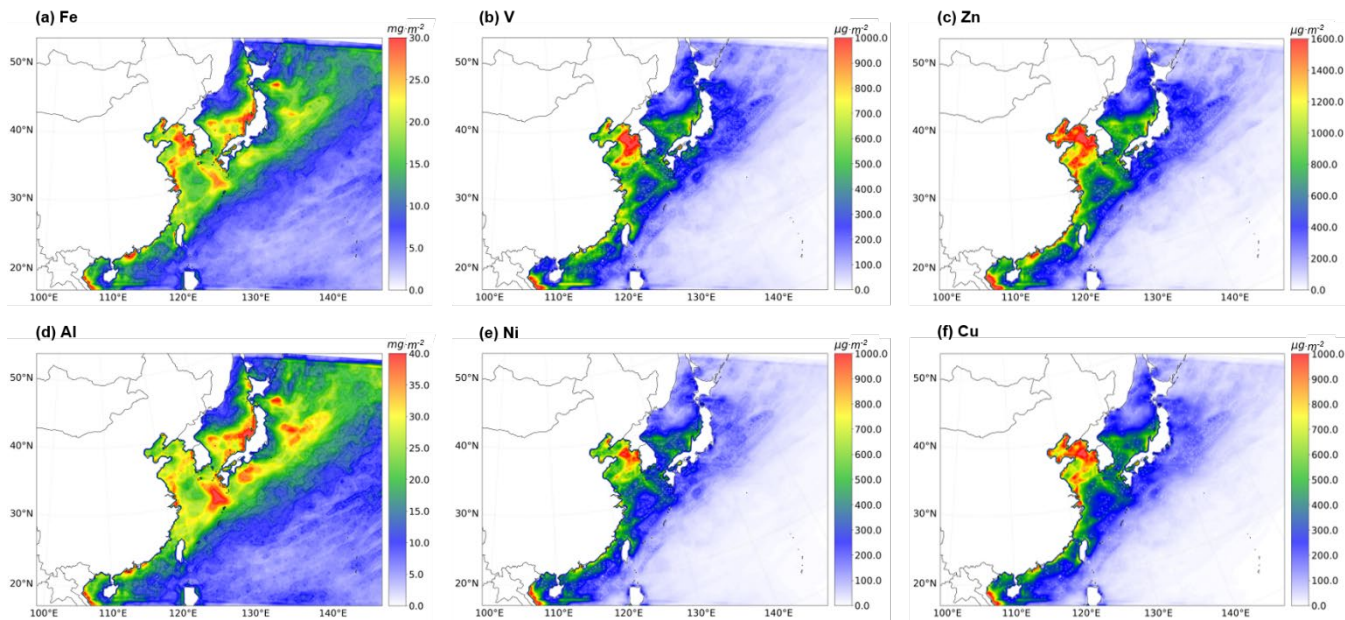
38

39 **Figure S2.** Spatial distribution of the contributions of land anthropogenic, dust sources and ship sources to the annual
 40 average concentrations of Fe (a-c), Al (d-f), V (g-i), Ni (j-l), Zn (m-o), and Cu (p-r) in the sea area, respectively (36 km × 36
 41 km resolution) in the year of 2017.



42
 43

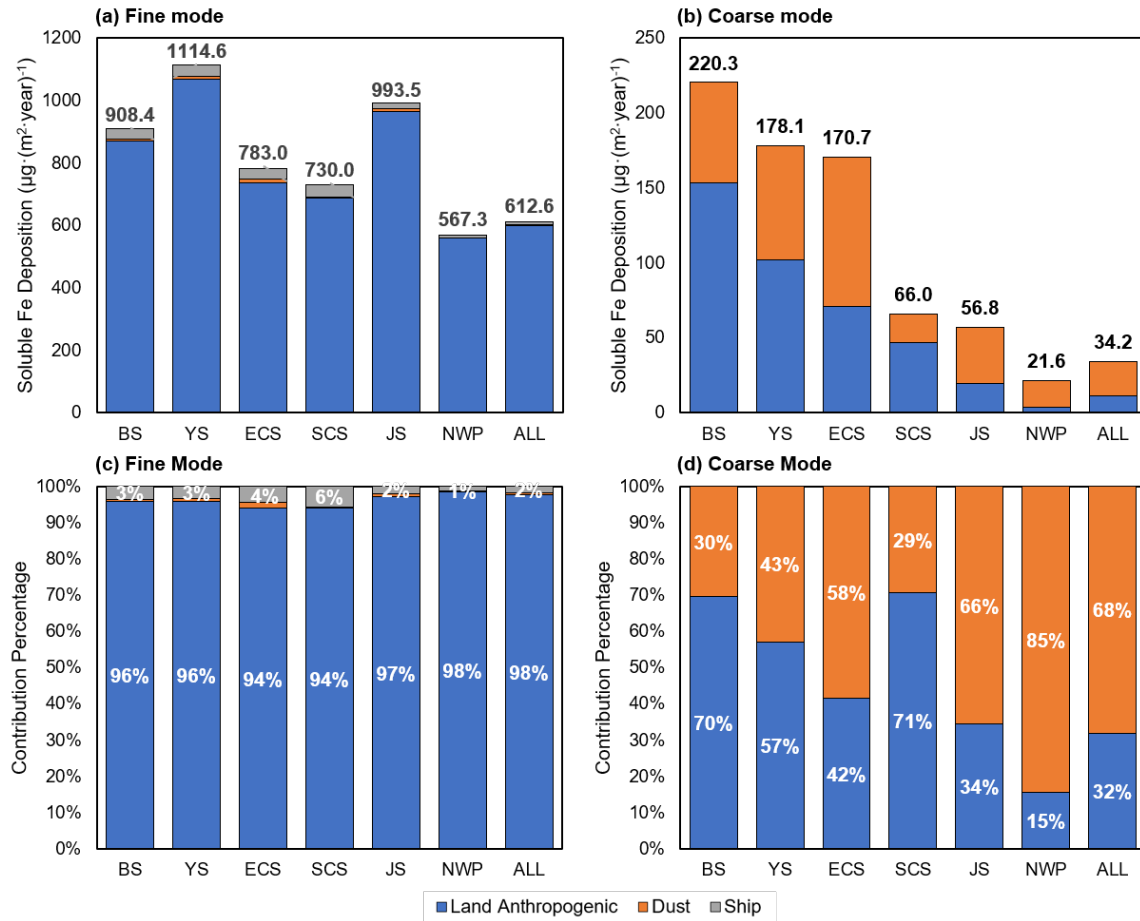
44 **Figure S3.** Spatial distribution of depositional fluxes of Fe (a), V (b), Zn (c), Al (d), Ni (e), Cu (f) in the sea area (36 km × 36
45 km resolution, considering all emission sources) in the year of 2017.



46

47

48 **Figure S4.** Absolute and relative contributions of soluble iron deposition fluxes from land anthropogenic, ship, and dust
 49 sources in different sea areas, fine mode (a), coarse mode (b) (units: $\mu\text{g}\cdot\text{m}^{-2}\cdot\text{year}^{-1}$), the numbers on top of the stacked bar
 50 graphs represent total deposition fluxes from three sources.



51

52

53 **Table S1.** Emission factors for ships in previous studies (Unit: g·kWh⁻¹)

Engine type	Fuel Type	Sulfur content (%)	Cu	Fe	V	Ni	Zn	Al	Source
ME SSD	HFO	2.70	1.80E-05	4.90E-03	1.94E-02	9.50E-03	1.30E-04	6.10E-04	(Celo et al., 2015)
ME SSD	HFO	2.85	5.00E-05	6.75E-03	1.99E-02	8.69E-03	2.00E-04	1.87E-02	(Agrawal et al., 2008a)
ME SSD	HFO	2.05	1.01E-04	3.89E-03	5.60E-02	1.27E-02	1.43E-04	1.72E-02	(Agrawal et al., 2008b)
ME MSD	HFO	1.48	3.00E-06	4.10E-04	6.80E-03	2.43E-03	1.00E-04	2.30E-03	(Celo et al., 2015)
ME MSD	HFO	2.21	3.00E-06	2.40E-03	1.23E-02	5.50E-03	8.00E-05	4.90E-04	
ME MSD	HFO	2.33	1.35E-05	2.22E-04	1.54E-03	2.91E-04	5.96E-05	1.37E-04	(Corbin et al., 2018)
ME MSD	HFO	0.58		1.21E-04	4.27E-04	1.06E-03	6.50E-05	8.36E-05	(Moldanová et al., 2013)
ME MSD	HFO	0.96		2.46E-04	1.69E-03	1.50E-03	6.63E-05	2.08E-05	
ME MSD	HFO	2.70	1.49E-04	1.27E-03	1.43E-02	4.10E-03	5.80E-04	1.79E-04	(Sippula et al., 2014)
ME MSD	HFO	0.68	3.25E-05	1.55E-03	8.55E-06	1.62E-05	1.31E-04		(Zhang et al., 2018a)
ME MSD	HFO	1.60	3.60E-04	5.30E-03	7.90E-03	2.00E-03	1.30E-03	2.60E-04	(Streibel et al., 2017)
ME MSD	HFO	0.48		1.62E-02	3.60E-02	2.75E-01	1.08E-02		(Zetterdahl et al., 2016)
ME MSD	MDO	0.10		8.69E-06	3.80E-05				(Moldanová et al., 2013)
ME MSD	MDO	0.13		2.29E-06	1.25E-04	1.70E-06			(Zhang et al., 2016)
ME HSD	MDO	0.08		5.08E-05	4.25E-05	7.77E-05			
AE MSD	MGO	0.03		3.06E-06	1.43E-06	3.06E-06	2.45E-04	1.98E-04	(Moldanová et al., 2013)
AE MSD	MGO	0.06	2.00E-05	1.40E-04	1.50E-04	4.00E-05	3.10E-04	3.00E-04	(Agrawal et al., 2008a)

54

55 **Table S2.** Emission factors for ships used in this study (Unit: g·kWh⁻¹)

Engine type	Fuel Type	Sulfur content	Cu	Fe	V	Ni	Zn	Al
ME SSD	HFO	2.7%	4.74E-05	5.12E-03	1.94E-02	9.50E-03	1.88E-04	1.77E-02
ME MSD	HFO	2.7%	7.27E-05	1.27E-03	1.24E-02	4.21E-03	3.03E-04	3.89E-04
	MDO	0.5%	1.67E-04	3.18E-04	2.66E-04	9.77E-05	3.33E-03	2.90E-03
ME HSD	MDO	0.5%	1.67E-04	6.09E-04	6.37E-04	1.92E-04	3.33E-03	2.90E-03
AE MSD	MGO	0.5%	1.67E-04	6.09E-04	6.37E-04	1.92E-04	3.33E-03	2.90E-03

56

57 **Table S3.** Dust metal emission factors in previous studies and applied in this study (Unit: %)

	Cu	Fe	V	Ni	Zn	Al	Source
PM3	1.54E-04		9.22E-05	4.78E-05	1.35E-04	7.67E-02	(Li et al., 2022)
Coarse	1.59E-05		6.33E-05	2.18E-05	7.16E-05	6.00E-02	
Coarse	4.71E-05	2.44E-02	6.95E-05	5.10E-05	1.20E-04		(Luo et al., 2022)
Coarse	3.00E-05	2.35E-02	6.38E-05	4.20E-05	8.70E-05		
Coarse	4.77E-05	3.78E-02		7.03E-05	1.93E-04	4.09E-02	(Abbasi et al., 2021)
Coarse	3.80E-05	3.80E-02		7.00E-05	1.45E-04	4.10E-02	
Coarse		2.86E-02				6.03E-02	(Baker et al., 2020)
Coarse	3.41E-05	3.84E-02		2.91E-05	9.31E-05	7.58E-02	(Nishikawa et al., 2013)
Coarse	5.00E-05	7.70E-02	5.00E-04	1.00E-04	1.00E-04	8.40E-02	(Desboeufs et al., 2005)
Coarse	1.00E-05	2.44E-02	3.00E-05	6.70E-05	1.60E-04	7.84E-02	
Fine	1.77E-04	3.36E-02	1.16E-04	5.70E-05	1.32E-03	5.70E-02	Applied in this study
Coarse	3.36E-05	3.24E-02	6.36E-05	5.10E-05	9.93E-05	6.86E-02	

58

59 **Table S4.** Solubility of metals in previous studies and applied in this study (Unit: %)

Mode		Cu	Fe	V	Ni	Zn	Al	Source
Fine	Total	0.6146	0.232	0.6842	0.41	0.8608	0.1404	(Jiang et al., 2014)
		0.1643		0.4342	0.1314	0.6678		(Wang et al., 2015)
		0.349	0.046		0.068	0.413		(Liu et al., 2022)
		0.5769	0.4667	0.421	0.568	0.7		(Karthikeyan et al., 2006)
		0.51	/	0.43	0.49	0.73	0.14	Applied in this study
Coarse	Total	0.41	0.027	-	-	0.816	0.0472	(Jiang et al., 2014)
		0.51	0.077	0.55	0.26	0.84	0.051	(Hsu et al., 2010)
		0.47	0.012	0.262		0.463		(Wang et al., 2015)
		0.41	0.274	0.326	0.284	0.423		(Karthikeyan et al., 2006)
		0.14	0.066		0.12	0.57	0.45	(Jickells et al., 2016)
		0.45	/	0.38	0.27	0.62	0.049	Applied in this study
Fine	Dust		0.01					(Kurusu et al., 2021)
	Land		0.08					(Ito, 2015)
	Ship		0.65					
Coarse	Dust		0.017					(Ooki et al., 2009)
	Land		0.025					(Baker et al., 2020)

60

61 **Table S5.** Monthly metal emissions from ships in 2017 (Unit: tons·month⁻¹)

Month	Cu	Fe	V	Ni	Zn	Al
01	1.1825	34.6850	129.0917	61.7265	18.2189	121.8235
02	1.1118	31.7941	118.4216	56.1886	17.2285	111.6897
03	1.3335	36.7252	136.4392	64.6687	20.8952	129.2200
04	1.4518	41.3125	153.5250	72.8817	22.5648	145.2409
05	1.4068	43.3444	162.0243	77.0775	21.3147	151.9547

06	1.2169	36.9126	137.9572	65.5797	18.5189	129.4294
07	1.5311	45.1684	169.1841	80.2542	23.4339	158.3524
08	1.5608	43.9847	164.3985	77.8443	24.2096	154.3517
09	1.2467	34.1564	127.2538	60.1975	19.5106	119.8588
10	1.5415	43.1018	161.1650	76.1933	23.9349	150.8402
11	1.6353	45.4896	170.3909	80.4884	25.3904	159.1439
12	1.6341	46.1274	172.7453	81.6644	25.2818	161.3140
Sum	16.8529	482.8020	1802.5965	854.7649	260.5023	1693.2192

62

63 **Table S6.** Monthly fine mode metal emissions from land anthropogenic sources in 2017 (Unit: tons·month⁻¹)

Month	Cu	Fe	V	Ni	Zn	Al
01	626.35	11077.53	566.88	517.94	1373.93	13178.09
02	538.29	10242.82	523.12	453.34	1112.31	11625.46
03	551.13	10499.15	516.35	449.68	1115.10	12020.72
04	543.95	10296.52	539.68	457.48	1069.83	11301.25
05	533.11	10285.04	530.53	448.49	1056.53	11501.22
06	529.13	10342.16	527.65	446.97	1055.52	11647.78
07	517.53	10288.07	535.65	445.04	1053.97	12082.21
08	511.01	10185.41	513.17	429.63	1047.99	12167.32
09	527.01	10223.80	505.84	432.51	1051.61	11659.44
10	549.53	10486.76	542.89	458.17	1091.11	11977.92
11	557.35	10560.46	541.44	464.38	1127.93	12093.87
12	594.54	10952.06	551.70	490.91	1251.36	12789.79
Sum	6578.94	125439.79	6394.90	5494.52	13407.19	144045.08

64

65 **Table S7.** Monthly coarse mode metal emissions from land anthropogenic sources in 2017 (Unit: tons·month⁻¹)

Month	Cu	Fe	V	Ni	Zn	Al
01	461.51	7255.44	139.25	879.44	685.35	8324.76
02	493.37	6678.36	147.77	354.98	714.29	8011.84
03	534.38	6955.81	150.49	302.30	750.38	8052.39
04	564.46	6757.91	154.73	230.91	775.96	8500.91
05	547.67	6644.82	152.76	208.55	768.33	8327.12
06	534.57	6585.42	151.23	208.17	766.45	8269.86
07	512.16	6792.39	149.71	209.89	758.49	8023.75
08	503.29	6787.56	148.34	208.26	743.85	7694.13
09	540.66	6842.74	151.52	208.03	766.84	7932.16
10	565.57	7131.48	154.42	235.22	784.64	8390.68
11	539.02	7079.40	151.42	312.63	757.12	8270.60
12	499.86	7126.84	145.26	563.84	713.47	8339.15
Sum	6296.51	82638.16	1796.88	3922.21	8985.18	98137.34

67 **Table S8.** Comparison of metals emission inventories with other studies (Units: tons·year⁻¹)

Area	Emission Source	Period	V	V-this study ^a	Ni	Ni-this study	Zn	Zn-this study	Cu	Cu-this study	Source
China	Solid Waste	2013			43.5	27.9	1790.7	2194.0	382.4	185.6	(Wang et al., 2017) ^b
	solid waste incineration		0.27	0.67							
	No-road transport		1247.0	1803.7							
China	Iron and steel production	2017	79.6	109.2							(Bai et al., 2021) ^c
	Domestic coal combustion		10.5	75.6							
	Total		11505.0	16394.8							
China	iron and steel industry	2011			105.0	196.1			448.8	528.5	(Wang et al., 2016)
East Asia	Ship	2015	1329.8	1802.6	580.4	854.8					(Zhao et al., 2021) ^c
China	primary anthropogenic sources	2012			3395.5	5458.0	22319.6	22526.9	9547.6	12793.1	(Tian et al., 2015)
China	primary anthropogenic sources	2017					19473.1	22526.9	9813.1	12793.1	(Liu et al., 2023)

68

69 **Table S9.** Comparison of mean annual concentration of metals in PM_{2.5} from other studies (Units: ng·m⁻³)

Area	Periods	Longitude	Latitude	Cu	Fe	V	Ni	Zn	Al	Source
------	---------	-----------	----------	----	----	---	----	----	----	--------

East Asia	2017			3.55	112.56	4.38	3.25	33.02	135.78	This study
Shanghai	2018-2019	120.97°E	31.09°N	3.85	194.5	5.54	3.18	40.84	400.1	(Zou et al., 2020)
Beijing	2010	116.30°E	39.99°N	34	1696	4	4	270	1823	(Tao et al., 2016)
Chengdu	2011	104.7°E	30.65°N	23	693	1.7	2.5	350	560	(Tao et al., 2014)
Guangzhou	2014	113.35°E	23.12°N	37	353	9	4	225	305	(Tao et al., 2017)
Gunshan	2012-2013	126.71°E	35.98°N	29	237	-	13	113	166	(Jeon et al., 2012)
Handan	2013	114.50°E	36.69°N	18.8	-	5.4	3.4	300	-	(Wei et al., 2014)
Hangzhou	2005	120.15°E	30.28°N	71	-	-	3	130	-	(Liu et al., 2015)
Jinan	2007	116.98°E	36.67°N	30	1300	7.35	9.05	700	890	(Zhang et al., 2018b)
Lanzhou	2012-2013	103.81°E	36.03°N	47.06	-	7.97	9.4	322	-	(Tan et al., 2017)
Nanjing	2013	118.76°E	32.05°N	71.5	902	5.19	16	497	811.5	(Li et al., 2016)
Niigata	2016	138.86°E	37.80°N	2.14	82.4	1.13	6.06	10.9	144	(Li et al., 2018)
Qingdao	2007	120.38°E	36.07°N	20	630	9.99	6.24	270	470	(Zhang et al., 2018b)
Shanghai	2010	121.53°E	31.22°N	15	1328	-	9	236	1542	(Wang et al., 2013)
Taian	2014	117.11°E	36.18°N	40	1055	-	10	220	350	(Liu et al., 2016)
Tianjin	2008	117.20°E	39.12°N	38.9	145.1	2.2	-	339.4	69.8	(Gu et al., 2011)
Tuoji-island	2012	120.76°E	38.17°N	12.6	466	6	4	94.3	-	(Zhang et al., 2014)
Wuhan	2013	114.21°E	30.30°N	25.27	1680	-	4.8	290.78	-	(Zhang et al., 2015)
Wuhan	2014	114.17°E	30.36°N	30.13	1820.76	6.35	3.57	419.21	-	(Acciai et al., 2017)
Xiamen	2015	118.03°E	24.30°N	26	250	10.95	5.37	220	280	(Zhuang, 2016)

Zaozhuang	2007	117.32°E	34.82°N	40	1000	6.11	9.85	1220	630	(Zhang et al., 2018b)
Zhengzhou	2010	113.51°E	34.80°N	24.1	1248.8	3.7	3.3	444.1	579.6	(Geng et al., 2013)
Zhuhai	2014	113.53°E	22.36°N	20	212	12	7	149	309	(Tao et al., 2017)
the East China Sea				58	410	3.8	1.5	51	615	(Hsu et al., 2010)

70

71 **Table S10.** Comparison of mean annual deposition flux of metals from other studies (Units: $\text{mg}\cdot\text{m}^{-2}\cdot\text{year}^{-1}$)

Area	Periods	Cu	Fe	V	Ni	Zn	Al	Source
East Asia	2017	0.55	62.20	0.42	0.47	1.05	119.43	This study
China	2000-2018	12.77			6.61	96.75		(Chen et al., 2022)
North China	2008-2018	16.30			16.40	129.80		(Peng et al., 2019)
South China	2008-2019	18.80			4.89	88.60		
Tokyo Bay	2004-2005	16.00		6.90	6.80			(Sakata et al., 2008)
Kushiro	2008	0.57	70.81		0.72	4.02	146.00	
		0.11	20.55	0.23	0.14	0.02	35.97	
Otsuchi	2008	2.21	204.77		0.74	14.60	356.61	(Okubo et al., 2013)
		0.24	47.39	0.52	0.29	0.05	90.17	
Hedo	2008	0.35	62.05		0.80	5.48	105.12	
		0.33	20.20	0.62	0.47	0.06	33.29	
Pearl Delta	River 2001-2002	18.60	555.00	2.09	8.35	104.00		(Wong et al., 2003)
China	2006-2015	11.56			8.08	72.90		(Ni and Ma, 2018)

Spain	2004-2006	0.79	347.00		0.65	6.26	457.00	(Bacardit and Camarero, 2009)
Jiangsu	2019	11.00			3.30	157.00		(Chen et al., 2019)
Northern China	2007-2010	15.10	3957.10	5.35	7.87	106.50	5046.50	(Pan and Wang, 2015)
Guizhou	2018	1.22				30.27		(Lin et al., 2022)
		0.41	30.46	0.80	0.54	0.11	49.08	
Beijing	2016-2020			0.16	0.53	6.18		(Pan et al., 2021)
		0.46	118.69	1.00	0.55	0.11	240.99	
Hunan	2016-2018	6.41			1.57	73.09		(Feng et al., 2019)
		0.41	28.60	0.77	0.55	0.10	47.03	
Mount Emei	2017-2022	1.70	6.93			41.40	6.38	(Fu et al., 2023)
Daya Bay, China	2015-2017	4.67	209.37	2.41	1.91	93.96	477.40	(Wu et al., 2018)
		0.47	29.78	0.95	0.66	0.20	45.07	
Lushan	2011-2012	6.29	0.00	9.99	2.94	112.87	854.40	(Nie et al., 2017)
		0.41	18.24	0.68	0.56	0.06	30.44	

73 References

- 74 Abbasi, S., Rezaei, M., Keshavarzi, B., Mina, M., Ritsema, C., and Geissen, V.: Investigation of the 2018 Shiraz dust event:
75 Potential sources of metals, rare earth elements, and radionuclides; health assessment, *Chemosphere*, 279, 130533,
76 10.1016/j.chemosphere.2021.130533, 2021.
- 77 Acciai, C., Zhang, Z., Wang, F., Zhong, Z., and Lonati, G.: Characteristics and Source Analysis of Trace Elements in PM_{2.5}
78 in the Urban Atmosphere of Wuhan in Spring, *Aerosol and Air Quality Research*, 17, 2224-2234,
79 10.4209/aaqr.2017.06.0207, 2017.
- 80 Agrawal, H., Welch, W. A., Miller, J. W., and Cocker, D. R.: Emission Measurements from a Crude Oil Tanker at Sea,
81 *Environmental Science & Technology*, 42, 7098-7103, 10.1021/es703102y, 2008a.
- 82 Agrawal, H., Malloy, Q. G. J., Welch, W. A., Wayne Miller, J., and Cocker, D. R.: In-use gaseous and particulate matter
83 emissions from a modern ocean going container vessel, *Atmospheric Environment*, 42, 5504-5510,
84 10.1016/j.atmosenv.2008.02.053, 2008b.
- 85 Bacardit, M. and Camarero, L.: Fluxes of Al, Fe, Ti, Mn, Pb, Cd, Zn, Ni, Cu, and As in monthly bulk deposition over the
86 Pyrenees (SW Europe): The influence of meteorology on the atmospheric component of trace element cycles and its
87 implications for high mountain lakes, *Journal of Geophysical Research: Biogeosciences*, 114, 10.1029/2008JG000732,
88 2009.
- 89 Bai, X., Luo, L., Tian, H., Liu, S., Hao, Y., Zhao, S., Lin, S., Zhu, C., Guo, Z., and Lv, Y.: Atmospheric Vanadium Emission
90 Inventory from Both Anthropogenic and Natural Sources in China, *Environmental Science & Technology*, 55, 11568-
91 11578, 10.1021/acs.est.1c04766, 2021.
- 92 Baker, A. R., Li, M., and Chance, R.: Trace Metal Fractional Solubility in Size-Segregated Aerosols From the Tropical Eastern
93 Atlantic Ocean, *Global Biogeochemical Cycles*, 34, e2019GB006510, 10.1029/2019GB006510, 2020.
- 94 Celio, V., Dabek-Zlotorzynska, E., and McCurdy, M.: Chemical Characterization of Exhaust Emissions from Selected
95 Canadian Marine Vessels: The Case of Trace Metals and Lanthanoids, *Environmental Science & Technology*, 49, 5220-
96 5226, 10.1021/acs.est.5b00127, 2015.
- 97 Chen, D., Wang, X., Li, Y., Lang, J., Zhou, Y., Guo, X., and Zhao, Y.: High-spatiotemporal-resolution ship emission inventory
98 of China based on AIS data in 2014, *Science of The Total Environment*, 609, 776-787, 10.1016/j.scitotenv.2017.07.051,
99 2017.
- 100 Chen, L., Zhou, S., Wu, S., Wang, C., and He, D.: Concentration, fluxes, risks, and sources of heavy metals in atmospheric
101 deposition in the Lihe River watershed, Taihu region, eastern China, *Environmental Pollution*, 255, 113301,
102 10.1016/j.envpol.2019.113301, 2019.

103 Chen, Q., Gao, Y., Ni, R., Pan, Y., Yan, Y., Yang, J., Liu, X., and Gu, X.: Temporal and Spatial Variation Characteristics of
104 Heavy Metal in Atmospheric Deposition in China from 2000 to 2018, *Environmental Science*, 43,
105 10.13227/j.hjkx.202201135, 2022.

106 Clough, S. A., Shephard, M. W., Mlawer, E. J., Delamere, J. S., Iacono, M. J., Cady-Pereira, K., Boukabara, S., and Brown,
107 P. D.: Atmospheric radiative transfer modeling: a summary of the AER codes, *Journal of Quantitative Spectroscopy and*
108 *Radiative Transfer*, 91, 233-244, 10.1016/j.jqsrt.2004.05.058, 2005.

109 Corbin, J. C., Mensah, A. A., Pieber, S. M., Orasche, J., Michalke, B., Zanatta, M., Czech, H., Massabò, D., Buatier de Mongeot,
110 F., Mennucci, C., El Haddad, I., Kumar, N. K., Stengel, B., Huang, Y., Zimmermann, R., Prévôt, A. S. H., and Gysel, M.:
111 Trace Metals in Soot and PM_{2.5} from Heavy-Fuel-Oil Combustion in a Marine Engine, *Environmental Science &*
112 *Technology*, 52, 6714-6722, 10.1021/acs.est.8b01764, 2018.

113 Desboeufs, K. V., Sofikitis, A., Losno, R., Colin, J. L., and Ausset, P.: Dissolution and solubility of trace metals from natural
114 and anthropogenic aerosol particulate matter, *Chemosphere*, 58, 195-203, 10.1016/j.chemosphere.2004.02.025, 2005.

115 Fan, Q., Zhang, Y., Ma, W., Ma, H., Feng, J., Yu, Q., Yang, X., Ng, S. K. W., Fu, Q., and Chen, L.: Spatial and Seasonal
116 Dynamics of Ship Emissions over the Yangtze River Delta and East China Sea and Their Potential Environmental
117 Influence, *Environmental Science & Technology*, 50, 1322-1329, 10.1021/acs.est.5b03965, 2016.

118 Feng, W., Guo, Z., Peng, C., Xiao, X., Shi, L., Zeng, P., Ran, H., and Xue, Q.: Atmospheric bulk deposition of heavy
119 metal(loid)s in central south China: Fluxes, influencing factors and implication for paddy soils, *Journal of Hazardous*
120 *Materials*, 371, 634-642, 10.1016/j.jhazmat.2019.02.090, 2019.

121 Fu, Y., Tang, Y., Shu, X., Hopke, P. K., He, L., Ying, Q., Xia, Z., Lei, M., and Qiao, X.: Changes of atmospheric metal(loid)
122 deposition from 2017 to 2021 at Mount Emei under China's air pollution control strategy, *Atmospheric Environment*, 302,
123 119714, 10.1016/j.atmosenv.2023.119714, 2023.

124 Geng, N., Wang, J., Xu, Y., Zhang, W., Chen, C., and Zhang, R.: PM_{2.5} in an industrial district of Zhengzhou, China: Chemical
125 composition and source apportionment, *Particuology*, 11, 99-109, 10.1016/j.partic.2012.08.004, 2013.

126 Gu, J., Bai, Z., Li, W., Wu, L., Liu, A., Dong, H., and Xie, Y.: Chemical composition of PM_{2.5} during winter in Tianjin, China,
127 *Particuology*, 9, 215-221, 10.1016/j.partic.2011.03.001, 2011.

128 Hsu, S.-C., Wong, G. T. F., Gong, G.-C., Shiah, F.-K., Huang, Y.-T., Kao, S.-J., Tsai, F., Candice Lung, S.-C., Lin, F.-J., Lin,
129 I. I., Hung, C.-C., and Tseng, C.-M.: Sources, solubility, and dry deposition of aerosol trace elements over the East China
130 Sea, *Marine Chemistry*, 120, 116-127, 10.1016/j.marchem.2008.10.003, 2010.

131 Ito, A.: Atmospheric Processing of Combustion Aerosols as a Source of Bioavailable Iron, *Environmental Science &*
132 *Technology Letters*, 2, 70-75, 10.1021/acs.estlett.5b00007, 2015.

133 Jeon, H.-L., Choi, S.-H., Im, J.-Y., Park, H.-J., Hong, E.-J., and Son, B.-S.: Chemical Characteristics of Heavy Metals of
134 PM_{2.5} in Atmosphere, *Korean Journal of Environmental Health Sciences*, 38, 233-240, 10.5668/JEHS.2012.38.3.233,
135 2012.

136 Jiang, S. Y. N., Yang, F., Chan, K. L., and Ning, Z.: Water solubility of metals in coarse PM and PM_{2.5} in typical urban
137 environment in Hong Kong, *Atmospheric Pollution Research*, 5, 236-244, 10.5094/APR.2014.029, 2014.

138 Jickells, T. D., Baker, A. R., and Chance, R.: Atmospheric transport of trace elements and nutrients to the oceans, *Philosophical
139 Transactions of the Royal Society A: Mathematical, Physical and Engineering Sciences*, 374, 20150286,
140 10.1098/rsta.2015.0286, 2016.

141 Kain, J. S.: The Kain–Fritsch Convective Parameterization: An Update, *Journal of Applied Meteorology*, 43, 170-181,
142 10.1175/1520-0450(2004)043<0170:TKCPAU>2.0.CO;2, 2004.

143 Karthikeyan, S., Joshi, U. M., and Balasubramanian, R.: Microwave assisted sample preparation for determining water-soluble
144 fraction of trace elements in urban airborne particulate matter: Evaluation of bioavailability, *Analytica Chimica Acta*, 576,
145 23-30, 10.1016/j.aca.2006.05.051, 2006.

146 Kurisu, M., Sakata, K., Uematsu, M., Ito, A., and Takahashi, Y.: Contribution of combustion Fe in marine aerosols over the
147 northwestern Pacific estimated by Fe stable isotope ratios, *Atmos. Chem. Phys.*, 21, 16027-16050, 10.5194/acp-21-
148 16027-2021, 2021.

149 Li, F., Yang, H., Ayyamperumal, R., and Liu, Y.: Pollution, sources, and human health risk assessment of heavy metals in
150 urban areas around industrialization and urbanization-Northwest China, *Chemosphere*, 308, 136396,
151 10.1016/j.chemosphere.2022.136396, 2022.

152 Li, H., Wang, Q. g., Yang, M., Li, F., Wang, J., Sun, Y., Wang, C., Wu, H., and Qian, X.: Chemical characterization and source
153 apportionment of PM_{2.5} aerosols in a megacity of Southeast China, *Atmospheric Research*, 181, 288-299,
154 10.1016/j.atmosres.2016.07.005, 2016.

155 Li, M., Zhang, Q., Kurokawa, J. I., Woo, J. H., He, K., Lu, Z., Ohara, T., Song, Y., Streets, D. G., Carmichael, G. R., Cheng,
156 Y., Hong, C., Huo, H., Jiang, X., Kang, S., Liu, F., Su, H., and Zheng, B.: MIX: a mosaic Asian anthropogenic emission
157 inventory under the international collaboration framework of the MICS-Asia and HTAP, *Atmos. Chem. Phys.*, 17, 935-
158 963, 10.5194/acp-17-935-2017, 2017.

159 Li, P., Sato, K., Hasegawa, H., Huo, M., Minoura, H., Inomata, Y., Take, N., Yuba, A., Futami, M., Takahashi, T., and Kotake,
160 Y.: Chemical Characteristics and Source Apportionment of PM_{2.5} and Long-Range Transport from Northeast Asia
161 Continent to Niigata in Eastern Japan, *Aerosol and Air Quality Research*, 18, 938-956, 10.4209/aaqr.2017.05.0181, 2018.

162 Lin, S.-x., Zhang, Z.-l., Xiao, Z.-q., Liu, X.-l., and Zhang, Q.-h.: Atmospheric deposition fluxes and health risk assessment of
163 potentially toxic elements in Caohai Lake (Guizhou Province, China), *Journal of Mountain Science*, 19, 1107-1118,
164 10.1007/s11629-021-7170-z, 2022.

165 Liu, B., Song, N., Dai, Q., Mei, R., Sui, B., Bi, X., and Feng, Y.: Chemical composition and source apportionment of ambient
166 PM_{2.5} during the non-heating period in Taian, China, *Atmospheric Research*, 170, 23-33,
167 10.1016/j.atmosres.2015.11.002, 2016.

168 Liu, G., Li, J., Wu, D., and Xu, H.: Chemical composition and source apportionment of the ambient PM_{2.5} in Hangzhou,
169 China, *Particuology*, 18, 135-143, 10.1016/j.partic.2014.03.011, 2015.

170 Liu, M., Wang, W., Li, J., Wang, T., Xu, Z., Song, Y., Zhang, W., Zhou, L., Lian, C., Yang, J., Li, Y., Sun, Y., Tong, S., Guo,
171 Y., and Ge, M.: High fraction of soluble trace metals in fine particles under heavy haze in central China, *Science of The*
172 *Total Environment*, 841, 156771, 10.1016/j.scitotenv.2022.156771, 2022.

173 Liu, S., Tian, H., Zhu, C., Cheng, K., Wang, Y., Luo, L., Bai, X., Hao, Y., Lin, S., Zhao, S., Wang, S., Chu, B., Guo, Z., Lv,
174 Y., and Hao, J.: Reduced but still noteworthy atmospheric pollution of trace elements in China, *One Earth*, 6, 536-547,
175 10.1016/j.oneear.2023.04.006, 2023.

176 Luo, H., Wang, Q., Guan, Q., Ma, Y., Ni, F., Yang, E., and Zhang, J.: Heavy metal pollution levels, source apportionment and
177 risk assessment in dust storms in key cities in Northwest China, *Journal of Hazardous Materials*, 422, 126878,
178 10.1016/j.jhazmat.2021.126878, 2022.

179 Moldanová, J., Fridell, E., Winnes, H., Holmin-Fridell, S., Boman, J., Jedynska, A., Tishkova, V., Demirdjian, B., Joulie, S.,
180 Bladt, H., Ivleva, N. P., and Niessner, R.: Physical and chemical characterisation of PM emissions from two ships
181 operating in European Emission Control Areas, *Atmos. Meas. Tech.*, 6, 3577-3596, 10.5194/amt-6-3577-2013, 2013.

182 Ni, R. and Ma, Y.: Current inventory and changes of the input/output balance of trace elements in farmland across China,
183 *PLOS ONE*, 13, e0199460, 10.1371/journal.pone.0199460, 2018.

184 Nie, X., Wang, Y., Li, Y., Sun, L., Li, T., Yang, M., Yang, X., and Wang, W.: Characteristics and impacts of trace elements
185 in atmospheric deposition at a high-elevation site, southern China, *Environmental Science and Pollution Research*, 24,
186 22839-22851, 10.1007/s11356-017-8791-1, 2017.

187 Nishikawa, M., Batdorj, D., Ukachi, M., Onishi, K., Nagano, K., Mori, I., Matsui, I., and Sano, T.: Preparation and chemical
188 characterisation of an Asian mineral dust certified reference material, *Analytical Methods*, 5, 4088-4095,
189 10.1039/C3AY40435H, 2013.

190 Okubo, A., Takeda, S., and Obata, H.: Atmospheric deposition of trace metals to the western North Pacific Ocean observed at
191 coastal station in Japan, *Atmospheric Research*, 129-130, 20-32, 10.1016/j.atmosres.2013.03.014, 2013.

192 Ooki, A., Nishioka, J., Ono, T., and Noriki, S.: Size dependence of iron solubility of Asian mineral dust particles, *Journal of*
193 *Geophysical Research: Atmospheres*, 114, 10.1029/2008JD010804, 2009.

194 Pan, Y., Liu, J., Zhang, L., Cao, J., Hu, J., Tian, S., Li, X., and Xu, W.: Bulk Deposition and Source Apportionment of
195 Atmospheric Heavy Metals and Metalloids in Agricultural Areas of Rural Beijing during 2016–2020, *Atmosphere*, 12,
196 283, 10.3390/atmos12020283, 2021.

197 Pan, Y. P. and Wang, Y. S.: Atmospheric wet and dry deposition of trace elements at 10 sites in Northern China, *Atmos. Chem.*
198 *Phys.*, 15, 951-972, 10.5194/acp-15-951-2015, 2015.

199 Peng, H., Chen, Y., Weng, L., Ma, J., Ma, Y., Li, Y., and Islam, M. S.: Comparisons of heavy metal input inventory in
200 agricultural soils in North and South China: A review, *Science of The Total Environment*, 660, 776-786,
201 10.1016/j.scitotenv.2019.01.066, 2019.

202 Pleim, J. E.: A Combined Local and Nonlocal Closure Model for the Atmospheric Boundary Layer. Part I: Model Description
203 and Testing, *Journal of Applied Meteorology and Climatology*, 46, 1383-1395, 10.1175/JAM2539.1, 2007.

204 Sakata, M., Tani, Y., and Takagi, T.: Wet and dry deposition fluxes of trace elements in Tokyo Bay, *Atmospheric Environment*,
205 42, 5913-5922, 10.1016/j.atmosenv.2008.03.027, 2008.

206 Sippula, O., Stengel, B., Sklorz, M., Streibel, T., Rabe, R., Orasche, J., Lintelmann, J., Michalke, B., Abbaszade, G., Radischat,
207 C., Gröger, T., Schnelle-Kreis, J., Harndorf, H., and Zimmermann, R.: Particle Emissions from a Marine Engine:
208 Chemical Composition and Aromatic Emission Profiles under Various Operating Conditions, *Environmental Science &*
209 *Technology*, 48, 11721-11729, 10.1021/es502484z, 2014.

210 Streibel, T., Schnelle-Kreis, J., Czech, H., Harndorf, H., Jakobi, G., Jokiniemi, J., Karg, E., Lintelmann, J., Matuschek, G.,
211 Michalke, B., Müller, L., Orasche, J., Passig, J., Radischat, C., Rabe, R., Reda, A., Rüger, C., Schwemer, T., Sippula, O.,
212 Stengel, B., Sklorz, M., Torvela, T., Weggler, B., and Zimmermann, R.: Aerosol emissions of a ship diesel engine
213 operated with diesel fuel or heavy fuel oil, *Environmental Science and Pollution Research*, 24, 10976-10991,
214 10.1007/s11356-016-6724-z, 2017.

215 Tan, J., Zhang, L., Zhou, X., Duan, J., Li, Y., Hu, J., and He, K.: Chemical characteristics and source apportionment of PM_{2.5}
216 in Lanzhou, China, *Science of The Total Environment*, 601-602, 1743-1752, 10.1016/j.scitotenv.2017.06.050, 2017.

217 Tao, J., Zhang, L., Zhang, R., Wu, Y., Zhang, Z., Zhang, X., Tang, Y., Cao, J., and Zhang, Y.: Uncertainty assessment of
218 source attribution of PM_{2.5} and its water-soluble organic carbon content using different biomass burning tracers in
219 positive matrix factorization analysis — a case study in Beijing, China, *Science of The Total Environment*, 543, 326-335,
220 10.1016/j.scitotenv.2015.11.057, 2016.

221 Tao, J., Gao, J., Zhang, L., Zhang, R., Che, H., Zhang, Z., Lin, Z., Jing, J., Cao, J., and Hsu, S. C.: PM_{2.5} pollution
222 in a megacity of southwest China: source apportionment and implication, *Atmos. Chem. Phys.*, 14, 8679-8699,
223 10.5194/acp-14-8679-2014, 2014.

224 Tao, J., Zhang, L., Cao, J., Zhong, L., Chen, D., Yang, Y., Chen, D., Chen, L., Zhang, Z., Wu, Y., Xia, Y., Ye, S., and Zhang,
225 R.: Source apportionment of PM_{2.5} at urban and suburban areas of the Pearl River Delta region, south China - With
226 emphasis on ship emissions, *Science of The Total Environment*, 574, 1559-1570, 10.1016/j.scitotenv.2016.08.175, 2017.

227 Tian, H. Z., Zhu, C. Y., Gao, J. J., Cheng, K., Hao, J. M., Wang, K., Hua, S. B., Wang, Y., and Zhou, J. R.: Quantitative
228 assessment of atmospheric emissions of toxic heavy metals from anthropogenic sources in China: historical trend, spatial
229 distribution, uncertainties, and control policies, *Atmos. Chem. Phys.*, 15, 10127-10147, 10.5194/acp-15-10127-2015,
230 2015.

231 Wang, J., Hu, Z., Chen, Y., Chen, Z., and Xu, S.: Contamination characteristics and possible sources of PM₁₀ and PM_{2.5} in
232 different functional areas of Shanghai, China, *Atmospheric Environment*, 68, 221-229, 10.1016/j.atmosenv.2012.10.070,
233 2013.

234 Wang, K., Tian, H., Hua, S., Zhu, C., Gao, J., Xue, Y., Hao, J., Wang, Y., and Zhou, J.: A comprehensive emission inventory
235 of multiple air pollutants from iron and steel industry in China: Temporal trends and spatial variation characteristics,
236 *Science of The Total Environment*, 559, 7-14, 10.1016/j.scitotenv.2016.03.125, 2016.

237 Wang, Q., Ma, Y., Tan, J., Zheng, N., Duan, J., Sun, Y., He, K., and Zhang, Y.: Characteristics of size-fractionated atmospheric
238 metals and water-soluble metals in two typical episodes in Beijing, *Atmospheric Environment*, 119, 294-303,
239 10.1016/j.atmosenv.2015.08.061, 2015.

240 Wang, Y., Cheng, K., Wu, W., Tian, H., Yi, P., Zhi, G., Fan, J., and Liu, S.: Atmospheric emissions of typical toxic heavy
241 metals from open burning of municipal solid waste in China, *Atmospheric Environment*, 152, 6-15,
242 10.1016/j.atmosenv.2016.12.017, 2017.

243 Wei, Z., Wang, L. T., Chen, M. Z., and Zheng, Y.: The 2013 severe haze over the Southern Hebei, China: PM_{2.5} composition
244 and source apportionment, *Atmospheric Pollution Research*, 5, 759-768, 10.5094/APR.2014.085, 2014.

245 Wong, C. S. C., Li, X. D., Zhang, G., Qi, S. H., and Peng, X. Z.: Atmospheric deposition of heavy metals in the Pearl River
246 Delta, China, *Atmospheric Environment*, 37, 767-776, 10.1016/S1352-2310(02)00929-9, 2003.

247 Wu, Y., Zhang, J., Ni, Z., Liu, S., Jiang, Z., and Huang, X.: Atmospheric deposition of trace elements to Daya Bay, South
248 China Sea: Fluxes and sources, *Marine Pollution Bulletin*, 127, 672-683, 10.1016/j.marpolbul.2017.12.046, 2018.

249 Xiu, A. and Pleim, J. E.: Development of a Land Surface Model. Part I: Application in a Mesoscale Meteorological Model,
250 *Journal of Applied Meteorology*, 40, 192-209, 10.1175/1520-0450(2001)040<0192:DOALSM>2.0.CO;2, 2001.

251 Zetterdahl, M., Moldanová, J., Pei, X., Pathak, R. K., and Demirdjian, B.: Impact of the 0.1% fuel sulfur content limit in SECA
252 on particle and gaseous emissions from marine vessels, *Atmospheric Environment*, 145, 338-345,
253 10.1016/j.atmosenv.2016.09.022, 2016.

254 Zhang, F., Chen, Y., Tian, C., Lou, D., Li, J., Zhang, G., and Matthias, V.: Emission factors for gaseous and particulate
255 pollutants from offshore diesel engine vessels in China, *Atmos. Chem. Phys.*, 16, 6319-6334, 10.5194/acp-16-6319-2016,
256 2016.

257 Zhang, F., Chen, Y., Tian, C., Wang, X., Huang, G., Fang, Y., and Zong, Z.: Identification and quantification of shipping
258 emissions in Bohai Rim, China, *Science of The Total Environment*, 497-498, 570-577, 10.1016/j.scitotenv.2014.08.016,
259 2014.

260 Zhang, F., Wang, Z.-w., Cheng, H.-r., Lv, X.-p., Gong, W., Wang, X.-m., and Zhang, G.: Seasonal variations and chemical
261 characteristics of PM_{2.5} in Wuhan, central China, *Science of The Total Environment*, 518-519, 97-105,
262 10.1016/j.scitotenv.2015.02.054, 2015.

263 Zhang, F., Chen, Y., Chen, Q., Feng, Y., shang, Y., Yang, X., Gao, H., Tian, C., Li, J., Zhang, G., Matthias, V., and Xie, Z.:
264 Real-World Emission Factors of Gaseous and Particulate Pollutants from Marine Fishing Boats and Their Total Emissions
265 in China, *Environmental Science & Technology*, 52, 4910-4919, 10.1021/acs.est.7b04002, 2018a.

266 Zhang, J., Zhou, X., Wang, Z., Yang, L., Wang, J., and Wang, W.: Trace elements in PM_{2.5} in Shandong Province: Source
267 identification and health risk assessment, *Science of The Total Environment*, 621, 558-577,
268 10.1016/j.scitotenv.2017.11.292, 2018b.

269 Zhao, J., Zhang, Y., Xu, H., Tao, S., Wang, R., Yu, Q., Chen, Y., Zou, Z., and Ma, W.: Trace Elements From Ocean-Going
270 Vessels in East Asia: Vanadium and Nickel Emissions and Their Impacts on Air Quality, *Journal of Geophysical Research:
271 Atmospheres*, 126, e2020JD033984, 10.1029/2020JD033984, 2021.

272 Zheng, B., Zhang, Q., Geng, G., Chen, C., Shi, Q., Cui, M., Lei, Y., and He, K.: Changes in China's anthropogenic emissions
273 and air quality during the COVID-19 pandemic in 2020, *Earth Syst. Sci. Data*, 13, 2895-2907, 10.5194/essd-13-2895-
274 2021, 2021.

275 Zhuang, M.: Characteristic of elements in PM_{2.5} and health risk assessment of heavy metals at Xiamen, *Environmental
276 Chemistry*, 35, 1723-1732, 10.7524/j.issn.0254-6108.2016.08.2016032803, 2016.

277 Zou, Z., Zhao, J., Zhang, C., Zhang, Y., Yang, X., Chen, J., Xu, J., Xue, R., and Zhou, B.: Effects of cleaner ship fuels on air
278 quality and implications for future policy: A case study of Chongming Ecological Island in China, *Journal of Cleaner
279 Production*, 267, 122088, 10.1016/j.jclepro.2020.122088, 2020.

280