

~~Simulation performance of different planetary boundary layer schemes in WRF V4.3.1 on wind field over Sichuan Basin within “Gray zone” resolution~~

Simulation performance of planetary boundary layer schemes in WRFV4.3.1 for near-surface wind over the western Sichuan Basin: a single site assessment

Qin Wang¹, Bo Zeng², Gong Chen², Yaoting Li¹

¹Civil Aviation Flight University of China, Guanghan, China

²Institute of Plateau Meteorology, CMA, Chengdu/Heavy Rain and Drought-Flood Disasters in Plateau and Basin Key Laboratory of Sichuan Province, Chengdu, China

Correspondence to: Bo Zeng (bozeng126@126.com)

Abstract. The topography of Sichuan Basin is complex ~~and unique~~, high-resolution wind field simulation over this region is of great significance for meteorology, air quality, and wind energy utilization. In this study, the Weather Research and Forecasting (WRF) model was used to investigate the performance of different planetary boundary layer (PBL) parameterization schemes on simulating near-surface wind fields over Sichuan Basin at a spatial resolution of 0.33km. The experiment is based on multiple multi-case studies, so 28 near-surface wind events from 2021 to 2022 were selected, and a total of 112 sensitivity simulations were carried out by employing four commonly used PBL schemes: YSU, MYJ, MYNN2, and QNSE, and compared to observations. ~~The results show that the wind direction which can be well reproduced, is not very sensitive to the PBL schemes as the wind speed shows. The results demonstrate that the wind direction can be well reproduced, yet it is not as sensitive to the PBL scheme as the near-surface wind speed.~~ As for wind speed, the QNSE scheme had the best performance in reproducing the temporal variation out of the four schemes, while the MYJ scheme had the smallest model bias. Further cluster analysis demonstrates that the sensitivity of the PBL schemes is affected by diurnal variation and different circulation genesis. For instance, when the near-surface wind event caused by the southward movement of strong cold air and occurred during 6:00 and 8:00 (UTC), the variation and speed can be well reproduced by all four PBL schemes and the differences between them are tinysmall. However, the simulation results for strong winds occurring during the mid-night to early morning hours exhibit poor root mean square errors but high correlation coefficients, whereas for strong wind processes happening in the early to late evening hours and for southwesterly wind processes demonstrate the opposite pattern. However, the simulation of surface wind events mostly occurred during midnight and early morning, showing the characteristics of poor root mean square error and good correlation coefficient, while the simulation results of the evening-to-evening process and southerly wind process were opposite. Overall, the four schemes are better for near-surface wind simulations in daytime than at night. The results show the role of PBL schemes in wind field

simulation under unstable weather conditions, and provide a valuable reference for further research in the study area and surrounding areas.

1 Introduction

Wind, as ~~the one of the most~~ fundamental natural phenomenon in the atmosphere, poses not only hazards to civil aviation safety and maritime transportation during severe wind events (Manasseh and Middleton, 1999; Leung et al., 2022), but also impacts the dispersion of atmospheric pollutants directly near the surface, leading to adverse effects on public health and the environment (Liu et al., 2020; Coccia, 2020; Yang and Shao, 2021). What's more, wind energy has attracted increasing attention because of its non-polluting and renewable nature, but due to the random nature of wind speed, wind power generation is intermittent, which poses security and stability challenges for large-scale integration of wind energy into the power network (Liu et al., 2019; Kibona, 2020; Shi et al., 2021). Therefore, the accurate prediction of near-surface winds ~~s-farms~~ has become the key to ensure traffic safety, optimize wind energy utilization and evaluate air quality, and it is also an important scientific issue for disaster prevention and mitigation, economic benefits and human life and health.

Near-surface wind fields are influenced by a combination of various factors (Zhang et al., 2021), including atmospheric dynamic and thermodynamic processes (such as pressure gradient force, temperature gradients, and so on), topography (such as geographical features, elevation), and underlying surface (such as vegetation, land use).~~Near-surface wind fields are influenced by a combination of various factors, including atmospheric thermal and dynamic conditions, topography, and underlying surface (Zhang et al., 2021).~~ As a state-of-the-art mesoscale weather prediction model, the Weather Research Forecast (WRF) model can predict the fine-scale structure of near-surface wind fields by simulating the evolution of various physical processes in the atmosphere, which is significantly better than the prediction model based on statistics which lacking the description of thermodynamic processes. Furthermore, there are so many researches on the prediction and simulation of the refined characteristics of local wind field by using WRF model (Prieto-Herráez et al., 2020; Salfate et al., 2020; Xu et al., 2020; Tiesi et al., 2021; Wu et al., 2022; Yan et al., 2022; Mi et al., 2023). Although the simulation of near-surface wind fields involves the nonlinear interactions of various physical processes, the physical processes in the planetary boundary layer (PBL) play a direct role in influencing near-surface wind fields. As the interaction area between the atmosphere and the ground, the thermal and dynamic structure, the turbulent motion and mixing process in the boundary layer will directly affect the distribution of the near-surface wind field, so the simulation of the boundary layer by the model can directly affect the accuracy of the near-surface wind field (Chen et al., 2020).

In the mesoscale model, since the employed grid scales and time steps cannot explicitly represent the spatiotemporal scales which turbulent eddies operate on, the PBL parameterization scheme was used to express the effects of turbulent eddies (Dudhia, 2014). The latest version 4.3 of WRF model provides more than 10 kinds of

PBL parameterization schemes, the differences among them are mainly due to the different methods of dealing with the turbulence closure problem, ~~which further leads to the different simulation result.~~ In China, Ma et al. (2014) conducted a series of sensitivity simulations on spring strong wind events in Xinjiang Province using the YSU, MYJ, and ACM2 schemes. The results indicated that the YSU scheme exhibited greater downward transport of high-level momentum, attributed to enhanced turbulent mixing effects (Hong et al., 2006). The YSU scheme has also been shown to be the optimal PBL scheme for simulating 10-meter wind speeds in other regions (Cui et al., 2018; Li et al., 2018). However, in coastal areas like Fujian Province (Yang et al., 2014), studies have demonstrated that the MYJ scheme is the best choice for simulating near-surface wind speeds due to its advancements in calculating turbulent kinetic energy (TKE). The MYJ scheme computes TKE at each level, allowing for a more precise representation of turbulence within the boundary layer, which enhances its ability to model the generation, dissipation, and transport of turbulence (Janjić, 1990; Jaydeep et al., 2024). In the mountainous terrain of Huangshan and Guizhou, ACM2 has demonstrated superior performance in simulating near-surface wind speeds (Zhang and Yin, 2013; Mu et al., 2017). From these studies, it is evident that the performance of a PBL scheme is highly dependent on its ability to accurately represent the key physical processes within the boundary layer across different topographical contexts, leading to significant regional variations in the performance of PBL schemes in WRF. ~~Ma et al. (2014) conducted series sensitivity simulations on spring strong wind events in Xinjiang by using the schemes of YSU, MYJ, and ACM2, the results showed more downward transport of high-level momentum in the YSU scheme. Studies by Wang et al. (2010) and Zhang and Yin (2013) indicated that the ACM2 scheme performed well in simulating winter wind conditions in Lanzhou city and Huangshan, Anhui. In addition, more studies have shown that the MYJ scheme demonstrates the best simulation of near-surface wind speeds in the coastal areas of Fujian (Yang et al., 2014), while in regions such as western Neimenggu and Jiangsu, the YSU scheme exhibits the best forecasting performance for 10-meters wind speeds (Cui et al., 2018; Li et al., 2018). In typical mountainous terrain of Guizhou, the ACM2 scheme performs better in simulating near-surface wind speeds at 70m height compared to the MYJ and YSU schemes (Mu et al., 2017). From these studies, it is evident that WRF has obvious regional performance regarding the PBL scheme. Therefore, without considering the nonlinear amplification of initial condition errors and the inaccuracy of numerical models, the reliable wind speed prediction for specific areas is still challenging and worthy of further study.~~

Sichuan Basin is one of the four major basins in China, it is bordered by the Qinghai-Tibet Plateau to the west, the Daba Mountains to the north, the Wushan Mountains to the east, and the Yunnan-guizhou Plateau to the south. Because of the complex terrain of its surrounding areas, the local atmospheric circulation is also complex and unique (Yu et al., 2020), the weather here is characterized by low wind speed, low sunshine and high humidity throughout the year, therefore it is also one of the four major haze areas in China (Li et al., 2021). Under the unique terrain of the Sichuan Basin, it is difficult to determine whether cold air from mid to high latitudes

can bypass the Qinghai-Tibet Plateau and then cross the Qinling Mountains to enter the basin. Besides, the basin effect makes it easier to form an inversion structure close to the surface and stabilizing the atmosphere (Gao et al., 2016; Feng et al., 2023).
 130 These factors make it one of the regions with the poorest wind forecasting performance in China (Pan et al., 2021; Xiang et al., 2023). Therefore, wind is not still as widely studied as temperature and precipitation in Sichuan Basin, and numerous studies hitherto have concentrated on the pollutant dispersion under stable and weak wind conditions here, and less attention paid to unstable or strong wind process.
 135 ~~and the main focus of wind simulation is about the pollutant diffusion under stable weather conditions.~~

As is known, the interaction between the surface and atmosphere, as well as the characteristics of turbulent motion over the basin terrain, differ from that over plains and plateau areas (Turnipseed et al., 2004; Rajput et al., 2024). However, there has been no comprehensive evaluation of the performance of PBL schemes in simulating the near-surface wind field over the Sichuan Basin, whether using a single measurement site or multiple regional sites. Thus, combining the spatiotemporal refinement requirements from low-altitude flight safety, this study aims to evaluate the performance of four commonly used PBL schemes in reproducing near-surface wind fields with high spatiotemporal resolution by using the wind data from Guanghan Airport in the western Sichuan Basin. So, a horizontal resolution of 0.3 km was used in the model set-up for research, which is a major challenge in such region, because the spatial resolution is in the range of 0.1-1km, which is often referred as "gray zone" in numerical forecasting (Wyngaard, 2004; Liu et al., 2018; Yu et al., 2022).
 140 ~~However, there is no detailed evaluation for the performance of PBL schemes in the near-surface wind field over the Sichuan Basin. Thus, the present study aims at evaluating the performance of four PBL schemes under the windy conditions over the Sichuan Basin. In the model set-up, a horizontal resolution of 0.3km was used for research, which is a major challenge in such region, because the spatial resolution is in the range of 0.1-1km, which is often referred as "gray zone" in numerical forecasting (Liu et al., 2018; Yu et al., 2022).~~
 145 As suggested by many studies, the spatial resolution in "gray zone", is too finely detailed with regarding to the mesoscale turbulence parameterization scheme, and too coarse for the Large Eddy Simulation (LES) scheme to analyze turbulent eddies/vortices (Shin and Hong, 2015; Honnert et al., 2016).
 150 So far, the impact of different PBL schemes under the spatial resolution of "gray zone" is still uncertain. Hence, a total of 28 wind events is simulated with a purpose of getting a reliable evaluation, and the study is based on a case study approach, rather than on continuous simulations. In general, this study not only has important significance for improving the wind field forecast in this region, but also
 155 provides a scientific basis for the further improvement and development of PBL scheme.

2 Data and Method

2.1 Data and experimental design

In this study, the experimental approach is different from what has been used in other studies, where one case or long continuous time is simulated. In this study, a total of 28 historical near-surface wind events was simulated by running WRF-ARW (version 4.3.1). We choose Guanghan Airport as the representative of Sichuan Basin, and the 28 discontinuous windy days, with a criteria of the maximum wind speed greater than 6 m s^{-1} are simulated.

The simulation domain consists of four two-way nested domains of horizontal resolutions 9 km, 3 km, 1 km and 0.33 km, with 105×105 , 103×103 , 103×103 and 103×103 grids cells, respectively, and the vertical resolution is 45 levels for all domains. Figure 1 presents the domain set-up. As can be seen from Fig. 1 (a), the outermost domain (D01) covers the western Sichuan Plateau and the northern Qinlin Mountains. The surrounding mountains are mostly between 1,000 and 3,000 meters above sea level, while the basin is between 250 and 750 meters. Due to the complex topography in the upstream region, the influence of cold air on the Sichuan Basin is variable, and the wind simulation is very difficult. In the western domain 2, the elevation gradually decreases from 2000 to 500 meters, with a topography that is higher in the western and northern parts, and lower in the eastern and southern parts. In the domain 4, the transitional zone from plateau to basin is avoided. This area is located in the northern part of Chengdu Plain, and the simulation center is set at Guanghan Airport (104.32° E , 30.93° N). Additionally, Guanghan Airport is located at the western foothills of the Longquan Mountains, only 10km away.

–Given the complex terrain in study region and the high resolution of model design, the input of land surface data is particularly important, and its accuracy will directly affect the simulation of land surface processes and atmospheric boundary layer characteristics (Qi et al., 2021). Therefore, we replaced the terrain data of the 4-layer nested area with 3 s resolution ($\sim 90 \text{ m}$) from the southwest region of Shuttle Radar Topography Mission (SRTM3)(Farr et al., 2007).

~~Therefore, we replaced the terrain data of the 4-layer nested area with the 90 m-resolution terrain data from the southwest region of Shuttle Radar Topography Mission (SRTM3).~~

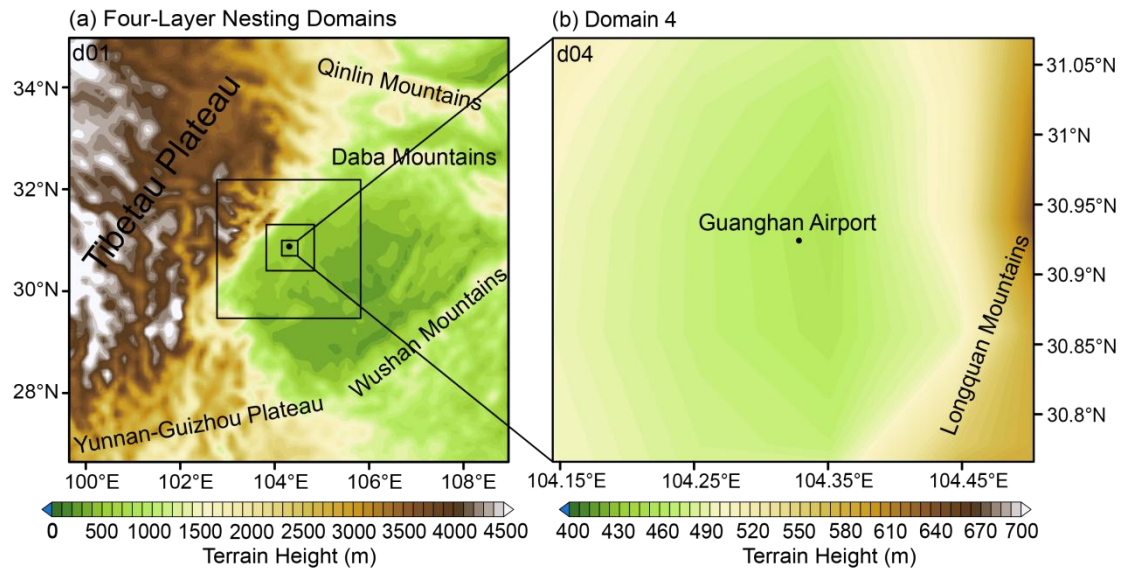


Figure 1. Configurations of (a) four-layer nesting domains (D01-D04) in WRF and the (b) study area. The spatial resolutions are 9, 3, 1 and 0.3 km, for domains D1 to D4, respectively. The figure depicts the actual orography implemented in the experiments.

To evaluate the model's ability in different PBL schemes, the observed wind fields at 10 meters height at Guanghai Airport station is used. The terrain here is flat and homogeneous, and prevailing wind direction are north and northeast in climatology. Wind direction and speed were measured using the FIRST CLASS three-cup anemometer and wind vane, both manufactured by Thies Clima inc. in Germany. The anemometer has a measurement range of 0.3 to 75 m s⁻¹ and a starting threshold of less than 0.3 m s⁻¹, with an accuracy of 1% of the measured value or less than 0.2 m s⁻¹. The wind vane covers a measurement range of 0 to 360°, with a starting threshold of less than 0.5 m s⁻¹ at a 10° amplitude (as per ASTM D 5366-96) and 0.2 m s⁻¹ at a 90° amplitude (according to VDI 3786 Part 2), and an accuracy of 0.5°. During the research period, the anemometers were annually calibrated by accredited institutions. Before incorporating the wind data into our analysis, we performed basic data checks and quality control procedures, including outlier removal.

The hourly reanalysis dataset ERA5 with a horizontal resolution of 0.25° and 38 vertical levels, is used to provide the initial and boundary conditions for WRF simulations, which are updated every 3 hours when input into the model. Each event is simulated using four different PBL parametrisation schemes. Thus, a total of 112 simulations are carried out. Each simulation spans 24 hours, with the corresponding high winds in the middle of the simulation, and discarding a spin-up period of 3 hours, and the model results are output every 10 minutes, enabling a high temporal resolution for demanding, the other model configuration is summarised in Table 1.

Table 1. Configures of the physical scheme in WRF simulation.

Parameterizations	Configuration
Micro-physical scheme	WSM 3-class graupel scheme (same for each domain)
Longwave radiative scheme	RRTM shortwave (same for each domain)
Shortwave radiative scheme	Dudhia shortwave (same for each domain)
Cumulus convection scheme	Kain-Fritsch for the outermost domain, and closed in other 3-layers

2.2 PBL Schemes

There are more than 10 PBL parameterization schemes in WRF-V4.3.1, but four commonly used PBL schemes were selected for this study, which are YSU (Yonsei University) scheme (Hong et. al., 2006), MYJ (Mellor-Yamada-Janjic) scheme (Janjié, 1990), MYNN2 (Mellor-Yamada- Nakanishi-Niino Level 2) scheme (Nakanishi and Niino , 2009) and QNSE (Quasi-Normal Scale Elimination) scheme (Sukoriansky and Galperin, 2006). Among them, YSU is a non-local, first-order closure scheme that represents entrainment at the top of the PBL explicitly, while the rest are local closure scheme, detail characteristics can be seen in Table 2. The surface layer scheme in the experiment is matched with each PBL scheme.

Table 2. The four selected PBL schemes and surface schemes in experiment.

Advantages description for the four PBL schemes used in WRF model.

<u>PBL scheme</u>	<u>Advantages</u>	<u>Surface layer scheme</u>	<u>Land surface scheme</u>
<u>YSU</u>	<u>1st-order closure scheme that is widely utilized for its robust representation of turbulence closure processes (Hong et. al., 2006).</u>	<u>Revised MM5 Monin-Obukhov scheme</u>	<u>Noah MP</u>
<u>MYJ</u>	<u>A 1.5-order closure scheme that is known for its effectiveness in capturing vertical mixing processes (Janjié, 1990).</u>	<u>MYJ</u>	<u>Noah MP</u>
<u>MYNN2</u>	<u>A 1.5-order closure scheme that improves the simulation of sub-grid scale turbulence (Nakanishi and Niino , 2009).</u>	<u>MYNN</u>	<u>Noah MP</u>
<u>QNSE</u>	<u>A 1.5-order turbulence closure scheme that accounts for both</u>	<u>QNSE</u>	<u>Noah MP</u>

turbulent and non-turbulent mixing processes in the atmosphere (Sukoriansky and Galperin, 2006).

Scheme	Advantages
YSU	1st-order closure scheme that is widely utilized for its robust representation of turbulence closure processes (Hong et. al., 2006).
MYJ	A 1.5-order closure scheme that is known for its effectiveness in capturing vertical mixing processes (Janjić, 1990).
QNSE	A 1.5-order closure scheme that improves the simulation of sub-grid scale turbulence (Nakanishi and Niino, 2009).
MYNN2	A 1.5-order turbulence closure scheme that accounts for both turbulent and non-turbulent mixing processes in the atmosphere (Sukoriansky and Galperin, 2006).

245

2.3 Statistical metrics for validation

As suggested by Wang et al. (2017), different sky conditions and atmospheric stability will affect the simulation of wind fields. So, in order to accurately evaluate the sensitivity of four PBL schemes to the near-surface wind field in the western Sichuan Basin on the east side of the Qinghai Tibet Plateau, 28 near-surface wind cases are selected for simulation based on wind speed data at 10-minute intervals from 2021 to 2022, when the 10 minutes averaged wind speed greater than or equal to 6m/s last for 30 minutes~~28 surface wind cases with an 10 minutes averaged wind speed greater than 6 m s⁻¹ from 2021 to 2022 were selected for simulation~~, and the result is evaluated separately through different circulation patterns and K-means clustering analysis method. The main statistical metric used includes:

Root Mean Square Error (RMSE), which is the square root of the average of the squared differences between the simulated and observed values. RMSE is a commonly used metric in model evaluation, assigning higher weight to cases with larger simulation errors:

$$RMSE = \sqrt{\frac{\sum_{i=1}^N (O_i - S_i)^2}{N}} \quad (1)$$

$$RMSE = \sqrt{\frac{\sum (\theta_i - S_i)^2}{N}} \quad (1)$$

where N is the total number of samples, O_i represents the observed near-surface wind, and S_i denotes the simulated near-surface wind, measured in m s⁻¹.

Correlation Coefficient (COR) is an indicator that measures the strength and direction of the linear relationship between simulation and observation. By analyzing COR, the consistency between simulation results and observation results can be evaluated, and the corresponding PBL scheme can accurately capture the variation relationship of ground wind speed:

$$COR = \frac{\sum_{i=1}^N (S_i - \bar{S})(O_i - \bar{O})}{\sqrt{\sum_{i=1}^N (S_i - \bar{S})^2 \sum_{i=1}^N (O_i - \bar{O})^2}} \quad (2)$$

$$COR = \frac{\sum_{i=1}^N (x_j - \bar{x}_j)(x_o - \bar{x}_o)}{\sqrt{\sum_{i=1}^N (x_j - \bar{x}_j)^2 \sum_{i=1}^N (x_o - \bar{x}_o)^2}} \quad (2)$$

where N is the total number of samples, O_i represents the observed values, and S_i denotes the simulated values.

where N is the total number of samples, x_o represents the observed values, and x_j denotes the simulated values.

BIAS Mean Error (ME) refers to the average difference between simulated and observed values, reflecting the overall bias of the simulation results. If MEBIAS is close to 0, it indicates that the simulation results have good accuracy at the average level. The calculation formula is as follows:

$$BIAS = \frac{1}{N} \sum_{i=1}^N (S_i - O_i) \quad (3)$$

$$ME = \frac{1}{N} \sum_{i=1}^N (x_j - x_o) \quad (3)$$

The Weibull distribution is a probability function used to describe the distribution of wind speed (Lai, et al., 2006; Jiang, et al., 2015). The expression for the Weibull distribution probability density function of wind speed v is:

$$f(v) = \frac{\kappa}{\lambda} \left(\frac{v}{\lambda}\right)^{\kappa-1} \exp\left[-\left(\frac{v}{\lambda}\right)^{\kappa}\right] \quad (4)$$

where k is the shape parameter, a dimensionless parameter, and λ is the scale factor, measured in m s^{-1} . These two parameters can be calculated using the following formulas:

$$\kappa = \frac{\sigma}{\mu} \quad (5)$$

$$\lambda = \frac{\mu}{\left(0.568 + \frac{0.434}{k}\right)^{\frac{1}{k}}} \quad (6)$$

where σ and μ represent the standard deviation and mean value of the wind speed, respectively.

3. Overview of historical cases and evaluation of simulation results

3.1 Summary of 28 near-surface wind events

Since the experiment approach is concerned about multiple cases simulation in this study, it is necessary to understand the characteristics of these cases, such as the temporal variation, the peak time and ~~dominated synoptic factors-circulation~~, which can help to classify them and evaluate their simulation performance separately in the following analysis.

Therefore, Table 3 ~~provides detailed information derived from wind data recorded at 10-minute intervals.gives the detail information based on wind filed every 10 minutes~~. It is shown that out of the 28 near-surface wind events participating in the simulation, 24 were northerly events, accounting for 85% of the total. The events in which the maximum wind is above 8 m s^{-1} accounts for 18%, and the events of $5\text{-}7 \text{ m s}^{-1}$ accounts for 82%. Meanwhile, the wind direction corresponding to the peak time was distributed between $350^\circ\text{-}50^\circ$, with northeasterly winds between $0\text{-}50^\circ$ being the most common. Additionally, the left are 4 southerly winds cases, all of which appear to occur in summer or early autumn.

~~As for the dominated factors of each event, the term 'cold air' in Table 3 was used to denote the cases which are generated by incursion of cold air from northern regions like Siberia or Mongolia in Sichuan Basin, often accompanied by sharp temperature drop and changes in humidity. The term 'convective system' specifically denotes the strong wind cases primarily caused by convective weather systems, often accompanied by thunderstorm. In such cases, the vertical motion or convection is the dominant. As for the dominated atmospheric circulation of each event,~~ It is shown that most of the wind events were mainly caused by incursion of cold air, only little were associated with ~~convective weather systemsdeep convection~~. Influenced by this, the spring (March-May) process accounted for the most, accounting for 46%, followed by summer and autumn, both accounting for 25%. In terms of the peak time, 60% of the simulated cases appear to concentrate on 05:00 - 09:00 UTC and 10:00 - 14:00 UTC at night, then followed by 15:00 - 19:00 UTC, and there are a total of 6 events occurred at 20:00 - 23:00 UTC and 00:00 - 04:00 UTC, accounting for 21%.

~~Besides, the observed wind rose and time series of wind speed are presented in Fig.2. It is indicated that during these periods, the near-surface wind is mostly from a northwesterly-to-northeasterly direction.~~The near-surface wind speed in the Sichuan Basin exhibits a distinct diurnal variation, characterized by lower wind speeds in the morning and evening and higher wind speeds at midday. In order to analyze the temporal variation of wind speed under different conditions, the hourly time series of the observed wind speed for 28 cases is presented in Fig. 2. It is showed that many cases with the incursion of cold air exhibit diurnal variation characteristics. Because, in these cases, cold air predominantly affects the western Sichuan Basin around midday (Table 3). However, for strong wind events such as cases No. 9, 13, 25, and 26, which were caused by convective systems, there was no clear diurnal variation in wind speed, and is characterized by sudden changes in wind speed, reflecting the transient and localized nature of convective processes.

Table 3. Characteristics and circulation patterns of the 28 chosen near-surface wind events.

Event ID	Date yyyy-mm-dd	Maximum wind speed (m s ⁻¹) /direction(°)	Maximum wind time hh:mm	Circulation- classification Impact Factor
1	2021-03-17	6.0/350°	09:40	Cold air
2	2021-03-24	6.8/350°	08:00	Cold air
3	2021-03-30	6.1/90°	09:50	Cold air
4	2021-03-31	6.4/45°	09:00	Cold air
5	2021-04-23	6.3/47°	11:00	Cold air
6	2021-04-25	7.0/70°	08:00	Cold air
7	2021-04-27	8.3/18°	11:10	Cold air
8	2021-06-16	6.9/46°	07:40	Cold air
9	2021-07-21		06:20	Deep-e Convective
		7.1/158°		system
10	2021-08-22	8.0/47°	03:10	Cold air
11	2021-08-25	6.1/33°	06:00	Cold air
12	2021-09-15	6.6/50°	15:20	Cold air
13	2021-09-19	6.0/183°	08:00	Convective system Deep- convection
14	2021-09-25	6.1/54°	05:00	Cold air
15	2021-10-01	6.0/332°	14:40	Cold air
16	2021-10-04	7.3/45°	03:30	Cold air
17	2021-11-06	9.6/51°	12:00	Cold air
18	2021-12-25	6.0/46°	20:50	Cold air
19	2022-03-19	7.9/10°	22:10	Cold air
20	2022-03-30	8.3/43°	12:20	Cold air
21	2022-04-14	6.0/27°	18:40	Cold air
22	2022-04-27	8.3/50°	17:00	Cold air
23	2022-05-08	7.1/26°	17:30	Cold air
24	2022-05-13	9.2/40°	22:40	Cold air
25	2022-06-23	6.2/119°	11:10	Convective system Deep- convection
26	2022-08-17	8.6/148°	14:40	Convective system Deep- convection
27	2022-08-28	6.7/40°	13:20	Cold air
28	2022-10-03	8.5/43°	02:40	Cold air

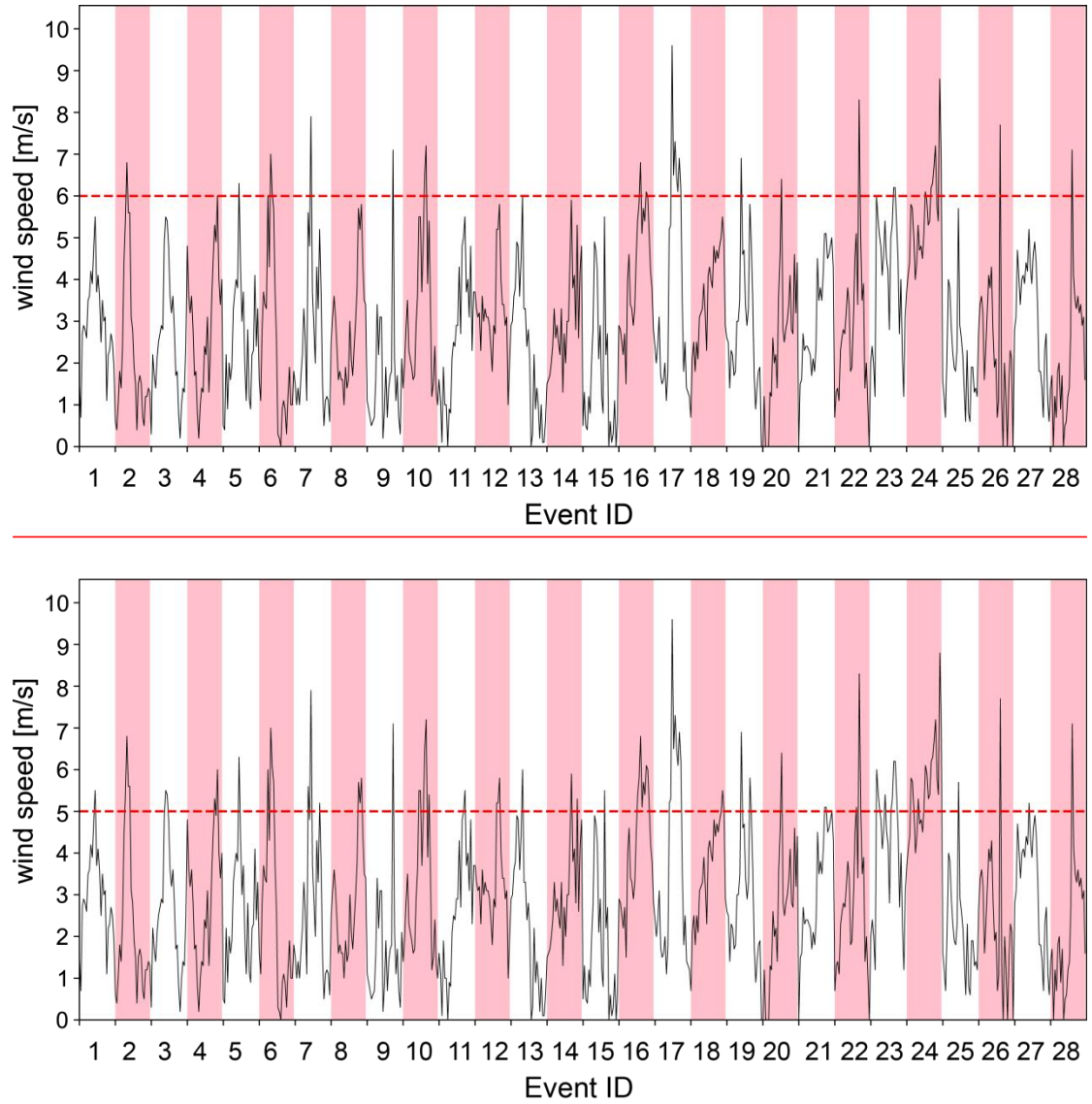


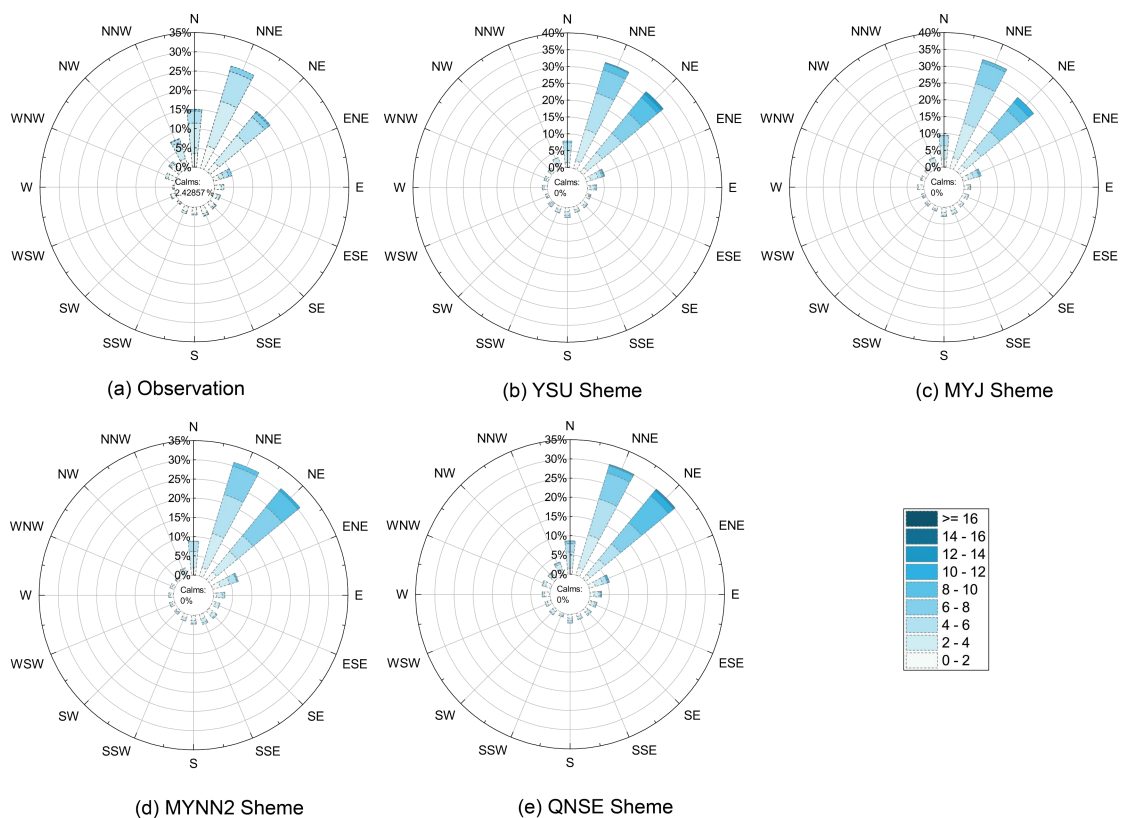
Figure 2. ~~Observed wind rose chart (a) and~~ The time series of hourly wind speed ~~(b)~~ for all the 28 near-surface wind events listed in Table 3-. each event represents one day, the label of x-axis represents the event ID shown in Table 3, the shading was employed to highlight the time series of the 28 selected cases, which are discontinuous across days. For the wind rose, the circles represent the relative frequency (%), and the colors represent wind speed.

3.2 Overall simulation performance of 28 wind events

First, the performance of the model in different PBL schemes is assessed with respect to wind direction. Thereby, the simulated wind rose of four PBL schemes are given in Fig. 3. By comparing with the observation (Fig. 2), it is found that four PBL schemes can reproduce the distribution of wind direction. Specifically, the simulated wind directions are basically distributed in NNW, N, NNE, NE and ENE, reproducing the characteristics of highly concentrating on NNE and NE. Besides, it is also shown that the occurrence frequencies of the wind fields simulated by all PBL schemes in the NNE and NE directions are all relatively higher than observation, but for wind in

NNW direction, the simulated frequencies are significantly lower. Besides, it is also shown that all the PBL schemes tend to overestimate the prevailing wind direction and significantly underestimate the NNW wind, indicating an clockwise bias which may be related to the plateau topography with steep terrain in the northwest and west. The statistical metrics (Gómez et al., 2015) in simulated 10-m wind direction are also given in Table 4. From the perspective of BIAS, RMSE, and Circular COR, the differences of wind directions between the four PBL schemes are very small. Therefore, it is concluded that the wind direction of the near-surface wind field in Sichuan Basin is very insensitive to the selected PBL schemes.

However, there are still some differences in wind direction simulations among four PBL schemes. In MYJ scheme, the frequency of NNE wind is higher than NE wind, which is consistent with the observations. Moreover, the frequencies of N wind and NE wind are closer to the observations. Therefore, MYJ has the best simulation of wind direction. The wind direction distribution simulated by the MYNN2 scheme is very close to QNSE scheme, but due to the worse performance in simulating NNW wind and the larger frequency of simulated NNE and NE wind, MYNN2 scheme is the worst among the four schemes. In general, for wind fields with weather processes passing through, more attention is paid to the simulation of wind speed. So, we will focus on the performance of wind speed next.



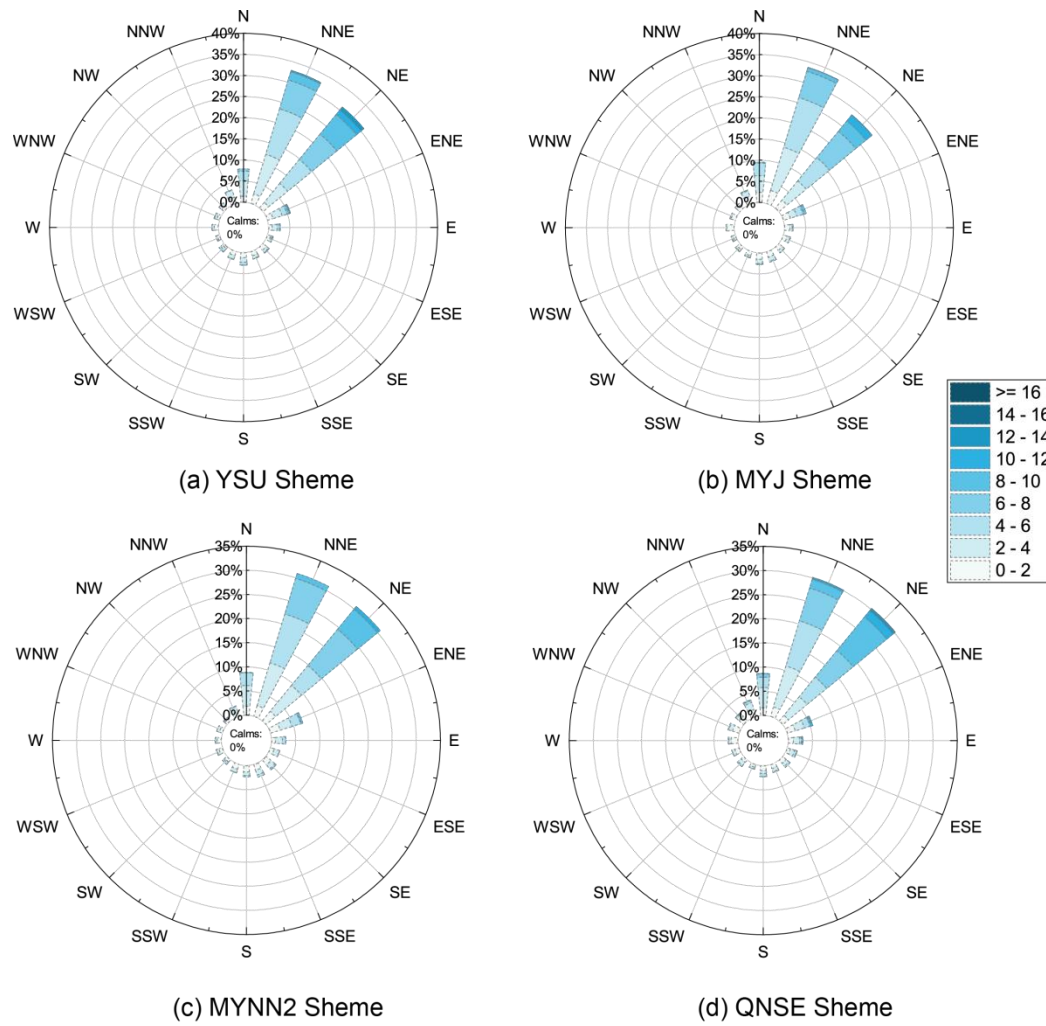


Figure 3. Same as in Fig. 2a, but for the simulated near-surface wind field corresponding to the four PBL schemes, the circles represent the relative frequency (%), and the colors represent wind speed. The wind rose chart for all the observed and simulated 28 near-surface wind events listed in Table 3, (a) for observation, (b) for YSU scheme, (c) for MYJ scheme, (d) for MYNN2 scheme, and (e) for QNSE scheme, the circles represent the relative frequency (%), and the colors represent wind speed.

Table 4. Statistical metrics for simulated 10-m wind direction.

	Average Wind Direction (°)	BIAS(°)	RMSE(°)	Circular COR
Observations	22.2			
YSU	33.3	12.1	57.8	0.37
MYJ	32.1	12.5	58.9	0.36
MYNN2	36.9	14.2	61.3	0.33
QNSE	31.0	9.8	62.1	0.30

In fact, by comparing Fig. 2 and Fig. 3, it seems that all the four PBL schemes exhibit obvious exaggeration of wind speed, which is also shown in other numerous studies (Dzebre et al., 2020; Ma et al., 2024). For instance, in the research by Yu et al. (2022), all 11 WRF PBL schemes overestimate near-surface wind speeds by approximately 1 m s^{-1} in the Hebei Plain. Similarly, in the experiment conducted by Gómez et al. (2015), the MYJ scheme strongly overestimates the maximum wind speed by more than 10 m s^{-1} at 50% of the locations, while the YSU scheme shows deviations greater than 3 m s^{-1} . But, what are the specific simulation characteristics of these commonly used PBL schemes in the Sichuan Basin? To further evaluate the advantages and disadvantages of each scheme in simulating near-surface wind speed, three statistical metrics (COR, RMSE and BIAS) were calculated. These statistics were derived from data recorded at 10-minute intervals across 28 distinct events, as illustrated in Figure 4. To further assess the advantages and disadvantages of each scheme in simulating surface wind speed, three statistics of COR, RMSE, and ME were selected for comprehensive evaluation of the simulation results, as shown in Fig. 4. In terms of COR, both the mean and median values for all schemes fall within the range of 0.4 to 0.6, which indicates a tendency for the COR to cluster around this range across the events. the mean and median correlation coefficients between simulation of the four schemes and observation are all between 0.4-0.6, and Moreover, the median is above the mean value, indicating that the correlation coefficients are all negatively skewed distribution, that is, the correlation coefficients between simulated and observed wind speed are higher than the mean value in most cases, but very poor in some certain cases. It is further illustrated by the heat map displayed in Fig. 4d, where cases No. 3, 11 and 20 demonstrate correlation coefficients below 0. In contrast, QNSE shows the best mean correlation coefficient of 0.6, suggesting the best performance in reproducing the temporal variation of observed wind speed in most cases.

Although there is little difference between the simulated and the observed wind speed in the RMSE and MEBIAS, it is noteworthy that MYJ scheme has the smallest mean RMSE and BIAS (2.3 and 1.2 m s^{-1}) while QNSE has the largest (2.7 and 1.8 m s^{-1}). The BIAS is consistent with RMSE as illustrated in the Fig. 4 (c), except that the median and mean BIAS is not as close as RMSE shows in MYJ scheme, indicating that the systematic error (BIAS) might be either too high or too low in certain cases. However, overall, MYJ scheme is highly precise and has little variance in its performance, which is crucial for accurate weather forecasts. What's more, in MYJ scheme not only the ME is the lowest (value is 0.96 m s^{-1}), but also the difference between the median and mean values is significant, which suggests that most of the wind speed bias produced by MYJ are actually below 0.96 m s^{-1} . Therefore, it is demonstrated that the bias of near-surface wind speed produced by MYJ scheme in Sichuan Basin is the smallest based on the multiple cases simulation. The main reason for this may be associated with the basin topography, because the boundary layer is in stable condition in most time, the turbulence is mainly generated and maintained by wind shear, so that the situation showing strong locality. Therefore,

the simulation error obtained by MYJ scheme is the smallest in this stable and weakly stable boundary layer, which is consistent with the research results of Zhang et al. (2012). Besides, the result that QNSE scheme has the best performance on capturing the temporal variation of wind speed, maybe because that QNSE scheme improves simulation of sub-grid scale turbulence, and considers more complex and detailed physical processes. Under stable atmospheric stratification, QNSE adopted $k-\varepsilon$ model developed from turbulent spectral closure model, while under the unstable situation, the method of MYJ scheme is used, so QNSE scheme has more advantages in the simulation of wind speed variation trend. However, the specific causes require further investigation in future works.

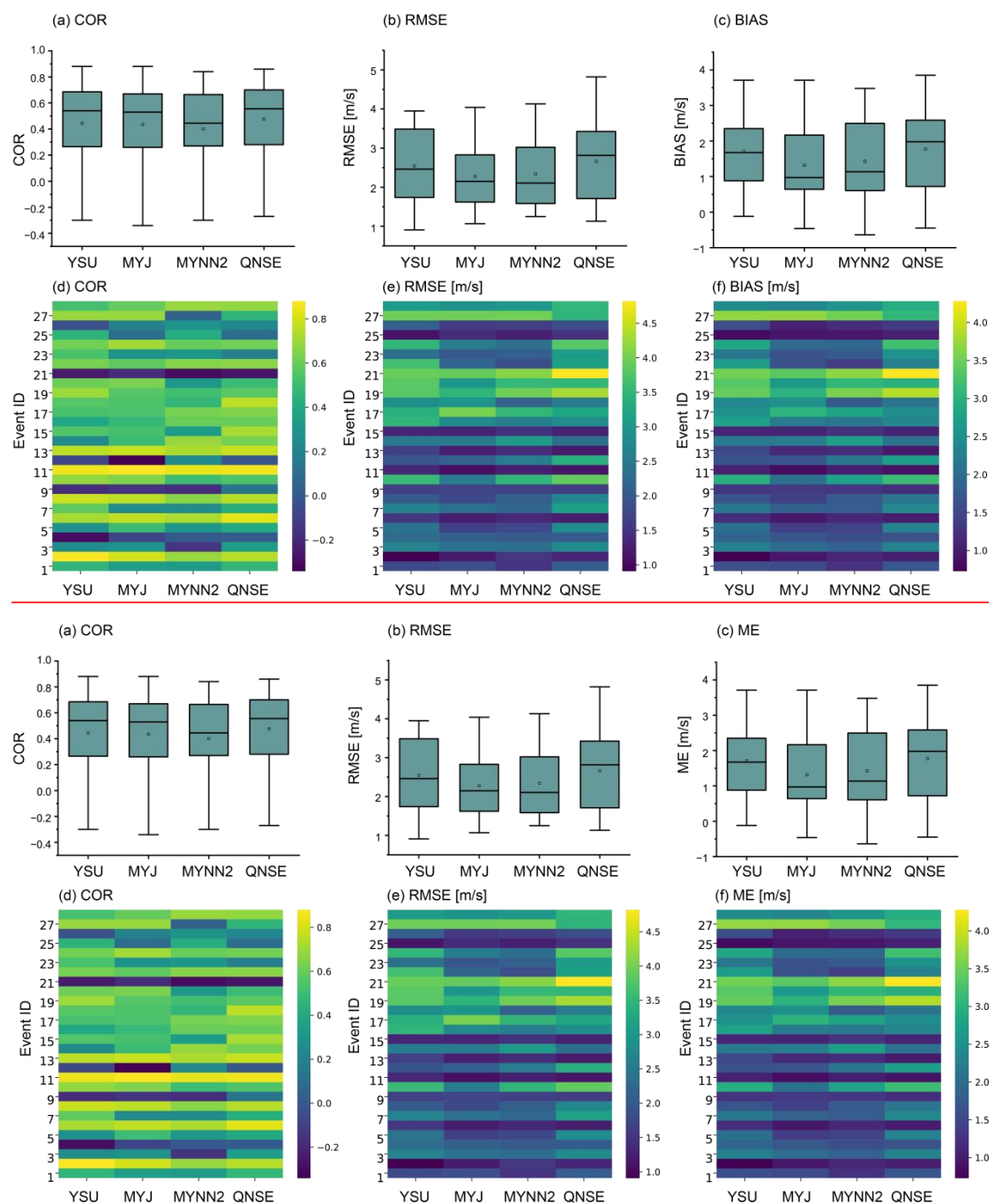


Figure 4. Different performance metrics for the comparison of observed and simulated near-surface wind speed at 10-minute intervals for 28 events. Box plots shows the overall characteristics of COR, RMSE and ~~MEBIAS~~, and heat-map gives details for certain case. The box represents the metrics range from first quartile to third quartile, and the line inside the box represents the median, while the empty square represents the mean.

3.3 Differences of wind velocity segments and diurnal variations simulated by four PBL schemes

Figure 5 shows ~~the histogram of~~ the frequency distribution of different winds with the observed—and the simulated wind data at Guanghan Airport ~~wind speed at 40 meters high of the airport and the corresponding Weibull distribution fitting curve.~~ As can be seen, the observed wind speed distribution is left-skewed, primarily due to the concentration of wind speeds within the 1-4 m s⁻¹ range, where the cumulative frequency exceeds 0.6. When comparing the spread of each PBL scheme's distribution to the observations, all four PBL schemes exhibit a wider distribution, indicating overestimation of the wind speed variability.

In order to give a more precision comparison during four PBL schemes, the corresponding Weibull distribution fitting curves, shape parameters, and scale parameters were calculated in Fig.5. The shape parameter (k) reflects the distribution of wind speeds. A lower k value indicates a more dispersed distribution with greater wind speed variability, while a higher k value suggests a more concentrated distribution with less variability. As can be seen from the figure, the observed mode of wind speed is leftward, which is mainly due to the fact that the high wind speed sections are very concentrated and have a low frequency during 28 wind events. The observed shape parameter is 1.79, while the shape parameters for YSU, MYJ, MYNN2, and QNSE are 1.89, 1.83, 1.93, and 1.77, respectively. The corresponding Weibull fitting κ of the observation is 1.79, and the κ value produced by QNSE is the closest to it, while the fitting κ values of the other three schemes are all larger. QNSE has a shape parameter very close to the observed value, indicating it simulates wind variability most similarly to the actual observations. From the shape parameter perspective, QNSE provides the most similar wind speed distribution to the observations. YSU and MYNN2 show more concentrated wind speed distributions, potentially underestimating wind speed variability. The observed scale parameter is 3.30 m s⁻¹, while the scale parameters for YSU, MYJ, MYNN2, and QNSE are 5.20 m s⁻¹, 4.69 m s⁻¹, 4.88 m s⁻¹, and 5.25 m s⁻¹, respectively. In terms of the scale parameter, all PBL schemes overestimate wind speeds, with YSU and QNSE showing the largest deviations. MYJ and MYNN2 are closer to the observed wind speeds. The corresponding Weibull fitting λ values of the four parametric schemes are all larger than the observation (3.29 m s⁻¹).—

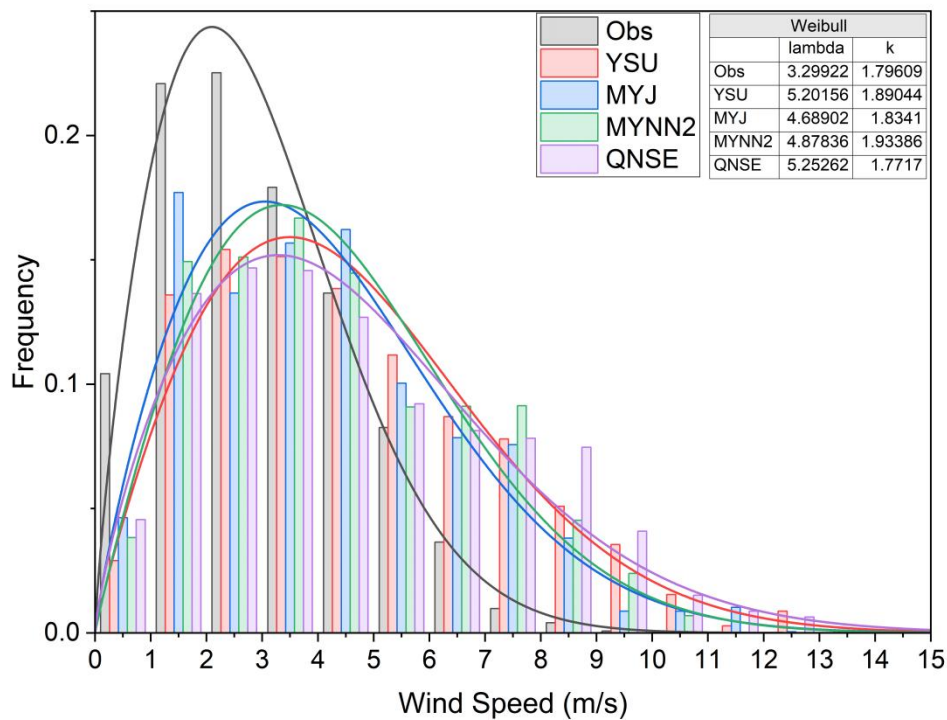
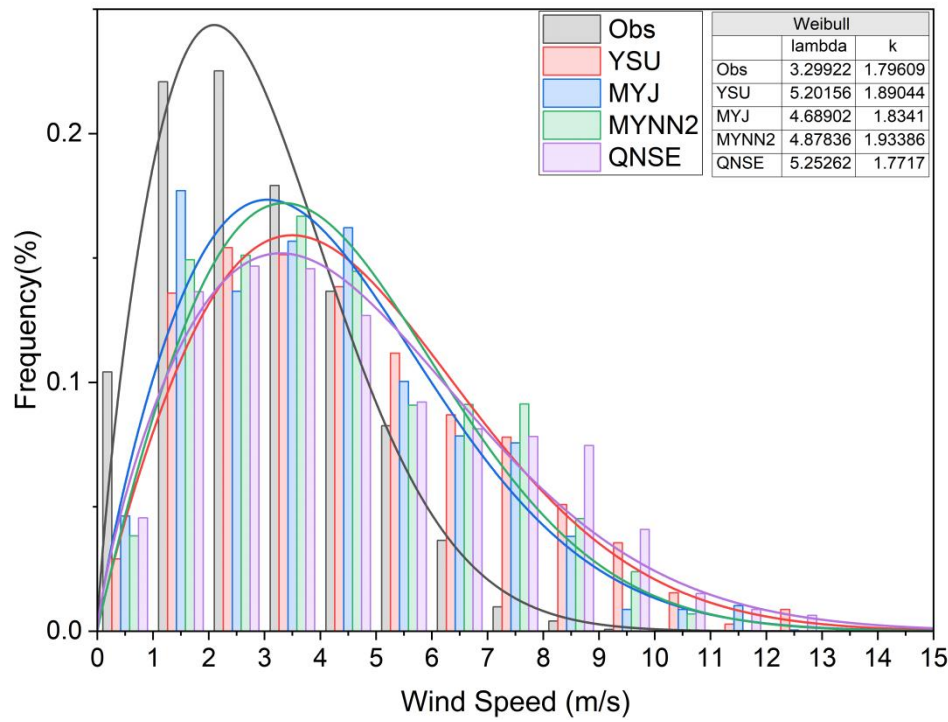


Figure 5. The frequency distribution of different wind speeds and Weibull fitting curves for the observed and simulated wind speeds from four PBL schemes, sampled every 10 minutes during 28 wind events. The shape parameter is denoted by (k), and the scale parameter by (λ). Each colored line and bar represents one of the

~~PBL schemes. The frequency and Weibull fitting of the observed and four PBL schemes simulated wind speed of 28 wind events.~~

When wind speed below 3 m s^{-1} , none of the PBL scheme has a good performance. Moreover, the lower the wind speed, the greater the bias. In the wind speed range of ~~wind speed greater than 3 m s^{-1} and less than 5 m s^{-1} , the frequency distribution of wind speeds simulated by the various PBL schemes is the closest to the observations, when compared to the other wind speed segment.~~ different PBL schemes show significant differences compared with observations. Specifically for wind speeds during the $3\text{-}4 \text{ m s}^{-1}$, the simulation results of the MYJ scheme are closest to the observations, followed by MYNN2. For wind speeds during the $4\text{-}5 \text{ m s}^{-1}$, YSU and MYJ simulations are closer to the observations, indicating better performance in this wind speed range. All schemes tend to overestimate when wind speed above 5 m s^{-1} . Figure 6 further provides the deviations between the observed and simulated wind speed of four PBL schemes in different wind speed ranges. As can be seen, the performance of four PBL schemes differ greatly with the increase of wind speed, and the wind speed deviation of the same PBL scheme also increases. For the wind speed below 3 m s^{-1} , the simulated wind of each PBL scheme are about $1.5\text{-}2 \text{ m s}^{-1}$ higher than the observation. In terms of mean values, the MYJ scheme exhibits relatively smaller deviations for wind speeds below 8 m s^{-1} , an average deviation ranging from 0.5 to 1.25 m s^{-1} . In contrast, for wind speeds above 8 m s^{-1} , the MYNN2 scheme demonstrates the smallest deviation, with an average deviation of 2 m s^{-1} . ~~In terms of mean values, the MYJ scheme exhibits relatively smaller deviations for wind speeds below 7 m s^{-1} , while the MYNN2 scheme demonstrates the smallest deviation in simulation for wind speeds above 7 m s^{-1} .~~

In general, the fitting curve of QNSE scheme is most close to the observation, and the λ value is slightly to the right than the mode. The mode of four schemes are to the right relative compared with the observation, tending to a normal distribution.

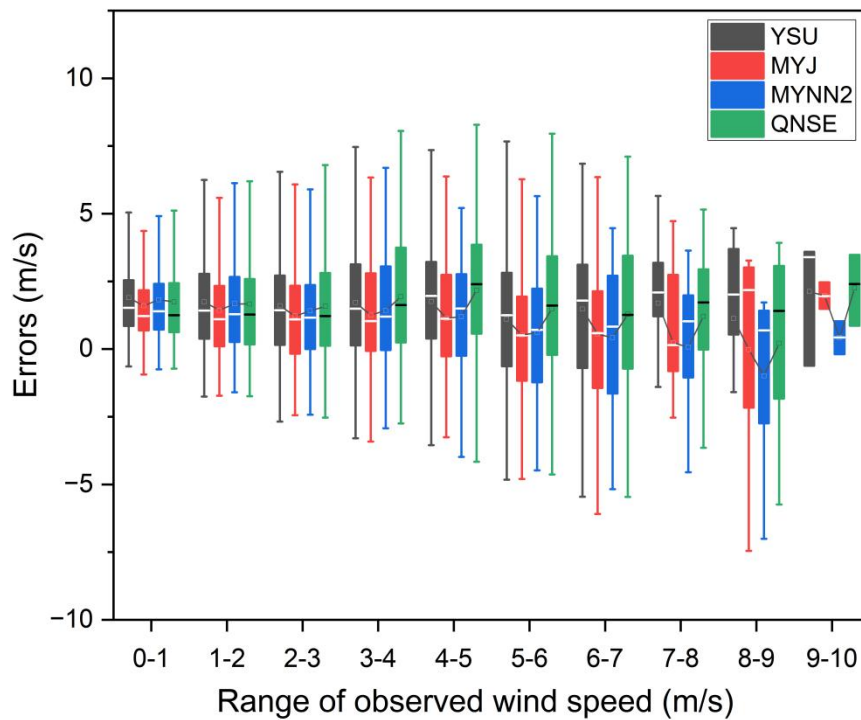


Figure 6. Wind speed errors of four PBL schemes in different wind speed segments for 28 wind events with 10-minute intervals-, the line inside the box represents the median.

The variation of near-surface wind field is easily affected by surface characteristics, especially ground heating. When the weather background is fixed, the change of local thermal characteristics in a day will inevitably affect the near-surface wind field. Therefore, there will be significant differences in the wind field simulation during different time periods between different PBL schemes. According to the relationship between world time and local time, the daytime in the text corresponds to world time 00:00 - 10:00, and the nighttime refers to world time 11:00 - 23:00. Figure 7 presents the diurnal variation characteristics of wind speed deviations simulated by the four PBL schemes in the WRF model through box plots.

In terms of the mean, the performance of wind speed ~~error~~ for each scheme is better in the daytime than in the night. The deviation is the highest at 18:00 and 19:00 UTC, which means that the strong wind occurring at this time cannot be well simulated. As for YSU scheme, the simulation ability is the best at noon, while MYJ simulated well at noon and evening, and MYNN2 simulated in the evening. The QNSE scheme shows little variation in its simulation results during the daytime and the best simulation ability at noon across 28 different wind cases. The consistent performance suggests the reliable outputs for various strong wind events occurring within the daytime. In contrast, during nighttime simulations, there is a increase in variability among the results produced by the QNSE scheme. Overall, the performance of the PBL schemes varies based on the time of day, indicating that the PBL schemes may be sensitive to diurnal changes in atmospheric conditions. QNSE has little difference in the simulation of 28 wind cases in the daytime and a large difference in the night,

indicating that QNSE scheme is stable in the simulation of strong wind in the daytime, but unstable in the night, with a large variation of simulation performance. However, in general, QNSE scheme has the best simulation ability at noon.

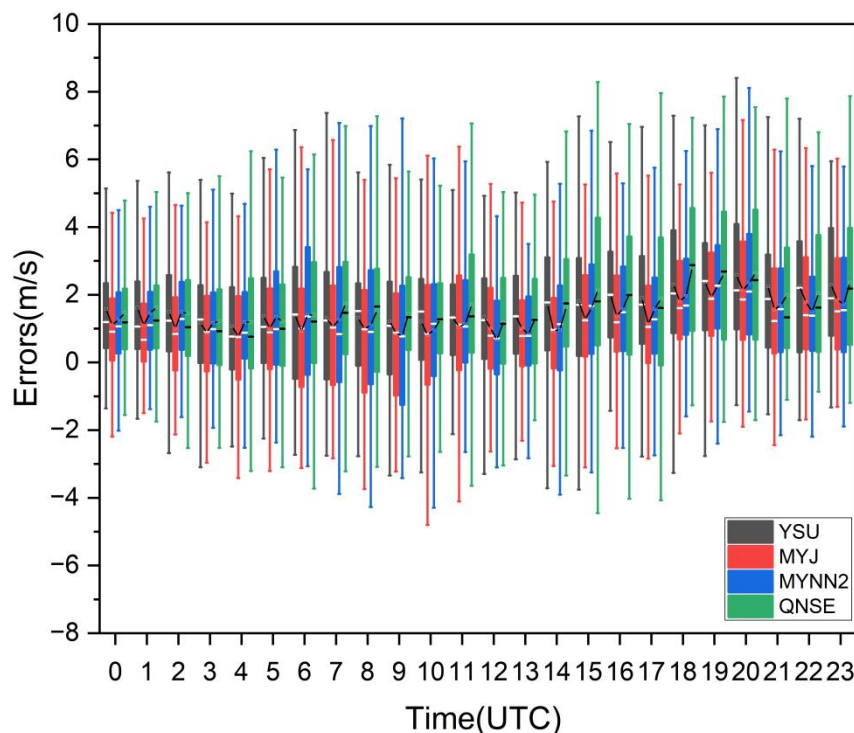


Figure 7. Diurnal variation of wind speed errors corresponding to four PBL schemes. The line inside the box represents the mean, while the black short line connects the mean values of each PBL scheme at each hour. Statistics are derived from the data at 10-minute intervals.

3.4 K-means clustering analysis and performance in different types of events

From the previous analysis, it is known that as the horizontal grid spacing of 0.33 km is within the PBL gray zone resolution, QNSE scheme can better capture the trend of near-surface wind events over western Sichuan Basin, while the bias produced by MYJ scheme is the minimum. The results also show the difference in different wind speed segment and different time in this region, ~~but it is not significant~~. At the same time, Previous studies have indicated that the simulation of meteorological elements within the boundary layer is influenced by meteorological conditions such as circulation patterns. Therefore, it is necessary to further classify and analyze these 28 cases to understand the specific performance of PBL schemes in simulating near-surface wind events in western Sichuan basin.

The K-means cluster method is used to divide the simulation results of 28 near-surface wind events into three categories, as presented in Fig. 8. The RMSE of the cluster center of the first class is 1.9 m s^{-1} , and the COR is 0.2. A total of 10 events belong to this class, presenting the class with good RMSE but poor COR. At the cluster center of the second class, the RMSE is 2.85 m s^{-1} , and the COR is 0.6. A total of 12 events belong to this class, characterized by good COR but large bias. At last,

the left 6 events belong to the third category, in which both RMSE and COR are very good for simulation, and the cluster center has the RMSE of 1.25 m s^{-1} , and COR of 0.76. Furthermore, it is shown that among the three types of events, the QNSE scheme has the best simulation correlation coefficient, while the MYJ scheme has the smallest wind speed simulation error. This is consistent with [the results obtained before applying K-means clustering](#)~~the unclassified results~~, indicating that QNSE and MYJ schemes are relatively stable and reliable choices for the [near-surface](#) wind simulation in Sichuan Basin with model grid resolution of 0.3 km .

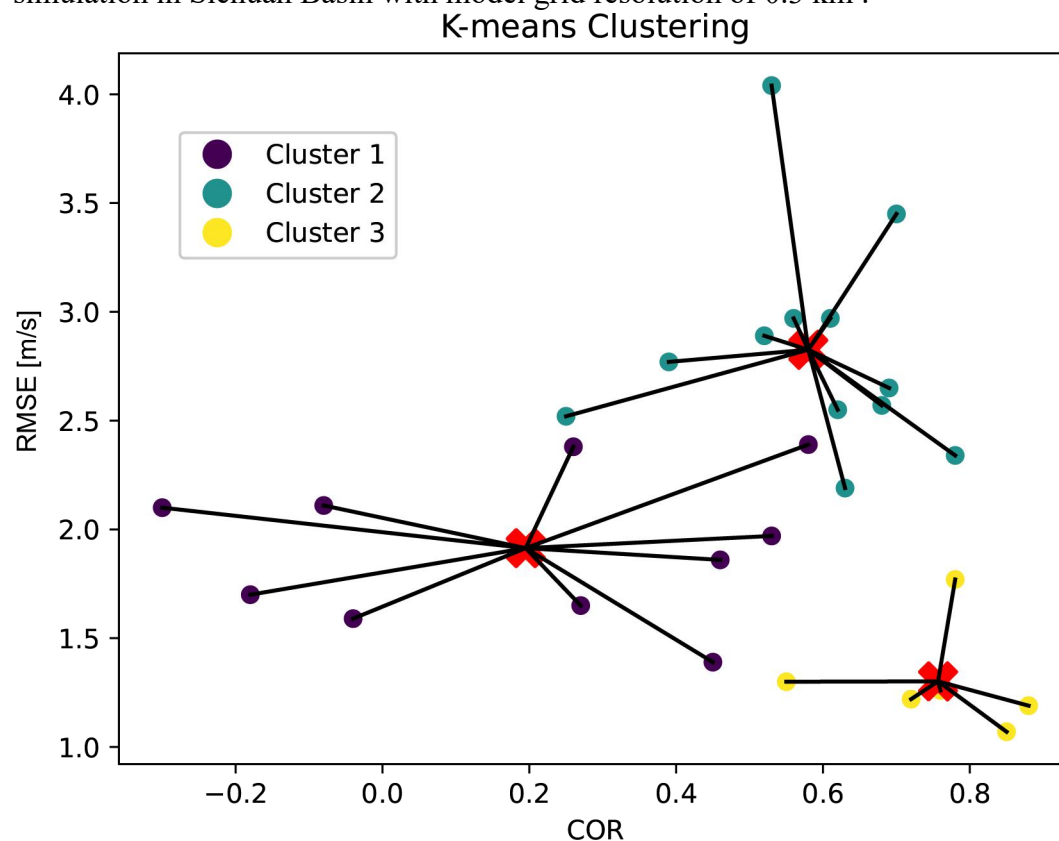
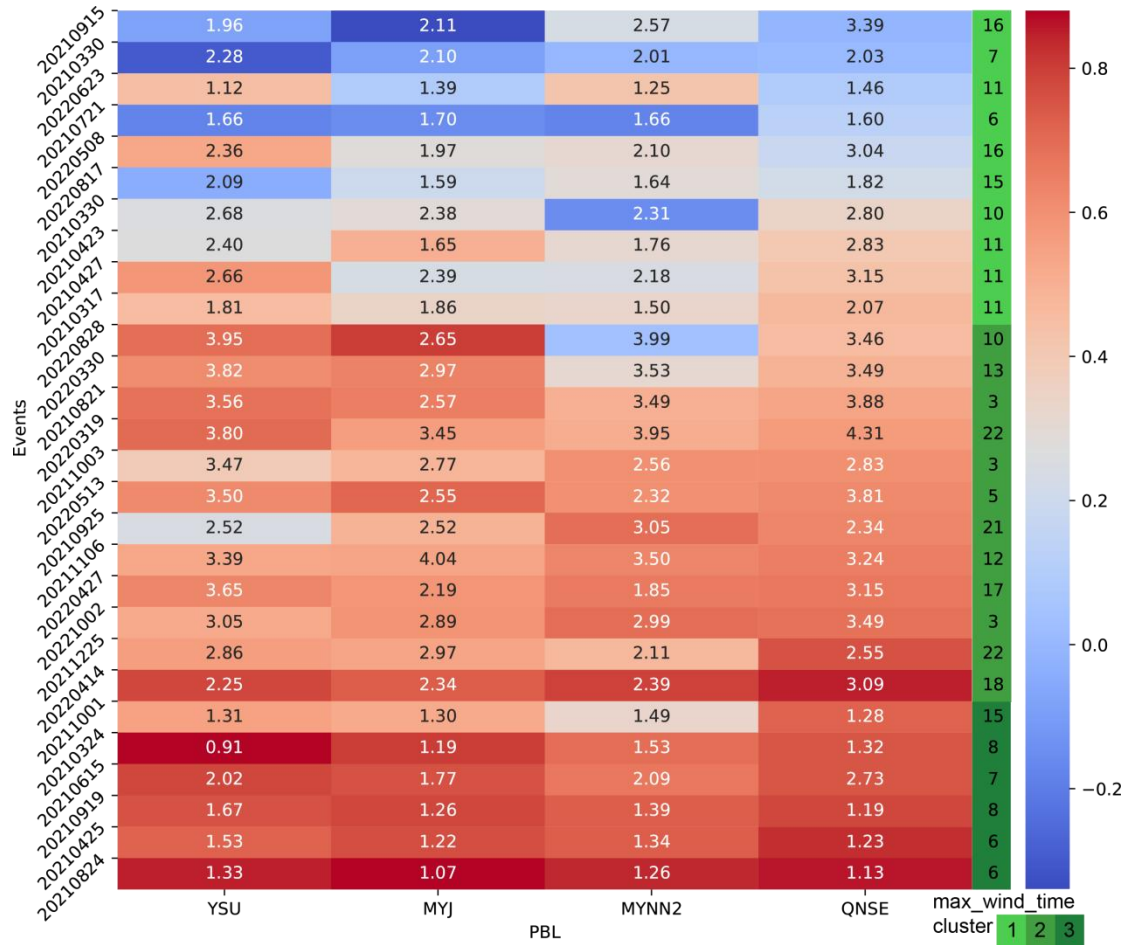


Figure 8. Scatter plot of K-means cluster analysis, the red cross symbol represents the cluster center.

According to the K-means analysis, it is found that different PBL schemes are very sensitive to the diurnal variation and circulation background of [near-surface](#) wind in the simulation of [near-surface](#) wind speed in the Basin, ~~though there is no obvious seasonal difference~~. Figure 9 shows the RMSE and COR heat-maps of three types of events after cluster analysis, and peak time of gale is specially marked. It can be seen that the four PBL schemes have the least sensitivity to the event of class III. This kind of event is characterized by that the gale period basically occurs between 06:00 and 08:00 UTC, which is also the period with the highest surface temperature and the most unstable atmospheric stratification in the region. What's more, in the events of class III, except for one thunderstorm gale event, the rest are all typical strong cold air induced [near-surface](#) wind processes, which indicates that the four PBL schemes have the good performance in simulating the typical strong cold air wind event occurred in the afternoon. As shown in Figure 10, the RMSE ranges from 0.21 m s^{-1} to 0.96 m s^{-1} , and the COR ranges from 0.05 to 0.19, with only one case

595 having a difference of 0.3, which means that there is little difference between four PBL schemes.



600 **Figure 9.** Heat-map about the RMSE (numbers) and COR (coloring) of four PBL schemes for 28 near-surface wind simulations according to the cluster analysis. The information in the right column is gale moment (numbers) and classification label (coloring).

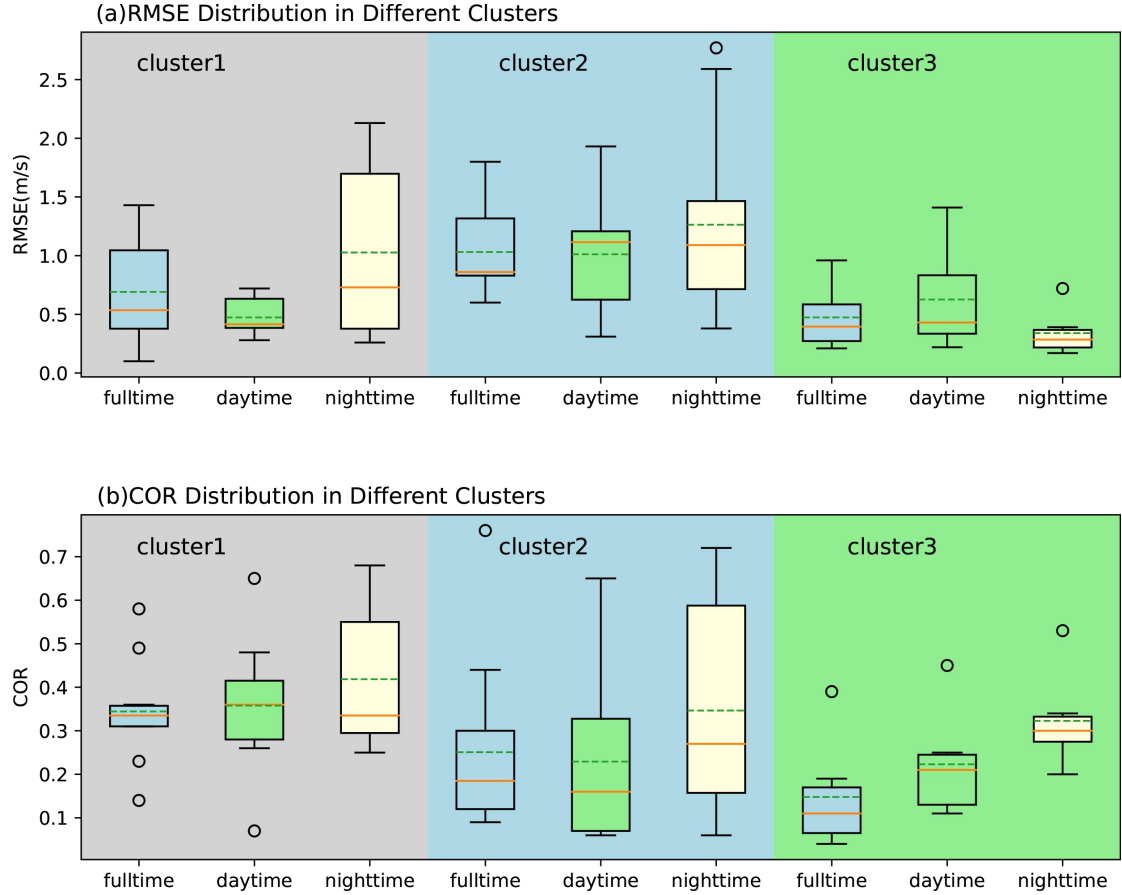


Figure 10. Box plots of the maximum differences during four PBL schemes in three types of events, with the green dotted line as the mean, the orange solid line as the median, and the circle as the outlier.

The most obvious differences among the four PBL schemes are mainly in the events of class I and II. Except for one southerly gale event belonging to class III, the other southerly wind events are classified into class I, indicating that the four PBL schemes often have good RMSE and poor COR for southerly wind events caused by convection in Sichuan Basin. In Figure 9, it is shown that in class I, the maximum wind speed often occurred in the two periods of 10:00 - 11:00 UTC and 15:00 - 16:00 UTC, and only two cases occurred at 06:00 - 07:00 UTC. The period of 10:00 - 16:00 UTC is the period when the atmospheric stratification in the basin changes from unstable to stable, and it is also the period when the inversion layer is established. In this kind of events, the difference between the maximum and minimum RMSE and COR obtained by different PBL schemes is as large as 1.43 m s^{-1} and 0.58.

The simulation events of class II show the most significant differences among the four PBL schemes, and the characteristics such as gale occurrence time are significantly different from those in class I and class III. It is observed that the four PBL schemes often exhibit high CORR and high RMSE for near-surface wind events occurring in the early morning (17:00-22:00 UTC) and early afternoon (03:00-05:00 UTC), and these near-surface wind events are concentrated in dry and cold air scenarios. In this type the maximum difference between different PBL schemes can

reach 1.49 m s^{-1} and 0.76 . In addition, Fig. 10 shows that the differences between different PBL schemes in— class I and class II events in the daytime are relatively small, while there are greater differences at night. Meanwhile, in class III, the RMSE performance at night is better than that in the daytime, but the COR is worse than that in the daytime. Therefore, it can be concluded that there are obvious and diversified differences among the simulation results shown by various PBL schemes under different types of near-surface wind events.

4 Summary and conclusions

In this study, a horizontal resolution of 0.33 km which is within the PBL gray zone resolution is employed to investigate the performance of four commonly used PBL schemes on near-surface wind simulation over the Sichuan Basin. In China, the near-surface wind prediction over Sichuan Basin has always a low score, and the main focus of wind simulation is about the pollutant diffusion under stable weather conditions at a horizontal resolution equals or greater than 1 km . Thus, we chose the site of Guanghan Airport as the representation, and conducted a total of 112 WRF sensitivity experiments, specifically focusing on 28 events with near-surface winds exceeding 6 m s^{-1} by varying the PBL scheme, and assessed the impact of different PBL schemes on wind speed and direction simulations. Subsequent analyses considered factors such as diurnal variation of near-surface wind processes and circulation background to gain further understanding of their influence on model sensitivity. Therefore, the findings of our study offer the valuable insights in this region.

From our evaluation and analysis, the sensitivity of near-surface wind direction over Sichuan Basin to the four commonly used PBL schemes is very low, and the performance of MYNN2 is the worst when simulating the near-surface wind direction, while the other three schemes are generally consistent with the observations, and the MYJ scheme is the best for simulating NNE and NE winds. Our findings on wind direction is agree with the finding in many other researches (Gómez-Navarro et al., 2015; Tan et al., 2017; Shen and Du, 2023).

Generally speaking, no scheme can simulate the trend and wind speed of near-surface wind events well at the same time, which is also mentioned by Cohen et al. (2015). However, the 1.5-order QNSE local closure approximation scheme appears to be the best for the temporal variation, while MYJ is the scheme with smallest simulation error on wind speed. As the metrics RMSE and MEBIAS shows the similar characteristics, K-means cluster analysis is employed based on the COR and RMSE, and the simulation results are divided into three categories. The first category of events showed poor correlation but small RMSE; the second category of events showed high correlation but large RMSE; the third category of events showed high correlation coefficient and small RMSE. Further analysis found that the four PBL schemes can simulate the groundnear-surface wind events caused by the typical strong cold air (occurring at 6:00-8:00 UTC), and there is little difference between them. For the near-surface wind events occurring in the midnight to early morning,

they are mainly concentrated in the second category; while the evening to night and the southerly wind process are mainly concentrated in the first category.

Therefore, multiple cases studies and K-means clustering analysis gives us the hint that the simulation performance of the PBL schemes mainly depends on the prevailing weather conditions of each case, such as circulation backgrounds and the time of near-surface wind events. The results also point to the need for future research to explore the mechanisms behind the observed differences in wind speed simulation, particularly during nighttime and different atmospheric conditions.

Code and data availability. The Weather Research and Forecasting (WRF) model version 4.3.1 used in this study is freely available online and can be downloaded from https://www2.mmm.ucar.edu/wrf/users/download/get_source.html (Skamarock et al., 2008). The ERA5 data are available from ECMWF (<https://www.ecmwf.int/en/forecasts/datasets/reanalysis-datasets/era5>, last access: 23 June 2023, DOI: <https://doi.org/10.24381/cds.bd0915c6>, Hersbach et al., 2018). The topographic data are available from Shuttle Radar Topography Mission (SRTM) 90 m DEM Digital Elevation Database (<https://srtm.csi.cgiar.org/>, last access: 20 June 2023). The observations and model output upon which this work is based are available from Zenodo (<https://doi.org/10.5281/zenodo.11328605>, Wang et al., 2024), and the data can also be obtained from pwd@cafuc.end.cn.

Author contributions. QW conceptualized the study and conducted the simulations. BZ, YY and GC analyzed the model results, and QW and BZ contributed to the interpretations. The original draft of the paper was written by QW, and all the authors took part in the edition and revision of it.

Competing interests. The contact author has declared that none of the authors has any competing interests.

Disclaimer. Publisher's note: Copernicus Publications remains neutral with regard to jurisdictional claims in published maps and institutional affiliations.

Acknowledgments. The authors acknowledge NCAR for the WRF model and ECMWF for the ERA5 reanalysis datasets.

Financial support. This research has been supported by the National Key Research and Development Program of China (grant no. 2022YFC3003902 and 2023YFC3007502), the National Natural Science Foundation of China (grant no. 42030611), and Sichuan Science and Technology Program (grant no. 2022NFSC0021 and 2023NSFSC0904).

References

- Cohen, A. E., Cavallo, S. M., Coniglio, M. C., and Brooks, H. E.: A Review of
710 Planetary Boundary Layer Parameterization Schemes and Their Sensitivity in
Simulating Southeastern U.S. Cold Season Severe Weather Environments, *Wea.*
Forecasting, 30, 591–612, <https://doi.org/10.1175/WAF-D-14-00105.1>, 2015.
- Cui, C. -X., Bao, Y. -X., Yuan, C. -S., Zhou, L. -Y., Jiao, S. -M, and Zong,
715 C.: Influence of Different Boundary Layer Parameterization Schemes on the
Simulation of an Advection Fog Process in Jiangsu, *Chinese J. Atmos. Sci.*, 42,
1344-1362, doi:10.3878/j.issn.1006-9895.1801.17212, 2018(in Chinese).
- Chen, L., Li, G., Zhang, F., and Wang, C.: Simulation uncertainty of Near-Surface
wind caused by boundary layer parameterization over the complex terrain, *Front.*
Energy Res., 8, <https://doi.org/10.3389/fenrg.2020.554544>, 2020.
- 720 Coccia, M.: The effects of atmospheric stability with low wind speed and of air
pollution on the accelerated transmission dynamics of COVID-19, *Int. J. Environ.*
Stud., 78, 1–27, <https://doi.org/10.1080/00207233.2020.1802937>, 2020.
- Dudhia, J.: A history of mesoscale model development, *Asia-Pac. J. Atmos. Sci.*, 50,
121–131, <https://doi.org/10.1007/s13143-014-0031-8>, 2014.
- 725 Dzebre, D. E. and Muiyiwa, S. A.: A preliminary sensitivity study of Planetary
Boundary Layer parameterisation schemes in the weather research and
forecasting model to surface winds in coastal Ghana, *Renewable Energy*, 146,
66-86, 2020.
- Farr, T.G., Rosen, P. A., Caro, E. R., Crippen, R., Duren, R.M., Hensley, S., Kobrick,
730 M., Paller, M., Rodríguez, E., Roth, L., Seal, D.A., Shaffer, S.J., Shimada, J.,
Umland, J.W., Werner, M., Oskin, M.E., Burbank, D.W., and Alsdorf, D.E.: The
Shuttle Radar Topography Mission, *Reviews of Geophysics*, 45, <https://doi.org/10.1029/2005RG000183>, 2007.
- Feng, X., Zhang, Z., Guo, J. -P., and Wang, S. -G.: Multilayer inversion formation and
735 evolution during persistent heavy air pollution events in the Sichuan Basin,
China, *Atmos. Res.*, 286, 106691, doi: 10.1016/j.atmosres.2023.106691, 2023.
- Gómez-Navarro, J. J., Raible, C. C., and Dierer, S.: Sensitivity of the WRF model to
PBL parametrisations and nesting techniques: evaluation of wind storms over
complex terrain, *Geosci. Model Dev.*, 8, 3349 – 3363,
740 <https://doi.org/10.5194/gmd-8-3349-2015>, 2015.
- Gao, D. -M., Li, Y. -Q., Jiang, X. -W., Li, J., and Wu, Y.: Influence of Planetary
Boundary Layer Parameterization Schemes on the Prediction of Rainfall with
Different Magnitudes in the Sichuan Basin Using the WRF Model, *Chinese J.*
Atmos. Sci., 40, 371-389, doi: 10.3878/j.issn.1006-9895.1503.14323, 2016.
- 745 Hong, S., Noh, Y., and Dudhia, J.: A New Vertical Diffusion Package with an Explicit
Treatment of Entrainment Processes, *Mon. Weather Rev.*, 134, 2318–2341,
<https://doi.org/10.1175/mwr3199.1>, 2006.
- Hu, X., Nielsen-Gammon, J. W., and Zhang, F.: Evaluation of Three Planetary
Boundary Layer Schemes in the WRF Model. *J. Appl. Meteor. Climatol.*, 49,

- 750 [1831–1844, https://doi.org/10.1175/2010JAMC2432.1](https://doi.org/10.1175/2010JAMC2432.1), 2010.
- Honnert, R., Couvreur, F., Masson, V., and Lancz, D.: Sampling the structure of convective turbulence and implications for Grey-Zone parametrizations. *Bound.-Layer Meteor.*, 160, 133–156, <https://doi.org/10.1007/s10546-016-0130-4>, 2016.
- 755 Hersbach, H., Bell, B., Berrisford, P., Biavati, G., Horányi, A., Muñoz Sabater, J., Nicolas, J., Peubey, C., Radu, R., Rozum, I., Schepers, D., Simmons, A., Soci, C., Dee, D., and Thépaut, J.- N.: ERA5 hourly data on pressure levels from 1959 to present, Copernicus Climate Change Service (C3S) Climate Data Store (CDS) [data set], <https://doi.org/10.24381/cds.bd0915c6>, 2018.
- 760 Janjić Z.: The step-mountain coordinate:Physical package, *Mon. Weather Rev.*, 118, 1429–1443, [https://doi.org/10.1175/1520-0493\(1990\)118<1429:TSMCPP>2.0.CO;2](https://doi.org/10.1175/1520-0493(1990)118<1429:TSMCPP>2.0.CO;2), 1990.
- [Jiang, H., Wang, J. Z. , Dong, Y., and Lu, H. :Comprehensive assessment of wind resources and the low-carbon economy: An empirical study in the Alxa and Xilin Gol Leagues of inner Mongolia, China, Renewable and Sustainable Energy Reviews, 50, 1304-1319, https://doi.org/10.1016/j.rser.2015.05.082, 2015.](https://doi.org/10.1016/j.rser.2015.05.082)
- 765 [Jaydeep, S., Narendra, S., Narendra, O., Dimri, A.P., and Ravi, S. S.: Impacts of different boundary layer parameterization schemes on simulation of meteorology over Himalaya, Atmos. Res.,298, https://doi.org/10.1016/j.atmosres.2023.107154, 2024.](https://doi.org/10.1016/j.atmosres.2023.107154)
- 770 Kibona, T. E.: Application of WRF mesoscale model for prediction of wind energy resources in Tanzania, *Sci. Afr.*, 7, e00302, <https://doi.org/10.1016/j.sciaf.2020.e00302>, 2020.
- [Lai, C. D., Murthy, D., and Xie, M. : Weibull distributions and their applications, Springer Handbook of Engineering Statistics, Chapter 3. 63-78, 10.1007/978-1-84628-288-1_3, 2006.](https://doi.org/10.1007/978-1-84628-288-1_3)
- 775 Li, Y. -P., Wang, D. -H., and Yin, J. -F.: Evaluations of different boundary layer schemes on low-level wind prediction in western Inner Mongolia, *Acta Scientiarum Naturalium University Sunyatseni*, 57(4), 16-29, doi: 10.13471/j.cnki. acta. snus. 2018.04.003, 2018(in Chinese).
- 780 Liu, M. -J., Zhang, X., and Chen, B. -D.: Assessment of the suitability of planetary boundary layer schemes at “grey zone” resolutions, *Chinese J. Atmos. Sci.*, 42 (1), 52-69, doi: 10.3878/j.issn. 1006- 9895. 1704.16269, 2018.
- Liu, F., Sun, F., Liu, W., Wang, T., Hong, W., Wang, X., and Lim, W. H.: On wind speed pattern and energy potential in China, *Appl. Energy*, 236, 867–876, <https://doi.org/10.1016/j.apenergy.2018.12.056>, 2019.
- 785 Leung, A. C. W., Gough, W. A., Butler, K., Mohsin, T., and Hewer, M. J.: Characterizing observed surface wind speed in the Hudson Bay and Labrador regions of Canada from an aviation perspective, *Int. J. Biometeorol.*, 66, 411–425, <https://doi.org/10.1007/s00484-020-02021-9>, 2020.
- 790 Liu, Y., Zhou, Y., and Lu, J.: Exploring the relationship between air pollution and meteorological conditions in China under environmental governance, *Sci. Rep.*,

- 10, <https://doi.org/10.1038/s41598-020-71338-7>, 2020.
- Li, X., Hussain, S. A., Sobri, S., and Said, M. S. M.: Overiewing the air quality
795 models on air pollution in Sichuan Basin, China, *Chemosphere*, 271, 129502,
<https://doi.org/10.1016/j.chemosphere.2020.129502>, 2021.
- Manasseh, R., and Middleton, J. H.: The surface wind gust regime and aircraft
operations at Sydney Airport, *J. Wind Eng. Ind. Aerodyn.*, 79, 269–288,
[https://doi.org/10.1016/s0167-6105\(97\)00293-6](https://doi.org/10.1016/s0167-6105(97)00293-6), 1999.
- 800 Ma, Y. -Y., Yang, Y., Hu, X. M., Qi, Y. -C., and Zhang, M.: Evaluation of Three
Planetary Boundary Layer Parameterization Schemes in WRF Model for the
February 28th, 2007 Gust Episode in XinjianG, *Desert and Oasis Meteorology*,
8(3), 8-18, doi: 10. 3969/ j. issn. 1002-0799. 2014.03.002, 2014 (in Chinese).
- Mu, Q. -C., Wang, Y. -W., Shao, K., Wang, L. -F., and Gao, Y. Q.: Three planetary
805 boundary layer parameterization schemes for the preliminary evaluation of near
surface wind simulation accuracy over complex terrain, *Res. Sci.*, 39, 1319- 1360,
doi: 10.18402/resci.2017.07.12, 2017.
- Mi, L., Shen, L., Yan, H., Cai, C., Zhou, P., and Li, K.: Wind field simulation using
WRF model in complex terrain: A sensitivity study with orthogonal design,
810 *Energy*, 285, 129411, <https://doi.org/10.1016/j.energy.2023.129411>, 2023.
- Ma, Y.-F., Wang, Y., Xian, T., Tian, G., Lu, C., Mao, X., and Wang, L.-P.: Impact of
PBL schemes on multiscale WRF modeling over complex terrain, Part I:
Mesoscale simulations. *Atmospheric Research*, 297,
<https://doi.org/10.1016/j.atmosres.2023.107117>, 2024.
- 815 Nakanishi, M., and Niino, H.: Development of an improved turbulence closure model
for the atmospheric boundary layer, *J. Meteorol. Soc. Jpn.*, 87, 895–912,
<https://doi.org/10.2151/jmsj.87.895>, 2009.
- Prieto-Herráez, D., Frías-Paredes, L., Cascón, J. M., Lagüela-López, S., Gastón, M.,
Sevilla, M. I. A., Martín-Nieto, I., Fernandes-Correia, P., Laiz-Alonso, P.,
820 Carrasco-Díaz, O., Blázquez, C. S., Hernández, E., Ferragut-Canals, L., and
González-Aguilera, D.: Local wind speed forecasting based on WRF-HDWind
coupling, *Atmos. Res.*, 248, 105219,
<https://doi.org/10.1016/j.atmosres.2020.105219>, 2020.
- Pan, L., Liu, Y., Roux, G., Cheng, W., Liu, Y., Ju, H., Jin, S., Feng, S., Du, J., and
825 Peng, L.: Seasonal variation of the surface wind forecast performance of the
high-resolution WRF-RTFDDA system over China, *Atmos. Res.*, 259, 105673,
<https://doi.org/10.1016/j.atmosres.2021.105673>, 2021.
- Qi, X., Ye, Y., Xiong, X., Zhang, F., and Shen, Z.: Research on the adaptability of
SRTM3 DEM data in wind speed simulation of wind farm in complex terrain,
830 *Arab. J. Geosci.*, 14, <https://doi.org/10.1007/s12517-020-06326-2>, 2021.
- Rajput, A., Singh, N., Singh, J., and Rastogi S.: Insights of Boundary Layer
Turbulence Over the Complex Terrain of Central Himalaya from GVAX Field
Campaign. *Asia-Pac J Atmos Sci* 60, 143–164,
<https://doi.org/10.1007/s13143-023-00341-5>, 2024.
- 835 Sukoriansky, S., Galperin, B., and Perov, V.: A quasi-normal scale elimination model

of turbulence and its application to stably stratified flows, *Nonlinear Process Geophys.*, 13, 9–22, <https://doi.org/10.5194/npg-13-9-2006>, 2006.

Skamarock, W. C., Klemp, J. B., Dudhia, J., Gill, D. O., Barker, D., Duda, M. G., Huang, X. Y., Wang W., and Powers, J. G.: A description of the Advanced Research WRF version 3, NCAR Technical note-475+ STR, 840 <https://doi.org/10.5065/D68S4MVH>, 2008 (data available at https://www2.mmm.ucar.edu/wrf/users/download/get_source.html, last access: 28 October 2021).

Shin, H. -H., and Hong, S.: Representation of the Subgrid-Scale turbulent transport in convective boundary layers at Gray-Zone resolutions, *Mon. Weather Rev.*, 143, 845 250–271, <https://doi.org/10.1175/mwr-d-14-00116.1>, 2015.

Salfate, I., MariN, J., Cuevas, O., and Montecinos, S.: Improving wind speed forecasts from the Weather Research and Forecasting model at a wind farm in the semiarid Coquimbo region in central Chile, *Wind Energy*, 23, 1939–1954, 850 <https://doi.org/10.1002/we.2527>, 2020.

Shi, H., Dong, Z., Xiao, N., and Huang, Q.: Wind Speed Distributions Used in Wind Energy Assessment: A Review, *Front. Energy Res.*, 9: 769920, doi: 10.3389/fenrg.2021.769920, 2021.

Shen, Y., and Du, Y.: Sensitivity of boundary layer parameterization schemes in a marine boundary layer jet and associated precipitation during a coastal warm-sector heavy rainfall event, *Front. Earth Sci.* 10,1085136, doi: 855 10.3389/feart.2022.1085136, 2023.

Turnipseed, A., Anderson, D., Burns, S., Blanken, P., and Monson, R.: Airflows and turbulent flux measurements in mountainous terrain: Part 2: Mesoscale effects, 860 *Agricultural and Forest Meteorology*, 125, 187-205, [10.1016/j.agrformet.2004.04.007](https://doi.org/10.1016/j.agrformet.2004.04.007), 2004,

Tan, J., Zhang, Y., Ma, W., Yu, Q., Wang, Q., Fu, Q., Zhou, B., Chen, J., and Chen, L.: Evaluation and potential improvements of WRF/CMAQ in simulating multi-levels air pollution in megacity Shanghai, China, *Stoch. Environ. Res. Risk Assess*, 31, 2513–2526, <https://doi.org/10.1007/s00477-016-1342-3>, 2017. 865

Tiesi, A., Pucillo, A., Bonaldo, D., Ricchi, A., Carniel, S., and Miglietta, M. M.: Initialization of WRF model simulations with sentinel-1 wind speed for severe weather events, *Front. Mar. Sci.*, 8, <https://doi.org/10.3389/fmars.2021.573489>, 2021.

Wyngaard, J. C.: Toward Numerical Modeling in the “Terra Incognita”. *J. Atmos. Sci.*, 61, 1816 – 1826, [https://doi.org/10.1175/1520-0469\(2004\)061%3C1816:TNMITT%3E2.0.CO;2](https://doi.org/10.1175/1520-0469(2004)061%3C1816:TNMITT%3E2.0.CO;2), 2004. 870

Wang, Y., Zhang, L., Hu, J., and Zhang, Y.: Verification of WRF Simulation Capacity on PBL Characteristic and Analysis of Surface Meteorological Characteristic over Complex Terrain, *Plateau Meteorol.*, 29(6), 1397-1407, 875 doi:CNKI:SUN:GYQX.0.2010-06-005, 2010(in Chinese).

Wang, C. -G., Shen, Y. -J., Luo, F., Cao, L., Yan, J. -D., and Jiang, H. -M.: Comparison and analysis of several planetary boundary layer schemes in WRF

- model between clear and overcast days, *Chinese J. Geophys.*, 60, 141-153, doi: 10.6038/cjg20170307, 2017.
- 880 Wu, A. -N., Li, G. -P., Shi, C. -Y., and Qin, L. -L.: Numerical Simulation Analysis of a Gale Weather in the Dam Area of Baihetan Hydropower Station by Using the Subgrid-scale Terrain Parameterization Scheme, *Plateau and Mountain Meteorol. Res.*, 42, 222-230, doi: 10.3969/j.issn.1674-2184.2022.03.003, 2022 (in Chinese).
- 885 Wang, Q., Zeng, B., Chen, G., and Li, Y.: Simulation performance of different planetary boundary layer schemes in WRF V4.3.1 on wind field over Sichuan Basin within “Gray zone” resolution, Zenodo [data set], <https://doi.org/10.5281/zenodo.11328605>, 2024.
- 890 Xu, W., Ning, L., and Luo, Y.: Applying satellite data assimilation to wind simulation of coastal wind farms in Guangdong, China, *Remote Sens.*, 12, 973, <https://doi.org/10.3390/rs12060973>, 2020.
- Xiang, T., Zhi, X., Guo, W., Lyu, Y., Ji, Y., Zhu, Y., Yin, Y., and Huang, J.: Ten-Meter wind speed forecast correction in southwest China based on U-Net neural network. *Atmosphere*, 14, 1355, <https://doi.org/10.3390/atmos14091355>, 2023.
- 895 Yang, G. -Y., Wu, X., and Zhou, H.: Effect analysis of WRF on wind speed prediction at the coast wind power station of Fujian province, *J. Meteorol. Sci.*, 34(5), 530-535, doi:10.3969/2013JMS.0014, 2014(in Chinese).
- 900 Yu, S., Tao, N., He, J. -J., Ma, Z. -F., Liu, P., Xiao D. -X., Hu, J. -F., Yang J. -C., and Yan, X. L.: Classification of circulation patterns during the formation and dissipation of continuous pollution weather over the Sichuan Basin, China, *Atmos. Environ.*, 223, 1-18, doi: 10.1016/j.atmosenv.2019.117244, 2020.
- 905 Yang, J., and Shao, M.: Impacts of Extreme air pollution Meteorology on air quality in China, *J. Geophys. Res.-Atmos.*, 126, <https://doi.org/10.1029/2020jd033210>, 2021.
- Yan, H., Mi, L., Shen, L., Cai, C., Liu, Y., & Li, K.: A short-term wind speed interval prediction method based on WRF simulation and multivariate line regression for deep learning algorithms, *Energy Conv. Manag.*, 258, 115540, <https://doi.org/10.1016/j.enconman.2022.115540>, 2022.
- 910 Yu, E. -T., Bai, R., Chen, X., and Shao, L.: Impact of physical parameterizations on wind simulation with WRF V3.9.1.1 under stable conditions at planetary boundary layer gray-zone resolution: a case study over the coastal regions of North China, *Geosci. Model Dev.*, 15, 8111–8134, <https://doi.org/10.5194/gmd-15-8111-2022>, 2022.
- 915 Zhang, B. -H., Liu, S. -H., and Ma, Y. -J.: The effect of MYJ and YSU schemes on the simulation of boundary layer meteorological factors of WRF, *Chinese J. Geophys.*, 55, 2239-2248, doi: 10.6038/j.issn.0001-5733.2012.07.010, 2012.
- Zhang, X. -P., and Yin, Y.: Evaluation of the four PBL schemes in WRF Model over complex topographic areas, *Trans. Atmos. Sci.*, 36(1), 68-76, doi:10.13878/j.cnki.dqkxxb.2013.01.008, 2013(in Chinese).
- 920 Zhang, L., Xin, J., Yin, Y., Chang, W., Xue, M., Jia, D., and Ma, Y.: Understanding the

major impact of planetary boundary layer schemes on simulation of vertical wind structure, *Atmosphere*, 12, 777, <https://doi.org/10.3390/atmos12060777>, 2021.