

European tree cover during the Holocene reconstructed from pollen records

Luke Sweeney^{1,2,*}, Sandy P. Harrison^{1,2}, Marc Vander Linden³

1: Geography and Environmental Science, School of Archaeology, Geography and Environmental Science (SAGES), University of Reading, Whiteknights, Reading, RG6 6AH, UK. Email: l.sweeney@pgr.reading.ac.uk

2: Leverhulme Centre for Wildfires, Environment and Society, Imperial College London, South Kensington, London, SW7 2BW, UK. Email: s.p.harrison@reading.ac.uk

3: Institute for the Modelling of Socio-Environmental Transitions, Bournemouth University, Christchurch House, Talbot Campus, Poole, BH 12 5BB, UK. Email: mvanderlinden@bournemouth.ac.uk

*Correspondence to: Luke Sweeney (l.sweeney@pgr.reading.ac.uk)

Abstract

Changes in tree cover influence many aspects of the earth system. Recent regional changes in tree cover, as documented by remote-sensed observations, are insufficient to capture the response to large climate changes or to differentiate the impacts of human activities from natural drivers. Pollen records provide an opportunity to examine the causes of changes in tree cover in response to large climate changes in the past and during periods when human influence was less important than today. Here we reconstruct changes in tree cover in Europe through the Holocene using fossil pollen records, using the modelled relationship between observed modern tree cover and modern pollen samples. At a pan-European scale, tree cover is low at the beginning of the Holocene but increases rapidly during the early Holocene and is maximal at ca. 6,500 cal. BP, after which tree cover declines to present-day levels. The rapidity of the post-glacial increase in tree cover and the timing and length of maximum tree cover varies regionally, reflecting differences in climate trajectories during the early and mid-Holocene. The nature of the subsequent reduction in tree cover also varies, which may be due to differences in climate but may also reflect different degrees of human influence. The reconstructed patterns of change in tree cover are similar to those shown by previous reconstructions. Our approach is relatively simple, only requires readily available data and could therefore be applied to reconstruct tree cover globally.

1. Introduction

Tree cover in Europe has been expanding in recent decades (FAO, 2020; Turubanova et al., 2023), with potential implications for land-atmosphere energy exchanges, water and carbon cycles, and ultimately local and global climates (Bonan, 2008; Alkama and Cescatti, 2016). Changes in tree cover may reflect forest or woodland expansion, or the presence of trees in vegetation mosaics and urban settings. Tree cover both affects and is affected by the environment (Moyes et al., 2015; Abis and Brovkin, 2017) and this two-way relationship leads to complex interactions between both. For example, deforestation in the Amazon has been linked to changes in weather patterns, which subsequently affect the moisture available for rainforest maintenance (Staal et al., 2018; Leite-Filho et al., 2020). Similarly, increases in tree cover resulting from farm abandonment has been shown to change fire frequency in the Iberian Peninsula (Moreira et al., 2001; Viedma et al., 2015), which in turn affects vegetation cover and structure and results in further changes to the fire regime. Satellite data can be used to assess the environmental controls on tree cover but, since they only cover the past 20–30 years, are insufficient to look at the response to longer term changes in climate or relationships when the human influence of land-use and vegetation cover was less ubiquitous.

Pollen from sedimentary sequences provides a record of past vegetation changes. The relative abundance of arboreal pollen has often been used to infer changes in tree abundance at a site (e.g. Thorley, 1981; Eastwood et al. 1999; Gil-Romera et al., 2008). The relationship between pollen abundances and vegetation cover is not straightforward however, because it is influenced by differences between species in pollen productivity and transportability, and site characteristics that affect the pollen source area, such as basin size and type (Bradshaw and Webb, 1985; Prentice and Webb, 1986; Prentice, 1988; Sugita, 1993).

Several different techniques have been applied to reconstruct regional and sub-regional vegetation in Europe using pollen, including biomization/pseudobiomization (e.g. Fyfe et al., 2015; Binney et al., 2017) and the application of MAT using plant functional types (e.g. Davis et al., 2014). Other studies have made reconstructions combining different approaches (e.g. Roberts et al., 2018) or by combining pollen-based reconstructions with simulated potential vegetation (Pirzamanbein et al., 2014). However, the most recent quantitative pan-European pollen-based reconstructions of Holocene vegetation changes have been made using the REVEALS approach (Sugita, 2007b, a) or the Modern Analogue Technique (MAT) (Overpeck et al., 1985; Guiot, 1990; Jackson and Williams, 2004; Zanon et al. 2018). The REVEALS method calculates regional vegetation cover based on modelled relationships between pollen abundance, estimated differences in species level pollen productivity and pollen transport, and differences in site characteristics. Initially used at individual sites or small regions (e.g. Gaillard et al., 2010; Nielsen et al., 2012; Marquer et al., 2014), REVEALS was first applied at a pan-European scale

by Trondman et al. (2015) and later extended with additional sites, taxa and an improved temporal resolution by Githumbi et al. (2022). The most recent analysis by Serge et al. (2023), is based on 1607 records for 500-year intervals before 700 cal. BP and for the subsequent intervals of 700–350 cal. BP, 350–100 cal. BP and 100 cal. BP–present. They tested the impact of including 15 additional taxa (total n=46) on the vegetation reconstructions, producing maps of landcover and species abundance at record-containing 1° grid cells. In contrast, the MAT approach reconstructs past vegetation based on identifying modern analogues of fossil pollen assemblages, on the assumption that samples found in the fossil record that share a similar composition to those found in present-day pollen assemblages will have similar vegetation. Zanon et al. (2018) applied MAT to 2,526 individual fossil pollen samples from Europe to generate interpolated maps at 250-year intervals at 5 arc-minute resolution through the Holocene.

Each of these approaches presents challenges. The REVEALS approach requires, and is sensitive to, estimates of relative pollen productivity (RPP) and pollen fall speeds (FS) for individual species (Bunting and Farrell, 2022; Githumbi et al., 2022; Serge et al., 2023). Landscape-level reconstructions are problematic if RPP information is not available for relatively common taxa (Harrison et al., 2020). RPP values have been estimated for common taxa in Europe and China, and there are a limited number of studies from North America (see e.g. Wicczorek and Herzschuh, 2020). Studies have been conducted for some ecosystems in South America and Africa, but these only provide RPPs for a very limited number of taxa (e.g. Duffin & Bunting, 2008; Whitney et al, 2018; Gaillard et al., 2021; Hill et al., 2021; Tabares et al., 2021; Piraquive Bermúdez et al., 2022) and even this level of information is not readily available for other regions. The MAT technique requires a large modern pollen data set for training purposes, but such data sets are now available for all regions of the world. However, the application of MAT involves a number of arbitrary decisions including the choice of analogue threshold (i.e. how similar modern and fossil assemblages must be to be considered analogous), and the number of analogues used (Jackson and Williams, 2004). Techniques designed to minimise the number of samples for which no analogues are found, such as grouping species into plant functional types (PFTs) (see Davis et al., 2003), introduce further uncertainties since the allocation of pollen taxa to PFTs is often ambiguous (Zanon et al., 2018).

In this paper, we develop a simple calibration approach to derive estimates of tree cover at individual sites across Europe, capitalising on an extensive modern pollen data set, new remote-sensed data on tree cover, harmonised age models, and improved information about basin size for fossil records from Europe. We evaluate how well this method reconstructs modern tree cover compared to existing methods. We then reconstruct pan-European changes in tree cover through the Holocene and compare these reconstructions with existing reconstructions.

Deleted: The key elements of each technique, including the approach applied within this paper, are summarised in Table 1....

Table 1: Key elements of the reconstruction technique from this study, the REVEALS approach (i.e. Serge et al., 2023) and MAT (i.e. Zanon et al., 2018) ... [1]

Deleted: **Table 1: Key elements of the reconstruction technique from this study, the REVEALS approach (i.e. Serge et al., 2023) and MAT (i.e. Zanon et al., 2018)** ... [2]

2. Methods

Tree cover during the Holocene was reconstructed by applying a statistical model describing modern tree cover to fossil pollen records from individual sites. There were three steps: 1) selection and treatment of data; 2) development of the predictive model relating modern pollen data to modern tree cover; and 3) application of this model to fossil pollen records (Fig. 1). All analyses were performed using the R Statistical Software (v4.3.3) (R Core Team, 2024).

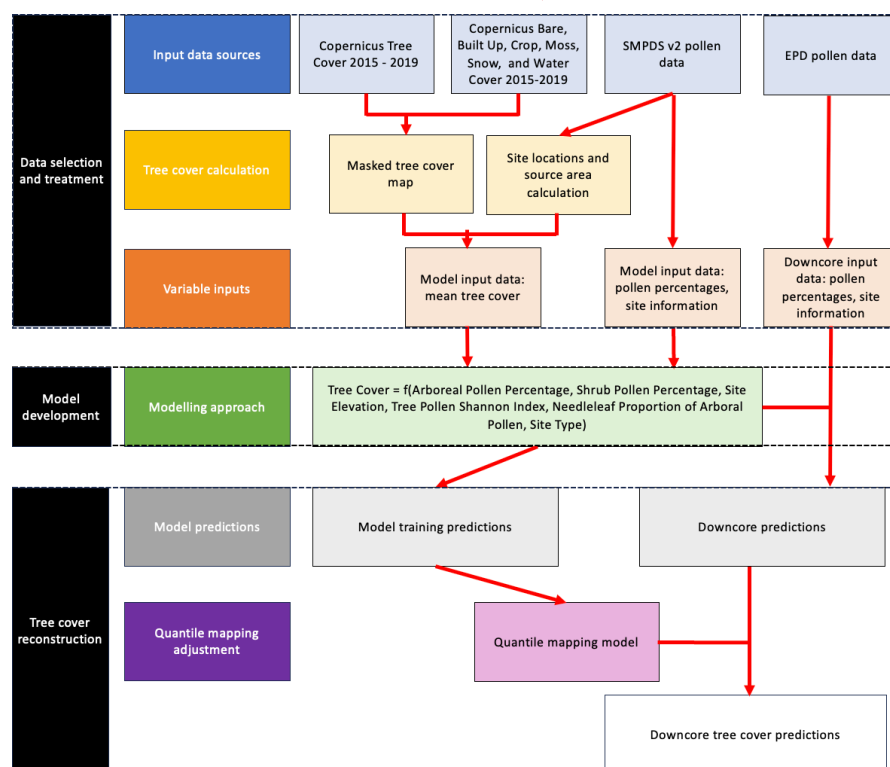
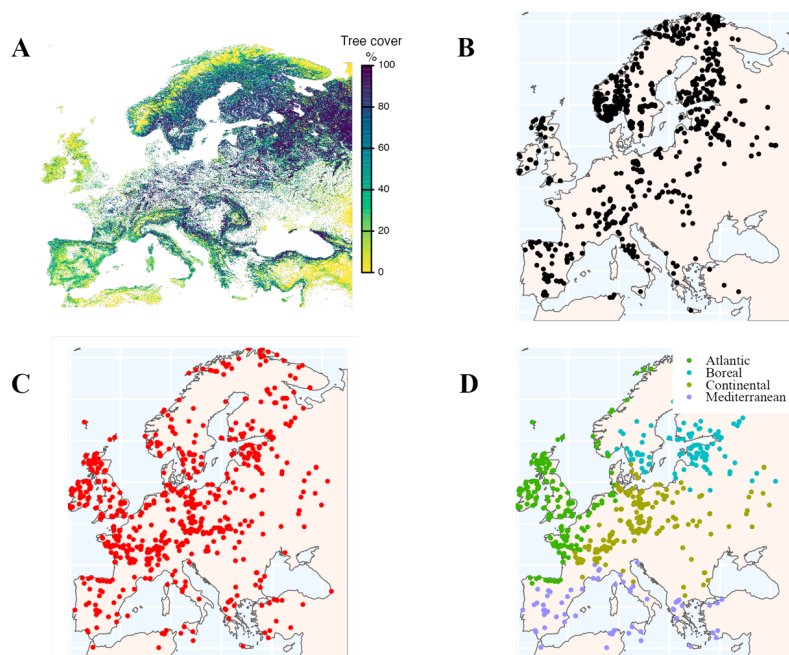


Figure 1: Methodology to reconstruct European tree cover during the Holocene

2.1 Selection and treatment of data

We used the Copernicus Dynamic Land Cover Dataset to source information on tree cover. This data set provides percentage land cover estimates for individual land-cover classes at a spatial resolution of 100m. We used the land-cover class designated as forest/tree cover, which at this spatial resolution can be regarded as an estimate of actual tree cover. A composite map of modern tree cover for the region 12°W to 45°E and 34–73°N was generated by averaging annual percentage forest/tree cover data from

135 Copernicus annual land cover maps from 2015 to 2019 (Buchhorn et al., 2020a, e, d, c, b), after removing cells dominated (> 50%) by other land-cover classes, which include bare ground, built up areas, moss or lichen, permanent water, snow, and crops (Fig. 2A). However, the Copernicus maps do not distinguish between natural forests and plantations and so the tree cover target may include planted species. This modern tree cover map has a resolution of 100m.



140 **Figure 2: A - Observed tree cover based on compositing annual tree cover maps from the Copernicus land cover data sets (2015-2019) and screening out cells where the dominant land cover was not natural; B - Modern pollen records used for model fitting; C - Fossil pollen sites used for tree cover reconstructions; D - Classification of the fossil pollen sites into climatic sub-regions**

145 Modern pollen data (Fig. 2B) was obtained from version 2 of the SPECIAL Modern Pollen Dataset (Villegas-Diaz and Harrison, 2022). This dataset was created from multiple different published regional datasets, from data repositories (Neotoma, PANGAEA) or directly from data collectors/authors (see Supplementary Information, [Section S1, Table S1](#) for sources and citations) but employs a standardised taxonomy, and includes improvements to metadata and age models. The data set was further amended for the current analysis by including updated meta information (see *Code and data availability*). The SMPDS contains pollen samples from the post-industrial era (post-1850 CE). We extracted samples that were explicitly dated to post-1950 and assumed that all samples characterised as modern but without an explicit age assignment also dated to post-1950 CE. We assume that at the regional scale these samples broadly reflect modern (2015–2019) tree cover values. Site metadata (elevation, site type, basin size) from the SMPDSv2, along with the additional metadata updates, were used as explanatory

Deleted: :

155 variables in the tree cover model (see below). Depauperate samples with Hill's N2 values (Hill, 1973)
of < 2 were excluded, following Wei et al. (2021). Wei et al. (2021) found that low taxa diversity
produced unreliable estimates of reconstructed variables, in this case temperature via tolerance
weighted partial least squares estimation. Pollen counts from cores with multiple modern samples were
averaged to prevent over-sampling. Likewise, where there were multiple cores from the same site,
160 pollen counts were averaged so that there was only a single count from each site. Only samples from
lakes and bogs were included, to ensure appropriate pollen source areas could be calculated; samples
gathered via moss polsters or pollen traps were excluded as these generally reflect only the very local
pollen rain. However, bog records with a radius $\geq 400\text{m}$ were excluded from the analysis because we
included taxa that grow on bog surfaces in our analysis (see below), and the exclusion of large bogs
165 reduces the potential for these to bias the regional vegetation reconstructions. Finally, since upslope
pollen transport is known to increase the proportion of non-local pollen at high-elevation sites (Fall,
1992; Ortu et al., 2008, 2010), and the complex topography of mountainous areas also impacts pollen
transport (Markgraf, 1980; Bunting et al., 2008; Marquer et al., 2020; Wörl et al., 2022), we excluded
236 site records above 1000m. To test the effect of the inclusion of bog sites and the restriction on site
170 elevation, we ran three alternative models excluding bogs, including high elevation sites and applying
a more restrictive 500m limit to site elevation, and examined summary statistics for each.

The percentage of arboreal pollen (AP%) and shrub pollen (SP%) were calculated based on the Total
Terrestrial Pollen Sum (TTPS), and allocation of species into AP/SP or herbaceous (e.g. grass/ herb)
175 pollen types in Europe (see Supplementary Information, [Section S2](#), [Table S2](#) and [Code and data availability](#)). To take into account broadscale differences in pollen productivity and pollen transport for
species at a site level, the pollen data were also used to calculate the needleleaf share of the AP
(%needleleaf), the share of tree pollen that are from species that are primarily wind pollinated (%wind
pollinated) and the proportion of *Pinus* in the tree pollen (%*Pinus*). [We also calculated the Shannon](#)
180 [Index \(SI\) of tree species diversity from the pollen data](#). Species identified as not native to Europe,
obligate aquatics and cereals were excluded from the TTPS, but Cyperaceae, Polypodiales and
Ericaceae were included as characteristic of more open environments and to prevent the pollen
assemblages from these environments being dominated by pollen transported from long distances.

185 The source area for each record, and hence the appropriate area for the calculation of mean tree cover,
was calculated using Prentice's (1985) source area formula for 70% of pollen, and lake or bog area from
the SMPDS, noting that the original formula makes no distinction for different site types. The selection
of 70% is a simplification and other research has suggested lower percentages may be sufficient to
capture most of the vegetation signal (e.g. ~30 – 45%; Sugita, 1994), so we also tested the implications
190 of using 50 and 35% pollen source areas. The original source area formula used species-specific FS
values but these are not available for all the taxa used in our analysis, so here we used the median FS

Deleted: :

Deleted: The Shannon Index (SI) of tree species diversity was also calculated from the pollen data, to account for localised tree cover and/or long distance transport of pollen

(0.03) from Githumbi et al. (2022) and Serge et al. (2023) since the tree cover map represents the broad species community around each record location. We assumed basin areas were circular to calculate the radius. For those sites that have no exact information on basin size but were categorised as small (0.1–1km²), we assumed basin areas of 0.5km²: there were 30 such sites included in the model construction. Source area radii varied in size from 5,026m to 418,894m for the largest lake, with a median of 28,316m. These values are reduced when using areas representing 50% and 35% of pollen: for 50% of source pollen the radii varied from 591m to 141,392m, with a median of 5293m; for 35% of source pollen the source radii varied from 150m to 72,919m, with a median of 1908m. Mean tree cover was calculated for each site from the tree cover map using the R package *exactextractr* (function: *exact_extract*) (Baston, 2023; [version 0.10.0](#)). There were 263 records where more than half of the contributing grid cells were masked as land-cover classes other than vegetation; these were excluded from the model construction. A total of 852 pollen records were included in the final model training dataset, of which 133 were bog records.

Fossil pollen data were obtained from the SPECIAL-EPD dataset (Harrison et al., 2024), a database of pollen records from Europe, the Middle East and western Eurasia. It builds on a pollen compilation covering the Middle East (EMBSecBIO database: Cordova et al., 2009; Harrison and Marinova, 2017; Marinova et al., 2017; Harrison et al., 2021), data available from public data repositories (NEOTOMA: <https://www.neotomadb.org/>; PANGAEA: <https://www.pangaea.de/>) and data provided by the original authors for the Iberian Peninsula (Liu et al., 2023) and some other regions. It includes 1,758 records from 1,573 sites. The data have been extensively quality-controlled and mistakes have been corrected and documented. New BACON Bayesian age models, based on the recalibration of radiocarbon ages using INTCAL2020 (Reimer et al., 2020) or Marine20 (Heaton et al., 2020) calibration curve as appropriate, are provided for all the records using the *rbacon* R package (Blaauw [and Christen, 2011](#); [version 3.4.2](#)) in the *ageR* R package (Villegas-Diaz et al., 2021; [version 0.2.0.900](#)). We filtered the fossil data in the same way as the modern pollen data, by only using pollen records from lakes and bogs below 1000m in the region 12°W to 45°E and 34-73°N. Where there were multiple records from the same site, we selected a single record, prioritising the record with the maximum number of samples for the period 12,000 cal. BP to present (Fig. 2C). The pollen counts were used to calculate AP% and SP%, %needleleaf, %wind pollinated, %*Pinus* and the tree SI, using the species categorisation applied to the modern pollen data (see Supplementary Information, [Section S2](#), [Table S2](#) and [Code and data availability](#)).

Deleted: et al.,

Deleted: 2

Deleted: :

235 2.2 Model development

A Beta regression, which is suitable for use with proportional data, was used to model tree cover using the R package *betareg* (Cribari-Neto and Zeileis, 2010; [version 3.2-2](#)). The explanatory variables included AP%, SP%, %needleleaf, site elevation, site type (lake or bog) and arboreal pollen SI values. The AP% and SP% were expected to explain most of the variability in tree cover. The %needleleaf was also included to reflect potential broad differences in both pollen productivity and transport between needleleaf and broadleaf species (see Table 1 from Serge et al., 2023), without having to limit the species considered to those for which there are RPP values. As an additional approach to address differences in pollen production and transport, we tested the implications of including broad pollen dispersal syndromes in the model in place of %needleleaf. We calculated the percentage of the tree pollen based on wind pollination as opposed to biotic (insect, bird) or dual (wind or biotic) pollination methods, following the categorisations by Tong et al. (2023), and Kling and Ackerly (2021) (see Supplementary Information, [Section S2, Table S2](#)). *Pinus* is the most ubiquitous pollen type recorded in the modelled data set, and is widely recognised as a potential contaminant in more open vegetation due to long-distance transport. We therefore also tested the impact of including %*Pinus* as a predictor in the regression model. Although records above 1000m were excluded from the data set, site elevation was included as an explanatory variable to capture any residual impacts of elevation on tree cover. We tested the implications of including sites of all elevations within the model, as well as a more restrictive 500m upper limit for sites. Site type (bog, lake) was included because there is a greater potential for pollen mixing prior to sedimentation in lake settings, which means that lakes may be more representative of the regional tree cover (Sugita, 1993; Githumbi et al., 2022). [We also included tree SI as a way to evaluate potential impacts of very localised tree cover or long-distance transport from a single taxa or few taxon influencing the recorded AP%.](#) The final model was selected based on the Akaike Information Criteria (AIC: Akaike, 1974) and Cox-Snell R^2 value (Cox and Snell, 1989). We tested the inclusion of interaction effects associated with elevation, since the relationship between AP% and tree cover may be directly influenced by elevation due to upslope transport. In addition, given the potential importance of both RPP and transport, and landscape fragmentation, we tested the inclusion of second and third order polynomial coefficients for %needleleaf and tree SI. As Beta regression allows explicit modelling of the precision parameter as well as the mean (i.e. variance does not need to be consistent across observations) (see Simas et al., 2010), we tested the inclusion of regressors describing precision. Finally, as excluding cells dominated by crop cover in the modern observed tree cover map may have implications for downcore reconstructions, we also tested the implications of removing this crop cover restriction when calculating observed tree cover on the regression model fit.

The modern tree cover model was tested based on leave one out cross validation (LOOCV), and calculation of root mean squared error (RMSE), mean absolute error (MAE) and R^2 correlation between

Deleted: :

Deleted: We also included tree SI, to take account of potential impacts of very localised tree cover or long-distance transport from a single taxa or few taxon influencing the recorded AP%

observed and predicted values. A quantile mapping adjustment, using the R package *qmap* (Gudmundsson et al., 2012; version 1.0-6) was calculated on the LOOCV model predictions to account for compression of the reconstructions, with overestimation of low tree cover and underestimation of high tree cover values, following Zanon et al. (2018). This decompression was then used to adjust downcore reconstructions generated from the Beta regression.

2.3 Application of model to fossil pollen data

The tree cover model, adjusted to deal with the compression bias, was applied to the variables generated from 811 records from the SPECIAL-EPD with data for part or all of the interval between 12,000 cal. BP and the present day. Since the records cover different time periods and have different temporal resolutions, reconstructed tree cover values were binned in 200-year bins. Standard error estimates for site predictions were calculated through the application of a bootstrapping approach, with 1000 resamples of the model training data used to generate models, and equivalent quantile mapping adjustment, which were then applied to the fossil pollen data. We examined temporal trends in tree cover for the European region as a whole and for modern biogeographical regions as defined by the European Environment Agency (EEA) classification (European Environment Agency, 2016). We also produced maps of tree cover through time for 50km² grid cells by averaging reconstructed tree cover across all sites in the same cell. These reconstructions were compared with the Serge et al. (2023) and Zanon et al. (2018) reconstructions of Holocene tree cover. As basin size was not available for all record site locations, we extracted tree cover median values using a general 5km² buffer to maximise the number of site comparisons and to prevent edge effects.

2.4 Comparison of reconstructions

Our new approach shares some features with the methods used in previous reconstructions (Table 1), but is less data-demanding than the REVEALS-based technique and does not require *a priori* decisions about the selection of analogues. We compare our final predictions to both modern and fossil reconstructions of tree cover by Serge et al. (2023) and Zanon et al. (2018). Modern is defined as the interval 100 cal. BP and the present day in Serge et al. (2023) and between 125 cal. BP and present for Zanon et al. (2018). We make comparisons to the Serge et al. (2023) reconstructions based on the 31 taxa originally used by Githumbi et al. (2022) since Serge et al. (2023) show that this produces better results than using the expanded data set of 46 taxa.

Deleted:

The final predictions were compared to modern reconstructions of tree cover by Serge et al. (2023) and Zanon et al. (2018), where modern is the interval 100 cal. BP and the present day in Serge et al. (2023) and between 125 cal. BP and present for Zanon et al. (2018). We make comparisons to the Serge et al. (2023) reconstructions based on the 31 taxa originally used by Githumbi et al. (2022) since Serge et al. (2023) show that this produces better results than using the expanded data set of 46 taxa.

For each of the 1° grid cells in Serge et al. (2023), tree cover was calculated from the sum of the appropriate vegetation types. Time series of the change in median tree cover were constructed using median tree cover corresponding to the pollen source area of each of our individual modern reconstructions. As the Serge et al. (2023) and Zanon et al. (2018) data is available in gridded format, comparison with our site-based predictions is not straightforward. Where the site location source areas straddled multiple grid cells, a median was calculated, weighted by the proportion of grid cell coverage using R package *exactextractr* (function: *exact_extract*) (Baston, 2023). The tree cover time series for the Zanon et al. (2018) and Serge et al. (2023) data were initially constructed using all of the extracted tree cover values for each of our model training site locations. However, since there can be multiple sites within some of these grid cells, we tested whether this affected the comparisons by taking an average of extracted tree cover values for locations sharing the same grid cell values from Zanon et al. (2018) or from Serge et al. (2023), and using this to create new time series for these two reconstructions.

Table 1: Key elements of the reconstruction technique from this study, the REVEALS approach (i.e. Serge et al., 2023) and MAT (i.e. Zanon et al., 2018)

	<u>This paper</u>	<u>REVEALS (Serge)</u>	<u>MAT (Zanon)</u>
<u>Training data</u>	Modern pollen data Modern tree cover	NA	Modern pollen data Modern tree cover
<u>Training model</u>	Regression based model linking modern pollen to modern tree cover	NA, although defined relationship between RPP and FS per taxa from modern data underpins technique	Calibration of modern pollen assemblages to tree cover
<u>Downcore data requirements</u>	Pollen data; Site characteristics	Pollen data; Site characteristics; RPP and FS per taxa	Pollen data
<u>Main Assumptions and Challenges</u>	Regression model applicability and included variables	Accuracy of RPP and FS values; Limited set of taxa	Number of analogues used (commonly 3-5); Threshold of similarity; Non-analogues
<u>Scale</u>	Site-based	Typically 1° where sites are located	Site-based; (Zanon: spatio-temporal interpolation)

For each of the 1° grid cells in Serge et al. (2023), tree cover was calculated from the sum of the appropriate vegetation types. Time series of the change in median tree cover were constructed using median tree cover corresponding to the pollen source area of each of our individual modern reconstructions. As the Serge et al. (2023) and Zanon et al. (2018) data is available in gridded format, comparison with our site-based predictions is not straightforward. Where the site location source areas straddled multiple grid cells, a median was calculated, weighted by the proportion of grid cell coverage using R package *exactextractr* (function: *exact_extract*) (Baston, 2023; version 0.10.0). The tree cover time series for the Zanon et al. (2018) and Serge et al. (2023) data were initially constructed using all of the extracted tree cover values for each of our model training site locations. However, since there can be multiple sites within some of these grid cells, we tested whether this affected the comparisons by taking an average of extracted tree cover values for locations sharing the same grid cell values from Zanon et al. (2018) or from Serge et al. (2023), and using this to create new time series for these two reconstructions.

3. Results

3.1 Model fit and validation

The final model has a (Cox-Snell) pseudo- R^2 of 0.60, and LOOCV RMSE of 0.14 and MAE of 0.11, indicating a reasonable fit to the data. Variance inflation factor (VIF) scores are not readily interpretable

because of the inclusion of interaction terms, but a version of the model with the same variables but excluding the interaction terms has VIF values < 2 for all the explanatory variables, indicating that there is no multicollinearity and that all the explanatory variables represent independent controls on tree cover. The Cox-Snell R^2 for this **reduced** model **was** 0.54.

There is a positive relationship between tree cover and AP% and a negative relationship between tree cover and SP% (Table 2), as expected. However, the strength of each relationship is moderated by elevation, with increasing elevation reducing both the positive effect of AP% and the negative effect of SP% on tree cover. There is a negative correlation between %needleleaf and tree cover, although the significant positive quadratic term for needleleaf suggests this relationship becomes positive at higher abundances of %needleleaf. This negative relationship may be a reflection of longer distance pollen transport of needleleaf species (e.g. *Pinus*) to open environments. As tree cover increases, this may imply an increased diversity of species, including broadleaf species. The positive quadratic term indicates that this relationship becomes positive at higher levels of tree cover, potentially reflecting higher tree cover in boreal needleleaf forests. Replacing %needleleaf with either %wind pollination tree species or %*Pinus* as explanatory variables related to pollen transport resulted in a poorer model fit (Supplementary Information, **Section S3, Tables S3 and S4**). Increased tree SI is positively related to tree cover, with the effect decreasing with elevation. However, the negative correlation for the quadratic term for the SI suggests that the relationship has less of an effect on tree cover as tree SI increases. Again, this relationship may be explained in the context of open environments, where tree species diversity may be limited to species with longer distance pollen transport. For example, records in tundra tend to have a greater average disconnect between observed tree cover and AP%, as well as the lowest average tree SI values by biome (Supplementary Information, **Section S4, Table S5, Fig. S1 and Fig. S2**). Tree species diversity may then increase with tree cover, with the negative quadratic term implying that the highest levels of tree cover are represented by relatively uniform species types. There is no significant relationship between site type and tree cover, but the interaction term between them is significant, with a reduction in the effect of elevation on the likelihood of higher tree cover for lake sites. One possible explanation for this relationship is that the increasing likelihood of longer distance pollen transport with elevation affects bog sites more than lake sites in a relative sense, in that bog sites typically have a smaller source area. The Cox-Snell R^2 value increases slightly to 0.62 (from 0.60) if bogs are excluded from the model (Supplementary Information, **Section S5, Table S6**) but this causes a substantial reduction in spatial and temporal coverage. Conversely, including higher elevation sites ($>1000\text{m}$) within the model reduces the Cox-Snell R^2 to 0.50 (from 0.60) (Supplementary Information, **Section S6, Table S7**). Limiting the maximum elevation of sites had very limited impact on overall model fit (Supplementary Information, **Section S7, Table S8**). A likelihood-ratio test of the model with the inclusion of variables for precision against a model with a constant precision parameter shows that there is a significant improvement in the model with variable dispersion. Increases in %needleleaf and

Deleted: :

Deleted: :

Deleted: :

Deleted: :

Deleted: :

SI are associated with increased precision of the tree cover reconstructions, whereas lake sites are generally less variable in terms of tree cover than bog sites.

405

Table 2: Modern tree cover model coefficients

Coefficients (mean model with logit link)	Estimate	Standard Error	P Value
(Intercept)	-5.598	0.437	1.54e-37 ***
Tree pollen %	2.374	0.223	1.56e-26 ***
Shrub pollen %	-3.458	0.630	4.06e-08 ***
Needle share of AP%	-1.317	0.456	0.004 **
Needle share of AP%^2	3.009	0.514	4.80e-09 ***
AP Shannon index	5.091	0.458	1.04e-28 ***
AP Shannon index^2	-1.375	0.138	2.09e-23 ***
Lake or bog site	0.031	0.132	0.815
Elevation	0.003	0.001	0.005 **
AP pollen:elevation interaction	-0.001	0.000	0.003 **
SP pollen:elevation interaction	0.004	0.001	0.001 **
AP Shannon:elevation interaction	-0.004	0.001	2.06e-04 ***
AP Shannon^2:elevation interaction	0.002	0.000	2.10e-06 ***
Lake or bog site:elevation interaction	-0.001	0.000	5.57e-04 ***
Precision submodel (log link; after variable selection^^)			
(Intercept)	0.407	0.256	0.112
Needle share of AP%	0.798	0.229	5.05e-4 ***
AP Shannon index	0.840	0.121	4.04e-12 ***
Lake or bog site	0.534	0.126	2.17e-5 ***

Significance codes: 0 = '***'; 0.001 = '**'; 0.01 = '*'; 0.05 = '.'; 0.1 = '.'; 1 = ''

^^Only significant (at 5% significance) covariates were included

410 The influence of each variable on the quality of the statistical model is shown in Table 3, with the
change in AIC value based on the removal of each variable, including the removal of associated
interaction, polynomial and precision terms as applicable. Although AP and SP were expected to be
the most important explanatory variables, the model only using only these two variables has an AIC
value 568 greater than the final model, and a Cox-Snell R^2 of only 0.27 (Table 2). The poorer fit may
415 reflect the observed limitation of using linear pollen percentages to represent tree cover (“the
Fagerlind Effect”; Fagerlind, 1952; Prentice and Webb, 1986). Although pollen percentages provide a
reasonable approximation of tree cover (Prentice and Webb, 1986), the inclusion of the other
variables is important in fitting the final model.

420 **Table 3: Change in modern model AIC values and Cox-Snell R² model values when excluding specific variables (exclusion includes interactions, polynomials and precision variables) and for a model with only arboreal and shrub pollen percentage**

Model	Δ AIC	Cox-Snell R ²
Final model	0	0.60
excluding AP	165	0.51
excluding SP	31	0.58
excluding %needleshare	121	0.55
excluding AP Shannon index	396	0.41
excluding lake or bog site	56	0.57
excluding elevation	204	0.48
AP and SP model	568	0.27

425 We tested the influence of excluding cells dominated by crop cover when calculating observed tree cover values for each record location by re-running the regression using the same variables but without excluding these cells. The number of records used to train the model increased to 1050 (from 852), but the model pseudo (Cox-Snell) R² was reduced from 0.60 to 0.47 (Supplementary Information, [Section S8, Table S9](#)), supporting out decision not to include these cells in the model training. Using different pollen percentage values to calculate the source area for each record resulted in an increase in the number of records considered (935 for 35%, 934 for 50% compared to 852 in our original model) but the model fits were worse, with pseudo (Cox-Snell) R² reduced to 0.58 and 0.55 for 50% and 35% of pollen respectively (Supplementary Information, [Section S9, Tables S10 and S11](#)).

435 The application of the quantile mapping approach reduced the bias towards the mean, whilst preserving the general structure of the data (Supplementary Information, [Section S10, Fig. S3](#)). However, there is still a tendency for under- and over-estimation at low and high observed tree cover respectively in the final model (Fig. 3A). There is no obvious spatial patterning in the biases, except for a tendency to overestimate tree cover in northernmost Scandinavia (Supplementary Information, [Section S11, Fig. S4](#)). The correlation between the final “decompressed” predictions and observed tree cover values is 0.80 (Fig. 3B). This correlation value compares favourably to the correlation between raw AP% and observed tree cover values (0.54): raw AP% values tend to overestimate observed tree cover (Supplementary information, [Section S12, Fig. S5](#)).

Deleted: :

Deleted: :

Deleted: :

Deleted: :

Deleted: :

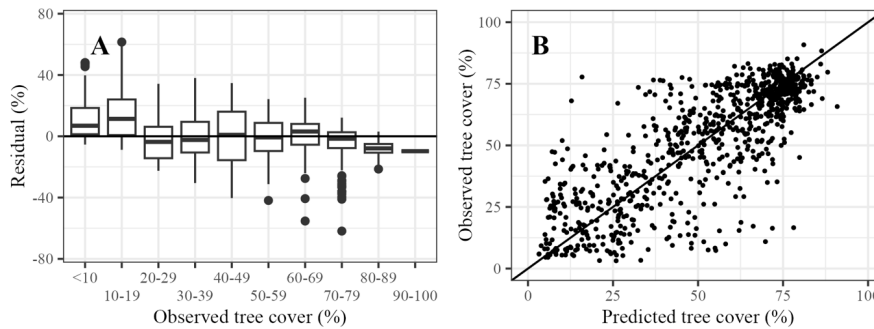


Figure 3: Evaluation of final model performance. A – Differences between predictions and observations (residual), in bins of observed tree cover percentage; B – Predictions of tree cover compared to observed tree cover

Our modern predictions differ from those of Serge et al. (2023) and Zanon et al. (2018) (Fig. 4). The correlation between the Zanon et al. (2018) reconstructions and observed tree cover is 0.78, which is similar to the correlation between our predictions and observed tree cover (0.8). The Zanon et al. (2018) reconstructions have fewer outliers, but nevertheless they underestimate tree cover at high levels of observed tree cover (Fig. 4A). The correlation between the Serge et al. (2023) predictions and observations is only 0.5. This is partly caused by the use of larger 1° grid cells, but even when taking this into account and comparing with an average value for each grid cell, the correlations between predictions and observations were still lower (0.59) than our predictions and those of Zanon et al. (2018) (Supplementary Information, [Section S13, Fig. S6](#)). Zanon et al. (2018) visually compare their interpolated modern tree cover map and the observed tree cover from Hansen et al. (2013), but they do not report a correlation or R^2 value. However, the correlation values for Serge et al. (2023) broadly align with those reported comparing REVEALS tree cover estimates, with observed tree cover derived from Hansen et al. (2013) ($R^2 = 0.15$; correlation ~ 0.4).

Deleted :

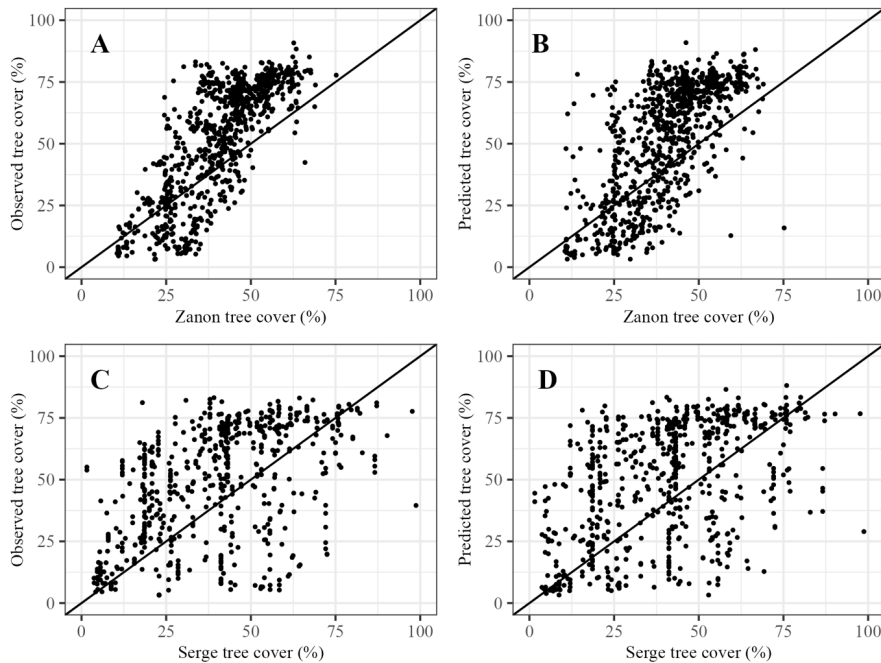


Figure 4: Modern tree cover from Zanon et al. (2018) compared to (A) observed tree cover and (B) our predicted tree cover. Modern tree cover from Serge et al. (2023) compared to (C) observed tree cover values and (D) our predicted tree cover.

3.2 Holocene changes in tree cover

We applied the tree cover model to reconstruct Holocene changes in tree cover at individual sites (see section *Data and code availability* for binned reconstructions at site level). The median tree cover value, considering Europe as a whole, increased rapidly between 12,000 to ca. 8,500 cal. BP, and then more slowly to a peak at ca. 6,500 cal. BP. Median tree cover declined overall between 6,500 cal. BP and 4,000 cal. BP, albeit with some variability. Median tree cover declined steadily to present-day levels after ca. 4,000 cal. BP (Fig. 5A). This same pattern is shown when considering changes in mean tree cover (Supplementary Information, [Section S14, Fig. S7](#)), different LOESS smoothing (R package *locfit*: Loader, 2020; [version 1.5-9.12](#)) of the median tree cover value (Fig. 5B), and based on median tree covers reconstructed with the model bootstraps used to generate reconstruction standard errors (Supplementary Information, [Section S15, Fig. S8](#)). The rapid warming at the end of the Younger Dryas (Alley, 2000; Cheng et al., 2020), and the changes associated with the 8,200 cal. BP event (Alley et al., 1997; Alley and Ágústsdóttir, 2005) and the 4,200 cal. BP event (e.g. Weiss et al., 1993; Bini et al., 2019) are not apparent at this pan-European scale.

Deleted :

Deleted :

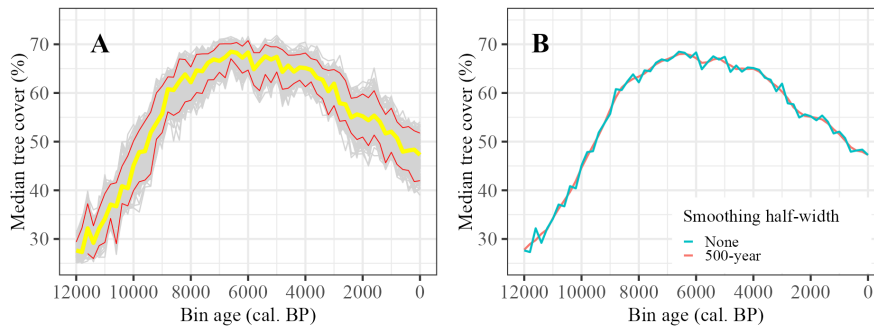


Figure 5: A - Median reconstructed tree cover for Europe from 12,000 to 0 cal. BP, with 95% confidence intervals for 1000 bootstrap resampling of records; B - Median reconstructed tree cover for Europe from 12,000 to 0 cal. BP, with differing LOESS regression smoothing half-widths.

490 Given the importance of the tree SI to the regression model (Table 2), we also ran the reconstructions
 based on a model excluding this variable. Although the reconstruction followed the same broad mid-
 Holocene increase and decline in tree cover, median tree cover prior to 7,000 cal. BP was much greater
 than shown in Fig. 5, with a less marked increase to the mid-Holocene (see Supplementary Information,
 Section S16, Fig. S9 and Fig. S10). As shown in Fig. S10, there is a slight increase in tree SI through
 495 time, which may imply a slight underestimation in tree cover during the early part of the Holocene.

These pan-European trends mask considerable regional variability in tree cover at any given time and
 in trends through time (Fig. 6 and see Supplementary Information, Section S17, Figs. 11 to 19 for
 gridded maps of reconstructed tree cover).

Deleted: :

Deleted: Supplementary Information 16

Deleted: :

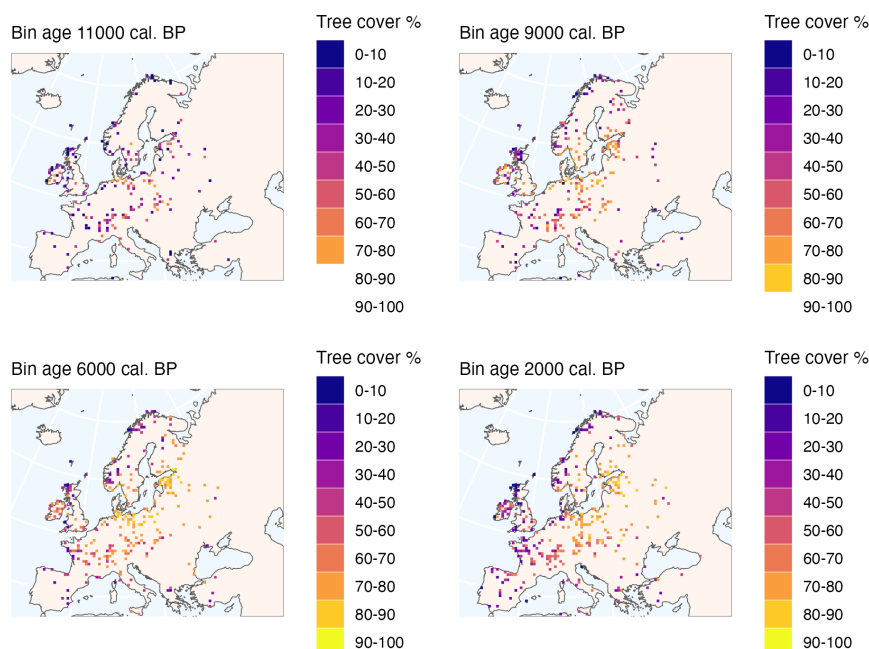


Figure 6: Gridded maps of average reconstructed tree cover for selected periods, for 50km² grid cells. Bin ages are 200-years in width, with ages referring to mid-point of each bin.

To examine these trends, we consider four biogeographical regions for which there is sufficient data: the Atlantic, Boreal, Continental and Mediterranean regions (Figure 2D; Supplementary Information, [Section S18](#), [Table S12](#)).

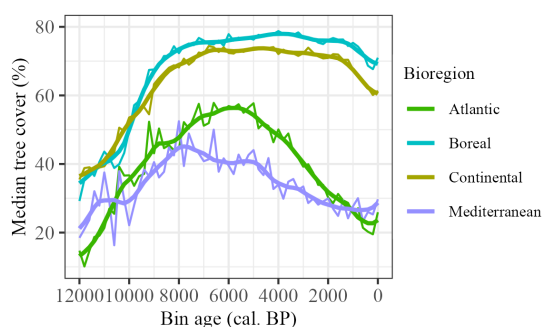


Figure 7: Median tree cover values, for selected biogeographical regions. Smoothed lines reflect LOESS fitted regression with 1000-year halfwidth.

The increase in tree cover at the beginning of the Holocene is shown in all four regions, but the trajectories are different (Fig. 7). There is an immediate rapid increase in the Atlantic region, but the increase is initially slow in the Boreal and Continental regions and only becomes more rapid after ca.

11,000 cal. BP in the Continental region and after ca. 10,300 cal. BP in the Boreal region. The initial increase in the Mediterranean region is interrupted by a decline between 11,000 and 10,000 cal. BP and only begins to increase again after ca. 9,800 cal. BP. The maximum in tree cover in the Mediterranean region is reached at ca. 8,000 cal. BP. After this there is a decline towards present-day levels, although
520 this is interrupted by intervals of relative stability e.g. between ca. 6,000 and 5,000 cal. BP, again between 4,000 and 3,000 cal. BP and in the most recent millennium. There is also a well-defined maximum in tree cover in the Atlantic region, but this occurs at ca. 6,000 cal. BP. The subsequent decline is gradual until the last ca. 500 years. The maximum in tree cover is broader in the Continental and Boreal regions, with high levels of tree cover characteristic of the entire interval between ca. 8,000 and
525 1,000 cal. BP although the absolute maximum occurs at ca. 6,400 cal. BP in the Continental region and not until ca. 4,000 cal. BP in the Boreal region. Both regions are characterised by a rapid decline in the last millennium.

This broad pattern of increase, mid-Holocene maximum and then decline to present is consistent with
530 previous reconstructions (Fig. 8). Initial levels of tree cover are similar in the three reconstructions (ca. 27.5-30%), but the increase in tree cover is more rapid in the Zanon et al. (2018) and Serge et al. (2023) reconstructions. Our reconstructed maximum cover is slightly lower (ca. 5–10%) than shown by the other reconstructions. However, the mid-Holocene timing of this maximum is broadly consistent across all of the reconstructions (although Zanon et al. (2018) show a double peak in tree cover, with an earlier
535 peak at ca. 9,000 cal. BP) within the limitations of the age models and binning intervals used (see Supplementary Information, [Section S19, Fig. S20](#), and [Section S20, Fig. S21](#)). These broad trends are maintained when calculating tree cover from Zanon et al. (2018) and Serge et al. (2023) data such that only a single value per grid cell is permitted in the calculation of the median (Supplementary
Information, [Section S21, Fig. S22](#)). The biggest difference between our reconstructed tree cover and
540 previous studies is that the decrease post-ca. 2000 cal. BP is less abrupt. Both Zanon et al. (2018) and Serge et al. (2023) show a steep decline to levels (ca. 35%) similar to those at the beginning of the Holocene whereas we show a decline to only ca. 47.5%. Based on pollen record locations and a 5km² buffer, observed modern median tree cover is 46%, which suggests our estimated decline is more realistic.

Deleted: :

Deleted: :

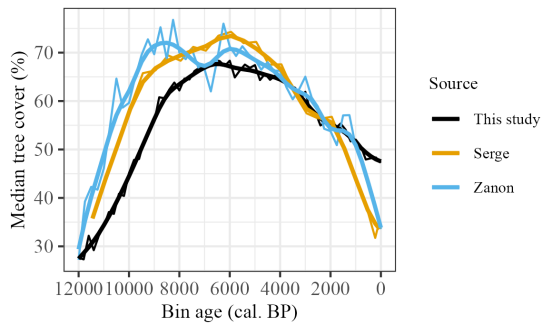


Figure 8: Reconstructed median tree cover compared to equivalent extracted tree cover medians for Serge et al. (2023) and Zanon et al. (2018). Smoothed lines reflect LOESS fitted regression with 1000-year halfwidth.

550 The three reconstructions also show some similarities at a sub-regional scale (Fig. 9), although comparison is more difficult because of differences in methodologies and coverage. As is the case for the pan-European comparison, Zanon et al. (2018) and Serge et al. (2023) generally show higher tree cover than our reconstruction. The peak tree cover in the Atlantic region occurs earlier in these reconstructions, and Zanon et al. (2018) also show an earlier peak in the Continental region. The later

555 Holocene decline in tree cover is similar across all three reconstructions in the Atlantic region, but the previous reconstructions show a steeper decline in the Boreal and Continental regions. The biggest differences between the three reconstructions is in the Mediterranean region, where Serge et al. (2023) show a pronounced peak reaching 60% cover at ca. 5,500 cal. BP, whereas the other two reconstructions show comparatively muted changes in tree cover at around 40% throughout the mid- to late Holocene.

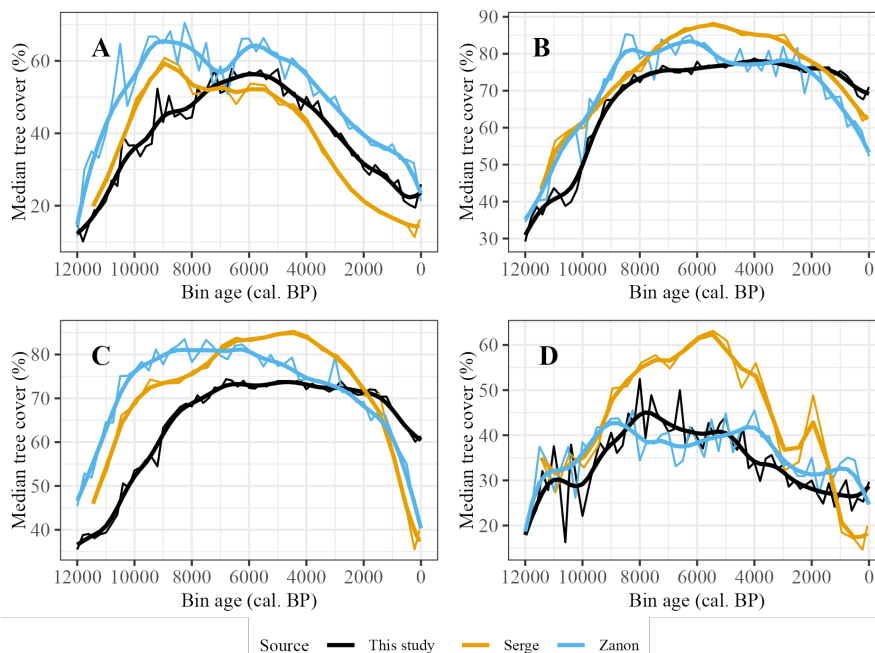


Figure 9: Reconstructed median tree cover compared to equivalent extracted tree cover medians for Serge et al. (2023) and Zanon et al. (2018), for selected modern biogeographical regions. Smoothed lines reflect LOESS fitted regression with 1000-year halfwidth. A – Atlantic; B- Boreal; C- Continental; D – Mediterranean.

Although the overall European median tree cover partially reflects the quantity of data for each region, recalculating the European level median tree cover based on just the four biogeographical regions of focus has very little material effect on the overall pattern of median tree cover for each reconstruction (Supplementary Information, [Section S22, Fig. S23](#)).

4. Discussion

Our reconstructions show that tree cover peaked in the mid-Holocene period, with median tree cover ca. 40% greater than at the beginning of the Holocene. This general pattern is shown by the REVEALS and MAT reconstructions, and is also visible in plant functional type (Davis et al., 2015) and pseudo-biomization reconstructions of vegetation cover (Fyfe et al., 2015). Despite the similarities in median values between our reconstructions and those calculated from the REVEALS and MAT reconstructions, our site-based estimates are not fully comparable with the gridded estimates provided by the REVEALS reconstruction and the gridded and interpolated values provided by the MAT reconstructions. Nevertheless, the similarities give some support to the overall robustness of our reconstructions. There

are differences in the timing and extent of changes between regions, although the general pattern of increase, mid-Holocene peak and subsequent decline is shown everywhere. There are some differences between our reconstructions and those from other studies. Firstly, the maximum tree cover from our reconstructions is around 5–10% less than the maximum calculated from the other reconstructions. This could reflect the conservative nature of our modern-day tree cover model, which underestimates tree cover at the high end despite the application of quantitative mapping adjustment to model predictions. However, Zanon et al. (2018) also underestimate tree cover at high levels of tree cover. Alternatively, the difference may reflect the exclusion of higher elevation records from fossil dataset in order to minimise the impact of upslope pollen transport, which was not done in the other two reconstructions and would tend to reduce overall median tree cover. Secondly, the timings of peak tree cover vary between the reconstructions, with the MAT-based estimate peaking 2000 years earlier and the REVEALS estimate ca. 500 years later than shown in our reconstruction. The small difference between the peak timing shown by REVEALS and our reconstructions likely reflect differences in coverage through time and differences in the binning procedure. This may also partially explain the difference with the MAT-based reconstructions. However, this reconstruction also shows a marked decline between ca. 8000 and 7000 yr BP and a second peak in tree cover slightly after the peak shown by our reconstructions. It is difficult to assess the robustness of the reconstructed decline, which is strongly affected by a single point, but this would affect the overall shape of the curve and hence the timing of peak cover. Thirdly, the increase in tree cover in the early Holocene is less rapid in our reconstruction than the other reconstructions. This could reflect an underestimation of tree cover because of the lower tree SI values in our reconstructions, but the rapid increase in tree cover in the MAT- and REVEALS-based reconstructions is more likely to reflect an overestimation of tree cover because of long-distance pollen transport into the more open landscape characteristic of the early Holocene. The major difference at the pan-European scale is the reduction in tree cover from ca. 2000 cal. BP to present, which is less marked in our reconstructions and more consistent with observed tree cover. The observed tree cover values used in the model construction exclude areas dominated by land-cover types such as built areas or areas dominated by crops. We account for this in defining modern source areas in our model. Not accounting for changes in these other land-cover types, which through anthropogenic land use have increased substantially over the past 1000 years (Klein Goldewijk et al., 2017) would result in a steeper decline in tree cover, as seen in the other two reconstructions.

We took an inclusive approach in defining the modern training data and for the fossil records to maximise spatial coverage. The inclusion of bogs, for example, reduced the goodness-of-fit of the model slightly but resulted in much better spatial coverage. Conversely, the exclusion of high-elevation sites did not have a major impact on spatial coverage but was necessary to improve model fit because of the tendency for upslope transport of pollen in mountainous areas. Nevertheless, there are still areas of Europe which lack data, or where there is a mismatch in coverage between the modern and fossil

Deleted: There are some differences between our reconstructions and those from other studies. Firstly, the maximum tree cover from our reconstructions is around 5–10% less than the maximum calculated from the other reconstructions. This could reflect the conservative nature of our modern-day tree cover model, which underestimates tree cover at the high end despite the application of quantitative mapping adjustment to model predictions. However, Zanon et al. (2018) also underestimate tree cover at high levels of tree cover. Alternatively, the difference may reflect the exclusion of higher elevation records from fossil dataset in order to minimise the impact of upslope pollen transport, which was not done in the other two reconstructions and would tend to reduce overall median tree cover. Secondly, the timings of peak tree cover vary between the reconstructions, with the MAT-based estimate peaking earlier and the REVEALS estimate later than shown in our reconstruction. These differences likely reflect differences in coverage through time and differences in the binning procedure. The major difference at the pan-European scale is the reduction in tree cover from ca. 2000 cal. BP to present, which is less marked in our reconstructions and more consistent with observed tree cover. The observed tree cover values used in the model construction exclude areas dominated by land-cover types such as built areas or areas dominated by crops. We account for this in defining modern source areas in our model. Not accounting for changes in these other land-cover types, which through anthropogenic land use have increased substantially over the past 1000 years (Klein Goldewijk et al., 2017) would result in a steeper decline in tree cover, as seen in the other two reconstructions.

records. Improved sampling of such areas would enhance our confidence in the reconstructions of Holocene tree cover.

650 Our reconstructions are consistent with understanding of Holocene climate patterns. The rapid increase
in tree cover at the beginning of the Holocene shown in the pan-European reconstruction and in most
of the sub-regional reconstructions reflects the marked warming after the Younger Dryas. This warming
is less pronounced and more gradual in the Mediterranean region, consistent with the fact that the
Younger Dryas cool interval is not strongly registered over much of this region (Bottema, 1995; Cruz-
655 Silva et al., 2023). Subsequent pan-European changes in tree cover broadly reflect changes in growing
season temperature, which itself is a reflection of orbitally-forced changes in summer insolation.
However, modelling studies have shown that the timing of maximum warmth during the Holocene in
Europe was delayed compared to the maximum of insolation forcing as a consequence of feedbacks
associated with the presence of the Laurentide and Scandinavian ice sheets (Renssen et al., 2009;
660 Blaschek and Renssen, 2013; Zhang et al., 2016, 2018). However, they consistently show that the
warming was delayed in the region bordering the Atlantic (and northwest Europe more generally) by
ca. 2,000 years compared to more continental regions, consistent with our reconstructions. The more
muted changes in tree cover in the Mediterranean region compared to other regions of Europe is
consistent with previous reconstructions and is partly explained by the fact that these changes are largely
665 driven by changes in precipitation and precipitation seasonality (Cruz-Silva et al., 2023). The late
Holocene decline in tree cover is consistent with the orbitally-driven cooling. However, the more rapid
decline in tree cover during the last millennium shown in the Boreal and Continental regions, is more
difficult to explain as a function of climate changes: transient model simulations of the response to
changes in orbital and greenhouse gas forcing (e.g. Liu et al., 2009; Zhang et al., 2016; Braconnot et
670 al., 2019; Dallmeyer et al., 2020) generally indicate muted changes in either summer or winter
temperatures during the most recent millennia.

There are several other factors that could have influenced tree cover during the Holocene. Human
influence on the landscape has been identified in many regions of Europe from 6,000 cal. BP onwards
675 (e.g. Roberts et al., 2018; Zapolska et al., 2023). Although this may have contributed to the observed
decline in tree cover from the mid-Holocene onwards, the most rapid population growth occurred only
during the past 2000 years (Klein Goldewijk et al., 2010, 2017). The recent decline in tree cover may
therefore reflect this rapid growth and the consequent increasing human influence on the landscape in
some regions (see e.g. Marquer et al., 2017; Roberts et al., 2019). Climate-driven changes in disturbance
680 (wildfires, windthrow) may also contribute to the inferred changes in tree cover. Changes in the
frequency or intensity of storms has, for example, been shown in maritime Europe (e.g. Pouzet et al.,
2018; Sjöström et al., 2024) during the late Holocene; storms are a major cause of widespread forest
damage in Europe today (Senf and Siedl, 2020) and could have been important during the Holocene.

685 Changing wildfire regimes could also have been an important influence on tree cover (Marlon et al.,
2013; Kuosmanen et al., 2014). Much of the debate about the relative importance of climate and human
activities on the environment during the Holocene has been based on local-scale correlations; other
contributing factors have been largely ignored. More formal modelling of these relationships, using
quantitative information on climate, population size, and disturbance is required to assign the impact of
each on tree cover more confidently.

690 Our simple modelling approach yields a reasonably robust picture of changes in tree cover through the
Holocene, largely consistent with known changes in climate. We have shown that both %needleleaf and
the SI are important predictors of tree cover. These measures are, to some extent, surrogates for pollen
productivity and factors affecting pollen transport distance as explicitly addressed in the REVEALS-
695 based reconstructions. Thus, their importance in the model is not surprising and we have demonstrated
that the final model is able to capture modern day patterns. However, our approach is predicated on the
assumption of stationarity between tree cover and the explanatory variables through time, as indeed are
the other statistical reconstruction techniques considered here. This may be problematic for variables
such as elevation, where changes in elevational lapse rates (Mountain Research Initiative EDW Working
700 Group, 2015) or atmospheric circulation patterns (Bartlein et al., 2017) could affect the relationship,
but is less likely to be an issue for explanatory variables that reflect biophysical controls on pollen
transport and deposition such as basin type or proportion of needleleaf trees. Tree diversity is somewhat
more problematic, since the influence of long-distance transport into the more open landscapes likely
to have been characteristic of the colder, drier climate at the start of the Holocene may not be adequately
705 captured in the modern training data. The relatively slow rate of the initial increase in tree cover may
be a reflection of this. This could be explored using macrofossil of sedimentary DNA data, to
discriminate between local diversity and potential long-distance contamination of the SI index.
Nevertheless, the overall pattern of changes in tree cover during the Holocene appear to robust and
explicable, supporting the idea that modern relationships between tree cover and the explanatory
710 variables provide a reasonable basis for reconstructions.

Our approach is less data-demanding than the REVEALS approach. Serge et al. (2023) have pointed out
that lack of reliable information on species RPP values is likely to lead to less accurate reconstructions.
Even in Europe, there is limited RPP data and, as the comparison of reconstructions based on 31 and 46
715 species shows, some of that data may not be reliable. RPP data is more limited in many other regions
of the world (Harrison et al., 2020). Given this, our simple modelling approach provides an alternative
method that could be applied to reconstruct tree cover globally. It is difficult to compare our
reconstructions with the MAT-based approach of Zanon et al. (2018) since they do not provide
individual site estimates and it is therefore not possible to determine the degree to which the patterns
720 are influenced by the spatial and temporal interpolations they applied. Nevertheless, our simple

Deleted: Our simple modelling approach yields a reasonably robust picture of changes in tree cover through the Holocene, largely consistent with known changes in climate. As with other statistical reconstruction techniques, it is predicated on the assumption of stationarity between tree cover and the explanatory variables. This may be problematic for variables such as elevation, where changes in elevational lapse rates (Mountain Research Initiative EDW Working Group, 2015) or atmospheric circulation patterns (Bartlein et al., 2017) could affect the relationship, but is less likely to be an issue for explanatory variables that reflect biophysical controls on pollen transport and deposition such as basin type or proportion of needleleaf trees.

approach overcomes the methodological issues associated with MAT, such as how to measure the degree of analogy between assemblages, how to deal with non-analogues, and the sensitivity of the reconstructions to the number of analogues used. Thus, given the existence of global modern pollen training data sets and good remote-sensing based modern estimates of tree cover, our approach could be applied to other regions of the world to generate robust reconstructions of tree cover.

5. Conclusions

We have made use of modern pollen data and maps of tree cover percentage to build a simple model of tree cover. We then applied this model to fossil pollen records to reconstruct tree cover at a site level during the Holocene across Europe. At a pan-European level, tree cover increased from the early Holocene to the mid-Holocene, and then subsequently declined to the present day. There are regional variations in the speed of the initial increase, the timing of maximum tree cover, and the form of the subsequent decline. Our simple approach produces similar reconstructions of the trends in tree cover during the Holocene reconstructed using other methods, and since it only requires readily available data could be used to reconstruct tree cover in other regions of the world.

6. Code and data availability

The SMPDSv2 modern pollen database is available from the University of Reading Research Data Archive (<https://researchdata.reading.ac.uk/389/>) and/or via <https://github.com/special-uor/smpds?tab=readme-ov-file>. Metadata updates to SMPDSv2, including basin size updates are available at <https://doi.org/10.5281/zenodo.15283096>.

The SPECIAL.EPD fossil pollen database is available from the University of Reading Research Data Archive (<https://researchdata.reading.ac.uk/1295/>). The code used in generating tree cover, binned site-based reconstructions of tree cover, the code as cross-analysis of the data, and species categorisation tables are available at <https://doi.org/10.5281/zenodo.15283096>.

7. Supplemental link

The supplement related to this article is available online.

8. Author contribution

LS, SPH and MVL conceived this study. LS carried out the analysis. LS and SPH wrote the first draft of the manuscript and all authors contributed to the final version.

9. Competing interests

The authors declare that they have no conflict of interest.

10. Acknowledgments

We thank colleagues in the Leverhulme Centre for Wildfires, Environment and Society (<https://centreforwildfires.org/>) and from the SPECIAL group at the University of Reading (<https://research.reading.ac.uk/palaeoclimate/>) for discussions during the development of this work.

Much of the fossil data were obtained from the Neotoma Paleoecology Database (<http://www.neotomadb.org>) and its constituent databases: European Pollen Database (EPD) and The Alpine Palynological Database (ALPADABA). The work of data contributors, data stewards, and the Neotoma community is gratefully acknowledged. We also thank members of the EMBSECBIO data community and other palynologists who have contributed records to the modern and fossil data set used here.

11. Financial support

LS acknowledges support from the Leverhulme Centre for Wildfires, Environment and Society. SPH acknowledges support from the ERC-funded project GC 2.0 (Global Change 2.0: Unlocking the past for a clearer future; grant number 694481).

12. References

- Abis, B. and Brovkin, V.: Environmental conditions for alternative tree-cover states in high latitudes, *Biogeosciences*, 14, 511–527, <https://doi.org/10.5194/bg-14-511-2017>, 2017.
- Akaike, H.: A New Look at the Statistical Model Identification, *IEEE Trans. Automat. Contr.*, 19, 716–723, <https://doi.org/10.1109/TAC.1974.1100705>, 1974.

- Alkama, R. and Cescatti, A.: Biophysical climate impacts of recent changes in global forest cover, *Science*, 351, 600–604, <https://doi.org/10.1126/science.aac8083>, 2016.
- Alley, R. B.: The Younger Dryas cold interval as viewed from central Greenland, *Quat. Sci. Rev.*, 19, 213–226, [https://doi.org/10.1016/S0277-3791\(99\)00062-1](https://doi.org/10.1016/S0277-3791(99)00062-1), 2000.
- 795 Alley, R. B. and Ágústssdóttir, A. M.: The 8k event: Cause and consequences of a major Holocene abrupt climate change, *Quat. Sci. Rev.*, 24, 1123–1149, <https://doi.org/10.1016/j.quascirev.2004.12.004>, 2005.
- Alley, R. B., Mayewski, P. A., Sowers, T., Stuiver, M., Taylor, K. C., and Clark, P. U.: Holocene climatic instability: A prominent, widespread event 8200 yr ago, *Geology*, 25, 483–486, [https://doi.org/10.1130/0091-7613\(1997\)025<0483:HCIAPW>2.3.CO;2](https://doi.org/10.1130/0091-7613(1997)025<0483:HCIAPW>2.3.CO;2), 1997.
- 800 Bartlein, P. J., Harrison, S. P., and Izumi, K.: Underlying causes of Eurasian midcontinental aridity in simulations of mid-Holocene climate, *Geophys Res Lett*, 44, 9020–9028, <https://doi.org/10.1002/2017GL074476>, 2017.
- [Baston, D.: exactextractr: Fast Extraction from Raster Datasets using Polygons, <https://isciences.gitlab.io/exactextractr/>, exactextractr version 0.10.0, 2023.](https://doi.org/10.1002/2017GL074476)
- 805 Bini, M., Zanchetta, G., Perşoiu, A., Cartier, R., Català, A., Cacho, I., Dean, J. R., Di Rita, F., Drysdale, R. N., Finnè, M., Isola, I., Jalali, B., Lirer, F., Magri, D., Masi, A., Marks, L., Mercuri, A. M., Peyron, O., Sadori, L., Sicre, M.-A., Welc, F., Zielhofer, C., and Brisset, E.: The 4.2 ka BP Event in the Mediterranean region: an overview, *Clim. Past*, 15, 555–577, <https://doi.org/10.5194/cp-15-555-2019>, 2019.
- 810 Binney, H., Edwards, M., Macias-Fauria, M., Lozhkin, A., Anderson, P., Kaplan, J. O., Andreev, A., Bezrukova, E., Blyakharchuk, T., Jankovska, V., Khazina, I., Krivonogov, S., Kremenetski, K., Nield, J., Novenko, E., Ryabogina, N., Solovieva, N., Willis, K., and Zernitskaya, V.: Vegetation of Eurasia from the last glacial maximum to present: Key biogeographic patterns, *Quat Sci Rev*, 157, 80–97, <https://doi.org/10.1016/j.quascirev.2016.11.022>, 2017.
- 815 [Blaauw, M. and Christen, J. A.: Flexible paleoclimate age-depth models using an autoregressive gamma process, *Bayesian Anal*, 6, <https://doi.org/10.1214/11-BA618>, rbacon version 3.4.2, 2011.](https://doi.org/10.1214/11-BA618)
- Blaschek, M. and Renssen, H.: The Holocene thermal maximum in the Nordic Seas: the impact of Greenland Ice Sheet melt and other forcings in a coupled atmosphere–sea-ice–ocean model, *Clim. Past*, 9, 1629–1643, <https://doi.org/10.5194/cp-9-1629-2013>, 2013.
- 820 Bonan, G. B.: Forests and Climate Change: Forcings, Feedbacks, and the Climate Benefits of Forests, *Science*, 320, 1444–1449, <https://doi.org/10.1126/science.1155121>, 2008.
- Bottema, S.: The Younger Dryas in the Eastern Mediterranean, *Quat. Sci. Rev.*, 14, 883–891, [https://doi.org/10.1016/0277-3791\(95\)00069-0](https://doi.org/10.1016/0277-3791(95)00069-0), 1995.
- Braconnot, P., Zhu, D., Marti, O., and Servonnat, J.: Strengths and challenges for transient Mid- to Late
- 825 Holocene simulations with dynamical vegetation, *Clim. Past*, 15, 997–1024, <https://doi.org/10.5194/cp-15-997-2019>, 2019.

- Bradshaw, R. H. W. and Webb, T.: Relationships between Contemporary Pollen and Vegetation Data from Wisconsin and Michigan, USA, *Ecology*, 66, 721–737, <https://doi.org/10.2307/1940533>, 1985.
- Buchhorn, M., Smets, B., Bertels, L., de Roo, B., Lesiv, M., Tsendbazar, N.-E., Li, L., and Tarko, A.:
830 Copernicus Global Land Service: Land Cover 100m: collection 3: epoch 2015: Globe, <https://doi.org/https://doi.org/10.5281/zenodo.3939038>, 2020a.
- Buchhorn, M., Smets, B., Bertels, L., Roo, B. De, Lesiv, M., Tsendbazar, N.-E., Herold, M., and Fritz, S.: Copernicus Global Land Service: Land Cover 100m: collection 3: epoch 2016: Globe, <https://doi.org/10.5281/zenodo.3518026>, September 2020b.
- 835 Buchhorn, M., Smets, B., Bertels, L., Roo, B. De, Lesiv, M., Tsendbazar, N.-E., Herold, M., and Fritz, S.: Copernicus Global Land Service: Land Cover 100m: collection 3: epoch 2017: Globe, <https://doi.org/10.5281/zenodo.3518036>, September 2020c.
- Buchhorn, M., Smets, B., Bertels, L., Roo, B. De, Lesiv, M., Tsendbazar, N.-E., Herold, M., and Fritz, S.: Copernicus Global Land Service: Land Cover 100m: collection 3: epoch 2018: Globe,
840 <https://doi.org/10.5281/zenodo.3518038>, September 2020d.
- Buchhorn, M., Smets, B., Bertels, L., Roo, B. De, Lesiv, M., Tsendbazar, N.-E., Herold, M., and Fritz, S.: Copernicus Global Land Service: Land Cover 100m: collection 3: epoch 2019: Globe, <https://doi.org/10.5281/zenodo.3939050>, September 2020e.
- Bunting, M. J. and Farrell, M.: Do Local Habitat Conditions Affect Estimates of Relative Pollen
845 Productivity and Source Area in Heathlands?, *Front. Ecol. Evol.*, 10, <https://doi.org/10.3389/fevo.2022.787345>, 2022.
- Bunting, M. J., Twiddle, C. L., and Middleton, R.: Using models of pollen dispersal and deposition in hilly landscapes: Some possible approaches, *Palaeogeogr. Palaeoclimatol.*, 259, 77–91, <https://doi.org/10.1016/j.palaeo.2007.03.051>, 2008.
- 850 Cheng, H., Zhang, H., Spötl, C., Baker, J., Sinha, A., Li, H., Bartolomé, M., Moreno, A., Kathayat, G., Zhao, J., Dong, X., Li, Y., Ning, Y., Jia, X., Zong, B., Ait Brahimi, Y., Pérez-Mejías, C., Cai, Y., Novello, V. F., Cruz, F. W., Severinghaus, J. P., An, Z., and Edwards, R. L.: Timing and structure of the Younger Dryas event and its underlying climate dynamics, *Proc. Natl. Acad. Sci. U.S.A.*, 117, 23408–23417, <https://doi.org/10.1073/pnas.2007869117>, 2020.
- 855 Cordova, C. E., Harrison, S. P., Mudie, P. J., Riehl, S., Leroy, S. A. G., and Ortiz, N.: Pollen, plant macrofossil and charcoal records for palaeovegetation reconstruction in the Mediterranean-Black Sea Corridor since the Last Glacial Maximum, *Quaternary International*, 197, 12–26, <https://doi.org/10.1016/j.quaint.2007.06.015>, 2009.
- Cox, D. R. and Snell, E. J.: Analysis of Binary Data, 2nd Edition., Chapman & Hall, 1989.
- 860 Cribari-Neto, F. and Zeileis, A.: Beta Regression in R, *J. Stat. Softw.*, 34, <https://doi.org/10.18637/jss.v034.i02>, [betareg version 3.2-2](https://doi.org/10.18637/jss.v034.i02), 2010.

- Cruz-Silva, E., Harrison, S. P., Prentice, I. C., Marinova, E., Bartlein, P. J., Renssen, H., and Zhang, Y.: Pollen-based reconstructions of Holocene climate trends in the eastern Mediterranean region, *Clim. Past*, 19, 2093–2108, <https://doi.org/10.5194/cp-19-2093-2023>, 2023.
- 865 Dallmeyer, A., Claussen, M., Lorenz, S. J., and Shanahan, T.: The end of the African humid period as seen by a transient comprehensive Earth system model simulation of the last 8000 years, *Clim. Past*, 16, 117–140, <https://doi.org/10.5194/cp-16-117-2020>, 2020.
- Davis, B. A. S., Brewer, S., Stevenson, A. C., and Guiot, J.: The temperature of Europe during the Holocene reconstructed from pollen data, *Quat Sci Rev*, 22, 1701–1716, [https://doi.org/10.1016/S0277-3791\(03\)00173-2](https://doi.org/10.1016/S0277-3791(03)00173-2), 2003.
- 870 Eastwood, W. J., Roberts, N., Lamb, H. F., and Tibby, J. C.: Holocene environmental change in southwest Turkey: a palaeoecological record of lake and catchment-related changes, *Quat Sci Rev*, 18, 671–695, [https://doi.org/10.1016/S0277-3791\(98\)00104-8](https://doi.org/10.1016/S0277-3791(98)00104-8), 1999.
- Davis, B. A. S., Collins, P. M., and Kaplan, J. O.: The age and post-glacial development of the modern European vegetation: a plant functional approach based on pollen data, *Veg. Hist. Archaeobot.*, 24, 303–317, <https://doi.org/10.1007/s00334-014-0476-9>, 2015.
- 875 Duffin, K. I. and Bunting, M. J.: Relative pollen productivity and fall speed estimates for southern African savanna taxa, *Veg Hist Archaeobot*, 17, 507–525, <https://doi.org/10.1007/s00334-007-0101-2>, 2008.
- 880 European Environment Agency: Biogeographical regions, <https://sdi.eea.europa.eu/catalogue/srv/api/records/11db8d14-f167-4cd5-9205-95638dfd9618>, 2016.
- Fall, P. L.: Spatial patterns of atmospheric pollen dispersal in the Colorado Rocky Mountains, USA, *Rev. Palaeobot. Palynol.*, 74, 293–313, [https://doi.org/10.1016/0034-6667\(92\)90013-7](https://doi.org/10.1016/0034-6667(92)90013-7), 1992.
- FAO: Global Forest Resources Assessment 2020, FAO, <https://doi.org/10.4060/ca9825en>, 2020.
- 885 Fyfe, R. M., Woodbridge, J., and Roberts, N.: From forest to farmland: pollen-inferred land cover change across Europe using the pseudobiomization approach, *Glob. Chang. Biol.*, 21, 1197–1212, <https://doi.org/10.1111/gcb.12776>, 2015.
- Gaillard, M.-J., Sugita, S., Mazier, F., Trondman, A.-K., Broström, A., Hickler, T., Kaplan, J. O., Kjellström, E., Kokfelt, U., Kuneš, P., Lemmen, C., Miller, P., Olofsson, J., Poska, A., Rundgren, M., 890 Smith, B., Strandberg, G., Fyfe, R., Nielsen, A. B., Alenius, T., Balakauskas, L., Barnekow, L., Birks, H. J. B., Björkman, L., Giesecke, T., Hjelle, K., Kalnina, L., Kangur, M., van der Knaap, W. O., Koff, T., Lagerås, P., Latalowa, M., Leydet, M., Lechterbeck, J., Lindbladh, M., Odgaard, B., Peglar, S., Segerström, U., von Stedingk, H., and Seppä, H.: Holocene land-cover reconstructions for studies on land cover-climate feedbacks, *Clim. Past*, 6, 483–499, <https://doi.org/10.5194/cp-6-483-2010>, 2010.
- 895 Gaillard, M.-J., Githumbi, E., Achoundong, G., Lézine, A.-M., Hély, C., Lebamba, J., Marquer, L., Mazier, F., Li, F., and Sugita, S.: The challenge of pollen-based quantitative reconstruction of Holocene plant cover in tropical regions: A pilot study in Cameroon, in: *Quaternary Vegetation Dynamics: the*

- African Pollen Database, edited by: Runge, J., Gosling, W., Lézine, A.-M., and Scott, L., CRC Press, London, 259–279, 2021.
- 900 Gil-Romera, G., García Antón, M., and Calleja, J. A.: The late Holocene palaeoecological sequence of Serranía de las Villuercas (southern Meseta, western Spain), *Veg Hist Archaeobot*, 17, 653–666, <https://doi.org/10.1007/s00334-008-0146-x>, 2008.
- Githumbi, E., Fyfe, R., Gaillard, M.-J., Trondman, A.-K., Mazier, F., Nielsen, A.-B., Poska, A., Sugita, S., Woodbridge, J., Azuara, J., Feurdean, A., Grindean, R., Lebreton, V., Marquer, L., Nebout-Combourieu, N., Stančikaitė, M., Tanțău, I., Tonkov, S., and Shumilovskikh, L.: European pollen-based REVEALS land-cover reconstructions for the Holocene: methodology, mapping and potentials, *Earth Syst. Sci. Data*, 14, 1581–1619, <https://doi.org/10.5194/essd-14-1581-2022>, 2022.
- 905 Gudmundsson, L., Bremnes, J. B., Haugen, J. E., and Engen-Skaugen, T.: Technical Note: Downscaling RCM precipitation to the station scale using statistical transformations - a comparison of methods, *Hydrol. Earth Syst. Sci.*, 16, 3383–3390, <https://doi.org/10.5194/hess-16-3383-2012>, [qmap version 1.0-6](https://doi.org/10.5194/hess-16-3383-2012), 2012.
- Guiot, J.: Methodology of the last climatic cycle reconstruction in France from pollen data, *Palaeogeogr. Palaeoclimatol.*, 80, 49–69, [https://doi.org/10.1016/0031-0182\(90\)90033-4](https://doi.org/10.1016/0031-0182(90)90033-4), 1990.
- Hansen, M. C., Potapov, P. V., Moore, R., Hancher, M., Turubanova, S. A., Tyukavina, A., Thau, D., Stehman, S. V., Goetz, S. J., Loveland, T. R., Kommareddy, A., Egorov, A., Chini, L., Justice, C. O., and Townshend, J. R. G.: High-Resolution Global Maps of 21st-Century Forest Cover Change, *Science*, 342, 850–853, <https://doi.org/10.1126/science.1244693>, 2013.
- Harrison, S. P. and Marinova, E.: EMBSeCBIO modern pollen biomisation, University of Reading. Dataset, <https://doi.org/10.17864/1947.109>, 2017.
- 920 Harrison, S. P., Gaillard, M.-J., Stocker, B. D., Vander Linden, M., Klein Goldewijk, K., Boles, O., Braconnot, P., Dawson, A., Fluet-Chouinard, E., Kaplan, J. O., Kastner, T., Pausata, F. S. R., Robinson, E., Whitehouse, N. J., Madella, M., and Morrison, K. D.: Development and testing scenarios for implementing land use and land cover changes during the Holocene in Earth system model experiments, *Geosci Model Dev*, 13, 805–824, <https://doi.org/10.5194/gmd-13-805-2020>, 2020.
- 925 Harrison, S. P., Marinova, E., and Cruz-Silva, E.: EMBSeCBIO pollen database, University of Reading. Dataset, <https://doi.org/10.17864/1947.309>, 2021.
- Harrison, S.P., Egbudom, M.A., Liu, M., Cruz-Silva, E. and Sweeney, L.F.: The SPECIAL EPD Database: an expanded resource to document changes in vegetation and climate from pollen records from Europe, the Middle East and western Eurasia. University of Reading. Dataset. <https://doi.org/10.17864/1947.001295>, 2024
- 930 Heaton, T. J., Köhler, P., Butzin, M., Bard, E., Reimer, R. W., Austin, W. E. N., Bronk Ramsey, C., Grootes, P. M., Hughen, K. A., Kromer, B., Reimer, P. J., Adkins, J., Burke, A., Cook, M. S., Olsen, J., and Skinner, L. C.: Marine20—The Marine Radiocarbon Age Calibration Curve (0–55,000 cal BP), *Radiocarbon*, 62, 779–820, <https://doi.org/10.1017/RDC.2020.68>, 2020.

- 935 Hill, J. L. and Curran, P. J.: Area, shape and isolation of tropical forest fragments: effects on tree species
diversity and implications for conservation, *J. Biogeogr.*, 30, 1391–1403,
<https://doi.org/10.1046/j.1365-2699.2003.00930.x>, 2003.
- Hill, M. O.: Diversity and Evenness: A Unifying Notation and Its Consequences, *Ecology*, 54, 427–432,
<https://doi.org/10.2307/1934352>, 1973.
- 940 Hill, T. R., Duthie, T. J., and Bunting, J.: Pollen productivity estimates from KwaZulu-Natal
Drakensberg, South Africa, in: *Quaternary Vegetation Dynamics: the African Pollen Database*, edited
by: Runge, J., Gosling, W., Lézine, A.-M., and Scott, L., CRC Press, London, 259–274, 2021.
- Jackson, S. T. and Williams, J. W.: Modern Analogs in Quaternary Paleoecology: Here Today, Gone
Yesterday, Gone Tomorrow?, *Annu. Rev. Earth Pl. Sc.*, 32, 495–537,
945 <https://doi.org/10.1146/annurev.earth.32.101802.120435>, 2004.
- Jactel, H., Bauhus, J., Boberg, J., Bonal, D., Castagneyrol, B., Gardiner, B., Gonzalez-Olabarria, J. R.,
Koricheva, J., Meurisse, N., and Brockerhoff, E. G.: Tree Diversity Drives Forest Stand Resistance to
Natural Disturbances, *Curr. For. Rep.*, 3, 223–243, <https://doi.org/10.1007/s40725-017-0064-1>, 2017.
- Klein Goldewijk, K., Beusen, A., and Janssen, P.: Long-term dynamic modeling of global population
950 and built-up area in a spatially explicit way: HYDE 3.1, *Holocene*, 20, 565–573,
<https://doi.org/10.1177/0959683609356587>, 2010.
- Klein Goldewijk, K., Beusen, A., Doelman, J., and Stehfest, E.: Anthropogenic land use estimates for
the Holocene – HYDE 3.2, *Earth Syst. Sci. Data*, 9, 927–953, <https://doi.org/10.5194/essd-9-927-2017>,
2017.
- 955 Kling, M. M. and Ackerly, D. D.: Global wind patterns shape genetic differentiation, asymmetric gene
flow, and genetic diversity in trees, *Proceedings of the National Academy of Sciences*, 118,
<https://doi.org/10.1073/pnas.2017317118>, 2021.
- Kuosmanen, N., Fang, K., Bradshaw, R. H., Clear, J. L., and Seppä, H.: Role of forest fires in Holocene
stand-scale dynamics in the unmanaged taiga forest of northwestern Russia, *Holocene*, 24, 1503–1514,
960 <https://doi.org/10.1177/0959683614544065>, 2014.
- Leite-Filho, A. T., Costa, M. H., and Fu, R.: The southern Amazon rainy season: The role of
deforestation and its interactions with large-scale mechanisms, *Int. J. Climatol.*, 40, 2328–2341,
<https://doi.org/10.1002/joc.6335>, 2020.
- Liu, M., Shen, Y., González-Sampériz, P., Gil-Romera, G., ter Braak, C. J. F., Prentice, I. C., and
965 Harrison, S. P.: Holocene climates of the Iberian Peninsula: pollen-based reconstructions of changes in
the west–east gradient of temperature and moisture, *Climate of the Past*, 19, 803–834,
<https://doi.org/10.5194/cp-19-803-2023>, 2023.
- Liu, Z., Otto-Bliesner, B. L., He, F., Brady, E. C., Tomas, R., Clark, P. U., Carlson, A. E., Lynch-
Stieglitz, J., Curry, W., Brook, E., Erickson, D., Jacob, R., Kutzbach, J., and Cheng, J.: Transient
970 Simulation of Last Deglaciation with a New Mechanism for Bølling-Allerød Warming, *Science*, 325,
310–314, <https://doi.org/10.1126/science.1171041>, 2009.

Loader, C.: Locfit: Local regression, likelihood and density estimation, <http://cran.r-project.org/package=locfit> 5Cnpapers2://publication/uuid/E5C68958-7122-4093-A8E2-

3108F9DF726A, *locfit* version 1.5-9.12, 2025.

Deleted: 0

Formatted: Font: Italic

975 Marinova, E., Harrison, S. P., Bragg, F., Connor, S., de Laet, V., Leroy, S. A. G., Mudie, P., Atanassova, J., Bozilova, E., Caner, H., Cordova, C., Djamali, M., Filipova-Marinova, M., Gerasimenko, N., Jahns, S., Kouli, K., Kotthoff, U., Kvavadze, E., Lazarova, M., Novenko, E., Ramezani, E., Röpke, A., Shumilovskikh, L., Tanțău, I., and Tonkov, S.: Pollen-derived biomes in the Eastern Mediterranean–Black Sea–Caspian–Corridor, *J Biogeogr*, 45, 484–499, <https://doi.org/10.1111/jbi.13128>, 2018.

980 Markgraf, V.: Pollen Dispersal in a Mountain Area, *Grana*, 19, 127–146, <https://doi.org/10.1080/00173138009424995>, 1980.

Marlon, J. R., Bartlein, P. J., Daniau, A.-L., Harrison, S. P., Maezumi, S. Y., Power, M. J., Tinner, W., and Vannière, B.: Global biomass burning: a synthesis and review of Holocene paleofire records and their controls, *Quat Sci Rev*, 65, 5–25, <https://doi.org/10.1016/j.quascirev.2012.11.029>, 2013.

985 Marquer, L., Gaillard, M.-J., Sugita, S., Trondman, A.-K., Mazier, F., Nielsen, A. B., Fyfe, R. M., Odgaard, B. V., Alenius, T., Birks, H. J. B., Bjune, A. E., Christiansen, J., Dodson, J., Edwards, K. J., Giesecke, T., Herzschuh, U., Kangur, M., Lorenz, S., Poska, A., Schult, M., and Seppä, H.: Holocene changes in vegetation composition in northern Europe: why quantitative pollen-based vegetation reconstructions matter, *Quat. Sci. Rev.*, 90, 199–216, <https://doi.org/10.1016/j.quascirev.2014.02.013>, 2014.

990 Marquer, L., Gaillard, M.-J., Sugita, S., Poska, A., Trondman, A.-K., Mazier, F., Nielsen, A. B., Fyfe, R. M., Jönsson, A. M., Smith, B., Kaplan, J. O., Alenius, T., Birks, H. J. B., Bjune, A. E., Christiansen, J., Dodson, J., Edwards, K. J., Giesecke, T., Herzschuh, U., Kangur, M., Koff, T., Latałowa, M., Lechterbeck, J., Olofsson, J., and Seppä, H.: Quantifying the effects of land use and climate on Holocene vegetation in Europe, *Quat. Sci. Rev.*, 171, 20–37, <https://doi.org/10.1016/j.quascirev.2017.07.001>, 2017.

1000 Marquer, L., Mazier, F., Sugita, S., Galop, D., Houet, T., Faure, E., Gaillard, M.-J., Haunold, S., de Munnik, N., Simonneau, A., De Vleeschouwer, F., and Le Roux, G.: Pollen-based reconstruction of Holocene land-cover in mountain regions: Evaluation of the Landscape Reconstruction Algorithm in the Videssos valley, northern Pyrenees, France, *Quat Sci Rev*, 228, 106049, <https://doi.org/10.1016/j.quascirev.2019.106049>, 2020.

Moreira, F., Rego, F. C., and Ferreira, P. G.: Temporal (1958–1995) pattern of change in a cultural landscape of northwestern Portugal: implications for fire occurrence, *Landsc. Ecol.*, 16, 557–567, <https://doi.org/10.1023/A:1013130528470>, 2001.

1005 Mountain Research Initiative EDW Working Group: Elevation-dependent warming in mountain regions of the world, *Nat Clim Chang*, 5, 424–430, <https://doi.org/10.1038/nclimate2563>, 2015.

- Moyes, A. B., Germino, M. J., and Kueppers, L. M.: Moisture rivals temperature in limiting photosynthesis by trees establishing beyond their cold-edge range limit under ambient and warmed conditions, *New Phytol.*, 207, 1005–1014, <https://doi.org/10.1111/nph.13422>, 2015.
- Nielsen, A. B., Giesecke, T., Theuerkauf, M., Feeser, I., Behre, K.-E., Beug, H.-J., Chen, S.-H., Christiansen, J., Dörfler, W., Endtmann, E., Jahns, S., de Klerk, P., Köhl, N., Latałowa, M., Odgaard, B. V., Rasmussen, P., Stockholm, J. R., Voigt, R., Wiethold, J., and Wolters, S.: Quantitative reconstructions of changes in regional openness in north-central Europe reveal new insights into old questions, *Quat. Sci. Rev.*, 47, 131–149, <https://doi.org/10.1016/j.quascirev.2012.05.011>, 2012.
- Ortu, E., de Beaulieu, J. L., Caramiello, R., and Siniscalco, C.: Late Glacial and Holocene vegetation dynamics at various altitudes in the Ellero Valley, Maritime Alps, northwestern Italy, *Ecoscience*, 15, 200–212, <https://doi.org/10.2980/15-2-2926>, 2008.
- Ortu, E., David, F., and Peyron, O.: Pollen-inferred palaeoclimate reconstruction in the Alps during the Lateglacial and the early Holocene: how to estimate the effect of elevation and local parameters, *J. Quat. Sci.*, 25, 651–661, <https://doi.org/10.1002/jqs.1335>, 2010.
- Overpeck, J. T., Webb, T., and Prentice, I. C.: Quantitative Interpretation of Fossil Pollen Spectra: Dissimilarity Coefficients and the Method of Modern Analogs, *Quat. Res.*, 23, 87–108, [https://doi.org/10.1016/0033-5894\(85\)90074-2](https://doi.org/10.1016/0033-5894(85)90074-2), 1985.
- Pirquive Bermúdez, D., Theuerkauf, M., and Giesecke, T.: Towards quantifying changes in forest cover in the Araucaria forest-grassland mosaic in southern Brazil, *Veg Hist Archaeobot*, 31, 107–122, <https://doi.org/10.1007/s00334-021-00841-2>, 2022.
- Pirzamanbein, B., Lindström, J., Poska, A., Sugita, S., Trondman, A.-K., Fyfe, R., Mazier, F., Nielsen, A. B., Kaplan, J. O., Bjune, A. E., Birks, H. J. B., Giesecke, T., Kangur, M., Latałowa, M., Marquer, L., Smith, B., and Gaillard, M.-J.: Creating spatially continuous maps of past land cover from point estimates: A new statistical approach applied to pollen data, *Ecological Complexity*, 20, 127–141, <https://doi.org/10.1016/j.ecocom.2014.09.005>, 2014.
- Pouzet, P., Maanan, M., Piotrowska, N., Baltzer, A., Stéphan, P., and Robin, M.: Chronology of Holocene storm events along the European Atlantic coast, *Progress in Physical Geography: Earth and Environment*, 42, 431–450, <https://doi.org/10.1177/0309133318776500>, 2018.
- Prentice, C.: Records of vegetation in time and space: the principles of pollen analysis, in: *Vegetation history*, Springer Netherlands, Dordrecht, 17–42, https://doi.org/10.1007/978-94-009-3081-0_2, 1988.
- Prentice, I. C.: Pollen Representation, Source Area, and Basin Size: Toward a Unified Theory of Pollen Analysis, *Quat. Res.*, 23, 76–86, [https://doi.org/10.1016/0033-5894\(85\)90073-0](https://doi.org/10.1016/0033-5894(85)90073-0), 1985.
- Prentice, I. C. and Webb, T.: Pollen percentages, tree abundances and the Fagerlinde effect, *J. Quat. Sci.*, 1, 35–43, <https://doi.org/10.1002/jqs.3390010105>, 1986.
- R Core Team: R: A Language and Environment for Statistical Computing, R Foundation for Statistical Computing, Vienna, Austria, [version 4.3.3](https://www.R-project.org/), 2024.

Deleted: 2

- 1045 Reimer, P. J., Austin, W. E. N., Bard, E., Bayliss, A., Blackwell, P. G., Bronk Ramsey, C., Butzin, M., Cheng, H., Edwards, R. L., Friedrich, M., Grootes, P. M., Guilderson, T. P., Hajdas, I., Heaton, T. J., Hogg, A. G., Hughen, K. A., Kromer, B., Manning, S. W., Muscheler, R., Palmer, J. G., Pearson, C., van der Plicht, J., Reimer, R. W., Richards, D. A., Scott, E. M., Southon, J. R., Turney, C. S. M., Wacker, L., Adolphi, F., Büntgen, U., Capano, M., Fahrni, S. M., Fogtmann-Schulz, A., Friedrich, R., Köhler, P., Kudsk, S., Miyake, F., Olsen, J., Reinig, F., Sakamoto, M., Sookdeo, A., and Talamo, S.: The IntCal20 Northern Hemisphere Radiocarbon Age Calibration Curve (0–55 cal kBP), *Radiocarbon*, 62, 1–33, <https://doi.org/10.1017/rdc.2020.41>, 2020.
- 1050 Renssen, H., Seppä, H., Heiri, O., Roche, D. M., Goosse, H., and Fichefet, T.: The spatial and temporal complexity of the Holocene thermal maximum, *Nat. Geosci.*, 2, 411–414, <https://doi.org/10.1038/ngeo513>, 2009.
- 1055 Roberts, C. N., Woodbridge, J., Palmisano, A., Bevan, A., Fyfe, R., and Shennan, S.: Mediterranean landscape change during the Holocene: Synthesis, comparison and regional trends in population, land cover and climate, *Holocene*, 29, 923–937, <https://doi.org/10.1177/0959683619826697>, 2019.
- 1060 Roberts, N., Fyfe, R. M., Woodbridge, J., Gaillard, M.-J., Davis, B. A. S., Kaplan, J. O., Marquer, L., Mazier, F., Nielsen, A. B., Sugita, S., Trondman, A.-K., and Leydet, M.: Europe's lost forests: a pollen-based synthesis for the last 11,000 years, *Sci. Rep.*, 8, 716, <https://doi.org/10.1038/s41598-017-18646-7>, 2018.
- Senf, C. and Seidl, R.: Mapping the forest disturbance regimes of Europe, *Nat Sustain*, 4, 63–70, <https://doi.org/10.1038/s41893-020-00609-y>, 2020.
- 1065 Serge, M., Mazier, F., Fyfe, R., Gaillard, M.-J., Klein, T., Lagnoux, A., Galop, D., Githumbi, E., Mindrescu, M., Nielsen, A., Trondman, A.-K., Poska, A., Sugita, S., Woodbridge, J., Abel-Schaad, D., Åkesson, C., Alenius, T., Ammann, B., Andersen, S., Anderson, R., Andrič, M., Balakauskas, L., Barnekow, L., Batalova, V., Bergman, J., Birks, H., Björkman, L., Bjune, A., Borisova, O., Broothaerts, N., Carrion, J., Caseldine, C., Christiansen, J., Cui, Q., Currás, A., Czerwiński, S., David, R., Davies, A., De Jong, R., Di Rita, F., Dietre, B., Dörfler, W., Doyen, E., Edwards, K., Ejarque, A., Endtmann, E., Etienne, D., Faure, E., Feeser, I., Feurdean, A., Fischer, E., Fletcher, W., Franco-Múgica, F., Fredh, E., Froyd, C., Garcés-Pastor, S., García-Moreiras, I., Gauthier, E., Gil-Romera, G., González-Sampériz, P., Grant, M., Grindean, R., Haas, J., Hannon, G., Heather, A.-J., Heikkilä, M., Hjelle, K., Jahns, S., Jasiunas, N., Jiménez-Moreno, G., Jouffroy-Bapicot, I., Kabailienė, M., Kamerling, I., Kangur, M., Karpínska-Kołaczek, M., Kasianova, A., Kołaczek, P., Lagerås, P., Latalowa, M., Lechterbeck, J., Leroyer, C., Leydet, M., Lindbladh, M., Lisitsyna, O., López-Sáez, J.-A., Lowe, J., Luelmo-Lautenschlaeger, R., Lukanina, E., Macijauskaitė, L., Magri, D., Marguerie, D., Marquer, L., Martinez-Cortizas, A., Mehl, I., Mesa-Fernández, J., Mighall, T., Miola, A., Miras, Y., Morales-Molino, C., et al.: Testing the Effect of Relative Pollen Productivity on the REVEALS Model: A Validated Reconstruction of Europe-Wide Holocene Vegetation, *Land (Basel)*, 12, 986, <https://doi.org/10.3390/land12050986>, 2023.

- Simas, A. B., Barreto-Souza, W., and Rocha, A. V.: Improved estimators for a general class of beta regression models, *Comput. Stat. Data Anal.*, 54, 348–366, <https://doi.org/10.1016/j.csda.2009.08.017>, 2010.
- 1085 Sjöström, J. K., Gyllencreutz, R., Martínez Cortizas, A., Nylund, A., Piilo, S. R., Schenk, F., McKeown, M., Ryberg, E. E., and Kylander, M. E.: Holocene storminess dynamics in northwestern Ireland: Shifts in storm duration and frequency between the mid- and late Holocene, *Quat Sci Rev*, 337, 108803, <https://doi.org/10.1016/j.quascirev.2024.108803>, 2024.
- 1090 Staal, A., Tuinenburg, O. A., Bosmans, J. H. C., Holmgren, M., van Nes, E. H., Scheffer, M., Zemp, D. C., and Dekker, S. C.: Forest-rainfall cascades buffer against drought across the Amazon, *Nat. Clim. Change*, 8, 539–543, <https://doi.org/10.1038/s41558-018-0177-y>, 2018.
- Sugita, S.: A Model of Pollen Source Area for an Entire Lake Surface, *Quat. Res.*, 39, 239–244, <https://doi.org/10.1006/qres.1993.1027>, 1993.
- Sugita, S.: Pollen Representation of Vegetation in Quaternary Sediments: Theory and Method in Patchy Vegetation, *J Ecol*, 82, 881, <https://doi.org/10.2307/2261452>, 1994.
- 1095 Sugita, S.: Theory of quantitative reconstruction of vegetation I: Pollen from large sites REVEALS regional vegetation composition, *Holocene*, <https://doi.org/10.1177/0959683607075837>, 2007a.
- Sugita, S.: Theory of quantitative reconstruction of vegetation II: all you need is LOVE, *Holocene*, 17, 243–257, <https://doi.org/10.1177/0959683607075838>, 2007b.
- 1100 Tabares, X., Ratzmann, G., Kruse, S., Theuerkauf, M., Mapani, B., and Herzschuh, U.: Relative pollen productivity estimates of savanna taxa from southern Africa and their application to reconstruct shrub encroachment during the last century, *Holocene*, 31, 1100–1111, <https://doi.org/10.1177/09596836211003193>, 2021.
- Thorley, A.: Pollen Analytical Evidence Relating to the Vegetation History of the Chalk, *J Biogeogr*, 8, 93, <https://doi.org/10.2307/2844552>, 1981.
- 1105 Tong, Z.-Y., Wu, L.-Y., Feng, H.-H., Zhang, M., Armbruster, W. S., Renner, S. S., and Huang, S.-Q.: New calculations indicate that 90% of flowering plant species are animal-pollinated, *Natl Sci Rev*, 10, <https://doi.org/10.1093/nsr/nwad219>, 2023.
- Trondman, A. -K., Gaillard, M. -J., Mazier, F., Sugita, S., Fyfe, R. M., Nielsen, A. B., Twiddle, C., Barratt, P., Birks, H. J. B., Bjune, A. E., Björkman, L., Broström, A., Caseldine, C., David, R., Dodson, J., Dörfler, W., Fischer, E., Geel, B., Giesecke, T., Hultberg, T., Kalnina, L., Kangur, M., Knaap, P., Koff, T., Kuneš, P., Lagerås, P., Latałowa, M., Lechterbeck, J., Leroyer, C., Leydet, M., Lindbladh, M., Marquer, L., Mitchell, F. J. G., Odgaard, B. V., Peglar, S. M., Persson, T., Poska, A., Rösch, M., Seppä, H., Veski, S., and Wick, L.: Pollen-based quantitative reconstructions of Holocene regional vegetation cover (plant-functional types and land-cover types) in Europe suitable for climate modelling, *Glob. Chang. Biol.*, 21, 676–697, <https://doi.org/10.1111/gcb.12737>, 2015.
- 1115 Turubanova, S., Potapov, P., Hansen, M. C., Li, X., Tyukavina, A., Pickens, A. H., Hernandez-Serna, A., Arranz, A. P., Guerra-Hernandez, J., Senf, C., Häme, T., Valbuena, R., Eklundh, L., Brovkina, O.,

- Navrátilová, B., Novotný, J., Harris, N., and Stolle, F.: Tree canopy extent and height change in Europe, 2001–2021, quantified using Landsat data archive, *Remote Sens. Environ.*, 298, 113797, <https://doi.org/10.1016/j.rse.2023.113797>, 2023.
- Viedma, O., Moity, N., and Moreno, J. M.: Changes in landscape fire-hazard during the second half of the 20th century: Agriculture abandonment and the changing role of driving factors, *Agric. Ecosyst. Environ.*, 207, 126–140, <https://doi.org/10.1016/j.agee.2015.04.011>, 2015.
- Villegas-Díaz, R., Cruz-Silva, E., and Harrison, S. P.: ageR: Supervised Age Models, <https://doi.org/10.5281/zenodo.4636716>, *ageR version 0.2.0.900*, 2021.
- Villegas-Díaz, R. and Harrison, S.P.: The SPECIAL Modern Pollen Data Set for Climate Reconstructions, version 2 (SMPDSv2). University of Reading. Dataset. <https://doi.org/10.17864/1947.000389>, 2022
- Wei, D., González-Sampériz, P., Gil-Romera, G., Harrison, S. P., and Prentice, I. C.: Seasonal temperature and moisture changes in interior semi-arid Spain from the last interglacial to the Late Holocene, *Quat. Res.*, 101, 143–155, <https://doi.org/10.1017/qua.2020.108>, 2021.
- Weiss, H., Courty, M.-A., Wetterstrom, W., Guichard, F., Senior, L., Meadow, R., and Curnow, A.: The Genesis and Collapse of Third Millennium North Mesopotamian Civilization, *Science*, 261, 995–1004, <https://doi.org/10.1126/science.261.5124.995>, 1993.
- Whitney, B. S., Smallman, T. L., Mitchard, E. T., Carson, J. F., Mayle, F. E., and Bunting, M. J.: Constraining pollen-based estimates of forest cover in the Amazon: A simulation approach, *Holocene*, 29, 262–270, <https://doi.org/10.1177/0959683618810394>, 2019.
- Wieczorek, M. and Herzschuh, U.: Compilation of relative pollen productivity (RPP) estimates and taxonomically harmonised RPP datasets for single continents and Northern Hemisphere extratropics, *Earth Syst Sci Data*, 12, 3515–3528, <https://doi.org/10.5194/essd-12-3515-2020>, 2020.
- Wörl, V., Jetschni, J., and Jochner-Oette, S.: Birch Pollen Deposition and Transport along an Altitudinal Gradient in the Bavarian Alps—A Case Study Using Gravimetric Pollen Traps in the Pollen Season 2020, *Atmosphere*, 13, 2007, <https://doi.org/10.3390/atmos13122007>, 2022.
- Zanon, M., Davis, B. A. S., Marquer, L., Brewer, S., and Kaplan, J. O.: European forest cover during the past 12,000 years: A palynological reconstruction based on modern analogs and remote sensing, *Front. Plant Sci.*, 9, 1–25, <https://doi.org/10.3389/fpls.2018.00253>, 2018.
- Zapolska, A., Serge, M. A., Mazier, F., Quiquet, A., Renssen, H., Vrac, M., Fyfe, R., and Roche, D. M.: More than agriculture: Analysing time-cumulative human impact on European land-cover of second half of the Holocene, *Quat. Sci. Rev.*, 314, 108227, <https://doi.org/10.1016/j.quascirev.2023.108227>, 2023.
- Zhang, Y., Renssen, H., and Seppä, H.: Effects of melting ice sheets and orbital forcing on the early Holocene warming in the extratropical Northern Hemisphere, *Clim. Past*, 12, 1119–1135, <https://doi.org/10.5194/cp-12-1119-2016>, 2016.

- 1155 Zhang, Y., Renssen, H., Seppä, H., and Valdes, P. J.: Holocene temperature trends in the extratropical Northern Hemisphere based on inter-model comparisons, *J. Quat. Sci.*, 33, 464–476, <https://doi.org/10.1002/jqs.3027>, 2018.

Page 3: [1] Deleted	Luke Fionn Sweeney	13/06/2025 10:26:00
---------------------	--------------------	---------------------

▼

Page 3: [2] Deleted	Luke Fionn Sweeney	13/06/2025 10:27:00
---------------------	--------------------	---------------------