

Migration as a Hidden Risk Factor in Seismic Fatality: A Spatial Modeling of the Chi-Chi Earthquake and Suburban Syndrome

Tzu-Hsin Karen Chen^{1,2}, Kuan-Hui Elaine Lin³, Thung-Hong Lin⁴, Gee-Yu Liu⁵, Chin-Hsun Yeh⁵, and Diana Maria Ceballos²

5 ¹Department of Urban Design and Planning, University of Washington, Seattle, WA 98105, USA

²Department of Environmental and Occupational Health Sciences, University of Washington, Seattle, WA 98105, USA

³Graduate Institute of Sustainability Management and Environmental Education, National Taiwan Normal University, Taipei 10645, Taiwan

⁴Institute of Sociology, Academia Sinica, Taipei 11529, Taiwan

10 ⁵National Center for Research on Earthquake Engineering, Taipei 10668, Taiwan

Correspondence to: Tzu-Hsin Karen Chen (kthchen@uw.edu) and Kuan-Hui Elaine Lin (khelin@ntnu.edu.tw)

Abstract. Suburban areas have disproportionately experienced higher fatalities during major earthquakes. Place-based models attribute this spatial disparity to hazard, exposure, and social vulnerability factors. However, the impact of migration on seismic fatality remains underexplored, primarily due to the challenges in accessing mobility data. In this study, we apply a geospatial method, the radiation model, to estimate migration patterns as a critical component of exposure and vulnerability. Analyzing the 1999 Chi-Chi earthquake in Taiwan with Poisson regression across 4,052 neighborhoods, we factor in migration inflow (i.e., population traveling from other neighborhoods), migrants' origin income, and indigenous population percentage among migrants, along with other risk factors proven in previous studies. Our findings indicate that migration inflow significantly correlates with increased fatalities. Furthermore, a lower income at the migrants' origin neighborhood is significantly associated with higher fatalities at their destination. An elevated proportion of indigenous population in the migrants' origin neighborhood also significantly correlates with increased fatalities, although the impact of the Chi-Chi earthquake does not predominantly affect indigenous jurisdictions. This study underscores the seismic fatality risk in the outskirts of megacities, where migrants from lower income and historically marginalized groups are more likely to reside for precarious employment conditions, emphasizing the need for affordable and safe living infrastructures for the migrating population. Addressing migrants' vulnerabilities in housing will not only reduce seismic fatality risk but also improve preparedness against other disasters and public health emergencies.

1 Introduction

30 Globally, from 1996 to 2015, earthquakes resulted in over 750,000 deaths, comprising 55.6% of all natural hazard fatalities in this period (UNISDR, 2016). Seismic fatalities, while intuitively linked to earthquake exposure, do not always align with

population density or hazard magnitude. For example, during Taiwan's 1999 Chi-Chi earthquake, most fatalities occurred not in densely populated urban centers or remote rural areas but in suburban or urban fringe areas around the Taichung metropolitan region (Fig. 1). Similar mortality patterns were observed in subsequent significant earthquakes in Wenchuan, China (2008),
35 Central Chile (2010), and Gorkha, Nepal (2015), predominantly affecting suburbs or neighborhoods of small-to-medium-sized cities (Adhikari et al., 2021; Allan et al., 2013; Panday et al., 2021; Xu et al., 2009). This pattern, which we term as the 'suburban syndrome,' suggests that the highest fatality rates may be more related to urban development and housing safety issues than to the earthquake's magnitude alone. Nevertheless, this socio-spatial fatality pattern in suburban belts has been underexplored in seismic risk research.

40 By 2030, small and mid-sized cities and towns with populations of less than one million are expected to account for 54% of the world's urban population, having experienced rapid growth and urban expansion in recent decades (UN, 2018). **These cities, particularly those on the outskirts of metropolitan areas, often provide more affordable housing options for lower-income groups, including migrant workers attracted to cities for job opportunities (Taubenböck et al., 2018). During off-season periods in agriculture, rural populations wandering into urban areas frequently take on temporary jobs, such as construction work (Fan and Li, 2020; Kumar and Sati, 2023). Socioeconomically marginalized migrants from rural villages and indigenous tribes are more likely to reside in urban peripheries where lower-cost rental housing is available, though often at the expense of structure safety and maintenance (Andersen et al., 2018; Belanger et al., 2013; Shier et al., 2015). Social vulnerabilities in these areas are exacerbated by issues like unregulated development, informal settlements, overcrowded living conditions, poor construction standards, weak governance, and limited financial resources (Birkmann et al., 2016). These factors collectively**
50 **heighten the social vulnerability of suburban belts to earthquakes.**

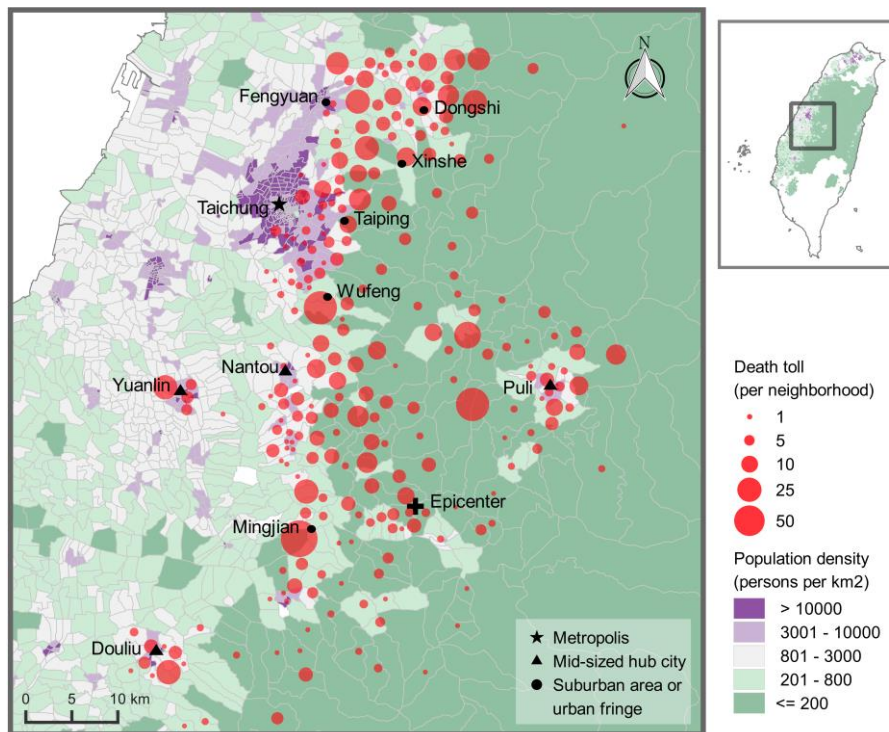


Figure 1: A case of the suburban syndrome in seismic fatalities. Spatial distributions of fatalities and population density indicate that the neighborhoods in medium-sized hub cities, suburban areas, and urban fringes suffered the most fatalities during the Chi-Chi earthquake. The population data is from Taiwan Census 2000 and fatality data from Tien et al. (2002).

55 Seismic risk assessment has primarily focused on individuals' places of residence to estimate exposure and other risk factors (Aldrich and Sawada, 2015; Derakhshan et al., 2020; Lin et al., 2015; Masi et al., 2021; Pavić et al., 2020; Rashed and Weeks, 2003). These measures were able to identify areas with higher exposure and social vulnerability associated with earthquake-related fatalities, thereby informing resource allocation and policy interventions. However, the residence-based approaches overlook the effect of migration patterns at daily, seasonal, and long-term scales that can have a strong impact to reshape risks.

60 More critically, the migration data hardly is reflected in any official population registers. We argue that migration patterns are a vital yet overlooked component in understanding the suburban syndrome in disaster risk assessment. Ignoring population flow between places can lead to an underestimation of exposure, root cause, and progression of vulnerability to environmental hazards (Kumar and Sati, 2023; Wang et al., 2022). For example, seasonal farm workers in North Carolina, USA, faced greater impacts from Hurricane Katrina due to inadequate housing in migrant worker camps (Montz et al., 2011). In Lisbon, Portugal,

65 more than 50% of the population is found in different census locations during the day compared to their residential records, resulting in a 22% higher exposure to the 2012 Lisbon earthquake (Freire and Aubrecht, 2012). Between 1990 and 2010, the migration of the working-age population from rural to urban areas in China led to a 34% increase in the population exposed to seismically hazardous areas, higher than the average population growth at 18% (He et al., 2016). In the United States, exposure to toxic sites is 10% higher when based on people's mobile signal locations than estimates based on their residence (Liu et al.,

70 2023). These examples underscore the critical role of migration patterns in hazard exposure, necessitating a paradigm shift towards mobility-based risk assessments.

In this study, we hypothesize that incorporating the migration effect into risk models could explain the suburban syndrome, characterized by higher fatalities in small and medium-sized cities and suburban areas. We also hypothesize that migrants from historically marginalized groups, especially indigenous people in colonial societies, may expose to higher seismic risks.

75 Mobility data from recent technological advancements, such as social media records and mobile phone signals, were not widely available before the 2000s. Thus, we introduce the application of the radiation model (Simini et al., 2012) to estimate migration effects on seismic risks. The effect is examined through a case study of the Chi-Chi earthquake that struck Taiwan in 1999. The database for this earthquake encompasses the location of each death and high-resolution ground motion data from 650 stations. By combining earthquake hazard, socioeconomic, indigenous population data, and migration estimates at the

80 neighborhood level, we construct three nested multivariate models. Our analyses address three questions: (i) What are the determinant factors constituting seismic risk in terms of hazard, exposure, and vulnerability? (ii) What roles do migration patterns play in seismic fatalities with respect to the size of the migrant population and the economic status of their origin? (iii) Are historically marginalized populations, especially indigenous people, more vulnerable during migration in terms of seismic risk?

85 **1.1 Background for place-based and mobility-based effects in the “suburban syndrome”**

When performing seismic risk assessment, studies usually conceive risk factors of a given place by measuring three distinctive components that determine fatality—hazard, exposure, and vulnerability (Bilham and Gaur, 2013; Lin et al., 2015). Hazard refers to natural or human-induced physical events that may have adverse effects on exposed elements, such as populations or buildings. Exposure refers to an inventory of elements in an area in which hazard events may occur. In seismic risk assessments,

90 while 'vulnerability' sometimes refers to the fragility of buildings, we specifically refer this term to social vulnerability, which reflects the sociodemographic context of a neighborhood that is prone to suffering seismic fatalities (IPCC, 2012; Turner et al., 2003). Following assumption that living in a poor neighborhood affects a wide range of individual outcomes (Wilson, 2012), the place-based effect refers to internal physical and socioeconomic context of a neighborhood in which hazard, exposure, and vulnerability interact to shape its risk profile. In addition, the mobility-based effect, as we define here, refers to

95 interactions of the outer linkages of a neighborhood with its migrants from other neighborhoods that affect the risk profile, but yet their mobility has been underestimated. These two mechanisms increase the seismic risk in developing and densely populated neighborhoods along the expanding suburban belt—suburban areas, the urban fringe, and local hub cities and towns.

The place-based effect appears to be magnified when hazard, exposure, and vulnerability are considered to reinforce each other, and fatalities are higher in certain neighborhoods. However, the investigations for these phenomena remain insufficient.

100 Seismic risk studies most frequently report the concentration of disadvantaged or vulnerable populations living in poorly constructed buildings (e.g., low-rent or low-price residential and commercial property or slums) in seismic-hazard-prone areas.

During the past four decades, construction booms especially have been witnessed in cities worldwide, resulting in an unprecedented increase of building stocks constructed using inferior materials and assembly methods (Bilham and Gaur, 2013).
105 Most such buildings occur in developing countries or regions where building standards were poorly regulated or enforced. It is deemed that earthquake-resistant buildings are often exclusive to the economically developed neighborhoods. The expensive real estate with high-standard building codes are usually not affordable for the socially disadvantaged population (i.e., low-income, unemployed, and minority people; transient-migrant or commuting workers; and people who are less educated) in the earthquake zones (Önder et al., 2004). Overall, corruption in the construction industry, absence of education on earthquakes,
110 prevalence of poverty, and income inequality, which relates to segregation in earthquake zones, are responsible for fatalities associated with building collapses (Anbarci et al., 2005; Escaleras et al., 2007). There are still other factors that can heighten social and geographical segregation during earthquakes. Public or social housing is often built on newly derived lands that are prone to various types of hazard threats, such as those close to transportation, hillsides, riverbanks, or coasts, under city planning (Cutter et al., 2006). Proximity to industrial sites during an earthquake can increase the risk of explosions and fires,
115 potentially leading to fatalities (Moghaddam et al., 2023). The spatial segregation of building quality and unequal exposure to hazards can be worsened under rapid and unregulated urban expansion (Brouwer et al., 2007; Lavell, 2003; McGranahan et al., 2007). Therefore, during building booms particularly, the rapidly developing yet relatively poor neighborhoods around the suburban belt could therefore face greater exposure to hazards with a higher proportion of buildings with low-quality codes to enhance seismic risks.

120

Another mechanism, the mobility-based effect, which focus on human mobility across neighborhood boundaries, could profoundly influence earthquake fatalities through migration behavior. Human mobility shapes population dynamics at different timescales from a day to several seasons in a year. The simplest view of human mobility is the “push–pull” theory, which states that a pull-in force occurs in places with more favorable conditions and opportunities that attract migration,
125 whereas a push-out force occurs in places with fewer opportunities and more constrains that force people to move out of those places (Ravenstein, 1889). These processes cause short-term population flow (e.g., commuting daily to work, weeks/months in temporary jobs, and semesters/years at school) and long-term migration; these population flows can take place in both formal and informal forms. Research indicates that city scale (population or accumulated goods) and job opportunities are critical factors of a pull process (Jamshed et al., 2020; Simini et al., 2012). The gravity model, for example, uses two elements—
130 population number and distance between places—to predict population flows (Simini et al., 2012; Viboud et al., 2006). Survey studies also find that low family income (Fell et al., 2004), unemployment (Böheim and Taylor, 2002), and the cost of commuting are key factors in a push process. All of these dynamisms form the prototype of the relationships in urban systems and urban–rural linkages (Dicken et al., 2001; Jessop et al., 2008). Ignoring such socio-spatial interactivities could lead to underestimation of the population exposure, especially for hub cities with high population mobility (Lall and Deichmann,
135 2012). In this regard, the mobility-based effect boosts seismic risk in suburbs and medium-sized hub cities. Sharp and Clark (2008) studied commuting behaviors among urban, suburban, fringe, and rural areas and found that the fringe area is often

marked with a high proportion of new buildings and high mobility. **Exposure and vulnerability** are two mechanisms occurring simultaneously and linking the suburban and fringe commuting population to intensified risk. Thus, disaster risks are likely to be underestimated in such areas.

140 2 Methods

2.1 Taiwan's Chi-Chi earthquake study area

Taiwan is located on the western edge of the Pacific Ring of Fire, a seismically active zone at the convergence of the Philippine Sea Plate and the Eurasian Plate. Due to complex and active tectonic settings, Taiwan experiences frequent earthquakes. On average, 18,649 earthquakes have hit Taiwan annually from 1991 to 2004, among which 1,047 earthquakes could be sensed
145 (CWB, 2019). The Chi-Chi earthquake was the most lethal earthquake since the 1935 Shinchiku-Taichū earthquake. It struck at 01:47 (GMT+8) on September 21, 1999, in Chi-Chi Township, Nantou County (23.77° N latitude, 120.98° E longitude, Fig. 2), southeast of the Taichung metropolis, the second largest city of Taiwan. The sequence produced a 90 km surface rupture along the Chelungpu thrust fault stretching between foothills of the Central Mountain Ranges in the east to the alluvial plains and basins in the west (Fig. 2). The MW 7.6 main shock and aftershocks resulted in either the complete destruction or the
150 serious damage of approximately 110,000 buildings and resulted in 2,444 deaths, 94% of which were due to building collapses (Kao and Chen, 2000; Tien et al., 2002). **The top three damaged structural types were reinforced concrete structures (44%), unreinforced brick structures (22%), and unreinforced clay block buildings (12%)** (Tsai et al., 2000). Fatalities were concentrated in Taichung County (1,138 deaths) and Nantou County (928 deaths). Most fatalities occurred in suburbs or urban fringes along the periphery of the Taichung metropolis and medium-sized cities outside of the metropolis (Fig. 1). Previous
155 studies on the Chi-Chi earthquake found known risk factors from the hazard, exposure, and vulnerability components in risks (Lin et al., 2017; Lin et al., 2015). Yet, migration effects and factors of the disadvantaged population remain unknown.

In this study, we adopted **the neighborhood geographic unit** to estimate the socio-spatial effect of the seismic fatalities in the Chi-Chi earthquake of Taiwan. The smallest (forth-level) administrative division in Taiwan is the village level in rural districts, which is equivalent to neighborhood in urban districts. As village and neighborhood refer to the same administrative level, we
160 hereafter use neighborhood to harmonize the terminologies and use rural or urban neighborhood for specifying the context as necessary. In total, Taiwan encompassed 7,558 neighborhoods with an average population of 3,000 in 1999. Although the earthquake was sensible island wide, it did not yield tangible damage across the entire island. Thus, we excluded neighborhoods under the threshold of ground motion intensity, $Sa_{0.3}$ of 0.14g, which suggests that no damage occurred below this intensity (Lin et al., 2015). This resulted in 4,502 neighborhoods as our study area. **We used the urbanization levels of districts defined
165 by Liu et al. (2006) to determine deaths located in suburbs and the urban-rural fringe.**

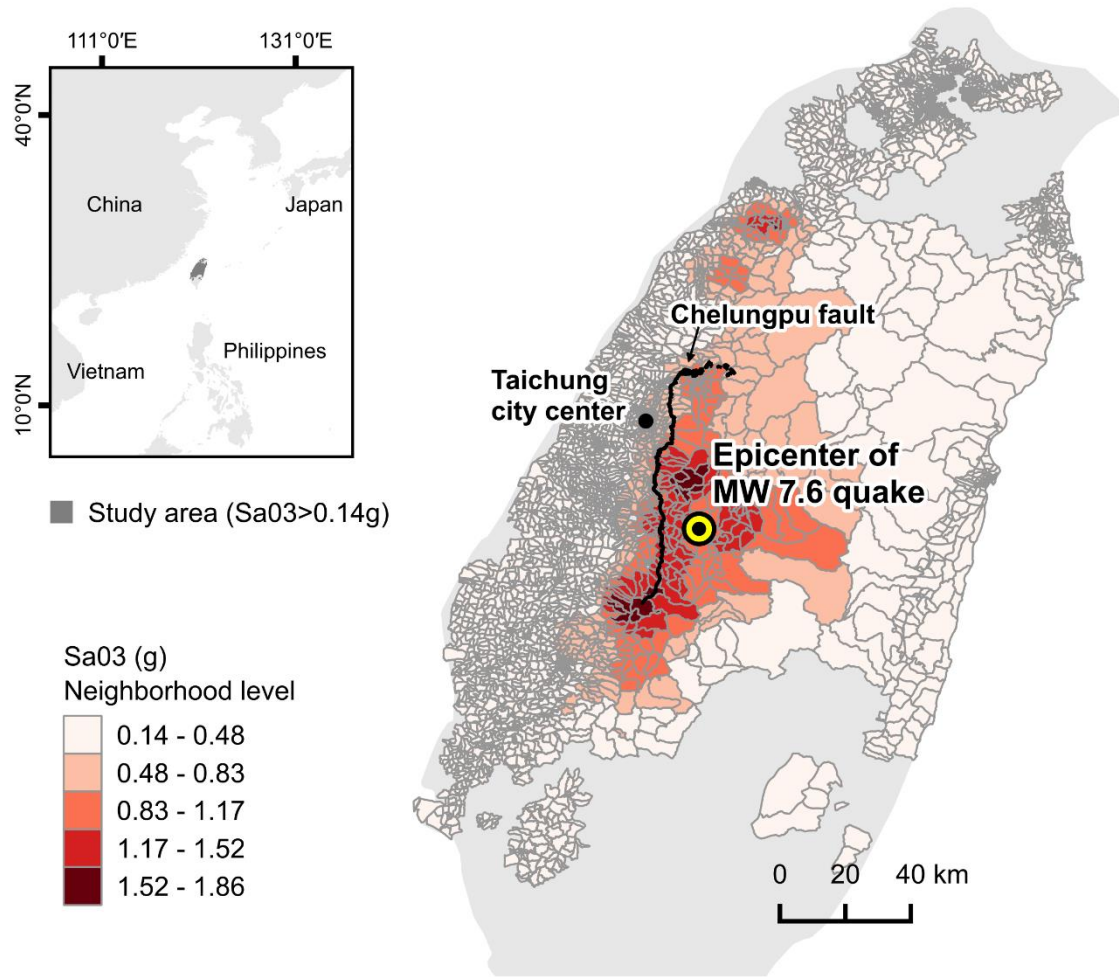


Figure 2: Map of Taiwan’s mainland and the study area ($Sa_{03} \geq 0.14g$) with gray lines showing neighborhood boundaries. The Chi-Chi earthquake resulted in a 90 km surface rupture along the Chelungpu thrust fault stretching between the foothills of the Central Mountain Range to the plains in the western coast.

170

2.2 Data

We define risk according to the 5th assessment IPCC report as “the potential for consequences where something of human value (i.e., fatality in our case) is at stake and where the outcome is uncertain” (IPCC, 2012; UNDRO, 1980). Thus, we collect data of our variables based on the formula of fatality risk as Eq. 1:

175

2.2.1 Dependent Variable: Earthquake Fatalities

180 The dependent variable in this study is the death toll in each neighborhood. We obtained the data from Tien et al. (2002) who investigated the fatalities caused by the Chi-Chi earthquake. Notably, the research team from the National Central University tracked the location of each death using the global positioning system (Kao and Chen, 2000; Tien et al., 2002). The death toll thus reflected the location of the death rather than their registered residence. The fatalities per neighborhood ranges from 0 to 87 (Table 1).

Table 1: Descriptive statistics of the selected variables at the neighborhood level (n = 4052).

Dependent variable	Mean	SD	Min. – Max.	Source
Fatalities	0.52	3.79	0–87	Tien et al. (2002)
<i>Independent variable</i>				
<i>Hazard</i>				
Sa03 (g)	0.36	0.27	0.14–1.86	Central Weather Bureau
Fault-impacted area	0.02	0.13	0–1	Chen et al. (2001)
<i>Exposure</i>				
Population (unit: 10,000 people)	0.29	0.26	0–3.88	Taiwan Census 2000
Percentage of low seismic capacity building	0.37	0.21	0–1	NCREE*(Yeh et al., 2006)
<i>Vulnerability</i>				
Sex ratio	1.08	0.31	0.19–11.86	Taiwan Census 2000
Percentage of population under the age of 15	0.2	0.04	0–0.41	Taiwan Census 2000
Percentage of population over the age of 64	0.11	0.05	0–0.65	
Ln (Median household income)	6.24	0.17	5.41–7.26	Ministry of Finance
Ln (Standard deviation of household income)	6.31	0.5	5.2–10.07	
Indigenous population proportion	0.03	0.14	0–0.98	Ministry of Interior
<i>Migration pattern</i>				
Ln (Estimated migration inflow)	0.78	0.93	-3.69–3.86	Radiation model (this study)
Ln (Average income of migrants' origin)	6.25	0.15	5.76–6.98	Radiation model (this study)
Indigenous population proportion in migrants	0.04	0.13	0–0.93	Radiation model (this study)

185 * National Center for Research on Earthquake Engineering

2.2.2 Independent Variable: Hazard

The seismic hazard dimension comprises two variables: seismic intensity and surface rupture. For seismic intensity, we measured Sa03, standing for spectral acceleration at 0.3 second. This measurement is found more representative than peak ground acceleration or peak ground velocity when **considering damages of low-to-midrise buildings (one to six stories), which comprised 99.8% of the buildings damaged during the Chi-Chi earthquake** (Lin et al., 2015; Wu et al., 2004; Wu et al., 2002). The Sa03 ground motion data was obtained from the Central Weather Bureau (CWB), which had installed approximately 650 free-field strong motion stations around Taiwan before the Chi-Chi earthquake under the Taiwan Strong Motion Instrumentation Program (Shin et al., 2003). In terms of surface rupture, the Chelungpu Fault surveyed by Chen et al. (2001) was applied to identify the distribution of the fault rupture. Chelungpu is a thrust fault; empirically major destruction occurred on the hanging wall side of depression. We thus identified a fault-impact zone with a 5-km buffer (4 km on the hanging wall and 1 km on the footwall) along the fault. The ratio of the area in the fault-impact zone (from 0 to 1) in each neighborhood was calculated based on the geographical information system to reflect its influence on fatalities.

2.2.3 Independent Variable: Exposure

The exposure variables included population size and proportion of buildings with low-seismic capacity (Lin et al., 2017; Lin et al., 2015). We obtained the population data from the Taiwan Population and Household Census 2000 (Chang and Shyue, 2009). The average population per neighborhood was 2,901, with a minimum of 16 people in a rural village and a maximum of 38,822 in the densest neighborhood of the urban areas. Additionally, building fragility is a crucial intermediate factor that can fundamentally influence earthquake fatalities (Bilham and Gaur, 2013; Birkmann et al., 2016; Lin et al., 2015; Yeh et al., 2006). People situated in fragile buildings with low seismic resistance would suffer from a higher degree of exposure from the doubling effect of the initial seismic hazard and the potential collapse of buildings. We obtained the building seismic capacity data from the National Center for Research on Earthquake Engineering (Yeh et al., 2006). The building capacity classification was based on the history of seismic design codes for the buildings in four levels (high, moderate, low and pre-code) (Scawthorn et al., 2006). We considered pre-code and low-code buildings as low seismic capacity and calculated the percentage of the floor area with low seismic capacity per neighborhood in the year 2000. The average percentage of low seismic capacity buildings was 37% among the studied neighborhoods (Table 1).

2.2.4 Independent Variable: Vulnerability

The vulnerability variables included neighborhood-level sex ratio (male/female population), percentage of population under the age of 15, percentage of population over the age of 64, household income, income inequality, and indigenous population proportion. Sex ratio, dependent population (age under 15 and over 64), median income, and income inequality are known risk factors for Chi-Chi earthquake death tolls (Li et al., 2017; Lin et al., 2015). **The population dependency factor calculates the percentage of the population under the age of 15 and over the age of 64. A larger dependent population, either young or aged,**

indicates a higher degree of vulnerability. We obtained demographic data at the neighborhood level from Taiwan Population and Household Census 2000. The overall sex ratio was 1.08 on average, meaning that males outnumber females in the studied neighborhoods. There were no statistics available regarding the non-binary gender population.

Household income, measured by median and standard deviation, reflects the average economic development and income inequities of each neighborhood, respectively, which are key factors of vulnerability (Cutter et al., 2006; Cutter and Finch, 2008; Kahn, 2005). We obtained the household income data before tax in 1999 from the Ministry of Finance (2023). Notably, the median annual household income of each neighborhood ranges from 224,000 TWD (~7,400 USD) to 1,425,000 TWD (~47,500 USD), and the standard deviation of annual household income ranges from 182,060 TWD (~6,068 USD) to 23,734,840 TWD (~791,161 USD); these values indicated considerable social differences between neighborhoods. We used the logarithmic transformation of the median and standard deviation of household income to deal with the skewed distributions of these variables.

We integrated the proportion of the indigenous population as a new variable to reflect the land dispossession and economic marginalization that occurred since the colonial era. The Ministry of Interior in Taiwan defines indigenous populations as groups of people with their own distinct languages, cultures, and traditions, and acknowledges the existence of 16 official indigenous groups. As of 2024, their population numbered 589,038, representing approximately 2.5% of Taiwan's total population of 23 million (Ministry of Interior, 2024). In contrast to the majority Han population, who migrated to Taiwan in different stages in the last centuries, the indigenous peoples belong to the Austronesian language family and have inhabited the island for millennia. The colonial history of Taiwan began in 1624 with the Dutch Republic (Dutch East India Company), followed by Spain, China (during the Ming and Qing dynasties), Japan (1895-1945), and lately the Chinese Nationalist Party (also known as Kuomintang, KMT), who settled in Taiwan after world war II and lifted martial law in 1987 (Nesterova and Jackson, 2018). Over the political transitions, the indigenous peoples have lost their lands, with most remaining indigenous territories concentrating in mountainous regions. Hence, agriculture has been the primary employment sector for indigenous peoples, comprising 20% of their labor force, compared to 6.6% of agricultural employment in the total workforce in 2002 in Taiwan (Council of Indigenous Peoples, 2005). Manufacturing (15%) and construction (13%) are the next largest sectors for indigenous employment. Nevertheless, indigenous occupations often fall into the precarious category known as "3K jobs." The term "3K jobs" derives from Japanese words meaning "hard (kitsui)," "dirty (kitanai)," and "dangerous (kiken)," respectively. Typical 3K jobs are found in manufacturing and construction, usually offered on a contract basis with daily wages two to three times higher than the minimum wage, making them an attractive option for farmers during the off-season. It is worth noting that 64% of indigenous farmers experience off-seasons ranging from one to six months, leading them to seek temporary work and housing in nearby towns (Council of Indigenous Peoples, 2005).

We obtained the proportion of indigenous population data from the Ministry of Interior (2023). The available neighborhood-level data closest to our study year was documented in 2008, and we considered the indigenous population distribution between 1999 and 2008 to be similar.

2.2.5 Independent Variable: Migration Pattern

In Taiwan, during the 1999 earthquake, no statistics were available on internal migration at the neighborhood level. Therefore, we utilized a radiation model to estimate population migration at this granularity (Simini et al., 2012). This model, which is widely used to determine migration flows between origin and destination areas, utilizes population data and pairwise distances between neighborhoods to represent the push-and-pull factors in migration (Gibb et al., 2023; Li et al., 2017; Simini et al., 2012; Yang et al., 2014). The formula for the model uses the product of the populations of the origin and destination neighborhoods as the numerator. The denominator is an adjusted product of the populations within the vicinity of both the origin and destination areas, represents the effect of competing neighborhoods on the population flow. We applied the radiation model to quantify T_{ij} , the proportion of the migrants from neighborhood i moving to neighborhood j , as follows in Eq. 2:

$$T_{ij} = \frac{Pop_i Pop_j}{(Pop_i + S_{ij})(Pop_i + Pop_j + S_{ij})} \quad (\text{Eq. 2})$$

260

where Pop_i and Pop_j are the populations of neighborhoods i and j , respectively; S_{ij} is the total population within a buffer zone around the centroid of i , with the radius being the distance between the centroids of i and j , excluding the populations at both the source and destination points.. Based on this origin-destination matrix, we produced three variables: estimated migration inflow, average income of migrants' origin, and the proportion of indigenous population in migrants.

265

Estimated migration inflow for neighborhood j can be represented as $\sum_i T_i T_{ij}$, where T_i is the total number of migrants originating from i . Although T_i is an unknown parameter, it is proportional to Pop_i based on Simini et al. (2012). Therefore, we calculated the estimated migration inflow for neighborhood j as $\sum_i Pop_i T_{ij}$, which is a relative size proportional to the total number of migrants in a neighborhood j . Specifically, the estimated value represents the size of migrant inflow assuming that every place has 100% of its population migrating. In reality, however, the inflow is smaller and proportional to this estimate (Simini et al. 2012). Since this variable does not represent the absolute number of migrants but rather their relative size, we used the logarithm of the relative size of migrant inflow to interpret the effect of a percent change in migrant size on the percent change in fatalities.

270

We calculated the average income of migrants' origin by weighting the origin's median income by the relative migrant inflow among all migrants in neighborhood j (Eq. 3). Similar to the neighborhood's income variable, we used the logarithm transformation of the variable to deal with its skewed distribution.

275

$$MigrantIncome_i = \frac{\sum_i Pop_i T_{ij} \times Income_i}{\sum_i Pop_i T_{ij}} \quad (\text{Eq. 3})$$

We calculated the proportion of indigenous population in migrants based on the proportion of indigenous people and the relative migrant inflow. Assuming the proportion of migrants being indigenous from neighborhood i equals to the proportion

280

of indigenous population in neighborhood i , the proportion of indigenous population in the migrants to neighborhood j was calculated as Eq. 4.

$$\%MigrantIndi_i = \frac{\sum_i Pop_i T_{ij} \times Indigenous\%_i}{\sum_i Pop_i T_{ij}} \quad (\text{Eq. 4})$$

We used the library 'spdep' in R to calculate distance between neighborhoods (see the Code Availability section).

285

2.3 Models

We used Poisson regression and maximum likelihood estimation to predict incidence rate ratio and significance levels for each covariate from the risk components of hazard, exposure, and vulnerability. The incidence rate ratio (IRR) of a given variable can be interpreted as the factor by which the fatality rate multiplies when that variable increases by one unit, assuming all other variables remain constant (Clayton and Hills, 2013). For example, if the IRR for the variable fault ratio is 2.65, it means that an increase in the fault ratio from 0% to 100% will lead to a 165% increase in fatalities (calculated as $(2.65-1) \times 100\%$). In other words, for each 10% increase in the fault ratio, fatalities are expected to increase by 16.5%. When a variable is in logarithmic form, the IRR can be interpreted as the factor by which the fatality rate multiplies for a 1% increase in that variable.

We modeled neighborhood-level fatalities against these variables, assuming a linear response association, across 4,052 neighborhoods in Taiwan. We started with known risk factors in the basic model (Model 1; Eq. 4). Subsequently, we incorporated the proportion of the indigenous population in the model (Model 2; Eq. 5). Lastly, we included estimated characteristics of migration patterns (i.e., migrant inflow, average income of migrants' origin, and indigenous population proportion in migrants) in the final model (Model 3; Eq. 6). The three nested regression models can be described as follows:

$$\log E(FAT_i/x) = \beta_0 + \beta_1 Sa03_i + \beta_2 Fault_i + \beta_3 Pop_i + \beta_4 LowCapacityBuilding_i + \beta_5 SexRatio_i + \beta_6 AgeUnder15_i + \beta_7 AgeOver64_i + \beta_8 MedianIncome_i + \beta_9 StdIncome_i + \varepsilon_i \quad (\text{Model 1, Eq. 4})$$

$$\log E(FAT_i/x) = \beta_0 + \beta_1 Sa03_i + \beta_2 Fault_i + \beta_3 Pop_i + \beta_4 LowCapacityBuilding_i + \beta_5 SexRatio_i + \beta_6 AgeUnder15_i + \beta_7 AgeOver64_i + \beta_8 MedianIncome_i + \beta_9 StdIncome_i + \beta_{10} Indigenous_i + \varepsilon_i \quad (\text{Model 2, Eq. 5})$$

$$\log E(FAT_i/x) = \beta_0 + \beta_1 Sa03_i + \beta_2 Fault_i + \beta_3 Pop_i + \beta_4 LowCapacityBuilding_i + \beta_5 SexRatio_i + \beta_6 AgeUnder15_i + \beta_7 AgeOver64_i + \beta_8 MedianIncome_i + \beta_9 StdIncome_i + \beta_{10} Indigenous_i + \beta_{11} MigrationInflow_i + \beta_{12} MigrantIncome_i + \beta_{13} MigrantIndigenous_i + \varepsilon_i \quad (\text{Model 3, Eq. 6})$$

The response FAT_i refers to the fatality count in neighborhood i . For each neighborhood i , hazard variables included $Fault_i$ (proportion of the area in the fault zone) and $SA03_i$ (the ground motion intensity measured as Sa03 (g)). Exposure variables included POP_i (population) and $LowCapacityBuilding_i$ (proportion of buildings with low capacity). Vulnerability variables

310

included $SexRatio_i$ (ratio of males to females), $AgeUnder15_i$ (percentage of the population under age 15), $AgeOver64_i$ (percentage of the population aged 65 or older), $MedianIncome_i$ (the logarithm of the median household income in neighborhood i), $StdIncome_i$ (the logarithm of the standard deviation of household income in neighborhood i), and
315 $Indigenous_i$ (proportion of indigenous people in neighborhood i 's population). Migration pattern variables, estimated by the radiation model, included $MigrationInflow_i$ (the logarithm of relative size of migrant inflow to neighborhood i), $MigrantIncome_i$ (the logarithm of average income of the migrants' origin in neighborhood i), and $MigrantIndigenous_i$ (percentage of indigenous people among migrants in neighborhood i). While we hypothesized that most variables would have a positive effect on fatality risk, some may have negative effects. For instance, median household income is associated with
320 greater resources to cope with earthquakes. Similarly, although older groups may be more vulnerable due to physical limitations, they may also possess more experience in dealing with earthquake situations. The parameter ε_i represents the error term. We assessed model performance by using R^2 and log-likelihood values. We performed all statistical computations in R (version 4.3.1); statistical significance was evaluated at $P < 0.05$.

3 Results

325 3.1 Estimated migration patterns

Using the radiation model, we characterize the relative size of migration inflow, average income of migrants' origin, and the percentage of indigenous people among migrants (Fig. 3). Two example neighborhoods show they attracted migrants from different areas and distances based on their geography. A neighborhood in Wufeng (Fig. 1), a regional hub in the outskirts of Taichung metropolitan area, was estimated to have migrants from other neighborhoods in around 10 km, as well as some
330 migrants from Nantou, a mountain city about 40 km away. In contrast, the neighborhood in Puli (Fig. 1), a mountainous town, was estimated to have migrants from other mountainous villages that are up to 80 km away. This shows that the radiation model captures long-distance migration patterns between remote villages and their closest large town.

Comparing the patterns of migrants and residents, higher migration inflow, income of origin and percent indigenous population among migrants were aligned with the spatial pattern of population, population size, and percent indigenous population among
335 residents. Yet, there is some differences between the patterns of migrants and residents. A higher migration inflow was estimated in the suburbs and a lower migration inflow in rural areas and city centers, as city centers have more competing destinations along the way from the rural area to the city. The radiation model also highlights a distinct zone of indigenous migrants at the foothills along the indigenous neighborhoods in mountainous areas (Fig. 3). This observation supports various case studies that highlight indigenous migrants' preferences for blue-collar jobs in towns and cities, while still staying close to
340 their homeland.

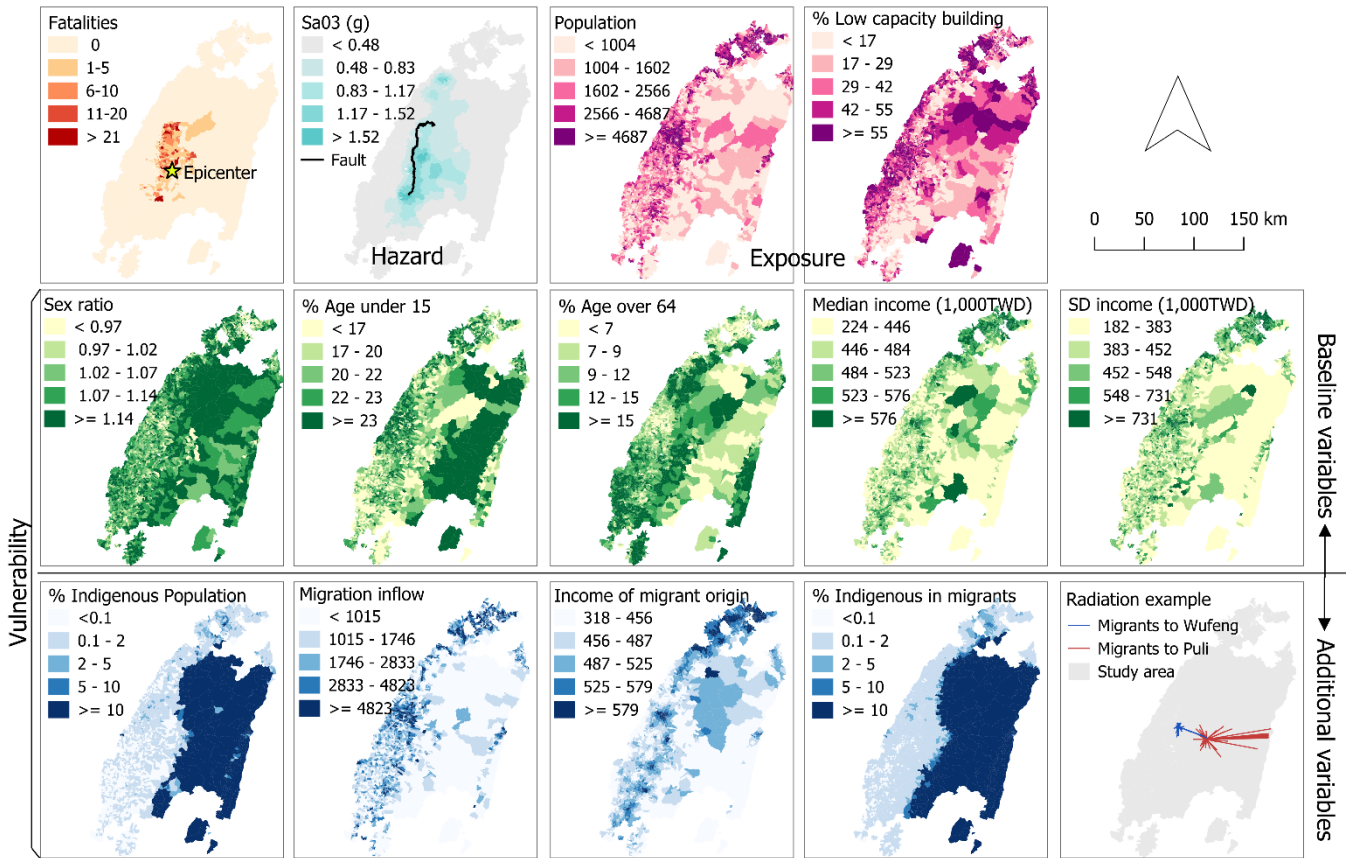


Figure 3: Maps of seismic fatality risk factors, including hazard, exposure, vulnerability, and migration pattern variables. Migrant inflow, as well as income and the proportion of the indigenous population within the migrant inflow, are estimated using the radiation model. Examples from migrant origins in Wufeng and Puli demonstrate that towns in remote areas (e.g., Puli) act as job opportunity hubs for villages from a long distance.

345

3.2 Risk factors of seismic fatalities

350

The 1999 Chi-Chi earthquake resulted in 2,444 deaths, including 1,049 in suburbs and the urban-rural fringe. Model 1 confirms the findings of Lin et al. (2015), indicating that seismic intensity, fault impact zone, population, buildings with low seismic capacity, female ratio, lower household income, and higher income inequality are associated with increased fatalities (Table 2). Seismic hazard remains determining factors influencing the distribution of fatalities in the Chi-Chi earthquake. A 0.1g increase in Sa03 could lead to a 173% rise in neighborhood fatalities (mean Sa03 = 0.36), assuming other variables remain constant. The presence of a fault zone covering 10% of a neighborhood's area resulted in a 90% increase in fatalities. Due to the correlation between seismic intensity and proximity to the fault, the interplay between these two variables is a primary determinant of fatalities. Exposure variables also show significant associations with fatalities. We find that an increase of 1,000

355

residents in a neighborhood could result in a 38% rise in fatalities, while a 10% increase in the percentage of buildings with low seismic capacity could result in a 10% rise in fatalities. We also find that several vulnerability variables are significant. Each 10% increase in a neighborhood's male-to-female ratio is associated with a 3.5% decrease in fatalities. Each 10% increase in median household income, for example from 403,000 TWD (~12,587 USD) to 443,300 TWD (~13,846 USD), could reduce fatalities by 6%. Each 10% increase in standard deviation of household income could lead to an 8% increase in fatalities. The only variable presenting a different direction of association compared to Lin et al. (2015) is the percentage of population aged over 64. Our findings suggest that a 10% increase in a neighborhood's population over age 64 is associated with 10 % lower fatalities. This discrepancy is likely due to our use of higher resolution data at the neighborhood level, as opposed to the previous study's district-level analysis, and the observation that higher death tolls occurred in neighborhoods predominantly aged 15-64.

Model 2, which includes the proportion of the indigenous population in addition to Model 1's variables, indicates a negative association of the indigenous population with fatalities (Table 2). It suggests that every 10% increase in a neighborhood's indigenous population is associated with a 7.5% reduction in fatalities, demonstrating that the impact of the Chi-Chi earthquake is not primarily concentrated in indigenous jurisdictions. However, Model 3, which incorporates migration variables, reveals that a higher proportion of indigenous people among the migrants is linked to increased fatalities. Specifically, a 10% increase in the indigenous proportion among migrants correlates with a 19% increase in fatalities. Model 3 also shows that higher migration inflow and a lower average income in migrants' places of origin are both associated with increased fatalities ($P < 0.05$).

375 **Table 2: Incidence rate ratios and standard errors estimated by Poisson models for neighborhood-level risk factors, estimated by three nested models. Model 1 includes hazard, exposure, and vulnerability variables previously found in Lin et al. (2015), Model 2 adds the indigenous population proportion, and Model 3 includes migration pattern variables.**

Neighborhood-level covariates	Incidence Rate Ratio (Standard Error)		
	Model 1	Model 2	Model 3
<i>Hazard</i>			
Sa03 (g)	27.26 (1.07)***	26.72 (1.07)***	21.44 (1.07)***
Fault-impacted area	10.06 (1.06)***	9.82 (1.06)***	10.17 (1.06)***
<i>Exposure</i>			
Population (unit: 10,000 people)	4.78 (1.06)***	4.74 (1.06)***	4.46 (1.06)***
Percentage of low seismic capacity building	2.01 (1.13)***	1.9 (1.13)***	1.37 (1.13)*
<i>Vulnerability</i>			
Sex ratio	0.65 (1.1)***	0.65 (1.1)***	0.7 (1.11)***
Percentage of population under the age of 15	0.28 (2.26)	0.65 (2.34)	0.28 (2.38)
Percentage of population over the age of 64	0 (2.1)***	0 (2.13)***	0 (2.29)***
Ln (Median household income)	0.1 (1.2)***	0.08 (1.22)***	0.4 (1.29)***
Ln (Standard deviation of household income)	1.79 (1.05)***	1.79 (1.05)***	1.81 (1.05)***
Indigenous population proportion		0.25 (1.4)***	0.08 (1.82)***
<i>Migration pattern</i>			
Ln (Estimated migration inflow)			1.24 (1.04)***
Ln (Average income of migrants' origin)			0.02 (1.37)***
Indigenous population proportion in migrants			2.93 (1.57)*
N	4502		
Log likelihood	-4371	-4359.6	-4252.4
Pseudo R-square	0.49	0.492	0.504

Note: ***P-value < 0.001, **P-value < 0.01, and *P-value < 0.05

This study presents novel models to understand migration as a risk factor of seismic fatalities which has been long underestimated due to lack of mobility data. We find that not only place-based risk factors contribute to fatality risk in the Chi-Chi earthquake. Rather, after adjusting for seismic intensity, population exposure, and residence-based socioeconomic factors, higher fatality risk was among neighborhoods attracting migrants of lower origin income or/and indigenous migrants. This finding, along with the migration patterns concentrating in the suburban areas outside large cities as well as medium-sized cities serving as regional hubs, help explain the suburban syndrome of seismic fatalities.

Our basic model aligns with previous studies, confirming that hazard variables (fault impact and ground motion intensity), exposure factors (population and percentage of buildings with low seismic capacity), and socioeconomic vulnerability indicators (median and standard deviation of household income) are all determinants of seismic fatality at the neighborhood level. Consistent to previous studies (Lin et al. 2015), hazard and exposure factors together constitute the most important part (an $R^2 = 0.4$) contributing to seismic fatality. Social vulnerability variables, although play a marginal effect (an increase of $R^2 < 0.1$), are significantly associated with fatality disparities. That is to say, when seismic intensity and exposure are at similar levels, it is the composition of social vulnerability that could either exacerbate or mitigate the scale of seismic fatality. The basic model results explain the fatality distribution shown in Fig. 1. The highest fatalities appeared in the medium-sized cities in suburbs (e.g., Dali, Taiping, and Fengyuan) and urban fringes (e.g., Wufeng, Dongshi, and Daliao) of the Taichung metropolis. Those are considered as satellite cities and regional hubs in the urban–rural corridor. Remarkably, percent buildings with low seismic capacity are significantly correlated with fatalities and presented a predominant effect explaining high fatalities in suburbs with lower costs of living. The analysis reflects the view of buildings becoming weapons of mass destruction. Additionally, small and medium-sized cities often suffer from socio-political difficulties of poor governance and insufficient capacity to cope with hazards when experiencing rapid sprawl (Bilham, 2013; Bilham and Gaur, 2013). This calls for urgent seismic risk reduction efforts in suburban neighborhoods and hub cities or towns that could undergo intensified hazard exposure and vulnerability during an earthquake.

Our final model demonstrates that the correlation between migration patterns and fatalities is significant. Although with a R^2 only increase 0.014 compared to the base model, the effect is statistically significant. And most importantly, by adding the various migration variables, the roles of migration patterns become even clearer. Not only the estimated migrant inflow is associated with higher fatalities, but the model also shows that lower income at the origin and a higher proportion of indigenous people among migrants correlate with increased fatalities. Thus, social vulnerability within migrant groups significantly contributes to heightened risks, beyond mere underestimated exposure. Migrant workers often face a myriad of social vulnerabilities (Ahonen et al., 2007; Flynn, 2018), which can exacerbate their risks of death during an earthquake. The vulnerability of migrant workers often leads to a high likelihood of taking risky, non-contractual, temporary employment such

as that in construction or agriculture, often without sufficient benefits or safeguards (Ahonen et al., 2018; Al-Tarawneh et al., 2020; Foley, 2017; Foley et al., 2014; Howard, 2017). Precariousness in their jobs often provides economic precarity and results in many immigrant/migrant workers living in overcrowded, substandard housing arrangements, including makeshift dwellings, trailers, or employer-provided accommodations (Caxaj et al., 2024). These living conditions often lack basic safety features, such as fire exits or structural stability, increasing their vulnerability to injury and death during an earthquake.

Migrant workers often experience what has been termed as ‘overlapping vulnerabilities’ (Ceballos et al., 2020; Flynn et al., 2015) or ‘cumulative precarity’ (Gravel and Dubé, 2016), which create disparities in health beyond seismic risks (Benach et al., 2011; Facey and Eakin, 2010; Krieger, 2010). For example, migrant workers experienced higher rates of illness and death during the COVID-19 pandemic, which is also associated with their commuting behavior and housing conditions (Fielding-Miller et al., 2020; Istiko et al., 2022; Reid et al., 2021). In various cultures, migratory populations are sometimes described as "wanderers," as seen in the Taiwanese indigenous pop song *Wandering* and the classical piece *Zigeunerweisen* in German music, which highlight the instability experienced by migrants. In the context of the Chi-Chi earthquake, migration variables further amplify seismic risk. Indigenous hometowns in Taiwan’s mountainous regions were less affected by the earthquake, while migrants who moved to small and medium-sized cities for precarious jobs faced significantly higher exposure to earthquake disasters and social vulnerability. Indigenous populations in Taiwan face an elevated risk of fatality compared to the general population (Juan et al., 2016) due to various social vulnerabilities, including low income, limited education, and inadequate access to healthcare (Liao et al., 2024). They are found especially vulnerable when migrating into cities for job opportunities but only affordable for inferior rental housing conditions that create residential segregation (Hu and Chen, 2011; Wu et al., 2018). Therefore, our findings suggest that safety regulations on rental housing, particularly affordable options, as well as rent subsidies for low-income, migrants, and historically marginalized groups, are imperative strategies to reduce their risk.

As far as we are aware, this is the first study that incorporates migration dimensions into the hazard-exposure-vulnerability model of seismic fatality risk. Nevertheless, this study is not without its limitations. First, given the early timeline of the case study (1999), we were unable to validate the migration patterns using newer technology. Previous studies that validated the model with empirical data have shown that radiation models predict commuting patterns well at the national level (Masucci et al., 2013; Simini et al., 2012), though they may underestimate long-distance and international migration (Kluge and Schewe, 2021). Future studies on recent earthquakes could employ mobile data to further distinguish between different migration behaviors (e.g., daily commuting versus seasonal migration), which would allow for disaggregating the sources of seismic risks associated with mobility. Second, we did not account for the saturation effect of Sa03 — that is, the possibility that higher Sa03 values might not cause additional damage beyond a certain threshold. Third, incorporating additional sociodemographic variables of migrant workers, such as languages spoken, occupation at the time of the earthquake, and social networks including

tribal affiliations, can further elucidate the sources of vulnerability and resilience to disasters. This study reveals general relevance and opens scientific questions for future research on migrants' exposure to environmental hazards.

5 Conclusions

450 In this study, we integrate migration pattern variables into the traditional seismic fatality risk model to explain the concentration of earthquake fatalities in suburban areas. While ground motion intensity and population exposure account for higher seismic fatalities in suburban neighborhoods and urban–rural corridors during the Chi-Chi earthquake, the presence of migrants from low-income origins and a higher proportion of indigenous population further amplified the fatalities in these areas. It is important to note that our findings may not extend universally to all earthquakes, given the diverse geological and tectonic structures, social contexts, institutional settings, and other uncertainties they involve. Nonetheless, low-cost housing 455 options with a lack of safe infrastructure will disproportionately deteriorate fatality during earthquakes. This illustrates a pressing necessity to enforce building code regulations especially providing a safe housing and living standard for migrant workers without compromising affordability.

460 While the investigation of a single earthquake cannot be generally applied, it sheds lights on pathways for improving methods, assumptions, and implications critical for advancing seismic risk assessment studies and potentially impacting how extreme weather events and other catastrophes' fatalities are studied. Our empirical findings underscore the need to reexamine city-, region-, and nation-wide earthquake preparedness and response policies to better allocate resources to areas at greatest risk. These findings suggest that focusing seismic risk mitigation efforts in newly developed, economically disadvantaged suburban neighborhoods and hub cities that cater rural-urban migrations, characterized by high concentrations of migrants living in 465 informal housing or low-cost condominiums is important. Recognizing the suburban syndrome and implementing safety and affordability regulations in suburban housing could play a pivotal role in safeguarding human lives against future catastrophic earthquakes.

Appendix A

470 Table S1: Incidence rate ratios (IRRs) and standard errors estimated by Poisson models with all variables are in log form. In the log-form model, the IRR can be interpreted as the effect of a one percent increase in the variable.

Neighborhood-level covariates	Incidence Rate Ratio (Standard Error)	
	Model 4	
<i>Hazard</i>		
Ln (Sa03 (g))	9.36	(1.06)***
Ln (Fault-impacted area)	1.22	(1.01)***
<i>Exposure</i>		
Ln (Population (unit: 10,000 people))	2.81	(1.05)***
Ln (Percentage of low seismic capacity building)	0.92	(1.04)*
<i>Vulnerability</i>		
Ln (Sex ratio)	0.51	(1.16)***
Ln (Percentage of population under the age of 15)	0.71	(1.14)*
Ln (Percentage of population over the age of 64)	1.51	(1.10)***
Ln (Median household income)	0.39	(1.28)***
Ln (Standard deviation of household income)	1.87	(1.05)***
Ln (Indigenous population proportion)	1.06	(1.02)***
<i>Migration pattern</i>		
Ln (Estimated migration inflow)	1.03	(1.04)
Ln (Average income of migrants' origin)	0.05	(1.36)***
Ln (Indigenous population proportion in migrants)	1.13	(1.02)***
N	4502	
Log likelihood		-3882.26
Pseudo R-square		0.548

Note: ***P-value < 0.001, **P-value < 0.01, and *P-value < 0.05

Code availability

475 The code for migration pattern and statistical analyses are available on GitHub (<https://github.com/karenthchen/Migration-seismic-risk>). Maps presented in this paper are generated using QGIS, a freely available software.

Author contribution

All authors designed research; T-H.K.C. performed research; T-H.K.C, G-Y.L., and C-H.Y. curated data; and T-H.K.C, K-
480 H.E.L, T.H.L, and D.M.C wrote the paper.

Competing interests

The contact authors have declared that none of the authors has any competing interests.

References

- 485 Adhikari, B., Bhandari, P. M., Neupane, D., and Mishra, S. R.: A Retrospective Analysis of Mortality From 2015 Gorkha earthquakes of Nepal: evidence and future recommendations, *Disaster medicine and public health preparedness*, 15, 127-133, 2021.
- Ahonen, E. Q., Benavides, F. G., and Benach, J.: Immigrant populations, work and health—a systematic literature review, *Scandinavian journal of work, environment & health*, 2007. 96-104, 2007.
- 490 Ahonen, E. Q., Fujishiro, K., Cunningham, T., and Flynn, M.: Work as an inclusive part of population health inequities research and prevention, *American journal of public health*, 108, 306-311, 2018.
- Al-Tarawneh, I. S., Wurzelbacher, S. J., and Bertke, S. J.: Comparative analyses of workers' compensation claims of injury among temporary and permanent employed workers in Ohio, *American Journal of Industrial Medicine*, 63, 3-22, 2020.
- Aldrich, D. P. and Sawada, Y.: The physical and social determinants of mortality in the 3.11 tsunami, *Social Science & Medicine*, 124, 66-75, 2015.
- 495 Allan, P., Bryant, M., Wirsching, C., Garcia, D., and Teresa Rodriguez, M.: The influence of urban morphology on the resilience of cities following an earthquake, *Journal of Urban Design*, 18, 242-262, 2013.
- Anbarci, N., Escaleras, M., and Register, C. A.: Earthquake fatalities: the interaction of nature and political economy, *Journal of Public Economics*, 89, 1907-1933, 2005.
- 500 Andersen, M. J., Williamson, A. B., Fernando, P., Eades, S., and Redman, S.: 'They took the land, now we're fighting for a house': Aboriginal perspectives about urban housing disadvantage, *Housing Studies*, 33, 635-660, 2018.
- Belanger, Y. D., Awosoga, O. A., and Weasel Head, G.: Homelessness, urban Aboriginal people, and the need for a national enumeration, 2013. 2013.
- Benach, J., Muntaner, C., and Santana, V.: Employment conditions and health inequalities, 2011. 2011.
- 505 Bilham, R.: Societal and observational problems in earthquake risk assessments and their delivery to those most at risk, *Tectonophysics*, 584, 166-173, 2013.
- Bilham, R. and Gaur, V.: Buildings as weapons of mass destruction, *Science*, 341, 618-619, 2013.
- Birkmann, J., Welle, T., Solecki, W., Lwasa, S., and Garschagen, M.: Boost resilience of small and mid-sized cities, *Nature*, 537, 605-608, 2016.
- 510 Böheim, R. and Taylor, M. P.: Tied down or room to move? Investigating the relationships between housing tenure, employment status and residential mobility in Britain, *Scottish Journal of Political Economy*, 49, 369-392, 2002.
- Brouwer, R., Akter, S., Brander, L., and Haque, E.: Socioeconomic vulnerability and adaptation to environmental risk: a case study of climate change and flooding in Bangladesh, *Risk Analysis: An International Journal*, 27, 313-326, 2007.
- Caxaj, C. S., Weiler, A. M., and Martyniuk, J.: Housing conditions and health implications for migrant agricultural workers in
515 Canada: A scoping review, *Canadian Journal of Nursing Research*, 56, 16-28, 2024.

- Ceballos, D. M., Côté, D., Bakhiyi, B., Flynn, M. A., Zayed, J., Gravel, S., Herrick, R. F., and Labrèche, F.: Overlapping vulnerabilities in workers of the electronics recycling industry formal sector: A commentary, *American journal of industrial medicine*, 63, 955-962, 2020.
- 520 Chang, C.-J. and Shyue, S.-W.: A study on the application of data mining to disadvantaged social classes in Taiwan's population census, *Expert Systems with Applications*, 36, 510-518, 2009.
- Chen, W.-S., Chen, Y.-G., Chang, H.-C., Lee, Y.-H., and Lee, J.-C.: Paleoseismic study of the Chelungpu fault in the Wanfung area, *Western Pacific Earth Sciences*, 1, 499-506, 2001.
- Clayton, D. and Hills, M.: *Statistical models in epidemiology*, OUP Oxford, 2013.
- Council of Indigenous Peoples, T.: *Employment Status Survey of Taiwan Indigenous Peoples*. 2005.
- 525 Cutter, S. L., Emrich, C. T., Mitchell, J. T., Boruff, B. J., Gall, M., Schmittlein, M. C., Burton, C. G., and Melton, G.: The long road home: Race, class, and recovery from Hurricane Katrina, *Environment: Science and Policy for Sustainable Development*, 48, 8-20, 2006.
- Cutter, S. L. and Finch, C.: Temporal and spatial changes in social vulnerability to natural hazards, *Proceedings of the national academy of sciences*, 105, 2301-2306, 2008.
- 530 CWB: Special issue on earthquake observations: 20 years after the Chi-Chi earthquake, Central Weather Bureau, 2019.
- Derakhshan, S., Hodgson, M. E., and Cutter, S. L.: Vulnerability of populations exposed to seismic risk in the state of Oklahoma, *Applied geography*, 124, 102295, 2020.
- Dicken, P., Kelly, P. F., Olds, K., and Wai-Chung Yeung, H.: Chains and networks, territories and scales: towards a relational framework for analysing the global economy, *Global networks*, 1, 89-112, 2001.
- 535 Escaleras, M., Anbarci, N., and Register, C. A.: Public sector corruption and major earthquakes: A potentially deadly interaction, *Public Choice*, 132, 209-230, 2007.
- Facey, M. E. and Eakin, J. M.: Contingent work and ill-health: conceptualizing the links, *Social Theory & Health*, 8, 326-349, 2010.
- Fan, C. C. and Li, T.: Split households, family migration and urban settlement: Findings from China's 2015 national floating population survey, *Social Inclusion*, 8, 252-263, 2020.
- 540 Fell, D. B., Dodds, L., and King, W. D.: Residential mobility during pregnancy, *Paediatric and perinatal epidemiology*, 18, 408-414, 2004.
- Fielding-Miller, R. K., Sundaram, M. E., and Brouwer, K.: Social determinants of COVID-19 mortality at the county level, *PloS one*, 15, e0240151, 2020.
- 545 Flynn, M., Cunningham, T., Guerin, R., Keller, B., Chapman, L., and Hudson, D.: Overlapping vulnerabilities: the occupational health and safety of young immigrant workers in small construction firms. NIOSH and ASSE Report, 2015.
- Flynn, M. A.: Im/migration, work, and health: anthropology and the occupational health of labor im/migrants, *Anthropology of work review: AWR*, 39, 116, 2018.
- 550 Foley, M.: Factors underlying observed injury rate differences between temporary workers and permanent peers, *American journal of industrial medicine*, 60, 841-851, 2017.
- Foley, M., Ruser, J., Shor, G., Shuford, H., and Sygnatur, E.: Contingent workers: Workers' compensation data analysis strategies and limitations, *American journal of industrial medicine*, 57, 764-775, 2014.
- Freire, S. and Aubrecht, C.: Integrating population dynamics into mapping human exposure to seismic hazard, *Natural Hazards and Earth System Sciences*, 12, 3533-3543, 2012.
- 555 Gibb, R., Colón-González, F. J., Lan, P. T., Huong, P. T., Nam, V. S., Duoc, V. T., Hung, D. T., Dong, N. T., Chien, V. C., and Trang, L. T. T.: Interactions between climate change, urban infrastructure and mobility are driving dengue emergence in Vietnam, *Nature communications*, 14, 8179, 2023.
- Gravel, S. and Dubé, J.: Occupational health and safety for workers in precarious job situations: combating inequalities in the workplace, *E-Journal of international and comparative labour studies*, 2016. 2016.
- 560 He, C., Huang, Q., Dou, Y., Tu, W., and Liu, J.: The population in China's earthquake-prone areas has increased by over 32 million along with rapid urbanization, *Environmental Research Letters*, 11, 074028, 2016.
- Howard, J.: Nonstandard work arrangements and worker health and safety, *American journal of industrial medicine*, 60, 1-10, 2017.
- 565 Hu, C.-P. and Chen, H.-R.: A Study on Urbanization and Residential Segregation-an Example of Aborigines in Taipei County, *Journal of architecture and planning*, 12, 75-91, 2011.

- IPCC: Managing the risks of extreme events and disasters to advance climate change adaptation: A special report of working groups I and II of the intergovernmental panel on climate change, Cambridge University Press, Cambridge, UK; New York, USA, 2012.
- 570 Istiko, S. N., Durham, J., and Elliott, L.: (Not that) essential: A scoping review of migrant workers' access to health services and social protection during the COVID-19 pandemic in Australia, Canada, and New Zealand, *International Journal of Environmental Research and Public Health*, 19, 2981, 2022.
- Jamshed, A., Birkmann, J., Rana, I. A., and McMillan, J. M.: The relevance of city size to the vulnerability of surrounding rural areas: An empirical study of flooding in Pakistan, *International Journal of Disaster Risk Reduction*, 48, 101601, 2020.
- 575 Jessop, B., Brenner, N., and Jones, M.: Theorizing sociospatial relations, *Environment and planning D: society and space*, 26, 389-401, 2008.
- Juan, S.-C., Awerbuch-Friedlander, T., and Levins, R.: Ethnic density and mortality: aboriginal population health in Taiwan, *Public Health Reviews*, 37, 1-8, 2016.
- Kahn, M. E.: The death toll from natural disasters: the role of income, geography, and institutions, *Review of economics and statistics*, 87, 271-284, 2005.
- 580 Kao, H. and Chen, W.-P.: The Chi-Chi earthquake sequence: Active, out-of-sequence thrust faulting in Taiwan, *Science*, 288, 2346-2349, 2000.
- Kluge, L. and Schewe, J.: Evaluation and extension of the radiation model for internal migration, *Physical Review E*, 104, 054311, 2021.
- 585 Krieger, N.: Workers are people too: societal aspects of occupational health disparities—an ecosocial perspective, *American journal of industrial medicine*, 53, 104-115, 2010.
- Kumar, S. and Sati, V. P.: Patterns and determinants of rural–urban migration in the Garhwal Himalaya, *GeoJournal*, 88, 3679-3698, 2023.
- Lall, S. V. and Deichmann, U.: Density and disasters: economics of urban hazard risk, *The World Bank Research Observer*, 27, 74-105, 2012.
- 590 Lavell, A.: Local level risk management—Concepts and experience in Central America, 2003, 15.
- Li, F., Feng, Z., Li, P., and You, Z.: Measuring directional urban spatial interaction in China: A migration perspective, *PloS one*, 12, e0171107, 2017.
- Liao, Z.-Y., Kean, S., and Haycock-Stuart, E.: Indigenous lands and health access: The influence of a sense of place on disparities in post-stroke recovery in Taiwan, *Health & Place*, 86, 103210, 2024.
- 595 Lin, K.-H. E., Lin, T.-H., Hu, B. W., Chang, Y.-C., Yeh, C. H., Liu, G. Y., and Chan, C. H.: Earthquake, housing damage, and fatality: A causal-effect analysis of seismic risk in Chi-Chi Earthquake., *City and Planning*, 44, 83-112, 2017.
- Lin, K. E., Chang, Y., Liu, G., Chan, C., Lin, T., and Yeh, C.: An interdisciplinary perspective on social and physical determinants of seismic risk, *Natural Hazards and Earth System Sciences*, 15, 2173, 2015.
- 600 Liu, C.-Y., Hung, Y.-T., Chuang, Y.-L., Chen, Y.-J., Weng, W.-S., Liu, J.-S., and Liang, K.-Y.: Incorporating development stratification of Taiwan townships into sampling design of large scale health interview survey, *J Health Manag*, 4, 1-22, 2006.
- Liu, Z., Liu, C., and Mostafavi, A.: Beyond residence: A mobility-based approach for improved evaluation of human exposure to environmental hazards, *Environmental Science & Technology*, 57, 15511-15522, 2023.
- Masi, A., Lagomarsino, S., Dolce, M., Manfredi, V., and Ottonelli, D.: Towards the updated Italian seismic risk assessment: exposure and vulnerability modelling, *Bulletin of Earthquake Engineering*, 19, 3253-3286, 2021.
- 605 Masucci, A. P., Serras, J., Johansson, A., and Batty, M.: Gravity versus radiation models: On the importance of scale and heterogeneity in commuting flows, *Physical Review E—Statistical, Nonlinear, and Soft Matter Physics*, 88, 022812, 2013.
- McGranahan, G., Balk, D., and Anderson, B.: The rising tide: assessing the risks of climate change and human settlements in low elevation coastal zones, *Environment and urbanization*, 19, 17-37, 2007.
- Ministry of Finance, T.: Taxable income in counties, cities, towns and villages. 2023.
- 610 Ministry of Interior, T.: Neighborhood-level statistics of indigenous population in Taiwan 2008. 2023.
- Ministry of Interior, T.: Weekly Interior Statistics Bulletin, Week 6 of the Year 113 [in Chinese]. 2024.
- Moghaddam, P. S., Jahangiri, K., Sohrabzadeh, S., Hassani, N., Moghaddam, M. H., and Tehrani, G. M.: Foresight of the consequences of the hazmat release from an oil refinery on the surrounding urban community following an earthquake: A Natech scenario analysis, *Disaster medicine and public health preparedness*, 17, e79, 2023.

- 615 Montz, B. E., Allen, T. R., and Monitz, G. I.: Systemic trends in disaster vulnerability: Migrant and seasonal farm workers in North Carolina, *Risk, Hazards & Crisis in Public Policy*, 2, 1-17, 2011.
- Nesterova, Y. and Jackson, L.: Understanding the 'local' in indigenous Taiwan, *International Education Journal: Comparative Perspectives*, 17, 55-66, 2018.
- 620 Önder, Z., Dökmeci, V., and Keskin, B.: The impact of public perception of earthquake risk on Istanbul's housing market, *Journal of Real Estate Literature*, 12, 181-194, 2004.
- Panday, S., Rushton, S., Karki, J., Balen, J., and Barnes, A.: The role of social capital in disaster resilience in remote communities after the 2015 Nepal earthquake, *International Journal of Disaster Risk Reduction*, 55, 102112, 2021.
- Pavić, G., Hadzima-Nyarko, M., Bulajić, B., and Jurković, Ž.: Development of seismic vulnerability and exposure models—A case study of Croatia, *Sustainability*, 12, 973, 2020.
- 625 Rashed, T. and Weeks, J.: Assessing vulnerability to earthquake hazards through spatial multicriteria analysis of urban areas, *International Journal of Geographical Information Science*, 17, 547-576, 2003.
- Ravenstein, E. G.: The laws of migration, *Journal of the royal statistical society*, 52, 241-305, 1889.
- Reid, A., Ronda-Perez, E., and Schenker, M. B.: Migrant workers, essential work, and COVID-19, *American Journal of Industrial Medicine*, 64, 73-77, 2021.
- 630 Scawthorn, C., Flores, P., Blais, N., Seligson, H., Tate, E., Chang, S., Mifflin, E., Thomas, W., Murphy, J., and Jones, C.: HAZUS-MH flood loss estimation methodology. II. Damage and loss assessment, *Natural Hazards Review*, 7, 72-81, 2006.
- Sharp, J. S. and Clark, J. K.: Between the country and the concrete: Rediscovering the Rural-Urban fringe, *City & Community*, 7, 61-79, 2008.
- Shier, M. L., Graham, J. R., Fukuda, E., and Turner, A.: Risk and protective factors of precarious housing among Indigenous people living in urban centres in Alberta, Canada, *Canadian Review of Social Policy*, 2015. 65-94, 2015.
- 635 Shin, T., Tsai, Y., Yeh, Y., Liu, C., and Wu, Y.: Strong-motion instrumentation programs in Taiwan, *INTERNATIONAL GEOPHYSICS SERIES*, 81, 1057-1064, 2003.
- Simini, F., González, M. C., Maritan, A., and Barabási, A.-L.: A universal model for mobility and migration patterns, *Nature*, 484, 96-100, 2012.
- 640 Taubenböck, H., Kraff, N. J., and Wurm, M.: The morphology of the Arrival City-A global categorization based on literature surveys and remotely sensed data, *Applied Geography*, 92, 150-167, 2018.
- Tien, Y. M., Juang, D. S., Pai, C. H., Hisao, C. P., and Chen, C. J.: Statistical analyses of relation between mortality and building type in the 1999 chi-chi earthquake, *Journal of the Chinese Institute of Engineers*, 25, 577-590, 2002.
- Tsai, K., Hsiao, C. P., and Bruneau, M.: Overview of building damages in 921 Chi-Chi earthquake, *Earthquake Engineering and Engineering Seismology*, 2, 93-108, 2000.
- 645 Turner, B. L., Kasperson, R. E., Matson, P. A., McCarthy, J. J., Corell, R. W., Christensen, L., Eckley, N., Kasperson, J. X., Luers, A., and Martello, M. L.: A framework for vulnerability analysis in sustainability science, *Proceedings of the national academy of sciences*, 100, 8074-8079, 2003.
- UN: World Urbanization Prospects 2018, Department of Economic and Social Affairs of the United Nation 2018.
- 650 UNDRO: Natural disasters and vulnerability analysis. In: Report of Experts Group Meeting of 9-12 July 1979, UNDRO, Geneva, Switzerland, 1980.
- UNISDR: Poverty & death: disaster mortality 1996-2015, United Nations Office for Disaster Risk Reduction, Geneva, Switzerland, 2016.
- Viboud, C., Bjørnstad, O. N., Smith, D. L., Simonsen, L., Miller, M. A., and Grenfell, B. T.: Synchrony, waves, and spatial hierarchies in the spread of influenza, *science*, 312, 447-451, 2006.
- 655 Wang, S., Zhang, M., Huang, X., Hu, T., Sun, Q. C., Corcoran, J., and Liu, Y.: Urban-rural disparity of social vulnerability to natural hazards in Australia, *Scientific reports*, 12, 13665, 2022.
- Wilson, W. J.: *The truly disadvantaged: The inner city, the underclass, and public policy*, University of Chicago Press, 2012.
- Wu, Y.-M., Chen, Y.-C., and Chen, H.-M.: The Spatial Distribution and Center of Indigenous Population in Taiwan, *Taiwan Journal of Indigenous Studies*, 11, 149-189, 2018.
- 660 Wu, Y.-M., Hsiao, N.-C., and Teng, T.-L.: Relationships between strong ground motion peak values and seismic loss during the 1999 Chi-Chi, Taiwan earthquake, *Natural Hazards*, 32, 357-373, 2004.
- Wu, Y.-M., Hsiao, N.-C., Teng, T.-L., and Shin, T.-C.: Near real-time seismic damage assessment of the rapid reporting system, *Terrestrial Atmospheric and Oceanic Sciences*, 13, 313-324, 2002.

- 665 Xu, X., Wen, X., Yu, G., Chen, G., Klinger, Y., Hubbard, J., and Shaw, J.: Coseismic reverse-and oblique-slip surface faulting generated by the 2008 Mw 7.9 Wenchuan earthquake, China, *Geology*, 37, 515-518, 2009.
- Yang, Y., Herrera, C., Eagle, N., and González, M. C.: Limits of predictability in commuting flows in the absence of data for calibration, *Scientific reports*, 4, 5662, 2014.
- 670 Yeh, C.-H., Loh, C.-H., and Tsai, K.-C.: Overview of Taiwan earthquake loss estimation system, *Natural hazards*, 37, 23-37, 2006.