

The Alongshore Tilt of Mean Dynamic Topography and its Implications for Model Validation and Ocean Monitoring

Christoph Renkl^{1,2}, Eric C.J. Oliver², and Keith R. Thompson^{2,†}

¹Physical Oceanography Department, Woods Hole Oceanographic Institution, Woods Hole, MA, USA

²Department of Oceanography, Dalhousie University, Halifax NS, Canada

[†]deceased

Correspondence: Christoph Renkl (christoph.renkl@whoi.edu)

Abstract. Mean dynamic topography (MDT) plays an important role in the dynamics of shelf circulation. Coastal tide gauge observations in combination with the latest generation of geoid models are providing estimates of the alongshore tilt of MDT with unprecedented accuracy. Additionally, high-resolution ocean models are providing better representations of nearshore circulation and the associated tilt of MDT along their coastal boundaries. It has been shown that the newly available geodetic estimates can be used to validate model predictions of coastal MDT variability on global and basin scales. On smaller scales, however, there are significant variations in alongshore MDT that are on the same order of magnitude as the accuracy of the geoid models.

In this study, we use a regional ocean model of the Gulf of Maine and Scotian Shelf (GoMSS) to demonstrate that the new observations of geodetically referenced coastal sea level can provide valuable information also for the validation of such high-resolution models. The predicted coastal MDT is in good agreement with coastal tide gauge observations referenced to the Canadian Gravimetric Geoid model (CGG2013a) including a significant tilt of alongshore MDT along the coast of Nova Scotia. Using the validated GoMSS model and two idealized models, we show that this alongshore tilt of MDT can be interpreted in two complementary, and dynamically consistent, ways: In the coastal view, the tilt of MDT along the coast can provide a direct estimate of the average alongshore current. In the regional view, the tilt ~~can be used to approximate net Ekman pumping associated with vortex tube stretching averaged over an offshore area~~ provides a measure of area-integrated nearshore circulation. This highlights the value of using geodetic MDT estimates for model validation and ocean monitoring.

1 Introduction

It has long been recognized that the alongshore tilt of mean dynamic topography (~~MDT~~ (MDT; the local mean sea level above the geoid)) plays an important role in the dynamics of shelf circulation (e.g., Scott and Csanady, 1976; Csanady, 1978; Hickey and Pola, 1983; Werner and Hickey, 1983; Lentz, 2008). On the inner shelf (the region just outside the surf zone in water depths of order ten meters) frictional effects are dominant. Furthermore, due to the coastal constraint of no normal flow, currents in the nearshore mostly vary in alongshore direction (Lentz and Fewings, 2012). It has been shown that this results in continental shelves acting as a low wave number filter (Huthnance, 2004). This implies that mesoscale variations of sea level in the deep

ocean are attenuated and only signals with large [alongshore](#) length scales on the order of thousand kilometers can be detected
25 at the coast.

On the shelf, a multitude of drivers including wind stress, input of freshwater by rivers, and tidal rectification contribute to the circulation and thus impact the sea level at the coast (Lentz and Fewings, 2012). It is important to note that the coast acts as a waveguide and the effect of these drivers can be felt long distances “downstream” in the sense of coastal trapped wave propagation (e.g., Csanady, 1978; Thompson, 1986; Thompson and Mitchum, 2014; Frederikse et al., 2017; Hughes et al.,
30 2019; Lentz, 2024). The large number of drivers, and the possibility of remote effects, has resulted in debate about the origin of the observed alongshore pressure gradient at the coast (e.g., Csanady, 1978; Chapman et al., 1986; Xu and Oey, 2011).

MDT appears in the momentum equation in the form of a gradient term and thus is an integrated measure of the mean circulation. This makes MDT a potentially useful variable for ocean monitoring and the validation of ocean models. The direct observation of MDT is complicated by the need to specify the geoid, relative to which MDT is defined. However, recent
35 advances in geodesy have led to new and improved models of the geoid that can be used to get reliable estimates of MDT at coastal tide gauges (Woodworth et al., 2012). [These](#) [In coastal regions with flat topography, these](#) independent measurements are accurate on the centimeter level (Huang, 2017) and thus provide potentially valuable information for the validation of ocean and shelf circulation models.

Higginson et al. (2015) compared multiple global ocean models with geodetically referenced sea level observations along
40 the east coast of North America using different geoid models. While they showed a general convergence between the estimates of MDT, they also pointed out that some models predicted a drop near Cape Hatteras that is not evident in the observations. They concluded that these models did not capture the attenuation of the deep ocean signal over the shelf. A similar analysis was done by Lin et al. (2015) for the Pacific coasts of North America and Japan. They demonstrated a good agreement between the two approaches and furthermore used an analysis of the momentum budget along the coasts to illustrate the dominant dynamics
45 behind the observed MDT. These studies as well as others (e.g., Hughes et al., 2015; Ophaug et al., 2015; Woodworth et al., 2015; Filmer et al., 2018) illustrate the value of the newly available geodetic estimates of coastal MDT for model validation. On the other hand, the overall convergence of the geodetically estimated and predicted MDT simultaneously also increases confidence in the geoid models (Huang, 2017).

Most of the previous studies, including the ones mentioned above, focus on global and basin-scale variability of MDT at the
50 coast. There are however significant variations on smaller scales that are on the same order of magnitude as the accuracy of the geoid models. In this study, we focus on the MDT along the northwest Atlantic coast predicted by the Gulf of Maine and Scotian Shelf (GoMSS) model (Katavouta and Thompson, 2016). The circulation in this region is part of a large-scale buoyancy-driven coastal circulation originating along the south coast of Greenland (Chapman and Beardsley, 1989). On smaller scales, tidal rectification can generate mean currents up to 20 cm s^{-1} (Loder, 1980) and it has been shown that GoMSS is able to capture
55 these processes well (Katavouta and Thompson, 2016; Katavouta et al., 2016).

This raises our first research question: Can new observations of geodetically referenced coastal sea level help validate high-resolution regional ocean models? The second question is what can the alongshore tilt of MDT at the coast tell us about shelf circulation, followed by, what are the implications for coastal monitoring? These questions are of practical importance because

(i) MDT provides an integrated measure of the mean circulation, (ii) tide gauges are cheap to deploy and maintain compared to many other oceanographic observing platforms (e.g., ships and gliders), and (iii) long records (several decades of hourly data) exist for some locations thereby providing background against which to interpret more recent variability. Using GoMSS and several idealized models, we demonstrate that alongshore MDT can be used to estimate not only flow along the coast, but also [diagnostics of area-integrated upwelling rates offshore nearshore circulation](#).

This study is structured as follows: Section 2 provides a description of the approaches to estimate coastal MDT from sea level observations and ocean models. In Section 3, the mean circulation and MDT predicted by GoMSS are presented and validated using geodetically referenced sea level measurements by tide gauges. In Section 4, two views of the dynamical role of the alongshore tilt of MDT at the coast are introduced and subsequently tested in both idealized models of shelf circulation (Section 5) and the realistic GoMSS model (Section 6). The results are summarized and implications for ocean monitoring are discussed in Section 7.

2 Estimating the Alongshore Tilt of Coastal MDT

Mean dynamic topography (MDT), henceforth denoted by η , refers to the mean sea level (MSL) above the geoid corrected for the inverse barometer effect and averaged over a period of time to remove tidal and meteorological variations. MDT is also referred to as ocean dynamic sea level and is solely defined by ocean dynamics and density (Gregory et al., 2019). The alongshore tilt of MDT can be estimated using two independent approaches: a geodetic approach based on sea level observations and a hydrodynamic approach based on ocean circulation models. In this section, these approaches are outlined and information about data used in this study is presented.

2.1 Geodetic Approach

In the geodetic approach, sea level measurements by tide gauges relative to tidal benchmarks are referenced to a common vertical datum which traditionally is estimated by spirit levelling (Huang, 2017). Recent advances by the geodetic community have led to new and improved high-resolution geoid models with an accuracy of several centimeters. These geoid models provide the geoid height relative to a reference ellipsoid. Through satellite-based navigation systems (e.g., Global Positioning System, GPS), sea level heights measured by tide gauges relative to the same ellipsoid can be determined. Subtracting the local geoid height yields an estimate of the MDT

$$\eta = \eta_{\text{BM}} + h_e - N, \quad (1)$$

where η_{BM} is the MSL relative to the GPS tidal benchmark with height h_e above the reference ellipsoid, and N is the geoid height above the same ellipsoid.

MSL values were computed from hourly observations of sea level at available tide gauges in the Gulf of Maine and Scotian Shelf area for the period 2011–2013. These tide gauges measure the real, observed height of the air-sea interface using acoustic, microwave radar, or air pressure-compensated pressure sensors. Since the focus of this study is on the regional-scale MDT

90 signal, only tide gauges that are not influenced by highly localized effects were considered (see below). Table 1 gives a summary of the stations used in this study and their locations are shown in Figure 1. Overall, the proportion of missing values over the study period is less than 3% at all stations.

For stations in the USA, hourly water level records with respect to Mean Lower Low Water (MLLW) were retrieved from the National Oceanic and Atmospheric Administration (NOAA). The tide gauge in Chatham, Lydia Cove, MA (NOAA ID
95 #8447435) was excluded because of its location in a shallow lagoon behind a series of sandbars. GPS ellipsoidal heights at nearby benchmarks were obtained from the Online Positioning User Service (OPUS) provided by the National Geodetic Survey (NGS). Their shared solutions list benchmark coordinates relative to the North American Datum, NAD83(2011) epoch 2010.0. They were converted to the International Terrestrial Reference System, ITRF2008 epoch 2010.0 (Altamimi et al., 2011), using the Horizontal Time-Dependent Positioning tool (HTDP, Pearson and Snay, 2013) provided by NGS. At benchmarks where
100 multiple OPUS shared solutions were available, the one with the smallest uncertainty in observed ellipsoidal height was chosen. Using information from benchmark sheets about the relative height of the benchmarks with respect to MLLW, the sea level observations were expressed relative to the GRS80 ellipsoid.

For tide gauges in Canada, hourly water level records with respect to chart datum (CD) were obtained from the Canadian Hydrographic Service (CHS). GPS ellipsoidal heights were obtained for nearby benchmarks of the Natural Resources Canada
105 (NRCAN) High Precision 3D Geodetic Network in the ITRF2008 epoch 2010.0 reference frame. Generally, the height of the benchmark relative to CD is not known, but can be inferred from orthometric height differences with tidal benchmarks of NRCAN's Vertical Passive Control Network published by CHS. Using this information, MSL can be expressed relative to the GRS80 ellipsoid.

Note that the tide gauge for Saint John, NB, Canada (CHS ID #65) was excluded because it is situated in the mouth of St.
110 John River and sheltered by breakwaters. It follows that sea level variations at this tide gauge are likely to be dominated by local processes (e.g., tides and river discharge). The permanent tide gauges located in Halifax, NS, Canada (CHS ID #490) and at the Bedford Institute of Oceanography, Dartmouth, NS, Canada (CHS ID #491) are only a few kilometers apart. Here, the record at the latter will be used because it has fewer missing values and is closer to the GPS benchmark. (The resulting MDTs agree within millimeters.)

115 The Canadian Gravimetric Geoid model of 2013 - Version A (CGG2013a, Véronneau and Huang, 2016) was used to provide the geoid height relative to the GRS80 ellipsoid in the ITRF2008 epoch 2010.0 reference frame as well as a measure of its accuracy. The CGG2013a geoid heights are available on a grid with 2' spacing. These were bilinearly interpolated to the benchmark locations and then subtracted from the MSL referenced to the benchmarks.

GPS coordinates are generally expressed in a tide-free coordinate system (Woodworth et al., 2012) as is the geoid model
120 CGG2013a. In order to make geodetically referenced MSL observations comparable to ocean circulation models, mean tidal effects on the coordinate systems have to be considered. Therefore, h_e and N were calculated by converting GPS heights and geoid heights from tide-free to mean tide coordinates using the corrections provided by Ekman (1989). Note that the minus sign error reported by Woodworth et al. (2012) was taken into account.

Geodetic estimates of coastal MDT were then computed using (1). Uncertainties in the geodetic MDT estimates for the study
125 period arise from errors in the GPS ellipsoidal heights as well as geoid height. These uncertainties are independent and their
standard deviations are known. It was therefore possible to use conventional error propagation rules to estimate the standard
error of the geodetically determined MDT. The main source of uncertainty is the estimated error in the CGG2013a geoid height
which is generally one order of magnitude higher compared to errors in the ellipsoidal heights. Overall, the uncertainties in
MDT are typically less than 1.6 cm (Table 1).

130 Since MDT is solely defined by ocean dynamics and density (Gregory et al., 2019), the geodetic MDT estimates were
corrected for the inverse barometer effect following Andersen and Scharroo (2011). Here, 6-hourly data of air pressure reduced
to MSL from the NCEP Climate Forecast System Version 2 (CFSv2, Saha et al., 2014) were used. The time-mean air pressure
 p_a at the grid point closest to the tide gauges was used to compute the mean inverse barometer correction in centimeters

$$\eta_{IB} = \frac{p_a - p_{ref}}{\rho_0 g} = 0.99485 \text{ cm hPa}^{-1} (p_a - p_{ref}), \quad (2)$$

135 which was added to the geodetic MDT estimates. Here, $p_{ref} = 1013.0$ hPa is the atmospheric reference pressure. The difference
in the mean inverse barometer effect between the tide gauges in Boston and North Sydney is 2 cm.

2.2 Hydrodynamic Approach

Ocean circulation models typically have their vertical coordinate system expressed relative to an equipotential surface assumed
to be the geoid. Therefore, MSL predicted by the model is equal to the MDT (plus an unknown, dynamically irrelevant
140 constant) and can be directly compared to the geodetic estimates. This is referred to as the hydrodynamic or ocean approach
(e.g., Woodworth et al., 2012).

To estimate the MDT along the northwest Atlantic coast, we use the Gulf of Maine and Scotian Shelf (GoMSS, Figure 1)
model developed by Katavouta and Thompson (2016) and upgraded by Renkl and Thompson (2022). GoMSS is based on
version 3.6 of the Nucleus for European Modelling of the Ocean (NEMO, Madec et al., 2017). In comparison to the original
145 configuration, the bathymetry was replaced with a combination of the 30'' GEBCO bathymetry (Weatherall et al., 2015) and
high-resolution in-situ measurements using an optimal interpolation procedure. This was done to ensure the bathymetry is
accurately represented in GoMSS, particularly in shallow regions. GoMSS has a horizontal grid spacing of $1/36^\circ$ corresponding
to 2.1 to 3.6 km in the study region. The model has 52 vertical ~~levels that~~z-levels that, in a state of rest, increase in thickness
from 0.72 m at the surface to 235.33 m ~~in a state of rest~~at depth, but vary in time via a variable volume formulation of the
150 nonlinear free surface (z^* -coordinate, Levier et al., 2007). Partial cells at the bottom ensure a better resolution of the bathymetry
that is clipped at 4000 m.

Both the initial conditions and lateral boundary forcing are based on water temperature, salinity, sea surface height, and
currents from the GLORYS12v1 reanalysis (Lellouche et al., 2021). Additionally, tidal elevation and currents for five tidal
constituents (M_2, N_2, S_2, K_1, O_1) from FES2004 (Lyard et al., 2006) were prescribed along the lateral boundaries. Atmospheric
155 forcing at the air-sea boundary was based on the CFSv2 (~~Saha et al., 2014~~)(0.5° grid spacing; Saha et al., 2014).

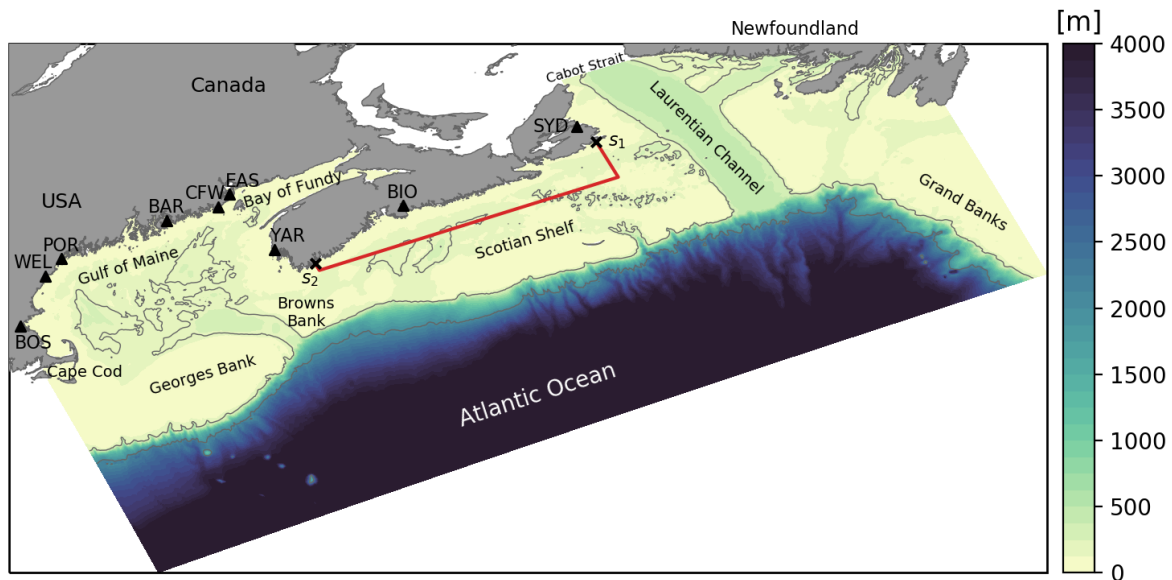


Figure 1. GoMSS model domain and tide gauge locations for the Scotian Shelf, Gulf of Maine and Bay of Fundy. Contours indicate the 200 and 2000 m isobaths. The triangles indicate the tide gauge locations with the abbreviations referring to the stations listed in Table 1. The area enclosed by the red polygon and the coastline illustrates the region over which the regional view is evaluated and the markers s_1 and s_2 indicate reference points along the coast.

The following analysis is based on daily mean output fields of a hindcast for the period 2011–2013. Note that GoMSS does not include forcing by atmospheric pressure and therefore no corrections for the inverse barometer effect have to be applied to the model output.

Model predictions of the alongshore MDT from the hydrodynamic approach are based on the predicted MSL over the three-year period. The coastal MDT is taken at the wet (non-land) grid cell closest to the coast and the alongshore tilt of MDT, in the following denoted by $\Delta\eta_c$, is the difference in MDT between two points along the coast.

3 Model Prediction of Mean Circulation and Validation Using Geodetically Estimated MDT

Before the dynamical role of $\Delta\eta_c$ is explored in the realistic, high-resolution regional ocean model GoMSS, its predictions of the MDT and mean circulation are presented. To illustrate the main features of the circulation in the Scotian Shelf and Gulf of Maine region, the mean depth-averaged currents predicted by GoMSS for the period 2011–2013 are shown in Figure 2.

GoMSS is able to capture the main features of the mean circulation which are closely connected to the complex bathymetry in the region and have been documented in numerous studies. The nearshore outflow from the Gulf of Saint Lawrence through Cabot Strait is the origin of the Nova Scotia Current (NSC) which follows the coastline toward the Gulf of Maine. This

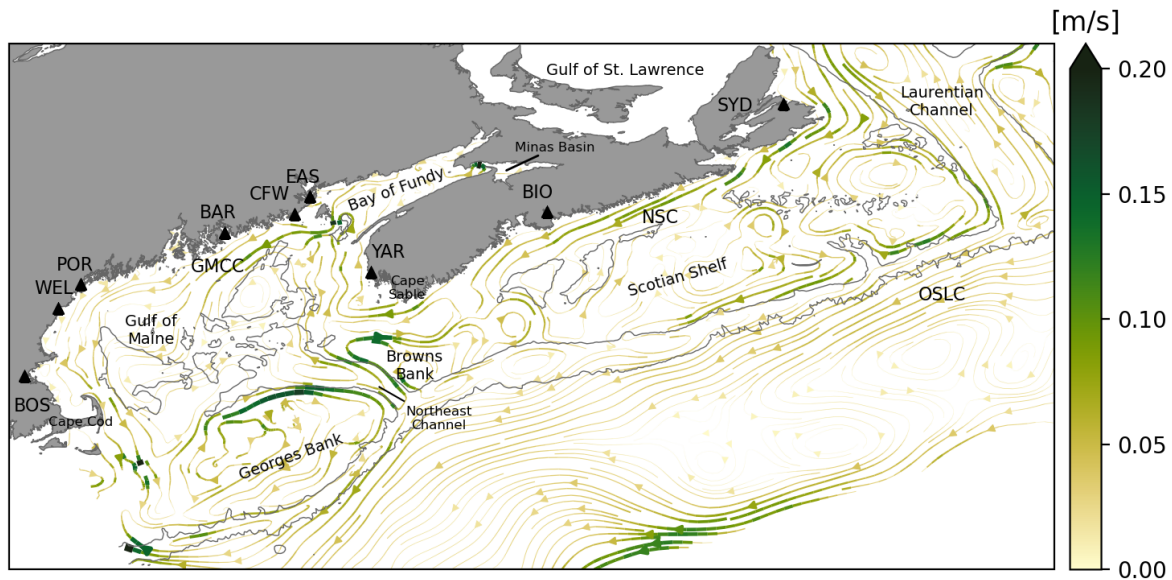


Figure 2. Streamlines of mean depth-averaged circulation predicted by GoMSS for the period 2011–2013. Grey contours mark the 200 and 2000 m isobaths and triangles show the locations of the tide gauges listed in Table 1. Acronyms indicate circulation features described in the text. NSC: Nova Scotia Current; OSLC: Offshore Labrador Current; GMCC: Gulf of Maine Coastal Current.

outflow is associated with relatively fresh and cold water originating from the inshore Labrador Current and runoff from the Saint Lawrence River (e.g., Smith and Schwing, 1991; Hannah et al., 2001; Dever et al., 2016; Rutherford and Fennel, 2018). Another part of the outflow through Cabot Strait follows the western side of the Laurentian Channel and joins the offshore branch of the Labrador Current (OSLC) flowing along the shelf break. The strong current along the offshore boundary of GoMSS is related to mesoscale eddies associated with the Gulf Stream outside the model domain and is also present in the forcing data from GLORYS12v1 (not shown).

On the shelf and in the Gulf of Maine, the mean circulation is dominated by rectified tidal flow which is aligned with bathymetric features. Most notable is the clockwise gyre on Georges Bank with predicted residual currents up to 20 cm s^{-1} along its northern flank. This is consistent with previous studies and can be explained by has been attributed to tidal rectification and baroclinic processes associated with strong tidal mixing (Loder, 1980; Butman et al., 1982; Greenberg, 1983; Naimie et al., 1994; Naimie, thermal wind associated with a tidal mixing front (Loder, 1980; Butman et al., 1982; Greenberg, 1983; Naimie et al., 1994; Naimie, 1996; GoMSS also predicts a clockwise gyre over Browns Bank which is caused by the same mechanisms (e.g., Greenberg, 1983; Smith, 1983; Tee et al., 1993; Hannah et al., 2001). These two gyres create an inflow-outflow pattern in the Northeast Channel.

In the vicinity of Cape Sable, strong tidal currents generate a tidally rectified mean flow that locally enhances the Nova Scotia Current. It has been shown that this is also associated with permanent topographic upwelling in that region (Garrett and Loucks, 1976; Greenberg, 1983; Tee et al., 1988, 1993; Chegini et al., 2018).

185 In the Gulf of Maine, GoMSS predicts a generally counter-clockwise circulation. One dominant feature is the Gulf of Maine Coastal Current (GMCC) flowing from the Bay of Fundy along the coast of Maine and splitting into two branches south of Bar Harbor (BAR). This pattern is consistent with observations and is primarily driven by a pressure gradient force (Pettigrew et al., 1998, 2005).

The circulation features described above are also expressed in the MDT predicted by GoMSS (Figure 3a). To center MDT variations on the shelf (water depths < 200 m) around zero, the spatial median value over this region has been subtracted. Contours indicate the 200 and 2000 m isobaths which mark the shelf break as well as important banks and channels on the shelf. Triangles show the locations of the tide gauges listed in Table 1.

The strong signal in the deep ocean is related to eddies associated with the Gulf Stream and the offshore branch of the Labrador Current. On the shelves, ~~gradients~~-variations in MDT are generally aligned with bathymetric features which is consistent with the topographically driven and tidally rectified circulation described above.

Relatively high values of MDT are predicted on the western side of Cabot Strait associated with the outflow from the Gulf of Saint Lawrence. The offshore gradient of MDT ~~indicates~~-suggests a geostrophic balance with the Nova Scotia Current. Additionally, areas of elevated MDT are apparent over the banks on the shelf driven by tidal rectification. In the Gulf of Maine, MDT is generally lower toward the center which is consistent with the overall counterclockwise circulation. This is also in agreement with observations (Li et al., 2014a). As shown by Renkl and Thompson (2022), the predicted MDT in the upper Bay of Fundy has to be treated with caution because of the limited spatial resolution of GoMSS in that region.

3.1 Model Validation Using Geodetic Tilt Estimates

In Figure 3b, the predicted and observed MDT along the coast are shown as a function of alongshore distance from Cape Cod to Cabot Strait. The means of the observations and predictions of coastal MDT at the grid points closest to the tide gauges have been removed.

The shaded area marks the coastline in the upper Bay of Fundy and illustrates more clearly the strong setdown in that area. As discussed above, the MDT prediction in that region has to be treated with caution and therefore, the coastline is separated in two parts along the Gulf of Maine (Figure 3c) and Nova Scotia (Figure 3d), respectively. In both panels, the means of the respective observations and predictions at the grid points closest to the tide gauges have been removed.

210 Along the coast of the Gulf of Maine, the predicted coastal MDT is mostly flat, with a small increase toward Cape Cod Bay due to wind setup (not shown). The small-scale variability originates from local interactions between the flow and bathymetry in tidal inlets which are part of the rugged coastline. While the predicted local minimum near Cutler Farris Wharf (CFW) and Eastport (EAS) is due to local processes, the overall difference in MDT either side of this setdown is presumably associated with the Gulf of Maine Coastal Current.

215 The alongshore MDT predicted along the coast of the Gulf of Maine agrees well with the geodetic estimates. The largest discrepancy is found at Boston (BOS) where the tide gauge is located inside the harbor, sheltered from the open ocean. Therefore, it is likely that the strong setup seen in the observations is a manifestation of local processes. However, it cannot be ruled out that the wind setup toward Cape Cod Bay is underestimated in GoMSS.

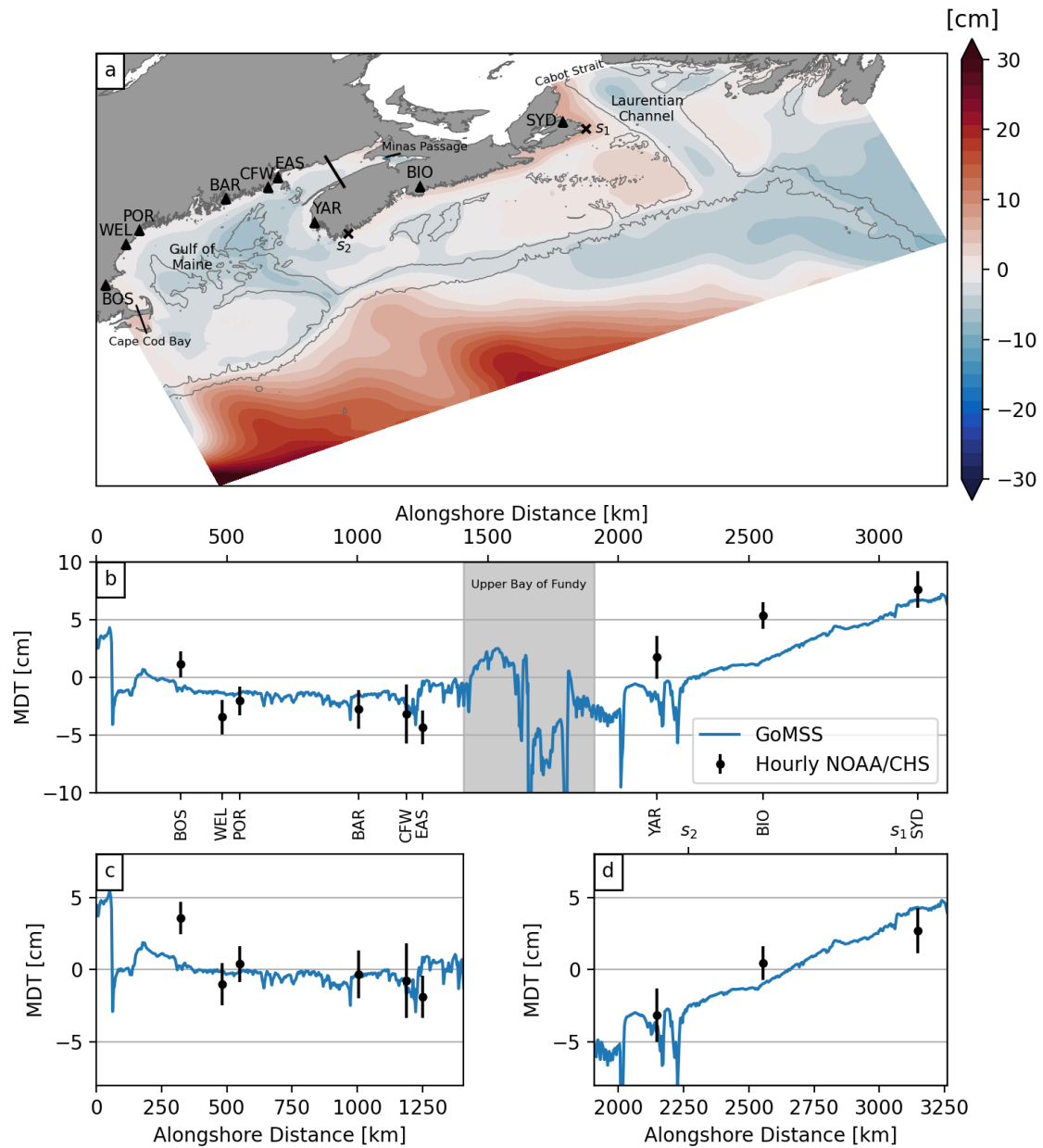


Figure 3. Predicted and observed mean dynamic topography (MDT). (a) MDT predicted by GoMSS (spatial median value over area where water depth < 200 m removed). Markers indicate the locations of the coastal tide gauges listed in Table 1. The line separates the upper Bay of Fundy where the model has difficulty resolving the residual circulation due to the limited resolution. (b) Coastal MDT as a function of distance along the coast of Gulf of Maine and Nova Scotia. The minima in Minas Passage (-28 cm and 25 cm, respectively) are not shown. Geodetic estimates of MDT are shown with their respective uncertainty. The shaded area indicates the coast along the upper Bay of Fundy. (c) and (d) Enlarged views of either side of the shaded area in (b). In panels (b)–(d), the means of the respective observations and predictions at the grid points closest to the tide gauges have been removed.

Along the coast of Nova Scotia (Figure 3d), both the observations and predictions show a strong tilt of coastal MDT. The
 220 observed difference in MDT between the tide gauges in Sydney (SYD) and Yarmouth (YAR) is $\Delta\eta_c = 5.9 \pm 2.0$ cm. GoMSS
 predicts a tilt of $\Delta\eta_c = 8.3$ cm. This is slightly larger than the geodetically estimated tilt, but within two standard deviations
 of the observed value. Note that a local setdown near YAR is predicted which is related to strong tidal currents in that region.
 The tide gauge itself is located inside Yarmouth Harbour which is not resolved in the model. This will lead to discrepancies
 between the model and observations.

225 Rather than stating $\Delta\eta_c$ as a difference between two fixed locations, it is often reported as the alongshore gradient consistent
 with its expression in the momentum equation. However, it is not straightforward to calculate the coastal MDT gradient because
 the irregular shape of the coastline leads to uncertainty in the distance between the fixed locations (Mandelbrot, 1982). For
 example, using an alongshore distance of $\Delta L = 999$ km computed from the coastline in GoMSS results in a predicted MDT
 gradient $\Delta\eta_c/\Delta L = 8.4 \times 10^{-8}$ (equivalent to 0.8 cm per 100 km). If the interest is the large-scale gradient, this value is
 230 arguably an underestimation. If instead one were to use $\Delta L = 650$ km based on three straight line segments from SYD to
 YAR, the gradient is $\Delta\eta_c/\Delta L = 1.3 \times 10^{-7}$. This gradient is comparable to the values used by Smith (1983) in his diagnostic
 model to describe the circulation off southwest Nova Scotia. However, the above discussion highlights the subjectivity that can
 be introduced by focusing on gradients rather than $\Delta\eta_c$ between two fixed locations.

In addition to the large-scale tilt, GoMSS predicts local minima of MDT around YAR and just southeast of it at Cape Sable.
 235 As discussed above in relation to the mean circulation, these setdowns can be explained by the strong tidal currents and the
 curvature of the coastline in that region (e.g., Greenberg, 1983; Smith, 1983; Tee et al., 1993; Chegini et al., 2018).

The above discussion answers the first major question raised in the Introduction: Can new observations of geodetically
 referenced coastal sea level help validate high-resolution regional ocean models? The overall agreement of $\Delta\eta_c$ estimated
 independently by the hydrodynamic and geodetic approaches provides validation of the ocean model. This gives confidence
 240 that GoMSS captures the mean shelf-scale ocean circulation on the Scotian Shelf and in the Gulf of Maine. While there are
 some limitations to this method (see Section 7), the dynamical interpretation of $\Delta\eta_c$ below illustrates that the alongshore tilt of
 MDT is an integrated measure of nearshore ocean dynamics highlighting its usefulness for model validation. Specifically, the
 next sections address the following questions: What can the alongshore tilt of MDT at the coast tell us about shelf circulation?
 What are the implications for coastal monitoring?

245 **4 Dynamical Interpretation of $\Delta\eta_c$**

Assuming steady state and neglecting the inverse barometer effect, the linearized momentum equation for the depth-averaged
 current $\bar{\mathbf{u}}$ can be written

$$g\nabla(\eta - \eta_s) = -f\hat{\mathbf{k}} \times \bar{\mathbf{u}} - \frac{1}{H}\nabla\chi + \frac{\boldsymbol{\tau}^w - \boldsymbol{\tau}^b}{\rho_0 H} + \bar{\mathbf{D}}_1, \quad (3)$$

which is a slightly rewritten form of the one presented by Csanady (1979) to include effects of lateral friction and separate the
 250 baroclinic pressure into the steric contribution to the sea level

$$\eta_s = - \int_{-H}^0 \epsilon dz \quad (4)$$

and the vertically integrated potential energy anomaly

$$\chi = g \int_{-H}^0 z \epsilon dz. \quad (5)$$

Here, $\epsilon = (\rho - \rho_0)/\rho_0$ is the normalized density perturbation and H is the water depth at rest. Equation (3) can be considered
 255 an equation for the gradient of the dynamically active component of sea level, multiplied by the vertical acceleration due to
 gravity g , that is balanced by the Coriolis term with parameter f , the gradient of χ , the difference between wind stress (τ^w)
 and bottom stress (τ^b), and ~~horizontal mixing~~ lateral friction (\overline{D}_1).

Taking the curl of (3) and neglecting latitudinal variations of the Coriolis parameter leads to the following equation for the
 vorticity of the depth-averaged flow on an f -plane (e.g., Mertz and Wright, 1992)

$$260 \quad -\frac{f}{H} \overline{\mathbf{u}} \cdot \nabla H = J(\chi, H^{-1}) + \hat{\mathbf{k}} \cdot \nabla \times \left(\frac{\tau^w - \tau^b}{\rho_0 H} \right) + \hat{\mathbf{k}} \cdot \nabla \times \overline{D}_1, \quad (6)$$

describing the change of potential vorticity due vortex tube stretching by flow across isobaths.

The first term on the right-hand side of (6) is the joint effect of baroclinicity and relief (JEBAR, Sarkisyan and Ivanov, 1971)

$$J(\chi, H^{-1}) = \frac{\partial \chi}{\partial x} \frac{\partial H^{-1}}{\partial y} - \frac{\partial \chi}{\partial y} \frac{\partial H^{-1}}{\partial x}. \quad (7)$$

265 As shown by Mertz and Wright (1992), this can be interpreted as the baroclinic contribution to the torque related to the
 depth-averaged pressure. They furthermore showed that JEBAR acts as a correction to the vortex stretching term in (6) by
 removing the nonphysical contribution of the geostrophic flow referenced to the bottom. Note that JEBAR vanishes in the case
 of constant water depth. The remaining terms in (6) describe the ~~net torque exerted by curl of~~ the difference between wind
~~stress and bottom friction~~ , and vorticity dissipation due to lateral mixing and their associated Ekman transports across depth
 270 contours, as well as the effects of lateral friction.

In the following, (3) and (6) will be used to explore the role of $\Delta\eta_c$ in coastal and shelf circulation.

4.1 Interpretation of $\Delta\eta_c$ in Terms of Coastal Circulation

At the coast, the depth-averaged momentum balance (3) simplifies. Due to the condition of no flow across the coastal boundary,
 the first term on the right-hand side vanishes in the alongshore component. Furthermore, it is assumed that density variations
 275 along the coast, i.e., the combined effect of $\nabla\eta_s$ and $\frac{1}{H}\nabla\chi$, can be neglected. This assumption will be shown to be reasonable

in the analysis of the alongshore momentum balance predicted by GoMSS in Section 6.1. It follows from (3), under the assumption of steady state, that the momentum equation in *alongshore direction* reduces to

$$g\nabla\eta = \frac{\boldsymbol{\tau}^w - \boldsymbol{\tau}^b}{\rho_0 H} + \overline{\mathbf{D}}_1. \quad (8)$$

Thus, the large-scale alongshore gradient of MDT at the coast, is primarily balanced by the sum of wind stress, bottom drag, and horizontal mixing.

The integral of (8) along a curve C_c following the coastline between two points (see Figure 4) gives the large-scale alongshore balance of the tilt of MDT in vector form

$$g\Delta\eta_c = \int_{C_c} \left[\frac{\boldsymbol{\tau}^w - \boldsymbol{\tau}^b}{\rho_0 H} + \overline{\mathbf{D}}_1 \right] \cdot d\mathbf{r}_c, \quad (9)$$

where $d\mathbf{r}$ is the unit vector parallel to the integration path. This is one interpretation of $\Delta\eta_c$ in terms of coastal circulation.

From (9) it is clear that, along the coast, the tilt of MDT is in frictional equilibrium. In the following, this interpretation is referred to as the *coastal view*.

In the special case when the sea level difference along the coast due to wind stress,

$$g\Delta\eta_w = \int_{C_c} \frac{\boldsymbol{\tau}^w}{\rho_0 H} \cdot d\mathbf{r}, \quad (10)$$

is known, a new variable $\tilde{\eta}$ can be defined as the wind-corrected MDT. More generally, it can be shown that $\tilde{\eta}$ could also incorporate corrections for the neglected nonlinear terms (e.g., the Bernoulli effect) and atmospheric pressure variations. Thus, (9) becomes

$$g\Delta\tilde{\eta}_c = - \int_{C_c} \left[\frac{\boldsymbol{\tau}^b}{\rho_0 H} - \overline{\mathbf{D}}_1 \right] \cdot d\mathbf{r}. \quad (11)$$

If $\boldsymbol{\tau}^b$ is parameterized in terms of the depth-averaged current, $\overline{\mathbf{D}}_1$ can be neglected (e.g., outside a narrow viscous boundary layer), and the wind-driven tilt along the coast is known, it will be shown that $\Delta\tilde{\eta}_c$ can be interpreted as a measure of the average alongshore flow between two points along the coast.

4.2 Interpretation of $\Delta\eta_c$ in Terms of Regional Circulation

Instead of integrating the momentum balance along the coast, it is also possible to define an offshore curve C_o from s_2 to s_1 along which (3) can be integrated. Together with the coastal integration path, this forms a closed curve $C = C_c + C_o$ (Figure 4). Note that the closed line integral of the sea level gradient term along C is zero and so

$$\int_{C_c} \nabla\eta \cdot d\mathbf{r} + \int_{C_o} \nabla\eta \cdot d\mathbf{r} = 0. \quad (12)$$

This demonstrates that the tilt of MDT along the coast $\Delta\eta_c$ must equal the drop along the offshore integration path $\Delta\eta_o$:

$$\Delta\eta_c = -\Delta\eta_o.$$

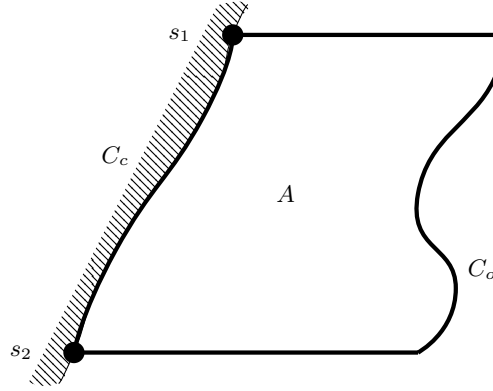


Figure 4. Schematic of closed curve along which the momentum balance is integrated. The hatched area is the land and the bold line illustrates the closed integration path C which can be divided into a coastal (C_c) and offshore part (C_o). The area enclosed by C is denoted by A .

Since $\Delta\eta_o$ is determined by the regional ocean dynamics, it follows that $\Delta\eta_c$ can also be interpreted in terms of the regional ocean dynamics.

305 Using Green's theorem (Green, 1828), the line integral of a two-dimensional vector field \mathbf{F} along a closed curve C is equal to the surface integral of the curl of the field over the enclosed area A ,

$$\oint_C \mathbf{F} \cdot d\mathbf{r} = \iint_A (\nabla \times \mathbf{F}) \cdot \hat{\mathbf{n}} dA, \quad (13)$$

where $\hat{\mathbf{n}}$ is the unit vector perpendicular to the surface A .

For the case of depth-averaged ocean circulation, the term under the area integral is the relative vorticity of the flow field. 310 Therefore, the circuit integral of the momentum equation is equal to the area integral of the vorticity equation. Combining (3) and (13) with the vorticity equation (6) gives

$$\oint_C \left[\frac{\tau^w - \tau^b}{\rho_0 H} + \overline{\mathbf{D}}_1 \right] \cdot d\mathbf{r} = \iint_A \left[-\frac{f}{H} \bar{\mathbf{u}} \cdot \nabla H - J(\chi, H^{-1}) \right] dA. \quad (14)$$

The left-hand side is the closed line integral of the frictional terms which is balanced by the area integral of vortex tube stretching by flow across isobaths and the JEBAR term. Note that all the gradient terms, including the sea level gradient, have 315 dropped out.

The circuit integral on the left-hand side can be split into a coastal and offshore part. Note that the line integral along the coast is equal to $g\Delta\eta_c$. Hence, substituting (9) in (14) gives

$$g\Delta\eta_c = \iint_A \left[-\frac{f}{H} \bar{\mathbf{u}} \cdot \nabla H - J(\chi, H^{-1}) \right] dA - \int_{C_o} \left[\frac{\tau^w - \tau^b}{\rho_0 H} + \overline{\mathbf{D}}_1 \right] \cdot d\mathbf{r}, \quad (15)$$

where the second term on the right-hand side is the offshore segment of the circuit integral in (14). This is another interpretation 320 of $\Delta\eta_c$, this time in terms of regional ocean dynamics. It shows that the alongshore tilt of MDT at the coast can also be

interpreted as an integrated measure of the regional-nearshore ocean circulation. In the following this interpretation will be referred to as the *regional view*.

Both the coastal and regional views of $\Delta\eta_c$ are complementary and dynamically consistent: the offshore circulation drives the coastal dynamics, and on the other hand, the dynamics along the coast act as a boundary condition for the offshore circulation.

325 Consider now the JEBAR term, $J(\chi, H^{-1})$. Mertz and Wright (1992) showed

$$J(\chi, H^{-1}) = -\frac{f}{H}(\bar{\mathbf{u}}_g - \mathbf{u}_{g,b}) \cdot \nabla H, \quad (16)$$

where $\mathbf{u}_g(z)$ is a geostrophically balanced horizontal velocity defined in terms of the density field according to the following thermal wind equation

$$f\hat{\mathbf{k}} \times \frac{\partial \mathbf{u}_g}{\partial z} = g\nabla\epsilon \quad (17)$$

330 with bottom boundary condition $\mathbf{u}_g(-H) = \mathbf{u}_{g,b}$. Mertz and Wright (1992) used (16) to show the JEBAR term “*represents precisely the geostrophic component of the correction to the topographic stretching term to account for the fact that the bottom velocity, not the depth-averaged velocity, yields topographic vortex-tube stretching*”.

Using (16), the term under the area integral in (15) can be written

$$-\frac{f}{H}\bar{\mathbf{u}} \cdot \nabla H - J(\chi, H^{-1}) = -\frac{f}{H}\mathbf{u}^* \cdot \nabla H, \quad (18)$$

335 where

$$\mathbf{u}^* = \bar{\mathbf{u}} - \bar{\mathbf{u}}_g + \mathbf{u}_{g,b} \quad (19)$$

is the total flow minus the geostrophic flow relative to that at the bottom. ~~The cross-isobath motion of \mathbf{u}^* in (18) leads to vortex stretching and squashing with associated net Ekman pumping velocity-~~

$$\underline{w^* = -\mathbf{u}^* \cdot \nabla H.}$$

340 ~~With this definition of w^*~~ Hence, the regional view expressed by (15) can be written as

$$g\Delta\eta_c = f \iint_A \frac{w^*}{H} \frac{\mathbf{u}^*}{H} \cdot \nabla H dA - \int_{C_o} \left[\frac{\tau^w - \tau^b}{\rho_0 H} + \bar{\mathbf{D}}_1 \right] \cdot d\mathbf{x}. \quad (20)$$

In the following sections, we further discuss the coastal and regional views of $\Delta\eta_c$ in the context of idealized models for shelf circulation and finally demonstrate that these interpretations also hold in the realistic, high-resolution model GoMSS. Overall, these sections serve to illustrate the versatility of the dynamical interpretations that further highlights the usefulness
345 of the tilt of MDT for ocean model validation and monitoring.

5 $\Delta\eta_c$ in Idealized Ocean Models of Shelf Circulation

The role of the alongshore tilt of MDT in the circulation on continental shelves can be illustrated with the conceptual models discussed by Csanady (1982) that focus on flow trapped within the coastal boundary layer. Consider a coordinate system where

the y -axis is aligned with a straight coastline and the x -axis pointing offshore. Without lateral mixing and assuming the flow
 350 to be steady, linear, and barotropic, the governing equations (3) can then be written in component form as

$$g \frac{\partial \eta}{\partial x} = \frac{f}{H} V + \frac{\tau_x^w}{\rho_0 H}, \quad (21)$$

$$g \frac{\partial \eta}{\partial y} = -\frac{f}{H} U + \frac{\tau_y^w - \tau_y^b}{\rho_0 H}, \quad (22)$$

where U and V are the x - and y -components of the transport vector $\mathbf{U} = \bar{\mathbf{u}}H$. The Coriolis parameter f is assumed to be
 constant. Under the long-wave approximation that the alongshore current is much larger than the cross-shore current, the
 355 bottom friction in x -direction can be neglected.

Cross-differentiating (21) and (22) yields the vorticity equation of this model

$$f \frac{\bar{u}}{H} \frac{\partial H}{\partial x} = -\frac{\partial}{\partial x} \left(\frac{\tau_y^w}{\rho_0 H} \right) + \frac{\partial}{\partial y} \left(\frac{\tau_x^w}{\rho_0 H} \right) + \frac{\partial}{\partial x} \left(\frac{\tau_y^b}{\rho_0 H} \right). \quad (23)$$

The [combination of the](#) net torque exerted by the wind stress and bottom drag [and their associated Ekman transports across](#)
[depth contours](#) (right-hand side) \bar{v} is balanced by vortex stretching/squashing through movement into deeper or shallower water,
 360 respectively. This flow across isobaths results in convergence or divergence near the seafloor [leading to associated with](#) bottom
 stress-induced Ekman pumping.

Equation (22) can be rearranged to get an expression for \bar{u} which can be substituted in (23). Parameterizing bottom friction
 with the alongshore geostrophic current times a drag coefficient λ yields a single governing equation for the sea level

$$\frac{\partial^2 \eta}{\partial x^2} + \frac{\rho_0 f}{\lambda} \frac{\partial H}{\partial x} \frac{\partial \eta}{\partial y} = \frac{f}{g \lambda} \left(\frac{\partial \tau_y^w}{\partial x} - \frac{\partial \tau_x^w}{\partial y} \right). \quad (24)$$

365 Csanady (1982) pointed out the similarity of (24) to the heat conduction equation with downstream direction $-y$ correspond-
 ing to time. He furthermore used this analogy to discuss coastally trapped flow fields with respect to different forcing. In the
 following, two cases will be explored and the role of $\Delta \eta_c$ discussed.

5.1 Wind Stress Along Portion of Coast

Assume water depth increases linearly with distance from shore as $H(x) = H_0 + sx$ where s is a constant slope. The wind
 370 stress along the part of the domain where $0 \leq y \leq Y$ is taken to be constant and in alongshore direction only, $\boldsymbol{\tau}^w = (0, \tau_y^w)$.

As shown above the dashed line in Figure 5, this wind stress causes an Ekman transport toward the coast [From if \$\tau_y^w < 0\$,](#)
[From](#) (23) it can be seen that the wind stress over the sloping shelf as well as the flow across isobaths into shallower water
 exert a negative torque on the water column. Thus, the flow is steered to the left resulting in an alongshore current at the coast
 in the direction of the wind. Consequently, sea level piles up in the downstream direction.

375 Applying the assumptions above to (9), the coastal view of $\Delta \eta_c$ becomes

$$\Delta \eta_c = \frac{\tau_y^w Y}{g H_0} \frac{\tau_y^w Y}{g \rho_0 H_0} - \frac{\lambda}{g H_0} \frac{\lambda}{g H_0} \int_0^Y \bar{v}(0, y) dy. \quad (25)$$

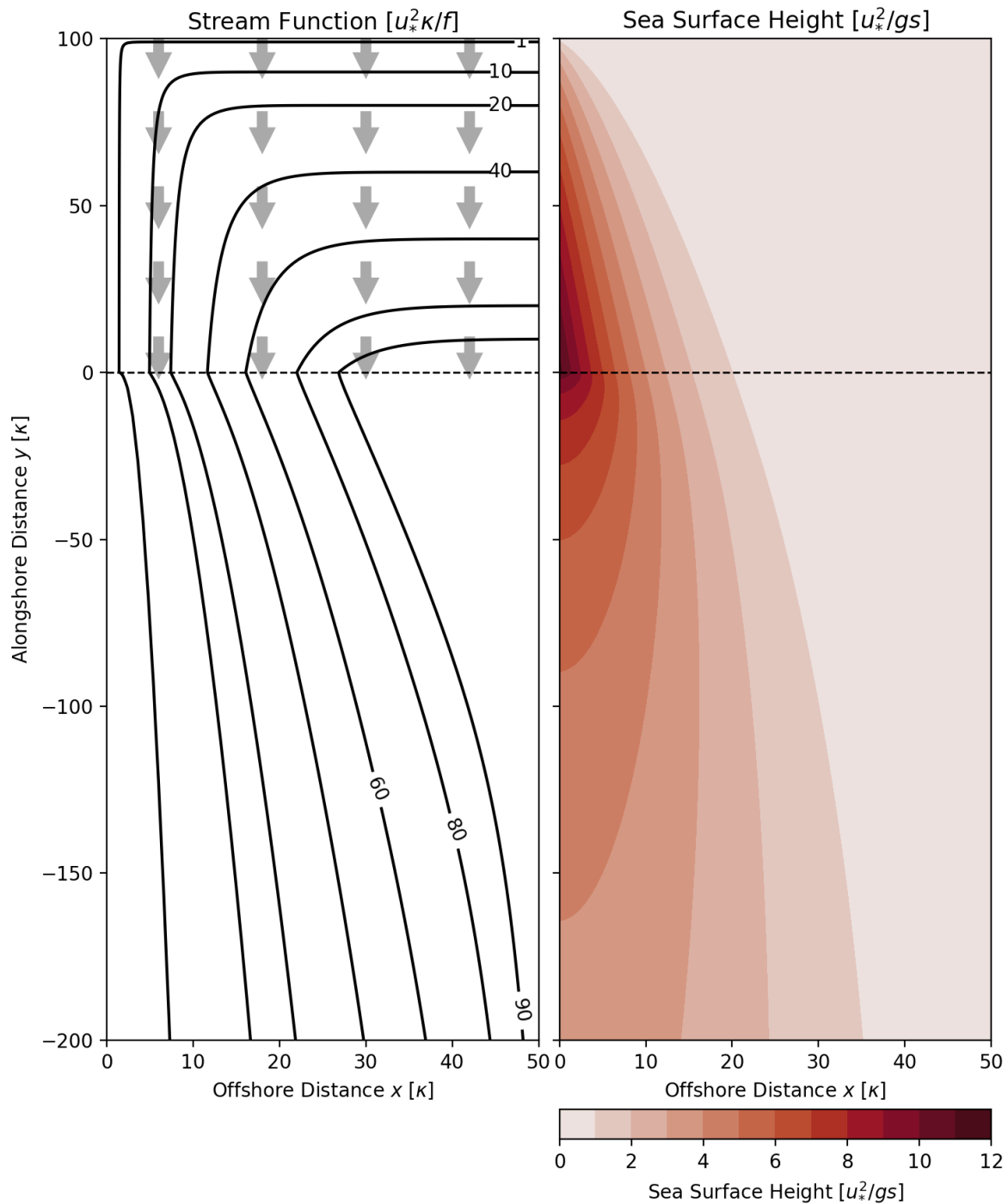


Figure 5. Stream function and sea surface height for two models of coastally trapped circulation. Water depth is increasing in x -direction as $H(x) = sx$, the bottom friction coefficient is $\lambda = 0.5 \times 10^{-3} \text{ m s}^{-1}$, and the Coriolis parameter $f = 10^{-3} \text{ s}^{-1}$. For $y > 0$, a spatially uniform wind stress $\tau_y^w = -u_*^2 = -\tau_y^w / \rho_0 = -u_*^2 = -0.01 \text{ m}^2 \text{ s}^{-2}$ (grey arrows) is applied (adapted from Csanady, 1982).

The first term on the right-hand side is the wind-driven tilt along the coast. As expected, $\Delta\eta_c$ is in frictional equilibrium and balances the difference between wind stress and bottom drag. If the wind setup along the coast is known, the corrected tilt of MDT along the coast $\Delta\tilde{\eta}_c$ can be used as a direct measure of the mean alongshore current.

380 The regional view can be directly obtained from (20) under the assumption of barotropic flow which implies $\mathbf{u}^* = \bar{\mathbf{u}}$. If the offshore integration path is chosen to be in deep water where the wind stress and bottom friction terms are negligible due to their inverse dependence on H , (20) becomes

$$\Delta\eta_c = -\frac{fs}{g} \int_0^Y \int_0^{L_x} \frac{\bar{u}}{H} dx dy. \quad (26)$$

This shows that, from a regional perspective, $\Delta\eta_c$ is equal-proportional to the cross-shore Ekman transport due to the wind forcing and the associated flow across isobaths. ~~Convergence of this onshore flow implies downwelling that is balanced by~~ The onshore wind-driven Ekman transport implies downwelling at the coast that is partially balanced by a return flow in the frictional bottom boundary layer ~~and partially by an offshore geostrophic flow in the interior. The total onshore flow is balanced by a divergence of the alongshore flow. The~~ rate of water exchange between the surface ~~and bottom Ekman layer~~ Ekman layer and the interior of the water column in that area can be monitored by observing the sea level at the coast.

390 5.1.1 Coastal Mound

Assume that the wind stress vanishes for $y < 0$ and the flow field is established by prescribing a cross-shore sea level distribution $\eta = \eta_0(x)$ at $y = 0$ which is the result of some upstream process e.g., wind-driven onshore transport as discussed above. It can be seen from (21) that the corresponding alongshore current is in geostrophic balance.

Figure 5 shows the resulting stream function and the associated sea surface height. The streamlines indicate a predominantly 395 alongshore flow, but they also show a spreading in offshore direction ~~further~~ farther downstream. Equation (23) shows that this cross-shore flow is caused by the frictional torque at the sea floor acting on the alongshore current.

From (9) and (20), this offshore flow across isobaths can be directly related to the alongshore tilt of MDT at the coast

$$\Delta\eta_c = \underbrace{\frac{\lambda}{gH_0} \int_{-y}^0 \bar{v}(0, y) dy}_{\text{coastal}} = -\underbrace{\frac{fs}{g} \int_{-y}^0 \int_0^{L_x} \frac{\bar{u}}{H} dx dy}_{\text{regional}}. \quad (27)$$

This shows again that, from a coastal point of view, $\Delta\eta_c$ is proportional to the mean alongshore current ~~driven by~~ related to the 400 pressure gradient. In the regional interpretation, $\Delta\eta_c$ is a measure of the area-integrated vortex stretching due to cross-isobath flow ~~and is thus a measure of Ekman suction at the top of the frictional bottom boundary layer in the region.~~

6 $\Delta\eta_c$ in the Realistic Ocean Model GoMSS

In Section 4, it was shown that the alongshore tilt of MDT at the coast can be interpreted in terms of the coastal and the regional circulation. Using idealized models, it was demonstrated that $\Delta\eta_c$ is a measure of the mean alongshore current at the coast

405 (coastal view), but can also be related to ~~the net Ekman pumping due to vortex stretching offshore~~ area-integrated nearshore circulation (regional view). Here, we will test whether these views also hold in the realistic GoMSS model with a focus on the nearshore region between the reference points s_1 and s_2 outlined by the red polygon in Figure 1.

6.1 Predicted Mean Alongshore Momentum Balance

As discussed in Section 4.1, the large-scale tilt of alongshore MDT at the coast is expected to be balanced by the sum of wind
410 stress, bottom friction, and lateral mixing. Using output from GoMSS, it is possible to check if this balance holds in the model and identify the dominant processes that lead to the predicted alongshore tilt of MDT. This is a necessary step before using $\Delta\eta_c$ to make inferences about coastal and regional circulation.

Here, the approach of Lin et al. (2015) is adopted, where each term in the alongshore momentum equation is integrated separately along the coast to yield an equivalent change in sea level. This approach is preferable over the comparison of the
415 actual terms in the momentum equation which can be noisy due to local variations in bathymetry and coastline. Alongshore integration smooths out these small-scale fluctuations and makes results easier to interpret.

The alongshore integration path C_c is defined such that it connects all center points of the grid cells closest to the coast where MDT is defined in the model (Figure 6). Note that the coastline in the model follows the edges of the grid cells and therefore, C_c is ~~half a grid cell away~~ slightly offset from the coast. Due to the grid structure, the coastline in the model has a step-like
420 shape, however, the integration path runs diagonally as indicated in the schematic.

Due to the staggering of the variables on the Arakawa C-grid, the alongshore integral of the momentum equation is straight-forward. The approximation of the line integral $\int \mathbf{u}(x, y) \cdot d\mathbf{r}$ is illustrated by the schematic in Figure 6. The x - and y -components of the momentum equation are defined at the u - and v -points, respectively, on the model grid. Each component is multiplied by the appropriate grid spacing Δx or Δy and summed up along the integration path. For increments in x -direction,
425 $\Delta y = 0$ and for steps in y -direction, $\Delta x = 0$. Diagonal elements include both the u - and v -component as shown in Figure 6.

Prior to the alongshore integration, the output fields of the three-dimensional momentum trends were first depth-averaged ~~and~~ (using the local water depth H at the u - and v -points) and then averaged over the period 2011–2013.

Figure 7 shows the alongshore MDT as well as mean sea level contributions by the individual terms in the momentum equation (3) at the coast on the Scotian Shelf. Note that the mean of each term over the shown segment was subtracted to center
430 the curves around zero. The red line shows the sum of the contributions of wind stress, bottom friction, and lateral mixing. It is clearly in close agreement with the MDT along the coast predicted by GoMSS. Including the remaining terms effectively closes the momentum balance defined by (3).

The alongshore wind stress causes the large-scale tilt of MDT (η_w) with higher values toward Cabot Strait. ~~The~~ Along most of the coastline, this wind-driven tilt ~~is partially balanced by~~ acts in concert with bottom friction (η_{BF}) acting on the ~~current~~
435 Nova Scotia Current flowing in the opposite direction of the wind stress at the coast. ~~In~~ An exception to this is the region around Sydney ~~where~~ where bottom drag is strongest and associated with the Nova Scotia Current flowing close to the coast as it exits the Gulf of Saint Lawrence. ~~Further~~ Farther downstream, the Nova Scotia Current veers offshore and bottom friction at the coast becomes negligible except in the region around YAR where it balances local MDT minima. These features are due to

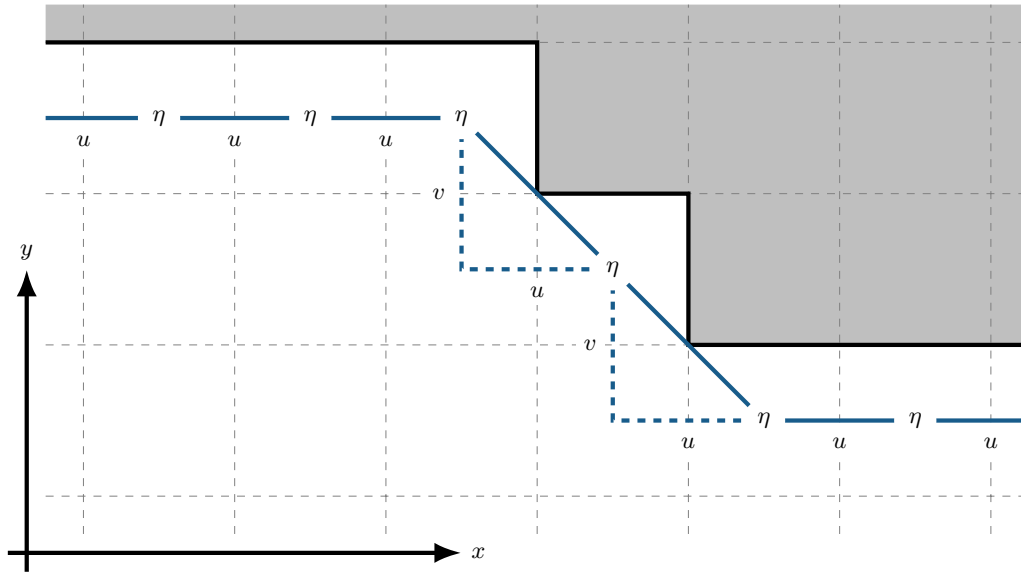


Figure 6. Schematic of the alongshore integration path in GoMSS. The gray area marks the land and the solid black line illustrates the coastline in the model. Solid blue lines illustrate segments of the integration path between grid cells and dashed lines indicate components of diagonal segments.

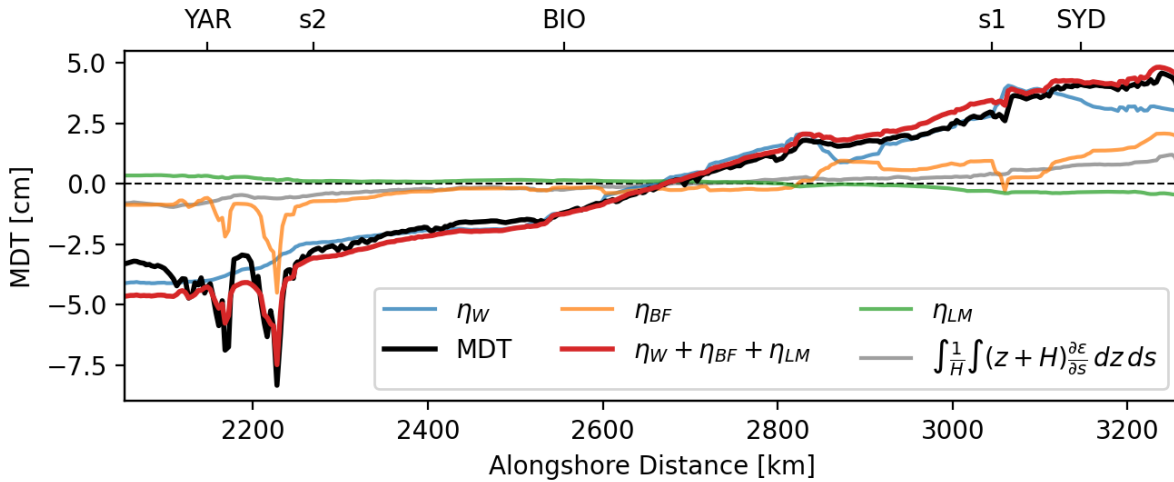


Figure 7. Predicted MDT (black line) and contributions by individual terms in the alongshore, depth-averaged momentum balance at the coast on the Scotian Shelf: wind stress (η_W), bottom friction (η_{BF}), and lateral mixing (η_{LM}) as well as their sum. The contribution from the depth-averaged baroclinic pressure gradient is also shown (grey line). Note that the mean of each term has been subtracted to center the curves around zero. Alongshore locations of the tide gauges are shown by their respective abbreviation.

the Bernoulli effect caused by strong tidal currents around Cape Sable mentioned above. Variations of the sea level equivalent
 440 due to lateral mixing (η_{LM}) are relatively small along the coast of Nova Scotia. These results show that $\Delta\eta_c$ is primarily a
 response to local Ekman dynamics and spatial variations of bathymetry (Lentz and Fewings, 2012). It is important to note that
 the bottom friction term depends on the alongshore current and thus implicitly includes the effect of large-scale, non-local
 forcing(e.g., JEBAR).

The close agreement between the coastal MDT and the sum of sea level equivalents due to the wind stress, bottom friction,
 445 and lateral mixing predicted by GoMSS is consistent with observational studies for other regions along the eastern seaboard of
 North America (e.g., Scott and Csanady, 1976; Fewings and Lentz, 2010)(e.g., Scott and Csanady, 1976; Fewings and Lentz, 2010; Lentz
 . They show that the coastal circulation is generally in “frictional equilibrium” (Lentz and Fewings, 2012). The overriding im-
 portance of wind stress and bottom friction [as coastal boundary](#) also justifies the choice of Csanady’s arrested topographic
 wave model in Section 5.

450 Previous studies have shown that the wind forcing is the dominant driver of sea level variability on the Scotian Shelf on syn-
 optic to interannual timescales (e.g., Thompson, 1986; Schwing, 1989; Li et al., 2014b). Many of these studies also demonstrate
 the influence of remote forcing and coastally trapped waves propagating along the Scotian Shelf. This is evident in Figure 7 for
 alongshore distances > 3100 km which corresponds to the coastline between SYD and the open boundary across Cabot Strait.
 Here, the wind-driven sea level tilts in the opposite direction compared to the MDT which is primarily balanced by bottom
 455 friction.

The steric contribution to the alongshore tilt of MDT at the coast is small (0.9 cm between s_1 and s_2 , about half of the
 contribution by bottom friction). This justifies the assumption made in the simplified alongshore momentum equation (8). In
 the cross-shore direction, a large density gradient exists which is related to the geostrophic outflow from the Gulf of Saint
 Lawrence with a coastal setup of MDT on the western side of Cabot Strait (El-Sabh, 1977). According to the idealized model
 460 of Csanady (1982, Figure 5), this setup “diffuses” in the downstream direction, with the flow trapped within a widening coastal
 boundary layer. Note that the associated fanning out of MDT contours is evident in Figure 3a which can be compared with the
 region $y < 0$ in Figure 5.

6.2 Coastal and Regional Interpretations of $\Delta\eta_c$

In the following, we apply the dynamical interpretations of $\Delta\eta_c$ derived in Section 4 to GoMSS. Note that the coastal and
 465 regional views are based on time-averaged dynamics and can therefore be applied to shelf circulation on timescales where a
 quasi-steady state can be assumed.

6.2.1 Coastal View

Based on (9), $\Delta\eta_c$ can be related to the integrated frictional effects along the coast. As shown above, alongshore wind stress
 is the main contributor to the MDT difference at the coast of Nova Scotia. Since the sea level equivalent due to wind stress
 470 can be computed from the GoMSS model output, the special case in (11) will be used. Given the negligible role of lateral
 mixing and assuming linear bottom friction $\tau_s^b = \lambda \bar{u}_s \tau_s^b / \rho_0 \equiv \lambda \bar{u}_s$, the wind-corrected tilt of MDT is proportional to the mean

depth-averaged alongshore current

$$\langle u_s \rangle = \frac{1}{\Delta L} \int_{s_1}^{s_2} \bar{u}_s ds. \quad (28)$$

It follows from (11) that the predicted mean depth-averaged alongshore current based on the $\Delta\tilde{\eta}_c$ is

$$475 \quad \langle \tilde{u}_s \rangle = -\frac{gH_0}{\lambda\Delta L} \Delta\tilde{\eta}_c, \quad (29)$$

where H_0 is the mean depth of the model along the coast.

It is to be expected that λ changes with seasonal stratification of the water column and ~~therefore current variance. Therefore~~ a time-varying friction coefficient is defined by

$$\lambda = \lambda_0 \{1 + \alpha \cos[(t - t_0)\omega]\}, \quad (30)$$

480 where λ_0 is a constant drag coefficient, α is a factor that controls the amplitude of the seasonal variations with frequency $\omega = 2\pi/365 \text{ days}^{-1}$, and t_0 corresponds to a time when stratification is at its seasonal maximum and current variance is minimal.

Furthermore, defining $\kappa = gH_0/\lambda_0\Delta L$, (29) becomes

$$\langle \tilde{u}_s \rangle = -\frac{\kappa}{1 + \alpha \cos[(t - t_0)\omega]} \Delta\tilde{\eta}_c, \quad (31)$$

485 which is a model with three parameters that can be applied to estimate the mean alongshore current based on $\Delta\tilde{\eta}_c$.

Figure 8a shows time series of $\langle u_s \rangle$ and $\langle \tilde{u}_s \rangle$ based on daily mean model output from GoMSS with realistic values of $\lambda_0 = 1.3 \times 10^{-3} \text{ m s}^{-1}$, $\alpha = 0.5$, and $t_0 = 30 \text{ days}$. These values were chosen to yield maximum agreement between the time series and λ_0 is comparable to literature values (e.g., Csanady, 1982). The mean water depth along the coast, $H_0 = 23.4 \text{ m}$, and $\Delta L = 774 \text{ km}$ were directly computed from the GoMSS grid. Based on the definition in (28), positive values correspond
490 to a southwest flow from s_1 to s_2 . Periodograms were analyzed to check if the time series contain an aliased signal from tidal variations. It was found that there is no significant energy at the alias frequencies. A third order Butterworth lowpass filter with cutoff frequency of 15 days was applied to the time series to remove high-frequency variability and thereby allow a quasi-steady state to be assumed.

Both time series show coherent low-frequency variability for timescales of 15 days or longer with correlation $r = 0.92$. The
495 RMSE between the time series is 1.4 cm s^{-1} . The good agreement between the two time series indicates that mean strength of the alongshore current can be estimated by the MDT difference at the coast after correction for the local wind effect. However, there is a small offset between the two time series that can be explained by the alongshore gradient of depth-integrated potential energy anomaly. While this term typically vanishes in shallow water, it is nonzero in GoMSS due to the finite water depth along the coast in the model (not shown).

500 6.2.2 Regional View

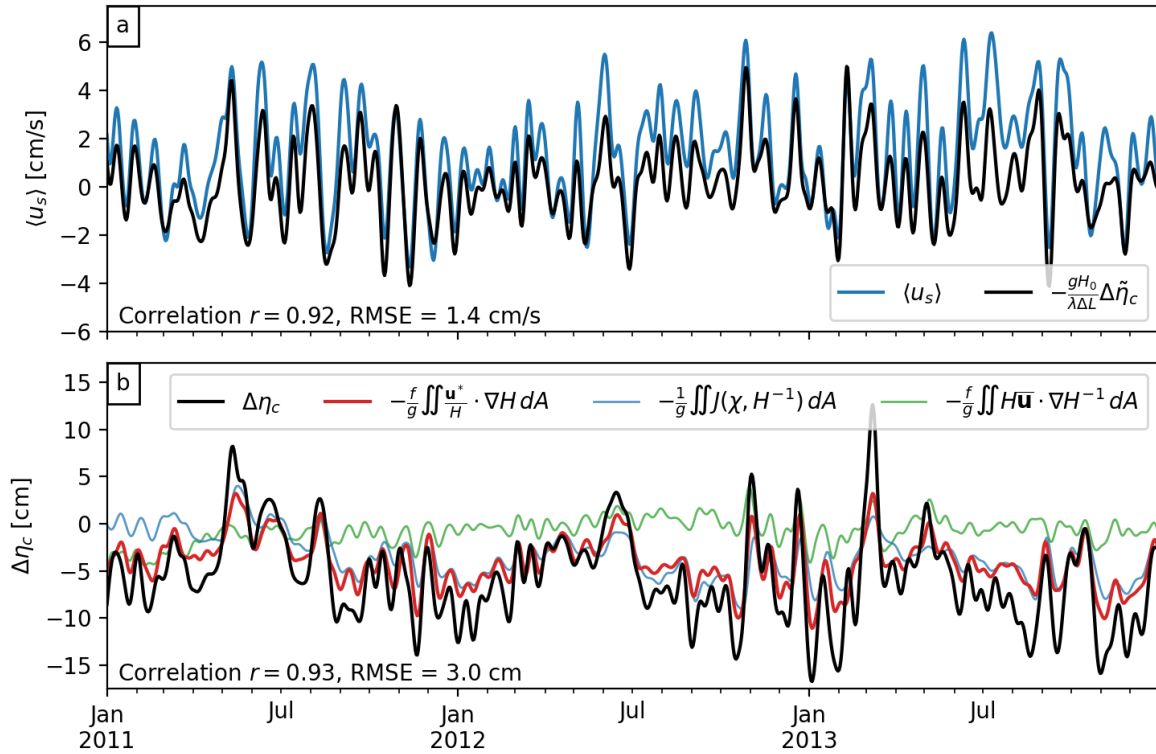


Figure 8. Lowpass-filtered time series of the alongshore tilt of MDT at the coast of Nova Scotia and related quantities. a) Mean alongshore depth-averaged current predicted by GoMSS (blue) and estimated from wind-corrected tilt of predicted MDT (black). b) Area-integrated $\Delta\eta_c = \eta(s_2) - \eta(s_1)$ predicted by GoMSS (black), diagnostic of area-integrated nearshore circulation (red), area-integrated JEBAR (blue), and flow across isobaths (green) as well as resulting upwelling rate (red). The estimated upwelling rate based on $\Delta\tilde{\eta}_c$ is shown model output was integrated over the area enclosed by the red polygon in black Figure 1. A third order Butterworth lowpass filter with cutoff frequency of 15 days was applied to the time series to remove high-frequency variability and thereby allow a quasi-steady state to be assumed.

Equation (20) relates Equations (15) and (20) relate coastal MDT to area-integrated vortex tube stretching area-integrated nearshore ocean circulation as well as wind stress and frictional forces projected along the offshore boundary. Assuming the wind stress and frictional terms are negligible in deep water because of their inverse dependence on H , the tilt of sea level along the coast is then given by

$$505 \quad \underline{g}\Delta\eta_c = \underline{f} - \underline{f} \iint_A \frac{w^* \mathbf{u}^*}{H H} \cdot \nabla H dA = - \underline{f} \iint_A \left[\frac{\bar{\mathbf{u}}}{H} \cdot \nabla H + J(\chi, H^{-1}) \right] dA. \quad (32)$$

To physically interpret this equation, note H/w^* is the time it takes for a water parcel moving vertically at w^* to travel from the seafloor to the surface. This motivates the following definition of an area mean net “upwelling” rate:-

$$\xi = \frac{1}{A} \iint_A \frac{w^*}{H} dA.$$

510 Substituting this definition of ξ into (32) gives the following expression for the upwelling rate in terms of the tilt of MDT along the coast:-

$$\xi = \frac{g}{fA} \Delta\eta_c.$$

This equation can be used to estimate the upwelling rate directly from the alongshore tilt of MDT at the coast-

Equation (??) has been used to estimate time series of ξ from daily Daily mean output from GoMSS has been integrated over the area enclosed by the red polygon in Figure 1 to calculate each term in (32) using $f = 10^{-4} \text{ s}^{-1}$. High-frequency
515 variability was removed using the same lowpass filter described above. The and the resulting time series is shown by the red line are shown in Figure 8b. ξ was also estimated from $\Delta\eta_c$ using (??) with $A =$ and $f =$. This estimate will henceforth be denoted by $\tilde{\xi}$.

There is clearly close agreement between ξ and $\tilde{\xi}$ $\Delta\eta_c$ and the area-integrated circulation (red line) in terms of both correlation ($r = 0.93$) and RMSE (-). The estimated $\tilde{\xi}$ is generally larger than ξ 3.0 cm) with larger discrepancies during extreme
520 events. This can be explained by the assumptions underlying (??)(32), i.e., the neglect of the wind stress and frictional terms in deep water. Additional analysis (not shown) indicates that the wind-drive wind-driven sea level difference along the offshore boundaries is not necessarily zero and explains most of the differences between ξ and $\tilde{\xi}$. However, the good agreement of the time series demonstrates that the derived relationship between $\Delta\eta_c$ is an effective measure of the net regional upwelling and area-integrated nearshore circulation also hold in a realistic model.

525 Figure 8b also shows the two components of ξ defined by (18) terms of the second equality in (32): the area-averaged JEBAR (blue) and the vortex stretching due to depth-averaged flow across isobaths (green). Clearly, the JEBAR contribution is dominant thereby highlighting the importance of baroclinicity in driving the Nova Scotia Current. The relatively fresh outflow from the Gulf of Saint Lawrence through Cabot Strait causes a strong cross-shore density gradient leading to a geostrophic flow along the coast.

530 In general, ξ is negative which is consistent with an overall vortex squashing by an onshore flow across isobaths. Episodes where $\xi > 0$ can be identified which correspond to periods of offshore flow and associated vortex stretching-

$\Delta\eta_c \equiv \eta(s_2) - \eta(s_1) < 0$, but there are also brief periods when the sign reverses. As shown above, the mean alongshore wind stress creates a sea level tilt along the coast, but it also causes an offshore Ekman transport in the surface boundary layer. Below, This is balanced by a mean onshore flow leads to upwelling of subsurface water at the coast below determined by the
535 thermal wind balance. Although the wind stress can be uniform over a large area, the increase in water depth associated Ekman transport toward the deeper region offshore leads to an input of negative vorticity into the water column. The a change in relative vorticity. The onshore cross-isobath flow towards shallower water at depth ensures that potential vorticity is conserved.

Similarly, frictional forces at the bottom as well as JEBAR exert a torque on the water column and generate relative vorticity. While bottom friction leads to an offshore flow across isobaths (see idealized case in Section 5.1.1), JEBAR is dominant along the coast of Nova Scotia. Here it drives an onshore flow that is proportional to $\Delta\eta_c$ following (32) which is captured in the time series of the upwelling rate ξ shown in Figure 8b.

7 Summary and Conclusion

In this study, we used newly available geodetic estimates of coastal MDT to validate the GoMSS regional ocean model. Additionally, the relationship between coastal MDT and shelf circulation was studied using a combination of theory, idealized models, and a numerical ocean circulation model (GoMSS). It was first shown that GoMSS predicts the main features of the mean circulation that are known to exist on the Scotian Shelf and in the Gulf of Maine, including the effect of outflow from the Gulf of Saint Lawrence and tidal rectification. While the coastal MDT is generally flat in the Gulf of Maine, GoMSS predicts a MDT difference between North Sydney and Yarmouth of $\Delta\eta_c = 8.3$ cm. This is slightly-somewhat larger than the geodetically determined value of $\Delta\eta_c = 5.9 \pm 2.0$ cm, but the difference is not statistically significant.

These results lead to an affirmative answer to the first question raised in the Introduction: *Can new observations of geodetically referenced coastal sea level help validate high-resolution regional ocean models like GoMSS?* The agreement of the independent estimates of MDT derived from the hydrodynamic and geodetic approaches provides validation of both the ocean and geoid models used in this study. It is important to note that some tide gauges are deployed in geographic settings (e.g., inside harbors or behind sandbanks) that are not resolved by ocean models and where sea level variations are likely dominated by local processes. Therefore, a comparison between observed and predicted MDT is only meaningful in locations that are relatively exposed to the open ocean. At the tide gauges considered in this study, the uncertainties in the geodetic MDT estimates are less than 1.6 cm and are primarily due to estimated error of the geoid model. With the ongoing efforts to improve these models, the uncertainties are expected to become smaller in the future. Nevertheless, the use of $\Delta\eta_c$ for model validation is limited to regions with long, geodetically referenced sea level records. In the upper Bay of Fundy, GoMSS predicts an unusually strong setdown in MDT that could not be directly validated because no sufficiently long sea level records exist (see Renkl and Thompson (2022) for a detailed study of this region).

The other questions addressed in this chapter focus on the physical interpretation of $\Delta\eta_c$: *What can the alongshore tilt of MDT at the coast tell us about shelf circulation? What are the implications for coastal monitoring?* Based on theory and idealized models of ocean and shelf circulation, it was shown that $\Delta\eta_c$ can be interpreted in two complementary, and dynamically consistent, ways. The coastal view is based on the time-averaged alongshore momentum equation at the coast and the regional view is based on vorticity dynamics integrated over an adjacent offshore region. The coastally trapped wave model of Csanady (1982) was used to show that $\Delta\eta_c$ can be used to estimate spatially averaged net Ekman pumping caused by depth-averaged flow across a linearly sloping bathymetry.

The usefulness of the coastal and regional views was demonstrated in a more realistic setting using output from GoMSS. First, it was shown that the tilt of MDT along the coast of Nova Scotia is balanced primarily by wind stress, bottom friction,

and a relatively small contribution from lateral mixing. This “frictional equilibrium” is a general characteristic of coastal circulation (Lentz and Fewings, 2012). This simplified momentum balance means that, if the wind-setup-tilt due to alongshore wind stress is known, $\Delta\eta_c$ can provide a direct estimate of the average alongshore current ($\langle\hat{u}_s\rangle$) between two points at the coast under the assumption that bottom friction can be approximated by a linear dependence on the depth-averaged flow. The scale factor linking $\Delta\eta_c$ and $\langle\hat{u}_s\rangle$ depends only on the mean water depth at the coast and the linear bottom drag coefficient. For practical applications, when the water depth cannot be inferred from a numerical model with a sidewall, it could presumably be determined from bathymetric soundings as the mean water depth along the coast outside the surf zone.

The regional view is more subtle than the coastal view. ~~As demonstrated with~~ In the idealized models, $\Delta\eta_c$ can be used to approximate vortex stretching ~~and the associated net Ekman pumping associated with cross-isobath flow~~ averaged over an offshore area. For the regional view to be physically meaningful, this area needs to be limited to a flow regime in the nearshore such that the dominant momentum balance simplifies along the offshore integration path. In the illustration of the realistic case using GoMSS, we chose the outer edge of the integration path in a quiescent region outside the Nova Scotia Current where the water is deep enough that wind stress and frictional terms can be neglected. Where the current crosses the integration path, it is in geostrophic balance.

On the Scotian Shelf, the ~~upwelling rate (denoted by ξ) is related to vortex tube stretching caused by regional interpretation of $\Delta\eta_c$ is dominated by JEBAR while the effect of the combined effect of JEBAR and depth-averaged flow across isobaths is small.~~ JEBAR plays a critical role and causes an overall onshore transport ~~near the sea floor which can result that balances the offshore wind-driven Ekman transport at the surface resulting~~ in upwelling at the coast ~~of Nova Scotia.~~ This overriding importance of baroclinic processes is presumably a distinct feature of the Nova Scotia Current due to the strong freshwater input from the Gulf of Saint Lawrence. In other regions along the eastern seaboard of North America, e.g., in the Middle Atlantic Bight, where sea level variations depend primarily on alongshore wind stress (Lentz, 2024), the regional view would likely be dominated by the effect of depth-averaged flow across isobath. However, there are brief periods of wind-induced downwelling.

The relationship between $\Delta\eta_c$ and the coastal and regional circulation applies not only to the long-term mean, but also on timescales for which a quasi-steady state can be assumed. ~~Time series of $\langle u_s \rangle$ and ξ~~ Diagnostic time series shown in Figure 8 were calculated directly from GoMSS output ~~and also estimated from $\Delta\eta_c$ using two using~~ simple linear relationships resulting from the coastal and regional views. The parameters in these linear relationships are based on physics. The tilt-based estimates are in good agreement with the filtered time series ~~of $\langle u_s \rangle$ and ξ~~ calculated directly from model output.

This close relationship between coastal MDT and integrated nearshore circulation highlights utility and value of tilt estimates based on geodically referenced sea level observations for model validation. Furthermore, it also has obvious implications for ocean monitoring: For example it may be possible to use long coastal sea level records to estimate time series of ~~upwelling rates~~ integrated nearshore circulation and potentially link them to upwelling. Such information may be of interest to biological oceanographers interested in understanding changes in nutrient cycling on the shelf over recent decades. This speculation applies not only to the Scotian Shelf. For example, in the future, it would be interesting to test the idea on the west coast of North America given the large number of long, geodetically referenced sea level records (e.g., Lin et al., 2015) and the large

amount of hydrographic data, e.g., the California Cooperative Oceanic Fisheries (CalCOFi) Database. Finally, our findings have implications for future deployments of tide gauges if they are to be used to monitor the shelf-scale ocean circulation. Coastal MDT can be affected by local processes, e.g., strong tidal flow around headlands and therefore, the location of the tide gauges should be exposed to the open ocean and at distance to areas where local processes dominate.

610 *Code and data availability.* Sea level observations, benchmark sheets, and GPS ellipsoidal heights for tide gauges in the USA were obtained from NOAA (<https://tidesandcurrents.noaa.gov/>) and the Online Positioning User Service (OPUS) provided by the NGS (<https://geodesy.noaa.gov/OPUS/view.jsp>). The conversion of the vertical datum was performed using the Horizontal Time-Dependent Positioning tool (HTDP; <https://geodesy.noaa.gov/TOOLS/Htdp/Htdp.shtml>). For tide gauges in Canada, sea level observations and benchmark sheets were obtained from the CHS (<https://www.isdm-gdsi.gc.ca/isdm-gdsi/twl-mne/maps-cartes/inventory-inventaire-eng.asp>, <https://tides.gc.ca/en/stations>) and GPS ellipsoidal heights were retrieved from NRCAN (<https://webapp.csrscs.nrcan-rncan.gc.ca/geod/data-donnees/passive-passif.php>). The Canadian Gravimetric Geoid model of 2013 (CGG2013a) can be retrieved from <https://webapp.csrscs.nrcan-rncan.gc.ca/geod/data-donnees/geoid.php>. All of the code and data required to configure and run the GoMSS model are publicly available: NEMO source code (<https://www.nemo-ocean.eu/>), NCEP CFSv2 data for surface boundary forcing (<https://rda.ucar.edu/datasets/ds094.0/>), GLORYS12v1 for open boundary conditions (https://data.marine.copernicus.eu/product/GLOBAL_MULTIYEAR_PHY_001_030), and
620 FES2004 for tidal boundary forcing (<https://www.aviso.altimetry.fr/en/data/products/auxiliary-products/global-tide-fes.html>).

Author contributions. CR and KRT conceptualized the study; CR compiled the observations, performed model simulations, analyzed the data, and wrote the manuscript draft with guidance from KRT and ECJO; CR and ECJO reviewed and edited the manuscript.

Competing interests. The authors declare that they have no conflict of interest.

Acknowledgements. This work was funded by the Marine Environmental Observation, Prediction and Response (MEOPAR) Network of
625 Canada. CR acknowledges funding from Nova Scotia Graduate Research Scholarship. The authors thank Anna Katavouta and Simon Higinson for their help with the model configuration and data acquisition. [The authors also thank Ken Brink, Chris Hughes, and an anonymous reviewer for their insightful comments and suggestions that helped improve the manuscript.](#)

References

- Altamimi, Z., Collilieux, X., and Métivier, L.: ITRF2008: An Improved Solution of the International Terrestrial Reference Frame, *Journal of Geodesy*, 85, 457–473, <https://doi.org/10.1007/s00190-011-0444-4>, 2011.
- Andersen, O. B. and Scharroo, R.: Range and Geophysical Corrections in Coastal Regions: And Implications for Mean Sea Surface Determination, in: *Coastal Altimetry*, edited by Vignudelli, S., Kostianoy, A. G., Cipollini, P., and Benveniste, J., pp. 103–145, Springer, https://doi.org/10.1007/978-3-642-12796-0_5, 2011.
- Brink, K. H., Beardsley, R. C., Limeburner, R., Irish, J. D., and Caruso, M.: Long-Term Moored Array Measurements of Currents and Hydrography over Georges Bank: 1994–1999, *Progress in Oceanography*, 82, 191–223, <https://doi.org/10.1016/j.pocean.2009.07.004>, 2009.
- Butman, B., Beardsley, R. C., Magnell, B., Frye, D., Vermersch, J. A., Schlitz, R., Limeburner, R., Wright, W. R., and Noble, M. A.: Recent Observations of the Mean Circulation on Georges Bank, *Journal of Physical Oceanography*, 12, 569–591, [https://doi.org/10.1175/1520-0485\(1982\)012<0569:ROOTMC>2.0.CO;2](https://doi.org/10.1175/1520-0485(1982)012<0569:ROOTMC>2.0.CO;2), 1982.
- Chapman, D. C. and Beardsley, R. C.: On the Origin of Shelf Water in the Middle Atlantic Bight, *Journal of Physical Oceanography*, 19, 384–391, [https://doi.org/10.1175/1520-0485\(1989\)019<0384:OTOOSW>2.0.CO;2](https://doi.org/10.1175/1520-0485(1989)019<0384:OTOOSW>2.0.CO;2), 1989.
- Chapman, D. C., Barth, J. A., Beardsley, R. C., and Fairbanks, R. G.: On the Continuity of Mean Flow between the Scotian Shelf and the Middle Atlantic Bight, *Journal of Physical Oceanography*, 16, 758–772, [https://doi.org/10.1175/1520-0485\(1986\)016<0758:OTCOMF>2.0.CO;2](https://doi.org/10.1175/1520-0485(1986)016<0758:OTCOMF>2.0.CO;2), 1986.
- Chegini, F., Lu, Y., Katavouta, A., and Ritchie, H.: Coastal Upwelling Off Southwest Nova Scotia Simulated With a High-Resolution Baroclinic Ocean Model, *Journal of Geophysical Research: Oceans*, 123, 2318–2331, <https://doi.org/10.1002/2017JC013431>, 2018.
- Chen, C., Beardsley, R., and Franks, P. J. S.: A 3-D Prognostic Numerical Model Study of the Georges Bank Ecosystem. Part I: Physical Model, *Deep Sea Research Part II: Topical Studies in Oceanography*, 48, 419–456, [https://doi.org/10.1016/S0967-0645\(00\)00124-7](https://doi.org/10.1016/S0967-0645(00)00124-7), 2001.
- Csanady, G. T.: The Arrested Topographic Wave, *Journal of Physical Oceanography*, 8, 47–62, [https://doi.org/10.1175/1520-0485\(1978\)008<0047:TATW>2.0.CO;2](https://doi.org/10.1175/1520-0485(1978)008<0047:TATW>2.0.CO;2), 1978.
- Csanady, G. T.: The Pressure Field along the Western Margin of the North Atlantic, *Journal of Geophysical Research*, 84, 4905, <https://doi.org/10.1029/JC084iC08p04905>, 1979.
- Csanady, G. T.: *Circulation in the Coastal Ocean*, Springer, ISBN 978-90-277-1400-8, <https://doi.org/10.1007/978-94-017-1041-1>, 1982.
- Dever, M., Hebert, D., Greenan, B. J. W., Sheng, J., and Smith, P. C.: Hydrography and Coastal Circulation along the Halifax Line and the Connections with the Gulf of St. Lawrence, *Atmosphere-Ocean*, 54, 199–217, <https://doi.org/10.1080/07055900.2016.1189397>, 2016.
- Ekman, M.: Impacts of Geodynamic Phenomena on Systems for Height and Gravity, *Bulletin Géodésique*, 63, 281–296, <https://doi.org/10.1007/BF02520477>, 1989.
- El-Sabh, M. I.: Oceanographic Features, Currents, and Transport in Cabot Strait, *Journal of the Fisheries Research Board of Canada*, 34, 516–528, <https://doi.org/10.1139/f77-083>, 1977.
- Fewings, M. R. and Lentz, S. J.: Momentum Balances on the Inner Continental Shelf at Martha’s Vineyard Coastal Observatory, *Journal of Geophysical Research: Oceans*, 115, <https://doi.org/10.1029/2009JC005578>, 2010.
- Filmer, M. S., Hughes, C. W., Woodworth, P. L., Featherstone, W. E., and Bingham, R. J.: Comparison between Geodetic and Oceanographic Approaches to Estimate Mean Dynamic Topography for Vertical Datum Unification: Evaluation at Australian Tide Gauges, *Journal of Geodesy*, 92, 1413–1437, <https://doi.org/10.1007/s00190-018-1131-5>, 2018.

- 665 Frederikse, T., Simon, K., Katsman, C. A., and Riva, R.: The Sea-Level Budget along the Northwest Atlantic Coast: GIA, Mass Changes, and Large-Scale Ocean Dynamics, *Journal of Geophysical Research: Oceans*, 122, 5486–5501, <https://doi.org/10.1002/2017JC012699>, 2017.
- Garrett, C. J. R. and Loucks, H.: Upwelling Along the Yarmouth Shore of Nova Scotia, *Journal of the Fisheries Research Board of Canada*, 33, 116–117, <https://doi.org/10.1139/f76-013>, 1976.
- Green, G.: *An Essay on the Application of Mathematical Analysis to the Theories of Electricity and Magnetism*, Nottingham, 1828.
- 670 Greenberg, D. A.: Modeling the Mean Barotropic Circulation in the Bay of Fundy and Gulf of Maine, *Journal of Physical Oceanography*, 13, 886–904, [https://doi.org/10.1175/1520-0485\(1983\)013<0886:MTMBCI>2.0.CO;2](https://doi.org/10.1175/1520-0485(1983)013<0886:MTMBCI>2.0.CO;2), 1983.
- Gregory, J. M., Griffies, S. M., Hughes, C. W., Lowe, J. A., Church, J. A., Fukimori, I., Gomez, N., Kopp, R. E., Landerer, F., Cozannet, G. L., Ponte, R. M., Stammer, D., Tamisiea, M. E., and van de Wal, R. S. W.: Concepts and Terminology for Sea Level: Mean, Variability and Change, Both Local and Global, *Surveys in Geophysics*, 40, 1251–1289, <https://doi.org/10.1007/s10712-019-09525-z>, 2019.
- 675 Hannah, C. G., Shore, J. A., Loder, J. W., and Naimie, C. E.: Seasonal Circulation on the Western and Central Scotian Shelf, *Journal of Physical Oceanography*, 31, 591–615, [https://doi.org/10.1175/1520-0485\(2001\)031<0591:SCOTWA>2.0.CO;2](https://doi.org/10.1175/1520-0485(2001)031<0591:SCOTWA>2.0.CO;2), 2001.
- Hickey, B. M. and Pola, N. E.: Seasonal Alongshore Pressure Gradient on the West Coast of the United States., *Journal of Geophysical Research*, 88, 7623–7633, <https://doi.org/10.1029/JC088iC12p07623>, 1983.
- Higginson, S., Thompson, K. R., Woodworth, P. L., and Hughes, C. W.: The Tilt of Mean Sea Level along the East Coast of North America, 680 *Geophysical Research Letters*, 42, 1471–1479, <https://doi.org/10.1002/2015GL063186>, 2015.
- Huang, J.: Determining Coastal Mean Dynamic Topography by Geodetic Methods, *Geophysical Research Letters*, 44, 11,125–11,128, <https://doi.org/10.1002/2017GL076020>, 2017.
- Hughes, C. W., Bingham, R. J., Roussenov, V., Williams, J., and Woodworth, P. L.: The Effect of Mediterranean Exchange Flow on European Time Mean Sea Level, *Geophysical Research Letters*, 42, 466–474, <https://doi.org/10.1002/2014GL062654>, 2015.
- 685 Hughes, C. W., Fukumori, I., Griffies, S. M., Huthnance, J. M., Minobe, S., Spence, P., Thompson, K. R., and Wise, A.: Sea Level and the Role of Coastal Trapped Waves in Mediating the Influence of the Open Ocean on the Coast, *Surveys in Geophysics*, 40, 1467–1492, <https://doi.org/10.1007/s10712-019-09535-x>, 2019.
- Huthnance, J. M.: Ocean-to-Shelf Signal Transmission: A Parameter Study, *Journal of Geophysical Research: Oceans*, 109, 1–11, <https://doi.org/10.1029/2004JC002358>, 2004.
- 690 Katavouta, A. and Thompson, K. R.: Downscaling Ocean Conditions with Application to the Gulf of Maine, Scotian Shelf and Adjacent Deep Ocean, *Ocean Modelling*, 104, 54–72, <https://doi.org/10.1016/j.ocemod.2016.05.007>, 2016.
- Katavouta, A., Thompson, K. R., Lu, Y., and Loder, J. W.: Interaction between the Tidal and Seasonal Variability of the Gulf of Maine and Scotian Shelf Region, *Journal of Physical Oceanography*, 46, 3279–3298, <https://doi.org/10.1175/JPO-D-15-0091.1>, 2016.
- Lellouche, J.-M., Eric, G., Romain, B.-B., Gilles, G., Angélique, M., Marie, D., Clément, B., Mathieu, H., Olivier, L. G., Charly, R., Tony, 695 C., Charles-Emmanuel, T., Florent, G., Giovanni, R., Mounir, B., Yann, D., and Pierre-Yves, L. T.: The Copernicus Global 1/12° Oceanic and Sea Ice GLORYS12 Reanalysis, *Frontiers in Earth Science*, 9, 2021.
- Lentz, S. J.: Observations and a Model of the Mean Circulation over the Middle Atlantic Bight Continental Shelf, *Journal of Physical Oceanography*, 38, 1203–1221, <https://doi.org/10.1175/2007JPO3768.1>, 2008.
- Lentz, S. J.: The Coastal Sea-Level Response to Wind Stress in the Middle Atlantic Bight, *Journal of Geophysical Research: Oceans*, 129, 700 e2024JC021 269, <https://doi.org/10.1029/2024JC021269>, 2024.
- Lentz, S. J. and Fewings, M. R.: The Wind- and Wave-Driven Inner-Shelf Circulation, *Annual Review of Marine Science*, 4, 317–343, <https://doi.org/10.1146/annurev-marine-120709-142745>, 2012.

- Levier, B., Tréguier, A.-M., Madec, G., and Garnier, V.: Free Surface and Variable Volume in the NEMO Code, Tech. rep., Ifremer, Brest, 2007.
- 705 Li, Y., He, R., and McGillicuddy, D. J.: Seasonal and Interannual Variability in Gulf of Maine Hydrodynamics: 2002-2011, *Deep-Sea Research Part II: Topical Studies in Oceanography*, 103, 210–222, <https://doi.org/10.1016/j.dsr2.2013.03.001>, 2014a.
- Li, Y., Ji, R., Fratantoni, P. S., Chen, C., Hare, J. A., Davis, C. S., and Beardsley, R. C.: Wind-Induced Interannual Variability of Sea Level Slope, along-Shelf Flow, and Surface Salinity on the Northwest Atlantic Shelf, *Journal of Geophysical Research: Oceans*, 119, 2462–2479, <https://doi.org/10.1002/2013JC009385>, 2014b.
- 710 Lin, H., Thompson, K. R., Huang, J., and Véronneau, M.: Tilt of Mean Sea Level along the Pacific Coasts of North America and Japan, *Journal of Geophysical Research: Oceans*, 120, 6815–6828, <https://doi.org/10.1002/2015JC010920>, 2015.
- Loder, J. W.: Topographic Rectification of Tidal Currents on the Sides of Georges Bank, *Journal of Physical Oceanography*, 10, 1399–1416, [https://doi.org/10.1175/1520-0485\(1980\)010<1399:TROTCO>2.0.CO;2](https://doi.org/10.1175/1520-0485(1980)010<1399:TROTCO>2.0.CO;2), 1980.
- Lyard, F., Lefevre, F., Letellier, T., and Francis, O.: Modelling the Global Ocean Tides: Modern Insights from FES2004, *Ocean Dynamics*, 715 56, 394–415, <https://doi.org/10.1007/s10236-006-0086-x>, 2006.
- Madec, G., Romain, B.-B., Pierre-Antoine, B., Clément, B., Diego, B., Daley, C., Jérôme, C., Emanuela, C., Coward, A., Damiano, D., Christian, E., Simona, F., Tim, G., James, H., Doroteaciro, I., Dan, L., Claire, L., Tomas, L., Nicolas, M., Sébastien, M., Silvia, M., Julien, P., Clément, R., Dave, S., Andrea, S., and Martin, V.: NEMO Ocean Engine Version 3.6 Stable, Tech. Rep. 27, Pôle de modélisation de l'Institut Pierre-Simon Laplace (IPSL), Paris, <https://doi.org/10.5281/zenodo.1472492>, 2017.
- 720 Mandelbrot, B. B.: *The Fractal Geometry of Nature*, W.H. Freeman and Company, 1982.
- Mertz, G. and Wright, D. G.: Interpretations of the JEBAR Term, *Journal of Physical Oceanography*, 22, 301–305, [https://doi.org/10.1175/1520-0485\(1992\)022<0301:IOTJT>2.0.CO;2](https://doi.org/10.1175/1520-0485(1992)022<0301:IOTJT>2.0.CO;2), 1992.
- Naimie, C. E.: Georges Bank Residual Circulation during Weak and Strong Stratification Periods: Prognostic Numerical Model Results, *Journal of Geophysical Research: Oceans*, 101, 6469–6486, <https://doi.org/10.1029/95JC03698>, 1996.
- 725 Naimie, C. E., Loder, J. W., and Lynch, D. R.: Seasonal Variation of the Three-Dimensional Residual Circulation on Georges Bank, *Journal of Geophysical Research: Oceans*, 99, 15 967–15 989, <https://doi.org/10.1029/94JC01202>, 1994.
- Ophaug, V., Breili, K., and Gerlach, C.: A Comparative Assessment of Coastal Mean Dynamic Topography in Norway by Geodetic and Ocean Approaches, *Journal of Geophysical Research: Oceans*, 120, 7807–7826, <https://doi.org/10.1002/2015JC011145>, 2015.
- Pearson, C. and Snay, R.: Introducing HTDP 3.1 to Transform Coordinates across Time and Spatial Reference Frames, *GPS Solutions*, 17, 730 1–15, <https://doi.org/10.1007/s10291-012-0255-y>, 2013.
- Pettigrew, N. R., Townsend, D. W., Xue, H., Wallinga, J. P., Brickley, P. J., and Hetland, R. D.: Observations of the Eastern Maine Coastal Current and Its Offshore Extensions in 1994, *Journal of Geophysical Research: Oceans*, 103, 30 623–30 639, <https://doi.org/10.1029/98JC01625>, 1998.
- Pettigrew, N. R., Churchill, J. H., Janzen, C. D., Mangum, L. J., Signell, R. P., Thomas, A. C., Townsend, D. W., Wallinga, J. P., and Xue, 735 H.: The Kinematic and Hydrographic Structure of the Gulf of Maine Coastal Current, *Deep Sea Research Part II: Topical Studies in Oceanography*, 52, 2369–2391, <https://doi.org/10.1016/j.dsr2.2005.06.033>, 2005.
- Renkl, C. and Thompson, K. R.: Validation of Ocean Model Predictions of Mean Dynamic Topography in Shallow, Tidally Dominated Regions Using Observations of Overtides, *Journal of Geophysical Research: Oceans*, 127, e2021JC018095, <https://doi.org/10.1029/2021JC018095>, 2022.

- 740 Rutherford, K. and Fennel, K.: Diagnosing Transit Times on the Northwestern North Atlantic Continental Shelf, *Ocean Science*, 14, 1207–1221, <https://doi.org/10.5194/os-14-1207-2018>, 2018.
- Saha, S., Moorthi, S., Wu, X., Wang, J., Nadiga, S., Tripp, P., Behringer, D., Hou, Y. T., Chuang, H. Y., Iredell, M., Ek, M., Meng, J., Yang, R., Mendez, M. P., Van Den Dool, H., Zhang, Q., Wang, W., Chen, M., and Becker, E.: The NCEP Climate Forecast System Version 2, *Journal of Climate*, 27, 2185–2208, <https://doi.org/10.1175/JCLI-D-12-00823.1>, 2014.
- 745 Sarkisyan, A. S. and Ivanov, V. F.: The Joint Effect of Baroclinicity and the Bottom Relief as an Important Factor in the Sea Current Dynamics, *Atmosphere and Ocean Physics*, 7, 116–124, 1971.
- Schwing, F. B.: Subtidal Response of the Scotian Shelf Bottom Pressure Field to Meteorological Forcing, *Atmosphere-Ocean*, 27, 157–180, <https://doi.org/10.1080/07055900.1989.9649332>, 1989.
- Scott, J. T. and Csanady, G. T.: Nearshore Currents off Long Island, *Journal of Geophysical Research*, 81, 5401–5409, <https://doi.org/10.1029/JC081i030p05401>, 1976.
- 750 Smith, P. C.: The Mean and Seasonal Circulation off Southwest Nova Scotia, *Journal of Physical Oceanography*, 13, 1034–1054, [https://doi.org/10.1175/1520-0485\(1983\)013<1034:TMASCO>2.0.CO;2](https://doi.org/10.1175/1520-0485(1983)013<1034:TMASCO>2.0.CO;2), 1983.
- Smith, P. C. and Schwing, F. B.: Mean Circulation and Variability on the Eastern Canadian Continental Shelf, *Continental Shelf Research*, 11, 977–1012, [https://doi.org/10.1016/0278-4343\(91\)90088-N](https://doi.org/10.1016/0278-4343(91)90088-N), 1991.
- 755 Tee, K.-T., Smith, P. C., and Lefaire, D.: Estimation and Verification of Tidally Induced Residual Currents, *Journal of Physical Oceanography*, 18, 1415–1434, [https://doi.org/10.1175/1520-0485\(1988\)018<1415:EAVOTI>2.0.CO;2](https://doi.org/10.1175/1520-0485(1988)018<1415:EAVOTI>2.0.CO;2), 1988.
- Tee, K. T., Smith, P. C., and Lefaire, D.: Topographic Upwelling off Southwest Nova Scotia, *Journal of Physical Oceanography*, 23, 1703–1726, [https://doi.org/10.1175/1520-0485\(1993\)023<1703:TUOSNS>2.0.CO;2](https://doi.org/10.1175/1520-0485(1993)023<1703:TUOSNS>2.0.CO;2), 1993.
- Thompson, K. R.: North Atlantic Sea-Level and Circulation, *Geophysical Journal International*, 87, 15–32, <https://doi.org/10.1111/j.1365-246X.1986.tb04543.x>, 1986.
- 760 Thompson, P. R. and Mitchum, G. T.: Coherent Sea Level Variability on the North Atlantic Western Boundary, *Journal of Geophysical Research: Oceans*, 119, 5676–5689, <https://doi.org/10.1002/2014JC009999>, 2014.
- Véronneau, M. and Huang, J.: The Canadian Geodetic Vertical Datum of 2013 (CGVD2013), *GEOMATICA*, 70, 9–19, <https://doi.org/10.5623/cig2016-101>, 2016.
- 765 Weatherall, P., Marks, K. M., Jakobsson, M., Schmitt, T., Tani, S., Arndt, J. E., Rovere, M., Chayes, D., Ferrini, V., and Wigley, R.: A New Digital Bathymetric Model of the World’s Oceans, *Earth and Space Science*, 2, 331–345, <https://doi.org/10.1002/2015EA000107>, 2015.
- Werner, F. E. and Hickey, B. M.: The Role of a Longshore Pressure Gradient in Pacific Northwest Coastal Dynamics, *Journal of Physical Oceanography*, 13, 395–410, [https://doi.org/10.1175/1520-0485\(1983\)013<0395:TROALP>2.0.CO;2](https://doi.org/10.1175/1520-0485(1983)013<0395:TROALP>2.0.CO;2), 1983.
- Woodworth, P. L., Hughes, C. W., Bingham, R. J., and Gruber, T.: Towards Worldwide Height System Unification Using Ocean Information, *Journal of Geodetic Science*, 2, 302–318, <https://doi.org/10.2478/v10156-012-0004-8>, 2012.
- 770 Woodworth, P. L., Gravelle, M., Marcos, M., Wöppelmann, G., and Hughes, C. W.: The Status of Measurement of the Mediterranean Mean Dynamic Topography by Geodetic Techniques, *Journal of Geodesy*, 89, 811–827, <https://doi.org/10.1007/s00190-015-0817-1>, 2015.
- Xu, F.-H. and Oey, L.-Y.: The Origin of Along-Shelf Pressure Gradient in the Middle Atlantic Bight, *Journal of Physical Oceanography*, 41, 1720–1740, <https://doi.org/10.1175/2011JPO4589.1>, 2011.

Table 1. Summary of geodetic MDT observations in the study area for the period 2011–2013. The numbers in parentheses after the station name are the IDs in the NOAA and CHS databases, respectively. The columns Lat. and Lon. list coordinates of the tide gauges. BM ID refers to the permanent identifiers of the GPS benchmarks assigned by NGS and NRCAN and the ellipsoidal height at these benchmarks are listed under h_e . The geoid height N interpolated to the benchmark locations are listed in column CGG2013a. In the last column, the resulting geodetic estimates of MDT are presented. Their error is a combination of the errors in h_e and N and were calculated using standard error propagation rules.

Name	Lat. [°N]	Lon. [°E]	BM ID	h_e [m]	CGG2013a [m]	MDT [m]
SYD North Sydney (612)	46.2167	-60.2500	NS29101	29.502840 ± 0.010	-13.180 ± 0.012	-0.201 ± 0.016
BIO Bedford Institute (491)	44.6833	-63.6167	961000	3.099574 ± 0.000	-21.469 ± 0.012	-0.224 ± 0.012
YAR Yarmouth (365)	43.8333	-66.1167	XXN9007	-19.457698 ± 0.015	-23.201 ± 0.011	-0.260 ± 0.019
EAS Eastport (8410140)	44.9033	-66.9850	PD1179	-18.828134 ± 0.006	-23.303 ± 0.013	-0.321 ± 0.015
CFW Cutler Farris Whf (8411060)	44.6570	-67.2047	PD0497	-16.757344 ± 0.014	-23.243 ± 0.022	-0.309 ± 0.026
BAR Bar Harbor (8413320)	44.3917	-68.2050	BBGN12	-18.875490 ± 0.004	-24.797 ± 0.016	-0.305 ± 0.017
POR Portland (8418150)	43.6567	-70.2467	AJ2726	-24.168144 ± 0.004	-26.996 ± 0.012	-0.298 ± 0.012
WEL Wells (8419317)	43.3200	-70.5633	BBCF81	-23.691065 ± 0.007	-27.333 ± 0.013	-0.312 ± 0.015
BOS Boston (8443970)	42.3539	-71.0503	AJ4030	-26.394000 ± 0.005	-28.666 ± 0.010	-0.266 ± 0.011