

Development of high-order global dynamical core using discontinuous Galerkin method for atmospheric LES and proposal of test cases: SCALE-DG v0.8.0

Yuta Kawai¹ and Hirofumi Tomita^{1,2}

¹RIKEN Center for Computational Science, Kobe, Japan

²RIKEN Cluster for Pioneering Research, Wako, Japan

Abstract. Focusing on the future global atmospheric simulations with grid spacing of $O(10\text{--}100\text{ m})$, we developed a global nonhydrostatic atmospheric dynamical core with high-order accuracy by applying a discontinuous Galerkin method (DGM) ~~both horizontally and vertically. Further~~for horizontal and vertical discretization. Furthermore, considering a global large-eddy simulation (LES), a Smagorinsky–Lilly turbulence model was introduced to the proposed global dynamical core in the
5 DGM framework. By conducting several tests with various polynomial orders (p), the impact of high-order DGM on the accuracy of the numerical simulations of atmospheric flows was investigated. To show high-order numerical convergence, a few modifications were made in the experimental setup of existing test cases. In addition, we proposed an idealized test case to ~~validate~~verify global LES models, which is a global extension of idealized planetary boundary layer (PBL) turbulence experiment performed in our previous studies. The error norms from the deterministic test cases, such as linear advection
10 and gravity wave ~~test cases, show an optimal order of spatial accuracy with about~~tests, showed an optimal convergence rate achieved by approximately $p + 1$ -order spatial accuracy when the temporal and round-off errors ~~are~~were sufficiently small. In the climatic test cases, such as the Held-Suarez test, the kinetic energy spectra ~~indicate~~indicated the advantage of effective ~~resolutions~~resolution when large polynomial orders ~~are~~were used. In the LES experiment, the global model provided a reasonable vertical structure of PBL and energy spectra ~~since~~because the results under shallow atmosphere approximation
15 well ~~reproduce~~reproduced those obtained in the plane computational domain.

1 Introduction

Recently developed supercomputers have enabled us to conduct high-resolution global atmospheric simulations using a sub-kilometer horizontal grid spacing (~~e.g., Miyamoto et al., 2013~~). ~~In~~. For example, Miyamoto et al. (2013) conducted a global simulation at a horizontal grid spacing of 870 m and discussed the numerical convergence of statistical properties of deep moist convections. In the near future, this continuous development of computer technology is expected to enable us to perform
20 global simulations using $O(10\text{--}100\text{ m})$ grid spacing (Sato et al., 2019), which begin to explicitly represent turbulence in the ~~inertia~~inertial sub-range. Then, large-eddy simulation (LES) is a promising strategy. ~~In~~, since in LES, the turbulence ~~with in a~~with in a spatial scale larger than a spatial filter is explicitly calculated, whereas the effect of turbulence ~~with in a~~with in a smaller spatial scale is parameterized ~~by using~~by using eddy viscosity and diffusion terms. By explicitly representing the large-scale eddies in

25 boundary layers and the low-level clouds such as shallow cumuli, we expect to reduce a source of uncertainty associated with the parameterizations and improve representation of global radiation budget in a realistic Earth's atmosphere.

Considering future high-resolution atmospheric simulations such as global LES, we discussed the problem of low numerical accuracy of conventional atmospheric dynamical cores in Kawai and Tomita (2021, 2023) (hereafter referred to as KT2021 and KT2023, respectively). To perform LES precisely, we ~~should take care~~ must ensure that the discretization errors do not
30 dominate over sub-grid scale (SGS) terms of turbulent models. Otherwise, the ~~physical meaning of SGS terms is likely to be lost~~ SGS terms might lose their physical significance. KT2021 investigated the order of accuracy necessary for advection schemes in the framework of conventional grid-point methods. ~~The study indicated that the advection~~ In particular, the study derived two ratios associated with numerical diffusion and numerical dispersion: the ratio of decay time with the SGS terms to that of the numerical diffusion error terms and that of phase speed due to the error in advection terms to that of the SGS
35 terms. Moreover, we pointed out that the advection scheme requires at least seventh- or eighth-order accuracy to ensure that ~~the values of e-folding time with numerical diffusion and dispersion errors are sufficiently larger than those with diffusion and dispersion terms from the SGS terms~~ both ratios are less than 10^{-1} at wavelengths longer than eight grid lengths for grid spacing simulations of $O(10)$ m. However, in ~~the~~ conventional grid-point methods, the required stencil ~~becomes large with increasing~~ grows larger as the order of accuracy increases. This can degrade computational performance of the ~~schemes in recent massive~~
40 high-order methods in recent massively parallel computers. Thus, we ~~recently focused on~~ focused on applicability of the discontinuous Galerkin method (DGM), ~~which is recognized as a local spectral method~~. At element boundaries, the representation of flow field is allowed to be discontinuous, and ~~common the~~ flux shared by two ~~neighbor~~ neighboring elements is calculated using approximated Riemann solvers. ~~Such~~ These computational features provide a straightforward strategy to achieve high-order discretization and computational compactness. ~~In the context of DGM, KT2023 investigated the problem with the order~~
45 ~~of accuracy necessary for~~ extended the discussion presented in KT2021 to the DGM framework and investigated a polynomial order necessary for precisely conducting LES. It indicated that the polynomial order needs to be higher than or equal to four ~~in~~ the case where upwind numerical flux and sufficiently high-order modal filter are used when the upwind numerical fluxes and sufficiently scale-selective modal filters are used to ensure numerical stability.

~~In~~ The basis of the state-of-the-art global nonhydrostatic atmosphere dynamical cores ~~whose basis~~ was mainly developed
50 during ~~2000–2010~~ 2000's–2010's. In these dynamical cores, low-order grid-point methods are often adopted. For example, the Non-hydrostatic ICosahedral Atmospheric Model (NICAM; Tomita and Satoh, 2004; Satoh et al., 2014), the Model for Prediction Across Scales (MPAS; Skamarock et al., 2012), and the ICosahedral Non-hydrostatic model (ICON; Zängl et al., 2015) are based on either a totally first- or totally second-order scheme. The discretization accuracy has not always been a primary factor in the performance of atmospheric models because physical processes have various uncertain parameters.
55 In situations where the grid spacing is coarser than the gray zone of turbulence, the totally second-order scheme may be appropriate in terms of ~~both~~ computational cost and numerical robustness. However, as described above, it is ~~important~~ crucial to increase numerical accuracy to precisely conduct the atmospheric LES. Furthermore, even in spatial resolutions ~~lower~~ coarser than that required by LES, it is undesirable that the ~~effective resolution is significantly apart~~ shortest wavelength fully resolved by discretization methods, so called the effective resolution, is significantly different from the grid spacing in terms

60 of the physics-dynamics coupling. The low-order ~~dynamical cores typically lead~~ spatial scheme typically leads to significant discretization errors at wavelengths shorter than eight grid ~~spacing lengths~~ (Kent et al., 2014). To decrease the gap between the effective resolution and grid scale, it is ~~natural~~ sensible to use high-order discretization methods in addition to designing better numerical filters for controlling the effective resolution.

Constructing high-order grid-point methods tends to be more complex for spherical geometries than ~~that~~ in plane domains
65 with structured grids. To ~~achieve~~ achieve the high-order discretization accuracy horizontally, a conventional straightforward approach is the spectral transformation method based on the spherical harmonics expansion ~~is a straightforward traditional approach. It provides sufficient~~. This approach provides desirable accuracy for numerical solutions in the wavelength range up to the truncated wave number while avoiding the ~~pole problem~~ problem of restrictive timestep near the poles due to the convergence of meridians. However, ~~in significantly~~ high-resolution global simulations, ~~we~~ can suffer from large costs
70 of data communication between all computational nodes in ~~massive parallel supercomputer environments~~ massively parallel supercomputers. On the other hand, some researchers have successfully developed global ~~nonhydrostatic~~ atmospheric dynamical cores based on high-order grid-point and element-based methods. ~~Ullrich and Jablonowski (2012b) proposed~~ The essence of the numerical methods can be found in horizontal discretization of the global shallow water equations; For example, Ullrich et al. (2010) for a high-order finite volume method (FVM), while Nair et al. (2005a) and Ullrich (2014) for high-order element-based methods. Ullrich and Jablonowski (2012b) proposed a global nonhydrostatic dynamical core (MCore) based on an FVM with a fourth-order reconstruction strategy for horizontal discretization horizontal reconstruction strategy. The Tempest model ~~(Ullrich, 2014; Guerra and Ullrich, 2016)~~ (Guerra and Ullrich, 2016) uses a high-order spectral element method ~~horizontally. The Climate Machine used a~~ (SEM) horizontally. In the Nonhydrostatic Unified Model of the Atmosphere (NUMA; Kelly and Giraldo, 2012; Giraldo et al., 2013), which is applicable for both limited-area and global atmospheric simulations,
80 the continuous and discontinuous Galerkin methods are adopted for the spatial discretization. The numerical method prototype used in NUMA is utilized and extended to a global spectral-element dynamical core in the Navy Environmental Prediction System Utilizing a Nonhydrostatic Engine (NEPTUNE) for both horizontal and vertical discretization (e.g., Zaron et al., 2022). SEM is also used for the nonhydrostatic High Order Method Modeling Environment (HOMME-NH; Dennis et al., 2005, 2012; Taylor et al. included in the Energy Exascale Earth System Model (E3SM), and for the nonhydrostatic dynamical core in the Korean Integrated Model (KIM) system (Hong et al., 2018). The ClimateMachine uses a nodal discontinuous Galerkin method both horizontally and vertically for both horizontal and vertical discretization. The corresponding regional dynamical core is described in Sridhar et al. (2022). ~~For the~~ In the case of classical high-order element-based methods, ~~to control numerical instability produced by it is cumbersome to control the numerical instability caused by the~~ aliasing errors with the nonlinear terms is a difficult problem nonlinear terms (Winters et al., 2018). To overcome this ~~issue~~ problem, a split form nodal DGM
90 (e.g., Gassner et al., 2016) is a theoretical and computationally efficient approach. ~~Recently, Souza et al. (2023) successfully applied one such method called “a flux-difference DGM”.~~ A similar method was successfully applied to a global shallow water model in Ricardo et al. (2024) and to a global dynamical core of dry atmosphere as the nonhydrostatic dynamical core for horizontal and vertical discretization in Souza et al. (2023). While conventional dynamical cores adopt a vertical discretization based on a low-order ~~FDM~~ finite difference method or FVM, some ~~previous~~ studies investigated the potential for the use of

95 high-order vertical discretization (e.g., Guerra and Ullrich, 2016; Yi and Giraldo, 2020; Ishioka et al., 2022). For example, Guerra and Ullrich (2016) introduced an arbitrary-order vertical discretization using a staggered nodal FEM. They reported that high-order vertical discretization improves the representation of vertical dynamics at a relatively low vertical resolution.

~~In the current study, considering~~ By building on progresses from the previous studies showing the applicability of the element-based methods to atmospheric flow simulations, the current study attempted to develop a high-order global dynamical core using a nodal DGM both horizontally and vertically for future global atmospheric simulations with $O(10-100)$ m grid spacing, ~~we constructed a global nonhydrostatic atmospheric dynamical core using DGM both horizontally and vertically.~~ For a quasi-uniform spherical grid, a cubed-sphere projection was adopted. ~~To treat the topography~~ Moreover, a terrain-following coordinate was used. ~~This study includes several progresses from previous studies that developed global atmospheric dynamical cores using DGM. We focused on the following three points: 1) We attempt quantitative evaluations in a series of test cases~~ for the global dynamical cores to reveal the impact of high-order DGM on the atmospheric flows. Few such studies for global nonhydrostatic dynamical cores are available although the numerical convergence characteristics of DGM was investigated for regional dynamical core (e.g., Giraldo and Restelli, 2008; Blaise et al., 2016). 2) The results of our study indicate that the high-order dynamical cores can provide a chance to modify the experimental setup in idealized test cases. When using the totally second-order dynamical cores, relatively large discretization errors may occur, which can overshadow the problems of ~~ill-posed experimental setup. Fast numerical convergence achieved using high-order schemes is expected to enable detection of such problems. Even when the aim of this study goes beyond dynamical core development to treat the topography. Although the numerical methods used in our dynamical core are similar to those used in previous studies that developed global DG dynamical cores such as NUMA and ClimateMachine, we consider an evaluation framework using high-order dynamical core to be useful; For example, when new physical models are included, the physical performance can be directly evaluated~~ by separating the effect of numerical discretization with dynamical processes. 3) that the following points are the unique contributions of the current study: 1) Considering global LES, we ~~formulate~~ formulated SGS eddy viscous and diffusion terms ~~in with~~ a Smagorinsky–Lilly type turbulent model in the DGM framework on the cubed-sphere ~~coordinate~~ coordinates. A discretization strategy for the scalar Laplacian operator on the cubed-sphere ~~coordinate~~ coordinates with DGM is reported in previous studies (e.g., Nair, 2009). However, they did not ~~consider~~ treat the vector Laplacian operator for the vector quantities (for example, momentum). This might be because the rigorous form ~~of vector Laplacian~~ is so complex that it may not be worth the computational cost required for numerical stabilization. ~~However, it is unavoidable for our purpose of~~ On the other hand, Ullrich (2014) presented a discretization strategy for the vector Laplacian operator with the continuous and discontinuous Galerkin methods. This approach can distinguish the divergence damping and vorticity damping with constant viscous coefficients. Guba et al. (2014) proposed a strategy of hyperviscosity with variable viscous coefficients in SEM where ~~the vector Laplacian operator is applied to the Cartesian component of the vector fields. For~~ introducing the turbulent model used in the current study, we derived the vector Laplacian operator that is applied to the vector component on the cubed-sphere coordinates and treated eddy viscous and diffusion coefficients dependent on local wind shear and stratification. First, using tensor analysis, we systematically derived the eddy viscosity and diffusion terms. Then, we represented the corresponding ~~semi-discretization equations with~~ semi-discretized equations using DGM. Subsequently, a quantitative check was performed

130 by conducting an idealized LES experiment of planetary boundary layer turbulence, ~~which is an extension of the numerical experiments performed in~~. In particular, we extended a numerical experiment of idealized planetary boundary turbulence used in regional plane models (KT2021 and KT2023) to spherical geometry by slightly changing the initial condition. 2) We modified experimental settings of idealized test cases to demonstrate the numerical convergence with high-order dynamical cores. When using totally second-order dynamical cores, relatively large discretization errors may occur, which can overshadow the problems of ill-posed experimental settings. Fast numerical convergence achieved using high-order schemes is expected to enable detection of such problems in standard tests. Even when research interests do not include the dynamics, we consider an evaluation framework using high-order dynamical core to be useful. For example, when new physical models are included, the physical performance can be directly evaluated by reducing numerical errors with the dynamical processes. 3) We attempted quantitative evaluations in a series of test cases for the global dynamical cores to investigate the impact of high-order DGM on the numerical accuracy of atmospheric flow simulations. Although the numerical convergence characteristics of DGM was closely investigated in the case of regional dynamical cores (e.g., Giraldo and Restelli, 2008; Brdar et al., 2013; Blaise et al., 2016), few studies have been conducted to demonstrate it for global nonhydrostatic dynamical cores.

The rest of this paper is organized as follows: In Sect. 2, the governing equations using the general curvilinear coordinates ~~were are~~ formulated. Then, we ~~introduceed-introduce~~ a cubed-sphere ~~eoordinate-projection~~ and a general vertical coordinate. We ~~represented-represent~~ eddy viscous and diffusion terms associated with the turbulent model in the general curvilinear coordinates. ~~Next, we explained~~ Furthermore, we explain the spatial and temporal discretization ~~adopted~~ for the governing equations. In Sect. ~~??, we validated~~ 3, we verify the proposed dynamical core through ~~a series of several~~ idealized numerical experiments. Finally, the findings of this study and our future plans are summarized.

2 Model Description

150 2.1 Governing Equations

As governing equations for dry atmospheric flows, we used the three-dimensional, fully compressible nonhydrostatic equations based on the flux form (e.g., Ullrich and Jablonowski, 2012b). Following Li et al. (2020), a non-orthogonal curvilinear horizontal coordinate (ξ, η) ~~is-was~~ introduced. Subsequently, a general vertical coordinate ζ ~~is-was~~ introduced. For the horizontal coordinate transformation, the ~~Jacobian are denoted as~~ $\sqrt{G_h}$ ~~and the~~ contravariant form of the metric tensor is represented by G_h^{ij} for $i, j = 1, 2$. ~~We define the~~ A three-dimensional metric tensor with the horizontal coordinate transformation ~~as~~

$$G^{ij} = \begin{pmatrix} G_h^{11} & G_h^{12} & 0 \\ G_h^{21} & G_h^{22} & 0 \\ 0 & 0 & 1 \end{pmatrix}.$$

is defined as

$$G^{ij} = \begin{pmatrix} G_h^{11} & G_h^{12} & 0 \\ G_h^{21} & G_h^{22} & 0 \\ 0 & 0 & 1 \end{pmatrix}. \quad (1)$$

The horizontal Jacobian is defined as $\sqrt{G_h} = |G_h^{ij}|^{-\frac{1}{2}}$. For the vertical coordinate transformation, the **Jacobian metric tensor** is defined as $\sqrt{G_v} = \partial z / \partial \zeta$ and the metric tensor $G_v^{13} = \partial \zeta / \partial \xi$, $G_v^{23} = \partial \zeta / \partial \eta$ and the vertical Jacobian is defined as $G_v^{13} = \partial \zeta / \partial \xi$, $G_v^{23} = \partial \zeta / \partial \eta$. The vertical velocity in the transformed vertical coordinate can be written using contravariant components of wind vector (u^ξ, u^η, u^ζ) as

$$\widetilde{u^\zeta} \equiv \frac{d\zeta}{dt} = \frac{1}{\sqrt{G_v}} \left(u^\zeta + \sqrt{G_v} G_v^{13} u^\xi + \sqrt{G_v} G_v^{23} u^\eta \right).$$

$$\widetilde{u^\zeta} \equiv \frac{d\zeta}{dt} = \frac{1}{\sqrt{G_v}} \left(u^\zeta + \sqrt{G_v} G_v^{13} u^\xi + \sqrt{G_v} G_v^{23} u^\eta \right). \quad (2)$$

The final Jacobian composed of horizontal and vertical coordinate transformations can be represented as $\sqrt{G} = \sqrt{G_h} \sqrt{G_v}$. Hereafter, to briefly describe the formulations, the coordinate variables are sometimes expressed using $(\xi_1, \xi_2, \xi_3) = (\xi, \eta, \zeta)$, $(\xi^1, \xi^2, \xi^3) = (\xi, \eta, \zeta)$. In addition, the Einstein summation notation will be applied for repeated indices when representing the geometric relations.

The compact form of the governing equations can be written as

$$170 \quad \frac{\partial \mathbf{q}}{\partial t} + \frac{\partial [\mathbf{f}(\mathbf{q}) + \mathbf{f}_{\text{SGS}}(\mathbf{q}, \nabla \mathbf{q})]}{\partial \xi} + \frac{\partial [\mathbf{g}(\mathbf{q}) + \mathbf{g}_{\text{SGS}}(\mathbf{q}, \nabla \mathbf{q})]}{\partial \eta} + \frac{\partial [\mathbf{h}(\mathbf{q}) + \mathbf{h}_{\text{SGS}}(\mathbf{q}, \nabla \mathbf{q})]}{\partial \zeta} = \mathbf{S}(\mathbf{q}) + \mathbf{S}_{\text{SGS}}(\mathbf{q}, \nabla \mathbf{q}). \quad (3)$$

Here, \mathbf{q} is the solution vector defined as

$$\mathbf{q} = \left(\sqrt{G} \rho', \sqrt{G} \rho u^\xi, \sqrt{G} \rho u^\eta, \sqrt{G} \rho u^\zeta, \sqrt{G} (\rho \theta)' \right)^T, \quad (4)$$

where ρ, θ are denote the density and potential temperature, respectively. To accurately treat nearly balanced flows accurately, we decomposed the density ρ and pressure p (thus $\rho \theta$) as $\phi(\xi, \eta, \zeta, t) = \phi_{\text{hyd}}(\xi, \eta, \zeta) + \phi'(\xi, \eta, \zeta, t)$ where ϕ_{hyd} are decomposed as $q(\xi, \eta, \zeta, t) = q_{\text{hyd}}(\xi, \eta, \zeta) + q'(\xi, \eta, \zeta, t)$, where q_{hyd} denotes a variable satisfying the hydrostatic balance and q' denotes the deviation. In Eq. (3), $\mathbf{f}(\mathbf{q})$, $\mathbf{g}(\mathbf{q})$, and $\mathbf{h}(\mathbf{q})$ are inviscid fluxes in the ξ , η , and ζ directions, respectively. The horizontal inviscid fluxes are represented as

$$\mathbf{f}(\mathbf{q}) = \begin{pmatrix} \sqrt{G} \rho u^\xi \\ \sqrt{G} (\rho u^\xi u^\xi + G_h^{11} p') \\ \sqrt{G} (\rho u^\eta u^\xi + G_h^{21} p') \\ \sqrt{G} \rho u^\zeta u^\xi \\ \sqrt{G} \rho \theta u^\xi \end{pmatrix}, \quad \mathbf{g}(\mathbf{q}) = \begin{pmatrix} \sqrt{G} \rho u^\eta \\ \sqrt{G} (\rho u^\xi u^\eta + G_h^{12} p') \\ \sqrt{G} (\rho u^\eta u^\eta + G_h^{22} p') \\ \sqrt{G} \rho u^\zeta u^\eta \\ \sqrt{G} \rho \theta u^\eta \end{pmatrix}, \quad (5)$$

180 and the vertical inviscid fluxes are represented as

$$\mathbf{h}(\mathbf{q}) = \begin{pmatrix} \sqrt{G}\rho\tilde{u}\tilde{\zeta} \\ \sqrt{G}[\rho u^\xi \tilde{u}\tilde{\zeta} + (G_v^{13}G_h^{11} + G_v^{23}G_h^{12})p'] \\ \sqrt{G}[\rho u^\eta \tilde{u}\tilde{\zeta} + (G_v^{13}G_h^{21} + G_v^{23}G_h^{22})p'] \\ \sqrt{G}\rho u^\zeta \tilde{u}\tilde{\zeta} + \sqrt{G}_h p' \\ \sqrt{G}\rho\theta\tilde{u}\tilde{\zeta} \end{pmatrix}. \quad (6)$$

Furthermore, $\mathbf{S}(\mathbf{q})$ represents the source terms as

$$\mathbf{S}(\mathbf{q}) = \begin{pmatrix} 0 \\ \sqrt{G}(F_H^1 + F_M^1 + F_C^1) \\ \sqrt{G}(F_H^2 + F_M^2 + F_C^2) \\ \sqrt{G}(F_{\text{buo}} + F_C^3) \\ 0 \end{pmatrix}, \quad (7)$$

185 $\mathbf{S}(\mathbf{q}) = \begin{pmatrix} 0 \\ \sqrt{G}(F_H^1 + F_M^1 + F_C^1) \\ \sqrt{G}(F_H^2 + F_M^2 + F_C^2) \\ \sqrt{G}(F_{\text{buo}} + F_C^3) \\ 0 \end{pmatrix}, \quad (7)$

where F_H^i for $i = 1, 2$ are the horizontal pressure gradient terms with hydrostatic balance and can be written expressed as

$$F_H^i = -\frac{G_h^{im'}}{\sqrt{G}_v} \left[\frac{\partial(\sqrt{G}_v p_{\text{hyd}})}{\partial \xi^{m'}} + \frac{\partial(G_v^{m'3} \sqrt{G}_v p_{\text{hyd}})}{\partial \xi^3} \right],$$

$$F_H^i = -\frac{G_h^{im'}}{\sqrt{G}_v} \left[\frac{\partial(\sqrt{G}_v p_{\text{hyd}})}{\partial \xi^{m'}} + \frac{\partial(G_v^{m'3} \sqrt{G}_v p_{\text{hyd}})}{\partial \xi^3} \right]. \quad (8)$$

190 hereHere, note that $m' = 1, 2$; $F_M^i = -\Gamma_{ml}^i(\rho u^m u^l + G^{ml} p')$ are the source terms due to the horizontal curvilinear coordinate, where m, l are take values of 1, 2, 3 and Γ_{ml}^i is the Christoffel symbol of the second kind, which means the spatial variation of basis-vector; the basis vector. $F_C^i = -G^{im} \epsilon_{jml} 2\Omega^m \rho u^l$ are the Coriolis terms, where ϵ_{jkl} is the three rank Levi-Civita tensor and Ω^k Ω^m are the components of angular velocity vector; $F_{\text{buo}} = -\rho'(a/r)^2 g$ is the buoyancy term, where r is the radial coordinate, a is the planetary radius, and g is the standard gravitational acceleration. To close the equation systems, the

195 pressure p is calculated using the state equation for the ideal gas as

$$p = P_0 \left(\frac{R}{P_0} \rho \theta \right)^{\frac{c_p}{c_v}},$$

$$p = P_0 \left(\frac{R}{P_0} \rho \theta \right)^{\frac{C_p}{C_v}}, \quad (9)$$

where P_0 is a constant pressure, R is the gas constant, and C_v and C_p are the specific heat at constant volume and constant pressure, respectively. The actual values for ~~the constants mentioned above is~~ these constants are provided in Table 1. In Eq. (3), the terms with subscript SGS are associated with a turbulent model; $f_{\text{SGS}}(\mathbf{q}, \nabla \mathbf{q})$, $g_{\text{SGS}}(\mathbf{q}, \nabla \mathbf{q})$, and $h_{\text{SGS}}(\mathbf{q}, \nabla \mathbf{q})$ are the parameterized eddy fluxes while $S_{\text{SGS}}(\mathbf{q}, \nabla \mathbf{q})$ are the source terms with the curvilinear ~~coordinate~~ coordinates. The terms associated with the turbulent model are detailed in Sect. 2.2.

As a horizontal curvilinear coordinate, we adopted an equiangular gnomonic cubed-sphere projection (Sadourny, 1972; Ronchi et al., 1996) ~~was adopted~~ to map a cube onto a sphere. Compared to a conformal projection (Rančić et al., 1996), we preferred this projection to generate more uniform grids in high spatial resolutions, although the non-orthogonal basis need to be treated. In each panel of the cube, a local coordinate using the central angles $(\alpha, \beta) \in [-\pi/4, \pi/4]$ ~~is was~~ introduced and related to the horizontal coordinates (ξ, η) by $\xi = \alpha, \eta = \beta$. ~~For the equiangular gnomonic cubed-sphere projection, we denote the horizontal contravariant metric tensor and the Jacobian as G_c and $\sqrt{G_c}$, respectively.~~ Based on the derivation with the coordinate transformation in previous studies (e.g., Nair et al., 2005b; Ullrich et al., 2012; Li et al., 2020), ~~G_c and $\sqrt{G_c}$ are analytically obtained as~~ the horizontal contravariant metric tensor and the horizontal Jacobian for the equiangular gnomonic cubed-sphere projection can be written as, respectively,

$$G_c^{ij} = \frac{\delta^2}{r^2(1+X^2)(1+Y^2)} \begin{pmatrix} 1+Y^2 & XY \\ XY & 1+X^2 \end{pmatrix}, \quad \sqrt{G_c} = \frac{r^2(1+X^2)(1+Y^2)}{\delta^3}, \quad (10)$$

where $X = \tan \alpha$, $Y = \tan \beta$, $\delta = \sqrt{1+X^2+Y^2}$, and r is the radial coordinate. The Christoffel symbol of the second kind Γ_{ml}^i is ~~written represented~~ as

$$\Gamma_{ml}^1 = \begin{pmatrix} \frac{2XY^2}{\delta^2} & \frac{-Y(1+Y^2)}{\delta^2} & \frac{\delta_S}{r} \\ \frac{-Y(1+Y^2)}{\delta^2} & 0 & 0 \\ \frac{\delta_S^2}{r} & 0 & 0 \end{pmatrix}, \quad \Gamma_{ml}^2 = \begin{pmatrix} 0 & \frac{-X(1+X^2)}{\delta^2} & 0 \\ \frac{-X(1+X^2)}{\delta^2} & \frac{2X^2Y}{\delta^2} & \frac{\delta_S}{r} \\ 0 & \frac{\delta_S^2}{r} & 0 \end{pmatrix},$$

$$\Gamma_{ml}^3 = \delta_S \frac{r(1+X^2)(1+Y^2)}{\delta^4} \begin{pmatrix} -(1+X^2) & XY & 0 \\ XY & -(1+Y^2) & 0 \\ 0 & 0 & 0 \end{pmatrix}, \quad (11)$$

where δ_S is ~~an index a~~ switch for shallow atmosphere approximation. The components of angular velocity vector included in the Coriolis terms F_C^i are given as

$$\Omega^1 = 0, \quad \Omega^2 = \delta_S \frac{\omega \delta}{r(1+Y^2)}, \quad \Omega^3 = \omega \frac{Y}{\delta}, \quad \text{for the equatorial panels,}$$

$$\Omega^1 = -\delta_S \frac{s\omega X\delta}{r(1+X^2)}, \quad \Omega^2 = -\delta_S \frac{s\omega Y\delta}{r(1+Y^2)}, \quad \Omega^3 = \frac{s\omega}{\delta}, \quad \text{for the polar panels,} \quad (12)$$

where ω is the angular velocity of ~~planet~~; ~~We introduced~~ the planet and an index s ~~with has~~ a value of 1 and -1 for the Northern and Southern polar panels, respectively. In the numerical experiments in Sect. ~~???~~3, the shallow atmosphere approximation was applied. Then, r and δ_S ~~were are~~ treated as follows: the radial coordinate r in Eqs. (10)–(12) and the buoyancy term in Eq. (6) is replaced by the planetary radius a . In Eqs. (11) and (12), the terms with δ_S are ignored. In addition, the pressure contribution in F_M^i disappears ~~since a~~ because the relation of $\Gamma_{ml}^i G^{ml} = 0$ is satisfied in the shallow atmosphere approximation.

To treat the topography, ~~in this study, we adopted~~ the traditional terrain-following coordinate (Phillips, 1957; Gal-Chen and Somerville, 1975) was adopted as a general vertical coordinate. The vertical coordinate ~~conversion is defined as~~

$$\zeta = z_T \frac{z-h}{z_T-h},$$

230 transformation can be expressed as

$$\zeta = z_T \frac{z-h}{z_T-h}, \quad (13)$$

where z is the height coordinate, z_T is the top height of computational domain (we assume it is a constant value), and h is the surface height. The corresponding Jacobian and metric tensor can be ~~written as~~

$$\sqrt{G_v} = 1 - \frac{h}{z_T}, \quad \sqrt{G_v} G_v^{13} = \left(\frac{\zeta}{z_T} - 1 \right) \frac{\partial h}{\partial \xi}, \quad \sqrt{G_v} G_v^{23} = \left(\frac{\zeta}{z_T} - 1 \right) \frac{\partial h}{\partial \eta},$$

235 represented as

$$\sqrt{G_v} = 1 - \frac{h}{z_T}, \quad \sqrt{G_v} G_v^{13} = \left(\frac{\zeta}{z_T} - 1 \right) \frac{\partial h}{\partial \xi}, \quad \sqrt{G_v} G_v^{23} = \left(\frac{\zeta}{z_T} - 1 \right) \frac{\partial h}{\partial \eta}, \quad (14)$$

respectively.

2.2 Formulation of eddy viscous and diffusion terms in general curvilinear coordinates

Considering global LES in future high-resolution simulations, this subsection describes eddy viscous and diffusion terms in the general curvilinear coordinates. We ~~focus utilized~~ on a Smagorinsky–Lilly type model (Smagorinsky, 1963; Lilly, 1962) that considered the stratification effect (Brown et al., 1994), ~~which was used in our previous studies~~ (~~. This turbulent model was also used in~~ KT2021 and KT2023). ~~The~~. As a spatial filter, the Favre-filtering (Favre, 1983) was used ~~as a spatial filter~~. ~~We did~~. We do not explicitly denote the symbol representing the spatial filter because the filtering approach is essentially the same as that explained in Appendix A of KT2023. The difficulties in the derivation of viscous and diffusion terms are caused by the gradient of vector quantities and the spatial divergence with the non-orthogonal basis because the manipulations ~~become~~ grow increasingly complex. However, previous studies that utilized tensor analysis help us provide a systematic derivation

(e.g., Rančić et al., 2017) (e.g., Ullrich, 2014; Rančić et al., 2017). In the absence of a vertical coordinate transformation, the parameterized fluxes with the turbulent model can be represented in the general curvilinear coordinates as

$$f_{\text{SGS}}(\mathbf{q}, \nabla \mathbf{q}) = \begin{pmatrix} 0 \\ -\sqrt{G}\rho\tau^{11} \\ -\sqrt{G}\rho\tau^{12} \\ -\sqrt{G}\rho\tau^{13} \\ -\sqrt{G}\rho\tau_*^1 \end{pmatrix}, \quad g_{\text{SGS}}(\mathbf{q}, \nabla \mathbf{q}) = \begin{pmatrix} 0 \\ -\sqrt{G}\rho\tau^{21} \\ -\sqrt{G}\rho\tau^{22} \\ -\sqrt{G}\rho\tau^{23} \\ -\sqrt{G}\rho\tau_*^2 \end{pmatrix}, \quad h_{\text{SGS}}(\mathbf{q}, \nabla \mathbf{q}) = \begin{pmatrix} 0 \\ -\sqrt{G}\rho\tau^{31} \\ -\sqrt{G}\rho\tau^{32} \\ -\sqrt{G}\rho\tau^{33} \\ -\sqrt{G}\rho\tau_*^3 \end{pmatrix},$$

250

$$f_{\text{SGS}}(\mathbf{q}, \nabla \mathbf{q}) = \begin{pmatrix} 0 \\ -\sqrt{G}\rho\tau^{11} \\ -\sqrt{G}\rho\tau^{12} \\ -\sqrt{G}\rho\tau^{13} \\ -\sqrt{G}\rho\tau_*^1 \end{pmatrix}, \quad g_{\text{SGS}}(\mathbf{q}, \nabla \mathbf{q}) = \begin{pmatrix} 0 \\ -\sqrt{G}\rho\tau^{21} \\ -\sqrt{G}\rho\tau^{22} \\ -\sqrt{G}\rho\tau^{23} \\ -\sqrt{G}\rho\tau_*^2 \end{pmatrix}, \quad h_{\text{SGS}}(\mathbf{q}, \nabla \mathbf{q}) = \begin{pmatrix} 0 \\ -\sqrt{G}\rho\tau^{31} \\ -\sqrt{G}\rho\tau^{32} \\ -\sqrt{G}\rho\tau^{33} \\ -\sqrt{G}\rho\tau_*^3 \end{pmatrix}, \quad (15)$$

and the source term ~~is~~ can be given by

$$S_{\text{SGS}}(\mathbf{q}, \nabla \mathbf{q}) = \begin{pmatrix} 0 \\ -\sqrt{G}\Gamma_{ml}^1 \rho \tau^{ml} \\ -\sqrt{G}\Gamma_{ml}^2 \rho \tau^{ml} \\ -\sqrt{G}\Gamma_{ml}^3 \rho \tau^{ml} \\ 0 \end{pmatrix}.$$

255

$$S_{\text{SGS}}(\mathbf{q}, \nabla \mathbf{q}) = \begin{pmatrix} 0 \\ -\sqrt{G}\Gamma_{ml}^1 \rho \tau^{ml} \\ -\sqrt{G}\Gamma_{ml}^2 \rho \tau^{ml} \\ -\sqrt{G}\Gamma_{ml}^3 \rho \tau^{ml} \\ 0 \end{pmatrix}. \quad (16)$$

In the equations, τ^{ij} is the contravariant components of parameterized eddy viscous flux tensor ($i = 1, 2, 3$ and $j = 1, 2, 3$) and can be written as

$$\tau^{ij} = -2\nu_{\text{SGS}} \left(S^{ij} - \frac{G^{ij}}{3} D \right) - \frac{2}{3} G^{ij} K_{\text{SGS}},$$

260

$$\tau^{ij} = -2\nu_{\text{SGS}} \left(S^{ij} - \frac{G^{ij}}{3} D \right) - \frac{2}{3} G^{ij} K_{\text{SGS}}, \quad (17)$$

where S^{ij} is the strain velocity tensor, ν_{SGS} is the eddy viscosity, D is the divergence of the three-dimensional velocity, and K_{SGS} is the SGS kinetic energy. The strain velocity tensor is represented as

$$S^{ij} = \frac{1}{2} \left(G^{im} \frac{\partial u^j_{,m}}{\partial \xi^m} + G^{jm} \frac{\partial u^i_{,m}}{\partial \xi^m} \right),$$

$$265 \quad \underline{S^{ij} = \frac{1}{2} \left(G^{im} \frac{\partial u^j_{,m}}{\partial \xi^m} + G^{jm} \frac{\partial u^i_{,m}}{\partial \xi^m} \right)}, \quad (18)$$

using the covariant derivative of the contravariant velocity component

$$\underline{u^i_{,j} = \frac{\partial u^i}{\partial \xi^j} + u^m \Gamma^i_{jm}}.$$

$$\underline{u^i_{,j} = \frac{\partial u^i}{\partial \xi^j} + u^m \Gamma^i_{jm}}. \quad (19)$$

270 The eddy viscosity is written as

$$\underline{\nu_{\text{SGS}} = C_s \Delta_{\text{SGS}} |S|},$$

$$\underline{\nu_{\text{SGS}} = C_s \Delta_{\text{SGS}} |S|}, \quad (20)$$

where C_s , Δ_{SGS} , and $|S|$ represent the Smagorinsky constant, the filter length, and the norm of strain tensor defined as
 275 $\sqrt{2G_{im}G_{jn}S^{ij}S^{mn}}$, respectively. The parameterized eddy diffusive flux can be written as

$$\underline{\tau_*^i = -\nu_{\text{SGS}}^* G^{ij} \frac{\partial \theta}{\partial \xi^j}},$$

$$\underline{\tau_*^i = -\nu_{\text{SGS}}^* G^{ij} \frac{\partial \theta}{\partial \xi^j}}, \quad (21)$$

where ν_{SGS}^* is the eddy diffusion coefficient. For further details of the turbulent model, refer to Sect. 2.2 of Nishizawa et al.
 280 (2015).

2.3 Spatial discretization

~~The~~ We performed the spatial discretization for Eq. (3) ~~is~~-based on a nodal DGM (e.g., Hesthaven and Warburton, 2007). In each cubed-sphere panel, the three-dimensional computational domain Ω ~~is~~-was divided using non-overlapping hexahedral

elements. To relate the coordinates $(\xi^1, \xi^2, \xi^3) = (\alpha, \beta, \zeta)$ with the local coordinates $\tilde{\mathbf{x}} \equiv (\tilde{x}^1, \tilde{x}^2, \tilde{x}^3)$ in a reference element Ω_e ,
 285 we adopted a linear mapping defined as

$$\tilde{x}^i = 2 \frac{\xi^i - \xi_e^i}{h_e^i}, \quad (22)$$

where ξ_e^i and h_e^i represent the center position and width of the element, respectively, in the ξ^i -direction, ~~respectively~~. By
 equally dividing the (α, β) plane, we ~~generate-generated~~ a horizontal mesh including $N_{e,h} \times N_{e,h}$ finite elements. The center
 horizontal position of (i', j') -th element ~~is given by~~ can be written as

$$290 \quad \alpha_{i'} = -\frac{\pi}{4} + \frac{\pi}{2N_{e,h}} \left(i' - \frac{1}{2} \right), \quad \beta_{j'} = -\frac{\pi}{4} + \frac{\pi}{2N_{e,h}} \left(j' - \frac{1}{2} \right).$$

$$\alpha_{i'} = -\frac{\pi}{4} + \frac{\pi}{2N_{e,h}} \left(i' - \frac{1}{2} \right), \quad \beta_{j'} = -\frac{\pi}{4} + \frac{\pi}{2N_{e,h}} \left(j' - \frac{1}{2} \right). \quad (23)$$

Using the tensor-product of one-dimensional Lagrange polynomials $l_m(\tilde{\mathbf{x}}) = l_{m_1}(\tilde{x}^1)l_{m_2}(\tilde{x}^2)l_{m_3}(\tilde{x}^3)$, a local approximated
 solution within each element Ω_e ~~is~~ can be represented as

$$295 \quad q^e|_{\Omega_e}(\tilde{\mathbf{x}}, t) = \sum_{m_1=1}^{p+1} \sum_{m_2=1}^{p+1} \sum_{m_3=1}^{p+1} Q_{m_1, m_2, m_3}^e(t) l_{m_1}(\tilde{x}^1)l_{m_2}(\tilde{x}^2)l_{m_3}(\tilde{x}^3), \quad (24)$$

In Eq. (24), the coefficients Q_{m_1, m_2, m_3}^e are the unknown degrees of freedom (DOF) and p is the polynomial order. In this
 study, the Legendre–Gauss–Lobatto (LGL) points were used for interpolation and integration nodes. We defined ~~an effective~~
~~horizontal~~ a representative grid spacing at the equator which approximately corresponds to that in the grid-point methods as

$$\Delta_{h,eq} = \frac{\pi a}{2N_{e,h}(p+1)},$$

300

$$\Delta_{h,eq} = \frac{\pi a}{2N_{e,h}(p+1)}. \quad (25)$$

~~which approximately corresponds to the grid spacing in the grid-point methods.~~ Similar to the case of the horizontal direction,
we defined a representative vertical grid spacing Δ_v . For the uniform vertical element size, $\Delta_v = z_T/(N_{e,v}(p+1))$ where $N_{e,v}$
is the number of vertical elements. Hereinafter, we simply refer to $\Delta_{h,eq}$ and Δ_v as the horizontal and vertical grid spacing,
 305 respectively.

By applying the Galerkin approximation to Eq. (3), ~~we obtain~~ a strong form of the semi-discretized equations can be obtained
 as

$$\frac{d}{dt} \int_{\Omega_e} q^e(\tilde{\mathbf{x}}, t) l_m(\tilde{\mathbf{x}}) J^E d\tilde{\mathbf{x}} = - \sum_{j=1}^3 \int_{\Omega_e} \frac{\partial \mathbf{F}_j(q^e, \mathbf{G})}{\partial \xi^j} l_m(\tilde{\mathbf{x}}) J^E d\tilde{\mathbf{x}}$$

$$\begin{aligned}
& - \int_{\partial\Omega_e} [\hat{\mathbf{F}}(\mathbf{q}^e, \mathbf{G}) - \mathbf{F}(\mathbf{q}^e, \mathbf{G})] \cdot \mathbf{n} l_m(\tilde{\mathbf{x}}) J^{\partial E} dS \\
& + \int_{\Omega_e} [\mathbf{S}(\mathbf{q}^e) + \mathbf{S}_{\text{SGS}}(\mathbf{q}^e, \mathbf{G})] l_m(\tilde{\mathbf{x}}) J^E d\tilde{\mathbf{x}},
\end{aligned} \tag{26}$$

where $(\mathbf{F}_1, \mathbf{F}_2, \mathbf{F}_3) = (\mathbf{f} + \mathbf{f}_{\text{SGS}}, \mathbf{g} + \mathbf{g}_{\text{SGS}}, \mathbf{h} + \mathbf{h}_{\text{SGS}})$ is the flux vector tensor, $\hat{\mathbf{F}}$ is the numerical flux at the element boundary $\partial\Omega_E$, and \mathbf{n} is the outward unit vector normal to $\partial\Omega_E$; In the volume and surface integrals, J^E and $J^{\partial E}$ represent the transformation Jacobian with the general curvilinear coordinates and local coordinates within each element. Note that, because of the linear mapping in Eq. (22), the associated geometric factors such as J^E and $J^{\partial E}$ have [a constant value in constant values](#) when the volume and surface integrals are calculated. For the turbulent model, we need to evaluate the eddy viscous flux tensor and diffusion flux, which include a few gradient terms with quantities such as $\chi = (u^\xi, u^\eta, u^\zeta, \theta)$, denoted by $\mathbf{G} = (\partial\chi/\partial\xi^1, \partial\chi/\partial\xi^2, \partial\chi/\partial\xi^3)$ in Eq. (26). The gradient discretization in the ξ^j -direction is given by

$$\begin{aligned}
\int_{\Omega_e} \rho \mathbf{G}_j l_m(\tilde{\mathbf{x}}) J^E d\tilde{\mathbf{x}} &= \int_{\Omega_e} \left[\frac{\partial \rho^e \chi^e}{\partial \xi^j} - \chi^e \left(\frac{\partial \rho}{\partial \xi^j} \right)^e \right] l_m(\tilde{\mathbf{x}}) J^E d\tilde{\mathbf{x}} \\
&+ \int_{\partial\Omega_e} (\widehat{\rho\chi} - \rho^e \chi^e) \mathbf{n}_{\tilde{x}^j} \cdot \mathbf{n} l_m(\tilde{\mathbf{x}}) J^{\partial E} dS,
\end{aligned} \tag{27}$$

where $\mathbf{n}_{\tilde{x}^j}$ is the unit vector in the \tilde{x}^j -direction and the density gradient is calculated by

$$\int_{\Omega_e} \left(\frac{\partial \rho}{\partial \xi^j} \right)^e l_m(\tilde{\mathbf{x}}) J^E d\tilde{\mathbf{x}} = \int_{\Omega_e} \frac{\partial \rho^e}{\partial \xi^j} l_m(\tilde{\mathbf{x}}) J^E d\tilde{\mathbf{x}} + \int_{\partial\Omega_e} (\hat{\rho} - \rho^e) \mathbf{n}_{\tilde{x}^j} \cdot \mathbf{n} l_m(\tilde{\mathbf{x}}) J^{\partial E} dS.$$

$$\int_{\Omega_e} \left(\frac{\partial \rho}{\partial \xi^j} \right)^e l_m(\tilde{\mathbf{x}}) J^E d\tilde{\mathbf{x}} = \int_{\Omega_e} \frac{\partial \rho^e}{\partial \xi^j} l_m(\tilde{\mathbf{x}}) J^E d\tilde{\mathbf{x}} + \int_{\partial\Omega_e} (\hat{\rho} - \rho^e) \mathbf{n}_{\tilde{x}^j} \cdot \mathbf{n} l_m(\tilde{\mathbf{x}}) J^{\partial E} dS. \tag{28}$$

For the numerical flux of the inviscid terms, ~~this study used~~ the Rusanov flux (Rusanov, 1961) [was used](#) as a simple choice of the approximated Riemann solvers. Its numerical dissipation is provided based on the maximum absolute eigenvalue of the Jacobian matrix at the left and right sides of the element boundary. ~~From previous studies (Li et al., 2020), Previous studies (e.g., Li et al., 2020) formulated~~ the Rusanov flux ~~considered-taken into account~~ the horizontal and vertical coordinate transformations ~~is formulated~~ as

$$\hat{\mathbf{F}}_{\text{invis}} = \frac{1}{2} \{ [\mathbf{F}_{\text{invis}}(\mathbf{q}^+) + \mathbf{F}_{\text{invis}}(\mathbf{q}^-)] \cdot \mathbf{n} - \lambda_{\max} [\mathbf{q}^+ - \mathbf{q}^-] \},$$

330

$$\hat{\mathbf{F}}_{\text{invis}} = \frac{1}{2} \{ [\mathbf{F}_{\text{invis}}(\mathbf{q}^+) + \mathbf{F}_{\text{invis}}(\mathbf{q}^-)] \cdot \mathbf{n} - \lambda_{\max} [\mathbf{q}^+ - \mathbf{q}^-] \}, \tag{29}$$

where λ_{\max} is the maximum of the absolute value of eigenvalues of the flux Jacobian in the direction \mathbf{n} , and \mathbf{q}^- and \mathbf{q}^+ represent the interior and exterior values at $\partial\Omega_e$. At the element boundaries in the horizontal directions (ξ and η), λ_{\max} can be represented as

$$335 \quad \lambda_{\max,\xi} = |u^\xi| + \sqrt{G_c^{11}} c_s, \quad \lambda_{\max,\eta} = |u^\eta| + \sqrt{G_c^{22}} c_s,$$

$$\lambda_{\max,\xi} = |u^\xi| + \sqrt{G_c^{11}} c_s, \quad \lambda_{\max,\eta} = |u^\eta| + \sqrt{G_c^{22}} c_s, \quad (30)$$

respectively, where $c_s = [(C_p/C_v)RT]^{1/2}$ is the speed of sound wave. For the vertical direction ζ , λ_{\max} can be represented as

$$340 \quad \lambda_{\max,\zeta} = |\tilde{u}^\zeta| + \left[1/\sqrt{G_v} + G_v^{13} G_X + G_v^{23} G_Y \right]^{1/2} c_s,$$

$$\lambda_{\max,\zeta} = |\tilde{u}^\zeta| + \left[1/\sqrt{G_v} + G_v^{13} G_X + G_v^{23} G_Y \right]^{1/2} c_s, \quad (31)$$

where $G_X = G_v^{13} G_c^{11} + G_v^{23} G_c^{12}$ and $G_Y = G_v^{13} G_c^{21} + G_v^{23} G_c^{22}$. ~~As~~ The central flux was adopted as the numerical flux of the gradient \mathbf{G} and the SGS fluxes ($\mathbf{f}_{\text{SGS}}, \mathbf{g}_{\text{SGS}}, \mathbf{h}_{\text{SGS}}$) with the turbulent model, ~~we adopted the central flux.~~

When the same nodes are used for interpolation and integration (i.e., collocation), ~~we can obtain~~ a matrix form of Eqs. (26) and (27) can be obtained as

$$\frac{d\mathbf{q}^e}{dt} = - \sum_{j=1}^3 d_j D_{\tilde{x}^j} \mathbf{F}_j(\mathbf{q}^e, \mathbf{G}) - \sum_{f=1}^6 s_{\partial\Omega_{e,f}} L_{\partial\Omega_{e,f}} [\hat{\mathbf{F}}(\mathbf{q}^e, \mathbf{G}) - \mathbf{F}(\mathbf{q}^e, \mathbf{G})] \cdot \mathbf{n} + \mathbf{S}(\mathbf{q}^e) + \mathbf{S}_{\text{SGS}}(\mathbf{q}^e, \mathbf{G}), \quad (32)$$

$$\rho \mathbf{G}_j = d_j D_{\tilde{x}^j} (\rho^e \chi^e) - \chi^e \left(\frac{\partial \rho}{\partial \xi^j} \right)^e + \sum_{f'=1}^2 s_{\partial\Omega_{e,f'}} L_{\partial\Omega_{e,f'}} (\widehat{\rho \chi} - \rho^e \chi^e) \mathbf{n}_{\tilde{x}^j} \cdot \mathbf{n}, \quad (33)$$

where $D_{\tilde{x}^j}$ represents the differential matrix for the \tilde{x}^j -direction; $L_{\partial\Omega_{e,f}}$ represents the lifting matrix with the surface integral for the f -th element surface, and $L_{\partial\Omega_{e,f'}}$ ~~represent~~ represents the same for the f' -th element surface in the gradient operator for the \tilde{x}^j -direction. The components of these matrices are given as

$$(D_{\tilde{x}^j})_{m,m'} = M^{-1} \int_{\Omega_e} l_m \frac{\partial l_{m'}}{\partial \tilde{x}^j} d\tilde{\mathbf{x}}, \quad (L_{\partial\Omega_{e,j}})_{m,m'} = M^{-1} \int_{\partial\Omega_{e,j}} l_m l_{m'}^{\partial\Omega_{e,j}} dS, \quad (34)$$

where M denotes the mass matrix and is given by

$$M_{m,m'} = \int_{\Omega_e} l_m l_{m'} d\tilde{\mathbf{x}}. \quad (35)$$

355 The density gradient term is calculated ~~by~~ as

$$\left(\frac{\partial \rho}{\partial \xi^j}\right)^e = d_j D_{\bar{x}^j} \rho^e - \sum_{f'=1}^2 s_{\partial \Omega_{e,f'}} L_{\partial \Omega_{e,f'}} (\bar{\rho} - \rho^e) \mathbf{n}_{\bar{x}^j} \cdot \mathbf{n}. \quad (36)$$

Note that, in Eqs. (32), (33), and (36), $d_j = \partial \bar{x}^j / \partial \xi^j$ and ~~$s_{\partial \Omega_{e,j}} = J_{\partial \Omega_{e,j}} / J^E$~~ $s_{\partial \Omega_{e,f'}} = J_{\partial \Omega_{e,f'}} / J^E$ are constant values in the volume and surface integrals, respectively. We changed the calculation method of mass and lifting matrices depending on temporal discretization; This is detailed in Sect. 2.4.

360 The balance between the pressure gradient and buoyancy terms should be carefully treated in the discrete momentum equation (e.g., Blaise et al., 2016; Orgis et al., 2017). ~~Because~~ In the above formulation, because a different discretization space is used between the terms ~~in the above formulation~~, a numerical imbalance is possible and may cause spurious oscillations, which can destabilize the simulations. To avoid this incompatibility, the vertical polynomial order for the density in the buoyancy term was reduced by one following Blaise et al. (2016).

365 2.4 Temporal discretization

The semi-discretized equations in Eq. (26) can be represented as ~~an~~ the following ordinary differential equation (ODE) system ~~as-~~

$$\frac{dq}{dt} = \mathcal{S}(q, \nabla q) + \mathcal{F}(q, \nabla q), \quad (37)$$

where $\mathcal{S}(q, \nabla q)$ and $\mathcal{F}(q, \nabla q)$ represent the tendencies with slow and fast contributions, respectively. This study adopted
370 Runge–Kutta (RK) schemes to solve the ODE system from $t = n\Delta t$ to $t = (n+1)\Delta t$, where Δt is the time step and n is a natural number. In this subsection, we describe two approaches for temporal discretization, namely, horizontal explicit and vertical implicit (HEVI) and horizontal explicit and vertical explicit (HEVE) approaches.

We introduce two types of Courant number, which are used to explain timestep settings for the numerical experiments in Sect. 3. For the horizontal advection test, the advective Courant number associated with the horizontal wind is defined as
375 $C_{r,adv} = U_0 \Delta t / \Delta_{h,eq}$, where U_0 is the representative wind speed. For other numerical experiments, the acoustic Courant number associated with the sound wave propagation is defined as $C_{r,c_s} = c_s \Delta t / \Delta$, where Δ is the grid spacing; In particular, for the HEVI approach, $\Delta = \Delta_{h,eq}$.

2.4.1 HEVI approach

If the aspect ratio of horizontal grid spacing to its vertical counterpart is large, it is impractical to use fully explicit temporal
380 schemes because the vertically propagating sound waves severely restrict ~~to~~ the timestep. A strategy to avoid computational cost in such case is the HEVI approach. The terms corresponding to vertical dynamics with a fast time-scale are evaluated using an implicit temporal scheme, while the remaining terms are evaluated using an explicit temporal scheme. ~~Such procedure can be~~ This procedure is regarded as a framework of implicit-explicit (IMEX) time integration scheme (Bao et al., 2015; Gardner

et al., 2018). General formulation of IMEX RK scheme (e.g., Ascher et al., 1997) with ν stages can be ~~written~~ represented as

$$385 \quad \underline{\mathbf{q}}^{(s)} \equiv \underline{\mathbf{q}^n + \Delta t \sum_{s'=1}^{s-1} a_{ss'} \mathcal{S}(t + c_{s'} \Delta t, \mathbf{q}^{(s')}) + \Delta t \sum_{s'=1}^s \tilde{a}_{ss'} \mathcal{F}(t + \tilde{c}_{s'} \Delta t, \mathbf{q}^{(s')})} \quad \underline{\text{for } s = 1, \dots, \nu}$$

$$\underline{\mathbf{q}}^{n+1} \equiv \underline{\mathbf{q}^n + \Delta t \sum_{s=1}^{\nu} b_s \mathcal{S}(t + c_s \Delta t, \mathbf{q}^{(s)}) + \Delta t \sum_{s=1}^{\nu} \tilde{b}_s \mathcal{F}(t + \tilde{c}_s \Delta t, \mathbf{q}^{(s)})},$$

$$390 \quad \underline{\mathbf{q}}^{(s)} \equiv \underline{\mathbf{q}^n + \Delta t \sum_{s'=1}^{s-1} a_{ss'} \mathcal{S}(t + c_{s'} \Delta t, \mathbf{q}^{(s')}) + \Delta t \sum_{s'=1}^s \tilde{a}_{ss'} \mathcal{F}(t + \tilde{c}_{s'} \Delta t, \mathbf{q}^{(s')})} \quad \underline{\text{for } s = 1, \dots, \nu}$$

$$\underline{\mathbf{q}}^{n+1} \equiv \underline{\mathbf{q}^n + \Delta t \sum_{s=1}^{\nu} b_s \mathcal{S}(t + c_s \Delta t, \mathbf{q}^{(s)}) + \Delta t \sum_{s=1}^{\nu} \tilde{b}_s \mathcal{F}(t + \tilde{c}_s \Delta t, \mathbf{q}^{(s)})}, \quad (38)$$

where $a_{ss'}$, b_s , and c_s define the explicit temporal integrator, while $\tilde{a}_{ss'}$, \tilde{b}_s , and \tilde{c}_s define the implicit temporal integrator; $c_s = \sum_{s'=1}^{s-1} a_{ss'}$ and $\tilde{c}_s = \sum_{s'=1}^{s-1} \tilde{a}_{ss'}$ represents time when slow and fast terms are evaluated, respectively. These coefficients are compactly represented using “double Butcher tableaux”, as shown in Table 2. Note that, in the table of the explicit part, $\mathcal{A} = \{a_{ss'}\}$ with $a_{ss'} = 0$ for $s' \geq s$. On the other hand, for the implicit part, $\tilde{\mathcal{A}} = \{\tilde{a}_{ss'}\}$ with $\tilde{a}_{ss'} = 0$ for $s' > s$ in the case of the diagonally implicit RK scheme.

In this study, the terms associated with vertical mass flux, vertical pressure gradient, vertical flux of potential temperature, and buoyancy in Eqs. (3) ~~are~~ were treated as fast terms, whereas the other terms ~~are~~ were treated as slow terms. To minimize contaminating the spatial accuracy of high-order DGM by temporal errors ~~with~~ present in low-order HEVI scheme, ~~this study adopted~~ a third-order scheme proposed by Kennedy and Carpenter (2003) ~~was~~ adopted; it includes four explicit and three implicit evaluations. The corresponding double Butcher tableaux are given in Table 2. In the implicit part of each stage, the corresponding nonlinear equation system ~~was~~ is solved using Newton’s method. In each iteration, the linearized equation system is solved. ~~To obtain the solutions of~~ Obtaining accurate solutions of the nonlinear equation system ~~precisely, we need a lot of~~ generally requires numerous iterations. However, this study performed a single iteration in Newton’s method (i.e., Rosenbrock approach), ~~thus~~ significantly reducing the computational cost ~~significantly. Such~~ Similar approach has been used in previous studies (e.g., Ullrich and Jablonowski, 2012a) (Ullrich and Jablonowski, 2012a). In the case of the collocation approach, because the horizontal dependency between all nodes within ~~the~~ an element vanishes, the vertical implicit evaluation can be parallelly performed at each horizontal node.

For the case of HEVI, ~~we evaluated~~ the volume and surface integrations in Eqs. (34) and (35) ~~were~~ evaluated using inexact integration with the LGL nodes. Consequently, M and $L_{\partial\Omega_{e,3}}$ ~~become~~ became diagonal matrices, which further ~~simplify~~ simplified the matrix structure associated with the vertical spatial operator.

2.4.2 HEVE approach

When we consider a horizontal grid spacing with $O(10 \text{ m})$ such as in LES, the ratio of horizontal to vertical grid spacing approaches unity. The advantages of HEVI approach decrease. Thus, it is suitable to adopt a fully explicit temporal approach, referred to as HEVE approach. In such cases, RK schemes with a strong stability preserving (SSP) property (e.g., Gottlieb et al., 2001) (Gottlieb et al., 2001) are often used together in combination with DGM. Same as in Similar to KT2023, this study adopted a ten-stage RK scheme with the fourth-order accuracy proposed by Ketcheson (2008). The corresponding Butcher table is given in Table 3. When using the HEVE approach, entries of the matrices in Eqs. (34) and (35) were directly calculated following Sect. 3.2 in Hesthaven and Warburton (2007).

2.5 Modal filtering

For high-order methods DGM, numerical instability is likely to occur because inherent numerical dissipations are small. Further in advection-dominated flows because the numerical dissipations with the upwind numerical fluxes weaken. Furthermore, we adopted a collocation approach due to its computational efficiency, as described in Sect. 2.3. One drawback is that the aliasing errors with evaluations of the nonlinear terms can drive numerical instability. To suppress the this numerical instability, a modal filter was used as an additional stabilization mechanism. The filter matrix for the three-dimensional problem can be obtained as

$$\mathcal{F} = V^{3D} C^{3D} V^{3D},$$

$$\mathcal{F} = V^{3D} C^{3D} V^{3D}, \quad (39)$$

where V^{3D} represents the Vandermode matrix associated with the LGL interpolation nodes (in Eq. (24)) and C^{3D} represents is the diagonal cutoff matrix. The entries of C^{3D} are defined as

$$C_{(m_1, m_2, m_3), (m'_1, m'_2, m'_3)}^{3D} = \delta_{m_1, m'_1} \sigma_{m_1}^h \delta_{m_2, m'_2} \sigma_{m_2}^h \delta_{m_3, m'_3} \sigma_{m_3}^v,$$

$$C_{(m_1, m_2, m_3), (m'_1, m'_2, m'_3)}^{3D} = \delta_{m_1, m'_1} \sigma_{m_1}^h \delta_{m_2, m'_2} \sigma_{m_2}^h \delta_{m_3, m'_3} \sigma_{m_3}^v, \quad (40)$$

where σ_i^h represents and σ_i^v represent the decay coefficient for the one-dimensional horizontal mode and vertical modes i , while σ_i^v represents that for the vertical mode i , respectively. Based on Hesthaven and Warburton (2007), a typical choice of the coefficient for mode i is provided with an exponential function as

$$\sigma_i = \begin{cases} 1 & \text{if } 0 \leq i \leq p_c \\ \exp \left[-\alpha_m \left(\frac{i - p_c}{p - p_c} \right)^{p_m} \right] & \text{if } p_c \leq i \leq p, \end{cases} \quad (41)$$

where p_c , p_m , and $\alpha_T \alpha_m$ represent the cutoff parameter ($p_c=0$ in this study), the order of the filter, and the non-dimensional decay strength, respectively. In this study, p_c was considered 0. We applied the filter \mathcal{F} to the solution vector \mathbf{q} (in Eq. (4)) at the final stage of the RK scheme with a timestep Δt . Then, the decay time scale for the highest mode is is can be regarded as approximately equal to $\Delta t/\alpha_m$. We set the order p_m , and decay coefficient α_m such that the strength of filter should ensure numerical stability while being as weak as possible. We checked the impact of the modal filter on the convergence rate in Sect. 3.1. In addition, the investigation on how much the modal filters can contaminate the eddy viscosity with the turbulent model and the energy spectra was performed in KT2023.

3 Validation-Verification of dynamical core

~~To validate~~ We conducted several tests to verify our dynamical core, ~~we conducted several tests, which.~~ These tests are summarized in Table ~~1-4.~~ For investigating the behavior of numerical convergence, the number of elements and polynomial order were changed as detailed in Table 5. The dissipation mechanisms used in the numerical experiments are summarized in Table 6. When evaluating numerical errors for the deterministic experiments such as linear advection, gravity wave, mountain wave, and baroclinic wave tests, we ~~use~~ used the following error norms as

$$\underline{L_{1,error}} = \frac{\sum_E \int_{\Omega_E} |\psi(\xi, \eta, \zeta, t) - \psi_{\text{ref}}(\xi, \eta, \zeta, t)| d\mathbf{x}}{\sum_E \int_{\Omega_E} d\mathbf{x}},$$

$$\underline{L_{2,error}} = \left[\frac{\sum_E \int_{\Omega_E} [\psi(\xi, \eta, \zeta, t) - \psi_{\text{ref}}(\xi, \eta, \zeta, t)]^2 d\mathbf{x}}{\sum_E \int_{\Omega_E} d\mathbf{x}} \right]^{1/2},$$

$$\underline{L_{\text{inf,error}}} = \max[\psi(\xi, \eta, \zeta, t) - \psi_{\text{ref}}(\xi, \eta, \zeta, t)],$$

455

$$\underline{L_{1,error}} = \frac{\sum_E \int_{\Omega_E} |\psi(\xi, \eta, \zeta, t) - \psi_{\text{ref}}(\xi, \eta, \zeta, t)| d\mathbf{x}}{\sum_E \int_{\Omega_E} d\mathbf{x}},$$

$$\underline{L_{2,error}} = \left[\frac{\sum_E \int_{\Omega_E} [\psi(\xi, \eta, \zeta, t) - \psi_{\text{ref}}(\xi, \eta, \zeta, t)]^2 d\mathbf{x}}{\sum_E \int_{\Omega_E} d\mathbf{x}} \right]^{1/2},$$

(42)

$$\underline{L_{\text{inf,error}}} = \max[\psi(\xi, \eta, \zeta, t) - \psi_{\text{ref}}(\xi, \eta, \zeta, t)],$$

where $\psi(\xi, \eta, \zeta, t)$ and $\psi_{\text{ref}}(\xi, \eta, \zeta, t)$ denote the numerical and reference solutions, respectively, and \sum_E represents the summation over all elements. Except for the linear advection test case, the results obtained from a sufficiently high-resolution experiment were used as the reference solution since because the exact solution is unknown. In such case, the numerical solution was interpolated into the computational grid with the highest resolution experiment when evaluating the error norms.

For idealized climatological or turbulent flow simulations, such as the Held Suarez and global LES tests, it is difficult to directly evaluate the numerical convergence. ~~Thus,~~ using the error norms defined in Eq. (42). In the long-termed integration, the

465 chaotic behavior of the nonlinear systems can diverge the numerical solutions. In the turbulent flow simulations, a smaller-scale structure becomes more apparent as the grid spacing decreases until the spatial resolution reaches the physical dissipation scale. Thus, for the test cases, we mainly investigated on the impact of the polynomial order on ~~effective resolution while focusing on the energy spectra~~ the shortest wavelength at which the energy spectra began to separate from that in the reference solution.

3.1 Linear advection

470 To ~~validate~~-verify the spatial discretization with the cubed-sphere geometry, we conducted a ~~test for~~ two-dimensional linear advection ~~of test for~~ a scalar quantity q . The experimental setup is similar to test case 1 of Williamson et al. (1992). The longitudinal and latitudinal components of horizontal wind ~~are were~~ prescribed by a solid body rotation as

$$u = u_0(\cos \theta \cos \alpha + \sin \theta \cos \lambda \sin \alpha), \quad v = -u_0 \sin \lambda \sin \alpha,$$

475 $u = u_0(\cos \phi \cos \phi_0 + \sin \phi \cos \lambda \sin \phi_0), \quad v = -u_0 \sin \lambda \sin \phi_0,$ (43)

where λ and θ are the longitude and latitude coordinates, respectively, ~~$u_0 = 2\pi a / (12 \text{ [days]})$, and $\alpha = 2\pi a / (12 \text{ [days]})$, and ϕ_0 denotes the angle between the axis of solid body rotation and the North pole. We considered three values of $\alpha = 0, \pi/4, \pi/2$ $\phi_0 = 0, \pi/4, \pi/2$ radians to investigate the impact of singularity with four corners of each panel in the cubed sphere. Although a cosine-bell profile is often given as an initial profile of the advected field, we used a Gaussian profile ~~was used in this test~~~~

480 ~~ease to ensure to confirm~~ the order of accuracy ~~is~~ higher than two. The profile is defined as

$$q(\lambda, \theta) = \exp\left(-\frac{d(\lambda, \theta)}{D}\right),$$

$$q(\lambda, \phi) = \exp\left(-\frac{d(\lambda, \phi)}{D}\right),$$
 (44)

where D is the characteristic horizontal scale; d is the great circle distance between a position on the sphere ~~(λ, θ)~~ (λ, ϕ) and the center position of Gaussian profile ~~(λ_c, θ_c)~~ (λ_c, ϕ_c) , which is calculated by

$$d(\lambda, \theta) = a \arccos \left[\sin \theta_c \sin \theta \sin \phi_c \sin \phi + \cos \theta_c \cos \theta \cos \phi_c \cos \phi \cos(\lambda - \lambda_c) \right].$$
 (45)

In this experiment, we set ~~to~~ $D = a/5$ and ~~$(\lambda_c, \theta_c) = (3\pi/2, 0)$~~ $(\lambda_c, \phi_c) = (3\pi/2, 0)$.

To investigate a convergence rate ~~of numerical solutions~~, we changed the horizontal ~~resolution as~~ $N_{e,h}(p+1) = 32, 64, 128,$ and 256 for $p = 1, 3,$ and 7; The corresponding effective horizontal grid spacing at the equator is $\Delta_{h,eq} = 313, 156, 78$ and grid spacing $\Delta_{h,eq}$ from 313 km to 39 km. For $p = 11$, we changed it as $N_{e,h}(p+1) = 24, 48, 96,$ and 192, which correspond to ~~$\Delta_{h,eq} = 417, 208, 104,$ and~~ for $p = 1, 3, 7,$ and from 417 km to 52 km for $p = 11$. As a temporal scheme, we adopted a fully explicit fourth-order RK scheme described in Sect. 2.4.2. ~~The Courant number for advection $u_0 \Delta t / \Delta_{h,eq}$ was set to be about~~

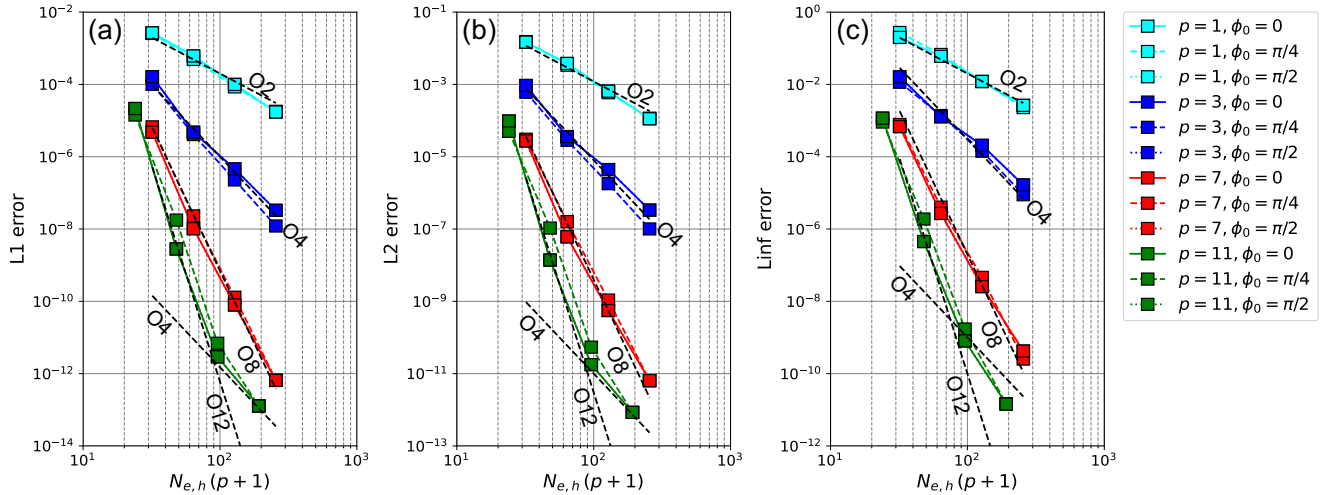


Figure 1. Dependence of (a) L_1 , (b) L_2 , and (c) L_{inf} errors at $t = 12$ days on horizontal resolution in a two-dimensional linear advection problem-test using $p = 1, 3, 7$, and 11 . The colored solid, dashed, and dotted lines represent the results for $\alpha = 0, \phi_0 = 0, \pi/4$, and $\pi/2$, respectively. A black dashed line labeled “ O_n ” indicates the slope with n -th order accuracy.

0.6 To focus on the spatial errors, we set sufficiently small timesteps such that $C_{r,adv} = 7.41 \times 10^{-2}$. In this experiment, the modal filter was not used-required because the upwind numerical flux provided a sufficient numerical stabilization.

495 Figure 1 shows the numerical errors after one period ($t = 12$ days), the dependence of the L_1 , L_2 , and L_{inf} errors at 12 days on the horizontal resolution. As theoretically expected, we obtain about-obtained $p + 1$ -order spatial accuracy for L_1, L_2 , and L_{inf} errors for $p = 1, 3$, and 7 . For $p = 11$ in the high spatial resolutions, the discretization error with the fourth-order temporal scheme, or the round-off error, degrades the convergence rate of 12th-order spatial accuracy. In the figure, the dashed lines represent the error norms in the case of $\alpha = \pi/4$ radian $\phi_0 = \pi/4$ radians when the Gaussian profile passes over the singular points on cubed-sphere mesh. Their magnitudes are similar to that obtained for $\alpha = 0, \pi/2$ were similar to those obtained for $\phi_0 = 0, \pi/2$ radians, which are represented by solid and dashed lines. Even for, respectively. For $p = 1$, there is less difference between the angles of rotation axis. Thus, the numerical errors were almost independent of the angle of the rotation axis. The errors for $\phi_0 = \pi/4$ radians can be smaller than those observed for $\phi_0 = 0, \pi/2$ radians (e.g., $p = 3$). The reason has not been confirmed, but we have found similar results in previous studies (Ullrich et al., 2010). In summary, when applying DGM to the advection problem, we consider the influence of singularity with the cubed-sphere coordinate to be quite small.

505 Because the modal filters are used in other test cases, we checked the impact of the modal filters on the numerical convergence. We conducted the linear advection test in the case of $\phi_0 = 0$ where the order and decay coefficient of the filter changed as $p_m = 64, 32, 16, 8$ and $\alpha_m = 10^{-3}, 10^{-1}, 10^1$. Figure 2 shows the impact of the modal filters on the horizontal resolution dependence of the error norms. The results indicate that the filters can degrade the original convergence rate and increase the numerical errors because the modal filter diminishes the high modes in the polynomial expansion. If the case of using

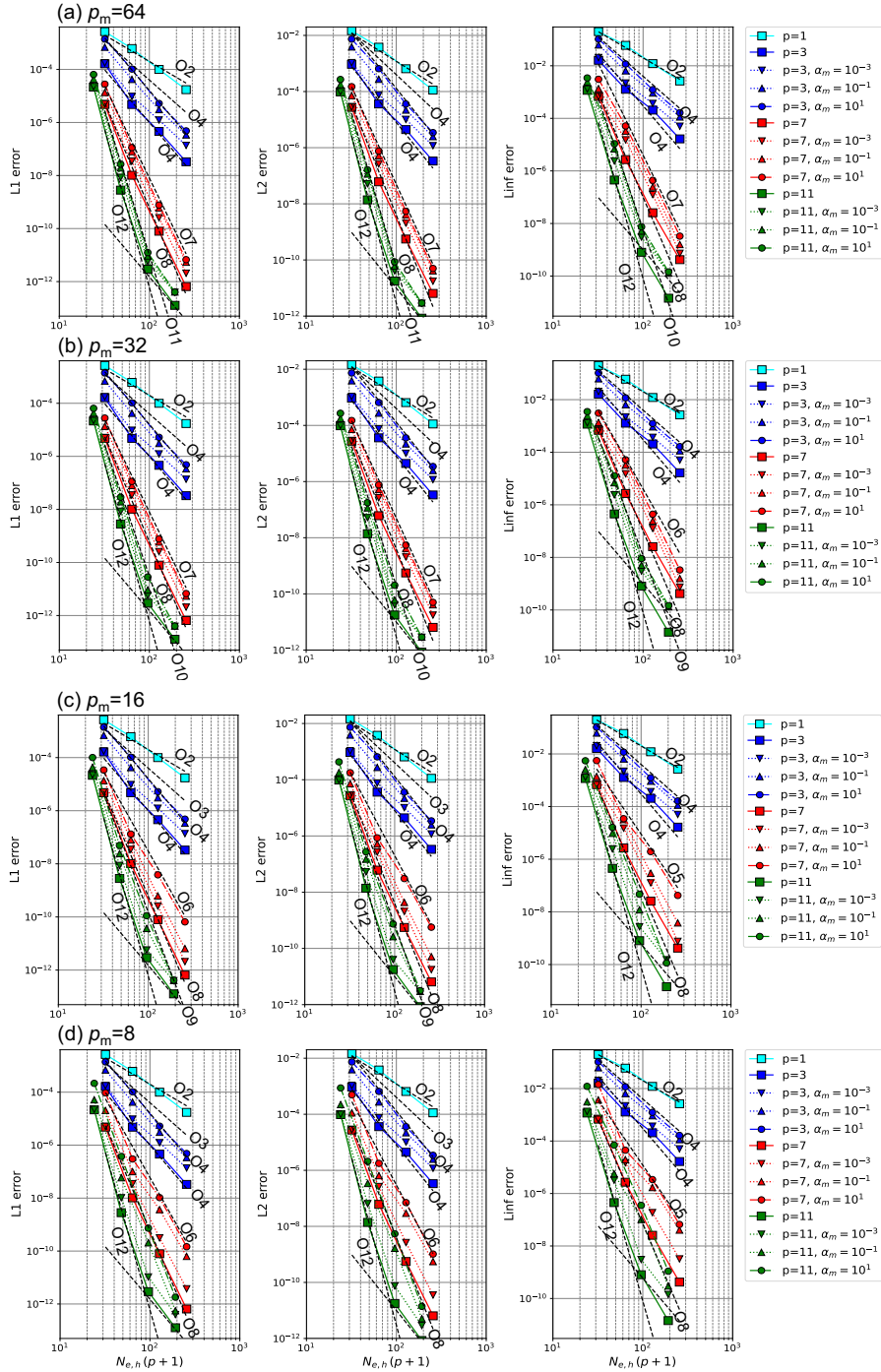


Figure 2. The impact of the modal filters on the horizontal resolution dependence of L_1 , L_2 , and L_{inf} errors at $t=12$ days in a two-dimensional linear advection test for the case $\phi_m = 0$ using $p = 1, 3, 7$, and 11 : (a) $p_m = 64$, (b) $p_m = 32$, (c) $p_m = 16$, and (d) $p_m = 8$. In each p_m , we changed α_m as 0 (without the filter), 10^{-3} , 10^{-1} , and 10^1 .

high-order modal filters such as $p_m \geq 32$, the degradation of convergence rate was in the range of 1~3 for $p = 7, 11$ even if we set sufficiently large values of α_m such that the highest mode was immediately decayed after one timestep. For $p = 3$, the degradation of convergence rate appeared less obvious. However, it should be noted that the errors without the modal filter were much larger compared to $p = 7, 11$. Thus, for $p = 3$, the effect of the increased error due to the filters may be more pronounced in the representation of the flow fields.

3.2 Internal gravity wave

To check wave propagation with pressure gradient and buoyancy terms, test cases of gravity wave are often utilized. For example, Tomita and Satoh (2004) also performed an internal gravity wave test. However, the basic state and initial perturbation produce vertically high modes and nonlinear terms can develop small flow structures. This is inconvenient for investigating numerical convergence. On the other hand, the experimental setting based on Baldauf and Brdar (2013), which originally assumed a two-dimensional computational domain, can focus on a single mode. This study ~~considered~~ presents a global domain version of gravity wave test in Baldauf and Brdar (2013). The initial condition ~~is was~~ a rest isothermal atmosphere of $T_0 = 300$ K, which corresponds to a constant Brunt Väisälä frequency of $\sqrt{g^2/(C_p T_0)} \sim 1.8 \times 10^{-2} \text{ s}^{-1}$. ~~Further~~ Furthermore, we added a small temperature perturbation with a Gaussian profile as

$$T' = \Delta T \exp\left(-\frac{d}{D}\right) \sin\left(n_v \pi \frac{z}{z_T}\right) \exp\left(-\frac{g}{2RT_0} z\right),$$

$$T' = \Delta T \exp\left(-\frac{d}{D}\right) \sin\left(n_v \pi \frac{z}{z_T}\right) \exp\left(-\frac{g}{2RT_0} z\right), \quad (46)$$

where ΔT is the amplitude, D is the characteristic horizontal scale, n_v is the index with vertical mode, and d ~~is calculated from~~ was calculated using Eq. (45). In this experiment, we set to $z_T = 10$ km, $\Delta T = 0.01$ K, $D = a/5$, $n_v = 1$, and $(\lambda_c, \theta_c) = (0, \pi)$, $(\lambda_c, \phi_c) = (0, \pi)$. The Coriolis force and topography were not considered.

The horizontal and vertical ~~effective~~ grid spacing were changed ~~as from~~ (313 km, 417 m) ~~;(156 km, 208 m); (78 km, 104 m); and (to~~ (39 km, 52 m) using ~~$p = 1, 3$, and 7~~ $p = 1, 3, 7$. Whereas, for $p = 11$, they were changed ~~as from~~ (208 km, 417 m) ~~;(104 km, 208 m); and (to~~ (102 km, 104 m). As the temporal scheme, we adopted an IMEX Runge–Kutta scheme with the third-order accuracy, as described in Sect. 2.4.1. ~~For the HEVI scheme, we set the Courant number against the horizontally propagating sound wave as $C_{rh,cs} \sim 0.134$~~ For the HEVI scheme, we set the timestep such that $C_{c,c_s} = 1.34 \times 10^{-1}$ for $p = 1, 3, 7$ and $C_{rh,cs} \sim 0.126$ $C_{c,c_s} = 1.26 \times 10^{-1}$ for $p = 11$. To investigate the impact of temporal ~~error~~ errors, we also conducted additional experiments with smaller timesteps for $p = 7$ and $p = 11$ where the above Courant number ~~value~~ was reduced by factors of 1/2 and 1/4. In the absence of a modal filter, the self-convergence of numerical solutions ~~were~~ was investigated. The reference solution was obtained from a high-resolution experiment where horizontal and vertical grid spacing were (20 km, 26 m) with $p = 7$ and $C_{rh,cs} \sim 0.067$ $C_{c,c_s} = 6.30 \times 10^{-2}$.

To present the temporal evolution of gravity wave, Figure 3 shows the spatial distribution of potential temperature, ~~and zonal and vertical winds~~ zonal wind, and vertical wind after $t = 0.5$ days and $t = 2$ days. Based on this result, the horizontal phase

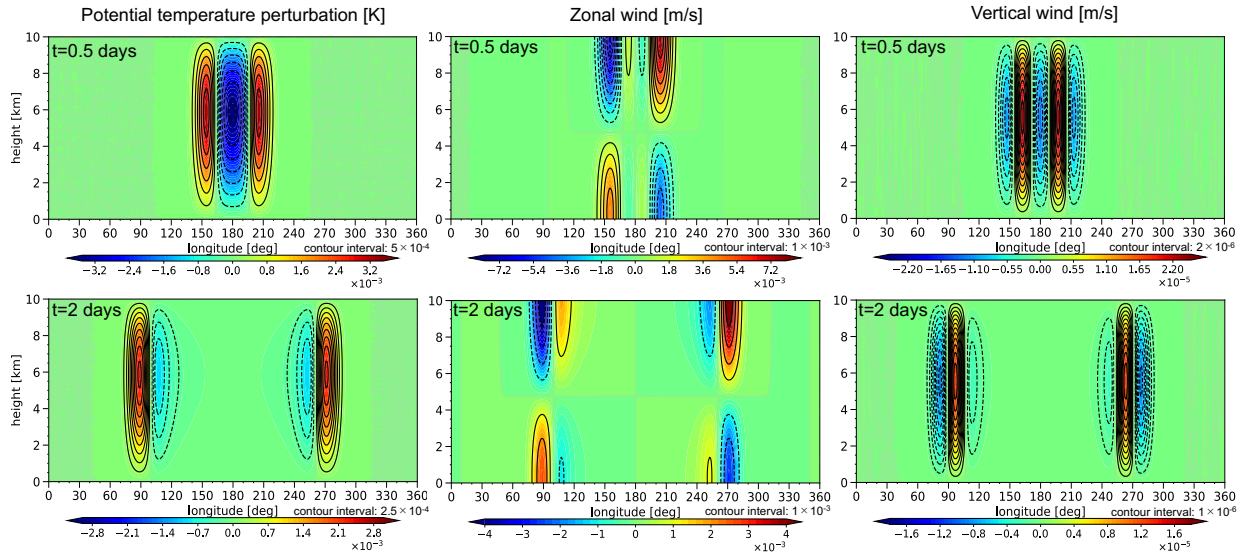


Figure 3. The spatial distribution of potential temperature, ~~and~~ zonal wind, and vertical wind at the equator after $t = 0.5$ days (upper panel) and $t = 2$ days (lower panel) obtained from a gravity wave test case with $(\Delta_{h,eq}, \Delta_v) = (78 \text{ km}, 104 \text{ m})$ using $p = 7$.

speed ~~is was~~ estimated to be ~~about~~ ~~approximately~~ 58 m s^{-1} . This result corresponds well to the linear theoretical value under the hydrostatic approximation, $N_{zT} / (\pi n_v) \sim 57 \text{ m s}^{-1}$.

545 Figure 4 shows the dependence of error norms on spatial resolutions for the density perturbation (ρ'), horizontal wind (u^ξ), vertical wind (w), and perturbation of potential temperature weighted density ($(\rho\theta)'$). For relatively low-order p , such as $p = 1$ and $p = 3$, almost $p + 1$ -order accuracy ~~is was~~ observed for the four variables in sufficiently high spatial resolutions. However, due to the fast wave modes, temporal errors for the third-order HEVI scheme can dominate over the spatial errors in the cases of ~~large larger~~ p and ~~high-resolution~~ ~~higher resolutions~~. This behavior ~~is was~~ evident for the error norms of all variables except for

550 the horizontal wind. For the case of $p = 7$ with $C_{Th,cs} \sim 0.134$, ~~the numerical convergence rate has about~~ $C_{r,cs} = 1.34 \times 10^{-1}$, ~~the convergence rate had approximately~~ third-order ~~slope slopes~~ for ρ' and $(\rho\theta)'$, and it ~~has had~~ between second- and third-order slope for w . As the ~~time step decreases, the numerical timestep decreased, the~~ convergence rate for $p = 7$ ~~approaches almost approached~~ $p + 1$ -order. Even for the ~~ease cases~~ of small Courant number, due to ~~an~~ increase in round-off errors, the reduction in the error norms for ρ' and u^ξ ~~stops as the spatial resolution increased~~ ~~stopped as the grid spacing decreased~~. For

555 $p = 11$, this problem of round-off errors ~~is worse; Stagnating error reduction appears was worse. Stagnating of error reduction appeared~~ in the spatial resolutions ~~lower coarser~~ than that in $p = 7$ and the errors increased with the spatial resolution. Note that the influence of round-off ~~error errors~~ might be overestimated because the amplitude of initial perturbation was significantly small and no modal filter was used in this experiment. Thus, the problem is considered to be not critical in practical simulations ~~including that include~~ the modal filtering or turbulent schemes.

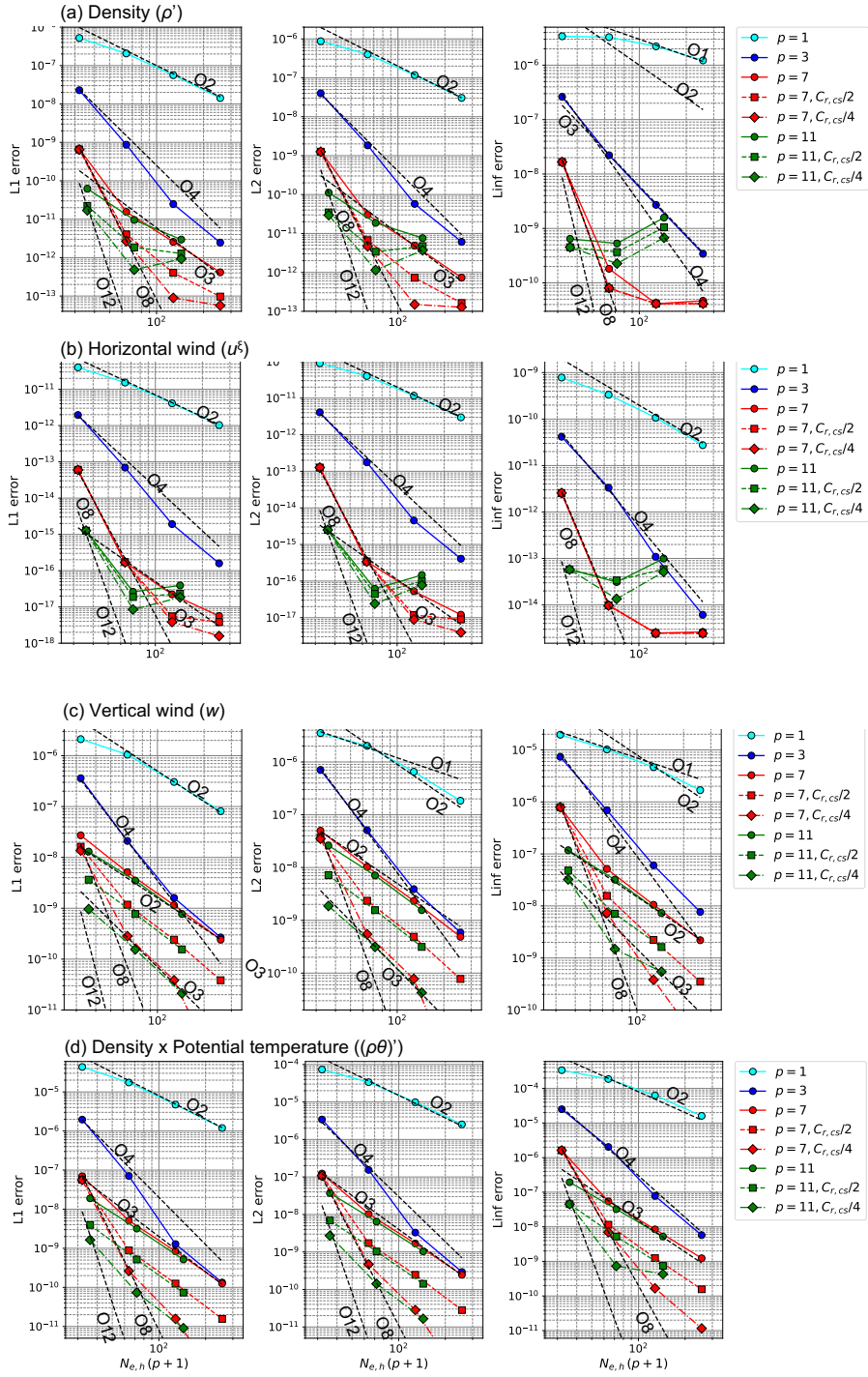


Figure 4. Dependence of L_1 , L_2 , and L_{inf} errors on spatial resolution for (a) density perturbation (ρ'), (b) horizontal wind (u^ξ), (c) vertical wind (w), and (d) perturbation of potential temperature weighted density ($(\rho\theta)'$) after $t = 2$ days in a gravity wave test case.

Adopting the basic terrain-following coordinate introduced in Sect. 2.1 together with low-order schemes is well known to produce large numerical errors with pressure gradient terms and to develop spurious flows (e.g., Zängl, 2012). However, such issues can be avoided using high-order DGM. To check the numerical behavior of the basic terrain-following coordinate in high-order DGM, we performed a mountain wave test on a reduced planet radius based on Klemp et al. (2015) (referred to as KSP2015) and the test case 2-1 in a Dynamical core model intercomparison project (DCMIP) test case document (Ullrich et al., 2012). Here, the planetary radius was set to a/X_r , where $X_r = 166.7$ is the scaling factor. In this experiment, the rotation was not considered. KSP2015 considered a topography profile in the form of

$$h^{\text{KSP2015}}(\lambda, \theta) = h_0 \exp\left(-\frac{\tilde{d}^2}{d_0^2}\right) \cos^2\left(\pi \frac{\tilde{d}}{d_1}\right) \cos \theta,$$

$$h^{\text{KSP2015}}(\lambda, \phi) = h_0 \exp\left(-\frac{\tilde{d}^2}{d_0^2}\right) \cos^2\left(\pi \frac{\tilde{d}}{d_1}\right) \cos \phi, \quad (47)$$

where $\tilde{d} = a/X_r(\lambda - \lambda_c)$ (here, $\lambda_c = \pi$), $d_0 = 5000$ m, and $d_1 = 4000$ m. The maximum height of mountain h_0 was set to 25 m. In the this topography profile, the mountain wave structure along the equator is comparable to the results with two-dimensional Schär type mountain (Schär et al., 2002). On the other hand, from the perspective of investigating the numerical convergence, it is undesirable for the zonal scale of topography to decrease with the latitudes and eventually become zero at the poles. To ensure that the minimum horizontal scale is sufficiently resolved in high resolution simulations, we eliminated the undulation of the mountain is eliminated at the high latitudes using a tapering function as

$$h(\lambda, \theta, \phi) = h^{\text{KSP2015}}(\lambda, \theta, \phi) \frac{1}{2} \left[1 + \tanh\left(\frac{|\theta| - \pi/3}{8\pi/180}\right) \tanh\left(\frac{|\phi| - \pi/3}{8\pi/180}\right) \right]. \quad (48)$$

As initial condition, we assumed a rest isothermal atmosphere of 300 K. KSP2015 considered an impulsive start where a zonal wind in solid body rotation ($u = U_0 \cos \theta$, $u = U_0 \cos \phi$ where $u_0 = 20$ m s⁻¹) and the corresponding balanced state were initially given. However, such impulsive start produces initial shocks with small spatial scales, which complicates the discussion on the numerical convergence. To mitigate the influence of impulsive start, we gradually accelerated the wind using relaxation terms with the time scale of 60 s. For further details, refer to Further details are provided in Appendix B1.

The horizontal and vertical effective grid spacing (at about $z < 15$ km) changed as grid spacing changed from (625 m, 500 m), (313 m, 250 m), and (to (156 m, 125 m) using $p = 3, 7$, and 11 $p = 3, 7, 11$). The model top was set to 30 km. As the temporal scheme, we used a fully explicit fourth-order RK scheme was used. The Courant number against the propagating sound wave was fixed to $C_{\text{th,cs}} \sim 0.263$. The described in Sect. 2.4.2. For the HEVE scheme, we set the timesteps such that $C_{r,cs} = 2.63 \times 10^{-1}$. The reflection of waves at the model top was suppressed by introducing a sponge layer and gradually increasing the vertical grid spacing at about $z > 15$ km. by introducing a sponge layer at $z > 15$ km, where the vertical element size linearly increased with the altitude. Moreover, a lateral sponge layer was placed on the 1/4 sector of the sphere to reduce

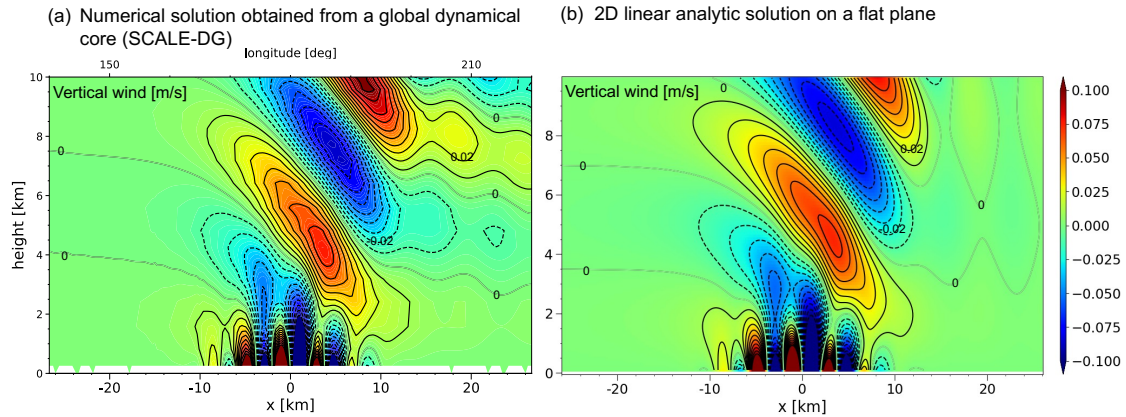


Figure 5. The spatial distribution of vertical wind at the equator obtained from a mountain wave test case with a Schär-like mountain: (a) Numerical solution at $t = 2$ hours obtained from $(\Delta_{h,eq}, \Delta_v) = (625 \text{ m}, 500 \text{ m})$ using $p = 7$, (b) Two-dimensional linear analytic solution on a flat plane (shown for comparison).

590 the disruption of targeting mountain wave structure by initial shocks globally propagating. For the details of the sponge layer, refer to Appendix B2. The reference solution was obtained from a high-resolution experiment where the horizontal and vertical grid spacing were $(78 \text{ m}, 62.5 \text{ m})$ with $p = 7$. In this test case, to ensure the numerical stability, we used a weak modal filter, which are summarized in Table. 7.

Figure 5(a) shows the spatial distribution of vertical wind after 2 hours. For a comparison, a linear analytic solution on a flat plane in the two-dimensional Cartesian coordinates is shown in Fig. 5(b) (The derivation can be found in Appendix A of KSP2015, for example). Since, because the characteristic wavelength of mountain scaled by the Scorer parameter is $d_0 N / U_0 \sim O(1)$, this setting corresponds to a nonhydrostatic regime of mountain wave. In such regime, the waves with small-scale wavelengths are trapped near the surface, while large-scale waves propagate upward. The obtained wind pattern well reproduces that reproduced the results shown in Fig. 2(a) of KSP2015. On the other hand, the numerical solution and the linear analytic solution on a flat plane is was slightly different. We consider that the difference. For example, the vertical wavelength of the large-scale waves in Fig. 5(a) was shorter compared to that in Fig. 5(b). Based on the consideration using our regional dynamical core, the difference might be caused by the spherical experimental setup. Thus, we expect this difference to decreases as the planetary radius increases in addition to optimizing the sponge layer while the spatial scale of the mountain remains unchanged.

605 Figure 6 shows the dependence of error norms on spatial resolutions resolution for the density perturbation (ρ') , horizontal wind (u^x) , vertical wind (w) , and perturbation of potential temperature weighted density $((\rho\theta)')$. A comparison performed at the fixed DOF shows that the numerical errors decrease decreased with the increase in polynomial order, although the numerical convergence rate is convergence rate was smaller than $p+1$ -order accuracy. For example, the slope of L_2 error norm is about was approximately 3/4 of that with $p+1$ -order accuracy. Based on additional experiments with the corresponding two-dimensional setup, the sub-optimal convergence can be related to several factors such as the modal filter and the spatial discretization for

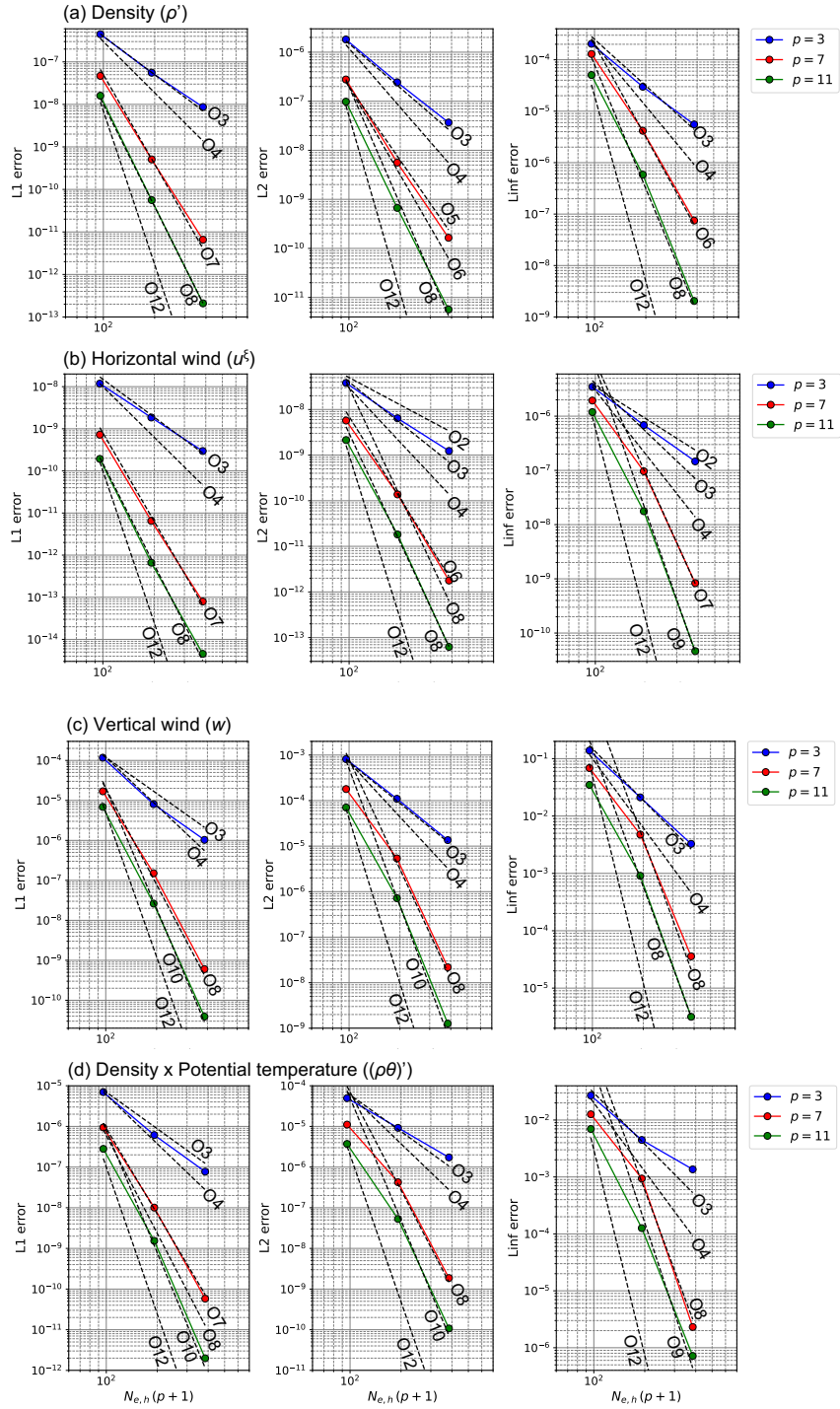


Figure 6. Dependence of L_1 , L_2 , and L_{inf} errors on spatial resolution for (a) perturbation of density (ρ'), (b) horizontal wind (u^ξ), (c) vertical wind (w), and (d) perturbation of potential temperature weighted density ($(\rho\theta)'$) after 2 hours in a mountain wave test case.

Jacobian cofactors ($\sqrt{G_v}G_v^{13}$ and $\sqrt{G_v}G_v^{23}$). For further details, refer to Appendix B3. Because the modal filters shave off the high modes in the polynomial expansion, the convergence rate can be degraded. When requiring a convergence rate with a certain order of the accuracy, we need to increase the polynomial order according to the filter intensity.

3.4 Baroclinic instability

615 Baroclinic instability is a typical phenomenon in ~~mid-latitude~~the mid-latitudes. It includes small-scale structures such as front and filament formations~~are included~~. We conducted an idealized numerical experiment based on Jablonowski and Williamson (2006) (referred to as JW2006). In the aspect of numerical method, dynamical cores must accurately represent the wave growth process. In addition, it is necessary to treat the developing small-scale flow structures while ensuring numerical stability. ~~As for~~For the experimental setup, the initial zonally symmetric fields ~~can be were~~ expressed using the analytic expressions of a steady-state solution of the adiabatic inviscid primitive ~~equation~~equations. To trigger baroclinic instability, a perturbation ~~of zonal wind~~with a Gaussian profile ~~is added~~was added to the zonal wind in the Northern hemisphere. For further details on parameter values, refer to Sect. 2(a) of JW2006.

We investigated on the dependence of numerical solutions on the horizontal resolution as performed in JW2006. The horizontal ~~effective~~grid spacing $\Delta_{h,eq}$ changed ~~as from~~ 250 km ~~, 125 km, 63 km, and to~~ 32 km with a fixed total vertical DOF 625 of 24 for $p = 3$ and 7, whereas it changed ~~as from~~ 208 km ~~, 104 km, and to~~ 52 km with a fixed total vertical DOF of 36 for $p = 11$. ~~We used a stretch vertical grid spacing such that the effective vertical grid spacing Δ_v near the surface became about 350 m~~We used a stretched vertical grid based on Eq. (102) in Ullrich et al. (2012). The stretching parameter was set such that the vertical grid spacing Δ_v near the surface took the values of 305 m, 523 m, and 426 m for $p = 3, 7$, and 11, respectively. The stretching is further detailed in Appendix C. For the third-order HEVI scheme, ~~we set the Courant number against~~ 630 ~~the horizontally propagating sound wave as $C_{rh,cs} \sim 0.14$~~ we set the timesteps such that $C_{r,cs} = 1.68 \times 10^{-1}$ for $p = 3, 7$ and $C_{r,cs} = 1.26 \times 10^{-1}$ for $p = 11$. Furthermore, the modal filter was utilized to maintain the numerical stability. Its parameters are summarized in Table 8. When calculating the L_2 error of surface pressure, we used the results obtained from the corresponding highest resolution experiment for each p as the reference solution ~~. If the vertical spatial errors have similar values among different horizontal resolution cases, the vertical errors virtually cancel out. Thus, we can to~~ directly discuss the behavior of 635 numerical convergence associated with the horizontal spatial or temporal accuracy.

Figure 7 shows the temporal evolution of baroclinic wave for the case of $\Delta_{h,eq} = 63$ km using $p = 7$. The obtained horizontal distributions of surface pressure and temperature at 850 hPa ~~are were~~ similar to those reported in the previous studies. For example, see Fig. 5 in JW06, which ~~is was~~ obtained from the FV dynamical core (Lin and Rood, 1996, 1997). The wave ~~grows very slow~~grew very slowly for 4 days. After that, the highs and lows ~~deepen~~deepened significantly and the wave ~~begins~~ 640 began to break at the 8-th day. Figure 8 shows dependence of the surface pressure and temperature at 850 hPa (after 9 days) on the horizontal spatial resolution for $p = 7$. The same figure obtained from the FV dynamical core can be seen in Fig. 6 of JW06. Our dynamical core ~~provides~~provided reasonably accurate numerical solutions for experiments performed at high spatial resolution~~experiments~~. These solutions ~~are were~~ comparable to the reference solutions reported in the previous studies.

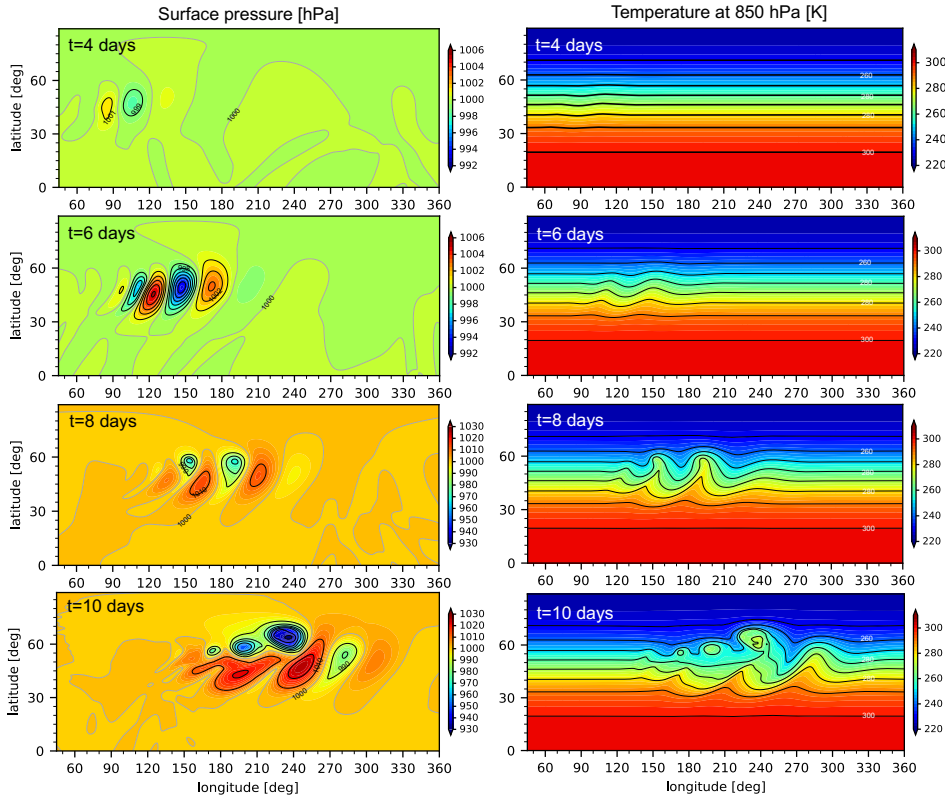


Figure 7. Spatial distribution of the surface pressure and temperature at 850 hPa after $t = 4, 6, 8,$ and 10 days in a baroclinic instability test. We present the results obtained from the experiment using $p = 7$ with $\Delta_{h,eq} = 63$ km and vertical DOF of 24.

In addition, the effective resolution ~~is was~~ apparently higher than that of the low-order global dynamical core. For example, in the marginally resolved simulation setting, $\Delta_{h,eq} \sim 250$ km, the amplitude and phase errors ~~are were~~ small.

For a quantitative evaluation ~~for~~ of the horizontal resolution dependence, Figure 9 shows the temporal evolution of L_2 error norm of the surface pressure for $p = 3, 7,$ and 11. In the figure, the gray shade represents ~~the an~~ uncertainty range of reference solutions estimated by various dynamical cores in JW2006. In our evaluation strategy, ~~due to the cancelation of vertical errors between different horizontal resolutions for each p ,~~ we successfully captured the numerical convergence with horizontal discretization and temporal errors. ~~The L_2 errors until~~ This is because the vertical spatial errors have similar values among different horizontal resolution cases with the same p and these errors virtually cancel out when the L_2 error is evaluated. ~~Until~~ about 6 days (except ~~the~~ initial adjustment stage) ~~decreases with,~~ the L_2 error decreased with the horizontal resolution. The magnitude ~~is was~~ significantly small compared to that ~~reported~~ in previous studies (for example, the FV dynamical core and Mcore (Ullrich and Jablonowski, 2012b)). For example, in the horizontal grid spacing of 50 km (0.5 degrees), the L_2 error was 1×10^{-2} for the FV dynamical core and 5×10^{-3} for Mcore (Ullrich and Jablonowski, 2012b). After 6 days when the baroclinic wave ~~starts started~~ to develop significantly, the L_2 errors rapidly ~~grow grew~~ and the difference between horizontal

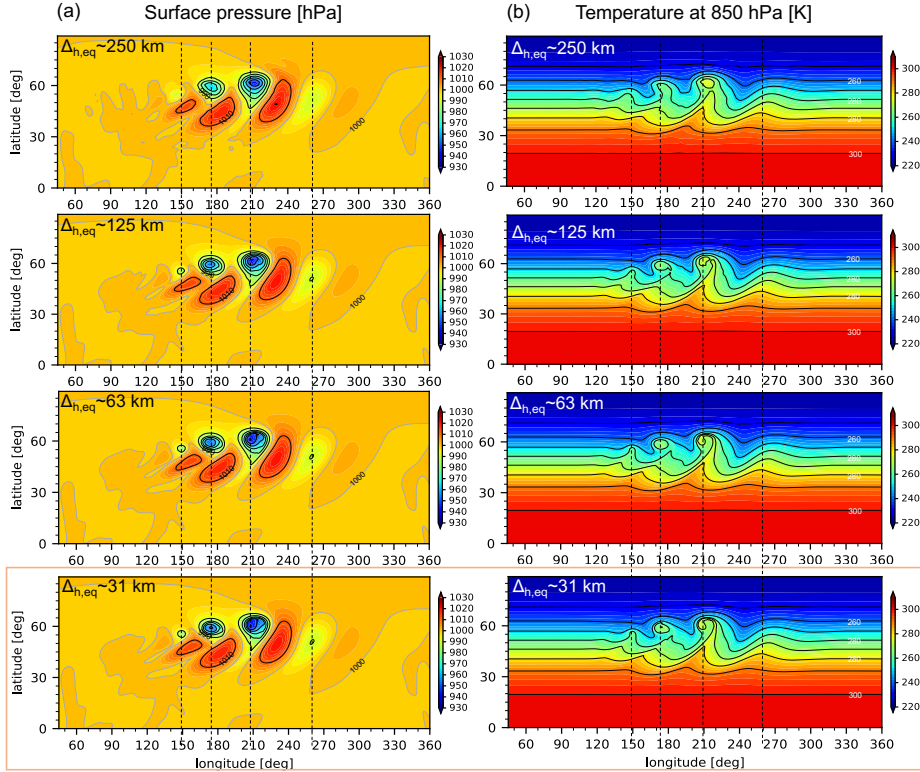


Figure 8. Horizontal resolution dependence of (a) surface pressure and (b) temperature at 850 hPa after $t = 9$ days in a baroclinic instability test. We present the results obtained from the experiments using $p = 7$ with the vertical DOF of 24.

resolutions ~~decreases~~decreased. For $p = 3$, the feature of numerical convergence at the mature stage ~~is~~was similar to that obtained from MCore. In summary, the L_2 errors for $\Delta_{h,eq} < 250$ km are within the uncertainty range suggested by JW2006. Thus, we consider that the numerical solutions obtained from the proposed model are reasonable.

660 3.5 Held–Suarez test

As a long-term idealized benchmark ~~toward~~for real climate simulations, we conducted the Held–Suarez test (Held and Suarez, 1994), which ~~uses~~used a prescribed forcing that mimics complex physics parameterization. The boundary-layer friction ~~is~~was represented in a form of Rayleigh damping. The diabatic heating/cooling effect ~~is~~was represented using a Newtonian relaxation term to a prescribed temperature in radiative equilibrium T_e . For further details on these terms, see p.1826 in Held
665 and Suarez (1994). In this study, a rest atmospheric field in hydrostatic balance with T_e was given as the initial condition.

To investigate the spatial resolution dependence, the ~~effective~~horizontal grid spacing $\Delta_{h,eq}$ and vertical DOF changed ~~as from~~
(208 km, 32) ~~;~~(104 km, 64), and ~~(to~~(52 km, 128) for $p = 3, 7$, and ~~as from~~(208 km, 36) ~~;~~(104 km, 72), and ~~(to~~(52 km, 144) for
 $p = 11$. The vertical grid spacing was stretched using the strategy in Appendix C. For example, when the vertical DOF is 32,

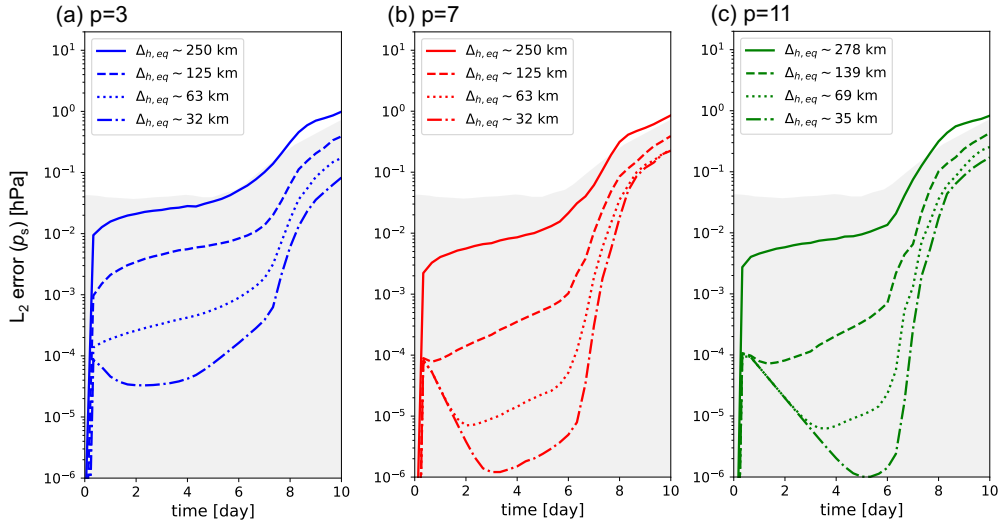


Figure 9. Dependence of the L_2 error norm for surface pressure on horizontal spatial resolution in a baroclinic instability test using (a) $p = 3$, (b) $p = 7$, and (c) $p = 11$. Note that the reference solution for each p is the result from the corresponding highest resolution experiment.

the ~~effective~~ vertical grid spacing near the surface becomes ~~about~~ approximately 350 m. ~~For~~ In the cases of $\Delta_{h,eq} = 208, 104,$ and 52 km, the temporal integration was performed for ~~at least~~ 1200 days; The first 200-days data was discarded during the statistical analysis. For high resolution cases of $\Delta_{h,eq} = 52$ km and 26 km, the results after the spin-up period with coarser resolutions were used as the initial data, and ~~shorter~~ temporal integration was conducted ~~because of the limited computational resources for 1000 days~~. As the temporal scheme, we adopted the third-order HEVI scheme with ~~the Courant number against the horizontally propagating sound wave of $C_{r,h,cs} \sim 0.13$~~ the acoustic Courant number of $C_{r,cs} = 1.26 \times 10^{-1}$ for $p = 3, 7$ and $C_{r,cs} = 7.56 \times 10^{-2}$ for $p = 11$. Moreover, we used the modal filters summarized in Table 9. ~~To~~ Note that the large decay coefficients were set to stabilize long temporal integrations with nonlinear flow processes; ~~note that the large decay coefficients were set~~. The reference solution was obtained from a high-resolution experiment where $\Delta_{h,eq}$ and vertical DOF were (26 km, 256) with $p = 7$.

Figure 10 shows the zonally and temporally averaged atmospheric fields in a statistical equilibrium state for $\Delta_{h,eq} = 208$ km using $p = 7$. The obtained pattern and strength of general circulations ~~are~~ were similar with the results obtained by using ~~nearly spatial resolution~~ nearly the same horizontal spatial resolution used in previous studies (e.g., Wan et al., 2008). For a single westerly jet in each hemisphere, a maximum velocity of ~~about 30-32~~ $m s^{-1}$ ~~is~~ was obtained at $p = 250$ hPa. Easterlies ~~exist~~ existed in equatorial and polar lower atmosphere and near the model top at low latitude. As shown in Fig. 10(c)-(f), the baroclinic wave activity in the proposed DG model ~~is~~ was similar to that reported in previous studies. At $p = 250$ hPa in the mid-latitudes, the magnitude of eddy momentum flux ~~reaches about~~ reached approximately $70 m^2/s^2$. The maximum of poleward eddy heat flux ~~is~~ was located at $p = 850$ hPa in the midlatitude ; ~~its values reaches about~~ and its value reached approximately

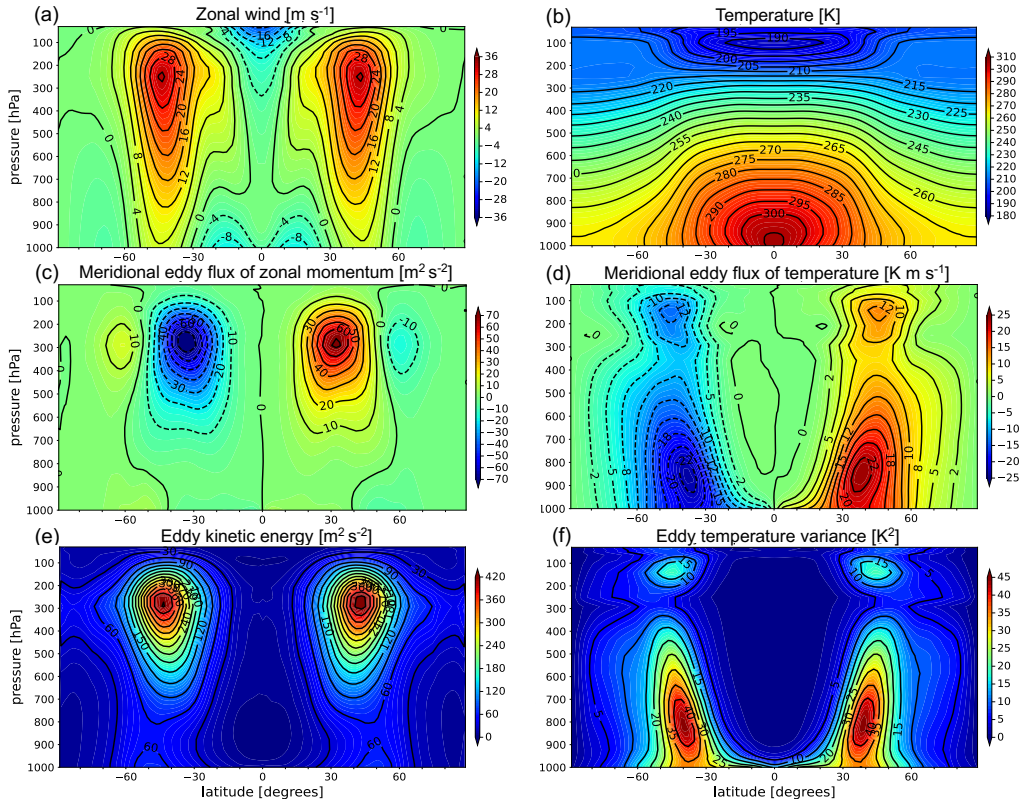


Figure 10. Zonally and temporally ~~averaging~~-averaged atmospheric fields in a statistical equilibrium state: (a) zonal wind, (b) temperature, (c) meridional eddy flux of zonal momentum, (d) meridional eddy flux of temperature, (e) eddy kinetic energy, and (f) eddy temperature variance obtained from a Held–Suarez test with $\Delta h_{\text{eq}} = 208$ km using $p = 7$. As is typically done in previous studies, when taking the zonal and temporal average, we used the 1000-days data after the spin-up calculation.

22 K m s^{-1} . The eddy kinetic energy and temperature variance ~~reach~~reached maximum values of ~~about~~approximately $430 \text{ m}^2/\text{s}^2$ at $p = 250$ hPa and 45 K^2 at $p = 800$ hPa in the midlatitude, respectively.

As discussed in a previous study (Wan et al., 2008), these eddy quantities such as the eddy kinetic energy and tempera-
690 ture variance are sensitive to the spatial ~~resolutions~~resolution. As shown in Figs. 11(a), (c), the absolute peak values ~~increase~~
increased with the spatial ~~resolutions and begin~~resolution and began to converge when the horizontal grid spacing ~~is less~~
~~than about~~was less than 50 km. The convergence of peak values with $p = 7, 11$ ~~is~~was faster than that in the case of $p = 3$.
For comparison, the corresponding peak values indicated from previous studies are shown by the colored boxes in the figure.
The obtained trend of spatial resolution dependence for $p = 3$ ~~is~~was similar to that reported by studies ~~by~~using conventional
695 low-order grid point methods (Tomita and Satoh, 2004; Wan et al., 2013). On the other hand, the peak values from $p = 7, 11$
at the horizontal grid spacing of ~~about~~approximately 200 km ~~are~~were similar to the results obtained by using the horizontal
spectral method (Wan et al., 2008).

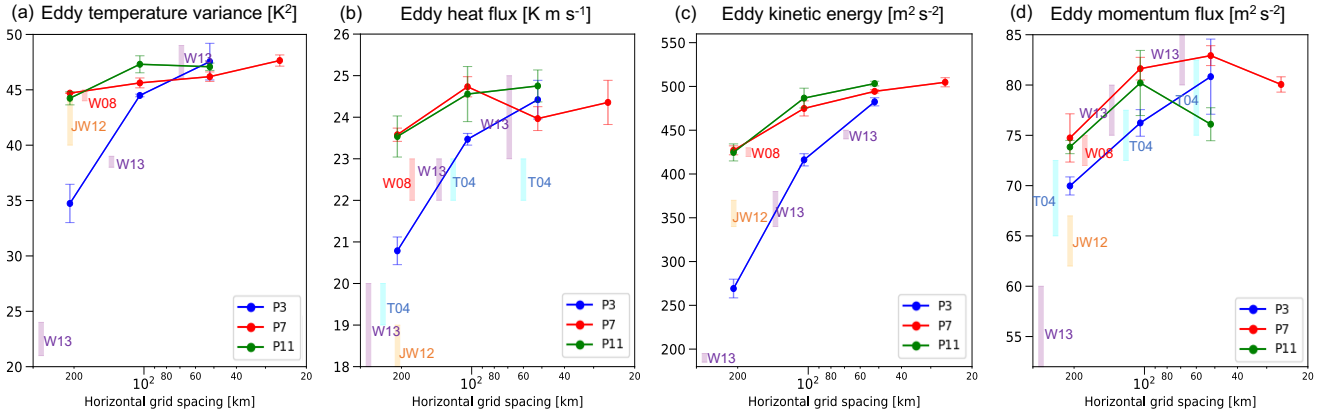


Figure 11. Dependence of absolute peak values on the spatial resolution: (a) eddy temperature variance, (b) eddy heat flux, (c) eddy kinetic energy, and (d) eddy momentum flux. The time averaging period is the same as that in Fig. 11. In each panel, the difference between the Northern and Southern hemispheres is represented using the error bars. The colored boxes labeled by T04, W08, JW12, and W13 denote the corresponding peak values indicated by the results reported in Tomita and Satoh (2004), Wan et al. (2008), Ullrich et al. (2012), and Wan et al. (2013), respectively. Because the peak values were estimated from the contour figures, note that the uncertainty is large, and its range is roughly represented by the box height.

Figure 12 shows kinetic energy spectra of horizontal winds at $p = 850$ hPa and $p = 250$ hPa. As reported in previous studies (e.g., Malardel and Wedi, 2016; Tolstykh et al., 2017), the obtained spectra have had the n^{-3} slope at the spherical harmonic degrees between $10 \sim 100$. The steep-steeper slope compared to -3 reflects the influence of numerical dissipation mechanism with the upwind numerical flux and the modal filter. For the cases of $p = 7, 11$, the obtained energy spectra well follow-followed that for the reference experiment at the wavelengths longer than about-eight-grid/eight grid lengths. In the spatial resolution dependence of peak values with the eddy quantities shown in Fig. 11, there is-was no significant difference between $p = 7$ and $p = 11$, whereas the improvement of effective resolution by higher polynomial order of $p = 11$ can be observed in the energy spectra as the grid spacing decreases. For $p = 3$, the energy spectra overlap-overlapped with that of the reference experiment up-to-about-10~20-grids at a wavelength range longer than $10 \sim 20$ grid lengths. Furthermore, for $\Delta_{h,eq} = 208$ km with $p = 3$, the spectra-are-entirely-entire spectra were smaller than the reference solution. Thus, using strong modal filters to ensure numerical stability for long-term integration has a significant effect on the spectra and effective resolutions in-relatively-small-polynomial-order when using $p \leq 3$. These results indicate that there is room for improving our treatment of the nonlinear terms to weaken the modal filters.

3.6 Planetary boundary layer turbulence experiment on a small planet

As a first step toward future global LES with $O(10$ m) grid spacing, we performed a global extension of the LES experiment of idealized planetary boundary layer turbulence in Nishizawa et al. (2015), KT2021, and KT2023. Currently, it is not feasible to conduct a global LES for a planetary size of Earth using a uniform spatial resolution of $O(10$ m). To save the required

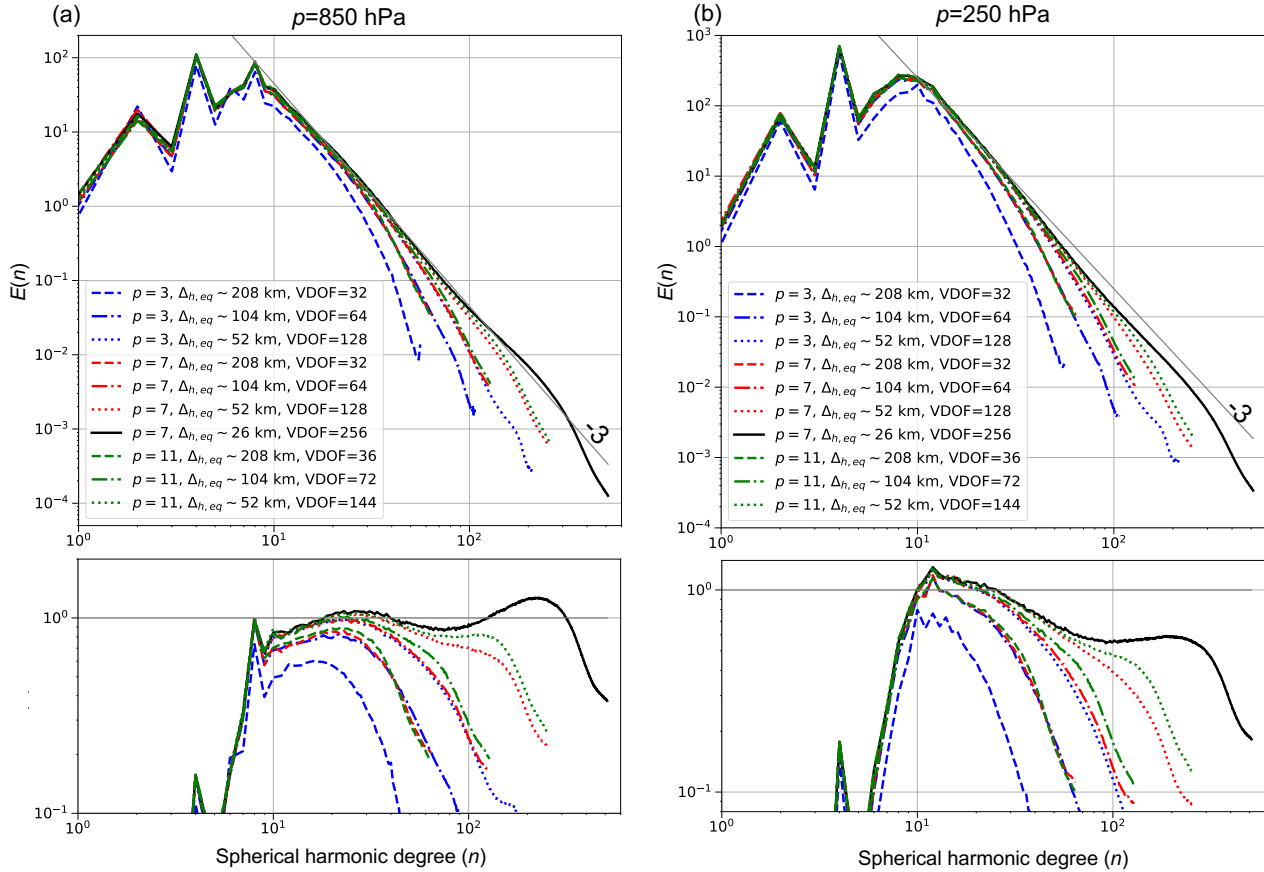


Figure 12. Energy spectra of horizontal wind in a statistical equilibrium state at (a) $p = 850$ hPa and (b) $p = 250$ hPa in a Held–Suarez test. As explained in the legend, the difference between spatial resolutions is represented by line types, and the line color indicates the polynomial order. The results from the reference experiment are shown by solid black lines. Lower panels represent the compensated spectra, which is proportion to $E(n)n^3$. The temporal average was calculated over 1000 days after the spin-up period; In the highest resolution case ($\Delta_{h,eq} = 26$ km), it was performed over 300 days.

715 computational resources, the planetary radius ~~set to be was set to~~ 3.4 km ~~here~~. Although this value is significantly different from that in realistic planets such as Earth and the effect of spherical geometry may affect the convection structure, we consider that this test is useful to ~~validate~~-verify the turbulent model described in Sect. 2.2. We focused on the case of applying the shallow atmosphere approximation because we expected the results to be comparable to ~~the results those~~ reported in our previous studies. This approximation is obviously unsuitable for discussing physical aspect in this experimental setting~~;~~. For the case
720 without approximation, refer to Appendix D. The experimental setup is as follows: The altitude of model top was set to 3 km. There were no rotation and topography. Initially, we set a stable stratification with a vertical gradient of potential temperature of 4 K/km and added random perturbations with an amplitude of 1 K. ~~Since Because~~ it is difficult to consider a uniform wind in the global situation, there ~~is was~~ no initial motion in contrast to that in our previous studies. To drive thermal convections, a constant heat flux ~~with~~ of 200 W m^{-2} was imposed at the surface. To focus on the ~~validation of~~ turbulent model, radiation
725 and moist processes were not considered. In the turbulent model, we set the filter length to double that of ~~effective the~~ local grid spacing, which ~~is same as that in follows~~ our previous studies. A reflection of waves at the model top ~~is prevented using a sponge layer located above $z = 2 \text{ km}$ was prevented~~ using a sponge layer, where the vertical wind was decayed by the Rayleigh damping. The e -folding time varied as the half cosine function from zero at $z = 2 \text{ km}$ to 10 s at the model top.

To check the impact of polynomial order on the energy spectra ~~in the same context as as in~~ KT2023, we changed p as ~~3, 4, 7~~
730 ~~3, 4, and 7~~ while setting the ~~effective horizontal and vertical~~ grid spacing to be ~~about approximately~~ 10 m. Numerical stability was ensured by using a modal filter with parameters $p_{m,h} = p_{m,v} = 32$ and $\alpha_{m,h} = \alpha_{m,v} = 10^{-3}$. As the temporal scheme, a fully explicit fourth-order RK scheme described in Sect. 2.4.2 was used for the inviscid terms, whereas the forward Euler scheme was adopted for the SGS terms. ~~The time step was set to 0.0125 s; The corresponding Courant number for the sound wave is about 0.438~~ We set the timestep such that $C_{r,c_s} = 4.38 \times 10^{-1}$. The integration time was 4 hours for the case of $p = 7$.
735 To reduce the computational cost, the output at 3 hours was used as the initial condition of the other experiments for which the integration time was 1 hour.

Figure 13 shows the horizontal distribution for vertical wind at $z = 500 \text{ m}$ and cross-section along the equator after $t = 4$ hours in the case of $p = 7$. The convective cells ~~have had~~ polygonal structures with a horizontal scale of ~~about approximately~~ 2-3 km. The height of PBL ~~reaches reached~~ between 1–1.5 km. To present the vertical structure of PBL, Figure 14 shows the
740 vertical distribution of potential temperature, turbulent transport of heat and momentum, and skewness of vertical wind for $p = 7$. In these panels, the gray shade represents the results obtained from KT2023 using the plane regional model. The results obtained in this study ~~are were~~ well similar to those reported in KT2023.

Figure 15 shows the kinetic energy spectra of three-dimensional wind at $z = 500 \text{ m}$, which was temporally averaged during the last 30 minutes. The features of the obtained energy spectra ~~are were~~ similar to those reported in KT2023. At longer
745 wavelengths than ~~eight grid~~ eight grid lengths, the slope of spectra was ~~about approximately~~ $-5/3$. On the other hand, the slope of spectra at the shorter wavelength range ~~deepens deepened~~ due to the turbulent model, numerical dissipation with the upwind numerical flux, and ~~modal filter used in this study the modal filter~~. KT2023 indicated that ~~the required polynomial order is $p > 3$, which is $p > 3$~~ is required that the effect of numerical diffusion term is sufficiently small compared to that of the SGS

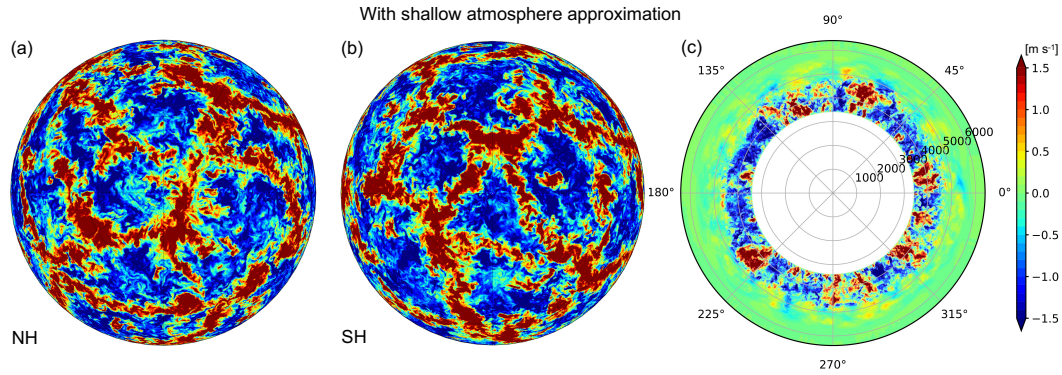


Figure 13. The horizontal distribution of vertical wind at $z = 500$ m after $t = 4$ hours when the shallow atmosphere approximation is applied in the LES of an idealized planetary boundary layer turbulence for the case of $\Delta h_{,eq} = 10$ m using $p = 7$: (a) Northern hemisphere (NH), (b) Southern hemisphere (SH), and (c) their corresponding cross-sections along the equator.

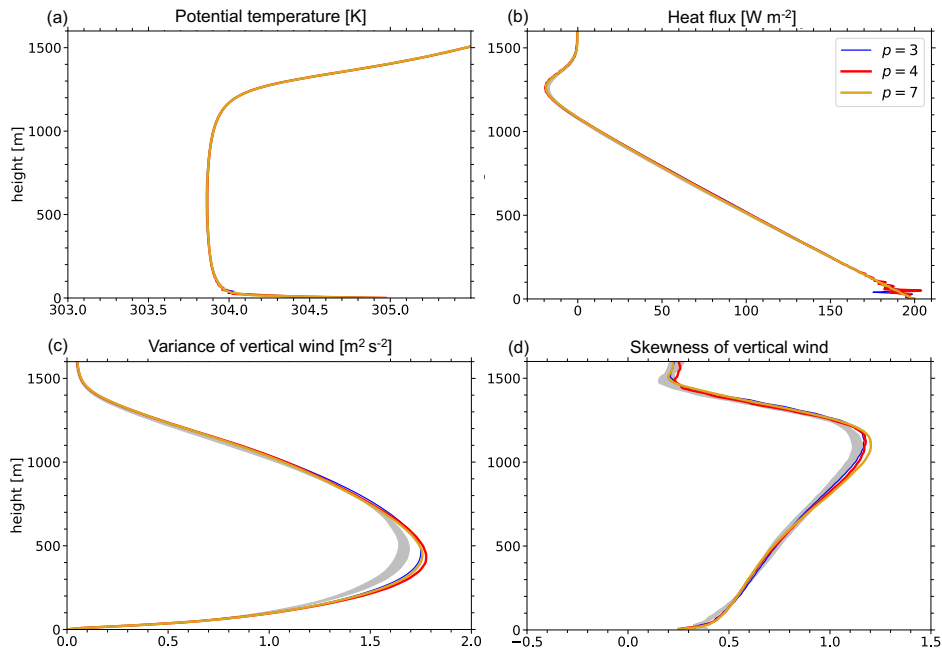


Figure 14. The vertical structure of PBL temporally ~~averaging~~-averaged during the last 30 minutes: (a) potential temperature, (b) resolved eddy heat flux plus SGS heat flux, (c) ~~variable~~-variance of vertical wind, and (d) skewness of vertical wind for $p=3,4,7$. $p=3,4$, and 7 . The gray shade represents the results obtained from KT2023 using the plane model.

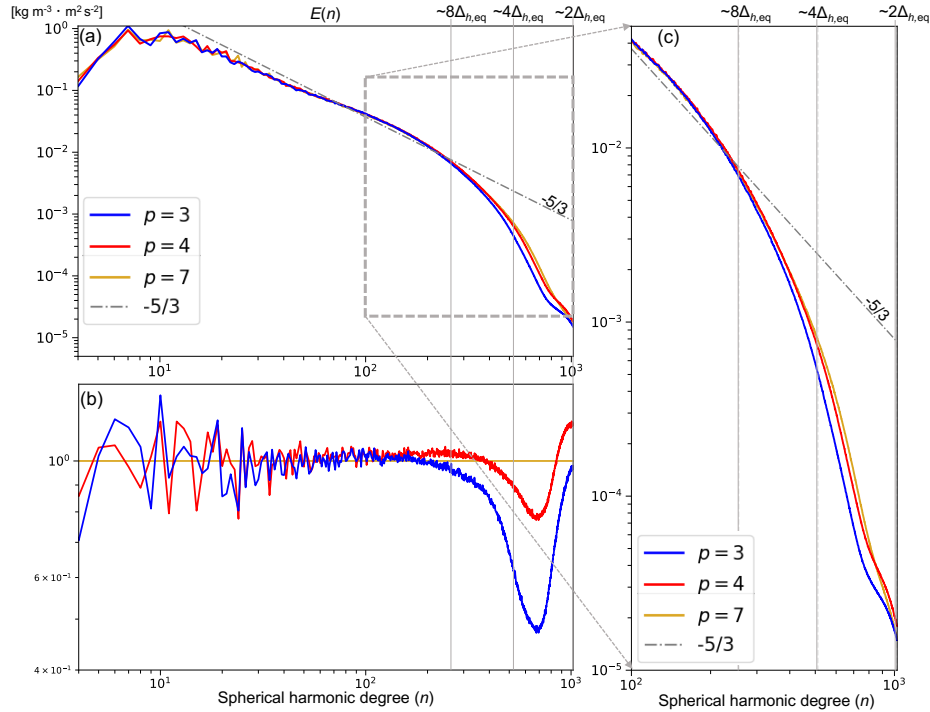


Figure 15. (a) Density-weighted energy spectra $E(n)$ of three-dimensional wind at the height of 500 m for $p=3, 4, 7$. $p=3, 4$, and 7 . The dash-dotted gray line represents $aE(n)$ where $a = 8.0 \times 10^1$. (b) ~~Compensated spectra $E(n)/(an^{-5/3})$~~ Spectra normalized by the result of $p=7$. (c) Partial expanded view of energy spectra in the short wavelength range.

eddy viscosity term at the wavelength longer than eight grid length. This is true for global LES ~~based on the results obtained~~ in this study as shown in Fig. 15(b).

4 Conclusions

For conducting future high-resolution atmospheric simulations precisely, our previous ~~studies~~ study (KT2021) indicated that conventional low-order discretization methods used in the state-of-the-art global nonhydrostatic dynamical cores have a problem of numerical errors because it is possible to contaminate the effect of physical parameterization schemes. To overcome
755 this issue, we developed a global nonhydrostatic atmospheric dynamical core of dry atmosphere using the discontinuous Galerkin method (DGM) as the spatial discretization ~~considering advantages, such as~~ because DGM has several advantages over grid-point methods, including the simple strategy for ~~the~~ high-order discretization and high computational efficiency ~~the~~ high floating-point operations per second (FLOPS) count in recent parallel supercomputers, ~~over grid-point methods~~. Furthermore, considering global LES, we formulated a Smagorinsky–Lilly type turbulent model in the cubed sphere ~~coordinate~~
760 coordinates and discretized it in the DGM framework. To ~~validate~~ verify the proposed global dynamical core, several numerical

experiments, from the linear advection test to the Held–Suarez test, were conducted. To ~~show~~ demonstrate the high-order numerical convergence, the experimental setup of existing test cases were slightly modified. In addition, an idealized test case was proposed to ~~validate the global dynamical core~~ check the behavior of global dynamical cores including the turbulent model. Thorough the numerical experiments with various polynomial orders (p) and spatial resolutions, we discussed the impact of high-order spatial discretization on ~~atmospheric flows~~ the quality of numerical solutions in the atmospheric flow simulations.

For the deterministic test cases, such as the linear advection and gravity wave ~~test cases~~ tests, $p+1$ -order spatial accuracy was confirmed until the temporal discretization and round-off errors became significant compared to the spatial errors. In the gravity wave test, it was observed that the temporal errors with the third-order HEVI scheme can contaminate the convergence rate of high-order spatial discretization even when using the ~~Courant number against horizontal propagating sound wave~~ horizontal acoustic Courant number of $O(0.1)$. To investigate the numerical performance of terrain-following coordinate with DGM, we conducted a mountain wave test case based on that used in Klemp et al. (2015). However, we made some modifications to investigate high-order numerical convergence. When comparing the results for a fixed DOF, the advantage of large polynomial order ~~is~~ was apparent in terms of the fast numerical convergence, although the ~~convergence rate is~~ resultant convergence rate was slightly smaller than the optimal order associated with the spatial discretization. The results of the baroclinic instability test showed that, when $p \geq 3$ and $\Delta_{h,eq} < 240$ km, the obtained L_2 error norms of surface pressure entered the uncertainty range indicated by the previous studies. We confirmed the rapid numerical convergence over the second-order accuracy until the mature stage was reached. Subsequently, the sharp gradient with the front structure developed and the waves began to break, which made it difficult to identify the numerical convergence with the high-order schemes.

For test cases in which small-scale turbulent structures developed, such as the Held–Suarez test and the LES experiment of PBL turbulence, we mainly focused on the energy spectra in ~~the terms of effective resolutions~~ terms of the effective resolution. In the Held–Suarez test, where the turbulence model was not used, the extent of dissipation effect with the numerical flux and modal filters ~~is clearly visible;~~ was clearly visible. Based on the comparison with the energy spectra for the reference experiment, we confirmed that the effective resolution ~~is~~ was improved as the polynomial order ~~increases~~ increased. When we used high-order modal filters with large decay coefficients to ensure numerical stability during long temporal integration, the effective resolution was estimated to be between ~~about~~ 10~20 grids–grid lengths for $p = 3$ and eight ~~grids~~–grid lengths for $p = 7, 11$. To enhance the effective resolutions by weakening the modal filters, we consider that entropy stable DGM adopted in Souza et al. (2023) is a promising method, although this topic is beyond the scope of current study. To check the behavior of turbulent model included in global dynamical cores, we proposed an idealized test case of global LES considering ~~a small planet~~ with a small planetary radius, which is an extension of the experimental setup used in KT2021 and KT2023 with ~~the regional plane model~~ regional plane models. In our numerical experiments with the shallow atmosphere approximation, the convective cell pattern and vertical structures of PBL well ~~reproduce~~ reproduced the results of the regional plane model. We confirmed that the obtained energy spectra ~~obey~~ obeyed the Kolmogorov spectra of turbulence at the wavelength range longer than ~~about eight grids~~ eight grid lengths when $p > 3$ ~~is~~ was used together with the Rusanov numerical flux and a ~~sufficiently high-order modal filter;~~ This result is scale-selective modal filter. This result was consistent with the numerical criteria discussed in KT2023.

Table 1. Values of parameters.

Symbol	Description	Value
C_p	Specific heat for constant pressure of dry air	$1.0046 \times 10^4 \text{ J K}^{-1} \text{ kg}^{-1}$
C_v	Specific heat for constant volume of dry air	$7.1760 \times 10^3 \text{ J K}^{-1} \text{ kg}^{-1}$
R	Gas constant	$C_p - C_v$
P_0	Reference value of pressure	1000 hPa
a	Planetary radius of planet	$6.3712 \times 10^3 \text{ km}$
X_r	Factor of reduced planetary radius	166.7
ω	Angular velocity of planet	$7.2920 \times 10^{-5} \text{ s}^{-1}$
g	Standard gravitational acceleration	9.8066 m/s^2

This study ~~indicates~~ ~~demonstrated~~ the applicability of high-order DGM to global atmospheric dynamical cores via a series of numerical experiments, ~~while~~; ~~However~~, several tasks required to conduct ~~actual atmospheric simulations are realistic atmospheric simulations were~~ not performed. To treat the effect of topography in LES, we ~~also need to~~ ~~must also~~ consider the vertical coordinate transformation in the SGS terms of turbulent model. Such formulation can be achieved using the chain rule, as performed in the differential terms with inviscid fluxes. A related issue is the treatment of topography with steep slopes in high-order strategies. To investigate whether DGM-based dynamical core is robust for realistic topography, a Held-Suarez experiment with realistic topography may be appropriate. Such work is expected to yield deep understandings about the impact of effective resolutions of topography on large-scale flows when high-order DGM is used. Furthermore, ~~a severe timestep restriction for explicit temporal schemes is one of the unresolved issues in high-order DGM. We expect that the computational overheads would be ignored in several cases; A coarser spatial resolution can be used due to the high-order numerical convergence or the small communication cost in DGM is taken advantage of. However, to accelerate DG dynamical cores in all situations, developing sophisticated temporal treatments is an important future work. Finally~~, it is indispensable to perform a coupling between the physics (such as moist and radiation processes) and DGM-based dynamics. Recent studies begin to discuss the potential difficulties with the element-based methods; ~~For example, in the context of spectral element method~~ ~~SEM~~, Herrington et al. (2019) indicated that a straightforward evaluation for physics tendencies at irregular nodes within the element causes a grid imprinting along the element boundaries. To solve this problem, they introduced a physics grid with a quasi-equal volume coarser than the node intervals with the dynamics when calculating the physics tendencies. While taking care of the advantages associated with the effective resolutions of high-order dynamical cores, we will explore how to treat the coupling of physics and dynamics in the DGM framework.

815 *Code and data availability.* Source codes of SCALE-DG v0.8.0 and setting files for numerical experiments are available at the Zenodo repository (<https://doi.org/10.5281/zenodo.10901697>), where we have provided scripts to create figures in this paper. They are provided as open source under the MIT license. SCALE library v.5.5.1 which is a key dependent software of SCALE-DG is available at the Zenodo

Table 2. Double Butcher table for a third-order IMEX RK scheme proposed by Kennedy and Carpenter (2003).

c_s	$a_{ss'}$			
0	0	0	0	0
$\frac{1767732205903}{2027836641118}$	$\frac{1767732205903}{2027836641118}$	0	0	0
$\frac{3}{5}$	$\frac{5535828885825}{10492691773637}$	$\frac{788022342437}{10882634858940}$	0	0
1	$\frac{6485989280629}{16251701735622}$	$-\frac{4246266847089}{9704473918619}$	$-\frac{10755448449292}{10357097424841}$	0
b_s	$\frac{1471266399579}{7840856788654}$	$-\frac{4482444167858}{7529755066697}$	$\frac{11266239266428}{11593286722821}$	$\frac{1767732205903}{4055673282236}$

\tilde{c}_s	$\tilde{a}_{ss'}$			
0	0	0	0	0
$\frac{1767732205903}{2027836641118}$	$\frac{1767732205903}{4055673282236}$	$\frac{1767732205903}{4055673282236}$	0	0
$\frac{3}{5}$	$\frac{2746238789719}{10658868560708}$	$-\frac{640167445237}{6845629431997}$	$\frac{1767732205903}{4055673282236}$	0
1	$\frac{1471266399579}{7840856788654}$	$-\frac{4482444167858}{7529755066697}$	$\frac{1767732205903}{11593286722821}$	$\frac{1767732205903}{4055673282236}$
\tilde{b}_s	$\frac{1471266399579}{7840856788654}$	$-\frac{4482444167858}{7529755066697}$	$\frac{11266239266428}{11593286722821}$	$\frac{1767732205903}{4055673282236}$

Table 3. Butcher table for a fourth-order fully explicit RK scheme with ten stages proposed by Ketcheson (2008).

c_s	$a_{ss'}$								
0									
$\frac{1}{6}$	$\frac{1}{6}$								
$\frac{1}{3}$	$\frac{1}{6}$	$\frac{1}{6}$							
$\frac{1}{2}$	$\frac{1}{6}$	$\frac{1}{6}$	$\frac{1}{6}$						
$\frac{2}{3}$	$\frac{1}{6}$	$\frac{1}{6}$	$\frac{1}{6}$	$\frac{1}{6}$					
$\frac{1}{3}$	$\frac{1}{15}$	$\frac{1}{15}$	$\frac{1}{15}$	$\frac{1}{15}$	$\frac{1}{15}$				
$\frac{1}{2}$	$\frac{1}{15}$	$\frac{1}{15}$	$\frac{1}{15}$	$\frac{1}{15}$	$\frac{1}{15}$	$\frac{1}{6}$			
$\frac{2}{3}$	$\frac{1}{15}$	$\frac{1}{15}$	$\frac{1}{15}$	$\frac{1}{15}$	$\frac{1}{15}$	$\frac{1}{6}$	$\frac{1}{6}$		
$\frac{5}{6}$	$\frac{1}{15}$	$\frac{1}{15}$	$\frac{1}{15}$	$\frac{1}{15}$	$\frac{1}{15}$	$\frac{1}{6}$	$\frac{1}{6}$	$\frac{1}{6}$	
1	$\frac{1}{15}$	$\frac{1}{15}$	$\frac{1}{15}$	$\frac{1}{15}$	$\frac{1}{15}$	$\frac{1}{6}$	$\frac{1}{6}$	$\frac{1}{6}$	$\frac{1}{6}$
b_s	$\frac{1}{10}$	$\frac{1}{10}$	$\frac{1}{10}$	$\frac{1}{10}$	$\frac{1}{10}$	$\frac{1}{10}$	$\frac{1}{10}$	$\frac{1}{10}$	$\frac{1}{10}$

repository (<https://doi.org/10.5281/zenodo.10952494>), and is subject to the BSD-2-Clause license. Due to large data size, the obtained results from the numerical experiments are saved in the local storage at RIKEN R-CCS.

Table 4. Summary of numerical experiments for validating the proposed dynamical core.

Test case	Focus
Linear advection	Validation of the cubed-sphere projection, Convergence rate with advection, Impact of modal filters on numerical convergence
Internal gravity wave	Validation of the pressure gradient and buoyancy terms, Convergence rate with wave propagation
Mountain wave	Validation of the terrain-following coordinate, Convergence rate with vertical coordinate transformation
Baroclinic instability	Numerical robustness in developing small-scale flow structures, Numerical convergence discussed in previous studies
Held–Suarez test	Numerical robustness in climatic simulations with long-term integrations, Numerical convergence and effective resolutions
Global LES in a small planet	Validation of the turbulent model formulated in cubed-sphere coordinate, Effective resolutions on energy spectra, Consistency of numerical criterion indicated in KT2023

820 **Appendix A: [Additional linear advection test](#)**

In Sect. 3.1, by conducting a linear advection test with a smooth profile in a solid-body rotation flow, we tested the spatial discretization with the cubed-sphere geometry and checked the convergence rate with the high-order DGM. In this section, we performed a linear advection test using the Gaussian hills and slotted cylinder profiles in a deformation flow, which is the Case 4 presented in Nair and Lauritzen (2010) (hereinafter, referred to as NL2010). The experimental setup with the spatial resolution, polynomial order, and timestep was similar to that described in Sect. 3.1. To compare the errors reported in Guba et al. (2014) (hereinafter, referred to as G2014), we normalized the errors following Appendix C of NL2010.

Figure A1 shows the dependence of error norms on the horizontal resolution when the Gaussian hills were given as the initial condition of the tracer. Because of the infinitely smooth profile, we obtained $p + 1$ -order accuracy for $p = 1, 3, 7$, and 11. The behavior of numerical convergence and the magnitude of errors were comparable to those in G2014 (see the values of l_1, l_2, l_∞ for "Gauss." with the hyperviscosity (but without the limiter) in Tables 1-4 and Fig. 4 of G2014). In our results, the L_{inf} error was larger than the unity for $p = 11$ in the coarsest spatial resolution. This reflects a numerical instability with the aliasing errors near the static stagnation point of the deformation flow. It occurred when the static stagnation point was located at the element boundaries and numerical dissipation was not sufficient. By introducing a very weak modal filter with $\alpha_{m,h} = 2.5 \times 10^{-2}$ and $p_{m,h} = 64$, we can control the numerical instability as shown by the green dashed line in Fig. A1.

Figure A2 shows the dependence of error norms on the horizontal resolution when the slotted cylinders were given as the initial tracer profile. Because of the C0 discontinuous field, we cannot expect the convergence rate higher than the first-order accuracy. Even when using the high polynomial orders $p > 3$, we obtained at most the first order for the L_1 error norm. For

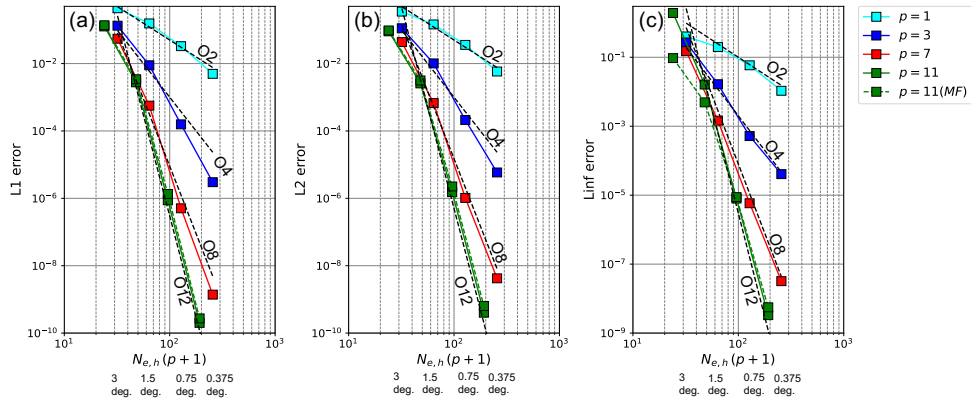


Figure A1. Dependence of (a) L_1 , (b) L_2 , and (c) L_{∞} errors at $t = 12$ days on the horizontal resolution in the Case 4 in NL2010 with the Gaussian hills using $\rho = 1, 3, 7$, and 11 . The green dashed line represents the case of applying a modal filter for $\rho = 11$.

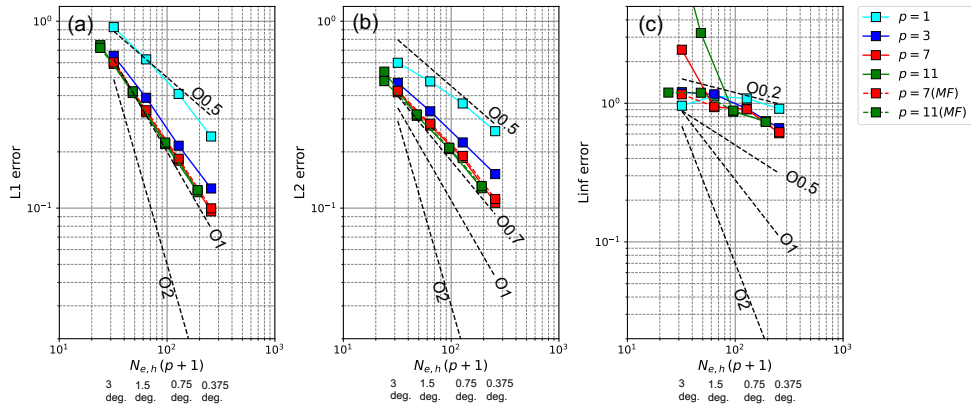


Figure A2. Dependence of (a) L_1 , (b) L_2 , and (c) L_{∞} errors at $t = 12$ days on the horizontal resolution in the Case 4 in NL2010 with the slotted cylinders using $\rho = 1, 3, 7$, and 11 . The dashed lines represents the cases of applying a modal filter for $\rho = 7, 11$.

Table 5. Summary of the polynomial order p , the number of elements, and the resulting equatorial resolution $\Delta_{h,eq}$ in the numerical experiments. For the number of elements, we denote the number of horizontally one-dimensional elements on a panel of the cubed-sphere as $N_{e,h}$ and the number of vertical elements as $N_{e,v}$.

Test case	p	$(N_{e,h}, N_{e,v})$	$\Delta_{h,eq}$
Linear advection	1	(16,-), (32,-), (64,-), (128,-)	313, 156, 78, 39 km
	3	(8,-), (16,-), (32,-), (64,-)	313, 156, 78, 39 km
	7	(4,-), (8,-), (16,-), (32,-)	313, 156, 78, 39 km
	11	(2,-), (4,-), (8,-), (16,-)	417, 208, 104, 52 km
Internal gravity wave	1	(16,12), (32,24), (64,48), (128,96)	313, 156, 78, 39 km
	3	(8,6), (16,12), (32,24), (64,48)	313, 156, 78, 39 km
	7	(4,3), (8,6), (16,12), (32,24), (64,48)	313, 156, 78, 39 km
	11	(3,2), (6,4), (12,8)	278, 139, 69 km
Mountain wave	3	(24,12), (48,20), (96,36)	625, 313, 156 m
	7	(12,6), (24,12), (48,20), (96,36)	625, 313, 156, 78 m
	11	(8,5), (16,8), (32,14)	625, 313, 156 m
Baroclinic wave	3	(10,8), (20,8), (40,8), (80,8)	250, 125, 63, 31 km
	7	(5,4), (10,4), (20,4), (40,4), (80,4)	250, 125, 63, 31, 16 km
	11	(3,3), (6,3), (12,3), (24,3)	278, 139, 69, 35 km
Held–Suarez test	3	(12,8), (24,16), (48,32)	208, 104, 52 km
	7	(6,4), (12,8), (24,16), (48,32)	208, 104, 52, 26 km
	11	(4,3), (8,6), (16,12)	208, 104, 52 km
Global LES in a small planet	3	(128,64)	10 m
	4	(100,52)	11 m
	7	(64,32), (12,8), (24,16), (48,32)	10 m

840 the L_{inf} error, the convergence rate was near the zero order. The behavior of slow numerical convergence and the magnitude of numerical errors were similar to those reported in G2014 (see the error norms for “Cyl.” with the hyperviscosity (but without the limiter) in Tables 1-4 of G2014). As seen in the Gaussian hills case, due to the numerical instability near the static stagnation point, we observed very large L_{inf} error values for the cases of $p = 7, 11$ with the coarse spatial resolution. The modal filter used for the Gaussian hills case can suppress the numerical instability as shown by the dashed lines in Fig. A2.

Appendix B: Additional information for mountain wave test

In this section, we detail the spin-up strategy and sponge layer, which were used in the mountain wave test described in Sect. 3.3. In addition, we consider ~~some~~ reasons why the obtained convergence rate ~~is~~ was slightly less than the optimal order accuracy.

Table 6. Summary of dissipation mechanism in the numerical experiments. In the table, \bigcirc means it is included, while $-$ means it is not included. For the modal filtering in the mountain wave, baroclinic wave, and Held–Suarez tests, “scale-selective” means a high-order filter with $p_m \geq 8$ and “strong” means a large decay coefficient of $\alpha_m \geq O(1)$. The parameters of the filters are detailed in Tables 7, 8, and 9.

Test case	Implicit diffusion with Rusanov flux	Explicit diffusion with modal filtering	Turbulence parameterization
Linear advection	\bigcirc	$-$	$-$
Impact of modal filters in linear advection	\bigcirc	$p_{m,h} = 64, 32, 16, 8$ and $\alpha_{m,h} = 10^{-3}, 10^{-1}, 10^1$	$-$
Internal gravity wave	\bigcirc	$-$	$-$
Mountain wave	\bigcirc	scale-selective, weak (see Table. 7)	$-$
Baroclinic wave	\bigcirc	scale-selective, weak for $p = 3$, scale-selective, strong for $p = 7, 11$ (see Table. 8)	$-$
Held–Suarez test	\bigcirc	scale-selective, weak for $p = 3$, scale-selective, strong for $p = 7, 11$ (see Table. 9)	$-$
Global LES in a small planet	\bigcirc	$p_{m,h} = p_{m,v} = 32, \alpha_{m,h} = \alpha_{m,v} = 10^{-3}$	\bigcirc

Table 7. Modal filter orders and decay coefficients used in the mountain wave test.

	$p_{m,h}, p_{m,v}$	$\alpha_{m,h}, \alpha_{m,v}$
$p = 3$	32	1.0×10^{-2}
$p = 7$ ($\Delta_{h,eq} = 625$ m)	64	1.0×10^{-2}
$p = 7$ ($\Delta_{h,eq} = 313, 156, 78$ m)	64	5.0×10^{-3}
$p = 11$ ($\Delta_{h,eq} = 625$ m)	64	1.0×10^{-2}
$p = 11$ ($\Delta_{h,eq} = 313$ m)	64	7.5×10^{-2}
$p = 11$ ($\Delta_{h,eq} = 156$ m)	64	5.0×10^{-3}

Table 8. Modal filter orders and decay coefficients used in the baroclinic instability test. Because the vertical resolution was fixed when increasing the horizontal resolution, the decay coefficient for the vertical filter $\alpha_{m,v}$ was reduced in proportion to the timestep.

	$p_{m,h}$	$\alpha_{m,h}$	$p_{m,v}$	$\alpha_{m,v}$ (for $\Delta_{h,eq} = 250$ km)
$p = 3$	16	2.0×10^{-1}	12	8.0×10^{-1}
$p = 7$	16	2.0×10^0	16	1.2×10^0
$p = 11$	24	1.6×10^1	24	1.6×10^1

Table 9. Modal filter orders and decay coefficients used in the Held–Suarez test after 250-days spin-up experiments. Note that we temporarily increased $\alpha_{m,h}$ to 6.0×10^0 for 20 days during the 1000-day integration for the case of $\Delta_{h,eq} = 26$ km using $p = 7$.

	$p_{m,h}$	$\alpha_{m,h}$	$p_{m,v}$	$\alpha_{m,v}$
$p = 3$	8	1.0×10^{-1}	8	5.0×10^{-2}
$p = 7$ ($\Delta_{h,eq} = 208, 104$ km)	16	4.0×10^0	16	4.0×10^0
$p = 7$ ($\Delta_{h,eq} = 52, 26^*$ km)	16	5.0×10^0	16	5.0×10^0
$p = 11$	16	4.0×10^0	16	4.0×10^0

B1 Spin-up strategy

To mitigate the influence of impulsive start on numerical solutions, we gradually accelerated the wind as performed in previous studies with regional experimental setup (e.g., Durran, 1986; Sachspurger et al., 2016). The initial condition ~~is~~ was a rest
850 isothermal atmosphere and ~~is~~ was represented as

$$\begin{aligned}
 u^\xi &= 0, \quad u^\zeta = 0, \quad u^\eta = 0, \\
 p &= P_0 \exp\left(-\frac{gz}{RT_0}\right), \\
 \rho &= \frac{P_0}{RT_0} \exp\left(-\frac{gz}{RT_0}\right),
 \end{aligned} \tag{B1}$$

where $P_0 = 10^5$ Pa and $T_0 = 300$ K. To accelerate a zonal wind, we added the relaxation terms in the right-hand side of governing
855 equations as

$$\begin{aligned}
 \frac{\partial \sqrt{G} \rho'}{\partial t} &= \dots - \alpha_f \sqrt{G} \rho', \\
 \frac{\partial \sqrt{G} \rho u^\xi}{\partial t} &= \dots - \alpha_f \sqrt{G} (\rho u^\xi - \rho U^\xi), \\
 \frac{\partial \sqrt{G} \rho u^\eta}{\partial t} &= \dots - \alpha_f \sqrt{G} (\rho u^\eta - \rho U^\eta), \\
 \frac{\partial \sqrt{G} \rho u^\zeta}{\partial t} &= \dots - \alpha_f \sqrt{G} (\rho u^\zeta - \rho U^\zeta), \\
 860 \quad \frac{\partial \sqrt{G} (\rho \theta)'}{\partial t} &= \dots - \alpha_f \sqrt{G} (\rho \theta)',
 \end{aligned} \tag{B2}$$

where (U^ξ, U^η, U^ζ) are the vector components of prescribed wind and α_f is a time-dependent coefficient with Rayleigh forcing terms, which is provided in this subsection. Note that we set the hydrostatic balance part of pressure and density as

$$\begin{aligned}
 p_{\text{hyd}} &= P_0 \exp\left(-\frac{u_{\text{eq}}}{2RT_0} \sin^2 \theta - \frac{gz}{RT_0}\right), \quad \rho_{\text{hyd}} = \frac{p_{\text{hyd}}}{RT_0}, \\
 865 \quad p_{\text{hyd}} &= P_0 \exp\left(-\frac{u_{\text{eq}}}{2RT_0} \sin^2 \phi - \frac{gz}{RT_0}\right), \quad \rho_{\text{hyd}} = \frac{p_{\text{hyd}}}{RT_0},
 \end{aligned} \tag{B3}$$

which satisfies a dynamically balanced state associated with a zonal wind in solid rotation, $u_{\text{eq}} \cos \theta u_{\text{eq}} \cos \phi$. Then, the perturbation at the initial time is given by $p' = p - p_{\text{hyd}}$, $\rho' = \rho - \rho_{\text{hyd}}$.

As the horizontal component of prescribed wind, we ~~consider~~ considered a zonal wind in solid body rotation where $u_{\text{eq}} = 20$ m s⁻¹. The corresponding (U^ξ, U^η) can be calculated by considering the coordinate conversion between the cubed-sphere and geographic coordinates. To improve the inconsistency with no-flux boundary condition at the surface, ~~we add~~ the vertical component was added in the form of

$$U^\xi = -\sqrt{G_v}(G_v^{13}U^\xi + G_v^{23}U^\eta) \exp\left(-\frac{\zeta}{H_f}\right),$$

$$U^\zeta = -\sqrt{G_v}(G_v^{13}U^\xi + G_v^{23}U^\eta) \exp\left(-\frac{\zeta}{H_f}\right), \quad (\text{B4})$$

where H_f was set to 2 km in this study. This modification also reduces the influence of initial shock. On the other hand, the coefficient with the forcing terms ~~is~~ was given as $\alpha_f(t) = w(t)\tau_f^{-1}$, where

$$w = 1 \quad \text{for } 0 \leq t \leq t_1,$$

$$w = \frac{1}{2} \left[1 - \cos\left(\pi \frac{t - t_1}{t_2 - t_1}\right) \right] \quad \text{for } t_1 \leq t \leq t_2,$$

$$w = 0 \quad \text{for } t \geq t_2,$$

$$w = 1 \quad \text{for } 0 \leq t \leq t_1,$$

$$w = \frac{1}{2} \left[1 - \cos\left(\pi \frac{t - t_1}{t_2 - t_1}\right) \right] \quad \text{for } t_1 \leq t \leq t_2,$$

$$w = 0 \quad \text{for } t \geq t_2,$$

and τ_f is the forcing time scale. In this study, these parameters were set as $\tau_f = 60$ s, $t_1 = 200$ s, and $t_2 = 1800$ s.

885 B2 Sponge layer

To suppress a reflection of waves at the model top, we introduced a sponge layer at upper computational domain. In addition, to reduce the disruption of our targeting structure of mountain wave due to the global propagation of initial shocks, a lateral sponge layer was placed ~~on the 1/4 sector of the sphere~~. As in Eq. (B2), linear damping terms were added to the governing equations as follows:

$$\frac{\partial \sqrt{G} \rho'}{\partial t} = \dots - \alpha_s \sqrt{G} \rho',$$

$$\frac{\partial \sqrt{G} \rho u^\xi}{\partial t} = \dots - \alpha_s \sqrt{G} (\rho u^\xi - U^\xi),$$

$$\begin{aligned}
\frac{\partial \sqrt{G} \rho u^\eta}{\partial t} &= \dots - \alpha_s \sqrt{G} (\rho u^\eta - \rho U^\eta), \\
\frac{\partial \sqrt{G} \rho u^\zeta}{\partial t} &= \dots - \alpha_s \sqrt{G} (\rho u^\zeta - \rho U^\zeta), \\
\frac{\partial \sqrt{G} (\rho \theta)'}{\partial t} &= \dots - \alpha_s \sqrt{G} (\rho \theta)'.
\end{aligned} \tag{B6}$$

895 The decay coefficient ~~is was~~ given as $\alpha_s = (1 - w(t))(\alpha_{s,h} + \alpha_{s,v})$ where $\alpha_{s,h}$ and $\alpha_{s,v}$ are the coefficients for lateral and upper sponge layers, respectively. To avoid the sponge layer interfering with the initial forcing in Eq. (B2), as the initial forcing weakens, ~~we gradually activated~~ the sponge layer ~~is gradually activated~~ using the coefficient $(1 - w(t))$. The coefficient for the upper sponge layer ~~is was~~ given as

$$\alpha_{s,v} = \frac{\tau_{s,v}^{-1}}{2} \left\{ \frac{1}{2} \left[1 + \tanh \left(\frac{z - (z_T + z_{sp})/2}{\delta_{sp,v} (z_T - z_{sp})} \right) \right] \right\},$$

900

$$\alpha_{s,v} = \frac{\tau_{s,v}^{-1}}{2} \left\{ \frac{1}{2} \left[1 + \tanh \left(\frac{z - (z_T + z_{sp})/2}{\delta_{sp,v} (z_T - z_{sp})} \right) \right] \right\}, \tag{B7}$$

whereas, for the lateral sponge layer,

$$\begin{aligned}
\alpha_{s,h} &= \frac{\tau_{s,h}^{-1}}{2} \left\{ \left[1 - \tanh \left(\frac{\lambda - \pi/4}{\delta_{sp,h} \pi/2} \right) \right] + \left[1 + \tanh \left(\frac{\lambda - 7\pi/4}{\delta_{sp,h} \pi/2} \right) \right] \right\} \\
&\quad \cdot \frac{1}{2} \left[1 + \tanh \left(\frac{|\theta| - \pi/3}{8\pi/180} \right) \right],
\end{aligned}$$

905

$$\alpha_{s,h} = \frac{\tau_{s,h}^{-1}}{2} \left\{ \left[1 - \tanh \left(\frac{\lambda - \pi/4}{\delta_{sp,h} \pi/2} \right) \right] + \left[1 + \tanh \left(\frac{\lambda - 7\pi/4}{\delta_{sp,h} \pi/2} \right) \right] \right\} \cdot \frac{1}{2} \left[1 + \tanh \left(\frac{|\phi| - \pi/3}{8\pi/180} \right) \right], \tag{B8}$$

where z_T is the height of model top, and $\tau^{s,v}$ and $\tau^{s,h}$ are the decay time scales corresponding to the upper and lateral sponge layers. Note that the coefficient for the lateral sponge layer is multiplied by a tapering function in the latitudinal direction to avoid an infinite zonal scale near the poles, as performed in Eq. (48). In this study, we set $z_{sp} = 15$ km, $\delta_{sp,v} = \delta_{sp,h} = 0.16$, and

910 $\tau_{s,v} = \tau_{s,h} = 100$ s.

B3 ~~Investigation of degrading~~ Investigation on the degradation of the optimal numerical convergence

~~Figure 6 indicates that In Fig. 6,~~ the convergence rate obtained from the mountain test case ~~is was~~ slightly smaller than ~~that achieved for~~ $p + 1$ -order accuracy. We consider the reasons behind this result to be as follows: First, to evaluate the differentials with the Jacobian cofactors ($\sqrt{G_v} G_v^{13}$ and $\sqrt{G_v} G_v^{23}$), we used same discretization operator, as described in Sect. 2.3.

915 This strategy is beneficial to simply satisfy the geometric conservation law identity in the discretized equations. However, because the calculated geometric factors have the order p , it is possible to degrade the optimal convergence. Figures B1 (a),

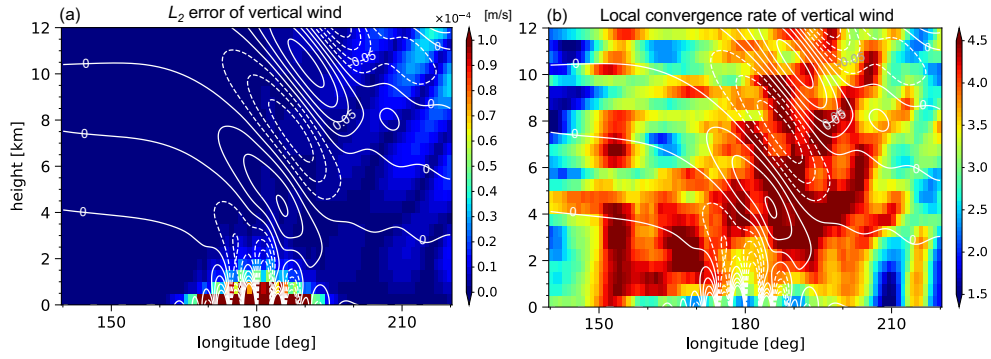


Figure B1. After 2 hours in a mountain wave test case with global model, spatial distribution of (a) L_2 error ~~norm~~ and (b) local convergence rate for the vertical wind at the equator. For the L_2 error ~~norm~~, we show the result obtained from the experiment where the ~~effective~~ horizontal and vertical grid spacing ($\Delta_{\text{eff},h}, \Delta_{\text{eff},v}, \Delta_h, \Delta_v$) are set to 156 m and 125 m, respectively, using $p = 3$. The cell color in the figure corresponds to the average values within the finite element. When evaluating the local convergence rate, we used the element average of L_2 error ~~norm~~ obtained from two experiments: a coarse resolution experiment ($\Delta_{\text{eff},h} = 625$ m, $\Delta_h = 625$ m, $\Delta_{\text{eff},v} = 500$ m, $\Delta_v = 500$ m) and the highest resolution experiment for $p = 3$ ($\Delta_{\text{eff},h} = 156$ m, $\Delta_h = 156$ m, $\Delta_{\text{eff},v} = 125$ m, $\Delta_v = 125$ m). To see the large-scale structure of local convergence rate, moving average was taken across the five elements horizontally. In each figure, the white lines represent the vertical wind in the highest resolution experiment for $p = 3$.

(b) show the spatial distribution of numerical errors for vertical wind and the local convergence rate, respectively, for $p = 3$. The numerical error ~~is was~~ large near the surface where the mountain exists. Furthermore, the relatively slow convergence rate ~~appears appeared~~. The rate near the surface ~~is was~~ between two and three, while it ~~approaches approached~~ the value of four at locations apart from the surface. Second, the modal filter can reduce the convergence rate during the long-term temporal integrations even if we adopted a high-order modal filter with a relatively small decay coefficient.

To increase the certainty of our speculations, we conducted additional numerical experiments. To simplify the investigations and save the computational resources, we treated the corresponding two-dimensional experimental setup. With respect to the Jacobian cofactors, we considered two cases: (i) the case where it is numerically given by using the same discretization operator mentioned in Sect. 2.3, and (ii) the case when it is given by analytically evaluating the spatial derivatives at the node. In addition, to discuss the impact of modal filters on the convergence rate, we ~~consider considered~~ the case of no modal filter for $p = 3$ because we found that the 2-hours temporal integration without filters can be ~~somehow~~ performed only for $p = 3$. As performed with the global model case, we ~~conduct a series of conducted several~~ numerical experiments changing the spatial resolutions and polynomial orders. To evaluate the error norms, we used the results from the reference experiments with $p = 7$, where ~~$\Delta_{\text{eff},h} = 78$ m and $\Delta_{\text{eff},v} = 62.5$ horizontal and vertical grid spacing were $\Delta_h = 78$ m and $\Delta_v = 62.5$ m ($z < 15$ km), respectively.~~

Figures B2(a), (b) show the spatial distribution of numerical errors for vertical wind and the local convergence rate obtained from the two-dimensional experiments with $p = 3$. As shown in the global experiment (see Fig. B1), the convergence rate near the mountain ~~achieves achieved~~ only the third-order accuracy in the cases of numerically calculated Jacobian cofactor. On the

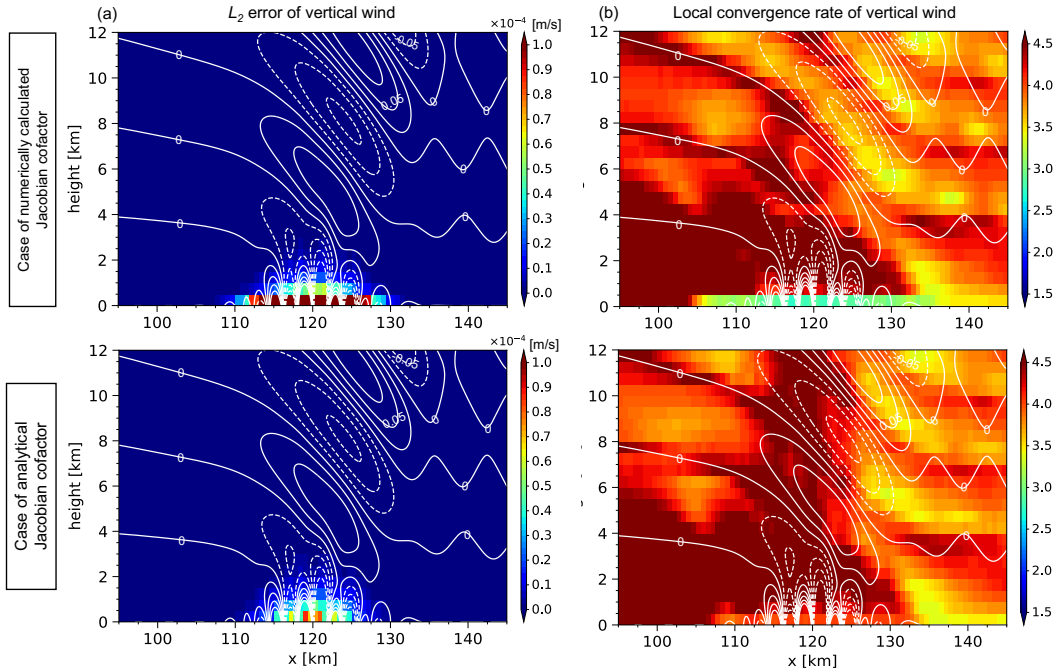


Figure B2. After 2 hours in a **two-dimensional two-dimensional** mountain wave test case, spatial distribution of (a) L_2 error norm and (b) local convergence rate for the vertical wind in the cases of numerically calculated Jacobian cofactor (upper panels) and analytical Jacobian cofactor (lower panels) for $p = 3$. In the L_2 error norm, we show the results obtained from the experiments with $\Delta_{\text{eff},h} = 156$ $\Delta_h = 156$ m and $\Delta_{\text{eff},v} = 125$ $\Delta_v = 125$ m. When evaluating the local convergence rate, we used the results obtained from two experiments: a coarse resolution experiment ($\Delta_{\text{eff},h} = 312$ $\Delta_h = 312$ m, $\Delta_{\text{eff},v} = 250$ $\Delta_v = 250$ m) and the highest resolution experiment for $p = 3$ ($\Delta_{\text{eff},h} = 39$ $\Delta_h = 39$ m, $\Delta_{\text{eff},v} = 31.25$ $\Delta_v = 31.25$ m). In each figure, the white lines represent the vertical wind in the reference experiment.

other hand, when the analytical Jacobian cofactor **is was** used, the numerical errors near the mountain **decrease decreased** and the convergence rate **reaches to about approached the** fourth-order accuracy. Thus, **we confirm that** the calculation strategy of Jacobian cofactor is one of **the** reasons for sub-optimal convergence.

Figure B3 shows that the dependence of L_1 , L_2 , and L_{inf} errors on the spatial resolution. First, we focus on the results with $p = 3$. When the metric cofactors **are were** analytically evaluated and the modal filter **is was** not used, the fourth-order accuracy **is was** observed except for the density. In case of numerically calculated Jacobian cofactor, the convergence rate of L_2 and L_{inf} errors **are were** characterized by the sub-optimal order because the Jacobian cofactors have only p th-order accuracy, as mentioned above. Such behavior **is was** observed for horizontal wind, vertical wind, and the perturbation of potential temperature weighted density based on the comparison between (i) and (ii) cases. On the other hand, **as indicated by** the blue and cyan lines **indicate that**, the order reduction with the modal filters **is was** obvious for the horizontal wind, while for other variables, there **is was** little influence. This may be because the filters act on not only the perturbation part of horizontal wind but also on the mean flow part. For higher order cases ($p = 7, 11$), the filters are unavoidable for ensuring numerical

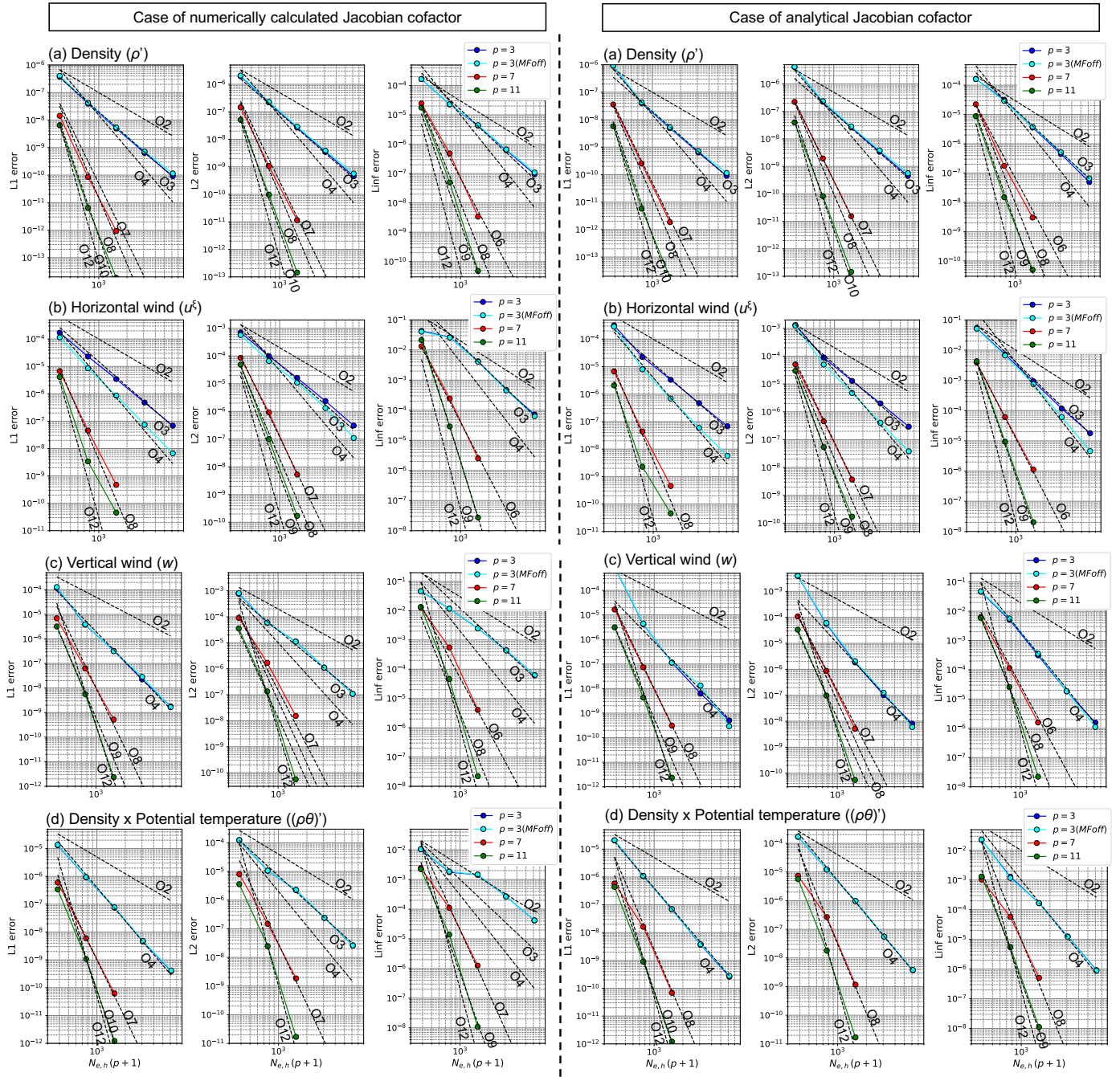


Figure B3. Dependence of L_1 , L_2 , and L_{inf} errors on spatial resolution for (a) density perturbation (ρ'), (b) horizontal wind (u^ξ), (c) vertical wind (w), and (d) perturbation of potential temperature weighted density ($(\rho\theta)'$) after 2 hours in a mountain wave test case with the **two-dimensional experimental setup**. Note that the cyan lines represent the results for the case $p = 3$ without the modal filter (MFoff).

stability in classical DGM. Then, the convergence rate can be limited by the modal filters, and the analytical Jacobian cofactor would have little impact. Even for the case (ii), L_2 and L_{inf} errors of horizontal and vertical wind ~~have had~~ the convergence rate slightly less than the optimal order. As for the density, note that the third-order accuracy ~~is was~~ obtained for $p = 3$ even when using the analytical Jacobian cofactor and removing the modal filter. It remains unclear why the density error does not
 950 decrease in the optimal order. We may need to pursue how to discretely deal with the hydrostatic balance (e.g., Li and Xing, 2018) and investigate the boundary errors with no-normal flux condition near the surface.

Appendix C: Vertical grid stretching in the baroclinic wave and Held–Suarez tests

In the baroclinic wave and Held–Suarez tests, a function form for stretching the vertical element size is similar with that in Ullrich and Jablonowski (2012b). We calculated the vertical coordinate ζ at the top element boundary of k' -th element as

$$955 \quad \zeta_{k'+\frac{1}{2}} = z_T \frac{1}{\sqrt{b+1}-1} \left[\sqrt{b \left(\frac{k'}{N_{e,v}} \right)^2 + 1} - 1 \right] \quad (\text{C1})$$

where b is a positive parameter and $N_{e,z}$ is the number of elements in the vertical direction. As b decreases, the vertical element size near the surface reduces compared to the upper domain of the model. We set $b = 20$ for $p = 3, 7$ and $b = 5$ for $p = 11$ in the baroclinic wave test, while $b = 3$ for $p = 3, 7$ and $b = 5$ for $p = 11$ in the Held–Suarez test.

Appendix D: The effect of not using shallow atmosphere approximation on global PBL turbulence experiment

960 In Sect. 3.6, we showed the results of PBL turbulence experiment with shallow atmosphere approximation. By applying this approximation, the obtained results become comparable with those reported in KT2021 and KT2023 which used the plane regional model. However, because the planetary radius is set to be 3.4 km, this approximation is not suitable for discussing physical aspects such as the impact of sphere geometry on the convective cells. This section shows the results when the shallow atmosphere approximation is not applied.

965 Figures D1 and D2 show the horizontal distributions of convective cells and vertical structure of PBL when the shallow atmosphere approximation is not applied. In Fig. D2, all results with the shallow atmosphere approximation are represented by the gray shade. An open cell pattern with the characteristic horizontal scale of a few kilometers ~~is was~~ observed irrespective of whether we apply the shallow atmosphere approximation. On the other hand, the winds ~~become became~~ weaker and the PBL ~~is was~~ shallower compared to that in the shallow atmosphere approximation. We consider that such changes are consistent with
 970 the effect of spherical geometry because horizontal area increases with the altitude.

Figure D3 shows the energy spectra when the shallow atmosphere approximation is not applied. The major ~~features feature~~ of energy spectra in the ~~inertia subrange (such as inertial~~ subrange remained mostly unchanged. For example, the wavelength range obeyed $-5/3$ power law and the relation of effective resolution with polynomial order), ~~remain mostly unchanged.~~

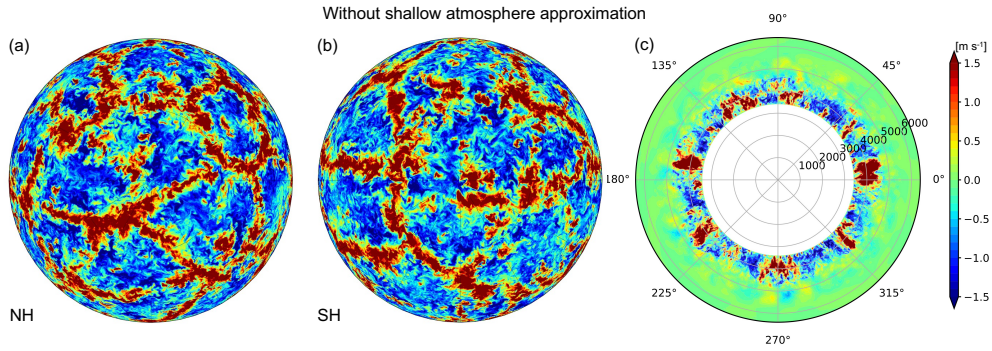


Figure D1. Same as Fig. 13, but these results were obtained without shallow atmosphere approximation. The horizontal distribution for vertical wind at $z = 500$ m after $t = 4$ hours: (a) Northern hemisphere (NH), (b) Southern hemisphere (SH), and (c) the corresponding cross-sections along the equator.

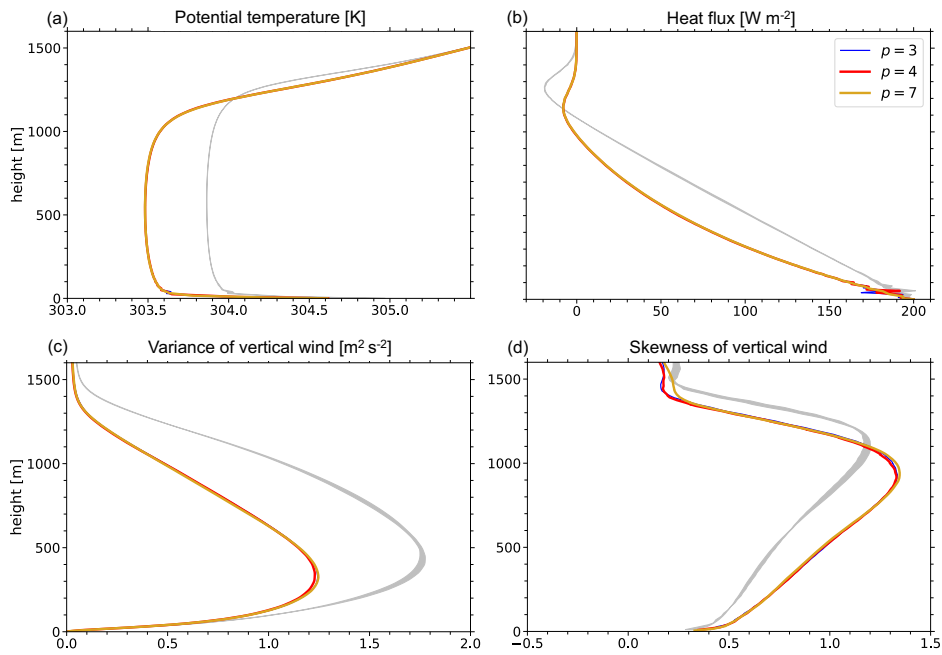


Figure D2. Same as Fig. 14, but figures show the vertical structure of PBL temporally averaged during the last 30 minutes without shallow atmosphere approximation: (a) potential temperature, (b) resolved eddy heat flux plus SGS heat flux, (c) variance of vertical wind, and (d) skewness of vertical wind. In these panels, the blue, red, and yellow lines represent the results for $p = 3, 4,$ and $7,$ respectively. We indicate the corresponding results with the shallow atmosphere approximation, shown in Fig. 14, by the gray shade.

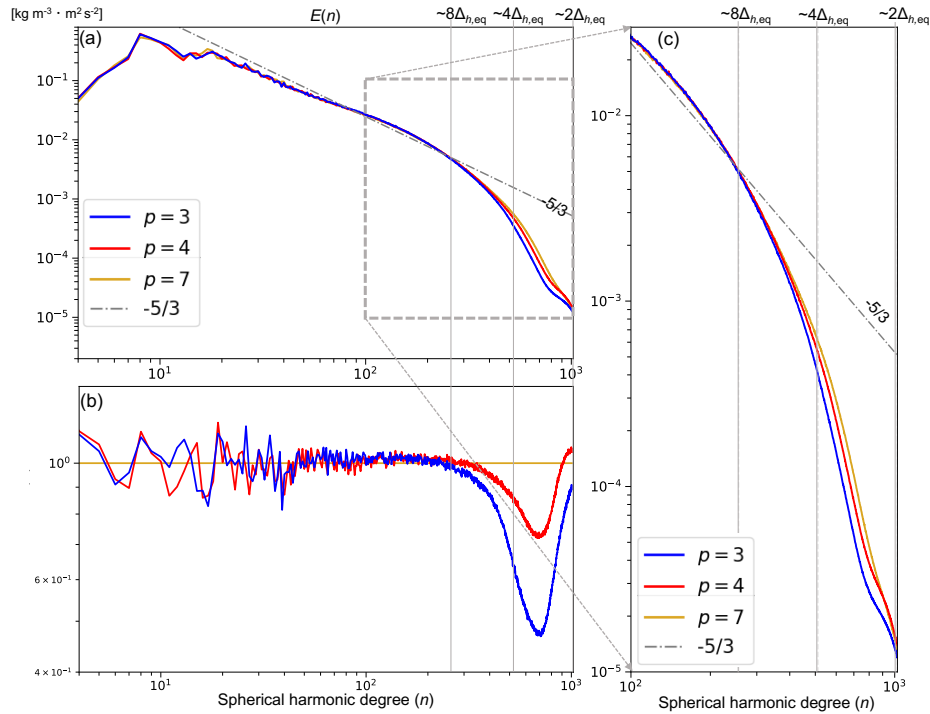


Figure D3. Same as Fig. 15, but figures show the results without shallow atmosphere approximation: (a) Density-weighted energy spectra $E(n)$ of three-dimensional wind at a height of 500 m for $p = 3, 4,$ and 7 . The dash-dotted gray line represents $aE(n)$ where $a = 8.0 \times 10^1$. (b) ~~Compensated spectra $E(n)/(an^{-5/3})$~~ Spectra normalized by the result of $p = 7$. (c) Partial expanded view of energy spectra in the short wavelength range.

Author contributions. All authors have contributed to writing this paper. YK mainly performed the general development of the simulation programs based on DGM and conducted the numerical experiments. HT guided this project considering future high-resolution atmospheric simulations and high performance computers. He also contributed to improve the structure of this paper and discuss the simulation results.

Competing interests. The authors have no competing interests to declare.

Acknowledgements. This research was supported by the MEXT KAKENHI (grant number: JP20H05731), Moonshot R&D (grant number: JPMJMS2286), the Foundation for Computational Science (FOCUS) Establishing Supercomputing Center of Excellence, JST AIP (grant number: JPMJCR19U2), JICA and JST SATREPS (grant Number: JPMJSA2109), and JSPS Core-to-Core Program (grant number: JPJSCCA20220001). The experiments in this study were performed using the supercomputer Fugaku at RIKEN (Project ID: ra000005, hp200271, and hp230278) and the Wisteria supercomputer at the University of Tokyo. We thank Dr. Seiya Nishizawa, Dr. Hiroaki Miura,

and Dr. Keiichi Ishioka [and three reviewers \(Dr. Valeria Barra and anonymous reviewers\)](#) for their valuable comments and suggestions. We would like to thank Editage (www.editage.jp) for the English language editing.

- Ascher, U. M., Ruuth, S. J., and Spiteri, R. J.: Implicit-explicit Runge-Kutta methods for time-dependent partial differential equations, *Applied Numerical Mathematics*, 25, 151–167, [https://doi.org/10.1016/S0168-9274\(97\)00056-1](https://doi.org/10.1016/S0168-9274(97)00056-1), special Issue on Time Integration, 1997.
- Baldauf, M. and Brdar, S.: An analytic solution for linear gravity waves in a channel as a test for numerical models using the non-hydrostatic, compressible Euler equations, *Quarterly Journal of the Royal Meteorological Society*, 139, 1977–1989, <https://doi.org/10.1002/qj.2105>,
990 2013.
- Bao, L., Klöforn, R., and Nair, R. D.: Horizontally Explicit and Vertically Implicit (HEVI) Time Discretization Scheme for a Discontinuous Galerkin Nonhydrostatic Model, *Monthly Weather Review*, 143, 972 – 990, <https://doi.org/10.1175/MWR-D-14-00083.1>, 2015.
- Blaise, S., Lambrechts, J., and Deleersnijder, E.: A stabilization for three-dimensional discontinuous Galerkin discretizations applied to nonhydrostatic atmospheric simulations, *International Journal for Numerical Methods in Fluids*, 81, 558–585,
995 <https://doi.org/10.1002/flid.4197>, 2016.
- Brdar, S., Baldauf, M., Dedner, A., and Klöforn, R.: Comparison of dynamical cores for NWP models: comparison of COSMO and Dune, *Theoretical and Computational Fluid Dynamics*, 27, 453–472, <https://doi.org/10.1007/s00162-012-0264-z>, 2013.
- Brown, A. R., Derbyshire, S. H., and Mason, P. J.: Large-eddy simulation of stable atmospheric boundary layers with a revised stochastic subgrid model, *Quarterly Journal of the Royal Meteorological Society*, 120, 1485–1512, <https://doi.org/10.1002/qj.49712052004>, 1994.
- 1000 Dennis, J., Fournier, A., Spatz, W. F., St-Cyr, A., Taylor, M. A., Thomas, S. J., and Tufo, H.: High-Resolution Mesh Convergence Properties and Parallel Efficiency of a Spectral Element Atmospheric Dynamical Core, *The International Journal of High Performance Computing Applications*, 19, 225–235, <https://doi.org/10.1177/1094342005056108>, 2005.
- Dennis, J. M., Edwards, J., Evans, K. J., Guba, O., Lauritzen, P. H., Mirin, A. A., St-Cyr, A., Taylor, M. A., and Worley, P. H.: CAM-SE: A scalable spectral element dynamical core for the Community Atmosphere Model, *The International Journal of High Performance*
1005 *Computing Applications*, 26, 74–89, <https://doi.org/10.1177/1094342011428142>, 2012.
- Durran, D. R.: Another Look at Downslope Windstorms. Part I: The Development of Analogs to Supercritical Flow in an Infinitely Deep, Continuously Stratified Fluid, *Journal of Atmospheric Sciences*, 43, 2527 – 2543, [https://doi.org/10.1175/1520-0469\(1986\)043<2527:ALADWP>2.0.CO;2](https://doi.org/10.1175/1520-0469(1986)043<2527:ALADWP>2.0.CO;2), 1986.
- Favre, A.: Turbulence: Space-time statistical properties and behavior in supersonic flows, *The Physics of Fluids*, 26, 2851–2863,
1010 <https://doi.org/10.1063/1.864049>, 1983.
- Gal-Chen, T. and Somerville, R. C.: On the use of a coordinate transformation for the solution of the Navier-Stokes equations, *Journal of Computational Physics*, 17, 209–228, [https://doi.org/10.1016/0021-9991\(75\)90037-6](https://doi.org/10.1016/0021-9991(75)90037-6), 1975.
- Gardner, D. J., Guerra, J. E., Hamon, F. P., Reynolds, D. R., Ullrich, P. A., and Woodward, C. S.: Implicit–explicit (IMEX) Runge–Kutta methods for non-hydrostatic atmospheric models, *Geoscientific Model Development*, 11, 1497–1515, <https://doi.org/10.5194/gmd-11-1497-2018>, 2018.
- 1015 Gassner, G. J., Winters, A. R., and Kopriva, D. A.: Split form nodal discontinuous Galerkin schemes with summation-by-parts property for the compressible Euler equations, *Journal of Computational Physics*, 327, 39–66, <https://doi.org/10.1016/j.jcp.2016.09.013>, 2016.
- Giraldo, F. and Restelli, M.: A study of spectral element and discontinuous Galerkin methods for the Navier–Stokes equations in nonhydrostatic mesoscale atmospheric modeling: Equation sets and test cases, *Journal of Computational Physics*, 227, 3849–3877,
1020 <https://doi.org/10.1016/j.jcp.2007.12.009>, 2008.

- Giraldo, F. X., Kelly, J. F., and Constantinescu, E. M.: Implicit-Explicit Formulations of a Three-Dimensional Nonhydrostatic Unified Model of the Atmosphere (NUMA), *SIAM Journal on Scientific Computing*, 35, B1162–B1194, <https://doi.org/10.1137/120876034>, 2013.
- Gottlieb, S., Shu, C.-W., and Tadmor, E.: Strong Stability-Preserving High-Order Time Discretization Methods, *SIAM Review*, 43, 89–112, <https://doi.org/10.1137/S003614450036757X>, 2001.
- 1025 Guba, O., Taylor, M. A., Ullrich, P. A., Overfelt, J. R., and Levy, M. N.: The spectral element method (SEM) on variable-resolution grids: evaluating grid sensitivity and resolution-aware numerical viscosity, *Geoscientific Model Development*, 7, 2803–2816, <https://doi.org/10.5194/gmd-7-2803-2014>, 2014.
- Guerra, J. E. and Ullrich, P. A.: A high-order staggered finite-element vertical discretization for non-hydrostatic atmospheric models, *Geoscientific Model Development*, 9, 2007–2029, <https://doi.org/10.5194/gmd-9-2007-2016>, 2016.
- 1030 Held, I. M. and Suarez, M. J.: A Proposal for the Intercomparison of the Dynamical Cores of Atmospheric General Circulation Models, *Bulletin of the American Meteorological Society*, 75, 1825 – 1830, [https://doi.org/10.1175/1520-0477\(1994\)075<1825:APFTIO>2.0.CO;2](https://doi.org/10.1175/1520-0477(1994)075<1825:APFTIO>2.0.CO;2), 1994.
- Herrington, A. R., Lauritzen, P. H., Taylor, M. A., Goldhaber, S., Eaton, B. E., Bacmeister, J. T., Reed, K. A., and Ullrich, P. A.: Physics–Dynamics Coupling with Element-Based High-Order Galerkin Methods: Quasi-Equal-Area Physics Grid, *Monthly Weather Review*, 147, 69 – 84, <https://doi.org/10.1175/MWR-D-18-0136.1>, 2019.
- 1035 Hesthaven, J. S. and Warburton, T.: Nodal discontinuous Galerkin methods: algorithms, analysis, and applications, Springer Science & Business Media, <https://doi.org/10.1007/978-0-387-72067-8>, 2007.
- Hong, S.-Y., Kwon, Y. C., Kim, T.-H., Kim, J.-E. E., Choi, S., Kwon, I.-H., Kim, J., Lee, E.-H., Park, R. S., and Kim, D.-I.: The Korean Integrated Model (KIM) System for Global Weather Forecasting, *Asia-Pacific Journal of Atmospheric Sciences*, 54, 267–292, <https://api.semanticscholar.org/CorpusID:126095360>, 2018.
- 1040 Ishioka, K., Yamamoto, N., and Fujita, M.: A Formulation of a Three-Dimensional Spectral Model for the Primitive Equations, *Journal of the Meteorological Society of Japan. Ser. II*, 100, 445–469, <https://doi.org/10.2151/jmsj.2022-022>, 2022.
- Jablonowski, C. and Williamson, D. L.: A baroclinic instability test case for atmospheric model dynamical cores, *Quarterly Journal of the Royal Meteorological Society*, 132, 2943–2975, <https://doi.org/10.1256/qj.06.12>, 2006.
- 1045 Kawai, Y. and Tomita, H.: Numerical Accuracy of Advection Scheme Necessary for Large-Eddy Simulation of Planetary Boundary Layer Turbulence, *Monthly Weather Review*, 149, 2993 – 3012, <https://doi.org/10.1175/MWR-D-20-0362.1>, 2021.
- Kawai, Y. and Tomita, H.: Numerical Accuracy Necessary for Large-Eddy Simulation of Planetary Boundary Layer Turbulence Using the Discontinuous Galerkin Method, *Monthly Weather Review*, 151, 1479 – 1508, <https://doi.org/10.1175/MWR-D-22-0245.1>, 2023.
- Kelly, J. F. and Giraldo, F. X.: Continuous and discontinuous Galerkin methods for a scalable three-dimensional nonhydrostatic atmospheric model: Limited-area mode, *Journal of Computational Physics*, 231, 7988–8008, <https://doi.org/https://doi.org/10.1016/j.jcp.2012.04.042>, 2012.
- 1050 Kennedy, C. A. and Carpenter, M. H.: Additive Runge–Kutta schemes for convection–diffusion–reaction equations, *Applied numerical mathematics*, 44, 139–181, [https://doi.org/10.1016/S0168-9274\(02\)00138-1](https://doi.org/10.1016/S0168-9274(02)00138-1), 2003.
- Kent, J., Whitehead, J. P., Jablonowski, C., and Rood, R. B.: Determining the effective resolution of advection schemes. Part I: Dispersion analysis, *Journal of Computational Physics*, 278, 485–496, <https://doi.org/https://doi.org/10.1016/j.jcp.2014.01.043>, 2014.
- 1055 Ketcheson, D. I.: Highly Efficient Strong Stability-Preserving Runge–Kutta Methods with Low-Storage Implementations, *SIAM Journal on Scientific Computing*, 30, 2113–2136, <https://doi.org/10.1137/07070485X>, 2008.

- Klemp, J. B., Skamarock, W. C., and Park, S.-H.: Idealized global nonhydrostatic atmospheric test cases on a reduced-radius sphere, *Journal of Advances in Modeling Earth Systems*, 7, 1155–1177, <https://doi.org/10.1002/2015MS000435>, 2015.
- 1060 Li, G. and Xing, Y.: Well-balanced discontinuous Galerkin methods with hydrostatic reconstruction for the Euler equations with gravitation, *Journal of Computational Physics*, 352, 445–462, <https://doi.org/10.1016/j.jcp.2017.09.063>, 2018.
- Li, X., Chen, C., Shen, X., and Xiao, F.: Development of a unified high-order nonhydrostatic multi-moment constrained finite volume dynamical core: derivation of flux-form governing equations in the general curvilinear coordinate system, arXiv preprint arXiv:2004.05779, <https://doi.org/10.48550/arXiv.2004.05779>, 2020.
- 1065 Lilly, D. K.: On the numerical simulation of buoyant convection, *Tellus*, 14, 148–172, <https://doi.org/10.1111/j.2153-3490.1962.tb00128.x>, 1962.
- Lin, S.-J. and Rood, R. B.: Multidimensional Flux-Form Semi-Lagrangian Transport Schemes, *Monthly Weather Review*, 124, 2046 – 2070, [https://doi.org/10.1175/1520-0493\(1996\)124<2046:MFFSLT>2.0.CO;2](https://doi.org/10.1175/1520-0493(1996)124<2046:MFFSLT>2.0.CO;2), 1996.
- Lin, S.-J. and Rood, R. B.: An explicit flux-form semi-Lagrangian shallow-water model on the sphere, *Quarterly Journal of the Royal Meteorological Society*, 123, 2477–2498, <https://doi.org/10.1002/qj.49712354416>, 1997.
- 1070 Malardel, S. and Wedi, N. P.: How does subgrid-scale parametrization influence nonlinear spectral energy fluxes in global NWP models?, *Journal of Geophysical Research: Atmospheres*, 121, 5395–5410, <https://doi.org/10.1002/2015JD023970>, 2016.
- Miyamoto, Y., Kajikawa, Y., Yoshida, R., Yamaura, T., Yashiro, H., and Tomita, H.: Deep moist atmospheric convection in a subkilometer global simulation, *Geophysical Research Letters*, 40, 4922–4926, <https://doi.org/10.1002/grl.50944>, 2013.
- 1075 Nair, R. D.: Diffusion Experiments with a Global Discontinuous Galerkin Shallow-Water Model, *Monthly Weather Review*, 137, 3339 – 3350, <https://doi.org/10.1175/2009MWR2843.1>, 2009.
- Nair, R. D. and Lauritzen, P. H.: A class of deformational flow test cases for linear transport problems on the sphere, *Journal of Computational Physics*, 229, 8868–8887, <https://doi.org/https://doi.org/10.1016/j.jcp.2010.08.014>, 2010.
- Nair, R. D., Thomas, S. J., and Loft, R. D.: A Discontinuous Galerkin Global Shallow Water Model, *Monthly Weather Review*, 133, 876–888, <https://doi.org/10.1175/MWR2903.1>, 2005a.
- 1080 Nair, R. D., Thomas, S. J., and Loft, R. D.: A Discontinuous Galerkin Transport Scheme on the Cubed Sphere, *Monthly Weather Review*, 133, 814 – 828, <https://doi.org/10.1175/MWR2890.1>, 2005b.
- Nishizawa, S., Yashiro, H., Sato, Y., Miyamoto, Y., and Tomita, H.: Influence of grid aspect ratio on planetary boundary layer turbulence in large-eddy simulations, *Geoscientific Model Development*, 8, 3393–3419, <https://doi.org/10.5194/gmd-8-3393-2015>, 2015.
- 1085 Orgis, T., Läuter, M., Handorf, D., and Dethloff, K.: Baroclinic waves on the β plane using low-order Discontinuous Galerkin discretisation, *Journal of Computational Physics*, 339, 461–481, <https://doi.org/10.1016/j.jcp.2017.03.029>, 2017.
- Phillips, N. A.: A coordinate system having some special advantages for numerical forecasting, *Journal of Atmospheric Sciences*, 14, 184 – 185, [https://doi.org/10.1175/1520-0469\(1957\)014<0184:ACSHSS>2.0.CO;2](https://doi.org/10.1175/1520-0469(1957)014<0184:ACSHSS>2.0.CO;2), 1957.
- Rančić, M., Purser, R. J., and Mesinger, F.: A global shallow-water model using an expanded spherical cube: Gnomonic versus conformal coordinates, *Quarterly Journal of the Royal Meteorological Society*, 122, 959–982, <https://doi.org/10.1002/qj.49712253209>, 1996.
- 1090 Rančić, M., Purser, R. J., Jović, D., Vasic, R., and Black, T.: A Nonhydrostatic Multiscale Model on the Uniform Jacobian Cubed Sphere, *Monthly Weather Review*, 145, 1083 – 1105, <https://doi.org/10.1175/MWR-D-16-0178.1>, 2017.
- Ricardo, K., Lee, D., and Duru, K.: Conservation and stability in a discontinuous Galerkin method for the vector invariant spherical shallow water equations, *Journal of Computational Physics*, 500, 112 763, <https://doi.org/https://doi.org/10.1016/j.jcp.2024.112763>, 2024.

- 1095 Ronchi, C., Iacono, R., and Paolucci, P.: The “Cubed Sphere”: A New Method for the Solution of Partial Differential Equations in Spherical Geometry, *Journal of Computational Physics*, 124, 93–114, <https://doi.org/10.1006/jcph.1996.0047>, 1996.
- Rusanov, V. V.: Calculation of Interaction of Non-Steady Shock Waves with Obstacles, *Journal of Computational and Mathematical Physics USSR*, 1, 267, [https://doi.org/10.1016/0041-5553\(62\)90062-9](https://doi.org/10.1016/0041-5553(62)90062-9), 1961.
- Sachsperger, J., Serafin, S., and Grubišić, V.: Dynamics of rotor formation in uniformly stratified two-dimensional flow over a mountain, *Quarterly Journal of the Royal Meteorological Society*, 142, 1201–1212, <https://doi.org/https://doi.org/10.1002/qj.2746>, 2016.
- 1100 Sadourny, R.: Conservative Finite-Difference Approximations of the Primitive Equations on Quasi-Uniform Spherical Grids, *Monthly Weather Review*, 100, 136 – 144, [https://doi.org/10.1175/1520-0493\(1972\)100<0136:CFAOTP>2.3.CO;2](https://doi.org/10.1175/1520-0493(1972)100<0136:CFAOTP>2.3.CO;2), 1972.
- Satoh, M., Tomita, H., Yashiro, H., Miura, H., Kodama, C., Seiki, T., Noda, A. T., Yamada, Y., Goto, D., Sawada, M., et al.: The Non-hydrostatic Icosahedral Atmospheric Model: Description and development, *Progress in Earth and Planetary Science*, 1, 18, <https://doi.org/10.1186/s40645-014-0018-1>, 2014.
- 1105 Satoh, M., Stevens, B., Judt, F., Khairoutdinov, M., Lin, S.-J., Putman, W. M., and Düben, P.: Global Cloud-Resolving Models, *Current Climate Change Reports*, 5, 172–184, <https://doi.org/10.1007/s40641-019-00131-0>, 2019.
- Schär, C., Leuenberger, D., Fuhrer, O., Lüthi, D., and Girard, C.: A New Terrain-Following Vertical Coordinate Formulation for Atmospheric Prediction Models, *Monthly Weather Review*, 130, 2459 – 2480, [https://doi.org/10.1175/1520-0493\(2002\)130<2459:ANTFVC>2.0.CO;2](https://doi.org/10.1175/1520-0493(2002)130<2459:ANTFVC>2.0.CO;2),
- 1110 2002.
- Skamarock, W. C., Klemp, J. B., Duda, M. G., Fowler, L. D., Park, S.-H., and Ringler, T. D.: A Multiscale Nonhydrostatic Atmospheric Model Using Centroidal Voronoi Tessellations and C-Grid Staggering, *Monthly Weather Review*, 140, 3090–3105, <https://doi.org/10.1175/MWR-D-11-00215.1>, 2012.
- Smagorinsky, J.: General circulation experiments with the primitive equations: I. The basic experiment, *Monthly Weather Review*, 91, 99–164, [https://doi.org/10.1175/1520-0493\(1963\)091<0099:GCEWTP>2.3.CO;2](https://doi.org/10.1175/1520-0493(1963)091<0099:GCEWTP>2.3.CO;2), 1963.
- 1115 Souza, A. N., He, J., Bischoff, T., Waruszewski, M., Novak, L., Barra, V., Gibson, T., Sridhar, A., Kandala, S., Byrne, S., Wilcox, L. C., Kozdon, J., Giraldo, F. X., Knoth, O., Marshall, J., Ferrari, R., and Schneider, T.: The Flux-Differencing Discontinuous Galerkin Method Applied to an Idealized Fully Compressible Nonhydrostatic Dry Atmosphere, *Journal of Advances in Modeling Earth Systems*, 15, e2022MS003 527, <https://doi.org/10.1029/2022MS003527>, 2023.
- 1120 Sridhar, A., Tissaoui, Y., Marras, S., Shen, Z., Kawczynski, C., Byrne, S., Pamnany, K., Waruszewski, M., Gibson, T. H., Kozdon, J. E., Churavy, V., Wilcox, L. C., Giraldo, F. X., and Schneider, T.: Large-eddy simulations with ClimateMachine v0.2.0: a new open-source code for atmospheric simulations on GPUs and CPUs, *Geoscientific Model Development*, 15, 6259–6284, <https://doi.org/10.5194/gmd-15-6259-2022>, 2022.
- Taylor, M. A., Guba, O., Steyer, A., Ullrich, P. A., Hall, D. M., and Eldred, C.: An Energy Consistent Discretization of the Nonhydrostatic Equations in Primitive Variables, *Journal of Advances in Modeling Earth Systems*, 12, e2019MS001 783, <https://doi.org/https://doi.org/10.1029/2019MS001783>, 2020.
- 1125 Tolstykh, M., Shashkin, V., Fadeev, R., and Goyman, G.: Vorticity-divergence semi-Lagrangian global atmospheric model SL-AV20: dynamical core, *Geoscientific Model Development*, 10, 1961–1983, <https://doi.org/10.5194/gmd-10-1961-2017>, 2017.
- Tomita, H. and Satoh, M.: A new dynamical framework of nonhydrostatic global model using the icosahedral grid, *Fluid Dynamics Research*, 34, 357–400, <https://doi.org/10.1016/j.fluidyn.2004.03.003>, 2004.
- 1130 Ullrich, P. and Jablonowski, C.: Operator-Split Runge–Kutta–Rosenbrock Methods for Nonhydrostatic Atmospheric Models, *Monthly Weather Review*, 140, 1257 – 1284, <https://doi.org/10.1175/MWR-D-10-05073.1>, 2012a.

- Ullrich, P. A.: A global finite-element shallow-water model supporting continuous and discontinuous elements, *Geoscientific Model Development*, 7, 3017–3035, <https://doi.org/10.5194/gmd-7-3017-2014>, 2014.
- 1135 Ullrich, P. A. and Jablonowski, C.: MCore: A non-hydrostatic atmospheric dynamical core utilizing high-order finite-volume methods, *Journal of Computational Physics*, 231, 5078 – 5108, <https://doi.org/10.1016/j.jcp.2012.04.024>, 2012b.
- Ullrich, P. A., Jablonowski, C., and Van Leer, B.: High-order finite-volume methods for the shallow-water equations on the sphere, *Journal of Computational Physics*, 229, 6104–6134, <https://doi.org/https://doi.org/10.1016/j.jcp.2010.04.044>, 2010.
- Ullrich, P. A., Jablonowski, C., Kent, J., Lauritzen, P. H., Nair, R. D., and Taylor, M. A.: Dynamical core model intercomparison project
1140 (DCMIP) test case document, DCMIP Summer School, 83, <https://api.semanticscholar.org/CorpusID:197412504>, 2012.
- Wan, H., Giorgetta, M. A., and Bonaventura, L.: Ensemble Held–Suarez Test with a Spectral Transform Model: Variability, Sensitivity, and Convergence, *Monthly Weather Review*, 136, 1075 – 1092, <https://doi.org/10.1175/2007MWR2044.1>, 2008.
- Wan, H., Giorgetta, M. A., Zängl, G., Restelli, M., Majewski, D., Bonaventura, L., Fröhlich, K., Reinert, D., Rípodas, P., Kornblüeh, L.,
1145 and Förstner, J.: The ICON-1.2 hydrostatic atmospheric dynamical core on triangular grids – Part 1: Formulation and performance of the baseline version, *Geoscientific Model Development*, 6, 735–763, <https://doi.org/10.5194/gmd-6-735-2013>, 2013.
- Williamson, D. L., Drake, J. B., Hack, J. J., Jakob, R., and Swarztrauber, P. N.: A standard test set for numerical approximations to the shallow water equations in spherical geometry, *Journal of Computational Physics*, 102, 211–224, [https://doi.org/10.1016/S0021-9991\(05\)80016-6](https://doi.org/10.1016/S0021-9991(05)80016-6), 1992.
- Winters, A. R., Moura, R. C., Mengaldo, G., Gassner, G. J., Walch, S., Peiro, J., and Sherwin, S. J.: A comparative study on polynomial
1150 dealiasing and split form discontinuous Galerkin schemes for under-resolved turbulence computations, *Journal of Computational Physics*, 372, 1–21, <https://doi.org/10.1016/j.jcp.2018.06.016>, 2018.
- Yi, T.-H. and Giraldo, F. X.: Vertical Discretization for a Nonhydrostatic Atmospheric Model Based on High-Order Spectral Elements, *Monthly Weather Review*, 148, 415 – 436, <https://doi.org/10.1175/MWR-D-18-0283.1>, 2020.
- Zängl, G.: Extending the Numerical Stability Limit of Terrain-Following Coordinate Models over Steep Slopes, *Monthly Weather Review*,
1155 140, 3722–3733, <https://doi.org/10.1175/MWR-D-12-00049.1>, 2012.
- Zängl, G., Reinert, D., Rípodas, P., and Baldauf, M.: The ICON (ICOsahedral Non-hydrostatic) modelling framework of DWD and MPI-M: Description of the non-hydrostatic dynamical core, *Quarterly Journal of the Royal Meteorological Society*, 141, 563–579, <https://doi.org/10.1002/qj.2378>, 2015.
- Zaron, E. D., Chua, B. S., Reinecke, P. A., Michalakes, J., Doyle, J. D., and Xu, L.: The Tangent-Linear and Adjoint Models of the NEPTUNE
1160 Dynamical Core, *Tellus A: Dynamic Meteorology and Oceanography*, <https://doi.org/10.16993/tellusa.146>, 2022.